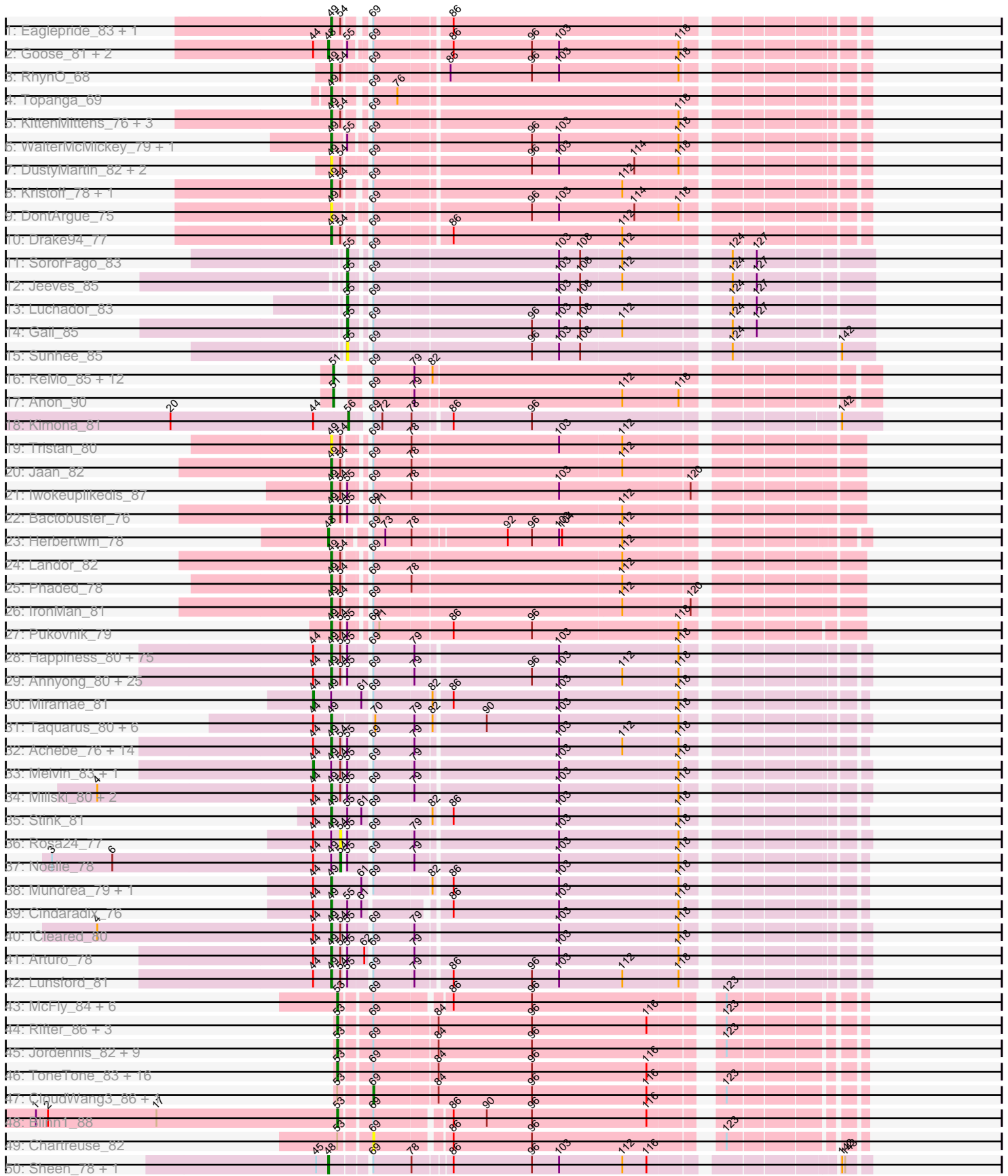
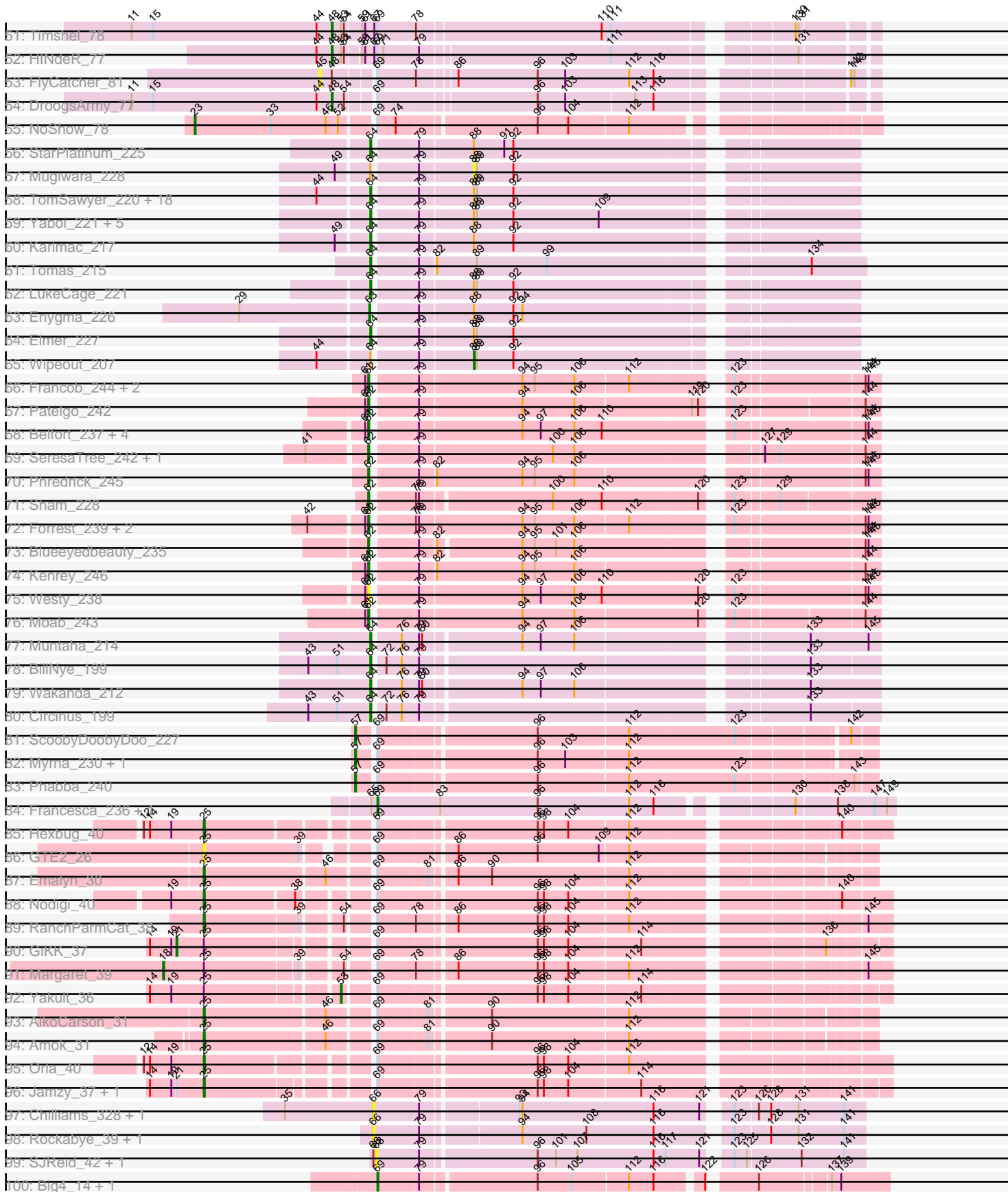


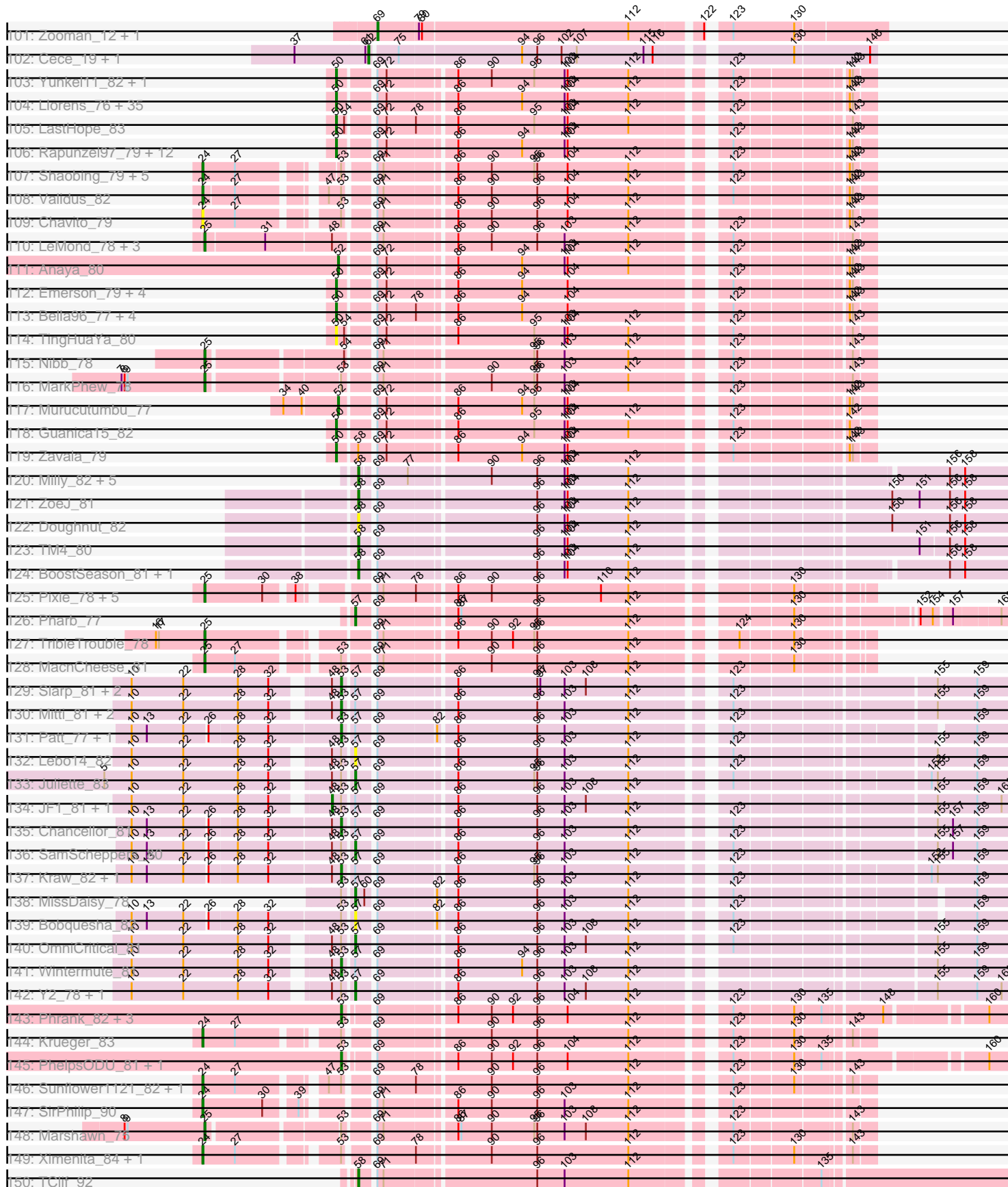
Pham 224158



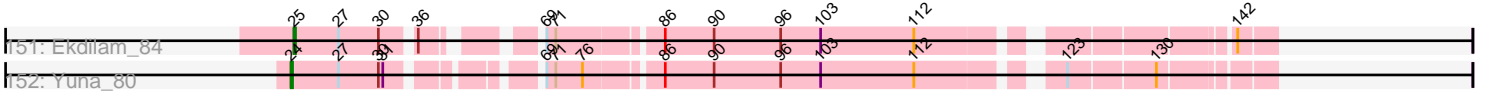
Pham 224158



Pham 224158



Pham 224158



Note: Tracks are now grouped by subcluster and scaled. Switching in subcluster is indicated by changes in track color. Track scale is now set by default to display the region 30 bp upstream of start 1 to 30 bp downstream of the last possible start. If this default region is judged to be packed too tightly with annotated starts, the track will be further scaled to only show that region of the ORF with annotated starts. This action will be indicated by adding "Zoomed" to the title. For starts, yellow indicates the location of called starts comprised solely of Glimmer/GeneMark auto-annotations, green indicates the location of called starts with at least 1 manual gene annotation.

Pham 224158 Report

This analysis was run 03/28/25 on database version 593.

Pham number 224158 has 464 members, 42 are drafts.

Phages represented in each track:

- Track 1 : Eaglepride_83, Stasia_78
- Track 2 : Goose_81, Chupacabra_77, OKCentral2016_79
- Track 3 : RhynO_68
- Track 4 : Topanga_69
- Track 5 : KittenMittens_76, Poompha_77, Severus_78, PeaceMeal1_77
- Track 6 : WalterMcMickey_79, Twister_80
- Track 7 : DustyMartin_82, Shapes_82, Rowdy_82
- Track 8 : Kristoff_78, Rebeuca_81
- Track 9 : DontArgue_75
- Track 10 : Drake94_77
- Track 11 : SororFago_83
- Track 12 : Jeeves_85
- Track 13 : Luchador_83
- Track 14 : Gail_85
- Track 15 : Sunhee_85
- Track 16 : ReMo_85, MinecraftSteve_88, ShayRa_85, DekHockey33_89, Boohoo_86, Battleship_90, Switzerland_85, LastResort_85, Anaysia_87, JSwag_87, KatherineG_87, Waits_87, Nebulosus_84
- Track 17 : Anon_90
- Track 18 : Kimona_81
- Track 19 : Tristan_80
- Track 20 : Jaan_82
- Track 21 : Iwokeuplikedis_87
- Track 22 : Bactobuster_76
- Track 23 : Herbertwm_78
- Track 24 : Landor_82
- Track 25 : Phaded_78
- Track 26 : IronMan_81
- Track 27 : Pukovnik_79
- Track 28 : Happiness_80, Eurydice_82, Chaph_81, Burger_79, LochMonster_82, Koreni_80, Romney_80, Mazhar510_81, JoongJeon_80, OKaNui_80, Lorenzo_81, Wilbur_81, Felipe_81, Obama12_82, Huxley_70, Funston_80, Phighter1804_81, Eris_80, CentreCat_81, Nebs_82, NotAPhaseMom_80, SheldonCooper_81, Cerulean_83, Relief_80, Bruiser_80, Camperdownii_77, Medusa_80, ChampagnePapi_84, Scamp_81, Flux_82, Eapen_81, Caelakin_79, Eagle_80, Dhanush_81, Iceman_79, Maverick_80, Shygu2_79, YoSam321_81, Kyee_81, Palestino_80, SenorClean_76, Spino_80, PeterPeter_81, Ulysses_80, Ruin_81,

Cocoaberry_81, TygerBlood_81, Pipcraft_77, Avle17_81, LHTSCC_83, KFPoly_80, Phacado_81, Sabertooth_81, Kremtemulon_78, Xena_77, Tinybot_80, Ohfah_82, Kratark_80, Koan_76, NorthStar_78, Maxo_83, Cintron_81, Kampy_80, Gadost_81, Nemo27_80, Kingmustik0402_81, Bombshell_81, Lemur_81, Datway_78, BangNhom_78, Wander_81, TroyPia_82, LittleB_81, Houdini22_80, Clarenza_80, Iracema64_81

- Track 29 : Anyong_80, Albee_81, Connomayer_81, TinaFeyge_79, Jaykayelowell_78, Pumbaa_81, Polymorphads_82, Florean_81, DirtyDunning_80, BubbleTrouble_80, Baby16_81, Sparxx_82, Roosevelt_79, TiroTheta9_80, JetBlade_82, LappelDuVide_81, Holli_80, Abdiel_80, Citius_81, Broseidon_81, Deano_78, Shaka_79, HamSlice_77, Morrow_83, Blackmoor_80, Bartimeaus_81
- Track 30 : Miramae_81
- Track 31 : Taquarus_80, LittleGuy_81, Nyxis_80, Eros_81, Phontbonne_81, Commander_79, Peaches_79
- Track 32 : Achebe_76, Perplexer_77, Morpher26_77, Wile_76, Alberto7_82, Katalie136_77, AbbysRanger_77, Backyardigan_75, Druantia_79, Badger_76, Wizard007_77, Bumblebee11_76, BellusTerra_81, Cici_77, PetiteSangsue_77
- Track 33 : Melvin_83, Skipitt_80
- Track 34 : Millski_80, Thanksgivukkah_80, MeeZee_80
- Track 35 : Stink_81
- Track 36 : Rosa24_77
- Track 37 : Noelle_78
- Track 38 : Mundrea_79, AvatarAhPeg_81
- Track 39 : Cindaradix_76
- Track 40 : ICleared_80
- Track 41 : Arturo_78
- Track 42 : Lunsford_81
- Track 43 : McFly_84, DaVinci_82, Cookiedough_84, Neeharika16_83, Dorothea_84, Kipper29_84, BABullseye_77
- Track 44 : Rifter_86, Gruunaga_85, Hexamo_85, Gladiator_82
- Track 45 : Jordennis_82, Candra_82, Hoot_79, Pmask_83, Kazan_85, SuperAwesome_84, VohminGhazi_84, GreedyLawyer_78, Newrala_83, SmellyB_84
- Track 46 : ToneTone_83, Wiks_85, Artemis2UCLA_85, WunderPhul_86, Helmet_87, Temprado_87, Zulu_87, Lilbunny_85, Blue7_87, Roksolana_86, Zaka_86, BlessJoy_85, Tucker_86, Koko_87, Indra_89, Yokurt_85, Garak_87
- Track 47 : CloudWang3_86, Hammer_86
- Track 48 : Blinn1_88
- Track 49 : Chartreuse_82
- Track 50 : Sheen_78, Toro_79
- Track 51 : Timshel_78
- Track 52 : HINdeR_77
- Track 53 : FlyCatcher_81
- Track 54 : DroogsArmy_77
- Track 55 : NoShow_78
- Track 56 : StarPlatinum_225
- Track 57 : Mugiwara_228
- Track 58 : TomSawyer_220, Jollison_213, KentuckyRacer_222, Spilled_223, Starbow_213, Bordeaux_214, Amabiko_220, Quaran19_216, IchabodCrane_211, Gibbi_224, Spelly_221, JimJam_223, MindFlayer_209, Rikishi_224, Birchlyn_215, PumpkinSpice_219, SaltySpittoon_216, Battuta_214, CeilingFan_220
- Track 59 : Yaboi_221, Wofford_218, Sollertia_217, Stanimal_216, Genie2_215, BoomerJR_215
- Track 60 : Karimac_217

- Track 61 : Tomas_215
- Track 62 : LukeCage_221
- Track 63 : Enygma_226
- Track 64 : Elmer_227
- Track 65 : Wipeout_207
- Track 66 : Francob_244, Gilson_240, MeganTheeKilla_243
- Track 67 : Patelgo_242
- Track 68 : Belfort_237, Comrade_233, Karp_236, SparkleGoddess_238, Stigma_236
- Track 69 : SeresaTree_242, Faust_238
- Track 70 : Phredrick_245
- Track 71 : Sham_228
- Track 72 : Forrest_239, Emma1919_241, Jada_238
- Track 73 : Blueeyedbeauty_235
- Track 74 : Kenrey_246
- Track 75 : Westy_238
- Track 76 : Moab_243
- Track 77 : Muntaha_214
- Track 78 : BillNye_199
- Track 79 : Wakanda_212
- Track 80 : Circinus_199
- Track 81 : ScoobyDoobyDoo_227
- Track 82 : Myrna_230, Greely_237
- Track 83 : Phabba_240
- Track 84 : Francesca_236, Dorin_235
- Track 85 : Hexbug_40
- Track 86 : GTE2_26
- Track 87 : Emalyn_30
- Track 88 : Nodigi_40
- Track 89 : RanchParmCat_38
- Track 90 : GiKK_37
- Track 91 : Margaret_39
- Track 92 : Yakult_36
- Track 93 : AikoCarson_31
- Track 94 : Amok_31
- Track 95 : Orla_40
- Track 96 : Jamzy_37, Button_35
- Track 97 : Chilliams_328, Chilliams_37
- Track 98 : Rockabye_39, Rockabye_338
- Track 99 : SJReid_42, SJReid_353
- Track 100 : Big4_14, Big4_340
- Track 101 : Zooman_12, Zooman_325
- Track 102 : Cece_19, Cece_321
- Track 103 : Yunkel11_82, Efra2_83
- Track 104 : Llorens_76, CaseJules_78, Boiii_76, BEEST_76, Asayake_76, Topper_76, Dalmuri_76, Twitch_76, Blizzard_76, Homura_75, ShiaSurprise_77, Joy99_77, Peel_76, Belladonna_76, Jeckyll_76, HedwigODU_76, Atiba_77, Hyperbowlee_75, Durfee_76, AlishaPH_75, Piatt_75, Capricorn_76, Tachez_76, Zabiza_72, CREW_75, Jarvi_76, Rosmarinus_76, Spock_76, Lunahalos_76, Adephegia_75, Padfoot_76, BaghaKamala_75, Inky_76, CallaLilly_77, ActinUp_77, BGlluvia_76
- Track 105 : LastHope_83

- Track 106 : Rapunzel97_79, Apocalypse_79, Slimphazie_78, BarrelRoll_77, TruffulaTree_78, CheetoDust_76, JAWS_75, Veliki_77, Deby_76, Mynx_78, Ramen_77, Pokerus_77, Jayhawk_79
- Track 107 : Shaobing_79, McMater_79, Richo_79, Niklas_80, Peanam_80, Dartin_79
- Track 108 : Validus_82
- Track 109 : Chavito_79
- Track 110 : LeMond_78, Oscar_78, Scarlett_79, KiSi_79
- Track 111 : Anaya_80
- Track 112 : Emerson_79, Prithvi_79, LindNT_75, Padpat_80, TreyKay_79
- Track 113 : Bella96_77, TiniBug_76, SamuelLPlaqson_76, Urkel_76, DrHayes_76
- Track 114 : TingHuaYa_80
- Track 115 : Nibb_78
- Track 116 : MarkPhew_78
- Track 117 : Murucutumbu_77
- Track 118 : Guanica15_82
- Track 119 : Zavala_79
- Track 120 : Milly_82, Strobilo_83, Marcoliusprime_81, DismalFunk_82, DismalStressor_82, Findley_82
- Track 121 : ZoeJ_81
- Track 122 : Doughnut_82
- Track 123 : TM4_80
- Track 124 : BoostSeason_81, Mufasa_81
- Track 125 : Pixie_78, ShedlockHolmes_81, TBond007_75, Hurricane_79, Keshu_81, Lea83_80
- Track 126 : Pharb_77
- Track 127 : TribbleTrouble_78
- Track 128 : MacnCheese_81
- Track 129 : Slarp_81, Cheetobro_81, Taquito_80
- Track 130 : Mitti_81, Eponine_83, Fionnbharth_81
- Track 131 : Patt_77, Reptar3000_78
- Track 132 : Lebo14_82
- Track 133 : Juliette_83
- Track 134 : JF1_81, Ruthiejr_82
- Track 135 : Chancellor_81
- Track 136 : SamScheppers_80
- Track 137 : Kraw_82, Malthus_82
- Track 138 : MissDaisy_78
- Track 139 : Bobquesha_82
- Track 140 : OmniCritical_81
- Track 141 : Wintermute_81
- Track 142 : Y2_78, Y10_78
- Track 143 : Phrank_82, Tierra_81, Bryler_82, Cain_82
- Track 144 : Krueger_83
- Track 145 : PhelpsODU_81, Unicorn_81
- Track 146 : Sunflower1121_82, Shadow1_83
- Track 147 : SirPhilip_90
- Track 148 : Marshawn_75
- Track 149 : Ximenita_84, Syra333_82
- Track 150 : TClif_92
- Track 151 : Ekdilam_84
- Track 152 : Yuna_80

Summary of Final Annotations (See graph section above for start numbers):

The start number called the most often in the published annotations is 49, it was called in 151 of the 422 non-draft genes in the pham.

Genes that call this "Most Annotated" start:

- AbbysRanger_77, Abdiel_80, Achebe_76, Albee_81, Alberto7_82, Annyong_80, Arturo_78, AvatarAhPeg_81, Avle17_81, Baby16_81, Backyardigan_75, Bactobuster_76, Badger_76, BangNhom_78, Bartimeaus_81, BellusTerra_81, Blackmoor_80, Bombshell_81, Broseidon_81, Bruiser_80, BubbleTrouble_80, Bumblebee11_76, Burger_79, Caelakin_79, Camperdownii_77, CentreCat_81, Cerulean_83, ChampagnePapi_84, Chaph_81, Cici_77, Cindaradix_76, Cintron_81, Citius_81, Clarenza_80, Cocoaberry_81, Commander_79, Connomayer_81, Datway_78, Deano_78, Dhanush_81, DirtyDunning_80, DontArgue_75, Drake94_77, Druantia_79, DustyMartin_82, Eagle_80, Eaglepride_83, Eapen_81, Eris_80, Eros_81, Eurydice_82, Floean_81, Flux_82, Funston_80, Gadost_81, HamSlice_77, Happiness_80, Holli_80, Houdini22_80, Huxley_70, ICleared_80, Iceman_79, Iracema64_81, IronMan_81, Iwokeuplikedis_87, Jaan_82, Jaykayelowell_78, JetBlade_82, JoongJeon_80, KFPoly_80, Kampy_80, Katalie136_77, Kingmustik0402_81, KittenMittens_76, Koan_76, Koreni_80, Kratark_80, Kremtemulon_78, Kristoff_78, Kyee_81, LHTSCC_83, Landor_82, LappelDuVide_81, Lemur_81, LittleB_81, LittleGuy_81, LochMonster_82, Lorenzo_81, Lunsford_81, Maverick_80, Maxo_83, Mazhar510_81, Medusa_80, MeeZee_80, Millski_80, Morpher26_77, Morrow_83, Mundrea_79, Nebs_82, Nemo27_80, NorthStar_78, NotAPhaseMom_80, Nyxis_80, OKaNui_80, Obama12_82, Ohfah_82, Palestino_80, PeaceMeal1_77, Peaches_79, Perplexer_77, PeterPeter_81, PetiteSangsue_77, Phacado_81, Phaded_78, Phelipe_81, Phighter1804_81, Phontbonne_81, Pipcraft_77, Polymorphads_82, Poompha_77, Pukovnik_79, Pumbaa_81, Rebeuca_81, Relief_80, RhynO_68, Romney_80, Roosevelt_79, Rowdy_82, Ruin_81, Sabertooth_81, Scamp_81, SeniorClean_76, Severus_78, Shaka_79, Shapes_82, SheldonCooper_81, Shygu2_79, Sparxx_82, Spino_80, Stasia_78, Stink_81, Taquarus_80, Thanksgivukkah_80, TinaFeyge_79, Tinybot_80, TiroTheta9_80, Topanga_69, Tristan_80, TroyPia_82, Twister_80, TygerBlood_81, Ulysses_80, WalterMcMickey_79, Wander_81, Wilbur_81, Wile_76, Wizard007_77, Xena_77, YoSam321_81,

Genes that have the "Most Annotated" start but do not call it:

- Karimac_217, Melvin_83, Miramae_81, Mugiwaru_228, Noelle_78, Rosa24_77, Skipitt_80,

Genes that do not have the "Most Annotated" start:

- ActinUp_77, Adephegia_75, AikoCarson_31, AlishaPH_75, Amabiko_220, Amok_31, Anaya_80, Anaysia_87, Anon_90, Apocalypse_79, Artemis2UCLA_85, Asayake_76, Atiba_77, BABullseye_77, BEEST_76, BGlluviae_76, BaghaKamala_75, BarrelRoll_77, Battleship_90, Battuta_214, Belfort_237, Bella96_77, Belladonna_76, Big4_14, Big4_340, BillNye_199, Birchlyn_215, BlessJoy_85, Blinn1_88, Blizzard_76, Blue7_87, Blueeyedbeauty_235, Bobquesha_82, Boiiii_76, Boohoo_86, BoomerJR_215, BoostSeason_81, Bordeaux_214, Bryler_82, Button_35, CREW_75, Cain_82, CallaLilly_77, Candra_82, Capricorn_76, CaseJules_78, Cece_19, Cece_321, CeilingFan_220, Chancellor_81,

Chartreuse_82, Chavito_79, CheetoDust_76, Cheetobro_81, Chilliams_328, Chilliams_37, Chupacabra_77, Circinus_199, CloudWang3_86, Comrade_233, Cookiedough_84, DaVinci_82, Dalmuri_76, Dartin_79, Deby_76, DekHockey33_89, DismalFunk_82, DismalStressor_82, Dorin_235, Dorothea_84, Doughnut_82, DrHayes_76, DroogsArmy_77, Durfee_76, Efra2_83, Ekdilam_84, Elmer_227, Emalyn_30, Emerson_79, Emma1919_241, Enygma_226, Eponine_83, Faust_238, Findley_82, Fionnbharth_81, FlyCatcher_81, Forrest_239, Francesca_236, Francob_244, GTE2_26, Gail_85, Garak_87, Genie2_215, GiKK_37, Gibbi_224, Gilson_240, Gladiator_82, Goose_81, GreedyLawyer_78, Greely_237, Gruunaga_85, Guanica15_82, HINdeR_77, Hammer_86, HedwigODU_76, Helmet_87, Herbertwm_78, Hexamo_85, Hexbug_40, Homura_75, Hoot_79, Hurricane_79, Hyperbowlee_75, IchabodCrane_211, Indra_89, Inky_76, JAWS_75, JF1_81, JSwag_87, Jada_238, Jamzy_37, Jarvi_76, Jayhawk_79, Jeckyll_76, Jeeves_85, JimJam_223, Jollison_213, Jordennis_82, Joy99_77, Juliette_83, Karp_236, KatherineG_87, Kazan_85, Kenrey_246, KentuckyRacer_222, Keshu_81, KiSi_79, Kimona_81, Kipper29_84, Koko_87, Kraw_82, Krueger_83, LastHope_83, LastResort_85, LeMond_78, Lea83_80, Lebo14_82, Lilbunny_85, LindNT_75, Llorens_76, Luchador_83, LukeCage_221, Lunahalos_76, MacnCheese_81, Malthus_82, Marcoliusprime_81, Margaret_39, MarkPhew_78, Marshawn_75, McFly_84, McMater_79, MeganTheeKilla_243, Milly_82, MindFlayer_209, MinecraftSteve_88, MissDaisy_78, Mitti_81, Moab_243, Mufasa_81, Muntaha_214, Murucutumbu_77, Mynx_78, Myrna_230, Nebulosus_84, Neeharika16_83, Newrala_83, Nibb_78, Niklas_80, NoShow_78, Nodigi_40, OKCentral2016_79, OmniCritical_81, Orla_40, Oscar_78, Padfoot_76, Padpat_80, Patelgo_242, Patt_77, Peanam_80, Peel_76, Phabba_240, Pharb_77, PhelpsODU_81, Phrank_82, Phredrick_245, Piatt_75, Pixie_78, Pmask_83, Pokerus_77, Prithvi_79, PumpkinSpice_219, Quaran19_216, Ramen_77, RanchParmCat_38, Rapunzel97_79, ReMo_85, Reptar3000_78, Richo_79, Rifter_86, Rikishi_224, Rockabye_338, Rockabye_39, Roksolana_86, Rosmarinus_76, Ruthiejr_82, SJReid_353, SJReid_42, SaltySpittoon_216, SamScheppers_80, SamuelLPlaqson_76, Scarlett_79, ScoobyDoobyDoo_227, SeresaTree_242, Shadow1_83, Sham_228, Shaobing_79, ShayRa_85, ShedlockHolmes_81, Sheen_78, ShiaSurprise_77, SirPhilip_90, Slarp_81, Slimphazie_78, SmellyB_84, Sollertia_217, SororFago_83, SparkleGoddess_238, Spelly_221, Spilled_223, Spock_76, Stanimal_216, StarPlatinum_225, Starbow_213, Stigma_236, Strobilo_83, Sunflower1121_82, Sunhee_85, SuperAwesome_84, Switzerland_85, Syra333_82, TBond007_75, TClif_92, TM4_80, Tachez_76, Taquito_80, Temprado_87, Tierra_81, Timshel_78, TingHuaYa_80, TiniBug_76, TomSawyer_220, Tomas_215, ToneTone_83, Topper_76, Toro_79, TreyKay_79, TribbleTrouble_78, TruffulaTree_78, Tucker_86, Twitch_76, Unicorn_81, Urkel_76, Validus_82, Veliki_77, VohminGhazi_84, Waits_87, Wakanda_212, Westy_238, Wiks_85, Wintermute_81, Wipeout_207, Wofford_218, WunderPhul_86, Ximenita_84, Y10_78, Y2_78, Yaboi_221, Yakult_36, Yokurt_85, Yuna_80, Yunkel11_82, Zabiza_72, Zaka_86, Zavala_79, ZoeJ_81, Zooman_12, Zooman_325, Zulu_87,

Summary by start number:

Start 18:

- Found in 1 of 464 (0.2%) of genes in pham
- Manual Annotations of this start: 1 of 422
- Called 100.0% of time when present
- Phage (with cluster) where this start called: Margaret_39 (CT),

Start 21:

- Found in 3 of 464 (0.6%) of genes in pham
- Manual Annotations of this start: 1 of 422
- Called 33.3% of time when present
- Phage (with cluster) where this start called: GiKK_37 (CT),

Start 23:

- Found in 1 of 464 (0.2%) of genes in pham
- Manual Annotations of this start: 1 of 422
- Called 100.0% of time when present
- Phage (with cluster) where this start called: NoShow_78 (AB),

Start 24:

- Found in 15 of 464 (3.2%) of genes in pham
- Manual Annotations of this start: 11 of 422
- Called 100.0% of time when present
- Phage (with cluster) where this start called: Chavito_79 (K1), Dartin_79 (K1), Krueger_83 (K6), McMater_79 (K1), Niklas_80 (K1), Peanam_80 (K1), Richo_79 (K1), Shadow1_83 (K6), Shaobing_79 (K1), SirPhilip_90 (K6), Sunflower1121_82 (K6), Syra333_82 (K6), Validus_82 (K1), Ximenita_84 (K6), Yuna_80 (K6),

Start 25:

- Found in 29 of 464 (6.2%) of genes in pham
- Manual Annotations of this start: 24 of 422
- Called 89.7% of time when present
- Phage (with cluster) where this start called: AikoCarson_31 (CT), Amok_31 (CT), Button_35 (CT), Ekdilam_84 (K6), Emalyn_30 (CT), GTE2_26 (CT), Hexbug_40 (CT), Hurricane_79 (K3), Jamzy_37 (CT), Keshu_81 (K3), KiSi_79 (K1), LeMond_78 (K1), Lea83_80 (K3), MacnCheese_81 (K3), MarkPheW_78 (K1), Marshawn_75 (K6), Nibb_78 (K1), Nodigi_40 (CT), Orla_40 (CT), Oscar_78 (K1), Pixie_78 (K3), RanchParmCat_38 (CT), Scarlett_79 (K1), ShedlockHolmes_81 (K3), TBond007_75 (K3), TripleTrouble_78 (K3),

Start 44:

- Found in 166 of 464 (35.8%) of genes in pham
- Manual Annotations of this start: 3 of 422
- Called 1.8% of time when present
- Phage (with cluster) where this start called: Melvin_83 (A4), Miramae_81 (A4), Skipitt_80 (A4),

Start 45:

- Found in 3 of 464 (0.6%) of genes in pham
- No Manual Annotations of this start.
- Called 33.3% of time when present
- Phage (with cluster) where this start called: FlyCatcher_81 (A7),

Start 48:

- Found in 32 of 464 (6.9%) of genes in pham
- Manual Annotations of this start: 10 of 422
- Called 34.4% of time when present
- Phage (with cluster) where this start called: Chupacabra_77 (A10), DroogsArmy_77 (A7), Goose_81 (A10), HINdeR_77 (A7), Herbertwm_78 (A2), JF1_81 (K4), OKCentral2016_79 (A10), Ruthiejr_82 (K4), Sheen_78 (A7), Timshel_78 (A7),

Toro_79 (A7),

Start 49:

- Found in 166 of 464 (35.8%) of genes in pham
- Manual Annotations of this start: 151 of 422
- Called 95.8% of time when present
- Phage (with cluster) where this start called: AbbysRanger_77 (A4), Abdiel_80 (A4), Achebe_76 (A4), Albee_81 (A4), Alberto7_82 (A4), Annyong_80 (A4), Arturo_78 (A4), AvatarAhPeg_81 (A4), Avle17_81 (A4), Baby16_81 (A4), Backyardigan_75 (A4), Bactobuster_76 (A2), Badger_76 (A4), BangNhom_78 (A4), Bartimeaus_81 (A4), BellusTerra_81 (A4), Blackmoor_80 (A4), Bombshell_81 (A4), Broseidon_81 (A4), Bruiser_80 (A4), BubbleTrouble_80 (A4), Bumblebee11_76 (A4), Burger_79 (A4), Caelakin_79 (A4), Camperdownii_77 (A4), CentreCat_81 (A4), Cerulean_83 (A4), ChampagnePapi_84 (A4), Chaph_81 (A4), Cici_77 (A4), Cindaradix_76 (A4), Cintron_81 (A4), Citius_81 (A4), Clarenza_80 (A4), Cocoaberry_81 (A4), Commander_79 (A4), Connomayer_81 (A4), Datway_78 (A4), Deano_78 (A4), Dhanush_81 (A4), DirtyDunning_80 (A4), DontArgue_75 (A10), Drake94_77 (A10), Druantia_79 (A4), DustyMartin_82 (A10), Eagle_80 (A4), Eaglepride_83 (A10), Eapen_81 (A4), Eris_80 (A4), Eros_81 (A4), Eurydice_82 (A4), Florean_81 (A4), Flux_82 (A4), Funston_80 (A4), Gadost_81 (A4), HamSlice_77 (A4), Happiness_80 (A4), Holli_80 (A4), Houdini22_80 (A4), Huxley_70 (A4), ICleared_80 (A4), Iceman_79 (A4), Iracema64_81 (A4), IronMan_81 (A2), Iwokeuplikedis_87 (A2), Jaan_82 (A2), Jaykayelowell_78 (A4), JetBlade_82 (A4), JoongJeon_80 (A4), KFPoly_80 (A4), Kampy_80 (A4), Katalie136_77 (A4), Kingmustik0402_81 (A4), KittenMittens_76 (A10), Koan_76 (A4), Koreni_80 (A4), Kratark_80 (A4), Kremtemulon_78 (A4), Kristoff_78 (A10), Kyee_81 (A4), LHTSCC_83 (A4), Landor_82 (A2), LappelDuVide_81 (A4), Lemur_81 (A4), LittleB_81 (A4), LittleGuy_81 (A4), LochMonster_82 (A4), Lorenzo_81 (A4), Lunsford_81 (A4), Maverick_80 (A4), Maxo_83 (A4), Mazhar510_81 (A4), Medusa_80 (A4), MeeZee_80 (A4), Millski_80 (A4), Morpher26_77 (A4), Morrow_83 (A4), Mundrea_79 (A4), Nebs_82 (A4), Nemo27_80 (A4), NorthStar_78 (A4), NotAPhaseMom_80 (A4), Nyxis_80 (A4), OKaNui_80 (A4), Obama12_82 (A4), Ohfah_82 (A4), Palestino_80 (A4), PeaceMeal1_77 (A10), Peaches_79 (A4), Perplexer_77 (A4), PeterPeter_81 (A4), PetiteSangsue_77 (A4), Phacado_81 (A4), Phaded_78 (A2), Felipe_81 (A4), Phighter1804_81 (A4), Phontbonne_81 (A4), Pipcraft_77 (A4), Polymorphads_82 (A4), Poompha_77 (A10), Pukovnik_79 (A2), Pumbaa_81 (A4), Rebeuca_81 (A10), Relief_80 (A4), RhynO_68 (A10), Romney_80 (A4), Roosevelt_79 (A4), Rowdy_82 (A10), Ruin_81 (A4), Sabertooth_81 (A4), Scamp_81 (A4), SeniorClean_76 (A4), Severus_78 (A10), Shaka_79 (A4), Shapes_82 (A10), SheldonCooper_81 (A4), Shygu2_79 (A4), Sparxx_82 (A4), Spino_80 (A4), Stasia_78 (A4), Stink_81 (A4), Taquarus_80 (A4), Thanksgivukkah_80 (A4), TinaFeyge_79 (A4), Tinybot_80 (A4), TiroTheta9_80 (A4), Topanga_69 (A10), Tristan_80 (A2), TroyPia_82 (A4), Twister_80 (A10), TygerBlood_81 (A4), Ulysses_80 (A4), WalterMcMickey_79 (A10), Wander_81 (A4), Wilbur_81 (A4), Wile_76 (A4), Wizard007_77 (A4), Xena_77 (A4), YoSam321_81 (A4),

Start 50:

- Found in 65 of 464 (14.0%) of genes in pham
- Manual Annotations of this start: 63 of 422
- Called 100.0% of time when present
- Phage (with cluster) where this start called: ActinUp_77 (K1), Adephegia_75 (K1), AlishaPH_75 (K1), Apocalypse_79 (K1), Asayake_76 (K1), Atiba_77 (K1), BEEST_76 (K1), BGiluviae_76 (K1), BaghaKamala_75 (K1), BarrelRoll_77 (K1), Bella96_77 (K1),

Belladonna_76 (K1), Blizzard_76 (K1), Boiiii_76 (K1), CREW_75 (K1), CallaLilly_77 (K1), Capricorn_76 (K1), CaseJules_78 (K1), CheetoDust_76 (K1), Dalmuri_76 (K1), Deby_76 (K1), DrHayes_76 (K1), Durfee_76 (K1), Efra2_83 (K1), Emerson_79 (K1), Guanica15_82 (K1), HedwigODU_76 (K1), Homura_75 (K1), Hyperbowlee_75 (K1), Inky_76 (K1), JAWS_75 (K1), Jarvi_76 (K1), Jayhawk_79 (K1), Jeckyll_76 (K1), Joy99_77 (K1), LastHope_83 (K1), LindNT_75 (K1), Llorens_76 (K1), Lunahalos_76 (K1), Mynx_78 (K1), Padfoot_76 (K1), Padpat_80 (K1), Peel_76 (K1), Piatt_75 (K1), Pokerus_77 (K1), Prithvi_79 (K1), Ramen_77 (K1), Rapunzel97_79 (K1), Rosmarinus_76 (K1), SamuelLPlaqson_76 (K1), ShiaSurprise_77 (K1), Slimphazie_78 (K1), Spock_76 (K1), Tachez_76 (K1), TingHuaYa_80 (K1), TiniBug_76 (K1), Topper_76 (K1), TreyKay_79 (K1), TruffulaTree_78 (K1), Twitch_76 (K1), Urkel_76 (K1), Veliki_77 (K1), Yunkel11_82 (K1), Zabiza_72 (K1), Zavala_79 (K1),

Start 51:

- Found in 16 of 464 (3.4%) of genes in pham
- Manual Annotations of this start: 14 of 422
- Called 87.5% of time when present
- Phage (with cluster) where this start called: Anaysia_87 (A15), Anon_90 (A15), Battleship_90 (A15), Boohoo_86 (A15), DekHockey33_89 (A15), JSwag_87 (A15), KatherineG_87 (A15), LastResort_85 (A15), MinecraftSteve_88 (A15), Nebulosus_84 (A15), ReMo_85 (A15), ShayRa_85 (A15), Switzerland_85 (A15), Waits_87 (A15),

Start 52:

- Found in 3 of 464 (0.6%) of genes in pham
- Manual Annotations of this start: 2 of 422
- Called 66.7% of time when present
- Phage (with cluster) where this start called: Anaya_80 (K1), Murucutumbu_77 (K1),

Start 53:

- Found in 89 of 464 (19.2%) of genes in pham
- Manual Annotations of this start: 52 of 422
- Called 65.2% of time when present
- Phage (with cluster) where this start called: Artemis2UCLA_85 (A6), BABullseye_77 (A6), BlessJoy_85 (A6), Blinn1_88 (A6), Blue7_87 (A6), Bryler_82 (K6), Cain_82 (K6), Candra_82 (A6), Chancellor_81 (K4), Cheetobro_81 (K4), Cookiedough_84 (A6), DaVinci_82 (A6), Dorothea_84 (A6), Eponine_83 (K4), Fionnbharth_81 (K4), Garak_87 (A6), Gladiator_82 (A6), GreedyLawyer_78 (A6), Gruunaga_85 (A6), Helmet_87 (A6), Hexamo_85 (A6), Hoot_79 (A6), Indra_89 (A6), Jordennis_82 (A6), Kazan_85 (A6), Kipper29_84 (A6), Koko_87 (A6), Kraw_82 (K4), Lilbunny_85 (A6), Malthus_82 (K4), McFly_84 (A6), Mitti_81 (K4), Neeharika16_83 (A6), Newrala_83 (A6), Patt_77 (K4), PhelpsODU_81 (K6), Phrank_82 (K6), Pmask_83 (A6), Reptar3000_78 (K4), Rifter_86 (A6), Roksolana_86 (A6), Slarp_81 (K4), SmellyB_84 (A6), SuperAwesome_84 (A6), Taquito_80 (K4), Temprado_87 (A6), Tierra_81 (K6), ToneTone_83 (A6), Tucker_86 (A6), Unicorn_81 (K6), VohminGhazi_84 (A6), Wiks_85 (A6), Wintermute_81 (K4), WunderPhul_86 (A6), Yakult_36 (CT), Yokurt_85 (A6), Zaka_86 (A6), Zulu_87 (A6),

Start 54:

- Found in 156 of 464 (33.6%) of genes in pham
- Manual Annotations of this start: 1 of 422
- Called 1.3% of time when present
- Phage (with cluster) where this start called: Noelle_78 (A4), Rosa24_77 (A4),

Start 55:

- Found in 142 of 464 (30.6%) of genes in pham
- Manual Annotations of this start: 4 of 422
- Called 3.5% of time when present
- Phage (with cluster) where this start called: Gail_85 (A14), Jeeves_85 (A14), Luchador_83 (A14), SororFago_83 (A14), Sunhee_85 (A14),

Start 56:

- Found in 1 of 464 (0.2%) of genes in pham
- Manual Annotations of this start: 1 of 422
- Called 100.0% of time when present
- Phage (with cluster) where this start called: Kimona_81 (A19),

Start 57:

- Found in 27 of 464 (5.8%) of genes in pham
- Manual Annotations of this start: 10 of 422
- Called 48.1% of time when present
- Phage (with cluster) where this start called: Bobquesha_82 (K4), Greely_237 (C2), Juliette_83 (K4), Lebo14_82 (K4), MissDaisy_78 (K4), Myrna_230 (C2), OmniCritical_81 (K4), Phabba_240 (C2), Pharb_77 (K3), SamScheppers_80 (K4), ScoobyDoobyDoo_227 (C2), Y10_78 (K4), Y2_78 (K4),

Start 58:

- Found in 13 of 464 (2.8%) of genes in pham
- Manual Annotations of this start: 11 of 422
- Called 92.3% of time when present
- Phage (with cluster) where this start called: BoostSeason_81 (K2), DismalFunk_82 (K2), DismalStressor_82 (K2), Doughnut_82 (K2), Findley_82 (K2), Marcoliusprime_81 (K2), Milly_82 (K2), Mufasa_81 (K2), Strobilo_83 (K2), TClif_92 (K6), TM4_80 (K2), ZoeJ_81 (K2),

Start 62:

- Found in 23 of 464 (5.0%) of genes in pham
- Manual Annotations of this start: 20 of 422
- Called 95.7% of time when present
- Phage (with cluster) where this start called: Belfort_237 (BK1), Blueeyedbeauty_235 (BK1), Cece_19 (GD3), Cece_321 (GD3), Comrade_233 (BK1), Emma1919_241 (BK1), Faust_238 (BK1), Forrest_239 (BK1), Francob_244 (BK1), Gilson_240 (BK1), Jada_238 (BK1), Karp_236 (BK1), Kenrey_246 (BK1), MeganTheeKilla_243 (BK1), Moab_243 (BK1), Patelgo_242 (BK1), Phredrick_245 (BK1), SeresaTree_242 (BK1), Sham_228 (BK1), SparkleGoddess_238 (BK1), Stigma_236 (BK1), Westy_238 (BK1),

Start 63:

- Found in 1 of 464 (0.2%) of genes in pham
- Manual Annotations of this start: 1 of 422
- Called 100.0% of time when present
- Phage (with cluster) where this start called: Enygma_226 (BE2),

Start 64:

- Found in 36 of 464 (7.8%) of genes in pham
- Manual Annotations of this start: 32 of 422
- Called 94.4% of time when present

- Phage (with cluster) where this start called: Amabiko_220 (BE2), Battuta_214 (BE2), BillNye_199 (BK2), Birchlyn_215 (BE2), BoomerJR_215 (BE2), Bordeaux_214 (BE2), CeilingFan_220 (BE2), Circinus_199 (BK2), Elmer_227 (BE2), Genie2_215 (BE2), Gibbi_224 (BE2), IchabodCrane_211 (BE2), JimJam_223 (BE2), Jollison_213 (BE2), Karimac_217 (BE2), KentuckyRacer_222 (BE2), LukeCage_221 (BE2), MindFlayer_209 (BE2), Muntaha_214 (BK2), PumpkinSpice_219 (BE2), Quaran19_216 (BE2), Rikishi_224 (BE2), SaltySpittoon_216 (BE2), Sollertia_217 (BE2), Spelly_221 (BE2), Spilled_223 (BE2), Stanimal_216 (BE2), StarPlatinum_225 (BE2), Starbow_213 (BE2), TomSawyer_220 (BE2), Tomas_215 (BE2), Wakanda_212 (BK2), Wofford_218 (BE2), Yaboi_221 (BE2),

Start 66:

- Found in 6 of 464 (1.3%) of genes in pham
- No Manual Annotations of this start.
- Called 66.7% of time when present
- Phage (with cluster) where this start called: Chilliams_328 (FC), Chilliams_37 (FC), Rockabye_338 (FC), Rockabye_39 (FC),

Start 68:

- Found in 2 of 464 (0.4%) of genes in pham
- No Manual Annotations of this start.
- Called 100.0% of time when present
- Phage (with cluster) where this start called: SJReid_353 (FC), SJReid_42 (FC),

Start 69:

- Found in 391 of 464 (84.3%) of genes in pham
- Manual Annotations of this start: 8 of 422
- Called 2.3% of time when present
- Phage (with cluster) where this start called: Big4_14 (GD2), Big4_340 (GD2), Chartreuse_82 (A6), CloudWang3_86 (A6), Dorin_235 (CG), Francesca_236 (CG), Hammer_86 (A6), Zooman_12 (GD2), Zooman_325 (GD2),

Start 88:

- Found in 32 of 464 (6.9%) of genes in pham
- Manual Annotations of this start: 1 of 422
- Called 6.2% of time when present
- Phage (with cluster) where this start called: Mugiwara_228 (BE2), Wipeout_207 (BE2),

Summary by clusters:

There are 23 clusters represented in this pham: GD2, GD3, K3, K2, K1, FC, K6, K4, A15, A14, A10, A19, A2, A4, A7, A6, C2, AB, CG, BK1, BK2, CT, BE2,

Info for manual annotations of cluster A10:

- Start number 48 was manually annotated 3 times for cluster A10.
- Start number 49 was manually annotated 12 times for cluster A10.

Info for manual annotations of cluster A14:

- Start number 55 was manually annotated 4 times for cluster A14.

Info for manual annotations of cluster A15:

- Start number 51 was manually annotated 14 times for cluster A15.

Info for manual annotations of cluster A19:

- Start number 56 was manually annotated 1 time for cluster A19.

Info for manual annotations of cluster A2:

- Start number 48 was manually annotated 1 time for cluster A2.
- Start number 49 was manually annotated 7 times for cluster A2.

Info for manual annotations of cluster A4:

- Start number 44 was manually annotated 3 times for cluster A4.
- Start number 49 was manually annotated 132 times for cluster A4.
- Start number 54 was manually annotated 1 time for cluster A4.

Info for manual annotations of cluster A6:

- Start number 53 was manually annotated 34 times for cluster A6.
- Start number 69 was manually annotated 2 times for cluster A6.

Info for manual annotations of cluster A7:

- Start number 48 was manually annotated 4 times for cluster A7.

Info for manual annotations of cluster AB:

- Start number 23 was manually annotated 1 time for cluster AB.

Info for manual annotations of cluster BE2:

- Start number 63 was manually annotated 1 time for cluster BE2.
- Start number 64 was manually annotated 28 times for cluster BE2.
- Start number 88 was manually annotated 1 time for cluster BE2.

Info for manual annotations of cluster BK1:

- Start number 62 was manually annotated 18 times for cluster BK1.

Info for manual annotations of cluster BK2:

- Start number 64 was manually annotated 4 times for cluster BK2.

Info for manual annotations of cluster C2:

- Start number 57 was manually annotated 3 times for cluster C2.

Info for manual annotations of cluster CG:

- Start number 69 was manually annotated 2 times for cluster CG.

Info for manual annotations of cluster CT:

- Start number 18 was manually annotated 1 time for cluster CT.
- Start number 21 was manually annotated 1 time for cluster CT.
- Start number 25 was manually annotated 9 times for cluster CT.
- Start number 53 was manually annotated 1 time for cluster CT.

Info for manual annotations of cluster GD2:

- Start number 69 was manually annotated 4 times for cluster GD2.

Info for manual annotations of cluster GD3:

- Start number 62 was manually annotated 2 times for cluster GD3.

Info for manual annotations of cluster K1:

- Start number 24 was manually annotated 4 times for cluster K1.
- Start number 25 was manually annotated 6 times for cluster K1.
- Start number 50 was manually annotated 63 times for cluster K1.
- Start number 52 was manually annotated 2 times for cluster K1.

Info for manual annotations of cluster K2:

- Start number 58 was manually annotated 10 times for cluster K2.

Info for manual annotations of cluster K3:

- Start number 25 was manually annotated 7 times for cluster K3.
- Start number 57 was manually annotated 1 time for cluster K3.

Info for manual annotations of cluster K4:

- Start number 48 was manually annotated 2 times for cluster K4.
- Start number 53 was manually annotated 11 times for cluster K4.
- Start number 57 was manually annotated 6 times for cluster K4.

Info for manual annotations of cluster K6:

- Start number 24 was manually annotated 7 times for cluster K6.
- Start number 25 was manually annotated 2 times for cluster K6.
- Start number 53 was manually annotated 6 times for cluster K6.
- Start number 58 was manually annotated 1 time for cluster K6.

Gene Information:

Gene: AbbysRanger_77 Start: 47535, Stop: 47068, Start Num: 49

Candidate Starts for AbbysRanger_77:

(Start: 44 @47553 has 3 MA's), (Start: 49 @47535 has 151 MA's), (Start: 54 @47526 has 1 MA's), (Start: 55 @47523 has 4 MA's), (Start: 69 @47505 has 8 MA's), (79, 47466), (103, 47331), (112, 47268), (118, 47214),

Gene: Abdiel_80 Start: 47911, Stop: 47441, Start Num: 49

Candidate Starts for Abdiel_80:

(Start: 44 @47929 has 3 MA's), (Start: 49 @47911 has 151 MA's), (Start: 54 @47902 has 1 MA's), (Start: 55 @47899 has 4 MA's), (Start: 69 @47881 has 8 MA's), (79, 47842), (96, 47734), (103, 47707), (112, 47644), (118, 47590),

Gene: Achebe_76 Start: 47514, Stop: 47047, Start Num: 49

Candidate Starts for Achebe_76:

(Start: 44 @47532 has 3 MA's), (Start: 49 @47514 has 151 MA's), (Start: 54 @47505 has 1 MA's), (Start: 55 @47502 has 4 MA's), (Start: 69 @47484 has 8 MA's), (79, 47445), (103, 47310), (112, 47247), (118, 47193),

Gene: ActinUp_77 Start: 50506, Stop: 50967, Start Num: 50

Candidate Starts for ActinUp_77:

(Start: 50 @50506 has 63 MA's), (Start: 69 @50533 has 8 MA's), (72, 50542), (86, 50602), (94, 50665), (103, 50707), (104, 50710), (112, 50770), (123, 50848), (142, 50944), (143, 50947),

Gene: Adephagia_75 Start: 50343, Stop: 50804, Start Num: 50

Candidate Starts for Adephagia_75:

(Start: 50 @50343 has 63 MA's), (Start: 69 @50370 has 8 MA's), (72, 50379), (86, 50439), (94, 50502), (103, 50544), (104, 50547), (112, 50607), (123, 50685), (142, 50781), (143, 50784),

Gene: AikoCarson_31 Start: 24720, Stop: 24127, Start Num: 25

Candidate Starts for AikoCarson_31:

(Start: 25 @24720 has 24 MA's), (46, 24606), (Start: 69 @24567 has 8 MA's), (81, 24519), (90, 24465), (112, 24333),

Gene: Albee_81 Start: 47899, Stop: 47429, Start Num: 49

Candidate Starts for Albee_81:

(Start: 44 @47917 has 3 MA's), (Start: 49 @47899 has 151 MA's), (Start: 54 @47890 has 1 MA's), (Start: 55 @47887 has 4 MA's), (Start: 69 @47869 has 8 MA's), (79, 47830), (96, 47722), (103, 47695), (112, 47632), (118, 47578),

Gene: Alberto7_82 Start: 48236, Stop: 47766, Start Num: 49

Candidate Starts for Alberto7_82:

(Start: 44 @48254 has 3 MA's), (Start: 49 @48236 has 151 MA's), (Start: 54 @48227 has 1 MA's), (Start: 55 @48224 has 4 MA's), (Start: 69 @48206 has 8 MA's), (79, 48167), (103, 48032), (112, 47969), (118, 47915),

Gene: AlishaPH_75 Start: 50604, Stop: 51065, Start Num: 50

Candidate Starts for AlishaPH_75:

(Start: 50 @50604 has 63 MA's), (Start: 69 @50631 has 8 MA's), (72, 50640), (86, 50700), (94, 50763), (103, 50805), (104, 50808), (112, 50868), (123, 50946), (142, 51042), (143, 51045),

Gene: Amabiko_220 Start: 105547, Stop: 105984, Start Num: 64

Candidate Starts for Amabiko_220:

(Start: 44 @105499 has 3 MA's), (Start: 64 @105547 has 32 MA's), (79, 105586), (Start: 88 @105637 has 1 MA's), (89, 105640), (92, 105676),

Gene: Amok_31 Start: 24679, Stop: 24086, Start Num: 25

Candidate Starts for Amok_31:

(Start: 25 @24679 has 24 MA's), (46, 24565), (Start: 69 @24526 has 8 MA's), (81, 24478), (90, 24424), (112, 24292),

Gene: Anaya_80 Start: 51402, Stop: 51863, Start Num: 52

Candidate Starts for Anaya_80:

(Start: 52 @51402 has 2 MA's), (Start: 69 @51429 has 8 MA's), (72, 51438), (86, 51498), (94, 51561), (103, 51603), (104, 51606), (112, 51666), (123, 51744), (142, 51840), (143, 51843),

Gene: Anaysia_87 Start: 47291, Stop: 46824, Start Num: 51

Candidate Starts for Anaysia_87:

(Start: 51 @47291 has 14 MA's), (Start: 69 @47279 has 8 MA's), (79, 47240), (82, 47225),

Gene: Annyong_80 Start: 47944, Stop: 47474, Start Num: 49

Candidate Starts for Annyong_80:

(Start: 44 @47962 has 3 MA's), (Start: 49 @47944 has 151 MA's), (Start: 54 @47935 has 1 MA's), (Start: 55 @47932 has 4 MA's), (Start: 69 @47914 has 8 MA's), (79, 47875), (96, 47767), (103, 47740), (112, 47677), (118, 47623),

Gene: Anon_90 Start: 48046, Stop: 47579, Start Num: 51

Candidate Starts for Anon_90:

(Start: 51 @48046 has 14 MA's), (Start: 69 @48034 has 8 MA's), (79, 47995), (112, 47794), (118, 47740),

Gene: Apocalypse_79 Start: 51145, Stop: 51606, Start Num: 50

Candidate Starts for Apocalypse_79:

(Start: 50 @51145 has 63 MA's), (Start: 69 @51172 has 8 MA's), (72, 51181), (86, 51241), (94, 51304), (103, 51346), (104, 51349), (123, 51487), (142, 51583), (143, 51586),

Gene: Artemis2UCLA_85 Start: 46023, Stop: 45562, Start Num: 53

Candidate Starts for Artemis2UCLA_85:

(Start: 53 @46023 has 52 MA's), (Start: 69 @45996 has 8 MA's), (84, 45936), (96, 45843), (116, 45729),

Gene: Arturo_78 Start: 48027, Stop: 47557, Start Num: 49

Candidate Starts for Arturo_78:

(Start: 44 @48045 has 3 MA's), (Start: 49 @48027 has 151 MA's), (Start: 54 @48018 has 1 MA's), (Start: 55 @48015 has 4 MA's), (Start: 62 @48000 has 20 MA's), (Start: 69 @47997 has 8 MA's), (79, 47958), (103, 47823), (118, 47706),

Gene: Asayake_76 Start: 50658, Stop: 51119, Start Num: 50

Candidate Starts for Asayake_76:

(Start: 50 @50658 has 63 MA's), (Start: 69 @50685 has 8 MA's), (72, 50694), (86, 50754), (94, 50817), (103, 50859), (104, 50862), (112, 50922), (123, 51000), (142, 51096), (143, 51099),

Gene: Atiba_77 Start: 50306, Stop: 50767, Start Num: 50

Candidate Starts for Atiba_77:

(Start: 50 @50306 has 63 MA's), (Start: 69 @50333 has 8 MA's), (72, 50342), (86, 50402), (94, 50465), (103, 50507), (104, 50510), (112, 50570), (123, 50648), (142, 50744), (143, 50747),

Gene: AvatarAhPeg_81 Start: 48152, Stop: 47682, Start Num: 49

Candidate Starts for AvatarAhPeg_81:

(Start: 44 @48170 has 3 MA's), (Start: 49 @48152 has 151 MA's), (61, 48125), (Start: 69 @48119 has 8 MA's), (82, 48065), (86, 48050), (103, 47945), (118, 47828),

Gene: Avle17_81 Start: 47893, Stop: 47423, Start Num: 49

Candidate Starts for Avle17_81:

(Start: 44 @47911 has 3 MA's), (Start: 49 @47893 has 151 MA's), (Start: 54 @47884 has 1 MA's), (Start: 55 @47881 has 4 MA's), (Start: 69 @47863 has 8 MA's), (79, 47824), (103, 47689), (118, 47572),

Gene: BABullseye_77 Start: 44344, Stop: 43892, Start Num: 53

Candidate Starts for BABullseye_77:

(Start: 53 @44344 has 52 MA's), (Start: 69 @44317 has 8 MA's), (86, 44251), (96, 44173), (123, 44005),

Gene: BEEST_76 Start: 50658, Stop: 51119, Start Num: 50

Candidate Starts for BEEST_76:

(Start: 50 @50658 has 63 MA's), (Start: 69 @50685 has 8 MA's), (72, 50694), (86, 50754), (94, 50817), (103, 50859), (104, 50862), (112, 50922), (123, 51000), (142, 51096), (143, 51099),

Gene: BGlluviae_76 Start: 50461, Stop: 50922, Start Num: 50

Candidate Starts for BGlluviae_76:

(Start: 50 @50461 has 63 MA's), (Start: 69 @50488 has 8 MA's), (72, 50497), (86, 50557), (94, 50620), (103, 50662), (104, 50665), (112, 50725), (123, 50803), (142, 50899), (143, 50902),

Gene: Baby16_81 Start: 47910, Stop: 47440, Start Num: 49

Candidate Starts for Baby16_81:

(Start: 44 @47928 has 3 MA's), (Start: 49 @47910 has 151 MA's), (Start: 54 @47901 has 1 MA's), (Start: 55 @47898 has 4 MA's), (Start: 69 @47880 has 8 MA's), (79, 47841), (96, 47733), (103, 47706), (112, 47643), (118, 47589),

Gene: Backyardigan_75 Start: 47551, Stop: 47084, Start Num: 49

Candidate Starts for Backyardigan_75:

(Start: 44 @47569 has 3 MA's), (Start: 49 @47551 has 151 MA's), (Start: 54 @47542 has 1 MA's), (Start: 55 @47539 has 4 MA's), (Start: 69 @47521 has 8 MA's), (79, 47482), (103, 47347), (112, 47284), (118, 47230),

Gene: Bactobuster_76 Start: 47201, Stop: 46731, Start Num: 49

Candidate Starts for Bactobuster_76:

(Start: 49 @47201 has 151 MA's), (Start: 54 @47192 has 1 MA's), (Start: 55 @47189 has 4 MA's), (Start: 69 @47177 has 8 MA's), (71, 47171), (112, 46937),

Gene: Badger_76 Start: 47517, Stop: 47050, Start Num: 49

Candidate Starts for Badger_76:

(Start: 44 @47535 has 3 MA's), (Start: 49 @47517 has 151 MA's), (Start: 54 @47508 has 1 MA's), (Start: 55 @47505 has 4 MA's), (Start: 69 @47487 has 8 MA's), (79, 47448), (103, 47313), (112, 47250), (118, 47196),

Gene: BaghaKamala_75 Start: 49892, Stop: 50353, Start Num: 50

Candidate Starts for BaghaKamala_75:

(Start: 50 @49892 has 63 MA's), (Start: 69 @49919 has 8 MA's), (72, 49928), (86, 49988), (94, 50051), (103, 50093), (104, 50096), (112, 50156), (123, 50234), (142, 50330), (143, 50333),

Gene: BangNhom_78 Start: 48336, Stop: 47866, Start Num: 49

Candidate Starts for BangNhom_78:

(Start: 44 @48354 has 3 MA's), (Start: 49 @48336 has 151 MA's), (Start: 54 @48327 has 1 MA's), (Start: 55 @48324 has 4 MA's), (Start: 69 @48306 has 8 MA's), (79, 48267), (103, 48132), (118, 48015),

Gene: BarrelRoll_77 Start: 50863, Stop: 51324, Start Num: 50

Candidate Starts for BarrelRoll_77:

(Start: 50 @50863 has 63 MA's), (Start: 69 @50890 has 8 MA's), (72, 50899), (86, 50959), (94, 51022), (103, 51064), (104, 51067), (123, 51205), (142, 51301), (143, 51304),

Gene: Bartimeaus_81 Start: 47901, Stop: 47431, Start Num: 49

Candidate Starts for Bartimeaus_81:

(Start: 44 @47919 has 3 MA's), (Start: 49 @47901 has 151 MA's), (Start: 54 @47892 has 1 MA's), (Start: 55 @47889 has 4 MA's), (Start: 69 @47871 has 8 MA's), (79, 47832), (96, 47724), (103, 47697), (112, 47634), (118, 47580),

Gene: Battleship_90 Start: 47304, Stop: 46837, Start Num: 51

Candidate Starts for Battleship_90:

(Start: 51 @47304 has 14 MA's), (Start: 69 @47292 has 8 MA's), (79, 47253), (82, 47238),

Gene: Battuta_214 Start: 104863, Stop: 105300, Start Num: 64

Candidate Starts for Battuta_214:

(Start: 44 @104815 has 3 MA's), (Start: 64 @104863 has 32 MA's), (79, 104902), (Start: 88 @104953 has 1 MA's), (89, 104956), (92, 104992),

Gene: Belfort_237 Start: 115212, Stop: 115670, Start Num: 62

Candidate Starts for Belfort_237:

(61, 115209), (Start: 62 @115212 has 20 MA's), (79, 115251), (94, 115350), (97, 115368), (106, 115401), (110, 115428), (123, 115536), (144, 115656), (145, 115659),

Gene: Bella96_77 Start: 50721, Stop: 51182, Start Num: 50

Candidate Starts for Bella96_77:

(Start: 50 @50721 has 63 MA's), (Start: 69 @50748 has 8 MA's), (72, 50757), (78, 50784), (86, 50817), (94, 50880), (104, 50925), (123, 51063), (142, 51159), (143, 51162),

Gene: Belladonna_76 Start: 50461, Stop: 50922, Start Num: 50

Candidate Starts for Belladonna_76:

(Start: 50 @50461 has 63 MA's), (Start: 69 @50488 has 8 MA's), (72, 50497), (86, 50557), (94, 50620), (103, 50662), (104, 50665), (112, 50725), (123, 50803), (142, 50899), (143, 50902),

Gene: BellusTerra_81 Start: 47764, Stop: 47297, Start Num: 49

Candidate Starts for BellusTerra_81:

(Start: 44 @47782 has 3 MA's), (Start: 49 @47764 has 151 MA's), (Start: 54 @47755 has 1 MA's), (Start: 55 @47752 has 4 MA's), (Start: 69 @47734 has 8 MA's), (79, 47695), (103, 47560), (112, 47497), (118, 47443),

Gene: Big4_14 Start: 6390, Stop: 6845, Start Num: 69

Candidate Starts for Big4_14:

(Start: 69 @6390 has 8 MA's), (79, 6429), (96, 6537), (105, 6570), (112, 6624), (116, 6648), (122, 6687), (126, 6726), (137, 6789), (139, 6798),

Gene: Big4_340 Start: 181084, Stop: 181539, Start Num: 69

Candidate Starts for Big4_340:

(Start: 69 @181084 has 8 MA's), (79, 181123), (96, 181231), (105, 181264), (112, 181318), (116, 181342), (122, 181381), (126, 181420), (137, 181483), (139, 181492),

Gene: BillNye_199 Start: 106142, Stop: 106591, Start Num: 64

Candidate Starts for BillNye_199:

(43, 106085), (Start: 51 @106112 has 14 MA's), (Start: 64 @106142 has 32 MA's), (72, 106151), (76, 106166), (79, 106181), (133, 106526),

Gene: Birchlyn_215 Start: 102795, Stop: 103232, Start Num: 64

Candidate Starts for Birchlyn_215:

(Start: 44 @102747 has 3 MA's), (Start: 64 @102795 has 32 MA's), (79, 102834), (Start: 88 @102885 has 1 MA's), (89, 102888), (92, 102924),

Gene: Blackmoor_80 Start: 47901, Stop: 47431, Start Num: 49

Candidate Starts for Blackmoor_80:

(Start: 44 @47919 has 3 MA's), (Start: 49 @47901 has 151 MA's), (Start: 54 @47892 has 1 MA's), (Start: 55 @47889 has 4 MA's), (Start: 69 @47871 has 8 MA's), (79, 47832), (96, 47724), (103, 47697), (112, 47634), (118, 47580),

Gene: BlessJoy_85 Start: 46544, Stop: 46083, Start Num: 53

Candidate Starts for BlessJoy_85:

(Start: 53 @46544 has 52 MA's), (Start: 69 @46517 has 8 MA's), (84, 46457), (96, 46364), (116, 46250),

Gene: Blinn1_88 Start: 47002, Stop: 46550, Start Num: 53

Candidate Starts for Blinn1_88:

(1, 47302), (2, 47290), (17, 47182), (Start: 53 @47002 has 52 MA's), (Start: 69 @46975 has 8 MA's), (86, 46909), (90, 46876), (96, 46831), (116, 46717),

Gene: Blizzard_76 Start: 50658, Stop: 51119, Start Num: 50

Candidate Starts for Blizzard_76:

(Start: 50 @50658 has 63 MA's), (Start: 69 @50685 has 8 MA's), (72, 50694), (86, 50754), (94, 50817), (103, 50859), (104, 50862), (112, 50922), (123, 51000), (142, 51096), (143, 51099),

Gene: Blue7_87 Start: 46242, Stop: 45781, Start Num: 53

Candidate Starts for Blue7_87:

(Start: 53 @46242 has 52 MA's), (Start: 69 @46215 has 8 MA's), (84, 46155), (96, 46062), (116, 45948),

Gene: Blueeyedbeauty_235 Start: 114281, Stop: 114733, Start Num: 62

Candidate Starts for Blueeyedbeauty_235:

(Start: 62 @114281 has 20 MA's), (79, 114320), (82, 114335), (94, 114413), (95, 114425), (101, 114446), (106, 114464), (144, 114719), (145, 114722),

Gene: Bobquesha_82 Start: 49631, Stop: 50194, Start Num: 57

Candidate Starts for Bobquesha_82:

(10, 49424), (13, 49439), (22, 49475), (26, 49496), (28, 49523), (32, 49553), (Start: 53 @49622 has 52 MA's), (Start: 57 @49631 has 10 MA's), (Start: 69 @49646 has 8 MA's), (82, 49700), (86, 49715), (96, 49793), (103, 49820), (112, 49883), (123, 49961), (159, 50162),

Gene: Boiiii_76 Start: 50660, Stop: 51121, Start Num: 50

Candidate Starts for Boiiii_76:

(Start: 50 @50660 has 63 MA's), (Start: 69 @50687 has 8 MA's), (72, 50696), (86, 50756), (94, 50819), (103, 50861), (104, 50864), (112, 50924), (123, 51002), (142, 51098), (143, 51101),

Gene: Bombshell_81 Start: 47896, Stop: 47426, Start Num: 49

Candidate Starts for Bombshell_81:

(Start: 44 @47914 has 3 MA's), (Start: 49 @47896 has 151 MA's), (Start: 54 @47887 has 1 MA's), (Start: 55 @47884 has 4 MA's), (Start: 69 @47866 has 8 MA's), (79, 47827), (103, 47692), (118, 47575),

Gene: Boohoo_86 Start: 46608, Stop: 46141, Start Num: 51

Candidate Starts for Boohoo_86:

(Start: 51 @46608 has 14 MA's), (Start: 69 @46596 has 8 MA's), (79, 46557), (82, 46542),

Gene: BoomerJR_215 Start: 106090, Stop: 106527, Start Num: 64

Candidate Starts for BoomerJR_215:

(Start: 64 @106090 has 32 MA's), (79, 106129), (Start: 88 @106180 has 1 MA's), (89, 106183), (92, 106219), (109, 106303),

Gene: BoostSeason_81 Start: 52795, Stop: 53367, Start Num: 58

Candidate Starts for BoostSeason_81:

(Start: 58 @52795 has 11 MA's), (Start: 69 @52807 has 8 MA's), (96, 52954), (103, 52981), (104, 52984), (112, 53044), (156, 53308), (158, 53323),

Gene: Bordeaux_214 Start: 105446, Stop: 105883, Start Num: 64

Candidate Starts for Bordeaux_214:

(Start: 44 @105398 has 3 MA's), (Start: 64 @105446 has 32 MA's), (79, 105485), (Start: 88 @105536 has 1 MA's), (89, 105539), (92, 105575),

Gene: Broseidon_81 Start: 47902, Stop: 47432, Start Num: 49

Candidate Starts for Broseidon_81:

(Start: 44 @47920 has 3 MA's), (Start: 49 @47902 has 151 MA's), (Start: 54 @47893 has 1 MA's), (Start: 55 @47890 has 4 MA's), (Start: 69 @47872 has 8 MA's), (79, 47833), (96, 47725), (103, 47698), (112, 47635), (118, 47581),

Gene: Bruiser_80 Start: 47899, Stop: 47429, Start Num: 49

Candidate Starts for Bruiser_80:

(Start: 44 @47917 has 3 MA's), (Start: 49 @47899 has 151 MA's), (Start: 54 @47890 has 1 MA's), (Start: 55 @47887 has 4 MA's), (Start: 69 @47869 has 8 MA's), (79, 47830), (103, 47695), (118, 47578),

Gene: Bryler_82 Start: 50964, Stop: 51536, Start Num: 53

Candidate Starts for Bryler_82:

(Start: 53 @50964 has 52 MA's), (Start: 69 @50985 has 8 MA's), (86, 51054), (90, 51087), (92, 51108), (96, 51132), (104, 51162), (112, 51222), (123, 51300), (130, 51354), (135, 51378), (148, 51429), (160, 51516),

Gene: BubbleTrouble_80 Start: 47926, Stop: 47456, Start Num: 49

Candidate Starts for BubbleTrouble_80:

(Start: 44 @47944 has 3 MA's), (Start: 49 @47926 has 151 MA's), (Start: 54 @47917 has 1 MA's), (Start: 55 @47914 has 4 MA's), (Start: 69 @47896 has 8 MA's), (79, 47857), (96, 47749), (103, 47722), (112, 47659), (118, 47605),

Gene: Bumblebee11_76 Start: 47517, Stop: 47050, Start Num: 49

Candidate Starts for Bumblebee11_76:

(Start: 44 @47535 has 3 MA's), (Start: 49 @47517 has 151 MA's), (Start: 54 @47508 has 1 MA's), (Start: 55 @47505 has 4 MA's), (Start: 69 @47487 has 8 MA's), (79, 47448), (103, 47313), (112, 47250), (118, 47196),

Gene: Burger_79 Start: 47899, Stop: 47429, Start Num: 49

Candidate Starts for Burger_79:

(Start: 44 @47917 has 3 MA's), (Start: 49 @47899 has 151 MA's), (Start: 54 @47890 has 1 MA's), (Start: 55 @47887 has 4 MA's), (Start: 69 @47869 has 8 MA's), (79, 47830), (103, 47695), (118, 47578),

Gene: Button_35 Start: 26057, Stop: 25458, Start Num: 25

Candidate Starts for Button_35:

(14, 26108), (19, 26087), (Start: 21 @26084 has 1 MA's), (Start: 25 @26057 has 24 MA's), (Start: 69 @25916 has 8 MA's), (96, 25769), (98, 25763), (104, 25739), (114, 25670),

Gene: CREW_75 Start: 50461, Stop: 50922, Start Num: 50

Candidate Starts for CREW_75:

(Start: 50 @50461 has 63 MA's), (Start: 69 @50488 has 8 MA's), (72, 50497), (86, 50557), (94, 50620), (103, 50662), (104, 50665), (112, 50725), (123, 50803), (142, 50899), (143, 50902),

Gene: Caelakin_79 Start: 47899, Stop: 47429, Start Num: 49

Candidate Starts for Caelakin_79:

(Start: 44 @47917 has 3 MA's), (Start: 49 @47899 has 151 MA's), (Start: 54 @47890 has 1 MA's), (Start: 55 @47887 has 4 MA's), (Start: 69 @47869 has 8 MA's), (79, 47830), (103, 47695), (118, 47578),

Gene: Cain_82 Start: 50952, Stop: 51524, Start Num: 53

Candidate Starts for Cain_82:

(Start: 53 @50952 has 52 MA's), (Start: 69 @50973 has 8 MA's), (86, 51042), (90, 51075), (92, 51096), (96, 51120), (104, 51150), (112, 51210), (123, 51288), (130, 51342), (135, 51366), (148, 51417), (160, 51504),

Gene: CallaLilly_77 Start: 50384, Stop: 50845, Start Num: 50

Candidate Starts for CallaLilly_77:

(Start: 50 @50384 has 63 MA's), (Start: 69 @50411 has 8 MA's), (72, 50420), (86, 50480), (94, 50543), (103, 50585), (104, 50588), (112, 50648), (123, 50726), (142, 50822), (143, 50825),

Gene: Camperdownii_77 Start: 47142, Stop: 46675, Start Num: 49

Candidate Starts for Camperdownii_77:

(Start: 44 @47160 has 3 MA's), (Start: 49 @47142 has 151 MA's), (Start: 54 @47133 has 1 MA's), (Start: 55 @47130 has 4 MA's), (Start: 69 @47112 has 8 MA's), (79, 47073), (103, 46938), (118, 46821),

Gene: Candra_82 Start: 46048, Stop: 45587, Start Num: 53

Candidate Starts for Candra_82:

(Start: 53 @46048 has 52 MA's), (Start: 69 @46021 has 8 MA's), (84, 45961), (96, 45868), (123, 45700),

Gene: Capricorn_76 Start: 50461, Stop: 50922, Start Num: 50

Candidate Starts for Capricorn_76:

(Start: 50 @50461 has 63 MA's), (Start: 69 @50488 has 8 MA's), (72, 50497), (86, 50557), (94, 50620), (103, 50662), (104, 50665), (112, 50725), (123, 50803), (142, 50899), (143, 50902),

Gene: CaseJules_78 Start: 50658, Stop: 51119, Start Num: 50

Candidate Starts for CaseJules_78:

(Start: 50 @50658 has 63 MA's), (Start: 69 @50685 has 8 MA's), (72, 50694), (86, 50754), (94, 50817), (103, 50859), (104, 50862), (112, 50922), (123, 51000), (142, 51096), (143, 51099),

Gene: Cece_19 Start: 6614, Stop: 7075, Start Num: 62

Candidate Starts for Cece_19:

(37, 6542), (61, 6611), (Start: 62 @6614 has 20 MA's), (75, 6638), (94, 6755), (96, 6770), (102, 6794), (107, 6809), (115, 6875), (116, 6884), (130, 6998), (146, 7070),

Gene: Cece_321 Start: 175048, Stop: 175509, Start Num: 62

Candidate Starts for Cece_321:

(37, 174976), (61, 175045), (Start: 62 @175048 has 20 MA's), (75, 175072), (94, 175189), (96, 175204), (102, 175228), (107, 175243), (115, 175309), (116, 175318), (130, 175432), (146, 175504),

Gene: CeilingFan_220 Start: 106240, Stop: 106677, Start Num: 64

Candidate Starts for CeilingFan_220:

(Start: 44 @106192 has 3 MA's), (Start: 64 @106240 has 32 MA's), (79, 106279), (Start: 88 @106330 has 1 MA's), (89, 106333), (92, 106369),

Gene: CentreCat_81 Start: 47939, Stop: 47469, Start Num: 49

Candidate Starts for CentreCat_81:

(Start: 44 @47957 has 3 MA's), (Start: 49 @47939 has 151 MA's), (Start: 54 @47930 has 1 MA's), (Start: 55 @47927 has 4 MA's), (Start: 69 @47909 has 8 MA's), (79, 47870), (103, 47735), (118, 47618),

Gene: Cerulean_83 Start: 48337, Stop: 47867, Start Num: 49

Candidate Starts for Cerulean_83:

(Start: 44 @48355 has 3 MA's), (Start: 49 @48337 has 151 MA's), (Start: 54 @48328 has 1 MA's), (Start: 55 @48325 has 4 MA's), (Start: 69 @48307 has 8 MA's), (79, 48268), (103, 48133), (118, 48016),

Gene: ChampagnePapi_84 Start: 48339, Stop: 47869, Start Num: 49

Candidate Starts for ChampagnePapi_84:

(Start: 44 @48357 has 3 MA's), (Start: 49 @48339 has 151 MA's), (Start: 54 @48330 has 1 MA's), (Start: 55 @48327 has 4 MA's), (Start: 69 @48309 has 8 MA's), (79, 48270), (103, 48135), (118, 48018),

Gene: Chancellor_81 Start: 51093, Stop: 51677, Start Num: 53

Candidate Starts for Chancellor_81:

(10, 50895), (13, 50910), (22, 50946), (26, 50967), (28, 50994), (32, 51024), (Start: 48 @51084 has 10 MA's), (Start: 53 @51093 has 52 MA's), (Start: 57 @51102 has 10 MA's), (Start: 69 @51117 has 8 MA's), (86, 51186), (96, 51264), (103, 51291), (112, 51354), (123, 51432), (155, 51606), (157, 51621), (159, 51645),

Gene: Chaph_81 Start: 47910, Stop: 47440, Start Num: 49

Candidate Starts for Chaph_81:

(Start: 44 @47928 has 3 MA's), (Start: 49 @47910 has 151 MA's), (Start: 54 @47901 has 1 MA's), (Start: 55 @47898 has 4 MA's), (Start: 69 @47880 has 8 MA's), (79, 47841), (103, 47706), (118, 47589),

Gene: Chartreuse_82 Start: 45323, Stop: 44898, Start Num: 69

Candidate Starts for Chartreuse_82:

(Start: 53 @45350 has 52 MA's), (Start: 69 @45323 has 8 MA's), (86, 45257), (96, 45179), (123, 45011),

Gene: Chavito_79 Start: 52300, Stop: 52866, Start Num: 24

Candidate Starts for Chavito_79:

(Start: 24 @52300 has 11 MA's), (27, 52330), (Start: 53 @52411 has 52 MA's), (Start: 69 @52432 has 8 MA's), (71, 52438), (86, 52501), (90, 52534), (96, 52579), (104, 52609), (112, 52669), (142, 52843), (143, 52846),

Gene: CheetoDust_76 Start: 50058, Stop: 50519, Start Num: 50

Candidate Starts for CheetoDust_76:

(Start: 50 @50058 has 63 MA's), (Start: 69 @50085 has 8 MA's), (72, 50094), (86, 50154), (94, 50217), (103, 50259), (104, 50262), (123, 50400), (142, 50496), (143, 50499),

Gene: Cheetobro_81 Start: 51228, Stop: 51812, Start Num: 53

Candidate Starts for Cheetobro_81:

(10, 51039), (22, 51090), (28, 51144), (32, 51174), (Start: 48 @51219 has 10 MA's), (Start: 53 @51228 has 52 MA's), (Start: 57 @51237 has 10 MA's), (Start: 69 @51252 has 8 MA's), (86, 51321), (96, 51399), (97, 51402), (103, 51426), (108, 51447), (112, 51489), (123, 51567), (155, 51741), (159, 51780),

Gene: Chilliams_328 Start: 188863, Stop: 189315, Start Num: 66
Candidate Starts for Chilliams_328:
(35, 188776), (66, 188863), (79, 188908), (93, 188995), (94, 188998), (116, 189127), (121, 189172),
(123, 189190), (126, 189211), (128, 189223), (131, 189250), (141, 189295),

Gene: Chilliams_37 Start: 16129, Stop: 16581, Start Num: 66
Candidate Starts for Chilliams_37:
(35, 16042), (66, 16129), (79, 16174), (93, 16261), (94, 16264), (116, 16393), (121, 16438), (123,
16456), (126, 16477), (128, 16489), (131, 16516), (141, 16561),

Gene: Chupacabra_77 Start: 47509, Stop: 47042, Start Num: 48
Candidate Starts for Chupacabra_77:
(Start: 44 @47524 has 3 MA's), (Start: 48 @47509 has 10 MA's), (Start: 55 @47494 has 4 MA's),
(Start: 69 @47482 has 8 MA's), (86, 47413), (96, 47335), (103, 47308), (118, 47191),

Gene: Cici_77 Start: 47530, Stop: 47063, Start Num: 49
Candidate Starts for Cici_77:
(Start: 44 @47548 has 3 MA's), (Start: 49 @47530 has 151 MA's), (Start: 54 @47521 has 1 MA's),
(Start: 55 @47518 has 4 MA's), (Start: 69 @47500 has 8 MA's), (79, 47461), (103, 47326), (112,
47263), (118, 47209),

Gene: Cindaradix_76 Start: 48112, Stop: 47648, Start Num: 49
Candidate Starts for Cindaradix_76:
(Start: 44 @48130 has 3 MA's), (Start: 49 @48112 has 151 MA's), (Start: 55 @48097 has 4 MA's), (61,
48085), (86, 48016), (103, 47911), (118, 47794),

Gene: Cintron_81 Start: 48015, Stop: 47545, Start Num: 49
Candidate Starts for Cintron_81:
(Start: 44 @48033 has 3 MA's), (Start: 49 @48015 has 151 MA's), (Start: 54 @48006 has 1 MA's),
(Start: 55 @48003 has 4 MA's), (Start: 69 @47985 has 8 MA's), (79, 47946), (103, 47811), (118,
47694),

Gene: Circinus_199 Start: 105749, Stop: 106198, Start Num: 64
Candidate Starts for Circinus_199:
(43, 105692), (Start: 51 @105719 has 14 MA's), (Start: 64 @105749 has 32 MA's), (72, 105758), (76,
105773), (79, 105788), (133, 106133),

Gene: Citius_81 Start: 47920, Stop: 47450, Start Num: 49
Candidate Starts for Citius_81:
(Start: 44 @47938 has 3 MA's), (Start: 49 @47920 has 151 MA's), (Start: 54 @47911 has 1 MA's),
(Start: 55 @47908 has 4 MA's), (Start: 69 @47890 has 8 MA's), (79, 47851), (96, 47743), (103,
47716), (112, 47653), (118, 47599),

Gene: Clarenza_80 Start: 47896, Stop: 47426, Start Num: 49
Candidate Starts for Clarenza_80:
(Start: 44 @47914 has 3 MA's), (Start: 49 @47896 has 151 MA's), (Start: 54 @47887 has 1 MA's),
(Start: 55 @47884 has 4 MA's), (Start: 69 @47866 has 8 MA's), (79, 47827), (103, 47692), (118,
47575),

Gene: CloudWang3_86 Start: 46525, Stop: 46091, Start Num: 69
Candidate Starts for CloudWang3_86:
(Start: 53 @46552 has 52 MA's), (Start: 69 @46525 has 8 MA's), (84, 46465), (96, 46372), (116,
46258), (123, 46204),

Gene: Cocoaberry_81 Start: 47900, Stop: 47430, Start Num: 49

Candidate Starts for Cocoaberry_81:

(Start: 44 @47918 has 3 MA's), (Start: 49 @47900 has 151 MA's), (Start: 54 @47891 has 1 MA's), (Start: 55 @47888 has 4 MA's), (Start: 69 @47870 has 8 MA's), (79, 47831), (103, 47696), (118, 47579),

Gene: Commander_79 Start: 47900, Stop: 47427, Start Num: 49

Candidate Starts for Commander_79:

(Start: 44 @47918 has 3 MA's), (Start: 49 @47900 has 151 MA's), (70, 47867), (79, 47828), (82, 47813), (90, 47765), (103, 47693), (118, 47576),

Gene: Comrade_233 Start: 115408, Stop: 115866, Start Num: 62

Candidate Starts for Comrade_233:

(61, 115405), (Start: 62 @115408 has 20 MA's), (79, 115447), (94, 115546), (97, 115564), (106, 115597), (110, 115624), (123, 115732), (144, 115852), (145, 115855),

Gene: Connomayer_81 Start: 47899, Stop: 47429, Start Num: 49

Candidate Starts for Connomayer_81:

(Start: 44 @47917 has 3 MA's), (Start: 49 @47899 has 151 MA's), (Start: 54 @47890 has 1 MA's), (Start: 55 @47887 has 4 MA's), (Start: 69 @47869 has 8 MA's), (79, 47830), (96, 47722), (103, 47695), (112, 47632), (118, 47578),

Gene: Cookiedough_84 Start: 46657, Stop: 46205, Start Num: 53

Candidate Starts for Cookiedough_84:

(Start: 53 @46657 has 52 MA's), (Start: 69 @46630 has 8 MA's), (86, 46564), (96, 46486), (123, 46318),

Gene: DaVinci_82 Start: 45404, Stop: 44952, Start Num: 53

Candidate Starts for DaVinci_82:

(Start: 53 @45404 has 52 MA's), (Start: 69 @45377 has 8 MA's), (86, 45311), (96, 45233), (123, 45065),

Gene: Dalmuri_76 Start: 50461, Stop: 50922, Start Num: 50

Candidate Starts for Dalmuri_76:

(Start: 50 @50461 has 63 MA's), (Start: 69 @50488 has 8 MA's), (72, 50497), (86, 50557), (94, 50620), (103, 50662), (104, 50665), (112, 50725), (123, 50803), (142, 50899), (143, 50902),

Gene: Dartin_79 Start: 51840, Stop: 52403, Start Num: 24

Candidate Starts for Dartin_79:

(Start: 24 @51840 has 11 MA's), (27, 51870), (Start: 53 @51948 has 52 MA's), (Start: 69 @51969 has 8 MA's), (71, 51975), (86, 52038), (90, 52071), (95, 52113), (96, 52116), (104, 52146), (112, 52206), (123, 52284), (142, 52380), (143, 52383),

Gene: Datway_78 Start: 47710, Stop: 47240, Start Num: 49

Candidate Starts for Datway_78:

(Start: 44 @47728 has 3 MA's), (Start: 49 @47710 has 151 MA's), (Start: 54 @47701 has 1 MA's), (Start: 55 @47698 has 4 MA's), (Start: 69 @47680 has 8 MA's), (79, 47641), (103, 47506), (118, 47389),

Gene: Deano_78 Start: 47907, Stop: 47437, Start Num: 49

Candidate Starts for Deano_78:

(Start: 44 @47925 has 3 MA's), (Start: 49 @47907 has 151 MA's), (Start: 54 @47898 has 1 MA's), (Start: 55 @47895 has 4 MA's), (Start: 69 @47877 has 8 MA's), (79, 47838), (96, 47730), (103, 47703), (112, 47640), (118, 47586),

Gene: Deby_76 Start: 50830, Stop: 51291, Start Num: 50

Candidate Starts for Deby_76:

(Start: 50 @50830 has 63 MA's), (Start: 69 @50857 has 8 MA's), (72, 50866), (86, 50926), (94, 50989), (103, 51031), (104, 51034), (123, 51172), (142, 51268), (143, 51271),

Gene: DekHockey33_89 Start: 47389, Stop: 46922, Start Num: 51

Candidate Starts for DekHockey33_89:

(Start: 51 @47389 has 14 MA's), (Start: 69 @47377 has 8 MA's), (79, 47338), (82, 47323),

Gene: Dhanush_81 Start: 47902, Stop: 47432, Start Num: 49

Candidate Starts for Dhanush_81:

(Start: 44 @47920 has 3 MA's), (Start: 49 @47902 has 151 MA's), (Start: 54 @47893 has 1 MA's), (Start: 55 @47890 has 4 MA's), (Start: 69 @47872 has 8 MA's), (79, 47833), (103, 47698), (118, 47581),

Gene: DirtyDunning_80 Start: 47911, Stop: 47441, Start Num: 49

Candidate Starts for DirtyDunning_80:

(Start: 44 @47929 has 3 MA's), (Start: 49 @47911 has 151 MA's), (Start: 54 @47902 has 1 MA's), (Start: 55 @47899 has 4 MA's), (Start: 69 @47881 has 8 MA's), (79, 47842), (96, 47734), (103, 47707), (112, 47644), (118, 47590),

Gene: DismalFunk_82 Start: 53325, Stop: 53894, Start Num: 58

Candidate Starts for DismalFunk_82:

(Start: 58 @53325 has 11 MA's), (Start: 69 @53334 has 8 MA's), (77, 53364), (90, 53436), (96, 53481), (103, 53508), (104, 53511), (112, 53571), (156, 53835), (158, 53850),

Gene: DismalStressor_82 Start: 53325, Stop: 53894, Start Num: 58

Candidate Starts for DismalStressor_82:

(Start: 58 @53325 has 11 MA's), (Start: 69 @53334 has 8 MA's), (77, 53364), (90, 53436), (96, 53481), (103, 53508), (104, 53511), (112, 53571), (156, 53835), (158, 53850),

Gene: DontArgue_75 Start: 46372, Stop: 45908, Start Num: 49

Candidate Starts for DontArgue_75:

(Start: 49 @46372 has 151 MA's), (Start: 69 @46348 has 8 MA's), (96, 46201), (103, 46174), (114, 46099), (118, 46057),

Gene: Dorin_235 Start: 120741, Stop: 121214, Start Num: 69

Candidate Starts for Dorin_235:

(65, 120735), (Start: 69 @120741 has 8 MA's), (83, 120801), (96, 120897), (112, 120987), (116, 121011), (130, 121119), (138, 121158), (147, 121194), (149, 121206),

Gene: Dorothea_84 Start: 46650, Stop: 46198, Start Num: 53

Candidate Starts for Dorothea_84:

(Start: 53 @46650 has 52 MA's), (Start: 69 @46623 has 8 MA's), (86, 46557), (96, 46479), (123, 46311),

Gene: Doughnut_82 Start: 52967, Stop: 53548, Start Num: 58

Candidate Starts for Doughnut_82:

(Start: 58 @52967 has 11 MA's), (Start: 69 @52979 has 8 MA's), (96, 53126), (103, 53153), (104, 53156), (112, 53216), (150, 53432), (156, 53489), (158, 53504),

Gene: DrHayes_76 Start: 50854, Stop: 51315, Start Num: 50

Candidate Starts for DrHayes_76:

(Start: 50 @50854 has 63 MA's), (Start: 69 @50881 has 8 MA's), (72, 50890), (78, 50917), (86, 50950), (94, 51013), (104, 51058), (123, 51196), (142, 51292), (143, 51295),

Gene: Drake94_77 Start: 46666, Stop: 46199, Start Num: 49

Candidate Starts for Drake94_77:

(Start: 49 @46666 has 151 MA's), (Start: 54 @46657 has 1 MA's), (Start: 69 @46642 has 8 MA's), (86, 46573), (112, 46405),

Gene: DroogsArmy_77 Start: 49905, Stop: 49435, Start Num: 48

Candidate Starts for DroogsArmy_77:

(11, 50100), (15, 50079), (Start: 44 @49920 has 3 MA's), (Start: 48 @49905 has 10 MA's), (Start: 54 @49893 has 1 MA's), (Start: 69 @49872 has 8 MA's), (96, 49725), (103, 49698), (113, 49632), (116, 49614),

Gene: Druantia_79 Start: 47726, Stop: 47259, Start Num: 49

Candidate Starts for Druantia_79:

(Start: 44 @47744 has 3 MA's), (Start: 49 @47726 has 151 MA's), (Start: 54 @47717 has 1 MA's), (Start: 55 @47714 has 4 MA's), (Start: 69 @47696 has 8 MA's), (79, 47657), (103, 47522), (112, 47459), (118, 47405),

Gene: Durfee_76 Start: 50658, Stop: 51119, Start Num: 50

Candidate Starts for Durfee_76:

(Start: 50 @50658 has 63 MA's), (Start: 69 @50685 has 8 MA's), (72, 50694), (86, 50754), (94, 50817), (103, 50859), (104, 50862), (112, 50922), (123, 51000), (142, 51096), (143, 51099),

Gene: DustyMartin_82 Start: 47658, Stop: 47191, Start Num: 49

Candidate Starts for DustyMartin_82:

(Start: 49 @47658 has 151 MA's), (Start: 54 @47649 has 1 MA's), (Start: 69 @47631 has 8 MA's), (96, 47484), (103, 47457), (114, 47382), (118, 47340),

Gene: Eagle_80 Start: 47961, Stop: 47491, Start Num: 49

Candidate Starts for Eagle_80:

(Start: 44 @47979 has 3 MA's), (Start: 49 @47961 has 151 MA's), (Start: 54 @47952 has 1 MA's), (Start: 55 @47949 has 4 MA's), (Start: 69 @47931 has 8 MA's), (79, 47892), (103, 47757), (118, 47640),

Gene: Eaglepride_83 Start: 47586, Stop: 47122, Start Num: 49

Candidate Starts for Eaglepride_83:

(Start: 49 @47586 has 151 MA's), (Start: 54 @47577 has 1 MA's), (Start: 69 @47562 has 8 MA's), (86, 47493),

Gene: Eapen_81 Start: 47894, Stop: 47424, Start Num: 49

Candidate Starts for Eapen_81:

(Start: 44 @47912 has 3 MA's), (Start: 49 @47894 has 151 MA's), (Start: 54 @47885 has 1 MA's), (Start: 55 @47882 has 4 MA's), (Start: 69 @47864 has 8 MA's), (79, 47825), (103, 47690), (118, 47573),

Gene: Efra2_83 Start: 51293, Stop: 51754, Start Num: 50

Candidate Starts for Efra2_83:

(Start: 50 @51293 has 63 MA's), (Start: 69 @51320 has 8 MA's), (72, 51329), (86, 51389), (90, 51422), (95, 51464), (103, 51494), (104, 51497), (112, 51557), (123, 51635), (142, 51731), (143, 51734),

Gene: Ekdilam_84 Start: 58038, Stop: 58601, Start Num: 25

Candidate Starts for Ekdilam_84:

(Start: 25 @58038 has 24 MA's), (27, 58068), (30, 58095), (36, 58113), (Start: 69 @58167 has 8 MA's), (71, 58173), (86, 58236), (90, 58269), (96, 58314), (103, 58341), (112, 58404), (142, 58578),

Gene: Elmer_227 Start: 109351, Stop: 109788, Start Num: 64

Candidate Starts for Elmer_227:

(Start: 64 @109351 has 32 MA's), (79, 109390), (Start: 88 @109441 has 1 MA's), (89, 109444), (92, 109480),

Gene: Emalyn_30 Start: 23911, Stop: 23318, Start Num: 25

Candidate Starts for Emalyn_30:

(Start: 25 @23911 has 24 MA's), (46, 23797), (Start: 69 @23758 has 8 MA's), (81, 23710), (86, 23689), (90, 23656), (112, 23524),

Gene: Emerson_79 Start: 50897, Stop: 51358, Start Num: 50

Candidate Starts for Emerson_79:

(Start: 50 @50897 has 63 MA's), (Start: 69 @50924 has 8 MA's), (72, 50933), (86, 50993), (94, 51056), (104, 51101), (123, 51239), (142, 51335), (143, 51338),

Gene: Emma1919_241 Start: 114442, Stop: 114897, Start Num: 62

Candidate Starts for Emma1919_241:

(42, 114388), (61, 114439), (Start: 62 @114442 has 20 MA's), (78, 114478), (79, 114481), (94, 114580), (95, 114592), (106, 114631), (112, 114682), (123, 114763), (144, 114883), (145, 114886),

Gene: Enygma_226 Start: 109104, Stop: 109541, Start Num: 63

Candidate Starts for Enygma_226:

(29, 108981), (Start: 63 @109104 has 1 MA's), (79, 109143), (Start: 88 @109194 has 1 MA's), (92, 109233), (94, 109242),

Gene: Eponine_83 Start: 52075, Stop: 52659, Start Num: 53

Candidate Starts for Eponine_83:

(10, 51886), (22, 51937), (28, 51991), (32, 52021), (Start: 48 @52066 has 10 MA's), (Start: 53 @52075 has 52 MA's), (Start: 57 @52084 has 10 MA's), (Start: 69 @52099 has 8 MA's), (86, 52168), (96, 52246), (103, 52273), (112, 52336), (123, 52414), (155, 52588), (159, 52627),

Gene: Eris_80 Start: 47911, Stop: 47441, Start Num: 49

Candidate Starts for Eris_80:

(Start: 44 @47929 has 3 MA's), (Start: 49 @47911 has 151 MA's), (Start: 54 @47902 has 1 MA's), (Start: 55 @47899 has 4 MA's), (Start: 69 @47881 has 8 MA's), (79, 47842), (103, 47707), (118, 47590),

Gene: Eros_81 Start: 47904, Stop: 47431, Start Num: 49

Candidate Starts for Eros_81:

(Start: 44 @47922 has 3 MA's), (Start: 49 @47904 has 151 MA's), (70, 47871), (79, 47832), (82, 47817), (90, 47769), (103, 47697), (118, 47580),

Gene: Eurydice_82 Start: 47936, Stop: 47466, Start Num: 49

Candidate Starts for Eurydice_82:

(Start: 44 @47954 has 3 MA's), (Start: 49 @47936 has 151 MA's), (Start: 54 @47927 has 1 MA's), (Start: 55 @47924 has 4 MA's), (Start: 69 @47906 has 8 MA's), (79, 47867), (103, 47732), (118, 47615),

Gene: Faust_238 Start: 116256, Stop: 116714, Start Num: 62

Candidate Starts for Faust_238:

(41, 116202), (Start: 62 @116256 has 20 MA's), (79, 116295), (100, 116424), (106, 116445), (127, 116604), (129, 116619), (144, 116700),

Gene: Findley_82 Start: 53343, Stop: 53912, Start Num: 58

Candidate Starts for Findley_82:

(Start: 58 @53343 has 11 MA's), (Start: 69 @53352 has 8 MA's), (77, 53382), (90, 53454), (96, 53499), (103, 53526), (104, 53529), (112, 53589), (156, 53853), (158, 53868),

Gene: Fionnbharth_81 Start: 51473, Stop: 52057, Start Num: 53

Candidate Starts for Fionnbharth_81:

(10, 51284), (22, 51335), (28, 51389), (32, 51419), (Start: 48 @51464 has 10 MA's), (Start: 53 @51473 has 52 MA's), (Start: 57 @51482 has 10 MA's), (Start: 69 @51497 has 8 MA's), (86, 51566), (96, 51644), (103, 51671), (112, 51734), (123, 51812), (155, 51986), (159, 52025),

Gene: Florean_81 Start: 47898, Stop: 47428, Start Num: 49

Candidate Starts for Florean_81:

(Start: 44 @47916 has 3 MA's), (Start: 49 @47898 has 151 MA's), (Start: 54 @47889 has 1 MA's), (Start: 55 @47886 has 4 MA's), (Start: 69 @47868 has 8 MA's), (79, 47829), (96, 47721), (103, 47694), (112, 47631), (118, 47577),

Gene: Flux_82 Start: 47897, Stop: 47427, Start Num: 49

Candidate Starts for Flux_82:

(Start: 44 @47915 has 3 MA's), (Start: 49 @47897 has 151 MA's), (Start: 54 @47888 has 1 MA's), (Start: 55 @47885 has 4 MA's), (Start: 69 @47867 has 8 MA's), (79, 47828), (103, 47693), (118, 47576),

Gene: FlyCatcher_81 Start: 50450, Stop: 49965, Start Num: 45

Candidate Starts for FlyCatcher_81:

(45, 50450), (Start: 48 @50438 has 10 MA's), (Start: 69 @50405 has 8 MA's), (78, 50369), (86, 50336), (96, 50258), (103, 50231), (112, 50168), (116, 50144), (142, 49988), (143, 49985),

Gene: Forrest_239 Start: 115200, Stop: 115655, Start Num: 62

Candidate Starts for Forrest_239:

(42, 115146), (61, 115197), (Start: 62 @115200 has 20 MA's), (78, 115236), (79, 115239), (94, 115338), (95, 115350), (106, 115389), (112, 115440), (123, 115521), (144, 115641), (145, 115644),

Gene: Francesca_236 Start: 121384, Stop: 121857, Start Num: 69

Candidate Starts for Francesca_236:

(65, 121378), (Start: 69 @121384 has 8 MA's), (83, 121444), (96, 121540), (112, 121630), (116, 121654), (130, 121762), (138, 121801), (147, 121837), (149, 121849),

Gene: Francob_244 Start: 115817, Stop: 116272, Start Num: 62

Candidate Starts for Francob_244:

(61, 115814), (Start: 62 @115817 has 20 MA's), (79, 115856), (94, 115955), (95, 115967), (106, 116006), (112, 116057), (123, 116138), (144, 116258), (145, 116261),

Gene: Funston_80 Start: 47896, Stop: 47426, Start Num: 49

Candidate Starts for Funston_80:

(Start: 44 @47914 has 3 MA's), (Start: 49 @47896 has 151 MA's), (Start: 54 @47887 has 1 MA's), (Start: 55 @47884 has 4 MA's), (Start: 69 @47866 has 8 MA's), (79, 47827), (103, 47692), (118, 47575),

Gene: GTE2_26 Start: 24090, Stop: 23512, Start Num: 25

Candidate Starts for GTE2_26:

(Start: 25 @24090 has 24 MA's), (39, 23997), (Start: 69 @23952 has 8 MA's), (86, 23883), (96, 23805), (109, 23745), (112, 23718),

Gene: Gadost_81 Start: 47900, Stop: 47430, Start Num: 49

Candidate Starts for Gadost_81:

(Start: 44 @47918 has 3 MA's), (Start: 49 @47900 has 151 MA's), (Start: 54 @47891 has 1 MA's), (Start: 55 @47888 has 4 MA's), (Start: 69 @47870 has 8 MA's), (79, 47831), (103, 47696), (118, 47579),

Gene: Gail_85 Start: 47839, Stop: 47372, Start Num: 55

Candidate Starts for Gail_85:

(Start: 55 @47839 has 4 MA's), (Start: 69 @47827 has 8 MA's), (96, 47674), (103, 47647), (108, 47626), (112, 47587), (124, 47497), (127, 47476),

Gene: Garak_87 Start: 46485, Stop: 46024, Start Num: 53

Candidate Starts for Garak_87:

(Start: 53 @46485 has 52 MA's), (Start: 69 @46458 has 8 MA's), (84, 46398), (96, 46305), (116, 46191),

Gene: Genie2_215 Start: 106215, Stop: 106652, Start Num: 64

Candidate Starts for Genie2_215:

(Start: 64 @106215 has 32 MA's), (79, 106254), (Start: 88 @106305 has 1 MA's), (89, 106308), (92, 106344), (109, 106428),

Gene: GiKK_37 Start: 26414, Stop: 25788, Start Num: 21

Candidate Starts for GiKK_37:

(14, 26438), (19, 26417), (Start: 21 @26414 has 1 MA's), (Start: 25 @26387 has 24 MA's), (Start: 69 @26246 has 8 MA's), (96, 26099), (98, 26093), (104, 26069), (114, 26000), (136, 25841),

Gene: Gibbi_224 Start: 105733, Stop: 106170, Start Num: 64

Candidate Starts for Gibbi_224:

(Start: 44 @105685 has 3 MA's), (Start: 64 @105733 has 32 MA's), (79, 105772), (Start: 88 @105823 has 1 MA's), (89, 105826), (92, 105862),

Gene: Gilson_240 Start: 115082, Stop: 115537, Start Num: 62

Candidate Starts for Gilson_240:

(61, 115079), (Start: 62 @115082 has 20 MA's), (79, 115121), (94, 115220), (95, 115232), (106, 115271), (112, 115322), (123, 115403), (144, 115523), (145, 115526),

Gene: Gladiator_82 Start: 46208, Stop: 45747, Start Num: 53

Candidate Starts for Gladiator_82:

(Start: 53 @46208 has 52 MA's), (Start: 69 @46181 has 8 MA's), (84, 46121), (96, 46028), (116, 45914), (123, 45860),

Gene: Goose_81 Start: 47320, Stop: 46853, Start Num: 48

Candidate Starts for Goose_81:

(Start: 44 @47335 has 3 MA's), (Start: 48 @47320 has 10 MA's), (Start: 55 @47305 has 4 MA's),
(Start: 69 @47293 has 8 MA's), (86, 47224), (96, 47146), (103, 47119), (118, 47002),

Gene: GreedyLawyer_78 Start: 45978, Stop: 45517, Start Num: 53

Candidate Starts for GreedyLawyer_78:

(Start: 53 @45978 has 52 MA's), (Start: 69 @45951 has 8 MA's), (84, 45891), (96, 45798), (123, 45630),

Gene: Greely_237 Start: 134475, Stop: 134945, Start Num: 57

Candidate Starts for Greely_237:

(Start: 57 @134475 has 10 MA's), (Start: 69 @134490 has 8 MA's), (96, 134637), (103, 134664), (112, 134724),

Gene: Gruunaga_85 Start: 46163, Stop: 45702, Start Num: 53

Candidate Starts for Gruunaga_85:

(Start: 53 @46163 has 52 MA's), (Start: 69 @46136 has 8 MA's), (84, 46076), (96, 45983), (116, 45869), (123, 45815),

Gene: Guanica15_82 Start: 51039, Stop: 51500, Start Num: 50

Candidate Starts for Guanica15_82:

(Start: 50 @51039 has 63 MA's), (Start: 69 @51066 has 8 MA's), (72, 51075), (86, 51135), (95, 51210), (103, 51240), (104, 51243), (112, 51303), (123, 51381), (142, 51477),

Gene: HINdeR_77 Start: 49316, Stop: 48840, Start Num: 48

Candidate Starts for HINdeR_77:

(Start: 44 @49331 has 3 MA's), (Start: 48 @49316 has 10 MA's), (Start: 53 @49307 has 52 MA's), (Start: 54 @49304 has 1 MA's), (59, 49292), (61, 49289), (67, 49280), (Start: 69 @49277 has 8 MA's), (71, 49271), (79, 49238), (111, 49058), (131, 48905),

Gene: HamSlice_77 Start: 47898, Stop: 47428, Start Num: 49

Candidate Starts for HamSlice_77:

(Start: 44 @47916 has 3 MA's), (Start: 49 @47898 has 151 MA's), (Start: 54 @47889 has 1 MA's), (Start: 55 @47886 has 4 MA's), (Start: 69 @47868 has 8 MA's), (79, 47829), (96, 47721), (103, 47694), (112, 47631), (118, 47577),

Gene: Hammer_86 Start: 45843, Stop: 45409, Start Num: 69

Candidate Starts for Hammer_86:

(Start: 53 @45870 has 52 MA's), (Start: 69 @45843 has 8 MA's), (84, 45783), (96, 45690), (116, 45576), (123, 45522),

Gene: Happiness_80 Start: 47922, Stop: 47452, Start Num: 49

Candidate Starts for Happiness_80:

(Start: 44 @47940 has 3 MA's), (Start: 49 @47922 has 151 MA's), (Start: 54 @47913 has 1 MA's), (Start: 55 @47910 has 4 MA's), (Start: 69 @47892 has 8 MA's), (79, 47853), (103, 47718), (118, 47601),

Gene: HedwigODU_76 Start: 50506, Stop: 50967, Start Num: 50

Candidate Starts for HedwigODU_76:

(Start: 50 @50506 has 63 MA's), (Start: 69 @50533 has 8 MA's), (72, 50542), (86, 50602), (94, 50665), (103, 50707), (104, 50710), (112, 50770), (123, 50848), (142, 50944), (143, 50947),

Gene: Helmet_87 Start: 46485, Stop: 46024, Start Num: 53

Candidate Starts for Helmet_87:

(Start: 53 @46485 has 52 MA's), (Start: 69 @46458 has 8 MA's), (84, 46398), (96, 46305), (116, 46191),

Gene: Herbertwm_78 Start: 46898, Stop: 46428, Start Num: 48

Candidate Starts for Herbertwm_78:

(Start: 48 @46898 has 10 MA's), (Start: 69 @46868 has 8 MA's), (73, 46856), (78, 46832), (92, 46745), (96, 46721), (103, 46694), (104, 46691), (112, 46631),

Gene: Hexamo_85 Start: 46038, Stop: 45577, Start Num: 53

Candidate Starts for Hexamo_85:

(Start: 53 @46038 has 52 MA's), (Start: 69 @46011 has 8 MA's), (84, 45951), (96, 45858), (116, 45744), (123, 45690),

Gene: Hexbug_40 Start: 28044, Stop: 27442, Start Num: 25

Candidate Starts for Hexbug_40:

(12, 28101), (14, 28095), (19, 28074), (Start: 25 @28044 has 24 MA's), (Start: 69 @27903 has 8 MA's), (96, 27756), (98, 27750), (104, 27726), (112, 27669), (140, 27486),

Gene: Holli_80 Start: 47689, Stop: 47219, Start Num: 49

Candidate Starts for Holli_80:

(Start: 44 @47707 has 3 MA's), (Start: 49 @47689 has 151 MA's), (Start: 54 @47680 has 1 MA's), (Start: 55 @47677 has 4 MA's), (Start: 69 @47659 has 8 MA's), (79, 47620), (96, 47512), (103, 47485), (112, 47422), (118, 47368),

Gene: Homura_75 Start: 50461, Stop: 50922, Start Num: 50

Candidate Starts for Homura_75:

(Start: 50 @50461 has 63 MA's), (Start: 69 @50488 has 8 MA's), (72, 50497), (86, 50557), (94, 50620), (103, 50662), (104, 50665), (112, 50725), (123, 50803), (142, 50899), (143, 50902),

Gene: Hoot_79 Start: 43863, Stop: 43402, Start Num: 53

Candidate Starts for Hoot_79:

(Start: 53 @43863 has 52 MA's), (Start: 69 @43836 has 8 MA's), (84, 43776), (96, 43683), (123, 43515),

Gene: Houdini22_80 Start: 47900, Stop: 47430, Start Num: 49

Candidate Starts for Houdini22_80:

(Start: 44 @47918 has 3 MA's), (Start: 49 @47900 has 151 MA's), (Start: 54 @47891 has 1 MA's), (Start: 55 @47888 has 4 MA's), (Start: 69 @47870 has 8 MA's), (79, 47831), (103, 47696), (118, 47579),

Gene: Hurricane_79 Start: 51359, Stop: 51922, Start Num: 25

Candidate Starts for Hurricane_79:

(Start: 25 @51359 has 24 MA's), (30, 51416), (38, 51440), (Start: 69 @51491 has 8 MA's), (71, 51497), (78, 51527), (86, 51560), (90, 51593), (96, 51638), (110, 51701), (112, 51728), (130, 51860),

Gene: Huxley_70 Start: 45792, Stop: 45322, Start Num: 49

Candidate Starts for Huxley_70:

(Start: 44 @45810 has 3 MA's), (Start: 49 @45792 has 151 MA's), (Start: 54 @45783 has 1 MA's), (Start: 55 @45780 has 4 MA's), (Start: 69 @45762 has 8 MA's), (79, 45723), (103, 45588), (118, 45471),

Gene: Hyperbowlee_75 Start: 50658, Stop: 51119, Start Num: 50

Candidate Starts for Hyperbowlee_75:

(Start: 50 @50658 has 63 MA's), (Start: 69 @50685 has 8 MA's), (72, 50694), (86, 50754), (94, 50817), (103, 50859), (104, 50862), (112, 50922), (123, 51000), (142, 51096), (143, 51099),

Gene: ICleared_80 Start: 47967, Stop: 47497, Start Num: 49

Candidate Starts for ICleared_80:

(4, 48198), (Start: 44 @47985 has 3 MA's), (Start: 49 @47967 has 151 MA's), (Start: 54 @47958 has 1 MA's), (Start: 55 @47955 has 4 MA's), (Start: 69 @47937 has 8 MA's), (79, 47898), (103, 47763), (118, 47646),

Gene: Iceman_79 Start: 48189, Stop: 47719, Start Num: 49

Candidate Starts for Iceman_79:

(Start: 44 @48207 has 3 MA's), (Start: 49 @48189 has 151 MA's), (Start: 54 @48180 has 1 MA's), (Start: 55 @48177 has 4 MA's), (Start: 69 @48159 has 8 MA's), (79, 48120), (103, 47985), (118, 47868),

Gene: IchabodCrane_211 Start: 105248, Stop: 105685, Start Num: 64

Candidate Starts for IchabodCrane_211:

(Start: 44 @105200 has 3 MA's), (Start: 64 @105248 has 32 MA's), (79, 105287), (Start: 88 @105338 has 1 MA's), (89, 105341), (92, 105377),

Gene: Indra_89 Start: 46486, Stop: 46025, Start Num: 53

Candidate Starts for Indra_89:

(Start: 53 @46486 has 52 MA's), (Start: 69 @46459 has 8 MA's), (84, 46399), (96, 46306), (116, 46192),

Gene: Inky_76 Start: 50461, Stop: 50922, Start Num: 50

Candidate Starts for Inky_76:

(Start: 50 @50461 has 63 MA's), (Start: 69 @50488 has 8 MA's), (72, 50497), (86, 50557), (94, 50620), (103, 50662), (104, 50665), (112, 50725), (123, 50803), (142, 50899), (143, 50902),

Gene: Iracema64_81 Start: 48163, Stop: 47693, Start Num: 49

Candidate Starts for Iracema64_81:

(Start: 44 @48181 has 3 MA's), (Start: 49 @48163 has 151 MA's), (Start: 54 @48154 has 1 MA's), (Start: 55 @48151 has 4 MA's), (Start: 69 @48133 has 8 MA's), (79, 48094), (103, 47959), (118, 47842),

Gene: IronMan_81 Start: 48725, Stop: 48255, Start Num: 49

Candidate Starts for IronMan_81:

(Start: 49 @48725 has 151 MA's), (Start: 54 @48716 has 1 MA's), (Start: 69 @48701 has 8 MA's), (112, 48461), (120, 48398),

Gene: Iwokeuplikedis_87 Start: 48540, Stop: 48067, Start Num: 49

Candidate Starts for Iwokeuplikedis_87:

(Start: 49 @48540 has 151 MA's), (Start: 54 @48531 has 1 MA's), (Start: 55 @48528 has 4 MA's), (Start: 69 @48516 has 8 MA's), (78, 48480), (103, 48336), (120, 48210),

Gene: JAWS_75 Start: 50423, Stop: 50884, Start Num: 50

Candidate Starts for JAWS_75:

(Start: 50 @50423 has 63 MA's), (Start: 69 @50450 has 8 MA's), (72, 50459), (86, 50519), (94, 50582), (103, 50624), (104, 50627), (123, 50765), (142, 50861), (143, 50864),

Gene: JF1_81 Start: 51381, Stop: 51974, Start Num: 48

Candidate Starts for JF1_81:

(10, 51201), (22, 51252), (28, 51306), (32, 51336), (Start: 48 @51381 has 10 MA's), (Start: 53 @51390 has 52 MA's), (Start: 57 @51399 has 10 MA's), (Start: 69 @51414 has 8 MA's), (86, 51483), (96, 51561), (103, 51588), (108, 51609), (112, 51651), (155, 51903), (159, 51942), (161, 51966),

Gene: JSwag_87 Start: 46806, Stop: 46339, Start Num: 51

Candidate Starts for JSwag_87:

(Start: 51 @46806 has 14 MA's), (Start: 69 @46794 has 8 MA's), (79, 46755), (82, 46740),

Gene: Jaan_82 Start: 48833, Stop: 48363, Start Num: 49

Candidate Starts for Jaan_82:

(Start: 49 @48833 has 151 MA's), (Start: 54 @48824 has 1 MA's), (Start: 69 @48809 has 8 MA's), (78, 48773), (112, 48569),

Gene: Jada_238 Start: 114440, Stop: 114895, Start Num: 62

Candidate Starts for Jada_238:

(42, 114386), (61, 114437), (Start: 62 @114440 has 20 MA's), (78, 114476), (79, 114479), (94, 114578), (95, 114590), (106, 114629), (112, 114680), (123, 114761), (144, 114881), (145, 114884),

Gene: Jamzy_37 Start: 26370, Stop: 25771, Start Num: 25

Candidate Starts for Jamzy_37:

(14, 26421), (19, 26400), (Start: 21 @26397 has 1 MA's), (Start: 25 @26370 has 24 MA's), (Start: 69 @26229 has 8 MA's), (96, 26082), (98, 26076), (104, 26052), (114, 25983),

Gene: Jarvi_76 Start: 50461, Stop: 50922, Start Num: 50

Candidate Starts for Jarvi_76:

(Start: 50 @50461 has 63 MA's), (Start: 69 @50488 has 8 MA's), (72, 50497), (86, 50557), (94, 50620), (103, 50662), (104, 50665), (112, 50725), (123, 50803), (142, 50899), (143, 50902),

Gene: Jayhawk_79 Start: 50923, Stop: 51384, Start Num: 50

Candidate Starts for Jayhawk_79:

(Start: 50 @50923 has 63 MA's), (Start: 69 @50950 has 8 MA's), (72, 50959), (86, 51019), (94, 51082), (103, 51124), (104, 51127), (123, 51265), (142, 51361), (143, 51364),

Gene: Jaykayelowell_78 Start: 47892, Stop: 47422, Start Num: 49

Candidate Starts for Jaykayelowell_78:

(Start: 44 @47910 has 3 MA's), (Start: 49 @47892 has 151 MA's), (Start: 54 @47883 has 1 MA's), (Start: 55 @47880 has 4 MA's), (Start: 69 @47862 has 8 MA's), (79, 47823), (96, 47715), (103, 47688), (112, 47625), (118, 47571),

Gene: Jeckyll_76 Start: 50461, Stop: 50922, Start Num: 50

Candidate Starts for Jeckyll_76:

(Start: 50 @50461 has 63 MA's), (Start: 69 @50488 has 8 MA's), (72, 50497), (86, 50557), (94, 50620), (103, 50662), (104, 50665), (112, 50725), (123, 50803), (142, 50899), (143, 50902),

Gene: Jeeves_85 Start: 46559, Stop: 46092, Start Num: 55

Candidate Starts for Jeeves_85:

(Start: 55 @46559 has 4 MA's), (Start: 69 @46547 has 8 MA's), (103, 46367), (108, 46346), (112, 46307), (124, 46217), (127, 46196),

Gene: JetBlade_82 Start: 47927, Stop: 47457, Start Num: 49

Candidate Starts for JetBlade_82:

(Start: 44 @47945 has 3 MA's), (Start: 49 @47927 has 151 MA's), (Start: 54 @47918 has 1 MA's), (Start: 55 @47915 has 4 MA's), (Start: 69 @47897 has 8 MA's), (79, 47858), (96, 47750), (103,

47723), (112, 47660), (118, 47606),

Gene: JimJam_223 Start: 107169, Stop: 107606, Start Num: 64

Candidate Starts for JimJam_223:

(Start: 44 @107121 has 3 MA's), (Start: 64 @107169 has 32 MA's), (79, 107208), (Start: 88 @107259 has 1 MA's), (89, 107262), (92, 107298),

Gene: Jollison_213 Start: 105379, Stop: 105816, Start Num: 64

Candidate Starts for Jollison_213:

(Start: 44 @105331 has 3 MA's), (Start: 64 @105379 has 32 MA's), (79, 105418), (Start: 88 @105469 has 1 MA's), (89, 105472), (92, 105508),

Gene: JoongJeon_80 Start: 47893, Stop: 47423, Start Num: 49

Candidate Starts for JoongJeon_80:

(Start: 44 @47911 has 3 MA's), (Start: 49 @47893 has 151 MA's), (Start: 54 @47884 has 1 MA's), (Start: 55 @47881 has 4 MA's), (Start: 69 @47863 has 8 MA's), (79, 47824), (103, 47689), (118, 47572),

Gene: Jordennis_82 Start: 46245, Stop: 45784, Start Num: 53

Candidate Starts for Jordennis_82:

(Start: 53 @46245 has 52 MA's), (Start: 69 @46218 has 8 MA's), (84, 46158), (96, 46065), (123, 45897),

Gene: Joy99_77 Start: 50590, Stop: 51051, Start Num: 50

Candidate Starts for Joy99_77:

(Start: 50 @50590 has 63 MA's), (Start: 69 @50617 has 8 MA's), (72, 50626), (86, 50686), (94, 50749), (103, 50791), (104, 50794), (112, 50854), (123, 50932), (142, 51028), (143, 51031),

Gene: Juliette_83 Start: 51509, Stop: 52081, Start Num: 57

Candidate Starts for Juliette_83:

(5, 51284), (10, 51311), (22, 51362), (28, 51416), (32, 51446), (Start: 48 @51491 has 10 MA's), (Start: 53 @51500 has 52 MA's), (Start: 57 @51509 has 10 MA's), (Start: 69 @51524 has 8 MA's), (86, 51593), (95, 51668), (96, 51671), (103, 51698), (112, 51761), (123, 51839), (153, 52004), (155, 52010), (159, 52049),

Gene: KFPoly_80 Start: 47893, Stop: 47423, Start Num: 49

Candidate Starts for KFPoly_80:

(Start: 44 @47911 has 3 MA's), (Start: 49 @47893 has 151 MA's), (Start: 54 @47884 has 1 MA's), (Start: 55 @47881 has 4 MA's), (Start: 69 @47863 has 8 MA's), (79, 47824), (103, 47689), (118, 47572),

Gene: Kamy_80 Start: 47902, Stop: 47432, Start Num: 49

Candidate Starts for Kamy_80:

(Start: 44 @47920 has 3 MA's), (Start: 49 @47902 has 151 MA's), (Start: 54 @47893 has 1 MA's), (Start: 55 @47890 has 4 MA's), (Start: 69 @47872 has 8 MA's), (79, 47833), (103, 47698), (118, 47581),

Gene: Karimac_217 Start: 105564, Stop: 106001, Start Num: 64

Candidate Starts for Karimac_217:

(Start: 49 @105534 has 151 MA's), (Start: 64 @105564 has 32 MA's), (79, 105603), (Start: 88 @105654 has 1 MA's), (92, 105693),

Gene: Karp_236 Start: 116720, Stop: 117178, Start Num: 62

Candidate Starts for Karp_236:

(61, 116717), (Start: 62 @116720 has 20 MA's), (79, 116759), (94, 116858), (97, 116876), (106, 116909), (110, 116936), (123, 117044), (144, 117164), (145, 117167),

Gene: Katalie136_77 Start: 47517, Stop: 47050, Start Num: 49

Candidate Starts for Katalie136_77:

(Start: 44 @47535 has 3 MA's), (Start: 49 @47517 has 151 MA's), (Start: 54 @47508 has 1 MA's), (Start: 55 @47505 has 4 MA's), (Start: 69 @47487 has 8 MA's), (79, 47448), (103, 47313), (112, 47250), (118, 47196),

Gene: KatherineG_87 Start: 47118, Stop: 46651, Start Num: 51

Candidate Starts for KatherineG_87:

(Start: 51 @47118 has 14 MA's), (Start: 69 @47106 has 8 MA's), (79, 47067), (82, 47052),

Gene: Kazan_85 Start: 46018, Stop: 45557, Start Num: 53

Candidate Starts for Kazan_85:

(Start: 53 @46018 has 52 MA's), (Start: 69 @45991 has 8 MA's), (84, 45931), (96, 45838), (123, 45670),

Gene: Kenrey_246 Start: 116000, Stop: 116455, Start Num: 62

Candidate Starts for Kenrey_246:

(61, 115997), (Start: 62 @116000 has 20 MA's), (79, 116039), (82, 116054), (94, 116138), (95, 116150), (106, 116189), (144, 116441),

Gene: KentuckyRacer_222 Start: 107084, Stop: 107521, Start Num: 64

Candidate Starts for KentuckyRacer_222:

(Start: 44 @107036 has 3 MA's), (Start: 64 @107084 has 32 MA's), (79, 107123), (Start: 88 @107174 has 1 MA's), (89, 107177), (92, 107213),

Gene: Keshu_81 Start: 51550, Stop: 52113, Start Num: 25

Candidate Starts for Keshu_81:

(Start: 25 @51550 has 24 MA's), (30, 51607), (38, 51631), (Start: 69 @51682 has 8 MA's), (71, 51688), (78, 51718), (86, 51751), (90, 51784), (96, 51829), (110, 51892), (112, 51919), (130, 52051),

Gene: KiSi_79 Start: 51113, Stop: 51700, Start Num: 25

Candidate Starts for KiSi_79:

(Start: 25 @51113 has 24 MA's), (31, 51170), (Start: 48 @51233 has 10 MA's), (Start: 69 @51266 has 8 MA's), (71, 51272), (86, 51335), (90, 51368), (96, 51413), (103, 51440), (112, 51503), (123, 51581), (143, 51680),

Gene: Kimona_81 Start: 46685, Stop: 46218, Start Num: 56

Candidate Starts for Kimona_81:

(20, 46847), (Start: 44 @46706 has 3 MA's), (Start: 56 @46685 has 1 MA's), (Start: 69 @46673 has 8 MA's), (72, 46664), (78, 46637), (86, 46604), (96, 46526), (142, 46256),

Gene: Kingmustik0402_81 Start: 47888, Stop: 47418, Start Num: 49

Candidate Starts for Kingmustik0402_81:

(Start: 44 @47906 has 3 MA's), (Start: 49 @47888 has 151 MA's), (Start: 54 @47879 has 1 MA's), (Start: 55 @47876 has 4 MA's), (Start: 69 @47858 has 8 MA's), (79, 47819), (103, 47684), (118, 47567),

Gene: Kipper29_84 Start: 46022, Stop: 45570, Start Num: 53

Candidate Starts for Kipper29_84:

(Start: 53 @46022 has 52 MA's), (Start: 69 @45995 has 8 MA's), (86, 45929), (96, 45851), (123, 45683),

Gene: KittenMittens_76 Start: 46673, Stop: 46209, Start Num: 49

Candidate Starts for KittenMittens_76:

(Start: 49 @46673 has 151 MA's), (Start: 54 @46664 has 1 MA's), (Start: 69 @46649 has 8 MA's), (118, 46358),

Gene: Koan_76 Start: 47899, Stop: 47429, Start Num: 49

Candidate Starts for Koan_76:

(Start: 44 @47917 has 3 MA's), (Start: 49 @47899 has 151 MA's), (Start: 54 @47890 has 1 MA's), (Start: 55 @47887 has 4 MA's), (Start: 69 @47869 has 8 MA's), (79, 47830), (103, 47695), (118, 47578),

Gene: Koko_87 Start: 46875, Stop: 46414, Start Num: 53

Candidate Starts for Koko_87:

(Start: 53 @46875 has 52 MA's), (Start: 69 @46848 has 8 MA's), (84, 46788), (96, 46695), (116, 46581),

Gene: Koreni_80 Start: 47580, Stop: 47110, Start Num: 49

Candidate Starts for Koreni_80:

(Start: 44 @47598 has 3 MA's), (Start: 49 @47580 has 151 MA's), (Start: 54 @47571 has 1 MA's), (Start: 55 @47568 has 4 MA's), (Start: 69 @47550 has 8 MA's), (79, 47511), (103, 47376), (118, 47259),

Gene: Kratark_80 Start: 47933, Stop: 47463, Start Num: 49

Candidate Starts for Kratark_80:

(Start: 44 @47951 has 3 MA's), (Start: 49 @47933 has 151 MA's), (Start: 54 @47924 has 1 MA's), (Start: 55 @47921 has 4 MA's), (Start: 69 @47903 has 8 MA's), (79, 47864), (103, 47729), (118, 47612),

Gene: Kraw_82 Start: 51209, Stop: 51790, Start Num: 53

Candidate Starts for Kraw_82:

(10, 51011), (13, 51026), (22, 51062), (26, 51083), (28, 51110), (32, 51140), (Start: 48 @51200 has 10 MA's), (Start: 53 @51209 has 52 MA's), (Start: 57 @51218 has 10 MA's), (Start: 69 @51233 has 8 MA's), (86, 51302), (95, 51377), (96, 51380), (103, 51407), (112, 51470), (123, 51548), (153, 51713), (155, 51719), (159, 51758),

Gene: Kremtemulon_78 Start: 47779, Stop: 47309, Start Num: 49

Candidate Starts for Kremtemulon_78:

(Start: 44 @47797 has 3 MA's), (Start: 49 @47779 has 151 MA's), (Start: 54 @47770 has 1 MA's), (Start: 55 @47767 has 4 MA's), (Start: 69 @47749 has 8 MA's), (79, 47710), (103, 47575), (118, 47458),

Gene: Kristoff_78 Start: 47941, Stop: 47477, Start Num: 49

Candidate Starts for Kristoff_78:

(Start: 49 @47941 has 151 MA's), (Start: 54 @47932 has 1 MA's), (Start: 69 @47917 has 8 MA's), (112, 47680),

Gene: Krueger_83 Start: 51452, Stop: 52018, Start Num: 24

Candidate Starts for Krueger_83:

(Start: 24 @51452 has 11 MA's), (27, 51482), (Start: 53 @51563 has 52 MA's), (Start: 69 @51584 has 8 MA's), (90, 51686), (96, 51731), (112, 51821), (123, 51899), (130, 51953), (143, 51998),

Gene: Kyee_81 Start: 47894, Stop: 47424, Start Num: 49

Candidate Starts for Kyee_81:

(Start: 44 @47912 has 3 MA's), (Start: 49 @47894 has 151 MA's), (Start: 54 @47885 has 1 MA's), (Start: 55 @47882 has 4 MA's), (Start: 69 @47864 has 8 MA's), (79, 47825), (103, 47690), (118, 47573),

Gene: LHTSCC_83 Start: 48339, Stop: 47869, Start Num: 49

Candidate Starts for LHTSCC_83:

(Start: 44 @48357 has 3 MA's), (Start: 49 @48339 has 151 MA's), (Start: 54 @48330 has 1 MA's), (Start: 55 @48327 has 4 MA's), (Start: 69 @48309 has 8 MA's), (79, 48270), (103, 48135), (118, 48018),

Gene: Landor_82 Start: 48758, Stop: 48288, Start Num: 49

Candidate Starts for Landor_82:

(Start: 49 @48758 has 151 MA's), (Start: 54 @48749 has 1 MA's), (Start: 69 @48734 has 8 MA's), (112, 48494),

Gene: LappelDuVide_81 Start: 47899, Stop: 47429, Start Num: 49

Candidate Starts for LappelDuVide_81:

(Start: 44 @47917 has 3 MA's), (Start: 49 @47899 has 151 MA's), (Start: 54 @47890 has 1 MA's), (Start: 55 @47887 has 4 MA's), (Start: 69 @47869 has 8 MA's), (79, 47830), (96, 47722), (103, 47695), (112, 47632), (118, 47578),

Gene: LastHope_83 Start: 51070, Stop: 51531, Start Num: 50

Candidate Starts for LastHope_83:

(Start: 50 @51070 has 63 MA's), (Start: 54 @51076 has 1 MA's), (Start: 69 @51097 has 8 MA's), (72, 51106), (78, 51133), (86, 51166), (95, 51241), (103, 51271), (104, 51274), (112, 51334), (123, 51412), (143, 51511),

Gene: LastResort_85 Start: 47049, Stop: 46582, Start Num: 51

Candidate Starts for LastResort_85:

(Start: 51 @47049 has 14 MA's), (Start: 69 @47037 has 8 MA's), (79, 46998), (82, 46983),

Gene: LeMond_78 Start: 50717, Stop: 51304, Start Num: 25

Candidate Starts for LeMond_78:

(Start: 25 @50717 has 24 MA's), (31, 50774), (Start: 48 @50837 has 10 MA's), (Start: 69 @50870 has 8 MA's), (71, 50876), (86, 50939), (90, 50972), (96, 51017), (103, 51044), (112, 51107), (123, 51185), (143, 51284),

Gene: Lea83_80 Start: 51451, Stop: 52014, Start Num: 25

Candidate Starts for Lea83_80:

(Start: 25 @51451 has 24 MA's), (30, 51508), (38, 51532), (Start: 69 @51583 has 8 MA's), (71, 51589), (78, 51619), (86, 51652), (90, 51685), (96, 51730), (110, 51793), (112, 51820), (130, 51952),

Gene: Lebo14_82 Start: 51635, Stop: 52210, Start Num: 57

Candidate Starts for Lebo14_82:

(10, 51437), (22, 51488), (28, 51542), (32, 51572), (Start: 48 @51617 has 10 MA's), (Start: 53 @51626 has 52 MA's), (Start: 57 @51635 has 10 MA's), (Start: 69 @51650 has 8 MA's), (86, 51719), (96, 51797), (103, 51824), (112, 51887), (123, 51965), (155, 52139), (159, 52178),

Gene: Lemur_81 Start: 47896, Stop: 47426, Start Num: 49

Candidate Starts for Lemur_81:

(Start: 44 @47914 has 3 MA's), (Start: 49 @47896 has 151 MA's), (Start: 54 @47887 has 1 MA's), (Start: 55 @47884 has 4 MA's), (Start: 69 @47866 has 8 MA's), (79, 47827), (103, 47692), (118, 47575),

Gene: Lilbunny_85 Start: 46117, Stop: 45656, Start Num: 53

Candidate Starts for Lilbunny_85:

(Start: 53 @46117 has 52 MA's), (Start: 69 @46090 has 8 MA's), (84, 46030), (96, 45937), (116, 45823),

Gene: LindNT_75 Start: 50926, Stop: 51387, Start Num: 50

Candidate Starts for LindNT_75:

(Start: 50 @50926 has 63 MA's), (Start: 69 @50953 has 8 MA's), (72, 50962), (86, 51022), (94, 51085), (104, 51130), (123, 51268), (142, 51364), (143, 51367),

Gene: LittleB_81 Start: 47900, Stop: 47430, Start Num: 49

Candidate Starts for LittleB_81:

(Start: 44 @47918 has 3 MA's), (Start: 49 @47900 has 151 MA's), (Start: 54 @47891 has 1 MA's), (Start: 55 @47888 has 4 MA's), (Start: 69 @47870 has 8 MA's), (79, 47831), (103, 47696), (118, 47579),

Gene: LittleGuy_81 Start: 47787, Stop: 47314, Start Num: 49

Candidate Starts for LittleGuy_81:

(Start: 44 @47805 has 3 MA's), (Start: 49 @47787 has 151 MA's), (70, 47754), (79, 47715), (82, 47700), (90, 47652), (103, 47580), (118, 47463),

Gene: Llorens_76 Start: 50461, Stop: 50922, Start Num: 50

Candidate Starts for Llorens_76:

(Start: 50 @50461 has 63 MA's), (Start: 69 @50488 has 8 MA's), (72, 50497), (86, 50557), (94, 50620), (103, 50662), (104, 50665), (112, 50725), (123, 50803), (142, 50899), (143, 50902),

Gene: LochMonster_82 Start: 48136, Stop: 47666, Start Num: 49

Candidate Starts for LochMonster_82:

(Start: 44 @48154 has 3 MA's), (Start: 49 @48136 has 151 MA's), (Start: 54 @48127 has 1 MA's), (Start: 55 @48124 has 4 MA's), (Start: 69 @48106 has 8 MA's), (79, 48067), (103, 47932), (118, 47815),

Gene: Lorenzo_81 Start: 47897, Stop: 47427, Start Num: 49

Candidate Starts for Lorenzo_81:

(Start: 44 @47915 has 3 MA's), (Start: 49 @47897 has 151 MA's), (Start: 54 @47888 has 1 MA's), (Start: 55 @47885 has 4 MA's), (Start: 69 @47867 has 8 MA's), (79, 47828), (103, 47693), (118, 47576),

Gene: Luchador_83 Start: 47820, Stop: 47353, Start Num: 55

Candidate Starts for Luchador_83:

(Start: 55 @47820 has 4 MA's), (Start: 69 @47808 has 8 MA's), (103, 47628), (108, 47607), (124, 47478), (127, 47457),

Gene: LukeCage_221 Start: 107799, Stop: 108236, Start Num: 64

Candidate Starts for LukeCage_221:

(Start: 64 @107799 has 32 MA's), (79, 107838), (Start: 88 @107889 has 1 MA's), (89, 107892), (92, 107928),

Gene: Lunahalos_76 Start: 50461, Stop: 50922, Start Num: 50

Candidate Starts for Lunahalos_76:

(Start: 50 @50461 has 63 MA's), (Start: 69 @50488 has 8 MA's), (72, 50497), (86, 50557), (94, 50620), (103, 50662), (104, 50665), (112, 50725), (123, 50803), (142, 50899), (143, 50902),

Gene: Lunsford_81 Start: 47892, Stop: 47422, Start Num: 49

Candidate Starts for Lunsford_81:

(Start: 44 @47910 has 3 MA's), (Start: 49 @47892 has 151 MA's), (Start: 54 @47883 has 1 MA's), (Start: 55 @47880 has 4 MA's), (Start: 69 @47862 has 8 MA's), (79, 47823), (86, 47793), (96, 47715), (103, 47688), (112, 47625), (118, 47571),

Gene: MacnCheese_81 Start: 51963, Stop: 52529, Start Num: 25

Candidate Starts for MacnCheese_81:

(Start: 25 @51963 has 24 MA's), (27, 51993), (Start: 53 @52074 has 52 MA's), (Start: 69 @52098 has 8 MA's), (71, 52104), (90, 52200), (96, 52245), (112, 52335), (130, 52467),

Gene: Malthus_82 Start: 51209, Stop: 51790, Start Num: 53

Candidate Starts for Malthus_82:

(10, 51011), (13, 51026), (22, 51062), (26, 51083), (28, 51110), (32, 51140), (Start: 48 @51200 has 10 MA's), (Start: 53 @51209 has 52 MA's), (Start: 57 @51218 has 10 MA's), (Start: 69 @51233 has 8 MA's), (86, 51302), (95, 51377), (96, 51380), (103, 51407), (112, 51470), (123, 51548), (153, 51713), (155, 51719), (159, 51758),

Gene: Marcoliusprime_81 Start: 53325, Stop: 53894, Start Num: 58

Candidate Starts for Marcoliusprime_81:

(Start: 58 @53325 has 11 MA's), (Start: 69 @53334 has 8 MA's), (77, 53364), (90, 53436), (96, 53481), (103, 53508), (104, 53511), (112, 53571), (156, 53835), (158, 53850),

Gene: Margaret_39 Start: 27083, Stop: 26442, Start Num: 18

Candidate Starts for Margaret_39:

(Start: 18 @27083 has 1 MA's), (Start: 25 @27044 has 24 MA's), (39, 26957), (Start: 54 @26924 has 1 MA's), (Start: 69 @26903 has 8 MA's), (78, 26867), (86, 26834), (96, 26756), (98, 26750), (104, 26726), (112, 26669), (145, 26465),

Gene: MarkPhew_78 Start: 50597, Stop: 51175, Start Num: 25

Candidate Starts for MarkPhew_78:

(7, 50516), (8, 50519), (9, 50522), (Start: 25 @50597 has 24 MA's), (Start: 53 @50714 has 52 MA's), (Start: 69 @50738 has 8 MA's), (71, 50744), (90, 50840), (95, 50882), (96, 50885), (103, 50912), (112, 50975), (123, 51053), (143, 51155),

Gene: Marshawn_75 Start: 50991, Stop: 51566, Start Num: 25

Candidate Starts for Marshawn_75:

(8, 50913), (9, 50916), (Start: 25 @50991 has 24 MA's), (Start: 53 @51108 has 52 MA's), (Start: 69 @51132 has 8 MA's), (71, 51138), (86, 51201), (87, 51204), (90, 51234), (95, 51276), (96, 51279), (103, 51306), (108, 51327), (112, 51369), (123, 51447), (143, 51546),

Gene: Maverick_80 Start: 47896, Stop: 47426, Start Num: 49

Candidate Starts for Maverick_80:

(Start: 44 @47914 has 3 MA's), (Start: 49 @47896 has 151 MA's), (Start: 54 @47887 has 1 MA's), (Start: 55 @47884 has 4 MA's), (Start: 69 @47866 has 8 MA's), (79, 47827), (103, 47692), (118, 47575),

Gene: Maxo_83 Start: 47902, Stop: 47432, Start Num: 49

Candidate Starts for Maxo_83:

(Start: 44 @47920 has 3 MA's), (Start: 49 @47902 has 151 MA's), (Start: 54 @47893 has 1 MA's), (Start: 55 @47890 has 4 MA's), (Start: 69 @47872 has 8 MA's), (79, 47833), (103, 47698), (118, 47581),

Gene: Mazhar510_81 Start: 47897, Stop: 47427, Start Num: 49

Candidate Starts for Mazhar510_81:

(Start: 44 @47915 has 3 MA's), (Start: 49 @47897 has 151 MA's), (Start: 54 @47888 has 1 MA's), (Start: 55 @47885 has 4 MA's), (Start: 69 @47867 has 8 MA's), (79, 47828), (103, 47693), (118, 47576),

Gene: McFly_84 Start: 46358, Stop: 45906, Start Num: 53

Candidate Starts for McFly_84:

(Start: 53 @46358 has 52 MA's), (Start: 69 @46331 has 8 MA's), (86, 46265), (96, 46187), (123, 46019),

Gene: McMater_79 Start: 51840, Stop: 52403, Start Num: 24

Candidate Starts for McMater_79:

(Start: 24 @51840 has 11 MA's), (27, 51870), (Start: 53 @51948 has 52 MA's), (Start: 69 @51969 has 8 MA's), (71, 51975), (86, 52038), (90, 52071), (95, 52113), (96, 52116), (104, 52146), (112, 52206), (123, 52284), (142, 52380), (143, 52383),

Gene: Medusa_80 Start: 47912, Stop: 47442, Start Num: 49

Candidate Starts for Medusa_80:

(Start: 44 @47930 has 3 MA's), (Start: 49 @47912 has 151 MA's), (Start: 54 @47903 has 1 MA's), (Start: 55 @47900 has 4 MA's), (Start: 69 @47882 has 8 MA's), (79, 47843), (103, 47708), (118, 47591),

Gene: MeeZee_80 Start: 47893, Stop: 47423, Start Num: 49

Candidate Starts for MeeZee_80:

(4, 48124), (Start: 44 @47911 has 3 MA's), (Start: 49 @47893 has 151 MA's), (Start: 54 @47884 has 1 MA's), (Start: 55 @47881 has 4 MA's), (Start: 69 @47863 has 8 MA's), (79, 47824), (103, 47689), (118, 47572),

Gene: MeganTheeKilla_243 Start: 114982, Stop: 115437, Start Num: 62

Candidate Starts for MeganTheeKilla_243:

(61, 114979), (Start: 62 @114982 has 20 MA's), (79, 115021), (94, 115120), (95, 115132), (106, 115171), (112, 115222), (123, 115303), (144, 115423), (145, 115426),

Gene: Melvin_83 Start: 47912, Stop: 47424, Start Num: 44

Candidate Starts for Melvin_83:

(Start: 44 @47912 has 3 MA's), (Start: 49 @47894 has 151 MA's), (Start: 54 @47885 has 1 MA's), (Start: 55 @47882 has 4 MA's), (Start: 69 @47864 has 8 MA's), (79, 47825), (103, 47690), (118, 47573),

Gene: Millski_80 Start: 47900, Stop: 47430, Start Num: 49

Candidate Starts for Millski_80:

(4, 48131), (Start: 44 @47918 has 3 MA's), (Start: 49 @47900 has 151 MA's), (Start: 54 @47891 has 1 MA's), (Start: 55 @47888 has 4 MA's), (Start: 69 @47870 has 8 MA's), (79, 47831), (103, 47696), (118, 47579),

Gene: Milly_82 Start: 53316, Stop: 53885, Start Num: 58

Candidate Starts for Milly_82:

(Start: 58 @53316 has 11 MA's), (Start: 69 @53325 has 8 MA's), (77, 53355), (90, 53427), (96, 53472), (103, 53499), (104, 53502), (112, 53562), (156, 53826), (158, 53841),

Gene: MindFlayer_209 Start: 104764, Stop: 105201, Start Num: 64

Candidate Starts for MindFlayer_209:

(Start: 44 @104716 has 3 MA's), (Start: 64 @104764 has 32 MA's), (79, 104803), (Start: 88 @104854 has 1 MA's), (89, 104857), (92, 104893),

Gene: MinecraftSteve_88 Start: 47100, Stop: 46633, Start Num: 51

Candidate Starts for MinecraftSteve_88:

(Start: 51 @47100 has 14 MA's), (Start: 69 @47088 has 8 MA's), (79, 47049), (82, 47034),

Gene: Miramae_81 Start: 47833, Stop: 47345, Start Num: 44

Candidate Starts for Miramae_81:

(Start: 44 @47833 has 3 MA's), (Start: 49 @47815 has 151 MA's), (61, 47788), (Start: 69 @47782 has 8 MA's), (82, 47728), (86, 47713), (103, 47608), (118, 47491),

Gene: MissDaisy_78 Start: 49211, Stop: 49774, Start Num: 57

Candidate Starts for MissDaisy_78:

(Start: 53 @49202 has 52 MA's), (Start: 57 @49211 has 10 MA's), (60, 49220), (Start: 69 @49226 has 8 MA's), (82, 49280), (86, 49295), (96, 49373), (103, 49400), (112, 49463), (123, 49541), (159, 49742),

Gene: Mitti_81 Start: 51367, Stop: 51951, Start Num: 53

Candidate Starts for Mitti_81:

(10, 51178), (22, 51229), (28, 51283), (32, 51313), (Start: 48 @51358 has 10 MA's), (Start: 53 @51367 has 52 MA's), (Start: 57 @51376 has 10 MA's), (Start: 69 @51391 has 8 MA's), (86, 51460), (96, 51538), (103, 51565), (112, 51628), (123, 51706), (155, 51880), (159, 51919),

Gene: Moab_243 Start: 117249, Stop: 117701, Start Num: 62

Candidate Starts for Moab_243:

(61, 117246), (Start: 62 @117249 has 20 MA's), (79, 117288), (94, 117387), (106, 117438), (120, 117555), (123, 117570), (144, 117687),

Gene: Morpher26_77 Start: 47538, Stop: 47071, Start Num: 49

Candidate Starts for Morpher26_77:

(Start: 44 @47556 has 3 MA's), (Start: 49 @47538 has 151 MA's), (Start: 54 @47529 has 1 MA's), (Start: 55 @47526 has 4 MA's), (Start: 69 @47508 has 8 MA's), (79, 47469), (103, 47334), (112, 47271), (118, 47217),

Gene: Morrow_83 Start: 47939, Stop: 47469, Start Num: 49

Candidate Starts for Morrow_83:

(Start: 44 @47957 has 3 MA's), (Start: 49 @47939 has 151 MA's), (Start: 54 @47930 has 1 MA's), (Start: 55 @47927 has 4 MA's), (Start: 69 @47909 has 8 MA's), (79, 47870), (96, 47762), (103, 47735), (112, 47672), (118, 47618),

Gene: Mufasa_81 Start: 52782, Stop: 53354, Start Num: 58

Candidate Starts for Mufasa_81:

(Start: 58 @52782 has 11 MA's), (Start: 69 @52794 has 8 MA's), (96, 52941), (103, 52968), (104, 52971), (112, 53031), (156, 53295), (158, 53310),

Gene: Mugiwara_228 Start: 108345, Stop: 108692, Start Num: 88

Candidate Starts for Mugiwara_228:

(Start: 49 @108225 has 151 MA's), (Start: 64 @108255 has 32 MA's), (79, 108294), (Start: 88 @108345 has 1 MA's), (89, 108348), (92, 108384),

Gene: Mundrea_79 Start: 47777, Stop: 47307, Start Num: 49

Candidate Starts for Mundrea_79:

(Start: 44 @47795 has 3 MA's), (Start: 49 @47777 has 151 MA's), (61, 47750), (Start: 69 @47744 has 8 MA's), (82, 47690), (86, 47675), (103, 47570), (118, 47453),

Gene: Muntaha_214 Start: 105868, Stop: 106320, Start Num: 64

Candidate Starts for Muntaha_214:

(Start: 64 @105868 has 32 MA's), (76, 105892), (79, 105907), (80, 105910), (94, 106000), (97, 106018), (106, 106051), (133, 106252), (145, 106309),

Gene: Murucutumbu_77 Start: 51702, Stop: 52163, Start Num: 52

Candidate Starts for Murucutumbu_77:

(34, 51651), (40, 51669), (Start: 52 @51702 has 2 MA's), (Start: 69 @51729 has 8 MA's), (72, 51738), (86, 51798), (94, 51861), (95, 51873), (103, 51903), (104, 51906), (123, 52044), (142, 52140), (143, 52143),

Gene: Mynx_78 Start: 51192, Stop: 51653, Start Num: 50

Candidate Starts for Mynx_78:

(Start: 50 @51192 has 63 MA's), (Start: 69 @51219 has 8 MA's), (72, 51228), (86, 51288), (94, 51351), (103, 51393), (104, 51396), (123, 51534), (142, 51630), (143, 51633),

Gene: Myrna_230 Start: 134129, Stop: 134599, Start Num: 57

Candidate Starts for Myrna_230:

(Start: 57 @134129 has 10 MA's), (Start: 69 @134144 has 8 MA's), (96, 134291), (103, 134318), (112, 134378),

Gene: Nebs_82 Start: 47939, Stop: 47469, Start Num: 49

Candidate Starts for Nebs_82:

(Start: 44 @47957 has 3 MA's), (Start: 49 @47939 has 151 MA's), (Start: 54 @47930 has 1 MA's), (Start: 55 @47927 has 4 MA's), (Start: 69 @47909 has 8 MA's), (79, 47870), (103, 47735), (118, 47618),

Gene: Nebulosus_84 Start: 46606, Stop: 46139, Start Num: 51

Candidate Starts for Nebulosus_84:

(Start: 51 @46606 has 14 MA's), (Start: 69 @46594 has 8 MA's), (79, 46555), (82, 46540),

Gene: Neeharika16_83 Start: 46108, Stop: 45656, Start Num: 53

Candidate Starts for Neeharika16_83:

(Start: 53 @46108 has 52 MA's), (Start: 69 @46081 has 8 MA's), (86, 46015), (96, 45937), (123, 45769),

Gene: Nemo27_80 Start: 47895, Stop: 47425, Start Num: 49

Candidate Starts for Nemo27_80:

(Start: 44 @47913 has 3 MA's), (Start: 49 @47895 has 151 MA's), (Start: 54 @47886 has 1 MA's), (Start: 55 @47883 has 4 MA's), (Start: 69 @47865 has 8 MA's), (79, 47826), (103, 47691), (118, 47574),

Gene: Newrala_83 Start: 46453, Stop: 45992, Start Num: 53

Candidate Starts for Newrala_83:

(Start: 53 @46453 has 52 MA's), (Start: 69 @46426 has 8 MA's), (84, 46366), (96, 46273), (123, 46105),

Gene: Nibb_78 Start: 50412, Stop: 50990, Start Num: 25

Candidate Starts for Nibb_78:

(Start: 25 @50412 has 24 MA's), (Start: 54 @50535 has 1 MA's), (Start: 69 @50556 has 8 MA's), (71, 50562), (95, 50700), (96, 50703), (103, 50730), (112, 50793), (123, 50871), (143, 50970),

Gene: Niklas_80 Start: 51901, Stop: 52464, Start Num: 24

Candidate Starts for Niklas_80:

(Start: 24 @51901 has 11 MA's), (27, 51931), (Start: 53 @52009 has 52 MA's), (Start: 69 @52030 has 8 MA's), (71, 52036), (86, 52099), (90, 52132), (95, 52174), (96, 52177), (104, 52207), (112, 52267), (123, 52345), (142, 52441), (143, 52444),

Gene: NoShow_78 Start: 51191, Stop: 51799, Start Num: 23

Candidate Starts for NoShow_78:

(Start: 23 @51191 has 1 MA's), (33, 51266), (46, 51320), (Start: 52 @51332 has 2 MA's), (Start: 69 @51359 has 8 MA's), (74, 51377), (96, 51506), (104, 51536), (112, 51593),

Gene: Nodigi_40 Start: 28027, Stop: 27425, Start Num: 25

Candidate Starts for Nodigi_40:

(19, 28057), (Start: 25 @28027 has 24 MA's), (38, 27943), (Start: 69 @27886 has 8 MA's), (96, 27739), (98, 27733), (104, 27709), (112, 27652), (140, 27469),

Gene: Noelle_78 Start: 47735, Stop: 47277, Start Num: 54

Candidate Starts for Noelle_78:

(3, 48020), (6, 47960), (Start: 44 @47762 has 3 MA's), (Start: 49 @47744 has 151 MA's), (Start: 54 @47735 has 1 MA's), (Start: 55 @47732 has 4 MA's), (Start: 69 @47714 has 8 MA's), (79, 47675), (103, 47540), (118, 47423),

Gene: NorthStar_78 Start: 47899, Stop: 47429, Start Num: 49

Candidate Starts for NorthStar_78:

(Start: 44 @47917 has 3 MA's), (Start: 49 @47899 has 151 MA's), (Start: 54 @47890 has 1 MA's), (Start: 55 @47887 has 4 MA's), (Start: 69 @47869 has 8 MA's), (79, 47830), (103, 47695), (118, 47578),

Gene: NotAPhaseMom_80 Start: 47900, Stop: 47430, Start Num: 49

Candidate Starts for NotAPhaseMom_80:

(Start: 44 @47918 has 3 MA's), (Start: 49 @47900 has 151 MA's), (Start: 54 @47891 has 1 MA's), (Start: 55 @47888 has 4 MA's), (Start: 69 @47870 has 8 MA's), (79, 47831), (103, 47696), (118, 47579),

Gene: Nyxis_80 Start: 47781, Stop: 47308, Start Num: 49

Candidate Starts for Nyxis_80:

(Start: 44 @47799 has 3 MA's), (Start: 49 @47781 has 151 MA's), (70, 47748), (79, 47709), (82, 47694), (90, 47646), (103, 47574), (118, 47457),

Gene: OKCentral2016_79 Start: 46747, Stop: 46280, Start Num: 48

Candidate Starts for OKCentral2016_79:

(Start: 44 @46762 has 3 MA's), (Start: 48 @46747 has 10 MA's), (Start: 55 @46732 has 4 MA's), (Start: 69 @46720 has 8 MA's), (86, 46651), (96, 46573), (103, 46546), (118, 46429),

Gene: OKaNui_80 Start: 47950, Stop: 47480, Start Num: 49

Candidate Starts for OKaNui_80:

(Start: 44 @47968 has 3 MA's), (Start: 49 @47950 has 151 MA's), (Start: 54 @47941 has 1 MA's), (Start: 55 @47938 has 4 MA's), (Start: 69 @47920 has 8 MA's), (79, 47881), (103, 47746), (118, 47629),

Gene: Obama12_82 Start: 48323, Stop: 47853, Start Num: 49

Candidate Starts for Obama12_82:

(Start: 44 @48341 has 3 MA's), (Start: 49 @48323 has 151 MA's), (Start: 54 @48314 has 1 MA's), (Start: 55 @48311 has 4 MA's), (Start: 69 @48293 has 8 MA's), (79, 48254), (103, 48119), (118, 48002),

Gene: Ohfah_82 Start: 47939, Stop: 47469, Start Num: 49

Candidate Starts for Ohfah_82:

(Start: 44 @47957 has 3 MA's), (Start: 49 @47939 has 151 MA's), (Start: 54 @47930 has 1 MA's), (Start: 55 @47927 has 4 MA's), (Start: 69 @47909 has 8 MA's), (79, 47870), (103, 47735), (118, 47618),

Gene: OmniCritical_81 Start: 51378, Stop: 51953, Start Num: 57

Candidate Starts for OmniCritical_81:

(10, 51180), (22, 51231), (28, 51285), (32, 51315), (Start: 48 @51360 has 10 MA's), (Start: 53 @51369 has 52 MA's), (Start: 57 @51378 has 10 MA's), (Start: 69 @51393 has 8 MA's), (86, 51462), (96, 51540), (103, 51567), (108, 51588), (112, 51630), (123, 51708), (155, 51882), (159, 51921),

Gene: Orla_40 Start: 28015, Stop: 27413, Start Num: 25

Candidate Starts for Orla_40:

(12, 28072), (14, 28066), (19, 28045), (Start: 25 @28015 has 24 MA's), (Start: 69 @27874 has 8 MA's), (96, 27727), (98, 27721), (104, 27697), (112, 27640),

Gene: Oscar_78 Start: 50636, Stop: 51223, Start Num: 25

Candidate Starts for Oscar_78:

(Start: 25 @50636 has 24 MA's), (31, 50693), (Start: 48 @50756 has 10 MA's), (Start: 69 @50789 has 8 MA's), (71, 50795), (86, 50858), (90, 50891), (96, 50936), (103, 50963), (112, 51026), (123, 51104), (143, 51203),

Gene: Padfoot_76 Start: 50658, Stop: 51119, Start Num: 50

Candidate Starts for Padfoot_76:

(Start: 50 @50658 has 63 MA's), (Start: 69 @50685 has 8 MA's), (72, 50694), (86, 50754), (94, 50817), (103, 50859), (104, 50862), (112, 50922), (123, 51000), (142, 51096), (143, 51099),

Gene: Padpat_80 Start: 50897, Stop: 51358, Start Num: 50

Candidate Starts for Padpat_80:

(Start: 50 @50897 has 63 MA's), (Start: 69 @50924 has 8 MA's), (72, 50933), (86, 50993), (94, 51056), (104, 51101), (123, 51239), (142, 51335), (143, 51338),

Gene: Palestino_80 Start: 47896, Stop: 47426, Start Num: 49

Candidate Starts for Palestino_80:

(Start: 44 @47914 has 3 MA's), (Start: 49 @47896 has 151 MA's), (Start: 54 @47887 has 1 MA's), (Start: 55 @47884 has 4 MA's), (Start: 69 @47866 has 8 MA's), (79, 47827), (103, 47692), (118, 47575),

Gene: Patelgo_242 Start: 117496, Stop: 117948, Start Num: 62

Candidate Starts for Patelgo_242:

(61, 117493), (Start: 62 @117496 has 20 MA's), (79, 117535), (94, 117634), (106, 117685), (119, 117796), (120, 117802), (123, 117817), (144, 117934),

Gene: Patt_77 Start: 49361, Stop: 49933, Start Num: 53

Candidate Starts for Patt_77:

(10, 49163), (13, 49178), (22, 49214), (26, 49235), (28, 49262), (32, 49292), (Start: 53 @49361 has 52 MA's), (Start: 57 @49370 has 10 MA's), (Start: 69 @49385 has 8 MA's), (82, 49439), (86, 49454), (96, 49532), (103, 49559), (112, 49622), (123, 49700), (159, 49901),

Gene: PeaceMeal1_77 Start: 46674, Stop: 46210, Start Num: 49

Candidate Starts for PeaceMeal1_77:

(Start: 49 @46674 has 151 MA's), (Start: 54 @46665 has 1 MA's), (Start: 69 @46650 has 8 MA's), (118, 46359),

Gene: Peaches_79 Start: 47901, Stop: 47428, Start Num: 49

Candidate Starts for Peaches_79:

(Start: 44 @47919 has 3 MA's), (Start: 49 @47901 has 151 MA's), (70, 47868), (79, 47829), (82, 47814), (90, 47766), (103, 47694), (118, 47577),

Gene: Peanam_80 Start: 51859, Stop: 52422, Start Num: 24

Candidate Starts for Peanam_80:

(Start: 24 @51859 has 11 MA's), (27, 51889), (Start: 53 @51967 has 52 MA's), (Start: 69 @51988 has 8 MA's), (71, 51994), (86, 52057), (90, 52090), (95, 52132), (96, 52135), (104, 52165), (112, 52225), (123, 52303), (142, 52399), (143, 52402),

Gene: Peel_76 Start: 50463, Stop: 50924, Start Num: 50

Candidate Starts for Peel_76:

(Start: 50 @50463 has 63 MA's), (Start: 69 @50490 has 8 MA's), (72, 50499), (86, 50559), (94, 50622), (103, 50664), (104, 50667), (112, 50727), (123, 50805), (142, 50901), (143, 50904),

Gene: Perplexer_77 Start: 47518, Stop: 47051, Start Num: 49

Candidate Starts for Perplexer_77:

(Start: 44 @47536 has 3 MA's), (Start: 49 @47518 has 151 MA's), (Start: 54 @47509 has 1 MA's), (Start: 55 @47506 has 4 MA's), (Start: 69 @47488 has 8 MA's), (79, 47449), (103, 47314), (112, 47251), (118, 47197),

Gene: PeterPeter_81 Start: 47893, Stop: 47423, Start Num: 49

Candidate Starts for PeterPeter_81:

(Start: 44 @47911 has 3 MA's), (Start: 49 @47893 has 151 MA's), (Start: 54 @47884 has 1 MA's), (Start: 55 @47881 has 4 MA's), (Start: 69 @47863 has 8 MA's), (79, 47824), (103, 47689), (118, 47572),

Gene: PetiteSangsue_77 Start: 47521, Stop: 47054, Start Num: 49

Candidate Starts for PetiteSangsue_77:

(Start: 44 @47539 has 3 MA's), (Start: 49 @47521 has 151 MA's), (Start: 54 @47512 has 1 MA's), (Start: 55 @47509 has 4 MA's), (Start: 69 @47491 has 8 MA's), (79, 47452), (103, 47317), (112, 47254), (118, 47200),

Gene: Phabba_240 Start: 133855, Stop: 134328, Start Num: 57

Candidate Starts for Phabba_240:

(Start: 57 @133855 has 10 MA's), (Start: 69 @133870 has 8 MA's), (96, 134017), (112, 134104), (123, 134206), (143, 134308),

Gene: Phacado_81 Start: 47895, Stop: 47425, Start Num: 49

Candidate Starts for Phacado_81:

(Start: 44 @47913 has 3 MA's), (Start: 49 @47895 has 151 MA's), (Start: 54 @47886 has 1 MA's), (Start: 55 @47883 has 4 MA's), (Start: 69 @47865 has 8 MA's), (79, 47826), (103, 47691), (118, 47574),

Gene: Phaded_78 Start: 48717, Stop: 48247, Start Num: 49

Candidate Starts for Phaded_78:

(Start: 49 @48717 has 151 MA's), (Start: 54 @48708 has 1 MA's), (Start: 69 @48693 has 8 MA's), (78, 48657), (112, 48453),

Gene: Pharb_77 Start: 50633, Stop: 51190, Start Num: 57

Candidate Starts for Pharb_77:

(Start: 57 @50633 has 10 MA's), (Start: 69 @50648 has 8 MA's), (86, 50717), (87, 50720), (96, 50795), (112, 50885), (130, 51017), (152, 51113), (154, 51125), (157, 51140), (161, 51182),

Gene: Phelipe_81 Start: 47860, Stop: 47345, Start Num: 49

Candidate Starts for Phelipe_81:

(Start: 44 @47878 has 3 MA's), (Start: 49 @47860 has 151 MA's), (Start: 54 @47851 has 1 MA's), (Start: 55 @47848 has 4 MA's), (Start: 69 @47830 has 8 MA's), (79, 47791), (103, 47656), (118, 47539),

Gene: PhelpsODU_81 Start: 51079, Stop: 51651, Start Num: 53

Candidate Starts for PhelpsODU_81:

(Start: 53 @51079 has 52 MA's), (Start: 69 @51100 has 8 MA's), (86, 51169), (90, 51202), (92, 51223), (96, 51247), (104, 51277), (112, 51337), (123, 51415), (130, 51469), (135, 51493), (160, 51631),

Gene: Phighter1804_81 Start: 47960, Stop: 47490, Start Num: 49

Candidate Starts for Phighter1804_81:

(Start: 44 @47978 has 3 MA's), (Start: 49 @47960 has 151 MA's), (Start: 54 @47951 has 1 MA's), (Start: 55 @47948 has 4 MA's), (Start: 69 @47930 has 8 MA's), (79, 47891), (103, 47756), (118, 47639),

Gene: Phontbonne_81 Start: 47797, Stop: 47324, Start Num: 49

Candidate Starts for Phontbonne_81:

(Start: 44 @47815 has 3 MA's), (Start: 49 @47797 has 151 MA's), (70, 47764), (79, 47725), (82, 47710), (90, 47662), (103, 47590), (118, 47473),

Gene: Phrank_82 Start: 50939, Stop: 51511, Start Num: 53

Candidate Starts for Phrank_82:

(Start: 53 @50939 has 52 MA's), (Start: 69 @50960 has 8 MA's), (86, 51029), (90, 51062), (92, 51083), (96, 51107), (104, 51137), (112, 51197), (123, 51275), (130, 51329), (135, 51353), (148, 51404), (160, 51491),

Gene: Phredrick_245 Start: 114858, Stop: 115313, Start Num: 62

Candidate Starts for Phredrick_245:

(Start: 62 @114858 has 20 MA's), (79, 114897), (82, 114912), (94, 114996), (95, 115008), (106, 115047), (144, 115299), (145, 115302),

Gene: Piatt_75 Start: 50658, Stop: 51119, Start Num: 50

Candidate Starts for Piatt_75:

(Start: 50 @50658 has 63 MA's), (Start: 69 @50685 has 8 MA's), (72, 50694), (86, 50754), (94, 50817), (103, 50859), (104, 50862), (112, 50922), (123, 51000), (142, 51096), (143, 51099),

Gene: Pipcraft_77 Start: 47900, Stop: 47430, Start Num: 49

Candidate Starts for Pipcraft_77:

(Start: 44 @47918 has 3 MA's), (Start: 49 @47900 has 151 MA's), (Start: 54 @47891 has 1 MA's), (Start: 55 @47888 has 4 MA's), (Start: 69 @47870 has 8 MA's), (79, 47831), (103, 47696), (118, 47579),

Gene: Pixie_78 Start: 50938, Stop: 51501, Start Num: 25

Candidate Starts for Pixie_78:

(Start: 25 @50938 has 24 MA's), (30, 50995), (38, 51019), (Start: 69 @51070 has 8 MA's), (71, 51076), (78, 51106), (86, 51139), (90, 51172), (96, 51217), (110, 51280), (112, 51307), (130, 51439),

Gene: Pmask_83 Start: 46654, Stop: 46193, Start Num: 53

Candidate Starts for Pmask_83:

(Start: 53 @46654 has 52 MA's), (Start: 69 @46627 has 8 MA's), (84, 46567), (96, 46474), (123, 46306),

Gene: Pokerus_77 Start: 50906, Stop: 51367, Start Num: 50

Candidate Starts for Pokerus_77:

(Start: 50 @50906 has 63 MA's), (Start: 69 @50933 has 8 MA's), (72, 50942), (86, 51002), (94, 51065), (103, 51107), (104, 51110), (123, 51248), (142, 51344), (143, 51347),

Gene: Polymorphads_82 Start: 47920, Stop: 47450, Start Num: 49

Candidate Starts for Polymorphads_82:

(Start: 44 @47938 has 3 MA's), (Start: 49 @47920 has 151 MA's), (Start: 54 @47911 has 1 MA's), (Start: 55 @47908 has 4 MA's), (Start: 69 @47890 has 8 MA's), (79, 47851), (96, 47743), (103, 47716), (112, 47653), (118, 47599),

Gene: Poompha_77 Start: 46672, Stop: 46208, Start Num: 49

Candidate Starts for Poompha_77:

(Start: 49 @46672 has 151 MA's), (Start: 54 @46663 has 1 MA's), (Start: 69 @46648 has 8 MA's), (118, 46357),

Gene: Prithvi_79 Start: 50926, Stop: 51387, Start Num: 50

Candidate Starts for Prithvi_79:

(Start: 50 @50926 has 63 MA's), (Start: 69 @50953 has 8 MA's), (72, 50962), (86, 51022), (94, 51085), (104, 51130), (123, 51268), (142, 51364), (143, 51367),

Gene: Pukovnik_79 Start: 48185, Stop: 47718, Start Num: 49

Candidate Starts for Pukovnik_79:

(Start: 49 @48185 has 151 MA's), (Start: 54 @48176 has 1 MA's), (Start: 55 @48173 has 4 MA's), (Start: 69 @48161 has 8 MA's), (71, 48155), (86, 48086), (96, 48008), (118, 47867),

Gene: Pumbaa_81 Start: 47844, Stop: 47374, Start Num: 49

Candidate Starts for Pumbaa_81:

(Start: 44 @47862 has 3 MA's), (Start: 49 @47844 has 151 MA's), (Start: 54 @47835 has 1 MA's), (Start: 55 @47832 has 4 MA's), (Start: 69 @47814 has 8 MA's), (79, 47775), (96, 47667), (103, 47640), (112, 47577), (118, 47523),

Gene: PumpkinSpice_219 Start: 105985, Stop: 106422, Start Num: 64

Candidate Starts for PumpkinSpice_219:

(Start: 44 @105937 has 3 MA's), (Start: 64 @105985 has 32 MA's), (79, 106024), (Start: 88 @106075 has 1 MA's), (89, 106078), (92, 106114),

Gene: Quaran19_216 Start: 105426, Stop: 105863, Start Num: 64

Candidate Starts for Quaran19_216:

(Start: 44 @105378 has 3 MA's), (Start: 64 @105426 has 32 MA's), (79, 105465), (Start: 88 @105516 has 1 MA's), (89, 105519), (92, 105555),

Gene: Ramen_77 Start: 50227, Stop: 50688, Start Num: 50

Candidate Starts for Ramen_77:

(Start: 50 @50227 has 63 MA's), (Start: 69 @50254 has 8 MA's), (72, 50263), (86, 50323), (94, 50386), (103, 50428), (104, 50431), (123, 50569), (142, 50665), (143, 50668),

Gene: RanchParmCat_38 Start: 27186, Stop: 26581, Start Num: 25

Candidate Starts for RanchParmCat_38:

(Start: 25 @27186 has 24 MA's), (39, 27096), (Start: 54 @27063 has 1 MA's), (Start: 69 @27042 has 8 MA's), (78, 27006), (86, 26973), (96, 26895), (98, 26889), (104, 26865), (112, 26808), (145, 26604),

Gene: Rapunzel97_79 Start: 50878, Stop: 51339, Start Num: 50

Candidate Starts for Rapunzel97_79:

(Start: 50 @50878 has 63 MA's), (Start: 69 @50905 has 8 MA's), (72, 50914), (86, 50974), (94, 51037), (103, 51079), (104, 51082), (123, 51220), (142, 51316), (143, 51319),

Gene: ReMo_85 Start: 47046, Stop: 46579, Start Num: 51

Candidate Starts for ReMo_85:

(Start: 51 @47046 has 14 MA's), (Start: 69 @47034 has 8 MA's), (79, 46995), (82, 46980),

Gene: Rebeuca_81 Start: 47942, Stop: 47478, Start Num: 49

Candidate Starts for Rebeuca_81:

(Start: 49 @47942 has 151 MA's), (Start: 54 @47933 has 1 MA's), (Start: 69 @47918 has 8 MA's), (112, 47681),

Gene: Relief_80 Start: 47896, Stop: 47426, Start Num: 49

Candidate Starts for Relief_80:

(Start: 44 @47914 has 3 MA's), (Start: 49 @47896 has 151 MA's), (Start: 54 @47887 has 1 MA's), (Start: 55 @47884 has 4 MA's), (Start: 69 @47866 has 8 MA's), (79, 47827), (103, 47692), (118, 47575),

Gene: Reptar3000_78 Start: 49350, Stop: 49922, Start Num: 53

Candidate Starts for Reptar3000_78:

(10, 49152), (13, 49167), (22, 49203), (26, 49224), (28, 49251), (32, 49281), (Start: 53 @49350 has 52 MA's), (Start: 57 @49359 has 10 MA's), (Start: 69 @49374 has 8 MA's), (82, 49428), (86, 49443), (96, 49521), (103, 49548), (112, 49611), (123, 49689), (159, 49890),

Gene: RhynO_68 Start: 43272, Stop: 42805, Start Num: 49

Candidate Starts for RhynO_68:

(Start: 49 @43272 has 151 MA's), (Start: 54 @43263 has 1 MA's), (Start: 69 @43245 has 8 MA's), (85, 43179), (96, 43098), (103, 43071), (118, 42954),

Gene: Richo_79 Start: 51840, Stop: 52403, Start Num: 24

Candidate Starts for Richo_79:

(Start: 24 @51840 has 11 MA's), (27, 51870), (Start: 53 @51948 has 52 MA's), (Start: 69 @51969 has 8 MA's), (71, 51975), (86, 52038), (90, 52071), (95, 52113), (96, 52116), (104, 52146), (112, 52206), (123, 52284), (142, 52380), (143, 52383),

Gene: Rifter_86 Start: 45665, Stop: 45204, Start Num: 53

Candidate Starts for Rifter_86:

(Start: 53 @45665 has 52 MA's), (Start: 69 @45638 has 8 MA's), (84, 45578), (96, 45485), (116, 45371), (123, 45317),

Gene: Rikishi_224 Start: 105707, Stop: 106144, Start Num: 64

Candidate Starts for Rikishi_224:

(Start: 44 @105659 has 3 MA's), (Start: 64 @105707 has 32 MA's), (79, 105746), (Start: 88 @105797 has 1 MA's), (89, 105800), (92, 105836),

Gene: Rockabye_39 Start: 16440, Stop: 16892, Start Num: 66

Candidate Starts for Rockabye_39:

(66, 16440), (79, 16485), (94, 16575), (108, 16638), (116, 16704), (123, 16767), (128, 16800), (131, 16827), (141, 16872),

Gene: Rockabye_338 Start: 189053, Stop: 189505, Start Num: 66

Candidate Starts for Rockabye_338:

(66, 189053), (79, 189098), (94, 189188), (108, 189251), (116, 189317), (123, 189380), (128, 189413), (131, 189440), (141, 189485),

Gene: Roksolana_86 Start: 46381, Stop: 45920, Start Num: 53

Candidate Starts for Roksolana_86:

(Start: 53 @46381 has 52 MA's), (Start: 69 @46354 has 8 MA's), (84, 46294), (96, 46201), (116, 46087),

Gene: Romney_80 Start: 47896, Stop: 47426, Start Num: 49

Candidate Starts for Romney_80:

(Start: 44 @47914 has 3 MA's), (Start: 49 @47896 has 151 MA's), (Start: 54 @47887 has 1 MA's), (Start: 55 @47884 has 4 MA's), (Start: 69 @47866 has 8 MA's), (79, 47827), (103, 47692), (118, 47575),

Gene: Roosevelt_79 Start: 47901, Stop: 47431, Start Num: 49

Candidate Starts for Roosevelt_79:

(Start: 44 @47919 has 3 MA's), (Start: 49 @47901 has 151 MA's), (Start: 54 @47892 has 1 MA's), (Start: 55 @47889 has 4 MA's), (Start: 69 @47871 has 8 MA's), (79, 47832), (96, 47724), (103, 47697), (112, 47634), (118, 47580),

Gene: Rosa24_77 Start: 47918, Stop: 47457, Start Num: 54

Candidate Starts for Rosa24_77:

(Start: 44 @47945 has 3 MA's), (Start: 49 @47927 has 151 MA's), (Start: 54 @47918 has 1 MA's), (Start: 55 @47915 has 4 MA's), (Start: 69 @47897 has 8 MA's), (79, 47858), (103, 47723), (118, 47606),

Gene: Rosmarinus_76 Start: 50449, Stop: 50910, Start Num: 50

Candidate Starts for Rosmarinus_76:

(Start: 50 @50449 has 63 MA's), (Start: 69 @50476 has 8 MA's), (72, 50485), (86, 50545), (94, 50608), (103, 50650), (104, 50653), (112, 50713), (123, 50791), (142, 50887), (143, 50890),

Gene: Rowdy_82 Start: 47658, Stop: 47191, Start Num: 49

Candidate Starts for Rowdy_82:

(Start: 49 @47658 has 151 MA's), (Start: 54 @47649 has 1 MA's), (Start: 69 @47631 has 8 MA's), (96, 47484), (103, 47457), (114, 47382), (118, 47340),

Gene: Ruin_81 Start: 47892, Stop: 47422, Start Num: 49

Candidate Starts for Ruin_81:

(Start: 44 @47910 has 3 MA's), (Start: 49 @47892 has 151 MA's), (Start: 54 @47883 has 1 MA's), (Start: 55 @47880 has 4 MA's), (Start: 69 @47862 has 8 MA's), (79, 47823), (103, 47688), (118, 47571),

Gene: Ruthiejr_82 Start: 51254, Stop: 51847, Start Num: 48

Candidate Starts for Ruthiejr_82:

(10, 51074), (22, 51125), (28, 51179), (32, 51209), (Start: 48 @51254 has 10 MA's), (Start: 53 @51263 has 52 MA's), (Start: 57 @51272 has 10 MA's), (Start: 69 @51287 has 8 MA's), (86, 51356), (96, 51434), (103, 51461), (108, 51482), (112, 51524), (155, 51776), (159, 51815), (161, 51839),

Gene: SJReid_42 Start: 17118, Stop: 17570, Start Num: 68

Candidate Starts for SJReid_42:

(66, 17115), (68, 17118), (79, 17160), (96, 17268), (101, 17286), (107, 17307), (116, 17382), (117, 17394), (121, 17427), (123, 17445), (125, 17457), (132, 17508), (141, 17550),

Gene: SJReid_353 Start: 189957, Stop: 190409, Start Num: 68

Candidate Starts for SJReid_353:

(66, 189954), (68, 189957), (79, 189999), (96, 190107), (101, 190125), (107, 190146), (116, 190221), (117, 190233), (121, 190266), (123, 190284), (125, 190296), (132, 190347), (141, 190389),

Gene: Sabertooth_81 Start: 47904, Stop: 47434, Start Num: 49

Candidate Starts for Sabertooth_81:

(Start: 44 @47922 has 3 MA's), (Start: 49 @47904 has 151 MA's), (Start: 54 @47895 has 1 MA's), (Start: 55 @47892 has 4 MA's), (Start: 69 @47874 has 8 MA's), (79, 47835), (103, 47700), (118, 47583),

Gene: SaltySpittoon_216 Start: 104968, Stop: 105405, Start Num: 64

Candidate Starts for SaltySpittoon_216:

(Start: 44 @104920 has 3 MA's), (Start: 64 @104968 has 32 MA's), (79, 105007), (Start: 88 @105058 has 1 MA's), (89, 105061), (92, 105097),

Gene: SamScheppers_80 Start: 51574, Stop: 52149, Start Num: 57

Candidate Starts for SamScheppers_80:

(10, 51367), (13, 51382), (22, 51418), (26, 51439), (28, 51466), (32, 51496), (Start: 48 @51556 has 10 MA's), (Start: 53 @51565 has 52 MA's), (Start: 57 @51574 has 10 MA's), (Start: 69 @51589 has 8 MA's), (86, 51658), (96, 51736), (103, 51763), (112, 51826), (123, 51904), (155, 52078), (157, 52093), (159, 52117),

Gene: SamuelLPlaqson_76 Start: 50854, Stop: 51315, Start Num: 50

Candidate Starts for SamuelLPlaqson_76:

(Start: 50 @50854 has 63 MA's), (Start: 69 @50881 has 8 MA's), (72, 50890), (78, 50917), (86, 50950), (94, 51013), (104, 51058), (123, 51196), (142, 51292), (143, 51295),

Gene: Scamp_81 Start: 47901, Stop: 47431, Start Num: 49

Candidate Starts for Scamp_81:

(Start: 44 @47919 has 3 MA's), (Start: 49 @47901 has 151 MA's), (Start: 54 @47892 has 1 MA's), (Start: 55 @47889 has 4 MA's), (Start: 69 @47871 has 8 MA's), (79, 47832), (103, 47697), (118, 47580),

Gene: Scarlett_79 Start: 50972, Stop: 51559, Start Num: 25

Candidate Starts for Scarlett_79:

(Start: 25 @50972 has 24 MA's), (31, 51029), (Start: 48 @51092 has 10 MA's), (Start: 69 @51125 has 8 MA's), (71, 51131), (86, 51194), (90, 51227), (96, 51272), (103, 51299), (112, 51362), (123, 51440), (143, 51539),

Gene: ScoobyDoobyDoo_227 Start: 131341, Stop: 131811, Start Num: 57

Candidate Starts for ScoobyDoobyDoo_227:

(Start: 57 @131341 has 10 MA's), (Start: 69 @131356 has 8 MA's), (96, 131503), (112, 131590), (123, 131692), (142, 131788),

Gene: SenorClean_76 Start: 47899, Stop: 47429, Start Num: 49

Candidate Starts for SenorClean_76:

(Start: 44 @47917 has 3 MA's), (Start: 49 @47899 has 151 MA's), (Start: 54 @47890 has 1 MA's), (Start: 55 @47887 has 4 MA's), (Start: 69 @47869 has 8 MA's), (79, 47830), (103, 47695), (118, 47578),

Gene: SeresaTree_242 Start: 116481, Stop: 116939, Start Num: 62

Candidate Starts for SeresaTree_242:

(41, 116427), (Start: 62 @116481 has 20 MA's), (79, 116520), (100, 116649), (106, 116670), (127, 116829), (129, 116844), (144, 116925),

Gene: Severus_78 Start: 46672, Stop: 46208, Start Num: 49

Candidate Starts for Severus_78:

(Start: 49 @46672 has 151 MA's), (Start: 54 @46663 has 1 MA's), (Start: 69 @46648 has 8 MA's), (118, 46357),

Gene: Shadow1_83 Start: 51593, Stop: 52159, Start Num: 24

Candidate Starts for Shadow1_83:

(Start: 24 @51593 has 11 MA's), (27, 51623), (47, 51692), (Start: 53 @51704 has 52 MA's), (Start: 69 @51725 has 8 MA's), (78, 51761), (90, 51827), (96, 51872), (112, 51962), (123, 52040), (130, 52094), (143, 52139),

Gene: Shaka_79 Start: 47897, Stop: 47427, Start Num: 49

Candidate Starts for Shaka_79:

(Start: 44 @47915 has 3 MA's), (Start: 49 @47897 has 151 MA's), (Start: 54 @47888 has 1 MA's), (Start: 55 @47885 has 4 MA's), (Start: 69 @47867 has 8 MA's), (79, 47828), (96, 47720), (103, 47693), (112, 47630), (118, 47576),

Gene: Sham_228 Start: 116010, Stop: 116459, Start Num: 62

Candidate Starts for Sham_228:

(Start: 62 @116010 has 20 MA's), (78, 116046), (79, 116049), (100, 116172), (110, 116220), (120, 116313), (123, 116328), (129, 116367),

Gene: Shaobing_79 Start: 51876, Stop: 52439, Start Num: 24

Candidate Starts for Shaobing_79:

(Start: 24 @51876 has 11 MA's), (27, 51906), (Start: 53 @51984 has 52 MA's), (Start: 69 @52005 has 8 MA's), (71, 52011), (86, 52074), (90, 52107), (95, 52149), (96, 52152), (104, 52182), (112, 52242), (123, 52320), (142, 52416), (143, 52419),

Gene: Shapes_82 Start: 47658, Stop: 47191, Start Num: 49

Candidate Starts for Shapes_82:

(Start: 49 @47658 has 151 MA's), (Start: 54 @47649 has 1 MA's), (Start: 69 @47631 has 8 MA's), (96, 47484), (103, 47457), (114, 47382), (118, 47340),

Gene: ShayRa_85 Start: 45678, Stop: 45211, Start Num: 51

Candidate Starts for ShayRa_85:

(Start: 51 @45678 has 14 MA's), (Start: 69 @45666 has 8 MA's), (79, 45627), (82, 45612),

Gene: ShedlockHolmes_81 Start: 51455, Stop: 52018, Start Num: 25

Candidate Starts for ShedlockHolmes_81:

(Start: 25 @51455 has 24 MA's), (30, 51512), (38, 51536), (Start: 69 @51587 has 8 MA's), (71, 51593), (78, 51623), (86, 51656), (90, 51689), (96, 51734), (110, 51797), (112, 51824), (130, 51956),

Gene: Sheen_78 Start: 49775, Stop: 49302, Start Num: 48

Candidate Starts for Sheen_78:

(45, 49787), (Start: 48 @49775 has 10 MA's), (Start: 69 @49742 has 8 MA's), (78, 49706), (86, 49673), (96, 49595), (103, 49568), (112, 49505), (116, 49481), (142, 49325), (143, 49322),

Gene: SheldonCooper_81 Start: 48337, Stop: 47867, Start Num: 49

Candidate Starts for SheldonCooper_81:

(Start: 44 @48355 has 3 MA's), (Start: 49 @48337 has 151 MA's), (Start: 54 @48328 has 1 MA's), (Start: 55 @48325 has 4 MA's), (Start: 69 @48307 has 8 MA's), (79, 48268), (103, 48133), (118, 48016),

Gene: ShiaSurprise_77 Start: 50658, Stop: 51119, Start Num: 50

Candidate Starts for ShiaSurprise_77:

(Start: 50 @50658 has 63 MA's), (Start: 69 @50685 has 8 MA's), (72, 50694), (86, 50754), (94, 50817), (103, 50859), (104, 50862), (112, 50922), (123, 51000), (142, 51096), (143, 51099),

Gene: Shygu2_79 Start: 47843, Stop: 47373, Start Num: 49

Candidate Starts for Shygu2_79:

(Start: 44 @47861 has 3 MA's), (Start: 49 @47843 has 151 MA's), (Start: 54 @47834 has 1 MA's), (Start: 55 @47831 has 4 MA's), (Start: 69 @47813 has 8 MA's), (79, 47774), (103, 47639), (118, 47522),

Gene: SirPhilip_90 Start: 57157, Stop: 57723, Start Num: 24

Candidate Starts for SirPhilip_90:

(Start: 24 @57157 has 11 MA's), (30, 57214), (39, 57241), (Start: 69 @57289 has 8 MA's), (71, 57295), (86, 57358), (90, 57391), (96, 57436), (103, 57463), (112, 57526), (123, 57604),

Gene: Skipitt_80 Start: 47911, Stop: 47423, Start Num: 44

Candidate Starts for Skipitt_80:

(Start: 44 @47911 has 3 MA's), (Start: 49 @47893 has 151 MA's), (Start: 54 @47884 has 1 MA's), (Start: 55 @47881 has 4 MA's), (Start: 69 @47863 has 8 MA's), (79, 47824), (103, 47689), (118, 47572),

Gene: Slarp_81 Start: 51231, Stop: 51815, Start Num: 53

Candidate Starts for Slarp_81:

(10, 51042), (22, 51093), (28, 51147), (32, 51177), (Start: 48 @51222 has 10 MA's), (Start: 53 @51231 has 52 MA's), (Start: 57 @51240 has 10 MA's), (Start: 69 @51255 has 8 MA's), (86, 51324), (96, 51402), (97, 51405), (103, 51429), (108, 51450), (112, 51492), (123, 51570), (155, 51744), (159, 51783),

Gene: Slimphazie_78 Start: 50878, Stop: 51339, Start Num: 50

Candidate Starts for Slimphazie_78:

(Start: 50 @50878 has 63 MA's), (Start: 69 @50905 has 8 MA's), (72, 50914), (86, 50974), (94, 51037), (103, 51079), (104, 51082), (123, 51220), (142, 51316), (143, 51319),

Gene: SmellyB_84 Start: 46012, Stop: 45551, Start Num: 53

Candidate Starts for SmellyB_84:

(Start: 53 @46012 has 52 MA's), (Start: 69 @45985 has 8 MA's), (84, 45925), (96, 45832), (123, 45664),

Gene: Sollertia_217 Start: 106204, Stop: 106641, Start Num: 64

Candidate Starts for Sollertia_217:

(Start: 64 @106204 has 32 MA's), (79, 106243), (Start: 88 @106294 has 1 MA's), (89, 106297), (92, 106333), (109, 106417),

Gene: SororFago_83 Start: 47758, Stop: 47291, Start Num: 55

Candidate Starts for SororFago_83:

(Start: 55 @47758 has 4 MA's), (Start: 69 @47746 has 8 MA's), (103, 47566), (108, 47545), (112, 47506), (124, 47416), (127, 47395),

Gene: SparkleGoddess_238 Start: 115994, Stop: 116452, Start Num: 62

Candidate Starts for SparkleGoddess_238:

(61, 115991), (Start: 62 @115994 has 20 MA's), (79, 116033), (94, 116132), (97, 116150), (106, 116183), (110, 116210), (123, 116318), (144, 116438), (145, 116441),

Gene: Sparxx_82 Start: 47895, Stop: 47425, Start Num: 49

Candidate Starts for Sparxx_82:

(Start: 44 @47913 has 3 MA's), (Start: 49 @47895 has 151 MA's), (Start: 54 @47886 has 1 MA's), (Start: 55 @47883 has 4 MA's), (Start: 69 @47865 has 8 MA's), (79, 47826), (96, 47718), (103, 47691), (112, 47628), (118, 47574),

Gene: Spelly_221 Start: 104897, Stop: 105334, Start Num: 64

Candidate Starts for Spelly_221:

(Start: 44 @104849 has 3 MA's), (Start: 64 @104897 has 32 MA's), (79, 104936), (Start: 88 @104987 has 1 MA's), (89, 104990), (92, 105026),

Gene: Spilled_223 Start: 106101, Stop: 106538, Start Num: 64

Candidate Starts for Spilled_223:

(Start: 44 @106053 has 3 MA's), (Start: 64 @106101 has 32 MA's), (79, 106140), (Start: 88 @106191 has 1 MA's), (89, 106194), (92, 106230),

Gene: Spino_80 Start: 47899, Stop: 47429, Start Num: 49

Candidate Starts for Spino_80:

(Start: 44 @47917 has 3 MA's), (Start: 49 @47899 has 151 MA's), (Start: 54 @47890 has 1 MA's), (Start: 55 @47887 has 4 MA's), (Start: 69 @47869 has 8 MA's), (79, 47830), (103, 47695), (118, 47578),

Gene: Spock_76 Start: 50462, Stop: 50923, Start Num: 50

Candidate Starts for Spock_76:

(Start: 50 @50462 has 63 MA's), (Start: 69 @50489 has 8 MA's), (72, 50498), (86, 50558), (94, 50621), (103, 50663), (104, 50666), (112, 50726), (123, 50804), (142, 50900), (143, 50903),

Gene: Stanimal_216 Start: 106576, Stop: 107013, Start Num: 64

Candidate Starts for Stanimal_216:

(Start: 64 @106576 has 32 MA's), (79, 106615), (Start: 88 @106666 has 1 MA's), (89, 106669), (92, 106705), (109, 106789),

Gene: StarPlatinum_225 Start: 108298, Stop: 108735, Start Num: 64
Candidate Starts for StarPlatinum_225:
(Start: 64 @108298 has 32 MA's), (79, 108337), (Start: 88 @108388 has 1 MA's), (91, 108418), (92, 108427),

Gene: Starbow_213 Start: 104941, Stop: 105378, Start Num: 64
Candidate Starts for Starbow_213:
(Start: 44 @104893 has 3 MA's), (Start: 64 @104941 has 32 MA's), (79, 104980), (Start: 88 @105031 has 1 MA's), (89, 105034), (92, 105070),

Gene: Stasia_78 Start: 47849, Stop: 47385, Start Num: 49
Candidate Starts for Stasia_78:
(Start: 49 @47849 has 151 MA's), (Start: 54 @47840 has 1 MA's), (Start: 69 @47825 has 8 MA's), (86, 47756),

Gene: Stigma_236 Start: 115959, Stop: 116417, Start Num: 62
Candidate Starts for Stigma_236:
(61, 115956), (Start: 62 @115959 has 20 MA's), (79, 115998), (94, 116097), (97, 116115), (106, 116148), (110, 116175), (123, 116283), (144, 116403), (145, 116406),

Gene: Stink_81 Start: 48123, Stop: 47653, Start Num: 49
Candidate Starts for Stink_81:
(Start: 44 @48141 has 3 MA's), (Start: 49 @48123 has 151 MA's), (Start: 55 @48108 has 4 MA's), (61, 48096), (Start: 69 @48090 has 8 MA's), (82, 48036), (86, 48021), (103, 47916), (118, 47799),

Gene: Strobilo_83 Start: 53322, Stop: 53891, Start Num: 58
Candidate Starts for Strobilo_83:
(Start: 58 @53322 has 11 MA's), (Start: 69 @53331 has 8 MA's), (77, 53361), (90, 53433), (96, 53478), (103, 53505), (104, 53508), (112, 53568), (156, 53832), (158, 53847),

Gene: Sunflower1121_82 Start: 51137, Stop: 51703, Start Num: 24
Candidate Starts for Sunflower1121_82:
(Start: 24 @51137 has 11 MA's), (27, 51167), (47, 51236), (Start: 53 @51248 has 52 MA's), (Start: 69 @51269 has 8 MA's), (78, 51305), (90, 51371), (96, 51416), (112, 51506), (123, 51584), (130, 51638), (143, 51683),

Gene: Sunhee_85 Start: 46182, Stop: 45712, Start Num: 55
Candidate Starts for Sunhee_85:
(Start: 55 @46182 has 4 MA's), (Start: 69 @46170 has 8 MA's), (96, 46017), (103, 45990), (108, 45969), (124, 45840), (142, 45744),

Gene: SuperAwesome_84 Start: 46693, Stop: 46232, Start Num: 53
Candidate Starts for SuperAwesome_84:
(Start: 53 @46693 has 52 MA's), (Start: 69 @46666 has 8 MA's), (84, 46606), (96, 46513), (123, 46345),

Gene: Switzerland_85 Start: 46647, Stop: 46180, Start Num: 51
Candidate Starts for Switzerland_85:
(Start: 51 @46647 has 14 MA's), (Start: 69 @46635 has 8 MA's), (79, 46596), (82, 46581),

Gene: Syra333_82 Start: 51468, Stop: 52034, Start Num: 24
Candidate Starts for Syra333_82:

(Start: 24 @51468 has 11 MA's), (27, 51498), (Start: 53 @51579 has 52 MA's), (Start: 69 @51600 has 8 MA's), (78, 51636), (90, 51702), (96, 51747), (112, 51837), (123, 51915), (130, 51969), (143, 52014),

Gene: TBond007_75 Start: 50937, Stop: 51500, Start Num: 25

Candidate Starts for TBond007_75:

(Start: 25 @50937 has 24 MA's), (30, 50994), (38, 51018), (Start: 69 @51069 has 8 MA's), (71, 51075), (78, 51105), (86, 51138), (90, 51171), (96, 51216), (110, 51279), (112, 51306), (130, 51438),

Gene: TClif_92 Start: 57429, Stop: 58010, Start Num: 58

Candidate Starts for TClif_92:

(Start: 58 @57429 has 11 MA's), (Start: 69 @57441 has 8 MA's), (71, 57447), (96, 57588), (103, 57615), (112, 57678), (135, 57834),

Gene: TM4_80 Start: 47753, Stop: 48331, Start Num: 58

Candidate Starts for TM4_80:

(Start: 58 @47753 has 11 MA's), (Start: 69 @47765 has 8 MA's), (96, 47912), (103, 47939), (104, 47942), (112, 48002), (151, 48245), (156, 48272), (158, 48287),

Gene: Tachez_76 Start: 50306, Stop: 50767, Start Num: 50

Candidate Starts for Tachez_76:

(Start: 50 @50306 has 63 MA's), (Start: 69 @50333 has 8 MA's), (72, 50342), (86, 50402), (94, 50465), (103, 50507), (104, 50510), (112, 50570), (123, 50648), (142, 50744), (143, 50747),

Gene: Taquarus_80 Start: 47905, Stop: 47432, Start Num: 49

Candidate Starts for Taquarus_80:

(Start: 44 @47923 has 3 MA's), (Start: 49 @47905 has 151 MA's), (70, 47872), (79, 47833), (82, 47818), (90, 47770), (103, 47698), (118, 47581),

Gene: Taquito_80 Start: 51265, Stop: 51849, Start Num: 53

Candidate Starts for Taquito_80:

(10, 51076), (22, 51127), (28, 51181), (32, 51211), (Start: 48 @51256 has 10 MA's), (Start: 53 @51265 has 52 MA's), (Start: 57 @51274 has 10 MA's), (Start: 69 @51289 has 8 MA's), (86, 51358), (96, 51436), (97, 51439), (103, 51463), (108, 51484), (112, 51526), (123, 51604), (155, 51778), (159, 51817),

Gene: Temprado_87 Start: 46485, Stop: 46024, Start Num: 53

Candidate Starts for Temprado_87:

(Start: 53 @46485 has 52 MA's), (Start: 69 @46458 has 8 MA's), (84, 46398), (96, 46305), (116, 46191),

Gene: Thanksgivukkah_80 Start: 47897, Stop: 47427, Start Num: 49

Candidate Starts for Thanksgivukkah_80:

(4, 48128), (Start: 44 @47915 has 3 MA's), (Start: 49 @47897 has 151 MA's), (Start: 54 @47888 has 1 MA's), (Start: 55 @47885 has 4 MA's), (Start: 69 @47867 has 8 MA's), (79, 47828), (103, 47693), (118, 47576),

Gene: Tierra_81 Start: 51365, Stop: 51937, Start Num: 53

Candidate Starts for Tierra_81:

(Start: 53 @51365 has 52 MA's), (Start: 69 @51386 has 8 MA's), (86, 51455), (90, 51488), (92, 51509), (96, 51533), (104, 51563), (112, 51623), (123, 51701), (130, 51755), (135, 51779), (148, 51830), (160, 51917),

Gene: Timshel_78 Start: 49748, Stop: 49266, Start Num: 48

Candidate Starts for Timshel_78:

(11, 49943), (15, 49922), (Start: 44 @49763 has 3 MA's), (Start: 48 @49748 has 10 MA's), (Start: 53 @49739 has 52 MA's), (Start: 54 @49736 has 1 MA's), (59, 49721), (61, 49718), (67, 49709), (Start: 69 @49706 has 8 MA's), (78, 49670), (110, 49493), (111, 49484), (130, 49334), (131, 49331),

Gene: TinaFeyge_79 Start: 47894, Stop: 47424, Start Num: 49

Candidate Starts for TinaFeyge_79:

(Start: 44 @47912 has 3 MA's), (Start: 49 @47894 has 151 MA's), (Start: 54 @47885 has 1 MA's), (Start: 55 @47882 has 4 MA's), (Start: 69 @47864 has 8 MA's), (79, 47825), (96, 47717), (103, 47690), (112, 47627), (118, 47573),

Gene: TingHuaYa_80 Start: 51141, Stop: 51602, Start Num: 50

Candidate Starts for TingHuaYa_80:

(Start: 50 @51141 has 63 MA's), (Start: 54 @51147 has 1 MA's), (Start: 69 @51168 has 8 MA's), (72, 51177), (86, 51237), (95, 51312), (103, 51342), (104, 51345), (112, 51405), (123, 51483), (143, 51582),

Gene: TiniBug_76 Start: 50853, Stop: 51314, Start Num: 50

Candidate Starts for TiniBug_76:

(Start: 50 @50853 has 63 MA's), (Start: 69 @50880 has 8 MA's), (72, 50889), (78, 50916), (86, 50949), (94, 51012), (104, 51057), (123, 51195), (142, 51291), (143, 51294),

Gene: Tinybot_80 Start: 47926, Stop: 47456, Start Num: 49

Candidate Starts for Tinybot_80:

(Start: 44 @47944 has 3 MA's), (Start: 49 @47926 has 151 MA's), (Start: 54 @47917 has 1 MA's), (Start: 55 @47914 has 4 MA's), (Start: 69 @47896 has 8 MA's), (79, 47857), (103, 47722), (118, 47605),

Gene: TiroTheta9_80 Start: 47893, Stop: 47423, Start Num: 49

Candidate Starts for TiroTheta9_80:

(Start: 44 @47911 has 3 MA's), (Start: 49 @47893 has 151 MA's), (Start: 54 @47884 has 1 MA's), (Start: 55 @47881 has 4 MA's), (Start: 69 @47863 has 8 MA's), (79, 47824), (96, 47716), (103, 47689), (112, 47626), (118, 47572),

Gene: TomSawyer_220 Start: 107412, Stop: 107849, Start Num: 64

Candidate Starts for TomSawyer_220:

(Start: 44 @107364 has 3 MA's), (Start: 64 @107412 has 32 MA's), (79, 107451), (Start: 88 @107502 has 1 MA's), (89, 107505), (92, 107541),

Gene: Tomas_215 Start: 106606, Stop: 107055, Start Num: 64

Candidate Starts for Tomas_215:

(Start: 64 @106606 has 32 MA's), (79, 106645), (82, 106660), (89, 106699), (99, 106768), (134, 107002),

Gene: ToneTone_83 Start: 46045, Stop: 45584, Start Num: 53

Candidate Starts for ToneTone_83:

(Start: 53 @46045 has 52 MA's), (Start: 69 @46018 has 8 MA's), (84, 45958), (96, 45865), (116, 45751),

Gene: Topanga_69 Start: 44300, Stop: 43836, Start Num: 49

Candidate Starts for Topanga_69:

(Start: 49 @44300 has 151 MA's), (Start: 69 @44276 has 8 MA's), (76, 44252),

Gene: Topper_76 Start: 50461, Stop: 50922, Start Num: 50

Candidate Starts for Topper_76:

(Start: 50 @50461 has 63 MA's), (Start: 69 @50488 has 8 MA's), (72, 50497), (86, 50557), (94, 50620), (103, 50662), (104, 50665), (112, 50725), (123, 50803), (142, 50899), (143, 50902),

Gene: Toro_79 Start: 50438, Stop: 49965, Start Num: 48

Candidate Starts for Toro_79:

(45, 50450), (Start: 48 @50438 has 10 MA's), (Start: 69 @50405 has 8 MA's), (78, 50369), (86, 50336), (96, 50258), (103, 50231), (112, 50168), (116, 50144), (142, 49988), (143, 49985),

Gene: TreyKay_79 Start: 50926, Stop: 51387, Start Num: 50

Candidate Starts for TreyKay_79:

(Start: 50 @50926 has 63 MA's), (Start: 69 @50953 has 8 MA's), (72, 50962), (86, 51022), (94, 51085), (104, 51130), (123, 51268), (142, 51364), (143, 51367),

Gene: TribbleTrouble_78 Start: 51156, Stop: 51722, Start Num: 25

Candidate Starts for TribbleTrouble_78:

(16, 51108), (17, 51111), (Start: 25 @51156 has 24 MA's), (Start: 69 @51291 has 8 MA's), (71, 51297), (86, 51360), (90, 51393), (92, 51414), (95, 51435), (96, 51438), (112, 51528), (124, 51612), (130, 51660),

Gene: Tristan_80 Start: 48549, Stop: 48079, Start Num: 49

Candidate Starts for Tristan_80:

(Start: 49 @48549 has 151 MA's), (Start: 54 @48540 has 1 MA's), (Start: 69 @48525 has 8 MA's), (78, 48489), (103, 48345), (112, 48285),

Gene: TroyPia_82 Start: 47934, Stop: 47464, Start Num: 49

Candidate Starts for TroyPia_82:

(Start: 44 @47952 has 3 MA's), (Start: 49 @47934 has 151 MA's), (Start: 54 @47925 has 1 MA's), (Start: 55 @47922 has 4 MA's), (Start: 69 @47904 has 8 MA's), (79, 47865), (103, 47730), (118, 47613),

Gene: TruffulaTree_78 Start: 50874, Stop: 51335, Start Num: 50

Candidate Starts for TruffulaTree_78:

(Start: 50 @50874 has 63 MA's), (Start: 69 @50901 has 8 MA's), (72, 50910), (86, 50970), (94, 51033), (103, 51075), (104, 51078), (123, 51216), (142, 51312), (143, 51315),

Gene: Tucker_86 Start: 46248, Stop: 45787, Start Num: 53

Candidate Starts for Tucker_86:

(Start: 53 @46248 has 52 MA's), (Start: 69 @46221 has 8 MA's), (84, 46161), (96, 46068), (116, 45954),

Gene: Twister_80 Start: 47500, Stop: 47036, Start Num: 49

Candidate Starts for Twister_80:

(Start: 49 @47500 has 151 MA's), (Start: 55 @47488 has 4 MA's), (Start: 69 @47476 has 8 MA's), (96, 47329), (103, 47302), (118, 47185),

Gene: Twitch_76 Start: 50463, Stop: 50924, Start Num: 50

Candidate Starts for Twitch_76:

(Start: 50 @50463 has 63 MA's), (Start: 69 @50490 has 8 MA's), (72, 50499), (86, 50559), (94, 50622), (103, 50664), (104, 50667), (112, 50727), (123, 50805), (142, 50901), (143, 50904),

Gene: TygerBlood_81 Start: 47899, Stop: 47429, Start Num: 49

Candidate Starts for TygerBlood_81:

(Start: 44 @47917 has 3 MA's), (Start: 49 @47899 has 151 MA's), (Start: 54 @47890 has 1 MA's), (Start: 55 @47887 has 4 MA's), (Start: 69 @47869 has 8 MA's), (79, 47830), (103, 47695), (118, 47578),

Gene: Ulysses_80 Start: 47582, Stop: 47112, Start Num: 49

Candidate Starts for Ulysses_80:

(Start: 44 @47600 has 3 MA's), (Start: 49 @47582 has 151 MA's), (Start: 54 @47573 has 1 MA's), (Start: 55 @47570 has 4 MA's), (Start: 69 @47552 has 8 MA's), (79, 47513), (103, 47378), (118, 47261),

Gene: Unicorn_81 Start: 51079, Stop: 51651, Start Num: 53

Candidate Starts for Unicorn_81:

(Start: 53 @51079 has 52 MA's), (Start: 69 @51100 has 8 MA's), (86, 51169), (90, 51202), (92, 51223), (96, 51247), (104, 51277), (112, 51337), (123, 51415), (130, 51469), (135, 51493), (160, 51631),

Gene: Urkel_76 Start: 50854, Stop: 51315, Start Num: 50

Candidate Starts for Urkel_76:

(Start: 50 @50854 has 63 MA's), (Start: 69 @50881 has 8 MA's), (72, 50890), (78, 50917), (86, 50950), (94, 51013), (104, 51058), (123, 51196), (142, 51292), (143, 51295),

Gene: Validus_82 Start: 52159, Stop: 52722, Start Num: 24

Candidate Starts for Validus_82:

(Start: 24 @52159 has 11 MA's), (27, 52186), (47, 52255), (Start: 53 @52267 has 52 MA's), (Start: 69 @52288 has 8 MA's), (71, 52294), (86, 52357), (90, 52390), (96, 52435), (104, 52465), (112, 52525), (123, 52603), (142, 52699), (143, 52702),

Gene: Veliki_77 Start: 50414, Stop: 50875, Start Num: 50

Candidate Starts for Veliki_77:

(Start: 50 @50414 has 63 MA's), (Start: 69 @50441 has 8 MA's), (72, 50450), (86, 50510), (94, 50573), (103, 50615), (104, 50618), (123, 50756), (142, 50852), (143, 50855),

Gene: VohminGhazi_84 Start: 46013, Stop: 45552, Start Num: 53

Candidate Starts for VohminGhazi_84:

(Start: 53 @46013 has 52 MA's), (Start: 69 @45986 has 8 MA's), (84, 45926), (96, 45833), (123, 45665),

Gene: Waits_87 Start: 47034, Stop: 46567, Start Num: 51

Candidate Starts for Waits_87:

(Start: 51 @47034 has 14 MA's), (Start: 69 @47022 has 8 MA's), (79, 46983), (82, 46968),

Gene: Wakanda_212 Start: 105499, Stop: 105951, Start Num: 64

Candidate Starts for Wakanda_212:

(Start: 64 @105499 has 32 MA's), (76, 105523), (79, 105538), (80, 105541), (94, 105631), (97, 105649), (106, 105682), (133, 105883),

Gene: WalterMcMickey_79 Start: 47500, Stop: 47036, Start Num: 49

Candidate Starts for WalterMcMickey_79:

(Start: 49 @47500 has 151 MA's), (Start: 55 @47488 has 4 MA's), (Start: 69 @47476 has 8 MA's), (96, 47329), (103, 47302), (118, 47185),

Gene: Wander_81 Start: 47893, Stop: 47423, Start Num: 49

Candidate Starts for Wander_81:

(Start: 44 @47911 has 3 MA's), (Start: 49 @47893 has 151 MA's), (Start: 54 @47884 has 1 MA's), (Start: 55 @47881 has 4 MA's), (Start: 69 @47863 has 8 MA's), (79, 47824), (103, 47689), (118, 47572),

Gene: Westy_238 Start: 116391, Stop: 116849, Start Num: 62

Candidate Starts for Westy_238:

(61, 116388), (Start: 62 @116391 has 20 MA's), (79, 116430), (94, 116529), (97, 116547), (106, 116580), (110, 116607), (120, 116700), (123, 116715), (144, 116835), (145, 116838),

Gene: Wiks_85 Start: 46116, Stop: 45655, Start Num: 53

Candidate Starts for Wiks_85:

(Start: 53 @46116 has 52 MA's), (Start: 69 @46089 has 8 MA's), (84, 46029), (96, 45936), (116, 45822),

Gene: Wilbur_81 Start: 47896, Stop: 47426, Start Num: 49

Candidate Starts for Wilbur_81:

(Start: 44 @47914 has 3 MA's), (Start: 49 @47896 has 151 MA's), (Start: 54 @47887 has 1 MA's), (Start: 55 @47884 has 4 MA's), (Start: 69 @47866 has 8 MA's), (79, 47827), (103, 47692), (118, 47575),

Gene: Wile_76 Start: 47547, Stop: 47080, Start Num: 49

Candidate Starts for Wile_76:

(Start: 44 @47565 has 3 MA's), (Start: 49 @47547 has 151 MA's), (Start: 54 @47538 has 1 MA's), (Start: 55 @47535 has 4 MA's), (Start: 69 @47517 has 8 MA's), (79, 47478), (103, 47343), (112, 47280), (118, 47226),

Gene: Wintermute_81 Start: 51441, Stop: 52025, Start Num: 53

Candidate Starts for Wintermute_81:

(10, 51252), (22, 51303), (28, 51357), (32, 51387), (Start: 48 @51432 has 10 MA's), (Start: 53 @51441 has 52 MA's), (Start: 57 @51450 has 10 MA's), (Start: 69 @51465 has 8 MA's), (86, 51534), (94, 51597), (96, 51612), (103, 51639), (112, 51702), (155, 51954), (159, 51993),

Gene: Wipeout_207 Start: 106454, Stop: 106801, Start Num: 88

Candidate Starts for Wipeout_207:

(Start: 44 @106316 has 3 MA's), (Start: 64 @106364 has 32 MA's), (79, 106403), (Start: 88 @106454 has 1 MA's), (89, 106457), (92, 106493),

Gene: Wizard007_77 Start: 47273, Stop: 46806, Start Num: 49

Candidate Starts for Wizard007_77:

(Start: 44 @47291 has 3 MA's), (Start: 49 @47273 has 151 MA's), (Start: 54 @47264 has 1 MA's), (Start: 55 @47261 has 4 MA's), (Start: 69 @47243 has 8 MA's), (79, 47204), (103, 47069), (112, 47006), (118, 46952),

Gene: Wofford_218 Start: 109219, Stop: 109656, Start Num: 64

Candidate Starts for Wofford_218:

(Start: 64 @109219 has 32 MA's), (79, 109258), (Start: 88 @109309 has 1 MA's), (89, 109312), (92, 109348), (109, 109432),

Gene: WunderPhul_86 Start: 46114, Stop: 45653, Start Num: 53

Candidate Starts for WunderPhul_86:

(Start: 53 @46114 has 52 MA's), (Start: 69 @46087 has 8 MA's), (84, 46027), (96, 45934), (116, 45820),

Gene: Xena_77 Start: 47718, Stop: 47248, Start Num: 49

Candidate Starts for Xena_77:

(Start: 44 @47736 has 3 MA's), (Start: 49 @47718 has 151 MA's), (Start: 54 @47709 has 1 MA's), (Start: 55 @47706 has 4 MA's), (Start: 69 @47688 has 8 MA's), (79, 47649), (103, 47514), (118, 47397),

Gene: Ximenita_84 Start: 51791, Stop: 52357, Start Num: 24

Candidate Starts for Ximenita_84:

(Start: 24 @51791 has 11 MA's), (27, 51821), (Start: 53 @51902 has 52 MA's), (Start: 69 @51923 has 8 MA's), (78, 51959), (90, 52025), (96, 52070), (112, 52160), (123, 52238), (130, 52292), (143, 52337),

Gene: Y10_78 Start: 51399, Stop: 51974, Start Num: 57

Candidate Starts for Y10_78:

(10, 51201), (22, 51252), (28, 51306), (32, 51336), (Start: 48 @51381 has 10 MA's), (Start: 53 @51390 has 52 MA's), (Start: 57 @51399 has 10 MA's), (Start: 69 @51414 has 8 MA's), (86, 51483), (96, 51561), (103, 51588), (108, 51609), (112, 51651), (155, 51903), (159, 51942), (161, 51966),

Gene: Y2_78 Start: 51399, Stop: 51974, Start Num: 57

Candidate Starts for Y2_78:

(10, 51201), (22, 51252), (28, 51306), (32, 51336), (Start: 48 @51381 has 10 MA's), (Start: 53 @51390 has 52 MA's), (Start: 57 @51399 has 10 MA's), (Start: 69 @51414 has 8 MA's), (86, 51483), (96, 51561), (103, 51588), (108, 51609), (112, 51651), (155, 51903), (159, 51942), (161, 51966),

Gene: Yaboi_221 Start: 106139, Stop: 106576, Start Num: 64

Candidate Starts for Yaboi_221:

(Start: 64 @106139 has 32 MA's), (79, 106178), (Start: 88 @106229 has 1 MA's), (89, 106232), (92, 106268), (109, 106352),

Gene: Yakult_36 Start: 26432, Stop: 25950, Start Num: 53

Candidate Starts for Yakult_36:

(14, 26600), (19, 26579), (Start: 25 @26549 has 24 MA's), (Start: 53 @26432 has 52 MA's), (Start: 69 @26408 has 8 MA's), (96, 26261), (98, 26255), (104, 26231), (114, 26162),

Gene: YoSam321_81 Start: 47894, Stop: 47424, Start Num: 49

Candidate Starts for YoSam321_81:

(Start: 44 @47912 has 3 MA's), (Start: 49 @47894 has 151 MA's), (Start: 54 @47885 has 1 MA's), (Start: 55 @47882 has 4 MA's), (Start: 69 @47864 has 8 MA's), (79, 47825), (103, 47690), (118, 47573),

Gene: Yokurt_85 Start: 46116, Stop: 45655, Start Num: 53

Candidate Starts for Yokurt_85:

(Start: 53 @46116 has 52 MA's), (Start: 69 @46089 has 8 MA's), (84, 46029), (96, 45936), (116, 45822),

Gene: Yuna_80 Start: 52283, Stop: 52852, Start Num: 24

Candidate Starts for Yuna_80:

(Start: 24 @52283 has 11 MA's), (27, 52313), (30, 52340), (31, 52343), (Start: 69 @52418 has 8 MA's), (71, 52424), (76, 52442), (86, 52487), (90, 52520), (96, 52565), (103, 52592), (112, 52655), (123, 52733), (130, 52787),

Gene: Yunkel11_82 Start: 51044, Stop: 51505, Start Num: 50

Candidate Starts for Yunkel11_82:

(Start: 50 @51044 has 63 MA's), (Start: 69 @51071 has 8 MA's), (72, 51080), (86, 51140), (90, 51173), (95, 51215), (103, 51245), (104, 51248), (112, 51308), (123, 51386), (142, 51482), (143, 51485),

Gene: Zabiza_72 Start: 46811, Stop: 47272, Start Num: 50

Candidate Starts for Zabiza_72:

(Start: 50 @46811 has 63 MA's), (Start: 69 @46838 has 8 MA's), (72, 46847), (86, 46907), (94, 46970), (103, 47012), (104, 47015), (112, 47075), (123, 47153), (142, 47249), (143, 47252),

Gene: Zaka_86 Start: 46116, Stop: 45655, Start Num: 53

Candidate Starts for Zaka_86:

(Start: 53 @46116 has 52 MA's), (Start: 69 @46089 has 8 MA's), (84, 46029), (96, 45936), (116, 45822),

Gene: Zavala_79 Start: 50952, Stop: 51413, Start Num: 50

Candidate Starts for Zavala_79:

(Start: 50 @50952 has 63 MA's), (Start: 58 @50967 has 11 MA's), (Start: 69 @50979 has 8 MA's), (72, 50988), (86, 51048), (94, 51111), (103, 51153), (104, 51156), (123, 51294), (142, 51390), (143, 51393),

Gene: ZoeJ_81 Start: 52756, Stop: 53337, Start Num: 58

Candidate Starts for ZoeJ_81:

(Start: 58 @52756 has 11 MA's), (Start: 69 @52768 has 8 MA's), (96, 52915), (103, 52942), (104, 52945), (112, 53005), (150, 53221), (151, 53248), (156, 53278), (158, 53293),

Gene: Zooman_12 Start: 5578, Stop: 6045, Start Num: 69

Candidate Starts for Zooman_12:

(Start: 69 @5578 has 8 MA's), (79, 5617), (80, 5620), (112, 5821), (122, 5884), (123, 5899), (130, 5959),

Gene: Zooman_325 Start: 181229, Stop: 181696, Start Num: 69

Candidate Starts for Zooman_325:

(Start: 69 @181229 has 8 MA's), (79, 181268), (80, 181271), (112, 181472), (122, 181535), (123, 181550), (130, 181610),

Gene: Zulu_87 Start: 46494, Stop: 46033, Start Num: 53

Candidate Starts for Zulu_87:

(Start: 53 @46494 has 52 MA's), (Start: 69 @46467 has 8 MA's), (84, 46407), (96, 46314), (116, 46200),