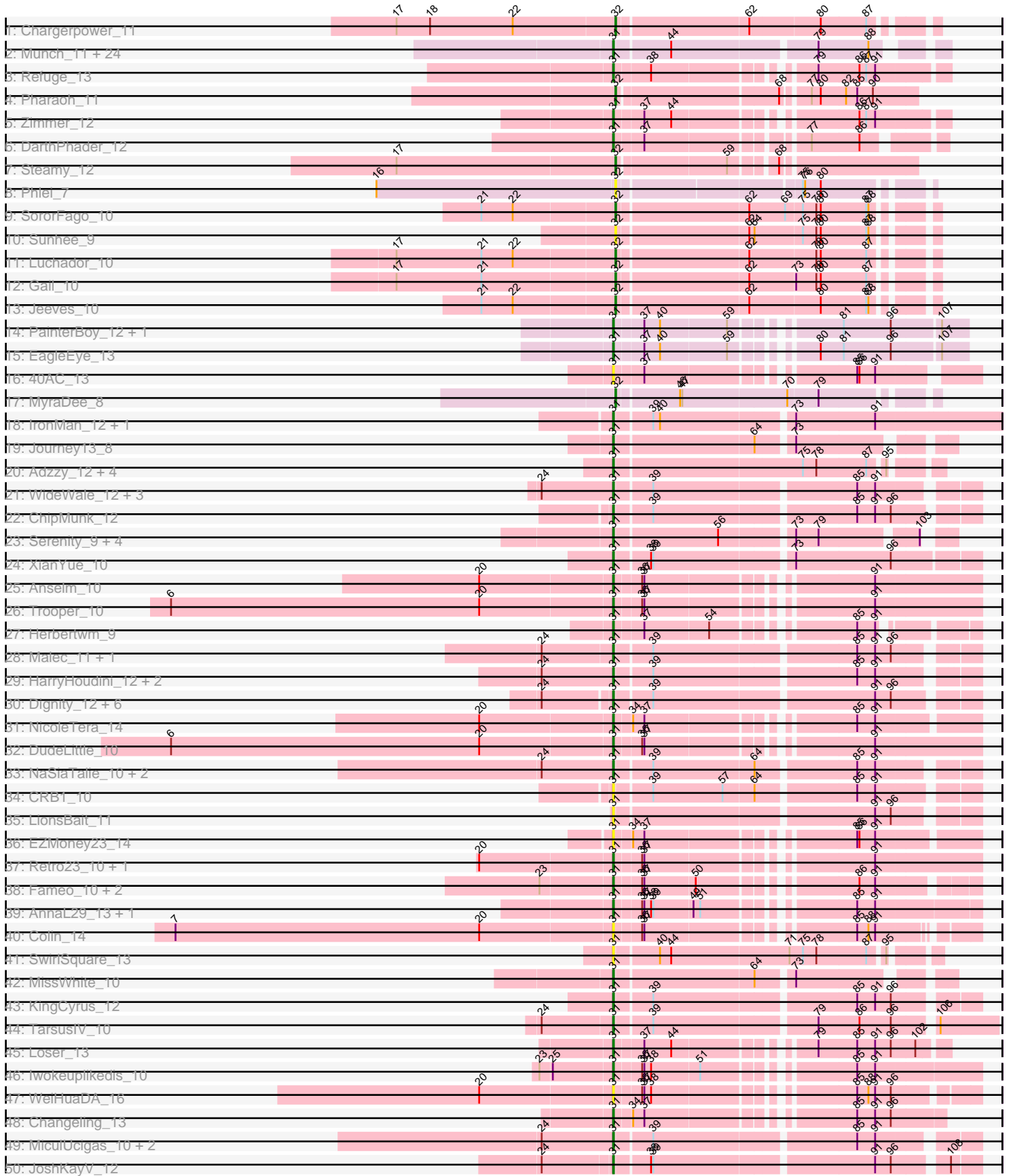
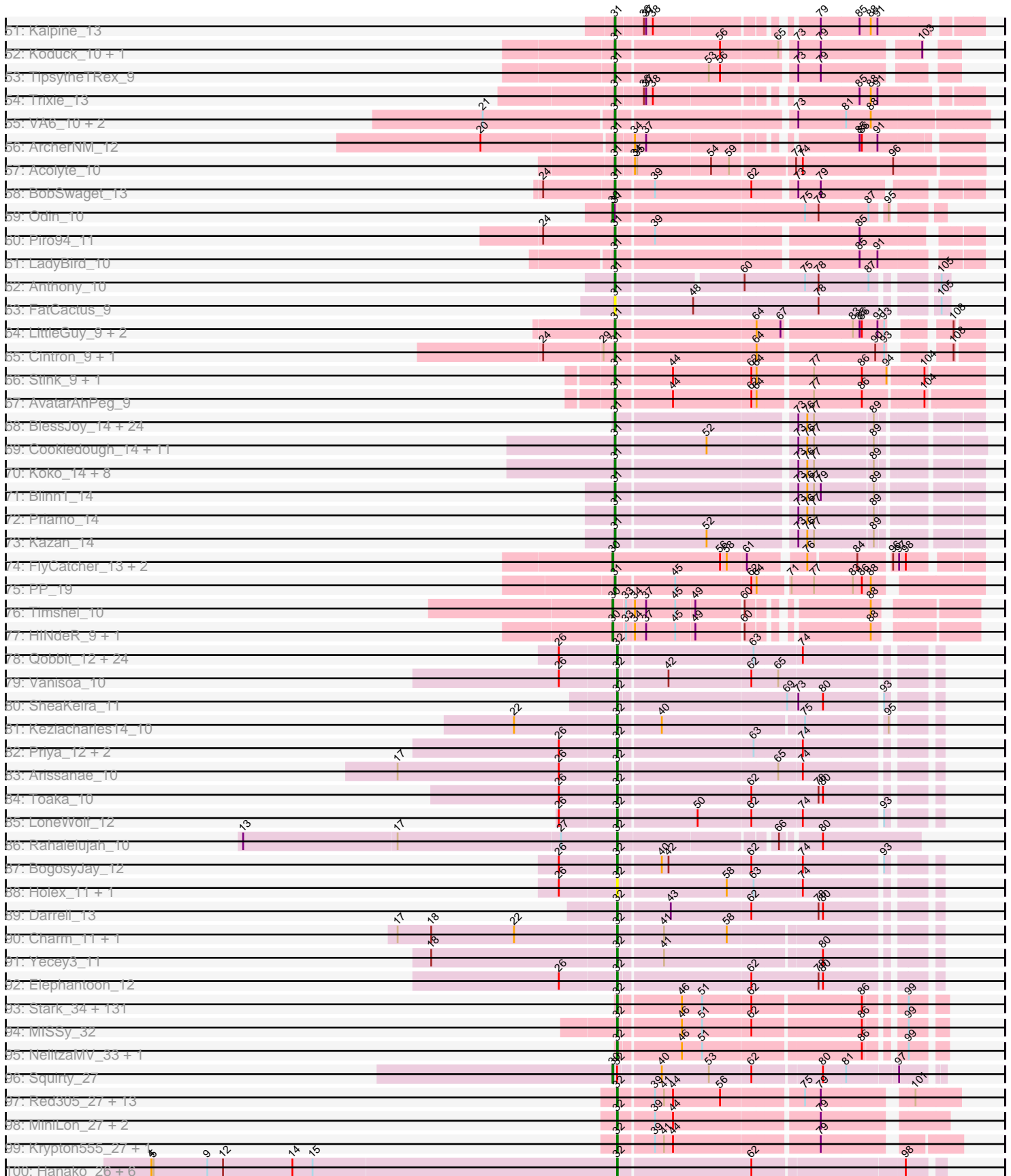


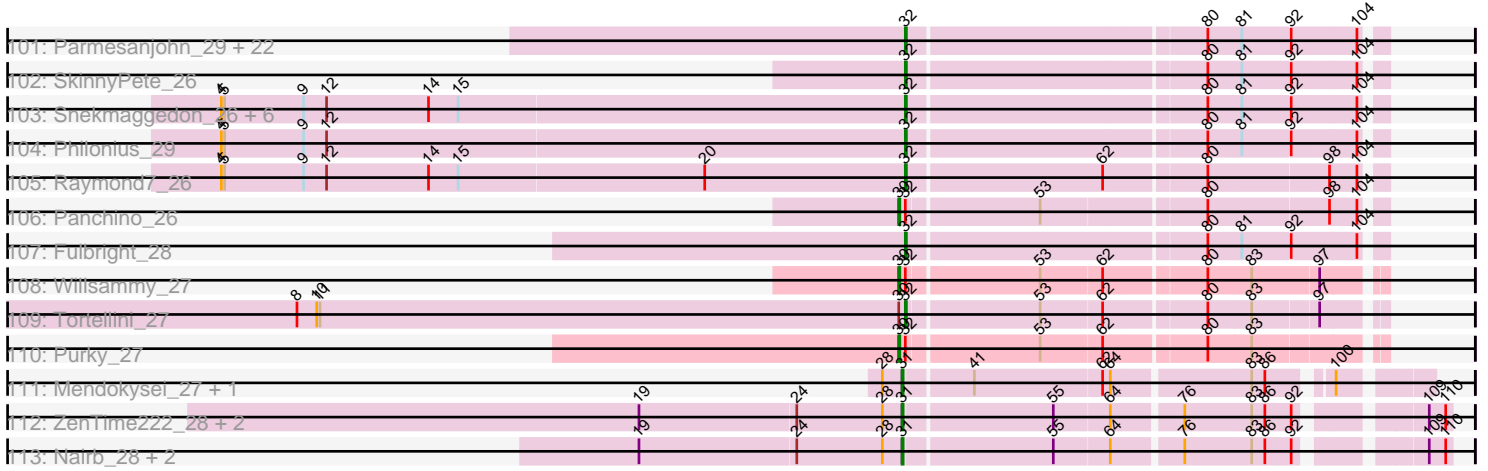
Zoomed Pham 224166



Zoomed Pham 224166



Zoomed Pham 224166



Note: Tracks are now grouped by subcluster and scaled. Switching in subcluster is indicated by changes in track color. Track scale is now set by default to display the region 30 bp upstream of start 1 to 30 bp downstream of the last possible start. If this default region is judged to be packed too tightly with annotated starts, the track will be further scaled to only show that region of the ORF with annotated starts. This action will be indicated by adding "Zoomed" to the title. For starts, yellow indicates the location of called starts comprised solely of Glimmer/GeneMark auto-annotations, green indicates the location of called starts with at least 1 manual gene annotation.

Pham 224166 Report

This analysis was run 03/28/25 on database version 593.

Pham number 224166 has 435 members, 54 are drafts.

Phages represented in each track:

- Track 1 : Chargerpower_11
- Track 2 : Munch_11, Ebony_11, Salz_11, Lucivia_11, Et2Brutus_10, MaCh_11, Orange_11, Insomnia_11, Mulciber_11, Jabith_11, Flaverint_11, Petersenfast_10, Fibonacci_11, Bowtie_11, Sham4_11, Bachome_11, Gilberta_11, Timothy_11, Joselito_11, Aneem_11, TinyTimmy_11, Bud_11, Mabel_11, Hutc2_11, Snape_11
- Track 3 : Refuge_13
- Track 4 : Pharaoh_11
- Track 5 : Zimmer_12
- Track 6 : DarthPhader_12
- Track 7 : Steamy_12
- Track 8 : Phlei_7
- Track 9 : SororFago_10
- Track 10 : Sunhee_9
- Track 11 : Luchador_10
- Track 12 : Gail_10
- Track 13 : Jeeves_10
- Track 14 : PainterBoy_12, Lucyedi_12
- Track 15 : EagleEye_13
- Track 16 : 40AC_13
- Track 17 : MyraDee_8
- Track 18 : IronMan_12, Tristan_11
- Track 19 : Journey13_8
- Track 20 : Adzzy_12, Ph8s_12, Caraxes_10, Che12_12, Superchunk_10
- Track 21 : WideWale_12, Updawg_12, Equemioh13_12, Gratitude_11
- Track 22 : ChipMunk_12
- Track 23 : Serenity_9, Bradman_9, MajorMajor_9, Quokka_8, Jsquared_9
- Track 24 : XianYue_10
- Track 25 : Anselm_10
- Track 26 : Trooper_10
- Track 27 : Herbertwm_9
- Track 28 : Malec_11, Larenn_11
- Track 29 : HarryHoudini_12, Baehexic_11, Drake55_12
- Track 30 : Dignity_12, AbbyPaige_12, Whabigail7_12, Buggy_12, Smeagan_12, Leviathan_12, Agape74_12
- Track 31 : NicoleTera_14
- Track 32 : DudeLittle_10
- Track 33 : NaSiaTalie_10, Flare16_10, Sknot_11

- Track 34 : CRB1_10
- Track 35 : LionsBait_11
- Track 36 : EZMoney23_14
- Track 37 : Retro23_10, Dalmatian_10
- Track 38 : Fameo_10, QueenB2_10, Heffalump_12
- Track 39 : AnnaL29_13, RedRock_13
- Track 40 : Colin_14
- Track 41 : SwirlSquare_13
- Track 42 : MissWhite_10
- Track 43 : KingCyrus_12
- Track 44 : TarsusIV_10
- Track 45 : Loser_13
- Track 46 : Iwokeuplikedis_10
- Track 47 : WeiHuaDA_16
- Track 48 : Changeling_13
- Track 49 : MiculUcigas_10, Terrific_14, Centaur_12
- Track 50 : JoshKayV_12
- Track 51 : Kalpine_13
- Track 52 : Koduck_10, L5_11
- Track 53 : TopsytheTRex_9
- Track 54 : Trixie_13
- Track 55 : VA6_10, Benvolio_10, Echild_10
- Track 56 : ArcherNM_12
- Track 57 : Acolyte_10
- Track 58 : BobSwaget_13
- Track 59 : Odin_10
- Track 60 : Piro94_11
- Track 61 : LadyBird_10
- Track 62 : Anthony_10
- Track 63 : FatCactus_9
- Track 64 : LittleGuy_9, Nyxis_9, Phontbonne_9
- Track 65 : Cintron_9, Kremtemulon_9
- Track 66 : Stink_9, Miramae_9
- Track 67 : AvatarAhPeg_9
- Track 68 : BlessJoy_14, Rifter_14, Wiks_14, Hoot_14, Hammer_14, CloudWang3_14, VohminGhazi_14, SmellyB_14, Gladiator_14, Blue7_14, Dorothea_14, Chartreuse_14, DaVinci_14, Yokurt_14, Gruunaga_14, ToneTone_13, WunderPhul_14, Zulu_14, Lilbunny_14, Candra_14, Jeffabunny_14, Kipper29_14, GreedyLawyer_14, Zaka_14, McFly_14
- Track 69 : Cookiedough_14, Isiphiwo_14, SuperCallie99_14, JewelBug_14, Pmask_14, Jordennis_14, Neeharika16_14, Newrala_14, EricB_14, BABullseye_14, Polyphemus_13, SuperAwesome_14
- Track 70 : Koko_14, Tucker_14, Roksolana_14, Artemis2UCLA_14, Temprado_15, Helmet_15, Indra_14, Hexamo_14, Garak_15
- Track 71 : Blinn1_14
- Track 72 : Priamo_14
- Track 73 : Kazan_14
- Track 74 : FlyCatcher_13, Sheen_11, Toro_12
- Track 75 : PP_19
- Track 76 : Timshel_10
- Track 77 : HINdeR_9, DroogsArmy_10
- Track 78 : Qobbit_12, Aliter_12, Ugenie5_9, Phaeder_12, RyeScarlet_13, ExplosioNervosa_12, Scherzo_12, Fayely_12, Phonnegut_12, EmyBug_12,

Maminiaina_12, Pioneer_12, Sachima_10, Tubs_12, Myxus_12, Hanray_11, Onglai_11, EdogawaKiddo_10, HortumSL17_12, Alma_12, Conquerage_12, Lilleskat_10, Catalina_12, Beemo_12, PackMan_12

- Track 79 : Vanisoa_10
- Track 80 : SheaKeira_11
- Track 81 : Keziacharles14_10
- Track 82 : Priya_12, Eidsmoe_12, Spouty_12
- Track 83 : Arissanae_10
- Track 84 : Toaka_10
- Track 85 : LoneWolf_12
- Track 86 : Rahalelujah_10
- Track 87 : BogosyJay_12
- Track 88 : Halex_11, Jiawan_11
- Track 89 : Darrell_13
- Track 90 : Charm_11, DreamTeam1_11
- Track 91 : Yecey3_11
- Track 92 : Elephantoon_12
- Track 93 : Stark_34, Gemini_36, Harella_32, Maxxinista_34, Elph10_34, Tarkin_35, Moldemort_34, Emmina_34, Gage_35, StormChicken_33, HufflyPuff_32, Petra64142_35, FireRed_33, StellaBean_33, BugsBunny_31, Rimmer_32, Glexan_31, FoghornLeghorn_32, Kostya_34, Kanye_35, SirDuracell_32, TeardropMSU_32, GoldenSpark_35, Thresher_34, Sassay_32, BaboJay_32, 244_35, Nala_33, ChotaBhai_33, Simpliphy_34, HanKaySha_34, Lilpickle_32, Phaja_33, Argent26_35, Nimrod_33, Rakim_34, MadamMonkfish_33, Dumbo_33, Asriel_32, BilboSwaggins_33, Manda_34, Myrale_33, Ukulele_33, Becksu_33, YassJohnny_34, SophKB_33, Cactus_34, Youngblood_33, Adnama_36, GooberAzure_35, Pat3_32, IHOP_33, Hopey_35, Balomoji_32, Dusk_32, Miniwave_33, PhatBacter_33, JeTaimie_35, FairyPath_33, MPhalcon_32, Icee_32, BadStone_32, Saints25_34, Kimchi_35, Stank_36, ShereKhan_35, Bask21_33, Qualification_34, Easy2Say_35, StolenFromERC_35, Contagion_32, Tuco_34, Palpatine_33, Hoonter_35, Traaww1_31, Flypotenuse_31, Mosby_32, Lilac_35, Barbarian_32, Sotrice96_33, Amao_33, Eureka_33, Czyszczon1_34, RiverMonster_33, BigBubba_34, AmericanBeauty_35, Terminus_33, Goldilocks_34, Bench_35, Murphy_34, Command613_34, Gator_31, CrystalP_33, Phrux_33, Mindy_33, Elite2014_32, Cjw1_33, Misfit_33, Tomaszewski_32, Goku_33, ChosenOne_33, Bruin_33, ABCat_32, Wiggin_36, Xandras_35, Willez_32, DrDrey_34, Paperbeatsrock_35, Holt_34, Policronamos_33, Thimble_33, Marshmallow_33, TBrady12_35, ShamWow_33, Cookies_33, Porky_33, DoctorDiddles_33, Filch_34, Henry_34, Teaspoon_34, Pumpkin_35, Buck_32, Highbury_34, xkcd_34, NoSleep_34, Lilizi_35, Phaux_32, OrionPax_34, Toto_33, Murica_32, Pharsalus_34, Inca_32
- Track 94 : MISSy_32
- Track 95 : NelitzaMV_33, Daikon_32
- Track 96 : Squirty_27
- Track 97 : Red305_27, Jubie_27, Bellis_27, Lumos_27, Snenia_27, Finnry_27, Clautastrophe_27, TriFive_27, Nicholas_27, Moostard_27, Samty_27, Kingsolomon_27, MsGreen_27, Jobypre_27
- Track 98 : MiniLon_27, MiniMac_27, Lolly9_27
- Track 99 : Krypton555_27, Whirlwind_28
- Track 100 : Hanako_26, Redi_26, Nenae_26, PhancyPhin_26, ShrimpFriedEgg_26, BabeRuth_26, Purgamenstris_26
- Track 101 : Parmesanjohn_29, Silvy_29, Magsby_29, Schnauzer_29, Xerxes_29, Duplicity_29, Journey_29, Charlie_29, Bosection6_29, Phloss_26, Tapioca_29, Melville_29, Gex_29, Carcharodon_29, Aggie_29, Chewbacca_29, Silvafighter_29,

- Smurph_29, Tortoise12_29, Pipsqueaks_29, Scitech_26, Xeno_28, EGUicorn_30
- Track 102 : SkinnyPete_26
 - Track 103 : Snekmaggon_26, Andies_26, MichelleMyBell_27, Rebel_26, Shweta_26, SpongeBob_26, Jamie19_26
 - Track 104 : Philonius_29
 - Track 105 : Raymond7_26
 - Track 106 : Panchino_26
 - Track 107 : Fulbright_28
 - Track 108 : Willsammy_27
 - Track 109 : Tortellini_27
 - Track 110 : Purky_27
 - Track 111 : Mendokysei_27, Nette_29
 - Track 112 : ZenTime222_28, Ibrahim_28, RonRayGun_28
 - Track 113 : Nairb_28, Bernal13_28, Whitty_28

Summary of Final Annotations (See graph section above for start numbers):

The start number called the most often in the published annotations is 32, it was called in 223 of the 381 non-draft genes in the pham.

Genes that call this "Most Annotated" start:

- 244_35, ABCat_32, Adnama_36, Aggie_29, Aliter_12, Alma_12, Amao_33, AmericanBeauty_35, Andies_26, Argent26_35, Arissanae_10, Asriel_32, BabeRuth_26, BaboJay_32, BadStone_32, Balomoji_32, Barbarian_32, Bask21_33, Becksu_33, Beemo_12, Bellis_27, Bench_35, BigBubba_34, BilboSwaggins_33, BogosyJay_12, Bosection6_29, Bruin_33, Buck_32, BugsBunny_31, Cactus_34, Carcharodon_29, Catalina_12, Chargerpower_11, Charlie_29, Charm_11, Chewbacca_29, ChosenOne_33, ChotaBhai_33, Cjw1_33, Clautastrophe_27, Command613_34, Conquerage_12, Contagion_32, Cookies_33, CrystalP_33, Czczyszczon1_34, Daikon_32, Darrell_13, DoctorDiddles_33, DrDrey_34, DreamTeam1_11, Dumbo_33, Duplicity_29, Dusk_32, EGUicorn_30, Easy2Say_35, EdogawaKiddo_10, Eidsmoe_12, Elephantoon_12, Elite2014_32, Elph10_34, Emmina_34, EmyBug_12, Eureka_33, ExplosioNervosa_12, FairyPath_33, Fayely_12, Filch_34, Finnry_27, FireRed_33, Flypotenuse_31, FoghornLeghorn_32, Fulbright_28, Gage_35, Gail_10, Gator_31, Gemini_36, Gex_29, Glexan_31, Goku_33, GoldenSpark_35, Goldilocks_34, GooberAzure_35, HanKaySha_34, Hanako_26, Hanray_11, Harella_32, Henry_34, Highbury_34, Halex_11, Holt_34, Hoonter_35, Hopey_35, HortumSL17_12, HufflyPuff_32, IHOP_33, Icee_32, Inca_32, Jamie19_26, JeTaime_35, Jeeves_10, Jiawan_11, Jobypre_27, Journey_29, Jubie_27, Kanye_35, Keziacharles14_10, Kimchi_35, Kingsolomon_27, Kostya_34, Krypton555_27, Lilac_35, Lilizi_35, Lilleskat_10, Lilpickle_32, Lolly9_27, LoneWolf_12, Luchador_10, Lumos_27, MISSy_32, MPhalcon_32, MadamMonkfish_33, Magsby_29, Maminiaina_12, Manda_34, Marshmallow_33, Maxxinista_34, Melville_29, MichelleMyBell_27, Mindy_33, MiniLon_27, MiniMac_27, Miniwave_33, Misfit_33, Moldemort_34, Moostard_27, Mosby_32, MsGreen_27, Murica_32, Murphy_34, MyraDee_8, Myrale_33, Myxus_12, Nala_33, NelitzaMV_33, Nенаe_26, Nicholas_27, Nimrod_33, NoSleep_34, Onglai_11, OrionPax_34, PackMan_12, Palpatine_33, Paperbeatsrock_35, Parmesanjohn_29, Pat3_32, Petra64142_35, Phaeder_12, Phaja_33, PhancyPhin_26, Pharaoh_11, Pharsalus_34, PhatBacter_33, Phaux_32, Philonius_29, Phlei_7, Phloss_26,

Phonnegut_12, Phrux_33, Pioneer_12, Pipsqueaks_29, Policronamos_33, Porky_33, Priya_12, Pumpkin_35, Purgamenstris_26, Qobbit_12, Quallification_34, Rahalelujah_10, Rakim_34, Raymond7_26, Rebel_26, Red305_27, Redi_26, Rimmer_32, RiverMonster_33, RyeScarlet_13, Sachima_10, Saints25_34, Samty_27, Sassay_32, Scherzo_12, Schnauzer_29, Scitech_26, ShamWow_33, SheaKeira_11, ShereKhan_35, ShrimpFriedEgg_26, Shweta_26, Silvafighter_29, Silvy_29, Simpliphy_34, SirDuracell_32, SkinnyPete_26, Smurph_29, Snekmaggedon_26, Snenia_27, SophKB_33, SororFago_10, Sotrice96_33, SpongeBob_26, Spouty_12, Stank_36, Stark_34, Steamy_12, StellaBean_33, StolenFromERC_35, StormChicken_33, Sunhee_9, TBrady12_35, Tapioca_29, Tarkin_35, TeardropMSU_32, Teaspoon_34, Terminus_33, Thimble_33, Thresher_34, Toaka_10, Tomaszewski_32, Tortellini_27, Tortoise12_29, Toto_33, Traaww1_31, TriFive_27, Tubs_12, Tuco_34, Ugenie5_9, Ukulele_33, Vanisoa_10, Whirlwind_28, Wiggin_36, Willez_32, Xandras_35, Xeno_28, Xerxes_29, YassJohnny_34, Yecey3_11, Youngblood_33, xkcd_34,

Genes that have the "Most Annotated" start but do not call it:

- Panchino_26, Purky_27, Squirty_27, Willsammy_27,

Genes that do not have the "Most Annotated" start:

- 40AC_13, AbbyPaige_12, Acolyte_10, Adzzy_12, Agape74_12, Aneem_11, AnnaL29_13, Anselm_10, Anthony_10, ArcherNM_12, Artemis2UCLA_14, AvatarAhPeg_9, BABullseye_14, Bachome_11, Baehexic_11, Benvolio_10, Bernal13_28, BlessJoy_14, Blinn1_14, Blue7_14, BobSwaget_13, Bowtie_11, Bradman_9, Bud_11, Buggy_12, CRB1_10, Candra_14, Caraxes_10, Centaur_12, Changeling_13, Chartreuse_14, Che12_12, ChipMunk_12, Cintron_9, CloudWang3_14, Colin_14, Cookiedough_14, DaVinci_14, Dalmatian_10, DARTHPhader_12, Dignity_12, Dorothea_14, Drake55_12, DroogsArmy_10, DudeLittle_10, EZMoney23_14, EagleEye_13, Ebony_11, Echild_10, Equemioh13_12, EricB_14, Et2Brutus_10, Fameo_10, FatCactus_9, Fibonacci_11, Flare16_10, Flaverint_11, FlyCatcher_13, Garak_15, Gilberta_11, Gladiator_14, Gratitude_11, GreedyLawyer_14, Gruunaga_14, HINdeR_9, Hammer_14, HarryHoudini_12, Heffalump_12, Helmet_15, Herbertwm_9, Hexamo_14, Hoot_14, Hutc2_11, Ibrahim_28, Indra_14, Insomnia_11, IronMan_12, Isiphiwo_14, Iwokeuplikedis_10, Jabith_11, Jeffabunny_14, JewelBug_14, Jordennis_14, Joselito_11, JoshKayV_12, Journey13_8, Jsquared_9, Kalpine_13, Kazan_14, KingCyrus_12, Kipper29_14, Koduck_10, Koko_14, Kremtemulon_9, L5_11, LadyBird_10, Larenn_11, Leviathan_12, Lilbunny_14, LionsBait_11, LittleGuy_9, Loser_13, Lucivia_11, Lucyedi_12, MaCh_11, Mabel_11, MajorMajor_9, Malec_11, McFly_14, Mendokyse_27, MiculUcigas_10, Miramae_9, MissWhite_10, Mulciber_11, Munch_11, NaSiaTalie_10, Nairb_28, Neeharika16_14, Nette_29, Newrala_14, NicoleTera_14, Nyxis_9, Odin_10, Orange_11, PP_19, PainterBoy_12, Petersenfast_10, Ph8s_12, Phontbonne_9, Piro94_11, Pmask_14, Polyphemus_13, Priamo_14, QueenB2_10, Quokka_8, RedRock_13, Refuge_13, Retro23_10, Rifter_14, Roksolana_14, RonRayGun_28, Salz_11, Serenity_9, Sham4_11, Sheen_11, Sknot_11, Smeagan_12, SmellyB_14, Snape_11, Stink_9, SuperAwesome_14, SuperCallie99_14, Superchunk_10, SwirlSquare_13, TarsusIV_10, Temprado_15, Terrific_14, Timothy_11, Timshel_10, TinyTimmy_11, TipsytheTRex_9, ToneTone_13, Toro_12, Tristan_11, Trixie_13, Trooper_10, Tucker_14, Updawg_12, VA6_10, VohminGhazi_14, WeiHuaDA_16, Whabigail7_12, Whitty_28, WideWale_12, Wiks_14, WunderPhul_14, XianYue_10, Yokurt_14, Zaka_14, ZenTime222_28, Zimmer_12, Zulu_14,

Summary by start number:

Start 30:

- Found in 12 of 435 (2.8%) of genes in pham
- Manual Annotations of this start: 9 of 381
- Called 91.7% of time when present
- Phage (with cluster) where this start called: DroogsArmy_10 (A7), FlyCatcher_13 (A7), HINdeR_9 (A7), Odin_10 (A2), Panchino_26 (N), Purky_27 (P6), Sheen_11 (A7), Squirty_27 (F3), Timshel_10 (A7), Toro_12 (A7), Willsammy_27 (P1),

Start 31:

- Found in 176 of 435 (40.5%) of genes in pham
- Manual Annotations of this start: 149 of 381
- Called 99.4% of time when present
- Phage (with cluster) where this start called: 40AC_13 (A17), AbbyPaige_12 (A2), Acolyte_10 (A2), Adzzy_12 (A2), Agape74_12 (A2), Aneem_11 (A11), AnnaL29_13 (A2), Anselm_10 (A2), Anthony_10 (A20), ArcherNM_12 (A2), Artemis2UCLA_14 (A6), AvatarAhPeg_9 (A4), BABullseye_14 (A6), Bachome_11 (A11), Baehexic_11 (A2), Benvolio_10 (A2), Bernal13_28 (T), BlessJoy_14 (A6), Blinn1_14 (A6), Blue7_14 (A6), BobSwaget_13 (A2), Bowtie_11 (A11), Bradman_9 (A2), Bud_11 (A11), Buggy_12 (A2), CRB1_10 (A2), Candra_14 (A6), Caraxes_10 (A2), Centaur_12 (A2), Changeling_13 (A2), Chartreuse_14 (A6), Che12_12 (A2), ChipMunk_12 (A2), Cintron_9 (A4), CloudWang3_14 (A6), Colin_14 (A2), Cookiedough_14 (A6), DaVinci_14 (A6), Dalmatian_10 (A2), DarthPhader_12 (A12), Dignity_12 (A2), Dorothea_14 (A6), Drake55_12 (A2), DudeLittle_10 (A2), EZMoney23_14 (A2), EagleEye_13 (A16), Ebony_11 (A11), Echild_10 (A2), Equemioh13_12 (A2), EricB_14 (A6), Et2Brutus_10 (A11), Fameo_10 (A2), FatCactus_9 (A20), Fibonacci_11 (A11), Flare16_10 (A2), Flaverint_11 (A11), Garak_15 (A6), Gilberta_11 (A11), Gladiator_14 (A6), Gratitude_11 (A2), GreedyLawyer_14 (A6), Gruunaga_14 (A6), Hammer_14 (A6), HarryHoudini_12 (A2), Heffalump_12 (A2), Helmet_15 (A6), Herbertwm_9 (A2), Hexamo_14 (A6), Hoot_14 (A6), Hutc2_11 (A11), Ibrahim_28 (T), Indra_14 (A6), Insomnia_11 (A11), IronMan_12 (A2), Isiphiwo_14 (A6), Iwokeuplikedis_10 (A2), Jabith_11 (A11), Jeffabunny_14 (A6), JewelBug_14 (A6), Jordennis_14 (A6), Joselito_11 (A11), JoshKayV_12 (A2), Journey13_8 (A2), Jsquared_9 (A2), Kalpine_13 (A2), Kazan_14 (A6), KingCyrus_12 (A2), Kipper29_14 (A6), Koduck_10 (A2), Koko_14 (A6), Kremtemulon_9 (A4), L5_11 (A2), LadyBird_10 (A2), Larenn_11 (A2), Leviathan_12 (A2), Lilbunny_14 (A6), LionsBait_11 (A2), LittleGuy_9 (A4), Loser_13 (A2), Lucivia_11 (A11), Lucyedi_12 (A16), MaCh_11 (A11), Mabel_11 (A11), MajorMajor_9 (A2), Malec_11 (A2), McFly_14 (A6), Mendokysei_27 (T), MiculUcigas_10 (A2), Miramae_9 (A4), MissWhite_10 (A2), Mulciber_11 (A11), Munch_11 (A11), NaSiaTalie_10 (A2), Nairb_28 (T), Neeharika16_14 (A6), Nette_29 (T), Newrala_14 (A6), NicoleTera_14 (A2), Nyxis_9 (A4), Orange_11 (A11), PP_19 (A7), PainterBoy_12 (A16), Petersenfast_10 (A11), Ph8s_12 (A2), Phontbonne_9 (A4), Piro94_11 (A2), Pmask_14 (A6), Polyphemus_13 (A6), Priamo_14 (A6), QueenB2_10 (A2), Quokka_8 (A2), RedRock_13 (A2), Refuge_13 (A12), Retro23_10 (A2), Rifter_14 (A6), Roksolana_14 (A6), RonRayGun_28 (T), Salz_11 (A11), Serenity_9 (A2), Sham4_11 (A11), Sknot_11 (A2), Smeagan_12 (A2), SmellyB_14 (A6), Snape_11 (A11), Stink_9 (A4), SuperAwesome_14 (A6), SuperCallie99_14 (A6), Superchunk_10 (A2), SwirlSquare_13 (A2), TarsusIV_10 (A2), Temprado_15 (A6), Terrific_14 (A2), Timothy_11 (A11), TinyTimmy_11 (A11), TipsytheTRex_9 (A2), ToneTone_13 (A6), Tristan_11 (A2), Trixie_13 (A2), Trooper_10 (A2), Tucker_14 (A6), Updawg_12 (A2), VA6_10 (A2), VohminGhazi_14 (A6), WeiHuaDA_16 (A2),

Whabigail7_12 (A2), Whitty_28 (T), WideWale_12 (A2), Wiks_14 (A6), WunderPhul_14 (A6), XianYue_10 (A2), Yokurt_14 (A6), Zaka_14 (A6), ZenTime222_28 (T), Zimmer_12 (A12), Zulu_14 (A6),

Start 32:

- Found in 253 of 435 (58.2%) of genes in pham
- Manual Annotations of this start: 223 of 381
- Called 98.4% of time when present
- Phage (with cluster) where this start called: 244_35 (E), ABCat_32 (E), Adnama_36 (E), Aggie_29 (N), Aliter_12 (A9), Alma_12 (A9), Amao_33 (E), AmericanBeauty_35 (E), Andies_26 (N), Argent26_35 (E), Arissanae_10 (A9), Asriel_32 (E), BabeRuth_26 (N), BaboJay_32 (E), BadStone_32 (E), Balomoji_32 (E), Barbarian_32 (E), Bask21_33 (E), Becksu_33 (E), Beemo_12 (A9), Bellis_27 (L3), Bench_35 (E), BigBubba_34 (E), BilboSwaggins_33 (E), BogosyJay_12 (A9), Bosection6_29 (N), Bruin_33 (E), Buck_32 (E), BugsBunny_31 (E), Cactus_34 (E), Carcharodon_29 (N), Catalina_12 (A9), Chargerpower_11 (A), Charlie_29 (N), Charm_11 (A9), Chewbacca_29 (N), ChosenOne_33 (E), ChotaBhai_33 (E), Cjw1_33 (E), Clautastrophe_27 (L3), Command613_34 (E), Conquerage_12 (A9), Contagion_32 (E), Cookies_33 (E), CrystalP_33 (E), Czystoczon1_34 (E), Daikon_32 (E), Darrell_13 (A9), DoctorDiddles_33 (E), DrDrey_34 (E), DreamTeam1_11 (A9), Dumbo_33 (E), Duplicity_29 (N), Dusk_32 (E), EGUnicorn_30 (N), Easy2Say_35 (E), EdogawaKiddo_10 (A9), Eidsmoe_12 (A9), Elephantoon_12 (A9), Elite2014_32 (E), Elph10_34 (E), Emmina_34 (E), EmyBug_12 (A9), Eureka_33 (E), ExplosioNervosa_12 (A9), FairyPath_33 (E), Fayely_12 (A9), Filch_34 (E), Finnry_27 (L3), FireRed_33 (E), Flypotenuse_31 (E), FoghornLeghorn_32 (E), Fulbright_28 (N), Gage_35 (E), Gail_10 (A14), Gator_31 (E), Gemini_36 (E), Gex_29 (N), Glexan_31 (E), Goku_33 (E), GoldenSpark_35 (E), Goldilocks_34 (E), GooberAzure_35 (E), HanKaySha_34 (E), Hanako_26 (N), Hanray_11 (A9), Harella_32 (E), Henry_34 (E), Highbury_34 (E), Horex_11 (A9), Holt_34 (E), Hoonter_35 (E), Hopey_35 (E), HortumSL17_12 (A9), HufflyPuff_32 (E), IHOP_33 (E), Icee_32 (E), Inca_32 (E), Jamie19_26 (N), JeTaimie_35 (E), Jeeves_10 (A14), Jiawan_11 (A9), Jobypre_27 (L3), Journey_29 (N), Jubie_27 (L3), Kanye_35 (E), Keziacharles14_10 (A9), Kimchi_35 (E), Kingsolomon_27 (L3), Kostya_34 (E), Krypton555_27 (L3), Lilac_35 (E), Lilizi_35 (E), Lilleskat_10 (A9), Lilpickle_32 (E), Lolly9_27 (L3), LoneWolf_12 (A9), Luchador_10 (A14), Lumos_27 (L3), MISSy_32 (E), MPhalcon_32 (E), MadamMonkfish_33 (E), Magsby_29 (N), Maminiaina_12 (A9), Manda_34 (E), Marshmallow_33 (E), Maxxinista_34 (E), Melville_29 (N), MichelleMyBell_27 (N), Mindy_33 (E), MiniLon_27 (L3), MiniMac_27 (L3), Miniwave_33 (E), Misfit_33 (E), Moldemort_34 (E), Moostard_27 (L3), Mosby_32 (E), MsGreen_27 (L3), Murica_32 (E), Murphy_34 (E), MyraDee_8 (A18), Myrale_33 (E), Myxus_12 (A9), Nala_33 (E), NelitzaMV_33 (E), Nenae_26 (N), Nicholas_27 (L3), Nimrod_33 (E), NoSleep_34 (E), Onglai_11 (A9), OrionPax_34 (E), PackMan_12 (A9), Palpatine_33 (E), Paperbeatsrock_35 (E), Parmesanjohn_29 (N), Pat3_32 (E), Petra64142_35 (E), Phaeder_12 (A9), Phaja_33 (E), PhancyPhin_26 (N), Pharaoh_11 (A12), Pharsalus_34 (E), PhatBacter_33 (E), Phaux_32 (E), Philonius_29 (N), Phlei_7 (A13), Phloss_26 (N), Phonnegut_12 (A9), Phrux_33 (E), Pioneer_12 (A9), Pipsqueaks_29 (N), Policronamos_33 (E), Porky_33 (E), Priya_12 (A9), Pumpkin_35 (E), Purgamenstris_26 (N), Qobbit_12 (A9), Quallification_34 (E), Rahalelujah_10 (A9), Rakim_34 (E), Raymond7_26 (N), Rebel_26 (N), Red305_27 (L3), Redi_26 (N), Rimmer_32 (E), RiverMonster_33 (E), RyeScarlet_13 (A9), Sachima_10 (A9), Saints25_34 (E), Samty_27 (L3), Sassay_32 (E), Scherzo_12 (A9), Schnauzer_29 (N), Scitech_26 (N), ShamWow_33 (E), SheaKeira_11 (A9), ShereKhan_35 (E), ShrimpFriedEgg_26 (N), Shweta_26 (N), Silvafighter_29 (N), Silvy_29 (N),

Simpliphy_34 (E), SirDuracell_32 (E), SkinnyPete_26 (N), Smurph_29 (N), Snekmaggon_26 (N), Snenia_27 (L3), SophKB_33 (E), SororFago_10 (A14), Sotrice96_33 (E), SpongeBob_26 (N), Spouty_12 (A9), Stank_36 (E), Stark_34 (E), Steamy_12 (A12), StellaBean_33 (E), StolenFromERC_35 (E), StormChicken_33 (E), Sunhee_9 (A14), TBrady12_35 (E), Tapioca_29 (N), Tarkin_35 (E), TeardropMSU_32 (E), Teaspoon_34 (E), Terminus_33 (E), Thimble_33 (E), Thresher_34 (E), Toaka_10 (A9), Tomaszewski_32 (E), Tortellini_27 (P2), Tortoise12_29 (N), Toto_33 (E), Traaww1_31 (E), TriFive_27 (L3), Tubs_12 (A9), Tuco_34 (E), Ugenie5_9 (A9), Ukulele_33 (E), Vanisoa_10 (A9), Whirlwind_28 (L3), Wiggin_36 (E), Willez_32 (E), Xandras_35 (E), Xeno_28 (N), Xerxes_29 (N), YassJohnny_34 (E), Yecey3_11 (A9), Youngblood_33 (E), xkcd_34 (E),

Summary by clusters:

There are 22 clusters represented in this pham: A, P6, A14, A17, A16, A11, A13, A12, A18, A2, A4, A7, A6, A9, P2, P1, E, N, T, A20, F3, L3,

Info for manual annotations of cluster A:

- Start number 32 was manually annotated 1 time for cluster A.

Info for manual annotations of cluster A11:

- Start number 31 was manually annotated 24 times for cluster A11.

Info for manual annotations of cluster A12:

- Start number 31 was manually annotated 3 times for cluster A12.
- Start number 32 was manually annotated 2 times for cluster A12.

Info for manual annotations of cluster A14:

- Start number 32 was manually annotated 4 times for cluster A14.

Info for manual annotations of cluster A16:

- Start number 31 was manually annotated 3 times for cluster A16.

Info for manual annotations of cluster A18:

- Start number 32 was manually annotated 1 time for cluster A18.

Info for manual annotations of cluster A2:

- Start number 30 was manually annotated 1 time for cluster A2.
- Start number 31 was manually annotated 60 times for cluster A2.

Info for manual annotations of cluster A20:

- Start number 31 was manually annotated 1 time for cluster A20.

Info for manual annotations of cluster A4:

- Start number 31 was manually annotated 8 times for cluster A4.

Info for manual annotations of cluster A6:

- Start number 31 was manually annotated 42 times for cluster A6.

Info for manual annotations of cluster A7:

- Start number 30 was manually annotated 4 times for cluster A7.

- Start number 31 was manually annotated 1 time for cluster A7.

Info for manual annotations of cluster A9:

- Start number 32 was manually annotated 35 times for cluster A9.

Info for manual annotations of cluster E:

- Start number 32 was manually annotated 125 times for cluster E.

Info for manual annotations of cluster F3:

- Start number 30 was manually annotated 1 time for cluster F3.

Info for manual annotations of cluster L3:

- Start number 32 was manually annotated 16 times for cluster L3.

Info for manual annotations of cluster N:

- Start number 30 was manually annotated 1 time for cluster N.
- Start number 32 was manually annotated 38 times for cluster N.

Info for manual annotations of cluster P1:

- Start number 30 was manually annotated 1 time for cluster P1.

Info for manual annotations of cluster P2:

- Start number 32 was manually annotated 1 time for cluster P2.

Info for manual annotations of cluster P6:

- Start number 30 was manually annotated 1 time for cluster P6.

Info for manual annotations of cluster T:

- Start number 31 was manually annotated 7 times for cluster T.

Gene Information:

Gene: 244_35 Start: 31427, Stop: 31810, Start Num: 32

Candidate Starts for 244_35:

(Start: 32 @31427 has 223 MA's), (46, 31505), (51, 31532), (62, 31595), (86, 31730), (99, 31769),

Gene: 40AC_13 Start: 8077, Stop: 8496, Start Num: 31

Candidate Starts for 40AC_13:

(Start: 31 @8077 has 149 MA's), (37, 8113), (85, 8353), (86, 8356), (91, 8377),

Gene: ABCat_32 Start: 31139, Stop: 31522, Start Num: 32

Candidate Starts for ABCat_32:

(Start: 32 @31139 has 223 MA's), (46, 31217), (51, 31244), (62, 31307), (86, 31442), (99, 31481),

Gene: AbbyPaige_12 Start: 6436, Stop: 6876, Start Num: 31

Candidate Starts for AbbyPaige_12:

(24, 6349), (Start: 31 @6436 has 149 MA's), (39, 6481), (91, 6760), (96, 6781),

Gene: Acolyte_10 Start: 6056, Stop: 6523, Start Num: 31

Candidate Starts for Acolyte_10:

(Start: 31 @6056 has 149 MA's), (34, 6077), (35, 6080), (54, 6176), (59, 6200), (72, 6278), (74, 6287), (96, 6407),

Gene: Adnama_36 Start: 31654, Stop: 32037, Start Num: 32

Candidate Starts for Adnama_36:

(Start: 32 @31654 has 223 MA's), (46, 31732), (51, 31759), (62, 31822), (86, 31957), (99, 31996),

Gene: Adzzy_12 Start: 5846, Stop: 6244, Start Num: 31

Candidate Starts for Adzzy_12:

(Start: 31 @5846 has 149 MA's), (75, 6086), (78, 6104), (87, 6170), (95, 6188),

Gene: Agape74_12 Start: 6436, Stop: 6876, Start Num: 31

Candidate Starts for Agape74_12:

(24, 6349), (Start: 31 @6436 has 149 MA's), (39, 6481), (91, 6760), (96, 6781),

Gene: Aggie_29 Start: 24340, Stop: 24744, Start Num: 32

Candidate Starts for Aggie_29:

(Start: 32 @24340 has 223 MA's), (80, 24598), (81, 24628), (92, 24670), (104, 24727),

Gene: Aliter_12 Start: 7651, Stop: 8037, Start Num: 32

Candidate Starts for Aliter_12:

(26, 7576), (Start: 32 @7651 has 223 MA's), (63, 7822), (74, 7882),

Gene: Alma_12 Start: 7730, Stop: 8116, Start Num: 32

Candidate Starts for Alma_12:

(26, 7655), (Start: 32 @7730 has 223 MA's), (63, 7901), (74, 7961),

Gene: Amao_33 Start: 30351, Stop: 30734, Start Num: 32

Candidate Starts for Amao_33:

(Start: 32 @30351 has 223 MA's), (46, 30429), (51, 30456), (62, 30519), (86, 30654), (99, 30693),

Gene: AmericanBeauty_35 Start: 31134, Stop: 31517, Start Num: 32

Candidate Starts for AmericanBeauty_35:

(Start: 32 @31134 has 223 MA's), (46, 31212), (51, 31239), (62, 31302), (86, 31437), (99, 31476),

Gene: Andies_26 Start: 23507, Stop: 23911, Start Num: 32

Candidate Starts for Andies_26:

(4, 22886), (5, 22889), (9, 22961), (12, 22982), (14, 23075), (15, 23102), (Start: 32 @23507 has 223 MA's), (80, 23765), (81, 23795), (92, 23837), (104, 23894),

Gene: Aneem_11 Start: 7621, Stop: 8007, Start Num: 31

Candidate Starts for Aneem_11:

(Start: 31 @7621 has 149 MA's), (44, 7690), (79, 7870), (88, 7936),

Gene: AnnaL29_13 Start: 7888, Stop: 8322, Start Num: 31

Candidate Starts for AnnaL29_13:

(Start: 31 @7888 has 149 MA's), (36, 7921), (37, 7924), (38, 7933), (39, 7936), (49, 7987), (51, 7996), (85, 8164), (91, 8188),

Gene: Anselm_10 Start: 6094, Stop: 6534, Start Num: 31

Candidate Starts for Anselm_10:

(20, 5920), (Start: 31 @6094 has 149 MA's), (36, 6127), (37, 6130), (91, 6394),

Gene: Anthony_10 Start: 5261, Stop: 5653, Start Num: 31
Candidate Starts for Anthony_10:
(Start: 31 @5261 has 149 MA's), (60, 5414), (75, 5492), (78, 5510), (87, 5576), (105, 5642),

Gene: ArcherNM_12 Start: 7805, Stop: 8230, Start Num: 31
Candidate Starts for ArcherNM_12:
(20, 7634), (Start: 31 @7805 has 149 MA's), (34, 7826), (37, 7841), (85, 8081), (86, 8084), (91, 8105),

Gene: Argent26_35 Start: 31137, Stop: 31520, Start Num: 32
Candidate Starts for Argent26_35:
(Start: 32 @31137 has 223 MA's), (46, 31215), (51, 31242), (62, 31305), (86, 31440), (99, 31479),

Gene: Arissanae_10 Start: 5852, Stop: 6238, Start Num: 32
Candidate Starts for Arissanae_10:
(17, 5561), (26, 5777), (Start: 32 @5852 has 223 MA's), (65, 6053), (74, 6083),

Gene: Artemis2UCLA_14 Start: 6948, Stop: 7379, Start Num: 31
Candidate Starts for Artemis2UCLA_14:
(Start: 31 @6948 has 149 MA's), (73, 7167), (76, 7179), (77, 7188), (89, 7263),

Gene: Asriel_32 Start: 30008, Stop: 30391, Start Num: 32
Candidate Starts for Asriel_32:
(Start: 32 @30008 has 223 MA's), (46, 30086), (51, 30113), (62, 30176), (86, 30311), (99, 30350),

Gene: AvatarAhPeg_9 Start: 5393, Stop: 5845, Start Num: 31
Candidate Starts for AvatarAhPeg_9:
(Start: 31 @5393 has 149 MA's), (44, 5462), (62, 5564), (64, 5570), (77, 5636), (86, 5699), (104, 5774),

Gene: BABullseye_14 Start: 7065, Stop: 7499, Start Num: 31
Candidate Starts for BABullseye_14:
(Start: 31 @7065 has 149 MA's), (52, 7179), (73, 7284), (76, 7296), (77, 7305), (89, 7380),

Gene: BabeRuth_26 Start: 23389, Stop: 23793, Start Num: 32
Candidate Starts for BabeRuth_26:
(4, 22768), (5, 22771), (9, 22843), (12, 22864), (14, 22957), (15, 22984), (Start: 32 @23389 has 223 MA's), (62, 23563), (98, 23752),

Gene: BaboJay_32 Start: 30697, Stop: 31080, Start Num: 32
Candidate Starts for BaboJay_32:
(Start: 32 @30697 has 223 MA's), (46, 30775), (51, 30802), (62, 30865), (86, 31000), (99, 31039),

Gene: Bachome_11 Start: 7618, Stop: 8004, Start Num: 31
Candidate Starts for Bachome_11:
(Start: 31 @7618 has 149 MA's), (44, 7687), (79, 7867), (88, 7933),

Gene: BadStone_32 Start: 31139, Stop: 31522, Start Num: 32
Candidate Starts for BadStone_32:
(Start: 32 @31139 has 223 MA's), (46, 31217), (51, 31244), (62, 31307), (86, 31442), (99, 31481),

Gene: Baehexic_11 Start: 6510, Stop: 6947, Start Num: 31
Candidate Starts for Baehexic_11:
(24, 6414), (Start: 31 @6510 has 149 MA's), (39, 6555), (85, 6810), (91, 6834),

Gene: Balomoji_32 Start: 30873, Stop: 31256, Start Num: 32
Candidate Starts for Balomoji_32:
(Start: 32 @30873 has 223 MA's), (46, 30951), (51, 30978), (62, 31041), (86, 31176), (99, 31215),

Gene: Barbarian_32 Start: 30008, Stop: 30391, Start Num: 32
Candidate Starts for Barbarian_32:
(Start: 32 @30008 has 223 MA's), (46, 30086), (51, 30113), (62, 30176), (86, 30311), (99, 30350),

Gene: Bask21_33 Start: 30325, Stop: 30708, Start Num: 32
Candidate Starts for Bask21_33:
(Start: 32 @30325 has 223 MA's), (46, 30403), (51, 30430), (62, 30493), (86, 30628), (99, 30667),

Gene: Becksu_33 Start: 31330, Stop: 31713, Start Num: 32
Candidate Starts for Becksu_33:
(Start: 32 @31330 has 223 MA's), (46, 31408), (51, 31435), (62, 31498), (86, 31633), (99, 31672),

Gene: Beemo_12 Start: 7757, Stop: 8143, Start Num: 32
Candidate Starts for Beemo_12:
(26, 7682), (Start: 32 @7757 has 223 MA's), (63, 7928), (74, 7988),

Gene: Bellis_27 Start: 26437, Stop: 26853, Start Num: 32
Candidate Starts for Bellis_27:
(Start: 32 @26437 has 223 MA's), (39, 26482), (41, 26494), (44, 26506), (56, 26569), (75, 26668), (79, 26689), (101, 26794),

Gene: Bench_35 Start: 31007, Stop: 31390, Start Num: 32
Candidate Starts for Bench_35:
(Start: 32 @31007 has 223 MA's), (46, 31085), (51, 31112), (62, 31175), (86, 31310), (99, 31349),

Gene: Benvolio_10 Start: 6083, Stop: 6544, Start Num: 31
Candidate Starts for Benvolio_10:
(21, 5912), (Start: 31 @6083 has 149 MA's), (73, 6302), (81, 6365), (88, 6398),

Gene: Bernal13_28 Start: 25159, Stop: 25599, Start Num: 31
Candidate Starts for Bernal13_28:
(19, 24922), (24, 25063), (28, 25141), (Start: 31 @25159 has 149 MA's), (55, 25288), (64, 25336), (76, 25393), (83, 25453), (86, 25465), (92, 25489), (109, 25579), (110, 25594),

Gene: BigBubba_34 Start: 30910, Stop: 31293, Start Num: 32
Candidate Starts for BigBubba_34:
(Start: 32 @30910 has 223 MA's), (46, 30988), (51, 31015), (62, 31078), (86, 31213), (99, 31252),

Gene: BilboSwaggins_33 Start: 31147, Stop: 31530, Start Num: 32
Candidate Starts for BilboSwaggins_33:
(Start: 32 @31147 has 223 MA's), (46, 31225), (51, 31252), (62, 31315), (86, 31450), (99, 31489),

Gene: BlessJoy_14 Start: 7046, Stop: 7477, Start Num: 31
Candidate Starts for BlessJoy_14:
(Start: 31 @7046 has 149 MA's), (73, 7265), (76, 7277), (77, 7286), (89, 7361),

Gene: Blinn1_14 Start: 7098, Stop: 7529, Start Num: 31
Candidate Starts for Blinn1_14:
(Start: 31 @7098 has 149 MA's), (73, 7317), (76, 7329), (77, 7338), (79, 7347), (89, 7413),

Gene: Blue7_14 Start: 7039, Stop: 7470, Start Num: 31

Candidate Starts for Blue7_14:

(Start: 31 @7039 has 149 MA's), (73, 7258), (76, 7270), (77, 7279), (89, 7354),

Gene: BobSwaget_13 Start: 7689, Stop: 8114, Start Num: 31

Candidate Starts for BobSwaget_13:

(24, 7596), (Start: 31 @7689 has 149 MA's), (39, 7734), (62, 7860), (73, 7908), (79, 7938),

Gene: BogosyJay_12 Start: 7514, Stop: 7900, Start Num: 32

Candidate Starts for BogosyJay_12:

(26, 7439), (Start: 32 @7514 has 223 MA's), (40, 7565), (42, 7574), (62, 7682), (74, 7745), (93, 7844),

Gene: Bosection6_29 Start: 24339, Stop: 24743, Start Num: 32

Candidate Starts for Bosection6_29:

(Start: 32 @24339 has 223 MA's), (80, 24597), (81, 24627), (92, 24669), (104, 24726),

Gene: Bowtie_11 Start: 7621, Stop: 8007, Start Num: 31

Candidate Starts for Bowtie_11:

(Start: 31 @7621 has 149 MA's), (44, 7690), (79, 7870), (88, 7936),

Gene: Bradman_9 Start: 5207, Stop: 5602, Start Num: 31

Candidate Starts for Bradman_9:

(Start: 31 @5207 has 149 MA's), (56, 5339), (73, 5426), (79, 5456), (103, 5573),

Gene: Bruin_33 Start: 31167, Stop: 31550, Start Num: 32

Candidate Starts for Bruin_33:

(Start: 32 @31167 has 223 MA's), (46, 31245), (51, 31272), (62, 31335), (86, 31470), (99, 31509),

Gene: Buck_32 Start: 31103, Stop: 31486, Start Num: 32

Candidate Starts for Buck_32:

(Start: 32 @31103 has 223 MA's), (46, 31181), (51, 31208), (62, 31271), (86, 31406), (99, 31445),

Gene: Bud_11 Start: 7627, Stop: 8013, Start Num: 31

Candidate Starts for Bud_11:

(Start: 31 @7627 has 149 MA's), (44, 7696), (79, 7876), (88, 7942),

Gene: BugsBunny_31 Start: 30736, Stop: 31119, Start Num: 32

Candidate Starts for BugsBunny_31:

(Start: 32 @30736 has 223 MA's), (46, 30814), (51, 30841), (62, 30904), (86, 31039), (99, 31078),

Gene: Buggy_12 Start: 6435, Stop: 6875, Start Num: 31

Candidate Starts for Buggy_12:

(24, 6348), (Start: 31 @6435 has 149 MA's), (39, 6480), (91, 6759), (96, 6780),

Gene: CRB1_10 Start: 5971, Stop: 6411, Start Num: 31

Candidate Starts for CRB1_10:

(Start: 31 @5971 has 149 MA's), (39, 6016), (57, 6109), (64, 6148), (85, 6271), (91, 6295),

Gene: Cactus_34 Start: 30358, Stop: 30741, Start Num: 32

Candidate Starts for Cactus_34:

(Start: 32 @30358 has 223 MA's), (46, 30436), (51, 30463), (62, 30526), (86, 30661), (99, 30700),

Gene: Candra_14 Start: 7098, Stop: 7529, Start Num: 31

Candidate Starts for Candra_14:

(Start: 31 @7098 has 149 MA's), (73, 7317), (76, 7329), (77, 7338), (89, 7413),

Gene: Caraxes_10 Start: 5746, Stop: 6141, Start Num: 31

Candidate Starts for Caraxes_10:

(Start: 31 @5746 has 149 MA's), (75, 5986), (78, 6004), (87, 6070), (95, 6088),

Gene: Carcharodon_29 Start: 24339, Stop: 24743, Start Num: 32

Candidate Starts for Carcharodon_29:

(Start: 32 @24339 has 223 MA's), (80, 24597), (81, 24627), (92, 24669), (104, 24726),

Gene: Catalina_12 Start: 7724, Stop: 8110, Start Num: 32

Candidate Starts for Catalina_12:

(26, 7649), (Start: 32 @7724 has 223 MA's), (63, 7895), (74, 7955),

Gene: Centaur_12 Start: 6489, Stop: 6926, Start Num: 31

Candidate Starts for Centaur_12:

(24, 6393), (Start: 31 @6489 has 149 MA's), (39, 6534), (85, 6789), (91, 6813),

Gene: Changeling_13 Start: 7898, Stop: 8287, Start Num: 31

Candidate Starts for Changeling_13:

(Start: 31 @7898 has 149 MA's), (34, 7919), (37, 7934), (85, 8174), (91, 8198), (96, 8219),

Gene: Chargerpower_11 Start: 6184, Stop: 6570, Start Num: 32

Candidate Starts for Chargerpower_11:

(17, 5893), (18, 5938), (22, 6049), (Start: 32 @6184 has 223 MA's), (62, 6352), (80, 6442), (87, 6502),

Gene: Charlie_29 Start: 24339, Stop: 24743, Start Num: 32

Candidate Starts for Charlie_29:

(Start: 32 @24339 has 223 MA's), (80, 24597), (81, 24627), (92, 24669), (104, 24726),

Gene: Charm_11 Start: 5913, Stop: 6296, Start Num: 32

Candidate Starts for Charm_11:

(17, 5622), (18, 5667), (22, 5778), (Start: 32 @5913 has 223 MA's), (41, 5970), (58, 6054),

Gene: Chartreuse_14 Start: 7012, Stop: 7443, Start Num: 31

Candidate Starts for Chartreuse_14:

(Start: 31 @7012 has 149 MA's), (73, 7231), (76, 7243), (77, 7252), (89, 7327),

Gene: Che12_12 Start: 5840, Stop: 6238, Start Num: 31

Candidate Starts for Che12_12:

(Start: 31 @5840 has 149 MA's), (75, 6080), (78, 6098), (87, 6164), (95, 6182),

Gene: Chewbacca_29 Start: 24339, Stop: 24743, Start Num: 32

Candidate Starts for Chewbacca_29:

(Start: 32 @24339 has 223 MA's), (80, 24597), (81, 24627), (92, 24669), (104, 24726),

Gene: ChipMunk_12 Start: 6373, Stop: 6813, Start Num: 31

Candidate Starts for ChipMunk_12:

(Start: 31 @6373 has 149 MA's), (39, 6418), (85, 6673), (91, 6697), (96, 6718),

Gene: ChosenOne_33 Start: 30355, Stop: 30738, Start Num: 32

Candidate Starts for ChosenOne_33:

(Start: 32 @30355 has 223 MA's), (46, 30433), (51, 30460), (62, 30523), (86, 30658), (99, 30697),

Gene: ChotaBhai_33 Start: 30393, Stop: 30776, Start Num: 32

Candidate Starts for ChotaBhai_33:

(Start: 32 @30393 has 223 MA's), (46, 30471), (51, 30498), (62, 30561), (86, 30696), (99, 30735),

Gene: Cintron_9 Start: 5501, Stop: 5926, Start Num: 31

Candidate Starts for Cintron_9:

(24, 5408), (29, 5486), (Start: 31 @5501 has 149 MA's), (64, 5678), (90, 5825), (93, 5837), (108, 5891),

Gene: Cjw1_33 Start: 31907, Stop: 32290, Start Num: 32

Candidate Starts for Cjw1_33:

(Start: 32 @31907 has 223 MA's), (46, 31985), (51, 32012), (62, 32075), (86, 32210), (99, 32249),

Gene: Clautastrophe_27 Start: 26434, Stop: 26850, Start Num: 32

Candidate Starts for Clautastrophe_27:

(Start: 32 @26434 has 223 MA's), (39, 26479), (41, 26491), (44, 26503), (56, 26566), (75, 26665), (79, 26686), (101, 26791),

Gene: CloudWang3_14 Start: 7043, Stop: 7474, Start Num: 31

Candidate Starts for CloudWang3_14:

(Start: 31 @7043 has 149 MA's), (73, 7262), (76, 7274), (77, 7283), (89, 7358),

Gene: Colin_14 Start: 7692, Stop: 8105, Start Num: 31

Candidate Starts for Colin_14:

(7, 7110), (20, 7518), (Start: 31 @7692 has 149 MA's), (36, 7725), (37, 7728), (85, 7968), (88, 7983), (91, 7992),

Gene: Command613_34 Start: 31414, Stop: 31797, Start Num: 32

Candidate Starts for Command613_34:

(Start: 32 @31414 has 223 MA's), (46, 31492), (51, 31519), (62, 31582), (86, 31717), (99, 31756),

Gene: Conquerage_12 Start: 7753, Stop: 8139, Start Num: 32

Candidate Starts for Conquerage_12:

(26, 7678), (Start: 32 @7753 has 223 MA's), (63, 7924), (74, 7984),

Gene: Contagion_32 Start: 30651, Stop: 31034, Start Num: 32

Candidate Starts for Contagion_32:

(Start: 32 @30651 has 223 MA's), (46, 30729), (51, 30756), (62, 30819), (86, 30954), (99, 30993),

Gene: Cookiedough_14 Start: 7065, Stop: 7499, Start Num: 31

Candidate Starts for Cookiedough_14:

(Start: 31 @7065 has 149 MA's), (52, 7179), (73, 7284), (76, 7296), (77, 7305), (89, 7380),

Gene: Cookies_33 Start: 31016, Stop: 31399, Start Num: 32

Candidate Starts for Cookies_33:

(Start: 32 @31016 has 223 MA's), (46, 31094), (51, 31121), (62, 31184), (86, 31319), (99, 31358),

Gene: CrystalP_33 Start: 31147, Stop: 31530, Start Num: 32

Candidate Starts for CrystalP_33:

(Start: 32 @31147 has 223 MA's), (46, 31225), (51, 31252), (62, 31315), (86, 31450), (99, 31489),

Gene: Czyszczone1_34 Start: 30892, Stop: 31275, Start Num: 32
Candidate Starts for Czyszczone1_34:
(Start: 32 @30892 has 223 MA's), (46, 30970), (51, 30997), (62, 31060), (86, 31195), (99, 31234),

Gene: DaVinci_14 Start: 7066, Stop: 7497, Start Num: 31
Candidate Starts for DaVinci_14:
(Start: 31 @7066 has 149 MA's), (73, 7285), (76, 7297), (77, 7306), (89, 7381),

Gene: Daikon_32 Start: 30885, Stop: 31268, Start Num: 32
Candidate Starts for Daikon_32:
(Start: 32 @30885 has 223 MA's), (46, 30963), (51, 30990), (86, 31188), (99, 31227),

Gene: Dalmatian_10 Start: 6085, Stop: 6525, Start Num: 31
Candidate Starts for Dalmatian_10:
(20, 5911), (Start: 31 @6085 has 149 MA's), (36, 6118), (37, 6121), (91, 6385),

Gene: Darrell_13 Start: 7946, Stop: 8335, Start Num: 32
Candidate Starts for Darrell_13:
(Start: 32 @7946 has 223 MA's), (43, 8009), (62, 8114), (78, 8201), (80, 8207),

Gene: DarthPhader_12 Start: 7926, Stop: 8303, Start Num: 31
Candidate Starts for DarthPhader_12:
(Start: 31 @7926 has 149 MA's), (37, 7962), (77, 8151), (86, 8214),

Gene: Dignity_12 Start: 6380, Stop: 6820, Start Num: 31
Candidate Starts for Dignity_12:
(24, 6293), (Start: 31 @6380 has 149 MA's), (39, 6425), (91, 6704), (96, 6725),

Gene: DoctorDiddles_33 Start: 30309, Stop: 30692, Start Num: 32
Candidate Starts for DoctorDiddles_33:
(Start: 32 @30309 has 223 MA's), (46, 30387), (51, 30414), (62, 30477), (86, 30612), (99, 30651),

Gene: Dorothea_14 Start: 7065, Stop: 7496, Start Num: 31
Candidate Starts for Dorothea_14:
(Start: 31 @7065 has 149 MA's), (73, 7284), (76, 7296), (77, 7305), (89, 7380),

Gene: DrDrey_34 Start: 31639, Stop: 32022, Start Num: 32
Candidate Starts for DrDrey_34:
(Start: 32 @31639 has 223 MA's), (46, 31717), (51, 31744), (62, 31807), (86, 31942), (99, 31981),

Gene: Drake55_12 Start: 6506, Stop: 6943, Start Num: 31
Candidate Starts for Drake55_12:
(24, 6410), (Start: 31 @6506 has 149 MA's), (39, 6551), (85, 6806), (91, 6830),

Gene: DreamTeam1_11 Start: 5913, Stop: 6296, Start Num: 32
Candidate Starts for DreamTeam1_11:
(17, 5622), (18, 5667), (22, 5778), (Start: 32 @5913 has 223 MA's), (41, 5970), (58, 6054),

Gene: DroogsArmy_10 Start: 6654, Stop: 7067, Start Num: 30
Candidate Starts for DroogsArmy_10:
(Start: 30 @6654 has 9 MA's), (33, 6669), (34, 6678), (37, 6693), (45, 6732), (49, 6756), (60, 6816),
(88, 6948),

Gene: DudeLittle_10 Start: 6087, Stop: 6527, Start Num: 31

Candidate Starts for DudeLittle_10:

(6, 5499), (20, 5913), (Start: 31 @6087 has 149 MA's), (36, 6120), (37, 6123), (91, 6387),

Gene: Dumbo_33 Start: 30614, Stop: 30997, Start Num: 32

Candidate Starts for Dumbo_33:

(Start: 32 @30614 has 223 MA's), (46, 30692), (51, 30719), (62, 30782), (86, 30917), (99, 30956),

Gene: Duplicity_29 Start: 24339, Stop: 24743, Start Num: 32

Candidate Starts for Duplicity_29:

(Start: 32 @24339 has 223 MA's), (80, 24597), (81, 24627), (92, 24669), (104, 24726),

Gene: Dusk_32 Start: 30799, Stop: 31182, Start Num: 32

Candidate Starts for Dusk_32:

(Start: 32 @30799 has 223 MA's), (46, 30877), (51, 30904), (62, 30967), (86, 31102), (99, 31141),

Gene: EGUunicorn_30 Start: 24339, Stop: 24743, Start Num: 32

Candidate Starts for EGUunicorn_30:

(Start: 32 @24339 has 223 MA's), (80, 24597), (81, 24627), (92, 24669), (104, 24726),

Gene: EZMoney23_14 Start: 7982, Stop: 8410, Start Num: 31

Candidate Starts for EZMoney23_14:

(Start: 31 @7982 has 149 MA's), (34, 8003), (37, 8018), (85, 8258), (86, 8261), (91, 8282),

Gene: EagleEye_13 Start: 7139, Stop: 7555, Start Num: 31

Candidate Starts for EagleEye_13:

(Start: 31 @7139 has 149 MA's), (37, 7175), (40, 7196), (59, 7283), (80, 7367), (81, 7397), (96, 7460), (107, 7520),

Gene: Easy2Say_35 Start: 32397, Stop: 32780, Start Num: 32

Candidate Starts for Easy2Say_35:

(Start: 32 @32397 has 223 MA's), (46, 32475), (51, 32502), (62, 32565), (86, 32700), (99, 32739),

Gene: Ebony_11 Start: 7679, Stop: 8065, Start Num: 31

Candidate Starts for Ebony_11:

(Start: 31 @7679 has 149 MA's), (44, 7748), (79, 7928), (88, 7994),

Gene: Echild_10 Start: 6083, Stop: 6544, Start Num: 31

Candidate Starts for Echild_10:

(21, 5912), (Start: 31 @6083 has 149 MA's), (73, 6302), (81, 6365), (88, 6398),

Gene: EdogawaKiddo_10 Start: 7723, Stop: 8109, Start Num: 32

Candidate Starts for EdogawaKiddo_10:

(26, 7648), (Start: 32 @7723 has 223 MA's), (63, 7894), (74, 7954),

Gene: Eidsmoe_12 Start: 7753, Stop: 8139, Start Num: 32

Candidate Starts for Eidsmoe_12:

(26, 7678), (Start: 32 @7753 has 223 MA's), (63, 7924), (74, 7984),

Gene: Elephantoon_12 Start: 7375, Stop: 7764, Start Num: 32

Candidate Starts for Elephantoon_12:

(26, 7300), (Start: 32 @7375 has 223 MA's), (62, 7543), (78, 7630), (80, 7636),

Gene: Elite2014_32 Start: 30354, Stop: 30737, Start Num: 32
Candidate Starts for Elite2014_32:
(Start: 32 @30354 has 223 MA's), (46, 30432), (51, 30459), (62, 30522), (86, 30657), (99, 30696),

Gene: Elph10_34 Start: 30617, Stop: 31000, Start Num: 32
Candidate Starts for Elph10_34:
(Start: 32 @30617 has 223 MA's), (46, 30695), (51, 30722), (62, 30785), (86, 30920), (99, 30959),

Gene: Emmina_34 Start: 30975, Stop: 31358, Start Num: 32
Candidate Starts for Emmina_34:
(Start: 32 @30975 has 223 MA's), (46, 31053), (51, 31080), (62, 31143), (86, 31278), (99, 31317),

Gene: EmyBug_12 Start: 7753, Stop: 8139, Start Num: 32
Candidate Starts for EmyBug_12:
(26, 7678), (Start: 32 @7753 has 223 MA's), (63, 7924), (74, 7984),

Gene: Equemioh13_12 Start: 6492, Stop: 6929, Start Num: 31
Candidate Starts for Equemioh13_12:
(24, 6396), (Start: 31 @6492 has 149 MA's), (39, 6537), (85, 6792), (91, 6816),

Gene: EricB_14 Start: 7066, Stop: 7500, Start Num: 31
Candidate Starts for EricB_14:
(Start: 31 @7066 has 149 MA's), (52, 7180), (73, 7285), (76, 7297), (77, 7306), (89, 7381),

Gene: Et2Brutus_10 Start: 7624, Stop: 8010, Start Num: 31
Candidate Starts for Et2Brutus_10:
(Start: 31 @7624 has 149 MA's), (44, 7693), (79, 7873), (88, 7939),

Gene: Eureka_33 Start: 31130, Stop: 31513, Start Num: 32
Candidate Starts for Eureka_33:
(Start: 32 @31130 has 223 MA's), (46, 31208), (51, 31235), (62, 31298), (86, 31433), (99, 31472),

Gene: ExplosioNervosa_12 Start: 7756, Stop: 8142, Start Num: 32
Candidate Starts for ExplosioNervosa_12:
(26, 7681), (Start: 32 @7756 has 223 MA's), (63, 7927), (74, 7987),

Gene: FairyPath_33 Start: 31342, Stop: 31725, Start Num: 32
Candidate Starts for FairyPath_33:
(Start: 32 @31342 has 223 MA's), (46, 31420), (51, 31447), (62, 31510), (86, 31645), (99, 31684),

Gene: Fameo_10 Start: 6032, Stop: 6451, Start Num: 31
Candidate Starts for Fameo_10:
(23, 5939), (Start: 31 @6032 has 149 MA's), (36, 6065), (37, 6068), (50, 6134), (86, 6311), (91, 6332),

Gene: FatCactus_9 Start: 5172, Stop: 5573, Start Num: 31
Candidate Starts for FatCactus_9:
(Start: 31 @5172 has 149 MA's), (48, 5268), (78, 5430), (105, 5562),

Gene: Fayely_12 Start: 7756, Stop: 8142, Start Num: 32
Candidate Starts for Fayely_12:
(26, 7681), (Start: 32 @7756 has 223 MA's), (63, 7927), (74, 7987),

Gene: Fibonacci_11 Start: 7624, Stop: 8010, Start Num: 31

Candidate Starts for Fibonacci_11:

(Start: 31 @7624 has 149 MA's), (44, 7693), (79, 7873), (88, 7939),

Gene: Filch_34 Start: 30905, Stop: 31288, Start Num: 32

Candidate Starts for Filch_34:

(Start: 32 @30905 has 223 MA's), (46, 30983), (51, 31010), (62, 31073), (86, 31208), (99, 31247),

Gene: Finnry_27 Start: 26438, Stop: 26854, Start Num: 32

Candidate Starts for Finnry_27:

(Start: 32 @26438 has 223 MA's), (39, 26483), (41, 26495), (44, 26507), (56, 26570), (75, 26669), (79, 26690), (101, 26795),

Gene: FireRed_33 Start: 31175, Stop: 31558, Start Num: 32

Candidate Starts for FireRed_33:

(Start: 32 @31175 has 223 MA's), (46, 31253), (51, 31280), (62, 31343), (86, 31478), (99, 31517),

Gene: Flare16_10 Start: 6050, Stop: 6487, Start Num: 31

Candidate Starts for Flare16_10:

(24, 5954), (Start: 31 @6050 has 149 MA's), (39, 6095), (64, 6227), (85, 6350), (91, 6374),

Gene: Flaverint_11 Start: 7621, Stop: 8007, Start Num: 31

Candidate Starts for Flaverint_11:

(Start: 31 @7621 has 149 MA's), (44, 7690), (79, 7870), (88, 7936),

Gene: FlyCatcher_13 Start: 7094, Stop: 7537, Start Num: 30

Candidate Starts for FlyCatcher_13:

(Start: 30 @7094 has 9 MA's), (56, 7238), (58, 7247), (61, 7271), (76, 7337), (84, 7397), (96, 7436), (97, 7442), (98, 7451),

Gene: Flypotenuse_31 Start: 30743, Stop: 31126, Start Num: 32

Candidate Starts for Flypotenuse_31:

(Start: 32 @30743 has 223 MA's), (46, 30821), (51, 30848), (62, 30911), (86, 31046), (99, 31085),

Gene: FoghornLeghorn_32 Start: 30651, Stop: 31034, Start Num: 32

Candidate Starts for FoghornLeghorn_32:

(Start: 32 @30651 has 223 MA's), (46, 30729), (51, 30756), (62, 30819), (86, 30954), (99, 30993),

Gene: Fulbright_28 Start: 24162, Stop: 24566, Start Num: 32

Candidate Starts for Fulbright_28:

(Start: 32 @24162 has 223 MA's), (80, 24420), (81, 24450), (92, 24492), (104, 24549),

Gene: Gage_35 Start: 31137, Stop: 31520, Start Num: 32

Candidate Starts for Gage_35:

(Start: 32 @31137 has 223 MA's), (46, 31215), (51, 31242), (62, 31305), (86, 31440), (99, 31479),

Gene: Gail_10 Start: 6144, Stop: 6530, Start Num: 32

Candidate Starts for Gail_10:

(17, 5856), (21, 5970), (Start: 32 @6144 has 223 MA's), (62, 6312), (73, 6369), (78, 6396), (80, 6402), (87, 6462),

Gene: Garak_15 Start: 7065, Stop: 7496, Start Num: 31

Candidate Starts for Garak_15:

(Start: 31 @7065 has 149 MA's), (73, 7284), (76, 7296), (77, 7305), (89, 7380),

Gene: Gator_31 Start: 30755, Stop: 31138, Start Num: 32
Candidate Starts for Gator_31:
(Start: 32 @30755 has 223 MA's), (46, 30833), (51, 30860), (62, 30923), (86, 31058), (99, 31097),

Gene: Gemini_36 Start: 31654, Stop: 32037, Start Num: 32
Candidate Starts for Gemini_36:
(Start: 32 @31654 has 223 MA's), (46, 31732), (51, 31759), (62, 31822), (86, 31957), (99, 31996),

Gene: Gex_29 Start: 24335, Stop: 24739, Start Num: 32
Candidate Starts for Gex_29:
(Start: 32 @24335 has 223 MA's), (80, 24593), (81, 24623), (92, 24665), (104, 24722),

Gene: Gilberta_11 Start: 7618, Stop: 8004, Start Num: 31
Candidate Starts for Gilberta_11:
(Start: 31 @7618 has 149 MA's), (44, 7687), (79, 7867), (88, 7933),

Gene: Gladiator_14 Start: 7039, Stop: 7470, Start Num: 31
Candidate Starts for Gladiator_14:
(Start: 31 @7039 has 149 MA's), (73, 7258), (76, 7270), (77, 7279), (89, 7354),

Gene: Glexan_31 Start: 30743, Stop: 31126, Start Num: 32
Candidate Starts for Glexan_31:
(Start: 32 @30743 has 223 MA's), (46, 30821), (51, 30848), (62, 30911), (86, 31046), (99, 31085),

Gene: Goku_33 Start: 30859, Stop: 31242, Start Num: 32
Candidate Starts for Goku_33:
(Start: 32 @30859 has 223 MA's), (46, 30937), (51, 30964), (62, 31027), (86, 31162), (99, 31201),

Gene: GoldenSpark_35 Start: 31137, Stop: 31520, Start Num: 32
Candidate Starts for GoldenSpark_35:
(Start: 32 @31137 has 223 MA's), (46, 31215), (51, 31242), (62, 31305), (86, 31440), (99, 31479),

Gene: Goldilocks_34 Start: 30557, Stop: 30940, Start Num: 32
Candidate Starts for Goldilocks_34:
(Start: 32 @30557 has 223 MA's), (46, 30635), (51, 30662), (62, 30725), (86, 30860), (99, 30899),

Gene: GooberAzure_35 Start: 31137, Stop: 31520, Start Num: 32
Candidate Starts for GooberAzure_35:
(Start: 32 @31137 has 223 MA's), (46, 31215), (51, 31242), (62, 31305), (86, 31440), (99, 31479),

Gene: Gratitude_11 Start: 6492, Stop: 6929, Start Num: 31
Candidate Starts for Gratitude_11:
(24, 6396), (Start: 31 @6492 has 149 MA's), (39, 6537), (85, 6792), (91, 6816),

Gene: GreedyLawyer_14 Start: 7065, Stop: 7496, Start Num: 31
Candidate Starts for GreedyLawyer_14:
(Start: 31 @7065 has 149 MA's), (73, 7284), (76, 7296), (77, 7305), (89, 7380),

Gene: Gruunaga_14 Start: 7039, Stop: 7470, Start Num: 31
Candidate Starts for Gruunaga_14:
(Start: 31 @7039 has 149 MA's), (73, 7258), (76, 7270), (77, 7279), (89, 7354),

Gene: HINdeR_9 Start: 6752, Stop: 7165, Start Num: 30
Candidate Starts for HINdeR_9:
(Start: 30 @6752 has 9 MA's), (33, 6767), (34, 6776), (37, 6791), (45, 6830), (49, 6854), (60, 6914),
(88, 7046),

Gene: Hammer_14 Start: 7039, Stop: 7470, Start Num: 31
Candidate Starts for Hammer_14:
(Start: 31 @7039 has 149 MA's), (73, 7258), (76, 7270), (77, 7279), (89, 7354),

Gene: HanKaySha_34 Start: 30889, Stop: 31272, Start Num: 32
Candidate Starts for HanKaySha_34:
(Start: 32 @30889 has 223 MA's), (46, 30967), (51, 30994), (62, 31057), (86, 31192), (99, 31231),

Gene: Hanako_26 Start: 23389, Stop: 23793, Start Num: 32
Candidate Starts for Hanako_26:
(4, 22768), (5, 22771), (9, 22843), (12, 22864), (14, 22957), (15, 22984), (Start: 32 @23389 has 223
MA's), (62, 23563), (98, 23752),

Gene: Hanray_11 Start: 7759, Stop: 8145, Start Num: 32
Candidate Starts for Hanray_11:
(26, 7684), (Start: 32 @7759 has 223 MA's), (63, 7930), (74, 7990),

Gene: Harella_32 Start: 31259, Stop: 31642, Start Num: 32
Candidate Starts for Harella_32:
(Start: 32 @31259 has 223 MA's), (46, 31337), (51, 31364), (62, 31427), (86, 31562), (99, 31601),

Gene: HarryHoudini_12 Start: 6506, Stop: 6943, Start Num: 31
Candidate Starts for HarryHoudini_12:
(24, 6410), (Start: 31 @6506 has 149 MA's), (39, 6551), (85, 6806), (91, 6830),

Gene: Heffalump_12 Start: 7831, Stop: 8250, Start Num: 31
Candidate Starts for Heffalump_12:
(23, 7738), (Start: 31 @7831 has 149 MA's), (36, 7864), (37, 7867), (50, 7933), (86, 8110), (91, 8131),

Gene: Helmet_15 Start: 7065, Stop: 7496, Start Num: 31
Candidate Starts for Helmet_15:
(Start: 31 @7065 has 149 MA's), (73, 7284), (76, 7296), (77, 7305), (89, 7380),

Gene: Henry_34 Start: 31147, Stop: 31530, Start Num: 32
Candidate Starts for Henry_34:
(Start: 32 @31147 has 223 MA's), (46, 31225), (51, 31252), (62, 31315), (86, 31450), (99, 31489),

Gene: Herbertwm_9 Start: 5886, Stop: 6293, Start Num: 31
Candidate Starts for Herbertwm_9:
(Start: 31 @5886 has 149 MA's), (37, 5922), (54, 6006), (85, 6162), (91, 6186),

Gene: Hexamo_14 Start: 7020, Stop: 7451, Start Num: 31
Candidate Starts for Hexamo_14:
(Start: 31 @7020 has 149 MA's), (73, 7239), (76, 7251), (77, 7260), (89, 7335),

Gene: Highbury_34 Start: 30805, Stop: 31188, Start Num: 32
Candidate Starts for Highbury_34:
(Start: 32 @30805 has 223 MA's), (46, 30883), (51, 30910), (62, 30973), (86, 31108), (99, 31147),

Gene: Holec_11 Start: 7759, Stop: 8145, Start Num: 32

Candidate Starts for Holec_11:

(26, 7684), (Start: 32 @7759 has 223 MA's), (58, 7897), (63, 7930), (74, 7990),

Gene: Holt_34 Start: 30424, Stop: 30807, Start Num: 32

Candidate Starts for Holt_34:

(Start: 32 @30424 has 223 MA's), (46, 30502), (51, 30529), (62, 30592), (86, 30727), (99, 30766),

Gene: Hoonter_35 Start: 31137, Stop: 31520, Start Num: 32

Candidate Starts for Hoonter_35:

(Start: 32 @31137 has 223 MA's), (46, 31215), (51, 31242), (62, 31305), (86, 31440), (99, 31479),

Gene: Hoot_14 Start: 7044, Stop: 7475, Start Num: 31

Candidate Starts for Hoot_14:

(Start: 31 @7044 has 149 MA's), (73, 7263), (76, 7275), (77, 7284), (89, 7359),

Gene: Hokey_35 Start: 31424, Stop: 31807, Start Num: 32

Candidate Starts for Hokey_35:

(Start: 32 @31424 has 223 MA's), (46, 31502), (51, 31529), (62, 31592), (86, 31727), (99, 31766),

Gene: HortumSL17_12 Start: 7723, Stop: 8109, Start Num: 32

Candidate Starts for HortumSL17_12:

(26, 7648), (Start: 32 @7723 has 223 MA's), (63, 7894), (74, 7954),

Gene: HufflyPuff_32 Start: 31131, Stop: 31514, Start Num: 32

Candidate Starts for HufflyPuff_32:

(Start: 32 @31131 has 223 MA's), (46, 31209), (51, 31236), (62, 31299), (86, 31434), (99, 31473),

Gene: Hutc2_11 Start: 7624, Stop: 8010, Start Num: 31

Candidate Starts for Hutc2_11:

(Start: 31 @7624 has 149 MA's), (44, 7693), (79, 7873), (88, 7939),

Gene: IHOP_33 Start: 31324, Stop: 31707, Start Num: 32

Candidate Starts for IHOP_33:

(Start: 32 @31324 has 223 MA's), (46, 31402), (51, 31429), (62, 31492), (86, 31627), (99, 31666),

Gene: Ibrahim_28 Start: 25159, Stop: 25599, Start Num: 31

Candidate Starts for Ibrahim_28:

(19, 24922), (24, 25063), (28, 25141), (Start: 31 @25159 has 149 MA's), (55, 25288), (64, 25336), (76, 25393), (83, 25453), (86, 25465), (92, 25489), (109, 25579), (110, 25594),

Gene: Icee_32 Start: 30805, Stop: 31188, Start Num: 32

Candidate Starts for Icee_32:

(Start: 32 @30805 has 223 MA's), (46, 30883), (51, 30910), (62, 30973), (86, 31108), (99, 31147),

Gene: Inca_32 Start: 29826, Stop: 30209, Start Num: 32

Candidate Starts for Inca_32:

(Start: 32 @29826 has 223 MA's), (46, 29904), (51, 29931), (62, 29994), (86, 30129), (99, 30168),

Gene: Indra_14 Start: 7065, Stop: 7496, Start Num: 31

Candidate Starts for Indra_14:

(Start: 31 @7065 has 149 MA's), (73, 7284), (76, 7296), (77, 7305), (89, 7380),

Gene: Insomnia_11 Start: 7673, Stop: 8059, Start Num: 31
Candidate Starts for Insomnia_11:
(Start: 31 @7673 has 149 MA's), (44, 7742), (79, 7922), (88, 7988),

Gene: IronMan_12 Start: 7666, Stop: 8154, Start Num: 31
Candidate Starts for IronMan_12:
(Start: 31 @7666 has 149 MA's), (39, 7711), (40, 7720), (73, 7885), (91, 7990),

Gene: Isiphiwo_14 Start: 7065, Stop: 7499, Start Num: 31
Candidate Starts for Isiphiwo_14:
(Start: 31 @7065 has 149 MA's), (52, 7179), (73, 7284), (76, 7296), (77, 7305), (89, 7380),

Gene: Iwokeuplikedis_10 Start: 5757, Stop: 6194, Start Num: 31
Candidate Starts for Iwokeuplikedis_10:
(23, 5664), (25, 5679), (Start: 31 @5757 has 149 MA's), (36, 5790), (37, 5793), (38, 5802), (51, 5865),
(85, 6033), (91, 6057),

Gene: Jabith_11 Start: 7673, Stop: 8059, Start Num: 31
Candidate Starts for Jabith_11:
(Start: 31 @7673 has 149 MA's), (44, 7742), (79, 7922), (88, 7988),

Gene: Jamie19_26 Start: 23389, Stop: 23793, Start Num: 32
Candidate Starts for Jamie19_26:
(4, 22768), (5, 22771), (9, 22843), (12, 22864), (14, 22957), (15, 22984), (Start: 32 @23389 has 223
MA's), (80, 23647), (81, 23677), (92, 23719), (104, 23776),

Gene: JeTaime_35 Start: 31948, Stop: 32331, Start Num: 32
Candidate Starts for JeTaime_35:
(Start: 32 @31948 has 223 MA's), (46, 32026), (51, 32053), (62, 32116), (86, 32251), (99, 32290),

Gene: Jeeves_10 Start: 6157, Stop: 6543, Start Num: 32
Candidate Starts for Jeeves_10:
(21, 5983), (22, 6025), (Start: 32 @6157 has 223 MA's), (62, 6325), (80, 6415), (87, 6475), (88, 6478),

Gene: Jeffabunny_14 Start: 7068, Stop: 7499, Start Num: 31
Candidate Starts for Jeffabunny_14:
(Start: 31 @7068 has 149 MA's), (73, 7287), (76, 7299), (77, 7308), (89, 7383),

Gene: JewelBug_14 Start: 7066, Stop: 7497, Start Num: 31
Candidate Starts for JewelBug_14:
(Start: 31 @7066 has 149 MA's), (52, 7180), (73, 7285), (76, 7297), (77, 7306), (89, 7381),

Gene: Jiawan_11 Start: 7759, Stop: 8145, Start Num: 32
Candidate Starts for Jiawan_11:
(26, 7684), (Start: 32 @7759 has 223 MA's), (58, 7897), (63, 7930), (74, 7990),

Gene: Jobypre_27 Start: 26434, Stop: 26850, Start Num: 32
Candidate Starts for Jobypre_27:
(Start: 32 @26434 has 223 MA's), (39, 26479), (41, 26491), (44, 26503), (56, 26566), (75, 26665), (79,
26686), (101, 26791),

Gene: Jordennis_14 Start: 7065, Stop: 7499, Start Num: 31

Candidate Starts for Jordennis_14:

(Start: 31 @7065 has 149 MA's), (52, 7179), (73, 7284), (76, 7296), (77, 7305), (89, 7380),

Gene: Joselito_11 Start: 7621, Stop: 8007, Start Num: 31

Candidate Starts for Joselito_11:

(Start: 31 @7621 has 149 MA's), (44, 7690), (79, 7870), (88, 7936),

Gene: JoshKayV_12 Start: 6385, Stop: 6825, Start Num: 31

Candidate Starts for JoshKayV_12:

(24, 6295), (Start: 31 @6385 has 149 MA's), (38, 6427), (39, 6430), (91, 6709), (96, 6730), (108, 6790),

Gene: Journey_29 Start: 24339, Stop: 24743, Start Num: 32

Candidate Starts for Journey_29:

(Start: 32 @24339 has 223 MA's), (80, 24597), (81, 24627), (92, 24669), (104, 24726),

Gene: Journey13_8 Start: 5230, Stop: 5628, Start Num: 31

Candidate Starts for Journey13_8:

(Start: 31 @5230 has 149 MA's), (64, 5407), (73, 5449),

Gene: Jsquared_9 Start: 5161, Stop: 5556, Start Num: 31

Candidate Starts for Jsquared_9:

(Start: 31 @5161 has 149 MA's), (56, 5293), (73, 5380), (79, 5410), (103, 5527),

Gene: Jubie_27 Start: 26435, Stop: 26851, Start Num: 32

Candidate Starts for Jubie_27:

(Start: 32 @26435 has 223 MA's), (39, 26480), (41, 26492), (44, 26504), (56, 26567), (75, 26666), (79, 26687), (101, 26792),

Gene: Kalpine_13 Start: 7796, Stop: 8218, Start Num: 31

Candidate Starts for Kalpine_13:

(Start: 31 @7796 has 149 MA's), (36, 7829), (37, 7832), (38, 7841), (79, 8021), (85, 8072), (88, 8087), (91, 8096),

Gene: Kanye_35 Start: 32133, Stop: 32516, Start Num: 32

Candidate Starts for Kanye_35:

(Start: 32 @32133 has 223 MA's), (46, 32211), (51, 32238), (62, 32301), (86, 32436), (99, 32475),

Gene: Kazan_14 Start: 7071, Stop: 7502, Start Num: 31

Candidate Starts for Kazan_14:

(Start: 31 @7071 has 149 MA's), (52, 7185), (73, 7290), (76, 7302), (77, 7311), (89, 7386),

Gene: Keziacharles14_10 Start: 5897, Stop: 6280, Start Num: 32

Candidate Starts for Keziacharles14_10:

(22, 5762), (Start: 32 @5897 has 223 MA's), (40, 5951), (75, 6128), (95, 6230),

Gene: Kimchi_35 Start: 31140, Stop: 31523, Start Num: 32

Candidate Starts for Kimchi_35:

(Start: 32 @31140 has 223 MA's), (46, 31218), (51, 31245), (62, 31308), (86, 31443), (99, 31482),

Gene: KingCyrus_12 Start: 6373, Stop: 6813, Start Num: 31

Candidate Starts for KingCyrus_12:

(Start: 31 @6373 has 149 MA's), (39, 6418), (85, 6673), (91, 6697), (96, 6718),

Gene: Kingsolomon_27 Start: 26434, Stop: 26850, Start Num: 32
Candidate Starts for Kingsolomon_27:
(Start: 32 @26434 has 223 MA's), (39, 26479), (41, 26491), (44, 26503), (56, 26566), (75, 26665), (79, 26686), (101, 26791),

Gene: Kipper29_14 Start: 7065, Stop: 7496, Start Num: 31
Candidate Starts for Kipper29_14:
(Start: 31 @7065 has 149 MA's), (73, 7284), (76, 7296), (77, 7305), (89, 7380),

Gene: Koduck_10 Start: 5448, Stop: 5843, Start Num: 31
Candidate Starts for Koduck_10:
(Start: 31 @5448 has 149 MA's), (56, 5580), (65, 5652), (73, 5667), (79, 5697), (103, 5814),

Gene: Koko_14 Start: 7065, Stop: 7496, Start Num: 31
Candidate Starts for Koko_14:
(Start: 31 @7065 has 149 MA's), (73, 7284), (76, 7296), (77, 7305), (89, 7380),

Gene: Kostya_34 Start: 31148, Stop: 31531, Start Num: 32
Candidate Starts for Kostya_34:
(Start: 32 @31148 has 223 MA's), (46, 31226), (51, 31253), (62, 31316), (86, 31451), (99, 31490),

Gene: Kremtemulon_9 Start: 5501, Stop: 5926, Start Num: 31
Candidate Starts for Kremtemulon_9:
(24, 5408), (29, 5486), (Start: 31 @5501 has 149 MA's), (64, 5678), (90, 5825), (93, 5837), (108, 5891),

Gene: Krypton555_27 Start: 26338, Stop: 26751, Start Num: 32
Candidate Starts for Krypton555_27:
(Start: 32 @26338 has 223 MA's), (39, 26383), (41, 26395), (44, 26407), (79, 26590),

Gene: L5_11 Start: 5456, Stop: 5851, Start Num: 31
Candidate Starts for L5_11:
(Start: 31 @5456 has 149 MA's), (56, 5588), (65, 5660), (73, 5675), (79, 5705), (103, 5822),

Gene: LadyBird_10 Start: 5973, Stop: 6413, Start Num: 31
Candidate Starts for LadyBird_10:
(Start: 31 @5973 has 149 MA's), (85, 6273), (91, 6297),

Gene: Larenn_11 Start: 6290, Stop: 6727, Start Num: 31
Candidate Starts for Larenn_11:
(24, 6197), (Start: 31 @6290 has 149 MA's), (39, 6335), (85, 6590), (91, 6614), (96, 6635),

Gene: Leviathan_12 Start: 6428, Stop: 6868, Start Num: 31
Candidate Starts for Leviathan_12:
(24, 6341), (Start: 31 @6428 has 149 MA's), (39, 6473), (91, 6752), (96, 6773),

Gene: Lilac_35 Start: 30644, Stop: 31027, Start Num: 32
Candidate Starts for Lilac_35:
(Start: 32 @30644 has 223 MA's), (46, 30722), (51, 30749), (62, 30812), (86, 30947), (99, 30986),

Gene: Lilbunny_14 Start: 7046, Stop: 7477, Start Num: 31
Candidate Starts for Lilbunny_14:
(Start: 31 @7046 has 149 MA's), (73, 7265), (76, 7277), (77, 7286), (89, 7361),

Gene: Lilizi_35 Start: 30852, Stop: 31235, Start Num: 32
Candidate Starts for Lilizi_35:
(Start: 32 @30852 has 223 MA's), (46, 30930), (51, 30957), (62, 31020), (86, 31155), (99, 31194),

Gene: Lilleskat_10 Start: 7723, Stop: 8109, Start Num: 32
Candidate Starts for Lilleskat_10:
(26, 7648), (Start: 32 @7723 has 223 MA's), (63, 7894), (74, 7954),

Gene: Lilpickle_32 Start: 30354, Stop: 30737, Start Num: 32
Candidate Starts for Lilpickle_32:
(Start: 32 @30354 has 223 MA's), (46, 30432), (51, 30459), (62, 30522), (86, 30657), (99, 30696),

Gene: LionsBait_11 Start: 7753, Stop: 8190, Start Num: 31
Candidate Starts for LionsBait_11:
(Start: 31 @7753 has 149 MA's), (91, 8077), (96, 8098),

Gene: LittleGuy_9 Start: 5399, Stop: 5824, Start Num: 31
Candidate Starts for LittleGuy_9:
(Start: 31 @5399 has 149 MA's), (64, 5576), (67, 5606), (83, 5693), (85, 5702), (86, 5705), (91, 5726),
(93, 5735), (108, 5789),

Gene: Lolly9_27 Start: 26216, Stop: 26617, Start Num: 32
Candidate Starts for Lolly9_27:
(Start: 32 @26216 has 223 MA's), (39, 26261), (44, 26285), (79, 26468),

Gene: LoneWolf_12 Start: 7570, Stop: 7956, Start Num: 32
Candidate Starts for LoneWolf_12:
(26, 7495), (Start: 32 @7570 has 223 MA's), (50, 7669), (62, 7738), (74, 7801), (93, 7900),

Gene: Loser_13 Start: 7855, Stop: 8244, Start Num: 31
Candidate Starts for Loser_13:
(Start: 31 @7855 has 149 MA's), (37, 7891), (44, 7927), (79, 8080), (85, 8131), (91, 8155), (96, 8176),
(102, 8206),

Gene: Luchador_10 Start: 6145, Stop: 6531, Start Num: 32
Candidate Starts for Luchador_10:
(17, 5857), (21, 5971), (22, 6013), (Start: 32 @6145 has 223 MA's), (62, 6313), (78, 6397), (80, 6403),
(87, 6463),

Gene: Lucivia_11 Start: 7670, Stop: 8056, Start Num: 31
Candidate Starts for Lucivia_11:
(Start: 31 @7670 has 149 MA's), (44, 7739), (79, 7919), (88, 7985),

Gene: Lucyedi_12 Start: 7076, Stop: 7492, Start Num: 31
Candidate Starts for Lucyedi_12:
(Start: 31 @7076 has 149 MA's), (37, 7112), (40, 7133), (59, 7220), (81, 7334), (96, 7397), (107, 7457),

Gene: Lumos_27 Start: 26431, Stop: 26847, Start Num: 32
Candidate Starts for Lumos_27:
(Start: 32 @26431 has 223 MA's), (39, 26476), (41, 26488), (44, 26500), (56, 26563), (75, 26662), (79,
26683), (101, 26788),

Gene: MISSy_32 Start: 30660, Stop: 31043, Start Num: 32

Candidate Starts for MISSy_32:

(Start: 32 @30660 has 223 MA's), (46, 30738), (51, 30765), (62, 30828), (86, 30963), (99, 31002),

Gene: MPhalcon_32 Start: 30653, Stop: 31036, Start Num: 32

Candidate Starts for MPhalcon_32:

(Start: 32 @30653 has 223 MA's), (46, 30731), (51, 30758), (62, 30821), (86, 30956), (99, 30995),

Gene: MaCh_11 Start: 7618, Stop: 8004, Start Num: 31

Candidate Starts for MaCh_11:

(Start: 31 @7618 has 149 MA's), (44, 7687), (79, 7867), (88, 7933),

Gene: Mabel_11 Start: 7685, Stop: 8071, Start Num: 31

Candidate Starts for Mabel_11:

(Start: 31 @7685 has 149 MA's), (44, 7754), (79, 7934), (88, 8000),

Gene: MadamMonkfish_33 Start: 30565, Stop: 30948, Start Num: 32

Candidate Starts for MadamMonkfish_33:

(Start: 32 @30565 has 223 MA's), (46, 30643), (51, 30670), (62, 30733), (86, 30868), (99, 30907),

Gene: Magsby_29 Start: 24336, Stop: 24740, Start Num: 32

Candidate Starts for Magsby_29:

(Start: 32 @24336 has 223 MA's), (80, 24594), (81, 24624), (92, 24666), (104, 24723),

Gene: MajorMajor_9 Start: 5207, Stop: 5602, Start Num: 31

Candidate Starts for MajorMajor_9:

(Start: 31 @5207 has 149 MA's), (56, 5339), (73, 5426), (79, 5456), (103, 5573),

Gene: Malec_11 Start: 6295, Stop: 6732, Start Num: 31

Candidate Starts for Malec_11:

(24, 6202), (Start: 31 @6295 has 149 MA's), (39, 6340), (85, 6595), (91, 6619), (96, 6640),

Gene: Maminiaina_12 Start: 7493, Stop: 7879, Start Num: 32

Candidate Starts for Maminiaina_12:

(26, 7418), (Start: 32 @7493 has 223 MA's), (63, 7664), (74, 7724),

Gene: Manda_34 Start: 31632, Stop: 32015, Start Num: 32

Candidate Starts for Manda_34:

(Start: 32 @31632 has 223 MA's), (46, 31710), (51, 31737), (62, 31800), (86, 31935), (99, 31974),

Gene: Marshmallow_33 Start: 31145, Stop: 31528, Start Num: 32

Candidate Starts for Marshmallow_33:

(Start: 32 @31145 has 223 MA's), (46, 31223), (51, 31250), (62, 31313), (86, 31448), (99, 31487),

Gene: Maxxinista_34 Start: 30614, Stop: 30997, Start Num: 32

Candidate Starts for Maxxinista_34:

(Start: 32 @30614 has 223 MA's), (46, 30692), (51, 30719), (62, 30782), (86, 30917), (99, 30956),

Gene: McFly_14 Start: 7065, Stop: 7496, Start Num: 31

Candidate Starts for McFly_14:

(Start: 31 @7065 has 149 MA's), (73, 7284), (76, 7296), (77, 7305), (89, 7380),

Gene: Melville_29 Start: 24339, Stop: 24743, Start Num: 32

Candidate Starts for Melville_29:

(Start: 32 @24339 has 223 MA's), (80, 24597), (81, 24627), (92, 24669), (104, 24726),

Gene: Mendokysei_27 Start: 24965, Stop: 25378, Start Num: 31

Candidate Starts for Mendokysei_27:

(28, 24947), (Start: 31 @24965 has 149 MA's), (41, 25022), (62, 25136), (64, 25142), (83, 25259), (86, 25271), (100, 25313),

Gene: MichelleMyBell_27 Start: 23327, Stop: 23731, Start Num: 32

Candidate Starts for MichelleMyBell_27:

(4, 22706), (5, 22709), (9, 22781), (12, 22802), (14, 22895), (15, 22922), (Start: 32 @23327 has 223 MA's), (80, 23585), (81, 23615), (92, 23657), (104, 23714),

Gene: MiculUcigas_10 Start: 6050, Stop: 6487, Start Num: 31

Candidate Starts for MiculUcigas_10:

(24, 5954), (Start: 31 @6050 has 149 MA's), (39, 6095), (85, 6350), (91, 6374),

Gene: Mindy_33 Start: 30925, Stop: 31308, Start Num: 32

Candidate Starts for Mindy_33:

(Start: 32 @30925 has 223 MA's), (46, 31003), (51, 31030), (62, 31093), (86, 31228), (99, 31267),

Gene: MiniLon_27 Start: 26216, Stop: 26617, Start Num: 32

Candidate Starts for MiniLon_27:

(Start: 32 @26216 has 223 MA's), (39, 26261), (44, 26285), (79, 26468),

Gene: MiniMac_27 Start: 26217, Stop: 26618, Start Num: 32

Candidate Starts for MiniMac_27:

(Start: 32 @26217 has 223 MA's), (39, 26262), (44, 26286), (79, 26469),

Gene: Miniwave_33 Start: 31344, Stop: 31727, Start Num: 32

Candidate Starts for Miniwave_33:

(Start: 32 @31344 has 223 MA's), (46, 31422), (51, 31449), (62, 31512), (86, 31647), (99, 31686),

Gene: Miramae_9 Start: 5393, Stop: 5845, Start Num: 31

Candidate Starts for Miramae_9:

(Start: 31 @5393 has 149 MA's), (44, 5462), (62, 5564), (64, 5570), (77, 5636), (86, 5699), (94, 5732), (104, 5774),

Gene: Misfit_33 Start: 31234, Stop: 31617, Start Num: 32

Candidate Starts for Misfit_33:

(Start: 32 @31234 has 223 MA's), (46, 31312), (51, 31339), (62, 31402), (86, 31537), (99, 31576),

Gene: MissWhite_10 Start: 5274, Stop: 5672, Start Num: 31

Candidate Starts for MissWhite_10:

(Start: 31 @5274 has 149 MA's), (64, 5451), (73, 5493),

Gene: Moldemort_34 Start: 30889, Stop: 31272, Start Num: 32

Candidate Starts for Moldemort_34:

(Start: 32 @30889 has 223 MA's), (46, 30967), (51, 30994), (62, 31057), (86, 31192), (99, 31231),

Gene: Moostard_27 Start: 26437, Stop: 26853, Start Num: 32

Candidate Starts for Moostard_27:

(Start: 32 @26437 has 223 MA's), (39, 26482), (41, 26494), (44, 26506), (56, 26569), (75, 26668), (79, 26689), (101, 26794),

Gene: Mosby_32 Start: 30651, Stop: 31034, Start Num: 32
Candidate Starts for Mosby_32:
(Start: 32 @30651 has 223 MA's), (46, 30729), (51, 30756), (62, 30819), (86, 30954), (99, 30993),

Gene: MsGreen_27 Start: 26434, Stop: 26850, Start Num: 32
Candidate Starts for MsGreen_27:
(Start: 32 @26434 has 223 MA's), (39, 26479), (41, 26491), (44, 26503), (56, 26566), (75, 26665), (79, 26686), (101, 26791),

Gene: Mulciber_11 Start: 7624, Stop: 8007, Start Num: 31
Candidate Starts for Mulciber_11:
(Start: 31 @7624 has 149 MA's), (44, 7693), (79, 7873), (88, 7939),

Gene: Munch_11 Start: 7621, Stop: 8007, Start Num: 31
Candidate Starts for Munch_11:
(Start: 31 @7621 has 149 MA's), (44, 7690), (79, 7870), (88, 7936),

Gene: Murica_32 Start: 31131, Stop: 31514, Start Num: 32
Candidate Starts for Murica_32:
(Start: 32 @31131 has 223 MA's), (46, 31209), (51, 31236), (62, 31299), (86, 31434), (99, 31473),

Gene: Murphy_34 Start: 31126, Stop: 31509, Start Num: 32
Candidate Starts for Murphy_34:
(Start: 32 @31126 has 223 MA's), (46, 31204), (51, 31231), (62, 31294), (86, 31429), (99, 31468),

Gene: MyraDee_8 Start: 4622, Stop: 5008, Start Num: 32
Candidate Starts for MyraDee_8:
(Start: 32 @4622 has 223 MA's), (46, 4700), (47, 4703), (70, 4838), (79, 4877),

Gene: Myrale_33 Start: 31010, Stop: 31393, Start Num: 32
Candidate Starts for Myrale_33:
(Start: 32 @31010 has 223 MA's), (46, 31088), (51, 31115), (62, 31178), (86, 31313), (99, 31352),

Gene: Myxus_12 Start: 7723, Stop: 8109, Start Num: 32
Candidate Starts for Myxus_12:
(26, 7648), (Start: 32 @7723 has 223 MA's), (63, 7894), (74, 7954),

Gene: NaSiaTalie_10 Start: 6047, Stop: 6484, Start Num: 31
Candidate Starts for NaSiaTalie_10:
(24, 5951), (Start: 31 @6047 has 149 MA's), (39, 6092), (64, 6224), (85, 6347), (91, 6371),

Gene: Nairb_28 Start: 25159, Stop: 25599, Start Num: 31
Candidate Starts for Nairb_28:
(19, 24922), (24, 25063), (28, 25141), (Start: 31 @25159 has 149 MA's), (55, 25288), (64, 25336), (76, 25393), (83, 25453), (86, 25465), (92, 25489), (109, 25579), (110, 25594),

Gene: Nala_33 Start: 31165, Stop: 31548, Start Num: 32
Candidate Starts for Nala_33:
(Start: 32 @31165 has 223 MA's), (46, 31243), (51, 31270), (62, 31333), (86, 31468), (99, 31507),

Gene: Neeharika16_14 Start: 7065, Stop: 7499, Start Num: 31
Candidate Starts for Neeharika16_14:

(Start: 31 @7065 has 149 MA's), (52, 7179), (73, 7284), (76, 7296), (77, 7305), (89, 7380),

Gene: NelitzaMV_33 Start: 31215, Stop: 31598, Start Num: 32

Candidate Starts for NelitzaMV_33:

(Start: 32 @31215 has 223 MA's), (46, 31293), (51, 31320), (86, 31518), (99, 31557),

Gene: Nенаe_26 Start: 23389, Stop: 23793, Start Num: 32

Candidate Starts for Nенаe_26:

(4, 22768), (5, 22771), (9, 22843), (12, 22864), (14, 22957), (15, 22984), (Start: 32 @23389 has 223 MA's), (62, 23563), (98, 23752),

Gene: Nette_29 Start: 24974, Stop: 25387, Start Num: 31

Candidate Starts for Nette_29:

(28, 24956), (Start: 31 @24974 has 149 MA's), (41, 25031), (62, 25145), (64, 25151), (83, 25268), (86, 25280), (100, 25322),

Gene: Newrala_14 Start: 7065, Stop: 7499, Start Num: 31

Candidate Starts for Newrala_14:

(Start: 31 @7065 has 149 MA's), (52, 7179), (73, 7284), (76, 7296), (77, 7305), (89, 7380),

Gene: Nicholas_27 Start: 26434, Stop: 26850, Start Num: 32

Candidate Starts for Nicholas_27:

(Start: 32 @26434 has 223 MA's), (39, 26479), (41, 26491), (44, 26503), (56, 26566), (75, 26665), (79, 26686), (101, 26791),

Gene: NicoleTera_14 Start: 7753, Stop: 8181, Start Num: 31

Candidate Starts for NicoleTera_14:

(20, 7579), (Start: 31 @7753 has 149 MA's), (34, 7774), (37, 7789), (85, 8029), (91, 8053),

Gene: Nimrod_33 Start: 31389, Stop: 31772, Start Num: 32

Candidate Starts for Nimrod_33:

(Start: 32 @31389 has 223 MA's), (46, 31467), (51, 31494), (62, 31557), (86, 31692), (99, 31731),

Gene: NoSleep_34 Start: 30886, Stop: 31269, Start Num: 32

Candidate Starts for NoSleep_34:

(Start: 32 @30886 has 223 MA's), (46, 30964), (51, 30991), (62, 31054), (86, 31189), (99, 31228),

Gene: Nyxis_9 Start: 5402, Stop: 5827, Start Num: 31

Candidate Starts for Nyxis_9:

(Start: 31 @5402 has 149 MA's), (64, 5579), (67, 5609), (83, 5696), (85, 5705), (86, 5708), (91, 5729), (93, 5738), (108, 5792),

Gene: Odin_10 Start: 5885, Stop: 6283, Start Num: 30

Candidate Starts for Odin_10:

(Start: 30 @5885 has 9 MA's), (Start: 31 @5888 has 149 MA's), (75, 6128), (78, 6146), (87, 6212), (95, 6230),

Gene: Onglai_11 Start: 6089, Stop: 6475, Start Num: 32

Candidate Starts for Onglai_11:

(26, 6014), (Start: 32 @6089 has 223 MA's), (63, 6260), (74, 6320),

Gene: Orange_11 Start: 7621, Stop: 8007, Start Num: 31

Candidate Starts for Orange_11:

(Start: 31 @7621 has 149 MA's), (44, 7690), (79, 7870), (88, 7936),

Gene: OrionPax_34 Start: 30892, Stop: 31275, Start Num: 32

Candidate Starts for OrionPax_34:

(Start: 32 @30892 has 223 MA's), (46, 30970), (51, 30997), (62, 31060), (86, 31195), (99, 31234),

Gene: PP_19 Start: 11239, Stop: 11685, Start Num: 31

Candidate Starts for PP_19:

(Start: 31 @11239 has 149 MA's), (45, 11311), (62, 11410), (64, 11416), (71, 11452), (77, 11482), (83, 11533), (86, 11545), (88, 11557),

Gene: PackMan_12 Start: 7723, Stop: 8109, Start Num: 32

Candidate Starts for PackMan_12:

(26, 7648), (Start: 32 @7723 has 223 MA's), (63, 7894), (74, 7954),

Gene: PainterBoy_12 Start: 7076, Stop: 7492, Start Num: 31

Candidate Starts for PainterBoy_12:

(Start: 31 @7076 has 149 MA's), (37, 7112), (40, 7133), (59, 7220), (81, 7334), (96, 7397), (107, 7457),

Gene: Palpatine_33 Start: 31161, Stop: 31544, Start Num: 32

Candidate Starts for Palpatine_33:

(Start: 32 @31161 has 223 MA's), (46, 31239), (51, 31266), (62, 31329), (86, 31464), (99, 31503),

Gene: Panchino_26 Start: 23349, Stop: 23753, Start Num: 30

Candidate Starts for Panchino_26:

(Start: 30 @23349 has 9 MA's), (Start: 32 @23355 has 223 MA's), (53, 23469), (80, 23607), (98, 23712), (104, 23736),

Gene: Paperbeatsrock_35 Start: 32127, Stop: 32510, Start Num: 32

Candidate Starts for Paperbeatsrock_35:

(Start: 32 @32127 has 223 MA's), (46, 32205), (51, 32232), (62, 32295), (86, 32430), (99, 32469),

Gene: Parmesanjohn_29 Start: 24339, Stop: 24743, Start Num: 32

Candidate Starts for Parmesanjohn_29:

(Start: 32 @24339 has 223 MA's), (80, 24597), (81, 24627), (92, 24669), (104, 24726),

Gene: Pat3_32 Start: 29873, Stop: 30256, Start Num: 32

Candidate Starts for Pat3_32:

(Start: 32 @29873 has 223 MA's), (46, 29951), (51, 29978), (62, 30041), (86, 30176), (99, 30215),

Gene: Petersenfast_10 Start: 7624, Stop: 8010, Start Num: 31

Candidate Starts for Petersenfast_10:

(Start: 31 @7624 has 149 MA's), (44, 7693), (79, 7873), (88, 7939),

Gene: Petra64142_35 Start: 31607, Stop: 31990, Start Num: 32

Candidate Starts for Petra64142_35:

(Start: 32 @31607 has 223 MA's), (46, 31685), (51, 31712), (62, 31775), (86, 31910), (99, 31949),

Gene: Ph8s_12 Start: 5847, Stop: 6245, Start Num: 31

Candidate Starts for Ph8s_12:

(Start: 31 @5847 has 149 MA's), (75, 6087), (78, 6105), (87, 6171), (95, 6189),

Gene: Phaeder_12 Start: 7723, Stop: 8109, Start Num: 32

Candidate Starts for Phaeder_12:

(26, 7648), (Start: 32 @7723 has 223 MA's), (63, 7894), (74, 7954),

Gene: Phaja_33 Start: 31323, Stop: 31706, Start Num: 32

Candidate Starts for Phaja_33:

(Start: 32 @31323 has 223 MA's), (46, 31401), (51, 31428), (62, 31491), (86, 31626), (99, 31665),

Gene: PhancyPhin_26 Start: 23386, Stop: 23790, Start Num: 32

Candidate Starts for PhancyPhin_26:

(4, 22765), (5, 22768), (9, 22840), (12, 22861), (14, 22954), (15, 22981), (Start: 32 @23386 has 223 MA's), (62, 23560), (98, 23749),

Gene: Pharaoh_11 Start: 7518, Stop: 7892, Start Num: 32

Candidate Starts for Pharaoh_11:

(Start: 32 @7518 has 223 MA's), (68, 7722), (77, 7752), (80, 7764), (82, 7797), (85, 7812), (90, 7833),

Gene: Pharsalus_34 Start: 31927, Stop: 32310, Start Num: 32

Candidate Starts for Pharsalus_34:

(Start: 32 @31927 has 223 MA's), (46, 32005), (51, 32032), (62, 32095), (86, 32230), (99, 32269),

Gene: PhatBacter_33 Start: 31175, Stop: 31558, Start Num: 32

Candidate Starts for PhatBacter_33:

(Start: 32 @31175 has 223 MA's), (46, 31253), (51, 31280), (62, 31343), (86, 31478), (99, 31517),

Gene: Phaux_32 Start: 31173, Stop: 31556, Start Num: 32

Candidate Starts for Phaux_32:

(Start: 32 @31173 has 223 MA's), (46, 31251), (51, 31278), (62, 31341), (86, 31476), (99, 31515),

Gene: Philonius_29 Start: 24330, Stop: 24734, Start Num: 32

Candidate Starts for Philonius_29:

(4, 23709), (5, 23712), (9, 23784), (12, 23805), (Start: 32 @24330 has 223 MA's), (80, 24588), (81, 24618), (92, 24660), (104, 24717),

Gene: Phlei_7 Start: 7530, Stop: 7898, Start Num: 32

Candidate Starts for Phlei_7:

(16, 7212), (Start: 32 @7530 has 223 MA's), (75, 7752), (76, 7755), (80, 7776),

Gene: Phloss_26 Start: 23766, Stop: 24170, Start Num: 32

Candidate Starts for Phloss_26:

(Start: 32 @23766 has 223 MA's), (80, 24024), (81, 24054), (92, 24096), (104, 24153),

Gene: Phonnegut_12 Start: 7756, Stop: 8142, Start Num: 32

Candidate Starts for Phonnegut_12:

(26, 7681), (Start: 32 @7756 has 223 MA's), (63, 7927), (74, 7987),

Gene: Phontbonne_9 Start: 5400, Stop: 5825, Start Num: 31

Candidate Starts for Phontbonne_9:

(Start: 31 @5400 has 149 MA's), (64, 5577), (67, 5607), (83, 5694), (85, 5703), (86, 5706), (91, 5727), (93, 5736), (108, 5790),

Gene: Phrux_33 Start: 30888, Stop: 31271, Start Num: 32

Candidate Starts for Phrux_33:

(Start: 32 @30888 has 223 MA's), (46, 30966), (51, 30993), (62, 31056), (86, 31191), (99, 31230),

Gene: Pioneer_12 Start: 7756, Stop: 8142, Start Num: 32
Candidate Starts for Pioneer_12:
(26, 7681), (Start: 32 @7756 has 223 MA's), (63, 7927), (74, 7987),

Gene: Pipsqueaks_29 Start: 24339, Stop: 24743, Start Num: 32
Candidate Starts for Pipsqueaks_29:
(Start: 32 @24339 has 223 MA's), (80, 24597), (81, 24627), (92, 24669), (104, 24726),

Gene: Piro94_11 Start: 6507, Stop: 6944, Start Num: 31
Candidate Starts for Piro94_11:
(24, 6411), (Start: 31 @6507 has 149 MA's), (39, 6552), (85, 6807),

Gene: Pmask_14 Start: 7065, Stop: 7499, Start Num: 31
Candidate Starts for Pmask_14:
(Start: 31 @7065 has 149 MA's), (52, 7179), (73, 7284), (76, 7296), (77, 7305), (89, 7380),

Gene: Policronamos_33 Start: 31173, Stop: 31556, Start Num: 32
Candidate Starts for Policronamos_33:
(Start: 32 @31173 has 223 MA's), (46, 31251), (51, 31278), (62, 31341), (86, 31476), (99, 31515),

Gene: Polyphemus_13 Start: 7067, Stop: 7501, Start Num: 31
Candidate Starts for Polyphemus_13:
(Start: 31 @7067 has 149 MA's), (52, 7181), (73, 7286), (76, 7298), (77, 7307), (89, 7382),

Gene: Porky_33 Start: 30984, Stop: 31367, Start Num: 32
Candidate Starts for Porky_33:
(Start: 32 @30984 has 223 MA's), (46, 31062), (51, 31089), (62, 31152), (86, 31287), (99, 31326),

Gene: Priamo_14 Start: 7083, Stop: 7514, Start Num: 31
Candidate Starts for Priamo_14:
(Start: 31 @7083 has 149 MA's), (73, 7302), (76, 7314), (77, 7323), (89, 7398),

Gene: Priya_12 Start: 7754, Stop: 8140, Start Num: 32
Candidate Starts for Priya_12:
(26, 7679), (Start: 32 @7754 has 223 MA's), (63, 7925), (74, 7985),

Gene: Pumpkin_35 Start: 31224, Stop: 31607, Start Num: 32
Candidate Starts for Pumpkin_35:
(Start: 32 @31224 has 223 MA's), (46, 31302), (51, 31329), (62, 31392), (86, 31527), (99, 31566),

Gene: Purgamenstris_26 Start: 23389, Stop: 23793, Start Num: 32
Candidate Starts for Purgamenstris_26:
(4, 22768), (5, 22771), (9, 22843), (12, 22864), (14, 22957), (15, 22984), (Start: 32 @23389 has 223 MA's), (62, 23563), (98, 23752),

Gene: Purky_27 Start: 24726, Stop: 25124, Start Num: 30
Candidate Starts for Purky_27:
(Start: 30 @24726 has 9 MA's), (Start: 32 @24732 has 223 MA's), (53, 24846), (62, 24900), (80, 24984), (83, 25023),

Gene: Qobbit_12 Start: 7753, Stop: 8139, Start Num: 32
Candidate Starts for Qobbit_12:

(26, 7678), (Start: 32 @7753 has 223 MA's), (63, 7924), (74, 7984),

Gene: Quallification_34 Start: 31353, Stop: 31736, Start Num: 32

Candidate Starts for Quallification_34:

(Start: 32 @31353 has 223 MA's), (46, 31431), (51, 31458), (62, 31521), (86, 31656), (99, 31695),

Gene: QueenB2_10 Start: 6032, Stop: 6451, Start Num: 31

Candidate Starts for QueenB2_10:

(23, 5939), (Start: 31 @6032 has 149 MA's), (36, 6065), (37, 6068), (50, 6134), (86, 6311), (91, 6332),

Gene: Quokka_8 Start: 5207, Stop: 5602, Start Num: 31

Candidate Starts for Quokka_8:

(Start: 31 @5207 has 149 MA's), (56, 5339), (73, 5426), (79, 5456), (103, 5573),

Gene: Rahalelujah_10 Start: 5820, Stop: 6185, Start Num: 32

Candidate Starts for Rahalelujah_10:

(13, 5325), (17, 5529), (27, 5745), (Start: 32 @5820 has 223 MA's), (66, 6012), (80, 6057),

Gene: Rakim_34 Start: 31253, Stop: 31636, Start Num: 32

Candidate Starts for Rakim_34:

(Start: 32 @31253 has 223 MA's), (46, 31331), (51, 31358), (62, 31421), (86, 31556), (99, 31595),

Gene: Raymond7_26 Start: 23716, Stop: 24120, Start Num: 32

Candidate Starts for Raymond7_26:

(4, 23095), (5, 23098), (9, 23170), (12, 23191), (14, 23284), (15, 23311), (20, 23533), (Start: 32 @23716 has 223 MA's), (62, 23890), (80, 23974), (98, 24079), (104, 24103),

Gene: Rebel_26 Start: 23178, Stop: 23582, Start Num: 32

Candidate Starts for Rebel_26:

(4, 22557), (5, 22560), (9, 22632), (12, 22653), (14, 22746), (15, 22773), (Start: 32 @23178 has 223 MA's), (80, 23436), (81, 23466), (92, 23508), (104, 23565),

Gene: Red305_27 Start: 26434, Stop: 26850, Start Num: 32

Candidate Starts for Red305_27:

(Start: 32 @26434 has 223 MA's), (39, 26479), (41, 26491), (44, 26503), (56, 26566), (75, 26665), (79, 26686), (101, 26791),

Gene: RedRock_13 Start: 7965, Stop: 8399, Start Num: 31

Candidate Starts for RedRock_13:

(Start: 31 @7965 has 149 MA's), (36, 7998), (37, 8001), (38, 8010), (39, 8013), (49, 8064), (51, 8073), (85, 8241), (91, 8265),

Gene: Redi_26 Start: 23389, Stop: 23793, Start Num: 32

Candidate Starts for Redi_26:

(4, 22768), (5, 22771), (9, 22843), (12, 22864), (14, 22957), (15, 22984), (Start: 32 @23389 has 223 MA's), (62, 23563), (98, 23752),

Gene: Refuge_13 Start: 8359, Stop: 8748, Start Num: 31

Candidate Starts for Refuge_13:

(Start: 31 @8359 has 149 MA's), (38, 8404), (79, 8584), (86, 8638), (87, 8647), (91, 8659),

Gene: Retro23_10 Start: 6086, Stop: 6526, Start Num: 31

Candidate Starts for Retro23_10:

(20, 5912), (Start: 31 @6086 has 149 MA's), (36, 6119), (37, 6122), (91, 6386),

Gene: Rifter_14 Start: 7038, Stop: 7469, Start Num: 31

Candidate Starts for Rifter_14:

(Start: 31 @7038 has 149 MA's), (73, 7257), (76, 7269), (77, 7278), (89, 7353),

Gene: Rimmer_32 Start: 30713, Stop: 31096, Start Num: 32

Candidate Starts for Rimmer_32:

(Start: 32 @30713 has 223 MA's), (46, 30791), (51, 30818), (62, 30881), (86, 31016), (99, 31055),

Gene: RiverMonster_33 Start: 30902, Stop: 31285, Start Num: 32

Candidate Starts for RiverMonster_33:

(Start: 32 @30902 has 223 MA's), (46, 30980), (51, 31007), (62, 31070), (86, 31205), (99, 31244),

Gene: Roksolana_14 Start: 7065, Stop: 7496, Start Num: 31

Candidate Starts for Roksolana_14:

(Start: 31 @7065 has 149 MA's), (73, 7284), (76, 7296), (77, 7305), (89, 7380),

Gene: RonRayGun_28 Start: 25159, Stop: 25599, Start Num: 31

Candidate Starts for RonRayGun_28:

(19, 24922), (24, 25063), (28, 25141), (Start: 31 @25159 has 149 MA's), (55, 25288), (64, 25336), (76, 25393), (83, 25453), (86, 25465), (92, 25489), (109, 25579), (110, 25594),

Gene: RyeScarlet_13 Start: 7759, Stop: 8145, Start Num: 32

Candidate Starts for RyeScarlet_13:

(26, 7684), (Start: 32 @7759 has 223 MA's), (63, 7930), (74, 7990),

Gene: Sachima_10 Start: 7723, Stop: 8109, Start Num: 32

Candidate Starts for Sachima_10:

(26, 7648), (Start: 32 @7723 has 223 MA's), (63, 7894), (74, 7954),

Gene: Saints25_34 Start: 30805, Stop: 31188, Start Num: 32

Candidate Starts for Saints25_34:

(Start: 32 @30805 has 223 MA's), (46, 30883), (51, 30910), (62, 30973), (86, 31108), (99, 31147),

Gene: Salz_11 Start: 7621, Stop: 8004, Start Num: 31

Candidate Starts for Salz_11:

(Start: 31 @7621 has 149 MA's), (44, 7690), (79, 7870), (88, 7936),

Gene: Samty_27 Start: 26437, Stop: 26853, Start Num: 32

Candidate Starts for Samty_27:

(Start: 32 @26437 has 223 MA's), (39, 26482), (41, 26494), (44, 26506), (56, 26569), (75, 26668), (79, 26689), (101, 26794),

Gene: Sassay_32 Start: 30651, Stop: 31034, Start Num: 32

Candidate Starts for Sassay_32:

(Start: 32 @30651 has 223 MA's), (46, 30729), (51, 30756), (62, 30819), (86, 30954), (99, 30993),

Gene: Scherzo_12 Start: 7756, Stop: 8142, Start Num: 32

Candidate Starts for Scherzo_12:

(26, 7681), (Start: 32 @7756 has 223 MA's), (63, 7927), (74, 7987),

Gene: Schnauzer_29 Start: 24339, Stop: 24743, Start Num: 32

Candidate Starts for Schnauzer_29:

(Start: 32 @24339 has 223 MA's), (80, 24597), (81, 24627), (92, 24669), (104, 24726),

Gene: Scitech_26 Start: 23516, Stop: 23920, Start Num: 32

Candidate Starts for Scitech_26:

(Start: 32 @23516 has 223 MA's), (80, 23774), (81, 23804), (92, 23846), (104, 23903),

Gene: Serenity_9 Start: 5207, Stop: 5602, Start Num: 31

Candidate Starts for Serenity_9:

(Start: 31 @5207 has 149 MA's), (56, 5339), (73, 5426), (79, 5456), (103, 5573),

Gene: Sham4_11 Start: 7624, Stop: 8010, Start Num: 31

Candidate Starts for Sham4_11:

(Start: 31 @7624 has 149 MA's), (44, 7693), (79, 7873), (88, 7939),

Gene: ShamWow_33 Start: 31147, Stop: 31530, Start Num: 32

Candidate Starts for ShamWow_33:

(Start: 32 @31147 has 223 MA's), (46, 31225), (51, 31252), (62, 31315), (86, 31450), (99, 31489),

Gene: SheaKeira_11 Start: 5924, Stop: 6310, Start Num: 32

Candidate Starts for SheaKeira_11:

(Start: 32 @5924 has 223 MA's), (69, 6137), (73, 6149), (80, 6182), (93, 6254),

Gene: Sheen_11 Start: 7152, Stop: 7595, Start Num: 30

Candidate Starts for Sheen_11:

(Start: 30 @7152 has 9 MA's), (56, 7296), (58, 7305), (61, 7329), (76, 7395), (84, 7455), (96, 7494), (97, 7500), (98, 7509),

Gene: ShereKhan_35 Start: 32130, Stop: 32513, Start Num: 32

Candidate Starts for ShereKhan_35:

(Start: 32 @32130 has 223 MA's), (46, 32208), (51, 32235), (62, 32298), (86, 32433), (99, 32472),

Gene: ShrimpFriedEgg_26 Start: 23389, Stop: 23793, Start Num: 32

Candidate Starts for ShrimpFriedEgg_26:

(4, 22768), (5, 22771), (9, 22843), (12, 22864), (14, 22957), (15, 22984), (Start: 32 @23389 has 223 MA's), (62, 23563), (98, 23752),

Gene: Shweta_26 Start: 23517, Stop: 23921, Start Num: 32

Candidate Starts for Shweta_26:

(4, 22896), (5, 22899), (9, 22971), (12, 22992), (14, 23085), (15, 23112), (Start: 32 @23517 has 223 MA's), (80, 23775), (81, 23805), (92, 23847), (104, 23904),

Gene: Silvafighter_29 Start: 24339, Stop: 24743, Start Num: 32

Candidate Starts for Silvafighter_29:

(Start: 32 @24339 has 223 MA's), (80, 24597), (81, 24627), (92, 24669), (104, 24726),

Gene: Silvy_29 Start: 24340, Stop: 24744, Start Num: 32

Candidate Starts for Silvy_29:

(Start: 32 @24340 has 223 MA's), (80, 24598), (81, 24628), (92, 24670), (104, 24727),

Gene: Simpliphy_34 Start: 30892, Stop: 31275, Start Num: 32

Candidate Starts for Simpliphy_34:

(Start: 32 @30892 has 223 MA's), (46, 30970), (51, 30997), (62, 31060), (86, 31195), (99, 31234),

Gene: SirDuracell_32 Start: 29812, Stop: 30195, Start Num: 32
Candidate Starts for SirDuracell_32:
(Start: 32 @29812 has 223 MA's), (46, 29890), (51, 29917), (62, 29980), (86, 30115), (99, 30154),

Gene: SkinnyPete_26 Start: 23379, Stop: 23783, Start Num: 32
Candidate Starts for SkinnyPete_26:
(Start: 32 @23379 has 223 MA's), (80, 23637), (81, 23667), (92, 23709), (104, 23766),

Gene: Sknot_11 Start: 6050, Stop: 6487, Start Num: 31
Candidate Starts for Sknot_11:
(24, 5954), (Start: 31 @6050 has 149 MA's), (39, 6095), (64, 6227), (85, 6350), (91, 6374),

Gene: Smeagan_12 Start: 6431, Stop: 6871, Start Num: 31
Candidate Starts for Smeagan_12:
(24, 6344), (Start: 31 @6431 has 149 MA's), (39, 6476), (91, 6755), (96, 6776),

Gene: SmellyB_14 Start: 7065, Stop: 7496, Start Num: 31
Candidate Starts for SmellyB_14:
(Start: 31 @7065 has 149 MA's), (73, 7284), (76, 7296), (77, 7305), (89, 7380),

Gene: Smurph_29 Start: 24339, Stop: 24743, Start Num: 32
Candidate Starts for Smurph_29:
(Start: 32 @24339 has 223 MA's), (80, 24597), (81, 24627), (92, 24669), (104, 24726),

Gene: Snape_11 Start: 7627, Stop: 8010, Start Num: 31
Candidate Starts for Snape_11:
(Start: 31 @7627 has 149 MA's), (44, 7696), (79, 7876), (88, 7942),

Gene: Snekmaggedon_26 Start: 23389, Stop: 23793, Start Num: 32
Candidate Starts for Snekmaggedon_26:
(4, 22768), (5, 22771), (9, 22843), (12, 22864), (14, 22957), (15, 22984), (Start: 32 @23389 has 223 MA's), (80, 23647), (81, 23677), (92, 23719), (104, 23776),

Gene: Snenia_27 Start: 26435, Stop: 26851, Start Num: 32
Candidate Starts for Snenia_27:
(Start: 32 @26435 has 223 MA's), (39, 26480), (41, 26492), (44, 26504), (56, 26567), (75, 26666), (79, 26687), (101, 26792),

Gene: SophKB_33 Start: 31146, Stop: 31529, Start Num: 32
Candidate Starts for SophKB_33:
(Start: 32 @31146 has 223 MA's), (46, 31224), (51, 31251), (62, 31314), (86, 31449), (99, 31488),

Gene: SororFago_10 Start: 6135, Stop: 6521, Start Num: 32
Candidate Starts for SororFago_10:
(21, 5961), (22, 6003), (Start: 32 @6135 has 223 MA's), (62, 6303), (69, 6348), (75, 6369), (78, 6387), (80, 6393), (87, 6453), (88, 6456),

Gene: Sotrice96_33 Start: 31101, Stop: 31484, Start Num: 32
Candidate Starts for Sotrice96_33:
(Start: 32 @31101 has 223 MA's), (46, 31179), (51, 31206), (62, 31269), (86, 31404), (99, 31443),

Gene: SpongeBob_26 Start: 23389, Stop: 23793, Start Num: 32

Candidate Starts for SpongeBob_26:

(4, 22768), (5, 22771), (9, 22843), (12, 22864), (14, 22957), (15, 22984), (Start: 32 @23389 has 223 MA's), (80, 23647), (81, 23677), (92, 23719), (104, 23776),

Gene: Spouty_12 Start: 7753, Stop: 8139, Start Num: 32

Candidate Starts for Spouty_12:

(26, 7678), (Start: 32 @7753 has 223 MA's), (63, 7924), (74, 7984),

Gene: Squirty_27 Start: 23877, Stop: 24275, Start Num: 30

Candidate Starts for Squirty_27:

(Start: 30 @23877 has 9 MA's), (Start: 32 @23883 has 223 MA's), (40, 23934), (53, 23997), (62, 24051), (80, 24135), (81, 24165), (97, 24228),

Gene: Stank_36 Start: 31653, Stop: 32036, Start Num: 32

Candidate Starts for Stank_36:

(Start: 32 @31653 has 223 MA's), (46, 31731), (51, 31758), (62, 31821), (86, 31956), (99, 31995),

Gene: Stark_34 Start: 30905, Stop: 31288, Start Num: 32

Candidate Starts for Stark_34:

(Start: 32 @30905 has 223 MA's), (46, 30983), (51, 31010), (62, 31073), (86, 31208), (99, 31247),

Gene: Steamy_12 Start: 7580, Stop: 7939, Start Num: 32

Candidate Starts for Steamy_12:

(17, 7289), (Start: 32 @7580 has 223 MA's), (59, 7718), (68, 7769),

Gene: StellaBean_33 Start: 31146, Stop: 31529, Start Num: 32

Candidate Starts for StellaBean_33:

(Start: 32 @31146 has 223 MA's), (46, 31224), (51, 31251), (62, 31314), (86, 31449), (99, 31488),

Gene: Stink_9 Start: 5394, Stop: 5846, Start Num: 31

Candidate Starts for Stink_9:

(Start: 31 @5394 has 149 MA's), (44, 5463), (62, 5565), (64, 5571), (77, 5637), (86, 5700), (94, 5733), (104, 5775),

Gene: StolenFromERC_35 Start: 31137, Stop: 31520, Start Num: 32

Candidate Starts for StolenFromERC_35:

(Start: 32 @31137 has 223 MA's), (46, 31215), (51, 31242), (62, 31305), (86, 31440), (99, 31479),

Gene: StormChicken_33 Start: 31321, Stop: 31704, Start Num: 32

Candidate Starts for StormChicken_33:

(Start: 32 @31321 has 223 MA's), (46, 31399), (51, 31426), (62, 31489), (86, 31624), (99, 31663),

Gene: Sunhee_9 Start: 6154, Stop: 6540, Start Num: 32

Candidate Starts for Sunhee_9:

(Start: 32 @6154 has 223 MA's), (62, 6322), (64, 6328), (75, 6388), (78, 6406), (80, 6412), (87, 6472), (88, 6475),

Gene: SuperAwesome_14 Start: 7065, Stop: 7499, Start Num: 31

Candidate Starts for SuperAwesome_14:

(Start: 31 @7065 has 149 MA's), (52, 7179), (73, 7284), (76, 7296), (77, 7305), (89, 7380),

Gene: SuperCallie99_14 Start: 7066, Stop: 7500, Start Num: 31

Candidate Starts for SuperCallie99_14:

(Start: 31 @7066 has 149 MA's), (52, 7180), (73, 7285), (76, 7297), (77, 7306), (89, 7381),

Gene: Superchunk_10 Start: 5746, Stop: 6141, Start Num: 31

Candidate Starts for Superchunk_10:

(Start: 31 @5746 has 149 MA's), (75, 5986), (78, 6004), (87, 6070), (95, 6088),

Gene: SwirlSquare_13 Start: 5878, Stop: 6273, Start Num: 31

Candidate Starts for SwirlSquare_13:

(Start: 31 @5878 has 149 MA's), (40, 5932), (44, 5947), (71, 6100), (75, 6118), (78, 6136), (87, 6202), (95, 6220),

Gene: TBrady12_35 Start: 31137, Stop: 31520, Start Num: 32

Candidate Starts for TBrady12_35:

(Start: 32 @31137 has 223 MA's), (46, 31215), (51, 31242), (62, 31305), (86, 31440), (99, 31479),

Gene: Tapioca_29 Start: 24339, Stop: 24743, Start Num: 32

Candidate Starts for Tapioca_29:

(Start: 32 @24339 has 223 MA's), (80, 24597), (81, 24627), (92, 24669), (104, 24726),

Gene: Tarkin_35 Start: 32136, Stop: 32519, Start Num: 32

Candidate Starts for Tarkin_35:

(Start: 32 @32136 has 223 MA's), (46, 32214), (51, 32241), (62, 32304), (86, 32439), (99, 32478),

Gene: TarsusIV_10 Start: 5976, Stop: 6443, Start Num: 31

Candidate Starts for TarsusIV_10:

(24, 5883), (Start: 31 @5976 has 149 MA's), (39, 6021), (79, 6225), (86, 6279), (96, 6321), (106, 6369),

Gene: TeardropMSU_32 Start: 31047, Stop: 31430, Start Num: 32

Candidate Starts for TeardropMSU_32:

(Start: 32 @31047 has 223 MA's), (46, 31125), (51, 31152), (62, 31215), (86, 31350), (99, 31389),

Gene: Teaspoon_34 Start: 31100, Stop: 31483, Start Num: 32

Candidate Starts for Teaspoon_34:

(Start: 32 @31100 has 223 MA's), (46, 31178), (51, 31205), (62, 31268), (86, 31403), (99, 31442),

Gene: Temprado_15 Start: 7065, Stop: 7496, Start Num: 31

Candidate Starts for Temprado_15:

(Start: 31 @7065 has 149 MA's), (73, 7284), (76, 7296), (77, 7305), (89, 7380),

Gene: Terminus_33 Start: 31234, Stop: 31617, Start Num: 32

Candidate Starts for Terminus_33:

(Start: 32 @31234 has 223 MA's), (46, 31312), (51, 31339), (62, 31402), (86, 31537), (99, 31576),

Gene: Terrific_14 Start: 6504, Stop: 6941, Start Num: 31

Candidate Starts for Terrific_14:

(24, 6408), (Start: 31 @6504 has 149 MA's), (39, 6549), (85, 6804), (91, 6828),

Gene: Thimble_33 Start: 30097, Stop: 30480, Start Num: 32

Candidate Starts for Thimble_33:

(Start: 32 @30097 has 223 MA's), (46, 30175), (51, 30202), (62, 30265), (86, 30400), (99, 30439),

Gene: Thresher_34 Start: 31901, Stop: 32284, Start Num: 32

Candidate Starts for Thresher_34:

(Start: 32 @31901 has 223 MA's), (46, 31979), (51, 32006), (62, 32069), (86, 32204), (99, 32243),

Gene: Timothy_11 Start: 7621, Stop: 8007, Start Num: 31

Candidate Starts for Timothy_11:

(Start: 31 @7621 has 149 MA's), (44, 7690), (79, 7870), (88, 7936),

Gene: Timshel_10 Start: 6896, Stop: 7309, Start Num: 30

Candidate Starts for Timshel_10:

(Start: 30 @6896 has 9 MA's), (33, 6911), (34, 6920), (37, 6935), (45, 6974), (49, 6998), (60, 7058), (88, 7190),

Gene: TinyTimmy_11 Start: 7673, Stop: 8059, Start Num: 31

Candidate Starts for TinyTimmy_11:

(Start: 31 @7673 has 149 MA's), (44, 7742), (79, 7922), (88, 7988),

Gene: TopsytheTRex_9 Start: 5160, Stop: 5561, Start Num: 31

Candidate Starts for TopsytheTRex_9:

(Start: 31 @5160 has 149 MA's), (53, 5277), (56, 5292), (73, 5379), (79, 5409),

Gene: Toaka_10 Start: 6100, Stop: 6489, Start Num: 32

Candidate Starts for Toaka_10:

(26, 6025), (Start: 32 @6100 has 223 MA's), (62, 6268), (78, 6355), (80, 6361),

Gene: Tomaszewski_32 Start: 30744, Stop: 31127, Start Num: 32

Candidate Starts for Tomaszewski_32:

(Start: 32 @30744 has 223 MA's), (46, 30822), (51, 30849), (62, 30912), (86, 31047), (99, 31086),

Gene: ToneTone_13 Start: 6978, Stop: 7409, Start Num: 31

Candidate Starts for ToneTone_13:

(Start: 31 @6978 has 149 MA's), (73, 7197), (76, 7209), (77, 7218), (89, 7293),

Gene: Toro_12 Start: 7094, Stop: 7537, Start Num: 30

Candidate Starts for Toro_12:

(Start: 30 @7094 has 9 MA's), (56, 7238), (58, 7247), (61, 7271), (76, 7337), (84, 7397), (96, 7436), (97, 7442), (98, 7451),

Gene: Tortellini_27 Start: 25084, Stop: 25476, Start Num: 32

Candidate Starts for Tortellini_27:

(1, 23986), (2, 24166), (3, 24202), (8, 24529), (10, 24547), (11, 24550), (Start: 30 @25078 has 9 MA's), (Start: 32 @25084 has 223 MA's), (53, 25198), (62, 25252), (80, 25336), (83, 25375), (97, 25429),

Gene: Tortoise12_29 Start: 24339, Stop: 24743, Start Num: 32

Candidate Starts for Tortoise12_29:

(Start: 32 @24339 has 223 MA's), (80, 24597), (81, 24627), (92, 24669), (104, 24726),

Gene: Toto_33 Start: 31147, Stop: 31530, Start Num: 32

Candidate Starts for Toto_33:

(Start: 32 @31147 has 223 MA's), (46, 31225), (51, 31252), (62, 31315), (86, 31450), (99, 31489),

Gene: Traaww1_31 Start: 30785, Stop: 31168, Start Num: 32

Candidate Starts for Traaww1_31:

(Start: 32 @30785 has 223 MA's), (46, 30863), (51, 30890), (62, 30953), (86, 31088), (99, 31127),

Gene: TriFive_27 Start: 26434, Stop: 26850, Start Num: 32
Candidate Starts for TriFive_27:
(Start: 32 @26434 has 223 MA's), (39, 26479), (41, 26491), (44, 26503), (56, 26566), (75, 26665), (79, 26686), (101, 26791),

Gene: Tristan_11 Start: 7718, Stop: 8206, Start Num: 31
Candidate Starts for Tristan_11:
(Start: 31 @7718 has 149 MA's), (39, 7763), (40, 7772), (73, 7937), (91, 8042),

Gene: Trixie_13 Start: 7668, Stop: 8090, Start Num: 31
Candidate Starts for Trixie_13:
(Start: 31 @7668 has 149 MA's), (36, 7701), (37, 7704), (38, 7713), (85, 7944), (88, 7959), (91, 7968),

Gene: Trooper_10 Start: 5793, Stop: 6233, Start Num: 31
Candidate Starts for Trooper_10:
(6, 5205), (20, 5619), (Start: 31 @5793 has 149 MA's), (36, 5826), (37, 5829), (91, 6093),

Gene: Tubs_12 Start: 7723, Stop: 8109, Start Num: 32
Candidate Starts for Tubs_12:
(26, 7648), (Start: 32 @7723 has 223 MA's), (63, 7894), (74, 7954),

Gene: Tucker_14 Start: 7065, Stop: 7496, Start Num: 31
Candidate Starts for Tucker_14:
(Start: 31 @7065 has 149 MA's), (73, 7284), (76, 7296), (77, 7305), (89, 7380),

Gene: Tuco_34 Start: 31655, Stop: 32038, Start Num: 32
Candidate Starts for Tuco_34:
(Start: 32 @31655 has 223 MA's), (46, 31733), (51, 31760), (62, 31823), (86, 31958), (99, 31997),

Gene: Ugenie5_9 Start: 7756, Stop: 8142, Start Num: 32
Candidate Starts for Ugenie5_9:
(26, 7681), (Start: 32 @7756 has 223 MA's), (63, 7927), (74, 7987),

Gene: Ukulele_33 Start: 30905, Stop: 31288, Start Num: 32
Candidate Starts for Ukulele_33:
(Start: 32 @30905 has 223 MA's), (46, 30983), (51, 31010), (62, 31073), (86, 31208), (99, 31247),

Gene: Updawg_12 Start: 6492, Stop: 6929, Start Num: 31
Candidate Starts for Updawg_12:
(24, 6396), (Start: 31 @6492 has 149 MA's), (39, 6537), (85, 6792), (91, 6816),

Gene: VA6_10 Start: 5970, Stop: 6431, Start Num: 31
Candidate Starts for VA6_10:
(21, 5799), (Start: 31 @5970 has 149 MA's), (73, 6189), (81, 6252), (88, 6285),

Gene: Vanisoa_10 Start: 5811, Stop: 6197, Start Num: 32
Candidate Starts for Vanisoa_10:
(26, 5736), (Start: 32 @5811 has 223 MA's), (42, 5871), (62, 5979), (65, 6012),

Gene: VohminGhazi_14 Start: 7065, Stop: 7496, Start Num: 31
Candidate Starts for VohminGhazi_14:
(Start: 31 @7065 has 149 MA's), (73, 7284), (76, 7296), (77, 7305), (89, 7380),

Gene: WeiHuaDA_16 Start: 8278, Stop: 8700, Start Num: 31
Candidate Starts for WeiHuaDA_16:
(20, 8104), (Start: 31 @8278 has 149 MA's), (36, 8311), (37, 8314), (38, 8323), (85, 8554), (88, 8569),
(91, 8578), (96, 8599),

Gene: Whabigail7_12 Start: 6446, Stop: 6886, Start Num: 31
Candidate Starts for Whabigail7_12:
(24, 6359), (Start: 31 @6446 has 149 MA's), (39, 6491), (91, 6770), (96, 6791),

Gene: Whirlwind_28 Start: 26172, Stop: 26585, Start Num: 32
Candidate Starts for Whirlwind_28:
(Start: 32 @26172 has 223 MA's), (39, 26217), (41, 26229), (44, 26241), (79, 26424),

Gene: Whitty_28 Start: 25159, Stop: 25599, Start Num: 31
Candidate Starts for Whitty_28:
(19, 24922), (24, 25063), (28, 25141), (Start: 31 @25159 has 149 MA's), (55, 25288), (64, 25336), (76,
25393), (83, 25453), (86, 25465), (92, 25489), (109, 25579), (110, 25594),

Gene: WideWale_12 Start: 6492, Stop: 6929, Start Num: 31
Candidate Starts for WideWale_12:
(24, 6396), (Start: 31 @6492 has 149 MA's), (39, 6537), (85, 6792), (91, 6816),

Gene: Wiggin_36 Start: 31651, Stop: 32034, Start Num: 32
Candidate Starts for Wiggin_36:
(Start: 32 @31651 has 223 MA's), (46, 31729), (51, 31756), (62, 31819), (86, 31954), (99, 31993),

Gene: Wiks_14 Start: 7046, Stop: 7477, Start Num: 31
Candidate Starts for Wiks_14:
(Start: 31 @7046 has 149 MA's), (73, 7265), (76, 7277), (77, 7286), (89, 7361),

Gene: Willez_32 Start: 30651, Stop: 31034, Start Num: 32
Candidate Starts for Willez_32:
(Start: 32 @30651 has 223 MA's), (46, 30729), (51, 30756), (62, 30819), (86, 30954), (99, 30993),

Gene: Willsammy_27 Start: 24742, Stop: 25143, Start Num: 30
Candidate Starts for Willsammy_27:
(Start: 30 @24742 has 9 MA's), (Start: 32 @24748 has 223 MA's), (53, 24862), (62, 24916), (80,
25000), (83, 25039), (97, 25096),

Gene: WunderPhul_14 Start: 7046, Stop: 7477, Start Num: 31
Candidate Starts for WunderPhul_14:
(Start: 31 @7046 has 149 MA's), (73, 7265), (76, 7277), (77, 7286), (89, 7361),

Gene: Xandras_35 Start: 31137, Stop: 31520, Start Num: 32
Candidate Starts for Xandras_35:
(Start: 32 @31137 has 223 MA's), (46, 31215), (51, 31242), (62, 31305), (86, 31440), (99, 31479),

Gene: Xeno_28 Start: 24105, Stop: 24509, Start Num: 32
Candidate Starts for Xeno_28:
(Start: 32 @24105 has 223 MA's), (80, 24363), (81, 24393), (92, 24435), (104, 24492),

Gene: Xerxes_29 Start: 24336, Stop: 24740, Start Num: 32
Candidate Starts for Xerxes_29:

(Start: 32 @24336 has 223 MA's), (80, 24594), (81, 24624), (92, 24666), (104, 24723),

Gene: XianYue_10 Start: 5913, Stop: 6362, Start Num: 31

Candidate Starts for XianYue_10:

(Start: 31 @5913 has 149 MA's), (38, 5955), (39, 5958), (73, 6132), (96, 6258),

Gene: YassJohnny_34 Start: 31662, Stop: 32045, Start Num: 32

Candidate Starts for YassJohnny_34:

(Start: 32 @31662 has 223 MA's), (46, 31740), (51, 31767), (62, 31830), (86, 31965), (99, 32004),

Gene: Yecey3_11 Start: 5912, Stop: 6295, Start Num: 32

Candidate Starts for Yecey3_11:

(18, 5666), (Start: 32 @5912 has 223 MA's), (41, 5969), (80, 6167),

Gene: Yokurt_14 Start: 7046, Stop: 7477, Start Num: 31

Candidate Starts for Yokurt_14:

(Start: 31 @7046 has 149 MA's), (73, 7265), (76, 7277), (77, 7286), (89, 7361),

Gene: Youngblood_33 Start: 31307, Stop: 31690, Start Num: 32

Candidate Starts for Youngblood_33:

(Start: 32 @31307 has 223 MA's), (46, 31385), (51, 31412), (62, 31475), (86, 31610), (99, 31649),

Gene: Zaka_14 Start: 7046, Stop: 7477, Start Num: 31

Candidate Starts for Zaka_14:

(Start: 31 @7046 has 149 MA's), (73, 7265), (76, 7277), (77, 7286), (89, 7361),

Gene: ZenTime222_28 Start: 25159, Stop: 25599, Start Num: 31

Candidate Starts for ZenTime222_28:

(19, 24922), (24, 25063), (28, 25141), (Start: 31 @25159 has 149 MA's), (55, 25288), (64, 25336), (76, 25393), (83, 25453), (86, 25465), (92, 25489), (109, 25579), (110, 25594),

Gene: Zimmer_12 Start: 7633, Stop: 8022, Start Num: 31

Candidate Starts for Zimmer_12:

(Start: 31 @7633 has 149 MA's), (37, 7669), (44, 7705), (86, 7912), (87, 7921), (91, 7933),

Gene: Zulu_14 Start: 7045, Stop: 7476, Start Num: 31

Candidate Starts for Zulu_14:

(Start: 31 @7045 has 149 MA's), (73, 7264), (76, 7276), (77, 7285), (89, 7360),

Gene: xkcd_34 Start: 31316, Stop: 31699, Start Num: 32

Candidate Starts for xkcd_34:

(Start: 32 @31316 has 223 MA's), (46, 31394), (51, 31421), (62, 31484), (86, 31619), (99, 31658),