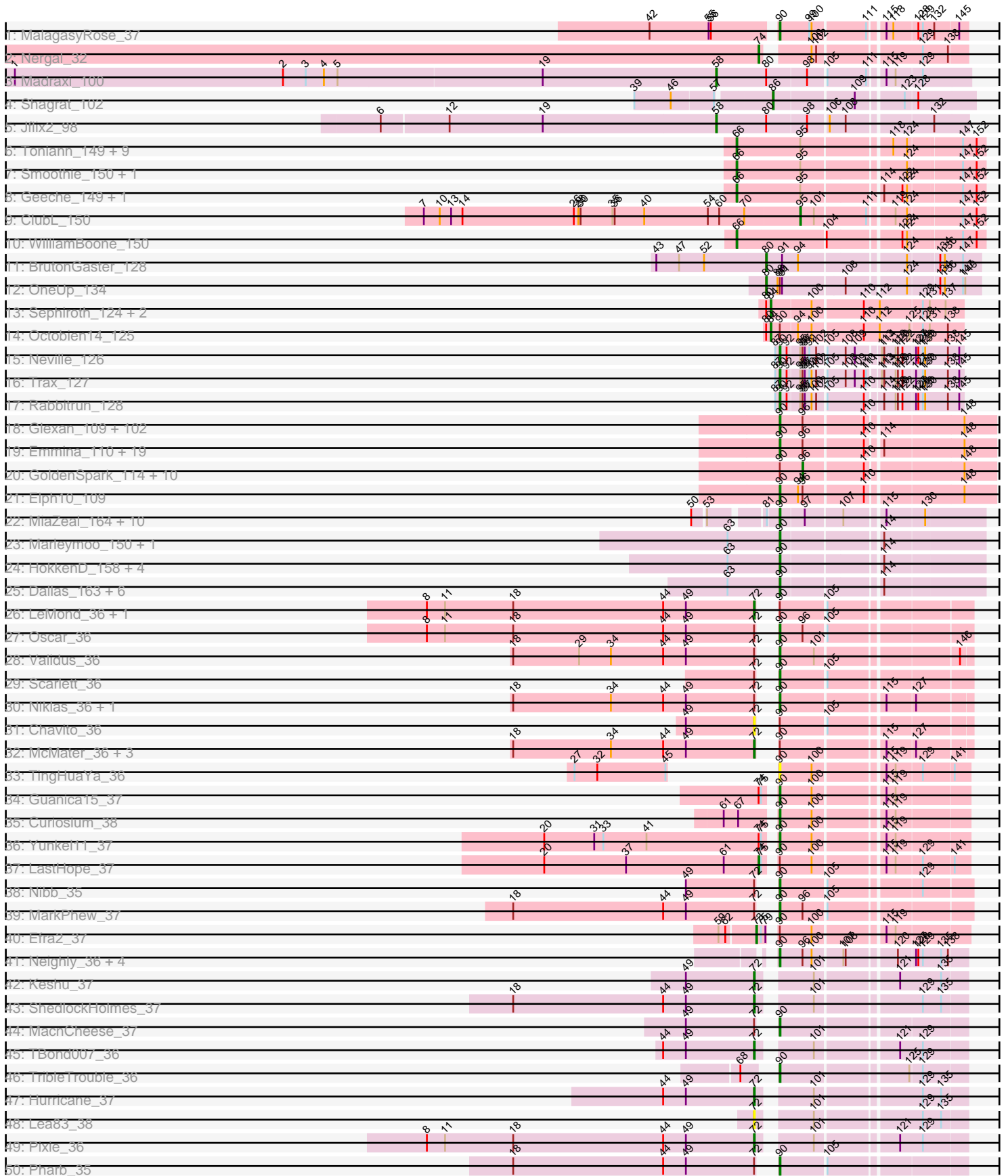
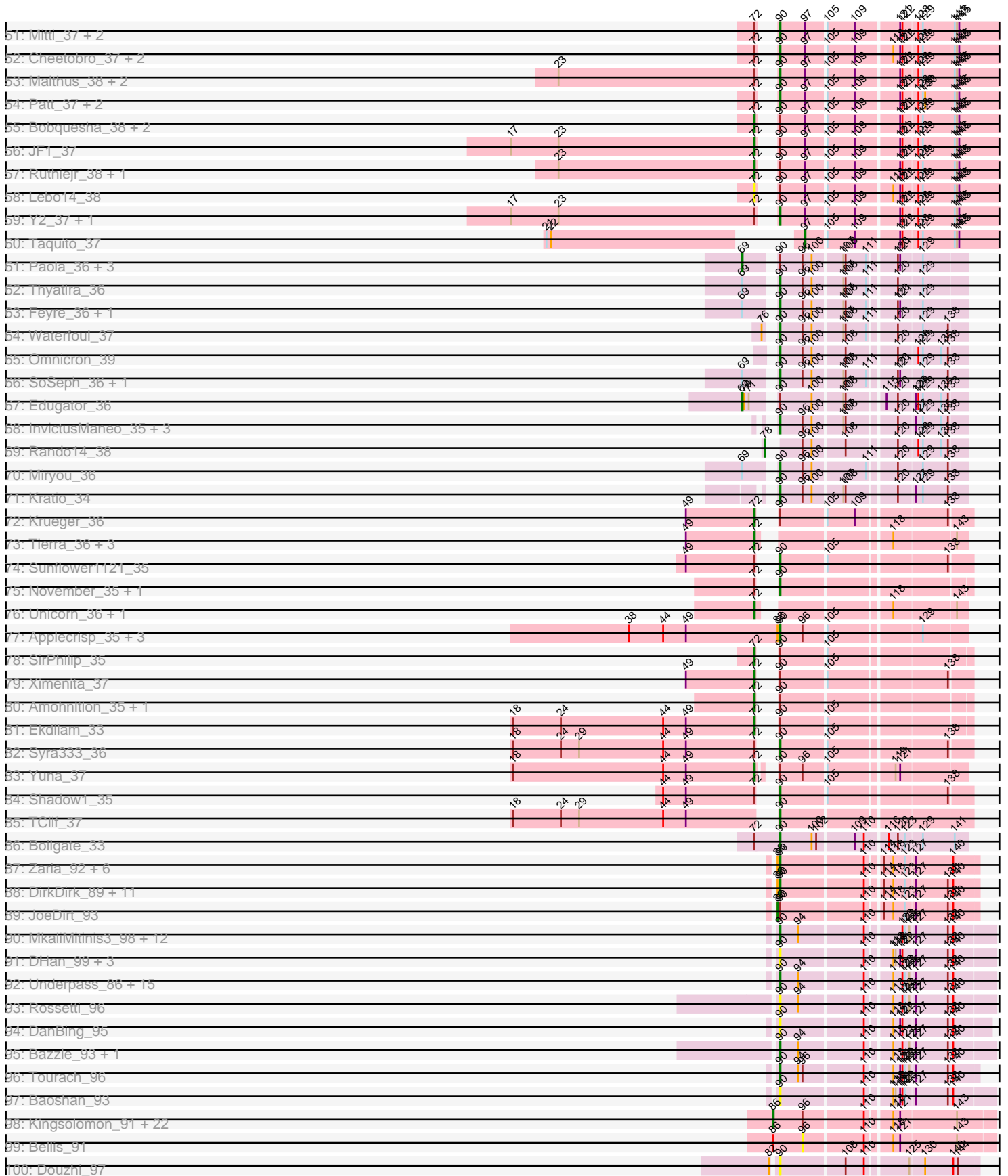


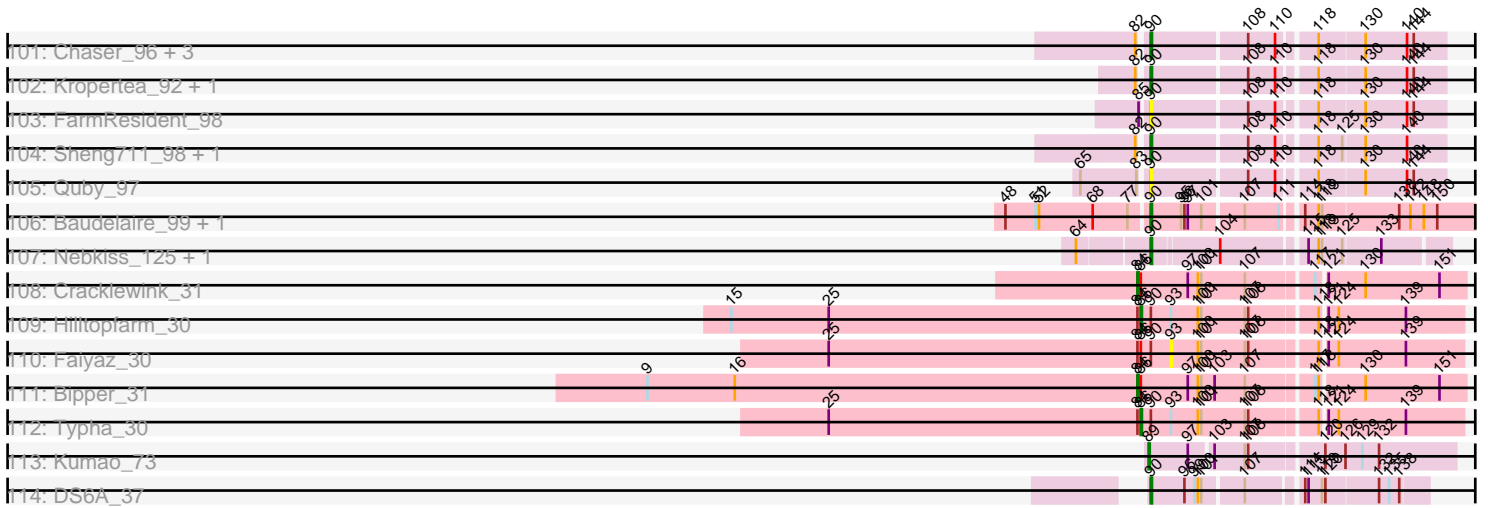
Pham 224177



Pham 224177



Pham 224177



Note: Tracks are now grouped by subcluster and scaled. Switching in subcluster is indicated by changes in track color. Track scale is now set by default to display the region 30 bp upstream of start 1 to 30 bp downstream of the last possible start. If this default region is judged to be packed too tightly with annotated starts, the track will be further scaled to only show that region of the ORF with annotated starts. This action will be indicated by adding "Zoomed" to the title. For starts, yellow indicates the location of called starts comprised solely of Glimmer/GeneMark auto-annotations, green indicates the location of called starts with at least 1 manual gene annotation.

Pham 224177 Report

This analysis was run 03/28/25 on database version 593.

Pham number 224177 has 394 members, 58 are drafts.

Phages represented in each track:

- Track 1 : MalagasyRose_37
- Track 2 : Nergal_32
- Track 3 : Madraxi_100
- Track 4 : Shagrat_102
- Track 5 : Jflix2_98
- Track 6 : Toniann_149, PhinkBoden_147, Lozinak_149, Dusty_145, Norvs_147, Engineer_151, Bachita_152, Cucurbita_148, Miskis_142, Aphelion_148
- Track 7 : Smoothie_150, Culver_149
- Track 8 : Geeche_149, Abscondus_147
- Track 9 : ClubL_150
- Track 10 : WilliamBoone_150
- Track 11 : BrutonGaster_128
- Track 12 : OneUp_134
- Track 13 : Sephiroth_124, Kudefre_129, Syleon_129
- Track 14 : Octobien14_125
- Track 15 : Neville_126
- Track 16 : Trax_127
- Track 17 : Rabbitrun_128
- Track 18 : Glexan_109, Lilizi_110, Nimrod_110, ShamWow_110, RiverMonster_109, Adnama_114, Contagion_107, Inca_107, Misfit_111, SirDuracell_110, Bruin_107, Harella_111, NelitzaMV_107, Thresher_111, Gator_108, DoctorDiddles_109, Flypotenuse_106, Wiggins_112, Sotrice96_111, Dusk_107, Policronamos_113, Balomoji_110, Tuco_111, StellaBean_108, Pharsalus_107, Daikon_111, Gage_112, Hopey_110, Traaww1_106, Phaja_108, Cookies_107, Mosby_107, Buck_111, StolenFromERC_112, Mindy_109, Pumpkin_111, ChotaBhai_110, Barbarian_109, ABCat_107, Hoonter_113, Cactus_114, FireRed_113, Icee_111, Gemini_115, MPhalcon_111, Rimmer_108, Willez_105, ShereKhan_108, Bench_112, FoghornLeghorn_103, Tomaszewski_105, Phrux_106, GooberAzure_113, Paperbeatsrock_109, Stark_110, PhatBacter_113, Teaspoon_110, Tarkin_109, Elite2014_109, xkcd_114, CrystalP_110, Stank_112, Ukulele_104, Qualification_111, Youngblood_114, AmericanBeauty_113, Goldilocks_113, BugsBunny_109, Czystoczon1_110, Pat3_107, HufflyPuff_112, Cjw1_110, NoSleep_110, Kanye_107, IHOP_108, JeTaime_108, Palpatine_111, Lilpickle_109, DrDrey_110, Kimchi_114, Murica_114, TBrady12_113, Bask21_110, Kostya_110, ChosenOne_110, Dumbo_110, TeardropMSU_106, YassJohnny_107, BadStone_107, Asriel_108, Filch_112, Lilac_111, Argent26_114, Miniwave_105, Terminus_113, Myrale_110, Maxxinista_112, BigBubba_111, Xandras_109, Holt_115, Rakim_111, Toto_108,

Nala_112

- Track 19 : Emmina_110, Phaux_112, 244_111, Easy2Say_110, SophKB_108, Eureka_110, Porky_108, Simpliphy_108, Moldemort_112, Manda_111, Murphy_109, HanKaySha_110, Saints25_106, Highbury_106, OrionPax_108, Goku_109, Henry_108, BaboJay_109, MadamMonkfish_109, Marshmallow_108
- Track 20 : GoldenSpark_114, Becksu_108, Amao_110, StormChicken_112, Petra64142_114, Sassay_105, FairyPath_110, Command613_112, BilboSwaggins_109, Thimble_112, MISSy_111
- Track 21 : Elph10_109
- Track 22 : MiaZeal_164, Squint_155, Ariel_161, Shaboozey_160, Nekros_160, Hannaconda_156, KashFlow_161, Superphikiman_159, Porcelain_161, Rearden_161, LittleE_169
- Track 23 : Marleymoo_150, Bobby_155
- Track 24 : HokkenD_158, Bombitas_150, JuicyJay_158, NihilNomen_165, Pound_156
- Track 25 : Dallas_163, Yeet_155, Bagrid_172, Minerva_163, DmpstrDiver_162, Odette_167, Zelink_156
- Track 26 : LeMond_36, KiSi_36
- Track 27 : Oscar_36
- Track 28 : Validus_36
- Track 29 : Scarlett_36
- Track 30 : Niklas_36, Shaobing_36
- Track 31 : Chavito_36
- Track 32 : McMater_36, Richo_36, Dartin_36, Peanam_36
- Track 33 : TingHuaYa_36
- Track 34 : Guanica15_37
- Track 35 : Curiosium_38
- Track 36 : Yunkel11_37
- Track 37 : LastHope_37
- Track 38 : Nibb_35
- Track 39 : MarkPhew_37
- Track 40 : Efra2_37
- Track 41 : Neighly_36, Psycho_36, Larva_36, Dadosky_36, AlleyCat_36
- Track 42 : Keshu_37
- Track 43 : ShedlockHolmes_37
- Track 44 : MacnCheese_37
- Track 45 : TBond007_36
- Track 46 : TribbleTrouble_36
- Track 47 : Hurricane_37
- Track 48 : Lea83_38
- Track 49 : Pixie_36
- Track 50 : Pharb_35
- Track 51 : Mitti_37, Wintermute_37, Eponine_39
- Track 52 : Cheetobro_37, Chancellor_37, Slarp_37
- Track 53 : Malthus_38, Kraw_38, Fionnbharth_37
- Track 54 : Patt_37, MissDaisy_37, Reptar3000_37
- Track 55 : Bobquesha_38, SamScheppers_37, OmniCritical_37
- Track 56 : JF1_37
- Track 57 : Ruthiejr_38, Juliette_39
- Track 58 : Lebo14_38
- Track 59 : Y2_37, Y10_37
- Track 60 : Taquito_37
- Track 61 : Paola_36, Gengar_36, Guillsminger_36, Leston_36

- Track 62 : Thyatira_36
- Track 63 : Feyre_36, OkiRoe_36
- Track 64 : Waterfoul_37
- Track 65 : Omnicron_39
- Track 66 : SoSeph_36, Heftyboy_36
- Track 67 : Edugator_36
- Track 68 : InvictusManeo_35, Collard_35, ViviJ_35, Agent47_36
- Track 69 : Rando14_38
- Track 70 : Miryou_36
- Track 71 : Kratio_34
- Track 72 : Krueger_36
- Track 73 : Tierra_36, Phrank_36, Bryler_36, Cain_36
- Track 74 : Sunflower1121_35
- Track 75 : November_35, DARTH_P_35
- Track 76 : Unicorn_36, PhelpsODU_36
- Track 77 : Applecrisp_35, Fefferhead_35, Amgine_34, Ellie_33
- Track 78 : SirPhilip_35
- Track 79 : Ximenita_37
- Track 80 : Amohnition_35, Hammy_35
- Track 81 : Ekdilam_33
- Track 82 : Syra333_36
- Track 83 : Yuna_37
- Track 84 : Shadow1_35
- Track 85 : TClif_37
- Track 86 : Boilgate_33
- Track 87 : Zaria_92, Tyson_93, Acquire49_92, LeBron_91, Calm_93, AvadaKedavra_92, Silverleaf_91
- Track 88 : DirkDirk_89, Enceladus_89, OhShagHennessy_88, Wamburggrxpress_91, MAckerman_90, Wyatt2_93, Rose5_93, Appletree2_91, UPIE_91, Poochiewood_90, Halena_89, CicholasNage_89
- Track 89 : JoeDirt_93
- Track 90 : MkaliMitinis3_98, Miley16_96, Netyap_95, Faith1_96, DrSeegs_95, Breezona_96, Winky_96, Sarshaun_97, Lewan_97, Wigglewiggle_96, Itos_96, Soap141_96, Gabriela_96
- Track 91 : DHan_99, Hafay_97, Claus_95, ZhongYanYuan_93
- Track 92 : Underpass_86, GuuelaD_93, BobsGarage_95, LilDestine_94, Wilder_97, Rumpelstiltskin_92, Finemlucis_97, SoJulia_98, Loadrie_95, BigCheese_96, Nicholasp3_96, Vetrix_94, Kahlid_95, Zakai_97, Crossroads_96, Gardann_96
- Track 93 : Rossetti_96
- Track 94 : DanBing_95
- Track 95 : Bazzle_93, Archie_93
- Track 96 : Tourach_96
- Track 97 : Baoshan_93
- Track 98 : Kingsolomon_91, Jubie_92, Nicholas_91, Whirlwind_94, MiniLon_97, Snenia_92, Finnry_93, Jobypre_93, LiyuLake_92, Lumos_93, MsGreen_93, Red305_94, KirDoubleO7_91, BourbonZero_94, Ellson_92, TriFive_93, Samty_92, Krypton555_95, DuncansLeg_93, MiniMac_97, Moostard_90, Lolly9_92, Clautastrophe_91
- Track 99 : Bellis_91
- Track 100 : Douzhi_97
- Track 101 : Chaser_96, PYPDinur_97, Bromden_97, BrainDrainer_98
- Track 102 : Kropertea_92, DyoEdafos_99
- Track 103 : FarmResident_98

- Track 104 : Sheng711_98, Douge_97
- Track 105 : Quby_97
- Track 106 : Baudelaire_99, Aegeus_99
- Track 107 : Nebkiss_125, Gaia_124
- Track 108 : Cracklewink_31
- Track 109 : Hilltopfarm_30
- Track 110 : Faiyaz_30
- Track 111 : Bipper_31
- Track 112 : Typha_30
- Track 113 : Kumao_73
- Track 114 : DS6A_37

Summary of Final Annotations (See graph section above for start numbers):

The start number called the most often in the published annotations is 90, it was called in 250 of the 336 non-draft genes in the pham.

Genes that call this "Most Annotated" start:

- 244_111, ABCat_107, Acquire49_92, Adnama_114, Aegeus_99, Agent47_36, AlleyCat_36, AmericanBeauty_113, Amgine_34, Applecrisp_35, Appletree2_91, Archie_93, Argent26_114, Ariel_161, Asriel_108, AvadaKedavra_92, BaboJay_109, BadStone_107, Bagrid_172, Balomoji_110, Baoshan_93, Barbarian_109, Bask21_110, Baudelaire_99, Bazzle_93, Bench_112, BigBubba_111, BigCheese_96, Bobby_155, BobsGarage_95, Boilgate_33, Bombitas_150, BrainDrainer_98, Breezona_96, Bromden_97, Bruin_107, Buck_111, BugsBunny_109, Cactus_114, Calm_93, Chancellor_37, Chaser_96, Cheetobro_37, ChosenOne_110, ChotaBhai_110, CicholasNage_89, Cjw1_110, Claus_95, Collard_35, Contagion_107, Cookies_107, Crossroads_96, CrystalP_110, Curiosium_38, Czyszczon1_110, DHan_99, DS6A_37, Dadosky_36, Daikon_111, Dallas_163, DanBing_95, DarthP_35, DirkDirk_89, DmpstrDiver_162, DoctorDiddles_109, Douge_97, Douzhi_97, DrDrey_110, DrSeegs_95, Dumbo_110, Dusk_107, DyoEdafos_99, Easy2Say_110, Elite2014_109, Ellie_33, Elph10_109, Emmina_110, Enceladus_89, Eponine_39, Eureka_110, Faith1_96, FarmResident_98, Fefferhead_35, Feyre_36, Filch_112, Finemlucis_97, Fionnbharth_37, FireRed_113, Flypotenuse_106, FoghornLeghorn_103, Gabriela_96, Gage_112, Gaia_124, Gardann_96, Gator_108, Gemini_115, Glexan_109, Goku_109, Goldilocks_113, GooberAzure_113, Guanica15_37, GuuelaD_93, Hafay_97, Halena_89, HanKaySha_110, Hannaconda_156, Harella_111, Heftyboy_36, Henry_108, Highbury_106, HokkenD_158, Holt_115, Hoonter_113, Hopey_110, HufflyPuff_112, IHOP_108, Icee_111, Inca_107, InvictusManeo_35, Itos_96, JeTaime_108, JuicyJay_158, Kahlid_95, Kanye_107, KashFlow_161, Kimchi_114, Kostya_110, Kratio_34, Kraw_38, Kropertea_92, Larva_36, LeBron_91, Lewan_97, LilDestine_94, Lilac_111, Lilizi_110, Lilpickle_109, LittleE_169, Loadrie_95, MAckerman_90, MPhalcon_111, MacnCheese_37, MadamMonkfish_109, MalagasyRose_37, Malthus_38, Manda_111, MarkPhew_37, Marleymoo_150, Marshmallow_108, Maxxinista_112, MiaZeal_164, Miley16_96, Mindy_109, Minerva_163, Miniwave_105, Miryou_36, Misfit_111, MissDaisy_37, Mitti_37, MkaliMitinis3_98, Moldemort_112, Mosby_107, Murica_114, Murphy_109, Myrale_110, Nala_112, Nebkiss_125, Neighly_36, Nekros_160, NelitzaMV_107, Netyap_95, Neville_126, Nibb_35, Nicholasp3_96, NihilNomen_165, Niklas_36, Nimrod_110, NoSleep_110,

November_35, Odette_167, OhShagHennessy_88, OkiRoe_36, Omnicron_39, OrionPax_108, Oscar_36, PYPDinur_97, Palpatine_111, Paperbeatsrock_109, Pat3_107, Patt_37, Phaja_108, Pharb_35, Pharsalus_107, PhatBacter_113, Phaux_112, Phrux_106, Policronamos_113, Poochiewood_90, Porcelain_161, Porky_108, Pound_156, Psycho_36, Pumpkin_111, Qualification_111, Quby_97, Rabbitrun_128, Rakim_111, Rearden_161, Reptar3000_37, Rimmer_108, RiverMonster_109, Rose5_93, Rossetti_96, Rumpelstiltskin_92, Saints25_106, Sarshaun_97, Scarlett_36, Shaboozey_160, Shadow1_35, ShamWow_110, Shaobing_36, Sheng711_98, ShereKhan_108, Silverleaf_91, Simpliphy_108, SirDuracell_110, Slarp_37, SoJulia_98, SoSeph_36, Soap141_96, SophKB_108, Sotrice96_111, Squint_155, Stank_112, Stark_110, StellaBean_108, StolenFromERC_112, Sunflower1121_35, Superphikiman_159, Syra333_36, TBrady12_113, TClif_37, Tarkin_109, TeardropMSU_106, Teaspoon_110, Terminus_113, Thresher_111, Thyatira_36, TingHuaYa_36, Tomaszewski_105, Toto_108, Tourach_96, Traaww1_106, Trax_127, TribbleTrouble_36, Tuco_111, Tyson_93, UPIE_91, Ukulele_104, Underpass_86, Validus_36, Vetrix_94, ViviJ_35, Wamburgexpress_91, Waterfoul_37, Wiggin_112, Wigglewiggle_96, Wilder_97, Willez_105, Winky_96, Wintermute_37, Wyatt2_93, Xandras_109, Y10_37, Y2_37, YassJohnny_107, Yeet_155, Youngblood_114, Yunkel11_37, Zakai_97, Zaria_92, Zelink_156, ZhongYanYuan_93, xkcd_114,

Genes that have the "Most Annotated" start but do not call it:

- Amao_110, Amohntion_35, Becksu_108, BilboSwaggins_109, Bobquesha_38, Chavito_36, Command613_112, Dartin_36, Edugator_36, Efra2_37, Ekdilam_33, FairyPath_110, Faiyaz_30, Gengar_36, GoldenSpark_114, Guillsminger_36, Hammy_35, Hilltopfarm_30, JF1_37, JoeDirt_93, Juliette_39, KiSi_36, Krueger_36, LastHope_37, LeMond_36, Lebo14_38, Leston_36, MISSy_111, McMater_36, Octobien14_125, OmniCritical_37, OneUp_134, Paola_36, Peanam_36, Petra64142_114, Richo_36, Ruthiejr_38, SamScheppers_37, Sassay_105, SirPhilip_35, StormChicken_112, Thimble_112, Typha_30, Ximenita_37, Yuna_37,

Genes that do not have the "Most Annotated" start:

- Abscondus_147, Aphelion_148, Bachita_152, Bellis_91, Bipper_31, BourbonZero_94, BrutonGaster_128, Bryler_36, Cain_36, Clautastrophe_91, ClubL_150, Cracklewink_31, Cucurbita_148, Culver_149, DuncansLeg_93, Dusty_145, Ellson_92, Engineer_151, Finnry_93, Geeche_149, Hurricane_37, Jflix2_98, Jobypre_93, Jubie_92, Keshu_37, Kingsolomon_91, KirDoubleO7_91, Krypton555_95, Kudrefre_129, Kumao_73, Lea83_38, LiyuLake_92, Lolly9_92, Lozinak_149, Lumos_93, Madraxi_100, MiniLon_97, MiniMac_97, Miskis_142, Moostard_90, MsGreen_93, Nergal_32, Nicholas_91, Norvs_147, PhelpsODU_36, PhinkBoden_147, Phrank_36, Pixie_36, Rando14_38, Red305_94, Samty_92, Sephiroth_124, Shagrat_102, ShedlockHolmes_37, Smoothie_150, Snenia_92, Syleon_129, TBond007_36, Taquito_37, Tierra_36, Toniann_149, TriFive_93, Unicorn_36, Whirlwind_94, WilliamBoone_150,

Summary by start number:

Start 58:

- Found in 2 of 394 (0.5%) of genes in pham
- Manual Annotations of this start: 2 of 336
- Called 100.0% of time when present
- Phage (with cluster) where this start called: Jflix2_98 (CF), Madraxi_100 (CF),

Start 66:

- Found in 15 of 394 (3.8%) of genes in pham
- Manual Annotations of this start: 13 of 336
- Called 100.0% of time when present
- Phage (with cluster) where this start called: Abscondus_147 (CQ1), Aphelion_148 (CQ1), Bachita_152 (CQ1), Cucurbita_148 (CQ1), Culver_149 (CQ1), Dusty_145 (CQ1), Engineer_151 (CQ1), Geeche_149 (CQ1), Lozinak_149 (CQ1), Miskis_142 (CQ1), Norvs_147 (CQ1), PhinkBoden_147 (CQ1), Smoothie_150 (CQ1), Toniann_149 (CQ1), WilliamBoone_150 (CQ1),

Start 69:

- Found in 11 of 394 (2.8%) of genes in pham
- Manual Annotations of this start: 5 of 336
- Called 45.5% of time when present
- Phage (with cluster) where this start called: Edugator_36 (K5), Gengar_36 (K5), Guillsminger_36 (K5), Leston_36 (K5), Paola_36 (K5),

Start 72:

- Found in 62 of 394 (15.7%) of genes in pham
- Manual Annotations of this start: 26 of 336
- Called 53.2% of time when present
- Phage (with cluster) where this start called: Amohnition_35 (K6), Bobquesha_38 (K4), Bryler_36 (K6), Cain_36 (K6), Chavito_36 (K1), Dartin_36 (K1), Ekdilam_33 (K6), Hammy_35 (K6), Hurricane_37 (K3), JF1_37 (K4), Juliette_39 (K4), Keshu_37 (K3), KiSi_36 (K1), Krueger_36 (K6), LeMond_36 (K1), Lea83_38 (K3), Lebo14_38 (K4), McMater_36 (K1), OmniCritical_37 (K4), Peanam_36 (K1), PhelpsODU_36 (K6), Phrank_36 (K6), Pixie_36 (K3), Richo_36 (K1), Ruthiejr_38 (K4), SamScheppers_37 (K4), ShedlockHolmes_37 (K3), SirPhilip_35 (K6), TBond007_36 (K3), Tierra_36 (K6), Unicorn_36 (K6), Ximenita_37 (K6), Yuna_37 (K6),

Start 73:

- Found in 1 of 394 (0.3%) of genes in pham
- Manual Annotations of this start: 1 of 336
- Called 100.0% of time when present
- Phage (with cluster) where this start called: Efra2_37 (K1),

Start 74:

- Found in 4 of 394 (1.0%) of genes in pham
- Manual Annotations of this start: 2 of 336
- Called 50.0% of time when present
- Phage (with cluster) where this start called: LastHope_37 (K1), Nergal_32 (AG),

Start 78:

- Found in 1 of 394 (0.3%) of genes in pham
- Manual Annotations of this start: 1 of 336
- Called 100.0% of time when present
- Phage (with cluster) where this start called: Rando14_38 (K5),

Start 80:

- Found in 8 of 394 (2.0%) of genes in pham
- Manual Annotations of this start: 2 of 336
- Called 25.0% of time when present

- Phage (with cluster) where this start called: BrutonGaster_128 (CQ2), OneUp_134 (CQ2),

Start 84:

- Found in 9 of 394 (2.3%) of genes in pham
- Manual Annotations of this start: 6 of 336
- Called 66.7% of time when present
- Phage (with cluster) where this start called: Bipper_31 (Y), Cracklewink_31 (Y), Kudrefre_129 (DU1), Octobien14_125 (DU1), Sephiroth_124 (DU1), Syleon_129 (DU1),

Start 86:

- Found in 30 of 394 (7.6%) of genes in pham
- Manual Annotations of this start: 20 of 336
- Called 86.7% of time when present
- Phage (with cluster) where this start called: BourbonZero_94 (L3), Clautastrophe_91 (L3), DuncansLeg_93 (L3), Ellson_92 (L3), Finnry_93 (L3), Hilltopfarm_30 (Y), Jobypre_93 (L3), Jubie_92 (L3), Kingsolomon_91 (L3), KirDoubleO7_91 (L3), Krypton555_95 (L3), LiyuLake_92 (L3), Lolly9_92 (L3), Lumos_93 (L3), MiniLon_97 (L3), MiniMac_97 (L3), Moostard_90 (L3), MsGreen_93 (L3), Nicholas_91 (L3), Red305_94 (L3), Samty_92 (L3), Shagrat_102 (CF), Snenia_92 (L3), TriFive_93 (L3), Typha_30 (Y), Whirlwind_94 (L3),

Start 88:

- Found in 25 of 394 (6.3%) of genes in pham
- Manual Annotations of this start: 1 of 336
- Called 4.0% of time when present
- Phage (with cluster) where this start called: JoeDirt_93 (L1),

Start 89:

- Found in 1 of 394 (0.3%) of genes in pham
- Manual Annotations of this start: 1 of 336
- Called 100.0% of time when present
- Phage (with cluster) where this start called: Kumao_73 (singleton),

Start 90:

- Found in 329 of 394 (83.5%) of genes in pham
- Manual Annotations of this start: 250 of 336
- Called 86.3% of time when present
- Phage (with cluster) where this start called: 244_111 (E), ABCat_107 (E), Acquire49_92 (L1), Adnama_114 (E), Aegeus_99 (L5), Agent47_36 (K5), AlleyCat_36 (K5), AmericanBeauty_113 (E), Amgine_34 (K6), Applecrisp_35 (K6), Appletree2_91 (L1), Archie_93 (L2), Argent26_114 (E), Ariel_161 (J), Asriel_108 (E), AvadaKedavra_92 (L1), BaboJay_109 (E), BadStone_107 (E), Bagrid_172 (J), Balomoji_110 (E), Baoshan_93 (L2), Barbarian_109 (E), Bask21_110 (E), Baudelaire_99 (L5), Bazzle_93 (L2), Bench_112 (E), BigBubba_111 (E), BigCheese_96 (L2), Bobby_155 (J), BobsGarage_95 (L2), Boilgate_33 (K8), Bombitas_150 (J), BrainDrainer_98 (L4), Breezona_96 (L2), Bromden_97 (L4), Bruin_107 (E), Buck_111 (E), BugsBunny_109 (E), Cactus_114 (E), Calm_93 (L1), Chancellor_37 (K4), Chaser_96 (L4), Cheetobro_37 (K4), ChosenOne_110 (E), ChotaBhai_110 (E), CicholasNage_89 (L1), Cjw1_110 (E), Claus_95 (L2), Collard_35 (K5), Contagion_107 (E), Cookies_107 (E), Crossroads_96 (L2), CrystalP_110 (E), Curiosium_38 (K1), Czystczon1_110 (E), DHan_99 (L2), DS6A_37 (singleton),

Dadosky_36 (K5), Daikon_111 (E), Dallas_163 (J), DanBing_95 (L2), DarthP_35 (K6), DirkDirk_89 (L1), DmpstrDiver_162 (J), DoctorDiddles_109 (E), Douge_97 (L4), Douzhi_97 (L4), DrDrey_110 (E), DrSeegs_95 (L2), Dumbo_110 (E), Dusk_107 (E), DyoEdafos_99 (L4), Easy2Say_110 (E), Elite2014_109 (E), Ellie_33 (K6), Elph10_109 (E), Emmina_110 (E), Enceladus_89 (L1), Eponine_39 (K4), Eureka_110 (E), Faith1_96 (L2), FarmResident_98 (L4), Fefferhead_35 (K6), Feyre_36 (K5), Filch_112 (E), Finemlucis_97 (L2), Fionnbharth_37 (K4), FireRed_113 (E), Flypotenuse_106 (E), FoghornLeghorn_103 (E), Gabriela_96 (L2), Gage_112 (E), Gaia_124 (X), Gardann_96 (L2), Gator_108 (E), Gemini_115 (E), Glexan_109 (E), Goku_109 (E), Goldilocks_113 (E), GooberAzure_113 (E), Guanica15_37 (K1), GuuelaD_93 (L2), Hafay_97 (L2), Halena_89 (L1), HanKaySha_110 (E), Hannaconda_156 (J), Harella_111 (E), Heftyboy_36 (K5), Henry_108 (E), Highbury_106 (E), HokkenD_158 (J), Holt_115 (E), Hoonter_113 (E), Hopey_110 (E), HuffyPuff_112 (E), IHOP_108 (E), Icee_111 (E), Inca_107 (E), InvictusManeo_35 (K5), Itos_96 (L2), JeTaime_108 (E), JuicyJay_158 (J), Kahlid_95 (L2), Kanye_107 (E), KashFlow_161 (J), Kimchi_114 (E), Kostya_110 (E), Kratio_34 (K5), Kraw_38 (K4), Kropertea_92 (L4), Larva_36 (K5), LeBron_91 (L1), Lewan_97 (L2), LilDestine_94 (L2), Lilac_111 (E), Lilizi_110 (E), Lilpickle_109 (E), LittleE_169 (J), Loadrie_95 (L2), MAckerman_90 (L1), MPhalcon_111 (E), MacnCheese_37 (K3), MadamMonkfish_109 (E), MalagasyRose_37 (AG), Malthus_38 (K4), Manda_111 (E), MarkPhew_37 (K1), Marleymoo_150 (J), Marshmallow_108 (E), Maxxinista_112 (E), MiaZeal_164 (J), Miley16_96 (L2), Mindy_109 (E), Minerva_163 (J), Miniwave_105 (E), Miryou_36 (K5), Misfit_111 (E), MissDaisy_37 (K4), Mitti_37 (K4), MkaliMinitis3_98 (L2), Moldemort_112 (E), Mosby_107 (E), Murica_114 (E), Murphy_109 (E), Myrale_110 (E), Nala_112 (E), Nebkiss_125 (X), Neighly_36 (K3), Nekros_160 (J), NelitzaMV_107 (E), Netyap_95 (L2), Neville_126 (DU2), Nibb_35 (K1), Nicholasp3_96 (L2), NihilNomen_165 (J), Niklas_36 (K1), Nimrod_110 (E), NoSleep_110 (E), November_35 (K6), Odette_167 (J), OhShagHennessy_88 (L1), OkiRoe_36 (K5), Omnicron_39 (K5), OrionPax_108 (E), Oscar_36 (K1), PYPDinur_97 (L4), Palpatine_111 (E), Paperbeatsrock_109 (E), Pat3_107 (E), Patt_37 (K4), Phaja_108 (E), Pharb_35 (K3), Pharsalus_107 (E), PhatBacter_113 (E), Paux_112 (E), Phrux_106 (E), Policronamos_113 (E), Poochiewood_90 (L1), Porcelain_161 (J), Porky_108 (E), Pound_156 (J), Psycho_36 (K5), Pumpkin_111 (E), Quallification_111 (E), Quby_97 (L4), Rabbitrun_128 (DU2), Rakim_111 (E), Rearden_161 (J), Reptar3000_37 (K4), Rimmer_108 (E), RiverMonster_109 (E), Rose5_93 (L1), Rossetti_96 (L2), Rumpelstiltskin_92 (L2), Saints25_106 (E), Sarshaun_97 (L2), Scarlett_36 (K1), Shaboozey_160 (J), Shadow1_35 (K6), ShamWow_110 (E), Shaobing_36 (K1), Sheng711_98 (L4), ShereKhan_108 (E), Silverleaf_91 (L1), Simpliphy_108 (E), SirDuracell_110 (E), Slarp_37 (K4), SoJulia_98 (L2), SoSeph_36 (K5), Soap141_96 (L2), SophKB_108 (E), Sotrice96_111 (E), Squint_155 (J), Stank_112 (E), Stark_110 (E), StellaBean_108 (E), StolenFromERC_112 (E), Sunflower1121_35 (K6), Superphikiman_159 (J), Syra333_36 (K6), TBrady12_113 (E), TClif_37 (K6), Tarkin_109 (E), TeardropMSU_106 (E), Teaspoon_110 (E), Terminus_113 (E), Thresher_111 (E), Thyatira_36 (K5), TingHuaYa_36 (K1), Tomaszewski_105 (E), Toto_108 (E), Tourach_96 (L2), Traaww1_106 (E), Trax_127 (DU2), TribeTrouble_36 (K3), Tuco_111 (E), Tyson_93 (L1), UPIE_91 (L1), Ukulele_104 (E), Underpass_86 (L2), Validus_36 (K1), Vetrrix_94 (L2), ViviJ_35 (K5), Wamburgrxpress_91 (L1), Waterfoul_37 (K5), Wiggin_112 (E), Wigglewiggle_96 (L2), Wilder_97 (L2), Willez_105 (E), Winky_96 (L2), Wintermute_37 (K4), Wyatt2_93 (L1), Xandras_109 (E), Y10_37 (K4), Y2_37 (K4), YassJohnny_107 (E), Yeet_155 (J), Youngblood_114 (E), Yunkel11_37 (K1), Zakai_97 (L2), Zaria_92 (L1), Zelink_156 (J), ZhongYanYuan_93 (L2), xkcd_114 (E),

Start 93:

- Found in 3 of 394 (0.8%) of genes in pham
- No Manual Annotations of this start.
- Called 33.3% of time when present
- Phage (with cluster) where this start called: Faiyaz_30 (Y),

Start 95:

- Found in 20 of 394 (5.1%) of genes in pham
- Manual Annotations of this start: 1 of 336
- Called 5.0% of time when present
- Phage (with cluster) where this start called: ClubL_150 (CQ1),

Start 96:

- Found in 196 of 394 (49.7%) of genes in pham
- Manual Annotations of this start: 4 of 336
- Called 6.1% of time when present
- Phage (with cluster) where this start called: Amao_110 (E), Becksu_108 (E), Bellis_91 (L3), BilboSwaggins_109 (E), Command613_112 (E), FairyPath_110 (E), GoldenSpark_114 (E), MISSy_111 (E), Petra64142_114 (E), Sassay_105 (E), StormChicken_112 (E), Thimble_112 (E),

Start 97:

- Found in 41 of 394 (10.4%) of genes in pham
- Manual Annotations of this start: 1 of 336
- Called 2.4% of time when present
- Phage (with cluster) where this start called: Taquito_37 (K4),

Summary by clusters:

There are 22 clusters represented in this pham: singleton, DU1, K3, K1, K6, K5, K4, K8, CQ2, CQ1, E, AG, J, CF, L4, L5, L2, L3, L1, Y, X, DU2,

Info for manual annotations of cluster AG:

- Start number 74 was manually annotated 1 time for cluster AG.
- Start number 90 was manually annotated 1 time for cluster AG.

Info for manual annotations of cluster CF:

- Start number 58 was manually annotated 2 times for cluster CF.
- Start number 86 was manually annotated 1 time for cluster CF.

Info for manual annotations of cluster CQ1:

- Start number 66 was manually annotated 13 times for cluster CQ1.
- Start number 95 was manually annotated 1 time for cluster CQ1.

Info for manual annotations of cluster CQ2:

- Start number 80 was manually annotated 2 times for cluster CQ2.

Info for manual annotations of cluster DU1:

- Start number 84 was manually annotated 4 times for cluster DU1.

Info for manual annotations of cluster DU2:

- Start number 90 was manually annotated 3 times for cluster DU2.

Info for manual annotations of cluster E:

- Start number 90 was manually annotated 121 times for cluster E.
- Start number 96 was manually annotated 4 times for cluster E.

Info for manual annotations of cluster J:

- Start number 90 was manually annotated 19 times for cluster J.

Info for manual annotations of cluster K1:

- Start number 72 was manually annotated 3 times for cluster K1.
- Start number 73 was manually annotated 1 time for cluster K1.
- Start number 74 was manually annotated 1 time for cluster K1.
- Start number 90 was manually annotated 10 times for cluster K1.

Info for manual annotations of cluster K3:

- Start number 72 was manually annotated 5 times for cluster K3.
- Start number 90 was manually annotated 3 times for cluster K3.

Info for manual annotations of cluster K4:

- Start number 72 was manually annotated 5 times for cluster K4.
- Start number 90 was manually annotated 13 times for cluster K4.
- Start number 97 was manually annotated 1 time for cluster K4.

Info for manual annotations of cluster K5:

- Start number 69 was manually annotated 5 times for cluster K5.
- Start number 78 was manually annotated 1 time for cluster K5.
- Start number 90 was manually annotated 16 times for cluster K5.

Info for manual annotations of cluster K6:

- Start number 72 was manually annotated 13 times for cluster K6.
- Start number 90 was manually annotated 8 times for cluster K6.

Info for manual annotations of cluster K8:

- Start number 90 was manually annotated 1 time for cluster K8.

Info for manual annotations of cluster L1:

- Start number 88 was manually annotated 1 time for cluster L1.
- Start number 90 was manually annotated 18 times for cluster L1.

Info for manual annotations of cluster L2:

- Start number 90 was manually annotated 28 times for cluster L2.

Info for manual annotations of cluster L3:

- Start number 86 was manually annotated 17 times for cluster L3.

Info for manual annotations of cluster L4:

- Start number 90 was manually annotated 4 times for cluster L4.

Info for manual annotations of cluster L5:

- Start number 90 was manually annotated 2 times for cluster L5.

Info for manual annotations of cluster X:

- Start number 90 was manually annotated 2 times for cluster X.

Info for manual annotations of cluster Y:

- Start number 84 was manually annotated 2 times for cluster Y.
- Start number 86 was manually annotated 2 times for cluster Y.

Gene Information:

Gene: 244_111 Start: 62553, Stop: 62816, Start Num: 90

Candidate Starts for 244_111:

(Start: 90 @62553 has 250 MA's), (Start: 96 @62583 has 4 MA's), (110, 62658), (114, 62673), (148, 62775),

Gene: ABCat_107 Start: 63757, Stop: 64020, Start Num: 90

Candidate Starts for ABCat_107:

(Start: 90 @63757 has 250 MA's), (Start: 96 @63787 has 4 MA's), (110, 63862), (148, 63979),

Gene: Abscondus_147 Start: 80394, Stop: 80693, Start Num: 66

Candidate Starts for Abscondus_147:

(Start: 66 @80394 has 13 MA's), (Start: 95 @80475 has 1 MA's), (114, 80568), (122, 80592), (124, 80598), (147, 80664), (152, 80682),

Gene: Acquire49_92 Start: 57880, Stop: 58119, Start Num: 90

Candidate Starts for Acquire49_92:

(Start: 88 @57877 has 1 MA's), (Start: 90 @57880 has 250 MA's), (110, 57985), (114, 58000), (118, 58012), (123, 58027), (127, 58039), (140, 58087),

Gene: Adnama_114 Start: 63046, Stop: 63309, Start Num: 90

Candidate Starts for Adnama_114:

(Start: 90 @63046 has 250 MA's), (Start: 96 @63076 has 4 MA's), (110, 63151), (148, 63268),

Gene: Aegeus_99 Start: 60382, Stop: 60651, Start Num: 90

Candidate Starts for Aegeus_99:

(48, 60259), (51, 60286), (52, 60289), (68, 60337), (77, 60367), (Start: 90 @60382 has 250 MA's), (Start: 95 @60409 has 1 MA's), (Start: 96 @60412 has 4 MA's), (Start: 97 @60415 has 1 MA's), (101, 60427), (107, 60460), (111, 60490), (114, 60502), (118, 60514), (119, 60517), (138, 60583), (142, 60592), (148, 60604), (150, 60616),

Gene: Agent47_36 Start: 30297, Stop: 30521, Start Num: 90

Candidate Starts for Agent47_36:

(Start: 90 @30297 has 250 MA's), (Start: 96 @30327 has 4 MA's), (100, 30339), (107, 30375), (108, 30378), (120, 30435), (127, 30456), (129, 30465), (135, 30489), (138, 30498),

Gene: AlleyCat_36 Start: 30143, Stop: 30367, Start Num: 90

Candidate Starts for AlleyCat_36:

(Start: 90 @30143 has 250 MA's), (Start: 96 @30173 has 4 MA's), (100, 30185), (107, 30221), (108, 30224), (120, 30281), (127, 30302), (128, 30305), (129, 30311), (135, 30335), (138, 30344),

Gene: Amao_110 Start: 63350, Stop: 63583, Start Num: 96

Candidate Starts for Amao_110:

(Start: 90 @63320 has 250 MA's), (Start: 96 @63350 has 4 MA's), (110, 63425), (148, 63542),

Gene: AmericanBeauty_113 Start: 63088, Stop: 63351, Start Num: 90
Candidate Starts for AmericanBeauty_113:
(Start: 90 @63088 has 250 MA's), (Start: 96 @63118 has 4 MA's), (110, 63193), (148, 63310),

Gene: Amgine_34 Start: 29490, Stop: 29714, Start Num: 90
Candidate Starts for Amgine_34:
(38, 29292), (44, 29337), (49, 29367), (Start: 88 @29487 has 1 MA's), (Start: 90 @29490 has 250 MA's), (Start: 96 @29520 has 4 MA's), (105, 29547), (129, 29658),

Gene: Amohndition_35 Start: 29885, Stop: 30115, Start Num: 72
Candidate Starts for Amohndition_35:
(Start: 72 @29885 has 26 MA's), (Start: 90 @29888 has 250 MA's),

Gene: Aphelion_148 Start: 81287, Stop: 81586, Start Num: 66
Candidate Starts for Aphelion_148:
(Start: 66 @81287 has 13 MA's), (Start: 95 @81368 has 1 MA's), (118, 81473), (124, 81491), (147, 81557), (152, 81575),

Gene: Applecrisp_35 Start: 29912, Stop: 30136, Start Num: 90
Candidate Starts for Applecrisp_35:
(38, 29714), (44, 29759), (49, 29789), (Start: 88 @29909 has 1 MA's), (Start: 90 @29912 has 250 MA's), (Start: 96 @29942 has 4 MA's), (105, 29969), (129, 30080),

Gene: Appletree2_91 Start: 57640, Stop: 57879, Start Num: 90
Candidate Starts for Appletree2_91:
(Start: 88 @57637 has 1 MA's), (Start: 90 @57640 has 250 MA's), (110, 57745), (114, 57760), (118, 57772), (123, 57787), (127, 57799), (138, 57841), (140, 57847),

Gene: Archie_93 Start: 59561, Stop: 59821, Start Num: 90
Candidate Starts for Archie_93:
(Start: 90 @59561 has 250 MA's), (94, 59585), (110, 59666), (118, 59693), (122, 59705), (125, 59714), (127, 59720), (138, 59762), (140, 59768),

Gene: Argent26_114 Start: 62970, Stop: 63233, Start Num: 90
Candidate Starts for Argent26_114:
(Start: 90 @62970 has 250 MA's), (Start: 96 @63000 has 4 MA's), (110, 63075), (148, 63192),

Gene: Ariel_161 Start: 83041, Stop: 83286, Start Num: 90
Candidate Starts for Ariel_161:
(50, 82951), (53, 82966), (81, 83029), (Start: 90 @83041 has 250 MA's), (Start: 97 @83071 has 1 MA's), (107, 83116), (115, 83161), (130, 83209),

Gene: Asriel_108 Start: 61503, Stop: 61766, Start Num: 90
Candidate Starts for Asriel_108:
(Start: 90 @61503 has 250 MA's), (Start: 96 @61533 has 4 MA's), (110, 61608), (148, 61725),

Gene: AvadaKedavra_92 Start: 57992, Stop: 58231, Start Num: 90
Candidate Starts for AvadaKedavra_92:
(Start: 88 @57989 has 1 MA's), (Start: 90 @57992 has 250 MA's), (110, 58097), (114, 58112), (118, 58124), (123, 58139), (127, 58151), (140, 58199),

Gene: BaboJay_109 Start: 63726, Stop: 63989, Start Num: 90
Candidate Starts for BaboJay_109:

(Start: 90 @63726 has 250 MA's), (Start: 96 @63756 has 4 MA's), (110, 63831), (114, 63846), (148, 63948),

Gene: Bachita_152 Start: 81434, Stop: 81733, Start Num: 66

Candidate Starts for Bachita_152:

(Start: 66 @81434 has 13 MA's), (Start: 95 @81515 has 1 MA's), (118, 81620), (124, 81638), (147, 81704), (152, 81722),

Gene: BadStone_107 Start: 63305, Stop: 63568, Start Num: 90

Candidate Starts for BadStone_107:

(Start: 90 @63305 has 250 MA's), (Start: 96 @63335 has 4 MA's), (110, 63410), (148, 63527),

Gene: Bagrid_172 Start: 89184, Stop: 89429, Start Num: 90

Candidate Starts for Bagrid_172:

(63, 89115), (Start: 90 @89184 has 250 MA's), (114, 89301),

Gene: Balomoji_110 Start: 63286, Stop: 63549, Start Num: 90

Candidate Starts for Balomoji_110:

(Start: 90 @63286 has 250 MA's), (Start: 96 @63316 has 4 MA's), (110, 63391), (148, 63508),

Gene: Baoshan_93 Start: 60216, Stop: 60476, Start Num: 90

Candidate Starts for Baoshan_93:

(Start: 90 @60216 has 250 MA's), (110, 60321), (118, 60348), (119, 60351), (121, 60357), (122, 60360), (123, 60363), (127, 60375), (138, 60417), (140, 60423),

Gene: Barbarian_109 Start: 61503, Stop: 61766, Start Num: 90

Candidate Starts for Barbarian_109:

(Start: 90 @61503 has 250 MA's), (Start: 96 @61533 has 4 MA's), (110, 61608), (148, 61725),

Gene: Bask21_110 Start: 62122, Stop: 62385, Start Num: 90

Candidate Starts for Bask21_110:

(Start: 90 @62122 has 250 MA's), (Start: 96 @62152 has 4 MA's), (110, 62227), (148, 62344),

Gene: Baudelaire_99 Start: 60382, Stop: 60651, Start Num: 90

Candidate Starts for Baudelaire_99:

(48, 60259), (51, 60286), (52, 60289), (68, 60337), (77, 60367), (Start: 90 @60382 has 250 MA's), (Start: 95 @60409 has 1 MA's), (Start: 96 @60412 has 4 MA's), (Start: 97 @60415 has 1 MA's), (101, 60427), (107, 60460), (111, 60490), (114, 60502), (118, 60514), (119, 60517), (138, 60583), (142, 60592), (148, 60604), (150, 60616),

Gene: Bazzle_93 Start: 60117, Stop: 60377, Start Num: 90

Candidate Starts for Bazzle_93:

(Start: 90 @60117 has 250 MA's), (94, 60141), (110, 60222), (118, 60249), (122, 60261), (125, 60270), (127, 60276), (138, 60318), (140, 60324),

Gene: Becksu_108 Start: 63389, Stop: 63622, Start Num: 96

Candidate Starts for Becksu_108:

(Start: 90 @63359 has 250 MA's), (Start: 96 @63389 has 4 MA's), (110, 63464), (148, 63581),

Gene: Bellis_91 Start: 59773, Stop: 60003, Start Num: 96

Candidate Starts for Bellis_91:

(Start: 86 @59734 has 20 MA's), (Start: 96 @59773 has 4 MA's), (110, 59848), (118, 59875), (121, 59884), (143, 59956),

Gene: Bench_112 Start: 63727, Stop: 63990, Start Num: 90

Candidate Starts for Bench_112:

(Start: 90 @63727 has 250 MA's), (Start: 96 @63757 has 4 MA's), (110, 63832), (148, 63949),

Gene: BigBubba_111 Start: 62199, Stop: 62462, Start Num: 90

Candidate Starts for BigBubba_111:

(Start: 90 @62199 has 250 MA's), (Start: 96 @62229 has 4 MA's), (110, 62304), (148, 62421),

Gene: BigCheese_96 Start: 60326, Stop: 60586, Start Num: 90

Candidate Starts for BigCheese_96:

(Start: 90 @60326 has 250 MA's), (94, 60350), (110, 60431), (118, 60458), (122, 60470), (123, 60473), (125, 60479), (127, 60485), (138, 60527), (140, 60533),

Gene: BilboSwaggins_109 Start: 63813, Stop: 64046, Start Num: 96

Candidate Starts for BilboSwaggins_109:

(Start: 90 @63783 has 250 MA's), (Start: 96 @63813 has 4 MA's), (110, 63888), (148, 64005),

Gene: Bipper_31 Start: 28074, Stop: 28352, Start Num: 84

Candidate Starts for Bipper_31:

(9, 27636), (16, 27714), (Start: 84 @28074 has 6 MA's), (Start: 86 @28077 has 20 MA's), (Start: 97 @28119 has 1 MA's), (100, 28128), (101, 28131), (103, 28143), (107, 28170), (117, 28224), (118, 28227), (130, 28263), (151, 28329),

Gene: Bobby_155 Start: 88907, Stop: 89152, Start Num: 90

Candidate Starts for Bobby_155:

(63, 88838), (Start: 90 @88907 has 250 MA's), (114, 89024),

Gene: Bobquesha_38 Start: 30372, Stop: 30659, Start Num: 72

Candidate Starts for Bobquesha_38:

(Start: 72 @30372 has 26 MA's), (Start: 90 @30378 has 250 MA's), (Start: 97 @30411 has 1 MA's), (105, 30435), (109, 30471), (121, 30522), (122, 30525), (128, 30543), (129, 30549), (141, 30591), (143, 30594), (145, 30597),

Gene: BobsGarage_95 Start: 60326, Stop: 60586, Start Num: 90

Candidate Starts for BobsGarage_95:

(Start: 90 @60326 has 250 MA's), (94, 60350), (110, 60431), (118, 60458), (122, 60470), (123, 60473), (125, 60479), (127, 60485), (138, 60527), (140, 60533),

Gene: Boilgate_33 Start: 31436, Stop: 31663, Start Num: 90

Candidate Starts for Boilgate_33:

(Start: 72 @31433 has 26 MA's), (Start: 90 @31436 has 250 MA's), (100, 31478), (102, 31484), (109, 31529), (110, 31541), (116, 31565), (120, 31577), (123, 31586), (129, 31607), (141, 31646),

Gene: Bombitas_150 Start: 84182, Stop: 84427, Start Num: 90

Candidate Starts for Bombitas_150:

(63, 84113), (Start: 90 @84182 has 250 MA's), (114, 84299),

Gene: BourbonZero_94 Start: 59760, Stop: 60029, Start Num: 86

Candidate Starts for BourbonZero_94:

(Start: 86 @59760 has 20 MA's), (Start: 96 @59799 has 4 MA's), (110, 59874), (118, 59901), (121, 59910), (143, 59982),

Gene: BrainDrainer_98 Start: 60036, Stop: 60275, Start Num: 90
Candidate Starts for BrainDrainer_98:
(82, 60030), (Start: 90 @60036 has 250 MA's), (108, 60117), (110, 60141), (118, 60168), (130, 60207),
(140, 60243), (144, 60249),

Gene: Breezona_96 Start: 60332, Stop: 60592, Start Num: 90
Candidate Starts for Breezona_96:
(Start: 90 @60332 has 250 MA's), (94, 60356), (110, 60437), (122, 60476), (123, 60479), (125, 60485),
(127, 60491), (138, 60533), (140, 60539),

Gene: Bromden_97 Start: 60914, Stop: 61153, Start Num: 90
Candidate Starts for Bromden_97:
(82, 60908), (Start: 90 @60914 has 250 MA's), (108, 60995), (110, 61019), (118, 61046), (130, 61085),
(140, 61121), (144, 61127),

Gene: Bruin_107 Start: 62411, Stop: 62674, Start Num: 90
Candidate Starts for Bruin_107:
(Start: 90 @62411 has 250 MA's), (Start: 96 @62441 has 4 MA's), (110, 62516), (148, 62633),

Gene: BrutonGaster_128 Start: 76649, Stop: 76906, Start Num: 80
Candidate Starts for BrutonGaster_128:
(43, 76505), (47, 76535), (52, 76568), (Start: 80 @76649 has 2 MA's), (91, 76670), (94, 76691), (124,
76817), (134, 76853), (136, 76859), (147, 76883),

Gene: Bryler_36 Start: 28890, Stop: 29123, Start Num: 72
Candidate Starts for Bryler_36:
(49, 28800), (Start: 72 @28890 has 26 MA's), (118, 29031), (143, 29109),

Gene: Buck_111 Start: 64227, Stop: 64490, Start Num: 90
Candidate Starts for Buck_111:
(Start: 90 @64227 has 250 MA's), (Start: 96 @64257 has 4 MA's), (110, 64332), (148, 64449),

Gene: BugsBunny_109 Start: 63725, Stop: 63988, Start Num: 90
Candidate Starts for BugsBunny_109:
(Start: 90 @63725 has 250 MA's), (Start: 96 @63755 has 4 MA's), (110, 63830), (148, 63947),

Gene: Cactus_114 Start: 62665, Stop: 62928, Start Num: 90
Candidate Starts for Cactus_114:
(Start: 90 @62665 has 250 MA's), (Start: 96 @62695 has 4 MA's), (110, 62770), (148, 62887),

Gene: Cain_36 Start: 28878, Stop: 29111, Start Num: 72
Candidate Starts for Cain_36:
(49, 28788), (Start: 72 @28878 has 26 MA's), (118, 29019), (143, 29097),

Gene: Calm_93 Start: 57891, Stop: 58130, Start Num: 90
Candidate Starts for Calm_93:
(Start: 88 @57888 has 1 MA's), (Start: 90 @57891 has 250 MA's), (110, 57996), (114, 58011), (118,
58023), (123, 58038), (127, 58050), (140, 58098),

Gene: Chancellor_37 Start: 30638, Stop: 30919, Start Num: 90
Candidate Starts for Chancellor_37:
(Start: 72 @30632 has 26 MA's), (Start: 90 @30638 has 250 MA's), (Start: 97 @30671 has 1 MA's),
(105, 30695), (109, 30731), (118, 30773), (121, 30782), (122, 30785), (128, 30803), (129, 30809),

(141, 30851), (143, 30854), (145, 30857),

Gene: Chaser_96 Start: 59337, Stop: 59576, Start Num: 90

Candidate Starts for Chaser_96:

(82, 59331), (Start: 90 @59337 has 250 MA's), (108, 59418), (110, 59442), (118, 59469), (130, 59508), (140, 59544), (144, 59550),

Gene: Chavito_36 Start: 29119, Stop: 29349, Start Num: 72

Candidate Starts for Chavito_36:

(49, 29029), (Start: 72 @29119 has 26 MA's), (Start: 90 @29122 has 250 MA's), (105, 29179),

Gene: Cheetobro_37 Start: 30635, Stop: 30916, Start Num: 90

Candidate Starts for Cheetobro_37:

(Start: 72 @30629 has 26 MA's), (Start: 90 @30635 has 250 MA's), (Start: 97 @30668 has 1 MA's), (105, 30692), (109, 30728), (118, 30770), (121, 30779), (122, 30782), (128, 30800), (129, 30806), (141, 30848), (143, 30851), (145, 30854),

Gene: ChosenOne_110 Start: 62611, Stop: 62874, Start Num: 90

Candidate Starts for ChosenOne_110:

(Start: 90 @62611 has 250 MA's), (Start: 96 @62641 has 4 MA's), (110, 62716), (148, 62833),

Gene: ChotaBhai_110 Start: 63064, Stop: 63327, Start Num: 90

Candidate Starts for ChotaBhai_110:

(Start: 90 @63064 has 250 MA's), (Start: 96 @63094 has 4 MA's), (110, 63169), (148, 63286),

Gene: CicholasNage_89 Start: 57544, Stop: 57783, Start Num: 90

Candidate Starts for CicholasNage_89:

(Start: 88 @57541 has 1 MA's), (Start: 90 @57544 has 250 MA's), (110, 57649), (114, 57664), (118, 57676), (123, 57691), (127, 57703), (138, 57745), (140, 57751),

Gene: Cjw1_110 Start: 64420, Stop: 64683, Start Num: 90

Candidate Starts for Cjw1_110:

(Start: 90 @64420 has 250 MA's), (Start: 96 @64450 has 4 MA's), (110, 64525), (148, 64642),

Gene: Claus_95 Start: 60040, Stop: 60279, Start Num: 90

Candidate Starts for Claus_95:

(Start: 90 @60040 has 250 MA's), (110, 60145), (118, 60172), (119, 60175), (121, 60181), (122, 60184), (127, 60199), (138, 60241), (140, 60247),

Gene: Clautastrophe_91 Start: 59729, Stop: 59998, Start Num: 86

Candidate Starts for Clautastrophe_91:

(Start: 86 @59729 has 20 MA's), (Start: 96 @59768 has 4 MA's), (110, 59843), (118, 59870), (121, 59879), (143, 59951),

Gene: ClubL_150 Start: 80767, Stop: 80985, Start Num: 95

Candidate Starts for ClubL_150:

(7, 80272), (10, 80293), (13, 80308), (14, 80323), (26, 80470), (28, 80476), (30, 80479), (35, 80521), (36, 80524), (40, 80563), (54, 80647), (60, 80662), (70, 80695), (Start: 95 @80767 has 1 MA's), (101, 80785), (111, 80848), (119, 80875), (124, 80890), (147, 80956), (152, 80974),

Gene: Collard_35 Start: 30258, Stop: 30482, Start Num: 90

Candidate Starts for Collard_35:

(Start: 90 @30258 has 250 MA's), (Start: 96 @30288 has 4 MA's), (100, 30300), (107, 30336), (108, 30339), (120, 30396), (127, 30417), (129, 30426), (135, 30450), (138, 30459),

Gene: Command613_112 Start: 63309, Stop: 63542, Start Num: 96

Candidate Starts for Command613_112:

(Start: 90 @63279 has 250 MA's), (Start: 96 @63309 has 4 MA's), (110, 63384), (148, 63501),

Gene: Contagion_107 Start: 62773, Stop: 63036, Start Num: 90

Candidate Starts for Contagion_107:

(Start: 90 @62773 has 250 MA's), (Start: 96 @62803 has 4 MA's), (110, 62878), (148, 62995),

Gene: Cookies_107 Start: 63050, Stop: 63313, Start Num: 90

Candidate Starts for Cookies_107:

(Start: 90 @63050 has 250 MA's), (Start: 96 @63080 has 4 MA's), (110, 63155), (148, 63272),

Gene: Cracklewink_31 Start: 28074, Stop: 28352, Start Num: 84

Candidate Starts for Cracklewink_31:

(Start: 84 @28074 has 6 MA's), (Start: 86 @28077 has 20 MA's), (Start: 97 @28119 has 1 MA's), (100, 28128), (101, 28131), (107, 28170), (117, 28224), (121, 28230), (130, 28263), (151, 28329),

Gene: Crossroads_96 Start: 60044, Stop: 60304, Start Num: 90

Candidate Starts for Crossroads_96:

(Start: 90 @60044 has 250 MA's), (94, 60068), (110, 60149), (118, 60176), (122, 60188), (123, 60191), (125, 60197), (127, 60203), (138, 60245), (140, 60251),

Gene: CrystalP_110 Start: 63783, Stop: 64046, Start Num: 90

Candidate Starts for CrystalP_110:

(Start: 90 @63783 has 250 MA's), (Start: 96 @63813 has 4 MA's), (110, 63888), (148, 64005),

Gene: Cucurbita_148 Start: 81747, Stop: 82046, Start Num: 66

Candidate Starts for Cucurbita_148:

(Start: 66 @81747 has 13 MA's), (Start: 95 @81828 has 1 MA's), (118, 81933), (124, 81951), (147, 82017), (152, 82035),

Gene: Culver_149 Start: 80011, Stop: 80310, Start Num: 66

Candidate Starts for Culver_149:

(Start: 66 @80011 has 13 MA's), (Start: 95 @80092 has 1 MA's), (124, 80215), (147, 80281), (152, 80299),

Gene: Curiosium_38 Start: 29582, Stop: 29809, Start Num: 90

Candidate Starts for Curiosium_38:

(61, 29525), (67, 29543), (Start: 90 @29582 has 250 MA's), (100, 29624), (115, 29705), (119, 29717),

Gene: Czyszczone1_110 Start: 62766, Stop: 63029, Start Num: 90

Candidate Starts for Czyszczone1_110:

(Start: 90 @62766 has 250 MA's), (Start: 96 @62796 has 4 MA's), (110, 62871), (148, 62988),

Gene: DHan_99 Start: 60263, Stop: 60523, Start Num: 90

Candidate Starts for DHan_99:

(Start: 90 @60263 has 250 MA's), (110, 60368), (118, 60395), (119, 60398), (121, 60404), (122, 60407), (127, 60422), (138, 60464), (140, 60470),

Gene: DS6A_37 Start: 31428, Stop: 31652, Start Num: 90

Candidate Starts for DS6A_37:

(Start: 90 @31428 has 250 MA's), (Start: 96 @31458 has 4 MA's), (99, 31467), (100, 31470), (101, 31473), (107, 31506), (114, 31548), (115, 31551), (119, 31563), (120, 31566), (132, 31611), (135, 31620), (138, 31629),

Gene: Dadosky_36 Start: 30144, Stop: 30368, Start Num: 90

Candidate Starts for Dadosky_36:

(Start: 90 @30144 has 250 MA's), (Start: 96 @30174 has 4 MA's), (100, 30186), (107, 30222), (108, 30225), (120, 30282), (127, 30303), (128, 30306), (129, 30312), (135, 30336), (138, 30345),

Gene: Daikon_111 Start: 62582, Stop: 62845, Start Num: 90

Candidate Starts for Daikon_111:

(Start: 90 @62582 has 250 MA's), (Start: 96 @62612 has 4 MA's), (110, 62687), (148, 62804),

Gene: Dallas_163 Start: 87175, Stop: 87420, Start Num: 90

Candidate Starts for Dallas_163:

(63, 87106), (Start: 90 @87175 has 250 MA's), (114, 87292),

Gene: DanBing_95 Start: 59956, Stop: 60210, Start Num: 90

Candidate Starts for DanBing_95:

(Start: 90 @59956 has 250 MA's), (110, 60061), (118, 60088), (121, 60097), (122, 60100), (127, 60115), (138, 60157), (140, 60163),

Gene: DarthP_35 Start: 29810, Stop: 30037, Start Num: 90

Candidate Starts for DarthP_35:

(Start: 72 @29807 has 26 MA's), (Start: 90 @29810 has 250 MA's),

Gene: Dartin_36 Start: 28807, Stop: 29037, Start Num: 72

Candidate Starts for Dartin_36:

(18, 28489), (34, 28618), (44, 28687), (49, 28717), (Start: 72 @28807 has 26 MA's), (Start: 90 @28810 has 250 MA's), (115, 28933), (127, 28969),

Gene: DirkDirk_89 Start: 57220, Stop: 57459, Start Num: 90

Candidate Starts for DirkDirk_89:

(Start: 88 @57217 has 1 MA's), (Start: 90 @57220 has 250 MA's), (110, 57325), (114, 57340), (118, 57352), (123, 57367), (127, 57379), (138, 57421), (140, 57427),

Gene: DmpstrDiver_162 Start: 85902, Stop: 86147, Start Num: 90

Candidate Starts for DmpstrDiver_162:

(63, 85833), (Start: 90 @85902 has 250 MA's), (114, 86019),

Gene: DoctorDiddles_109 Start: 62552, Stop: 62815, Start Num: 90

Candidate Starts for DoctorDiddles_109:

(Start: 90 @62552 has 250 MA's), (Start: 96 @62582 has 4 MA's), (110, 62657), (148, 62774),

Gene: Douge_97 Start: 59456, Stop: 59695, Start Num: 90

Candidate Starts for Douge_97:

(82, 59450), (Start: 90 @59456 has 250 MA's), (108, 59537), (110, 59561), (118, 59588), (125, 59609), (130, 59627), (140, 59663),

Gene: Douzhi_97 Start: 59725, Stop: 59964, Start Num: 90

Candidate Starts for Douzhi_97:

(82, 59719), (Start: 90 @59725 has 250 MA's), (108, 59806), (110, 59830), (125, 59878), (130, 59896), (140, 59932), (144, 59938),

Gene: DrDrey_110 Start: 64443, Stop: 64706, Start Num: 90

Candidate Starts for DrDrey_110:

(Start: 90 @64443 has 250 MA's), (Start: 96 @64473 has 4 MA's), (110, 64548), (148, 64665),

Gene: DrSeegs_95 Start: 60332, Stop: 60592, Start Num: 90

Candidate Starts for DrSeegs_95:

(Start: 90 @60332 has 250 MA's), (94, 60356), (110, 60437), (122, 60476), (123, 60479), (125, 60485), (127, 60491), (138, 60533), (140, 60539),

Gene: Dumbo_110 Start: 62803, Stop: 63066, Start Num: 90

Candidate Starts for Dumbo_110:

(Start: 90 @62803 has 250 MA's), (Start: 96 @62833 has 4 MA's), (110, 62908), (148, 63025),

Gene: DuncansLeg_93 Start: 59748, Stop: 60017, Start Num: 86

Candidate Starts for DuncansLeg_93:

(Start: 86 @59748 has 20 MA's), (Start: 96 @59787 has 4 MA's), (110, 59862), (118, 59889), (121, 59898), (143, 59970),

Gene: Dusk_107 Start: 62965, Stop: 63228, Start Num: 90

Candidate Starts for Dusk_107:

(Start: 90 @62965 has 250 MA's), (Start: 96 @62995 has 4 MA's), (110, 63070), (148, 63187),

Gene: Dusty_145 Start: 80222, Stop: 80521, Start Num: 66

Candidate Starts for Dusty_145:

(Start: 66 @80222 has 13 MA's), (Start: 95 @80303 has 1 MA's), (118, 80408), (124, 80426), (147, 80492), (152, 80510),

Gene: DyoEdafos_99 Start: 60045, Stop: 60284, Start Num: 90

Candidate Starts for DyoEdafos_99:

(82, 60039), (Start: 90 @60045 has 250 MA's), (108, 60126), (110, 60150), (118, 60177), (130, 60216), (140, 60252), (144, 60258),

Gene: Easy2Say_110 Start: 63437, Stop: 63700, Start Num: 90

Candidate Starts for Easy2Say_110:

(Start: 90 @63437 has 250 MA's), (Start: 96 @63467 has 4 MA's), (110, 63542), (114, 63557), (148, 63659),

Gene: Edugator_36 Start: 30537, Stop: 30794, Start Num: 69

Candidate Starts for Edugator_36:

(Start: 69 @30537 has 5 MA's), (70, 30540), (71, 30546), (Start: 90 @30570 has 250 MA's), (100, 30612), (107, 30648), (108, 30651), (115, 30693), (120, 30708), (127, 30729), (128, 30732), (129, 30738), (135, 30762), (138, 30771),

Gene: Efra2_37 Start: 29012, Stop: 29254, Start Num: 73

Candidate Starts for Efra2_37:

(59, 28967), (62, 28976), (Start: 73 @29012 has 1 MA's), (75, 29018), (79, 29024), (Start: 90 @29027 has 250 MA's), (100, 29069), (115, 29150), (119, 29162),

Gene: Ekdilam_33 Start: 29562, Stop: 29792, Start Num: 72

Candidate Starts for Ekdilam_33:

(18, 29244), (24, 29307), (44, 29442), (49, 29472), (Start: 72 @29562 has 26 MA's), (Start: 90 @29565 has 250 MA's), (105, 29622),

Gene: Elite2014_109 Start: 62610, Stop: 62873, Start Num: 90

Candidate Starts for Elite2014_109:

(Start: 90 @62610 has 250 MA's), (Start: 96 @62640 has 4 MA's), (110, 62715), (148, 62832),

Gene: Ellie_33 Start: 29603, Stop: 29827, Start Num: 90

Candidate Starts for Ellie_33:

(38, 29405), (44, 29450), (49, 29480), (Start: 88 @29600 has 1 MA's), (Start: 90 @29603 has 250 MA's), (Start: 96 @29633 has 4 MA's), (105, 29660), (129, 29771),

Gene: Ellson_92 Start: 60063, Stop: 60332, Start Num: 86

Candidate Starts for Ellson_92:

(Start: 86 @60063 has 20 MA's), (Start: 96 @60102 has 4 MA's), (110, 60177), (118, 60204), (121, 60213), (143, 60285),

Gene: Elph10_109 Start: 62449, Stop: 62712, Start Num: 90

Candidate Starts for Elph10_109:

(Start: 90 @62449 has 250 MA's), (94, 62473), (Start: 96 @62479 has 4 MA's), (110, 62554), (148, 62671),

Gene: Emmina_110 Start: 62388, Stop: 62651, Start Num: 90

Candidate Starts for Emmina_110:

(Start: 90 @62388 has 250 MA's), (Start: 96 @62418 has 4 MA's), (110, 62493), (114, 62508), (148, 62610),

Gene: Enceladus_89 Start: 57921, Stop: 58160, Start Num: 90

Candidate Starts for Enceladus_89:

(Start: 88 @57918 has 1 MA's), (Start: 90 @57921 has 250 MA's), (110, 58026), (114, 58041), (118, 58053), (123, 58068), (127, 58080), (138, 58122), (140, 58128),

Gene: Engineer_151 Start: 81270, Stop: 81569, Start Num: 66

Candidate Starts for Engineer_151:

(Start: 66 @81270 has 13 MA's), (Start: 95 @81351 has 1 MA's), (118, 81456), (124, 81474), (147, 81540), (152, 81558),

Gene: Eponine_39 Start: 31391, Stop: 31672, Start Num: 90

Candidate Starts for Eponine_39:

(Start: 72 @31385 has 26 MA's), (Start: 90 @31391 has 250 MA's), (Start: 97 @31424 has 1 MA's), (105, 31448), (109, 31484), (121, 31535), (122, 31538), (128, 31556), (129, 31562), (141, 31604), (143, 31607), (145, 31610),

Gene: Eureka_110 Start: 63576, Stop: 63839, Start Num: 90

Candidate Starts for Eureka_110:

(Start: 90 @63576 has 250 MA's), (Start: 96 @63606 has 4 MA's), (110, 63681), (114, 63696), (148, 63798),

Gene: FairyPath_110 Start: 63911, Stop: 64144, Start Num: 96

Candidate Starts for FairyPath_110:

(Start: 90 @63881 has 250 MA's), (Start: 96 @63911 has 4 MA's), (110, 63986), (148, 64103),

Gene: Faith1_96 Start: 59969, Stop: 60229, Start Num: 90

Candidate Starts for Faith1_96:

(Start: 90 @59969 has 250 MA's), (94, 59993), (110, 60074), (122, 60113), (123, 60116), (125, 60122), (127, 60128), (138, 60170), (140, 60176),

Gene: Faiyaz_30 Start: 27537, Stop: 27782, Start Num: 93

Candidate Starts for Faiyaz_30:

(25, 27231), (Start: 84 @27507 has 6 MA's), (Start: 86 @27510 has 20 MA's), (Start: 90 @27519 has 250 MA's), (93, 27537), (100, 27561), (101, 27564), (107, 27603), (108, 27606), (118, 27660), (121, 27663), (124, 27672), (139, 27732),

Gene: FarmResident_98 Start: 59612, Stop: 59851, Start Num: 90

Candidate Starts for FarmResident_98:

(85, 59606), (Start: 90 @59612 has 250 MA's), (108, 59693), (110, 59717), (118, 59744), (130, 59783), (140, 59819), (144, 59825),

Gene: Fefferhead_35 Start: 29803, Stop: 30027, Start Num: 90

Candidate Starts for Fefferhead_35:

(38, 29605), (44, 29650), (49, 29680), (Start: 88 @29800 has 1 MA's), (Start: 90 @29803 has 250 MA's), (Start: 96 @29833 has 4 MA's), (105, 29860), (129, 29971),

Gene: Feyre_36 Start: 30208, Stop: 30432, Start Num: 90

Candidate Starts for Feyre_36:

(Start: 69 @30175 has 5 MA's), (Start: 90 @30208 has 250 MA's), (Start: 96 @30238 has 4 MA's), (100, 30250), (107, 30286), (108, 30289), (111, 30316), (120, 30346), (121, 30349), (129, 30376),

Gene: Filch_112 Start: 62762, Stop: 63025, Start Num: 90

Candidate Starts for Filch_112:

(Start: 90 @62762 has 250 MA's), (Start: 96 @62792 has 4 MA's), (110, 62867), (148, 62984),

Gene: Finemlucis_97 Start: 61077, Stop: 61337, Start Num: 90

Candidate Starts for Finemlucis_97:

(Start: 90 @61077 has 250 MA's), (94, 61101), (110, 61182), (118, 61209), (122, 61221), (123, 61224), (125, 61230), (127, 61236), (138, 61278), (140, 61284),

Gene: Finnry_93 Start: 60082, Stop: 60351, Start Num: 86

Candidate Starts for Finnry_93:

(Start: 86 @60082 has 20 MA's), (Start: 96 @60121 has 4 MA's), (110, 60196), (118, 60223), (121, 60232), (143, 60304),

Gene: Fionnbharth_37 Start: 30626, Stop: 30907, Start Num: 90

Candidate Starts for Fionnbharth_37:

(23, 30362), (Start: 72 @30620 has 26 MA's), (Start: 90 @30626 has 250 MA's), (Start: 97 @30659 has 1 MA's), (105, 30683), (109, 30719), (121, 30770), (122, 30773), (128, 30791), (129, 30797), (141, 30839), (143, 30842), (145, 30845),

Gene: FireRed_113 Start: 63852, Stop: 64115, Start Num: 90

Candidate Starts for FireRed_113:

(Start: 90 @63852 has 250 MA's), (Start: 96 @63882 has 4 MA's), (110, 63957), (148, 64074),

Gene: Flypotenuse_106 Start: 62157, Stop: 62420, Start Num: 90

Candidate Starts for Flypotenuse_106:

(Start: 90 @62157 has 250 MA's), (Start: 96 @62187 has 4 MA's), (110, 62262), (148, 62379),

Gene: FoghornLeghorn_103 Start: 60742, Stop: 61005, Start Num: 90
Candidate Starts for FoghornLeghorn_103:
(Start: 90 @60742 has 250 MA's), (Start: 96 @60772 has 4 MA's), (110, 60847), (148, 60964),

Gene: Gabriela_96 Start: 59315, Stop: 59575, Start Num: 90
Candidate Starts for Gabriela_96:
(Start: 90 @59315 has 250 MA's), (94, 59339), (110, 59420), (122, 59459), (123, 59462), (125, 59468),
(127, 59474), (138, 59516), (140, 59522),

Gene: Gage_112 Start: 63108, Stop: 63371, Start Num: 90
Candidate Starts for Gage_112:
(Start: 90 @63108 has 250 MA's), (Start: 96 @63138 has 4 MA's), (110, 63213), (148, 63330),

Gene: Gaia_124 Start: 69033, Stop: 69269, Start Num: 90
Candidate Starts for Gaia_124:
(64, 68973), (Start: 90 @69033 has 250 MA's), (104, 69087), (115, 69153), (118, 69162), (119, 69165),
(125, 69183), (133, 69213),

Gene: Gardann_96 Start: 59810, Stop: 60070, Start Num: 90
Candidate Starts for Gardann_96:
(Start: 90 @59810 has 250 MA's), (94, 59834), (110, 59915), (118, 59942), (122, 59954), (123, 59957),
(125, 59963), (127, 59969), (138, 60011), (140, 60017),

Gene: Gator_108 Start: 63017, Stop: 63280, Start Num: 90
Candidate Starts for Gator_108:
(Start: 90 @63017 has 250 MA's), (Start: 96 @63047 has 4 MA's), (110, 63122), (148, 63239),

Gene: Geeche_149 Start: 80647, Stop: 80946, Start Num: 66
Candidate Starts for Geeche_149:
(Start: 66 @80647 has 13 MA's), (Start: 95 @80728 has 1 MA's), (114, 80821), (122, 80845), (124,
80851), (147, 80917), (152, 80935),

Gene: Gemini_115 Start: 63487, Stop: 63750, Start Num: 90
Candidate Starts for Gemini_115:
(Start: 90 @63487 has 250 MA's), (Start: 96 @63517 has 4 MA's), (110, 63592), (148, 63709),

Gene: Gengar_36 Start: 30285, Stop: 30542, Start Num: 69
Candidate Starts for Gengar_36:
(Start: 69 @30285 has 5 MA's), (Start: 90 @30318 has 250 MA's), (Start: 96 @30348 has 4 MA's),
(100, 30360), (107, 30396), (108, 30399), (111, 30426), (120, 30456), (121, 30459), (129, 30486),

Gene: Glexan_109 Start: 63167, Stop: 63430, Start Num: 90
Candidate Starts for Glexan_109:
(Start: 90 @63167 has 250 MA's), (Start: 96 @63197 has 4 MA's), (110, 63272), (148, 63389),

Gene: Goku_109 Start: 63305, Stop: 63568, Start Num: 90
Candidate Starts for Goku_109:
(Start: 90 @63305 has 250 MA's), (Start: 96 @63335 has 4 MA's), (110, 63410), (114, 63425), (148,
63527),

Gene: GoldenSpark_114 Start: 63000, Stop: 63233, Start Num: 96
Candidate Starts for GoldenSpark_114:
(Start: 90 @62970 has 250 MA's), (Start: 96 @63000 has 4 MA's), (110, 63075), (148, 63192),

Gene: Goldilocks_113 Start: 62986, Stop: 63249, Start Num: 90
Candidate Starts for Goldilocks_113:
(Start: 90 @62986 has 250 MA's), (Start: 96 @63016 has 4 MA's), (110, 63091), (148, 63208),

Gene: GooberAzure_113 Start: 62970, Stop: 63233, Start Num: 90
Candidate Starts for GooberAzure_113:
(Start: 90 @62970 has 250 MA's), (Start: 96 @63000 has 4 MA's), (110, 63075), (148, 63192),

Gene: Guanica15_37 Start: 28984, Stop: 29211, Start Num: 90
Candidate Starts for Guanica15_37:
(Start: 74 @28972 has 2 MA's), (75, 28975), (Start: 90 @28984 has 250 MA's), (100, 29026), (115, 29107), (119, 29119),

Gene: Guillsminger_36 Start: 30256, Stop: 30513, Start Num: 69
Candidate Starts for Guillsminger_36:
(Start: 69 @30256 has 5 MA's), (Start: 90 @30289 has 250 MA's), (Start: 96 @30319 has 4 MA's), (100, 30331), (107, 30367), (108, 30370), (111, 30397), (120, 30427), (121, 30430), (129, 30457),

Gene: GuuelaD_93 Start: 59928, Stop: 60188, Start Num: 90
Candidate Starts for GuuelaD_93:
(Start: 90 @59928 has 250 MA's), (94, 59952), (110, 60033), (118, 60060), (122, 60072), (123, 60075), (125, 60081), (127, 60087), (138, 60129), (140, 60135),

Gene: Hafay_97 Start: 60035, Stop: 60274, Start Num: 90
Candidate Starts for Hafay_97:
(Start: 90 @60035 has 250 MA's), (110, 60140), (118, 60167), (119, 60170), (121, 60176), (122, 60179), (127, 60194), (138, 60236), (140, 60242),

Gene: Halena_89 Start: 56807, Stop: 57046, Start Num: 90
Candidate Starts for Halena_89:
(Start: 88 @56804 has 1 MA's), (Start: 90 @56807 has 250 MA's), (110, 56912), (114, 56927), (118, 56939), (123, 56954), (127, 56966), (138, 57008), (140, 57014),

Gene: Hammy_35 Start: 29798, Stop: 30028, Start Num: 72
Candidate Starts for Hammy_35:
(Start: 72 @29798 has 26 MA's), (Start: 90 @29801 has 250 MA's),

Gene: HanKaySha_110 Start: 63158, Stop: 63421, Start Num: 90
Candidate Starts for HanKaySha_110:
(Start: 90 @63158 has 250 MA's), (Start: 96 @63188 has 4 MA's), (110, 63263), (114, 63278), (148, 63380),

Gene: Hannaconda_156 Start: 86966, Stop: 87211, Start Num: 90
Candidate Starts for Hannaconda_156:
(50, 86876), (53, 86891), (81, 86954), (Start: 90 @86966 has 250 MA's), (Start: 97 @86996 has 1 MA's), (107, 87041), (115, 87086), (130, 87134),

Gene: Harella_111 Start: 63683, Stop: 63946, Start Num: 90
Candidate Starts for Harella_111:
(Start: 90 @63683 has 250 MA's), (Start: 96 @63713 has 4 MA's), (110, 63788), (148, 63905),

Gene: Heftyboy_36 Start: 30435, Stop: 30659, Start Num: 90

Candidate Starts for Heftyboy_36:

(Start: 69 @30402 has 5 MA's), (Start: 90 @30435 has 250 MA's), (Start: 96 @30465 has 4 MA's), (100, 30477), (107, 30513), (108, 30516), (111, 30543), (120, 30573), (121, 30576), (129, 30603), (138, 30636),

Gene: Henry_108 Start: 62968, Stop: 63231, Start Num: 90

Candidate Starts for Henry_108:

(Start: 90 @62968 has 250 MA's), (Start: 96 @62998 has 4 MA's), (110, 63073), (114, 63088), (148, 63190),

Gene: Highbury_106 Start: 61315, Stop: 61578, Start Num: 90

Candidate Starts for Highbury_106:

(Start: 90 @61315 has 250 MA's), (Start: 96 @61345 has 4 MA's), (110, 61420), (114, 61435), (148, 61537),

Gene: Hilltopfarm_30 Start: 27540, Stop: 27812, Start Num: 86

Candidate Starts for Hilltopfarm_30:

(15, 27174), (25, 27261), (Start: 84 @27537 has 6 MA's), (Start: 86 @27540 has 20 MA's), (Start: 90 @27549 has 250 MA's), (93, 27567), (100, 27591), (101, 27594), (107, 27633), (108, 27636), (118, 27690), (121, 27693), (124, 27702), (139, 27762),

Gene: HokkenD_158 Start: 88260, Stop: 88505, Start Num: 90

Candidate Starts for HokkenD_158:

(63, 88191), (Start: 90 @88260 has 250 MA's), (114, 88377),

Gene: Holt_115 Start: 63384, Stop: 63647, Start Num: 90

Candidate Starts for Holt_115:

(Start: 90 @63384 has 250 MA's), (Start: 96 @63414 has 4 MA's), (110, 63489), (148, 63606),

Gene: Hoonter_113 Start: 63463, Stop: 63726, Start Num: 90

Candidate Starts for Hoonter_113:

(Start: 90 @63463 has 250 MA's), (Start: 96 @63493 has 4 MA's), (110, 63568), (148, 63685),

Gene: Hokey_110 Start: 63769, Stop: 64032, Start Num: 90

Candidate Starts for Hokey_110:

(Start: 90 @63769 has 250 MA's), (Start: 96 @63799 has 4 MA's), (110, 63874), (148, 63991),

Gene: HufflyPuff_112 Start: 64078, Stop: 64341, Start Num: 90

Candidate Starts for HufflyPuff_112:

(Start: 90 @64078 has 250 MA's), (Start: 96 @64108 has 4 MA's), (110, 64183), (148, 64300),

Gene: Hurricane_37 Start: 30347, Stop: 30586, Start Num: 72

Candidate Starts for Hurricane_37:

(44, 30227), (49, 30257), (Start: 72 @30347 has 26 MA's), (101, 30404), (129, 30530), (135, 30554),

Gene: IHOP_108 Start: 62686, Stop: 62949, Start Num: 90

Candidate Starts for IHOP_108:

(Start: 90 @62686 has 250 MA's), (Start: 96 @62716 has 4 MA's), (110, 62791), (148, 62908),

Gene: Icee_111 Start: 62494, Stop: 62757, Start Num: 90

Candidate Starts for Icee_111:

(Start: 90 @62494 has 250 MA's), (Start: 96 @62524 has 4 MA's), (110, 62599), (148, 62716),

Gene: Inca_107 Start: 61175, Stop: 61438, Start Num: 90

Candidate Starts for Inca_107:

(Start: 90 @61175 has 250 MA's), (Start: 96 @61205 has 4 MA's), (110, 61280), (148, 61397),

Gene: InvictusManeo_35 Start: 30301, Stop: 30525, Start Num: 90

Candidate Starts for InvictusManeo_35:

(Start: 90 @30301 has 250 MA's), (Start: 96 @30331 has 4 MA's), (100, 30343), (107, 30379), (108, 30382), (120, 30439), (127, 30460), (129, 30469), (135, 30493), (138, 30502),

Gene: Itos_96 Start: 58875, Stop: 59135, Start Num: 90

Candidate Starts for Itos_96:

(Start: 90 @58875 has 250 MA's), (94, 58899), (110, 58980), (122, 59019), (123, 59022), (125, 59028), (127, 59034), (138, 59076), (140, 59082),

Gene: JF1_37 Start: 30619, Stop: 30906, Start Num: 72

Candidate Starts for JF1_37:

(17, 30298), (23, 30361), (Start: 72 @30619 has 26 MA's), (Start: 90 @30625 has 250 MA's), (Start: 97 @30658 has 1 MA's), (105, 30682), (109, 30718), (121, 30769), (122, 30772), (128, 30790), (129, 30796), (141, 30838), (143, 30841), (145, 30844),

Gene: JeTaime_108 Start: 62594, Stop: 62857, Start Num: 90

Candidate Starts for JeTaime_108:

(Start: 90 @62594 has 250 MA's), (Start: 96 @62624 has 4 MA's), (110, 62699), (148, 62816),

Gene: Jflix2_98 Start: 56001, Stop: 56309, Start Num: 58

Candidate Starts for Jflix2_98:

(6, 55566), (12, 55650), (19, 55773), (Start: 58 @56001 has 2 MA's), (Start: 80 @56067 has 2 MA's), (98, 56118), (106, 56142), (108, 56163), (132, 56265),

Gene: Jobypre_93 Start: 59729, Stop: 59998, Start Num: 86

Candidate Starts for Jobypre_93:

(Start: 86 @59729 has 20 MA's), (Start: 96 @59768 has 4 MA's), (110, 59843), (118, 59870), (121, 59879), (143, 59951),

Gene: JoeDirt_93 Start: 58479, Stop: 58721, Start Num: 88

Candidate Starts for JoeDirt_93:

(Start: 88 @58479 has 1 MA's), (Start: 90 @58482 has 250 MA's), (110, 58587), (114, 58602), (118, 58614), (123, 58629), (127, 58641), (138, 58683), (140, 58689),

Gene: Jubie_92 Start: 59864, Stop: 60133, Start Num: 86

Candidate Starts for Jubie_92:

(Start: 86 @59864 has 20 MA's), (Start: 96 @59903 has 4 MA's), (110, 59978), (118, 60005), (121, 60014), (143, 60086),

Gene: JuicyJay_158 Start: 87907, Stop: 88152, Start Num: 90

Candidate Starts for JuicyJay_158:

(63, 87838), (Start: 90 @87907 has 250 MA's), (114, 88024),

Gene: Juliette_39 Start: 30778, Stop: 31065, Start Num: 72

Candidate Starts for Juliette_39:

(23, 30520), (Start: 72 @30778 has 26 MA's), (Start: 90 @30784 has 250 MA's), (Start: 97 @30817 has 1 MA's), (105, 30841), (109, 30877), (121, 30928), (122, 30931), (128, 30949), (129, 30955), (141, 30997), (143, 31000), (145, 31003),

Gene: Kahlid_95 Start: 59728, Stop: 59988, Start Num: 90

Candidate Starts for Kahlid_95:

(Start: 90 @59728 has 250 MA's), (94, 59752), (110, 59833), (118, 59860), (122, 59872), (123, 59875), (125, 59881), (127, 59887), (138, 59929), (140, 59935),

Gene: Kanye_107 Start: 63219, Stop: 63482, Start Num: 90

Candidate Starts for Kanye_107:

(Start: 90 @63219 has 250 MA's), (Start: 96 @63249 has 4 MA's), (110, 63324), (148, 63441),

Gene: KashFlow_161 Start: 86779, Stop: 87024, Start Num: 90

Candidate Starts for KashFlow_161:

(50, 86689), (53, 86704), (81, 86767), (Start: 90 @86779 has 250 MA's), (Start: 97 @86809 has 1 MA's), (107, 86854), (115, 86899), (130, 86947),

Gene: Keshu_37 Start: 30338, Stop: 30577, Start Num: 72

Candidate Starts for Keshu_37:

(49, 30248), (Start: 72 @30338 has 26 MA's), (101, 30395), (121, 30491), (135, 30545),

Gene: KiSi_36 Start: 29106, Stop: 29339, Start Num: 72

Candidate Starts for KiSi_36:

(8, 28674), (11, 28698), (18, 28788), (44, 28986), (49, 29016), (Start: 72 @29106 has 26 MA's), (Start: 90 @29109 has 250 MA's), (105, 29166),

Gene: Kimchi_114 Start: 63111, Stop: 63374, Start Num: 90

Candidate Starts for Kimchi_114:

(Start: 90 @63111 has 250 MA's), (Start: 96 @63141 has 4 MA's), (110, 63216), (148, 63333),

Gene: Kingsolomon_91 Start: 59838, Stop: 60107, Start Num: 86

Candidate Starts for Kingsolomon_91:

(Start: 86 @59838 has 20 MA's), (Start: 96 @59877 has 4 MA's), (110, 59952), (118, 59979), (121, 59988), (143, 60060),

Gene: KirDoubleO7_91 Start: 59750, Stop: 60019, Start Num: 86

Candidate Starts for KirDoubleO7_91:

(Start: 86 @59750 has 20 MA's), (Start: 96 @59789 has 4 MA's), (110, 59864), (118, 59891), (121, 59900), (143, 59972),

Gene: Kostya_110 Start: 62788, Stop: 63051, Start Num: 90

Candidate Starts for Kostya_110:

(Start: 90 @62788 has 250 MA's), (Start: 96 @62818 has 4 MA's), (110, 62893), (148, 63010),

Gene: Kratio_34 Start: 29847, Stop: 30071, Start Num: 90

Candidate Starts for Kratio_34:

(Start: 90 @29847 has 250 MA's), (Start: 96 @29877 has 4 MA's), (100, 29889), (107, 29925), (108, 29928), (120, 29985), (127, 30006), (129, 30015), (138, 30048),

Gene: Kraw_38 Start: 30550, Stop: 30831, Start Num: 90

Candidate Starts for Kraw_38:

(23, 30286), (Start: 72 @30544 has 26 MA's), (Start: 90 @30550 has 250 MA's), (Start: 97 @30583 has 1 MA's), (105, 30607), (109, 30643), (121, 30694), (122, 30697), (128, 30715), (129, 30721), (141, 30763), (143, 30766), (145, 30769),

Gene: Kropertea_92 Start: 59330, Stop: 59569, Start Num: 90

Candidate Starts for Kropertea_92:

(82, 59324), (Start: 90 @59330 has 250 MA's), (108, 59411), (110, 59435), (118, 59462), (130, 59501), (140, 59537), (144, 59543),

Gene: Krueger_36 Start: 28751, Stop: 28984, Start Num: 72

Candidate Starts for Krueger_36:

(49, 28661), (Start: 72 @28751 has 26 MA's), (Start: 90 @28754 has 250 MA's), (105, 28811), (109, 28847), (138, 28955),

Gene: Krypton555_95 Start: 60241, Stop: 60510, Start Num: 86

Candidate Starts for Krypton555_95:

(Start: 86 @60241 has 20 MA's), (Start: 96 @60280 has 4 MA's), (110, 60355), (118, 60382), (121, 60391), (143, 60463),

Gene: Kudrefre_129 Start: 69576, Stop: 69818, Start Num: 84

Candidate Starts for Kudrefre_129:

(Start: 80 @69570 has 2 MA's), (Start: 84 @69576 has 6 MA's), (100, 69627), (110, 69690), (112, 69711), (129, 69765), (131, 69774), (137, 69795),

Gene: Kumao_73 Start: 50178, Stop: 50432, Start Num: 89

Candidate Starts for Kumao_73:

(Start: 89 @50178 has 1 MA's), (Start: 97 @50211 has 1 MA's), (103, 50229), (107, 50256), (108, 50259), (120, 50319), (126, 50337), (129, 50352), (132, 50367),

Gene: Larva_36 Start: 30011, Stop: 30235, Start Num: 90

Candidate Starts for Larva_36:

(Start: 90 @30011 has 250 MA's), (Start: 96 @30041 has 4 MA's), (100, 30053), (107, 30089), (108, 30092), (120, 30149), (127, 30170), (128, 30173), (129, 30179), (135, 30203), (138, 30212),

Gene: LastHope_37 Start: 28857, Stop: 29096, Start Num: 74

Candidate Starts for LastHope_37:

(20, 28575), (37, 28683), (61, 28812), (Start: 74 @28857 has 2 MA's), (75, 28860), (Start: 90 @28869 has 250 MA's), (100, 28911), (115, 28992), (119, 29004), (129, 29037), (141, 29076),

Gene: LeBron_91 Start: 57114, Stop: 57353, Start Num: 90

Candidate Starts for LeBron_91:

(Start: 88 @57111 has 1 MA's), (Start: 90 @57114 has 250 MA's), (110, 57219), (114, 57234), (118, 57246), (123, 57261), (127, 57273), (140, 57321),

Gene: LeMond_36 Start: 29177, Stop: 29410, Start Num: 72

Candidate Starts for LeMond_36:

(8, 28745), (11, 28769), (18, 28859), (44, 29057), (49, 29087), (Start: 72 @29177 has 26 MA's), (Start: 90 @29180 has 250 MA's), (105, 29237),

Gene: Lea83_38 Start: 30405, Stop: 30644, Start Num: 72

Candidate Starts for Lea83_38:

(Start: 72 @30405 has 26 MA's), (101, 30462), (129, 30588), (135, 30612),

Gene: Lebo14_38 Start: 30633, Stop: 30920, Start Num: 72

Candidate Starts for Lebo14_38:

(Start: 72 @30633 has 26 MA's), (Start: 90 @30639 has 250 MA's), (Start: 97 @30672 has 1 MA's), (105, 30696), (109, 30732), (118, 30774), (121, 30783), (122, 30786), (128, 30804), (129, 30810),

(141, 30852), (143, 30855), (145, 30858),

Gene: Leston_36 Start: 30386, Stop: 30643, Start Num: 69

Candidate Starts for Leston_36:

(Start: 69 @30386 has 5 MA's), (Start: 90 @30419 has 250 MA's), (Start: 96 @30449 has 4 MA's), (100, 30461), (107, 30497), (108, 30500), (111, 30527), (120, 30557), (121, 30560), (129, 30587),

Gene: Lewan_97 Start: 59968, Stop: 60228, Start Num: 90

Candidate Starts for Lewan_97:

(Start: 90 @59968 has 250 MA's), (94, 59992), (110, 60073), (122, 60112), (123, 60115), (125, 60121), (127, 60127), (138, 60169), (140, 60175),

Gene: LilDestine_94 Start: 59639, Stop: 59899, Start Num: 90

Candidate Starts for LilDestine_94:

(Start: 90 @59639 has 250 MA's), (94, 59663), (110, 59744), (118, 59771), (122, 59783), (123, 59786), (125, 59792), (127, 59798), (138, 59840), (140, 59846),

Gene: Lilac_111 Start: 63912, Stop: 64175, Start Num: 90

Candidate Starts for Lilac_111:

(Start: 90 @63912 has 250 MA's), (Start: 96 @63942 has 4 MA's), (110, 64017), (148, 64134),

Gene: Lilizi_110 Start: 63198, Stop: 63461, Start Num: 90

Candidate Starts for Lilizi_110:

(Start: 90 @63198 has 250 MA's), (Start: 96 @63228 has 4 MA's), (110, 63303), (148, 63420),

Gene: Lilpickle_109 Start: 62610, Stop: 62873, Start Num: 90

Candidate Starts for Lilpickle_109:

(Start: 90 @62610 has 250 MA's), (Start: 96 @62640 has 4 MA's), (110, 62715), (148, 62832),

Gene: LittleE_169 Start: 87841, Stop: 88086, Start Num: 90

Candidate Starts for LittleE_169:

(50, 87751), (53, 87766), (81, 87829), (Start: 90 @87841 has 250 MA's), (Start: 97 @87871 has 1 MA's), (107, 87916), (115, 87961), (130, 88009),

Gene: LiyuLake_92 Start: 59823, Stop: 60092, Start Num: 86

Candidate Starts for LiyuLake_92:

(Start: 86 @59823 has 20 MA's), (Start: 96 @59862 has 4 MA's), (110, 59937), (118, 59964), (121, 59973), (143, 60045),

Gene: Loadrie_95 Start: 60130, Stop: 60390, Start Num: 90

Candidate Starts for Loadrie_95:

(Start: 90 @60130 has 250 MA's), (94, 60154), (110, 60235), (118, 60262), (122, 60274), (123, 60277), (125, 60283), (127, 60289), (138, 60331), (140, 60337),

Gene: Lolly9_92 Start: 59914, Stop: 60183, Start Num: 86

Candidate Starts for Lolly9_92:

(Start: 86 @59914 has 20 MA's), (Start: 96 @59953 has 4 MA's), (110, 60028), (118, 60055), (121, 60064), (143, 60136),

Gene: Lozinak_149 Start: 81275, Stop: 81574, Start Num: 66

Candidate Starts for Lozinak_149:

(Start: 66 @81275 has 13 MA's), (Start: 95 @81356 has 1 MA's), (118, 81461), (124, 81479), (147, 81545), (152, 81563),

Gene: Lumos_93 Start: 59726, Stop: 59995, Start Num: 86

Candidate Starts for Lumos_93:

(Start: 86 @59726 has 20 MA's), (Start: 96 @59765 has 4 MA's), (110, 59840), (118, 59867), (121, 59876), (143, 59948),

Gene: MAckerman_90 Start: 56800, Stop: 57039, Start Num: 90

Candidate Starts for MAckerman_90:

(Start: 88 @56797 has 1 MA's), (Start: 90 @56800 has 250 MA's), (110, 56905), (114, 56920), (118, 56932), (123, 56947), (127, 56959), (138, 57001), (140, 57007),

Gene: MISSy_111 Start: 63925, Stop: 64158, Start Num: 96

Candidate Starts for MISSy_111:

(Start: 90 @63895 has 250 MA's), (Start: 96 @63925 has 4 MA's), (110, 64000), (148, 64117),

Gene: MPhalcon_111 Start: 63313, Stop: 63576, Start Num: 90

Candidate Starts for MPhalcon_111:

(Start: 90 @63313 has 250 MA's), (Start: 96 @63343 has 4 MA's), (110, 63418), (148, 63535),

Gene: MacnCheese_37 Start: 30394, Stop: 30618, Start Num: 90

Candidate Starts for MacnCheese_37:

(49, 30301), (Start: 72 @30391 has 26 MA's), (Start: 90 @30394 has 250 MA's),

Gene: MadamMonkfish_109 Start: 62620, Stop: 62883, Start Num: 90

Candidate Starts for MadamMonkfish_109:

(Start: 90 @62620 has 250 MA's), (Start: 96 @62650 has 4 MA's), (110, 62725), (114, 62740), (148, 62842),

Gene: Madraxi_100 Start: 58159, Stop: 58470, Start Num: 58

Candidate Starts for Madraxi_100:

(1, 57238), (2, 57592), (3, 57622), (4, 57646), (5, 57664), (19, 57931), (Start: 58 @58159 has 2 MA's), (Start: 80 @58225 has 2 MA's), (98, 58276), (105, 58297), (111, 58348), (115, 58363), (119, 58375), (129, 58408),

Gene: MalagasyRose_37 Start: 29428, Stop: 29652, Start Num: 90

Candidate Starts for MalagasyRose_37:

(42, 29272), (55, 29350), (56, 29353), (Start: 90 @29428 has 250 MA's), (99, 29467), (100, 29470), (111, 29536), (115, 29551), (118, 29560), (128, 29590), (129, 29596), (132, 29611), (145, 29641),

Gene: Malthus_38 Start: 30550, Stop: 30831, Start Num: 90

Candidate Starts for Malthus_38:

(23, 30286), (Start: 72 @30544 has 26 MA's), (Start: 90 @30550 has 250 MA's), (Start: 97 @30583 has 1 MA's), (105, 30607), (109, 30643), (121, 30694), (122, 30697), (128, 30715), (129, 30721), (141, 30763), (143, 30766), (145, 30769),

Gene: Manda_111 Start: 63350, Stop: 63613, Start Num: 90

Candidate Starts for Manda_111:

(Start: 90 @63350 has 250 MA's), (Start: 96 @63380 has 4 MA's), (110, 63455), (114, 63470), (148, 63572),

Gene: MarkPhew_37 Start: 29081, Stop: 29311, Start Num: 90

Candidate Starts for MarkPhew_37:

(18, 28760), (44, 28958), (49, 28988), (Start: 72 @29078 has 26 MA's), (Start: 90 @29081 has 250 MA's), (Start: 96 @29111 has 4 MA's), (105, 29138),

Gene: Marleymoo_150 Start: 84999, Stop: 85244, Start Num: 90
Candidate Starts for Marleymoo_150:
(63, 84930), (Start: 90 @84999 has 250 MA's), (114, 85116),

Gene: Marshmallow_108 Start: 63308, Stop: 63571, Start Num: 90
Candidate Starts for Marshmallow_108:
(Start: 90 @63308 has 250 MA's), (Start: 96 @63338 has 4 MA's), (110, 63413), (114, 63428), (148, 63530),

Gene: Maxxinsta_112 Start: 63097, Stop: 63360, Start Num: 90
Candidate Starts for Maxxinsta_112:
(Start: 90 @63097 has 250 MA's), (Start: 96 @63127 has 4 MA's), (110, 63202), (148, 63319),

Gene: McMater_36 Start: 28807, Stop: 29037, Start Num: 72
Candidate Starts for McMater_36:
(18, 28489), (34, 28618), (44, 28687), (49, 28717), (Start: 72 @28807 has 26 MA's), (Start: 90 @28810 has 250 MA's), (115, 28933), (127, 28969),

Gene: MiaZeal_164 Start: 83595, Stop: 83840, Start Num: 90
Candidate Starts for MiaZeal_164:
(50, 83505), (53, 83520), (81, 83583), (Start: 90 @83595 has 250 MA's), (Start: 97 @83625 has 1 MA's), (107, 83670), (115, 83715), (130, 83763),

Gene: Miley16_96 Start: 60332, Stop: 60592, Start Num: 90
Candidate Starts for Miley16_96:
(Start: 90 @60332 has 250 MA's), (94, 60356), (110, 60437), (122, 60476), (123, 60479), (125, 60485), (127, 60491), (138, 60533), (140, 60539),

Gene: Mindy_109 Start: 62629, Stop: 62892, Start Num: 90
Candidate Starts for Mindy_109:
(Start: 90 @62629 has 250 MA's), (Start: 96 @62659 has 4 MA's), (110, 62734), (148, 62851),

Gene: Minerva_163 Start: 86325, Stop: 86570, Start Num: 90
Candidate Starts for Minerva_163:
(63, 86256), (Start: 90 @86325 has 250 MA's), (114, 86442),

Gene: MiniLon_97 Start: 59915, Stop: 60184, Start Num: 86
Candidate Starts for MiniLon_97:
(Start: 86 @59915 has 20 MA's), (Start: 96 @59954 has 4 MA's), (110, 60029), (118, 60056), (121, 60065), (143, 60137),

Gene: MiniMac_97 Start: 59910, Stop: 60179, Start Num: 86
Candidate Starts for MiniMac_97:
(Start: 86 @59910 has 20 MA's), (Start: 96 @59949 has 4 MA's), (110, 60024), (118, 60051), (121, 60060), (143, 60132),

Gene: Miniwave_105 Start: 62806, Stop: 63069, Start Num: 90
Candidate Starts for Miniwave_105:
(Start: 90 @62806 has 250 MA's), (Start: 96 @62836 has 4 MA's), (110, 62911), (148, 63028),

Gene: Miryou_36 Start: 30274, Stop: 30498, Start Num: 90

Candidate Starts for Miryou_36:

(Start: 69 @30241 has 5 MA's), (Start: 90 @30274 has 250 MA's), (Start: 96 @30304 has 4 MA's), (100, 30316), (111, 30382), (120, 30412), (129, 30442), (138, 30475),

Gene: Misfit_111 Start: 64409, Stop: 64672, Start Num: 90

Candidate Starts for Misfit_111:

(Start: 90 @64409 has 250 MA's), (Start: 96 @64439 has 4 MA's), (110, 64514), (148, 64631),

Gene: Miskis_142 Start: 80036, Stop: 80335, Start Num: 66

Candidate Starts for Miskis_142:

(Start: 66 @80036 has 13 MA's), (Start: 95 @80117 has 1 MA's), (118, 80222), (124, 80240), (147, 80306), (152, 80324),

Gene: MissDaisy_37 Start: 30393, Stop: 30674, Start Num: 90

Candidate Starts for MissDaisy_37:

(Start: 72 @30387 has 26 MA's), (Start: 90 @30393 has 250 MA's), (Start: 97 @30426 has 1 MA's), (105, 30450), (109, 30486), (121, 30537), (122, 30540), (128, 30558), (129, 30564), (130, 30567), (141, 30606), (143, 30609), (145, 30612),

Gene: Mitti_37 Start: 30551, Stop: 30832, Start Num: 90

Candidate Starts for Mitti_37:

(Start: 72 @30545 has 26 MA's), (Start: 90 @30551 has 250 MA's), (Start: 97 @30584 has 1 MA's), (105, 30608), (109, 30644), (121, 30695), (122, 30698), (128, 30716), (129, 30722), (141, 30764), (143, 30767), (145, 30770),

Gene: MkaliMitinis3_98 Start: 60094, Stop: 60354, Start Num: 90

Candidate Starts for MkaliMitinis3_98:

(Start: 90 @60094 has 250 MA's), (94, 60118), (110, 60199), (122, 60238), (123, 60241), (125, 60247), (127, 60253), (138, 60295), (140, 60301),

Gene: Moldemort_112 Start: 63078, Stop: 63341, Start Num: 90

Candidate Starts for Moldemort_112:

(Start: 90 @63078 has 250 MA's), (Start: 96 @63108 has 4 MA's), (110, 63183), (114, 63198), (148, 63300),

Gene: Moostard_90 Start: 59833, Stop: 60102, Start Num: 86

Candidate Starts for Moostard_90:

(Start: 86 @59833 has 20 MA's), (Start: 96 @59872 has 4 MA's), (110, 59947), (118, 59974), (121, 59983), (143, 60055),

Gene: Mosby_107 Start: 62773, Stop: 63036, Start Num: 90

Candidate Starts for Mosby_107:

(Start: 90 @62773 has 250 MA's), (Start: 96 @62803 has 4 MA's), (110, 62878), (148, 62995),

Gene: MsGreen_93 Start: 59728, Stop: 59997, Start Num: 86

Candidate Starts for MsGreen_93:

(Start: 86 @59728 has 20 MA's), (Start: 96 @59767 has 4 MA's), (110, 59842), (118, 59869), (121, 59878), (143, 59950),

Gene: Murica_114 Start: 65112, Stop: 65375, Start Num: 90

Candidate Starts for Murica_114:

(Start: 90 @65112 has 250 MA's), (Start: 96 @65142 has 4 MA's), (110, 65217), (148, 65334),

Gene: Murphy_109 Start: 63470, Stop: 63733, Start Num: 90

Candidate Starts for Murphy_109:

(Start: 90 @63470 has 250 MA's), (Start: 96 @63500 has 4 MA's), (110, 63575), (114, 63590), (148, 63692),

Gene: Myrale_110 Start: 63567, Stop: 63830, Start Num: 90

Candidate Starts for Myrale_110:

(Start: 90 @63567 has 250 MA's), (Start: 96 @63597 has 4 MA's), (110, 63672), (148, 63789),

Gene: Nala_112 Start: 63822, Stop: 64085, Start Num: 90

Candidate Starts for Nala_112:

(Start: 90 @63822 has 250 MA's), (Start: 96 @63852 has 4 MA's), (110, 63927), (148, 64044),

Gene: Nebkiss_125 Start: 67959, Stop: 68195, Start Num: 90

Candidate Starts for Nebkiss_125:

(64, 67899), (Start: 90 @67959 has 250 MA's), (104, 68013), (115, 68079), (118, 68088), (119, 68091), (125, 68109), (133, 68139),

Gene: Neighly_36 Start: 30010, Stop: 30234, Start Num: 90

Candidate Starts for Neighly_36:

(Start: 90 @30010 has 250 MA's), (Start: 96 @30040 has 4 MA's), (100, 30052), (107, 30088), (108, 30091), (120, 30148), (127, 30169), (128, 30172), (129, 30178), (135, 30202), (138, 30211),

Gene: Nekros_160 Start: 86261, Stop: 86506, Start Num: 90

Candidate Starts for Nekros_160:

(50, 86171), (53, 86186), (81, 86249), (Start: 90 @86261 has 250 MA's), (Start: 97 @86291 has 1 MA's), (107, 86336), (115, 86381), (130, 86429),

Gene: NelitzaMV_107 Start: 61795, Stop: 62058, Start Num: 90

Candidate Starts for NelitzaMV_107:

(Start: 90 @61795 has 250 MA's), (Start: 96 @61825 has 4 MA's), (110, 61900), (148, 62017),

Gene: Nergal_32 Start: 27271, Stop: 27504, Start Num: 74

Candidate Starts for Nergal_32:

(Start: 74 @27271 has 2 MA's), (100, 27319), (102, 27325), (129, 27448), (138, 27481),

Gene: Netyap_95 Start: 59970, Stop: 60230, Start Num: 90

Candidate Starts for Netyap_95:

(Start: 90 @59970 has 250 MA's), (94, 59994), (110, 60075), (122, 60114), (123, 60117), (125, 60123), (127, 60129), (138, 60171), (140, 60177),

Gene: Neville_126 Start: 70558, Stop: 70776, Start Num: 90

Candidate Starts for Neville_126:

(87, 70552), (Start: 90 @70558 has 250 MA's), (92, 70567), (Start: 95 @70582 has 1 MA's), (Start: 96 @70585 has 4 MA's), (Start: 97 @70588 has 1 MA's), (99, 70594), (102, 70603), (105, 70612), (108, 70636), (109, 70648), (113, 70675), (114, 70678), (119, 70693), (120, 70696), (122, 70699), (127, 70714), (128, 70717), (129, 70723), (130, 70726), (138, 70756), (145, 70771),

Gene: Nibb_35 Start: 28648, Stop: 28878, Start Num: 90

Candidate Starts for Nibb_35:

(49, 28555), (Start: 72 @28645 has 26 MA's), (Start: 90 @28648 has 250 MA's), (105, 28705), (129, 28816),

Gene: Nicholas_91 Start: 59838, Stop: 60107, Start Num: 86

Candidate Starts for Nicholas_91:

(Start: 86 @59838 has 20 MA's), (Start: 96 @59877 has 4 MA's), (110, 59952), (118, 59979), (121, 59988), (143, 60060),

Gene: Nicholasp3_96 Start: 59810, Stop: 60070, Start Num: 90

Candidate Starts for Nicholasp3_96:

(Start: 90 @59810 has 250 MA's), (94, 59834), (110, 59915), (118, 59942), (122, 59954), (123, 59957), (125, 59963), (127, 59969), (138, 60011), (140, 60017),

Gene: NihilNomen_165 Start: 86033, Stop: 86278, Start Num: 90

Candidate Starts for NihilNomen_165:

(63, 85964), (Start: 90 @86033 has 250 MA's), (114, 86150),

Gene: Niklas_36 Start: 28813, Stop: 29040, Start Num: 90

Candidate Starts for Niklas_36:

(18, 28492), (34, 28621), (44, 28690), (49, 28720), (Start: 72 @28810 has 26 MA's), (Start: 90 @28813 has 250 MA's), (115, 28936), (127, 28972),

Gene: Nimrod_110 Start: 63456, Stop: 63719, Start Num: 90

Candidate Starts for Nimrod_110:

(Start: 90 @63456 has 250 MA's), (Start: 96 @63486 has 4 MA's), (110, 63561), (148, 63678),

Gene: NoSleep_110 Start: 62630, Stop: 62893, Start Num: 90

Candidate Starts for NoSleep_110:

(Start: 90 @62630 has 250 MA's), (Start: 96 @62660 has 4 MA's), (110, 62735), (148, 62852),

Gene: Norvs_147 Start: 80466, Stop: 80765, Start Num: 66

Candidate Starts for Norvs_147:

(Start: 66 @80466 has 13 MA's), (Start: 95 @80547 has 1 MA's), (118, 80652), (124, 80670), (147, 80736), (152, 80754),

Gene: November_35 Start: 29729, Stop: 29956, Start Num: 90

Candidate Starts for November_35:

(Start: 72 @29726 has 26 MA's), (Start: 90 @29729 has 250 MA's),

Gene: Octobien14_125 Start: 68110, Stop: 68352, Start Num: 84

Candidate Starts for Octobien14_125:

(Start: 80 @68104 has 2 MA's), (Start: 84 @68110 has 6 MA's), (Start: 90 @68122 has 250 MA's), (94, 68143), (100, 68161), (110, 68224), (112, 68245), (125, 68284), (129, 68299), (131, 68308), (138, 68332),

Gene: Odette_167 Start: 88739, Stop: 88984, Start Num: 90

Candidate Starts for Odette_167:

(63, 88670), (Start: 90 @88739 has 250 MA's), (114, 88856),

Gene: OhShagHennessy_88 Start: 57057, Stop: 57296, Start Num: 90

Candidate Starts for OhShagHennessy_88:

(Start: 88 @57054 has 1 MA's), (Start: 90 @57057 has 250 MA's), (110, 57162), (114, 57177), (118, 57189), (123, 57204), (127, 57216), (138, 57258), (140, 57264),

Gene: OkiRoe_36 Start: 30291, Stop: 30515, Start Num: 90

Candidate Starts for OkiRoe_36:

(Start: 69 @30258 has 5 MA's), (Start: 90 @30291 has 250 MA's), (Start: 96 @30321 has 4 MA's), (100, 30333), (107, 30369), (108, 30372), (111, 30399), (120, 30429), (121, 30432), (129, 30459),

Gene: OmniCritical_37 Start: 30529, Stop: 30816, Start Num: 72

Candidate Starts for OmniCritical_37:

(Start: 72 @30529 has 26 MA's), (Start: 90 @30535 has 250 MA's), (Start: 97 @30568 has 1 MA's), (105, 30592), (109, 30628), (121, 30679), (122, 30682), (128, 30700), (129, 30706), (141, 30748), (143, 30751), (145, 30754),

Gene: Omnicron_39 Start: 29782, Stop: 30006, Start Num: 90

Candidate Starts for Omnicron_39:

(Start: 90 @29782 has 250 MA's), (Start: 96 @29812 has 4 MA's), (100, 29824), (108, 29863), (120, 29920), (128, 29944), (129, 29950), (135, 29974), (138, 29983),

Gene: OneUp_134 Start: 80067, Stop: 80324, Start Num: 80

Candidate Starts for OneUp_134:

(Start: 80 @80067 has 2 MA's), (Start: 88 @80082 has 1 MA's), (Start: 90 @80085 has 250 MA's), (91, 80088), (108, 80166), (124, 80235), (134, 80271), (136, 80277), (147, 80301), (149, 80304),

Gene: OrionPax_108 Start: 62703, Stop: 62966, Start Num: 90

Candidate Starts for OrionPax_108:

(Start: 90 @62703 has 250 MA's), (Start: 96 @62733 has 4 MA's), (110, 62808), (114, 62823), (148, 62925),

Gene: Oscar_36 Start: 29182, Stop: 29412, Start Num: 90

Candidate Starts for Oscar_36:

(8, 28747), (11, 28771), (18, 28861), (44, 29059), (49, 29089), (Start: 72 @29179 has 26 MA's), (Start: 90 @29182 has 250 MA's), (Start: 96 @29212 has 4 MA's), (105, 29239),

Gene: PYPDinur_97 Start: 60288, Stop: 60527, Start Num: 90

Candidate Starts for PYPDinur_97:

(82, 60282), (Start: 90 @60288 has 250 MA's), (108, 60369), (110, 60393), (118, 60420), (130, 60459), (140, 60495), (144, 60501),

Gene: Palpatine_111 Start: 64107, Stop: 64370, Start Num: 90

Candidate Starts for Palpatine_111:

(Start: 90 @64107 has 250 MA's), (Start: 96 @64137 has 4 MA's), (110, 64212), (148, 64329),

Gene: Paola_36 Start: 30256, Stop: 30513, Start Num: 69

Candidate Starts for Paola_36:

(Start: 69 @30256 has 5 MA's), (Start: 90 @30289 has 250 MA's), (Start: 96 @30319 has 4 MA's), (100, 30331), (107, 30367), (108, 30370), (111, 30397), (120, 30427), (121, 30430), (129, 30457),

Gene: Paperbeatsrock_109 Start: 63484, Stop: 63747, Start Num: 90

Candidate Starts for Paperbeatsrock_109:

(Start: 90 @63484 has 250 MA's), (Start: 96 @63514 has 4 MA's), (110, 63589), (148, 63706),

Gene: Pat3_107 Start: 62123, Stop: 62386, Start Num: 90

Candidate Starts for Pat3_107:

(Start: 90 @62123 has 250 MA's), (Start: 96 @62153 has 4 MA's), (110, 62228), (148, 62345),

Gene: Patt_37 Start: 30369, Stop: 30650, Start Num: 90

Candidate Starts for Patt_37:

(Start: 72 @30363 has 26 MA's), (Start: 90 @30369 has 250 MA's), (Start: 97 @30402 has 1 MA's), (105, 30426), (109, 30462), (121, 30513), (122, 30516), (128, 30534), (129, 30540), (130, 30543), (141, 30582), (143, 30585), (145, 30588),

Gene: Peanam_36 Start: 28807, Stop: 29037, Start Num: 72

Candidate Starts for Peanam_36:

(18, 28489), (34, 28618), (44, 28687), (49, 28717), (Start: 72 @28807 has 26 MA's), (Start: 90 @28810 has 250 MA's), (115, 28933), (127, 28969),

Gene: Petra64142_114 Start: 63982, Stop: 64215, Start Num: 96

Candidate Starts for Petra64142_114:

(Start: 90 @63952 has 250 MA's), (Start: 96 @63982 has 4 MA's), (110, 64057), (148, 64174),

Gene: Phaja_108 Start: 62688, Stop: 62951, Start Num: 90

Candidate Starts for Phaja_108:

(Start: 90 @62688 has 250 MA's), (Start: 96 @62718 has 4 MA's), (110, 62793), (148, 62910),

Gene: Pharb_35 Start: 29653, Stop: 29877, Start Num: 90

Candidate Starts for Pharb_35:

(18, 29332), (44, 29530), (49, 29560), (Start: 72 @29650 has 26 MA's), (Start: 90 @29653 has 250 MA's), (105, 29710),

Gene: Pharsalus_107 Start: 63183, Stop: 63446, Start Num: 90

Candidate Starts for Pharsalus_107:

(Start: 90 @63183 has 250 MA's), (Start: 96 @63213 has 4 MA's), (110, 63288), (148, 63405),

Gene: PhatBacter_113 Start: 63852, Stop: 64115, Start Num: 90

Candidate Starts for PhatBacter_113:

(Start: 90 @63852 has 250 MA's), (Start: 96 @63882 has 4 MA's), (110, 63957), (148, 64074),

Gene: Phaux_112 Start: 64412, Stop: 64675, Start Num: 90

Candidate Starts for Phaux_112:

(Start: 90 @64412 has 250 MA's), (Start: 96 @64442 has 4 MA's), (110, 64517), (114, 64532), (148, 64634),

Gene: PhelpsODU_36 Start: 28916, Stop: 29149, Start Num: 72

Candidate Starts for PhelpsODU_36:

(Start: 72 @28916 has 26 MA's), (118, 29057), (143, 29135),

Gene: PhinkBoden_147 Start: 80864, Stop: 81163, Start Num: 66

Candidate Starts for PhinkBoden_147:

(Start: 66 @80864 has 13 MA's), (Start: 95 @80945 has 1 MA's), (118, 81050), (124, 81068), (147, 81134), (152, 81152),

Gene: Phrank_36 Start: 28866, Stop: 29099, Start Num: 72

Candidate Starts for Phrank_36:

(49, 28776), (Start: 72 @28866 has 26 MA's), (118, 29007), (143, 29085),

Gene: Phrux_106 Start: 62490, Stop: 62753, Start Num: 90

Candidate Starts for Phrux_106:

(Start: 90 @62490 has 250 MA's), (Start: 96 @62520 has 4 MA's), (110, 62595), (148, 62712),

Gene: Pixie_36 Start: 29889, Stop: 30128, Start Num: 72

Candidate Starts for Pixie_36:

(8, 29457), (11, 29481), (18, 29571), (44, 29769), (49, 29799), (Start: 72 @29889 has 26 MA's), (101, 29946), (121, 30042), (129, 30072),

Gene: Policronamos_113 Start: 64116, Stop: 64379, Start Num: 90

Candidate Starts for Policronamos_113:

(Start: 90 @64116 has 250 MA's), (Start: 96 @64146 has 4 MA's), (110, 64221), (148, 64338),

Gene: Pochiewood_90 Start: 58454, Stop: 58693, Start Num: 90

Candidate Starts for Pochiewood_90:

(Start: 88 @58451 has 1 MA's), (Start: 90 @58454 has 250 MA's), (110, 58559), (114, 58574), (118, 58586), (123, 58601), (127, 58613), (138, 58655), (140, 58661),

Gene: Porcelain_161 Start: 83394, Stop: 83639, Start Num: 90

Candidate Starts for Porcelain_161:

(50, 83304), (53, 83319), (81, 83382), (Start: 90 @83394 has 250 MA's), (Start: 97 @83424 has 1 MA's), (107, 83469), (115, 83514), (130, 83562),

Gene: Porky_108 Start: 62234, Stop: 62497, Start Num: 90

Candidate Starts for Porky_108:

(Start: 90 @62234 has 250 MA's), (Start: 96 @62264 has 4 MA's), (110, 62339), (114, 62354), (148, 62456),

Gene: Pound_156 Start: 84927, Stop: 85172, Start Num: 90

Candidate Starts for Pound_156:

(63, 84858), (Start: 90 @84927 has 250 MA's), (114, 85044),

Gene: Psycho_36 Start: 30141, Stop: 30365, Start Num: 90

Candidate Starts for Psycho_36:

(Start: 90 @30141 has 250 MA's), (Start: 96 @30171 has 4 MA's), (100, 30183), (107, 30219), (108, 30222), (120, 30279), (127, 30300), (128, 30303), (129, 30309), (135, 30333), (138, 30342),

Gene: Pumpkin_111 Start: 62830, Stop: 63093, Start Num: 90

Candidate Starts for Pumpkin_111:

(Start: 90 @62830 has 250 MA's), (Start: 96 @62860 has 4 MA's), (110, 62935), (148, 63052),

Gene: Quallification_111 Start: 63898, Stop: 64161, Start Num: 90

Candidate Starts for Quallification_111:

(Start: 90 @63898 has 250 MA's), (Start: 96 @63928 has 4 MA's), (110, 64003), (148, 64120),

Gene: Quby_97 Start: 59700, Stop: 59939, Start Num: 90

Candidate Starts for Quby_97:

(65, 59646), (83, 59694), (Start: 90 @59700 has 250 MA's), (108, 59781), (110, 59805), (118, 59832), (130, 59871), (140, 59907), (144, 59913),

Gene: Rabbitrun_128 Start: 72178, Stop: 72396, Start Num: 90

Candidate Starts for Rabbitrun_128:

(87, 72172), (Start: 90 @72178 has 250 MA's), (92, 72187), (Start: 95 @72202 has 1 MA's), (Start: 96 @72205 has 4 MA's), (Start: 97 @72208 has 1 MA's), (100, 72217), (102, 72223), (105, 72232), (110, 72280), (114, 72298), (119, 72313), (120, 72316), (122, 72319), (127, 72334), (128, 72337), (129, 72343), (130, 72346), (138, 72376), (145, 72391),

Gene: Rakim_111 Start: 62900, Stop: 63163, Start Num: 90
Candidate Starts for Rakim_111:
(Start: 90 @62900 has 250 MA's), (Start: 96 @62930 has 4 MA's), (110, 63005), (148, 63122),

Gene: Rando14_38 Start: 29354, Stop: 29578, Start Num: 78
Candidate Starts for Rando14_38:
(Start: 78 @29354 has 1 MA's), (Start: 96 @29384 has 4 MA's), (100, 29396), (108, 29435), (120, 29492), (128, 29516), (129, 29522), (135, 29546), (138, 29555),

Gene: Rearden_161 Start: 84648, Stop: 84893, Start Num: 90
Candidate Starts for Rearden_161:
(50, 84558), (53, 84573), (81, 84636), (Start: 90 @84648 has 250 MA's), (Start: 97 @84678 has 1 MA's), (107, 84723), (115, 84768), (130, 84816),

Gene: Red305_94 Start: 59729, Stop: 59998, Start Num: 86
Candidate Starts for Red305_94:
(Start: 86 @59729 has 20 MA's), (Start: 96 @59768 has 4 MA's), (110, 59843), (118, 59870), (121, 59879), (143, 59951),

Gene: Reptar3000_37 Start: 30360, Stop: 30641, Start Num: 90
Candidate Starts for Reptar3000_37:
(Start: 72 @30354 has 26 MA's), (Start: 90 @30360 has 250 MA's), (Start: 97 @30393 has 1 MA's), (105, 30417), (109, 30453), (121, 30504), (122, 30507), (128, 30525), (129, 30531), (130, 30534), (141, 30573), (143, 30576), (145, 30579),

Gene: Richo_36 Start: 28807, Stop: 29037, Start Num: 72
Candidate Starts for Richo_36:
(18, 28489), (34, 28618), (44, 28687), (49, 28717), (Start: 72 @28807 has 26 MA's), (Start: 90 @28810 has 250 MA's), (115, 28933), (127, 28969),

Gene: Rimmer_108 Start: 63289, Stop: 63552, Start Num: 90
Candidate Starts for Rimmer_108:
(Start: 90 @63289 has 250 MA's), (Start: 96 @63319 has 4 MA's), (110, 63394), (148, 63511),

Gene: RiverMonster_109 Start: 63385, Stop: 63648, Start Num: 90
Candidate Starts for RiverMonster_109:
(Start: 90 @63385 has 250 MA's), (Start: 96 @63415 has 4 MA's), (110, 63490), (148, 63607),

Gene: Rose5_93 Start: 58324, Stop: 58563, Start Num: 90
Candidate Starts for Rose5_93:
(Start: 88 @58321 has 1 MA's), (Start: 90 @58324 has 250 MA's), (110, 58429), (114, 58444), (118, 58456), (123, 58471), (127, 58483), (138, 58525), (140, 58531),

Gene: Rossetti_96 Start: 60130, Stop: 60390, Start Num: 90
Candidate Starts for Rossetti_96:
(Start: 90 @60130 has 250 MA's), (94, 60154), (110, 60235), (118, 60262), (122, 60274), (123, 60277), (125, 60283), (127, 60289), (138, 60331), (140, 60337),

Gene: Rumpelstiltskin_92 Start: 59603, Stop: 59863, Start Num: 90
Candidate Starts for Rumpelstiltskin_92:
(Start: 90 @59603 has 250 MA's), (94, 59627), (110, 59708), (118, 59735), (122, 59747), (123, 59750), (125, 59756), (127, 59762), (138, 59804), (140, 59810),

Gene: Ruthiejr_38 Start: 30510, Stop: 30797, Start Num: 72

Candidate Starts for Ruthiejr_38:

(23, 30252), (Start: 72 @30510 has 26 MA's), (Start: 90 @30516 has 250 MA's), (Start: 97 @30549 has 1 MA's), (105, 30573), (109, 30609), (121, 30660), (122, 30663), (128, 30681), (129, 30687), (141, 30729), (143, 30732), (145, 30735),

Gene: Saints25_106 Start: 61315, Stop: 61578, Start Num: 90

Candidate Starts for Saints25_106:

(Start: 90 @61315 has 250 MA's), (Start: 96 @61345 has 4 MA's), (110, 61420), (114, 61435), (148, 61537),

Gene: SamScheppers_37 Start: 31023, Stop: 31310, Start Num: 72

Candidate Starts for SamScheppers_37:

(Start: 72 @31023 has 26 MA's), (Start: 90 @31029 has 250 MA's), (Start: 97 @31062 has 1 MA's), (105, 31086), (109, 31122), (121, 31173), (122, 31176), (128, 31194), (129, 31200), (141, 31242), (143, 31245), (145, 31248),

Gene: Samty_92 Start: 59826, Stop: 60095, Start Num: 86

Candidate Starts for Samty_92:

(Start: 86 @59826 has 20 MA's), (Start: 96 @59865 has 4 MA's), (110, 59940), (118, 59967), (121, 59976), (143, 60048),

Gene: Sarshaun_97 Start: 60721, Stop: 60981, Start Num: 90

Candidate Starts for Sarshaun_97:

(Start: 90 @60721 has 250 MA's), (94, 60745), (110, 60826), (122, 60865), (123, 60868), (125, 60874), (127, 60880), (138, 60922), (140, 60928),

Gene: Sassay_105 Start: 61765, Stop: 61998, Start Num: 96

Candidate Starts for Sassay_105:

(Start: 90 @61735 has 250 MA's), (Start: 96 @61765 has 4 MA's), (110, 61840), (148, 61957),

Gene: Scarlett_36 Start: 29182, Stop: 29412, Start Num: 90

Candidate Starts for Scarlett_36:

(Start: 72 @29179 has 26 MA's), (Start: 90 @29182 has 250 MA's), (105, 29239),

Gene: Sephiroth_124 Start: 69346, Stop: 69588, Start Num: 84

Candidate Starts for Sephiroth_124:

(Start: 80 @69340 has 2 MA's), (Start: 84 @69346 has 6 MA's), (100, 69397), (110, 69460), (112, 69481), (129, 69535), (131, 69544), (137, 69565),

Gene: Shaboozey_160 Start: 83866, Stop: 84111, Start Num: 90

Candidate Starts for Shaboozey_160:

(50, 83776), (53, 83791), (81, 83854), (Start: 90 @83866 has 250 MA's), (Start: 97 @83896 has 1 MA's), (107, 83941), (115, 83986), (130, 84034),

Gene: Shadow1_35 Start: 28661, Stop: 28891, Start Num: 90

Candidate Starts for Shadow1_35:

(44, 28538), (49, 28568), (Start: 72 @28658 has 26 MA's), (Start: 90 @28661 has 250 MA's), (105, 28718), (138, 28862),

Gene: Shagrat_102 Start: 54294, Stop: 54536, Start Num: 86

Candidate Starts for Shagrat_102:

(39, 54126), (46, 54174), (57, 54228), (Start: 86 @54294 has 20 MA's), (109, 54393), (123, 54447), (128, 54462),

Gene: ShamWow_110 Start: 63783, Stop: 64046, Start Num: 90

Candidate Starts for ShamWow_110:

(Start: 90 @63783 has 250 MA's), (Start: 96 @63813 has 4 MA's), (110, 63888), (148, 64005),

Gene: Shaobing_36 Start: 28810, Stop: 29037, Start Num: 90

Candidate Starts for Shaobing_36:

(18, 28489), (34, 28618), (44, 28687), (49, 28717), (Start: 72 @28807 has 26 MA's), (Start: 90 @28810 has 250 MA's), (115, 28933), (127, 28969),

Gene: ShedlockHolmes_37 Start: 30411, Stop: 30650, Start Num: 72

Candidate Starts for ShedlockHolmes_37:

(18, 30093), (44, 30291), (49, 30321), (Start: 72 @30411 has 26 MA's), (101, 30468), (129, 30594), (135, 30618),

Gene: Sheng711_98 Start: 59764, Stop: 60003, Start Num: 90

Candidate Starts for Sheng711_98:

(82, 59758), (Start: 90 @59764 has 250 MA's), (108, 59845), (110, 59869), (118, 59896), (125, 59917), (130, 59935), (140, 59971),

Gene: ShereKhan_108 Start: 64144, Stop: 64407, Start Num: 90

Candidate Starts for ShereKhan_108:

(Start: 90 @64144 has 250 MA's), (Start: 96 @64174 has 4 MA's), (110, 64249), (148, 64366),

Gene: Silverleaf_91 Start: 57820, Stop: 58059, Start Num: 90

Candidate Starts for Silverleaf_91:

(Start: 88 @57817 has 1 MA's), (Start: 90 @57820 has 250 MA's), (110, 57925), (114, 57940), (118, 57952), (123, 57967), (127, 57979), (140, 58027),

Gene: Simpliphy_108 Start: 62956, Stop: 63219, Start Num: 90

Candidate Starts for Simpliphy_108:

(Start: 90 @62956 has 250 MA's), (Start: 96 @62986 has 4 MA's), (110, 63061), (114, 63076), (148, 63178),

Gene: SirDuracell_110 Start: 62622, Stop: 62885, Start Num: 90

Candidate Starts for SirDuracell_110:

(Start: 90 @62622 has 250 MA's), (Start: 96 @62652 has 4 MA's), (110, 62727), (148, 62844),

Gene: SirPhilip_35 Start: 28286, Stop: 28516, Start Num: 72

Candidate Starts for SirPhilip_35:

(Start: 72 @28286 has 26 MA's), (Start: 90 @28289 has 250 MA's), (105, 28346),

Gene: Slarp_37 Start: 30638, Stop: 30919, Start Num: 90

Candidate Starts for Slarp_37:

(Start: 72 @30632 has 26 MA's), (Start: 90 @30638 has 250 MA's), (Start: 97 @30671 has 1 MA's), (105, 30695), (109, 30731), (118, 30773), (121, 30782), (122, 30785), (128, 30803), (129, 30809), (141, 30851), (143, 30854), (145, 30857),

Gene: Smoothie_150 Start: 80851, Stop: 81150, Start Num: 66

Candidate Starts for Smoothie_150:

(Start: 66 @80851 has 13 MA's), (Start: 95 @80932 has 1 MA's), (124, 81055), (147, 81121), (152, 81139),

Gene: Snenia_92 Start: 59730, Stop: 59999, Start Num: 86

Candidate Starts for Snenia_92:

(Start: 86 @59730 has 20 MA's), (Start: 96 @59769 has 4 MA's), (110, 59844), (118, 59871), (121, 59880), (143, 59952),

Gene: SoJulia_98 Start: 61486, Stop: 61746, Start Num: 90

Candidate Starts for SoJulia_98:

(Start: 90 @61486 has 250 MA's), (94, 61510), (110, 61591), (118, 61618), (122, 61630), (123, 61633), (125, 61639), (127, 61645), (138, 61687), (140, 61693),

Gene: SoSeph_36 Start: 30435, Stop: 30659, Start Num: 90

Candidate Starts for SoSeph_36:

(Start: 69 @30402 has 5 MA's), (Start: 90 @30435 has 250 MA's), (Start: 96 @30465 has 4 MA's), (100, 30477), (107, 30513), (108, 30516), (111, 30543), (120, 30573), (121, 30576), (129, 30603), (138, 30636),

Gene: Soap141_96 Start: 60721, Stop: 60981, Start Num: 90

Candidate Starts for Soap141_96:

(Start: 90 @60721 has 250 MA's), (94, 60745), (110, 60826), (122, 60865), (123, 60868), (125, 60874), (127, 60880), (138, 60922), (140, 60928),

Gene: SophKB_108 Start: 62945, Stop: 63208, Start Num: 90

Candidate Starts for SophKB_108:

(Start: 90 @62945 has 250 MA's), (Start: 96 @62975 has 4 MA's), (110, 63050), (114, 63065), (148, 63167),

Gene: Sotrice96_111 Start: 63409, Stop: 63672, Start Num: 90

Candidate Starts for Sotrice96_111:

(Start: 90 @63409 has 250 MA's), (Start: 96 @63439 has 4 MA's), (110, 63514), (148, 63631),

Gene: Squint_155 Start: 83260, Stop: 83505, Start Num: 90

Candidate Starts for Squint_155:

(50, 83170), (53, 83185), (81, 83248), (Start: 90 @83260 has 250 MA's), (Start: 97 @83290 has 1 MA's), (107, 83335), (115, 83380), (130, 83428),

Gene: Stank_112 Start: 63183, Stop: 63446, Start Num: 90

Candidate Starts for Stank_112:

(Start: 90 @63183 has 250 MA's), (Start: 96 @63213 has 4 MA's), (110, 63288), (148, 63405),

Gene: Stark_110 Start: 63269, Stop: 63532, Start Num: 90

Candidate Starts for Stark_110:

(Start: 90 @63269 has 250 MA's), (Start: 96 @63299 has 4 MA's), (110, 63374), (148, 63491),

Gene: StellaBean_108 Start: 63566, Stop: 63829, Start Num: 90

Candidate Starts for StellaBean_108:

(Start: 90 @63566 has 250 MA's), (Start: 96 @63596 has 4 MA's), (110, 63671), (148, 63788),

Gene: StolenFromERC_112 Start: 63108, Stop: 63371, Start Num: 90

Candidate Starts for StolenFromERC_112:

(Start: 90 @63108 has 250 MA's), (Start: 96 @63138 has 4 MA's), (110, 63213), (148, 63330),

Gene: StormChicken_112 Start: 63483, Stop: 63716, Start Num: 96
Candidate Starts for StormChicken_112:
(Start: 90 @63453 has 250 MA's), (Start: 96 @63483 has 4 MA's), (110, 63558), (148, 63675),

Gene: Sunflower1121_35 Start: 28754, Stop: 28984, Start Num: 90
Candidate Starts for Sunflower1121_35:
(49, 28661), (Start: 72 @28751 has 26 MA's), (Start: 90 @28754 has 250 MA's), (105, 28811), (138, 28955),

Gene: Superphikiman_159 Start: 83181, Stop: 83426, Start Num: 90
Candidate Starts for Superphikiman_159:
(50, 83091), (53, 83106), (81, 83169), (Start: 90 @83181 has 250 MA's), (Start: 97 @83211 has 1 MA's), (107, 83256), (115, 83301), (130, 83349),

Gene: Syleon_129 Start: 70097, Stop: 70339, Start Num: 84
Candidate Starts for Syleon_129:
(Start: 80 @70091 has 2 MA's), (Start: 84 @70097 has 6 MA's), (100, 70148), (110, 70211), (112, 70232), (129, 70286), (131, 70295), (137, 70316),

Gene: Syra333_36 Start: 28680, Stop: 28910, Start Num: 90
Candidate Starts for Syra333_36:
(18, 28359), (24, 28422), (29, 28446), (44, 28557), (49, 28587), (Start: 72 @28677 has 26 MA's), (Start: 90 @28680 has 250 MA's), (105, 28737), (138, 28881),

Gene: TBond007_36 Start: 29888, Stop: 30127, Start Num: 72
Candidate Starts for TBond007_36:
(44, 29768), (49, 29798), (Start: 72 @29888 has 26 MA's), (101, 29945), (121, 30041), (129, 30071),

Gene: TBrady12_113 Start: 62620, Stop: 62883, Start Num: 90
Candidate Starts for TBrady12_113:
(Start: 90 @62620 has 250 MA's), (Start: 96 @62650 has 4 MA's), (110, 62725), (148, 62842),

Gene: TClif_37 Start: 29261, Stop: 29491, Start Num: 90
Candidate Starts for TClif_37:
(18, 28940), (24, 29003), (29, 29027), (44, 29138), (49, 29168), (Start: 90 @29261 has 250 MA's),

Gene: Taquito_37 Start: 31057, Stop: 31305, Start Num: 97
Candidate Starts for Taquito_37:
(21, 30796), (22, 30802), (Start: 97 @31057 has 1 MA's), (105, 31081), (109, 31117), (121, 31168), (122, 31171), (128, 31189), (129, 31195), (141, 31237), (143, 31240), (145, 31243),

Gene: Tarkin_109 Start: 64009, Stop: 64272, Start Num: 90
Candidate Starts for Tarkin_109:
(Start: 90 @64009 has 250 MA's), (Start: 96 @64039 has 4 MA's), (110, 64114), (148, 64231),

Gene: TeardropMSU_106 Start: 62511, Stop: 62774, Start Num: 90
Candidate Starts for TeardropMSU_106:
(Start: 90 @62511 has 250 MA's), (Start: 96 @62541 has 4 MA's), (110, 62616), (148, 62733),

Gene: Teaspoon_110 Start: 63168, Stop: 63431, Start Num: 90
Candidate Starts for Teaspoon_110:
(Start: 90 @63168 has 250 MA's), (Start: 96 @63198 has 4 MA's), (110, 63273), (148, 63390),

Gene: Terminus_113 Start: 64409, Stop: 64672, Start Num: 90
Candidate Starts for Terminus_113:
(Start: 90 @64409 has 250 MA's), (Start: 96 @64439 has 4 MA's), (110, 64514), (148, 64631),

Gene: Thimble_112 Start: 62400, Stop: 62633, Start Num: 96
Candidate Starts for Thimble_112:
(Start: 90 @62370 has 250 MA's), (Start: 96 @62400 has 4 MA's), (110, 62475), (148, 62592),

Gene: Thresher_111 Start: 64049, Stop: 64312, Start Num: 90
Candidate Starts for Thresher_111:
(Start: 90 @64049 has 250 MA's), (Start: 96 @64079 has 4 MA's), (110, 64154), (148, 64271),

Gene: Thyatira_36 Start: 30289, Stop: 30513, Start Num: 90
Candidate Starts for Thyatira_36:
(Start: 69 @30256 has 5 MA's), (Start: 90 @30289 has 250 MA's), (Start: 96 @30319 has 4 MA's),
(100, 30331), (107, 30367), (108, 30370), (111, 30397), (120, 30427), (129, 30457),

Gene: Tierra_36 Start: 29587, Stop: 29820, Start Num: 72
Candidate Starts for Tierra_36:
(49, 29497), (Start: 72 @29587 has 26 MA's), (118, 29728), (143, 29806),

Gene: TingHuaYa_36 Start: 28723, Stop: 28950, Start Num: 90
Candidate Starts for TingHuaYa_36:
(27, 28600), (32, 28630), (45, 28720), (Start: 90 @28723 has 250 MA's), (100, 28765), (115, 28846),
(119, 28858), (129, 28891), (141, 28930),

Gene: Tomaszewski_105 Start: 62947, Stop: 63210, Start Num: 90
Candidate Starts for Tomaszewski_105:
(Start: 90 @62947 has 250 MA's), (Start: 96 @62977 has 4 MA's), (110, 63052), (148, 63169),

Gene: Toniann_149 Start: 80607, Stop: 80906, Start Num: 66
Candidate Starts for Toniann_149:
(Start: 66 @80607 has 13 MA's), (Start: 95 @80688 has 1 MA's), (118, 80793), (124, 80811), (147,
80877), (152, 80895),

Gene: Toto_108 Start: 63783, Stop: 64046, Start Num: 90
Candidate Starts for Toto_108:
(Start: 90 @63783 has 250 MA's), (Start: 96 @63813 has 4 MA's), (110, 63888), (148, 64005),

Gene: Tourach_96 Start: 60701, Stop: 60940, Start Num: 90
Candidate Starts for Tourach_96:
(Start: 90 @60701 has 250 MA's), (94, 60725), (Start: 96 @60731 has 4 MA's), (110, 60806), (118,
60833), (121, 60842), (122, 60845), (123, 60848), (125, 60854), (127, 60860), (138, 60902), (140,
60908),

Gene: Traaww1_106 Start: 62332, Stop: 62595, Start Num: 90
Candidate Starts for Traaww1_106:
(Start: 90 @62332 has 250 MA's), (Start: 96 @62362 has 4 MA's), (110, 62437), (148, 62554),

Gene: Trax_127 Start: 71378, Stop: 71596, Start Num: 90
Candidate Starts for Trax_127:

(87, 71372), (Start: 90 @71378 has 250 MA's), (92, 71387), (Start: 95 @71402 has 1 MA's), (Start: 96 @71405 has 4 MA's), (Start: 97 @71408 has 1 MA's), (99, 71414), (100, 71417), (102, 71423), (105, 71432), (108, 71456), (109, 71468), (110, 71480), (111, 71483), (113, 71495), (114, 71498), (119, 71513), (120, 71516), (122, 71519), (127, 71534), (129, 71543), (130, 71546), (138, 71576), (145, 71591),

Gene: TriFive_93 Start: 59842, Stop: 60111, Start Num: 86

Candidate Starts for TriFive_93:

(Start: 86 @59842 has 20 MA's), (Start: 96 @59881 has 4 MA's), (110, 59956), (118, 59983), (121, 59992), (143, 60064),

Gene: TribbleTrouble_36 Start: 30199, Stop: 30423, Start Num: 90

Candidate Starts for TribbleTrouble_36:

(68, 30175), (Start: 90 @30199 has 250 MA's), (125, 30352), (129, 30367),

Gene: Tuco_111 Start: 64570, Stop: 64833, Start Num: 90

Candidate Starts for Tuco_111:

(Start: 90 @64570 has 250 MA's), (Start: 96 @64600 has 4 MA's), (110, 64675), (148, 64792),

Gene: Typha_30 Start: 27510, Stop: 27782, Start Num: 86

Candidate Starts for Typha_30:

(25, 27231), (Start: 84 @27507 has 6 MA's), (Start: 86 @27510 has 20 MA's), (Start: 90 @27519 has 250 MA's), (93, 27537), (100, 27561), (101, 27564), (107, 27603), (108, 27606), (118, 27660), (121, 27663), (124, 27672), (139, 27732),

Gene: Tyson_93 Start: 58217, Stop: 58456, Start Num: 90

Candidate Starts for Tyson_93:

(Start: 88 @58214 has 1 MA's), (Start: 90 @58217 has 250 MA's), (110, 58322), (114, 58337), (118, 58349), (123, 58364), (127, 58376), (140, 58424),

Gene: UPIE_91 Start: 57813, Stop: 58052, Start Num: 90

Candidate Starts for UPIE_91:

(Start: 88 @57810 has 1 MA's), (Start: 90 @57813 has 250 MA's), (110, 57918), (114, 57933), (118, 57945), (123, 57960), (127, 57972), (138, 58014), (140, 58020),

Gene: Ukulele_104 Start: 62768, Stop: 63031, Start Num: 90

Candidate Starts for Ukulele_104:

(Start: 90 @62768 has 250 MA's), (Start: 96 @62798 has 4 MA's), (110, 62873), (148, 62990),

Gene: Underpass_86 Start: 54846, Stop: 55106, Start Num: 90

Candidate Starts for Underpass_86:

(Start: 90 @54846 has 250 MA's), (94, 54870), (110, 54951), (118, 54978), (122, 54990), (123, 54993), (125, 54999), (127, 55005), (138, 55047), (140, 55053),

Gene: Unicorn_36 Start: 28916, Stop: 29149, Start Num: 72

Candidate Starts for Unicorn_36:

(Start: 72 @28916 has 26 MA's), (118, 29057), (143, 29135),

Gene: Validus_36 Start: 28742, Stop: 28969, Start Num: 90

Candidate Starts for Validus_36:

(18, 28421), (29, 28508), (34, 28550), (44, 28619), (49, 28649), (Start: 72 @28739 has 26 MA's), (Start: 90 @28742 has 250 MA's), (101, 28787), (146, 28955),

Gene: Vetric_94 Start: 59584, Stop: 59844, Start Num: 90

Candidate Starts for Vetric_94:

(Start: 90 @59584 has 250 MA's), (94, 59608), (110, 59689), (118, 59716), (122, 59728), (123, 59731), (125, 59737), (127, 59743), (138, 59785), (140, 59791),

Gene: ViviJ_35 Start: 30058, Stop: 30282, Start Num: 90

Candidate Starts for ViviJ_35:

(Start: 90 @30058 has 250 MA's), (Start: 96 @30088 has 4 MA's), (100, 30100), (107, 30136), (108, 30139), (120, 30196), (127, 30217), (129, 30226), (135, 30250), (138, 30259),

Gene: Wamburgxpress_91 Start: 57941, Stop: 58180, Start Num: 90

Candidate Starts for Wamburgxpress_91:

(Start: 88 @57938 has 1 MA's), (Start: 90 @57941 has 250 MA's), (110, 58046), (114, 58061), (118, 58073), (123, 58088), (127, 58100), (138, 58142), (140, 58148),

Gene: Waterfoul_37 Start: 30530, Stop: 30754, Start Num: 90

Candidate Starts for Waterfoul_37:

(76, 30524), (Start: 90 @30530 has 250 MA's), (Start: 96 @30560 has 4 MA's), (100, 30572), (107, 30608), (108, 30611), (111, 30638), (120, 30668), (129, 30698), (138, 30731),

Gene: Whirlwind_94 Start: 60069, Stop: 60338, Start Num: 86

Candidate Starts for Whirlwind_94:

(Start: 86 @60069 has 20 MA's), (Start: 96 @60108 has 4 MA's), (110, 60183), (118, 60210), (121, 60219), (143, 60291),

Gene: Wiggin_112 Start: 62613, Stop: 62876, Start Num: 90

Candidate Starts for Wiggin_112:

(Start: 90 @62613 has 250 MA's), (Start: 96 @62643 has 4 MA's), (110, 62718), (148, 62835),

Gene: Wigglewigggle_96 Start: 59892, Stop: 60152, Start Num: 90

Candidate Starts for Wigglewigggle_96:

(Start: 90 @59892 has 250 MA's), (94, 59916), (110, 59997), (122, 60036), (123, 60039), (125, 60045), (127, 60051), (138, 60093), (140, 60099),

Gene: Wilder_97 Start: 59728, Stop: 59988, Start Num: 90

Candidate Starts for Wilder_97:

(Start: 90 @59728 has 250 MA's), (94, 59752), (110, 59833), (118, 59860), (122, 59872), (123, 59875), (125, 59881), (127, 59887), (138, 59929), (140, 59935),

Gene: Willez_105 Start: 61735, Stop: 61998, Start Num: 90

Candidate Starts for Willez_105:

(Start: 90 @61735 has 250 MA's), (Start: 96 @61765 has 4 MA's), (110, 61840), (148, 61957),

Gene: WilliamBoone_150 Start: 78865, Stop: 79164, Start Num: 66

Candidate Starts for WilliamBoone_150:

(Start: 66 @78865 has 13 MA's), (104, 78976), (122, 79063), (124, 79069), (147, 79135), (152, 79153),

Gene: Winky_96 Start: 60332, Stop: 60592, Start Num: 90

Candidate Starts for Winky_96:

(Start: 90 @60332 has 250 MA's), (94, 60356), (110, 60437), (122, 60476), (123, 60479), (125, 60485), (127, 60491), (138, 60533), (140, 60539),

Gene: Wintermute_37 Start: 30625, Stop: 30906, Start Num: 90

Candidate Starts for Wintermute_37:

(Start: 72 @30619 has 26 MA's), (Start: 90 @30625 has 250 MA's), (Start: 97 @30658 has 1 MA's), (105, 30682), (109, 30718), (121, 30769), (122, 30772), (128, 30790), (129, 30796), (141, 30838), (143, 30841), (145, 30844),

Gene: Wyatt2_93 Start: 58248, Stop: 58487, Start Num: 90

Candidate Starts for Wyatt2_93:

(Start: 88 @58245 has 1 MA's), (Start: 90 @58248 has 250 MA's), (110, 58353), (114, 58368), (118, 58380), (123, 58395), (127, 58407), (138, 58449), (140, 58455),

Gene: Xandras_109 Start: 62436, Stop: 62699, Start Num: 90

Candidate Starts for Xandras_109:

(Start: 90 @62436 has 250 MA's), (Start: 96 @62466 has 4 MA's), (110, 62541), (148, 62658),

Gene: Ximenita_37 Start: 28862, Stop: 29095, Start Num: 72

Candidate Starts for Ximenita_37:

(49, 28772), (Start: 72 @28862 has 26 MA's), (Start: 90 @28865 has 250 MA's), (105, 28922), (138, 29066),

Gene: Y10_37 Start: 30625, Stop: 30906, Start Num: 90

Candidate Starts for Y10_37:

(17, 30298), (23, 30361), (Start: 72 @30619 has 26 MA's), (Start: 90 @30625 has 250 MA's), (Start: 97 @30658 has 1 MA's), (105, 30682), (109, 30718), (121, 30769), (122, 30772), (128, 30790), (129, 30796), (141, 30838), (143, 30841), (145, 30844),

Gene: Y2_37 Start: 30625, Stop: 30906, Start Num: 90

Candidate Starts for Y2_37:

(17, 30298), (23, 30361), (Start: 72 @30619 has 26 MA's), (Start: 90 @30625 has 250 MA's), (Start: 97 @30658 has 1 MA's), (105, 30682), (109, 30718), (121, 30769), (122, 30772), (128, 30790), (129, 30796), (141, 30838), (143, 30841), (145, 30844),

Gene: YassJohnny_107 Start: 61756, Stop: 62019, Start Num: 90

Candidate Starts for YassJohnny_107:

(Start: 90 @61756 has 250 MA's), (Start: 96 @61786 has 4 MA's), (110, 61861), (148, 61978),

Gene: Yeet_155 Start: 85621, Stop: 85866, Start Num: 90

Candidate Starts for Yeet_155:

(63, 85552), (Start: 90 @85621 has 250 MA's), (114, 85738),

Gene: Youngblood_114 Start: 63905, Stop: 64168, Start Num: 90

Candidate Starts for Youngblood_114:

(Start: 90 @63905 has 250 MA's), (Start: 96 @63935 has 4 MA's), (110, 64010), (148, 64127),

Gene: Yuna_37 Start: 29330, Stop: 29563, Start Num: 72

Candidate Starts for Yuna_37:

(18, 29012), (44, 29210), (49, 29240), (Start: 72 @29330 has 26 MA's), (Start: 90 @29339 has 250 MA's), (Start: 96 @29369 has 4 MA's), (105, 29396), (119, 29474), (121, 29480),

Gene: Yunkel11_37 Start: 28983, Stop: 29210, Start Num: 90

Candidate Starts for Yunkel11_37:

(20, 28689), (31, 28755), (33, 28767), (41, 28824), (Start: 74 @28971 has 2 MA's), (75, 28974), (Start: 90 @28983 has 250 MA's), (100, 29025), (115, 29106), (119, 29118),

Gene: Zakai_97 Start: 60371, Stop: 60631, Start Num: 90

Candidate Starts for Zakai_97:

(Start: 90 @60371 has 250 MA's), (94, 60395), (110, 60476), (118, 60503), (122, 60515), (123, 60518), (125, 60524), (127, 60530), (138, 60572), (140, 60578),

Gene: Zaria_92 Start: 57356, Stop: 57595, Start Num: 90

Candidate Starts for Zaria_92:

(Start: 88 @57353 has 1 MA's), (Start: 90 @57356 has 250 MA's), (110, 57461), (114, 57476), (118, 57488), (123, 57503), (127, 57515), (140, 57563),

Gene: Zelink_156 Start: 85981, Stop: 86226, Start Num: 90

Candidate Starts for Zelink_156:

(63, 85912), (Start: 90 @85981 has 250 MA's), (114, 86098),

Gene: ZhongYanYuan_93 Start: 59783, Stop: 60043, Start Num: 90

Candidate Starts for ZhongYanYuan_93:

(Start: 90 @59783 has 250 MA's), (110, 59888), (118, 59915), (119, 59918), (121, 59924), (122, 59927), (127, 59942), (138, 59984), (140, 59990),

Gene: xkcd_114 Start: 64090, Stop: 64353, Start Num: 90

Candidate Starts for xkcd_114:

(Start: 90 @64090 has 250 MA's), (Start: 96 @64120 has 4 MA's), (110, 64195), (148, 64312),