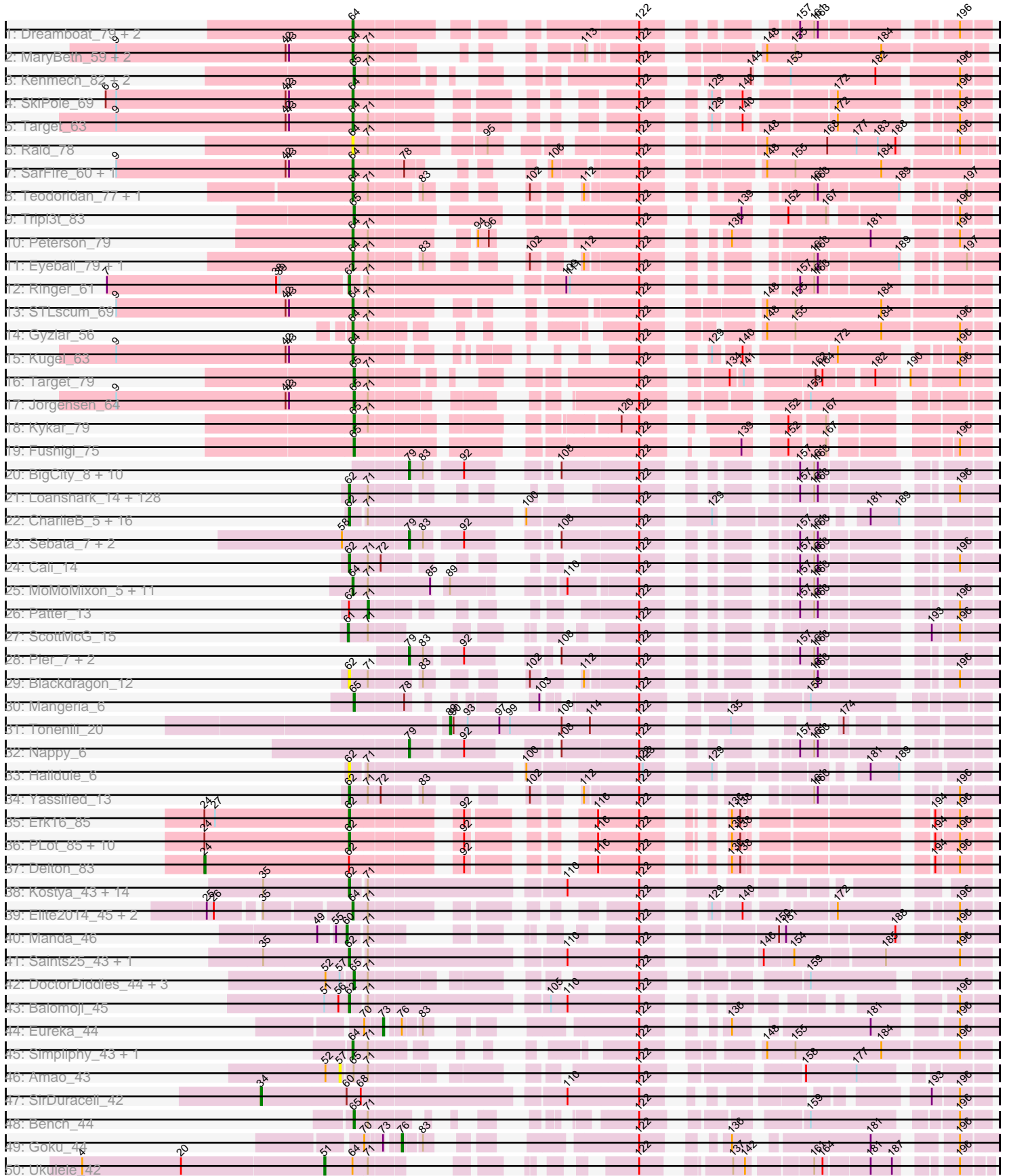
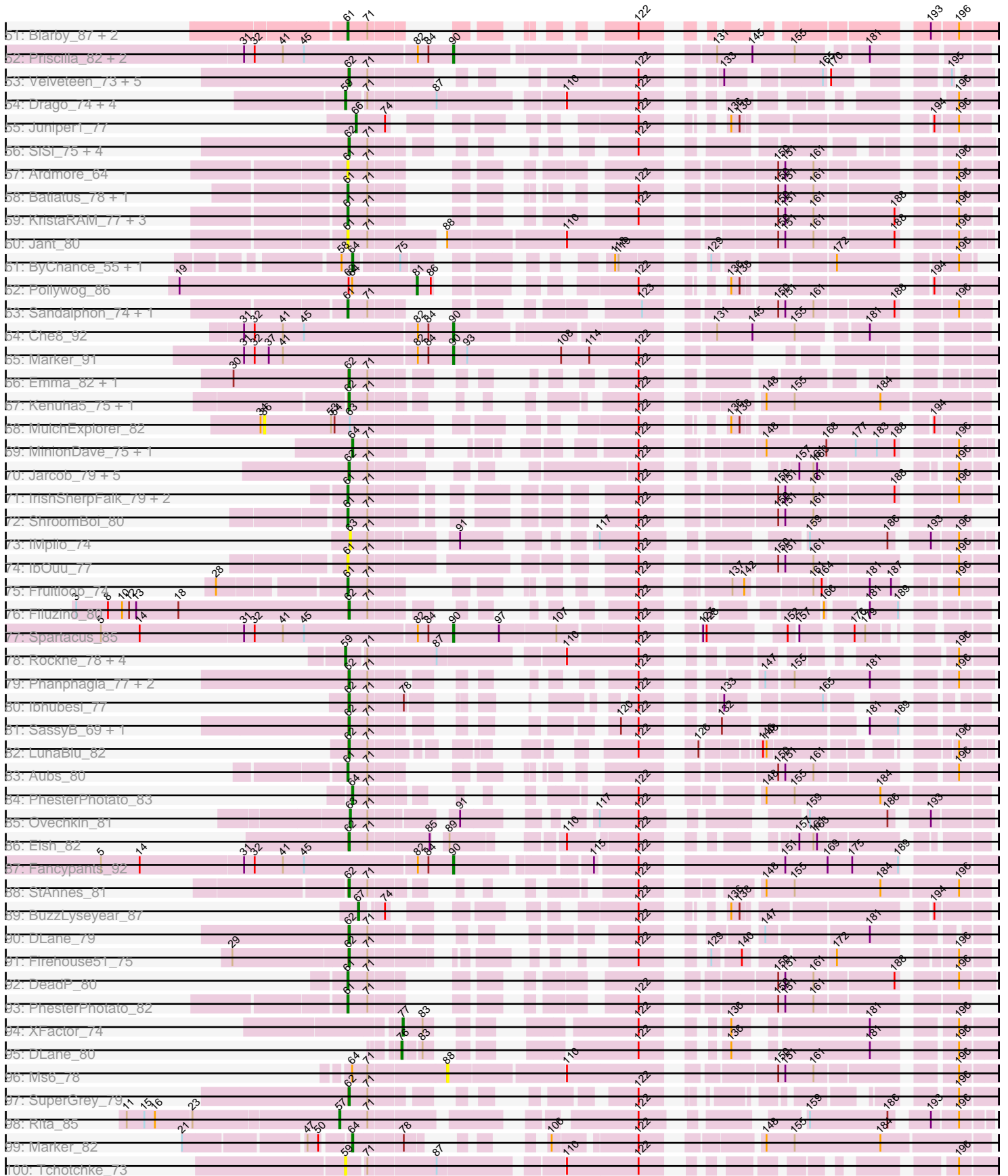


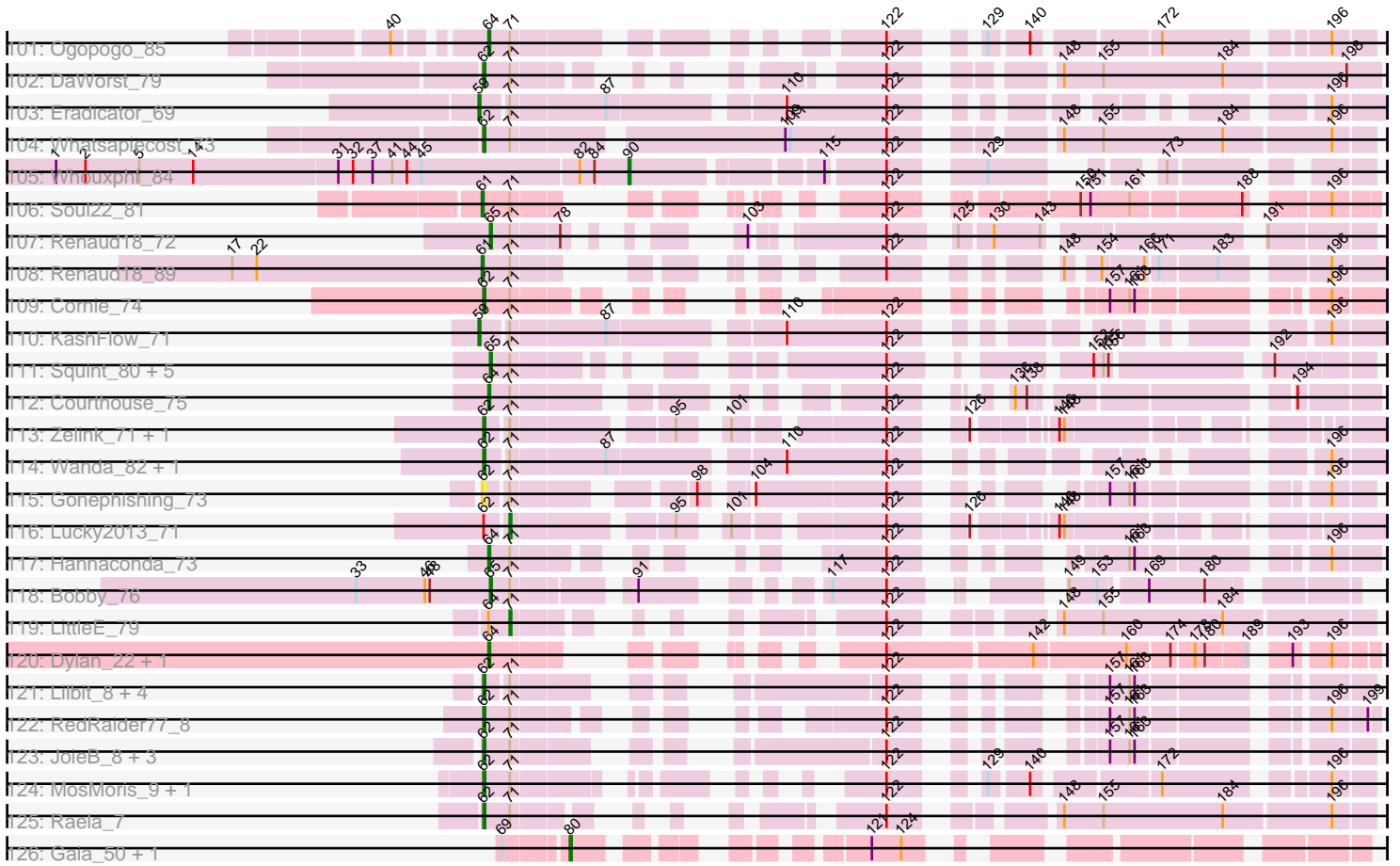
Pham 224179



Pham 224179



Pham 224179



Note: Tracks are now grouped by subcluster and scaled. Switching in subcluster is indicated by changes in track color. Track scale is now set by default to display the region 30 bp upstream of start 1 to 30 bp downstream of the last possible start. If this default region is judged to be packed too tightly with annotated starts, the track will be further scaled to only show that region of the ORF with annotated starts. This action will be indicated by adding "Zoomed" to the title. For starts, yellow indicates the location of called starts comprised solely of Glimmer/GeneMark auto-annotations, green indicates the location of called starts with at least 1 manual gene annotation.

Pham 224179 Report

This analysis was run 03/28/25 on database version 593.

Pham number 224179 has 392 members, 27 are drafts.

Phages represented in each track:

- Track 1 : Dreamboat_79, Jasper_78, PherrisBueller_78
- Track 2 : MaryBeth_59, Corvo_62, MetalQZJ_58
- Track 3 : Kenmech_82, Abbysshoes_80, Dussy_79
- Track 4 : SkiPole_69
- Track 5 : Target_63
- Track 6 : Raid_78
- Track 7 : SarFire_60, Thor_60
- Track 8 : Teodoridan_77, Ajay_76
- Track 9 : Tripl3t_83
- Track 10 : Peterson_79
- Track 11 : Eyeball_79, KSSJEB_78
- Track 12 : Ringer_61
- Track 13 : STLscum_69
- Track 14 : Gyzlar_56
- Track 15 : Kugel_63
- Track 16 : Target_79
- Track 17 : Jorgensen_64
- Track 18 : Kykar_79
- Track 19 : Fushigi_75
- Track 20 : BigCity_8, InterFolia_8, EggyFarm_8, Grasshills_8, LolaVinca_8, DTDevon_8, Tyke_8, Specks_8, Dandelion_7, FrayBell_8, Drazdys_8
- Track 21 : Loanshark_14, Pinkcreek_9, Teardrop_13, StubbySaigey_13, BananaFence_14, YemiJoy2021_14, SVoro_14, Rahel_13, Essence_13, LifeSavor_14, Belieber_12, Ewok_14, Kboogie_13, EmmaElysia_13, Bonray_14, Dietrick_12, Ablatia_12, Jessibeth14_14, NedWong_14, Trinitium_13, Phlegm_14, ZygoTaiga_15, Delilah_14, Janiyra_13, Gizmo_15, Gamgam_13, Pivoine_13, McWolfish_14, Capablanca_14, ChickenPhender_13, Adlitam_13, ErnieJ_17, PurduePete_14, Rizal_13, Naija_13, FoxtrotP1_15, Khaleesi_14, Derek_14, Caravan_16, ValleyTerrace_13, Shifa_10, Shelob_17, Bipolarisk_14, Morizzled23_13, Amataga_13, InigoMontoya_14, DrPhinkDaddy_14, Sprinklers_13, Turret_13, Zalkecks_15, Darko_13, Wally_13, Bread_14, Ava3_15, Jaygup_13, Alice_12, Latch_13, Tortoise16_12, Basquiat_13, Matsumoto_12, Phusco_13, Shrimp_14, CindyLou_13, SilverDipper_13, Shnickers_13, ArcherS7_13, JPickles_13, BackyardAgain_12, CharlieB_15, TinyTim_14, Megamind_14, Atlantean_13, Napoleon13_13, ET08_12, ChaylaJr_13, EmToTheThree_17, Rabinovish_12, Jedediah_13, Erdmann_14, LRRHood_14, Pleione_15, HyRo_11, Quasimodo_13, SrishMeg2525_14, Ghost_14, Norm_14, Chomp_13, Littleton_14,

Zeenon_16, Maby2021_14, Daffodil_15, Guwapp_13, FudgeTart_14, Breeniome_14, Phox_14, EasyJones_13, Ngannou_13, Babyland_13, Roots515_14, Chargie21_13, Delylah_16, ParkTD_14, Catera_13, MikeLiesIn_15, Asterius_15, Audrick_14, Blackbrain_13, JustHall_13, Melpomini_13, Willis_14, Stubby_14, Jemmno_12, BadAgartude_14, Fludd_13, SmallFry_13, McGee_13, Izajani_14, Burrough_14, Yucca_13, Issimir_14, Momo_13, YoungMoneyMata_13, Salacia_15, Gabriel_14, ShiaLabeouf_13, Bangla1971_13, Flabslab_13, Cactojaque_12, Ading_13

- Track 22 : CharlieB_5, Yassified_6, Ronan_6, Blackdragon_5, Shaqnato_6, LRRHood_6, Koguma_6, Bigswole_5, Cali_6, Phox_6, Lethe_6, Sprinklers_6, Lukilu_6, IkeLoa_6, ET08_5, Grungle_6, BeanWater_5
- Track 23 : Sebata_7, JayJay_7, LinStu_7
- Track 24 : Cali_14
- Track 25 : MoMoMixon_5, ScottMcG_5, Nidhogg_5, Pio_6, Mikro_6, Astraea_6, Bxz1_6, Sauce_5, NoodleTree_6, Spud_6, QBert_6, DirtMonster_6
- Track 26 : Patter_13
- Track 27 : ScottMcG_15
- Track 28 : Pier_7, NuevoMundo_7, StephanieG_7
- Track 29 : Blackdragon_12
- Track 30 : Mangeria_6
- Track 31 : Tonenili_20
- Track 32 : Nappy_6
- Track 33 : Halldule_6
- Track 34 : Yassified_13
- Track 35 : Erk16_85
- Track 36 : PLOT_85, Mopey_86, Prager_84, Penelope2018_84, Visconti_85, WaldoWhy_85, Chill_85, Butterscotch_82, Giuseppe_86, Adjutor_82, Thoth_84
- Track 37 : Delton_83
- Track 38 : Kostya_43, FireRed_45, Nimrod_45, xkcd_46, Misfit_44, Terminus_44, Petra64142_47, BugsBunny_43, PhatBacter_45, Palpatine_45, Phaux_44, Murica_44, BigBubba_43, HufflyPuff_44, Policronamos_45
- Track 39 : Elite2014_45, Lilpickle_45, ChosenOne_46
- Track 40 : Manda_46
- Track 41 : Saints25_43, Highbury_43
- Track 42 : DoctorDiddles_44, ChotaBhai_44, Pat3_42, BaboJay_42
- Track 43 : Balomoji_45
- Track 44 : Eureka_44
- Track 45 : Simpliphy_43, Petruchio_60
- Track 46 : Amao_43
- Track 47 : SirDuracell_42
- Track 48 : Bench_44
- Track 49 : Goku_44
- Track 50 : Ukulele_42
- Track 51 : Blarby_87, Zapner_87, Jabbawokkie_88
- Track 52 : Priscilla_82, Koella_74, NormanBulbieJr_80
- Track 53 : Velveteen_73, BigPhil_72, Sarma624_77, Brookers_74, Cerasum_72, Coco12_75
- Track 54 : Drago_74, Enby_78, DirtMcgirt_76, Lorde_77, UncleRicky_76
- Track 55 : Juniper1_77
- Track 56 : SiSi_75, Girr_75, Ruby_73, MisterCuddles_76, Veteran_71
- Track 57 : Ardmore_64
- Track 58 : Batiatus_78, Tweety_79
- Track 59 : KristaRAM_77, Nitzel_73, Bobi_85, Krakatau_74
- Track 60 : Jant_80

- Track 61 : ByChance_55, BlueCrab_63
- Track 62 : Pollywog_86
- Track 63 : Sandalphon_74, Minnie_76
- Track 64 : Che8_92
- Track 65 : Marker_91
- Track 66 : Emma_82, Mantra_76
- Track 67 : Kenuha5_75, Gandalph_77
- Track 68 : MulchExplorer_82
- Track 69 : MinionDave_75, CaptainTrips_79
- Track 70 : Jarcob_79, Clifton_72, Philus_82, James_80, DRBy19_83, OlympiaSaint_79
- Track 71 : IrishSherpFalk_79, WillSterrel_78, Bubbles123_74
- Track 72 : ShroomBoi_80
- Track 73 : IMpilo_74
- Track 74 : IbOuu_77
- Track 75 : Fruitloop_74
- Track 76 : Filuzino_80
- Track 77 : Spartacus_85
- Track 78 : Rockne_78, Phatniss_74, Llij_73, Boomer_81, PMC_74
- Track 79 : Phanphagia_77, Shauna1_78, Kingsley_82
- Track 80 : lbhubesi_77
- Track 81 : SassyB_69, PopTart_69
- Track 82 : LunaBlu_82
- Track 83 : Aubs_80
- Track 84 : PhesterPhotato_83
- Track 85 : Ovechkin_81
- Track 86 : Eish_82
- Track 87 : Fancypants_92
- Track 88 : StAnnes_81
- Track 89 : BuzzLyseyear_87
- Track 90 : DLane_79
- Track 91 : Firehouse51_75
- Track 92 : DeadP_80
- Track 93 : PhesterPhotato_82
- Track 94 : XFactor_74
- Track 95 : DLane_80
- Track 96 : Ms6_78
- Track 97 : SuperGrey_79
- Track 98 : Rita_85
- Track 99 : Marker_82
- Track 100 : Tchotchke_73
- Track 101 : Ogopogo_85
- Track 102 : DaWorst_79
- Track 103 : Eradicator_69
- Track 104 : Whatsapiecost_73
- Track 105 : Whouxphf_84
- Track 106 : Soul22_81
- Track 107 : Renaud18_72
- Track 108 : Renaud18_89
- Track 109 : Cornie_74
- Track 110 : KashFlow_71
- Track 111 : Squint_80, Porcelain_79, MiaZeal_80, Lucky2013_77, Superphikiman_77, Ariel_79

- Track 112 : Courthouse_75
- Track 113 : Zelink_71, Schatzie_68
- Track 114 : Wanda_82, Klein_78
- Track 115 : Gonephishing_73
- Track 116 : Lucky2013_71
- Track 117 : Hannaconda_73
- Track 118 : Bobby_76
- Track 119 : LittleE_79
- Track 120 : Dylan_22, Zakhe101_23
- Track 121 : Lilbit_8, FeliMaine_8, Pringar_7, Beelzebub_9, Clarkson_8
- Track 122 : RedRaider77_8
- Track 123 : JoieB_8, Huphlebuff_7, LittleLaf_7, Corazon_7
- Track 124 : MosMoris_9, Gattaca_9
- Track 125 : Raela_7
- Track 126 : Gaia_50, Nebkiss_54

Summary of Final Annotations (See graph section above for start numbers):

The start number called the most often in the published annotations is 62, it was called in 223 of the 365 non-draft genes in the pham.

Genes that call this "Most Annotated" start:

- Ablatia_12, Ading_13, Adjutor_82, Adlitam_13, Alice_12, Amataga_13, ArcherS7_13, Asterius_15, Atlantean_13, Audrick_14, Ava3_15, Babyland_13, BackyardAgain_12, BadAgartude_14, Balomoji_45, BananaFence_14, Bangla1971_13, Basquiat_13, BeanWater_5, Beelzebub_9, Belieber_12, BigBubba_43, BigPhil_72, Bigswole_5, Bipolarisk_14, Blackbrain_13, Blackdragon_12, Blackdragon_5, Bonray_14, Bread_14, Breeniome_14, Brookers_74, BugsBunny_43, Burrough_14, Butterscotch_82, Cactojaque_12, Cali_14, Cali_6, Capablanca_14, Caravan_16, Catera_13, Cerasum_72, Chergie21_13, CharlieB_15, CharlieB_5, ChaylaJr_13, ChickenPhender_13, Chill_85, Chomp_13, CindyLou_13, Clarkson_8, Clifton_72, Coco12_75, Corazon_7, Cornie_74, DLane_79, DRBy19_83, DaWorst_79, Daffodil_15, Darko_13, Delilah_14, Delylah_16, Derek_14, Dietrick_12, DrPhinkDaddy_14, ET08_12, ET08_5, EasyJones_13, Eish_82, EmToTheThree_17, EmmaElysia_13, Emma_82, Erdmann_14, Erk16_85, ErnieJ_17, Essence_13, Ewok_14, FeliMaine_8, Filuzino_80, FireRed_45, Firehouse51_75, Flabslab_13, Fludd_13, FoxtrotP1_15, FudgeTart_14, Gabriel_14, Gamgam_13, Gandolph_77, Gattaca_9, Ghost_14, Girr_75, Giuseppe_86, Gizmo_15, Gonephishing_73, Grungle_6, Guwapp_13, Halldule_6, Highbury_43, HufflyPuff_44, Huphlebuff_7, HyRo_11, Ibhuesi_77, IkeLoa_6, InigoMontoya_14, Issimir_14, Izajani_14, JPickles_13, James_80, Janiyra_13, Jarcob_79, Jaygup_13, Jedediah_13, Jemmno_12, Jessibeth14_14, JoieB_8, JustHall_13, Kboogie_13, Kenuha5_75, Khaleesi_14, Kingsley_82, Klein_78, Koguma_6, Kostya_43, LRRHood_14, LRRHood_6, Latch_13, Lethe_6, LifeSavor_14, Lilbit_8, LittleLaf_7, Littleton_14, Loanshark_14, Lukilu_6, LunaBlu_82, Maby2021_14, Mantra_76, Matsumoto_12, McGee_13, McWolfish_14, Megamind_14, Melpomini_13, MikeLiesIn_15, Misfit_44, MisterCuddles_76, Momo_13, Mopey_86, Morizzled23_13, MosMoris_9, Murica_44, Naija_13, Napoleon13_13, NedWong_14, Ngannou_13, Nimrod_45, Norm_14, OlympiaSaint_79, PLot_85, Palpatine_45, ParkTD_14, Penelope2018_84,

Petra64142_47, Phanphagia_77, PhatBacter_45, Phaux_44, Philus_82, Phlegm_14, Phox_14, Phox_6, Phusco_13, Pinkcreek_9, Pivoine_13, Pleione_15, Policronamos_45, PopTart_69, Prager_84, Pringar_7, PurduePete_14, Quasimodo_13, Rabinovich_12, Raela_7, Rahel_13, RedRaider77_8, Ringer_61, Rizal_13, Ronan_6, Roots515_14, Ruby_73, SVoro_14, Saints25_43, Salacia_15, Sarma624_77, SassyB_69, Schatzie_68, Shaqato_6, Shauna1_78, Shelob_17, ShiaLabeouf_13, Shifa_10, Shnickers_13, Shrimp_14, SiSi_75, SilverDipper_13, SmallFry_13, Sprinklers_13, Sprinklers_6, SrishMeg2525_14, StAnnes_81, StubbySaigey_13, Stubby_14, SuperGrey_79, Teardrop_13, Terminus_44, Thoth_84, TinyTim_14, Tortoise16_12, Trinitium_13, Turret_13, ValleyTerrace_13, Velveteen_73, Veteran_71, Visconti_85, WaldoWhy_85, Wally_13, Wanda_82, Whatsapiecost_73, Willis_14, Yassified_13, Yassified_6, YemiJoy2021_14, YoungMoneyMata_13, Yucca_13, Zalkecks_15, Zeenon_16, Zelink_71, ZgyoTaiga_15, xkcd_46,

Genes that have the "Most Annotated" start but do not call it:

- Delton_83, Lucky2013_71, Patter_13, Pollywog_86,

Genes that do not have the "Most Annotated" start:

- Abbyshoes_80, Ajay_76, Amao_43, Ardmore_64, Ariel_79, Astraea_6, Aubs_80, BaboJay_42, Batiatus_78, Bench_44, BigCity_8, Blarby_87, BlueCrab_63, Bobby_76, Bobi_85, Boomer_81, Bubbles123_74, BuzzLyseyear_87, Bxz1_6, ByChance_55, CaptainTrips_79, Che8_92, ChosenOne_46, ChotaBhai_44, Corvo_62, Courthouse_75, DLane_80, DTDevon_8, Dandelion_7, DeadP_80, DirtMcgirt_76, DirtMonster_6, DoctorDiddles_44, Drago_74, Drazdys_8, Dreamboat_79, Dussy_79, Dylan_22, EggYFarm_8, Elite2014_45, Enby_78, Eradicator_69, Eureka_44, Eyeball_79, Fancypants_92, FrayBell_8, Fruitloop_74, Fushigi_75, Gaia_50, Goku_44, Grasshills_8, Gyzlar_56, Hannaconda_73, IMpilo_74, IbOuu_77, InterFolia_8, IrishSherpFalk_79, Jabbawokkie_88, Jant_80, Jasper_78, JayJay_7, Jorgensen_64, Juniper1_77, KSSJEB_78, KashFlow_71, Kenmech_82, Koella_74, Krakatau_74, KristaRAM_77, Kugel_63, Kykar_79, Lilpickle_45, LinStu_7, LittleE_79, Lij_73, LolaVinca_8, Lorde_77, Lucky2013_77, Manda_46, Mangeria_6, Marker_82, Marker_91, MaryBeth_59, MetalQZJ_58, MiaZeal_80, Mikro_6, MinionDave_75, Minnie_76, MoMoMixon_5, Ms6_78, MulchExplorer_82, Nappy_6, Nebkiss_54, Nidhogg_5, Nitzel_73, NoodleTree_6, NormanBulbieJr_80, NuevoMundo_7, Ogopogo_85, Ovechkin_81, PMC_74, Pat3_42, Peterson_79, Petruccio_60, Phatniss_74, PherrisBueller_78, PhesterPhotato_82, PhesterPhotato_83, Pier_7, Pio_6, Porcelain_79, Priscilla_82, QBert_6, Raid_78, Renaud18_72, Renaud18_89, Rita_85, Rockne_78, STLscum_69, Sandalphon_74, SarFire_60, Sauce_5, ScottMcG_15, ScottMcG_5, Sebata_7, ShroomBoi_80, Simpliphy_43, SirDuracell_42, SkiPole_69, Soul22_81, Spartacus_85, Specks_8, Spud_6, Squint_80, StephanieG_7, Superphikiman_77, Target_63, Target_79, Tchotchke_73, Teodoridan_77, Thor_60, Tonenili_20, Tripl3t_83, Tweety_79, Tyke_8, Ukulele_42, UncleRicky_76, Whouxphf_84, WillSterrel_78, XFactor_74, Zakhe101_23, Zapner_87,

Summary by start number:

Start 24:

- Found in 13 of 392 (3.3%) of genes in pham
- Manual Annotations of this start: 1 of 365
- Called 7.7% of time when present
- Phage (with cluster) where this start called: Delton_83 (D1),

Start 34:

- Found in 2 of 392 (0.5%) of genes in pham
- Manual Annotations of this start: 1 of 365
- Called 50.0% of time when present
- Phage (with cluster) where this start called: SirDuracell_42 (E),

Start 36:

- Found in 1 of 392 (0.3%) of genes in pham
- No Manual Annotations of this start.
- Called 100.0% of time when present
- Phage (with cluster) where this start called: MulchExplorer_82 (F1),

Start 51:

- Found in 2 of 392 (0.5%) of genes in pham
- Manual Annotations of this start: 1 of 365
- Called 50.0% of time when present
- Phage (with cluster) where this start called: Ukulele_42 (E),

Start 57:

- Found in 6 of 392 (1.5%) of genes in pham
- Manual Annotations of this start: 1 of 365
- Called 33.3% of time when present
- Phage (with cluster) where this start called: Amao_43 (E), Rita_85 (F1),

Start 59:

- Found in 13 of 392 (3.3%) of genes in pham
- Manual Annotations of this start: 12 of 365
- Called 100.0% of time when present
- Phage (with cluster) where this start called: Boomer_81 (F1), DirtMcgirt_76 (F1), Drago_74 (F1), Enby_78 (F1), Eradicator_69 (F1), KashFlow_71 (J), Llij_73 (F1), Lorde_77 (F1), PMC_74 (F1), Phatniss_74 (F1), Rockne_78 (F1), Tchotchke_73 (F1), UncleRicky_76 (F1),

Start 60:

- Found in 2 of 392 (0.5%) of genes in pham
- Manual Annotations of this start: 1 of 365
- Called 50.0% of time when present
- Phage (with cluster) where this start called: Manda_46 (E),

Start 61:

- Found in 25 of 392 (6.4%) of genes in pham
- Manual Annotations of this start: 21 of 365
- Called 100.0% of time when present
- Phage (with cluster) where this start called: Ardmore_64 (F1), Aubs_80 (F1), Batiatus_78 (F1), Blarby_87 (F), Bobi_85 (F1), Bubbles123_74 (F1), DeadP_80 (F1), Fruitloop_74 (F1), IbOuu_77 (F1), IrishSherpFalk_79 (F1), Jabbawokkie_88 (F2), Jant_80 (F1), Krakatau_74 (F1), KristaRAM_77 (F1), Minnie_76 (F1), Nitzel_73 (F1), PhesterPhotato_82 (F1), Renaud18_89 (F4), Sandalphon_74 (F1), ScottMcG_15 (C1), ShroomBoi_80 (F1), Soul22_81 (F2), Tweety_79 (F1), WillSterrel_78 (F1), Zapner_87 (F2),

Start 62:

- Found in 240 of 392 (61.2%) of genes in pham
- Manual Annotations of this start: 223 of 365
- Called 98.3% of time when present
- Phage (with cluster) where this start called: Ablatia_12 (C1), Ading_13 (C1), Adjutor_82 (D1), Adlitam_13 (C1), Alice_12 (C1), Amataga_13 (C1), ArcherS7_13 (C1), Asterius_15 (C1), Atlantean_13 (C1), Audrick_14 (C1), Ava3_15 (C1), Babyland_13 (C1), BackyardAgain_12 (C1), BadAgartude_14 (C1), Balomoji_45 (E), BananaFence_14 (C1), Bangla1971_13 (C1), Basquiat_13 (C1), BeanWater_5 (C1), Beelzebub_9 (S), Belieber_12 (C1), BigBubba_43 (E), BigPhil_72 (F1), Bigswole_5 (C1), Bipolarisk_14 (C1), Blackbrain_13 (C1), Blackdragon_12 (C1), Blackdragon_5 (C1), Bonray_14 (C1), Bread_14 (C1), Breeniome_14 (C1), Brookers_74 (F1), BugsBunny_43 (E), Burrough_14 (C1), Butterscotch_82 (D1), Cactojaque_12 (C1), Cali_14 (C1), Cali_6 (C1), Capablanca_14 (C1), Caravan_16 (C1), Catera_13 (C1), Cerasum_72 (F1), Chargie21_13 (C1), CharlieB_15 (C1), CharlieB_5 (C1), ChaylaJr_13 (C1), ChickenPhender_13 (C1), Chill_85 (D1), Chomp_13 (C1), CindyLou_13 (C1), Clarkson_8 (S), Clifton_72 (F1), Coco12_75 (F1), Corazon_7 (S), Cornie_74 (F5), DLane_79 (F1), DRBy19_83 (F1), DaWorst_79 (F1), Daffodil_15 (C1), Darko_13 (C1), Delilah_14 (C1), Delylah_16 (C1), Derek_14 (C1), Dietrick_12 (C1), DrPhinkDaddy_14 (C1), ET08_12 (C1), ET08_5 (C1), EasyJones_13 (C1), Eish_82 (F1), EmToTheThree_17 (C1), EmmaElysia_13 (C1), Emma_82 (F1), Erdmann_14 (C1), Erk16_85 (D1), ErnieJ_17 (C1), Essence_13 (C1), Ewok_14 (C1), FeliMaine_8 (S), Filuzino_80 (F1), FireRed_45 (E), Firehouse51_75 (F1), Flabslab_13 (C1), Fludd_13 (C1), FoxtrotP1_15 (C1), FudgeTart_14 (C1), Gabriel_14 (C1), Gamgam_13 (C1), Gandolph_77 (F1), Gattaca_9 (S), Ghost_14 (C1), Girr_75 (F1), Giuseppe_86 (D1), Gizmo_15 (C1), Gonephishing_73 (J), Grungle_6 (C1), Guwapp_13 (C1), Halldule_6 (C1), Highbury_43 (E), HufflyPuff_44 (E), Huphlepuuff_7 (S), HyRo_11 (C1), Ibhubesi_77 (F1), IkeLoa_6 (C1), InigoMontoya_14 (C1), Issimir_14 (C1), Izajani_14 (C1), JPickles_13 (C1), James_80 (F1), Janiyra_13 (C1), Jarcob_79 (F1), Jaygup_13 (C1), Jedediah_13 (C1), Jemmno_12 (C1), Jessibeth14_14 (C1), JoieB_8 (S), JustHall_13 (C1), Kboogie_13 (C1), Kenuha5_75 (F1), Khaleesi_14 (C1), Kingsley_82 (F1), Klein_78 (J), Koguma_6 (C1), Kostya_43 (E), LRRHood_14 (C1), LRRHood_6 (C1), Latch_13 (C1), Lethe_6 (C1), LifeSavor_14 (C1), Lilbit_8 (S), LittleLaf_7 (S), Littleton_14 (C1), Loanshark_14 (C1), Lukilu_6 (C1), LunaBlu_82 (F1), Maby2021_14 (C1), Mantra_76 (F1), Matsumoto_12 (C1), McGee_13 (C1), McWolfish_14 (C1), Megamind_14 (C1), Melpomini_13 (C1), MikeLiesIn_15 (C1), Misfit_44 (E), MisterCuddles_76 (F1), Momo_13 (C1), Mopey_86 (D1), Morizzled23_13 (C1), MosMoris_9 (S), Murica_44 (E), Naija_13 (C1), Napoleon13_13 (C1), NedWong_14 (C1), Ngannou_13 (C1), Nimrod_45 (E), Norm_14 (C1), OlympiaSaint_79 (F1), PLOT_85 (D1), Palpatine_45 (E), ParkTD_14 (C1), Penelope2018_84 (D1), Petra64142_47 (E), Phanphagia_77 (F1), PhatBacter_45 (E), Phaux_44 (E), Philus_82 (F1), Phlegm_14 (C1), Phox_14 (C1), Phox_6 (C1), Phusco_13 (C1), Pinkcreek_9 (C1), Pivoine_13 (C1), Pleione_15 (C1), Policronamos_45 (E), PopTart_69 (F1), Prager_84 (D1), Pringar_7 (S), PurduePete_14 (C1), Quasimodo_13 (C1), Rabinovich_12 (C1), Raela_7 (S), Rahel_13 (C1), RedRaider77_8 (S), Ringer_61 (A1), Rizal_13 (C1), Ronan_6 (C1), Roots515_14 (C1), Ruby_73 (F1), SVoro_14 (C1), Saints25_43 (E), Salacia_15 (C1), Sarma624_77 (F1), SassyB_69 (F1), Schatzie_68 (J), Shaqnato_6 (C1), Shauna1_78 (F1), Shelob_17 (C1), ShiaLabeouf_13 (C1), Shifa_10 (C1), Shnickers_13 (C1), Shrimp_14 (C1), SiSi_75 (F1), SilverDipper_13 (C1), SmallFry_13 (C1), Sprinklers_13 (C1), Sprinklers_6 (C1), SrishMeg2525_14 (C1), StAnnes_81 (F1), StubbySaigey_13 (C1), Stubby_14 (C1), SuperGrey_79 (F1), Teardrop_13 (C1), Terminus_44 (E), Thoth_84 (D1), TinyTim_14 (C1), Tortoise16_12 (C1), Trinitium_13 (C1), Turret_13 (C1), ValleyTerrace_13 (C1), Velveteen_73 (F1), Veteran_71 (F1),

Visconti_85 (D1), WaldoWhy_85 (D1), Wally_13 (C1), Wanda_82 (J), Whatsapiecost_73 (F1), Willis_14 (C1), Yassified_13 (C1), Yassified_6 (C1), YemiJoy2021_14 (C1), YoungMoneyMata_13 (C1), Yucca_13 (C1), Zalkecks_15 (C1), Zeenon_16 (C1), Zelink_71 (J), ZygoTaiga_15 (C1), xkcd_46 (E),

Start 63:

- Found in 3 of 392 (0.8%) of genes in pham
- Manual Annotations of this start: 1 of 365
- Called 66.7% of time when present
- Phage (with cluster) where this start called: IMpilo_74 (F1), Ovechkin_81 (F1),

Start 64:

- Found in 51 of 392 (13.0%) of genes in pham
- Manual Annotations of this start: 45 of 365
- Called 92.2% of time when present
- Phage (with cluster) where this start called: Ajay_76 (A1), Astraea_6 (C1), BlueCrab_63 (F1), Bxz1_6 (C1), ByChance_55 (F1), CaptainTrips_79 (F1), ChosenOne_46 (E), Corvo_62 (A1), Courthouse_75 (J), DirtMonster_6 (C1), Dreamboat_79 (A1), Dylan_22 (O), Elite2014_45 (E), Eyeball_79 (A1), Gyzlar_56 (A1), Hannaconda_73 (J), Jasper_78 (A1), KSSJEB_78 (A1), Kugel_63 (A1), Lilpickle_45 (E), Marker_82 (F1), MaryBeth_59 (A1), MetalQZJ_58 (A1), Mikro_6 (C1), MinionDave_75 (F1), MoMoMixon_5 (C1), Nidhogg_5 (C1), NoodleTree_6 (C1), Ogopogo_85 (F1), Peterson_79 (A1), Petruchio_60 (A1), PherrisBueller_78 (A1), PhesterPhotato_83 (F1), Pio_6 (C1), QBert_6 (C1), Raid_78 (A1), STLscum_69 (A1), SarFire_60 (A1), Sauce_5 (C1), ScottMcG_5 (C1), Simpliphy_43 (E), SkiPole_69 (A1), Spud_6 (C1), Target_63 (A1), Teodoridan_77 (A1), Thor_60 (A1), Zakhe101_23 (O),

Start 65:

- Found in 23 of 392 (5.9%) of genes in pham
- Manual Annotations of this start: 22 of 365
- Called 95.7% of time when present
- Phage (with cluster) where this start called: Abbysshoes_80 (A1), Ariel_79 (J), BaboJay_42 (E), Bench_44 (E), Bobby_76 (J), ChotaBhai_44 (E), DoctorDiddles_44 (E), Dussy_79 (A1), Fushigi_75 (A1), Jorgensen_64 (A1), Kenmech_82 (A1), Kykar_79 (A1), Lucky2013_77 (J), Mangeria_6 (C1), MiaZeal_80 (J), Pat3_42 (E), Porcelain_79 (J), Renaud18_72 (F4), Squint_80 (J), Superphikiman_77 (J), Target_79 (A1), Tripl3t_83 (A1),

Start 66:

- Found in 1 of 392 (0.3%) of genes in pham
- Manual Annotations of this start: 1 of 365
- Called 100.0% of time when present
- Phage (with cluster) where this start called: Juniper1_77 (F1),

Start 67:

- Found in 1 of 392 (0.3%) of genes in pham
- Manual Annotations of this start: 1 of 365
- Called 100.0% of time when present
- Phage (with cluster) where this start called: BuzzLyseyear_87 (F1),

Start 71:

- Found in 326 of 392 (83.2%) of genes in pham

- Manual Annotations of this start: 3 of 365
- Called 0.9% of time when present
- Phage (with cluster) where this start called: LittleE_79 (J), Lucky2013_71 (J), Patter_13 (C1),

Start 73:

- Found in 2 of 392 (0.5%) of genes in pham
- Manual Annotations of this start: 1 of 365
- Called 50.0% of time when present
- Phage (with cluster) where this start called: Eureka_44 (E),

Start 76:

- Found in 3 of 392 (0.8%) of genes in pham
- Manual Annotations of this start: 2 of 365
- Called 66.7% of time when present
- Phage (with cluster) where this start called: DLane_80 (F1), Goku_44 (E),

Start 77:

- Found in 1 of 392 (0.3%) of genes in pham
- Manual Annotations of this start: 1 of 365
- Called 100.0% of time when present
- Phage (with cluster) where this start called: XFactor_74 (F1),

Start 79:

- Found in 18 of 392 (4.6%) of genes in pham
- Manual Annotations of this start: 15 of 365
- Called 100.0% of time when present
- Phage (with cluster) where this start called: BigCity_8 (C1), DTDevon_8 (C1), Dandelion_7 (C1), Drazdys_8 (C1), EggyFarm_8 (C1), FrayBell_8 (C1), Grasshills_8 (C1), InterFolia_8 (C1), JayJay_7 (C1), LinStu_7 (C1), LolaVinca_8 (C1), Nappy_6 (C1), NuevoMundo_7 (C1), Pier_7 (C1), Sebata_7 (C1), Specks_8 (C1), StephanieG_7 (C1), Tyke_8 (C1),

Start 80:

- Found in 2 of 392 (0.5%) of genes in pham
- Manual Annotations of this start: 2 of 365
- Called 100.0% of time when present
- Phage (with cluster) where this start called: Gaia_50 (X), Nebkiss_54 (X),

Start 81:

- Found in 1 of 392 (0.3%) of genes in pham
- Manual Annotations of this start: 1 of 365
- Called 100.0% of time when present
- Phage (with cluster) where this start called: Pollywog_86 (F1),

Start 88:

- Found in 2 of 392 (0.5%) of genes in pham
- No Manual Annotations of this start.
- Called 50.0% of time when present
- Phage (with cluster) where this start called: Ms6_78 (F1),

Start 89:

- Found in 14 of 392 (3.6%) of genes in pham

- Manual Annotations of this start: 1 of 365
- Called 7.1% of time when present
- Phage (with cluster) where this start called: Tonenili_20 (C1),

Start 90:

- Found in 9 of 392 (2.3%) of genes in pham
- Manual Annotations of this start: 8 of 365
- Called 88.9% of time when present
- Phage (with cluster) where this start called: Che8_92 (F1), Fancypants_92 (F1), Koella_74 (F1), Marker_91 (F1), NormanBulbieJr_80 (F1), Priscilla_82 (F1), Spartacus_85 (F1), Whouxphf_84 (F1),

Summary by clusters:

There are 13 clusters represented in this pham: F1, F2, E, F5, F, F4, J, O, A1, S, X, C1, D1,

Info for manual annotations of cluster A1:

- Start number 62 was manually annotated 1 time for cluster A1.
- Start number 64 was manually annotated 18 times for cluster A1.
- Start number 65 was manually annotated 8 times for cluster A1.

Info for manual annotations of cluster C1:

- Start number 61 was manually annotated 1 time for cluster C1.
- Start number 62 was manually annotated 142 times for cluster C1.
- Start number 64 was manually annotated 12 times for cluster C1.
- Start number 65 was manually annotated 1 time for cluster C1.
- Start number 71 was manually annotated 1 time for cluster C1.
- Start number 79 was manually annotated 15 times for cluster C1.
- Start number 89 was manually annotated 1 time for cluster C1.

Info for manual annotations of cluster D1:

- Start number 24 was manually annotated 1 time for cluster D1.
- Start number 62 was manually annotated 12 times for cluster D1.

Info for manual annotations of cluster E:

- Start number 34 was manually annotated 1 time for cluster E.
- Start number 51 was manually annotated 1 time for cluster E.
- Start number 60 was manually annotated 1 time for cluster E.
- Start number 62 was manually annotated 16 times for cluster E.
- Start number 64 was manually annotated 4 times for cluster E.
- Start number 65 was manually annotated 5 times for cluster E.
- Start number 73 was manually annotated 1 time for cluster E.
- Start number 76 was manually annotated 1 time for cluster E.

Info for manual annotations of cluster F1:

- Start number 57 was manually annotated 1 time for cluster F1.
- Start number 59 was manually annotated 11 times for cluster F1.
- Start number 61 was manually annotated 16 times for cluster F1.
- Start number 62 was manually annotated 35 times for cluster F1.
- Start number 63 was manually annotated 1 time for cluster F1.
- Start number 64 was manually annotated 7 times for cluster F1.

- Start number 66 was manually annotated 1 time for cluster F1.
- Start number 67 was manually annotated 1 time for cluster F1.
- Start number 76 was manually annotated 1 time for cluster F1.
- Start number 77 was manually annotated 1 time for cluster F1.
- Start number 81 was manually annotated 1 time for cluster F1.
- Start number 90 was manually annotated 8 times for cluster F1.

Info for manual annotations of cluster F2:

- Start number 61 was manually annotated 3 times for cluster F2.

Info for manual annotations of cluster F4:

- Start number 61 was manually annotated 1 time for cluster F4.
- Start number 65 was manually annotated 1 time for cluster F4.

Info for manual annotations of cluster F5:

- Start number 62 was manually annotated 1 time for cluster F5.

Info for manual annotations of cluster J:

- Start number 59 was manually annotated 1 time for cluster J.
- Start number 62 was manually annotated 4 times for cluster J.
- Start number 64 was manually annotated 2 times for cluster J.
- Start number 65 was manually annotated 7 times for cluster J.
- Start number 71 was manually annotated 2 times for cluster J.

Info for manual annotations of cluster O:

- Start number 64 was manually annotated 2 times for cluster O.

Info for manual annotations of cluster S:

- Start number 62 was manually annotated 12 times for cluster S.

Info for manual annotations of cluster X:

- Start number 80 was manually annotated 2 times for cluster X.

Gene Information:

Gene: Abbyshoes_80 Start: 47965, Stop: 47543, Start Num: 65

Candidate Starts for Abbyshoes_80:

(Start: 65 @47965 has 22 MA's), (Start: 71 @47953 has 3 MA's), (122, 47797), (144, 47725), (153, 47701), (182, 47629), (196, 47566),

Gene: Ablatia_12 Start: 3972, Stop: 4337, Start Num: 62

Candidate Starts for Ablatia_12:

(Start: 62 @3972 has 223 MA's), (Start: 71 @3987 has 3 MA's), (122, 4122), (157, 4200), (161, 4212), (163, 4215), (196, 4308),

Gene: Ading_13 Start: 3949, Stop: 4314, Start Num: 62

Candidate Starts for Ading_13:

(Start: 62 @3949 has 223 MA's), (Start: 71 @3964 has 3 MA's), (122, 4099), (157, 4177), (161, 4189), (163, 4192), (196, 4285),

Gene: Adjutor_82 Start: 59655, Stop: 60050, Start Num: 62

Candidate Starts for Adjutor_82:

(Start: 24 @59532 has 1 MA's), (Start: 62 @59655 has 223 MA's), (92, 59730), (116, 59802), (122, 59835), (136, 59871), (138, 59877), (194, 60009), (196, 60027),

Gene: Adlitam_13 Start: 3966, Stop: 4331, Start Num: 62

Candidate Starts for Adlitam_13:

(Start: 62 @3966 has 223 MA's), (Start: 71 @3981 has 3 MA's), (122, 4116), (157, 4194), (161, 4206), (163, 4209), (196, 4302),

Gene: Ajay_76 Start: 46873, Stop: 46502, Start Num: 64

Candidate Starts for Ajay_76:

(Start: 64 @46873 has 45 MA's), (Start: 71 @46861 has 3 MA's), (83, 46825), (102, 46783), (112, 46759), (122, 46717), (161, 46627), (163, 46624), (189, 46561), (197, 46525),

Gene: Alice_12 Start: 4384, Stop: 4734, Start Num: 62

Candidate Starts for Alice_12:

(Start: 62 @4384 has 223 MA's), (Start: 71 @4399 has 3 MA's), (122, 4519), (157, 4597), (161, 4609), (163, 4612), (196, 4705),

Gene: Amao_43 Start: 35234, Stop: 34809, Start Num: 57

Candidate Starts for Amao_43:

(52, 35246), (Start: 57 @35234 has 1 MA's), (Start: 65 @35225 has 22 MA's), (Start: 71 @35213 has 3 MA's), (122, 35039), (158, 34937), (177, 34895),

Gene: Amataga_13 Start: 3970, Stop: 4335, Start Num: 62

Candidate Starts for Amataga_13:

(Start: 62 @3970 has 223 MA's), (Start: 71 @3985 has 3 MA's), (122, 4120), (157, 4198), (161, 4210), (163, 4213), (196, 4306),

Gene: ArcherS7_13 Start: 3966, Stop: 4331, Start Num: 62

Candidate Starts for ArcherS7_13:

(Start: 62 @3966 has 223 MA's), (Start: 71 @3981 has 3 MA's), (122, 4116), (157, 4194), (161, 4206), (163, 4209), (196, 4302),

Gene: Ardmore_64 Start: 42842, Stop: 43237, Start Num: 61

Candidate Starts for Ardmore_64:

(Start: 61 @42842 has 21 MA's), (Start: 71 @42857 has 3 MA's), (150, 43079), (151, 43085), (161, 43109), (196, 43208),

Gene: Ariel_79 Start: 48566, Stop: 48168, Start Num: 65

Candidate Starts for Ariel_79:

(Start: 65 @48566 has 22 MA's), (Start: 71 @48554 has 3 MA's), (122, 48398), (152, 48314), (155, 48308), (156, 48305), (192, 48221),

Gene: Asterius_15 Start: 5050, Stop: 5400, Start Num: 62

Candidate Starts for Asterius_15:

(Start: 62 @5050 has 223 MA's), (Start: 71 @5065 has 3 MA's), (122, 5185), (157, 5263), (161, 5275), (163, 5278), (196, 5371),

Gene: Astraea_6 Start: 1759, Stop: 2151, Start Num: 64

Candidate Starts for Astraea_6:

(Start: 64 @1759 has 45 MA's), (Start: 71 @1771 has 3 MA's), (85, 1819), (Start: 89 @1825 has 1 MA's), (110, 1888), (122, 1942), (157, 2020), (161, 2032), (163, 2035),

Gene: Atlantean_13 Start: 3970, Stop: 4335, Start Num: 62

Candidate Starts for Atlantean_13:

(Start: 62 @3970 has 223 MA's), (Start: 71 @3985 has 3 MA's), (122, 4120), (157, 4198), (161, 4210), (163, 4213), (196, 4306),

Gene: Aubs_80 Start: 49176, Stop: 49556, Start Num: 61

Candidate Starts for Aubs_80:

(Start: 61 @49176 has 21 MA's), (Start: 71 @49191 has 3 MA's), (150, 49398), (151, 49404), (161, 49428), (196, 49527),

Gene: Audrick_14 Start: 3949, Stop: 4314, Start Num: 62

Candidate Starts for Audrick_14:

(Start: 62 @3949 has 223 MA's), (Start: 71 @3964 has 3 MA's), (122, 4099), (157, 4177), (161, 4189), (163, 4192), (196, 4285),

Gene: Ava3_15 Start: 5050, Stop: 5400, Start Num: 62

Candidate Starts for Ava3_15:

(Start: 62 @5050 has 223 MA's), (Start: 71 @5065 has 3 MA's), (122, 5185), (157, 5263), (161, 5275), (163, 5278), (196, 5371),

Gene: BaboJay_42 Start: 35493, Stop: 35068, Start Num: 65

Candidate Starts for BaboJay_42:

(52, 35514), (Start: 57 @35502 has 1 MA's), (Start: 65 @35493 has 22 MA's), (Start: 71 @35481 has 3 MA's), (122, 35307), (159, 35205),

Gene: Babyland_13 Start: 3970, Stop: 4335, Start Num: 62

Candidate Starts for Babyland_13:

(Start: 62 @3970 has 223 MA's), (Start: 71 @3985 has 3 MA's), (122, 4120), (157, 4198), (161, 4210), (163, 4213), (196, 4306),

Gene: BackyardAgain_12 Start: 3966, Stop: 4331, Start Num: 62

Candidate Starts for BackyardAgain_12:

(Start: 62 @3966 has 223 MA's), (Start: 71 @3981 has 3 MA's), (122, 4116), (157, 4194), (161, 4206), (163, 4209), (196, 4302),

Gene: BadAgartude_14 Start: 4738, Stop: 5088, Start Num: 62

Candidate Starts for BadAgartude_14:

(Start: 62 @4738 has 223 MA's), (Start: 71 @4753 has 3 MA's), (122, 4873), (157, 4951), (161, 4963), (163, 4966), (196, 5059),

Gene: Balomoji_45 Start: 36485, Stop: 36057, Start Num: 62

Candidate Starts for Balomoji_45:

(Start: 51 @36506 has 1 MA's), (56, 36494), (Start: 62 @36485 has 223 MA's), (Start: 71 @36473 has 3 MA's), (105, 36335), (110, 36323), (122, 36263), (196, 36086),

Gene: BananaFence_14 Start: 4971, Stop: 5336, Start Num: 62

Candidate Starts for BananaFence_14:

(Start: 62 @4971 has 223 MA's), (Start: 71 @4986 has 3 MA's), (122, 5121), (157, 5199), (161, 5211), (163, 5214), (196, 5307),

Gene: Bangla1971_13 Start: 3966, Stop: 4331, Start Num: 62

Candidate Starts for Bangla1971_13:

(Start: 62 @3966 has 223 MA's), (Start: 71 @3981 has 3 MA's), (122, 4116), (157, 4194), (161, 4206), (163, 4209), (196, 4302),

Gene: Basquiat_13 Start: 3951, Stop: 4316, Start Num: 62

Candidate Starts for Basquiat_13:

(Start: 62 @3951 has 223 MA's), (Start: 71 @3966 has 3 MA's), (122, 4101), (157, 4179), (161, 4191), (163, 4194), (196, 4287),

Gene: Batiatus_78 Start: 48266, Stop: 48646, Start Num: 61

Candidate Starts for Batiatus_78:

(Start: 61 @48266 has 21 MA's), (Start: 71 @48281 has 3 MA's), (122, 48401), (150, 48488), (151, 48494), (161, 48518), (196, 48617),

Gene: BeanWater_5 Start: 2594, Stop: 3034, Start Num: 62

Candidate Starts for BeanWater_5:

(Start: 62 @2594 has 223 MA's), (Start: 71 @2606 has 3 MA's), (100, 2726), (122, 2816), (129, 2858), (181, 2954), (189, 2978),

Gene: Beelzebub_9 Start: 2804, Stop: 3181, Start Num: 62

Candidate Starts for Beelzebub_9:

(Start: 62 @2804 has 223 MA's), (Start: 71 @2816 has 3 MA's), (122, 2972), (157, 3050), (161, 3062), (163, 3065),

Gene: Belieber_12 Start: 3970, Stop: 4335, Start Num: 62

Candidate Starts for Belieber_12:

(Start: 62 @3970 has 223 MA's), (Start: 71 @3985 has 3 MA's), (122, 4120), (157, 4198), (161, 4210), (163, 4213), (196, 4306),

Gene: Bench_44 Start: 35114, Stop: 34752, Start Num: 65

Candidate Starts for Bench_44:

(Start: 65 @35114 has 22 MA's), (Start: 71 @35102 has 3 MA's), (122, 34982), (159, 34880), (196, 34775),

Gene: BigBubba_43 Start: 35101, Stop: 34667, Start Num: 62

Candidate Starts for BigBubba_43:

(35, 35173), (Start: 62 @35101 has 223 MA's), (Start: 71 @35089 has 3 MA's), (110, 34939), (122, 34879),

Gene: BigCity_8 Start: 2903, Stop: 3259, Start Num: 79

Candidate Starts for BigCity_8:

(Start: 79 @2903 has 15 MA's), (83, 2915), (92, 2942), (108, 2987), (122, 3050), (157, 3128), (161, 3140), (163, 3143),

Gene: BigPhil_72 Start: 44249, Stop: 44626, Start Num: 62

Candidate Starts for BigPhil_72:

(Start: 62 @44249 has 223 MA's), (Start: 71 @44264 has 3 MA's), (122, 44420), (133, 44462), (165, 44528), (170, 44531), (195, 44600),

Gene: Bigswole_5 Start: 1613, Stop: 2053, Start Num: 62

Candidate Starts for Bigswole_5:

(Start: 62 @1613 has 223 MA's), (Start: 71 @1625 has 3 MA's), (100, 1745), (122, 1835), (129, 1877), (181, 1973), (189, 1997),

Gene: Bipolarisk_14 Start: 5050, Stop: 5400, Start Num: 62
Candidate Starts for Bipolarisk_14:
(Start: 62 @5050 has 223 MA's), (Start: 71 @5065 has 3 MA's), (122, 5185), (157, 5263), (161, 5275),
(163, 5278), (196, 5371),

Gene: Blackbrain_13 Start: 3966, Stop: 4331, Start Num: 62
Candidate Starts for Blackbrain_13:
(Start: 62 @3966 has 223 MA's), (Start: 71 @3981 has 3 MA's), (122, 4116), (157, 4194), (161, 4206),
(163, 4209), (196, 4302),

Gene: Blackdragon_5 Start: 1616, Stop: 2056, Start Num: 62
Candidate Starts for Blackdragon_5:
(Start: 62 @1616 has 223 MA's), (Start: 71 @1628 has 3 MA's), (100, 1748), (122, 1838), (129, 1880),
(181, 1976), (189, 2000),

Gene: Blackdragon_12 Start: 4007, Stop: 4381, Start Num: 62
Candidate Starts for Blackdragon_12:
(Start: 62 @4007 has 223 MA's), (Start: 71 @4022 has 3 MA's), (83, 4058), (102, 4100), (112, 4124),
(122, 4166), (161, 4256), (163, 4259), (196, 4352),

Gene: Blarby_87 Start: 46989, Stop: 47345, Start Num: 61
Candidate Starts for Blarby_87:
(Start: 61 @46989 has 21 MA's), (Start: 71 @47004 has 3 MA's), (122, 47124), (193, 47295), (196,
47316),

Gene: BlueCrab_63 Start: 41722, Stop: 42096, Start Num: 64
Candidate Starts for BlueCrab_63:
(58, 41713), (Start: 64 @41722 has 45 MA's), (75, 41755), (118, 41863), (119, 41866), (129, 41914),
(172, 42001), (196, 42085),

Gene: Bobby_76 Start: 51549, Stop: 51166, Start Num: 65
Candidate Starts for Bobby_76:
(33, 51630), (46, 51588), (48, 51585), (Start: 65 @51549 has 22 MA's), (Start: 71 @51537 has 3 MA's),
(91, 51477), (117, 51405), (122, 51372), (149, 51312), (153, 51297), (169, 51273), (180, 51240),

Gene: Bobi_85 Start: 50553, Stop: 50930, Start Num: 61
Candidate Starts for Bobi_85:
(Start: 61 @50553 has 21 MA's), (Start: 71 @50568 has 3 MA's), (122, 50688), (150, 50775), (151,
50781), (161, 50805), (188, 50868), (196, 50907),

Gene: Bonray_14 Start: 5044, Stop: 5394, Start Num: 62
Candidate Starts for Bonray_14:
(Start: 62 @5044 has 223 MA's), (Start: 71 @5059 has 3 MA's), (122, 5179), (157, 5257), (161, 5269),
(163, 5272), (196, 5365),

Gene: Boomer_81 Start: 48708, Stop: 49136, Start Num: 59
Candidate Starts for Boomer_81:
(Start: 59 @48708 has 12 MA's), (Start: 71 @48723 has 3 MA's), (87, 48777), (110, 48870), (122,
48930), (196, 49107),

Gene: Bread_14 Start: 5050, Stop: 5400, Start Num: 62
Candidate Starts for Bread_14:

(Start: 62 @5050 has 223 MA's), (Start: 71 @5065 has 3 MA's), (122, 5185), (157, 5263), (161, 5275), (163, 5278), (196, 5371),

Gene: Breeniome_14 Start: 3966, Stop: 4331, Start Num: 62

Candidate Starts for Breeniome_14:

(Start: 62 @3966 has 223 MA's), (Start: 71 @3981 has 3 MA's), (122, 4116), (157, 4194), (161, 4206), (163, 4209), (196, 4302),

Gene: Brookers_74 Start: 47200, Stop: 47577, Start Num: 62

Candidate Starts for Brookers_74:

(Start: 62 @47200 has 223 MA's), (Start: 71 @47215 has 3 MA's), (122, 47371), (133, 47413), (165, 47479), (170, 47482), (195, 47551),

Gene: Bubbles123_74 Start: 48058, Stop: 48471, Start Num: 61

Candidate Starts for Bubbles123_74:

(Start: 61 @48058 has 21 MA's), (Start: 71 @48073 has 3 MA's), (122, 48229), (150, 48316), (151, 48322), (161, 48346), (188, 48409), (196, 48448),

Gene: BugsBunny_43 Start: 35586, Stop: 35152, Start Num: 62

Candidate Starts for BugsBunny_43:

(35, 35658), (Start: 62 @35586 has 223 MA's), (Start: 71 @35574 has 3 MA's), (110, 35424), (122, 35364),

Gene: Burrough_14 Start: 5050, Stop: 5400, Start Num: 62

Candidate Starts for Burrough_14:

(Start: 62 @5050 has 223 MA's), (Start: 71 @5065 has 3 MA's), (122, 5185), (157, 5263), (161, 5275), (163, 5278), (196, 5371),

Gene: Butterscotch_82 Start: 59706, Stop: 60101, Start Num: 62

Candidate Starts for Butterscotch_82:

(Start: 24 @59583 has 1 MA's), (Start: 62 @59706 has 223 MA's), (92, 59781), (116, 59853), (122, 59886), (136, 59922), (138, 59928), (194, 60060), (196, 60078),

Gene: BuzzLyseyear_87 Start: 51492, Stop: 51857, Start Num: 67

Candidate Starts for BuzzLyseyear_87:

(Start: 67 @51492 has 1 MA's), (74, 51507), (122, 51642), (136, 51678), (138, 51684), (194, 51816),

Gene: Bxz1_6 Start: 1759, Stop: 2151, Start Num: 64

Candidate Starts for Bxz1_6:

(Start: 64 @1759 has 45 MA's), (Start: 71 @1771 has 3 MA's), (85, 1819), (Start: 89 @1825 has 1 MA's), (110, 1888), (122, 1942), (157, 2020), (161, 2032), (163, 2035),

Gene: ByChance_55 Start: 36650, Stop: 37024, Start Num: 64

Candidate Starts for ByChance_55:

(58, 36641), (Start: 64 @36650 has 45 MA's), (75, 36683), (118, 36791), (119, 36794), (129, 36842), (172, 36929), (196, 37013),

Gene: Cactojaque_12 Start: 3900, Stop: 4265, Start Num: 62

Candidate Starts for Cactojaque_12:

(Start: 62 @3900 has 223 MA's), (Start: 71 @3915 has 3 MA's), (122, 4050), (157, 4128), (161, 4140), (163, 4143), (196, 4236),

Gene: Cali_14 Start: 5699, Stop: 6064, Start Num: 62

Candidate Starts for Cali_14:

(Start: 62 @5699 has 223 MA's), (Start: 71 @5714 has 3 MA's), (72, 5723), (122, 5849), (157, 5927), (161, 5939), (163, 5942), (196, 6035),

Gene: Cali_6 Start: 2751, Stop: 3191, Start Num: 62

Candidate Starts for Cali_6:

(Start: 62 @2751 has 223 MA's), (Start: 71 @2763 has 3 MA's), (100, 2883), (122, 2973), (129, 3015), (181, 3111), (189, 3135),

Gene: Capablanca_14 Start: 5050, Stop: 5415, Start Num: 62

Candidate Starts for Capablanca_14:

(Start: 62 @5050 has 223 MA's), (Start: 71 @5065 has 3 MA's), (122, 5200), (157, 5278), (161, 5290), (163, 5293), (196, 5386),

Gene: CaptainTrips_79 Start: 47890, Stop: 48285, Start Num: 64

Candidate Starts for CaptainTrips_79:

(Start: 64 @47890 has 45 MA's), (Start: 71 @47902 has 3 MA's), (122, 48037), (148, 48115), (168, 48166), (177, 48190), (183, 48208), (188, 48223), (196, 48262),

Gene: Caravan_16 Start: 5077, Stop: 5427, Start Num: 62

Candidate Starts for Caravan_16:

(Start: 62 @5077 has 223 MA's), (Start: 71 @5092 has 3 MA's), (122, 5212), (157, 5290), (161, 5302), (163, 5305), (196, 5398),

Gene: Catera_13 Start: 3970, Stop: 4335, Start Num: 62

Candidate Starts for Catera_13:

(Start: 62 @3970 has 223 MA's), (Start: 71 @3985 has 3 MA's), (122, 4120), (157, 4198), (161, 4210), (163, 4213), (196, 4306),

Gene: Cerasum_72 Start: 44267, Stop: 44644, Start Num: 62

Candidate Starts for Cerasum_72:

(Start: 62 @44267 has 223 MA's), (Start: 71 @44282 has 3 MA's), (122, 44438), (133, 44480), (165, 44546), (170, 44549), (195, 44618),

Gene: Chargie21_13 Start: 3951, Stop: 4316, Start Num: 62

Candidate Starts for Chargie21_13:

(Start: 62 @3951 has 223 MA's), (Start: 71 @3966 has 3 MA's), (122, 4101), (157, 4179), (161, 4191), (163, 4194), (196, 4287),

Gene: CharlieB_5 Start: 1612, Stop: 2052, Start Num: 62

Candidate Starts for CharlieB_5:

(Start: 62 @1612 has 223 MA's), (Start: 71 @1624 has 3 MA's), (100, 1744), (122, 1834), (129, 1876), (181, 1972), (189, 1996),

Gene: CharlieB_15 Start: 4563, Stop: 4913, Start Num: 62

Candidate Starts for CharlieB_15:

(Start: 62 @4563 has 223 MA's), (Start: 71 @4578 has 3 MA's), (122, 4698), (157, 4776), (161, 4788), (163, 4791), (196, 4884),

Gene: ChaylaJr_13 Start: 3993, Stop: 4358, Start Num: 62

Candidate Starts for ChaylaJr_13:

(Start: 62 @3993 has 223 MA's), (Start: 71 @4008 has 3 MA's), (122, 4143), (157, 4221), (161, 4233), (163, 4236), (196, 4329),

Gene: Che8_92 Start: 51445, Stop: 51828, Start Num: 90

Candidate Starts for Che8_92:

(31, 51271), (32, 51280), (41, 51304), (45, 51322), (82, 51415), (84, 51424), (Start: 90 @51445 has 8 MA's), (131, 51631), (145, 51661), (155, 51697), (181, 51748),

Gene: ChickenPhender_13 Start: 3951, Stop: 4316, Start Num: 62

Candidate Starts for ChickenPhender_13:

(Start: 62 @3951 has 223 MA's), (Start: 71 @3966 has 3 MA's), (122, 4101), (157, 4179), (161, 4191), (163, 4194), (196, 4287),

Gene: Chill_85 Start: 59683, Stop: 60078, Start Num: 62

Candidate Starts for Chill_85:

(Start: 24 @59560 has 1 MA's), (Start: 62 @59683 has 223 MA's), (92, 59758), (116, 59830), (122, 59863), (136, 59899), (138, 59905), (194, 60037), (196, 60055),

Gene: Chomp_13 Start: 3970, Stop: 4335, Start Num: 62

Candidate Starts for Chomp_13:

(Start: 62 @3970 has 223 MA's), (Start: 71 @3985 has 3 MA's), (122, 4120), (157, 4198), (161, 4210), (163, 4213), (196, 4306),

Gene: ChosenOne_46 Start: 35277, Stop: 34882, Start Num: 64

Candidate Starts for ChosenOne_46:

(25, 35379), (26, 35373), (35, 35343), (Start: 64 @35277 has 45 MA's), (Start: 71 @35265 has 3 MA's), (122, 35109), (129, 35076), (140, 35055), (172, 34989), (196, 34905),

Gene: ChotaBhai_44 Start: 35156, Stop: 34737, Start Num: 65

Candidate Starts for ChotaBhai_44:

(52, 35177), (Start: 57 @35165 has 1 MA's), (Start: 65 @35156 has 22 MA's), (Start: 71 @35144 has 3 MA's), (122, 34970), (159, 34868),

Gene: CindyLou_13 Start: 3970, Stop: 4335, Start Num: 62

Candidate Starts for CindyLou_13:

(Start: 62 @3970 has 223 MA's), (Start: 71 @3985 has 3 MA's), (122, 4120), (157, 4198), (161, 4210), (163, 4213), (196, 4306),

Gene: Clarkson_8 Start: 2580, Stop: 2957, Start Num: 62

Candidate Starts for Clarkson_8:

(Start: 62 @2580 has 223 MA's), (Start: 71 @2592 has 3 MA's), (122, 2748), (157, 2826), (161, 2838), (163, 2841),

Gene: Clifton_72 Start: 46816, Stop: 47196, Start Num: 62

Candidate Starts for Clifton_72:

(Start: 62 @46816 has 223 MA's), (Start: 71 @46831 has 3 MA's), (122, 46987), (157, 47065), (161, 47077), (163, 47080), (196, 47173),

Gene: Coco12_75 Start: 48324, Stop: 48701, Start Num: 62

Candidate Starts for Coco12_75:

(Start: 62 @48324 has 223 MA's), (Start: 71 @48339 has 3 MA's), (122, 48495), (133, 48537), (165, 48603), (170, 48606), (195, 48675),

Gene: Corazon_7 Start: 2530, Stop: 2910, Start Num: 62

Candidate Starts for Corazon_7:

(Start: 62 @2530 has 223 MA's), (Start: 71 @2545 has 3 MA's), (122, 2701), (157, 2779), (161, 2791), (163, 2794),

Gene: Cornie_74 Start: 46648, Stop: 46998, Start Num: 62

Candidate Starts for Cornie_74:

(Start: 62 @46648 has 223 MA's), (Start: 71 @46663 has 3 MA's), (157, 46861), (161, 46873), (163, 46876), (196, 46969),

Gene: Corvo_62 Start: 41848, Stop: 41459, Start Num: 64

Candidate Starts for Corvo_62:

(9, 42049), (42, 41905), (43, 41902), (Start: 64 @41848 has 45 MA's), (Start: 71 @41836 has 3 MA's), (113, 41749), (122, 41716), (148, 41638), (155, 41614), (184, 41542),

Gene: Courthouse_75 Start: 48166, Stop: 47780, Start Num: 64

Candidate Starts for Courthouse_75:

(Start: 64 @48166 has 45 MA's), (Start: 71 @48154 has 3 MA's), (122, 47998), (136, 47962), (138, 47956), (194, 47824),

Gene: DLane_79 Start: 49141, Stop: 49515, Start Num: 62

Candidate Starts for DLane_79:

(Start: 62 @49141 has 223 MA's), (Start: 71 @49156 has 3 MA's), (122, 49291), (147, 49360), (181, 49441),

Gene: DLane_80 Start: 49512, Stop: 49868, Start Num: 76

Candidate Starts for DLane_80:

(Start: 76 @49512 has 2 MA's), (83, 49524), (122, 49644), (136, 49686), (181, 49782), (196, 49839),

Gene: DRBy19_83 Start: 50545, Stop: 50925, Start Num: 62

Candidate Starts for DRBy19_83:

(Start: 62 @50545 has 223 MA's), (Start: 71 @50560 has 3 MA's), (122, 50716), (157, 50794), (161, 50806), (163, 50809), (196, 50902),

Gene: DTDevon_8 Start: 2464, Stop: 2820, Start Num: 79

Candidate Starts for DTDevon_8:

(Start: 79 @2464 has 15 MA's), (83, 2476), (92, 2503), (108, 2548), (122, 2611), (157, 2689), (161, 2701), (163, 2704),

Gene: DaWorst_79 Start: 47793, Stop: 48188, Start Num: 62

Candidate Starts for DaWorst_79:

(Start: 62 @47793 has 223 MA's), (Start: 71 @47808 has 3 MA's), (122, 47928), (148, 48000), (155, 48024), (184, 48096), (198, 48168),

Gene: Daffodil_15 Start: 5050, Stop: 5400, Start Num: 62

Candidate Starts for Daffodil_15:

(Start: 62 @5050 has 223 MA's), (Start: 71 @5065 has 3 MA's), (122, 5185), (157, 5263), (161, 5275), (163, 5278), (196, 5371),

Gene: Dandelion_7 Start: 2464, Stop: 2820, Start Num: 79

Candidate Starts for Dandelion_7:

(Start: 79 @2464 has 15 MA's), (83, 2476), (92, 2503), (108, 2548), (122, 2611), (157, 2689), (161, 2701), (163, 2704),

Gene: Darko_13 Start: 4940, Stop: 5305, Start Num: 62

Candidate Starts for Darko_13:

(Start: 62 @4940 has 223 MA's), (Start: 71 @4955 has 3 MA's), (122, 5090), (157, 5168), (161, 5180), (163, 5183), (196, 5276),

Gene: DeadP_80 Start: 47212, Stop: 47607, Start Num: 61

Candidate Starts for DeadP_80:

(Start: 61 @47212 has 21 MA's), (Start: 71 @47227 has 3 MA's), (150, 47449), (151, 47455), (161, 47479), (188, 47542), (196, 47581),

Gene: Delilah_14 Start: 5050, Stop: 5400, Start Num: 62

Candidate Starts for Delilah_14:

(Start: 62 @5050 has 223 MA's), (Start: 71 @5065 has 3 MA's), (122, 5185), (157, 5263), (161, 5275), (163, 5278), (196, 5371),

Gene: Delton_83 Start: 59993, Stop: 60511, Start Num: 24

Candidate Starts for Delton_83:

(Start: 24 @59993 has 1 MA's), (Start: 62 @60116 has 223 MA's), (92, 60191), (116, 60263), (122, 60296), (136, 60332), (138, 60338), (194, 60470), (196, 60488),

Gene: Delylah_16 Start: 5077, Stop: 5427, Start Num: 62

Candidate Starts for Delylah_16:

(Start: 62 @5077 has 223 MA's), (Start: 71 @5092 has 3 MA's), (122, 5212), (157, 5290), (161, 5302), (163, 5305), (196, 5398),

Gene: Derek_14 Start: 3966, Stop: 4331, Start Num: 62

Candidate Starts for Derek_14:

(Start: 62 @3966 has 223 MA's), (Start: 71 @3981 has 3 MA's), (122, 4116), (157, 4194), (161, 4206), (163, 4209), (196, 4302),

Gene: Dietrick_12 Start: 3968, Stop: 4333, Start Num: 62

Candidate Starts for Dietrick_12:

(Start: 62 @3968 has 223 MA's), (Start: 71 @3983 has 3 MA's), (122, 4118), (157, 4196), (161, 4208), (163, 4211), (196, 4304),

Gene: DirtMcgirt_76 Start: 45318, Stop: 45746, Start Num: 59

Candidate Starts for DirtMcgirt_76:

(Start: 59 @45318 has 12 MA's), (Start: 71 @45333 has 3 MA's), (87, 45387), (110, 45480), (122, 45540), (196, 45717),

Gene: DirtMonster_6 Start: 2758, Stop: 3150, Start Num: 64

Candidate Starts for DirtMonster_6:

(Start: 64 @2758 has 45 MA's), (Start: 71 @2770 has 3 MA's), (85, 2818), (Start: 89 @2824 has 1 MA's), (110, 2887), (122, 2941), (157, 3019), (161, 3031), (163, 3034),

Gene: DoctorDiddles_44 Start: 35192, Stop: 34773, Start Num: 65

Candidate Starts for DoctorDiddles_44:

(52, 35213), (Start: 57 @35201 has 1 MA's), (Start: 65 @35192 has 22 MA's), (Start: 71 @35180 has 3 MA's), (122, 35006), (159, 34904),

Gene: DrPhinkDaddy_14 Start: 5050, Stop: 5400, Start Num: 62

Candidate Starts for DrPhinkDaddy_14:

(Start: 62 @5050 has 223 MA's), (Start: 71 @5065 has 3 MA's), (122, 5185), (157, 5263), (161, 5275), (163, 5278), (196, 5371),

Gene: Drago_74 Start: 45321, Stop: 45749, Start Num: 59

Candidate Starts for Drago_74:

(Start: 59 @45321 has 12 MA's), (Start: 71 @45336 has 3 MA's), (87, 45390), (110, 45483), (122, 45543), (196, 45720),

Gene: Drazdys_8 Start: 2464, Stop: 2820, Start Num: 79

Candidate Starts for Drazdys_8:

(Start: 79 @2464 has 15 MA's), (83, 2476), (92, 2503), (108, 2548), (122, 2611), (157, 2689), (161, 2701), (163, 2704),

Gene: Dreamboat_79 Start: 46273, Stop: 45872, Start Num: 64

Candidate Starts for Dreamboat_79:

(Start: 64 @46273 has 45 MA's), (122, 46081), (157, 46003), (161, 45991), (163, 45988), (196, 45895),

Gene: Dussy_79 Start: 47985, Stop: 47563, Start Num: 65

Candidate Starts for Dussy_79:

(Start: 65 @47985 has 22 MA's), (Start: 71 @47973 has 3 MA's), (122, 47817), (144, 47745), (153, 47721), (182, 47649), (196, 47586),

Gene: Dylan_22 Start: 10677, Stop: 11069, Start Num: 64

Candidate Starts for Dylan_22:

(Start: 64 @10677 has 45 MA's), (122, 10809), (142, 10893), (160, 10947), (174, 10971), (178, 10983), (180, 10989), (189, 11013), (193, 11028), (196, 11046),

Gene: ET08_12 Start: 4991, Stop: 5341, Start Num: 62

Candidate Starts for ET08_12:

(Start: 62 @4991 has 223 MA's), (Start: 71 @5006 has 3 MA's), (122, 5126), (157, 5204), (161, 5216), (163, 5219), (196, 5312),

Gene: ET08_5 Start: 2600, Stop: 3040, Start Num: 62

Candidate Starts for ET08_5:

(Start: 62 @2600 has 223 MA's), (Start: 71 @2612 has 3 MA's), (100, 2732), (122, 2822), (129, 2864), (181, 2960), (189, 2984),

Gene: EasyJones_13 Start: 3951, Stop: 4316, Start Num: 62

Candidate Starts for EasyJones_13:

(Start: 62 @3951 has 223 MA's), (Start: 71 @3966 has 3 MA's), (122, 4101), (157, 4179), (161, 4191), (163, 4194), (196, 4287),

Gene: EggyFarm_8 Start: 2903, Stop: 3259, Start Num: 79

Candidate Starts for EggyFarm_8:

(Start: 79 @2903 has 15 MA's), (83, 2915), (92, 2942), (108, 2987), (122, 3050), (157, 3128), (161, 3140), (163, 3143),

Gene: Eish_82 Start: 49234, Stop: 49629, Start Num: 62

Candidate Starts for Eish_82:

(Start: 62 @49234 has 223 MA's), (Start: 71 @49249 has 3 MA's), (85, 49297), (Start: 89 @49303 has 1 MA's), (110, 49366), (122, 49420), (157, 49498), (161, 49510), (163, 49513),

Gene: Elite2014_45 Start: 35276, Stop: 34881, Start Num: 64

Candidate Starts for Elite2014_45:

(25, 35378), (26, 35372), (35, 35342), (Start: 64 @35276 has 45 MA's), (Start: 71 @35264 has 3 MA's), (122, 35108), (129, 35075), (140, 35054), (172, 34988), (196, 34904),

Gene: EmToTheThree_17 Start: 6464, Stop: 6814, Start Num: 62

Candidate Starts for EmToTheThree_17:

(Start: 62 @6464 has 223 MA's), (Start: 71 @6479 has 3 MA's), (122, 6599), (157, 6677), (161, 6689), (163, 6692), (196, 6785),

Gene: Emma_82 Start: 47609, Stop: 47959, Start Num: 62

Candidate Starts for Emma_82:

(30, 47513), (Start: 62 @47609 has 223 MA's), (Start: 71 @47624 has 3 MA's), (122, 47744),

Gene: EmmaElysia_13 Start: 3966, Stop: 4331, Start Num: 62

Candidate Starts for EmmaElysia_13:

(Start: 62 @3966 has 223 MA's), (Start: 71 @3981 has 3 MA's), (122, 4116), (157, 4194), (161, 4206), (163, 4209), (196, 4302),

Gene: Enby_78 Start: 45597, Stop: 46025, Start Num: 59

Candidate Starts for Enby_78:

(Start: 59 @45597 has 12 MA's), (Start: 71 @45612 has 3 MA's), (87, 45666), (110, 45759), (122, 45819), (196, 45996),

Gene: Eradicator_69 Start: 46041, Stop: 46469, Start Num: 59

Candidate Starts for Eradicator_69:

(Start: 59 @46041 has 12 MA's), (Start: 71 @46056 has 3 MA's), (87, 46110), (110, 46203), (122, 46263), (196, 46440),

Gene: Erdmann_14 Start: 5050, Stop: 5400, Start Num: 62

Candidate Starts for Erdmann_14:

(Start: 62 @5050 has 223 MA's), (Start: 71 @5065 has 3 MA's), (122, 5185), (157, 5263), (161, 5275), (163, 5278), (196, 5371),

Gene: Erk16_85 Start: 60039, Stop: 60434, Start Num: 62

Candidate Starts for Erk16_85:

(Start: 24 @59916 has 1 MA's), (27, 59925), (Start: 62 @60039 has 223 MA's), (92, 60114), (116, 60186), (122, 60219), (136, 60255), (138, 60261), (194, 60393), (196, 60411),

Gene: ErnieJ_17 Start: 5141, Stop: 5506, Start Num: 62

Candidate Starts for ErnieJ_17:

(Start: 62 @5141 has 223 MA's), (Start: 71 @5156 has 3 MA's), (122, 5291), (157, 5369), (161, 5381), (163, 5384), (196, 5477),

Gene: Essence_13 Start: 3966, Stop: 4331, Start Num: 62

Candidate Starts for Essence_13:

(Start: 62 @3966 has 223 MA's), (Start: 71 @3981 has 3 MA's), (122, 4116), (157, 4194), (161, 4206), (163, 4209), (196, 4302),

Gene: Eureka_44 Start: 36100, Stop: 35735, Start Num: 73

Candidate Starts for Eureka_44:

(70, 36112), (Start: 73 @36100 has 1 MA's), (Start: 76 @36091 has 2 MA's), (83, 36079), (122, 35959), (136, 35917), (181, 35821), (196, 35764),

Gene: Ewok_14 Start: 5050, Stop: 5400, Start Num: 62

Candidate Starts for Ewok_14:

(Start: 62 @5050 has 223 MA's), (Start: 71 @5065 has 3 MA's), (122, 5185), (157, 5263), (161, 5275), (163, 5278), (196, 5371),

Gene: Eyeball_79 Start: 47899, Stop: 47528, Start Num: 64

Candidate Starts for Eyeball_79:

(Start: 64 @47899 has 45 MA's), (Start: 71 @47887 has 3 MA's), (83, 47851), (102, 47809), (112, 47785), (122, 47743), (161, 47653), (163, 47650), (189, 47587), (197, 47551),

Gene: Fancypants_92 Start: 52024, Stop: 52425, Start Num: 90

Candidate Starts for Fancypants_92:

(5, 51730), (14, 51763), (31, 51850), (32, 51859), (41, 51883), (45, 51901), (82, 51994), (84, 52003), (Start: 90 @52024 has 8 MA's), (115, 52123), (122, 52156), (151, 52261), (169, 52297), (175, 52318), (189, 52357),

Gene: FeliMaine_8 Start: 2581, Stop: 2958, Start Num: 62

Candidate Starts for FeliMaine_8:

(Start: 62 @2581 has 223 MA's), (Start: 71 @2593 has 3 MA's), (122, 2749), (157, 2827), (161, 2839), (163, 2842),

Gene: Filuzino_80 Start: 50124, Stop: 50459, Start Num: 62

Candidate Starts for Filuzino_80:

(3, 49893), (8, 49920), (10, 49932), (12, 49938), (13, 49944), (18, 49980), (Start: 62 @50124 has 223 MA's), (Start: 71 @50139 has 3 MA's), (122, 50259), (166, 50361), (181, 50382), (189, 50406),

Gene: FireRed_45 Start: 36025, Stop: 35591, Start Num: 62

Candidate Starts for FireRed_45:

(35, 36097), (Start: 62 @36025 has 223 MA's), (Start: 71 @36013 has 3 MA's), (110, 35863), (122, 35803),

Gene: Firehouse51_75 Start: 49196, Stop: 49573, Start Num: 62

Candidate Starts for Firehouse51_75:

(29, 49100), (Start: 62 @49196 has 223 MA's), (Start: 71 @49211 has 3 MA's), (122, 49346), (129, 49379), (140, 49400), (172, 49466), (196, 49550),

Gene: Flabslab_13 Start: 3966, Stop: 4331, Start Num: 62

Candidate Starts for Flabslab_13:

(Start: 62 @3966 has 223 MA's), (Start: 71 @3981 has 3 MA's), (122, 4116), (157, 4194), (161, 4206), (163, 4209), (196, 4302),

Gene: Fludd_13 Start: 3952, Stop: 4317, Start Num: 62

Candidate Starts for Fludd_13:

(Start: 62 @3952 has 223 MA's), (Start: 71 @3967 has 3 MA's), (122, 4102), (157, 4180), (161, 4192), (163, 4195), (196, 4288),

Gene: FoxtrotP1_15 Start: 5609, Stop: 5959, Start Num: 62

Candidate Starts for FoxtrotP1_15:

(Start: 62 @5609 has 223 MA's), (Start: 71 @5624 has 3 MA's), (122, 5744), (157, 5822), (161, 5834), (163, 5837), (196, 5930),

Gene: FrayBell_8 Start: 2465, Stop: 2821, Start Num: 79

Candidate Starts for FrayBell_8:

(Start: 79 @2465 has 15 MA's), (83, 2477), (92, 2504), (108, 2549), (122, 2612), (157, 2690), (161, 2702), (163, 2705),

Gene: Fruitloop_74 Start: 47706, Stop: 48077, Start Num: 61

Candidate Starts for Fruitloop_74:

(28, 47610), (Start: 61 @47706 has 21 MA's), (Start: 71 @47721 has 3 MA's), (122, 47841), (137, 47895), (142, 47904), (161, 47952), (164, 47958), (181, 47994), (187, 48012), (196, 48048),

Gene: FudgeTart_14 Start: 5050, Stop: 5400, Start Num: 62

Candidate Starts for FudgeTart_14:

(Start: 62 @5050 has 223 MA's), (Start: 71 @5065 has 3 MA's), (122, 5185), (157, 5263), (161, 5275), (163, 5278), (196, 5371),

Gene: Fushigi_75 Start: 45357, Stop: 44953, Start Num: 65

Candidate Starts for Fushigi_75:

(Start: 65 @45357 has 22 MA's), (122, 45159), (139, 45108), (152, 45084), (167, 45057), (196, 44976),

Gene: Gabriel_14 Start: 3966, Stop: 4331, Start Num: 62

Candidate Starts for Gabriel_14:

(Start: 62 @3966 has 223 MA's), (Start: 71 @3981 has 3 MA's), (122, 4116), (157, 4194), (161, 4206), (163, 4209), (196, 4302),

Gene: Gaia_50 Start: 37260, Stop: 36913, Start Num: 80

Candidate Starts for Gaia_50:

(69, 37293), (Start: 80 @37260 has 2 MA's), (121, 37140), (124, 37122),

Gene: Gamgam_13 Start: 3970, Stop: 4335, Start Num: 62

Candidate Starts for Gamgam_13:

(Start: 62 @3970 has 223 MA's), (Start: 71 @3985 has 3 MA's), (122, 4120), (157, 4198), (161, 4210), (163, 4213), (196, 4306),

Gene: Gandalph_77 Start: 45404, Stop: 45799, Start Num: 62

Candidate Starts for Gandalph_77:

(Start: 62 @45404 has 223 MA's), (Start: 71 @45419 has 3 MA's), (122, 45539), (148, 45617), (155, 45641), (184, 45713),

Gene: Gattaca_9 Start: 2524, Stop: 2901, Start Num: 62

Candidate Starts for Gattaca_9:

(Start: 62 @2524 has 223 MA's), (Start: 71 @2539 has 3 MA's), (122, 2674), (129, 2707), (140, 2728), (172, 2794), (196, 2878),

Gene: Ghost_14 Start: 3970, Stop: 4335, Start Num: 62

Candidate Starts for Ghost_14:

(Start: 62 @3970 has 223 MA's), (Start: 71 @3985 has 3 MA's), (122, 4120), (157, 4198), (161, 4210), (163, 4213), (196, 4306),

Gene: Girr_75 Start: 48247, Stop: 48597, Start Num: 62

Candidate Starts for Girr_75:

(Start: 62 @48247 has 223 MA's), (Start: 71 @48262 has 3 MA's), (122, 48382),

Gene: Giuseppe_86 Start: 59752, Stop: 60147, Start Num: 62

Candidate Starts for Giuseppe_86:

(Start: 24 @59629 has 1 MA's), (Start: 62 @59752 has 223 MA's), (92, 59827), (116, 59899), (122, 59932), (136, 59968), (138, 59974), (194, 60106), (196, 60124),

Gene: Gizmo_15 Start: 5050, Stop: 5400, Start Num: 62

Candidate Starts for Gizmo_15:

(Start: 62 @5050 has 223 MA's), (Start: 71 @5065 has 3 MA's), (122, 5185), (157, 5263), (161, 5275), (163, 5278), (196, 5371),

Gene: Goku_44 Start: 35820, Stop: 35464, Start Num: 76

Candidate Starts for Goku_44:

(70, 35841), (Start: 73 @35829 has 1 MA's), (Start: 76 @35820 has 2 MA's), (83, 35808), (122, 35688), (136, 35646), (181, 35550), (196, 35493),

Gene: Gonephishing_73 Start: 48084, Stop: 47683, Start Num: 62

Candidate Starts for Gonephishing_73:

(Start: 62 @48084 has 223 MA's), (Start: 71 @48072 has 3 MA's), (98, 47988), (104, 47970), (122, 47892), (157, 47814), (161, 47802), (163, 47799), (196, 47706),

Gene: Grasshills_8 Start: 2903, Stop: 3259, Start Num: 79

Candidate Starts for Grasshills_8:

(Start: 79 @2903 has 15 MA's), (83, 2915), (92, 2942), (108, 2987), (122, 3050), (157, 3128), (161, 3140), (163, 3143),

Gene: Grungle_6 Start: 1770, Stop: 2210, Start Num: 62

Candidate Starts for Grungle_6:

(Start: 62 @1770 has 223 MA's), (Start: 71 @1782 has 3 MA's), (100, 1902), (122, 1992), (129, 2034), (181, 2130), (189, 2154),

Gene: Guwapp_13 Start: 3966, Stop: 4331, Start Num: 62

Candidate Starts for Guwapp_13:

(Start: 62 @3966 has 223 MA's), (Start: 71 @3981 has 3 MA's), (122, 4116), (157, 4194), (161, 4206), (163, 4209), (196, 4302),

Gene: Gyzlar_56 Start: 38713, Stop: 38327, Start Num: 64

Candidate Starts for Gyzlar_56:

(Start: 64 @38713 has 45 MA's), (Start: 71 @38701 has 3 MA's), (122, 38581), (148, 38509), (155, 38485), (184, 38413), (196, 38350),

Gene: Halldule_6 Start: 1766, Stop: 2206, Start Num: 62

Candidate Starts for Halldule_6:

(Start: 62 @1766 has 223 MA's), (Start: 71 @1778 has 3 MA's), (100, 1898), (122, 1988), (123, 1991), (129, 2030), (181, 2126), (189, 2150),

Gene: Hannaconda_73 Start: 46951, Stop: 46607, Start Num: 64

Candidate Starts for Hannaconda_73:

(Start: 64 @46951 has 45 MA's), (Start: 71 @46939 has 3 MA's), (122, 46819), (161, 46729), (163, 46726), (196, 46633),

Gene: Highbury_43 Start: 34897, Stop: 34421, Start Num: 62

Candidate Starts for Highbury_43:

(35, 34969), (Start: 62 @34897 has 223 MA's), (Start: 71 @34885 has 3 MA's), (110, 34735), (122, 34675), (146, 34603), (154, 34579), (185, 34507), (196, 34444),

Gene: HufflyPuff_44 Start: 35981, Stop: 35547, Start Num: 62

Candidate Starts for HufflyPuff_44:

(35, 36053), (Start: 62 @35981 has 223 MA's), (Start: 71 @35969 has 3 MA's), (110, 35819), (122, 35759),

Gene: Huphlepuuff_7 Start: 2307, Stop: 2687, Start Num: 62

Candidate Starts for Huphlepuuff_7:

(Start: 62 @2307 has 223 MA's), (Start: 71 @2322 has 3 MA's), (122, 2478), (157, 2556), (161, 2568), (163, 2571),

Gene: HyRo_11 Start: 4892, Stop: 5257, Start Num: 62

Candidate Starts for HyRo_11:

(Start: 62 @4892 has 223 MA's), (Start: 71 @4907 has 3 MA's), (122, 5042), (157, 5120), (161, 5132), (163, 5135), (196, 5228),

Gene: IMpilo_74 Start: 45725, Stop: 46135, Start Num: 63

Candidate Starts for IMpilo_74:

(Start: 63 @45725 has 1 MA's), (Start: 71 @45740 has 3 MA's), (91, 45800), (117, 45872), (122, 45905), (159, 46001), (186, 46067), (193, 46091), (196, 46112),

Gene: IbOuu_77 Start: 46622, Stop: 47065, Start Num: 61

Candidate Starts for IbOuu_77:

(Start: 61 @46622 has 21 MA's), (Start: 71 @46637 has 3 MA's), (122, 46817), (150, 46904), (151, 46910), (161, 46934), (196, 47036),

Gene: Ibhubesi_77 Start: 46004, Stop: 46342, Start Num: 62

Candidate Starts for Ibhubesi_77:

(Start: 62 @46004 has 223 MA's), (Start: 71 @46019 has 3 MA's), (78, 46046), (122, 46139), (133, 46181), (165, 46247),

Gene: IkeLoa_6 Start: 2612, Stop: 3052, Start Num: 62

Candidate Starts for IkeLoa_6:

(Start: 62 @2612 has 223 MA's), (Start: 71 @2624 has 3 MA's), (100, 2744), (122, 2834), (129, 2876), (181, 2972), (189, 2996),

Gene: InigoMontoya_14 Start: 3970, Stop: 4335, Start Num: 62

Candidate Starts for InigoMontoya_14:

(Start: 62 @3970 has 223 MA's), (Start: 71 @3985 has 3 MA's), (122, 4120), (157, 4198), (161, 4210), (163, 4213), (196, 4306),

Gene: InterFolia_8 Start: 2464, Stop: 2820, Start Num: 79

Candidate Starts for InterFolia_8:

(Start: 79 @2464 has 15 MA's), (83, 2476), (92, 2503), (108, 2548), (122, 2611), (157, 2689), (161, 2701), (163, 2704),

Gene: IrishSherpFalk_79 Start: 48781, Stop: 49194, Start Num: 61

Candidate Starts for IrishSherpFalk_79:

(Start: 61 @48781 has 21 MA's), (Start: 71 @48796 has 3 MA's), (122, 48952), (150, 49039), (151, 49045), (161, 49069), (188, 49132), (196, 49171),

Gene: Issimir_14 Start: 5044, Stop: 5394, Start Num: 62

Candidate Starts for Issimir_14:

(Start: 62 @5044 has 223 MA's), (Start: 71 @5059 has 3 MA's), (122, 5179), (157, 5257), (161, 5269), (163, 5272), (196, 5365),

Gene: Izajani_14 Start: 5050, Stop: 5400, Start Num: 62

Candidate Starts for Izajani_14:

(Start: 62 @5050 has 223 MA's), (Start: 71 @5065 has 3 MA's), (122, 5185), (157, 5263), (161, 5275), (163, 5278), (196, 5371),

Gene: JPickles_13 Start: 3970, Stop: 4335, Start Num: 62

Candidate Starts for JPickles_13:

(Start: 62 @3970 has 223 MA's), (Start: 71 @3985 has 3 MA's), (122, 4120), (157, 4198), (161, 4210), (163, 4213), (196, 4306),

Gene: Jabbawokkie_88 Start: 46909, Stop: 47265, Start Num: 61

Candidate Starts for Jabbawokkie_88:

(Start: 61 @46909 has 21 MA's), (Start: 71 @46924 has 3 MA's), (122, 47044), (193, 47215), (196, 47236),

Gene: James_80 Start: 49880, Stop: 50260, Start Num: 62

Candidate Starts for James_80:

(Start: 62 @49880 has 223 MA's), (Start: 71 @49895 has 3 MA's), (122, 50051), (157, 50129), (161, 50141), (163, 50144), (196, 50237),

Gene: Janiyra_13 Start: 3949, Stop: 4314, Start Num: 62

Candidate Starts for Janiyra_13:

(Start: 62 @3949 has 223 MA's), (Start: 71 @3964 has 3 MA's), (122, 4099), (157, 4177), (161, 4189), (163, 4192), (196, 4285),

Gene: Jant_80 Start: 46925, Stop: 47389, Start Num: 61

Candidate Starts for Jant_80:

(Start: 61 @46925 has 21 MA's), (Start: 71 @46940 has 3 MA's), (88, 46994), (110, 47087), (150, 47234), (151, 47240), (161, 47264), (188, 47327), (196, 47366),

Gene: Jacob_79 Start: 49477, Stop: 49857, Start Num: 62

Candidate Starts for Jacob_79:

(Start: 62 @49477 has 223 MA's), (Start: 71 @49492 has 3 MA's), (122, 49648), (157, 49726), (161, 49738), (163, 49741), (196, 49834),

Gene: Jasper_78 Start: 46159, Stop: 45758, Start Num: 64

Candidate Starts for Jasper_78:

(Start: 64 @46159 has 45 MA's), (122, 45967), (157, 45889), (161, 45877), (163, 45874), (196, 45781),

Gene: JayJay_7 Start: 1993, Stop: 2349, Start Num: 79

Candidate Starts for JayJay_7:

(58, 1942), (Start: 79 @1993 has 15 MA's), (83, 2005), (92, 2032), (108, 2077), (122, 2140), (157, 2218), (161, 2230), (163, 2233),

Gene: Jaygup_13 Start: 3966, Stop: 4331, Start Num: 62

Candidate Starts for Jaygup_13:

(Start: 62 @3966 has 223 MA's), (Start: 71 @3981 has 3 MA's), (122, 4116), (157, 4194), (161, 4206), (163, 4209), (196, 4302),

Gene: Jedediah_13 Start: 3970, Stop: 4335, Start Num: 62

Candidate Starts for Jedediah_13:

(Start: 62 @3970 has 223 MA's), (Start: 71 @3985 has 3 MA's), (122, 4120), (157, 4198), (161, 4210), (163, 4213), (196, 4306),

Gene: Jemmno_12 Start: 3970, Stop: 4335, Start Num: 62

Candidate Starts for Jemmno_12:

(Start: 62 @3970 has 223 MA's), (Start: 71 @3985 has 3 MA's), (122, 4120), (157, 4198), (161, 4210), (163, 4213), (196, 4306),

Gene: Jessibeth14_14 Start: 5050, Stop: 5400, Start Num: 62

Candidate Starts for Jessibeth14_14:

(Start: 62 @5050 has 223 MA's), (Start: 71 @5065 has 3 MA's), (122, 5185), (157, 5263), (161, 5275), (163, 5278), (196, 5371),

Gene: JoieB_8 Start: 2529, Stop: 2909, Start Num: 62

Candidate Starts for JoieB_8:

(Start: 62 @2529 has 223 MA's), (Start: 71 @2544 has 3 MA's), (122, 2700), (157, 2778), (161, 2790), (163, 2793),

Gene: Jorgensen_64 Start: 41112, Stop: 40717, Start Num: 65

Candidate Starts for Jorgensen_64:

(9, 41313), (42, 41169), (43, 41166), (Start: 65 @41112 has 22 MA's), (Start: 71 @41100 has 3 MA's), (122, 40944), (159, 40842),

Gene: Juniper1_77 Start: 47775, Stop: 48149, Start Num: 66

Candidate Starts for Juniper1_77:

(Start: 66 @47775 has 1 MA's), (74, 47799), (122, 47934), (136, 47970), (138, 47976), (194, 48108), (196, 48126),

Gene: JustHall_13 Start: 4965, Stop: 5330, Start Num: 62

Candidate Starts for JustHall_13:

(Start: 62 @4965 has 223 MA's), (Start: 71 @4980 has 3 MA's), (122, 5115), (157, 5193), (161, 5205), (163, 5208), (196, 5301),

Gene: KSSJEB_78 Start: 46842, Stop: 46471, Start Num: 64

Candidate Starts for KSSJEB_78:

(Start: 64 @46842 has 45 MA's), (Start: 71 @46830 has 3 MA's), (83, 46794), (102, 46752), (112, 46728), (122, 46686), (161, 46596), (163, 46593), (189, 46530), (197, 46494),

Gene: KashFlow_71 Start: 46755, Stop: 46327, Start Num: 59

Candidate Starts for KashFlow_71:

(Start: 59 @46755 has 12 MA's), (Start: 71 @46740 has 3 MA's), (87, 46686), (110, 46593), (122, 46533), (196, 46356),

Gene: Kboogie_13 Start: 3968, Stop: 4333, Start Num: 62

Candidate Starts for Kboogie_13:

(Start: 62 @3968 has 223 MA's), (Start: 71 @3983 has 3 MA's), (122, 4118), (157, 4196), (161, 4208), (163, 4211), (196, 4304),

Gene: Kenmech_82 Start: 49111, Stop: 48689, Start Num: 65

Candidate Starts for Kenmech_82:

(Start: 65 @49111 has 22 MA's), (Start: 71 @49099 has 3 MA's), (122, 48943), (144, 48871), (153, 48847), (182, 48775), (196, 48712),

Gene: Kenuha5_75 Start: 48762, Stop: 49157, Start Num: 62

Candidate Starts for Kenuha5_75:

(Start: 62 @48762 has 223 MA's), (Start: 71 @48777 has 3 MA's), (122, 48897), (148, 48975), (155, 48999), (184, 49071),

Gene: Khaleesi_14 Start: 5050, Stop: 5400, Start Num: 62

Candidate Starts for Khaleesi_14:

(Start: 62 @5050 has 223 MA's), (Start: 71 @5065 has 3 MA's), (122, 5185), (157, 5263), (161, 5275), (163, 5278), (196, 5371),

Gene: Kingsley_82 Start: 50469, Stop: 50837, Start Num: 62

Candidate Starts for Kingsley_82:

(Start: 62 @50469 has 223 MA's), (Start: 71 @50484 has 3 MA's), (122, 50604), (147, 50673), (155, 50694), (181, 50754), (196, 50811),

Gene: Klein_78 Start: 51350, Stop: 50925, Start Num: 62

Candidate Starts for Klein_78:

(Start: 62 @51350 has 223 MA's), (Start: 71 @51338 has 3 MA's), (87, 51284), (110, 51191), (122, 51131), (196, 50954),

Gene: Koella_74 Start: 45585, Stop: 45968, Start Num: 90

Candidate Starts for Koella_74:

(31, 45411), (32, 45420), (41, 45444), (45, 45462), (82, 45555), (84, 45564), (Start: 90 @45585 has 8 MA's), (131, 45771), (145, 45801), (155, 45837), (181, 45888),

Gene: Koguma_6 Start: 1766, Stop: 2206, Start Num: 62

Candidate Starts for Koguma_6:

(Start: 62 @1766 has 223 MA's), (Start: 71 @1778 has 3 MA's), (100, 1898), (122, 1988), (129, 2030), (181, 2126), (189, 2150),

Gene: Kostya_43 Start: 35472, Stop: 35038, Start Num: 62

Candidate Starts for Kostya_43:

(35, 35544), (Start: 62 @35472 has 223 MA's), (Start: 71 @35460 has 3 MA's), (110, 35310), (122, 35250),

Gene: Krakatau_74 Start: 44687, Stop: 45067, Start Num: 61

Candidate Starts for Krakatau_74:

(Start: 61 @44687 has 21 MA's), (Start: 71 @44702 has 3 MA's), (122, 44822), (150, 44909), (151, 44915), (161, 44939), (188, 45002), (196, 45038),

Gene: KristaRAM_77 Start: 47329, Stop: 47721, Start Num: 61

Candidate Starts for KristaRAM_77:

(Start: 61 @47329 has 21 MA's), (Start: 71 @47344 has 3 MA's), (122, 47479), (150, 47566), (151, 47572), (161, 47596), (188, 47659), (196, 47698),

Gene: Kugel_63 Start: 41957, Stop: 41598, Start Num: 64

Candidate Starts for Kugel_63:

(9, 42158), (42, 42014), (43, 42011), (Start: 64 @41957 has 45 MA's), (122, 41825), (129, 41792), (140, 41771), (172, 41705), (196, 41621),

Gene: Kykar_79 Start: 47679, Stop: 47278, Start Num: 65

Candidate Starts for Kykar_79:

(Start: 65 @47679 has 22 MA's), (Start: 71 @47667 has 3 MA's), (120, 47508), (122, 47493), (152, 47412), (167, 47385),

Gene: LRRHood_6 Start: 2751, Stop: 3191, Start Num: 62

Candidate Starts for LRRHood_6:

(Start: 62 @2751 has 223 MA's), (Start: 71 @2763 has 3 MA's), (100, 2883), (122, 2973), (129, 3015), (181, 3111), (189, 3135),

Gene: LRRHood_14 Start: 5702, Stop: 6052, Start Num: 62

Candidate Starts for LRRHood_14:

(Start: 62 @5702 has 223 MA's), (Start: 71 @5717 has 3 MA's), (122, 5837), (157, 5915), (161, 5927), (163, 5930), (196, 6023),

Gene: Latch_13 Start: 3970, Stop: 4335, Start Num: 62

Candidate Starts for Latch_13:

(Start: 62 @3970 has 223 MA's), (Start: 71 @3985 has 3 MA's), (122, 4120), (157, 4198), (161, 4210), (163, 4213), (196, 4306),

Gene: Lethe_6 Start: 1613, Stop: 2053, Start Num: 62

Candidate Starts for Lethe_6:

(Start: 62 @1613 has 223 MA's), (Start: 71 @1625 has 3 MA's), (100, 1745), (122, 1835), (129, 1877), (181, 1973), (189, 1997),

Gene: LifeSavor_14 Start: 3966, Stop: 4331, Start Num: 62

Candidate Starts for LifeSavor_14:

(Start: 62 @3966 has 223 MA's), (Start: 71 @3981 has 3 MA's), (122, 4116), (157, 4194), (161, 4206), (163, 4209), (196, 4302),

Gene: Lilbit_8 Start: 2581, Stop: 2958, Start Num: 62

Candidate Starts for Lilbit_8:

(Start: 62 @2581 has 223 MA's), (Start: 71 @2593 has 3 MA's), (122, 2749), (157, 2827), (161, 2839), (163, 2842),

Gene: Lilpickle_45 Start: 35276, Stop: 34881, Start Num: 64

Candidate Starts for Lilpickle_45:

(25, 35378), (26, 35372), (35, 35342), (Start: 64 @35276 has 45 MA's), (Start: 71 @35264 has 3 MA's), (122, 35108), (129, 35075), (140, 35054), (172, 34988), (196, 34904),

Gene: LinStu_7 Start: 2992, Stop: 3348, Start Num: 79

Candidate Starts for LinStu_7:

(58, 2941), (Start: 79 @2992 has 15 MA's), (83, 3004), (92, 3031), (108, 3076), (122, 3139), (157, 3217), (161, 3229), (163, 3232),

Gene: LittleE_79 Start: 51011, Stop: 50637, Start Num: 71

Candidate Starts for LittleE_79:

(Start: 64 @51023 has 45 MA's), (Start: 71 @51011 has 3 MA's), (122, 50891), (148, 50819), (155, 50795), (184, 50723),

Gene: LittleLaf_7 Start: 2307, Stop: 2687, Start Num: 62

Candidate Starts for LittleLaf_7:

(Start: 62 @2307 has 223 MA's), (Start: 71 @2322 has 3 MA's), (122, 2478), (157, 2556), (161, 2568), (163, 2571),

Gene: Littleton_14 Start: 3970, Stop: 4335, Start Num: 62

Candidate Starts for Littleton_14:

(Start: 62 @3970 has 223 MA's), (Start: 71 @3985 has 3 MA's), (122, 4120), (157, 4198), (161, 4210), (163, 4213), (196, 4306),

Gene: Llij_73 Start: 45475, Stop: 45903, Start Num: 59

Candidate Starts for Llij_73:

(Start: 59 @45475 has 12 MA's), (Start: 71 @45490 has 3 MA's), (87, 45544), (110, 45637), (122, 45697), (196, 45874),

Gene: Loanshark_14 Start: 5050, Stop: 5400, Start Num: 62

Candidate Starts for Loanshark_14:

(Start: 62 @5050 has 223 MA's), (Start: 71 @5065 has 3 MA's), (122, 5185), (157, 5263), (161, 5275), (163, 5278), (196, 5371),

Gene: LolaVinca_8 Start: 2464, Stop: 2820, Start Num: 79

Candidate Starts for LolaVinca_8:

(Start: 79 @2464 has 15 MA's), (83, 2476), (92, 2503), (108, 2548), (122, 2611), (157, 2689), (161, 2701), (163, 2704),

Gene: Lorde_77 Start: 44762, Stop: 45190, Start Num: 59

Candidate Starts for Lorde_77:

(Start: 59 @44762 has 12 MA's), (Start: 71 @44777 has 3 MA's), (87, 44831), (110, 44924), (122, 44984), (196, 45161),

Gene: Lucky2013_71 Start: 46711, Stop: 46307, Start Num: 71

Candidate Starts for Lucky2013_71:

(Start: 62 @46723 has 223 MA's), (Start: 71 @46711 has 3 MA's), (95, 46627), (101, 46609), (122, 46531), (126, 46501), (146, 46462), (148, 46459),

Gene: Lucky2013_77 Start: 48582, Stop: 48184, Start Num: 65

Candidate Starts for Lucky2013_77:

(Start: 65 @48582 has 22 MA's), (Start: 71 @48570 has 3 MA's), (122, 48414), (152, 48330), (155, 48324), (156, 48321), (192, 48237),

Gene: Lukilu_6 Start: 2765, Stop: 3205, Start Num: 62

Candidate Starts for Lukilu_6:

(Start: 62 @2765 has 223 MA's), (Start: 71 @2777 has 3 MA's), (100, 2897), (122, 2987), (129, 3029), (181, 3125), (189, 3149),

Gene: LunaBlu_82 Start: 48900, Stop: 49268, Start Num: 62

Candidate Starts for LunaBlu_82:

(Start: 62 @48900 has 223 MA's), (Start: 71 @48915 has 3 MA's), (122, 49050), (126, 49080), (146, 49119), (148, 49122), (196, 49245),

Gene: Maby2021_14 Start: 5050, Stop: 5400, Start Num: 62

Candidate Starts for Maby2021_14:

(Start: 62 @5050 has 223 MA's), (Start: 71 @5065 has 3 MA's), (122, 5185), (157, 5263), (161, 5275), (163, 5278), (196, 5371),

Gene: Manda_46 Start: 36625, Stop: 36245, Start Num: 60

Candidate Starts for Manda_46:

(49, 36646), (55, 36634), (Start: 60 @36625 has 1 MA's), (Start: 71 @36613 has 3 MA's), (122, 36493), (150, 36406), (151, 36400), (188, 36313), (196, 36274),

Gene: Mangeria_6 Start: 1759, Stop: 2133, Start Num: 65

Candidate Starts for Mangeria_6:

(Start: 65 @1759 has 22 MA's), (78, 1798), (103, 1843), (122, 1906), (159, 2008),

Gene: Mantra_76 Start: 47820, Stop: 48170, Start Num: 62

Candidate Starts for Mantra_76:

(30, 47724), (Start: 62 @47820 has 223 MA's), (Start: 71 @47835 has 3 MA's), (122, 47955),

Gene: Marker_91 Start: 50605, Stop: 50967, Start Num: 90

Candidate Starts for Marker_91:

(31, 50431), (32, 50440), (37, 50452), (41, 50464), (82, 50575), (84, 50584), (Start: 90 @50605 has 8 MA's), (93, 50617), (108, 50695), (114, 50719), (122, 50761),

Gene: Marker_82 Start: 48016, Stop: 48423, Start Num: 64

Candidate Starts for Marker_82:

(21, 47893), (47, 47986), (50, 47995), (Start: 64 @48016 has 45 MA's), (78, 48055), (106, 48100), (122, 48163), (148, 48241), (155, 48265), (184, 48337),

Gene: MaryBeth_59 Start: 41225, Stop: 40836, Start Num: 64

Candidate Starts for MaryBeth_59:

(9, 41426), (42, 41282), (43, 41279), (Start: 64 @41225 has 45 MA's), (Start: 71 @41213 has 3 MA's), (113, 41126), (122, 41093), (148, 41015), (155, 40991), (184, 40919),

Gene: Matsumoto_12 Start: 3970, Stop: 4335, Start Num: 62

Candidate Starts for Matsumoto_12:

(Start: 62 @3970 has 223 MA's), (Start: 71 @3985 has 3 MA's), (122, 4120), (157, 4198), (161, 4210), (163, 4213), (196, 4306),

Gene: McGee_13 Start: 3968, Stop: 4333, Start Num: 62

Candidate Starts for McGee_13:

(Start: 62 @3968 has 223 MA's), (Start: 71 @3983 has 3 MA's), (122, 4118), (157, 4196), (161, 4208), (163, 4211), (196, 4304),

Gene: McWolfish_14 Start: 5050, Stop: 5400, Start Num: 62

Candidate Starts for McWolfish_14:

(Start: 62 @5050 has 223 MA's), (Start: 71 @5065 has 3 MA's), (122, 5185), (157, 5263), (161, 5275), (163, 5278), (196, 5371),

Gene: Megamind_14 Start: 5050, Stop: 5400, Start Num: 62

Candidate Starts for Megamind_14:

(Start: 62 @5050 has 223 MA's), (Start: 71 @5065 has 3 MA's), (122, 5185), (157, 5263), (161, 5275), (163, 5278), (196, 5371),

Gene: Melpomini_13 Start: 3949, Stop: 4314, Start Num: 62

Candidate Starts for Melpomini_13:

(Start: 62 @3949 has 223 MA's), (Start: 71 @3964 has 3 MA's), (122, 4099), (157, 4177), (161, 4189), (163, 4192), (196, 4285),

Gene: MetalQZJ_58 Start: 41225, Stop: 40836, Start Num: 64

Candidate Starts for MetalQZJ_58:

(9, 41426), (42, 41282), (43, 41279), (Start: 64 @41225 has 45 MA's), (Start: 71 @41213 has 3 MA's), (113, 41126), (122, 41093), (148, 41015), (155, 40991), (184, 40919),

Gene: MiaZeal_80 Start: 49238, Stop: 48840, Start Num: 65

Candidate Starts for MiaZeal_80:

(Start: 65 @49238 has 22 MA's), (Start: 71 @49226 has 3 MA's), (122, 49070), (152, 48986), (155, 48980), (156, 48977), (192, 48893),

Gene: MikeLiesIn_15 Start: 5050, Stop: 5400, Start Num: 62

Candidate Starts for MikeLiesIn_15:

(Start: 62 @5050 has 223 MA's), (Start: 71 @5065 has 3 MA's), (122, 5185), (157, 5263), (161, 5275), (163, 5278), (196, 5371),

Gene: Mikro_6 Start: 2758, Stop: 3150, Start Num: 64

Candidate Starts for Mikro_6:

(Start: 64 @2758 has 45 MA's), (Start: 71 @2770 has 3 MA's), (85, 2818), (Start: 89 @2824 has 1 MA's), (110, 2887), (122, 2941), (157, 3019), (161, 3031), (163, 3034),

Gene: MinionDave_75 Start: 47890, Stop: 48285, Start Num: 64

Candidate Starts for MinionDave_75:

(Start: 64 @47890 has 45 MA's), (Start: 71 @47902 has 3 MA's), (122, 48037), (148, 48115), (168, 48166), (177, 48190), (183, 48208), (188, 48223), (196, 48262),

Gene: Minnie_76 Start: 50008, Stop: 50400, Start Num: 61

Candidate Starts for Minnie_76:

(Start: 61 @50008 has 21 MA's), (Start: 71 @50023 has 3 MA's), (123, 50161), (150, 50245), (151, 50251), (161, 50275), (188, 50338), (196, 50377),

Gene: Misfit_44 Start: 36046, Stop: 35612, Start Num: 62

Candidate Starts for Misfit_44:

(35, 36118), (Start: 62 @36046 has 223 MA's), (Start: 71 @36034 has 3 MA's), (110, 35884), (122, 35824),

Gene: MisterCuddles_76 Start: 48247, Stop: 48597, Start Num: 62

Candidate Starts for MisterCuddles_76:

(Start: 62 @48247 has 223 MA's), (Start: 71 @48262 has 3 MA's), (122, 48382),

Gene: MoMoMixon_5 Start: 1605, Stop: 1997, Start Num: 64

Candidate Starts for MoMoMixon_5:

(Start: 64 @1605 has 45 MA's), (Start: 71 @1617 has 3 MA's), (85, 1665), (Start: 89 @1671 has 1 MA's), (110, 1734), (122, 1788), (157, 1866), (161, 1878), (163, 1881),

Gene: Momo_13 Start: 3970, Stop: 4335, Start Num: 62

Candidate Starts for Momo_13:

(Start: 62 @3970 has 223 MA's), (Start: 71 @3985 has 3 MA's), (122, 4120), (157, 4198), (161, 4210), (163, 4213), (196, 4306),

Gene: Mopey_86 Start: 59779, Stop: 60174, Start Num: 62

Candidate Starts for Mopey_86:

(Start: 24 @59656 has 1 MA's), (Start: 62 @59779 has 223 MA's), (92, 59854), (116, 59926), (122, 59959), (136, 59995), (138, 60001), (194, 60133), (196, 60151),

Gene: Morizzled23_13 Start: 3949, Stop: 4314, Start Num: 62

Candidate Starts for Morizzled23_13:

(Start: 62 @3949 has 223 MA's), (Start: 71 @3964 has 3 MA's), (122, 4099), (157, 4177), (161, 4189), (163, 4192), (196, 4285),

Gene: MosMoris_9 Start: 2524, Stop: 2901, Start Num: 62

Candidate Starts for MosMoris_9:

(Start: 62 @2524 has 223 MA's), (Start: 71 @2539 has 3 MA's), (122, 2674), (129, 2707), (140, 2728), (172, 2794), (196, 2878),

Gene: Ms6_78 Start: 44647, Stop: 45045, Start Num: 88

Candidate Starts for Ms6_78:

(Start: 64 @44581 has 45 MA's), (Start: 71 @44593 has 3 MA's), (88, 44647), (110, 44740), (150, 44887), (151, 44893), (161, 44917), (196, 45016),

Gene: MulchExplorer_82 Start: 47402, Stop: 47863, Start Num: 36

Candidate Starts for MulchExplorer_82:

(Start: 34 @47399 has 1 MA's), (36, 47402), (53, 47459), (54, 47462), (Start: 63 @47474 has 1 MA's), (122, 47648), (136, 47684), (138, 47690), (194, 47822),

Gene: Murica_44 Start: 35981, Stop: 35547, Start Num: 62

Candidate Starts for Murica_44:

(35, 36053), (Start: 62 @35981 has 223 MA's), (Start: 71 @35969 has 3 MA's), (110, 35819), (122, 35759),

Gene: Naija_13 Start: 3970, Stop: 4335, Start Num: 62

Candidate Starts for Naija_13:

(Start: 62 @3970 has 223 MA's), (Start: 71 @3985 has 3 MA's), (122, 4120), (157, 4198), (161, 4210), (163, 4213), (196, 4306),

Gene: Napoleon13_13 Start: 3968, Stop: 4333, Start Num: 62

Candidate Starts for Napoleon13_13:

(Start: 62 @3968 has 223 MA's), (Start: 71 @3983 has 3 MA's), (122, 4118), (157, 4196), (161, 4208), (163, 4211), (196, 4304),

Gene: Nappy_6 Start: 1987, Stop: 2343, Start Num: 79

Candidate Starts for Nappy_6:

(Start: 79 @1987 has 15 MA's), (92, 2026), (108, 2071), (122, 2134), (157, 2212), (161, 2224), (163, 2227),

Gene: Nebkiss_54 Start: 36961, Stop: 36614, Start Num: 80

Candidate Starts for Nebkiss_54:

(69, 36994), (Start: 80 @36961 has 2 MA's), (121, 36841), (124, 36823),

Gene: NedWong_14 Start: 5050, Stop: 5400, Start Num: 62

Candidate Starts for NedWong_14:

(Start: 62 @5050 has 223 MA's), (Start: 71 @5065 has 3 MA's), (122, 5185), (157, 5263), (161, 5275), (163, 5278), (196, 5371),

Gene: Ngannou_13 Start: 3949, Stop: 4314, Start Num: 62

Candidate Starts for Ngannou_13:

(Start: 62 @3949 has 223 MA's), (Start: 71 @3964 has 3 MA's), (122, 4099), (157, 4177), (161, 4189), (163, 4192), (196, 4285),

Gene: Nidhogg_5 Start: 1605, Stop: 1997, Start Num: 64

Candidate Starts for Nidhogg_5:

(Start: 64 @1605 has 45 MA's), (Start: 71 @1617 has 3 MA's), (85, 1665), (Start: 89 @1671 has 1 MA's), (110, 1734), (122, 1788), (157, 1866), (161, 1878), (163, 1881),

Gene: Nimrod_45 Start: 36239, Stop: 35805, Start Num: 62

Candidate Starts for Nimrod_45:

(35, 36311), (Start: 62 @36239 has 223 MA's), (Start: 71 @36227 has 3 MA's), (110, 36077), (122, 36017),

Gene: Nitzel_73 Start: 45555, Stop: 45947, Start Num: 61

Candidate Starts for Nitzel_73:

(Start: 61 @45555 has 21 MA's), (Start: 71 @45570 has 3 MA's), (122, 45705), (150, 45792), (151, 45798), (161, 45822), (188, 45885), (196, 45924),

Gene: NoodleTree_6 Start: 1759, Stop: 2151, Start Num: 64

Candidate Starts for NoodleTree_6:

(Start: 64 @1759 has 45 MA's), (Start: 71 @1771 has 3 MA's), (85, 1819), (Start: 89 @1825 has 1 MA's), (110, 1888), (122, 1942), (157, 2020), (161, 2032), (163, 2035),

Gene: Norm_14 Start: 5050, Stop: 5400, Start Num: 62

Candidate Starts for Norm_14:

(Start: 62 @5050 has 223 MA's), (Start: 71 @5065 has 3 MA's), (122, 5185), (157, 5263), (161, 5275), (163, 5278), (196, 5371),

Gene: NormanBulbieJr_80 Start: 49599, Stop: 49982, Start Num: 90

Candidate Starts for NormanBulbieJr_80:

(31, 49425), (32, 49434), (41, 49458), (45, 49476), (82, 49569), (84, 49578), (Start: 90 @49599 has 8 MA's), (131, 49785), (145, 49815), (155, 49851), (181, 49902),

Gene: NuevoMundo_7 Start: 2137, Stop: 2493, Start Num: 79

Candidate Starts for NuevoMundo_7:

(Start: 79 @2137 has 15 MA's), (83, 2149), (92, 2176), (108, 2221), (122, 2284), (157, 2362), (161, 2374), (163, 2377),

Gene: Ogotogo_85 Start: 48076, Stop: 48471, Start Num: 64

Candidate Starts for Ogotogo_85:

(40, 48034), (Start: 64 @48076 has 45 MA's), (Start: 71 @48088 has 3 MA's), (122, 48244), (129, 48277), (140, 48298), (172, 48364), (196, 48448),

Gene: OlympiaSaint_79 Start: 48822, Stop: 49202, Start Num: 62

Candidate Starts for OlympiaSaint_79:

(Start: 62 @48822 has 223 MA's), (Start: 71 @48837 has 3 MA's), (122, 48993), (157, 49071), (161, 49083), (163, 49086), (196, 49179),

Gene: Ovechkin_81 Start: 48812, Stop: 49225, Start Num: 63

Candidate Starts for Ovechkin_81:

(Start: 63 @48812 has 1 MA's), (Start: 71 @48827 has 3 MA's), (91, 48887), (117, 48959), (122, 48992), (159, 49088), (186, 49154), (193, 49178),

Gene: PLOT_85 Start: 59930, Stop: 60325, Start Num: 62

Candidate Starts for PLOT_85:

(Start: 24 @59807 has 1 MA's), (Start: 62 @59930 has 223 MA's), (92, 60005), (116, 60077), (122, 60110), (136, 60146), (138, 60152), (194, 60284), (196, 60302),

Gene: PMC_74 Start: 46932, Stop: 47360, Start Num: 59

Candidate Starts for PMC_74:

(Start: 59 @46932 has 12 MA's), (Start: 71 @46947 has 3 MA's), (87, 47001), (110, 47094), (122, 47154), (196, 47331),

Gene: Palpatine_45 Start: 36011, Stop: 35577, Start Num: 62

Candidate Starts for Palpatine_45:

(35, 36083), (Start: 62 @36011 has 223 MA's), (Start: 71 @35999 has 3 MA's), (110, 35849), (122, 35789),

Gene: ParkTD_14 Start: 5050, Stop: 5400, Start Num: 62

Candidate Starts for ParkTD_14:

(Start: 62 @5050 has 223 MA's), (Start: 71 @5065 has 3 MA's), (122, 5185), (157, 5263), (161, 5275), (163, 5278), (196, 5371),

Gene: Pat3_42 Start: 34357, Stop: 33938, Start Num: 65

Candidate Starts for Pat3_42:

(52, 34378), (Start: 57 @34366 has 1 MA's), (Start: 65 @34357 has 22 MA's), (Start: 71 @34345 has 3 MA's), (122, 34171), (159, 34069),

Gene: Patter_13 Start: 4002, Stop: 4352, Start Num: 71

Candidate Starts for Patter_13:

(Start: 62 @3987 has 223 MA's), (Start: 71 @4002 has 3 MA's), (122, 4137), (157, 4215), (161, 4227), (163, 4230), (196, 4323),

Gene: Penelope2018_84 Start: 59705, Stop: 60100, Start Num: 62

Candidate Starts for Penelope2018_84:

(Start: 24 @59582 has 1 MA's), (Start: 62 @59705 has 223 MA's), (92, 59780), (116, 59852), (122, 59885), (136, 59921), (138, 59927), (194, 60059), (196, 60077),

Gene: Peterson_79 Start: 49024, Stop: 48623, Start Num: 64

Candidate Starts for Peterson_79:

(Start: 64 @49024 has 45 MA's), (Start: 71 @49012 has 3 MA's), (94, 48949), (96, 48940), (122, 48847), (136, 48805), (181, 48709), (196, 48652),

Gene: Petra64142_47 Start: 36475, Stop: 36041, Start Num: 62

Candidate Starts for Petra64142_47:

(35, 36547), (Start: 62 @36475 has 223 MA's), (Start: 71 @36463 has 3 MA's), (110, 36313), (122, 36253),

Gene: Petruchio_60 Start: 40166, Stop: 39780, Start Num: 64

Candidate Starts for Petruchio_60:

(Start: 64 @40166 has 45 MA's), (Start: 71 @40154 has 3 MA's), (122, 40034), (148, 39962), (155, 39938), (184, 39866), (196, 39803),

Gene: Phanphagia_77 Start: 48265, Stop: 48633, Start Num: 62

Candidate Starts for Phanphagia_77:

(Start: 62 @48265 has 223 MA's), (Start: 71 @48280 has 3 MA's), (122, 48400), (147, 48469), (155, 48490), (181, 48550), (196, 48607),

Gene: PhatBacter_45 Start: 36025, Stop: 35591, Start Num: 62
Candidate Starts for PhatBacter_45:
(35, 36097), (Start: 62 @36025 has 223 MA's), (Start: 71 @36013 has 3 MA's), (110, 35863), (122, 35803),

Gene: Phatniss_74 Start: 46570, Stop: 46998, Start Num: 59
Candidate Starts for Phatniss_74:
(Start: 59 @46570 has 12 MA's), (Start: 71 @46585 has 3 MA's), (87, 46639), (110, 46732), (122, 46792), (196, 46969),

Gene: Phaux_44 Start: 36023, Stop: 35589, Start Num: 62
Candidate Starts for Phaux_44:
(35, 36095), (Start: 62 @36023 has 223 MA's), (Start: 71 @36011 has 3 MA's), (110, 35861), (122, 35801),

Gene: PherrisBueller_78 Start: 45810, Stop: 45409, Start Num: 64
Candidate Starts for PherrisBueller_78:
(Start: 64 @45810 has 45 MA's), (122, 45618), (157, 45540), (161, 45528), (163, 45525), (196, 45432),

Gene: PhesterPhotato_83 Start: 48607, Stop: 48993, Start Num: 64
Candidate Starts for PhesterPhotato_83:
(Start: 64 @48607 has 45 MA's), (Start: 71 @48619 has 3 MA's), (122, 48739), (148, 48811), (155, 48835), (184, 48907),

Gene: PhesterPhotato_82 Start: 48233, Stop: 48610, Start Num: 61
Candidate Starts for PhesterPhotato_82:
(Start: 61 @48233 has 21 MA's), (Start: 71 @48248 has 3 MA's), (122, 48383), (150, 48470), (151, 48476), (161, 48500),

Gene: Philus_82 Start: 50521, Stop: 50901, Start Num: 62
Candidate Starts for Philus_82:
(Start: 62 @50521 has 223 MA's), (Start: 71 @50536 has 3 MA's), (122, 50692), (157, 50770), (161, 50782), (163, 50785), (196, 50878),

Gene: Phlegm_14 Start: 3970, Stop: 4335, Start Num: 62
Candidate Starts for Phlegm_14:
(Start: 62 @3970 has 223 MA's), (Start: 71 @3985 has 3 MA's), (122, 4120), (157, 4198), (161, 4210), (163, 4213), (196, 4306),

Gene: Phox_6 Start: 2748, Stop: 3188, Start Num: 62
Candidate Starts for Phox_6:
(Start: 62 @2748 has 223 MA's), (Start: 71 @2760 has 3 MA's), (100, 2880), (122, 2970), (129, 3012), (181, 3108), (189, 3132),

Gene: Phox_14 Start: 5699, Stop: 6049, Start Num: 62
Candidate Starts for Phox_14:
(Start: 62 @5699 has 223 MA's), (Start: 71 @5714 has 3 MA's), (122, 5834), (157, 5912), (161, 5924), (163, 5927), (196, 6020),

Gene: Phusco_13 Start: 3966, Stop: 4331, Start Num: 62
Candidate Starts for Phusco_13:
(Start: 62 @3966 has 223 MA's), (Start: 71 @3981 has 3 MA's), (122, 4116), (157, 4194), (161, 4206), (163, 4209), (196, 4302),

Gene: Pier_7 Start: 2140, Stop: 2496, Start Num: 79

Candidate Starts for Pier_7:

(Start: 79 @2140 has 15 MA's), (83, 2152), (92, 2179), (108, 2224), (122, 2287), (157, 2365), (161, 2377), (163, 2380),

Gene: Pinkcreek_9 Start: 4088, Stop: 4453, Start Num: 62

Candidate Starts for Pinkcreek_9:

(Start: 62 @4088 has 223 MA's), (Start: 71 @4103 has 3 MA's), (122, 4238), (157, 4316), (161, 4328), (163, 4331), (196, 4424),

Gene: Pio_6 Start: 1759, Stop: 2151, Start Num: 64

Candidate Starts for Pio_6:

(Start: 64 @1759 has 45 MA's), (Start: 71 @1771 has 3 MA's), (85, 1819), (Start: 89 @1825 has 1 MA's), (110, 1888), (122, 1942), (157, 2020), (161, 2032), (163, 2035),

Gene: Pivoine_13 Start: 3970, Stop: 4335, Start Num: 62

Candidate Starts for Pivoine_13:

(Start: 62 @3970 has 223 MA's), (Start: 71 @3985 has 3 MA's), (122, 4120), (157, 4198), (161, 4210), (163, 4213), (196, 4306),

Gene: Pleione_15 Start: 5050, Stop: 5400, Start Num: 62

Candidate Starts for Pleione_15:

(Start: 62 @5050 has 223 MA's), (Start: 71 @5065 has 3 MA's), (122, 5185), (157, 5263), (161, 5275), (163, 5278), (196, 5371),

Gene: Policronamos_45 Start: 36023, Stop: 35589, Start Num: 62

Candidate Starts for Policronamos_45:

(35, 36095), (Start: 62 @36023 has 223 MA's), (Start: 71 @36011 has 3 MA's), (110, 35861), (122, 35801),

Gene: Pollywog_86 Start: 51074, Stop: 51427, Start Num: 81

Candidate Starts for Pollywog_86:

(19, 50873), (Start: 62 @51017 has 223 MA's), (Start: 64 @51020 has 45 MA's), (Start: 81 @51074 has 1 MA's), (86, 51086), (122, 51206), (136, 51242), (138, 51248), (194, 51380),

Gene: PopTart_69 Start: 45137, Stop: 45511, Start Num: 62

Candidate Starts for PopTart_69:

(Start: 62 @45137 has 223 MA's), (Start: 71 @45152 has 3 MA's), (120, 45272), (122, 45287), (132, 45329), (181, 45425), (189, 45449),

Gene: Porcelain_79 Start: 49238, Stop: 48840, Start Num: 65

Candidate Starts for Porcelain_79:

(Start: 65 @49238 has 22 MA's), (Start: 71 @49226 has 3 MA's), (122, 49070), (152, 48986), (155, 48980), (156, 48977), (192, 48893),

Gene: Prager_84 Start: 59610, Stop: 60005, Start Num: 62

Candidate Starts for Prager_84:

(Start: 24 @59487 has 1 MA's), (Start: 62 @59610 has 223 MA's), (92, 59685), (116, 59757), (122, 59790), (136, 59826), (138, 59832), (194, 59964), (196, 59982),

Gene: Pringar_7 Start: 2135, Stop: 2512, Start Num: 62

Candidate Starts for Pringar_7:

(Start: 62 @2135 has 223 MA's), (Start: 71 @2147 has 3 MA's), (122, 2303), (157, 2381), (161, 2393), (163, 2396),

Gene: Priscilla_82 Start: 49697, Stop: 50080, Start Num: 90

Candidate Starts for Priscilla_82:

(31, 49523), (32, 49532), (41, 49556), (45, 49574), (82, 49667), (84, 49676), (Start: 90 @49697 has 8 MA's), (131, 49883), (145, 49913), (155, 49949), (181, 50000),

Gene: PurduePete_14 Start: 5050, Stop: 5400, Start Num: 62

Candidate Starts for PurduePete_14:

(Start: 62 @5050 has 223 MA's), (Start: 71 @5065 has 3 MA's), (122, 5185), (157, 5263), (161, 5275), (163, 5278), (196, 5371),

Gene: QBert_6 Start: 2762, Stop: 3154, Start Num: 64

Candidate Starts for QBert_6:

(Start: 64 @2762 has 45 MA's), (Start: 71 @2774 has 3 MA's), (85, 2822), (Start: 89 @2828 has 1 MA's), (110, 2891), (122, 2945), (157, 3023), (161, 3035), (163, 3038),

Gene: Quasimodo_13 Start: 4969, Stop: 5334, Start Num: 62

Candidate Starts for Quasimodo_13:

(Start: 62 @4969 has 223 MA's), (Start: 71 @4984 has 3 MA's), (122, 5119), (157, 5197), (161, 5209), (163, 5212), (196, 5305),

Gene: Rabinovish_12 Start: 4755, Stop: 5105, Start Num: 62

Candidate Starts for Rabinovish_12:

(Start: 62 @4755 has 223 MA's), (Start: 71 @4770 has 3 MA's), (122, 4890), (157, 4968), (161, 4980), (163, 4983), (196, 5076),

Gene: Raela_7 Start: 2533, Stop: 2922, Start Num: 62

Candidate Starts for Raela_7:

(Start: 62 @2533 has 223 MA's), (Start: 71 @2548 has 3 MA's), (122, 2668), (148, 2740), (155, 2764), (184, 2836), (196, 2899),

Gene: Rahel_13 Start: 3966, Stop: 4331, Start Num: 62

Candidate Starts for Rahel_13:

(Start: 62 @3966 has 223 MA's), (Start: 71 @3981 has 3 MA's), (122, 4116), (157, 4194), (161, 4206), (163, 4209), (196, 4302),

Gene: Raid_78 Start: 47398, Stop: 46961, Start Num: 64

Candidate Starts for Raid_78:

(Start: 64 @47398 has 45 MA's), (Start: 71 @47386 has 3 MA's), (95, 47302), (122, 47206), (148, 47128), (168, 47077), (177, 47053), (183, 47035), (188, 47020), (196, 46984),

Gene: RedRaider77_8 Start: 2530, Stop: 2889, Start Num: 62

Candidate Starts for RedRaider77_8:

(Start: 62 @2530 has 223 MA's), (Start: 71 @2545 has 3 MA's), (122, 2680), (157, 2758), (161, 2770), (163, 2773), (196, 2866), (199, 2884),

Gene: Renaud18_72 Start: 42500, Stop: 42886, Start Num: 65

Candidate Starts for Renaud18_72:

(Start: 65 @42500 has 22 MA's), (Start: 71 @42512 has 3 MA's), (78, 42539), (103, 42584), (122, 42647), (125, 42674), (130, 42692), (143, 42719), (191, 42827),

Gene: Renaud18_89 Start: 49475, Stop: 49831, Start Num: 61

Candidate Starts for Renaud18_89:

(17, 49322), (22, 49337), (Start: 61 @49475 has 21 MA's), (Start: 71 @49490 has 3 MA's), (122, 49610), (148, 49670), (154, 49685), (166, 49709), (171, 49715), (183, 49748), (196, 49802),

Gene: Ringer_61 Start: 42004, Stop: 41573, Start Num: 62

Candidate Starts for Ringer_61:

(7, 42205), (38, 42061), (39, 42058), (Start: 62 @42004 has 223 MA's), (Start: 71 @41992 has 3 MA's), (109, 41842), (111, 41839), (122, 41782), (157, 41704), (161, 41692), (163, 41689),

Gene: Rita_85 Start: 50514, Stop: 50948, Start Num: 57

Candidate Starts for Rita_85:

(11, 50340), (15, 50355), (16, 50364), (23, 50394), (Start: 57 @50514 has 1 MA's), (Start: 71 @50538 has 3 MA's), (122, 50718), (159, 50814), (186, 50880), (193, 50904), (196, 50925),

Gene: Rizal_13 Start: 3965, Stop: 4330, Start Num: 62

Candidate Starts for Rizal_13:

(Start: 62 @3965 has 223 MA's), (Start: 71 @3980 has 3 MA's), (122, 4115), (157, 4193), (161, 4205), (163, 4208), (196, 4301),

Gene: Rockne_78 Start: 46944, Stop: 47372, Start Num: 59

Candidate Starts for Rockne_78:

(Start: 59 @46944 has 12 MA's), (Start: 71 @46959 has 3 MA's), (87, 47013), (110, 47106), (122, 47166), (196, 47343),

Gene: Ronan_6 Start: 1749, Stop: 2189, Start Num: 62

Candidate Starts for Ronan_6:

(Start: 62 @1749 has 223 MA's), (Start: 71 @1761 has 3 MA's), (100, 1881), (122, 1971), (129, 2013), (181, 2109), (189, 2133),

Gene: Roots515_14 Start: 5049, Stop: 5399, Start Num: 62

Candidate Starts for Roots515_14:

(Start: 62 @5049 has 223 MA's), (Start: 71 @5064 has 3 MA's), (122, 5184), (157, 5262), (161, 5274), (163, 5277), (196, 5370),

Gene: Ruby_73 Start: 48248, Stop: 48598, Start Num: 62

Candidate Starts for Ruby_73:

(Start: 62 @48248 has 223 MA's), (Start: 71 @48263 has 3 MA's), (122, 48383),

Gene: STLscum_69 Start: 42972, Stop: 42544, Start Num: 64

Candidate Starts for STLscum_69:

(9, 43173), (42, 43029), (43, 43026), (Start: 64 @42972 has 45 MA's), (Start: 71 @42960 has 3 MA's), (122, 42804), (148, 42726), (155, 42702), (184, 42630),

Gene: SVoro_14 Start: 5044, Stop: 5394, Start Num: 62

Candidate Starts for SVoro_14:

(Start: 62 @5044 has 223 MA's), (Start: 71 @5059 has 3 MA's), (122, 5179), (157, 5257), (161, 5269), (163, 5272), (196, 5365),

Gene: Saints25_43 Start: 34897, Stop: 34421, Start Num: 62

Candidate Starts for Saints25_43:

(35, 34969), (Start: 62 @34897 has 223 MA's), (Start: 71 @34885 has 3 MA's), (110, 34735), (122, 34675), (146, 34603), (154, 34579), (185, 34507), (196, 34444),

Gene: Salacia_15 Start: 5050, Stop: 5400, Start Num: 62

Candidate Starts for Salacia_15:

(Start: 62 @5050 has 223 MA's), (Start: 71 @5065 has 3 MA's), (122, 5185), (157, 5263), (161, 5275), (163, 5278), (196, 5371),

Gene: Sandalphon_74 Start: 47993, Stop: 48385, Start Num: 61

Candidate Starts for Sandalphon_74:

(Start: 61 @47993 has 21 MA's), (Start: 71 @48008 has 3 MA's), (123, 48146), (150, 48230), (151, 48236), (161, 48260), (188, 48323), (196, 48362),

Gene: SarFire_60 Start: 40901, Stop: 40488, Start Num: 64

Candidate Starts for SarFire_60:

(9, 41102), (42, 40958), (43, 40955), (Start: 64 @40901 has 45 MA's), (78, 40862), (106, 40817), (122, 40754), (148, 40676), (155, 40652), (184, 40580),

Gene: Sarma624_77 Start: 44943, Stop: 45320, Start Num: 62

Candidate Starts for Sarma624_77:

(Start: 62 @44943 has 223 MA's), (Start: 71 @44958 has 3 MA's), (122, 45114), (133, 45156), (165, 45222), (170, 45225), (195, 45294),

Gene: SassyB_69 Start: 45137, Stop: 45511, Start Num: 62

Candidate Starts for SassyB_69:

(Start: 62 @45137 has 223 MA's), (Start: 71 @45152 has 3 MA's), (120, 45272), (122, 45287), (132, 45329), (181, 45425), (189, 45449),

Gene: Sauce_5 Start: 1609, Stop: 2001, Start Num: 64

Candidate Starts for Sauce_5:

(Start: 64 @1609 has 45 MA's), (Start: 71 @1621 has 3 MA's), (85, 1669), (Start: 89 @1675 has 1 MA's), (110, 1738), (122, 1792), (157, 1870), (161, 1882), (163, 1885),

Gene: Schatzie_68 Start: 49861, Stop: 49445, Start Num: 62

Candidate Starts for Schatzie_68:

(Start: 62 @49861 has 223 MA's), (Start: 71 @49849 has 3 MA's), (95, 49765), (101, 49747), (122, 49669), (126, 49639), (146, 49600), (148, 49597),

Gene: ScottMcG_15 Start: 5206, Stop: 5562, Start Num: 61

Candidate Starts for ScottMcG_15:

(Start: 61 @5206 has 21 MA's), (Start: 71 @5221 has 3 MA's), (122, 5341), (193, 5512), (196, 5533),

Gene: ScottMcG_5 Start: 1605, Stop: 1997, Start Num: 64

Candidate Starts for ScottMcG_5:

(Start: 64 @1605 has 45 MA's), (Start: 71 @1617 has 3 MA's), (85, 1665), (Start: 89 @1671 has 1 MA's), (110, 1734), (122, 1788), (157, 1866), (161, 1878), (163, 1881),

Gene: Sebata_7 Start: 2992, Stop: 3348, Start Num: 79

Candidate Starts for Sebata_7:

(58, 2941), (Start: 79 @2992 has 15 MA's), (83, 3004), (92, 3031), (108, 3076), (122, 3139), (157, 3217), (161, 3229), (163, 3232),

Gene: Shaqnato_6 Start: 1766, Stop: 2206, Start Num: 62

Candidate Starts for Shaqnato_6:

(Start: 62 @1766 has 223 MA's), (Start: 71 @1778 has 3 MA's), (100, 1898), (122, 1988), (129, 2030), (181, 2126), (189, 2150),

Gene: Shauna1_78 Start: 48515, Stop: 48883, Start Num: 62

Candidate Starts for Shauna1_78:

(Start: 62 @48515 has 223 MA's), (Start: 71 @48530 has 3 MA's), (122, 48650), (147, 48719), (155, 48740), (181, 48800), (196, 48857),

Gene: Shelob_17 Start: 6224, Stop: 6574, Start Num: 62

Candidate Starts for Shelob_17:

(Start: 62 @6224 has 223 MA's), (Start: 71 @6239 has 3 MA's), (122, 6359), (157, 6437), (161, 6449), (163, 6452), (196, 6545),

Gene: ShiaLabeouf_13 Start: 3966, Stop: 4331, Start Num: 62

Candidate Starts for ShiaLabeouf_13:

(Start: 62 @3966 has 223 MA's), (Start: 71 @3981 has 3 MA's), (122, 4116), (157, 4194), (161, 4206), (163, 4209), (196, 4302),

Gene: Shifa_10 Start: 4323, Stop: 4688, Start Num: 62

Candidate Starts for Shifa_10:

(Start: 62 @4323 has 223 MA's), (Start: 71 @4338 has 3 MA's), (122, 4473), (157, 4551), (161, 4563), (163, 4566), (196, 4659),

Gene: Shnickers_13 Start: 3966, Stop: 4331, Start Num: 62

Candidate Starts for Shnickers_13:

(Start: 62 @3966 has 223 MA's), (Start: 71 @3981 has 3 MA's), (122, 4116), (157, 4194), (161, 4206), (163, 4209), (196, 4302),

Gene: Shrimp_14 Start: 5054, Stop: 5404, Start Num: 62

Candidate Starts for Shrimp_14:

(Start: 62 @5054 has 223 MA's), (Start: 71 @5069 has 3 MA's), (122, 5189), (157, 5267), (161, 5279), (163, 5282), (196, 5375),

Gene: ShroomBoi_80 Start: 48740, Stop: 49138, Start Num: 61

Candidate Starts for ShroomBoi_80:

(Start: 61 @48740 has 21 MA's), (Start: 71 @48755 has 3 MA's), (122, 48911), (150, 48998), (151, 49004), (161, 49028),

Gene: SiSi_75 Start: 47345, Stop: 47695, Start Num: 62

Candidate Starts for SiSi_75:

(Start: 62 @47345 has 223 MA's), (Start: 71 @47360 has 3 MA's), (122, 47480),

Gene: SilverDipper_13 Start: 3970, Stop: 4335, Start Num: 62

Candidate Starts for SilverDipper_13:

(Start: 62 @3970 has 223 MA's), (Start: 71 @3985 has 3 MA's), (122, 4120), (157, 4198), (161, 4210), (163, 4213), (196, 4306),

Gene: Simpliphy_43 Start: 34882, Stop: 34496, Start Num: 64

Candidate Starts for Simpliphy_43:

(Start: 64 @34882 has 45 MA's), (Start: 71 @34870 has 3 MA's), (122, 34750), (148, 34678), (155, 34654), (184, 34582), (196, 34519),

Gene: SirDuracell_42 Start: 34192, Stop: 33677, Start Num: 34

Candidate Starts for SirDuracell_42:

(Start: 34 @34192 has 1 MA's), (Start: 60 @34120 has 1 MA's), (68, 34108), (110, 33952), (122, 33892), (193, 33721), (196, 33700),

Gene: SkiPole_69 Start: 42424, Stop: 42029, Start Num: 64

Candidate Starts for SkiPole_69:

(6, 42634), (9, 42625), (42, 42481), (43, 42478), (Start: 64 @42424 has 45 MA's), (122, 42256), (129, 42223), (140, 42202), (172, 42136), (196, 42052),

Gene: SmallFry_13 Start: 3966, Stop: 4331, Start Num: 62

Candidate Starts for SmallFry_13:

(Start: 62 @3966 has 223 MA's), (Start: 71 @3981 has 3 MA's), (122, 4116), (157, 4194), (161, 4206), (163, 4209), (196, 4302),

Gene: Soul22_81 Start: 46673, Stop: 47050, Start Num: 61

Candidate Starts for Soul22_81:

(Start: 61 @46673 has 21 MA's), (Start: 71 @46688 has 3 MA's), (122, 46808), (150, 46895), (151, 46901), (161, 46925), (188, 46988), (196, 47027),

Gene: Spartacus_85 Start: 51000, Stop: 51356, Start Num: 90

Candidate Starts for Spartacus_85:

(5, 50706), (14, 50739), (31, 50826), (32, 50835), (41, 50859), (45, 50877), (82, 50970), (84, 50979), (Start: 90 @51000 has 8 MA's), (97, 51039), (107, 51084), (122, 51147), (127, 51180), (128, 51183), (152, 51234), (157, 51240), (176, 51276), (179, 51285),

Gene: Specks_8 Start: 2464, Stop: 2820, Start Num: 79

Candidate Starts for Specks_8:

(Start: 79 @2464 has 15 MA's), (83, 2476), (92, 2503), (108, 2548), (122, 2611), (157, 2689), (161, 2701), (163, 2704),

Gene: Sprinklers_13 Start: 4140, Stop: 4490, Start Num: 62

Candidate Starts for Sprinklers_13:

(Start: 62 @4140 has 223 MA's), (Start: 71 @4155 has 3 MA's), (122, 4275), (157, 4353), (161, 4365), (163, 4368), (196, 4461),

Gene: Sprinklers_6 Start: 1749, Stop: 2189, Start Num: 62

Candidate Starts for Sprinklers_6:

(Start: 62 @1749 has 223 MA's), (Start: 71 @1761 has 3 MA's), (100, 1881), (122, 1971), (129, 2013), (181, 2109), (189, 2133),

Gene: Spud_6 Start: 1759, Stop: 2151, Start Num: 64

Candidate Starts for Spud_6:

(Start: 64 @1759 has 45 MA's), (Start: 71 @1771 has 3 MA's), (85, 1819), (Start: 89 @1825 has 1 MA's), (110, 1888), (122, 1942), (157, 2020), (161, 2032), (163, 2035),

Gene: Squint_80 Start: 49357, Stop: 48959, Start Num: 65

Candidate Starts for Squint_80:

(Start: 65 @49357 has 22 MA's), (Start: 71 @49345 has 3 MA's), (122, 49189), (152, 49105), (155, 49099), (156, 49096), (192, 49012),

Gene: SrishMeg2525_14 Start: 5050, Stop: 5400, Start Num: 62

Candidate Starts for SrishMeg2525_14:

(Start: 62 @5050 has 223 MA's), (Start: 71 @5065 has 3 MA's), (122, 5185), (157, 5263), (161, 5275), (163, 5278), (196, 5371),

Gene: StAnnes_81 Start: 49578, Stop: 49967, Start Num: 62

Candidate Starts for StAnnes_81:

(Start: 62 @49578 has 223 MA's), (Start: 71 @49593 has 3 MA's), (122, 49713), (148, 49785), (155, 49809), (184, 49881), (196, 49944),

Gene: StephanieG_7 Start: 2140, Stop: 2496, Start Num: 79

Candidate Starts for StephanieG_7:

(Start: 79 @2140 has 15 MA's), (83, 2152), (92, 2179), (108, 2224), (122, 2287), (157, 2365), (161, 2377), (163, 2380),

Gene: Stubby_14 Start: 5456, Stop: 5821, Start Num: 62

Candidate Starts for Stubby_14:

(Start: 62 @5456 has 223 MA's), (Start: 71 @5471 has 3 MA's), (122, 5606), (157, 5684), (161, 5696), (163, 5699), (196, 5792),

Gene: StubbySaigey_13 Start: 3970, Stop: 4335, Start Num: 62

Candidate Starts for StubbySaigey_13:

(Start: 62 @3970 has 223 MA's), (Start: 71 @3985 has 3 MA's), (122, 4120), (157, 4198), (161, 4210), (163, 4213), (196, 4306),

Gene: SuperGrey_79 Start: 50245, Stop: 50601, Start Num: 62

Candidate Starts for SuperGrey_79:

(Start: 62 @50245 has 223 MA's), (Start: 71 @50260 has 3 MA's), (122, 50395), (196, 50572),

Gene: Superphikiman_77 Start: 48448, Stop: 48050, Start Num: 65

Candidate Starts for Superphikiman_77:

(Start: 65 @48448 has 22 MA's), (Start: 71 @48436 has 3 MA's), (122, 48280), (152, 48196), (155, 48190), (156, 48187), (192, 48103),

Gene: Target_63 Start: 40851, Stop: 40456, Start Num: 64

Candidate Starts for Target_63:

(9, 41052), (42, 40908), (43, 40905), (Start: 64 @40851 has 45 MA's), (Start: 71 @40839 has 3 MA's), (122, 40683), (129, 40650), (140, 40629), (172, 40563), (196, 40479),

Gene: Target_79 Start: 46689, Stop: 46291, Start Num: 65

Candidate Starts for Target_79:

(Start: 65 @46689 has 22 MA's), (Start: 71 @46677 has 3 MA's), (122, 46521), (134, 46467), (141, 46458), (162, 46410), (164, 46404), (182, 46368), (190, 46350), (196, 46314),

Gene: Tchotchke_73 Start: 46858, Stop: 47286, Start Num: 59

Candidate Starts for Tchotchke_73:

(Start: 59 @46858 has 12 MA's), (Start: 71 @46873 has 3 MA's), (87, 46927), (110, 47020), (122, 47080), (196, 47257),

Gene: Teardrop_13 Start: 3966, Stop: 4331, Start Num: 62

Candidate Starts for Teardrop_13:

(Start: 62 @3966 has 223 MA's), (Start: 71 @3981 has 3 MA's), (122, 4116), (157, 4194), (161, 4206), (163, 4209), (196, 4302),

Gene: Teodoridan_77 Start: 45969, Stop: 45598, Start Num: 64

Candidate Starts for Teodoridan_77:

(Start: 64 @45969 has 45 MA's), (Start: 71 @45957 has 3 MA's), (83, 45921), (102, 45879), (112, 45855), (122, 45813), (161, 45723), (163, 45720), (189, 45657), (197, 45621),

Gene: Terminus_44 Start: 36046, Stop: 35612, Start Num: 62

Candidate Starts for Terminus_44:

(35, 36118), (Start: 62 @36046 has 223 MA's), (Start: 71 @36034 has 3 MA's), (110, 35884), (122, 35824),

Gene: Thor_60 Start: 40259, Stop: 39846, Start Num: 64

Candidate Starts for Thor_60:

(9, 40460), (42, 40316), (43, 40313), (Start: 64 @40259 has 45 MA's), (78, 40220), (106, 40175), (122, 40112), (148, 40034), (155, 40010), (184, 39938),

Gene: Thoth_84 Start: 59759, Stop: 60154, Start Num: 62

Candidate Starts for Thoth_84:

(Start: 24 @59636 has 1 MA's), (Start: 62 @59759 has 223 MA's), (92, 59834), (116, 59906), (122, 59939), (136, 59975), (138, 59981), (194, 60113), (196, 60131),

Gene: TinyTim_14 Start: 5050, Stop: 5400, Start Num: 62

Candidate Starts for TinyTim_14:

(Start: 62 @5050 has 223 MA's), (Start: 71 @5065 has 3 MA's), (122, 5185), (157, 5263), (161, 5275), (163, 5278), (196, 5371),

Gene: Tonenili_20 Start: 6077, Stop: 6418, Start Num: 89

Candidate Starts for Tonenili_20:

(Start: 89 @6077 has 1 MA's), (Start: 90 @6080 has 8 MA's), (93, 6092), (97, 6119), (99, 6128), (108, 6170), (114, 6194), (122, 6236), (135, 6287), (174, 6329),

Gene: Tortoise16_12 Start: 3966, Stop: 4331, Start Num: 62

Candidate Starts for Tortoise16_12:

(Start: 62 @3966 has 223 MA's), (Start: 71 @3981 has 3 MA's), (122, 4116), (157, 4194), (161, 4206), (163, 4209), (196, 4302),

Gene: Trinitium_13 Start: 3966, Stop: 4331, Start Num: 62

Candidate Starts for Trinitium_13:

(Start: 62 @3966 has 223 MA's), (Start: 71 @3981 has 3 MA's), (122, 4116), (157, 4194), (161, 4206), (163, 4209), (196, 4302),

Gene: Tripl3t_83 Start: 50856, Stop: 50458, Start Num: 65

Candidate Starts for Tripl3t_83:

(Start: 65 @50856 has 22 MA's), (122, 50664), (139, 50613), (152, 50589), (167, 50562), (196, 50481),

Gene: Turret_13 Start: 3949, Stop: 4314, Start Num: 62

Candidate Starts for Turret_13:

(Start: 62 @3949 has 223 MA's), (Start: 71 @3964 has 3 MA's), (122, 4099), (157, 4177), (161, 4189), (163, 4192), (196, 4285),

Gene: Tweety_79 Start: 48958, Stop: 49341, Start Num: 61

Candidate Starts for Tweety_79:

(Start: 61 @48958 has 21 MA's), (Start: 71 @48973 has 3 MA's), (122, 49093), (150, 49180), (151, 49186), (161, 49210), (196, 49312),

Gene: Tyke_8 Start: 2464, Stop: 2820, Start Num: 79

Candidate Starts for Tyke_8:

(Start: 79 @2464 has 15 MA's), (83, 2476), (92, 2503), (108, 2548), (122, 2611), (157, 2689), (161, 2701), (163, 2704),

Gene: Ukulele_42 Start: 35251, Stop: 34865, Start Num: 51

Candidate Starts for Ukulele_42:

(4, 35455), (20, 35371), (Start: 51 @35251 has 1 MA's), (Start: 64 @35227 has 45 MA's), (Start: 71 @35215 has 3 MA's), (122, 35095), (137, 35041), (142, 35032), (161, 34984), (164, 34978), (181, 34942), (187, 34924), (196, 34888),

Gene: UncleRicky_76 Start: 46818, Stop: 47246, Start Num: 59

Candidate Starts for UncleRicky_76:

(Start: 59 @46818 has 12 MA's), (Start: 71 @46833 has 3 MA's), (87, 46887), (110, 46980), (122, 47040), (196, 47217),

Gene: ValleyTerrace_13 Start: 3970, Stop: 4335, Start Num: 62

Candidate Starts for ValleyTerrace_13:

(Start: 62 @3970 has 223 MA's), (Start: 71 @3985 has 3 MA's), (122, 4120), (157, 4198), (161, 4210), (163, 4213), (196, 4306),

Gene: Velveteen_73 Start: 44943, Stop: 45320, Start Num: 62

Candidate Starts for Velveteen_73:

(Start: 62 @44943 has 223 MA's), (Start: 71 @44958 has 3 MA's), (122, 45114), (133, 45156), (165, 45222), (170, 45225), (195, 45294),

Gene: Veteran_71 Start: 47213, Stop: 47563, Start Num: 62

Candidate Starts for Veteran_71:

(Start: 62 @47213 has 223 MA's), (Start: 71 @47228 has 3 MA's), (122, 47348),

Gene: Visconti_85 Start: 59720, Stop: 60115, Start Num: 62

Candidate Starts for Visconti_85:

(Start: 24 @59597 has 1 MA's), (Start: 62 @59720 has 223 MA's), (92, 59795), (116, 59867), (122, 59900), (136, 59936), (138, 59942), (194, 60074), (196, 60092),

Gene: WaldoWhy_85 Start: 59683, Stop: 60078, Start Num: 62

Candidate Starts for WaldoWhy_85:

(Start: 24 @59560 has 1 MA's), (Start: 62 @59683 has 223 MA's), (92, 59758), (116, 59830), (122, 59863), (136, 59899), (138, 59905), (194, 60037), (196, 60055),

Gene: Wally_13 Start: 3970, Stop: 4335, Start Num: 62

Candidate Starts for Wally_13:

(Start: 62 @3970 has 223 MA's), (Start: 71 @3985 has 3 MA's), (122, 4120), (157, 4198), (161, 4210), (163, 4213), (196, 4306),

Gene: Wanda_82 Start: 51659, Stop: 51234, Start Num: 62

Candidate Starts for Wanda_82:

(Start: 62 @51659 has 223 MA's), (Start: 71 @51647 has 3 MA's), (87, 51593), (110, 51500), (122, 51440), (196, 51263),

Gene: Whatsapiecost_73 Start: 43853, Stop: 44332, Start Num: 62

Candidate Starts for Whatsapiecost_73:

(Start: 62 @43853 has 223 MA's), (Start: 71 @43868 has 3 MA's), (109, 44018), (111, 44021), (122, 44078), (148, 44150), (155, 44174), (184, 44246), (196, 44309),

Gene: Whouxphf_84 Start: 50087, Stop: 50422, Start Num: 90

Candidate Starts for Whouxphf_84:

(1, 49742), (2, 49760), (5, 49793), (14, 49826), (31, 49913), (32, 49922), (37, 49934), (41, 49946), (44, 49955), (45, 49964), (82, 50057), (84, 50066), (Start: 90 @50087 has 8 MA's), (115, 50186), (122, 50219), (129, 50261), (173, 50327),

Gene: WillSterrel_78 Start: 48814, Stop: 49227, Start Num: 61

Candidate Starts for WillSterrel_78:

(Start: 61 @48814 has 21 MA's), (Start: 71 @48829 has 3 MA's), (122, 48985), (150, 49072), (151, 49078), (161, 49102), (188, 49165), (196, 49204),

Gene: Willis_14 Start: 4975, Stop: 5340, Start Num: 62

Candidate Starts for Willis_14:

(Start: 62 @4975 has 223 MA's), (Start: 71 @4990 has 3 MA's), (122, 5125), (157, 5203), (161, 5215), (163, 5218), (196, 5311),

Gene: XFactor_74 Start: 47423, Stop: 47782, Start Num: 77

Candidate Starts for XFactor_74:

(Start: 77 @47423 has 1 MA's), (83, 47438), (122, 47558), (136, 47600), (181, 47696), (196, 47753),

Gene: Yassified_6 Start: 1770, Stop: 2210, Start Num: 62

Candidate Starts for Yassified_6:

(Start: 62 @1770 has 223 MA's), (Start: 71 @1782 has 3 MA's), (100, 1902), (122, 1992), (129, 2034), (181, 2130), (189, 2154),

Gene: Yassified_13 Start: 4163, Stop: 4537, Start Num: 62

Candidate Starts for Yassified_13:

(Start: 62 @4163 has 223 MA's), (Start: 71 @4178 has 3 MA's), (72, 4187), (83, 4214), (102, 4256), (112, 4280), (122, 4322), (161, 4412), (163, 4415), (196, 4508),

Gene: YemiJoy2021_14 Start: 5050, Stop: 5400, Start Num: 62

Candidate Starts for YemiJoy2021_14:

(Start: 62 @5050 has 223 MA's), (Start: 71 @5065 has 3 MA's), (122, 5185), (157, 5263), (161, 5275), (163, 5278), (196, 5371),

Gene: YoungMoneyMata_13 Start: 3968, Stop: 4333, Start Num: 62

Candidate Starts for YoungMoneyMata_13:

(Start: 62 @3968 has 223 MA's), (Start: 71 @3983 has 3 MA's), (122, 4118), (157, 4196), (161, 4208), (163, 4211), (196, 4304),

Gene: Yucca_13 Start: 4972, Stop: 5322, Start Num: 62

Candidate Starts for Yucca_13:

(Start: 62 @4972 has 223 MA's), (Start: 71 @4987 has 3 MA's), (122, 5107), (157, 5185), (161, 5197), (163, 5200), (196, 5293),

Gene: Zakhe101_23 Start: 10681, Stop: 11073, Start Num: 64

Candidate Starts for Zakhe101_23:

(Start: 64 @10681 has 45 MA's), (122, 10813), (142, 10897), (160, 10951), (174, 10975), (178, 10987), (180, 10993), (189, 11017), (193, 11032), (196, 11050),

Gene: Zalkecks_15 Start: 5050, Stop: 5400, Start Num: 62

Candidate Starts for Zalkecks_15:

(Start: 62 @5050 has 223 MA's), (Start: 71 @5065 has 3 MA's), (122, 5185), (157, 5263), (161, 5275), (163, 5278), (196, 5371),

Gene: Zapner_87 Start: 47003, Stop: 47359, Start Num: 61

Candidate Starts for Zapner_87:

(Start: 61 @47003 has 21 MA's), (Start: 71 @47018 has 3 MA's), (122, 47138), (193, 47309), (196, 47330),

Gene: Zeenon_16 Start: 5051, Stop: 5401, Start Num: 62

Candidate Starts for Zeenon_16:

(Start: 62 @5051 has 223 MA's), (Start: 71 @5066 has 3 MA's), (122, 5186), (157, 5264), (161, 5276), (163, 5279), (196, 5372),

Gene: Zelink_71 Start: 51457, Stop: 51044, Start Num: 62

Candidate Starts for Zelink_71:

(Start: 62 @51457 has 223 MA's), (Start: 71 @51445 has 3 MA's), (95, 51361), (101, 51343), (122, 51265), (126, 51235), (146, 51196), (148, 51193),

Gene: ZygoTaiga_15 Start: 5050, Stop: 5400, Start Num: 62

Candidate Starts for ZygoTaiga_15:

(Start: 62 @5050 has 223 MA's), (Start: 71 @5065 has 3 MA's), (122, 5185), (157, 5263), (161, 5275), (163, 5278), (196, 5371),

Gene: xkcd_46 Start: 36166, Stop: 35732, Start Num: 62

Candidate Starts for xkcd_46:

(35, 36238), (Start: 62 @36166 has 223 MA's), (Start: 71 @36154 has 3 MA's), (110, 36004), (122, 35944),