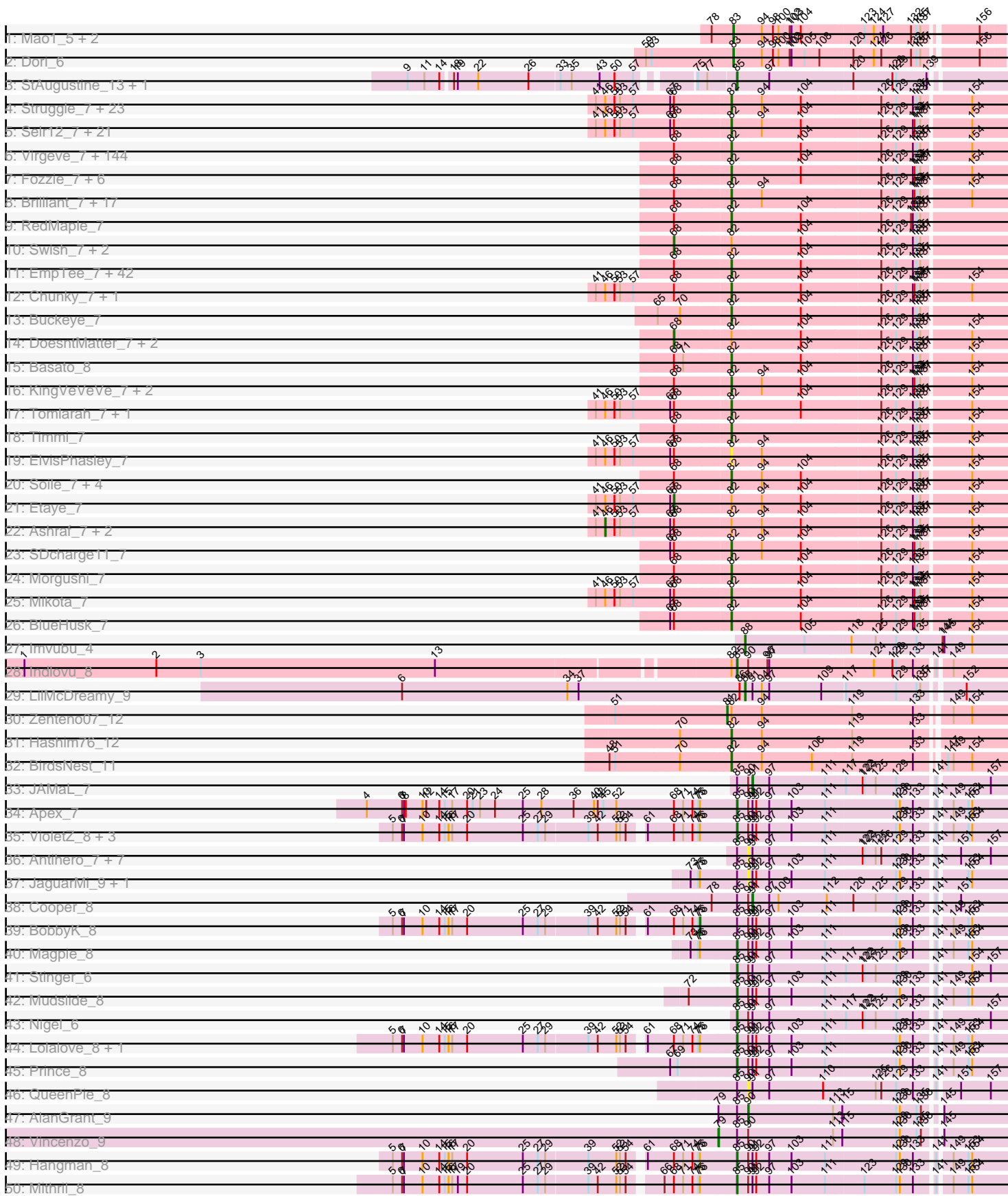
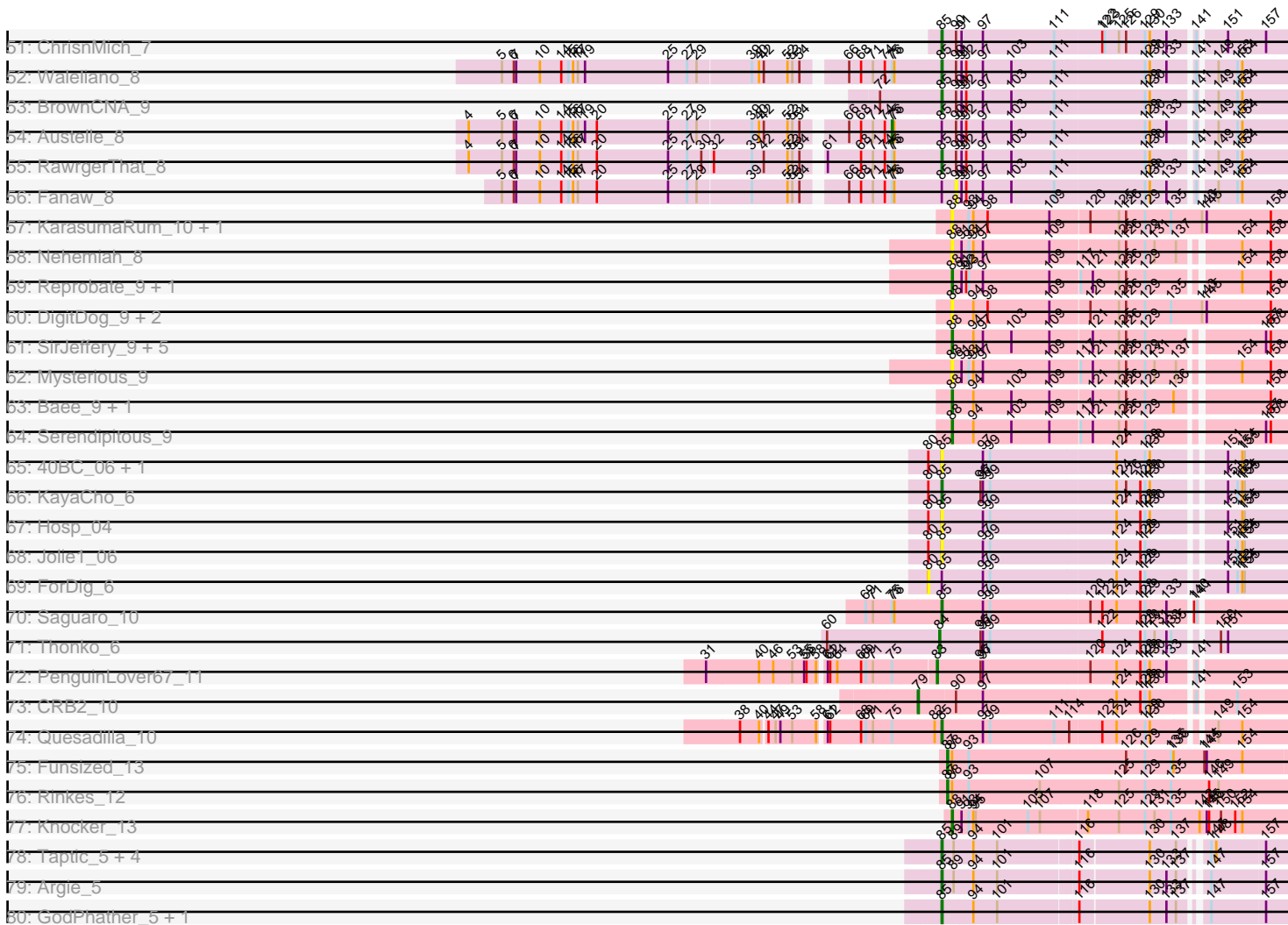


Pham 224183



Pham 224183



Note: Tracks are now grouped by subcluster and scaled. Switching in subcluster is indicated by changes in track color. Track scale is now set by default to display the region 30 bp upstream of start 1 to 30 bp downstream of the last possible start. If this default region is judged to be packed too tightly with annotated starts, the track will be further scaled to only show that region of the ORF with annotated starts. This action will be indicated by adding "Zoomed" to the title. For starts, yellow indicates the location of called starts comprised solely of Glimmer/GeneMark auto-annotations, green indicates the location of called starts with at least 1 manual gene annotation.

Pham 224183 Report

This analysis was run 03/28/25 on database version 593.

Pham number 224183 has 378 members, 50 are drafts.

Phages represented in each track:

- Track 1 : Mao1_5, Mask_6, Sejanus_6
- Track 2 : Dori_6
- Track 3 : StAugustine_13, Causa_15
- Track 4 : Struggle_7, Coletti_7, Veritas_7, MichaelPhcott_7, PhrankReynolds_7, Trypo_7, Riverton_7, Wallhey_7, Mag7_7, Labeouficaum_7, Phleuron_7, Freya_7, Oline_7, Derpp_7, PhenghisKhan_7, Doddsville_7, DuchessDung_7, BatteryCK_7, Chute_7, CharlieGBrown_7, Pinkman_7, TyrionL_7, Kailash_7, Phergie_7
- Track 5 : Selr12_7, MelsMeow_7, Plmatters_7, Windsor_7, Mesmerelda_8, Lumine_7, Roliet_7, Crownjwl_8, Phipps_7, Soto_7, Dione_7, Roscoe_8, SirBeauregard_7, Olak_7, Scrick_7, Haleema_7, Phunky_7, Dingo_7, MiniBoss_7, Kwksand96_7, Chaelin_7, LuckyMarjie_7
- Track 6 : Virgeve_7, Morty_7, HenryJackson_7, Orion_7, Weher20_7, Childish_7, Adriana_7, Skippy_7, Yoshand_7, LemonSlice_7, Kloppinator_7, Legolas_7, Puhltonio_7, ThreeOh3D2_7, ProfessorX_7, DonSanchon_7, Riggan_7, PhrodoBaggins_7, Pherdinand_7, AngelCake_7, ShiVal_7, Orwigg_7, Serendipity_7, Slatt_7, Chipette_9, Craff_7, TooFast2Furius_9, Surely_7, True_7, Oosterbaan_7, Haimas_7, Megatron_7, Cobra_7, Burr_7, Iridoclysis_7, Mana_7, Gophee_7, DirtJuice_7, Usavi_7, Valjean_7, Thora_7, TomBombadil_7, Zaider_8, SilverBell_7, Inchworm_7, Placalicious_7, Boehler_7, Hamish_7, Hetaeria_7, Xavier_7, Lulwa_7, Spartan300_7, Vaishali24_7, TallGrassMM_7, Schadenfreude_7, Pipsqueak_7, Hocus_7, UncleHowie_7, Squiggle_7, Simielle_7, BlackStallion_7, Vista_7, Schueller_7, Solosis_7, Potter_7, Sigman_7, Fang_7, LeeLot_7, Samaymay_7, Sophia_7, Nyala_7, Altwerkus_7, Emiris_7, Caspi_8, Cher_7, Zelda_7, Hartsy_7, Colbert_7, Chah_7, Andre_7, ABU_7, Kahve_7, MRabcd_7, YouGoGlencoco_7, IsaacEli_7, AltPhacts_7, Omniscient_7, Mutante_7, QueenBeane_7, KLucky39_7, Bishoperium_7, Apizium_7, SassyCat97_7, Charles1_7, Piglet_007, Mesh1_7, Antonia_7, Banjo_7, Dice_7, LostAndPhound_7, FriarPreacher_7, Keitherie_7, Kikipoo_7, HighStump_7, Lego3393_7, Vortex_7, PG1_7, Cornbread_8, LasagnaCat_7, Mecca_7, PinheadLarry_7, Hertubise_7, Olive_7, Mosaic_7, Megamind20_8, JacAttac_7, Chorkpop_7, Gareth_7, Bluephacebaby_7, Serpentine_007, Phamished_7, Phareon_7, CamL_7, Telesworld_7, Cannibal_7, Jillium_7, Vaticameos_7, Sheila_7, Podrick_7, Fringe_7, Dati_7, Quisquillae_7, UAch1_7, Murdoc_7, Manad_7, Waterdiva_7, Lasso_7, Cornobble_7, Squid_7, Anderson_7, Vivaldi_7, Numberten_7, Mcshane_7, Magic8_7, Horchata_7
- Track 7 : Fozzie_7, Swiphy_7, Nathan_8, GeneCoco_7, Pacifista_7, OSmaximus_7, PhatLouie_7

- Track 8 : Brilliant_7, DaddyDaniels_7, LeiMonet_7, Khan1_7, Plata_7, Longacauda_7, MrPhizzler_7, JakeO_7, Durga_7, Thunderbird_7, Jiminy_7, JDog_7, Zonia_7, Jiraiya_7, Duggie_7, Iridessa_7, Gwennie1_8, Rimu_7
- Track 9 : RedMaple_7
- Track 10 : Swish_7, Katniss_7, Badfish_7
- Track 11 : EmpTee_7, Robyn_7, Pops_7, PhatCats2014_7, Matalotodo_7, Newman_7, Grand2040_7, Aelin_7, Eremos_7, KingTut_7, Lulumae_7, MitKao_7, Gyarad_007, Nacho_007, Eugenia_7, Prickles_7, Roy17_7, Held_7, Lopsy_7, Cosmolli16_7, Tooj_7, AbsoluteMadLad_7, OliverWalter_7, Nicole21_7, KlimbOn_7, Daffy_7, Suffolk_7, Carthage_7, Toni_7, CampRoach_7, Scoot17C_7, Virapocalypse_7, FugateOSU_7, JangoPhett_7, Frankicide_7, Giraffe_7, Mulan_7, CheetO_7, Maru_7, Gwilliam_7, Daka_7, HSavage_7, Inverness_7
- Track 12 : Chunky_7, Melc17_7
- Track 13 : Buckeye_7
- Track 14 : DoesntMatter_7, FluffyNinja_7, Beaglebox_7
- Track 15 : Basato_8
- Track 16 : KingVeVeVe_7, Ricotta_7, Kwadwo_7
- Track 17 : Tomlarah_7, Kimbrough_7
- Track 18 : Timmi_7
- Track 19 : ElvisPhasley_7
- Track 20 : Soile_7, Jesabah_8, DelRivs_7, Harvey_7, Orfeu_7
- Track 21 : Etaye_7
- Track 22 : Ashraf_7, ImtiyazSitla_7, Maskar_7
- Track 23 : SDcharge11_7
- Track 24 : Morgushi_7
- Track 25 : Mikota_7
- Track 26 : BlueHusk_7
- Track 27 : Imvubu_4
- Track 28 : Indlovu_8
- Track 29 : LilMcDreamy_9
- Track 30 : Zenteno07_12
- Track 31 : Hashim76_12
- Track 32 : BirdsNest_11
- Track 33 : JAMaL_7
- Track 34 : Apex_7
- Track 35 : VioletZ_8, Zemanar_9, Heath_8, Frederick_8
- Track 36 : Antihero_7, Ahwei_7, Lambano_7, Epah_7, Hally898_7, Poster_7, GinPorsche_7, Nanao_7
- Track 37 : JaguarMi_9, Xincheng_8
- Track 38 : Cooper_8
- Track 39 : BobbyK_8
- Track 40 : Magpie_8
- Track 41 : Stinger_6
- Track 42 : Mudslide_8
- Track 43 : Nigel_6
- Track 44 : Lolalove_8, Hydro_8
- Track 45 : Prince_8
- Track 46 : QueenPie_8
- Track 47 : AlanGrant_9
- Track 48 : Vincenzo_9
- Track 49 : Hangman_8
- Track 50 : Mithril_8
- Track 51 : ChrisnMich_7

- Track 52 : Waleliano_8
- Track 53 : BrownCNA_9
- Track 54 : Austelle_8
- Track 55 : RawrgerThat_8
- Track 56 : Fanaw_8
- Track 57 : KarasumaRum_10, StinkyVeggy_10
- Track 58 : Nehemiah_8
- Track 59 : Reprobate_9, Phelemich_9
- Track 60 : DigitDog_9, Shenyu_9, Nangang_9
- Track 61 : SirJeffery_9, Acadian_9, Rita130_9, EastView9101_9, Suigeneris_9, Donny_9
- Track 62 : Mysterious_9
- Track 63 : Bae_9, Rich_9
- Track 64 : Serendipitous_9
- Track 65 : 40BC_06, 39HC_06
- Track 66 : KayaCho_6
- Track 67 : Hosp_04
- Track 68 : Jolie1_06
- Track 69 : ForDig_6
- Track 70 : Saguaro_10
- Track 71 : Thonko_6
- Track 72 : PenguinLover67_11
- Track 73 : CRB2_10
- Track 74 : Quesadilla_10
- Track 75 : Funsized_13
- Track 76 : Rinkes_12
- Track 77 : Knocker_13
- Track 78 : Taptic_5, PR_05, D12_05, Megabear_5, Cepens_5
- Track 79 : Argie_5
- Track 80 : GodPhather_5, Jeon_5

Summary of Final Annotations (See graph section above for start numbers):

The start number called the most often in the published annotations is 82, it was called in 259 of the 328 non-draft genes in the pham.

Genes that call this "Most Annotated" start:

- ABU_7, AbsoluteMadLad_7, Adriana_7, Aelin_7, AltPhacts_7, Altwerkus_7, Anderson_7, Andre_7, AngelCake_7, Antonia_7, Apizium_7, Banjo_7, Basato_8, BatteryCK_7, BirdsNest_11, Bishoperium_7, BlackStallion_7, BlueHusk_7, Bluephacebaby_7, Boehler_7, Brilliant_7, Buckeye_7, Burr_7, CamL_7, CampRoach_7, Cannibal_7, Carthage_7, Caspiboi_8, Chaelin_7, Chah_7, Charles1_7, CharlieGBrown_7, CheetO_7, Cher_7, Childish_7, Chipette_9, Chorkpop_7, Chunky_7, Chute_7, Cobra_7, Colbert_7, Coletti_7, Cornbread_8, Cornobble_7, Cosmolli16_7, Craff_7, Crownjwl_8, DaddyDaniels_7, Daffy_7, Daka_7, Dati_7, DelRivs_7, Derpp_7, Dice_7, Dingo_7, Dione_7, DirtJuice_7, Doddsville_7, DonSanchon_7, DuchessDung_7, Duggie_7, Durga_7, ElvisPhasley_7, Emiris_7, EmpTee_7, Eremos_7, Eugenia_7, Fang_7, Fozzie_7, Frankicide_7, Freya_7, FriarPreacher_7, Fringe_7, FugateOSU_7, Gareth_7, GeneCoco_7, Giraffe_7, Gophee_7, Grand2040_7, Gwennie1_8, Gwilliam_7, Gyarad_007,

HSavage_7, Haimas_7, Haleema_7, Hamish_7, Hartsy_7, Harvey_7, Hashim76_12, Held_7, HenryJackson_7, Hertubise_7, Hetaeria_7, HighStump_7, Hocus_7, Horchata_7, Inchworm_7, Inverness_7, Iridessa_7, Iridoclysis_7, IsaacEli_7, JDog_7, JacAttac_7, JakeO_7, JangoPhett_7, Jesabah_8, Jillium_7, Jiminy_7, Jiraiya_7, KLucky39_7, Kahve_7, Kailash_7, Keitherie_7, Khan1_7, Kikipoo_7, Kimbrough_7, KingTut_7, KingVeVeVe_7, KlimbOn_7, Kloppinator_7, Kwadwo_7, Kwksand96_7, Labeouficaum_7, LasagnaCat_7, Lasso_7, LeeLot_7, Lego3393_7, Legolas_7, LeiMonet_7, LemonSlice_7, Longacauda_7, Lopsy_7, LostAndPhound_7, LuckyMarjie_7, Lulumae_7, Lulwa_7, Lumine_7, MRabcd_7, Mag7_7, Magic8_7, Mana_7, Manad_7, Maru_7, Matalotodo_7, Mcshane_7, Mecca_7, Megamind20_8, Megatron_7, Melc17_7, MelsMeow_7, Mesh1_7, Mesmerelda_8, MichaelPhcott_7, Mikota_7, MiniBoss_7, MitKao_7, Morgushi_7, Morty_7, Mosaic_7, MrPhizzler_7, Mulan_7, Murdoc_7, Mutante_7, Nacho_007, Nathan_8, Newman_7, Nicole21_7, Numberten_7, Nyala_7, OSmaximus_7, Olak_7, Oline_7, Olive_7, OliverWalter_7, Omniscient_7, Oosterbaan_7, Orfeu_7, Orion_7, Orwigg_7, PG1_7, Pacifista_7, Phamished_7, Phareon_7, PhatCats2014_7, PhatLouie_7, PhenghisKhan_7, Pherdinand_7, Phergie_7, Phipps_7, Phleuron_7, PhrankReynolds_7, PhrodoBaggins_7, Phunky_7, Piglet_007, PinheadLarry_7, Pinkman_7, Pipsqueak_7, Placalicious_7, Plata_7, Plmatters_7, Podrick_7, Pops_7, Potter_7, Prickles_7, ProfessorX_7, Puhltonio_7, QueenBeane_7, Quisquilliae_7, RedMaple_7, Ricotta_7, Riggan_7, Rimu_7, Riverton_7, Robyn_7, Roliet_7, Roscoe_8, Roy17_7, SDcharge11_7, Samaymay_7, SassyCat97_7, Schadenfreude_7, Schueller_7, Scoot17C_7, Scrick_7, Selr12_7, Serendipity_7, Serpentine_007, Sheila_7, ShiVal_7, Sigman_7, SilverBell_7, Simielle_7, SirBeauregard_7, Skippy_7, Slatt_7, Soile_7, Solosis_7, Sophia_7, Soto_7, Spartan300_7, Squid_7, Squiggle_7, Struggle_7, Suffolk_7, Surely_7, Swiphy_7, TallGrassMM_7, Telesworld_7, Thora_7, ThreeOh3D2_7, Thunderbird_7, Timmi_7, TomBombadil_7, Tomlarah_7, Toni_7, TooFast2Furius_9, Tooj_7, True_7, Trypo_7, TyrionL_7, UAch1_7, UncleHowie_7, Usavi_7, Vaishali24_7, Valjean_7, Vaticameos_7, Veritas_7, Virapocalypse_7, Virgeve_7, Vista_7, Vivaldi_7, Vortex_7, Wallhey_7, Waterdiva_7, Weher20_7, Windsor_7, Xavier_7, Yoshand_7, YouGoGlencoco_7, Zaider_8, Zelda_7, Zonia_7,

Genes that have the "Most Annotated" start but do not call it:

- Ashraf_7, Badfish_7, Beaglebox_7, DoesntMatter_7, Etype_7, FluffyNinja_7, ImtiyazSitla_7, Indlovu_8, Katniss_7, Maskar_7, Quesadilla_10, Swish_7, Zenteno07_12,

Genes that do not have the "Most Annotated" start:

- 39HC_06, 40BC_06, Acadian_9, Ahwei_7, AlanGrant_9, Antihero_7, Apex_7, Argie_5, Austelle_8, Bae_9, BobbyK_8, BrownCNA_9, CRB2_10, Causa_15, Cepens_5, ChrisnMich_7, Cooper_8, D12_05, DigitDog_9, Donny_9, Dori_6, EastView9101_9, Epah_7, Fanaw_8, ForDig_6, Frederick_8, Funsized_13, GinPorsche_7, GodPhather_5, Hally898_7, Hangman_8, Heath_8, Hosp_04, Hydro_8, Imvubu_4, JAMaL_7, JaguarMi_9, Jeon_5, Jolie1_06, KarasumaRum_10, KayaCho_6, Knocker_13, Lambano_7, LilMcDreamy_9, Lolalove_8, Magpie_8, Mao1_5, Mask_6, Megabear_5, Mithril_8, Mudslide_8, Mysterious_9, Nanao_7, Nangang_9, Nehemiah_8, Nigel_6, PR_05, PenguinLover67_11, Phelemich_9, Poster_7, Prince_8, QueenPie_8, RawrgerThat_8, Reprobate_9, Rich_9, Rinkes_12, Rita130_9, Saguaro_10, Sejanus_6, Serendipitous_9, Shenyu_9, SirJeffery_9, StAugustine_13, Stinger_6, StinkyVeggy_10, Suigeneris_9, Taptic_5, Thonko_6, Vincenzo_9, VioletZ_8, Waleliano_8, Xincheng_8, Zemanar_9,

Summary by start number:

Start 46:

- Found in 57 of 378 (15.1%) of genes in pham
- Manual Annotations of this start: 3 of 328
- Called 5.3% of time when present
- Phage (with cluster) where this start called: Ashraf_7 (B1), ImtiyazSitla_7 (B1), Maskar_7 (B1),

Start 68:

- Found in 305 of 378 (80.7%) of genes in pham
- Manual Annotations of this start: 7 of 328
- Called 2.3% of time when present
- Phage (with cluster) where this start called: Badfish_7 (B1), Beaglebox_7 (B1), DoesntMatter_7 (B1), Etaye_7 (B1), FluffyNinja_7 (B1), Katniss_7 (B1), Swish_7 (B1),

Start 75:

- Found in 22 of 378 (5.8%) of genes in pham
- Manual Annotations of this start: 1 of 328
- Called 4.5% of time when present
- Phage (with cluster) where this start called: Austelle_8 (B4),

Start 76:

- Found in 18 of 378 (4.8%) of genes in pham
- Manual Annotations of this start: 1 of 328
- Called 5.6% of time when present
- Phage (with cluster) where this start called: BobbyK_8 (B4),

Start 79:

- Found in 3 of 378 (0.8%) of genes in pham
- Manual Annotations of this start: 2 of 328
- Called 66.7% of time when present
- Phage (with cluster) where this start called: CRB2_10 (B9), Vincenzo_9 (B4),

Start 80:

- Found in 6 of 378 (1.6%) of genes in pham
- No Manual Annotations of this start.
- Called 16.7% of time when present
- Phage (with cluster) where this start called: ForDig_6 (B6),

Start 81:

- Found in 1 of 378 (0.3%) of genes in pham
- Manual Annotations of this start: 1 of 328
- Called 100.0% of time when present
- Phage (with cluster) where this start called: Zenteno07_12 (B13),

Start 82:

- Found in 295 of 378 (78.0%) of genes in pham
- Manual Annotations of this start: 259 of 328
- Called 95.6% of time when present
- Phage (with cluster) where this start called: ABU_7 (B1), AbsoluteMadLad_7 (B1), Adriana_7 (B1), Aelin_7 (B1), AltPhacts_7 (B1), Altwerkus_7 (B1), Anderson_7 (B1), Andre_7 (B1), AngelCake_7 (B1), Antonia_7 (B1), Apizium_7 (B1), Banjo_7 (B1),

Basato_8 (B1), BatteryCK_7 (B1), BirdsNest_11 (B13), Bishoperium_7 (B1), BlackStallion_7 (B1), BlueHusk_7 (B1), Bluephacebaby_7 (B1), Boehler_7 (B1), Brilliant_7 (B1), Buckeye_7 (B1), Burr_7 (B1), CamL_7 (B1), CampRoach_7 (B1), Cannibal_7 (B1), Carthage_7 (B1), Caspiroi_8 (B1), Chaelin_7 (B1), Chah_7 (B1), Charles1_7 (B1), CharlieGBrown_7 (B1), CheetO_7 (B1), Cher_7 (B1), Childish_7 (B1), Chipette_9 (B1), Chorkpop_7 (B1), Chunky_7 (B1), Chute_7 (B1), Cobra_7 (B1), Colbert_7 (B1), Coletti_7 (B1), Cornbread_8 (B1), Cornobble_7 (B1), Cosmolli16_7 (B1), Craff_7 (B1), Crownjwl_8 (B1), DaddyDaniels_7 (B1), Daffy_7 (B1), Daka_7 (B1), Dati_7 (B1), DelRivs_7 (B1), Derpp_7 (B1), Dice_7 (B1), Dingo_7 (B1), Dione_7 (B1), DirtJuice_7 (B1), Doddsville_7 (B1), DonSanchon_7 (B1), DuchessDung_7 (B1), Duggie_7 (B1), Durga_7 (B1), ElvisPhasley_7 (B1), Emiris_7 (B1), EmpTee_7 (B1), Eremos_7 (B1), Eugenia_7 (B1), Fang_7 (B1), Fozzie_7 (B1), Frankicide_7 (B1), Freya_7 (B1), FriarPreacher_7 (B1), Fringe_7 (B1), FugateOSU_7 (B1), Gareth_7 (B1), GeneCoco_7 (B1), Giraffe_7 (B1), Gophee_7 (B1), Grand2040_7 (B1), Gwennie1_8 (B1), Gwilliam_7 (B1), Gyarad_007 (B1), HSavage_7 (B1), Haimas_7 (B1), Haleema_7 (B1), Hamish_7 (B1), Hartsy_7 (B1), Harvey_7 (B1), Hashim76_12 (B13), Held_7 (B1), HenryJackson_7 (B1), Hertubise_7 (B1), Hetaeria_7 (B1), HighStump_7 (B1), Hocus_7 (B1), Horchata_7 (B1), Inchworm_7 (B1), Inverness_7 (B1), Iridessa_7 (B1), Iridoclysis_7 (B1), IsaacEli_7 (B1), JDog_7 (B1), JacAttac_7 (B1), JakeO_7 (B1), JangoPhett_7 (B1), Jesabah_8 (B1), Jillium_7 (B1), Jiminy_7 (B1), Jiraiya_7 (B1), KLucky39_7 (B1), Kahve_7 (B1), Kailash_7 (B1), Keitherie_7 (B1), Khan1_7 (B1), Kikipoo_7 (B1), Kimbrough_7 (B1), KingTut_7 (B1), KingVeVeVe_7 (B1), KlimbOn_7 (B1), Kloppinator_7 (B1), Kwadwo_7 (B1), Kwksand96_7 (B1), Labeouficaum_7 (B1), LasagnaCat_7 (B1), Lasso_7 (B1), LeeLot_7 (B1), Lego3393_7 (B1), Legolas_7 (B1), LeiMonet_7 (B1), LemonSlice_7 (B1), Longacauda_7 (B1), Lopsy_7 (B1), LostAndPhound_7 (B1), LuckyMarjie_7 (B1), Lulumae_7 (B1), Lulwa_7 (B1), Lumine_7 (B1), MRabcd_7 (B1), Mag7_7 (B1), Magic8_7 (B1), Mana_7 (B1), Manad_7 (B1), Maru_7 (B1), Matalotodo_7 (B1), Mcshane_7 (B1), Mecca_7 (B1), Megamind20_8 (B1), Megatron_7 (B1), Melc17_7 (B1), MelsMeow_7 (B1), Mesh1_7 (B1), Mesmerelda_8 (B1), MichaelPhcott_7 (B1), Mikota_7 (B1), MiniBoss_7 (B1), MitKao_7 (B1), Morgushi_7 (B1), Morty_7 (B1), Mosaic_7 (B1), MrPhizzler_7 (B1), Mulan_7 (B1), Murdoc_7 (B1), Mutante_7 (B1), Nacho_007 (B1), Nathan_8 (B1), Newman_7 (B1), Nicole21_7 (B1), Numberten_7 (B1), Nyala_7 (B1), OSmaximus_7 (B1), Olak_7 (B1), Oline_7 (B1), Olive_7 (B1), OliverWalter_7 (B1), Omniscient_7 (B1), Oosterbaan_7 (B1), Orfeu_7 (B1), Orion_7 (B1), Orwigg_7 (B1), PG1_7 (B1), Pacifista_7 (B1), Phamished_7 (B1), Phareon_7 (B1), PhatCats2014_7 (B1), PhatLouie_7 (B1), PhenghisKhan_7 (B1), Pherdinand_7 (B1), Phergie_7 (B1), Phipps_7 (B1), Phleuron_7 (B1), PhrankReynolds_7 (B1), PhrodoBaggins_7 (B1), Phunky_7 (B1), Piglet_007 (B1), PinheadLarry_7 (B1), Pinkman_7 (B1), Pipsqueak_7 (B1), Placalicious_7 (B1), Plata_7 (B1), Plmatters_7 (B1), Podrick_7 (B1), Pops_7 (B1), Potter_7 (B1), Prickles_7 (B1), ProfessorX_7 (B1), Puhltonio_7 (B1), QueenBeane_7 (B1), Quisquiliae_7 (B1), RedMaple_7 (B1), Ricotta_7 (B1), Riggan_7 (B1), Rimu_7 (B1), Riverton_7 (B1), Robyn_7 (B1), Roliet_7 (B1), Roscoe_8 (B1), Roy17_7 (B1), SDcharge11_7 (B1), Samaymay_7 (B1), SassyCat97_7 (B1), Schadenfreude_7 (B1), Schueller_7 (B1), Scoot17C_7 (B1), Scrick_7 (B1), Selr12_7 (B1), Serendipity_7 (B1), Serpentine_007 (B1), Sheila_7 (B1), ShiVal_7 (B1), Sigman_7 (B1), SilverBell_7 (B1), Simielle_7 (B1), SirBeauregard_7 (B1), Skippy_7 (B1), Slatt_7 (B1), Soile_7 (B1), Solosis_7 (B1), Sophia_7 (B1), Soto_7 (B1), Spartan300_7 (B1), Squid_7 (B1), Squiggle_7 (B1), Struggle_7 (B1), Suffolk_7 (B1), Surely_7 (B1), Swiphy_7 (B1), TallGrassMM_7 (B1), Telesworld_7 (B1), Thora_7 (B1), ThreeOh3D2_7 (B1), Thunderbird_7 (B1), Timmi_7 (B1), TomBombadil_7 (B1), Tomlarah_7 (B1), Toni_7 (B1), TooFast2Furius_9 (B1), Tooj_7 (B1), True_7 (B1), Trypo_7 (B1), TyrionL_7

(B1), UAch1_7 (B1), UncleHowie_7 (B1), Usavi_7 (B1), Vaishali24_7 (B1), Valjean_7 (B1), Vaticameos_7 (B1), Veritas_7 (B1), Virapocalypse_7 (B1), Virgeve_7 (B1), Vista_7 (B1), Vivaldi_7 (B1), Vortex_7 (B1), Wallhey_7 (B1), Waterdiva_7 (B1), Weher20_7 (B1), Windsor_7 (B1), Xavier_7 (B1), Yoshand_7 (B1), YouGoGlencoco_7 (B1), Zaider_8 (B1), Zelda_7 (B1), Zonia_7 (B1),

Start 83:

- Found in 5 of 378 (1.3%) of genes in pham
- Manual Annotations of this start: 5 of 328
- Called 100.0% of time when present
- Phage (with cluster) where this start called: Dori_6 (AD), Mao1_5 (AD), Mask_6 (AD), PenguinLover67_11 (B9), Sejanus_6 (AD),

Start 84:

- Found in 1 of 378 (0.3%) of genes in pham
- Manual Annotations of this start: 1 of 328
- Called 100.0% of time when present
- Phage (with cluster) where this start called: Thonko_6 (B8),

Start 85:

- Found in 55 of 378 (14.6%) of genes in pham
- Manual Annotations of this start: 31 of 328
- Called 65.5% of time when present
- Phage (with cluster) where this start called: 39HC_06 (B6), 40BC_06 (B6), Apex_7 (B4), Argie_5 (W), BrownCNA_9 (B4), Causa_15 (AI), Cepens_5 (W), ChrisnMich_7 (B4), D12_05 (W), Frederick_8 (B4), GodPhather_5 (W), Hangman_8 (B4), Heath_8 (B4), Hosp_04 (B6), Hydro_8 (B4), Indlovu_8 (B11), Jeon_5 (W), Jolie1_06 (B6), KayaCho_6 (B6), Lolalove_8 (B4), Magpie_8 (B4), Megabear_5 (W), Mithril_8 (B4), Mudslide_8 (B4), Nigel_6 (B4), PR_05 (W), Prince_8 (B4), Quesadilla_10 (B9), RawrgerThat_8 (B4), Saguaro_10 (B7), StAugustine_13 (AI), Stinger_6 (B4), Taptic_5 (W), VioletZ_8 (B4), Waleliano_8 (B4), Zemanar_9 (B4),

Start 87:

- Found in 2 of 378 (0.5%) of genes in pham
- Manual Annotations of this start: 2 of 328
- Called 100.0% of time when present
- Phage (with cluster) where this start called: Funsized_13 (B9), Rinkes_12 (B9),

Start 88:

- Found in 23 of 378 (6.1%) of genes in pham
- Manual Annotations of this start: 12 of 328
- Called 91.3% of time when present
- Phage (with cluster) where this start called: Acadian_9 (B5), Bae_9 (B5), DigitDog_9 (B5), Donny_9 (B5), EastView9101_9 (B5), Imvubu_4 (B10), KarasumaRum_10 (B5), Knocker_13 (B9), LilMcDreamy_9 (B12), Mysterious_9 (B5), Nangang_9 (B5), Nehemiah_8 (B5), Phelemich_9 (B5), Reprobate_9 (B5), Rich_9 (B5), Rita130_9 (B5), Serendipitous_9 (B5), Shenyu_9 (B5), SirJeffery_9 (B5), StinkyVeggy_10 (B5), Suigeneris_9 (B5),

Start 90:

- Found in 38 of 378 (10.1%) of genes in pham
- Manual Annotations of this start: 1 of 328
- Called 34.2% of time when present

- Phage (with cluster) where this start called: Ahwei_7 (B4), AlanGrant_9 (B4), Antihero_7 (B4), Epah_7 (B4), Fanaw_8 (B4), GinPorsche_7 (B4), Hally898_7 (B4), JaguarMi_9 (B4), Lambano_7 (B4), Nanao_7 (B4), Poster_7 (B4), QueenPie_8 (B4), Xincheng_8 (B4),

Start 91:

- Found in 40 of 378 (10.6%) of genes in pham
- Manual Annotations of this start: 2 of 328
- Called 5.0% of time when present
- Phage (with cluster) where this start called: Cooper_8 (B4), JAMaL_7 (B4),

Summary by clusters:

There are 14 clusters represented in this pham: B10, AI, B4, B5, B6, B7, B12, B1, W, B11, AD, B8, B9, B13,

Info for manual annotations of cluster AD:

- Start number 83 was manually annotated 4 times for cluster AD.

Info for manual annotations of cluster AI:

- Start number 85 was manually annotated 1 time for cluster AI.

Info for manual annotations of cluster B1:

- Start number 46 was manually annotated 3 times for cluster B1.
- Start number 68 was manually annotated 7 times for cluster B1.
- Start number 82 was manually annotated 257 times for cluster B1.

Info for manual annotations of cluster B10:

- Start number 88 was manually annotated 1 time for cluster B10.

Info for manual annotations of cluster B11:

- Start number 85 was manually annotated 1 time for cluster B11.

Info for manual annotations of cluster B12:

- Start number 88 was manually annotated 1 time for cluster B12.

Info for manual annotations of cluster B13:

- Start number 81 was manually annotated 1 time for cluster B13.
- Start number 82 was manually annotated 2 times for cluster B13.

Info for manual annotations of cluster B4:

- Start number 75 was manually annotated 1 time for cluster B4.
- Start number 76 was manually annotated 1 time for cluster B4.
- Start number 79 was manually annotated 1 time for cluster B4.
- Start number 85 was manually annotated 18 times for cluster B4.
- Start number 90 was manually annotated 1 time for cluster B4.
- Start number 91 was manually annotated 2 times for cluster B4.

Info for manual annotations of cluster B5:

- Start number 88 was manually annotated 9 times for cluster B5.

Info for manual annotations of cluster B6:

- Start number 85 was manually annotated 1 time for cluster B6.

Info for manual annotations of cluster B7:

- Start number 85 was manually annotated 1 time for cluster B7.

Info for manual annotations of cluster B8:

- Start number 84 was manually annotated 1 time for cluster B8.

Info for manual annotations of cluster B9:

- Start number 79 was manually annotated 1 time for cluster B9.
- Start number 83 was manually annotated 1 time for cluster B9.
- Start number 85 was manually annotated 1 time for cluster B9.
- Start number 87 was manually annotated 2 times for cluster B9.
- Start number 88 was manually annotated 1 time for cluster B9.

Info for manual annotations of cluster W:

- Start number 85 was manually annotated 8 times for cluster W.

Gene Information:

Gene: 39HC_06 Start: 4766, Stop: 5182, Start Num: 85

Candidate Starts for 39HC_06:

(80, 4751), (Start: 85 @4766 has 31 MA's), (97, 4817), (99, 4826), (124, 4982), (129, 5018), (130, 5024), (151, 5102), (154, 5120), (155, 5123),

Gene: 40BC_06 Start: 4766, Stop: 5182, Start Num: 85

Candidate Starts for 40BC_06:

(80, 4751), (Start: 85 @4766 has 31 MA's), (97, 4817), (99, 4826), (124, 4982), (129, 5018), (130, 5024), (151, 5102), (154, 5120), (155, 5123),

Gene: ABU_7 Start: 3963, Stop: 4409, Start Num: 82

Candidate Starts for ABU_7:

(Start: 68 @3876 has 7 MA's), (Start: 82 @3963 has 259 MA's), (104, 4074), (126, 4200), (129, 4224), (133, 4251), (135, 4257), (137, 4263), (154, 4338),

Gene: AbsoluteMadLad_7 Start: 3961, Stop: 4407, Start Num: 82

Candidate Starts for AbsoluteMadLad_7:

(Start: 68 @3874 has 7 MA's), (Start: 82 @3961 has 259 MA's), (104, 4072), (126, 4198), (129, 4222), (133, 4249), (135, 4255), (137, 4261),

Gene: Acadian_9 Start: 6265, Stop: 6666, Start Num: 88

Candidate Starts for Acadian_9:

(Start: 88 @6265 has 12 MA's), (94, 6292), (97, 6304), (103, 6340), (109, 6388), (121, 6439), (125, 6472), (126, 6481), (129, 6505), (157, 6637), (158, 6643),

Gene: Adriana_7 Start: 3965, Stop: 4411, Start Num: 82

Candidate Starts for Adriana_7:

(Start: 68 @3878 has 7 MA's), (Start: 82 @3965 has 259 MA's), (104, 4076), (126, 4202), (129, 4226), (133, 4253), (135, 4259), (137, 4265), (154, 4340),

Gene: Aelin_7 Start: 3965, Stop: 4411, Start Num: 82

Candidate Starts for Aelin_7:

(Start: 68 @3878 has 7 MA's), (Start: 82 @3965 has 259 MA's), (104, 4076), (126, 4202), (129, 4226), (133, 4253), (135, 4259), (137, 4265),

Gene: Ahwei_7 Start: 5221, Stop: 5616, Start Num: 90

Candidate Starts for Ahwei_7:

(Start: 85 @5203 has 31 MA's), (Start: 90 @5221 has 1 MA's), (Start: 91 @5227 has 2 MA's), (97, 5254), (111, 5344), (122, 5401), (123, 5404), (125, 5422), (126, 5431), (129, 5455), (133, 5482), (141, 5509), (151, 5539), (157, 5587),

Gene: AlanGrant_9 Start: 7025, Stop: 7429, Start Num: 90

Candidate Starts for AlanGrant_9:

(Start: 79 @6977 has 2 MA's), (Start: 85 @7007 has 31 MA's), (Start: 90 @7025 has 1 MA's), (113, 7160), (115, 7175), (129, 7259), (130, 7265), (135, 7292), (138, 7298), (145, 7316),

Gene: AltPhacts_7 Start: 3966, Stop: 4412, Start Num: 82

Candidate Starts for AltPhacts_7:

(Start: 68 @3879 has 7 MA's), (Start: 82 @3966 has 259 MA's), (104, 4077), (126, 4203), (129, 4227), (133, 4254), (135, 4260), (137, 4266), (154, 4341),

Gene: Altwerkus_7 Start: 3965, Stop: 4411, Start Num: 82

Candidate Starts for Altwerkus_7:

(Start: 68 @3878 has 7 MA's), (Start: 82 @3965 has 259 MA's), (104, 4076), (126, 4202), (129, 4226), (133, 4253), (135, 4259), (137, 4265), (154, 4340),

Gene: Anderson_7 Start: 3965, Stop: 4411, Start Num: 82

Candidate Starts for Anderson_7:

(Start: 68 @3878 has 7 MA's), (Start: 82 @3965 has 259 MA's), (104, 4076), (126, 4202), (129, 4226), (133, 4253), (135, 4259), (137, 4265), (154, 4340),

Gene: Andre_7 Start: 3966, Stop: 4412, Start Num: 82

Candidate Starts for Andre_7:

(Start: 68 @3879 has 7 MA's), (Start: 82 @3966 has 259 MA's), (104, 4077), (126, 4203), (129, 4227), (133, 4254), (135, 4260), (137, 4266), (154, 4341),

Gene: AngelCake_7 Start: 3962, Stop: 4408, Start Num: 82

Candidate Starts for AngelCake_7:

(Start: 68 @3875 has 7 MA's), (Start: 82 @3962 has 259 MA's), (104, 4073), (126, 4199), (129, 4223), (133, 4250), (135, 4256), (137, 4262), (154, 4337),

Gene: Antihero_7 Start: 5221, Stop: 5616, Start Num: 90

Candidate Starts for Antihero_7:

(Start: 85 @5203 has 31 MA's), (Start: 90 @5221 has 1 MA's), (Start: 91 @5227 has 2 MA's), (97, 5254), (111, 5344), (122, 5401), (123, 5404), (125, 5422), (126, 5431), (129, 5455), (133, 5482), (141, 5509), (151, 5539), (157, 5587),

Gene: Antonia_7 Start: 3965, Stop: 4411, Start Num: 82

Candidate Starts for Antonia_7:

(Start: 68 @3878 has 7 MA's), (Start: 82 @3965 has 259 MA's), (104, 4076), (126, 4202), (129, 4226), (133, 4253), (135, 4259), (137, 4265), (154, 4340),

Gene: Apex_7 Start: 5846, Stop: 6265, Start Num: 85

Candidate Starts for Apex_7:

(4, 5255), (6, 5312), (7, 5315), (8, 5318), (10, 5345), (12, 5351), (14, 5372), (15, 5381), (17, 5393), (20, 5417), (21, 5426), (23, 5438), (24, 5462), (25, 5507), (28, 5537), (36, 5588), (40, 5621), (42, 5627), (45, 5636), (52, 5657), (Start: 68 @5750 has 7 MA's), (71, 5765), (74, 5780), (Start: 75 @5786 has 1 MA's), (Start: 76 @5789 has 1 MA's), (Start: 85 @5846 has 31 MA's), (Start: 90 @5864 has 1 MA's), (Start: 91 @5870 has 2 MA's), (92, 5876), (97, 5897), (103, 5933), (111, 5987), (129, 6098), (130, 6104), (133, 6125), (141, 6152), (149, 6170), (153, 6194), (154, 6200),

Gene: Apizium_7 Start: 3963, Stop: 4409, Start Num: 82

Candidate Starts for Apizium_7:

(Start: 68 @3876 has 7 MA's), (Start: 82 @3963 has 259 MA's), (104, 4074), (126, 4200), (129, 4224), (133, 4251), (135, 4257), (137, 4263), (154, 4338),

Gene: Argie_5 Start: 2882, Stop: 3286, Start Num: 85

Candidate Starts for Argie_5:

(Start: 85 @2882 has 31 MA's), (89, 2897), (94, 2921), (101, 2951), (116, 3044), (130, 3128), (133, 3149), (137, 3161), (147, 3185), (157, 3251),

Gene: Ashraf_7 Start: 3764, Stop: 4408, Start Num: 46

Candidate Starts for Ashraf_7:

(41, 3749), (Start: 46 @3764 has 3 MA's), (50, 3779), (53, 3788), (57, 3809), (67, 3869), (Start: 68 @3875 has 7 MA's), (Start: 82 @3962 has 259 MA's), (94, 4010), (104, 4073), (126, 4199), (129, 4223), (133, 4250), (135, 4256), (137, 4262), (154, 4337),

Gene: Austelle_8 Start: 6242, Stop: 6721, Start Num: 75

Candidate Starts for Austelle_8:

(4, 5732), (5, 5774), (6, 5789), (7, 5792), (10, 5822), (14, 5849), (15, 5858), (16, 5864), (17, 5870), (19, 5879), (20, 5894), (25, 5984), (27, 6008), (29, 6020), (39, 6086), (40, 6095), (42, 6101), (52, 6131), (53, 6137), (54, 6146), (66, 6191), (Start: 68 @6206 has 7 MA's), (71, 6221), (74, 6236), (Start: 75 @6242 has 1 MA's), (Start: 76 @6245 has 1 MA's), (Start: 85 @6302 has 31 MA's), (Start: 90 @6320 has 1 MA's), (Start: 91 @6326 has 2 MA's), (92, 6332), (97, 6353), (103, 6389), (111, 6443), (129, 6554), (130, 6560), (133, 6581), (141, 6608), (149, 6626), (153, 6650), (154, 6656),

Gene: Badfish_7 Start: 3878, Stop: 4411, Start Num: 68

Candidate Starts for Badfish_7:

(Start: 68 @3878 has 7 MA's), (Start: 82 @3965 has 259 MA's), (104, 4076), (126, 4202), (129, 4226), (133, 4253), (135, 4259), (137, 4265),

Gene: Bae_9 Start: 6271, Stop: 6672, Start Num: 88

Candidate Starts for Bae_9:

(Start: 88 @6271 has 12 MA's), (94, 6298), (103, 6346), (109, 6394), (121, 6445), (125, 6478), (126, 6487), (129, 6511), (136, 6547), (158, 6649),

Gene: Banjo_7 Start: 3966, Stop: 4412, Start Num: 82

Candidate Starts for Banjo_7:

(Start: 68 @3879 has 7 MA's), (Start: 82 @3966 has 259 MA's), (104, 4077), (126, 4203), (129, 4227), (133, 4254), (135, 4260), (137, 4266), (154, 4341),

Gene: Basato_8 Start: 4199, Stop: 4645, Start Num: 82

Candidate Starts for Basato_8:

(Start: 68 @4112 has 7 MA's), (71, 4127), (Start: 82 @4199 has 259 MA's), (104, 4310), (126, 4436), (129, 4460), (133, 4487), (135, 4493), (137, 4499), (154, 4574),

Gene: BatteryCK_7 Start: 3962, Stop: 4408, Start Num: 82

Candidate Starts for BatteryCK_7:

(41, 3749), (Start: 46 @3764 has 3 MA's), (50, 3779), (53, 3788), (57, 3809), (67, 3869), (Start: 68 @3875 has 7 MA's), (Start: 82 @3962 has 259 MA's), (94, 4010), (104, 4073), (126, 4199), (129, 4223), (133, 4250), (135, 4256), (137, 4262), (154, 4337),

Gene: Beaglebox_7 Start: 3878, Stop: 4411, Start Num: 68

Candidate Starts for Beaglebox_7:

(Start: 68 @3878 has 7 MA's), (Start: 82 @3965 has 259 MA's), (104, 4076), (126, 4202), (129, 4226), (133, 4253), (135, 4259), (137, 4265), (154, 4340),

Gene: BirdsNest_11 Start: 4695, Stop: 5120, Start Num: 82

Candidate Starts for BirdsNest_11:

(48, 4506), (51, 4515), (70, 4617), (Start: 82 @4695 has 259 MA's), (94, 4740), (106, 4821), (119, 4884), (133, 4980), (147, 5016), (149, 5025), (154, 5055),

Gene: Bishoperium_7 Start: 3966, Stop: 4412, Start Num: 82

Candidate Starts for Bishoperium_7:

(Start: 68 @3879 has 7 MA's), (Start: 82 @3966 has 259 MA's), (104, 4077), (126, 4203), (129, 4227), (133, 4254), (135, 4260), (137, 4266), (154, 4341),

Gene: BlackStallion_7 Start: 3963, Stop: 4409, Start Num: 82

Candidate Starts for BlackStallion_7:

(Start: 68 @3876 has 7 MA's), (Start: 82 @3963 has 259 MA's), (104, 4074), (126, 4200), (129, 4224), (133, 4251), (135, 4257), (137, 4263), (154, 4338),

Gene: BlueHusk_7 Start: 3962, Stop: 4408, Start Num: 82

Candidate Starts for BlueHusk_7:

(67, 3869), (Start: 68 @3875 has 7 MA's), (Start: 82 @3962 has 259 MA's), (104, 4073), (126, 4199), (129, 4223), (133, 4250), (134, 4253), (135, 4256), (137, 4262), (154, 4337),

Gene: Bluephacebaby_7 Start: 3966, Stop: 4412, Start Num: 82

Candidate Starts for Bluephacebaby_7:

(Start: 68 @3879 has 7 MA's), (Start: 82 @3966 has 259 MA's), (104, 4077), (126, 4203), (129, 4227), (133, 4254), (135, 4260), (137, 4266), (154, 4341),

Gene: BobbyK_8 Start: 6242, Stop: 6718, Start Num: 76

Candidate Starts for BobbyK_8:

(5, 5771), (6, 5786), (7, 5789), (10, 5819), (14, 5846), (15, 5855), (16, 5861), (17, 5867), (20, 5891), (25, 5981), (27, 6005), (29, 6017), (39, 6083), (42, 6098), (52, 6128), (53, 6134), (54, 6143), (61, 6161), (Start: 68 @6203 has 7 MA's), (71, 6218), (74, 6233), (Start: 75 @6239 has 1 MA's), (Start: 76 @6242 has 1 MA's), (Start: 85 @6299 has 31 MA's), (Start: 90 @6317 has 1 MA's), (Start: 91 @6323 has 2 MA's), (92, 6329), (97, 6350), (103, 6386), (111, 6440), (129, 6551), (130, 6557), (133, 6578), (141, 6605), (149, 6623), (153, 6647), (154, 6653),

Gene: Boehler_7 Start: 3965, Stop: 4411, Start Num: 82

Candidate Starts for Boehler_7:

(Start: 68 @3878 has 7 MA's), (Start: 82 @3965 has 259 MA's), (104, 4076), (126, 4202), (129, 4226), (133, 4253), (135, 4259), (137, 4265), (154, 4340),

Gene: Brilliant_7 Start: 3964, Stop: 4410, Start Num: 82

Candidate Starts for Brilliant_7:

(Start: 68 @3877 has 7 MA's), (Start: 82 @3964 has 259 MA's), (94, 4012), (126, 4201), (129, 4225), (133, 4252), (134, 4255), (135, 4258), (137, 4264), (154, 4339),

Gene: BrownCNA_9 Start: 6553, Stop: 6972, Start Num: 85

Candidate Starts for BrownCNA_9:

(72, 6481), (Start: 85 @6553 has 31 MA's), (Start: 90 @6571 has 1 MA's), (Start: 91 @6577 has 2 MA's), (92, 6583), (97, 6604), (103, 6640), (111, 6694), (129, 6805), (130, 6811), (141, 6859), (149, 6877), (153, 6901), (154, 6907),

Gene: Buckeye_7 Start: 3967, Stop: 4413, Start Num: 82

Candidate Starts for Buckeye_7:

(65, 3853), (70, 3889), (Start: 82 @3967 has 259 MA's), (104, 4078), (126, 4204), (129, 4228), (133, 4255), (135, 4261), (137, 4267),

Gene: Burr_7 Start: 3966, Stop: 4412, Start Num: 82

Candidate Starts for Burr_7:

(Start: 68 @3879 has 7 MA's), (Start: 82 @3966 has 259 MA's), (104, 4077), (126, 4203), (129, 4227), (133, 4254), (135, 4260), (137, 4266), (154, 4341),

Gene: CRB2_10 Start: 6980, Stop: 7420, Start Num: 79

Candidate Starts for CRB2_10:

(Start: 79 @6980 has 2 MA's), (Start: 90 @7025 has 1 MA's), (97, 7058), (124, 7223), (128, 7253), (129, 7259), (130, 7265), (141, 7313), (153, 7355),

Gene: CamL_7 Start: 3962, Stop: 4408, Start Num: 82

Candidate Starts for CamL_7:

(Start: 68 @3875 has 7 MA's), (Start: 82 @3962 has 259 MA's), (104, 4073), (126, 4199), (129, 4223), (133, 4250), (135, 4256), (137, 4262), (154, 4337),

Gene: CampRoach_7 Start: 3962, Stop: 4408, Start Num: 82

Candidate Starts for CampRoach_7:

(Start: 68 @3875 has 7 MA's), (Start: 82 @3962 has 259 MA's), (104, 4073), (126, 4199), (129, 4223), (133, 4250), (135, 4256), (137, 4262),

Gene: Cannibal_7 Start: 3965, Stop: 4411, Start Num: 82

Candidate Starts for Cannibal_7:

(Start: 68 @3878 has 7 MA's), (Start: 82 @3965 has 259 MA's), (104, 4076), (126, 4202), (129, 4226), (133, 4253), (135, 4259), (137, 4265), (154, 4340),

Gene: Carthage_7 Start: 3966, Stop: 4412, Start Num: 82

Candidate Starts for Carthage_7:

(Start: 68 @3879 has 7 MA's), (Start: 82 @3966 has 259 MA's), (104, 4077), (126, 4203), (129, 4227), (133, 4254), (135, 4260), (137, 4266),

Gene: Caspiboi_8 Start: 3965, Stop: 4411, Start Num: 82

Candidate Starts for Caspiboi_8:

(Start: 68 @3878 has 7 MA's), (Start: 82 @3965 has 259 MA's), (104, 4076), (126, 4202), (129, 4226), (133, 4253), (135, 4259), (137, 4265), (154, 4340),

Gene: Causa_15 Start: 8967, Stop: 9377, Start Num: 85

Candidate Starts for Causa_15:

(9, 8490), (11, 8517), (14, 8541), (18, 8556), (19, 8562), (22, 8595), (26, 8676), (33, 8724), (35, 8742), (43, 8784), (50, 8808), (57, 8838), (Start: 75 @8910 has 1 MA's), (77, 8925), (Start: 85 @8967 has 31 MA's), (97, 9018), (120, 9150), (128, 9213), (129, 9219), (139, 9267),

Gene: Cepens_5 Start: 2882, Stop: 3286, Start Num: 85

Candidate Starts for Cepens_5:

(Start: 85 @2882 has 31 MA's), (89, 2897), (94, 2921), (101, 2951), (116, 3044), (130, 3128), (137, 3161), (147, 3185), (148, 3191), (157, 3251),

Gene: Chaelin_7 Start: 3963, Stop: 4409, Start Num: 82

Candidate Starts for Chaelin_7:

(41, 3750), (Start: 46 @3765 has 3 MA's), (50, 3780), (53, 3789), (57, 3810), (67, 3870), (Start: 68 @3876 has 7 MA's), (Start: 82 @3963 has 259 MA's), (94, 4011), (104, 4074), (126, 4200), (129, 4224), (133, 4251), (134, 4254), (135, 4257), (137, 4263), (154, 4338),

Gene: Chah_7 Start: 3963, Stop: 4409, Start Num: 82

Candidate Starts for Chah_7:

(Start: 68 @3876 has 7 MA's), (Start: 82 @3963 has 259 MA's), (104, 4074), (126, 4200), (129, 4224), (133, 4251), (135, 4257), (137, 4263), (154, 4338),

Gene: Charles1_7 Start: 3965, Stop: 4411, Start Num: 82

Candidate Starts for Charles1_7:

(Start: 68 @3878 has 7 MA's), (Start: 82 @3965 has 259 MA's), (104, 4076), (126, 4202), (129, 4226), (133, 4253), (135, 4259), (137, 4265), (154, 4340),

Gene: CharlieGBrown_7 Start: 3962, Stop: 4408, Start Num: 82

Candidate Starts for CharlieGBrown_7:

(41, 3749), (Start: 46 @3764 has 3 MA's), (50, 3779), (53, 3788), (57, 3809), (67, 3869), (Start: 68 @3875 has 7 MA's), (Start: 82 @3962 has 259 MA's), (94, 4010), (104, 4073), (126, 4199), (129, 4223), (133, 4250), (135, 4256), (137, 4262), (154, 4337),

Gene: CheetO_7 Start: 3965, Stop: 4411, Start Num: 82

Candidate Starts for CheetO_7:

(Start: 68 @3878 has 7 MA's), (Start: 82 @3965 has 259 MA's), (104, 4076), (126, 4202), (129, 4226), (133, 4253), (135, 4259), (137, 4265),

Gene: Cher_7 Start: 3965, Stop: 4411, Start Num: 82

Candidate Starts for Cher_7:

(Start: 68 @3878 has 7 MA's), (Start: 82 @3965 has 259 MA's), (104, 4076), (126, 4202), (129, 4226), (133, 4253), (135, 4259), (137, 4265), (154, 4340),

Gene: Childish_7 Start: 3965, Stop: 4411, Start Num: 82

Candidate Starts for Childish_7:

(Start: 68 @3878 has 7 MA's), (Start: 82 @3965 has 259 MA's), (104, 4076), (126, 4202), (129, 4226), (133, 4253), (135, 4259), (137, 4265), (154, 4340),

Gene: Chipette_9 Start: 4200, Stop: 4646, Start Num: 82

Candidate Starts for Chipette_9:

(Start: 68 @4113 has 7 MA's), (Start: 82 @4200 has 259 MA's), (104, 4311), (126, 4437), (129, 4461), (133, 4488), (135, 4494), (137, 4500), (154, 4575),

Gene: Chorkpop_7 Start: 3965, Stop: 4411, Start Num: 82

Candidate Starts for Chorkpop_7:

(Start: 68 @3878 has 7 MA's), (Start: 82 @3965 has 259 MA's), (104, 4076), (126, 4202), (129, 4226), (133, 4253), (135, 4259), (137, 4265), (154, 4340),

Gene: ChrisnMich_7 Start: 5203, Stop: 5616, Start Num: 85

Candidate Starts for ChrisnMich_7:

(Start: 85 @5203 has 31 MA's), (Start: 90 @5221 has 1 MA's), (Start: 91 @5227 has 2 MA's), (97, 5254), (111, 5344), (122, 5401), (123, 5404), (125, 5422), (126, 5431), (129, 5455), (130, 5461), (133, 5482), (141, 5509), (151, 5539), (157, 5587),

Gene: Chunky_7 Start: 3965, Stop: 4411, Start Num: 82

Candidate Starts for Chunky_7:

(41, 3752), (Start: 46 @3767 has 3 MA's), (50, 3782), (53, 3791), (57, 3812), (Start: 68 @3878 has 7 MA's), (Start: 82 @3965 has 259 MA's), (104, 4076), (126, 4202), (129, 4226), (133, 4253), (134, 4256), (135, 4259), (137, 4265), (154, 4340),

Gene: Chute_7 Start: 3962, Stop: 4408, Start Num: 82

Candidate Starts for Chute_7:

(41, 3749), (Start: 46 @3764 has 3 MA's), (50, 3779), (53, 3788), (57, 3809), (67, 3869), (Start: 68 @3875 has 7 MA's), (Start: 82 @3962 has 259 MA's), (94, 4010), (104, 4073), (126, 4199), (129, 4223), (133, 4250), (135, 4256), (137, 4262), (154, 4337),

Gene: Cobra_7 Start: 3962, Stop: 4408, Start Num: 82

Candidate Starts for Cobra_7:

(Start: 68 @3875 has 7 MA's), (Start: 82 @3962 has 259 MA's), (104, 4073), (126, 4199), (129, 4223), (133, 4250), (135, 4256), (137, 4262), (154, 4337),

Gene: Colbert_7 Start: 3962, Stop: 4408, Start Num: 82

Candidate Starts for Colbert_7:

(Start: 68 @3875 has 7 MA's), (Start: 82 @3962 has 259 MA's), (104, 4073), (126, 4199), (129, 4223), (133, 4250), (135, 4256), (137, 4262), (154, 4337),

Gene: Coletti_7 Start: 3962, Stop: 4408, Start Num: 82

Candidate Starts for Coletti_7:

(41, 3749), (Start: 46 @3764 has 3 MA's), (50, 3779), (53, 3788), (57, 3809), (67, 3869), (Start: 68 @3875 has 7 MA's), (Start: 82 @3962 has 259 MA's), (94, 4010), (104, 4073), (126, 4199), (129, 4223), (133, 4250), (135, 4256), (137, 4262), (154, 4337),

Gene: Cooper_8 Start: 5288, Stop: 5677, Start Num: 91

Candidate Starts for Cooper_8:

(78, 5225), (Start: 85 @5264 has 31 MA's), (Start: 90 @5282 has 1 MA's), (Start: 91 @5288 has 2 MA's), (97, 5315), (100, 5330), (112, 5408), (120, 5447), (125, 5483), (129, 5516), (133, 5543), (141, 5570), (151, 5600),

Gene: Cornbread_8 Start: 3965, Stop: 4411, Start Num: 82

Candidate Starts for Cornbread_8:

(Start: 68 @3878 has 7 MA's), (Start: 82 @3965 has 259 MA's), (104, 4076), (126, 4202), (129, 4226), (133, 4253), (135, 4259), (137, 4265), (154, 4340),

Gene: Cornobble_7 Start: 3963, Stop: 4409, Start Num: 82

Candidate Starts for Cornobble_7:

(Start: 68 @3876 has 7 MA's), (Start: 82 @3963 has 259 MA's), (104, 4074), (126, 4200), (129, 4224), (133, 4251), (135, 4257), (137, 4263), (154, 4338),

Gene: Cosmolli16_7 Start: 3963, Stop: 4409, Start Num: 82

Candidate Starts for Cosmolli16_7:

(Start: 68 @3876 has 7 MA's), (Start: 82 @3963 has 259 MA's), (104, 4074), (126, 4200), (129, 4224), (133, 4251), (135, 4257), (137, 4263),

Gene: Craff_7 Start: 3965, Stop: 4411, Start Num: 82

Candidate Starts for Craff_7:

(Start: 68 @3878 has 7 MA's), (Start: 82 @3965 has 259 MA's), (104, 4076), (126, 4202), (129, 4226), (133, 4253), (135, 4259), (137, 4265), (154, 4340),

Gene: Crownjwl_8 Start: 4200, Stop: 4646, Start Num: 82

Candidate Starts for Crownjwl_8:

(41, 3987), (Start: 46 @4002 has 3 MA's), (50, 4017), (53, 4026), (57, 4047), (67, 4107), (Start: 68 @4113 has 7 MA's), (Start: 82 @4200 has 259 MA's), (94, 4248), (104, 4311), (126, 4437), (129, 4461), (133, 4488), (134, 4491), (135, 4494), (137, 4500), (154, 4575),

Gene: D12_05 Start: 2882, Stop: 3286, Start Num: 85

Candidate Starts for D12_05:

(Start: 85 @2882 has 31 MA's), (89, 2897), (94, 2921), (101, 2951), (116, 3044), (130, 3128), (137, 3161), (147, 3185), (148, 3191), (157, 3251),

Gene: DaddyDaniels_7 Start: 3964, Stop: 4410, Start Num: 82

Candidate Starts for DaddyDaniels_7:

(Start: 68 @3877 has 7 MA's), (Start: 82 @3964 has 259 MA's), (94, 4012), (126, 4201), (129, 4225), (133, 4252), (134, 4255), (135, 4258), (137, 4264), (154, 4339),

Gene: Daffy_7 Start: 3965, Stop: 4411, Start Num: 82

Candidate Starts for Daffy_7:

(Start: 68 @3878 has 7 MA's), (Start: 82 @3965 has 259 MA's), (104, 4076), (126, 4202), (129, 4226), (133, 4253), (135, 4259), (137, 4265),

Gene: Daka_7 Start: 3968, Stop: 4414, Start Num: 82

Candidate Starts for Daka_7:

(Start: 68 @3881 has 7 MA's), (Start: 82 @3968 has 259 MA's), (104, 4079), (126, 4205), (129, 4229), (133, 4256), (135, 4262), (137, 4268),

Gene: Dati_7 Start: 3962, Stop: 4408, Start Num: 82

Candidate Starts for Dati_7:

(Start: 68 @3875 has 7 MA's), (Start: 82 @3962 has 259 MA's), (104, 4073), (126, 4199), (129, 4223), (133, 4250), (135, 4256), (137, 4262), (154, 4337),

Gene: DelRivs_7 Start: 3964, Stop: 4410, Start Num: 82

Candidate Starts for DelRivs_7:

(Start: 68 @3877 has 7 MA's), (Start: 82 @3964 has 259 MA's), (94, 4012), (104, 4075), (126, 4201), (129, 4225), (133, 4252), (135, 4258), (137, 4264), (154, 4339),

Gene: Derpp_7 Start: 3962, Stop: 4408, Start Num: 82

Candidate Starts for Derpp_7:

(41, 3749), (Start: 46 @3764 has 3 MA's), (50, 3779), (53, 3788), (57, 3809), (67, 3869), (Start: 68 @3875 has 7 MA's), (Start: 82 @3962 has 259 MA's), (94, 4010), (104, 4073), (126, 4199), (129, 4223), (133, 4250), (135, 4256), (137, 4262), (154, 4337),

Gene: Dice_7 Start: 3964, Stop: 4410, Start Num: 82

Candidate Starts for Dice_7:

(Start: 68 @3877 has 7 MA's), (Start: 82 @3964 has 259 MA's), (104, 4075), (126, 4201), (129, 4225), (133, 4252), (135, 4258), (137, 4264), (154, 4339),

Gene: DigitDog_9 Start: 6253, Stop: 6675, Start Num: 88

Candidate Starts for DigitDog_9:

(Start: 88 @6253 has 12 MA's), (94, 6280), (98, 6298), (109, 6376), (120, 6424), (125, 6460), (126, 6469), (129, 6493), (135, 6526), (143, 6565), (145, 6571), (158, 6652),

Gene: Dingo_7 Start: 3962, Stop: 4408, Start Num: 82

Candidate Starts for Dingo_7:

(41, 3749), (Start: 46 @3764 has 3 MA's), (50, 3779), (53, 3788), (57, 3809), (67, 3869), (Start: 68 @3875 has 7 MA's), (Start: 82 @3962 has 259 MA's), (94, 4010), (104, 4073), (126, 4199), (129, 4223), (133, 4250), (134, 4253), (135, 4256), (137, 4262), (154, 4337),

Gene: Dione_7 Start: 3965, Stop: 4411, Start Num: 82

Candidate Starts for Dione_7:

(41, 3752), (Start: 46 @3767 has 3 MA's), (50, 3782), (53, 3791), (57, 3812), (67, 3872), (Start: 68 @3878 has 7 MA's), (Start: 82 @3965 has 259 MA's), (94, 4013), (104, 4076), (126, 4202), (129, 4226), (133, 4253), (134, 4256), (135, 4259), (137, 4265), (154, 4340),

Gene: DirtJuice_7 Start: 3965, Stop: 4411, Start Num: 82

Candidate Starts for DirtJuice_7:

(Start: 68 @3878 has 7 MA's), (Start: 82 @3965 has 259 MA's), (104, 4076), (126, 4202), (129, 4226), (133, 4253), (135, 4259), (137, 4265), (154, 4340),

Gene: Doddsville_7 Start: 3962, Stop: 4408, Start Num: 82

Candidate Starts for Doddsville_7:

(41, 3749), (Start: 46 @3764 has 3 MA's), (50, 3779), (53, 3788), (57, 3809), (67, 3869), (Start: 68 @3875 has 7 MA's), (Start: 82 @3962 has 259 MA's), (94, 4010), (104, 4073), (126, 4199), (129, 4223), (133, 4250), (135, 4256), (137, 4262), (154, 4337),

Gene: DoesntMatter_7 Start: 3875, Stop: 4408, Start Num: 68

Candidate Starts for DoesntMatter_7:

(Start: 68 @3875 has 7 MA's), (Start: 82 @3962 has 259 MA's), (104, 4073), (126, 4199), (129, 4223), (133, 4250), (135, 4256), (137, 4262), (154, 4337),

Gene: DonSanchon_7 Start: 3965, Stop: 4411, Start Num: 82

Candidate Starts for DonSanchon_7:

(Start: 68 @3878 has 7 MA's), (Start: 82 @3965 has 259 MA's), (104, 4076), (126, 4202), (129, 4226), (133, 4253), (135, 4259), (137, 4265), (154, 4340),

Gene: Donny_9 Start: 6267, Stop: 6668, Start Num: 88

Candidate Starts for Donny_9:

(Start: 88 @6267 has 12 MA's), (94, 6294), (97, 6306), (103, 6342), (109, 6390), (121, 6441), (125, 6474), (126, 6483), (129, 6507), (157, 6639), (158, 6645),

Gene: Dori_6 Start: 3274, Stop: 3681, Start Num: 83

Candidate Starts for Dori_6:

(59, 3136), (63, 3145), (Start: 83 @3274 has 5 MA's), (94, 3319), (98, 3337), (100, 3346), (102, 3364), (103, 3367), (105, 3388), (108, 3412), (120, 3463), (124, 3496), (126, 3508), (132, 3556), (135, 3565), (137, 3571), (156, 3646),

Gene: DuchessDung_7 Start: 3962, Stop: 4408, Start Num: 82

Candidate Starts for DuchessDung_7:

(41, 3749), (Start: 46 @3764 has 3 MA's), (50, 3779), (53, 3788), (57, 3809), (67, 3869), (Start: 68 @3875 has 7 MA's), (Start: 82 @3962 has 259 MA's), (94, 4010), (104, 4073), (126, 4199), (129,

4223), (133, 4250), (135, 4256), (137, 4262), (154, 4337),

Gene: Duggie_7 Start: 3964, Stop: 4410, Start Num: 82

Candidate Starts for Duggie_7:

(Start: 68 @3877 has 7 MA's), (Start: 82 @3964 has 259 MA's), (94, 4012), (126, 4201), (129, 4225), (133, 4252), (134, 4255), (135, 4258), (137, 4264), (154, 4339),

Gene: Durga_7 Start: 3961, Stop: 4407, Start Num: 82

Candidate Starts for Durga_7:

(Start: 68 @3874 has 7 MA's), (Start: 82 @3961 has 259 MA's), (94, 4009), (126, 4198), (129, 4222), (133, 4249), (134, 4252), (135, 4255), (137, 4261), (154, 4336),

Gene: EastView9101_9 Start: 6267, Stop: 6668, Start Num: 88

Candidate Starts for EastView9101_9:

(Start: 88 @6267 has 12 MA's), (94, 6294), (97, 6306), (103, 6342), (109, 6390), (121, 6441), (125, 6474), (126, 6483), (129, 6507), (157, 6639), (158, 6645),

Gene: ElvisPhasley_7 Start: 3966, Stop: 4412, Start Num: 82

Candidate Starts for ElvisPhasley_7:

(41, 3753), (Start: 46 @3768 has 3 MA's), (50, 3783), (53, 3792), (57, 3813), (67, 3873), (Start: 68 @3879 has 7 MA's), (Start: 82 @3966 has 259 MA's), (94, 4014), (126, 4203), (129, 4227), (133, 4254), (135, 4260), (137, 4266), (154, 4341),

Gene: Emiris_7 Start: 3966, Stop: 4412, Start Num: 82

Candidate Starts for Emiris_7:

(Start: 68 @3879 has 7 MA's), (Start: 82 @3966 has 259 MA's), (104, 4077), (126, 4203), (129, 4227), (133, 4254), (135, 4260), (137, 4266), (154, 4341),

Gene: EmpTee_7 Start: 3966, Stop: 4412, Start Num: 82

Candidate Starts for EmpTee_7:

(Start: 68 @3879 has 7 MA's), (Start: 82 @3966 has 259 MA's), (104, 4077), (126, 4203), (129, 4227), (133, 4254), (135, 4260), (137, 4266),

Gene: Epah_7 Start: 5221, Stop: 5616, Start Num: 90

Candidate Starts for Epah_7:

(Start: 85 @5203 has 31 MA's), (Start: 90 @5221 has 1 MA's), (Start: 91 @5227 has 2 MA's), (97, 5254), (111, 5344), (122, 5401), (123, 5404), (125, 5422), (126, 5431), (129, 5455), (133, 5482), (141, 5509), (151, 5539), (157, 5587),

Gene: Eremos_7 Start: 3965, Stop: 4411, Start Num: 82

Candidate Starts for Eremos_7:

(Start: 68 @3878 has 7 MA's), (Start: 82 @3965 has 259 MA's), (104, 4076), (126, 4202), (129, 4226), (133, 4253), (135, 4259), (137, 4265),

Gene: Etaye_7 Start: 3875, Stop: 4408, Start Num: 68

Candidate Starts for Etaye_7:

(41, 3749), (Start: 46 @3764 has 3 MA's), (50, 3779), (53, 3788), (57, 3809), (67, 3869), (Start: 68 @3875 has 7 MA's), (Start: 82 @3962 has 259 MA's), (94, 4010), (104, 4073), (126, 4199), (129, 4223), (133, 4250), (135, 4256), (137, 4262), (154, 4337),

Gene: Eugenia_7 Start: 3966, Stop: 4412, Start Num: 82

Candidate Starts for Eugenia_7:

(Start: 68 @3879 has 7 MA's), (Start: 82 @3966 has 259 MA's), (104, 4077), (126, 4203), (129, 4227), (133, 4254), (135, 4260), (137, 4266),

Gene: Fanaw_8 Start: 6320, Stop: 6721, Start Num: 90

Candidate Starts for Fanaw_8:

(5, 5774), (6, 5789), (7, 5792), (10, 5822), (14, 5849), (15, 5858), (16, 5864), (17, 5870), (20, 5894), (25, 5984), (27, 6008), (29, 6020), (39, 6086), (52, 6131), (53, 6137), (54, 6146), (66, 6191), (Start: 68 @6206 has 7 MA's), (71, 6221), (74, 6236), (Start: 75 @6242 has 1 MA's), (Start: 76 @6245 has 1 MA's), (Start: 85 @6302 has 31 MA's), (Start: 90 @6320 has 1 MA's), (Start: 91 @6326 has 2 MA's), (92, 6332), (97, 6353), (103, 6389), (111, 6443), (129, 6554), (130, 6560), (133, 6581), (141, 6608), (149, 6626), (153, 6650), (154, 6656),

Gene: Fang_7 Start: 3966, Stop: 4412, Start Num: 82

Candidate Starts for Fang_7:

(Start: 68 @3879 has 7 MA's), (Start: 82 @3966 has 259 MA's), (104, 4077), (126, 4203), (129, 4227), (133, 4254), (135, 4260), (137, 4266), (154, 4341),

Gene: FluffyNinja_7 Start: 3876, Stop: 4409, Start Num: 68

Candidate Starts for FluffyNinja_7:

(Start: 68 @3876 has 7 MA's), (Start: 82 @3963 has 259 MA's), (104, 4074), (126, 4200), (129, 4224), (133, 4251), (135, 4257), (137, 4263), (154, 4338),

Gene: ForDig_6 Start: 4751, Stop: 5182, Start Num: 80

Candidate Starts for ForDig_6:

(80, 4751), (Start: 85 @4766 has 31 MA's), (97, 4817), (99, 4826), (124, 4982), (128, 5012), (129, 5018), (151, 5102), (153, 5114), (154, 5120), (155, 5123),

Gene: Fozzie_7 Start: 3963, Stop: 4409, Start Num: 82

Candidate Starts for Fozzie_7:

(Start: 68 @3876 has 7 MA's), (Start: 82 @3963 has 259 MA's), (104, 4074), (126, 4200), (129, 4224), (133, 4251), (134, 4254), (135, 4257), (137, 4263), (154, 4338),

Gene: Frankicide_7 Start: 3967, Stop: 4413, Start Num: 82

Candidate Starts for Frankicide_7:

(Start: 68 @3880 has 7 MA's), (Start: 82 @3967 has 259 MA's), (104, 4078), (126, 4204), (129, 4228), (133, 4255), (135, 4261), (137, 4267),

Gene: Frederick_8 Start: 6302, Stop: 6721, Start Num: 85

Candidate Starts for Frederick_8:

(5, 5774), (6, 5789), (7, 5792), (10, 5822), (14, 5849), (15, 5858), (16, 5864), (17, 5870), (20, 5894), (25, 5984), (27, 6008), (29, 6020), (39, 6086), (42, 6101), (52, 6131), (53, 6137), (54, 6146), (61, 6164), (Start: 68 @6206 has 7 MA's), (71, 6221), (74, 6236), (Start: 75 @6242 has 1 MA's), (Start: 76 @6245 has 1 MA's), (Start: 85 @6302 has 31 MA's), (Start: 90 @6320 has 1 MA's), (Start: 91 @6326 has 2 MA's), (92, 6332), (97, 6353), (103, 6389), (111, 6443), (129, 6554), (130, 6560), (133, 6581), (141, 6608), (149, 6626), (153, 6650), (154, 6656),

Gene: Freya_7 Start: 3966, Stop: 4412, Start Num: 82

Candidate Starts for Freya_7:

(41, 3753), (Start: 46 @3768 has 3 MA's), (50, 3783), (53, 3792), (57, 3813), (67, 3873), (Start: 68 @3879 has 7 MA's), (Start: 82 @3966 has 259 MA's), (94, 4014), (104, 4077), (126, 4203), (129, 4227), (133, 4254), (135, 4260), (137, 4266), (154, 4341),

Gene: FriarPreacher_7 Start: 3962, Stop: 4408, Start Num: 82

Candidate Starts for FriarPreacher_7:

(Start: 68 @3875 has 7 MA's), (Start: 82 @3962 has 259 MA's), (104, 4073), (126, 4199), (129, 4223), (133, 4250), (135, 4256), (137, 4262), (154, 4337),

Gene: Fringe_7 Start: 3963, Stop: 4409, Start Num: 82

Candidate Starts for Fringe_7:

(Start: 68 @3876 has 7 MA's), (Start: 82 @3963 has 259 MA's), (104, 4074), (126, 4200), (129, 4224), (133, 4251), (135, 4257), (137, 4263), (154, 4338),

Gene: FugateOSU_7 Start: 3965, Stop: 4411, Start Num: 82

Candidate Starts for FugateOSU_7:

(Start: 68 @3878 has 7 MA's), (Start: 82 @3965 has 259 MA's), (104, 4076), (126, 4202), (129, 4226), (133, 4253), (135, 4259), (137, 4265),

Gene: Funsized_13 Start: 8281, Stop: 8709, Start Num: 87

Candidate Starts for Funsized_13:

(Start: 87 @8281 has 2 MA's), (Start: 88 @8287 has 12 MA's), (93, 8308), (126, 8506), (129, 8530), (135, 8563), (136, 8566), (144, 8605), (145, 8608), (154, 8653),

Gene: Gareth_7 Start: 3962, Stop: 4408, Start Num: 82

Candidate Starts for Gareth_7:

(Start: 68 @3875 has 7 MA's), (Start: 82 @3962 has 259 MA's), (104, 4073), (126, 4199), (129, 4223), (133, 4250), (135, 4256), (137, 4262), (154, 4337),

Gene: GeneCoco_7 Start: 3965, Stop: 4411, Start Num: 82

Candidate Starts for GeneCoco_7:

(Start: 68 @3878 has 7 MA's), (Start: 82 @3965 has 259 MA's), (104, 4076), (126, 4202), (129, 4226), (133, 4253), (134, 4256), (135, 4259), (137, 4265), (154, 4340),

Gene: GinPorsche_7 Start: 5221, Stop: 5616, Start Num: 90

Candidate Starts for GinPorsche_7:

(Start: 85 @5203 has 31 MA's), (Start: 90 @5221 has 1 MA's), (Start: 91 @5227 has 2 MA's), (97, 5254), (111, 5344), (122, 5401), (123, 5404), (125, 5422), (126, 5431), (129, 5455), (133, 5482), (141, 5509), (151, 5539), (157, 5587),

Gene: Giraffe_7 Start: 3966, Stop: 4412, Start Num: 82

Candidate Starts for Giraffe_7:

(Start: 68 @3879 has 7 MA's), (Start: 82 @3966 has 259 MA's), (104, 4077), (126, 4203), (129, 4227), (133, 4254), (135, 4260), (137, 4266),

Gene: GodPhather_5 Start: 2882, Stop: 3286, Start Num: 85

Candidate Starts for GodPhather_5:

(Start: 85 @2882 has 31 MA's), (94, 2921), (101, 2951), (116, 3044), (130, 3128), (133, 3149), (137, 3161), (147, 3185), (157, 3251),

Gene: Gophee_7 Start: 3965, Stop: 4411, Start Num: 82

Candidate Starts for Gophee_7:

(Start: 68 @3878 has 7 MA's), (Start: 82 @3965 has 259 MA's), (104, 4076), (126, 4202), (129, 4226), (133, 4253), (135, 4259), (137, 4265), (154, 4340),

Gene: Grand2040_7 Start: 3963, Stop: 4409, Start Num: 82

Candidate Starts for Grand2040_7:

(Start: 68 @3876 has 7 MA's), (Start: 82 @3963 has 259 MA's), (104, 4074), (126, 4200), (129, 4224), (133, 4251), (135, 4257), (137, 4263),

Gene: Gwennie1_8 Start: 3965, Stop: 4411, Start Num: 82

Candidate Starts for Gwennie1_8:

(Start: 68 @3878 has 7 MA's), (Start: 82 @3965 has 259 MA's), (94, 4013), (126, 4202), (129, 4226), (133, 4253), (134, 4256), (135, 4259), (137, 4265), (154, 4340),

Gene: Gwilliam_7 Start: 3962, Stop: 4408, Start Num: 82

Candidate Starts for Gwilliam_7:

(Start: 68 @3875 has 7 MA's), (Start: 82 @3962 has 259 MA's), (104, 4073), (126, 4199), (129, 4223), (133, 4250), (135, 4256), (137, 4262),

Gene: Gyarad_007 Start: 3965, Stop: 4411, Start Num: 82

Candidate Starts for Gyarad_007:

(Start: 68 @3878 has 7 MA's), (Start: 82 @3965 has 259 MA's), (104, 4076), (126, 4202), (129, 4226), (133, 4253), (135, 4259), (137, 4265),

Gene: HSavage_7 Start: 3967, Stop: 4413, Start Num: 82

Candidate Starts for HSavage_7:

(Start: 68 @3880 has 7 MA's), (Start: 82 @3967 has 259 MA's), (104, 4078), (126, 4204), (129, 4228), (133, 4255), (135, 4261), (137, 4267),

Gene: Haimas_7 Start: 3965, Stop: 4411, Start Num: 82

Candidate Starts for Haimas_7:

(Start: 68 @3878 has 7 MA's), (Start: 82 @3965 has 259 MA's), (104, 4076), (126, 4202), (129, 4226), (133, 4253), (135, 4259), (137, 4265), (154, 4340),

Gene: Haleema_7 Start: 3965, Stop: 4411, Start Num: 82

Candidate Starts for Haleema_7:

(41, 3752), (Start: 46 @3767 has 3 MA's), (50, 3782), (53, 3791), (57, 3812), (67, 3872), (Start: 68 @3878 has 7 MA's), (Start: 82 @3965 has 259 MA's), (94, 4013), (104, 4076), (126, 4202), (129, 4226), (133, 4253), (134, 4256), (135, 4259), (137, 4265), (154, 4340),

Gene: Hally898_7 Start: 5221, Stop: 5616, Start Num: 90

Candidate Starts for Hally898_7:

(Start: 85 @5203 has 31 MA's), (Start: 90 @5221 has 1 MA's), (Start: 91 @5227 has 2 MA's), (97, 5254), (111, 5344), (122, 5401), (123, 5404), (125, 5422), (126, 5431), (129, 5455), (133, 5482), (141, 5509), (151, 5539), (157, 5587),

Gene: Hamish_7 Start: 3965, Stop: 4411, Start Num: 82

Candidate Starts for Hamish_7:

(Start: 68 @3878 has 7 MA's), (Start: 82 @3965 has 259 MA's), (104, 4076), (126, 4202), (129, 4226), (133, 4253), (135, 4259), (137, 4265), (154, 4340),

Gene: Hangman_8 Start: 6302, Stop: 6721, Start Num: 85

Candidate Starts for Hangman_8:

(5, 5774), (6, 5789), (7, 5792), (10, 5822), (14, 5849), (15, 5858), (16, 5864), (17, 5870), (20, 5894), (25, 5984), (27, 6008), (29, 6020), (39, 6086), (52, 6131), (53, 6137), (54, 6146), (61, 6164), (Start: 68 @6206 has 7 MA's), (71, 6221), (74, 6236), (Start: 75 @6242 has 1 MA's), (Start: 76 @6245 has 1 MA's), (Start: 85 @6302 has 31 MA's), (Start: 90 @6320 has 1 MA's), (Start: 91 @6326 has 2 MA's), (92, 6332), (97, 6353), (103, 6389), (111, 6443), (129, 6554), (130, 6560), (133, 6581), (141, 6608), (149, 6626), (153, 6650), (154, 6656),

Gene: Hartsy_7 Start: 3962, Stop: 4408, Start Num: 82

Candidate Starts for Hartsy_7:

(Start: 68 @3875 has 7 MA's), (Start: 82 @3962 has 259 MA's), (104, 4073), (126, 4199), (129, 4223), (133, 4250), (135, 4256), (137, 4262), (154, 4337),

Gene: Harvey_7 Start: 3966, Stop: 4412, Start Num: 82

Candidate Starts for Harvey_7:

(Start: 68 @3879 has 7 MA's), (Start: 82 @3966 has 259 MA's), (94, 4014), (104, 4077), (126, 4203), (129, 4227), (133, 4254), (135, 4260), (137, 4266), (154, 4341),

Gene: Hashim76_12 Start: 5115, Stop: 5540, Start Num: 82

Candidate Starts for Hashim76_12:

(70, 5037), (Start: 82 @5115 has 259 MA's), (94, 5160), (119, 5304), (133, 5400),

Gene: Heath_8 Start: 6302, Stop: 6721, Start Num: 85

Candidate Starts for Heath_8:

(5, 5774), (6, 5789), (7, 5792), (10, 5822), (14, 5849), (15, 5858), (16, 5864), (17, 5870), (20, 5894), (25, 5984), (27, 6008), (29, 6020), (39, 6086), (42, 6101), (52, 6131), (53, 6137), (54, 6146), (61, 6164), (Start: 68 @6206 has 7 MA's), (71, 6221), (74, 6236), (Start: 75 @6242 has 1 MA's), (Start: 76 @6245 has 1 MA's), (Start: 85 @6302 has 31 MA's), (Start: 90 @6320 has 1 MA's), (Start: 91 @6326 has 2 MA's), (92, 6332), (97, 6353), (103, 6389), (111, 6443), (129, 6554), (130, 6560), (133, 6581), (141, 6608), (149, 6626), (153, 6650), (154, 6656),

Gene: Held_7 Start: 3966, Stop: 4412, Start Num: 82

Candidate Starts for Held_7:

(Start: 68 @3879 has 7 MA's), (Start: 82 @3966 has 259 MA's), (104, 4077), (126, 4203), (129, 4227), (133, 4254), (135, 4260), (137, 4266),

Gene: HenryJackson_7 Start: 3965, Stop: 4411, Start Num: 82

Candidate Starts for HenryJackson_7:

(Start: 68 @3878 has 7 MA's), (Start: 82 @3965 has 259 MA's), (104, 4076), (126, 4202), (129, 4226), (133, 4253), (135, 4259), (137, 4265), (154, 4340),

Gene: Hertubise_7 Start: 3965, Stop: 4411, Start Num: 82

Candidate Starts for Hertubise_7:

(Start: 68 @3878 has 7 MA's), (Start: 82 @3965 has 259 MA's), (104, 4076), (126, 4202), (129, 4226), (133, 4253), (135, 4259), (137, 4265), (154, 4340),

Gene: Hetaeria_7 Start: 3965, Stop: 4411, Start Num: 82

Candidate Starts for Hetaeria_7:

(Start: 68 @3878 has 7 MA's), (Start: 82 @3965 has 259 MA's), (104, 4076), (126, 4202), (129, 4226), (133, 4253), (135, 4259), (137, 4265), (154, 4340),

Gene: HighStump_7 Start: 3965, Stop: 4411, Start Num: 82

Candidate Starts for HighStump_7:

(Start: 68 @3878 has 7 MA's), (Start: 82 @3965 has 259 MA's), (104, 4076), (126, 4202), (129, 4226), (133, 4253), (135, 4259), (137, 4265), (154, 4340),

Gene: Hocus_7 Start: 3965, Stop: 4411, Start Num: 82

Candidate Starts for Hocus_7:

(Start: 68 @3878 has 7 MA's), (Start: 82 @3965 has 259 MA's), (104, 4076), (126, 4202), (129, 4226), (133, 4253), (135, 4259), (137, 4265), (154, 4340),

Gene: Horchata_7 Start: 3964, Stop: 4410, Start Num: 82

Candidate Starts for Horchata_7:

(Start: 68 @3877 has 7 MA's), (Start: 82 @3964 has 259 MA's), (104, 4075), (126, 4201), (129, 4225), (133, 4252), (135, 4258), (137, 4264), (154, 4339),

Gene: Hosp_04 Start: 2968, Stop: 3384, Start Num: 85

Candidate Starts for Hosp_04:

(80, 2953), (Start: 85 @2968 has 31 MA's), (97, 3019), (99, 3028), (124, 3184), (128, 3214), (129, 3220), (130, 3226), (151, 3304), (154, 3322), (155, 3325),

Gene: Hydro_8 Start: 6299, Stop: 6718, Start Num: 85

Candidate Starts for Hydro_8:

(5, 5771), (6, 5786), (7, 5789), (10, 5819), (14, 5846), (15, 5855), (16, 5861), (17, 5867), (20, 5891), (25, 5981), (27, 6005), (29, 6017), (39, 6083), (42, 6098), (52, 6128), (53, 6134), (54, 6143), (61, 6161), (Start: 68 @6203 has 7 MA's), (71, 6218), (74, 6233), (Start: 75 @6239 has 1 MA's), (Start: 76 @6242 has 1 MA's), (Start: 85 @6299 has 31 MA's), (Start: 90 @6317 has 1 MA's), (Start: 91 @6323 has 2 MA's), (92, 6329), (97, 6350), (103, 6386), (111, 6440), (129, 6551), (130, 6557), (133, 6578), (141, 6605), (149, 6623), (153, 6647), (154, 6653),

Gene: ImtiyazSitla_7 Start: 3764, Stop: 4408, Start Num: 46

Candidate Starts for ImtiyazSitla_7:

(41, 3749), (Start: 46 @3764 has 3 MA's), (50, 3779), (53, 3788), (57, 3809), (67, 3869), (Start: 68 @3875 has 7 MA's), (Start: 82 @3962 has 259 MA's), (94, 4010), (104, 4073), (126, 4199), (129, 4223), (133, 4250), (135, 4256), (137, 4262), (154, 4337),

Gene: Imvubu_4 Start: 3089, Stop: 3511, Start Num: 88

Candidate Starts for Imvubu_4:

(Start: 88 @3089 has 12 MA's), (105, 3185), (118, 3257), (125, 3296), (129, 3329), (135, 3362), (144, 3404), (145, 3407), (154, 3452),

Gene: Inchworm_7 Start: 3962, Stop: 4408, Start Num: 82

Candidate Starts for Inchworm_7:

(Start: 68 @3875 has 7 MA's), (Start: 82 @3962 has 259 MA's), (104, 4073), (126, 4199), (129, 4223), (133, 4250), (135, 4256), (137, 4262), (154, 4337),

Gene: Indlovu_8 Start: 5946, Stop: 6359, Start Num: 85

Candidate Starts for Indlovu_8:

(1, 4827), (2, 5040), (3, 5112), (13, 5490), (Start: 82 @5937 has 259 MA's), (Start: 85 @5946 has 31 MA's), (Start: 90 @5964 has 1 MA's), (96, 5994), (97, 5997), (124, 6162), (128, 6192), (129, 6198), (133, 6225), (141, 6252), (149, 6270),

Gene: Inverness_7 Start: 3967, Stop: 4413, Start Num: 82

Candidate Starts for Inverness_7:

(Start: 68 @3880 has 7 MA's), (Start: 82 @3967 has 259 MA's), (104, 4078), (126, 4204), (129, 4228), (133, 4255), (135, 4261), (137, 4267),

Gene: Iridessa_7 Start: 3964, Stop: 4410, Start Num: 82

Candidate Starts for Iridessa_7:

(Start: 68 @3877 has 7 MA's), (Start: 82 @3964 has 259 MA's), (94, 4012), (126, 4201), (129, 4225), (133, 4252), (134, 4255), (135, 4258), (137, 4264), (154, 4339),

Gene: Iridoclysis_7 Start: 3969, Stop: 4415, Start Num: 82

Candidate Starts for Iridoclysis_7:

(Start: 68 @3882 has 7 MA's), (Start: 82 @3969 has 259 MA's), (104, 4080), (126, 4206), (129, 4230), (133, 4257), (135, 4263), (137, 4269), (154, 4344),

Gene: IsaacEli_7 Start: 3962, Stop: 4408, Start Num: 82

Candidate Starts for IsaacEli_7:

(Start: 68 @3875 has 7 MA's), (Start: 82 @3962 has 259 MA's), (104, 4073), (126, 4199), (129, 4223), (133, 4250), (135, 4256), (137, 4262), (154, 4337),

Gene: JAMaL_7 Start: 5846, Stop: 6244, Start Num: 91

Candidate Starts for JAMaL_7:

(Start: 85 @5822 has 31 MA's), (Start: 90 @5840 has 1 MA's), (Start: 91 @5846 has 2 MA's), (97, 5873), (111, 5963), (117, 5993), (122, 6020), (123, 6023), (125, 6041), (129, 6074), (141, 6128), (157, 6206),

Gene: JDog_7 Start: 3964, Stop: 4410, Start Num: 82

Candidate Starts for JDog_7:

(Start: 68 @3877 has 7 MA's), (Start: 82 @3964 has 259 MA's), (94, 4012), (126, 4201), (129, 4225), (133, 4252), (134, 4255), (135, 4258), (137, 4264), (154, 4339),

Gene: JacAttac_7 Start: 3962, Stop: 4408, Start Num: 82

Candidate Starts for JacAttac_7:

(Start: 68 @3875 has 7 MA's), (Start: 82 @3962 has 259 MA's), (104, 4073), (126, 4199), (129, 4223), (133, 4250), (135, 4256), (137, 4262), (154, 4337),

Gene: JaguarMi_9 Start: 6144, Stop: 6545, Start Num: 90

Candidate Starts for JaguarMi_9:

(73, 6057), (Start: 75 @6066 has 1 MA's), (Start: 76 @6069 has 1 MA's), (Start: 85 @6126 has 31 MA's), (Start: 90 @6144 has 1 MA's), (Start: 91 @6150 has 2 MA's), (92, 6156), (97, 6177), (103, 6213), (111, 6267), (129, 6378), (130, 6384), (133, 6405), (141, 6432), (153, 6474), (154, 6480),

Gene: JakeO_7 Start: 3964, Stop: 4410, Start Num: 82

Candidate Starts for JakeO_7:

(Start: 68 @3877 has 7 MA's), (Start: 82 @3964 has 259 MA's), (94, 4012), (126, 4201), (129, 4225), (133, 4252), (134, 4255), (135, 4258), (137, 4264), (154, 4339),

Gene: JangoPhett_7 Start: 3963, Stop: 4409, Start Num: 82

Candidate Starts for JangoPhett_7:

(Start: 68 @3876 has 7 MA's), (Start: 82 @3963 has 259 MA's), (104, 4074), (126, 4200), (129, 4224), (133, 4251), (135, 4257), (137, 4263),

Gene: Jeon_5 Start: 2882, Stop: 3286, Start Num: 85

Candidate Starts for Jeon_5:

(Start: 85 @2882 has 31 MA's), (94, 2921), (101, 2951), (116, 3044), (130, 3128), (133, 3149), (137, 3161), (147, 3185), (157, 3251),

Gene: Jesabah_8 Start: 3966, Stop: 4412, Start Num: 82

Candidate Starts for Jesabah_8:

(Start: 68 @3879 has 7 MA's), (Start: 82 @3966 has 259 MA's), (94, 4014), (104, 4077), (126, 4203), (129, 4227), (133, 4254), (135, 4260), (137, 4266), (154, 4341),

Gene: Jillium_7 Start: 3965, Stop: 4411, Start Num: 82

Candidate Starts for Jillium_7:

(Start: 68 @3878 has 7 MA's), (Start: 82 @3965 has 259 MA's), (104, 4076), (126, 4202), (129, 4226), (133, 4253), (135, 4259), (137, 4265), (154, 4340),

Gene: Jiminy_7 Start: 3964, Stop: 4410, Start Num: 82

Candidate Starts for Jiminy_7:

(Start: 68 @3877 has 7 MA's), (Start: 82 @3964 has 259 MA's), (94, 4012), (126, 4201), (129, 4225), (133, 4252), (134, 4255), (135, 4258), (137, 4264), (154, 4339),

Gene: Jiraiya_7 Start: 3964, Stop: 4410, Start Num: 82

Candidate Starts for Jiraiya_7:

(Start: 68 @3877 has 7 MA's), (Start: 82 @3964 has 259 MA's), (94, 4012), (126, 4201), (129, 4225), (133, 4252), (134, 4255), (135, 4258), (137, 4264), (154, 4339),

Gene: Jolie1_06 Start: 4766, Stop: 5182, Start Num: 85

Candidate Starts for Jolie1_06:

(80, 4751), (Start: 85 @4766 has 31 MA's), (97, 4817), (99, 4826), (124, 4982), (128, 5012), (129, 5018), (151, 5102), (153, 5114), (154, 5120), (155, 5123),

Gene: KLucky39_7 Start: 3965, Stop: 4411, Start Num: 82

Candidate Starts for KLucky39_7:

(Start: 68 @3878 has 7 MA's), (Start: 82 @3965 has 259 MA's), (104, 4076), (126, 4202), (129, 4226), (133, 4253), (135, 4259), (137, 4265), (154, 4340),

Gene: Kahve_7 Start: 3965, Stop: 4411, Start Num: 82

Candidate Starts for Kahve_7:

(Start: 68 @3878 has 7 MA's), (Start: 82 @3965 has 259 MA's), (104, 4076), (126, 4202), (129, 4226), (133, 4253), (135, 4259), (137, 4265), (154, 4340),

Gene: Kailash_7 Start: 3962, Stop: 4408, Start Num: 82

Candidate Starts for Kailash_7:

(41, 3749), (Start: 46 @3764 has 3 MA's), (50, 3779), (53, 3788), (57, 3809), (67, 3869), (Start: 68 @3875 has 7 MA's), (Start: 82 @3962 has 259 MA's), (94, 4010), (104, 4073), (126, 4199), (129, 4223), (133, 4250), (135, 4256), (137, 4262), (154, 4337),

Gene: KarasumaRum_10 Start: 6414, Stop: 6836, Start Num: 88

Candidate Starts for KarasumaRum_10:

(Start: 88 @6414 has 12 MA's), (93, 6435), (94, 6441), (98, 6459), (109, 6537), (120, 6585), (125, 6621), (126, 6630), (129, 6654), (135, 6687), (143, 6726), (145, 6732), (158, 6813),

Gene: Katniss_7 Start: 3879, Stop: 4412, Start Num: 68

Candidate Starts for Katniss_7:

(Start: 68 @3879 has 7 MA's), (Start: 82 @3966 has 259 MA's), (104, 4077), (126, 4203), (129, 4227), (133, 4254), (135, 4260), (137, 4266),

Gene: KayaCho_6 Start: 4769, Stop: 5185, Start Num: 85

Candidate Starts for KayaCho_6:

(80, 4754), (Start: 85 @4769 has 31 MA's), (96, 4817), (97, 4820), (99, 4829), (124, 4985), (126, 4997), (128, 5015), (129, 5021), (130, 5027), (151, 5105), (153, 5117), (154, 5123), (155, 5126),

Gene: Keitherie_7 Start: 3961, Stop: 4407, Start Num: 82

Candidate Starts for Keitherie_7:

(Start: 68 @3874 has 7 MA's), (Start: 82 @3961 has 259 MA's), (104, 4072), (126, 4198), (129, 4222), (133, 4249), (135, 4255), (137, 4261), (154, 4336),

Gene: Khan1_7 Start: 3964, Stop: 4410, Start Num: 82

Candidate Starts for Khan1_7:

(Start: 68 @3877 has 7 MA's), (Start: 82 @3964 has 259 MA's), (94, 4012), (126, 4201), (129, 4225), (133, 4252), (134, 4255), (135, 4258), (137, 4264), (154, 4339),

Gene: Kikipoo_7 Start: 3962, Stop: 4408, Start Num: 82

Candidate Starts for Kikipoo_7:

(Start: 68 @3875 has 7 MA's), (Start: 82 @3962 has 259 MA's), (104, 4073), (126, 4199), (129, 4223), (133, 4250), (135, 4256), (137, 4262), (154, 4337),

Gene: Kimbrough_7 Start: 3965, Stop: 4411, Start Num: 82

Candidate Starts for Kimbrough_7:

(41, 3752), (Start: 46 @3767 has 3 MA's), (50, 3782), (53, 3791), (57, 3812), (67, 3872), (Start: 68 @3878 has 7 MA's), (Start: 82 @3965 has 259 MA's), (104, 4076), (126, 4202), (129, 4226), (133, 4253), (135, 4259), (137, 4265), (154, 4340),

Gene: KingTut_7 Start: 3966, Stop: 4412, Start Num: 82

Candidate Starts for KingTut_7:

(Start: 68 @3879 has 7 MA's), (Start: 82 @3966 has 259 MA's), (104, 4077), (126, 4203), (129, 4227), (133, 4254), (135, 4260), (137, 4266),

Gene: KingVeVeVe_7 Start: 3966, Stop: 4412, Start Num: 82

Candidate Starts for KingVeVeVe_7:

(Start: 68 @3879 has 7 MA's), (Start: 82 @3966 has 259 MA's), (94, 4014), (104, 4077), (126, 4203), (129, 4227), (133, 4254), (134, 4257), (135, 4260), (137, 4266), (154, 4341),

Gene: KlimbOn_7 Start: 3965, Stop: 4411, Start Num: 82

Candidate Starts for KlimbOn_7:

(Start: 68 @3878 has 7 MA's), (Start: 82 @3965 has 259 MA's), (104, 4076), (126, 4202), (129, 4226), (133, 4253), (135, 4259), (137, 4265),

Gene: Kloppinator_7 Start: 3963, Stop: 4409, Start Num: 82

Candidate Starts for Kloppinator_7:

(Start: 68 @3876 has 7 MA's), (Start: 82 @3963 has 259 MA's), (104, 4074), (126, 4200), (129, 4224), (133, 4251), (135, 4257), (137, 4263), (154, 4338),

Gene: Knocker_13 Start: 8739, Stop: 9161, Start Num: 88

Candidate Starts for Knocker_13:

(Start: 88 @8739 has 12 MA's), (Start: 91 @8751 has 2 MA's), (93, 8760), (94, 8766), (95, 8769), (105, 8835), (107, 8850), (118, 8907), (125, 8946), (129, 8979), (131, 8991), (135, 9012), (142, 9048), (145, 9057), (146, 9060), (150, 9075), (152, 9093), (154, 9102),

Gene: Kwadwo_7 Start: 3965, Stop: 4411, Start Num: 82

Candidate Starts for Kwadwo_7:

(Start: 68 @3878 has 7 MA's), (Start: 82 @3965 has 259 MA's), (94, 4013), (104, 4076), (126, 4202), (129, 4226), (133, 4253), (134, 4256), (135, 4259), (137, 4265), (154, 4340),

Gene: Kwksand96_7 Start: 3962, Stop: 4408, Start Num: 82

Candidate Starts for Kwksand96_7:

(41, 3749), (Start: 46 @3764 has 3 MA's), (50, 3779), (53, 3788), (57, 3809), (67, 3869), (Start: 68 @3875 has 7 MA's), (Start: 82 @3962 has 259 MA's), (94, 4010), (104, 4073), (126, 4199), (129, 4223), (133, 4250), (134, 4253), (135, 4256), (137, 4262), (154, 4337),

Gene: Labeouficaum_7 Start: 3962, Stop: 4408, Start Num: 82

Candidate Starts for Labeouficaum_7:

(41, 3749), (Start: 46 @3764 has 3 MA's), (50, 3779), (53, 3788), (57, 3809), (67, 3869), (Start: 68 @3875 has 7 MA's), (Start: 82 @3962 has 259 MA's), (94, 4010), (104, 4073), (126, 4199), (129, 4223), (133, 4250), (135, 4256), (137, 4262), (154, 4337),

Gene: Lambano_7 Start: 5221, Stop: 5616, Start Num: 90

Candidate Starts for Lambano_7:

(Start: 85 @5203 has 31 MA's), (Start: 90 @5221 has 1 MA's), (Start: 91 @5227 has 2 MA's), (97, 5254), (111, 5344), (122, 5401), (123, 5404), (125, 5422), (126, 5431), (129, 5455), (133, 5482), (141, 5509), (151, 5539), (157, 5587),

Gene: LasagnaCat_7 Start: 3962, Stop: 4408, Start Num: 82

Candidate Starts for LasagnaCat_7:

(Start: 68 @3875 has 7 MA's), (Start: 82 @3962 has 259 MA's), (104, 4073), (126, 4199), (129, 4223), (133, 4250), (135, 4256), (137, 4262), (154, 4337),

Gene: Lasso_7 Start: 3965, Stop: 4411, Start Num: 82

Candidate Starts for Lasso_7:

(Start: 68 @3878 has 7 MA's), (Start: 82 @3965 has 259 MA's), (104, 4076), (126, 4202), (129, 4226), (133, 4253), (135, 4259), (137, 4265), (154, 4340),

Gene: LeeLot_7 Start: 3965, Stop: 4411, Start Num: 82

Candidate Starts for LeeLot_7:

(Start: 68 @3878 has 7 MA's), (Start: 82 @3965 has 259 MA's), (104, 4076), (126, 4202), (129, 4226), (133, 4253), (135, 4259), (137, 4265), (154, 4340),

Gene: Lego3393_7 Start: 3963, Stop: 4409, Start Num: 82

Candidate Starts for Lego3393_7:

(Start: 68 @3876 has 7 MA's), (Start: 82 @3963 has 259 MA's), (104, 4074), (126, 4200), (129, 4224), (133, 4251), (135, 4257), (137, 4263), (154, 4338),

Gene: Legolas_7 Start: 3966, Stop: 4412, Start Num: 82

Candidate Starts for Legolas_7:

(Start: 68 @3879 has 7 MA's), (Start: 82 @3966 has 259 MA's), (104, 4077), (126, 4203), (129, 4227), (133, 4254), (135, 4260), (137, 4266), (154, 4341),

Gene: LeiMonet_7 Start: 3961, Stop: 4407, Start Num: 82

Candidate Starts for LeiMonet_7:

(Start: 68 @3874 has 7 MA's), (Start: 82 @3961 has 259 MA's), (94, 4009), (126, 4198), (129, 4222), (133, 4249), (134, 4252), (135, 4255), (137, 4261), (154, 4336),

Gene: LemonSlice_7 Start: 3966, Stop: 4412, Start Num: 82

Candidate Starts for LemonSlice_7:

(Start: 68 @3879 has 7 MA's), (Start: 82 @3966 has 259 MA's), (104, 4077), (126, 4203), (129, 4227), (133, 4254), (135, 4260), (137, 4266), (154, 4341),

Gene: LilMcDreamy_9 Start: 7042, Stop: 7443, Start Num: 88

Candidate Starts for LilMcDreamy_9:

(6, 6490), (34, 6757), (37, 6775), (86, 7033), (Start: 88 @7042 has 12 MA's), (Start: 91 @7054 has 2 MA's), (94, 7069), (97, 7081), (109, 7165), (117, 7201), (129, 7282), (135, 7315), (137, 7321), (152, 7375),

Gene: Lolalove_8 Start: 6299, Stop: 6718, Start Num: 85

Candidate Starts for Lolalove_8:

(5, 5771), (6, 5786), (7, 5789), (10, 5819), (14, 5846), (15, 5855), (16, 5861), (17, 5867), (20, 5891), (25, 5981), (27, 6005), (29, 6017), (39, 6083), (42, 6098), (52, 6128), (53, 6134), (54, 6143), (61, 6161), (Start: 68 @6203 has 7 MA's), (71, 6218), (74, 6233), (Start: 75 @6239 has 1 MA's), (Start: 76 @6242 has 1 MA's), (Start: 85 @6299 has 31 MA's), (Start: 90 @6317 has 1 MA's), (Start: 91 @6323 has 2 MA's), (92, 6329), (97, 6350), (103, 6386), (111, 6440), (129, 6551), (130, 6557), (133, 6578), (141, 6605), (149, 6623), (153, 6647), (154, 6653),

Gene: Longacauda_7 Start: 3964, Stop: 4410, Start Num: 82

Candidate Starts for Longacauda_7:

(Start: 68 @3877 has 7 MA's), (Start: 82 @3964 has 259 MA's), (94, 4012), (126, 4201), (129, 4225), (133, 4252), (134, 4255), (135, 4258), (137, 4264), (154, 4339),

Gene: Lopsy_7 Start: 3965, Stop: 4411, Start Num: 82

Candidate Starts for Lopsy_7:

(Start: 68 @3878 has 7 MA's), (Start: 82 @3965 has 259 MA's), (104, 4076), (126, 4202), (129, 4226), (133, 4253), (135, 4259), (137, 4265),

Gene: LostAndPhound_7 Start: 3965, Stop: 4411, Start Num: 82

Candidate Starts for LostAndPhound_7:

(Start: 68 @3878 has 7 MA's), (Start: 82 @3965 has 259 MA's), (104, 4076), (126, 4202), (129, 4226), (133, 4253), (135, 4259), (137, 4265), (154, 4340),

Gene: LuckyMarjie_7 Start: 3965, Stop: 4411, Start Num: 82

Candidate Starts for LuckyMarjie_7:

(41, 3752), (Start: 46 @3767 has 3 MA's), (50, 3782), (53, 3791), (57, 3812), (67, 3872), (Start: 68 @3878 has 7 MA's), (Start: 82 @3965 has 259 MA's), (94, 4013), (104, 4076), (126, 4202), (129, 4226), (133, 4253), (134, 4256), (135, 4259), (137, 4265), (154, 4340),

Gene: Lulumae_7 Start: 3966, Stop: 4412, Start Num: 82

Candidate Starts for Lulumae_7:

(Start: 68 @3879 has 7 MA's), (Start: 82 @3966 has 259 MA's), (104, 4077), (126, 4203), (129, 4227), (133, 4254), (135, 4260), (137, 4266),

Gene: Lulwa_7 Start: 3965, Stop: 4411, Start Num: 82

Candidate Starts for Lulwa_7:

(Start: 68 @3878 has 7 MA's), (Start: 82 @3965 has 259 MA's), (104, 4076), (126, 4202), (129, 4226), (133, 4253), (135, 4259), (137, 4265), (154, 4340),

Gene: Lumine_7 Start: 3965, Stop: 4411, Start Num: 82

Candidate Starts for Lumine_7:

(41, 3752), (Start: 46 @3767 has 3 MA's), (50, 3782), (53, 3791), (57, 3812), (67, 3872), (Start: 68 @3878 has 7 MA's), (Start: 82 @3965 has 259 MA's), (94, 4013), (104, 4076), (126, 4202), (129, 4226), (133, 4253), (134, 4256), (135, 4259), (137, 4265), (154, 4340),

Gene: MRabcd_7 Start: 3962, Stop: 4408, Start Num: 82

Candidate Starts for MRabcd_7:

(Start: 68 @3875 has 7 MA's), (Start: 82 @3962 has 259 MA's), (104, 4073), (126, 4199), (129, 4223), (133, 4250), (135, 4256), (137, 4262), (154, 4337),

Gene: Mag7_7 Start: 3962, Stop: 4408, Start Num: 82

Candidate Starts for Mag7_7:

(41, 3749), (Start: 46 @3764 has 3 MA's), (50, 3779), (53, 3788), (57, 3809), (67, 3869), (Start: 68 @3875 has 7 MA's), (Start: 82 @3962 has 259 MA's), (94, 4010), (104, 4073), (126, 4199), (129, 4223), (133, 4250), (135, 4256), (137, 4262), (154, 4337),

Gene: Magic8_7 Start: 3962, Stop: 4408, Start Num: 82

Candidate Starts for Magic8_7:

(Start: 68 @3875 has 7 MA's), (Start: 82 @3962 has 259 MA's), (104, 4073), (126, 4199), (129, 4223), (133, 4250), (135, 4256), (137, 4262), (154, 4337),

Gene: Magpie_8 Start: 6457, Stop: 6876, Start Num: 85

Candidate Starts for Magpie_8:

(73, 6388), (Start: 75 @6397 has 1 MA's), (Start: 76 @6400 has 1 MA's), (Start: 85 @6457 has 31 MA's), (Start: 90 @6475 has 1 MA's), (Start: 91 @6481 has 2 MA's), (92, 6487), (97, 6508), (103, 6544), (111, 6598), (129, 6709), (130, 6715), (133, 6736), (141, 6763), (149, 6781), (153, 6805), (154, 6811),

Gene: Mana_7 Start: 3965, Stop: 4411, Start Num: 82

Candidate Starts for Mana_7:

(Start: 68 @3878 has 7 MA's), (Start: 82 @3965 has 259 MA's), (104, 4076), (126, 4202), (129, 4226), (133, 4253), (135, 4259), (137, 4265), (154, 4340),

Gene: Manad_7 Start: 3966, Stop: 4412, Start Num: 82

Candidate Starts for Manad_7:

(Start: 68 @3879 has 7 MA's), (Start: 82 @3966 has 259 MA's), (104, 4077), (126, 4203), (129, 4227), (133, 4254), (135, 4260), (137, 4266), (154, 4341),

Gene: Mao1_5 Start: 3670, Stop: 4077, Start Num: 83

Candidate Starts for Mao1_5:

(78, 3637), (Start: 83 @3670 has 5 MA's), (94, 3715), (98, 3733), (100, 3742), (102, 3760), (103, 3763), (104, 3778), (123, 3877), (124, 3892), (127, 3907), (132, 3952), (135, 3961), (137, 3967), (156, 4042),

Gene: Maru_7 Start: 3963, Stop: 4409, Start Num: 82

Candidate Starts for Maru_7:

(Start: 68 @3876 has 7 MA's), (Start: 82 @3963 has 259 MA's), (104, 4074), (126, 4200), (129, 4224), (133, 4251), (135, 4257), (137, 4263),

Gene: Mask_6 Start: 3671, Stop: 4078, Start Num: 83

Candidate Starts for Mask_6:

(78, 3638), (Start: 83 @3671 has 5 MA's), (94, 3716), (98, 3734), (100, 3743), (102, 3761), (103, 3764), (104, 3779), (123, 3878), (124, 3893), (127, 3908), (132, 3953), (135, 3962), (137, 3968), (156, 4043),

Gene: Maskar_7 Start: 3764, Stop: 4408, Start Num: 46

Candidate Starts for Maskar_7:

(41, 3749), (Start: 46 @3764 has 3 MA's), (50, 3779), (53, 3788), (57, 3809), (67, 3869), (Start: 68 @3875 has 7 MA's), (Start: 82 @3962 has 259 MA's), (94, 4010), (104, 4073), (126, 4199), (129, 4223), (133, 4250), (135, 4256), (137, 4262), (154, 4337),

Gene: Matalotodo_7 Start: 3966, Stop: 4412, Start Num: 82

Candidate Starts for Matalotodo_7:

(Start: 68 @3879 has 7 MA's), (Start: 82 @3966 has 259 MA's), (104, 4077), (126, 4203), (129, 4227), (133, 4254), (135, 4260), (137, 4266),

Gene: Mcshane_7 Start: 3966, Stop: 4412, Start Num: 82

Candidate Starts for Mcshane_7:

(Start: 68 @3879 has 7 MA's), (Start: 82 @3966 has 259 MA's), (104, 4077), (126, 4203), (129, 4227), (133, 4254), (135, 4260), (137, 4266), (154, 4341),

Gene: Mecca_7 Start: 3962, Stop: 4408, Start Num: 82

Candidate Starts for Mecca_7:

(Start: 68 @3875 has 7 MA's), (Start: 82 @3962 has 259 MA's), (104, 4073), (126, 4199), (129, 4223), (133, 4250), (135, 4256), (137, 4262), (154, 4337),

Gene: Megabear_5 Start: 2882, Stop: 3286, Start Num: 85

Candidate Starts for Megabear_5:

(Start: 85 @2882 has 31 MA's), (89, 2897), (94, 2921), (101, 2951), (116, 3044), (130, 3128), (137, 3161), (147, 3185), (148, 3191), (157, 3251),

Gene: Megamind20_8 Start: 3966, Stop: 4412, Start Num: 82

Candidate Starts for Megamind20_8:

(Start: 68 @3879 has 7 MA's), (Start: 82 @3966 has 259 MA's), (104, 4077), (126, 4203), (129, 4227), (133, 4254), (135, 4260), (137, 4266), (154, 4341),

Gene: Megatron_7 Start: 3962, Stop: 4408, Start Num: 82

Candidate Starts for Megatron_7:

(Start: 68 @3875 has 7 MA's), (Start: 82 @3962 has 259 MA's), (104, 4073), (126, 4199), (129, 4223), (133, 4250), (135, 4256), (137, 4262), (154, 4337),

Gene: Melc17_7 Start: 3962, Stop: 4408, Start Num: 82

Candidate Starts for Melc17_7:

(41, 3749), (Start: 46 @3764 has 3 MA's), (50, 3779), (53, 3788), (57, 3809), (Start: 68 @3875 has 7 MA's), (Start: 82 @3962 has 259 MA's), (104, 4073), (126, 4199), (129, 4223), (133, 4250), (134, 4253), (135, 4256), (137, 4262), (154, 4337),

Gene: MelsMeow_7 Start: 3962, Stop: 4408, Start Num: 82

Candidate Starts for MelsMeow_7:

(41, 3749), (Start: 46 @3764 has 3 MA's), (50, 3779), (53, 3788), (57, 3809), (67, 3869), (Start: 68 @3875 has 7 MA's), (Start: 82 @3962 has 259 MA's), (94, 4010), (104, 4073), (126, 4199), (129, 4223), (133, 4250), (134, 4253), (135, 4256), (137, 4262), (154, 4337),

Gene: Mesh1_7 Start: 3965, Stop: 4411, Start Num: 82

Candidate Starts for Mesh1_7:

(Start: 68 @3878 has 7 MA's), (Start: 82 @3965 has 259 MA's), (104, 4076), (126, 4202), (129, 4226), (133, 4253), (135, 4259), (137, 4265), (154, 4340),

Gene: Mesmerelda_8 Start: 3965, Stop: 4411, Start Num: 82

Candidate Starts for Mesmerelda_8:

(41, 3752), (Start: 46 @3767 has 3 MA's), (50, 3782), (53, 3791), (57, 3812), (67, 3872), (Start: 68 @3878 has 7 MA's), (Start: 82 @3965 has 259 MA's), (94, 4013), (104, 4076), (126, 4202), (129, 4226), (133, 4253), (134, 4256), (135, 4259), (137, 4265), (154, 4340),

Gene: MichaelPhcott_7 Start: 3962, Stop: 4408, Start Num: 82

Candidate Starts for MichaelPhcott_7:

(41, 3749), (Start: 46 @3764 has 3 MA's), (50, 3779), (53, 3788), (57, 3809), (67, 3869), (Start: 68 @3875 has 7 MA's), (Start: 82 @3962 has 259 MA's), (94, 4010), (104, 4073), (126, 4199), (129, 4223), (133, 4250), (135, 4256), (137, 4262), (154, 4337),

Gene: Mikota_7 Start: 3963, Stop: 4409, Start Num: 82

Candidate Starts for Mikota_7:

(41, 3750), (Start: 46 @3765 has 3 MA's), (50, 3780), (53, 3789), (57, 3810), (67, 3870), (Start: 68 @3876 has 7 MA's), (Start: 82 @3963 has 259 MA's), (104, 4074), (126, 4200), (129, 4224), (133, 4251), (134, 4254), (135, 4257), (137, 4263), (154, 4338),

Gene: MiniBoss_7 Start: 3965, Stop: 4411, Start Num: 82

Candidate Starts for MiniBoss_7:

(41, 3752), (Start: 46 @3767 has 3 MA's), (50, 3782), (53, 3791), (57, 3812), (67, 3872), (Start: 68 @3878 has 7 MA's), (Start: 82 @3965 has 259 MA's), (94, 4013), (104, 4076), (126, 4202), (129, 4226), (133, 4253), (134, 4256), (135, 4259), (137, 4265), (154, 4340),

Gene: MitKao_7 Start: 3965, Stop: 4411, Start Num: 82

Candidate Starts for MitKao_7:

(Start: 68 @3878 has 7 MA's), (Start: 82 @3965 has 259 MA's), (104, 4076), (126, 4202), (129, 4226), (133, 4253), (135, 4259), (137, 4265),

Gene: Mithril_8 Start: 6302, Stop: 6721, Start Num: 85

Candidate Starts for Mithril_8:

(5, 5774), (6, 5789), (7, 5792), (10, 5822), (14, 5849), (15, 5858), (16, 5864), (17, 5870), (19, 5879), (20, 5894), (25, 5984), (27, 6008), (29, 6020), (39, 6086), (42, 6101), (52, 6131), (53, 6137), (54, 6146), (66, 6191), (Start: 68 @6206 has 7 MA's), (71, 6221), (74, 6236), (Start: 75 @6242 has 1 MA's), (Start: 76 @6245 has 1 MA's), (Start: 85 @6302 has 31 MA's), (Start: 90 @6320 has 1 MA's), (Start: 91 @6326 has 2 MA's), (92, 6332), (97, 6353), (103, 6389), (111, 6443), (123, 6503), (129, 6554), (130, 6560), (133, 6581), (141, 6608), (149, 6626), (153, 6650), (154, 6656),

Gene: Morgushi_7 Start: 3963, Stop: 4409, Start Num: 82

Candidate Starts for Morgushi_7:

(Start: 68 @3876 has 7 MA's), (Start: 82 @3963 has 259 MA's), (104, 4074), (126, 4200), (129, 4224), (133, 4251), (135, 4257), (154, 4338),

Gene: Morty_7 Start: 3962, Stop: 4408, Start Num: 82

Candidate Starts for Morty_7:

(Start: 68 @3875 has 7 MA's), (Start: 82 @3962 has 259 MA's), (104, 4073), (126, 4199), (129, 4223), (133, 4250), (135, 4256), (137, 4262), (154, 4337),

Gene: Mosaic_7 Start: 3966, Stop: 4412, Start Num: 82

Candidate Starts for Mosaic_7:

(Start: 68 @3879 has 7 MA's), (Start: 82 @3966 has 259 MA's), (104, 4077), (126, 4203), (129, 4227), (133, 4254), (135, 4260), (137, 4266), (154, 4341),

Gene: MrPhizzler_7 Start: 3961, Stop: 4407, Start Num: 82

Candidate Starts for MrPhizzler_7:

(Start: 68 @3874 has 7 MA's), (Start: 82 @3961 has 259 MA's), (94, 4009), (126, 4198), (129, 4222), (133, 4249), (134, 4252), (135, 4255), (137, 4261), (154, 4336),

Gene: Mudslide_8 Start: 6550, Stop: 6969, Start Num: 85

Candidate Starts for Mudslide_8:

(72, 6478), (Start: 85 @6550 has 31 MA's), (Start: 90 @6568 has 1 MA's), (Start: 91 @6574 has 2 MA's), (92, 6580), (97, 6601), (103, 6637), (111, 6691), (129, 6802), (130, 6808), (133, 6829), (141, 6856), (149, 6874), (153, 6898), (154, 6904),

Gene: Mulan_7 Start: 3965, Stop: 4411, Start Num: 82

Candidate Starts for Mulan_7:

(Start: 68 @3878 has 7 MA's), (Start: 82 @3965 has 259 MA's), (104, 4076), (126, 4202), (129, 4226), (133, 4253), (135, 4259), (137, 4265),

Gene: Murdoc_7 Start: 3965, Stop: 4411, Start Num: 82

Candidate Starts for Murdoc_7:

(Start: 68 @3878 has 7 MA's), (Start: 82 @3965 has 259 MA's), (104, 4076), (126, 4202), (129, 4226), (133, 4253), (135, 4259), (137, 4265), (154, 4340),

Gene: Mutante_7 Start: 3962, Stop: 4408, Start Num: 82

Candidate Starts for Mutante_7:

(Start: 68 @3875 has 7 MA's), (Start: 82 @3962 has 259 MA's), (104, 4073), (126, 4199), (129, 4223), (133, 4250), (135, 4256), (137, 4262), (154, 4337),

Gene: Mysterious_9 Start: 6540, Stop: 6941, Start Num: 88

Candidate Starts for Mysterious_9:

(Start: 88 @6540 has 12 MA's), (Start: 91 @6552 has 2 MA's), (93, 6561), (94, 6567), (97, 6579), (109, 6663), (117, 6699), (121, 6714), (125, 6747), (126, 6756), (129, 6780), (131, 6792), (137, 6819), (154, 6882), (158, 6918),

Gene: Nacho_007 Start: 3965, Stop: 4411, Start Num: 82

Candidate Starts for Nacho_007:

(Start: 68 @3878 has 7 MA's), (Start: 82 @3965 has 259 MA's), (104, 4076), (126, 4202), (129, 4226), (133, 4253), (135, 4259), (137, 4265),

Gene: Nanao_7 Start: 5221, Stop: 5616, Start Num: 90

Candidate Starts for Nanao_7:

(Start: 85 @5203 has 31 MA's), (Start: 90 @5221 has 1 MA's), (Start: 91 @5227 has 2 MA's), (97, 5254), (111, 5344), (122, 5401), (123, 5404), (125, 5422), (126, 5431), (129, 5455), (133, 5482), (141, 5509), (151, 5539), (157, 5587),

Gene: Nangang_9 Start: 6253, Stop: 6675, Start Num: 88

Candidate Starts for Nangang_9:

(Start: 88 @6253 has 12 MA's), (94, 6280), (98, 6298), (109, 6376), (120, 6424), (125, 6460), (126, 6469), (129, 6493), (135, 6526), (143, 6565), (145, 6571), (158, 6652),

Gene: Nathan_8 Start: 3963, Stop: 4409, Start Num: 82

Candidate Starts for Nathan_8:

(Start: 68 @3876 has 7 MA's), (Start: 82 @3963 has 259 MA's), (104, 4074), (126, 4200), (129, 4224), (133, 4251), (134, 4254), (135, 4257), (137, 4263), (154, 4338),

Gene: Nehemiah_8 Start: 6540, Stop: 6941, Start Num: 88

Candidate Starts for Nehemiah_8:

(Start: 88 @6540 has 12 MA's), (Start: 91 @6552 has 2 MA's), (93, 6561), (94, 6567), (97, 6579), (109, 6663), (125, 6747), (126, 6756), (129, 6780), (131, 6792), (137, 6819), (154, 6882), (158, 6918),

Gene: Newman_7 Start: 3965, Stop: 4411, Start Num: 82

Candidate Starts for Newman_7:

(Start: 68 @3878 has 7 MA's), (Start: 82 @3965 has 259 MA's), (104, 4076), (126, 4202), (129, 4226), (133, 4253), (135, 4259), (137, 4265),

Gene: Nicole21_7 Start: 3963, Stop: 4409, Start Num: 82

Candidate Starts for Nicole21_7:

(Start: 68 @3876 has 7 MA's), (Start: 82 @3963 has 259 MA's), (104, 4074), (126, 4200), (129, 4224), (133, 4251), (135, 4257), (137, 4263),

Gene: Nigel_6 Start: 5100, Stop: 5522, Start Num: 85

Candidate Starts for Nigel_6:

(Start: 85 @5100 has 31 MA's), (Start: 90 @5118 has 1 MA's), (Start: 91 @5124 has 2 MA's), (97, 5151), (111, 5241), (117, 5271), (122, 5298), (123, 5301), (125, 5319), (129, 5352), (133, 5379), (141, 5406), (157, 5484),

Gene: Numberten_7 Start: 3965, Stop: 4411, Start Num: 82

Candidate Starts for Numberten_7:

(Start: 68 @3878 has 7 MA's), (Start: 82 @3965 has 259 MA's), (104, 4076), (126, 4202), (129, 4226), (133, 4253), (135, 4259), (137, 4265), (154, 4340),

Gene: Nyala_7 Start: 3966, Stop: 4412, Start Num: 82

Candidate Starts for Nyala_7:

(Start: 68 @3879 has 7 MA's), (Start: 82 @3966 has 259 MA's), (104, 4077), (126, 4203), (129, 4227), (133, 4254), (135, 4260), (137, 4266), (154, 4341),

Gene: OSmaximus_7 Start: 3963, Stop: 4409, Start Num: 82

Candidate Starts for OSmaximus_7:

(Start: 68 @3876 has 7 MA's), (Start: 82 @3963 has 259 MA's), (104, 4074), (126, 4200), (129, 4224), (133, 4251), (134, 4254), (135, 4257), (137, 4263), (154, 4338),

Gene: Olak_7 Start: 3963, Stop: 4409, Start Num: 82

Candidate Starts for Olak_7:

(41, 3750), (Start: 46 @3765 has 3 MA's), (50, 3780), (53, 3789), (57, 3810), (67, 3870), (Start: 68 @3876 has 7 MA's), (Start: 82 @3963 has 259 MA's), (94, 4011), (104, 4074), (126, 4200), (129, 4224), (133, 4251), (134, 4254), (135, 4257), (137, 4263), (154, 4338),

Gene: Oline_7 Start: 3962, Stop: 4408, Start Num: 82

Candidate Starts for Oline_7:

(41, 3749), (Start: 46 @3764 has 3 MA's), (50, 3779), (53, 3788), (57, 3809), (67, 3869), (Start: 68 @3875 has 7 MA's), (Start: 82 @3962 has 259 MA's), (94, 4010), (104, 4073), (126, 4199), (129, 4223), (133, 4250), (135, 4256), (137, 4262), (154, 4337),

Gene: Olive_7 Start: 3962, Stop: 4408, Start Num: 82

Candidate Starts for Olive_7:

(Start: 68 @3875 has 7 MA's), (Start: 82 @3962 has 259 MA's), (104, 4073), (126, 4199), (129, 4223), (133, 4250), (135, 4256), (137, 4262), (154, 4337),

Gene: OliverWalter_7 Start: 3961, Stop: 4407, Start Num: 82

Candidate Starts for OliverWalter_7:

(Start: 68 @3874 has 7 MA's), (Start: 82 @3961 has 259 MA's), (104, 4072), (126, 4198), (129, 4222), (133, 4249), (135, 4255), (137, 4261),

Gene: Omniscient_7 Start: 3965, Stop: 4411, Start Num: 82

Candidate Starts for Omniscient_7:

(Start: 68 @3878 has 7 MA's), (Start: 82 @3965 has 259 MA's), (104, 4076), (126, 4202), (129, 4226), (133, 4253), (135, 4259), (137, 4265), (154, 4340),

Gene: Oosterbaan_7 Start: 3966, Stop: 4412, Start Num: 82

Candidate Starts for Oosterbaan_7:

(Start: 68 @3879 has 7 MA's), (Start: 82 @3966 has 259 MA's), (104, 4077), (126, 4203), (129, 4227), (133, 4254), (135, 4260), (137, 4266), (154, 4341),

Gene: Orfeu_7 Start: 3964, Stop: 4410, Start Num: 82

Candidate Starts for Orfeu_7:

(Start: 68 @3877 has 7 MA's), (Start: 82 @3964 has 259 MA's), (94, 4012), (104, 4075), (126, 4201), (129, 4225), (133, 4252), (135, 4258), (137, 4264), (154, 4339),

Gene: Orion_7 Start: 3963, Stop: 4409, Start Num: 82

Candidate Starts for Orion_7:

(Start: 68 @3876 has 7 MA's), (Start: 82 @3963 has 259 MA's), (104, 4074), (126, 4200), (129, 4224), (133, 4251), (135, 4257), (137, 4263), (154, 4338),

Gene: Orwigg_7 Start: 3966, Stop: 4412, Start Num: 82

Candidate Starts for Orwigg_7:

(Start: 68 @3879 has 7 MA's), (Start: 82 @3966 has 259 MA's), (104, 4077), (126, 4203), (129, 4227), (133, 4254), (135, 4260), (137, 4266), (154, 4341),

Gene: PG1_7 Start: 3963, Stop: 4409, Start Num: 82

Candidate Starts for PG1_7:

(Start: 68 @3876 has 7 MA's), (Start: 82 @3963 has 259 MA's), (104, 4074), (126, 4200), (129, 4224), (133, 4251), (135, 4257), (137, 4263), (154, 4338),

Gene: PR_05 Start: 2882, Stop: 3286, Start Num: 85

Candidate Starts for PR_05:

(Start: 85 @2882 has 31 MA's), (89, 2897), (94, 2921), (101, 2951), (116, 3044), (130, 3128), (137, 3161), (147, 3185), (148, 3191), (157, 3251),

Gene: Pacifista_7 Start: 3962, Stop: 4408, Start Num: 82

Candidate Starts for Pacifista_7:

(Start: 68 @3875 has 7 MA's), (Start: 82 @3962 has 259 MA's), (104, 4073), (126, 4199), (129, 4223), (133, 4250), (134, 4253), (135, 4256), (137, 4262), (154, 4337),

Gene: PenguinLover67_11 Start: 7154, Stop: 7573, Start Num: 83

Candidate Starts for PenguinLover67_11:

(31, 6878), (40, 6944), (Start: 46 @6962 has 3 MA's), (53, 6986), (55, 7001), (56, 7004), (58, 7016), (61, 7022), (62, 7025), (64, 7034), (Start: 68 @7064 has 7 MA's), (69, 7070), (71, 7079), (Start: 75 @7103 has 1 MA's), (Start: 83 @7154 has 5 MA's), (96, 7208), (97, 7211), (120, 7343), (124, 7376), (128, 7406), (129, 7412), (130, 7418), (133, 7439), (141, 7466),

Gene: Phamished_7 Start: 3962, Stop: 4408, Start Num: 82

Candidate Starts for Phamished_7:

(Start: 68 @3875 has 7 MA's), (Start: 82 @3962 has 259 MA's), (104, 4073), (126, 4199), (129, 4223), (133, 4250), (135, 4256), (137, 4262), (154, 4337),

Gene: Phareon_7 Start: 3965, Stop: 4411, Start Num: 82

Candidate Starts for Phareon_7:

(Start: 68 @3878 has 7 MA's), (Start: 82 @3965 has 259 MA's), (104, 4076), (126, 4202), (129, 4226), (133, 4253), (135, 4259), (137, 4265), (154, 4340),

Gene: PhatCats2014_7 Start: 3966, Stop: 4412, Start Num: 82

Candidate Starts for PhatCats2014_7:

(Start: 68 @3879 has 7 MA's), (Start: 82 @3966 has 259 MA's), (104, 4077), (126, 4203), (129, 4227), (133, 4254), (135, 4260), (137, 4266),

Gene: PhatLouie_7 Start: 3965, Stop: 4411, Start Num: 82

Candidate Starts for PhatLouie_7:

(Start: 68 @3878 has 7 MA's), (Start: 82 @3965 has 259 MA's), (104, 4076), (126, 4202), (129, 4226), (133, 4253), (134, 4256), (135, 4259), (137, 4265), (154, 4340),

Gene: Phelemich_9 Start: 6543, Stop: 6944, Start Num: 88

Candidate Starts for Phelemich_9:

(Start: 88 @6543 has 12 MA's), (Start: 91 @6555 has 2 MA's), (92, 6561), (93, 6564), (97, 6582), (109, 6666), (117, 6702), (121, 6717), (125, 6750), (126, 6759), (129, 6783), (154, 6885), (158, 6921),

Gene: PhenghisKhan_7 Start: 3962, Stop: 4408, Start Num: 82

Candidate Starts for PhenghisKhan_7:

(41, 3749), (Start: 46 @3764 has 3 MA's), (50, 3779), (53, 3788), (57, 3809), (67, 3869), (Start: 68 @3875 has 7 MA's), (Start: 82 @3962 has 259 MA's), (94, 4010), (104, 4073), (126, 4199), (129, 4223), (133, 4250), (135, 4256), (137, 4262), (154, 4337),

Gene: Pherdinand_7 Start: 3963, Stop: 4409, Start Num: 82

Candidate Starts for Pherdinand_7:

(Start: 68 @3876 has 7 MA's), (Start: 82 @3963 has 259 MA's), (104, 4074), (126, 4200), (129, 4224), (133, 4251), (135, 4257), (137, 4263), (154, 4338),

Gene: Phergie_7 Start: 3962, Stop: 4408, Start Num: 82

Candidate Starts for Phergie_7:

(41, 3749), (Start: 46 @3764 has 3 MA's), (50, 3779), (53, 3788), (57, 3809), (67, 3869), (Start: 68 @3875 has 7 MA's), (Start: 82 @3962 has 259 MA's), (94, 4010), (104, 4073), (126, 4199), (129, 4223), (133, 4250), (135, 4256), (137, 4262), (154, 4337),

Gene: Phipps_7 Start: 3965, Stop: 4411, Start Num: 82

Candidate Starts for Phipps_7:

(41, 3752), (Start: 46 @3767 has 3 MA's), (50, 3782), (53, 3791), (57, 3812), (67, 3872), (Start: 68 @3878 has 7 MA's), (Start: 82 @3965 has 259 MA's), (94, 4013), (104, 4076), (126, 4202), (129, 4226), (133, 4253), (134, 4256), (135, 4259), (137, 4265), (154, 4340),

Gene: Phleuron_7 Start: 3962, Stop: 4408, Start Num: 82

Candidate Starts for Phleuron_7:

(41, 3749), (Start: 46 @3764 has 3 MA's), (50, 3779), (53, 3788), (57, 3809), (67, 3869), (Start: 68 @3875 has 7 MA's), (Start: 82 @3962 has 259 MA's), (94, 4010), (104, 4073), (126, 4199), (129, 4223), (133, 4250), (135, 4256), (137, 4262), (154, 4337),

Gene: PhrankReynolds_7 Start: 3962, Stop: 4408, Start Num: 82

Candidate Starts for PhrankReynolds_7:

(41, 3749), (Start: 46 @3764 has 3 MA's), (50, 3779), (53, 3788), (57, 3809), (67, 3869), (Start: 68 @3875 has 7 MA's), (Start: 82 @3962 has 259 MA's), (94, 4010), (104, 4073), (126, 4199), (129, 4223), (133, 4250), (135, 4256), (137, 4262), (154, 4337),

Gene: PhrodoBaggins_7 Start: 3965, Stop: 4411, Start Num: 82

Candidate Starts for PhrodoBaggins_7:

(Start: 68 @3878 has 7 MA's), (Start: 82 @3965 has 259 MA's), (104, 4076), (126, 4202), (129, 4226), (133, 4253), (135, 4259), (137, 4265), (154, 4340),

Gene: Phunky_7 Start: 3965, Stop: 4411, Start Num: 82

Candidate Starts for Phunky_7:

(41, 3752), (Start: 46 @3767 has 3 MA's), (50, 3782), (53, 3791), (57, 3812), (67, 3872), (Start: 68 @3878 has 7 MA's), (Start: 82 @3965 has 259 MA's), (94, 4013), (104, 4076), (126, 4202), (129, 4226), (133, 4253), (134, 4256), (135, 4259), (137, 4265), (154, 4340),

Gene: Piglet_007 Start: 3965, Stop: 4411, Start Num: 82

Candidate Starts for Piglet_007:

(Start: 68 @3878 has 7 MA's), (Start: 82 @3965 has 259 MA's), (104, 4076), (126, 4202), (129, 4226), (133, 4253), (135, 4259), (137, 4265), (154, 4340),

Gene: PinheadLarry_7 Start: 3965, Stop: 4411, Start Num: 82

Candidate Starts for PinheadLarry_7:

(Start: 68 @3878 has 7 MA's), (Start: 82 @3965 has 259 MA's), (104, 4076), (126, 4202), (129, 4226), (133, 4253), (135, 4259), (137, 4265), (154, 4340),

Gene: Pinkman_7 Start: 3962, Stop: 4408, Start Num: 82

Candidate Starts for Pinkman_7:

(41, 3749), (Start: 46 @3764 has 3 MA's), (50, 3779), (53, 3788), (57, 3809), (67, 3869), (Start: 68 @3875 has 7 MA's), (Start: 82 @3962 has 259 MA's), (94, 4010), (104, 4073), (126, 4199), (129, 4223), (133, 4250), (135, 4256), (137, 4262), (154, 4337),

Gene: Pipsqueak_7 Start: 3965, Stop: 4411, Start Num: 82

Candidate Starts for Pipsqueak_7:

(Start: 68 @3878 has 7 MA's), (Start: 82 @3965 has 259 MA's), (104, 4076), (126, 4202), (129, 4226), (133, 4253), (135, 4259), (137, 4265), (154, 4340),

Gene: Placalicious_7 Start: 3965, Stop: 4411, Start Num: 82

Candidate Starts for Placalicious_7:

(Start: 68 @3878 has 7 MA's), (Start: 82 @3965 has 259 MA's), (104, 4076), (126, 4202), (129, 4226), (133, 4253), (135, 4259), (137, 4265), (154, 4340),

Gene: Plata_7 Start: 3964, Stop: 4410, Start Num: 82

Candidate Starts for Plata_7:

(Start: 68 @3877 has 7 MA's), (Start: 82 @3964 has 259 MA's), (94, 4012), (126, 4201), (129, 4225), (133, 4252), (134, 4255), (135, 4258), (137, 4264), (154, 4339),

Gene: Plmatters_7 Start: 3965, Stop: 4411, Start Num: 82

Candidate Starts for Plmatters_7:

(41, 3752), (Start: 46 @3767 has 3 MA's), (50, 3782), (53, 3791), (57, 3812), (67, 3872), (Start: 68 @3878 has 7 MA's), (Start: 82 @3965 has 259 MA's), (94, 4013), (104, 4076), (126, 4202), (129, 4226), (133, 4253), (134, 4256), (135, 4259), (137, 4265), (154, 4340),

Gene: Podrick_7 Start: 3965, Stop: 4411, Start Num: 82

Candidate Starts for Podrick_7:

(Start: 68 @3878 has 7 MA's), (Start: 82 @3965 has 259 MA's), (104, 4076), (126, 4202), (129, 4226), (133, 4253), (135, 4259), (137, 4265), (154, 4340),

Gene: Pops_7 Start: 3965, Stop: 4411, Start Num: 82

Candidate Starts for Pops_7:

(Start: 68 @3878 has 7 MA's), (Start: 82 @3965 has 259 MA's), (104, 4076), (126, 4202), (129, 4226), (133, 4253), (135, 4259), (137, 4265),

Gene: Poster_7 Start: 5221, Stop: 5616, Start Num: 90

Candidate Starts for Poster_7:

(Start: 85 @5203 has 31 MA's), (Start: 90 @5221 has 1 MA's), (Start: 91 @5227 has 2 MA's), (97, 5254), (111, 5344), (122, 5401), (123, 5404), (125, 5422), (126, 5431), (129, 5455), (133, 5482), (141, 5509), (151, 5539), (157, 5587),

Gene: Potter_7 Start: 3966, Stop: 4412, Start Num: 82

Candidate Starts for Potter_7:

(Start: 68 @3879 has 7 MA's), (Start: 82 @3966 has 259 MA's), (104, 4077), (126, 4203), (129, 4227), (133, 4254), (135, 4260), (137, 4266), (154, 4341),

Gene: Prickles_7 Start: 3971, Stop: 4417, Start Num: 82

Candidate Starts for Prickles_7:

(Start: 68 @3884 has 7 MA's), (Start: 82 @3971 has 259 MA's), (104, 4082), (126, 4208), (129, 4232), (133, 4259), (135, 4265), (137, 4271),

Gene: Prince_8 Start: 6462, Stop: 6881, Start Num: 85

Candidate Starts for Prince_8:

(67, 6366), (69, 6378), (Start: 85 @6462 has 31 MA's), (Start: 90 @6480 has 1 MA's), (Start: 91 @6486 has 2 MA's), (92, 6492), (97, 6513), (103, 6549), (111, 6603), (129, 6714), (130, 6720), (133, 6741), (141, 6768), (149, 6786), (153, 6810), (154, 6816),

Gene: ProfessorX_7 Start: 3963, Stop: 4409, Start Num: 82

Candidate Starts for ProfessorX_7:

(Start: 68 @3876 has 7 MA's), (Start: 82 @3963 has 259 MA's), (104, 4074), (126, 4200), (129, 4224), (133, 4251), (135, 4257), (137, 4263), (154, 4338),

Gene: Puhltonio_7 Start: 3965, Stop: 4411, Start Num: 82

Candidate Starts for Puhltonio_7:

(Start: 68 @3878 has 7 MA's), (Start: 82 @3965 has 259 MA's), (104, 4076), (126, 4202), (129, 4226), (133, 4253), (135, 4259), (137, 4265), (154, 4340),

Gene: QueenBeane_7 Start: 3962, Stop: 4408, Start Num: 82

Candidate Starts for QueenBeane_7:

(Start: 68 @3875 has 7 MA's), (Start: 82 @3962 has 259 MA's), (104, 4073), (126, 4199), (129, 4223), (133, 4250), (135, 4256), (137, 4262), (154, 4337),

Gene: QueenPie_8 Start: 6109, Stop: 6507, Start Num: 90

Candidate Starts for QueenPie_8:

(Start: 85 @6091 has 31 MA's), (Start: 90 @6109 has 1 MA's), (Start: 91 @6115 has 2 MA's), (97, 6142), (110, 6229), (125, 6310), (126, 6319), (129, 6343), (133, 6370), (141, 6397), (151, 6427), (157, 6475),

Gene: Quesadilla_10 Start: 6979, Stop: 7392, Start Num: 85

Candidate Starts for Quesadilla_10:

(38, 6742), (40, 6766), (44, 6772), (47, 6781), (49, 6787), (53, 6802), (58, 6832), (61, 6838), (62, 6841), (Start: 68 @6880 has 7 MA's), (69, 6886), (71, 6895), (Start: 75 @6919 has 1 MA's), (Start: 82 @6970 has 259 MA's), (Start: 85 @6979 has 31 MA's), (97, 7030), (99, 7039), (111, 7120), (114, 7138), (122, 7177), (124, 7195), (129, 7231), (130, 7237), (149, 7303), (154, 7333),

Gene: Quisquilliae_7 Start: 3965, Stop: 4411, Start Num: 82

Candidate Starts for Quisquilliae_7:

(Start: 68 @3878 has 7 MA's), (Start: 82 @3965 has 259 MA's), (104, 4076), (126, 4202), (129, 4226), (133, 4253), (135, 4259), (137, 4265), (154, 4340),

Gene: RawrgerThat_8 Start: 6296, Stop: 6715, Start Num: 85

Candidate Starts for RawrgerThat_8:

(4, 5729), (5, 5771), (6, 5786), (7, 5789), (10, 5819), (14, 5846), (15, 5855), (16, 5861), (17, 5867), (20, 5891), (25, 5981), (27, 6005), (30, 6023), (32, 6032), (39, 6080), (42, 6095), (52, 6125), (53, 6131), (54, 6140), (61, 6158), (Start: 68 @6200 has 7 MA's), (71, 6215), (74, 6230), (Start: 75 @6236 has 1 MA's), (Start: 76 @6239 has 1 MA's), (Start: 85 @6296 has 31 MA's), (Start: 90 @6314 has 1 MA's), (Start: 91 @6320 has 2 MA's), (92, 6326), (97, 6347), (103, 6383), (111, 6437), (129, 6548), (130, 6554), (141, 6602), (149, 6620), (153, 6644), (154, 6650),

Gene: RedMaple_7 Start: 3962, Stop: 4408, Start Num: 82

Candidate Starts for RedMaple_7:

(Start: 68 @3875 has 7 MA's), (Start: 82 @3962 has 259 MA's), (104, 4073), (126, 4199), (129, 4223), (132, 4247), (133, 4250), (135, 4256), (137, 4262),

Gene: Reprobate_9 Start: 6540, Stop: 6941, Start Num: 88

Candidate Starts for Reprobate_9:

(Start: 88 @6540 has 12 MA's), (Start: 91 @6552 has 2 MA's), (92, 6558), (93, 6561), (97, 6579), (109, 6663), (117, 6699), (121, 6714), (125, 6747), (126, 6756), (129, 6780), (154, 6882), (158, 6918),

Gene: Rich_9 Start: 6268, Stop: 6669, Start Num: 88

Candidate Starts for Rich_9:

(Start: 88 @6268 has 12 MA's), (94, 6295), (103, 6343), (109, 6391), (121, 6442), (125, 6475), (126, 6484), (129, 6508), (136, 6544), (158, 6646),

Gene: Ricotta_7 Start: 3964, Stop: 4410, Start Num: 82

Candidate Starts for Ricotta_7:

(Start: 68 @3877 has 7 MA's), (Start: 82 @3964 has 259 MA's), (94, 4012), (104, 4075), (126, 4201), (129, 4225), (133, 4252), (134, 4255), (135, 4258), (137, 4264), (154, 4339),

Gene: Riggan_7 Start: 3969, Stop: 4415, Start Num: 82

Candidate Starts for Riggan_7:

(Start: 68 @3882 has 7 MA's), (Start: 82 @3969 has 259 MA's), (104, 4080), (126, 4206), (129, 4230), (133, 4257), (135, 4263), (137, 4269), (154, 4344),

Gene: Rimu_7 Start: 3961, Stop: 4407, Start Num: 82

Candidate Starts for Rimu_7:

(Start: 68 @3874 has 7 MA's), (Start: 82 @3961 has 259 MA's), (94, 4009), (126, 4198), (129, 4222), (133, 4249), (134, 4252), (135, 4255), (137, 4261), (154, 4336),

Gene: Rinkes_12 Start: 8096, Stop: 8527, Start Num: 87

Candidate Starts for Rinkes_12:

(Start: 87 @8096 has 2 MA's), (Start: 88 @8102 has 12 MA's), (93, 8123), (107, 8213), (125, 8312), (129, 8345), (135, 8378), (146, 8426), (149, 8438),

Gene: Rita130_9 Start: 6267, Stop: 6668, Start Num: 88

Candidate Starts for Rita130_9:

(Start: 88 @6267 has 12 MA's), (94, 6294), (97, 6306), (103, 6342), (109, 6390), (121, 6441), (125, 6474), (126, 6483), (129, 6507), (157, 6639), (158, 6645),

Gene: Riverton_7 Start: 3965, Stop: 4411, Start Num: 82

Candidate Starts for Riverton_7:

(41, 3752), (Start: 46 @3767 has 3 MA's), (50, 3782), (53, 3791), (57, 3812), (67, 3872), (Start: 68 @3878 has 7 MA's), (Start: 82 @3965 has 259 MA's), (94, 4013), (104, 4076), (126, 4202), (129, 4226), (133, 4253), (135, 4259), (137, 4265), (154, 4340),

Gene: Robyn_7 Start: 3967, Stop: 4413, Start Num: 82

Candidate Starts for Robyn_7:

(Start: 68 @3880 has 7 MA's), (Start: 82 @3967 has 259 MA's), (104, 4078), (126, 4204), (129, 4228), (133, 4255), (135, 4261), (137, 4267),

Gene: Roliet_7 Start: 3965, Stop: 4411, Start Num: 82

Candidate Starts for Roliet_7:

(41, 3752), (Start: 46 @3767 has 3 MA's), (50, 3782), (53, 3791), (57, 3812), (67, 3872), (Start: 68 @3878 has 7 MA's), (Start: 82 @3965 has 259 MA's), (94, 4013), (104, 4076), (126, 4202), (129, 4226), (133, 4253), (134, 4256), (135, 4259), (137, 4265), (154, 4340),

Gene: Roscoe_8 Start: 4200, Stop: 4646, Start Num: 82

Candidate Starts for Roscoe_8:

(41, 3987), (Start: 46 @4002 has 3 MA's), (50, 4017), (53, 4026), (57, 4047), (67, 4107), (Start: 68 @4113 has 7 MA's), (Start: 82 @4200 has 259 MA's), (94, 4248), (104, 4311), (126, 4437), (129, 4461), (133, 4488), (134, 4491), (135, 4494), (137, 4500), (154, 4575),

Gene: Roy17_7 Start: 3966, Stop: 4412, Start Num: 82

Candidate Starts for Roy17_7:

(Start: 68 @3879 has 7 MA's), (Start: 82 @3966 has 259 MA's), (104, 4077), (126, 4203), (129, 4227), (133, 4254), (135, 4260), (137, 4266),

Gene: SDcharge11_7 Start: 3964, Stop: 4410, Start Num: 82

Candidate Starts for SDcharge11_7:

(67, 3871), (Start: 68 @3877 has 7 MA's), (Start: 82 @3964 has 259 MA's), (94, 4012), (104, 4075), (126, 4201), (129, 4225), (133, 4252), (134, 4255), (135, 4258), (137, 4264), (154, 4339),

Gene: Saguaro_10 Start: 7187, Stop: 7600, Start Num: 85

Candidate Starts for Saguaro_10:

(69, 7094), (71, 7103), (Start: 75 @7127 has 1 MA's), (Start: 76 @7130 has 1 MA's), (Start: 85 @7187 has 31 MA's), (97, 7238), (99, 7247), (120, 7370), (122, 7385), (124, 7403), (128, 7433), (129, 7439), (133, 7466), (140, 7490), (141, 7493),

Gene: Samaymay_7 Start: 3962, Stop: 4408, Start Num: 82

Candidate Starts for Samaymay_7:

(Start: 68 @3875 has 7 MA's), (Start: 82 @3962 has 259 MA's), (104, 4073), (126, 4199), (129, 4223), (133, 4250), (135, 4256), (137, 4262), (154, 4337),

Gene: SassyCat97_7 Start: 3962, Stop: 4408, Start Num: 82

Candidate Starts for SassyCat97_7:

(Start: 68 @3875 has 7 MA's), (Start: 82 @3962 has 259 MA's), (104, 4073), (126, 4199), (129, 4223), (133, 4250), (135, 4256), (137, 4262), (154, 4337),

Gene: Schadenfreude_7 Start: 3963, Stop: 4409, Start Num: 82

Candidate Starts for Schadenfreude_7:

(Start: 68 @3876 has 7 MA's), (Start: 82 @3963 has 259 MA's), (104, 4074), (126, 4200), (129, 4224), (133, 4251), (135, 4257), (137, 4263), (154, 4338),

Gene: Schueller_7 Start: 3965, Stop: 4411, Start Num: 82

Candidate Starts for Schueller_7:

(Start: 68 @3878 has 7 MA's), (Start: 82 @3965 has 259 MA's), (104, 4076), (126, 4202), (129, 4226), (133, 4253), (135, 4259), (137, 4265), (154, 4340),

Gene: Scoot17C_7 Start: 3966, Stop: 4412, Start Num: 82

Candidate Starts for Scoot17C_7:

(Start: 68 @3879 has 7 MA's), (Start: 82 @3966 has 259 MA's), (104, 4077), (126, 4203), (129, 4227), (133, 4254), (135, 4260), (137, 4266),

Gene: Scrick_7 Start: 3966, Stop: 4412, Start Num: 82

Candidate Starts for Scrick_7:

(41, 3753), (Start: 46 @3768 has 3 MA's), (50, 3783), (53, 3792), (57, 3813), (67, 3873), (Start: 68 @3879 has 7 MA's), (Start: 82 @3966 has 259 MA's), (94, 4014), (104, 4077), (126, 4203), (129, 4227), (133, 4254), (134, 4257), (135, 4260), (137, 4266), (154, 4341),

Gene: Sejanus_6 Start: 3671, Stop: 4078, Start Num: 83

Candidate Starts for Sejanus_6:

(78, 3638), (Start: 83 @3671 has 5 MA's), (94, 3716), (98, 3734), (100, 3743), (102, 3761), (103, 3764), (104, 3779), (123, 3878), (124, 3893), (127, 3908), (132, 3953), (135, 3962), (137, 3968), (156, 4043),

Gene: Selr12_7 Start: 3965, Stop: 4411, Start Num: 82

Candidate Starts for Selr12_7:

(41, 3752), (Start: 46 @3767 has 3 MA's), (50, 3782), (53, 3791), (57, 3812), (67, 3872), (Start: 68 @3878 has 7 MA's), (Start: 82 @3965 has 259 MA's), (94, 4013), (104, 4076), (126, 4202), (129, 4226), (133, 4253), (134, 4256), (135, 4259), (137, 4265), (154, 4340),

Gene: Serendipitous_9 Start: 6319, Stop: 6720, Start Num: 88

Candidate Starts for Serendipitous_9:

(Start: 88 @6319 has 12 MA's), (94, 6346), (103, 6394), (109, 6442), (117, 6478), (121, 6493), (125, 6526), (126, 6535), (129, 6559), (157, 6691), (158, 6697),

Gene: Serendipity_7 Start: 3965, Stop: 4411, Start Num: 82

Candidate Starts for Serendipity_7:

(Start: 68 @3878 has 7 MA's), (Start: 82 @3965 has 259 MA's), (104, 4076), (126, 4202), (129, 4226), (133, 4253), (135, 4259), (137, 4265), (154, 4340),

Gene: Serpentine_007 Start: 3965, Stop: 4411, Start Num: 82

Candidate Starts for Serpentine_007:

(Start: 68 @3878 has 7 MA's), (Start: 82 @3965 has 259 MA's), (104, 4076), (126, 4202), (129, 4226), (133, 4253), (135, 4259), (137, 4265), (154, 4340),

Gene: Sheila_7 Start: 3963, Stop: 4409, Start Num: 82

Candidate Starts for Sheila_7:

(Start: 68 @3876 has 7 MA's), (Start: 82 @3963 has 259 MA's), (104, 4074), (126, 4200), (129, 4224), (133, 4251), (135, 4257), (137, 4263), (154, 4338),

Gene: Shenyu_9 Start: 6253, Stop: 6675, Start Num: 88

Candidate Starts for Shenyu_9:

(Start: 88 @6253 has 12 MA's), (94, 6280), (98, 6298), (109, 6376), (120, 6424), (125, 6460), (126, 6469), (129, 6493), (135, 6526), (143, 6565), (145, 6571), (158, 6652),

Gene: ShiVal_7 Start: 3965, Stop: 4411, Start Num: 82

Candidate Starts for ShiVal_7:

(Start: 68 @3878 has 7 MA's), (Start: 82 @3965 has 259 MA's), (104, 4076), (126, 4202), (129, 4226), (133, 4253), (135, 4259), (137, 4265), (154, 4340),

Gene: Sigman_7 Start: 3962, Stop: 4408, Start Num: 82

Candidate Starts for Sigman_7:

(Start: 68 @3875 has 7 MA's), (Start: 82 @3962 has 259 MA's), (104, 4073), (126, 4199), (129, 4223), (133, 4250), (135, 4256), (137, 4262), (154, 4337),

Gene: SilverBell_7 Start: 3965, Stop: 4411, Start Num: 82

Candidate Starts for SilverBell_7:

(Start: 68 @3878 has 7 MA's), (Start: 82 @3965 has 259 MA's), (104, 4076), (126, 4202), (129, 4226), (133, 4253), (135, 4259), (137, 4265), (154, 4340),

Gene: Simielle_7 Start: 3965, Stop: 4411, Start Num: 82

Candidate Starts for Simielle_7:

(Start: 68 @3878 has 7 MA's), (Start: 82 @3965 has 259 MA's), (104, 4076), (126, 4202), (129, 4226), (133, 4253), (135, 4259), (137, 4265), (154, 4340),

Gene: SirBeauregard_7 Start: 3963, Stop: 4409, Start Num: 82

Candidate Starts for SirBeauregard_7:

(41, 3750), (Start: 46 @3765 has 3 MA's), (50, 3780), (53, 3789), (57, 3810), (67, 3870), (Start: 68 @3876 has 7 MA's), (Start: 82 @3963 has 259 MA's), (94, 4011), (104, 4074), (126, 4200), (129, 4224), (133, 4251), (134, 4254), (135, 4257), (137, 4263), (154, 4338),

Gene: SirJeffery_9 Start: 6267, Stop: 6668, Start Num: 88

Candidate Starts for SirJeffery_9:

(Start: 88 @6267 has 12 MA's), (94, 6294), (97, 6306), (103, 6342), (109, 6390), (121, 6441), (125, 6474), (126, 6483), (129, 6507), (157, 6639), (158, 6645),

Gene: Skippy_7 Start: 3965, Stop: 4411, Start Num: 82

Candidate Starts for Skippy_7:

(Start: 68 @3878 has 7 MA's), (Start: 82 @3965 has 259 MA's), (104, 4076), (126, 4202), (129, 4226), (133, 4253), (135, 4259), (137, 4265), (154, 4340),

Gene: Slatt_7 Start: 3967, Stop: 4413, Start Num: 82

Candidate Starts for Slatt_7:

(Start: 68 @3880 has 7 MA's), (Start: 82 @3967 has 259 MA's), (104, 4078), (126, 4204), (129, 4228), (133, 4255), (135, 4261), (137, 4267), (154, 4342),

Gene: Soile_7 Start: 3964, Stop: 4410, Start Num: 82

Candidate Starts for Soile_7:

(Start: 68 @3877 has 7 MA's), (Start: 82 @3964 has 259 MA's), (94, 4012), (104, 4075), (126, 4201), (129, 4225), (133, 4252), (135, 4258), (137, 4264), (154, 4339),

Gene: Solosis_7 Start: 3965, Stop: 4411, Start Num: 82

Candidate Starts for Solosis_7:

(Start: 68 @3878 has 7 MA's), (Start: 82 @3965 has 259 MA's), (104, 4076), (126, 4202), (129, 4226), (133, 4253), (135, 4259), (137, 4265), (154, 4340),

Gene: Sophia_7 Start: 3965, Stop: 4411, Start Num: 82

Candidate Starts for Sophia_7:

(Start: 68 @3878 has 7 MA's), (Start: 82 @3965 has 259 MA's), (104, 4076), (126, 4202), (129, 4226), (133, 4253), (135, 4259), (137, 4265), (154, 4340),

Gene: Soto_7 Start: 3962, Stop: 4408, Start Num: 82

Candidate Starts for Soto_7:

(41, 3749), (Start: 46 @3764 has 3 MA's), (50, 3779), (53, 3788), (57, 3809), (67, 3869), (Start: 68 @3875 has 7 MA's), (Start: 82 @3962 has 259 MA's), (94, 4010), (104, 4073), (126, 4199), (129, 4223), (133, 4250), (134, 4253), (135, 4256), (137, 4262), (154, 4337),

Gene: Spartan300_7 Start: 3962, Stop: 4408, Start Num: 82

Candidate Starts for Spartan300_7:

(Start: 68 @3875 has 7 MA's), (Start: 82 @3962 has 259 MA's), (104, 4073), (126, 4199), (129, 4223), (133, 4250), (135, 4256), (137, 4262), (154, 4337),

Gene: Squid_7 Start: 3962, Stop: 4408, Start Num: 82

Candidate Starts for Squid_7:

(Start: 68 @3875 has 7 MA's), (Start: 82 @3962 has 259 MA's), (104, 4073), (126, 4199), (129, 4223), (133, 4250), (135, 4256), (137, 4262), (154, 4337),

Gene: Squiggle_7 Start: 3965, Stop: 4411, Start Num: 82

Candidate Starts for Squiggle_7:

(Start: 68 @3878 has 7 MA's), (Start: 82 @3965 has 259 MA's), (104, 4076), (126, 4202), (129, 4226), (133, 4253), (135, 4259), (137, 4265), (154, 4340),

Gene: StAugustine_13 Start: 8961, Stop: 9371, Start Num: 85

Candidate Starts for StAugustine_13:

(9, 8484), (11, 8511), (14, 8535), (18, 8550), (19, 8556), (22, 8589), (26, 8670), (33, 8718), (35, 8736), (43, 8778), (50, 8802), (57, 8832), (Start: 75 @8904 has 1 MA's), (77, 8919), (Start: 85 @8961 has 31 MA's), (97, 9012), (120, 9144), (128, 9207), (129, 9213), (139, 9261),

Gene: Stinger_6 Start: 4739, Stop: 5161, Start Num: 85

Candidate Starts for Stinger_6:

(Start: 85 @4739 has 31 MA's), (Start: 90 @4757 has 1 MA's), (Start: 91 @4763 has 2 MA's), (97, 4790), (111, 4880), (117, 4910), (122, 4937), (123, 4940), (125, 4958), (129, 4991), (141, 5045), (154, 5093), (157, 5123),

Gene: StinkyVeggy_10 Start: 6414, Stop: 6836, Start Num: 88

Candidate Starts for StinkyVeggy_10:

(Start: 88 @6414 has 12 MA's), (93, 6435), (94, 6441), (98, 6459), (109, 6537), (120, 6585), (125, 6621), (126, 6630), (129, 6654), (135, 6687), (143, 6726), (145, 6732), (158, 6813),

Gene: Struggle_7 Start: 3962, Stop: 4408, Start Num: 82

Candidate Starts for Struggle_7:

(41, 3749), (Start: 46 @3764 has 3 MA's), (50, 3779), (53, 3788), (57, 3809), (67, 3869), (Start: 68 @3875 has 7 MA's), (Start: 82 @3962 has 259 MA's), (94, 4010), (104, 4073), (126, 4199), (129, 4223), (133, 4250), (135, 4256), (137, 4262), (154, 4337),

Gene: Suffolk_7 Start: 3964, Stop: 4410, Start Num: 82

Candidate Starts for Suffolk_7:

(Start: 68 @3877 has 7 MA's), (Start: 82 @3964 has 259 MA's), (104, 4075), (126, 4201), (129, 4225), (133, 4252), (135, 4258), (137, 4264),

Gene: Suigeneris_9 Start: 6267, Stop: 6668, Start Num: 88

Candidate Starts for Suigeneris_9:

(Start: 88 @6267 has 12 MA's), (94, 6294), (97, 6306), (103, 6342), (109, 6390), (121, 6441), (125, 6474), (126, 6483), (129, 6507), (157, 6639), (158, 6645),

Gene: Surely_7 Start: 3965, Stop: 4411, Start Num: 82

Candidate Starts for Surely_7:

(Start: 68 @3878 has 7 MA's), (Start: 82 @3965 has 259 MA's), (104, 4076), (126, 4202), (129, 4226), (133, 4253), (135, 4259), (137, 4265), (154, 4340),

Gene: Swiphy_7 Start: 3965, Stop: 4411, Start Num: 82

Candidate Starts for Swiphy_7:

(Start: 68 @3878 has 7 MA's), (Start: 82 @3965 has 259 MA's), (104, 4076), (126, 4202), (129, 4226), (133, 4253), (134, 4256), (135, 4259), (137, 4265), (154, 4340),

Gene: Swish_7 Start: 3879, Stop: 4412, Start Num: 68

Candidate Starts for Swish_7:

(Start: 68 @3879 has 7 MA's), (Start: 82 @3966 has 259 MA's), (104, 4077), (126, 4203), (129, 4227), (133, 4254), (135, 4260), (137, 4266),

Gene: TallGrassMM_7 Start: 3965, Stop: 4411, Start Num: 82

Candidate Starts for TallGrassMM_7:

(Start: 68 @3878 has 7 MA's), (Start: 82 @3965 has 259 MA's), (104, 4076), (126, 4202), (129, 4226), (133, 4253), (135, 4259), (137, 4265), (154, 4340),

Gene: Taptic_5 Start: 2882, Stop: 3286, Start Num: 85

Candidate Starts for Taptic_5:

(Start: 85 @2882 has 31 MA's), (89, 2897), (94, 2921), (101, 2951), (116, 3044), (130, 3128), (137, 3161), (147, 3185), (148, 3191), (157, 3251),

Gene: Telesworld_7 Start: 3965, Stop: 4411, Start Num: 82

Candidate Starts for Telesworld_7:

(Start: 68 @3878 has 7 MA's), (Start: 82 @3965 has 259 MA's), (104, 4076), (126, 4202), (129, 4226), (133, 4253), (135, 4259), (137, 4265), (154, 4340),

Gene: Thonko_6 Start: 3289, Stop: 3702, Start Num: 84

Candidate Starts for Thonko_6:

(60, 3148), (Start: 84 @3289 has 1 MA's), (96, 3340), (97, 3343), (99, 3352), (122, 3490), (128, 3538), (129, 3544), (131, 3556), (133, 3571), (135, 3577), (150, 3619), (151, 3628),

Gene: Thora_7 Start: 3962, Stop: 4408, Start Num: 82

Candidate Starts for Thora_7:

(Start: 68 @3875 has 7 MA's), (Start: 82 @3962 has 259 MA's), (104, 4073), (126, 4199), (129, 4223), (133, 4250), (135, 4256), (137, 4262), (154, 4337),

Gene: ThreeOh3D2_7 Start: 3963, Stop: 4409, Start Num: 82

Candidate Starts for ThreeOh3D2_7:

(Start: 68 @3876 has 7 MA's), (Start: 82 @3963 has 259 MA's), (104, 4074), (126, 4200), (129, 4224), (133, 4251), (135, 4257), (137, 4263), (154, 4338),

Gene: Thunderbird_7 Start: 3964, Stop: 4410, Start Num: 82

Candidate Starts for Thunderbird_7:

(Start: 68 @3877 has 7 MA's), (Start: 82 @3964 has 259 MA's), (94, 4012), (126, 4201), (129, 4225), (133, 4252), (134, 4255), (135, 4258), (137, 4264), (154, 4339),

Gene: Timmi_7 Start: 3965, Stop: 4411, Start Num: 82

Candidate Starts for Timmi_7:

(Start: 68 @3878 has 7 MA's), (Start: 82 @3965 has 259 MA's), (126, 4202), (129, 4226), (133, 4253), (135, 4259), (137, 4265), (154, 4340),

Gene: TomBombadil_7 Start: 3965, Stop: 4411, Start Num: 82

Candidate Starts for TomBombadil_7:

(Start: 68 @3878 has 7 MA's), (Start: 82 @3965 has 259 MA's), (104, 4076), (126, 4202), (129, 4226), (133, 4253), (135, 4259), (137, 4265), (154, 4340),

Gene: Tomlarah_7 Start: 3965, Stop: 4411, Start Num: 82

Candidate Starts for Tomlarah_7:

(41, 3752), (Start: 46 @3767 has 3 MA's), (50, 3782), (53, 3791), (57, 3812), (67, 3872), (Start: 68 @3878 has 7 MA's), (Start: 82 @3965 has 259 MA's), (104, 4076), (126, 4202), (129, 4226), (133, 4253), (135, 4259), (137, 4265), (154, 4340),

Gene: Toni_7 Start: 3966, Stop: 4412, Start Num: 82

Candidate Starts for Toni_7:

(Start: 68 @3879 has 7 MA's), (Start: 82 @3966 has 259 MA's), (104, 4077), (126, 4203), (129, 4227), (133, 4254), (135, 4260), (137, 4266),

Gene: TooFast2Furius_9 Start: 4200, Stop: 4646, Start Num: 82

Candidate Starts for TooFast2Furius_9:

(Start: 68 @4113 has 7 MA's), (Start: 82 @4200 has 259 MA's), (104, 4311), (126, 4437), (129, 4461), (133, 4488), (135, 4494), (137, 4500), (154, 4575),

Gene: Tooj_7 Start: 3963, Stop: 4409, Start Num: 82

Candidate Starts for Tooj_7:

(Start: 68 @3876 has 7 MA's), (Start: 82 @3963 has 259 MA's), (104, 4074), (126, 4200), (129, 4224), (133, 4251), (135, 4257), (137, 4263),

Gene: True_7 Start: 3963, Stop: 4409, Start Num: 82

Candidate Starts for True_7:

(Start: 68 @3876 has 7 MA's), (Start: 82 @3963 has 259 MA's), (104, 4074), (126, 4200), (129, 4224), (133, 4251), (135, 4257), (137, 4263), (154, 4338),

Gene: Trypo_7 Start: 3962, Stop: 4408, Start Num: 82

Candidate Starts for Trypo_7:

(41, 3749), (Start: 46 @3764 has 3 MA's), (50, 3779), (53, 3788), (57, 3809), (67, 3869), (Start: 68 @3875 has 7 MA's), (Start: 82 @3962 has 259 MA's), (94, 4010), (104, 4073), (126, 4199), (129, 4223), (133, 4250), (135, 4256), (137, 4262), (154, 4337),

Gene: TyrionL_7 Start: 3962, Stop: 4408, Start Num: 82

Candidate Starts for TyrionL_7:

(41, 3749), (Start: 46 @3764 has 3 MA's), (50, 3779), (53, 3788), (57, 3809), (67, 3869), (Start: 68 @3875 has 7 MA's), (Start: 82 @3962 has 259 MA's), (94, 4010), (104, 4073), (126, 4199), (129, 4223), (133, 4250), (135, 4256), (137, 4262), (154, 4337),

Gene: UAch1_7 Start: 3965, Stop: 4411, Start Num: 82

Candidate Starts for UAch1_7:

(Start: 68 @3878 has 7 MA's), (Start: 82 @3965 has 259 MA's), (104, 4076), (126, 4202), (129, 4226), (133, 4253), (135, 4259), (137, 4265), (154, 4340),

Gene: UncleHowie_7 Start: 3965, Stop: 4411, Start Num: 82

Candidate Starts for UncleHowie_7:

(Start: 68 @3878 has 7 MA's), (Start: 82 @3965 has 259 MA's), (104, 4076), (126, 4202), (129, 4226), (133, 4253), (135, 4259), (137, 4265), (154, 4340),

Gene: Usavi_7 Start: 3962, Stop: 4408, Start Num: 82

Candidate Starts for Usavi_7:

(Start: 68 @3875 has 7 MA's), (Start: 82 @3962 has 259 MA's), (104, 4073), (126, 4199), (129, 4223), (133, 4250), (135, 4256), (137, 4262), (154, 4337),

Gene: Vaishali24_7 Start: 3966, Stop: 4412, Start Num: 82

Candidate Starts for Vaishali24_7:

(Start: 68 @3879 has 7 MA's), (Start: 82 @3966 has 259 MA's), (104, 4077), (126, 4203), (129, 4227), (133, 4254), (135, 4260), (137, 4266), (154, 4341),

Gene: Valjean_7 Start: 3965, Stop: 4411, Start Num: 82

Candidate Starts for Valjean_7:

(Start: 68 @3878 has 7 MA's), (Start: 82 @3965 has 259 MA's), (104, 4076), (126, 4202), (129, 4226), (133, 4253), (135, 4259), (137, 4265), (154, 4340),

Gene: Vaticameos_7 Start: 3962, Stop: 4408, Start Num: 82

Candidate Starts for Vaticameos_7:

(Start: 68 @3875 has 7 MA's), (Start: 82 @3962 has 259 MA's), (104, 4073), (126, 4199), (129, 4223), (133, 4250), (135, 4256), (137, 4262), (154, 4337),

Gene: Veritas_7 Start: 3962, Stop: 4408, Start Num: 82

Candidate Starts for Veritas_7:

(41, 3749), (Start: 46 @3764 has 3 MA's), (50, 3779), (53, 3788), (57, 3809), (67, 3869), (Start: 68 @3875 has 7 MA's), (Start: 82 @3962 has 259 MA's), (94, 4010), (104, 4073), (126, 4199), (129, 4223), (133, 4250), (135, 4256), (137, 4262), (154, 4337),

Gene: Vincenzo_9 Start: 6977, Stop: 7429, Start Num: 79

Candidate Starts for Vincenzo_9:

(Start: 79 @6977 has 2 MA's), (Start: 85 @7007 has 31 MA's), (Start: 90 @7025 has 1 MA's), (113, 7160), (115, 7175), (129, 7259), (130, 7265), (135, 7292), (138, 7298), (145, 7316),

Gene: VioletZ_8 Start: 6302, Stop: 6721, Start Num: 85

Candidate Starts for VioletZ_8:

(5, 5774), (6, 5789), (7, 5792), (10, 5822), (14, 5849), (15, 5858), (16, 5864), (17, 5870), (20, 5894), (25, 5984), (27, 6008), (29, 6020), (39, 6086), (42, 6101), (52, 6131), (53, 6137), (54, 6146), (61, 6164), (Start: 68 @6206 has 7 MA's), (71, 6221), (74, 6236), (Start: 75 @6242 has 1 MA's), (Start: 76 @6245 has 1 MA's), (Start: 85 @6302 has 31 MA's), (Start: 90 @6320 has 1 MA's), (Start: 91 @6326 has 2 MA's), (92, 6332), (97, 6353), (103, 6389), (111, 6443), (129, 6554), (130, 6560), (133, 6581), (141, 6608), (149, 6626), (153, 6650), (154, 6656),

Gene: Virapocalypse_7 Start: 3963, Stop: 4409, Start Num: 82

Candidate Starts for Virapocalypse_7:

(Start: 68 @3876 has 7 MA's), (Start: 82 @3963 has 259 MA's), (104, 4074), (126, 4200), (129, 4224), (133, 4251), (135, 4257), (137, 4263),

Gene: Virgeve_7 Start: 3965, Stop: 4411, Start Num: 82

Candidate Starts for Virgeve_7:

(Start: 68 @3878 has 7 MA's), (Start: 82 @3965 has 259 MA's), (104, 4076), (126, 4202), (129, 4226), (133, 4253), (135, 4259), (137, 4265), (154, 4340),

Gene: Vista_7 Start: 3965, Stop: 4411, Start Num: 82

Candidate Starts for Vista_7:

(Start: 68 @3878 has 7 MA's), (Start: 82 @3965 has 259 MA's), (104, 4076), (126, 4202), (129, 4226), (133, 4253), (135, 4259), (137, 4265), (154, 4340),

Gene: Vivaldi_7 Start: 3963, Stop: 4409, Start Num: 82

Candidate Starts for Vivaldi_7:

(Start: 68 @3876 has 7 MA's), (Start: 82 @3963 has 259 MA's), (104, 4074), (126, 4200), (129, 4224), (133, 4251), (135, 4257), (137, 4263), (154, 4338),

Gene: Vortex_7 Start: 3966, Stop: 4412, Start Num: 82

Candidate Starts for Vortex_7:

(Start: 68 @3879 has 7 MA's), (Start: 82 @3966 has 259 MA's), (104, 4077), (126, 4203), (129, 4227), (133, 4254), (135, 4260), (137, 4266), (154, 4341),

Gene: Waleliano_8 Start: 6302, Stop: 6721, Start Num: 85

Candidate Starts for Waleliano_8:

(5, 5774), (6, 5789), (7, 5792), (10, 5822), (14, 5849), (15, 5858), (16, 5864), (17, 5870), (19, 5879), (25, 5984), (27, 6008), (29, 6020), (39, 6086), (40, 6095), (42, 6101), (52, 6131), (53, 6137), (54, 6146), (66, 6191), (Start: 68 @6206 has 7 MA's), (71, 6221), (74, 6236), (Start: 75 @6242 has 1 MA's), (Start: 76 @6245 has 1 MA's), (Start: 85 @6302 has 31 MA's), (Start: 90 @6320 has 1 MA's), (Start: 91 @6326 has 2 MA's), (92, 6332), (97, 6353), (103, 6389), (111, 6443), (129, 6554), (130, 6560), (133, 6581), (141, 6608), (149, 6626), (153, 6650), (154, 6656),

Gene: Wallhey_7 Start: 3962, Stop: 4408, Start Num: 82

Candidate Starts for Wallhey_7:

(41, 3749), (Start: 46 @3764 has 3 MA's), (50, 3779), (53, 3788), (57, 3809), (67, 3869), (Start: 68 @3875 has 7 MA's), (Start: 82 @3962 has 259 MA's), (94, 4010), (104, 4073), (126, 4199), (129, 4223), (133, 4250), (135, 4256), (137, 4262), (154, 4337),

Gene: Waterdiva_7 Start: 3966, Stop: 4412, Start Num: 82

Candidate Starts for Waterdiva_7:

(Start: 68 @3879 has 7 MA's), (Start: 82 @3966 has 259 MA's), (104, 4077), (126, 4203), (129, 4227), (133, 4254), (135, 4260), (137, 4266), (154, 4341),

Gene: Weher20_7 Start: 3962, Stop: 4408, Start Num: 82

Candidate Starts for Weher20_7:

(Start: 68 @3875 has 7 MA's), (Start: 82 @3962 has 259 MA's), (104, 4073), (126, 4199), (129, 4223), (133, 4250), (135, 4256), (137, 4262), (154, 4337),

Gene: Windsor_7 Start: 3963, Stop: 4409, Start Num: 82

Candidate Starts for Windsor_7:

(41, 3750), (Start: 46 @3765 has 3 MA's), (50, 3780), (53, 3789), (57, 3810), (67, 3870), (Start: 68 @3876 has 7 MA's), (Start: 82 @3963 has 259 MA's), (94, 4011), (104, 4074), (126, 4200), (129, 4224), (133, 4251), (134, 4254), (135, 4257), (137, 4263), (154, 4338),

Gene: Xavier_7 Start: 3965, Stop: 4411, Start Num: 82

Candidate Starts for Xavier_7:

(Start: 68 @3878 has 7 MA's), (Start: 82 @3965 has 259 MA's), (104, 4076), (126, 4202), (129, 4226), (133, 4253), (135, 4259), (137, 4265), (154, 4340),

Gene: Xincheng_8 Start: 6144, Stop: 6545, Start Num: 90

Candidate Starts for Xincheng_8:

(73, 6057), (Start: 75 @6066 has 1 MA's), (Start: 76 @6069 has 1 MA's), (Start: 85 @6126 has 31 MA's), (Start: 90 @6144 has 1 MA's), (Start: 91 @6150 has 2 MA's), (92, 6156), (97, 6177), (103, 6213), (111, 6267), (129, 6378), (130, 6384), (133, 6405), (141, 6432), (153, 6474), (154, 6480),

Gene: Yoshand_7 Start: 3963, Stop: 4409, Start Num: 82

Candidate Starts for Yoshand_7:

(Start: 68 @3876 has 7 MA's), (Start: 82 @3963 has 259 MA's), (104, 4074), (126, 4200), (129, 4224), (133, 4251), (135, 4257), (137, 4263), (154, 4338),

Gene: YouGoGlencoco_7 Start: 3962, Stop: 4408, Start Num: 82

Candidate Starts for YouGoGlencoco_7:

(Start: 68 @3875 has 7 MA's), (Start: 82 @3962 has 259 MA's), (104, 4073), (126, 4199), (129, 4223), (133, 4250), (135, 4256), (137, 4262), (154, 4337),

Gene: Zaider_8 Start: 4195, Stop: 4641, Start Num: 82

Candidate Starts for Zaider_8:

(Start: 68 @4108 has 7 MA's), (Start: 82 @4195 has 259 MA's), (104, 4306), (126, 4432), (129, 4456), (133, 4483), (135, 4489), (137, 4495), (154, 4570),

Gene: Zelda_7 Start: 3965, Stop: 4411, Start Num: 82

Candidate Starts for Zelda_7:

(Start: 68 @3878 has 7 MA's), (Start: 82 @3965 has 259 MA's), (104, 4076), (126, 4202), (129, 4226), (133, 4253), (135, 4259), (137, 4265), (154, 4340),

Gene: Zemanar_9 Start: 6302, Stop: 6721, Start Num: 85

Candidate Starts for Zemanar_9:

(5, 5774), (6, 5789), (7, 5792), (10, 5822), (14, 5849), (15, 5858), (16, 5864), (17, 5870), (20, 5894), (25, 5984), (27, 6008), (29, 6020), (39, 6086), (42, 6101), (52, 6131), (53, 6137), (54, 6146), (61, 6164), (Start: 68 @6206 has 7 MA's), (71, 6221), (74, 6236), (Start: 75 @6242 has 1 MA's), (Start: 76 @6245 has 1 MA's), (Start: 85 @6302 has 31 MA's), (Start: 90 @6320 has 1 MA's), (Start: 91 @6326 has 2 MA's), (92, 6332), (97, 6353), (103, 6389), (111, 6443), (129, 6554), (130, 6560), (133, 6581), (141, 6608), (149, 6626), (153, 6650), (154, 6656),

Gene: Zenteno07_12 Start: 5148, Stop: 5579, Start Num: 81

Candidate Starts for Zenteno07_12:

(51, 4974), (Start: 81 @5148 has 1 MA's), (Start: 82 @5154 has 259 MA's), (94, 5199), (119, 5343), (133, 5439), (149, 5484), (154, 5514),

Gene: Zonia_7 Start: 3961, Stop: 4407, Start Num: 82

Candidate Starts for Zonia_7:

(Start: 68 @3874 has 7 MA's), (Start: 82 @3961 has 259 MA's), (94, 4009), (126, 4198), (129, 4222), (133, 4249), (134, 4252), (135, 4255), (137, 4261), (154, 4336),