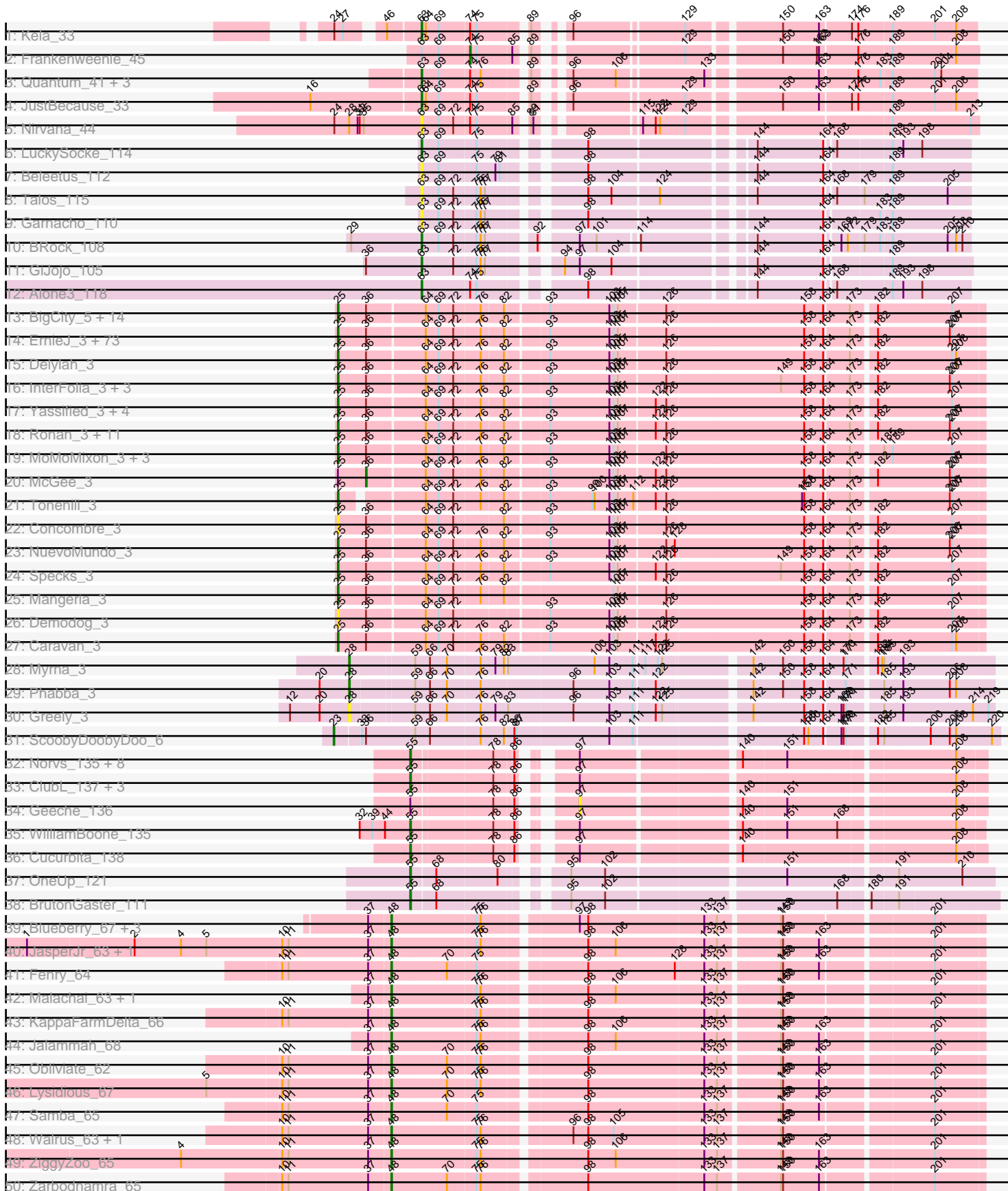
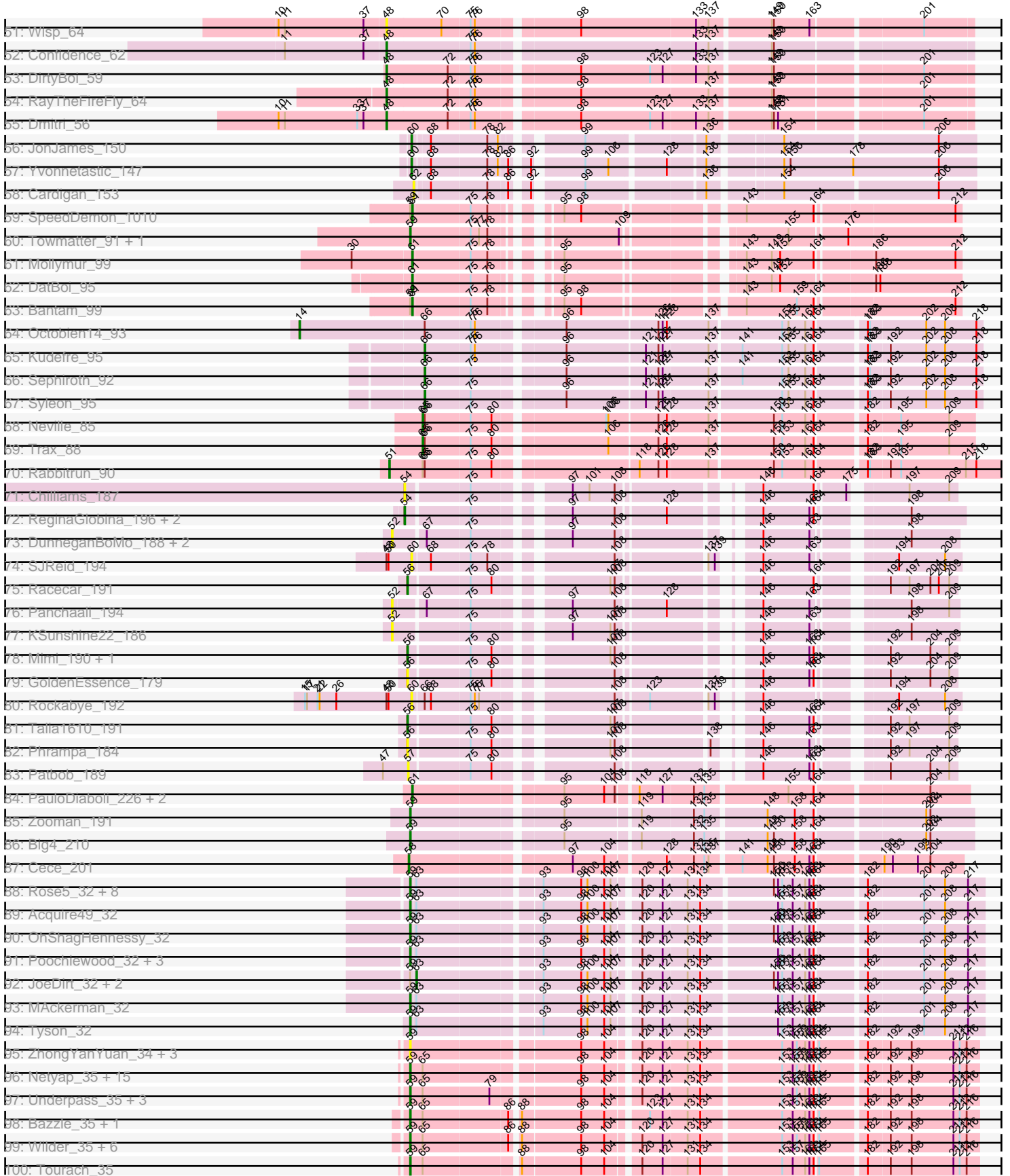


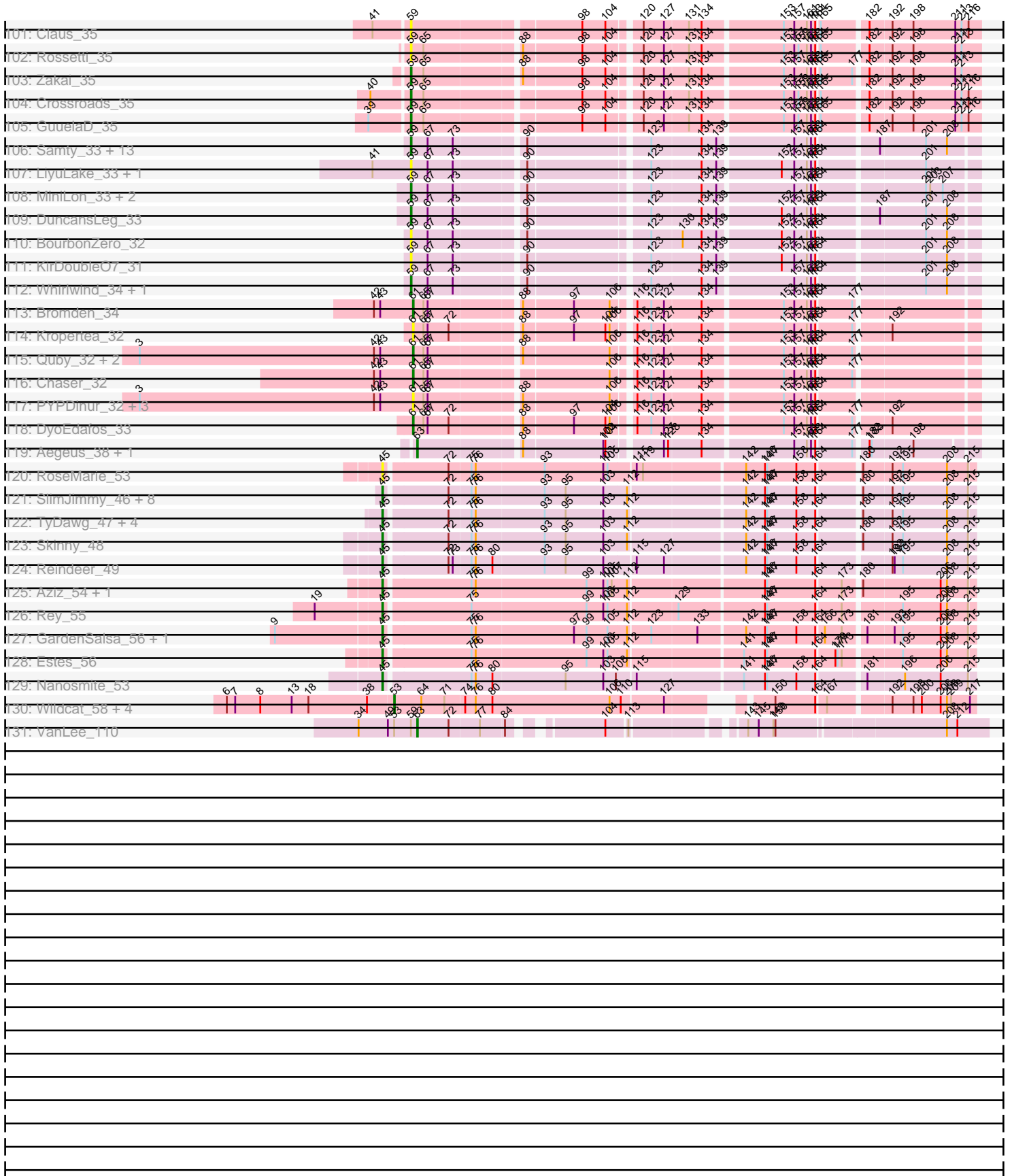
Pham 224195



Pham 224195



Pham 224195



Note: Tracks are now grouped by subcluster and scaled. Switching in subcluster is indicated by changes in track color. Track scale is now set by default to display the region 30 bp upstream of start 1 to 30 bp downstream of the last possible start. If this default region is judged to be packed too tightly with annotated starts, the track will be further scaled to only show that region of the ORF with annotated starts. This action will be indicated by adding "Zoomed" to the title. For starts, yellow indicates the location of called starts comprised solely of Glimmer/GeneMark auto-annotations, green indicates the location of called starts with at least 1 manual gene annotation.

Pham 224195 Report

This analysis was run 03/28/25 on database version 593.

Pham number 224195 has 349 members, 75 are drafts.

Phages represented in each track:

- Track 1 : Kela_33
- Track 2 : Frankenweenie_45
- Track 3 : Quantum_41, Kradal_42, Satis_42, EhyElimayoE_42
- Track 4 : JustBecause_33
- Track 5 : Nirvana_44
- Track 6 : LuckySocke_114
- Track 7 : Beleetus_112
- Track 8 : Talos_115
- Track 9 : Garnacho_110
- Track 10 : BRock_108
- Track 11 : GiJojo_105
- Track 12 : Alone3_118
- Track 13 : BigCity_5, CharlieB_3, Grasshills_5, Bigswole_3, I3_3, EggyFarm_5, Lethe_3, Dandelion_2, JulietS_3, Nappy_3, NoodleTree_3, Astraea_3, JayJay_3, StephanieG_3, Grungle_3
- Track 14 : ErnieJ_3, Trinitium_3, Teardrop_3, Janiyra_3, Wally_3, YoungMoneyMata_3, Chargie21_3, Basquiat_3, Rizal_3, Latch_3, Essence_3, Kboogie_3, Matsumoto_3, Babyland_3, Ading_3, Tainan_3, Flabslab_3, Derek_3, Turret_3, Napoleon13_3, Jezreel_3, Jaygup_3, Pio_3, Ngannou_3, Gamgam_3, DTDevon_3, Chomp_3, CindyLou_3, Momo_3, Bangla1971_3, ShiaLabeouf_3, EmmaElysia_3, Pier_3, Ghost_3, Shnickers_3, Breeniome_3, Jedediah_3, Kamryn_3, Ablatia_3, Phusco_3, Naija_3, Jemmno_3, Belieber_3, ChickenPhender_3, ArcherS7_3, Tortoise16_2, Dietrick_3, Patter_3, Audrick_3, Fludd_3, Tyke_3, GlutenPhree_3, StubbySaigey_3, Drazdys_3, Spud_3, Cactojaque_2, Morizzled23_3, Spec_3, ValleyTerrace_3, Guwapp_3, Phlegm_3, InigoMontoya_3, Rahel_3, Gabriel_3, Amataga_3, LifeSavor_3, ChaylaJr_3, JPickles_3, Adlitam_3, BackyardAgain_3, Atlantean_3, Pivoine_3, SmallFry_3, SilverDipper_3
- Track 15 : Delylah_3
- Track 16 : InterFolia_3, FrayBell_3, LordLeafolot_3, LolaVinca_3
- Track 17 : Yassified_3, Halldule_3, Blackdragon_3, Bxz1_3, DeejaClivia_3
- Track 18 : Ronan_3, Melpomini_3, Shaqnato_3, ScottMcG_3, BadAgartude_3, Koguma_3, Littleton_3, Sprinklers_3, Sauce_3, Catera_3, Blackbrain_3, EasyJones_3
- Track 19 : MoMoMixon_3, Nidhogg_3, JigglyPuff_3, Naval22_3
- Track 20 : McGee_3
- Track 21 : Tonenili_3

- Track 22 : Concombre_3
- Track 23 : NuevoMundo_3
- Track 24 : Specks_3
- Track 25 : Mangeria_3
- Track 26 : Demodog_3
- Track 27 : Caravan_3
- Track 28 : Myrna_3
- Track 29 : Phabba_3
- Track 30 : Greely_3
- Track 31 : ScoobyDoobyDoo_6
- Track 32 : Norvs_135, Aphelion_136, Engineer_139, Abscondus_136, Smoothie_138, Lozinak_137, Culver_136, Bachita_140, Dusty_133
- Track 33 : ClubL_137, PhinkBoden_136, Toniann_137, Miskis_132
- Track 34 : Geeche_136
- Track 35 : WilliamBoone_135
- Track 36 : Cucurbita_138
- Track 37 : OneUp_121
- Track 38 : BrutonGaster_111
- Track 39 : Blueberry_67, Gambino_70, Azula_68, MissRona_68
- Track 40 : JasperJr_63, Guacamole_63
- Track 41 : Fenry_64
- Track 42 : Malachai_63, Begonia_63
- Track 43 : KappaFarmDelta_66
- Track 44 : Jalammah_68
- Track 45 : Obliviate_62
- Track 46 : Lysidious_67
- Track 47 : Samba_65
- Track 48 : Walrus_63, Pipp_67
- Track 49 : ZiggyZoo_65
- Track 50 : Zarbodnamra_65
- Track 51 : Wisp_64
- Track 52 : Confidence_62
- Track 53 : DirtyBoi_59
- Track 54 : RayTheFireFly_64
- Track 55 : Dmitri_56
- Track 56 : JonJames_150
- Track 57 : Yvonnetastic_147
- Track 58 : Cardigan_153
- Track 59 : SpeedDemon_1010
- Track 60 : Towmatter_91, Daredevil_89
- Track 61 : Mollymur_99
- Track 62 : DatBoi_95
- Track 63 : Bantam_99
- Track 64 : Octobien14_93
- Track 65 : Kudfre_95
- Track 66 : Sephiroth_92
- Track 67 : Syleon_95
- Track 68 : Neville_85
- Track 69 : Trax_88
- Track 70 : Rabbitrun_90
- Track 71 : Chilliams_187
- Track 72 : ReginaGlobina_196, LeoJr_192, Atuin_183
- Track 73 : DunneganBoMo_188, Ellewin_187, WaddleDee_188

- Track 74 : SJReid_194
- Track 75 : Racecar_191
- Track 76 : Panchaali_194
- Track 77 : KSunshine22_186
- Track 78 : Mimi_190, Bloom_194
- Track 79 : GoldenEssence_179
- Track 80 : Rockabye_192
- Track 81 : Talia1610_191
- Track 82 : Phrampa_184
- Track 83 : Patbob_189
- Track 84 : PauloDiaboli_226, A3Wally_226, Dodo_225
- Track 85 : Zooman_191
- Track 86 : Big4_210
- Track 87 : Cece_201
- Track 88 : Rose5_32, Enceladus_32, DirkDirk_32, Calm_32, CicholasNage_32, Zaria_32, Wamburggrxpress_32, Wyatt2_32, Appletree2_32
- Track 89 : Acquire49_32
- Track 90 : OhShagHennessy_32
- Track 91 : Poochiewood_32, Halena_32, Silverleaf_32, AvadaKedavra_32
- Track 92 : JoeDirt_32, LeBron_32, UPIE_32
- Track 93 : MAckerman_32
- Track 94 : Tyson_32
- Track 95 : ZhongYanYuan_34, Baoshan_34, DHan_36, DanBing_35
- Track 96 : Netyap_35, Lewan_35, Rumpelstiltskin_35, Winky_35, Vetrix_35, Miley16_35, Faith1_35, Gabriela_35, DrSeegs_35, Itos_35, SoJulia_36, Loadrie_35, Breezona_35, BigCheese_35, BobsGarage_35, Finemlucis_35
- Track 97 : Underpass_35, Gardann_35, LilDestine_35, Nicholasp3_35
- Track 98 : Bazzle_35, Archie_35
- Track 99 : Wilder_35, Kahlid_35, Soap141_35, Wigglewiggle_35, MkaliMitinis3_35, Hafay_35, Sarshaun_35
- Track 100 : Tourach_35
- Track 101 : Claus_35
- Track 102 : Rossetti_35
- Track 103 : Zakai_35
- Track 104 : Crossroads_35
- Track 105 : GuuelaD_35
- Track 106 : Samty_33, Clautastrophe_33, Kingsolomon_33, TriFive_33, Nicholas_33, Lumos_33, Moostard_33, Snenia_33, Finnry_33, MsGreen_33, Jobypre_33, Red305_33, Jubie_33, Bellis_33
- Track 107 : LiyuLake_33, Ellson_33
- Track 108 : MiniLon_33, MiniMac_33, Lolly9_33
- Track 109 : DuncansLeg_33
- Track 110 : BourbonZero_32
- Track 111 : KirDoubleO7_31
- Track 112 : Whirlwind_34, Krypton555_33
- Track 113 : Bromden_34
- Track 114 : Kropertea_32
- Track 115 : Quby_32, Douge_32, FarmResident_32
- Track 116 : Chaser_32
- Track 117 : PYPDinur_32, BrainDrainer_33, Sheng711_32, Douzhi_32
- Track 118 : DyoEdafos_33
- Track 119 : Aegeus_38, Baudelaire_38
- Track 120 : RoseMarie_53

- Track 121 : SlimJimmy_46, KleverKiS_48, Diminimus_48, Auspice_47, Dulcita_48, Glaske16_48, FreakyGoo_48, Izel_47, Bricole_47
- Track 122 : TyDawg_47, PegLeg_47, Bongo_47, LilhomieP_46, IPhane7_47
- Track 123 : Skinny_48
- Track 124 : Reindeer_49
- Track 125 : Aziz_54, GenevaB15_54
- Track 126 : Rey_55
- Track 127 : GardenSalsa_56, MrMagoo_56
- Track 128 : Estes_56
- Track 129 : Nanosmite_53
- Track 130 : Wildcat_58, MaryV_58, Cosmo_58, Azrael100_57, EniyanLRS_55
- Track 131 : VanLee_110

Summary of Final Annotations (See graph section above for start numbers):

The start number called the most often in the published annotations is 25, it was called in 102 of the 274 non-draft genes in the pham.

Genes that call this "Most Annotated" start:

- Ablatia_3, Ading_3, Adlitam_3, Amataga_3, ArcherS7_3, Astraea_3, Atlantean_3, Audrick_3, Babyland_3, BackyardAgain_3, BadAgartude_3, Bangla1971_3, Basquiat_3, Belieber_3, BigCity_5, Bigswole_3, Blackbrain_3, Blackdragon_3, Breeniome_3, Bxz1_3, Cactojaque_2, Caravan_3, Catera_3, Chargie21_3, CharlieB_3, ChaylaJr_3, ChickenPhender_3, Chomp_3, CindyLou_3, Concombre_3, DTDevon_3, Dandelion_2, DeejaClivia_3, Delylah_3, Demodog_3, Derek_3, Dietrick_3, Drazdys_3, EasyJones_3, EggyFarm_5, EmmaElysia_3, ErnieJ_3, Essence_3, Flabslab_3, Fludd_3, FrayBell_3, Gabriel_3, Gangam_3, Ghost_3, GlutenPhree_3, Grasshills_5, Grungle_3, Guwapp_3, Halldule_3, I3_3, InigoMontoya_3, InterFolia_3, JPickles_3, Janiyra_3, JayJay_3, Jaygup_3, Jedediah_3, Jemmno_3, Jezreel_3, JigglyPuff_3, JulietS_3, Kamryn_3, Kboogie_3, Koguma_3, Latch_3, Lethe_3, LifeSavor_3, Littleton_3, LolaVinca_3, LordLeafolot_3, Mangeria_3, Matsumoto_3, Melpomini_3, MoMoMixon_3, Momo_3, Morizzled23_3, Naija_3, Napoleon13_3, Nappy_3, Naval22_3, Ngannou_3, Nidhogg_3, NoodleTree_3, NuevoMundo_3, Patter_3, Phlegm_3, Phusco_3, Pier_3, Pio_3, Pivoine_3, Rahel_3, Rizal_3, Ronan_3, Sauce_3, ScottMcG_3, Shaqnato_3, ShiaLabeouf_3, Shnickers_3, SilverDipper_3, SmallFry_3, Spec_3, Specks_3, Sprinklers_3, Spud_3, StephanieG_3, StubbySaigey_3, Tainan_3, Teardrop_3, Tonenili_3, Tortoise16_2, Trinitium_3, Turret_3, Tyke_3, ValleyTerrace_3, Wally_3, Yassified_3, YoungMoneyMata_3,

Genes that have the "Most Annotated" start but do not call it:

- McGee_3,

Genes that do not have the "Most Annotated" start:

- A3Wally_226, Abscondus_136, Acquire49_32, Aegeus_38, Alone3_118, Aphelion_136, Appletree2_32, Archie_35, Atuin_183, Auspice_47, AvadaKedavra_32, Aziz_54, Azrael100_57, Azula_68, BRock_108, Bachita_140, Bantam_99, Baoshan_34, Baudelaire_38, Bazzle_35, Begonia_63, Beleetus_112, Bellis_33, Big4_210, BigCheese_35, Bloom_194, Blueberry_67, BobsGarage_35, Bongo_47, BourbonZero_32, BrainDrainer_33, Breezona_35, Bricole_47,

Bromden_34, BrutonGaster_111, Calm_32, Cardigan_153, Cece_201, Chaser_32, Chilliams_187, CicholasNage_32, Claus_35, Clautastrophe_33, ClubL_137, Confidence_62, Cosmo_58, Crossroads_35, Cucurbita_138, Culver_136, DHan_36, DanBing_35, Daredevil_89, DatBoi_95, Diminimus_48, DirkDirk_32, DirtyBoi_59, Dmitri_56, Dodo_225, Douge_32, Douzhi_32, DrSeegs_35, Dulcita_48, DuncansLeg_33, DunneganBoMo_188, Dusty_133, DyoEdafos_33, EhyElimayoE_42, Ellewin_187, Ellson_33, Enceladus_32, Engineer_139, EniyanLRS_55, Estes_56, Faith1_35, FarmResident_32, Fenry_64, Finemlucis_35, Finrny_33, Frankenweenie_45, FreakyGoo_48, Gabriela_35, Gambino_70, Gardann_35, GardenSalsa_56, Garnacho_110, Geeche_136, GenevaB15_54, GiJojo_105, Glaske16_48, GoldenEssence_179, Greely_3, Guacamole_63, GuuelaD_35, Hafay_35, Halena_32, IPhone7_47, Itos_35, Izel_47, Jalammah_68, JasperJr_63, Jobypre_33, JoeDirt_32, JonJames_150, Jubie_33, JustBecause_33, KSunshine22_186, Kahlid_35, KappaFarmDelta_66, Kela_33, Kingsolomon_33, KirDoubleO7_31, KleverKiS_48, Kradal_42, Kropertea_32, Krypton555_33, Kudrefre_95, LeBron_32, LeoJr_192, Lewan_35, LilDestine_35, LilhomieP_46, LiyuLake_33, Loadrie_35, Lolly9_33, Lozinak_137, LuckySocke_114, Lumos_33, Lysidious_67, MAckerman_32, Malachai_63, MaryV_58, Miley16_35, Mimi_190, MiniLon_33, MiniMac_33, Miskis_132, MissRona_68, MkaliMitinis3_35, Mollymur_99, Moostard_33, MrMagoo_56, MsGreen_33, Myrna_3, Nanosmite_53, Netyap_35, Neville_85, Nicholas_33, Nicholasp3_35, Nirvana_44, Norvs_135, Obliviate_62, Octobien14_93, OhShagHennessy_32, OneUp_121, PYPDinur_32, Panchaali_194, Patbob_189, PauloDiaboli_226, PegLeg_47, Phabba_3, PhinkBoden_136, Phrampa_184, Pipp_67, Poochiewood_32, Quantum_41, Quby_32, Rabbitrun_90, Racecar_191, RayTheFireFly_64, Red305_33, ReginaGlobina_196, Reindeer_49, Rey_55, Rockabye_192, Rose5_32, RoseMarie_53, Rossetti_35, Rumpelstiltskin_35, SJReid_194, Samba_65, Samty_33, Sarshaun_35, Satis_42, ScoobyDoobyDoo_6, Sephiroth_92, Sheng711_32, Silverleaf_32, Skinny_48, SlimJimmy_46, Smoothie_138, Snenia_33, SoJulia_36, Soap141_35, SpeedDemon_1010, Syleon_95, Talia1610_191, Talos_115, Toniann_137, Tourach_35, Towmatter_91, Trax_88, TriFive_33, TyDawg_47, Tyson_32, UPIE_32, Underpass_35, VanLee_110, Vetric_35, WaddleDee_188, Walrus_63, Wamburgxpress_32, Whirlwind_34, Wigglewiggle_35, Wildcat_58, Wilder_35, WilliamBoone_135, Winky_35, Wisp_64, Wyatt2_32, Yvonnetastic_147, Zakai_35, Zarbodnamra_65, Zaria_32, ZhongYanYuan_34, ZiggyZoo_65, Zooman_191,

Summary by start number:

Start 14:

- Found in 1 of 349 (0.3%) of genes in pham
- Manual Annotations of this start: 1 of 274
- Called 100.0% of time when present
- Phage (with cluster) where this start called: Octobien14_93 (DU1),

Start 23:

- Found in 1 of 349 (0.3%) of genes in pham
- Manual Annotations of this start: 1 of 274
- Called 100.0% of time when present
- Phage (with cluster) where this start called: ScoobyDoobyDoo_6 (C2),

Start 25:

- Found in 123 of 349 (35.2%) of genes in pham
- Manual Annotations of this start: 102 of 274

- Called 99.2% of time when present
- Phage (with cluster) where this start called: Ablatia_3 (C1), Ading_3 (C1), Adlitam_3 (C1), Amataga_3 (C1), ArcherS7_3 (C1), Astraea_3 (C1), Atlantean_3 (C1), Audrick_3 (C1), Babyland_3 (C1), BackyardAgain_3 (C1), BadAgartude_3 (C1), Bangla1971_3 (C1), Basquiat_3 (C1), Belieber_3 (C1), BigCity_5 (C1), Bigswole_3 (C1), Blackbrain_3 (C1), Blackdragon_3 (C1), Breeniome_3 (C1), Bxz1_3 (C1), Cactojaque_2 (C1), Caravan_3 (C1), Catera_3 (C1), Chargie21_3 (C1), CharlieB_3 (C1), ChaylaJr_3 (C1), ChickenPhender_3 (C1), Chomp_3 (C1), CindyLou_3 (C1), Concombre_3 (C1), DTDevon_3 (C1), Dandelion_2 (C1), DeejaClivia_3 (C1), Delylah_3 (C1), Demodog_3 (C1), Derek_3 (C1), Dietrick_3 (C1), Drazdys_3 (C1), EasyJones_3 (C1), EggyFarm_5 (C1), EmmaElysia_3 (C1), ErnieJ_3 (C1), Essence_3 (C1), Flabslab_3 (C1), Fludd_3 (C1), FrayBell_3 (C1), Gabriel_3 (C1), Gamgam_3 (C1), Ghost_3 (C1), GlutenPhree_3 (C1), Grasshills_5 (C1), Grungle_3 (C1), Guwapp_3 (C1), Halldule_3 (C1), I3_3 (C1), InigoMontoya_3 (C1), InterFolia_3 (C1), JPickles_3 (C1), Janiyra_3 (C1), JayJay_3 (C1), Jaygup_3 (C1), Jedediah_3 (C1), Jemmno_3 (C1), Jezreel_3 (C1), JigglyPuff_3 (C1), JulietS_3 (C1), Kamryn_3 (C1), Kboogie_3 (C1), Koguma_3 (C1), Latch_3 (C1), Lethe_3 (C1), LifeSavor_3 (C1), Littleton_3 (C1), LolaVinca_3 (C1), LordLeafolot_3 (C1), Mangeria_3 (C1), Matsumoto_3 (C1), Melpomini_3 (C1), MoMoMixon_3 (C1), Momo_3 (C1), Morizzled23_3 (C1), Naija_3 (C1), Napoleon13_3 (C1), Nappy_3 (C1), Naval22_3 (C1), Ngannou_3 (C1), Nidhogg_3 (C1), NoodleTree_3 (C1), NuevoMundo_3 (C1), Patter_3 (C1), Phlegm_3 (C1), Phusco_3 (C1), Pier_3 (C1), Pio_3 (C1), Pivoine_3 (C1), Rahel_3 (C1), Rizal_3 (C1), Ronan_3 (C1), Sauce_3 (C1), ScottMcG_3 (C1), Shaqnato_3 (C1), ShiaLabeouf_3 (C1), Shnickers_3 (C1), SilverDipper_3 (C1), SmallFry_3 (C1), Spec_3 (C1), Specks_3 (C1), Sprinklers_3 (C1), Spud_3 (C1), StephanieG_3 (C1), StubbySaigey_3 (C1), Tainan_3 (C1), Teardrop_3 (C1), Tonenili_3 (C1), Tortoise16_2 (C1), Trinitium_3 (C1), Turret_3 (C1), Tyke_3 (C1), ValleyTerrace_3 (C1), Wally_3 (C1), Yassified_3 (C1), YoungMoneyMata_3 (C1),

Start 28:

- Found in 4 of 349 (1.1%) of genes in pham
- Manual Annotations of this start: 2 of 274
- Called 75.0% of time when present
- Phage (with cluster) where this start called: Greely_3 (C2), Myrna_3 (C2), Phabba_3 (C2),

Start 36:

- Found in 124 of 349 (35.5%) of genes in pham
- Manual Annotations of this start: 1 of 274
- Called 0.8% of time when present
- Phage (with cluster) where this start called: McGee_3 (C1),

Start 45:

- Found in 24 of 349 (6.9%) of genes in pham
- Manual Annotations of this start: 20 of 274
- Called 100.0% of time when present
- Phage (with cluster) where this start called: Auspice_47 (M1), Aziz_54 (M2), Bongo_47 (M1), Bricole_47 (M1), Diminimus_48 (M1), Dulcita_48 (M1), Estes_56 (M2), FreakyGoo_48 (M1), GardenSalsa_56 (M2), GenevaB15_54 (M2), Glaske16_48 (M1), IPhane7_47 (M1), Izel_47 (M1), KleverKiS_48 (M1), LilhomieP_46 (M1), MrMagoo_56 (M2), Nanosmite_53 (M3), PegLeg_47 (M1), Reindeer_49 (M1), Rey_55 (M2), RoseMarie_53 (M), Skinny_48 (M1), SlimJimmy_46 (M1), TyDawg_47 (M1),

Start 48:

- Found in 25 of 349 (7.2%) of genes in pham
- Manual Annotations of this start: 22 of 274
- Called 92.0% of time when present
- Phage (with cluster) where this start called: Azula_68 (CV), Begonia_63 (CV), Blueberry_67 (CV), Confidence_62 (CY1), DirtyBoi_59 (DB), Dmitri_56 (DB), Ferry_64 (CV), Gambino_70 (CV), Guacamole_63 (CV), Jalammah_68 (CV), JasperJr_63 (CV), KappaFarmDelta_66 (CV), Lysidious_67 (CV), Malachai_63 (CV), MissRona_68 (CV), Obliviate_62 (CV), Pipp_67 (CV), RayTheFireFly_64 (DB), Samba_65 (CV), Walrus_63 (CV), Wisp_64 (CV), Zarbodnamra_65 (CV), ZiggyZoo_65 (CV),

Start 51:

- Found in 1 of 349 (0.3%) of genes in pham
- Manual Annotations of this start: 1 of 274
- Called 100.0% of time when present
- Phage (with cluster) where this start called: Rabbitrun_90 (DU2),

Start 52:

- Found in 5 of 349 (1.4%) of genes in pham
- No Manual Annotations of this start.
- Called 100.0% of time when present
- Phage (with cluster) where this start called: DunneganBoMo_188 (FC), Ellewin_187 (FC), KSunshine22_186 (FC), Panchaali_194 (FC), WaddleDee_188 (FC),

Start 53:

- Found in 6 of 349 (1.7%) of genes in pham
- Manual Annotations of this start: 5 of 274
- Called 83.3% of time when present
- Phage (with cluster) where this start called: Azrael100_57 (V), Cosmo_58 (V), EniyanLRS_55 (V), MaryV_58 (V), Wildcat_58 (V),

Start 54:

- Found in 4 of 349 (1.1%) of genes in pham
- Manual Annotations of this start: 1 of 274
- Called 100.0% of time when present
- Phage (with cluster) where this start called: Atuin_183 (FC), Chilliams_187 (FC), LeoJr_192 (FC), ReginaGlobina_196 (FC),

Start 55:

- Found in 18 of 349 (5.2%) of genes in pham
- Manual Annotations of this start: 16 of 274
- Called 94.4% of time when present
- Phage (with cluster) where this start called: Abscondus_136 (CQ1), Aphelion_136 (CQ1), Bachita_140 (CQ1), BrutonGaster_111 (CQ2), ClubL_137 (CQ1), Cucurbita_138 (CQ1), Culver_136 (CQ1), Dusty_133 (CQ1), Engineer_139 (CQ1), Lozinak_137 (CQ1), Miskis_132 (CQ1), Norvs_135 (CQ1), OneUp_121 (CQ2), PhinkBoden_136 (CQ1), Smoothie_138 (CQ1), Toniann_137 (CQ1), WilliamBoone_135 (CQ1),

Start 56:

- Found in 6 of 349 (1.7%) of genes in pham

- Manual Annotations of this start: 3 of 274
- Called 100.0% of time when present
- Phage (with cluster) where this start called: Bloom_194 (FC), GoldenEssence_179 (FC), Mimi_190 (FC), Phrampa_184 (FC), Racecar_191 (FC), Talia1610_191 (FC),

Start 57:

- Found in 1 of 349 (0.3%) of genes in pham
- No Manual Annotations of this start.
- Called 100.0% of time when present
- Phage (with cluster) where this start called: Patbob_189 (FC),

Start 58:

- Found in 1 of 349 (0.3%) of genes in pham
- Manual Annotations of this start: 1 of 274
- Called 100.0% of time when present
- Phage (with cluster) where this start called: Cece_201 (GD3),

Start 59:

- Found in 94 of 349 (26.9%) of genes in pham
- Manual Annotations of this start: 64 of 274
- Called 89.4% of time when present
- Phage (with cluster) where this start called: Acquire49_32 (L1), Appletree2_32 (L1), Archie_35 (L2), AvadaKedavra_32 (L1), Baoshan_34 (L2), Bazzle_35 (L2), Bellis_33 (L3), Big4_210 (GD2), BigCheese_35 (L2), BobsGarage_35 (L2), BourbonZero_32 (L3), Breezona_35 (L2), Calm_32 (L1), CicholasNage_32 (L1), Claus_35 (L2), Clautastrophe_33 (L3), Crossroads_35 (L2), DHan_36 (L2), DanBing_35 (L2), Daredevil_89 (DL), DirkDirk_32 (L1), DrSeegs_35 (L2), DuncansLeg_33 (L3), Ellson_33 (L3), Enceladus_32 (L1), Faith1_35 (L2), Finemlucis_35 (L2), Finnry_33 (L3), Gabriela_35 (L2), Gardann_35 (L2), GuuelaD_35 (L2), Hafay_35 (L2), Halena_32 (L1), Itos_35 (L2), Jobypre_33 (L3), Jubie_33 (L3), Kahlid_35 (L2), Kingsolomon_33 (L3), KirDoubleO7_31 (L3), Krypton555_33 (L3), Lewan_35 (L2), LilDestine_35 (L2), LiyuLake_33 (L3), Loadrie_35 (L2), Lolly9_33 (L3), Lumos_33 (L3), MAckerman_32 (L1), Miley16_35 (L2), MiniLon_33 (L3), MiniMac_33 (L3), MkaliMinitis3_35 (L2), Moostard_33 (L3), MsGreen_33 (L3), Netyap_35 (L2), Nicholas_33 (L3), Nicholasp3_35 (L2), OhShagHennessy_32 (L1), Poochiewood_32 (L1), Red305_33 (L3), Rose5_32 (L1), Rossetti_35 (L2), Rumpelstiltskin_35 (L2), Samty_33 (L3), Sarshaun_35 (L2), Silverleaf_32 (L1), Snenia_33 (L3), SoJulia_36 (L2), Soap141_35 (L2), Tourach_35 (L2), Towmatter_91 (DL), TriFive_33 (L3), Tyson_32 (L1), Underpass_35 (L2), Vetrix_35 (L2), Wamburgrxpress_32 (L1), Whirlwind_34 (L3), Wigglewobble_35 (L2), Wilder_35 (L2), Winky_35 (L2), Wyatt2_32 (L1), Zakai_35 (L2), Zaria_32 (L1), ZhongYanYuan_34 (L2), Zooman_191 (GD2),

Start 60:

- Found in 4 of 349 (1.1%) of genes in pham
- Manual Annotations of this start: 2 of 274
- Called 100.0% of time when present
- Phage (with cluster) where this start called: JonJames_150 (DD), Rockabye_192 (FC), SJReid_194 (FC), Yvonnestic_147 (DD),

Start 61:

- Found in 18 of 349 (5.2%) of genes in pham
- Manual Annotations of this start: 10 of 274
- Called 100.0% of time when present

- Phage (with cluster) where this start called: A3Wally_226 (GD1), Bantam_99 (DL), BrainDrainer_33 (L4), Bromden_34 (L4), Chaser_32 (L4), DatBoi_95 (DL), Dodo_225 (GD1), Douge_32 (L4), Douzhi_32 (L4), DyoEdafos_33 (L4), FarmResident_32 (L4), Kropertea_32 (L4), Mollymur_99 (DL), PYPDinur_32 (L4), PauloDiaboli_226 (GD1), Quby_32 (L4), Sheng711_32 (L4), SpeedDemon_1010 (DL),

Start 62:

- Found in 1 of 349 (0.3%) of genes in pham
- No Manual Annotations of this start.
- Called 100.0% of time when present
- Phage (with cluster) where this start called: Cardigan_153 (DD),

Start 63:

- Found in 38 of 349 (10.9%) of genes in pham
- Manual Annotations of this start: 16 of 274
- Called 52.6% of time when present
- Phage (with cluster) where this start called: Aegeus_38 (L5), Alone3_118 (BS), BRock_108 (BS), Baudelaire_38 (L5), Beleetus_112 (BS), EhyElimayoE_42 (BM), Garnacho_110 (BS), GiJojo_105 (BS), JoeDirt_32 (L1), JustBecause_33 (BM), Kela_33 (BM), Kradal_42 (BM), LeBron_32 (L1), LuckySocke_114 (BS), Nirvana_44 (BM), Quantum_41 (BM), Satis_42 (BM), Talos_115 (BS), UPIE_32 (L1), VanLee_110 (singleton),

Start 65:

- Found in 48 of 349 (13.8%) of genes in pham
- Manual Annotations of this start: 2 of 274
- Called 4.2% of time when present
- Phage (with cluster) where this start called: Neville_85 (DU2), Trax_88 (DU2),

Start 66:

- Found in 12 of 349 (3.4%) of genes in pham
- Manual Annotations of this start: 3 of 274
- Called 25.0% of time when present
- Phage (with cluster) where this start called: Kudrefre_95 (DU1), Sephiroth_92 (DU1), Syleon_95 (DU1),

Start 74:

- Found in 14 of 349 (4.0%) of genes in pham
- Manual Annotations of this start: 1 of 274
- Called 7.1% of time when present
- Phage (with cluster) where this start called: Frankenweenie_45 (BM),

Start 97:

- Found in 37 of 349 (10.6%) of genes in pham
- No Manual Annotations of this start.
- Called 2.7% of time when present
- Phage (with cluster) where this start called: Geeche_136 (CQ1),

Summary by clusters:

There are 28 clusters represented in this pham: GD1, DL, GD3, BM, DD, V, DB, singleton, FC, M1, M3, BS, DU2, CV, C2, CQ1, CY1, M, L4, L5, L2, L3, L1, C1, CQ2, DU1, GD2, M2,

Info for manual annotations of cluster BM:

- Start number 63 was manually annotated 6 times for cluster BM.
- Start number 74 was manually annotated 1 time for cluster BM.

Info for manual annotations of cluster BS:

- Start number 63 was manually annotated 4 times for cluster BS.

Info for manual annotations of cluster C1:

- Start number 25 was manually annotated 102 times for cluster C1.
- Start number 36 was manually annotated 1 time for cluster C1.

Info for manual annotations of cluster C2:

- Start number 23 was manually annotated 1 time for cluster C2.
- Start number 28 was manually annotated 2 times for cluster C2.

Info for manual annotations of cluster CQ1:

- Start number 55 was manually annotated 14 times for cluster CQ1.

Info for manual annotations of cluster CQ2:

- Start number 55 was manually annotated 2 times for cluster CQ2.

Info for manual annotations of cluster CV:

- Start number 48 was manually annotated 18 times for cluster CV.

Info for manual annotations of cluster CY1:

- Start number 48 was manually annotated 1 time for cluster CY1.

Info for manual annotations of cluster DB:

- Start number 48 was manually annotated 3 times for cluster DB.

Info for manual annotations of cluster DD:

- Start number 60 was manually annotated 2 times for cluster DD.

Info for manual annotations of cluster DL:

- Start number 59 was manually annotated 1 time for cluster DL.
- Start number 61 was manually annotated 4 times for cluster DL.

Info for manual annotations of cluster DU1:

- Start number 14 was manually annotated 1 time for cluster DU1.
- Start number 66 was manually annotated 3 times for cluster DU1.

Info for manual annotations of cluster DU2:

- Start number 51 was manually annotated 1 time for cluster DU2.
- Start number 65 was manually annotated 2 times for cluster DU2.

Info for manual annotations of cluster FC:

- Start number 54 was manually annotated 1 time for cluster FC.
- Start number 56 was manually annotated 3 times for cluster FC.

Info for manual annotations of cluster GD1:

- Start number 61 was manually annotated 2 times for cluster GD1.

Info for manual annotations of cluster GD2:

- Start number 59 was manually annotated 2 times for cluster GD2.

Info for manual annotations of cluster GD3:

- Start number 58 was manually annotated 1 time for cluster GD3.

Info for manual annotations of cluster L1:

- Start number 59 was manually annotated 16 times for cluster L1.
- Start number 63 was manually annotated 3 times for cluster L1.

Info for manual annotations of cluster L2:

- Start number 59 was manually annotated 28 times for cluster L2.

Info for manual annotations of cluster L3:

- Start number 59 was manually annotated 17 times for cluster L3.

Info for manual annotations of cluster L4:

- Start number 61 was manually annotated 4 times for cluster L4.

Info for manual annotations of cluster L5:

- Start number 63 was manually annotated 2 times for cluster L5.

Info for manual annotations of cluster M1:

- Start number 45 was manually annotated 13 times for cluster M1.

Info for manual annotations of cluster M2:

- Start number 45 was manually annotated 6 times for cluster M2.

Info for manual annotations of cluster M3:

- Start number 45 was manually annotated 1 time for cluster M3.

Info for manual annotations of cluster V:

- Start number 53 was manually annotated 5 times for cluster V.

Gene Information:

Gene: A3Wally_226 Start: 120716, Stop: 121450, Start Num: 61

Candidate Starts for A3Wally_226:

(Start: 61 @120716 has 10 MA's), (95, 120911), (104, 120968), (108, 120983), (118, 121007), (127, 121040), (132, 121082), (135, 121097), (155, 121208), (164, 121244), (204, 121394),

Gene: Ablatia_3 Start: 477, Stop: 1343, Start Num: 25

Candidate Starts for Ablatia_3:

(Start: 25 @477 has 102 MA's), (Start: 36 @516 has 1 MA's), (64, 594), (69, 612), (72, 633), (76, 669), (82, 699), (93, 753), (103, 837), (105, 843), (107, 849), (126, 912), (158, 1104), (164, 1131), (173, 1164), (182, 1194), (206, 1296), (207, 1299),

Gene: Abscondus_136 Start: 75128, Stop: 75835, Start Num: 55

Candidate Starts for Abscondus_136:

(Start: 55 @75128 has 16 MA's), (78, 75236), (86, 75260), (97, 75308), (140, 75512), (151, 75572), (208, 75794),

Gene: Acquire49_32 Start: 28983, Stop: 28231, Start Num: 59

Candidate Starts for Acquire49_32:

(Start: 59 @28983 has 64 MA's), (Start: 63 @28977 has 16 MA's), (93, 28815), (98, 28761), (100, 28752), (104, 28728), (107, 28719), (120, 28689), (127, 28662), (131, 28629), (134, 28611), (151, 28509), (153, 28503), (157, 28488), (161, 28470), (163, 28464), (164, 28458), (182, 28395), (201, 28317), (208, 28287), (217, 28254),

Gene: Ading_3 Start: 456, Stop: 1322, Start Num: 25

Candidate Starts for Ading_3:

(Start: 25 @456 has 102 MA's), (Start: 36 @495 has 1 MA's), (64, 573), (69, 591), (72, 612), (76, 648), (82, 678), (93, 732), (103, 816), (105, 822), (107, 828), (126, 891), (158, 1083), (164, 1110), (173, 1143), (182, 1173), (206, 1275), (207, 1278),

Gene: Adlitam_3 Start: 473, Stop: 1339, Start Num: 25

Candidate Starts for Adlitam_3:

(Start: 25 @473 has 102 MA's), (Start: 36 @512 has 1 MA's), (64, 590), (69, 608), (72, 629), (76, 665), (82, 695), (93, 749), (103, 833), (105, 839), (107, 845), (126, 908), (158, 1100), (164, 1127), (173, 1160), (182, 1190), (206, 1292), (207, 1295),

Gene: Aegeus_38 Start: 32914, Stop: 32189, Start Num: 63

Candidate Starts for Aegeus_38:

(Start: 63 @32914 has 16 MA's), (88, 32779), (103, 32668), (104, 32665), (127, 32599), (128, 32593), (134, 32548), (157, 32425), (161, 32407), (163, 32401), (164, 32395), (177, 32347), (182, 32332), (183, 32329), (198, 32272),

Gene: Alone3_118 Start: 63397, Stop: 64086, Start Num: 63

Candidate Starts for Alone3_118:

(Start: 63 @63397 has 16 MA's), (Start: 74 @63463 has 1 MA's), (75, 63472), (98, 63595), (144, 63802), (164, 63895), (168, 63904), (189, 63976), (193, 63991), (198, 64018),

Gene: Amataga_3 Start: 477, Stop: 1343, Start Num: 25

Candidate Starts for Amataga_3:

(Start: 25 @477 has 102 MA's), (Start: 36 @516 has 1 MA's), (64, 594), (69, 612), (72, 633), (76, 669), (82, 699), (93, 753), (103, 837), (105, 843), (107, 849), (126, 912), (158, 1104), (164, 1131), (173, 1164), (182, 1194), (206, 1296), (207, 1299),

Gene: Aphelion_136 Start: 76000, Stop: 76707, Start Num: 55

Candidate Starts for Aphelion_136:

(Start: 55 @76000 has 16 MA's), (78, 76108), (86, 76132), (97, 76180), (140, 76384), (151, 76444), (208, 76666),

Gene: Appletree2_32 Start: 28926, Stop: 28174, Start Num: 59

Candidate Starts for Appletree2_32:

(Start: 59 @28926 has 64 MA's), (Start: 63 @28920 has 16 MA's), (93, 28758), (98, 28704), (100, 28695), (104, 28671), (107, 28662), (120, 28632), (127, 28605), (131, 28572), (134, 28554), (150, 28458), (151, 28452), (153, 28446), (157, 28431), (161, 28413), (163, 28407), (164, 28401), (182, 28338), (201, 28260), (208, 28230), (217, 28197),

Gene: ArcherS7_3 Start: 473, Stop: 1339, Start Num: 25

Candidate Starts for ArcherS7_3:

(Start: 25 @473 has 102 MA's), (Start: 36 @512 has 1 MA's), (64, 590), (69, 608), (72, 629), (76, 665), (82, 695), (93, 749), (103, 833), (105, 839), (107, 845), (126, 908), (158, 1100), (164, 1127), (173, 1160), (182, 1190), (206, 1292), (207, 1295),

Gene: Archie_35 Start: 30615, Stop: 29869, Start Num: 59

Candidate Starts for Archie_35:

(Start: 59 @30615 has 64 MA's), (Start: 65 @30597 has 2 MA's), (86, 30480), (88, 30471), (98, 30390), (104, 30357), (123, 30309), (127, 30291), (131, 30258), (134, 30240), (153, 30132), (157, 30117), (161, 30099), (163, 30093), (164, 30087), (165, 30084), (182, 30024), (192, 29994), (198, 29964), (211, 29904), (213, 29895), (216, 29886),

Gene: Astraea_3 Start: 473, Stop: 1339, Start Num: 25

Candidate Starts for Astraea_3:

(Start: 25 @473 has 102 MA's), (Start: 36 @512 has 1 MA's), (64, 590), (69, 608), (72, 629), (76, 665), (82, 695), (93, 749), (103, 833), (105, 839), (107, 845), (126, 908), (158, 1100), (164, 1127), (173, 1160), (182, 1190), (207, 1295),

Gene: Atlantean_3 Start: 477, Stop: 1343, Start Num: 25

Candidate Starts for Atlantean_3:

(Start: 25 @477 has 102 MA's), (Start: 36 @516 has 1 MA's), (64, 594), (69, 612), (72, 633), (76, 669), (82, 699), (93, 753), (103, 837), (105, 843), (107, 849), (126, 912), (158, 1104), (164, 1131), (173, 1164), (182, 1194), (206, 1296), (207, 1299),

Gene: Atuin_183 Start: 129201, Stop: 129866, Start Num: 54

Candidate Starts for Atuin_183:

(Start: 54 @129201 has 1 MA's), (75, 129285), (97, 129396), (108, 129456), (128, 129519), (146, 129612), (163, 129678), (164, 129684), (198, 129789),

Gene: Audrick_3 Start: 456, Stop: 1322, Start Num: 25

Candidate Starts for Audrick_3:

(Start: 25 @456 has 102 MA's), (Start: 36 @495 has 1 MA's), (64, 573), (69, 591), (72, 612), (76, 648), (82, 678), (93, 732), (103, 816), (105, 822), (107, 828), (126, 891), (158, 1083), (164, 1110), (173, 1143), (182, 1173), (206, 1275), (207, 1278),

Gene: Auspice_47 Start: 35928, Stop: 35131, Start Num: 45

Candidate Starts for Auspice_47:

(Start: 45 @35928 has 20 MA's), (72, 35844), (75, 35814), (76, 35808), (93, 35712), (95, 35682), (103, 35628), (112, 35595), (142, 35439), (146, 35412), (147, 35409), (158, 35367), (164, 35340), (180, 35286), (192, 35247), (195, 35232), (208, 35169), (215, 35139),

Gene: AvadaKedavra_32 Start: 28993, Stop: 28241, Start Num: 59

Candidate Starts for AvadaKedavra_32:

(Start: 59 @28993 has 64 MA's), (Start: 63 @28987 has 16 MA's), (93, 28825), (98, 28771), (104, 28738), (107, 28729), (120, 28699), (127, 28672), (131, 28639), (134, 28621), (151, 28519), (153, 28513), (157, 28498), (161, 28480), (163, 28474), (164, 28468), (182, 28405), (201, 28327), (208, 28297), (217, 28264),

Gene: Aziz_54 Start: 37868, Stop: 37068, Start Num: 45

Candidate Starts for Aziz_54:

(Start: 45 @37868 has 20 MA's), (75, 37751), (76, 37745), (99, 37589), (103, 37565), (105, 37559), (107, 37553), (112, 37532), (146, 37349), (147, 37346), (164, 37277), (173, 37244), (180, 37223), (206, 37115), (208, 37106), (215, 37076),

Gene: Azrael100_57 Start: 41517, Stop: 40768, Start Num: 53

Candidate Starts for Azrael100_57:

(6, 41754), (7, 41742), (8, 41706), (13, 41661), (18, 41637), (38, 41553), (Start: 53 @41517 has 5 MA's), (64, 41478), (71, 41445), (Start: 74 @41418 has 1 MA's), (76, 41403), (80, 41379), (106, 41211), (110, 41196), (127, 41139), (150, 41037), (164, 40980), (167, 40968), (192, 40887), (198, 40857), (200, 40845), (206, 40818), (208, 40809), (209, 40803), (217, 40776),

Gene: Azula_68 Start: 44110, Stop: 44895, Start Num: 48

Candidate Starts for Azula_68:

(37, 44080), (Start: 48 @44110 has 22 MA's), (75, 44227), (76, 44233), (97, 44353), (98, 44365), (133, 44527), (137, 44545), (149, 44626), (150, 44629), (201, 44827),

Gene: BRock_108 Start: 57585, Stop: 58268, Start Num: 63

Candidate Starts for BRock_108:

(29, 57486), (Start: 63 @57585 has 16 MA's), (69, 57609), (72, 57630), (75, 57660), (76, 57666), (77, 57672), (92, 57729), (97, 57771), (101, 57795), (114, 57846), (144, 57984), (164, 58077), (169, 58092), (172, 58101), (179, 58122), (183, 58143), (189, 58158), (205, 58236), (208, 58248), (210, 58257),

Gene: Babyland_3 Start: 477, Stop: 1343, Start Num: 25

Candidate Starts for Babyland_3:

(Start: 25 @477 has 102 MA's), (Start: 36 @516 has 1 MA's), (64, 594), (69, 612), (72, 633), (76, 669), (82, 699), (93, 753), (103, 837), (105, 843), (107, 849), (126, 912), (158, 1104), (164, 1131), (173, 1164), (182, 1194), (206, 1296), (207, 1299),

Gene: Bachita_140 Start: 76138, Stop: 76845, Start Num: 55

Candidate Starts for Bachita_140:

(Start: 55 @76138 has 16 MA's), (78, 76246), (86, 76270), (97, 76318), (140, 76522), (151, 76582), (208, 76804),

Gene: BackyardAgain_3 Start: 473, Stop: 1339, Start Num: 25

Candidate Starts for BackyardAgain_3:

(Start: 25 @473 has 102 MA's), (Start: 36 @512 has 1 MA's), (64, 590), (69, 608), (72, 629), (76, 665), (82, 695), (93, 749), (103, 833), (105, 839), (107, 845), (126, 908), (158, 1100), (164, 1127), (173, 1160), (182, 1190), (206, 1292), (207, 1295),

Gene: BadAgartude_3 Start: 494, Stop: 1360, Start Num: 25

Candidate Starts for BadAgartude_3:

(Start: 25 @494 has 102 MA's), (Start: 36 @533 has 1 MA's), (64, 611), (69, 629), (72, 650), (76, 686), (82, 716), (93, 770), (103, 854), (105, 860), (107, 866), (122, 914), (126, 929), (158, 1121), (164, 1148), (173, 1181), (182, 1211), (206, 1313), (207, 1316),

Gene: Bangla1971_3 Start: 473, Stop: 1339, Start Num: 25

Candidate Starts for Bangla1971_3:

(Start: 25 @473 has 102 MA's), (Start: 36 @512 has 1 MA's), (64, 590), (69, 608), (72, 629), (76, 665), (82, 695), (93, 749), (103, 833), (105, 839), (107, 845), (126, 908), (158, 1100), (164, 1127), (173, 1160), (182, 1190), (206, 1292), (207, 1295),

Gene: Bantam_99 Start: 65318, Stop: 65998, Start Num: 61

Candidate Starts for Bantam_99:

(Start: 59 @65315 has 64 MA's), (Start: 61 @65318 has 10 MA's), (75, 65396), (78, 65420), (95, 65483), (98, 65507), (143, 65708), (159, 65780), (164, 65804), (212, 65990),

Gene: Baoshan_34 Start: 29947, Stop: 29201, Start Num: 59

Candidate Starts for Baoshan_34:

(Start: 59 @29947 has 64 MA's), (98, 29722), (104, 29689), (120, 29650), (127, 29623), (131, 29590), (134, 29572), (153, 29464), (157, 29449), (159, 29443), (161, 29431), (163, 29425), (164, 29419), (165, 29416), (182, 29356), (192, 29326), (198, 29296), (211, 29236), (213, 29227), (216, 29218),

Gene: Basquiat_3 Start: 456, Stop: 1322, Start Num: 25

Candidate Starts for Basquiat_3:

(Start: 25 @456 has 102 MA's), (Start: 36 @495 has 1 MA's), (64, 573), (69, 591), (72, 612), (76, 648), (82, 678), (93, 732), (103, 816), (105, 822), (107, 828), (126, 891), (158, 1083), (164, 1110), (173, 1143), (182, 1173), (206, 1275), (207, 1278),

Gene: Baudelaire_38 Start: 32914, Stop: 32189, Start Num: 63

Candidate Starts for Baudelaire_38:

(Start: 63 @32914 has 16 MA's), (88, 32779), (103, 32668), (104, 32665), (127, 32599), (128, 32593), (134, 32548), (157, 32425), (161, 32407), (163, 32401), (164, 32395), (177, 32347), (182, 32332), (183, 32329), (198, 32272),

Gene: Bazzle_35 Start: 30364, Stop: 29618, Start Num: 59

Candidate Starts for Bazzle_35:

(Start: 59 @30364 has 64 MA's), (Start: 65 @30346 has 2 MA's), (86, 30229), (88, 30220), (98, 30139), (104, 30106), (123, 30058), (127, 30040), (131, 30007), (134, 29989), (153, 29881), (157, 29866), (161, 29848), (163, 29842), (164, 29836), (165, 29833), (182, 29773), (192, 29743), (198, 29713), (211, 29653), (213, 29644), (216, 29635),

Gene: Begonia_63 Start: 42626, Stop: 43411, Start Num: 48

Candidate Starts for Begonia_63:

(37, 42596), (Start: 48 @42626 has 22 MA's), (75, 42743), (76, 42749), (98, 42881), (106, 42920), (133, 43043), (137, 43061), (149, 43142), (150, 43145), (201, 43343),

Gene: Beleetus_112 Start: 61004, Stop: 61693, Start Num: 63

Candidate Starts for Beleetus_112:

(Start: 63 @61004 has 16 MA's), (69, 61028), (75, 61079), (79, 61106), (81, 61112), (98, 61202), (144, 61409), (164, 61502), (189, 61583),

Gene: Belieber_3 Start: 477, Stop: 1343, Start Num: 25

Candidate Starts for Belieber_3:

(Start: 25 @477 has 102 MA's), (Start: 36 @516 has 1 MA's), (64, 594), (69, 612), (72, 633), (76, 669), (82, 699), (93, 753), (103, 837), (105, 843), (107, 849), (126, 912), (158, 1104), (164, 1131), (173, 1164), (182, 1194), (206, 1296), (207, 1299),

Gene: Bellis_33 Start: 30388, Stop: 29648, Start Num: 59

Candidate Starts for Bellis_33:

(Start: 59 @30388 has 64 MA's), (67, 30364), (73, 30328), (90, 30238), (123, 30082), (134, 30013), (139, 29992), (157, 29890), (161, 29872), (163, 29866), (164, 29860), (187, 29782), (201, 29719), (208, 29689),

Gene: Big4_210 Start: 117042, Stop: 117785, Start Num: 59

Candidate Starts for Big4_210:

(Start: 59 @117042 has 64 MA's), (95, 117240), (119, 117339), (132, 117411), (135, 117426), (148, 117507), (150, 117516), (158, 117546), (164, 117573), (202, 117717), (204, 117723),

Gene: BigCheese_35 Start: 30126, Stop: 29380, Start Num: 59

Candidate Starts for BigCheese_35:

(Start: 59 @30126 has 64 MA's), (Start: 65 @30108 has 2 MA's), (98, 29901), (104, 29868), (120, 29829), (127, 29802), (131, 29769), (134, 29751), (153, 29643), (157, 29628), (159, 29622), (161, 29610), (163, 29604), (164, 29598), (165, 29595), (182, 29535), (192, 29505), (198, 29475), (211, 29415), (213, 29406), (216, 29397),

Gene: BigCity_5 Start: 1066, Stop: 1932, Start Num: 25

Candidate Starts for BigCity_5:

(Start: 25 @1066 has 102 MA's), (Start: 36 @1105 has 1 MA's), (64, 1183), (69, 1201), (72, 1222), (76, 1258), (82, 1288), (93, 1342), (103, 1426), (105, 1432), (107, 1438), (126, 1501), (158, 1693), (164, 1720), (173, 1753), (182, 1783), (207, 1888),

Gene: Bigswole_3 Start: 473, Stop: 1339, Start Num: 25

Candidate Starts for Bigswole_3:

(Start: 25 @473 has 102 MA's), (Start: 36 @512 has 1 MA's), (64, 590), (69, 608), (72, 629), (76, 665), (82, 695), (93, 749), (103, 833), (105, 839), (107, 845), (126, 908), (158, 1100), (164, 1127), (173, 1160), (182, 1190), (207, 1295),

Gene: Blackbrain_3 Start: 473, Stop: 1339, Start Num: 25

Candidate Starts for Blackbrain_3:

(Start: 25 @473 has 102 MA's), (Start: 36 @512 has 1 MA's), (64, 590), (69, 608), (72, 629), (76, 665), (82, 695), (93, 749), (103, 833), (105, 839), (107, 845), (122, 893), (126, 908), (158, 1100), (164, 1127), (173, 1160), (182, 1190), (206, 1292), (207, 1295),

Gene: Blackdragon_3 Start: 477, Stop: 1343, Start Num: 25

Candidate Starts for Blackdragon_3:

(Start: 25 @477 has 102 MA's), (Start: 36 @516 has 1 MA's), (64, 594), (69, 612), (72, 633), (76, 669), (82, 699), (93, 753), (103, 837), (105, 843), (107, 849), (122, 897), (126, 912), (158, 1104), (164, 1131), (173, 1164), (182, 1194), (207, 1299),

Gene: Bloom_194 Start: 131939, Stop: 132589, Start Num: 56

Candidate Starts for Bloom_194:

(Start: 56 @131939 has 3 MA's), (75, 132020), (80, 132050), (107, 132185), (108, 132191), (146, 132347), (163, 132413), (164, 132419), (192, 132494), (204, 132551), (209, 132578),

Gene: Blueberry_67 Start: 44110, Stop: 44895, Start Num: 48

Candidate Starts for Blueberry_67:

(37, 44080), (Start: 48 @44110 has 22 MA's), (75, 44227), (76, 44233), (97, 44353), (98, 44365), (133, 44527), (137, 44545), (149, 44626), (150, 44629), (201, 44827),

Gene: BobsGarage_35 Start: 30126, Stop: 29380, Start Num: 59

Candidate Starts for BobsGarage_35:

(Start: 59 @30126 has 64 MA's), (Start: 65 @30108 has 2 MA's), (98, 29901), (104, 29868), (120, 29829), (127, 29802), (131, 29769), (134, 29751), (153, 29643), (157, 29628), (159, 29622), (161, 29610), (163, 29604), (164, 29598), (165, 29595), (182, 29535), (192, 29505), (198, 29475), (211, 29415), (213, 29406), (216, 29397),

Gene: Bongo_47 Start: 35928, Stop: 35131, Start Num: 45

Candidate Starts for Bongo_47:

(Start: 45 @35928 has 20 MA's), (72, 35844), (75, 35814), (76, 35808), (93, 35712), (95, 35682), (103, 35628), (112, 35595), (142, 35439), (146, 35412), (147, 35409), (158, 35367), (164, 35340), (180, 35286), (192, 35247), (195, 35232), (208, 35169), (215, 35139),

Gene: BourbonZero_32 Start: 30339, Stop: 29599, Start Num: 59

Candidate Starts for BourbonZero_32:

(Start: 59 @30339 has 64 MA's), (67, 30315), (73, 30279), (90, 30189), (123, 30033), (130, 29991), (134, 29964), (139, 29943), (152, 29859), (157, 29841), (161, 29823), (163, 29817), (164, 29811), (201, 29670), (208, 29640),

Gene: BrainDrainer_33 Start: 29227, Stop: 28490, Start Num: 61

Candidate Starts for BrainDrainer_33:

(3, 29617), (42, 29281), (43, 29272), (Start: 61 @29227 has 10 MA's), (Start: 65 @29212 has 2 MA's), (67, 29206), (88, 29086), (106, 28966), (116, 28942), (123, 28924), (127, 28906), (134, 28855), (153, 28747), (157, 28732), (161, 28714), (163, 28708), (164, 28702),

Gene: Breeniome_3 Start: 473, Stop: 1339, Start Num: 25

Candidate Starts for Breeniome_3:

(Start: 25 @473 has 102 MA's), (Start: 36 @512 has 1 MA's), (64, 590), (69, 608), (72, 629), (76, 665), (82, 695), (93, 749), (103, 833), (105, 839), (107, 845), (126, 908), (158, 1100), (164, 1127), (173, 1160), (182, 1190), (206, 1292), (207, 1295),

Gene: Breezona_35 Start: 30126, Stop: 29380, Start Num: 59

Candidate Starts for Breezona_35:

(Start: 59 @30126 has 64 MA's), (Start: 65 @30108 has 2 MA's), (98, 29901), (104, 29868), (120, 29829), (127, 29802), (131, 29769), (134, 29751), (153, 29643), (157, 29628), (159, 29622), (161, 29610), (163, 29604), (164, 29598), (165, 29595), (182, 29535), (192, 29505), (198, 29475), (211, 29415), (213, 29406), (216, 29397),

Gene: Bricole_47 Start: 35914, Stop: 35117, Start Num: 45

Candidate Starts for Bricole_47:

(Start: 45 @35914 has 20 MA's), (72, 35830), (75, 35800), (76, 35794), (93, 35698), (95, 35668), (103, 35614), (112, 35581), (142, 35425), (146, 35398), (147, 35395), (158, 35353), (164, 35326), (180, 35272), (192, 35233), (195, 35218), (208, 35155), (215, 35125),

Gene: Bromden_34 Start: 29644, Stop: 28907, Start Num: 61

Candidate Starts for Bromden_34:

(42, 29698), (43, 29689), (Start: 61 @29644 has 10 MA's), (Start: 65 @29629 has 2 MA's), (67, 29623), (88, 29503), (97, 29434), (106, 29383), (116, 29359), (123, 29341), (127, 29323), (134, 29272), (153, 29164), (157, 29149), (161, 29131), (163, 29125), (164, 29119), (177, 29071),

Gene: BrutonGaster_111 Start: 69747, Stop: 70487, Start Num: 55

Candidate Starts for BrutonGaster_111:

(Start: 55 @69747 has 16 MA's), (68, 69780), (95, 69924), (102, 69972), (168, 70278), (180, 70314), (191, 70350),

Gene: Bxz1_3 Start: 473, Stop: 1339, Start Num: 25

Candidate Starts for Bxz1_3:

(Start: 25 @473 has 102 MA's), (Start: 36 @512 has 1 MA's), (64, 590), (69, 608), (72, 629), (76, 665), (82, 695), (93, 749), (103, 833), (105, 839), (107, 845), (122, 893), (126, 908), (158, 1100), (164, 1127), (173, 1160), (182, 1190), (207, 1295),

Gene: Cactojaque_2 Start: 407, Stop: 1273, Start Num: 25

Candidate Starts for Cactojaque_2:

(Start: 25 @407 has 102 MA's), (Start: 36 @446 has 1 MA's), (64, 524), (69, 542), (72, 563), (76, 599), (82, 629), (93, 683), (103, 767), (105, 773), (107, 779), (126, 842), (158, 1034), (164, 1061), (173, 1094), (182, 1124), (206, 1226), (207, 1229),

Gene: Calm_32 Start: 28998, Stop: 28246, Start Num: 59

Candidate Starts for Calm_32:

(Start: 59 @28998 has 64 MA's), (Start: 63 @28992 has 16 MA's), (93, 28830), (98, 28776), (100, 28767), (104, 28743), (107, 28734), (120, 28704), (127, 28677), (131, 28644), (134, 28626), (150, 28530), (151, 28524), (153, 28518), (157, 28503), (161, 28485), (163, 28479), (164, 28473), (182, 28410), (201, 28332), (208, 28302), (217, 28269),

Gene: Caravan_3 Start: 473, Stop: 1339, Start Num: 25

Candidate Starts for Caravan_3:

(Start: 25 @473 has 102 MA's), (Start: 36 @512 has 1 MA's), (64, 590), (69, 608), (72, 629), (76, 665), (82, 695), (93, 749), (103, 833), (105, 839), (107, 845), (122, 893), (126, 908), (158, 1100), (164, 1127), (173, 1160), (182, 1190), (207, 1295), (208, 1301),

Gene: Cardigan_153 Start: 82886, Stop: 83590, Start Num: 62

Candidate Starts for Cardigan_153:

(62, 82886), (68, 82904), (78, 82982), (86, 83006), (92, 83024), (99, 83084), (136, 83234), (154, 83324), (206, 83537),

Gene: Catera_3 Start: 477, Stop: 1343, Start Num: 25

Candidate Starts for Catera_3:

(Start: 25 @477 has 102 MA's), (Start: 36 @516 has 1 MA's), (64, 594), (69, 612), (72, 633), (76, 669), (82, 699), (93, 753), (103, 837), (105, 843), (107, 849), (122, 897), (126, 912), (158, 1104), (164, 1131), (173, 1164), (182, 1194), (206, 1296), (207, 1299),

Gene: Cece_201 Start: 121407, Stop: 122135, Start Num: 58

Candidate Starts for Cece_201:

(Start: 58 @121407 has 1 MA's), (97, 121617), (104, 121662), (128, 121740), (132, 121776), (135, 121791), (137, 121797), (141, 121836), (148, 121872), (150, 121881), (158, 121911), (163, 121932), (164, 121938), (190, 122022), (193, 122034), (199, 122070), (204, 122088),

Gene: Chargie21_3 Start: 456, Stop: 1322, Start Num: 25

Candidate Starts for Chargie21_3:

(Start: 25 @456 has 102 MA's), (Start: 36 @495 has 1 MA's), (64, 573), (69, 591), (72, 612), (76, 648), (82, 678), (93, 732), (103, 816), (105, 822), (107, 828), (126, 891), (158, 1083), (164, 1110), (173, 1143), (182, 1173), (206, 1275), (207, 1278),

Gene: CharlieB_3 Start: 473, Stop: 1339, Start Num: 25

Candidate Starts for CharlieB_3:

(Start: 25 @473 has 102 MA's), (Start: 36 @512 has 1 MA's), (64, 590), (69, 608), (72, 629), (76, 665), (82, 695), (93, 749), (103, 833), (105, 839), (107, 845), (126, 908), (158, 1100), (164, 1127), (173, 1160), (182, 1190), (207, 1295),

Gene: Chaser_32 Start: 29045, Stop: 28308, Start Num: 61

Candidate Starts for Chaser_32:

(42, 29099), (43, 29090), (Start: 61 @29045 has 10 MA's), (Start: 65 @29030 has 2 MA's), (67, 29024), (106, 28784), (116, 28760), (123, 28742), (127, 28724), (134, 28673), (153, 28565), (157, 28550), (161, 28532), (163, 28526), (164, 28520), (177, 28472),

Gene: ChaylaJr_3 Start: 498, Stop: 1364, Start Num: 25

Candidate Starts for ChaylaJr_3:

(Start: 25 @498 has 102 MA's), (Start: 36 @537 has 1 MA's), (64, 615), (69, 633), (72, 654), (76, 690), (82, 720), (93, 774), (103, 858), (105, 864), (107, 870), (126, 933), (158, 1125), (164, 1152), (173,

1185), (182, 1215), (206, 1317), (207, 1320),

Gene: ChickenPhender_3 Start: 456, Stop: 1322, Start Num: 25

Candidate Starts for ChickenPhender_3:

(Start: 25 @456 has 102 MA's), (Start: 36 @495 has 1 MA's), (64, 573), (69, 591), (72, 612), (76, 648), (82, 678), (93, 732), (103, 816), (105, 822), (107, 828), (126, 891), (158, 1083), (164, 1110), (173, 1143), (182, 1173), (206, 1275), (207, 1278),

Gene: Chilliams_187 Start: 126484, Stop: 127137, Start Num: 54

Candidate Starts for Chilliams_187:

(Start: 54 @126484 has 1 MA's), (75, 126568), (97, 126679), (101, 126703), (108, 126739), (146, 126895), (164, 126967), (175, 127003), (197, 127069), (209, 127126),

Gene: Chomp_3 Start: 477, Stop: 1343, Start Num: 25

Candidate Starts for Chomp_3:

(Start: 25 @477 has 102 MA's), (Start: 36 @516 has 1 MA's), (64, 594), (69, 612), (72, 633), (76, 669), (82, 699), (93, 753), (103, 837), (105, 843), (107, 849), (126, 912), (158, 1104), (164, 1131), (173, 1164), (182, 1194), (206, 1296), (207, 1299),

Gene: CicholasNage_32 Start: 28985, Stop: 28233, Start Num: 59

Candidate Starts for CicholasNage_32:

(Start: 59 @28985 has 64 MA's), (Start: 63 @28979 has 16 MA's), (93, 28817), (98, 28763), (100, 28754), (104, 28730), (107, 28721), (120, 28691), (127, 28664), (131, 28631), (134, 28613), (150, 28517), (151, 28511), (153, 28505), (157, 28490), (161, 28472), (163, 28466), (164, 28460), (182, 28397), (201, 28319), (208, 28289), (217, 28256),

Gene: CindyLou_3 Start: 477, Stop: 1343, Start Num: 25

Candidate Starts for CindyLou_3:

(Start: 25 @477 has 102 MA's), (Start: 36 @516 has 1 MA's), (64, 594), (69, 612), (72, 633), (76, 669), (82, 699), (93, 753), (103, 837), (105, 843), (107, 849), (126, 912), (158, 1104), (164, 1131), (173, 1164), (182, 1194), (206, 1296), (207, 1299),

Gene: Claus_35 Start: 30103, Stop: 29357, Start Num: 59

Candidate Starts for Claus_35:

(41, 30151), (Start: 59 @30103 has 64 MA's), (98, 29878), (104, 29845), (120, 29806), (127, 29779), (131, 29746), (134, 29728), (153, 29620), (157, 29605), (161, 29587), (163, 29581), (164, 29575), (165, 29572), (182, 29512), (192, 29482), (198, 29452), (211, 29392), (213, 29383), (216, 29374),

Gene: Clautastrophe_33 Start: 30387, Stop: 29647, Start Num: 59

Candidate Starts for Clautastrophe_33:

(Start: 59 @30387 has 64 MA's), (67, 30363), (73, 30327), (90, 30237), (123, 30081), (134, 30012), (139, 29991), (157, 29889), (161, 29871), (163, 29865), (164, 29859), (187, 29781), (201, 29718), (208, 29688),

Gene: ClubL_137 Start: 74712, Stop: 75419, Start Num: 55

Candidate Starts for ClubL_137:

(Start: 55 @74712 has 16 MA's), (78, 74820), (86, 74844), (97, 74892), (208, 75378),

Gene: Concombres_3 Start: 473, Stop: 1339, Start Num: 25

Candidate Starts for Concombres_3:

(Start: 25 @473 has 102 MA's), (Start: 36 @512 has 1 MA's), (64, 590), (69, 608), (72, 629), (82, 695), (93, 749), (103, 833), (105, 839), (107, 845), (126, 908), (158, 1100), (164, 1127), (173, 1160), (182, 1190), (207, 1295),

Gene: Confidence_62 Start: 41352, Stop: 42137, Start Num: 48

Candidate Starts for Confidence_62:

(11, 41211), (37, 41322), (Start: 48 @41352 has 22 MA's), (75, 41469), (76, 41475), (133, 41769), (137, 41787), (149, 41868), (150, 41871),

Gene: Cosmo_58 Start: 41518, Stop: 40769, Start Num: 53

Candidate Starts for Cosmo_58:

(6, 41755), (7, 41743), (8, 41707), (13, 41662), (18, 41638), (38, 41554), (Start: 53 @41518 has 5 MA's), (64, 41479), (71, 41446), (Start: 74 @41419 has 1 MA's), (76, 41404), (80, 41380), (106, 41212), (110, 41197), (127, 41140), (150, 41038), (164, 40981), (167, 40969), (192, 40888), (198, 40858), (200, 40846), (206, 40819), (208, 40810), (209, 40804), (217, 40777),

Gene: Crossroads_35 Start: 30126, Stop: 29380, Start Num: 59

Candidate Starts for Crossroads_35:

(40, 30177), (Start: 59 @30126 has 64 MA's), (Start: 65 @30108 has 2 MA's), (98, 29901), (104, 29868), (120, 29829), (127, 29802), (131, 29769), (134, 29751), (153, 29643), (157, 29628), (159, 29622), (161, 29610), (163, 29604), (164, 29598), (165, 29595), (182, 29535), (192, 29505), (198, 29475), (211, 29415), (213, 29406), (216, 29397),

Gene: Cucurbita_138 Start: 76451, Stop: 77158, Start Num: 55

Candidate Starts for Cucurbita_138:

(Start: 55 @76451 has 16 MA's), (78, 76559), (86, 76583), (97, 76631), (140, 76835), (208, 77117),

Gene: Culver_136 Start: 74454, Stop: 75161, Start Num: 55

Candidate Starts for Culver_136:

(Start: 55 @74454 has 16 MA's), (78, 74562), (86, 74586), (97, 74634), (140, 74838), (151, 74898), (208, 75120),

Gene: DHan_36 Start: 30039, Stop: 29293, Start Num: 59

Candidate Starts for DHan_36:

(Start: 59 @30039 has 64 MA's), (98, 29814), (104, 29781), (120, 29742), (127, 29715), (131, 29682), (134, 29664), (153, 29556), (157, 29541), (159, 29535), (161, 29523), (163, 29517), (164, 29511), (165, 29508), (182, 29448), (192, 29418), (198, 29388), (211, 29328), (213, 29319), (216, 29310),

Gene: DTDevon_3 Start: 473, Stop: 1339, Start Num: 25

Candidate Starts for DTDevon_3:

(Start: 25 @473 has 102 MA's), (Start: 36 @512 has 1 MA's), (64, 590), (69, 608), (72, 629), (76, 665), (82, 695), (93, 749), (103, 833), (105, 839), (107, 845), (126, 908), (158, 1100), (164, 1127), (173, 1160), (182, 1190), (206, 1292), (207, 1295),

Gene: DanBing_35 Start: 29943, Stop: 29197, Start Num: 59

Candidate Starts for DanBing_35:

(Start: 59 @29943 has 64 MA's), (98, 29718), (104, 29685), (120, 29646), (127, 29619), (131, 29586), (134, 29568), (153, 29460), (157, 29445), (159, 29439), (161, 29427), (163, 29421), (164, 29415), (165, 29412), (182, 29352), (192, 29322), (198, 29292), (211, 29232), (213, 29223), (216, 29214),

Gene: Dandelion_2 Start: 473, Stop: 1339, Start Num: 25

Candidate Starts for Dandelion_2:

(Start: 25 @473 has 102 MA's), (Start: 36 @512 has 1 MA's), (64, 590), (69, 608), (72, 629), (76, 665), (82, 695), (93, 749), (103, 833), (105, 839), (107, 845), (126, 908), (158, 1100), (164, 1127), (173, 1160), (182, 1190), (207, 1295),

Gene: Daredevil_89 Start: 61004, Stop: 61684, Start Num: 59

Candidate Starts for Daredevil_89:

(Start: 59 @61004 has 64 MA's), (75, 61088), (77, 61100), (78, 61112), (109, 61253), (155, 61454), (176, 61529),

Gene: DatBoi_95 Start: 64460, Stop: 65134, Start Num: 61

Candidate Starts for DatBoi_95:

(Start: 61 @64460 has 10 MA's), (75, 64538), (78, 64562), (95, 64625), (143, 64844), (149, 64880), (152, 64892), (186, 65012), (188, 65018),

Gene: DeejaClivia_3 Start: 477, Stop: 1343, Start Num: 25

Candidate Starts for DeejaClivia_3:

(Start: 25 @477 has 102 MA's), (Start: 36 @516 has 1 MA's), (64, 594), (69, 612), (72, 633), (76, 669), (82, 699), (93, 753), (103, 837), (105, 843), (107, 849), (122, 897), (126, 912), (158, 1104), (164, 1131), (173, 1164), (182, 1194), (207, 1299),

Gene: Delylah_3 Start: 473, Stop: 1339, Start Num: 25

Candidate Starts for Delylah_3:

(Start: 25 @473 has 102 MA's), (Start: 36 @512 has 1 MA's), (64, 590), (69, 608), (72, 629), (76, 665), (82, 695), (93, 749), (103, 833), (105, 839), (107, 845), (126, 908), (158, 1100), (164, 1127), (173, 1160), (182, 1190), (207, 1295), (208, 1301),

Gene: Demodog_3 Start: 473, Stop: 1339, Start Num: 25

Candidate Starts for Demodog_3:

(Start: 25 @473 has 102 MA's), (Start: 36 @512 has 1 MA's), (64, 590), (69, 608), (72, 629), (93, 749), (103, 833), (105, 839), (107, 845), (126, 908), (158, 1100), (164, 1127), (173, 1160), (182, 1190), (207, 1295),

Gene: Derek_3 Start: 473, Stop: 1339, Start Num: 25

Candidate Starts for Derek_3:

(Start: 25 @473 has 102 MA's), (Start: 36 @512 has 1 MA's), (64, 590), (69, 608), (72, 629), (76, 665), (82, 695), (93, 749), (103, 833), (105, 839), (107, 845), (126, 908), (158, 1100), (164, 1127), (173, 1160), (182, 1190), (206, 1292), (207, 1295),

Gene: Dietrick_3 Start: 473, Stop: 1339, Start Num: 25

Candidate Starts for Dietrick_3:

(Start: 25 @473 has 102 MA's), (Start: 36 @512 has 1 MA's), (64, 590), (69, 608), (72, 629), (76, 665), (82, 695), (93, 749), (103, 833), (105, 839), (107, 845), (126, 908), (158, 1100), (164, 1127), (173, 1160), (182, 1190), (206, 1292), (207, 1295),

Gene: Diminimus_48 Start: 35927, Stop: 35130, Start Num: 45

Candidate Starts for Diminimus_48:

(Start: 45 @35927 has 20 MA's), (72, 35843), (75, 35813), (76, 35807), (93, 35711), (95, 35681), (103, 35627), (112, 35594), (142, 35438), (146, 35411), (147, 35408), (158, 35366), (164, 35339), (180, 35285), (192, 35246), (195, 35231), (208, 35168), (215, 35138),

Gene: DirkDirk_32 Start: 28983, Stop: 28231, Start Num: 59

Candidate Starts for DirkDirk_32:

(Start: 59 @28983 has 64 MA's), (Start: 63 @28977 has 16 MA's), (93, 28815), (98, 28761), (100, 28752), (104, 28728), (107, 28719), (120, 28689), (127, 28662), (131, 28629), (134, 28611), (150, 28515), (151, 28509), (153, 28503), (157, 28488), (161, 28470), (163, 28464), (164, 28458), (182, 28395), (201, 28317), (208, 28287), (217, 28254),

Gene: DirtyBoi_59 Start: 38234, Stop: 39019, Start Num: 48

Candidate Starts for DirtyBoi_59:

(Start: 48 @38234 has 22 MA's), (72, 38321), (75, 38351), (76, 38357), (98, 38489), (123, 38588), (127, 38606), (133, 38651), (137, 38669), (149, 38750), (150, 38753), (201, 38951),

Gene: Dmitri_56 Start: 40718, Stop: 41503, Start Num: 48

Candidate Starts for Dmitri_56:

(10, 40565), (11, 40574), (33, 40676), (37, 40685), (Start: 48 @40718 has 22 MA's), (72, 40805), (75, 40835), (76, 40841), (98, 40973), (123, 41072), (127, 41090), (133, 41135), (137, 41153), (149, 41234), (150, 41237), (151, 41243), (201, 41435),

Gene: Dodo_225 Start: 120518, Stop: 121252, Start Num: 61

Candidate Starts for Dodo_225:

(Start: 61 @120518 has 10 MA's), (95, 120713), (104, 120770), (108, 120785), (118, 120809), (127, 120842), (132, 120884), (135, 120899), (155, 121010), (164, 121046), (204, 121196),

Gene: Douge_32 Start: 28983, Stop: 28246, Start Num: 61

Candidate Starts for Douge_32:

(3, 29373), (42, 29037), (43, 29028), (Start: 61 @28983 has 10 MA's), (Start: 65 @28968 has 2 MA's), (67, 28962), (88, 28842), (106, 28722), (116, 28698), (123, 28680), (127, 28662), (134, 28611), (153, 28503), (157, 28488), (161, 28470), (163, 28464), (164, 28458), (177, 28410),

Gene: Douzhi_32 Start: 29088, Stop: 28351, Start Num: 61

Candidate Starts for Douzhi_32:

(3, 29478), (42, 29142), (43, 29133), (Start: 61 @29088 has 10 MA's), (Start: 65 @29073 has 2 MA's), (67, 29067), (88, 28947), (106, 28827), (116, 28803), (123, 28785), (127, 28767), (134, 28716), (153, 28608), (157, 28593), (161, 28575), (163, 28569), (164, 28563),

Gene: DrSeegs_35 Start: 30126, Stop: 29380, Start Num: 59

Candidate Starts for DrSeegs_35:

(Start: 59 @30126 has 64 MA's), (Start: 65 @30108 has 2 MA's), (98, 29901), (104, 29868), (120, 29829), (127, 29802), (131, 29769), (134, 29751), (153, 29643), (157, 29628), (159, 29622), (161, 29610), (163, 29604), (164, 29598), (165, 29595), (182, 29535), (192, 29505), (198, 29475), (211, 29415), (213, 29406), (216, 29397),

Gene: Drazdys_3 Start: 473, Stop: 1339, Start Num: 25

Candidate Starts for Drazdys_3:

(Start: 25 @473 has 102 MA's), (Start: 36 @512 has 1 MA's), (64, 590), (69, 608), (72, 629), (76, 665), (82, 695), (93, 749), (103, 833), (105, 839), (107, 845), (126, 908), (158, 1100), (164, 1127), (173, 1160), (182, 1190), (206, 1292), (207, 1295),

Gene: Dulcita_48 Start: 35928, Stop: 35131, Start Num: 45

Candidate Starts for Dulcita_48:

(Start: 45 @35928 has 20 MA's), (72, 35844), (75, 35814), (76, 35808), (93, 35712), (95, 35682), (103, 35628), (112, 35595), (142, 35439), (146, 35412), (147, 35409), (158, 35367), (164, 35340), (180, 35286), (192, 35247), (195, 35232), (208, 35169), (215, 35139),

Gene: DuncansLeg_33 Start: 30374, Stop: 29634, Start Num: 59

Candidate Starts for DuncansLeg_33:

(Start: 59 @30374 has 64 MA's), (67, 30350), (73, 30314), (90, 30224), (123, 30068), (134, 29999), (139, 29978), (152, 29894), (157, 29876), (161, 29858), (163, 29852), (164, 29846), (187, 29768), (201, 29705), (208, 29675),

Gene: DunneganBoMo_188 Start: 133952, Stop: 134626, Start Num: 52

Candidate Starts for DunneganBoMo_188:

(52, 133952), (67, 133994), (75, 134054), (97, 134165), (108, 134225), (146, 134381), (163, 134447), (198, 134558),

Gene: Dusty_133 Start: 74690, Stop: 75397, Start Num: 55

Candidate Starts for Dusty_133:

(Start: 55 @74690 has 16 MA's), (78, 74798), (86, 74822), (97, 74870), (140, 75074), (151, 75134), (208, 75356),

Gene: DyoEdafos_33 Start: 29180, Stop: 28443, Start Num: 61

Candidate Starts for DyoEdafos_33:

(Start: 61 @29180 has 10 MA's), (Start: 65 @29165 has 2 MA's), (67, 29159), (72, 29129), (88, 29039), (97, 28970), (104, 28925), (106, 28919), (116, 28895), (123, 28877), (127, 28859), (134, 28808), (153, 28700), (157, 28685), (161, 28667), (163, 28661), (164, 28655), (177, 28607), (192, 28562),

Gene: EasyJones_3 Start: 456, Stop: 1322, Start Num: 25

Candidate Starts for EasyJones_3:

(Start: 25 @456 has 102 MA's), (Start: 36 @495 has 1 MA's), (64, 573), (69, 591), (72, 612), (76, 648), (82, 678), (93, 732), (103, 816), (105, 822), (107, 828), (122, 876), (126, 891), (158, 1083), (164, 1110), (173, 1143), (182, 1173), (206, 1275), (207, 1278),

Gene: EggyFarm_5 Start: 1066, Stop: 1932, Start Num: 25

Candidate Starts for EggyFarm_5:

(Start: 25 @1066 has 102 MA's), (Start: 36 @1105 has 1 MA's), (64, 1183), (69, 1201), (72, 1222), (76, 1258), (82, 1288), (93, 1342), (103, 1426), (105, 1432), (107, 1438), (126, 1501), (158, 1693), (164, 1720), (173, 1753), (182, 1783), (207, 1888),

Gene: EhyElimayoE_42 Start: 24210, Stop: 23518, Start Num: 63

Candidate Starts for EhyElimayoE_42:

(Start: 63 @24210 has 16 MA's), (69, 24186), (Start: 74 @24144 has 1 MA's), (76, 24129), (89, 24075), (96, 24048), (106, 23988), (133, 23874), (163, 23733), (176, 23682), (183, 23652), (189, 23637), (201, 23577), (204, 23568),

Gene: Ellewin_187 Start: 134030, Stop: 134704, Start Num: 52

Candidate Starts for Ellewin_187:

(52, 134030), (67, 134072), (75, 134132), (97, 134243), (108, 134303), (146, 134459), (163, 134525), (198, 134636),

Gene: Ellson_33 Start: 30351, Stop: 29611, Start Num: 59

Candidate Starts for Ellson_33:

(41, 30405), (Start: 59 @30351 has 64 MA's), (67, 30327), (73, 30291), (90, 30201), (123, 30045), (134, 29976), (139, 29955), (152, 29871), (157, 29853), (161, 29835), (163, 29829), (164, 29823), (201, 29682),

Gene: EmmaElysia_3 Start: 473, Stop: 1339, Start Num: 25

Candidate Starts for EmmaElysia_3:

(Start: 25 @473 has 102 MA's), (Start: 36 @512 has 1 MA's), (64, 590), (69, 608), (72, 629), (76, 665), (82, 695), (93, 749), (103, 833), (105, 839), (107, 845), (126, 908), (158, 1100), (164, 1127), (173, 1160), (182, 1190), (206, 1292), (207, 1295),

Gene: Enceladus_32 Start: 28967, Stop: 28215, Start Num: 59

Candidate Starts for Enceladus_32:

(Start: 59 @28967 has 64 MA's), (Start: 63 @28961 has 16 MA's), (93, 28799), (98, 28745), (100, 28736), (104, 28712), (107, 28703), (120, 28673), (127, 28646), (131, 28613), (134, 28595), (150, 28499), (151, 28493), (153, 28487), (157, 28472), (161, 28454), (163, 28448), (164, 28442), (182, 28379), (201, 28301), (208, 28271), (217, 28238),

Gene: Engineer_139 Start: 76111, Stop: 76818, Start Num: 55

Candidate Starts for Engineer_139:

(Start: 55 @76111 has 16 MA's), (78, 76219), (86, 76243), (97, 76291), (140, 76495), (151, 76555), (208, 76777),

Gene: EniyanLRS_55 Start: 41216, Stop: 40467, Start Num: 53

Candidate Starts for EniyanLRS_55:

(6, 41453), (7, 41441), (8, 41405), (13, 41360), (18, 41336), (38, 41252), (Start: 53 @41216 has 5 MA's), (64, 41177), (71, 41144), (Start: 74 @41117 has 1 MA's), (76, 41102), (80, 41078), (106, 40910), (110, 40895), (127, 40838), (150, 40736), (164, 40679), (167, 40667), (192, 40586), (198, 40556), (200, 40544), (206, 40517), (208, 40508), (209, 40502), (217, 40475),

Gene: ErnieJ_3 Start: 473, Stop: 1339, Start Num: 25

Candidate Starts for ErnieJ_3:

(Start: 25 @473 has 102 MA's), (Start: 36 @512 has 1 MA's), (64, 590), (69, 608), (72, 629), (76, 665), (82, 695), (93, 749), (103, 833), (105, 839), (107, 845), (126, 908), (158, 1100), (164, 1127), (173, 1160), (182, 1190), (206, 1292), (207, 1295),

Gene: Essence_3 Start: 473, Stop: 1339, Start Num: 25

Candidate Starts for Essence_3:

(Start: 25 @473 has 102 MA's), (Start: 36 @512 has 1 MA's), (64, 590), (69, 608), (72, 629), (76, 665), (82, 695), (93, 749), (103, 833), (105, 839), (107, 845), (126, 908), (158, 1100), (164, 1127), (173, 1160), (182, 1190), (206, 1292), (207, 1295),

Gene: Estes_56 Start: 38134, Stop: 37334, Start Num: 45

Candidate Starts for Estes_56:

(Start: 45 @38134 has 20 MA's), (75, 38017), (76, 38011), (99, 37855), (103, 37831), (105, 37825), (112, 37798), (141, 37645), (146, 37615), (147, 37612), (164, 37543), (170, 37519), (171, 37516), (173, 37510), (195, 37435), (206, 37381), (208, 37372), (215, 37342),

Gene: Faith1_35 Start: 30126, Stop: 29380, Start Num: 59

Candidate Starts for Faith1_35:

(Start: 59 @30126 has 64 MA's), (Start: 65 @30108 has 2 MA's), (98, 29901), (104, 29868), (120, 29829), (127, 29802), (131, 29769), (134, 29751), (153, 29643), (157, 29628), (159, 29622), (161, 29610), (163, 29604), (164, 29598), (165, 29595), (182, 29535), (192, 29505), (198, 29475), (211, 29415), (213, 29406), (216, 29397),

Gene: FarmResident_32 Start: 29027, Stop: 28290, Start Num: 61

Candidate Starts for FarmResident_32:

(3, 29417), (42, 29081), (43, 29072), (Start: 61 @29027 has 10 MA's), (Start: 65 @29012 has 2 MA's), (67, 29006), (88, 28886), (106, 28766), (116, 28742), (123, 28724), (127, 28706), (134, 28655), (153, 28547), (157, 28532), (161, 28514), (163, 28508), (164, 28502), (177, 28454),

Gene: Fenry_64 Start: 42529, Stop: 43314, Start Num: 48

Candidate Starts for Fenry_64:

(10, 42379), (11, 42388), (37, 42499), (Start: 48 @42529 has 22 MA's), (70, 42607), (75, 42646), (98, 42784), (128, 42907), (133, 42946), (137, 42964), (149, 43045), (150, 43048), (163, 43099), (201, 43246),

Gene: Finemlucis_35 Start: 30402, Stop: 29656, Start Num: 59

Candidate Starts for Finemlucis_35:

(Start: 59 @30402 has 64 MA's), (Start: 65 @30384 has 2 MA's), (98, 30177), (104, 30144), (120, 30105), (127, 30078), (131, 30045), (134, 30027), (153, 29919), (157, 29904), (159, 29898), (161, 29886), (163, 29880), (164, 29874), (165, 29871), (182, 29811), (192, 29781), (198, 29751), (211, 29691), (213, 29682), (216, 29673),

Gene: Finnry_33 Start: 30390, Stop: 29650, Start Num: 59

Candidate Starts for Finnry_33:

(Start: 59 @30390 has 64 MA's), (67, 30366), (73, 30330), (90, 30240), (123, 30084), (134, 30015), (139, 29994), (157, 29892), (161, 29874), (163, 29868), (164, 29862), (187, 29784), (201, 29721), (208, 29691),

Gene: Flabslab_3 Start: 473, Stop: 1339, Start Num: 25

Candidate Starts for Flabslab_3:

(Start: 25 @473 has 102 MA's), (Start: 36 @512 has 1 MA's), (64, 590), (69, 608), (72, 629), (76, 665), (82, 695), (93, 749), (103, 833), (105, 839), (107, 845), (126, 908), (158, 1100), (164, 1127), (173, 1160), (182, 1190), (206, 1292), (207, 1295),

Gene: Fludd_3 Start: 459, Stop: 1325, Start Num: 25

Candidate Starts for Fludd_3:

(Start: 25 @459 has 102 MA's), (Start: 36 @498 has 1 MA's), (64, 576), (69, 594), (72, 615), (76, 651), (82, 681), (93, 735), (103, 819), (105, 825), (107, 831), (126, 894), (158, 1086), (164, 1113), (173, 1146), (182, 1176), (206, 1278), (207, 1281),

Gene: Frankenweenie_45 Start: 24877, Stop: 24248, Start Num: 74

Candidate Starts for Frankenweenie_45:

(Start: 63 @24943 has 16 MA's), (69, 24919), (Start: 74 @24877 has 1 MA's), (75, 24868), (85, 24820), (89, 24808), (129, 24634), (150, 24517), (162, 24469), (163, 24466), (176, 24415), (189, 24370), (208, 24280),

Gene: FrayBell_3 Start: 473, Stop: 1339, Start Num: 25

Candidate Starts for FrayBell_3:

(Start: 25 @473 has 102 MA's), (Start: 36 @512 has 1 MA's), (64, 590), (69, 608), (72, 629), (76, 665), (82, 695), (93, 749), (103, 833), (105, 839), (107, 845), (126, 908), (149, 1067), (158, 1100), (164, 1127), (173, 1160), (182, 1190), (206, 1292), (207, 1295),

Gene: FreakyGoo_48 Start: 35928, Stop: 35131, Start Num: 45

Candidate Starts for FreakyGoo_48:

(Start: 45 @35928 has 20 MA's), (72, 35844), (75, 35814), (76, 35808), (93, 35712), (95, 35682), (103, 35628), (112, 35595), (142, 35439), (146, 35412), (147, 35409), (158, 35367), (164, 35340), (180, 35286), (192, 35247), (195, 35232), (208, 35169), (215, 35139),

Gene: Gabriel_3 Start: 473, Stop: 1339, Start Num: 25

Candidate Starts for Gabriel_3:

(Start: 25 @473 has 102 MA's), (Start: 36 @512 has 1 MA's), (64, 590), (69, 608), (72, 629), (76, 665), (82, 695), (93, 749), (103, 833), (105, 839), (107, 845), (126, 908), (158, 1100), (164, 1127), (173, 1160), (182, 1190), (206, 1292), (207, 1295),

Gene: Gabriela_35 Start: 30388, Stop: 29642, Start Num: 59

Candidate Starts for Gabriela_35:

(Start: 59 @30388 has 64 MA's), (Start: 65 @30370 has 2 MA's), (98, 30163), (104, 30130), (120, 30091), (127, 30064), (131, 30031), (134, 30013), (153, 29905), (157, 29890), (159, 29884), (161, 29872), (163, 29866), (164, 29860), (165, 29857), (182, 29797), (192, 29767), (198, 29737), (211, 29677), (213, 29668), (216, 29659),

Gene: Gambino_70 Start: 44110, Stop: 44895, Start Num: 48

Candidate Starts for Gambino_70:

(37, 44080), (Start: 48 @44110 has 22 MA's), (75, 44227), (76, 44233), (97, 44353), (98, 44365), (133, 44527), (137, 44545), (149, 44626), (150, 44629), (201, 44827),

Gene: Gamgam_3 Start: 477, Stop: 1343, Start Num: 25

Candidate Starts for Gamgam_3:

(Start: 25 @477 has 102 MA's), (Start: 36 @516 has 1 MA's), (64, 594), (69, 612), (72, 633), (76, 669), (82, 699), (93, 753), (103, 837), (105, 843), (107, 849), (126, 912), (158, 1104), (164, 1131), (173, 1164), (182, 1194), (206, 1296), (207, 1299),

Gene: Gardann_35 Start: 30128, Stop: 29382, Start Num: 59

Candidate Starts for Gardann_35:

(Start: 59 @30128 has 64 MA's), (Start: 65 @30110 has 2 MA's), (79, 30017), (98, 29903), (104, 29870), (120, 29831), (127, 29804), (131, 29771), (134, 29753), (153, 29645), (157, 29630), (159, 29624), (161, 29612), (163, 29606), (164, 29600), (165, 29597), (182, 29537), (192, 29507), (198, 29477), (211, 29417), (213, 29408), (216, 29399),

Gene: GardenSalsa_56 Start: 38232, Stop: 37432, Start Num: 45

Candidate Starts for GardenSalsa_56:

(9, 38379), (Start: 45 @38232 has 20 MA's), (75, 38115), (76, 38109), (97, 37971), (99, 37953), (105, 37923), (112, 37896), (123, 37866), (133, 37803), (142, 37740), (146, 37713), (147, 37710), (158, 37668), (164, 37641), (166, 37632), (173, 37608), (181, 37581), (193, 37545), (195, 37533), (206, 37479), (208, 37470), (215, 37440),

Gene: Garnacho_110 Start: 61225, Stop: 61914, Start Num: 63

Candidate Starts for Garnacho_110:

(Start: 63 @61225 has 16 MA's), (69, 61249), (72, 61270), (75, 61300), (76, 61306), (77, 61312), (98, 61423), (164, 61723), (183, 61789), (189, 61804),

Gene: Geeche_136 Start: 75093, Stop: 75620, Start Num: 97

Candidate Starts for Geeche_136:

(Start: 55 @74913 has 16 MA's), (78, 75021), (86, 75045), (97, 75093), (140, 75297), (151, 75357), (208, 75579),

Gene: GenevaB15_54 Start: 37868, Stop: 37068, Start Num: 45

Candidate Starts for GenevaB15_54:

(Start: 45 @37868 has 20 MA's), (75, 37751), (76, 37745), (99, 37589), (103, 37565), (105, 37559), (107, 37553), (112, 37532), (146, 37349), (147, 37346), (164, 37277), (173, 37244), (180, 37223), (206, 37115), (208, 37106), (215, 37076),

Gene: Ghost_3 Start: 477, Stop: 1343, Start Num: 25

Candidate Starts for Ghost_3:

(Start: 25 @477 has 102 MA's), (Start: 36 @516 has 1 MA's), (64, 594), (69, 612), (72, 633), (76, 669), (82, 699), (93, 753), (103, 837), (105, 843), (107, 849), (126, 912), (158, 1104), (164, 1131), (173, 1164), (182, 1194), (206, 1296), (207, 1299),

Gene: GiJojo_105 Start: 62109, Stop: 62801, Start Num: 63

Candidate Starts for GiJojo_105:

(Start: 36 @62031 has 1 MA's), (Start: 63 @62109 has 16 MA's), (72, 62154), (75, 62184), (76, 62190), (77, 62196), (94, 62274), (97, 62295), (104, 62340), (144, 62514), (164, 62607), (189, 62688),

Gene: Glaske16_48 Start: 35927, Stop: 35130, Start Num: 45

Candidate Starts for Glaske16_48:

(Start: 45 @35927 has 20 MA's), (72, 35843), (75, 35813), (76, 35807), (93, 35711), (95, 35681), (103, 35627), (112, 35594), (142, 35438), (146, 35411), (147, 35408), (158, 35366), (164, 35339), (180, 35285), (192, 35246), (195, 35231), (208, 35168), (215, 35138),

Gene: GlutenPhree_3 Start: 477, Stop: 1343, Start Num: 25

Candidate Starts for GlutenPhree_3:

(Start: 25 @477 has 102 MA's), (Start: 36 @516 has 1 MA's), (64, 594), (69, 612), (72, 633), (76, 669), (82, 699), (93, 753), (103, 837), (105, 843), (107, 849), (126, 912), (158, 1104), (164, 1131), (173, 1164), (182, 1194), (206, 1296), (207, 1299),

Gene: GoldenEssence_179 Start: 126151, Stop: 126801, Start Num: 56

Candidate Starts for GoldenEssence_179:

(Start: 56 @126151 has 3 MA's), (75, 126232), (80, 126262), (108, 126403), (146, 126559), (163, 126625), (164, 126631), (192, 126706), (204, 126763), (209, 126790),

Gene: Grasshills_5 Start: 1066, Stop: 1932, Start Num: 25

Candidate Starts for Grasshills_5:

(Start: 25 @1066 has 102 MA's), (Start: 36 @1105 has 1 MA's), (64, 1183), (69, 1201), (72, 1222), (76, 1258), (82, 1288), (93, 1342), (103, 1426), (105, 1432), (107, 1438), (126, 1501), (158, 1693), (164, 1720), (173, 1753), (182, 1783), (207, 1888),

Gene: Greely_3 Start: 1065, Stop: 1916, Start Num: 28

Candidate Starts for Greely_3:

(12, 984), (20, 1026), (Start: 28 @1065 has 2 MA's), (Start: 59 @1149 has 64 MA's), (Start: 66 @1170 has 3 MA's), (70, 1194), (76, 1239), (79, 1260), (83, 1275), (96, 1365), (103, 1416), (111, 1449), (122, 1476), (125, 1485), (142, 1593), (158, 1665), (164, 1692), (169, 1713), (170, 1716), (171, 1719), (185, 1764), (193, 1788), (214, 1887), (219, 1908),

Gene: Grungle_3 Start: 477, Stop: 1343, Start Num: 25

Candidate Starts for Grungle_3:

(Start: 25 @477 has 102 MA's), (Start: 36 @516 has 1 MA's), (64, 594), (69, 612), (72, 633), (76, 669), (82, 699), (93, 753), (103, 837), (105, 843), (107, 849), (126, 912), (158, 1104), (164, 1131), (173, 1164), (182, 1194), (207, 1299),

Gene: Guacamole_63 Start: 41500, Stop: 42285, Start Num: 48

Candidate Starts for Guacamole_63:

(1, 40993), (2, 41143), (4, 41209), (5, 41245), (10, 41350), (11, 41359), (37, 41470), (Start: 48 @41500 has 22 MA's), (75, 41617), (76, 41623), (98, 41755), (106, 41794), (133, 41917), (137, 41935), (149, 42016), (150, 42019), (163, 42070), (201, 42217),

Gene: GuuelaD_35 Start: 30160, Stop: 29414, Start Num: 59

Candidate Starts for GuuelaD_35:

(39, 30214), (Start: 59 @30160 has 64 MA's), (Start: 65 @30142 has 2 MA's), (98, 29935), (104, 29902), (120, 29863), (127, 29836), (131, 29803), (134, 29785), (153, 29677), (157, 29662), (159, 29656), (161, 29644), (163, 29638), (164, 29632), (165, 29629), (182, 29569), (192, 29539), (198, 29509), (211, 29449), (213, 29440), (216, 29431),

Gene: Guwapp_3 Start: 473, Stop: 1339, Start Num: 25

Candidate Starts for Guwapp_3:

(Start: 25 @473 has 102 MA's), (Start: 36 @512 has 1 MA's), (64, 590), (69, 608), (72, 629), (76, 665), (82, 695), (93, 749), (103, 833), (105, 839), (107, 845), (126, 908), (158, 1100), (164, 1127), (173, 1160), (182, 1190), (206, 1292), (207, 1295),

Gene: Hafay_35 Start: 30159, Stop: 29413, Start Num: 59

Candidate Starts for Hafay_35:

(Start: 59 @30159 has 64 MA's), (Start: 65 @30141 has 2 MA's), (86, 30024), (88, 30015), (98, 29934), (104, 29901), (120, 29862), (127, 29835), (131, 29802), (134, 29784), (153, 29676), (157, 29661), (159, 29655), (161, 29643), (163, 29637), (164, 29631), (165, 29628), (182, 29568), (192, 29538), (198, 29508), (211, 29448), (213, 29439), (216, 29430),

Gene: Halena_32 Start: 28994, Stop: 28242, Start Num: 59

Candidate Starts for Halena_32:

(Start: 59 @28994 has 64 MA's), (Start: 63 @28988 has 16 MA's), (93, 28826), (98, 28772), (104, 28739), (107, 28730), (120, 28700), (127, 28673), (131, 28640), (134, 28622), (151, 28520), (153, 28514), (157, 28499), (161, 28481), (163, 28475), (164, 28469), (182, 28406), (201, 28328), (208, 28298), (217, 28265),

Gene: Halldule_3 Start: 473, Stop: 1339, Start Num: 25

Candidate Starts for Halldule_3:

(Start: 25 @473 has 102 MA's), (Start: 36 @512 has 1 MA's), (64, 590), (69, 608), (72, 629), (76, 665), (82, 695), (93, 749), (103, 833), (105, 839), (107, 845), (122, 893), (126, 908), (158, 1100), (164, 1127), (173, 1160), (182, 1190), (207, 1295),

Gene: I3_3 Start: 475, Stop: 1341, Start Num: 25

Candidate Starts for I3_3:

(Start: 25 @475 has 102 MA's), (Start: 36 @514 has 1 MA's), (64, 592), (69, 610), (72, 631), (76, 667), (82, 697), (93, 751), (103, 835), (105, 841), (107, 847), (126, 910), (158, 1102), (164, 1129), (173, 1162), (182, 1192), (207, 1297),

Gene: IPHane7_47 Start: 35928, Stop: 35131, Start Num: 45

Candidate Starts for IPHane7_47:

(Start: 45 @35928 has 20 MA's), (72, 35844), (75, 35814), (76, 35808), (93, 35712), (95, 35682), (103, 35628), (112, 35595), (142, 35439), (146, 35412), (147, 35409), (158, 35367), (164, 35340), (180, 35286), (192, 35247), (195, 35232), (208, 35169), (215, 35139),

Gene: InigoMontoya_3 Start: 477, Stop: 1343, Start Num: 25

Candidate Starts for InigoMontoya_3:

(Start: 25 @477 has 102 MA's), (Start: 36 @516 has 1 MA's), (64, 594), (69, 612), (72, 633), (76, 669), (82, 699), (93, 753), (103, 837), (105, 843), (107, 849), (126, 912), (158, 1104), (164, 1131), (173, 1164), (182, 1194), (206, 1296), (207, 1299),

Gene: InterFolia_3 Start: 473, Stop: 1339, Start Num: 25

Candidate Starts for InterFolia_3:

(Start: 25 @473 has 102 MA's), (Start: 36 @512 has 1 MA's), (64, 590), (69, 608), (72, 629), (76, 665), (82, 695), (93, 749), (103, 833), (105, 839), (107, 845), (126, 908), (149, 1067), (158, 1100), (164, 1127), (173, 1160), (182, 1190), (206, 1292), (207, 1295),

Gene: Itos_35 Start: 30126, Stop: 29380, Start Num: 59

Candidate Starts for Itos_35:

(Start: 59 @30126 has 64 MA's), (Start: 65 @30108 has 2 MA's), (98, 29901), (104, 29868), (120, 29829), (127, 29802), (131, 29769), (134, 29751), (153, 29643), (157, 29628), (159, 29622), (161, 29610), (163, 29604), (164, 29598), (165, 29595), (182, 29535), (192, 29505), (198, 29475), (211, 29415), (213, 29406), (216, 29397),

Gene: Izel_47 Start: 35927, Stop: 35130, Start Num: 45

Candidate Starts for Izel_47:

(Start: 45 @35927 has 20 MA's), (72, 35843), (75, 35813), (76, 35807), (93, 35711), (95, 35681), (103, 35627), (112, 35594), (142, 35438), (146, 35411), (147, 35408), (158, 35366), (164, 35339), (180, 35285), (192, 35246), (195, 35231), (208, 35168), (215, 35138),

Gene: JPickles_3 Start: 477, Stop: 1343, Start Num: 25

Candidate Starts for JPickles_3:

(Start: 25 @477 has 102 MA's), (Start: 36 @516 has 1 MA's), (64, 594), (69, 612), (72, 633), (76, 669), (82, 699), (93, 753), (103, 837), (105, 843), (107, 849), (126, 912), (158, 1104), (164, 1131), (173, 1164), (182, 1194), (206, 1296), (207, 1299),

Gene: Jalammah_68 Start: 43432, Stop: 44217, Start Num: 48

Candidate Starts for Jalammah_68:

(37, 43402), (Start: 48 @43432 has 22 MA's), (75, 43549), (76, 43555), (98, 43687), (106, 43726), (133, 43849), (137, 43867), (149, 43948), (150, 43951), (163, 44002), (201, 44149),

Gene: Janiyra_3 Start: 456, Stop: 1322, Start Num: 25

Candidate Starts for Janiyra_3:

(Start: 25 @456 has 102 MA's), (Start: 36 @495 has 1 MA's), (64, 573), (69, 591), (72, 612), (76, 648), (82, 678), (93, 732), (103, 816), (105, 822), (107, 828), (126, 891), (158, 1083), (164, 1110), (173, 1143), (182, 1173), (206, 1275), (207, 1278),

Gene: JasperJr_63 Start: 41500, Stop: 42285, Start Num: 48

Candidate Starts for JasperJr_63:

(1, 40993), (2, 41143), (4, 41209), (5, 41245), (10, 41350), (11, 41359), (37, 41470), (Start: 48 @41500 has 22 MA's), (75, 41617), (76, 41623), (98, 41755), (106, 41794), (133, 41917), (137, 41935), (149, 42016), (150, 42019), (163, 42070), (201, 42217),

Gene: JayJay_3 Start: 477, Stop: 1343, Start Num: 25

Candidate Starts for JayJay_3:

(Start: 25 @477 has 102 MA's), (Start: 36 @516 has 1 MA's), (64, 594), (69, 612), (72, 633), (76, 669), (82, 699), (93, 753), (103, 837), (105, 843), (107, 849), (126, 912), (158, 1104), (164, 1131), (173, 1164), (182, 1194), (207, 1299),

Gene: Jaygup_3 Start: 473, Stop: 1339, Start Num: 25

Candidate Starts for Jaygup_3:

(Start: 25 @473 has 102 MA's), (Start: 36 @512 has 1 MA's), (64, 590), (69, 608), (72, 629), (76, 665), (82, 695), (93, 749), (103, 833), (105, 839), (107, 845), (126, 908), (158, 1100), (164, 1127), (173, 1160), (182, 1190), (206, 1292), (207, 1295),

Gene: Jedediah_3 Start: 477, Stop: 1343, Start Num: 25

Candidate Starts for Jedediah_3:

(Start: 25 @477 has 102 MA's), (Start: 36 @516 has 1 MA's), (64, 594), (69, 612), (72, 633), (76, 669), (82, 699), (93, 753), (103, 837), (105, 843), (107, 849), (126, 912), (158, 1104), (164, 1131), (173, 1164), (182, 1194), (206, 1296), (207, 1299),

Gene: Jemmno_3 Start: 477, Stop: 1343, Start Num: 25

Candidate Starts for Jemmno_3:

(Start: 25 @477 has 102 MA's), (Start: 36 @516 has 1 MA's), (64, 594), (69, 612), (72, 633), (76, 669), (82, 699), (93, 753), (103, 837), (105, 843), (107, 849), (126, 912), (158, 1104), (164, 1131), (173, 1164), (182, 1194), (206, 1296), (207, 1299),

Gene: Jezreel_3 Start: 473, Stop: 1339, Start Num: 25

Candidate Starts for Jezreel_3:

(Start: 25 @473 has 102 MA's), (Start: 36 @512 has 1 MA's), (64, 590), (69, 608), (72, 629), (76, 665), (82, 695), (93, 749), (103, 833), (105, 839), (107, 845), (126, 908), (158, 1100), (164, 1127), (173, 1160), (182, 1190), (206, 1292), (207, 1295),

Gene: JigglyPuff_3 Start: 470, Stop: 1336, Start Num: 25

Candidate Starts for JigglyPuff_3:

(Start: 25 @470 has 102 MA's), (Start: 36 @509 has 1 MA's), (64, 587), (69, 605), (72, 626), (76, 662), (82, 692), (93, 746), (103, 830), (105, 836), (107, 842), (126, 905), (158, 1097), (164, 1124), (173, 1157), (185, 1196), (189, 1208), (207, 1292),

Gene: Jobypre_33 Start: 30387, Stop: 29647, Start Num: 59

Candidate Starts for Jobypre_33:

(Start: 59 @30387 has 64 MA's), (67, 30363), (73, 30327), (90, 30237), (123, 30081), (134, 30012), (139, 29991), (157, 29889), (161, 29871), (163, 29865), (164, 29859), (187, 29781), (201, 29718), (208, 29688),

Gene: JoeDirt_32 Start: 28959, Stop: 28213, Start Num: 63

Candidate Starts for JoeDirt_32:

(Start: 59 @28965 has 64 MA's), (Start: 63 @28959 has 16 MA's), (93, 28797), (98, 28743), (100, 28734), (104, 28710), (107, 28701), (120, 28671), (127, 28644), (131, 28611), (134, 28593), (150, 28497), (151, 28491), (153, 28485), (157, 28470), (161, 28452), (163, 28446), (164, 28440), (182, 28377), (201, 28299), (208, 28269), (217, 28236),

Gene: JonJames_150 Start: 83739, Stop: 84446, Start Num: 60

Candidate Starts for JonJames_150:

(Start: 60 @83739 has 2 MA's), (68, 83760), (78, 83838), (82, 83853), (99, 83940), (136, 84090), (154, 84180), (206, 84393),

Gene: Jubie_33 Start: 30388, Stop: 29648, Start Num: 59

Candidate Starts for Jubie_33:

(Start: 59 @30388 has 64 MA's), (67, 30364), (73, 30328), (90, 30238), (123, 30082), (134, 30013), (139, 29992), (157, 29890), (161, 29872), (163, 29866), (164, 29860), (187, 29782), (201, 29719), (208, 29689),

Gene: JulietS_3 Start: 473, Stop: 1339, Start Num: 25

Candidate Starts for JulietS_3:

(Start: 25 @473 has 102 MA's), (Start: 36 @512 has 1 MA's), (64, 590), (69, 608), (72, 629), (76, 665), (82, 695), (93, 749), (103, 833), (105, 839), (107, 845), (126, 908), (158, 1100), (164, 1127), (173, 1160), (182, 1190), (207, 1295),

Gene: JustBecause_33 Start: 20081, Stop: 19389, Start Num: 63

Candidate Starts for JustBecause_33:

(16, 20231), (Start: 63 @20081 has 16 MA's), (64, 20075), (69, 20057), (Start: 74 @20015 has 1 MA's), (75, 20006), (89, 19946), (96, 19919), (129, 19772), (150, 19655), (163, 19604), (174, 19562), (176, 19553), (189, 19508), (201, 19448), (208, 19418),

Gene: KSunshine22_186 Start: 133047, Stop: 133721, Start Num: 52

Candidate Starts for KSunshine22_186:

(52, 133047), (75, 133149), (97, 133260), (107, 133314), (108, 133320), (146, 133476), (163, 133542), (198, 133653),

Gene: Kahlid_35 Start: 30131, Stop: 29385, Start Num: 59

Candidate Starts for Kahlid_35:

(Start: 59 @30131 has 64 MA's), (Start: 65 @30113 has 2 MA's), (86, 29996), (88, 29987), (98, 29906), (104, 29873), (120, 29834), (127, 29807), (131, 29774), (134, 29756), (153, 29648), (157, 29633), (159, 29627), (161, 29615), (163, 29609), (164, 29603), (165, 29600), (182, 29540), (192, 29510), (198, 29480), (211, 29420), (213, 29411), (216, 29402),

Gene: Kamryn_3 Start: 473, Stop: 1339, Start Num: 25

Candidate Starts for Kamryn_3:

(Start: 25 @473 has 102 MA's), (Start: 36 @512 has 1 MA's), (64, 590), (69, 608), (72, 629), (76, 665), (82, 695), (93, 749), (103, 833), (105, 839), (107, 845), (126, 908), (158, 1100), (164, 1127), (173, 1160), (182, 1190), (206, 1292), (207, 1295),

Gene: KappaFarmDelta_66 Start: 40666, Stop: 41451, Start Num: 48

Candidate Starts for KappaFarmDelta_66:

(10, 40516), (11, 40525), (37, 40636), (Start: 48 @40666 has 22 MA's), (75, 40783), (76, 40789), (98, 40921), (133, 41083), (137, 41101), (149, 41182), (150, 41185), (201, 41383),

Gene: Kboogie_3 Start: 473, Stop: 1339, Start Num: 25

Candidate Starts for Kboogie_3:

(Start: 25 @473 has 102 MA's), (Start: 36 @512 has 1 MA's), (64, 590), (69, 608), (72, 629), (76, 665), (82, 695), (93, 749), (103, 833), (105, 839), (107, 845), (126, 908), (158, 1100), (164, 1127), (173, 1160), (182, 1190), (206, 1292), (207, 1295),

Gene: Kela_33 Start: 20036, Stop: 19344, Start Num: 63

Candidate Starts for Kela_33:

(24, 20126), (27, 20117), (46, 20078), (Start: 63 @20036 has 16 MA's), (64, 20030), (69, 20012), (Start: 74 @19970 has 1 MA's), (75, 19961), (89, 19901), (96, 19874), (129, 19727), (150, 19610), (163, 19559), (174, 19517), (176, 19508), (189, 19463), (201, 19403), (208, 19373),

Gene: Kingsolomon_33 Start: 30387, Stop: 29647, Start Num: 59

Candidate Starts for Kingsolomon_33:

(Start: 59 @30387 has 64 MA's), (67, 30363), (73, 30327), (90, 30237), (123, 30081), (134, 30012), (139, 29991), (157, 29889), (161, 29871), (163, 29865), (164, 29859), (187, 29781), (201, 29718), (208, 29688),

Gene: KirDoubleO7_31 Start: 30384, Stop: 29644, Start Num: 59

Candidate Starts for KirDoubleO7_31:

(Start: 59 @30384 has 64 MA's), (67, 30360), (73, 30324), (90, 30234), (123, 30078), (134, 30009), (139, 29988), (152, 29904), (157, 29886), (161, 29868), (163, 29862), (164, 29856), (201, 29715), (208, 29685),

Gene: KleverKiS_48 Start: 35908, Stop: 35111, Start Num: 45

Candidate Starts for KleverKiS_48:

(Start: 45 @35908 has 20 MA's), (72, 35824), (75, 35794), (76, 35788), (93, 35692), (95, 35662), (103, 35608), (112, 35575), (142, 35419), (146, 35392), (147, 35389), (158, 35347), (164, 35320), (180, 35266), (192, 35227), (195, 35212), (208, 35149), (215, 35119),

Gene: Koguma_3 Start: 473, Stop: 1339, Start Num: 25

Candidate Starts for Koguma_3:

(Start: 25 @473 has 102 MA's), (Start: 36 @512 has 1 MA's), (64, 590), (69, 608), (72, 629), (76, 665), (82, 695), (93, 749), (103, 833), (105, 839), (107, 845), (122, 893), (126, 908), (158, 1100), (164, 1127), (173, 1160), (182, 1190), (206, 1292), (207, 1295),

Gene: Kradal_42 Start: 24210, Stop: 23518, Start Num: 63

Candidate Starts for Kradal_42:

(Start: 63 @24210 has 16 MA's), (69, 24186), (Start: 74 @24144 has 1 MA's), (76, 24129), (89, 24075), (96, 24048), (106, 23988), (133, 23874), (163, 23733), (176, 23682), (183, 23652), (189, 23637), (201, 23577), (204, 23568),

Gene: Kropertea_32 Start: 28987, Stop: 28250, Start Num: 61

Candidate Starts for Kropertea_32:

(Start: 61 @28987 has 10 MA's), (Start: 65 @28972 has 2 MA's), (67, 28966), (72, 28936), (88, 28846), (97, 28777), (104, 28732), (106, 28726), (116, 28702), (123, 28684), (127, 28666), (134, 28615), (153, 28507), (157, 28492), (161, 28474), (163, 28468), (164, 28462), (177, 28414), (192, 28369),

Gene: Krypton555_33 Start: 30293, Stop: 29553, Start Num: 59

Candidate Starts for Krypton555_33:

(Start: 59 @30293 has 64 MA's), (67, 30269), (73, 30233), (90, 30143), (123, 29987), (134, 29918), (139, 29897), (157, 29795), (161, 29777), (163, 29771), (164, 29765), (201, 29624), (208, 29594),

Gene: Kudfre_95 Start: 56708, Stop: 57451, Start Num: 66

Candidate Starts for Kudfre_95:

(Start: 66 @56708 has 3 MA's), (75, 56771), (76, 56777), (96, 56888), (121, 56996), (126, 57014), (127, 57020), (137, 57083), (141, 57125), (153, 57182), (155, 57191), (161, 57215), (164, 57227), (182, 57290), (183, 57293), (192, 57320), (202, 57371), (208, 57398), (218, 57443),

Gene: Latch_3 Start: 477, Stop: 1343, Start Num: 25

Candidate Starts for Latch_3:

(Start: 25 @477 has 102 MA's), (Start: 36 @516 has 1 MA's), (64, 594), (69, 612), (72, 633), (76, 669), (82, 699), (93, 753), (103, 837), (105, 843), (107, 849), (126, 912), (158, 1104), (164, 1131), (173, 1164), (182, 1194), (206, 1296), (207, 1299),

Gene: LeBron_32 Start: 29003, Stop: 28257, Start Num: 63

Candidate Starts for LeBron_32:

(Start: 59 @29009 has 64 MA's), (Start: 63 @29003 has 16 MA's), (93, 28841), (98, 28787), (100, 28778), (104, 28754), (107, 28745), (120, 28715), (127, 28688), (131, 28655), (134, 28637), (150, 28541), (151, 28535), (153, 28529), (157, 28514), (161, 28496), (163, 28490), (164, 28484), (182, 28421), (201, 28343), (208, 28313), (217, 28280),

Gene: LeoJr_192 Start: 129755, Stop: 130420, Start Num: 54

Candidate Starts for LeoJr_192:

(Start: 54 @129755 has 1 MA's), (75, 129839), (97, 129950), (108, 130010), (128, 130073), (146, 130166), (163, 130232), (164, 130238), (198, 130343),

Gene: Lethe_3 Start: 473, Stop: 1339, Start Num: 25

Candidate Starts for Lethe_3:

(Start: 25 @473 has 102 MA's), (Start: 36 @512 has 1 MA's), (64, 590), (69, 608), (72, 629), (76, 665), (82, 695), (93, 749), (103, 833), (105, 839), (107, 845), (126, 908), (158, 1100), (164, 1127), (173, 1160), (182, 1190), (207, 1295),

Gene: Lewan_35 Start: 30126, Stop: 29380, Start Num: 59

Candidate Starts for Lewan_35:

(Start: 59 @30126 has 64 MA's), (Start: 65 @30108 has 2 MA's), (98, 29901), (104, 29868), (120, 29829), (127, 29802), (131, 29769), (134, 29751), (153, 29643), (157, 29628), (159, 29622), (161, 29610), (163, 29604), (164, 29598), (165, 29595), (182, 29535), (192, 29505), (198, 29475), (211, 29415), (213, 29406), (216, 29397),

Gene: LifeSavor_3 Start: 473, Stop: 1339, Start Num: 25

Candidate Starts for LifeSavor_3:

(Start: 25 @473 has 102 MA's), (Start: 36 @512 has 1 MA's), (64, 590), (69, 608), (72, 629), (76, 665), (82, 695), (93, 749), (103, 833), (105, 839), (107, 845), (126, 908), (158, 1100), (164, 1127), (173, 1160), (182, 1190), (206, 1292), (207, 1295),

Gene: LilDestine_35 Start: 30125, Stop: 29379, Start Num: 59

Candidate Starts for LilDestine_35:

(Start: 59 @30125 has 64 MA's), (Start: 65 @30107 has 2 MA's), (79, 30014), (98, 29900), (104, 29867), (120, 29828), (127, 29801), (131, 29768), (134, 29750), (153, 29642), (157, 29627), (159, 29621), (161, 29609), (163, 29603), (164, 29597), (165, 29594), (182, 29534), (192, 29504), (198, 29474), (211, 29414), (213, 29405), (216, 29396),

Gene: LilhomieP_46 Start: 35928, Stop: 35131, Start Num: 45

Candidate Starts for LilhomieP_46:

(Start: 45 @35928 has 20 MA's), (72, 35844), (75, 35814), (76, 35808), (93, 35712), (95, 35682), (103, 35628), (112, 35595), (142, 35439), (146, 35412), (147, 35409), (158, 35367), (164, 35340), (180, 35286), (192, 35247), (195, 35232), (208, 35169), (215, 35139),

Gene: Littleton_3 Start: 477, Stop: 1343, Start Num: 25

Candidate Starts for Littleton_3:

(Start: 25 @477 has 102 MA's), (Start: 36 @516 has 1 MA's), (64, 594), (69, 612), (72, 633), (76, 669), (82, 699), (93, 753), (103, 837), (105, 843), (107, 849), (122, 897), (126, 912), (158, 1104), (164, 1131), (173, 1164), (182, 1194), (206, 1296), (207, 1299),

Gene: LiyuLake_33 Start: 30342, Stop: 29602, Start Num: 59

Candidate Starts for LiyuLake_33:

(41, 30396), (Start: 59 @30342 has 64 MA's), (67, 30318), (73, 30282), (90, 30192), (123, 30036), (134, 29967), (139, 29946), (152, 29862), (157, 29844), (161, 29826), (163, 29820), (164, 29814), (201, 29673),

Gene: Loadrie_35 Start: 30158, Stop: 29412, Start Num: 59

Candidate Starts for Loadrie_35:

(Start: 59 @30158 has 64 MA's), (Start: 65 @30140 has 2 MA's), (98, 29933), (104, 29900), (120, 29861), (127, 29834), (131, 29801), (134, 29783), (153, 29675), (157, 29660), (159, 29654), (161, 29642), (163, 29636), (164, 29630), (165, 29627), (182, 29567), (192, 29537), (198, 29507), (211, 29447), (213, 29438), (216, 29429),

Gene: LolaVinca_3 Start: 473, Stop: 1339, Start Num: 25

Candidate Starts for LolaVinca_3:

(Start: 25 @473 has 102 MA's), (Start: 36 @512 has 1 MA's), (64, 590), (69, 608), (72, 629), (76, 665), (82, 695), (93, 749), (103, 833), (105, 839), (107, 845), (126, 908), (149, 1067), (158, 1100), (164, 1127), (173, 1160), (182, 1190), (206, 1292), (207, 1295),

Gene: Lolly9_33 Start: 30157, Stop: 29417, Start Num: 59

Candidate Starts for Lolly9_33:

(Start: 59 @30157 has 64 MA's), (67, 30133), (73, 30097), (90, 30007), (123, 29851), (134, 29782), (139, 29761), (157, 29659), (161, 29641), (163, 29635), (164, 29629), (201, 29488), (203, 29482), (207, 29464),

Gene: LordLeafolot_3 Start: 473, Stop: 1339, Start Num: 25

Candidate Starts for LordLeafolot_3:

(Start: 25 @473 has 102 MA's), (Start: 36 @512 has 1 MA's), (64, 590), (69, 608), (72, 629), (76, 665), (82, 695), (93, 749), (103, 833), (105, 839), (107, 845), (126, 908), (149, 1067), (158, 1100), (164, 1127), (173, 1160), (182, 1190), (206, 1292), (207, 1295),

Gene: Lozinak_137 Start: 75782, Stop: 76489, Start Num: 55

Candidate Starts for Lozinak_137:

(Start: 55 @75782 has 16 MA's), (78, 75890), (86, 75914), (97, 75962), (140, 76166), (151, 76226), (208, 76448),

Gene: LuckySocke_114 Start: 61556, Stop: 62245, Start Num: 63

Candidate Starts for LuckySocke_114:

(Start: 63 @61556 has 16 MA's), (69, 61580), (75, 61631), (98, 61754), (144, 61961), (164, 62054), (168, 62063), (189, 62135), (193, 62150), (198, 62177),

Gene: Lumos_33 Start: 30384, Stop: 29644, Start Num: 59

Candidate Starts for Lumos_33:

(Start: 59 @30384 has 64 MA's), (67, 30360), (73, 30324), (90, 30234), (123, 30078), (134, 30009), (139, 29988), (157, 29886), (161, 29868), (163, 29862), (164, 29856), (187, 29778), (201, 29715), (208, 29685),

Gene: Lysidious_67 Start: 43158, Stop: 43943, Start Num: 48

Candidate Starts for Lysidious_67:

(5, 42906), (10, 43008), (11, 43017), (37, 43128), (Start: 48 @43158 has 22 MA's), (70, 43236), (75, 43275), (76, 43281), (98, 43413), (133, 43575), (137, 43593), (149, 43674), (150, 43677), (163, 43728), (201, 43875),

Gene: MAckerman_32 Start: 28983, Stop: 28231, Start Num: 59

Candidate Starts for MAckerman_32:

(Start: 59 @28983 has 64 MA's), (Start: 63 @28977 has 16 MA's), (93, 28815), (98, 28761), (100, 28752), (104, 28728), (107, 28719), (120, 28689), (127, 28662), (131, 28629), (134, 28611), (151, 28509), (153, 28503), (157, 28488), (161, 28470), (163, 28464), (164, 28458), (182, 28395), (201, 28317), (208, 28287), (217, 28254),

Gene: Malachai_63 Start: 42626, Stop: 43411, Start Num: 48

Candidate Starts for Malachai_63:

(37, 42596), (Start: 48 @42626 has 22 MA's), (75, 42743), (76, 42749), (98, 42881), (106, 42920), (133, 43043), (137, 43061), (149, 43142), (150, 43145), (201, 43343),

Gene: Mangeria_3 Start: 473, Stop: 1339, Start Num: 25

Candidate Starts for Mangeria_3:

(Start: 25 @473 has 102 MA's), (Start: 36 @512 has 1 MA's), (64, 590), (69, 608), (72, 629), (76, 665), (82, 695), (105, 839), (107, 845), (126, 908), (158, 1100), (164, 1127), (173, 1160), (182, 1190), (207, 1295),

Gene: MaryV_58 Start: 41503, Stop: 40754, Start Num: 53

Candidate Starts for MaryV_58:

(6, 41740), (7, 41728), (8, 41692), (13, 41647), (18, 41623), (38, 41539), (Start: 53 @41503 has 5 MA's), (64, 41464), (71, 41431), (Start: 74 @41404 has 1 MA's), (76, 41389), (80, 41365), (106, 41197), (110, 41182), (127, 41125), (150, 41023), (164, 40966), (167, 40954), (192, 40873), (198, 40843), (200, 40831), (206, 40804), (208, 40795), (209, 40789), (217, 40762),

Gene: Matsumoto_3 Start: 477, Stop: 1343, Start Num: 25

Candidate Starts for Matsumoto_3:

(Start: 25 @477 has 102 MA's), (Start: 36 @516 has 1 MA's), (64, 594), (69, 612), (72, 633), (76, 669), (82, 699), (93, 753), (103, 837), (105, 843), (107, 849), (126, 912), (158, 1104), (164, 1131), (173, 1164), (182, 1194), (206, 1296), (207, 1299),

Gene: McGee_3 Start: 512, Stop: 1339, Start Num: 36

Candidate Starts for McGee_3:

(Start: 25 @473 has 102 MA's), (Start: 36 @512 has 1 MA's), (64, 590), (69, 608), (72, 629), (76, 665), (82, 695), (93, 749), (103, 833), (105, 839), (107, 845), (122, 893), (126, 908), (158, 1100), (164, 1127), (173, 1160), (182, 1190), (206, 1292), (207, 1295),

Gene: Melpomini_3 Start: 456, Stop: 1322, Start Num: 25

Candidate Starts for Melpomini_3:

(Start: 25 @456 has 102 MA's), (Start: 36 @495 has 1 MA's), (64, 573), (69, 591), (72, 612), (76, 648), (82, 678), (93, 732), (103, 816), (105, 822), (107, 828), (122, 876), (126, 891), (158, 1083), (164, 1110), (173, 1143), (182, 1173), (206, 1275), (207, 1278),

Gene: Miley16_35 Start: 30126, Stop: 29380, Start Num: 59

Candidate Starts for Miley16_35:

(Start: 59 @30126 has 64 MA's), (Start: 65 @30108 has 2 MA's), (98, 29901), (104, 29868), (120, 29829), (127, 29802), (131, 29769), (134, 29751), (153, 29643), (157, 29628), (159, 29622), (161, 29610), (163, 29604), (164, 29598), (165, 29595), (182, 29535), (192, 29505), (198, 29475), (211, 29415), (213, 29406), (216, 29397),

Gene: Mimi_190 Start: 131559, Stop: 132209, Start Num: 56

Candidate Starts for Mimi_190:

(Start: 56 @131559 has 3 MA's), (75, 131640), (80, 131670), (107, 131805), (108, 131811), (146, 131967), (163, 132033), (164, 132039), (192, 132114), (204, 132171), (209, 132198),

Gene: MiniLon_33 Start: 30158, Stop: 29418, Start Num: 59

Candidate Starts for MiniLon_33:

(Start: 59 @30158 has 64 MA's), (67, 30134), (73, 30098), (90, 30008), (123, 29852), (134, 29783), (139, 29762), (157, 29660), (161, 29642), (163, 29636), (164, 29630), (201, 29489), (203, 29483), (207, 29465),

Gene: MiniMac_33 Start: 30158, Stop: 29418, Start Num: 59

Candidate Starts for MiniMac_33:

(Start: 59 @30158 has 64 MA's), (67, 30134), (73, 30098), (90, 30008), (123, 29852), (134, 29783), (139, 29762), (157, 29660), (161, 29642), (163, 29636), (164, 29630), (201, 29489), (203, 29483), (207, 29465),

Gene: Miskis_132 Start: 75213, Stop: 75920, Start Num: 55

Candidate Starts for Miskis_132:

(Start: 55 @75213 has 16 MA's), (78, 75321), (86, 75345), (97, 75393), (208, 75879),

Gene: MissRona_68 Start: 44111, Stop: 44896, Start Num: 48

Candidate Starts for MissRona_68:

(37, 44081), (Start: 48 @44111 has 22 MA's), (75, 44228), (76, 44234), (97, 44354), (98, 44366), (133, 44528), (137, 44546), (149, 44627), (150, 44630), (201, 44828),

Gene: MkaliMitinis3_35 Start: 30126, Stop: 29380, Start Num: 59

Candidate Starts for MkaliMitinis3_35:

(Start: 59 @30126 has 64 MA's), (Start: 65 @30108 has 2 MA's), (86, 29991), (88, 29982), (98, 29901), (104, 29868), (120, 29829), (127, 29802), (131, 29769), (134, 29751), (153, 29643), (157, 29628), (159, 29622), (161, 29610), (163, 29604), (164, 29598), (165, 29595), (182, 29535), (192, 29505), (198, 29475), (211, 29415), (213, 29406), (216, 29397),

Gene: MoMoMixon_3 Start: 473, Stop: 1339, Start Num: 25

Candidate Starts for MoMoMixon_3:

(Start: 25 @473 has 102 MA's), (Start: 36 @512 has 1 MA's), (64, 590), (69, 608), (72, 629), (76, 665), (82, 695), (93, 749), (103, 833), (105, 839), (107, 845), (126, 908), (158, 1100), (164, 1127), (173, 1160), (185, 1199), (189, 1211), (207, 1295),

Gene: Mollymur_99 Start: 66160, Stop: 66834, Start Num: 61

Candidate Starts for Mollymur_99:

(30, 66079), (Start: 61 @66160 has 10 MA's), (75, 66238), (78, 66262), (95, 66325), (143, 66544), (149, 66580), (152, 66592), (164, 66640), (186, 66712), (212, 66826),

Gene: Momo_3 Start: 477, Stop: 1343, Start Num: 25

Candidate Starts for Momo_3:

(Start: 25 @477 has 102 MA's), (Start: 36 @516 has 1 MA's), (64, 594), (69, 612), (72, 633), (76, 669), (82, 699), (93, 753), (103, 837), (105, 843), (107, 849), (126, 912), (158, 1104), (164, 1131), (173, 1164), (182, 1194), (206, 1296), (207, 1299),

Gene: Moostard_33 Start: 30389, Stop: 29649, Start Num: 59

Candidate Starts for Moostard_33:

(Start: 59 @30389 has 64 MA's), (67, 30365), (73, 30329), (90, 30239), (123, 30083), (134, 30014), (139, 29993), (157, 29891), (161, 29873), (163, 29867), (164, 29861), (187, 29783), (201, 29720), (208, 29690),

Gene: Morizzled23_3 Start: 456, Stop: 1322, Start Num: 25

Candidate Starts for Morizzled23_3:

(Start: 25 @456 has 102 MA's), (Start: 36 @495 has 1 MA's), (64, 573), (69, 591), (72, 612), (76, 648), (82, 678), (93, 732), (103, 816), (105, 822), (107, 828), (126, 891), (158, 1083), (164, 1110), (173, 1143), (182, 1173), (206, 1275), (207, 1278),

Gene: MrMagoo_56 Start: 38232, Stop: 37432, Start Num: 45

Candidate Starts for MrMagoo_56:

(9, 38379), (Start: 45 @38232 has 20 MA's), (75, 38115), (76, 38109), (97, 37971), (99, 37953), (105, 37923), (112, 37896), (123, 37866), (133, 37803), (142, 37740), (146, 37713), (147, 37710), (158, 37668), (164, 37641), (166, 37632), (173, 37608), (181, 37581), (193, 37545), (195, 37533), (206, 37479), (208, 37470), (215, 37440),

Gene: MsGreen_33 Start: 30387, Stop: 29647, Start Num: 59

Candidate Starts for MsGreen_33:

(Start: 59 @30387 has 64 MA's), (67, 30363), (73, 30327), (90, 30237), (123, 30081), (134, 30012), (139, 29991), (157, 29889), (161, 29871), (163, 29865), (164, 29859), (187, 29781), (201, 29718), (208, 29688),

Gene: Myrna_3 Start: 913, Stop: 1767, Start Num: 28

Candidate Starts for Myrna_3:

(Start: 28 @913 has 2 MA's), (Start: 59 @1000 has 64 MA's), (Start: 66 @1021 has 3 MA's), (70, 1045), (76, 1090), (79, 1111), (82, 1123), (83, 1126), (100, 1246), (103, 1267), (111, 1300), (117, 1312), (123, 1330), (125, 1336), (142, 1444), (150, 1486), (158, 1516), (164, 1543), (170, 1567), (171, 1570), (182, 1606), (184, 1612), (185, 1615), (193, 1639),

Gene: Naija_3 Start: 477, Stop: 1343, Start Num: 25

Candidate Starts for Naija_3:

(Start: 25 @477 has 102 MA's), (Start: 36 @516 has 1 MA's), (64, 594), (69, 612), (72, 633), (76, 669), (82, 699), (93, 753), (103, 837), (105, 843), (107, 849), (126, 912), (158, 1104), (164, 1131), (173, 1164), (182, 1194), (206, 1296), (207, 1299),

Gene: Nanosmite_53 Start: 37550, Stop: 36750, Start Num: 45

Candidate Starts for Nanosmite_53:

(Start: 45 @37550 has 20 MA's), (75, 37433), (76, 37427), (80, 37403), (95, 37301), (103, 37247), (108, 37229), (115, 37205), (141, 37061), (146, 37031), (147, 37028), (158, 36986), (164, 36959), (181, 36899), (196, 36848), (206, 36797), (215, 36758),

Gene: Napoleon13_3 Start: 473, Stop: 1339, Start Num: 25

Candidate Starts for Napoleon13_3:

(Start: 25 @473 has 102 MA's), (Start: 36 @512 has 1 MA's), (64, 590), (69, 608), (72, 629), (76, 665), (82, 695), (93, 749), (103, 833), (105, 839), (107, 845), (126, 908), (158, 1100), (164, 1127), (173, 1160), (182, 1190), (206, 1292), (207, 1295),

Gene: Nappy_3 Start: 473, Stop: 1339, Start Num: 25

Candidate Starts for Nappy_3:

(Start: 25 @473 has 102 MA's), (Start: 36 @512 has 1 MA's), (64, 590), (69, 608), (72, 629), (76, 665), (82, 695), (93, 749), (103, 833), (105, 839), (107, 845), (126, 908), (158, 1100), (164, 1127), (173, 1160), (182, 1190), (207, 1295),

Gene: Naval22_3 Start: 473, Stop: 1339, Start Num: 25

Candidate Starts for Naval22_3:

(Start: 25 @473 has 102 MA's), (Start: 36 @512 has 1 MA's), (64, 590), (69, 608), (72, 629), (76, 665), (82, 695), (93, 749), (103, 833), (105, 839), (107, 845), (126, 908), (158, 1100), (164, 1127), (173, 1160), (185, 1199), (189, 1211), (207, 1295),

Gene: Netyap_35 Start: 30126, Stop: 29380, Start Num: 59

Candidate Starts for Netyap_35:

(Start: 59 @30126 has 64 MA's), (Start: 65 @30108 has 2 MA's), (98, 29901), (104, 29868), (120, 29829), (127, 29802), (131, 29769), (134, 29751), (153, 29643), (157, 29628), (159, 29622), (161, 29610), (163, 29604), (164, 29598), (165, 29595), (182, 29535), (192, 29505), (198, 29475), (211, 29415), (213, 29406), (216, 29397),

Gene: Neville_85 Start: 54863, Stop: 55597, Start Num: 65

Candidate Starts for Neville_85:

(Start: 65 @54863 has 2 MA's), (Start: 66 @54866 has 3 MA's), (75, 54929), (80, 54959), (105, 55103), (106, 55106), (126, 55172), (128, 55184), (137, 55241), (150, 55328), (153, 55340), (161, 55373), (164, 55385), (182, 55448), (195, 55493), (209, 55562),

Gene: Ngannou_3 Start: 456, Stop: 1322, Start Num: 25

Candidate Starts for Ngannou_3:

(Start: 25 @456 has 102 MA's), (Start: 36 @495 has 1 MA's), (64, 573), (69, 591), (72, 612), (76, 648), (82, 678), (93, 732), (103, 816), (105, 822), (107, 828), (126, 891), (158, 1083), (164, 1110), (173,

1143), (182, 1173), (206, 1275), (207, 1278),

Gene: Nicholas_33 Start: 30387, Stop: 29647, Start Num: 59

Candidate Starts for Nicholas_33:

(Start: 59 @30387 has 64 MA's), (67, 30363), (73, 30327), (90, 30237), (123, 30081), (134, 30012), (139, 29991), (157, 29889), (161, 29871), (163, 29865), (164, 29859), (187, 29781), (201, 29718), (208, 29688),

Gene: Nicholasp3_35 Start: 30128, Stop: 29382, Start Num: 59

Candidate Starts for Nicholasp3_35:

(Start: 59 @30128 has 64 MA's), (Start: 65 @30110 has 2 MA's), (79, 30017), (98, 29903), (104, 29870), (120, 29831), (127, 29804), (131, 29771), (134, 29753), (153, 29645), (157, 29630), (159, 29624), (161, 29612), (163, 29606), (164, 29600), (165, 29597), (182, 29537), (192, 29507), (198, 29477), (211, 29417), (213, 29408), (216, 29399),

Gene: Nidhogg_3 Start: 473, Stop: 1339, Start Num: 25

Candidate Starts for Nidhogg_3:

(Start: 25 @473 has 102 MA's), (Start: 36 @512 has 1 MA's), (64, 590), (69, 608), (72, 629), (76, 665), (82, 695), (93, 749), (103, 833), (105, 839), (107, 845), (126, 908), (158, 1100), (164, 1127), (173, 1160), (185, 1199), (189, 1211), (207, 1295),

Gene: Nirvana_44 Start: 25143, Stop: 24448, Start Num: 63

Candidate Starts for Nirvana_44:

(24, 25266), (Start: 28 @25245 has 2 MA's), (31, 25233), (32, 25230), (35, 25224), (Start: 63 @25143 has 16 MA's), (69, 25119), (72, 25098), (Start: 74 @25077 has 1 MA's), (75, 25068), (85, 25020), (89, 25008), (91, 25005), (115, 24894), (122, 24876), (124, 24870), (129, 24834), (189, 24570), (213, 24459),

Gene: NoodleTree_3 Start: 473, Stop: 1339, Start Num: 25

Candidate Starts for NoodleTree_3:

(Start: 25 @473 has 102 MA's), (Start: 36 @512 has 1 MA's), (64, 590), (69, 608), (72, 629), (76, 665), (82, 695), (93, 749), (103, 833), (105, 839), (107, 845), (126, 908), (158, 1100), (164, 1127), (173, 1160), (182, 1190), (207, 1295),

Gene: Norvs_135 Start: 75176, Stop: 75883, Start Num: 55

Candidate Starts for Norvs_135:

(Start: 55 @75176 has 16 MA's), (78, 75284), (86, 75308), (97, 75356), (140, 75560), (151, 75620), (208, 75842),

Gene: NuevoMundo_3 Start: 470, Stop: 1336, Start Num: 25

Candidate Starts for NuevoMundo_3:

(Start: 25 @470 has 102 MA's), (Start: 36 @509 has 1 MA's), (64, 587), (69, 605), (72, 626), (76, 662), (82, 692), (93, 746), (103, 830), (105, 836), (107, 842), (126, 905), (128, 917), (158, 1097), (164, 1124), (173, 1157), (182, 1187), (206, 1289), (207, 1292),

Gene: Obliviate_62 Start: 39884, Stop: 40669, Start Num: 48

Candidate Starts for Obliviate_62:

(10, 39734), (11, 39743), (37, 39854), (Start: 48 @39884 has 22 MA's), (70, 39962), (75, 40001), (76, 40007), (98, 40139), (133, 40301), (137, 40319), (149, 40400), (150, 40403), (163, 40454), (201, 40601),

Gene: Octobien14_93 Start: 55909, Stop: 56829, Start Num: 14

Candidate Starts for Octobien14_93:

(Start: 14 @55909 has 1 MA's), (Start: 66 @56086 has 3 MA's), (75, 56149), (76, 56155), (96, 56266), (126, 56392), (127, 56398), (128, 56404), (137, 56461), (153, 56560), (155, 56569), (161, 56593), (164, 56605), (182, 56668), (183, 56671), (202, 56749), (208, 56776), (218, 56821),

Gene: OhShagHennessy_32 Start: 28948, Stop: 28196, Start Num: 59

Candidate Starts for OhShagHennessy_32:

(Start: 59 @28948 has 64 MA's), (Start: 63 @28942 has 16 MA's), (93, 28780), (98, 28726), (100, 28717), (104, 28693), (107, 28684), (120, 28654), (127, 28627), (131, 28594), (134, 28576), (150, 28480), (151, 28474), (153, 28468), (157, 28453), (161, 28435), (163, 28429), (164, 28423), (182, 28360), (201, 28282), (208, 28252), (217, 28219),

Gene: OneUp_121 Start: 73707, Stop: 74444, Start Num: 55

Candidate Starts for OneUp_121:

(Start: 55 @73707 has 16 MA's), (68, 73740), (80, 73824), (95, 73884), (102, 73932), (151, 74169), (191, 74310), (210, 74400),

Gene: PYPDinur_32 Start: 29088, Stop: 28351, Start Num: 61

Candidate Starts for PYPDinur_32:

(3, 29478), (42, 29142), (43, 29133), (Start: 61 @29088 has 10 MA's), (Start: 65 @29073 has 2 MA's), (67, 29067), (88, 28947), (106, 28827), (116, 28803), (123, 28785), (127, 28767), (134, 28716), (153, 28608), (157, 28593), (161, 28575), (163, 28569), (164, 28563),

Gene: Panchaali_194 Start: 135235, Stop: 135906, Start Num: 52

Candidate Starts for Panchaali_194:

(52, 135235), (67, 135274), (75, 135334), (97, 135445), (108, 135505), (128, 135568), (146, 135661), (163, 135727), (198, 135838), (209, 135892),

Gene: Patbob_189 Start: 131947, Stop: 132597, Start Num: 57

Candidate Starts for Patbob_189:

(47, 131911), (57, 131947), (75, 132028), (80, 132058), (108, 132199), (146, 132355), (163, 132421), (164, 132427), (192, 132502), (204, 132559), (209, 132586),

Gene: Patter_3 Start: 494, Stop: 1360, Start Num: 25

Candidate Starts for Patter_3:

(Start: 25 @494 has 102 MA's), (Start: 36 @533 has 1 MA's), (64, 611), (69, 629), (72, 650), (76, 686), (82, 716), (93, 770), (103, 854), (105, 860), (107, 866), (126, 929), (158, 1121), (164, 1148), (173, 1181), (182, 1211), (206, 1313), (207, 1316),

Gene: PauloDiaboli_226 Start: 118929, Stop: 119663, Start Num: 61

Candidate Starts for PauloDiaboli_226:

(Start: 61 @118929 has 10 MA's), (95, 119124), (104, 119181), (108, 119196), (118, 119220), (127, 119253), (132, 119295), (135, 119310), (155, 119421), (164, 119457), (204, 119607),

Gene: PegLeg_47 Start: 35927, Stop: 35130, Start Num: 45

Candidate Starts for PegLeg_47:

(Start: 45 @35927 has 20 MA's), (72, 35843), (75, 35813), (76, 35807), (93, 35711), (95, 35681), (103, 35627), (112, 35594), (142, 35438), (146, 35411), (147, 35408), (158, 35366), (164, 35339), (180, 35285), (192, 35246), (195, 35231), (208, 35168), (215, 35138),

Gene: Phabba_3 Start: 1059, Stop: 1910, Start Num: 28

Candidate Starts for Phabba_3:

(20, 1020), (Start: 28 @1059 has 2 MA's), (Start: 59 @1143 has 64 MA's), (Start: 66 @1164 has 3 MA's), (70, 1188), (76, 1233), (96, 1359), (103, 1410), (111, 1443), (122, 1470), (142, 1587), (150,

1629), (158, 1659), (164, 1686), (171, 1713), (185, 1758), (193, 1782), (206, 1848), (208, 1857),

Gene: PhinkBoden_136 Start: 76041, Stop: 76748, Start Num: 55

Candidate Starts for PhinkBoden_136:

(Start: 55 @76041 has 16 MA's), (78, 76149), (86, 76173), (97, 76221), (208, 76707),

Gene: Phlegm_3 Start: 477, Stop: 1343, Start Num: 25

Candidate Starts for Phlegm_3:

(Start: 25 @477 has 102 MA's), (Start: 36 @516 has 1 MA's), (64, 594), (69, 612), (72, 633), (76, 669), (82, 699), (93, 753), (103, 837), (105, 843), (107, 849), (126, 912), (158, 1104), (164, 1131), (173, 1164), (182, 1194), (206, 1296), (207, 1299),

Gene: Phrampa_184 Start: 131310, Stop: 131960, Start Num: 56

Candidate Starts for Phrampa_184:

(Start: 56 @131310 has 3 MA's), (75, 131391), (80, 131421), (107, 131556), (108, 131562), (138, 131679), (146, 131718), (163, 131784), (192, 131865), (197, 131892), (209, 131949),

Gene: Phusco_3 Start: 473, Stop: 1339, Start Num: 25

Candidate Starts for Phusco_3:

(Start: 25 @473 has 102 MA's), (Start: 36 @512 has 1 MA's), (64, 590), (69, 608), (72, 629), (76, 665), (82, 695), (93, 749), (103, 833), (105, 839), (107, 845), (126, 908), (158, 1100), (164, 1127), (173, 1160), (182, 1190), (206, 1292), (207, 1295),

Gene: Pier_3 Start: 473, Stop: 1339, Start Num: 25

Candidate Starts for Pier_3:

(Start: 25 @473 has 102 MA's), (Start: 36 @512 has 1 MA's), (64, 590), (69, 608), (72, 629), (76, 665), (82, 695), (93, 749), (103, 833), (105, 839), (107, 845), (126, 908), (158, 1100), (164, 1127), (173, 1160), (182, 1190), (206, 1292), (207, 1295),

Gene: Pio_3 Start: 473, Stop: 1339, Start Num: 25

Candidate Starts for Pio_3:

(Start: 25 @473 has 102 MA's), (Start: 36 @512 has 1 MA's), (64, 590), (69, 608), (72, 629), (76, 665), (82, 695), (93, 749), (103, 833), (105, 839), (107, 845), (126, 908), (158, 1100), (164, 1127), (173, 1160), (182, 1190), (206, 1292), (207, 1295),

Gene: Pipp_67 Start: 41988, Stop: 42773, Start Num: 48

Candidate Starts for Pipp_67:

(10, 41838), (11, 41847), (37, 41958), (Start: 48 @41988 has 22 MA's), (75, 42105), (76, 42111), (96, 42222), (98, 42243), (105, 42279), (133, 42405), (137, 42423), (149, 42504), (150, 42507), (201, 42705),

Gene: Pivoine_3 Start: 477, Stop: 1343, Start Num: 25

Candidate Starts for Pivoine_3:

(Start: 25 @477 has 102 MA's), (Start: 36 @516 has 1 MA's), (64, 594), (69, 612), (72, 633), (76, 669), (82, 699), (93, 753), (103, 837), (105, 843), (107, 849), (126, 912), (158, 1104), (164, 1131), (173, 1164), (182, 1194), (206, 1296), (207, 1299),

Gene: Pochiewood_32 Start: 28984, Stop: 28232, Start Num: 59

Candidate Starts for Pochiewood_32:

(Start: 59 @28984 has 64 MA's), (Start: 63 @28978 has 16 MA's), (93, 28816), (98, 28762), (104, 28729), (107, 28720), (120, 28690), (127, 28663), (131, 28630), (134, 28612), (151, 28510), (153, 28504), (157, 28489), (161, 28471), (163, 28465), (164, 28459), (182, 28396), (201, 28318), (208, 28288), (217, 28255),

Gene: Quantum_41 Start: 24210, Stop: 23518, Start Num: 63

Candidate Starts for Quantum_41:

(Start: 63 @24210 has 16 MA's), (69, 24186), (Start: 74 @24144 has 1 MA's), (76, 24129), (89, 24075), (96, 24048), (106, 23988), (133, 23874), (163, 23733), (176, 23682), (183, 23652), (189, 23637), (201, 23577), (204, 23568),

Gene: Quby_32 Start: 28982, Stop: 28245, Start Num: 61

Candidate Starts for Quby_32:

(3, 29372), (42, 29036), (43, 29027), (Start: 61 @28982 has 10 MA's), (Start: 65 @28967 has 2 MA's), (67, 28961), (88, 28841), (106, 28721), (116, 28697), (123, 28679), (127, 28661), (134, 28610), (153, 28502), (157, 28487), (161, 28469), (163, 28463), (164, 28457), (177, 28409),

Gene: Rabbitrun_90 Start: 55546, Stop: 56391, Start Num: 51

Candidate Starts for Rabbitrun_90:

(Start: 51 @55546 has 1 MA's), (Start: 65 @55594 has 2 MA's), (Start: 66 @55597 has 3 MA's), (75, 55660), (80, 55690), (118, 55876), (126, 55903), (128, 55915), (137, 55972), (150, 56059), (153, 56071), (161, 56104), (164, 56116), (182, 56179), (183, 56182), (192, 56209), (195, 56224), (215, 56317), (218, 56332),

Gene: Racecar_191 Start: 131722, Stop: 132372, Start Num: 56

Candidate Starts for Racecar_191:

(Start: 56 @131722 has 3 MA's), (75, 131803), (80, 131833), (107, 131968), (108, 131974), (146, 132130), (164, 132202), (192, 132277), (197, 132304), (204, 132334), (206, 132346), (209, 132361),

Gene: Rahel_3 Start: 473, Stop: 1339, Start Num: 25

Candidate Starts for Rahel_3:

(Start: 25 @473 has 102 MA's), (Start: 36 @512 has 1 MA's), (64, 590), (69, 608), (72, 629), (76, 665), (82, 695), (93, 749), (103, 833), (105, 839), (107, 845), (126, 908), (158, 1100), (164, 1127), (173, 1160), (182, 1190), (206, 1292), (207, 1295),

Gene: RayTheFireFly_64 Start: 40609, Stop: 41394, Start Num: 48

Candidate Starts for RayTheFireFly_64:

(Start: 48 @40609 has 22 MA's), (72, 40696), (75, 40726), (76, 40732), (98, 40864), (137, 41044), (149, 41125), (150, 41128), (201, 41326),

Gene: Red305_33 Start: 30387, Stop: 29647, Start Num: 59

Candidate Starts for Red305_33:

(Start: 59 @30387 has 64 MA's), (67, 30363), (73, 30327), (90, 30237), (123, 30081), (134, 30012), (139, 29991), (157, 29889), (161, 29871), (163, 29865), (164, 29859), (187, 29781), (201, 29718), (208, 29688),

Gene: ReginaGlobina_196 Start: 131038, Stop: 131703, Start Num: 54

Candidate Starts for ReginaGlobina_196:

(Start: 54 @131038 has 1 MA's), (75, 131122), (97, 131233), (108, 131293), (128, 131356), (146, 131449), (163, 131515), (164, 131521), (198, 131626),

Gene: Reindeer_49 Start: 37136, Stop: 36339, Start Num: 45

Candidate Starts for Reindeer_49:

(Start: 45 @37136 has 20 MA's), (72, 37052), (73, 37046), (75, 37022), (76, 37016), (80, 36992), (93, 36920), (95, 36890), (103, 36836), (115, 36794), (127, 36755), (142, 36647), (146, 36620), (147, 36617), (158, 36575), (164, 36548), (192, 36455), (193, 36452), (195, 36440), (208, 36377), (215, 36347),

Gene: Rey_55 Start: 38168, Stop: 37368, Start Num: 45

Candidate Starts for Rey_55:

(19, 38258), (Start: 45 @38168 has 20 MA's), (75, 38051), (99, 37889), (103, 37865), (105, 37859), (112, 37832), (129, 37766), (146, 37649), (147, 37646), (164, 37577), (173, 37544), (195, 37469), (206, 37415), (208, 37406), (215, 37376),

Gene: Rizal_3 Start: 473, Stop: 1339, Start Num: 25

Candidate Starts for Rizal_3:

(Start: 25 @473 has 102 MA's), (Start: 36 @512 has 1 MA's), (64, 590), (69, 608), (72, 629), (76, 665), (82, 695), (93, 749), (103, 833), (105, 839), (107, 845), (126, 908), (158, 1100), (164, 1127), (173, 1160), (182, 1190), (206, 1292), (207, 1295),

Gene: Rockabye_192 Start: 125265, Stop: 125918, Start Num: 60

Candidate Starts for Rockabye_192:

(15, 125112), (17, 125115), (21, 125130), (22, 125133), (26, 125157), (Start: 48 @125229 has 22 MA's), (50, 125232), (Start: 60 @125265 has 2 MA's), (Start: 66 @125280 has 3 MA's), (68, 125289), (75, 125343), (76, 125349), (77, 125355), (108, 125514), (123, 125553), (137, 125628), (139, 125637), (146, 125670), (194, 125829), (208, 125895),

Gene: Ronan_3 Start: 456, Stop: 1322, Start Num: 25

Candidate Starts for Ronan_3:

(Start: 25 @456 has 102 MA's), (Start: 36 @495 has 1 MA's), (64, 573), (69, 591), (72, 612), (76, 648), (82, 678), (93, 732), (103, 816), (105, 822), (107, 828), (122, 876), (126, 891), (158, 1083), (164, 1110), (173, 1143), (182, 1173), (206, 1275), (207, 1278),

Gene: Rose5_32 Start: 28983, Stop: 28231, Start Num: 59

Candidate Starts for Rose5_32:

(Start: 59 @28983 has 64 MA's), (Start: 63 @28977 has 16 MA's), (93, 28815), (98, 28761), (100, 28752), (104, 28728), (107, 28719), (120, 28689), (127, 28662), (131, 28629), (134, 28611), (150, 28515), (151, 28509), (153, 28503), (157, 28488), (161, 28470), (163, 28464), (164, 28458), (182, 28395), (201, 28317), (208, 28287), (217, 28254),

Gene: RoseMarie_53 Start: 39590, Stop: 38793, Start Num: 45

Candidate Starts for RoseMarie_53:

(Start: 45 @39590 has 20 MA's), (72, 39506), (75, 39476), (76, 39470), (93, 39374), (103, 39290), (105, 39284), (115, 39248), (119, 39239), (142, 39101), (146, 39074), (147, 39071), (158, 39029), (164, 39002), (180, 38948), (192, 38909), (195, 38894), (208, 38831), (215, 38801),

Gene: Rossetti_35 Start: 30398, Stop: 29652, Start Num: 59

Candidate Starts for Rossetti_35:

(Start: 59 @30398 has 64 MA's), (Start: 65 @30380 has 2 MA's), (88, 30254), (98, 30173), (104, 30140), (120, 30101), (127, 30074), (131, 30041), (134, 30023), (153, 29915), (157, 29900), (159, 29894), (161, 29882), (163, 29876), (164, 29870), (165, 29867), (182, 29807), (192, 29777), (198, 29747), (211, 29687), (213, 29678),

Gene: Rumpelstiltskin_35 Start: 30394, Stop: 29648, Start Num: 59

Candidate Starts for Rumpelstiltskin_35:

(Start: 59 @30394 has 64 MA's), (Start: 65 @30376 has 2 MA's), (98, 30169), (104, 30136), (120, 30097), (127, 30070), (131, 30037), (134, 30019), (153, 29911), (157, 29896), (159, 29890), (161, 29878), (163, 29872), (164, 29866), (165, 29863), (182, 29803), (192, 29773), (198, 29743), (211, 29683), (213, 29674), (216, 29665),

Gene: SJReid_194 Start: 123863, Stop: 124516, Start Num: 60

Candidate Starts for SJReid_194:

(Start: 48 @123827 has 22 MA's), (50, 123830), (Start: 60 @123863 has 2 MA's), (68, 123887), (75, 123941), (78, 123965), (108, 124112), (137, 124226), (139, 124235), (146, 124268), (163, 124334), (194, 124427), (208, 124493),

Gene: Samba_65 Start: 43857, Stop: 44642, Start Num: 48

Candidate Starts for Samba_65:

(10, 43707), (11, 43716), (37, 43827), (Start: 48 @43857 has 22 MA's), (70, 43935), (75, 43974), (98, 44112), (133, 44274), (137, 44292), (149, 44373), (150, 44376), (163, 44427), (201, 44574),

Gene: Samty_33 Start: 30388, Stop: 29648, Start Num: 59

Candidate Starts for Samty_33:

(Start: 59 @30388 has 64 MA's), (67, 30364), (73, 30328), (90, 30238), (123, 30082), (134, 30013), (139, 29992), (157, 29890), (161, 29872), (163, 29866), (164, 29860), (187, 29782), (201, 29719), (208, 29689),

Gene: Sarshaun_35 Start: 30159, Stop: 29413, Start Num: 59

Candidate Starts for Sarshaun_35:

(Start: 59 @30159 has 64 MA's), (Start: 65 @30141 has 2 MA's), (86, 30024), (88, 30015), (98, 29934), (104, 29901), (120, 29862), (127, 29835), (131, 29802), (134, 29784), (153, 29676), (157, 29661), (159, 29655), (161, 29643), (163, 29637), (164, 29631), (165, 29628), (182, 29568), (192, 29538), (198, 29508), (211, 29448), (213, 29439), (216, 29430),

Gene: Satis_42 Start: 24206, Stop: 23514, Start Num: 63

Candidate Starts for Satis_42:

(Start: 63 @24206 has 16 MA's), (69, 24182), (Start: 74 @24140 has 1 MA's), (76, 24125), (89, 24071), (96, 24044), (106, 23984), (133, 23870), (163, 23729), (176, 23678), (183, 23648), (189, 23633), (201, 23573), (204, 23564),

Gene: Sauce_3 Start: 477, Stop: 1343, Start Num: 25

Candidate Starts for Sauce_3:

(Start: 25 @477 has 102 MA's), (Start: 36 @516 has 1 MA's), (64, 594), (69, 612), (72, 633), (76, 669), (82, 699), (93, 753), (103, 837), (105, 843), (107, 849), (122, 897), (126, 912), (158, 1104), (164, 1131), (173, 1164), (182, 1194), (206, 1296), (207, 1299),

Gene: ScoobyDoobyDoo_6 Start: 1594, Stop: 2481, Start Num: 23

Candidate Starts for ScoobyDoobyDoo_6:

(Start: 23 @1594 has 1 MA's), (33, 1627), (Start: 36 @1633 has 1 MA's), (Start: 59 @1702 has 64 MA's), (Start: 66 @1723 has 3 MA's), (76, 1792), (82, 1825), (86, 1837), (87, 1840), (103, 1969), (111, 2002), (158, 2221), (160, 2227), (164, 2248), (169, 2269), (170, 2272), (171, 2275), (182, 2311), (185, 2320), (200, 2383), (206, 2410), (208, 2419), (220, 2470),

Gene: ScottMcG_3 Start: 473, Stop: 1339, Start Num: 25

Candidate Starts for ScottMcG_3:

(Start: 25 @473 has 102 MA's), (Start: 36 @512 has 1 MA's), (64, 590), (69, 608), (72, 629), (76, 665), (82, 695), (93, 749), (103, 833), (105, 839), (107, 845), (122, 893), (126, 908), (158, 1100), (164, 1127), (173, 1160), (182, 1190), (206, 1292), (207, 1295),

Gene: Sephiroth_92 Start: 56677, Stop: 57420, Start Num: 66

Candidate Starts for Sephiroth_92:

(Start: 66 @56677 has 3 MA's), (75, 56740), (96, 56857), (121, 56965), (126, 56983), (127, 56989), (137, 57052), (141, 57094), (153, 57151), (155, 57160), (161, 57184), (164, 57196), (182, 57259),

(183, 57262), (192, 57289), (202, 57340), (208, 57367), (218, 57412),

Gene: Shaqnato_3 Start: 473, Stop: 1339, Start Num: 25

Candidate Starts for Shaqnato_3:

(Start: 25 @473 has 102 MA's), (Start: 36 @512 has 1 MA's), (64, 590), (69, 608), (72, 629), (76, 665), (82, 695), (93, 749), (103, 833), (105, 839), (107, 845), (122, 893), (126, 908), (158, 1100), (164, 1127), (173, 1160), (182, 1190), (206, 1292), (207, 1295),

Gene: Sheng711_32 Start: 29088, Stop: 28351, Start Num: 61

Candidate Starts for Sheng711_32:

(3, 29478), (42, 29142), (43, 29133), (Start: 61 @29088 has 10 MA's), (Start: 65 @29073 has 2 MA's), (67, 29067), (88, 28947), (106, 28827), (116, 28803), (123, 28785), (127, 28767), (134, 28716), (153, 28608), (157, 28593), (161, 28575), (163, 28569), (164, 28563),

Gene: ShiaLabeouf_3 Start: 473, Stop: 1339, Start Num: 25

Candidate Starts for ShiaLabeouf_3:

(Start: 25 @473 has 102 MA's), (Start: 36 @512 has 1 MA's), (64, 590), (69, 608), (72, 629), (76, 665), (82, 695), (93, 749), (103, 833), (105, 839), (107, 845), (126, 908), (158, 1100), (164, 1127), (173, 1160), (182, 1190), (206, 1292), (207, 1295),

Gene: Shnickers_3 Start: 473, Stop: 1339, Start Num: 25

Candidate Starts for Shnickers_3:

(Start: 25 @473 has 102 MA's), (Start: 36 @512 has 1 MA's), (64, 590), (69, 608), (72, 629), (76, 665), (82, 695), (93, 749), (103, 833), (105, 839), (107, 845), (126, 908), (158, 1100), (164, 1127), (173, 1160), (182, 1190), (206, 1292), (207, 1295),

Gene: SilverDipper_3 Start: 477, Stop: 1343, Start Num: 25

Candidate Starts for SilverDipper_3:

(Start: 25 @477 has 102 MA's), (Start: 36 @516 has 1 MA's), (64, 594), (69, 612), (72, 633), (76, 669), (82, 699), (93, 753), (103, 837), (105, 843), (107, 849), (126, 912), (158, 1104), (164, 1131), (173, 1164), (182, 1194), (206, 1296), (207, 1299),

Gene: Silverleaf_32 Start: 28983, Stop: 28231, Start Num: 59

Candidate Starts for Silverleaf_32:

(Start: 59 @28983 has 64 MA's), (Start: 63 @28977 has 16 MA's), (93, 28815), (98, 28761), (104, 28728), (107, 28719), (120, 28689), (127, 28662), (131, 28629), (134, 28611), (151, 28509), (153, 28503), (157, 28488), (161, 28470), (163, 28464), (164, 28458), (182, 28395), (201, 28317), (208, 28287), (217, 28254),

Gene: Skinny_48 Start: 36357, Stop: 35560, Start Num: 45

Candidate Starts for Skinny_48:

(Start: 45 @36357 has 20 MA's), (72, 36273), (75, 36243), (76, 36237), (93, 36141), (95, 36111), (103, 36057), (112, 36024), (142, 35868), (146, 35841), (147, 35838), (158, 35796), (164, 35769), (180, 35715), (192, 35676), (195, 35661), (208, 35598), (215, 35568),

Gene: SlimJimmy_46 Start: 35911, Stop: 35114, Start Num: 45

Candidate Starts for SlimJimmy_46:

(Start: 45 @35911 has 20 MA's), (72, 35827), (75, 35797), (76, 35791), (93, 35695), (95, 35665), (103, 35611), (112, 35578), (142, 35422), (146, 35395), (147, 35392), (158, 35350), (164, 35323), (180, 35269), (192, 35230), (195, 35215), (208, 35152), (215, 35122),

Gene: SmallFry_3 Start: 473, Stop: 1339, Start Num: 25

Candidate Starts for SmallFry_3:

(Start: 25 @473 has 102 MA's), (Start: 36 @512 has 1 MA's), (64, 590), (69, 608), (72, 629), (76, 665), (82, 695), (93, 749), (103, 833), (105, 839), (107, 845), (126, 908), (158, 1100), (164, 1127), (173, 1160), (182, 1190), (206, 1292), (207, 1295),

Gene: Smoothie_138 Start: 75782, Stop: 76489, Start Num: 55

Candidate Starts for Smoothie_138:

(Start: 55 @75782 has 16 MA's), (78, 75890), (86, 75914), (97, 75962), (140, 76166), (151, 76226), (208, 76448),

Gene: Snenia_33 Start: 30388, Stop: 29648, Start Num: 59

Candidate Starts for Snenia_33:

(Start: 59 @30388 has 64 MA's), (67, 30364), (73, 30328), (90, 30238), (123, 30082), (134, 30013), (139, 29992), (157, 29890), (161, 29872), (163, 29866), (164, 29860), (187, 29782), (201, 29719), (208, 29689),

Gene: SoJulia_36 Start: 30387, Stop: 29641, Start Num: 59

Candidate Starts for SoJulia_36:

(Start: 59 @30387 has 64 MA's), (Start: 65 @30369 has 2 MA's), (98, 30162), (104, 30129), (120, 30090), (127, 30063), (131, 30030), (134, 30012), (153, 29904), (157, 29889), (159, 29883), (161, 29871), (163, 29865), (164, 29859), (165, 29856), (182, 29796), (192, 29766), (198, 29736), (211, 29676), (213, 29667), (216, 29658),

Gene: Soap141_35 Start: 30159, Stop: 29413, Start Num: 59

Candidate Starts for Soap141_35:

(Start: 59 @30159 has 64 MA's), (Start: 65 @30141 has 2 MA's), (86, 30024), (88, 30015), (98, 29934), (104, 29901), (120, 29862), (127, 29835), (131, 29802), (134, 29784), (153, 29676), (157, 29661), (159, 29655), (161, 29643), (163, 29637), (164, 29631), (165, 29628), (182, 29568), (192, 29538), (198, 29508), (211, 29448), (213, 29439), (216, 29430),

Gene: Spec_3 Start: 473, Stop: 1339, Start Num: 25

Candidate Starts for Spec_3:

(Start: 25 @473 has 102 MA's), (Start: 36 @512 has 1 MA's), (64, 590), (69, 608), (72, 629), (76, 665), (82, 695), (93, 749), (103, 833), (105, 839), (107, 845), (126, 908), (158, 1100), (164, 1127), (173, 1160), (182, 1190), (206, 1292), (207, 1295),

Gene: Specks_3 Start: 473, Stop: 1339, Start Num: 25

Candidate Starts for Specks_3:

(Start: 25 @473 has 102 MA's), (Start: 36 @512 has 1 MA's), (64, 590), (69, 608), (72, 629), (76, 665), (82, 695), (93, 749), (103, 833), (105, 839), (107, 845), (122, 893), (126, 908), (149, 1067), (158, 1100), (164, 1127), (173, 1160), (182, 1190), (207, 1295),

Gene: SpeedDemon_1010 Start: 67850, Stop: 68530, Start Num: 61

Candidate Starts for SpeedDemon_1010:

(Start: 59 @67847 has 64 MA's), (Start: 61 @67850 has 10 MA's), (75, 67928), (78, 67952), (95, 68015), (98, 68039), (143, 68240), (164, 68336), (212, 68522),

Gene: Sprinklers_3 Start: 456, Stop: 1322, Start Num: 25

Candidate Starts for Sprinklers_3:

(Start: 25 @456 has 102 MA's), (Start: 36 @495 has 1 MA's), (64, 573), (69, 591), (72, 612), (76, 648), (82, 678), (93, 732), (103, 816), (105, 822), (107, 828), (122, 876), (126, 891), (158, 1083), (164, 1110), (173, 1143), (182, 1173), (206, 1275), (207, 1278),

Gene: Spud_3 Start: 473, Stop: 1339, Start Num: 25

Candidate Starts for Spud_3:

(Start: 25 @473 has 102 MA's), (Start: 36 @512 has 1 MA's), (64, 590), (69, 608), (72, 629), (76, 665), (82, 695), (93, 749), (103, 833), (105, 839), (107, 845), (126, 908), (158, 1100), (164, 1127), (173, 1160), (182, 1190), (206, 1292), (207, 1295),

Gene: StephanieG_3 Start: 473, Stop: 1339, Start Num: 25

Candidate Starts for StephanieG_3:

(Start: 25 @473 has 102 MA's), (Start: 36 @512 has 1 MA's), (64, 590), (69, 608), (72, 629), (76, 665), (82, 695), (93, 749), (103, 833), (105, 839), (107, 845), (126, 908), (158, 1100), (164, 1127), (173, 1160), (182, 1190), (207, 1295),

Gene: StubbySaigey_3 Start: 477, Stop: 1343, Start Num: 25

Candidate Starts for StubbySaigey_3:

(Start: 25 @477 has 102 MA's), (Start: 36 @516 has 1 MA's), (64, 594), (69, 612), (72, 633), (76, 669), (82, 699), (93, 753), (103, 837), (105, 843), (107, 849), (126, 912), (158, 1104), (164, 1131), (173, 1164), (182, 1194), (206, 1296), (207, 1299),

Gene: Syleon_95 Start: 56627, Stop: 57370, Start Num: 66

Candidate Starts for Syleon_95:

(Start: 66 @56627 has 3 MA's), (75, 56690), (96, 56807), (121, 56915), (126, 56933), (127, 56939), (137, 57002), (153, 57101), (155, 57110), (161, 57134), (164, 57146), (182, 57209), (183, 57212), (192, 57239), (202, 57290), (208, 57317), (218, 57362),

Gene: Tainan_3 Start: 473, Stop: 1339, Start Num: 25

Candidate Starts for Tainan_3:

(Start: 25 @473 has 102 MA's), (Start: 36 @512 has 1 MA's), (64, 590), (69, 608), (72, 629), (76, 665), (82, 695), (93, 749), (103, 833), (105, 839), (107, 845), (126, 908), (158, 1100), (164, 1127), (173, 1160), (182, 1190), (206, 1292), (207, 1295),

Gene: Talia1610_191 Start: 132018, Stop: 132668, Start Num: 56

Candidate Starts for Talia1610_191:

(Start: 56 @132018 has 3 MA's), (75, 132099), (80, 132129), (107, 132264), (108, 132270), (146, 132426), (163, 132492), (164, 132498), (192, 132573), (197, 132600), (209, 132657),

Gene: Talos_115 Start: 61418, Stop: 62107, Start Num: 63

Candidate Starts for Talos_115:

(Start: 63 @61418 has 16 MA's), (69, 61442), (72, 61463), (75, 61493), (76, 61499), (77, 61505), (98, 61616), (104, 61649), (124, 61712), (144, 61823), (164, 61916), (168, 61925), (179, 61961), (189, 61997), (205, 62075),

Gene: Teardrop_3 Start: 473, Stop: 1339, Start Num: 25

Candidate Starts for Teardrop_3:

(Start: 25 @473 has 102 MA's), (Start: 36 @512 has 1 MA's), (64, 590), (69, 608), (72, 629), (76, 665), (82, 695), (93, 749), (103, 833), (105, 839), (107, 845), (126, 908), (158, 1100), (164, 1127), (173, 1160), (182, 1190), (206, 1292), (207, 1295),

Gene: Tonenili_3 Start: 467, Stop: 1318, Start Num: 25

Candidate Starts for Tonenili_3:

(Start: 25 @467 has 102 MA's), (64, 569), (69, 587), (72, 608), (76, 644), (82, 674), (93, 728), (99, 788), (100, 791), (103, 812), (105, 818), (107, 824), (112, 845), (122, 872), (126, 887), (157, 1076), (158, 1079), (164, 1106), (173, 1139), (206, 1271), (207, 1274),

Gene: Toniann_137 Start: 75311, Stop: 76018, Start Num: 55

Candidate Starts for Toniann_137:

(Start: 55 @75311 has 16 MA's), (78, 75419), (86, 75443), (97, 75491), (208, 75977),

Gene: Tortoise16_2 Start: 473, Stop: 1339, Start Num: 25

Candidate Starts for Tortoise16_2:

(Start: 25 @473 has 102 MA's), (Start: 36 @512 has 1 MA's), (64, 590), (69, 608), (72, 629), (76, 665), (82, 695), (93, 749), (103, 833), (105, 839), (107, 845), (126, 908), (158, 1100), (164, 1127), (173, 1160), (182, 1190), (206, 1292), (207, 1295),

Gene: Tourach_35 Start: 30120, Stop: 29374, Start Num: 59

Candidate Starts for Tourach_35:

(Start: 59 @30120 has 64 MA's), (Start: 65 @30102 has 2 MA's), (88, 29976), (98, 29895), (104, 29862), (120, 29823), (127, 29796), (131, 29763), (134, 29745), (153, 29637), (157, 29622), (161, 29604), (163, 29598), (164, 29592), (165, 29589), (182, 29529), (192, 29499), (198, 29469), (211, 29409), (213, 29400), (216, 29391),

Gene: Towmatter_91 Start: 61086, Stop: 61766, Start Num: 59

Candidate Starts for Towmatter_91:

(Start: 59 @61086 has 64 MA's), (75, 61170), (77, 61182), (78, 61194), (109, 61335), (155, 61536), (176, 61611),

Gene: Trax_88 Start: 55858, Stop: 56592, Start Num: 65

Candidate Starts for Trax_88:

(Start: 65 @55858 has 2 MA's), (Start: 66 @55861 has 3 MA's), (75, 55924), (80, 55954), (106, 56101), (126, 56167), (128, 56179), (137, 56236), (150, 56323), (153, 56335), (161, 56368), (164, 56380), (182, 56443), (195, 56488), (209, 56557),

Gene: TriFive_33 Start: 30387, Stop: 29647, Start Num: 59

Candidate Starts for TriFive_33:

(Start: 59 @30387 has 64 MA's), (67, 30363), (73, 30327), (90, 30237), (123, 30081), (134, 30012), (139, 29991), (157, 29889), (161, 29871), (163, 29865), (164, 29859), (187, 29781), (201, 29718), (208, 29688),

Gene: Trinitium_3 Start: 473, Stop: 1339, Start Num: 25

Candidate Starts for Trinitium_3:

(Start: 25 @473 has 102 MA's), (Start: 36 @512 has 1 MA's), (64, 590), (69, 608), (72, 629), (76, 665), (82, 695), (93, 749), (103, 833), (105, 839), (107, 845), (126, 908), (158, 1100), (164, 1127), (173, 1160), (182, 1190), (206, 1292), (207, 1295),

Gene: Turret_3 Start: 456, Stop: 1322, Start Num: 25

Candidate Starts for Turret_3:

(Start: 25 @456 has 102 MA's), (Start: 36 @495 has 1 MA's), (64, 573), (69, 591), (72, 612), (76, 648), (82, 678), (93, 732), (103, 816), (105, 822), (107, 828), (126, 891), (158, 1083), (164, 1110), (173, 1143), (182, 1173), (206, 1275), (207, 1278),

Gene: TyDawg_47 Start: 35928, Stop: 35131, Start Num: 45

Candidate Starts for TyDawg_47:

(Start: 45 @35928 has 20 MA's), (72, 35844), (75, 35814), (76, 35808), (93, 35712), (95, 35682), (103, 35628), (112, 35595), (142, 35439), (146, 35412), (147, 35409), (158, 35367), (164, 35340), (180, 35286), (192, 35247), (195, 35232), (208, 35169), (215, 35139),

Gene: Tyke_3 Start: 473, Stop: 1339, Start Num: 25

Candidate Starts for Tyke_3:

(Start: 25 @473 has 102 MA's), (Start: 36 @512 has 1 MA's), (64, 590), (69, 608), (72, 629), (76, 665), (82, 695), (93, 749), (103, 833), (105, 839), (107, 845), (126, 908), (158, 1100), (164, 1127), (173, 1160), (182, 1190), (206, 1292), (207, 1295),

Gene: Tyson_32 Start: 28983, Stop: 28231, Start Num: 59

Candidate Starts for Tyson_32:

(Start: 59 @28983 has 64 MA's), (Start: 63 @28977 has 16 MA's), (93, 28815), (98, 28761), (100, 28752), (104, 28728), (107, 28719), (120, 28689), (127, 28662), (131, 28629), (134, 28611), (151, 28509), (153, 28503), (157, 28488), (161, 28470), (163, 28464), (164, 28458), (182, 28395), (201, 28317), (208, 28287), (217, 28254),

Gene: UPIE_32 Start: 28975, Stop: 28229, Start Num: 63

Candidate Starts for UPIE_32:

(Start: 59 @28981 has 64 MA's), (Start: 63 @28975 has 16 MA's), (93, 28813), (98, 28759), (100, 28750), (104, 28726), (107, 28717), (120, 28687), (127, 28660), (131, 28627), (134, 28609), (150, 28513), (151, 28507), (153, 28501), (157, 28486), (161, 28468), (163, 28462), (164, 28456), (182, 28393), (201, 28315), (208, 28285), (217, 28252),

Gene: Underpass_35 Start: 30128, Stop: 29382, Start Num: 59

Candidate Starts for Underpass_35:

(Start: 59 @30128 has 64 MA's), (Start: 65 @30110 has 2 MA's), (79, 30017), (98, 29903), (104, 29870), (120, 29831), (127, 29804), (131, 29771), (134, 29753), (153, 29645), (157, 29630), (159, 29624), (161, 29612), (163, 29606), (164, 29600), (165, 29597), (182, 29537), (192, 29507), (198, 29477), (211, 29417), (213, 29408), (216, 29399),

Gene: ValleyTerrace_3 Start: 477, Stop: 1343, Start Num: 25

Candidate Starts for ValleyTerrace_3:

(Start: 25 @477 has 102 MA's), (Start: 36 @516 has 1 MA's), (64, 594), (69, 612), (72, 633), (76, 669), (82, 699), (93, 753), (103, 837), (105, 843), (107, 849), (126, 912), (158, 1104), (164, 1131), (173, 1164), (182, 1194), (206, 1296), (207, 1299),

Gene: VanLee_110 Start: 57959, Stop: 58672, Start Num: 63

Candidate Starts for VanLee_110:

(34, 57878), (49, 57920), (Start: 53 @57929 has 5 MA's), (Start: 59 @57953 has 64 MA's), (Start: 63 @57959 has 16 MA's), (72, 58004), (77, 58046), (84, 58079), (104, 58184), (113, 58211), (143, 58346), (145, 58361), (149, 58382), (150, 58385), (208, 58613), (212, 58628),

Gene: Vetric_35 Start: 30132, Stop: 29386, Start Num: 59

Candidate Starts for Vetric_35:

(Start: 59 @30132 has 64 MA's), (Start: 65 @30114 has 2 MA's), (98, 29907), (104, 29874), (120, 29835), (127, 29808), (131, 29775), (134, 29757), (153, 29649), (157, 29634), (159, 29628), (161, 29616), (163, 29610), (164, 29604), (165, 29601), (182, 29541), (192, 29511), (198, 29481), (211, 29421), (213, 29412), (216, 29403),

Gene: WaddleDee_188 Start: 133225, Stop: 133899, Start Num: 52

Candidate Starts for WaddleDee_188:

(52, 133225), (67, 133267), (75, 133327), (97, 133438), (108, 133498), (146, 133654), (163, 133720), (198, 133831),

Gene: Wally_3 Start: 477, Stop: 1343, Start Num: 25

Candidate Starts for Wally_3:

(Start: 25 @477 has 102 MA's), (Start: 36 @516 has 1 MA's), (64, 594), (69, 612), (72, 633), (76, 669), (82, 699), (93, 753), (103, 837), (105, 843), (107, 849), (126, 912), (158, 1104), (164, 1131), (173,

1164), (182, 1194), (206, 1296), (207, 1299),

Gene: Walrus_63 Start: 40796, Stop: 41581, Start Num: 48

Candidate Starts for Walrus_63:

(10, 40646), (11, 40655), (37, 40766), (Start: 48 @40796 has 22 MA's), (75, 40913), (76, 40919), (96, 41030), (98, 41051), (105, 41087), (133, 41213), (137, 41231), (149, 41312), (150, 41315), (201, 41513),

Gene: Wamburgexpress_32 Start: 28996, Stop: 28244, Start Num: 59

Candidate Starts for Wamburgexpress_32:

(Start: 59 @28996 has 64 MA's), (Start: 63 @28990 has 16 MA's), (93, 28828), (98, 28774), (100, 28765), (104, 28741), (107, 28732), (120, 28702), (127, 28675), (131, 28642), (134, 28624), (150, 28528), (151, 28522), (153, 28516), (157, 28501), (161, 28483), (163, 28477), (164, 28471), (182, 28408), (201, 28330), (208, 28300), (217, 28267),

Gene: Whirlwind_34 Start: 30135, Stop: 29395, Start Num: 59

Candidate Starts for Whirlwind_34:

(Start: 59 @30135 has 64 MA's), (67, 30111), (73, 30075), (90, 29985), (123, 29829), (134, 29760), (139, 29739), (157, 29637), (161, 29619), (163, 29613), (164, 29607), (201, 29466), (208, 29436),

Gene: Wigglewigggle_35 Start: 30158, Stop: 29412, Start Num: 59

Candidate Starts for Wigglewigggle_35:

(Start: 59 @30158 has 64 MA's), (Start: 65 @30140 has 2 MA's), (86, 30023), (88, 30014), (98, 29933), (104, 29900), (120, 29861), (127, 29834), (131, 29801), (134, 29783), (153, 29675), (157, 29660), (159, 29654), (161, 29642), (163, 29636), (164, 29630), (165, 29627), (182, 29567), (192, 29537), (198, 29507), (211, 29447), (213, 29438), (216, 29429),

Gene: Wildcat_58 Start: 41513, Stop: 40764, Start Num: 53

Candidate Starts for Wildcat_58:

(6, 41750), (7, 41738), (8, 41702), (13, 41657), (18, 41633), (38, 41549), (Start: 53 @41513 has 5 MA's), (64, 41474), (71, 41441), (Start: 74 @41414 has 1 MA's), (76, 41399), (80, 41375), (106, 41207), (110, 41192), (127, 41135), (150, 41033), (164, 40976), (167, 40964), (192, 40883), (198, 40853), (200, 40841), (206, 40814), (208, 40805), (209, 40799), (217, 40772),

Gene: Wilder_35 Start: 30131, Stop: 29385, Start Num: 59

Candidate Starts for Wilder_35:

(Start: 59 @30131 has 64 MA's), (Start: 65 @30113 has 2 MA's), (86, 29996), (88, 29987), (98, 29906), (104, 29873), (120, 29834), (127, 29807), (131, 29774), (134, 29756), (153, 29648), (157, 29633), (159, 29627), (161, 29615), (163, 29609), (164, 29603), (165, 29600), (182, 29540), (192, 29510), (198, 29480), (211, 29420), (213, 29411), (216, 29402),

Gene: WilliamBoone_135 Start: 72980, Stop: 73684, Start Num: 55

Candidate Starts for WilliamBoone_135:

(32, 72908), (39, 72926), (44, 72944), (Start: 55 @72980 has 16 MA's), (78, 73088), (86, 73112), (97, 73160), (140, 73364), (151, 73424), (168, 73493), (208, 73646),

Gene: Winky_35 Start: 30126, Stop: 29380, Start Num: 59

Candidate Starts for Winky_35:

(Start: 59 @30126 has 64 MA's), (Start: 65 @30108 has 2 MA's), (98, 29901), (104, 29868), (120, 29829), (127, 29802), (131, 29769), (134, 29751), (153, 29643), (157, 29628), (159, 29622), (161, 29610), (163, 29604), (164, 29598), (165, 29595), (182, 29535), (192, 29505), (198, 29475), (211, 29415), (213, 29406), (216, 29397),

Gene: Wisp_64 Start: 41649, Stop: 42434, Start Num: 48

Candidate Starts for Wisp_64:

(10, 41499), (11, 41508), (37, 41619), (Start: 48 @41649 has 22 MA's), (70, 41727), (75, 41766), (76, 41772), (98, 41904), (133, 42066), (137, 42084), (149, 42165), (150, 42168), (163, 42219), (201, 42366),

Gene: Wyatt2_32 Start: 28983, Stop: 28231, Start Num: 59

Candidate Starts for Wyatt2_32:

(Start: 59 @28983 has 64 MA's), (Start: 63 @28977 has 16 MA's), (93, 28815), (98, 28761), (100, 28752), (104, 28728), (107, 28719), (120, 28689), (127, 28662), (131, 28629), (134, 28611), (150, 28515), (151, 28509), (153, 28503), (157, 28488), (161, 28470), (163, 28464), (164, 28458), (182, 28395), (201, 28317), (208, 28287), (217, 28254),

Gene: Yassified_3 Start: 477, Stop: 1343, Start Num: 25

Candidate Starts for Yassified_3:

(Start: 25 @477 has 102 MA's), (Start: 36 @516 has 1 MA's), (64, 594), (69, 612), (72, 633), (76, 669), (82, 699), (93, 753), (103, 837), (105, 843), (107, 849), (122, 897), (126, 912), (158, 1104), (164, 1131), (173, 1164), (182, 1194), (207, 1299),

Gene: YoungMoneyMata_3 Start: 473, Stop: 1339, Start Num: 25

Candidate Starts for YoungMoneyMata_3:

(Start: 25 @473 has 102 MA's), (Start: 36 @512 has 1 MA's), (64, 590), (69, 608), (72, 629), (76, 665), (82, 695), (93, 749), (103, 833), (105, 839), (107, 845), (126, 908), (158, 1100), (164, 1127), (173, 1160), (182, 1190), (206, 1292), (207, 1295),

Gene: Yvonnetastic_147 Start: 80424, Stop: 81140, Start Num: 60

Candidate Starts for Yvonnetastic_147:

(Start: 60 @80424 has 2 MA's), (68, 80445), (78, 80523), (82, 80538), (86, 80547), (92, 80565), (99, 80625), (106, 80658), (128, 80730), (136, 80775), (154, 80865), (156, 80874), (178, 80964), (206, 81087),

Gene: Zakai_35 Start: 30382, Stop: 29636, Start Num: 59

Candidate Starts for Zakai_35:

(Start: 59 @30382 has 64 MA's), (Start: 65 @30364 has 2 MA's), (88, 30238), (98, 30157), (104, 30124), (120, 30085), (127, 30058), (131, 30025), (134, 30007), (153, 29899), (157, 29884), (161, 29866), (163, 29860), (164, 29854), (165, 29851), (177, 29806), (182, 29791), (192, 29761), (198, 29731), (211, 29671), (213, 29662),

Gene: Zarbodnamra_65 Start: 41043, Stop: 41828, Start Num: 48

Candidate Starts for Zarbodnamra_65:

(10, 40893), (11, 40902), (37, 41013), (Start: 48 @41043 has 22 MA's), (70, 41121), (75, 41160), (76, 41166), (98, 41298), (133, 41460), (137, 41478), (149, 41559), (150, 41562), (163, 41613), (201, 41760),

Gene: Zaria_32 Start: 28998, Stop: 28246, Start Num: 59

Candidate Starts for Zaria_32:

(Start: 59 @28998 has 64 MA's), (Start: 63 @28992 has 16 MA's), (93, 28830), (98, 28776), (100, 28767), (104, 28743), (107, 28734), (120, 28704), (127, 28677), (131, 28644), (134, 28626), (150, 28530), (151, 28524), (153, 28518), (157, 28503), (161, 28485), (163, 28479), (164, 28473), (182, 28410), (201, 28332), (208, 28302), (217, 28269),

Gene: ZhongYanYuan_34 Start: 29947, Stop: 29201, Start Num: 59

Candidate Starts for ZhongYanYuan_34:

(Start: 59 @29947 has 64 MA's), (98, 29722), (104, 29689), (120, 29650), (127, 29623), (131, 29590), (134, 29572), (153, 29464), (157, 29449), (159, 29443), (161, 29431), (163, 29425), (164, 29419), (165, 29416), (182, 29356), (192, 29326), (198, 29296), (211, 29236), (213, 29227), (216, 29218),

Gene: ZiggyZoo_65 Start: 42702, Stop: 43487, Start Num: 48

Candidate Starts for ZiggyZoo_65:

(4, 42411), (10, 42552), (11, 42561), (37, 42672), (Start: 48 @42702 has 22 MA's), (75, 42819), (76, 42825), (98, 42957), (106, 42996), (133, 43119), (137, 43137), (149, 43218), (150, 43221), (163, 43272), (201, 43419),

Gene: Zooman_191 Start: 113275, Stop: 114018, Start Num: 59

Candidate Starts for Zooman_191:

(Start: 59 @113275 has 64 MA's), (95, 113473), (119, 113572), (132, 113644), (135, 113659), (148, 113740), (158, 113779), (164, 113806), (202, 113950), (204, 113956),