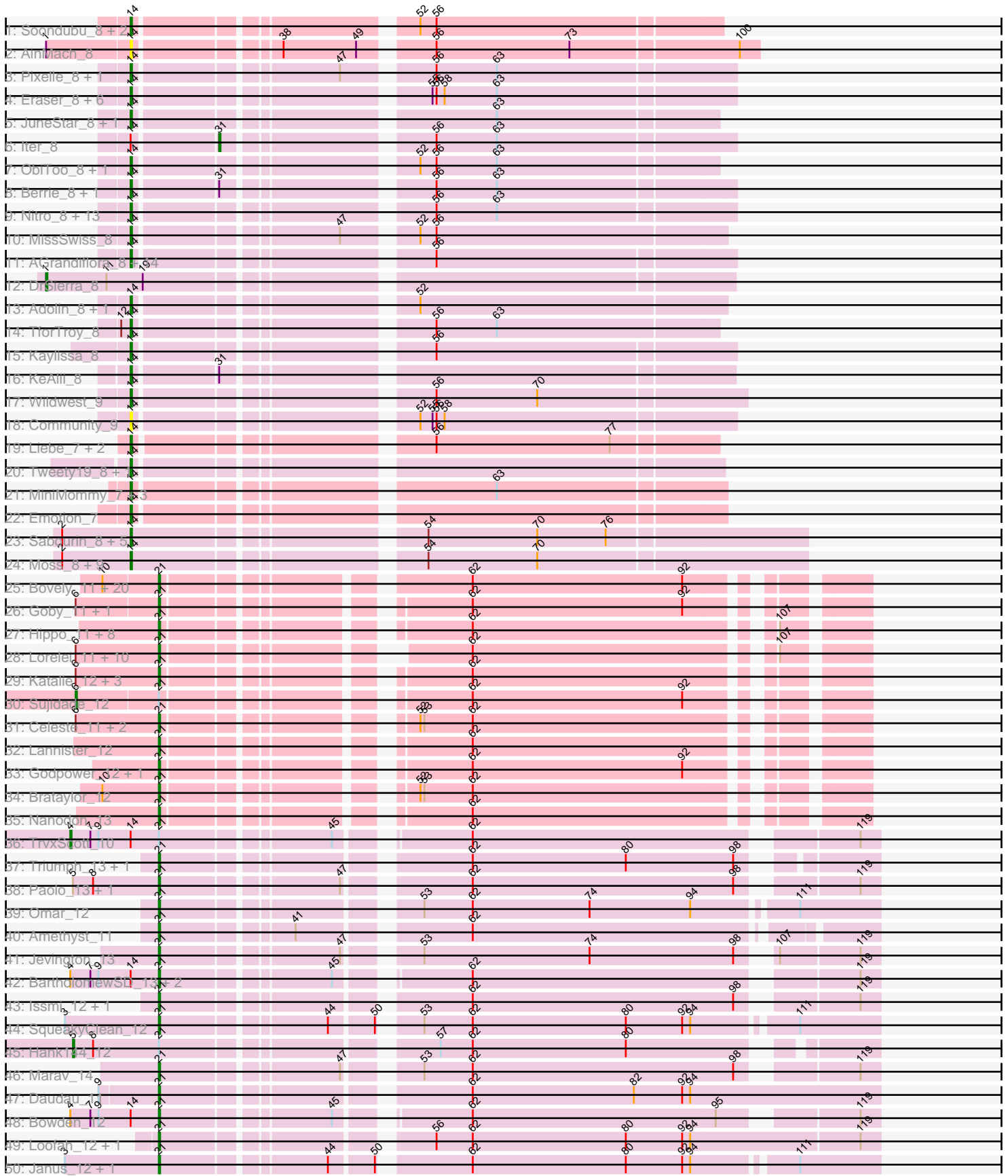
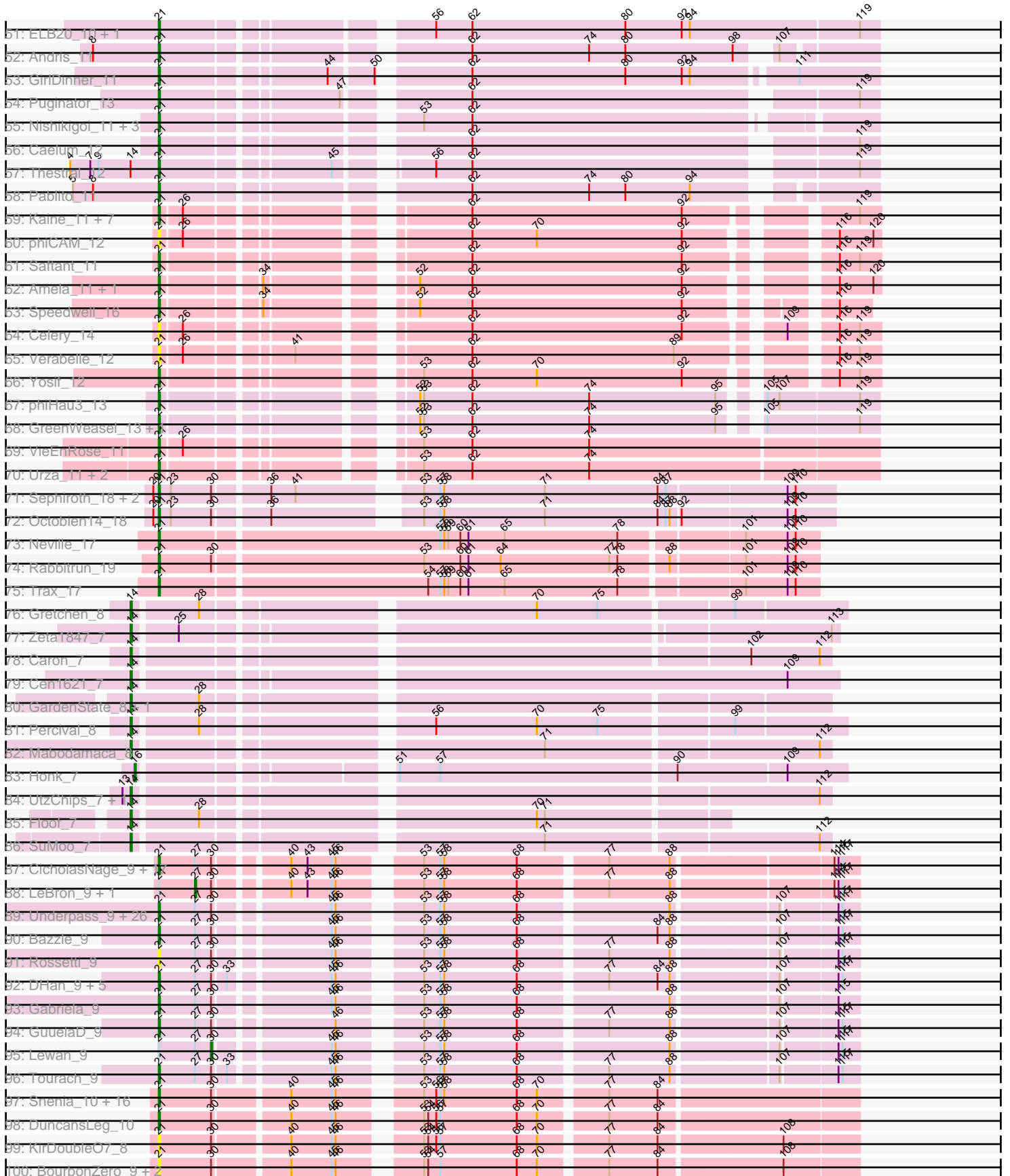


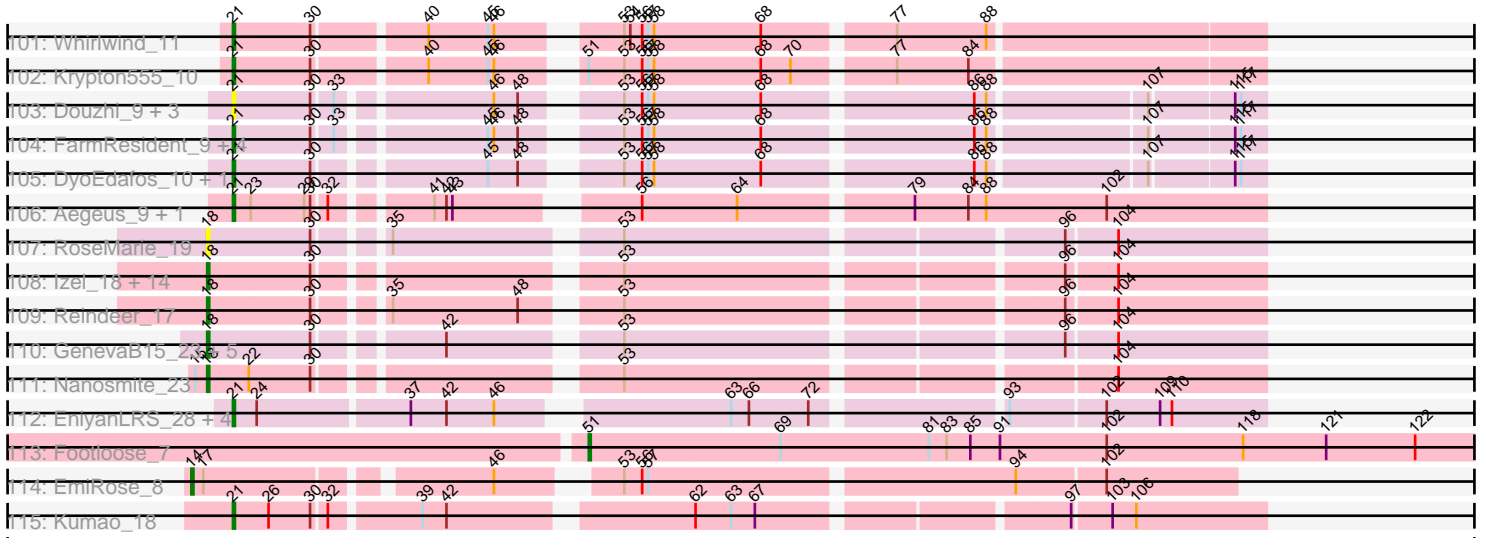
Pham 224196



Pham 224196



Pham 224196



Note: Tracks are now grouped by subcluster and scaled. Switching in subcluster is indicated by changes in track color. Track scale is now set by default to display the region 30 bp upstream of start 1 to 30 bp downstream of the last possible start. If this default region is judged to be packed too tightly with annotated starts, the track will be further scaled to only show that region of the ORF with annotated starts. This action will be indicated by adding "Zoomed" to the title. For starts, yellow indicates the location of called starts comprised solely of Glimmer/GeneMark auto-annotations, green indicates the location of called starts with at least 1 manual gene annotation.

Pham 224196 Report

This analysis was run 03/28/25 on database version 593.

WARNING: Pham size does not match number of genes in report. Either unphamerated genes have been added (by you) or starterator has removed genes due to invalid start codon.

Pham number 224196 has 345 members, 57 are drafts.

Phages represented in each track:

- Track 1 : Soondubu_8, DrManhattan_8, Exile_8
- Track 2 : AinMach_8
- Track 3 : Pixelle_8, Phives_9
- Track 4 : Eraser_8, Asa16_8, Elezi_8, London_8, Subaru_8, Niobe_8, Jstan_8
- Track 5 : JuneStar_8, Sue2_8
- Track 6 : lter_8
- Track 7 : ObiToo_8, Crewmate_9
- Track 8 : Berrie_8, Ascela_8
- Track 9 : Nitro_8, Turab_8, LadyAstra_7, IttyBittyPiggy_8, Amyev_8, AEgle_8, Adumb2043_8, Yang_8, Janeemi_9, Cassia_8, Lizalica_8, Tian_8, Pumpkins_8, Shaffner_8
- Track 10 : MissSwiss_8
- Track 11 : AGrandiflora_8, Tallboi_8, JohnDoe_8, Powerpuff_8, Mudpuppy_8, Tuck_9, Joemato_8, Warda_8, VResidence_8, Lego_8, Cyan_8, YesChef_8, Tbone_8, Tutumahutu_8, Simpson_8
- Track 12 : DrSierra_8
- Track 13 : Adolin_8, Reedo_8
- Track 14 : TforTroy_8
- Track 15 : Kaylissa_8
- Track 16 : KeAlii_8
- Track 17 : Wildwest_9
- Track 18 : Community_9
- Track 19 : Liebe_7, MaGuCo_7, Maureen_7
- Track 20 : Tweety19_8, Snek_8
- Track 21 : MiniMommy_7, JasmineDragon_7, ShakeltOph_7, VroomVroom_7
- Track 22 : Emotion_7
- Track 23 : Sabourin_8, Sooty_8, Gambol_8, Cappuccino_8, Donkey_8, Kalimba_8
- Track 24 : Moss_8, Halsey_8, Stuu_8, Ashes_8, RockScotty_8, Giorgio_8, SpecialK_8, Mysterium_8, Beaupre_8, Gumpizza_8
- Track 25 : Bovely_11, Oliynyk_12, Rusticus_12, Ozzie_11, Aaronocolus_11, Leviticus_11, Unstoppable_11, BeardedLady_12, BryanRecycles_12, Nerdos_11, Jash_12, Esperer_11, Indigo_11, Eddasa_12, SunsetPointe_11, Phettuccine_11, EnochSoames_12, Caliburn_11, Hydra_13, Legacy_11, Izzy_12

- Track 26 : Goby_11, Toma_11
- Track 27 : Hippo_11, Snorlax_11, SarahRose_11, Whatever_11, Chucky_11, BarryBee_13, Emaanora_13, Werner_11, TagePhighter_12
- Track 28 : Lorelei_11, Maneekul_11, Triste_11, Dwayne_11, Nabi_11, TuanPN_11, Rana_11, Ejemplo_11, Yasdnil_11, OzzyJ_12, Asten_11
- Track 29 : Katalie_12, RedBear_13, Danzina_12, South40_12
- Track 30 : Sujidade_12
- Track 31 : Celeste_11, Dattran_12, Zemlya_12
- Track 32 : Lannister_12
- Track 33 : Godpower_12, Lika_11
- Track 34 : Brataylor_12
- Track 35 : Nanodon_13
- Track 36 : TrvxScott_10
- Track 37 : Triumph_13, Axiom_12
- Track 38 : Paolo_13, Zainub_13
- Track 39 : Omar_12
- Track 40 : Amethyst_11
- Track 41 : Jevington_13
- Track 42 : BartholomewSD_13, Alvy_13, TinaBelcher_11
- Track 43 : Issmi_12, Superstar_13
- Track 44 : SqueakyClean_12
- Track 45 : Hank144_12
- Track 46 : Marav_14
- Track 47 : Daudau_11
- Track 48 : Bowden_12
- Track 49 : Loofah_12, Paedore_11
- Track 50 : Janus_12, Animus_12
- Track 51 : ELB20_10, R4_11
- Track 52 : Andris_11
- Track 53 : GirlDinner_11
- Track 54 : Puginator_13
- Track 55 : Nishikigoi_11, Haizum_11, Tefunt_11, Diane_11
- Track 56 : Caelum_12
- Track 57 : Thestral_12
- Track 58 : Pablito_11
- Track 59 : Kaine_11, Vanseggelen_14, Conan_12, ElGato_12, Dexers_10, Provolone_12, Alsaber_12, Pavo_12
- Track 60 : phiCAM_12
- Track 61 : Saftant_11
- Track 62 : Amela_11, Verse_11
- Track 63 : Speedwell_16
- Track 64 : Celery_14
- Track 65 : Verabelle_12
- Track 66 : Yosif_12
- Track 67 : phiHau3_13
- Track 68 : GreenWeasel_13, BroPlease_12
- Track 69 : VieEnRose_11
- Track 70 : Urza_11, Itza_11, Celia_11
- Track 71 : Sephiroth_18, Syleon_18, Kudrefre_17
- Track 72 : Octobien14_18
- Track 73 : Neville_17
- Track 74 : Rabbitrun_19
- Track 75 : Trax_17

- Track 76 : Gretchen_8
- Track 77 : Zeta1847_7
- Track 78 : Caron_7
- Track 79 : Cen1621_7
- Track 80 : GardenState_8, IAmGroot_8
- Track 81 : Percival_8
- Track 82 : Mabodamaca_8
- Track 83 : Honk_7
- Track 84 : UtzChips_7, Barnstormer_7
- Track 85 : Floof_7
- Track 86 : SuMoo_7
- Track 87 : CicholasNage_9, DirkDirk_9, OhShagHennessy_9, Zaria_9, AvadaKedavra_9, JoeDirt_9, Wamburgxpress_9, Calm_9, Acquire49_9, Tyson_9, Wyatt2_9, Appletree2_9, Rose5_9, Enceladus_9, Silverleaf_9, Halena_9, MAckerman_9, Poochiewood_9
- Track 88 : LeBron_9, UPIE_9
- Track 89 : Underpass_9, Nicholasp3_9, BobsGarage_9, Miley16_9, Zakai_9, Loadrie_9, Gardann_9, SoJulia_9, MkaliMitinis3_9, BigCheese_9, Kahlid_9, Faith1_9, Itos_9, Netyap_9, LilDestine_9, Winky_9, Breezona_9, Vetrix_9, DrSeegs_9, Rumpelstiltskin_9, Soap141_9, Sarshaun_9, Finemlucis_9, Wilder_9, Crossroads_9, Hafay_9, Wigglewiggle_9
- Track 90 : Bazzle_9
- Track 91 : Rossetti_9
- Track 92 : DHan_9, Claus_9, Baoshan_8, ZhongYanYuan_8, Archie_9, DanBing_8
- Track 93 : Gabriela_9
- Track 94 : GuuelaD_9
- Track 95 : Lewan_9
- Track 96 : Tourach_9
- Track 97 : Snenia_10, Finnry_10, MiniMac_10, MsGreen_10, Jobypre_10, Lolly9_10, Red305_10, Jubie_10, Clautastrophe_10, Bellis_10, Samty_10, Kingsolomon_10, TriFive_10, Nicholas_10, Moostard_10, MiniLon_10, Lumos_10
- Track 98 : DuncansLeg_10
- Track 99 : KirDoubleO7_8
- Track 100 : BourbonZero_9, LiyuLake_10, Ellson_10
- Track 101 : Whirlwind_11
- Track 102 : Krypton555_10
- Track 103 : Douzhi_9, PYPDinur_9, BrainDrainer_10, Sheng711_9
- Track 104 : FarmResident_9, Douge_9, Chaser_9, Bromden_9, Quby_9
- Track 105 : DyoEdafos_10, Kropertea_9
- Track 106 : Aegeus_9, Baudelaire_9
- Track 107 : RoseMarie_19
- Track 108 : Izel_18, IPhane7_19, KleverKiS_19, Glaske16_20, PegLeg_19, Skinny_20, FreakyGoo_19, LilhomieP_18, TyDawg_19, Diminimus_20, Auspice_19, Bricole_19, Bongo_19, SlimJimmy_18, Dulcita_20
- Track 109 : Reindeer_17
- Track 110 : GenevaB15_23, Aziz_23, GardenSalsa_23, Estes_24, Rey_23, MrMagoo_23
- Track 111 : Nanosmite_23
- Track 112 : EniyanLRS_28, Azrael100_30, Cosmo_31, MaryV_31, Wildcat_31
- Track 113 : Footloose_7
- Track 114 : EmiRose_8
- Track 115 : Kumao_18

Summary of Final Annotations (See graph section above for start numbers):

The start number called the most often in the published annotations is 21, it was called in 183 of the 288 non-draft genes in the pham.

Genes that call this "Most Annotated" start:

- Aaronocolus_11, Acquire49_9, Aegeus_9, Alsaber_12, Alvy_13, Amela_11, Amethyst_11, Andris_11, Animus_12, Appletree2_9, Archie_9, Asten_11, AvadaKedavra_9, Axiom_12, Azrael100_30, Baoshan_8, BarryBee_13, BartholomewSD_13, Baudelaire_9, Bazzle_9, BeardedLady_12, Bellis_10, BigCheese_9, BobsGarage_9, BourbonZero_9, Bovely_11, Bowden_12, BrainDrainer_10, Brataylor_12, Breezona_9, BroPlease_12, Bromden_9, BryanRecycles_12, Caelum_12, Caliburn_11, Calm_9, Celery_14, Celeste_11, Celia_11, Chaser_9, Chucky_11, CicholasNage_9, Claus_9, Clautastrophe_10, Conan_12, Cosmo_31, Crossroads_9, DHan_9, DanBing_8, Danzina_12, Dattran_12, Daudau_11, Dexters_10, Diane_11, DirkDirk_9, Douge_9, Douzhi_9, DrSeegs_9, DuncansLeg_10, Dwayne_11, DyoEdafos_10, ELB20_10, Eddasa_12, Ejemplo_11, ElGato_12, Ellson_10, Emaanora_13, Enceladus_9, EniyanLRS_28, EnochSoames_12, Esperer_11, Faith1_9, FarmResident_9, Finemlucis_9, Finnry_10, Gabriela_9, Gardann_9, GirlDinner_11, Goby_11, Godpower_12, GreenWeasel_13, GuuelaD_9, Hafay_9, Haizum_11, Halena_9, Hippo_11, Hydra_13, Indigo_11, Issmi_12, Itos_9, Itza_11, Izzy_12, Janus_12, Jash_12, Jevington_13, Jobypre_10, JoeDirt_9, Jubie_10, Kahlid_9, Kaine_11, Katalie_12, Kingsolomon_10, KirDoubleO7_8, Kropertea_9, Krypton555_10, Kudrefre_17, Kumao_18, Lannister_12, Legacy_11, Leviticus_11, Lika_11, LilDestine_9, LiyuLake_10, Loadrie_9, Lolly9_10, Loofah_12, Lorelei_11, Lumos_10, MAckerman_9, Maneekul_11, Marav_14, MaryV_31, Miley16_9, MiniLon_10, MiniMac_10, MkaliMitinis3_9, Moostard_10, MsGreen_10, Nabi_11, Nanodon_13, Nerdos_11, Netyap_9, Neville_17, Nicholas_10, Nicholasp3_9, Nishikigoi_11, Octobien14_18, OhShagHennessy_9, Oliynyk_12, Omar_12, Ozzie_11, OzzyJ_12, PYPDinur_9, Pablito_11, Paedore_11, Paolo_13, Pavo_12, Phettuccine_11, Poochiewood_9, Provolone_12, Puginator_13, Quby_9, R4_11, Rabbitrun_19, Rana_11, Red305_10, RedBear_13, Rose5_9, Rossetti_9, Rumpelstiltskin_9, Rusticus_12, Saftant_11, Samty_10, SarahRose_11, Sarshaun_9, Sephiroth_18, Sheng711_9, Silverleaf_9, Slenia_10, Snorlax_11, SoJulia_9, Soap141_9, South40_12, Speedwell_16, SqueakyClean_12, SunsetPointe_11, Superstar_13, Syleon_18, TagePhighter_12, Tefunt_11, Thestral_12, TinaBelcher_11, Toma_11, Tourach_9, Trax_17, TriFive_10, Triste_11, Triumph_13, TuanPN_11, Tyson_9, Underpass_9, Unstoppable_11, Urza_11, Vanseggelen_14, Verabelle_12, Verse_11, Vetrrix_9, VieEnRose_11, Wamburgxpress_9, Werner_11, Whatever_11, Whirlwind_11, Wigglewiggle_9, Wildcat_31, Wilder_9, Winky_9, Wyatt2_9, Yasdnil_11, Yosif_12, Zainub_13, Zakai_9, Zaria_9, Zemlya_12, ZhongYanYuan_8, phiCAM_12, phiHau3_13,

Genes that have the "Most Annotated" start but do not call it:

- Hank144_12, LeBron_9, Lewan_9, Sujidade_12, TrvxScott_10, UPIE_9,

Genes that do not have the "Most Annotated" start:

- AEgle_8, AGrandiflora_8, Adolin_8, Adumb2043_8, AinMach_8, Amyev_8, Asa16_8, Ascela_8, Ashes_8, Auspice_19, Aziz_23, Barnstormer_7, Beaupre_8, Berrie_8, Bongo_19, Bricole_19, Cappuccino_8, Caron_7, Cassia_8, Cen1621_7,

Community_9, Crewmate_9, Cyan_8, Diminimus_20, Donkey_8, DrManhattan_8, DrSierra_8, Dulcita_20, Elezi_8, EmiRose_8, Emotion_7, Eraser_8, Estes_24, Exile_8, Floof_7, Footloose_7, FreakyGoo_19, Gambol_8, GardenSalsa_23, GardenState_8, GenevaB15_23, Giorgio_8, Glaske16_20, Gretchen_8, Gumpizza_8, Halsey_8, Honk_7, IAmGroot_8, IPhane7_19, Iter_8, IttyBittyPiggy_8, Izel_18, Janeemi_9, JasmineDragon_7, Joemato_8, JohnDoe_8, Jstan_8, JuneStar_8, Kalimba_8, Kaylissa_8, KeAlii_8, KleverKiS_19, LadyAstra_7, Lego_8, Liebe_7, LilhomieP_18, Lizalica_8, London_8, MaGuCo_7, Mabodamaca_8, Maureen_7, MiniMommy_7, MissSwiss_8, Moss_8, MrMagoo_23, Mudpuppy_8, Mysterium_8, Nanosmite_23, Niobe_8, Nitro_8, ObiToo_8, PegLeg_19, Percival_8, Phives_9, Pixelle_8, Powerpuff_8, Pumpkins_8, Reedo_8, Reindeer_17, Rey_23, RockScotty_8, RoseMarie_19, Sabourin_8, Shaffner_8, ShakeltOph_7, Simpson_8, Skinny_20, SlimJimmy_18, Snek_8, Soondubu_8, Sooty_8, SpecialK_8, Stuu_8, SuMoo_7, Subaru_8, Sue2_8, Tallboi_8, Tbone_8, TforTroy_8, Tian_8, Tuck_9, Turab_8, Tutumahutu_8, Tweety19_8, TyDawg_19, UtzChips_7, VResidence_8, VroomVroom_7, Warda_8, Wildwest_9, Yang_8, YesChef_8, Zeta1847_7,

Summary by start number:

Start 1:

- Found in 2 of 345 (0.6%) of genes in pham
- Manual Annotations of this start: 1 of 288
- Called 50.0% of time when present
- Phage (with cluster) where this start called: DrSierra_8 (AZ1),

Start 4:

- Found in 6 of 345 (1.7%) of genes in pham
- Manual Annotations of this start: 1 of 288
- Called 16.7% of time when present
- Phage (with cluster) where this start called: TrvxScott_10 (BD2),

Start 5:

- Found in 4 of 345 (1.2%) of genes in pham
- Manual Annotations of this start: 1 of 288
- Called 25.0% of time when present
- Phage (with cluster) where this start called: Hank144_12 (BD2),

Start 6:

- Found in 21 of 345 (6.1%) of genes in pham
- Manual Annotations of this start: 1 of 288
- Called 4.8% of time when present
- Phage (with cluster) where this start called: Sujidade_12 (BD1),

Start 14:

- Found in 102 of 345 (29.6%) of genes in pham
- Manual Annotations of this start: 75 of 288
- Called 93.1% of time when present
- Phage (with cluster) where this start called: AEgle_8 (AZ1), AGrandiflora_8 (AZ1), Adolin_8 (AZ1), Adumb2043_8 (AZ1), AinMach_8 (AZ), Amyev_8 (AZ1), Asa16_8 (AZ1), Ascela_8 (AZ1), Ashes_8 (AZ5), Barnstormer_7 (EH), Beaupre_8 (AZ5), Berrie_8 (AZ1), Cappuccino_8 (AZ5), Caron_7 (EH), Cassia_8 (AZ1), Cen1621_7 (EH), Community_9 (AZ1), Crewmate_9 (AZ1), Cyan_8 (AZ1), Donkey_8 (AZ5), DrManhattan_8 (AZ1), Elezi_8 (AZ1), EmiRose_8 (singleton), Emotion_7 (AZ4),

Eraser_8 (AZ1), Exile_8 (AZ), Floof_7 (EH), Gambol_8 (AZ5), GardenState_8 (EH), Giorgio_8 (AZ5), Gretchen_8 (EH), Gumpizza_8 (AZ5), Halsey_8 (AZ5), IAmGroot_8 (EH), IttyBittyPiggy_8 (AZ1), Janeemi_9 (AZ1), JasmineDragon_7 (AZ4), Joemato_8 (AZ1), JohnDoe_8 (AZ1), Jstan_8 (AZ1), JuneStar_8 (AZ1), Kalimba_8 (AZ5), Kaylissa_8 (AZ1), KeAlii_8 (AZ1), LadyAstra_7 (AZ4), Lego_8 (AZ1), Liebe_7 (AZ2), Lizalica_8 (AZ1), London_8 (AZ1), MaGuCo_7 (AZ2), Mabodamaca_8 (EH), Maureen_7 (AZ2), MiniMommy_7 (AZ4), MissSwiss_8 (AZ1), Moss_8 (AZ5), Mudpuppy_8 (AZ1), Mysterium_8 (AZ5), Niobe_8 (AZ1), Nitro_8 (AZ1), ObiToo_8 (AZ1), Percival_8 (EH), Phives_9 (AZ1), Pixelle_8 (AZ1), Powerpuff_8 (AZ1), Pumpkins_8 (AZ1), Reedo_8 (AZ1), RockScotty_8 (AZ5), Sabourin_8 (AZ5), Shaffner_8 (AZ1), ShakeltOph_7 (AZ4), Simpson_8 (AZ1), Snek_8 (AZ3), Soondubu_8 (AZ), Sooty_8 (AZ5), SpecialK_8 (AZ5), Stuu_8 (AZ5), SuMoo_7 (EH), Subaru_8 (AZ1), Sue2_8 (AZ1), Tallboi_8 (AZ1), Tbone_8 (AZ1), TforTroy_8 (AZ1), Tian_8 (AZ1), Tuck_9 (AZ1), Turab_8 (AZ1), Tutumahutu_8 (AZ1), Tweety19_8 (AZ3), UtzChips_7 (EH), VResidence_8 (AZ1), VroomVroom_7 (AZ4), Warda_8 (AZ1), Wildwest_9 (AZ1), Yang_8 (AZ1), YesChef_8 (AZ1), Zeta1847_7 (EH),

Start 16:

- Found in 1 of 345 (0.3%) of genes in pham
- Manual Annotations of this start: 1 of 288
- Called 100.0% of time when present
- Phage (with cluster) where this start called: Honk_7 (EH),

Start 18:

- Found in 24 of 345 (7.0%) of genes in pham
- Manual Annotations of this start: 20 of 288
- Called 100.0% of time when present
- Phage (with cluster) where this start called: Auspice_19 (M1), Aziz_23 (M2), Bongo_19 (M1), Bricole_19 (M1), Diminimus_20 (M1), Dulcita_20 (M1), Estes_24 (M2), FreakyGoo_19 (M1), GardenSalsa_23 (M2), GenevaB15_23 (M2), Glaske16_20 (M1), IPhane7_19 (M1), Izel_18 (M1), KleverKiS_19 (M1), LilhomieP_18 (M1), MrMagoo_23 (M2), Nanosmite_23 (M3), PegLeg_19 (M1), Reindeer_17 (M1), Rey_23 (M2), RoseMarie_19 (M), Skinny_20 (M1), SlimJimmy_18 (M1), TyDawg_19 (M1),

Start 21:

- Found in 222 of 345 (64.3%) of genes in pham
- Manual Annotations of this start: 183 of 288
- Called 97.3% of time when present
- Phage (with cluster) where this start called: Aaronocolus_11 (BD1), Acquire49_9 (L1), Aegeus_9 (L5), Alsaber_12 (BD3), Alvy_13 (BD2), Amela_11 (BD3), Amethyst_11 (BD2), Andris_11 (BD2), Animus_12 (BD2), Appletree2_9 (L1), Archie_9 (L2), Asten_11 (BD1), AvadaKedavra_9 (L1), Axiom_12 (BD2), Azrael100_30 (V), Baoshan_8 (L2), BarryBee_13 (BD1), BartholomewSD_13 (BD2), Baudelaire_9 (L5), Bazzle_9 (L2), BeardedLady_12 (BD1), Bellis_10 (L3), BigCheese_9 (L2), BobsGarage_9 (L2), BourbonZero_9 (L3), Bovely_11 (BD1), Bowden_12 (BD2), BrainDrainer_10 (L4), Brataylor_12 (BD1), Breezona_9 (L2), BroPlease_12 (BD4), Bromden_9 (L4), BryanRecycles_12 (BD1), Caelum_12 (BD2), Caliburn_11 (BD1), Calm_9 (L1), Celery_14 (BD3), Celeste_11 (BD1), Celia_11 (BD6), Chaser_9 (L4), Chucky_11 (BD1), CicholasNage_9 (L1), Claus_9 (L2), Clautastrophe_10 (L3), Conan_12 (BD3), Cosmo_31 (V), Crossroads_9 (L2), DHan_9 (L2), DanBing_8 (L2), Danzina_12 (BD1), Dattran_12 (BD1), Daudau_11 (BD2), Dexters_10 (BD3), Diane_11 (BD2), DirkDirk_9 (L1), Douge_9 (L4), Douzhi_9 (L4),

DrSeegs_9 (L2), DuncansLeg_10 (L3), Dwayne_11 (BD1), DyoEdafos_10 (L4), ELB20_10 (BD2), Eddasa_12 (BD1), Ejemplo_11 (BD1), ElGato_12 (BD3), Ellson_10 (L3), Emaanora_13 (BD1), Enceladus_9 (L1), EniyanLRS_28 (V), EnochSoames_12 (BD1), Esperer_11 (BD1), Faith1_9 (L2), FarmResident_9 (L4), Finemlucis_9 (L2), Finnry_10 (L3), Gabriela_9 (L2), Gardann_9 (L2), GirlDinner_11 (BD2), Goby_11 (BD1), Godpower_12 (BD1), GreenWeasel_13 (BD4), GuuelaD_9 (L2), Hafay_9 (L2), Haizum_11 (BD2), Halena_9 (L1), Hippo_11 (BD1), Hydra_13 (BD1), Indigo_11 (BD1), Issmi_12 (BD2), Itos_9 (L2), Itza_11 (BD6), Izzy_12 (BD1), Janus_12 (BD2), Jash_12 (BD1), Jevington_13 (BD2), Jobypre_10 (L3), JoeDirt_9 (L1), Jubie_10 (L3), Kahlid_9 (L2), Kaine_11 (BD3), Katalie_12 (BD1), Kingsolomon_10 (L3), KirDoubleO7_8 (L3), Kropertea_9 (L4), Krypton555_10 (L3), Kudrefre_17 (DU1), Kumao_18 (singleton), Lannister_12 (BD1), Legacy_11 (BD1), Leviticus_11 (BD1), Lika_11 (BD1), LilDestine_9 (L2), LiyuLake_10 (L3), Loadrie_9 (L2), Lolly9_10 (L3), Loofah_12 (BD2), Lorelei_11 (BD1), Lumos_10 (L3), MAckerman_9 (L1), Maneekul_11 (BD1), Marav_14 (BD2), MaryV_31 (V), Miley16_9 (L2), MiniLon_10 (L3), MiniMac_10 (L3), MkaliMitinis3_9 (L2), Moostard_10 (L3), MsGreen_10 (L3), Nabi_11 (BD1), Nanodon_13 (BD1), Nerdos_11 (BD1), Netyap_9 (L2), Neville_17 (DU2), Nicholas_10 (L3), Nicholasp3_9 (L2), Nishikigoi_11 (BD2), Octobien14_18 (DU1), OhShagHennessy_9 (L1), Oliynyk_12 (BD1), Omar_12 (BD2), Ozzie_11 (BD1), OzzyJ_12 (BD1), PYPDinur_9 (L4), Pablito_11 (BD2), Paedore_11 (BD2), Paolo_13 (BD2), Pavo_12 (BD3), Phettuccine_11 (BD1), Poochiewood_9 (L1), Provolone_12 (BD3), Puginator_13 (BD2), Quby_9 (L4), R4_11 (BD2), Rabbitrun_19 (DU2), Rana_11 (BD1), Red305_10 (L3), RedBear_13 (BD1), Rose5_9 (L1), Rossetti_9 (L2), Rumpelstiltskin_9 (L2), Rusticus_12 (BD1), Saftant_11 (BD3), Samty_10 (L3), SarahRose_11 (BD1), Sarshaun_9 (L2), Sephiroth_18 (DU1), Sheng711_9 (L4), Silverleaf_9 (L1), Snenia_10 (L3), Snorlax_11 (BD1), SoJulia_9 (L2), Soap141_9 (L2), South40_12 (BD1), Speedwell_16 (BD3), SqueakyClean_12 (BD2), SunsetPointe_11 (BD1), Superstar_13 (BD2), Syleon_18 (DU1), TagePghter_12 (BD1), Tefunt_11 (BD2), Thestral_12 (BD2), TinaBelcher_11 (BD2), Toma_11 (BD1), Tourach_9 (L2), Trax_17 (DU2), TriFive_10 (L3), Triste_11 (BD1), Triumph_13 (BD2), TuanPN_11 (BD1), Tyson_9 (L1), Underpass_9 (L2), Unstoppable_11 (BD1), Urza_11 (BD6), Vanseggelen_14 (BD3), Verabelle_12 (BD3), Verse_11 (BD3), Vetrix_9 (L2), VieEnRose_11 (BD6), Wamburggrxpress_9 (L1), Werner_11 (BD1), Whatever_11 (BD1), Whirlwind_11 (L3), Wigglewiggle_9 (L2), Wildcat_31 (V), Wilder_9 (L2), Winky_9 (L2), Wyatt2_9 (L1), Yasdnil_11 (BD1), Yosif_12 (BD3), Zainub_13 (BD2), Zakai_9 (L2), Zaria_9 (L1), Zemlya_12 (BD1), ZhongYanYuan_8 (L2), phiCAM_12 (BD3), phiHau3_13 (BD4),

Start 27:

- Found in 59 of 345 (17.1%) of genes in pham
- Manual Annotations of this start: 2 of 288
- Called 3.4% of time when present
- Phage (with cluster) where this start called: LeBron_9 (L1), UPIE_9 (L1),

Start 30:

- Found in 126 of 345 (36.5%) of genes in pham
- Manual Annotations of this start: 1 of 288
- Called 0.8% of time when present
- Phage (with cluster) where this start called: Lewan_9 (L2),

Start 31:

- Found in 4 of 345 (1.2%) of genes in pham
- Manual Annotations of this start: 1 of 288

- Called 25.0% of time when present
- Phage (with cluster) where this start called: Iter_8 (AZ1),

Start 51:

- Found in 3 of 345 (0.9%) of genes in pham
- Manual Annotations of this start: 1 of 288
- Called 33.3% of time when present
- Phage (with cluster) where this start called: Footloose_7 (singleton),

Summary by clusters:

There are 25 clusters represented in this pham: singleton, L1, M1, M3, M2, BD4, BD6, BD1, BD3, BD2, DU1, DU2, EH, M, L4, L5, L2, L3, V, AZ, AZ1, AZ2, AZ3, AZ4, AZ5,

Info for manual annotations of cluster AZ:

- Start number 14 was manually annotated 1 time for cluster AZ.

Info for manual annotations of cluster AZ1:

- Start number 1 was manually annotated 1 time for cluster AZ1.
- Start number 14 was manually annotated 43 times for cluster AZ1.
- Start number 31 was manually annotated 1 time for cluster AZ1.

Info for manual annotations of cluster AZ2:

- Start number 14 was manually annotated 3 times for cluster AZ2.

Info for manual annotations of cluster AZ3:

- Start number 14 was manually annotated 2 times for cluster AZ3.

Info for manual annotations of cluster AZ4:

- Start number 14 was manually annotated 3 times for cluster AZ4.

Info for manual annotations of cluster AZ5:

- Start number 14 was manually annotated 10 times for cluster AZ5.

Info for manual annotations of cluster BD1:

- Start number 6 was manually annotated 1 time for cluster BD1.
- Start number 21 was manually annotated 54 times for cluster BD1.

Info for manual annotations of cluster BD2:

- Start number 4 was manually annotated 1 time for cluster BD2.
- Start number 5 was manually annotated 1 time for cluster BD2.
- Start number 21 was manually annotated 30 times for cluster BD2.

Info for manual annotations of cluster BD3:

- Start number 21 was manually annotated 12 times for cluster BD3.

Info for manual annotations of cluster BD4:

- Start number 21 was manually annotated 3 times for cluster BD4.

Info for manual annotations of cluster BD6:

- Start number 21 was manually annotated 4 times for cluster BD6.

Info for manual annotations of cluster DU1:

- Start number 21 was manually annotated 4 times for cluster DU1.

Info for manual annotations of cluster DU2:

- Start number 21 was manually annotated 3 times for cluster DU2.

Info for manual annotations of cluster EH:

- Start number 14 was manually annotated 12 times for cluster EH.
- Start number 16 was manually annotated 1 time for cluster EH.

Info for manual annotations of cluster L1:

- Start number 21 was manually annotated 17 times for cluster L1.
- Start number 27 was manually annotated 2 times for cluster L1.

Info for manual annotations of cluster L2:

- Start number 21 was manually annotated 27 times for cluster L2.
- Start number 30 was manually annotated 1 time for cluster L2.

Info for manual annotations of cluster L3:

- Start number 21 was manually annotated 17 times for cluster L3.

Info for manual annotations of cluster L4:

- Start number 21 was manually annotated 4 times for cluster L4.

Info for manual annotations of cluster L5:

- Start number 21 was manually annotated 2 times for cluster L5.

Info for manual annotations of cluster M1:

- Start number 18 was manually annotated 13 times for cluster M1.

Info for manual annotations of cluster M2:

- Start number 18 was manually annotated 6 times for cluster M2.

Info for manual annotations of cluster M3:

- Start number 18 was manually annotated 1 time for cluster M3.

Info for manual annotations of cluster V:

- Start number 21 was manually annotated 5 times for cluster V.

Gene Information:

Gene: AEgle_8 Start: 7858, Stop: 8265, Start Num: 14

Candidate Starts for AEgle_8:

(Start: 14 @7858 has 75 MA's), (56, 8050), (63, 8095),

Gene: AGrandiflora_8 Start: 7839, Stop: 8246, Start Num: 14

Candidate Starts for AGrandiflora_8:

(Start: 14 @7839 has 75 MA's), (56, 8031),

Gene: Aaronocolus_11 Start: 8395, Stop: 8847, Start Num: 21

Candidate Starts for Aaronocolus_11:

(10, 8356), (Start: 21 @8395 has 183 MA's), (62, 8587), (92, 8743),

Gene: Acquire49_9 Start: 7246, Stop: 7713, Start Num: 21

Candidate Starts for Acquire49_9:

(Start: 21 @7246 has 183 MA's), (Start: 27 @7273 has 2 MA's), (Start: 30 @7285 has 1 MA's), (40, 7330), (43, 7342), (45, 7360), (46, 7363), (53, 7411), (57, 7423), (58, 7426), (68, 7480), (77, 7540), (88, 7585), (114, 7696), (115, 7699), (117, 7702),

Gene: Adolin_8 Start: 7854, Stop: 8258, Start Num: 14

Candidate Starts for Adolin_8:

(Start: 14 @7854 has 75 MA's), (52, 8034),

Gene: Adumb2043_8 Start: 7857, Stop: 8264, Start Num: 14

Candidate Starts for Adumb2043_8:

(Start: 14 @7857 has 75 MA's), (56, 8049), (63, 8094),

Gene: Aegeus_9 Start: 6856, Stop: 7332, Start Num: 21

Candidate Starts for Aegeus_9:

(Start: 21 @6856 has 183 MA's), (23, 6865), (29, 6892), (Start: 30 @6895 has 1 MA's), (32, 6901), (41, 6943), (42, 6949), (43, 6952), (56, 7027), (64, 7075), (79, 7156), (84, 7183), (88, 7192), (102, 7252),

Gene: AinMach_8 Start: 7070, Stop: 7495, Start Num: 14

Candidate Starts for AinMach_8:

(Start: 1 @7010 has 1 MA's), (Start: 14 @7070 has 75 MA's), (38, 7163), (49, 7217), (56, 7262), (73, 7361), (100, 7481),

Gene: Alsaber_12 Start: 8454, Stop: 8915, Start Num: 21

Candidate Starts for Alsaber_12:

(Start: 21 @8454 has 183 MA's), (26, 8469), (62, 8643), (92, 8799), (119, 8901),

Gene: Alvy_13 Start: 8321, Stop: 8794, Start Num: 21

Candidate Starts for Alvy_13:

(Start: 4 @8255 has 1 MA's), (7, 8270), (9, 8276), (Start: 14 @8300 has 75 MA's), (Start: 21 @8321 has 183 MA's), (45, 8435), (62, 8516), (119, 8780),

Gene: Amela_11 Start: 8566, Stop: 9024, Start Num: 21

Candidate Starts for Amela_11:

(Start: 21 @8566 has 183 MA's), (34, 8629), (52, 8716), (62, 8755), (92, 8911), (116, 8995), (120, 9019),

Gene: Amethyst_11 Start: 8131, Stop: 8607, Start Num: 21

Candidate Starts for Amethyst_11:

(Start: 21 @8131 has 183 MA's), (41, 8218), (62, 8329),

Gene: Amyev_8 Start: 7873, Stop: 8280, Start Num: 14

Candidate Starts for Amyev_8:

(Start: 14 @7873 has 75 MA's), (56, 8065), (63, 8110),

Gene: Andris_11 Start: 8194, Stop: 8664, Start Num: 21

Candidate Starts for Andris_11:

(8, 8146), (Start: 21 @8194 has 183 MA's), (62, 8392), (74, 8479), (80, 8506), (98, 8584), (107, 8599),

Gene: Animus_12 Start: 8547, Stop: 9035, Start Num: 21

Candidate Starts for Animus_12:

(3, 8478), (Start: 21 @8547 has 183 MA's), (44, 8658), (50, 8688), (62, 8745), (80, 8859), (92, 8901), (94, 8907), (111, 8976),

Gene: Appletree2_9 Start: 7220, Stop: 7687, Start Num: 21

Candidate Starts for Appletree2_9:

(Start: 21 @7220 has 183 MA's), (Start: 27 @7247 has 2 MA's), (Start: 30 @7259 has 1 MA's), (40, 7304), (43, 7316), (45, 7334), (46, 7337), (53, 7385), (57, 7397), (58, 7400), (68, 7454), (77, 7514), (88, 7559), (114, 7670), (115, 7673), (117, 7676),

Gene: Archie_9 Start: 7204, Stop: 7668, Start Num: 21

Candidate Starts for Archie_9:

(Start: 21 @7204 has 183 MA's), (Start: 27 @7231 has 2 MA's), (Start: 30 @7243 has 1 MA's), (33, 7252), (45, 7318), (46, 7321), (53, 7369), (57, 7381), (58, 7384), (68, 7438), (77, 7498), (84, 7534), (88, 7543), (107, 7615), (115, 7654), (117, 7657),

Gene: Asa16_8 Start: 7826, Stop: 8233, Start Num: 14

Candidate Starts for Asa16_8:

(Start: 14 @7826 has 75 MA's), (55, 8015), (56, 8018), (58, 8024), (63, 8063),

Gene: Ascela_8 Start: 7852, Stop: 8259, Start Num: 14

Candidate Starts for Ascela_8:

(Start: 14 @7852 has 75 MA's), (Start: 31 @7909 has 1 MA's), (56, 8044), (63, 8089),

Gene: Ashes_8 Start: 7343, Stop: 7810, Start Num: 14

Candidate Starts for Ashes_8:

(2, 7292), (Start: 14 @7343 has 75 MA's), (54, 7535), (70, 7616),

Gene: Asten_11 Start: 8357, Stop: 8806, Start Num: 21

Candidate Starts for Asten_11:

(Start: 6 @8300 has 1 MA's), (Start: 21 @8357 has 183 MA's), (62, 8546), (107, 8750),

Gene: Auspice_19 Start: 11031, Stop: 11513, Start Num: 18

Candidate Starts for Auspice_19:

(Start: 18 @11031 has 20 MA's), (Start: 30 @11082 has 1 MA's), (53, 11211), (96, 11415), (104, 11439),

Gene: AvadaKedavra_9 Start: 7246, Stop: 7713, Start Num: 21

Candidate Starts for AvadaKedavra_9:

(Start: 21 @7246 has 183 MA's), (Start: 27 @7273 has 2 MA's), (Start: 30 @7285 has 1 MA's), (40, 7330), (43, 7342), (45, 7360), (46, 7363), (53, 7411), (57, 7423), (58, 7426), (68, 7480), (77, 7540), (88, 7585), (114, 7696), (115, 7699), (117, 7702),

Gene: Axiom_12 Start: 8226, Stop: 8696, Start Num: 21

Candidate Starts for Axiom_12:

(Start: 21 @8226 has 183 MA's), (62, 8424), (80, 8538), (98, 8616),

Gene: Aziz_23 Start: 11594, Stop: 12076, Start Num: 18

Candidate Starts for Aziz_23:

(Start: 18 @11594 has 20 MA's), (Start: 30 @11645 has 1 MA's), (42, 11699), (53, 11774), (96, 11978), (104, 12002),

Gene: Azrael100_30 Start: 14162, Stop: 14638, Start Num: 21

Candidate Starts for Azrael100_30:

(Start: 21 @14162 has 183 MA's), (24, 14174), (37, 14246), (42, 14264), (46, 14288), (63, 14387), (66, 14396), (72, 14426), (93, 14513), (102, 14558), (109, 14585), (110, 14591),

Gene: Baoshan_8 Start: 7059, Stop: 7523, Start Num: 21

Candidate Starts for Baoshan_8:

(Start: 21 @7059 has 183 MA's), (Start: 27 @7086 has 2 MA's), (Start: 30 @7098 has 1 MA's), (33, 7107), (45, 7173), (46, 7176), (53, 7224), (57, 7236), (58, 7239), (68, 7293), (77, 7353), (84, 7389), (88, 7398), (107, 7470), (115, 7509), (117, 7512),

Gene: Barnstormer_7 Start: 7106, Stop: 7585, Start Num: 14

Candidate Starts for Barnstormer_7:

(13, 7100), (Start: 14 @7106 has 75 MA's), (112, 7577),

Gene: BarryBee_13 Start: 8364, Stop: 8813, Start Num: 21

Candidate Starts for BarryBee_13:

(Start: 21 @8364 has 183 MA's), (62, 8553), (107, 8757),

Gene: BartholomewSD_13 Start: 8321, Stop: 8794, Start Num: 21

Candidate Starts for BartholomewSD_13:

(Start: 4 @8255 has 1 MA's), (7, 8270), (9, 8276), (Start: 14 @8300 has 75 MA's), (Start: 21 @8321 has 183 MA's), (45, 8435), (62, 8516), (119, 8780),

Gene: Baudelaire_9 Start: 6856, Stop: 7332, Start Num: 21

Candidate Starts for Baudelaire_9:

(Start: 21 @6856 has 183 MA's), (23, 6865), (29, 6892), (Start: 30 @6895 has 1 MA's), (32, 6901), (41, 6943), (42, 6949), (43, 6952), (56, 7027), (64, 7075), (79, 7156), (84, 7183), (88, 7192), (102, 7252),

Gene: Bazzle_9 Start: 7180, Stop: 7644, Start Num: 21

Candidate Starts for Bazzle_9:

(Start: 21 @7180 has 183 MA's), (Start: 27 @7207 has 2 MA's), (Start: 30 @7219 has 1 MA's), (45, 7294), (46, 7297), (53, 7345), (57, 7357), (58, 7360), (68, 7414), (84, 7510), (88, 7519), (107, 7591), (115, 7630), (117, 7633),

Gene: BeardedLady_12 Start: 8642, Stop: 9094, Start Num: 21

Candidate Starts for BeardedLady_12:

(10, 8603), (Start: 21 @8642 has 183 MA's), (62, 8834), (92, 8990),

Gene: Beaupre_8 Start: 7344, Stop: 7811, Start Num: 14

Candidate Starts for Beaupre_8:

(2, 7293), (Start: 14 @7344 has 75 MA's), (54, 7536), (70, 7617),

Gene: Bellis_10 Start: 7367, Stop: 7843, Start Num: 21

Candidate Starts for Bellis_10:

(Start: 21 @7367 has 183 MA's), (Start: 30 @7406 has 1 MA's), (40, 7457), (45, 7487), (46, 7490), (53, 7538), (56, 7547), (57, 7550), (58, 7553), (68, 7607), (70, 7622), (77, 7667), (84, 7703),

Gene: Berrie_8 Start: 7831, Stop: 8238, Start Num: 14

Candidate Starts for Berrie_8:

(Start: 14 @7831 has 75 MA's), (Start: 31 @7888 has 1 MA's), (56, 8023), (63, 8068),

Gene: BigCheese_9 Start: 7231, Stop: 7695, Start Num: 21

Candidate Starts for BigCheese_9:

(Start: 21 @7231 has 183 MA's), (Start: 27 @7258 has 2 MA's), (Start: 30 @7270 has 1 MA's), (45, 7345), (46, 7348), (53, 7396), (57, 7408), (58, 7411), (68, 7465), (88, 7570), (107, 7642), (115, 7681), (117, 7684),

Gene: BobsGarage_9 Start: 7231, Stop: 7695, Start Num: 21

Candidate Starts for BobsGarage_9:

(Start: 21 @7231 has 183 MA's), (Start: 27 @7258 has 2 MA's), (Start: 30 @7270 has 1 MA's), (45, 7345), (46, 7348), (53, 7396), (57, 7408), (58, 7411), (68, 7465), (88, 7570), (107, 7642), (115, 7681), (117, 7684),

Gene: Bongo_19 Start: 11031, Stop: 11513, Start Num: 18

Candidate Starts for Bongo_19:

(Start: 18 @11031 has 20 MA's), (Start: 30 @11082 has 1 MA's), (53, 11211), (96, 11415), (104, 11439),

Gene: BourbonZero_9 Start: 7373, Stop: 7849, Start Num: 21

Candidate Starts for BourbonZero_9:

(Start: 21 @7373 has 183 MA's), (Start: 30 @7412 has 1 MA's), (40, 7463), (45, 7493), (46, 7496), (53, 7544), (54, 7547), (57, 7556), (68, 7613), (70, 7628), (77, 7673), (84, 7709), (108, 7796),

Gene: Bovely_11 Start: 8401, Stop: 8853, Start Num: 21

Candidate Starts for Bovely_11:

(10, 8362), (Start: 21 @8401 has 183 MA's), (62, 8593), (92, 8749),

Gene: Bowden_12 Start: 8235, Stop: 8708, Start Num: 21

Candidate Starts for Bowden_12:

(Start: 4 @8169 has 1 MA's), (7, 8184), (9, 8190), (Start: 14 @8214 has 75 MA's), (Start: 21 @8235 has 183 MA's), (45, 8349), (62, 8430), (95, 8610), (119, 8694),

Gene: BrainDrainer_10 Start: 7050, Stop: 7514, Start Num: 21

Candidate Starts for BrainDrainer_10:

(Start: 21 @7050 has 183 MA's), (Start: 30 @7089 has 1 MA's), (33, 7098), (46, 7167), (48, 7179), (53, 7215), (56, 7224), (57, 7227), (58, 7230), (68, 7284), (86, 7383), (88, 7389), (107, 7461), (115, 7500), (117, 7503),

Gene: Brataylor_12 Start: 8367, Stop: 8816, Start Num: 21

Candidate Starts for Brataylor_12:

(10, 8328), (Start: 21 @8367 has 183 MA's), (52, 8517), (53, 8520), (62, 8556),

Gene: Breezona_9 Start: 7231, Stop: 7695, Start Num: 21

Candidate Starts for Breezona_9:

(Start: 21 @7231 has 183 MA's), (Start: 27 @7258 has 2 MA's), (Start: 30 @7270 has 1 MA's), (45, 7345), (46, 7348), (53, 7396), (57, 7408), (58, 7411), (68, 7465), (88, 7570), (107, 7642), (115, 7681), (117, 7684),

Gene: Bricole_19 Start: 11030, Stop: 11512, Start Num: 18

Candidate Starts for Bricole_19:

(Start: 18 @11030 has 20 MA's), (Start: 30 @11081 has 1 MA's), (53, 11210), (96, 11414), (104, 11438),

Gene: BroPlease_12 Start: 8450, Stop: 8917, Start Num: 21

Candidate Starts for BroPlease_12:

(Start: 21 @8450 has 183 MA's), (52, 8600), (53, 8603), (62, 8639), (74, 8726), (95, 8819), (105, 8837), (119, 8903),

Gene: Bromden_9 Start: 6960, Stop: 7424, Start Num: 21

Candidate Starts for Bromden_9:

(Start: 21 @6960 has 183 MA's), (Start: 30 @6999 has 1 MA's), (33, 7008), (45, 7074), (46, 7077), (48, 7089), (53, 7125), (56, 7134), (57, 7137), (58, 7140), (68, 7194), (86, 7293), (88, 7299), (107, 7371), (115, 7410), (117, 7413),

Gene: BryanRecycles_12 Start: 8558, Stop: 9010, Start Num: 21

Candidate Starts for BryanRecycles_12:

(10, 8519), (Start: 21 @8558 has 183 MA's), (62, 8750), (92, 8906),

Gene: Caelum_12 Start: 8087, Stop: 8563, Start Num: 21

Candidate Starts for Caelum_12:

(Start: 21 @8087 has 183 MA's), (62, 8285), (119, 8549),

Gene: Caliburn_11 Start: 8375, Stop: 8827, Start Num: 21

Candidate Starts for Caliburn_11:

(10, 8336), (Start: 21 @8375 has 183 MA's), (62, 8567), (92, 8723),

Gene: Calm_9 Start: 7247, Stop: 7714, Start Num: 21

Candidate Starts for Calm_9:

(Start: 21 @7247 has 183 MA's), (Start: 27 @7274 has 2 MA's), (Start: 30 @7286 has 1 MA's), (40, 7331), (43, 7343), (45, 7361), (46, 7364), (53, 7412), (57, 7424), (58, 7427), (68, 7481), (77, 7541), (88, 7586), (114, 7697), (115, 7700), (117, 7703),

Gene: Cappuccino_8 Start: 7252, Stop: 7719, Start Num: 14

Candidate Starts for Cappuccino_8:

(2, 7201), (Start: 14 @7252 has 75 MA's), (54, 7444), (70, 7525), (76, 7576),

Gene: Caron_7 Start: 7134, Stop: 7613, Start Num: 14

Candidate Starts for Caron_7:

(Start: 14 @7134 has 75 MA's), (102, 7554), (112, 7605),

Gene: Cassia_8 Start: 7956, Stop: 8351, Start Num: 14

Candidate Starts for Cassia_8:

(Start: 14 @7956 has 75 MA's), (56, 8148), (63, 8193),

Gene: Celery_14 Start: 8413, Stop: 8874, Start Num: 21

Candidate Starts for Celery_14:

(Start: 21 @8413 has 183 MA's), (26, 8428), (62, 8602), (92, 8758), (109, 8818), (116, 8845), (119, 8860),

Gene: Celeste_11 Start: 8365, Stop: 8814, Start Num: 21

Candidate Starts for Celeste_11:

(Start: 6 @8308 has 1 MA's), (Start: 21 @8365 has 183 MA's), (52, 8515), (53, 8518), (62, 8554),

Gene: Celia_11 Start: 8664, Stop: 9149, Start Num: 21

Candidate Starts for Celia_11:

(Start: 21 @8664 has 183 MA's), (53, 8817), (62, 8853), (74, 8940),

Gene: Cen1621_7 Start: 6257, Stop: 6748, Start Num: 14

Candidate Starts for Cen1621_7:
(Start: 14 @6257 has 75 MA's), (109, 6710),

Gene: Chaser_9 Start: 6965, Stop: 7429, Start Num: 21
Candidate Starts for Chaser_9:
(Start: 21 @6965 has 183 MA's), (Start: 30 @7004 has 1 MA's), (33, 7013), (45, 7079), (46, 7082), (48, 7094), (53, 7130), (56, 7139), (57, 7142), (58, 7145), (68, 7199), (86, 7298), (88, 7304), (107, 7376), (115, 7415), (117, 7418),

Gene: Chucky_11 Start: 8365, Stop: 8814, Start Num: 21
Candidate Starts for Chucky_11:
(Start: 21 @8365 has 183 MA's), (62, 8554), (107, 8758),

Gene: CicholasNage_9 Start: 7247, Stop: 7714, Start Num: 21
Candidate Starts for CicholasNage_9:
(Start: 21 @7247 has 183 MA's), (Start: 27 @7274 has 2 MA's), (Start: 30 @7286 has 1 MA's), (40, 7331), (43, 7343), (45, 7361), (46, 7364), (53, 7412), (57, 7424), (58, 7427), (68, 7481), (77, 7541), (88, 7586), (114, 7697), (115, 7700), (117, 7703),

Gene: Claus_9 Start: 7239, Stop: 7703, Start Num: 21
Candidate Starts for Claus_9:
(Start: 21 @7239 has 183 MA's), (Start: 27 @7266 has 2 MA's), (Start: 30 @7278 has 1 MA's), (33, 7287), (45, 7353), (46, 7356), (53, 7404), (57, 7416), (58, 7419), (68, 7473), (77, 7533), (84, 7569), (88, 7578), (107, 7650), (115, 7689), (117, 7692),

Gene: Clautastrophe_10 Start: 7371, Stop: 7847, Start Num: 21
Candidate Starts for Clautastrophe_10:
(Start: 21 @7371 has 183 MA's), (Start: 30 @7410 has 1 MA's), (40, 7461), (45, 7491), (46, 7494), (53, 7542), (56, 7551), (57, 7554), (58, 7557), (68, 7611), (70, 7626), (77, 7671), (84, 7707),

Gene: Community_9 Start: 8908, Stop: 9315, Start Num: 14
Candidate Starts for Community_9:
(Start: 14 @8908 has 75 MA's), (52, 9088), (55, 9097), (56, 9100), (58, 9106),

Gene: Conan_12 Start: 8164, Stop: 8625, Start Num: 21
Candidate Starts for Conan_12:
(Start: 21 @8164 has 183 MA's), (26, 8179), (62, 8353), (92, 8509), (119, 8611),

Gene: Cosmo_31 Start: 14169, Stop: 14645, Start Num: 21
Candidate Starts for Cosmo_31:
(Start: 21 @14169 has 183 MA's), (24, 14181), (37, 14253), (42, 14271), (46, 14295), (63, 14394), (66, 14403), (72, 14433), (93, 14520), (102, 14565), (109, 14592), (110, 14598),

Gene: Crewmate_9 Start: 8291, Stop: 8698, Start Num: 14
Candidate Starts for Crewmate_9:
(Start: 14 @8291 has 75 MA's), (52, 8471), (56, 8483), (63, 8528),

Gene: Crossroads_9 Start: 7231, Stop: 7695, Start Num: 21
Candidate Starts for Crossroads_9:
(Start: 21 @7231 has 183 MA's), (Start: 27 @7258 has 2 MA's), (Start: 30 @7270 has 1 MA's), (45, 7345), (46, 7348), (53, 7396), (57, 7408), (58, 7411), (68, 7465), (88, 7570), (107, 7642), (115, 7681), (117, 7684),

Gene: Cyan_8 Start: 7843, Stop: 8250, Start Num: 14

Candidate Starts for Cyan_8:

(Start: 14 @7843 has 75 MA's), (56, 8035),

Gene: DHan_9 Start: 7175, Stop: 7639, Start Num: 21

Candidate Starts for DHan_9:

(Start: 21 @7175 has 183 MA's), (Start: 27 @7202 has 2 MA's), (Start: 30 @7214 has 1 MA's), (33, 7223), (45, 7289), (46, 7292), (53, 7340), (57, 7352), (58, 7355), (68, 7409), (77, 7469), (84, 7505), (88, 7514), (107, 7586), (115, 7625), (117, 7628),

Gene: DanBing_8 Start: 7058, Stop: 7522, Start Num: 21

Candidate Starts for DanBing_8:

(Start: 21 @7058 has 183 MA's), (Start: 27 @7085 has 2 MA's), (Start: 30 @7097 has 1 MA's), (33, 7106), (45, 7172), (46, 7175), (53, 7223), (57, 7235), (58, 7238), (68, 7292), (77, 7352), (84, 7388), (88, 7397), (107, 7469), (115, 7508), (117, 7511),

Gene: Danzina_12 Start: 8569, Stop: 9018, Start Num: 21

Candidate Starts for Danzina_12:

(Start: 6 @8512 has 1 MA's), (Start: 21 @8569 has 183 MA's), (62, 8758),

Gene: Dattran_12 Start: 8364, Stop: 8813, Start Num: 21

Candidate Starts for Dattran_12:

(Start: 6 @8307 has 1 MA's), (Start: 21 @8364 has 183 MA's), (52, 8514), (53, 8517), (62, 8553),

Gene: Daudau_11 Start: 8198, Stop: 8698, Start Num: 21

Candidate Starts for Daudau_11:

(9, 8156), (Start: 21 @8198 has 183 MA's), (62, 8396), (82, 8516), (92, 8552), (94, 8558),

Gene: Dexers_10 Start: 8157, Stop: 8618, Start Num: 21

Candidate Starts for Dexers_10:

(Start: 21 @8157 has 183 MA's), (26, 8172), (62, 8346), (92, 8502), (119, 8604),

Gene: Diane_11 Start: 8130, Stop: 8606, Start Num: 21

Candidate Starts for Diane_11:

(Start: 21 @8130 has 183 MA's), (53, 8292), (62, 8328),

Gene: Diminimus_20 Start: 11030, Stop: 11512, Start Num: 18

Candidate Starts for Diminimus_20:

(Start: 18 @11030 has 20 MA's), (Start: 30 @11081 has 1 MA's), (53, 11210), (96, 11414), (104, 11438),

Gene: DirkDirk_9 Start: 7248, Stop: 7715, Start Num: 21

Candidate Starts for DirkDirk_9:

(Start: 21 @7248 has 183 MA's), (Start: 27 @7275 has 2 MA's), (Start: 30 @7287 has 1 MA's), (40, 7332), (43, 7344), (45, 7362), (46, 7365), (53, 7413), (57, 7425), (58, 7428), (68, 7482), (77, 7542), (88, 7587), (114, 7698), (115, 7701), (117, 7704),

Gene: Donkey_8 Start: 7252, Stop: 7719, Start Num: 14

Candidate Starts for Donkey_8:

(2, 7201), (Start: 14 @7252 has 75 MA's), (54, 7444), (70, 7525), (76, 7576),

Gene: Douge_9 Start: 6911, Stop: 7375, Start Num: 21

Candidate Starts for Douge_9:

(Start: 21 @6911 has 183 MA's), (Start: 30 @6950 has 1 MA's), (33, 6959), (45, 7025), (46, 7028), (48, 7040), (53, 7076), (56, 7085), (57, 7088), (58, 7091), (68, 7145), (86, 7244), (88, 7250), (107, 7322), (115, 7361), (117, 7364),

Gene: Douzhi_9 Start: 6911, Stop: 7375, Start Num: 21

Candidate Starts for Douzhi_9:

(Start: 21 @6911 has 183 MA's), (Start: 30 @6950 has 1 MA's), (33, 6959), (46, 7028), (48, 7040), (53, 7076), (56, 7085), (57, 7088), (58, 7091), (68, 7145), (86, 7244), (88, 7250), (107, 7322), (115, 7361), (117, 7364),

Gene: DrManhattan_8 Start: 7844, Stop: 8248, Start Num: 14

Candidate Starts for DrManhattan_8:

(Start: 14 @7844 has 75 MA's), (52, 8024), (56, 8036),

Gene: DrSeegs_9 Start: 7231, Stop: 7695, Start Num: 21

Candidate Starts for DrSeegs_9:

(Start: 21 @7231 has 183 MA's), (Start: 27 @7258 has 2 MA's), (Start: 30 @7270 has 1 MA's), (45, 7345), (46, 7348), (53, 7396), (57, 7408), (58, 7411), (68, 7465), (88, 7570), (107, 7642), (115, 7681), (117, 7684),

Gene: DrSierra_8 Start: 7783, Stop: 8259, Start Num: 1

Candidate Starts for DrSierra_8:

(Start: 1 @7783 has 1 MA's), (11, 7828), (19, 7855),

Gene: Dulcita_20 Start: 11030, Stop: 11512, Start Num: 18

Candidate Starts for Dulcita_20:

(Start: 18 @11030 has 20 MA's), (Start: 30 @11081 has 1 MA's), (53, 11210), (96, 11414), (104, 11438),

Gene: DuncansLeg_10 Start: 7375, Stop: 7851, Start Num: 21

Candidate Starts for DuncansLeg_10:

(Start: 21 @7375 has 183 MA's), (Start: 30 @7414 has 1 MA's), (40, 7465), (45, 7495), (46, 7498), (53, 7546), (54, 7549), (56, 7555), (57, 7558), (68, 7615), (70, 7630), (77, 7675), (84, 7711),

Gene: Dwayne_11 Start: 8364, Stop: 8813, Start Num: 21

Candidate Starts for Dwayne_11:

(Start: 6 @8307 has 1 MA's), (Start: 21 @8364 has 183 MA's), (62, 8553), (107, 8757),

Gene: DyoEdafos_10 Start: 7121, Stop: 7585, Start Num: 21

Candidate Starts for DyoEdafos_10:

(Start: 21 @7121 has 183 MA's), (Start: 30 @7160 has 1 MA's), (45, 7235), (48, 7250), (53, 7286), (56, 7295), (57, 7298), (58, 7301), (68, 7355), (86, 7454), (88, 7460), (107, 7532), (115, 7571), (117, 7574),

Gene: ELB20_10 Start: 8214, Stop: 8711, Start Num: 21

Candidate Starts for ELB20_10:

(Start: 21 @8214 has 183 MA's), (56, 8385), (62, 8412), (80, 8526), (92, 8568), (94, 8574), (119, 8697),

Gene: Eddasa_12 Start: 8558, Stop: 9010, Start Num: 21

Candidate Starts for Eddasa_12:

(10, 8519), (Start: 21 @8558 has 183 MA's), (62, 8750), (92, 8906),

Gene: Ejemplo_11 Start: 8367, Stop: 8816, Start Num: 21

Candidate Starts for Ejemplo_11:

(Start: 6 @8310 has 1 MA's), (Start: 21 @8367 has 183 MA's), (62, 8556), (107, 8760),

Gene: ElGato_12 Start: 8167, Stop: 8628, Start Num: 21

Candidate Starts for ElGato_12:

(Start: 21 @8167 has 183 MA's), (26, 8182), (62, 8356), (92, 8512), (119, 8614),

Gene: Elezi_8 Start: 7827, Stop: 8234, Start Num: 14

Candidate Starts for Elezi_8:

(Start: 14 @7827 has 75 MA's), (55, 8016), (56, 8019), (58, 8025), (63, 8064),

Gene: Ellson_10 Start: 7383, Stop: 7859, Start Num: 21

Candidate Starts for Ellson_10:

(Start: 21 @7383 has 183 MA's), (Start: 30 @7422 has 1 MA's), (40, 7473), (45, 7503), (46, 7506), (53, 7554), (54, 7557), (57, 7566), (68, 7623), (70, 7638), (77, 7683), (84, 7719), (108, 7806),

Gene: Emaanora_13 Start: 8364, Stop: 8813, Start Num: 21

Candidate Starts for Emaanora_13:

(Start: 21 @8364 has 183 MA's), (62, 8553), (107, 8757),

Gene: EmiRose_8 Start: 7240, Stop: 7716, Start Num: 14

Candidate Starts for EmiRose_8:

(Start: 14 @7240 has 75 MA's), (17, 7246), (46, 7375), (53, 7420), (56, 7429), (57, 7432), (94, 7609), (102, 7651),

Gene: Emotion_7 Start: 6195, Stop: 6596, Start Num: 14

Candidate Starts for Emotion_7:

(Start: 14 @6195 has 75 MA's),

Gene: Enceladus_9 Start: 7248, Stop: 7715, Start Num: 21

Candidate Starts for Enceladus_9:

(Start: 21 @7248 has 183 MA's), (Start: 27 @7275 has 2 MA's), (Start: 30 @7287 has 1 MA's), (40, 7332), (43, 7344), (45, 7362), (46, 7365), (53, 7413), (57, 7425), (58, 7428), (68, 7482), (77, 7542), (88, 7587), (114, 7698), (115, 7701), (117, 7704),

Gene: EniyanLRS_28 Start: 13863, Stop: 14339, Start Num: 21

Candidate Starts for EniyanLRS_28:

(Start: 21 @13863 has 183 MA's), (24, 13875), (37, 13947), (42, 13965), (46, 13989), (63, 14088), (66, 14097), (72, 14127), (93, 14214), (102, 14259), (109, 14286), (110, 14292),

Gene: EnochSoames_12 Start: 8554, Stop: 9006, Start Num: 21

Candidate Starts for EnochSoames_12:

(10, 8515), (Start: 21 @8554 has 183 MA's), (62, 8746), (92, 8902),

Gene: Eraser_8 Start: 7827, Stop: 8234, Start Num: 14

Candidate Starts for Eraser_8:

(Start: 14 @7827 has 75 MA's), (55, 8016), (56, 8019), (58, 8025), (63, 8064),

Gene: Esperer_11 Start: 8395, Stop: 8847, Start Num: 21

Candidate Starts for Esperer_11:

(10, 8356), (Start: 21 @8395 has 183 MA's), (62, 8587), (92, 8743),

Gene: Estes_24 Start: 11731, Stop: 12213, Start Num: 18

Candidate Starts for Estes_24:

(Start: 18 @11731 has 20 MA's), (Start: 30 @11782 has 1 MA's), (42, 11836), (53, 11911), (96, 12115), (104, 12139),

Gene: Exile_8 Start: 7864, Stop: 8262, Start Num: 14

Candidate Starts for Exile_8:

(Start: 14 @7864 has 75 MA's), (52, 8044), (56, 8056),

Gene: Faith1_9 Start: 7231, Stop: 7695, Start Num: 21

Candidate Starts for Faith1_9:

(Start: 21 @7231 has 183 MA's), (Start: 27 @7258 has 2 MA's), (Start: 30 @7270 has 1 MA's), (45, 7345), (46, 7348), (53, 7396), (57, 7408), (58, 7411), (68, 7465), (88, 7570), (107, 7642), (115, 7681), (117, 7684),

Gene: FarmResident_9 Start: 6956, Stop: 7420, Start Num: 21

Candidate Starts for FarmResident_9:

(Start: 21 @6956 has 183 MA's), (Start: 30 @6995 has 1 MA's), (33, 7004), (45, 7070), (46, 7073), (48, 7085), (53, 7121), (56, 7130), (57, 7133), (58, 7136), (68, 7190), (86, 7289), (88, 7295), (107, 7367), (115, 7406), (117, 7409),

Gene: Finemlucis_9 Start: 7231, Stop: 7695, Start Num: 21

Candidate Starts for Finemlucis_9:

(Start: 21 @7231 has 183 MA's), (Start: 27 @7258 has 2 MA's), (Start: 30 @7270 has 1 MA's), (45, 7345), (46, 7348), (53, 7396), (57, 7408), (58, 7411), (68, 7465), (88, 7570), (107, 7642), (115, 7681), (117, 7684),

Gene: Finnry_10 Start: 7368, Stop: 7844, Start Num: 21

Candidate Starts for Finnry_10:

(Start: 21 @7368 has 183 MA's), (Start: 30 @7407 has 1 MA's), (40, 7458), (45, 7488), (46, 7491), (53, 7539), (56, 7548), (57, 7551), (58, 7554), (68, 7608), (70, 7623), (77, 7668), (84, 7704),

Gene: Floof_7 Start: 6625, Stop: 7029, Start Num: 14

Candidate Starts for Floof_7:

(Start: 14 @6625 has 75 MA's), (28, 6670), (70, 6895), (71, 6901),

Gene: Footloose_7 Start: 5771, Stop: 6229, Start Num: 51

Candidate Starts for Footloose_7:

(Start: 51 @5771 has 1 MA's), (69, 5867), (81, 5942), (83, 5951), (85, 5963), (91, 5978), (102, 6032), (118, 6101), (121, 6143), (122, 6188),

Gene: FreakyGoo_19 Start: 11031, Stop: 11513, Start Num: 18

Candidate Starts for FreakyGoo_19:

(Start: 18 @11031 has 20 MA's), (Start: 30 @11082 has 1 MA's), (53, 11211), (96, 11415), (104, 11439),

Gene: Gabriela_9 Start: 7231, Stop: 7695, Start Num: 21

Candidate Starts for Gabriela_9:

(Start: 21 @7231 has 183 MA's), (Start: 27 @7258 has 2 MA's), (Start: 30 @7270 has 1 MA's), (45, 7345), (46, 7348), (53, 7396), (57, 7408), (58, 7411), (68, 7465), (88, 7570), (107, 7642), (115, 7681),

Gene: Gambol_8 Start: 7252, Stop: 7719, Start Num: 14

Candidate Starts for Gambol_8:

(2, 7201), (Start: 14 @7252 has 75 MA's), (54, 7444), (70, 7525), (76, 7576),

Gene: Gardann_9 Start: 7231, Stop: 7695, Start Num: 21

Candidate Starts for Gardann_9:

(Start: 21 @7231 has 183 MA's), (Start: 27 @7258 has 2 MA's), (Start: 30 @7270 has 1 MA's), (45, 7345), (46, 7348), (53, 7396), (57, 7408), (58, 7411), (68, 7465), (88, 7570), (107, 7642), (115, 7681), (117, 7684),

Gene: GardenSalsa_23 Start: 11567, Stop: 12049, Start Num: 18

Candidate Starts for GardenSalsa_23:

(Start: 18 @11567 has 20 MA's), (Start: 30 @11618 has 1 MA's), (42, 11672), (53, 11747), (96, 11951), (104, 11975),

Gene: GardenState_8 Start: 7336, Stop: 7818, Start Num: 14

Candidate Starts for GardenState_8:

(Start: 14 @7336 has 75 MA's), (28, 7387),

Gene: GenevaB15_23 Start: 11594, Stop: 12076, Start Num: 18

Candidate Starts for GenevaB15_23:

(Start: 18 @11594 has 20 MA's), (Start: 30 @11645 has 1 MA's), (42, 11699), (53, 11774), (96, 11978), (104, 12002),

Gene: Giorgio_8 Start: 7345, Stop: 7812, Start Num: 14

Candidate Starts for Giorgio_8:

(2, 7294), (Start: 14 @7345 has 75 MA's), (54, 7537), (70, 7618),

Gene: GirlDinner_11 Start: 8209, Stop: 8697, Start Num: 21

Candidate Starts for GirlDinner_11:

(Start: 21 @8209 has 183 MA's), (44, 8320), (50, 8350), (62, 8407), (80, 8521), (92, 8563), (94, 8569), (111, 8638),

Gene: Glaske16_20 Start: 11030, Stop: 11512, Start Num: 18

Candidate Starts for Glaske16_20:

(Start: 18 @11030 has 20 MA's), (Start: 30 @11081 has 1 MA's), (53, 11210), (96, 11414), (104, 11438),

Gene: Goby_11 Start: 8367, Stop: 8816, Start Num: 21

Candidate Starts for Goby_11:

(Start: 6 @8310 has 1 MA's), (Start: 21 @8367 has 183 MA's), (62, 8556), (92, 8712),

Gene: Godpower_12 Start: 8382, Stop: 8831, Start Num: 21

Candidate Starts for Godpower_12:

(Start: 21 @8382 has 183 MA's), (62, 8571), (92, 8727),

Gene: GreenWeasel_13 Start: 8459, Stop: 8926, Start Num: 21

Candidate Starts for GreenWeasel_13:

(Start: 21 @8459 has 183 MA's), (52, 8609), (53, 8612), (62, 8648), (74, 8735), (95, 8828), (105, 8846), (119, 8912),

Gene: Gretchen_8 Start: 8203, Stop: 8691, Start Num: 14

Candidate Starts for Gretchen_8:

(Start: 14 @8203 has 75 MA's), (28, 8248), (70, 8473), (75, 8518), (99, 8611),

Gene: Gumpizza_8 Start: 7344, Stop: 7811, Start Num: 14

Candidate Starts for Gumpizza_8:

(2, 7293), (Start: 14 @7344 has 75 MA's), (54, 7536), (70, 7617),

Gene: GuuelaD_9 Start: 7264, Stop: 7728, Start Num: 21

Candidate Starts for GuuelaD_9:

(Start: 21 @7264 has 183 MA's), (Start: 27 @7291 has 2 MA's), (Start: 30 @7303 has 1 MA's), (46, 7381), (53, 7429), (57, 7441), (58, 7444), (68, 7498), (77, 7558), (88, 7603), (107, 7675), (115, 7714), (117, 7717),

Gene: Hafay_9 Start: 7264, Stop: 7728, Start Num: 21

Candidate Starts for Hafay_9:

(Start: 21 @7264 has 183 MA's), (Start: 27 @7291 has 2 MA's), (Start: 30 @7303 has 1 MA's), (45, 7378), (46, 7381), (53, 7429), (57, 7441), (58, 7444), (68, 7498), (88, 7603), (107, 7675), (115, 7714), (117, 7717),

Gene: Haizum_11 Start: 8160, Stop: 8636, Start Num: 21

Candidate Starts for Haizum_11:

(Start: 21 @8160 has 183 MA's), (53, 8322), (62, 8358),

Gene: Halena_9 Start: 7247, Stop: 7714, Start Num: 21

Candidate Starts for Halena_9:

(Start: 21 @7247 has 183 MA's), (Start: 27 @7274 has 2 MA's), (Start: 30 @7286 has 1 MA's), (40, 7331), (43, 7343), (45, 7361), (46, 7364), (53, 7412), (57, 7424), (58, 7427), (68, 7481), (77, 7541), (88, 7586), (114, 7697), (115, 7700), (117, 7703),

Gene: Halsey_8 Start: 7343, Stop: 7810, Start Num: 14

Candidate Starts for Halsey_8:

(2, 7292), (Start: 14 @7343 has 75 MA's), (54, 7535), (70, 7616),

Gene: Hank144_12 Start: 8436, Stop: 8966, Start Num: 5

Candidate Starts for Hank144_12:

(Start: 5 @8436 has 1 MA's), (8, 8451), (Start: 21 @8499 has 183 MA's), (57, 8673), (62, 8697), (80, 8811),

Gene: Hippo_11 Start: 8364, Stop: 8813, Start Num: 21

Candidate Starts for Hippo_11:

(Start: 21 @8364 has 183 MA's), (62, 8553), (107, 8757),

Gene: Honk_7 Start: 6227, Stop: 6709, Start Num: 16

Candidate Starts for Honk_7:

(Start: 16 @6227 has 1 MA's), (Start: 51 @6386 has 1 MA's), (57, 6416), (90, 6587), (109, 6665),

Gene: Hydra_13 Start: 8923, Stop: 9375, Start Num: 21

Candidate Starts for Hydra_13:

(10, 8884), (Start: 21 @8923 has 183 MA's), (62, 9115), (92, 9271),

Gene: IAmGroot_8 Start: 7980, Stop: 8462, Start Num: 14

Candidate Starts for IAmGroot_8:

(Start: 14 @7980 has 75 MA's), (28, 8031),

Gene: IPHane7_19 Start: 11031, Stop: 11513, Start Num: 18

Candidate Starts for IPHane7_19:

(Start: 18 @11031 has 20 MA's), (Start: 30 @11082 has 1 MA's), (53, 11211), (96, 11415), (104, 11439),

Gene: Indigo_11 Start: 8395, Stop: 8847, Start Num: 21
Candidate Starts for Indigo_11:
(10, 8356), (Start: 21 @8395 has 183 MA's), (62, 8587), (92, 8743),

Gene: Issmi_12 Start: 8440, Stop: 8916, Start Num: 21
Candidate Starts for Issmi_12:
(Start: 21 @8440 has 183 MA's), (62, 8638), (98, 8830), (119, 8902),

Gene: Iter_8 Start: 7909, Stop: 8259, Start Num: 31
Candidate Starts for Iter_8:
(Start: 14 @7852 has 75 MA's), (Start: 31 @7909 has 1 MA's), (56, 8044), (63, 8089),

Gene: Itos_9 Start: 7231, Stop: 7695, Start Num: 21
Candidate Starts for Itos_9:
(Start: 21 @7231 has 183 MA's), (Start: 27 @7258 has 2 MA's), (Start: 30 @7270 has 1 MA's), (45, 7345), (46, 7348), (53, 7396), (57, 7408), (58, 7411), (68, 7465), (88, 7570), (107, 7642), (115, 7681), (117, 7684),

Gene: IttyBittyPiggy_8 Start: 7843, Stop: 8253, Start Num: 14
Candidate Starts for IttyBittyPiggy_8:
(Start: 14 @7843 has 75 MA's), (56, 8035), (63, 8080),

Gene: Itza_11 Start: 8587, Stop: 9072, Start Num: 21
Candidate Starts for Itza_11:
(Start: 21 @8587 has 183 MA's), (53, 8740), (62, 8776), (74, 8863),

Gene: Izel_18 Start: 11030, Stop: 11512, Start Num: 18
Candidate Starts for Izel_18:
(Start: 18 @11030 has 20 MA's), (Start: 30 @11081 has 1 MA's), (53, 11210), (96, 11414), (104, 11438),

Gene: Izzy_12 Start: 8605, Stop: 9057, Start Num: 21
Candidate Starts for Izzy_12:
(10, 8566), (Start: 21 @8605 has 183 MA's), (62, 8797), (92, 8953),

Gene: Janeemi_9 Start: 8938, Stop: 9369, Start Num: 14
Candidate Starts for Janeemi_9:
(Start: 14 @8938 has 75 MA's), (56, 9130), (63, 9175),

Gene: Janus_12 Start: 8547, Stop: 9035, Start Num: 21
Candidate Starts for Janus_12:
(3, 8478), (Start: 21 @8547 has 183 MA's), (44, 8658), (50, 8688), (62, 8745), (80, 8859), (92, 8901), (94, 8907), (111, 8976),

Gene: Jash_12 Start: 8558, Stop: 9010, Start Num: 21
Candidate Starts for Jash_12:
(10, 8519), (Start: 21 @8558 has 183 MA's), (62, 8750), (92, 8906),

Gene: JasmineDragon_7 Start: 6172, Stop: 6573, Start Num: 14
Candidate Starts for JasmineDragon_7:
(Start: 14 @6172 has 75 MA's), (63, 6409),

Gene: Jevington_13 Start: 8742, Stop: 9218, Start Num: 21

Candidate Starts for Jevington_13:

(Start: 21 @8742 has 183 MA's), (47, 8862), (53, 8904), (74, 9027), (98, 9132), (107, 9147), (119, 9204),

Gene: Jobypre_10 Start: 7371, Stop: 7847, Start Num: 21

Candidate Starts for Jobypre_10:

(Start: 21 @7371 has 183 MA's), (Start: 30 @7410 has 1 MA's), (40, 7461), (45, 7491), (46, 7494), (53, 7542), (56, 7551), (57, 7554), (58, 7557), (68, 7611), (70, 7626), (77, 7671), (84, 7707),

Gene: JoeDirt_9 Start: 7247, Stop: 7714, Start Num: 21

Candidate Starts for JoeDirt_9:

(Start: 21 @7247 has 183 MA's), (Start: 27 @7274 has 2 MA's), (Start: 30 @7286 has 1 MA's), (40, 7331), (43, 7343), (45, 7361), (46, 7364), (53, 7412), (57, 7424), (58, 7427), (68, 7481), (77, 7541), (88, 7586), (114, 7697), (115, 7700), (117, 7703),

Gene: Joemato_8 Start: 7843, Stop: 8250, Start Num: 14

Candidate Starts for Joemato_8:

(Start: 14 @7843 has 75 MA's), (56, 8035),

Gene: JohnDoe_8 Start: 7841, Stop: 8248, Start Num: 14

Candidate Starts for JohnDoe_8:

(Start: 14 @7841 has 75 MA's), (56, 8033),

Gene: Jstan_8 Start: 7827, Stop: 8234, Start Num: 14

Candidate Starts for Jstan_8:

(Start: 14 @7827 has 75 MA's), (55, 8016), (56, 8019), (58, 8025), (63, 8064),

Gene: Jubie_10 Start: 7371, Stop: 7847, Start Num: 21

Candidate Starts for Jubie_10:

(Start: 21 @7371 has 183 MA's), (Start: 30 @7410 has 1 MA's), (40, 7461), (45, 7491), (46, 7494), (53, 7542), (56, 7551), (57, 7554), (58, 7557), (68, 7611), (70, 7626), (77, 7671), (84, 7707),

Gene: JuneStar_8 Start: 7957, Stop: 8352, Start Num: 14

Candidate Starts for JuneStar_8:

(Start: 14 @7957 has 75 MA's), (63, 8194),

Gene: Kahlid_9 Start: 7231, Stop: 7695, Start Num: 21

Candidate Starts for Kahlid_9:

(Start: 21 @7231 has 183 MA's), (Start: 27 @7258 has 2 MA's), (Start: 30 @7270 has 1 MA's), (45, 7345), (46, 7348), (53, 7396), (57, 7408), (58, 7411), (68, 7465), (88, 7570), (107, 7642), (115, 7681), (117, 7684),

Gene: Kaine_11 Start: 8157, Stop: 8618, Start Num: 21

Candidate Starts for Kaine_11:

(Start: 21 @8157 has 183 MA's), (26, 8172), (62, 8346), (92, 8502), (119, 8604),

Gene: Kalimba_8 Start: 7252, Stop: 7719, Start Num: 14

Candidate Starts for Kalimba_8:

(2, 7201), (Start: 14 @7252 has 75 MA's), (54, 7444), (70, 7525), (76, 7576),

Gene: Katalie_12 Start: 8637, Stop: 9086, Start Num: 21

Candidate Starts for Katalie_12:

(Start: 6 @8580 has 1 MA's), (Start: 21 @8637 has 183 MA's), (62, 8826),

Gene: Kaylissa_8 Start: 7844, Stop: 8251, Start Num: 14

Candidate Starts for Kaylissa_8:

(Start: 14 @7844 has 75 MA's), (56, 8036),

Gene: KeAlii_8 Start: 7870, Stop: 8277, Start Num: 14

Candidate Starts for KeAlii_8:

(Start: 14 @7870 has 75 MA's), (Start: 31 @7927 has 1 MA's),

Gene: Kingsolomon_10 Start: 7371, Stop: 7847, Start Num: 21

Candidate Starts for Kingsolomon_10:

(Start: 21 @7371 has 183 MA's), (Start: 30 @7410 has 1 MA's), (40, 7461), (45, 7491), (46, 7494), (53, 7542), (56, 7551), (57, 7554), (58, 7557), (68, 7611), (70, 7626), (77, 7671), (84, 7707),

Gene: KirDoubleO7_8 Start: 7384, Stop: 7860, Start Num: 21

Candidate Starts for KirDoubleO7_8:

(Start: 21 @7384 has 183 MA's), (Start: 30 @7423 has 1 MA's), (40, 7474), (45, 7504), (46, 7507), (53, 7555), (54, 7558), (56, 7564), (57, 7567), (68, 7624), (70, 7639), (77, 7684), (84, 7720), (108, 7807),

Gene: KleverKiS_19 Start: 11027, Stop: 11509, Start Num: 18

Candidate Starts for KleverKiS_19:

(Start: 18 @11027 has 20 MA's), (Start: 30 @11078 has 1 MA's), (53, 11207), (96, 11411), (104, 11435),

Gene: Kropertea_9 Start: 6927, Stop: 7391, Start Num: 21

Candidate Starts for Kropertea_9:

(Start: 21 @6927 has 183 MA's), (Start: 30 @6966 has 1 MA's), (45, 7041), (48, 7056), (53, 7092), (56, 7101), (57, 7104), (58, 7107), (68, 7161), (86, 7260), (88, 7266), (107, 7338), (115, 7377), (117, 7380),

Gene: Krypton555_10 Start: 7360, Stop: 7836, Start Num: 21

Candidate Starts for Krypton555_10:

(Start: 21 @7360 has 183 MA's), (Start: 30 @7399 has 1 MA's), (40, 7450), (45, 7480), (46, 7483), (Start: 51 @7513 has 1 MA's), (53, 7531), (56, 7540), (57, 7543), (58, 7546), (68, 7600), (70, 7615), (77, 7660), (84, 7696),

Gene: Kudrefre_17 Start: 10644, Stop: 11111, Start Num: 21

Candidate Starts for Kudrefre_17:

(20, 10641), (Start: 21 @10644 has 183 MA's), (23, 10653), (Start: 30 @10683 has 1 MA's), (36, 10719), (41, 10737), (53, 10812), (57, 10824), (58, 10827), (71, 10902), (84, 10986), (87, 10992), (109, 11076), (110, 11082),

Gene: Kumao_18 Start: 10373, Stop: 10849, Start Num: 21

Candidate Starts for Kumao_18:

(Start: 21 @10373 has 183 MA's), (26, 10391), (Start: 30 @10412 has 1 MA's), (32, 10418), (39, 10460), (42, 10472), (62, 10583), (63, 10601), (67, 10613), (97, 10754), (103, 10772), (106, 10784),

Gene: LadyAstra_7 Start: 6168, Stop: 6569, Start Num: 14

Candidate Starts for LadyAstra_7:

(Start: 14 @6168 has 75 MA's), (56, 6360), (63, 6405),

Gene: Lannister_12 Start: 8385, Stop: 8834, Start Num: 21

Candidate Starts for Lannister_12:

(Start: 21 @8385 has 183 MA's), (62, 8574),

Gene: LeBron_9 Start: 7274, Stop: 7714, Start Num: 27

Candidate Starts for LeBron_9:

(Start: 21 @7247 has 183 MA's), (Start: 27 @7274 has 2 MA's), (Start: 30 @7286 has 1 MA's), (40, 7331), (43, 7343), (45, 7361), (46, 7364), (53, 7412), (57, 7424), (58, 7427), (68, 7481), (77, 7541), (88, 7586), (114, 7697), (115, 7700), (117, 7703),

Gene: Legacy_11 Start: 8366, Stop: 8818, Start Num: 21

Candidate Starts for Legacy_11:

(10, 8327), (Start: 21 @8366 has 183 MA's), (62, 8558), (92, 8714),

Gene: Lego_8 Start: 7842, Stop: 8249, Start Num: 14

Candidate Starts for Lego_8:

(Start: 14 @7842 has 75 MA's), (56, 8034),

Gene: Leviticus_11 Start: 8395, Stop: 8847, Start Num: 21

Candidate Starts for Leviticus_11:

(10, 8356), (Start: 21 @8395 has 183 MA's), (62, 8587), (92, 8743),

Gene: Lewan_9 Start: 7270, Stop: 7695, Start Num: 30

Candidate Starts for Lewan_9:

(Start: 21 @7231 has 183 MA's), (Start: 27 @7258 has 2 MA's), (Start: 30 @7270 has 1 MA's), (45, 7345), (46, 7348), (53, 7396), (57, 7408), (58, 7411), (68, 7465), (88, 7570), (107, 7642), (115, 7681), (117, 7684),

Gene: Liebe_7 Start: 6336, Stop: 6731, Start Num: 14

Candidate Starts for Liebe_7:

(Start: 14 @6336 has 75 MA's), (56, 6528), (77, 6657),

Gene: Lika_11 Start: 8383, Stop: 8832, Start Num: 21

Candidate Starts for Lika_11:

(Start: 21 @8383 has 183 MA's), (62, 8572), (92, 8728),

Gene: LilDestine_9 Start: 7231, Stop: 7695, Start Num: 21

Candidate Starts for LilDestine_9:

(Start: 21 @7231 has 183 MA's), (Start: 27 @7258 has 2 MA's), (Start: 30 @7270 has 1 MA's), (45, 7345), (46, 7348), (53, 7396), (57, 7408), (58, 7411), (68, 7465), (88, 7570), (107, 7642), (115, 7681), (117, 7684),

Gene: LilhomieP_18 Start: 11031, Stop: 11513, Start Num: 18

Candidate Starts for LilhomieP_18:

(Start: 18 @11031 has 20 MA's), (Start: 30 @11082 has 1 MA's), (53, 11211), (96, 11415), (104, 11439),

Gene: LiyuLake_10 Start: 7375, Stop: 7851, Start Num: 21

Candidate Starts for LiyuLake_10:

(Start: 21 @7375 has 183 MA's), (Start: 30 @7414 has 1 MA's), (40, 7465), (45, 7495), (46, 7498), (53, 7546), (54, 7549), (57, 7558), (68, 7615), (70, 7630), (77, 7675), (84, 7711), (108, 7798),

Gene: Lizalica_8 Start: 7834, Stop: 8241, Start Num: 14

Candidate Starts for Lizalica_8:

(Start: 14 @7834 has 75 MA's), (56, 8026), (63, 8071),

Gene: Loadrie_9 Start: 7264, Stop: 7728, Start Num: 21

Candidate Starts for Loadrie_9:

(Start: 21 @7264 has 183 MA's), (Start: 27 @7291 has 2 MA's), (Start: 30 @7303 has 1 MA's), (45, 7378), (46, 7381), (53, 7429), (57, 7441), (58, 7444), (68, 7498), (88, 7603), (107, 7675), (115, 7714), (117, 7717),

Gene: Lolly9_10 Start: 7378, Stop: 7854, Start Num: 21

Candidate Starts for Lolly9_10:

(Start: 21 @7378 has 183 MA's), (Start: 30 @7417 has 1 MA's), (40, 7468), (45, 7498), (46, 7501), (53, 7549), (56, 7558), (57, 7561), (58, 7564), (68, 7618), (70, 7633), (77, 7678), (84, 7714),

Gene: London_8 Start: 7827, Stop: 8234, Start Num: 14

Candidate Starts for London_8:

(Start: 14 @7827 has 75 MA's), (55, 8016), (56, 8019), (58, 8025), (63, 8064),

Gene: Loofah_12 Start: 8254, Stop: 8751, Start Num: 21

Candidate Starts for Loofah_12:

(Start: 21 @8254 has 183 MA's), (56, 8425), (62, 8452), (80, 8566), (92, 8608), (94, 8614), (119, 8737),

Gene: Lorelei_11 Start: 8361, Stop: 8804, Start Num: 21

Candidate Starts for Lorelei_11:

(Start: 6 @8304 has 1 MA's), (Start: 21 @8361 has 183 MA's), (62, 8544), (107, 8748),

Gene: Lumos_10 Start: 7371, Stop: 7847, Start Num: 21

Candidate Starts for Lumos_10:

(Start: 21 @7371 has 183 MA's), (Start: 30 @7410 has 1 MA's), (40, 7461), (45, 7491), (46, 7494), (53, 7542), (56, 7551), (57, 7554), (58, 7557), (68, 7611), (70, 7626), (77, 7671), (84, 7707),

Gene: MAckerman_9 Start: 7246, Stop: 7713, Start Num: 21

Candidate Starts for MAckerman_9:

(Start: 21 @7246 has 183 MA's), (Start: 27 @7273 has 2 MA's), (Start: 30 @7285 has 1 MA's), (40, 7330), (43, 7342), (45, 7360), (46, 7363), (53, 7411), (57, 7423), (58, 7426), (68, 7480), (77, 7540), (88, 7585), (114, 7696), (115, 7699), (117, 7702),

Gene: MaGuCo_7 Start: 6195, Stop: 6590, Start Num: 14

Candidate Starts for MaGuCo_7:

(Start: 14 @6195 has 75 MA's), (56, 6387), (77, 6516),

Gene: Mabodamaca_8 Start: 7413, Stop: 7892, Start Num: 14

Candidate Starts for Mabodamaca_8:

(Start: 14 @7413 has 75 MA's), (71, 7689), (112, 7884),

Gene: Maneekul_11 Start: 8366, Stop: 8815, Start Num: 21

Candidate Starts for Maneekul_11:

(Start: 6 @8309 has 1 MA's), (Start: 21 @8366 has 183 MA's), (62, 8555), (107, 8759),

Gene: Marav_14 Start: 9092, Stop: 9568, Start Num: 21

Candidate Starts for Marav_14:

(Start: 21 @9092 has 183 MA's), (47, 9212), (53, 9254), (62, 9290), (98, 9482), (119, 9554),

Gene: MaryV_31 Start: 14135, Stop: 14611, Start Num: 21

Candidate Starts for MaryV_31:

(Start: 21 @14135 has 183 MA's), (24, 14147), (37, 14219), (42, 14237), (46, 14261), (63, 14360), (66, 14369), (72, 14399), (93, 14486), (102, 14531), (109, 14558), (110, 14564),

Gene: Maureen_7 Start: 6336, Stop: 6731, Start Num: 14

Candidate Starts for Maureen_7:

(Start: 14 @6336 has 75 MA's), (56, 6528), (77, 6657),

Gene: Miley16_9 Start: 7231, Stop: 7695, Start Num: 21

Candidate Starts for Miley16_9:

(Start: 21 @7231 has 183 MA's), (Start: 27 @7258 has 2 MA's), (Start: 30 @7270 has 1 MA's), (45, 7345), (46, 7348), (53, 7396), (57, 7408), (58, 7411), (68, 7465), (88, 7570), (107, 7642), (115, 7681), (117, 7684),

Gene: MiniLon_10 Start: 7378, Stop: 7854, Start Num: 21

Candidate Starts for MiniLon_10:

(Start: 21 @7378 has 183 MA's), (Start: 30 @7417 has 1 MA's), (40, 7468), (45, 7498), (46, 7501), (53, 7549), (56, 7558), (57, 7561), (58, 7564), (68, 7618), (70, 7633), (77, 7678), (84, 7714),

Gene: MiniMac_10 Start: 7379, Stop: 7855, Start Num: 21

Candidate Starts for MiniMac_10:

(Start: 21 @7379 has 183 MA's), (Start: 30 @7418 has 1 MA's), (40, 7469), (45, 7499), (46, 7502), (53, 7550), (56, 7559), (57, 7562), (58, 7565), (68, 7619), (70, 7634), (77, 7679), (84, 7715),

Gene: MiniMommy_7 Start: 6172, Stop: 6573, Start Num: 14

Candidate Starts for MiniMommy_7:

(Start: 14 @6172 has 75 MA's), (63, 6409),

Gene: MissSwiss_8 Start: 7857, Stop: 8261, Start Num: 14

Candidate Starts for MissSwiss_8:

(Start: 14 @7857 has 75 MA's), (47, 7992), (52, 8037), (56, 8049),

Gene: MkaliMitinis3_9 Start: 7231, Stop: 7695, Start Num: 21

Candidate Starts for MkaliMitinis3_9:

(Start: 21 @7231 has 183 MA's), (Start: 27 @7258 has 2 MA's), (Start: 30 @7270 has 1 MA's), (45, 7345), (46, 7348), (53, 7396), (57, 7408), (58, 7411), (68, 7465), (88, 7570), (107, 7642), (115, 7681), (117, 7684),

Gene: Moostard_10 Start: 7367, Stop: 7843, Start Num: 21

Candidate Starts for Moostard_10:

(Start: 21 @7367 has 183 MA's), (Start: 30 @7406 has 1 MA's), (40, 7457), (45, 7487), (46, 7490), (53, 7538), (56, 7547), (57, 7550), (58, 7553), (68, 7607), (70, 7622), (77, 7667), (84, 7703),

Gene: Moss_8 Start: 7343, Stop: 7810, Start Num: 14

Candidate Starts for Moss_8:

(2, 7292), (Start: 14 @7343 has 75 MA's), (54, 7535), (70, 7616),

Gene: MrMagoo_23 Start: 11567, Stop: 12049, Start Num: 18

Candidate Starts for MrMagoo_23:

(Start: 18 @11567 has 20 MA's), (Start: 30 @11618 has 1 MA's), (42, 11672), (53, 11747), (96, 11951), (104, 11975),

Gene: MsGreen_10 Start: 7371, Stop: 7847, Start Num: 21

Candidate Starts for MsGreen_10:

(Start: 21 @7371 has 183 MA's), (Start: 30 @7410 has 1 MA's), (40, 7461), (45, 7491), (46, 7494), (53, 7542), (56, 7551), (57, 7554), (58, 7557), (68, 7611), (70, 7626), (77, 7671), (84, 7707),

Gene: Mudpuppy_8 Start: 7842, Stop: 8249, Start Num: 14

Candidate Starts for Mudpuppy_8:

(Start: 14 @7842 has 75 MA's), (56, 8034),

Gene: Mysterium_8 Start: 7344, Stop: 7811, Start Num: 14

Candidate Starts for Mysterium_8:

(2, 7293), (Start: 14 @7344 has 75 MA's), (54, 7536), (70, 7617),

Gene: Nabi_11 Start: 8361, Stop: 8804, Start Num: 21

Candidate Starts for Nabi_11:

(Start: 6 @8304 has 1 MA's), (Start: 21 @8361 has 183 MA's), (62, 8544), (107, 8748),

Gene: Nanodon_13 Start: 8557, Stop: 9006, Start Num: 21

Candidate Starts for Nanodon_13:

(Start: 21 @8557 has 183 MA's), (62, 8746),

Gene: Nanosmite_23 Start: 11785, Stop: 12267, Start Num: 18

Candidate Starts for Nanosmite_23:

(15, 11779), (Start: 18 @11785 has 20 MA's), (22, 11806), (Start: 30 @11836 has 1 MA's), (53, 11965), (104, 12193),

Gene: Nerdos_11 Start: 8395, Stop: 8847, Start Num: 21

Candidate Starts for Nerdos_11:

(10, 8356), (Start: 21 @8395 has 183 MA's), (62, 8587), (92, 8743),

Gene: Netyap_9 Start: 7231, Stop: 7695, Start Num: 21

Candidate Starts for Netyap_9:

(Start: 21 @7231 has 183 MA's), (Start: 27 @7258 has 2 MA's), (Start: 30 @7270 has 1 MA's), (45, 7345), (46, 7348), (53, 7396), (57, 7408), (58, 7411), (68, 7465), (88, 7570), (107, 7642), (115, 7681), (117, 7684),

Gene: Neville_17 Start: 10452, Stop: 10922, Start Num: 21

Candidate Starts for Neville_17:

(Start: 21 @10452 has 183 MA's), (57, 10653), (58, 10656), (59, 10659), (60, 10668), (61, 10674), (65, 10701), (78, 10785), (101, 10869), (109, 10899), (110, 10905),

Gene: Nicholas_10 Start: 7371, Stop: 7847, Start Num: 21

Candidate Starts for Nicholas_10:

(Start: 21 @7371 has 183 MA's), (Start: 30 @7410 has 1 MA's), (40, 7461), (45, 7491), (46, 7494), (53, 7542), (56, 7551), (57, 7554), (58, 7557), (68, 7611), (70, 7626), (77, 7671), (84, 7707),

Gene: Nicholasp3_9 Start: 7231, Stop: 7695, Start Num: 21

Candidate Starts for Nicholasp3_9:

(Start: 21 @7231 has 183 MA's), (Start: 27 @7258 has 2 MA's), (Start: 30 @7270 has 1 MA's), (45, 7345), (46, 7348), (53, 7396), (57, 7408), (58, 7411), (68, 7465), (88, 7570), (107, 7642), (115, 7681), (117, 7684),

Gene: Niobe_8 Start: 7827, Stop: 8234, Start Num: 14

Candidate Starts for Niobe_8:

(Start: 14 @7827 has 75 MA's), (55, 8016), (56, 8019), (58, 8025), (63, 8064),

Gene: Nishikigoi_11 Start: 8160, Stop: 8636, Start Num: 21

Candidate Starts for Nishikigoi_11:

(Start: 21 @8160 has 183 MA's), (53, 8322), (62, 8358),

Gene: Nitro_8 Start: 7844, Stop: 8251, Start Num: 14

Candidate Starts for Nitro_8:

(Start: 14 @7844 has 75 MA's), (56, 8036), (63, 8081),

Gene: ObiToo_8 Start: 8041, Stop: 8436, Start Num: 14

Candidate Starts for ObiToo_8:

(Start: 14 @8041 has 75 MA's), (52, 8221), (56, 8233), (63, 8278),

Gene: Octobien14_18 Start: 11707, Stop: 12174, Start Num: 21

Candidate Starts for Octobien14_18:

(20, 11704), (Start: 21 @11707 has 183 MA's), (23, 11716), (Start: 30 @11746 has 1 MA's), (36, 11782), (53, 11875), (57, 11887), (58, 11890), (71, 11965), (84, 12049), (87, 12055), (88, 12058), (92, 12064), (109, 12139), (110, 12145),

Gene: OhShagHennessy_9 Start: 7220, Stop: 7687, Start Num: 21

Candidate Starts for OhShagHennessy_9:

(Start: 21 @7220 has 183 MA's), (Start: 27 @7247 has 2 MA's), (Start: 30 @7259 has 1 MA's), (40, 7304), (43, 7316), (45, 7334), (46, 7337), (53, 7385), (57, 7397), (58, 7400), (68, 7454), (77, 7514), (88, 7559), (114, 7670), (115, 7673), (117, 7676),

Gene: Oliynyk_12 Start: 8558, Stop: 9010, Start Num: 21

Candidate Starts for Oliynyk_12:

(10, 8519), (Start: 21 @8558 has 183 MA's), (62, 8750), (92, 8906),

Gene: Omar_12 Start: 8382, Stop: 8870, Start Num: 21

Candidate Starts for Omar_12:

(Start: 21 @8382 has 183 MA's), (53, 8544), (62, 8580), (74, 8667), (94, 8742), (111, 8811),

Gene: Ozzie_11 Start: 8375, Stop: 8827, Start Num: 21

Candidate Starts for Ozzie_11:

(10, 8336), (Start: 21 @8375 has 183 MA's), (62, 8567), (92, 8723),

Gene: OzzyJ_12 Start: 8358, Stop: 8807, Start Num: 21

Candidate Starts for OzzyJ_12:

(Start: 6 @8301 has 1 MA's), (Start: 21 @8358 has 183 MA's), (62, 8547), (107, 8751),

Gene: PYPDinur_9 Start: 6911, Stop: 7375, Start Num: 21

Candidate Starts for PYPDinur_9:

(Start: 21 @6911 has 183 MA's), (Start: 30 @6950 has 1 MA's), (33, 6959), (46, 7028), (48, 7040), (53, 7076), (56, 7085), (57, 7088), (58, 7091), (68, 7145), (86, 7244), (88, 7250), (107, 7322), (115, 7361), (117, 7364),

Gene: Pablito_11 Start: 8226, Stop: 8696, Start Num: 21

Candidate Starts for Pablito_11:

(Start: 5 @8163 has 1 MA's), (8, 8178), (Start: 21 @8226 has 183 MA's), (62, 8424), (74, 8511), (80, 8538), (94, 8586),

Gene: Paedore_11 Start: 8254, Stop: 8751, Start Num: 21

Candidate Starts for Paedore_11:

(Start: 21 @8254 has 183 MA's), (56, 8425), (62, 8452), (80, 8566), (92, 8608), (94, 8614), (119, 8737),

Gene: Paolo_13 Start: 8769, Stop: 9245, Start Num: 21

Candidate Starts for Paolo_13:

(Start: 5 @8706 has 1 MA's), (8, 8721), (Start: 21 @8769 has 183 MA's), (47, 8889), (62, 8967), (98, 9159), (119, 9231),

Gene: Pavo_12 Start: 8437, Stop: 8898, Start Num: 21

Candidate Starts for Pavo_12:

(Start: 21 @8437 has 183 MA's), (26, 8452), (62, 8626), (92, 8782), (119, 8884),

Gene: PegLeg_19 Start: 11030, Stop: 11512, Start Num: 18

Candidate Starts for PegLeg_19:

(Start: 18 @11030 has 20 MA's), (Start: 30 @11081 has 1 MA's), (53, 11210), (96, 11414), (104, 11438),

Gene: Percival_8 Start: 8037, Stop: 8525, Start Num: 14

Candidate Starts for Percival_8:

(Start: 14 @8037 has 75 MA's), (28, 8082), (56, 8232), (70, 8307), (75, 8352), (99, 8445),

Gene: Phettuccine_11 Start: 8395, Stop: 8847, Start Num: 21

Candidate Starts for Phettuccine_11:

(10, 8356), (Start: 21 @8395 has 183 MA's), (62, 8587), (92, 8743),

Gene: Phives_9 Start: 8933, Stop: 9340, Start Num: 14

Candidate Starts for Phives_9:

(Start: 14 @8933 has 75 MA's), (47, 9068), (56, 9125), (63, 9170),

Gene: Pixelle_8 Start: 7876, Stop: 8283, Start Num: 14

Candidate Starts for Pixelle_8:

(Start: 14 @7876 has 75 MA's), (47, 8011), (56, 8068), (63, 8113),

Gene: Pochiewood_9 Start: 7246, Stop: 7713, Start Num: 21

Candidate Starts for Pochiewood_9:

(Start: 21 @7246 has 183 MA's), (Start: 27 @7273 has 2 MA's), (Start: 30 @7285 has 1 MA's), (40, 7330), (43, 7342), (45, 7360), (46, 7363), (53, 7411), (57, 7423), (58, 7426), (68, 7480), (77, 7540), (88, 7585), (114, 7696), (115, 7699), (117, 7702),

Gene: Powerpuff_8 Start: 7893, Stop: 8300, Start Num: 14

Candidate Starts for Powerpuff_8:

(Start: 14 @7893 has 75 MA's), (56, 8085),

Gene: Provolone_12 Start: 8167, Stop: 8628, Start Num: 21

Candidate Starts for Provolone_12:

(Start: 21 @8167 has 183 MA's), (26, 8182), (62, 8356), (92, 8512), (119, 8614),

Gene: Puginator_13 Start: 8715, Stop: 9191, Start Num: 21

Candidate Starts for Puginator_13:

(Start: 21 @8715 has 183 MA's), (47, 8835), (62, 8913), (119, 9177),

Gene: Pumpkins_8 Start: 7958, Stop: 8353, Start Num: 14

Candidate Starts for Pumpkins_8:

(Start: 14 @7958 has 75 MA's), (56, 8150), (63, 8195),

Gene: Quby_9 Start: 6910, Stop: 7374, Start Num: 21

Candidate Starts for Quby_9:

(Start: 21 @6910 has 183 MA's), (Start: 30 @6949 has 1 MA's), (33, 6958), (45, 7024), (46, 7027), (48, 7039), (53, 7075), (56, 7084), (57, 7087), (58, 7090), (68, 7144), (86, 7243), (88, 7249), (107, 7321), (115, 7360), (117, 7363),

Gene: R4_11 Start: 8225, Stop: 8722, Start Num: 21

Candidate Starts for R4_11:

(Start: 21 @8225 has 183 MA's), (56, 8396), (62, 8423), (80, 8537), (92, 8579), (94, 8585), (119, 8708),

Gene: Rabbitrun_19 Start: 10976, Stop: 11446, Start Num: 21

Candidate Starts for Rabbitrun_19:

(Start: 21 @10976 has 183 MA's), (Start: 30 @11015 has 1 MA's), (53, 11165), (60, 11192), (61, 11198), (64, 11222), (77, 11303), (78, 11309), (88, 11342), (101, 11393), (109, 11423), (110, 11429),

Gene: Rana_11 Start: 8361, Stop: 8804, Start Num: 21

Candidate Starts for Rana_11:

(Start: 6 @8304 has 1 MA's), (Start: 21 @8361 has 183 MA's), (62, 8544), (107, 8748),

Gene: Red305_10 Start: 7371, Stop: 7847, Start Num: 21

Candidate Starts for Red305_10:

(Start: 21 @7371 has 183 MA's), (Start: 30 @7410 has 1 MA's), (40, 7461), (45, 7491), (46, 7494), (53, 7542), (56, 7551), (57, 7554), (58, 7557), (68, 7611), (70, 7626), (77, 7671), (84, 7707),

Gene: RedBear_13 Start: 8637, Stop: 9086, Start Num: 21

Candidate Starts for RedBear_13:

(Start: 6 @8580 has 1 MA's), (Start: 21 @8637 has 183 MA's), (62, 8826),

Gene: Reedo_8 Start: 7890, Stop: 8297, Start Num: 14

Candidate Starts for Reedo_8:

(Start: 14 @7890 has 75 MA's), (52, 8070),

Gene: Reindeer_17 Start: 10883, Stop: 11365, Start Num: 18

Candidate Starts for Reindeer_17:

(Start: 18 @10883 has 20 MA's), (Start: 30 @10934 has 1 MA's), (35, 10961), (48, 11024), (53, 11063), (96, 11267), (104, 11291),

Gene: Rey_23 Start: 11802, Stop: 12284, Start Num: 18

Candidate Starts for Rey_23:

(Start: 18 @11802 has 20 MA's), (Start: 30 @11853 has 1 MA's), (42, 11907), (53, 11982), (96, 12186), (104, 12210),

Gene: RockScotty_8 Start: 7343, Stop: 7810, Start Num: 14

Candidate Starts for RockScotty_8:

(2, 7292), (Start: 14 @7343 has 75 MA's), (54, 7535), (70, 7616),

Gene: Rose5_9 Start: 7246, Stop: 7713, Start Num: 21

Candidate Starts for Rose5_9:

(Start: 21 @7246 has 183 MA's), (Start: 27 @7273 has 2 MA's), (Start: 30 @7285 has 1 MA's), (40, 7330), (43, 7342), (45, 7360), (46, 7363), (53, 7411), (57, 7423), (58, 7426), (68, 7480), (77, 7540), (88, 7585), (114, 7696), (115, 7699), (117, 7702),

Gene: RoseMarie_19 Start: 11274, Stop: 11756, Start Num: 18

Candidate Starts for RoseMarie_19:

(Start: 18 @11274 has 20 MA's), (Start: 30 @11325 has 1 MA's), (35, 11352), (53, 11454), (96, 11658), (104, 11682),

Gene: Rossetti_9 Start: 7231, Stop: 7695, Start Num: 21

Candidate Starts for Rossetti_9:

(Start: 21 @7231 has 183 MA's), (Start: 27 @7258 has 2 MA's), (Start: 30 @7270 has 1 MA's), (45, 7345), (46, 7348), (53, 7396), (57, 7408), (58, 7411), (68, 7465), (77, 7525), (88, 7570), (107, 7642), (115, 7681), (117, 7684),

Gene: Rumpelstiltskin_9 Start: 7231, Stop: 7695, Start Num: 21

Candidate Starts for Rumpelstiltskin_9:

(Start: 21 @7231 has 183 MA's), (Start: 27 @7258 has 2 MA's), (Start: 30 @7270 has 1 MA's), (45, 7345), (46, 7348), (53, 7396), (57, 7408), (58, 7411), (68, 7465), (88, 7570), (107, 7642), (115, 7681), (117, 7684),

Gene: Rusticus_12 Start: 8558, Stop: 9010, Start Num: 21

Candidate Starts for Rusticus_12:

(10, 8519), (Start: 21 @8558 has 183 MA's), (62, 8750), (92, 8906),

Gene: Sabourin_8 Start: 7252, Stop: 7719, Start Num: 14

Candidate Starts for Sabourin_8:

(2, 7201), (Start: 14 @7252 has 75 MA's), (54, 7444), (70, 7525), (76, 7576),

Gene: Saftant_11 Start: 8442, Stop: 8903, Start Num: 21

Candidate Starts for Saftant_11:

(Start: 21 @8442 has 183 MA's), (62, 8631), (92, 8787), (116, 8874), (119, 8889),

Gene: Samty_10 Start: 7367, Stop: 7843, Start Num: 21

Candidate Starts for Samty_10:

(Start: 21 @7367 has 183 MA's), (Start: 30 @7406 has 1 MA's), (40, 7457), (45, 7487), (46, 7490), (53, 7538), (56, 7547), (57, 7550), (58, 7553), (68, 7607), (70, 7622), (77, 7667), (84, 7703),

Gene: SarahRose_11 Start: 8364, Stop: 8813, Start Num: 21

Candidate Starts for SarahRose_11:

(Start: 21 @8364 has 183 MA's), (62, 8553), (107, 8757),

Gene: Sarshaun_9 Start: 7264, Stop: 7728, Start Num: 21

Candidate Starts for Sarshaun_9:

(Start: 21 @7264 has 183 MA's), (Start: 27 @7291 has 2 MA's), (Start: 30 @7303 has 1 MA's), (45, 7378), (46, 7381), (53, 7429), (57, 7441), (58, 7444), (68, 7498), (88, 7603), (107, 7675), (115, 7714), (117, 7717),

Gene: Sephiroth_18 Start: 10815, Stop: 11282, Start Num: 21

Candidate Starts for Sephiroth_18:

(20, 10812), (Start: 21 @10815 has 183 MA's), (23, 10824), (Start: 30 @10854 has 1 MA's), (36, 10890), (41, 10908), (53, 10983), (57, 10995), (58, 10998), (71, 11073), (84, 11157), (87, 11163), (109, 11247), (110, 11253),

Gene: Shaffner_8 Start: 7952, Stop: 8347, Start Num: 14

Candidate Starts for Shaffner_8:

(Start: 14 @7952 has 75 MA's), (56, 8144), (63, 8189),

Gene: ShakeltOph_7 Start: 6172, Stop: 6573, Start Num: 14

Candidate Starts for ShakeltOph_7:

(Start: 14 @6172 has 75 MA's), (63, 6409),

Gene: Sheng711_9 Start: 6911, Stop: 7375, Start Num: 21

Candidate Starts for Sheng711_9:

(Start: 21 @6911 has 183 MA's), (Start: 30 @6950 has 1 MA's), (33, 6959), (46, 7028), (48, 7040), (53, 7076), (56, 7085), (57, 7088), (58, 7091), (68, 7145), (86, 7244), (88, 7250), (107, 7322), (115, 7361), (117, 7364),

Gene: Silverleaf_9 Start: 7246, Stop: 7713, Start Num: 21

Candidate Starts for Silverleaf_9:

(Start: 21 @7246 has 183 MA's), (Start: 27 @7273 has 2 MA's), (Start: 30 @7285 has 1 MA's), (40, 7330), (43, 7342), (45, 7360), (46, 7363), (53, 7411), (57, 7423), (58, 7426), (68, 7480), (77, 7540), (88, 7585), (114, 7696), (115, 7699), (117, 7702),

Gene: Simpson_8 Start: 7843, Stop: 8250, Start Num: 14

Candidate Starts for Simpson_8:

(Start: 14 @7843 has 75 MA's), (56, 8035),

Gene: Skinny_20 Start: 11031, Stop: 11513, Start Num: 18

Candidate Starts for Skinny_20:

(Start: 18 @11031 has 20 MA's), (Start: 30 @11082 has 1 MA's), (53, 11211), (96, 11415), (104, 11439),

Gene: SlimJimmy_18 Start: 11030, Stop: 11512, Start Num: 18

Candidate Starts for SlimJimmy_18:

(Start: 18 @11030 has 20 MA's), (Start: 30 @11081 has 1 MA's), (53, 11210), (96, 11414), (104, 11438),

Gene: Snek_8 Start: 6968, Stop: 7366, Start Num: 14

Candidate Starts for Snek_8:

(Start: 14 @6968 has 75 MA's),

Gene: Snenia_10 Start: 7372, Stop: 7848, Start Num: 21

Candidate Starts for Snenia_10:

(Start: 21 @7372 has 183 MA's), (Start: 30 @7411 has 1 MA's), (40, 7462), (45, 7492), (46, 7495), (53, 7543), (56, 7552), (57, 7555), (58, 7558), (68, 7612), (70, 7627), (77, 7672), (84, 7708),

Gene: Snorlax_11 Start: 8364, Stop: 8813, Start Num: 21

Candidate Starts for Snorlax_11:

(Start: 21 @8364 has 183 MA's), (62, 8553), (107, 8757),

Gene: SoJulia_9 Start: 7231, Stop: 7695, Start Num: 21

Candidate Starts for SoJulia_9:

(Start: 21 @7231 has 183 MA's), (Start: 27 @7258 has 2 MA's), (Start: 30 @7270 has 1 MA's), (45, 7345), (46, 7348), (53, 7396), (57, 7408), (58, 7411), (68, 7465), (88, 7570), (107, 7642), (115, 7681), (117, 7684),

Gene: Soap141_9 Start: 7264, Stop: 7728, Start Num: 21

Candidate Starts for Soap141_9:

(Start: 21 @7264 has 183 MA's), (Start: 27 @7291 has 2 MA's), (Start: 30 @7303 has 1 MA's), (45, 7378), (46, 7381), (53, 7429), (57, 7441), (58, 7444), (68, 7498), (88, 7603), (107, 7675), (115, 7714), (117, 7717),

Gene: Soondubu_8 Start: 7865, Stop: 8263, Start Num: 14

Candidate Starts for Soondubu_8:

(Start: 14 @7865 has 75 MA's), (52, 8045), (56, 8057),

Gene: Sooty_8 Start: 7253, Stop: 7720, Start Num: 14

Candidate Starts for Sooty_8:

(2, 7202), (Start: 14 @7253 has 75 MA's), (54, 7445), (70, 7526), (76, 7577),

Gene: South40_12 Start: 8637, Stop: 9086, Start Num: 21

Candidate Starts for South40_12:

(Start: 6 @8580 has 1 MA's), (Start: 21 @8637 has 183 MA's), (62, 8826),

Gene: SpecialK_8 Start: 7250, Stop: 7717, Start Num: 14

Candidate Starts for SpecialK_8:

(2, 7199), (Start: 14 @7250 has 75 MA's), (54, 7442), (70, 7523),

Gene: Speedwell_16 Start: 10184, Stop: 10633, Start Num: 21

Candidate Starts for Speedwell_16:

(Start: 21 @10184 has 183 MA's), (34, 10247), (52, 10334), (62, 10373), (92, 10529), (116, 10610),

Gene: SqueakyClean_12 Start: 8473, Stop: 8961, Start Num: 21

Candidate Starts for SqueakyClean_12:

(3, 8404), (Start: 21 @8473 has 183 MA's), (44, 8584), (50, 8614), (53, 8635), (62, 8671), (80, 8785), (92, 8827), (94, 8833), (111, 8902),

Gene: Stuu_8 Start: 7343, Stop: 7810, Start Num: 14

Candidate Starts for Stuu_8:

(2, 7292), (Start: 14 @7343 has 75 MA's), (54, 7535), (70, 7616),

Gene: SuMoo_7 Start: 6373, Stop: 6852, Start Num: 14

Candidate Starts for SuMoo_7:

(Start: 14 @6373 has 75 MA's), (71, 6649), (112, 6844),

Gene: Subaru_8 Start: 7827, Stop: 8234, Start Num: 14

Candidate Starts for Subaru_8:

(Start: 14 @7827 has 75 MA's), (55, 8016), (56, 8019), (58, 8025), (63, 8064),

Gene: Sue2_8 Start: 7875, Stop: 8270, Start Num: 14

Candidate Starts for Sue2_8:

(Start: 14 @7875 has 75 MA's), (63, 8112),

Gene: Sujidade_12 Start: 8602, Stop: 9108, Start Num: 6

Candidate Starts for Sujidade_12:

(Start: 6 @8602 has 1 MA's), (Start: 21 @8659 has 183 MA's), (62, 8848), (92, 9004),

Gene: SunsetPointe_11 Start: 8385, Stop: 8837, Start Num: 21

Candidate Starts for SunsetPointe_11:

(10, 8346), (Start: 21 @8385 has 183 MA's), (62, 8577), (92, 8733),

Gene: Superstar_13 Start: 9291, Stop: 9767, Start Num: 21
Candidate Starts for Superstar_13:
(Start: 21 @9291 has 183 MA's), (62, 9489), (98, 9681), (119, 9753),

Gene: Syleon_18 Start: 10737, Stop: 11204, Start Num: 21
Candidate Starts for Syleon_18:
(20, 10734), (Start: 21 @10737 has 183 MA's), (23, 10746), (Start: 30 @10776 has 1 MA's), (36, 10812), (41, 10830), (53, 10905), (57, 10917), (58, 10920), (71, 10995), (84, 11079), (87, 11085), (109, 11169), (110, 11175),

Gene: TagePhighter_12 Start: 8364, Stop: 8813, Start Num: 21
Candidate Starts for TagePhighter_12:
(Start: 21 @8364 has 183 MA's), (62, 8553), (107, 8757),

Gene: Tallboi_8 Start: 7862, Stop: 8269, Start Num: 14
Candidate Starts for Tallboi_8:
(Start: 14 @7862 has 75 MA's), (56, 8054),

Gene: Tbone_8 Start: 7839, Stop: 8246, Start Num: 14
Candidate Starts for Tbone_8:
(Start: 14 @7839 has 75 MA's), (56, 8031),

Gene: Tefunt_11 Start: 8160, Stop: 8636, Start Num: 21
Candidate Starts for Tefunt_11:
(Start: 21 @8160 has 183 MA's), (53, 8322), (62, 8358),

Gene: TforTroy_8 Start: 7981, Stop: 8379, Start Num: 14
Candidate Starts for TforTroy_8:
(12, 7975), (Start: 14 @7981 has 75 MA's), (56, 8173), (63, 8218),

Gene: Thestral_12 Start: 8238, Stop: 8711, Start Num: 21
Candidate Starts for Thestral_12:
(Start: 4 @8172 has 1 MA's), (7, 8187), (9, 8193), (Start: 14 @8217 has 75 MA's), (Start: 21 @8238 has 183 MA's), (45, 8352), (56, 8406), (62, 8433), (119, 8697),

Gene: Tian_8 Start: 7873, Stop: 8280, Start Num: 14
Candidate Starts for Tian_8:
(Start: 14 @7873 has 75 MA's), (56, 8065), (63, 8110),

Gene: TinaBelcher_11 Start: 8186, Stop: 8659, Start Num: 21
Candidate Starts for TinaBelcher_11:
(Start: 4 @8120 has 1 MA's), (7, 8135), (9, 8141), (Start: 14 @8165 has 75 MA's), (Start: 21 @8186 has 183 MA's), (45, 8300), (62, 8381), (119, 8645),

Gene: Toma_11 Start: 8367, Stop: 8816, Start Num: 21
Candidate Starts for Toma_11:
(Start: 6 @8310 has 1 MA's), (Start: 21 @8367 has 183 MA's), (62, 8556), (92, 8712),

Gene: Tourach_9 Start: 7244, Stop: 7708, Start Num: 21
Candidate Starts for Tourach_9:
(Start: 21 @7244 has 183 MA's), (Start: 27 @7271 has 2 MA's), (Start: 30 @7283 has 1 MA's), (33, 7292), (45, 7358), (46, 7361), (53, 7409), (57, 7421), (58, 7424), (68, 7478), (77, 7538), (88, 7583), (107, 7655), (115, 7694), (117, 7697),

Gene: Trax_17 Start: 10452, Stop: 10922, Start Num: 21

Candidate Starts for Trax_17:

(Start: 21 @10452 has 183 MA's), (54, 10644), (57, 10653), (58, 10656), (59, 10659), (60, 10668), (61, 10674), (65, 10701), (78, 10785), (101, 10869), (109, 10899), (110, 10905),

Gene: TriFive_10 Start: 7371, Stop: 7847, Start Num: 21

Candidate Starts for TriFive_10:

(Start: 21 @7371 has 183 MA's), (Start: 30 @7410 has 1 MA's), (40, 7461), (45, 7491), (46, 7494), (53, 7542), (56, 7551), (57, 7554), (58, 7557), (68, 7611), (70, 7626), (77, 7671), (84, 7707),

Gene: Triste_11 Start: 8358, Stop: 8807, Start Num: 21

Candidate Starts for Triste_11:

(Start: 6 @8301 has 1 MA's), (Start: 21 @8358 has 183 MA's), (62, 8547), (107, 8751),

Gene: Triumph_13 Start: 8256, Stop: 8726, Start Num: 21

Candidate Starts for Triumph_13:

(Start: 21 @8256 has 183 MA's), (62, 8454), (80, 8568), (98, 8646),

Gene: TrvxScott_10 Start: 8121, Stop: 8660, Start Num: 4

Candidate Starts for TrvxScott_10:

(Start: 4 @8121 has 1 MA's), (7, 8136), (9, 8142), (Start: 14 @8166 has 75 MA's), (Start: 21 @8187 has 183 MA's), (45, 8301), (62, 8382), (119, 8646),

Gene: TuanPN_11 Start: 8367, Stop: 8816, Start Num: 21

Candidate Starts for TuanPN_11:

(Start: 6 @8310 has 1 MA's), (Start: 21 @8367 has 183 MA's), (62, 8556), (107, 8760),

Gene: Tuck_9 Start: 8887, Stop: 9315, Start Num: 14

Candidate Starts for Tuck_9:

(Start: 14 @8887 has 75 MA's), (56, 9079),

Gene: Turab_8 Start: 7857, Stop: 8264, Start Num: 14

Candidate Starts for Turab_8:

(Start: 14 @7857 has 75 MA's), (56, 8049), (63, 8094),

Gene: Tutumahutu_8 Start: 7893, Stop: 8300, Start Num: 14

Candidate Starts for Tutumahutu_8:

(Start: 14 @7893 has 75 MA's), (56, 8085),

Gene: Tweety19_8 Start: 6967, Stop: 7365, Start Num: 14

Candidate Starts for Tweety19_8:

(Start: 14 @6967 has 75 MA's),

Gene: TyDawg_19 Start: 11031, Stop: 11513, Start Num: 18

Candidate Starts for TyDawg_19:

(Start: 18 @11031 has 20 MA's), (Start: 30 @11082 has 1 MA's), (53, 11211), (96, 11415), (104, 11439),

Gene: Tyson_9 Start: 7246, Stop: 7713, Start Num: 21

Candidate Starts for Tyson_9:

(Start: 21 @7246 has 183 MA's), (Start: 27 @7273 has 2 MA's), (Start: 30 @7285 has 1 MA's), (40, 7330), (43, 7342), (45, 7360), (46, 7363), (53, 7411), (57, 7423), (58, 7426), (68, 7480), (77, 7540), (88,

7585), (114, 7696), (115, 7699), (117, 7702),

Gene: UPIE_9 Start: 7271, Stop: 7711, Start Num: 27

Candidate Starts for UPIE_9:

(Start: 21 @7244 has 183 MA's), (Start: 27 @7271 has 2 MA's), (Start: 30 @7283 has 1 MA's), (40, 7328), (43, 7340), (45, 7358), (46, 7361), (53, 7409), (57, 7421), (58, 7424), (68, 7478), (77, 7538), (88, 7583), (114, 7694), (115, 7697), (117, 7700),

Gene: Underpass_9 Start: 7231, Stop: 7695, Start Num: 21

Candidate Starts for Underpass_9:

(Start: 21 @7231 has 183 MA's), (Start: 27 @7258 has 2 MA's), (Start: 30 @7270 has 1 MA's), (45, 7345), (46, 7348), (53, 7396), (57, 7408), (58, 7411), (68, 7465), (88, 7570), (107, 7642), (115, 7681), (117, 7684),

Gene: Unstoppable_11 Start: 8386, Stop: 8838, Start Num: 21

Candidate Starts for Unstoppable_11:

(10, 8347), (Start: 21 @8386 has 183 MA's), (62, 8578), (92, 8734),

Gene: Urza_11 Start: 8599, Stop: 9084, Start Num: 21

Candidate Starts for Urza_11:

(Start: 21 @8599 has 183 MA's), (53, 8752), (62, 8788), (74, 8875),

Gene: UtzChips_7 Start: 7094, Stop: 7573, Start Num: 14

Candidate Starts for UtzChips_7:

(13, 7088), (Start: 14 @7094 has 75 MA's), (112, 7565),

Gene: VResidence_8 Start: 7916, Stop: 8323, Start Num: 14

Candidate Starts for VResidence_8:

(Start: 14 @7916 has 75 MA's), (56, 8108),

Gene: Vanseggelen_14 Start: 8092, Stop: 8553, Start Num: 21

Candidate Starts for Vanseggelen_14:

(Start: 21 @8092 has 183 MA's), (26, 8107), (62, 8281), (92, 8437), (119, 8539),

Gene: Verabelle_12 Start: 8442, Stop: 8903, Start Num: 21

Candidate Starts for Verabelle_12:

(Start: 21 @8442 has 183 MA's), (26, 8457), (41, 8526), (62, 8631), (89, 8781), (116, 8874), (119, 8889),

Gene: Verse_11 Start: 8560, Stop: 9018, Start Num: 21

Candidate Starts for Verse_11:

(Start: 21 @8560 has 183 MA's), (34, 8623), (52, 8710), (62, 8749), (92, 8905), (116, 8989), (120, 9013),

Gene: Vetrux_9 Start: 7231, Stop: 7695, Start Num: 21

Candidate Starts for Vetrux_9:

(Start: 21 @7231 has 183 MA's), (Start: 27 @7258 has 2 MA's), (Start: 30 @7270 has 1 MA's), (45, 7345), (46, 7348), (53, 7396), (57, 7408), (58, 7411), (68, 7465), (88, 7570), (107, 7642), (115, 7681), (117, 7684),

Gene: VieEnRose_11 Start: 8669, Stop: 9154, Start Num: 21

Candidate Starts for VieEnRose_11:

(Start: 21 @8669 has 183 MA's), (26, 8684), (53, 8822), (62, 8858), (74, 8945),

Gene: VroomVroom_7 Start: 6184, Stop: 6585, Start Num: 14
Candidate Starts for VroomVroom_7:
(Start: 14 @6184 has 75 MA's), (63, 6421),

Gene: Wamburgrxpress_9 Start: 7246, Stop: 7713, Start Num: 21
Candidate Starts for Wamburgrxpress_9:
(Start: 21 @7246 has 183 MA's), (Start: 27 @7273 has 2 MA's), (Start: 30 @7285 has 1 MA's), (40, 7330), (43, 7342), (45, 7360), (46, 7363), (53, 7411), (57, 7423), (58, 7426), (68, 7480), (77, 7540), (88, 7585), (114, 7696), (115, 7699), (117, 7702),

Gene: Warda_8 Start: 7839, Stop: 8246, Start Num: 14
Candidate Starts for Warda_8:
(Start: 14 @7839 has 75 MA's), (56, 8031),

Gene: Werner_11 Start: 8365, Stop: 8814, Start Num: 21
Candidate Starts for Werner_11:
(Start: 21 @8365 has 183 MA's), (62, 8554), (107, 8758),

Gene: Whatever_11 Start: 8365, Stop: 8814, Start Num: 21
Candidate Starts for Whatever_11:
(Start: 21 @8365 has 183 MA's), (62, 8554), (107, 8758),

Gene: Whirlwind_11 Start: 7365, Stop: 7841, Start Num: 21
Candidate Starts for Whirlwind_11:
(Start: 21 @7365 has 183 MA's), (Start: 30 @7404 has 1 MA's), (40, 7455), (45, 7485), (46, 7488), (53, 7536), (54, 7539), (56, 7545), (57, 7548), (58, 7551), (68, 7605), (77, 7665), (88, 7710),

Gene: Wigglewigggle_9 Start: 7264, Stop: 7728, Start Num: 21
Candidate Starts for Wigglewigggle_9:
(Start: 21 @7264 has 183 MA's), (Start: 27 @7291 has 2 MA's), (Start: 30 @7303 has 1 MA's), (45, 7378), (46, 7381), (53, 7429), (57, 7441), (58, 7444), (68, 7498), (88, 7603), (107, 7675), (115, 7714), (117, 7717),

Gene: Wildcat_31 Start: 14145, Stop: 14621, Start Num: 21
Candidate Starts for Wildcat_31:
(Start: 21 @14145 has 183 MA's), (24, 14157), (37, 14229), (42, 14247), (46, 14271), (63, 14370), (66, 14379), (72, 14409), (93, 14496), (102, 14541), (109, 14568), (110, 14574),

Gene: Wilder_9 Start: 7231, Stop: 7695, Start Num: 21
Candidate Starts for Wilder_9:
(Start: 21 @7231 has 183 MA's), (Start: 27 @7258 has 2 MA's), (Start: 30 @7270 has 1 MA's), (45, 7345), (46, 7348), (53, 7396), (57, 7408), (58, 7411), (68, 7465), (88, 7570), (107, 7642), (115, 7681), (117, 7684),

Gene: Wildwest_9 Start: 8762, Stop: 9178, Start Num: 14
Candidate Starts for Wildwest_9:
(Start: 14 @8762 has 75 MA's), (56, 8954), (70, 9029),

Gene: Winky_9 Start: 7231, Stop: 7695, Start Num: 21
Candidate Starts for Winky_9:
(Start: 21 @7231 has 183 MA's), (Start: 27 @7258 has 2 MA's), (Start: 30 @7270 has 1 MA's), (45, 7345), (46, 7348), (53, 7396), (57, 7408), (58, 7411), (68, 7465), (88, 7570), (107, 7642), (115, 7681),

(117, 7684),

Gene: Wyatt2_9 Start: 7246, Stop: 7713, Start Num: 21

Candidate Starts for Wyatt2_9:

(Start: 21 @7246 has 183 MA's), (Start: 27 @7273 has 2 MA's), (Start: 30 @7285 has 1 MA's), (40, 7330), (43, 7342), (45, 7360), (46, 7363), (53, 7411), (57, 7423), (58, 7426), (68, 7480), (77, 7540), (88, 7585), (114, 7696), (115, 7699), (117, 7702),

Gene: Yang_8 Start: 7957, Stop: 8352, Start Num: 14

Candidate Starts for Yang_8:

(Start: 14 @7957 has 75 MA's), (56, 8149), (63, 8194),

Gene: Yasdnii_11 Start: 8363, Stop: 8812, Start Num: 21

Candidate Starts for Yasdnii_11:

(Start: 6 @8306 has 1 MA's), (Start: 21 @8363 has 183 MA's), (62, 8552), (107, 8756),

Gene: YesChef_8 Start: 7893, Stop: 8300, Start Num: 14

Candidate Starts for YesChef_8:

(Start: 14 @7893 has 75 MA's), (56, 8085),

Gene: Yosif_12 Start: 8821, Stop: 9279, Start Num: 21

Candidate Starts for Yosif_12:

(Start: 21 @8821 has 183 MA's), (53, 8974), (62, 9010), (70, 9058), (92, 9166), (116, 9250), (119, 9265),

Gene: Zainub_13 Start: 8727, Stop: 9203, Start Num: 21

Candidate Starts for Zainub_13:

(Start: 5 @8664 has 1 MA's), (8, 8679), (Start: 21 @8727 has 183 MA's), (47, 8847), (62, 8925), (98, 9117), (119, 9189),

Gene: Zakai_9 Start: 7219, Stop: 7683, Start Num: 21

Candidate Starts for Zakai_9:

(Start: 21 @7219 has 183 MA's), (Start: 27 @7246 has 2 MA's), (Start: 30 @7258 has 1 MA's), (45, 7333), (46, 7336), (53, 7384), (57, 7396), (58, 7399), (68, 7453), (88, 7558), (107, 7630), (115, 7669), (117, 7672),

Gene: Zaria_9 Start: 7247, Stop: 7714, Start Num: 21

Candidate Starts for Zaria_9:

(Start: 21 @7247 has 183 MA's), (Start: 27 @7274 has 2 MA's), (Start: 30 @7286 has 1 MA's), (40, 7331), (43, 7343), (45, 7361), (46, 7364), (53, 7412), (57, 7424), (58, 7427), (68, 7481), (77, 7541), (88, 7586), (114, 7697), (115, 7700), (117, 7703),

Gene: Zemlya_12 Start: 8375, Stop: 8824, Start Num: 21

Candidate Starts for Zemlya_12:

(Start: 6 @8318 has 1 MA's), (Start: 21 @8375 has 183 MA's), (52, 8525), (53, 8528), (62, 8564),

Gene: Zeta1847_7 Start: 6205, Stop: 6684, Start Num: 14

Candidate Starts for Zeta1847_7:

(Start: 14 @6205 has 75 MA's), (25, 6235), (113, 6679),

Gene: ZhongYanYuan_8 Start: 7059, Stop: 7523, Start Num: 21

Candidate Starts for ZhongYanYuan_8:

(Start: 21 @7059 has 183 MA's), (Start: 27 @7086 has 2 MA's), (Start: 30 @7098 has 1 MA's), (33, 7107), (45, 7173), (46, 7176), (53, 7224), (57, 7236), (58, 7239), (68, 7293), (77, 7353), (84, 7389), (88, 7398), (107, 7470), (115, 7509), (117, 7512),

Gene: phiCAM_12 Start: 10223, Stop: 10681, Start Num: 21

Candidate Starts for phiCAM_12:

(Start: 21 @10223 has 183 MA's), (26, 10238), (62, 10412), (70, 10460), (92, 10568), (116, 10652), (120, 10676),

Gene: phiHau3_13 Start: 8427, Stop: 8894, Start Num: 21

Candidate Starts for phiHau3_13:

(Start: 21 @8427 has 183 MA's), (52, 8577), (53, 8580), (62, 8616), (74, 8703), (95, 8796), (105, 8814), (107, 8823), (119, 8880),