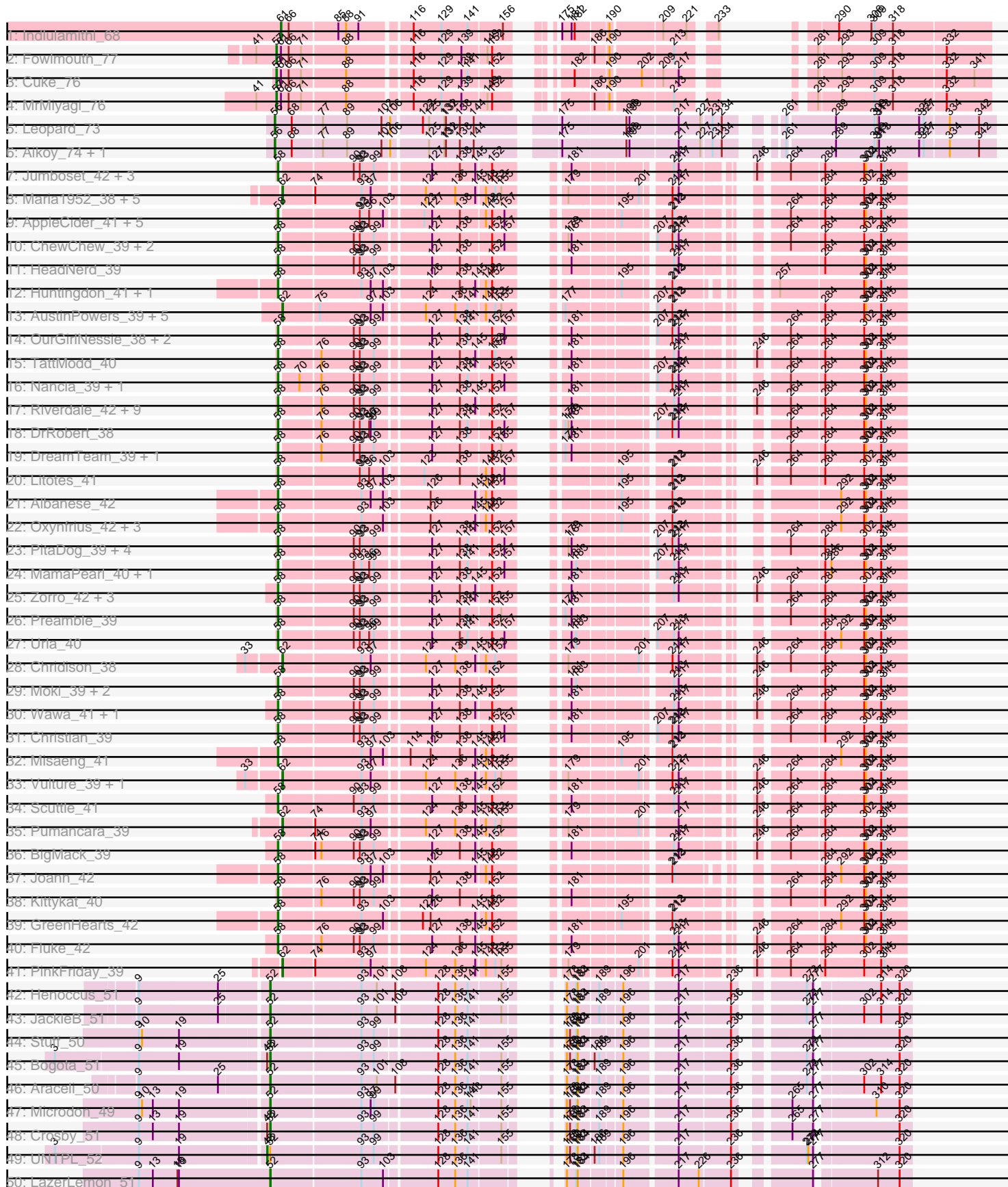
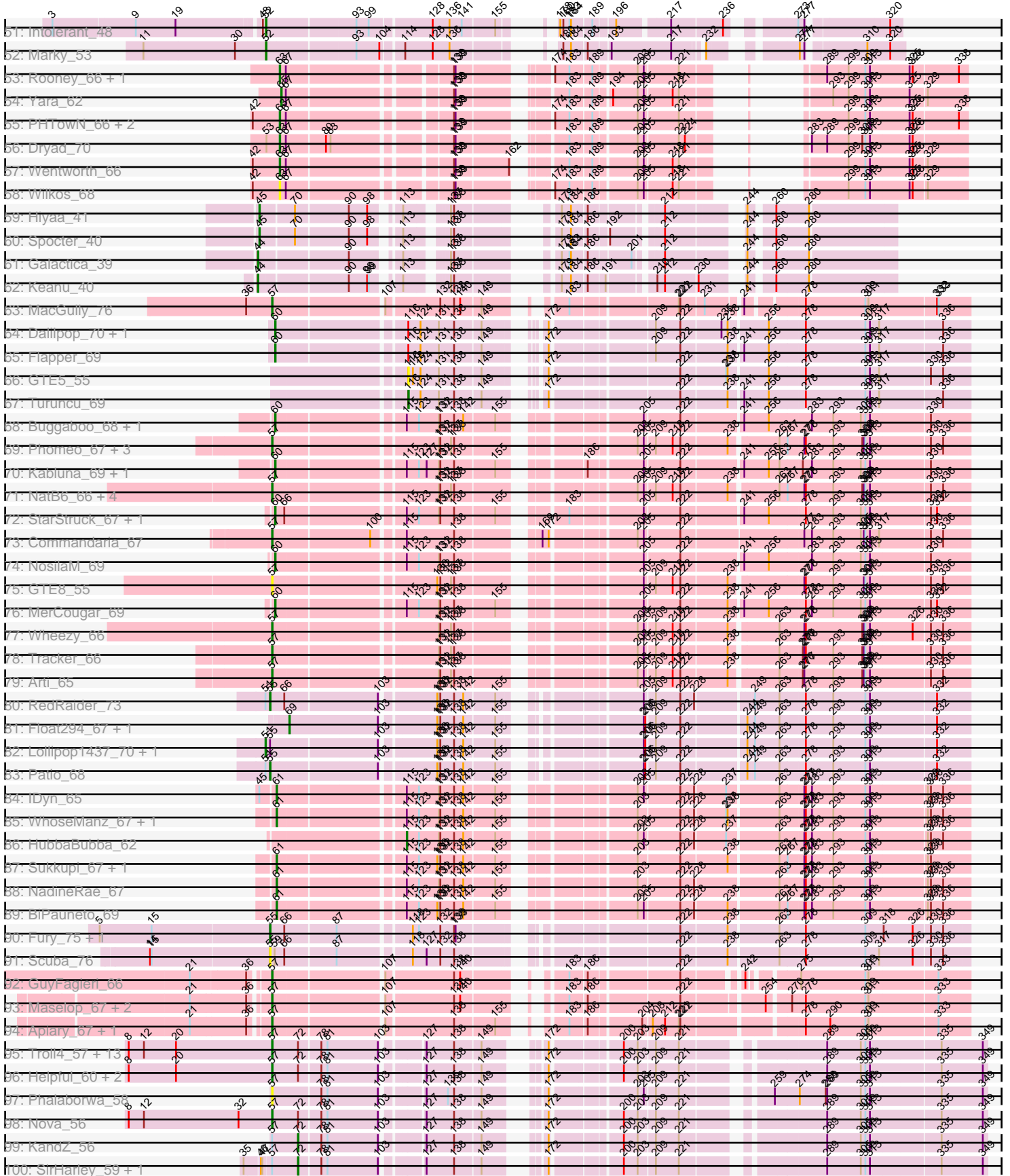


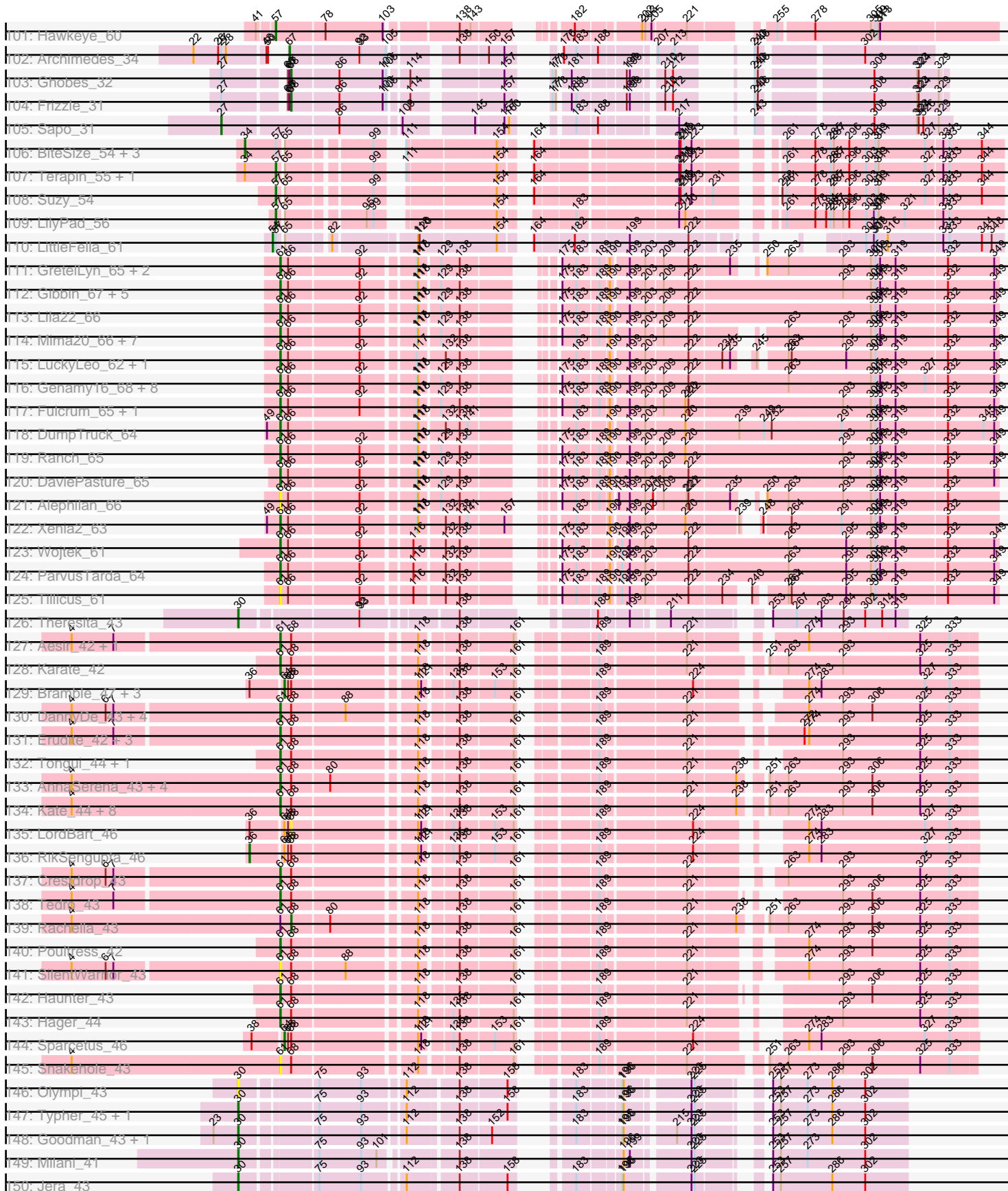
Pham 224199



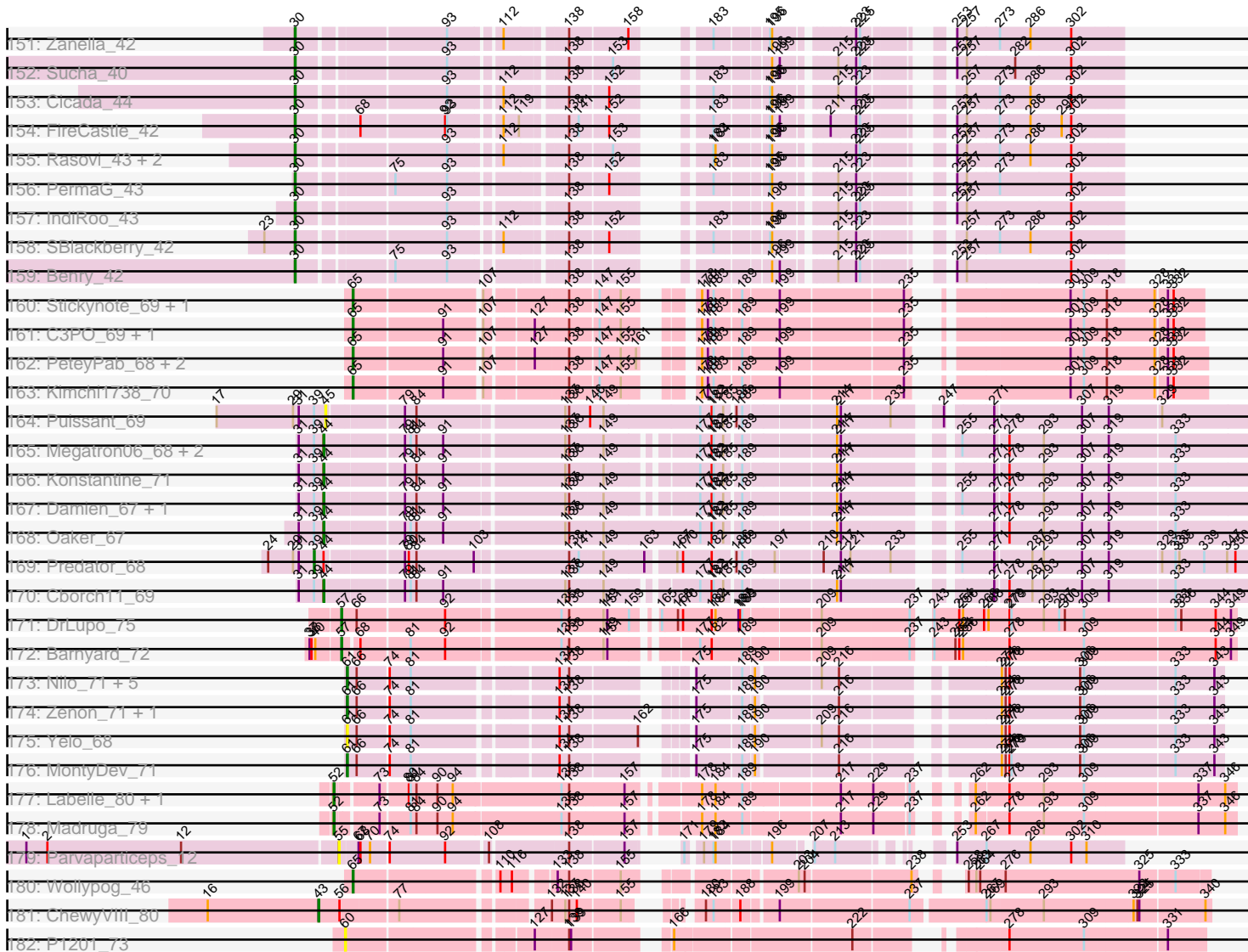
Pham 224199



Pham 224199



Pham 224199



Note: Tracks are now grouped by subcluster and scaled. Switching in subcluster is indicated by changes in track color. Track scale is now set by default to display the region 30 bp upstream of start 1 to 30 bp downstream of the last possible start. If this default region is judged to be packed too tightly with annotated starts, the track will be further scaled to only show that region of the ORF with annotated starts. This action will be indicated by adding "Zoomed" to the title. For starts, yellow indicates the location of called starts comprised solely of Glimmer/GeneMark auto-annotations, green indicates the location of called starts with at least 1 manual gene annotation.

Pham 224199 Report

This analysis was run 03/28/25 on database version 593.

Pham number 224199 has 340 members, 31 are drafts.

Phages represented in each track:

- Track 1 : Indlulamithi_68
- Track 2 : Fowlmouth_77
- Track 3 : Cuke_76
- Track 4 : MrMiyagi_76
- Track 5 : Leopard_73
- Track 6 : Aikoy_74, Onyinye_74
- Track 7 : Jumboset_42, MrGloopy_42, Glenn_42, Savage2526_42
- Track 8 : Maria1952_38, Daiboju_39, Temper16_39, Herb_39, KingBob_39, Sergei_39
- Track 9 : AppleCider_41, CallieOMalley_41, Suppi_41, Wayne_41, PartyCup_44, Canowicakte_41
- Track 10 : ChewChew_39, CristinaYang_39, LilStuart_39
- Track 11 : HeadNerd_39
- Track 12 : Huntingdon_41, RcigaStruga_41
- Track 13 : AustinPowers_39, Supakev_39, Eunoia_39, Aledel_39, OMalley_39, Riovina_39
- Track 14 : OurGirlNessie_38, Pterodactyl_39, Lasagna_38
- Track 15 : TattModd_40
- Track 16 : Nancia_39, Bodacious_39
- Track 17 : Riverdale_42, Beethoven_41, Vallejo_42, Immaculata_41, Kalizoi_41, Carpal_41, Cholula_41, BrotherBLo_41, Rozby_41, Potatoes_41
- Track 18 : DrRobert_38
- Track 19 : DreamTeam_39, Gisselle_39
- Track 20 : Litotes_41
- Track 21 : Albanese_42
- Track 22 : Oxynfrius_42, Lakshmi_42, Nubia_42, Greenhouse_43
- Track 23 : PitaDog_39, Lennox_39, WonderBoy_38, Lucy_39, Makoto_39
- Track 24 : MamaPearl_40, EstebanJulior_40
- Track 25 : Zorro_42, Dino_42, MeganNoll_41, RAP15_42
- Track 26 : Preamble_39
- Track 27 : Urla_40
- Track 28 : Chridison_38
- Track 29 : Moki_39, Bennie_39, Huckleberry_39
- Track 30 : Wawa_41, Korra_41
- Track 31 : Christian_39
- Track 32 : Misaeng_41
- Track 33 : Vulture_39, HunterDalle_39

- Track 34 : Scuttle_41
- Track 35 : Pumancara_39
- Track 36 : BigMack_39
- Track 37 : Joann_42
- Track 38 : Kittykat_40
- Track 39 : GreenHearts_42
- Track 40 : Fluke_42
- Track 41 : PinkFriday_39
- Track 42 : Henoccus_51
- Track 43 : JackieB_51
- Track 44 : Stuff_50
- Track 45 : Bogota_51
- Track 46 : Araceli_50
- Track 47 : Microdon_49
- Track 48 : Crosby_51
- Track 49 : UNTPL_52
- Track 50 : LazerLemon_51
- Track 51 : Intolerant_48
- Track 52 : Marky_53
- Track 53 : Rooney_66, Gibson_66
- Track 54 : Yara_62
- Track 55 : PHTowN_66, ShakeNBake_66, Lizz_66
- Track 56 : Dryad_70
- Track 57 : Wentworth_66
- Track 58 : Wilkos_68
- Track 59 : Hiya_41
- Track 60 : Spocter_40
- Track 61 : Galactica_39
- Track 62 : Keanu_40
- Track 63 : MacGully_76
- Track 64 : Dalilpop_70, GRU1_55
- Track 65 : Flapper_69
- Track 66 : GTE5_55
- Track 67 : Turuncu_69
- Track 68 : Buggaboo_68, SuperSulley_68
- Track 69 : Phomeo_67, Foxboro_67, Jifall16_66, KidneyBean_67
- Track 70 : Kabluna_69, Bonum_70
- Track 71 : NatB6_66, Emianna_66, NovumRegina_66, Kurt_66, GrootJr_68
- Track 72 : StarStruck_67, Outis_67
- Track 73 : Commandaria_67
- Track 74 : NosilaM_69
- Track 75 : GTE8_55
- Track 76 : MerCougar_69
- Track 77 : Wheezy_66
- Track 78 : Tracker_66
- Track 79 : Arti_65
- Track 80 : RedRaider_73
- Track 81 : Float294_67, Skysand_68
- Track 82 : Lollipop1437_70, Ennea_73
- Track 83 : Patio_68
- Track 84 : IDyn_65
- Track 85 : WhoseManz_67, Marietta_68
- Track 86 : HubbaBubba_62

- Track 87 : Sukkupi_67, Yndexa_67
- Track 88 : NadineRae_67
- Track 89 : BiPauneto_69
- Track 90 : Fury_75, Pleakley_75
- Track 91 : Scuba_76
- Track 92 : GuyFagieri_66
- Track 93 : Maselop_67, CoffeeBean_67, Braxoaddie_67
- Track 94 : Apiary_67, Polyyuki_67
- Track 95 : Troll4_57, BigMama_55, WaldoWhy_59, Chill_59, Erk16_56, Butterscotch_56, PBI1_54, Visconti_58, Giuseppe_58, Mopey_58, Adjutor_56, Thoth_57, Delton_58, Prager_57
- Track 96 : Helpful_60, Penelope2018_57, PLOT_57
- Track 97 : Phalaborwa_58
- Track 98 : Nova_56
- Track 99 : KandZ_56
- Track 100 : SirHarley_59, Gumball_57
- Track 101 : Hawkeye_60
- Track 102 : Archimedes_34
- Track 103 : Ghobes_32
- Track 104 : Frizzle_31
- Track 105 : Sapo_31
- Track 106 : BiteSize_54, Sienna_54, Beyoncage_54, Madi_54
- Track 107 : Terapin_55, Djokovic_54
- Track 108 : Suzy_54
- Track 109 : LilyPad_56
- Track 110 : LittleFella_61
- Track 111 : GretelLyn_65, Yikes_67, Sadboi_66
- Track 112 : Gibbin_67, Patos_69, BirthdayBoy_67, NorManre_69, Lambo_63, OtterstedtS21_65
- Track 113 : Lila22_66
- Track 114 : Mima20_66, DoobyDoo_64, Erutan_65, Zany_63, Jalebi_64, LavAbarElk_65, Sampudon_65, MoiGyank_68
- Track 115 : LuckyLeo_62, Apeppi_60
- Track 116 : Genamy16_68, RazorC_65, Stormer_65, NovaSharks_67, Jamemuya19_65, Rumi_66, Astralis_66, Alyssamiracle_68, Avian_64
- Track 117 : Fulcrum_65, GOATification_65
- Track 118 : DumpTruck_64
- Track 119 : Ranch_65
- Track 120 : DaviePasture_65
- Track 121 : Alephilan_66
- Track 122 : Xenia2_63
- Track 123 : Wojtek_61
- Track 124 : ParvusTarda_64
- Track 125 : Tillicus_61
- Track 126 : Theresita_43
- Track 127 : Aesir_42, JDawG_42
- Track 128 : Karate_42
- Track 129 : Bramble_47, TinyMiny_46, Kors_47, Ajin_46
- Track 130 : DannyDe_43, Annapurna_44, Chivey_43, Hiddenleaf_43, FreddieHg_43
- Track 131 : Erudite_42, MortySmith_41, JingleBells_43, Dauntless_42
- Track 132 : Tongui_44, Rie18_43
- Track 133 : AnnaSerena_43, Pharpay_43, Anakin_43, NarutoRun_43, Artiphact_43

- Track 134 : Kate_44, CoolCookie_43, Krampus_43, Gilda_43, PhunaPhoke_43, Cybele_43, Neptune_43, Potty_43, OverHedge_43
- Track 135 : LordBart_46
- Track 136 : RikSengupta_46
- Track 137 : Crestdrop_43
- Track 138 : Tedro_43
- Track 139 : Rachella_43
- Track 140 : Poultruss_42
- Track 141 : SilentWarrior_43
- Track 142 : Haunter_43
- Track 143 : Hager_44
- Track 144 : Sparcetuss_46
- Track 145 : Snakehole_43
- Track 146 : Olympi_43
- Track 147 : Typher_45, TurboVicky_43
- Track 148 : Goodman_43, Johann_43
- Track 149 : Milani_41
- Track 150 : Jera_43
- Track 151 : Zanella_42
- Track 152 : Sucha_40
- Track 153 : Cicada_44
- Track 154 : FireCastle_42
- Track 155 : Rasovi_43, Linayshia_43, Htur_43
- Track 156 : PermaG_43
- Track 157 : IndiRoo_43
- Track 158 : SBlackberry_42
- Track 159 : Benry_42
- Track 160 : Stickynote_69, Darwin_70
- Track 161 : C3PO_69, Cruella_69
- Track 162 : PeteyPab_68, PotatoChip_69, Zion_69
- Track 163 : Kimchi1738_70
- Track 164 : Puissant_69
- Track 165 : Megatron06_68, Thumb_68, Phreeze_66
- Track 166 : Konstantine_71
- Track 167 : Damien_67, Beckerton_66
- Track 168 : Oaker_67
- Track 169 : Predator_68
- Track 170 : Cborch11_69
- Track 171 : DrLupo_75
- Track 172 : Barnyard_72
- Track 173 : Nilo_71, Riparian_71, Papyrus_69, Rope_69, Weiss13_69, Candle_67
- Track 174 : Zenon_71, Send513_69
- Track 175 : Yelo_68
- Track 176 : MontyDev_71
- Track 177 : Labelle_80, Patience_81
- Track 178 : Madruga_79
- Track 179 : Parvarticeps_12
- Track 180 : Wollypog_46
- Track 181 : ChewyVIII_80
- Track 182 : P1201_73

Summary of Final Annotations (See graph section above for start numbers):

The start number called the most often in the published annotations is 61, it was called in 77 of the 309 non-draft genes in the pham.

Genes that call this "Most Annotated" start:

- Aesir_42, Alephilan_66, Alyssamiracle_68, Anakin_43, AnnaSerena_43, Annapurna_44, Apeppi_60, Artiphact_43, Astralis_66, Avian_64, BiPauneto_69, BirthdayBoy_67, Candle_67, Chivey_43, CoolCookie_43, Crestdrop_43, Cybele_43, DannyDe_43, Dauntless_42, DaviePasture_65, DoobyDoo_64, DumpTruck_64, Erudite_42, Erutan_65, FreddieHg_43, Fulcrum_65, GOATification_65, Genamy16_68, Gibbin_67, Gilda_43, GretelLyn_65, Hager_44, Haunter_43, Hiddenleaf_43, IDyn_65, Indlulamithi_68, JDawG_42, Jalebi_64, Jamemuya19_65, JingleBells_43, Karate_42, Kate_44, Krampus_43, Lambo_63, LavAbarElk_65, Lila22_66, LuckyLeo_62, Marietta_68, Mima20_66, MoiGyank_68, MontyDev_71, MortySmith_41, NadineRae_67, NarutoRun_43, Neptune_43, Nilo_71, NorManre_69, NovaSharks_67, OtterstedtS21_65, OverHedge_43, Papyrus_69, ParvusTarda_64, Patos_69, Pharpay_43, PhunaPhoke_43, Potty_43, Poultruss_42, Ranch_65, RazorC_65, Rie18_43, Riparian_71, Rope_69, Rumi_66, Sadboi_66, Sampudon_65, Send513_69, SilentWarrior_43, Snakehole_43, Stormer_65, Sukkupi_67, Tedro_43, Tillicus_61, Tongui_44, Weiss13_69, WhoseManz_67, Wojtek_61, Xenia2_63, Yelo_68, Yikes_67, Yndexa_67, Zany_63, Zenon_71,

Genes that have the "Most Annotated" start but do not call it:

- Cuke_76, Fowlmouth_77, MrMiyagi_76, Rachella_43,

Genes that do not have the "Most Annotated" start:

- Adjutor_56, Aikoy_74, Ajin_46, Albanese_42, Aledel_39, Apiary_67, AppleCider_41, Araceli_50, Archimedes_34, Arti_65, AustinPowers_39, Barnyard_72, Beckerton_66, Beethoven_41, Bennie_39, Benry_42, Beyoncage_54, BigMack_39, BigMama_55, BiteSize_54, Bodacious_39, Bogota_51, Bonum_70, Bramble_47, Braxoaddie_67, BrotherBLo_41, Buggaboo_68, Butterscotch_56, C3PO_69, CallieOMalley_41, Canowicakte_41, Carpal_41, Cborch11_69, ChewChew_39, ChewyVIII_80, Chill_59, Cholula_41, Chridison_38, Christian_39, Cicada_44, CoffeeBean_67, Commandaria_67, CristinaYang_39, Crosby_51, Cruella_69, Daiboju_39, Dalilpop_70, Damien_67, Darwin_70, Delton_58, Dino_42, Djokovic_54, DrLupo_75, DrRobert_38, DreamTeam_39, Dryad_70, Emianna_66, Ennea_73, Erk16_56, EstebanJulior_40, Eunoia_39, FireCastle_42, Flapper_69, Float294_67, Fluke_42, Foxboro_67, Frizzle_31, Fury_75, GRU1_55, GTE5_55, GTE8_55, Galactica_39, Ghobes_32, Gibson_66, Gisselle_39, Giuseppe_58, Glenn_42, Goodman_43, GreenHearts_42, Greenhouse_43, GrootJr_68, Gumball_57, GuyFagieri_66, Hawkeye_60, HeadNerd_39, Helpful_60, Henoccus_51, Herb_39, Hiyaa_41, Htur_43, HubbaBubba_62, Huckleberry_39, HunterDalle_39, Huntingdon_41, Immaculata_41, IndiRoo_43, Intolerant_48, JackieB_51, Jera_43, Jifall16_66, Joann_42, Johann_43, Jumboset_42, Kabluna_69, Kalizoi_41, KandZ_56, Keanu_40, KidneyBean_67, Kimchi1738_70, KingBob_39, Kittykat_40, Konstantine_71, Korra_41, Kors_47, Kurt_66, Labelle_80, Lakshmi_42, Lasagna_38, LazerLemon_51, Lennox_39, Leopard_73, LilStuart_39, LilyPad_56, Linayshia_43, Litotes_41, LittleFella_61, Lizz_66, Lollipop1437_70, LordBart_46, Lucy_39, MacGully_76, Madi_54, Madruga_79, Makoto_39, MamaPearl_40, Maria1952_38, Marky_53, Maselop_67, MeganNoll_41, Megatron06_68, MerCougar_69, Microdon_49, Milani_41, Misaeng_41, Moki_39, Mopey_58, MrGloopy_42,

Nancia_39, NatB6_66, NosilaM_69, Nova_56, NovumRegina_66, Nubia_42, OMalley_39, Oaker_67, Olympi_43, Onyinye_74, OurGirlNessie_38, Outis_67, Oxynfrius_42, P1201_73, PBI1_54, PHTowN_66, PLOT_57, PartyCup_44, Parvapariceps_12, Patience_81, Patio_68, Penelope2018_57, PermaG_43, PeteyPab_68, Phalaborwa_58, Phomeo_67, Phreeze_66, PinkFriday_39, PitaDog_39, Pleakley_75, Polyuyki_67, PotatoChip_69, Potatoes_41, Prager_57, Preamble_39, Predator_68, Pterodactyl_39, Puissant_69, Pumancara_39, RAP15_42, Rasovi_43, RcigaStruga_41, RedRaider_73, RikSengupta_46, Rivovina_39, Riverdale_42, Rooney_66, Rozby_41, SBlackberry_42, Sapo_31, Savage2526_42, Scuba_76, Scuttle_41, Sergei_39, ShakeNBake_66, Sienna_54, SirHarley_59, Skysand_68, Sparcetus_46, Spocter_40, StarStruck_67, Stickynote_69, Stuff_50, Sucha_40, Supakev_39, SuperSulley_68, Suppi_41, Suzy_54, TattModd_40, Temper16_39, Terapin_55, Theresita_43, Thoth_57, Thumb_68, TinyMiny_46, Tracker_66, Troll4_57, TurboVicky_43, Turuncu_69, Typher_45, UNTPL_52, Urla_40, Vallejo_42, Visconti_58, Vulture_39, WaldoWhy_59, Wawa_41, Wayne_41, Wentworth_66, Wheezy_66, Wilkos_68, Wollypog_46, WonderBoy_38, Yara_62, Zanella_42, Zion_69, Zorro_42,

Summary by start number:

Start 27:

- Found in 4 of 340 (1.2%) of genes in pham
- Manual Annotations of this start: 1 of 309
- Called 25.0% of time when present
- Phage (with cluster) where this start called: Sapo_31 (DA),

Start 30:

- Found in 20 of 340 (5.9%) of genes in pham
- Manual Annotations of this start: 17 of 309
- Called 95.0% of time when present
- Phage (with cluster) where this start called: Berry_42 (EJ), Cicada_44 (EJ), FireCastle_42 (EJ), Goodman_43 (EJ), Htur_43 (EJ), IndiRoo_43 (EJ), Jera_43 (EJ), Johann_43 (EJ), Linayshia_43 (EJ), Milani_41 (EJ), Olympi_43 (EJ), PermaG_43 (EJ), Rasovi_43 (EJ), SBlackberry_42 (EJ), Sucha_40 (EJ), Theresita_43 (EA7), TurboVicky_43 (EJ), Typher_45 (EJ), Zanella_42 (EJ),

Start 34:

- Found in 6 of 340 (1.8%) of genes in pham
- Manual Annotations of this start: 4 of 309
- Called 66.7% of time when present
- Phage (with cluster) where this start called: Beyoncage_54 (DG1), BiteSize_54 (DG1), Madi_54 (DG1), Sienna_54 (DG1),

Start 36:

- Found in 13 of 340 (3.8%) of genes in pham
- Manual Annotations of this start: 1 of 309
- Called 7.7% of time when present
- Phage (with cluster) where this start called: RikSengupta_46 (EF),

Start 39:

- Found in 10 of 340 (2.9%) of genes in pham
- Manual Annotations of this start: 1 of 309
- Called 10.0% of time when present

- Phage (with cluster) where this start called: Predator_68 (H1),

Start 43:

- Found in 1 of 340 (0.3%) of genes in pham
- Manual Annotations of this start: 1 of 309
- Called 100.0% of time when present
- Phage (with cluster) where this start called: ChewyVIII_80 (singleton),

Start 44:

- Found in 11 of 340 (3.2%) of genes in pham
- Manual Annotations of this start: 10 of 309
- Called 90.9% of time when present
- Phage (with cluster) where this start called: Beckerton_66 (H1), Cborch11_69 (H1), Damien_67 (H1), Galactica_39 (BQ), Keanu_40 (BQ), Konstantine_71 (H1), Megatron06_68 (H1), Oaker_67 (H1), Phreeze_66 (H1), Thumb_68 (H1),

Start 45:

- Found in 4 of 340 (1.2%) of genes in pham
- Manual Annotations of this start: 2 of 309
- Called 75.0% of time when present
- Phage (with cluster) where this start called: Hiya_41 (BQ), Puissant_69 (H1), Spocter_40 (BQ),

Start 48:

- Found in 5 of 340 (1.5%) of genes in pham
- Manual Annotations of this start: 1 of 309
- Called 20.0% of time when present
- Phage (with cluster) where this start called: UNTPL_52 (BH),

Start 51:

- Found in 4 of 340 (1.2%) of genes in pham
- Manual Annotations of this start: 2 of 309
- Called 50.0% of time when present
- Phage (with cluster) where this start called: Ennea_73 (CR3), Lollipop1437_70 (CR3),

Start 52:

- Found in 14 of 340 (4.1%) of genes in pham
- Manual Annotations of this start: 13 of 309
- Called 92.9% of time when present
- Phage (with cluster) where this start called: Araceli_50 (BH), Bogota_51 (BH), Crosby_51 (BH), Henoccus_51 (BH), Intolerant_48 (BH), JackieB_51 (BH), Labelle_80 (U), LazerLemon_51 (BH), Madrugua_79 (U), Marky_53 (BH), Microdon_49 (BH), Patience_81 (U), Stuff_50 (BH),

Start 54:

- Found in 1 of 340 (0.3%) of genes in pham
- Manual Annotations of this start: 1 of 309
- Called 100.0% of time when present
- Phage (with cluster) where this start called: LittleFella_61 (DG2),

Start 55:

- Found in 8 of 340 (2.4%) of genes in pham

- Manual Annotations of this start: 4 of 309
- Called 75.0% of time when present
- Phage (with cluster) where this start called: Fury_75 (CR5), Parvapaticeps_12 (UNK), Patio_68 (CR3), Pleakley_75 (CR5), RedRaider_73 (CR3), Scuba_76 (CR5),

Start 56:

- Found in 4 of 340 (1.2%) of genes in pham
- Manual Annotations of this start: 3 of 309
- Called 75.0% of time when present
- Phage (with cluster) where this start called: Aikoy_74 (AE), Leopard_73 (AE), Onyinye_74 (AE),

Start 57:

- Found in 58 of 340 (17.1%) of genes in pham
- Manual Annotations of this start: 47 of 309
- Called 86.2% of time when present
- Phage (with cluster) where this start called: Adjutor_56 (D1), Apiary_67 (CR6), Arti_65 (CR2), Barnyard_72 (H2), BigMama_55 (D1), Braxoaddie_67 (CR6), Butterscotch_56 (D1), Chill_59 (D1), CoffeeBean_67 (CR6), Commandaria_67 (CR2), Cuke_76 (AC), Delton_58 (D1), Djokovic_54 (DG1), DrLupo_75 (H2), Emianna_66 (CR2), Erk16_56 (D1), Fowlmouth_77 (AC), Foxboro_67 (CR2), GTE8_55 (CR2), Giuseppe_58 (D1), GrootJr_68 (CR2), GuyFagieri_66 (CR6), Hawkeye_60 (D2), Helpful_60 (D1), Jifall16_66 (CR2), KidneyBean_67 (CR2), Kurt_66 (CR2), LilyPad_56 (DG1), MacGully_76 (CR), Maselop_67 (CR6), Mopey_58 (D1), MrMiyagi_76 (AC), NatB6_66 (CR2), Nova_56 (D1), NovumRegina_66 (CR2), PBI1_54 (D1), PLOT_57 (D1), Penelope2018_57 (D1), Phalaborwa_58 (D1), Phomeo_67 (CR2), Polyuyuki_67 (CR6), Prager_57 (D1), Suzy_54 (DG1), Terapin_55 (DG1), Thoth_57 (D1), Tracker_66 (CR2), Troll4_57 (D1), Visconti_58 (D1), WaldoWhy_59 (D1), Wheezy_66 (CR2),

Start 58:

- Found in 67 of 340 (19.7%) of genes in pham
- Manual Annotations of this start: 66 of 309
- Called 100.0% of time when present
- Phage (with cluster) where this start called: Albanese_42 (AK), AppleCider_41 (AK), Beethoven_41 (AK), Bennie_39 (AK), BigMack_39 (AK), Bodacious_39 (AK), BrotherBLo_41 (AK), CallieOMalley_41 (AK), Canowicakte_41 (AK), Carpal_41 (AK), ChewChew_39 (AK), Cholula_41 (AK), Christian_39 (AK), CristinaYang_39 (AK), Dino_42 (AK), DrRobert_38 (AK), DreamTeam_39 (AK), EstebanJulior_40 (AK), Fluke_42 (AK), Gisselle_39 (AK), Glenn_42 (AK), GreenHearts_42 (AK), Greenhouse_43 (AK), HeadNerd_39 (AK), Huckleberry_39 (AK), Huntingdon_41 (AK), Immaculata_41 (AK), Joann_42 (AK), Jumboset_42 (AK), Kalizoi_41 (AK), Kittykat_40 (AK), Korra_41 (AK), Lakshmi_42 (AK), Lasagna_38 (AK), Lennox_39 (AK), LilStuart_39 (AK), Litotes_41 (AK), Lucy_39 (AK), Makoto_39 (AK), MamaPearl_40 (AK), MeganNoll_41 (AK), Misaeng_41 (AK), Moki_39 (AK), MrGloopy_42 (AK), Nancia_39 (AK), Nubia_42 (AK), OurGirlNessie_38 (AK), Oxynfrius_42 (AK), PartyCup_44 (AK), PitaDog_39 (AK), Potatoes_41 (AK), Preamble_39 (AK), Pterodactyl_39 (AK), RAP15_42 (AK), RcigaStruga_41 (AK), Riverdale_42 (AK), Rozby_41 (AK), Savage2526_42 (AK), Scuttle_41 (AK), Suppi_41 (AK), TattModd_40 (AK), Urla_40 (AK), Vallejo_42 (AK), Wawa_41 (AK), Wayne_41 (AK), WonderBoy_38 (AK), Zorro_42 (AK),

Start 60:

- Found in 12 of 340 (3.5%) of genes in pham
- Manual Annotations of this start: 10 of 309
- Called 100.0% of time when present
- Phage (with cluster) where this start called: Bonum_70 (CR2), Buggaboo_68 (CR2), Dalilpop_70 (CR1), Flapper_69 (CR1), GRU1_55 (CR1), Kabluna_69 (CR2), MerCougar_69 (CR2), NosilaM_69 (CR2), Outis_67 (CR2), P1201_73 (singleton), StarStruck_67 (CR2), SuperSulley_68 (CR2),

Start 61:

- Found in 96 of 340 (28.2%) of genes in pham
- Manual Annotations of this start: 77 of 309
- Called 95.8% of time when present
- Phage (with cluster) where this start called: Aesir_42 (EF), Alephilan_66 (DV), Alyssamiracle_68 (DV), Anakin_43 (EF), AnnaSerena_43 (EF), Annapurna_44 (EF), Apeppi_60 (DV), Artiphact_43 (EF), Astralis_66 (DV), Avian_64 (DV), BiPauneto_69 (CR4), BirthdayBoy_67 (DV), Candle_67 (R), Chivey_43 (EF), CoolCookie_43 (EF), Crestdrop_43 (EF), Cybele_43 (EF), DannyDe_43 (EF), Dauntless_42 (EF), DaviePasture_65 (DV), DoobyDoo_64 (DV), DumpTruck_64 (DV), Erudite_42 (EF), Erutan_65 (DV), FreddieHg_43 (EF), Fulcrum_65 (DV), GOATification_65 (DV), Genamy16_68 (DV), Gibbin_67 (DV), Gilda_43 (EF), GretelLyn_65 (DV), Hager_44 (EF), Haunter_43 (EF), Hiddenleaf_43 (EF), IDyn_65 (CR4), Indlulamithi_68 (AC), JDawG_42 (EF), Jalebi_64 (DV), Jamemuya19_65 (DV), JingleBells_43 (EF), Karate_42 (EF), Kate_44 (EF), Krampus_43 (EF), Lambo_63 (DV), LavAbarElk_65 (DV), Lila22_66 (DV), LuckyLeo_62 (DV), Marietta_68 (CR4), Mima20_66 (DV), MoiGyank_68 (DV), MontyDev_71 (R), MortySmith_41 (EF), NadineRae_67 (CR4), NarutoRun_43 (EF), Neptune_43 (EF), Nilo_71 (R), NorManre_69 (DV), NovaSharks_67 (DV), OtterstedtS21_65 (DV), OverHedge_43 (EF), Papyrus_69 (R), ParvusTarda_64 (DV), Patos_69 (DV), Pharpay_43 (EF), PhunaPhoke_43 (EF), Potty_43 (EF), Poultruss_42 (EF), Ranch_65 (DV), RazorC_65 (DV), Rie18_43 (EF), Riparian_71 (R), Rope_69 (R), Rumi_66 (DV), Sadboi_66 (DV), Sampudon_65 (DV), Send513_69 (R), SilentWarrior_43 (EF), Snakehole_43 (EF), Stormer_65 (DV), Sukkupi_67 (CR4), Tedro_43 (EF), Tillicus_61 (DV), Tongui_44 (EF), Weiss13_69 (R), WhoseManz_67 (CR4), Wojtek_61 (DV), Xenia2_63 (DV), Yelo_68 (R), Yikes_67 (DV), Yndexa_67 (CR4), Zany_63 (DV), Zenon_71 (R),

Start 62:

- Found in 17 of 340 (5.0%) of genes in pham
- Manual Annotations of this start: 17 of 309
- Called 100.0% of time when present
- Phage (with cluster) where this start called: Aledel_39 (AK), AustinPowers_39 (AK), Chridison_38 (AK), Daiboju_39 (AK), Eunoia_39 (AK), Herb_39 (AK), HunterDalle_39 (AK), KingBob_39 (AK), Maria1952_38 (AK), OMalley_39 (AK), PinkFriday_39 (AK), Pumancara_39 (AK), Riovina_39 (AK), Sergei_39 (AK), Supakev_39 (AK), Temper16_39 (AK), Vulture_39 (AK),

Start 63:

- Found in 8 of 340 (2.4%) of genes in pham
- Manual Annotations of this start: 7 of 309
- Called 100.0% of time when present
- Phage (with cluster) where this start called: Dryad_70 (BN), Gibson_66 (BN), Lizz_66 (BN), PHTowN_66 (BN), Rooney_66 (BN), ShakeNBake_66 (BN), Wentworth_66 (BN), Wilkos_68 (BN),

Start 64:

- Found in 7 of 340 (2.1%) of genes in pham
- Manual Annotations of this start: 3 of 309
- Called 71.4% of time when present
- Phage (with cluster) where this start called: Ajin_46 (EF), Bramble_47 (EF), Kors_47 (EF), Sparcetus_46 (EF), TinyMiny_46 (EF),

Start 65:

- Found in 19 of 340 (5.6%) of genes in pham
- Manual Annotations of this start: 10 of 309
- Called 52.6% of time when present
- Phage (with cluster) where this start called: C3PO_69 (EN), Cruella_69 (EN), Darwin_70 (EN), Kimchi1738_70 (EN), PeteyPab_68 (EN), PotatoChip_69 (EN), Stickynote_69 (EN), Wollypog_46 (singleton), Yara_62 (BN), Zion_69 (EN),

Start 67:

- Found in 13 of 340 (3.8%) of genes in pham
- Manual Annotations of this start: 1 of 309
- Called 7.7% of time when present
- Phage (with cluster) where this start called: Archimedes_34 (DA),

Start 68:

- Found in 51 of 340 (15.0%) of genes in pham
- Manual Annotations of this start: 3 of 309
- Called 7.8% of time when present
- Phage (with cluster) where this start called: Frizzle_31 (DA), Ghobes_32 (DA), LordBart_46 (EF), Rachella_43 (EF),

Start 69:

- Found in 2 of 340 (0.6%) of genes in pham
- Manual Annotations of this start: 2 of 309
- Called 100.0% of time when present
- Phage (with cluster) where this start called: Float294_67 (CR3), Skysand_68 (CR3),

Start 72:

- Found in 21 of 340 (6.2%) of genes in pham
- Manual Annotations of this start: 3 of 309
- Called 14.3% of time when present
- Phage (with cluster) where this start called: Gumball_57 (D1), KandZ_56 (D1), SirHarley_59 (D1),

Start 115:

- Found in 17 of 340 (5.0%) of genes in pham
- Manual Annotations of this start: 1 of 309
- Called 5.9% of time when present
- Phage (with cluster) where this start called: HubbaBubba_62 (CR4),

Start 116:

- Found in 13 of 340 (3.8%) of genes in pham
- Manual Annotations of this start: 1 of 309
- Called 15.4% of time when present
- Phage (with cluster) where this start called: GTE5_55 (CR1), Turuncu_69 (CR1),

Summary by clusters:

There are 29 clusters represented in this pham: singleton, BN, BH, DA, BQ, DV, AC, EN, AE, EJ, AK, EF, DG2, DG1, U, CR, UNK, EA7, CR2, CR3, CR1, CR6, CR4, CR5, H2, H1, R, D2, D1,

Info for manual annotations of cluster AC:

- Start number 57 was manually annotated 3 times for cluster AC.
- Start number 61 was manually annotated 1 time for cluster AC.

Info for manual annotations of cluster AE:

- Start number 56 was manually annotated 3 times for cluster AE.

Info for manual annotations of cluster AK:

- Start number 58 was manually annotated 66 times for cluster AK.
- Start number 62 was manually annotated 17 times for cluster AK.

Info for manual annotations of cluster BH:

- Start number 48 was manually annotated 1 time for cluster BH.
- Start number 52 was manually annotated 10 times for cluster BH.

Info for manual annotations of cluster BN:

- Start number 63 was manually annotated 7 times for cluster BN.
- Start number 65 was manually annotated 1 time for cluster BN.

Info for manual annotations of cluster BQ:

- Start number 44 was manually annotated 2 times for cluster BQ.
- Start number 45 was manually annotated 2 times for cluster BQ.

Info for manual annotations of cluster CR:

- Start number 57 was manually annotated 1 time for cluster CR.

Info for manual annotations of cluster CR1:

- Start number 60 was manually annotated 2 times for cluster CR1.
- Start number 116 was manually annotated 1 time for cluster CR1.

Info for manual annotations of cluster CR2:

- Start number 57 was manually annotated 12 times for cluster CR2.
- Start number 60 was manually annotated 8 times for cluster CR2.

Info for manual annotations of cluster CR3:

- Start number 51 was manually annotated 2 times for cluster CR3.
- Start number 55 was manually annotated 2 times for cluster CR3.
- Start number 69 was manually annotated 2 times for cluster CR3.

Info for manual annotations of cluster CR4:

- Start number 61 was manually annotated 7 times for cluster CR4.
- Start number 115 was manually annotated 1 time for cluster CR4.

Info for manual annotations of cluster CR5:

- Start number 55 was manually annotated 2 times for cluster CR5.

Info for manual annotations of cluster CR6:

- Start number 57 was manually annotated 6 times for cluster CR6.

Info for manual annotations of cluster D1:

- Start number 57 was manually annotated 18 times for cluster D1.
- Start number 72 was manually annotated 3 times for cluster D1.

Info for manual annotations of cluster D2:

- Start number 57 was manually annotated 1 time for cluster D2.

Info for manual annotations of cluster DA:

- Start number 27 was manually annotated 1 time for cluster DA.
- Start number 67 was manually annotated 1 time for cluster DA.
- Start number 68 was manually annotated 2 times for cluster DA.

Info for manual annotations of cluster DG1:

- Start number 34 was manually annotated 4 times for cluster DG1.
- Start number 57 was manually annotated 4 times for cluster DG1.

Info for manual annotations of cluster DG2:

- Start number 54 was manually annotated 1 time for cluster DG2.

Info for manual annotations of cluster DV:

- Start number 61 was manually annotated 30 times for cluster DV.

Info for manual annotations of cluster EA7:

- Start number 30 was manually annotated 1 time for cluster EA7.

Info for manual annotations of cluster EF:

- Start number 36 was manually annotated 1 time for cluster EF.
- Start number 61 was manually annotated 30 times for cluster EF.
- Start number 64 was manually annotated 3 times for cluster EF.
- Start number 68 was manually annotated 1 time for cluster EF.

Info for manual annotations of cluster EJ:

- Start number 30 was manually annotated 16 times for cluster EJ.

Info for manual annotations of cluster EN:

- Start number 65 was manually annotated 8 times for cluster EN.

Info for manual annotations of cluster H1:

- Start number 39 was manually annotated 1 time for cluster H1.
- Start number 44 was manually annotated 8 times for cluster H1.

Info for manual annotations of cluster H2:

- Start number 57 was manually annotated 2 times for cluster H2.

Info for manual annotations of cluster R:

- Start number 61 was manually annotated 9 times for cluster R.

Info for manual annotations of cluster U:

- Start number 52 was manually annotated 3 times for cluster U.

Gene Information:

Gene: Adjutor_56 Start: 43047, Stop: 44225, Start Num: 57

Candidate Starts for Adjutor_56:

(8, 42765), (12, 42795), (20, 42858), (Start: 57 @43047 has 47 MA's), (Start: 72 @43095 has 3 MA's), (78, 43134), (81, 43146), (103, 43245), (127, 43308), (138, 43362), (149, 43410), (172, 43476), (200, 43590), (203, 43617), (209, 43647), (221, 43692), (289, 43926), (305, 43992), (309, 44001), (313, 44010), (335, 44136), (349, 44217),

Gene: Aesir_42 Start: 28494, Stop: 29621, Start Num: 61

Candidate Starts for Aesir_42:

(4, 28101), (7, 28182), (Start: 61 @28494 has 77 MA's), (Start: 68 @28515 has 3 MA's), (118, 28725), (138, 28788), (161, 28884), (189, 28989), (221, 29139), (274, 29307), (293, 29373), (325, 29514), (333, 29571),

Gene: Aikoy_74 Start: 50610, Stop: 51827, Start Num: 56

Candidate Starts for Aikoy_74:

(Start: 56 @50610 has 3 MA's), (Start: 68 @50637 has 3 MA's), (77, 50691), (89, 50736), (102, 50802), (106, 50814), (125, 50874), (131, 50904), (132, 50907), (138, 50934), (144, 50961), (175, 51090), (198, 51210), (199, 51216), (217, 51306), (227, 51348), (231, 51366), (234, 51384), (261, 51447), (289, 51531), (309, 51606), (311, 51612), (313, 51615), (325, 51684), (327, 51693), (334, 51738), (342, 51795),

Gene: Ajin_46 Start: 29709, Stop: 30806, Start Num: 64

Candidate Starts for Ajin_46:

(Start: 36 @29655 has 1 MA's), (Start: 64 @29709 has 3 MA's), (66, 29712), (Start: 68 @29718 has 3 MA's), (118, 29928), (121, 29934), (135, 29979), (138, 29991), (153, 30054), (161, 30087), (189, 30192), (224, 30354), (274, 30489), (283, 30513), (327, 30705), (333, 30753),

Gene: Albanese_42 Start: 28164, Stop: 29111, Start Num: 58

Candidate Starts for Albanese_42:

(Start: 58 @28164 has 66 MA's), (93, 28311), (97, 28329), (103, 28353), (126, 28428), (145, 28509), (148, 28524), (152, 28536), (195, 28686), (212, 28755), (213, 28758), (292, 28992), (302, 29037), (304, 29040), (314, 29067), (315, 29070),

Gene: Aledel_39 Start: 27504, Stop: 28451, Start Num: 62

Candidate Starts for Aledel_39:

(Start: 62 @27504 has 17 MA's), (75, 27570), (97, 27669), (103, 27693), (124, 27759), (136, 27807), (141, 27831), (148, 27861), (153, 27879), (155, 27891), (177, 27933), (207, 28071), (212, 28092), (213, 28095), (284, 28302), (302, 28377), (304, 28380), (314, 28407), (315, 28410),

Gene: Alephilan_66 Start: 44039, Stop: 45202, Start Num: 61

Candidate Starts for Alephilan_66:

(Start: 61 @44039 has 77 MA's), (66, 44054), (92, 44183), (117, 44273), (118, 44276), (129, 44312), (138, 44345), (175, 44459), (183, 44486), (189, 44525), (190, 44540), (193, 44549), (199, 44570), (203, 44600), (206, 44615), (209, 44630), (221, 44675), (222, 44678), (235, 44753), (250, 44774), (263, 44813), (293, 44915), (305, 44969), (309, 44978), (313, 44987), (319, 45011), (332, 45104),

Gene: Alyssamiracle_68 Start: 43081, Stop: 44298, Start Num: 61

Candidate Starts for Alyssamiracle_68:

(Start: 61 @43081 has 77 MA's), (66, 43096), (92, 43225), (117, 43315), (118, 43318), (129, 43354), (138, 43387), (175, 43501), (183, 43528), (189, 43567), (190, 43582), (199, 43612), (203, 43642), (209, 43672), (222, 43720), (263, 43909), (305, 44065), (309, 44074), (313, 44083), (319, 44107), (327, 44161), (332, 44200), (349, 44290),

Gene: Anakin_43 Start: 28820, Stop: 29974, Start Num: 61

Candidate Starts for Anakin_43:

(4, 28421), (Start: 61 @28820 has 77 MA's), (Start: 68 @28841 has 3 MA's), (80, 28910), (118, 29051), (138, 29114), (161, 29210), (189, 29315), (221, 29465), (238, 29555), (251, 29591), (263, 29621), (293, 29726), (306, 29783), (325, 29867), (333, 29924),

Gene: AnnaSerena_43 Start: 28855, Stop: 30009, Start Num: 61

Candidate Starts for AnnaSerena_43:

(4, 28456), (Start: 61 @28855 has 77 MA's), (Start: 68 @28876 has 3 MA's), (80, 28945), (118, 29086), (138, 29149), (161, 29245), (189, 29350), (221, 29500), (238, 29590), (251, 29626), (263, 29656), (293, 29761), (306, 29818), (325, 29902), (333, 29959),

Gene: Annapurna_44 Start: 28123, Stop: 29250, Start Num: 61

Candidate Starts for Annapurna_44:

(4, 27730), (6, 27796), (7, 27811), (Start: 61 @28123 has 77 MA's), (Start: 68 @28144 has 3 MA's), (88, 28240), (118, 28354), (138, 28417), (161, 28513), (189, 28618), (221, 28768), (274, 28936), (293, 29002), (306, 29059), (325, 29143), (333, 29200),

Gene: Apeppi_60 Start: 43297, Stop: 44457, Start Num: 61

Candidate Starts for Apeppi_60:

(Start: 61 @43297 has 77 MA's), (66, 43312), (92, 43441), (117, 43531), (132, 43576), (138, 43603), (183, 43744), (190, 43795), (199, 43825), (203, 43855), (222, 43933), (234, 43993), (235, 44008), (245, 44029), (263, 44068), (264, 44074), (295, 44176), (305, 44224), (309, 44233), (319, 44266), (332, 44359), (349, 44449),

Gene: Apiary_67 Start: 50069, Stop: 48903, Start Num: 57

Candidate Starts for Apiary_67:

(21, 50207), (Start: 36 @50099 has 1 MA's), (Start: 57 @50069 has 47 MA's), (107, 49871), (138, 49748), (155, 49673), (183, 49610), (186, 49583), (204, 49490), (208, 49475), (212, 49451), (221, 49424), (222, 49421), (278, 49211), (290, 49163), (309, 49094), (311, 49088), (333, 48962),

Gene: AppleCider_41 Start: 27545, Stop: 28492, Start Num: 58

Candidate Starts for AppleCider_41:

(Start: 58 @27545 has 66 MA's), (92, 27689), (93, 27692), (96, 27707), (103, 27734), (123, 27797), (127, 27812), (138, 27860), (148, 27905), (152, 27917), (157, 27941), (195, 28067), (212, 28136), (213, 28139), (264, 28283), (284, 28343), (302, 28418), (304, 28421), (314, 28448), (315, 28451),

Gene: Araceli_50 Start: 35827, Stop: 36834, Start Num: 52

Candidate Starts for Araceli_50:

(9, 35590), (25, 35740), (Start: 52 @35827 has 13 MA's), (93, 35992), (101, 36022), (108, 36058), (128, 36133), (136, 36166), (141, 36190), (155, 36250), (178, 36280), (183, 36298), (184, 36301), (189, 36334), (196, 36370), (217, 36460), (236, 36556), (273, 36655), (277, 36667), (302, 36745), (314, 36778), (320, 36811),

Gene: Archimedes_34 Start: 31001, Stop: 30105, Start Num: 67

Candidate Starts for Archimedes_34:

(22, 31136), (26, 31091), (Start: 27 @31085 has 1 MA's), (28, 31076), (Start: 48 @31007 has 1 MA's), (50, 31004), (Start: 67 @31001 has 1 MA's), (92, 30872), (93, 30869), (105, 30821), (138, 30728),

(150, 30677), (157, 30647), (176, 30617), (183, 30593), (188, 30560), (207, 30476), (213, 30452), (243, 30404), (246, 30398), (302, 30227),

Gene: Arti_65 Start: 52065, Stop: 50866, Start Num: 57

Candidate Starts for Arti_65:

(Start: 57 @52065 has 47 MA's), (131, 51777), (132, 51774), (137, 51753), (138, 51747), (203, 51474), (205, 51462), (209, 51444), (218, 51411), (222, 51396), (238, 51309), (263, 51222), (276, 51180), (277, 51177), (293, 51120), (306, 51063), (307, 51060), (309, 51057), (313, 51048), (330, 50940), (336, 50916),

Gene: Artiphact_43 Start: 28844, Stop: 29998, Start Num: 61

Candidate Starts for Artiphact_43:

(4, 28445), (Start: 61 @28844 has 77 MA's), (Start: 68 @28865 has 3 MA's), (80, 28934), (118, 29075), (138, 29138), (161, 29234), (189, 29339), (221, 29489), (238, 29579), (251, 29615), (263, 29645), (293, 29750), (306, 29807), (325, 29891), (333, 29948),

Gene: Astralis_66 Start: 42660, Stop: 43877, Start Num: 61

Candidate Starts for Astralis_66:

(Start: 61 @42660 has 77 MA's), (66, 42675), (92, 42804), (117, 42894), (118, 42897), (129, 42933), (138, 42966), (175, 43080), (183, 43107), (189, 43146), (190, 43161), (199, 43191), (203, 43221), (209, 43251), (222, 43299), (263, 43488), (305, 43644), (309, 43653), (313, 43662), (319, 43686), (327, 43740), (332, 43779), (349, 43869),

Gene: AustinPowers_39 Start: 27502, Stop: 28449, Start Num: 62

Candidate Starts for AustinPowers_39:

(Start: 62 @27502 has 17 MA's), (75, 27568), (97, 27667), (103, 27691), (124, 27757), (136, 27805), (141, 27829), (148, 27859), (153, 27877), (155, 27889), (177, 27931), (207, 28069), (212, 28090), (213, 28093), (284, 28300), (302, 28375), (304, 28378), (314, 28405), (315, 28408),

Gene: Avian_64 Start: 42809, Stop: 44026, Start Num: 61

Candidate Starts for Avian_64:

(Start: 61 @42809 has 77 MA's), (66, 42824), (92, 42953), (117, 43043), (118, 43046), (129, 43082), (138, 43115), (175, 43229), (183, 43256), (189, 43295), (190, 43310), (199, 43340), (203, 43370), (209, 43400), (222, 43448), (263, 43637), (305, 43793), (309, 43802), (313, 43811), (319, 43835), (327, 43889), (332, 43928), (349, 44018),

Gene: Barnyard_72 Start: 49524, Stop: 50783, Start Num: 57

Candidate Starts for Barnyard_72:

(37, 49479), (38, 49482), (40, 49488), (Start: 57 @49524 has 47 MA's), (Start: 68 @49542 has 3 MA's), (81, 49614), (92, 49668), (135, 49833), (138, 49845), (149, 49899), (151, 49905), (177, 50010), (182, 50028), (189, 50073), (209, 50181), (237, 50316), (243, 50325), (252, 50358), (254, 50364), (256, 50370), (278, 50442), (309, 50559), (344, 50751), (349, 50775),

Gene: Beckerton_66 Start: 50602, Stop: 51891, Start Num: 44

Candidate Starts for Beckerton_66:

(31, 50563), (Start: 39 @50587 has 1 MA's), (Start: 44 @50602 has 10 MA's), (79, 50716), (84, 50734), (91, 50776), (137, 50950), (138, 50956), (149, 51007), (177, 51121), (182, 51139), (183, 51142), (185, 51157), (189, 51178), (214, 51310), (217, 51316), (255, 51454), (271, 51499), (278, 51517), (293, 51571), (307, 51631), (319, 51667), (333, 51763),

Gene: Beethoven_41 Start: 27476, Stop: 28423, Start Num: 58

Candidate Starts for Beethoven_41:

(Start: 58 @27476 has 66 MA's), (76, 27545), (90, 27608), (92, 27620), (93, 27623), (99, 27647), (127, 27743), (138, 27791), (145, 27821), (152, 27848), (181, 27920), (213, 28070), (217, 28079), (246, 28166), (264, 28214), (284, 28274), (302, 28349), (304, 28352), (314, 28379), (315, 28382),

Gene: Bennie_39 Start: 26287, Stop: 27234, Start Num: 58

Candidate Starts for Bennie_39:

(Start: 58 @26287 has 66 MA's), (90, 26419), (92, 26431), (93, 26434), (99, 26458), (127, 26554), (138, 26602), (152, 26659), (181, 26731), (183, 26740), (213, 26881), (217, 26890), (246, 26977), (284, 27085), (302, 27160), (304, 27163), (314, 27190), (315, 27193),

Gene: Benry_42 Start: 26004, Stop: 27011, Start Num: 30

Candidate Starts for Benry_42:

(Start: 30 @26004 has 17 MA's), (75, 26133), (93, 26214), (138, 26361), (196, 26568), (199, 26580), (215, 26643), (223, 26670), (225, 26676), (253, 26760), (257, 26775), (302, 26937),

Gene: Beyoncage_54 Start: 40427, Stop: 41632, Start Num: 34

Candidate Starts for Beyoncage_54:

(Start: 34 @40427 has 4 MA's), (Start: 57 @40487 has 47 MA's), (Start: 65 @40496 has 10 MA's), (99, 40634), (111, 40658), (154, 40811), (164, 40844), (217, 41090), (218, 41093), (219, 41099), (223, 41114), (261, 41234), (278, 41282), (285, 41312), (287, 41318), (296, 41348), (303, 41381), (309, 41399), (311, 41405), (327, 41486), (331, 41516), (333, 41528), (344, 41591),

Gene: BiPauneto_69 Start: 51654, Stop: 50455, Start Num: 61

Candidate Starts for BiPauneto_69:

(Start: 61 @51654 has 77 MA's), (Start: 115 @51435 has 1 MA's), (123, 51411), (130, 51375), (131, 51372), (132, 51369), (138, 51342), (142, 51324), (155, 51267), (203, 51069), (205, 51057), (222, 50991), (228, 50964), (238, 50904), (263, 50811), (267, 50796), (277, 50766), (278, 50763), (283, 50751), (293, 50709), (309, 50646), (313, 50637), (329, 50535), (330, 50529), (336, 50505),

Gene: BigMack_39 Start: 26387, Stop: 27334, Start Num: 58

Candidate Starts for BigMack_39:

(Start: 58 @26387 has 66 MA's), (74, 26444), (76, 26456), (90, 26519), (92, 26531), (93, 26534), (99, 26558), (127, 26654), (138, 26702), (145, 26732), (152, 26759), (181, 26831), (213, 26981), (217, 26990), (246, 27077), (264, 27125), (284, 27185), (302, 27260), (304, 27263), (314, 27290), (315, 27293),

Gene: BigMama_55 Start: 43123, Stop: 44301, Start Num: 57

Candidate Starts for BigMama_55:

(8, 42841), (12, 42871), (20, 42934), (Start: 57 @43123 has 47 MA's), (Start: 72 @43171 has 3 MA's), (78, 43210), (81, 43222), (103, 43321), (127, 43384), (138, 43438), (149, 43486), (172, 43552), (200, 43666), (203, 43693), (209, 43723), (221, 43768), (289, 44002), (305, 44068), (309, 44077), (313, 44086), (335, 44212), (349, 44293),

Gene: BirthdayBoy_67 Start: 44385, Stop: 45602, Start Num: 61

Candidate Starts for BirthdayBoy_67:

(Start: 61 @44385 has 77 MA's), (66, 44400), (92, 44529), (117, 44619), (118, 44622), (129, 44658), (138, 44691), (175, 44805), (183, 44832), (189, 44871), (190, 44886), (199, 44916), (203, 44946), (209, 44976), (222, 45024), (293, 45315), (305, 45369), (309, 45378), (313, 45387), (319, 45411), (332, 45504), (349, 45594),

Gene: BiteSize_54 Start: 40513, Stop: 41718, Start Num: 34

Candidate Starts for BiteSize_54:

(Start: 34 @40513 has 4 MA's), (Start: 57 @40573 has 47 MA's), (Start: 65 @40582 has 10 MA's), (99, 40720), (111, 40744), (154, 40897), (164, 40930), (217, 41176), (218, 41179), (219, 41185), (223, 41200), (261, 41320), (278, 41368), (285, 41398), (287, 41404), (296, 41434), (303, 41467), (309, 41485), (311, 41491), (327, 41572), (331, 41602), (333, 41614), (344, 41677),

Gene: Bodacious_39 Start: 26343, Stop: 27293, Start Num: 58

Candidate Starts for Bodacious_39:

(Start: 58 @26343 has 66 MA's), (70, 26376), (76, 26412), (90, 26475), (92, 26487), (93, 26490), (99, 26514), (127, 26610), (138, 26658), (141, 26673), (152, 26715), (157, 26739), (181, 26787), (207, 26913), (212, 26937), (213, 26940), (217, 26949), (264, 27084), (284, 27144), (302, 27219), (304, 27222), (314, 27249), (315, 27252),

Gene: Bogota_51 Start: 36181, Stop: 37179, Start Num: 52

Candidate Starts for Bogota_51:

(3, 35788), (9, 35944), (19, 36022), (Start: 48 @36175 has 1 MA's), (Start: 52 @36181 has 13 MA's), (93, 36346), (99, 36370), (128, 36478), (136, 36511), (141, 36535), (155, 36595), (178, 36625), (180, 36631), (183, 36643), (184, 36646), (186, 36670), (189, 36679), (196, 36715), (217, 36805), (236, 36901), (273, 37000), (277, 37012), (320, 37156),

Gene: Bonum_70 Start: 52948, Stop: 51740, Start Num: 60

Candidate Starts for Bonum_70:

(Start: 60 @52948 has 10 MA's), (Start: 115 @52726 has 1 MA's), (123, 52702), (127, 52687), (131, 52663), (132, 52660), (138, 52633), (155, 52558), (186, 52441), (205, 52345), (222, 52279), (241, 52168), (256, 52120), (263, 52099), (276, 52057), (283, 52039), (293, 51997), (305, 51943), (309, 51934), (313, 51925), (330, 51817),

Gene: Bramble_47 Start: 29758, Stop: 30855, Start Num: 64

Candidate Starts for Bramble_47:

(Start: 36 @29704 has 1 MA's), (Start: 64 @29758 has 3 MA's), (66, 29761), (Start: 68 @29767 has 3 MA's), (118, 29977), (121, 29983), (135, 30028), (138, 30040), (153, 30103), (161, 30136), (189, 30241), (224, 30403), (274, 30538), (283, 30562), (327, 30754), (333, 30802),

Gene: Braxoaddie_67 Start: 50055, Stop: 48892, Start Num: 57

Candidate Starts for Braxoaddie_67:

(21, 50193), (Start: 36 @50085 has 1 MA's), (Start: 57 @50055 has 47 MA's), (107, 49857), (138, 49734), (140, 49722), (183, 49596), (186, 49569), (222, 49407), (254, 49263), (270, 49224), (278, 49200), (309, 49083), (311, 49077), (333, 48951),

Gene: BrotherBLo_41 Start: 27508, Stop: 28455, Start Num: 58

Candidate Starts for BrotherBLo_41:

(Start: 58 @27508 has 66 MA's), (76, 27577), (90, 27640), (92, 27652), (93, 27655), (99, 27679), (127, 27775), (138, 27823), (145, 27853), (152, 27880), (181, 27952), (213, 28102), (217, 28111), (246, 28198), (264, 28246), (284, 28306), (302, 28381), (304, 28384), (314, 28411), (315, 28414),

Gene: Buggaboo_68 Start: 53499, Stop: 52291, Start Num: 60

Candidate Starts for Buggaboo_68:

(Start: 60 @53499 has 10 MA's), (Start: 115 @53277 has 1 MA's), (123, 53253), (131, 53214), (132, 53211), (138, 53184), (142, 53166), (155, 53109), (205, 52896), (222, 52830), (241, 52719), (256, 52671), (283, 52590), (293, 52548), (305, 52494), (309, 52485), (313, 52476), (330, 52368),

Gene: Butterscotch_56 Start: 43107, Stop: 44285, Start Num: 57

Candidate Starts for Butterscotch_56:

(8, 42825), (12, 42855), (20, 42918), (Start: 57 @43107 has 47 MA's), (Start: 72 @43155 has 3 MA's), (78, 43194), (81, 43206), (103, 43305), (127, 43368), (138, 43422), (149, 43470), (172, 43536), (200, 43650), (203, 43677), (209, 43707), (221, 43752), (289, 43986), (305, 44052), (309, 44061), (313, 44070), (335, 44196), (349, 44277),

Gene: C3PO_69 Start: 50533, Stop: 49421, Start Num: 65

Candidate Starts for C3PO_69:

(Start: 65 @50533 has 10 MA's), (91, 50398), (107, 50347), (127, 50284), (138, 50233), (147, 50191), (155, 50158), (178, 50095), (181, 50086), (183, 50077), (189, 50041), (199, 49987), (235, 49804), (301, 49615), (309, 49594), (318, 49564), (328, 49492), (331, 49477), (332, 49468),

Gene: CallieOMalley_41 Start: 27545, Stop: 28492, Start Num: 58

Candidate Starts for CallieOMalley_41:

(Start: 58 @27545 has 66 MA's), (92, 27689), (93, 27692), (96, 27707), (103, 27734), (123, 27797), (127, 27812), (138, 27860), (148, 27905), (152, 27917), (157, 27941), (195, 28067), (212, 28136), (213, 28139), (264, 28283), (284, 28343), (302, 28418), (304, 28421), (314, 28448), (315, 28451),

Gene: Candle_67 Start: 51720, Stop: 52889, Start Num: 61

Candidate Starts for Candle_67:

(Start: 61 @51720 has 77 MA's), (66, 51735), (74, 51777), (81, 51810), (134, 52011), (138, 52026), (175, 52158), (189, 52221), (190, 52236), (209, 52326), (216, 52353), (274, 52554), (276, 52560), (278, 52566), (306, 52677), (309, 52683), (333, 52815), (343, 52875),

Gene: Canowicakte_41 Start: 27580, Stop: 28527, Start Num: 58

Candidate Starts for Canowicakte_41:

(Start: 58 @27580 has 66 MA's), (92, 27724), (93, 27727), (96, 27742), (103, 27769), (123, 27832), (127, 27847), (138, 27895), (148, 27940), (152, 27952), (157, 27976), (195, 28102), (212, 28171), (213, 28174), (264, 28318), (284, 28378), (302, 28453), (304, 28456), (314, 28483), (315, 28486),

Gene: Carpal_41 Start: 27488, Stop: 28435, Start Num: 58

Candidate Starts for Carpal_41:

(Start: 58 @27488 has 66 MA's), (76, 27557), (90, 27620), (92, 27632), (93, 27635), (99, 27659), (127, 27755), (138, 27803), (145, 27833), (152, 27860), (181, 27932), (213, 28082), (217, 28091), (246, 28178), (264, 28226), (284, 28286), (302, 28361), (304, 28364), (314, 28391), (315, 28394),

Gene: Cborch11_69 Start: 50121, Stop: 51410, Start Num: 44

Candidate Starts for Cborch11_69:

(31, 50082), (Start: 39 @50106 has 1 MA's), (Start: 44 @50121 has 10 MA's), (79, 50235), (81, 50244), (84, 50253), (91, 50295), (137, 50469), (138, 50475), (149, 50526), (177, 50640), (182, 50658), (183, 50661), (185, 50676), (189, 50697), (214, 50829), (217, 50835), (271, 51018), (278, 51036), (287, 51072), (293, 51090), (307, 51150), (319, 51186), (333, 51282),

Gene: ChewChew_39 Start: 26335, Stop: 27285, Start Num: 58

Candidate Starts for ChewChew_39:

(Start: 58 @26335 has 66 MA's), (90, 26467), (92, 26479), (93, 26482), (99, 26506), (127, 26602), (138, 26650), (152, 26707), (157, 26731), (179, 26773), (181, 26779), (207, 26905), (212, 26929), (213, 26932), (217, 26941), (264, 27076), (284, 27136), (302, 27211), (314, 27241), (315, 27244),

Gene: ChewyVIII_80 Start: 59181, Stop: 57982, Start Num: 43

Candidate Starts for ChewyVIII_80:

(16, 59355), (Start: 43 @59181 has 1 MA's), (Start: 56 @59148 has 3 MA's), (77, 59064), (132, 58863), (137, 58842), (138, 58836), (140, 58824), (155, 58761), (180, 58707), (183, 58695), (188, 58662), (199, 58614), (237, 58422), (267, 58314), (269, 58308), (293, 58227), (322, 58095), (324, 58089),

(325, 58086), (340, 57990),

Gene: Chill_59 Start: 43170, Stop: 44348, Start Num: 57

Candidate Starts for Chill_59:

(8, 42888), (12, 42918), (20, 42981), (Start: 57 @43170 has 47 MA's), (Start: 72 @43218 has 3 MA's), (78, 43257), (81, 43269), (103, 43368), (127, 43431), (138, 43485), (149, 43533), (172, 43599), (200, 43713), (203, 43740), (209, 43770), (221, 43815), (289, 44049), (305, 44115), (309, 44124), (313, 44133), (335, 44259), (349, 44340),

Gene: Chivey_43 Start: 28072, Stop: 29199, Start Num: 61

Candidate Starts for Chivey_43:

(4, 27679), (6, 27745), (7, 27760), (Start: 61 @28072 has 77 MA's), (Start: 68 @28093 has 3 MA's), (88, 28189), (118, 28303), (138, 28366), (161, 28462), (189, 28567), (221, 28717), (274, 28885), (293, 28951), (306, 29008), (325, 29092), (333, 29149),

Gene: Cholula_41 Start: 27534, Stop: 28481, Start Num: 58

Candidate Starts for Cholula_41:

(Start: 58 @27534 has 66 MA's), (76, 27603), (90, 27666), (92, 27678), (93, 27681), (99, 27705), (127, 27801), (138, 27849), (145, 27879), (152, 27906), (181, 27978), (213, 28128), (217, 28137), (246, 28224), (264, 28272), (284, 28332), (302, 28407), (304, 28410), (314, 28437), (315, 28440),

Gene: Chridison_38 Start: 27433, Stop: 28383, Start Num: 62

Candidate Starts for Chridison_38:

(33, 27379), (Start: 62 @27433 has 17 MA's), (93, 27580), (97, 27598), (124, 27688), (136, 27739), (145, 27778), (148, 27793), (153, 27811), (179, 27871), (201, 27988), (212, 28027), (217, 28039), (246, 28126), (264, 28174), (284, 28234), (302, 28309), (304, 28312), (314, 28339), (315, 28342),

Gene: Christian_39 Start: 26331, Stop: 27281, Start Num: 58

Candidate Starts for Christian_39:

(Start: 58 @26331 has 66 MA's), (90, 26463), (92, 26475), (93, 26478), (99, 26502), (127, 26598), (138, 26646), (152, 26703), (157, 26727), (181, 26775), (207, 26901), (212, 26925), (213, 26928), (217, 26937), (264, 27072), (284, 27132), (302, 27207), (314, 27237), (315, 27240),

Gene: Cicada_44 Start: 27802, Stop: 28815, Start Num: 30

Candidate Starts for Cicada_44:

(Start: 30 @27802 has 17 MA's), (93, 28012), (112, 28081), (138, 28165), (152, 28222), (183, 28300), (195, 28369), (196, 28372), (215, 28447), (223, 28474), (257, 28579), (273, 28630), (286, 28678), (302, 28741),

Gene: CoffeeBean_67 Start: 50013, Stop: 48850, Start Num: 57

Candidate Starts for CoffeeBean_67:

(21, 50151), (Start: 36 @50043 has 1 MA's), (Start: 57 @50013 has 47 MA's), (107, 49815), (138, 49692), (140, 49680), (183, 49554), (186, 49527), (222, 49365), (254, 49221), (270, 49182), (278, 49158), (309, 49041), (311, 49035), (333, 48909),

Gene: Commandaria_67 Start: 53320, Stop: 52109, Start Num: 57

Candidate Starts for Commandaria_67:

(Start: 57 @53320 has 47 MA's), (100, 53140), (Start: 115 @53092 has 1 MA's), (138, 52999), (169, 52876), (172, 52867), (203, 52726), (205, 52714), (222, 52648), (277, 52420), (283, 52405), (293, 52363), (305, 52309), (307, 52303), (309, 52300), (313, 52291), (317, 52276), (330, 52183), (336, 52159),

Gene: CoolCookie_43 Start: 28850, Stop: 30004, Start Num: 61

Candidate Starts for CoolCookie_43:

(4, 28451), (Start: 61 @28850 has 77 MA's), (Start: 68 @28871 has 3 MA's), (118, 29081), (138, 29144), (161, 29240), (189, 29345), (221, 29495), (238, 29585), (251, 29621), (263, 29651), (293, 29756), (306, 29813), (325, 29897), (333, 29954),

Gene: Crestdrop_43 Start: 28106, Stop: 29230, Start Num: 61

Candidate Starts for Crestdrop_43:

(4, 27713), (6, 27779), (7, 27794), (Start: 61 @28106 has 77 MA's), (Start: 68 @28127 has 3 MA's), (118, 28337), (138, 28400), (161, 28496), (189, 28601), (221, 28751), (263, 28880), (293, 28982), (325, 29123), (333, 29180),

Gene: CristinaYang_39 Start: 26331, Stop: 27281, Start Num: 58

Candidate Starts for CristinaYang_39:

(Start: 58 @26331 has 66 MA's), (90, 26463), (92, 26475), (93, 26478), (99, 26502), (127, 26598), (138, 26646), (152, 26703), (157, 26727), (179, 26769), (181, 26775), (207, 26901), (212, 26925), (213, 26928), (217, 26937), (264, 27072), (284, 27132), (302, 27207), (314, 27237), (315, 27240),

Gene: Crosby_51 Start: 35943, Stop: 36941, Start Num: 52

Candidate Starts for Crosby_51:

(9, 35706), (13, 35733), (19, 35784), (Start: 48 @35937 has 1 MA's), (Start: 52 @35943 has 13 MA's), (93, 36108), (99, 36132), (128, 36240), (136, 36273), (141, 36297), (155, 36357), (178, 36387), (180, 36393), (183, 36405), (184, 36408), (189, 36441), (196, 36477), (217, 36567), (236, 36663), (265, 36735), (277, 36774), (320, 36918),

Gene: Cruella_69 Start: 50533, Stop: 49421, Start Num: 65

Candidate Starts for Cruella_69:

(Start: 65 @50533 has 10 MA's), (91, 50398), (107, 50347), (127, 50284), (138, 50233), (147, 50191), (155, 50158), (178, 50095), (181, 50086), (183, 50077), (189, 50041), (199, 49987), (235, 49804), (301, 49615), (309, 49594), (318, 49564), (328, 49492), (331, 49477), (332, 49468),

Gene: Cuke_76 Start: 45241, Stop: 46281, Start Num: 57

Candidate Starts for Cuke_76:

(Start: 57 @45241 has 47 MA's), (Start: 61 @45250 has 77 MA's), (66, 45265), (71, 45286), (88, 45367), (Start: 116 @45475 has 1 MA's), (129, 45526), (139, 45565), (141, 45577), (152, 45619), (182, 45700), (190, 45757), (202, 45811), (209, 45847), (217, 45877), (281, 45961), (293, 46003), (309, 46066), (318, 46096), (332, 46195), (341, 46249),

Gene: Cybele_43 Start: 28820, Stop: 29974, Start Num: 61

Candidate Starts for Cybele_43:

(4, 28421), (Start: 61 @28820 has 77 MA's), (Start: 68 @28841 has 3 MA's), (118, 29051), (138, 29114), (161, 29210), (189, 29315), (221, 29465), (238, 29555), (251, 29591), (263, 29621), (293, 29726), (306, 29783), (325, 29867), (333, 29924),

Gene: Daiboju_39 Start: 27511, Stop: 28464, Start Num: 62

Candidate Starts for Daiboju_39:

(Start: 62 @27511 has 17 MA's), (74, 27568), (93, 27658), (97, 27676), (124, 27766), (136, 27817), (145, 27856), (148, 27871), (153, 27889), (155, 27901), (179, 27949), (201, 28066), (212, 28105), (217, 28117), (284, 28315), (302, 28390), (314, 28420), (315, 28423),

Gene: Dalilpop_70 Start: 54174, Stop: 52993, Start Num: 60

Candidate Starts for Dalilpop_70:

(Start: 60 @54174 has 10 MA's), (Start: 116 @53949 has 1 MA's), (124, 53925), (131, 53889), (138, 53859), (149, 53811), (172, 53748), (209, 53577), (222, 53529), (235, 53454), (238, 53442), (256,

53370), (278, 53301), (309, 53184), (313, 53175), (317, 53160), (336, 53043),

Gene: Damien_67 Start: 50083, Stop: 51372, Start Num: 44

Candidate Starts for Damien_67:

(31, 50044), (Start: 39 @50068 has 1 MA's), (Start: 44 @50083 has 10 MA's), (79, 50197), (84, 50215), (91, 50257), (137, 50431), (138, 50437), (149, 50488), (177, 50602), (182, 50620), (183, 50623), (185, 50638), (189, 50659), (214, 50791), (217, 50797), (255, 50935), (271, 50980), (278, 50998), (293, 51052), (307, 51112), (319, 51148), (333, 51244),

Gene: DannyDe_43 Start: 28078, Stop: 29205, Start Num: 61

Candidate Starts for DannyDe_43:

(4, 27685), (6, 27751), (7, 27766), (Start: 61 @28078 has 77 MA's), (Start: 68 @28099 has 3 MA's), (88, 28195), (118, 28309), (138, 28372), (161, 28468), (189, 28573), (221, 28723), (274, 28891), (293, 28957), (306, 29014), (325, 29098), (333, 29155),

Gene: Darwin_70 Start: 49774, Stop: 48662, Start Num: 65

Candidate Starts for Darwin_70:

(Start: 65 @49774 has 10 MA's), (107, 49588), (138, 49474), (147, 49432), (155, 49399), (178, 49336), (181, 49327), (183, 49318), (189, 49282), (199, 49228), (235, 49045), (301, 48856), (309, 48835), (318, 48805), (328, 48733), (331, 48718), (332, 48709),

Gene: Dauntless_42 Start: 28400, Stop: 29557, Start Num: 61

Candidate Starts for Dauntless_42:

(4, 28007), (7, 28088), (Start: 61 @28400 has 77 MA's), (Start: 68 @28421 has 3 MA's), (118, 28631), (138, 28694), (161, 28790), (189, 28895), (221, 29045), (272, 29237), (274, 29243), (293, 29309), (325, 29450), (333, 29507),

Gene: DaviePasture_65 Start: 43993, Stop: 45210, Start Num: 61

Candidate Starts for DaviePasture_65:

(Start: 61 @43993 has 77 MA's), (66, 44008), (92, 44137), (117, 44227), (118, 44230), (129, 44266), (138, 44299), (175, 44413), (183, 44440), (189, 44479), (190, 44494), (199, 44524), (203, 44554), (209, 44584), (222, 44632), (293, 44923), (305, 44977), (309, 44986), (313, 44995), (319, 45019), (332, 45112), (349, 45202),

Gene: Delton_58 Start: 43505, Stop: 44683, Start Num: 57

Candidate Starts for Delton_58:

(8, 43223), (12, 43253), (20, 43316), (Start: 57 @43505 has 47 MA's), (Start: 72 @43553 has 3 MA's), (78, 43592), (81, 43604), (103, 43703), (127, 43766), (138, 43820), (149, 43868), (172, 43934), (200, 44048), (203, 44075), (209, 44105), (221, 44150), (289, 44384), (305, 44450), (309, 44459), (313, 44468), (335, 44594), (349, 44675),

Gene: Dino_42 Start: 27635, Stop: 28582, Start Num: 58

Candidate Starts for Dino_42:

(Start: 58 @27635 has 66 MA's), (90, 27767), (92, 27779), (93, 27782), (99, 27806), (127, 27902), (138, 27950), (145, 27980), (152, 28007), (181, 28079), (213, 28229), (217, 28238), (246, 28325), (264, 28373), (284, 28433), (302, 28508), (314, 28538), (315, 28541),

Gene: Djokovic_54 Start: 40486, Stop: 41631, Start Num: 57

Candidate Starts for Djokovic_54:

(Start: 34 @40426 has 4 MA's), (Start: 57 @40486 has 47 MA's), (Start: 65 @40495 has 10 MA's), (99, 40633), (111, 40657), (154, 40810), (164, 40843), (217, 41089), (218, 41092), (219, 41098), (223, 41113), (261, 41233), (278, 41281), (285, 41311), (287, 41317), (296, 41347), (303, 41380), (309, 41398), (311, 41404), (327, 41485), (331, 41515), (333, 41527), (344, 41590),

Gene: DoobyDoo_64 Start: 43023, Stop: 44186, Start Num: 61

Candidate Starts for DoobyDoo_64:

(Start: 61 @43023 has 77 MA's), (66, 43038), (92, 43167), (117, 43257), (118, 43260), (129, 43296), (138, 43329), (175, 43443), (183, 43470), (189, 43509), (190, 43524), (199, 43554), (203, 43584), (209, 43614), (222, 43662), (263, 43797), (293, 43899), (305, 43953), (309, 43962), (313, 43971), (319, 43995), (332, 44088), (349, 44178),

Gene: DrLupo_75 Start: 50706, Stop: 51980, Start Num: 57

Candidate Starts for DrLupo_75:

(Start: 57 @50706 has 47 MA's), (66, 50730), (92, 50859), (135, 51027), (138, 51039), (149, 51093), (151, 51099), (159, 51132), (165, 51153), (168, 51177), (170, 51183), (182, 51228), (184, 51234), (187, 51267), (188, 51270), (189, 51273), (209, 51381), (237, 51516), (243, 51525), (254, 51564), (256, 51570), (266, 51600), (268, 51606), (278, 51639), (279, 51642), (293, 51693), (297, 51717), (300, 51726), (309, 51756), (333, 51885), (336, 51894), (344, 51948), (349, 51972),

Gene: DrRobert_38 Start: 26111, Stop: 27061, Start Num: 58

Candidate Starts for DrRobert_38:

(Start: 58 @26111 has 66 MA's), (76, 26180), (90, 26243), (92, 26255), (93, 26258), (96, 26273), (97, 26276), (99, 26282), (127, 26378), (138, 26426), (141, 26441), (152, 26483), (157, 26507), (177, 26543), (179, 26549), (181, 26555), (207, 26681), (212, 26705), (213, 26708), (217, 26717), (264, 26852), (284, 26912), (302, 26987), (304, 26990), (314, 27017), (315, 27020),

Gene: DreamTeam_39 Start: 26441, Stop: 27388, Start Num: 58

Candidate Starts for DreamTeam_39:

(Start: 58 @26441 has 66 MA's), (76, 26510), (90, 26573), (92, 26585), (93, 26588), (99, 26612), (127, 26708), (138, 26756), (152, 26813), (155, 26831), (177, 26873), (181, 26885), (264, 27179), (284, 27239), (302, 27314), (304, 27317), (314, 27344), (315, 27347),

Gene: Dryad_70 Start: 48069, Stop: 47071, Start Num: 63

Candidate Starts for Dryad_70:

(53, 48093), (Start: 63 @48069 has 7 MA's), (Start: 67 @48057 has 1 MA's), (80, 47985), (83, 47976), (138, 47778), (139, 47775), (183, 47619), (189, 47583), (203, 47508), (205, 47496), (221, 47433), (224, 47421), (283, 47364), (289, 47334), (299, 47292), (306, 47265), (309, 47259), (313, 47250), (325, 47178), (326, 47172),

Gene: DumpTruck_64 Start: 42784, Stop: 43998, Start Num: 61

Candidate Starts for DumpTruck_64:

(49, 42760), (Start: 61 @42784 has 77 MA's), (66, 42796), (117, 43015), (118, 43018), (132, 43060), (138, 43087), (141, 43102), (183, 43228), (190, 43282), (199, 43312), (203, 43342), (220, 43414), (239, 43513), (249, 43561), (252, 43576), (291, 43708), (305, 43765), (309, 43774), (313, 43783), (319, 43807), (332, 43900), (345, 43969), (349, 43990),

Gene: Emianna_66 Start: 53297, Stop: 52098, Start Num: 57

Candidate Starts for Emianna_66:

(Start: 57 @53297 has 47 MA's), (131, 53009), (132, 53006), (137, 52985), (138, 52979), (203, 52706), (205, 52694), (209, 52676), (218, 52643), (222, 52628), (238, 52541), (263, 52454), (267, 52439), (277, 52409), (278, 52406), (293, 52352), (306, 52295), (307, 52292), (309, 52289), (313, 52280), (330, 52172), (336, 52148),

Gene: Ennea_73 Start: 54279, Stop: 53080, Start Num: 51

Candidate Starts for Ennea_73:

(Start: 51 @54279 has 2 MA's), (Start: 55 @54270 has 4 MA's), (103, 54072), (130, 53979), (131, 53976), (132, 53973), (138, 53946), (142, 53928), (155, 53871), (205, 53676), (206, 53673), (209, 53658), (222, 53610), (244, 53496), (249, 53484), (263, 53436), (278, 53388), (293, 53334), (309, 53271), (313, 53262), (332, 53142),

Gene: Erk16_56 Start: 43209, Stop: 44387, Start Num: 57

Candidate Starts for Erk16_56:

(8, 42927), (12, 42957), (20, 43020), (Start: 57 @43209 has 47 MA's), (Start: 72 @43257 has 3 MA's), (78, 43296), (81, 43308), (103, 43407), (127, 43470), (138, 43524), (149, 43572), (172, 43638), (200, 43752), (203, 43779), (209, 43809), (221, 43854), (289, 44088), (305, 44154), (309, 44163), (313, 44172), (335, 44298), (349, 44379),

Gene: Erudite_42 Start: 28400, Stop: 29557, Start Num: 61

Candidate Starts for Erudite_42:

(4, 28007), (7, 28088), (Start: 61 @28400 has 77 MA's), (Start: 68 @28421 has 3 MA's), (118, 28631), (138, 28694), (161, 28790), (189, 28895), (221, 29045), (272, 29237), (274, 29243), (293, 29309), (325, 29450), (333, 29507),

Gene: Erutan_65 Start: 43665, Stop: 44828, Start Num: 61

Candidate Starts for Erutan_65:

(Start: 61 @43665 has 77 MA's), (66, 43680), (92, 43809), (117, 43899), (118, 43902), (129, 43938), (138, 43971), (175, 44085), (183, 44112), (189, 44151), (190, 44166), (199, 44196), (203, 44226), (209, 44256), (222, 44304), (263, 44439), (293, 44541), (305, 44595), (309, 44604), (313, 44613), (319, 44637), (332, 44730), (349, 44820),

Gene: EstebanJulior_40 Start: 27489, Stop: 28439, Start Num: 58

Candidate Starts for EstebanJulior_40:

(Start: 58 @27489 has 66 MA's), (90, 27621), (93, 27636), (96, 27651), (99, 27660), (127, 27756), (138, 27804), (141, 27819), (152, 27861), (157, 27885), (181, 27933), (183, 27942), (207, 28059), (213, 28086), (217, 28095), (284, 28290), (286, 28302), (302, 28365), (304, 28368), (314, 28395), (315, 28398),

Gene: Eunoia_39 Start: 27504, Stop: 28451, Start Num: 62

Candidate Starts for Eunoia_39:

(Start: 62 @27504 has 17 MA's), (75, 27570), (97, 27669), (103, 27693), (124, 27759), (136, 27807), (141, 27831), (148, 27861), (153, 27879), (155, 27891), (177, 27933), (207, 28071), (212, 28092), (213, 28095), (284, 28302), (302, 28377), (304, 28380), (314, 28407), (315, 28410),

Gene: FireCastle_42 Start: 27533, Stop: 28546, Start Num: 30

Candidate Starts for FireCastle_42:

(Start: 30 @27533 has 17 MA's), (Start: 68 @27614 has 3 MA's), (92, 27740), (93, 27743), (112, 27812), (119, 27836), (138, 27896), (141, 27911), (152, 27953), (183, 28031), (195, 28100), (196, 28103), (199, 28115), (211, 28169), (223, 28205), (225, 28211), (253, 28295), (257, 28310), (273, 28361), (286, 28409), (298, 28457), (302, 28472),

Gene: Flapper_69 Start: 53365, Stop: 52184, Start Num: 60

Candidate Starts for Flapper_69:

(Start: 60 @53365 has 10 MA's), (Start: 116 @53140 has 1 MA's), (124, 53116), (131, 53080), (138, 53050), (149, 53002), (172, 52939), (209, 52768), (222, 52720), (238, 52633), (241, 52609), (256, 52561), (278, 52492), (309, 52375), (313, 52366), (317, 52351), (336, 52234),

Gene: Float294_67 Start: 53958, Stop: 52795, Start Num: 69

Candidate Starts for Float294_67:

(Start: 69 @53958 has 2 MA's), (103, 53787), (130, 53694), (131, 53691), (132, 53688), (138, 53661), (142, 53643), (155, 53586), (205, 53391), (206, 53388), (209, 53373), (222, 53325), (244, 53211), (249, 53199), (263, 53151), (278, 53103), (293, 53049), (309, 52986), (313, 52977), (332, 52857),

Gene: Fluke_42 Start: 27751, Stop: 28698, Start Num: 58

Candidate Starts for Fluke_42:

(Start: 58 @27751 has 66 MA's), (76, 27820), (90, 27883), (92, 27895), (93, 27898), (99, 27922), (127, 28018), (138, 28066), (145, 28096), (152, 28123), (181, 28195), (213, 28345), (217, 28354), (246, 28441), (264, 28489), (284, 28549), (302, 28624), (304, 28627), (314, 28654), (315, 28657),

Gene: Fowlmouth_77 Start: 47770, Stop: 48810, Start Num: 57

Candidate Starts for Fowlmouth_77:

(41, 47731), (Start: 57 @47770 has 47 MA's), (Start: 61 @47779 has 77 MA's), (66, 47794), (71, 47815), (88, 47896), (Start: 116 @48004 has 1 MA's), (129, 48055), (139, 48094), (149, 48139), (152, 48148), (186, 48262), (190, 48286), (213, 48397), (281, 48490), (293, 48532), (309, 48595), (318, 48625), (332, 48724),

Gene: Foxboro_67 Start: 53822, Stop: 52623, Start Num: 57

Candidate Starts for Foxboro_67:

(Start: 57 @53822 has 47 MA's), (131, 53534), (132, 53531), (137, 53510), (138, 53504), (203, 53231), (205, 53219), (209, 53201), (218, 53168), (222, 53153), (238, 53066), (263, 52979), (267, 52964), (277, 52934), (278, 52931), (293, 52877), (306, 52820), (307, 52817), (309, 52814), (313, 52805), (330, 52697), (336, 52673),

Gene: FreddieHg_43 Start: 28088, Stop: 29215, Start Num: 61

Candidate Starts for FreddieHg_43:

(4, 27695), (6, 27761), (7, 27776), (Start: 61 @28088 has 77 MA's), (Start: 68 @28109 has 3 MA's), (88, 28205), (118, 28319), (138, 28382), (161, 28478), (189, 28583), (221, 28733), (274, 28901), (293, 28967), (306, 29024), (325, 29108), (333, 29165),

Gene: Frizzle_31 Start: 30097, Stop: 29171, Start Num: 68

Candidate Starts for Frizzle_31:

(Start: 27 @30205 has 1 MA's), (66, 30103), (Start: 67 @30100 has 1 MA's), (Start: 68 @30097 has 3 MA's), (86, 30010), (103, 29926), (105, 29920), (114, 29893), (157, 29746), (171, 29725), (173, 29719), (181, 29701), (183, 29692), (198, 29614), (199, 29608), (210, 29566), (212, 29554), (243, 29503), (246, 29497), (308, 29308), (323, 29227), (324, 29224), (329, 29185),

Gene: Fulcrum_65 Start: 43693, Stop: 44910, Start Num: 61

Candidate Starts for Fulcrum_65:

(Start: 61 @43693 has 77 MA's), (66, 43708), (92, 43837), (117, 43927), (118, 43930), (129, 43966), (138, 43999), (175, 44113), (183, 44140), (189, 44179), (190, 44194), (199, 44224), (203, 44254), (209, 44284), (220, 44326), (222, 44332), (293, 44623), (305, 44677), (309, 44686), (313, 44695), (319, 44719), (332, 44812), (349, 44902),

Gene: Fury_75 Start: 52498, Stop: 51308, Start Num: 55

Candidate Starts for Fury_75:

(5, 52828), (15, 52726), (Start: 55 @52498 has 4 MA's), (66, 52471), (87, 52378), (118, 52255), (123, 52243), (132, 52201), (138, 52174), (139, 52171), (222, 51841), (238, 51754), (263, 51661), (278, 51613), (309, 51496), (318, 51466), (326, 51409), (330, 51379), (336, 51355),

Gene: GOATification_65 Start: 43693, Stop: 44910, Start Num: 61

Candidate Starts for GOATification_65:

(Start: 61 @43693 has 77 MA's), (66, 43708), (92, 43837), (117, 43927), (118, 43930), (129, 43966), (138, 43999), (175, 44113), (183, 44140), (189, 44179), (190, 44194), (199, 44224), (203, 44254), (209, 44284), (220, 44326), (222, 44332), (293, 44623), (305, 44677), (309, 44686), (313, 44695), (319, 44719), (332, 44812), (349, 44902),

Gene: GRU1_55 Start: 45213, Stop: 44032, Start Num: 60

Candidate Starts for GRU1_55:

(Start: 60 @45213 has 10 MA's), (Start: 116 @44988 has 1 MA's), (124, 44964), (131, 44928), (138, 44898), (149, 44850), (172, 44787), (209, 44616), (222, 44568), (235, 44493), (238, 44481), (256, 44409), (278, 44340), (309, 44223), (313, 44214), (317, 44199), (336, 44082),

Gene: GTE5_55 Start: 46020, Stop: 45064, Start Num: 116

Candidate Starts for GTE5_55:

(Start: 116 @46020 has 1 MA's), (118, 46011), (124, 45996), (131, 45960), (138, 45930), (149, 45882), (172, 45819), (222, 45600), (237, 45516), (238, 45513), (256, 45441), (278, 45372), (309, 45255), (313, 45246), (317, 45231), (330, 45138), (336, 45114),

Gene: GTE8_55 Start: 46534, Stop: 45335, Start Num: 57

Candidate Starts for GTE8_55:

(Start: 57 @46534 has 47 MA's), (130, 46249), (132, 46243), (137, 46222), (138, 46216), (205, 45931), (209, 45913), (218, 45880), (222, 45865), (238, 45778), (277, 45646), (278, 45643), (293, 45589), (307, 45529), (309, 45526), (313, 45517), (330, 45409), (336, 45385),

Gene: Galactica_39 Start: 28326, Stop: 29291, Start Num: 44

Candidate Starts for Galactica_39:

(Start: 44 @28326 has 10 MA's), (90, 28488), (113, 28563), (137, 28626), (138, 28632), (179, 28755), (183, 28770), (184, 28773), (186, 28797), (201, 28872), (212, 28908), (244, 29025), (260, 29064), (280, 29127),

Gene: Genamy16_68 Start: 43067, Stop: 44284, Start Num: 61

Candidate Starts for Genamy16_68:

(Start: 61 @43067 has 77 MA's), (66, 43082), (92, 43211), (117, 43301), (118, 43304), (129, 43340), (138, 43373), (175, 43487), (183, 43514), (189, 43553), (190, 43568), (199, 43598), (203, 43628), (209, 43658), (222, 43706), (263, 43895), (305, 44051), (309, 44060), (313, 44069), (319, 44093), (327, 44147), (332, 44186), (349, 44276),

Gene: Ghobes_32 Start: 30098, Stop: 29172, Start Num: 68

Candidate Starts for Ghobes_32:

(Start: 27 @30206 has 1 MA's), (66, 30104), (Start: 67 @30101 has 1 MA's), (Start: 68 @30098 has 3 MA's), (86, 30011), (103, 29927), (105, 29921), (114, 29894), (157, 29747), (171, 29726), (173, 29720), (181, 29702), (198, 29615), (199, 29609), (210, 29567), (212, 29555), (243, 29504), (246, 29498), (308, 29309), (323, 29228), (324, 29225), (329, 29186),

Gene: Gibbin_67 Start: 44498, Stop: 45715, Start Num: 61

Candidate Starts for Gibbin_67:

(Start: 61 @44498 has 77 MA's), (66, 44513), (92, 44642), (117, 44732), (118, 44735), (129, 44771), (138, 44804), (175, 44918), (183, 44945), (189, 44984), (190, 44999), (199, 45029), (203, 45059), (209, 45089), (222, 45137), (293, 45428), (305, 45482), (309, 45491), (313, 45500), (319, 45524), (332, 45617), (349, 45707),

Gene: Gibson_66 Start: 47338, Stop: 46340, Start Num: 63

Candidate Starts for Gibson_66:

(Start: 63 @47338 has 7 MA's), (Start: 67 @47326 has 1 MA's), (138, 47047), (139, 47044), (174, 46915), (183, 46888), (189, 46852), (203, 46777), (205, 46765), (221, 46702), (289, 46603), (299, 46561), (309, 46528), (313, 46519), (325, 46447), (326, 46441), (338, 46357),

Gene: Gilda_43 Start: 28844, Stop: 29998, Start Num: 61

Candidate Starts for Gilda_43:

(4, 28445), (Start: 61 @28844 has 77 MA's), (Start: 68 @28865 has 3 MA's), (118, 29075), (138, 29138), (161, 29234), (189, 29339), (221, 29489), (238, 29579), (251, 29615), (263, 29645), (293, 29750), (306, 29807), (325, 29891), (333, 29948),

Gene: Gisselle_39 Start: 26441, Stop: 27388, Start Num: 58

Candidate Starts for Gisselle_39:

(Start: 58 @26441 has 66 MA's), (76, 26510), (90, 26573), (92, 26585), (93, 26588), (99, 26612), (127, 26708), (138, 26756), (152, 26813), (155, 26831), (177, 26873), (181, 26885), (264, 27179), (284, 27239), (302, 27314), (304, 27317), (314, 27344), (315, 27347),

Gene: Giuseppe_58 Start: 43075, Stop: 44253, Start Num: 57

Candidate Starts for Giuseppe_58:

(8, 42793), (12, 42823), (20, 42886), (Start: 57 @43075 has 47 MA's), (Start: 72 @43123 has 3 MA's), (78, 43162), (81, 43174), (103, 43273), (127, 43336), (138, 43390), (149, 43438), (172, 43504), (200, 43618), (203, 43645), (209, 43675), (221, 43720), (289, 43954), (305, 44020), (309, 44029), (313, 44038), (335, 44164), (349, 44245),

Gene: Glenn_42 Start: 27742, Stop: 28689, Start Num: 58

Candidate Starts for Glenn_42:

(Start: 58 @27742 has 66 MA's), (90, 27874), (92, 27886), (93, 27889), (99, 27913), (127, 28009), (138, 28057), (145, 28087), (152, 28114), (181, 28186), (213, 28336), (217, 28345), (246, 28432), (264, 28480), (284, 28540), (302, 28615), (304, 28618), (314, 28645), (315, 28648),

Gene: Goodman_43 Start: 27572, Stop: 28585, Start Num: 30

Candidate Starts for Goodman_43:

(23, 27527), (Start: 30 @27572 has 17 MA's), (75, 27701), (93, 27782), (112, 27851), (138, 27935), (152, 27992), (183, 28070), (195, 28139), (196, 28142), (215, 28217), (223, 28244), (225, 28250), (253, 28334), (257, 28349), (273, 28400), (286, 28448), (302, 28511),

Gene: GreenHearts_42 Start: 28250, Stop: 29197, Start Num: 58

Candidate Starts for GreenHearts_42:

(Start: 58 @28250 has 66 MA's), (93, 28397), (103, 28439), (122, 28499), (126, 28514), (145, 28595), (148, 28610), (152, 28622), (195, 28772), (212, 28841), (213, 28844), (292, 29078), (302, 29123), (304, 29126), (314, 29153), (315, 29156),

Gene: Greenhouse_43 Start: 28175, Stop: 29122, Start Num: 58

Candidate Starts for Greenhouse_43:

(Start: 58 @28175 has 66 MA's), (93, 28322), (103, 28364), (126, 28439), (145, 28520), (148, 28535), (152, 28547), (195, 28697), (212, 28766), (213, 28769), (292, 29003), (302, 29048), (304, 29051), (314, 29078), (315, 29081),

Gene: Gretellyn_65 Start: 44537, Stop: 45700, Start Num: 61

Candidate Starts for Gretellyn_65:

(Start: 61 @44537 has 77 MA's), (66, 44552), (92, 44681), (117, 44771), (118, 44774), (129, 44810), (138, 44843), (175, 44957), (183, 44984), (189, 45023), (190, 45038), (199, 45068), (203, 45098), (209, 45128), (222, 45176), (235, 45251), (250, 45272), (263, 45311), (293, 45413), (305, 45467), (309, 45476), (313, 45485), (319, 45509), (332, 45602), (349, 45692),

Gene: GrootJr_68 Start: 52691, Stop: 51492, Start Num: 57

Candidate Starts for GrootJr_68:

(Start: 57 @52691 has 47 MA's), (131, 52403), (132, 52400), (137, 52379), (138, 52373), (203, 52100), (205, 52088), (209, 52070), (218, 52037), (222, 52022), (238, 51935), (263, 51848), (267, 51833), (277, 51803), (278, 51800), (293, 51746), (306, 51689), (307, 51686), (309, 51683), (313, 51674), (330, 51566), (336, 51542),

Gene: Gumball_57 Start: 43615, Stop: 44745, Start Num: 72

Candidate Starts for Gumball_57:

(35, 43522), (46, 43549), (47, 43552), (Start: 57 @43567 has 47 MA's), (Start: 72 @43615 has 3 MA's), (78, 43654), (81, 43666), (103, 43765), (127, 43828), (138, 43882), (149, 43930), (172, 43996), (200, 44110), (203, 44137), (209, 44167), (221, 44212), (289, 44446), (305, 44512), (309, 44521), (313, 44530), (335, 44656), (349, 44737),

Gene: GuyFagieri_66 Start: 50059, Stop: 48929, Start Num: 57

Candidate Starts for GuyFagieri_66:

(21, 50194), (Start: 36 @50089 has 1 MA's), (Start: 57 @50059 has 47 MA's), (107, 49861), (138, 49738), (140, 49726), (183, 49600), (186, 49573), (222, 49411), (242, 49318), (275, 49246), (309, 49120), (311, 49114), (333, 48988),

Gene: Hager_44 Start: 28317, Stop: 29423, Start Num: 61

Candidate Starts for Hager_44:

(Start: 61 @28317 has 77 MA's), (Start: 68 @28338 has 3 MA's), (118, 28548), (135, 28599), (138, 28611), (161, 28707), (189, 28812), (221, 28962), (293, 29175), (325, 29316), (333, 29373),

Gene: Haunter_43 Start: 28275, Stop: 29381, Start Num: 61

Candidate Starts for Haunter_43:

(Start: 61 @28275 has 77 MA's), (Start: 68 @28296 has 3 MA's), (118, 28506), (138, 28569), (161, 28665), (189, 28770), (221, 28920), (293, 29133), (306, 29190), (325, 29274), (333, 29331),

Gene: Hawkeye_60 Start: 42876, Stop: 44036, Start Num: 57

Candidate Starts for Hawkeye_60:

(41, 42849), (Start: 57 @42876 has 47 MA's), (78, 42963), (103, 43074), (138, 43191), (143, 43212), (182, 43332), (202, 43440), (203, 43446), (205, 43458), (221, 43521), (255, 43638), (278, 43695), (305, 43803), (309, 43812), (311, 43818), (313, 43821),

Gene: HeadNerd_39 Start: 26287, Stop: 27234, Start Num: 58

Candidate Starts for HeadNerd_39:

(Start: 58 @26287 has 66 MA's), (90, 26419), (92, 26431), (93, 26434), (99, 26458), (127, 26554), (138, 26602), (152, 26659), (181, 26731), (213, 26881), (217, 26890), (284, 27085), (302, 27160), (304, 27163), (314, 27190), (315, 27193),

Gene: Helpful_60 Start: 43436, Stop: 44614, Start Num: 57

Candidate Starts for Helpful_60:

(8, 43154), (20, 43247), (Start: 57 @43436 has 47 MA's), (Start: 72 @43484 has 3 MA's), (78, 43523), (81, 43535), (103, 43634), (127, 43697), (138, 43751), (149, 43799), (172, 43865), (200, 43979), (203, 44006), (209, 44036), (221, 44081), (289, 44315), (305, 44381), (309, 44390), (313, 44399), (335, 44525), (349, 44606),

Gene: Henococcus_51 Start: 35844, Stop: 36851, Start Num: 52

Candidate Starts for Henococcus_51:

(9, 35607), (25, 35757), (Start: 52 @35844 has 13 MA's), (93, 36009), (101, 36039), (108, 36075), (128, 36150), (136, 36183), (141, 36207), (155, 36267), (178, 36297), (183, 36315), (184, 36318), (189, 36351), (196, 36387), (217, 36477), (236, 36573), (273, 36672), (277, 36684), (314, 36795), (320, 36828),

Gene: Herb_39 Start: 27510, Stop: 28463, Start Num: 62

Candidate Starts for Herb_39:

(Start: 62 @27510 has 17 MA's), (74, 27567), (93, 27657), (97, 27675), (124, 27765), (136, 27816), (145, 27855), (148, 27870), (153, 27888), (155, 27900), (179, 27948), (201, 28065), (212, 28104), (217, 28116), (284, 28314), (302, 28389), (314, 28419), (315, 28422),

Gene: Hiddenleaf_43 Start: 28072, Stop: 29199, Start Num: 61

Candidate Starts for Hiddenleaf_43:

(4, 27679), (6, 27745), (7, 27760), (Start: 61 @28072 has 77 MA's), (Start: 68 @28093 has 3 MA's), (88, 28189), (118, 28303), (138, 28366), (161, 28462), (189, 28567), (221, 28717), (274, 28885), (293, 28951), (306, 29008), (325, 29092), (333, 29149),

Gene: Hiyaa_41 Start: 29720, Stop: 30685, Start Num: 45

Candidate Starts for Hiyaa_41:

(Start: 45 @29720 has 2 MA's), (70, 29783), (90, 29882), (98, 29918), (113, 29957), (137, 30020), (138, 30026), (179, 30149), (184, 30167), (186, 30191), (212, 30302), (244, 30419), (260, 30458), (280, 30521),

Gene: Htur_43 Start: 27973, Stop: 28986, Start Num: 30

Candidate Starts for Htur_43:

(Start: 30 @27973 has 17 MA's), (93, 28183), (112, 28252), (138, 28336), (153, 28399), (183, 28471), (184, 28474), (195, 28540), (196, 28543), (223, 28645), (225, 28651), (253, 28735), (257, 28750), (273, 28801), (286, 28849), (302, 28912),

Gene: HubbaBubba_62 Start: 48109, Stop: 47129, Start Num: 115

Candidate Starts for HubbaBubba_62:

(Start: 115 @48109 has 1 MA's), (123, 48085), (131, 48046), (132, 48043), (138, 48016), (142, 47998), (155, 47941), (203, 47743), (205, 47731), (222, 47665), (228, 47638), (237, 47581), (263, 47485), (277, 47440), (278, 47437), (283, 47425), (293, 47383), (309, 47320), (313, 47311), (329, 47209), (330, 47203), (336, 47179),

Gene: Huckleberry_39 Start: 26270, Stop: 27217, Start Num: 58

Candidate Starts for Huckleberry_39:

(Start: 58 @26270 has 66 MA's), (90, 26402), (92, 26414), (93, 26417), (99, 26441), (127, 26537), (138, 26585), (152, 26642), (181, 26714), (183, 26723), (213, 26864), (217, 26873), (246, 26960), (284, 27068), (302, 27143), (304, 27146), (314, 27173), (315, 27176),

Gene: HunterDalle_39 Start: 27432, Stop: 28382, Start Num: 62

Candidate Starts for HunterDalle_39:

(33, 27378), (Start: 62 @27432 has 17 MA's), (93, 27579), (97, 27597), (124, 27687), (136, 27738), (145, 27777), (148, 27792), (153, 27810), (155, 27822), (179, 27870), (201, 27987), (212, 28026), (217, 28038), (246, 28125), (264, 28173), (284, 28233), (302, 28308), (304, 28311), (314, 28338), (315, 28341),

Gene: Huntingdon_41 Start: 27893, Stop: 28828, Start Num: 58

Candidate Starts for Huntingdon_41:

(Start: 58 @27893 has 66 MA's), (93, 28040), (97, 28058), (103, 28082), (126, 28157), (138, 28208), (145, 28238), (148, 28253), (152, 28265), (195, 28415), (212, 28484), (213, 28487), (257, 28598),

(302, 28754), (304, 28757), (314, 28784), (315, 28787),

Gene: IDyn_65 Start: 49575, Stop: 48376, Start Num: 61

Candidate Starts for IDyn_65:

(Start: 45 @49602 has 2 MA's), (Start: 61 @49575 has 77 MA's), (Start: 115 @49356 has 1 MA's), (123, 49332), (131, 49293), (132, 49290), (138, 49263), (142, 49245), (155, 49188), (203, 48990), (205, 48978), (222, 48912), (228, 48885), (237, 48828), (263, 48732), (277, 48687), (278, 48684), (283, 48672), (293, 48630), (309, 48567), (313, 48558), (329, 48456), (330, 48450), (336, 48426),

Gene: Immaculata_41 Start: 27533, Stop: 28480, Start Num: 58

Candidate Starts for Immaculata_41:

(Start: 58 @27533 has 66 MA's), (76, 27602), (90, 27665), (92, 27677), (93, 27680), (99, 27704), (127, 27800), (138, 27848), (145, 27878), (152, 27905), (181, 27977), (213, 28127), (217, 28136), (246, 28223), (264, 28271), (284, 28331), (302, 28406), (304, 28409), (314, 28436), (315, 28439),

Gene: IndiRoo_43 Start: 26273, Stop: 27280, Start Num: 30

Candidate Starts for IndiRoo_43:

(Start: 30 @26273 has 17 MA's), (93, 26483), (138, 26630), (196, 26837), (215, 26912), (223, 26939), (225, 26945), (253, 27029), (257, 27044), (302, 27206),

Gene: Indlulamithi_68 Start: 48569, Stop: 49600, Start Num: 61

Candidate Starts for Indlulamithi_68:

(Start: 61 @48569 has 77 MA's), (66, 48584), (85, 48671), (88, 48686), (91, 48710), (Start: 116 @48794 has 1 MA's), (129, 48845), (141, 48896), (156, 48959), (175, 48995), (181, 49013), (182, 49019), (190, 49076), (209, 49166), (221, 49211), (233, 49250), (290, 49316), (306, 49379), (309, 49385), (318, 49415),

Gene: Intolerant_48 Start: 35879, Stop: 36877, Start Num: 52

Candidate Starts for Intolerant_48:

(3, 35486), (9, 35642), (19, 35720), (Start: 48 @35873 has 1 MA's), (Start: 52 @35879 has 13 MA's), (93, 36044), (99, 36068), (128, 36176), (136, 36209), (141, 36233), (155, 36293), (178, 36323), (180, 36329), (183, 36341), (184, 36344), (189, 36377), (196, 36413), (217, 36503), (236, 36599), (273, 36698), (277, 36710), (320, 36854),

Gene: JDawG_42 Start: 28489, Stop: 29616, Start Num: 61

Candidate Starts for JDawG_42:

(4, 28096), (7, 28177), (Start: 61 @28489 has 77 MA's), (Start: 68 @28510 has 3 MA's), (118, 28720), (138, 28783), (161, 28879), (189, 28984), (221, 29134), (274, 29302), (293, 29368), (325, 29509), (333, 29566),

Gene: JackieB_51 Start: 35683, Stop: 36690, Start Num: 52

Candidate Starts for JackieB_51:

(9, 35446), (25, 35596), (Start: 52 @35683 has 13 MA's), (93, 35848), (101, 35878), (108, 35914), (128, 35989), (136, 36022), (141, 36046), (155, 36106), (178, 36136), (183, 36154), (184, 36157), (189, 36190), (196, 36226), (217, 36316), (236, 36412), (273, 36511), (277, 36523), (302, 36601), (314, 36634), (320, 36667),

Gene: Jalebi_64 Start: 44890, Stop: 46053, Start Num: 61

Candidate Starts for Jalebi_64:

(Start: 61 @44890 has 77 MA's), (66, 44905), (92, 45034), (117, 45124), (118, 45127), (129, 45163), (138, 45196), (175, 45310), (183, 45337), (189, 45376), (190, 45391), (199, 45421), (203, 45451), (209, 45481), (222, 45529), (263, 45664), (293, 45766), (305, 45820), (309, 45829), (313, 45838), (319, 45862), (332, 45955), (349, 46045),

Gene: Jamemuya19_65 Start: 42672, Stop: 43889, Start Num: 61

Candidate Starts for Jamemuya19_65:

(Start: 61 @42672 has 77 MA's), (66, 42687), (92, 42816), (117, 42906), (118, 42909), (129, 42945), (138, 42978), (175, 43092), (183, 43119), (189, 43158), (190, 43173), (199, 43203), (203, 43233), (209, 43263), (222, 43311), (263, 43500), (305, 43656), (309, 43665), (313, 43674), (319, 43698), (327, 43752), (332, 43791), (349, 43881),

Gene: Jera_43 Start: 26765, Stop: 27778, Start Num: 30

Candidate Starts for Jera_43:

(Start: 30 @26765 has 17 MA's), (75, 26894), (93, 26975), (112, 27044), (138, 27128), (158, 27212), (183, 27263), (195, 27332), (196, 27335), (223, 27437), (225, 27443), (253, 27527), (257, 27542), (286, 27641), (302, 27704),

Gene: Jifall16_66 Start: 53318, Stop: 52119, Start Num: 57

Candidate Starts for Jifall16_66:

(Start: 57 @53318 has 47 MA's), (131, 53030), (132, 53027), (137, 53006), (138, 53000), (203, 52727), (205, 52715), (209, 52697), (218, 52664), (222, 52649), (238, 52562), (263, 52475), (267, 52460), (277, 52430), (278, 52427), (293, 52373), (306, 52316), (307, 52313), (309, 52310), (313, 52301), (330, 52193), (336, 52169),

Gene: JingleBells_43 Start: 28193, Stop: 29350, Start Num: 61

Candidate Starts for JingleBells_43:

(4, 27800), (7, 27881), (Start: 61 @28193 has 77 MA's), (Start: 68 @28214 has 3 MA's), (118, 28424), (138, 28487), (161, 28583), (189, 28688), (221, 28838), (272, 29030), (274, 29036), (293, 29102), (325, 29243), (333, 29300),

Gene: Joann_42 Start: 28143, Stop: 29078, Start Num: 58

Candidate Starts for Joann_42:

(Start: 58 @28143 has 66 MA's), (93, 28290), (97, 28308), (103, 28332), (126, 28407), (145, 28488), (148, 28503), (152, 28515), (212, 28734), (213, 28737), (284, 28929), (292, 28959), (302, 29004), (304, 29007), (314, 29034), (315, 29037),

Gene: Johann_43 Start: 27572, Stop: 28585, Start Num: 30

Candidate Starts for Johann_43:

(23, 27527), (Start: 30 @27572 has 17 MA's), (75, 27701), (93, 27782), (112, 27851), (138, 27935), (152, 27992), (183, 28070), (195, 28139), (196, 28142), (215, 28217), (223, 28244), (225, 28250), (253, 28334), (257, 28349), (273, 28400), (286, 28448), (302, 28511),

Gene: Jumboset_42 Start: 27650, Stop: 28597, Start Num: 58

Candidate Starts for Jumboset_42:

(Start: 58 @27650 has 66 MA's), (90, 27782), (92, 27794), (93, 27797), (99, 27821), (127, 27917), (138, 27965), (145, 27995), (152, 28022), (181, 28094), (213, 28244), (217, 28253), (246, 28340), (264, 28388), (284, 28448), (302, 28523), (304, 28526), (314, 28553), (315, 28556),

Gene: Kabluna_69 Start: 52277, Stop: 51069, Start Num: 60

Candidate Starts for Kabluna_69:

(Start: 60 @52277 has 10 MA's), (Start: 115 @52055 has 1 MA's), (123, 52031), (127, 52016), (131, 51992), (132, 51989), (138, 51962), (155, 51887), (186, 51770), (205, 51674), (222, 51608), (241, 51497), (256, 51449), (263, 51428), (276, 51386), (283, 51368), (293, 51326), (305, 51272), (309, 51263), (313, 51254), (330, 51146),

Gene: Kalizoi_41 Start: 27475, Stop: 28422, Start Num: 58

Candidate Starts for Kalizoi_41:

(Start: 58 @27475 has 66 MA's), (76, 27544), (90, 27607), (92, 27619), (93, 27622), (99, 27646), (127, 27742), (138, 27790), (145, 27820), (152, 27847), (181, 27919), (213, 28069), (217, 28078), (246, 28165), (264, 28213), (284, 28273), (302, 28348), (304, 28351), (314, 28378), (315, 28381),

Gene: KandZ_56 Start: 43281, Stop: 44411, Start Num: 72

Candidate Starts for KandZ_56:

(Start: 57 @43233 has 47 MA's), (Start: 72 @43281 has 3 MA's), (78, 43320), (81, 43332), (103, 43431), (127, 43494), (138, 43548), (149, 43596), (172, 43662), (200, 43776), (203, 43803), (209, 43833), (221, 43878), (289, 44112), (305, 44178), (309, 44187), (313, 44196), (335, 44322), (349, 44403),

Gene: Karate_42 Start: 28845, Stop: 29999, Start Num: 61

Candidate Starts for Karate_42:

(Start: 61 @28845 has 77 MA's), (Start: 68 @28866 has 3 MA's), (118, 29076), (138, 29139), (161, 29235), (189, 29340), (221, 29490), (251, 29616), (263, 29646), (293, 29751), (325, 29892), (333, 29949),

Gene: Kate_44 Start: 28852, Stop: 30006, Start Num: 61

Candidate Starts for Kate_44:

(4, 28453), (Start: 61 @28852 has 77 MA's), (Start: 68 @28873 has 3 MA's), (118, 29083), (138, 29146), (161, 29242), (189, 29347), (221, 29497), (238, 29587), (251, 29623), (263, 29653), (293, 29758), (306, 29815), (325, 29899), (333, 29956),

Gene: Keanu_40 Start: 29418, Stop: 30383, Start Num: 44

Candidate Starts for Keanu_40:

(Start: 44 @29418 has 10 MA's), (90, 29580), (98, 29616), (99, 29619), (113, 29655), (137, 29718), (138, 29724), (179, 29847), (184, 29865), (186, 29889), (191, 29919), (210, 29988), (212, 30000), (230, 30060), (244, 30117), (260, 30156), (280, 30219),

Gene: KidneyBean_67 Start: 53442, Stop: 52243, Start Num: 57

Candidate Starts for KidneyBean_67:

(Start: 57 @53442 has 47 MA's), (131, 53154), (132, 53151), (137, 53130), (138, 53124), (203, 52851), (205, 52839), (209, 52821), (218, 52788), (222, 52773), (238, 52686), (263, 52599), (267, 52584), (277, 52554), (278, 52551), (293, 52497), (306, 52440), (307, 52437), (309, 52434), (313, 52425), (330, 52317), (336, 52293),

Gene: Kimchi1738_70 Start: 50509, Stop: 49391, Start Num: 65

Candidate Starts for Kimchi1738_70:

(Start: 65 @50509 has 10 MA's), (91, 50374), (107, 50323), (138, 50209), (147, 50167), (155, 50134), (178, 50071), (181, 50062), (183, 50053), (189, 50017), (199, 49963), (235, 49780), (301, 49591), (309, 49570), (318, 49540), (328, 49468), (331, 49453), (332, 49444),

Gene: KingBob_39 Start: 27511, Stop: 28464, Start Num: 62

Candidate Starts for KingBob_39:

(Start: 62 @27511 has 17 MA's), (74, 27568), (93, 27658), (97, 27676), (124, 27766), (136, 27817), (145, 27856), (148, 27871), (153, 27889), (155, 27901), (179, 27949), (201, 28066), (212, 28105), (217, 28117), (284, 28315), (302, 28390), (314, 28420), (315, 28423),

Gene: Kittykat_40 Start: 26532, Stop: 27479, Start Num: 58

Candidate Starts for Kittykat_40:

(Start: 58 @26532 has 66 MA's), (76, 26601), (90, 26664), (92, 26676), (93, 26679), (99, 26703), (127, 26799), (138, 26847), (152, 26904), (181, 26976), (264, 27270), (284, 27330), (302, 27405), (304,

27408), (314, 27435), (315, 27438),

Gene: Konstantine_71 Start: 50914, Stop: 52203, Start Num: 44

Candidate Starts for Konstantine_71:

(31, 50875), (Start: 39 @50899 has 1 MA's), (Start: 44 @50914 has 10 MA's), (79, 51028), (84, 51046), (91, 51088), (137, 51262), (138, 51268), (149, 51319), (177, 51433), (182, 51451), (183, 51454), (185, 51469), (189, 51490), (214, 51622), (217, 51628), (271, 51811), (278, 51829), (293, 51883), (307, 51943), (319, 51979), (333, 52075),

Gene: Korra_41 Start: 27487, Stop: 28434, Start Num: 58

Candidate Starts for Korra_41:

(Start: 58 @27487 has 66 MA's), (90, 27619), (92, 27631), (93, 27634), (99, 27658), (127, 27754), (138, 27802), (145, 27832), (152, 27859), (181, 27931), (213, 28081), (217, 28090), (246, 28177), (264, 28225), (284, 28285), (302, 28360), (304, 28363), (314, 28390), (315, 28393),

Gene: Kors_47 Start: 29786, Stop: 30883, Start Num: 64

Candidate Starts for Kors_47:

(Start: 36 @29732 has 1 MA's), (Start: 64 @29786 has 3 MA's), (66, 29789), (Start: 68 @29795 has 3 MA's), (118, 30005), (121, 30011), (135, 30056), (138, 30068), (153, 30131), (161, 30164), (189, 30269), (224, 30431), (274, 30566), (283, 30590), (327, 30782), (333, 30830),

Gene: Krampus_43 Start: 28852, Stop: 30006, Start Num: 61

Candidate Starts for Krampus_43:

(4, 28453), (Start: 61 @28852 has 77 MA's), (Start: 68 @28873 has 3 MA's), (118, 29083), (138, 29146), (161, 29242), (189, 29347), (221, 29497), (238, 29587), (251, 29623), (263, 29653), (293, 29758), (306, 29815), (325, 29899), (333, 29956),

Gene: Kurt_66 Start: 53312, Stop: 52113, Start Num: 57

Candidate Starts for Kurt_66:

(Start: 57 @53312 has 47 MA's), (131, 53024), (132, 53021), (137, 53000), (138, 52994), (203, 52721), (205, 52709), (209, 52691), (218, 52658), (222, 52643), (238, 52556), (263, 52469), (267, 52454), (277, 52424), (278, 52421), (293, 52367), (306, 52310), (307, 52307), (309, 52304), (313, 52295), (330, 52187), (336, 52163),

Gene: Labelle_80 Start: 52685, Stop: 53917, Start Num: 52

Candidate Starts for Labelle_80:

(Start: 52 @52685 has 13 MA's), (73, 52739), (80, 52778), (81, 52781), (84, 52790), (90, 52823), (94, 52847), (135, 53012), (138, 53024), (157, 53105), (178, 53189), (184, 53210), (189, 53252), (217, 53390), (229, 53441), (237, 53492), (262, 53528), (278, 53576), (293, 53630), (309, 53693), (337, 53861), (346, 53903),

Gene: Lakshmi_42 Start: 28138, Stop: 29085, Start Num: 58

Candidate Starts for Lakshmi_42:

(Start: 58 @28138 has 66 MA's), (93, 28285), (103, 28327), (126, 28402), (145, 28483), (148, 28498), (152, 28510), (195, 28660), (212, 28729), (213, 28732), (292, 28966), (302, 29011), (304, 29014), (314, 29041), (315, 29044),

Gene: Lambo_63 Start: 43490, Stop: 44707, Start Num: 61

Candidate Starts for Lambo_63:

(Start: 61 @43490 has 77 MA's), (66, 43505), (92, 43634), (117, 43724), (118, 43727), (129, 43763), (138, 43796), (175, 43910), (183, 43937), (189, 43976), (190, 43991), (199, 44021), (203, 44051), (209, 44081), (222, 44129), (293, 44420), (305, 44474), (309, 44483), (313, 44492), (319, 44516), (332, 44609), (349, 44699),

Gene: Lasagna_38 Start: 26108, Stop: 27058, Start Num: 58

Candidate Starts for Lasagna_38:

(Start: 58 @26108 has 66 MA's), (90, 26240), (92, 26252), (93, 26255), (99, 26279), (127, 26375), (138, 26423), (141, 26438), (152, 26480), (157, 26504), (181, 26552), (207, 26678), (212, 26702), (213, 26705), (217, 26714), (264, 26849), (284, 26909), (302, 26984), (314, 27014), (315, 27017),

Gene: LavAbarElk_65 Start: 43284, Stop: 44447, Start Num: 61

Candidate Starts for LavAbarElk_65:

(Start: 61 @43284 has 77 MA's), (66, 43299), (92, 43428), (117, 43518), (118, 43521), (129, 43557), (138, 43590), (175, 43704), (183, 43731), (189, 43770), (190, 43785), (199, 43815), (203, 43845), (209, 43875), (222, 43923), (263, 44058), (293, 44160), (305, 44214), (309, 44223), (313, 44232), (319, 44256), (332, 44349), (349, 44439),

Gene: LazerLemon_51 Start: 36312, Stop: 37310, Start Num: 52

Candidate Starts for LazerLemon_51:

(9, 36060), (13, 36087), (18, 36132), (19, 36135), (Start: 52 @36312 has 13 MA's), (93, 36477), (103, 36519), (128, 36609), (136, 36642), (141, 36666), (178, 36756), (183, 36774), (184, 36777), (196, 36846), (217, 36936), (226, 36975), (236, 37032), (277, 37143), (312, 37248), (320, 37287),

Gene: Lennox_39 Start: 26316, Stop: 27266, Start Num: 58

Candidate Starts for Lennox_39:

(Start: 58 @26316 has 66 MA's), (90, 26448), (92, 26460), (93, 26463), (99, 26487), (127, 26583), (138, 26631), (141, 26646), (152, 26688), (157, 26712), (179, 26754), (181, 26760), (207, 26886), (212, 26910), (213, 26913), (217, 26922), (264, 27057), (284, 27117), (302, 27192), (314, 27222), (315, 27225),

Gene: Leopard_73 Start: 50916, Stop: 52133, Start Num: 56

Candidate Starts for Leopard_73:

(Start: 56 @50916 has 3 MA's), (Start: 68 @50943 has 3 MA's), (77, 50997), (89, 51042), (102, 51108), (106, 51120), (122, 51168), (125, 51180), (131, 51210), (132, 51213), (138, 51240), (144, 51267), (175, 51396), (198, 51516), (199, 51522), (217, 51612), (227, 51654), (231, 51672), (234, 51690), (261, 51753), (289, 51837), (309, 51912), (311, 51918), (313, 51921), (325, 51990), (327, 51999), (334, 52044), (342, 52101),

Gene: LilStuart_39 Start: 26319, Stop: 27269, Start Num: 58

Candidate Starts for LilStuart_39:

(Start: 58 @26319 has 66 MA's), (90, 26451), (92, 26463), (93, 26466), (99, 26490), (127, 26586), (138, 26634), (152, 26691), (157, 26715), (179, 26757), (181, 26763), (207, 26889), (212, 26913), (213, 26916), (217, 26925), (264, 27060), (284, 27120), (302, 27195), (314, 27225), (315, 27228),

Gene: Lila22_66 Start: 44442, Stop: 45659, Start Num: 61

Candidate Starts for Lila22_66:

(Start: 61 @44442 has 77 MA's), (66, 44457), (92, 44586), (117, 44676), (118, 44679), (129, 44715), (138, 44748), (175, 44862), (183, 44889), (189, 44928), (190, 44943), (199, 44973), (203, 45003), (209, 45033), (222, 45081), (305, 45426), (309, 45435), (313, 45444), (319, 45468), (332, 45561), (349, 45651),

Gene: LilyPad_56 Start: 41683, Stop: 42828, Start Num: 57

Candidate Starts for LilyPad_56:

(Start: 57 @41683 has 47 MA's), (Start: 65 @41692 has 10 MA's), (95, 41818), (99, 41830), (154, 42007), (183, 42112), (217, 42286), (220, 42298), (261, 42430), (278, 42478), (284, 42499), (285, 42508), (287, 42514), (293, 42532), (296, 42544), (303, 42577), (307, 42592), (309, 42595), (311,

42601), (321, 42646), (331, 42712), (333, 42724),

Gene: Linayshia_43 Start: 27941, Stop: 28954, Start Num: 30

Candidate Starts for Linayshia_43:

(Start: 30 @27941 has 17 MA's), (93, 28151), (112, 28220), (138, 28304), (153, 28367), (183, 28439), (184, 28442), (195, 28508), (196, 28511), (223, 28613), (225, 28619), (253, 28703), (257, 28718), (273, 28769), (286, 28817), (302, 28880),

Gene: Litotes_41 Start: 27533, Stop: 28480, Start Num: 58

Candidate Starts for Litotes_41:

(Start: 58 @27533 has 66 MA's), (92, 27677), (93, 27680), (96, 27695), (103, 27722), (123, 27785), (138, 27848), (148, 27893), (152, 27905), (157, 27929), (195, 28055), (212, 28124), (213, 28127), (246, 28223), (264, 28271), (284, 28331), (302, 28406), (314, 28436), (315, 28439),

Gene: LittleFella_61 Start: 43303, Stop: 44364, Start Num: 54

Candidate Starts for LittleFella_61:

(Start: 54 @43303 has 1 MA's), (Start: 57 @43309 has 47 MA's), (Start: 65 @43318 has 10 MA's), (82, 43387), (118, 43528), (120, 43531), (154, 43663), (164, 43696), (182, 43765), (199, 43852), (222, 43960), (303, 44113), (307, 44128), (309, 44131), (316, 44152), (331, 44248), (333, 44260), (344, 44323), (348, 44341),

Gene: Lizz_66 Start: 47161, Stop: 46163, Start Num: 63

Candidate Starts for Lizz_66:

(42, 47212), (Start: 63 @47161 has 7 MA's), (Start: 67 @47149 has 1 MA's), (138, 46870), (139, 46867), (174, 46738), (183, 46711), (189, 46675), (203, 46600), (205, 46588), (221, 46525), (299, 46384), (309, 46351), (313, 46342), (325, 46270), (326, 46264), (338, 46180),

Gene: Lollipop1437_70 Start: 53959, Stop: 52760, Start Num: 51

Candidate Starts for Lollipop1437_70:

(Start: 51 @53959 has 2 MA's), (Start: 55 @53950 has 4 MA's), (103, 53752), (130, 53659), (131, 53656), (132, 53653), (138, 53626), (142, 53608), (155, 53551), (205, 53356), (206, 53353), (209, 53338), (222, 53290), (244, 53176), (249, 53164), (263, 53116), (278, 53068), (293, 53014), (309, 52951), (313, 52942), (332, 52822),

Gene: LordBart_46 Start: 29704, Stop: 30792, Start Num: 68

Candidate Starts for LordBart_46:

(Start: 36 @29641 has 1 MA's), (Start: 64 @29695 has 3 MA's), (66, 29698), (Start: 68 @29704 has 3 MA's), (118, 29914), (121, 29920), (135, 29965), (138, 29977), (153, 30040), (161, 30073), (189, 30178), (224, 30340), (274, 30475), (283, 30499), (327, 30691), (333, 30739),

Gene: LuckyLeo_62 Start: 43297, Stop: 44457, Start Num: 61

Candidate Starts for LuckyLeo_62:

(Start: 61 @43297 has 77 MA's), (66, 43312), (92, 43441), (117, 43531), (132, 43576), (138, 43603), (183, 43744), (190, 43795), (199, 43825), (203, 43855), (222, 43933), (234, 43993), (235, 44008), (245, 44029), (263, 44068), (264, 44074), (295, 44176), (305, 44224), (309, 44233), (319, 44266), (332, 44359), (349, 44449),

Gene: Lucy_39 Start: 26316, Stop: 27266, Start Num: 58

Candidate Starts for Lucy_39:

(Start: 58 @26316 has 66 MA's), (90, 26448), (92, 26460), (93, 26463), (99, 26487), (127, 26583), (138, 26631), (141, 26646), (152, 26688), (157, 26712), (179, 26754), (181, 26760), (207, 26886), (212, 26910), (213, 26913), (217, 26922), (264, 27057), (284, 27117), (302, 27192), (314, 27222), (315, 27225),

Gene: MacGully_76 Start: 53240, Stop: 52086, Start Num: 57

Candidate Starts for MacGully_76:

(Start: 36 @53291 has 1 MA's), (Start: 57 @53240 has 47 MA's), (107, 53042), (132, 52946), (138, 52919), (140, 52907), (149, 52871), (183, 52781), (221, 52595), (222, 52592), (231, 52550), (241, 52490), (278, 52394), (309, 52277), (311, 52271), (332, 52148), (333, 52145),

Gene: Madi_54 Start: 40504, Stop: 41709, Start Num: 34

Candidate Starts for Madi_54:

(Start: 34 @40504 has 4 MA's), (Start: 57 @40564 has 47 MA's), (Start: 65 @40573 has 10 MA's), (99, 40711), (111, 40735), (154, 40888), (164, 40921), (217, 41167), (218, 41170), (219, 41176), (223, 41191), (261, 41311), (278, 41359), (285, 41389), (287, 41395), (296, 41425), (303, 41458), (309, 41476), (311, 41482), (327, 41563), (331, 41593), (333, 41605), (344, 41668),

Gene: Madruga_79 Start: 52639, Stop: 53871, Start Num: 52

Candidate Starts for Madruga_79:

(Start: 52 @52639 has 13 MA's), (73, 52693), (81, 52735), (84, 52744), (90, 52777), (94, 52801), (135, 52966), (138, 52978), (157, 53059), (178, 53143), (184, 53164), (189, 53206), (217, 53344), (229, 53395), (237, 53446), (262, 53482), (278, 53530), (293, 53584), (309, 53647), (337, 53815), (346, 53857),

Gene: Makoto_39 Start: 26327, Stop: 27277, Start Num: 58

Candidate Starts for Makoto_39:

(Start: 58 @26327 has 66 MA's), (90, 26459), (92, 26471), (93, 26474), (99, 26498), (127, 26594), (138, 26642), (141, 26657), (152, 26699), (157, 26723), (179, 26765), (181, 26771), (207, 26897), (212, 26921), (213, 26924), (217, 26933), (264, 27068), (284, 27128), (302, 27203), (314, 27233), (315, 27236),

Gene: MamaPearl_40 Start: 27489, Stop: 28439, Start Num: 58

Candidate Starts for MamaPearl_40:

(Start: 58 @27489 has 66 MA's), (90, 27621), (93, 27636), (96, 27651), (99, 27660), (127, 27756), (138, 27804), (141, 27819), (152, 27861), (157, 27885), (181, 27933), (183, 27942), (207, 28059), (213, 28086), (217, 28095), (284, 28290), (286, 28302), (302, 28365), (304, 28368), (314, 28395), (315, 28398),

Gene: Maria1952_38 Start: 27510, Stop: 28463, Start Num: 62

Candidate Starts for Maria1952_38:

(Start: 62 @27510 has 17 MA's), (74, 27567), (93, 27657), (97, 27675), (124, 27765), (136, 27816), (145, 27855), (148, 27870), (153, 27888), (155, 27900), (179, 27948), (201, 28065), (212, 28104), (217, 28116), (284, 28314), (302, 28389), (314, 28419), (315, 28422),

Gene: Marietta_68 Start: 49875, Stop: 48676, Start Num: 61

Candidate Starts for Marietta_68:

(Start: 61 @49875 has 77 MA's), (Start: 115 @49656 has 1 MA's), (123, 49632), (131, 49593), (132, 49590), (138, 49563), (142, 49545), (155, 49488), (203, 49290), (222, 49212), (228, 49185), (237, 49128), (238, 49125), (263, 49032), (277, 48987), (278, 48984), (283, 48972), (293, 48930), (309, 48867), (313, 48858), (329, 48756), (330, 48750), (336, 48726),

Gene: Marky_53 Start: 36621, Stop: 37619, Start Num: 52

Candidate Starts for Marky_53:

(11, 36390), (Start: 30 @36564 has 17 MA's), (Start: 52 @36621 has 13 MA's), (93, 36786), (104, 36831), (114, 36867), (128, 36918), (136, 36951), (180, 37071), (184, 37086), (186, 37110), (193, 37146), (217, 37263), (232, 37311), (274, 37437), (277, 37446), (310, 37548), (320, 37590),

Gene: Maselop_67 Start: 50089, Stop: 48926, Start Num: 57

Candidate Starts for Maselop_67:

(21, 50227), (Start: 36 @50119 has 1 MA's), (Start: 57 @50089 has 47 MA's), (107, 49891), (138, 49768), (140, 49756), (183, 49630), (186, 49603), (222, 49441), (254, 49297), (270, 49258), (278, 49234), (309, 49117), (311, 49111), (333, 48985),

Gene: MeganNoll_41 Start: 27707, Stop: 28654, Start Num: 58

Candidate Starts for MeganNoll_41:

(Start: 58 @27707 has 66 MA's), (90, 27839), (92, 27851), (93, 27854), (99, 27878), (127, 27974), (138, 28022), (145, 28052), (152, 28079), (181, 28151), (213, 28301), (217, 28310), (246, 28397), (264, 28445), (284, 28505), (302, 28580), (314, 28610), (315, 28613),

Gene: Megatron06_68 Start: 50660, Stop: 51949, Start Num: 44

Candidate Starts for Megatron06_68:

(31, 50621), (Start: 39 @50645 has 1 MA's), (Start: 44 @50660 has 10 MA's), (79, 50774), (81, 50783), (84, 50792), (91, 50834), (137, 51008), (138, 51014), (149, 51065), (177, 51179), (182, 51197), (183, 51200), (185, 51215), (189, 51236), (214, 51368), (217, 51374), (255, 51512), (271, 51557), (278, 51575), (293, 51629), (307, 51689), (319, 51725), (333, 51821),

Gene: MerCougar_69 Start: 54002, Stop: 52794, Start Num: 60

Candidate Starts for MerCougar_69:

(Start: 60 @54002 has 10 MA's), (Start: 115 @53780 has 1 MA's), (123, 53756), (131, 53717), (132, 53714), (138, 53687), (155, 53612), (205, 53399), (222, 53333), (238, 53246), (241, 53222), (256, 53174), (278, 53105), (283, 53093), (293, 53051), (305, 52997), (309, 52988), (313, 52979), (330, 52871), (332, 52859),

Gene: Microdon_49 Start: 35690, Stop: 36691, Start Num: 52

Candidate Starts for Microdon_49:

(9, 35453), (10, 35459), (13, 35480), (19, 35531), (Start: 52 @35690 has 13 MA's), (93, 35855), (97, 35873), (99, 35879), (128, 35990), (136, 36023), (141, 36047), (143, 36053), (155, 36107), (178, 36137), (180, 36143), (183, 36155), (184, 36158), (189, 36191), (196, 36227), (217, 36317), (236, 36413), (265, 36485), (277, 36524), (310, 36626), (320, 36668),

Gene: Milani_41 Start: 26576, Stop: 27577, Start Num: 30

Candidate Starts for Milani_41:

(Start: 30 @26576 has 17 MA's), (75, 26705), (93, 26786), (101, 26816), (138, 26927), (196, 27134), (199, 27146), (223, 27236), (225, 27242), (253, 27326), (257, 27341), (273, 27392), (302, 27503),

Gene: Mima20_66 Start: 44053, Stop: 45216, Start Num: 61

Candidate Starts for Mima20_66:

(Start: 61 @44053 has 77 MA's), (66, 44068), (92, 44197), (117, 44287), (118, 44290), (129, 44326), (138, 44359), (175, 44473), (183, 44500), (189, 44539), (190, 44554), (199, 44584), (203, 44614), (209, 44644), (222, 44692), (263, 44827), (293, 44929), (305, 44983), (309, 44992), (313, 45001), (319, 45025), (332, 45118), (349, 45208),

Gene: Misaeng_41 Start: 28126, Stop: 29073, Start Num: 58

Candidate Starts for Misaeng_41:

(Start: 58 @28126 has 66 MA's), (93, 28273), (97, 28291), (103, 28315), (114, 28351), (126, 28390), (138, 28441), (145, 28471), (148, 28486), (152, 28498), (195, 28648), (212, 28717), (213, 28720), (292, 28954), (302, 28999), (304, 29002), (314, 29029), (315, 29032),

Gene: MoiGyank_68 Start: 44818, Stop: 45981, Start Num: 61

Candidate Starts for MoiGyank_68:

(Start: 61 @44818 has 77 MA's), (66, 44833), (92, 44962), (117, 45052), (118, 45055), (129, 45091), (138, 45124), (175, 45238), (183, 45265), (189, 45304), (190, 45319), (199, 45349), (203, 45379), (209, 45409), (222, 45457), (263, 45592), (293, 45694), (305, 45748), (309, 45757), (313, 45766), (319, 45790), (332, 45883), (349, 45973),

Gene: Moki_39 Start: 26432, Stop: 27379, Start Num: 58

Candidate Starts for Moki_39:

(Start: 58 @26432 has 66 MA's), (90, 26564), (92, 26576), (93, 26579), (99, 26603), (127, 26699), (138, 26747), (152, 26804), (181, 26876), (183, 26885), (213, 27026), (217, 27035), (246, 27122), (284, 27230), (302, 27305), (304, 27308), (314, 27335), (315, 27338),

Gene: MontyDev_71 Start: 51361, Stop: 52530, Start Num: 61

Candidate Starts for MontyDev_71:

(Start: 61 @51361 has 77 MA's), (66, 51376), (74, 51418), (81, 51451), (134, 51652), (138, 51667), (175, 51799), (189, 51862), (190, 51877), (216, 51994), (274, 52195), (276, 52201), (278, 52207), (279, 52210), (306, 52318), (309, 52324), (333, 52456), (343, 52516),

Gene: Mopey_58 Start: 43111, Stop: 44289, Start Num: 57

Candidate Starts for Mopey_58:

(8, 42829), (12, 42859), (20, 42922), (Start: 57 @43111 has 47 MA's), (Start: 72 @43159 has 3 MA's), (78, 43198), (81, 43210), (103, 43309), (127, 43372), (138, 43426), (149, 43474), (172, 43540), (200, 43654), (203, 43681), (209, 43711), (221, 43756), (289, 43990), (305, 44056), (309, 44065), (313, 44074), (335, 44200), (349, 44281),

Gene: MortySmith_41 Start: 27877, Stop: 29034, Start Num: 61

Candidate Starts for MortySmith_41:

(4, 27484), (7, 27565), (Start: 61 @27877 has 77 MA's), (Start: 68 @27898 has 3 MA's), (118, 28108), (138, 28171), (161, 28267), (189, 28372), (221, 28522), (272, 28714), (274, 28720), (293, 28786), (325, 28927), (333, 28984),

Gene: MrGloopy_42 Start: 27636, Stop: 28583, Start Num: 58

Candidate Starts for MrGloopy_42:

(Start: 58 @27636 has 66 MA's), (90, 27768), (92, 27780), (93, 27783), (99, 27807), (127, 27903), (138, 27951), (145, 27981), (152, 28008), (181, 28080), (213, 28230), (217, 28239), (246, 28326), (264, 28374), (284, 28434), (302, 28509), (304, 28512), (314, 28539), (315, 28542),

Gene: MrMiyagi_76 Start: 48172, Stop: 49212, Start Num: 57

Candidate Starts for MrMiyagi_76:

(41, 48133), (Start: 57 @48172 has 47 MA's), (Start: 61 @48181 has 77 MA's), (66, 48196), (71, 48217), (88, 48298), (Start: 116 @48406 has 1 MA's), (129, 48457), (139, 48496), (149, 48541), (152, 48550), (186, 48664), (190, 48688), (213, 48799), (281, 48892), (293, 48934), (309, 48997), (318, 49027), (332, 49126),

Gene: NadineRae_67 Start: 49484, Stop: 48285, Start Num: 61

Candidate Starts for NadineRae_67:

(Start: 61 @49484 has 77 MA's), (Start: 115 @49265 has 1 MA's), (123, 49241), (131, 49202), (132, 49199), (138, 49172), (142, 49154), (155, 49097), (203, 48899), (222, 48821), (228, 48794), (263, 48641), (277, 48596), (278, 48593), (283, 48581), (293, 48539), (309, 48476), (313, 48467), (329, 48365), (330, 48359), (336, 48335),

Gene: Nancia_39 Start: 26343, Stop: 27293, Start Num: 58

Candidate Starts for Nancia_39:

(Start: 58 @26343 has 66 MA's), (70, 26376), (76, 26412), (90, 26475), (92, 26487), (93, 26490), (99, 26514), (127, 26610), (138, 26658), (141, 26673), (152, 26715), (157, 26739), (181, 26787), (207, 26913), (212, 26937), (213, 26940), (217, 26949), (264, 27084), (284, 27144), (302, 27219), (304, 27222), (314, 27249), (315, 27252),

Gene: NarutoRun_43 Start: 28820, Stop: 29974, Start Num: 61

Candidate Starts for NarutoRun_43:

(4, 28421), (Start: 61 @28820 has 77 MA's), (Start: 68 @28841 has 3 MA's), (80, 28910), (118, 29051), (138, 29114), (161, 29210), (189, 29315), (221, 29465), (238, 29555), (251, 29591), (263, 29621), (293, 29726), (306, 29783), (325, 29867), (333, 29924),

Gene: NatB6_66 Start: 52381, Stop: 51182, Start Num: 57

Candidate Starts for NatB6_66:

(Start: 57 @52381 has 47 MA's), (131, 52093), (132, 52090), (137, 52069), (138, 52063), (203, 51790), (205, 51778), (209, 51760), (218, 51727), (222, 51712), (238, 51625), (263, 51538), (267, 51523), (277, 51493), (278, 51490), (293, 51436), (306, 51379), (307, 51376), (309, 51373), (313, 51364), (330, 51256), (336, 51232),

Gene: Neptune_43 Start: 28820, Stop: 29974, Start Num: 61

Candidate Starts for Neptune_43:

(4, 28421), (Start: 61 @28820 has 77 MA's), (Start: 68 @28841 has 3 MA's), (118, 29051), (138, 29114), (161, 29210), (189, 29315), (221, 29465), (238, 29555), (251, 29591), (263, 29621), (293, 29726), (306, 29783), (325, 29867), (333, 29924),

Gene: Nilo_71 Start: 51718, Stop: 52887, Start Num: 61

Candidate Starts for Nilo_71:

(Start: 61 @51718 has 77 MA's), (66, 51733), (74, 51775), (81, 51808), (134, 52009), (138, 52024), (175, 52156), (189, 52219), (190, 52234), (209, 52324), (216, 52351), (274, 52552), (276, 52558), (278, 52564), (306, 52675), (309, 52681), (333, 52813), (343, 52873),

Gene: NorManre_69 Start: 44890, Stop: 46107, Start Num: 61

Candidate Starts for NorManre_69:

(Start: 61 @44890 has 77 MA's), (66, 44905), (92, 45034), (117, 45124), (118, 45127), (129, 45163), (138, 45196), (175, 45310), (183, 45337), (189, 45376), (190, 45391), (199, 45421), (203, 45451), (209, 45481), (222, 45529), (293, 45820), (305, 45874), (309, 45883), (313, 45892), (319, 45916), (332, 46009), (349, 46099),

Gene: NosilaM_69 Start: 53310, Stop: 52105, Start Num: 60

Candidate Starts for NosilaM_69:

(Start: 60 @53310 has 10 MA's), (Start: 115 @53091 has 1 MA's), (123, 53067), (131, 53028), (132, 53025), (138, 52998), (205, 52710), (222, 52644), (241, 52533), (256, 52485), (283, 52404), (293, 52362), (305, 52308), (309, 52299), (313, 52290), (330, 52182),

Gene: Nova_56 Start: 43563, Stop: 44741, Start Num: 57

Candidate Starts for Nova_56:

(8, 43281), (12, 43311), (32, 43497), (Start: 57 @43563 has 47 MA's), (Start: 72 @43611 has 3 MA's), (78, 43650), (81, 43662), (103, 43761), (127, 43824), (138, 43878), (149, 43926), (172, 43992), (200, 44106), (203, 44133), (209, 44163), (221, 44208), (289, 44442), (305, 44508), (309, 44517), (313, 44526), (335, 44652), (349, 44733),

Gene: NovaSharks_67 Start: 42658, Stop: 43875, Start Num: 61

Candidate Starts for NovaSharks_67:

(Start: 61 @42658 has 77 MA's), (66, 42673), (92, 42802), (117, 42892), (118, 42895), (129, 42931), (138, 42964), (175, 43078), (183, 43105), (189, 43144), (190, 43159), (199, 43189), (203, 43219), (209, 43249), (222, 43297), (263, 43486), (305, 43642), (309, 43651), (313, 43660), (319, 43684), (327, 43738), (332, 43777), (349, 43867),

Gene: NovumRegina_66 Start: 52690, Stop: 51491, Start Num: 57

Candidate Starts for NovumRegina_66:

(Start: 57 @52690 has 47 MA's), (131, 52402), (132, 52399), (137, 52378), (138, 52372), (203, 52099), (205, 52087), (209, 52069), (218, 52036), (222, 52021), (238, 51934), (263, 51847), (267, 51832), (277, 51802), (278, 51799), (293, 51745), (306, 51688), (307, 51685), (309, 51682), (313, 51673), (330, 51565), (336, 51541),

Gene: Nubia_42 Start: 28083, Stop: 29030, Start Num: 58

Candidate Starts for Nubia_42:

(Start: 58 @28083 has 66 MA's), (93, 28230), (103, 28272), (126, 28347), (145, 28428), (148, 28443), (152, 28455), (195, 28605), (212, 28674), (213, 28677), (292, 28911), (302, 28956), (304, 28959), (314, 28986), (315, 28989),

Gene: OMalley_39 Start: 27504, Stop: 28451, Start Num: 62

Candidate Starts for OMalley_39:

(Start: 62 @27504 has 17 MA's), (75, 27570), (97, 27669), (103, 27693), (124, 27759), (136, 27807), (141, 27831), (148, 27861), (153, 27879), (155, 27891), (177, 27933), (207, 28071), (212, 28092), (213, 28095), (284, 28302), (302, 28377), (304, 28380), (314, 28407), (315, 28410),

Gene: Oaker_67 Start: 50680, Stop: 52002, Start Num: 44

Candidate Starts for Oaker_67:

(31, 50641), (Start: 39 @50665 has 1 MA's), (Start: 44 @50680 has 10 MA's), (79, 50794), (81, 50803), (84, 50812), (91, 50854), (137, 51028), (138, 51034), (149, 51085), (177, 51232), (182, 51250), (183, 51253), (185, 51268), (189, 51289), (214, 51421), (217, 51427), (271, 51610), (278, 51628), (293, 51682), (307, 51742), (319, 51778), (333, 51874),

Gene: Olympi_43 Start: 27608, Stop: 28621, Start Num: 30

Candidate Starts for Olympi_43:

(Start: 30 @27608 has 17 MA's), (75, 27737), (93, 27818), (112, 27887), (138, 27971), (158, 28055), (183, 28106), (195, 28175), (196, 28178), (223, 28280), (225, 28286), (253, 28370), (257, 28385), (273, 28436), (286, 28484), (302, 28547),

Gene: Onyinye_74 Start: 50783, Stop: 52000, Start Num: 56

Candidate Starts for Onyinye_74:

(Start: 56 @50783 has 3 MA's), (Start: 68 @50810 has 3 MA's), (77, 50864), (89, 50909), (102, 50975), (106, 50987), (125, 51047), (131, 51077), (132, 51080), (138, 51107), (144, 51134), (175, 51263), (198, 51383), (199, 51389), (217, 51479), (227, 51521), (231, 51539), (234, 51557), (261, 51620), (289, 51704), (309, 51779), (311, 51785), (313, 51788), (325, 51857), (327, 51866), (334, 51911), (342, 51968),

Gene: OtterstedtS21_65 Start: 43824, Stop: 45041, Start Num: 61

Candidate Starts for OtterstedtS21_65:

(Start: 61 @43824 has 77 MA's), (66, 43839), (92, 43968), (117, 44058), (118, 44061), (129, 44097), (138, 44130), (175, 44244), (183, 44271), (189, 44310), (190, 44325), (199, 44355), (203, 44385), (209, 44415), (222, 44463), (293, 44754), (305, 44808), (309, 44817), (313, 44826), (319, 44850), (332, 44943), (349, 45033),

Gene: OurGirlNessie_38 Start: 26071, Stop: 27021, Start Num: 58

Candidate Starts for OurGirlNessie_38:

(Start: 58 @26071 has 66 MA's), (90, 26203), (92, 26215), (93, 26218), (99, 26242), (127, 26338), (138, 26386), (141, 26401), (152, 26443), (157, 26467), (181, 26515), (207, 26641), (212, 26665), (213, 26668), (217, 26677), (264, 26812), (284, 26872), (302, 26947), (314, 26977), (315, 26980),

Gene: Outis_67 Start: 53139, Stop: 51931, Start Num: 60

Candidate Starts for Outis_67:

(Start: 60 @53139 has 10 MA's), (66, 53121), (Start: 115 @52917 has 1 MA's), (123, 52893), (131, 52854), (132, 52851), (138, 52824), (155, 52749), (183, 52662), (205, 52536), (222, 52470), (241, 52359), (256, 52311), (278, 52242), (293, 52188), (305, 52134), (309, 52125), (313, 52116), (330, 52008), (332, 51996),

Gene: OverHedge_43 Start: 28810, Stop: 29964, Start Num: 61

Candidate Starts for OverHedge_43:

(4, 28411), (Start: 61 @28810 has 77 MA's), (Start: 68 @28831 has 3 MA's), (118, 29041), (138, 29104), (161, 29200), (189, 29305), (221, 29455), (238, 29545), (251, 29581), (263, 29611), (293, 29716), (306, 29773), (325, 29857), (333, 29914),

Gene: Oxynfrius_42 Start: 28104, Stop: 29051, Start Num: 58

Candidate Starts for Oxynfrius_42:

(Start: 58 @28104 has 66 MA's), (93, 28251), (103, 28293), (126, 28368), (145, 28449), (148, 28464), (152, 28476), (195, 28626), (212, 28695), (213, 28698), (292, 28932), (302, 28977), (304, 28980), (314, 29007), (315, 29010),

Gene: P1201_73 Start: 54596, Stop: 53460, Start Num: 60

Candidate Starts for P1201_73:

(Start: 60 @54596 has 10 MA's), (127, 54338), (138, 54287), (139, 54284), (166, 54173), (222, 53918), (278, 53753), (309, 53636), (331, 53519),

Gene: PBI1_54 Start: 43038, Stop: 44216, Start Num: 57

Candidate Starts for PBI1_54:

(8, 42756), (12, 42786), (20, 42849), (Start: 57 @43038 has 47 MA's), (Start: 72 @43086 has 3 MA's), (78, 43125), (81, 43137), (103, 43236), (127, 43299), (138, 43353), (149, 43401), (172, 43467), (200, 43581), (203, 43608), (209, 43638), (221, 43683), (289, 43917), (305, 43983), (309, 43992), (313, 44001), (335, 44127), (349, 44208),

Gene: PHTowN_66 Start: 47159, Stop: 46161, Start Num: 63

Candidate Starts for PHTowN_66:

(42, 47210), (Start: 63 @47159 has 7 MA's), (Start: 67 @47147 has 1 MA's), (138, 46868), (139, 46865), (174, 46736), (183, 46709), (189, 46673), (203, 46598), (205, 46586), (221, 46523), (299, 46382), (309, 46349), (313, 46340), (325, 46268), (326, 46262), (338, 46178),

Gene: PLOT_57 Start: 43090, Stop: 44268, Start Num: 57

Candidate Starts for PLOT_57:

(8, 42808), (20, 42901), (Start: 57 @43090 has 47 MA's), (Start: 72 @43138 has 3 MA's), (78, 43177), (81, 43189), (103, 43288), (127, 43351), (138, 43405), (149, 43453), (172, 43519), (200, 43633), (203, 43660), (209, 43690), (221, 43735), (289, 43969), (305, 44035), (309, 44044), (313, 44053), (335, 44179), (349, 44260),

Gene: Papyrus_69 Start: 51328, Stop: 52497, Start Num: 61

Candidate Starts for Papyrus_69:

(Start: 61 @51328 has 77 MA's), (66, 51343), (74, 51385), (81, 51418), (134, 51619), (138, 51634), (175, 51766), (189, 51829), (190, 51844), (209, 51934), (216, 51961), (274, 52162), (276, 52168),

(278, 52174), (306, 52285), (309, 52291), (333, 52423), (343, 52483),

Gene: PartyCup_44 Start: 27759, Stop: 28706, Start Num: 58

Candidate Starts for PartyCup_44:

(Start: 58 @27759 has 66 MA's), (92, 27903), (93, 27906), (96, 27921), (103, 27948), (123, 28011), (127, 28026), (138, 28074), (148, 28119), (152, 28131), (157, 28155), (195, 28281), (212, 28350), (213, 28353), (264, 28497), (284, 28557), (302, 28632), (304, 28635), (314, 28662), (315, 28665),

Gene: Parvaparticeps_12 Start: 7767, Stop: 8726, Start Num: 55

Candidate Starts for Parvaparticeps_12:

(1, 7284), (2, 7317), (12, 7527), (Start: 55 @7767 has 4 MA's), (Start: 67 @7794 has 1 MA's), (Start: 68 @7797 has 3 MA's), (70, 7812), (74, 7836), (92, 7923), (108, 7983), (138, 8097), (157, 8178), (171, 8202), (179, 8220), (183, 8235), (184, 8238), (196, 8307), (207, 8352), (213, 8379), (253, 8475), (267, 8520), (286, 8589), (302, 8652), (310, 8673),

Gene: ParvusTarda_64 Start: 43199, Stop: 44413, Start Num: 61

Candidate Starts for ParvusTarda_64:

(Start: 61 @43199 has 77 MA's), (66, 43214), (92, 43343), (Start: 116 @43427 has 1 MA's), (132, 43478), (138, 43505), (175, 43619), (183, 43646), (190, 43697), (195, 43712), (199, 43727), (203, 43757), (222, 43835), (263, 44024), (295, 44132), (305, 44180), (309, 44189), (313, 44198), (319, 44222), (332, 44315), (349, 44405),

Gene: Patience_81 Start: 53552, Stop: 54784, Start Num: 52

Candidate Starts for Patience_81:

(Start: 52 @53552 has 13 MA's), (73, 53606), (80, 53645), (81, 53648), (84, 53657), (90, 53690), (94, 53714), (135, 53879), (138, 53891), (157, 53972), (178, 54056), (184, 54077), (189, 54119), (217, 54257), (229, 54308), (237, 54359), (262, 54395), (278, 54443), (293, 54497), (309, 54560), (337, 54728), (346, 54770),

Gene: Patio_68 Start: 53007, Stop: 51817, Start Num: 55

Candidate Starts for Patio_68:

(Start: 51 @53016 has 2 MA's), (Start: 55 @53007 has 4 MA's), (103, 52809), (130, 52716), (131, 52713), (132, 52710), (138, 52683), (142, 52665), (155, 52608), (205, 52413), (206, 52410), (209, 52395), (222, 52347), (244, 52233), (249, 52221), (263, 52173), (278, 52125), (293, 52071), (309, 52008), (313, 51999), (332, 51879),

Gene: Patos_69 Start: 44889, Stop: 46106, Start Num: 61

Candidate Starts for Patos_69:

(Start: 61 @44889 has 77 MA's), (66, 44904), (92, 45033), (117, 45123), (118, 45126), (129, 45162), (138, 45195), (175, 45309), (183, 45336), (189, 45375), (190, 45390), (199, 45420), (203, 45450), (209, 45480), (222, 45528), (293, 45819), (305, 45873), (309, 45882), (313, 45891), (319, 45915), (332, 46008), (349, 46098),

Gene: Penelope2018_57 Start: 43108, Stop: 44286, Start Num: 57

Candidate Starts for Penelope2018_57:

(8, 42826), (20, 42919), (Start: 57 @43108 has 47 MA's), (Start: 72 @43156 has 3 MA's), (78, 43195), (81, 43207), (103, 43306), (127, 43369), (138, 43423), (149, 43471), (172, 43537), (200, 43651), (203, 43678), (209, 43708), (221, 43753), (289, 43987), (305, 44053), (309, 44062), (313, 44071), (335, 44197), (349, 44278),

Gene: PermaG_43 Start: 27639, Stop: 28652, Start Num: 30

Candidate Starts for PermaG_43:

(Start: 30 @27639 has 17 MA's), (75, 27768), (93, 27849), (138, 28002), (152, 28059), (183, 28137), (195, 28206), (196, 28209), (215, 28284), (223, 28311), (253, 28401), (257, 28416), (273, 28467), (302, 28578),

Gene: PeteyPab_68 Start: 50318, Stop: 49200, Start Num: 65

Candidate Starts for PeteyPab_68:

(Start: 65 @50318 has 10 MA's), (91, 50183), (107, 50132), (127, 50069), (138, 50018), (147, 49976), (155, 49943), (161, 49922), (178, 49880), (181, 49871), (183, 49862), (189, 49826), (199, 49772), (235, 49589), (301, 49400), (309, 49379), (318, 49349), (328, 49277), (331, 49262), (332, 49253),

Gene: Phalaborwa_58 Start: 43258, Stop: 44436, Start Num: 57

Candidate Starts for Phalaborwa_58:

(Start: 57 @43258 has 47 MA's), (78, 43345), (81, 43357), (103, 43456), (127, 43519), (135, 43561), (138, 43573), (149, 43621), (172, 43687), (203, 43828), (205, 43840), (209, 43858), (221, 43903), (259, 44041), (274, 44083), (288, 44134), (289, 44137), (305, 44203), (309, 44212), (313, 44221), (335, 44347), (349, 44428),

Gene: Pharpay_43 Start: 28865, Stop: 30019, Start Num: 61

Candidate Starts for Pharpay_43:

(4, 28466), (Start: 61 @28865 has 77 MA's), (Start: 68 @28886 has 3 MA's), (80, 28955), (118, 29096), (138, 29159), (161, 29255), (189, 29360), (221, 29510), (238, 29600), (251, 29636), (263, 29666), (293, 29771), (306, 29828), (325, 29912), (333, 29969),

Gene: Phomeo_67 Start: 53314, Stop: 52115, Start Num: 57

Candidate Starts for Phomeo_67:

(Start: 57 @53314 has 47 MA's), (131, 53026), (132, 53023), (137, 53002), (138, 52996), (203, 52723), (205, 52711), (209, 52693), (218, 52660), (222, 52645), (238, 52558), (263, 52471), (267, 52456), (277, 52426), (278, 52423), (293, 52369), (306, 52312), (307, 52309), (309, 52306), (313, 52297), (330, 52189), (336, 52165),

Gene: Phreeze_66 Start: 49680, Stop: 50969, Start Num: 44

Candidate Starts for Phreeze_66:

(31, 49641), (Start: 39 @49665 has 1 MA's), (Start: 44 @49680 has 10 MA's), (79, 49794), (81, 49803), (84, 49812), (91, 49854), (137, 50028), (138, 50034), (149, 50085), (177, 50199), (182, 50217), (183, 50220), (185, 50235), (189, 50256), (214, 50388), (217, 50394), (255, 50532), (271, 50577), (278, 50595), (293, 50649), (307, 50709), (319, 50745), (333, 50841),

Gene: PhunaPhoke_43 Start: 28838, Stop: 29992, Start Num: 61

Candidate Starts for PhunaPhoke_43:

(4, 28439), (Start: 61 @28838 has 77 MA's), (Start: 68 @28859 has 3 MA's), (118, 29069), (138, 29132), (161, 29228), (189, 29333), (221, 29483), (238, 29573), (251, 29609), (263, 29639), (293, 29744), (306, 29801), (325, 29885), (333, 29942),

Gene: PinkFriday_39 Start: 26620, Stop: 27570, Start Num: 62

Candidate Starts for PinkFriday_39:

(Start: 62 @26620 has 17 MA's), (74, 26677), (93, 26767), (97, 26785), (124, 26875), (136, 26926), (145, 26965), (148, 26980), (153, 26998), (155, 27010), (179, 27058), (201, 27175), (212, 27214), (217, 27226), (246, 27313), (264, 27361), (284, 27421), (302, 27496), (314, 27526), (315, 27529),

Gene: PitaDog_39 Start: 26328, Stop: 27278, Start Num: 58

Candidate Starts for PitaDog_39:

(Start: 58 @26328 has 66 MA's), (90, 26460), (92, 26472), (93, 26475), (99, 26499), (127, 26595), (138, 26643), (141, 26658), (152, 26700), (157, 26724), (179, 26766), (181, 26772), (207, 26898),

(212, 26922), (213, 26925), (217, 26934), (264, 27069), (284, 27129), (302, 27204), (314, 27234), (315, 27237),

Gene: Pleakley_75 Start: 52499, Stop: 51309, Start Num: 55

Candidate Starts for Pleakley_75:

(5, 52829), (15, 52727), (Start: 55 @52499 has 4 MA's), (66, 52472), (87, 52379), (118, 52256), (123, 52244), (132, 52202), (138, 52175), (139, 52172), (222, 51842), (238, 51755), (263, 51662), (278, 51614), (309, 51497), (318, 51467), (326, 51410), (330, 51380), (336, 51356),

Gene: Polyuyki_67 Start: 50081, Stop: 48915, Start Num: 57

Candidate Starts for Polyuyki_67:

(21, 50219), (Start: 36 @50111 has 1 MA's), (Start: 57 @50081 has 47 MA's), (107, 49883), (138, 49760), (155, 49685), (183, 49622), (186, 49595), (204, 49502), (208, 49487), (212, 49463), (221, 49436), (222, 49433), (278, 49223), (290, 49175), (309, 49106), (311, 49100), (333, 48974),

Gene: PotatoChip_69 Start: 50320, Stop: 49202, Start Num: 65

Candidate Starts for PotatoChip_69:

(Start: 65 @50320 has 10 MA's), (91, 50185), (107, 50134), (127, 50071), (138, 50020), (147, 49978), (155, 49945), (161, 49924), (178, 49882), (181, 49873), (183, 49864), (189, 49828), (199, 49774), (235, 49591), (301, 49402), (309, 49381), (318, 49351), (328, 49279), (331, 49264), (332, 49255),

Gene: Potatoes_41 Start: 27534, Stop: 28481, Start Num: 58

Candidate Starts for Potatoes_41:

(Start: 58 @27534 has 66 MA's), (76, 27603), (90, 27666), (92, 27678), (93, 27681), (99, 27705), (127, 27801), (138, 27849), (145, 27879), (152, 27906), (181, 27978), (213, 28128), (217, 28137), (246, 28224), (264, 28272), (284, 28332), (302, 28407), (304, 28410), (314, 28437), (315, 28440),

Gene: Potty_43 Start: 28843, Stop: 29997, Start Num: 61

Candidate Starts for Potty_43:

(4, 28444), (Start: 61 @28843 has 77 MA's), (Start: 68 @28864 has 3 MA's), (118, 29074), (138, 29137), (161, 29233), (189, 29338), (221, 29488), (238, 29578), (251, 29614), (263, 29644), (293, 29749), (306, 29806), (325, 29890), (333, 29947),

Gene: Poultruss_42 Start: 29185, Stop: 30312, Start Num: 61

Candidate Starts for Poultruss_42:

(Start: 61 @29185 has 77 MA's), (Start: 68 @29206 has 3 MA's), (118, 29416), (138, 29479), (161, 29575), (189, 29680), (221, 29830), (274, 29998), (293, 30064), (306, 30121), (325, 30205), (333, 30262),

Gene: Prager_57 Start: 43127, Stop: 44305, Start Num: 57

Candidate Starts for Prager_57:

(8, 42845), (12, 42875), (20, 42938), (Start: 57 @43127 has 47 MA's), (Start: 72 @43175 has 3 MA's), (78, 43214), (81, 43226), (103, 43325), (127, 43388), (138, 43442), (149, 43490), (172, 43556), (200, 43670), (203, 43697), (209, 43727), (221, 43772), (289, 44006), (305, 44072), (309, 44081), (313, 44090), (335, 44216), (349, 44297),

Gene: Preamble_39 Start: 26398, Stop: 27345, Start Num: 58

Candidate Starts for Preamble_39:

(Start: 58 @26398 has 66 MA's), (90, 26530), (92, 26542), (93, 26545), (99, 26569), (127, 26665), (138, 26713), (141, 26728), (152, 26770), (155, 26788), (177, 26830), (181, 26842), (264, 27136), (284, 27196), (302, 27271), (304, 27274), (314, 27301), (315, 27304),

Gene: Predator_68 Start: 49458, Stop: 50774, Start Num: 39

Candidate Starts for Predator_68:

(24, 49386), (29, 49425), (31, 49434), (Start: 39 @49458 has 1 MA's), (Start: 44 @49473 has 10 MA's), (79, 49578), (80, 49584), (84, 49596), (103, 49686), (138, 49818), (141, 49833), (149, 49869), (163, 49932), (167, 49971), (170, 49980), (182, 50022), (186, 50052), (189, 50061), (197, 50106), (210, 50172), (217, 50199), (221, 50214), (233, 50274), (255, 50337), (271, 50382), (287, 50436), (293, 50454), (307, 50514), (319, 50550), (329, 50625), (333, 50646), (335, 50652), (339, 50691), (347, 50727), (350, 50739),

Gene: Pterodactyl_39 Start: 26308, Stop: 27258, Start Num: 58

Candidate Starts for Pterodactyl_39:

(Start: 58 @26308 has 66 MA's), (90, 26440), (92, 26452), (93, 26455), (99, 26479), (127, 26575), (138, 26623), (141, 26638), (152, 26680), (157, 26704), (181, 26752), (207, 26878), (212, 26902), (213, 26905), (217, 26914), (264, 27049), (284, 27109), (302, 27184), (314, 27214), (315, 27217),

Gene: Puissant_69 Start: 49917, Stop: 51227, Start Num: 45

Candidate Starts for Puissant_69:

(17, 49746), (29, 49866), (31, 49875), (Start: 39 @49899 has 1 MA's), (Start: 45 @49917 has 2 MA's), (79, 50019), (84, 50037), (137, 50253), (138, 50259), (146, 50289), (149, 50310), (177, 50457), (182, 50475), (183, 50478), (185, 50493), (186, 50505), (189, 50514), (214, 50646), (217, 50652), (233, 50727), (247, 50778), (271, 50835), (307, 50967), (319, 51003), (329, 51078),

Gene: Pumancara_39 Start: 26532, Stop: 27482, Start Num: 62

Candidate Starts for Pumancara_39:

(Start: 62 @26532 has 17 MA's), (74, 26589), (93, 26679), (97, 26697), (124, 26787), (136, 26838), (145, 26877), (148, 26892), (153, 26910), (155, 26922), (179, 26970), (201, 27087), (217, 27138), (246, 27225), (264, 27273), (284, 27333), (302, 27408), (314, 27438), (315, 27441),

Gene: RAP15_42 Start: 27707, Stop: 28654, Start Num: 58

Candidate Starts for RAP15_42:

(Start: 58 @27707 has 66 MA's), (90, 27839), (92, 27851), (93, 27854), (99, 27878), (127, 27974), (138, 28022), (145, 28052), (152, 28079), (181, 28151), (213, 28301), (217, 28310), (246, 28397), (264, 28445), (284, 28505), (302, 28580), (314, 28610), (315, 28613),

Gene: Rachella_43 Start: 28867, Stop: 30000, Start Num: 68

Candidate Starts for Rachella_43:

(4, 28447), (Start: 61 @28846 has 77 MA's), (Start: 68 @28867 has 3 MA's), (80, 28936), (118, 29077), (138, 29140), (161, 29236), (189, 29341), (221, 29491), (238, 29581), (251, 29617), (263, 29647), (293, 29752), (306, 29809), (325, 29893), (333, 29950),

Gene: Ranch_65 Start: 42668, Stop: 43885, Start Num: 61

Candidate Starts for Ranch_65:

(Start: 61 @42668 has 77 MA's), (66, 42683), (92, 42812), (117, 42902), (118, 42905), (129, 42941), (138, 42974), (175, 43088), (183, 43115), (189, 43154), (190, 43169), (199, 43199), (203, 43229), (209, 43259), (220, 43301), (293, 43598), (305, 43652), (309, 43661), (313, 43670), (319, 43694), (332, 43787), (349, 43877),

Gene: Rasovi_43 Start: 27973, Stop: 28986, Start Num: 30

Candidate Starts for Rasovi_43:

(Start: 30 @27973 has 17 MA's), (93, 28183), (112, 28252), (138, 28336), (153, 28399), (183, 28471), (184, 28474), (195, 28540), (196, 28543), (223, 28645), (225, 28651), (253, 28735), (257, 28750), (273, 28801), (286, 28849), (302, 28912),

Gene: RazorC_65 Start: 42812, Stop: 44029, Start Num: 61

Candidate Starts for RazorC_65:

(Start: 61 @42812 has 77 MA's), (66, 42827), (92, 42956), (117, 43046), (118, 43049), (129, 43085), (138, 43118), (175, 43232), (183, 43259), (189, 43298), (190, 43313), (199, 43343), (203, 43373), (209, 43403), (222, 43451), (263, 43640), (305, 43796), (309, 43805), (313, 43814), (319, 43838), (327, 43892), (332, 43931), (349, 44021),

Gene: RcigaStruga_41 Start: 27893, Stop: 28828, Start Num: 58

Candidate Starts for RcigaStruga_41:

(Start: 58 @27893 has 66 MA's), (93, 28040), (97, 28058), (103, 28082), (126, 28157), (138, 28208), (145, 28238), (148, 28253), (152, 28265), (195, 28415), (212, 28484), (213, 28487), (257, 28598), (302, 28754), (304, 28757), (314, 28784), (315, 28787),

Gene: RedRaider_73 Start: 55326, Stop: 54136, Start Num: 55

Candidate Starts for RedRaider_73:

(Start: 51 @55335 has 2 MA's), (Start: 55 @55326 has 4 MA's), (66, 55299), (103, 55128), (130, 55035), (131, 55032), (132, 55029), (138, 55002), (142, 54984), (155, 54927), (205, 54732), (209, 54714), (222, 54666), (228, 54639), (249, 54540), (263, 54492), (278, 54444), (293, 54390), (309, 54327), (313, 54318), (332, 54198),

Gene: Rie18_43 Start: 28391, Stop: 29497, Start Num: 61

Candidate Starts for Rie18_43:

(Start: 61 @28391 has 77 MA's), (Start: 68 @28412 has 3 MA's), (118, 28622), (138, 28685), (161, 28781), (189, 28886), (221, 29036), (293, 29249), (325, 29390), (333, 29447),

Gene: RikSengupta_46 Start: 29769, Stop: 30920, Start Num: 36

Candidate Starts for RikSengupta_46:

(Start: 36 @29769 has 1 MA's), (Start: 64 @29823 has 3 MA's), (66, 29826), (Start: 68 @29832 has 3 MA's), (118, 30042), (121, 30048), (135, 30093), (138, 30105), (153, 30168), (161, 30201), (189, 30306), (224, 30468), (274, 30603), (283, 30627), (327, 30819), (333, 30867),

Gene: Riovina_39 Start: 27504, Stop: 28451, Start Num: 62

Candidate Starts for Riovina_39:

(Start: 62 @27504 has 17 MA's), (75, 27570), (97, 27669), (103, 27693), (124, 27759), (136, 27807), (141, 27831), (148, 27861), (153, 27879), (155, 27891), (177, 27933), (207, 28071), (212, 28092), (213, 28095), (284, 28302), (302, 28377), (304, 28380), (314, 28407), (315, 28410),

Gene: Riparian_71 Start: 51165, Stop: 52334, Start Num: 61

Candidate Starts for Riparian_71:

(Start: 61 @51165 has 77 MA's), (66, 51180), (74, 51222), (81, 51255), (134, 51456), (138, 51471), (175, 51603), (189, 51666), (190, 51681), (209, 51771), (216, 51798), (274, 51999), (276, 52005), (278, 52011), (306, 52122), (309, 52128), (333, 52260), (343, 52320),

Gene: Riverdale_42 Start: 27672, Stop: 28619, Start Num: 58

Candidate Starts for Riverdale_42:

(Start: 58 @27672 has 66 MA's), (76, 27741), (90, 27804), (92, 27816), (93, 27819), (99, 27843), (127, 27939), (138, 27987), (145, 28017), (152, 28044), (181, 28116), (213, 28266), (217, 28275), (246, 28362), (264, 28410), (284, 28470), (302, 28545), (304, 28548), (314, 28575), (315, 28578),

Gene: Rooney_66 Start: 47314, Stop: 46316, Start Num: 63

Candidate Starts for Rooney_66:

(Start: 63 @47314 has 7 MA's), (Start: 67 @47302 has 1 MA's), (138, 47023), (139, 47020), (174, 46891), (183, 46864), (189, 46828), (203, 46753), (205, 46741), (221, 46678), (289, 46579), (299, 46537), (309, 46504), (313, 46495), (325, 46423), (326, 46417), (338, 46333),

Gene: Rope_69 Start: 51321, Stop: 52490, Start Num: 61

Candidate Starts for Rope_69:

(Start: 61 @51321 has 77 MA's), (66, 51336), (74, 51378), (81, 51411), (134, 51612), (138, 51627), (175, 51759), (189, 51822), (190, 51837), (209, 51927), (216, 51954), (274, 52155), (276, 52161), (278, 52167), (306, 52278), (309, 52284), (333, 52416), (343, 52476),

Gene: Rozby_41 Start: 27464, Stop: 28411, Start Num: 58

Candidate Starts for Rozby_41:

(Start: 58 @27464 has 66 MA's), (76, 27533), (90, 27596), (92, 27608), (93, 27611), (99, 27635), (127, 27731), (138, 27779), (145, 27809), (152, 27836), (181, 27908), (213, 28058), (217, 28067), (246, 28154), (264, 28202), (284, 28262), (302, 28337), (304, 28340), (314, 28367), (315, 28370),

Gene: Rumi_66 Start: 42355, Stop: 43572, Start Num: 61

Candidate Starts for Rumi_66:

(Start: 61 @42355 has 77 MA's), (66, 42370), (92, 42499), (117, 42589), (118, 42592), (129, 42628), (138, 42661), (175, 42775), (183, 42802), (189, 42841), (190, 42856), (199, 42886), (203, 42916), (209, 42946), (222, 42994), (263, 43183), (305, 43339), (309, 43348), (313, 43357), (319, 43381), (327, 43435), (332, 43474), (349, 43564),

Gene: SBlackberry_42 Start: 27445, Stop: 28458, Start Num: 30

Candidate Starts for SBlackberry_42:

(23, 27400), (Start: 30 @27445 has 17 MA's), (93, 27655), (112, 27724), (138, 27808), (152, 27865), (183, 27943), (195, 28012), (196, 28015), (215, 28090), (223, 28117), (257, 28222), (273, 28273), (286, 28321), (302, 28384),

Gene: Sadboi_66 Start: 44538, Stop: 45701, Start Num: 61

Candidate Starts for Sadboi_66:

(Start: 61 @44538 has 77 MA's), (66, 44553), (92, 44682), (117, 44772), (118, 44775), (129, 44811), (138, 44844), (175, 44958), (183, 44985), (189, 45024), (190, 45039), (199, 45069), (203, 45099), (209, 45129), (222, 45177), (235, 45252), (250, 45273), (263, 45312), (293, 45414), (305, 45468), (309, 45477), (313, 45486), (319, 45510), (332, 45603), (349, 45693),

Gene: Sampudon_65 Start: 44890, Stop: 46053, Start Num: 61

Candidate Starts for Sampudon_65:

(Start: 61 @44890 has 77 MA's), (66, 44905), (92, 45034), (117, 45124), (118, 45127), (129, 45163), (138, 45196), (175, 45310), (183, 45337), (189, 45376), (190, 45391), (199, 45421), (203, 45451), (209, 45481), (222, 45529), (263, 45664), (293, 45766), (305, 45820), (309, 45829), (313, 45838), (319, 45862), (332, 45955), (349, 46045),

Gene: Sapo_31 Start: 30227, Stop: 29166, Start Num: 27

Candidate Starts for Sapo_31:

(Start: 27 @30227 has 1 MA's), (86, 30014), (109, 29909), (145, 29801), (157, 29750), (160, 29744), (183, 29696), (188, 29663), (217, 29546), (243, 29507), (308, 29315), (323, 29234), (324, 29231), (326, 29222), (329, 29192),

Gene: Savage2526_42 Start: 27701, Stop: 28648, Start Num: 58

Candidate Starts for Savage2526_42:

(Start: 58 @27701 has 66 MA's), (90, 27833), (92, 27845), (93, 27848), (99, 27872), (127, 27968), (138, 28016), (145, 28046), (152, 28073), (181, 28145), (213, 28295), (217, 28304), (246, 28391), (264, 28439), (284, 28499), (302, 28574), (304, 28577), (314, 28604), (315, 28607),

Gene: Scuba_76 Start: 52584, Stop: 51394, Start Num: 55

Candidate Starts for Scuba_76:

(14, 52815), (15, 52812), (Start: 55 @52584 has 4 MA's), (59, 52575), (66, 52557), (87, 52464), (118, 52341), (127, 52314), (132, 52287), (138, 52260), (222, 51927), (238, 51840), (263, 51747), (278, 51699), (309, 51582), (317, 51558), (326, 51495), (330, 51465), (336, 51441),

Gene: Scuttle_41 Start: 27661, Stop: 28608, Start Num: 58

Candidate Starts for Scuttle_41:

(Start: 58 @27661 has 66 MA's), (90, 27793), (93, 27808), (99, 27832), (127, 27928), (138, 27976), (145, 28006), (152, 28033), (181, 28105), (213, 28255), (217, 28264), (246, 28351), (264, 28399), (284, 28459), (302, 28534), (304, 28537), (314, 28564), (315, 28567),

Gene: Send513_69 Start: 51699, Stop: 52868, Start Num: 61

Candidate Starts for Send513_69:

(Start: 61 @51699 has 77 MA's), (66, 51714), (74, 51756), (81, 51789), (134, 51990), (138, 52005), (175, 52137), (189, 52200), (190, 52215), (216, 52332), (274, 52533), (276, 52539), (278, 52545), (306, 52656), (309, 52662), (333, 52794), (343, 52854),

Gene: Sergei_39 Start: 27511, Stop: 28464, Start Num: 62

Candidate Starts for Sergei_39:

(Start: 62 @27511 has 17 MA's), (74, 27568), (93, 27658), (97, 27676), (124, 27766), (136, 27817), (145, 27856), (148, 27871), (153, 27889), (155, 27901), (179, 27949), (201, 28066), (212, 28105), (217, 28117), (284, 28315), (302, 28390), (314, 28420), (315, 28423),

Gene: ShakeNBake_66 Start: 47186, Stop: 46188, Start Num: 63

Candidate Starts for ShakeNBake_66:

(42, 47237), (Start: 63 @47186 has 7 MA's), (Start: 67 @47174 has 1 MA's), (138, 46895), (139, 46892), (174, 46763), (183, 46736), (189, 46700), (203, 46625), (205, 46613), (221, 46550), (299, 46409), (309, 46376), (313, 46367), (325, 46295), (326, 46289), (338, 46205),

Gene: Sienna_54 Start: 40504, Stop: 41709, Start Num: 34

Candidate Starts for Sienna_54:

(Start: 34 @40504 has 4 MA's), (Start: 57 @40564 has 47 MA's), (Start: 65 @40573 has 10 MA's), (99, 40711), (111, 40735), (154, 40888), (164, 40921), (217, 41167), (218, 41170), (219, 41176), (223, 41191), (261, 41311), (278, 41359), (285, 41389), (287, 41395), (296, 41425), (303, 41458), (309, 41476), (311, 41482), (327, 41563), (331, 41593), (333, 41605), (344, 41668),

Gene: SilentWarrior_43 Start: 28085, Stop: 29212, Start Num: 61

Candidate Starts for SilentWarrior_43:

(4, 27692), (6, 27758), (7, 27773), (Start: 61 @28085 has 77 MA's), (Start: 68 @28106 has 3 MA's), (88, 28202), (118, 28316), (138, 28379), (161, 28475), (189, 28580), (221, 28730), (274, 28898), (293, 28964), (325, 29105), (333, 29162),

Gene: SirHarley_59 Start: 43598, Stop: 44728, Start Num: 72

Candidate Starts for SirHarley_59:

(35, 43505), (46, 43532), (47, 43535), (Start: 57 @43550 has 47 MA's), (Start: 72 @43598 has 3 MA's), (78, 43637), (81, 43649), (103, 43748), (127, 43811), (138, 43865), (149, 43913), (172, 43979), (200, 44093), (203, 44120), (209, 44150), (221, 44195), (289, 44429), (305, 44495), (309, 44504), (313, 44513), (335, 44639), (349, 44720),

Gene: Skysand_68 Start: 53458, Stop: 52295, Start Num: 69

Candidate Starts for Skysand_68:

(Start: 69 @53458 has 2 MA's), (103, 53287), (130, 53194), (131, 53191), (132, 53188), (138, 53161), (142, 53143), (155, 53086), (205, 52891), (206, 52888), (209, 52873), (222, 52825), (244, 52711),

(249, 52699), (263, 52651), (278, 52603), (293, 52549), (309, 52486), (313, 52477), (332, 52357),

Gene: Snakehole_43 Start: 28023, Stop: 29177, Start Num: 61

Candidate Starts for Snakehole_43:

(4, 27624), (Start: 61 @28023 has 77 MA's), (Start: 68 @28044 has 3 MA's), (118, 28254), (138, 28317), (161, 28413), (189, 28518), (221, 28668), (251, 28794), (263, 28824), (293, 28929), (306, 28986), (325, 29070), (333, 29127),

Gene: Sparcetus_46 Start: 29700, Stop: 30797, Start Num: 64

Candidate Starts for Sparcetus_46:

(38, 29652), (Start: 64 @29700 has 3 MA's), (66, 29703), (Start: 68 @29709 has 3 MA's), (118, 29919), (121, 29925), (135, 29970), (138, 29982), (153, 30045), (161, 30078), (189, 30183), (224, 30345), (274, 30480), (283, 30504), (327, 30696), (333, 30744),

Gene: Spocter_40 Start: 29643, Stop: 30608, Start Num: 45

Candidate Starts for Spocter_40:

(Start: 45 @29643 has 2 MA's), (70, 29706), (90, 29805), (98, 29841), (113, 29880), (137, 29943), (138, 29949), (179, 30072), (184, 30090), (186, 30114), (192, 30147), (212, 30225), (244, 30342), (260, 30381), (280, 30444),

Gene: StarStruck_67 Start: 53139, Stop: 51931, Start Num: 60

Candidate Starts for StarStruck_67:

(Start: 60 @53139 has 10 MA's), (66, 53121), (Start: 115 @52917 has 1 MA's), (123, 52893), (131, 52854), (132, 52851), (138, 52824), (155, 52749), (183, 52662), (205, 52536), (222, 52470), (241, 52359), (256, 52311), (278, 52242), (293, 52188), (305, 52134), (309, 52125), (313, 52116), (330, 52008), (332, 51996),

Gene: Stickynote_69 Start: 50521, Stop: 49409, Start Num: 65

Candidate Starts for Stickynote_69:

(Start: 65 @50521 has 10 MA's), (107, 50335), (138, 50221), (147, 50179), (155, 50146), (178, 50083), (181, 50074), (183, 50065), (189, 50029), (199, 49975), (235, 49792), (301, 49603), (309, 49582), (318, 49552), (328, 49480), (331, 49465), (332, 49456),

Gene: Stormer_65 Start: 42359, Stop: 43576, Start Num: 61

Candidate Starts for Stormer_65:

(Start: 61 @42359 has 77 MA's), (66, 42374), (92, 42503), (117, 42593), (118, 42596), (129, 42632), (138, 42665), (175, 42779), (183, 42806), (189, 42845), (190, 42860), (199, 42890), (203, 42920), (209, 42950), (222, 42998), (263, 43187), (305, 43343), (309, 43352), (313, 43361), (319, 43385), (327, 43439), (332, 43478), (349, 43568),

Gene: Stuff_50 Start: 36182, Stop: 37180, Start Num: 52

Candidate Starts for Stuff_50:

(9, 35945), (10, 35951), (19, 36023), (Start: 52 @36182 has 13 MA's), (93, 36347), (99, 36371), (128, 36479), (136, 36512), (141, 36536), (178, 36626), (180, 36632), (183, 36644), (184, 36647), (196, 36716), (217, 36806), (236, 36902), (277, 37013), (320, 37157),

Gene: Sucha_40 Start: 25225, Stop: 26232, Start Num: 30

Candidate Starts for Sucha_40:

(Start: 30 @25225 has 17 MA's), (93, 25435), (138, 25582), (153, 25645), (196, 25789), (199, 25801), (215, 25864), (223, 25891), (225, 25897), (253, 25981), (257, 25996), (282, 26071), (302, 26158),

Gene: Sukkupi_67 Start: 51527, Stop: 50328, Start Num: 61

Candidate Starts for Sukkupi_67:

(Start: 61 @51527 has 77 MA's), (Start: 115 @51308 has 1 MA's), (123, 51284), (130, 51248), (131, 51245), (132, 51242), (138, 51215), (142, 51197), (155, 51140), (203, 50942), (222, 50864), (238, 50777), (263, 50684), (267, 50669), (277, 50639), (278, 50636), (283, 50624), (293, 50582), (309, 50519), (313, 50510), (329, 50408), (330, 50402),

Gene: Supakev_39 Start: 27504, Stop: 28451, Start Num: 62

Candidate Starts for Supakev_39:

(Start: 62 @27504 has 17 MA's), (75, 27570), (97, 27669), (103, 27693), (124, 27759), (136, 27807), (141, 27831), (148, 27861), (153, 27879), (155, 27891), (177, 27933), (207, 28071), (212, 28092), (213, 28095), (284, 28302), (302, 28377), (304, 28380), (314, 28407), (315, 28410),

Gene: SuperSulley_68 Start: 53499, Stop: 52291, Start Num: 60

Candidate Starts for SuperSulley_68:

(Start: 60 @53499 has 10 MA's), (Start: 115 @53277 has 1 MA's), (123, 53253), (131, 53214), (132, 53211), (138, 53184), (142, 53166), (155, 53109), (205, 52896), (222, 52830), (241, 52719), (256, 52671), (283, 52590), (293, 52548), (305, 52494), (309, 52485), (313, 52476), (330, 52368),

Gene: Suppi_41 Start: 27580, Stop: 28527, Start Num: 58

Candidate Starts for Suppi_41:

(Start: 58 @27580 has 66 MA's), (92, 27724), (93, 27727), (96, 27742), (103, 27769), (123, 27832), (127, 27847), (138, 27895), (148, 27940), (152, 27952), (157, 27976), (195, 28102), (212, 28171), (213, 28174), (264, 28318), (284, 28378), (302, 28453), (304, 28456), (314, 28483), (315, 28486),

Gene: Suzy_54 Start: 41757, Stop: 42902, Start Num: 57

Candidate Starts for Suzy_54:

(Start: 57 @41757 has 47 MA's), (Start: 65 @41766 has 10 MA's), (99, 41904), (154, 42081), (164, 42114), (217, 42360), (218, 42363), (219, 42369), (223, 42384), (231, 42420), (258, 42495), (261, 42504), (278, 42552), (285, 42582), (287, 42588), (296, 42618), (303, 42651), (309, 42669), (311, 42675), (327, 42756), (331, 42786), (333, 42798), (344, 42861),

Gene: TattModd_40 Start: 27321, Stop: 28268, Start Num: 58

Candidate Starts for TattModd_40:

(Start: 58 @27321 has 66 MA's), (76, 27390), (90, 27453), (92, 27465), (93, 27468), (99, 27492), (127, 27588), (138, 27636), (145, 27666), (152, 27693), (153, 27699), (181, 27765), (213, 27915), (217, 27924), (246, 28011), (264, 28059), (284, 28119), (302, 28194), (304, 28197), (314, 28224), (315, 28227),

Gene: Tedro_43 Start: 28325, Stop: 29431, Start Num: 61

Candidate Starts for Tedro_43:

(4, 27932), (7, 28013), (Start: 61 @28325 has 77 MA's), (Start: 68 @28346 has 3 MA's), (118, 28556), (138, 28619), (161, 28715), (189, 28820), (221, 28970), (293, 29183), (306, 29240), (325, 29324), (333, 29381),

Gene: Temper16_39 Start: 27511, Stop: 28464, Start Num: 62

Candidate Starts for Temper16_39:

(Start: 62 @27511 has 17 MA's), (74, 27568), (93, 27658), (97, 27676), (124, 27766), (136, 27817), (145, 27856), (148, 27871), (153, 27889), (155, 27901), (179, 27949), (201, 28066), (212, 28105), (217, 28117), (284, 28315), (302, 28390), (314, 28420), (315, 28423),

Gene: Terapin_55 Start: 40488, Stop: 41633, Start Num: 57

Candidate Starts for Terapin_55:

(Start: 34 @40428 has 4 MA's), (Start: 57 @40488 has 47 MA's), (Start: 65 @40497 has 10 MA's), (99, 40635), (111, 40659), (154, 40812), (164, 40845), (217, 41091), (218, 41094), (219, 41100), (223,

41115), (261, 41235), (278, 41283), (285, 41313), (287, 41319), (296, 41349), (303, 41382), (309, 41400), (311, 41406), (327, 41487), (331, 41517), (333, 41529), (344, 41592),

Gene: Theresita_43 Start: 26461, Stop: 27471, Start Num: 30

Candidate Starts for Theresita_43:

(Start: 30 @26461 has 17 MA's), (92, 26668), (93, 26671), (138, 26821), (188, 26989), (199, 27040), (211, 27094), (253, 27220), (267, 27265), (283, 27313), (294, 27355), (302, 27397), (314, 27427), (319, 27448),

Gene: Thoth_57 Start: 43106, Stop: 44284, Start Num: 57

Candidate Starts for Thoth_57:

(8, 42824), (12, 42854), (20, 42917), (Start: 57 @43106 has 47 MA's), (Start: 72 @43154 has 3 MA's), (78, 43193), (81, 43205), (103, 43304), (127, 43367), (138, 43421), (149, 43469), (172, 43535), (200, 43649), (203, 43676), (209, 43706), (221, 43751), (289, 43985), (305, 44051), (309, 44060), (313, 44069), (335, 44195), (349, 44276),

Gene: Thumb_68 Start: 50115, Stop: 51404, Start Num: 44

Candidate Starts for Thumb_68:

(31, 50076), (Start: 39 @50100 has 1 MA's), (Start: 44 @50115 has 10 MA's), (79, 50229), (81, 50238), (84, 50247), (91, 50289), (137, 50463), (138, 50469), (149, 50520), (177, 50634), (182, 50652), (183, 50655), (185, 50670), (189, 50691), (214, 50823), (217, 50829), (255, 50967), (271, 51012), (278, 51030), (293, 51084), (307, 51144), (319, 51180), (333, 51276),

Gene: Tillicus_61 Start: 43238, Stop: 44398, Start Num: 61

Candidate Starts for Tillicus_61:

(Start: 61 @43238 has 77 MA's), (66, 43253), (92, 43382), (Start: 116 @43466 has 1 MA's), (132, 43517), (138, 43544), (175, 43658), (183, 43685), (189, 43721), (190, 43736), (195, 43751), (199, 43766), (203, 43796), (222, 43874), (234, 43934), (240, 43961), (263, 44009), (264, 44015), (295, 44117), (305, 44165), (309, 44174), (319, 44207), (332, 44300), (349, 44390),

Gene: TinyMiny_46 Start: 29721, Stop: 30818, Start Num: 64

Candidate Starts for TinyMiny_46:

(Start: 36 @29667 has 1 MA's), (Start: 64 @29721 has 3 MA's), (66, 29724), (Start: 68 @29730 has 3 MA's), (118, 29940), (121, 29946), (135, 29991), (138, 30003), (153, 30066), (161, 30099), (189, 30204), (224, 30366), (274, 30501), (283, 30525), (327, 30717), (333, 30765),

Gene: Tongui_44 Start: 28445, Stop: 29551, Start Num: 61

Candidate Starts for Tongui_44:

(Start: 61 @28445 has 77 MA's), (Start: 68 @28466 has 3 MA's), (118, 28676), (138, 28739), (161, 28835), (189, 28940), (221, 29090), (293, 29303), (325, 29444), (333, 29501),

Gene: Tracker_66 Start: 52125, Stop: 50926, Start Num: 57

Candidate Starts for Tracker_66:

(Start: 57 @52125 has 47 MA's), (131, 51837), (132, 51834), (137, 51813), (138, 51807), (203, 51534), (205, 51522), (209, 51504), (218, 51471), (222, 51456), (238, 51369), (263, 51282), (276, 51240), (277, 51237), (278, 51234), (293, 51180), (306, 51123), (307, 51120), (309, 51117), (313, 51108), (330, 51000), (336, 50976),

Gene: Troll4_57 Start: 43237, Stop: 44415, Start Num: 57

Candidate Starts for Troll4_57:

(8, 42955), (12, 42985), (20, 43048), (Start: 57 @43237 has 47 MA's), (Start: 72 @43285 has 3 MA's), (78, 43324), (81, 43336), (103, 43435), (127, 43498), (138, 43552), (149, 43600), (172, 43666), (200, 43780), (203, 43807), (209, 43837), (221, 43882), (289, 44116), (305, 44182), (309, 44191), (313,

44200), (335, 44326), (349, 44407),

Gene: TurboVicky_43 Start: 27685, Stop: 28698, Start Num: 30

Candidate Starts for TurboVicky_43:

(Start: 30 @27685 has 17 MA's), (75, 27814), (93, 27895), (112, 27964), (138, 28048), (158, 28132), (183, 28183), (195, 28252), (196, 28255), (223, 28357), (225, 28363), (253, 28447), (257, 28462), (273, 28513), (286, 28561), (302, 28624),

Gene: Turuncu_69 Start: 52823, Stop: 51867, Start Num: 116

Candidate Starts for Turuncu_69:

(Start: 116 @52823 has 1 MA's), (124, 52799), (131, 52763), (138, 52733), (149, 52685), (172, 52622), (222, 52403), (238, 52316), (241, 52292), (256, 52244), (278, 52175), (309, 52058), (313, 52049), (317, 52034), (336, 51917),

Gene: Typher_45 Start: 27803, Stop: 28816, Start Num: 30

Candidate Starts for Typher_45:

(Start: 30 @27803 has 17 MA's), (75, 27932), (93, 28013), (112, 28082), (138, 28166), (158, 28250), (183, 28301), (195, 28370), (196, 28373), (223, 28475), (225, 28481), (253, 28565), (257, 28580), (273, 28631), (286, 28679), (302, 28742),

Gene: UNTPL_52 Start: 36210, Stop: 37214, Start Num: 48

Candidate Starts for UNTPL_52:

(3, 35823), (9, 35979), (19, 36057), (Start: 48 @36210 has 1 MA's), (Start: 52 @36216 has 13 MA's), (93, 36381), (99, 36405), (128, 36513), (136, 36546), (141, 36570), (155, 36630), (178, 36660), (180, 36666), (183, 36678), (184, 36681), (186, 36705), (189, 36714), (196, 36750), (217, 36840), (236, 36936), (273, 37035), (274, 37038), (277, 37047), (320, 37191),

Gene: Urla_40 Start: 27482, Stop: 28432, Start Num: 58

Candidate Starts for Urla_40:

(Start: 58 @27482 has 66 MA's), (90, 27614), (92, 27626), (93, 27629), (96, 27644), (99, 27653), (127, 27749), (138, 27797), (141, 27812), (152, 27854), (157, 27878), (181, 27926), (183, 27935), (207, 28052), (213, 28079), (217, 28088), (284, 28283), (292, 28313), (302, 28358), (304, 28361), (314, 28388), (315, 28391),

Gene: Vallejo_42 Start: 27675, Stop: 28622, Start Num: 58

Candidate Starts for Vallejo_42:

(Start: 58 @27675 has 66 MA's), (76, 27744), (90, 27807), (92, 27819), (93, 27822), (99, 27846), (127, 27942), (138, 27990), (145, 28020), (152, 28047), (181, 28119), (213, 28269), (217, 28278), (246, 28365), (264, 28413), (284, 28473), (302, 28548), (304, 28551), (314, 28578), (315, 28581),

Gene: Visconti_58 Start: 43117, Stop: 44295, Start Num: 57

Candidate Starts for Visconti_58:

(8, 42835), (12, 42865), (20, 42928), (Start: 57 @43117 has 47 MA's), (Start: 72 @43165 has 3 MA's), (78, 43204), (81, 43216), (103, 43315), (127, 43378), (138, 43432), (149, 43480), (172, 43546), (200, 43660), (203, 43687), (209, 43717), (221, 43762), (289, 43996), (305, 44062), (309, 44071), (313, 44080), (335, 44206), (349, 44287),

Gene: Vulture_39 Start: 27432, Stop: 28382, Start Num: 62

Candidate Starts for Vulture_39:

(33, 27378), (Start: 62 @27432 has 17 MA's), (93, 27579), (97, 27597), (124, 27687), (136, 27738), (145, 27777), (148, 27792), (153, 27810), (155, 27822), (179, 27870), (201, 27987), (212, 28026), (217, 28038), (246, 28125), (264, 28173), (284, 28233), (302, 28308), (304, 28311), (314, 28338), (315, 28341),

Gene: WaldoWhy_59 Start: 43170, Stop: 44348, Start Num: 57

Candidate Starts for WaldoWhy_59:

(8, 42888), (12, 42918), (20, 42981), (Start: 57 @43170 has 47 MA's), (Start: 72 @43218 has 3 MA's), (78, 43257), (81, 43269), (103, 43368), (127, 43431), (138, 43485), (149, 43533), (172, 43599), (200, 43713), (203, 43740), (209, 43770), (221, 43815), (289, 44049), (305, 44115), (309, 44124), (313, 44133), (335, 44259), (349, 44340),

Gene: Wawa_41 Start: 27508, Stop: 28455, Start Num: 58

Candidate Starts for Wawa_41:

(Start: 58 @27508 has 66 MA's), (90, 27640), (92, 27652), (93, 27655), (99, 27679), (127, 27775), (138, 27823), (145, 27853), (152, 27880), (181, 27952), (213, 28102), (217, 28111), (246, 28198), (264, 28246), (284, 28306), (302, 28381), (304, 28384), (314, 28411), (315, 28414),

Gene: Wayne_41 Start: 27626, Stop: 28573, Start Num: 58

Candidate Starts for Wayne_41:

(Start: 58 @27626 has 66 MA's), (92, 27770), (93, 27773), (96, 27788), (103, 27815), (123, 27878), (127, 27893), (138, 27941), (148, 27986), (152, 27998), (157, 28022), (195, 28148), (212, 28217), (213, 28220), (264, 28364), (284, 28424), (302, 28499), (304, 28502), (314, 28529), (315, 28532),

Gene: Weiss13_69 Start: 51402, Stop: 52571, Start Num: 61

Candidate Starts for Weiss13_69:

(Start: 61 @51402 has 77 MA's), (66, 51417), (74, 51459), (81, 51492), (134, 51693), (138, 51708), (175, 51840), (189, 51903), (190, 51918), (209, 52008), (216, 52035), (274, 52236), (276, 52242), (278, 52248), (306, 52359), (309, 52365), (333, 52497), (343, 52557),

Gene: Wentworth_66 Start: 47288, Stop: 46290, Start Num: 63

Candidate Starts for Wentworth_66:

(42, 47339), (Start: 63 @47288 has 7 MA's), (Start: 67 @47276 has 1 MA's), (138, 46997), (139, 46994), (162, 46898), (183, 46838), (189, 46802), (203, 46727), (205, 46715), (218, 46664), (221, 46652), (299, 46511), (309, 46478), (313, 46469), (325, 46397), (326, 46391), (329, 46367),

Gene: Wheezy_66 Start: 52339, Stop: 51140, Start Num: 57

Candidate Starts for Wheezy_66:

(Start: 57 @52339 has 47 MA's), (131, 52051), (132, 52048), (137, 52027), (138, 52021), (203, 51748), (205, 51736), (209, 51718), (218, 51685), (222, 51670), (238, 51583), (263, 51496), (277, 51451), (278, 51448), (306, 51337), (307, 51334), (309, 51331), (313, 51322), (326, 51244), (330, 51214), (336, 51190),

Gene: WhoseManz_67 Start: 49542, Stop: 48343, Start Num: 61

Candidate Starts for WhoseManz_67:

(Start: 61 @49542 has 77 MA's), (Start: 115 @49323 has 1 MA's), (123, 49299), (131, 49260), (132, 49257), (138, 49230), (142, 49212), (155, 49155), (203, 48957), (222, 48879), (228, 48852), (237, 48795), (238, 48792), (263, 48699), (277, 48654), (278, 48651), (283, 48639), (293, 48597), (309, 48534), (313, 48525), (329, 48423), (330, 48417), (336, 48393),

Gene: Wilkos_68 Start: 47443, Stop: 46445, Start Num: 63

Candidate Starts for Wilkos_68:

(42, 47494), (Start: 63 @47443 has 7 MA's), (Start: 67 @47431 has 1 MA's), (138, 47152), (139, 47149), (174, 47020), (183, 46993), (189, 46957), (203, 46882), (205, 46870), (218, 46819), (221, 46807), (299, 46666), (309, 46633), (313, 46624), (325, 46552), (326, 46546), (329, 46522),

Gene: Wojtek_61 Start: 42920, Stop: 44134, Start Num: 61

Candidate Starts for Wojtek_61:

(Start: 61 @42920 has 77 MA's), (66, 42935), (92, 43064), (Start: 116 @43148 has 1 MA's), (132, 43199), (138, 43226), (175, 43340), (183, 43367), (190, 43418), (195, 43433), (199, 43448), (203, 43478), (222, 43556), (263, 43745), (295, 43853), (305, 43901), (309, 43910), (319, 43943), (332, 44036), (349, 44126),

Gene: Wollypog_46 Start: 33478, Stop: 34599, Start Num: 65

Candidate Starts for Wollypog_46:

(Start: 65 @33478 has 10 MA's), (110, 33679), (Start: 116 @33697 has 1 MA's), (133, 33751), (138, 33769), (155, 33844), (203, 34045), (204, 34054), (238, 34210), (258, 34234), (263, 34246), (264, 34252), (276, 34288), (325, 34498), (333, 34549),

Gene: WonderBoy_38 Start: 26303, Stop: 27253, Start Num: 58

Candidate Starts for WonderBoy_38:

(Start: 58 @26303 has 66 MA's), (90, 26435), (92, 26447), (93, 26450), (99, 26474), (127, 26570), (138, 26618), (141, 26633), (152, 26675), (157, 26699), (179, 26741), (181, 26747), (207, 26873), (212, 26897), (213, 26900), (217, 26909), (264, 27044), (284, 27104), (302, 27179), (314, 27209), (315, 27212),

Gene: Xenia2_63 Start: 42310, Stop: 43470, Start Num: 61

Candidate Starts for Xenia2_63:

(49, 42286), (Start: 61 @42310 has 77 MA's), (66, 42322), (92, 42451), (117, 42541), (118, 42544), (132, 42586), (138, 42613), (141, 42628), (157, 42694), (183, 42754), (190, 42808), (199, 42838), (203, 42868), (220, 42940), (239, 43033), (248, 43042), (264, 43087), (291, 43180), (305, 43237), (309, 43246), (313, 43255), (319, 43279), (332, 43372),

Gene: Yara_62 Start: 46145, Stop: 45150, Start Num: 65

Candidate Starts for Yara_62:

(Start: 65 @46145 has 10 MA's), (Start: 67 @46136 has 1 MA's), (138, 45857), (139, 45854), (183, 45698), (189, 45662), (194, 45635), (203, 45587), (205, 45575), (218, 45524), (221, 45512), (293, 45401), (299, 45371), (309, 45338), (313, 45329), (325, 45257), (329, 45227),

Gene: Yelo_68 Start: 51781, Stop: 52950, Start Num: 61

Candidate Starts for Yelo_68:

(Start: 61 @51781 has 77 MA's), (66, 51796), (74, 51838), (81, 51871), (134, 52072), (138, 52087), (162, 52186), (175, 52219), (189, 52282), (190, 52297), (209, 52387), (216, 52414), (274, 52615), (276, 52621), (278, 52627), (306, 52738), (309, 52744), (333, 52876), (343, 52936),

Gene: Yikes_67 Start: 44984, Stop: 46147, Start Num: 61

Candidate Starts for Yikes_67:

(Start: 61 @44984 has 77 MA's), (66, 44999), (92, 45128), (117, 45218), (118, 45221), (129, 45257), (138, 45290), (175, 45404), (183, 45431), (189, 45470), (190, 45485), (199, 45515), (203, 45545), (209, 45575), (222, 45623), (235, 45698), (250, 45719), (263, 45758), (293, 45860), (305, 45914), (309, 45923), (313, 45932), (319, 45956), (332, 46049), (349, 46139),

Gene: Yndexa_67 Start: 51527, Stop: 50328, Start Num: 61

Candidate Starts for Yndexa_67:

(Start: 61 @51527 has 77 MA's), (Start: 115 @51308 has 1 MA's), (123, 51284), (130, 51248), (131, 51245), (132, 51242), (138, 51215), (142, 51197), (155, 51140), (203, 50942), (222, 50864), (238, 50777), (263, 50684), (267, 50669), (277, 50639), (278, 50636), (283, 50624), (293, 50582), (309, 50519), (313, 50510), (329, 50408), (330, 50402),

Gene: Zanella_42 Start: 27511, Stop: 28524, Start Num: 30

Candidate Starts for Zanella_42:

(Start: 30 @27511 has 17 MA's), (93, 27721), (112, 27790), (138, 27874), (158, 27958), (183, 28009), (195, 28078), (196, 28081), (223, 28183), (225, 28189), (253, 28273), (257, 28288), (273, 28339), (286, 28387), (302, 28450),

Gene: Zany_63 Start: 44385, Stop: 45548, Start Num: 61

Candidate Starts for Zany_63:

(Start: 61 @44385 has 77 MA's), (66, 44400), (92, 44529), (117, 44619), (118, 44622), (129, 44658), (138, 44691), (175, 44805), (183, 44832), (189, 44871), (190, 44886), (199, 44916), (203, 44946), (209, 44976), (222, 45024), (263, 45159), (293, 45261), (305, 45315), (309, 45324), (313, 45333), (319, 45357), (332, 45450), (349, 45540),

Gene: Zenon_71 Start: 51725, Stop: 52894, Start Num: 61

Candidate Starts for Zenon_71:

(Start: 61 @51725 has 77 MA's), (66, 51740), (74, 51782), (81, 51815), (134, 52016), (138, 52031), (175, 52163), (189, 52226), (190, 52241), (216, 52358), (274, 52559), (276, 52565), (278, 52571), (306, 52682), (309, 52688), (333, 52820), (343, 52880),

Gene: Zion_69 Start: 50318, Stop: 49200, Start Num: 65

Candidate Starts for Zion_69:

(Start: 65 @50318 has 10 MA's), (91, 50183), (107, 50132), (127, 50069), (138, 50018), (147, 49976), (155, 49943), (161, 49922), (178, 49880), (181, 49871), (183, 49862), (189, 49826), (199, 49772), (235, 49589), (301, 49400), (309, 49379), (318, 49349), (328, 49277), (331, 49262), (332, 49253),

Gene: Zorro_42 Start: 27635, Stop: 28582, Start Num: 58

Candidate Starts for Zorro_42:

(Start: 58 @27635 has 66 MA's), (90, 27767), (92, 27779), (93, 27782), (99, 27806), (127, 27902), (138, 27950), (145, 27980), (152, 28007), (181, 28079), (213, 28229), (217, 28238), (246, 28325), (264, 28373), (284, 28433), (302, 28508), (314, 28538), (315, 28541),