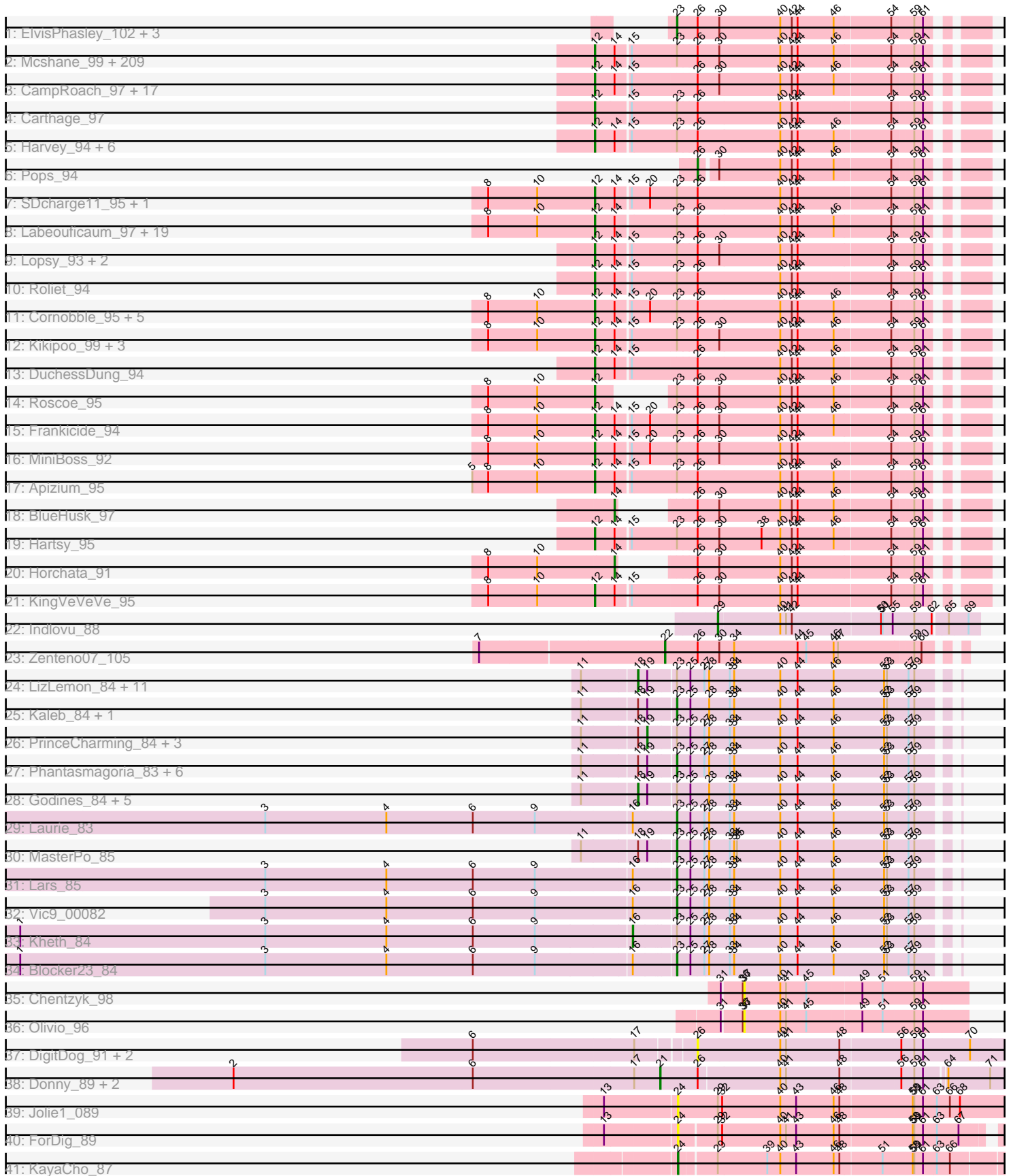


Pham 224201



Note: Tracks are now grouped by subcluster and scaled. Switching in subcluster is indicated by changes in track color. Track scale is now set by default to display the region 30 bp upstream of start 1 to 30 bp downstream of the last possible start. If this default region is judged to be packed too tightly with annotated starts, the track will be further scaled to only show that region of the ORF with annotated starts. This action will be indicated by adding "Zoomed" to the title. For starts, yellow indicates the location of called starts comprised solely of Glimmer/GeneMark auto-annotations, green indicates the location of called starts with at least 1 manual gene annotation.

Pham 224201 Report

This analysis was run 03/28/25 on database version 593.

Pham number 224201 has 336 members, 34 are drafts.

Phages represented in each track:

- Track 1 : ElvisPhasley_102, Chunky_95, HSavage_94, Boehler_94
- Track 2 : Mcshane_99, Placalicious_94, Craff_98, UAch1_97, Cher_97, Puhltonio_92, SilverBell_98, Struggle_97, Maru_96, True_98, Dati_94, Riggan_98, Thunderbird_97, Phunky_94, BlackStallion_96, Keitherie_100, Phipps_94, Eugenia_99, Mesh1_97, Weher20_94, Olak_99, Mecca_97, Oline_96, Phergie_97, Vaticameos_94, Selr12_101, AbsoluteMadLad_95, Ricotta_98, JacAttac_97, Lego3393_95, Inverness_94, Potter_91, Anderson_98, Simielle_97, Andre_101, Orfeu_97, Gwennie1_94, Lumine_98, Jiraiya_98, Bishoperium_97, Longacauda_97, ProfessorX_94, Oosterbaan_97, Kimbrough_98, TallGrassMM_96, Inchworm_98, Yoshand_98, Chah_99, Newman_92, Podrick_95, Badfish_97, Cannibal_97, Beaglebox_93, Slatt_99, Etaye_96, Kwadwo_96, FugateOSU_97, Hertubise_96, Toni_96, Manad_96, Orwigg_98, OliverWalter_96, GeneCoco_96, Doddsville_94, TomBombadil_97, Gareth_97, LeeLot_95, Haimas_94, FluffyNinja_98, Phareon_94, Waterdiva_98, DirtJuice_98, Daffy_96, HenryJackson_97, Nicole21_98, DonSanchon_92, Childish_97, KLucky39_94, UncleHowie_93, Burr_99, Swiphy_101, Cosmolli16_98, Colbert_95, Mesmerelda_98, Legolas_98, Matalotodo_95, Haleema_96, KingTut_87, Omniscient_98, Charles1_100, Tomlarah_97, Olive_93, JDog_96, LemonSlice_97, Nyala_97, EmpTee_96, Jillium_97, Melc17_94, Mana_94, Fringe_101, Piglet_0096, Spartan300_96, Altwerkus_94, Hocus_96, Samaymay_97, Squid_96, LuckyMarjie_94, Buckeye_95, Timmi_95, CamL_97, Crownjwl_94, MRabcd_97, Adriana_97, Scoot17C_97, Freya_93, Thora_95, Plmatters_94, Jiminy_97, Virapocalypse_98, Chute_97, HighStump_99, Held_95, Pherdinand_98, Banjo_93, Zaider_98, Mulan_96, Coletti_99, Plata_94, Hamish_94, Numberten_97, Grand2040_94, Bluephacebaby_96, FriarPreacher_94, Morgushi_94, DaddyDaniels_100, DelRivs_96, Suffolk_92, Squiggle_96, Dice_97, Soile_98, ABU_95, Orion_95, Zelda_97, TooFast2Furius_97, Chipette_94, Jesabah_97, LostAndPhound_96, CheetO_93, KlimbOn_96, Serpentine_0099, JakeO_98, Prickles_97, LasagnaCat_98, Sigman_96, Xavier_96, Scrick_98, Nathan_96, Sophia_95, Skippy_97, DoesntMatter_94, Iridoclysis_96, Trypo_97, Telesworld_95, Lulwa_94, PhenghisKhan_97, Nacho_0099, Emiris_99, Katniss_99, QueenBeane_97, LeiMonet_99, Cornbread_98, PhatLouie_99, PhatCats2014_96, Brilliant_100, Mosaic_94, Quisquilliae_99, Megatron_98, Lasso_96, SassyCat97_95, Vortex_95, PG1_95, PhrodoBaggins_99, Iridessa_99, PhrankReynolds_95, ShiVal_96, Usavi_97, Fang_97, Mutante_98, Pacifista_99, Sheila_91, Kahve_97, Morty_97, Giraffe_98, MitKao_97, Swish_98, Duggie_97, Serendipity_96, Riverton_95, ThreeOh3D2_98, PinheadLarry_96, Solosis_95, Hetaeria_96, Phamished_96, Gophee_96, Vista_96, YouGoGlencoco_97, Cobra_97, Murdoc_93,

JangoPhett_95, Dione_95

- Track 3 : CampRoach_97, Durga_99, Wallhey_98, Caspiboi_98, Khan1_97, Chorkpop_98, Surely_97, Lulumae_92, Kwksand96_98, Pinkman_96, Fozzie_93, MrPhizzler_96, Rimu_100, Roy17_94, Valjean_95, Megamind20_99, Virgeve_95, Zonia_97
- Track 4 : Carthage_97
- Track 5 : Harvey_94, Dingo_93, Soto_93, Pipsqueak_94, Mikota_91, Basato_95, Kloppinator_97
- Track 6 : Pops_94
- Track 7 : SDcharge11_95, Daka_98
- Track 8 : Labeouficaum_97, Phleuron_94, Derpp_96, Maskar_98, AngelCake_93, CharlieGBrown_95, ImtiyazSitla_98, MelsMeow_95, SirBeauregard_97, Mag7_95, BatteryCK_95, Ashraf_98, MichaelPhcott_95, Chaelin_97, Windsor_96, Schueller_95, Veritas_96, Magic8_96, Kailash_95, TyrionL_97
- Track 9 : Lopsy_93, Tooj_94, Eremos_94
- Track 10 : Roliet_94
- Track 11 : Cornobble_95, Aelin_96, Antonia_96, OSmaximus_97, RedMaple_95, Schadenfreude_97
- Track 12 : Kikipoo_99, Gwilliam_97, AltPhacts_94, IsaacEli_99
- Track 13 : DuchessDung_94
- Track 14 : Roscoe_95
- Track 15 : Frankicide_94
- Track 16 : MiniBoss_92
- Track 17 : Apizium_95
- Track 18 : BlueHusk_97
- Track 19 : Hartsy_95
- Track 20 : Horchata_91
- Track 21 : KingVeVeVe_95
- Track 22 : Indlovu_88
- Track 23 : Zenteno07_105
- Track 24 : LizLemon_84, Rhinoforte_84, Arbiter_81, Qyrzula_75, Brownie5_84, Ares_84, Bananafish_85, Tinciduntolum_85, Hedgerow_84, Opia_85, FrenchFry_85, Sabella_84
- Track 25 : Kaleb_84, Lephleur_84
- Track 26 : PrinceCharming_84, LilSmirk_84, West99_84, Tres_84
- Track 27 : Phantasmagoria_83, Allegro_84, Kolhan_85, Calamitous_85, Coffee_83, Faze9_83, Boyle_84
- Track 28 : Godines_84, ItsyBitsy1_81, Holeinone_84, TA17A_87, Glass_86, Rosebush_82
- Track 29 : Laurie_83
- Track 30 : MasterPo_85
- Track 31 : Lars_85
- Track 32 : Vic9_00082
- Track 33 : Kheth_84
- Track 34 : Blocker23_84
- Track 35 : Chentzyk_98
- Track 36 : Olivio_96
- Track 37 : DigitDog_91, Shenyu_90, Nangang_90
- Track 38 : Donny_89, Acadian_89, Suigeneris_90
- Track 39 : Jolie1_089
- Track 40 : ForDig_89
- Track 41 : KayaCho_87

Summary of Final Annotations (See graph section above for start numbers):

The start number called the most often in the published annotations is 12, it was called in 257 of the 302 non-draft genes in the pham.

Genes that call this "Most Annotated" start:

- ABU_95, AbsoluteMadLad_95, Adriana_97, Aelin_96, AltPhacts_94, Altwerkus_94, Anderson_98, Andre_101, AngelCake_93, Antonia_96, Apizium_95, Ashraf_98, Badfish_97, Banjo_93, Basato_95, BatteryCK_95, Beaglebox_93, Bishoperium_97, BlackStallion_96, Bluephacebaby_96, Brilliant_100, Buckeye_95, Burr_99, CamL_97, CampRoach_97, Cannibal_97, Carthage_97, Caspiboi_98, Chaelin_97, Chah_99, Charles1_100, CharlieGBrown_95, CheetO_93, Cher_97, Childish_97, Chipette_94, Chorkpop_98, Chute_97, Cobra_97, Colbert_95, Coletti_99, Cornbread_98, Cornobble_95, Cosmolli16_98, Craff_98, Crownjwl_94, DaddyDaniels_100, Daffy_96, Daka_98, Dati_94, DelRivs_96, Derpp_96, Dice_97, Dingo_93, Dione_95, DirtJuice_98, Doddsville_94, DoesntMatter_94, DonSancho_92, DuchessDung_94, Duggie_97, Durga_99, Emiris_99, EmpTee_96, Eremos_94, Etaye_96, Eugenia_99, Fang_97, FluffyNinja_98, Fozzie_93, Frankicide_94, Freya_93, FriarPreacher_94, Fringe_101, FugateOSU_97, Gareth_97, GeneCoco_96, Giraffe_98, Gophee_96, Grand2040_94, Gwennie1_94, Gwilliam_97, Haimas_94, Haleema_96, Hamish_94, Hartsy_95, Harvey_94, Held_95, HenryJackson_97, Hertubise_96, Hetaeria_96, HighStump_99, Hocus_96, ImtiyazSitla_98, Inchworm_98, Inverness_94, Iridessa_99, Iridoclysis_96, IsaacEli_99, JDog_96, JacAttac_97, JakeO_98, JangoPhett_95, Jesabah_97, Jillium_97, Jiminy_97, Jiraiya_98, KLUcky39_94, Kahve_97, Kailash_95, Katniss_99, Keitherie_100, Khan1_97, Kikipoo_99, Kimbrough_98, KingTut_87, KingVeVeVe_95, KlimbOn_96, Kloppinator_97, Kwadwo_96, Kwksand96_98, Labeouficaum_97, LasagnaCat_98, Lasso_96, LeeLot_95, Lego3393_95, Legolas_98, LeiMonet_99, LemonSlice_97, Longacauda_97, Lopsy_93, LostAndPhound_96, LuckyMarjie_94, Lulumae_92, Lulwa_94, Lumine_98, MRabcd_97, Mag7_95, Magic8_96, Mana_94, Manad_96, Maru_96, Maskar_98, Matalotodo_95, Mcshane_99, Mecca_97, Megamind20_99, Megatron_98, Melc17_94, MelsMeow_95, Mesh1_97, Mesmerelda_98, MichaelPhcott_95, Mikota_91, MiniBoss_92, MitKao_97, Morgushi_94, Morty_97, Mosaic_94, MrPhizzler_96, Mulan_96, Murdoc_93, Mutante_98, Nacho_0099, Nathan_96, Newman_92, Nicole21_98, Numberten_97, Nyala_97, OSmaximus_97, Olak_99, Oline_96, Olive_93, OliverWalter_96, Omniscient_98, Oosterbaan_97, Orfeu_97, Orion_95, Orwig_98, PG1_95, Pacifista_99, Phamished_96, Phareon_94, PhatCats2014_96, PhatLouie_99, PhenghisKhan_97, Pherdinand_98, Phergie_97, Phipps_94, Phleuron_94, PhrankReynolds_95, PhrodoBaggins_99, Phunky_94, Piglet_0096, PinheadLarry_96, Pinkman_96, Pipsqueak_94, Placalicious_94, Plata_94, Plmatters_94, Podrick_95, Potter_91, Prickles_97, ProfessorX_94, Puhltonio_92, QueenBeane_97, Quisquilliae_99, RedMaple_95, Ricotta_98, Riggan_98, Rimu_100, Riverton_95, Roliet_94, Roscoe_95, Roy17_94, SDcharge11_95, Samaymay_97, SassyCat97_95, Schadenfreude_97, Schueller_95, Scoot17C_97, Scrick_98, Selr12_101, Serendipity_96, Serpentine_0099, Sheila_91, ShiVal_96, Sigman_96, SilverBell_98, Simielle_97, SirBeauregard_97, Skippy_97, Slatt_99, Soile_98, Solosis_95, Sophia_95, Soto_93, Spartan300_96, Squid_96, Squiggle_96, Struggle_97, Suffolk_92, Surely_97, Swiphy_101, Swish_98, TallGrassMM_96, Telesworld_95, Thora_95, ThreeOh3D2_98, Thunderbird_97, Timmi_95, TomBombadil_97, Tomlarah_97, Toni_96, TooFast2Furius_97, Tooj_94,

True_98, Trypo_97, TyrionL_97, UAch1_97, UncleHowie_93, Usavi_97, Valjean_95, Vaticameos_94, Veritas_96, Virapocalypse_98, Virgeve_95, Vista_96, Vortex_95, Wallhey_98, Waterdiva_98, Weher20_94, Windsor_96, Xavier_96, Yoshand_98, YouGoGlencoco_97, Zaider_98, Zelda_97, Zonia_97,

Genes that have the "Most Annotated" start but do not call it:

-

Genes that do not have the "Most Annotated" start:

- Acadian_89, Allegro_84, Arbiter_81, Ares_84, Bananafish_85, Blocker23_84, BlueHusk_97, Boehler_94, Boyle_84, Brownie5_84, Calamitous_85, Chentzyk_98, Chunky_95, Coffee_83, DigitDog_91, Donny_89, ElvisPhasley_102, Faze9_83, ForDig_89, FrenchFry_85, Glass_86, Godines_84, HSavage_94, Hedgerow_84, Holeinone_84, Horchata_91, Indlovu_88, ItsyBitsy1_81, Jolie1_089, Kaleb_84, KayaCho_87, Kheth_84, Kolhan_85, Lars_85, Laurie_83, Lephleur_84, LilSmirk_84, LizLemon_84, MasterPo_85, Nangang_90, Olivio_96, Opia_85, Phantasmagoria_83, Pops_94, PrinceCharming_84, Qyrzula_75, Rhinoforte_84, Rosebush_82, Sabella_84, Shenyu_90, Suigeneris_90, TA17A_87, Tinciduntolum_85, Tres_84, Vic9_00082, West99_84, Zenteno07_105,

Summary by start number:

Start 12:

- Found in 279 of 336 (83.0%) of genes in pham
- Manual Annotations of this start: 257 of 302
- Called 100.0% of time when present
- Phage (with cluster) where this start called: ABU_95 (B1), AbsoluteMadLad_95 (B1), Adriana_97 (B1), Aelin_96 (B1), AltPhacts_94 (B1), Altwerkus_94 (B1), Anderson_98 (B1), Andre_101 (B1), AngelCake_93 (B1), Antonia_96 (B1), Apizium_95 (B1), Ashraf_98 (B1), Badfish_97 (B1), Banjo_93 (B1), Basato_95 (B1), BatteryCK_95 (B1), Beaglebox_93 (B1), Bishoperium_97 (B1), BlackStallion_96 (B1), Bluephacebaby_96 (B1), Brilliant_100 (B1), Buckeye_95 (B1), Burr_99 (B1), CamL_97 (B1), CampRoach_97 (B1), Cannibal_97 (B1), Carthage_97 (B1), Caspiboi_98 (B1), Chaelin_97 (B1), Chah_99 (B1), Charles1_100 (B1), CharlieGBrown_95 (B1), CheetO_93 (B1), Cher_97 (B1), Childish_97 (B1), Chipette_94 (B1), Chorkpop_98 (B1), Chute_97 (B1), Cobra_97 (B1), Colbert_95 (B1), Coletti_99 (B1), Cornbread_98 (B1), Cornobble_95 (B1), Cosmolli16_98 (B1), Craff_98 (B1), Crownjwl_94 (B1), DaddyDaniels_100 (B1), Daffy_96 (B1), Daka_98 (B1), Dati_94 (B1), DelRivs_96 (B1), Derpp_96 (B1), Dice_97 (B1), Dingo_93 (B1), Dione_95 (B1), DirtJuice_98 (B1), Doddsville_94 (B1), DoesntMatter_94 (B1), DonSanchon_92 (B1), DuchessDung_94 (B1), Duggie_97 (B1), Durga_99 (B1), Emiris_99 (B1), EmpTee_96 (B1), Eremos_94 (B1), Etaye_96 (B1), Eugenia_99 (B1), Fang_97 (B1), FluffyNinja_98 (B1), Fozzie_93 (B1), Frankicide_94 (B1), Freya_93 (B1), FriarPreacher_94 (B1), Fringe_101 (B1), FugateOSU_97 (B1), Gareth_97 (B1), GeneCoco_96 (B1), Giraffe_98 (B1), Gophee_96 (B1), Grand2040_94 (B1), Gwennie1_94 (B1), Gwilliam_97 (B1), Haimas_94 (B1), Haleema_96 (B1), Hamish_94 (B1), Hartsy_95 (B1), Harvey_94 (B1), Held_95 (B1), HenryJackson_97 (B1), Hertubise_96 (B1), Hetaeria_96 (B1), HighStump_99 (B1), Hocus_96 (B1), ImtiyazSitla_98 (B1), Inchworm_98 (B1), Inverness_94 (B1), Iridessa_99 (B1), Iridoclysis_96 (B1), IsaacEli_99 (B1), JDog_96 (B1), JacAttac_97 (B1), JakeO_98 (B1), JangoPhett_95 (B1), Jesabah_97 (B1), Jillium_97 (B1), Jiminy_97 (B1), Jiraiya_98 (B1), KLucky39_94 (B1), Kahve_97 (B1), Kailash_95 (B1), Katniss_99 (B1), Keitherie_100 (B1), Khan1_97 (B1), Kikipoo_99 (B1), Kimbrough_98 (B1),

KingTut_87 (B1), KingVeVeVe_95 (B1), KlimbOn_96 (B1), Kloppinator_97 (B1), Kwadwo_96 (B1), Kwksand96_98 (B1), Labeouficaum_97 (B1), LasagnaCat_98 (B1), Lasso_96 (B1), LeeLot_95 (B1), Lego3393_95 (B1), Legolas_98 (B1), LeiMonet_99 (B1), LemonSlice_97 (B1), Longacauda_97 (B1), Lopsy_93 (B1), LostAndPhound_96 (B1), LuckyMarjie_94 (B1), Lulumae_92 (B1), Lulwa_94 (B1), Lumine_98 (B1), MRabcd_97 (B1), Mag7_95 (B1), Magic8_96 (B1), Mana_94 (B1), Manad_96 (B1), Maru_96 (B1), Maskar_98 (B1), Matalotodo_95 (B1), Mcshane_99 (B1), Mecca_97 (B1), Megamind20_99 (B1), Megatron_98 (B1), Melc17_94 (B1), MelsMeow_95 (B1), Mesh1_97 (B1), Mesmerelda_98 (B1), MichaelPhcott_95 (B1), Mikota_91 (B1), MiniBoss_92 (B1), MitKao_97 (B1), Morgushi_94 (B1), Morty_97 (B1), Mosaic_94 (B1), MrPhizzler_96 (B1), Mulan_96 (B1), Murdoc_93 (B1), Mutante_98 (B1), Nacho_0099 (B1), Nathan_96 (B1), Newman_92 (B1), Nicole21_98 (B1), Numberten_97 (B1), Nyala_97 (B1), OSmaximus_97 (B1), Olak_99 (B1), Oline_96 (B1), Olive_93 (B1), OliverWalter_96 (B1), Omniscient_98 (B1), Oosterbaan_97 (B1), Orfeu_97 (B1), Orion_95 (B1), Orwigg_98 (B1), PG1_95 (B1), Pacifista_99 (B1), Phamished_96 (B1), Phareon_94 (B1), PhatCats2014_96 (B1), PhatLouie_99 (B1), PhenghisKhan_97 (B1), Pherdinand_98 (B1), Phergie_97 (B1), Phipps_94 (B1), Phleuron_94 (B1), PhrankReynolds_95 (B1), PhrodoBaggins_99 (B1), Phunky_94 (B1), Piglet_0096 (B1), PinheadLarry_96 (B1), Pinkman_96 (B1), Pipsqueak_94 (B1), Placalicious_94 (B1), Plata_94 (B1), Plmatters_94 (B1), Podrick_95 (B1), Potter_91 (B1), Prickles_97 (B1), ProfessorX_94 (B1), Puhltonio_92 (B1), QueenBeane_97 (B1), Quisquilliae_99 (B1), RedMaple_95 (B1), Ricotta_98 (B1), Riggan_98 (B1), Rimu_100 (B1), Riverton_95 (B1), Roliet_94 (B1), Roscoe_95 (B1), Roy17_94 (B1), SDcharge11_95 (B1), Samaymay_97 (B1), SassyCat97_95 (B1), Schadenfreude_97 (B1), Schueller_95 (B1), Scoot17C_97 (B1), Scrick_98 (B1), Selr12_101 (B1), Serendipity_96 (B1), Serpentine_0099 (B1), Sheila_91 (B1), ShiVal_96 (B1), Sigman_96 (B1), SilverBell_98 (B1), Simielle_97 (B1), SirBeauregard_97 (B1), Skippy_97 (B1), Slatt_99 (B1), Soile_98 (B1), Solosis_95 (B1), Sophia_95 (B1), Soto_93 (B1), Spartan300_96 (B1), Squid_96 (B1), Squiggle_96 (B1), Struggle_97 (B1), Suffolk_92 (B1), Surely_97 (B1), Swiphy_101 (B1), Swish_98 (B1), TallGrassMM_96 (B1), Telesworld_95 (B1), Thora_95 (B1), ThreeOh3D2_98 (B1), Thunderbird_97 (B1), Timmi_95 (B1), TomBombadil_97 (B1), Tomlarah_97 (B1), Toni_96 (B1), TooFast2Furious_97 (B1), Tooj_94 (B1), True_98 (B1), Trypo_97 (B1), TyrionL_97 (B1), UAch1_97 (B1), UncleHowie_93 (B1), Usavi_97 (B1), Valjean_95 (B1), Vaticameos_94 (B1), Veritas_96 (B1), Virapocalypse_98 (B1), Virgeve_95 (B1), Vista_96 (B1), Vortex_95 (B1), Wallhey_98 (B1), Waterdiva_98 (B1), Weher20_94 (B1), Windsor_96 (B1), Xavier_96 (B1), Yoshand_98 (B1), YouGoGlencoco_97 (B1), Zaider_98 (B1), Zelda_97 (B1), Zonia_97 (B1),

Start 14:

- Found in 279 of 336 (83.0%) of genes in pham
- Manual Annotations of this start: 2 of 302
- Called 0.7% of time when present
- Phage (with cluster) where this start called: BlueHusk_97 (B1), Horchata_91 (B1),

Start 16:

- Found in 5 of 336 (1.5%) of genes in pham
- Manual Annotations of this start: 1 of 302
- Called 20.0% of time when present
- Phage (with cluster) where this start called: Kheth_84 (B2),

Start 18:

- Found in 32 of 336 (9.5%) of genes in pham

- Manual Annotations of this start: 18 of 302
- Called 56.2% of time when present
- Phage (with cluster) where this start called: Arbiter_81 (B2), Ares_84 (B2), Bananafish_85 (B2), Brownie5_84 (B2), FrenchFry_85 (B2), Glass_86 (B2), Godines_84 (B2), Hedgerow_84 (B2), Holeinone_84 (B2), ItsyBitsy1_81 (B2), LizLemon_84 (B2), Opia_85 (B2), Qyrzula_75 (B2), Rhinoforte_84 (B2), Rosebush_82 (B2), Sabella_84 (B2), TA17A_87 (B2), Tinciduntolum_85 (B2),

Start 19:

- Found in 32 of 336 (9.5%) of genes in pham
- Manual Annotations of this start: 2 of 302
- Called 12.5% of time when present
- Phage (with cluster) where this start called: LilSmirk_84 (B2), PrinceCharming_84 (B2), Tres_84 (B2), West99_84 (B2),

Start 21:

- Found in 3 of 336 (0.9%) of genes in pham
- Manual Annotations of this start: 3 of 302
- Called 100.0% of time when present
- Phage (with cluster) where this start called: Acadian_89 (B5), Donny_89 (B5), Suigeneris_90 (B5),

Start 22:

- Found in 1 of 336 (0.3%) of genes in pham
- Manual Annotations of this start: 1 of 302
- Called 100.0% of time when present
- Phage (with cluster) where this start called: Zenteno07_105 (B13),

Start 23:

- Found in 300 of 336 (89.3%) of genes in pham
- Manual Annotations of this start: 15 of 302
- Called 6.0% of time when present
- Phage (with cluster) where this start called: Allegro_84 (B2), Blocker23_84 (B2), Boehler_94 (B1), Boyle_84 (B2), Calamitous_85 (B2), Chunky_95 (B1), Coffee_83 (B2), ElvisPhasley_102 (B1), Faze9_83 (B2), HSavage_94 (B1), Kaleb_84 (B2), Kolhan_85 (B2), Lars_85 (B2), Laurie_83 (B2), Lephleur_84 (B2), MasterPo_85 (B2), Phantasmagoria_83 (B2), Vic9_00082 (B2),

Start 24:

- Found in 3 of 336 (0.9%) of genes in pham
- Manual Annotations of this start: 1 of 302
- Called 100.0% of time when present
- Phage (with cluster) where this start called: ForDig_89 (B6), Jolie1_089 (B6), KayaCho_87 (B6),

Start 26:

- Found in 293 of 336 (87.2%) of genes in pham
- Manual Annotations of this start: 1 of 302
- Called 1.4% of time when present
- Phage (with cluster) where this start called: DigitDog_91 (B5), Nangang_90 (B5), Pops_94 (B1), Shenyu_90 (B5),

Start 29:

- Found in 4 of 336 (1.2%) of genes in pham
- Manual Annotations of this start: 1 of 302
- Called 25.0% of time when present
- Phage (with cluster) where this start called: Indlovu_88 (B11),

Start 37:

- Found in 2 of 336 (0.6%) of genes in pham
- No Manual Annotations of this start.
- Called 100.0% of time when present
- Phage (with cluster) where this start called: Chentzyk_98 (B3), Olivio_96 (B3),

Summary by clusters:

There are 7 clusters represented in this pham: B11, B5, B6, B1, B2, B3, B13,

Info for manual annotations of cluster B1:

- Start number 12 was manually annotated 257 times for cluster B1.
- Start number 14 was manually annotated 2 times for cluster B1.
- Start number 23 was manually annotated 3 times for cluster B1.
- Start number 26 was manually annotated 1 time for cluster B1.

Info for manual annotations of cluster B11:

- Start number 29 was manually annotated 1 time for cluster B11.

Info for manual annotations of cluster B13:

- Start number 22 was manually annotated 1 time for cluster B13.

Info for manual annotations of cluster B2:

- Start number 16 was manually annotated 1 time for cluster B2.
- Start number 18 was manually annotated 18 times for cluster B2.
- Start number 19 was manually annotated 2 times for cluster B2.
- Start number 23 was manually annotated 12 times for cluster B2.

Info for manual annotations of cluster B5:

- Start number 21 was manually annotated 3 times for cluster B5.

Info for manual annotations of cluster B6:

- Start number 24 was manually annotated 1 time for cluster B6.

Gene Information:

Gene: ABU_95 Start: 67275, Stop: 66544, Start Num: 12

Candidate Starts for ABU_95:

(Start: 12 @67275 has 257 MA's), (Start: 14 @67236 has 2 MA's), (15, 67209), (Start: 23 @67122 has 15 MA's), (Start: 26 @67083 has 1 MA's), (30, 67041), (40, 66915), (42, 66894), (44, 66882), (46, 66810), (54, 66696), (59, 66657), (61, 66639),

Gene: AbsoluteMadLad_95 Start: 67228, Stop: 66497, Start Num: 12

Candidate Starts for AbsoluteMadLad_95:

(Start: 12 @67228 has 257 MA's), (Start: 14 @67189 has 2 MA's), (15, 67162), (Start: 23 @67075 has 15 MA's), (Start: 26 @67036 has 1 MA's), (30, 66994), (40, 66868), (42, 66847), (44, 66835), (46, 66763), (54, 66649), (59, 66610), (61, 66592),

Gene: Acadian_89 Start: 66018, Stop: 65326, Start Num: 21

Candidate Starts for Acadian_89:

(2, 66897), (6, 66402), (17, 66072), (Start: 21 @66018 has 3 MA's), (Start: 26 @65943 has 1 MA's), (40, 65772), (41, 65763), (48, 65655), (56, 65538), (59, 65514), (61, 65496), (64, 65460), (71, 65379),

Gene: Adriana_97 Start: 67547, Stop: 66816, Start Num: 12

Candidate Starts for Adriana_97:

(Start: 12 @67547 has 257 MA's), (Start: 14 @67508 has 2 MA's), (15, 67481), (Start: 23 @67394 has 15 MA's), (Start: 26 @67355 has 1 MA's), (30, 67313), (40, 67187), (42, 67166), (44, 67154), (46, 67082), (54, 66968), (59, 66929), (61, 66911),

Gene: Aelin_96 Start: 66908, Stop: 66177, Start Num: 12

Candidate Starts for Aelin_96:

(8, 67127), (10, 67025), (Start: 12 @66908 has 257 MA's), (Start: 14 @66869 has 2 MA's), (15, 66842), (20, 66806), (Start: 23 @66755 has 15 MA's), (Start: 26 @66716 has 1 MA's), (40, 66548), (42, 66527), (44, 66515), (46, 66443), (54, 66329), (59, 66290), (61, 66272),

Gene: Allegro_84 Start: 63711, Stop: 63181, Start Num: 23

Candidate Starts for Allegro_84:

(11, 63888), (Start: 18 @63777 has 18 MA's), (Start: 19 @63759 has 2 MA's), (Start: 23 @63711 has 15 MA's), (25, 63684), (27, 63657), (28, 63648), (33, 63606), (34, 63597), (40, 63501), (44, 63465), (46, 63393), (52, 63297), (53, 63291), (57, 63249), (59, 63237),

Gene: AltPhacts_94 Start: 66481, Stop: 65750, Start Num: 12

Candidate Starts for AltPhacts_94:

(8, 66700), (10, 66598), (Start: 12 @66481 has 257 MA's), (Start: 14 @66442 has 2 MA's), (15, 66415), (Start: 23 @66328 has 15 MA's), (Start: 26 @66289 has 1 MA's), (30, 66247), (40, 66121), (42, 66100), (44, 66088), (46, 66016), (54, 65902), (59, 65863), (61, 65845),

Gene: Altwerkus_94 Start: 66604, Stop: 65873, Start Num: 12

Candidate Starts for Altwerkus_94:

(Start: 12 @66604 has 257 MA's), (Start: 14 @66565 has 2 MA's), (15, 66538), (Start: 23 @66451 has 15 MA's), (Start: 26 @66412 has 1 MA's), (30, 66370), (40, 66244), (42, 66223), (44, 66211), (46, 66139), (54, 66025), (59, 65986), (61, 65968),

Gene: Anderson_98 Start: 67151, Stop: 66420, Start Num: 12

Candidate Starts for Anderson_98:

(Start: 12 @67151 has 257 MA's), (Start: 14 @67112 has 2 MA's), (15, 67085), (Start: 23 @66998 has 15 MA's), (Start: 26 @66959 has 1 MA's), (30, 66917), (40, 66791), (42, 66770), (44, 66758), (46, 66686), (54, 66572), (59, 66533), (61, 66515),

Gene: Andre_101 Start: 67542, Stop: 66811, Start Num: 12

Candidate Starts for Andre_101:

(Start: 12 @67542 has 257 MA's), (Start: 14 @67503 has 2 MA's), (15, 67476), (Start: 23 @67389 has 15 MA's), (Start: 26 @67350 has 1 MA's), (30, 67308), (40, 67182), (42, 67161), (44, 67149), (46, 67077), (54, 66963), (59, 66924), (61, 66906),

Gene: AngelCake_93 Start: 66900, Stop: 66169, Start Num: 12

Candidate Starts for AngelCake_93:

(8, 67119), (10, 67017), (Start: 12 @66900 has 257 MA's), (Start: 14 @66861 has 2 MA's), (Start: 23 @66747 has 15 MA's), (Start: 26 @66708 has 1 MA's), (40, 66540), (42, 66519), (44, 66507), (46, 66435), (54, 66321), (59, 66282), (61, 66264),

Gene: Antonia_96 Start: 66776, Stop: 66045, Start Num: 12

Candidate Starts for Antonia_96:

(8, 66995), (10, 66893), (Start: 12 @66776 has 257 MA's), (Start: 14 @66737 has 2 MA's), (15, 66710), (20, 66674), (Start: 23 @66623 has 15 MA's), (Start: 26 @66584 has 1 MA's), (40, 66416), (42, 66395), (44, 66383), (46, 66311), (54, 66197), (59, 66158), (61, 66140),

Gene: Apizium_95 Start: 66429, Stop: 65698, Start Num: 12

Candidate Starts for Apizium_95:

(5, 66681), (8, 66648), (10, 66546), (Start: 12 @66429 has 257 MA's), (Start: 14 @66390 has 2 MA's), (15, 66363), (Start: 23 @66276 has 15 MA's), (Start: 26 @66237 has 1 MA's), (40, 66069), (42, 66048), (44, 66036), (46, 65964), (54, 65850), (59, 65811), (61, 65793),

Gene: Arbiter_81 Start: 63817, Stop: 63221, Start Num: 18

Candidate Starts for Arbiter_81:

(11, 63928), (Start: 18 @63817 has 18 MA's), (Start: 19 @63799 has 2 MA's), (Start: 23 @63751 has 15 MA's), (25, 63724), (27, 63697), (28, 63688), (33, 63646), (34, 63637), (40, 63541), (44, 63505), (46, 63433), (52, 63337), (53, 63331), (57, 63289), (59, 63277),

Gene: Ares_84 Start: 63776, Stop: 63180, Start Num: 18

Candidate Starts for Ares_84:

(11, 63887), (Start: 18 @63776 has 18 MA's), (Start: 19 @63758 has 2 MA's), (Start: 23 @63710 has 15 MA's), (25, 63683), (27, 63656), (28, 63647), (33, 63605), (34, 63596), (40, 63500), (44, 63464), (46, 63392), (52, 63296), (53, 63290), (57, 63248), (59, 63236),

Gene: Ashraf_98 Start: 67284, Stop: 66532, Start Num: 12

Candidate Starts for Ashraf_98:

(8, 67503), (10, 67401), (Start: 12 @67284 has 257 MA's), (Start: 14 @67245 has 2 MA's), (Start: 23 @67131 has 15 MA's), (Start: 26 @67092 has 1 MA's), (40, 66924), (42, 66903), (44, 66891), (46, 66819), (54, 66705), (59, 66666), (61, 66648),

Gene: Badfish_97 Start: 67455, Stop: 66724, Start Num: 12

Candidate Starts for Badfish_97:

(Start: 12 @67455 has 257 MA's), (Start: 14 @67416 has 2 MA's), (15, 67389), (Start: 23 @67302 has 15 MA's), (Start: 26 @67263 has 1 MA's), (30, 67221), (40, 67095), (42, 67074), (44, 67062), (46, 66990), (54, 66876), (59, 66837), (61, 66819),

Gene: Bananafish_85 Start: 63713, Stop: 63117, Start Num: 18

Candidate Starts for Bananafish_85:

(11, 63824), (Start: 18 @63713 has 18 MA's), (Start: 19 @63695 has 2 MA's), (Start: 23 @63647 has 15 MA's), (25, 63620), (27, 63593), (28, 63584), (33, 63542), (34, 63533), (40, 63437), (44, 63401), (46, 63329), (52, 63233), (53, 63227), (57, 63185), (59, 63173),

Gene: Banjo_93 Start: 66721, Stop: 65990, Start Num: 12

Candidate Starts for Banjo_93:

(Start: 12 @66721 has 257 MA's), (Start: 14 @66682 has 2 MA's), (15, 66655), (Start: 23 @66568 has 15 MA's), (Start: 26 @66529 has 1 MA's), (30, 66487), (40, 66361), (42, 66340), (44, 66328), (46, 66256), (54, 66142), (59, 66103), (61, 66085),

Gene: Basato_95 Start: 66941, Stop: 66210, Start Num: 12

Candidate Starts for Basato_95:

(Start: 12 @66941 has 257 MA's), (Start: 14 @66902 has 2 MA's), (15, 66875), (Start: 23 @66788 has 15 MA's), (Start: 26 @66749 has 1 MA's), (40, 66581), (42, 66560), (44, 66548), (46, 66476), (54, 66362), (59, 66323), (61, 66305),

Gene: BatteryCK_95 Start: 66711, Stop: 65980, Start Num: 12

Candidate Starts for BatteryCK_95:

(8, 66930), (10, 66828), (Start: 12 @66711 has 257 MA's), (Start: 14 @66672 has 2 MA's), (Start: 23 @66558 has 15 MA's), (Start: 26 @66519 has 1 MA's), (40, 66351), (42, 66330), (44, 66318), (46, 66246), (54, 66132), (59, 66093), (61, 66075),

Gene: Beaglebox_93 Start: 66843, Stop: 66112, Start Num: 12

Candidate Starts for Beaglebox_93:

(Start: 12 @66843 has 257 MA's), (Start: 14 @66804 has 2 MA's), (15, 66777), (Start: 23 @66690 has 15 MA's), (Start: 26 @66651 has 1 MA's), (30, 66609), (40, 66483), (42, 66462), (44, 66450), (46, 66378), (54, 66264), (59, 66225), (61, 66207),

Gene: Bishoperium_97 Start: 67290, Stop: 66559, Start Num: 12

Candidate Starts for Bishoperium_97:

(Start: 12 @67290 has 257 MA's), (Start: 14 @67251 has 2 MA's), (15, 67224), (Start: 23 @67137 has 15 MA's), (Start: 26 @67098 has 1 MA's), (30, 67056), (40, 66930), (42, 66909), (44, 66897), (46, 66825), (54, 66711), (59, 66672), (61, 66654),

Gene: BlackStallion_96 Start: 67139, Stop: 66408, Start Num: 12

Candidate Starts for BlackStallion_96:

(Start: 12 @67139 has 257 MA's), (Start: 14 @67100 has 2 MA's), (15, 67073), (Start: 23 @66986 has 15 MA's), (Start: 26 @66947 has 1 MA's), (30, 66905), (40, 66779), (42, 66758), (44, 66746), (46, 66674), (54, 66560), (59, 66521), (61, 66503),

Gene: Blocker23_84 Start: 63711, Stop: 63181, Start Num: 23

Candidate Starts for Blocker23_84:

(1, 65055), (3, 64545), (4, 64293), (6, 64113), (9, 63984), (Start: 16 @63789 has 1 MA's), (Start: 23 @63711 has 15 MA's), (25, 63684), (27, 63657), (28, 63648), (33, 63606), (34, 63597), (40, 63501), (44, 63465), (46, 63393), (52, 63297), (53, 63291), (57, 63249), (59, 63237),

Gene: BlueHusk_97 Start: 66586, Stop: 65990, Start Num: 14

Candidate Starts for BlueHusk_97:

(Start: 14 @66586 has 2 MA's), (Start: 26 @66529 has 1 MA's), (30, 66487), (40, 66361), (42, 66340), (44, 66328), (46, 66256), (54, 66142), (59, 66103), (61, 66085),

Gene: Bluephacebaby_96 Start: 67324, Stop: 66593, Start Num: 12

Candidate Starts for Bluephacebaby_96:

(Start: 12 @67324 has 257 MA's), (Start: 14 @67285 has 2 MA's), (15, 67258), (Start: 23 @67171 has 15 MA's), (Start: 26 @67132 has 1 MA's), (30, 67090), (40, 66964), (42, 66943), (44, 66931), (46, 66859), (54, 66745), (59, 66706), (61, 66688),

Gene: Boehler_94 Start: 66718, Stop: 66140, Start Num: 23

Candidate Starts for Boehler_94:

(Start: 23 @66718 has 15 MA's), (Start: 26 @66679 has 1 MA's), (30, 66637), (40, 66511), (42, 66490), (44, 66478), (46, 66406), (54, 66292), (59, 66253), (61, 66235),

Gene: Boyle_84 Start: 63759, Stop: 63229, Start Num: 23

Candidate Starts for Boyle_84:

(11, 63936), (Start: 18 @63825 has 18 MA's), (Start: 19 @63807 has 2 MA's), (Start: 23 @63759 has 15 MA's), (25, 63732), (27, 63705), (28, 63696), (33, 63654), (34, 63645), (40, 63549), (44, 63513), (46, 63441), (52, 63345), (53, 63339), (57, 63297), (59, 63285),

Gene: Brilliant_100 Start: 67303, Stop: 66572, Start Num: 12

Candidate Starts for Brilliant_100:

(Start: 12 @67303 has 257 MA's), (Start: 14 @67264 has 2 MA's), (15, 67237), (Start: 23 @67150 has 15 MA's), (Start: 26 @67111 has 1 MA's), (30, 67069), (40, 66943), (42, 66922), (44, 66910), (46, 66838), (54, 66724), (59, 66685), (61, 66667),

Gene: Brownie5_84 Start: 63825, Stop: 63229, Start Num: 18

Candidate Starts for Brownie5_84:

(11, 63936), (Start: 18 @63825 has 18 MA's), (Start: 19 @63807 has 2 MA's), (Start: 23 @63759 has 15 MA's), (25, 63732), (27, 63705), (28, 63696), (33, 63654), (34, 63645), (40, 63549), (44, 63513), (46, 63441), (52, 63345), (53, 63339), (57, 63297), (59, 63285),

Gene: Buckeye_95 Start: 67599, Stop: 66868, Start Num: 12

Candidate Starts for Buckeye_95:

(Start: 12 @67599 has 257 MA's), (Start: 14 @67560 has 2 MA's), (15, 67533), (Start: 23 @67446 has 15 MA's), (Start: 26 @67407 has 1 MA's), (30, 67365), (40, 67239), (42, 67218), (44, 67206), (46, 67134), (54, 67020), (59, 66981), (61, 66963),

Gene: Burr_99 Start: 67145, Stop: 66414, Start Num: 12

Candidate Starts for Burr_99:

(Start: 12 @67145 has 257 MA's), (Start: 14 @67106 has 2 MA's), (15, 67079), (Start: 23 @66992 has 15 MA's), (Start: 26 @66953 has 1 MA's), (30, 66911), (40, 66785), (42, 66764), (44, 66752), (46, 66680), (54, 66566), (59, 66527), (61, 66509),

Gene: Calamitous_85 Start: 63642, Stop: 63112, Start Num: 23

Candidate Starts for Calamitous_85:

(11, 63819), (Start: 18 @63708 has 18 MA's), (Start: 19 @63690 has 2 MA's), (Start: 23 @63642 has 15 MA's), (25, 63615), (27, 63588), (28, 63579), (33, 63537), (34, 63528), (40, 63432), (44, 63396), (46, 63324), (52, 63228), (53, 63222), (57, 63180), (59, 63168),

Gene: CamL_97 Start: 67075, Stop: 66344, Start Num: 12

Candidate Starts for CamL_97:

(Start: 12 @67075 has 257 MA's), (Start: 14 @67036 has 2 MA's), (15, 67009), (Start: 23 @66922 has 15 MA's), (Start: 26 @66883 has 1 MA's), (30, 66841), (40, 66715), (42, 66694), (44, 66682), (46, 66610), (54, 66496), (59, 66457), (61, 66439),

Gene: CampRoach_97 Start: 67171, Stop: 66440, Start Num: 12

Candidate Starts for CampRoach_97:

(Start: 12 @67171 has 257 MA's), (Start: 14 @67132 has 2 MA's), (15, 67105), (Start: 26 @66979 has 1 MA's), (30, 66937), (40, 66811), (42, 66790), (44, 66778), (46, 66706), (54, 66592), (59, 66553), (61, 66535),

Gene: Cannibal_97 Start: 67178, Stop: 66447, Start Num: 12

Candidate Starts for Cannibal_97:

(Start: 12 @67178 has 257 MA's), (Start: 14 @67139 has 2 MA's), (15, 67112), (Start: 23 @67025 has 15 MA's), (Start: 26 @66986 has 1 MA's), (30, 66944), (40, 66818), (42, 66797), (44, 66785), (46, 66713), (54, 66599), (59, 66560), (61, 66542),

Gene: Carthage_97 Start: 66633, Stop: 65902, Start Num: 12

Candidate Starts for Carthage_97:

(Start: 12 @66633 has 257 MA's), (15, 66567), (Start: 23 @66480 has 15 MA's), (Start: 26 @66441 has 1 MA's), (40, 66273), (42, 66252), (44, 66240), (54, 66054), (59, 66015), (61, 65997),

Gene: Caspiboi_98 Start: 67009, Stop: 66278, Start Num: 12

Candidate Starts for Caspiboi_98:

(Start: 12 @67009 has 257 MA's), (Start: 14 @66970 has 2 MA's), (15, 66943), (Start: 26 @66817 has 1 MA's), (30, 66775), (40, 66649), (42, 66628), (44, 66616), (46, 66544), (54, 66430), (59, 66391), (61, 66373),

Gene: Chaelin_97 Start: 67047, Stop: 66295, Start Num: 12

Candidate Starts for Chaelin_97:

(8, 67266), (10, 67164), (Start: 12 @67047 has 257 MA's), (Start: 14 @67008 has 2 MA's), (Start: 23 @66894 has 15 MA's), (Start: 26 @66855 has 1 MA's), (40, 66687), (42, 66666), (44, 66654), (46, 66582), (54, 66468), (59, 66429), (61, 66411),

Gene: Chah_99 Start: 66875, Stop: 66144, Start Num: 12

Candidate Starts for Chah_99:

(Start: 12 @66875 has 257 MA's), (Start: 14 @66836 has 2 MA's), (15, 66809), (Start: 23 @66722 has 15 MA's), (Start: 26 @66683 has 1 MA's), (30, 66641), (40, 66515), (42, 66494), (44, 66482), (46, 66410), (54, 66296), (59, 66257), (61, 66239),

Gene: Charles1_100 Start: 67453, Stop: 66722, Start Num: 12

Candidate Starts for Charles1_100:

(Start: 12 @67453 has 257 MA's), (Start: 14 @67414 has 2 MA's), (15, 67387), (Start: 23 @67300 has 15 MA's), (Start: 26 @67261 has 1 MA's), (30, 67219), (40, 67093), (42, 67072), (44, 67060), (46, 66988), (54, 66874), (59, 66835), (61, 66817),

Gene: CharlieGBrown_95 Start: 66806, Stop: 66075, Start Num: 12

Candidate Starts for CharlieGBrown_95:

(8, 67025), (10, 66923), (Start: 12 @66806 has 257 MA's), (Start: 14 @66767 has 2 MA's), (Start: 23 @66653 has 15 MA's), (Start: 26 @66614 has 1 MA's), (40, 66446), (42, 66425), (44, 66413), (46, 66341), (54, 66227), (59, 66188), (61, 66170),

Gene: CheetO_93 Start: 66925, Stop: 66194, Start Num: 12

Candidate Starts for CheetO_93:

(Start: 12 @66925 has 257 MA's), (Start: 14 @66886 has 2 MA's), (15, 66859), (Start: 23 @66772 has 15 MA's), (Start: 26 @66733 has 1 MA's), (30, 66691), (40, 66565), (42, 66544), (44, 66532), (46, 66460), (54, 66346), (59, 66307), (61, 66289),

Gene: Chentzyk_98 Start: 66666, Stop: 66220, Start Num: 37

Candidate Starts for Chentzyk_98:

(31, 66708), (36, 66669), (37, 66666), (40, 66591), (41, 66582), (45, 66540), (49, 66432), (51, 66390), (59, 66327), (61, 66309),

Gene: Cher_97 Start: 67279, Stop: 66548, Start Num: 12

Candidate Starts for Cher_97:

(Start: 12 @67279 has 257 MA's), (Start: 14 @67240 has 2 MA's), (15, 67213), (Start: 23 @67126 has 15 MA's), (Start: 26 @67087 has 1 MA's), (30, 67045), (40, 66919), (42, 66898), (44, 66886), (46, 66814), (54, 66700), (59, 66661), (61, 66643),

Gene: Childish_97 Start: 67469, Stop: 66738, Start Num: 12

Candidate Starts for Childish_97:

(Start: 12 @67469 has 257 MA's), (Start: 14 @67430 has 2 MA's), (15, 67403), (Start: 23 @67316 has 15 MA's), (Start: 26 @67277 has 1 MA's), (30, 67235), (40, 67109), (42, 67088), (44, 67076), (46, 67004), (54, 66890), (59, 66851), (61, 66833),

Gene: Chipette_94 Start: 66762, Stop: 66031, Start Num: 12

Candidate Starts for Chipette_94:

(Start: 12 @66762 has 257 MA's), (Start: 14 @66723 has 2 MA's), (15, 66696), (Start: 23 @66609 has 15 MA's), (Start: 26 @66570 has 1 MA's), (30, 66528), (40, 66402), (42, 66381), (44, 66369), (46, 66297), (54, 66183), (59, 66144), (61, 66126),

Gene: Chorkpop_98 Start: 66931, Stop: 66200, Start Num: 12

Candidate Starts for Chorkpop_98:

(Start: 12 @66931 has 257 MA's), (Start: 14 @66892 has 2 MA's), (15, 66865), (Start: 26 @66739 has 1 MA's), (30, 66697), (40, 66571), (42, 66550), (44, 66538), (46, 66466), (54, 66352), (59, 66313), (61, 66295),

Gene: Chunky_95 Start: 66380, Stop: 65802, Start Num: 23

Candidate Starts for Chunky_95:

(Start: 23 @66380 has 15 MA's), (Start: 26 @66341 has 1 MA's), (30, 66299), (40, 66173), (42, 66152), (44, 66140), (46, 66068), (54, 65954), (59, 65915), (61, 65897),

Gene: Chute_97 Start: 67470, Stop: 66739, Start Num: 12

Candidate Starts for Chute_97:

(Start: 12 @67470 has 257 MA's), (Start: 14 @67431 has 2 MA's), (15, 67404), (Start: 23 @67317 has 15 MA's), (Start: 26 @67278 has 1 MA's), (30, 67236), (40, 67110), (42, 67089), (44, 67077), (46, 67005), (54, 66891), (59, 66852), (61, 66834),

Gene: Cobra_97 Start: 67300, Stop: 66569, Start Num: 12

Candidate Starts for Cobra_97:

(Start: 12 @67300 has 257 MA's), (Start: 14 @67261 has 2 MA's), (15, 67234), (Start: 23 @67147 has 15 MA's), (Start: 26 @67108 has 1 MA's), (30, 67066), (40, 66940), (42, 66919), (44, 66907), (46, 66835), (54, 66721), (59, 66682), (61, 66664),

Gene: Coffee_83 Start: 63752, Stop: 63222, Start Num: 23

Candidate Starts for Coffee_83:

(11, 63929), (Start: 18 @63818 has 18 MA's), (Start: 19 @63800 has 2 MA's), (Start: 23 @63752 has 15 MA's), (25, 63725), (27, 63698), (28, 63689), (33, 63647), (34, 63638), (40, 63542), (44, 63506), (46, 63434), (52, 63338), (53, 63332), (57, 63290), (59, 63278),

Gene: Colbert_95 Start: 66199, Stop: 65468, Start Num: 12

Candidate Starts for Colbert_95:

(Start: 12 @66199 has 257 MA's), (Start: 14 @66160 has 2 MA's), (15, 66133), (Start: 23 @66046 has 15 MA's), (Start: 26 @66007 has 1 MA's), (30, 65965), (40, 65839), (42, 65818), (44, 65806), (46, 65734), (54, 65620), (59, 65581), (61, 65563),

Gene: Coletti_99 Start: 67826, Stop: 67095, Start Num: 12

Candidate Starts for Coletti_99:

(Start: 12 @67826 has 257 MA's), (Start: 14 @67787 has 2 MA's), (15, 67760), (Start: 23 @67673 has 15 MA's), (Start: 26 @67634 has 1 MA's), (30, 67592), (40, 67466), (42, 67445), (44, 67433), (46, 67361), (54, 67247), (59, 67208), (61, 67190),

Gene: Cornbread_98 Start: 67327, Stop: 66596, Start Num: 12

Candidate Starts for Cornbread_98:

(Start: 12 @67327 has 257 MA's), (Start: 14 @67288 has 2 MA's), (15, 67261), (Start: 23 @67174 has 15 MA's), (Start: 26 @67135 has 1 MA's), (30, 67093), (40, 66967), (42, 66946), (44, 66934), (46, 66862), (54, 66748), (59, 66709), (61, 66691),

Gene: Cornobble_95 Start: 66927, Stop: 66196, Start Num: 12

Candidate Starts for Cornobble_95:

(8, 67146), (10, 67044), (Start: 12 @66927 has 257 MA's), (Start: 14 @66888 has 2 MA's), (15, 66861), (20, 66825), (Start: 23 @66774 has 15 MA's), (Start: 26 @66735 has 1 MA's), (40, 66567), (42, 66546), (44, 66534), (46, 66462), (54, 66348), (59, 66309), (61, 66291),

Gene: Cosmolli16_98 Start: 67403, Stop: 66672, Start Num: 12

Candidate Starts for Cosmolli16_98:

(Start: 12 @67403 has 257 MA's), (Start: 14 @67364 has 2 MA's), (15, 67337), (Start: 23 @67250 has 15 MA's), (Start: 26 @67211 has 1 MA's), (30, 67169), (40, 67043), (42, 67022), (44, 67010), (46, 66938), (54, 66824), (59, 66785), (61, 66767),

Gene: Craff_98 Start: 67688, Stop: 66957, Start Num: 12

Candidate Starts for Craff_98:

(Start: 12 @67688 has 257 MA's), (Start: 14 @67649 has 2 MA's), (15, 67622), (Start: 23 @67535 has 15 MA's), (Start: 26 @67496 has 1 MA's), (30, 67454), (40, 67328), (42, 67307), (44, 67295), (46, 67223), (54, 67109), (59, 67070), (61, 67052),

Gene: Crownjwl_94 Start: 66943, Stop: 66212, Start Num: 12

Candidate Starts for Crownjwl_94:

(Start: 12 @66943 has 257 MA's), (Start: 14 @66904 has 2 MA's), (15, 66877), (Start: 23 @66790 has 15 MA's), (Start: 26 @66751 has 1 MA's), (30, 66709), (40, 66583), (42, 66562), (44, 66550), (46, 66478), (54, 66364), (59, 66325), (61, 66307),

Gene: DaddyDaniels_100 Start: 67422, Stop: 66691, Start Num: 12

Candidate Starts for DaddyDaniels_100:

(Start: 12 @67422 has 257 MA's), (Start: 14 @67383 has 2 MA's), (15, 67356), (Start: 23 @67269 has 15 MA's), (Start: 26 @67230 has 1 MA's), (30, 67188), (40, 67062), (42, 67041), (44, 67029), (46, 66957), (54, 66843), (59, 66804), (61, 66786),

Gene: Daffy_96 Start: 66916, Stop: 66185, Start Num: 12

Candidate Starts for Daffy_96:

(Start: 12 @66916 has 257 MA's), (Start: 14 @66877 has 2 MA's), (15, 66850), (Start: 23 @66763 has 15 MA's), (Start: 26 @66724 has 1 MA's), (30, 66682), (40, 66556), (42, 66535), (44, 66523), (46, 66451), (54, 66337), (59, 66298), (61, 66280),

Gene: Daka_98 Start: 66879, Stop: 66148, Start Num: 12

Candidate Starts for Daka_98:

(8, 67098), (10, 66996), (Start: 12 @66879 has 257 MA's), (Start: 14 @66840 has 2 MA's), (15, 66813), (20, 66777), (Start: 23 @66726 has 15 MA's), (Start: 26 @66687 has 1 MA's), (40, 66519), (42, 66498), (44, 66486), (54, 66300), (59, 66261), (61, 66243),

Gene: Dati_94 Start: 67101, Stop: 66370, Start Num: 12

Candidate Starts for Dati_94:

(Start: 12 @67101 has 257 MA's), (Start: 14 @67062 has 2 MA's), (15, 67035), (Start: 23 @66948 has 15 MA's), (Start: 26 @66909 has 1 MA's), (30, 66867), (40, 66741), (42, 66720), (44, 66708), (46, 66636), (54, 66522), (59, 66483), (61, 66465),

Gene: DelRivs_96 Start: 66730, Stop: 65999, Start Num: 12

Candidate Starts for DelRivs_96:

(Start: 12 @66730 has 257 MA's), (Start: 14 @66691 has 2 MA's), (15, 66664), (Start: 23 @66577 has 15 MA's), (Start: 26 @66538 has 1 MA's), (30, 66496), (40, 66370), (42, 66349), (44, 66337), (46, 66265), (54, 66151), (59, 66112), (61, 66094),

Gene: Derpp_96 Start: 66839, Stop: 66108, Start Num: 12

Candidate Starts for Derpp_96:

(8, 67058), (10, 66956), (Start: 12 @66839 has 257 MA's), (Start: 14 @66800 has 2 MA's), (Start: 23 @66686 has 15 MA's), (Start: 26 @66647 has 1 MA's), (40, 66479), (42, 66458), (44, 66446), (46, 66374), (54, 66260), (59, 66221), (61, 66203),

Gene: Dice_97 Start: 66762, Stop: 66031, Start Num: 12

Candidate Starts for Dice_97:

(Start: 12 @66762 has 257 MA's), (Start: 14 @66723 has 2 MA's), (15, 66696), (Start: 23 @66609 has 15 MA's), (Start: 26 @66570 has 1 MA's), (30, 66528), (40, 66402), (42, 66381), (44, 66369), (46, 66297), (54, 66183), (59, 66144), (61, 66126),

Gene: DigitDog_91 Start: 66458, Stop: 65841, Start Num: 26

Candidate Starts for DigitDog_91:

(6, 66893), (17, 66563), (Start: 26 @66458 has 1 MA's), (40, 66290), (41, 66281), (48, 66173), (56, 66056), (59, 66032), (61, 66014), (70, 65921),

Gene: Dingo_93 Start: 66204, Stop: 65473, Start Num: 12

Candidate Starts for Dingo_93:

(Start: 12 @66204 has 257 MA's), (Start: 14 @66165 has 2 MA's), (15, 66138), (Start: 23 @66051 has 15 MA's), (Start: 26 @66012 has 1 MA's), (40, 65844), (42, 65823), (44, 65811), (46, 65739), (54, 65625), (59, 65586), (61, 65568),

Gene: Dione_95 Start: 66482, Stop: 65751, Start Num: 12

Candidate Starts for Dione_95:

(Start: 12 @66482 has 257 MA's), (Start: 14 @66443 has 2 MA's), (15, 66416), (Start: 23 @66329 has 15 MA's), (Start: 26 @66290 has 1 MA's), (30, 66248), (40, 66122), (42, 66101), (44, 66089), (46, 66017), (54, 65903), (59, 65864), (61, 65846),

Gene: DirtJuice_98 Start: 67591, Stop: 66860, Start Num: 12

Candidate Starts for DirtJuice_98:

(Start: 12 @67591 has 257 MA's), (Start: 14 @67552 has 2 MA's), (15, 67525), (Start: 23 @67438 has 15 MA's), (Start: 26 @67399 has 1 MA's), (30, 67357), (40, 67231), (42, 67210), (44, 67198), (46, 67126), (54, 67012), (59, 66973), (61, 66955),

Gene: Doddsville_94 Start: 66922, Stop: 66191, Start Num: 12

Candidate Starts for Doddsville_94:

(Start: 12 @66922 has 257 MA's), (Start: 14 @66883 has 2 MA's), (15, 66856), (Start: 23 @66769 has 15 MA's), (Start: 26 @66730 has 1 MA's), (30, 66688), (40, 66562), (42, 66541), (44, 66529), (46, 66457), (54, 66343), (59, 66304), (61, 66286),

Gene: DoesntMatter_94 Start: 66756, Stop: 66025, Start Num: 12

Candidate Starts for DoesntMatter_94:

(Start: 12 @66756 has 257 MA's), (Start: 14 @66717 has 2 MA's), (15, 66690), (Start: 23 @66603 has 15 MA's), (Start: 26 @66564 has 1 MA's), (30, 66522), (40, 66396), (42, 66375), (44, 66363), (46, 66291), (54, 66177), (59, 66138), (61, 66120),

Gene: DonSanchon_92 Start: 66440, Stop: 65709, Start Num: 12

Candidate Starts for DonSanchon_92:

(Start: 12 @66440 has 257 MA's), (Start: 14 @66401 has 2 MA's), (15, 66374), (Start: 23 @66287 has 15 MA's), (Start: 26 @66248 has 1 MA's), (30, 66206), (40, 66080), (42, 66059), (44, 66047), (46, 65975), (54, 65861), (59, 65822), (61, 65804),

Gene: Donny_89 Start: 65845, Stop: 65159, Start Num: 21

Candidate Starts for Donny_89:

(2, 66724), (6, 66229), (17, 65899), (Start: 21 @65845 has 3 MA's), (Start: 26 @65770 has 1 MA's), (40, 65605), (41, 65596), (48, 65488), (56, 65371), (59, 65347), (61, 65329), (64, 65293), (71, 65212),

Gene: DuchessDung_94 Start: 66437, Stop: 65706, Start Num: 12

Candidate Starts for DuchessDung_94:

(Start: 12 @66437 has 257 MA's), (Start: 14 @66398 has 2 MA's), (15, 66371), (Start: 26 @66245 has 1 MA's), (40, 66077), (42, 66056), (44, 66044), (46, 65972), (54, 65858), (59, 65819), (61, 65801),

Gene: Duggie_97 Start: 67064, Stop: 66333, Start Num: 12

Candidate Starts for Duggie_97:

(Start: 12 @67064 has 257 MA's), (Start: 14 @67025 has 2 MA's), (15, 66998), (Start: 23 @66911 has 15 MA's), (Start: 26 @66872 has 1 MA's), (30, 66830), (40, 66704), (42, 66683), (44, 66671), (46, 66599), (54, 66485), (59, 66446), (61, 66428),

Gene: Durga_99 Start: 67545, Stop: 66814, Start Num: 12

Candidate Starts for Durga_99:

(Start: 12 @67545 has 257 MA's), (Start: 14 @67506 has 2 MA's), (15, 67479), (Start: 26 @67353 has 1 MA's), (30, 67311), (40, 67185), (42, 67164), (44, 67152), (46, 67080), (54, 66966), (59, 66927), (61, 66909),

Gene: ElvisPhasley_102 Start: 67655, Stop: 67077, Start Num: 23

Candidate Starts for ElvisPhasley_102:

(Start: 23 @67655 has 15 MA's), (Start: 26 @67616 has 1 MA's), (30, 67574), (40, 67448), (42, 67427), (44, 67415), (46, 67343), (54, 67229), (59, 67190), (61, 67172),

Gene: Emiris_99 Start: 67452, Stop: 66721, Start Num: 12

Candidate Starts for Emiris_99:

(Start: 12 @67452 has 257 MA's), (Start: 14 @67413 has 2 MA's), (15, 67386), (Start: 23 @67299 has 15 MA's), (Start: 26 @67260 has 1 MA's), (30, 67218), (40, 67092), (42, 67071), (44, 67059), (46, 66987), (54, 66873), (59, 66834), (61, 66816),

Gene: EmpTee_96 Start: 66853, Stop: 66122, Start Num: 12

Candidate Starts for EmpTee_96:

(Start: 12 @66853 has 257 MA's), (Start: 14 @66814 has 2 MA's), (15, 66787), (Start: 23 @66700 has 15 MA's), (Start: 26 @66661 has 1 MA's), (30, 66619), (40, 66493), (42, 66472), (44, 66460), (46, 66388), (54, 66274), (59, 66235), (61, 66217),

Gene: Eremos_94 Start: 66900, Stop: 66169, Start Num: 12

Candidate Starts for Eremos_94:

(Start: 12 @66900 has 257 MA's), (Start: 14 @66861 has 2 MA's), (15, 66834), (Start: 23 @66747 has 15 MA's), (Start: 26 @66708 has 1 MA's), (30, 66666), (40, 66540), (42, 66519), (44, 66507), (54, 66321), (59, 66282), (61, 66264),

Gene: Etaye_96 Start: 67629, Stop: 66898, Start Num: 12

Candidate Starts for Etaye_96:

(Start: 12 @67629 has 257 MA's), (Start: 14 @67590 has 2 MA's), (15, 67563), (Start: 23 @67476 has 15 MA's), (Start: 26 @67437 has 1 MA's), (30, 67395), (40, 67269), (42, 67248), (44, 67236), (46, 67164), (54, 67050), (59, 67011), (61, 66993),

Gene: Eugenia_99 Start: 67564, Stop: 66833, Start Num: 12

Candidate Starts for Eugenia_99:

(Start: 12 @67564 has 257 MA's), (Start: 14 @67525 has 2 MA's), (15, 67498), (Start: 23 @67411 has 15 MA's), (Start: 26 @67372 has 1 MA's), (30, 67330), (40, 67204), (42, 67183), (44, 67171), (46, 67099), (54, 66985), (59, 66946), (61, 66928),

Gene: Fang_97 Start: 66994, Stop: 66263, Start Num: 12

Candidate Starts for Fang_97:

(Start: 12 @66994 has 257 MA's), (Start: 14 @66955 has 2 MA's), (15, 66928), (Start: 23 @66841 has 15 MA's), (Start: 26 @66802 has 1 MA's), (30, 66760), (40, 66634), (42, 66613), (44, 66601), (46, 66529), (54, 66415), (59, 66376), (61, 66358),

Gene: Faze9_83 Start: 63774, Stop: 63244, Start Num: 23

Candidate Starts for Faze9_83:

(11, 63951), (Start: 18 @63840 has 18 MA's), (Start: 19 @63822 has 2 MA's), (Start: 23 @63774 has 15 MA's), (25, 63747), (27, 63720), (28, 63711), (33, 63669), (34, 63660), (40, 63564), (44, 63528), (46, 63456), (52, 63360), (53, 63354), (57, 63312), (59, 63300),

Gene: FluffyNinja_98 Start: 67141, Stop: 66410, Start Num: 12

Candidate Starts for FluffyNinja_98:

(Start: 12 @67141 has 257 MA's), (Start: 14 @67102 has 2 MA's), (15, 67075), (Start: 23 @66988 has 15 MA's), (Start: 26 @66949 has 1 MA's), (30, 66907), (40, 66781), (42, 66760), (44, 66748), (46, 66676), (54, 66562), (59, 66523), (61, 66505),

Gene: ForDig_89 Start: 66193, Stop: 65561, Start Num: 24

Candidate Starts for ForDig_89:

(13, 66334), (Start: 24 @66193 has 1 MA's), (Start: 29 @66124 has 1 MA's), (32, 66115), (40, 65995), (41, 65986), (43, 65965), (46, 65893), (48, 65881), (58, 65740), (59, 65737), (61, 65719), (63, 65692), (67, 65650),

Gene: Fozzie_93 Start: 67190, Stop: 66459, Start Num: 12

Candidate Starts for Fozzie_93:

(Start: 12 @67190 has 257 MA's), (Start: 14 @67151 has 2 MA's), (15, 67124), (Start: 26 @66998 has 1 MA's), (30, 66956), (40, 66830), (42, 66809), (44, 66797), (46, 66725), (54, 66611), (59, 66572), (61, 66554),

Gene: Frankicide_94 Start: 66690, Stop: 65959, Start Num: 12

Candidate Starts for Frankicide_94:

(8, 66909), (10, 66807), (Start: 12 @66690 has 257 MA's), (Start: 14 @66651 has 2 MA's), (15, 66624), (20, 66588), (Start: 23 @66537 has 15 MA's), (Start: 26 @66498 has 1 MA's), (30, 66456), (40, 66330), (42, 66309), (44, 66297), (46, 66225), (54, 66111), (59, 66072), (61, 66054),

Gene: FrenchFry_85 Start: 63827, Stop: 63231, Start Num: 18

Candidate Starts for FrenchFry_85:

(11, 63938), (Start: 18 @63827 has 18 MA's), (Start: 19 @63809 has 2 MA's), (Start: 23 @63761 has 15 MA's), (25, 63734), (27, 63707), (28, 63698), (33, 63656), (34, 63647), (40, 63551), (44, 63515), (46, 63443), (52, 63347), (53, 63341), (57, 63299), (59, 63287),

Gene: Freya_93 Start: 66460, Stop: 65729, Start Num: 12

Candidate Starts for Freya_93:

(Start: 12 @66460 has 257 MA's), (Start: 14 @66421 has 2 MA's), (15, 66394), (Start: 23 @66307 has 15 MA's), (Start: 26 @66268 has 1 MA's), (30, 66226), (40, 66100), (42, 66079), (44, 66067), (46, 65995), (54, 65881), (59, 65842), (61, 65824),

Gene: FriarPreacher_94 Start: 66839, Stop: 66108, Start Num: 12

Candidate Starts for FriarPreacher_94:

(Start: 12 @66839 has 257 MA's), (Start: 14 @66800 has 2 MA's), (15, 66773), (Start: 23 @66686 has 15 MA's), (Start: 26 @66647 has 1 MA's), (30, 66605), (40, 66479), (42, 66458), (44, 66446), (46, 66374), (54, 66260), (59, 66221), (61, 66203),

Gene: Fringe_101 Start: 67616, Stop: 66885, Start Num: 12

Candidate Starts for Fringe_101:

(Start: 12 @67616 has 257 MA's), (Start: 14 @67577 has 2 MA's), (15, 67550), (Start: 23 @67463 has 15 MA's), (Start: 26 @67424 has 1 MA's), (30, 67382), (40, 67256), (42, 67235), (44, 67223), (46, 67151), (54, 67037), (59, 66998), (61, 66980),

Gene: FugateOSU_97 Start: 67901, Stop: 67170, Start Num: 12

Candidate Starts for FugateOSU_97:

(Start: 12 @67901 has 257 MA's), (Start: 14 @67862 has 2 MA's), (15, 67835), (Start: 23 @67748 has 15 MA's), (Start: 26 @67709 has 1 MA's), (30, 67667), (40, 67541), (42, 67520), (44, 67508), (46, 67436), (54, 67322), (59, 67283), (61, 67265),

Gene: Gareth_97 Start: 67290, Stop: 66559, Start Num: 12

Candidate Starts for Gareth_97:

(Start: 12 @67290 has 257 MA's), (Start: 14 @67251 has 2 MA's), (15, 67224), (Start: 23 @67137 has 15 MA's), (Start: 26 @67098 has 1 MA's), (30, 67056), (40, 66930), (42, 66909), (44, 66897), (46, 66825), (54, 66711), (59, 66672), (61, 66654),

Gene: GeneCoco_96 Start: 67226, Stop: 66495, Start Num: 12

Candidate Starts for GeneCoco_96:

(Start: 12 @67226 has 257 MA's), (Start: 14 @67187 has 2 MA's), (15, 67160), (Start: 23 @67073 has 15 MA's), (Start: 26 @67034 has 1 MA's), (30, 66992), (40, 66866), (42, 66845), (44, 66833), (46, 66761), (54, 66647), (59, 66608), (61, 66590),

Gene: Giraffe_98 Start: 67294, Stop: 66563, Start Num: 12

Candidate Starts for Giraffe_98:

(Start: 12 @67294 has 257 MA's), (Start: 14 @67255 has 2 MA's), (15, 67228), (Start: 23 @67141 has 15 MA's), (Start: 26 @67102 has 1 MA's), (30, 67060), (40, 66934), (42, 66913), (44, 66901), (46, 66829), (54, 66715), (59, 66676), (61, 66658),

Gene: Glass_86 Start: 63834, Stop: 63238, Start Num: 18

Candidate Starts for Glass_86:

(11, 63945), (Start: 18 @63834 has 18 MA's), (Start: 19 @63816 has 2 MA's), (Start: 23 @63768 has 15 MA's), (25, 63741), (28, 63705), (33, 63663), (34, 63654), (40, 63558), (44, 63522), (46, 63450), (52, 63354), (53, 63348), (57, 63306), (59, 63294),

Gene: Godines_84 Start: 63740, Stop: 63144, Start Num: 18

Candidate Starts for Godines_84:

(11, 63851), (Start: 18 @63740 has 18 MA's), (Start: 19 @63722 has 2 MA's), (Start: 23 @63674 has 15 MA's), (25, 63647), (28, 63611), (33, 63569), (34, 63560), (40, 63464), (44, 63428), (46, 63356), (52, 63260), (53, 63254), (57, 63212), (59, 63200),

Gene: Gophee_96 Start: 67281, Stop: 66550, Start Num: 12

Candidate Starts for Gophee_96:

(Start: 12 @67281 has 257 MA's), (Start: 14 @67242 has 2 MA's), (15, 67215), (Start: 23 @67128 has 15 MA's), (Start: 26 @67089 has 1 MA's), (30, 67047), (40, 66921), (42, 66900), (44, 66888), (46, 66816), (54, 66702), (59, 66663), (61, 66645),

Gene: Grand2040_94 Start: 67016, Stop: 66285, Start Num: 12

Candidate Starts for Grand2040_94:

(Start: 12 @67016 has 257 MA's), (Start: 14 @66977 has 2 MA's), (15, 66950), (Start: 23 @66863 has 15 MA's), (Start: 26 @66824 has 1 MA's), (30, 66782), (40, 66656), (42, 66635), (44, 66623), (46, 66551), (54, 66437), (59, 66398), (61, 66380),

Gene: Gwennie1_94 Start: 67105, Stop: 66374, Start Num: 12

Candidate Starts for Gwennie1_94:

(Start: 12 @67105 has 257 MA's), (Start: 14 @67066 has 2 MA's), (15, 67039), (Start: 23 @66952 has 15 MA's), (Start: 26 @66913 has 1 MA's), (30, 66871), (40, 66745), (42, 66724), (44, 66712), (46, 66640), (54, 66526), (59, 66487), (61, 66469),

Gene: Gwilliam_97 Start: 67824, Stop: 67093, Start Num: 12

Candidate Starts for Gwilliam_97:

(8, 68043), (10, 67941), (Start: 12 @67824 has 257 MA's), (Start: 14 @67785 has 2 MA's), (15, 67758), (Start: 23 @67671 has 15 MA's), (Start: 26 @67632 has 1 MA's), (30, 67590), (40, 67464), (42, 67443), (44, 67431), (46, 67359), (54, 67245), (59, 67206), (61, 67188),

Gene: HSavage_94 Start: 66365, Stop: 65787, Start Num: 23

Candidate Starts for HSavage_94:

(Start: 23 @66365 has 15 MA's), (Start: 26 @66326 has 1 MA's), (30, 66284), (40, 66158), (42, 66137), (44, 66125), (46, 66053), (54, 65939), (59, 65900), (61, 65882),

Gene: Haimas_94 Start: 66721, Stop: 65990, Start Num: 12

Candidate Starts for Haimas_94:

(Start: 12 @66721 has 257 MA's), (Start: 14 @66682 has 2 MA's), (15, 66655), (Start: 23 @66568 has 15 MA's), (Start: 26 @66529 has 1 MA's), (30, 66487), (40, 66361), (42, 66340), (44, 66328), (46, 66256), (54, 66142), (59, 66103), (61, 66085),

Gene: Haleema_96 Start: 66840, Stop: 66109, Start Num: 12

Candidate Starts for Haleema_96:

(Start: 12 @66840 has 257 MA's), (Start: 14 @66801 has 2 MA's), (15, 66774), (Start: 23 @66687 has 15 MA's), (Start: 26 @66648 has 1 MA's), (30, 66606), (40, 66480), (42, 66459), (44, 66447), (46, 66375), (54, 66261), (59, 66222), (61, 66204),

Gene: Hamish_94 Start: 67009, Stop: 66278, Start Num: 12

Candidate Starts for Hamish_94:

(Start: 12 @67009 has 257 MA's), (Start: 14 @66970 has 2 MA's), (15, 66943), (Start: 23 @66856 has 15 MA's), (Start: 26 @66817 has 1 MA's), (30, 66775), (40, 66649), (42, 66628), (44, 66616), (46, 66544), (54, 66430), (59, 66391), (61, 66373),

Gene: Hartsy_95 Start: 66958, Stop: 66227, Start Num: 12

Candidate Starts for Hartsy_95:

(Start: 12 @66958 has 257 MA's), (Start: 14 @66919 has 2 MA's), (15, 66892), (Start: 23 @66805 has 15 MA's), (Start: 26 @66766 has 1 MA's), (30, 66724), (38, 66637), (40, 66598), (42, 66577), (44, 66565), (46, 66493), (54, 66379), (59, 66340), (61, 66322),

Gene: Harvey_94 Start: 66617, Stop: 65886, Start Num: 12

Candidate Starts for Harvey_94:

(Start: 12 @66617 has 257 MA's), (Start: 14 @66578 has 2 MA's), (15, 66551), (Start: 23 @66464 has 15 MA's), (Start: 26 @66425 has 1 MA's), (40, 66257), (42, 66236), (44, 66224), (46, 66152), (54, 66038), (59, 65999), (61, 65981),

Gene: Hedgerow_84 Start: 63791, Stop: 63195, Start Num: 18

Candidate Starts for Hedgerow_84:

(11, 63902), (Start: 18 @63791 has 18 MA's), (Start: 19 @63773 has 2 MA's), (Start: 23 @63725 has 15 MA's), (25, 63698), (27, 63671), (28, 63662), (33, 63620), (34, 63611), (40, 63515), (44, 63479), (46, 63407), (52, 63311), (53, 63305), (57, 63263), (59, 63251),

Gene: Held_95 Start: 66738, Stop: 66007, Start Num: 12

Candidate Starts for Held_95:

(Start: 12 @66738 has 257 MA's), (Start: 14 @66699 has 2 MA's), (15, 66672), (Start: 23 @66585 has 15 MA's), (Start: 26 @66546 has 1 MA's), (30, 66504), (40, 66378), (42, 66357), (44, 66345), (46, 66273), (54, 66159), (59, 66120), (61, 66102),

Gene: HenryJackson_97 Start: 67458, Stop: 66727, Start Num: 12

Candidate Starts for HenryJackson_97:

(Start: 12 @67458 has 257 MA's), (Start: 14 @67419 has 2 MA's), (15, 67392), (Start: 23 @67305 has 15 MA's), (Start: 26 @67266 has 1 MA's), (30, 67224), (40, 67098), (42, 67077), (44, 67065), (46, 66993), (54, 66879), (59, 66840), (61, 66822),

Gene: Hertubise_96 Start: 67100, Stop: 66369, Start Num: 12

Candidate Starts for Hertubise_96:

(Start: 12 @67100 has 257 MA's), (Start: 14 @67061 has 2 MA's), (15, 67034), (Start: 23 @66947 has 15 MA's), (Start: 26 @66908 has 1 MA's), (30, 66866), (40, 66740), (42, 66719), (44, 66707), (46, 66635), (54, 66521), (59, 66482), (61, 66464),

Gene: Hetaeria_96 Start: 66830, Stop: 66099, Start Num: 12

Candidate Starts for Hetaeria_96:

(Start: 12 @66830 has 257 MA's), (Start: 14 @66791 has 2 MA's), (15, 66764), (Start: 23 @66677 has 15 MA's), (Start: 26 @66638 has 1 MA's), (30, 66596), (40, 66470), (42, 66449), (44, 66437), (46, 66365), (54, 66251), (59, 66212), (61, 66194),

Gene: HighStump_99 Start: 67245, Stop: 66514, Start Num: 12

Candidate Starts for HighStump_99:

(Start: 12 @67245 has 257 MA's), (Start: 14 @67206 has 2 MA's), (15, 67179), (Start: 23 @67092 has 15 MA's), (Start: 26 @67053 has 1 MA's), (30, 67011), (40, 66885), (42, 66864), (44, 66852), (46, 66780), (54, 66666), (59, 66627), (61, 66609),

Gene: Hocus_96 Start: 66759, Stop: 66028, Start Num: 12

Candidate Starts for Hocus_96:

(Start: 12 @66759 has 257 MA's), (Start: 14 @66720 has 2 MA's), (15, 66693), (Start: 23 @66606 has 15 MA's), (Start: 26 @66567 has 1 MA's), (30, 66525), (40, 66399), (42, 66378), (44, 66366), (46, 66294), (54, 66180), (59, 66141), (61, 66123),

Gene: Holeinone_84 Start: 63681, Stop: 63085, Start Num: 18

Candidate Starts for Holeinone_84:

(11, 63792), (Start: 18 @63681 has 18 MA's), (Start: 19 @63663 has 2 MA's), (Start: 23 @63615 has 15 MA's), (25, 63588), (28, 63552), (33, 63510), (34, 63501), (40, 63405), (44, 63369), (46, 63297), (52, 63201), (53, 63195), (57, 63153), (59, 63141),

Gene: Horchata_91 Start: 66558, Stop: 65962, Start Num: 14

Candidate Starts for Horchata_91:

(8, 66816), (10, 66714), (Start: 14 @66558 has 2 MA's), (Start: 26 @66501 has 1 MA's), (30, 66459), (40, 66333), (42, 66312), (44, 66300), (54, 66114), (59, 66075), (61, 66057),

Gene: ImtiyazSitla_98 Start: 67284, Stop: 66532, Start Num: 12

Candidate Starts for ImtiyazSitla_98:

(8, 67503), (10, 67401), (Start: 12 @67284 has 257 MA's), (Start: 14 @67245 has 2 MA's), (Start: 23 @67131 has 15 MA's), (Start: 26 @67092 has 1 MA's), (40, 66924), (42, 66903), (44, 66891), (46, 66819), (54, 66705), (59, 66666), (61, 66648),

Gene: Inchworm_98 Start: 67132, Stop: 66401, Start Num: 12

Candidate Starts for Inchworm_98:

(Start: 12 @67132 has 257 MA's), (Start: 14 @67093 has 2 MA's), (15, 67066), (Start: 23 @66979 has 15 MA's), (Start: 26 @66940 has 1 MA's), (30, 66898), (40, 66772), (42, 66751), (44, 66739), (46, 66667), (54, 66553), (59, 66514), (61, 66496),

Gene: Indlovu_88 Start: 67222, Stop: 66713, Start Num: 29

Candidate Starts for Indlovu_88:

(Start: 29 @67222 has 1 MA's), (40, 67096), (41, 67087), (42, 67075), (50, 66898), (51, 66895), (55, 66874), (59, 66838), (62, 66802), (65, 66775), (69, 66736),

Gene: Inverness_94 Start: 66689, Stop: 65958, Start Num: 12

Candidate Starts for Inverness_94:

(Start: 12 @66689 has 257 MA's), (Start: 14 @66650 has 2 MA's), (15, 66623), (Start: 23 @66536 has 15 MA's), (Start: 26 @66497 has 1 MA's), (30, 66455), (40, 66329), (42, 66308), (44, 66296), (46, 66224), (54, 66110), (59, 66071), (61, 66053),

Gene: Iridessa_99 Start: 66857, Stop: 66126, Start Num: 12

Candidate Starts for Iridessa_99:

(Start: 12 @66857 has 257 MA's), (Start: 14 @66818 has 2 MA's), (15, 66791), (Start: 23 @66704 has 15 MA's), (Start: 26 @66665 has 1 MA's), (30, 66623), (40, 66497), (42, 66476), (44, 66464), (46, 66392), (54, 66278), (59, 66239), (61, 66221),

Gene: Iridoclysis_96 Start: 67022, Stop: 66291, Start Num: 12

Candidate Starts for Iridoclysis_96:

(Start: 12 @67022 has 257 MA's), (Start: 14 @66983 has 2 MA's), (15, 66956), (Start: 23 @66869 has 15 MA's), (Start: 26 @66830 has 1 MA's), (30, 66788), (40, 66662), (42, 66641), (44, 66629), (46, 66557), (54, 66443), (59, 66404), (61, 66386),

Gene: IsaacEli_99 Start: 67263, Stop: 66532, Start Num: 12

Candidate Starts for IsaacEli_99:

(8, 67482), (10, 67380), (Start: 12 @67263 has 257 MA's), (Start: 14 @67224 has 2 MA's), (15, 67197), (Start: 23 @67110 has 15 MA's), (Start: 26 @67071 has 1 MA's), (30, 67029), (40, 66903), (42, 66882), (44, 66870), (46, 66798), (54, 66684), (59, 66645), (61, 66627),

Gene: ItsyBitsy1_81 Start: 63908, Stop: 63312, Start Num: 18

Candidate Starts for ItsyBitsy1_81:

(11, 64019), (Start: 18 @63908 has 18 MA's), (Start: 19 @63890 has 2 MA's), (Start: 23 @63842 has 15 MA's), (25, 63815), (28, 63779), (33, 63737), (34, 63728), (40, 63632), (44, 63596), (46, 63524), (52, 63428), (53, 63422), (57, 63380), (59, 63368),

Gene: JDog_96 Start: 67292, Stop: 66561, Start Num: 12

Candidate Starts for JDog_96:

(Start: 12 @67292 has 257 MA's), (Start: 14 @67253 has 2 MA's), (15, 67226), (Start: 23 @67139 has 15 MA's), (Start: 26 @67100 has 1 MA's), (30, 67058), (40, 66932), (42, 66911), (44, 66899), (46, 66827), (54, 66713), (59, 66674), (61, 66656),

Gene: JacAttac_97 Start: 66736, Stop: 66005, Start Num: 12

Candidate Starts for JacAttac_97:

(Start: 12 @66736 has 257 MA's), (Start: 14 @66697 has 2 MA's), (15, 66670), (Start: 23 @66583 has 15 MA's), (Start: 26 @66544 has 1 MA's), (30, 66502), (40, 66376), (42, 66355), (44, 66343), (46, 66271), (54, 66157), (59, 66118), (61, 66100),

Gene: JakeO_98 Start: 67020, Stop: 66289, Start Num: 12

Candidate Starts for JakeO_98:

(Start: 12 @67020 has 257 MA's), (Start: 14 @66981 has 2 MA's), (15, 66954), (Start: 23 @66867 has 15 MA's), (Start: 26 @66828 has 1 MA's), (30, 66786), (40, 66660), (42, 66639), (44, 66627), (46, 66555), (54, 66441), (59, 66402), (61, 66384),

Gene: JangoPhett_95 Start: 67098, Stop: 66367, Start Num: 12

Candidate Starts for JangoPhett_95:

(Start: 12 @67098 has 257 MA's), (Start: 14 @67059 has 2 MA's), (15, 67032), (Start: 23 @66945 has 15 MA's), (Start: 26 @66906 has 1 MA's), (30, 66864), (40, 66738), (42, 66717), (44, 66705), (46, 66633), (54, 66519), (59, 66480), (61, 66462),

Gene: Jesabah_97 Start: 67861, Stop: 67130, Start Num: 12

Candidate Starts for Jesabah_97:

(Start: 12 @67861 has 257 MA's), (Start: 14 @67822 has 2 MA's), (15, 67795), (Start: 23 @67708 has 15 MA's), (Start: 26 @67669 has 1 MA's), (30, 67627), (40, 67501), (42, 67480), (44, 67468), (46, 67396), (54, 67282), (59, 67243), (61, 67225),

Gene: Jillium_97 Start: 67175, Stop: 66444, Start Num: 12

Candidate Starts for Jillium_97:

(Start: 12 @67175 has 257 MA's), (Start: 14 @67136 has 2 MA's), (15, 67109), (Start: 23 @67022 has 15 MA's), (Start: 26 @66983 has 1 MA's), (30, 66941), (40, 66815), (42, 66794), (44, 66782), (46, 66710), (54, 66596), (59, 66557), (61, 66539),

Gene: Jiminy_97 Start: 66956, Stop: 66225, Start Num: 12

Candidate Starts for Jiminy_97:

(Start: 12 @66956 has 257 MA's), (Start: 14 @66917 has 2 MA's), (15, 66890), (Start: 23 @66803 has 15 MA's), (Start: 26 @66764 has 1 MA's), (30, 66722), (40, 66596), (42, 66575), (44, 66563), (46, 66491), (54, 66377), (59, 66338), (61, 66320),

Gene: Jiraiya_98 Start: 67040, Stop: 66309, Start Num: 12

Candidate Starts for Jiraiya_98:

(Start: 12 @67040 has 257 MA's), (Start: 14 @67001 has 2 MA's), (15, 66974), (Start: 23 @66887 has 15 MA's), (Start: 26 @66848 has 1 MA's), (30, 66806), (40, 66680), (42, 66659), (44, 66647), (46, 66575), (54, 66461), (59, 66422), (61, 66404),

Gene: Jolie1_089 Start: 66284, Stop: 65610, Start Num: 24

Candidate Starts for Jolie1_089:

(13, 66428), (Start: 24 @66284 has 1 MA's), (Start: 29 @66203 has 1 MA's), (32, 66194), (40, 66074), (43, 66044), (46, 65972), (48, 65960), (58, 65819), (59, 65816), (61, 65798), (63, 65771), (66, 65747), (68, 65732),

Gene: KLucky39_94 Start: 66560, Stop: 65829, Start Num: 12

Candidate Starts for KLucky39_94:

(Start: 12 @66560 has 257 MA's), (Start: 14 @66521 has 2 MA's), (15, 66494), (Start: 23 @66407 has 15 MA's), (Start: 26 @66368 has 1 MA's), (30, 66326), (40, 66200), (42, 66179), (44, 66167), (46, 66095), (54, 65981), (59, 65942), (61, 65924),

Gene: Kahve_97 Start: 67456, Stop: 66725, Start Num: 12

Candidate Starts for Kahve_97:

(Start: 12 @67456 has 257 MA's), (Start: 14 @67417 has 2 MA's), (15, 67390), (Start: 23 @67303 has 15 MA's), (Start: 26 @67264 has 1 MA's), (30, 67222), (40, 67096), (42, 67075), (44, 67063), (46, 66991), (54, 66877), (59, 66838), (61, 66820),

Gene: Kailash_95 Start: 67155, Stop: 66424, Start Num: 12

Candidate Starts for Kailash_95:

(8, 67374), (10, 67272), (Start: 12 @67155 has 257 MA's), (Start: 14 @67116 has 2 MA's), (Start: 23 @67002 has 15 MA's), (Start: 26 @66963 has 1 MA's), (40, 66795), (42, 66774), (44, 66762), (46, 66690), (54, 66576), (59, 66537), (61, 66519),

Gene: Kaleb_84 Start: 63771, Stop: 63241, Start Num: 23

Candidate Starts for Kaleb_84:

(11, 63948), (Start: 18 @63837 has 18 MA's), (Start: 19 @63819 has 2 MA's), (Start: 23 @63771 has 15 MA's), (25, 63744), (28, 63708), (33, 63666), (34, 63657), (40, 63561), (44, 63525), (46, 63453), (52, 63357), (53, 63351), (57, 63309), (59, 63297),

Gene: Katniss_99 Start: 66872, Stop: 66141, Start Num: 12

Candidate Starts for Katniss_99:

(Start: 12 @66872 has 257 MA's), (Start: 14 @66833 has 2 MA's), (15, 66806), (Start: 23 @66719 has 15 MA's), (Start: 26 @66680 has 1 MA's), (30, 66638), (40, 66512), (42, 66491), (44, 66479), (46, 66407), (54, 66293), (59, 66254), (61, 66236),

Gene: KayaCho_87 Start: 66154, Stop: 65498, Start Num: 24

Candidate Starts for KayaCho_87:

(Start: 24 @66154 has 1 MA's), (Start: 29 @66085 has 1 MA's), (39, 65983), (40, 65956), (43, 65926), (46, 65851), (48, 65839), (51, 65755), (58, 65698), (59, 65695), (61, 65677), (63, 65650), (66, 65623),

Gene: Keitherie_100 Start: 67514, Stop: 66783, Start Num: 12

Candidate Starts for Keitherie_100:

(Start: 12 @67514 has 257 MA's), (Start: 14 @67475 has 2 MA's), (15, 67448), (Start: 23 @67361 has 15 MA's), (Start: 26 @67322 has 1 MA's), (30, 67280), (40, 67154), (42, 67133), (44, 67121), (46, 67049), (54, 66935), (59, 66896), (61, 66878),

Gene: Khan1_97 Start: 67235, Stop: 66504, Start Num: 12

Candidate Starts for Khan1_97:

(Start: 12 @67235 has 257 MA's), (Start: 14 @67196 has 2 MA's), (15, 67169), (Start: 26 @67043 has 1 MA's), (30, 67001), (40, 66875), (42, 66854), (44, 66842), (46, 66770), (54, 66656), (59, 66617), (61, 66599),

Gene: Kheth_84 Start: 63754, Stop: 63146, Start Num: 16

Candidate Starts for Kheth_84:

(1, 65020), (3, 64510), (4, 64258), (6, 64078), (9, 63949), (Start: 16 @63754 has 1 MA's), (Start: 23 @63676 has 15 MA's), (25, 63649), (27, 63622), (28, 63613), (33, 63571), (34, 63562), (40, 63466), (44, 63430), (46, 63358), (52, 63262), (53, 63256), (57, 63214), (59, 63202),

Gene: Kikipoo_99 Start: 67263, Stop: 66532, Start Num: 12

Candidate Starts for Kikipoo_99:

(8, 67482), (10, 67380), (Start: 12 @67263 has 257 MA's), (Start: 14 @67224 has 2 MA's), (15, 67197), (Start: 23 @67110 has 15 MA's), (Start: 26 @67071 has 1 MA's), (30, 67029), (40, 66903), (42, 66882), (44, 66870), (46, 66798), (54, 66684), (59, 66645), (61, 66627),

Gene: Kimbrough_98 Start: 67335, Stop: 66604, Start Num: 12

Candidate Starts for Kimbrough_98:

(Start: 12 @67335 has 257 MA's), (Start: 14 @67296 has 2 MA's), (15, 67269), (Start: 23 @67182 has 15 MA's), (Start: 26 @67143 has 1 MA's), (30, 67101), (40, 66975), (42, 66954), (44, 66942), (46, 66870), (54, 66756), (59, 66717), (61, 66699),

Gene: KingTut_87 Start: 63252, Stop: 62521, Start Num: 12

Candidate Starts for KingTut_87:

(Start: 12 @63252 has 257 MA's), (Start: 14 @63213 has 2 MA's), (15, 63186), (Start: 23 @63099 has 15 MA's), (Start: 26 @63060 has 1 MA's), (30, 63018), (40, 62892), (42, 62871), (44, 62859), (46, 62787), (54, 62673), (59, 62634), (61, 62616),

Gene: KingVeVeVe_95 Start: 66468, Stop: 65737, Start Num: 12

Candidate Starts for KingVeVeVe_95:

(8, 66687), (10, 66585), (Start: 12 @66468 has 257 MA's), (Start: 14 @66429 has 2 MA's), (15, 66402), (Start: 26 @66276 has 1 MA's), (30, 66234), (40, 66108), (42, 66087), (44, 66075), (54, 65889), (59, 65850), (61, 65832),

Gene: KlimbOn_96 Start: 66775, Stop: 66044, Start Num: 12

Candidate Starts for KlimbOn_96:

(Start: 12 @66775 has 257 MA's), (Start: 14 @66736 has 2 MA's), (15, 66709), (Start: 23 @66622 has 15 MA's), (Start: 26 @66583 has 1 MA's), (30, 66541), (40, 66415), (42, 66394), (44, 66382), (46, 66310), (54, 66196), (59, 66157), (61, 66139),

Gene: Kloppinator_97 Start: 66905, Stop: 66174, Start Num: 12

Candidate Starts for Kloppinator_97:

(Start: 12 @66905 has 257 MA's), (Start: 14 @66866 has 2 MA's), (15, 66839), (Start: 23 @66752 has 15 MA's), (Start: 26 @66713 has 1 MA's), (40, 66545), (42, 66524), (44, 66512), (46, 66440), (54, 66326), (59, 66287), (61, 66269),

Gene: Kolhan_85 Start: 63664, Stop: 63134, Start Num: 23

Candidate Starts for Kolhan_85:

(11, 63841), (Start: 18 @63730 has 18 MA's), (Start: 19 @63712 has 2 MA's), (Start: 23 @63664 has 15 MA's), (25, 63637), (27, 63610), (28, 63601), (33, 63559), (34, 63550), (40, 63454), (44, 63418), (46, 63346), (52, 63250), (53, 63244), (57, 63202), (59, 63190),

Gene: Kwadwo_96 Start: 66759, Stop: 66028, Start Num: 12

Candidate Starts for Kwadwo_96:

(Start: 12 @66759 has 257 MA's), (Start: 14 @66720 has 2 MA's), (15, 66693), (Start: 23 @66606 has 15 MA's), (Start: 26 @66567 has 1 MA's), (30, 66525), (40, 66399), (42, 66378), (44, 66366), (46, 66294), (54, 66180), (59, 66141), (61, 66123),

Gene: Kwksand96_98 Start: 67025, Stop: 66294, Start Num: 12

Candidate Starts for Kwksand96_98:

(Start: 12 @67025 has 257 MA's), (Start: 14 @66986 has 2 MA's), (15, 66959), (Start: 26 @66833 has 1 MA's), (30, 66791), (40, 66665), (42, 66644), (44, 66632), (46, 66560), (54, 66446), (59, 66407), (61,

66389),

Gene: Labeouficaum_97 Start: 66839, Stop: 66108, Start Num: 12

Candidate Starts for Labeouficaum_97:

(8, 67058), (10, 66956), (Start: 12 @66839 has 257 MA's), (Start: 14 @66800 has 2 MA's), (Start: 23 @66686 has 15 MA's), (Start: 26 @66647 has 1 MA's), (40, 66479), (42, 66458), (44, 66446), (46, 66374), (54, 66260), (59, 66221), (61, 66203),

Gene: Lars_85 Start: 63740, Stop: 63210, Start Num: 23

Candidate Starts for Lars_85:

(3, 64574), (4, 64322), (6, 64142), (9, 64013), (Start: 16 @63818 has 1 MA's), (Start: 23 @63740 has 15 MA's), (25, 63713), (27, 63686), (28, 63677), (33, 63635), (34, 63626), (40, 63530), (44, 63494), (46, 63422), (52, 63326), (53, 63320), (57, 63278), (59, 63266),

Gene: LasagnaCat_98 Start: 67141, Stop: 66410, Start Num: 12

Candidate Starts for LasagnaCat_98:

(Start: 12 @67141 has 257 MA's), (Start: 14 @67102 has 2 MA's), (15, 67075), (Start: 23 @66988 has 15 MA's), (Start: 26 @66949 has 1 MA's), (30, 66907), (40, 66781), (42, 66760), (44, 66748), (46, 66676), (54, 66562), (59, 66523), (61, 66505),

Gene: Lasso_96 Start: 67001, Stop: 66270, Start Num: 12

Candidate Starts for Lasso_96:

(Start: 12 @67001 has 257 MA's), (Start: 14 @66962 has 2 MA's), (15, 66935), (Start: 23 @66848 has 15 MA's), (Start: 26 @66809 has 1 MA's), (30, 66767), (40, 66641), (42, 66620), (44, 66608), (46, 66536), (54, 66422), (59, 66383), (61, 66365),

Gene: Laurie_83 Start: 63078, Stop: 62548, Start Num: 23

Candidate Starts for Laurie_83:

(3, 63918), (4, 63666), (6, 63486), (9, 63357), (Start: 16 @63162 has 1 MA's), (Start: 23 @63078 has 15 MA's), (25, 63051), (27, 63024), (28, 63015), (33, 62973), (34, 62964), (40, 62868), (44, 62832), (46, 62760), (52, 62664), (53, 62658), (57, 62616), (59, 62604),

Gene: LeeLot_95 Start: 67346, Stop: 66615, Start Num: 12

Candidate Starts for LeeLot_95:

(Start: 12 @67346 has 257 MA's), (Start: 14 @67307 has 2 MA's), (15, 67280), (Start: 23 @67193 has 15 MA's), (Start: 26 @67154 has 1 MA's), (30, 67112), (40, 66986), (42, 66965), (44, 66953), (46, 66881), (54, 66767), (59, 66728), (61, 66710),

Gene: Lego3393_95 Start: 67462, Stop: 66731, Start Num: 12

Candidate Starts for Lego3393_95:

(Start: 12 @67462 has 257 MA's), (Start: 14 @67423 has 2 MA's), (15, 67396), (Start: 23 @67309 has 15 MA's), (Start: 26 @67270 has 1 MA's), (30, 67228), (40, 67102), (42, 67081), (44, 67069), (46, 66997), (54, 66883), (59, 66844), (61, 66826),

Gene: Legolas_98 Start: 67089, Stop: 66358, Start Num: 12

Candidate Starts for Legolas_98:

(Start: 12 @67089 has 257 MA's), (Start: 14 @67050 has 2 MA's), (15, 67023), (Start: 23 @66936 has 15 MA's), (Start: 26 @66897 has 1 MA's), (30, 66855), (40, 66729), (42, 66708), (44, 66696), (46, 66624), (54, 66510), (59, 66471), (61, 66453),

Gene: LeiMonet_99 Start: 67222, Stop: 66491, Start Num: 12

Candidate Starts for LeiMonet_99:

(Start: 12 @67222 has 257 MA's), (Start: 14 @67183 has 2 MA's), (15, 67156), (Start: 23 @67069 has 15 MA's), (Start: 26 @67030 has 1 MA's), (30, 66988), (40, 66862), (42, 66841), (44, 66829), (46, 66757), (54, 66643), (59, 66604), (61, 66586),

Gene: LemonSlice_97 Start: 66748, Stop: 66017, Start Num: 12

Candidate Starts for LemonSlice_97:

(Start: 12 @66748 has 257 MA's), (Start: 14 @66709 has 2 MA's), (15, 66682), (Start: 23 @66595 has 15 MA's), (Start: 26 @66556 has 1 MA's), (30, 66514), (40, 66388), (42, 66367), (44, 66355), (46, 66283), (54, 66169), (59, 66130), (61, 66112),

Gene: Lephleur_84 Start: 63596, Stop: 63066, Start Num: 23

Candidate Starts for Lephleur_84:

(11, 63773), (Start: 18 @63662 has 18 MA's), (Start: 19 @63644 has 2 MA's), (Start: 23 @63596 has 15 MA's), (25, 63569), (28, 63533), (33, 63491), (34, 63482), (40, 63386), (44, 63350), (46, 63278), (52, 63182), (53, 63176), (57, 63134), (59, 63122),

Gene: LilSmirk_84 Start: 63683, Stop: 63105, Start Num: 19

Candidate Starts for LilSmirk_84:

(11, 63812), (Start: 18 @63701 has 18 MA's), (Start: 19 @63683 has 2 MA's), (Start: 23 @63635 has 15 MA's), (25, 63608), (27, 63581), (28, 63572), (33, 63530), (34, 63521), (40, 63425), (44, 63389), (46, 63317), (52, 63221), (53, 63215), (57, 63173), (59, 63161),

Gene: LizLemon_84 Start: 63833, Stop: 63237, Start Num: 18

Candidate Starts for LizLemon_84:

(11, 63944), (Start: 18 @63833 has 18 MA's), (Start: 19 @63815 has 2 MA's), (Start: 23 @63767 has 15 MA's), (25, 63740), (27, 63713), (28, 63704), (33, 63662), (34, 63653), (40, 63557), (44, 63521), (46, 63449), (52, 63353), (53, 63347), (57, 63305), (59, 63293),

Gene: Longacauda_97 Start: 66983, Stop: 66231, Start Num: 12

Candidate Starts for Longacauda_97:

(Start: 12 @66983 has 257 MA's), (Start: 14 @66944 has 2 MA's), (15, 66917), (Start: 23 @66830 has 15 MA's), (Start: 26 @66791 has 1 MA's), (30, 66749), (40, 66623), (42, 66602), (44, 66590), (46, 66518), (54, 66404), (59, 66365), (61, 66347),

Gene: Lopsy_93 Start: 66654, Stop: 65923, Start Num: 12

Candidate Starts for Lopsy_93:

(Start: 12 @66654 has 257 MA's), (Start: 14 @66615 has 2 MA's), (15, 66588), (Start: 23 @66501 has 15 MA's), (Start: 26 @66462 has 1 MA's), (30, 66420), (40, 66294), (42, 66273), (44, 66261), (54, 66075), (59, 66036), (61, 66018),

Gene: LostAndPhound_96 Start: 67290, Stop: 66559, Start Num: 12

Candidate Starts for LostAndPhound_96:

(Start: 12 @67290 has 257 MA's), (Start: 14 @67251 has 2 MA's), (15, 67224), (Start: 23 @67137 has 15 MA's), (Start: 26 @67098 has 1 MA's), (30, 67056), (40, 66930), (42, 66909), (44, 66897), (46, 66825), (54, 66711), (59, 66672), (61, 66654),

Gene: LuckyMarjie_94 Start: 66500, Stop: 65769, Start Num: 12

Candidate Starts for LuckyMarjie_94:

(Start: 12 @66500 has 257 MA's), (Start: 14 @66461 has 2 MA's), (15, 66434), (Start: 23 @66347 has 15 MA's), (Start: 26 @66308 has 1 MA's), (30, 66266), (40, 66140), (42, 66119), (44, 66107), (46, 66035), (54, 65921), (59, 65882), (61, 65864),

Gene: Lulumae_92 Start: 66481, Stop: 65750, Start Num: 12

Candidate Starts for Lulumae_92:

(Start: 12 @66481 has 257 MA's), (Start: 14 @66442 has 2 MA's), (15, 66415), (Start: 26 @66289 has 1 MA's), (30, 66247), (40, 66121), (42, 66100), (44, 66088), (46, 66016), (54, 65902), (59, 65863), (61, 65845),

Gene: Lulwa_94 Start: 66114, Stop: 65383, Start Num: 12

Candidate Starts for Lulwa_94:

(Start: 12 @66114 has 257 MA's), (Start: 14 @66075 has 2 MA's), (15, 66048), (Start: 23 @65961 has 15 MA's), (Start: 26 @65922 has 1 MA's), (30, 65880), (40, 65754), (42, 65733), (44, 65721), (46, 65649), (54, 65535), (59, 65496), (61, 65478),

Gene: Lumine_98 Start: 66938, Stop: 66207, Start Num: 12

Candidate Starts for Lumine_98:

(Start: 12 @66938 has 257 MA's), (Start: 14 @66899 has 2 MA's), (15, 66872), (Start: 23 @66785 has 15 MA's), (Start: 26 @66746 has 1 MA's), (30, 66704), (40, 66578), (42, 66557), (44, 66545), (46, 66473), (54, 66359), (59, 66320), (61, 66302),

Gene: MRabcd_97 Start: 67216, Stop: 66485, Start Num: 12

Candidate Starts for MRabcd_97:

(Start: 12 @67216 has 257 MA's), (Start: 14 @67177 has 2 MA's), (15, 67150), (Start: 23 @67063 has 15 MA's), (Start: 26 @67024 has 1 MA's), (30, 66982), (40, 66856), (42, 66835), (44, 66823), (46, 66751), (54, 66637), (59, 66598), (61, 66580),

Gene: Mag7_95 Start: 66699, Stop: 65968, Start Num: 12

Candidate Starts for Mag7_95:

(8, 66918), (10, 66816), (Start: 12 @66699 has 257 MA's), (Start: 14 @66660 has 2 MA's), (Start: 23 @66546 has 15 MA's), (Start: 26 @66507 has 1 MA's), (40, 66339), (42, 66318), (44, 66306), (46, 66234), (54, 66120), (59, 66081), (61, 66063),

Gene: Magic8_96 Start: 67067, Stop: 66336, Start Num: 12

Candidate Starts for Magic8_96:

(8, 67286), (10, 67184), (Start: 12 @67067 has 257 MA's), (Start: 14 @67028 has 2 MA's), (Start: 23 @66914 has 15 MA's), (Start: 26 @66875 has 1 MA's), (40, 66707), (42, 66686), (44, 66674), (46, 66602), (54, 66488), (59, 66449), (61, 66431),

Gene: Mana_94 Start: 66904, Stop: 66173, Start Num: 12

Candidate Starts for Mana_94:

(Start: 12 @66904 has 257 MA's), (Start: 14 @66865 has 2 MA's), (15, 66838), (Start: 23 @66751 has 15 MA's), (Start: 26 @66712 has 1 MA's), (30, 66670), (40, 66544), (42, 66523), (44, 66511), (46, 66439), (54, 66325), (59, 66286), (61, 66268),

Gene: Manad_96 Start: 67013, Stop: 66282, Start Num: 12

Candidate Starts for Manad_96:

(Start: 12 @67013 has 257 MA's), (Start: 14 @66974 has 2 MA's), (15, 66947), (Start: 23 @66860 has 15 MA's), (Start: 26 @66821 has 1 MA's), (30, 66779), (40, 66653), (42, 66632), (44, 66620), (46, 66548), (54, 66434), (59, 66395), (61, 66377),

Gene: Maru_96 Start: 67109, Stop: 66378, Start Num: 12

Candidate Starts for Maru_96:

(Start: 12 @67109 has 257 MA's), (Start: 14 @67070 has 2 MA's), (15, 67043), (Start: 23 @66956 has 15 MA's), (Start: 26 @66917 has 1 MA's), (30, 66875), (40, 66749), (42, 66728), (44, 66716), (46, 66644), (54, 66530), (59, 66491), (61, 66473),

Gene: Maskar_98 Start: 67284, Stop: 66532, Start Num: 12

Candidate Starts for Maskar_98:

(8, 67503), (10, 67401), (Start: 12 @67284 has 257 MA's), (Start: 14 @67245 has 2 MA's), (Start: 23 @67131 has 15 MA's), (Start: 26 @67092 has 1 MA's), (40, 66924), (42, 66903), (44, 66891), (46, 66819), (54, 66705), (59, 66666), (61, 66648),

Gene: MasterPo_85 Start: 63636, Stop: 63106, Start Num: 23

Candidate Starts for MasterPo_85:

(11, 63813), (Start: 18 @63702 has 18 MA's), (Start: 19 @63684 has 2 MA's), (Start: 23 @63636 has 15 MA's), (25, 63609), (27, 63582), (28, 63573), (33, 63531), (34, 63522), (35, 63516), (40, 63426), (44, 63390), (46, 63318), (52, 63222), (53, 63216), (57, 63174), (59, 63162),

Gene: Matalotodo_95 Start: 67748, Stop: 67017, Start Num: 12

Candidate Starts for Matalotodo_95:

(Start: 12 @67748 has 257 MA's), (Start: 14 @67709 has 2 MA's), (15, 67682), (Start: 23 @67595 has 15 MA's), (Start: 26 @67556 has 1 MA's), (30, 67514), (40, 67388), (42, 67367), (44, 67355), (46, 67283), (54, 67169), (59, 67130), (61, 67112),

Gene: Mcshane_99 Start: 67131, Stop: 66400, Start Num: 12

Candidate Starts for Mcshane_99:

(Start: 12 @67131 has 257 MA's), (Start: 14 @67092 has 2 MA's), (15, 67065), (Start: 23 @66978 has 15 MA's), (Start: 26 @66939 has 1 MA's), (30, 66897), (40, 66771), (42, 66750), (44, 66738), (46, 66666), (54, 66552), (59, 66513), (61, 66495),

Gene: Mecca_97 Start: 67315, Stop: 66584, Start Num: 12

Candidate Starts for Mecca_97:

(Start: 12 @67315 has 257 MA's), (Start: 14 @67276 has 2 MA's), (15, 67249), (Start: 23 @67162 has 15 MA's), (Start: 26 @67123 has 1 MA's), (30, 67081), (40, 66955), (42, 66934), (44, 66922), (46, 66850), (54, 66736), (59, 66697), (61, 66679),

Gene: Megamind20_99 Start: 67095, Stop: 66364, Start Num: 12

Candidate Starts for Megamind20_99:

(Start: 12 @67095 has 257 MA's), (Start: 14 @67056 has 2 MA's), (15, 67029), (Start: 26 @66903 has 1 MA's), (30, 66861), (40, 66735), (42, 66714), (44, 66702), (46, 66630), (54, 66516), (59, 66477), (61, 66459),

Gene: Megatron_98 Start: 67434, Stop: 66703, Start Num: 12

Candidate Starts for Megatron_98:

(Start: 12 @67434 has 257 MA's), (Start: 14 @67395 has 2 MA's), (15, 67368), (Start: 23 @67281 has 15 MA's), (Start: 26 @67242 has 1 MA's), (30, 67200), (40, 67074), (42, 67053), (44, 67041), (46, 66969), (54, 66855), (59, 66816), (61, 66798),

Gene: Melc17_94 Start: 67384, Stop: 66653, Start Num: 12

Candidate Starts for Melc17_94:

(Start: 12 @67384 has 257 MA's), (Start: 14 @67345 has 2 MA's), (15, 67318), (Start: 23 @67231 has 15 MA's), (Start: 26 @67192 has 1 MA's), (30, 67150), (40, 67024), (42, 67003), (44, 66991), (46, 66919), (54, 66805), (59, 66766), (61, 66748),

Gene: MelsMeow_95 Start: 66765, Stop: 66013, Start Num: 12

Candidate Starts for MelsMeow_95:

(8, 66984), (10, 66882), (Start: 12 @66765 has 257 MA's), (Start: 14 @66726 has 2 MA's), (Start: 23 @66612 has 15 MA's), (Start: 26 @66573 has 1 MA's), (40, 66405), (42, 66384), (44, 66372), (46, 66300), (54, 66186), (59, 66147), (61, 66129),

Gene: Mesh1_97 Start: 67199, Stop: 66468, Start Num: 12

Candidate Starts for Mesh1_97:

(Start: 12 @67199 has 257 MA's), (Start: 14 @67160 has 2 MA's), (15, 67133), (Start: 23 @67046 has 15 MA's), (Start: 26 @67007 has 1 MA's), (30, 66965), (40, 66839), (42, 66818), (44, 66806), (46, 66734), (54, 66620), (59, 66581), (61, 66563),

Gene: Mesmerelda_98 Start: 67315, Stop: 66584, Start Num: 12

Candidate Starts for Mesmerelda_98:

(Start: 12 @67315 has 257 MA's), (Start: 14 @67276 has 2 MA's), (15, 67249), (Start: 23 @67162 has 15 MA's), (Start: 26 @67123 has 1 MA's), (30, 67081), (40, 66955), (42, 66934), (44, 66922), (46, 66850), (54, 66736), (59, 66697), (61, 66679),

Gene: MichaelPhcott_95 Start: 66696, Stop: 65965, Start Num: 12

Candidate Starts for MichaelPhcott_95:

(8, 66915), (10, 66813), (Start: 12 @66696 has 257 MA's), (Start: 14 @66657 has 2 MA's), (Start: 23 @66543 has 15 MA's), (Start: 26 @66504 has 1 MA's), (40, 66336), (42, 66315), (44, 66303), (46, 66231), (54, 66117), (59, 66078), (61, 66060),

Gene: Mikota_91 Start: 66191, Stop: 65460, Start Num: 12

Candidate Starts for Mikota_91:

(Start: 12 @66191 has 257 MA's), (Start: 14 @66152 has 2 MA's), (15, 66125), (Start: 23 @66038 has 15 MA's), (Start: 26 @65999 has 1 MA's), (40, 65831), (42, 65810), (44, 65798), (46, 65726), (54, 65612), (59, 65573), (61, 65555),

Gene: MiniBoss_92 Start: 65812, Stop: 65081, Start Num: 12

Candidate Starts for MiniBoss_92:

(8, 66031), (10, 65929), (Start: 12 @65812 has 257 MA's), (Start: 14 @65773 has 2 MA's), (15, 65746), (20, 65710), (Start: 23 @65659 has 15 MA's), (Start: 26 @65620 has 1 MA's), (30, 65578), (40, 65452), (42, 65431), (44, 65419), (54, 65233), (59, 65194), (61, 65176),

Gene: MitKao_97 Start: 66917, Stop: 66186, Start Num: 12

Candidate Starts for MitKao_97:

(Start: 12 @66917 has 257 MA's), (Start: 14 @66878 has 2 MA's), (15, 66851), (Start: 23 @66764 has 15 MA's), (Start: 26 @66725 has 1 MA's), (30, 66683), (40, 66557), (42, 66536), (44, 66524), (46, 66452), (54, 66338), (59, 66299), (61, 66281),

Gene: Morgushi_94 Start: 66732, Stop: 66001, Start Num: 12

Candidate Starts for Morgushi_94:

(Start: 12 @66732 has 257 MA's), (Start: 14 @66693 has 2 MA's), (15, 66666), (Start: 23 @66579 has 15 MA's), (Start: 26 @66540 has 1 MA's), (30, 66498), (40, 66372), (42, 66351), (44, 66339), (46, 66267), (54, 66153), (59, 66114), (61, 66096),

Gene: Morty_97 Start: 67302, Stop: 66571, Start Num: 12

Candidate Starts for Morty_97:

(Start: 12 @67302 has 257 MA's), (Start: 14 @67263 has 2 MA's), (15, 67236), (Start: 23 @67149 has 15 MA's), (Start: 26 @67110 has 1 MA's), (30, 67068), (40, 66942), (42, 66921), (44, 66909), (46, 66837), (54, 66723), (59, 66684), (61, 66666),

Gene: Mosaic_94 Start: 66913, Stop: 66182, Start Num: 12

Candidate Starts for Mosaic_94:

(Start: 12 @66913 has 257 MA's), (Start: 14 @66874 has 2 MA's), (15, 66847), (Start: 23 @66760 has 15 MA's), (Start: 26 @66721 has 1 MA's), (30, 66679), (40, 66553), (42, 66532), (44, 66520), (46,

66448), (54, 66334), (59, 66295), (61, 66277),

Gene: MrPhizzler_96 Start: 67212, Stop: 66481, Start Num: 12

Candidate Starts for MrPhizzler_96:

(Start: 12 @67212 has 257 MA's), (Start: 14 @67173 has 2 MA's), (15, 67146), (Start: 26 @67020 has 1 MA's), (30, 66978), (40, 66852), (42, 66831), (44, 66819), (46, 66747), (54, 66633), (59, 66594), (61, 66576),

Gene: Mulan_96 Start: 66946, Stop: 66215, Start Num: 12

Candidate Starts for Mulan_96:

(Start: 12 @66946 has 257 MA's), (Start: 14 @66907 has 2 MA's), (15, 66880), (Start: 23 @66793 has 15 MA's), (Start: 26 @66754 has 1 MA's), (30, 66712), (40, 66586), (42, 66565), (44, 66553), (46, 66481), (54, 66367), (59, 66328), (61, 66310),

Gene: Murdoc_93 Start: 67025, Stop: 66294, Start Num: 12

Candidate Starts for Murdoc_93:

(Start: 12 @67025 has 257 MA's), (Start: 14 @66986 has 2 MA's), (15, 66959), (Start: 23 @66872 has 15 MA's), (Start: 26 @66833 has 1 MA's), (30, 66791), (40, 66665), (42, 66644), (44, 66632), (46, 66560), (54, 66446), (59, 66407), (61, 66389),

Gene: Mutante_98 Start: 66919, Stop: 66188, Start Num: 12

Candidate Starts for Mutante_98:

(Start: 12 @66919 has 257 MA's), (Start: 14 @66880 has 2 MA's), (15, 66853), (Start: 23 @66766 has 15 MA's), (Start: 26 @66727 has 1 MA's), (30, 66685), (40, 66559), (42, 66538), (44, 66526), (46, 66454), (54, 66340), (59, 66301), (61, 66283),

Gene: Nacho_0099 Start: 67746, Stop: 67015, Start Num: 12

Candidate Starts for Nacho_0099:

(Start: 12 @67746 has 257 MA's), (Start: 14 @67707 has 2 MA's), (15, 67680), (Start: 23 @67593 has 15 MA's), (Start: 26 @67554 has 1 MA's), (30, 67512), (40, 67386), (42, 67365), (44, 67353), (46, 67281), (54, 67167), (59, 67128), (61, 67110),

Gene: Nangang_90 Start: 66354, Stop: 65737, Start Num: 26

Candidate Starts for Nangang_90:

(6, 66789), (17, 66459), (Start: 26 @66354 has 1 MA's), (40, 66186), (41, 66177), (48, 66069), (56, 65952), (59, 65928), (61, 65910), (70, 65817),

Gene: Nathan_96 Start: 67167, Stop: 66436, Start Num: 12

Candidate Starts for Nathan_96:

(Start: 12 @67167 has 257 MA's), (Start: 14 @67128 has 2 MA's), (15, 67101), (Start: 23 @67014 has 15 MA's), (Start: 26 @66975 has 1 MA's), (30, 66933), (40, 66807), (42, 66786), (44, 66774), (46, 66702), (54, 66588), (59, 66549), (61, 66531),

Gene: Newman_92 Start: 67023, Stop: 66292, Start Num: 12

Candidate Starts for Newman_92:

(Start: 12 @67023 has 257 MA's), (Start: 14 @66984 has 2 MA's), (15, 66957), (Start: 23 @66870 has 15 MA's), (Start: 26 @66831 has 1 MA's), (30, 66789), (40, 66663), (42, 66642), (44, 66630), (46, 66558), (54, 66444), (59, 66405), (61, 66387),

Gene: Nicole21_98 Start: 67053, Stop: 66322, Start Num: 12

Candidate Starts for Nicole21_98:

(Start: 12 @67053 has 257 MA's), (Start: 14 @67014 has 2 MA's), (15, 66987), (Start: 23 @66900 has 15 MA's), (Start: 26 @66861 has 1 MA's), (30, 66819), (40, 66693), (42, 66672), (44, 66660), (46,

66588), (54, 66474), (59, 66435), (61, 66417),

Gene: Numberten_97 Start: 67032, Stop: 66301, Start Num: 12

Candidate Starts for Numberten_97:

(Start: 12 @67032 has 257 MA's), (Start: 14 @66993 has 2 MA's), (15, 66966), (Start: 23 @66879 has 15 MA's), (Start: 26 @66840 has 1 MA's), (30, 66798), (40, 66672), (42, 66651), (44, 66639), (46, 66567), (54, 66453), (59, 66414), (61, 66396),

Gene: Nyala_97 Start: 66768, Stop: 66037, Start Num: 12

Candidate Starts for Nyala_97:

(Start: 12 @66768 has 257 MA's), (Start: 14 @66729 has 2 MA's), (15, 66702), (Start: 23 @66615 has 15 MA's), (Start: 26 @66576 has 1 MA's), (30, 66534), (40, 66408), (42, 66387), (44, 66375), (46, 66303), (54, 66189), (59, 66150), (61, 66132),

Gene: OSmaximus_97 Start: 67321, Stop: 66590, Start Num: 12

Candidate Starts for OSmaximus_97:

(8, 67540), (10, 67438), (Start: 12 @67321 has 257 MA's), (Start: 14 @67282 has 2 MA's), (15, 67255), (20, 67219), (Start: 23 @67168 has 15 MA's), (Start: 26 @67129 has 1 MA's), (40, 66961), (42, 66940), (44, 66928), (46, 66856), (54, 66742), (59, 66703), (61, 66685),

Gene: Olak_99 Start: 67301, Stop: 66570, Start Num: 12

Candidate Starts for Olak_99:

(Start: 12 @67301 has 257 MA's), (Start: 14 @67262 has 2 MA's), (15, 67235), (Start: 23 @67148 has 15 MA's), (Start: 26 @67109 has 1 MA's), (30, 67067), (40, 66941), (42, 66920), (44, 66908), (46, 66836), (54, 66722), (59, 66683), (61, 66665),

Gene: Oline_96 Start: 66923, Stop: 66192, Start Num: 12

Candidate Starts for Oline_96:

(Start: 12 @66923 has 257 MA's), (Start: 14 @66884 has 2 MA's), (15, 66857), (Start: 23 @66770 has 15 MA's), (Start: 26 @66731 has 1 MA's), (30, 66689), (40, 66563), (42, 66542), (44, 66530), (46, 66458), (54, 66344), (59, 66305), (61, 66287),

Gene: Olive_93 Start: 67165, Stop: 66434, Start Num: 12

Candidate Starts for Olive_93:

(Start: 12 @67165 has 257 MA's), (Start: 14 @67126 has 2 MA's), (15, 67099), (Start: 23 @67012 has 15 MA's), (Start: 26 @66973 has 1 MA's), (30, 66931), (40, 66805), (42, 66784), (44, 66772), (46, 66700), (54, 66586), (59, 66547), (61, 66529),

Gene: OliverWalter_96 Start: 67217, Stop: 66486, Start Num: 12

Candidate Starts for OliverWalter_96:

(Start: 12 @67217 has 257 MA's), (Start: 14 @67178 has 2 MA's), (15, 67151), (Start: 23 @67064 has 15 MA's), (Start: 26 @67025 has 1 MA's), (30, 66983), (40, 66857), (42, 66836), (44, 66824), (46, 66752), (54, 66638), (59, 66599), (61, 66581),

Gene: Olivio_96 Start: 65939, Stop: 65493, Start Num: 37

Candidate Starts for Olivio_96:

(31, 65981), (36, 65942), (37, 65939), (40, 65864), (41, 65855), (45, 65813), (49, 65705), (51, 65663), (59, 65600), (61, 65582),

Gene: Omniscient_98 Start: 67622, Stop: 66891, Start Num: 12

Candidate Starts for Omniscient_98:

(Start: 12 @67622 has 257 MA's), (Start: 14 @67583 has 2 MA's), (15, 67556), (Start: 23 @67469 has 15 MA's), (Start: 26 @67430 has 1 MA's), (30, 67388), (40, 67262), (42, 67241), (44, 67229), (46,

67157), (54, 67043), (59, 67004), (61, 66986),

Gene: Oosterbaan_97 Start: 67160, Stop: 66429, Start Num: 12

Candidate Starts for Oosterbaan_97:

(Start: 12 @67160 has 257 MA's), (Start: 14 @67121 has 2 MA's), (15, 67094), (Start: 23 @67007 has 15 MA's), (Start: 26 @66968 has 1 MA's), (30, 66926), (40, 66800), (42, 66779), (44, 66767), (46, 66695), (54, 66581), (59, 66542), (61, 66524),

Gene: Opia_85 Start: 63726, Stop: 63130, Start Num: 18

Candidate Starts for Opia_85:

(11, 63837), (Start: 18 @63726 has 18 MA's), (Start: 19 @63708 has 2 MA's), (Start: 23 @63660 has 15 MA's), (25, 63633), (27, 63606), (28, 63597), (33, 63555), (34, 63546), (40, 63450), (44, 63414), (46, 63342), (52, 63246), (53, 63240), (57, 63198), (59, 63186),

Gene: Orfeu_97 Start: 67281, Stop: 66550, Start Num: 12

Candidate Starts for Orfeu_97:

(Start: 12 @67281 has 257 MA's), (Start: 14 @67242 has 2 MA's), (15, 67215), (Start: 23 @67128 has 15 MA's), (Start: 26 @67089 has 1 MA's), (30, 67047), (40, 66921), (42, 66900), (44, 66888), (46, 66816), (54, 66702), (59, 66663), (61, 66645),

Gene: Orion_95 Start: 66852, Stop: 66121, Start Num: 12

Candidate Starts for Orion_95:

(Start: 12 @66852 has 257 MA's), (Start: 14 @66813 has 2 MA's), (15, 66786), (Start: 23 @66699 has 15 MA's), (Start: 26 @66660 has 1 MA's), (30, 66618), (40, 66492), (42, 66471), (44, 66459), (46, 66387), (54, 66273), (59, 66234), (61, 66216),

Gene: Orwigg_98 Start: 67057, Stop: 66326, Start Num: 12

Candidate Starts for Orwigg_98:

(Start: 12 @67057 has 257 MA's), (Start: 14 @67018 has 2 MA's), (15, 66991), (Start: 23 @66904 has 15 MA's), (Start: 26 @66865 has 1 MA's), (30, 66823), (40, 66697), (42, 66676), (44, 66664), (46, 66592), (54, 66478), (59, 66439), (61, 66421),

Gene: PG1_95 Start: 67424, Stop: 66693, Start Num: 12

Candidate Starts for PG1_95:

(Start: 12 @67424 has 257 MA's), (Start: 14 @67385 has 2 MA's), (15, 67358), (Start: 23 @67271 has 15 MA's), (Start: 26 @67232 has 1 MA's), (30, 67190), (40, 67064), (42, 67043), (44, 67031), (46, 66959), (54, 66845), (59, 66806), (61, 66788),

Gene: Pacifista_99 Start: 67142, Stop: 66411, Start Num: 12

Candidate Starts for Pacifista_99:

(Start: 12 @67142 has 257 MA's), (Start: 14 @67103 has 2 MA's), (15, 67076), (Start: 23 @66989 has 15 MA's), (Start: 26 @66950 has 1 MA's), (30, 66908), (40, 66782), (42, 66761), (44, 66749), (46, 66677), (54, 66563), (59, 66524), (61, 66506),

Gene: Phamished_96 Start: 66940, Stop: 66209, Start Num: 12

Candidate Starts for Phamished_96:

(Start: 12 @66940 has 257 MA's), (Start: 14 @66901 has 2 MA's), (15, 66874), (Start: 23 @66787 has 15 MA's), (Start: 26 @66748 has 1 MA's), (30, 66706), (40, 66580), (42, 66559), (44, 66547), (46, 66475), (54, 66361), (59, 66322), (61, 66304),

Gene: Phantasmagoria_83 Start: 63643, Stop: 63113, Start Num: 23

Candidate Starts for Phantasmagoria_83:

(11, 63820), (Start: 18 @63709 has 18 MA's), (Start: 19 @63691 has 2 MA's), (Start: 23 @63643 has 15 MA's), (25, 63616), (27, 63589), (28, 63580), (33, 63538), (34, 63529), (40, 63433), (44, 63397), (46, 63325), (52, 63229), (53, 63223), (57, 63181), (59, 63169),

Gene: Phareon_94 Start: 66465, Stop: 65734, Start Num: 12

Candidate Starts for Phareon_94:

(Start: 12 @66465 has 257 MA's), (Start: 14 @66426 has 2 MA's), (15, 66399), (Start: 23 @66312 has 15 MA's), (Start: 26 @66273 has 1 MA's), (30, 66231), (40, 66105), (42, 66084), (44, 66072), (46, 66000), (54, 65886), (59, 65847), (61, 65829),

Gene: PhatCats2014_96 Start: 67425, Stop: 66694, Start Num: 12

Candidate Starts for PhatCats2014_96:

(Start: 12 @67425 has 257 MA's), (Start: 14 @67386 has 2 MA's), (15, 67359), (Start: 23 @67272 has 15 MA's), (Start: 26 @67233 has 1 MA's), (30, 67191), (40, 67065), (42, 67044), (44, 67032), (46, 66960), (54, 66846), (59, 66807), (61, 66789),

Gene: PhatLouie_99 Start: 67298, Stop: 66567, Start Num: 12

Candidate Starts for PhatLouie_99:

(Start: 12 @67298 has 257 MA's), (Start: 14 @67259 has 2 MA's), (15, 67232), (Start: 23 @67145 has 15 MA's), (Start: 26 @67106 has 1 MA's), (30, 67064), (40, 66938), (42, 66917), (44, 66905), (46, 66833), (54, 66719), (59, 66680), (61, 66662),

Gene: PhenghisKhan_97 Start: 66929, Stop: 66198, Start Num: 12

Candidate Starts for PhenghisKhan_97:

(Start: 12 @66929 has 257 MA's), (Start: 14 @66890 has 2 MA's), (15, 66863), (Start: 23 @66776 has 15 MA's), (Start: 26 @66737 has 1 MA's), (30, 66695), (40, 66569), (42, 66548), (44, 66536), (46, 66464), (54, 66350), (59, 66311), (61, 66293),

Gene: Pherdinand_98 Start: 67144, Stop: 66413, Start Num: 12

Candidate Starts for Pherdinand_98:

(Start: 12 @67144 has 257 MA's), (Start: 14 @67105 has 2 MA's), (15, 67078), (Start: 23 @66991 has 15 MA's), (Start: 26 @66952 has 1 MA's), (30, 66910), (40, 66784), (42, 66763), (44, 66751), (46, 66679), (54, 66565), (59, 66526), (61, 66508),

Gene: Phergie_97 Start: 66918, Stop: 66187, Start Num: 12

Candidate Starts for Phergie_97:

(Start: 12 @66918 has 257 MA's), (Start: 14 @66879 has 2 MA's), (15, 66852), (Start: 23 @66765 has 15 MA's), (Start: 26 @66726 has 1 MA's), (30, 66684), (40, 66558), (42, 66537), (44, 66525), (46, 66453), (54, 66339), (59, 66300), (61, 66282),

Gene: Phipps_94 Start: 66718, Stop: 65987, Start Num: 12

Candidate Starts for Phipps_94:

(Start: 12 @66718 has 257 MA's), (Start: 14 @66679 has 2 MA's), (15, 66652), (Start: 23 @66565 has 15 MA's), (Start: 26 @66526 has 1 MA's), (30, 66484), (40, 66358), (42, 66337), (44, 66325), (46, 66253), (54, 66139), (59, 66100), (61, 66082),

Gene: Phleuron_94 Start: 66729, Stop: 65998, Start Num: 12

Candidate Starts for Phleuron_94:

(8, 66948), (10, 66846), (Start: 12 @66729 has 257 MA's), (Start: 14 @66690 has 2 MA's), (Start: 23 @66576 has 15 MA's), (Start: 26 @66537 has 1 MA's), (40, 66369), (42, 66348), (44, 66336), (46, 66264), (54, 66150), (59, 66111), (61, 66093),

Gene: PhrankReynolds_95 Start: 66923, Stop: 66192, Start Num: 12

Candidate Starts for PhrankReynolds_95:

(Start: 12 @66923 has 257 MA's), (Start: 14 @66884 has 2 MA's), (15, 66857), (Start: 23 @66770 has 15 MA's), (Start: 26 @66731 has 1 MA's), (30, 66689), (40, 66563), (42, 66542), (44, 66530), (46, 66458), (54, 66344), (59, 66305), (61, 66287),

Gene: PhrodoBaggins_99 Start: 67298, Stop: 66567, Start Num: 12

Candidate Starts for PhrodoBaggins_99:

(Start: 12 @67298 has 257 MA's), (Start: 14 @67259 has 2 MA's), (15, 67232), (Start: 23 @67145 has 15 MA's), (Start: 26 @67106 has 1 MA's), (30, 67064), (40, 66938), (42, 66917), (44, 66905), (46, 66833), (54, 66719), (59, 66680), (61, 66662),

Gene: Phunky_94 Start: 66800, Stop: 66069, Start Num: 12

Candidate Starts for Phunky_94:

(Start: 12 @66800 has 257 MA's), (Start: 14 @66761 has 2 MA's), (15, 66734), (Start: 23 @66647 has 15 MA's), (Start: 26 @66608 has 1 MA's), (30, 66566), (40, 66440), (42, 66419), (44, 66407), (46, 66335), (54, 66221), (59, 66182), (61, 66164),

Gene: Piglet_0096 Start: 67417, Stop: 66686, Start Num: 12

Candidate Starts for Piglet_0096:

(Start: 12 @67417 has 257 MA's), (Start: 14 @67378 has 2 MA's), (15, 67351), (Start: 23 @67264 has 15 MA's), (Start: 26 @67225 has 1 MA's), (30, 67183), (40, 67057), (42, 67036), (44, 67024), (46, 66952), (54, 66838), (59, 66799), (61, 66781),

Gene: PinheadLarry_96 Start: 67069, Stop: 66338, Start Num: 12

Candidate Starts for PinheadLarry_96:

(Start: 12 @67069 has 257 MA's), (Start: 14 @67030 has 2 MA's), (15, 67003), (Start: 23 @66916 has 15 MA's), (Start: 26 @66877 has 1 MA's), (30, 66835), (40, 66709), (42, 66688), (44, 66676), (46, 66604), (54, 66490), (59, 66451), (61, 66433),

Gene: Pinkman_96 Start: 67141, Stop: 66410, Start Num: 12

Candidate Starts for Pinkman_96:

(Start: 12 @67141 has 257 MA's), (Start: 14 @67102 has 2 MA's), (15, 67075), (Start: 26 @66949 has 1 MA's), (30, 66907), (40, 66781), (42, 66760), (44, 66748), (46, 66676), (54, 66562), (59, 66523), (61, 66505),

Gene: Pipsqueak_94 Start: 66752, Stop: 66021, Start Num: 12

Candidate Starts for Pipsqueak_94:

(Start: 12 @66752 has 257 MA's), (Start: 14 @66713 has 2 MA's), (15, 66686), (Start: 23 @66599 has 15 MA's), (Start: 26 @66560 has 1 MA's), (40, 66392), (42, 66371), (44, 66359), (46, 66287), (54, 66173), (59, 66134), (61, 66116),

Gene: Placalicious_94 Start: 67510, Stop: 66779, Start Num: 12

Candidate Starts for Placalicious_94:

(Start: 12 @67510 has 257 MA's), (Start: 14 @67471 has 2 MA's), (15, 67444), (Start: 23 @67357 has 15 MA's), (Start: 26 @67318 has 1 MA's), (30, 67276), (40, 67150), (42, 67129), (44, 67117), (46, 67045), (54, 66931), (59, 66892), (61, 66874),

Gene: Plata_94 Start: 66732, Stop: 66001, Start Num: 12

Candidate Starts for Plata_94:

(Start: 12 @66732 has 257 MA's), (Start: 14 @66693 has 2 MA's), (15, 66666), (Start: 23 @66579 has 15 MA's), (Start: 26 @66540 has 1 MA's), (30, 66498), (40, 66372), (42, 66351), (44, 66339), (46, 66267), (54, 66153), (59, 66114), (61, 66096),

Gene: Plmatters_94 Start: 66743, Stop: 66012, Start Num: 12

Candidate Starts for Plmatters_94:

(Start: 12 @66743 has 257 MA's), (Start: 14 @66704 has 2 MA's), (15, 66677), (Start: 23 @66590 has 15 MA's), (Start: 26 @66551 has 1 MA's), (30, 66509), (40, 66383), (42, 66362), (44, 66350), (46, 66278), (54, 66164), (59, 66125), (61, 66107),

Gene: Podrick_95 Start: 66831, Stop: 66100, Start Num: 12

Candidate Starts for Podrick_95:

(Start: 12 @66831 has 257 MA's), (Start: 14 @66792 has 2 MA's), (15, 66765), (Start: 23 @66678 has 15 MA's), (Start: 26 @66639 has 1 MA's), (30, 66597), (40, 66471), (42, 66450), (44, 66438), (46, 66366), (54, 66252), (59, 66213), (61, 66195),

Gene: Pops_94 Start: 66731, Stop: 66201, Start Num: 26

Candidate Starts for Pops_94:

(Start: 26 @66731 has 1 MA's), (30, 66698), (40, 66572), (42, 66551), (44, 66539), (46, 66467), (54, 66353), (59, 66314), (61, 66296),

Gene: Potter_91 Start: 66752, Stop: 66021, Start Num: 12

Candidate Starts for Potter_91:

(Start: 12 @66752 has 257 MA's), (Start: 14 @66713 has 2 MA's), (15, 66686), (Start: 23 @66599 has 15 MA's), (Start: 26 @66560 has 1 MA's), (30, 66518), (40, 66392), (42, 66371), (44, 66359), (46, 66287), (54, 66173), (59, 66134), (61, 66116),

Gene: Prickles_97 Start: 66878, Stop: 66147, Start Num: 12

Candidate Starts for Prickles_97:

(Start: 12 @66878 has 257 MA's), (Start: 14 @66839 has 2 MA's), (15, 66812), (Start: 23 @66725 has 15 MA's), (Start: 26 @66686 has 1 MA's), (30, 66644), (40, 66518), (42, 66497), (44, 66485), (46, 66413), (54, 66299), (59, 66260), (61, 66242),

Gene: PrinceCharming_84 Start: 63736, Stop: 63158, Start Num: 19

Candidate Starts for PrinceCharming_84:

(11, 63865), (Start: 18 @63754 has 18 MA's), (Start: 19 @63736 has 2 MA's), (Start: 23 @63688 has 15 MA's), (25, 63661), (27, 63634), (28, 63625), (33, 63583), (34, 63574), (40, 63478), (44, 63442), (46, 63370), (52, 63274), (53, 63268), (57, 63226), (59, 63214),

Gene: ProfessorX_94 Start: 66511, Stop: 65780, Start Num: 12

Candidate Starts for ProfessorX_94:

(Start: 12 @66511 has 257 MA's), (Start: 14 @66472 has 2 MA's), (15, 66445), (Start: 23 @66358 has 15 MA's), (Start: 26 @66319 has 1 MA's), (30, 66277), (40, 66151), (42, 66130), (44, 66118), (46, 66046), (54, 65932), (59, 65893), (61, 65875),

Gene: Puhltonio_92 Start: 66748, Stop: 66017, Start Num: 12

Candidate Starts for Puhltonio_92:

(Start: 12 @66748 has 257 MA's), (Start: 14 @66709 has 2 MA's), (15, 66682), (Start: 23 @66595 has 15 MA's), (Start: 26 @66556 has 1 MA's), (30, 66514), (40, 66388), (42, 66367), (44, 66355), (46, 66283), (54, 66169), (59, 66130), (61, 66112),

Gene: QueenBeane_97 Start: 67075, Stop: 66344, Start Num: 12

Candidate Starts for QueenBeane_97:

(Start: 12 @67075 has 257 MA's), (Start: 14 @67036 has 2 MA's), (15, 67009), (Start: 23 @66922 has 15 MA's), (Start: 26 @66883 has 1 MA's), (30, 66841), (40, 66715), (42, 66694), (44, 66682), (46, 66610), (54, 66496), (59, 66457), (61, 66439),

Gene: Quisquilliae_99 Start: 67086, Stop: 66355, Start Num: 12

Candidate Starts for Quisquilliae_99:

(Start: 12 @67086 has 257 MA's), (Start: 14 @67047 has 2 MA's), (15, 67020), (Start: 23 @66933 has 15 MA's), (Start: 26 @66894 has 1 MA's), (30, 66852), (40, 66726), (42, 66705), (44, 66693), (46, 66621), (54, 66507), (59, 66468), (61, 66450),

Gene: Qyrzula_75 Start: 63848, Stop: 63252, Start Num: 18

Candidate Starts for Qyrzula_75:

(11, 63959), (Start: 18 @63848 has 18 MA's), (Start: 19 @63830 has 2 MA's), (Start: 23 @63782 has 15 MA's), (25, 63755), (27, 63728), (28, 63719), (33, 63677), (34, 63668), (40, 63572), (44, 63536), (46, 63464), (52, 63368), (53, 63362), (57, 63320), (59, 63308),

Gene: RedMaple_95 Start: 67409, Stop: 66678, Start Num: 12

Candidate Starts for RedMaple_95:

(8, 67628), (10, 67526), (Start: 12 @67409 has 257 MA's), (Start: 14 @67370 has 2 MA's), (15, 67343), (20, 67307), (Start: 23 @67256 has 15 MA's), (Start: 26 @67217 has 1 MA's), (40, 67049), (42, 67028), (44, 67016), (46, 66944), (54, 66830), (59, 66791), (61, 66773),

Gene: Rhinoforte_84 Start: 63745, Stop: 63149, Start Num: 18

Candidate Starts for Rhinoforte_84:

(11, 63856), (Start: 18 @63745 has 18 MA's), (Start: 19 @63727 has 2 MA's), (Start: 23 @63679 has 15 MA's), (25, 63652), (27, 63625), (28, 63616), (33, 63574), (34, 63565), (40, 63469), (44, 63433), (46, 63361), (52, 63265), (53, 63259), (57, 63217), (59, 63205),

Gene: Ricotta_98 Start: 66771, Stop: 66040, Start Num: 12

Candidate Starts for Ricotta_98:

(Start: 12 @66771 has 257 MA's), (Start: 14 @66732 has 2 MA's), (15, 66705), (Start: 23 @66618 has 15 MA's), (Start: 26 @66579 has 1 MA's), (30, 66537), (40, 66411), (42, 66390), (44, 66378), (46, 66306), (54, 66192), (59, 66153), (61, 66135),

Gene: Riggan_98 Start: 67256, Stop: 66525, Start Num: 12

Candidate Starts for Riggan_98:

(Start: 12 @67256 has 257 MA's), (Start: 14 @67217 has 2 MA's), (15, 67190), (Start: 23 @67103 has 15 MA's), (Start: 26 @67064 has 1 MA's), (30, 67022), (40, 66896), (42, 66875), (44, 66863), (46, 66791), (54, 66677), (59, 66638), (61, 66620),

Gene: Rimu_100 Start: 67235, Stop: 66504, Start Num: 12

Candidate Starts for Rimu_100:

(Start: 12 @67235 has 257 MA's), (Start: 14 @67196 has 2 MA's), (15, 67169), (Start: 26 @67043 has 1 MA's), (30, 67001), (40, 66875), (42, 66854), (44, 66842), (46, 66770), (54, 66656), (59, 66617), (61, 66599),

Gene: Riverton_95 Start: 66759, Stop: 66028, Start Num: 12

Candidate Starts for Riverton_95:

(Start: 12 @66759 has 257 MA's), (Start: 14 @66720 has 2 MA's), (15, 66693), (Start: 23 @66606 has 15 MA's), (Start: 26 @66567 has 1 MA's), (30, 66525), (40, 66399), (42, 66378), (44, 66366), (46, 66294), (54, 66180), (59, 66141), (61, 66123),

Gene: Roliet_94 Start: 66115, Stop: 65384, Start Num: 12

Candidate Starts for Roliet_94:

(Start: 12 @66115 has 257 MA's), (Start: 14 @66076 has 2 MA's), (15, 66049), (Start: 23 @65962 has 15 MA's), (Start: 26 @65923 has 1 MA's), (40, 65755), (42, 65734), (44, 65722), (54, 65536), (59, 65497), (61, 65479),

Gene: Roscoe_95 Start: 67027, Stop: 66401, Start Num: 12

Candidate Starts for Roscoe_95:

(8, 67246), (10, 67144), (Start: 12 @67027 has 257 MA's), (Start: 23 @66979 has 15 MA's), (Start: 26 @66940 has 1 MA's), (30, 66898), (40, 66772), (42, 66751), (44, 66739), (46, 66667), (54, 66553), (59, 66514), (61, 66496),

Gene: Rosebush_82 Start: 63817, Stop: 63221, Start Num: 18

Candidate Starts for Rosebush_82:

(11, 63928), (Start: 18 @63817 has 18 MA's), (Start: 19 @63799 has 2 MA's), (Start: 23 @63751 has 15 MA's), (25, 63724), (28, 63688), (33, 63646), (34, 63637), (40, 63541), (44, 63505), (46, 63433), (52, 63337), (53, 63331), (57, 63289), (59, 63277),

Gene: Roy17_94 Start: 66481, Stop: 65750, Start Num: 12

Candidate Starts for Roy17_94:

(Start: 12 @66481 has 257 MA's), (Start: 14 @66442 has 2 MA's), (15, 66415), (Start: 26 @66289 has 1 MA's), (30, 66247), (40, 66121), (42, 66100), (44, 66088), (46, 66016), (54, 65902), (59, 65863), (61, 65845),

Gene: SDcharge11_95 Start: 66131, Stop: 65400, Start Num: 12

Candidate Starts for SDcharge11_95:

(8, 66350), (10, 66248), (Start: 12 @66131 has 257 MA's), (Start: 14 @66092 has 2 MA's), (15, 66065), (20, 66029), (Start: 23 @65978 has 15 MA's), (Start: 26 @65939 has 1 MA's), (40, 65771), (42, 65750), (44, 65738), (54, 65552), (59, 65513), (61, 65495),

Gene: Sabella_84 Start: 63653, Stop: 63057, Start Num: 18

Candidate Starts for Sabella_84:

(11, 63764), (Start: 18 @63653 has 18 MA's), (Start: 19 @63635 has 2 MA's), (Start: 23 @63587 has 15 MA's), (25, 63560), (27, 63533), (28, 63524), (33, 63482), (34, 63473), (40, 63377), (44, 63341), (46, 63269), (52, 63173), (53, 63167), (57, 63125), (59, 63113),

Gene: Samaymay_97 Start: 67075, Stop: 66344, Start Num: 12

Candidate Starts for Samaymay_97:

(Start: 12 @67075 has 257 MA's), (Start: 14 @67036 has 2 MA's), (15, 67009), (Start: 23 @66922 has 15 MA's), (Start: 26 @66883 has 1 MA's), (30, 66841), (40, 66715), (42, 66694), (44, 66682), (46, 66610), (54, 66496), (59, 66457), (61, 66439),

Gene: SassyCat97_95 Start: 66743, Stop: 66012, Start Num: 12

Candidate Starts for SassyCat97_95:

(Start: 12 @66743 has 257 MA's), (Start: 14 @66704 has 2 MA's), (15, 66677), (Start: 23 @66590 has 15 MA's), (Start: 26 @66551 has 1 MA's), (30, 66509), (40, 66383), (42, 66362), (44, 66350), (46, 66278), (54, 66164), (59, 66125), (61, 66107),

Gene: Schadenfreude_97 Start: 66792, Stop: 66061, Start Num: 12

Candidate Starts for Schadenfreude_97:

(8, 67011), (10, 66909), (Start: 12 @66792 has 257 MA's), (Start: 14 @66753 has 2 MA's), (15, 66726), (20, 66690), (Start: 23 @66639 has 15 MA's), (Start: 26 @66600 has 1 MA's), (40, 66432), (42, 66411), (44, 66399), (46, 66327), (54, 66213), (59, 66174), (61, 66156),

Gene: Schueller_95 Start: 67016, Stop: 66285, Start Num: 12

Candidate Starts for Schueller_95:

(8, 67235), (10, 67133), (Start: 12 @67016 has 257 MA's), (Start: 14 @66977 has 2 MA's), (Start: 23 @66863 has 15 MA's), (Start: 26 @66824 has 1 MA's), (40, 66656), (42, 66635), (44, 66623), (46,

66551), (54, 66437), (59, 66398), (61, 66380),

Gene: Scoot17C_97 Start: 66857, Stop: 66126, Start Num: 12

Candidate Starts for Scoot17C_97:

(Start: 12 @66857 has 257 MA's), (Start: 14 @66818 has 2 MA's), (15, 66791), (Start: 23 @66704 has 15 MA's), (Start: 26 @66665 has 1 MA's), (30, 66623), (40, 66497), (42, 66476), (44, 66464), (46, 66392), (54, 66278), (59, 66239), (61, 66221),

Gene: Scrick_98 Start: 67126, Stop: 66395, Start Num: 12

Candidate Starts for Scrick_98:

(Start: 12 @67126 has 257 MA's), (Start: 14 @67087 has 2 MA's), (15, 67060), (Start: 23 @66973 has 15 MA's), (Start: 26 @66934 has 1 MA's), (30, 66892), (40, 66766), (42, 66745), (44, 66733), (46, 66661), (54, 66547), (59, 66508), (61, 66490),

Gene: Selr12_101 Start: 67167, Stop: 66436, Start Num: 12

Candidate Starts for Selr12_101:

(Start: 12 @67167 has 257 MA's), (Start: 14 @67128 has 2 MA's), (15, 67101), (Start: 23 @67014 has 15 MA's), (Start: 26 @66975 has 1 MA's), (30, 66933), (40, 66807), (42, 66786), (44, 66774), (46, 66702), (54, 66588), (59, 66549), (61, 66531),

Gene: Serendipity_96 Start: 67229, Stop: 66498, Start Num: 12

Candidate Starts for Serendipity_96:

(Start: 12 @67229 has 257 MA's), (Start: 14 @67190 has 2 MA's), (15, 67163), (Start: 23 @67076 has 15 MA's), (Start: 26 @67037 has 1 MA's), (30, 66995), (40, 66869), (42, 66848), (44, 66836), (46, 66764), (54, 66650), (59, 66611), (61, 66593),

Gene: Serpentine_0099 Start: 67309, Stop: 66578, Start Num: 12

Candidate Starts for Serpentine_0099:

(Start: 12 @67309 has 257 MA's), (Start: 14 @67270 has 2 MA's), (15, 67243), (Start: 23 @67156 has 15 MA's), (Start: 26 @67117 has 1 MA's), (30, 67075), (40, 66949), (42, 66928), (44, 66916), (46, 66844), (54, 66730), (59, 66691), (61, 66673),

Gene: Sheila_91 Start: 66309, Stop: 65578, Start Num: 12

Candidate Starts for Sheila_91:

(Start: 12 @66309 has 257 MA's), (Start: 14 @66270 has 2 MA's), (15, 66243), (Start: 23 @66156 has 15 MA's), (Start: 26 @66117 has 1 MA's), (30, 66075), (40, 65949), (42, 65928), (44, 65916), (46, 65844), (54, 65730), (59, 65691), (61, 65673),

Gene: Shenyu_90 Start: 66352, Stop: 65735, Start Num: 26

Candidate Starts for Shenyu_90:

(6, 66787), (17, 66457), (Start: 26 @66352 has 1 MA's), (40, 66184), (41, 66175), (48, 66067), (56, 65950), (59, 65926), (61, 65908), (70, 65815),

Gene: ShiVal_96 Start: 66780, Stop: 66049, Start Num: 12

Candidate Starts for ShiVal_96:

(Start: 12 @66780 has 257 MA's), (Start: 14 @66741 has 2 MA's), (15, 66714), (Start: 23 @66627 has 15 MA's), (Start: 26 @66588 has 1 MA's), (30, 66546), (40, 66420), (42, 66399), (44, 66387), (46, 66315), (54, 66201), (59, 66162), (61, 66144),

Gene: Sigman_96 Start: 66736, Stop: 66005, Start Num: 12

Candidate Starts for Sigman_96:

(Start: 12 @66736 has 257 MA's), (Start: 14 @66697 has 2 MA's), (15, 66670), (Start: 23 @66583 has 15 MA's), (Start: 26 @66544 has 1 MA's), (30, 66502), (40, 66376), (42, 66355), (44, 66343), (46,

66271), (54, 66157), (59, 66118), (61, 66100),

Gene: SilverBell_98 Start: 67190, Stop: 66459, Start Num: 12

Candidate Starts for SilverBell_98:

(Start: 12 @67190 has 257 MA's), (Start: 14 @67151 has 2 MA's), (15, 67124), (Start: 23 @67037 has 15 MA's), (Start: 26 @66998 has 1 MA's), (30, 66956), (40, 66830), (42, 66809), (44, 66797), (46, 66725), (54, 66611), (59, 66572), (61, 66554),

Gene: Simielle_97 Start: 66722, Stop: 65991, Start Num: 12

Candidate Starts for Simielle_97:

(Start: 12 @66722 has 257 MA's), (Start: 14 @66683 has 2 MA's), (15, 66656), (Start: 23 @66569 has 15 MA's), (Start: 26 @66530 has 1 MA's), (30, 66488), (40, 66362), (42, 66341), (44, 66329), (46, 66257), (54, 66143), (59, 66104), (61, 66086),

Gene: SirBeauregard_97 Start: 67044, Stop: 66292, Start Num: 12

Candidate Starts for SirBeauregard_97:

(8, 67263), (10, 67161), (Start: 12 @67044 has 257 MA's), (Start: 14 @67005 has 2 MA's), (Start: 23 @66891 has 15 MA's), (Start: 26 @66852 has 1 MA's), (40, 66684), (42, 66663), (44, 66651), (46, 66579), (54, 66465), (59, 66426), (61, 66408),

Gene: Skippy_97 Start: 67151, Stop: 66420, Start Num: 12

Candidate Starts for Skippy_97:

(Start: 12 @67151 has 257 MA's), (Start: 14 @67112 has 2 MA's), (15, 67085), (Start: 23 @66998 has 15 MA's), (Start: 26 @66959 has 1 MA's), (30, 66917), (40, 66791), (42, 66770), (44, 66758), (46, 66686), (54, 66572), (59, 66533), (61, 66515),

Gene: Slatt_99 Start: 67407, Stop: 66676, Start Num: 12

Candidate Starts for Slatt_99:

(Start: 12 @67407 has 257 MA's), (Start: 14 @67368 has 2 MA's), (15, 67341), (Start: 23 @67254 has 15 MA's), (Start: 26 @67215 has 1 MA's), (30, 67173), (40, 67047), (42, 67026), (44, 67014), (46, 66942), (54, 66828), (59, 66789), (61, 66771),

Gene: Soile_98 Start: 67276, Stop: 66545, Start Num: 12

Candidate Starts for Soile_98:

(Start: 12 @67276 has 257 MA's), (Start: 14 @67237 has 2 MA's), (15, 67210), (Start: 23 @67123 has 15 MA's), (Start: 26 @67084 has 1 MA's), (30, 67042), (40, 66916), (42, 66895), (44, 66883), (46, 66811), (54, 66697), (59, 66658), (61, 66640),

Gene: Solosis_95 Start: 66744, Stop: 66013, Start Num: 12

Candidate Starts for Solosis_95:

(Start: 12 @66744 has 257 MA's), (Start: 14 @66705 has 2 MA's), (15, 66678), (Start: 23 @66591 has 15 MA's), (Start: 26 @66552 has 1 MA's), (30, 66510), (40, 66384), (42, 66363), (44, 66351), (46, 66279), (54, 66165), (59, 66126), (61, 66108),

Gene: Sophia_95 Start: 66731, Stop: 66000, Start Num: 12

Candidate Starts for Sophia_95:

(Start: 12 @66731 has 257 MA's), (Start: 14 @66692 has 2 MA's), (15, 66665), (Start: 23 @66578 has 15 MA's), (Start: 26 @66539 has 1 MA's), (30, 66497), (40, 66371), (42, 66350), (44, 66338), (46, 66266), (54, 66152), (59, 66113), (61, 66095),

Gene: Soto_93 Start: 66172, Stop: 65441, Start Num: 12

Candidate Starts for Soto_93:

(Start: 12 @66172 has 257 MA's), (Start: 14 @66133 has 2 MA's), (15, 66106), (Start: 23 @66019 has 15 MA's), (Start: 26 @65980 has 1 MA's), (40, 65812), (42, 65791), (44, 65779), (46, 65707), (54, 65593), (59, 65554), (61, 65536),

Gene: Spartan300_96 Start: 66993, Stop: 66262, Start Num: 12

Candidate Starts for Spartan300_96:

(Start: 12 @66993 has 257 MA's), (Start: 14 @66954 has 2 MA's), (15, 66927), (Start: 23 @66840 has 15 MA's), (Start: 26 @66801 has 1 MA's), (30, 66759), (40, 66633), (42, 66612), (44, 66600), (46, 66528), (54, 66414), (59, 66375), (61, 66357),

Gene: Squid_96 Start: 67021, Stop: 66290, Start Num: 12

Candidate Starts for Squid_96:

(Start: 12 @67021 has 257 MA's), (Start: 14 @66982 has 2 MA's), (15, 66955), (Start: 23 @66868 has 15 MA's), (Start: 26 @66829 has 1 MA's), (30, 66787), (40, 66661), (42, 66640), (44, 66628), (46, 66556), (54, 66442), (59, 66403), (61, 66385),

Gene: Squiggle_96 Start: 66750, Stop: 66019, Start Num: 12

Candidate Starts for Squiggle_96:

(Start: 12 @66750 has 257 MA's), (Start: 14 @66711 has 2 MA's), (15, 66684), (Start: 23 @66597 has 15 MA's), (Start: 26 @66558 has 1 MA's), (30, 66516), (40, 66390), (42, 66369), (44, 66357), (46, 66285), (54, 66171), (59, 66132), (61, 66114),

Gene: Struggle_97 Start: 66848, Stop: 66117, Start Num: 12

Candidate Starts for Struggle_97:

(Start: 12 @66848 has 257 MA's), (Start: 14 @66809 has 2 MA's), (15, 66782), (Start: 23 @66695 has 15 MA's), (Start: 26 @66656 has 1 MA's), (30, 66614), (40, 66488), (42, 66467), (44, 66455), (46, 66383), (54, 66269), (59, 66230), (61, 66212),

Gene: Suffolk_92 Start: 66677, Stop: 65946, Start Num: 12

Candidate Starts for Suffolk_92:

(Start: 12 @66677 has 257 MA's), (Start: 14 @66638 has 2 MA's), (15, 66611), (Start: 23 @66524 has 15 MA's), (Start: 26 @66485 has 1 MA's), (30, 66443), (40, 66317), (42, 66296), (44, 66284), (46, 66212), (54, 66098), (59, 66059), (61, 66041),

Gene: Suigeneris_90 Start: 66233, Stop: 65547, Start Num: 21

Candidate Starts for Suigeneris_90:

(2, 67112), (6, 66617), (17, 66287), (Start: 21 @66233 has 3 MA's), (Start: 26 @66158 has 1 MA's), (40, 65993), (41, 65984), (48, 65876), (56, 65759), (59, 65735), (61, 65717), (64, 65681), (71, 65600),

Gene: Surely_97 Start: 67313, Stop: 66582, Start Num: 12

Candidate Starts for Surely_97:

(Start: 12 @67313 has 257 MA's), (Start: 14 @67274 has 2 MA's), (15, 67247), (Start: 26 @67121 has 1 MA's), (30, 67079), (40, 66953), (42, 66932), (44, 66920), (46, 66848), (54, 66734), (59, 66695), (61, 66677),

Gene: Swiphy_101 Start: 67298, Stop: 66567, Start Num: 12

Candidate Starts for Swiphy_101:

(Start: 12 @67298 has 257 MA's), (Start: 14 @67259 has 2 MA's), (15, 67232), (Start: 23 @67145 has 15 MA's), (Start: 26 @67106 has 1 MA's), (30, 67064), (40, 66938), (42, 66917), (44, 66905), (46, 66833), (54, 66719), (59, 66680), (61, 66662),

Gene: Swish_98 Start: 67160, Stop: 66429, Start Num: 12

Candidate Starts for Swish_98:

(Start: 12 @67160 has 257 MA's), (Start: 14 @67121 has 2 MA's), (15, 67094), (Start: 23 @67007 has 15 MA's), (Start: 26 @66968 has 1 MA's), (30, 66926), (40, 66800), (42, 66779), (44, 66767), (46, 66695), (54, 66581), (59, 66542), (61, 66524),

Gene: TA17A_87 Start: 63660, Stop: 63064, Start Num: 18

Candidate Starts for TA17A_87:

(11, 63771), (Start: 18 @63660 has 18 MA's), (Start: 19 @63642 has 2 MA's), (Start: 23 @63594 has 15 MA's), (25, 63567), (28, 63531), (33, 63489), (34, 63480), (40, 63384), (44, 63348), (46, 63276), (52, 63180), (53, 63174), (57, 63132), (59, 63120),

Gene: TallGrassMM_96 Start: 66809, Stop: 66078, Start Num: 12

Candidate Starts for TallGrassMM_96:

(Start: 12 @66809 has 257 MA's), (Start: 14 @66770 has 2 MA's), (15, 66743), (Start: 23 @66656 has 15 MA's), (Start: 26 @66617 has 1 MA's), (30, 66575), (40, 66449), (42, 66428), (44, 66416), (46, 66344), (54, 66230), (59, 66191), (61, 66173),

Gene: Telesworld_95 Start: 66883, Stop: 66152, Start Num: 12

Candidate Starts for Telesworld_95:

(Start: 12 @66883 has 257 MA's), (Start: 14 @66844 has 2 MA's), (15, 66817), (Start: 23 @66730 has 15 MA's), (Start: 26 @66691 has 1 MA's), (30, 66649), (40, 66523), (42, 66502), (44, 66490), (46, 66418), (54, 66304), (59, 66265), (61, 66247),

Gene: Thora_95 Start: 67264, Stop: 66533, Start Num: 12

Candidate Starts for Thora_95:

(Start: 12 @67264 has 257 MA's), (Start: 14 @67225 has 2 MA's), (15, 67198), (Start: 23 @67111 has 15 MA's), (Start: 26 @67072 has 1 MA's), (30, 67030), (40, 66904), (42, 66883), (44, 66871), (46, 66799), (54, 66685), (59, 66646), (61, 66628),

Gene: ThreeOh3D2_98 Start: 67417, Stop: 66686, Start Num: 12

Candidate Starts for ThreeOh3D2_98:

(Start: 12 @67417 has 257 MA's), (Start: 14 @67378 has 2 MA's), (15, 67351), (Start: 23 @67264 has 15 MA's), (Start: 26 @67225 has 1 MA's), (30, 67183), (40, 67057), (42, 67036), (44, 67024), (46, 66952), (54, 66838), (59, 66799), (61, 66781),

Gene: Thunderbird_97 Start: 67005, Stop: 66274, Start Num: 12

Candidate Starts for Thunderbird_97:

(Start: 12 @67005 has 257 MA's), (Start: 14 @66966 has 2 MA's), (15, 66939), (Start: 23 @66852 has 15 MA's), (Start: 26 @66813 has 1 MA's), (30, 66771), (40, 66645), (42, 66624), (44, 66612), (46, 66540), (54, 66426), (59, 66387), (61, 66369),

Gene: Timmi_95 Start: 66780, Stop: 66049, Start Num: 12

Candidate Starts for Timmi_95:

(Start: 12 @66780 has 257 MA's), (Start: 14 @66741 has 2 MA's), (15, 66714), (Start: 23 @66627 has 15 MA's), (Start: 26 @66588 has 1 MA's), (30, 66546), (40, 66420), (42, 66399), (44, 66387), (46, 66315), (54, 66201), (59, 66162), (61, 66144),

Gene: Tinciduntolum_85 Start: 63824, Stop: 63228, Start Num: 18

Candidate Starts for Tinciduntolum_85:

(11, 63935), (Start: 18 @63824 has 18 MA's), (Start: 19 @63806 has 2 MA's), (Start: 23 @63758 has 15 MA's), (25, 63731), (27, 63704), (28, 63695), (33, 63653), (34, 63644), (40, 63548), (44, 63512), (46, 63440), (52, 63344), (53, 63338), (57, 63296), (59, 63284),

Gene: TomBombadil_97 Start: 67305, Stop: 66574, Start Num: 12

Candidate Starts for TomBombadil_97:

(Start: 12 @67305 has 257 MA's), (Start: 14 @67266 has 2 MA's), (15, 67239), (Start: 23 @67152 has 15 MA's), (Start: 26 @67113 has 1 MA's), (30, 67071), (40, 66945), (42, 66924), (44, 66912), (46, 66840), (54, 66726), (59, 66687), (61, 66669),

Gene: Tomlarah_97 Start: 67613, Stop: 66882, Start Num: 12

Candidate Starts for Tomlarah_97:

(Start: 12 @67613 has 257 MA's), (Start: 14 @67574 has 2 MA's), (15, 67547), (Start: 23 @67460 has 15 MA's), (Start: 26 @67421 has 1 MA's), (30, 67379), (40, 67253), (42, 67232), (44, 67220), (46, 67148), (54, 67034), (59, 66995), (61, 66977),

Gene: Toni_96 Start: 67209, Stop: 66478, Start Num: 12

Candidate Starts for Toni_96:

(Start: 12 @67209 has 257 MA's), (Start: 14 @67170 has 2 MA's), (15, 67143), (Start: 23 @67056 has 15 MA's), (Start: 26 @67017 has 1 MA's), (30, 66975), (40, 66849), (42, 66828), (44, 66816), (46, 66744), (54, 66630), (59, 66591), (61, 66573),

Gene: TooFast2Furius_97 Start: 66927, Stop: 66196, Start Num: 12

Candidate Starts for TooFast2Furius_97:

(Start: 12 @66927 has 257 MA's), (Start: 14 @66888 has 2 MA's), (15, 66861), (Start: 23 @66774 has 15 MA's), (Start: 26 @66735 has 1 MA's), (30, 66693), (40, 66567), (42, 66546), (44, 66534), (46, 66462), (54, 66348), (59, 66309), (61, 66291),

Gene: Tooj_94 Start: 66423, Stop: 65692, Start Num: 12

Candidate Starts for Tooj_94:

(Start: 12 @66423 has 257 MA's), (Start: 14 @66384 has 2 MA's), (15, 66357), (Start: 23 @66270 has 15 MA's), (Start: 26 @66231 has 1 MA's), (30, 66189), (40, 66063), (42, 66042), (44, 66030), (54, 65844), (59, 65805), (61, 65787),

Gene: Tres_84 Start: 63660, Stop: 63079, Start Num: 19

Candidate Starts for Tres_84:

(11, 63789), (Start: 18 @63678 has 18 MA's), (Start: 19 @63660 has 2 MA's), (Start: 23 @63609 has 15 MA's), (25, 63582), (27, 63555), (28, 63546), (33, 63504), (34, 63495), (40, 63399), (44, 63363), (46, 63291), (52, 63195), (53, 63189), (57, 63147), (59, 63135),

Gene: True_98 Start: 67125, Stop: 66394, Start Num: 12

Candidate Starts for True_98:

(Start: 12 @67125 has 257 MA's), (Start: 14 @67086 has 2 MA's), (15, 67059), (Start: 23 @66972 has 15 MA's), (Start: 26 @66933 has 1 MA's), (30, 66891), (40, 66765), (42, 66744), (44, 66732), (46, 66660), (54, 66546), (59, 66507), (61, 66489),

Gene: Trypo_97 Start: 67477, Stop: 66746, Start Num: 12

Candidate Starts for Trypo_97:

(Start: 12 @67477 has 257 MA's), (Start: 14 @67438 has 2 MA's), (15, 67411), (Start: 23 @67324 has 15 MA's), (Start: 26 @67285 has 1 MA's), (30, 67243), (40, 67117), (42, 67096), (44, 67084), (46, 67012), (54, 66898), (59, 66859), (61, 66841),

Gene: TyrionL_97 Start: 66839, Stop: 66108, Start Num: 12

Candidate Starts for TyrionL_97:

(8, 67058), (10, 66956), (Start: 12 @66839 has 257 MA's), (Start: 14 @66800 has 2 MA's), (Start: 23 @66686 has 15 MA's), (Start: 26 @66647 has 1 MA's), (40, 66479), (42, 66458), (44, 66446), (46, 66374), (54, 66260), (59, 66221), (61, 66203),

Gene: UAch1_97 Start: 66830, Stop: 66099, Start Num: 12

Candidate Starts for UAch1_97:

(Start: 12 @66830 has 257 MA's), (Start: 14 @66791 has 2 MA's), (15, 66764), (Start: 23 @66677 has 15 MA's), (Start: 26 @66638 has 1 MA's), (30, 66596), (40, 66470), (42, 66449), (44, 66437), (46, 66365), (54, 66251), (59, 66212), (61, 66194),

Gene: UncleHowie_93 Start: 66441, Stop: 65710, Start Num: 12

Candidate Starts for UncleHowie_93:

(Start: 12 @66441 has 257 MA's), (Start: 14 @66402 has 2 MA's), (15, 66375), (Start: 23 @66288 has 15 MA's), (Start: 26 @66249 has 1 MA's), (30, 66207), (40, 66081), (42, 66060), (44, 66048), (46, 65976), (54, 65862), (59, 65823), (61, 65805),

Gene: Usavi_97 Start: 67603, Stop: 66872, Start Num: 12

Candidate Starts for Usavi_97:

(Start: 12 @67603 has 257 MA's), (Start: 14 @67564 has 2 MA's), (15, 67537), (Start: 23 @67450 has 15 MA's), (Start: 26 @67411 has 1 MA's), (30, 67369), (40, 67243), (42, 67222), (44, 67210), (46, 67138), (54, 67024), (59, 66985), (61, 66967),

Gene: Valjean_95 Start: 66985, Stop: 66254, Start Num: 12

Candidate Starts for Valjean_95:

(Start: 12 @66985 has 257 MA's), (Start: 14 @66946 has 2 MA's), (15, 66919), (Start: 26 @66793 has 1 MA's), (30, 66751), (40, 66625), (42, 66604), (44, 66592), (46, 66520), (54, 66406), (59, 66367), (61, 66349),

Gene: Vaticameos_94 Start: 65312, Stop: 64581, Start Num: 12

Candidate Starts for Vaticameos_94:

(Start: 12 @65312 has 257 MA's), (Start: 14 @65273 has 2 MA's), (15, 65246), (Start: 23 @65159 has 15 MA's), (Start: 26 @65120 has 1 MA's), (30, 65078), (40, 64952), (42, 64931), (44, 64919), (46, 64847), (54, 64733), (59, 64694), (61, 64676),

Gene: Veritas_96 Start: 66920, Stop: 66189, Start Num: 12

Candidate Starts for Veritas_96:

(8, 67139), (10, 67037), (Start: 12 @66920 has 257 MA's), (Start: 14 @66881 has 2 MA's), (Start: 23 @66767 has 15 MA's), (Start: 26 @66728 has 1 MA's), (40, 66560), (42, 66539), (44, 66527), (46, 66455), (54, 66341), (59, 66302), (61, 66284),

Gene: Vic9_00082 Start: 64144, Stop: 63614, Start Num: 23

Candidate Starts for Vic9_00082:

(3, 64978), (4, 64726), (6, 64546), (9, 64417), (Start: 16 @64222 has 1 MA's), (Start: 23 @64144 has 15 MA's), (25, 64117), (27, 64090), (28, 64081), (33, 64039), (34, 64030), (40, 63934), (44, 63898), (46, 63826), (52, 63730), (53, 63724), (57, 63682), (59, 63670),

Gene: Virapocalypse_98 Start: 67107, Stop: 66376, Start Num: 12

Candidate Starts for Virapocalypse_98:

(Start: 12 @67107 has 257 MA's), (Start: 14 @67068 has 2 MA's), (15, 67041), (Start: 23 @66954 has 15 MA's), (Start: 26 @66915 has 1 MA's), (30, 66873), (40, 66747), (42, 66726), (44, 66714), (46, 66642), (54, 66528), (59, 66489), (61, 66471),

Gene: Virgeve_95 Start: 66725, Stop: 65994, Start Num: 12

Candidate Starts for Virgeve_95:

(Start: 12 @66725 has 257 MA's), (Start: 14 @66686 has 2 MA's), (15, 66659), (Start: 26 @66533 has 1 MA's), (30, 66491), (40, 66365), (42, 66344), (44, 66332), (46, 66260), (54, 66146), (59, 66107), (61, 66089),

Gene: Vista_96 Start: 66919, Stop: 66188, Start Num: 12

Candidate Starts for Vista_96:

(Start: 12 @66919 has 257 MA's), (Start: 14 @66880 has 2 MA's), (15, 66853), (Start: 23 @66766 has 15 MA's), (Start: 26 @66727 has 1 MA's), (30, 66685), (40, 66559), (42, 66538), (44, 66526), (46, 66454), (54, 66340), (59, 66301), (61, 66283),

Gene: Vortex_95 Start: 67025, Stop: 66294, Start Num: 12

Candidate Starts for Vortex_95:

(Start: 12 @67025 has 257 MA's), (Start: 14 @66986 has 2 MA's), (15, 66959), (Start: 23 @66872 has 15 MA's), (Start: 26 @66833 has 1 MA's), (30, 66791), (40, 66665), (42, 66644), (44, 66632), (46, 66560), (54, 66446), (59, 66407), (61, 66389),

Gene: Wallhey_98 Start: 67024, Stop: 66293, Start Num: 12

Candidate Starts for Wallhey_98:

(Start: 12 @67024 has 257 MA's), (Start: 14 @66985 has 2 MA's), (15, 66958), (Start: 26 @66832 has 1 MA's), (30, 66790), (40, 66664), (42, 66643), (44, 66631), (46, 66559), (54, 66445), (59, 66406), (61, 66388),

Gene: Waterdiva_98 Start: 67291, Stop: 66560, Start Num: 12

Candidate Starts for Waterdiva_98:

(Start: 12 @67291 has 257 MA's), (Start: 14 @67252 has 2 MA's), (15, 67225), (Start: 23 @67138 has 15 MA's), (Start: 26 @67099 has 1 MA's), (30, 67057), (40, 66931), (42, 66910), (44, 66898), (46, 66826), (54, 66712), (59, 66673), (61, 66655),

Gene: Weher20_94 Start: 67363, Stop: 66632, Start Num: 12

Candidate Starts for Weher20_94:

(Start: 12 @67363 has 257 MA's), (Start: 14 @67324 has 2 MA's), (15, 67297), (Start: 23 @67210 has 15 MA's), (Start: 26 @67171 has 1 MA's), (30, 67129), (40, 67003), (42, 66982), (44, 66970), (46, 66898), (54, 66784), (59, 66745), (61, 66727),

Gene: West99_84 Start: 63829, Stop: 63251, Start Num: 19

Candidate Starts for West99_84:

(11, 63958), (Start: 18 @63847 has 18 MA's), (Start: 19 @63829 has 2 MA's), (Start: 23 @63781 has 15 MA's), (25, 63754), (27, 63727), (28, 63718), (33, 63676), (34, 63667), (40, 63571), (44, 63535), (46, 63463), (52, 63367), (53, 63361), (57, 63319), (59, 63307),

Gene: Windsor_96 Start: 67050, Stop: 66298, Start Num: 12

Candidate Starts for Windsor_96:

(8, 67269), (10, 67167), (Start: 12 @67050 has 257 MA's), (Start: 14 @67011 has 2 MA's), (Start: 23 @66897 has 15 MA's), (Start: 26 @66858 has 1 MA's), (40, 66690), (42, 66669), (44, 66657), (46, 66585), (54, 66471), (59, 66432), (61, 66414),

Gene: Xavier_96 Start: 66918, Stop: 66187, Start Num: 12

Candidate Starts for Xavier_96:

(Start: 12 @66918 has 257 MA's), (Start: 14 @66879 has 2 MA's), (15, 66852), (Start: 23 @66765 has 15 MA's), (Start: 26 @66726 has 1 MA's), (30, 66684), (40, 66558), (42, 66537), (44, 66525), (46, 66453), (54, 66339), (59, 66300), (61, 66282),

Gene: Yoshand_98 Start: 67143, Stop: 66412, Start Num: 12

Candidate Starts for Yoshand_98:

(Start: 12 @67143 has 257 MA's), (Start: 14 @67104 has 2 MA's), (15, 67077), (Start: 23 @66990 has 15 MA's), (Start: 26 @66951 has 1 MA's), (30, 66909), (40, 66783), (42, 66762), (44, 66750), (46,

66678), (54, 66564), (59, 66525), (61, 66507),

Gene: YouGoGlencoco_97 Start: 67033, Stop: 66302, Start Num: 12

Candidate Starts for YouGoGlencoco_97:

(Start: 12 @67033 has 257 MA's), (Start: 14 @66994 has 2 MA's), (15, 66967), (Start: 23 @66880 has 15 MA's), (Start: 26 @66841 has 1 MA's), (30, 66799), (40, 66673), (42, 66652), (44, 66640), (46, 66568), (54, 66454), (59, 66415), (61, 66397),

Gene: Zaider_98 Start: 67408, Stop: 66677, Start Num: 12

Candidate Starts for Zaider_98:

(Start: 12 @67408 has 257 MA's), (Start: 14 @67369 has 2 MA's), (15, 67342), (Start: 23 @67255 has 15 MA's), (Start: 26 @67216 has 1 MA's), (30, 67174), (40, 67048), (42, 67027), (44, 67015), (46, 66943), (54, 66829), (59, 66790), (61, 66772),

Gene: Zelda_97 Start: 67364, Stop: 66633, Start Num: 12

Candidate Starts for Zelda_97:

(Start: 12 @67364 has 257 MA's), (Start: 14 @67325 has 2 MA's), (15, 67298), (Start: 23 @67211 has 15 MA's), (Start: 26 @67172 has 1 MA's), (30, 67130), (40, 67004), (42, 66983), (44, 66971), (46, 66899), (54, 66785), (59, 66746), (61, 66728),

Gene: Zenteno07_105 Start: 69900, Stop: 69328, Start Num: 22

Candidate Starts for Zenteno07_105:

(7, 70275), (Start: 22 @69900 has 1 MA's), (Start: 26 @69834 has 1 MA's), (30, 69792), (34, 69762), (44, 69633), (45, 69615), (46, 69558), (47, 69549), (59, 69399), (60, 69384),

Gene: Zonia_97 Start: 67474, Stop: 66743, Start Num: 12

Candidate Starts for Zonia_97:

(Start: 12 @67474 has 257 MA's), (Start: 14 @67435 has 2 MA's), (15, 67408), (Start: 26 @67282 has 1 MA's), (30, 67240), (40, 67114), (42, 67093), (44, 67081), (46, 67009), (54, 66895), (59, 66856), (61, 66838),