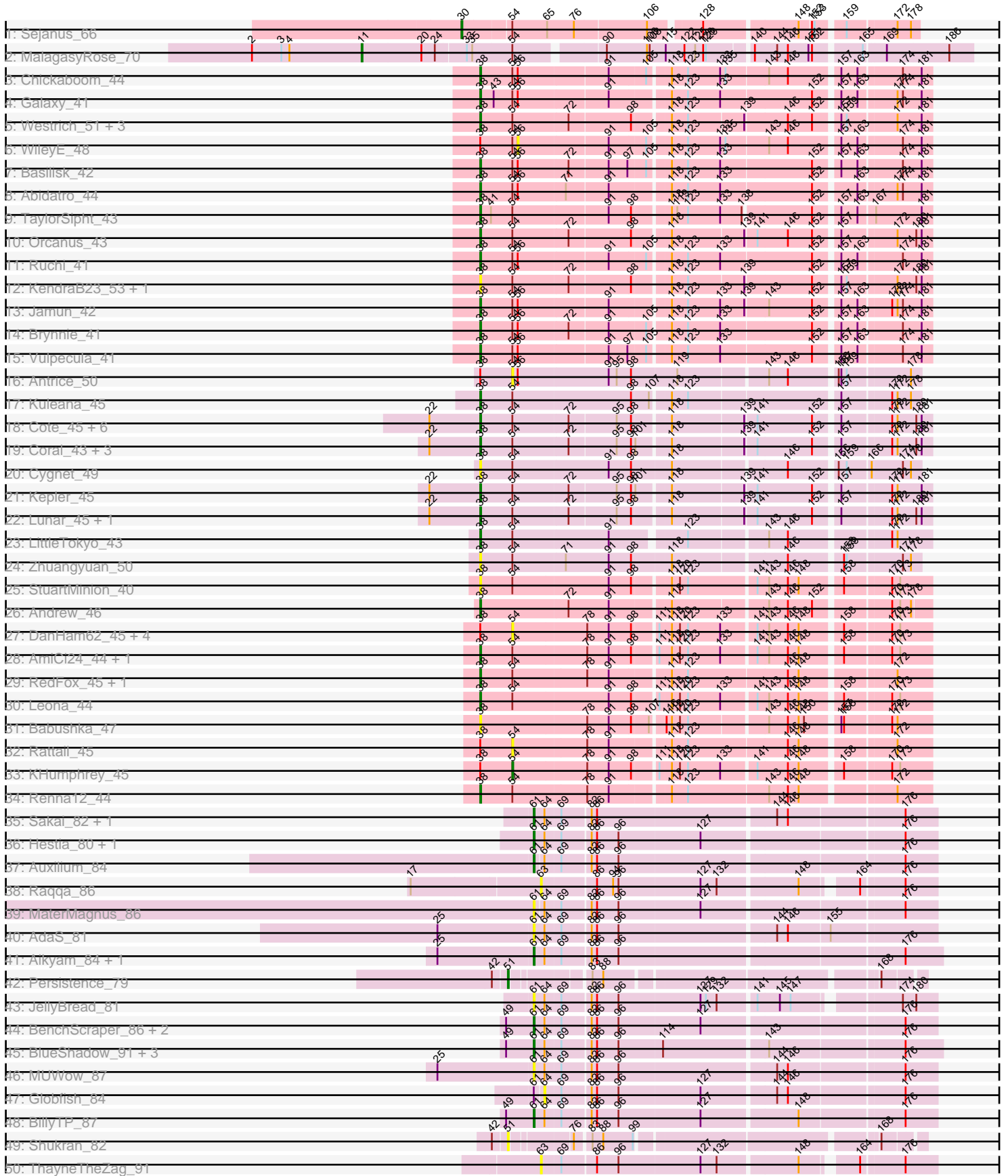
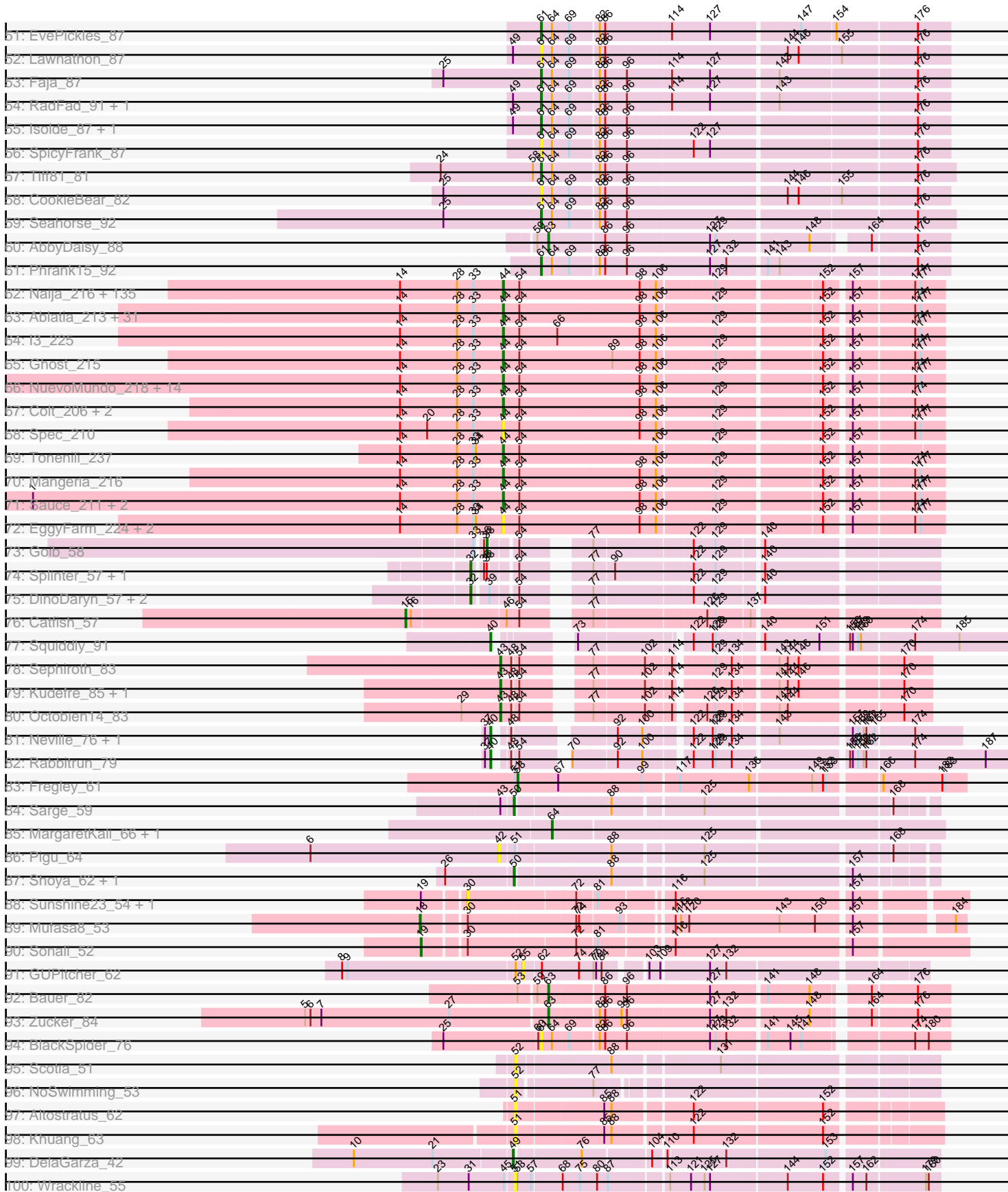


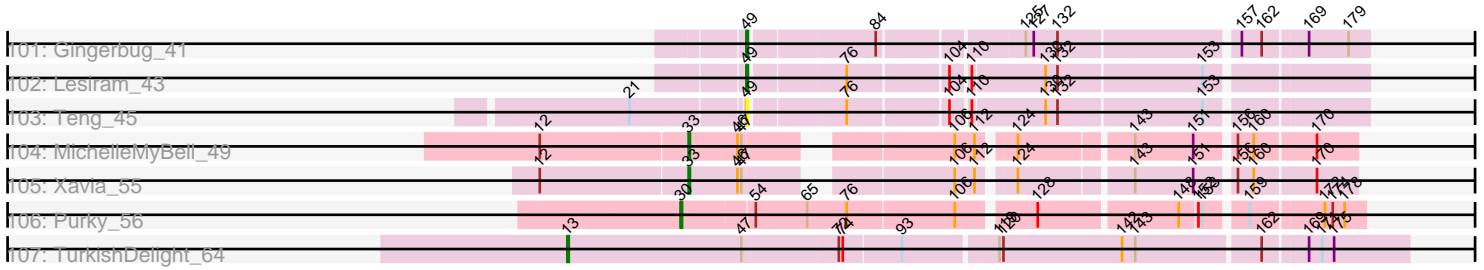
Pham 224203



Pham 224203



Pham 224203



Note: Tracks are now grouped by subcluster and scaled. Switching in subcluster is indicated by changes in track color. Track scale is now set by default to display the region 30 bp upstream of start 1 to 30 bp downstream of the last possible start. If this default region is judged to be packed too tightly with annotated starts, the track will be further scaled to only show that region of the ORF with annotated starts. This action will be indicated by adding "Zoomed" to the title. For starts, yellow indicates the location of called starts comprised solely of Glimmer/GeneMark auto-annotations, green indicates the location of called starts with at least 1 manual gene annotation.

Pham 224203 Report

This analysis was run 03/28/25 on database version 593.

Pham number 224203 has 331 members, 77 are drafts.

Phages represented in each track:

- Track 1 : Sejanus_66
- Track 2 : MalagasyRose_70
- Track 3 : Chickaboom_44
- Track 4 : Galaxy_41
- Track 5 : Westrich_51, Eesa_42, Gravel_52, Pelletreau_52
- Track 6 : WileyE_48
- Track 7 : Basilisk_42
- Track 8 : Abidatro_44
- Track 9 : TaylorSipht_43
- Track 10 : Orcanus_43
- Track 11 : Ruchi_41
- Track 12 : KendraB23_53, Toad24_45
- Track 13 : Jamun_42
- Track 14 : Brynnie_41
- Track 15 : Vulpecula_41
- Track 16 : Antrice_50
- Track 17 : Kuleana_45
- Track 18 : Cote_45, Bedetta_48, Colusalem_46, Amelia_43, HannahPhantana_44, Jerole_53, Bible12_47
- Track 19 : Coral_43, OtsoOtso_51, Melons_45, Polka_43
- Track 20 : Cygnet_49
- Track 21 : Kepler_45
- Track 22 : Lunar_45, Daob_45
- Track 23 : LittleTokyo_43
- Track 24 : Zhuangyuan_50
- Track 25 : StuartMinion_40
- Track 26 : Andrew_46
- Track 27 : DanHam62_45, Glotell_47, Camara_45, HamCheese_44, Atlantica_45
- Track 28 : AmiCi24_44, Juno112_44
- Track 29 : RedFox_45, PhluffyCoco_45
- Track 30 : Leona_44
- Track 31 : Babushka_47
- Track 32 : Rattail_45
- Track 33 : KHumphrey_45
- Track 34 : Renna12_44
- Track 35 : Sakai_82, Gorpy_83
- Track 36 : Hestia_80, Bhageatrice_92

- Track 37 : Auxilium_84
- Track 38 : Raqqa_86
- Track 39 : MaterMagnus_86
- Track 40 : AdaS_81
- Track 41 : Aikyam_84, Anekin_86
- Track 42 : Persistence_79
- Track 43 : JellyBread_81
- Track 44 : BenchScraper_86, Richie_89, Windest_89
- Track 45 : BlueShadow_91, Vopal_87, Raphaella_86, MidnightRain_92
- Track 46 : MUWow_87
- Track 47 : Globfish_84
- Track 48 : BillyTP_87
- Track 49 : Shukran_82
- Track 50 : ThayneTheZag_91
- Track 51 : EvePickles_87
- Track 52 : Lawnathon_87
- Track 53 : Faja_87
- Track 54 : RadFad_91, Hillester_90
- Track 55 : Isolde_87, YoungHarleezy_85
- Track 56 : SpicyFrank_87
- Track 57 : Tiff81_81
- Track 58 : CookieBear_82
- Track 59 : Seahorse_92
- Track 60 : AbbyDaisy_88
- Track 61 : Phrank15_92
- Track 62 : Naija_216, Bangla1971_215, IkeLoa_207, Drazdys_213, ShiaLabeouf_212, Primadonna_210, RoMag_210, Loanshark_212, Khaleesi_214, Jaygup_211, SrishMeg2525_212, Essence_212, SVoro_212, CindyLou_216, Delylah_217, GlutenPhree_215, ValleyTerrace_216, Delilah_213, Bipolarisk_213, Rizal_207, Koguma_214, CharlieB_209, Jessibeth14_215, BadAgartude_209, Jezreel_212, Gabriel_218, Capablanca_220, ArcherS7_215, Shelob_216, Pivoine_216, DTDevon_217, Ewok_214, Naval22_220, Morizzled23_212, Gamgam_216, JPickles_211, Littleton_218, MoMoMixon_213, ZygoTaiga_212, Breeniome_214, Erdmann_216, Blackdragon_210, Dietrick_204, McWolfish_212, NedWong_214, Asterius_217, Astraea_209, Kboogie_219, Roots515_217, Lukilu_206, Amataga_216, Maby2021_215, Momo_216, McGee_214, Latch_215, Patter_216, JustHall_209, Melpomini_210, Ading_216, EmToTheThree_215, Burrough_217, Derek_212, StephanieG_211, Phusco_213, Grungle_199, SmallFry_215, PurduePete_215, Shnickers_213, Bread_210, Shaqnato_206, Jedediah_215, Bonray_217, Atlantean_215, Ngannou_212, Issimir_208, Zeenon_217, Rahel_216, Tyke_213, Napoleon13_212, Daffodil_220, YoungMoneyMata_214, ScottMcG_209, EmmaElysia_219, NoodleTree_221, Norm_215, DrPhinkDaddy_212, Iota_210, Halldule_208, Teardrop_212, Sprinklers_213, Domi_209, Chomp_215, MikeLiesIn_217, ParkTD_214, Lethe_217, YemiJoy2021_216, Tortoise16_213, Jemmno_214, StubbySaigey_220, DirtMonster_208, FudgeTart_210, LifeSavor_214, Gizmo_221, Pleione_219, Izajani_213, Adlitam_214, Wally_213, Zalkecks_214, Catera_207, Megamind_212, Shrimp_217, Lee7_215, Fongie_216, Mikro_211, Yucca_215, BananaFence_212, Caravan_206, Salacia_215, Kamryn_214, Janiyra_218, Darko_214, Matsumoto_214, Nidhogg_216, Audrick_217, Phlegm_219, Ava3_214, Willis_216, TinyTim_213, ET08_203, Babyland_218, InigoMontoya_218, Guwapp_210, FoxtrotP1_213, Spud_209, Ronan_211, SilverDipper_219

- Track 63 : Ablatia_213, Tainan_216, Concombre_220, Pio_223, EasyJones_218, BeanWater_207, LolaVinca_213, Belieber_208, Basquiat_212, ChickenPhender_211, LordLeafolot_217, Specks_219, Bigswole_220, FrayBell_218, Trinitium_211, Demodog_221, JigglyPuff_222, Fludd_215, Phox_216, Cactojaque_210, Cali_208, ErnieJ_208, Chargie21_212, Blackbrain_212, LRRHood_208, Dandelion_223, Bxz1_205, InterFolia_218, Turret_208, Quasimodo_217, QBert_207, Nappy_216
- Track 64 : l3_225
- Track 65 : Ghost_215
- Track 66 : NuevoMundo_218, ChaylaJr_213, Sebata_216, Shifa_192, Pinkcreek_199, BackyardAgain_211, Alice_202, JayJay_217, Rabinovish_208, DeejaClivia_203, Pier_216, HyRo_203, Flabslab_210, LinStu_214, Stubby_199
- Track 67 : Colt_206, Blubba_204, Cane17_206
- Track 68 : Spec_210
- Track 69 : Tonenili_237
- Track 70 : Mangeria_216
- Track 71 : Sauce_211, Yassified_212, JulietS_208
- Track 72 : EggyFarm_224, Grasshills_223, BigCity_224
- Track 73 : Goib_58
- Track 74 : Splinter_57, Vendetta_57
- Track 75 : DinoDaryn_57, TZGordon_58, Huffy_57
- Track 76 : Catfish_57
- Track 77 : Squiddly_91
- Track 78 : Sephiroth_83
- Track 79 : Kudefre_85, Syleon_86
- Track 80 : Octobien14_83
- Track 81 : Neville_76, Trax_79
- Track 82 : Rabbitrun_79
- Track 83 : Fregley_61
- Track 84 : Sarge_59
- Track 85 : MargaretKali_66, Kumotta_70
- Track 86 : Pigu_64
- Track 87 : Shoya_62, BrayBeast_62
- Track 88 : Sunshine23_54, Maruru_53
- Track 89 : Mufasa8_53
- Track 90 : Sonali_52
- Track 91 : GUPitcher_62
- Track 92 : Bauer_82
- Track 93 : Zucker_84
- Track 94 : BlackSpider_76
- Track 95 : Scotia_51
- Track 96 : NoSwimming_53
- Track 97 : Altostratus_62
- Track 98 : Khuang_63
- Track 99 : DelaGarza_42
- Track 100 : Wrackline_55
- Track 101 : Gingerbug_41
- Track 102 : Lesiram_43
- Track 103 : Teng_45
- Track 104 : MichelleMyBell_49
- Track 105 : Xavia_55
- Track 106 : Purky_56
- Track 107 : TurkishDelight_64

Summary of Final Annotations (See graph section above for start numbers):

The start number called the most often in the published annotations is 44, it was called in 172 of the 254 non-draft genes in the pham.

Genes that call this "Most Annotated" start:

- Ablatia_213, Ading_216, Adlitam_214, Alice_202, Amataga_216, ArcherS7_215, Asterius_217, Astraea_209, Atlantean_215, Audrick_217, Ava3_214, Babyland_218, BackyardAgain_211, BadAgartude_209, BananaFence_212, Bangla1971_215, Basquiat_212, BeanWater_207, Belieber_208, BigCity_224, Bigswole_220, Bipolarisk_213, Blackbrain_212, Blackdragon_210, Blubba_204, Bonray_217, Bread_210, Breeniome_214, Burrough_217, Bxz1_205, Cactojaque_210, Cali_208, Cane17_206, Capablanca_220, Caravan_206, Catera_207, Charge21_212, CharlieB_209, ChaylaJr_213, ChickenPhender_211, Chomp_215, CindyLou_216, Colt_206, Concombre_220, DTDevon_217, Daffodil_220, Dandelion_223, Darko_214, DeejaClivia_203, Delilah_213, Delylah_217, Demodog_221, Derek_212, Dietrick_204, DirtMonster_208, Domi_209, DrPhinkDaddy_212, Drazdys_213, ET08_203, EasyJones_218, EggyFarm_224, EmToTheThree_215, EmmaElysia_219, Erdmann_216, ErnieJ_208, Essence_212, Ewok_214, Flabslab_210, Fludd_215, Fongie_216, FoxtrotP1_213, FrayBell_218, FudgeTart_210, Gabriel_218, Gamgam_216, Ghost_215, Gizmo_221, GlutenPhree_215, Grasshills_223, Grungle_199, Guwapp_210, Halldule_208, HyRo_203, I3_225, IkeLoa_207, InigoMontoya_218, InterFolia_218, Iota_210, Issimir_208, Izajani_213, JPickles_211, Janiyra_218, JayJay_217, Jaygup_211, Jedediah_215, Jemmno_214, Jessibeth14_215, Jezreel_212, JigglyPuff_222, JulietS_208, JustHall_209, Kamryn_214, Kboogie_219, Khaleesi_214, Koguma_214, LRRHood_208, Latch_215, Lee7_215, Lethe_217, LifeSavor_214, LinStu_214, Littleton_218, Loanshark_212, LolaVinca_213, LordLeafolot_217, Lukilu_206, Maby2021_215, Mangeria_216, Matsumoto_214, McGee_214, McWolfish_212, Megamind_212, Melpomini_210, MikeLiesIn_217, Mikro_211, MoMoMixon_213, Momo_216, Morizzled23_212, Naija_216, Napoleon13_212, Nappy_216, Naval22_220, NedWong_214, Ngannou_212, Nidhogg_216, NoodleTree_221, Norm_215, NuevoMundo_218, ParkTD_214, Patter_216, Phlegm_219, Phox_216, Phusco_213, Pier_216, Pinkcreek_199, Pio_223, Pivoine_216, Pleione_219, Primadonna_210, PurduePete_215, QBert_207, Quasimodo_217, Rabinovish_208, Rahel_216, Rizal_207, RoMag_210, Ronan_211, Roots515_217, SVoro_212, Salacia_215, Sauce_211, ScottMcG_209, Sebata_216, Shaqnato_206, Shelob_216, ShiaLabeouf_212, Shifa_192, Shnickers_213, Shrimp_217, SilverDipper_219, SmallFry_215, Spec_210, Specks_219, Sprinklers_213, Spud_209, SrishMeg2525_212, StephanieG_211, StubbySaigey_220, Stubby_199, Tainan_216, Teardrop_212, TinyTim_213, Tonenili_237, Tortoise16_213, Trinitium_211, Turret_208, Tyke_213, ValleyTerrace_216, Wally_213, Willis_216, Yassified_212, YemiJoy2021_216, YoungMoneyMata_214, Yucca_215, Zalkecks_214, Zeenon_217, ZygoTaiga_212,

Genes that have the "Most Annotated" start but do not call it:

-

Genes that do not have the "Most Annotated" start:

- AbbyDaisy_88, Abidatro_44, AdaS_81, Aikyam_84, Altostratus_62, Amelia_43, AmiCi24_44, Andrew_46, Anekin_86, Antrice_50, Atlantica_45, Auxilium_84, Babushka_47, Basilisk_42, Bauer_82, Bedetta_48, BenchScraper_86, Bhageatrice_92, Bibble12_47, BillyTP_87, BlackSpider_76, BlueShadow_91, BrayBeast_62, Brynnie_41, Camara_45, Catfish_57, Chickaboom_44, Colusalem_46, CookieBear_82, Coral_43, Cote_45, Cygnet_49, DanHam62_45, Daob_45, DelaGarza_42, DinoDaryn_57, Eesa_42, EvePickles_87, Faja_87, Fregley_61, GUPitcher_62, Galaxy_41, Gingerbug_41, Globfish_84, Glotell_47, Goib_58, Gorpy_83, Gravel_52, HamCheese_44, HannahPhantana_44, Hestia_80, Hillester_90, Huffy_57, Isolde_87, Jamun_42, JellyBread_81, Jerole_53, Juno112_44, KHumphrey_45, KendraB23_53, Kepler_45, Khuang_63, Kudrefre_85, Kuleana_45, Kumotta_70, Lawnathon_87, Leona_44, Lesiram_43, LittleTokyo_43, Lunar_45, MUWow_87, MalagasyRose_70, MargaretKali_66, Maruru_53, MaterMagnus_86, Melons_45, MichelleMyBell_49, MidnightRain_92, Mufasa8_53, Neville_76, NoSwimming_53, Octobien14_83, Orcanus_43, OtsoOtso_51, Pelletreau_52, Persistence_79, PhluffyCoco_45, Phrank15_92, Pigu_64, Polka_43, Purky_56, Rabbitrun_79, RadFad_91, Raphaella_86, Raqqa_86, Rattail_45, RedFox_45, Renna12_44, Richie_89, Ruchi_41, Sakai_82, Sarge_59, Scotia_51, Seahorse_92, Sejanus_66, Sephiroth_83, Shoya_62, Shukran_82, Sonali_52, SpicyFrank_87, Splinter_57, Squiddly_91, StuartMinion_40, Sunshine23_54, Syleon_86, TZGordon_58, TaylorSipht_43, Teng_45, ThayneTheZag_91, Tiff81_81, Toad24_45, Trax_79, TurkishDelight_64, Vendetta_57, Vopal_87, Vulpecula_41, Westrich_51, WileyE_48, Windest_89, Wrackline_55, Xavia_55, YoungHarleezy_85, Zhuangyuan_50, Zucker_84,

Summary by start number:

Start 11:

- Found in 1 of 331 (0.3%) of genes in pham
- Manual Annotations of this start: 1 of 254
- Called 100.0% of time when present
- Phage (with cluster) where this start called: MalagasyRose_70 (AG),

Start 13:

- Found in 1 of 331 (0.3%) of genes in pham
- Manual Annotations of this start: 1 of 254
- Called 100.0% of time when present
- Phage (with cluster) where this start called: TurkishDelight_64 (singleton),

Start 15:

- Found in 1 of 331 (0.3%) of genes in pham
- Manual Annotations of this start: 1 of 254
- Called 100.0% of time when present
- Phage (with cluster) where this start called: Catfish_57 (CU5),

Start 18:

- Found in 1 of 331 (0.3%) of genes in pham
- Manual Annotations of this start: 1 of 254
- Called 100.0% of time when present
- Phage (with cluster) where this start called: Mufasa8_53 (FG),

Start 19:

- Found in 3 of 331 (0.9%) of genes in pham

- Manual Annotations of this start: 1 of 254
- Called 33.3% of time when present
- Phage (with cluster) where this start called: Sonali_52 (FG),

Start 30:

- Found in 6 of 331 (1.8%) of genes in pham
- Manual Annotations of this start: 2 of 254
- Called 66.7% of time when present
- Phage (with cluster) where this start called: Maruru_53 (FG), Purky_56 (P6), Sejanus_66 (AD), Sunshine23_54 (FG),

Start 32:

- Found in 5 of 331 (1.5%) of genes in pham
- Manual Annotations of this start: 5 of 254
- Called 100.0% of time when present
- Phage (with cluster) where this start called: DinoDaryn_57 (CU1), Huffy_57 (CU1), Splinter_57 (CU1), TZGordon_58 (CU1), Vendetta_57 (CU1),

Start 33:

- Found in 201 of 331 (60.7%) of genes in pham
- Manual Annotations of this start: 2 of 254
- Called 1.0% of time when present
- Phage (with cluster) where this start called: MichelleMyBell_49 (N), Xavia_55 (P3),

Start 38:

- Found in 55 of 331 (16.6%) of genes in pham
- Manual Annotations of this start: 29 of 254
- Called 80.0% of time when present
- Phage (with cluster) where this start called: Abidatro_44 (AS1), Amelia_43 (AS2), AmiCi24_44 (AS3), Andrew_46 (AS3), Babushka_47 (AS3), Basilisk_42 (AS1), Bedetta_48 (AS2), Bibble12_47 (AS2), Brynnie_41 (AS1), Chickaboom_44 (AS1), Colusalem_46 (AS2), Coral_43 (AS2), Cote_45 (AS2), Cygnet_49 (AS2), Daob_45 (AS2), Eesa_42 (AS1), Galaxy_41 (AS1), Goib_58 (CU1), Gravel_52 (AS1), HannahPhantana_44 (AS2), Jamun_42 (AS1), Jerole_53 (AS2), Juno112_44 (AS3), KendraB23_53 (AS1), Kepler_45 (AS2), Kuleana_45 (AS2), Leona_44 (AS3), LittleTokyo_43 (AS2), Lunar_45 (AS2), Melons_45 (AS2), Orcanus_43 (AS1), OtsoOtso_51 (AS2), Pelletreau_52 (AS1), PhluffyCoco_45 (AS3), Polka_43 (AS2), RedFox_45 (AS3), Renna12_44 (AS3), Ruchi_41 (AS1), StuartMinion_40 (AS3), TaylorSipht_43 (AS1), Toad24_45 (AS1), Vulpecula_41 (AS1), Westrich_51 (AS1), Zhuangyuan_50 (AS2),

Start 40:

- Found in 4 of 331 (1.2%) of genes in pham
- Manual Annotations of this start: 4 of 254
- Called 100.0% of time when present
- Phage (with cluster) where this start called: Neville_76 (DU2), Rabbitrun_79 (DU2), Squiddly_91 (DN2), Trax_79 (DU2),

Start 42:

- Found in 3 of 331 (0.9%) of genes in pham
- No Manual Annotations of this start.
- Called 33.3% of time when present
- Phage (with cluster) where this start called: Pigu_64 (FB),

Start 43:

- Found in 6 of 331 (1.8%) of genes in pham
- Manual Annotations of this start: 4 of 254
- Called 66.7% of time when present
- Phage (with cluster) where this start called: Kudrefre_85 (DU1), Octobien14_83 (DU1), Sephiroth_83 (DU1), Syleon_86 (DU1),

Start 44:

- Found in 197 of 331 (59.5%) of genes in pham
- Manual Annotations of this start: 172 of 254
- Called 100.0% of time when present
- Phage (with cluster) where this start called: Ablatia_213 (C1), Ading_216 (C1), Adlitam_214 (C1), Alice_202 (C1), Amataga_216 (C1), ArcherS7_215 (C1), Asterius_217 (C1), Astraea_209 (C1), Atlantean_215 (C1), Audrick_217 (C1), Ava3_214 (C1), Babyland_218 (C1), BackyardAgain_211 (C1), BadAgartude_209 (C1), BananaFence_212 (C1), Bangla1971_215 (C1), Basquiat_212 (C1), BeanWater_207 (C1), Belieber_208 (C1), BigCity_224 (C1), Bigswole_220 (C1), Bipolarisk_213 (C1), Blackbrain_212 (C1), Blackdragon_210 (C1), Blubba_204 (C1), Bonray_217 (C1), Bread_210 (C1), Breeniome_214 (C1), Burrough_217 (C1), Bxz1_205 (C1), Cactojaque_210 (C1), Cali_208 (C1), Cane17_206 (C1), Capablanca_220 (C1), Caravan_206 (C1), Catera_207 (C1), Chargie21_212 (C1), CharlieB_209 (C1), ChaylaJr_213 (C1), ChickenPhender_211 (C1), Chomp_215 (C1), CindyLou_216 (C1), Colt_206 (C1), Concombre_220 (C1), DTDevon_217 (C1), Daffodil_220 (C1), Dandelion_223 (C1), Darko_214 (C1), DeejaClivia_203 (C1), Delilah_213 (C1), Delylah_217 (C1), Demodog_221 (C1), Derek_212 (C1), Dietrick_204 (C1), DirtMonster_208 (C1), Domi_209 (C1), DrPhinkDaddy_212 (C1), Drazdys_213 (C1), ET08_203 (C1), EasyJones_218 (C1), EggyFarm_224 (C1), EmToTheThree_215 (C1), EmmaElysia_219 (C1), Erdmann_216 (C1), ErnieJ_208 (C1), Essence_212 (C1), Ewok_214 (C1), Flabslab_210 (C1), Fludd_215 (C1), Fongie_216 (C1), FoxtrotP1_213 (C1), FrayBell_218 (C1), FudgeTart_210 (C1), Gabriel_218 (C1), Gamgam_216 (C1), Ghost_215 (C1), Gizmo_221 (C1), GlutenPhree_215 (C1), Grasshills_223 (C1), Grungle_199 (C1), Guwapp_210 (C1), Halldule_208 (C1), HyRo_203 (C1), I3_225 (C1), IkeLoa_207 (C1), InigoMontoya_218 (C1), InterFolia_218 (C1), Iota_210 (C1), Issimir_208 (C1), Izajani_213 (C1), JPickles_211 (C1), Janiyr_218 (C1), JayJay_217 (C1), Jaygup_211 (C1), Jedediah_215 (C1), Jemmno_214 (C1), Jessibeth14_215 (C1), Jezreel_212 (C1), JigglyPuff_222 (C1), JulietS_208 (C1), JustHall_209 (C1), Kamryn_214 (C1), Kboogie_219 (C1), Khaleesi_214 (C1), Koguma_214 (C1), LRRHood_208 (C1), Latch_215 (C1), Lee7_215 (C1), Lethe_217 (C1), LifeSavor_214 (C1), LinStu_214 (C1), Littleton_218 (C1), Loanshark_212 (C1), LolaVinca_213 (C1), LordLeafolot_217 (C1), Lukilu_206 (C1), Maby2021_215 (C1), Mangeria_216 (C1), Matsumoto_214 (C1), McGee_214 (C1), McWolfish_212 (C1), Megamind_212 (C1), Melpomini_210 (C1), MikeLiesIn_217 (C1), Mikro_211 (C1), MoMoMixon_213 (C1), Momo_216 (C1), Morizzled23_212 (C1), Naija_216 (C1), Napoleon13_212 (C1), Nappy_216 (C1), Naval22_220 (C1), NedWong_214 (C1), Ngannou_212 (C1), Nidhogg_216 (C1), NoodleTree_221 (C1), Norm_215 (C1), NuevoMundo_218 (C1), ParkTD_214 (C1), Patter_216 (C1), Phlegm_219 (C1), Phox_216 (C1), Phusco_213 (C1), Pier_216 (C1), Pinkcreek_199 (C1), Pio_223 (C1), Pivoine_216 (C1), Pleione_219 (C1), Primadonna_210 (C1), PurduePete_215 (C1), QBert_207 (C1), Quasimodo_217 (C1), Rabinovish_208 (C1), Rahel_216 (C1), Rizal_207 (C1), RoMag_210 (C1), Ronan_211 (C1), Roots515_217 (C1), SVoro_212 (C1), Salacia_215 (C1), Sauce_211 (C1), ScottMcG_209 (C1), Sebata_216 (C1),

Shaqnato_206 (C1), Shelob_216 (C1), ShiaLabeouf_212 (C1), Shifa_192 (C1), Shnickers_213 (C1), Shrimp_217 (C1), SilverDipper_219 (C1), SmallFry_215 (C1), Spec_210 (C1), Specks_219 (C1), Sprinklers_213 (C1), Spud_209 (C1), SrishMeg2525_212 (C1), StephanieG_211 (C1), StubbySaigey_220 (C1), Stubby_199 (C1), Tainan_216 (C1), Teardrop_212 (C1), TinyTim_213 (C1), Tonenili_237 (C1), Tortoise16_213 (C1), Trinitium_211 (C1), Turret_208 (C1), Tyke_213 (C1), ValleyTerrace_216 (C1), Wally_213 (C1), Willis_216 (C1), Yassified_212 (C1), YemiJoy2021_216 (C1), YoungMoneyMata_214 (C1), Yucca_215 (C1), Zalkecks_214 (C1), Zeenon_217 (C1), ZygoTaiga_212 (C1),

Start 49:

- Found in 17 of 331 (5.1%) of genes in pham
- Manual Annotations of this start: 3 of 254
- Called 23.5% of time when present
- Phage (with cluster) where this start called: DelaGarza_42 (GF), Gingerbug_41 (GF), Lesiram_43 (GF), Teng_45 (GF),

Start 50:

- Found in 3 of 331 (0.9%) of genes in pham
- Manual Annotations of this start: 3 of 254
- Called 100.0% of time when present
- Phage (with cluster) where this start called: BrayBeast_62 (FB), Sarge_59 (FB), Shoya_62 (FB),

Start 51:

- Found in 7 of 331 (2.1%) of genes in pham
- Manual Annotations of this start: 1 of 254
- Called 71.4% of time when present
- Phage (with cluster) where this start called: Altostratus_62 (FS), Khuang_63 (FS), Persistence_79 (AY), Shukran_82 (AY), Wrackline_55 (GF),

Start 52:

- Found in 3 of 331 (0.9%) of genes in pham
- No Manual Annotations of this start.
- Called 66.7% of time when present
- Phage (with cluster) where this start called: NoSwimming_53 (FO), Scotia_51 (FO),

Start 53:

- Found in 3 of 331 (0.9%) of genes in pham
- Manual Annotations of this start: 1 of 254
- Called 33.3% of time when present
- Phage (with cluster) where this start called: Fregley_61 (EG),

Start 54:

- Found in 262 of 331 (79.2%) of genes in pham
- Manual Annotations of this start: 1 of 254
- Called 3.1% of time when present
- Phage (with cluster) where this start called: Antrice_50 (AS2), Atlantica_45 (AS3), Camara_45 (AS3), DanHam62_45 (AS3), Glotell_47 (AS3), HamCheese_44 (AS3), KHumphrey_45 (AS3), Rattail_45 (AS3),

Start 55:

- Found in 1 of 331 (0.3%) of genes in pham

- No Manual Annotations of this start.
- Called 100.0% of time when present
- Phage (with cluster) where this start called: GUPitcher_62 (FJ),

Start 56:

- Found in 10 of 331 (3.0%) of genes in pham
- No Manual Annotations of this start.
- Called 10.0% of time when present
- Phage (with cluster) where this start called: WileyE_48 (AS1),

Start 61:

- Found in 33 of 331 (10.0%) of genes in pham
- Manual Annotations of this start: 17 of 254
- Called 97.0% of time when present
- Phage (with cluster) where this start called: AdaS_81 (AY), Aikyam_84 (AY), Anekin_86 (AY), Auxilium_84 (AY), BenchScraper_86 (AY), Bhageatrice_92 (AY), BillyTP_87 (AY), BlackSpider_76 (FN), BlueShadow_91 (AY), CookieBear_82 (AY), EvePickles_87 (AY), Faja_87 (AY), Gorpy_83 (AY), Hestia_80 (AY), Hillester_90 (AY), Isolde_87 (AY), JellyBread_81 (AY), Lawnathon_87 (AY), MUWow_87 (AY), MaterMagnus_86 (AY), MidnightRain_92 (AY), Phrank15_92 (AY), RadFad_91 (AY), Raphaella_86 (AY), Richie_89 (AY), Sakai_82 (AY), Seahorse_92 (AY), SpicyFrank_87 (AY), Tiff81_81 (AY), Vopal_87 (AY), Windest_89 (AY), YoungHarleezy_85 (AY),

Start 63:

- Found in 5 of 331 (1.5%) of genes in pham
- Manual Annotations of this start: 3 of 254
- Called 100.0% of time when present
- Phage (with cluster) where this start called: AbbyDaisy_88 (AY), Bauer_82 (FN), Raqqa_86 (AY), ThayneTheZag_91 (AY), Zucker_84 (FN),

Start 64:

- Found in 35 of 331 (10.6%) of genes in pham
- Manual Annotations of this start: 2 of 254
- Called 8.6% of time when present
- Phage (with cluster) where this start called: Globfish_84 (AY), Kumotta_70 (FB), MargaretKali_66 (FB),

Summary by clusters:

There are 24 clusters represented in this pham: singleton, FS, AS2, FB, FG, FJ, FN, FO, CU5, CU1, DN2, DU1, DU2, AS3, P3, AS1, P6, AD, AG, EG, N, GF, AY, C1,

Info for manual annotations of cluster AD:

- Start number 30 was manually annotated 1 time for cluster AD.

Info for manual annotations of cluster AG:

- Start number 11 was manually annotated 1 time for cluster AG.

Info for manual annotations of cluster AS1:

- Start number 38 was manually annotated 11 times for cluster AS1.

Info for manual annotations of cluster AS2:

- Start number 38 was manually annotated 11 times for cluster AS2.

Info for manual annotations of cluster AS3:

- Start number 38 was manually annotated 6 times for cluster AS3.
- Start number 54 was manually annotated 1 time for cluster AS3.

Info for manual annotations of cluster AY:

- Start number 51 was manually annotated 1 time for cluster AY.
- Start number 61 was manually annotated 17 times for cluster AY.
- Start number 63 was manually annotated 1 time for cluster AY.

Info for manual annotations of cluster C1:

- Start number 44 was manually annotated 172 times for cluster C1.

Info for manual annotations of cluster CU1:

- Start number 32 was manually annotated 5 times for cluster CU1.
- Start number 38 was manually annotated 1 time for cluster CU1.

Info for manual annotations of cluster CU5:

- Start number 15 was manually annotated 1 time for cluster CU5.

Info for manual annotations of cluster DN2:

- Start number 40 was manually annotated 1 time for cluster DN2.

Info for manual annotations of cluster DU1:

- Start number 43 was manually annotated 4 times for cluster DU1.

Info for manual annotations of cluster DU2:

- Start number 40 was manually annotated 3 times for cluster DU2.

Info for manual annotations of cluster EG:

- Start number 53 was manually annotated 1 time for cluster EG.

Info for manual annotations of cluster FB:

- Start number 50 was manually annotated 3 times for cluster FB.
- Start number 64 was manually annotated 2 times for cluster FB.

Info for manual annotations of cluster FG:

- Start number 18 was manually annotated 1 time for cluster FG.
- Start number 19 was manually annotated 1 time for cluster FG.

Info for manual annotations of cluster FN:

- Start number 63 was manually annotated 2 times for cluster FN.

Info for manual annotations of cluster GF:

- Start number 49 was manually annotated 3 times for cluster GF.

Info for manual annotations of cluster N:

- Start number 33 was manually annotated 1 time for cluster N.

Info for manual annotations of cluster P3:

- Start number 33 was manually annotated 1 time for cluster P3.

Info for manual annotations of cluster P6:

- Start number 30 was manually annotated 1 time for cluster P6.

Gene Information:

Gene: AbbyDaisy_88 Start: 50419, Stop: 50823, Start Num: 63

Candidate Starts for AbbyDaisy_88:

(59, 50407), (Start: 63 @50419 has 3 MA's), (86, 50476), (96, 50500), (127, 50590), (129, 50596), (148, 50692), (164, 50743), (176, 50788),

Gene: Abidatro_44 Start: 29002, Stop: 29472, Start Num: 38

Candidate Starts for Abidatro_44:

(Start: 38 @29002 has 29 MA's), (Start: 54 @29038 has 1 MA's), (56, 29044), (71, 29095), (91, 29140), (118, 29200), (123, 29218), (133, 29254), (152, 29353), (163, 29395), (172, 29434), (174, 29440), (181, 29461),

Gene: Ablatia_213 Start: 119512, Stop: 119967, Start Num: 44

Candidate Starts for Ablatia_213:

(14, 119398), (28, 119461), (Start: 33 @119479 has 2 MA's), (Start: 44 @119512 has 172 MA's), (Start: 54 @119530 has 1 MA's), (98, 119662), (106, 119680), (129, 119740), (152, 119848), (157, 119872), (174, 119935), (177, 119941),

Gene: AdaS_81 Start: 45341, Stop: 45766, Start Num: 61

Candidate Starts for AdaS_81:

(25, 45236), (Start: 61 @45341 has 17 MA's), (Start: 64 @45353 has 2 MA's), (69, 45368), (82, 45398), (86, 45404), (96, 45428), (144, 45596), (146, 45608), (155, 45653),

Gene: Ading_216 Start: 121132, Stop: 121587, Start Num: 44

Candidate Starts for Ading_216:

(14, 121018), (28, 121081), (Start: 33 @121099 has 2 MA's), (Start: 44 @121132 has 172 MA's), (Start: 54 @121150 has 1 MA's), (98, 121282), (106, 121300), (129, 121360), (152, 121468), (157, 121492), (174, 121555), (177, 121561),

Gene: Adlitam_214 Start: 119736, Stop: 120191, Start Num: 44

Candidate Starts for Adlitam_214:

(14, 119622), (28, 119685), (Start: 33 @119703 has 2 MA's), (Start: 44 @119736 has 172 MA's), (Start: 54 @119754 has 1 MA's), (98, 119886), (106, 119904), (129, 119964), (152, 120072), (157, 120096), (174, 120159), (177, 120165),

Gene: Aikyam_84 Start: 46399, Stop: 46830, Start Num: 61

Candidate Starts for Aikyam_84:

(25, 46294), (Start: 61 @46399 has 17 MA's), (Start: 64 @46411 has 2 MA's), (69, 46426), (82, 46456), (86, 46462), (96, 46486), (176, 46789),

Gene: Alice_202 Start: 118711, Stop: 119166, Start Num: 44

Candidate Starts for Alice_202:

(14, 118597), (28, 118660), (Start: 33 @118678 has 2 MA's), (Start: 44 @118711 has 172 MA's), (Start: 54 @118729 has 1 MA's), (98, 118861), (106, 118879), (129, 118939), (152, 119047), (157,

119071), (174, 119134), (177, 119140),

Gene: Altostratus_62 Start: 36693, Stop: 37115, Start Num: 51

Candidate Starts for Altostratus_62:

(Start: 51 @36693 has 1 MA's), (85, 36783), (88, 36789), (122, 36867), (152, 37005),

Gene: Amataga_216 Start: 119548, Stop: 120003, Start Num: 44

Candidate Starts for Amataga_216:

(14, 119434), (28, 119497), (Start: 33 @119515 has 2 MA's), (Start: 44 @119548 has 172 MA's),
(Start: 54 @119566 has 1 MA's), (98, 119698), (106, 119716), (129, 119776), (152, 119884), (157,
119908), (174, 119971), (177, 119977),

Gene: Amelia_43 Start: 27285, Stop: 27752, Start Num: 38

Candidate Starts for Amelia_43:

(22, 27228), (Start: 38 @27285 has 29 MA's), (Start: 54 @27321 has 1 MA's), (72, 27381), (95, 27432),
(98, 27447), (118, 27483), (139, 27561), (141, 27573), (152, 27633), (157, 27657), (170, 27708), (172,
27714), (180, 27735), (181, 27741),

Gene: AmiCi24_44 Start: 28339, Stop: 28809, Start Num: 38

Candidate Starts for AmiCi24_44:

(Start: 38 @28339 has 29 MA's), (Start: 54 @28375 has 1 MA's), (78, 28456), (91, 28480), (98, 28504),
(111, 28528), (118, 28540), (120, 28549), (123, 28558), (133, 28594), (141, 28630), (143, 28642),
(146, 28663), (148, 28675), (158, 28717), (170, 28765), (173, 28774),

Gene: Andrew_46 Start: 28224, Stop: 28688, Start Num: 38

Candidate Starts for Andrew_46:

(Start: 38 @28224 has 29 MA's), (72, 28320), (91, 28365), (118, 28425), (143, 28524), (146, 28545),
(152, 28572), (170, 28647), (173, 28656), (178, 28668),

Gene: Anekin_86 Start: 48622, Stop: 49053, Start Num: 61

Candidate Starts for Anekin_86:

(25, 48517), (Start: 61 @48622 has 17 MA's), (Start: 64 @48634 has 2 MA's), (69, 48649), (82, 48679),
(86, 48685), (96, 48709), (176, 49012),

Gene: Antrice_50 Start: 28494, Stop: 28919, Start Num: 54

Candidate Starts for Antrice_50:

(Start: 38 @28458 has 29 MA's), (Start: 54 @28494 has 1 MA's), (56, 28500), (91, 28599), (95, 28608),
(98, 28623), (119, 28671), (143, 28764), (146, 28785), (156, 28833), (157, 28836), (159, 28842), (178,
28908),

Gene: ArcherS7_215 Start: 120590, Stop: 121045, Start Num: 44

Candidate Starts for ArcherS7_215:

(14, 120476), (28, 120539), (Start: 33 @120557 has 2 MA's), (Start: 44 @120590 has 172 MA's),
(Start: 54 @120608 has 1 MA's), (98, 120740), (106, 120758), (129, 120818), (152, 120926), (157,
120950), (174, 121013), (177, 121019),

Gene: Asterius_217 Start: 119957, Stop: 120412, Start Num: 44

Candidate Starts for Asterius_217:

(14, 119843), (28, 119906), (Start: 33 @119924 has 2 MA's), (Start: 44 @119957 has 172 MA's),
(Start: 54 @119975 has 1 MA's), (98, 120107), (106, 120125), (129, 120185), (152, 120293), (157,
120317), (174, 120380), (177, 120386),

Gene: Astraea_209 Start: 119152, Stop: 119607, Start Num: 44

Candidate Starts for Astraea_209:

(14, 119038), (28, 119101), (Start: 33 @119119 has 2 MA's), (Start: 44 @119152 has 172 MA's), (Start: 54 @119170 has 1 MA's), (98, 119302), (106, 119320), (129, 119380), (152, 119488), (157, 119512), (174, 119575), (177, 119581),

Gene: Atlantean_215 Start: 119548, Stop: 120003, Start Num: 44

Candidate Starts for Atlantean_215:

(14, 119434), (28, 119497), (Start: 33 @119515 has 2 MA's), (Start: 44 @119548 has 172 MA's), (Start: 54 @119566 has 1 MA's), (98, 119698), (106, 119716), (129, 119776), (152, 119884), (157, 119908), (174, 119971), (177, 119977),

Gene: Atlantica_45 Start: 28377, Stop: 28811, Start Num: 54

Candidate Starts for Atlantica_45:

(Start: 38 @28341 has 29 MA's), (Start: 54 @28377 has 1 MA's), (78, 28458), (91, 28482), (98, 28506), (111, 28530), (118, 28542), (120, 28551), (123, 28560), (133, 28596), (141, 28632), (143, 28644), (146, 28665), (148, 28677), (158, 28719), (170, 28767), (173, 28776),

Gene: Audrick_217 Start: 119438, Stop: 119893, Start Num: 44

Candidate Starts for Audrick_217:

(14, 119324), (28, 119387), (Start: 33 @119405 has 2 MA's), (Start: 44 @119438 has 172 MA's), (Start: 54 @119456 has 1 MA's), (98, 119588), (106, 119606), (129, 119666), (152, 119774), (157, 119798), (174, 119861), (177, 119867),

Gene: Auxilium_84 Start: 46039, Stop: 46461, Start Num: 61

Candidate Starts for Auxilium_84:

(Start: 61 @46039 has 17 MA's), (Start: 64 @46048 has 2 MA's), (69, 46063), (82, 46093), (86, 46099), (96, 46123), (176, 46426),

Gene: Ava3_214 Start: 119982, Stop: 120437, Start Num: 44

Candidate Starts for Ava3_214:

(14, 119868), (28, 119931), (Start: 33 @119949 has 2 MA's), (Start: 44 @119982 has 172 MA's), (Start: 54 @120000 has 1 MA's), (98, 120132), (106, 120150), (129, 120210), (152, 120318), (157, 120342), (174, 120405), (177, 120411),

Gene: Babushka_47 Start: 28169, Stop: 28636, Start Num: 38

Candidate Starts for Babushka_47:

(Start: 38 @28169 has 29 MA's), (78, 28286), (91, 28310), (98, 28334), (107, 28352), (116, 28364), (118, 28370), (120, 28379), (123, 28388), (143, 28469), (146, 28490), (148, 28502), (150, 28508), (157, 28541), (158, 28544), (170, 28592), (172, 28598),

Gene: Babyland_218 Start: 120325, Stop: 120780, Start Num: 44

Candidate Starts for Babyland_218:

(14, 120211), (28, 120274), (Start: 33 @120292 has 2 MA's), (Start: 44 @120325 has 172 MA's), (Start: 54 @120343 has 1 MA's), (98, 120475), (106, 120493), (129, 120553), (152, 120661), (157, 120685), (174, 120748), (177, 120754),

Gene: BackyardAgain_211 Start: 117513, Stop: 117968, Start Num: 44

Candidate Starts for BackyardAgain_211:

(14, 117399), (28, 117462), (Start: 33 @117480 has 2 MA's), (Start: 44 @117513 has 172 MA's), (Start: 54 @117531 has 1 MA's), (98, 117663), (106, 117681), (129, 117741), (152, 117849), (157, 117873), (174, 117936), (177, 117942),

Gene: BadAgartude_209 Start: 119650, Stop: 120105, Start Num: 44

Candidate Starts for BadAgartude_209:

(14, 119536), (28, 119599), (Start: 33 @119617 has 2 MA's), (Start: 44 @119650 has 172 MA's), (Start: 54 @119668 has 1 MA's), (98, 119800), (106, 119818), (129, 119878), (152, 119986), (157, 120010), (174, 120073), (177, 120079),

Gene: BananaFence_212 Start: 119781, Stop: 120236, Start Num: 44

Candidate Starts for BananaFence_212:

(14, 119667), (28, 119730), (Start: 33 @119748 has 2 MA's), (Start: 44 @119781 has 172 MA's), (Start: 54 @119799 has 1 MA's), (98, 119931), (106, 119949), (129, 120009), (152, 120117), (157, 120141), (174, 120204), (177, 120210),

Gene: Bangla1971_215 Start: 119554, Stop: 120009, Start Num: 44

Candidate Starts for Bangla1971_215:

(14, 119440), (28, 119503), (Start: 33 @119521 has 2 MA's), (Start: 44 @119554 has 172 MA's), (Start: 54 @119572 has 1 MA's), (98, 119704), (106, 119722), (129, 119782), (152, 119890), (157, 119914), (174, 119977), (177, 119983),

Gene: Basilisk_42 Start: 28172, Stop: 28642, Start Num: 38

Candidate Starts for Basilisk_42:

(Start: 38 @28172 has 29 MA's), (Start: 54 @28208 has 1 MA's), (56, 28214), (72, 28268), (91, 28310), (97, 28331), (105, 28349), (118, 28370), (123, 28388), (133, 28424), (152, 28523), (157, 28547), (163, 28565), (174, 28610), (181, 28631),

Gene: Basquiat_212 Start: 118067, Stop: 118522, Start Num: 44

Candidate Starts for Basquiat_212:

(14, 117953), (28, 118016), (Start: 33 @118034 has 2 MA's), (Start: 44 @118067 has 172 MA's), (Start: 54 @118085 has 1 MA's), (98, 118217), (106, 118235), (129, 118295), (152, 118403), (157, 118427), (174, 118490), (177, 118496),

Gene: Bauer_82 Start: 45126, Stop: 45530, Start Num: 63

Candidate Starts for Bauer_82:

(Start: 53 @45099 has 1 MA's), (59, 45114), (Start: 63 @45126 has 3 MA's), (86, 45183), (96, 45207), (127, 45297), (141, 45354), (148, 45399), (164, 45450), (176, 45495),

Gene: BeanWater_207 Start: 118593, Stop: 119048, Start Num: 44

Candidate Starts for BeanWater_207:

(14, 118479), (28, 118542), (Start: 33 @118560 has 2 MA's), (Start: 44 @118593 has 172 MA's), (Start: 54 @118611 has 1 MA's), (98, 118743), (106, 118761), (129, 118821), (152, 118929), (157, 118953), (174, 119016), (177, 119022),

Gene: Bedetta_48 Start: 27432, Stop: 27899, Start Num: 38

Candidate Starts for Bedetta_48:

(22, 27375), (Start: 38 @27432 has 29 MA's), (Start: 54 @27468 has 1 MA's), (72, 27528), (95, 27579), (98, 27594), (118, 27630), (139, 27708), (141, 27720), (152, 27780), (157, 27804), (170, 27855), (172, 27861), (180, 27882), (181, 27888),

Gene: Belieber_208 Start: 117381, Stop: 117836, Start Num: 44

Candidate Starts for Belieber_208:

(14, 117267), (28, 117330), (Start: 33 @117348 has 2 MA's), (Start: 44 @117381 has 172 MA's), (Start: 54 @117399 has 1 MA's), (98, 117531), (106, 117549), (129, 117609), (152, 117717), (157, 117741), (174, 117804), (177, 117810),

Gene: BenchScraper_86 Start: 46987, Stop: 47412, Start Num: 61

Candidate Starts for BenchScraper_86:

(Start: 49 @46957 has 3 MA's), (Start: 61 @46987 has 17 MA's), (Start: 64 @46999 has 2 MA's), (69, 47014), (82, 47044), (86, 47050), (96, 47074), (127, 47164), (176, 47377),

Gene: Bhageatrice_92 Start: 51263, Stop: 51688, Start Num: 61

Candidate Starts for Bhageatrice_92:

(Start: 61 @51263 has 17 MA's), (Start: 64 @51275 has 2 MA's), (69, 51290), (82, 51320), (86, 51326), (96, 51350), (127, 51440), (176, 51653),

Gene: Bible12_47 Start: 27280, Stop: 27747, Start Num: 38

Candidate Starts for Bible12_47:

(22, 27223), (Start: 38 @27280 has 29 MA's), (Start: 54 @27316 has 1 MA's), (72, 27376), (95, 27427), (98, 27442), (118, 27478), (139, 27556), (141, 27568), (152, 27628), (157, 27652), (170, 27703), (172, 27709), (180, 27730), (181, 27736),

Gene: BigCity_224 Start: 122164, Stop: 122619, Start Num: 44

Candidate Starts for BigCity_224:

(14, 122050), (28, 122113), (Start: 33 @122131 has 2 MA's), (34, 122134), (Start: 44 @122164 has 172 MA's), (Start: 54 @122182 has 1 MA's), (98, 122314), (106, 122332), (129, 122392), (152, 122500), (157, 122524), (174, 122587), (177, 122593),

Gene: Bigswole_220 Start: 122018, Stop: 122473, Start Num: 44

Candidate Starts for Bigswole_220:

(14, 121904), (28, 121967), (Start: 33 @121985 has 2 MA's), (Start: 44 @122018 has 172 MA's), (Start: 54 @122036 has 1 MA's), (98, 122168), (106, 122186), (129, 122246), (152, 122354), (157, 122378), (174, 122441), (177, 122447),

Gene: BillyTP_87 Start: 49093, Stop: 49518, Start Num: 61

Candidate Starts for BillyTP_87:

(Start: 49 @49063 has 3 MA's), (Start: 61 @49093 has 17 MA's), (Start: 64 @49105 has 2 MA's), (69, 49120), (82, 49150), (86, 49156), (96, 49180), (127, 49270), (148, 49372), (176, 49483),

Gene: Bipolarisk_213 Start: 120251, Stop: 120706, Start Num: 44

Candidate Starts for Bipolarisk_213:

(14, 120137), (28, 120200), (Start: 33 @120218 has 2 MA's), (Start: 44 @120251 has 172 MA's), (Start: 54 @120269 has 1 MA's), (98, 120401), (106, 120419), (129, 120479), (152, 120587), (157, 120611), (174, 120674), (177, 120680),

Gene: BlackSpider_76 Start: 45516, Stop: 45926, Start Num: 61

Candidate Starts for BlackSpider_76:

(25, 45411), (60, 45513), (Start: 61 @45516 has 17 MA's), (Start: 64 @45528 has 2 MA's), (69, 45543), (82, 45573), (86, 45579), (96, 45603), (127, 45693), (129, 45699), (132, 45711), (141, 45750), (145, 45774), (147, 45786), (174, 45888), (180, 45903),

Gene: Blackbrain_212 Start: 119152, Stop: 119607, Start Num: 44

Candidate Starts for Blackbrain_212:

(14, 119038), (28, 119101), (Start: 33 @119119 has 2 MA's), (Start: 44 @119152 has 172 MA's), (Start: 54 @119170 has 1 MA's), (98, 119302), (106, 119320), (129, 119380), (152, 119488), (157, 119512), (174, 119575), (177, 119581),

Gene: Blackdragon_210 Start: 119884, Stop: 120339, Start Num: 44

Candidate Starts for Blackdragon_210:

(14, 119770), (28, 119833), (Start: 33 @119851 has 2 MA's), (Start: 44 @119884 has 172 MA's), (Start: 54 @119902 has 1 MA's), (98, 120034), (106, 120052), (129, 120112), (152, 120220), (157, 120244), (174, 120307), (177, 120313),

Gene: Blubba_204 Start: 123233, Stop: 123688, Start Num: 44

Candidate Starts for Blubba_204:

(14, 123119), (28, 123182), (Start: 33 @123200 has 2 MA's), (Start: 44 @123233 has 172 MA's), (Start: 54 @123251 has 1 MA's), (98, 123383), (106, 123401), (129, 123461), (152, 123569), (157, 123593), (174, 123656),

Gene: BlueShadow_91 Start: 48348, Stop: 48779, Start Num: 61

Candidate Starts for BlueShadow_91:

(Start: 49 @48318 has 3 MA's), (Start: 61 @48348 has 17 MA's), (Start: 64 @48360 has 2 MA's), (69, 48375), (82, 48405), (86, 48411), (96, 48435), (114, 48483), (143, 48594), (176, 48738),

Gene: Bonray_217 Start: 121653, Stop: 122108, Start Num: 44

Candidate Starts for Bonray_217:

(14, 121539), (28, 121602), (Start: 33 @121620 has 2 MA's), (Start: 44 @121653 has 172 MA's), (Start: 54 @121671 has 1 MA's), (98, 121803), (106, 121821), (129, 121881), (152, 121989), (157, 122013), (174, 122076), (177, 122082),

Gene: BrayBeast_62 Start: 35523, Stop: 35936, Start Num: 50

Candidate Starts for BrayBeast_62:

(26, 35457), (Start: 50 @35523 has 3 MA's), (88, 35619), (125, 35709), (157, 35859),

Gene: Bread_210 Start: 119651, Stop: 120106, Start Num: 44

Candidate Starts for Bread_210:

(14, 119537), (28, 119600), (Start: 33 @119618 has 2 MA's), (Start: 44 @119651 has 172 MA's), (Start: 54 @119669 has 1 MA's), (98, 119801), (106, 119819), (129, 119879), (152, 119987), (157, 120011), (174, 120074), (177, 120080),

Gene: Breeniome_214 Start: 119105, Stop: 119560, Start Num: 44

Candidate Starts for Breeniome_214:

(14, 118991), (28, 119054), (Start: 33 @119072 has 2 MA's), (Start: 44 @119105 has 172 MA's), (Start: 54 @119123 has 1 MA's), (98, 119255), (106, 119273), (129, 119333), (152, 119441), (157, 119465), (174, 119528), (177, 119534),

Gene: Brynnie_41 Start: 28050, Stop: 28520, Start Num: 38

Candidate Starts for Brynnie_41:

(Start: 38 @28050 has 29 MA's), (Start: 54 @28086 has 1 MA's), (56, 28092), (72, 28146), (91, 28188), (105, 28227), (118, 28248), (123, 28266), (133, 28302), (152, 28401), (157, 28425), (163, 28443), (174, 28488), (181, 28509),

Gene: Burrough_217 Start: 121421, Stop: 121876, Start Num: 44

Candidate Starts for Burrough_217:

(14, 121307), (28, 121370), (Start: 33 @121388 has 2 MA's), (Start: 44 @121421 has 172 MA's), (Start: 54 @121439 has 1 MA's), (98, 121571), (106, 121589), (129, 121649), (152, 121757), (157, 121781), (174, 121844), (177, 121850),

Gene: Bxz1_205 Start: 121627, Stop: 122082, Start Num: 44

Candidate Starts for Bxz1_205:

(14, 121513), (28, 121576), (Start: 33 @121594 has 2 MA's), (Start: 44 @121627 has 172 MA's), (Start: 54 @121645 has 1 MA's), (98, 121777), (106, 121795), (129, 121855), (152, 121963), (157,

121987), (174, 122050), (177, 122056),

Gene: Cactojaque_210 Start: 118087, Stop: 118542, Start Num: 44

Candidate Starts for Cactojaque_210:

(14, 117973), (28, 118036), (Start: 33 @118054 has 2 MA's), (Start: 44 @118087 has 172 MA's), (Start: 54 @118105 has 1 MA's), (98, 118237), (106, 118255), (129, 118315), (152, 118423), (157, 118447), (174, 118510), (177, 118516),

Gene: Cali_208 Start: 120034, Stop: 120489, Start Num: 44

Candidate Starts for Cali_208:

(14, 119920), (28, 119983), (Start: 33 @120001 has 2 MA's), (Start: 44 @120034 has 172 MA's), (Start: 54 @120052 has 1 MA's), (98, 120184), (106, 120202), (129, 120262), (152, 120370), (157, 120394), (174, 120457), (177, 120463),

Gene: Camara_45 Start: 28277, Stop: 28711, Start Num: 54

Candidate Starts for Camara_45:

(Start: 38 @28241 has 29 MA's), (Start: 54 @28277 has 1 MA's), (78, 28358), (91, 28382), (98, 28406), (111, 28430), (118, 28442), (120, 28451), (123, 28460), (133, 28496), (141, 28532), (143, 28544), (146, 28565), (148, 28577), (158, 28619), (170, 28667), (173, 28676),

Gene: Cane17_206 Start: 123642, Stop: 124097, Start Num: 44

Candidate Starts for Cane17_206:

(14, 123528), (28, 123591), (Start: 33 @123609 has 2 MA's), (Start: 44 @123642 has 172 MA's), (Start: 54 @123660 has 1 MA's), (98, 123792), (106, 123810), (129, 123870), (152, 123978), (157, 124002), (174, 124065),

Gene: Capablanca_220 Start: 122248, Stop: 122703, Start Num: 44

Candidate Starts for Capablanca_220:

(14, 122134), (28, 122197), (Start: 33 @122215 has 2 MA's), (Start: 44 @122248 has 172 MA's), (Start: 54 @122266 has 1 MA's), (98, 122398), (106, 122416), (129, 122476), (152, 122584), (157, 122608), (174, 122671), (177, 122677),

Gene: Caravan_206 Start: 120368, Stop: 120823, Start Num: 44

Candidate Starts for Caravan_206:

(14, 120254), (28, 120317), (Start: 33 @120335 has 2 MA's), (Start: 44 @120368 has 172 MA's), (Start: 54 @120386 has 1 MA's), (98, 120518), (106, 120536), (129, 120596), (152, 120704), (157, 120728), (174, 120791), (177, 120797),

Gene: Catera_207 Start: 118761, Stop: 119216, Start Num: 44

Candidate Starts for Catera_207:

(14, 118647), (28, 118710), (Start: 33 @118728 has 2 MA's), (Start: 44 @118761 has 172 MA's), (Start: 54 @118779 has 1 MA's), (98, 118911), (106, 118929), (129, 118989), (152, 119097), (157, 119121), (174, 119184), (177, 119190),

Gene: Catfish_57 Start: 38946, Stop: 39467, Start Num: 15

Candidate Starts for Catfish_57:

(Start: 15 @38946 has 1 MA's), (16, 38952), (46, 39051), (Start: 54 @39063 has 1 MA's), (77, 39117), (126, 39234), (129, 39243), (137, 39279),

Gene: Chargie21_212 Start: 118067, Stop: 118522, Start Num: 44

Candidate Starts for Chargie21_212:

(14, 117953), (28, 118016), (Start: 33 @118034 has 2 MA's), (Start: 44 @118067 has 172 MA's), (Start: 54 @118085 has 1 MA's), (98, 118217), (106, 118235), (129, 118295), (152, 118403), (157,

118427), (174, 118490), (177, 118496),

Gene: CharlieB_209 Start: 119788, Stop: 120243, Start Num: 44

Candidate Starts for CharlieB_209:

(14, 119674), (28, 119737), (Start: 33 @119755 has 2 MA's), (Start: 44 @119788 has 172 MA's), (Start: 54 @119806 has 1 MA's), (98, 119938), (106, 119956), (129, 120016), (152, 120124), (157, 120148), (174, 120211), (177, 120217),

Gene: ChaylaJr_213 Start: 118767, Stop: 119222, Start Num: 44

Candidate Starts for ChaylaJr_213:

(14, 118653), (28, 118716), (Start: 33 @118734 has 2 MA's), (Start: 44 @118767 has 172 MA's), (Start: 54 @118785 has 1 MA's), (98, 118917), (106, 118935), (129, 118995), (152, 119103), (157, 119127), (174, 119190), (177, 119196),

Gene: Chickaboom_44 Start: 28771, Stop: 29241, Start Num: 38

Candidate Starts for Chickaboom_44:

(Start: 38 @28771 has 29 MA's), (Start: 54 @28807 has 1 MA's), (56, 28813), (91, 28909), (105, 28948), (118, 28969), (123, 28987), (133, 29023), (135, 29029), (143, 29074), (146, 29095), (157, 29146), (163, 29164), (174, 29209), (181, 29230),

Gene: ChickenPhender_211 Start: 118214, Stop: 118669, Start Num: 44

Candidate Starts for ChickenPhender_211:

(14, 118100), (28, 118163), (Start: 33 @118181 has 2 MA's), (Start: 44 @118214 has 172 MA's), (Start: 54 @118232 has 1 MA's), (98, 118364), (106, 118382), (129, 118442), (152, 118550), (157, 118574), (174, 118637), (177, 118643),

Gene: Chomp_215 Start: 120837, Stop: 121292, Start Num: 44

Candidate Starts for Chomp_215:

(14, 120723), (28, 120786), (Start: 33 @120804 has 2 MA's), (Start: 44 @120837 has 172 MA's), (Start: 54 @120855 has 1 MA's), (98, 120987), (106, 121005), (129, 121065), (152, 121173), (157, 121197), (174, 121260), (177, 121266),

Gene: CindyLou_216 Start: 121097, Stop: 121552, Start Num: 44

Candidate Starts for CindyLou_216:

(14, 120983), (28, 121046), (Start: 33 @121064 has 2 MA's), (Start: 44 @121097 has 172 MA's), (Start: 54 @121115 has 1 MA's), (98, 121247), (106, 121265), (129, 121325), (152, 121433), (157, 121457), (174, 121520), (177, 121526),

Gene: Colt_206 Start: 122873, Stop: 123328, Start Num: 44

Candidate Starts for Colt_206:

(14, 122759), (28, 122822), (Start: 33 @122840 has 2 MA's), (Start: 44 @122873 has 172 MA's), (Start: 54 @122891 has 1 MA's), (98, 123023), (106, 123041), (129, 123101), (152, 123209), (157, 123233), (174, 123296),

Gene: Colusalem_46 Start: 27262, Stop: 27729, Start Num: 38

Candidate Starts for Colusalem_46:

(22, 27205), (Start: 38 @27262 has 29 MA's), (Start: 54 @27298 has 1 MA's), (72, 27358), (95, 27409), (98, 27424), (118, 27460), (139, 27538), (141, 27550), (152, 27610), (157, 27634), (170, 27685), (172, 27691), (180, 27712), (181, 27718),

Gene: Concombres_220 Start: 121707, Stop: 122162, Start Num: 44

Candidate Starts for Concombres_220:

(14, 121593), (28, 121656), (Start: 33 @121674 has 2 MA's), (Start: 44 @121707 has 172 MA's), (Start: 54 @121725 has 1 MA's), (98, 121857), (106, 121875), (129, 121935), (152, 122043), (157, 122067), (174, 122130), (177, 122136),

Gene: CookieBear_82 Start: 47392, Stop: 47817, Start Num: 61

Candidate Starts for CookieBear_82:

(25, 47287), (Start: 61 @47392 has 17 MA's), (Start: 64 @47404 has 2 MA's), (69, 47419), (82, 47449), (86, 47455), (96, 47479), (144, 47647), (146, 47659), (155, 47704), (176, 47782),

Gene: Coral_43 Start: 27133, Stop: 27600, Start Num: 38

Candidate Starts for Coral_43:

(22, 27076), (Start: 38 @27133 has 29 MA's), (Start: 54 @27169 has 1 MA's), (72, 27229), (95, 27280), (98, 27295), (101, 27298), (118, 27331), (139, 27409), (141, 27421), (152, 27481), (157, 27505), (170, 27556), (172, 27562), (180, 27583), (181, 27589),

Gene: Cote_45 Start: 27610, Stop: 28077, Start Num: 38

Candidate Starts for Cote_45:

(22, 27553), (Start: 38 @27610 has 29 MA's), (Start: 54 @27646 has 1 MA's), (72, 27706), (95, 27757), (98, 27772), (118, 27808), (139, 27886), (141, 27898), (152, 27958), (157, 27982), (170, 28033), (172, 28039), (180, 28060), (181, 28066),

Gene: Cygnet_49 Start: 29068, Stop: 29529, Start Num: 38

Candidate Starts for Cygnet_49:

(Start: 38 @29068 has 29 MA's), (Start: 54 @29104 has 1 MA's), (91, 29209), (98, 29233), (118, 29275), (146, 29395), (156, 29443), (159, 29452), (166, 29476), (174, 29509), (178, 29518),

Gene: DTDevon_217 Start: 121586, Stop: 122041, Start Num: 44

Candidate Starts for DTDevon_217:

(14, 121472), (28, 121535), (Start: 33 @121553 has 2 MA's), (Start: 44 @121586 has 172 MA's), (Start: 54 @121604 has 1 MA's), (98, 121736), (106, 121754), (129, 121814), (152, 121922), (157, 121946), (174, 122009), (177, 122015),

Gene: Daffodil_220 Start: 120551, Stop: 121006, Start Num: 44

Candidate Starts for Daffodil_220:

(14, 120437), (28, 120500), (Start: 33 @120518 has 2 MA's), (Start: 44 @120551 has 172 MA's), (Start: 54 @120569 has 1 MA's), (98, 120701), (106, 120719), (129, 120779), (152, 120887), (157, 120911), (174, 120974), (177, 120980),

Gene: DanHam62_45 Start: 28376, Stop: 28810, Start Num: 54

Candidate Starts for DanHam62_45:

(Start: 38 @28340 has 29 MA's), (Start: 54 @28376 has 1 MA's), (78, 28457), (91, 28481), (98, 28505), (111, 28529), (118, 28541), (120, 28550), (123, 28559), (133, 28595), (141, 28631), (143, 28643), (146, 28664), (148, 28676), (158, 28718), (170, 28766), (173, 28775),

Gene: Dandelion_223 Start: 123191, Stop: 123646, Start Num: 44

Candidate Starts for Dandelion_223:

(14, 123077), (28, 123140), (Start: 33 @123158 has 2 MA's), (Start: 44 @123191 has 172 MA's), (Start: 54 @123209 has 1 MA's), (98, 123341), (106, 123359), (129, 123419), (152, 123527), (157, 123551), (174, 123614), (177, 123620),

Gene: Daob_45 Start: 27618, Stop: 28085, Start Num: 38

Candidate Starts for Daob_45:

(22, 27561), (Start: 38 @27618 has 29 MA's), (Start: 54 @27654 has 1 MA's), (72, 27714), (95, 27765), (98, 27780), (118, 27816), (139, 27894), (141, 27906), (152, 27966), (157, 27990), (170, 28041), (172, 28047), (180, 28068), (181, 28074),

Gene: Darko_214 Start: 119785, Stop: 120240, Start Num: 44

Candidate Starts for Darko_214:

(14, 119671), (28, 119734), (Start: 33 @119752 has 2 MA's), (Start: 44 @119785 has 172 MA's), (Start: 54 @119803 has 1 MA's), (98, 119935), (106, 119953), (129, 120013), (152, 120121), (157, 120145), (174, 120208), (177, 120214),

Gene: DeejaClivia_203 Start: 117927, Stop: 118382, Start Num: 44

Candidate Starts for DeejaClivia_203:

(14, 117813), (28, 117876), (Start: 33 @117894 has 2 MA's), (Start: 44 @117927 has 172 MA's), (Start: 54 @117945 has 1 MA's), (98, 118077), (106, 118095), (129, 118155), (152, 118263), (157, 118287), (174, 118350), (177, 118356),

Gene: DelaGarza_42 Start: 25918, Stop: 25496, Start Num: 49

Candidate Starts for DelaGarza_42:

(10, 26086), (21, 25999), (Start: 49 @25918 has 3 MA's), (76, 25852), (104, 25783), (110, 25771), (132, 25711), (153, 25606),

Gene: Delilah_213 Start: 120669, Stop: 121124, Start Num: 44

Candidate Starts for Delilah_213:

(14, 120555), (28, 120618), (Start: 33 @120636 has 2 MA's), (Start: 44 @120669 has 172 MA's), (Start: 54 @120687 has 1 MA's), (98, 120819), (106, 120837), (129, 120897), (152, 121005), (157, 121029), (174, 121092), (177, 121098),

Gene: Delylah_217 Start: 120958, Stop: 121413, Start Num: 44

Candidate Starts for Delylah_217:

(14, 120844), (28, 120907), (Start: 33 @120925 has 2 MA's), (Start: 44 @120958 has 172 MA's), (Start: 54 @120976 has 1 MA's), (98, 121108), (106, 121126), (129, 121186), (152, 121294), (157, 121318), (174, 121381), (177, 121387),

Gene: Demodog_221 Start: 121717, Stop: 122172, Start Num: 44

Candidate Starts for Demodog_221:

(14, 121603), (28, 121666), (Start: 33 @121684 has 2 MA's), (Start: 44 @121717 has 172 MA's), (Start: 54 @121735 has 1 MA's), (98, 121867), (106, 121885), (129, 121945), (152, 122053), (157, 122077), (174, 122140), (177, 122146),

Gene: Derek_212 Start: 120114, Stop: 120569, Start Num: 44

Candidate Starts for Derek_212:

(14, 120000), (28, 120063), (Start: 33 @120081 has 2 MA's), (Start: 44 @120114 has 172 MA's), (Start: 54 @120132 has 1 MA's), (98, 120264), (106, 120282), (129, 120342), (152, 120450), (157, 120474), (174, 120537), (177, 120543),

Gene: Dietrick_204 Start: 118790, Stop: 119245, Start Num: 44

Candidate Starts for Dietrick_204:

(14, 118676), (28, 118739), (Start: 33 @118757 has 2 MA's), (Start: 44 @118790 has 172 MA's), (Start: 54 @118808 has 1 MA's), (98, 118940), (106, 118958), (129, 119018), (152, 119126), (157, 119150), (174, 119213), (177, 119219),

Gene: DinoDaryn_57 Start: 37067, Stop: 37507, Start Num: 32

Candidate Starts for DinoDaryn_57:

(Start: 32 @37067 has 5 MA's), (39, 37082), (Start: 54 @37106 has 1 MA's), (77, 37160), (122, 37262), (129, 37286), (140, 37331),

Gene: DirtMonster_208 Start: 120030, Stop: 120485, Start Num: 44

Candidate Starts for DirtMonster_208:

(14, 119916), (28, 119979), (Start: 33 @119997 has 2 MA's), (Start: 44 @120030 has 172 MA's), (Start: 54 @120048 has 1 MA's), (98, 120180), (106, 120198), (129, 120258), (152, 120366), (157, 120390), (174, 120453), (177, 120459),

Gene: Domi_209 Start: 120141, Stop: 120596, Start Num: 44

Candidate Starts for Domi_209:

(14, 120027), (28, 120090), (Start: 33 @120108 has 2 MA's), (Start: 44 @120141 has 172 MA's), (Start: 54 @120159 has 1 MA's), (98, 120291), (106, 120309), (129, 120369), (152, 120477), (157, 120501), (174, 120564), (177, 120570),

Gene: DrPhinkDaddy_212 Start: 121329, Stop: 121784, Start Num: 44

Candidate Starts for DrPhinkDaddy_212:

(14, 121215), (28, 121278), (Start: 33 @121296 has 2 MA's), (Start: 44 @121329 has 172 MA's), (Start: 54 @121347 has 1 MA's), (98, 121479), (106, 121497), (129, 121557), (152, 121665), (157, 121689), (174, 121752), (177, 121758),

Gene: Drazdys_213 Start: 120231, Stop: 120686, Start Num: 44

Candidate Starts for Drazdys_213:

(14, 120117), (28, 120180), (Start: 33 @120198 has 2 MA's), (Start: 44 @120231 has 172 MA's), (Start: 54 @120249 has 1 MA's), (98, 120381), (106, 120399), (129, 120459), (152, 120567), (157, 120591), (174, 120654), (177, 120660),

Gene: ET08_203 Start: 119822, Stop: 120277, Start Num: 44

Candidate Starts for ET08_203:

(14, 119708), (28, 119771), (Start: 33 @119789 has 2 MA's), (Start: 44 @119822 has 172 MA's), (Start: 54 @119840 has 1 MA's), (98, 119972), (106, 119990), (129, 120050), (152, 120158), (157, 120182), (174, 120245), (177, 120251),

Gene: EasyJones_218 Start: 119310, Stop: 119765, Start Num: 44

Candidate Starts for EasyJones_218:

(14, 119196), (28, 119259), (Start: 33 @119277 has 2 MA's), (Start: 44 @119310 has 172 MA's), (Start: 54 @119328 has 1 MA's), (98, 119460), (106, 119478), (129, 119538), (152, 119646), (157, 119670), (174, 119733), (177, 119739),

Gene: Eesa_42 Start: 29653, Stop: 30120, Start Num: 38

Candidate Starts for Eesa_42:

(Start: 38 @29653 has 29 MA's), (Start: 54 @29689 has 1 MA's), (72, 29749), (98, 29815), (118, 29851), (123, 29869), (139, 29929), (146, 29974), (152, 30001), (157, 30025), (159, 30031), (172, 30082), (181, 30109),

Gene: EggyFarm_224 Start: 122165, Stop: 122620, Start Num: 44

Candidate Starts for EggyFarm_224:

(14, 122051), (28, 122114), (Start: 33 @122132 has 2 MA's), (34, 122135), (Start: 44 @122165 has 172 MA's), (Start: 54 @122183 has 1 MA's), (98, 122315), (106, 122333), (129, 122393), (152, 122501), (157, 122525), (174, 122588), (177, 122594),

Gene: EmToTheThree_215 Start: 120702, Stop: 121157, Start Num: 44

Candidate Starts for EmToTheThree_215:

(14, 120588), (28, 120651), (Start: 33 @120669 has 2 MA's), (Start: 44 @120702 has 172 MA's), (Start: 54 @120720 has 1 MA's), (98, 120852), (106, 120870), (129, 120930), (152, 121038), (157, 121062), (174, 121125), (177, 121131),

Gene: EmmaElysia_219 Start: 120993, Stop: 121448, Start Num: 44

Candidate Starts for EmmaElysia_219:

(14, 120879), (28, 120942), (Start: 33 @120960 has 2 MA's), (Start: 44 @120993 has 172 MA's), (Start: 54 @121011 has 1 MA's), (98, 121143), (106, 121161), (129, 121221), (152, 121329), (157, 121353), (174, 121416), (177, 121422),

Gene: Erdmann_216 Start: 120661, Stop: 121116, Start Num: 44

Candidate Starts for Erdmann_216:

(14, 120547), (28, 120610), (Start: 33 @120628 has 2 MA's), (Start: 44 @120661 has 172 MA's), (Start: 54 @120679 has 1 MA's), (98, 120811), (106, 120829), (129, 120889), (152, 120997), (157, 121021), (174, 121084), (177, 121090),

Gene: ErnieJ_208 Start: 117489, Stop: 117944, Start Num: 44

Candidate Starts for ErnieJ_208:

(14, 117375), (28, 117438), (Start: 33 @117456 has 2 MA's), (Start: 44 @117489 has 172 MA's), (Start: 54 @117507 has 1 MA's), (98, 117639), (106, 117657), (129, 117717), (152, 117825), (157, 117849), (174, 117912), (177, 117918),

Gene: Essence_212 Start: 119443, Stop: 119898, Start Num: 44

Candidate Starts for Essence_212:

(14, 119329), (28, 119392), (Start: 33 @119410 has 2 MA's), (Start: 44 @119443 has 172 MA's), (Start: 54 @119461 has 1 MA's), (98, 119593), (106, 119611), (129, 119671), (152, 119779), (157, 119803), (174, 119866), (177, 119872),

Gene: EvePickles_87 Start: 49459, Stop: 49884, Start Num: 61

Candidate Starts for EvePickles_87:

(Start: 61 @49459 has 17 MA's), (Start: 64 @49471 has 2 MA's), (69, 49486), (82, 49516), (86, 49522), (114, 49594), (127, 49636), (147, 49729), (154, 49765), (176, 49849),

Gene: Ewok_214 Start: 120579, Stop: 121034, Start Num: 44

Candidate Starts for Ewok_214:

(14, 120465), (28, 120528), (Start: 33 @120546 has 2 MA's), (Start: 44 @120579 has 172 MA's), (Start: 54 @120597 has 1 MA's), (98, 120729), (106, 120747), (129, 120807), (152, 120915), (157, 120939), (174, 121002), (177, 121008),

Gene: Faja_87 Start: 48745, Stop: 49170, Start Num: 61

Candidate Starts for Faja_87:

(25, 48640), (Start: 61 @48745 has 17 MA's), (Start: 64 @48757 has 2 MA's), (69, 48772), (82, 48802), (86, 48808), (96, 48832), (114, 48880), (127, 48922), (143, 48991), (176, 49135),

Gene: Flabslab_210 Start: 117631, Stop: 118086, Start Num: 44

Candidate Starts for Flabslab_210:

(14, 117517), (28, 117580), (Start: 33 @117598 has 2 MA's), (Start: 44 @117631 has 172 MA's), (Start: 54 @117649 has 1 MA's), (98, 117781), (106, 117799), (129, 117859), (152, 117967), (157, 117991), (174, 118054), (177, 118060),

Gene: Fludd_215 Start: 119022, Stop: 119477, Start Num: 44

Candidate Starts for Fludd_215:

(14, 118908), (28, 118971), (Start: 33 @118989 has 2 MA's), (Start: 44 @119022 has 172 MA's), (Start: 54 @119040 has 1 MA's), (98, 119172), (106, 119190), (129, 119250), (152, 119358), (157, 119382), (174, 119445), (177, 119451),

Gene: Fongie_216 Start: 120602, Stop: 121057, Start Num: 44

Candidate Starts for Fongie_216:

(14, 120488), (28, 120551), (Start: 33 @120569 has 2 MA's), (Start: 44 @120602 has 172 MA's), (Start: 54 @120620 has 1 MA's), (98, 120752), (106, 120770), (129, 120830), (152, 120938), (157, 120962), (174, 121025), (177, 121031),

Gene: FoxtrotP1_213 Start: 121259, Stop: 121714, Start Num: 44

Candidate Starts for FoxtrotP1_213:

(14, 121145), (28, 121208), (Start: 33 @121226 has 2 MA's), (Start: 44 @121259 has 172 MA's), (Start: 54 @121277 has 1 MA's), (98, 121409), (106, 121427), (129, 121487), (152, 121595), (157, 121619), (174, 121682), (177, 121688),

Gene: FrayBell_218 Start: 119112, Stop: 119567, Start Num: 44

Candidate Starts for FrayBell_218:

(14, 118998), (28, 119061), (Start: 33 @119079 has 2 MA's), (Start: 44 @119112 has 172 MA's), (Start: 54 @119130 has 1 MA's), (98, 119262), (106, 119280), (129, 119340), (152, 119448), (157, 119472), (174, 119535), (177, 119541),

Gene: Fregley_61 Start: 42057, Stop: 41593, Start Num: 53

Candidate Starts for Fregley_61:

(Start: 51 @42060 has 1 MA's), (Start: 53 @42057 has 1 MA's), (67, 42012), (99, 41925), (117, 41889), (136, 41814), (149, 41748), (152, 41736), (153, 41733), (166, 41682), (182, 41619), (183, 41616),

Gene: FudgeTart_210 Start: 119726, Stop: 120181, Start Num: 44

Candidate Starts for FudgeTart_210:

(14, 119612), (28, 119675), (Start: 33 @119693 has 2 MA's), (Start: 44 @119726 has 172 MA's), (Start: 54 @119744 has 1 MA's), (98, 119876), (106, 119894), (129, 119954), (152, 120062), (157, 120086), (174, 120149), (177, 120155),

Gene: GUPitcher_62 Start: 39387, Stop: 39782, Start Num: 55

Candidate Starts for GUPitcher_62:

(8, 39192), (9, 39198), (52, 39381), (55, 39387), (62, 39405), (74, 39444), (77, 39459), (79, 39462), (84, 39468), (103, 39504), (109, 39516), (127, 39564), (132, 39582),

Gene: Gabriel_218 Start: 119181, Stop: 119636, Start Num: 44

Candidate Starts for Gabriel_218:

(14, 119067), (28, 119130), (Start: 33 @119148 has 2 MA's), (Start: 44 @119181 has 172 MA's), (Start: 54 @119199 has 1 MA's), (98, 119331), (106, 119349), (129, 119409), (152, 119517), (157, 119541), (174, 119604), (177, 119610),

Gene: Galaxy_41 Start: 27422, Stop: 27892, Start Num: 38

Candidate Starts for Galaxy_41:

(Start: 38 @27422 has 29 MA's), (Start: 43 @27437 has 4 MA's), (Start: 54 @27458 has 1 MA's), (56, 27464), (91, 27560), (118, 27620), (123, 27638), (133, 27674), (152, 27773), (157, 27797), (163, 27815), (172, 27854), (174, 27860), (181, 27881),

Gene: Gamgam_216 Start: 119538, Stop: 119993, Start Num: 44

Candidate Starts for Gamgam_216:

(14, 119424), (28, 119487), (Start: 33 @119505 has 2 MA's), (Start: 44 @119538 has 172 MA's), (Start: 54 @119556 has 1 MA's), (98, 119688), (106, 119706), (129, 119766), (152, 119874), (157, 119898), (174, 119961), (177, 119967),

Gene: Ghost_215 Start: 119459, Stop: 119914, Start Num: 44

Candidate Starts for Ghost_215:

(14, 119345), (28, 119408), (Start: 33 @119426 has 2 MA's), (Start: 44 @119459 has 172 MA's), (Start: 54 @119477 has 1 MA's), (89, 119579), (98, 119609), (106, 119627), (129, 119687), (152, 119795), (157, 119819), (174, 119882), (177, 119888),

Gene: Gingerbug_41 Start: 26445, Stop: 26023, Start Num: 49

Candidate Starts for Gingerbug_41:

(Start: 49 @26445 has 3 MA's), (84, 26358), (125, 26262), (127, 26256), (132, 26238), (157, 26112), (162, 26097), (169, 26067), (179, 26037),

Gene: Gizmo_221 Start: 122577, Stop: 123032, Start Num: 44

Candidate Starts for Gizmo_221:

(14, 122463), (28, 122526), (Start: 33 @122544 has 2 MA's), (Start: 44 @122577 has 172 MA's), (Start: 54 @122595 has 1 MA's), (98, 122727), (106, 122745), (129, 122805), (152, 122913), (157, 122937), (174, 123000), (177, 123006),

Gene: Globfish_84 Start: 47023, Stop: 47436, Start Num: 64

Candidate Starts for Globfish_84:

(Start: 61 @47014 has 17 MA's), (Start: 64 @47023 has 2 MA's), (69, 47038), (82, 47068), (86, 47074), (96, 47098), (127, 47188), (144, 47266), (146, 47278), (176, 47401),

Gene: Glotell_47 Start: 28433, Stop: 28867, Start Num: 54

Candidate Starts for Glotell_47:

(Start: 38 @28397 has 29 MA's), (Start: 54 @28433 has 1 MA's), (78, 28514), (91, 28538), (98, 28562), (111, 28586), (118, 28598), (120, 28607), (123, 28616), (133, 28652), (141, 28688), (143, 28700), (146, 28721), (148, 28733), (158, 28775), (170, 28823), (173, 28832),

Gene: GlutenPhree_215 Start: 119549, Stop: 120004, Start Num: 44

Candidate Starts for GlutenPhree_215:

(14, 119435), (28, 119498), (Start: 33 @119516 has 2 MA's), (Start: 44 @119549 has 172 MA's), (Start: 54 @119567 has 1 MA's), (98, 119699), (106, 119717), (129, 119777), (152, 119885), (157, 119909), (174, 119972), (177, 119978),

Gene: Goib_58 Start: 38192, Stop: 38617, Start Num: 38

Candidate Starts for Goib_58:

(Start: 33 @38183 has 2 MA's), (36, 38189), (Start: 38 @38192 has 29 MA's), (Start: 54 @38216 has 1 MA's), (77, 38270), (122, 38372), (129, 38396), (140, 38441),

Gene: Gorpy_83 Start: 48809, Stop: 49234, Start Num: 61

Candidate Starts for Gorpy_83:

(Start: 61 @48809 has 17 MA's), (Start: 64 @48821 has 2 MA's), (69, 48836), (82, 48866), (86, 48872), (144, 49064), (146, 49076), (176, 49199),

Gene: Grasshills_223 Start: 122164, Stop: 122619, Start Num: 44

Candidate Starts for Grasshills_223:

(14, 122050), (28, 122113), (Start: 33 @122131 has 2 MA's), (34, 122134), (Start: 44 @122164 has 172 MA's), (Start: 54 @122182 has 1 MA's), (98, 122314), (106, 122332), (129, 122392), (152, 122500), (157, 122524), (174, 122587), (177, 122593),

Gene: Gravel_52 Start: 29743, Stop: 30210, Start Num: 38

Candidate Starts for Gravel_52:

(Start: 38 @29743 has 29 MA's), (Start: 54 @29779 has 1 MA's), (72, 29839), (98, 29905), (118, 29941), (123, 29959), (139, 30019), (146, 30064), (152, 30091), (157, 30115), (159, 30121), (172, 30172), (181, 30199),

Gene: Grungle_199 Start: 117496, Stop: 117951, Start Num: 44

Candidate Starts for Grungle_199:

(14, 117382), (28, 117445), (Start: 33 @117463 has 2 MA's), (Start: 44 @117496 has 172 MA's), (Start: 54 @117514 has 1 MA's), (98, 117646), (106, 117664), (129, 117724), (152, 117832), (157, 117856), (174, 117919), (177, 117925),

Gene: Guwapp_210 Start: 118293, Stop: 118748, Start Num: 44

Candidate Starts for Guwapp_210:

(14, 118179), (28, 118242), (Start: 33 @118260 has 2 MA's), (Start: 44 @118293 has 172 MA's), (Start: 54 @118311 has 1 MA's), (98, 118443), (106, 118461), (129, 118521), (152, 118629), (157, 118653), (174, 118716), (177, 118722),

Gene: Halldule_208 Start: 118678, Stop: 119133, Start Num: 44

Candidate Starts for Halldule_208:

(14, 118564), (28, 118627), (Start: 33 @118645 has 2 MA's), (Start: 44 @118678 has 172 MA's), (Start: 54 @118696 has 1 MA's), (98, 118828), (106, 118846), (129, 118906), (152, 119014), (157, 119038), (174, 119101), (177, 119107),

Gene: HamCheese_44 Start: 28363, Stop: 28797, Start Num: 54

Candidate Starts for HamCheese_44:

(Start: 38 @28327 has 29 MA's), (Start: 54 @28363 has 1 MA's), (78, 28444), (91, 28468), (98, 28492), (111, 28516), (118, 28528), (120, 28537), (123, 28546), (133, 28582), (141, 28618), (143, 28630), (146, 28651), (148, 28663), (158, 28705), (170, 28753), (173, 28762),

Gene: HannahPhantana_44 Start: 27280, Stop: 27747, Start Num: 38

Candidate Starts for HannahPhantana_44:

(22, 27223), (Start: 38 @27280 has 29 MA's), (Start: 54 @27316 has 1 MA's), (72, 27376), (95, 27427), (98, 27442), (118, 27478), (139, 27556), (141, 27568), (152, 27628), (157, 27652), (170, 27703), (172, 27709), (180, 27730), (181, 27736),

Gene: Hestia_80 Start: 45962, Stop: 46387, Start Num: 61

Candidate Starts for Hestia_80:

(Start: 61 @45962 has 17 MA's), (Start: 64 @45974 has 2 MA's), (69, 45989), (82, 46019), (86, 46025), (96, 46049), (127, 46139), (176, 46352),

Gene: Hillester_90 Start: 48709, Stop: 49134, Start Num: 61

Candidate Starts for Hillester_90:

(Start: 49 @48679 has 3 MA's), (Start: 61 @48709 has 17 MA's), (Start: 64 @48721 has 2 MA's), (69, 48736), (82, 48766), (86, 48772), (96, 48796), (114, 48844), (127, 48886), (143, 48955), (176, 49099),

Gene: Huffy_57 Start: 37067, Stop: 37507, Start Num: 32

Candidate Starts for Huffy_57:

(Start: 32 @37067 has 5 MA's), (39, 37082), (Start: 54 @37106 has 1 MA's), (77, 37160), (122, 37262), (129, 37286), (140, 37331),

Gene: HyRo_203 Start: 118809, Stop: 119264, Start Num: 44

Candidate Starts for HyRo_203:

(14, 118695), (28, 118758), (Start: 33 @118776 has 2 MA's), (Start: 44 @118809 has 172 MA's), (Start: 54 @118827 has 1 MA's), (98, 118959), (106, 118977), (129, 119037), (152, 119145), (157, 119169), (174, 119232), (177, 119238),

Gene: I3_225 Start: 121254, Stop: 121709, Start Num: 44

Candidate Starts for I3_225:

(14, 121140), (28, 121203), (Start: 33 @121221 has 2 MA's), (Start: 44 @121254 has 172 MA's), (Start: 54 @121272 has 1 MA's), (66, 121314), (98, 121404), (106, 121422), (129, 121482), (152, 121590), (157, 121614), (174, 121677), (177, 121683),

Gene: IkeLoa_207 Start: 119203, Stop: 119658, Start Num: 44

Candidate Starts for IkeLoa_207:

(14, 119089), (28, 119152), (Start: 33 @119170 has 2 MA's), (Start: 44 @119203 has 172 MA's), (Start: 54 @119221 has 1 MA's), (98, 119353), (106, 119371), (129, 119431), (152, 119539), (157, 119563), (174, 119626), (177, 119632),

Gene: InigoMontoya_218 Start: 120212, Stop: 120667, Start Num: 44

Candidate Starts for InigoMontoya_218:

(14, 120098), (28, 120161), (Start: 33 @120179 has 2 MA's), (Start: 44 @120212 has 172 MA's), (Start: 54 @120230 has 1 MA's), (98, 120362), (106, 120380), (129, 120440), (152, 120548), (157, 120572), (174, 120635), (177, 120641),

Gene: InterFolia_218 Start: 120917, Stop: 121372, Start Num: 44

Candidate Starts for InterFolia_218:

(14, 120803), (28, 120866), (Start: 33 @120884 has 2 MA's), (Start: 44 @120917 has 172 MA's), (Start: 54 @120935 has 1 MA's), (98, 121067), (106, 121085), (129, 121145), (152, 121253), (157, 121277), (174, 121340), (177, 121346),

Gene: Iota_210 Start: 119897, Stop: 120352, Start Num: 44

Candidate Starts for Iota_210:

(14, 119783), (28, 119846), (Start: 33 @119864 has 2 MA's), (Start: 44 @119897 has 172 MA's), (Start: 54 @119915 has 1 MA's), (98, 120047), (106, 120065), (129, 120125), (152, 120233), (157, 120257), (174, 120320), (177, 120326),

Gene: Isolde_87 Start: 49198, Stop: 49623, Start Num: 61

Candidate Starts for Isolde_87:

(Start: 49 @49168 has 3 MA's), (Start: 61 @49198 has 17 MA's), (Start: 64 @49210 has 2 MA's), (69, 49225), (82, 49255), (86, 49261), (96, 49285), (176, 49588),

Gene: Issimir_208 Start: 119850, Stop: 120305, Start Num: 44

Candidate Starts for Issimir_208:

(14, 119736), (28, 119799), (Start: 33 @119817 has 2 MA's), (Start: 44 @119850 has 172 MA's), (Start: 54 @119868 has 1 MA's), (98, 120000), (106, 120018), (129, 120078), (152, 120186), (157, 120210), (174, 120273), (177, 120279),

Gene: Izajani_213 Start: 120719, Stop: 121174, Start Num: 44

Candidate Starts for Izajani_213:

(14, 120605), (28, 120668), (Start: 33 @120686 has 2 MA's), (Start: 44 @120719 has 172 MA's), (Start: 54 @120737 has 1 MA's), (98, 120869), (106, 120887), (129, 120947), (152, 121055), (157, 121079), (174, 121142), (177, 121148),

Gene: JPickles_211 Start: 118197, Stop: 118652, Start Num: 44

Candidate Starts for JPickles_211:

(14, 118083), (28, 118146), (Start: 33 @118164 has 2 MA's), (Start: 44 @118197 has 172 MA's), (Start: 54 @118215 has 1 MA's), (98, 118347), (106, 118365), (129, 118425), (152, 118533), (157, 118557), (174, 118620), (177, 118626),

Gene: Jamun_42 Start: 28931, Stop: 29401, Start Num: 38

Candidate Starts for Jamun_42:

(Start: 38 @28931 has 29 MA's), (Start: 54 @28967 has 1 MA's), (56, 28973), (91, 29069), (118, 29129), (123, 29147), (133, 29183), (139, 29210), (143, 29234), (152, 29282), (157, 29306), (163, 29324), (170, 29357), (172, 29363), (174, 29369), (181, 29390),

Gene: Janiyra_218 Start: 120437, Stop: 120892, Start Num: 44

Candidate Starts for Janiyra_218:

(14, 120323), (28, 120386), (Start: 33 @120404 has 2 MA's), (Start: 44 @120437 has 172 MA's), (Start: 54 @120455 has 1 MA's), (98, 120587), (106, 120605), (129, 120665), (152, 120773), (157, 120797), (174, 120860), (177, 120866),

Gene: JayJay_217 Start: 120141, Stop: 120596, Start Num: 44

Candidate Starts for JayJay_217:

(14, 120027), (28, 120090), (Start: 33 @120108 has 2 MA's), (Start: 44 @120141 has 172 MA's), (Start: 54 @120159 has 1 MA's), (98, 120291), (106, 120309), (129, 120369), (152, 120477), (157, 120501), (174, 120564), (177, 120570),

Gene: Jaygup_211 Start: 119258, Stop: 119713, Start Num: 44

Candidate Starts for Jaygup_211:

(14, 119144), (28, 119207), (Start: 33 @119225 has 2 MA's), (Start: 44 @119258 has 172 MA's), (Start: 54 @119276 has 1 MA's), (98, 119408), (106, 119426), (129, 119486), (152, 119594), (157, 119618), (174, 119681), (177, 119687),

Gene: Jedediah_215 Start: 120311, Stop: 120766, Start Num: 44

Candidate Starts for Jedediah_215:

(14, 120197), (28, 120260), (Start: 33 @120278 has 2 MA's), (Start: 44 @120311 has 172 MA's), (Start: 54 @120329 has 1 MA's), (98, 120461), (106, 120479), (129, 120539), (152, 120647), (157, 120671), (174, 120734), (177, 120740),

Gene: JellyBread_81 Start: 47875, Stop: 48285, Start Num: 61

Candidate Starts for JellyBread_81:

(Start: 61 @47875 has 17 MA's), (Start: 64 @47887 has 2 MA's), (69, 47902), (82, 47932), (86, 47938), (96, 47962), (127, 48052), (129, 48058), (132, 48070), (141, 48109), (145, 48133), (147, 48145), (174, 48247), (180, 48262),

Gene: Jemmno_214 Start: 119140, Stop: 119595, Start Num: 44

Candidate Starts for Jemmno_214:

(14, 119026), (28, 119089), (Start: 33 @119107 has 2 MA's), (Start: 44 @119140 has 172 MA's), (Start: 54 @119158 has 1 MA's), (98, 119290), (106, 119308), (129, 119368), (152, 119476), (157, 119500), (174, 119563), (177, 119569),

Gene: Jerole_53 Start: 27404, Stop: 27871, Start Num: 38

Candidate Starts for Jerole_53:

(22, 27347), (Start: 38 @27404 has 29 MA's), (Start: 54 @27440 has 1 MA's), (72, 27500), (95, 27551), (98, 27566), (118, 27602), (139, 27680), (141, 27692), (152, 27752), (157, 27776), (170, 27827), (172, 27833), (180, 27854), (181, 27860),

Gene: Jessibeth14_215 Start: 121328, Stop: 121783, Start Num: 44

Candidate Starts for Jessibeth14_215:

(14, 121214), (28, 121277), (Start: 33 @121295 has 2 MA's), (Start: 44 @121328 has 172 MA's), (Start: 54 @121346 has 1 MA's), (98, 121478), (106, 121496), (129, 121556), (152, 121664), (157, 121688), (174, 121751), (177, 121757),

Gene: Jezreel_212 Start: 120398, Stop: 120853, Start Num: 44

Candidate Starts for Jezreel_212:

(14, 120284), (28, 120347), (Start: 33 @120365 has 2 MA's), (Start: 44 @120398 has 172 MA's), (Start: 54 @120416 has 1 MA's), (98, 120548), (106, 120566), (129, 120626), (152, 120734), (157, 120758), (174, 120821), (177, 120827),

Gene: JigglyPuff_222 Start: 121715, Stop: 122170, Start Num: 44

Candidate Starts for JigglyPuff_222:

(14, 121601), (28, 121664), (Start: 33 @121682 has 2 MA's), (Start: 44 @121715 has 172 MA's), (Start: 54 @121733 has 1 MA's), (98, 121865), (106, 121883), (129, 121943), (152, 122051), (157, 122075), (174, 122138), (177, 122144),

Gene: JulietS_208 Start: 117438, Stop: 117893, Start Num: 44

Candidate Starts for JulietS_208:

(1, 116919), (14, 117324), (28, 117387), (Start: 33 @117405 has 2 MA's), (Start: 44 @117438 has 172 MA's), (Start: 54 @117456 has 1 MA's), (98, 117588), (106, 117606), (129, 117666), (152, 117774), (157, 117798), (174, 117861), (177, 117867),

Gene: Juno112_44 Start: 28343, Stop: 28813, Start Num: 38

Candidate Starts for Juno112_44:

(Start: 38 @28343 has 29 MA's), (Start: 54 @28379 has 1 MA's), (78, 28460), (91, 28484), (98, 28508), (111, 28532), (118, 28544), (120, 28553), (123, 28562), (133, 28598), (141, 28634), (143, 28646), (146, 28667), (148, 28679), (158, 28721), (170, 28769), (173, 28778),

Gene: JustHall_209 Start: 119344, Stop: 119799, Start Num: 44

Candidate Starts for JustHall_209:

(14, 119230), (28, 119293), (Start: 33 @119311 has 2 MA's), (Start: 44 @119344 has 172 MA's), (Start: 54 @119362 has 1 MA's), (98, 119494), (106, 119512), (129, 119572), (152, 119680), (157, 119704), (174, 119767), (177, 119773),

Gene: KHumphrey_45 Start: 28276, Stop: 28710, Start Num: 54

Candidate Starts for KHumphrey_45:

(Start: 38 @28240 has 29 MA's), (Start: 54 @28276 has 1 MA's), (78, 28357), (91, 28381), (98, 28405), (111, 28429), (118, 28441), (120, 28450), (123, 28459), (133, 28495), (141, 28531), (146, 28564), (148, 28576), (158, 28618), (170, 28666), (173, 28675),

Gene: Kamryn_214 Start: 120974, Stop: 121429, Start Num: 44

Candidate Starts for Kamryn_214:

(14, 120860), (28, 120923), (Start: 33 @120941 has 2 MA's), (Start: 44 @120974 has 172 MA's), (Start: 54 @120992 has 1 MA's), (98, 121124), (106, 121142), (129, 121202), (152, 121310), (157, 121334), (174, 121397), (177, 121403),

Gene: Kboogie_219 Start: 120002, Stop: 120457, Start Num: 44

Candidate Starts for Kboogie_219:

(14, 119888), (28, 119951), (Start: 33 @119969 has 2 MA's), (Start: 44 @120002 has 172 MA's), (Start: 54 @120020 has 1 MA's), (98, 120152), (106, 120170), (129, 120230), (152, 120338), (157, 120362), (174, 120425), (177, 120431),

Gene: KendraB23_53 Start: 29930, Stop: 30397, Start Num: 38

Candidate Starts for KendraB23_53:

(Start: 38 @29930 has 29 MA's), (Start: 54 @29966 has 1 MA's), (72, 30026), (98, 30092), (118, 30128), (123, 30146), (139, 30206), (152, 30278), (157, 30302), (159, 30308), (172, 30359), (180, 30380), (181, 30386),

Gene: Kepler_45 Start: 28028, Stop: 28495, Start Num: 38

Candidate Starts for Kepler_45:

(22, 27971), (Start: 38 @28028 has 29 MA's), (Start: 54 @28064 has 1 MA's), (72, 28124), (95, 28175), (98, 28190), (101, 28193), (118, 28226), (139, 28304), (141, 28316), (152, 28376), (157, 28400), (170, 28451), (172, 28457), (181, 28484),

Gene: Khaleesi_214 Start: 120795, Stop: 121250, Start Num: 44

Candidate Starts for Khaleesi_214:

(14, 120681), (28, 120744), (Start: 33 @120762 has 2 MA's), (Start: 44 @120795 has 172 MA's), (Start: 54 @120813 has 1 MA's), (98, 120945), (106, 120963), (129, 121023), (152, 121131), (157, 121155), (174, 121218), (177, 121224),

Gene: Khuang_63 Start: 36921, Stop: 37343, Start Num: 51

Candidate Starts for Khuang_63:

(Start: 51 @36921 has 1 MA's), (85, 37011), (88, 37017), (122, 37095), (152, 37233),

Gene: Koguma_214 Start: 119655, Stop: 120110, Start Num: 44

Candidate Starts for Koguma_214:

(14, 119541), (28, 119604), (Start: 33 @119622 has 2 MA's), (Start: 44 @119655 has 172 MA's), (Start: 54 @119673 has 1 MA's), (98, 119805), (106, 119823), (129, 119883), (152, 119991), (157, 120015), (174, 120078), (177, 120084),

Gene: Kudfre_85 Start: 49906, Stop: 50304, Start Num: 43

Candidate Starts for Kudfre_85:

(Start: 43 @49906 has 4 MA's), (48, 49918), (Start: 54 @49924 has 1 MA's), (77, 49978), (102, 50032), (114, 50059), (129, 50095), (134, 50113), (143, 50155), (144, 50164), (146, 50176), (170, 50275),

Gene: Kuleana_45 Start: 27612, Stop: 28070, Start Num: 38

Candidate Starts for Kuleana_45:

(Start: 38 @27612 has 29 MA's), (Start: 54 @27648 has 1 MA's), (98, 27777), (107, 27795), (118, 27813), (123, 27831), (157, 27987), (170, 28038), (172, 28044), (178, 28059),

Gene: Kumotta_70 Start: 37512, Stop: 37922, Start Num: 64

Candidate Starts for Kumotta_70:

(Start: 64 @37512 has 2 MA's),

Gene: LRRHood_208 Start: 119007, Stop: 119462, Start Num: 44

Candidate Starts for LRRHood_208:

(14, 118893), (28, 118956), (Start: 33 @118974 has 2 MA's), (Start: 44 @119007 has 172 MA's), (Start: 54 @119025 has 1 MA's), (98, 119157), (106, 119175), (129, 119235), (152, 119343), (157, 119367), (174, 119430), (177, 119436),

Gene: Latch_215 Start: 119548, Stop: 120003, Start Num: 44

Candidate Starts for Latch_215:

(14, 119434), (28, 119497), (Start: 33 @119515 has 2 MA's), (Start: 44 @119548 has 172 MA's), (Start: 54 @119566 has 1 MA's), (98, 119698), (106, 119716), (129, 119776), (152, 119884), (157,

119908), (174, 119971), (177, 119977),

Gene: Lawnathon_87 Start: 48159, Stop: 48584, Start Num: 61

Candidate Starts for Lawnathon_87:

(Start: 49 @48129 has 3 MA's), (Start: 61 @48159 has 17 MA's), (Start: 64 @48171 has 2 MA's), (69, 48186), (82, 48216), (86, 48222), (144, 48414), (146, 48426), (155, 48471), (176, 48549),

Gene: Lee7_215 Start: 122175, Stop: 122630, Start Num: 44

Candidate Starts for Lee7_215:

(14, 122061), (28, 122124), (Start: 33 @122142 has 2 MA's), (Start: 44 @122175 has 172 MA's), (Start: 54 @122193 has 1 MA's), (98, 122325), (106, 122343), (129, 122403), (152, 122511), (157, 122535), (174, 122598), (177, 122604),

Gene: Leona_44 Start: 28420, Stop: 28890, Start Num: 38

Candidate Starts for Leona_44:

(Start: 38 @28420 has 29 MA's), (Start: 54 @28456 has 1 MA's), (91, 28561), (98, 28585), (111, 28609), (118, 28621), (120, 28630), (123, 28639), (133, 28675), (141, 28711), (143, 28723), (146, 28744), (148, 28756), (158, 28798), (170, 28846), (173, 28855),

Gene: Lesiram_43 Start: 25890, Stop: 25468, Start Num: 49

Candidate Starts for Lesiram_43:

(Start: 49 @25890 has 3 MA's), (76, 25824), (104, 25755), (110, 25743), (130, 25692), (132, 25683), (153, 25578),

Gene: Lethe_217 Start: 121438, Stop: 121893, Start Num: 44

Candidate Starts for Lethe_217:

(14, 121324), (28, 121387), (Start: 33 @121405 has 2 MA's), (Start: 44 @121438 has 172 MA's), (Start: 54 @121456 has 1 MA's), (98, 121588), (106, 121606), (129, 121666), (152, 121774), (157, 121798), (174, 121861), (177, 121867),

Gene: LifeSavor_214 Start: 120073, Stop: 120528, Start Num: 44

Candidate Starts for LifeSavor_214:

(14, 119959), (28, 120022), (Start: 33 @120040 has 2 MA's), (Start: 44 @120073 has 172 MA's), (Start: 54 @120091 has 1 MA's), (98, 120223), (106, 120241), (129, 120301), (152, 120409), (157, 120433), (174, 120496), (177, 120502),

Gene: LinStu_214 Start: 119294, Stop: 119749, Start Num: 44

Candidate Starts for LinStu_214:

(14, 119180), (28, 119243), (Start: 33 @119261 has 2 MA's), (Start: 44 @119294 has 172 MA's), (Start: 54 @119312 has 1 MA's), (98, 119444), (106, 119462), (129, 119522), (152, 119630), (157, 119654), (174, 119717), (177, 119723),

Gene: LittleTokyo_43 Start: 27119, Stop: 27583, Start Num: 38

Candidate Starts for LittleTokyo_43:

(Start: 38 @27119 has 29 MA's), (Start: 54 @27155 has 1 MA's), (91, 27260), (123, 27335), (143, 27416), (146, 27437), (170, 27539), (172, 27545),

Gene: Littleton_218 Start: 120785, Stop: 121240, Start Num: 44

Candidate Starts for Littleton_218:

(14, 120671), (28, 120734), (Start: 33 @120752 has 2 MA's), (Start: 44 @120785 has 172 MA's), (Start: 54 @120803 has 1 MA's), (98, 120935), (106, 120953), (129, 121013), (152, 121121), (157, 121145), (174, 121208), (177, 121214),

Gene: Loanshark_212 Start: 120110, Stop: 120565, Start Num: 44

Candidate Starts for Loanshark_212:

(14, 119996), (28, 120059), (Start: 33 @120077 has 2 MA's), (Start: 44 @120110 has 172 MA's), (Start: 54 @120128 has 1 MA's), (98, 120260), (106, 120278), (129, 120338), (152, 120446), (157, 120470), (174, 120533), (177, 120539),

Gene: LolaVinca_213 Start: 120347, Stop: 120802, Start Num: 44

Candidate Starts for LolaVinca_213:

(14, 120233), (28, 120296), (Start: 33 @120314 has 2 MA's), (Start: 44 @120347 has 172 MA's), (Start: 54 @120365 has 1 MA's), (98, 120497), (106, 120515), (129, 120575), (152, 120683), (157, 120707), (174, 120770), (177, 120776),

Gene: LordLeafolot_217 Start: 119960, Stop: 120415, Start Num: 44

Candidate Starts for LordLeafolot_217:

(14, 119846), (28, 119909), (Start: 33 @119927 has 2 MA's), (Start: 44 @119960 has 172 MA's), (Start: 54 @119978 has 1 MA's), (98, 120110), (106, 120128), (129, 120188), (152, 120296), (157, 120320), (174, 120383), (177, 120389),

Gene: Lukilu_206 Start: 121010, Stop: 121465, Start Num: 44

Candidate Starts for Lukilu_206:

(14, 120896), (28, 120959), (Start: 33 @120977 has 2 MA's), (Start: 44 @121010 has 172 MA's), (Start: 54 @121028 has 1 MA's), (98, 121160), (106, 121178), (129, 121238), (152, 121346), (157, 121370), (174, 121433), (177, 121439),

Gene: Lunar_45 Start: 27944, Stop: 28411, Start Num: 38

Candidate Starts for Lunar_45:

(22, 27887), (Start: 38 @27944 has 29 MA's), (Start: 54 @27980 has 1 MA's), (72, 28040), (95, 28091), (98, 28106), (118, 28142), (139, 28220), (141, 28232), (152, 28292), (157, 28316), (170, 28367), (172, 28373), (180, 28394), (181, 28400),

Gene: MUWow_87 Start: 49555, Stop: 49980, Start Num: 61

Candidate Starts for MUWow_87:

(25, 49450), (Start: 61 @49555 has 17 MA's), (Start: 64 @49567 has 2 MA's), (69, 49582), (82, 49612), (86, 49618), (96, 49642), (144, 49810), (146, 49822), (176, 49945),

Gene: Maby2021_215 Start: 121239, Stop: 121694, Start Num: 44

Candidate Starts for Maby2021_215:

(14, 121125), (28, 121188), (Start: 33 @121206 has 2 MA's), (Start: 44 @121239 has 172 MA's), (Start: 54 @121257 has 1 MA's), (98, 121389), (106, 121407), (129, 121467), (152, 121575), (157, 121599), (174, 121662), (177, 121668),

Gene: MalagasyRose_70 Start: 46724, Stop: 47353, Start Num: 11

Candidate Starts for MalagasyRose_70:

(2, 46601), (3, 46634), (4, 46643), (Start: 11 @46724 has 1 MA's), (20, 46790), (24, 46805), (Start: 33 @46835 has 2 MA's), (35, 46841), (Start: 54 @46883 has 1 MA's), (90, 46973), (106, 47018), (108, 47021), (115, 47039), (122, 47060), (125, 47072), (128, 47081), (129, 47084), (140, 47129), (144, 47153), (146, 47165), (151, 47186), (152, 47189), (165, 47237), (169, 47258), (186, 47327),

Gene: Mangeria_216 Start: 121341, Stop: 121796, Start Num: 44

Candidate Starts for Mangeria_216:

(14, 121227), (28, 121290), (Start: 33 @121308 has 2 MA's), (Start: 44 @121341 has 172 MA's), (Start: 54 @121359 has 1 MA's), (98, 121491), (106, 121509), (129, 121569), (152, 121677), (157, 121701), (174, 121764), (177, 121770),

Gene: MargaretKali_66 Start: 36130, Stop: 36540, Start Num: 64

Candidate Starts for MargaretKali_66:

(Start: 64 @36130 has 2 MA's),

Gene: Maruru_53 Start: 40603, Stop: 41109, Start Num: 30

Candidate Starts for Maruru_53:

(Start: 19 @40561 has 1 MA's), (Start: 30 @40603 has 2 MA's), (72, 40714), (81, 40735), (116, 40804), (157, 40990),

Gene: MaterMagnus_86 Start: 49021, Stop: 49443, Start Num: 61

Candidate Starts for MaterMagnus_86:

(Start: 61 @49021 has 17 MA's), (Start: 64 @49030 has 2 MA's), (69, 49045), (82, 49075), (86, 49081), (96, 49105), (127, 49195), (176, 49408),

Gene: Matsumoto_214 Start: 119990, Stop: 120445, Start Num: 44

Candidate Starts for Matsumoto_214:

(14, 119876), (28, 119939), (Start: 33 @119957 has 2 MA's), (Start: 44 @119990 has 172 MA's), (Start: 54 @120008 has 1 MA's), (98, 120140), (106, 120158), (129, 120218), (152, 120326), (157, 120350), (174, 120413), (177, 120419),

Gene: McGee_214 Start: 119184, Stop: 119639, Start Num: 44

Candidate Starts for McGee_214:

(14, 119070), (28, 119133), (Start: 33 @119151 has 2 MA's), (Start: 44 @119184 has 172 MA's), (Start: 54 @119202 has 1 MA's), (98, 119334), (106, 119352), (129, 119412), (152, 119520), (157, 119544), (174, 119607), (177, 119613),

Gene: McWolfish_212 Start: 120006, Stop: 120461, Start Num: 44

Candidate Starts for McWolfish_212:

(14, 119892), (28, 119955), (Start: 33 @119973 has 2 MA's), (Start: 44 @120006 has 172 MA's), (Start: 54 @120024 has 1 MA's), (98, 120156), (106, 120174), (129, 120234), (152, 120342), (157, 120366), (174, 120429), (177, 120435),

Gene: Megamind_212 Start: 120297, Stop: 120752, Start Num: 44

Candidate Starts for Megamind_212:

(14, 120183), (28, 120246), (Start: 33 @120264 has 2 MA's), (Start: 44 @120297 has 172 MA's), (Start: 54 @120315 has 1 MA's), (98, 120447), (106, 120465), (129, 120525), (152, 120633), (157, 120657), (174, 120720), (177, 120726),

Gene: Melons_45 Start: 27758, Stop: 28225, Start Num: 38

Candidate Starts for Melons_45:

(22, 27701), (Start: 38 @27758 has 29 MA's), (Start: 54 @27794 has 1 MA's), (72, 27854), (95, 27905), (98, 27920), (101, 27923), (118, 27956), (139, 28034), (141, 28046), (152, 28106), (157, 28130), (170, 28181), (172, 28187), (180, 28208), (181, 28214),

Gene: Melpomini_210 Start: 119082, Stop: 119537, Start Num: 44

Candidate Starts for Melpomini_210:

(14, 118968), (28, 119031), (Start: 33 @119049 has 2 MA's), (Start: 44 @119082 has 172 MA's), (Start: 54 @119100 has 1 MA's), (98, 119232), (106, 119250), (129, 119310), (152, 119418), (157, 119442), (174, 119505), (177, 119511),

Gene: MichelleMyBell_49 Start: 33179, Stop: 33610, Start Num: 33

Candidate Starts for MichelleMyBell_49:

(12, 33071), (Start: 33 @33179 has 2 MA's), (46, 33215), (47, 33218), (106, 33347), (112, 33362), (124, 33383), (143, 33461), (151, 33503), (156, 33527), (160, 33539), (170, 33581),

Gene: MidnightRain_92 Start: 49545, Stop: 49970, Start Num: 61

Candidate Starts for MidnightRain_92:

(Start: 49 @49515 has 3 MA's), (Start: 61 @49545 has 17 MA's), (Start: 64 @49557 has 2 MA's), (69, 49572), (82, 49602), (86, 49608), (96, 49632), (114, 49680), (143, 49791), (176, 49935),

Gene: MikeLiesIn_217 Start: 121433, Stop: 121888, Start Num: 44

Candidate Starts for MikeLiesIn_217:

(14, 121319), (28, 121382), (Start: 33 @121400 has 2 MA's), (Start: 44 @121433 has 172 MA's), (Start: 54 @121451 has 1 MA's), (98, 121583), (106, 121601), (129, 121661), (152, 121769), (157, 121793), (174, 121856), (177, 121862),

Gene: Mikro_211 Start: 121982, Stop: 122437, Start Num: 44

Candidate Starts for Mikro_211:

(14, 121868), (28, 121931), (Start: 33 @121949 has 2 MA's), (Start: 44 @121982 has 172 MA's), (Start: 54 @122000 has 1 MA's), (98, 122132), (106, 122150), (129, 122210), (152, 122318), (157, 122342), (174, 122405), (177, 122411),

Gene: MoMoMixon_213 Start: 120472, Stop: 120927, Start Num: 44

Candidate Starts for MoMoMixon_213:

(14, 120358), (28, 120421), (Start: 33 @120439 has 2 MA's), (Start: 44 @120472 has 172 MA's), (Start: 54 @120490 has 1 MA's), (98, 120622), (106, 120640), (129, 120700), (152, 120808), (157, 120832), (174, 120895), (177, 120901),

Gene: Momo_216 Start: 119548, Stop: 120003, Start Num: 44

Candidate Starts for Momo_216:

(14, 119434), (28, 119497), (Start: 33 @119515 has 2 MA's), (Start: 44 @119548 has 172 MA's), (Start: 54 @119566 has 1 MA's), (98, 119698), (106, 119716), (129, 119776), (152, 119884), (157, 119908), (174, 119971), (177, 119977),

Gene: Morizzled23_212 Start: 118915, Stop: 119370, Start Num: 44

Candidate Starts for Morizzled23_212:

(14, 118801), (28, 118864), (Start: 33 @118882 has 2 MA's), (Start: 44 @118915 has 172 MA's), (Start: 54 @118933 has 1 MA's), (98, 119065), (106, 119083), (129, 119143), (152, 119251), (157, 119275), (174, 119338), (177, 119344),

Gene: Mufasa8_53 Start: 38883, Stop: 39419, Start Num: 18

Candidate Starts for Mufasa8_53:

(Start: 18 @38883 has 1 MA's), (Start: 30 @38925 has 2 MA's), (72, 39039), (74, 39042), (93, 39084), (116, 39129), (118, 39135), (120, 39144), (143, 39243), (150, 39282), (157, 39315), (184, 39408),

Gene: Naija_216 Start: 120251, Stop: 120706, Start Num: 44

Candidate Starts for Naija_216:

(14, 120137), (28, 120200), (Start: 33 @120218 has 2 MA's), (Start: 44 @120251 has 172 MA's), (Start: 54 @120269 has 1 MA's), (98, 120401), (106, 120419), (129, 120479), (152, 120587), (157, 120611), (174, 120674), (177, 120680),

Gene: Napoleon13_212 Start: 119279, Stop: 119734, Start Num: 44

Candidate Starts for Napoleon13_212:

(14, 119165), (28, 119228), (Start: 33 @119246 has 2 MA's), (Start: 44 @119279 has 172 MA's), (Start: 54 @119297 has 1 MA's), (98, 119429), (106, 119447), (129, 119507), (152, 119615), (157,

119639), (174, 119702), (177, 119708),

Gene: Nappy_216 Start: 120952, Stop: 121407, Start Num: 44

Candidate Starts for Nappy_216:

(14, 120838), (28, 120901), (Start: 33 @120919 has 2 MA's), (Start: 44 @120952 has 172 MA's), (Start: 54 @120970 has 1 MA's), (98, 121102), (106, 121120), (129, 121180), (152, 121288), (157, 121312), (174, 121375), (177, 121381),

Gene: Naval22_220 Start: 122028, Stop: 122483, Start Num: 44

Candidate Starts for Naval22_220:

(14, 121914), (28, 121977), (Start: 33 @121995 has 2 MA's), (Start: 44 @122028 has 172 MA's), (Start: 54 @122046 has 1 MA's), (98, 122178), (106, 122196), (129, 122256), (152, 122364), (157, 122388), (174, 122451), (177, 122457),

Gene: NedWong_214 Start: 120684, Stop: 121139, Start Num: 44

Candidate Starts for NedWong_214:

(14, 120570), (28, 120633), (Start: 33 @120651 has 2 MA's), (Start: 44 @120684 has 172 MA's), (Start: 54 @120702 has 1 MA's), (98, 120834), (106, 120852), (129, 120912), (152, 121020), (157, 121044), (174, 121107), (177, 121113),

Gene: Neville_76 Start: 48231, Stop: 48671, Start Num: 40

Candidate Starts for Neville_76:

(37, 48225), (Start: 40 @48231 has 4 MA's), (48, 48240), (92, 48333), (100, 48360), (122, 48402), (128, 48423), (129, 48426), (134, 48444), (143, 48489), (157, 48558), (159, 48564), (161, 48570), (162, 48573), (165, 48582), (174, 48621),

Gene: Ngannou_212 Start: 118530, Stop: 118985, Start Num: 44

Candidate Starts for Ngannou_212:

(14, 118416), (28, 118479), (Start: 33 @118497 has 2 MA's), (Start: 44 @118530 has 172 MA's), (Start: 54 @118548 has 1 MA's), (98, 118680), (106, 118698), (129, 118758), (152, 118866), (157, 118890), (174, 118953), (177, 118959),

Gene: Nidhogg_216 Start: 121077, Stop: 121532, Start Num: 44

Candidate Starts for Nidhogg_216:

(14, 120963), (28, 121026), (Start: 33 @121044 has 2 MA's), (Start: 44 @121077 has 172 MA's), (Start: 54 @121095 has 1 MA's), (98, 121227), (106, 121245), (129, 121305), (152, 121413), (157, 121437), (174, 121500), (177, 121506),

Gene: NoSwimming_53 Start: 38737, Stop: 39144, Start Num: 52

Candidate Starts for NoSwimming_53:

(52, 38737), (77, 38809),

Gene: NoodleTree_221 Start: 120984, Stop: 121439, Start Num: 44

Candidate Starts for NoodleTree_221:

(14, 120870), (28, 120933), (Start: 33 @120951 has 2 MA's), (Start: 44 @120984 has 172 MA's), (Start: 54 @121002 has 1 MA's), (98, 121134), (106, 121152), (129, 121212), (152, 121320), (157, 121344), (174, 121407), (177, 121413),

Gene: Norm_215 Start: 120986, Stop: 121441, Start Num: 44

Candidate Starts for Norm_215:

(14, 120872), (28, 120935), (Start: 33 @120953 has 2 MA's), (Start: 44 @120986 has 172 MA's), (Start: 54 @121004 has 1 MA's), (98, 121136), (106, 121154), (129, 121214), (152, 121322), (157, 121346), (174, 121409), (177, 121415),

Gene: NuevoMundo_218 Start: 121545, Stop: 122000, Start Num: 44

Candidate Starts for NuevoMundo_218:

(14, 121431), (28, 121494), (Start: 33 @121512 has 2 MA's), (Start: 44 @121545 has 172 MA's), (Start: 54 @121563 has 1 MA's), (98, 121695), (106, 121713), (129, 121773), (152, 121881), (157, 121905), (174, 121968), (177, 121974),

Gene: Octobien14_83 Start: 49218, Stop: 49616, Start Num: 43

Candidate Starts for Octobien14_83:

(29, 49179), (Start: 43 @49218 has 4 MA's), (48, 49230), (Start: 54 @49236 has 1 MA's), (77, 49290), (102, 49344), (114, 49371), (126, 49398), (129, 49407), (134, 49425), (143, 49467), (144, 49476), (170, 49587),

Gene: Orcanus_43 Start: 29287, Stop: 29754, Start Num: 38

Candidate Starts for Orcanus_43:

(Start: 38 @29287 has 29 MA's), (Start: 54 @29323 has 1 MA's), (72, 29383), (98, 29449), (118, 29485), (139, 29563), (141, 29575), (146, 29608), (152, 29635), (157, 29659), (172, 29716), (180, 29737), (181, 29743),

Gene: OtsoOtso_51 Start: 27134, Stop: 27601, Start Num: 38

Candidate Starts for OtsoOtso_51:

(22, 27077), (Start: 38 @27134 has 29 MA's), (Start: 54 @27170 has 1 MA's), (72, 27230), (95, 27281), (98, 27296), (101, 27299), (118, 27332), (139, 27410), (141, 27422), (152, 27482), (157, 27506), (170, 27557), (172, 27563), (180, 27584), (181, 27590),

Gene: ParkTD_214 Start: 120548, Stop: 121003, Start Num: 44

Candidate Starts for ParkTD_214:

(14, 120434), (28, 120497), (Start: 33 @120515 has 2 MA's), (Start: 44 @120548 has 172 MA's), (Start: 54 @120566 has 1 MA's), (98, 120698), (106, 120716), (129, 120776), (152, 120884), (157, 120908), (174, 120971), (177, 120977),

Gene: Patter_216 Start: 119562, Stop: 120017, Start Num: 44

Candidate Starts for Patter_216:

(14, 119448), (28, 119511), (Start: 33 @119529 has 2 MA's), (Start: 44 @119562 has 172 MA's), (Start: 54 @119580 has 1 MA's), (98, 119712), (106, 119730), (129, 119790), (152, 119898), (157, 119922), (174, 119985), (177, 119991),

Gene: Pelletreau_52 Start: 29743, Stop: 30210, Start Num: 38

Candidate Starts for Pelletreau_52:

(Start: 38 @29743 has 29 MA's), (Start: 54 @29779 has 1 MA's), (72, 29839), (98, 29905), (118, 29941), (123, 29959), (139, 30019), (146, 30064), (152, 30091), (157, 30115), (159, 30121), (172, 30172), (181, 30199),

Gene: Persistence_79 Start: 45632, Stop: 46033, Start Num: 51

Candidate Starts for Persistence_79:

(42, 45617), (Start: 51 @45632 has 1 MA's), (83, 45707), (88, 45716), (168, 45992),

Gene: Phlegm_219 Start: 120251, Stop: 120706, Start Num: 44

Candidate Starts for Phlegm_219:

(14, 120137), (28, 120200), (Start: 33 @120218 has 2 MA's), (Start: 44 @120251 has 172 MA's), (Start: 54 @120269 has 1 MA's), (98, 120401), (106, 120419), (129, 120479), (152, 120587), (157, 120611), (174, 120674), (177, 120680),

Gene: PhluffyCoco_45 Start: 28438, Stop: 28911, Start Num: 38

Candidate Starts for PhluffyCoco_45:

(Start: 38 @28438 has 29 MA's), (Start: 54 @28474 has 1 MA's), (78, 28555), (91, 28579), (118, 28639), (123, 28657), (146, 28765), (148, 28777), (172, 28873),

Gene: Phox_216 Start: 120213, Stop: 120668, Start Num: 44

Candidate Starts for Phox_216:

(14, 120099), (28, 120162), (Start: 33 @120180 has 2 MA's), (Start: 44 @120213 has 172 MA's), (Start: 54 @120231 has 1 MA's), (98, 120363), (106, 120381), (129, 120441), (152, 120549), (157, 120573), (174, 120636), (177, 120642),

Gene: Phrank15_92 Start: 49189, Stop: 49614, Start Num: 61

Candidate Starts for Phrank15_92:

(Start: 61 @49189 has 17 MA's), (Start: 64 @49201 has 2 MA's), (69, 49216), (82, 49246), (86, 49252), (96, 49276), (127, 49366), (132, 49384), (141, 49423), (143, 49435), (176, 49579),

Gene: Phusco_213 Start: 119083, Stop: 119538, Start Num: 44

Candidate Starts for Phusco_213:

(14, 118969), (28, 119032), (Start: 33 @119050 has 2 MA's), (Start: 44 @119083 has 172 MA's), (Start: 54 @119101 has 1 MA's), (98, 119233), (106, 119251), (129, 119311), (152, 119419), (157, 119443), (174, 119506), (177, 119512),

Gene: Pier_216 Start: 121090, Stop: 121545, Start Num: 44

Candidate Starts for Pier_216:

(14, 120976), (28, 121039), (Start: 33 @121057 has 2 MA's), (Start: 44 @121090 has 172 MA's), (Start: 54 @121108 has 1 MA's), (98, 121240), (106, 121258), (129, 121318), (152, 121426), (157, 121450), (174, 121513), (177, 121519),

Gene: Pigu_64 Start: 34020, Stop: 34448, Start Num: 42

Candidate Starts for Pigu_64:

(6, 33813), (42, 34020), (Start: 51 @34035 has 1 MA's), (88, 34131), (125, 34221), (168, 34407),

Gene: Pinkcreek_199 Start: 118466, Stop: 118921, Start Num: 44

Candidate Starts for Pinkcreek_199:

(14, 118352), (28, 118415), (Start: 33 @118433 has 2 MA's), (Start: 44 @118466 has 172 MA's), (Start: 54 @118484 has 1 MA's), (98, 118616), (106, 118634), (129, 118694), (152, 118802), (157, 118826), (174, 118889), (177, 118895),

Gene: Pio_223 Start: 122282, Stop: 122737, Start Num: 44

Candidate Starts for Pio_223:

(14, 122168), (28, 122231), (Start: 33 @122249 has 2 MA's), (Start: 44 @122282 has 172 MA's), (Start: 54 @122300 has 1 MA's), (98, 122432), (106, 122450), (129, 122510), (152, 122618), (157, 122642), (174, 122705), (177, 122711),

Gene: Pivoine_216 Start: 120251, Stop: 120706, Start Num: 44

Candidate Starts for Pivoine_216:

(14, 120137), (28, 120200), (Start: 33 @120218 has 2 MA's), (Start: 44 @120251 has 172 MA's), (Start: 54 @120269 has 1 MA's), (98, 120401), (106, 120419), (129, 120479), (152, 120587), (157, 120611), (174, 120674), (177, 120680),

Gene: Pleione_219 Start: 121026, Stop: 121481, Start Num: 44

Candidate Starts for Pleione_219:

(14, 120912), (28, 120975), (Start: 33 @120993 has 2 MA's), (Start: 44 @121026 has 172 MA's), (Start: 54 @121044 has 1 MA's), (98, 121176), (106, 121194), (129, 121254), (152, 121362), (157, 121386), (174, 121449), (177, 121455),

Gene: Polka_43 Start: 27134, Stop: 27601, Start Num: 38

Candidate Starts for Polka_43:

(22, 27077), (Start: 38 @27134 has 29 MA's), (Start: 54 @27170 has 1 MA's), (72, 27230), (95, 27281), (98, 27296), (101, 27299), (118, 27332), (139, 27410), (141, 27422), (152, 27482), (157, 27506), (170, 27557), (172, 27563), (180, 27584), (181, 27590),

Gene: Primadonna_210 Start: 119912, Stop: 120367, Start Num: 44

Candidate Starts for Primadonna_210:

(14, 119798), (28, 119861), (Start: 33 @119879 has 2 MA's), (Start: 44 @119912 has 172 MA's), (Start: 54 @119930 has 1 MA's), (98, 120062), (106, 120080), (129, 120140), (152, 120248), (157, 120272), (174, 120335), (177, 120341),

Gene: PurduePete_215 Start: 121254, Stop: 121709, Start Num: 44

Candidate Starts for PurduePete_215:

(14, 121140), (28, 121203), (Start: 33 @121221 has 2 MA's), (Start: 44 @121254 has 172 MA's), (Start: 54 @121272 has 1 MA's), (98, 121404), (106, 121422), (129, 121482), (152, 121590), (157, 121614), (174, 121677), (177, 121683),

Gene: Purky_56 Start: 37685, Stop: 38155, Start Num: 30

Candidate Starts for Purky_56:

(Start: 30 @37685 has 2 MA's), (Start: 54 @37736 has 1 MA's), (65, 37775), (76, 37805), (106, 37883), (128, 37934), (148, 38033), (152, 38045), (153, 38048), (159, 38075), (172, 38126), (174, 38132), (178, 38141),

Gene: QBert_207 Start: 118614, Stop: 119069, Start Num: 44

Candidate Starts for QBert_207:

(14, 118500), (28, 118563), (Start: 33 @118581 has 2 MA's), (Start: 44 @118614 has 172 MA's), (Start: 54 @118632 has 1 MA's), (98, 118764), (106, 118782), (129, 118842), (152, 118950), (157, 118974), (174, 119037), (177, 119043),

Gene: Quasimodo_217 Start: 119884, Stop: 120339, Start Num: 44

Candidate Starts for Quasimodo_217:

(14, 119770), (28, 119833), (Start: 33 @119851 has 2 MA's), (Start: 44 @119884 has 172 MA's), (Start: 54 @119902 has 1 MA's), (98, 120034), (106, 120052), (129, 120112), (152, 120220), (157, 120244), (174, 120307), (177, 120313),

Gene: Rabbitrun_79 Start: 48496, Stop: 48996, Start Num: 40

Candidate Starts for Rabbitrun_79:

(37, 48490), (Start: 40 @48496 has 4 MA's), (48, 48505), (Start: 54 @48511 has 1 MA's), (70, 48553), (92, 48598), (100, 48625), (122, 48667), (128, 48688), (129, 48691), (134, 48709), (156, 48820), (157, 48823), (159, 48829), (161, 48835), (162, 48838), (174, 48886), (187, 48964),

Gene: Rabinovish_208 Start: 120159, Stop: 120614, Start Num: 44

Candidate Starts for Rabinovish_208:

(14, 120045), (28, 120108), (Start: 33 @120126 has 2 MA's), (Start: 44 @120159 has 172 MA's), (Start: 54 @120177 has 1 MA's), (98, 120309), (106, 120327), (129, 120387), (152, 120495), (157, 120519), (174, 120582), (177, 120588),

Gene: RadFad_91 Start: 48709, Stop: 49134, Start Num: 61

Candidate Starts for RadFad_91:

(Start: 49 @48679 has 3 MA's), (Start: 61 @48709 has 17 MA's), (Start: 64 @48721 has 2 MA's), (69, 48736), (82, 48766), (86, 48772), (96, 48796), (114, 48844), (127, 48886), (143, 48955), (176, 49099),

Gene: Rahel_216 Start: 119986, Stop: 120441, Start Num: 44

Candidate Starts for Rahel_216:

(14, 119872), (28, 119935), (Start: 33 @119953 has 2 MA's), (Start: 44 @119986 has 172 MA's), (Start: 54 @120004 has 1 MA's), (98, 120136), (106, 120154), (129, 120214), (152, 120322), (157, 120346), (174, 120409), (177, 120415),

Gene: Raphaella_86 Start: 47326, Stop: 47757, Start Num: 61

Candidate Starts for Raphaella_86:

(Start: 49 @47296 has 3 MA's), (Start: 61 @47326 has 17 MA's), (Start: 64 @47338 has 2 MA's), (69, 47353), (82, 47383), (86, 47389), (96, 47413), (114, 47461), (143, 47572), (176, 47716),

Gene: Raqqa_86 Start: 48107, Stop: 48511, Start Num: 63

Candidate Starts for Raqqa_86:

(17, 47966), (Start: 63 @48107 has 3 MA's), (86, 48164), (94, 48182), (96, 48188), (127, 48278), (132, 48296), (148, 48380), (164, 48431), (176, 48476),

Gene: Rattail_45 Start: 28560, Stop: 28997, Start Num: 54

Candidate Starts for Rattail_45:

(Start: 38 @28524 has 29 MA's), (Start: 54 @28560 has 1 MA's), (78, 28641), (91, 28665), (118, 28725), (123, 28743), (146, 28851), (148, 28863), (172, 28959),

Gene: RedFox_45 Start: 28437, Stop: 28910, Start Num: 38

Candidate Starts for RedFox_45:

(Start: 38 @28437 has 29 MA's), (Start: 54 @28473 has 1 MA's), (78, 28554), (91, 28578), (118, 28638), (123, 28656), (146, 28764), (148, 28776), (172, 28872),

Gene: Renna12_44 Start: 28294, Stop: 28767, Start Num: 38

Candidate Starts for Renna12_44:

(Start: 38 @28294 has 29 MA's), (Start: 54 @28330 has 1 MA's), (78, 28411), (91, 28435), (118, 28495), (123, 28513), (143, 28600), (146, 28621), (148, 28633), (172, 28729),

Gene: Richie_89 Start: 49559, Stop: 49984, Start Num: 61

Candidate Starts for Richie_89:

(Start: 49 @49529 has 3 MA's), (Start: 61 @49559 has 17 MA's), (Start: 64 @49571 has 2 MA's), (69, 49586), (82, 49616), (86, 49622), (96, 49646), (127, 49736), (176, 49949),

Gene: Rizal_207 Start: 118504, Stop: 118959, Start Num: 44

Candidate Starts for Rizal_207:

(14, 118390), (28, 118453), (Start: 33 @118471 has 2 MA's), (Start: 44 @118504 has 172 MA's), (Start: 54 @118522 has 1 MA's), (98, 118654), (106, 118672), (129, 118732), (152, 118840), (157, 118864), (174, 118927), (177, 118933),

Gene: RoMag_210 Start: 120297, Stop: 120752, Start Num: 44

Candidate Starts for RoMag_210:

(14, 120183), (28, 120246), (Start: 33 @120264 has 2 MA's), (Start: 44 @120297 has 172 MA's), (Start: 54 @120315 has 1 MA's), (98, 120447), (106, 120465), (129, 120525), (152, 120633), (157, 120657), (174, 120720), (177, 120726),

Gene: Ronan_211 Start: 118689, Stop: 119144, Start Num: 44

Candidate Starts for Ronan_211:

(14, 118575), (28, 118638), (Start: 33 @118656 has 2 MA's), (Start: 44 @118689 has 172 MA's), (Start: 54 @118707 has 1 MA's), (98, 118839), (106, 118857), (129, 118917), (152, 119025), (157, 119049), (174, 119112), (177, 119118),

Gene: Roots515_217 Start: 121805, Stop: 122260, Start Num: 44

Candidate Starts for Roots515_217:

(14, 121691), (28, 121754), (Start: 33 @121772 has 2 MA's), (Start: 44 @121805 has 172 MA's), (Start: 54 @121823 has 1 MA's), (98, 121955), (106, 121973), (129, 122033), (152, 122141), (157, 122165), (174, 122228), (177, 122234),

Gene: Ruchi_41 Start: 28118, Stop: 28588, Start Num: 38

Candidate Starts for Ruchi_41:

(Start: 38 @28118 has 29 MA's), (Start: 54 @28154 has 1 MA's), (56, 28160), (91, 28256), (105, 28295), (118, 28316), (123, 28334), (133, 28370), (152, 28469), (157, 28493), (163, 28511), (174, 28556), (181, 28577),

Gene: SVoro_212 Start: 120599, Stop: 121054, Start Num: 44

Candidate Starts for SVoro_212:

(14, 120485), (28, 120548), (Start: 33 @120566 has 2 MA's), (Start: 44 @120599 has 172 MA's), (Start: 54 @120617 has 1 MA's), (98, 120749), (106, 120767), (129, 120827), (152, 120935), (157, 120959), (174, 121022), (177, 121028),

Gene: Sakai_82 Start: 47520, Stop: 47945, Start Num: 61

Candidate Starts for Sakai_82:

(Start: 61 @47520 has 17 MA's), (Start: 64 @47532 has 2 MA's), (69, 47547), (82, 47577), (86, 47583), (144, 47775), (146, 47787), (176, 47910),

Gene: Salacia_215 Start: 120389, Stop: 120844, Start Num: 44

Candidate Starts for Salacia_215:

(14, 120275), (28, 120338), (Start: 33 @120356 has 2 MA's), (Start: 44 @120389 has 172 MA's), (Start: 54 @120407 has 1 MA's), (98, 120539), (106, 120557), (129, 120617), (152, 120725), (157, 120749), (174, 120812), (177, 120818),

Gene: Sarge_59 Start: 33281, Stop: 33694, Start Num: 50

Candidate Starts for Sarge_59:

(Start: 43 @33269 has 4 MA's), (Start: 50 @33281 has 3 MA's), (88, 33377), (125, 33467), (168, 33653),

Gene: Sauce_211 Start: 119212, Stop: 119667, Start Num: 44

Candidate Starts for Sauce_211:

(1, 118693), (14, 119098), (28, 119161), (Start: 33 @119179 has 2 MA's), (Start: 44 @119212 has 172 MA's), (Start: 54 @119230 has 1 MA's), (98, 119362), (106, 119380), (129, 119440), (152, 119548), (157, 119572), (174, 119635), (177, 119641),

Gene: Scotia_51 Start: 37733, Stop: 38152, Start Num: 52

Candidate Starts for Scotia_51:

(52, 37733), (88, 37826), (131, 37934),

Gene: ScottMcG_209 Start: 119282, Stop: 119737, Start Num: 44

Candidate Starts for ScottMcG_209:

(14, 119168), (28, 119231), (Start: 33 @119249 has 2 MA's), (Start: 44 @119282 has 172 MA's), (Start: 54 @119300 has 1 MA's), (98, 119432), (106, 119450), (129, 119510), (152, 119618), (157,

119642), (174, 119705), (177, 119711),

Gene: Seahorse_92 Start: 52725, Stop: 53156, Start Num: 61

Candidate Starts for Seahorse_92:

(25, 52620), (Start: 61 @52725 has 17 MA's), (Start: 64 @52737 has 2 MA's), (69, 52752), (82, 52782), (86, 52788), (96, 52812), (176, 53115),

Gene: Sebata_216 Start: 120719, Stop: 121174, Start Num: 44

Candidate Starts for Sebata_216:

(14, 120605), (28, 120668), (Start: 33 @120686 has 2 MA's), (Start: 44 @120719 has 172 MA's), (Start: 54 @120737 has 1 MA's), (98, 120869), (106, 120887), (129, 120947), (152, 121055), (157, 121079), (174, 121142), (177, 121148),

Gene: Sejanus_66 Start: 51688, Stop: 52152, Start Num: 30

Candidate Starts for Sejanus_66:

(Start: 30 @51688 has 2 MA's), (Start: 54 @51739 has 1 MA's), (65, 51778), (76, 51808), (106, 51886), (128, 51937), (148, 52036), (152, 52048), (153, 52051), (159, 52078), (172, 52129), (178, 52144),

Gene: Sephiroth_83 Start: 50078, Stop: 50476, Start Num: 43

Candidate Starts for Sephiroth_83:

(Start: 43 @50078 has 4 MA's), (48, 50090), (Start: 54 @50096 has 1 MA's), (77, 50150), (102, 50204), (114, 50231), (129, 50267), (134, 50285), (143, 50327), (144, 50336), (146, 50348), (170, 50447),

Gene: Shaqnato_206 Start: 119420, Stop: 119875, Start Num: 44

Candidate Starts for Shaqnato_206:

(14, 119306), (28, 119369), (Start: 33 @119387 has 2 MA's), (Start: 44 @119420 has 172 MA's), (Start: 54 @119438 has 1 MA's), (98, 119570), (106, 119588), (129, 119648), (152, 119756), (157, 119780), (174, 119843), (177, 119849),

Gene: Shelob_216 Start: 122160, Stop: 122615, Start Num: 44

Candidate Starts for Shelob_216:

(14, 122046), (28, 122109), (Start: 33 @122127 has 2 MA's), (Start: 44 @122160 has 172 MA's), (Start: 54 @122178 has 1 MA's), (98, 122310), (106, 122328), (129, 122388), (152, 122496), (157, 122520), (174, 122583), (177, 122589),

Gene: ShiaLabeouf_212 Start: 119194, Stop: 119649, Start Num: 44

Candidate Starts for ShiaLabeouf_212:

(14, 119080), (28, 119143), (Start: 33 @119161 has 2 MA's), (Start: 44 @119194 has 172 MA's), (Start: 54 @119212 has 1 MA's), (98, 119344), (106, 119362), (129, 119422), (152, 119530), (157, 119554), (174, 119617), (177, 119623),

Gene: Shifa_192 Start: 118778, Stop: 119233, Start Num: 44

Candidate Starts for Shifa_192:

(14, 118664), (28, 118727), (Start: 33 @118745 has 2 MA's), (Start: 44 @118778 has 172 MA's), (Start: 54 @118796 has 1 MA's), (98, 118928), (106, 118946), (129, 119006), (152, 119114), (157, 119138), (174, 119201), (177, 119207),

Gene: Shnickers_213 Start: 119258, Stop: 119713, Start Num: 44

Candidate Starts for Shnickers_213:

(14, 119144), (28, 119207), (Start: 33 @119225 has 2 MA's), (Start: 44 @119258 has 172 MA's), (Start: 54 @119276 has 1 MA's), (98, 119408), (106, 119426), (129, 119486), (152, 119594), (157, 119618), (174, 119681), (177, 119687),

Gene: Shoya_62 Start: 35352, Stop: 35765, Start Num: 50

Candidate Starts for Shoya_62:

(26, 35286), (Start: 50 @35352 has 3 MA's), (88, 35448), (125, 35538), (157, 35688),

Gene: Shrimp_217 Start: 121315, Stop: 121770, Start Num: 44

Candidate Starts for Shrimp_217:

(14, 121201), (28, 121264), (Start: 33 @121282 has 2 MA's), (Start: 44 @121315 has 172 MA's), (Start: 54 @121333 has 1 MA's), (98, 121465), (106, 121483), (129, 121543), (152, 121651), (157, 121675), (174, 121738), (177, 121744),

Gene: Shukran_82 Start: 46326, Stop: 46727, Start Num: 51

Candidate Starts for Shukran_82:

(42, 46311), (Start: 51 @46326 has 1 MA's), (76, 46386), (83, 46401), (88, 46410), (99, 46443), (168, 46686),

Gene: SilverDipper_219 Start: 120807, Stop: 121262, Start Num: 44

Candidate Starts for SilverDipper_219:

(14, 120693), (28, 120756), (Start: 33 @120774 has 2 MA's), (Start: 44 @120807 has 172 MA's), (Start: 54 @120825 has 1 MA's), (98, 120957), (106, 120975), (129, 121035), (152, 121143), (157, 121167), (174, 121230), (177, 121236),

Gene: SmallFry_215 Start: 119352, Stop: 119807, Start Num: 44

Candidate Starts for SmallFry_215:

(14, 119238), (28, 119301), (Start: 33 @119319 has 2 MA's), (Start: 44 @119352 has 172 MA's), (Start: 54 @119370 has 1 MA's), (98, 119502), (106, 119520), (129, 119580), (152, 119688), (157, 119712), (174, 119775), (177, 119781),

Gene: Sonali_52 Start: 41017, Stop: 41565, Start Num: 19

Candidate Starts for Sonali_52:

(Start: 19 @41017 has 1 MA's), (Start: 30 @41059 has 2 MA's), (72, 41170), (81, 41191), (116, 41260), (157, 41446),

Gene: Spec_210 Start: 119543, Stop: 119998, Start Num: 44

Candidate Starts for Spec_210:

(14, 119429), (20, 119459), (28, 119492), (Start: 33 @119510 has 2 MA's), (Start: 44 @119543 has 172 MA's), (Start: 54 @119561 has 1 MA's), (98, 119693), (106, 119711), (129, 119771), (152, 119879), (157, 119903), (174, 119966), (177, 119972),

Gene: Specks_219 Start: 120668, Stop: 121123, Start Num: 44

Candidate Starts for Specks_219:

(14, 120554), (28, 120617), (Start: 33 @120635 has 2 MA's), (Start: 44 @120668 has 172 MA's), (Start: 54 @120686 has 1 MA's), (98, 120818), (106, 120836), (129, 120896), (152, 121004), (157, 121028), (174, 121091), (177, 121097),

Gene: SpicyFrank_87 Start: 47815, Stop: 48240, Start Num: 61

Candidate Starts for SpicyFrank_87:

(Start: 61 @47815 has 17 MA's), (Start: 64 @47827 has 2 MA's), (69, 47842), (82, 47872), (86, 47878), (96, 47902), (122, 47974), (127, 47992), (176, 48205),

Gene: Splinter_57 Start: 38151, Stop: 38588, Start Num: 32

Candidate Starts for Splinter_57:

(Start: 32 @38151 has 5 MA's), (36, 38160), (Start: 38 @38163 has 29 MA's), (Start: 54 @38187 has 1 MA's), (77, 38241), (90, 38262), (122, 38343), (129, 38367), (140, 38412),

Gene: Sprinklers_213 Start: 119910, Stop: 120365, Start Num: 44

Candidate Starts for Sprinklers_213:

(14, 119796), (28, 119859), (Start: 33 @119877 has 2 MA's), (Start: 44 @119910 has 172 MA's), (Start: 54 @119928 has 1 MA's), (98, 120060), (106, 120078), (129, 120138), (152, 120246), (157, 120270), (174, 120333), (177, 120339),

Gene: Spud_209 Start: 119622, Stop: 120077, Start Num: 44

Candidate Starts for Spud_209:

(14, 119508), (28, 119571), (Start: 33 @119589 has 2 MA's), (Start: 44 @119622 has 172 MA's), (Start: 54 @119640 has 1 MA's), (98, 119772), (106, 119790), (129, 119850), (152, 119958), (157, 119982), (174, 120045), (177, 120051),

Gene: Squiddly_91 Start: 53227, Stop: 53721, Start Num: 40

Candidate Starts for Squiddly_91:

(Start: 40 @53227 has 4 MA's), (73, 53281), (122, 53386), (128, 53407), (129, 53410), (140, 53455), (151, 53512), (156, 53536), (157, 53539), (159, 53545), (160, 53548), (174, 53602), (185, 53650),

Gene: SrishMeg2525_212 Start: 120786, Stop: 121241, Start Num: 44

Candidate Starts for SrishMeg2525_212:

(14, 120672), (28, 120735), (Start: 33 @120753 has 2 MA's), (Start: 44 @120786 has 172 MA's), (Start: 54 @120804 has 1 MA's), (98, 120936), (106, 120954), (129, 121014), (152, 121122), (157, 121146), (174, 121209), (177, 121215),

Gene: StephanieG_211 Start: 120820, Stop: 121275, Start Num: 44

Candidate Starts for StephanieG_211:

(14, 120706), (28, 120769), (Start: 33 @120787 has 2 MA's), (Start: 44 @120820 has 172 MA's), (Start: 54 @120838 has 1 MA's), (98, 120970), (106, 120988), (129, 121048), (152, 121156), (157, 121180), (174, 121243), (177, 121249),

Gene: StuartMinion_40 Start: 25394, Stop: 25864, Start Num: 38

Candidate Starts for StuartMinion_40:

(Start: 38 @25394 has 29 MA's), (Start: 54 @25430 has 1 MA's), (91, 25535), (98, 25559), (118, 25595), (120, 25604), (123, 25613), (141, 25685), (143, 25697), (146, 25718), (148, 25730), (158, 25772), (170, 25820), (173, 25829),

Gene: Stubby_199 Start: 118669, Stop: 119124, Start Num: 44

Candidate Starts for Stubby_199:

(14, 118555), (28, 118618), (Start: 33 @118636 has 2 MA's), (Start: 44 @118669 has 172 MA's), (Start: 54 @118687 has 1 MA's), (98, 118819), (106, 118837), (129, 118897), (152, 119005), (157, 119029), (174, 119092), (177, 119098),

Gene: StubbySaigey_220 Start: 120341, Stop: 120796, Start Num: 44

Candidate Starts for StubbySaigey_220:

(14, 120227), (28, 120290), (Start: 33 @120308 has 2 MA's), (Start: 44 @120341 has 172 MA's), (Start: 54 @120359 has 1 MA's), (98, 120491), (106, 120509), (129, 120569), (152, 120677), (157, 120701), (174, 120764), (177, 120770),

Gene: Sunshine23_54 Start: 40949, Stop: 41446, Start Num: 30

Candidate Starts for Sunshine23_54:

(Start: 19 @40907 has 1 MA's), (Start: 30 @40949 has 2 MA's), (72, 41060), (81, 41081), (116, 41150), (157, 41336),

Gene: Syleon_86 Start: 50016, Stop: 50414, Start Num: 43

Candidate Starts for Syleon_86:

(Start: 43 @50016 has 4 MA's), (48, 50028), (Start: 54 @50034 has 1 MA's), (77, 50088), (102, 50142), (114, 50169), (129, 50205), (134, 50223), (143, 50265), (144, 50274), (146, 50286), (170, 50385),

Gene: TZGordon_58 Start: 37043, Stop: 37483, Start Num: 32

Candidate Starts for TZGordon_58:

(Start: 32 @37043 has 5 MA's), (39, 37058), (Start: 54 @37082 has 1 MA's), (77, 37136), (122, 37238), (129, 37262), (140, 37307),

Gene: Tainan_216 Start: 119687, Stop: 120142, Start Num: 44

Candidate Starts for Tainan_216:

(14, 119573), (28, 119636), (Start: 33 @119654 has 2 MA's), (Start: 44 @119687 has 172 MA's), (Start: 54 @119705 has 1 MA's), (98, 119837), (106, 119855), (129, 119915), (152, 120023), (157, 120047), (174, 120110), (177, 120116),

Gene: TaylorSipht_43 Start: 28692, Stop: 29159, Start Num: 38

Candidate Starts for TaylorSipht_43:

(Start: 38 @28692 has 29 MA's), (41, 28704), (Start: 54 @28728 has 1 MA's), (91, 28830), (98, 28854), (118, 28890), (119, 28896), (123, 28908), (133, 28944), (138, 28968), (152, 29040), (157, 29064), (163, 29082), (167, 29097), (181, 29148),

Gene: Teardrop_212 Start: 118854, Stop: 119309, Start Num: 44

Candidate Starts for Teardrop_212:

(14, 118740), (28, 118803), (Start: 33 @118821 has 2 MA's), (Start: 44 @118854 has 172 MA's), (Start: 54 @118872 has 1 MA's), (98, 119004), (106, 119022), (129, 119082), (152, 119190), (157, 119214), (174, 119277), (177, 119283),

Gene: Teng_45 Start: 25920, Stop: 25498, Start Num: 49

Candidate Starts for Teng_45:

(21, 25998), (Start: 49 @25920 has 3 MA's), (76, 25854), (104, 25785), (110, 25773), (130, 25722), (132, 25713), (153, 25608),

Gene: ThayneTheZag_91 Start: 48711, Stop: 49115, Start Num: 63

Candidate Starts for ThayneTheZag_91:

(Start: 63 @48711 has 3 MA's), (69, 48732), (86, 48768), (96, 48792), (127, 48882), (132, 48900), (148, 48984), (164, 49035), (176, 49080),

Gene: Tiff81_81 Start: 46437, Stop: 46868, Start Num: 61

Candidate Starts for Tiff81_81:

(24, 46326), (58, 46428), (Start: 61 @46437 has 17 MA's), (Start: 64 @46449 has 2 MA's), (82, 46494), (86, 46500), (96, 46524), (176, 46827),

Gene: TinyTim_213 Start: 119635, Stop: 120090, Start Num: 44

Candidate Starts for TinyTim_213:

(14, 119521), (28, 119584), (Start: 33 @119602 has 2 MA's), (Start: 44 @119635 has 172 MA's), (Start: 54 @119653 has 1 MA's), (98, 119785), (106, 119803), (129, 119863), (152, 119971), (157, 119995), (174, 120058), (177, 120064),

Gene: Toad24_45 Start: 29983, Stop: 30450, Start Num: 38

Candidate Starts for Toad24_45:

(Start: 38 @29983 has 29 MA's), (Start: 54 @30019 has 1 MA's), (72, 30079), (98, 30145), (118, 30181), (123, 30199), (139, 30259), (152, 30331), (157, 30355), (159, 30361), (172, 30412), (180,

30433), (181, 30439),

Gene: Tonenili_237 Start: 125468, Stop: 125920, Start Num: 44

Candidate Starts for Tonenili_237:

(14, 125354), (28, 125417), (Start: 33 @125435 has 2 MA's), (34, 125438), (Start: 44 @125468 has 172 MA's), (Start: 54 @125486 has 1 MA's), (106, 125636), (129, 125696), (152, 125804), (157, 125828),

Gene: Tortoise16_213 Start: 120097, Stop: 120552, Start Num: 44

Candidate Starts for Tortoise16_213:

(14, 119983), (28, 120046), (Start: 33 @120064 has 2 MA's), (Start: 44 @120097 has 172 MA's), (Start: 54 @120115 has 1 MA's), (98, 120247), (106, 120265), (129, 120325), (152, 120433), (157, 120457), (174, 120520), (177, 120526),

Gene: Trax_79 Start: 49196, Stop: 49636, Start Num: 40

Candidate Starts for Trax_79:

(37, 49190), (Start: 40 @49196 has 4 MA's), (48, 49205), (92, 49298), (100, 49325), (122, 49367), (128, 49388), (129, 49391), (134, 49409), (143, 49454), (157, 49523), (159, 49529), (161, 49535), (162, 49538), (165, 49547), (174, 49586),

Gene: Trinitium_211 Start: 118389, Stop: 118844, Start Num: 44

Candidate Starts for Trinitium_211:

(14, 118275), (28, 118338), (Start: 33 @118356 has 2 MA's), (Start: 44 @118389 has 172 MA's), (Start: 54 @118407 has 1 MA's), (98, 118539), (106, 118557), (129, 118617), (152, 118725), (157, 118749), (174, 118812), (177, 118818),

Gene: TurkishDelight_64 Start: 53655, Stop: 54263, Start Num: 13

Candidate Starts for TurkishDelight_64:

(Start: 13 @53655 has 1 MA's), (47, 53787), (72, 53856), (74, 53859), (93, 53901), (119, 53967), (120, 53970), (142, 54060), (143, 54069), (162, 54159), (169, 54189), (171, 54198), (175, 54207),

Gene: Turret_208 Start: 117971, Stop: 118426, Start Num: 44

Candidate Starts for Turret_208:

(14, 117857), (28, 117920), (Start: 33 @117938 has 2 MA's), (Start: 44 @117971 has 172 MA's), (Start: 54 @117989 has 1 MA's), (98, 118121), (106, 118139), (129, 118199), (152, 118307), (157, 118331), (174, 118394), (177, 118400),

Gene: Tyke_213 Start: 121464, Stop: 121919, Start Num: 44

Candidate Starts for Tyke_213:

(14, 121350), (28, 121413), (Start: 33 @121431 has 2 MA's), (Start: 44 @121464 has 172 MA's), (Start: 54 @121482 has 1 MA's), (98, 121614), (106, 121632), (129, 121692), (152, 121800), (157, 121824), (174, 121887), (177, 121893),

Gene: ValleyTerrace_216 Start: 119548, Stop: 120003, Start Num: 44

Candidate Starts for ValleyTerrace_216:

(14, 119434), (28, 119497), (Start: 33 @119515 has 2 MA's), (Start: 44 @119548 has 172 MA's), (Start: 54 @119566 has 1 MA's), (98, 119698), (106, 119716), (129, 119776), (152, 119884), (157, 119908), (174, 119971), (177, 119977),

Gene: Vendetta_57 Start: 38151, Stop: 38588, Start Num: 32

Candidate Starts for Vendetta_57:

(Start: 32 @38151 has 5 MA's), (36, 38160), (Start: 38 @38163 has 29 MA's), (Start: 54 @38187 has 1 MA's), (77, 38241), (90, 38262), (122, 38343), (129, 38367), (140, 38412),

Gene: Vopal_87 Start: 49392, Stop: 49823, Start Num: 61

Candidate Starts for Vopal_87:

(Start: 49 @49362 has 3 MA's), (Start: 61 @49392 has 17 MA's), (Start: 64 @49404 has 2 MA's), (69, 49419), (82, 49449), (86, 49455), (96, 49479), (114, 49527), (143, 49638), (176, 49782),

Gene: Vulpecula_41 Start: 27795, Stop: 28265, Start Num: 38

Candidate Starts for Vulpecula_41:

(Start: 38 @27795 has 29 MA's), (Start: 54 @27831 has 1 MA's), (56, 27837), (91, 27933), (97, 27954), (105, 27972), (118, 27993), (123, 28011), (133, 28047), (152, 28146), (157, 28170), (163, 28188), (174, 28233), (181, 28254),

Gene: Wally_213 Start: 119532, Stop: 119987, Start Num: 44

Candidate Starts for Wally_213:

(14, 119418), (28, 119481), (Start: 33 @119499 has 2 MA's), (Start: 44 @119532 has 172 MA's), (Start: 54 @119550 has 1 MA's), (98, 119682), (106, 119700), (129, 119760), (152, 119868), (157, 119892), (174, 119955), (177, 119961),

Gene: Westrich_51 Start: 29667, Stop: 30134, Start Num: 38

Candidate Starts for Westrich_51:

(Start: 38 @29667 has 29 MA's), (Start: 54 @29703 has 1 MA's), (72, 29763), (98, 29829), (118, 29865), (123, 29883), (139, 29943), (146, 29988), (152, 30015), (157, 30039), (159, 30045), (172, 30096), (181, 30123),

Gene: WileyE_48 Start: 28813, Stop: 29241, Start Num: 56

Candidate Starts for WileyE_48:

(Start: 38 @28771 has 29 MA's), (Start: 54 @28807 has 1 MA's), (56, 28813), (91, 28909), (105, 28948), (118, 28969), (123, 28987), (133, 29023), (135, 29029), (143, 29074), (146, 29095), (157, 29146), (163, 29164), (174, 29209), (181, 29230),

Gene: Willis_216 Start: 120446, Stop: 120901, Start Num: 44

Candidate Starts for Willis_216:

(14, 120332), (28, 120395), (Start: 33 @120413 has 2 MA's), (Start: 44 @120446 has 172 MA's), (Start: 54 @120464 has 1 MA's), (98, 120596), (106, 120614), (129, 120674), (152, 120782), (157, 120806), (174, 120869), (177, 120875),

Gene: Windest_89 Start: 47044, Stop: 47469, Start Num: 61

Candidate Starts for Windest_89:

(Start: 49 @47014 has 3 MA's), (Start: 61 @47044 has 17 MA's), (Start: 64 @47056 has 2 MA's), (69, 47071), (82, 47101), (86, 47107), (96, 47131), (127, 47221), (176, 47434),

Gene: Wrackline_55 Start: 29872, Stop: 29441, Start Num: 51

Candidate Starts for Wrackline_55:

(23, 29953), (31, 29920), (45, 29881), (Start: 51 @29872 has 1 MA's), (Start: 53 @29869 has 1 MA's), (57, 29854), (68, 29824), (75, 29806), (80, 29788), (87, 29776), (113, 29716), (121, 29695), (125, 29680), (127, 29674), (144, 29593), (152, 29554), (157, 29530), (162, 29515), (179, 29455), (180, 29452),

Gene: Xavia_55 Start: 40820, Stop: 41251, Start Num: 33

Candidate Starts for Xavia_55:

(12, 40712), (Start: 33 @40820 has 2 MA's), (46, 40856), (47, 40859), (106, 40988), (112, 41003), (124, 41024), (143, 41102), (151, 41144), (156, 41168), (160, 41180), (170, 41222),

Gene: Yassified_212 Start: 119896, Stop: 120351, Start Num: 44

Candidate Starts for Yassified_212:

(1, 119377), (14, 119782), (28, 119845), (Start: 33 @119863 has 2 MA's), (Start: 44 @119896 has 172 MA's), (Start: 54 @119914 has 1 MA's), (98, 120046), (106, 120064), (129, 120124), (152, 120232), (157, 120256), (174, 120319), (177, 120325),

Gene: YemiJoy2021_216 Start: 121202, Stop: 121657, Start Num: 44

Candidate Starts for YemiJoy2021_216:

(14, 121088), (28, 121151), (Start: 33 @121169 has 2 MA's), (Start: 44 @121202 has 172 MA's), (Start: 54 @121220 has 1 MA's), (98, 121352), (106, 121370), (129, 121430), (152, 121538), (157, 121562), (174, 121625), (177, 121631),

Gene: YoungHarleezy_85 Start: 48839, Stop: 49270, Start Num: 61

Candidate Starts for YoungHarleezy_85:

(Start: 49 @48809 has 3 MA's), (Start: 61 @48839 has 17 MA's), (Start: 64 @48851 has 2 MA's), (69, 48866), (82, 48896), (86, 48902), (96, 48926), (176, 49229),

Gene: YoungMoneyMata_214 Start: 120016, Stop: 120471, Start Num: 44

Candidate Starts for YoungMoneyMata_214:

(14, 119902), (28, 119965), (Start: 33 @119983 has 2 MA's), (Start: 44 @120016 has 172 MA's), (Start: 54 @120034 has 1 MA's), (98, 120166), (106, 120184), (129, 120244), (152, 120352), (157, 120376), (174, 120439), (177, 120445),

Gene: Yucca_215 Start: 121194, Stop: 121649, Start Num: 44

Candidate Starts for Yucca_215:

(14, 121080), (28, 121143), (Start: 33 @121161 has 2 MA's), (Start: 44 @121194 has 172 MA's), (Start: 54 @121212 has 1 MA's), (98, 121344), (106, 121362), (129, 121422), (152, 121530), (157, 121554), (174, 121617), (177, 121623),

Gene: Zalkecks_214 Start: 120275, Stop: 120730, Start Num: 44

Candidate Starts for Zalkecks_214:

(14, 120161), (28, 120224), (Start: 33 @120242 has 2 MA's), (Start: 44 @120275 has 172 MA's), (Start: 54 @120293 has 1 MA's), (98, 120425), (106, 120443), (129, 120503), (152, 120611), (157, 120635), (174, 120698), (177, 120704),

Gene: Zeenon_217 Start: 120846, Stop: 121301, Start Num: 44

Candidate Starts for Zeenon_217:

(14, 120732), (28, 120795), (Start: 33 @120813 has 2 MA's), (Start: 44 @120846 has 172 MA's), (Start: 54 @120864 has 1 MA's), (98, 120996), (106, 121014), (129, 121074), (152, 121182), (157, 121206), (174, 121269), (177, 121275),

Gene: Zhuangyuan_50 Start: 28900, Stop: 29361, Start Num: 38

Candidate Starts for Zhuangyuan_50:

(Start: 38 @28900 has 29 MA's), (Start: 54 @28936 has 1 MA's), (71, 28993), (91, 29041), (98, 29065), (118, 29107), (146, 29227), (158, 29281), (159, 29284), (174, 29341), (178, 29350),

Gene: Zucker_84 Start: 49086, Stop: 49490, Start Num: 63

Candidate Starts for Zucker_84:

(5, 48822), (6, 48828), (7, 48840), (27, 48981), (Start: 63 @49086 has 3 MA's), (82, 49137), (86, 49143), (94, 49161), (96, 49167), (127, 49257), (132, 49275), (148, 49359), (164, 49410), (176, 49455),

Gene: ZygoTaiga_212 Start: 121466, Stop: 121921, Start Num: 44

Candidate Starts for ZygoTaiga_212:

(14, 121352), (28, 121415), (Start: 33 @121433 has 2 MA's), (Start: 44 @121466 has 172 MA's),
(Start: 54 @121484 has 1 MA's), (98, 121616), (106, 121634), (129, 121694), (152, 121802), (157,
121826), (174, 121889), (177, 121895),