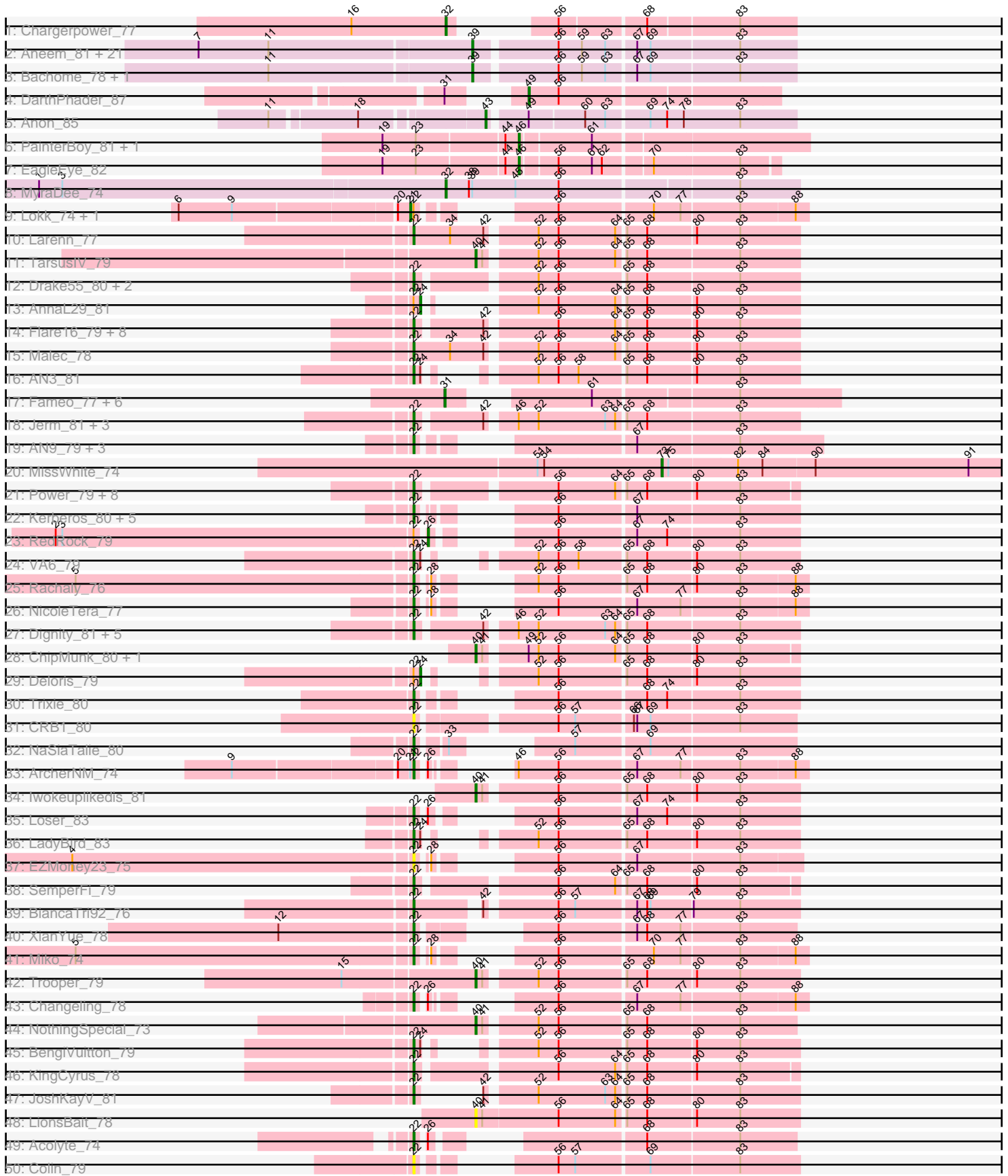
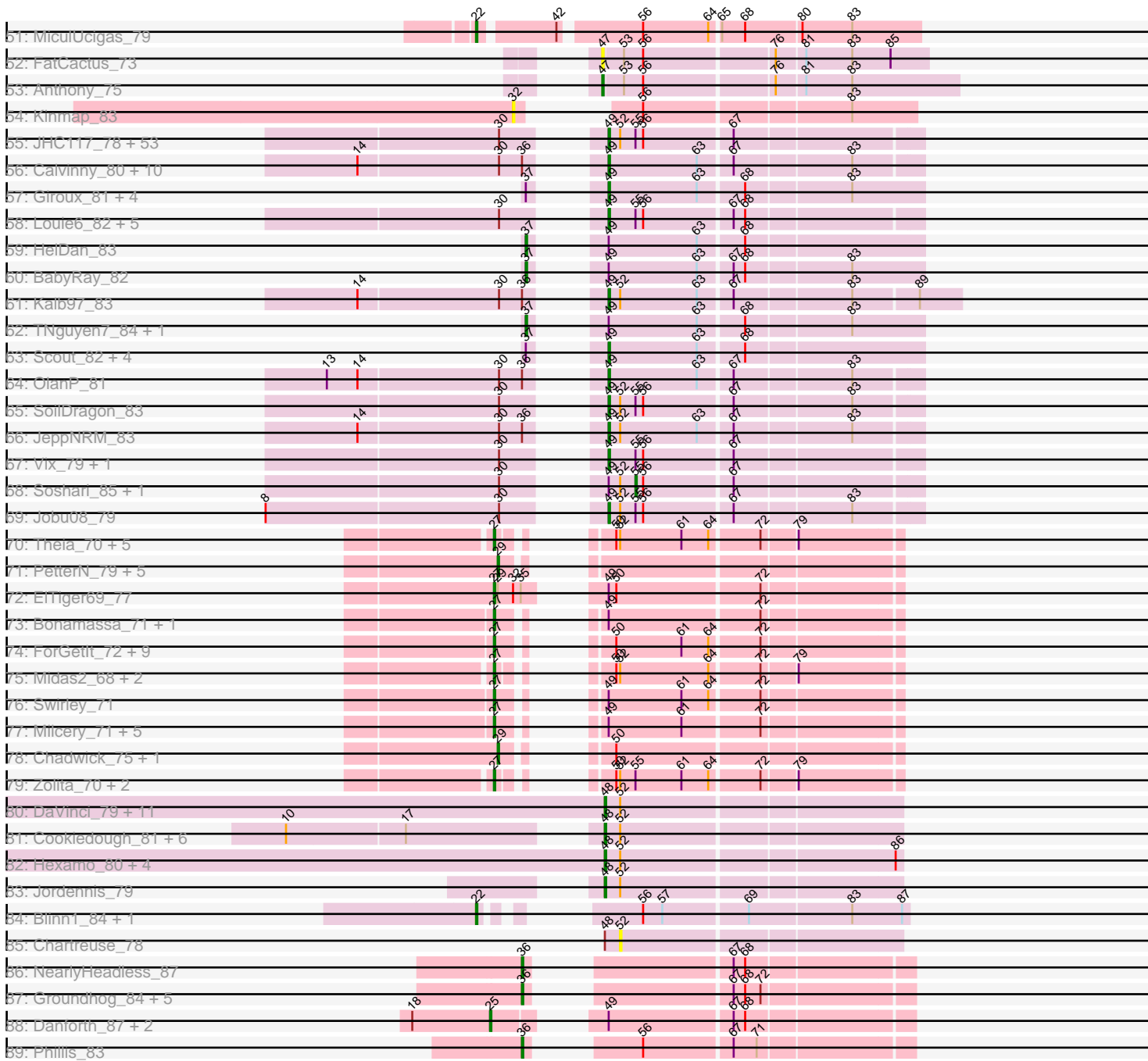


Pham 224227



Pham 224227



Note: Tracks are now grouped by subcluster and scaled. Switching in subcluster is indicated by changes in track color. Track scale is now set by default to display the region 30 bp upstream of start 1 to 30 bp downstream of the last possible start. If this default region is judged to be packed too tightly with annotated starts, the track will be further scaled to only show that region of the ORF with annotated starts. This action will be indicated by adding "Zoomed" to the title. For starts, yellow indicates the location of called starts comprised solely of Glimmer/GeneMark auto-annotations, green indicates the location of called starts with at least 1 manual gene annotation.

Pham 224227 Report

This analysis was run 03/28/25 on database version 593.

Pham number 224227 has 292 members, 26 are drafts.

Phages represented in each track:

- Track 1 : Chargerpower_77
- Track 2 : Aneem_81, Mabel_80, Lucivia_81, Orange_80, Sham4_76, MaCh_80, Fibonacci_79, Bud_75, Et2Brutus_79, Gilberta_77, Timothy_80, Snape_80, TinyTimmy_79, Joselito_79, Petersenfast_74, Salz_75, Hutc2_76, Insomnia_79, Munch_80, Flaverint_81, Mulciber_78, Jabith_79
- Track 3 : Bachome_78, Ebony_80
- Track 4 : DarthPhader_87
- Track 5 : Anon_85
- Track 6 : PainterBoy_81, Lucyedi_81
- Track 7 : EagleEye_82
- Track 8 : MyraDee_74
- Track 9 : Loka_74, BobSwaget_73
- Track 10 : Larenn_77
- Track 11 : TarsusIV_79
- Track 12 : Drake55_80, Piro94_78, HarryHoudini_79
- Track 13 : AnnaL29_81
- Track 14 : Flare16_79, Centaur_79, Equemioh13_79, Baehexic_78, WideWale_80, Gratitude_77, Updawg_80, Terrific_80, Sknot_79
- Track 15 : Malec_78
- Track 16 : AN3_81
- Track 17 : Fameo_77, Anselm_80, QueenB2_76, Heffalump_76, Dalmatian_79, DudeLittle_77, Retro23_79
- Track 18 : Jerm_81, Agape74_81, Buggy_81, LilTurb_80
- Track 19 : AN9_79, VC3_78, ANI8_79, C3_72
- Track 20 : MissWhite_74
- Track 21 : Power_79, SnapTap_79, FiringLine_79, Georgie2_81, First_0080, 20ES_81, SweetiePie_79, Crucio_79, QueenBeesly_79
- Track 22 : Kerberos_80, DBQu4n_80, Travvers_80, Tomathan_80, StarStuff_80, Pomar16_80
- Track 23 : RedRock_79
- Track 24 : VA6_79
- Track 25 : Rachaly_76
- Track 26 : NicoleTera_77
- Track 27 : Dignity_81, Leviathan_81, Turbido_80, Whabigail7_79, AbbyPaige_81, Smeagan_82
- Track 28 : ChipMunk_80, EvilGenius_79
- Track 29 : Deloris_79

- Track 30 : Trixie_80
- Track 31 : CRB1_80
- Track 32 : NaSiaTalie_80
- Track 33 : ArcherNM_74
- Track 34 : Iwokeuplikedis_81
- Track 35 : Loser_83
- Track 36 : LadyBird_83
- Track 37 : EZMoney23_75
- Track 38 : SemperFi_79
- Track 39 : BiancaTri92_76
- Track 40 : XianYue_78
- Track 41 : Miko_74
- Track 42 : Trooper_79
- Track 43 : Changeling_78
- Track 44 : NothingSpecial_73
- Track 45 : BengiVuitton_79
- Track 46 : KingCyrus_78
- Track 47 : JoshKayV_81
- Track 48 : LionsBait_78
- Track 49 : Acolyte_74
- Track 50 : Colin_79
- Track 51 : MiculUcigas_79
- Track 52 : FatCactus_73
- Track 53 : Anthony_75
- Track 54 : Kinmap_83
- Track 55 : JHC117_78, HashRod_84, LugYA_86, Grum1_83, Snickers_79, Mainiac_82, Grub_81, Aglet_84, Malinsilva_86, Methuselah_76, Bigflo_80, Beauxregard13_82, Cullens_84, Penny1_83, Grif_81, Marie_81, Sabinator_81, EpicPhail_84, JenCasNa_84, Stagni_80, LarryKay_83, Lilith_81, Sabia_81, Farber_83, Wooldri_85, PGHhamlin_85, PotatoSplit_84, MarQuardt_83, Pembroke_83, Phoxy_83, AugsMagnumOpus_86, Spike509_83, Microwolf_79, SoYo_80, MuchMore_86, Ollie_83, MadMarie_81, Hercules11_83, Taurus_84, Watson_82, Lowa_80, MoneyMay_83, GingkoMaracino_83, BreSam8_83, Tiffany_82, Colbster_79, P28Green_83, DaHudson_82, Fernando_84, GtownJaz_83, Rummer_82, Dieselweasel_84, Phoebe_84, LBerry_84
- Track 56 : Calvinny_80, Gemma_80, Groupthink_83, PhishRPhriends_79, Kalnok_83, Reba_78, Pawn_81, Manu_82, Marius_83, HaveUMetTed_83, Heliosoles_80
- Track 57 : Giroux_81, Pistachio_83, SaturnRing_84, BlueBird_85, Bugatti_84
- Track 58 : Louie6_82, Bxz2_78, KADY_80, BuzzBuzz_77, TinyPebbles_79, Daishi_82
- Track 59 : HelDan_83
- Track 60 : BabyRay_82
- Track 61 : Kalb97_83
- Track 62 : TNguyen7_84, Idleandcovert_83
- Track 63 : Scout_82, Puppy_84, Heathen_82, Fred313_80, Kachowdy_81
- Track 64 : OlanP_81
- Track 65 : SoilDragon_83
- Track 66 : JeppNRM_83
- Track 67 : Vix_79, Anubis_87
- Track 68 : Soshari_85, StepMih_83
- Track 69 : Jobu08_79

- Track 70 : Theia_70, Bluefalcon_67, Dublin_71, Archetta_69, Micasa_71, MarysWell_71
- Track 71 : PetterN_79, Benedict_75, Naca_74, Airmid_74, Jabiru_73, Scorpia_74
- Track 72 : EITiger69_77
- Track 73 : Bonamassa_71, HuhtaEnerson15_69
- Track 74 : ForGetIt_72, Tiger_70, PickleBack_72, Phlorence_70, Jovo_71, Conspiracy_72, AgentM_71, Lev2_72, Discoknowium_69, Aragog_71
- Track 75 : Midas2_68, Cuco_70, Coog_68
- Track 76 : Swirley_71
- Track 77 : Milcery_71, Prinash11_69, Tarynearal_70, Twigg_68, LittleCherry_70, George_66
- Track 78 : Chadwick_75, UnionJack_75
- Track 79 : Zolita_70, SydNat_71, Ghouboy_71
- Track 80 : DaVinci_79, McFly_81, Dorothea_81, Candra_79, EricB_80, SmellyB_81, SuperCallie99_78, BABullseye_74, VohminGhazi_81, Rifter_81, Kazan_82, Kipper29_81
- Track 81 : Cookiedough_81, Neeharika16_80, Isiphiwo_78, Hoot_76, Newrala_80, Pmask_80, SuperAwesome_81
- Track 82 : Hexamo_80, Hammer_81, Gruunaga_80, CloudWang3_81, Gladiator_77
- Track 83 : Jordennis_79
- Track 84 : Blinn1_84, Priamo_82
- Track 85 : Chartreuse_78
- Track 86 : NearlyHeadless_87
- Track 87 : Groundhog_84, Astro_86, Expelliarmus_83, Roary_88, Smeadley_86, Dixon_85
- Track 88 : Danforth_87, Saintus_82, Stephig9_85
- Track 89 : Phillis_83

Summary of Final Annotations (See graph section above for start numbers):

The start number called the most often in the published annotations is 49, it was called in 80 of the 266 non-draft genes in the pham.

Genes that call this "Most Annotated" start:

- Aglet_84, Anubis_87, AugsMagnumOpus_86, Beauxregard13_82, Bigflo_80, BlueBird_85, BreSam8_83, Bugatti_84, BuzzBuzz_77, Bxz2_78, Calvinny_80, Colbster_79, Cullens_84, DaHudson_82, Daishi_82, DarthPhader_87, Dieselweasel_84, EpicPhail_84, Farber_83, Fernando_84, Fred313_80, Gemma_80, GingkoMaracino_83, Giroux_81, Grif_81, Groupthink_83, Grub_81, Grum1_83, GtownJaz_83, HashRod_84, HaveUMetTed_83, Heathen_82, Heliosoles_80, Hercules11_83, JHC117_78, JenCasNa_84, JeppNRM_83, Jobu08_79, KADY_80, Kachowdy_81, Kalb97_83, Kalnoky_83, LBerry_84, LarryKay_83, Lilith_81, Louie6_82, Iowa_80, LugYA_86, MadMarie_81, Mainiac_82, Malinsilva_86, Manu_82, MarQuardt_83, Marie_81, Marius_83, Methuselah_76, Microwolf_79, MoneyMay_83, MuchMore_86, OlanP_81, Ollie_83, P28Green_83, PGHhamlin_85, Pawn_81, Pembroke_83, Penny1_83, PhishRPhriends_79, Phoebe_84, Phoxy_83, Pistachio_83, PotatoSplit_84, Puppy_84, Reba_78, Rummer_82, Sabia_81, Sabinator_81, SaturnRing_84, Scout_82, Snickers_79, SoYo_80, SoilDragon_83, Spike509_83, Stagni_80, Taurus_84, Tiffany_82, TinyPebbles_79, Vix_79, Watson_82, Wooldri_85,

Genes that have the "Most Annotated" start but do not call it:

- Anon_85, BabyRay_82, Bonamassa_71, ChipMunk_80, Danforth_87, EITiger69_77, EvilGenius_79, George_66, HelDan_83, HuhtaEnerson15_69, Idleandcovert_83, LittleCherry_70, Milcery_71, Prinasha11_69, Saintus_82, Soshari_85, StepMih_83, Stephig9_85, Swirley_71, TNguyen7_84, Tarynearal_70, Twigg_68,

Genes that do not have the "Most Annotated" start:

- 20ES_81, AN3_81, AN9_79, ANI8_79, AbbyPaige_81, Acolyte_74, Agape74_81, AgentM_71, Airmid_74, Aneem_81, AnnaL29_81, Anselm_80, Anthony_75, Aragog_71, ArcherNM_74, Archetta_69, Astro_86, BABullseye_74, Bachome_78, Baehexic_78, Benedict_75, BengiVuitton_79, BiancaTri92_76, Blinn1_84, Bluefalcon_67, BobSwaget_73, Bud_75, Buggy_81, C3_72, CRB1_80, Candra_79, Centaur_79, Chadwick_75, Changeling_78, Chargerpower_77, Chartreuse_78, CloudWang3_81, Colin_79, Conspiracy_72, Coog_68, Cookiedough_81, Crucio_79, Cuco_70, DBQu4n_80, DaVinci_79, Dalmatian_79, Deloris_79, Dignity_81, Discoknowium_69, Dixon_85, Dorothea_81, Drake55_80, Dublin_71, DudeLittle_77, EZMoney23_75, EagleEye_82, Ebony_80, Equemioh13_79, EricB_80, Et2Brutus_79, Expelliarmus_83, Fameo_77, FatCactus_73, Fibonacci_79, FiringLine_79, First_0080, Flare16_79, Flaverint_81, ForGetIt_72, Georgie2_81, Ghoulyboy_71, Gilberta_77, Gladiator_77, Gratitude_77, Groundhog_84, Gruunaga_80, Hammer_81, HarryHoudini_79, Heffalump_76, Hexamo_80, Hoot_76, Hutc2_76, Insomnia_79, Isiphiwo_78, Iwokeuplikedis_81, Jabiru_73, Jabith_79, Jerm_81, Jordennis_79, Joselito_79, JoshKayV_81, Jovo_71, Kazan_82, Kerberos_80, KingCyrus_78, Kinmap_83, Kipper29_81, LadyBird_83, Larenn_77, Lev2_72, Leviathan_81, LilTurb_80, LionsBait_78, Lokk_74, Loser_83, Lucivia_81, Lucyedi_81, MaCh_80, Mabel_80, Malec_78, MarysWell_71, McFly_81, Micasa_71, MiculUcigas_79, Midas2_68, Miko_74, MissWhite_74, Mulciber_78, Munch_80, MyraDee_74, NaSiaTalie_80, Naca_74, NearlyHeadless_87, Neeharika16_80, Newrala_80, NicoleTera_77, NothingSpecial_73, Orange_80, PainterBoy_81, Petersenfast_74, PetterN_79, Phillis_83, Phlorence_70, PickleBack_72, Piro94_78, Pmask_80, Pomar16_80, Power_79, Priamo_82, QueenB2_76, QueenBeesly_79, Rachaly_76, RedRock_79, Retro23_79, Rifter_81, Roary_88, Salz_75, Scorpia_74, SemperFi_79, Sham4_76, Sknot_79, Smeadley_86, Smeagan_82, SmellyB_81, SnapTap_79, Snape_80, StarStuff_80, SuperAwesome_81, SuperCallie99_78, SweetiePie_79, SydNat_71, TarsusIV_79, Terrific_80, Theia_70, Tiger_70, Timothy_80, TinyTimmy_79, Tomathan_80, Travvers_80, Trixie_80, Trooper_79, Turbido_80, UnionJack_75, Updawg_80, VA6_79, VC3_78, VohminGhazi_81, Whabigail7_79, WideWale_80, XianYue_78, Zolita_70,

Summary by start number:

Start 21:

- Found in 3 of 292 (1.0%) of genes in pham
- Manual Annotations of this start: 2 of 266
- Called 66.7% of time when present
- Phage (with cluster) where this start called: BobSwaget_73 (A2), Lokk_74 (A2),

Start 22:

- Found in 72 of 292 (24.7%) of genes in pham
- Manual Annotations of this start: 58 of 266
- Called 93.1% of time when present

- Phage (with cluster) where this start called: 20ES_81 (A2), AN3_81 (A2), AN9_79 (A2), AN18_79 (A2), AbbyPaige_81 (A2), Acolyte_74 (A2), Agape74_81 (A2), ArcherNM_74 (A2), Baehexic_78 (A2), BengiVuitton_79 (A2), BiancaTri92_76 (A2), Blinn1_84 (A6), Buggy_81 (A2), C3_72 (A2), CRB1_80 (A2), Centaur_79 (A2), Changeling_78 (A2), Colin_79 (A2), Crucio_79 (A2), DBQu4n_80 (A2), Dignity_81 (A2), Drake55_80 (A2), EZMoney23_75 (A2), Equemioh13_79 (A2), FiringLine_79 (A2), First_0080 (A2), Flare16_79 (A2), Georgie2_81 (A2), Gratitude_77 (A2), HarryHoudini_79 (A2), Jerm_81 (A2), JoshKayV_81 (A2), Kerberos_80 (A2), KingCyrus_78 (A2), LadyBird_83 (A2), Larenn_77 (A2), Leviathan_81 (A2), LilTurb_80 (A2), Loser_83 (A2), Malec_78 (A2), MiculUcigas_79 (A2), Miko_74 (A2), NaSiaTalie_80 (A2), NicoleTera_77 (A2), Piro94_78 (A2), Pomar16_80 (A2), Power_79 (A2), Priamo_82 (A6), QueenBeesly_79 (A2), Rachaly_76 (A2), SemperFi_79 (A2), Sknot_79 (A2), Smeagan_82 (A2), SnapTap_79 (A2), StarStuff_80 (A2), SweetiePie_79 (A2), Terrific_80 (A2), Tomathan_80 (A2), Travvers_80 (A2), Trixie_80 (A2), Turbido_80 (A2), Updawg_80 (A2), VA6_79 (A2), VC3_78 (A2), Whabigail7_79 (A2), WideWale_80 (A2), XianYue_78 (A2),

Start 24:

- Found in 6 of 292 (2.1%) of genes in pham
- Manual Annotations of this start: 2 of 266
- Called 33.3% of time when present
- Phage (with cluster) where this start called: AnnaL29_81 (A2), Deloris_79 (A2),

Start 25:

- Found in 3 of 292 (1.0%) of genes in pham
- Manual Annotations of this start: 3 of 266
- Called 100.0% of time when present
- Phage (with cluster) where this start called: Danforth_87 (A8), Saintus_82 (A8), Stephig9_85 (A8),

Start 26:

- Found in 5 of 292 (1.7%) of genes in pham
- Manual Annotations of this start: 1 of 266
- Called 20.0% of time when present
- Phage (with cluster) where this start called: RedRock_79 (A2),

Start 27:

- Found in 32 of 292 (11.0%) of genes in pham
- Manual Annotations of this start: 30 of 266
- Called 100.0% of time when present
- Phage (with cluster) where this start called: AgentM_71 (A5), Aragog_71 (A5), Archetta_69 (A5), Bluefalcon_67 (A5), Bonamassa_71 (A5), Conspiracy_72 (A5), Coog_68 (A5), Cuco_70 (A5), Discoknowium_69 (A5), Dublin_71 (A5), EITiger69_77 (A5), ForGetIt_72 (A5), George_66 (A5), Ghoulboy_71 (A5), HuhtaEnerson15_69 (A5), Jovo_71 (A5), Lev2_72 (A5), LittleCherry_70 (A5), MarysWell_71 (A5), Micasa_71 (A5), Midas2_68 (A5), Milcery_71 (A5), Phlorence_70 (A5), PickleBack_72 (A5), Prinash11_69 (A5), Swirley_71 (A5), SydNat_71 (A5), Tarynearl_70 (A5), Theia_70 (A5), Tiger_70 (A5), Twigg_68 (A5), Zolita_70 (A5),

Start 29:

- Found in 9 of 292 (3.1%) of genes in pham
- Manual Annotations of this start: 8 of 266
- Called 88.9% of time when present

- Phage (with cluster) where this start called: Airmid_74 (A5), Benedict_75 (A5), Chadwick_75 (A5), Jabiru_73 (A5), Naca_74 (A5), PetterN_79 (A5), Scorpio_74 (A5), UnionJack_75 (A5),

Start 31:

- Found in 8 of 292 (2.7%) of genes in pham
- Manual Annotations of this start: 7 of 266
- Called 87.5% of time when present
- Phage (with cluster) where this start called: Anselm_80 (A2), Dalmatian_79 (A2), DudeLittle_77 (A2), Fameo_77 (A2), Heffalump_76 (A2), QueenB2_76 (A2), Retro23_79 (A2),

Start 32:

- Found in 4 of 292 (1.4%) of genes in pham
- Manual Annotations of this start: 2 of 266
- Called 75.0% of time when present
- Phage (with cluster) where this start called: Chargerpower_77 (A), Kinmap_83 (A21), MyraDee_74 (A18),

Start 36:

- Found in 22 of 292 (7.5%) of genes in pham
- Manual Annotations of this start: 8 of 266
- Called 36.4% of time when present
- Phage (with cluster) where this start called: Astro_86 (A8), Dixon_85 (A8), Expelliarmus_83 (A8), Groundhog_84 (A8), NearlyHeadless_87 (A8), Phillis_83 (A8), Roary_88 (A8), Smeadley_86 (A8),

Start 37:

- Found in 14 of 292 (4.8%) of genes in pham
- Manual Annotations of this start: 4 of 266
- Called 28.6% of time when present
- Phage (with cluster) where this start called: BabyRay_82 (A3), HelDan_83 (A3), Idleandcovert_83 (A3), TNguyen7_84 (A3),

Start 39:

- Found in 25 of 292 (8.6%) of genes in pham
- Manual Annotations of this start: 23 of 266
- Called 96.0% of time when present
- Phage (with cluster) where this start called: Aneem_81 (A11), Bachome_78 (A11), Bud_75 (A11), Ebony_80 (A11), Et2Brutus_79 (A11), Fibonacchi_79 (A11), Flaverint_81 (A11), Gilberta_77 (A11), Hutc2_76 (A11), Insomnia_79 (A11), Jabith_79 (A11), Joselito_79 (A11), Lucivia_81 (A11), MaCh_80 (A11), Mabel_80 (A11), Mulciber_78 (A11), Munch_80 (A11), Orange_80 (A11), Petersenfast_74 (A11), Salz_75 (A11), Sham4_76 (A11), Snape_80 (A11), Timothy_80 (A11), TinyTimmy_79 (A11),

Start 40:

- Found in 7 of 292 (2.4%) of genes in pham
- Manual Annotations of this start: 6 of 266
- Called 100.0% of time when present
- Phage (with cluster) where this start called: ChipMunk_80 (A2), EvilGenius_79 (A2), Iwokeuplikedis_81 (A2), LionsBait_78 (A2), NothingSpecial_73 (A2), TarsusIV_79 (A2), Trooper_79 (A2),

Start 43:

- Found in 1 of 292 (0.3%) of genes in pham
- Manual Annotations of this start: 1 of 266
- Called 100.0% of time when present
- Phage (with cluster) where this start called: Anon_85 (A15),

Start 46:

- Found in 14 of 292 (4.8%) of genes in pham
- Manual Annotations of this start: 3 of 266
- Called 21.4% of time when present
- Phage (with cluster) where this start called: EagleEye_82 (A16), Lucyedi_81 (A16), PainterBoy_81 (A16),

Start 47:

- Found in 2 of 292 (0.7%) of genes in pham
- Manual Annotations of this start: 1 of 266
- Called 100.0% of time when present
- Phage (with cluster) where this start called: Anthony_75 (A20), FatCactus_73 (A20),

Start 48:

- Found in 26 of 292 (8.9%) of genes in pham
- Manual Annotations of this start: 24 of 266
- Called 96.2% of time when present
- Phage (with cluster) where this start called: BABullseye_74 (A6), Candra_79 (A6), CloudWang3_81 (A6), Cookiedough_81 (A6), DaVinci_79 (A6), Dorothea_81 (A6), EricB_80 (A6), Gladiator_77 (A6), Gruunaga_80 (A6), Hammer_81 (A6), Hexamo_80 (A6), Hoot_76 (A6), Isiphiwo_78 (A6), Jordennis_79 (A6), Kazan_82 (A6), Kipper29_81 (A6), McFly_81 (A6), Neeharika16_80 (A6), Newrala_80 (A6), Pmask_80 (A6), Rifter_81 (A6), SmellyB_81 (A6), SuperAwesome_81 (A6), SuperCallie99_78 (A6), VohminGhazi_81 (A6),

Start 49:

- Found in 111 of 292 (38.0%) of genes in pham
- Manual Annotations of this start: 80 of 266
- Called 80.2% of time when present
- Phage (with cluster) where this start called: Aglet_84 (A3), Anubis_87 (A3), AugsMagnumOpus_86 (A3), Beauxregard13_82 (A3), Bigflo_80 (A3), BlueBird_85 (A3), BreSam8_83 (A3), Bugatti_84 (A3), BuzzBuzz_77 (A3), Bxz2_78 (A3), Calvinny_80 (A3), Colbster_79 (A3), Cullens_84 (A3), DaHudson_82 (A3), Daishi_82 (A3), DARTHPhader_87 (A12), Dieselweasel_84 (A3), EpicPhail_84 (A3), Farber_83 (A3), Fernando_84 (A3), Fred313_80 (A3), Gemma_80 (A3), GingkoMaracino_83 (A3), Giroux_81 (A3), Grif_81 (A3), Groupthink_83 (A3), Grub_81 (A3), Grum1_83 (A3), GtownJaz_83 (A3), HashRod_84 (A3), HaveUMetTed_83 (A3), Heathen_82 (A3), Heliosoles_80 (A3), Hercules11_83 (A3), JHC117_78 (A3), JenCasNa_84 (A3), JeppNRM_83 (A3), Jobu08_79 (A3), KADY_80 (A3), Kachowdy_81 (A3), Kalb97_83 (A3), Kalnoky_83 (A3), LBerry_84 (A3), LarryKay_83 (A3), Lilith_81 (A3), Louie6_82 (A3), Iowa_80 (A3), LugYA_86 (A3), MadMarie_81 (A3), Mainiac_82 (A3), Malinsilva_86 (A3), Manu_82 (A3), MarQuardt_83 (A3), Marie_81 (A3), Marius_83 (A3), Methuselah_76 (A3), Microwolf_79 (A3), MoneyMay_83 (A3), MuchMore_86 (A3), OlanP_81 (A3), Ollie_83 (A3), P28Green_83 (A3), PGHhamlin_85 (A3), Pawn_81 (A3), Pembroke_83 (A3), Penny1_83 (A3), PhishRPhriends_79 (A3), Phoebe_84 (A3), Phoxy_83 (A3), Pistachio_83 (A3), PotatoSplit_84 (A3), Puppy_84

(A3), Reba_78 (A3), Rummer_82 (A3), Sabia_81 (A3), Sabinator_81 (A3), SaturnRing_84 (A3), Scout_82 (A3), Snickers_79 (A3), SoYo_80 (A3), SoilDragon_83 (A3), Spike509_83 (A3), Stagni_80 (A3), Taurus_84 (A3), Tiffany_82 (A3), TinyPebbles_79 (A3), Vix_79 (A3), Watson_82 (A3), Wooldri_85 (A3),

Start 52:

- Found in 126 of 292 (43.2%) of genes in pham
- No Manual Annotations of this start.
- Called 0.8% of time when present
- Phage (with cluster) where this start called: Chartreuse_78 (A6),

Start 55:

- Found in 69 of 292 (23.6%) of genes in pham
- Manual Annotations of this start: 2 of 266
- Called 2.9% of time when present
- Phage (with cluster) where this start called: Soshari_85 (A3), StepMih_83 (A3),

Start 73:

- Found in 1 of 292 (0.3%) of genes in pham
- Manual Annotations of this start: 1 of 266
- Called 100.0% of time when present
- Phage (with cluster) where this start called: MissWhite_74 (A2),

Summary by clusters:

There are 13 clusters represented in this pham: A, A15, A16, A11, A21, A12, A18, A20, A3, A2, A5, A6, A8,

Info for manual annotations of cluster A:

- Start number 32 was manually annotated 1 time for cluster A.

Info for manual annotations of cluster A11:

- Start number 39 was manually annotated 23 times for cluster A11.

Info for manual annotations of cluster A12:

- Start number 49 was manually annotated 1 time for cluster A12.

Info for manual annotations of cluster A15:

- Start number 43 was manually annotated 1 time for cluster A15.

Info for manual annotations of cluster A16:

- Start number 46 was manually annotated 3 times for cluster A16.

Info for manual annotations of cluster A18:

- Start number 32 was manually annotated 1 time for cluster A18.

Info for manual annotations of cluster A2:

- Start number 21 was manually annotated 2 times for cluster A2.
- Start number 22 was manually annotated 56 times for cluster A2.
- Start number 24 was manually annotated 2 times for cluster A2.
- Start number 26 was manually annotated 1 time for cluster A2.
- Start number 31 was manually annotated 7 times for cluster A2.
- Start number 40 was manually annotated 6 times for cluster A2.

- Start number 73 was manually annotated 1 time for cluster A2.

Info for manual annotations of cluster A20:

- Start number 47 was manually annotated 1 time for cluster A20.

Info for manual annotations of cluster A3:

- Start number 37 was manually annotated 4 times for cluster A3.
- Start number 49 was manually annotated 79 times for cluster A3.
- Start number 55 was manually annotated 2 times for cluster A3.

Info for manual annotations of cluster A5:

- Start number 27 was manually annotated 30 times for cluster A5.
- Start number 29 was manually annotated 8 times for cluster A5.

Info for manual annotations of cluster A6:

- Start number 22 was manually annotated 2 times for cluster A6.
- Start number 48 was manually annotated 24 times for cluster A6.

Info for manual annotations of cluster A8:

- Start number 25 was manually annotated 3 times for cluster A8.
- Start number 36 was manually annotated 8 times for cluster A8.

Gene Information:

Gene: 20ES_81 Start: 46774, Stop: 46457, Start Num: 22

Candidate Starts for 20ES_81:

(Start: 22 @46774 has 58 MA's), (56, 46663), (64, 46612), (65, 46606), (68, 46588), (80, 46546), (83, 46507),

Gene: AN3_81 Start: 45387, Stop: 45106, Start Num: 22

Candidate Starts for AN3_81:

(Start: 22 @45387 has 58 MA's), (Start: 24 @45381 has 2 MA's), (52, 45333), (56, 45315), (58, 45297), (65, 45258), (68, 45240), (80, 45198), (83, 45159),

Gene: AN9_79 Start: 45517, Stop: 45221, Start Num: 22

Candidate Starts for AN9_79:

(Start: 22 @45517 has 58 MA's), (67, 45385), (83, 45295),

Gene: ANI8_79 Start: 45517, Stop: 45221, Start Num: 22

Candidate Starts for ANI8_79:

(Start: 22 @45517 has 58 MA's), (67, 45385), (83, 45295),

Gene: AbbyPaige_81 Start: 47049, Stop: 46729, Start Num: 22

Candidate Starts for AbbyPaige_81:

(Start: 22 @47049 has 58 MA's), (42, 46995), (Start: 46 @46974 has 3 MA's), (52, 46956), (63, 46896), (64, 46887), (65, 46881), (68, 46863), (83, 46782),

Gene: Acolyte_74 Start: 46022, Stop: 45753, Start Num: 22

Candidate Starts for Acolyte_74:

(Start: 22 @46022 has 58 MA's), (Start: 26 @46016 has 1 MA's), (68, 45884), (83, 45803),

Gene: Agape74_81 Start: 47043, Stop: 46723, Start Num: 22

Candidate Starts for Agape74_81:

(Start: 22 @47043 has 58 MA's), (42, 46989), (Start: 46 @46968 has 3 MA's), (52, 46950), (63, 46890), (64, 46881), (65, 46875), (68, 46857), (83, 46776),

Gene: AgentM_71 Start: 44359, Stop: 44114, Start Num: 27

Candidate Starts for AgentM_71:

(Start: 27 @44359 has 30 MA's), (50, 44323), (61, 44272), (64, 44251), (72, 44215),

Gene: Aglet_84 Start: 46272, Stop: 46042, Start Num: 49

Candidate Starts for Aglet_84:

(30, 46314), (Start: 49 @46272 has 80 MA's), (52, 46263), (Start: 55 @46251 has 2 MA's), (56, 46245), (67, 46179),

Gene: Airmid_74 Start: 45167, Stop: 44925, Start Num: 29

Candidate Starts for Airmid_74:

(Start: 29 @45167 has 8 MA's),

Gene: Aneem_81 Start: 45984, Stop: 45709, Start Num: 39

Candidate Starts for Aneem_81:

(7, 46224), (11, 46161), (Start: 39 @45984 has 23 MA's), (56, 45915), (59, 45894), (63, 45873), (67, 45849), (69, 45837), (83, 45759),

Gene: AnnaL29_81 Start: 47245, Stop: 46979, Start Num: 24

Candidate Starts for AnnaL29_81:

(Start: 22 @47251 has 58 MA's), (Start: 24 @47245 has 2 MA's), (52, 47206), (56, 47188), (64, 47137), (65, 47131), (68, 47113), (80, 47071), (83, 47032),

Gene: Anon_85 Start: 46676, Stop: 46413, Start Num: 43

Candidate Starts for Anon_85:

(11, 46847), (18, 46775), (Start: 43 @46676 has 1 MA's), (Start: 49 @46646 has 80 MA's), (60, 46598), (63, 46580), (69, 46544), (74, 46529), (78, 46514), (83, 46463),

Gene: Anselm_80 Start: 46936, Stop: 46634, Start Num: 31

Candidate Starts for Anselm_80:

(Start: 31 @46936 has 7 MA's), (61, 46846), (83, 46723),

Gene: Anthony_75 Start: 45522, Stop: 45256, Start Num: 47

Candidate Starts for Anthony_75:

(Start: 47 @45522 has 1 MA's), (53, 45507), (56, 45492), (76, 45396), (81, 45375), (83, 45339),

Gene: Anubis_87 Start: 46158, Stop: 45928, Start Num: 49

Candidate Starts for Anubis_87:

(30, 46200), (Start: 49 @46158 has 80 MA's), (Start: 55 @46137 has 2 MA's), (56, 46131), (67, 46065),

Gene: Aragog_71 Start: 44377, Stop: 44132, Start Num: 27

Candidate Starts for Aragog_71:

(Start: 27 @44377 has 30 MA's), (50, 44341), (61, 44290), (64, 44269), (72, 44233),

Gene: ArcherNM_74 Start: 46349, Stop: 46071, Start Num: 22

Candidate Starts for ArcherNM_74:

(9, 46499), (20, 46361), (Start: 21 @46352 has 2 MA's), (Start: 22 @46349 has 58 MA's), (Start: 26 @46343 has 1 MA's), (Start: 46 @46322 has 3 MA's), (56, 46286), (67, 46220), (77, 46181), (83, 46130), (88, 46082),

Gene: Archetta_69 Start: 44318, Stop: 44076, Start Num: 27

Candidate Starts for Archetta_69:

(Start: 27 @44318 has 30 MA's), (50, 44285), (52, 44282), (61, 44234), (64, 44213), (72, 44177), (79, 44153),

Gene: Astro_86 Start: 46880, Stop: 46638, Start Num: 36

Candidate Starts for Astro_86:

(Start: 36 @46880 has 8 MA's), (67, 46769), (68, 46760), (72, 46748),

Gene: AugsMagnumOpus_86 Start: 46260, Stop: 46030, Start Num: 49

Candidate Starts for AugsMagnumOpus_86:

(30, 46302), (Start: 49 @46260 has 80 MA's), (52, 46251), (Start: 55 @46239 has 2 MA's), (56, 46233), (67, 46167),

Gene: BABullseye_74 Start: 43477, Stop: 43256, Start Num: 48

Candidate Starts for BABullseye_74:

(Start: 48 @43477 has 24 MA's), (52, 43465),

Gene: BabyRay_82 Start: 46614, Stop: 46357, Start Num: 37

Candidate Starts for BabyRay_82:

(Start: 37 @46614 has 4 MA's), (Start: 49 @46593 has 80 MA's), (63, 46524), (67, 46500), (68, 46491), (83, 46413),

Gene: Bachome_78 Start: 44864, Stop: 44589, Start Num: 39

Candidate Starts for Bachome_78:

(11, 45041), (Start: 39 @44864 has 23 MA's), (56, 44795), (59, 44774), (63, 44753), (67, 44729), (69, 44717), (83, 44639),

Gene: Baehexic_78 Start: 46443, Stop: 46123, Start Num: 22

Candidate Starts for Baehexic_78:

(Start: 22 @46443 has 58 MA's), (42, 46389), (56, 46332), (64, 46281), (65, 46275), (68, 46257), (80, 46215), (83, 46176),

Gene: Beauxregard13_82 Start: 46275, Stop: 46045, Start Num: 49

Candidate Starts for Beauxregard13_82:

(30, 46317), (Start: 49 @46275 has 80 MA's), (52, 46266), (Start: 55 @46254 has 2 MA's), (56, 46248), (67, 46182),

Gene: Benedict_75 Start: 44899, Stop: 44657, Start Num: 29

Candidate Starts for Benedict_75:

(Start: 29 @44899 has 8 MA's),

Gene: BengiVuitton_79 Start: 46581, Stop: 46300, Start Num: 22

Candidate Starts for BengiVuitton_79:

(Start: 22 @46581 has 58 MA's), (Start: 24 @46575 has 2 MA's), (52, 46527), (56, 46509), (65, 46452), (68, 46434), (80, 46392), (83, 46353),

Gene: BiancaTri92_76 Start: 46264, Stop: 45950, Start Num: 22

Candidate Starts for BiancaTri92_76:

(Start: 22 @46264 has 58 MA's), (42, 46216), (56, 46159), (57, 46144), (67, 46093), (68, 46084), (69, 46081), (79, 46045), (83, 46003),

Gene: Bigflo_80 Start: 46271, Stop: 46041, Start Num: 49

Candidate Starts for Bigflo_80:

(30, 46313), (Start: 49 @46271 has 80 MA's), (52, 46262), (Start: 55 @46250 has 2 MA's), (56, 46244), (67, 46178),

Gene: Blinn1_84 Start: 45891, Stop: 45631, Start Num: 22

Candidate Starts for Blinn1_84:

(Start: 22 @45891 has 58 MA's), (56, 45831), (57, 45816), (69, 45753), (83, 45675), (87, 45636),

Gene: BlueBird_85 Start: 47028, Stop: 46792, Start Num: 49

Candidate Starts for BlueBird_85:

(Start: 37 @47049 has 4 MA's), (Start: 49 @47028 has 80 MA's), (63, 46959), (68, 46926), (83, 46848),

Gene: Bluefalcon_67 Start: 44317, Stop: 44075, Start Num: 27

Candidate Starts for Bluefalcon_67:

(Start: 27 @44317 has 30 MA's), (50, 44284), (52, 44281), (61, 44233), (64, 44212), (72, 44176), (79, 44152),

Gene: BobSwaget_73 Start: 44446, Stop: 44162, Start Num: 21

Candidate Starts for BobSwaget_73:

(6, 44641), (9, 44593), (20, 44455), (Start: 21 @44446 has 2 MA's), (Start: 22 @44443 has 58 MA's), (56, 44377), (70, 44296), (77, 44272), (83, 44221), (88, 44173),

Gene: Bonamassa_71 Start: 44547, Stop: 44302, Start Num: 27

Candidate Starts for Bonamassa_71:

(Start: 27 @44547 has 30 MA's), (Start: 49 @44517 has 80 MA's), (72, 44403),

Gene: BreSam8_83 Start: 46265, Stop: 46035, Start Num: 49

Candidate Starts for BreSam8_83:

(30, 46307), (Start: 49 @46265 has 80 MA's), (52, 46256), (Start: 55 @46244 has 2 MA's), (56, 46238), (67, 46172),

Gene: Bud_75 Start: 44421, Stop: 44146, Start Num: 39

Candidate Starts for Bud_75:

(7, 44661), (11, 44598), (Start: 39 @44421 has 23 MA's), (56, 44352), (59, 44331), (63, 44310), (67, 44286), (69, 44274), (83, 44196),

Gene: Bugatti_84 Start: 47028, Stop: 46792, Start Num: 49

Candidate Starts for Bugatti_84:

(Start: 37 @47049 has 4 MA's), (Start: 49 @47028 has 80 MA's), (63, 46959), (68, 46926), (83, 46848),

Gene: Buggy_81 Start: 47094, Stop: 46774, Start Num: 22

Candidate Starts for Buggy_81:

(Start: 22 @47094 has 58 MA's), (42, 47040), (Start: 46 @47019 has 3 MA's), (52, 47001), (63, 46941), (64, 46932), (65, 46926), (68, 46908), (83, 46827),

Gene: BuzzBuzz_77 Start: 46300, Stop: 46070, Start Num: 49

Candidate Starts for BuzzBuzz_77:

(30, 46342), (Start: 49 @46300 has 80 MA's), (Start: 55 @46279 has 2 MA's), (56, 46273), (67, 46207), (68, 46198),

Gene: Bxz2_78 Start: 46307, Stop: 46077, Start Num: 49

Candidate Starts for Bxz2_78:

(30, 46349), (Start: 49 @46307 has 80 MA's), (Start: 55 @46286 has 2 MA's), (56, 46280), (67, 46214), (68, 46205),

Gene: C3_72 Start: 45517, Stop: 45221, Start Num: 22

Candidate Starts for C3_72:

(Start: 22 @45517 has 58 MA's), (67, 45385), (83, 45295),

Gene: CRB1_80 Start: 47036, Stop: 46719, Start Num: 22

Candidate Starts for CRB1_80:

(Start: 22 @47036 has 58 MA's), (56, 46925), (57, 46910), (66, 46862), (67, 46859), (69, 46847), (83, 46769),

Gene: Calvinny_80 Start: 46083, Stop: 45853, Start Num: 49

Candidate Starts for Calvinny_80:

(14, 46233), (30, 46125), (Start: 36 @46107 has 8 MA's), (Start: 49 @46083 has 80 MA's), (63, 46014), (67, 45990), (83, 45903),

Gene: Candra_79 Start: 45172, Stop: 44951, Start Num: 48

Candidate Starts for Candra_79:

(Start: 48 @45172 has 24 MA's), (52, 45160),

Gene: Centaur_79 Start: 46321, Stop: 46001, Start Num: 22

Candidate Starts for Centaur_79:

(Start: 22 @46321 has 58 MA's), (42, 46267), (56, 46210), (64, 46159), (65, 46153), (68, 46135), (80, 46093), (83, 46054),

Gene: Chadwick_75 Start: 44643, Stop: 44401, Start Num: 29

Candidate Starts for Chadwick_75:

(Start: 29 @44643 has 8 MA's), (50, 44610),

Gene: Changeling_78 Start: 46920, Stop: 46642, Start Num: 22

Candidate Starts for Changeling_78:

(Start: 22 @46920 has 58 MA's), (Start: 26 @46914 has 1 MA's), (56, 46857), (67, 46791), (77, 46752), (83, 46701), (88, 46653),

Gene: Chargerpower_77 Start: 44887, Stop: 44654, Start Num: 32

Candidate Starts for Chargerpower_77:

(16, 44971), (Start: 32 @44887 has 2 MA's), (56, 44854), (68, 44782), (83, 44704),

Gene: Chartreuse_78 Start: 44471, Stop: 44262, Start Num: 52

Candidate Starts for Chartreuse_78:

(Start: 48 @44483 has 24 MA's), (52, 44471),

Gene: ChipMunk_80 Start: 47961, Stop: 47692, Start Num: 40

Candidate Starts for ChipMunk_80:

(Start: 40 @47961 has 6 MA's), (41, 47955), (Start: 49 @47925 has 80 MA's), (52, 47916), (56, 47898), (64, 47847), (65, 47841), (68, 47823), (80, 47781), (83, 47742),

Gene: CloudWang3_81 Start: 45345, Stop: 45124, Start Num: 48

Candidate Starts for CloudWang3_81:

(Start: 48 @45345 has 24 MA's), (52, 45333), (86, 45129),

Gene: Colbster_79 Start: 46275, Stop: 46045, Start Num: 49

Candidate Starts for Colbster_79:

(30, 46317), (Start: 49 @46275 has 80 MA's), (52, 46266), (Start: 55 @46254 has 2 MA's), (56, 46248), (67, 46182),

Gene: Colin_79 Start: 47629, Stop: 47354, Start Num: 22

Candidate Starts for Colin_79:

(Start: 22 @47629 has 58 MA's), (56, 47563), (57, 47548), (69, 47485), (83, 47407),

Gene: Conspiracy_72 Start: 44599, Stop: 44354, Start Num: 27

Candidate Starts for Conspiracy_72:

(Start: 27 @44599 has 30 MA's), (50, 44563), (61, 44512), (64, 44491), (72, 44455),

Gene: Coog_68 Start: 44365, Stop: 44123, Start Num: 27

Candidate Starts for Coog_68:

(Start: 27 @44365 has 30 MA's), (50, 44332), (52, 44329), (64, 44260), (72, 44224), (79, 44200),

Gene: Cookiedough_81 Start: 45790, Stop: 45569, Start Num: 48

Candidate Starts for Cookiedough_81:

(10, 45994), (17, 45904), (Start: 48 @45790 has 24 MA's), (52, 45778),

Gene: Crucio_79 Start: 46848, Stop: 46531, Start Num: 22

Candidate Starts for Crucio_79:

(Start: 22 @46848 has 58 MA's), (56, 46737), (64, 46686), (65, 46680), (68, 46662), (80, 46620), (83, 46581),

Gene: Cuco_70 Start: 44225, Stop: 43983, Start Num: 27

Candidate Starts for Cuco_70:

(Start: 27 @44225 has 30 MA's), (50, 44192), (52, 44189), (64, 44120), (72, 44084), (79, 44060),

Gene: Cullens_84 Start: 46274, Stop: 46044, Start Num: 49

Candidate Starts for Cullens_84:

(30, 46316), (Start: 49 @46274 has 80 MA's), (52, 46265), (Start: 55 @46253 has 2 MA's), (56, 46247), (67, 46181),

Gene: DBQu4n_80 Start: 46541, Stop: 46269, Start Num: 22

Candidate Starts for DBQu4n_80:

(Start: 22 @46541 has 58 MA's), (56, 46478), (67, 46412), (83, 46322),

Gene: DaHudson_82 Start: 46264, Stop: 46034, Start Num: 49

Candidate Starts for DaHudson_82:

(30, 46306), (Start: 49 @46264 has 80 MA's), (52, 46255), (Start: 55 @46243 has 2 MA's), (56, 46237), (67, 46171),

Gene: DaVinci_79 Start: 44537, Stop: 44316, Start Num: 48

Candidate Starts for DaVinci_79:

(Start: 48 @44537 has 24 MA's), (52, 44525),

Gene: Daishi_82 Start: 45141, Stop: 44911, Start Num: 49

Candidate Starts for Daishi_82:

(30, 45183), (Start: 49 @45141 has 80 MA's), (Start: 55 @45120 has 2 MA's), (56, 45114), (67, 45048), (68, 45039),

Gene: Dalmatian_79 Start: 46667, Stop: 46365, Start Num: 31

Candidate Starts for Dalmatian_79:

(Start: 31 @46667 has 7 MA's), (61, 46577), (83, 46454),

Gene: Danforth_87 Start: 46987, Stop: 46715, Start Num: 25

Candidate Starts for Danforth_87:

(18, 47047), (Start: 25 @46987 has 3 MA's), (Start: 49 @46939 has 80 MA's), (67, 46846), (68, 46837),

Gene: DarthPhader_87 Start: 50218, Stop: 50003, Start Num: 49

Candidate Starts for DarthPhader_87:

(Start: 31 @50251 has 7 MA's), (Start: 49 @50218 has 80 MA's), (56, 50191),

Gene: Deloris_79 Start: 46271, Stop: 45996, Start Num: 24

Candidate Starts for Deloris_79:

(Start: 22 @46277 has 58 MA's), (Start: 24 @46271 has 2 MA's), (52, 46223), (56, 46205), (65, 46148), (68, 46130), (80, 46088), (83, 46049),

Gene: Dieselweasel_84 Start: 46273, Stop: 46043, Start Num: 49

Candidate Starts for Dieselweasel_84:

(30, 46315), (Start: 49 @46273 has 80 MA's), (52, 46264), (Start: 55 @46252 has 2 MA's), (56, 46246), (67, 46180),

Gene: Dignity_81 Start: 47132, Stop: 46812, Start Num: 22

Candidate Starts for Dignity_81:

(Start: 22 @47132 has 58 MA's), (42, 47078), (Start: 46 @47057 has 3 MA's), (52, 47039), (63, 46979), (64, 46970), (65, 46964), (68, 46946), (83, 46865),

Gene: Discoknowium_69 Start: 44116, Stop: 43871, Start Num: 27

Candidate Starts for Discoknowium_69:

(Start: 27 @44116 has 30 MA's), (50, 44080), (61, 44029), (64, 44008), (72, 43972),

Gene: Dixon_85 Start: 46439, Stop: 46197, Start Num: 36

Candidate Starts for Dixon_85:

(Start: 36 @46439 has 8 MA's), (67, 46328), (68, 46319), (72, 46307),

Gene: Dorothea_81 Start: 45783, Stop: 45562, Start Num: 48

Candidate Starts for Dorothea_81:

(Start: 48 @45783 has 24 MA's), (52, 45771),

Gene: Drake55_80 Start: 46578, Stop: 46258, Start Num: 22

Candidate Starts for Drake55_80:

(Start: 22 @46578 has 58 MA's), (52, 46485), (56, 46467), (65, 46410), (68, 46392), (83, 46311),

Gene: Dublin_71 Start: 44497, Stop: 44255, Start Num: 27

Candidate Starts for Dublin_71:

(Start: 27 @44497 has 30 MA's), (50, 44464), (52, 44461), (61, 44413), (64, 44392), (72, 44356), (79, 44332),

Gene: DudeLittle_77 Start: 46433, Stop: 46131, Start Num: 31

Candidate Starts for DudeLittle_77:

(Start: 31 @46433 has 7 MA's), (61, 46343), (83, 46220),

Gene: EZMoney23_75 Start: 46037, Stop: 45765, Start Num: 22

Candidate Starts for EZMoney23_75:

(4, 46337), (Start: 22 @46037 has 58 MA's), (28, 46031), (56, 45974), (67, 45908), (83, 45818),

Gene: EagleEye_82 Start: 46572, Stop: 46357, Start Num: 46

Candidate Starts for EagleEye_82:

(19, 46689), (23, 46659), (44, 46584), (Start: 46 @46572 has 3 MA's), (56, 46542), (61, 46512), (62, 46503), (70, 46464), (83, 46389),

Gene: Ebony_80 Start: 45555, Stop: 45280, Start Num: 39

Candidate Starts for Ebony_80:

(11, 45732), (Start: 39 @45555 has 23 MA's), (56, 45486), (59, 45465), (63, 45444), (67, 45420), (69, 45408), (83, 45330),

Gene: EITiger69_77 Start: 45591, Stop: 45328, Start Num: 27

Candidate Starts for EITiger69_77:

(Start: 27 @45591 has 30 MA's), (Start: 29 @45588 has 8 MA's), (Start: 32 @45576 has 2 MA's), (35, 45570), (Start: 49 @45543 has 80 MA's), (50, 45537), (72, 45429),

Gene: EpicPhail_84 Start: 46275, Stop: 46045, Start Num: 49

Candidate Starts for EpicPhail_84:

(30, 46317), (Start: 49 @46275 has 80 MA's), (52, 46266), (Start: 55 @46254 has 2 MA's), (56, 46248), (67, 46182),

Gene: Equemioh13_79 Start: 46550, Stop: 46230, Start Num: 22

Candidate Starts for Equemioh13_79:

(Start: 22 @46550 has 58 MA's), (42, 46496), (56, 46439), (64, 46388), (65, 46382), (68, 46364), (80, 46322), (83, 46283),

Gene: EricB_80 Start: 45129, Stop: 44908, Start Num: 48

Candidate Starts for EricB_80:

(Start: 48 @45129 has 24 MA's), (52, 45117),

Gene: Et2Brutus_79 Start: 45518, Stop: 45243, Start Num: 39

Candidate Starts for Et2Brutus_79:

(7, 45758), (11, 45695), (Start: 39 @45518 has 23 MA's), (56, 45449), (59, 45428), (63, 45407), (67, 45383), (69, 45371), (83, 45293),

Gene: EvilGenius_79 Start: 47962, Stop: 47693, Start Num: 40

Candidate Starts for EvilGenius_79:

(Start: 40 @47962 has 6 MA's), (41, 47956), (Start: 49 @47926 has 80 MA's), (52, 47917), (56, 47899), (64, 47848), (65, 47842), (68, 47824), (80, 47782), (83, 47743),

Gene: Expelliarmus_83 Start: 46653, Stop: 46411, Start Num: 36

Candidate Starts for Expelliarmus_83:

(Start: 36 @46653 has 8 MA's), (67, 46542), (68, 46533), (72, 46521),

Gene: Fameo_77 Start: 46475, Stop: 46173, Start Num: 31

Candidate Starts for Fameo_77:

(Start: 31 @46475 has 7 MA's), (61, 46385), (83, 46262),

Gene: Farber_83 Start: 46261, Stop: 46031, Start Num: 49
Candidate Starts for Farber_83:
(30, 46303), (Start: 49 @46261 has 80 MA's), (52, 46252), (Start: 55 @46240 has 2 MA's), (56, 46234),
(67, 46168),

Gene: FatCactus_73 Start: 44985, Stop: 44743, Start Num: 47
Candidate Starts for FatCactus_73:
(Start: 47 @44985 has 1 MA's), (53, 44970), (56, 44955), (76, 44859), (81, 44838), (83, 44802), (85,
44772),

Gene: Fernando_84 Start: 46274, Stop: 46044, Start Num: 49
Candidate Starts for Fernando_84:
(30, 46316), (Start: 49 @46274 has 80 MA's), (52, 46265), (Start: 55 @46253 has 2 MA's), (56, 46247),
(67, 46181),

Gene: Fibonacci_79 Start: 45524, Stop: 45249, Start Num: 39
Candidate Starts for Fibonacci_79:
(7, 45764), (11, 45701), (Start: 39 @45524 has 23 MA's), (56, 45455), (59, 45434), (63, 45413), (67,
45389), (69, 45377), (83, 45299),

Gene: FiringLine_79 Start: 46830, Stop: 46513, Start Num: 22
Candidate Starts for FiringLine_79:
(Start: 22 @46830 has 58 MA's), (56, 46719), (64, 46668), (65, 46662), (68, 46644), (80, 46602), (83,
46563),

Gene: First_0080 Start: 46674, Stop: 46357, Start Num: 22
Candidate Starts for First_0080:
(Start: 22 @46674 has 58 MA's), (56, 46563), (64, 46512), (65, 46506), (68, 46488), (80, 46446), (83,
46407),

Gene: Flare16_79 Start: 46365, Stop: 46045, Start Num: 22
Candidate Starts for Flare16_79:
(Start: 22 @46365 has 58 MA's), (42, 46311), (56, 46254), (64, 46203), (65, 46197), (68, 46179), (80,
46137), (83, 46098),

Gene: Flaverint_81 Start: 45982, Stop: 45707, Start Num: 39
Candidate Starts for Flaverint_81:
(7, 46222), (11, 46159), (Start: 39 @45982 has 23 MA's), (56, 45913), (59, 45892), (63, 45871), (67,
45847), (69, 45835), (83, 45757),

Gene: ForGetIt_72 Start: 44624, Stop: 44379, Start Num: 27
Candidate Starts for ForGetIt_72:
(Start: 27 @44624 has 30 MA's), (50, 44588), (61, 44537), (64, 44516), (72, 44480),

Gene: Fred313_80 Start: 46658, Stop: 46422, Start Num: 49
Candidate Starts for Fred313_80:
(Start: 37 @46679 has 4 MA's), (Start: 49 @46658 has 80 MA's), (63, 46589), (68, 46556),

Gene: Gemma_80 Start: 46081, Stop: 45851, Start Num: 49
Candidate Starts for Gemma_80:
(14, 46231), (30, 46123), (Start: 36 @46105 has 8 MA's), (Start: 49 @46081 has 80 MA's), (63, 46012),
(67, 45988), (83, 45901),

Gene: George_66 Start: 44285, Stop: 44040, Start Num: 27
Candidate Starts for George_66:
(Start: 27 @44285 has 30 MA's), (Start: 49 @44255 has 80 MA's), (61, 44198), (72, 44141),

Gene: Georgie2_81 Start: 47034, Stop: 46717, Start Num: 22
Candidate Starts for Georgie2_81:
(Start: 22 @47034 has 58 MA's), (56, 46923), (64, 46872), (65, 46866), (68, 46848), (80, 46806), (83, 46767),

Gene: Ghouboy_71 Start: 44592, Stop: 44350, Start Num: 27
Candidate Starts for Ghouboy_71:
(Start: 27 @44592 has 30 MA's), (50, 44559), (52, 44556), (Start: 55 @44544 has 2 MA's), (61, 44508), (64, 44487), (72, 44451), (79, 44427),

Gene: Gilberta_77 Start: 44858, Stop: 44583, Start Num: 39
Candidate Starts for Gilberta_77:
(7, 45098), (11, 45035), (Start: 39 @44858 has 23 MA's), (56, 44789), (59, 44768), (63, 44747), (67, 44723), (69, 44711), (83, 44633),

Gene: GingkoMaracino_83 Start: 46157, Stop: 45927, Start Num: 49
Candidate Starts for GingkoMaracino_83:
(30, 46199), (Start: 49 @46157 has 80 MA's), (52, 46148), (Start: 55 @46136 has 2 MA's), (56, 46130), (67, 46064),

Gene: Giroux_81 Start: 47027, Stop: 46791, Start Num: 49
Candidate Starts for Giroux_81:
(Start: 37 @47048 has 4 MA's), (Start: 49 @47027 has 80 MA's), (63, 46958), (68, 46925), (83, 46847),

Gene: Gladiator_77 Start: 45001, Stop: 44780, Start Num: 48
Candidate Starts for Gladiator_77:
(Start: 48 @45001 has 24 MA's), (52, 44989), (86, 44785),

Gene: Gratitude_77 Start: 46550, Stop: 46230, Start Num: 22
Candidate Starts for Gratitude_77:
(Start: 22 @46550 has 58 MA's), (42, 46496), (56, 46439), (64, 46388), (65, 46382), (68, 46364), (80, 46322), (83, 46283),

Gene: Grif_81 Start: 46348, Stop: 46118, Start Num: 49
Candidate Starts for Grif_81:
(30, 46390), (Start: 49 @46348 has 80 MA's), (52, 46339), (Start: 55 @46327 has 2 MA's), (56, 46321), (67, 46255),

Gene: Groundhog_84 Start: 46709, Stop: 46467, Start Num: 36
Candidate Starts for Groundhog_84:
(Start: 36 @46709 has 8 MA's), (67, 46598), (68, 46589), (72, 46577),

Gene: Groupthink_83 Start: 46082, Stop: 45852, Start Num: 49
Candidate Starts for Groupthink_83:
(14, 46232), (30, 46124), (Start: 36 @46106 has 8 MA's), (Start: 49 @46082 has 80 MA's), (63, 46013), (67, 45989), (83, 45902),

Gene: Grub_81 Start: 46264, Stop: 46034, Start Num: 49
Candidate Starts for Grub_81:

(30, 46306), (Start: 49 @46264 has 80 MA's), (52, 46255), (Start: 55 @46243 has 2 MA's), (56, 46237), (67, 46171),

Gene: Grum1_83 Start: 46274, Stop: 46044, Start Num: 49

Candidate Starts for Grum1_83:

(30, 46316), (Start: 49 @46274 has 80 MA's), (52, 46265), (Start: 55 @46253 has 2 MA's), (56, 46247), (67, 46181),

Gene: Gruunaga_80 Start: 44956, Stop: 44735, Start Num: 48

Candidate Starts for Gruunaga_80:

(Start: 48 @44956 has 24 MA's), (52, 44944), (86, 44740),

Gene: GtownJaz_83 Start: 46272, Stop: 46042, Start Num: 49

Candidate Starts for GtownJaz_83:

(30, 46314), (Start: 49 @46272 has 80 MA's), (52, 46263), (Start: 55 @46251 has 2 MA's), (56, 46245), (67, 46179),

Gene: Hammer_81 Start: 44663, Stop: 44442, Start Num: 48

Candidate Starts for Hammer_81:

(Start: 48 @44663 has 24 MA's), (52, 44651), (86, 44447),

Gene: HarryHoudini_79 Start: 46575, Stop: 46255, Start Num: 22

Candidate Starts for HarryHoudini_79:

(Start: 22 @46575 has 58 MA's), (52, 46482), (56, 46464), (65, 46407), (68, 46389), (83, 46308),

Gene: HashRod_84 Start: 46301, Stop: 46071, Start Num: 49

Candidate Starts for HashRod_84:

(30, 46343), (Start: 49 @46301 has 80 MA's), (52, 46292), (Start: 55 @46280 has 2 MA's), (56, 46274), (67, 46208),

Gene: HaveUMetTed_83 Start: 46070, Stop: 45840, Start Num: 49

Candidate Starts for HaveUMetTed_83:

(14, 46220), (30, 46112), (Start: 36 @46094 has 8 MA's), (Start: 49 @46070 has 80 MA's), (63, 46001), (67, 45977), (83, 45890),

Gene: Heathen_82 Start: 46746, Stop: 46510, Start Num: 49

Candidate Starts for Heathen_82:

(Start: 37 @46767 has 4 MA's), (Start: 49 @46746 has 80 MA's), (63, 46677), (68, 46644),

Gene: Heffalump_76 Start: 46943, Stop: 46641, Start Num: 31

Candidate Starts for Heffalump_76:

(Start: 31 @46943 has 7 MA's), (61, 46853), (83, 46730),

Gene: HelDan_83 Start: 46990, Stop: 46733, Start Num: 37

Candidate Starts for HelDan_83:

(Start: 37 @46990 has 4 MA's), (Start: 49 @46969 has 80 MA's), (63, 46900), (68, 46867),

Gene: Heliosoles_80 Start: 46086, Stop: 45856, Start Num: 49

Candidate Starts for Heliosoles_80:

(14, 46236), (30, 46128), (Start: 36 @46110 has 8 MA's), (Start: 49 @46086 has 80 MA's), (63, 46017), (67, 45993), (83, 45906),

Gene: Hercules11_83 Start: 46283, Stop: 46053, Start Num: 49

Candidate Starts for Hercules11_83:

(30, 46325), (Start: 49 @46283 has 80 MA's), (52, 46274), (Start: 55 @46262 has 2 MA's), (56, 46256), (67, 46190),

Gene: Hexamo_80 Start: 44831, Stop: 44610, Start Num: 48

Candidate Starts for Hexamo_80:

(Start: 48 @44831 has 24 MA's), (52, 44819), (86, 44615),

Gene: Hoot_76 Start: 42987, Stop: 42766, Start Num: 48

Candidate Starts for Hoot_76:

(10, 43191), (17, 43101), (Start: 48 @42987 has 24 MA's), (52, 42975),

Gene: HuhtaEnerson15_69 Start: 44200, Stop: 43955, Start Num: 27

Candidate Starts for HuhtaEnerson15_69:

(Start: 27 @44200 has 30 MA's), (Start: 49 @44170 has 80 MA's), (72, 44056),

Gene: Hutc2_76 Start: 44408, Stop: 44133, Start Num: 39

Candidate Starts for Hutc2_76:

(7, 44648), (11, 44585), (Start: 39 @44408 has 23 MA's), (56, 44339), (59, 44318), (63, 44297), (67, 44273), (69, 44261), (83, 44183),

Gene: Idleandcovert_83 Start: 47049, Stop: 46792, Start Num: 37

Candidate Starts for Idleandcovert_83:

(Start: 37 @47049 has 4 MA's), (Start: 49 @47028 has 80 MA's), (63, 46959), (68, 46926), (83, 46848),

Gene: Insomnia_79 Start: 45699, Stop: 45424, Start Num: 39

Candidate Starts for Insomnia_79:

(7, 45939), (11, 45876), (Start: 39 @45699 has 23 MA's), (56, 45630), (59, 45609), (63, 45588), (67, 45564), (69, 45552), (83, 45474),

Gene: Isiphiwo_78 Start: 45157, Stop: 44936, Start Num: 48

Candidate Starts for Isiphiwo_78:

(10, 45361), (17, 45271), (Start: 48 @45157 has 24 MA's), (52, 45145),

Gene: Iwokeuplikedis_81 Start: 47056, Stop: 46784, Start Num: 40

Candidate Starts for Iwokeuplikedis_81:

(Start: 40 @47056 has 6 MA's), (41, 47050), (56, 46993), (65, 46936), (68, 46918), (80, 46876), (83, 46837),

Gene: JHC117_78 Start: 46269, Stop: 46039, Start Num: 49

Candidate Starts for JHC117_78:

(30, 46311), (Start: 49 @46269 has 80 MA's), (52, 46260), (Start: 55 @46248 has 2 MA's), (56, 46242), (67, 46176),

Gene: Jabiru_73 Start: 44754, Stop: 44512, Start Num: 29

Candidate Starts for Jabiru_73:

(Start: 29 @44754 has 8 MA's),

Gene: Jabith_79 Start: 45716, Stop: 45441, Start Num: 39

Candidate Starts for Jabith_79:

(7, 45956), (11, 45893), (Start: 39 @45716 has 23 MA's), (56, 45647), (59, 45626), (63, 45605), (67, 45581), (69, 45569), (83, 45491),

Gene: JenCasNa_84 Start: 46274, Stop: 46044, Start Num: 49

Candidate Starts for JenCasNa_84:

(30, 46316), (Start: 49 @46274 has 80 MA's), (52, 46265), (Start: 55 @46253 has 2 MA's), (56, 46247), (67, 46181),

Gene: JeppNRM_83 Start: 46084, Stop: 45854, Start Num: 49

Candidate Starts for JeppNRM_83:

(14, 46234), (30, 46126), (Start: 36 @46108 has 8 MA's), (Start: 49 @46084 has 80 MA's), (52, 46075), (63, 46015), (67, 45991), (83, 45904),

Gene: Jerm_81 Start: 47115, Stop: 46795, Start Num: 22

Candidate Starts for Jerm_81:

(Start: 22 @47115 has 58 MA's), (42, 47061), (Start: 46 @47040 has 3 MA's), (52, 47022), (63, 46962), (64, 46953), (65, 46947), (68, 46929), (83, 46848),

Gene: Jobu08_79 Start: 46098, Stop: 45868, Start Num: 49

Candidate Starts for Jobu08_79:

(8, 46320), (30, 46140), (Start: 49 @46098 has 80 MA's), (52, 46089), (Start: 55 @46077 has 2 MA's), (56, 46071), (67, 46005), (83, 45918),

Gene: Jordennis_79 Start: 45369, Stop: 45148, Start Num: 48

Candidate Starts for Jordennis_79:

(Start: 48 @45369 has 24 MA's), (52, 45357),

Gene: Joselito_79 Start: 45736, Stop: 45461, Start Num: 39

Candidate Starts for Joselito_79:

(7, 45976), (11, 45913), (Start: 39 @45736 has 23 MA's), (56, 45667), (59, 45646), (63, 45625), (67, 45601), (69, 45589), (83, 45511),

Gene: JoshKayV_81 Start: 47259, Stop: 46987, Start Num: 22

Candidate Starts for JoshKayV_81:

(Start: 22 @47259 has 58 MA's), (42, 47253), (52, 47214), (63, 47154), (64, 47145), (65, 47139), (68, 47121), (83, 47040),

Gene: Jovo_71 Start: 44880, Stop: 44635, Start Num: 27

Candidate Starts for Jovo_71:

(Start: 27 @44880 has 30 MA's), (50, 44844), (61, 44793), (64, 44772), (72, 44736),

Gene: KADY_80 Start: 46301, Stop: 46071, Start Num: 49

Candidate Starts for KADY_80:

(30, 46343), (Start: 49 @46301 has 80 MA's), (Start: 55 @46280 has 2 MA's), (56, 46274), (67, 46208), (68, 46199),

Gene: Kachowdy_81 Start: 46998, Stop: 46762, Start Num: 49

Candidate Starts for Kachowdy_81:

(Start: 37 @47019 has 4 MA's), (Start: 49 @46998 has 80 MA's), (63, 46929), (68, 46896),

Gene: Kalb97_83 Start: 45452, Stop: 45192, Start Num: 49

Candidate Starts for Kalb97_83:

(14, 45602), (30, 45494), (Start: 36 @45476 has 8 MA's), (Start: 49 @45452 has 80 MA's), (52, 45443), (63, 45383), (67, 45359), (83, 45272), (89, 45224),

Gene: Kalnoky_83 Start: 46079, Stop: 45849, Start Num: 49

Candidate Starts for Kalnoky_83:

(14, 46229), (30, 46121), (Start: 36 @46103 has 8 MA's), (Start: 49 @46079 has 80 MA's), (63, 46010), (67, 45986), (83, 45899),

Gene: Kazan_82 Start: 45142, Stop: 44921, Start Num: 48

Candidate Starts for Kazan_82:

(Start: 48 @45142 has 24 MA's), (52, 45130),

Gene: Kerberos_80 Start: 46561, Stop: 46289, Start Num: 22

Candidate Starts for Kerberos_80:

(Start: 22 @46561 has 58 MA's), (56, 46498), (67, 46432), (83, 46342),

Gene: KingCyrus_78 Start: 47984, Stop: 47667, Start Num: 22

Candidate Starts for KingCyrus_78:

(Start: 22 @47984 has 58 MA's), (56, 47873), (64, 47822), (65, 47816), (68, 47798), (80, 47756), (83, 47717),

Gene: Kinmap_83 Start: 45453, Stop: 45217, Start Num: 32

Candidate Starts for Kinmap_83:

(Start: 32 @45453 has 2 MA's), (56, 45420), (83, 45267),

Gene: Kipper29_81 Start: 45155, Stop: 44934, Start Num: 48

Candidate Starts for Kipper29_81:

(Start: 48 @45155 has 24 MA's), (52, 45143),

Gene: LBerry_84 Start: 46275, Stop: 46045, Start Num: 49

Candidate Starts for LBerry_84:

(30, 46317), (Start: 49 @46275 has 80 MA's), (52, 46266), (Start: 55 @46254 has 2 MA's), (56, 46248), (67, 46182),

Gene: LadyBird_83 Start: 47185, Stop: 46904, Start Num: 22

Candidate Starts for LadyBird_83:

(Start: 22 @47185 has 58 MA's), (Start: 24 @47179 has 2 MA's), (52, 47131), (56, 47113), (65, 47056), (68, 47038), (80, 46996), (83, 46957),

Gene: Larenn_77 Start: 46535, Stop: 46206, Start Num: 22

Candidate Starts for Larenn_77:

(Start: 22 @46535 has 58 MA's), (34, 46502), (42, 46472), (52, 46433), (56, 46415), (64, 46364), (65, 46358), (68, 46340), (80, 46298), (83, 46259),

Gene: LarryKay_83 Start: 46305, Stop: 46075, Start Num: 49

Candidate Starts for LarryKay_83:

(30, 46347), (Start: 49 @46305 has 80 MA's), (52, 46296), (Start: 55 @46284 has 2 MA's), (56, 46278), (67, 46212),

Gene: Lev2_72 Start: 44512, Stop: 44267, Start Num: 27

Candidate Starts for Lev2_72:

(Start: 27 @44512 has 30 MA's), (50, 44476), (61, 44425), (64, 44404), (72, 44368),

Gene: Leviathan_81 Start: 47181, Stop: 46861, Start Num: 22

Candidate Starts for Leviathan_81:

(Start: 22 @47181 has 58 MA's), (42, 47127), (Start: 46 @47106 has 3 MA's), (52, 47088), (63, 47028), (64, 47019), (65, 47013), (68, 46995), (83, 46914),

Gene: LilTurb_80 Start: 46995, Stop: 46675, Start Num: 22

Candidate Starts for LilTurb_80:

(Start: 22 @46995 has 58 MA's), (42, 46941), (Start: 46 @46920 has 3 MA's), (52, 46902), (63, 46842), (64, 46833), (65, 46827), (68, 46809), (83, 46728),

Gene: Lilith_81 Start: 46264, Stop: 46034, Start Num: 49

Candidate Starts for Lilith_81:

(30, 46306), (Start: 49 @46264 has 80 MA's), (52, 46255), (Start: 55 @46243 has 2 MA's), (56, 46237), (67, 46171),

Gene: LionsBait_78 Start: 47560, Stop: 47279, Start Num: 40

Candidate Starts for LionsBait_78:

(Start: 40 @47560 has 6 MA's), (41, 47554), (56, 47488), (64, 47437), (65, 47431), (68, 47413), (80, 47371), (83, 47332),

Gene: LittleCherry_70 Start: 44070, Stop: 43825, Start Num: 27

Candidate Starts for LittleCherry_70:

(Start: 27 @44070 has 30 MA's), (Start: 49 @44040 has 80 MA's), (61, 43983), (72, 43926),

Gene: Lokk_74 Start: 45070, Stop: 44786, Start Num: 21

Candidate Starts for Lokk_74:

(6, 45265), (9, 45217), (20, 45079), (Start: 21 @45070 has 2 MA's), (Start: 22 @45067 has 58 MA's), (56, 45001), (70, 44920), (77, 44896), (83, 44845), (88, 44797),

Gene: Loser_83 Start: 47509, Stop: 47237, Start Num: 22

Candidate Starts for Loser_83:

(Start: 22 @47509 has 58 MA's), (Start: 26 @47503 has 1 MA's), (56, 47446), (67, 47380), (74, 47353), (83, 47290),

Gene: Louie6_82 Start: 46302, Stop: 46072, Start Num: 49

Candidate Starts for Louie6_82:

(30, 46344), (Start: 49 @46302 has 80 MA's), (Start: 55 @46281 has 2 MA's), (56, 46275), (67, 46209), (68, 46200),

Gene: Lowa_80 Start: 46263, Stop: 46033, Start Num: 49

Candidate Starts for Lowa_80:

(30, 46305), (Start: 49 @46263 has 80 MA's), (52, 46254), (Start: 55 @46242 has 2 MA's), (56, 46236), (67, 46170),

Gene: Lucivia_81 Start: 46015, Stop: 45740, Start Num: 39

Candidate Starts for Lucivia_81:

(7, 46255), (11, 46192), (Start: 39 @46015 has 23 MA's), (56, 45946), (59, 45925), (63, 45904), (67, 45880), (69, 45868), (83, 45790),

Gene: Lucyedi_81 Start: 46771, Stop: 46526, Start Num: 46

Candidate Starts for Lucyedi_81:

(19, 46888), (23, 46858), (44, 46783), (Start: 46 @46771 has 3 MA's), (61, 46711),

Gene: LugYA_86 Start: 46275, Stop: 46045, Start Num: 49

Candidate Starts for LugYA_86:

(30, 46317), (Start: 49 @46275 has 80 MA's), (52, 46266), (Start: 55 @46254 has 2 MA's), (56, 46248), (67, 46182),

Gene: MaCh_80 Start: 45979, Stop: 45704, Start Num: 39

Candidate Starts for MaCh_80:

(7, 46219), (11, 46156), (Start: 39 @45979 has 23 MA's), (56, 45910), (59, 45889), (63, 45868), (67, 45844), (69, 45832), (83, 45754),

Gene: Mabel_80 Start: 45980, Stop: 45705, Start Num: 39

Candidate Starts for Mabel_80:

(7, 46220), (11, 46157), (Start: 39 @45980 has 23 MA's), (56, 45911), (59, 45890), (63, 45869), (67, 45845), (69, 45833), (83, 45755),

Gene: MadMarie_81 Start: 46272, Stop: 46042, Start Num: 49

Candidate Starts for MadMarie_81:

(30, 46314), (Start: 49 @46272 has 80 MA's), (52, 46263), (Start: 55 @46251 has 2 MA's), (56, 46245), (67, 46179),

Gene: Mainiac_82 Start: 46264, Stop: 46034, Start Num: 49

Candidate Starts for Mainiac_82:

(30, 46306), (Start: 49 @46264 has 80 MA's), (52, 46255), (Start: 55 @46243 has 2 MA's), (56, 46237), (67, 46171),

Gene: Malec_78 Start: 47105, Stop: 46776, Start Num: 22

Candidate Starts for Malec_78:

(Start: 22 @47105 has 58 MA's), (34, 47072), (42, 47042), (52, 47003), (56, 46985), (64, 46934), (65, 46928), (68, 46910), (80, 46868), (83, 46829),

Gene: Malinsilva_86 Start: 46263, Stop: 46033, Start Num: 49

Candidate Starts for Malinsilva_86:

(30, 46305), (Start: 49 @46263 has 80 MA's), (52, 46254), (Start: 55 @46242 has 2 MA's), (56, 46236), (67, 46170),

Gene: Manu_82 Start: 46086, Stop: 45856, Start Num: 49

Candidate Starts for Manu_82:

(14, 46236), (30, 46128), (Start: 36 @46110 has 8 MA's), (Start: 49 @46086 has 80 MA's), (63, 46017), (67, 45993), (83, 45906),

Gene: MarQuardt_83 Start: 46273, Stop: 46043, Start Num: 49

Candidate Starts for MarQuardt_83:

(30, 46315), (Start: 49 @46273 has 80 MA's), (52, 46264), (Start: 55 @46252 has 2 MA's), (56, 46246), (67, 46180),

Gene: Marie_81 Start: 46274, Stop: 46044, Start Num: 49

Candidate Starts for Marie_81:

(30, 46316), (Start: 49 @46274 has 80 MA's), (52, 46265), (Start: 55 @46253 has 2 MA's), (56, 46247), (67, 46181),

Gene: Marius_83 Start: 46079, Stop: 45849, Start Num: 49

Candidate Starts for Marius_83:

(14, 46229), (30, 46121), (Start: 36 @46103 has 8 MA's), (Start: 49 @46079 has 80 MA's), (63, 46010), (67, 45986), (83, 45899),

Gene: MarysWell_71 Start: 44740, Stop: 44498, Start Num: 27

Candidate Starts for MarysWell_71:

(Start: 27 @44740 has 30 MA's), (50, 44707), (52, 44704), (61, 44656), (64, 44635), (72, 44599), (79, 44575),

Gene: McFly_81 Start: 45491, Stop: 45270, Start Num: 48

Candidate Starts for McFly_81:

(Start: 48 @45491 has 24 MA's), (52, 45479),

Gene: Methuselah_76 Start: 46295, Stop: 46065, Start Num: 49

Candidate Starts for Methuselah_76:

(30, 46337), (Start: 49 @46295 has 80 MA's), (52, 46286), (Start: 55 @46274 has 2 MA's), (56, 46268), (67, 46202),

Gene: Micasa_71 Start: 44462, Stop: 44220, Start Num: 27

Candidate Starts for Micasa_71:

(Start: 27 @44462 has 30 MA's), (50, 44429), (52, 44426), (61, 44378), (64, 44357), (72, 44321), (79, 44297),

Gene: Microwolf_79 Start: 46287, Stop: 46057, Start Num: 49

Candidate Starts for Microwolf_79:

(30, 46329), (Start: 49 @46287 has 80 MA's), (52, 46278), (Start: 55 @46266 has 2 MA's), (56, 46260), (67, 46194),

Gene: MiculUcigas_79 Start: 46268, Stop: 45948, Start Num: 22

Candidate Starts for MiculUcigas_79:

(Start: 22 @46268 has 58 MA's), (42, 46214), (56, 46157), (64, 46106), (65, 46100), (68, 46082), (80, 46040), (83, 46001),

Gene: Midas2_68 Start: 44365, Stop: 44123, Start Num: 27

Candidate Starts for Midas2_68:

(Start: 27 @44365 has 30 MA's), (50, 44332), (52, 44329), (64, 44260), (72, 44224), (79, 44200),

Gene: Miko_74 Start: 45841, Stop: 45563, Start Num: 22

Candidate Starts for Miko_74:

(5, 46138), (Start: 22 @45841 has 58 MA's), (28, 45835), (56, 45778), (70, 45697), (77, 45673), (83, 45622), (88, 45574),

Gene: Milcery_71 Start: 44253, Stop: 44008, Start Num: 27

Candidate Starts for Milcery_71:

(Start: 27 @44253 has 30 MA's), (Start: 49 @44223 has 80 MA's), (61, 44166), (72, 44109),

Gene: MissWhite_74 Start: 43643, Stop: 43320, Start Num: 73

Candidate Starts for MissWhite_74:

(51, 43754), (54, 43748), (Start: 73 @43643 has 1 MA's), (75, 43637), (82, 43577), (84, 43556), (90, 43511), (91, 43373),

Gene: MoneyMay_83 Start: 46274, Stop: 46044, Start Num: 49

Candidate Starts for MoneyMay_83:

(30, 46316), (Start: 49 @46274 has 80 MA's), (52, 46265), (Start: 55 @46253 has 2 MA's), (56, 46247), (67, 46181),

Gene: MuchMore_86 Start: 46260, Stop: 46030, Start Num: 49

Candidate Starts for MuchMore_86:

(30, 46302), (Start: 49 @46260 has 80 MA's), (52, 46251), (Start: 55 @46239 has 2 MA's), (56, 46233), (67, 46167),

Gene: Mulciber_78 Start: 45521, Stop: 45246, Start Num: 39

Candidate Starts for Mulciber_78:

(7, 45761), (11, 45698), (Start: 39 @45521 has 23 MA's), (56, 45452), (59, 45431), (63, 45410), (67, 45386), (69, 45374), (83, 45296),

Gene: Munch_80 Start: 45984, Stop: 45709, Start Num: 39

Candidate Starts for Munch_80:

(7, 46224), (11, 46161), (Start: 39 @45984 has 23 MA's), (56, 45915), (59, 45894), (63, 45873), (67, 45849), (69, 45837), (83, 45759),

Gene: MyraDee_74 Start: 43043, Stop: 42735, Start Num: 32

Candidate Starts for MyraDee_74:

(1, 43406), (3, 43385), (Start: 32 @43043 has 2 MA's), (38, 43022), (Start: 39 @43019 has 23 MA's), (45, 42980), (56, 42941), (83, 42788),

Gene: NaSiaTalie_80 Start: 46561, Stop: 46298, Start Num: 22

Candidate Starts for NaSiaTalie_80:

(Start: 22 @46561 has 58 MA's), (33, 46540), (57, 46489), (69, 46426),

Gene: Naca_74 Start: 45642, Stop: 45400, Start Num: 29

Candidate Starts for Naca_74:

(Start: 29 @45642 has 8 MA's),

Gene: NearlyHeadless_87 Start: 46723, Stop: 46481, Start Num: 36

Candidate Starts for NearlyHeadless_87:

(Start: 36 @46723 has 8 MA's), (67, 46612), (68, 46603),

Gene: Neeharika16_80 Start: 45241, Stop: 45020, Start Num: 48

Candidate Starts for Neeharika16_80:

(10, 45445), (17, 45355), (Start: 48 @45241 has 24 MA's), (52, 45229),

Gene: Newrala_80 Start: 45577, Stop: 45356, Start Num: 48

Candidate Starts for Newrala_80:

(10, 45781), (17, 45691), (Start: 48 @45577 has 24 MA's), (52, 45565),

Gene: NicoleTera_77 Start: 46504, Stop: 46226, Start Num: 22

Candidate Starts for NicoleTera_77:

(Start: 22 @46504 has 58 MA's), (28, 46498), (56, 46441), (67, 46375), (77, 46336), (83, 46285), (88, 46237),

Gene: NothingSpecial_73 Start: 46180, Stop: 45911, Start Num: 40

Candidate Starts for NothingSpecial_73:

(Start: 40 @46180 has 6 MA's), (41, 46174), (52, 46135), (56, 46117), (65, 46060), (68, 46042), (83, 45961),

Gene: OlanP_81 Start: 46258, Stop: 46028, Start Num: 49

Candidate Starts for OlanP_81:

(13, 46432), (14, 46408), (30, 46300), (Start: 36 @46282 has 8 MA's), (Start: 49 @46258 has 80 MA's), (63, 46189), (67, 46165), (83, 46078),

Gene: Ollie_83 Start: 46142, Stop: 45912, Start Num: 49

Candidate Starts for Ollie_83:

(30, 46184), (Start: 49 @46142 has 80 MA's), (52, 46133), (Start: 55 @46121 has 2 MA's), (56, 46115), (67, 46049),

Gene: Orange_80 Start: 45534, Stop: 45259, Start Num: 39

Candidate Starts for Orange_80:

(7, 45774), (11, 45711), (Start: 39 @45534 has 23 MA's), (56, 45465), (59, 45444), (63, 45423), (67, 45399), (69, 45387), (83, 45309),

Gene: P28Green_83 Start: 46277, Stop: 46047, Start Num: 49

Candidate Starts for P28Green_83:

(30, 46319), (Start: 49 @46277 has 80 MA's), (52, 46268), (Start: 55 @46256 has 2 MA's), (56, 46250), (67, 46184),

Gene: PGHhamlin_85 Start: 46263, Stop: 46033, Start Num: 49

Candidate Starts for PGHhamlin_85:

(30, 46305), (Start: 49 @46263 has 80 MA's), (52, 46254), (Start: 55 @46242 has 2 MA's), (56, 46236), (67, 46170),

Gene: PainterBoy_81 Start: 46481, Stop: 46236, Start Num: 46

Candidate Starts for PainterBoy_81:

(19, 46598), (23, 46568), (44, 46493), (Start: 46 @46481 has 3 MA's), (61, 46421),

Gene: Pawn_81 Start: 46086, Stop: 45856, Start Num: 49

Candidate Starts for Pawn_81:

(14, 46236), (30, 46128), (Start: 36 @46110 has 8 MA's), (Start: 49 @46086 has 80 MA's), (63, 46017), (67, 45993), (83, 45906),

Gene: Pembroke_83 Start: 46272, Stop: 46042, Start Num: 49

Candidate Starts for Pembroke_83:

(30, 46314), (Start: 49 @46272 has 80 MA's), (52, 46263), (Start: 55 @46251 has 2 MA's), (56, 46245), (67, 46179),

Gene: Penny1_83 Start: 46275, Stop: 46045, Start Num: 49

Candidate Starts for Penny1_83:

(30, 46317), (Start: 49 @46275 has 80 MA's), (52, 46266), (Start: 55 @46254 has 2 MA's), (56, 46248), (67, 46182),

Gene: Petersenfast_74 Start: 44415, Stop: 44140, Start Num: 39

Candidate Starts for Petersenfast_74:

(7, 44655), (11, 44592), (Start: 39 @44415 has 23 MA's), (56, 44346), (59, 44325), (63, 44304), (67, 44280), (69, 44268), (83, 44190),

Gene: PetterN_79 Start: 45429, Stop: 45187, Start Num: 29

Candidate Starts for PetterN_79:

(Start: 29 @45429 has 8 MA's),

Gene: Phillis_83 Start: 45739, Stop: 45497, Start Num: 36

Candidate Starts for Phillis_83:

(Start: 36 @45739 has 8 MA's), (56, 45694), (67, 45628), (71, 45610),

Gene: PhishRPhriends_79 Start: 45266, Stop: 45036, Start Num: 49

Candidate Starts for PhishRPhriends_79:

(14, 45416), (30, 45308), (Start: 36 @45290 has 8 MA's), (Start: 49 @45266 has 80 MA's), (63, 45197), (67, 45173), (83, 45086),

Gene: Phlorence_70 Start: 44259, Stop: 44014, Start Num: 27

Candidate Starts for Phlorence_70:

(Start: 27 @44259 has 30 MA's), (50, 44223), (61, 44172), (64, 44151), (72, 44115),

Gene: Phoebe_84 Start: 46267, Stop: 46037, Start Num: 49

Candidate Starts for Phoebe_84:

(30, 46309), (Start: 49 @46267 has 80 MA's), (52, 46258), (Start: 55 @46246 has 2 MA's), (56, 46240), (67, 46174),

Gene: Phoxy_83 Start: 46296, Stop: 46066, Start Num: 49

Candidate Starts for Phoxy_83:

(30, 46338), (Start: 49 @46296 has 80 MA's), (52, 46287), (Start: 55 @46275 has 2 MA's), (56, 46269), (67, 46203),

Gene: PickleBack_72 Start: 44434, Stop: 44189, Start Num: 27

Candidate Starts for PickleBack_72:

(Start: 27 @44434 has 30 MA's), (50, 44398), (61, 44347), (64, 44326), (72, 44290),

Gene: Piro94_78 Start: 46509, Stop: 46189, Start Num: 22

Candidate Starts for Piro94_78:

(Start: 22 @46509 has 58 MA's), (52, 46416), (56, 46398), (65, 46341), (68, 46323), (83, 46242),

Gene: Pistachio_83 Start: 46575, Stop: 46339, Start Num: 49

Candidate Starts for Pistachio_83:

(Start: 37 @46596 has 4 MA's), (Start: 49 @46575 has 80 MA's), (63, 46506), (68, 46473), (83, 46395),

Gene: Pmask_80 Start: 45778, Stop: 45557, Start Num: 48

Candidate Starts for Pmask_80:

(10, 45982), (17, 45892), (Start: 48 @45778 has 24 MA's), (52, 45766),

Gene: Pomar16_80 Start: 46631, Stop: 46359, Start Num: 22

Candidate Starts for Pomar16_80:

(Start: 22 @46631 has 58 MA's), (56, 46568), (67, 46502), (83, 46412),

Gene: PotatoSplit_84 Start: 46275, Stop: 46045, Start Num: 49

Candidate Starts for PotatoSplit_84:

(30, 46317), (Start: 49 @46275 has 80 MA's), (52, 46266), (Start: 55 @46254 has 2 MA's), (56, 46248), (67, 46182),

Gene: Power_79 Start: 47033, Stop: 46716, Start Num: 22

Candidate Starts for Power_79:

(Start: 22 @47033 has 58 MA's), (56, 46922), (64, 46871), (65, 46865), (68, 46847), (80, 46805), (83, 46766),

Gene: Priamo_82 Start: 45237, Stop: 44977, Start Num: 22

Candidate Starts for Priamo_82:

(Start: 22 @45237 has 58 MA's), (56, 45177), (57, 45162), (69, 45099), (83, 45021), (87, 44982),

Gene: Prinash11_69 Start: 44073, Stop: 43828, Start Num: 27

Candidate Starts for Prin Ashe11_69:

(Start: 27 @44073 has 30 MA's), (Start: 49 @44043 has 80 MA's), (61, 43986), (72, 43929),

Gene: Puppy_84 Start: 46645, Stop: 46409, Start Num: 49

Candidate Starts for Puppy_84:

(Start: 37 @46666 has 4 MA's), (Start: 49 @46645 has 80 MA's), (63, 46576), (68, 46543),

Gene: QueenB2_76 Start: 46156, Stop: 45854, Start Num: 31

Candidate Starts for QueenB2_76:

(Start: 31 @46156 has 7 MA's), (61, 46066), (83, 45943),

Gene: QueenBeesly_79 Start: 46830, Stop: 46513, Start Num: 22

Candidate Starts for QueenBeesly_79:

(Start: 22 @46830 has 58 MA's), (56, 46719), (64, 46668), (65, 46662), (68, 46644), (80, 46602), (83, 46563),

Gene: Rachaly_76 Start: 45987, Stop: 45709, Start Num: 22

Candidate Starts for Rachaly_76:

(5, 46284), (Start: 22 @45987 has 58 MA's), (28, 45981), (52, 45942), (56, 45924), (65, 45867), (68, 45849), (80, 45807), (83, 45768), (88, 45720),

Gene: Reba_78 Start: 44922, Stop: 44692, Start Num: 49

Candidate Starts for Reba_78:

(14, 45072), (30, 44964), (Start: 36 @44946 has 8 MA's), (Start: 49 @44922 has 80 MA's), (63, 44853), (67, 44829), (83, 44742),

Gene: RedRock_79 Start: 47115, Stop: 46849, Start Num: 26

Candidate Starts for RedRock_79:

(2, 47439), (3, 47433), (Start: 22 @47121 has 58 MA's), (Start: 26 @47115 has 1 MA's), (56, 47058), (67, 46992), (74, 46965), (83, 46902),

Gene: Retro23_79 Start: 46560, Stop: 46258, Start Num: 31

Candidate Starts for Retro23_79:

(Start: 31 @46560 has 7 MA's), (61, 46470), (83, 46347),

Gene: Rifter_81 Start: 44458, Stop: 44243, Start Num: 48

Candidate Starts for Rifter_81:

(Start: 48 @44458 has 24 MA's), (52, 44446),

Gene: Roary_88 Start: 46911, Stop: 46669, Start Num: 36

Candidate Starts for Roary_88:

(Start: 36 @46911 has 8 MA's), (67, 46800), (68, 46791), (72, 46779),

Gene: Rummer_82 Start: 46299, Stop: 46069, Start Num: 49

Candidate Starts for Rummer_82:

(30, 46341), (Start: 49 @46299 has 80 MA's), (52, 46290), (Start: 55 @46278 has 2 MA's), (56, 46272), (67, 46206),

Gene: Sabia_81 Start: 46279, Stop: 46049, Start Num: 49

Candidate Starts for Sabia_81:

(30, 46321), (Start: 49 @46279 has 80 MA's), (52, 46270), (Start: 55 @46258 has 2 MA's), (56, 46252), (67, 46186),

Gene: Sabinator_81 Start: 46273, Stop: 46043, Start Num: 49

Candidate Starts for Sabinator_81:

(30, 46315), (Start: 49 @46273 has 80 MA's), (52, 46264), (Start: 55 @46252 has 2 MA's), (56, 46246), (67, 46180),

Gene: Saintus_82 Start: 43589, Stop: 43317, Start Num: 25

Candidate Starts for Saintus_82:

(18, 43649), (Start: 25 @43589 has 3 MA's), (Start: 49 @43541 has 80 MA's), (67, 43448), (68, 43439),

Gene: Salz_75 Start: 44330, Stop: 44055, Start Num: 39

Candidate Starts for Salz_75:

(7, 44570), (11, 44507), (Start: 39 @44330 has 23 MA's), (56, 44261), (59, 44240), (63, 44219), (67, 44195), (69, 44183), (83, 44105),

Gene: SaturnRing_84 Start: 47028, Stop: 46792, Start Num: 49

Candidate Starts for SaturnRing_84:

(Start: 37 @47049 has 4 MA's), (Start: 49 @47028 has 80 MA's), (63, 46959), (68, 46926), (83, 46848),

Gene: Scorpia_74 Start: 45000, Stop: 44758, Start Num: 29

Candidate Starts for Scorpia_74:

(Start: 29 @45000 has 8 MA's),

Gene: Scout_82 Start: 46209, Stop: 45973, Start Num: 49

Candidate Starts for Scout_82:

(Start: 37 @46230 has 4 MA's), (Start: 49 @46209 has 80 MA's), (63, 46140), (68, 46107),

Gene: SemperFi_79 Start: 46718, Stop: 46401, Start Num: 22

Candidate Starts for SemperFi_79:

(Start: 22 @46718 has 58 MA's), (56, 46607), (64, 46556), (65, 46550), (68, 46532), (80, 46490), (83, 46451),

Gene: Sham4_76 Start: 44413, Stop: 44138, Start Num: 39

Candidate Starts for Sham4_76:

(7, 44653), (11, 44590), (Start: 39 @44413 has 23 MA's), (56, 44344), (59, 44323), (63, 44302), (67, 44278), (69, 44266), (83, 44188),

Gene: Sknot_79 Start: 46362, Stop: 46042, Start Num: 22

Candidate Starts for Sknot_79:

(Start: 22 @46362 has 58 MA's), (42, 46308), (56, 46251), (64, 46200), (65, 46194), (68, 46176), (80, 46134), (83, 46095),

Gene: Smeadley_86 Start: 46775, Stop: 46533, Start Num: 36

Candidate Starts for Smeadley_86:

(Start: 36 @46775 has 8 MA's), (67, 46664), (68, 46655), (72, 46643),

Gene: Smeagan_82 Start: 47272, Stop: 46952, Start Num: 22

Candidate Starts for Smeagan_82:

(Start: 22 @47272 has 58 MA's), (42, 47218), (Start: 46 @47197 has 3 MA's), (52, 47179), (63, 47119), (64, 47110), (65, 47104), (68, 47086), (83, 47005),

Gene: SmellyB_81 Start: 45136, Stop: 44915, Start Num: 48

Candidate Starts for SmellyB_81:

(Start: 48 @45136 has 24 MA's), (52, 45124),

Gene: SnapTap_79 Start: 46689, Stop: 46372, Start Num: 22

Candidate Starts for SnapTap_79:

(Start: 22 @46689 has 58 MA's), (56, 46578), (64, 46527), (65, 46521), (68, 46503), (80, 46461), (83, 46422),

Gene: Snape_80 Start: 45523, Stop: 45248, Start Num: 39

Candidate Starts for Snape_80:

(7, 45763), (11, 45700), (Start: 39 @45523 has 23 MA's), (56, 45454), (59, 45433), (63, 45412), (67, 45388), (69, 45376), (83, 45298),

Gene: Snickers_79 Start: 46244, Stop: 46014, Start Num: 49

Candidate Starts for Snickers_79:

(30, 46286), (Start: 49 @46244 has 80 MA's), (52, 46235), (Start: 55 @46223 has 2 MA's), (56, 46217), (67, 46151),

Gene: SoYo_80 Start: 46187, Stop: 45957, Start Num: 49

Candidate Starts for SoYo_80:

(30, 46229), (Start: 49 @46187 has 80 MA's), (52, 46178), (Start: 55 @46166 has 2 MA's), (56, 46160), (67, 46094),

Gene: SoilDragon_83 Start: 45714, Stop: 45484, Start Num: 49

Candidate Starts for SoilDragon_83:

(30, 45756), (Start: 49 @45714 has 80 MA's), (52, 45705), (Start: 55 @45693 has 2 MA's), (56, 45687), (67, 45621), (83, 45534),

Gene: Soshari_85 Start: 46274, Stop: 46065, Start Num: 55

Candidate Starts for Soshari_85:

(30, 46337), (Start: 49 @46295 has 80 MA's), (52, 46286), (Start: 55 @46274 has 2 MA's), (56, 46268), (67, 46202),

Gene: Spike509_83 Start: 46296, Stop: 46066, Start Num: 49

Candidate Starts for Spike509_83:

(30, 46338), (Start: 49 @46296 has 80 MA's), (52, 46287), (Start: 55 @46275 has 2 MA's), (56, 46269), (67, 46203),

Gene: Stagni_80 Start: 46274, Stop: 46044, Start Num: 49

Candidate Starts for Stagni_80:

(30, 46316), (Start: 49 @46274 has 80 MA's), (52, 46265), (Start: 55 @46253 has 2 MA's), (56, 46247), (67, 46181),

Gene: StarStuff_80 Start: 46596, Stop: 46324, Start Num: 22

Candidate Starts for StarStuff_80:

(Start: 22 @46596 has 58 MA's), (56, 46533), (67, 46467), (83, 46377),

Gene: StepMih_83 Start: 46244, Stop: 46035, Start Num: 55

Candidate Starts for StepMih_83:

(30, 46307), (Start: 49 @46265 has 80 MA's), (52, 46256), (Start: 55 @46244 has 2 MA's), (56, 46238), (67, 46172),

Gene: Stephig9_85 Start: 46744, Stop: 46472, Start Num: 25

Candidate Starts for Stephig9_85:

(18, 46804), (Start: 25 @46744 has 3 MA's), (Start: 49 @46696 has 80 MA's), (67, 46603), (68, 46594),

Gene: SuperAwesome_81 Start: 45817, Stop: 45596, Start Num: 48
Candidate Starts for SuperAwesome_81:
(10, 46021), (17, 45931), (Start: 48 @45817 has 24 MA's), (52, 45805),

Gene: SuperCallie99_78 Start: 45658, Stop: 45437, Start Num: 48
Candidate Starts for SuperCallie99_78:
(Start: 48 @45658 has 24 MA's), (52, 45646),

Gene: SweetiePie_79 Start: 46821, Stop: 46504, Start Num: 22
Candidate Starts for SweetiePie_79:
(Start: 22 @46821 has 58 MA's), (56, 46710), (64, 46659), (65, 46653), (68, 46635), (80, 46593), (83, 46554),

Gene: Swirley_71 Start: 44403, Stop: 44158, Start Num: 27
Candidate Starts for Swirley_71:
(Start: 27 @44403 has 30 MA's), (Start: 49 @44373 has 80 MA's), (61, 44316), (64, 44295), (72, 44259),

Gene: SydNat_71 Start: 44601, Stop: 44359, Start Num: 27
Candidate Starts for SydNat_71:
(Start: 27 @44601 has 30 MA's), (50, 44568), (52, 44565), (Start: 55 @44553 has 2 MA's), (61, 44517), (64, 44496), (72, 44460), (79, 44436),

Gene: TNguyen7_84 Start: 47007, Stop: 46750, Start Num: 37
Candidate Starts for TNguyen7_84:
(Start: 37 @47007 has 4 MA's), (Start: 49 @46986 has 80 MA's), (63, 46917), (68, 46884), (83, 46806),

Gene: TarsusIV_79 Start: 46873, Stop: 46601, Start Num: 40
Candidate Starts for TarsusIV_79:
(Start: 40 @46873 has 6 MA's), (41, 46867), (52, 46828), (56, 46810), (64, 46759), (65, 46753), (68, 46735), (83, 46654),

Gene: Tarynearal_70 Start: 44239, Stop: 43994, Start Num: 27
Candidate Starts for Tarynearal_70:
(Start: 27 @44239 has 30 MA's), (Start: 49 @44209 has 80 MA's), (61, 44152), (72, 44095),

Gene: Taurus_84 Start: 46274, Stop: 46044, Start Num: 49
Candidate Starts for Taurus_84:
(30, 46316), (Start: 49 @46274 has 80 MA's), (52, 46265), (Start: 55 @46253 has 2 MA's), (56, 46247), (67, 46181),

Gene: Terrific_80 Start: 46336, Stop: 46016, Start Num: 22
Candidate Starts for Terrific_80:
(Start: 22 @46336 has 58 MA's), (42, 46282), (56, 46225), (64, 46174), (65, 46168), (68, 46150), (80, 46108), (83, 46069),

Gene: Theia_70 Start: 44724, Stop: 44482, Start Num: 27
Candidate Starts for Theia_70:
(Start: 27 @44724 has 30 MA's), (50, 44691), (52, 44688), (61, 44640), (64, 44619), (72, 44583), (79, 44559),

Gene: Tiffany_82 Start: 46159, Stop: 45929, Start Num: 49

Candidate Starts for Tiffany_82:

(30, 46201), (Start: 49 @46159 has 80 MA's), (52, 46150), (Start: 55 @46138 has 2 MA's), (56, 46132), (67, 46066),

Gene: Tiger_70 Start: 44180, Stop: 43935, Start Num: 27

Candidate Starts for Tiger_70:

(Start: 27 @44180 has 30 MA's), (50, 44144), (61, 44093), (64, 44072), (72, 44036),

Gene: Timothy_80 Start: 45500, Stop: 45225, Start Num: 39

Candidate Starts for Timothy_80:

(7, 45740), (11, 45677), (Start: 39 @45500 has 23 MA's), (56, 45431), (59, 45410), (63, 45389), (67, 45365), (69, 45353), (83, 45275),

Gene: TinyPebbles_79 Start: 46303, Stop: 46073, Start Num: 49

Candidate Starts for TinyPebbles_79:

(30, 46345), (Start: 49 @46303 has 80 MA's), (Start: 55 @46282 has 2 MA's), (56, 46276), (67, 46210), (68, 46201),

Gene: TinyTimmy_79 Start: 45229, Stop: 44954, Start Num: 39

Candidate Starts for TinyTimmy_79:

(7, 45469), (11, 45406), (Start: 39 @45229 has 23 MA's), (56, 45160), (59, 45139), (63, 45118), (67, 45094), (69, 45082), (83, 45004),

Gene: Tomathan_80 Start: 46674, Stop: 46402, Start Num: 22

Candidate Starts for Tomathan_80:

(Start: 22 @46674 has 58 MA's), (56, 46611), (67, 46545), (83, 46455),

Gene: Travvers_80 Start: 46591, Stop: 46319, Start Num: 22

Candidate Starts for Travvers_80:

(Start: 22 @46591 has 58 MA's), (56, 46528), (67, 46462), (83, 46372),

Gene: Trixie_80 Start: 47546, Stop: 47271, Start Num: 22

Candidate Starts for Trixie_80:

(Start: 22 @47546 has 58 MA's), (56, 47480), (68, 47405), (74, 47387), (83, 47324),

Gene: Trooper_79 Start: 46430, Stop: 46158, Start Num: 40

Candidate Starts for Trooper_79:

(15, 46544), (Start: 40 @46430 has 6 MA's), (41, 46424), (52, 46385), (56, 46367), (65, 46310), (68, 46292), (80, 46250), (83, 46211),

Gene: Turbido_80 Start: 46993, Stop: 46673, Start Num: 22

Candidate Starts for Turbido_80:

(Start: 22 @46993 has 58 MA's), (42, 46939), (Start: 46 @46918 has 3 MA's), (52, 46900), (63, 46840), (64, 46831), (65, 46825), (68, 46807), (83, 46726),

Gene: Twigg_68 Start: 44051, Stop: 43806, Start Num: 27

Candidate Starts for Twigg_68:

(Start: 27 @44051 has 30 MA's), (Start: 49 @44021 has 80 MA's), (61, 43964), (72, 43907),

Gene: UnionJack_75 Start: 44664, Stop: 44422, Start Num: 29

Candidate Starts for UnionJack_75:

(Start: 29 @44664 has 8 MA's), (50, 44631),

Gene: Updawg_80 Start: 46550, Stop: 46230, Start Num: 22

Candidate Starts for Updawg_80:

(Start: 22 @46550 has 58 MA's), (42, 46496), (56, 46439), (64, 46388), (65, 46382), (68, 46364), (80, 46322), (83, 46283),

Gene: VA6_79 Start: 46565, Stop: 46284, Start Num: 22

Candidate Starts for VA6_79:

(Start: 22 @46565 has 58 MA's), (Start: 24 @46559 has 2 MA's), (52, 46511), (56, 46493), (58, 46475), (65, 46436), (68, 46418), (80, 46376), (83, 46337),

Gene: VC3_78 Start: 45517, Stop: 45221, Start Num: 22

Candidate Starts for VC3_78:

(Start: 22 @45517 has 58 MA's), (67, 45385), (83, 45295),

Gene: Vix_79 Start: 46354, Stop: 46124, Start Num: 49

Candidate Starts for Vix_79:

(30, 46396), (Start: 49 @46354 has 80 MA's), (Start: 55 @46333 has 2 MA's), (56, 46327), (67, 46261),

Gene: VohminGhazi_81 Start: 45137, Stop: 44916, Start Num: 48

Candidate Starts for VohminGhazi_81:

(Start: 48 @45137 has 24 MA's), (52, 45125),

Gene: Watson_82 Start: 46263, Stop: 46033, Start Num: 49

Candidate Starts for Watson_82:

(30, 46305), (Start: 49 @46263 has 80 MA's), (52, 46254), (Start: 55 @46242 has 2 MA's), (56, 46236), (67, 46170),

Gene: Whabigail7_79 Start: 46991, Stop: 46671, Start Num: 22

Candidate Starts for Whabigail7_79:

(Start: 22 @46991 has 58 MA's), (42, 46937), (Start: 46 @46916 has 3 MA's), (52, 46898), (63, 46838), (64, 46829), (65, 46823), (68, 46805), (83, 46724),

Gene: WideWale_80 Start: 46550, Stop: 46230, Start Num: 22

Candidate Starts for WideWale_80:

(Start: 22 @46550 has 58 MA's), (42, 46496), (56, 46439), (64, 46388), (65, 46382), (68, 46364), (80, 46322), (83, 46283),

Gene: Wooldri_85 Start: 46180, Stop: 45950, Start Num: 49

Candidate Starts for Wooldri_85:

(30, 46222), (Start: 49 @46180 has 80 MA's), (52, 46171), (Start: 55 @46159 has 2 MA's), (56, 46153), (67, 46087),

Gene: XianYue_78 Start: 46882, Stop: 46607, Start Num: 22

Candidate Starts for XianYue_78:

(12, 46996), (Start: 22 @46882 has 58 MA's), (56, 46813), (67, 46747), (68, 46738), (77, 46708), (83, 46657),

Gene: Zolita_70 Start: 44584, Stop: 44342, Start Num: 27

Candidate Starts for Zolita_70:

(Start: 27 @44584 has 30 MA's), (50, 44551), (52, 44548), (Start: 55 @44536 has 2 MA's), (61, 44500), (64, 44479), (72, 44443), (79, 44419),