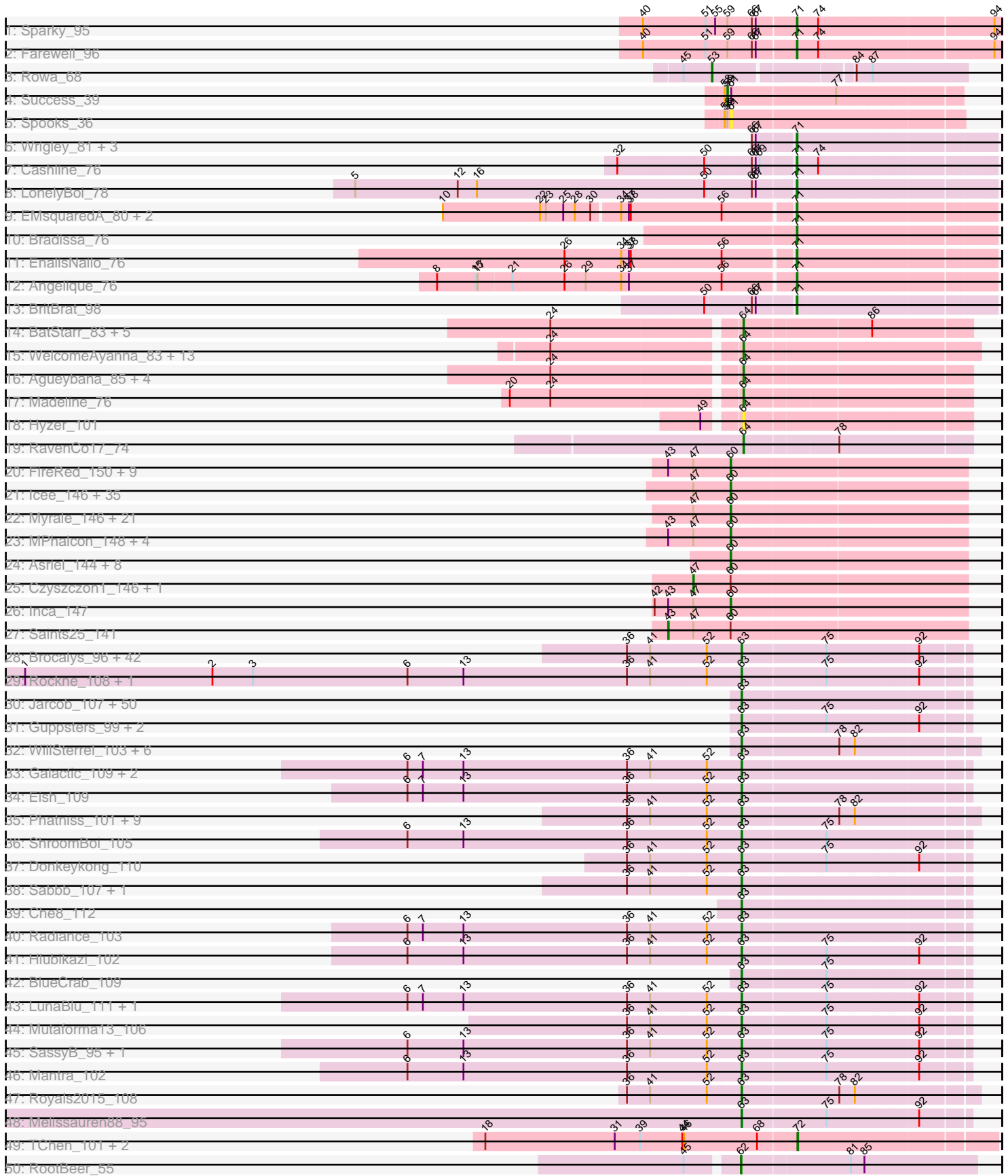
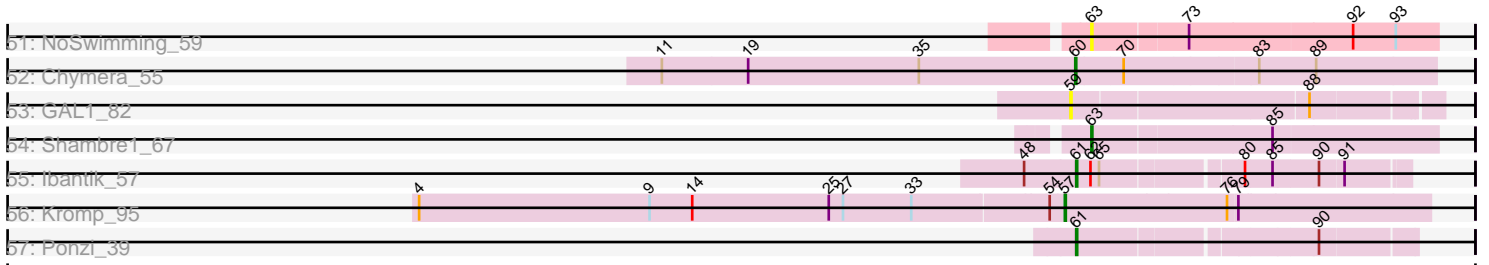


Pham 224239



Pham 224239



Note: Tracks are now grouped by subcluster and scaled. Switching in subcluster is indicated by changes in track color. Track scale is now set by default to display the region 30 bp upstream of start 1 to 30 bp downstream of the last possible start. If this default region is judged to be packed too tightly with annotated starts, the track will be further scaled to only show that region of the ORF with annotated starts. This action will be indicated by adding "Zoomed" to the title. For starts, yellow indicates the location of called starts comprised solely of Glimmer/GeneMark auto-annotations, green indicates the location of called starts with at least 1 manual gene annotation.

Pham 224239 Report

This analysis was run 03/28/25 on database version 593.

Pham number 224239 has 279 members, 9 are drafts.

Phages represented in each track:

- Track 1 : Sparky_95
- Track 2 : Farewell_96
- Track 3 : Rowa_68
- Track 4 : Success_39
- Track 5 : Spooks_36
- Track 6 : Wrigley_81, Posh_79, Pytheas_83, Jablanski_82
- Track 7 : Cashline_76
- Track 8 : LonelyBoi_78
- Track 9 : EMSquaredA_80, Floral_80, Pollux_82
- Track 10 : Bradissa_76
- Track 11 : EnalisNailo_76
- Track 12 : Angelique_76
- Track 13 : BritBrat_98
- Track 14 : BatStarr_83, Nymphadora_84, TimTam_84, Bosnia_82, Eviarto_84, Herod_84
- Track 15 : WelcomeAyanna_83, Trumpet_79, Zameen_79, Manasvini_81, Maridalia_83, Eudoria_79, Antonio_78, Bunnybear_78, Tayonia_79, Kita_80, ThankyouJordi_83, Suscepit_79, Polly_76, Neobush_81
- Track 16 : Agueybana_85, Zirinka_79, AlumE_82, BoyNamedSue_82, Bialota_79
- Track 17 : Madeline_76
- Track 18 : Hyzer_101
- Track 19 : RavenCo17_74
- Track 20 : FireRed_150, Thresher_148, Highbury_141, Palpatine_143, Command613_149, Nala_149, PhatBacter_150, Manda_149, BaboJay_146, Ukulele_143
- Track 21 : Icee_146, Wiggin_149, Cactus_154, Sotrice96_151, BadStone_145, SophKB_144, Rimmer_145, Elite2014_146, Goldilocks_152, Youngblood_150, Tuco_150, AmericanBeauty_149, Contagion_142, HufflyPuff_148, IHOP_151, Willez_144, Kanye_142, Easy2Say_148, Kimchi_151, Holt_152, Argent26_150, Bench_149, Lilpickle_146, RiverMonster_146, StolenFromERC_148, Adnama_150, Gage_137, Dumbo_149, ChosenOne_147, Phaux_147, Stank_150, Maxxinista_148, GoldenSpark_150, Quallification_146, ABCat_145, Gemini_151
- Track 22 : Myrale_146, ShereKhan_145, Murphy_148, OrionPax_144, Miniwave_140, DoctorDiddles_145, Teaspoon_130, MadamMonkfish_148, NoSleep_145, Nimrod_145, Cookies_148, JeTaime_144, Stark_143, Emmina_148, TBrady12_151, Paperbeatsrock_144, ShamWow_145, BigBubba_149, Phaja_151, Tarkin_144, Phrux_143, Buck_148

- Track 23 : MPhalcon_148, MISSy_147, Hopey_144, Policronamos_145, Murica_149
- Track 24 : Asriel_144, Flypotenuse_142, Balomoji_146, Glexan_150, Traaww1_144, Pat3_147, Harella_153, Barbarian_146, Hoonter_148
- Track 25 : Czyszczon1_146, Marshmallow_149
- Track 26 : Inca_147
- Track 27 : Saints25_141
- Track 28 : Brocalys_96, CaptainTrips_107, ShowerHandel_107, PhesterPhotato_109, MinionDave_103, Gorge_103, DLane_105, Moonbeam_107, Gandolph_104, MilanaBonita_98, DillTech15_111, Filuzino_105, GUmbie_104, Cabrinians_101, SuperGrey_103, Ms6_107, Ardmore_88, Philus_108, James_108, StAnnes_110, Pippy_103, KingMidas_105, Florinda_117, Hamulus_105, EleanorGeorge_108, SiSi_99, FreddyB_113, Tweety_109, Fastidio_108, Whouxphf_108, Phalconet_106, Krakatau_97, Batiatus_105, NormanBulbieJr_102, Taj_110, Wee_109, Rita_104, Bipolar_106, Emma_109, Kenuha5_96, Scottish_105, Veteran_94, Akhila_99
- Track 29 : Rockne_108, PMC_104
- Track 30 : Jarcob_107, Ruby_100, VRedHorse_105, Karhdo_100, Mattes_105, Clifton_96, BodEinwohner17_116, Llama_111, Wachhund_101, ByChance_95, Ochi17_110, Jinglebell_111, Seabastian_111, BobaPhett_108, Crumble_99, MisterCuddles_104, ShiLan_107, Nimbo_96, Byougenkin_101, OldBen_101, Leperchaun_106, JoeyJr_107, PHappiness_104, Geralt_97, Estave1_112, Inventum_102, MadMen_109, Lizziana_105, Deb65_97, DRBy19_104, Kersh_107, Sassafras_106, OfUltron_111, Polka14_108, SwagPigglett_106, lbhubesi_103, Daenerys_102, Priscilla_105, Phasih_100, Eradicator_95, RedBird_105, Sparkdehlily_111, Modragons_107, TDanisky_112, Hades_102, Girr_103, AlpineSix_102, Spoonbill_104, KristaRAM_113, RitaG_103, Martik_103
- Track 31 : Guppsters_99, Zizzle_108, DoRead_112
- Track 32 : WillSterrel_103, Mahavrat_98, Maravista_102, Juniper1_98, Phanphagia_109, IrishSherpFalk_105, Shauna1_106
- Track 33 : Galactic_109, Polo2Bam_116, NewHope4_108
- Track 34 : Eish_109
- Track 35 : Phatniss_101, Chuckly_102, Bubbles123_100, Dante_104, Llij_99, Whatsapiecost_99, Burwell21_99, Minnie_99, Zerg_103, Sandalphon_103
- Track 36 : ShroomBoi_105
- Track 37 : Donkeykong_110
- Track 38 : Sabbb_107, Pacc40_101
- Track 39 : Che8_112
- Track 40 : Radiance_103
- Track 41 : Hlubikazi_102
- Track 42 : BlueCrab_109
- Track 43 : LunaBlu_111, GigiOuiOui_99
- Track 44 : Mutaforma13_106
- Track 45 : SassyB_95, PopTart_95
- Track 46 : Mantra_102
- Track 47 : Royals2015_108
- Track 48 : Melissauren88_95
- Track 49 : TChen_101, LunaStella_101, Renaud18_112
- Track 50 : RootBeer_55
- Track 51 : NoSwimming_59
- Track 52 : Chymera_55
- Track 53 : GAL1_82
- Track 54 : Shambre1_67
- Track 55 : lbantik_57

- Track 56 : Kromp_95
- Track 57 : Ponzi_39

Summary of Final Annotations (See graph section above for start numbers):

The start number called the most often in the published annotations is 63, it was called in 132 of the 270 non-draft genes in the pham.

Genes that call this "Most Annotated" start:

- Akhila_99, AlpineSix_102, Ardmore_88, Batiatus_105, Bipolar_106, BlueCrab_109, BobaPhett_108, BodEinwohner17_116, Brocalys_96, Bubbles123_100, Burwell21_99, ByChance_95, Byougenkin_101, Cabrinians_101, CaptainTrips_107, Che8_112, Chuckly_102, Clifton_96, Crumble_99, DLane_105, DRBy19_104, Daenerys_102, Dante_104, Deb65_97, DillTech15_111, DoRead_112, Donkeykong_110, Eish_109, EleanorGeorge_108, Emma_109, Eradicator_95, Estave1_112, Fastidio_108, Filuzino_105, Florinda_117, FreddyB_113, GUmBie_104, Galactic_109, Gandalph_104, Geralt_97, GigiOuiOui_99, Girr_103, Gorge_103, Guppsters_99, Hades_102, Hamulus_105, Hlubikazi_102, Ibhubesi_103, Inventum_102, IrishSherpFalk_105, James_108, Jarcob_107, Jinglebell_111, JoeyJr_107, Juniper1_98, Karhdo_100, Kenuha5_96, Kersh_107, KingMidas_105, Krakatau_97, KristaRAM_113, Leperchaun_106, Lizziana_105, Llama_111, Llij_99, LunaBlu_111, MadMen_109, Mahavrat_98, Mantra_102, Maravista_102, Martik_103, Mattes_105, Melissauren88_95, MilanaBonita_98, MinionDave_103, Minnie_99, MisterCuddles_104, Modragons_107, Moonbeam_107, Ms6_107, Mutaforma13_106, NewHope4_108, Nimbo_96, NoSwimming_59, NormanBulbieJr_102, Ochi17_110, OfUltron_111, OldBen_101, PHappiness_104, PMC_104, Pacc40_101, Phalconet_106, Phanphagia_109, Phasih_100, Phatniss_101, PhesterPhotato_109, Philus_108, Pippy_103, Polka14_108, Polo2Bam_116, PopTart_95, Priscilla_105, Radiance_103, RedBird_105, RitaG_103, Rita_104, Rockne_108, Royals2015_108, Ruby_100, Sabbb_107, Sandalphon_103, Sassafras_106, SassyB_95, Scottish_105, Sebastian_111, Shambre1_67, Shauna1_106, ShiLan_107, ShowerHandel_107, ShroomBoi_105, SiSi_99, Sparkdehlily_111, Spoonbill_104, StAnnes_110, SuperGrey_103, SwagPiggett_106, TDanisky_112, Taj_110, Tweety_109, VRedHorse_105, Veteran_94, Wachhund_101, Wee_109, Whatsapiecost_99, Whouxphf_108, WillSterrel_103, Zerg_103, Zizzle_108,

Genes that have the "Most Annotated" start but do not call it:

-

Genes that do not have the "Most Annotated" start:

- ABCat_145, Adnama_150, Agueybana_85, AlumE_82, AmericanBeauty_149, Angelique_76, Antonio_78, Argent26_150, Asriel_144, BaboJay_146, BadStone_145, Balomoji_146, Barbarian_146, BatStarr_83, Bench_149, Bialota_79, BigBubba_149, Bosnia_82, BoyNamedSue_82, Bradissa_76, BritBrat_98, Buck_148, Bunnybear_78, Cactus_154, Cashline_76, ChosenOne_147, Chymera_55, Command613_149, Contagion_142, Cookies_148, Czystczon1_146, DoctorDiddles_145, Dumbo_149, EMsquaredA_80, Easy2Say_148, Elite2014_146, Emmina_148, EnalisNailo_76, Eudoria_79, Eviarto_84, Farewell_96, FireRed_150, Floral_80, Flypotenuse_142, GAL1_82, Gage_137, Gemini_151, Glexan_150, GoldenSpark_150, Goldilocks_152, Harella_153, Herod_84, Highbury_141, Holt_152, Hoonter_148, Hopey_144,

HufflyPuff_148, Hyzer_101, IHOP_151, Ibantik_57, Icee_146, Inca_147, Jablanski_82, JeTaime_144, Kanye_142, Kimchi_151, Kita_80, Kromp_95, Lilpickle_146, LonelyBoi_78, LunaStella_101, MISSy_147, MPhalcon_148, MadamMonkfish_148, Madeline_76, Manasvini_81, Manda_149, Maridalia_83, Marshmallow_149, Maxxinista_148, Miniwave_140, Murica_149, Murphy_148, Myrale_146, Nala_149, Neobush_81, Nimrod_145, NoSleep_145, Nymphadora_84, OrionPax_144, Palpatine_143, Paperbeatsrock_144, Pat3_147, Phaja_151, PhatBacter_150, Phaux_147, Phrux_143, Policronamos_145, Pollux_82, Polly_76, Ponzi_39, Posh_79, Pytheas_83, Qualification_146, RavenCo17_74, Renaud18_112, Rimmer_145, RiverMonster_146, RootBeer_55, Rowa_68, Saints25_141, ShamWow_145, ShereKhan_145, SophKB_144, Sotrice96_151, Sparky_95, Spooks_36, Stank_150, Stark_143, StolenFromERC_148, Success_39, Suscepit_79, TBrady12_151, TChen_101, Tarkin_144, Tayonia_79, Teaspoon_130, ThankyouJordi_83, Thresher_148, TimTam_84, Traaww1_144, Trumpet_79, Tuco_150, Ukulele_143, WelcomeAyanna_83, Wiggin_149, Willez_144, Wrigley_81, Youngblood_150, Zameen_79, Zirinka_79,

Summary by start number:

Start 43:

- Found in 17 of 279 (6.1%) of genes in pham
- Manual Annotations of this start: 1 of 270
- Called 5.9% of time when present
- Phage (with cluster) where this start called: Saints25_141 (E),

Start 47:

- Found in 77 of 279 (27.6%) of genes in pham
- Manual Annotations of this start: 2 of 270
- Called 2.6% of time when present
- Phage (with cluster) where this start called: Czyszczonek1_146 (E), Marshmallow_149 (E),

Start 53:

- Found in 1 of 279 (0.4%) of genes in pham
- Manual Annotations of this start: 1 of 270
- Called 100.0% of time when present
- Phage (with cluster) where this start called: Rowa_68 (BL),

Start 57:

- Found in 1 of 279 (0.4%) of genes in pham
- Manual Annotations of this start: 1 of 270
- Called 100.0% of time when present
- Phage (with cluster) where this start called: Kromp_95 (singleton),

Start 59:

- Found in 5 of 279 (1.8%) of genes in pham
- Manual Annotations of this start: 1 of 270
- Called 40.0% of time when present
- Phage (with cluster) where this start called: GAL1_82 (singleton), Success_39 (BT),

Start 60:

- Found in 87 of 279 (31.2%) of genes in pham
- Manual Annotations of this start: 84 of 270

- Called 96.6% of time when present
- Phage (with cluster) where this start called: ABCat_145 (E), Adnama_150 (E), AmericanBeauty_149 (E), Argent26_150 (E), Asriel_144 (E), BaboJay_146 (E), BadStone_145 (E), Balomoji_146 (E), Barbarian_146 (E), Bench_149 (E), BigBubba_149 (E), Buck_148 (E), Cactus_154 (E), ChosenOne_147 (E), Chymera_55 (singleton), Command613_149 (E), Contagion_142 (E), Cookies_148 (E), DoctorDiddles_145 (E), Dumbo_149 (E), Easy2Say_148 (E), Elite2014_146 (E), Emmina_148 (E), FireRed_150 (E), Flypotenuse_142 (E), Gage_137 (E), Gemini_151 (E), Glexan_150 (E), GoldenSpark_150 (E), Goldilocks_152 (E), Harella_153 (E), Highbury_141 (E), Holt_152 (E), Hoonter_148 (E), Hopey_144 (E), HufflyPuff_148 (E), IHOP_151 (E), Icee_146 (E), Inca_147 (E), JeTaime_144 (E), Kanye_142 (E), Kimchi_151 (E), Lilpickle_146 (E), MISSy_147 (E), MPhalcon_148 (E), MadamMonkfish_148 (E), Manda_149 (E), Maxxinista_148 (E), Miniwave_140 (E), Murica_149 (E), Murphy_148 (E), Myrale_146 (E), Nala_149 (E), Nimrod_145 (E), NoSleep_145 (E), OrionPax_144 (E), Palpatine_143 (E), Paperbeatsrock_144 (E), Pat3_147 (E), Phaja_151 (E), PhatBacter_150 (E), Phaux_147 (E), Phrux_143 (E), Policronamos_145 (E), Qualification_146 (E), Rimmer_145 (E), RiverMonster_146 (E), ShamWow_145 (E), ShereKhan_145 (E), SophKB_144 (E), Sotrice96_151 (E), Stank_150 (E), Stark_143 (E), StolenFromERC_148 (E), TBrady12_151 (E), Tarkin_144 (E), Teaspoon_130 (E), Thresher_148 (E), Traaww1_144 (E), Tuco_150 (E), Ukulele_143 (E), Wiggins_149 (E), Willez_144 (E), Youngblood_150 (E),

Start 61:

- Found in 4 of 279 (1.4%) of genes in pham
- Manual Annotations of this start: 2 of 270
- Called 75.0% of time when present
- Phage (with cluster) where this start called: Ibantik_57 (singleton), Ponzi_39 (singleton), Spooks_36 (BT),

Start 62:

- Found in 2 of 279 (0.7%) of genes in pham
- Manual Annotations of this start: 1 of 270
- Called 50.0% of time when present
- Phage (with cluster) where this start called: RootBeer_55 (FA),

Start 63:

- Found in 138 of 279 (49.5%) of genes in pham
- Manual Annotations of this start: 132 of 270
- Called 100.0% of time when present
- Phage (with cluster) where this start called: Akhila_99 (F1), AlpineSix_102 (F1), Ardmore_88 (F1), Batiatus_105 (F1), Bipolar_106 (F1), BlueCrab_109 (F1), BobaPhett_108 (F1), BodEinwohner17_116 (F1), Brocalys_96 (F1), Bubbles123_100 (F1), Burwell21_99 (F1), ByChance_95 (F1), Byougenkin_101 (F1), Cabrinians_101 (F1), CaptainTrips_107 (F1), Che8_112 (F1), Chuckly_102 (F1), Clifton_96 (F1), Crumble_99 (F1), DLane_105 (F1), DRBy19_104 (F1), Daenerys_102 (F1), Dante_104 (F1), Deb65_97 (F1), DillTech15_111 (F1), DoRead_112 (F1), Donkeykong_110 (F1), Eish_109 (F1), EleanorGeorge_108 (F1), Emma_109 (F1), Eradicator_95 (F1), Estave1_112 (F1), Fastidio_108 (F1), Filuzino_105 (F1), Florinda_117 (F1), FreddyB_113 (F1), GUmbie_104 (F1), Galactic_109 (F1), Gandolph_104 (F1), Geralt_97 (F1), GigiOuiOui_99 (F1), Girr_103 (F1), Gorge_103 (F1), Guppsters_99 (F1), Hades_102 (F1), Hamulus_105 (F1), Hlubikazi_102 (F1), Ibhubesi_103 (F1), Inventum_102 (F1), IrishSherpFalk_105 (F1), James_108 (F1), Jarcob_107 (F1), Jinglebell_111 (F1), JoeyJr_107 (F1), Juniper1_98 (F1),

Karhdo_100 (F1), Kenuha5_96 (F1), Kersh_107 (F1), KingMidas_105 (F1), Krakatau_97 (F1), KristaRAM_113 (F1), Leperchaun_106 (F1), Lizziana_105 (F1), Llama_111 (F1), Llij_99 (F1), LunaBlu_111 (F1), MadMen_109 (F1), Mahavrat_98 (F1), Mantra_102 (F1), Maravista_102 (F1), Martik_103 (F1), Mattes_105 (F1), Melissauren88_95 (F1), MilanaBonita_98 (F1), MinionDave_103 (F1), Minnie_99 (F1), MisterCuddles_104 (F1), Modragons_107 (F1), Moonbeam_107 (F1), Ms6_107 (F1), Mutaforma13_106 (F1), NewHope4_108 (F1), Nimbo_96 (F1), NoSwimming_59 (FO), NormanBulbieJr_102 (F1), Ochi17_110 (F1), OfUltron_111 (F1), OldBen_101 (F1), PHappiness_104 (F1), PMC_104 (F1), Pacc40_101 (F1), Phalconet_106 (F1), Phanphagia_109 (F1), Phasih_100 (F1), Phatniss_101 (F1), PhesterPhotato_109 (F1), Philus_108 (F1), Pippy_103 (F1), Polka14_108 (F1), Polo2Bam_116 (F1), PopTart_95 (F1), Priscilla_105 (F1), Radiance_103 (F1), RedBird_105 (F1), RitaG_103 (F1), Rita_104 (F1), Rockne_108 (F1), Royals2015_108 (F1), Ruby_100 (F1), Sabbb_107 (F1), Sandalphon_103 (F1), Sassafras_106 (F1), SassyB_95 (F1), Scottish_105 (F1), Seabastian_111 (F1), Shambre1_67 (singleton), Shauna1_106 (F1), ShiLan_107 (F1), ShowerHandel_107 (F1), ShroomBoi_105 (F1), SiSi_99 (F1), Sparkdehlily_111 (F1), Spoonbill_104 (F1), StAnnes_110 (F1), SuperGrey_103 (F1), SwagPiggett_106 (F1), TDanisky_112 (F1), Taj_110 (F1), Tweety_109 (F1), VRedHorse_105 (F1), Veteran_94 (F1), Wachhund_101 (F1), Wee_109 (F1), Whatsapiecost_99 (F1), Whouxphf_108 (F1), WillSterrel_103 (F1), Zerg_103 (F1), Zizzle_108 (F1),

Start 64:

- Found in 28 of 279 (10.0%) of genes in pham
- Manual Annotations of this start: 27 of 270
- Called 100.0% of time when present
- Phage (with cluster) where this start called: Agueybana_85 (CZ1), AlumE_82 (CZ1), Antonio_78 (CZ1), BatStarr_83 (CZ1), Bialota_79 (CZ1), Bosnia_82 (CZ1), BoyNamedSue_82 (CZ1), Bunnybear_78 (CZ), Eudoria_79 (CZ1), Eviarto_84 (CZ1), Herod_84 (CZ1), Hyzer_101 (CZ1), Kita_80 (CZ1), Madeline_76 (CZ1), Manasvini_81 (CZ1), Maridalia_83 (CZ1), Neobush_81 (CZ1), Nymphadora_84 (CZ1), Polly_76 (CZ1), RavenCo17_74 (CZ8), Suscepit_79 (CZ1), Tayonia_79 (CZ1), ThankyouJordi_83 (CZ1), TimTam_84 (CZ1), Trumpet_79 (CZ1), WelcomeAyanna_83 (CZ1), Zameen_79 (CZ1), Zirinka_79 (CZ1),

Start 71:

- Found in 15 of 279 (5.4%) of genes in pham
- Manual Annotations of this start: 15 of 270
- Called 100.0% of time when present
- Phage (with cluster) where this start called: Angelique_76 (CY1), Bradissa_76 (CY1), BritBrat_98 (CY2), Cashline_76 (CY), EMsquaredA_80 (CY1), EnalisNailo_76 (CY1), Farewell_96 (AF), Floral_80 (CY1), Jablanski_82 (CY), LonelyBoi_78 (CY), Pollux_82 (CY1), Posh_79 (CY), Pytheas_83 (CY), Sparky_95 (AF), Wrigley_81 (CY),

Start 72:

- Found in 3 of 279 (1.1%) of genes in pham
- Manual Annotations of this start: 3 of 270
- Called 100.0% of time when present
- Phage (with cluster) where this start called: LunaStella_101 (F4), Renaud18_112 (F4), TChen_101 (F4),

Summary by clusters:

There are 15 clusters represented in this pham: F1, CY1, E, CY2, BL, CZ1, singleton, CZ, BT, FA, CY, CZ8, F4, AF, FO,

Info for manual annotations of cluster AF:

- Start number 71 was manually annotated 2 times for cluster AF.

Info for manual annotations of cluster BL:

- Start number 53 was manually annotated 1 time for cluster BL.

Info for manual annotations of cluster BT:

- Start number 59 was manually annotated 1 time for cluster BT.

Info for manual annotations of cluster CY:

- Start number 71 was manually annotated 6 times for cluster CY.

Info for manual annotations of cluster CY1:

- Start number 71 was manually annotated 6 times for cluster CY1.

Info for manual annotations of cluster CY2:

- Start number 71 was manually annotated 1 time for cluster CY2.

Info for manual annotations of cluster CZ:

- Start number 64 was manually annotated 1 time for cluster CZ.

Info for manual annotations of cluster CZ1:

- Start number 64 was manually annotated 25 times for cluster CZ1.

Info for manual annotations of cluster CZ8:

- Start number 64 was manually annotated 1 time for cluster CZ8.

Info for manual annotations of cluster E:

- Start number 43 was manually annotated 1 time for cluster E.
- Start number 47 was manually annotated 2 times for cluster E.
- Start number 60 was manually annotated 83 times for cluster E.

Info for manual annotations of cluster F1:

- Start number 63 was manually annotated 131 times for cluster F1.

Info for manual annotations of cluster F4:

- Start number 72 was manually annotated 3 times for cluster F4.

Info for manual annotations of cluster FA:

- Start number 62 was manually annotated 1 time for cluster FA.

Gene Information:

Gene: ABCat_145 Start: 75550, Stop: 75897, Start Num: 60

Candidate Starts for ABCat_145:

(Start: 47 @75493 has 2 MA's), (Start: 60 @75550 has 84 MA's),

Gene: Adnama_150 Start: 74627, Stop: 74974, Start Num: 60
Candidate Starts for Adnama_150:
(Start: 47 @74570 has 2 MA's), (Start: 60 @74627 has 84 MA's),

Gene: Agueybana_85 Start: 52421, Stop: 52756, Start Num: 64
Candidate Starts for Agueybana_85:
(24, 52148), (Start: 64 @52421 has 27 MA's),

Gene: Akhila_99 Start: 55783, Stop: 56109, Start Num: 63
Candidate Starts for Akhila_99:
(36, 55609), (41, 55645), (52, 55732), (Start: 63 @55783 has 132 MA's), (75, 55906), (92, 56041),

Gene: AlpineSix_102 Start: 56250, Stop: 56576, Start Num: 63
Candidate Starts for AlpineSix_102:
(Start: 63 @56250 has 132 MA's),

Gene: AlumE_82 Start: 52312, Stop: 52647, Start Num: 64
Candidate Starts for AlumE_82:
(24, 52039), (Start: 64 @52312 has 27 MA's),

Gene: AmericanBeauty_149 Start: 74669, Stop: 75016, Start Num: 60
Candidate Starts for AmericanBeauty_149:
(Start: 47 @74612 has 2 MA's), (Start: 60 @74669 has 84 MA's),

Gene: Angelique_76 Start: 50625, Stop: 50915, Start Num: 71
Candidate Starts for Angelique_76:
(8, 50097), (15, 50157), (17, 50160), (21, 50208), (26, 50289), (29, 50322), (34, 50376), (37, 50388),
(56, 50526), (Start: 71 @50625 has 15 MA's),

Gene: Antonio_78 Start: 49950, Stop: 50285, Start Num: 64
Candidate Starts for Antonio_78:
(24, 49677), (Start: 64 @49950 has 27 MA's),

Gene: Ardmore_88 Start: 51672, Stop: 51998, Start Num: 63
Candidate Starts for Ardmore_88:
(36, 51498), (41, 51534), (52, 51621), (Start: 63 @51672 has 132 MA's), (75, 51795), (92, 51930),

Gene: Argent26_150 Start: 74551, Stop: 74898, Start Num: 60
Candidate Starts for Argent26_150:
(Start: 47 @74494 has 2 MA's), (Start: 60 @74551 has 84 MA's),

Gene: Asriel_144 Start: 74013, Stop: 74360, Start Num: 60
Candidate Starts for Asriel_144:
(Start: 60 @74013 has 84 MA's),

Gene: BaboJay_146 Start: 75796, Stop: 76143, Start Num: 60
Candidate Starts for BaboJay_146:
(Start: 43 @75700 has 1 MA's), (Start: 47 @75739 has 2 MA's), (Start: 60 @75796 has 84 MA's),

Gene: BadStone_145 Start: 75098, Stop: 75445, Start Num: 60
Candidate Starts for BadStone_145:
(Start: 47 @75041 has 2 MA's), (Start: 60 @75098 has 84 MA's),

Gene: Balomoji_146 Start: 75838, Stop: 76185, Start Num: 60
Candidate Starts for Balomoji_146:
(Start: 60 @75838 has 84 MA's),

Gene: Barbarian_146 Start: 74013, Stop: 74360, Start Num: 60
Candidate Starts for Barbarian_146:
(Start: 60 @74013 has 84 MA's),

Gene: BatStarr_83 Start: 53046, Stop: 53381, Start Num: 64
Candidate Starts for BatStarr_83:
(24, 52773), (Start: 64 @53046 has 27 MA's), (86, 53232),

Gene: Batiatus_105 Start: 57269, Stop: 57595, Start Num: 63
Candidate Starts for Batiatus_105:
(36, 57095), (41, 57131), (52, 57218), (Start: 63 @57269 has 132 MA's), (75, 57392), (92, 57527),

Gene: Bench_149 Start: 75511, Stop: 75858, Start Num: 60
Candidate Starts for Bench_149:
(Start: 47 @75454 has 2 MA's), (Start: 60 @75511 has 84 MA's),

Gene: Bialota_79 Start: 51706, Stop: 52038, Start Num: 64
Candidate Starts for Bialota_79:
(24, 51433), (Start: 64 @51706 has 27 MA's),

Gene: BigBubba_149 Start: 74425, Stop: 74772, Start Num: 60
Candidate Starts for BigBubba_149:
(Start: 47 @74368 has 2 MA's), (Start: 60 @74425 has 84 MA's),

Gene: Bipolar_106 Start: 58515, Stop: 58841, Start Num: 63
Candidate Starts for Bipolar_106:
(36, 58341), (41, 58377), (52, 58464), (Start: 63 @58515 has 132 MA's), (75, 58638), (92, 58773),

Gene: BlueCrab_109 Start: 58669, Stop: 58995, Start Num: 63
Candidate Starts for BlueCrab_109:
(Start: 63 @58669 has 132 MA's), (75, 58792),

Gene: BobaPhett_108 Start: 59318, Stop: 59644, Start Num: 63
Candidate Starts for BobaPhett_108:
(Start: 63 @59318 has 132 MA's),

Gene: BodEinwohner17_116 Start: 59725, Stop: 60051, Start Num: 63
Candidate Starts for BodEinwohner17_116:
(Start: 63 @59725 has 132 MA's),

Gene: Bosnia_82 Start: 54160, Stop: 54495, Start Num: 64
Candidate Starts for Bosnia_82:
(24, 53887), (Start: 64 @54160 has 27 MA's), (86, 54346),

Gene: BoyNamedSue_82 Start: 52312, Stop: 52647, Start Num: 64
Candidate Starts for BoyNamedSue_82:
(24, 52039), (Start: 64 @52312 has 27 MA's),

Gene: Bradissa_76 Start: 51528, Stop: 51818, Start Num: 71

Candidate Starts for Bradissa_76:

(Start: 71 @51528 has 15 MA's),

Gene: BritBrat_98 Start: 55168, Stop: 55455, Start Num: 71

Candidate Starts for BritBrat_98:

(50, 55045), (66, 55111), (67, 55117), (Start: 71 @55168 has 15 MA's),

Gene: Brocalys_96 Start: 54283, Stop: 54609, Start Num: 63

Candidate Starts for Brocalys_96:

(36, 54109), (41, 54145), (52, 54232), (Start: 63 @54283 has 132 MA's), (75, 54406), (92, 54541),

Gene: Bubbles123_100 Start: 56967, Stop: 57311, Start Num: 63

Candidate Starts for Bubbles123_100:

(36, 56793), (41, 56829), (52, 56916), (Start: 63 @56967 has 132 MA's), (78, 57111), (82, 57135),

Gene: Buck_148 Start: 76107, Stop: 76454, Start Num: 60

Candidate Starts for Buck_148:

(Start: 47 @76050 has 2 MA's), (Start: 60 @76107 has 84 MA's),

Gene: Bunnybear_78 Start: 50882, Stop: 51217, Start Num: 64

Candidate Starts for Bunnybear_78:

(24, 50609), (Start: 64 @50882 has 27 MA's),

Gene: Burwell21_99 Start: 56858, Stop: 57202, Start Num: 63

Candidate Starts for Burwell21_99:

(36, 56684), (41, 56720), (52, 56807), (Start: 63 @56858 has 132 MA's), (78, 57002), (82, 57026),

Gene: ByChance_95 Start: 52655, Stop: 52981, Start Num: 63

Candidate Starts for ByChance_95:

(Start: 63 @52655 has 132 MA's),

Gene: Byougenkin_101 Start: 54217, Stop: 54543, Start Num: 63

Candidate Starts for Byougenkin_101:

(Start: 63 @54217 has 132 MA's),

Gene: Cabrinians_101 Start: 56202, Stop: 56528, Start Num: 63

Candidate Starts for Cabrinians_101:

(36, 56028), (41, 56064), (52, 56151), (Start: 63 @56202 has 132 MA's), (75, 56325), (92, 56460),

Gene: Cactus_154 Start: 75022, Stop: 75369, Start Num: 60

Candidate Starts for Cactus_154:

(Start: 47 @74965 has 2 MA's), (Start: 60 @75022 has 84 MA's),

Gene: CaptainTrips_107 Start: 56860, Stop: 57186, Start Num: 63

Candidate Starts for CaptainTrips_107:

(36, 56686), (41, 56722), (52, 56809), (Start: 63 @56860 has 132 MA's), (75, 56983), (92, 57118),

Gene: Cashline_76 Start: 52028, Stop: 52315, Start Num: 71

Candidate Starts for Cashline_76:

(32, 51776), (50, 51905), (66, 51971), (67, 51977), (69, 51983), (Start: 71 @52028 has 15 MA's), (74, 52058),

Gene: Che8_112 Start: 58974, Stop: 59300, Start Num: 63

Candidate Starts for Che8_112:
(Start: 63 @58974 has 132 MA's),

Gene: ChosenOne_147 Start: 74389, Stop: 74736, Start Num: 60
Candidate Starts for ChosenOne_147:
(Start: 47 @74332 has 2 MA's), (Start: 60 @74389 has 84 MA's),

Gene: Chuckly_102 Start: 53949, Stop: 54293, Start Num: 63
Candidate Starts for Chuckly_102:
(36, 53775), (41, 53811), (52, 53898), (Start: 63 @53949 has 132 MA's), (78, 54093), (82, 54117),

Gene: Chymera_55 Start: 34305, Stop: 34673, Start Num: 60
Candidate Starts for Chymera_55:
(11, 33873), (19, 33963), (35, 34143), (Start: 60 @34305 has 84 MA's), (70, 34353), (83, 34488), (89, 34548),

Gene: Clifton_96 Start: 55258, Stop: 55584, Start Num: 63
Candidate Starts for Clifton_96:
(Start: 63 @55258 has 132 MA's),

Gene: Command613_149 Start: 75444, Stop: 75791, Start Num: 60
Candidate Starts for Command613_149:
(Start: 43 @75348 has 1 MA's), (Start: 47 @75387 has 2 MA's), (Start: 60 @75444 has 84 MA's),

Gene: Contagion_142 Start: 73952, Stop: 74299, Start Num: 60
Candidate Starts for Contagion_142:
(Start: 47 @73895 has 2 MA's), (Start: 60 @73952 has 84 MA's),

Gene: Cookies_148 Start: 75759, Stop: 76106, Start Num: 60
Candidate Starts for Cookies_148:
(Start: 47 @75702 has 2 MA's), (Start: 60 @75759 has 84 MA's),

Gene: Crumble_99 Start: 52956, Stop: 53282, Start Num: 63
Candidate Starts for Crumble_99:
(Start: 63 @52956 has 132 MA's),

Gene: Czyszczone1_146 Start: 74437, Stop: 74841, Start Num: 47
Candidate Starts for Czyszczone1_146:
(Start: 47 @74437 has 2 MA's), (Start: 60 @74494 has 84 MA's),

Gene: DLane_105 Start: 58431, Stop: 58757, Start Num: 63
Candidate Starts for DLane_105:
(36, 58257), (41, 58293), (52, 58380), (Start: 63 @58431 has 132 MA's), (75, 58554), (92, 58689),

Gene: DRBy19_104 Start: 57899, Stop: 58225, Start Num: 63
Candidate Starts for DRBy19_104:
(Start: 63 @57899 has 132 MA's),

Gene: Daenerys_102 Start: 57545, Stop: 57871, Start Num: 63
Candidate Starts for Daenerys_102:
(Start: 63 @57545 has 132 MA's),

Gene: Dante_104 Start: 58406, Stop: 58750, Start Num: 63

Candidate Starts for Dante_104:
(36, 58232), (41, 58268), (52, 58355), (Start: 63 @58406 has 132 MA's), (78, 58550), (82, 58574),

Gene: Deb65_97 Start: 55269, Stop: 55595, Start Num: 63
Candidate Starts for Deb65_97:
(Start: 63 @55269 has 132 MA's),

Gene: DillTech15_111 Start: 57330, Stop: 57656, Start Num: 63
Candidate Starts for DillTech15_111:
(36, 57156), (41, 57192), (52, 57279), (Start: 63 @57330 has 132 MA's), (75, 57453), (92, 57588),

Gene: DoRead_112 Start: 55713, Stop: 56039, Start Num: 63
Candidate Starts for DoRead_112:
(Start: 63 @55713 has 132 MA's), (75, 55836), (92, 55971),

Gene: DoctorDiddles_145 Start: 74489, Stop: 74836, Start Num: 60
Candidate Starts for DoctorDiddles_145:
(Start: 47 @74432 has 2 MA's), (Start: 60 @74489 has 84 MA's),

Gene: Donkeykong_110 Start: 59010, Stop: 59336, Start Num: 63
Candidate Starts for Donkeykong_110:
(36, 58836), (41, 58872), (52, 58959), (Start: 63 @59010 has 132 MA's), (75, 59133), (92, 59268),

Gene: Dumbo_149 Start: 75155, Stop: 75502, Start Num: 60
Candidate Starts for Dumbo_149:
(Start: 47 @75098 has 2 MA's), (Start: 60 @75155 has 84 MA's),

Gene: EMSquaredA_80 Start: 50168, Stop: 50458, Start Num: 71
Candidate Starts for EMSquaredA_80:
(10, 49655), (22, 49805), (23, 49814), (25, 49841), (28, 49859), (30, 49883), (34, 49922), (37, 49934),
(38, 49937), (56, 50072), (Start: 71 @50168 has 15 MA's),

Gene: Easy2Say_148 Start: 75017, Stop: 75364, Start Num: 60
Candidate Starts for Easy2Say_148:
(Start: 47 @74960 has 2 MA's), (Start: 60 @75017 has 84 MA's),

Gene: Eish_109 Start: 57682, Stop: 58008, Start Num: 63
Candidate Starts for Eish_109:
(6, 57169), (7, 57193), (13, 57256), (36, 57508), (52, 57631), (Start: 63 @57682 has 132 MA's),

Gene: EleanorGeorge_108 Start: 59015, Stop: 59341, Start Num: 63
Candidate Starts for EleanorGeorge_108:
(36, 58841), (41, 58877), (52, 58964), (Start: 63 @59015 has 132 MA's), (75, 59138), (92, 59273),

Gene: Elite2014_146 Start: 74388, Stop: 74735, Start Num: 60
Candidate Starts for Elite2014_146:
(Start: 47 @74331 has 2 MA's), (Start: 60 @74388 has 84 MA's),

Gene: Emma_109 Start: 55950, Stop: 56276, Start Num: 63
Candidate Starts for Emma_109:
(36, 55776), (41, 55812), (52, 55899), (Start: 63 @55950 has 132 MA's), (75, 56073), (92, 56208),

Gene: Emmina_148 Start: 74714, Stop: 75061, Start Num: 60

Candidate Starts for Emmina_148:

(Start: 47 @74657 has 2 MA's), (Start: 60 @74714 has 84 MA's),

Gene: EnalisNailo_76 Start: 50668, Stop: 50958, Start Num: 71

Candidate Starts for EnalisNailo_76:

(26, 50335), (34, 50422), (37, 50434), (38, 50437), (56, 50572), (Start: 71 @50668 has 15 MA's),

Gene: Eradicator_95 Start: 55231, Stop: 55557, Start Num: 63

Candidate Starts for Eradicator_95:

(Start: 63 @55231 has 132 MA's),

Gene: Estave1_112 Start: 60259, Stop: 60585, Start Num: 63

Candidate Starts for Estave1_112:

(Start: 63 @60259 has 132 MA's),

Gene: Eudoria_79 Start: 49950, Stop: 50285, Start Num: 64

Candidate Starts for Eudoria_79:

(24, 49677), (Start: 64 @49950 has 27 MA's),

Gene: Eviarto_84 Start: 53021, Stop: 53356, Start Num: 64

Candidate Starts for Eviarto_84:

(24, 52748), (Start: 64 @53021 has 27 MA's), (86, 53207),

Gene: Farewell_96 Start: 61361, Stop: 61663, Start Num: 71

Candidate Starts for Farewell_96:

(40, 61136), (51, 61232), (Start: 59 @61265 has 1 MA's), (66, 61301), (67, 61307), (Start: 71 @61361 has 15 MA's), (74, 61394), (94, 61652),

Gene: Fastidio_108 Start: 55371, Stop: 55697, Start Num: 63

Candidate Starts for Fastidio_108:

(36, 55197), (41, 55233), (52, 55320), (Start: 63 @55371 has 132 MA's), (75, 55494), (92, 55629),

Gene: Filuzino_105 Start: 58837, Stop: 59163, Start Num: 63

Candidate Starts for Filuzino_105:

(36, 58663), (41, 58699), (52, 58786), (Start: 63 @58837 has 132 MA's), (75, 58960), (92, 59095),

Gene: FireRed_150 Start: 75636, Stop: 75983, Start Num: 60

Candidate Starts for FireRed_150:

(Start: 43 @75540 has 1 MA's), (Start: 47 @75579 has 2 MA's), (Start: 60 @75636 has 84 MA's),

Gene: Floral_80 Start: 52125, Stop: 52415, Start Num: 71

Candidate Starts for Floral_80:

(10, 51612), (22, 51762), (23, 51771), (25, 51798), (28, 51816), (30, 51840), (34, 51879), (37, 51891), (38, 51894), (56, 52029), (Start: 71 @52125 has 15 MA's),

Gene: Florinda_117 Start: 58948, Stop: 59274, Start Num: 63

Candidate Starts for Florinda_117:

(36, 58774), (41, 58810), (52, 58897), (Start: 63 @58948 has 132 MA's), (75, 59071), (92, 59206),

Gene: Flypotenuse_142 Start: 74667, Stop: 75014, Start Num: 60

Candidate Starts for Flypotenuse_142:

(Start: 60 @74667 has 84 MA's),

Gene: FreddyB_113 Start: 57850, Stop: 58176, Start Num: 63
Candidate Starts for FreddyB_113:
(36, 57676), (41, 57712), (52, 57799), (Start: 63 @57850 has 132 MA's), (75, 57973), (92, 58108),

Gene: GAL1_82 Start: 49576, Stop: 49935, Start Num: 59
Candidate Starts for GAL1_82:
(Start: 59 @49576 has 1 MA's), (88, 49810),

Gene: GUmbie_104 Start: 56919, Stop: 57245, Start Num: 63
Candidate Starts for GUmbie_104:
(36, 56745), (41, 56781), (52, 56868), (Start: 63 @56919 has 132 MA's), (75, 57042), (92, 57177),

Gene: Gage_137 Start: 71069, Stop: 71416, Start Num: 60
Candidate Starts for Gage_137:
(Start: 47 @71012 has 2 MA's), (Start: 60 @71069 has 84 MA's),

Gene: Galactic_109 Start: 57393, Stop: 57719, Start Num: 63
Candidate Starts for Galactic_109:
(6, 56880), (7, 56904), (13, 56967), (36, 57219), (41, 57255), (52, 57342), (Start: 63 @57393 has 132 MA's),

Gene: Gandalph_104 Start: 54506, Stop: 54832, Start Num: 63
Candidate Starts for Gandalph_104:
(36, 54332), (41, 54368), (52, 54455), (Start: 63 @54506 has 132 MA's), (75, 54629), (92, 54764),

Gene: Gemini_151 Start: 75068, Stop: 75415, Start Num: 60
Candidate Starts for Gemini_151:
(Start: 47 @75011 has 2 MA's), (Start: 60 @75068 has 84 MA's),

Gene: Geralt_97 Start: 55267, Stop: 55593, Start Num: 63
Candidate Starts for Geralt_97:
(Start: 63 @55267 has 132 MA's),

Gene: GigiOuiOui_99 Start: 55921, Stop: 56247, Start Num: 63
Candidate Starts for GigiOuiOui_99:
(6, 55408), (7, 55432), (13, 55495), (36, 55747), (41, 55783), (52, 55870), (Start: 63 @55921 has 132 MA's), (75, 56044), (92, 56179),

Gene: Girr_103 Start: 57256, Stop: 57582, Start Num: 63
Candidate Starts for Girr_103:
(Start: 63 @57256 has 132 MA's),

Gene: Glexan_150 Start: 75917, Stop: 76264, Start Num: 60
Candidate Starts for Glexan_150:
(Start: 60 @75917 has 84 MA's),

Gene: GoldenSpark_150 Start: 74551, Stop: 74898, Start Num: 60
Candidate Starts for GoldenSpark_150:
(Start: 47 @74494 has 2 MA's), (Start: 60 @74551 has 84 MA's),

Gene: Goldilocks_152 Start: 75147, Stop: 75494, Start Num: 60
Candidate Starts for Goldilocks_152:
(Start: 47 @75090 has 2 MA's), (Start: 60 @75147 has 84 MA's),

Gene: Gorge_103 Start: 57487, Stop: 57813, Start Num: 63
Candidate Starts for Gorge_103:
(36, 57313), (41, 57349), (52, 57436), (Start: 63 @57487 has 132 MA's), (75, 57610), (92, 57745),

Gene: Guppsters_99 Start: 54367, Stop: 54693, Start Num: 63
Candidate Starts for Guppsters_99:
(Start: 63 @54367 has 132 MA's), (75, 54490), (92, 54625),

Gene: Hades_102 Start: 54518, Stop: 54844, Start Num: 63
Candidate Starts for Hades_102:
(Start: 63 @54518 has 132 MA's),

Gene: Hamulus_105 Start: 56687, Stop: 57013, Start Num: 63
Candidate Starts for Hamulus_105:
(36, 56513), (41, 56549), (52, 56636), (Start: 63 @56687 has 132 MA's), (75, 56810), (92, 56945),

Gene: Harella_153 Start: 76278, Stop: 76625, Start Num: 60
Candidate Starts for Harella_153:
(Start: 60 @76278 has 84 MA's),

Gene: Herod_84 Start: 53440, Stop: 53775, Start Num: 64
Candidate Starts for Herod_84:
(24, 53167), (Start: 64 @53440 has 27 MA's), (86, 53626),

Gene: Highbury_141 Start: 72834, Stop: 73181, Start Num: 60
Candidate Starts for Highbury_141:
(Start: 43 @72738 has 1 MA's), (Start: 47 @72777 has 2 MA's), (Start: 60 @72834 has 84 MA's),

Gene: Hlubikazi_102 Start: 55002, Stop: 55328, Start Num: 63
Candidate Starts for Hlubikazi_102:
(6, 54489), (13, 54576), (36, 54828), (41, 54864), (52, 54951), (Start: 63 @55002 has 132 MA's), (75, 55125), (92, 55260),

Gene: Holt_152 Start: 75334, Stop: 75681, Start Num: 60
Candidate Starts for Holt_152:
(Start: 47 @75277 has 2 MA's), (Start: 60 @75334 has 84 MA's),

Gene: Hoonter_148 Start: 74686, Stop: 75033, Start Num: 60
Candidate Starts for Hoonter_148:
(Start: 60 @74686 has 84 MA's),

Gene: Hokey_144 Start: 75005, Stop: 75352, Start Num: 60
Candidate Starts for Hokey_144:
(Start: 43 @74909 has 1 MA's), (Start: 47 @74948 has 2 MA's), (Start: 60 @75005 has 84 MA's),

Gene: HufflyPuff_148 Start: 75742, Stop: 76089, Start Num: 60
Candidate Starts for HufflyPuff_148:
(Start: 47 @75685 has 2 MA's), (Start: 60 @75742 has 84 MA's),

Gene: Hyzer_101 Start: 60183, Stop: 60518, Start Num: 64
Candidate Starts for Hyzer_101:
(49, 60138), (Start: 64 @60183 has 27 MA's),

Gene: IHOP_151 Start: 75087, Stop: 75434, Start Num: 60
Candidate Starts for IHOP_151:
(Start: 47 @75030 has 2 MA's), (Start: 60 @75087 has 84 MA's),

Gene: Ibantik_57 Start: 25161, Stop: 25478, Start Num: 61
Candidate Starts for Ibantik_57:
(48, 25107), (Start: 61 @25161 has 2 MA's), (Start: 62 @25176 has 1 MA's), (65, 25185), (80, 25320),
(85, 25347), (90, 25392), (91, 25416),

Gene: Ibhubesi_103 Start: 55132, Stop: 55458, Start Num: 63
Candidate Starts for Ibhubesi_103:
(Start: 63 @55132 has 132 MA's),

Gene: Icee_146 Start: 73588, Stop: 73935, Start Num: 60
Candidate Starts for Icee_146:
(Start: 47 @73531 has 2 MA's), (Start: 60 @73588 has 84 MA's),

Gene: Inca_147 Start: 73489, Stop: 73836, Start Num: 60
Candidate Starts for Inca_147:
(42, 73372), (Start: 43 @73393 has 1 MA's), (Start: 47 @73432 has 2 MA's), (Start: 60 @73489 has 84 MA's),

Gene: Inventum_102 Start: 56555, Stop: 56881, Start Num: 63
Candidate Starts for Inventum_102:
(Start: 63 @56555 has 132 MA's),

Gene: IrishSherpFalk_105 Start: 57329, Stop: 57673, Start Num: 63
Candidate Starts for IrishSherpFalk_105:
(Start: 63 @57329 has 132 MA's), (78, 57473), (82, 57497),

Gene: Jablanski_82 Start: 53171, Stop: 53461, Start Num: 71
Candidate Starts for Jablanski_82:
(66, 53114), (67, 53120), (Start: 71 @53171 has 15 MA's),

Gene: James_108 Start: 59148, Stop: 59474, Start Num: 63
Candidate Starts for James_108:
(36, 58974), (41, 59010), (52, 59097), (Start: 63 @59148 has 132 MA's), (75, 59271), (92, 59406),

Gene: Jacob_107 Start: 58468, Stop: 58794, Start Num: 63
Candidate Starts for Jacob_107:
(Start: 63 @58468 has 132 MA's),

Gene: JeTaime_144 Start: 74518, Stop: 74865, Start Num: 60
Candidate Starts for JeTaime_144:
(Start: 47 @74461 has 2 MA's), (Start: 60 @74518 has 84 MA's),

Gene: Jinglebell_111 Start: 58360, Stop: 58686, Start Num: 63
Candidate Starts for Jinglebell_111:
(Start: 63 @58360 has 132 MA's),

Gene: JoeyJr_107 Start: 58463, Stop: 58789, Start Num: 63
Candidate Starts for JoeyJr_107:

(Start: 63 @58463 has 132 MA's),

Gene: Juniper1_98 Start: 56030, Stop: 56374, Start Num: 63

Candidate Starts for Juniper1_98:

(Start: 63 @56030 has 132 MA's), (78, 56174), (82, 56198),

Gene: Kanye_142 Start: 74872, Stop: 75219, Start Num: 60

Candidate Starts for Kanye_142:

(Start: 47 @74815 has 2 MA's), (Start: 60 @74872 has 84 MA's),

Gene: Karhdo_100 Start: 54911, Stop: 55237, Start Num: 63

Candidate Starts for Karhdo_100:

(Start: 63 @54911 has 132 MA's),

Gene: Kenuha5_96 Start: 56035, Stop: 56361, Start Num: 63

Candidate Starts for Kenuha5_96:

(36, 55861), (41, 55897), (52, 55984), (Start: 63 @56035 has 132 MA's), (75, 56158), (92, 56293),

Gene: Kersh_107 Start: 59723, Stop: 60049, Start Num: 63

Candidate Starts for Kersh_107:

(Start: 63 @59723 has 132 MA's),

Gene: Kimchi_151 Start: 75248, Stop: 75595, Start Num: 60

Candidate Starts for Kimchi_151:

(Start: 47 @75191 has 2 MA's), (Start: 60 @75248 has 84 MA's),

Gene: KingMidas_105 Start: 56917, Stop: 57243, Start Num: 63

Candidate Starts for KingMidas_105:

(36, 56743), (41, 56779), (52, 56866), (Start: 63 @56917 has 132 MA's), (75, 57040), (92, 57175),

Gene: Kita_80 Start: 49959, Stop: 50294, Start Num: 64

Candidate Starts for Kita_80:

(24, 49686), (Start: 64 @49959 has 27 MA's),

Gene: Krakatau_97 Start: 52590, Stop: 52916, Start Num: 63

Candidate Starts for Krakatau_97:

(36, 52416), (41, 52452), (52, 52539), (Start: 63 @52590 has 132 MA's), (75, 52713), (92, 52848),

Gene: KristaRAM_113 Start: 58232, Stop: 58558, Start Num: 63

Candidate Starts for KristaRAM_113:

(Start: 63 @58232 has 132 MA's),

Gene: Kromp_95 Start: 57607, Stop: 57981, Start Num: 57

Candidate Starts for Kromp_95:

(4, 56935), (9, 57178), (14, 57223), (25, 57367), (27, 57382), (33, 57454), (54, 57592), (Start: 57 @57607 has 1 MA's), (76, 57775), (79, 57784),

Gene: Leperchaun_106 Start: 57697, Stop: 58023, Start Num: 63

Candidate Starts for Leperchaun_106:

(Start: 63 @57697 has 132 MA's),

Gene: Lilpickle_146 Start: 74388, Stop: 74735, Start Num: 60

Candidate Starts for Lilpickle_146:

(Start: 47 @74331 has 2 MA's), (Start: 60 @74388 has 84 MA's),

Gene: Lizziana_105 Start: 57926, Stop: 58252, Start Num: 63

Candidate Starts for Lizziana_105:

(Start: 63 @57926 has 132 MA's),

Gene: Llama_111 Start: 58003, Stop: 58329, Start Num: 63

Candidate Starts for Llama_111:

(Start: 63 @58003 has 132 MA's),

Gene: Llij_99 Start: 55622, Stop: 55966, Start Num: 63

Candidate Starts for Llij_99:

(36, 55448), (41, 55484), (52, 55571), (Start: 63 @55622 has 132 MA's), (78, 55766), (82, 55790),

Gene: LonelyBoi_78 Start: 53256, Stop: 53543, Start Num: 71

Candidate Starts for LonelyBoi_78:

(5, 52596), (12, 52755), (16, 52785), (50, 53133), (66, 53199), (67, 53205), (Start: 71 @53256 has 15 MA's),

Gene: LunaBlu_111 Start: 58815, Stop: 59141, Start Num: 63

Candidate Starts for LunaBlu_111:

(6, 58302), (7, 58326), (13, 58389), (36, 58641), (41, 58677), (52, 58764), (Start: 63 @58815 has 132 MA's), (75, 58938), (92, 59073),

Gene: LunaStella_101 Start: 55262, Stop: 55549, Start Num: 72

Candidate Starts for LunaStella_101:

(18, 54791), (31, 54992), (39, 55031), (44, 55097), (46, 55100), (68, 55211), (Start: 72 @55262 has 3 MA's),

Gene: MISSy_147 Start: 75227, Stop: 75574, Start Num: 60

Candidate Starts for MISSy_147:

(Start: 43 @75131 has 1 MA's), (Start: 47 @75170 has 2 MA's), (Start: 60 @75227 has 84 MA's),

Gene: MPhalcon_148 Start: 75024, Stop: 75371, Start Num: 60

Candidate Starts for MPhalcon_148:

(Start: 43 @74928 has 1 MA's), (Start: 47 @74967 has 2 MA's), (Start: 60 @75024 has 84 MA's),

Gene: MadMen_109 Start: 57291, Stop: 57617, Start Num: 63

Candidate Starts for MadMen_109:

(Start: 63 @57291 has 132 MA's),

Gene: MadamMonkfish_148 Start: 74973, Stop: 75320, Start Num: 60

Candidate Starts for MadamMonkfish_148:

(Start: 47 @74916 has 2 MA's), (Start: 60 @74973 has 84 MA's),

Gene: Madeline_76 Start: 51284, Stop: 51616, Start Num: 64

Candidate Starts for Madeline_76:

(20, 50948), (24, 51011), (Start: 64 @51284 has 27 MA's),

Gene: Mahavrat_98 Start: 54698, Stop: 55042, Start Num: 63

Candidate Starts for Mahavrat_98:

(Start: 63 @54698 has 132 MA's), (78, 54842), (82, 54866),

Gene: Manasvini_81 Start: 49974, Stop: 50309, Start Num: 64

Candidate Starts for Manasvini_81:

(24, 49701), (Start: 64 @49974 has 27 MA's),

Gene: Manda_149 Start: 75442, Stop: 75789, Start Num: 60

Candidate Starts for Manda_149:

(Start: 43 @75346 has 1 MA's), (Start: 47 @75385 has 2 MA's), (Start: 60 @75442 has 84 MA's),

Gene: Mantra_102 Start: 56533, Stop: 56859, Start Num: 63

Candidate Starts for Mantra_102:

(6, 56020), (13, 56107), (36, 56359), (52, 56482), (Start: 63 @56533 has 132 MA's), (75, 56656), (92, 56791),

Gene: Maravista_102 Start: 58887, Stop: 59231, Start Num: 63

Candidate Starts for Maravista_102:

(Start: 63 @58887 has 132 MA's), (78, 59031), (82, 59055),

Gene: Maridalia_83 Start: 51242, Stop: 51577, Start Num: 64

Candidate Starts for Maridalia_83:

(24, 50969), (Start: 64 @51242 has 27 MA's),

Gene: Marshmallow_149 Start: 76102, Stop: 76506, Start Num: 47

Candidate Starts for Marshmallow_149:

(Start: 47 @76102 has 2 MA's), (Start: 60 @76159 has 84 MA's),

Gene: Martik_103 Start: 58387, Stop: 58713, Start Num: 63

Candidate Starts for Martik_103:

(Start: 63 @58387 has 132 MA's),

Gene: Mattes_105 Start: 57605, Stop: 57931, Start Num: 63

Candidate Starts for Mattes_105:

(Start: 63 @57605 has 132 MA's),

Gene: Maxxinista_148 Start: 74634, Stop: 74981, Start Num: 60

Candidate Starts for Maxxinista_148:

(Start: 47 @74577 has 2 MA's), (Start: 60 @74634 has 84 MA's),

Gene: Melissauren88_95 Start: 53888, Stop: 54214, Start Num: 63

Candidate Starts for Melissauren88_95:

(Start: 63 @53888 has 132 MA's), (75, 54011), (92, 54146),

Gene: MilanaBonita_98 Start: 55783, Stop: 56109, Start Num: 63

Candidate Starts for MilanaBonita_98:

(36, 55609), (41, 55645), (52, 55732), (Start: 63 @55783 has 132 MA's), (75, 55906), (92, 56041),

Gene: MinionDave_103 Start: 57559, Stop: 57885, Start Num: 63

Candidate Starts for MinionDave_103:

(36, 57385), (41, 57421), (52, 57508), (Start: 63 @57559 has 132 MA's), (75, 57682), (92, 57817),

Gene: Miniwave_140 Start: 74380, Stop: 74727, Start Num: 60

Candidate Starts for Miniwave_140:

(Start: 47 @74323 has 2 MA's), (Start: 60 @74380 has 84 MA's),

Gene: Minnie_99 Start: 58017, Stop: 58361, Start Num: 63
Candidate Starts for Minnie_99:
(36, 57843), (41, 57879), (52, 57966), (Start: 63 @58017 has 132 MA's), (78, 58161), (82, 58185),

Gene: MisterCuddles_104 Start: 57256, Stop: 57582, Start Num: 63
Candidate Starts for MisterCuddles_104:
(Start: 63 @57256 has 132 MA's),

Gene: Modragons_107 Start: 57991, Stop: 58317, Start Num: 63
Candidate Starts for Modragons_107:
(Start: 63 @57991 has 132 MA's),

Gene: Moonbeam_107 Start: 57515, Stop: 57841, Start Num: 63
Candidate Starts for Moonbeam_107:
(36, 57341), (41, 57377), (52, 57464), (Start: 63 @57515 has 132 MA's), (75, 57638), (92, 57773),

Gene: Ms6_107 Start: 53778, Stop: 54104, Start Num: 63
Candidate Starts for Ms6_107:
(36, 53604), (41, 53640), (52, 53727), (Start: 63 @53778 has 132 MA's), (75, 53901), (92, 54036),

Gene: Murica_149 Start: 76472, Stop: 76819, Start Num: 60
Candidate Starts for Murica_149:
(Start: 43 @76376 has 1 MA's), (Start: 47 @76415 has 2 MA's), (Start: 60 @76472 has 84 MA's),

Gene: Murphy_148 Start: 75598, Stop: 75945, Start Num: 60
Candidate Starts for Murphy_148:
(Start: 47 @75541 has 2 MA's), (Start: 60 @75598 has 84 MA's),

Gene: Mutaforma13_106 Start: 57233, Stop: 57559, Start Num: 63
Candidate Starts for Mutaforma13_106:
(36, 57059), (41, 57095), (52, 57182), (Start: 63 @57233 has 132 MA's), (75, 57356), (92, 57491),

Gene: Myrale_146 Start: 75838, Stop: 76185, Start Num: 60
Candidate Starts for Myrale_146:
(Start: 47 @75781 has 2 MA's), (Start: 60 @75838 has 84 MA's),

Gene: Nala_149 Start: 75313, Stop: 75660, Start Num: 60
Candidate Starts for Nala_149:
(Start: 43 @75217 has 1 MA's), (Start: 47 @75256 has 2 MA's), (Start: 60 @75313 has 84 MA's),

Gene: Neobush_81 Start: 50518, Stop: 50853, Start Num: 64
Candidate Starts for Neobush_81:
(24, 50245), (Start: 64 @50518 has 27 MA's),

Gene: NewHope4_108 Start: 56941, Stop: 57267, Start Num: 63
Candidate Starts for NewHope4_108:
(6, 56428), (7, 56452), (13, 56515), (36, 56767), (41, 56803), (52, 56890), (Start: 63 @56941 has 132 MA's),

Gene: Nimbo_96 Start: 55269, Stop: 55595, Start Num: 63
Candidate Starts for Nimbo_96:
(Start: 63 @55269 has 132 MA's),

Gene: Nimrod_145 Start: 75854, Stop: 76201, Start Num: 60
Candidate Starts for Nimrod_145:
(Start: 47 @75797 has 2 MA's), (Start: 60 @75854 has 84 MA's),

Gene: NoSleep_145 Start: 74074, Stop: 74421, Start Num: 60
Candidate Starts for NoSleep_145:
(Start: 47 @74017 has 2 MA's), (Start: 60 @74074 has 84 MA's),

Gene: NoSwimming_59 Start: 40976, Stop: 41329, Start Num: 63
Candidate Starts for NoSwimming_59:
(Start: 63 @40976 has 132 MA's), (73, 41072), (92, 41240), (93, 41285),

Gene: NormanBulbieJr_102 Start: 57635, Stop: 57961, Start Num: 63
Candidate Starts for NormanBulbieJr_102:
(36, 57461), (41, 57497), (52, 57584), (Start: 63 @57635 has 132 MA's), (75, 57758), (92, 57893),

Gene: Nymphadora_84 Start: 53045, Stop: 53380, Start Num: 64
Candidate Starts for Nymphadora_84:
(24, 52772), (Start: 64 @53045 has 27 MA's), (86, 53231),

Gene: Ochi17_110 Start: 57598, Stop: 57924, Start Num: 63
Candidate Starts for Ochi17_110:
(Start: 63 @57598 has 132 MA's),

Gene: OfUltron_111 Start: 58147, Stop: 58473, Start Num: 63
Candidate Starts for OfUltron_111:
(Start: 63 @58147 has 132 MA's),

Gene: OldBen_101 Start: 56661, Stop: 56987, Start Num: 63
Candidate Starts for OldBen_101:
(Start: 63 @56661 has 132 MA's),

Gene: OrionPax_144 Start: 74532, Stop: 74879, Start Num: 60
Candidate Starts for OrionPax_144:
(Start: 47 @74475 has 2 MA's), (Start: 60 @74532 has 84 MA's),

Gene: PHappiness_104 Start: 57490, Stop: 57816, Start Num: 63
Candidate Starts for PHappiness_104:
(Start: 63 @57490 has 132 MA's),

Gene: PMC_104 Start: 56224, Stop: 56550, Start Num: 63
Candidate Starts for PMC_104:
(1, 55117), (2, 55408), (3, 55471), (6, 55711), (13, 55798), (36, 56050), (41, 56086), (52, 56173),
(Start: 63 @56224 has 132 MA's), (75, 56347), (92, 56482),

Gene: Pacc40_101 Start: 58086, Stop: 58412, Start Num: 63
Candidate Starts for Pacc40_101:
(36, 57912), (41, 57948), (52, 58035), (Start: 63 @58086 has 132 MA's),

Gene: Palpatine_143 Start: 75228, Stop: 75575, Start Num: 60
Candidate Starts for Palpatine_143:
(Start: 43 @75132 has 1 MA's), (Start: 47 @75171 has 2 MA's), (Start: 60 @75228 has 84 MA's),

Gene: Paperbeatsrock_144 Start: 75058, Stop: 75405, Start Num: 60
Candidate Starts for Paperbeatsrock_144:
(Start: 47 @75001 has 2 MA's), (Start: 60 @75058 has 84 MA's),

Gene: Pat3_147 Start: 75094, Stop: 75441, Start Num: 60
Candidate Starts for Pat3_147:
(Start: 60 @75094 has 84 MA's),

Gene: Phaja_151 Start: 75104, Stop: 75451, Start Num: 60
Candidate Starts for Phaja_151:
(Start: 47 @75047 has 2 MA's), (Start: 60 @75104 has 84 MA's),

Gene: Phalconet_106 Start: 57180, Stop: 57506, Start Num: 63
Candidate Starts for Phalconet_106:
(36, 57006), (41, 57042), (52, 57129), (Start: 63 @57180 has 132 MA's), (75, 57303), (92, 57438),

Gene: Phanphagia_109 Start: 58459, Stop: 58803, Start Num: 63
Candidate Starts for Phanphagia_109:
(Start: 63 @58459 has 132 MA's), (78, 58603), (82, 58627),

Gene: Phasih_100 Start: 55657, Stop: 55983, Start Num: 63
Candidate Starts for Phasih_100:
(Start: 63 @55657 has 132 MA's),

Gene: PhatBacter_150 Start: 75636, Stop: 75983, Start Num: 60
Candidate Starts for PhatBacter_150:
(Start: 43 @75540 has 1 MA's), (Start: 47 @75579 has 2 MA's), (Start: 60 @75636 has 84 MA's),

Gene: Phatniss_101 Start: 56036, Stop: 56380, Start Num: 63
Candidate Starts for Phatniss_101:
(36, 55862), (41, 55898), (52, 55985), (Start: 63 @56036 has 132 MA's), (78, 56180), (82, 56204),

Gene: Phaux_147 Start: 75898, Stop: 76245, Start Num: 60
Candidate Starts for Phaux_147:
(Start: 47 @75841 has 2 MA's), (Start: 60 @75898 has 84 MA's),

Gene: PhesterPhotato_109 Start: 57154, Stop: 57480, Start Num: 63
Candidate Starts for PhesterPhotato_109:
(36, 56980), (41, 57016), (52, 57103), (Start: 63 @57154 has 132 MA's), (75, 57277), (92, 57412),

Gene: Philus_108 Start: 58766, Stop: 59092, Start Num: 63
Candidate Starts for Philus_108:
(36, 58592), (41, 58628), (52, 58715), (Start: 63 @58766 has 132 MA's), (75, 58889), (92, 59024),

Gene: Phrux_143 Start: 74130, Stop: 74477, Start Num: 60
Candidate Starts for Phrux_143:
(Start: 47 @74073 has 2 MA's), (Start: 60 @74130 has 84 MA's),

Gene: Pippy_103 Start: 56195, Stop: 56521, Start Num: 63
Candidate Starts for Pippy_103:
(36, 56021), (41, 56057), (52, 56144), (Start: 63 @56195 has 132 MA's), (75, 56318), (92, 56453),

Gene: Policronamos_145 Start: 75313, Stop: 75660, Start Num: 60

Candidate Starts for Policronamos_145:
(Start: 43 @75217 has 1 MA's), (Start: 47 @75256 has 2 MA's), (Start: 60 @75313 has 84 MA's),

Gene: Polka14_108 Start: 58259, Stop: 58585, Start Num: 63
Candidate Starts for Polka14_108:
(Start: 63 @58259 has 132 MA's),

Gene: Pollux_82 Start: 52125, Stop: 52415, Start Num: 71
Candidate Starts for Pollux_82:
(10, 51612), (22, 51762), (23, 51771), (25, 51798), (28, 51816), (30, 51840), (34, 51879), (37, 51891),
(38, 51894), (56, 52029), (Start: 71 @52125 has 15 MA's),

Gene: Polly_76 Start: 49393, Stop: 49728, Start Num: 64
Candidate Starts for Polly_76:
(24, 49120), (Start: 64 @49393 has 27 MA's),

Gene: Polo2Bam_116 Start: 56795, Stop: 57121, Start Num: 63
Candidate Starts for Polo2Bam_116:
(6, 56282), (7, 56306), (13, 56369), (36, 56621), (41, 56657), (52, 56744), (Start: 63 @56795 has 132 MA's),

Gene: Ponzi_39 Start: 21753, Stop: 22079, Start Num: 61
Candidate Starts for Ponzi_39:
(Start: 61 @21753 has 2 MA's), (90, 21984),

Gene: PopTart_95 Start: 54627, Stop: 54953, Start Num: 63
Candidate Starts for PopTart_95:
(6, 54114), (13, 54201), (36, 54453), (41, 54489), (52, 54576), (Start: 63 @54627 has 132 MA's), (75, 54750), (92, 54885),

Gene: Posh_79 Start: 51944, Stop: 52234, Start Num: 71
Candidate Starts for Posh_79:
(66, 51887), (67, 51893), (Start: 71 @51944 has 15 MA's),

Gene: Priscilla_105 Start: 57733, Stop: 58059, Start Num: 63
Candidate Starts for Priscilla_105:
(Start: 63 @57733 has 132 MA's),

Gene: Pytheas_83 Start: 53170, Stop: 53460, Start Num: 71
Candidate Starts for Pytheas_83:
(66, 53113), (67, 53119), (Start: 71 @53170 has 15 MA's),

Gene: Quallification_146 Start: 75327, Stop: 75674, Start Num: 60
Candidate Starts for Quallification_146:
(Start: 47 @75270 has 2 MA's), (Start: 60 @75327 has 84 MA's),

Gene: Radiance_103 Start: 56827, Stop: 57153, Start Num: 63
Candidate Starts for Radiance_103:
(6, 56314), (7, 56338), (13, 56401), (36, 56653), (41, 56689), (52, 56776), (Start: 63 @56827 has 132 MA's),

Gene: RavenCo17_74 Start: 49279, Stop: 49611, Start Num: 64
Candidate Starts for RavenCo17_74:

(Start: 64 @49279 has 27 MA's), (78, 49411),

Gene: RedBird_105 Start: 58237, Stop: 58563, Start Num: 63

Candidate Starts for RedBird_105:

(Start: 63 @58237 has 132 MA's),

Gene: Renaud18_112 Start: 57550, Stop: 57837, Start Num: 72

Candidate Starts for Renaud18_112:

(18, 57079), (31, 57280), (39, 57319), (44, 57385), (46, 57388), (68, 57499), (Start: 72 @57550 has 3 MA's),

Gene: Rimmer_145 Start: 75079, Stop: 75426, Start Num: 60

Candidate Starts for Rimmer_145:

(Start: 47 @75022 has 2 MA's), (Start: 60 @75079 has 84 MA's),

Gene: Rita_104 Start: 58303, Stop: 58629, Start Num: 63

Candidate Starts for Rita_104:

(36, 58129), (41, 58165), (52, 58252), (Start: 63 @58303 has 132 MA's), (75, 58426), (92, 58561),

Gene: RitaG_103 Start: 57292, Stop: 57618, Start Num: 63

Candidate Starts for RitaG_103:

(Start: 63 @57292 has 132 MA's),

Gene: RiverMonster_146 Start: 74984, Stop: 75331, Start Num: 60

Candidate Starts for RiverMonster_146:

(Start: 47 @74927 has 2 MA's), (Start: 60 @74984 has 84 MA's),

Gene: Rockne_108 Start: 56236, Stop: 56562, Start Num: 63

Candidate Starts for Rockne_108:

(1, 55129), (2, 55420), (3, 55483), (6, 55723), (13, 55810), (36, 56062), (41, 56098), (52, 56185), (Start: 63 @56236 has 132 MA's), (75, 56359), (92, 56494),

Gene: RootBeer_55 Start: 38956, Stop: 39309, Start Num: 62

Candidate Starts for RootBeer_55:

(45, 38890), (Start: 62 @38956 has 1 MA's), (81, 39118), (85, 39139),

Gene: Rowa_68 Start: 42116, Stop: 42472, Start Num: 53

Candidate Starts for Rowa_68:

(45, 42074), (Start: 53 @42116 has 1 MA's), (84, 42302), (87, 42326),

Gene: Royals2015_108 Start: 56107, Stop: 56451, Start Num: 63

Candidate Starts for Royals2015_108:

(36, 55933), (41, 55969), (52, 56056), (Start: 63 @56107 has 132 MA's), (78, 56251), (82, 56275),

Gene: Ruby_100 Start: 57258, Stop: 57584, Start Num: 63

Candidate Starts for Ruby_100:

(Start: 63 @57258 has 132 MA's),

Gene: Sabbb_107 Start: 55263, Stop: 55589, Start Num: 63

Candidate Starts for Sabbb_107:

(36, 55089), (41, 55125), (52, 55212), (Start: 63 @55263 has 132 MA's),

Gene: Saints25_141 Start: 72738, Stop: 73181, Start Num: 43

Candidate Starts for Saints25_141:
(Start: 43 @72738 has 1 MA's), (Start: 47 @72777 has 2 MA's), (Start: 60 @72834 has 84 MA's),

Gene: Sandalphon_103 Start: 58290, Stop: 58634, Start Num: 63
Candidate Starts for Sandalphon_103:
(36, 58116), (41, 58152), (52, 58239), (Start: 63 @58290 has 132 MA's), (78, 58434), (82, 58458),

Gene: Sassafras_106 Start: 56554, Stop: 56880, Start Num: 63
Candidate Starts for Sassafras_106:
(Start: 63 @56554 has 132 MA's),

Gene: SassyB_95 Start: 54627, Stop: 54953, Start Num: 63
Candidate Starts for SassyB_95:
(6, 54114), (13, 54201), (36, 54453), (41, 54489), (52, 54576), (Start: 63 @54627 has 132 MA's), (75, 54750), (92, 54885),

Gene: Scottish_105 Start: 56356, Stop: 56682, Start Num: 63
Candidate Starts for Scottish_105:
(36, 56182), (41, 56218), (52, 56305), (Start: 63 @56356 has 132 MA's), (75, 56479), (92, 56614),

Gene: Seabastian_111 Start: 58148, Stop: 58474, Start Num: 63
Candidate Starts for Seabastian_111:
(Start: 63 @58148 has 132 MA's),

Gene: ShamWow_145 Start: 75352, Stop: 75699, Start Num: 60
Candidate Starts for ShamWow_145:
(Start: 47 @75295 has 2 MA's), (Start: 60 @75352 has 84 MA's),

Gene: Shambre1_67 Start: 41812, Stop: 42165, Start Num: 63
Candidate Starts for Shambre1_67:
(Start: 63 @41812 has 132 MA's), (85, 41995),

Gene: Shauna1_106 Start: 58075, Stop: 58419, Start Num: 63
Candidate Starts for Shauna1_106:
(Start: 63 @58075 has 132 MA's), (78, 58219), (82, 58243),

Gene: ShereKhan_145 Start: 75552, Stop: 75899, Start Num: 60
Candidate Starts for ShereKhan_145:
(Start: 47 @75495 has 2 MA's), (Start: 60 @75552 has 84 MA's),

Gene: ShiLan_107 Start: 59324, Stop: 59650, Start Num: 63
Candidate Starts for ShiLan_107:
(Start: 63 @59324 has 132 MA's),

Gene: ShowerHandel_107 Start: 57093, Stop: 57419, Start Num: 63
Candidate Starts for ShowerHandel_107:
(36, 56919), (41, 56955), (52, 57042), (Start: 63 @57093 has 132 MA's), (75, 57216), (92, 57351),

Gene: ShroomBoi_105 Start: 57753, Stop: 58079, Start Num: 63
Candidate Starts for ShroomBoi_105:
(6, 57240), (13, 57327), (36, 57579), (52, 57702), (Start: 63 @57753 has 132 MA's), (75, 57876),

Gene: SiSi_99 Start: 55811, Stop: 56137, Start Num: 63

Candidate Starts for SiSi_99:

(36, 55637), (41, 55673), (52, 55760), (Start: 63 @55811 has 132 MA's), (75, 55934), (92, 56069),

Gene: SophKB_144 Start: 75004, Stop: 75351, Start Num: 60

Candidate Starts for SophKB_144:

(Start: 47 @74947 has 2 MA's), (Start: 60 @75004 has 84 MA's),

Gene: Sotrice96_151 Start: 75718, Stop: 76065, Start Num: 60

Candidate Starts for Sotrice96_151:

(Start: 47 @75661 has 2 MA's), (Start: 60 @75718 has 84 MA's),

Gene: Sparkdehlily_111 Start: 55806, Stop: 56132, Start Num: 63

Candidate Starts for Sparkdehlily_111:

(Start: 63 @55806 has 132 MA's),

Gene: Sparky_95 Start: 62955, Stop: 63257, Start Num: 71

Candidate Starts for Sparky_95:

(40, 62730), (51, 62826), (55, 62841), (Start: 59 @62859 has 1 MA's), (66, 62895), (67, 62901), (Start: 71 @62955 has 15 MA's), (74, 62988), (94, 63246),

Gene: Spooks_36 Start: 24524, Stop: 24868, Start Num: 61

Candidate Starts for Spooks_36:

(58, 24515), (Start: 59 @24518 has 1 MA's), (Start: 61 @24524 has 2 MA's),

Gene: Spoonbill_104 Start: 55237, Stop: 55563, Start Num: 63

Candidate Starts for Spoonbill_104:

(Start: 63 @55237 has 132 MA's),

Gene: StAnnes_110 Start: 58889, Stop: 59215, Start Num: 63

Candidate Starts for StAnnes_110:

(36, 58715), (41, 58751), (52, 58838), (Start: 63 @58889 has 132 MA's), (75, 59012), (92, 59147),

Gene: Stank_150 Start: 75344, Stop: 75691, Start Num: 60

Candidate Starts for Stank_150:

(Start: 47 @75287 has 2 MA's), (Start: 60 @75344 has 84 MA's),

Gene: Stark_143 Start: 74150, Stop: 74497, Start Num: 60

Candidate Starts for Stark_143:

(Start: 47 @74093 has 2 MA's), (Start: 60 @74150 has 84 MA's),

Gene: StolenFromERC_148 Start: 74689, Stop: 75036, Start Num: 60

Candidate Starts for StolenFromERC_148:

(Start: 47 @74632 has 2 MA's), (Start: 60 @74689 has 84 MA's),

Gene: Success_39 Start: 23746, Stop: 24093, Start Num: 59

Candidate Starts for Success_39:

(58, 23743), (Start: 59 @23746 has 1 MA's), (Start: 61 @23752 has 2 MA's), (77, 23911),

Gene: SuperGrey_103 Start: 58875, Stop: 59201, Start Num: 63

Candidate Starts for SuperGrey_103:

(36, 58701), (41, 58737), (52, 58824), (Start: 63 @58875 has 132 MA's), (75, 58998), (92, 59133),

Gene: Suscepit_79 Start: 49951, Stop: 50286, Start Num: 64

Candidate Starts for Suscepit_79:
(24, 49678), (Start: 64 @49951 has 27 MA's),

Gene: SwagPiggett_106 Start: 58433, Stop: 58759, Start Num: 63
Candidate Starts for SwagPiggett_106:
(Start: 63 @58433 has 132 MA's),

Gene: TBrady12_151 Start: 74778, Stop: 75125, Start Num: 60
Candidate Starts for TBrady12_151:
(Start: 47 @74721 has 2 MA's), (Start: 60 @74778 has 84 MA's),

Gene: TChen_101 Start: 57213, Stop: 57500, Start Num: 72
Candidate Starts for TChen_101:
(18, 56742), (31, 56943), (39, 56982), (44, 57048), (46, 57051), (68, 57162), (Start: 72 @57213 has 3 MA's),

Gene: TDanisky_112 Start: 55806, Stop: 56132, Start Num: 63
Candidate Starts for TDanisky_112:
(Start: 63 @55806 has 132 MA's),

Gene: Taj_110 Start: 58080, Stop: 58430, Start Num: 63
Candidate Starts for Taj_110:
(36, 57906), (41, 57942), (52, 58029), (Start: 63 @58080 has 132 MA's), (75, 58203), (92, 58338),

Gene: Tarkin_144 Start: 75417, Stop: 75764, Start Num: 60
Candidate Starts for Tarkin_144:
(Start: 47 @75360 has 2 MA's), (Start: 60 @75417 has 84 MA's),

Gene: Tayonia_79 Start: 49950, Stop: 50285, Start Num: 64
Candidate Starts for Tayonia_79:
(24, 49677), (Start: 64 @49950 has 27 MA's),

Gene: Teaspoon_130 Start: 70361, Stop: 70708, Start Num: 60
Candidate Starts for Teaspoon_130:
(Start: 47 @70304 has 2 MA's), (Start: 60 @70361 has 84 MA's),

Gene: ThankyouJordi_83 Start: 53067, Stop: 53414, Start Num: 64
Candidate Starts for ThankyouJordi_83:
(24, 52794), (Start: 64 @53067 has 27 MA's),

Gene: Thresher_148 Start: 75611, Stop: 75958, Start Num: 60
Candidate Starts for Thresher_148:
(Start: 43 @75515 has 1 MA's), (Start: 47 @75554 has 2 MA's), (Start: 60 @75611 has 84 MA's),

Gene: TimTam_84 Start: 53045, Stop: 53380, Start Num: 64
Candidate Starts for TimTam_84:
(24, 52772), (Start: 64 @53045 has 27 MA's), (86, 53231),

Gene: Traaww1_144 Start: 74842, Stop: 75189, Start Num: 60
Candidate Starts for Traaww1_144:
(Start: 60 @74842 has 84 MA's),

Gene: Trumpet_79 Start: 49951, Stop: 50286, Start Num: 64

Candidate Starts for Trumpet_79:
(24, 49678), (Start: 64 @49951 has 27 MA's),

Gene: Tuco_150 Start: 76363, Stop: 76710, Start Num: 60
Candidate Starts for Tuco_150:
(Start: 47 @76306 has 2 MA's), (Start: 60 @76363 has 84 MA's),

Gene: Tweety_109 Start: 58225, Stop: 58551, Start Num: 63
Candidate Starts for Tweety_109:
(36, 58051), (41, 58087), (52, 58174), (Start: 63 @58225 has 132 MA's), (75, 58348), (92, 58483),

Gene: Ukulele_143 Start: 74533, Stop: 74880, Start Num: 60
Candidate Starts for Ukulele_143:
(Start: 43 @74437 has 1 MA's), (Start: 47 @74476 has 2 MA's), (Start: 60 @74533 has 84 MA's),

Gene: VRedHorse_105 Start: 54331, Stop: 54657, Start Num: 63
Candidate Starts for VRedHorse_105:
(Start: 63 @54331 has 132 MA's),

Gene: Veteran_94 Start: 55679, Stop: 56005, Start Num: 63
Candidate Starts for Veteran_94:
(36, 55505), (41, 55541), (52, 55628), (Start: 63 @55679 has 132 MA's), (75, 55802), (92, 55937),

Gene: Wachhund_101 Start: 54046, Stop: 54372, Start Num: 63
Candidate Starts for Wachhund_101:
(Start: 63 @54046 has 132 MA's),

Gene: Wee_109 Start: 58763, Stop: 59089, Start Num: 63
Candidate Starts for Wee_109:
(36, 58589), (41, 58625), (52, 58712), (Start: 63 @58763 has 132 MA's), (75, 58886), (92, 59021),

Gene: WelcomeAyanna_83 Start: 53214, Stop: 53561, Start Num: 64
Candidate Starts for WelcomeAyanna_83:
(24, 52941), (Start: 64 @53214 has 27 MA's),

Gene: Whatsapiecost_99 Start: 52358, Stop: 52702, Start Num: 63
Candidate Starts for Whatsapiecost_99:
(36, 52184), (41, 52220), (52, 52307), (Start: 63 @52358 has 132 MA's), (78, 52502), (82, 52526),

Gene: Whouxphf_108 Start: 58625, Stop: 58951, Start Num: 63
Candidate Starts for Whouxphf_108:
(36, 58451), (41, 58487), (52, 58574), (Start: 63 @58625 has 132 MA's), (75, 58748), (92, 58883),

Gene: Wiggin_149 Start: 74322, Stop: 74669, Start Num: 60
Candidate Starts for Wiggin_149:
(Start: 47 @74265 has 2 MA's), (Start: 60 @74322 has 84 MA's),

Gene: WillSterrel_103 Start: 57362, Stop: 57706, Start Num: 63
Candidate Starts for WillSterrel_103:
(Start: 63 @57362 has 132 MA's), (78, 57506), (82, 57530),

Gene: Willez_144 Start: 73995, Stop: 74342, Start Num: 60
Candidate Starts for Willez_144:

(Start: 47 @73938 has 2 MA's), (Start: 60 @73995 has 84 MA's),

Gene: Wrigley_81 Start: 51527, Stop: 51817, Start Num: 71

Candidate Starts for Wrigley_81:

(66, 51470), (67, 51476), (Start: 71 @51527 has 15 MA's),

Gene: Youngblood_150 Start: 75315, Stop: 75662, Start Num: 60

Candidate Starts for Youngblood_150:

(Start: 47 @75258 has 2 MA's), (Start: 60 @75315 has 84 MA's),

Gene: Zameen_79 Start: 49950, Stop: 50285, Start Num: 64

Candidate Starts for Zameen_79:

(24, 49677), (Start: 64 @49950 has 27 MA's),

Gene: Zerg_103 Start: 56837, Stop: 57181, Start Num: 63

Candidate Starts for Zerg_103:

(36, 56663), (41, 56699), (52, 56786), (Start: 63 @56837 has 132 MA's), (78, 56981), (82, 57005),

Gene: Zirinka_79 Start: 51694, Stop: 52026, Start Num: 64

Candidate Starts for Zirinka_79:

(24, 51421), (Start: 64 @51694 has 27 MA's),

Gene: Zizzle_108 Start: 58913, Stop: 59239, Start Num: 63

Candidate Starts for Zizzle_108:

(Start: 63 @58913 has 132 MA's), (75, 59036), (92, 59171),