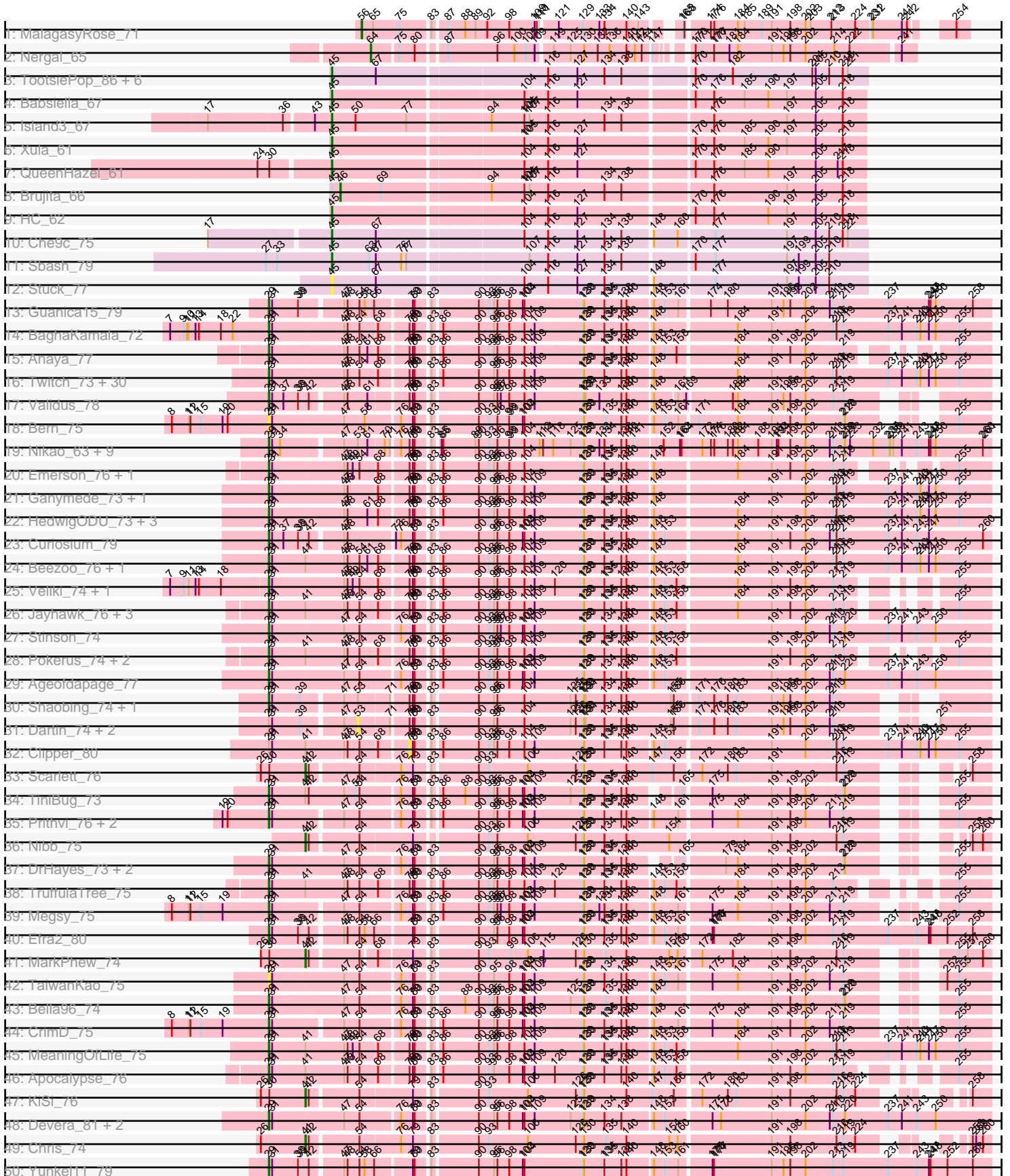
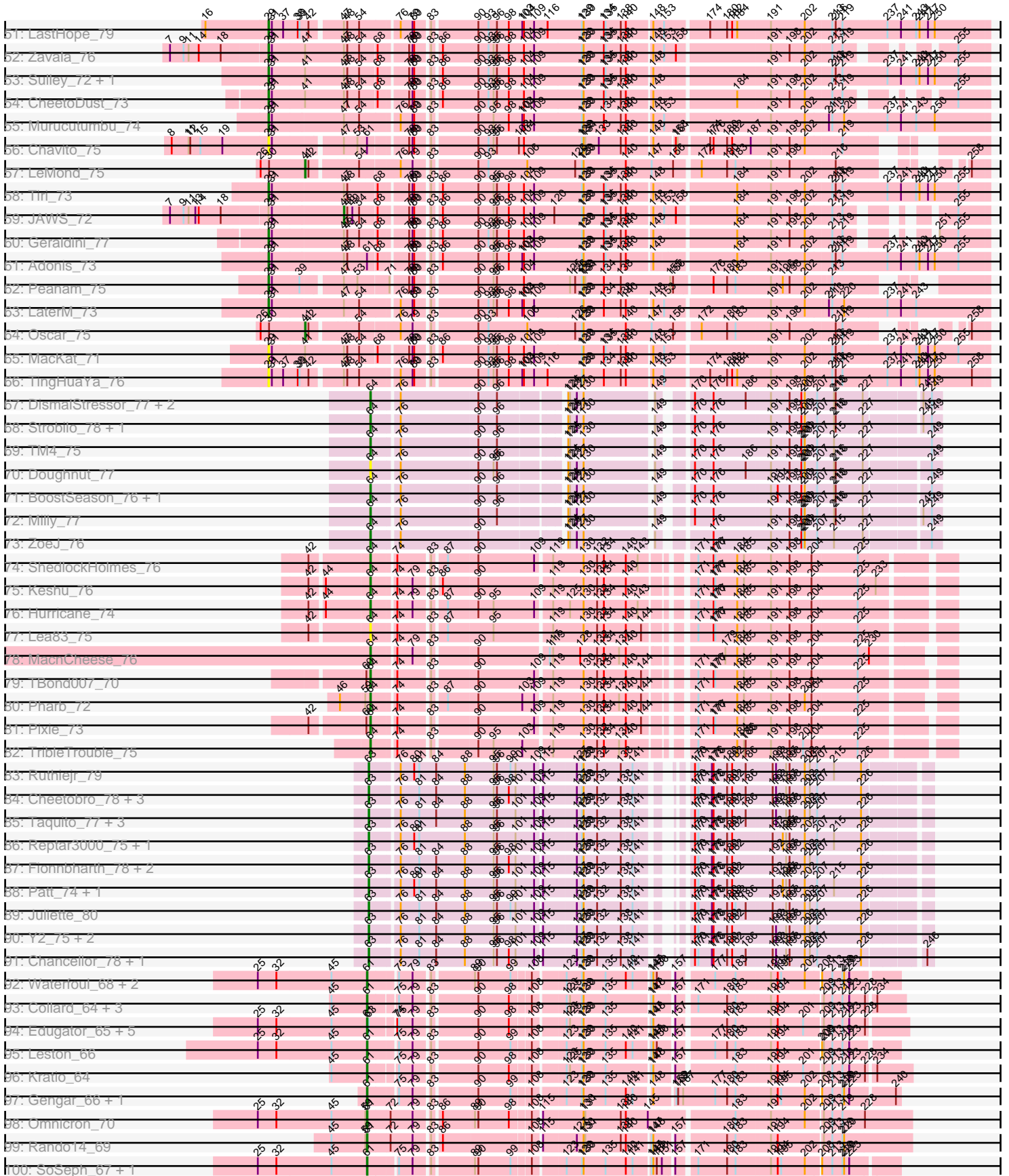


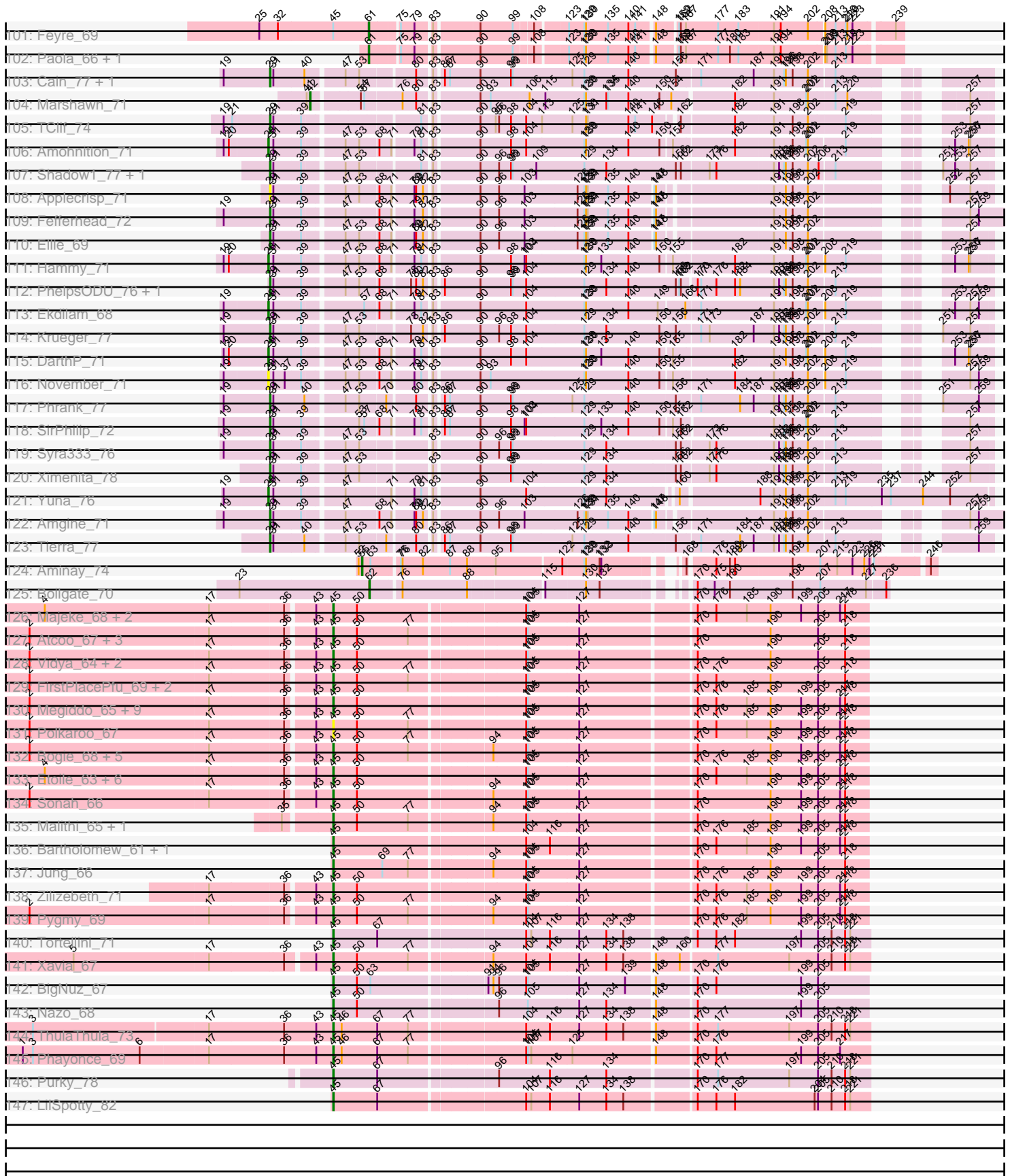
Pham 224240



Pham 224240



Pham 224240



Note: Tracks are now grouped by subcluster and scaled. Switching in subcluster is indicated by changes in track color. Track scale is now set by default to display the region 30 bp upstream of start 1 to 30 bp downstream of the last possible start. If this default region is judged to be packed too tightly with annotated starts, the track will be further scaled to only show that region of the ORF with annotated starts. This action will be indicated by adding "Zoomed" to the title. For starts, yellow indicates the location of called starts comprised solely of Glimmer/GeneMark auto-annotations, green indicates the location of called starts with at least 1 manual gene annotation.

Pham 224240 Report

This analysis was run 03/28/25 on database version 593.

Pham number 224240 has 278 members, 29 are drafts.

Phages represented in each track:

- Track 1 : MalagasyRose_71
- Track 2 : Nergal_65
- Track 3 : TootsiePop_86, Misha28_86, Aloeri_90, Piper2020_91, DocMcStuffins_84, ChickenDinner_90, Awesomesauce_87
- Track 4 : Babsiella_67
- Track 5 : Island3_67
- Track 6 : Xula_61
- Track 7 : QueenHazel_61
- Track 8 : Brujita_66
- Track 9 : HC_62
- Track 10 : Che9c_75
- Track 11 : Sbash_79
- Track 12 : Stuck_77
- Track 13 : Guanica15_79
- Track 14 : BaghaKamala_72
- Track 15 : Anaya_77
- Track 16 : Twitch_73, Jeckyll_73, AlishaPH_72, Atiba_74, Llorens_73, Belladonna_73, CaseJules_75, Lunahalos_73, CREW_72, Asayake_73, Blizzard_73, Rosmarinus_73, Adephagia_72, Boiiii_73, Durfee_73, Jarvi_73, Spock_73, BEEST_73, ShiaSurprise_74, Padfoot_73, Inky_73, CallaLilly_74, Capricorn_73, Dalmuri_73, Peel_73, Homura_72, Hyperbowlee_72, Topper_73, Piatt_72, Tachez_73, BGlluviae_73
- Track 17 : Validus_78
- Track 18 : Bern_75
- Track 19 : Nikao_63, Binglebops_60, Nutello_60, SgtBeansprout_61, Teejan_62, Amelie_60, Enkosi_62, Mdavu_61, LilPharaoh_61, Torres_62
- Track 20 : Emerson_76, Padpat_77
- Track 21 : Ganymede_73, QuincyRose_71
- Track 22 : HedwigODU_73, Zabiza_69, Joy99_74, ActinUp_74
- Track 23 : Curiosium_79
- Track 24 : Beezoo_76, YoureAdopted_73
- Track 25 : Veliki_74, Ramen_74
- Track 26 : Jayhawk_76, BarrelRoll_74, Rapunzel97_76, Slimphazie_75
- Track 27 : Stinson_74
- Track 28 : Pokerus_74, Deby_73, Mynx_75
- Track 29 : Ageofdapage_77
- Track 30 : Shaobing_74, Niklas_75

- Track 31 : Dartin_74, McMater_74, Richo_74
- Track 32 : Clipper_80
- Track 33 : Scarlett_76
- Track 34 : TiniBug_73
- Track 35 : Prithvi_76, LindNT_72, TreyKay_76
- Track 36 : Nibb_75
- Track 37 : DrHayes_73, SamuelLPlaqson_73, Urkel_73
- Track 38 : TruffulaTree_75
- Track 39 : Megsy_75
- Track 40 : Efra2_80
- Track 41 : MarkPhew_74
- Track 42 : TaiwanKao_75
- Track 43 : Bella96_74
- Track 44 : CrimD_75
- Track 45 : MeaningOfLife_75
- Track 46 : Apocalypse_76
- Track 47 : KiSi_76
- Track 48 : Devera_81, Dole_78, Illumine_79
- Track 49 : Chris_74
- Track 50 : Yunkel11_79
- Track 51 : LastHope_79
- Track 52 : Zavala_76
- Track 53 : Sulley_72, Angelica_72
- Track 54 : CheetoDust_73
- Track 55 : Murucutumbu_74
- Track 56 : Chavito_75
- Track 57 : LeMond_75
- Track 58 : Tiri_73
- Track 59 : JAWS_72
- Track 60 : Geraldini_77
- Track 61 : Adonis_73
- Track 62 : Peanam_75
- Track 63 : LaterM_73
- Track 64 : Oscar_75
- Track 65 : MacKat_71
- Track 66 : TingHuaYa_76
- Track 67 : DismalStressor_77, DismalFunk_77, Marcoliusprime_76
- Track 68 : Strobilo_78, Findley_77
- Track 69 : TM4_75
- Track 70 : Doughnut_77
- Track 71 : BoostSeason_76, Mufasa_76
- Track 72 : Milly_77
- Track 73 : ZoeJ_76
- Track 74 : ShedlockHolmes_76
- Track 75 : Keshu_76
- Track 76 : Hurricane_74
- Track 77 : Lea83_75
- Track 78 : MacnCheese_76
- Track 79 : TBond007_70
- Track 80 : Pharb_72
- Track 81 : Pixie_73
- Track 82 : TribbleTrouble_75
- Track 83 : Ruthiejr_79

- Track 84 : Cheetobro_78, Lebo14_79, Slarp_78, OmniCritical_78
- Track 85 : Taquito_77, Malthus_79, Mitti_78, Kraw_79
- Track 86 : Reptar3000_75, Bobquesha_79
- Track 87 : Fionnbharth_78, Eponine_80, Wintermute_78
- Track 88 : Patt_74, MissDaisy_75
- Track 89 : Juliette_80
- Track 90 : Y2_75, Y10_75, JF1_78
- Track 91 : Chancellor_78, SamScheppers_77
- Track 92 : Waterfoul_68, Miryou_70, Thyatira_69
- Track 93 : Collard_64, InvictusManeo_64, Agent47_66, ViviJ_64
- Track 94 : Edugator_65, Dadosky_68, AlleyCat_68, Psycho_66, Larva_67, Neighly_68
- Track 95 : Leston_66
- Track 96 : Kratio_64
- Track 97 : Gengar_66, OkiRoe_67
- Track 98 : Omnicron_70
- Track 99 : Rando14_69
- Track 100 : SoSeph_67, Heftyboy_67
- Track 101 : Feyre_69
- Track 102 : Paola_66, Guillsminger_67
- Track 103 : Cain_77, Bryler_77
- Track 104 : Marshawn_71
- Track 105 : TClif_74
- Track 106 : Amohnition_71
- Track 107 : Shadow1_77, Sunflower1121_78
- Track 108 : Applecrisp_71
- Track 109 : Fefferhead_72
- Track 110 : Ellie_69
- Track 111 : Hammy_71
- Track 112 : PhelpsODU_76, Unicorn_76
- Track 113 : Ekdilam_68
- Track 114 : Krueger_77
- Track 115 : DarthP_71
- Track 116 : November_71
- Track 117 : Phrank_77
- Track 118 : SirPhilip_72
- Track 119 : Syra333_76
- Track 120 : Ximenita_78
- Track 121 : Yuna_76
- Track 122 : Amgine_71
- Track 123 : Tierra_77
- Track 124 : Aminay_74
- Track 125 : Boilgate_70
- Track 126 : Majeke_68, Phegasus_68, Mangethe_68
- Track 127 : Atcoo_67, GreaseLightnin_70, StevieRay_70, Bhagsy_70
- Track 128 : Vidya_64, Thespis_67, Brusacoram_67
- Track 129 : FirstPlacePfu_69, Bunnies_71, Ksquared_69
- Track 130 : Megiddo_65, Willsammy_67, Jebeks_66, Gavriela_65, CactusJack_66, Juniormint_63, StressBall_65, Glaske_65, KilKor_66, Phalm_66
- Track 131 : Polkaroo_67
- Track 132 : Bogie_68, HUHilltop_68, Camster_66, Dynamo_65, Necropolis_63, Shipwreck_68

- Track 133 : Etoile_63, Donovan_65, Kari_63, Arib1_64, Fishburne_64, Techage_66, Langerak_65
- Track 134 : Sonah_66
- Track 135 : Malithi_65, Phineas_66
- Track 136 : Bartholomew_61, Venti_63
- Track 137 : Jung_66
- Track 138 : Zilizebeth_71
- Track 139 : Pygmy_69
- Track 140 : Tortellini_71
- Track 141 : Xavia_67
- Track 142 : BigNuz_67
- Track 143 : Nazo_68
- Track 144 : ThulaThula_73
- Track 145 : Phayonce_69
- Track 146 : Purky_78
- Track 147 : LilSpotty_82

Summary of Final Annotations (See graph section above for start numbers):

The start number called the most often in the published annotations is 29, it was called in 111 of the 249 non-draft genes in the pham.

Genes that call this "Most Annotated" start:

- ActinUp_74, Adephegia_72, Adonis_73, Ageofdapage_77, AlishaPH_72, Amelie_60, Amgine_71, Anaya_77, Angelica_72, Apocalypse_76, Applecrisp_71, Asayake_73, Atiba_74, BEEST_73, BGlluviae_73, BaghaKamala_72, BarrelRoll_74, Beezoo_76, Bella96_74, Belladonna_73, Bern_75, Biglebops_60, Blizzard_73, Boiiii_73, Bryler_77, CREW_72, Cain_77, CallaLilly_74, Capricorn_73, CaseJules_75, Chavito_75, CheetoDust_73, CrimD_75, Curiosium_79, Dalmuri_73, Deby_73, Devera_81, Dole_78, DrHayes_73, Durfee_73, Efra2_80, Ellie_69, Emerson_76, Enkosi_62, Fefferhead_72, Ganymede_73, Geraldini_77, Guanica15_79, HedwigODU_73, Homura_72, Hyperbowlee_72, Illumine_79, Inky_73, Jarvi_73, Jayhawk_76, Jeckyll_73, Joy99_74, Krueger_77, LastHope_79, LaterM_73, LilPharaoh_61, LindNT_72, Llorens_73, Lunahalos_73, MacKat_71, Mdavu_61, MeaningOfLife_75, Megsy_75, Murucutumbu_74, Mynx_75, Nikao_63, Niklas_75, Nutello_60, Padfoot_73, Padpat_77, Peanam_75, Peel_73, PhelpsODU_76, Phrank_77, Piatt_72, Pokerus_74, Prithvi_76, QuincyRose_71, Ramen_74, Rapunzel97_76, Rosmarinus_73, SamuelLPlaqson_73, SgtBeansprout_61, Shadow1_77, Shaobing_74, ShiaSurprise_74, SirPhilip_72, Slimphazie_75, Spock_73, Stinson_74, Sulley_72, Sunflower1121_78, Syra333_76, TClif_74, Tachez_73, TaiwanKao_75, Teejan_62, Tierra_77, TingHuaYa_76, TiniBug_73, Tiri_73, Topper_73, Torres_62, TreyKay_76, TruffulaTree_75, Twitch_73, Unicorn_76, Urkel_73, Validus_78, Veliki_74, Ximenita_78, YoureAdopted_73, Yunkel11_79, Zabiza_69, Zavala_76,

Genes that have the "Most Annotated" start but do not call it:

- Clipper_80, Dartin_74, JAWS_72, McMater_74, Richo_74,

Genes that do not have the "Most Annotated" start:

- Agent47_66, AlleyCat_68, Aloeri_90, Aminay_74, Amohnition_71, Arib1_64, Atcoo_67, Awesomesauce_87, Babsiella_67, Bartholomew_61, Bhagsy_70, BigNuz_67, Bobquesha_79, Bogie_68, Boilgate_70, BoostSeason_76, Brujita_66, Brusacoram_67, Bunnies_71, CactusJack_66, Camster_66, Chancellor_78, Che9c_75, Cheetobro_78, ChickenDinner_90, Chris_74, Collard_64, Dadosky_68, DarthP_71, DismalFunk_77, DismalStressor_77, DocMcStuffins_84, Donovan_65, Doughnut_77, Dynamo_65, Edugator_65, Ekdilam_68, Eponine_80, Etoile_63, Feyre_69, Findley_77, Fionnbharth_78, FirstPlacePfu_69, Fishburne_64, Gavriela_65, Gengar_66, Glaske_65, GreaseLightnin_70, Guillsminger_67, HC_62, HUHilltop_68, Hammy_71, Heftyboy_67, Hurricane_74, InvictusManeo_64, Island3_67, JF1_78, Jebeks_66, Juliette_80, Jung_66, Juniormint_63, Kari_63, Keshu_76, KiSi_76, KilKor_66, Kratio_64, Kraw_79, Ksquared_69, Langerak_65, Larva_67, LeMond_75, Lea83_75, Lebo14_79, Leston_66, LilSpotty_82, MacnCheese_76, Majeke_68, MalagasyRose_71, Malithi_65, Malthus_79, Mangethe_68, Marcoliusprime_76, MarkPhew_74, Marshawn_71, Megiddo_65, Milly_77, Miryou_70, Misha28_86, MissDaisy_75, Mitti_78, Mufasa_76, Nazo_68, Necropolis_63, Neighly_68, Nergal_65, Nibb_75, November_71, OkiRoe_67, OmniCritical_78, Omnicron_70, Oscar_75, Paola_66, Patt_74, Phalm_66, Pharb_72, Phayonce_69, Phegasus_68, Phineas_66, Piper2020_91, Pixie_73, Polkaroo_67, Psycho_66, Purky_78, Pygmy_69, QueenHazel_61, Rando14_69, Reptar3000_75, Ruthiejr_79, SamScheppers_77, Sbash_79, Scarlett_76, ShedlockHolmes_76, Shipwreck_68, Slarp_78, SoSeph_67, Sonah_66, StevieRay_70, StressBall_65, Strobilo_78, Stuck_77, TBond007_70, TM4_75, Taquito_77, Techage_66, Thespis_67, ThulaThula_73, Thyatira_69, TootsiePop_86, Tortellini_71, TripleTrouble_75, Venti_63, Vidya_64, ViviJ_64, Waterfoul_68, Willsammy_67, Wintermute_78, Xavia_67, Xula_61, Y10_75, Y2_75, Yuna_76, Zilizebeth_71, ZoeJ_76,

Summary by start number:

Start 28:

- Found in 6 of 278 (2.2%) of genes in pham
- Manual Annotations of this start: 5 of 249
- Called 100.0% of time when present
- Phage (with cluster) where this start called: Amohnition_71 (K6), DarthP_71 (K6), Ekdilam_68 (K6), Hammy_71 (K6), November_71 (K6), Yuna_76 (K6),

Start 29:

- Found in 125 of 278 (45.0%) of genes in pham
- Manual Annotations of this start: 111 of 249
- Called 96.0% of time when present
- Phage (with cluster) where this start called: ActinUp_74 (K1), Adephegia_72 (K1), Adonis_73 (K1), Ageofdapage_77 (K1), AlishaPH_72 (K1), Amelie_60 (K1), Amgine_71 (K6), Anaya_77 (K1), Angelica_72 (K1), Apocalypse_76 (K1), Applecrisp_71 (K6), Asayake_73 (K1), Atiba_74 (K1), BEEST_73 (K1), BGlluviae_73 (K1), BaghaKamala_72 (K1), BarrelRoll_74 (K1), Beezoo_76 (K1), Bella96_74 (K1), Belladonna_73 (K1), Bern_75 (K1), Binglebops_60 (K1), Blizzard_73 (K1), Boiii_73 (K1), Bryler_77 (K6), CREW_72 (K1), Cain_77 (K6), CallaLilly_74 (K1), Capricorn_73 (K1), CaseJules_75 (K1), Chavito_75 (K1), CheetoDust_73 (K1), CrimD_75 (K1), Curiosium_79 (K1), Dalmuri_73 (K1), Deby_73 (K1), Devera_81 (K1), Dole_78 (K1), DrHayes_73 (K1), Durfee_73 (K1), Efra2_80 (K1), Ellie_69 (K6), Emerson_76 (K1), Enkosi_62 (K1), Fefferhead_72 (K6), Ganymede_73 (K1), Geraldini_77 (K1), Guanica15_79 (K1), HedwigODU_73 (K1), Homura_72 (K1), Hyperbowlee_72 (K1),

Illumine_79 (K1), Inky_73 (K1), Jarvi_73 (K1), Jayhawk_76 (K1), Jeckyll_73 (K1), Joy99_74 (K1), Krueger_77 (K6), LastHope_79 (K1), LaterM_73 (K1), LilPharaoh_61 (K1), LindNT_72 (K1), Llorens_73 (K1), Lunahalos_73 (K1), MacKat_71 (K1), Mdavu_61 (K1), MeaningOfLife_75 (K1), Megsy_75 (K1), Murucutumbu_74 (K1), Mynx_75 (K1), Nikao_63 (K1), Niklas_75 (K1), Nutello_60 (K1), Padfoot_73 (K1), Padpat_77 (K1), Peanam_75 (K1), Peel_73 (K1), PhelpsODU_76 (K6), Phrank_77 (K6), Piatt_72 (K1), Pokerus_74 (K1), Prithvi_76 (K1), QuincyRose_71 (K1), Ramen_74 (K1), Rapunzel97_76 (K1), Rosmarinus_73 (K1), SamuelLPlaqson_73 (K1), SgtBeansprout_61 (K1), Shadow1_77 (K6), Shaobing_74 (K1), ShiaSurprise_74 (K1), SirPhilip_72 (K6), Slimphazie_75 (K1), Spock_73 (K1), Stinson_74 (K1), Sulley_72 (K1), Sunflower1121_78 (K6), Syra333_76 (K6), TClif_74 (K6), Tachez_73 (K1), TaiwanKao_75 (K1), Teejan_62 (K1), Tierra_77 (K6), TingHuaYa_76 (K1), TiniBug_73 (K1), Tiri_73 (K1), Topper_73 (K1), Torres_62 (K1), TreyKay_76 (K1), TruffulaTree_75 (K1), Twitch_73 (K1), Unicorn_76 (K6), Urkel_73 (K1), Validus_78 (K1), Veliki_74 (K1), Ximenita_78 (K6), YoureAdopted_73 (K1), Yunkel11_79 (K1), Zabiza_69 (K1), Zavala_76 (K1),

Start 41:

- Found in 27 of 278 (9.7%) of genes in pham
- Manual Annotations of this start: 7 of 249
- Called 25.9% of time when present
- Phage (with cluster) where this start called: Chris_74 (K1), KiSi_76 (K1), LeMond_75 (K1), MarkPheW_74 (K1), Nibb_75 (K1), Oscar_75 (K1), Scarlett_76 (K1),

Start 42:

- Found in 20 of 278 (7.2%) of genes in pham
- Manual Annotations of this start: 1 of 249
- Called 5.0% of time when present
- Phage (with cluster) where this start called: Marshawn_71 (K6),

Start 45:

- Found in 89 of 278 (32.0%) of genes in pham
- Manual Annotations of this start: 60 of 249
- Called 76.4% of time when present
- Phage (with cluster) where this start called: Aloeri_90 (F1), Arib1_64 (P1), Atcoo_67 (P1), Awesomesauce_87 (F1), Babsiella_67 (I1), Bartholomew_61 (P1), Bhagsy_70 (P1), BigNuz_67 (P4), Bogie_68 (P1), Brusacoram_67 (P1), Bunnies_71 (P1), CactusJack_66 (P1), Camster_66 (P1), Che9c_75 (I2), ChickenDinner_90 (F1), DocMcStuffins_84 (F1), Donovan_65 (P1), Dynamo_65 (P1), Etoile_63 (P1), FirstPlacePfu_69 (P1), Fishburne_64 (P1), Gavriela_65 (P1), Glaske_65 (P1), GreaseLightnin_70 (P1), HC_62 (I1), HUHilltop_68 (P1), Island3_67 (I1), Jebeks_66 (P1), Jung_66 (P1), Juniormint_63 (P1), Kari_63 (P1), KilKor_66 (P1), Ksquared_69 (P1), Langerak_65 (P1), LilSpotty_82 (singleton), Majeke_68 (P1), Malithi_65 (P1), Mangethe_68 (P1), Megiddo_65 (P1), Misha28_86 (F1), Nazo_68 (P4), Necropolis_63 (P1), Phalm_66 (P1), Phayonce_69 (P5), Phegasus_68 (P1), Phineas_66 (P1), Piper2020_91 (F1), Polkaroo_67 (P1), Purky_78 (P6), Pygmy_69 (P1), QueenHazel_61 (I1), Sbash_79 (I2), Shipwreck_68 (P1), Sonah_66 (P1), StevieRay_70 (P1), StressBall_65 (P1), Stuck_77 (I2), Techage_66 (P1), Thespis_67 (P1), ThulaThula_73 (P5), TootsiePop_86 (F1), Tortellini_71 (P2), Venti_63 (P1), Vidya_64 (P1), Willsammy_67 (P1), Xavia_67 (P3), Xula_61 (I1), Zilizabeth_71 (P1),

Start 46:

- Found in 4 of 278 (1.4%) of genes in pham

- Manual Annotations of this start: 1 of 249
- Called 25.0% of time when present
- Phage (with cluster) where this start called: Brujita_66 (I1),

Start 47:

- Found in 128 of 278 (46.0%) of genes in pham
- Manual Annotations of this start: 1 of 249
- Called 0.8% of time when present
- Phage (with cluster) where this start called: JAWS_72 (K1),

Start 53:

- Found in 35 of 278 (12.6%) of genes in pham
- No Manual Annotations of this start.
- Called 8.6% of time when present
- Phage (with cluster) where this start called: Dartin_74 (K1), McMater_74 (K1), Richo_74 (K1),

Start 55:

- Found in 1 of 278 (0.4%) of genes in pham
- Manual Annotations of this start: 1 of 249
- Called 100.0% of time when present
- Phage (with cluster) where this start called: Aminay_74 (K7),

Start 56:

- Found in 1 of 278 (0.4%) of genes in pham
- Manual Annotations of this start: 1 of 249
- Called 100.0% of time when present
- Phage (with cluster) where this start called: MalagasyRose_71 (AG),

Start 61:

- Found in 44 of 278 (15.8%) of genes in pham
- Manual Annotations of this start: 22 of 249
- Called 54.5% of time when present
- Phage (with cluster) where this start called: Agent47_66 (K5), AlleyCat_68 (K5), Collard_64 (K5), Dadosky_68 (K5), Edugator_65 (K5), Feyre_69 (K5), Gengar_66 (K5), Guillsminger_67 (K5), Heftyboy_67 (K5), InvictusManeo_64 (K5), Kratio_64 (K5), Larva_67 (K5), Leston_66 (K5), Miryou_70 (K5), Neighly_68 (K3), OkiRoe_67 (K5), Omnicron_70 (K5), Paola_66 (K5), Psycho_66 (K5), Rando14_69 (K5), SoSeph_67 (K5), Thyatira_69 (K5), ViviJ_64 (K5), Waterfoul_68 (K5),

Start 62:

- Found in 1 of 278 (0.4%) of genes in pham
- Manual Annotations of this start: 1 of 249
- Called 100.0% of time when present
- Phage (with cluster) where this start called: Boilgate_70 (K8),

Start 63:

- Found in 31 of 278 (11.2%) of genes in pham
- Manual Annotations of this start: 19 of 249
- Called 71.0% of time when present
- Phage (with cluster) where this start called: Bobquesha_79 (K4), Chancellor_78 (K4), Cheetobro_78 (K4), Eponine_80 (K4), Fionnbharth_78 (K4), JF1_78 (K4), Juliette_80 (K4), Kraw_79 (K4), Lebo14_79 (K4), Malthus_79 (K4), MissDaisy_75

(K4), Mitti_78 (K4), OmniCritical_78 (K4), Patt_74 (K4), Reptar3000_75 (K4), Ruthiejr_79 (K4), SamScheppers_77 (K4), Slarp_78 (K4), Taquito_77 (K4), Wintermute_78 (K4), Y10_75 (K4), Y2_75 (K4),

Start 64:

- Found in 21 of 278 (7.6%) of genes in pham
- Manual Annotations of this start: 19 of 249
- Called 100.0% of time when present
- Phage (with cluster) where this start called: BoostSeason_76 (K2), DismalFunk_77 (K2), DismalStressor_77 (K2), Doughnut_77 (K2), Findley_77 (K2), Hurricane_74 (K3), Keshu_76 (K3), Lea83_75 (K3), MacnCheese_76 (K3), Marcoliusprime_76 (K2), Milly_77 (K2), Mufasa_76 (K2), Nergal_65 (AG), Pharb_72 (K3), Pixie_73 (K3), ShedlockHolmes_76 (K3), Strobilo_78 (K2), TBond007_70 (K3), TM4_75 (K2), TripleTrouble_75 (K3), ZoeJ_76 (K2),

Start 78:

- Found in 86 of 278 (30.9%) of genes in pham
- No Manual Annotations of this start.
- Called 1.2% of time when present
- Phage (with cluster) where this start called: Clipper_80 (K1),

Summary by clusters:

There are 19 clusters represented in this pham: P2, F1, singleton, P1, P6, P4, AG, P3, I1, I2, K3, K2, K1, K7, K6, K5, K4, K8, P5,

Info for manual annotations of cluster AG:

- Start number 56 was manually annotated 1 time for cluster AG.
- Start number 64 was manually annotated 1 time for cluster AG.

Info for manual annotations of cluster F1:

- Start number 45 was manually annotated 5 times for cluster F1.

Info for manual annotations of cluster I1:

- Start number 45 was manually annotated 5 times for cluster I1.
- Start number 46 was manually annotated 1 time for cluster I1.

Info for manual annotations of cluster I2:

- Start number 45 was manually annotated 2 times for cluster I2.

Info for manual annotations of cluster K1:

- Start number 29 was manually annotated 95 times for cluster K1.
- Start number 41 was manually annotated 7 times for cluster K1.
- Start number 47 was manually annotated 1 time for cluster K1.

Info for manual annotations of cluster K2:

- Start number 64 was manually annotated 10 times for cluster K2.

Info for manual annotations of cluster K3:

- Start number 64 was manually annotated 8 times for cluster K3.

Info for manual annotations of cluster K4:

- Start number 63 was manually annotated 19 times for cluster K4.

Info for manual annotations of cluster K5:

- Start number 61 was manually annotated 22 times for cluster K5.

Info for manual annotations of cluster K6:

- Start number 28 was manually annotated 5 times for cluster K6.
- Start number 29 was manually annotated 16 times for cluster K6.
- Start number 42 was manually annotated 1 time for cluster K6.

Info for manual annotations of cluster K7:

- Start number 55 was manually annotated 1 time for cluster K7.

Info for manual annotations of cluster K8:

- Start number 62 was manually annotated 1 time for cluster K8.

Info for manual annotations of cluster P1:

- Start number 45 was manually annotated 40 times for cluster P1.

Info for manual annotations of cluster P2:

- Start number 45 was manually annotated 1 time for cluster P2.

Info for manual annotations of cluster P3:

- Start number 45 was manually annotated 1 time for cluster P3.

Info for manual annotations of cluster P4:

- Start number 45 was manually annotated 2 times for cluster P4.

Info for manual annotations of cluster P5:

- Start number 45 was manually annotated 2 times for cluster P5.

Info for manual annotations of cluster P6:

- Start number 45 was manually annotated 1 time for cluster P6.

Gene Information:

Gene: ActinUp_74 Start: 48731, Stop: 49918, Start Num: 29

Candidate Starts for ActinUp_74:

(Start: 29 @48731 has 111 MA's), (31, 48737), (Start: 47 @48857 has 1 MA's), (48, 48863), (Start: 61 @48893 has 22 MA's), (68, 48905), (78, 48950), (79, 48956), (80, 48959), (83, 48980), (86, 48992), (90, 49055), (93, 49073), (95, 49082), (96, 49088), (98, 49109), (104, 49133), (109, 49151), (129, 49235), (130, 49238), (134, 49274), (135, 49277), (138, 49304), (140, 49313), (148, 49355), (184, 49487), (191, 49544), (202, 49604), (213, 49649), (216, 49655), (219, 49667), (237, 49742), (241, 49766), (243, 49793), (244, 49799), (247, 49814), (250, 49826), (255, 49868),

Gene: Adephagia_72 Start: 48568, Stop: 49755, Start Num: 29

Candidate Starts for Adephagia_72:

(Start: 29 @48568 has 111 MA's), (31, 48574), (Start: 47 @48694 has 1 MA's), (48, 48700), (54, 48718), (68, 48742), (78, 48787), (79, 48793), (80, 48796), (83, 48817), (86, 48829), (90, 48892), (95, 48919), (96, 48925), (98, 48946), (104, 48970), (109, 48988), (129, 49072), (130, 49075), (134, 49111), (135, 49114), (138, 49141), (140, 49150), (148, 49192), (184, 49324), (191, 49381), (202, 49441), (213, 49486), (216, 49492), (219, 49504), (237, 49579), (241, 49603), (243, 49630), (244,

49636), (247, 49651), (250, 49663), (255, 49705),

Gene: Adonis_73 Start: 49003, Stop: 50190, Start Num: 29

Candidate Starts for Adonis_73:

(Start: 29 @49003 has 111 MA's), (31, 49009), (Start: 47 @49129 has 1 MA's), (48, 49135), (Start: 61 @49165 has 22 MA's), (68, 49177), (78, 49222), (79, 49228), (80, 49231), (83, 49252), (86, 49264), (90, 49327), (95, 49354), (96, 49360), (98, 49381), (103, 49402), (104, 49405), (109, 49423), (129, 49507), (130, 49510), (134, 49546), (135, 49549), (138, 49576), (140, 49585), (148, 49627), (184, 49759), (191, 49816), (202, 49876), (213, 49921), (216, 49927), (219, 49939), (237, 50014), (241, 50038), (243, 50065), (244, 50071), (247, 50086), (250, 50098), (255, 50140),

Gene: Agent47_66 Start: 46221, Stop: 47066, Start Num: 61

Candidate Starts for Agent47_66:

(Start: 45 @46158 has 60 MA's), (Start: 61 @46221 has 22 MA's), (75, 46263), (79, 46287), (83, 46311), (90, 46383), (98, 46437), (108, 46470), (123, 46521), (125, 46527), (129, 46548), (130, 46551), (135, 46590), (147, 46665), (148, 46668), (157, 46698), (171, 46725), (180, 46776), (183, 46791), (191, 46848), (194, 46860), (209, 46935), (213, 46950), (219, 46968), (223, 46980), (228, 47004), (234, 47016),

Gene: Ageofdapage_77 Start: 49926, Stop: 51116, Start Num: 29

Candidate Starts for Ageofdapage_77:

(Start: 29 @49926 has 111 MA's), (31, 49932), (Start: 47 @50052 has 1 MA's), (54, 50079), (76, 50136), (79, 50157), (80, 50160), (83, 50181), (86, 50193), (90, 50256), (93, 50274), (95, 50283), (96, 50289), (98, 50310), (103, 50331), (104, 50334), (109, 50352), (129, 50436), (130, 50439), (134, 50475), (138, 50505), (140, 50514), (148, 50556), (153, 50571), (191, 50745), (202, 50805), (211, 50841), (213, 50847), (220, 50868), (237, 50940), (241, 50964), (243, 50991), (250, 51024),

Gene: AlishaPH_72 Start: 48829, Stop: 50016, Start Num: 29

Candidate Starts for AlishaPH_72:

(Start: 29 @48829 has 111 MA's), (31, 48835), (Start: 47 @48955 has 1 MA's), (48, 48961), (54, 48979), (68, 49003), (78, 49048), (79, 49054), (80, 49057), (83, 49078), (86, 49090), (90, 49153), (95, 49180), (96, 49186), (98, 49207), (104, 49231), (109, 49249), (129, 49333), (130, 49336), (134, 49372), (135, 49375), (138, 49402), (140, 49411), (148, 49453), (184, 49585), (191, 49642), (202, 49702), (213, 49747), (216, 49753), (219, 49765), (237, 49840), (241, 49864), (243, 49891), (244, 49897), (247, 49912), (250, 49924), (255, 49966),

Gene: AlleyCat_68 Start: 46549, Stop: 47403, Start Num: 61

Candidate Starts for AlleyCat_68:

(25, 46357), (32, 46390), (Start: 45 @46486 has 60 MA's), (Start: 61 @46549 has 22 MA's), (Start: 63 @46552 has 19 MA's), (74, 46591), (75, 46594), (79, 46618), (83, 46642), (90, 46714), (98, 46768), (108, 46801), (123, 46852), (125, 46858), (129, 46879), (130, 46882), (135, 46921), (147, 46996), (148, 46999), (157, 47029), (180, 47107), (183, 47122), (191, 47179), (194, 47191), (201, 47236), (209, 47266), (213, 47281), (219, 47299), (223, 47311), (228, 47335),

Gene: Aloeri_90 Start: 51883, Stop: 52788, Start Num: 45

Candidate Starts for Aloeri_90:

(Start: 45 @51883 has 60 MA's), (67, 51961), (116, 52246), (127, 52297), (134, 52345), (138, 52375), (170, 52489), (182, 52555), (204, 52693), (205, 52699), (210, 52723), (218, 52747), (221, 52756),

Gene: Amelie_60 Start: 45735, Stop: 46916, Start Num: 29

Candidate Starts for Amelie_60:

(Start: 29 @45735 has 111 MA's), (31, 45741), (34, 45753), (Start: 47 @45849 has 1 MA's), (53, 45873), (Start: 61 @45885 has 22 MA's), (70, 45909), (71, 45915), (76, 45927), (78, 45942), (79,

45948), (80, 45951), (83, 45972), (85, 45981), (86, 45984), (89, 46038), (90, 46044), (93, 46062), (96, 46077), (98, 46098), (99, 46101), (104, 46122), (112, 46149), (114, 46155), (118, 46173), (125, 46203), (129, 46224), (130, 46227), (133, 46254), (134, 46263), (138, 46293), (140, 46302), (141, 46314), (152, 46359), (163, 46386), (164, 46389), (172, 46422), (174, 46437), (176, 46443), (180, 46467), (182, 46476), (184, 46485), (188, 46518), (191, 46539), (193, 46548), (194, 46551), (198, 46572), (202, 46599), (211, 46638), (213, 46644), (219, 46662), (220, 46665), (223, 46674), (232, 46710), (237, 46737), (238, 46740), (239, 46746), (241, 46761), (243, 46788), (247, 46809), (248, 46812), (250, 46821), (260, 46905), (261, 46908),

Gene: Amgine_71 Start: 49342, Stop: 50448, Start Num: 29

Candidate Starts for Amgine_71:

(19, 49264), (Start: 29 @49342 has 111 MA's), (31, 49348), (39, 49393), (Start: 47 @49456 has 1 MA's), (68, 49504), (71, 49522), (79, 49555), (80, 49558), (82, 49570), (83, 49579), (90, 49654), (96, 49687), (103, 49729), (126, 49822), (129, 49834), (130, 49837), (131, 49840), (135, 49876), (140, 49912), (147, 49951), (148, 49954), (191, 50134), (196, 50155), (198, 50167), (202, 50194), (257, 50389), (259, 50404),

Gene: Aminay_74 Start: 48045, Stop: 48938, Start Num: 55

Candidate Starts for Aminay_74:

(52, 48039), (Start: 55 @48045 has 1 MA's), (Start: 63 @48060 has 19 MA's), (75, 48102), (76, 48105), (82, 48141), (87, 48189), (88, 48219), (95, 48261), (122, 48372), (129, 48408), (130, 48411), (132, 48435), (133, 48438), (168, 48540), (176, 48582), (180, 48606), (182, 48615), (198, 48711), (207, 48759), (215, 48789), (223, 48816), (226, 48834), (229, 48843), (231, 48846), (246, 48927),

Gene: Amohnition_71 Start: 49043, Stop: 50146, Start Num: 28

Candidate Starts for Amohnition_71:

(19, 48968), (20, 48977), (Start: 28 @49043 has 5 MA's), (31, 49052), (39, 49097), (Start: 47 @49160 has 1 MA's), (53, 49184), (68, 49208), (71, 49226), (79, 49259), (81, 49271), (83, 49283), (90, 49358), (98, 49412), (104, 49436), (129, 49538), (130, 49541), (140, 49616), (150, 49670), (155, 49688), (182, 49790), (191, 49853), (198, 49886), (201, 49910), (202, 49913), (219, 49973), (253, 50081), (256, 50105), (257, 50108),

Gene: Anaya_77 Start: 49707, Stop: 50813, Start Num: 29

Candidate Starts for Anaya_77:

(Start: 29 @49707 has 111 MA's), (31, 49713), (Start: 47 @49833 has 1 MA's), (48, 49839), (54, 49857), (Start: 61 @49869 has 22 MA's), (68, 49881), (78, 49926), (79, 49932), (80, 49935), (83, 49956), (86, 49968), (90, 50031), (93, 50049), (95, 50058), (96, 50064), (98, 50085), (104, 50109), (109, 50127), (129, 50211), (130, 50214), (134, 50250), (135, 50253), (138, 50280), (140, 50289), (148, 50331), (153, 50346), (158, 50364), (184, 50463), (191, 50520), (198, 50553), (202, 50580), (219, 50643), (255, 50763),

Gene: Angelica_72 Start: 48688, Stop: 49875, Start Num: 29

Candidate Starts for Angelica_72:

(Start: 29 @48688 has 111 MA's), (31, 48694), (Start: 41 @48745 has 7 MA's), (Start: 47 @48814 has 1 MA's), (48, 48820), (54, 48838), (68, 48862), (78, 48907), (79, 48913), (80, 48916), (83, 48937), (86, 48949), (90, 49012), (93, 49030), (95, 49039), (96, 49045), (98, 49066), (104, 49090), (109, 49108), (129, 49192), (130, 49195), (134, 49231), (135, 49234), (138, 49261), (140, 49270), (148, 49312), (191, 49501), (202, 49561), (213, 49606), (216, 49612), (219, 49624), (237, 49699), (241, 49723), (243, 49750), (244, 49756), (247, 49771), (250, 49783), (255, 49825),

Gene: Apocalypse_76 Start: 49451, Stop: 50557, Start Num: 29

Candidate Starts for Apocalypse_76:

(Start: 29 @49451 has 111 MA's), (31, 49457), (Start: 41 @49508 has 7 MA's), (Start: 47 @49577 has 1 MA's), (48, 49583), (54, 49601), (68, 49625), (78, 49670), (79, 49676), (80, 49679), (83, 49700), (86, 49712), (90, 49775), (93, 49793), (95, 49802), (98, 49829), (103, 49850), (104, 49853), (109, 49871), (120, 49907), (129, 49955), (130, 49958), (134, 49994), (135, 49997), (138, 50024), (140, 50033), (148, 50075), (153, 50090), (158, 50108), (191, 50264), (198, 50297), (202, 50324), (213, 50369), (219, 50387), (255, 50507),

Gene: Applecrisp_71 Start: 48635, Stop: 49720, Start Num: 29

Candidate Starts for Applecrisp_71:

(Start: 29 @48635 has 111 MA's), (31, 48641), (39, 48686), (Start: 47 @48749 has 1 MA's), (53, 48773), (68, 48797), (71, 48815), (79, 48848), (80, 48851), (82, 48863), (83, 48872), (90, 48947), (96, 48980), (103, 49022), (126, 49115), (129, 49127), (130, 49130), (131, 49133), (135, 49169), (140, 49205), (147, 49244), (148, 49247), (191, 49427), (196, 49448), (198, 49460), (202, 49487), (252, 49646), (257, 49682),

Gene: Arib1_64 Start: 41089, Stop: 41991, Start Num: 45

Candidate Starts for Arib1_64:

(4, 40597), (17, 40885), (36, 41014), (43, 41059), (Start: 45 @41089 has 60 MA's), (50, 41131), (104, 41410), (105, 41413), (127, 41503), (170, 41695), (176, 41728), (185, 41782), (190, 41824), (199, 41875), (205, 41905), (217, 41944), (218, 41953),

Gene: Asayake_73 Start: 48883, Stop: 50070, Start Num: 29

Candidate Starts for Asayake_73:

(Start: 29 @48883 has 111 MA's), (31, 48889), (Start: 47 @49009 has 1 MA's), (48, 49015), (54, 49033), (68, 49057), (78, 49102), (79, 49108), (80, 49111), (83, 49132), (86, 49144), (90, 49207), (95, 49234), (96, 49240), (98, 49261), (104, 49285), (109, 49303), (129, 49387), (130, 49390), (134, 49426), (135, 49429), (138, 49456), (140, 49465), (148, 49507), (184, 49639), (191, 49696), (202, 49756), (213, 49801), (216, 49807), (219, 49819), (237, 49894), (241, 49918), (243, 49945), (244, 49951), (247, 49966), (250, 49978), (255, 50020),

Gene: Atcoo_67 Start: 44457, Stop: 45359, Start Num: 45

Candidate Starts for Atcoo_67:

(2, 43938), (17, 44253), (36, 44382), (43, 44427), (Start: 45 @44457 has 60 MA's), (50, 44499), (77, 44589), (104, 44778), (105, 44781), (127, 44871), (170, 45063), (190, 45192), (205, 45273), (218, 45321),

Gene: Atiba_74 Start: 48531, Stop: 49718, Start Num: 29

Candidate Starts for Atiba_74:

(Start: 29 @48531 has 111 MA's), (31, 48537), (Start: 47 @48657 has 1 MA's), (48, 48663), (54, 48681), (68, 48705), (78, 48750), (79, 48756), (80, 48759), (83, 48780), (86, 48792), (90, 48855), (95, 48882), (96, 48888), (98, 48909), (104, 48933), (109, 48951), (129, 49035), (130, 49038), (134, 49074), (135, 49077), (138, 49104), (140, 49113), (148, 49155), (184, 49287), (191, 49344), (202, 49404), (213, 49449), (216, 49455), (219, 49467), (237, 49542), (241, 49566), (243, 49593), (244, 49599), (247, 49614), (250, 49626), (255, 49668),

Gene: Awesomesauce_87 Start: 52119, Stop: 53024, Start Num: 45

Candidate Starts for Awesomesauce_87:

(Start: 45 @52119 has 60 MA's), (67, 52197), (116, 52482), (127, 52533), (134, 52581), (138, 52611), (170, 52725), (182, 52791), (204, 52929), (205, 52935), (210, 52959), (218, 52983), (221, 52992),

Gene: BEEST_73 Start: 48883, Stop: 50070, Start Num: 29

Candidate Starts for BEEST_73:

(Start: 29 @48883 has 111 MA's), (31, 48889), (Start: 47 @49009 has 1 MA's), (48, 49015), (54, 49033), (68, 49057), (78, 49102), (79, 49108), (80, 49111), (83, 49132), (86, 49144), (90, 49207), (95, 49234), (96, 49240), (98, 49261), (104, 49285), (109, 49303), (129, 49387), (130, 49390), (134, 49426), (135, 49429), (138, 49456), (140, 49465), (148, 49507), (184, 49639), (191, 49696), (202, 49756), (213, 49801), (216, 49807), (219, 49819), (237, 49894), (241, 49918), (243, 49945), (244, 49951), (247, 49966), (250, 49978), (255, 50020),

Gene: BGlluviae_73 Start: 48686, Stop: 49873, Start Num: 29

Candidate Starts for BGlluviae_73:

(Start: 29 @48686 has 111 MA's), (31, 48692), (Start: 47 @48812 has 1 MA's), (48, 48818), (54, 48836), (68, 48860), (78, 48905), (79, 48911), (80, 48914), (83, 48935), (86, 48947), (90, 49010), (95, 49037), (96, 49043), (98, 49064), (104, 49088), (109, 49106), (129, 49190), (130, 49193), (134, 49229), (135, 49232), (138, 49259), (140, 49268), (148, 49310), (184, 49442), (191, 49499), (202, 49559), (213, 49604), (216, 49610), (219, 49622), (237, 49697), (241, 49721), (243, 49748), (244, 49754), (247, 49769), (250, 49781), (255, 49823),

Gene: Babsiella_67 Start: 42425, Stop: 43327, Start Num: 45

Candidate Starts for Babsiella_67:

(Start: 45 @42425 has 60 MA's), (104, 42746), (116, 42788), (127, 42839), (170, 43031), (176, 43064), (185, 43118), (190, 43160), (197, 43190), (205, 43241), (218, 43289),

Gene: BaghaKamala_72 Start: 48117, Stop: 49304, Start Num: 29

Candidate Starts for BaghaKamala_72:

(7, 47949), (9, 47973), (10, 47979), (11, 47982), (13, 47994), (14, 48000), (18, 48039), (22, 48060), (Start: 29 @48117 has 111 MA's), (31, 48123), (Start: 47 @48243 has 1 MA's), (48, 48249), (54, 48267), (68, 48291), (78, 48336), (79, 48342), (80, 48345), (83, 48366), (86, 48378), (90, 48441), (95, 48468), (96, 48474), (98, 48495), (104, 48519), (109, 48537), (129, 48621), (130, 48624), (134, 48660), (135, 48663), (138, 48690), (140, 48699), (148, 48741), (184, 48873), (191, 48930), (202, 48990), (213, 49035), (216, 49041), (219, 49053), (237, 49128), (241, 49152), (243, 49179), (244, 49185), (247, 49200), (250, 49212), (255, 49254),

Gene: BarrelRoll_74 Start: 49169, Stop: 50275, Start Num: 29

Candidate Starts for BarrelRoll_74:

(Start: 29 @49169 has 111 MA's), (31, 49175), (Start: 41 @49226 has 7 MA's), (Start: 47 @49295 has 1 MA's), (48, 49301), (54, 49319), (68, 49343), (78, 49388), (79, 49394), (80, 49397), (83, 49418), (86, 49430), (90, 49493), (93, 49511), (95, 49520), (96, 49526), (98, 49547), (104, 49571), (109, 49589), (129, 49673), (130, 49676), (134, 49712), (135, 49715), (138, 49742), (140, 49751), (148, 49793), (153, 49808), (158, 49826), (184, 49925), (191, 49982), (198, 50015), (202, 50042), (213, 50087), (219, 50105), (255, 50225),

Gene: Bartholomew_61 Start: 40452, Stop: 41354, Start Num: 45

Candidate Starts for Bartholomew_61:

(Start: 45 @40452 has 60 MA's), (104, 40773), (116, 40815), (127, 40866), (170, 41058), (176, 41091), (185, 41145), (190, 41187), (199, 41238), (205, 41268), (217, 41307), (218, 41316),

Gene: Beezoo_76 Start: 49665, Stop: 50852, Start Num: 29

Candidate Starts for Beezoo_76:

(Start: 29 @49665 has 111 MA's), (31, 49671), (Start: 41 @49722 has 7 MA's), (Start: 47 @49791 has 1 MA's), (48, 49797), (54, 49815), (Start: 61 @49827 has 22 MA's), (68, 49839), (78, 49884), (79, 49890), (80, 49893), (83, 49914), (86, 49926), (90, 49989), (93, 50007), (95, 50016), (96, 50022), (98, 50043), (104, 50067), (109, 50085), (129, 50169), (130, 50172), (134, 50208), (135, 50211), (138, 50238), (140, 50247), (148, 50289), (184, 50421), (191, 50478), (202, 50538), (213, 50583), (216, 50589), (219, 50601), (237, 50676), (241, 50700), (243, 50727), (244, 50733), (247, 50748), (250,

50760), (255, 50802),

Gene: Bella96_74 Start: 49027, Stop: 50136, Start Num: 29

Candidate Starts for Bella96_74:

(Start: 29 @49027 has 111 MA's), (31, 49033), (Start: 47 @49153 has 1 MA's), (54, 49180), (76, 49237), (79, 49258), (80, 49261), (83, 49282), (88, 49333), (90, 49357), (93, 49375), (95, 49384), (96, 49390), (98, 49411), (103, 49432), (104, 49435), (109, 49453), (125, 49516), (129, 49537), (130, 49540), (135, 49579), (138, 49606), (140, 49615), (148, 49657), (191, 49846), (198, 49879), (202, 49906), (219, 49966), (220, 49969), (255, 50086),

Gene: Belladonna_73 Start: 48686, Stop: 49873, Start Num: 29

Candidate Starts for Belladonna_73:

(Start: 29 @48686 has 111 MA's), (31, 48692), (Start: 47 @48812 has 1 MA's), (48, 48818), (54, 48836), (68, 48860), (78, 48905), (79, 48911), (80, 48914), (83, 48935), (86, 48947), (90, 49010), (95, 49037), (96, 49043), (98, 49064), (104, 49088), (109, 49106), (129, 49190), (130, 49193), (134, 49229), (135, 49232), (138, 49259), (140, 49268), (148, 49310), (184, 49442), (191, 49499), (202, 49559), (213, 49604), (216, 49610), (219, 49622), (237, 49697), (241, 49721), (243, 49748), (244, 49754), (247, 49769), (250, 49781), (255, 49823),

Gene: Bern_75 Start: 47713, Stop: 48822, Start Num: 29

Candidate Starts for Bern_75:

(8, 47545), (11, 47575), (12, 47578), (15, 47596), (19, 47635), (20, 47644), (Start: 29 @47713 has 111 MA's), (31, 47719), (Start: 47 @47839 has 1 MA's), (58, 47875), (76, 47923), (79, 47944), (80, 47947), (83, 47968), (90, 48043), (93, 48061), (96, 48076), (98, 48097), (99, 48100), (103, 48118), (104, 48121), (129, 48223), (130, 48226), (135, 48265), (138, 48292), (140, 48301), (148, 48343), (153, 48358), (161, 48379), (171, 48406), (184, 48475), (191, 48532), (198, 48565), (202, 48592), (219, 48652), (220, 48655), (255, 48772),

Gene: Bhagsy_70 Start: 43574, Stop: 44476, Start Num: 45

Candidate Starts for Bhagsy_70:

(2, 43055), (17, 43370), (36, 43499), (43, 43544), (Start: 45 @43574 has 60 MA's), (50, 43616), (77, 43706), (104, 43895), (105, 43898), (127, 43988), (170, 44180), (190, 44309), (205, 44390), (218, 44438),

Gene: BigNuz_67 Start: 43296, Stop: 44198, Start Num: 45

Candidate Starts for BigNuz_67:

(Start: 45 @43296 has 60 MA's), (50, 43338), (Start: 63 @43362 has 19 MA's), (91, 43551), (94, 43560), (96, 43569), (104, 43617), (105, 43620), (127, 43710), (139, 43791), (148, 43836), (170, 43902), (176, 43935), (199, 44082), (205, 44112),

Gene: Biglebops_60 Start: 45750, Stop: 46931, Start Num: 29

Candidate Starts for Biglebops_60:

(Start: 29 @45750 has 111 MA's), (31, 45756), (34, 45768), (Start: 47 @45864 has 1 MA's), (53, 45888), (Start: 61 @45900 has 22 MA's), (70, 45924), (71, 45930), (76, 45942), (78, 45957), (79, 45963), (80, 45966), (83, 45987), (85, 45996), (86, 45999), (89, 46053), (90, 46059), (93, 46077), (96, 46092), (98, 46113), (99, 46116), (104, 46137), (112, 46164), (114, 46170), (118, 46188), (125, 46218), (129, 46239), (130, 46242), (133, 46269), (134, 46278), (138, 46308), (140, 46317), (141, 46329), (152, 46374), (163, 46401), (164, 46404), (172, 46437), (174, 46452), (176, 46458), (180, 46482), (182, 46491), (184, 46500), (188, 46533), (191, 46554), (193, 46563), (194, 46566), (198, 46587), (202, 46614), (211, 46653), (213, 46659), (219, 46677), (220, 46680), (223, 46689), (232, 46725), (237, 46752), (238, 46755), (239, 46761), (241, 46776), (243, 46803), (247, 46824), (248, 46827), (250, 46836), (260, 46920), (261, 46923),

Gene: Blizzard_73 Start: 48883, Stop: 50070, Start Num: 29

Candidate Starts for Blizzard_73:

(Start: 29 @48883 has 111 MA's), (31, 48889), (Start: 47 @49009 has 1 MA's), (48, 49015), (54, 49033), (68, 49057), (78, 49102), (79, 49108), (80, 49111), (83, 49132), (86, 49144), (90, 49207), (95, 49234), (96, 49240), (98, 49261), (104, 49285), (109, 49303), (129, 49387), (130, 49390), (134, 49426), (135, 49429), (138, 49456), (140, 49465), (148, 49507), (184, 49639), (191, 49696), (202, 49756), (213, 49801), (216, 49807), (219, 49819), (237, 49894), (241, 49918), (243, 49945), (244, 49951), (247, 49966), (250, 49978), (255, 50020),

Gene: Bobquesha_79 Start: 47993, Stop: 48871, Start Num: 63

Candidate Starts for Bobquesha_79:

(Start: 63 @47993 has 19 MA's), (76, 48038), (80, 48062), (81, 48071), (88, 48152), (95, 48194), (96, 48200), (101, 48233), (109, 48266), (115, 48275), (127, 48332), (129, 48341), (130, 48344), (132, 48368), (138, 48410), (141, 48431), (170, 48482), (171, 48488), (175, 48512), (176, 48515), (180, 48539), (182, 48548), (192, 48614), (196, 48632), (197, 48638), (198, 48644), (202, 48671), (207, 48692), (215, 48722), (226, 48767),

Gene: Bogie_68 Start: 43439, Stop: 44341, Start Num: 45

Candidate Starts for Bogie_68:

(2, 42920), (17, 43235), (36, 43364), (43, 43409), (Start: 45 @43439 has 60 MA's), (50, 43481), (77, 43571), (94, 43703), (104, 43760), (105, 43763), (127, 43853), (170, 44045), (190, 44174), (199, 44225), (205, 44255), (217, 44294), (218, 44303),

Gene: Boiiii_73 Start: 48885, Stop: 50072, Start Num: 29

Candidate Starts for Boiiii_73:

(Start: 29 @48885 has 111 MA's), (31, 48891), (Start: 47 @49011 has 1 MA's), (48, 49017), (54, 49035), (68, 49059), (78, 49104), (79, 49110), (80, 49113), (83, 49134), (86, 49146), (90, 49209), (95, 49236), (96, 49242), (98, 49263), (104, 49287), (109, 49305), (129, 49389), (130, 49392), (134, 49428), (135, 49431), (138, 49458), (140, 49467), (148, 49509), (184, 49641), (191, 49698), (202, 49758), (213, 49803), (216, 49809), (219, 49821), (237, 49896), (241, 49920), (243, 49947), (244, 49953), (247, 49968), (250, 49980), (255, 50022),

Gene: Boilgate_70 Start: 51766, Stop: 52578, Start Num: 62

Candidate Starts for Boilgate_70:

(23, 51538), (Start: 62 @51766 has 1 MA's), (76, 51811), (88, 51925), (115, 52045), (130, 52114), (132, 52138), (170, 52255), (175, 52285), (180, 52312), (198, 52417), (207, 52465), (227, 52543), (236, 52573),

Gene: BoostSeason_76 Start: 50587, Stop: 51489, Start Num: 64

Candidate Starts for BoostSeason_76:

(Start: 64 @50587 has 19 MA's), (76, 50629), (90, 50764), (96, 50797), (124, 50899), (125, 50902), (127, 50914), (130, 50926), (149, 51040), (170, 51079), (176, 51112), (191, 51208), (194, 51220), (198, 51241), (200, 51262), (202, 51268), (207, 51289), (215, 51319), (216, 51322), (227, 51367), (249, 51472),

Gene: Brujita_66 Start: 42486, Stop: 43373, Start Num: 46

Candidate Starts for Brujita_66:

(Start: 45 @42471 has 60 MA's), (Start: 46 @42486 has 1 MA's), (69, 42558), (94, 42735), (104, 42792), (105, 42795), (107, 42801), (116, 42834), (134, 42933), (138, 42963), (176, 43110), (197, 43236), (205, 43287), (218, 43335),

Gene: Brusacoram_67 Start: 43000, Stop: 43902, Start Num: 45

Candidate Starts for Brusacoram_67:

(2, 42481), (17, 42796), (36, 42925), (43, 42970), (Start: 45 @43000 has 60 MA's), (50, 43042), (104, 43321), (105, 43324), (127, 43414), (170, 43606), (190, 43735), (205, 43816), (218, 43864),

Gene: Bryler_77 Start: 48601, Stop: 49704, Start Num: 29

Candidate Starts for Bryler_77:

(19, 48523), (Start: 29 @48601 has 111 MA's), (31, 48607), (40, 48658), (Start: 47 @48715 has 1 MA's), (53, 48739), (80, 48817), (83, 48838), (86, 48850), (87, 48859), (90, 48910), (98, 48964), (99, 48967), (125, 49069), (129, 49090), (140, 49168), (156, 49246), (171, 49285), (187, 49378), (191, 49408), (195, 49426), (196, 49429), (198, 49441), (202, 49468), (213, 49510),

Gene: Bunnies_71 Start: 44201, Stop: 45103, Start Num: 45

Candidate Starts for Bunnies_71:

(2, 43682), (17, 43997), (36, 44126), (43, 44171), (Start: 45 @44201 has 60 MA's), (50, 44243), (77, 44333), (104, 44522), (105, 44525), (127, 44615), (170, 44807), (176, 44840), (190, 44936), (205, 45017), (218, 45065),

Gene: CREW_72 Start: 48686, Stop: 49873, Start Num: 29

Candidate Starts for CREW_72:

(Start: 29 @48686 has 111 MA's), (31, 48692), (Start: 47 @48812 has 1 MA's), (48, 48818), (54, 48836), (68, 48860), (78, 48905), (79, 48911), (80, 48914), (83, 48935), (86, 48947), (90, 49010), (95, 49037), (96, 49043), (98, 49064), (104, 49088), (109, 49106), (129, 49190), (130, 49193), (134, 49229), (135, 49232), (138, 49259), (140, 49268), (148, 49310), (184, 49442), (191, 49499), (202, 49559), (213, 49604), (216, 49610), (219, 49622), (237, 49697), (241, 49721), (243, 49748), (244, 49754), (247, 49769), (250, 49781), (255, 49823),

Gene: CactusJack_66 Start: 43072, Stop: 43974, Start Num: 45

Candidate Starts for CactusJack_66:

(2, 42553), (17, 42868), (36, 42997), (43, 43042), (Start: 45 @43072 has 60 MA's), (50, 43114), (104, 43393), (105, 43396), (127, 43486), (170, 43678), (176, 43711), (185, 43765), (190, 43807), (199, 43858), (205, 43888), (217, 43927), (218, 43936),

Gene: Cain_77 Start: 48589, Stop: 49692, Start Num: 29

Candidate Starts for Cain_77:

(19, 48511), (Start: 29 @48589 has 111 MA's), (31, 48595), (40, 48646), (Start: 47 @48703 has 1 MA's), (53, 48727), (80, 48805), (83, 48826), (86, 48838), (87, 48847), (90, 48898), (98, 48952), (99, 48955), (125, 49057), (129, 49078), (140, 49156), (156, 49234), (171, 49273), (187, 49366), (191, 49396), (195, 49414), (196, 49417), (198, 49429), (202, 49456), (213, 49498),

Gene: CallaLilly_74 Start: 48609, Stop: 49796, Start Num: 29

Candidate Starts for CallaLilly_74:

(Start: 29 @48609 has 111 MA's), (31, 48615), (Start: 47 @48735 has 1 MA's), (48, 48741), (54, 48759), (68, 48783), (78, 48828), (79, 48834), (80, 48837), (83, 48858), (86, 48870), (90, 48933), (95, 48960), (96, 48966), (98, 48987), (104, 49011), (109, 49029), (129, 49113), (130, 49116), (134, 49152), (135, 49155), (138, 49182), (140, 49191), (148, 49233), (184, 49365), (191, 49422), (202, 49482), (213, 49527), (216, 49533), (219, 49545), (237, 49620), (241, 49644), (243, 49671), (244, 49677), (247, 49692), (250, 49704), (255, 49746),

Gene: Camster_66 Start: 41900, Stop: 42802, Start Num: 45

Candidate Starts for Camster_66:

(2, 41381), (17, 41696), (36, 41825), (43, 41870), (Start: 45 @41900 has 60 MA's), (50, 41942), (77, 42032), (94, 42164), (104, 42221), (105, 42224), (127, 42314), (170, 42506), (190, 42635), (199, 42686), (205, 42716), (217, 42755), (218, 42764),

Gene: Capricorn_73 Start: 48686, Stop: 49873, Start Num: 29

Candidate Starts for Capricorn_73:

(Start: 29 @48686 has 111 MA's), (31, 48692), (Start: 47 @48812 has 1 MA's), (48, 48818), (54, 48836), (68, 48860), (78, 48905), (79, 48911), (80, 48914), (83, 48935), (86, 48947), (90, 49010), (95, 49037), (96, 49043), (98, 49064), (104, 49088), (109, 49106), (129, 49190), (130, 49193), (134, 49229), (135, 49232), (138, 49259), (140, 49268), (148, 49310), (184, 49442), (191, 49499), (202, 49559), (213, 49604), (216, 49610), (219, 49622), (237, 49697), (241, 49721), (243, 49748), (244, 49754), (247, 49769), (250, 49781), (255, 49823),

Gene: CaseJules_75 Start: 48883, Stop: 50070, Start Num: 29

Candidate Starts for CaseJules_75:

(Start: 29 @48883 has 111 MA's), (31, 48889), (Start: 47 @49009 has 1 MA's), (48, 49015), (54, 49033), (68, 49057), (78, 49102), (79, 49108), (80, 49111), (83, 49132), (86, 49144), (90, 49207), (95, 49234), (96, 49240), (98, 49261), (104, 49285), (109, 49303), (129, 49387), (130, 49390), (134, 49426), (135, 49429), (138, 49456), (140, 49465), (148, 49507), (184, 49639), (191, 49696), (202, 49756), (213, 49801), (216, 49807), (219, 49819), (237, 49894), (241, 49918), (243, 49945), (244, 49951), (247, 49966), (250, 49978), (255, 50020),

Gene: Chancellor_78 Start: 49464, Stop: 50342, Start Num: 63

Candidate Starts for Chancellor_78:

(Start: 63 @49464 has 19 MA's), (76, 49509), (81, 49542), (84, 49572), (88, 49623), (95, 49665), (96, 49671), (98, 49692), (101, 49704), (109, 49737), (115, 49746), (127, 49803), (129, 49812), (130, 49815), (132, 49839), (138, 49881), (141, 49902), (170, 49953), (171, 49959), (175, 49983), (176, 49986), (180, 50010), (182, 50019), (186, 50043), (192, 50085), (193, 50091), (197, 50109), (198, 50115), (202, 50142), (203, 50151), (207, 50163), (226, 50238), (246, 50331),

Gene: Chavito_75 Start: 49702, Stop: 50799, Start Num: 29

Candidate Starts for Chavito_75:

(8, 49534), (11, 49564), (12, 49567), (15, 49585), (19, 49624), (Start: 29 @49702 has 111 MA's), (31, 49708), (Start: 47 @49816 has 1 MA's), (53, 49840), (Start: 61 @49852 has 22 MA's), (78, 49909), (79, 49915), (80, 49918), (83, 49939), (90, 50011), (93, 50029), (95, 50038), (96, 50044), (102, 50080), (104, 50089), (129, 50191), (130, 50194), (131, 50197), (133, 50221), (138, 50260), (140, 50269), (148, 50311), (158, 50344), (161, 50347), (174, 50395), (176, 50401), (180, 50425), (182, 50434), (187, 50467), (191, 50503), (198, 50536), (202, 50563), (219, 50626),

Gene: Che9c_75 Start: 52152, Stop: 53057, Start Num: 45

Candidate Starts for Che9c_75:

(17, 51948), (Start: 45 @52152 has 60 MA's), (67, 52230), (104, 52473), (116, 52515), (127, 52566), (134, 52614), (138, 52644), (148, 52692), (160, 52734), (177, 52794), (197, 52917), (205, 52968), (210, 52992), (218, 53016), (221, 53025),

Gene: CheetoDust_73 Start: 48364, Stop: 49470, Start Num: 29

Candidate Starts for CheetoDust_73:

(Start: 29 @48364 has 111 MA's), (31, 48370), (Start: 41 @48421 has 7 MA's), (Start: 47 @48490 has 1 MA's), (48, 48496), (54, 48514), (68, 48538), (78, 48583), (79, 48589), (80, 48592), (83, 48613), (86, 48625), (90, 48688), (93, 48706), (95, 48715), (96, 48721), (98, 48742), (104, 48766), (109, 48784), (129, 48868), (130, 48871), (134, 48907), (135, 48910), (138, 48937), (140, 48946), (148, 48988), (184, 49120), (191, 49177), (198, 49210), (202, 49237), (213, 49282), (219, 49300), (255, 49420),

Gene: Cheetobro_78 Start: 49632, Stop: 50510, Start Num: 63

Candidate Starts for Cheetobro_78:

(Start: 63 @49632 has 19 MA's), (76, 49677), (81, 49710), (84, 49740), (88, 49791), (95, 49833), (96, 49839), (98, 49860), (101, 49872), (109, 49905), (115, 49914), (127, 49971), (129, 49980), (130,

49983), (132, 50007), (138, 50049), (141, 50070), (170, 50121), (171, 50127), (175, 50151), (176, 50154), (180, 50178), (182, 50187), (186, 50211), (192, 50253), (193, 50259), (197, 50277), (198, 50283), (202, 50310), (203, 50319), (207, 50331), (226, 50406),

Gene: ChickenDinner_90 Start: 51883, Stop: 52788, Start Num: 45

Candidate Starts for ChickenDinner_90:

(Start: 45 @51883 has 60 MA's), (67, 51961), (116, 52246), (127, 52297), (134, 52345), (138, 52375), (170, 52489), (182, 52555), (204, 52693), (205, 52699), (210, 52723), (218, 52747), (221, 52756),

Gene: Chris_74 Start: 49447, Stop: 50478, Start Num: 41

Candidate Starts for Chris_74:

(26, 49372), (Start: 41 @49447 has 7 MA's), (Start: 42 @49453 has 1 MA's), (54, 49531), (76, 49591), (79, 49612), (83, 49636), (90, 49711), (93, 49729), (106, 49795), (126, 49879), (130, 49894), (135, 49933), (140, 49969), (154, 50041), (160, 50053), (191, 50203), (198, 50236), (216, 50314), (219, 50326), (224, 50344), (258, 50449), (259, 50455), (260, 50467),

Gene: Clipper_80 Start: 50004, Stop: 50972, Start Num: 78

Candidate Starts for Clipper_80:

(Start: 29 @49785 has 111 MA's), (31, 49791), (Start: 41 @49842 has 7 MA's), (Start: 47 @49911 has 1 MA's), (48, 49917), (54, 49935), (68, 49959), (78, 50004), (79, 50010), (80, 50013), (83, 50034), (86, 50046), (90, 50109), (93, 50127), (95, 50136), (96, 50142), (98, 50163), (104, 50187), (109, 50205), (129, 50289), (130, 50292), (134, 50328), (135, 50331), (138, 50358), (140, 50367), (148, 50409), (153, 50424), (191, 50598), (202, 50658), (213, 50703), (216, 50709), (219, 50721), (237, 50796), (241, 50820), (243, 50847), (244, 50853), (247, 50868), (250, 50880), (255, 50922),

Gene: Collard_64 Start: 46182, Stop: 47027, Start Num: 61

Candidate Starts for Collard_64:

(Start: 45 @46119 has 60 MA's), (Start: 61 @46182 has 22 MA's), (75, 46224), (79, 46248), (83, 46272), (90, 46344), (98, 46398), (108, 46431), (123, 46482), (125, 46488), (129, 46509), (130, 46512), (135, 46551), (147, 46626), (148, 46629), (157, 46659), (171, 46686), (180, 46737), (183, 46752), (191, 46809), (194, 46821), (209, 46896), (213, 46911), (219, 46929), (223, 46941), (228, 46965), (234, 46977),

Gene: CrimD_75 Start: 49772, Stop: 50872, Start Num: 29

Candidate Starts for CrimD_75:

(8, 49604), (11, 49634), (12, 49637), (15, 49655), (19, 49694), (Start: 29 @49772 has 111 MA's), (31, 49778), (Start: 47 @49886 has 1 MA's), (54, 49913), (76, 49970), (79, 49991), (80, 49994), (83, 50015), (86, 50027), (90, 50090), (95, 50117), (96, 50123), (98, 50144), (103, 50165), (104, 50168), (109, 50186), (129, 50270), (130, 50273), (134, 50309), (135, 50312), (138, 50339), (140, 50348), (148, 50390), (161, 50426), (175, 50477), (184, 50522), (191, 50579), (198, 50612), (202, 50639), (211, 50678), (219, 50702), (255, 50822),

Gene: Curiosium_79 Start: 48656, Stop: 49837, Start Num: 29

Candidate Starts for Curiosium_79:

(Start: 29 @48656 has 111 MA's), (31, 48662), (37, 48680), (38, 48704), (39, 48707), (Start: 42 @48719 has 1 MA's), (Start: 47 @48770 has 1 MA's), (48, 48776), (73, 48845), (76, 48854), (79, 48875), (80, 48878), (83, 48899), (90, 48974), (95, 49001), (96, 49007), (98, 49028), (103, 49049), (104, 49052), (109, 49070), (129, 49154), (130, 49157), (134, 49193), (135, 49196), (138, 49223), (140, 49232), (148, 49274), (153, 49289), (184, 49406), (191, 49463), (198, 49496), (202, 49523), (211, 49559), (213, 49565), (216, 49571), (219, 49583), (237, 49658), (241, 49682), (243, 49709), (247, 49730), (260, 49826),

Gene: Dadosky_68 Start: 46551, Stop: 47405, Start Num: 61

Candidate Starts for Dadosky_68:

(25, 46359), (32, 46392), (Start: 45 @46488 has 60 MA's), (Start: 61 @46551 has 22 MA's), (Start: 63 @46554 has 19 MA's), (74, 46593), (75, 46596), (79, 46620), (83, 46644), (90, 46716), (98, 46770), (108, 46803), (123, 46854), (125, 46860), (129, 46881), (130, 46884), (135, 46923), (147, 46998), (148, 47001), (157, 47031), (180, 47109), (183, 47124), (191, 47181), (194, 47193), (201, 47238), (209, 47268), (213, 47283), (219, 47301), (223, 47313), (228, 47337),

Gene: Dalmuri_73 Start: 48686, Stop: 49873, Start Num: 29

Candidate Starts for Dalmuri_73:

(Start: 29 @48686 has 111 MA's), (31, 48692), (Start: 47 @48812 has 1 MA's), (48, 48818), (54, 48836), (68, 48860), (78, 48905), (79, 48911), (80, 48914), (83, 48935), (86, 48947), (90, 49010), (95, 49037), (96, 49043), (98, 49064), (104, 49088), (109, 49106), (129, 49190), (130, 49193), (134, 49229), (135, 49232), (138, 49259), (140, 49268), (148, 49310), (184, 49442), (191, 49499), (202, 49559), (213, 49604), (216, 49610), (219, 49622), (237, 49697), (241, 49721), (243, 49748), (244, 49754), (247, 49769), (250, 49781), (255, 49823),

Gene: DARTH_P_71 Start: 48900, Stop: 50003, Start Num: 28

Candidate Starts for DARTH_P_71:

(19, 48825), (20, 48834), (Start: 28 @48900 has 5 MA's), (31, 48909), (39, 48954), (Start: 47 @49017 has 1 MA's), (53, 49041), (68, 49065), (71, 49083), (79, 49116), (81, 49128), (83, 49140), (90, 49215), (98, 49269), (104, 49293), (129, 49395), (130, 49398), (133, 49425), (140, 49473), (150, 49527), (155, 49545), (182, 49647), (191, 49710), (196, 49731), (198, 49743), (201, 49767), (202, 49770), (208, 49794), (219, 49830), (253, 49938), (256, 49962), (257, 49965),

Gene: DARTH_P_74 Start: 49082, Stop: 50047, Start Num: 53

Candidate Starts for DARTH_P_74:

(Start: 29 @48944 has 111 MA's), (31, 48950), (39, 48995), (Start: 47 @49058 has 1 MA's), (53, 49082), (71, 49124), (78, 49151), (79, 49157), (80, 49160), (83, 49181), (90, 49253), (95, 49280), (96, 49286), (104, 49331), (125, 49412), (126, 49421), (129, 49433), (130, 49436), (131, 49439), (134, 49472), (138, 49502), (140, 49511), (155, 49589), (156, 49592), (171, 49628), (176, 49655), (180, 49679), (183, 49694), (191, 49754), (196, 49775), (198, 49787), (202, 49814), (211, 49850), (213, 49856), (251, 49961),

Gene: Deby_73 Start: 49136, Stop: 50242, Start Num: 29

Candidate Starts for Deby_73:

(Start: 29 @49136 has 111 MA's), (31, 49142), (Start: 41 @49193 has 7 MA's), (Start: 47 @49262 has 1 MA's), (48, 49268), (54, 49286), (68, 49310), (78, 49355), (79, 49361), (80, 49364), (83, 49385), (86, 49397), (90, 49460), (93, 49478), (95, 49487), (96, 49493), (98, 49514), (104, 49538), (109, 49556), (129, 49640), (130, 49643), (134, 49679), (135, 49682), (138, 49709), (140, 49718), (148, 49760), (153, 49775), (158, 49793), (191, 49949), (198, 49982), (202, 50009), (213, 50054), (219, 50072), (255, 50192),

Gene: Devera_81 Start: 50477, Stop: 51667, Start Num: 29

Candidate Starts for Devera_81:

(Start: 29 @50477 has 111 MA's), (31, 50483), (Start: 47 @50603 has 1 MA's), (54, 50630), (76, 50687), (79, 50708), (80, 50711), (83, 50732), (90, 50807), (95, 50834), (96, 50840), (98, 50861), (103, 50882), (104, 50885), (109, 50903), (125, 50966), (129, 50987), (130, 50990), (134, 51026), (138, 51056), (148, 51107), (153, 51122), (175, 51194), (178, 51209), (191, 51296), (202, 51356), (211, 51392), (213, 51398), (220, 51419), (237, 51491), (241, 51515), (243, 51542), (250, 51575),

Gene: DismalFunk_77 Start: 51116, Stop: 52018, Start Num: 64

Candidate Starts for DismalFunk_77:

(Start: 64 @51116 has 19 MA's), (76, 51158), (90, 51293), (96, 51326), (124, 51428), (125, 51431), (127, 51443), (130, 51455), (149, 51569), (170, 51608), (176, 51641), (186, 51698), (191, 51737), (198, 51770), (200, 51791), (202, 51797), (207, 51818), (215, 51848), (216, 51851), (227, 51896), (245, 51986), (249, 52001),

Gene: DismalStressor_77 Start: 51116, Stop: 52018, Start Num: 64

Candidate Starts for DismalStressor_77:

(Start: 64 @51116 has 19 MA's), (76, 51158), (90, 51293), (96, 51326), (124, 51428), (125, 51431), (127, 51443), (130, 51455), (149, 51569), (170, 51608), (176, 51641), (186, 51698), (191, 51737), (198, 51770), (200, 51791), (202, 51797), (207, 51818), (215, 51848), (216, 51851), (227, 51896), (245, 51986), (249, 52001),

Gene: DocMcStuffins_84 Start: 53513, Stop: 54418, Start Num: 45

Candidate Starts for DocMcStuffins_84:

(Start: 45 @53513 has 60 MA's), (67, 53591), (116, 53876), (127, 53927), (134, 53975), (138, 54005), (170, 54119), (182, 54185), (204, 54323), (205, 54329), (210, 54353), (218, 54377), (221, 54386),

Gene: Dole_78 Start: 50480, Stop: 51670, Start Num: 29

Candidate Starts for Dole_78:

(Start: 29 @50480 has 111 MA's), (31, 50486), (Start: 47 @50606 has 1 MA's), (54, 50633), (76, 50690), (79, 50711), (80, 50714), (83, 50735), (90, 50810), (95, 50837), (96, 50843), (98, 50864), (103, 50885), (104, 50888), (109, 50906), (125, 50969), (129, 50990), (130, 50993), (134, 51029), (138, 51059), (148, 51110), (153, 51125), (175, 51197), (178, 51212), (191, 51299), (202, 51359), (211, 51395), (213, 51401), (220, 51422), (237, 51494), (241, 51518), (243, 51545), (250, 51578),

Gene: Donovan_65 Start: 42034, Stop: 42936, Start Num: 45

Candidate Starts for Donovan_65:

(4, 41542), (17, 41830), (36, 41959), (43, 42004), (Start: 45 @42034 has 60 MA's), (50, 42076), (104, 42355), (105, 42358), (127, 42448), (170, 42640), (176, 42673), (185, 42727), (190, 42769), (199, 42820), (205, 42850), (217, 42889), (218, 42898),

Gene: Doughnut_77 Start: 50752, Stop: 51654, Start Num: 64

Candidate Starts for Doughnut_77:

(Start: 64 @50752 has 19 MA's), (76, 50794), (90, 50929), (95, 50956), (96, 50962), (124, 51064), (125, 51067), (127, 51079), (130, 51091), (149, 51205), (170, 51244), (176, 51277), (186, 51334), (191, 51373), (198, 51406), (200, 51427), (201, 51430), (202, 51433), (207, 51454), (215, 51484), (216, 51487), (227, 51532), (249, 51637),

Gene: DrHayes_73 Start: 49181, Stop: 50269, Start Num: 29

Candidate Starts for DrHayes_73:

(Start: 29 @49181 has 111 MA's), (31, 49187), (Start: 47 @49307 has 1 MA's), (54, 49334), (76, 49391), (79, 49412), (80, 49415), (83, 49436), (90, 49511), (95, 49538), (96, 49544), (98, 49565), (103, 49586), (104, 49589), (109, 49607), (129, 49691), (130, 49694), (134, 49730), (135, 49733), (138, 49760), (140, 49769), (165, 49835), (179, 49901), (184, 49922), (191, 49979), (198, 50012), (202, 50039), (219, 50099), (220, 50102), (255, 50219),

Gene: Durfee_73 Start: 48883, Stop: 50070, Start Num: 29

Candidate Starts for Durfee_73:

(Start: 29 @48883 has 111 MA's), (31, 48889), (Start: 47 @49009 has 1 MA's), (48, 49015), (54, 49033), (68, 49057), (78, 49102), (79, 49108), (80, 49111), (83, 49132), (86, 49144), (90, 49207), (95, 49234), (96, 49240), (98, 49261), (104, 49285), (109, 49303), (129, 49387), (130, 49390), (134, 49426), (135, 49429), (138, 49456), (140, 49465), (148, 49507), (184, 49639), (191, 49696), (202, 49756), (213, 49801), (216, 49807), (219, 49819), (237, 49894), (241, 49918), (243, 49945), (244,

49951), (247, 49966), (250, 49978), (255, 50020),

Gene: Dynamo_65 Start: 41473, Stop: 42375, Start Num: 45

Candidate Starts for Dynamo_65:

(2, 40954), (17, 41269), (36, 41398), (43, 41443), (Start: 45 @41473 has 60 MA's), (50, 41515), (77, 41605), (94, 41737), (104, 41794), (105, 41797), (127, 41887), (170, 42079), (190, 42208), (199, 42259), (205, 42289), (217, 42328), (218, 42337),

Gene: Edugator_65 Start: 47969, Stop: 48823, Start Num: 61

Candidate Starts for Edugator_65:

(25, 47777), (32, 47810), (Start: 45 @47906 has 60 MA's), (Start: 61 @47969 has 22 MA's), (Start: 63 @47972 has 19 MA's), (74, 48011), (75, 48014), (79, 48038), (83, 48062), (90, 48134), (98, 48188), (108, 48221), (123, 48272), (125, 48278), (129, 48299), (130, 48302), (135, 48341), (147, 48416), (148, 48419), (157, 48449), (180, 48527), (183, 48542), (191, 48599), (194, 48611), (201, 48656), (209, 48686), (213, 48701), (219, 48719), (223, 48731), (228, 48755),

Gene: Efra2_80 Start: 49519, Stop: 50703, Start Num: 29

Candidate Starts for Efra2_80:

(Start: 29 @49519 has 111 MA's), (31, 49525), (38, 49567), (39, 49570), (Start: 42 @49582 has 1 MA's), (Start: 47 @49633 has 1 MA's), (48, 49639), (54, 49660), (58, 49669), (66, 49681), (79, 49738), (80, 49741), (83, 49762), (90, 49837), (95, 49864), (96, 49870), (98, 49891), (103, 49912), (104, 49915), (129, 50017), (130, 50020), (134, 50056), (135, 50059), (138, 50086), (140, 50095), (148, 50137), (153, 50152), (161, 50173), (175, 50224), (176, 50227), (177, 50230), (191, 50326), (198, 50359), (202, 50386), (213, 50431), (219, 50449), (237, 50524), (243, 50575), (247, 50596), (248, 50599), (252, 50629), (258, 50674),

Gene: Ekdilam_68 Start: 49108, Stop: 50211, Start Num: 28

Candidate Starts for Ekdilam_68:

(19, 49033), (Start: 28 @49108 has 5 MA's), (31, 49117), (39, 49162), (57, 49255), (68, 49273), (71, 49291), (79, 49324), (81, 49336), (83, 49348), (90, 49423), (104, 49501), (129, 49603), (130, 49606), (140, 49681), (149, 49732), (166, 49771), (171, 49795), (191, 49918), (198, 49951), (201, 49975), (202, 49978), (208, 50002), (219, 50038), (253, 50146), (257, 50173), (259, 50188),

Gene: Ellie_69 Start: 48362, Stop: 49447, Start Num: 29

Candidate Starts for Ellie_69:

(Start: 29 @48362 has 111 MA's), (31, 48368), (39, 48413), (Start: 47 @48476 has 1 MA's), (53, 48500), (68, 48524), (71, 48542), (79, 48575), (80, 48578), (82, 48590), (83, 48599), (90, 48674), (96, 48707), (103, 48749), (126, 48842), (129, 48854), (130, 48857), (131, 48860), (135, 48896), (140, 48932), (147, 48971), (148, 48974), (191, 49154), (196, 49175), (198, 49187), (202, 49214), (257, 49409),

Gene: Emerson_76 Start: 49203, Stop: 50309, Start Num: 29

Candidate Starts for Emerson_76:

(Start: 29 @49203 has 111 MA's), (31, 49209), (Start: 47 @49329 has 1 MA's), (48, 49335), (49, 49344), (54, 49353), (68, 49377), (78, 49422), (79, 49428), (80, 49431), (83, 49452), (86, 49464), (90, 49527), (93, 49545), (95, 49554), (96, 49560), (98, 49581), (104, 49605), (129, 49707), (130, 49710), (134, 49746), (135, 49749), (138, 49776), (140, 49785), (148, 49827), (184, 49959), (191, 50016), (198, 50049), (202, 50076), (213, 50121), (219, 50139), (255, 50259),

Gene: Enkosi_62 Start: 48348, Stop: 49529, Start Num: 29

Candidate Starts for Enkosi_62:

(Start: 29 @48348 has 111 MA's), (31, 48354), (34, 48366), (Start: 47 @48462 has 1 MA's), (53, 48486), (Start: 61 @48498 has 22 MA's), (70, 48522), (71, 48528), (76, 48540), (78, 48555), (79,

48561), (80, 48564), (83, 48585), (85, 48594), (86, 48597), (89, 48651), (90, 48657), (93, 48675), (96, 48690), (98, 48711), (99, 48714), (104, 48735), (112, 48762), (114, 48768), (118, 48786), (125, 48816), (129, 48837), (130, 48840), (133, 48867), (134, 48876), (138, 48906), (140, 48915), (141, 48927), (152, 48972), (163, 48999), (164, 49002), (172, 49035), (174, 49050), (176, 49056), (180, 49080), (182, 49089), (184, 49098), (188, 49131), (191, 49152), (193, 49161), (194, 49164), (198, 49185), (202, 49212), (211, 49251), (213, 49257), (219, 49275), (220, 49278), (223, 49287), (232, 49323), (237, 49350), (238, 49353), (239, 49359), (241, 49374), (243, 49401), (247, 49422), (248, 49425), (250, 49434), (260, 49518), (261, 49521),

Gene: Eponine_80 Start: 50458, Stop: 51336, Start Num: 63

Candidate Starts for Eponine_80:

(Start: 63 @50458 has 19 MA's), (76, 50503), (81, 50536), (84, 50566), (88, 50617), (95, 50659), (96, 50665), (98, 50686), (101, 50698), (109, 50731), (115, 50740), (127, 50797), (129, 50806), (130, 50809), (132, 50833), (138, 50875), (141, 50896), (170, 50947), (171, 50953), (175, 50977), (176, 50980), (180, 51004), (182, 51013), (192, 51079), (197, 51103), (198, 51109), (202, 51136), (203, 51145), (207, 51157), (226, 51232),

Gene: Etoile_63 Start: 41860, Stop: 42762, Start Num: 45

Candidate Starts for Etoile_63:

(4, 41368), (17, 41656), (36, 41785), (43, 41830), (Start: 45 @41860 has 60 MA's), (50, 41902), (104, 42181), (105, 42184), (127, 42274), (170, 42466), (176, 42499), (185, 42553), (190, 42595), (199, 42646), (205, 42676), (217, 42715), (218, 42724),

Gene: Fefferhead_72 Start: 48571, Stop: 49677, Start Num: 29

Candidate Starts for Fefferhead_72:

(19, 48493), (Start: 29 @48571 has 111 MA's), (31, 48577), (39, 48622), (Start: 47 @48685 has 1 MA's), (68, 48733), (71, 48751), (79, 48784), (82, 48799), (83, 48808), (90, 48883), (96, 48916), (103, 48958), (126, 49051), (129, 49063), (130, 49066), (131, 49069), (135, 49105), (140, 49141), (147, 49180), (148, 49183), (191, 49363), (196, 49384), (198, 49396), (202, 49423), (257, 49618), (259, 49633),

Gene: Feyre_69 Start: 49943, Stop: 50788, Start Num: 61

Candidate Starts for Feyre_69:

(25, 49751), (32, 49784), (Start: 45 @49880 has 60 MA's), (Start: 61 @49943 has 22 MA's), (75, 49985), (79, 50009), (83, 50033), (90, 50105), (99, 50162), (108, 50192), (123, 50243), (129, 50270), (130, 50273), (135, 50312), (140, 50348), (141, 50360), (148, 50387), (159, 50420), (162, 50423), (167, 50432), (177, 50489), (183, 50525), (191, 50582), (194, 50594), (202, 50642), (208, 50666), (213, 50684), (219, 50702), (220, 50705), (223, 50714), (239, 50774),

Gene: Findley_77 Start: 51134, Stop: 52036, Start Num: 64

Candidate Starts for Findley_77:

(Start: 64 @51134 has 19 MA's), (76, 51176), (90, 51311), (96, 51344), (124, 51446), (125, 51449), (127, 51461), (130, 51473), (149, 51587), (170, 51626), (176, 51659), (191, 51755), (198, 51788), (200, 51809), (202, 51815), (207, 51836), (215, 51866), (216, 51869), (227, 51914), (245, 52004), (249, 52019),

Gene: Fionnbharth_78 Start: 49856, Stop: 50734, Start Num: 63

Candidate Starts for Fionnbharth_78:

(Start: 63 @49856 has 19 MA's), (76, 49901), (81, 49934), (84, 49964), (88, 50015), (95, 50057), (96, 50063), (98, 50084), (101, 50096), (109, 50129), (115, 50138), (127, 50195), (129, 50204), (130, 50207), (132, 50231), (138, 50273), (141, 50294), (170, 50345), (171, 50351), (175, 50375), (176, 50378), (180, 50402), (182, 50411), (192, 50477), (197, 50501), (198, 50507), (202, 50534), (203, 50543), (207, 50555), (226, 50630),

Gene: FirstPlacePfu_69 Start: 41066, Stop: 41968, Start Num: 45

Candidate Starts for FirstPlacePfu_69:

(2, 40547), (17, 40862), (36, 40991), (43, 41036), (Start: 45 @41066 has 60 MA's), (50, 41108), (77, 41198), (104, 41387), (105, 41390), (127, 41480), (170, 41672), (176, 41705), (190, 41801), (205, 41882), (218, 41930),

Gene: Fishburne_64 Start: 41860, Stop: 42762, Start Num: 45

Candidate Starts for Fishburne_64:

(4, 41368), (17, 41656), (36, 41785), (43, 41830), (Start: 45 @41860 has 60 MA's), (50, 41902), (104, 42181), (105, 42184), (127, 42274), (170, 42466), (176, 42499), (185, 42553), (190, 42595), (199, 42646), (205, 42676), (217, 42715), (218, 42724),

Gene: Ganymede_73 Start: 49093, Stop: 50280, Start Num: 29

Candidate Starts for Ganymede_73:

(Start: 29 @49093 has 111 MA's), (31, 49099), (Start: 47 @49219 has 1 MA's), (48, 49225), (68, 49267), (78, 49312), (79, 49318), (80, 49321), (83, 49342), (86, 49354), (90, 49417), (95, 49444), (96, 49450), (98, 49471), (104, 49495), (109, 49513), (129, 49597), (130, 49600), (134, 49636), (135, 49639), (138, 49666), (140, 49675), (148, 49717), (191, 49906), (202, 49966), (213, 50011), (216, 50017), (219, 50029), (237, 50104), (241, 50128), (243, 50155), (244, 50161), (247, 50176), (250, 50188), (255, 50230),

Gene: Gavriela_65 Start: 42765, Stop: 43667, Start Num: 45

Candidate Starts for Gavriela_65:

(2, 42246), (17, 42561), (36, 42690), (43, 42735), (Start: 45 @42765 has 60 MA's), (50, 42807), (104, 43086), (105, 43089), (127, 43179), (170, 43371), (176, 43404), (185, 43458), (190, 43500), (199, 43551), (205, 43581), (217, 43620), (218, 43629),

Gene: Gengar_66 Start: 47930, Stop: 48778, Start Num: 61

Candidate Starts for Gengar_66:

(Start: 61 @47930 has 22 MA's), (75, 47972), (79, 47996), (83, 48020), (90, 48092), (99, 48149), (108, 48179), (123, 48230), (129, 48257), (130, 48260), (135, 48299), (140, 48335), (141, 48347), (148, 48374), (159, 48407), (162, 48410), (167, 48419), (177, 48476), (180, 48497), (183, 48512), (191, 48569), (194, 48581), (195, 48587), (202, 48629), (208, 48653), (213, 48671), (219, 48689), (220, 48692), (223, 48701), (240, 48770),

Gene: Geraldini_77 Start: 49764, Stop: 50870, Start Num: 29

Candidate Starts for Geraldini_77:

(Start: 29 @49764 has 111 MA's), (31, 49770), (Start: 47 @49890 has 1 MA's), (48, 49896), (54, 49914), (68, 49938), (78, 49983), (79, 49989), (80, 49992), (83, 50013), (86, 50025), (90, 50088), (93, 50106), (95, 50115), (96, 50121), (98, 50142), (104, 50166), (109, 50184), (129, 50268), (130, 50271), (134, 50307), (135, 50310), (138, 50337), (140, 50346), (148, 50388), (184, 50520), (191, 50577), (198, 50610), (202, 50637), (213, 50682), (219, 50700), (251, 50787), (255, 50820),

Gene: Glaske_65 Start: 43072, Stop: 43974, Start Num: 45

Candidate Starts for Glaske_65:

(2, 42553), (17, 42868), (36, 42997), (43, 43042), (Start: 45 @43072 has 60 MA's), (50, 43114), (104, 43393), (105, 43396), (127, 43486), (170, 43678), (176, 43711), (185, 43765), (190, 43807), (199, 43858), (205, 43888), (217, 43927), (218, 43936),

Gene: GreaseLightnin_70 Start: 43854, Stop: 44756, Start Num: 45

Candidate Starts for GreaseLightnin_70:

(2, 43335), (17, 43650), (36, 43779), (43, 43824), (Start: 45 @43854 has 60 MA's), (50, 43896), (77, 43986), (104, 44175), (105, 44178), (127, 44268), (170, 44460), (190, 44589), (205, 44670), (218, 44718),

Gene: Guanica15_79 Start: 49265, Stop: 50449, Start Num: 29

Candidate Starts for Guanica15_79:

(Start: 29 @49265 has 111 MA's), (31, 49271), (38, 49313), (39, 49316), (Start: 47 @49379 has 1 MA's), (48, 49385), (54, 49406), (58, 49415), (66, 49427), (79, 49484), (80, 49487), (83, 49508), (90, 49583), (93, 49601), (95, 49610), (96, 49616), (98, 49637), (103, 49658), (104, 49661), (129, 49763), (130, 49766), (134, 49802), (135, 49805), (138, 49832), (140, 49841), (148, 49883), (153, 49898), (161, 49919), (174, 49967), (180, 49997), (191, 50072), (196, 50093), (198, 50105), (202, 50132), (211, 50171), (213, 50177), (219, 50195), (237, 50270), (247, 50342), (248, 50345), (250, 50354), (258, 50420),

Gene: Guillsminger_67 Start: 47872, Stop: 48717, Start Num: 61

Candidate Starts for Guillsminger_67:

(Start: 61 @47872 has 22 MA's), (75, 47914), (79, 47938), (83, 47962), (90, 48034), (99, 48091), (108, 48121), (123, 48172), (129, 48199), (130, 48202), (135, 48241), (140, 48277), (141, 48289), (148, 48316), (159, 48349), (162, 48352), (167, 48361), (177, 48418), (180, 48439), (183, 48454), (191, 48511), (194, 48523), (208, 48595), (209, 48598), (213, 48613), (219, 48631), (223, 48643),

Gene: HC_62 Start: 39977, Stop: 40879, Start Num: 45

Candidate Starts for HC_62:

(Start: 45 @39977 has 60 MA's), (104, 40298), (116, 40340), (127, 40391), (170, 40583), (176, 40616), (190, 40712), (197, 40742), (205, 40793), (218, 40841),

Gene: HUHilltop_68 Start: 41696, Stop: 42598, Start Num: 45

Candidate Starts for HUHilltop_68:

(2, 41177), (17, 41492), (36, 41621), (43, 41666), (Start: 45 @41696 has 60 MA's), (50, 41738), (77, 41828), (94, 41960), (104, 42017), (105, 42020), (127, 42110), (170, 42302), (190, 42431), (199, 42482), (205, 42512), (217, 42551), (218, 42560),

Gene: Hammy_71 Start: 48885, Stop: 49988, Start Num: 28

Candidate Starts for Hammy_71:

(19, 48810), (20, 48819), (Start: 28 @48885 has 5 MA's), (31, 48894), (39, 48939), (Start: 47 @49002 has 1 MA's), (53, 49026), (68, 49050), (71, 49068), (79, 49101), (81, 49113), (83, 49125), (90, 49200), (98, 49254), (103, 49275), (104, 49278), (129, 49380), (130, 49383), (133, 49410), (140, 49458), (150, 49512), (155, 49530), (182, 49632), (191, 49695), (198, 49728), (201, 49752), (202, 49755), (208, 49779), (219, 49815), (253, 49923), (256, 49947), (257, 49950),

Gene: HedwigODU_73 Start: 48731, Stop: 49918, Start Num: 29

Candidate Starts for HedwigODU_73:

(Start: 29 @48731 has 111 MA's), (31, 48737), (Start: 47 @48857 has 1 MA's), (48, 48863), (Start: 61 @48893 has 22 MA's), (68, 48905), (78, 48950), (79, 48956), (80, 48959), (83, 48980), (86, 48992), (90, 49055), (93, 49073), (95, 49082), (96, 49088), (98, 49109), (104, 49133), (109, 49151), (129, 49235), (130, 49238), (134, 49274), (135, 49277), (138, 49304), (140, 49313), (148, 49355), (184, 49487), (191, 49544), (202, 49604), (213, 49649), (216, 49655), (219, 49667), (237, 49742), (241, 49766), (243, 49793), (244, 49799), (247, 49814), (250, 49826), (255, 49868),

Gene: Heftyboy_67 Start: 48251, Stop: 49087, Start Num: 61

Candidate Starts for Heftyboy_67:

(25, 48059), (32, 48092), (Start: 45 @48188 has 60 MA's), (Start: 61 @48251 has 22 MA's), (75, 48293), (79, 48317), (83, 48341), (89, 48407), (90, 48413), (99, 48470), (108, 48500), (123, 48551),

(129, 48578), (130, 48581), (135, 48620), (140, 48656), (141, 48668), (147, 48695), (148, 48698), (150, 48704), (151, 48713), (157, 48728), (171, 48755), (180, 48806), (183, 48821), (191, 48878), (194, 48890), (195, 48896), (202, 48938), (208, 48962), (213, 48980), (219, 48998), (220, 49001), (223, 49010),

Gene: Homura_72 Start: 48686, Stop: 49873, Start Num: 29

Candidate Starts for Homura_72:

(Start: 29 @48686 has 111 MA's), (31, 48692), (Start: 47 @48812 has 1 MA's), (48, 48818), (54, 48836), (68, 48860), (78, 48905), (79, 48911), (80, 48914), (83, 48935), (86, 48947), (90, 49010), (95, 49037), (96, 49043), (98, 49064), (104, 49088), (109, 49106), (129, 49190), (130, 49193), (134, 49229), (135, 49232), (138, 49259), (140, 49268), (148, 49310), (184, 49442), (191, 49499), (202, 49559), (213, 49604), (216, 49610), (219, 49622), (237, 49697), (241, 49721), (243, 49748), (244, 49754), (247, 49769), (250, 49781), (255, 49823),

Gene: Hurricane_74 Start: 48983, Stop: 49900, Start Num: 64

Candidate Starts for Hurricane_74:

(Start: 42 @48890 has 1 MA's), (44, 48911), (Start: 64 @48983 has 19 MA's), (74, 49019), (79, 49046), (83, 49070), (87, 49091), (90, 49142), (95, 49169), (109, 49241), (119, 49265), (125, 49295), (130, 49319), (132, 49343), (134, 49355), (140, 49394), (143, 49415), (171, 49484), (176, 49511), (177, 49514), (184, 49553), (185, 49565), (191, 49607), (198, 49640), (204, 49679), (225, 49754),

Gene: Hyperbowlee_72 Start: 48883, Stop: 50070, Start Num: 29

Candidate Starts for Hyperbowlee_72:

(Start: 29 @48883 has 111 MA's), (31, 48889), (Start: 47 @49009 has 1 MA's), (48, 49015), (54, 49033), (68, 49057), (78, 49102), (79, 49108), (80, 49111), (83, 49132), (86, 49144), (90, 49207), (95, 49234), (96, 49240), (98, 49261), (104, 49285), (109, 49303), (129, 49387), (130, 49390), (134, 49426), (135, 49429), (138, 49456), (140, 49465), (148, 49507), (184, 49639), (191, 49696), (202, 49756), (213, 49801), (216, 49807), (219, 49819), (237, 49894), (241, 49918), (243, 49945), (244, 49951), (247, 49966), (250, 49978), (255, 50020),

Gene: Illumine_79 Start: 50479, Stop: 51669, Start Num: 29

Candidate Starts for Illumine_79:

(Start: 29 @50479 has 111 MA's), (31, 50485), (Start: 47 @50605 has 1 MA's), (54, 50632), (76, 50689), (79, 50710), (80, 50713), (83, 50734), (90, 50809), (95, 50836), (96, 50842), (98, 50863), (103, 50884), (104, 50887), (109, 50905), (125, 50968), (129, 50989), (130, 50992), (134, 51028), (138, 51058), (148, 51109), (153, 51124), (175, 51196), (178, 51211), (191, 51298), (202, 51358), (211, 51394), (213, 51400), (220, 51421), (237, 51493), (241, 51517), (243, 51544), (250, 51577),

Gene: Inky_73 Start: 48686, Stop: 49873, Start Num: 29

Candidate Starts for Inky_73:

(Start: 29 @48686 has 111 MA's), (31, 48692), (Start: 47 @48812 has 1 MA's), (48, 48818), (54, 48836), (68, 48860), (78, 48905), (79, 48911), (80, 48914), (83, 48935), (86, 48947), (90, 49010), (95, 49037), (96, 49043), (98, 49064), (104, 49088), (109, 49106), (129, 49190), (130, 49193), (134, 49229), (135, 49232), (138, 49259), (140, 49268), (148, 49310), (184, 49442), (191, 49499), (202, 49559), (213, 49604), (216, 49610), (219, 49622), (237, 49697), (241, 49721), (243, 49748), (244, 49754), (247, 49769), (250, 49781), (255, 49823),

Gene: InvictusManeo_64 Start: 46225, Stop: 47070, Start Num: 61

Candidate Starts for InvictusManeo_64:

(Start: 45 @46162 has 60 MA's), (Start: 61 @46225 has 22 MA's), (75, 46267), (79, 46291), (83, 46315), (90, 46387), (98, 46441), (108, 46474), (123, 46525), (125, 46531), (129, 46552), (130, 46555), (135, 46594), (147, 46669), (148, 46672), (157, 46702), (171, 46729), (180, 46780), (183, 46795), (191, 46852), (194, 46864), (209, 46939), (213, 46954), (219, 46972), (223, 46984), (228,

47008), (234, 47020),

Gene: Island3_67 Start: 42444, Stop: 43346, Start Num: 45

Candidate Starts for Island3_67:

(17, 42237), (36, 42366), (43, 42414), (Start: 45 @42444 has 60 MA's), (50, 42486), (77, 42576), (94, 42708), (104, 42765), (105, 42768), (107, 42774), (116, 42807), (134, 42906), (138, 42936), (176, 43083), (197, 43209), (205, 43260), (218, 43308),

Gene: JAWS_72 Start: 48855, Stop: 49835, Start Num: 47

Candidate Starts for JAWS_72:

(7, 48561), (9, 48585), (11, 48594), (13, 48606), (14, 48612), (18, 48651), (Start: 29 @48729 has 111 MA's), (31, 48735), (Start: 47 @48855 has 1 MA's), (48, 48861), (49, 48870), (54, 48879), (68, 48903), (78, 48948), (79, 48954), (80, 48957), (83, 48978), (86, 48990), (90, 49053), (95, 49080), (96, 49086), (98, 49107), (104, 49131), (109, 49149), (120, 49185), (129, 49233), (130, 49236), (134, 49272), (135, 49275), (138, 49302), (140, 49311), (148, 49353), (153, 49368), (158, 49386), (184, 49485), (191, 49542), (198, 49575), (202, 49602), (213, 49647), (219, 49665), (255, 49785),

Gene: JF1_78 Start: 49773, Stop: 50651, Start Num: 63

Candidate Starts for JF1_78:

(Start: 63 @49773 has 19 MA's), (76, 49818), (81, 49851), (84, 49881), (88, 49932), (95, 49974), (96, 49980), (101, 50013), (109, 50046), (115, 50055), (127, 50112), (129, 50121), (130, 50124), (132, 50148), (138, 50190), (141, 50211), (170, 50262), (171, 50268), (175, 50292), (176, 50295), (180, 50319), (182, 50328), (192, 50394), (193, 50400), (197, 50418), (198, 50424), (202, 50451), (203, 50460), (207, 50472), (226, 50547),

Gene: Jarvi_73 Start: 48686, Stop: 49873, Start Num: 29

Candidate Starts for Jarvi_73:

(Start: 29 @48686 has 111 MA's), (31, 48692), (Start: 47 @48812 has 1 MA's), (48, 48818), (54, 48836), (68, 48860), (78, 48905), (79, 48911), (80, 48914), (83, 48935), (86, 48947), (90, 49010), (95, 49037), (96, 49043), (98, 49064), (104, 49088), (109, 49106), (129, 49190), (130, 49193), (134, 49229), (135, 49232), (138, 49259), (140, 49268), (148, 49310), (184, 49442), (191, 49499), (202, 49559), (213, 49604), (216, 49610), (219, 49622), (237, 49697), (241, 49721), (243, 49748), (244, 49754), (247, 49769), (250, 49781), (255, 49823),

Gene: Jayhawk_76 Start: 49229, Stop: 50335, Start Num: 29

Candidate Starts for Jayhawk_76:

(Start: 29 @49229 has 111 MA's), (31, 49235), (Start: 41 @49286 has 7 MA's), (Start: 47 @49355 has 1 MA's), (48, 49361), (54, 49379), (68, 49403), (78, 49448), (79, 49454), (80, 49457), (83, 49478), (86, 49490), (90, 49553), (93, 49571), (95, 49580), (96, 49586), (98, 49607), (104, 49631), (109, 49649), (129, 49733), (130, 49736), (134, 49772), (135, 49775), (138, 49802), (140, 49811), (148, 49853), (153, 49868), (158, 49886), (184, 49985), (191, 50042), (198, 50075), (202, 50102), (213, 50147), (219, 50165), (255, 50285),

Gene: Jebeks_66 Start: 40993, Stop: 41895, Start Num: 45

Candidate Starts for Jebeks_66:

(2, 40474), (17, 40789), (36, 40918), (43, 40963), (Start: 45 @40993 has 60 MA's), (50, 41035), (104, 41314), (105, 41317), (127, 41407), (170, 41599), (176, 41632), (185, 41686), (190, 41728), (199, 41779), (205, 41809), (217, 41848), (218, 41857),

Gene: Jeckyll_73 Start: 48686, Stop: 49873, Start Num: 29

Candidate Starts for Jeckyll_73:

(Start: 29 @48686 has 111 MA's), (31, 48692), (Start: 47 @48812 has 1 MA's), (48, 48818), (54, 48836), (68, 48860), (78, 48905), (79, 48911), (80, 48914), (83, 48935), (86, 48947), (90, 49010), (95,

49037), (96, 49043), (98, 49064), (104, 49088), (109, 49106), (129, 49190), (130, 49193), (134, 49229), (135, 49232), (138, 49259), (140, 49268), (148, 49310), (184, 49442), (191, 49499), (202, 49559), (213, 49604), (216, 49610), (219, 49622), (237, 49697), (241, 49721), (243, 49748), (244, 49754), (247, 49769), (250, 49781), (255, 49823),

Gene: Joy99_74 Start: 48815, Stop: 50002, Start Num: 29

Candidate Starts for Joy99_74:

(Start: 29 @48815 has 111 MA's), (31, 48821), (Start: 47 @48941 has 1 MA's), (48, 48947), (Start: 61 @48977 has 22 MA's), (68, 48989), (78, 49034), (79, 49040), (80, 49043), (83, 49064), (86, 49076), (90, 49139), (93, 49157), (95, 49166), (96, 49172), (98, 49193), (104, 49217), (109, 49235), (129, 49319), (130, 49322), (134, 49358), (135, 49361), (138, 49388), (140, 49397), (148, 49439), (184, 49571), (191, 49628), (202, 49688), (213, 49733), (216, 49739), (219, 49751), (237, 49826), (241, 49850), (243, 49877), (244, 49883), (247, 49898), (250, 49910), (255, 49952),

Gene: Juliette_80 Start: 49877, Stop: 50755, Start Num: 63

Candidate Starts for Juliette_80:

(Start: 63 @49877 has 19 MA's), (76, 49922), (81, 49955), (84, 49985), (88, 50036), (95, 50078), (96, 50084), (99, 50108), (101, 50117), (109, 50150), (115, 50159), (127, 50216), (129, 50225), (130, 50228), (132, 50252), (138, 50294), (141, 50315), (170, 50366), (171, 50372), (175, 50396), (176, 50399), (180, 50423), (182, 50432), (183, 50438), (186, 50456), (192, 50498), (197, 50522), (198, 50528), (202, 50555), (203, 50564), (207, 50576), (226, 50651),

Gene: Jung_66 Start: 41978, Stop: 42880, Start Num: 45

Candidate Starts for Jung_66:

(Start: 45 @41978 has 60 MA's), (69, 42065), (77, 42110), (94, 42242), (104, 42299), (105, 42302), (127, 42392), (170, 42584), (190, 42713), (205, 42794), (218, 42842),

Gene: Juniormint_63 Start: 40449, Stop: 41351, Start Num: 45

Candidate Starts for Juniormint_63:

(2, 39930), (17, 40245), (36, 40374), (43, 40419), (Start: 45 @40449 has 60 MA's), (50, 40491), (104, 40770), (105, 40773), (127, 40863), (170, 41055), (176, 41088), (185, 41142), (190, 41184), (199, 41235), (205, 41265), (217, 41304), (218, 41313),

Gene: Kari_63 Start: 41857, Stop: 42759, Start Num: 45

Candidate Starts for Kari_63:

(4, 41365), (17, 41653), (36, 41782), (43, 41827), (Start: 45 @41857 has 60 MA's), (50, 41899), (104, 42178), (105, 42181), (127, 42271), (170, 42463), (176, 42496), (185, 42550), (190, 42592), (199, 42643), (205, 42673), (217, 42712), (218, 42721),

Gene: Keshu_76 Start: 49138, Stop: 50055, Start Num: 64

Candidate Starts for Keshu_76:

(Start: 42 @49045 has 1 MA's), (44, 49066), (Start: 64 @49138 has 19 MA's), (74, 49174), (79, 49201), (83, 49225), (86, 49237), (90, 49297), (119, 49420), (130, 49474), (132, 49498), (134, 49510), (140, 49549), (171, 49639), (176, 49666), (177, 49669), (184, 49708), (185, 49720), (191, 49762), (198, 49795), (204, 49834), (225, 49909), (233, 49939),

Gene: KiSi_76 Start: 49435, Stop: 50466, Start Num: 41

Candidate Starts for KiSi_76:

(26, 49360), (30, 49375), (Start: 41 @49435 has 7 MA's), (Start: 42 @49441 has 1 MA's), (54, 49519), (79, 49600), (83, 49624), (90, 49699), (93, 49717), (106, 49783), (126, 49867), (129, 49879), (130, 49882), (140, 49957), (147, 50002), (156, 50035), (172, 50074), (180, 50119), (183, 50134), (191, 50191), (198, 50224), (216, 50302), (219, 50314), (224, 50332), (258, 50437),

Gene: KilKor_66 Start: 43765, Stop: 44667, Start Num: 45

Candidate Starts for KilKor_66:

(2, 43246), (17, 43561), (36, 43690), (43, 43735), (Start: 45 @43765 has 60 MA's), (50, 43807), (104, 44086), (105, 44089), (127, 44179), (170, 44371), (176, 44404), (185, 44458), (190, 44500), (199, 44551), (205, 44581), (217, 44620), (218, 44629),

Gene: Kratio_64 Start: 45964, Stop: 46821, Start Num: 61

Candidate Starts for Kratio_64:

(Start: 45 @45901 has 60 MA's), (Start: 61 @45964 has 22 MA's), (75, 46006), (79, 46030), (83, 46054), (90, 46126), (98, 46180), (108, 46213), (123, 46264), (125, 46270), (129, 46291), (130, 46294), (135, 46333), (147, 46408), (148, 46411), (157, 46441), (183, 46534), (191, 46591), (194, 46603), (201, 46648), (209, 46678), (213, 46693), (219, 46711), (223, 46723), (228, 46747), (234, 46759),

Gene: Kraw_79 Start: 49580, Stop: 50458, Start Num: 63

Candidate Starts for Kraw_79:

(Start: 63 @49580 has 19 MA's), (76, 49625), (81, 49658), (84, 49688), (88, 49739), (95, 49781), (96, 49787), (101, 49820), (109, 49853), (115, 49862), (127, 49919), (129, 49928), (130, 49931), (132, 49955), (138, 49997), (141, 50018), (170, 50069), (171, 50075), (175, 50099), (176, 50102), (180, 50126), (182, 50135), (186, 50159), (192, 50201), (193, 50207), (197, 50225), (198, 50231), (202, 50258), (203, 50267), (207, 50279), (226, 50354),

Gene: Krueger_77 Start: 48733, Stop: 49833, Start Num: 29

Candidate Starts for Krueger_77:

(19, 48655), (Start: 29 @48733 has 111 MA's), (31, 48739), (39, 48784), (Start: 47 @48847 has 1 MA's), (53, 48871), (78, 48940), (82, 48961), (83, 48970), (86, 48982), (90, 49042), (96, 49075), (98, 49096), (104, 49120), (129, 49222), (134, 49261), (150, 49354), (156, 49378), (171, 49417), (173, 49432), (187, 49510), (191, 49540), (193, 49549), (195, 49558), (196, 49561), (198, 49573), (202, 49600), (213, 49642), (251, 49747), (257, 49795),

Gene: Ksquared_69 Start: 44078, Stop: 44980, Start Num: 45

Candidate Starts for Ksquared_69:

(2, 43559), (17, 43874), (36, 44003), (43, 44048), (Start: 45 @44078 has 60 MA's), (50, 44120), (77, 44210), (104, 44399), (105, 44402), (127, 44492), (170, 44684), (176, 44717), (190, 44813), (205, 44894), (218, 44942),

Gene: Langerak_65 Start: 41837, Stop: 42739, Start Num: 45

Candidate Starts for Langerak_65:

(4, 41345), (17, 41633), (36, 41762), (43, 41807), (Start: 45 @41837 has 60 MA's), (50, 41879), (104, 42158), (105, 42161), (127, 42251), (170, 42443), (176, 42476), (185, 42530), (190, 42572), (199, 42623), (205, 42653), (217, 42692), (218, 42701),

Gene: Larva_67 Start: 47423, Stop: 48277, Start Num: 61

Candidate Starts for Larva_67:

(25, 47231), (32, 47264), (Start: 45 @47360 has 60 MA's), (Start: 61 @47423 has 22 MA's), (Start: 63 @47426 has 19 MA's), (74, 47465), (75, 47468), (79, 47492), (83, 47516), (90, 47588), (98, 47642), (108, 47675), (123, 47726), (125, 47732), (129, 47753), (130, 47756), (135, 47795), (147, 47870), (148, 47873), (157, 47903), (180, 47981), (183, 47996), (191, 48053), (194, 48065), (201, 48110), (209, 48140), (213, 48155), (219, 48173), (223, 48185), (228, 48209),

Gene: LastHope_79 Start: 48375, Stop: 49559, Start Num: 29

Candidate Starts for LastHope_79:

(16, 48264), (Start: 29 @48375 has 111 MA's), (31, 48381), (37, 48399), (38, 48423), (39, 48426), (Start: 42 @48438 has 1 MA's), (Start: 47 @48489 has 1 MA's), (48, 48495), (54, 48516), (76, 48573), (79, 48594), (80, 48597), (83, 48618), (90, 48693), (93, 48711), (96, 48726), (98, 48747), (103, 48768), (104, 48771), (109, 48789), (116, 48813), (129, 48873), (130, 48876), (134, 48912), (135, 48915), (138, 48942), (140, 48951), (148, 48993), (153, 49008), (174, 49077), (180, 49107), (182, 49116), (184, 49125), (191, 49182), (202, 49242), (213, 49287), (216, 49293), (219, 49305), (237, 49380), (241, 49404), (243, 49431), (244, 49437), (247, 49452), (250, 49464),

Gene: LaterM_73 Start: 49344, Stop: 50534, Start Num: 29

Candidate Starts for LaterM_73:

(Start: 29 @49344 has 111 MA's), (31, 49350), (Start: 47 @49470 has 1 MA's), (54, 49497), (76, 49554), (79, 49575), (80, 49578), (83, 49599), (90, 49674), (93, 49692), (95, 49701), (96, 49707), (98, 49728), (103, 49749), (104, 49752), (109, 49770), (129, 49854), (130, 49857), (134, 49893), (138, 49923), (140, 49932), (148, 49974), (153, 49989), (191, 50163), (202, 50223), (211, 50259), (213, 50265), (220, 50286), (237, 50358), (241, 50382), (243, 50409),

Gene: LeMond_75 Start: 49039, Stop: 50070, Start Num: 41

Candidate Starts for LeMond_75:

(26, 48964), (30, 48979), (Start: 41 @49039 has 7 MA's), (Start: 42 @49045 has 1 MA's), (54, 49123), (76, 49183), (79, 49204), (83, 49228), (90, 49303), (93, 49321), (106, 49387), (126, 49471), (129, 49483), (130, 49486), (140, 49561), (147, 49606), (156, 49639), (172, 49678), (180, 49723), (183, 49738), (191, 49795), (198, 49828), (216, 49906), (258, 50041),

Gene: Lea83_75 Start: 49074, Stop: 49991, Start Num: 64

Candidate Starts for Lea83_75:

(Start: 42 @48981 has 1 MA's), (Start: 64 @49074 has 19 MA's), (74, 49110), (83, 49161), (87, 49182), (95, 49260), (119, 49356), (130, 49410), (132, 49434), (134, 49446), (140, 49485), (144, 49512), (171, 49575), (176, 49602), (177, 49605), (184, 49644), (185, 49656), (191, 49698), (198, 49731), (204, 49770), (225, 49845),

Gene: Lebo14_79 Start: 50030, Stop: 50908, Start Num: 63

Candidate Starts for Lebo14_79:

(Start: 63 @50030 has 19 MA's), (76, 50075), (81, 50108), (84, 50138), (88, 50189), (95, 50231), (96, 50237), (98, 50258), (101, 50270), (109, 50303), (115, 50312), (127, 50369), (129, 50378), (130, 50381), (132, 50405), (138, 50447), (141, 50468), (170, 50519), (171, 50525), (175, 50549), (176, 50552), (180, 50576), (182, 50585), (186, 50609), (192, 50651), (193, 50657), (197, 50675), (198, 50681), (202, 50708), (203, 50717), (207, 50729), (226, 50804),

Gene: Leston_66 Start: 48001, Stop: 48834, Start Num: 61

Candidate Starts for Leston_66:

(25, 47809), (32, 47842), (Start: 45 @47938 has 60 MA's), (Start: 61 @48001 has 22 MA's), (75, 48043), (79, 48067), (83, 48091), (90, 48163), (99, 48220), (108, 48250), (123, 48301), (129, 48328), (130, 48331), (135, 48370), (140, 48406), (141, 48418), (147, 48445), (148, 48448), (150, 48454), (157, 48478), (177, 48535), (180, 48556), (183, 48571), (191, 48628), (194, 48640), (208, 48712), (209, 48715), (213, 48730), (219, 48748), (223, 48760),

Gene: LilPharaoh_61 Start: 45463, Stop: 46644, Start Num: 29

Candidate Starts for LilPharaoh_61:

(Start: 29 @45463 has 111 MA's), (31, 45469), (34, 45481), (Start: 47 @45577 has 1 MA's), (53, 45601), (Start: 61 @45613 has 22 MA's), (70, 45637), (71, 45643), (76, 45655), (78, 45670), (79, 45676), (80, 45679), (83, 45700), (85, 45709), (86, 45712), (89, 45766), (90, 45772), (93, 45790), (96, 45805), (98, 45826), (99, 45829), (104, 45850), (112, 45877), (114, 45883), (118, 45901), (125, 45931), (129, 45952), (130, 45955), (133, 45982), (134, 45991), (138, 46021), (140, 46030), (141,

46042), (152, 46087), (163, 46114), (164, 46117), (172, 46150), (174, 46165), (176, 46171), (180, 46195), (182, 46204), (184, 46213), (188, 46246), (191, 46267), (193, 46276), (194, 46279), (198, 46300), (202, 46327), (211, 46366), (213, 46372), (219, 46390), (220, 46393), (223, 46402), (232, 46438), (237, 46465), (238, 46468), (239, 46474), (241, 46489), (243, 46516), (247, 46537), (248, 46540), (250, 46549), (260, 46633), (261, 46636),

Gene: LilSpotty_82 Start: 47559, Stop: 48464, Start Num: 45

Candidate Starts for LilSpotty_82:

(Start: 45 @47559 has 60 MA's), (67, 47637), (104, 47880), (107, 47889), (116, 47922), (127, 47973), (134, 48021), (138, 48051), (170, 48165), (176, 48198), (182, 48231), (204, 48369), (205, 48375), (210, 48399), (218, 48423), (221, 48432),

Gene: LindNT_72 Start: 49236, Stop: 50336, Start Num: 29

Candidate Starts for LindNT_72:

(19, 49158), (20, 49167), (Start: 29 @49236 has 111 MA's), (31, 49242), (Start: 47 @49350 has 1 MA's), (54, 49377), (76, 49434), (79, 49455), (80, 49458), (83, 49479), (86, 49491), (90, 49554), (95, 49581), (96, 49587), (98, 49608), (103, 49629), (104, 49632), (109, 49650), (129, 49734), (130, 49737), (134, 49773), (135, 49776), (138, 49803), (140, 49812), (148, 49854), (161, 49890), (175, 49941), (184, 49986), (191, 50043), (198, 50076), (202, 50103), (211, 50142), (219, 50166), (255, 50286),

Gene: Llorens_73 Start: 48686, Stop: 49873, Start Num: 29

Candidate Starts for Llorens_73:

(Start: 29 @48686 has 111 MA's), (31, 48692), (Start: 47 @48812 has 1 MA's), (48, 48818), (54, 48836), (68, 48860), (78, 48905), (79, 48911), (80, 48914), (83, 48935), (86, 48947), (90, 49010), (95, 49037), (96, 49043), (98, 49064), (104, 49088), (109, 49106), (129, 49190), (130, 49193), (134, 49229), (135, 49232), (138, 49259), (140, 49268), (148, 49310), (184, 49442), (191, 49499), (202, 49559), (213, 49604), (216, 49610), (219, 49622), (237, 49697), (241, 49721), (243, 49748), (244, 49754), (247, 49769), (250, 49781), (255, 49823),

Gene: Lunahalos_73 Start: 48686, Stop: 49873, Start Num: 29

Candidate Starts for Lunahalos_73:

(Start: 29 @48686 has 111 MA's), (31, 48692), (Start: 47 @48812 has 1 MA's), (48, 48818), (54, 48836), (68, 48860), (78, 48905), (79, 48911), (80, 48914), (83, 48935), (86, 48947), (90, 49010), (95, 49037), (96, 49043), (98, 49064), (104, 49088), (109, 49106), (129, 49190), (130, 49193), (134, 49229), (135, 49232), (138, 49259), (140, 49268), (148, 49310), (184, 49442), (191, 49499), (202, 49559), (213, 49604), (216, 49610), (219, 49622), (237, 49697), (241, 49721), (243, 49748), (244, 49754), (247, 49769), (250, 49781), (255, 49823),

Gene: MacKat_71 Start: 44669, Stop: 45856, Start Num: 29

Candidate Starts for MacKat_71:

(Start: 29 @44669 has 111 MA's), (31, 44675), (Start: 41 @44726 has 7 MA's), (Start: 47 @44795 has 1 MA's), (48, 44801), (54, 44819), (68, 44843), (78, 44888), (79, 44894), (80, 44897), (83, 44918), (86, 44930), (90, 44993), (93, 45011), (95, 45020), (96, 45026), (98, 45047), (104, 45071), (109, 45089), (129, 45173), (130, 45176), (134, 45212), (135, 45215), (138, 45242), (140, 45251), (148, 45293), (153, 45308), (191, 45482), (202, 45542), (213, 45587), (216, 45593), (219, 45605), (237, 45680), (241, 45704), (243, 45731), (244, 45737), (247, 45752), (250, 45764), (255, 45806),

Gene: MacnCheese_76 Start: 49599, Stop: 50501, Start Num: 64

Candidate Starts for MacnCheese_76:

(Start: 64 @49599 has 19 MA's), (74, 49635), (79, 49662), (83, 49686), (90, 49758), (117, 49875), (119, 49881), (128, 49929), (132, 49959), (134, 49971), (137, 49998), (140, 50010), (179, 50142), (184, 50163), (185, 50175), (191, 50217), (198, 50250), (204, 50289), (225, 50364), (230, 50382),

Gene: Majeke_68 Start: 42487, Stop: 43389, Start Num: 45

Candidate Starts for Majeke_68:

(4, 41992), (17, 42283), (36, 42412), (43, 42457), (Start: 45 @42487 has 60 MA's), (50, 42529), (104, 42808), (105, 42811), (127, 42901), (170, 43093), (176, 43126), (185, 43180), (190, 43222), (199, 43273), (205, 43303), (217, 43342), (218, 43351),

Gene: MalagasyRose_71 Start: 47350, Stop: 48273, Start Num: 56

Candidate Starts for MalagasyRose_71:

(Start: 56 @47350 has 1 MA's), (65, 47365), (75, 47404), (83, 47452), (87, 47473), (88, 47503), (89, 47521), (92, 47542), (98, 47578), (109, 47623), (110, 47626), (111, 47629), (121, 47656), (129, 47698), (133, 47728), (134, 47737), (140, 47776), (143, 47797), (165, 47842), (168, 47845), (174, 47881), (176, 47887), (184, 47929), (185, 47941), (189, 47965), (191, 47983), (198, 48016), (202, 48043), (203, 48052), (212, 48085), (213, 48088), (224, 48124), (231, 48148), (232, 48151), (241, 48199), (242, 48208), (254, 48250),

Gene: Malithi_65 Start: 41622, Stop: 42524, Start Num: 45

Candidate Starts for Malithi_65:

(35, 41544), (Start: 45 @41622 has 60 MA's), (50, 41664), (77, 41754), (94, 41886), (104, 41943), (105, 41946), (127, 42036), (170, 42228), (190, 42357), (199, 42408), (205, 42438), (217, 42477), (218, 42486),

Gene: Malthus_79 Start: 49580, Stop: 50458, Start Num: 63

Candidate Starts for Malthus_79:

(Start: 63 @49580 has 19 MA's), (76, 49625), (81, 49658), (84, 49688), (88, 49739), (95, 49781), (96, 49787), (101, 49820), (109, 49853), (115, 49862), (127, 49919), (129, 49928), (130, 49931), (132, 49955), (138, 49997), (141, 50018), (170, 50069), (171, 50075), (175, 50099), (176, 50102), (180, 50126), (182, 50135), (186, 50159), (192, 50201), (193, 50207), (197, 50225), (198, 50231), (202, 50258), (203, 50267), (207, 50279), (226, 50354),

Gene: Mangethe_68 Start: 42487, Stop: 43389, Start Num: 45

Candidate Starts for Mangethe_68:

(4, 41992), (17, 42283), (36, 42412), (43, 42457), (Start: 45 @42487 has 60 MA's), (50, 42529), (104, 42808), (105, 42811), (127, 42901), (170, 43093), (176, 43126), (185, 43180), (190, 43222), (199, 43273), (205, 43303), (217, 43342), (218, 43351),

Gene: Marcoliusprime_76 Start: 51116, Stop: 52018, Start Num: 64

Candidate Starts for Marcoliusprime_76:

(Start: 64 @51116 has 19 MA's), (76, 51158), (90, 51293), (96, 51326), (124, 51428), (125, 51431), (127, 51443), (130, 51455), (149, 51569), (170, 51608), (176, 51641), (186, 51698), (191, 51737), (198, 51770), (200, 51791), (202, 51797), (207, 51818), (215, 51848), (216, 51851), (227, 51896), (245, 51986), (249, 52001),

Gene: MarkPhew_74 Start: 48544, Stop: 49581, Start Num: 41

Candidate Starts for MarkPhew_74:

(26, 48469), (30, 48484), (Start: 41 @48544 has 7 MA's), (Start: 42 @48550 has 1 MA's), (54, 48628), (68, 48646), (79, 48697), (83, 48721), (90, 48796), (93, 48814), (99, 48853), (106, 48880), (115, 48907), (126, 48964), (130, 48979), (135, 49018), (140, 49054), (154, 49126), (160, 49138), (172, 49171), (182, 49225), (191, 49288), (198, 49321), (216, 49399), (219, 49411), (255, 49528), (257, 49543), (260, 49570),

Gene: Marshawn_71 Start: 48922, Stop: 49965, Start Num: 42

Candidate Starts for Marshawn_71:

(Start: 41 @48916 has 7 MA's), (Start: 42 @48922 has 1 MA's), (54, 49000), (57, 49006), (76, 49060), (80, 49084), (83, 49105), (90, 49180), (93, 49198), (106, 49264), (115, 49291), (129, 49360), (130, 49363), (134, 49399), (135, 49402), (140, 49438), (150, 49492), (154, 49510), (182, 49609), (191, 49672), (201, 49729), (202, 49732), (213, 49777), (220, 49798), (257, 49927),

Gene: McMater_74 Start: 49082, Stop: 50047, Start Num: 53

Candidate Starts for McMater_74:

(Start: 29 @48944 has 111 MA's), (31, 48950), (39, 48995), (Start: 47 @49058 has 1 MA's), (53, 49082), (71, 49124), (78, 49151), (79, 49157), (80, 49160), (83, 49181), (90, 49253), (95, 49280), (96, 49286), (104, 49331), (125, 49412), (126, 49421), (129, 49433), (130, 49436), (131, 49439), (134, 49472), (138, 49502), (140, 49511), (155, 49589), (156, 49592), (171, 49628), (176, 49655), (180, 49679), (183, 49694), (191, 49754), (196, 49775), (198, 49787), (202, 49814), (211, 49850), (213, 49856), (251, 49961),

Gene: Mdavu_61 Start: 45739, Stop: 46920, Start Num: 29

Candidate Starts for Mdavu_61:

(Start: 29 @45739 has 111 MA's), (31, 45745), (34, 45757), (Start: 47 @45853 has 1 MA's), (53, 45877), (Start: 61 @45889 has 22 MA's), (70, 45913), (71, 45919), (76, 45931), (78, 45946), (79, 45952), (80, 45955), (83, 45976), (85, 45985), (86, 45988), (89, 46042), (90, 46048), (93, 46066), (96, 46081), (98, 46102), (99, 46105), (104, 46126), (112, 46153), (114, 46159), (118, 46177), (125, 46207), (129, 46228), (130, 46231), (133, 46258), (134, 46267), (138, 46297), (140, 46306), (141, 46318), (152, 46363), (163, 46390), (164, 46393), (172, 46426), (174, 46441), (176, 46447), (180, 46471), (182, 46480), (184, 46489), (188, 46522), (191, 46543), (193, 46552), (194, 46555), (198, 46576), (202, 46603), (211, 46642), (213, 46648), (219, 46666), (220, 46669), (223, 46678), (232, 46714), (237, 46741), (238, 46744), (239, 46750), (241, 46765), (243, 46792), (247, 46813), (248, 46816), (250, 46825), (260, 46909), (261, 46912),

Gene: MeaningOfLife_75 Start: 49638, Stop: 50825, Start Num: 29

Candidate Starts for MeaningOfLife_75:

(Start: 29 @49638 has 111 MA's), (31, 49644), (Start: 41 @49695 has 7 MA's), (Start: 47 @49764 has 1 MA's), (48, 49770), (49, 49779), (54, 49788), (68, 49812), (78, 49857), (79, 49863), (80, 49866), (83, 49887), (86, 49899), (90, 49962), (93, 49980), (95, 49989), (96, 49995), (98, 50016), (104, 50040), (109, 50058), (129, 50142), (130, 50145), (134, 50181), (135, 50184), (138, 50211), (140, 50220), (148, 50262), (153, 50277), (158, 50295), (184, 50394), (191, 50451), (202, 50511), (213, 50556), (216, 50562), (219, 50574), (237, 50649), (241, 50673), (243, 50700), (244, 50706), (247, 50721), (250, 50733), (255, 50775),

Gene: Megiddo_65 Start: 43633, Stop: 44535, Start Num: 45

Candidate Starts for Megiddo_65:

(2, 43114), (17, 43429), (36, 43558), (43, 43603), (Start: 45 @43633 has 60 MA's), (50, 43675), (104, 43954), (105, 43957), (127, 44047), (170, 44239), (176, 44272), (185, 44326), (190, 44368), (199, 44419), (205, 44449), (217, 44488), (218, 44497),

Gene: Megsy_75 Start: 48863, Stop: 49963, Start Num: 29

Candidate Starts for Megsy_75:

(8, 48695), (11, 48725), (12, 48728), (15, 48746), (19, 48785), (Start: 29 @48863 has 111 MA's), (31, 48869), (Start: 47 @48977 has 1 MA's), (54, 49004), (76, 49061), (79, 49082), (80, 49085), (83, 49106), (86, 49118), (90, 49181), (93, 49199), (95, 49208), (96, 49214), (97, 49220), (98, 49235), (103, 49256), (104, 49259), (109, 49277), (129, 49361), (130, 49364), (133, 49391), (134, 49400), (138, 49430), (140, 49439), (148, 49481), (161, 49517), (175, 49568), (184, 49613), (191, 49670), (198, 49703), (202, 49730), (211, 49769), (219, 49793), (255, 49913),

Gene: Milly_77 Start: 51107, Stop: 52009, Start Num: 64

Candidate Starts for Milly_77:

(Start: 64 @51107 has 19 MA's), (76, 51149), (90, 51284), (96, 51317), (124, 51419), (125, 51422), (127, 51434), (130, 51446), (149, 51560), (170, 51599), (176, 51632), (191, 51728), (198, 51761), (200, 51782), (201, 51785), (202, 51788), (207, 51809), (215, 51839), (216, 51842), (227, 51887), (245, 51977), (249, 51992),

Gene: Miryou_70 Start: 50627, Stop: 51463, Start Num: 61

Candidate Starts for Miryou_70:

(25, 50435), (32, 50468), (Start: 45 @50564 has 60 MA's), (Start: 61 @50627 has 22 MA's), (75, 50669), (79, 50693), (83, 50717), (89, 50783), (90, 50789), (99, 50846), (108, 50876), (123, 50927), (129, 50954), (130, 50957), (135, 50996), (140, 51032), (141, 51044), (147, 51071), (148, 51074), (150, 51080), (157, 51104), (177, 51161), (183, 51197), (191, 51254), (194, 51266), (195, 51272), (202, 51314), (208, 51338), (213, 51356), (219, 51374), (220, 51377), (223, 51386),

Gene: Misha28_86 Start: 52818, Stop: 53723, Start Num: 45

Candidate Starts for Misha28_86:

(Start: 45 @52818 has 60 MA's), (67, 52896), (116, 53181), (127, 53232), (134, 53280), (138, 53310), (170, 53424), (182, 53490), (204, 53628), (205, 53634), (210, 53658), (218, 53682), (221, 53691),

Gene: MissDaisy_75 Start: 48011, Stop: 48889, Start Num: 63

Candidate Starts for MissDaisy_75:

(Start: 63 @48011 has 19 MA's), (76, 48056), (80, 48080), (81, 48089), (84, 48119), (88, 48170), (95, 48212), (96, 48218), (101, 48251), (109, 48284), (115, 48293), (127, 48350), (129, 48359), (130, 48362), (132, 48386), (138, 48428), (141, 48449), (170, 48500), (171, 48506), (175, 48530), (176, 48533), (180, 48557), (182, 48566), (192, 48632), (196, 48650), (197, 48656), (198, 48662), (202, 48689), (207, 48710), (215, 48740), (226, 48785),

Gene: Mitti_78 Start: 49771, Stop: 50649, Start Num: 63

Candidate Starts for Mitti_78:

(Start: 63 @49771 has 19 MA's), (76, 49816), (81, 49849), (84, 49879), (88, 49930), (95, 49972), (96, 49978), (101, 50011), (109, 50044), (115, 50053), (127, 50110), (129, 50119), (130, 50122), (132, 50146), (138, 50188), (141, 50209), (170, 50260), (171, 50266), (175, 50290), (176, 50293), (180, 50317), (182, 50326), (186, 50350), (192, 50392), (193, 50398), (197, 50416), (198, 50422), (202, 50449), (203, 50458), (207, 50470), (226, 50545),

Gene: Mufasa_76 Start: 50574, Stop: 51476, Start Num: 64

Candidate Starts for Mufasa_76:

(Start: 64 @50574 has 19 MA's), (76, 50616), (90, 50751), (96, 50784), (124, 50886), (125, 50889), (127, 50901), (130, 50913), (149, 51027), (170, 51066), (176, 51099), (191, 51195), (194, 51207), (198, 51228), (200, 51249), (202, 51255), (207, 51276), (215, 51306), (216, 51309), (227, 51354), (249, 51459),

Gene: Murucutumbu_74 Start: 49919, Stop: 51109, Start Num: 29

Candidate Starts for Murucutumbu_74:

(Start: 29 @49919 has 111 MA's), (31, 49925), (Start: 47 @50045 has 1 MA's), (54, 50072), (76, 50129), (79, 50150), (80, 50153), (83, 50174), (90, 50249), (95, 50276), (98, 50303), (103, 50324), (104, 50327), (109, 50345), (129, 50429), (130, 50432), (134, 50468), (138, 50498), (140, 50507), (148, 50549), (153, 50564), (191, 50738), (202, 50798), (211, 50834), (213, 50840), (220, 50861), (237, 50933), (241, 50957), (243, 50984), (250, 51017),

Gene: Mynx_75 Start: 49498, Stop: 50604, Start Num: 29

Candidate Starts for Mynx_75:

(Start: 29 @49498 has 111 MA's), (31, 49504), (Start: 41 @49555 has 7 MA's), (Start: 47 @49624 has 1 MA's), (48, 49630), (54, 49648), (68, 49672), (78, 49717), (79, 49723), (80, 49726), (83, 49747), (86, 49759), (90, 49822), (93, 49840), (95, 49849), (96, 49855), (98, 49876), (104, 49900), (109, 49918), (129, 50002), (130, 50005), (134, 50041), (135, 50044), (138, 50071), (140, 50080), (148, 50122), (153, 50137), (158, 50155), (191, 50311), (198, 50344), (202, 50371), (213, 50416), (219, 50434), (255, 50554),

Gene: Nazo_68 Start: 43481, Stop: 44383, Start Num: 45

Candidate Starts for Nazo_68:

(Start: 45 @43481 has 60 MA's), (50, 43523), (96, 43754), (105, 43805), (127, 43895), (134, 43943), (148, 44021), (170, 44087), (199, 44267), (205, 44297),

Gene: Necropolis_63 Start: 41062, Stop: 41964, Start Num: 45

Candidate Starts for Necropolis_63:

(2, 40543), (17, 40858), (36, 40987), (43, 41032), (Start: 45 @41062 has 60 MA's), (50, 41104), (77, 41194), (94, 41326), (104, 41383), (105, 41386), (127, 41476), (170, 41668), (190, 41797), (199, 41848), (205, 41878), (217, 41917), (218, 41926),

Gene: Neighly_68 Start: 47422, Stop: 48276, Start Num: 61

Candidate Starts for Neighly_68:

(25, 47230), (32, 47263), (Start: 45 @47359 has 60 MA's), (Start: 61 @47422 has 22 MA's), (Start: 63 @47425 has 19 MA's), (74, 47464), (75, 47467), (79, 47491), (83, 47515), (90, 47587), (98, 47641), (108, 47674), (123, 47725), (125, 47731), (129, 47752), (130, 47755), (135, 47794), (147, 47869), (148, 47872), (157, 47902), (180, 47980), (183, 47995), (191, 48052), (194, 48064), (201, 48109), (209, 48139), (213, 48154), (219, 48172), (223, 48184), (228, 48208),

Gene: Nergal_65 Start: 45413, Stop: 46264, Start Num: 64

Candidate Starts for Nergal_65:

(Start: 64 @45413 has 19 MA's), (75, 45452), (80, 45479), (87, 45521), (96, 45605), (100, 45635), (105, 45656), (109, 45671), (119, 45695), (125, 45725), (130, 45749), (132, 45773), (136, 45794), (140, 45824), (142, 45839), (144, 45851), (147, 45863), (170, 45902), (171, 45908), (176, 45935), (177, 45938), (181, 45962), (184, 45977), (191, 46031), (196, 46052), (198, 46064), (202, 46091), (214, 46136), (222, 46163), (241, 46238),

Gene: Nibb_75 Start: 48740, Stop: 49771, Start Num: 41

Candidate Starts for Nibb_75:

(Start: 41 @48740 has 7 MA's), (Start: 42 @48746 has 1 MA's), (54, 48824), (79, 48905), (90, 49004), (93, 49022), (96, 49037), (106, 49088), (126, 49172), (129, 49184), (130, 49187), (134, 49223), (140, 49262), (154, 49334), (191, 49496), (198, 49529), (216, 49607), (219, 49619), (258, 49742), (260, 49760),

Gene: Nikao_63 Start: 48348, Stop: 49529, Start Num: 29

Candidate Starts for Nikao_63:

(Start: 29 @48348 has 111 MA's), (31, 48354), (34, 48366), (Start: 47 @48462 has 1 MA's), (53, 48486), (Start: 61 @48498 has 22 MA's), (70, 48522), (71, 48528), (76, 48540), (78, 48555), (79, 48561), (80, 48564), (83, 48585), (85, 48594), (86, 48597), (89, 48651), (90, 48657), (93, 48675), (96, 48690), (98, 48711), (99, 48714), (104, 48735), (112, 48762), (114, 48768), (118, 48786), (125, 48816), (129, 48837), (130, 48840), (133, 48867), (134, 48876), (138, 48906), (140, 48915), (141, 48927), (152, 48972), (163, 48999), (164, 49002), (172, 49035), (174, 49050), (176, 49056), (180, 49080), (182, 49089), (184, 49098), (188, 49131), (191, 49152), (193, 49161), (194, 49164), (198, 49185), (202, 49212), (211, 49251), (213, 49257), (219, 49275), (220, 49278), (223, 49287), (232, 49323), (237, 49350), (238, 49353), (239, 49359), (241, 49374), (243, 49401), (247, 49422), (248, 49425), (250, 49434), (260, 49518), (261, 49521),

Gene: Niklas_75 Start: 49005, Stop: 50108, Start Num: 29

Candidate Starts for Niklas_75:

(Start: 29 @49005 has 111 MA's), (31, 49011), (39, 49056), (Start: 47 @49119 has 1 MA's), (53, 49143), (71, 49185), (78, 49212), (79, 49218), (80, 49221), (83, 49242), (90, 49314), (95, 49341), (96, 49347), (104, 49392), (125, 49473), (126, 49482), (129, 49494), (130, 49497), (131, 49500), (134, 49533), (138, 49563), (140, 49572), (155, 49650), (156, 49653), (171, 49689), (176, 49716), (180, 49740), (183, 49755), (191, 49815), (196, 49836), (198, 49848), (202, 49875), (211, 49911), (213, 49917),

Gene: November_71 Start: 48781, Stop: 49884, Start Num: 28

Candidate Starts for November_71:

(19, 48706), (Start: 28 @48781 has 5 MA's), (31, 48790), (37, 48808), (39, 48835), (Start: 47 @48898 has 1 MA's), (53, 48922), (68, 48946), (71, 48964), (79, 48997), (81, 49009), (83, 49021), (90, 49096), (93, 49114), (129, 49276), (130, 49279), (140, 49354), (150, 49408), (155, 49426), (182, 49528), (191, 49591), (198, 49624), (202, 49651), (208, 49675), (219, 49711), (257, 49846), (259, 49861),

Gene: Nutello_60 Start: 45735, Stop: 46916, Start Num: 29

Candidate Starts for Nutello_60:

(Start: 29 @45735 has 111 MA's), (31, 45741), (34, 45753), (Start: 47 @45849 has 1 MA's), (53, 45873), (Start: 61 @45885 has 22 MA's), (70, 45909), (71, 45915), (76, 45927), (78, 45942), (79, 45948), (80, 45951), (83, 45972), (85, 45981), (86, 45984), (89, 46038), (90, 46044), (93, 46062), (96, 46077), (98, 46098), (99, 46101), (104, 46122), (112, 46149), (114, 46155), (118, 46173), (125, 46203), (129, 46224), (130, 46227), (133, 46254), (134, 46263), (138, 46293), (140, 46302), (141, 46314), (152, 46359), (163, 46386), (164, 46389), (172, 46422), (174, 46437), (176, 46443), (180, 46467), (182, 46476), (184, 46485), (188, 46518), (191, 46539), (193, 46548), (194, 46551), (198, 46572), (202, 46599), (211, 46638), (213, 46644), (219, 46662), (220, 46665), (223, 46674), (232, 46710), (237, 46737), (238, 46740), (239, 46746), (241, 46761), (243, 46788), (247, 46809), (248, 46812), (250, 46821), (260, 46905), (261, 46908),

Gene: OkiRoe_67 Start: 48299, Stop: 49147, Start Num: 61

Candidate Starts for OkiRoe_67:

(Start: 61 @48299 has 22 MA's), (75, 48341), (79, 48365), (83, 48389), (90, 48461), (99, 48518), (108, 48548), (123, 48599), (129, 48626), (130, 48629), (135, 48668), (140, 48704), (141, 48716), (148, 48743), (159, 48776), (162, 48779), (167, 48788), (177, 48845), (180, 48866), (183, 48881), (191, 48938), (194, 48950), (195, 48956), (202, 48998), (208, 49022), (213, 49040), (219, 49058), (220, 49061), (223, 49070), (240, 49139),

Gene: OmniCritical_78 Start: 49773, Stop: 50651, Start Num: 63

Candidate Starts for OmniCritical_78:

(Start: 63 @49773 has 19 MA's), (76, 49818), (81, 49851), (84, 49881), (88, 49932), (95, 49974), (96, 49980), (98, 50001), (101, 50013), (109, 50046), (115, 50055), (127, 50112), (129, 50121), (130, 50124), (132, 50148), (138, 50190), (141, 50211), (170, 50262), (171, 50268), (175, 50292), (176, 50295), (180, 50319), (182, 50328), (186, 50352), (192, 50394), (193, 50400), (197, 50418), (198, 50424), (202, 50451), (203, 50460), (207, 50472), (226, 50547),

Gene: Omnicron_70 Start: 48420, Stop: 49313, Start Num: 61

Candidate Starts for Omnicron_70:

(25, 48228), (32, 48261), (Start: 45 @48357 has 60 MA's), (59, 48417), (Start: 61 @48420 has 22 MA's), (72, 48459), (79, 48498), (83, 48522), (86, 48534), (89, 48588), (90, 48594), (98, 48648), (108, 48681), (115, 48693), (130, 48762), (131, 48765), (138, 48828), (140, 48837), (145, 48876), (183, 49017), (191, 49074), (202, 49134), (209, 49161), (213, 49176), (219, 49194), (228, 49230),

Gene: Oscar_75 Start: 48959, Stop: 49990, Start Num: 41

Candidate Starts for Oscar_75:

(26, 48884), (30, 48899), (Start: 41 @48959 has 7 MA's), (Start: 42 @48965 has 1 MA's), (54, 49043), (76, 49103), (79, 49124), (83, 49148), (90, 49223), (93, 49241), (106, 49307), (126, 49391), (129, 49403), (130, 49406), (140, 49481), (147, 49526), (156, 49559), (172, 49598), (180, 49643), (183, 49658), (191, 49715), (198, 49748), (216, 49826), (219, 49838), (258, 49961),

Gene: Padfoot_73 Start: 48883, Stop: 50070, Start Num: 29

Candidate Starts for Padfoot_73:

(Start: 29 @48883 has 111 MA's), (31, 48889), (Start: 47 @49009 has 1 MA's), (48, 49015), (54, 49033), (68, 49057), (78, 49102), (79, 49108), (80, 49111), (83, 49132), (86, 49144), (90, 49207), (95, 49234), (96, 49240), (98, 49261), (104, 49285), (109, 49303), (129, 49387), (130, 49390), (134, 49426), (135, 49429), (138, 49456), (140, 49465), (148, 49507), (184, 49639), (191, 49696), (202, 49756), (213, 49801), (216, 49807), (219, 49819), (237, 49894), (241, 49918), (243, 49945), (244, 49951), (247, 49966), (250, 49978), (255, 50020),

Gene: Padpat_77 Start: 49203, Stop: 50309, Start Num: 29

Candidate Starts for Padpat_77:

(Start: 29 @49203 has 111 MA's), (31, 49209), (Start: 47 @49329 has 1 MA's), (48, 49335), (49, 49344), (54, 49353), (68, 49377), (78, 49422), (79, 49428), (80, 49431), (83, 49452), (86, 49464), (90, 49527), (93, 49545), (95, 49554), (96, 49560), (98, 49581), (104, 49605), (129, 49707), (130, 49710), (134, 49746), (135, 49749), (138, 49776), (140, 49785), (148, 49827), (184, 49959), (191, 50016), (198, 50049), (202, 50076), (213, 50121), (219, 50139), (255, 50259),

Gene: Paola_66 Start: 47872, Stop: 48717, Start Num: 61

Candidate Starts for Paola_66:

(Start: 61 @47872 has 22 MA's), (75, 47914), (79, 47938), (83, 47962), (90, 48034), (99, 48091), (108, 48121), (123, 48172), (129, 48199), (130, 48202), (135, 48241), (140, 48277), (141, 48289), (148, 48316), (159, 48349), (162, 48352), (167, 48361), (177, 48418), (180, 48439), (183, 48454), (191, 48511), (194, 48523), (208, 48595), (209, 48598), (213, 48613), (219, 48631), (223, 48643),

Gene: Patt_74 Start: 47732, Stop: 48610, Start Num: 63

Candidate Starts for Patt_74:

(Start: 63 @47732 has 19 MA's), (76, 47777), (80, 47801), (81, 47810), (84, 47840), (88, 47891), (95, 47933), (96, 47939), (101, 47972), (109, 48005), (115, 48014), (127, 48071), (129, 48080), (130, 48083), (132, 48107), (138, 48149), (141, 48170), (170, 48221), (171, 48227), (175, 48251), (176, 48254), (180, 48278), (182, 48287), (192, 48353), (196, 48371), (197, 48377), (198, 48383), (202, 48410), (207, 48431), (215, 48461), (226, 48506),

Gene: Peanam_75 Start: 48963, Stop: 50066, Start Num: 29

Candidate Starts for Peanam_75:

(Start: 29 @48963 has 111 MA's), (31, 48969), (39, 49014), (Start: 47 @49077 has 1 MA's), (53, 49101), (71, 49143), (78, 49170), (79, 49176), (80, 49179), (83, 49200), (90, 49272), (95, 49299), (96, 49305), (104, 49350), (125, 49431), (126, 49440), (129, 49452), (130, 49455), (131, 49458), (134, 49491), (138, 49521), (155, 49608), (156, 49611), (176, 49674), (180, 49698), (183, 49713), (191, 49773), (196, 49794), (198, 49806), (202, 49833), (213, 49875),

Gene: Peel_73 Start: 48688, Stop: 49875, Start Num: 29

Candidate Starts for Peel_73:

(Start: 29 @48688 has 111 MA's), (31, 48694), (Start: 47 @48814 has 1 MA's), (48, 48820), (54, 48838), (68, 48862), (78, 48907), (79, 48913), (80, 48916), (83, 48937), (86, 48949), (90, 49012), (95, 49039), (96, 49045), (98, 49066), (104, 49090), (109, 49108), (129, 49192), (130, 49195), (134, 49231), (135, 49234), (138, 49261), (140, 49270), (148, 49312), (184, 49444), (191, 49501), (202,

49561), (213, 49606), (216, 49612), (219, 49624), (237, 49699), (241, 49723), (243, 49750), (244, 49756), (247, 49771), (250, 49783), (255, 49825),

Gene: Phalm_66 Start: 43063, Stop: 43965, Start Num: 45

Candidate Starts for Phalm_66:

(2, 42544), (17, 42859), (36, 42988), (43, 43033), (Start: 45 @43063 has 60 MA's), (50, 43105), (104, 43384), (105, 43387), (127, 43477), (170, 43669), (176, 43702), (185, 43756), (190, 43798), (199, 43849), (205, 43879), (217, 43918), (218, 43927),

Gene: Pharb_72 Start: 48273, Stop: 49181, Start Num: 64

Candidate Starts for Pharb_72:

(Start: 46 @48225 has 1 MA's), (59, 48264), (Start: 64 @48273 has 19 MA's), (74, 48309), (83, 48360), (87, 48381), (90, 48432), (103, 48510), (109, 48531), (119, 48555), (130, 48609), (132, 48633), (134, 48645), (137, 48672), (140, 48684), (144, 48711), (171, 48774), (184, 48843), (185, 48855), (191, 48897), (198, 48930), (202, 48957), (204, 48969), (225, 49044),

Gene: Phayonce_69 Start: 45605, Stop: 46513, Start Num: 45

Candidate Starts for Phayonce_69:

(1, 45062), (3, 45080), (6, 45269), (17, 45386), (36, 45518), (43, 45575), (Start: 45 @45605 has 60 MA's), (Start: 46 @45620 has 1 MA's), (67, 45683), (77, 45737), (104, 45926), (105, 45929), (107, 45935), (125, 46007), (148, 46145), (170, 46211), (176, 46244), (199, 46391), (205, 46421), (217, 46460),

Gene: Phegasus_68 Start: 42454, Stop: 43356, Start Num: 45

Candidate Starts for Phegasus_68:

(4, 41959), (17, 42250), (36, 42379), (43, 42424), (Start: 45 @42454 has 60 MA's), (50, 42496), (104, 42775), (105, 42778), (127, 42868), (170, 43060), (176, 43093), (185, 43147), (190, 43189), (199, 43240), (205, 43270), (217, 43309), (218, 43318),

Gene: PhelpsODU_76 Start: 48713, Stop: 49819, Start Num: 29

Candidate Starts for PhelpsODU_76:

(Start: 29 @48713 has 111 MA's), (31, 48719), (39, 48764), (Start: 47 @48827 has 1 MA's), (53, 48851), (68, 48875), (78, 48920), (80, 48929), (82, 48941), (83, 48950), (86, 48962), (90, 49022), (98, 49076), (99, 49079), (104, 49100), (129, 49202), (134, 49241), (140, 49280), (156, 49361), (159, 49367), (162, 49370), (170, 49391), (171, 49397), (176, 49424), (182, 49457), (184, 49466), (191, 49523), (193, 49532), (195, 49541), (196, 49544), (198, 49556), (202, 49583), (213, 49625),

Gene: Phineas_66 Start: 42030, Stop: 42932, Start Num: 45

Candidate Starts for Phineas_66:

(35, 41952), (Start: 45 @42030 has 60 MA's), (50, 42072), (77, 42162), (94, 42294), (104, 42351), (105, 42354), (127, 42444), (170, 42636), (190, 42765), (199, 42816), (205, 42846), (217, 42885), (218, 42894),

Gene: Phrank_77 Start: 48576, Stop: 49679, Start Num: 29

Candidate Starts for Phrank_77:

(19, 48498), (Start: 29 @48576 has 111 MA's), (31, 48582), (40, 48633), (Start: 47 @48690 has 1 MA's), (53, 48714), (70, 48750), (80, 48792), (83, 48813), (86, 48825), (87, 48834), (90, 48885), (98, 48939), (99, 48942), (125, 49044), (129, 49065), (140, 49143), (156, 49221), (171, 49260), (184, 49329), (187, 49353), (191, 49383), (193, 49392), (195, 49401), (196, 49404), (198, 49416), (202, 49443), (213, 49485), (251, 49590), (259, 49653),

Gene: Piatt_72 Start: 48883, Stop: 50070, Start Num: 29

Candidate Starts for Piatt_72:

(Start: 29 @48883 has 111 MA's), (31, 48889), (Start: 47 @49009 has 1 MA's), (48, 49015), (54, 49033), (68, 49057), (78, 49102), (79, 49108), (80, 49111), (83, 49132), (86, 49144), (90, 49207), (95, 49234), (96, 49240), (98, 49261), (104, 49285), (109, 49303), (129, 49387), (130, 49390), (134, 49426), (135, 49429), (138, 49456), (140, 49465), (148, 49507), (184, 49639), (191, 49696), (202, 49756), (213, 49801), (216, 49807), (219, 49819), (237, 49894), (241, 49918), (243, 49945), (244, 49951), (247, 49966), (250, 49978), (255, 50020),

Gene: Piper2020_91 Start: 53066, Stop: 53971, Start Num: 45

Candidate Starts for Piper2020_91:

(Start: 45 @53066 has 60 MA's), (67, 53144), (116, 53429), (127, 53480), (134, 53528), (138, 53558), (170, 53672), (182, 53738), (204, 53876), (205, 53882), (210, 53906), (218, 53930), (221, 53939),

Gene: Pixie_73 Start: 48565, Stop: 49482, Start Num: 64

Candidate Starts for Pixie_73:

(Start: 42 @48472 has 1 MA's), (60, 48559), (Start: 64 @48565 has 19 MA's), (74, 48601), (83, 48652), (90, 48724), (109, 48823), (119, 48847), (130, 48901), (132, 48925), (134, 48937), (140, 48976), (144, 49003), (171, 49066), (176, 49093), (177, 49096), (184, 49135), (185, 49147), (191, 49189), (198, 49222), (204, 49261), (225, 49336),

Gene: Pokerus_74 Start: 49212, Stop: 50318, Start Num: 29

Candidate Starts for Pokerus_74:

(Start: 29 @49212 has 111 MA's), (31, 49218), (Start: 41 @49269 has 7 MA's), (Start: 47 @49338 has 1 MA's), (48, 49344), (54, 49362), (68, 49386), (78, 49431), (79, 49437), (80, 49440), (83, 49461), (86, 49473), (90, 49536), (93, 49554), (95, 49563), (96, 49569), (98, 49590), (104, 49614), (109, 49632), (129, 49716), (130, 49719), (134, 49755), (135, 49758), (138, 49785), (140, 49794), (148, 49836), (153, 49851), (158, 49869), (191, 50025), (198, 50058), (202, 50085), (213, 50130), (219, 50148), (255, 50268),

Gene: Polkaroo_67 Start: 43777, Stop: 44679, Start Num: 45

Candidate Starts for Polkaroo_67:

(2, 43258), (17, 43573), (36, 43702), (43, 43747), (Start: 45 @43777 has 60 MA's), (50, 43819), (77, 43909), (104, 44098), (105, 44101), (127, 44191), (170, 44383), (176, 44416), (185, 44470), (190, 44512), (199, 44563), (205, 44593), (217, 44632), (218, 44641),

Gene: Prithvi_76 Start: 49236, Stop: 50336, Start Num: 29

Candidate Starts for Prithvi_76:

(19, 49158), (20, 49167), (Start: 29 @49236 has 111 MA's), (31, 49242), (Start: 47 @49350 has 1 MA's), (54, 49377), (76, 49434), (79, 49455), (80, 49458), (83, 49479), (86, 49491), (90, 49554), (95, 49581), (96, 49587), (98, 49608), (103, 49629), (104, 49632), (109, 49650), (129, 49734), (130, 49737), (134, 49773), (135, 49776), (138, 49803), (140, 49812), (148, 49854), (161, 49890), (175, 49941), (184, 49986), (191, 50043), (198, 50076), (202, 50103), (211, 50142), (219, 50166), (255, 50286),

Gene: Psycho_66 Start: 46548, Stop: 47402, Start Num: 61

Candidate Starts for Psycho_66:

(25, 46356), (32, 46389), (Start: 45 @46485 has 60 MA's), (Start: 61 @46548 has 22 MA's), (Start: 63 @46551 has 19 MA's), (74, 46590), (75, 46593), (79, 46617), (83, 46641), (90, 46713), (98, 46767), (108, 46800), (123, 46851), (125, 46857), (129, 46878), (130, 46881), (135, 46920), (147, 46995), (148, 46998), (157, 47028), (180, 47106), (183, 47121), (191, 47178), (194, 47190), (201, 47235), (209, 47265), (213, 47280), (219, 47298), (223, 47310), (228, 47334),

Gene: Purky_78 Start: 47557, Stop: 48462, Start Num: 45

Candidate Starts for Purky_78:

(Start: 45 @47557 has 60 MA's), (67, 47635), (96, 47830), (116, 47920), (134, 48019), (170, 48163), (177, 48199), (197, 48322), (205, 48373), (210, 48397), (218, 48421), (221, 48430),

Gene: Pygmy_69 Start: 43495, Stop: 44397, Start Num: 45

Candidate Starts for Pygmy_69:

(2, 42976), (17, 43291), (36, 43420), (43, 43465), (Start: 45 @43495 has 60 MA's), (50, 43537), (77, 43627), (94, 43759), (104, 43816), (105, 43819), (127, 43909), (170, 44101), (176, 44134), (185, 44188), (190, 44230), (199, 44281), (205, 44311), (217, 44350), (218, 44359),

Gene: QueenHazel_61 Start: 41353, Stop: 42255, Start Num: 45

Candidate Starts for QueenHazel_61:

(24, 41236), (30, 41254), (Start: 45 @41353 has 60 MA's), (104, 41674), (116, 41716), (127, 41767), (170, 41959), (176, 41992), (185, 42046), (190, 42088), (205, 42169), (217, 42208), (218, 42217),

Gene: QuincyRose_71 Start: 49093, Stop: 50280, Start Num: 29

Candidate Starts for QuincyRose_71:

(Start: 29 @49093 has 111 MA's), (31, 49099), (Start: 47 @49219 has 1 MA's), (48, 49225), (68, 49267), (78, 49312), (79, 49318), (80, 49321), (83, 49342), (86, 49354), (90, 49417), (95, 49444), (96, 49450), (98, 49471), (104, 49495), (109, 49513), (129, 49597), (130, 49600), (134, 49636), (135, 49639), (138, 49666), (140, 49675), (148, 49717), (191, 49906), (202, 49966), (213, 50011), (216, 50017), (219, 50029), (237, 50104), (241, 50128), (243, 50155), (244, 50161), (247, 50176), (250, 50188), (255, 50230),

Gene: Ramen_74 Start: 48533, Stop: 49639, Start Num: 29

Candidate Starts for Ramen_74:

(7, 48365), (9, 48389), (11, 48398), (13, 48410), (14, 48416), (18, 48455), (Start: 29 @48533 has 111 MA's), (31, 48539), (Start: 47 @48659 has 1 MA's), (48, 48665), (49, 48674), (54, 48683), (68, 48707), (78, 48752), (79, 48758), (80, 48761), (83, 48782), (86, 48794), (90, 48857), (95, 48884), (96, 48890), (98, 48911), (104, 48935), (109, 48953), (120, 48989), (129, 49037), (130, 49040), (134, 49076), (135, 49079), (138, 49106), (140, 49115), (148, 49157), (153, 49172), (158, 49190), (184, 49289), (191, 49346), (198, 49379), (202, 49406), (213, 49451), (219, 49469), (255, 49589),

Gene: Rando14_69 Start: 47204, Stop: 48082, Start Num: 61

Candidate Starts for Rando14_69:

(Start: 45 @47141 has 60 MA's), (59, 47201), (Start: 61 @47204 has 22 MA's), (72, 47243), (79, 47282), (83, 47306), (86, 47318), (108, 47465), (115, 47477), (127, 47534), (130, 47546), (131, 47549), (138, 47612), (140, 47621), (147, 47660), (148, 47663), (157, 47693), (180, 47771), (183, 47786), (191, 47843), (194, 47855), (209, 47930), (213, 47945), (219, 47963), (220, 47966),

Gene: Rapunzel97_76 Start: 49184, Stop: 50290, Start Num: 29

Candidate Starts for Rapunzel97_76:

(Start: 29 @49184 has 111 MA's), (31, 49190), (Start: 41 @49241 has 7 MA's), (Start: 47 @49310 has 1 MA's), (48, 49316), (54, 49334), (68, 49358), (78, 49403), (79, 49409), (80, 49412), (83, 49433), (86, 49445), (90, 49508), (93, 49526), (95, 49535), (96, 49541), (98, 49562), (104, 49586), (109, 49604), (129, 49688), (130, 49691), (134, 49727), (135, 49730), (138, 49757), (140, 49766), (148, 49808), (153, 49823), (158, 49841), (184, 49940), (191, 49997), (198, 50030), (202, 50057), (213, 50102), (219, 50120), (255, 50240),

Gene: Reptar3000_75 Start: 47721, Stop: 48599, Start Num: 63

Candidate Starts for Reptar3000_75:

(Start: 63 @47721 has 19 MA's), (76, 47766), (80, 47790), (81, 47799), (88, 47880), (95, 47922), (96, 47928), (101, 47961), (109, 47994), (115, 48003), (127, 48060), (129, 48069), (130, 48072), (132, 48096), (138, 48138), (141, 48159), (170, 48210), (171, 48216), (175, 48240), (176, 48243), (180,

48267), (182, 48276), (192, 48342), (196, 48360), (197, 48366), (198, 48372), (202, 48399), (207, 48420), (215, 48450), (226, 48495),

Gene: Richo_74 Start: 49082, Stop: 50047, Start Num: 53

Candidate Starts for Richo_74:

(Start: 29 @48944 has 111 MA's), (31, 48950), (39, 48995), (Start: 47 @49058 has 1 MA's), (53, 49082), (71, 49124), (78, 49151), (79, 49157), (80, 49160), (83, 49181), (90, 49253), (95, 49280), (96, 49286), (104, 49331), (125, 49412), (126, 49421), (129, 49433), (130, 49436), (131, 49439), (134, 49472), (138, 49502), (140, 49511), (155, 49589), (156, 49592), (171, 49628), (176, 49655), (180, 49679), (183, 49694), (191, 49754), (196, 49775), (198, 49787), (202, 49814), (211, 49850), (213, 49856), (251, 49961),

Gene: Rosmarinus_73 Start: 48674, Stop: 49861, Start Num: 29

Candidate Starts for Rosmarinus_73:

(Start: 29 @48674 has 111 MA's), (31, 48680), (Start: 47 @48800 has 1 MA's), (48, 48806), (54, 48824), (68, 48848), (78, 48893), (79, 48899), (80, 48902), (83, 48923), (86, 48935), (90, 48998), (95, 49025), (96, 49031), (98, 49052), (104, 49076), (109, 49094), (129, 49178), (130, 49181), (134, 49217), (135, 49220), (138, 49247), (140, 49256), (148, 49298), (184, 49430), (191, 49487), (202, 49547), (213, 49592), (216, 49598), (219, 49610), (237, 49685), (241, 49709), (243, 49736), (244, 49742), (247, 49757), (250, 49769), (255, 49811),

Gene: Ruthiejr_79 Start: 49661, Stop: 50539, Start Num: 63

Candidate Starts for Ruthiejr_79:

(Start: 63 @49661 has 19 MA's), (76, 49706), (80, 49730), (81, 49739), (84, 49769), (88, 49820), (95, 49862), (96, 49868), (99, 49892), (101, 49901), (109, 49934), (115, 49943), (127, 50000), (129, 50009), (130, 50012), (132, 50036), (138, 50078), (141, 50099), (170, 50153), (171, 50159), (175, 50183), (176, 50186), (180, 50210), (182, 50219), (186, 50243), (192, 50285), (193, 50291), (197, 50309), (198, 50315), (202, 50342), (203, 50351), (207, 50363), (215, 50393), (226, 50438),

Gene: SamScheppers_77 Start: 49936, Stop: 50814, Start Num: 63

Candidate Starts for SamScheppers_77:

(Start: 63 @49936 has 19 MA's), (76, 49981), (81, 50014), (84, 50044), (88, 50095), (95, 50137), (96, 50143), (98, 50164), (101, 50176), (109, 50209), (115, 50218), (127, 50275), (129, 50284), (130, 50287), (132, 50311), (138, 50353), (141, 50374), (170, 50425), (171, 50431), (175, 50455), (176, 50458), (180, 50482), (182, 50491), (186, 50515), (192, 50557), (193, 50563), (197, 50581), (198, 50587), (202, 50614), (203, 50623), (207, 50635), (226, 50710), (246, 50803),

Gene: SamuelLPlaqson_73 Start: 49181, Stop: 50269, Start Num: 29

Candidate Starts for SamuelLPlaqson_73:

(Start: 29 @49181 has 111 MA's), (31, 49187), (Start: 47 @49307 has 1 MA's), (54, 49334), (76, 49391), (79, 49412), (80, 49415), (83, 49436), (90, 49511), (95, 49538), (96, 49544), (98, 49565), (103, 49586), (104, 49589), (109, 49607), (129, 49691), (130, 49694), (134, 49730), (135, 49733), (138, 49760), (140, 49769), (165, 49835), (179, 49901), (184, 49922), (191, 49979), (198, 50012), (202, 50039), (219, 50099), (220, 50102), (255, 50219),

Gene: Sbash_79 Start: 50602, Stop: 51504, Start Num: 45

Candidate Starts for Sbash_79:

(27, 50491), (33, 50509), (Start: 45 @50602 has 60 MA's), (Start: 63 @50668 has 19 MA's), (67, 50680), (76, 50725), (77, 50734), (107, 50932), (116, 50965), (127, 51016), (134, 51064), (138, 51094), (170, 51208), (177, 51244), (197, 51367), (199, 51388), (205, 51418), (210, 51442),

Gene: Scarlett_76 Start: 49295, Stop: 50326, Start Num: 41

Candidate Starts for Scarlett_76:

(26, 49220), (30, 49235), (Start: 41 @49295 has 7 MA's), (Start: 42 @49301 has 1 MA's), (54, 49379), (76, 49439), (79, 49460), (83, 49484), (90, 49559), (93, 49577), (106, 49643), (126, 49727), (129, 49739), (130, 49742), (140, 49817), (147, 49862), (156, 49895), (172, 49934), (180, 49979), (183, 49994), (191, 50051), (216, 50162), (219, 50174), (258, 50297),

Gene: SgtBeansprout_61 Start: 45735, Stop: 46916, Start Num: 29

Candidate Starts for SgtBeansprout_61:

(Start: 29 @45735 has 111 MA's), (31, 45741), (34, 45753), (Start: 47 @45849 has 1 MA's), (53, 45873), (Start: 61 @45885 has 22 MA's), (70, 45909), (71, 45915), (76, 45927), (78, 45942), (79, 45948), (80, 45951), (83, 45972), (85, 45981), (86, 45984), (89, 46038), (90, 46044), (93, 46062), (96, 46077), (98, 46098), (99, 46101), (104, 46122), (112, 46149), (114, 46155), (118, 46173), (125, 46203), (129, 46224), (130, 46227), (133, 46254), (134, 46263), (138, 46293), (140, 46302), (141, 46314), (152, 46359), (163, 46386), (164, 46389), (172, 46422), (174, 46437), (176, 46443), (180, 46467), (182, 46476), (184, 46485), (188, 46518), (191, 46539), (193, 46548), (194, 46551), (198, 46572), (202, 46599), (211, 46638), (213, 46644), (219, 46662), (220, 46665), (223, 46674), (232, 46710), (237, 46737), (238, 46740), (239, 46746), (241, 46761), (243, 46788), (247, 46809), (248, 46812), (250, 46821), (260, 46905), (261, 46908),

Gene: Shadow1_77 Start: 48873, Stop: 49973, Start Num: 29

Candidate Starts for Shadow1_77:

(Start: 29 @48873 has 111 MA's), (31, 48879), (39, 48924), (Start: 47 @48987 has 1 MA's), (53, 49011), (81, 49098), (83, 49110), (90, 49182), (96, 49215), (98, 49236), (99, 49239), (109, 49278), (129, 49362), (134, 49401), (156, 49518), (162, 49527), (173, 49572), (176, 49584), (191, 49680), (193, 49689), (195, 49698), (196, 49701), (198, 49713), (202, 49740), (206, 49758), (213, 49782), (251, 49887), (253, 49908), (257, 49935),

Gene: Shaobing_74 Start: 48980, Stop: 50083, Start Num: 29

Candidate Starts for Shaobing_74:

(Start: 29 @48980 has 111 MA's), (31, 48986), (39, 49031), (Start: 47 @49094 has 1 MA's), (53, 49118), (71, 49160), (78, 49187), (79, 49193), (80, 49196), (83, 49217), (90, 49289), (95, 49316), (96, 49322), (104, 49367), (125, 49448), (126, 49457), (129, 49469), (130, 49472), (131, 49475), (134, 49508), (138, 49538), (140, 49547), (155, 49625), (156, 49628), (171, 49664), (176, 49691), (180, 49715), (183, 49730), (191, 49790), (196, 49811), (198, 49823), (202, 49850), (211, 49886), (213, 49892),

Gene: ShedlockHolmes_76 Start: 49078, Stop: 49995, Start Num: 64

Candidate Starts for ShedlockHolmes_76:

(Start: 42 @48985 has 1 MA's), (Start: 64 @49078 has 19 MA's), (74, 49114), (83, 49165), (87, 49186), (90, 49237), (109, 49336), (119, 49360), (130, 49414), (132, 49438), (134, 49450), (140, 49489), (143, 49510), (171, 49579), (176, 49606), (177, 49609), (184, 49648), (185, 49660), (191, 49702), (198, 49735), (204, 49774), (225, 49849),

Gene: ShiaSurprise_74 Start: 48883, Stop: 50070, Start Num: 29

Candidate Starts for ShiaSurprise_74:

(Start: 29 @48883 has 111 MA's), (31, 48889), (Start: 47 @49009 has 1 MA's), (48, 49015), (54, 49033), (68, 49057), (78, 49102), (79, 49108), (80, 49111), (83, 49132), (86, 49144), (90, 49207), (95, 49234), (96, 49240), (98, 49261), (104, 49285), (109, 49303), (129, 49387), (130, 49390), (134, 49426), (135, 49429), (138, 49456), (140, 49465), (148, 49507), (184, 49639), (191, 49696), (202, 49756), (213, 49801), (216, 49807), (219, 49819), (237, 49894), (241, 49918), (243, 49945), (244, 49951), (247, 49966), (250, 49978), (255, 50020),

Gene: Shipwreck_68 Start: 43470, Stop: 44372, Start Num: 45

Candidate Starts for Shipwreck_68:

(2, 42951), (17, 43266), (36, 43395), (43, 43440), (Start: 45 @43470 has 60 MA's), (50, 43512), (77, 43602), (94, 43734), (104, 43791), (105, 43794), (127, 43884), (170, 44076), (190, 44205), (199, 44256), (205, 44286), (217, 44325), (218, 44334),

Gene: SirPhilip_72 Start: 49101, Stop: 50201, Start Num: 29

Candidate Starts for SirPhilip_72:

(19, 49023), (Start: 29 @49101 has 111 MA's), (31, 49107), (39, 49152), (53, 49239), (57, 49245), (68, 49263), (71, 49281), (79, 49314), (81, 49326), (83, 49338), (86, 49350), (87, 49359), (90, 49413), (98, 49467), (103, 49488), (104, 49491), (129, 49593), (133, 49623), (140, 49671), (150, 49725), (155, 49743), (162, 49755), (191, 49905), (195, 49923), (198, 49938), (201, 49962), (202, 49965), (213, 50010), (257, 50163),

Gene: Slarp_78 Start: 49635, Stop: 50513, Start Num: 63

Candidate Starts for Slarp_78:

(Start: 63 @49635 has 19 MA's), (76, 49680), (81, 49713), (84, 49743), (88, 49794), (95, 49836), (96, 49842), (98, 49863), (101, 49875), (109, 49908), (115, 49917), (127, 49974), (129, 49983), (130, 49986), (132, 50010), (138, 50052), (141, 50073), (170, 50124), (171, 50130), (175, 50154), (176, 50157), (180, 50181), (182, 50190), (186, 50214), (192, 50256), (193, 50262), (197, 50280), (198, 50286), (202, 50313), (203, 50322), (207, 50334), (226, 50409),

Gene: Slimphazie_75 Start: 49184, Stop: 50290, Start Num: 29

Candidate Starts for Slimphazie_75:

(Start: 29 @49184 has 111 MA's), (31, 49190), (Start: 41 @49241 has 7 MA's), (Start: 47 @49310 has 1 MA's), (48, 49316), (54, 49334), (68, 49358), (78, 49403), (79, 49409), (80, 49412), (83, 49433), (86, 49445), (90, 49508), (93, 49526), (95, 49535), (96, 49541), (98, 49562), (104, 49586), (109, 49604), (129, 49688), (130, 49691), (134, 49727), (135, 49730), (138, 49757), (140, 49766), (148, 49808), (153, 49823), (158, 49841), (184, 49940), (191, 49997), (198, 50030), (202, 50057), (213, 50102), (219, 50120), (255, 50240),

Gene: SoSeph_67 Start: 48251, Stop: 49087, Start Num: 61

Candidate Starts for SoSeph_67:

(25, 48059), (32, 48092), (Start: 45 @48188 has 60 MA's), (Start: 61 @48251 has 22 MA's), (75, 48293), (79, 48317), (83, 48341), (89, 48407), (90, 48413), (99, 48470), (108, 48500), (123, 48551), (129, 48578), (130, 48581), (135, 48620), (140, 48656), (141, 48668), (147, 48695), (148, 48698), (150, 48704), (151, 48713), (157, 48728), (171, 48755), (180, 48806), (183, 48821), (191, 48878), (194, 48890), (195, 48896), (202, 48938), (208, 48962), (213, 48980), (219, 48998), (220, 49001), (223, 49010),

Gene: Sonah_66 Start: 41167, Stop: 42069, Start Num: 45

Candidate Starts for Sonah_66:

(2, 40648), (17, 40963), (36, 41092), (43, 41137), (Start: 45 @41167 has 60 MA's), (50, 41209), (94, 41431), (104, 41488), (105, 41491), (127, 41581), (170, 41773), (190, 41902), (199, 41953), (205, 41983), (217, 42022), (218, 42031),

Gene: Spock_73 Start: 48687, Stop: 49874, Start Num: 29

Candidate Starts for Spock_73:

(Start: 29 @48687 has 111 MA's), (31, 48693), (Start: 47 @48813 has 1 MA's), (48, 48819), (54, 48837), (68, 48861), (78, 48906), (79, 48912), (80, 48915), (83, 48936), (86, 48948), (90, 49011), (95, 49038), (96, 49044), (98, 49065), (104, 49089), (109, 49107), (129, 49191), (130, 49194), (134, 49230), (135, 49233), (138, 49260), (140, 49269), (148, 49311), (184, 49443), (191, 49500), (202, 49560), (213, 49605), (216, 49611), (219, 49623), (237, 49698), (241, 49722), (243, 49749), (244, 49755), (247, 49770), (250, 49782), (255, 49824),

Gene: StevieRay_70 Start: 44234, Stop: 45136, Start Num: 45

Candidate Starts for StevieRay_70:

(2, 43715), (17, 44030), (36, 44159), (43, 44204), (Start: 45 @44234 has 60 MA's), (50, 44276), (77, 44366), (104, 44555), (105, 44558), (127, 44648), (170, 44840), (190, 44969), (205, 45050), (218, 45098),

Gene: Stinson_74 Start: 49279, Stop: 50469, Start Num: 29

Candidate Starts for Stinson_74:

(Start: 29 @49279 has 111 MA's), (31, 49285), (Start: 47 @49405 has 1 MA's), (54, 49432), (76, 49489), (79, 49510), (80, 49513), (83, 49534), (86, 49546), (90, 49609), (93, 49627), (95, 49636), (96, 49642), (97, 49648), (98, 49663), (103, 49684), (104, 49687), (109, 49705), (129, 49789), (130, 49792), (134, 49828), (138, 49858), (140, 49867), (148, 49909), (153, 49924), (191, 50098), (202, 50158), (211, 50194), (213, 50200), (220, 50221), (237, 50293), (241, 50317), (243, 50344), (250, 50377),

Gene: StressBall_65 Start: 42765, Stop: 43667, Start Num: 45

Candidate Starts for StressBall_65:

(2, 42246), (17, 42561), (36, 42690), (43, 42735), (Start: 45 @42765 has 60 MA's), (50, 42807), (104, 43086), (105, 43089), (127, 43179), (170, 43371), (176, 43404), (185, 43458), (190, 43500), (199, 43551), (205, 43581), (217, 43620), (218, 43629),

Gene: Strobilo_78 Start: 51113, Stop: 52015, Start Num: 64

Candidate Starts for Strobilo_78:

(Start: 64 @51113 has 19 MA's), (76, 51155), (90, 51290), (96, 51323), (124, 51425), (125, 51428), (127, 51440), (130, 51452), (149, 51566), (170, 51605), (176, 51638), (191, 51734), (198, 51767), (200, 51788), (202, 51794), (207, 51815), (215, 51845), (216, 51848), (227, 51893), (245, 51983), (249, 51998),

Gene: Stuck_77 Start: 49856, Stop: 50758, Start Num: 45

Candidate Starts for Stuck_77:

(Start: 45 @49856 has 60 MA's), (67, 49934), (104, 50177), (116, 50219), (127, 50270), (134, 50318), (148, 50396), (177, 50498), (197, 50621), (199, 50642), (205, 50672), (210, 50696),

Gene: Sulley_72 Start: 48714, Stop: 49901, Start Num: 29

Candidate Starts for Sulley_72:

(Start: 29 @48714 has 111 MA's), (31, 48720), (Start: 41 @48771 has 7 MA's), (Start: 47 @48840 has 1 MA's), (48, 48846), (54, 48864), (68, 48888), (78, 48933), (79, 48939), (80, 48942), (83, 48963), (86, 48975), (90, 49038), (93, 49056), (95, 49065), (96, 49071), (98, 49092), (104, 49116), (109, 49134), (129, 49218), (130, 49221), (134, 49257), (135, 49260), (138, 49287), (140, 49296), (148, 49338), (191, 49527), (202, 49587), (213, 49632), (216, 49638), (219, 49650), (237, 49725), (241, 49749), (243, 49776), (244, 49782), (247, 49797), (250, 49809), (255, 49851),

Gene: Sunflower1121_78 Start: 49019, Stop: 50119, Start Num: 29

Candidate Starts for Sunflower1121_78:

(Start: 29 @49019 has 111 MA's), (31, 49025), (39, 49070), (Start: 47 @49133 has 1 MA's), (53, 49157), (81, 49244), (83, 49256), (90, 49328), (96, 49361), (98, 49382), (99, 49385), (109, 49424), (129, 49508), (134, 49547), (156, 49664), (162, 49673), (173, 49718), (176, 49730), (191, 49826), (193, 49835), (195, 49844), (196, 49847), (198, 49859), (202, 49886), (206, 49904), (213, 49928), (251, 50033), (253, 50054), (257, 50081),

Gene: Syra333_76 Start: 48747, Stop: 49847, Start Num: 29

Candidate Starts for Syra333_76:

(19, 48669), (Start: 29 @48747 has 111 MA's), (31, 48753), (39, 48798), (Start: 47 @48861 has 1 MA's), (53, 48885), (83, 48984), (90, 49056), (96, 49089), (98, 49110), (99, 49113), (129, 49236), (134, 49275), (156, 49392), (162, 49401), (173, 49446), (176, 49458), (191, 49554), (193, 49563), (195, 49572), (196, 49575), (198, 49587), (202, 49614), (213, 49656), (257, 49809),

Gene: TBond007_70 Start: 48564, Stop: 49481, Start Num: 64

Candidate Starts for TBond007_70:

(60, 48558), (Start: 64 @48564 has 19 MA's), (74, 48600), (83, 48651), (90, 48723), (109, 48822), (119, 48846), (130, 48900), (132, 48924), (134, 48936), (140, 48975), (144, 49002), (171, 49065), (176, 49092), (177, 49095), (184, 49134), (185, 49146), (191, 49188), (198, 49221), (204, 49260), (225, 49335),

Gene: TClif_74 Start: 48506, Stop: 49597, Start Num: 29

Candidate Starts for TClif_74:

(19, 48431), (21, 48446), (Start: 29 @48506 has 111 MA's), (31, 48512), (39, 48557), (81, 48731), (83, 48743), (90, 48815), (95, 48842), (96, 48848), (98, 48869), (104, 48893), (113, 48920), (125, 48974), (130, 48998), (131, 49001), (140, 49073), (141, 49085), (146, 49115), (162, 49148), (182, 49238), (191, 49301), (198, 49334), (202, 49361), (219, 49424), (257, 49559),

Gene: TM4_75 Start: 45538, Stop: 46449, Start Num: 64

Candidate Starts for TM4_75:

(Start: 64 @45538 has 19 MA's), (76, 45580), (90, 45715), (96, 45748), (124, 45850), (125, 45853), (130, 45877), (149, 45991), (170, 46030), (176, 46063), (191, 46159), (198, 46192), (200, 46213), (201, 46216), (202, 46219), (207, 46240), (215, 46270), (227, 46318), (249, 46432),

Gene: Tachez_73 Start: 48531, Stop: 49718, Start Num: 29

Candidate Starts for Tachez_73:

(Start: 29 @48531 has 111 MA's), (31, 48537), (Start: 47 @48657 has 1 MA's), (48, 48663), (54, 48681), (68, 48705), (78, 48750), (79, 48756), (80, 48759), (83, 48780), (86, 48792), (90, 48855), (95, 48882), (96, 48888), (98, 48909), (104, 48933), (109, 48951), (129, 49035), (130, 49038), (134, 49074), (135, 49077), (138, 49104), (140, 49113), (148, 49155), (184, 49287), (191, 49344), (202, 49404), (213, 49449), (216, 49455), (219, 49467), (237, 49542), (241, 49566), (243, 49593), (244, 49599), (247, 49614), (250, 49626), (255, 49668),

Gene: TaiwanKao_75 Start: 49281, Stop: 50393, Start Num: 29

Candidate Starts for TaiwanKao_75:

(Start: 29 @49281 has 111 MA's), (31, 49287), (Start: 47 @49407 has 1 MA's), (54, 49434), (76, 49491), (79, 49512), (80, 49515), (83, 49536), (90, 49611), (95, 49638), (98, 49665), (103, 49686), (104, 49689), (109, 49707), (129, 49791), (130, 49794), (134, 49830), (138, 49860), (140, 49869), (148, 49911), (153, 49926), (161, 49947), (175, 49998), (184, 50043), (191, 50100), (198, 50133), (202, 50160), (211, 50199), (219, 50223), (252, 50322), (255, 50343),

Gene: Taquito_77 Start: 49669, Stop: 50547, Start Num: 63

Candidate Starts for Taquito_77:

(Start: 63 @49669 has 19 MA's), (76, 49714), (81, 49747), (84, 49777), (88, 49828), (95, 49870), (96, 49876), (101, 49909), (109, 49942), (115, 49951), (127, 50008), (129, 50017), (130, 50020), (132, 50044), (138, 50086), (141, 50107), (170, 50158), (171, 50164), (175, 50188), (176, 50191), (180, 50215), (182, 50224), (186, 50248), (192, 50290), (193, 50296), (197, 50314), (198, 50320), (202, 50347), (203, 50356), (207, 50368), (226, 50443),

Gene: Techage_66 Start: 42044, Stop: 42946, Start Num: 45

Candidate Starts for Techage_66:

(4, 41552), (17, 41840), (36, 41969), (43, 42014), (Start: 45 @42044 has 60 MA's), (50, 42086), (104, 42365), (105, 42368), (127, 42458), (170, 42650), (176, 42683), (185, 42737), (190, 42779), (199, 42830), (205, 42860), (217, 42899), (218, 42908),

Gene: Teejan_62 Start: 48348, Stop: 49529, Start Num: 29

Candidate Starts for Teejan_62:

(Start: 29 @48348 has 111 MA's), (31, 48354), (34, 48366), (Start: 47 @48462 has 1 MA's), (53, 48486), (Start: 61 @48498 has 22 MA's), (70, 48522), (71, 48528), (76, 48540), (78, 48555), (79, 48561), (80, 48564), (83, 48585), (85, 48594), (86, 48597), (89, 48651), (90, 48657), (93, 48675), (96, 48690), (98, 48711), (99, 48714), (104, 48735), (112, 48762), (114, 48768), (118, 48786), (125, 48816), (129, 48837), (130, 48840), (133, 48867), (134, 48876), (138, 48906), (140, 48915), (141, 48927), (152, 48972), (163, 48999), (164, 49002), (172, 49035), (174, 49050), (176, 49056), (180, 49080), (182, 49089), (184, 49098), (188, 49131), (191, 49152), (193, 49161), (194, 49164), (198, 49185), (202, 49212), (211, 49251), (213, 49257), (219, 49275), (220, 49278), (223, 49287), (232, 49323), (237, 49350), (238, 49353), (239, 49359), (241, 49374), (243, 49401), (247, 49422), (248, 49425), (250, 49434), (260, 49518), (261, 49521),

Gene: Thespis_67 Start: 43000, Stop: 43902, Start Num: 45

Candidate Starts for Thespis_67:

(2, 42481), (17, 42796), (36, 42925), (43, 42970), (Start: 45 @43000 has 60 MA's), (50, 43042), (104, 43321), (105, 43324), (127, 43414), (170, 43606), (190, 43735), (205, 43816), (218, 43864),

Gene: ThulaThula_73 Start: 47020, Stop: 47925, Start Num: 45

Candidate Starts for ThulaThula_73:

(3, 46501), (17, 46804), (36, 46933), (43, 46990), (Start: 45 @47020 has 60 MA's), (Start: 46 @47035 has 1 MA's), (67, 47098), (77, 47152), (104, 47341), (116, 47383), (127, 47434), (134, 47482), (138, 47512), (148, 47560), (170, 47626), (177, 47662), (197, 47785), (205, 47836), (210, 47860), (218, 47884), (221, 47893),

Gene: Thyatira_69 Start: 50243, Stop: 51079, Start Num: 61

Candidate Starts for Thyatira_69:

(25, 50051), (32, 50084), (Start: 45 @50180 has 60 MA's), (Start: 61 @50243 has 22 MA's), (75, 50285), (79, 50309), (83, 50333), (89, 50399), (90, 50405), (99, 50462), (108, 50492), (123, 50543), (129, 50570), (130, 50573), (135, 50612), (140, 50648), (141, 50660), (147, 50687), (148, 50690), (150, 50696), (157, 50720), (177, 50777), (183, 50813), (191, 50870), (194, 50882), (195, 50888), (202, 50930), (208, 50954), (213, 50972), (219, 50990), (220, 50993), (223, 51002),

Gene: Tierra_77 Start: 49387, Stop: 50490, Start Num: 29

Candidate Starts for Tierra_77:

(Start: 29 @49387 has 111 MA's), (31, 49393), (40, 49444), (Start: 47 @49501 has 1 MA's), (53, 49525), (70, 49561), (80, 49603), (83, 49624), (86, 49636), (87, 49645), (90, 49696), (98, 49750), (99, 49753), (125, 49855), (129, 49876), (140, 49954), (156, 50032), (171, 50071), (184, 50140), (187, 50164), (191, 50194), (193, 50203), (195, 50212), (196, 50215), (198, 50227), (202, 50254), (213, 50296), (259, 50464),

Gene: TingHuaYa_76 Start: 48446, Stop: 49630, Start Num: 29

Candidate Starts for TingHuaYa_76:

(Start: 29 @48446 has 111 MA's), (31, 48452), (37, 48470), (38, 48494), (39, 48497), (Start: 42 @48509 has 1 MA's), (Start: 47 @48560 has 1 MA's), (48, 48566), (54, 48587), (76, 48644), (79, 48665), (80, 48668), (83, 48689), (90, 48764), (93, 48782), (95, 48791), (96, 48797), (98, 48818), (103, 48839), (104, 48842), (109, 48860), (116, 48884), (129, 48944), (130, 48947), (134, 48983), (138, 49013), (140, 49022), (148, 49064), (153, 49079), (174, 49148), (180, 49178), (182, 49187), (184, 49196), (191, 49253), (202, 49313), (213, 49358), (216, 49364), (219, 49376), (237, 49451), (241,

49475), (243, 49502), (244, 49508), (247, 49523), (250, 49535), (258, 49601),

Gene: TiniBug_73 Start: 49181, Stop: 50269, Start Num: 29

Candidate Starts for TiniBug_73:

(Start: 29 @49181 has 111 MA's), (31, 49187), (Start: 41 @49238 has 7 MA's), (Start: 42 @49244 has 1 MA's), (Start: 47 @49307 has 1 MA's), (51, 49328), (54, 49334), (76, 49391), (79, 49412), (80, 49415), (83, 49436), (86, 49448), (88, 49487), (90, 49511), (93, 49529), (95, 49538), (96, 49544), (98, 49565), (103, 49586), (104, 49589), (109, 49607), (125, 49670), (129, 49691), (130, 49694), (134, 49730), (135, 49733), (138, 49760), (140, 49769), (165, 49835), (175, 49877), (191, 49979), (198, 50012), (202, 50039), (219, 50099), (220, 50102), (255, 50219),

Gene: Tiri_73 Start: 48587, Stop: 49774, Start Num: 29

Candidate Starts for Tiri_73:

(Start: 29 @48587 has 111 MA's), (31, 48593), (Start: 47 @48713 has 1 MA's), (48, 48719), (68, 48761), (78, 48806), (79, 48812), (80, 48815), (83, 48836), (86, 48848), (90, 48911), (95, 48938), (96, 48944), (98, 48965), (104, 48989), (109, 49007), (129, 49091), (130, 49094), (134, 49130), (135, 49133), (138, 49160), (140, 49169), (148, 49211), (184, 49343), (191, 49400), (202, 49460), (213, 49505), (216, 49511), (219, 49523), (237, 49598), (241, 49622), (243, 49649), (244, 49655), (247, 49670), (250, 49682), (255, 49724),

Gene: TootsiePop_86 Start: 52818, Stop: 53723, Start Num: 45

Candidate Starts for TootsiePop_86:

(Start: 45 @52818 has 60 MA's), (67, 52896), (116, 53181), (127, 53232), (134, 53280), (138, 53310), (170, 53424), (182, 53490), (204, 53628), (205, 53634), (210, 53658), (218, 53682), (221, 53691),

Gene: Topper_73 Start: 48686, Stop: 49873, Start Num: 29

Candidate Starts for Topper_73:

(Start: 29 @48686 has 111 MA's), (31, 48692), (Start: 47 @48812 has 1 MA's), (48, 48818), (54, 48836), (68, 48860), (78, 48905), (79, 48911), (80, 48914), (83, 48935), (86, 48947), (90, 49010), (95, 49037), (96, 49043), (98, 49064), (104, 49088), (109, 49106), (129, 49190), (130, 49193), (134, 49229), (135, 49232), (138, 49259), (140, 49268), (148, 49310), (184, 49442), (191, 49499), (202, 49559), (213, 49604), (216, 49610), (219, 49622), (237, 49697), (241, 49721), (243, 49748), (244, 49754), (247, 49769), (250, 49781), (255, 49823),

Gene: Torres_62 Start: 48349, Stop: 49530, Start Num: 29

Candidate Starts for Torres_62:

(Start: 29 @48349 has 111 MA's), (31, 48355), (34, 48367), (Start: 47 @48463 has 1 MA's), (53, 48487), (Start: 61 @48499 has 22 MA's), (70, 48523), (71, 48529), (76, 48541), (78, 48556), (79, 48562), (80, 48565), (83, 48586), (85, 48595), (86, 48598), (89, 48652), (90, 48658), (93, 48676), (96, 48691), (98, 48712), (99, 48715), (104, 48736), (112, 48763), (114, 48769), (118, 48787), (125, 48817), (129, 48838), (130, 48841), (133, 48868), (134, 48877), (138, 48907), (140, 48916), (141, 48928), (152, 48973), (163, 49000), (164, 49003), (172, 49036), (174, 49051), (176, 49057), (180, 49081), (182, 49090), (184, 49099), (188, 49132), (191, 49153), (193, 49162), (194, 49165), (198, 49186), (202, 49213), (211, 49252), (213, 49258), (219, 49276), (220, 49279), (223, 49288), (232, 49324), (237, 49351), (238, 49354), (239, 49360), (241, 49375), (243, 49402), (247, 49423), (248, 49426), (250, 49435), (260, 49519), (261, 49522),

Gene: Tortellini_71 Start: 46722, Stop: 47627, Start Num: 45

Candidate Starts for Tortellini_71:

(Start: 45 @46722 has 60 MA's), (67, 46800), (104, 47043), (107, 47052), (116, 47085), (127, 47136), (134, 47184), (138, 47214), (170, 47328), (176, 47361), (182, 47394), (199, 47508), (205, 47538), (210, 47562), (218, 47586), (221, 47595),

Gene: TreyKay_76 Start: 49236, Stop: 50336, Start Num: 29

Candidate Starts for TreyKay_76:

(19, 49158), (20, 49167), (Start: 29 @49236 has 111 MA's), (31, 49242), (Start: 47 @49350 has 1 MA's), (54, 49377), (76, 49434), (79, 49455), (80, 49458), (83, 49479), (86, 49491), (90, 49554), (95, 49581), (96, 49587), (98, 49608), (103, 49629), (104, 49632), (109, 49650), (129, 49734), (130, 49737), (134, 49773), (135, 49776), (138, 49803), (140, 49812), (148, 49854), (161, 49890), (175, 49941), (184, 49986), (191, 50043), (198, 50076), (202, 50103), (211, 50142), (219, 50166), (255, 50286),

Gene: TribbleTrouble_75 Start: 49560, Stop: 50477, Start Num: 64

Candidate Starts for TribbleTrouble_75:

(Start: 64 @49560 has 19 MA's), (74, 49596), (83, 49647), (90, 49719), (95, 49746), (103, 49797), (119, 49842), (130, 49896), (132, 49920), (134, 49932), (137, 49959), (140, 49971), (171, 50061), (184, 50130), (185, 50142), (186, 50145), (191, 50184), (198, 50217), (201, 50241), (204, 50256), (225, 50331),

Gene: TruffulaTree_75 Start: 49180, Stop: 50286, Start Num: 29

Candidate Starts for TruffulaTree_75:

(Start: 29 @49180 has 111 MA's), (31, 49186), (Start: 41 @49237 has 7 MA's), (Start: 47 @49306 has 1 MA's), (48, 49312), (54, 49330), (68, 49354), (78, 49399), (79, 49405), (80, 49408), (83, 49429), (86, 49441), (90, 49504), (93, 49522), (95, 49531), (96, 49537), (98, 49558), (104, 49582), (109, 49600), (120, 49636), (129, 49684), (130, 49687), (134, 49723), (135, 49726), (138, 49753), (140, 49762), (148, 49804), (153, 49819), (158, 49837), (184, 49936), (191, 49993), (198, 50026), (202, 50053), (213, 50098), (255, 50236),

Gene: Twitch_73 Start: 48688, Stop: 49875, Start Num: 29

Candidate Starts for Twitch_73:

(Start: 29 @48688 has 111 MA's), (31, 48694), (Start: 47 @48814 has 1 MA's), (48, 48820), (54, 48838), (68, 48862), (78, 48907), (79, 48913), (80, 48916), (83, 48937), (86, 48949), (90, 49012), (95, 49039), (96, 49045), (98, 49066), (104, 49090), (109, 49108), (129, 49192), (130, 49195), (134, 49231), (135, 49234), (138, 49261), (140, 49270), (148, 49312), (184, 49444), (191, 49501), (202, 49561), (213, 49606), (216, 49612), (219, 49624), (237, 49699), (241, 49723), (243, 49750), (244, 49756), (247, 49771), (250, 49783), (255, 49825),

Gene: Unicorn_76 Start: 48713, Stop: 49819, Start Num: 29

Candidate Starts for Unicorn_76:

(Start: 29 @48713 has 111 MA's), (31, 48719), (39, 48764), (Start: 47 @48827 has 1 MA's), (53, 48851), (68, 48875), (78, 48920), (80, 48929), (82, 48941), (83, 48950), (86, 48962), (90, 49022), (98, 49076), (99, 49079), (104, 49100), (129, 49202), (134, 49241), (140, 49280), (156, 49361), (159, 49367), (162, 49370), (170, 49391), (171, 49397), (176, 49424), (182, 49457), (184, 49466), (191, 49523), (193, 49532), (195, 49541), (196, 49544), (198, 49556), (202, 49583), (213, 49625),

Gene: Urkel_73 Start: 49181, Stop: 50269, Start Num: 29

Candidate Starts for Urkel_73:

(Start: 29 @49181 has 111 MA's), (31, 49187), (Start: 47 @49307 has 1 MA's), (54, 49334), (76, 49391), (79, 49412), (80, 49415), (83, 49436), (90, 49511), (95, 49538), (96, 49544), (98, 49565), (103, 49586), (104, 49589), (109, 49607), (129, 49691), (130, 49694), (134, 49730), (135, 49733), (138, 49760), (140, 49769), (165, 49835), (179, 49901), (184, 49922), (191, 49979), (198, 50012), (202, 50039), (219, 50099), (220, 50102), (255, 50219),

Gene: Validus_78 Start: 49542, Stop: 50633, Start Num: 29

Candidate Starts for Validus_78:

(Start: 29 @49542 has 111 MA's), (31, 49548), (37, 49566), (38, 49590), (39, 49593), (Start: 42 @49605 has 1 MA's), (Start: 47 @49656 has 1 MA's), (48, 49662), (Start: 61 @49692 has 22 MA's), (78, 49749), (79, 49755), (80, 49758), (83, 49779), (90, 49851), (95, 49878), (96, 49884), (97, 49890), (98, 49905), (104, 49929), (109, 49947), (129, 50031), (130, 50034), (131, 50037), (133, 50061), (138, 50100), (140, 50109), (148, 50151), (161, 50187), (169, 50199), (182, 50274), (184, 50283), (191, 50340), (196, 50361), (198, 50373), (202, 50400), (213, 50442), (219, 50460),

Gene: Veliki_74 Start: 48720, Stop: 49826, Start Num: 29

Candidate Starts for Veliki_74:

(7, 48552), (9, 48576), (11, 48585), (13, 48597), (14, 48603), (18, 48642), (Start: 29 @48720 has 111 MA's), (31, 48726), (Start: 47 @48846 has 1 MA's), (48, 48852), (49, 48861), (54, 48870), (68, 48894), (78, 48939), (79, 48945), (80, 48948), (83, 48969), (86, 48981), (90, 49044), (95, 49071), (96, 49077), (98, 49098), (104, 49122), (109, 49140), (120, 49176), (129, 49224), (130, 49227), (134, 49263), (135, 49266), (138, 49293), (140, 49302), (148, 49344), (153, 49359), (158, 49377), (184, 49476), (191, 49533), (198, 49566), (202, 49593), (213, 49638), (219, 49656), (255, 49776),

Gene: Venti_63 Start: 40452, Stop: 41354, Start Num: 45

Candidate Starts for Venti_63:

(Start: 45 @40452 has 60 MA's), (104, 40773), (116, 40815), (127, 40866), (170, 41058), (176, 41091), (185, 41145), (190, 41187), (199, 41238), (205, 41268), (217, 41307), (218, 41316),

Gene: Vidya_64 Start: 41288, Stop: 42190, Start Num: 45

Candidate Starts for Vidya_64:

(2, 40769), (17, 41084), (36, 41213), (43, 41258), (Start: 45 @41288 has 60 MA's), (50, 41330), (104, 41609), (105, 41612), (127, 41702), (170, 41894), (190, 42023), (205, 42104), (218, 42152),

Gene: ViviJ_64 Start: 45982, Stop: 46839, Start Num: 61

Candidate Starts for ViviJ_64:

(Start: 45 @45919 has 60 MA's), (Start: 61 @45982 has 22 MA's), (75, 46024), (79, 46048), (83, 46072), (90, 46144), (98, 46198), (108, 46231), (123, 46282), (125, 46288), (129, 46309), (130, 46312), (135, 46351), (147, 46426), (148, 46429), (157, 46459), (171, 46486), (180, 46537), (183, 46552), (191, 46609), (194, 46621), (209, 46696), (213, 46711), (219, 46729), (223, 46741), (228, 46765), (234, 46777),

Gene: Waterfoul_68 Start: 48313, Stop: 49149, Start Num: 61

Candidate Starts for Waterfoul_68:

(25, 48121), (32, 48154), (Start: 45 @48250 has 60 MA's), (Start: 61 @48313 has 22 MA's), (75, 48355), (79, 48379), (83, 48403), (89, 48469), (90, 48475), (99, 48532), (108, 48562), (123, 48613), (129, 48640), (130, 48643), (135, 48682), (140, 48718), (141, 48730), (147, 48757), (148, 48760), (150, 48766), (157, 48790), (177, 48847), (183, 48883), (191, 48940), (194, 48952), (195, 48958), (202, 49000), (208, 49024), (213, 49042), (219, 49060), (220, 49063), (223, 49072),

Gene: Willsammy_67 Start: 43249, Stop: 44151, Start Num: 45

Candidate Starts for Willsammy_67:

(2, 42730), (17, 43045), (36, 43174), (43, 43219), (Start: 45 @43249 has 60 MA's), (50, 43291), (104, 43570), (105, 43573), (127, 43663), (170, 43855), (176, 43888), (185, 43942), (190, 43984), (199, 44035), (205, 44065), (217, 44104), (218, 44113),

Gene: Wintermute_78 Start: 49845, Stop: 50723, Start Num: 63

Candidate Starts for Wintermute_78:

(Start: 63 @49845 has 19 MA's), (76, 49890), (81, 49923), (84, 49953), (88, 50004), (95, 50046), (96, 50052), (98, 50073), (101, 50085), (109, 50118), (115, 50127), (127, 50184), (129, 50193), (130, 50196), (132, 50220), (138, 50262), (141, 50283), (170, 50334), (171, 50340), (175, 50364), (176,

50367), (180, 50391), (182, 50400), (192, 50466), (197, 50490), (198, 50496), (202, 50523), (203, 50532), (207, 50544), (226, 50619),

Gene: Xavia_67 Start: 47327, Stop: 48229, Start Num: 45

Candidate Starts for Xavia_67:

(5, 46886), (17, 47123), (36, 47252), (43, 47297), (Start: 45 @47327 has 60 MA's), (50, 47369), (77, 47459), (94, 47591), (104, 47648), (116, 47690), (127, 47741), (134, 47789), (138, 47819), (148, 47867), (160, 47909), (177, 47969), (197, 48092), (205, 48143), (210, 48167), (218, 48191), (221, 48200),

Gene: Ximenita_78 Start: 49071, Stop: 50171, Start Num: 29

Candidate Starts for Ximenita_78:

(Start: 29 @49071 has 111 MA's), (31, 49077), (39, 49122), (Start: 47 @49185 has 1 MA's), (53, 49209), (83, 49308), (90, 49380), (98, 49434), (99, 49437), (129, 49560), (134, 49599), (156, 49716), (162, 49725), (173, 49770), (176, 49782), (191, 49878), (193, 49887), (195, 49896), (196, 49899), (198, 49911), (202, 49938), (213, 49980), (257, 50133),

Gene: Xula_61 Start: 41279, Stop: 42181, Start Num: 45

Candidate Starts for Xula_61:

(Start: 45 @41279 has 60 MA's), (104, 41600), (105, 41603), (116, 41642), (127, 41693), (170, 41885), (176, 41918), (185, 41972), (190, 42014), (197, 42044), (205, 42095), (218, 42143),

Gene: Y10_75 Start: 49773, Stop: 50651, Start Num: 63

Candidate Starts for Y10_75:

(Start: 63 @49773 has 19 MA's), (76, 49818), (81, 49851), (84, 49881), (88, 49932), (95, 49974), (96, 49980), (101, 50013), (109, 50046), (115, 50055), (127, 50112), (129, 50121), (130, 50124), (132, 50148), (138, 50190), (141, 50211), (170, 50262), (171, 50268), (175, 50292), (176, 50295), (180, 50319), (182, 50328), (192, 50394), (193, 50400), (197, 50418), (198, 50424), (202, 50451), (203, 50460), (207, 50472), (226, 50547),

Gene: Y2_75 Start: 49773, Stop: 50651, Start Num: 63

Candidate Starts for Y2_75:

(Start: 63 @49773 has 19 MA's), (76, 49818), (81, 49851), (84, 49881), (88, 49932), (95, 49974), (96, 49980), (101, 50013), (109, 50046), (115, 50055), (127, 50112), (129, 50121), (130, 50124), (132, 50148), (138, 50190), (141, 50211), (170, 50262), (171, 50268), (175, 50292), (176, 50295), (180, 50319), (182, 50328), (192, 50394), (193, 50400), (197, 50418), (198, 50424), (202, 50451), (203, 50460), (207, 50472), (226, 50547),

Gene: YoureAdopted_73 Start: 49050, Stop: 50237, Start Num: 29

Candidate Starts for YoureAdopted_73:

(Start: 29 @49050 has 111 MA's), (31, 49056), (Start: 41 @49107 has 7 MA's), (Start: 47 @49176 has 1 MA's), (48, 49182), (54, 49200), (Start: 61 @49212 has 22 MA's), (68, 49224), (78, 49269), (79, 49275), (80, 49278), (83, 49299), (86, 49311), (90, 49374), (93, 49392), (95, 49401), (96, 49407), (98, 49428), (104, 49452), (109, 49470), (129, 49554), (130, 49557), (134, 49593), (135, 49596), (138, 49623), (140, 49632), (148, 49674), (184, 49806), (191, 49863), (202, 49923), (213, 49968), (216, 49974), (219, 49986), (237, 50061), (241, 50085), (243, 50112), (244, 50118), (247, 50133), (250, 50145), (255, 50187),

Gene: Yuna_76 Start: 50152, Stop: 51321, Start Num: 28

Candidate Starts for Yuna_76:

(19, 50080), (Start: 28 @50152 has 5 MA's), (31, 50161), (39, 50206), (Start: 47 @50269 has 1 MA's), (71, 50335), (79, 50368), (81, 50380), (83, 50392), (90, 50467), (104, 50545), (129, 50647), (134, 50686), (160, 50797), (188, 50926), (191, 50947), (196, 50968), (198, 50980), (202, 51007), (213,

51052), (219, 51070), (235, 51130), (237, 51145), (244, 51202), (252, 51250),

Gene: Yunkel11_79 Start: 49270, Stop: 50454, Start Num: 29

Candidate Starts for Yunkel11_79:

(Start: 29 @49270 has 111 MA's), (31, 49276), (38, 49318), (39, 49321), (Start: 42 @49333 has 1 MA's), (Start: 47 @49384 has 1 MA's), (48, 49390), (54, 49411), (58, 49420), (66, 49432), (79, 49489), (80, 49492), (83, 49513), (90, 49588), (95, 49615), (96, 49621), (98, 49642), (103, 49663), (104, 49666), (129, 49768), (130, 49771), (134, 49807), (135, 49810), (138, 49837), (140, 49846), (148, 49888), (153, 49903), (161, 49924), (175, 49975), (176, 49978), (177, 49981), (191, 50077), (196, 50098), (198, 50110), (202, 50137), (213, 50182), (219, 50200), (237, 50275), (243, 50326), (247, 50347), (248, 50350), (252, 50380), (258, 50425),

Gene: Zabiza_69 Start: 45036, Stop: 46223, Start Num: 29

Candidate Starts for Zabiza_69:

(Start: 29 @45036 has 111 MA's), (31, 45042), (Start: 47 @45162 has 1 MA's), (48, 45168), (Start: 61 @45198 has 22 MA's), (68, 45210), (78, 45255), (79, 45261), (80, 45264), (83, 45285), (86, 45297), (90, 45360), (93, 45378), (95, 45387), (96, 45393), (98, 45414), (104, 45438), (109, 45456), (129, 45540), (130, 45543), (134, 45579), (135, 45582), (138, 45609), (140, 45618), (148, 45660), (184, 45792), (191, 45849), (202, 45909), (213, 45954), (216, 45960), (219, 45972), (237, 46047), (241, 46071), (243, 46098), (244, 46104), (247, 46119), (250, 46131), (255, 46173),

Gene: Zavala_76 Start: 49258, Stop: 50364, Start Num: 29

Candidate Starts for Zavala_76:

(7, 49090), (9, 49114), (11, 49123), (14, 49141), (18, 49180), (Start: 29 @49258 has 111 MA's), (31, 49264), (Start: 41 @49315 has 7 MA's), (Start: 47 @49384 has 1 MA's), (48, 49390), (54, 49408), (68, 49432), (78, 49477), (79, 49483), (80, 49486), (83, 49507), (86, 49519), (90, 49582), (93, 49600), (95, 49609), (96, 49615), (98, 49636), (104, 49660), (109, 49678), (129, 49762), (130, 49765), (134, 49801), (135, 49804), (138, 49831), (140, 49840), (148, 49882), (153, 49897), (158, 49915), (191, 50071), (198, 50104), (202, 50131), (213, 50176), (219, 50194), (255, 50314),

Gene: Zilizebeth_71 Start: 42809, Stop: 43711, Start Num: 45

Candidate Starts for Zilizebeth_71:

(17, 42605), (36, 42734), (43, 42779), (Start: 45 @42809 has 60 MA's), (50, 42851), (104, 43130), (105, 43133), (127, 43223), (170, 43415), (176, 43448), (185, 43502), (190, 43544), (199, 43595), (205, 43625), (217, 43664), (218, 43673),

Gene: ZoeJ_76 Start: 50548, Stop: 51450, Start Num: 64

Candidate Starts for ZoeJ_76:

(Start: 64 @50548 has 19 MA's), (76, 50590), (90, 50725), (124, 50860), (125, 50863), (127, 50875), (130, 50887), (149, 51001), (176, 51073), (191, 51169), (198, 51202), (200, 51223), (201, 51226), (202, 51229), (207, 51250), (215, 51280), (227, 51328), (249, 51433),