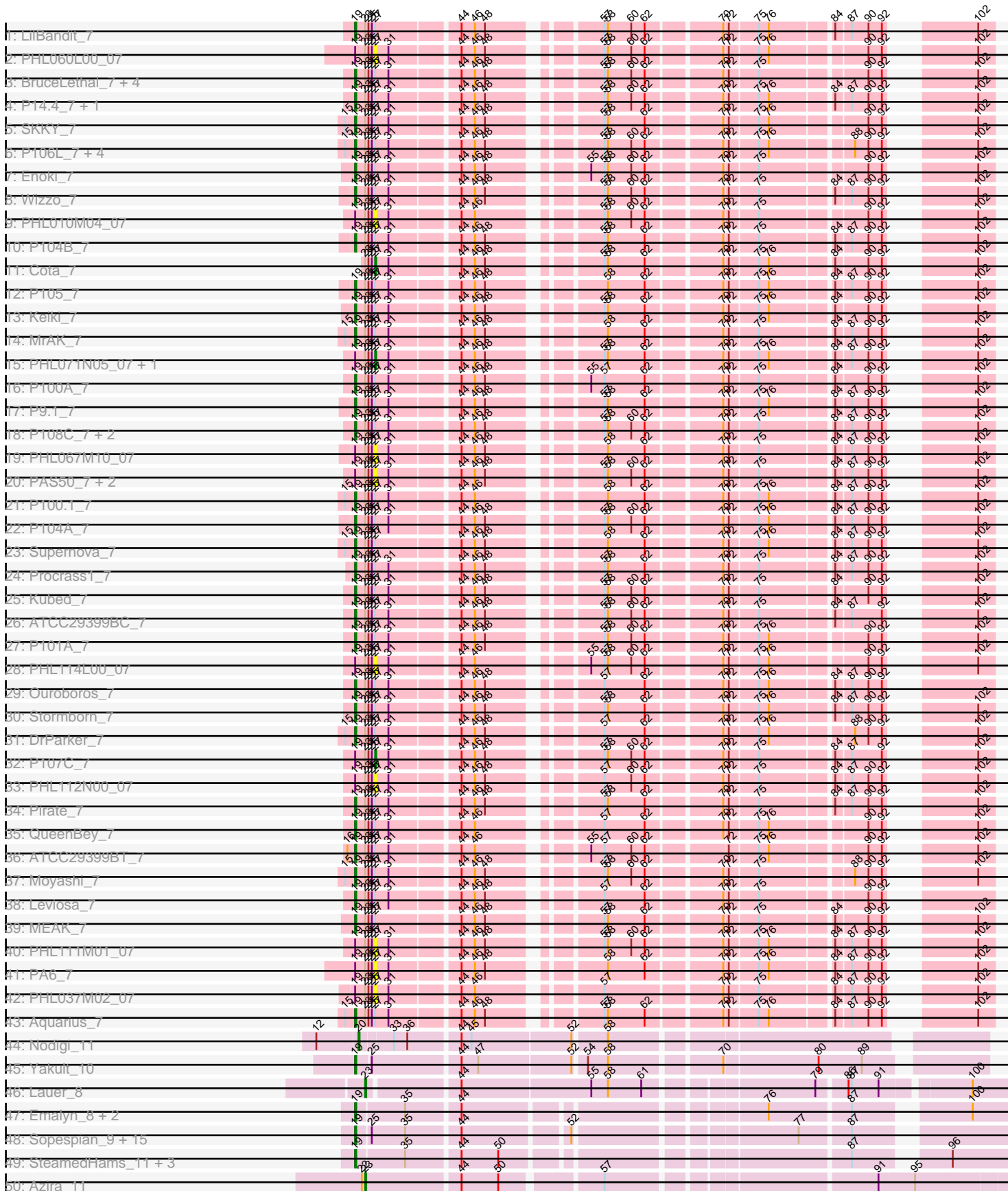
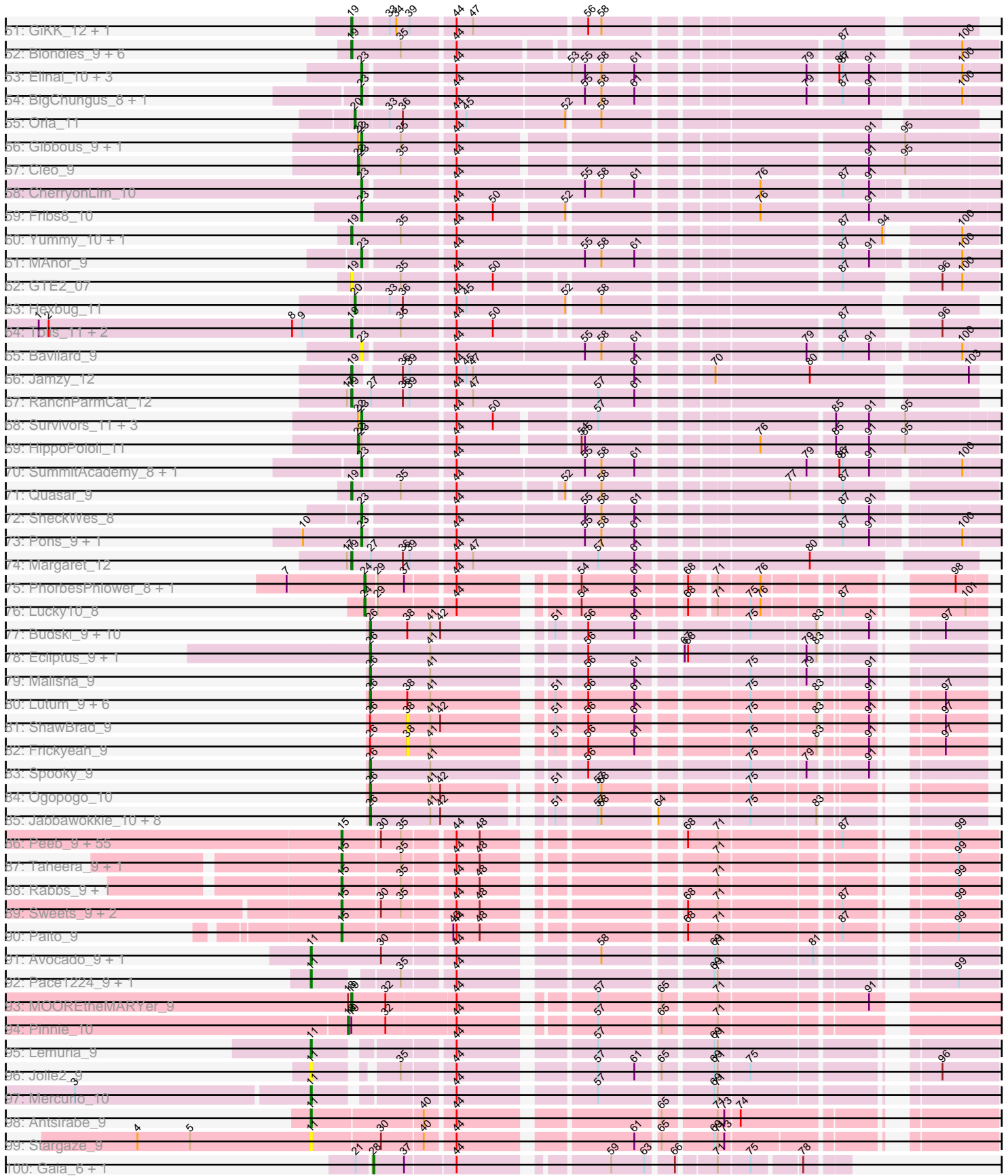


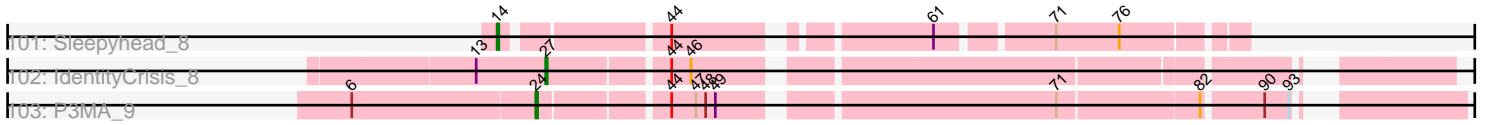
Pham 224262



Pham 224262



Pham 224262



A series of horizontal lines, likely representing a template or a set of empty rows for data entry, extending across the width of the page below the alignment tracks.

Note: Tracks are now grouped by subcluster and scaled. Switching in subcluster is indicated by changes in track color. Track scale is now set by default to display the region 30 bp upstream of start 1 to 30 bp downstream of the last possible start. If this default region is judged to be packed too tightly with annotated starts, the track will be further scaled to only show that region of the ORF with annotated starts. This action will be indicated by adding "Zoomed" to the title. For starts, yellow indicates the location of called starts comprised solely of Glimmer/GeneMark auto-annotations, green indicates the location of called starts with at least 1 manual gene annotation.

Pham 224262 Report

This analysis was run 03/28/25 on database version 593.

Pham number 224262 has 245 members, 41 are drafts.

Phages represented in each track:

- Track 1 : LilBandit_7
- Track 2 : PHL060L00_07
- Track 3 : BruceLethal_7, Rileysaurus_7, Enochoraptor_7, Lauchelly_7, P1.1_7
- Track 4 : P14.4_7, Attacne_7
- Track 5 : SKKY_7
- Track 6 : P106L_7, P106I_7, P106M_7, P106C_7, P106A_7
- Track 7 : Enoki_7
- Track 8 : Wizzo_7
- Track 9 : PHL010M04_07
- Track 10 : P104B_7
- Track 11 : Cota_7
- Track 12 : P105_7
- Track 13 : Keiki_7
- Track 14 : MrAK_7
- Track 15 : PHL071N05_07, P107A_7
- Track 16 : P100A_7
- Track 17 : P9.1_7
- Track 18 : P108C_7, Solid_7, P100D_7
- Track 19 : PHL067M10_07
- Track 20 : PAS50_7, PAD20_7, PHL113M01_07
- Track 21 : P100.1_7
- Track 22 : P104A_7
- Track 23 : Supernova_7
- Track 24 : Procrass1_7
- Track 25 : Kubed_7
- Track 26 : ATCC29399BC_7
- Track 27 : P101A_7
- Track 28 : PHL114L00_07
- Track 29 : Ouroboros_7
- Track 30 : Stormborn_7
- Track 31 : DrParker_7
- Track 32 : P107C_7
- Track 33 : PHL112N00_07
- Track 34 : Pirate_7
- Track 35 : QueenBey_7
- Track 36 : ATCC29399BT_7
- Track 37 : Moyashi_7

- Track 38 : Leviosa_7
- Track 39 : MEAK_7
- Track 40 : PHL111M01_07
- Track 41 : PA6_7
- Track 42 : PHL037M02_07
- Track 43 : Aquarius_7
- Track 44 : Nodigi_11
- Track 45 : Yakult_10
- Track 46 : Lauer_8
- Track 47 : Emalyn_8, Amok_8, AikoCarson_8
- Track 48 : Sopespian_9, Elliott_9, Nina_10, Cozz_9, ChickenTender_11, Agatha_9, MunkgeeRoachy_9, GoldHunter_10, Carsonalex_10, Typhonmarchy_10, RedBaron_10, Starburst_10, Socotra_10, PsychoKiller_9, Burnsey_9, Axym_9
- Track 49 : SteamedHams_11, AndPeggy_8, BillDoor_11, Yarn_8
- Track 50 : Azira_11
- Track 51 : GiKK_12, Button_10
- Track 52 : Blondies_9, Biskit_10, SweatNTears_11, Troje_9, SketchMex_8, Buttrmilkdreams_9, MScarn_11
- Track 53 : Elinal_10, Vine_10, KayGee_9, Yucky_11
- Track 54 : BigChungus_8, Feastonyet_8
- Track 55 : Orla_11
- Track 56 : Gibbous_9, Dre3_9
- Track 57 : Cleo_9
- Track 58 : CherryonLim_10
- Track 59 : Fribs8_10
- Track 60 : Yummy_10, Horseradish_10
- Track 61 : MAnor_9
- Track 62 : GTE2_07
- Track 63 : Hexbug_11
- Track 64 : Tolls_11, CanesSauce_9, ChocoMunchkin_9
- Track 65 : Bavidard_9
- Track 66 : Jamzy_12
- Track 67 : RanchParmCat_12
- Track 68 : Survivors_11, Nibbles_11, Zareef_13, MaVan_11
- Track 69 : HippoPololi_11
- Track 70 : SummitAcademy_8, PotPie_9
- Track 71 : Quasar_9
- Track 72 : SheckWes_8
- Track 73 : Pons_9, Mayweather_10
- Track 74 : Margaret_12
- Track 75 : PhorbesPhlower_8, Morkie_8
- Track 76 : Lucky10_8
- Track 77 : Budski_9, CheeseTouch_9, Getalong_9, Kamaru_9, Holliday_9, Periwinkle_9, Phistory_9, Whitney_9, Phabuloso_9, Squiddly_10, LitninMcQueen_9
- Track 78 : Ecliptus_9, ODay_9
- Track 79 : Malisha_9
- Track 80 : Lutum_9, BENtherdunthat_9, Asapag_9, Horus_9, BotCity_9, Kenna_9, Leroy_9
- Track 81 : ShawBrad_9
- Track 82 : Frickyeah_9
- Track 83 : Spooky_9
- Track 84 : Ogopogo_10

- Track 85 : Jabbawokkie_10, Che9d_9, SilverChicken_9, Soul22_9, Yoshi_9, Avani_9, Zapner_10, Blarby_10, Demsculpinboyz_9
- Track 86 : Peeb_9, Phreak_9, Hotshotbaby7_9, Maliketh_9, OctaviousRex_9, Jane_9, Angel_9, AzulaCat_9, ShaboiShabazz_9, Sizemore_9, Cherrybomb426_9, Crespo_9, Darionha_9, Aroostook_9, Marmie_9, Camri_9, Gideon_9, Mowgli_9, LouisV14_9, Coleslaw_9, JorRay_9, ECartman_9, Hope_9, BruceB_9, Barkley26_9, Gomashi_9, Jolene_9, Schiebel_9, GoldenAsh_9, Avrafan_9, Phish_9, Frosty24_9, TomBrady_9, Grizzly_9, Zombie_9, CLED96_9, BPs_9, Jonghyun_9, Liefie_9, ZoMa_9, Annihilator_9, DNAll_009, PinkYoshi_9, Renaissance_9, Kasen3_9, Kareem_9, Remy19_9, Cedasite_9, Plagueis_9, Chance64_9, Wendigo_9, Periodt_9, CassieYates_9, Olga_9, DMoney_9, BQuat_9
- Track 87 : Taheera_9, Terror_9
- Track 88 : Rabbs_9, Sneeze_9
- Track 89 : Sweets_9, Halo_9, TinaBug_9
- Track 90 : Paito_9
- Track 91 : Avocado_9, Cambiare_10
- Track 92 : Pace1224_9, FlagStaff_9
- Track 93 : MOOREtheMARYer_9
- Track 94 : Pinnie_10
- Track 95 : Lemuria_9
- Track 96 : Jolie2_9
- Track 97 : Mercurio_10
- Track 98 : Antsirabe_9
- Track 99 : Stargaze_9
- Track 100 : Gaia_6, Nebkiss_6
- Track 101 : Sleepyhead_8
- Track 102 : IdentityCrisis_8
- Track 103 : P3MA_9

Summary of Final Annotations (See graph section above for start numbers):

The start number called the most often in the published annotations is 19, it was called in 72 of the 204 non-draft genes in the pham.

Genes that call this "Most Annotated" start:

- ATCC29399BC_7, ATCC29399BT_7, Agatha_9, AikoCarson_8, Amok_8, AndPeggy_8, Aquarius_7, Attacne_7, Axym_9, BillDoor_11, Biskit_10, Blondies_9, BruceLethal_7, Burnsey_9, Button_10, Buttrmlkdreams_9, CanesSauce_9, Carsonalex_10, ChickenTender_11, ChocoMunchkin_9, Cozz_9, DrParker_7, Elliott_9, Emalyn_8, Enochoraptor_7, Enoki_7, GTE2_07, GiKK_12, GoldHunter_10, Horseradish_10, Jamzy_12, Keiki_7, Kubed_7, Lauchelly_7, Leviosa_7, LilBandit_7, MEAK_7, MOOREtheMARYer_9, MScarn_11, Margaret_12, Moyashi_7, MrAK_7, MunkgeeRoachy_9, Nina_10, Ouroboros_7, P1.1_7, P100.1_7, P100A_7, P100D_7, P101A_7, P104A_7, P104B_7, P105_7, P106A_7, P106C_7, P106I_7, P106L_7, P106M_7, P108C_7, P14.4_7, P9.1_7, Pirate_7, Procrass1_7, PsychoKiller_9, Quasar_9, QueenBey_7, RanchParmCat_12, RedBaron_10, Rileysaurus_7, SKKY_7, SketchMex_8, Socotra_10, Solid_7, Sopespian_9, Starburst_10, SteamedHams_11, Stormborn_7, Supernova_7, SweatNTears_11, Tolls_11, Troje_9, Typhonmarchy_10, Wizzo_7, Yakult_10, Yarn_8, Yummy_10,

Genes that have the "Most Annotated" start but do not call it:

- P107A_7, P107C_7, PA6_7, PAD20_7, PAS50_7, PHL010M04_07, PHL037M02_07, PHL060L00_07, PHL067M10_07, PHL071N05_07, PHL111M01_07, PHL112N00_07, PHL113M01_07, PHL114L00_07, Pinnie_10,

Genes that do not have the "Most Annotated" start:

- Angel_9, Annihilator_9, Antsirabe_9, Aroostook_9, Asapag_9, Avani_9, Avocado_9, Avrafan_9, Azira_11, AzulaCat_9, BENtherdunthat_9, BPs_9, BQuat_9, Barkley26_9, Bavidard_9, BigChungus_8, Blarby_10, BotCity_9, BruceB_9, Budski_9, CLED96_9, Cambiare_10, Camri_9, CassieYates_9, Cedasite_9, Chance64_9, Che9d_9, CheeseTouch_9, Cherrybomb426_9, CherryonLim_10, Cleo_9, Coleslaw_9, Cota_7, Crespo_9, DMoney_9, DNAllI_009, Darionha_9, Demsculpinboyz_9, Dre3_9, ECartman_9, Ecliptus_9, Elinal_10, Feastonyeet_8, FlagStaff_9, Fribs8_10, Frickyeah_9, Frosty24_9, Gaia_6, Getalong_9, Gibbous_9, Gideon_9, GoldenAsh_9, Gomashi_9, Grizzly_9, Halo_9, Hexbug_11, HippoPololi_11, Holliday_9, Hope_9, Horus_9, Hotshotbaby7_9, IdentityCrisis_8, Jabbawokkie_10, Jane_9, Jolene_9, Jolie2_9, Jonghyun_9, JorRay_9, Kamaru_9, Kareem_9, Kasen3_9, KayGee_9, Kenna_9, Lauer_8, Lemuria_9, Leroy_9, Liefie_9, LitninMcQueen_9, LouisV14_9, Lucky10_8, Lutum_9, MAnor_9, MaVan_11, Maliketh_9, Malisha_9, Marmie_9, Mayweather_10, Mercurio_10, Morkie_8, Mowgli_9, Nebkiss_6, Nibbles_11, Nodigi_11, ODay_9, OctaviousRex_9, Ogopogo_10, Olga_9, Orla_11, P3MA_9, Pace1224_9, Paito_9, Peeb_9, Periodt_9, Periwinkle_9, Phabuloso_9, Phish_9, Phistory_9, PhorbesPhlower_8, Phreak_9, PinkYoshi_9, Plagueis_9, Pons_9, PotPie_9, Rabbs_9, Remy19_9, Renaissance_9, Schiebel_9, ShaboiShabazz_9, ShawBrad_9, SheckWes_8, SilverChicken_9, Sizemore_9, Sleepyhead_8, Sneeze_9, Soul22_9, Spooky_9, Squiddly_10, Stargaze_9, SummitAcademy_8, Survivors_11, Sweets_9, Taheera_9, Terror_9, TinaBug_9, TomBrady_9, Vine_10, Wendigo_9, Whitney_9, Yoshi_9, Yucky_11, Zapner_10, Zareef_13, ZoMa_9, Zombie_9,

Summary by start number:

Start 11:

- Found in 9 of 245 (3.7%) of genes in pham
- Manual Annotations of this start: 6 of 204
- Called 100.0% of time when present
- Phage (with cluster) where this start called: Antsirabe_9 (G5), Avocado_9 (G2), Cambiare_10 (G2), FlagStaff_9 (G2), Jolie2_9 (G4), Lemuria_9 (G4), Mercurio_10 (G4), Pace1224_9 (G2), Stargaze_9 (G5),

Start 14:

- Found in 1 of 245 (0.4%) of genes in pham
- Manual Annotations of this start: 1 of 204
- Called 100.0% of time when present
- Phage (with cluster) where this start called: Sleepyhead_8 (singleton),

Start 15:

- Found in 76 of 245 (31.0%) of genes in pham
- Manual Annotations of this start: 60 of 204
- Called 84.2% of time when present
- Phage (with cluster) where this start called: Angel_9 (G1), Annihilator_9 (G1), Aroostook_9 (G1), Avrafan_9 (G1), AzulaCat_9 (G1), BPs_9 (G1), BQuat_9 (G1), Barkley26_9 (G1), BruceB_9 (G1), CLED96_9 (G1), Camri_9 (G1), CassieYates_9

(G1), Cedasite_9 (G1), Chance64_9 (G1), Cherrybomb426_9 (G1), Coleslaw_9 (G1), Crespo_9 (G1), DMoney_9 (G1), DNAIII_009 (G1), Darionha_9 (G1), ECartman_9 (G1), Frosty24_9 (G1), Gideon_9 (G1), GoldenAsh_9 (G1), Gomashi_9 (G1), Grizzly_9 (G1), Halo_9 (G1), Hope_9 (G1), Hotshotbaby7_9 (G1), Jane_9 (G1), Jolene_9 (G1), Jonghyun_9 (G1), JorRay_9 (G1), Kareem_9 (G1), Kasen3_9 (G1), Liefie_9 (G1), LouisV14_9 (G1), Maliketh_9 (G1), Marmie_9 (G1), Mowgli_9 (G1), OctaviousRex_9 (G1), Olga_9 (G1), Paito_9 (G1), Peeb_9 (G1), Periodt_9 (G1), Phish_9 (G1), Phreak_9 (G1), PinkYoshi_9 (G1), Plagueis_9 (G1), Rabbs_9 (G1), Remy19_9 (G1), Renaissance_9 (G1), Schiebel_9 (G1), ShaboiShabazz_9 (G1), Sizemore_9 (G1), Sneeze_9 (G1), Sweets_9 (G1), Taheera_9 (G1), Terror_9 (G1), TinaBug_9 (G1), TomBrady_9 (G1), Wendigo_9 (G1), ZoMa_9 (G1), Zombie_9 (G1),

Start 18:

- Found in 2 of 245 (0.8%) of genes in pham
- Manual Annotations of this start: 1 of 204
- Called 50.0% of time when present
- Phage (with cluster) where this start called: Pinnie_10 (G3),

Start 19:

- Found in 101 of 245 (41.2%) of genes in pham
- Manual Annotations of this start: 72 of 204
- Called 85.1% of time when present
- Phage (with cluster) where this start called: ATCC29399BC_7 (BU), ATCC29399BT_7 (BU), Agatha_9 (CT), AikoCarson_8 (CT), Amok_8 (CT), AndPeggy_8 (CT), Aquarius_7 (BU), Attacne_7 (BU), Axym_9 (CT), BillDoor_11 (CT), Biskit_10 (CT), Blondies_9 (CT), BruceLethal_7 (BU), Burnsey_9 (CT), Button_10 (CT), Buttrmlkdreams_9 (CT), CanesSauce_9 (CT), Carsonalex_10 (CT), ChickenTender_11 (CT), ChocoMunchkin_9 (CT), Cozz_9 (CT), DrParker_7 (BU), Elliott_9 (CT), Emalyn_8 (CT), Enochoraptor_7 (BU), Enoki_7 (BU), GTE2_07 (CT), GiKK_12 (CT), GoldHunter_10 (CT), Horseradish_10 (CT), Jamzy_12 (CT), Keiki_7 (BU), Kubed_7 (BU), Lauchelly_7 (BU), Leviosa_7 (BU), LilBandit_7 (BU), MEAK_7 (BU), MOOREtheMARYer_9 (G3), MScarn_11 (CT), Margaret_12 (CT), Moyashi_7 (BU), MrAK_7 (BU), MunkgeeRoachy_9 (CT), Nina_10 (CT), Ouroboros_7 (BU), P1.1_7 (BU), P100.1_7 (BU), P100A_7 (BU), P100D_7 (BU), P101A_7 (BU), P104A_7 (BU), P104B_7 (BU), P105_7 (BU), P106A_7 (BU), P106C_7 (BU), P106L_7 (BU), P106L_7 (BU), P106M_7 (BU), P108C_7 (BU), P14.4_7 (BU), P9.1_7 (BU), Pirate_7 (BU), Procrass1_7 (BU), PsychoKiller_9 (CT), Quasar_9 (CT), QueenBey_7 (BU), RanchParmCat_12 (CT), RedBaron_10 (CT), Rileysaurus_7 (BU), SKKY_7 (BU), SketchMex_8 (CT), Socotra_10 (CT), Solid_7 (BU), Sopespian_9 (CT), Starburst_10 (CT), SteamedHams_11 (CT), Stormborn_7 (BU), Supernova_7 (BU), SweatNTears_11 (CT), Tolls_11 (CT), Troje_9 (CT), Typhonmarchy_10 (CT), Wizzo_7 (BU), Yakult_10 (CT), Yarn_8 (CT), Yummy_10 (CT),

Start 20:

- Found in 3 of 245 (1.2%) of genes in pham
- Manual Annotations of this start: 3 of 204
- Called 100.0% of time when present
- Phage (with cluster) where this start called: Hexbug_11 (CT), Nodigi_11 (CT), Orla_11 (CT),

Start 22:

- Found in 9 of 245 (3.7%) of genes in pham
- Manual Annotations of this start: 2 of 204

- Called 22.2% of time when present
- Phage (with cluster) where this start called: Cleo_9 (CT), HippoPololi_11 (CT),

Start 23:

- Found in 82 of 245 (33.5%) of genes in pham
- Manual Annotations of this start: 20 of 204
- Called 28.0% of time when present
- Phage (with cluster) where this start called: Azira_11 (CT), Bavidard_9 (CT), BigChungus_8 (CT), CherryonLim_10 (CT), Dre3_9 (CT), Elinal_10 (CT), Feastonyeet_8 (CT), Fribs8_10 (CT), Gibbous_9 (CT), KayGee_9 (CT), Lauer_8 (CT), MAnor_9 (CT), MaVan_11 (CT), Mayweather_10 (CT), Nibbles_11 (CT), Pons_9 (CT), PotPie_9 (CT), SheckWes_8 (CT), SummitAcademy_8 (CT), Survivors_11 (CT), Vine_10 (CT), Yucky_11 (CT), Zareef_13 (CT),

Start 24:

- Found in 61 of 245 (24.9%) of genes in pham
- Manual Annotations of this start: 4 of 204
- Called 6.6% of time when present
- Phage (with cluster) where this start called: Lucky10_8 (DH), Morkie_8 (DH), P3MA_9 (singleton), PhorbesPhlower_8 (DH),

Start 26:

- Found in 34 of 245 (13.9%) of genes in pham
- Manual Annotations of this start: 29 of 204
- Called 94.1% of time when present
- Phage (with cluster) where this start called: Asapag_9 (DN1), Avani_9 (F2), BENTherdunthat_9 (DN1), Blarby_10 (F), BotCity_9 (DN), Budski_9 (DN), Che9d_9 (F2), CheeseTouch_9 (DN1), Demsculpinboyz_9 (F2), Ecliptus_9 (DN), Getalong_9 (DN1), Holliday_9 (DN1), Horus_9 (DN1), Jabbawokkie_10 (F2), Kamaru_9 (DN1), Kenna_9 (DN1), Leroy_9 (DN1), LitninMcQueen_9 (DN1), Lutum_9 (DN1), Malisha_9 (DN), ODay_9 (DN), Ogopogo_10 (F1), Periwinkle_9 (DN1), Phabuloso_9 (DN1), Phistory_9 (DN1), SilverChicken_9 (F2), Soul22_9 (F2), Spooky_9 (DN2), Squiddly_10 (DN2), Whitney_9 (DN1), Yoshi_9 (F2), Zapner_10 (F2),

Start 27:

- Found in 60 of 245 (24.5%) of genes in pham
- Manual Annotations of this start: 4 of 204
- Called 26.7% of time when present
- Phage (with cluster) where this start called: Cota_7 (BU), IdentityCrisis_8 (singleton), P107A_7 (BU), P107C_7 (BU), PA6_7 (BU), PAD20_7 (BU), PAS50_7 (BU), PHL010M04_07 (BU), PHL037M02_07 (BU), PHL060L00_07 (BU), PHL067M10_07 (BU), PHL071N05_07 (BU), PHL111M01_07 (BU), PHL112N00_07 (BU), PHL113M01_07 (BU), PHL114L00_07 (BU),

Start 28:

- Found in 2 of 245 (0.8%) of genes in pham
- Manual Annotations of this start: 2 of 204
- Called 100.0% of time when present
- Phage (with cluster) where this start called: Gaia_6 (X), Nebkiss_6 (X),

Start 38:

- Found in 20 of 245 (8.2%) of genes in pham
- No Manual Annotations of this start.

- Called 10.0% of time when present
- Phage (with cluster) where this start called: Frickyeah_9 (DN1), ShawBrad_9 (DN1),

Summary by clusters:

There are 16 clusters represented in this pham: DN, F1, F2, G4, G3, DH, G1, F, G5, BU, DN1, DN2, X, singleton, G2, CT,

Info for manual annotations of cluster BU:

- Start number 19 was manually annotated 42 times for cluster BU.
- Start number 27 was manually annotated 3 times for cluster BU.

Info for manual annotations of cluster CT:

- Start number 19 was manually annotated 29 times for cluster CT.
- Start number 20 was manually annotated 3 times for cluster CT.
- Start number 22 was manually annotated 2 times for cluster CT.
- Start number 23 was manually annotated 20 times for cluster CT.

Info for manual annotations of cluster DH:

- Start number 24 was manually annotated 3 times for cluster DH.

Info for manual annotations of cluster DN:

- Start number 26 was manually annotated 4 times for cluster DN.

Info for manual annotations of cluster DN1:

- Start number 26 was manually annotated 15 times for cluster DN1.

Info for manual annotations of cluster DN2:

- Start number 26 was manually annotated 2 times for cluster DN2.

Info for manual annotations of cluster F1:

- Start number 26 was manually annotated 1 time for cluster F1.

Info for manual annotations of cluster F2:

- Start number 26 was manually annotated 7 times for cluster F2.

Info for manual annotations of cluster G1:

- Start number 15 was manually annotated 60 times for cluster G1.

Info for manual annotations of cluster G2:

- Start number 11 was manually annotated 3 times for cluster G2.

Info for manual annotations of cluster G3:

- Start number 18 was manually annotated 1 time for cluster G3.
- Start number 19 was manually annotated 1 time for cluster G3.

Info for manual annotations of cluster G4:

- Start number 11 was manually annotated 2 times for cluster G4.

Info for manual annotations of cluster G5:

- Start number 11 was manually annotated 1 time for cluster G5.

Info for manual annotations of cluster X:

•Start number 28 was manually annotated 2 times for cluster X.

Gene Information:

Gene: ATCC29399BC_7 Start: 5617, Stop: 6096, Start Num: 19

Candidate Starts for ATCC29399BC_7:

(Start: 19 @5617 has 72 MA's), (Start: 23 @5626 has 20 MA's), (Start: 24 @5629 has 4 MA's), (25, 5632), (Start: 27 @5635 has 4 MA's), (31, 5647), (44, 5704), (46, 5716), (48, 5725), (57, 5806), (58, 5809), (60, 5830), (62, 5842), (70, 5902), (72, 5905), (75, 5929), (84, 5989), (87, 6001), (92, 6028), (102, 6082),

Gene: ATCC29399BT_7 Start: 5613, Stop: 6092, Start Num: 19

Candidate Starts for ATCC29399BT_7:

(16, 5607), (Start: 19 @5613 has 72 MA's), (Start: 23 @5622 has 20 MA's), (Start: 24 @5625 has 4 MA's), (25, 5628), (Start: 27 @5631 has 4 MA's), (31, 5643), (44, 5700), (46, 5712), (55, 5790), (57, 5802), (60, 5826), (62, 5838), (72, 5901), (75, 5925), (76, 5934), (90, 6012), (92, 6024), (102, 6078),

Gene: Agatha_9 Start: 6417, Stop: 6926, Start Num: 19

Candidate Starts for Agatha_9:

(Start: 19 @6417 has 72 MA's), (25, 6429), (35, 6459), (44, 6504), (52, 6591), (77, 6768), (87, 6810),

Gene: AikoCarson_8 Start: 6147, Stop: 6656, Start Num: 19

Candidate Starts for AikoCarson_8:

(Start: 19 @6147 has 72 MA's), (35, 6189), (44, 6234), (76, 6471), (87, 6540), (100, 6624),

Gene: Amok_8 Start: 6147, Stop: 6656, Start Num: 19

Candidate Starts for Amok_8:

(Start: 19 @6147 has 72 MA's), (35, 6189), (44, 6234), (76, 6471), (87, 6540), (100, 6624),

Gene: AndPeggy_8 Start: 6435, Stop: 6944, Start Num: 19

Candidate Starts for AndPeggy_8:

(Start: 19 @6435 has 72 MA's), (35, 6477), (44, 6522), (50, 6555), (87, 6828), (96, 6894),

Gene: Angel_9 Start: 8314, Stop: 8811, Start Num: 15

Candidate Starts for Angel_9:

(Start: 15 @8314 has 60 MA's), (30, 8347), (35, 8365), (44, 8407), (48, 8428), (68, 8578), (71, 8605), (87, 8704), (99, 8776),

Gene: Annihilator_9 Start: 8314, Stop: 8811, Start Num: 15

Candidate Starts for Annihilator_9:

(Start: 15 @8314 has 60 MA's), (30, 8347), (35, 8365), (44, 8407), (48, 8428), (68, 8578), (71, 8605), (87, 8704), (99, 8776),

Gene: Antsirabe_9 Start: 8572, Stop: 9105, Start Num: 11

Candidate Starts for Antsirabe_9:

(Start: 11 @8572 has 6 MA's), (40, 8668), (44, 8692), (65, 8851), (71, 8896), (73, 8902), (74, 8914),

Gene: Aquarius_7 Start: 5607, Stop: 6086, Start Num: 19

Candidate Starts for Aquarius_7:

(Start: 15 @5598 has 60 MA's), (Start: 19 @5607 has 72 MA's), (Start: 23 @5616 has 20 MA's), (Start: 24 @5619 has 4 MA's), (25, 5622), (Start: 27 @5625 has 4 MA's), (31, 5637), (44, 5694), (46, 5706), (48, 5715), (57, 5796), (58, 5799), (62, 5832), (70, 5892), (72, 5895), (75, 5919), (76, 5928), (84, 5979), (87, 5991), (90, 6006), (92, 6018), (102, 6072),

Gene: Aroostook_9 Start: 8314, Stop: 8811, Start Num: 15

Candidate Starts for Aroostook_9:

(Start: 15 @8314 has 60 MA's), (30, 8347), (35, 8365), (44, 8407), (48, 8428), (68, 8578), (71, 8605), (87, 8704), (99, 8776),

Gene: Asapag_9 Start: 6026, Stop: 6490, Start Num: 26

Candidate Starts for Asapag_9:

(Start: 26 @6026 has 29 MA's), (38, 6059), (41, 6080), (51, 6173), (56, 6197), (61, 6239), (75, 6329), (83, 6383), (91, 6419), (97, 6455),

Gene: Attacne_7 Start: 5618, Stop: 6097, Start Num: 19

Candidate Starts for Attacne_7:

(Start: 19 @5618 has 72 MA's), (Start: 23 @5627 has 20 MA's), (Start: 24 @5630 has 4 MA's), (25, 5633), (Start: 27 @5636 has 4 MA's), (31, 5648), (44, 5705), (46, 5717), (48, 5726), (57, 5807), (58, 5810), (60, 5831), (62, 5843), (70, 5903), (72, 5906), (75, 5930), (76, 5939), (84, 5990), (87, 6002), (90, 6017), (92, 6029), (102, 6083),

Gene: Avani_9 Start: 5986, Stop: 6441, Start Num: 26

Candidate Starts for Avani_9:

(Start: 26 @5986 has 29 MA's), (41, 6040), (42, 6049), (51, 6124), (57, 6157), (58, 6160), (64, 6205), (75, 6280), (83, 6334),

Gene: Avocado_9 Start: 8415, Stop: 8948, Start Num: 11

Candidate Starts for Avocado_9:

(Start: 11 @8415 has 6 MA's), (30, 8478), (44, 8538), (58, 8649), (69, 8739), (71, 8742), (81, 8823),

Gene: Avrafan_9 Start: 8314, Stop: 8811, Start Num: 15

Candidate Starts for Avrafan_9:

(Start: 15 @8314 has 60 MA's), (30, 8347), (35, 8365), (44, 8407), (48, 8428), (68, 8578), (71, 8605), (87, 8704), (99, 8776),

Gene: Axym_9 Start: 6417, Stop: 6926, Start Num: 19

Candidate Starts for Axym_9:

(Start: 19 @6417 has 72 MA's), (25, 6429), (35, 6459), (44, 6504), (52, 6591), (77, 6768), (87, 6810),

Gene: Azira_11 Start: 7290, Stop: 7823, Start Num: 23

Candidate Starts for Azira_11:

(Start: 22 @7287 has 2 MA's), (Start: 23 @7290 has 20 MA's), (44, 7371), (50, 7404), (57, 7485), (91, 7704), (95, 7737),

Gene: AzulaCat_9 Start: 8314, Stop: 8811, Start Num: 15

Candidate Starts for AzulaCat_9:

(Start: 15 @8314 has 60 MA's), (30, 8347), (35, 8365), (44, 8407), (48, 8428), (68, 8578), (71, 8605), (87, 8704), (99, 8776),

Gene: BENtherdunthat_9 Start: 6026, Stop: 6490, Start Num: 26

Candidate Starts for BENtherdunthat_9:

(Start: 26 @6026 has 29 MA's), (38, 6059), (41, 6080), (51, 6173), (56, 6197), (61, 6239), (75, 6329), (83, 6383), (91, 6419), (97, 6455),

Gene: BPs_9 Start: 8314, Stop: 8811, Start Num: 15

Candidate Starts for BPs_9:

(Start: 15 @8314 has 60 MA's), (30, 8347), (35, 8365), (44, 8407), (48, 8428), (68, 8578), (71, 8605), (87, 8704), (99, 8776),

Gene: BQuat_9 Start: 8314, Stop: 8811, Start Num: 15

Candidate Starts for BQuat_9:

(Start: 15 @8314 has 60 MA's), (30, 8347), (35, 8365), (44, 8407), (48, 8428), (68, 8578), (71, 8605), (87, 8704), (99, 8776),

Gene: Barkley26_9 Start: 8314, Stop: 8811, Start Num: 15

Candidate Starts for Barkley26_9:

(Start: 15 @8314 has 60 MA's), (30, 8347), (35, 8365), (44, 8407), (48, 8428), (68, 8578), (71, 8605), (87, 8704), (99, 8776),

Gene: Bavilard_9 Start: 6948, Stop: 7475, Start Num: 23

Candidate Starts for Bavilard_9:

(Start: 23 @6948 has 20 MA's), (44, 7023), (55, 7137), (58, 7152), (61, 7182), (79, 7317), (87, 7344), (91, 7368), (100, 7440),

Gene: BigChungus_8 Start: 6193, Stop: 6720, Start Num: 23

Candidate Starts for BigChungus_8:

(Start: 23 @6193 has 20 MA's), (44, 6268), (55, 6382), (58, 6397), (61, 6427), (79, 6562), (87, 6589), (91, 6613), (100, 6685),

Gene: BillDoor_11 Start: 6400, Stop: 6909, Start Num: 19

Candidate Starts for BillDoor_11:

(Start: 19 @6400 has 72 MA's), (35, 6442), (44, 6487), (50, 6520), (87, 6793), (96, 6859),

Gene: Biskit_10 Start: 6398, Stop: 6910, Start Num: 19

Candidate Starts for Biskit_10:

(Start: 19 @6398 has 72 MA's), (35, 6443), (44, 6488), (87, 6794), (100, 6878),

Gene: Blarby_10 Start: 6510, Stop: 6965, Start Num: 26

Candidate Starts for Blarby_10:

(Start: 26 @6510 has 29 MA's), (41, 6564), (42, 6573), (51, 6648), (57, 6681), (58, 6684), (64, 6729), (75, 6804), (83, 6858),

Gene: Blondies_9 Start: 6393, Stop: 6905, Start Num: 19

Candidate Starts for Blondies_9:

(Start: 19 @6393 has 72 MA's), (35, 6438), (44, 6483), (87, 6789), (100, 6873),

Gene: BotCity_9 Start: 6024, Stop: 6488, Start Num: 26

Candidate Starts for BotCity_9:

(Start: 26 @6024 has 29 MA's), (38, 6057), (41, 6078), (51, 6171), (56, 6195), (61, 6237), (75, 6327), (83, 6381), (91, 6417), (97, 6453),

Gene: BruceB_9 Start: 8314, Stop: 8811, Start Num: 15

Candidate Starts for BruceB_9:

(Start: 15 @8314 has 60 MA's), (30, 8347), (35, 8365), (44, 8407), (48, 8428), (68, 8578), (71, 8605), (87, 8704), (99, 8776),

Gene: BruceLethal_7 Start: 5607, Stop: 6086, Start Num: 19

Candidate Starts for BruceLethal_7:

(Start: 19 @5607 has 72 MA's), (Start: 23 @5616 has 20 MA's), (Start: 24 @5619 has 4 MA's), (25, 5622), (Start: 27 @5625 has 4 MA's), (31, 5637), (44, 5694), (46, 5706), (48, 5715), (57, 5796), (58, 5799), (60, 5820), (62, 5832), (70, 5892), (72, 5895), (75, 5919), (90, 6006), (92, 6018), (102, 6072),

Gene: Budski_9 Start: 6031, Stop: 6495, Start Num: 26

Candidate Starts for Budski_9:

(Start: 26 @6031 has 29 MA's), (38, 6064), (41, 6085), (42, 6094), (51, 6178), (56, 6202), (61, 6244), (75, 6334), (83, 6388), (91, 6424), (97, 6460),

Gene: Burnsey_9 Start: 6418, Stop: 6927, Start Num: 19

Candidate Starts for Burnsey_9:

(Start: 19 @6418 has 72 MA's), (25, 6430), (35, 6460), (44, 6505), (52, 6592), (77, 6769), (87, 6811),

Gene: Button_10 Start: 6434, Stop: 6943, Start Num: 19

Candidate Starts for Button_10:

(Start: 19 @6434 has 72 MA's), (33, 6461), (34, 6467), (39, 6479), (44, 6515), (47, 6530), (56, 6629), (58, 6641),

Gene: Buttrmlkdreams_9 Start: 6392, Stop: 6904, Start Num: 19

Candidate Starts for Buttrmlkdreams_9:

(Start: 19 @6392 has 72 MA's), (35, 6437), (44, 6482), (87, 6788), (100, 6872),

Gene: CLED96_9 Start: 8314, Stop: 8811, Start Num: 15

Candidate Starts for CLED96_9:

(Start: 15 @8314 has 60 MA's), (30, 8347), (35, 8365), (44, 8407), (48, 8428), (68, 8578), (71, 8605), (87, 8704), (99, 8776),

Gene: Cambiare_10 Start: 8877, Stop: 9410, Start Num: 11

Candidate Starts for Cambiare_10:

(Start: 11 @8877 has 6 MA's), (30, 8940), (44, 9000), (58, 9111), (69, 9201), (71, 9204), (81, 9285),

Gene: Camri_9 Start: 8314, Stop: 8811, Start Num: 15

Candidate Starts for Camri_9:

(Start: 15 @8314 has 60 MA's), (30, 8347), (35, 8365), (44, 8407), (48, 8428), (68, 8578), (71, 8605), (87, 8704), (99, 8776),

Gene: CanesSauce_9 Start: 6436, Stop: 6945, Start Num: 19

Candidate Starts for CanesSauce_9:

(1, 6151), (2, 6160), (8, 6382), (9, 6391), (Start: 19 @6436 has 72 MA's), (35, 6478), (44, 6523), (50, 6556), (87, 6829), (96, 6895),

Gene: Carsonalex_10 Start: 6474, Stop: 6983, Start Num: 19

Candidate Starts for Carsonalex_10:

(Start: 19 @6474 has 72 MA's), (25, 6486), (35, 6516), (44, 6561), (52, 6648), (77, 6825), (87, 6867),

Gene: CassieYates_9 Start: 8314, Stop: 8811, Start Num: 15

Candidate Starts for CassieYates_9:

(Start: 15 @8314 has 60 MA's), (30, 8347), (35, 8365), (44, 8407), (48, 8428), (68, 8578), (71, 8605), (87, 8704), (99, 8776),

Gene: Cedasite_9 Start: 8314, Stop: 8811, Start Num: 15

Candidate Starts for Cedasite_9:

(Start: 15 @8314 has 60 MA's), (30, 8347), (35, 8365), (44, 8407), (48, 8428), (68, 8578), (71, 8605), (87, 8704), (99, 8776),

Gene: Chance64_9 Start: 8314, Stop: 8811, Start Num: 15

Candidate Starts for Chance64_9:

(Start: 15 @8314 has 60 MA's), (30, 8347), (35, 8365), (44, 8407), (48, 8428), (68, 8578), (71, 8605), (87, 8704), (99, 8776),

Gene: Che9d_9 Start: 5995, Stop: 6450, Start Num: 26

Candidate Starts for Che9d_9:

(Start: 26 @5995 has 29 MA's), (41, 6049), (42, 6058), (51, 6133), (57, 6166), (58, 6169), (64, 6214), (75, 6289), (83, 6343),

Gene: CheeseTouch_9 Start: 6031, Stop: 6495, Start Num: 26

Candidate Starts for CheeseTouch_9:

(Start: 26 @6031 has 29 MA's), (38, 6064), (41, 6085), (42, 6094), (51, 6178), (56, 6202), (61, 6244), (75, 6334), (83, 6388), (91, 6424), (97, 6460),

Gene: Cherrybomb426_9 Start: 8314, Stop: 8811, Start Num: 15

Candidate Starts for Cherrybomb426_9:

(Start: 15 @8314 has 60 MA's), (30, 8347), (35, 8365), (44, 8407), (48, 8428), (68, 8578), (71, 8605), (87, 8704), (99, 8776),

Gene: CherryonLim_10 Start: 6919, Stop: 7446, Start Num: 23

Candidate Starts for CherryonLim_10:

(Start: 23 @6919 has 20 MA's), (44, 6994), (55, 7108), (58, 7123), (61, 7153), (76, 7246), (87, 7315), (91, 7339),

Gene: ChickenTender_11 Start: 6460, Stop: 6969, Start Num: 19

Candidate Starts for ChickenTender_11:

(Start: 19 @6460 has 72 MA's), (25, 6472), (35, 6502), (44, 6547), (52, 6634), (77, 6811), (87, 6853),

Gene: ChocoMunchkin_9 Start: 6436, Stop: 6945, Start Num: 19

Candidate Starts for ChocoMunchkin_9:

(1, 6151), (2, 6160), (8, 6382), (9, 6391), (Start: 19 @6436 has 72 MA's), (35, 6478), (44, 6523), (50, 6556), (87, 6829), (96, 6895),

Gene: Cleo_9 Start: 6596, Stop: 7126, Start Num: 22

Candidate Starts for Cleo_9:

(Start: 22 @6596 has 2 MA's), (Start: 23 @6599 has 20 MA's), (35, 6635), (44, 6680), (91, 7013), (95, 7046),

Gene: Coleslaw_9 Start: 8314, Stop: 8811, Start Num: 15

Candidate Starts for Coleslaw_9:

(Start: 15 @8314 has 60 MA's), (30, 8347), (35, 8365), (44, 8407), (48, 8428), (68, 8578), (71, 8605), (87, 8704), (99, 8776),

Gene: Cota_7 Start: 5643, Stop: 6104, Start Num: 27

Candidate Starts for Cota_7:

(Start: 23 @5634 has 20 MA's), (Start: 24 @5637 has 4 MA's), (25, 5640), (Start: 27 @5643 has 4 MA's), (31, 5655), (44, 5712), (46, 5724), (48, 5733), (57, 5814), (58, 5817), (62, 5850), (70, 5910), (72, 5913), (75, 5937), (76, 5946), (84, 5997), (90, 6024), (92, 6036), (102, 6090),

Gene: Cozz_9 Start: 6418, Stop: 6927, Start Num: 19

Candidate Starts for Cozz_9:

(Start: 19 @6418 has 72 MA's), (25, 6430), (35, 6460), (44, 6505), (52, 6592), (77, 6769), (87, 6811),

Gene: Crespo_9 Start: 8315, Stop: 8812, Start Num: 15

Candidate Starts for Crespo_9:

(Start: 15 @8315 has 60 MA's), (30, 8348), (35, 8366), (44, 8408), (48, 8429), (68, 8579), (71, 8606), (87, 8705), (99, 8777),

Gene: DMoney_9 Start: 8314, Stop: 8811, Start Num: 15

Candidate Starts for DMoney_9:

(Start: 15 @8314 has 60 MA's), (30, 8347), (35, 8365), (44, 8407), (48, 8428), (68, 8578), (71, 8605), (87, 8704), (99, 8776),

Gene: DNAIII_009 Start: 8323, Stop: 8820, Start Num: 15

Candidate Starts for DNAIII_009:

(Start: 15 @8323 has 60 MA's), (30, 8356), (35, 8374), (44, 8416), (48, 8437), (68, 8587), (71, 8614), (87, 8713), (99, 8785),

Gene: Darionha_9 Start: 8314, Stop: 8811, Start Num: 15

Candidate Starts for Darionha_9:

(Start: 15 @8314 has 60 MA's), (30, 8347), (35, 8365), (44, 8407), (48, 8428), (68, 8578), (71, 8605), (87, 8704), (99, 8776),

Gene: Demsculpinboyz_9 Start: 5986, Stop: 6441, Start Num: 26

Candidate Starts for Demsculpinboyz_9:

(Start: 26 @5986 has 29 MA's), (41, 6040), (42, 6049), (51, 6124), (57, 6157), (58, 6160), (64, 6205), (75, 6280), (83, 6334),

Gene: DrParker_7 Start: 5632, Stop: 6111, Start Num: 19

Candidate Starts for DrParker_7:

(Start: 15 @5623 has 60 MA's), (Start: 19 @5632 has 72 MA's), (Start: 23 @5641 has 20 MA's), (Start: 24 @5644 has 4 MA's), (25, 5647), (Start: 27 @5650 has 4 MA's), (31, 5662), (44, 5719), (46, 5731), (48, 5740), (57, 5821), (62, 5857), (70, 5917), (72, 5920), (75, 5944), (76, 5953), (88, 6019), (90, 6031), (92, 6043), (102, 6097),

Gene: Dre3_9 Start: 6546, Stop: 7073, Start Num: 23

Candidate Starts for Dre3_9:

(Start: 22 @6543 has 2 MA's), (Start: 23 @6546 has 20 MA's), (35, 6582), (44, 6627), (91, 6960), (95, 6993),

Gene: ECartman_9 Start: 8314, Stop: 8811, Start Num: 15

Candidate Starts for ECartman_9:

(Start: 15 @8314 has 60 MA's), (30, 8347), (35, 8365), (44, 8407), (48, 8428), (68, 8578), (71, 8605), (87, 8704), (99, 8776),

Gene: Ecliptus_9 Start: 6053, Stop: 6520, Start Num: 26

Candidate Starts for Ecliptus_9:

(Start: 26 @6053 has 29 MA's), (41, 6107), (56, 6224), (67, 6299), (68, 6302), (79, 6401), (83, 6410),

Gene: Elinal_10 Start: 6174, Stop: 6701, Start Num: 23

Candidate Starts for Elinal_10:

(Start: 23 @6174 has 20 MA's), (44, 6249), (53, 6351), (55, 6363), (58, 6378), (61, 6408), (79, 6543), (86, 6567), (87, 6570), (91, 6594), (100, 6666),

Gene: Elliott_9 Start: 6417, Stop: 6926, Start Num: 19

Candidate Starts for Elliott_9:

(Start: 19 @6417 has 72 MA's), (25, 6429), (35, 6459), (44, 6504), (52, 6591), (77, 6768), (87, 6810),

Gene: Emalyn_8 Start: 6146, Stop: 6655, Start Num: 19

Candidate Starts for Emalyn_8:

(Start: 19 @6146 has 72 MA's), (35, 6188), (44, 6233), (76, 6470), (87, 6539), (100, 6623),

Gene: Enochoraptor_7 Start: 5628, Stop: 6107, Start Num: 19

Candidate Starts for Enochoraptor_7:

(Start: 19 @5628 has 72 MA's), (Start: 23 @5637 has 20 MA's), (Start: 24 @5640 has 4 MA's), (25, 5643), (Start: 27 @5646 has 4 MA's), (31, 5658), (44, 5715), (46, 5727), (48, 5736), (57, 5817), (58, 5820), (60, 5841), (62, 5853), (70, 5913), (72, 5916), (75, 5940), (90, 6027), (92, 6039), (102, 6093),

Gene: Enoki_7 Start: 5613, Stop: 6092, Start Num: 19

Candidate Starts for Enoki_7:

(Start: 19 @5613 has 72 MA's), (Start: 23 @5622 has 20 MA's), (Start: 24 @5625 has 4 MA's), (25, 5628), (Start: 27 @5631 has 4 MA's), (31, 5643), (44, 5700), (46, 5712), (48, 5721), (55, 5790), (57, 5802), (58, 5805), (60, 5826), (62, 5838), (70, 5898), (72, 5901), (75, 5925), (90, 6012), (92, 6024), (102, 6078),

Gene: Feastonyeet_8 Start: 6193, Stop: 6720, Start Num: 23

Candidate Starts for Feastonyeet_8:

(Start: 23 @6193 has 20 MA's), (44, 6268), (55, 6382), (58, 6397), (61, 6427), (79, 6562), (87, 6589), (91, 6613), (100, 6685),

Gene: FlagStaff_9 Start: 8362, Stop: 8880, Start Num: 11

Candidate Starts for FlagStaff_9:

(Start: 11 @8362 has 6 MA's), (35, 8428), (44, 8470), (69, 8671), (71, 8674), (99, 8845),

Gene: Fribs8_10 Start: 7103, Stop: 7636, Start Num: 23

Candidate Starts for Fribs8_10:

(Start: 23 @7103 has 20 MA's), (44, 7184), (50, 7217), (52, 7274), (76, 7424), (91, 7517),

Gene: Frickyeah_9 Start: 6059, Stop: 6490, Start Num: 38

Candidate Starts for Frickyeah_9:

(Start: 26 @6026 has 29 MA's), (38, 6059), (41, 6080), (51, 6173), (56, 6197), (61, 6239), (75, 6329), (83, 6383), (91, 6419), (97, 6455),

Gene: Frosty24_9 Start: 8314, Stop: 8811, Start Num: 15

Candidate Starts for Frosty24_9:

(Start: 15 @8314 has 60 MA's), (30, 8347), (35, 8365), (44, 8407), (48, 8428), (68, 8578), (71, 8605), (87, 8704), (99, 8776),

Gene: GTE2_07 Start: 6096, Stop: 6605, Start Num: 19

Candidate Starts for GTE2_07:

(Start: 19 @6096 has 72 MA's), (35, 6138), (44, 6183), (50, 6216), (87, 6489), (96, 6555), (100, 6573),

Gene: Gaia_6 Start: 6666, Stop: 7031, Start Num: 28

Candidate Starts for Gaia_6:

(21, 6654), (Start: 28 @6666 has 2 MA's), (37, 6693), (44, 6735), (59, 6849), (63, 6879), (66, 6900), (71, 6930), (75, 6957), (78, 6996),

Gene: Getalong_9 Start: 6026, Stop: 6490, Start Num: 26

Candidate Starts for Getalong_9:

(Start: 26 @6026 has 29 MA's), (38, 6059), (41, 6080), (42, 6089), (51, 6173), (56, 6197), (61, 6239), (75, 6329), (83, 6383), (91, 6419), (97, 6455),

Gene: GiKK_12 Start: 6737, Stop: 7246, Start Num: 19

Candidate Starts for GiKK_12:

(Start: 19 @6737 has 72 MA's), (33, 6764), (34, 6770), (39, 6782), (44, 6818), (47, 6833), (56, 6932), (58, 6944),

Gene: Gibbous_9 Start: 6546, Stop: 7073, Start Num: 23

Candidate Starts for Gibbous_9:

(Start: 22 @6543 has 2 MA's), (Start: 23 @6546 has 20 MA's), (35, 6582), (44, 6627), (91, 6960), (95, 6993),

Gene: Gideon_9 Start: 8314, Stop: 8811, Start Num: 15

Candidate Starts for Gideon_9:

(Start: 15 @8314 has 60 MA's), (30, 8347), (35, 8365), (44, 8407), (48, 8428), (68, 8578), (71, 8605), (87, 8704), (99, 8776),

Gene: GoldHunter_10 Start: 6418, Stop: 6927, Start Num: 19

Candidate Starts for GoldHunter_10:

(Start: 19 @6418 has 72 MA's), (25, 6430), (35, 6460), (44, 6505), (52, 6592), (77, 6769), (87, 6811),

Gene: GoldenAsh_9 Start: 8314, Stop: 8811, Start Num: 15

Candidate Starts for GoldenAsh_9:

(Start: 15 @8314 has 60 MA's), (30, 8347), (35, 8365), (44, 8407), (48, 8428), (68, 8578), (71, 8605), (87, 8704), (99, 8776),

Gene: Gomashi_9 Start: 8315, Stop: 8812, Start Num: 15

Candidate Starts for Gomashi_9:

(Start: 15 @8315 has 60 MA's), (30, 8348), (35, 8366), (44, 8408), (48, 8429), (68, 8579), (71, 8606), (87, 8705), (99, 8777),

Gene: Grizzly_9 Start: 8314, Stop: 8811, Start Num: 15

Candidate Starts for Grizzly_9:

(Start: 15 @8314 has 60 MA's), (30, 8347), (35, 8365), (44, 8407), (48, 8428), (68, 8578), (71, 8605), (87, 8704), (99, 8776),

Gene: Halo_9 Start: 8309, Stop: 8806, Start Num: 15

Candidate Starts for Halo_9:

(Start: 15 @8309 has 60 MA's), (30, 8342), (35, 8360), (44, 8402), (48, 8423), (68, 8573), (71, 8600), (87, 8699), (99, 8771),

Gene: Hexbug_11 Start: 7426, Stop: 7932, Start Num: 20

Candidate Starts for Hexbug_11:

(Start: 20 @7426 has 3 MA's), (33, 7453), (36, 7465), (44, 7507), (45, 7516), (52, 7603), (58, 7630),

Gene: HippoPololi_11 Start: 7195, Stop: 7725, Start Num: 22

Candidate Starts for HippoPololi_11:

(Start: 22 @7195 has 2 MA's), (Start: 23 @7198 has 20 MA's), (44, 7279), (54, 7378), (55, 7381), (76, 7519), (85, 7582), (91, 7612), (95, 7645),

Gene: Holliday_9 Start: 6031, Stop: 6495, Start Num: 26

Candidate Starts for Holliday_9:

(Start: 26 @6031 has 29 MA's), (38, 6064), (41, 6085), (42, 6094), (51, 6178), (56, 6202), (61, 6244), (75, 6334), (83, 6388), (91, 6424), (97, 6460),

Gene: Hope_9 Start: 8314, Stop: 8811, Start Num: 15

Candidate Starts for Hope_9:

(Start: 15 @8314 has 60 MA's), (30, 8347), (35, 8365), (44, 8407), (48, 8428), (68, 8578), (71, 8605), (87, 8704), (99, 8776),

Gene: Horseradish_10 Start: 6296, Stop: 6808, Start Num: 19

Candidate Starts for Horseradish_10:

(Start: 19 @6296 has 72 MA's), (35, 6341), (44, 6386), (87, 6692), (94, 6728), (100, 6776),

Gene: Horus_9 Start: 6026, Stop: 6490, Start Num: 26

Candidate Starts for Horus_9:

(Start: 26 @6026 has 29 MA's), (38, 6059), (41, 6080), (51, 6173), (56, 6197), (61, 6239), (75, 6329), (83, 6383), (91, 6419), (97, 6455),

Gene: Hotshotbaby7_9 Start: 8314, Stop: 8811, Start Num: 15

Candidate Starts for Hotshotbaby7_9:

(Start: 15 @8314 has 60 MA's), (30, 8347), (35, 8365), (44, 8407), (48, 8428), (68, 8578), (71, 8605), (87, 8704), (99, 8776),

Gene: IdentityCrisis_8 Start: 6944, Stop: 7429, Start Num: 27

Candidate Starts for IdentityCrisis_8:

(13, 6902), (Start: 27 @6944 has 4 MA's), (44, 7013), (46, 7025),

Gene: Jabbawokkie_10 Start: 6509, Stop: 6964, Start Num: 26

Candidate Starts for Jabbawokkie_10:

(Start: 26 @6509 has 29 MA's), (41, 6563), (42, 6572), (51, 6647), (57, 6680), (58, 6683), (64, 6728), (75, 6803), (83, 6857),

Gene: Jamzy_12 Start: 6750, Stop: 7256, Start Num: 19

Candidate Starts for Jamzy_12:

(Start: 19 @6750 has 72 MA's), (36, 6786), (39, 6792), (44, 6828), (45, 6837), (47, 6843), (61, 6984), (70, 7041), (80, 7122), (103, 7248),

Gene: Jane_9 Start: 8314, Stop: 8811, Start Num: 15

Candidate Starts for Jane_9:

(Start: 15 @8314 has 60 MA's), (30, 8347), (35, 8365), (44, 8407), (48, 8428), (68, 8578), (71, 8605), (87, 8704), (99, 8776),

Gene: Jolene_9 Start: 8314, Stop: 8811, Start Num: 15

Candidate Starts for Jolene_9:

(Start: 15 @8314 has 60 MA's), (30, 8347), (35, 8365), (44, 8407), (48, 8428), (68, 8578), (71, 8605), (87, 8704), (99, 8776),

Gene: Jolie2_9 Start: 7539, Stop: 8054, Start Num: 11

Candidate Starts for Jolie2_9:

(Start: 11 @7539 has 6 MA's), (35, 7599), (44, 7641), (57, 7749), (61, 7782), (65, 7800), (69, 7842), (71, 7845), (75, 7872), (96, 8004),

Gene: Jonghyun_9 Start: 8314, Stop: 8811, Start Num: 15

Candidate Starts for Jonghyun_9:

(Start: 15 @8314 has 60 MA's), (30, 8347), (35, 8365), (44, 8407), (48, 8428), (68, 8578), (71, 8605), (87, 8704), (99, 8776),

Gene: JorRay_9 Start: 8314, Stop: 8811, Start Num: 15

Candidate Starts for JorRay_9:

(Start: 15 @8314 has 60 MA's), (30, 8347), (35, 8365), (44, 8407), (48, 8428), (68, 8578), (71, 8605), (87, 8704), (99, 8776),

Gene: Kamaru_9 Start: 6031, Stop: 6495, Start Num: 26

Candidate Starts for Kamaru_9:

(Start: 26 @6031 has 29 MA's), (38, 6064), (41, 6085), (42, 6094), (51, 6178), (56, 6202), (61, 6244), (75, 6334), (83, 6388), (91, 6424), (97, 6460),

Gene: Kareem_9 Start: 8314, Stop: 8811, Start Num: 15

Candidate Starts for Kareem_9:

(Start: 15 @8314 has 60 MA's), (30, 8347), (35, 8365), (44, 8407), (48, 8428), (68, 8578), (71, 8605), (87, 8704), (99, 8776),

Gene: Kasen3_9 Start: 8315, Stop: 8812, Start Num: 15

Candidate Starts for Kasen3_9:

(Start: 15 @8315 has 60 MA's), (30, 8348), (35, 8366), (44, 8408), (48, 8429), (68, 8579), (71, 8606), (87, 8705), (99, 8777),

Gene: KayGee_9 Start: 6174, Stop: 6701, Start Num: 23

Candidate Starts for KayGee_9:

(Start: 23 @6174 has 20 MA's), (44, 6249), (53, 6351), (55, 6363), (58, 6378), (61, 6408), (79, 6543), (86, 6567), (87, 6570), (91, 6594), (100, 6666),

Gene: Keiki_7 Start: 5625, Stop: 6104, Start Num: 19

Candidate Starts for Keiki_7:

(Start: 19 @5625 has 72 MA's), (Start: 23 @5634 has 20 MA's), (Start: 24 @5637 has 4 MA's), (25, 5640), (Start: 27 @5643 has 4 MA's), (31, 5655), (44, 5712), (46, 5724), (48, 5733), (57, 5814), (58, 5817), (62, 5850), (70, 5910), (72, 5913), (75, 5937), (76, 5946), (84, 5997), (90, 6024), (92, 6036), (102, 6090),

Gene: Kenna_9 Start: 6026, Stop: 6490, Start Num: 26

Candidate Starts for Kenna_9:

(Start: 26 @6026 has 29 MA's), (38, 6059), (41, 6080), (51, 6173), (56, 6197), (61, 6239), (75, 6329), (83, 6383), (91, 6419), (97, 6455),

Gene: Kubed_7 Start: 5615, Stop: 6094, Start Num: 19

Candidate Starts for Kubed_7:

(Start: 19 @5615 has 72 MA's), (Start: 23 @5624 has 20 MA's), (Start: 24 @5627 has 4 MA's), (25, 5630), (Start: 27 @5633 has 4 MA's), (31, 5645), (44, 5702), (46, 5714), (48, 5723), (57, 5804), (58, 5807), (60, 5828), (62, 5840), (70, 5900), (72, 5903), (75, 5927), (84, 5987), (90, 6014), (92, 6026), (102, 6080),

Gene: Lauchelly_7 Start: 5610, Stop: 6089, Start Num: 19

Candidate Starts for Lauchelly_7:

(Start: 19 @5610 has 72 MA's), (Start: 23 @5619 has 20 MA's), (Start: 24 @5622 has 4 MA's), (25, 5625), (Start: 27 @5628 has 4 MA's), (31, 5640), (44, 5697), (46, 5709), (48, 5718), (57, 5799), (58, 5802), (60, 5823), (62, 5835), (70, 5895), (72, 5898), (75, 5922), (90, 6009), (92, 6021), (102, 6075),

Gene: Lauer_8 Start: 6223, Stop: 6750, Start Num: 23

Candidate Starts for Lauer_8:

(Start: 23 @6223 has 20 MA's), (44, 6298), (55, 6412), (58, 6427), (61, 6457), (79, 6592), (86, 6616), (87, 6619), (91, 6643), (100, 6715),

Gene: Lemuria_9 Start: 7586, Stop: 8107, Start Num: 11

Candidate Starts for Lemuria_9:

(Start: 11 @7586 has 6 MA's), (44, 7694), (57, 7802), (69, 7895), (71, 7898),

Gene: Leroy_9 Start: 6027, Stop: 6491, Start Num: 26

Candidate Starts for Leroy_9:

(Start: 26 @6027 has 29 MA's), (38, 6060), (41, 6081), (51, 6174), (56, 6198), (61, 6240), (75, 6330), (83, 6384), (91, 6420), (97, 6456),

Gene: Leviosa_7 Start: 5631, Stop: 6110, Start Num: 19

Candidate Starts for Leviosa_7:

(Start: 19 @5631 has 72 MA's), (Start: 23 @5640 has 20 MA's), (Start: 24 @5643 has 4 MA's), (25, 5646), (Start: 27 @5649 has 4 MA's), (31, 5661), (44, 5718), (46, 5730), (48, 5739), (57, 5820), (62, 5856), (70, 5916), (72, 5919), (75, 5943), (90, 6030), (92, 6042),

Gene: Liefie_9 Start: 8313, Stop: 8810, Start Num: 15

Candidate Starts for Liefie_9:

(Start: 15 @8313 has 60 MA's), (30, 8346), (35, 8364), (44, 8406), (48, 8427), (68, 8577), (71, 8604), (87, 8703), (99, 8775),

Gene: LilBandit_7 Start: 5615, Stop: 6094, Start Num: 19

Candidate Starts for LilBandit_7:

(Start: 19 @5615 has 72 MA's), (Start: 23 @5624 has 20 MA's), (Start: 24 @5627 has 4 MA's), (25, 5630), (Start: 27 @5633 has 4 MA's), (44, 5702), (46, 5714), (48, 5723), (57, 5804), (58, 5807), (60, 5828), (62, 5840), (70, 5900), (72, 5903), (75, 5927), (76, 5936), (84, 5987), (87, 5999), (90, 6014), (92, 6026), (102, 6080),

Gene: LitninMcQueen_9 Start: 6031, Stop: 6495, Start Num: 26

Candidate Starts for LitninMcQueen_9:

(Start: 26 @6031 has 29 MA's), (38, 6064), (41, 6085), (42, 6094), (51, 6178), (56, 6202), (61, 6244), (75, 6334), (83, 6388), (91, 6424), (97, 6460),

Gene: LouisV14_9 Start: 8314, Stop: 8811, Start Num: 15

Candidate Starts for LouisV14_9:

(Start: 15 @8314 has 60 MA's), (30, 8347), (35, 8365), (44, 8407), (48, 8428), (68, 8578), (71, 8605), (87, 8704), (99, 8776),

Gene: Lucky10_8 Start: 5542, Stop: 6003, Start Num: 24

Candidate Starts for Lucky10_8:

(Start: 24 @5542 has 4 MA's), (29, 5551), (44, 5614), (54, 5701), (61, 5749), (68, 5788), (71, 5809), (75, 5836), (76, 5845), (87, 5905), (101, 5986),

Gene: Lutum_9 Start: 6026, Stop: 6490, Start Num: 26

Candidate Starts for Lutum_9:

(Start: 26 @6026 has 29 MA's), (38, 6059), (41, 6080), (51, 6173), (56, 6197), (61, 6239), (75, 6329), (83, 6383), (91, 6419), (97, 6455),

Gene: MAnor_9 Start: 6164, Stop: 6691, Start Num: 23

Candidate Starts for MAnor_9:

(Start: 23 @6164 has 20 MA's), (44, 6239), (55, 6353), (58, 6368), (61, 6398), (87, 6560), (91, 6584), (100, 6656),

Gene: MEAK_7 Start: 5617, Stop: 6096, Start Num: 19

Candidate Starts for MEAK_7:

(Start: 19 @5617 has 72 MA's), (Start: 23 @5626 has 20 MA's), (Start: 24 @5629 has 4 MA's), (25, 5632), (Start: 27 @5635 has 4 MA's), (44, 5704), (46, 5716), (48, 5725), (57, 5806), (58, 5809), (62, 5842), (70, 5902), (72, 5905), (75, 5929), (84, 5989), (90, 6016), (92, 6028), (102, 6082),

Gene: MOOREtheMARYer_9 Start: 8480, Stop: 8995, Start Num: 19

Candidate Starts for MOOREtheMARYer_9:

(Start: 18 @8477 has 1 MA's), (Start: 19 @8480 has 72 MA's), (32, 8510), (44, 8570), (57, 8672), (65, 8723), (71, 8768), (91, 8891),

Gene: MScarn_11 Start: 6392, Stop: 6904, Start Num: 19

Candidate Starts for MScarn_11:

(Start: 19 @6392 has 72 MA's), (35, 6437), (44, 6482), (87, 6788), (100, 6872),

Gene: MaVan_11 Start: 7290, Stop: 7823, Start Num: 23

Candidate Starts for MaVan_11:

(Start: 22 @7287 has 2 MA's), (Start: 23 @7290 has 20 MA's), (44, 7371), (50, 7404), (57, 7485), (85, 7674), (91, 7704), (95, 7737),

Gene: Maliketh_9 Start: 8314, Stop: 8811, Start Num: 15

Candidate Starts for Maliketh_9:

(Start: 15 @8314 has 60 MA's), (30, 8347), (35, 8365), (44, 8407), (48, 8428), (68, 8578), (71, 8605), (87, 8704), (99, 8776),

Gene: Malisha_9 Start: 7076, Stop: 7540, Start Num: 26

Candidate Starts for Malisha_9:

(Start: 26 @7076 has 29 MA's), (41, 7130), (56, 7247), (61, 7289), (75, 7379), (79, 7424), (91, 7469),

Gene: Margaret_12 Start: 7126, Stop: 7641, Start Num: 19

Candidate Starts for Margaret_12:

(17, 7123), (Start: 19 @7126 has 72 MA's), (Start: 27 @7144 has 4 MA's), (36, 7171), (39, 7177), (44, 7213), (47, 7228), (57, 7336), (61, 7369), (80, 7507),

Gene: Marmie_9 Start: 8314, Stop: 8811, Start Num: 15

Candidate Starts for Marmie_9:

(Start: 15 @8314 has 60 MA's), (30, 8347), (35, 8365), (44, 8407), (48, 8428), (68, 8578), (71, 8605), (87, 8704), (99, 8776),

Gene: Mayweather_10 Start: 6797, Stop: 7324, Start Num: 23

Candidate Starts for Mayweather_10:

(10, 6746), (Start: 23 @6797 has 20 MA's), (44, 6872), (55, 6986), (58, 7001), (61, 7031), (87, 7193), (91, 7217), (100, 7289),

Gene: Mercurio_10 Start: 8220, Stop: 8741, Start Num: 11

Candidate Starts for Mercurio_10:

(3, 8013), (Start: 11 @8220 has 6 MA's), (44, 8328), (57, 8436), (69, 8529), (71, 8532),

Gene: Morkie_8 Start: 5504, Stop: 5965, Start Num: 24

Candidate Starts for Morkie_8:

(7, 5435), (Start: 24 @5504 has 4 MA's), (29, 5513), (37, 5537), (44, 5576), (54, 5663), (61, 5711), (68, 5750), (71, 5771), (76, 5807), (98, 5939),

Gene: Mowgli_9 Start: 8314, Stop: 8811, Start Num: 15

Candidate Starts for Mowgli_9:

(Start: 15 @8314 has 60 MA's), (30, 8347), (35, 8365), (44, 8407), (48, 8428), (68, 8578), (71, 8605), (87, 8704), (99, 8776),

Gene: Moyashi_7 Start: 5635, Stop: 6114, Start Num: 19

Candidate Starts for Moyashi_7:

(Start: 15 @5626 has 60 MA's), (Start: 19 @5635 has 72 MA's), (Start: 23 @5644 has 20 MA's), (Start: 24 @5647 has 4 MA's), (25, 5650), (Start: 27 @5653 has 4 MA's), (31, 5665), (44, 5722), (46, 5734), (48, 5743), (57, 5824), (58, 5827), (60, 5848), (62, 5860), (70, 5920), (72, 5923), (75, 5947), (88, 6022), (90, 6034), (92, 6046), (102, 6100),

Gene: MrAK_7 Start: 5644, Stop: 6123, Start Num: 19

Candidate Starts for MrAK_7:

(Start: 15 @5635 has 60 MA's), (Start: 19 @5644 has 72 MA's), (Start: 23 @5653 has 20 MA's), (Start: 24 @5656 has 4 MA's), (25, 5659), (Start: 27 @5662 has 4 MA's), (31, 5674), (44, 5731), (46, 5743), (48, 5752), (58, 5836), (62, 5869), (70, 5929), (72, 5932), (75, 5956), (84, 6016), (87, 6028), (90, 6043), (92, 6055), (102, 6109),

Gene: MunkgeeRoachy_9 Start: 6465, Stop: 6974, Start Num: 19

Candidate Starts for MunkgeeRoachy_9:

(Start: 19 @6465 has 72 MA's), (25, 6477), (35, 6507), (44, 6552), (52, 6639), (77, 6816), (87, 6858),

Gene: Nebkiss_6 Start: 6667, Stop: 7032, Start Num: 28

Candidate Starts for Nebkiss_6:

(21, 6655), (Start: 28 @6667 has 2 MA's), (37, 6694), (44, 6736), (59, 6850), (63, 6880), (66, 6901), (71, 6931), (75, 6958), (78, 6997),

Gene: Nibbles_11 Start: 7290, Stop: 7823, Start Num: 23

Candidate Starts for Nibbles_11:

(Start: 22 @7287 has 2 MA's), (Start: 23 @7290 has 20 MA's), (44, 7371), (50, 7404), (57, 7485), (85, 7674), (91, 7704), (95, 7737),

Gene: Nina_10 Start: 7451, Stop: 7960, Start Num: 19

Candidate Starts for Nina_10:

(Start: 19 @7451 has 72 MA's), (25, 7463), (35, 7493), (44, 7538), (52, 7625), (77, 7802), (87, 7844),

Gene: Nodigi_11 Start: 7419, Stop: 7925, Start Num: 20

Candidate Starts for Nodigi_11:

(12, 7383), (Start: 20 @7419 has 3 MA's), (33, 7446), (36, 7458), (44, 7500), (45, 7509), (52, 7596), (58, 7623),

Gene: ODay_9 Start: 6051, Stop: 6518, Start Num: 26

Candidate Starts for ODay_9:

(Start: 26 @6051 has 29 MA's), (41, 6105), (56, 6222), (67, 6297), (68, 6300), (79, 6399), (83, 6408),

Gene: OctaviousRex_9 Start: 8314, Stop: 8811, Start Num: 15

Candidate Starts for OctaviousRex_9:

(Start: 15 @8314 has 60 MA's), (30, 8347), (35, 8365), (44, 8407), (48, 8428), (68, 8578), (71, 8605), (87, 8704), (99, 8776),

Gene: Ogopogo_10 Start: 6246, Stop: 6701, Start Num: 26

Candidate Starts for Ogopogo_10:

(Start: 26 @6246 has 29 MA's), (41, 6300), (42, 6309), (51, 6384), (57, 6417), (58, 6420), (75, 6540),

Gene: Olga_9 Start: 8314, Stop: 8811, Start Num: 15

Candidate Starts for Olga_9:

(Start: 15 @8314 has 60 MA's), (30, 8347), (35, 8365), (44, 8407), (48, 8428), (68, 8578), (71, 8605), (87, 8704), (99, 8776),

Gene: Orla_11 Start: 7423, Stop: 7929, Start Num: 20

Candidate Starts for Orla_11:

(Start: 20 @7423 has 3 MA's), (33, 7450), (36, 7462), (44, 7504), (45, 7513), (52, 7600), (58, 7627),

Gene: Ouroboros_7 Start: 5618, Stop: 6097, Start Num: 19

Candidate Starts for Ouroboros_7:

(Start: 19 @5618 has 72 MA's), (Start: 23 @5627 has 20 MA's), (Start: 24 @5630 has 4 MA's), (25, 5633), (Start: 27 @5636 has 4 MA's), (31, 5648), (44, 5705), (46, 5717), (48, 5726), (57, 5807), (62, 5843), (70, 5903), (72, 5906), (75, 5930), (76, 5939), (84, 5990), (87, 6002), (90, 6017), (92, 6029),

Gene: P1.1_7 Start: 5618, Stop: 6097, Start Num: 19

Candidate Starts for P1.1_7:

(Start: 19 @5618 has 72 MA's), (Start: 23 @5627 has 20 MA's), (Start: 24 @5630 has 4 MA's), (25, 5633), (Start: 27 @5636 has 4 MA's), (31, 5648), (44, 5705), (46, 5717), (48, 5726), (57, 5807), (58, 5810), (60, 5831), (62, 5843), (70, 5903), (72, 5906), (75, 5930), (90, 6017), (92, 6029), (102, 6083),

Gene: P100.1_7 Start: 5608, Stop: 6087, Start Num: 19

Candidate Starts for P100.1_7:

(Start: 15 @5599 has 60 MA's), (Start: 19 @5608 has 72 MA's), (Start: 23 @5617 has 20 MA's), (Start: 24 @5620 has 4 MA's), (25, 5623), (Start: 27 @5626 has 4 MA's), (31, 5638), (44, 5695), (46, 5707), (58, 5800), (62, 5833), (70, 5893), (72, 5896), (75, 5920), (76, 5929), (84, 5980), (87, 5992), (90, 6007), (92, 6019), (102, 6073),

Gene: P100A_7 Start: 5630, Stop: 6109, Start Num: 19

Candidate Starts for P100A_7:

(Start: 19 @5630 has 72 MA's), (Start: 23 @5639 has 20 MA's), (Start: 24 @5642 has 4 MA's), (25, 5645), (Start: 27 @5648 has 4 MA's), (31, 5660), (44, 5717), (46, 5729), (48, 5738), (55, 5807), (57, 5819), (62, 5855), (70, 5915), (72, 5918), (75, 5942), (84, 6002), (90, 6029), (92, 6041), (102, 6095),

Gene: P100D_7 Start: 5612, Stop: 6091, Start Num: 19

Candidate Starts for P100D_7:

(Start: 19 @5612 has 72 MA's), (Start: 23 @5621 has 20 MA's), (Start: 24 @5624 has 4 MA's), (25, 5627), (Start: 27 @5630 has 4 MA's), (31, 5642), (44, 5699), (46, 5711), (48, 5720), (57, 5801), (58, 5804), (60, 5825), (62, 5837), (70, 5897), (72, 5900), (75, 5924), (84, 5984), (87, 5996), (90, 6011), (92, 6023), (102, 6077),

Gene: P101A_7 Start: 5611, Stop: 6090, Start Num: 19

Candidate Starts for P101A_7:

(Start: 19 @5611 has 72 MA's), (Start: 23 @5620 has 20 MA's), (Start: 24 @5623 has 4 MA's), (25, 5626), (Start: 27 @5629 has 4 MA's), (31, 5641), (44, 5698), (46, 5710), (48, 5719), (57, 5800), (58, 5803), (60, 5824), (62, 5836), (70, 5896), (72, 5899), (75, 5923), (76, 5932), (90, 6010), (92, 6022), (102, 6076),

Gene: P104A_7 Start: 5613, Stop: 6092, Start Num: 19

Candidate Starts for P104A_7:

(Start: 19 @5613 has 72 MA's), (Start: 23 @5622 has 20 MA's), (Start: 24 @5625 has 4 MA's), (25, 5628), (Start: 27 @5631 has 4 MA's), (31, 5643), (44, 5700), (46, 5712), (48, 5721), (57, 5802), (58, 5805), (60, 5826), (62, 5838), (70, 5898), (72, 5901), (75, 5925), (76, 5934), (84, 5985), (87, 5997), (90, 6012), (92, 6024), (102, 6078),

Gene: P104B_7 Start: 5617, Stop: 6096, Start Num: 19

Candidate Starts for P104B_7:

(Start: 19 @5617 has 72 MA's), (Start: 23 @5626 has 20 MA's), (Start: 24 @5629 has 4 MA's), (25, 5632), (Start: 27 @5635 has 4 MA's), (31, 5647), (44, 5704), (46, 5716), (48, 5725), (57, 5806), (58, 5809), (62, 5842), (70, 5902), (72, 5905), (75, 5929), (84, 5989), (87, 6001), (90, 6016), (92, 6028), (102, 6082),

Gene: P105_7 Start: 5607, Stop: 6086, Start Num: 19

Candidate Starts for P105_7:

(Start: 19 @5607 has 72 MA's), (Start: 23 @5616 has 20 MA's), (Start: 24 @5619 has 4 MA's), (25, 5622), (Start: 27 @5625 has 4 MA's), (31, 5637), (44, 5694), (46, 5706), (48, 5715), (58, 5799), (62, 5832), (70, 5892), (72, 5895), (75, 5919), (76, 5928), (84, 5979), (87, 5991), (90, 6006), (92, 6018), (102, 6072),

Gene: P106A_7 Start: 5635, Stop: 6114, Start Num: 19

Candidate Starts for P106A_7:

(Start: 15 @5626 has 60 MA's), (Start: 19 @5635 has 72 MA's), (Start: 23 @5644 has 20 MA's), (Start: 24 @5647 has 4 MA's), (25, 5650), (Start: 27 @5653 has 4 MA's), (31, 5665), (44, 5722), (46, 5734), (48, 5743), (57, 5824), (58, 5827), (60, 5848), (62, 5860), (70, 5920), (72, 5923), (75, 5947), (76, 5956), (88, 6022), (90, 6034), (92, 6046), (102, 6100),

Gene: P106C_7 Start: 5635, Stop: 6114, Start Num: 19

Candidate Starts for P106C_7:

(Start: 15 @5626 has 60 MA's), (Start: 19 @5635 has 72 MA's), (Start: 23 @5644 has 20 MA's), (Start: 24 @5647 has 4 MA's), (25, 5650), (Start: 27 @5653 has 4 MA's), (31, 5665), (44, 5722), (46, 5734), (48, 5743), (57, 5824), (58, 5827), (60, 5848), (62, 5860), (70, 5920), (72, 5923), (75, 5947), (76, 5956), (88, 6022), (90, 6034), (92, 6046), (102, 6100),

Gene: P106I_7 Start: 5635, Stop: 6114, Start Num: 19

Candidate Starts for P106I_7:

(Start: 15 @5626 has 60 MA's), (Start: 19 @5635 has 72 MA's), (Start: 23 @5644 has 20 MA's), (Start: 24 @5647 has 4 MA's), (25, 5650), (Start: 27 @5653 has 4 MA's), (31, 5665), (44, 5722), (46, 5734), (48, 5743), (57, 5824), (58, 5827), (60, 5848), (62, 5860), (70, 5920), (72, 5923), (75, 5947), (76, 5956), (88, 6022), (90, 6034), (92, 6046), (102, 6100),

Gene: P106L_7 Start: 5635, Stop: 6114, Start Num: 19

Candidate Starts for P106L_7:

(Start: 15 @5626 has 60 MA's), (Start: 19 @5635 has 72 MA's), (Start: 23 @5644 has 20 MA's), (Start: 24 @5647 has 4 MA's), (25, 5650), (Start: 27 @5653 has 4 MA's), (31, 5665), (44, 5722), (46, 5734), (48, 5743), (57, 5824), (58, 5827), (60, 5848), (62, 5860), (70, 5920), (72, 5923), (75, 5947), (76, 5956), (88, 6022), (90, 6034), (92, 6046), (102, 6100),

Gene: P106M_7 Start: 5635, Stop: 6114, Start Num: 19

Candidate Starts for P106M_7:

(Start: 15 @5626 has 60 MA's), (Start: 19 @5635 has 72 MA's), (Start: 23 @5644 has 20 MA's), (Start: 24 @5647 has 4 MA's), (25, 5650), (Start: 27 @5653 has 4 MA's), (31, 5665), (44, 5722), (46, 5734), (48, 5743), (57, 5824), (58, 5827), (60, 5848), (62, 5860), (70, 5920), (72, 5923), (75, 5947), (76, 5956), (88, 6022), (90, 6034), (92, 6046), (102, 6100),

Gene: P107A_7 Start: 5639, Stop: 6100, Start Num: 27

Candidate Starts for P107A_7:

(Start: 19 @5621 has 72 MA's), (Start: 23 @5630 has 20 MA's), (Start: 24 @5633 has 4 MA's), (25, 5636), (Start: 27 @5639 has 4 MA's), (31, 5651), (44, 5708), (46, 5720), (48, 5729), (57, 5810), (58, 5813), (62, 5846), (70, 5906), (72, 5909), (75, 5933), (76, 5942), (84, 5993), (87, 6005), (90, 6020), (92, 6032), (102, 6086),

Gene: P107C_7 Start: 5635, Stop: 6096, Start Num: 27

Candidate Starts for P107C_7:

(Start: 19 @5617 has 72 MA's), (Start: 23 @5626 has 20 MA's), (Start: 24 @5629 has 4 MA's), (25, 5632), (Start: 27 @5635 has 4 MA's), (31, 5647), (44, 5704), (46, 5716), (48, 5725), (57, 5806), (58, 5809), (60, 5830), (62, 5842), (70, 5902), (72, 5905), (75, 5929), (84, 5989), (87, 6001), (92, 6028), (102, 6082),

Gene: P108C_7 Start: 5621, Stop: 6100, Start Num: 19

Candidate Starts for P108C_7:

(Start: 19 @5621 has 72 MA's), (Start: 23 @5630 has 20 MA's), (Start: 24 @5633 has 4 MA's), (25, 5636), (Start: 27 @5639 has 4 MA's), (31, 5651), (44, 5708), (46, 5720), (48, 5729), (57, 5810), (58, 5813), (60, 5834), (62, 5846), (70, 5906), (72, 5909), (75, 5933), (84, 5993), (87, 6005), (90, 6020), (92, 6032), (102, 6086),

Gene: P14.4_7 Start: 5612, Stop: 6091, Start Num: 19

Candidate Starts for P14.4_7:

(Start: 19 @5612 has 72 MA's), (Start: 23 @5621 has 20 MA's), (Start: 24 @5624 has 4 MA's), (25, 5627), (Start: 27 @5630 has 4 MA's), (31, 5642), (44, 5699), (46, 5711), (48, 5720), (57, 5801), (58, 5804), (60, 5825), (62, 5837), (70, 5897), (72, 5900), (75, 5924), (76, 5933), (84, 5984), (87, 5996), (90, 6011), (92, 6023), (102, 6077),

Gene: P3MA_9 Start: 6610, Stop: 7107, Start Num: 24

Candidate Starts for P3MA_9:

(6, 6499), (Start: 24 @6610 has 4 MA's), (44, 6682), (47, 6697), (48, 6703), (49, 6709), (71, 6898), (82, 6982), (90, 7015), (93, 7030),

Gene: P9.1_7 Start: 5610, Stop: 6089, Start Num: 19

Candidate Starts for P9.1_7:

(Start: 19 @5610 has 72 MA's), (Start: 23 @5619 has 20 MA's), (Start: 24 @5622 has 4 MA's), (25, 5625), (Start: 27 @5628 has 4 MA's), (31, 5640), (44, 5697), (46, 5709), (48, 5718), (57, 5799), (58, 5802), (62, 5835), (70, 5895), (72, 5898), (75, 5922), (76, 5931), (84, 5982), (87, 5994), (90, 6009), (92,

6021), (102, 6075),

Gene: PA6_7 Start: 5638, Stop: 6099, Start Num: 27

Candidate Starts for PA6_7:

(Start: 19 @5620 has 72 MA's), (Start: 23 @5629 has 20 MA's), (Start: 24 @5632 has 4 MA's), (25, 5635), (Start: 27 @5638 has 4 MA's), (31, 5650), (44, 5707), (46, 5719), (48, 5728), (58, 5812), (62, 5845), (70, 5905), (72, 5908), (75, 5932), (76, 5941), (84, 5992), (87, 6004), (90, 6019), (92, 6031), (102, 6085),

Gene: PAD20_7 Start: 5636, Stop: 6097, Start Num: 27

Candidate Starts for PAD20_7:

(Start: 19 @5618 has 72 MA's), (Start: 23 @5627 has 20 MA's), (Start: 24 @5630 has 4 MA's), (25, 5633), (Start: 27 @5636 has 4 MA's), (31, 5648), (44, 5705), (46, 5717), (48, 5726), (57, 5807), (58, 5810), (60, 5831), (62, 5843), (70, 5903), (72, 5906), (75, 5930), (84, 5990), (87, 6002), (90, 6017), (92, 6029), (102, 6083),

Gene: PAS50_7 Start: 5633, Stop: 6094, Start Num: 27

Candidate Starts for PAS50_7:

(Start: 19 @5615 has 72 MA's), (Start: 23 @5624 has 20 MA's), (Start: 24 @5627 has 4 MA's), (25, 5630), (Start: 27 @5633 has 4 MA's), (31, 5645), (44, 5702), (46, 5714), (48, 5723), (57, 5804), (58, 5807), (60, 5828), (62, 5840), (70, 5900), (72, 5903), (75, 5927), (84, 5987), (87, 5999), (90, 6014), (92, 6026), (102, 6080),

Gene: PHL010M04_07 Start: 5628, Stop: 6089, Start Num: 27

Candidate Starts for PHL010M04_07:

(Start: 19 @5610 has 72 MA's), (Start: 23 @5619 has 20 MA's), (Start: 24 @5622 has 4 MA's), (25, 5625), (Start: 27 @5628 has 4 MA's), (31, 5640), (44, 5697), (46, 5709), (57, 5799), (58, 5802), (60, 5823), (62, 5835), (70, 5895), (72, 5898), (75, 5922), (90, 6009), (92, 6021), (102, 6075),

Gene: PHL037M02_07 Start: 5634, Stop: 6095, Start Num: 27

Candidate Starts for PHL037M02_07:

(Start: 19 @5616 has 72 MA's), (Start: 23 @5625 has 20 MA's), (Start: 24 @5628 has 4 MA's), (25, 5631), (Start: 27 @5634 has 4 MA's), (31, 5646), (44, 5703), (46, 5715), (57, 5805), (70, 5901), (72, 5904), (75, 5928), (84, 5988), (87, 6000), (90, 6015), (92, 6027), (102, 6081),

Gene: PHL060L00_07 Start: 5626, Stop: 6087, Start Num: 27

Candidate Starts for PHL060L00_07:

(Start: 19 @5608 has 72 MA's), (Start: 23 @5617 has 20 MA's), (Start: 24 @5620 has 4 MA's), (25, 5623), (Start: 27 @5626 has 4 MA's), (31, 5638), (44, 5695), (46, 5707), (48, 5716), (57, 5797), (58, 5800), (60, 5821), (62, 5833), (70, 5893), (72, 5896), (75, 5920), (76, 5929), (90, 6007), (92, 6019), (102, 6073),

Gene: PHL067M10_07 Start: 5630, Stop: 6091, Start Num: 27

Candidate Starts for PHL067M10_07:

(Start: 19 @5612 has 72 MA's), (Start: 23 @5621 has 20 MA's), (Start: 24 @5624 has 4 MA's), (25, 5627), (Start: 27 @5630 has 4 MA's), (31, 5642), (44, 5699), (46, 5711), (48, 5720), (58, 5804), (62, 5837), (70, 5897), (72, 5900), (75, 5924), (84, 5984), (87, 5996), (90, 6011), (92, 6023), (102, 6077),

Gene: PHL071N05_07 Start: 5632, Stop: 6093, Start Num: 27

Candidate Starts for PHL071N05_07:

(Start: 19 @5614 has 72 MA's), (Start: 23 @5623 has 20 MA's), (Start: 24 @5626 has 4 MA's), (25, 5629), (Start: 27 @5632 has 4 MA's), (31, 5644), (44, 5701), (46, 5713), (48, 5722), (57, 5803), (58, 5806), (62, 5839), (70, 5899), (72, 5902), (75, 5926), (76, 5935), (84, 5986), (87, 5998), (90, 6013), (92,

6025), (102, 6079),

Gene: PHL111M01_07 Start: 5636, Stop: 6097, Start Num: 27

Candidate Starts for PHL111M01_07:

(Start: 19 @5618 has 72 MA's), (Start: 23 @5627 has 20 MA's), (Start: 24 @5630 has 4 MA's), (25, 5633), (Start: 27 @5636 has 4 MA's), (31, 5648), (44, 5705), (46, 5717), (48, 5726), (57, 5807), (58, 5810), (60, 5831), (62, 5843), (70, 5903), (72, 5906), (75, 5930), (76, 5939), (84, 5990), (87, 6002), (90, 6017), (92, 6029), (102, 6083),

Gene: PHL112N00_07 Start: 5636, Stop: 6097, Start Num: 27

Candidate Starts for PHL112N00_07:

(Start: 19 @5618 has 72 MA's), (Start: 23 @5627 has 20 MA's), (Start: 24 @5630 has 4 MA's), (25, 5633), (Start: 27 @5636 has 4 MA's), (31, 5648), (44, 5705), (46, 5717), (48, 5726), (57, 5807), (60, 5831), (62, 5843), (70, 5903), (72, 5906), (75, 5930), (84, 5990), (87, 6002), (90, 6017), (92, 6029), (102, 6083),

Gene: PHL113M01_07 Start: 5636, Stop: 6097, Start Num: 27

Candidate Starts for PHL113M01_07:

(Start: 19 @5618 has 72 MA's), (Start: 23 @5627 has 20 MA's), (Start: 24 @5630 has 4 MA's), (25, 5633), (Start: 27 @5636 has 4 MA's), (31, 5648), (44, 5705), (46, 5717), (48, 5726), (57, 5807), (58, 5810), (60, 5831), (62, 5843), (70, 5903), (72, 5906), (75, 5930), (84, 5990), (87, 6002), (90, 6017), (92, 6029), (102, 6083),

Gene: PHL114L00_07 Start: 5635, Stop: 6096, Start Num: 27

Candidate Starts for PHL114L00_07:

(Start: 19 @5617 has 72 MA's), (Start: 23 @5626 has 20 MA's), (Start: 24 @5629 has 4 MA's), (25, 5632), (Start: 27 @5635 has 4 MA's), (31, 5647), (44, 5704), (46, 5716), (55, 5794), (57, 5806), (58, 5809), (60, 5830), (62, 5842), (70, 5902), (72, 5905), (75, 5929), (76, 5938), (90, 6016), (92, 6028), (102, 6082),

Gene: Pace1224_9 Start: 8362, Stop: 8880, Start Num: 11

Candidate Starts for Pace1224_9:

(Start: 11 @8362 has 6 MA's), (35, 8428), (44, 8470), (69, 8671), (71, 8674), (99, 8845),

Gene: Paito_9 Start: 8413, Stop: 8910, Start Num: 15

Candidate Starts for Paito_9:

(Start: 15 @8413 has 60 MA's), (43, 8503), (44, 8506), (48, 8527), (68, 8677), (71, 8704), (87, 8803), (99, 8875),

Gene: Peeb_9 Start: 8314, Stop: 8811, Start Num: 15

Candidate Starts for Peeb_9:

(Start: 15 @8314 has 60 MA's), (30, 8347), (35, 8365), (44, 8407), (48, 8428), (68, 8578), (71, 8605), (87, 8704), (99, 8776),

Gene: Periodt_9 Start: 8314, Stop: 8811, Start Num: 15

Candidate Starts for Periodt_9:

(Start: 15 @8314 has 60 MA's), (30, 8347), (35, 8365), (44, 8407), (48, 8428), (68, 8578), (71, 8605), (87, 8704), (99, 8776),

Gene: Periwinkle_9 Start: 6026, Stop: 6490, Start Num: 26

Candidate Starts for Periwinkle_9:

(Start: 26 @6026 has 29 MA's), (38, 6059), (41, 6080), (42, 6089), (51, 6173), (56, 6197), (61, 6239), (75, 6329), (83, 6383), (91, 6419), (97, 6455),

Gene: Phabuloso_9 Start: 6031, Stop: 6495, Start Num: 26

Candidate Starts for Phabuloso_9:

(Start: 26 @6031 has 29 MA's), (38, 6064), (41, 6085), (42, 6094), (51, 6178), (56, 6202), (61, 6244), (75, 6334), (83, 6388), (91, 6424), (97, 6460),

Gene: Phish_9 Start: 8314, Stop: 8811, Start Num: 15

Candidate Starts for Phish_9:

(Start: 15 @8314 has 60 MA's), (30, 8347), (35, 8365), (44, 8407), (48, 8428), (68, 8578), (71, 8605), (87, 8704), (99, 8776),

Gene: Phistory_9 Start: 6015, Stop: 6479, Start Num: 26

Candidate Starts for Phistory_9:

(Start: 26 @6015 has 29 MA's), (38, 6048), (41, 6069), (42, 6078), (51, 6162), (56, 6186), (61, 6228), (75, 6318), (83, 6372), (91, 6408), (97, 6444),

Gene: PhorbesPhlower_8 Start: 5504, Stop: 5965, Start Num: 24

Candidate Starts for PhorbesPhlower_8:

(7, 5435), (Start: 24 @5504 has 4 MA's), (29, 5513), (37, 5537), (44, 5576), (54, 5663), (61, 5711), (68, 5750), (71, 5771), (76, 5807), (98, 5939),

Gene: Phreak_9 Start: 8314, Stop: 8811, Start Num: 15

Candidate Starts for Phreak_9:

(Start: 15 @8314 has 60 MA's), (30, 8347), (35, 8365), (44, 8407), (48, 8428), (68, 8578), (71, 8605), (87, 8704), (99, 8776),

Gene: PinkYoshi_9 Start: 8314, Stop: 8811, Start Num: 15

Candidate Starts for PinkYoshi_9:

(Start: 15 @8314 has 60 MA's), (30, 8347), (35, 8365), (44, 8407), (48, 8428), (68, 8578), (71, 8605), (87, 8704), (99, 8776),

Gene: Pinnie_10 Start: 8943, Stop: 9461, Start Num: 18

Candidate Starts for Pinnie_10:

(Start: 18 @8943 has 1 MA's), (Start: 19 @8946 has 72 MA's), (32, 8976), (44, 9036), (57, 9138), (65, 9189), (71, 9234),

Gene: Pirate_7 Start: 5610, Stop: 6089, Start Num: 19

Candidate Starts for Pirate_7:

(Start: 19 @5610 has 72 MA's), (Start: 23 @5619 has 20 MA's), (Start: 24 @5622 has 4 MA's), (25, 5625), (Start: 27 @5628 has 4 MA's), (31, 5640), (44, 5697), (46, 5709), (48, 5718), (57, 5799), (58, 5802), (62, 5835), (70, 5895), (72, 5898), (75, 5922), (84, 5982), (87, 5994), (90, 6009), (92, 6021), (102, 6075),

Gene: Plagueis_9 Start: 8314, Stop: 8811, Start Num: 15

Candidate Starts for Plagueis_9:

(Start: 15 @8314 has 60 MA's), (30, 8347), (35, 8365), (44, 8407), (48, 8428), (68, 8578), (71, 8605), (87, 8704), (99, 8776),

Gene: Pons_9 Start: 6176, Stop: 6703, Start Num: 23

Candidate Starts for Pons_9:

(10, 6125), (Start: 23 @6176 has 20 MA's), (44, 6251), (55, 6365), (58, 6380), (61, 6410), (87, 6572), (91, 6596), (100, 6668),

Gene: PotPie_9 Start: 7027, Stop: 7554, Start Num: 23

Candidate Starts for PotPie_9:

(Start: 23 @7027 has 20 MA's), (44, 7102), (55, 7216), (58, 7231), (61, 7261), (79, 7396), (86, 7420), (87, 7423), (91, 7447), (100, 7519),

Gene: Procrass1_7 Start: 5617, Stop: 6096, Start Num: 19

Candidate Starts for Procrass1_7:

(Start: 19 @5617 has 72 MA's), (Start: 23 @5626 has 20 MA's), (Start: 24 @5629 has 4 MA's), (25, 5632), (Start: 27 @5635 has 4 MA's), (31, 5647), (44, 5704), (46, 5716), (48, 5725), (57, 5806), (58, 5809), (62, 5842), (70, 5902), (72, 5905), (75, 5929), (84, 5989), (87, 6001), (90, 6016), (92, 6028), (102, 6082),

Gene: PsychoKiller_9 Start: 6417, Stop: 6926, Start Num: 19

Candidate Starts for PsychoKiller_9:

(Start: 19 @6417 has 72 MA's), (25, 6429), (35, 6459), (44, 6504), (52, 6591), (77, 6768), (87, 6810),

Gene: Quasar_9 Start: 7032, Stop: 7541, Start Num: 19

Candidate Starts for Quasar_9:

(Start: 19 @7032 has 72 MA's), (35, 7074), (44, 7119), (52, 7206), (58, 7233), (77, 7383), (87, 7425),

Gene: QueenBey_7 Start: 5611, Stop: 6090, Start Num: 19

Candidate Starts for QueenBey_7:

(Start: 19 @5611 has 72 MA's), (Start: 23 @5620 has 20 MA's), (Start: 24 @5623 has 4 MA's), (25, 5626), (Start: 27 @5629 has 4 MA's), (31, 5641), (44, 5698), (46, 5710), (57, 5800), (62, 5836), (70, 5896), (72, 5899), (75, 5923), (76, 5932), (90, 6010), (92, 6022), (102, 6076),

Gene: Rabbs_9 Start: 8297, Stop: 8794, Start Num: 15

Candidate Starts for Rabbs_9:

(Start: 15 @8297 has 60 MA's), (35, 8348), (44, 8390), (48, 8411), (71, 8588), (99, 8759),

Gene: RanchParmCat_12 Start: 7126, Stop: 7641, Start Num: 19

Candidate Starts for RanchParmCat_12:

(17, 7123), (Start: 19 @7126 has 72 MA's), (Start: 27 @7144 has 4 MA's), (36, 7171), (39, 7177), (44, 7213), (47, 7228), (57, 7336), (61, 7369),

Gene: RedBaron_10 Start: 6462, Stop: 6971, Start Num: 19

Candidate Starts for RedBaron_10:

(Start: 19 @6462 has 72 MA's), (25, 6474), (35, 6504), (44, 6549), (52, 6636), (77, 6813), (87, 6855),

Gene: Remy19_9 Start: 8314, Stop: 8811, Start Num: 15

Candidate Starts for Remy19_9:

(Start: 15 @8314 has 60 MA's), (30, 8347), (35, 8365), (44, 8407), (48, 8428), (68, 8578), (71, 8605), (87, 8704), (99, 8776),

Gene: Renaissance_9 Start: 8314, Stop: 8811, Start Num: 15

Candidate Starts for Renaissance_9:

(Start: 15 @8314 has 60 MA's), (30, 8347), (35, 8365), (44, 8407), (48, 8428), (68, 8578), (71, 8605), (87, 8704), (99, 8776),

Gene: Rileysaurus_7 Start: 5606, Stop: 6085, Start Num: 19

Candidate Starts for Rileysaurus_7:

(Start: 19 @5606 has 72 MA's), (Start: 23 @5615 has 20 MA's), (Start: 24 @5618 has 4 MA's), (25, 5621), (Start: 27 @5624 has 4 MA's), (31, 5636), (44, 5693), (46, 5705), (48, 5714), (57, 5795), (58,

5798), (60, 5819), (62, 5831), (70, 5891), (72, 5894), (75, 5918), (90, 6005), (92, 6017), (102, 6071),

Gene: SKKY_7 Start: 5642, Stop: 6121, Start Num: 19

Candidate Starts for SKKY_7:

(Start: 15 @5633 has 60 MA's), (Start: 19 @5642 has 72 MA's), (Start: 23 @5651 has 20 MA's), (Start: 24 @5654 has 4 MA's), (25, 5657), (Start: 27 @5660 has 4 MA's), (31, 5672), (44, 5729), (46, 5741), (48, 5750), (57, 5831), (58, 5834), (62, 5867), (70, 5927), (72, 5930), (75, 5954), (76, 5963), (90, 6041), (92, 6053), (102, 6107),

Gene: Schiebel_9 Start: 8314, Stop: 8811, Start Num: 15

Candidate Starts for Schiebel_9:

(Start: 15 @8314 has 60 MA's), (30, 8347), (35, 8365), (44, 8407), (48, 8428), (68, 8578), (71, 8605), (87, 8704), (99, 8776),

Gene: ShaboiShabazz_9 Start: 8314, Stop: 8811, Start Num: 15

Candidate Starts for ShaboiShabazz_9:

(Start: 15 @8314 has 60 MA's), (30, 8347), (35, 8365), (44, 8407), (48, 8428), (68, 8578), (71, 8605), (87, 8704), (99, 8776),

Gene: ShawBrad_9 Start: 6064, Stop: 6495, Start Num: 38

Candidate Starts for ShawBrad_9:

(Start: 26 @6031 has 29 MA's), (38, 6064), (41, 6085), (42, 6094), (51, 6178), (56, 6202), (61, 6244), (75, 6334), (83, 6388), (91, 6424), (97, 6460),

Gene: SheckWes_8 Start: 6164, Stop: 6691, Start Num: 23

Candidate Starts for SheckWes_8:

(Start: 23 @6164 has 20 MA's), (44, 6239), (55, 6353), (58, 6368), (61, 6398), (87, 6560), (91, 6584),

Gene: SilverChicken_9 Start: 5986, Stop: 6441, Start Num: 26

Candidate Starts for SilverChicken_9:

(Start: 26 @5986 has 29 MA's), (41, 6040), (42, 6049), (51, 6124), (57, 6157), (58, 6160), (64, 6205), (75, 6280), (83, 6334),

Gene: Sizemore_9 Start: 8315, Stop: 8812, Start Num: 15

Candidate Starts for Sizemore_9:

(Start: 15 @8315 has 60 MA's), (30, 8348), (35, 8366), (44, 8408), (48, 8429), (68, 8579), (71, 8606), (87, 8705), (99, 8777),

Gene: SketchMex_8 Start: 6398, Stop: 6910, Start Num: 19

Candidate Starts for SketchMex_8:

(Start: 19 @6398 has 72 MA's), (35, 6443), (44, 6488), (87, 6794), (100, 6878),

Gene: Sleepyhead_8 Start: 6495, Stop: 6890, Start Num: 14

Candidate Starts for Sleepyhead_8:

(Start: 14 @6495 has 1 MA's), (44, 6585), (61, 6720), (71, 6783), (76, 6822),

Gene: Sneeze_9 Start: 8296, Stop: 8793, Start Num: 15

Candidate Starts for Sneeze_9:

(Start: 15 @8296 has 60 MA's), (35, 8347), (44, 8389), (48, 8410), (71, 8587), (99, 8758),

Gene: Socotra_10 Start: 6417, Stop: 6926, Start Num: 19

Candidate Starts for Socotra_10:

(Start: 19 @6417 has 72 MA's), (25, 6429), (35, 6459), (44, 6504), (52, 6591), (77, 6768), (87, 6810),

Gene: Solid_7 Start: 5618, Stop: 6097, Start Num: 19

Candidate Starts for Solid_7:

(Start: 19 @5618 has 72 MA's), (Start: 23 @5627 has 20 MA's), (Start: 24 @5630 has 4 MA's), (25, 5633), (Start: 27 @5636 has 4 MA's), (31, 5648), (44, 5705), (46, 5717), (48, 5726), (57, 5807), (58, 5810), (60, 5831), (62, 5843), (70, 5903), (72, 5906), (75, 5930), (84, 5990), (87, 6002), (90, 6017), (92, 6029), (102, 6083),

Gene: Sopespian_9 Start: 6417, Stop: 6926, Start Num: 19

Candidate Starts for Sopespian_9:

(Start: 19 @6417 has 72 MA's), (25, 6429), (35, 6459), (44, 6504), (52, 6591), (77, 6768), (87, 6810),

Gene: Soul22_9 Start: 5985, Stop: 6440, Start Num: 26

Candidate Starts for Soul22_9:

(Start: 26 @5985 has 29 MA's), (41, 6039), (42, 6048), (51, 6123), (57, 6156), (58, 6159), (64, 6204), (75, 6279), (83, 6333),

Gene: Spooky_9 Start: 6024, Stop: 6488, Start Num: 26

Candidate Starts for Spooky_9:

(Start: 26 @6024 has 29 MA's), (41, 6078), (56, 6195), (75, 6327), (79, 6372), (91, 6417),

Gene: Squiddly_10 Start: 6711, Stop: 7175, Start Num: 26

Candidate Starts for Squiddly_10:

(Start: 26 @6711 has 29 MA's), (38, 6744), (41, 6765), (42, 6774), (51, 6858), (56, 6882), (61, 6924), (75, 7014), (83, 7068), (91, 7104), (97, 7140),

Gene: Starburst_10 Start: 6417, Stop: 6926, Start Num: 19

Candidate Starts for Starburst_10:

(Start: 19 @6417 has 72 MA's), (25, 6429), (35, 6459), (44, 6504), (52, 6591), (77, 6768), (87, 6810),

Gene: Stargaze_9 Start: 8534, Stop: 9064, Start Num: 11

Candidate Starts for Stargaze_9:

(4, 8378), (5, 8426), (Start: 11 @8534 has 6 MA's), (30, 8594), (40, 8630), (44, 8654), (61, 8795), (65, 8813), (69, 8855), (71, 8858), (73, 8864),

Gene: SteamedHams_11 Start: 6436, Stop: 6945, Start Num: 19

Candidate Starts for SteamedHams_11:

(Start: 19 @6436 has 72 MA's), (35, 6478), (44, 6523), (50, 6556), (87, 6829), (96, 6895),

Gene: Stormborn_7 Start: 5614, Stop: 6093, Start Num: 19

Candidate Starts for Stormborn_7:

(Start: 19 @5614 has 72 MA's), (Start: 23 @5623 has 20 MA's), (Start: 24 @5626 has 4 MA's), (25, 5629), (Start: 27 @5632 has 4 MA's), (31, 5644), (44, 5701), (46, 5713), (48, 5722), (57, 5803), (58, 5806), (62, 5839), (70, 5899), (72, 5902), (75, 5926), (76, 5935), (84, 5986), (87, 5998), (90, 6013), (92, 6025), (102, 6079),

Gene: SummitAcademy_8 Start: 6242, Stop: 6769, Start Num: 23

Candidate Starts for SummitAcademy_8:

(Start: 23 @6242 has 20 MA's), (44, 6317), (55, 6431), (58, 6446), (61, 6476), (79, 6611), (86, 6635), (87, 6638), (91, 6662), (100, 6734),

Gene: Supernova_7 Start: 5610, Stop: 6089, Start Num: 19

Candidate Starts for Supernova_7:

(Start: 15 @5601 has 60 MA's), (Start: 19 @5610 has 72 MA's), (Start: 23 @5619 has 20 MA's), (Start: 24 @5622 has 4 MA's), (25, 5625), (Start: 27 @5628 has 4 MA's), (44, 5697), (46, 5709), (48, 5718), (58, 5802), (62, 5835), (70, 5895), (72, 5898), (75, 5922), (76, 5931), (84, 5982), (87, 5994), (90, 6009), (92, 6021), (102, 6075),

Gene: Survivors_11 Start: 7144, Stop: 7677, Start Num: 23

Candidate Starts for Survivors_11:

(Start: 22 @7141 has 2 MA's), (Start: 23 @7144 has 20 MA's), (44, 7225), (50, 7258), (57, 7339), (85, 7528), (91, 7558), (95, 7591),

Gene: SweatNTears_11 Start: 6918, Stop: 7430, Start Num: 19

Candidate Starts for SweatNTears_11:

(Start: 19 @6918 has 72 MA's), (35, 6963), (44, 7008), (87, 7314), (100, 7398),

Gene: Sweets_9 Start: 8309, Stop: 8806, Start Num: 15

Candidate Starts for Sweets_9:

(Start: 15 @8309 has 60 MA's), (30, 8342), (35, 8360), (44, 8402), (48, 8423), (68, 8573), (71, 8600), (87, 8699), (99, 8771),

Gene: Taheera_9 Start: 8306, Stop: 8803, Start Num: 15

Candidate Starts for Taheera_9:

(Start: 15 @8306 has 60 MA's), (35, 8357), (44, 8399), (48, 8420), (71, 8597), (99, 8768),

Gene: Terror_9 Start: 8306, Stop: 8803, Start Num: 15

Candidate Starts for Terror_9:

(Start: 15 @8306 has 60 MA's), (35, 8357), (44, 8399), (48, 8420), (71, 8597), (99, 8768),

Gene: TinaBug_9 Start: 8309, Stop: 8806, Start Num: 15

Candidate Starts for TinaBug_9:

(Start: 15 @8309 has 60 MA's), (30, 8342), (35, 8360), (44, 8402), (48, 8423), (68, 8573), (71, 8600), (87, 8699), (99, 8771),

Gene: Tolls_11 Start: 6439, Stop: 6948, Start Num: 19

Candidate Starts for Tolls_11:

(1, 6154), (2, 6163), (8, 6385), (9, 6394), (Start: 19 @6439 has 72 MA's), (35, 6481), (44, 6526), (50, 6559), (87, 6832), (96, 6898),

Gene: TomBrady_9 Start: 8315, Stop: 8812, Start Num: 15

Candidate Starts for TomBrady_9:

(Start: 15 @8315 has 60 MA's), (30, 8348), (35, 8366), (44, 8408), (48, 8429), (68, 8579), (71, 8606), (87, 8705), (99, 8777),

Gene: Troje_9 Start: 6392, Stop: 6904, Start Num: 19

Candidate Starts for Troje_9:

(Start: 19 @6392 has 72 MA's), (35, 6437), (44, 6482), (87, 6788), (100, 6872),

Gene: Typhonomachy_10 Start: 6417, Stop: 6926, Start Num: 19

Candidate Starts for Typhonomachy_10:

(Start: 19 @6417 has 72 MA's), (25, 6429), (35, 6459), (44, 6504), (52, 6591), (77, 6768), (87, 6810),

Gene: Vine_10 Start: 7171, Stop: 7698, Start Num: 23

Candidate Starts for Vine_10:

(Start: 23 @7171 has 20 MA's), (44, 7246), (53, 7348), (55, 7360), (58, 7375), (61, 7405), (79, 7540), (86, 7564), (87, 7567), (91, 7591), (100, 7663),

Gene: Wendigo_9 Start: 8314, Stop: 8811, Start Num: 15

Candidate Starts for Wendigo_9:

(Start: 15 @8314 has 60 MA's), (30, 8347), (35, 8365), (44, 8407), (48, 8428), (68, 8578), (71, 8605), (87, 8704), (99, 8776),

Gene: Whitney_9 Start: 6026, Stop: 6490, Start Num: 26

Candidate Starts for Whitney_9:

(Start: 26 @6026 has 29 MA's), (38, 6059), (41, 6080), (42, 6089), (51, 6173), (56, 6197), (61, 6239), (75, 6329), (83, 6383), (91, 6419), (97, 6455),

Gene: Wizzo_7 Start: 5622, Stop: 6101, Start Num: 19

Candidate Starts for Wizzo_7:

(Start: 19 @5622 has 72 MA's), (Start: 23 @5631 has 20 MA's), (Start: 24 @5634 has 4 MA's), (25, 5637), (Start: 27 @5640 has 4 MA's), (31, 5652), (44, 5709), (46, 5721), (48, 5730), (57, 5811), (58, 5814), (60, 5835), (62, 5847), (70, 5907), (72, 5910), (75, 5934), (84, 5994), (87, 6006), (90, 6021), (92, 6033), (102, 6087),

Gene: Yakult_10 Start: 6322, Stop: 6834, Start Num: 19

Candidate Starts for Yakult_10:

(Start: 19 @6322 has 72 MA's), (25, 6334), (44, 6406), (47, 6421), (52, 6502), (54, 6511), (58, 6529), (70, 6619), (80, 6700), (89, 6739),

Gene: Yarn_8 Start: 6429, Stop: 6938, Start Num: 19

Candidate Starts for Yarn_8:

(Start: 19 @6429 has 72 MA's), (35, 6471), (44, 6516), (50, 6549), (87, 6822), (96, 6888),

Gene: Yoshi_9 Start: 5985, Stop: 6440, Start Num: 26

Candidate Starts for Yoshi_9:

(Start: 26 @5985 has 29 MA's), (41, 6039), (42, 6048), (51, 6123), (57, 6156), (58, 6159), (64, 6204), (75, 6279), (83, 6333),

Gene: Yucky_11 Start: 7031, Stop: 7558, Start Num: 23

Candidate Starts for Yucky_11:

(Start: 23 @7031 has 20 MA's), (44, 7106), (53, 7208), (55, 7220), (58, 7235), (61, 7265), (79, 7400), (86, 7424), (87, 7427), (91, 7451), (100, 7523),

Gene: Yummy_10 Start: 6296, Stop: 6808, Start Num: 19

Candidate Starts for Yummy_10:

(Start: 19 @6296 has 72 MA's), (35, 6341), (44, 6386), (87, 6692), (94, 6728), (100, 6776),

Gene: Zapner_10 Start: 6510, Stop: 6965, Start Num: 26

Candidate Starts for Zapner_10:

(Start: 26 @6510 has 29 MA's), (41, 6564), (42, 6573), (51, 6648), (57, 6681), (58, 6684), (64, 6729), (75, 6804), (83, 6858),

Gene: Zareef_13 Start: 7291, Stop: 7824, Start Num: 23

Candidate Starts for Zareef_13:

(Start: 22 @7288 has 2 MA's), (Start: 23 @7291 has 20 MA's), (44, 7372), (50, 7405), (57, 7486), (85, 7675), (91, 7705), (95, 7738),

Gene: ZoMa_9 Start: 8314, Stop: 8811, Start Num: 15

Candidate Starts for ZoMa_9:

(Start: 15 @8314 has 60 MA's), (30, 8347), (35, 8365), (44, 8407), (48, 8428), (68, 8578), (71, 8605), (87, 8704), (99, 8776),

Gene: Zombie_9 Start: 8314, Stop: 8811, Start Num: 15

Candidate Starts for Zombie_9:

(Start: 15 @8314 has 60 MA's), (30, 8347), (35, 8365), (44, 8407), (48, 8428), (68, 8578), (71, 8605), (87, 8704), (99, 8776),