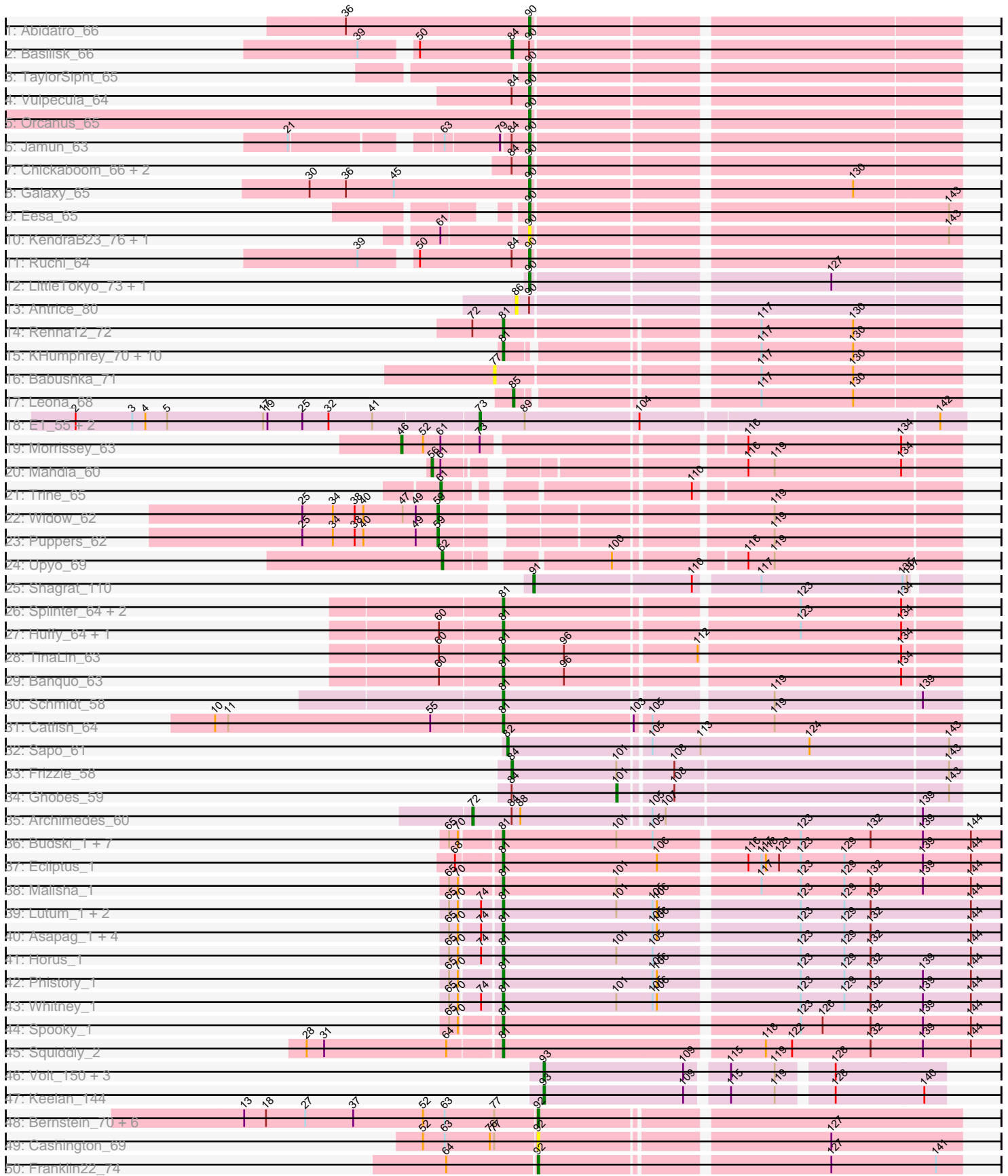
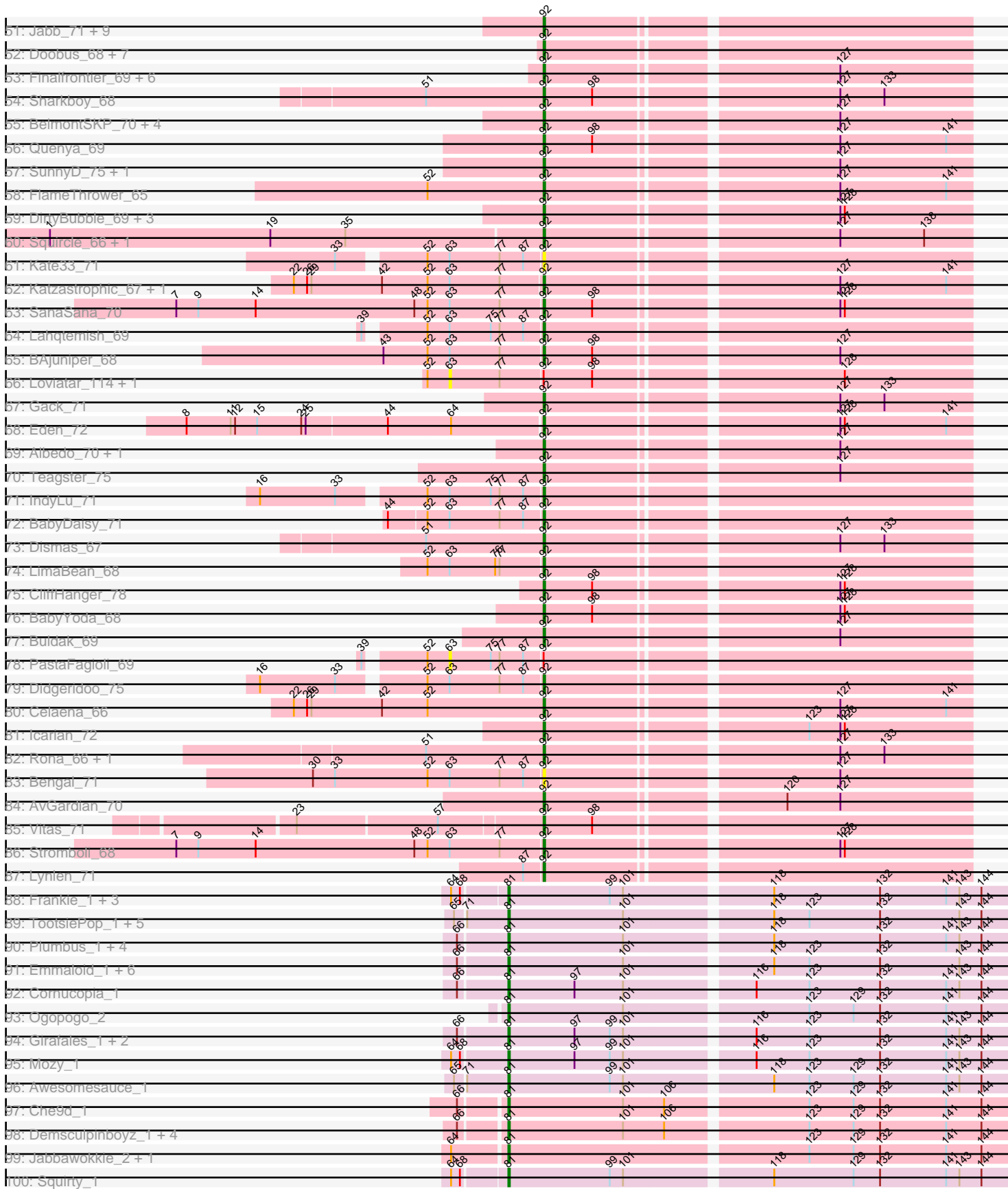


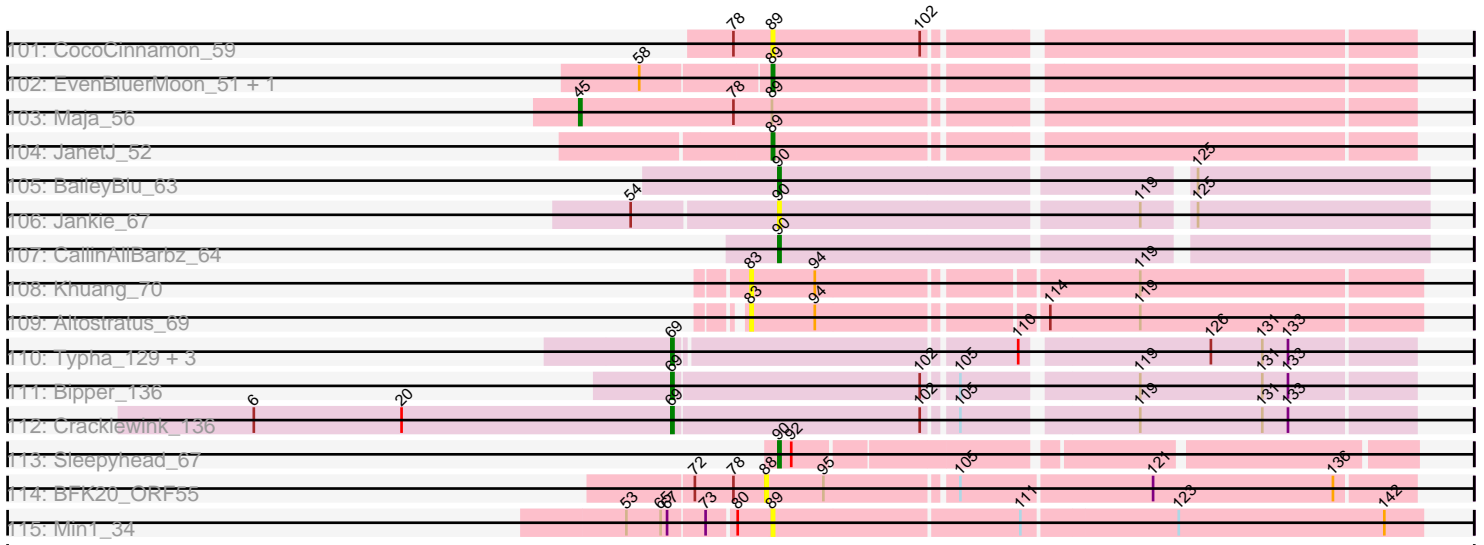
Pham 224285



Pham 224285



Pham 224285



Note: Tracks are now grouped by subcluster and scaled. Switching in subcluster is indicated by changes in track color. Track scale is now set by default to display the region 30 bp upstream of start 1 to 30 bp downstream of the last possible start. If this default region is judged to be packed too tightly with annotated starts, the track will be further scaled to only show that region of the ORF with annotated starts. This action will be indicated by adding "Zoomed" to the title. For starts, yellow indicates the location of called starts comprised solely of Glimmer/GeneMark auto-annotations, green indicates the location of called starts with at least 1 manual gene annotation.

Pham 224285 Report

This analysis was run 03/28/25 on database version 593.

Pham number 224285 has 220 members, 44 are drafts.

Phages represented in each track:

- Track 1 : Abidatro_66
- Track 2 : Basilisk_66
- Track 3 : TaylorSipht_65
- Track 4 : Vulpecula_64
- Track 5 : Orcanus_65
- Track 6 : Jamun_63
- Track 7 : Chickaboom_66, Brynnie_64, WileyE_70
- Track 8 : Galaxy_65
- Track 9 : Eesa_65
- Track 10 : KendraB23_76, Toad24_67
- Track 11 : Ruchi_64
- Track 12 : LittleTokyo_73, Cygnet_77
- Track 13 : Antrice_80
- Track 14 : Renna12_72
- Track 15 : KHumphrey_70, Rattail_71, Juno112_69, PhluffyCoco_68, DanHam62_68, AmiCi24_68, RedFox_71, Atlantica_71, Glotell_71, Camara_69, HamCheese_68
- Track 16 : Babushka_71
- Track 17 : Leona_68
- Track 18 : E1_55, Anatole_55, B3_57
- Track 19 : Morrissey_63
- Track 20 : Mahdia_60
- Track 21 : Trine_65
- Track 22 : Widow_62
- Track 23 : Puppies_62
- Track 24 : Upyo_69
- Track 25 : Shagrat_110
- Track 26 : Splinter_64, TZGordon_65, Vendetta_64
- Track 27 : Huffy_64, DinoDaryn_64
- Track 28 : TinaLin_63
- Track 29 : Banquo_63
- Track 30 : Schmidt_58
- Track 31 : Catfish_64
- Track 32 : Sapo_61
- Track 33 : Frizzle_58
- Track 34 : Ghobes_59
- Track 35 : Archimedes_60

- Track 36 : Budski_1, CheeseTouch_1, ODay_1, BotCity_1, Holliday_1, LitninMcQueen_1, Kamaru_1, Phabuloso_1
- Track 37 : Ecliptus_1
- Track 38 : Malisha_1
- Track 39 : Lutum_1, Periwinkle_1, Kenna_1
- Track 40 : Asapag_1, Leroy_1, BENtherdunthat_1, Getalong_1, Frickyeah_1
- Track 41 : Horus_1
- Track 42 : Phistory_1
- Track 43 : Whitney_1
- Track 44 : Spooky_1
- Track 45 : Squiddly_2
- Track 46 : Volt_150, Fryberger_144, Guey18_149, Ronaldo_147
- Track 47 : Keelan_144
- Track 48 : Bernstein_70, Coltrane_70, Brahms_70, Clayda5_72, Armstrong_70, Skylord_70, Rollins_70
- Track 49 : Cashington_69
- Track 50 : Franklin22_74
- Track 51 : Jabb_71, MsUbiquitous_71, CupcakePrincess_71, QMacho_72, Abigail_70, Johnathan_70, Burritobowl_72, SarBear_72, CroZenni_71, Phisb_72
- Track 52 : Doobus_68, Albright_69, Milomuff_73, Softsoap_71, BubbaBear_68, Solea_73, DickRichards_68, Avocadoman_69
- Track 53 : Finalfrontier_69, Eula_69, TukTuk_70, Jovita_68, Nicky22_69, Swervy_70, Slay_70
- Track 54 : Sharkboy_68
- Track 55 : BelmontSKP_70, PhigPhack_73, Arroyo_71, AnnaLie_70, SansAfet_72
- Track 56 : Quenya_69
- Track 57 : SunnyD_75, Shayna_75
- Track 58 : FlameThrower_65
- Track 59 : DirtyBubble_69, Elva_73, Stoor_69, WalkingDead_71
- Track 60 : Squircle_66, Olliecat_66
- Track 61 : Kate33_71
- Track 62 : Katzastrophic_67, Bachaco_66
- Track 63 : SanaSana_70
- Track 64 : Lahqtemish_69
- Track 65 : BAjuniper_68
- Track 66 : Loviatar_114, Akino08_114
- Track 67 : Gack_71
- Track 68 : Eden_72
- Track 69 : Albedo_70, Kenzers_69
- Track 70 : Teagster_75
- Track 71 : IndyLu_71
- Track 72 : BabyDaisy_71
- Track 73 : Dismas_67
- Track 74 : LimaBean_68
- Track 75 : CliffHanger_78
- Track 76 : BabyYoda_68
- Track 77 : Buldak_69
- Track 78 : PastaFagioli_69
- Track 79 : Didgeridoo_75
- Track 80 : Celaena_66
- Track 81 : Icarian_72
- Track 82 : Rona_66, Kieran_65
- Track 83 : Bengal_71

- Track 84 : AvGardian_70
- Track 85 : Vitas_71
- Track 86 : Stromboli_68
- Track 87 : Lynlen_71
- Track 88 : Frankie_1, Flathead_1, Hegedechwinu_1, Brushbloom_1
- Track 89 : TootsiePop_1, Aloeri_1, ChickenDinner_1, Piper2020_1, DocMcStuffins_1, Misha28_1
- Track 90 : Plumbus_1, MulchExplorer_1, Job42_1, Kimberlium_1, Juice456_1
- Track 91 : Emmaloid_1, Rialto_1, Starcevich_1, Slim_1, LittleShirley_1, Mova_1, Totinger_1
- Track 92 : Cornucopia_1
- Track 93 : Ogopogo_2
- Track 94 : Girafales_1, Tchotchke_1, Quico_1
- Track 95 : Mozy_1
- Track 96 : Awesomesauce_1
- Track 97 : Che9d_1
- Track 98 : Demsculpinboyz_1, SilverChicken_1, Yoshi_1, Soul22_1, Avani_1
- Track 99 : Jabbawokkie_2, Zapner_2
- Track 100 : Squirty_1
- Track 101 : CocoCinnamon_59
- Track 102 : EvenBluerMoon_51, Aoka_54
- Track 103 : Maja_56
- Track 104 : JanetJ_52
- Track 105 : BaileyBlu_63
- Track 106 : Jankie_67
- Track 107 : CallinAllBarbz_64
- Track 108 : Khuang_70
- Track 109 : Altostratus_69
- Track 110 : Typha_129, Faiyaz_131, AuntGwenStacy_132, Hilltopfarm_134
- Track 111 : Bipper_136
- Track 112 : Cracklewink_136
- Track 113 : Sleepyhead_67
- Track 114 : BFK20_ORF55
- Track 115 : Min1_34

Summary of Final Annotations (See graph section above for start numbers):

The start number called the most often in the published annotations is 92, it was called in 68 of the 176 non-draft genes in the pham.

Genes that call this "Most Annotated" start:

- Abigail_70, Albedo_70, Albright_69, AnnaLie_70, Armstrong_70, Arroyo_71, AvGardian_70, Avocadoman_69, BAjuniper_68, BabyDaisy_71, BabyYoda_68, Bachaco_66, BelmontSKP_70, Bengal_71, Bernstein_70, Brahms_70, BubbaBear_68, Buldak_69, Burritobowl_72, Cashington_69, Celaena_66, Clayda5_72, CliffHanger_78, Coltrane_70, CroZenni_71, CupcakePrincess_71, DickRichards_68, Didgeridoo_75, DirtyBubble_69, Dismas_67, Doobus_68, Eden_72, Elva_73, Eula_69, Finalfrontier_69, FlameThrower_65, Franklin22_74, Gack_71, Icarian_72, IndyLu_71, Jabb_71, Johnathan_70, Jovita_68, Kate33_71, Katzastrophic_67, Kenzers_69, Kieran_65, Lahqtemish_69, LimaBean_68,

Lynlen_71, Milomuff_73, MsUbiquitous_71, Nicky22_69, Olliecat_66, PhigPhack_73, Phisb_72, QMacho_72, Quenya_69, Rollins_70, Rona_66, SanaSana_70, SansAfet_72, SarBear_72, Sharkboy_68, Shayna_75, Skylord_70, Slay_70, Softsoap_71, Solea_73, Squirrel_66, Stoor_69, Stromboli_68, SunnyD_75, Swervy_70, Teagster_75, TukTuk_70, Vitas_71, WalkingDead_71,

Genes that have the "Most Annotated" start but do not call it:

- Akino08_114, Loviatar_114, PastaFagioli_69, Sleepyhead_67,

Genes that do not have the "Most Annotated" start:

- Abidatro_66, Aloeri_1, Altostratus_69, AmiCi24_68, Anatole_55, Antrice_80, Aoka_54, Archimedes_60, Asapag_1, Atlantica_71, AuntGwenStacy_132, Avani_1, Awesomesauce_1, B3_57, BENtherdunthat_1, BFK20_ORF55, Babushka_71, BaileyBlu_63, Banquo_63, Basilisk_66, Bipper_136, BotCity_1, Brushbloom_1, Brynnie_64, Budski_1, CallinAllBarbz_64, Camara_69, Catfish_64, Che9d_1, CheeseTouch_1, Chickaboom_66, ChickenDinner_1, CocoCinnamon_59, Cornucopia_1, Cracklewink_136, Cygnet_77, DanHam62_68, Demsculpinboyz_1, DinoDaryn_64, DocMcStuffins_1, E1_55, Ecliptus_1, Eesa_65, Emmaloid_1, EvenBluerMoon_51, Faiyaz_131, Flathead_1, Frankie_1, Frickyeh_1, Frizzle_58, Fryberger_144, Galaxy_65, Getalong_1, Ghobes_59, Girafales_1, Glotell_71, Guey18_149, HamCheese_68, Hegedechwinu_1, Hilltopfarm_134, Holliday_1, Horus_1, Huffy_64, Jabbawokkie_2, Jamun_63, JanetJ_52, Jankie_67, Job42_1, Juice456_1, Juno112_69, KHumphrey_70, Kamaru_1, Keelan_144, KendraB23_76, Kenna_1, Khuang_70, Kimberlium_1, Leona_68, Leroy_1, LitninMcQueen_1, LittleShirley_1, LittleTokyo_73, Lutum_1, Mahdia_60, Maja_56, Malisha_1, Min1_34, Misha28_1, Morrissey_63, Mova_1, Mozy_1, MulchExplorer_1, ODay_1, Ogopogo_2, Orcanus_65, Periwinkle_1, Phabuloso_1, Phistory_1, PhluffyCoco_68, Piper2020_1, Plumbus_1, Puppies_62, Quico_1, Rattail_71, RedFox_71, Renna12_72, Rialto_1, Ronaldo_147, Ruchi_64, Sapo_61, Schmidt_58, Shagrat_110, SilverChicken_1, Slim_1, Soul22_1, Splinter_64, Spooky_1, Squiddly_2, Squirty_1, Starcevich_1, TZGordon_65, TaylorSipht_65, Tchotchke_1, TinaLin_63, Toad24_67, TootsiePop_1, Totinger_1, Trine_65, Typha_129, Upyo_69, Vendetta_64, Volt_150, Vulpecula_64, Whitney_1, Widow_62, WileyE_70, Yoshi_1, Zapner_2,

Summary by start number:

Start 45:

- Found in 2 of 220 (0.9%) of genes in pham
- Manual Annotations of this start: 1 of 176
- Called 50.0% of time when present
- Phage (with cluster) where this start called: Maja_56 (FO),

Start 46:

- Found in 1 of 220 (0.5%) of genes in pham
- Manual Annotations of this start: 1 of 176
- Called 100.0% of time when present
- Phage (with cluster) where this start called: Morrissey_63 (CD),

Start 56:

- Found in 1 of 220 (0.5%) of genes in pham
- Manual Annotations of this start: 1 of 176
- Called 100.0% of time when present
- Phage (with cluster) where this start called: Mahdia_60 (CD),

Start 59:

- Found in 2 of 220 (0.9%) of genes in pham
- Manual Annotations of this start: 2 of 176
- Called 100.0% of time when present
- Phage (with cluster) where this start called: Puppets_62 (CD), Widow_62 (CD),

Start 61:

- Found in 5 of 220 (2.3%) of genes in pham
- Manual Annotations of this start: 1 of 176
- Called 20.0% of time when present
- Phage (with cluster) where this start called: Trine_65 (CD),

Start 62:

- Found in 1 of 220 (0.5%) of genes in pham
- Manual Annotations of this start: 1 of 176
- Called 100.0% of time when present
- Phage (with cluster) where this start called: Upyo_69 (CD),

Start 63:

- Found in 24 of 220 (10.9%) of genes in pham
- No Manual Annotations of this start.
- Called 12.5% of time when present
- Phage (with cluster) where this start called: Akino08_114 (EB), Loviatar_114 (EB), PastaFagioli_69 (EB),

Start 69:

- Found in 6 of 220 (2.7%) of genes in pham
- Manual Annotations of this start: 4 of 176
- Called 100.0% of time when present
- Phage (with cluster) where this start called: AuntGwenStacy_132 (Y), Bipper_136 (Y), Cracklewink_136 (Y), Faiyaz_131 (Y), Hilltopfarm_134 (Y), Typha_129 (Y),

Start 72:

- Found in 3 of 220 (1.4%) of genes in pham
- Manual Annotations of this start: 1 of 176
- Called 33.3% of time when present
- Phage (with cluster) where this start called: Archimedes_60 (DA),

Start 73:

- Found in 5 of 220 (2.3%) of genes in pham
- Manual Annotations of this start: 3 of 176
- Called 60.0% of time when present
- Phage (with cluster) where this start called: Anatole_55 (BV), B3_57 (BV), E1_55 (BV),

Start 77:

- Found in 24 of 220 (10.9%) of genes in pham
- No Manual Annotations of this start.
- Called 4.2% of time when present
- Phage (with cluster) where this start called: Babushka_71 (AS3),

Start 81:

- Found in 82 of 220 (37.3%) of genes in pham
- Manual Annotations of this start: 65 of 176
- Called 100.0% of time when present
- Phage (with cluster) where this start called: Aloeri_1 (F1), AmiCi24_68 (AS3), Asapag_1 (DN1), Atlantica_71 (AS3), Avani_1 (F2), Awesomesauce_1 (F1), BENtherdunthat_1 (DN1), Banquo_63 (CU1), BotCity_1 (DN), Brushbloom_1 (F1), Budski_1 (DN), Camara_69 (AS3), Catfish_64 (CU5), Che9d_1 (F2), CheeseTouch_1 (DN1), ChickenDinner_1 (F1), Cornucopia_1 (F1), DanHam62_68 (AS3), Demsculpinboyz_1 (F2), DinoDaryn_64 (CU1), DocMcStuffins_1 (F1), Ecliptus_1 (DN), Emmaloid_1 (F1), Flathead_1 (F1), Frankie_1 (F1), Frickyeah_1 (DN1), Getalong_1 (DN1), Girafales_1 (F1), Glotell_71 (AS3), HamCheese_68 (AS3), Hegedechwinu_1 (F1), Holliday_1 (DN1), Horus_1 (DN1), Huffy_64 (CU1), Jabbawokkie_2 (F2), Job42_1 (F1), Juice456_1 (F1), Juno112_69 (AS3), KHumphrey_70 (AS3), Kamaru_1 (DN1), Kenna_1 (DN1), Kimberlium_1 (F1), Leroy_1 (DN1), LitninMcQueen_1 (DN1), LittleShirley_1 (F1), Lutum_1 (DN1), Malisha_1 (DN), Misha28_1 (F1), Mova_1 (F1), Mozy_1 (F1), MulchExplorer_1 (F1), ODay_1 (DN), Ogopogo_2 (F1), Periwinkle_1 (DN1), Phabuloso_1 (DN1), Phistory_1 (DN1), PhluffyCoco_68 (AS3), Piper2020_1 (F1), Plumbus_1 (F1), Quico_1 (F1), Rattail_71 (AS3), RedFox_71 (AS3), Renna12_72 (AS3), Rialto_1 (F1), Schmidt_58 (CU4), SilverChicken_1 (F2), Slim_1 (F1), Soul22_1 (F2), Splinter_64 (CU1), Spooky_1 (DN2), Squiddly_2 (DN2), Squirty_1 (F3), Starcevich_1 (F1), TZGordon_65 (CU1), Tchotchke_1 (F1), TinaLin_63 (CU1), TootsiePop_1 (F1), Totinger_1 (F1), Vendetta_64 (CU1), Whitney_1 (DN1), Yoshi_1 (F2), Zapner_2 (F2),

Start 82:

- Found in 1 of 220 (0.5%) of genes in pham
- Manual Annotations of this start: 1 of 176
- Called 100.0% of time when present
- Phage (with cluster) where this start called: Sapo_61 (DA),

Start 83:

- Found in 2 of 220 (0.9%) of genes in pham
- No Manual Annotations of this start.
- Called 100.0% of time when present
- Phage (with cluster) where this start called: Altostratus_69 (FS), Khuang_70 (FS),

Start 84:

- Found in 10 of 220 (4.5%) of genes in pham
- Manual Annotations of this start: 2 of 176
- Called 20.0% of time when present
- Phage (with cluster) where this start called: Basilisk_66 (AS1), Frizzle_58 (DA),

Start 85:

- Found in 1 of 220 (0.5%) of genes in pham
- Manual Annotations of this start: 1 of 176
- Called 100.0% of time when present
- Phage (with cluster) where this start called: Leona_68 (AS3),

Start 86:

- Found in 1 of 220 (0.5%) of genes in pham
- No Manual Annotations of this start.
- Called 100.0% of time when present
- Phage (with cluster) where this start called: Antrice_80 (AS2),

Start 88:

- Found in 2 of 220 (0.9%) of genes in pham
- No Manual Annotations of this start.
- Called 50.0% of time when present
- Phage (with cluster) where this start called: BFK20_ORF55 (singleton),

Start 89:

- Found in 9 of 220 (4.1%) of genes in pham
- Manual Annotations of this start: 3 of 176
- Called 55.6% of time when present
- Phage (with cluster) where this start called: Aoka_54 (FO), CocoCinnamon_59 (FO), EvenBluerMoon_51 (FO), JanetJ_52 (FO), Min1_34 (singleton),

Start 90:

- Found in 21 of 220 (9.5%) of genes in pham
- Manual Annotations of this start: 14 of 176
- Called 90.5% of time when present
- Phage (with cluster) where this start called: Abidatro_66 (AS1), BaileyBlu_63 (FP), Brynnie_64 (AS1), CallinAllBarbz_64 (FP), Chickaboom_66 (AS1), Cygnet_77 (AS2), Eesa_65 (AS1), Galaxy_65 (AS1), Jamun_63 (AS1), Jankie_67 (FP), KendraB23_76 (AS1), LittleTokyo_73 (AS2), Orcanus_65 (AS1), Ruchi_64 (AS1), Sleepyhead_67 (singleton), TaylorSipht_65 (AS1), Toad24_67 (AS1), Vulpecula_64 (AS1), WileyE_70 (AS1),

Start 91:

- Found in 1 of 220 (0.5%) of genes in pham
- Manual Annotations of this start: 1 of 176
- Called 100.0% of time when present
- Phage (with cluster) where this start called: Shagrat_110 (CF),

Start 92:

- Found in 82 of 220 (37.3%) of genes in pham
- Manual Annotations of this start: 68 of 176
- Called 95.1% of time when present
- Phage (with cluster) where this start called: Abigail_70 (EB), Albedo_70 (EB), Albright_69 (EB), AnnaLie_70 (EB), Armstrong_70 (EB), Arroyo_71 (EB), AvGuardian_70 (EB), Avocadoman_69 (EB), BAjuniper_68 (EB), BabyDaisy_71 (EB), BabyYoda_68 (EB), Bachaco_66 (EB), BelmontSKP_70 (EB), Bengal_71 (EB), Bernstein_70 (EB), Brahms_70 (EB), BubbaBear_68 (EB), Buldak_69 (EB), Burritobowl_72 (EB), Cashington_69 (EB), Celaena_66 (EB), Clayda5_72 (EB), CliffHanger_78 (EB), Coltrane_70 (EB), CroZenni_71 (EB), CupcakePrincess_71 (EB), DickRichards_68 (EB), Didgeridoo_75 (EB), DirtyBubble_69 (EB), Dismas_67 (EB), Doobus_68 (EB), Eden_72 (EB), Elva_73 (EB), Eula_69 (EB), Finalfrontier_69 (EB), FlameThrower_65 (EB), Franklin22_74 (EB), Gack_71 (EB), Icarian_72 (EB), IndyLu_71 (EB), Jabb_71 (EB), Johnathan_70 (EB), Jovita_68 (EB), Kate33_71 (EB), Katzastrophic_67 (EB), Kenzers_69 (EB), Kieran_65 (EB), Lahqtemish_69 (EB), LimaBean_68 (EB), Lynlen_71 (EB), Milomuff_73 (EB), MsUbiquitous_71 (EB), Nicky22_69 (EB), Olliecat_66 (EB), PhigPhack_73 (EB), Phisb_72 (EB), QMacho_72 (EB), Quenya_69 (EB), Rollins_70 (EB), Rona_66 (EB), SanaSana_70 (EB), SansAfet_72 (EB), SarBear_72 (EB), Sharkboy_68 (EB), Shayna_75 (EB), Skylord_70 (EB), Slay_70 (EB), Softsoap_71 (EB), Solea_73 (EB), Squiracle_66 (EB), Stoor_69 (EB), Stromboli_68 (EB), SunnyD_75 (EB), Swervy_70 (EB), Teagster_75

(EB), TukTuk_70 (EB), Vitas_71 (EB), WalkingDead_71 (EB),

Start 93:

- Found in 5 of 220 (2.3%) of genes in pham
- Manual Annotations of this start: 5 of 176
- Called 100.0% of time when present
- Phage (with cluster) where this start called: Fryberger_144 (DP), Guey18_149 (DP), Keelan_144 (DP), Ronaldo_147 (DP), Volt_150 (DP),

Start 101:

- Found in 52 of 220 (23.6%) of genes in pham
- Manual Annotations of this start: 1 of 176
- Called 1.9% of time when present
- Phage (with cluster) where this start called: Ghobes_59 (DA),

Summary by clusters:

There are 23 clusters represented in this pham: FP, DN, singleton, FS, DA, BV, DP, FO, CU5, CU4, CU1, DN1, DN2, AS3, AS2, AS1, CF, CD, Y, EB, F1, F2, F3,

Info for manual annotations of cluster AS1:

- Start number 84 was manually annotated 1 time for cluster AS1.
- Start number 90 was manually annotated 10 times for cluster AS1.

Info for manual annotations of cluster AS2:

- Start number 90 was manually annotated 1 time for cluster AS2.

Info for manual annotations of cluster AS3:

- Start number 81 was manually annotated 5 times for cluster AS3.
- Start number 85 was manually annotated 1 time for cluster AS3.

Info for manual annotations of cluster BV:

- Start number 73 was manually annotated 3 times for cluster BV.

Info for manual annotations of cluster CD:

- Start number 46 was manually annotated 1 time for cluster CD.
- Start number 56 was manually annotated 1 time for cluster CD.
- Start number 59 was manually annotated 2 times for cluster CD.
- Start number 61 was manually annotated 1 time for cluster CD.
- Start number 62 was manually annotated 1 time for cluster CD.

Info for manual annotations of cluster CF:

- Start number 91 was manually annotated 1 time for cluster CF.

Info for manual annotations of cluster CU1:

- Start number 81 was manually annotated 7 times for cluster CU1.

Info for manual annotations of cluster CU4:

- Start number 81 was manually annotated 1 time for cluster CU4.

Info for manual annotations of cluster CU5:

- Start number 81 was manually annotated 1 time for cluster CU5.

Info for manual annotations of cluster DA:

- Start number 72 was manually annotated 1 time for cluster DA.
- Start number 82 was manually annotated 1 time for cluster DA.
- Start number 84 was manually annotated 1 time for cluster DA.
- Start number 101 was manually annotated 1 time for cluster DA.

Info for manual annotations of cluster DN:

- Start number 81 was manually annotated 4 times for cluster DN.

Info for manual annotations of cluster DN1:

- Start number 81 was manually annotated 15 times for cluster DN1.

Info for manual annotations of cluster DN2:

- Start number 81 was manually annotated 2 times for cluster DN2.

Info for manual annotations of cluster DP:

- Start number 93 was manually annotated 5 times for cluster DP.

Info for manual annotations of cluster EB:

- Start number 92 was manually annotated 68 times for cluster EB.

Info for manual annotations of cluster F1:

- Start number 81 was manually annotated 22 times for cluster F1.

Info for manual annotations of cluster F2:

- Start number 81 was manually annotated 7 times for cluster F2.

Info for manual annotations of cluster F3:

- Start number 81 was manually annotated 1 time for cluster F3.

Info for manual annotations of cluster FO:

- Start number 45 was manually annotated 1 time for cluster FO.
- Start number 89 was manually annotated 3 times for cluster FO.

Info for manual annotations of cluster FP:

- Start number 90 was manually annotated 2 times for cluster FP.

Info for manual annotations of cluster Y:

- Start number 69 was manually annotated 4 times for cluster Y.

Gene Information:

Gene: Abidatro_66 Start: 38766, Stop: 39044, Start Num: 90

Candidate Starts for Abidatro_66:

(36, 38640), (Start: 90 @38766 has 14 MA's),

Gene: Abigail_70 Start: 40540, Stop: 40815, Start Num: 92

Candidate Starts for Abigail_70:

(Start: 92 @40540 has 68 MA's),

Gene: Akino08_114 Start: 42028, Stop: 42363, Start Num: 63
Candidate Starts for Akino08_114:
(52, 42013), (63, 42028), (77, 42061), (Start: 92 @42088 has 68 MA's), (98, 42121), (128, 42277),

Gene: Albedo_70 Start: 41350, Stop: 41625, Start Num: 92
Candidate Starts for Albedo_70:
(Start: 92 @41350 has 68 MA's), (127, 41536),

Gene: Albright_69 Start: 40420, Stop: 40695, Start Num: 92
Candidate Starts for Albright_69:
(Start: 92 @40420 has 68 MA's),

Gene: Aloeri_1 Start: 42, Stop: 374, Start Num: 81
Candidate Starts for Aloeri_1:
(65, 9), (71, 15), (Start: 81 @42 has 65 MA's), (Start: 101 @120 has 1 MA's), (118, 213), (123, 237),
(132, 285), (143, 339), (144, 354),

Gene: Altostratus_69 Start: 38971, Stop: 39267, Start Num: 83
Candidate Starts for Altostratus_69:
(83, 38971), (94, 39001), (114, 39097), (119, 39139),

Gene: AmiCi24_68 Start: 38101, Stop: 38388, Start Num: 81
Candidate Starts for AmiCi24_68:
(Start: 81 @38101 has 65 MA's), (117, 38254), (130, 38317),

Gene: Anatole_55 Start: 34869, Stop: 35189, Start Num: 73
Candidate Starts for Anatole_55:
(2, 34596), (3, 34635), (4, 34644), (5, 34659), (17, 34725), (19, 34728), (25, 34752), (32, 34770), (41,
34800), (Start: 73 @34869 has 3 MA's), (Start: 89 @34899 has 3 MA's), (104, 34974), (142, 35172),

Gene: AnnaLie_70 Start: 41202, Stop: 41477, Start Num: 92
Candidate Starts for AnnaLie_70:
(Start: 92 @41202 has 68 MA's), (127, 41388),

Gene: Antrice_80 Start: 38853, Stop: 39140, Start Num: 86
Candidate Starts for Antrice_80:
(86, 38853), (Start: 90 @38862 has 14 MA's),

Gene: Aoka_54 Start: 36392, Stop: 36673, Start Num: 89
Candidate Starts for Aoka_54:
(58, 36335), (Start: 89 @36392 has 3 MA's),

Gene: Archimedes_60 Start: 44555, Stop: 44878, Start Num: 72
Candidate Starts for Archimedes_60:
(Start: 72 @44555 has 1 MA's), (Start: 84 @44582 has 2 MA's), (88, 44588), (105, 44672), (107,
44681), (139, 44852),

Gene: Armstrong_70 Start: 39580, Stop: 39855, Start Num: 92
Candidate Starts for Armstrong_70:
(13, 39382), (18, 39397), (27, 39424), (37, 39457), (52, 39505), (63, 39520), (77, 39553), (Start: 92
@39580 has 68 MA's),

Gene: Arroyo_71 Start: 41666, Stop: 41941, Start Num: 92

Candidate Starts for Arroyo_71:
(Start: 92 @41666 has 68 MA's), (127, 41852),

Gene: Asapag_1 Start: 39, Stop: 371, Start Num: 81
Candidate Starts for Asapag_1:
(65, 9), (70, 15), (74, 27), (Start: 81 @39 has 65 MA's), (105, 141), (106, 144), (123, 234), (129, 264),
(132, 282), (144, 351),

Gene: Atlantica_71 Start: 38103, Stop: 38390, Start Num: 81
Candidate Starts for Atlantica_71:
(Start: 81 @38103 has 65 MA's), (117, 38256), (130, 38319),

Gene: AuntGwenStacy_132 Start: 74981, Stop: 75304, Start Num: 69
Candidate Starts for AuntGwenStacy_132:
(Start: 69 @74981 has 4 MA's), (110, 75131), (126, 75212), (131, 75236), (133, 75248),

Gene: AvGardian_70 Start: 41184, Stop: 41459, Start Num: 92
Candidate Starts for AvGardian_70:
(Start: 92 @41184 has 68 MA's), (120, 41334), (127, 41370),

Gene: Avani_1 Start: 38, Stop: 370, Start Num: 81
Candidate Starts for Avani_1:
(66, 11), (Start: 81 @38 has 65 MA's), (Start: 101 @116 has 1 MA's), (106, 143), (123, 233), (129, 263), (132, 281), (141, 326), (144, 350),

Gene: Avocadoman_69 Start: 40737, Stop: 41012, Start Num: 92
Candidate Starts for Avocadoman_69:
(Start: 92 @40737 has 68 MA's),

Gene: Awesomesauce_1 Start: 42, Stop: 374, Start Num: 81
Candidate Starts for Awesomesauce_1:
(65, 9), (71, 15), (Start: 81 @42 has 65 MA's), (99, 111), (Start: 101 @120 has 1 MA's), (118, 213),
(123, 237), (129, 267), (132, 285), (141, 330), (143, 339), (144, 354),

Gene: B3_57 Start: 35532, Stop: 35852, Start Num: 73
Candidate Starts for B3_57:
(2, 35259), (3, 35298), (4, 35307), (5, 35322), (17, 35388), (19, 35391), (25, 35415), (32, 35433), (41, 35463), (Start: 73 @35532 has 3 MA's), (Start: 89 @35562 has 3 MA's), (104, 35637), (142, 35835),

Gene: BAjuniper_68 Start: 41633, Stop: 41908, Start Num: 92
Candidate Starts for BAjuniper_68:
(43, 41528), (52, 41558), (63, 41573), (77, 41606), (Start: 92 @41633 has 68 MA's), (98, 41666), (127, 41819),

Gene: BENtherdunthat_1 Start: 39, Stop: 371, Start Num: 81
Candidate Starts for BENtherdunthat_1:
(65, 9), (70, 15), (74, 27), (Start: 81 @39 has 65 MA's), (105, 141), (106, 144), (123, 234), (129, 264),
(132, 282), (144, 351),

Gene: BFK20_ORF55 Start: 42590, Stop: 42880, Start Num: 88
Candidate Starts for BFK20_ORF55:
(Start: 72 @42557 has 1 MA's), (78, 42575), (88, 42590), (95, 42617), (105, 42674), (121, 42761),
(136, 42845),

Gene: Babushka_71 Start: 38003, Stop: 38302, Start Num: 77

Candidate Starts for Babushka_71:

(77, 38003), (117, 38168), (130, 38231),

Gene: BabyDaisy_71 Start: 41763, Stop: 42038, Start Num: 92

Candidate Starts for BabyDaisy_71:

(44, 41664), (52, 41688), (63, 41703), (77, 41736), (87, 41751), (Start: 92 @41763 has 68 MA's),

Gene: BabyYoda_68 Start: 41093, Stop: 41368, Start Num: 92

Candidate Starts for BabyYoda_68:

(Start: 92 @41093 has 68 MA's), (98, 41126), (127, 41279), (128, 41282),

Gene: Bachaco_66 Start: 42043, Stop: 42318, Start Num: 92

Candidate Starts for Bachaco_66:

(22, 41878), (26, 41887), (29, 41890), (42, 41938), (52, 41968), (63, 41983), (77, 42016), (Start: 92 @42043 has 68 MA's), (127, 42229), (141, 42301),

Gene: BaileyBlu_63 Start: 40002, Stop: 40289, Start Num: 90

Candidate Starts for BaileyBlu_63:

(Start: 90 @40002 has 14 MA's), (125, 40182),

Gene: Banquo_63 Start: 39126, Stop: 39422, Start Num: 81

Candidate Starts for Banquo_63:

(60, 39084), (Start: 81 @39126 has 65 MA's), (96, 39168), (134, 39384),

Gene: Basilisk_66 Start: 38281, Stop: 38571, Start Num: 84

Candidate Starts for Basilisk_66:

(39, 38188), (50, 38218), (Start: 84 @38281 has 2 MA's), (Start: 90 @38293 has 14 MA's),

Gene: BelmontSKP_70 Start: 41202, Stop: 41477, Start Num: 92

Candidate Starts for BelmontSKP_70:

(Start: 92 @41202 has 68 MA's), (127, 41388),

Gene: Bengal_71 Start: 41208, Stop: 41483, Start Num: 92

Candidate Starts for Bengal_71:

(30, 41055), (33, 41070), (52, 41133), (63, 41148), (77, 41181), (87, 41196), (Start: 92 @41208 has 68 MA's), (127, 41394),

Gene: Bernstein_70 Start: 39578, Stop: 39853, Start Num: 92

Candidate Starts for Bernstein_70:

(13, 39380), (18, 39395), (27, 39422), (37, 39455), (52, 39503), (63, 39518), (77, 39551), (Start: 92 @39578 has 68 MA's),

Gene: Bipper_136 Start: 77103, Stop: 77429, Start Num: 69

Candidate Starts for Bipper_136:

(Start: 69 @77103 has 4 MA's), (102, 77217), (105, 77229), (119, 77304), (131, 77361), (133, 77373),

Gene: BotCity_1 Start: 39, Stop: 371, Start Num: 81

Candidate Starts for BotCity_1:

(65, 9), (70, 15), (Start: 81 @39 has 65 MA's), (Start: 101 @117 has 1 MA's), (105, 141), (123, 234), (132, 282), (139, 318), (144, 351),

Gene: Brahms_70 Start: 39480, Stop: 39755, Start Num: 92
Candidate Starts for Brahms_70:
(13, 39282), (18, 39297), (27, 39324), (37, 39357), (52, 39405), (63, 39420), (77, 39453), (Start: 92 @39480 has 68 MA's),

Gene: Brushbloom_1 Start: 40, Stop: 372, Start Num: 81
Candidate Starts for Brushbloom_1:
(64, 7), (68, 13), (Start: 81 @40 has 65 MA's), (99, 109), (Start: 101 @118 has 1 MA's), (118, 211), (132, 283), (141, 328), (143, 337), (144, 352),

Gene: Brynnie_64 Start: 38238, Stop: 38516, Start Num: 90
Candidate Starts for Brynnie_64:
(Start: 84 @38226 has 2 MA's), (Start: 90 @38238 has 14 MA's),

Gene: BubbaBear_68 Start: 41351, Stop: 41626, Start Num: 92
Candidate Starts for BubbaBear_68:
(Start: 92 @41351 has 68 MA's),

Gene: Budski_1 Start: 39, Stop: 371, Start Num: 81
Candidate Starts for Budski_1:
(65, 9), (70, 15), (Start: 81 @39 has 65 MA's), (Start: 101 @117 has 1 MA's), (105, 141), (123, 234), (132, 282), (139, 318), (144, 351),

Gene: Buldak_69 Start: 39158, Stop: 39433, Start Num: 92
Candidate Starts for Buldak_69:
(Start: 92 @39158 has 68 MA's), (127, 39344),

Gene: Burritobowl_72 Start: 40954, Stop: 41229, Start Num: 92
Candidate Starts for Burritobowl_72:
(Start: 92 @40954 has 68 MA's),

Gene: CallinAllBarbz_64 Start: 40753, Stop: 41040, Start Num: 90
Candidate Starts for CallinAllBarbz_64:
(Start: 90 @40753 has 14 MA's),

Gene: Camara_69 Start: 37993, Stop: 38280, Start Num: 81
Candidate Starts for Camara_69:
(Start: 81 @37993 has 65 MA's), (117, 38146), (130, 38209),

Gene: Cashington_69 Start: 41137, Stop: 41412, Start Num: 92
Candidate Starts for Cashington_69:
(52, 41062), (63, 41077), (76, 41107), (77, 41110), (Start: 92 @41137 has 68 MA's), (127, 41323),

Gene: Catfish_64 Start: 41148, Stop: 41444, Start Num: 81
Candidate Starts for Catfish_64:
(10, 40959), (11, 40968), (55, 41106), (Start: 81 @41148 has 65 MA's), (103, 41235), (105, 41244), (119, 41319),

Gene: Celaena_66 Start: 41809, Stop: 42084, Start Num: 92
Candidate Starts for Celaena_66:
(22, 41641), (26, 41650), (29, 41653), (42, 41701), (52, 41731), (Start: 92 @41809 has 68 MA's), (127, 41995), (141, 42067),

Gene: Che9d_1 Start: 48, Stop: 380, Start Num: 81

Candidate Starts for Che9d_1:

(66, 21), (Start: 81 @48 has 65 MA's), (Start: 101 @126 has 1 MA's), (106, 153), (123, 243), (129, 273), (132, 291), (141, 336), (144, 360),

Gene: CheeseTouch_1 Start: 39, Stop: 371, Start Num: 81

Candidate Starts for CheeseTouch_1:

(65, 9), (70, 15), (Start: 81 @39 has 65 MA's), (Start: 101 @117 has 1 MA's), (105, 141), (123, 234), (132, 282), (139, 318), (144, 351),

Gene: Chickaboom_66 Start: 38402, Stop: 38680, Start Num: 90

Candidate Starts for Chickaboom_66:

(Start: 84 @38390 has 2 MA's), (Start: 90 @38402 has 14 MA's),

Gene: ChickenDinner_1 Start: 42, Stop: 374, Start Num: 81

Candidate Starts for ChickenDinner_1:

(65, 9), (71, 15), (Start: 81 @42 has 65 MA's), (Start: 101 @120 has 1 MA's), (118, 213), (123, 237), (132, 285), (143, 339), (144, 354),

Gene: Clayda5_72 Start: 39546, Stop: 39821, Start Num: 92

Candidate Starts for Clayda5_72:

(13, 39348), (18, 39363), (27, 39390), (37, 39423), (52, 39471), (63, 39486), (77, 39519), (Start: 92 @39546 has 68 MA's),

Gene: CliffHanger_78 Start: 40817, Stop: 41092, Start Num: 92

Candidate Starts for CliffHanger_78:

(Start: 92 @40817 has 68 MA's), (98, 40850), (127, 41003), (128, 41006),

Gene: CocoCinnamon_59 Start: 36037, Stop: 36318, Start Num: 89

Candidate Starts for CocoCinnamon_59:

(78, 36019), (Start: 89 @36037 has 3 MA's), (102, 36106),

Gene: Coltrane_70 Start: 39480, Stop: 39755, Start Num: 92

Candidate Starts for Coltrane_70:

(13, 39282), (18, 39297), (27, 39324), (37, 39357), (52, 39405), (63, 39420), (77, 39453), (Start: 92 @39480 has 68 MA's),

Gene: Cornucopia_1 Start: 41, Stop: 373, Start Num: 81

Candidate Starts for Cornucopia_1:

(66, 11), (Start: 81 @41 has 65 MA's), (97, 86), (Start: 101 @119 has 1 MA's), (116, 200), (123, 236), (132, 284), (141, 329), (143, 338), (144, 353),

Gene: Cracklewink_136 Start: 76262, Stop: 76588, Start Num: 69

Candidate Starts for Cracklewink_136:

(6, 76067), (20, 76136), (Start: 69 @76262 has 4 MA's), (102, 76376), (105, 76388), (119, 76463), (131, 76520), (133, 76532),

Gene: CroZenni_71 Start: 41008, Stop: 41283, Start Num: 92

Candidate Starts for CroZenni_71:

(Start: 92 @41008 has 68 MA's),

Gene: CupcakePrincess_71 Start: 41251, Stop: 41526, Start Num: 92

Candidate Starts for CupcakePrincess_71:

(Start: 92 @41251 has 68 MA's),

Gene: Cygnet_77 Start: 39144, Stop: 39422, Start Num: 90

Candidate Starts for Cygnet_77:

(Start: 90 @39144 has 14 MA's), (127, 39336),

Gene: DanHam62_68 Start: 38102, Stop: 38389, Start Num: 81

Candidate Starts for DanHam62_68:

(Start: 81 @38102 has 65 MA's), (117, 38255), (130, 38318),

Gene: Demsculpinboyz_1 Start: 38, Stop: 370, Start Num: 81

Candidate Starts for Demsculpinboyz_1:

(66, 11), (Start: 81 @38 has 65 MA's), (Start: 101 @116 has 1 MA's), (106, 143), (123, 233), (129, 263), (132, 281), (141, 326), (144, 350),

Gene: DickRichards_68 Start: 40877, Stop: 41152, Start Num: 92

Candidate Starts for DickRichards_68:

(Start: 92 @40877 has 68 MA's),

Gene: Didgeridoo_75 Start: 42192, Stop: 42467, Start Num: 92

Candidate Starts for Didgeridoo_75:

(16, 42015), (33, 42066), (52, 42117), (63, 42132), (77, 42165), (87, 42180), (Start: 92 @42192 has 68 MA's),

Gene: DinoDaryn_64 Start: 39227, Stop: 39523, Start Num: 81

Candidate Starts for DinoDaryn_64:

(60, 39185), (Start: 81 @39227 has 65 MA's), (123, 39416), (134, 39485),

Gene: DirtyBubble_69 Start: 41228, Stop: 41503, Start Num: 92

Candidate Starts for DirtyBubble_69:

(Start: 92 @41228 has 68 MA's), (127, 41414), (128, 41417),

Gene: Dismas_67 Start: 41256, Stop: 41531, Start Num: 92

Candidate Starts for Dismas_67:

(51, 41181), (Start: 92 @41256 has 68 MA's), (127, 41442), (133, 41472),

Gene: DocMcStuffins_1 Start: 42, Stop: 374, Start Num: 81

Candidate Starts for DocMcStuffins_1:

(65, 9), (71, 15), (Start: 81 @42 has 65 MA's), (Start: 101 @120 has 1 MA's), (118, 213), (123, 237), (132, 285), (143, 339), (144, 354),

Gene: Doobus_68 Start: 40732, Stop: 41007, Start Num: 92

Candidate Starts for Doobus_68:

(Start: 92 @40732 has 68 MA's),

Gene: E1_55 Start: 34794, Stop: 35114, Start Num: 73

Candidate Starts for E1_55:

(2, 34521), (3, 34560), (4, 34569), (5, 34584), (17, 34650), (19, 34653), (25, 34677), (32, 34695), (41, 34725), (Start: 73 @34794 has 3 MA's), (Start: 89 @34824 has 3 MA's), (104, 34899), (142, 35097),

Gene: Ecliptus_1 Start: 40, Stop: 372, Start Num: 81

Candidate Starts for Ecliptus_1:

(68, 13), (Start: 81 @40 has 65 MA's), (106, 145), (116, 199), (117, 208), (118, 211), (120, 220), (123, 235), (129, 265), (139, 319), (144, 352),

Gene: Eden_72 Start: 40483, Stop: 40758, Start Num: 92

Candidate Starts for Eden_72:

(8, 40246), (11, 40276), (12, 40279), (15, 40294), (24, 40324), (25, 40327), (44, 40381), (64, 40423), (Start: 92 @40483 has 68 MA's), (127, 40669), (128, 40672), (141, 40741),

Gene: Eesa_65 Start: 39439, Stop: 39717, Start Num: 90

Candidate Starts for Eesa_65:

(Start: 90 @39439 has 14 MA's), (143, 39709),

Gene: Elva_73 Start: 41675, Stop: 41950, Start Num: 92

Candidate Starts for Elva_73:

(Start: 92 @41675 has 68 MA's), (127, 41861), (128, 41864),

Gene: Emmaloid_1 Start: 41, Stop: 373, Start Num: 81

Candidate Starts for Emmaloid_1:

(66, 11), (Start: 81 @41 has 65 MA's), (Start: 101 @119 has 1 MA's), (118, 212), (123, 236), (132, 284), (143, 338), (144, 353),

Gene: Eula_69 Start: 40916, Stop: 41191, Start Num: 92

Candidate Starts for Eula_69:

(Start: 92 @40916 has 68 MA's), (127, 41102),

Gene: EvenBluerMoon_51 Start: 35879, Stop: 36160, Start Num: 89

Candidate Starts for EvenBluerMoon_51:

(58, 35822), (Start: 89 @35879 has 3 MA's),

Gene: Faiyaz_131 Start: 75303, Stop: 75626, Start Num: 69

Candidate Starts for Faiyaz_131:

(Start: 69 @75303 has 4 MA's), (110, 75453), (126, 75534), (131, 75558), (133, 75570),

Gene: Finalfrontier_69 Start: 41583, Stop: 41858, Start Num: 92

Candidate Starts for Finalfrontier_69:

(Start: 92 @41583 has 68 MA's), (127, 41769),

Gene: FlameThrower_65 Start: 40846, Stop: 41121, Start Num: 92

Candidate Starts for FlameThrower_65:

(52, 40768), (Start: 92 @40846 has 68 MA's), (127, 41032), (141, 41104),

Gene: Flathead_1 Start: 40, Stop: 372, Start Num: 81

Candidate Starts for Flathead_1:

(64, 7), (68, 13), (Start: 81 @40 has 65 MA's), (99, 109), (Start: 101 @118 has 1 MA's), (118, 211), (132, 283), (141, 328), (143, 337), (144, 352),

Gene: Frankie_1 Start: 40, Stop: 372, Start Num: 81

Candidate Starts for Frankie_1:

(64, 7), (68, 13), (Start: 81 @40 has 65 MA's), (99, 109), (Start: 101 @118 has 1 MA's), (118, 211), (132, 283), (141, 328), (143, 337), (144, 352),

Gene: Franklin22_74 Start: 40216, Stop: 40491, Start Num: 92

Candidate Starts for Franklin22_74:

(64, 40156), (Start: 92 @40216 has 68 MA's), (127, 40402), (141, 40474),

Gene: Frickyeah_1 Start: 39, Stop: 371, Start Num: 81

Candidate Starts for Frickyeah_1:

(65, 9), (70, 15), (74, 27), (Start: 81 @39 has 65 MA's), (105, 141), (106, 144), (123, 234), (129, 264), (132, 282), (144, 351),

Gene: Frizzle_58 Start: 45018, Stop: 45314, Start Num: 84

Candidate Starts for Frizzle_58:

(Start: 84 @45018 has 2 MA's), (Start: 101 @45090 has 1 MA's), (108, 45123), (143, 45306),

Gene: Fryberger_144 Start: 66223, Stop: 66480, Start Num: 93

Candidate Starts for Fryberger_144:

(Start: 93 @66223 has 5 MA's), (109, 66319), (115, 66343), (119, 66373), (128, 66406),

Gene: Gack_71 Start: 40197, Stop: 40472, Start Num: 92

Candidate Starts for Gack_71:

(Start: 92 @40197 has 68 MA's), (127, 40383), (133, 40413),

Gene: Galaxy_65 Start: 37453, Stop: 37731, Start Num: 90

Candidate Starts for Galaxy_65:

(30, 37303), (36, 37327), (Start: 45 @37360 has 1 MA's), (Start: 90 @37453 has 14 MA's), (130, 37660),

Gene: Getalong_1 Start: 39, Stop: 371, Start Num: 81

Candidate Starts for Getalong_1:

(65, 9), (70, 15), (74, 27), (Start: 81 @39 has 65 MA's), (105, 141), (106, 144), (123, 234), (129, 264), (132, 282), (144, 351),

Gene: Ghobes_59 Start: 45003, Stop: 45227, Start Num: 101

Candidate Starts for Ghobes_59:

(Start: 84 @44931 has 2 MA's), (Start: 101 @45003 has 1 MA's), (108, 45036), (143, 45219),

Gene: Girafales_1 Start: 41, Stop: 373, Start Num: 81

Candidate Starts for Girafales_1:

(66, 11), (Start: 81 @41 has 65 MA's), (97, 86), (99, 110), (Start: 101 @119 has 1 MA's), (116, 200), (123, 236), (132, 284), (141, 329), (143, 338), (144, 353),

Gene: Glotell_71 Start: 38150, Stop: 38437, Start Num: 81

Candidate Starts for Glotell_71:

(Start: 81 @38150 has 65 MA's), (117, 38303), (130, 38366),

Gene: Guey18_149 Start: 67884, Stop: 68141, Start Num: 93

Candidate Starts for Guey18_149:

(Start: 93 @67884 has 5 MA's), (109, 67980), (115, 68004), (119, 68034), (128, 68067),

Gene: HamCheese_68 Start: 38089, Stop: 38376, Start Num: 81

Candidate Starts for HamCheese_68:

(Start: 81 @38089 has 65 MA's), (117, 38242), (130, 38305),

Gene: Hegedechwinu_1 Start: 40, Stop: 372, Start Num: 81

Candidate Starts for Hegedechwinu_1:

(64, 7), (68, 13), (Start: 81 @40 has 65 MA's), (99, 109), (Start: 101 @118 has 1 MA's), (118, 211), (132, 283), (141, 328), (143, 337), (144, 352),

Gene: Hilltopfarm_134 Start: 76128, Stop: 76451, Start Num: 69

Candidate Starts for Hilltopfarm_134:

(Start: 69 @76128 has 4 MA's), (110, 76278), (126, 76359), (131, 76383), (133, 76395),

Gene: Holliday_1 Start: 39, Stop: 371, Start Num: 81

Candidate Starts for Holliday_1:

(65, 9), (70, 15), (Start: 81 @39 has 65 MA's), (Start: 101 @117 has 1 MA's), (105, 141), (123, 234), (132, 282), (139, 318), (144, 351),

Gene: Horus_1 Start: 39, Stop: 371, Start Num: 81

Candidate Starts for Horus_1:

(65, 9), (70, 15), (74, 27), (Start: 81 @39 has 65 MA's), (Start: 101 @117 has 1 MA's), (105, 141), (123, 234), (129, 264), (132, 282), (144, 351),

Gene: Huffy_64 Start: 39227, Stop: 39523, Start Num: 81

Candidate Starts for Huffy_64:

(60, 39185), (Start: 81 @39227 has 65 MA's), (123, 39416), (134, 39485),

Gene: Icarian_72 Start: 41856, Stop: 42131, Start Num: 92

Candidate Starts for Icarian_72:

(Start: 92 @41856 has 68 MA's), (123, 42021), (127, 42042), (128, 42045),

Gene: IndyLu_71 Start: 41495, Stop: 41770, Start Num: 92

Candidate Starts for IndyLu_71:

(16, 41318), (33, 41369), (52, 41420), (63, 41435), (75, 41462), (77, 41468), (87, 41483), (Start: 92 @41495 has 68 MA's),

Gene: Jabb_71 Start: 41251, Stop: 41526, Start Num: 92

Candidate Starts for Jabb_71:

(Start: 92 @41251 has 68 MA's),

Gene: Jabbawokkie_2 Start: 561, Stop: 893, Start Num: 81

Candidate Starts for Jabbawokkie_2:

(64, 528), (Start: 81 @561 has 65 MA's), (123, 756), (129, 786), (132, 804), (141, 849), (144, 873),

Gene: Jamun_63 Start: 38467, Stop: 38745, Start Num: 90

Candidate Starts for Jamun_63:

(21, 38326), (63, 38413), (79, 38449), (Start: 84 @38455 has 2 MA's), (Start: 90 @38467 has 14 MA's),

Gene: JanetJ_52 Start: 36634, Stop: 36915, Start Num: 89

Candidate Starts for JanetJ_52:

(Start: 89 @36634 has 3 MA's),

Gene: Jankie_67 Start: 41285, Stop: 41572, Start Num: 90

Candidate Starts for Jankie_67:

(54, 41219), (Start: 90 @41285 has 14 MA's), (119, 41447), (125, 41465),

Gene: Job42_1 Start: 41, Stop: 373, Start Num: 81

Candidate Starts for Job42_1:

(66, 11), (Start: 81 @41 has 65 MA's), (Start: 101 @119 has 1 MA's), (118, 212), (132, 284), (141, 329), (143, 338), (144, 353),

Gene: Johnathan_70 Start: 40508, Stop: 40783, Start Num: 92
Candidate Starts for Johnathan_70:
(Start: 92 @40508 has 68 MA's),

Gene: Jovita_68 Start: 40684, Stop: 40959, Start Num: 92
Candidate Starts for Jovita_68:
(Start: 92 @40684 has 68 MA's), (127, 40870),

Gene: Juice456_1 Start: 41, Stop: 373, Start Num: 81
Candidate Starts for Juice456_1:
(66, 11), (Start: 81 @41 has 65 MA's), (Start: 101 @119 has 1 MA's), (118, 212), (132, 284), (141, 329), (143, 338), (144, 353),

Gene: Juno112_69 Start: 38104, Stop: 38391, Start Num: 81
Candidate Starts for Juno112_69:
(Start: 81 @38104 has 65 MA's), (117, 38257), (130, 38320),

Gene: KHumphrey_70 Start: 37978, Stop: 38265, Start Num: 81
Candidate Starts for KHumphrey_70:
(Start: 81 @37978 has 65 MA's), (117, 38131), (130, 38194),

Gene: Kamaru_1 Start: 39, Stop: 371, Start Num: 81
Candidate Starts for Kamaru_1:
(65, 9), (70, 15), (Start: 81 @39 has 65 MA's), (Start: 101 @117 has 1 MA's), (105, 141), (123, 234), (132, 282), (139, 318), (144, 351),

Gene: Kate33_71 Start: 41226, Stop: 41501, Start Num: 92
Candidate Starts for Kate33_71:
(33, 41100), (52, 41151), (63, 41166), (77, 41199), (87, 41214), (Start: 92 @41226 has 68 MA's),

Gene: Katzastrophic_67 Start: 41352, Stop: 41627, Start Num: 92
Candidate Starts for Katzastrophic_67:
(22, 41187), (26, 41196), (29, 41199), (42, 41247), (52, 41277), (63, 41292), (77, 41325), (Start: 92 @41352 has 68 MA's), (127, 41538), (141, 41610),

Gene: Keelan_144 Start: 66560, Stop: 66817, Start Num: 93
Candidate Starts for Keelan_144:
(Start: 93 @66560 has 5 MA's), (109, 66656), (115, 66680), (119, 66710), (128, 66743), (140, 66803),

Gene: KendraB23_76 Start: 39417, Stop: 39695, Start Num: 90
Candidate Starts for KendraB23_76:
(Start: 61 @39363 has 1 MA's), (Start: 90 @39417 has 14 MA's), (143, 39687),

Gene: Kenna_1 Start: 39, Stop: 371, Start Num: 81
Candidate Starts for Kenna_1:
(65, 9), (70, 15), (74, 27), (Start: 81 @39 has 65 MA's), (Start: 101 @117 has 1 MA's), (105, 141), (106, 144), (123, 234), (129, 264), (132, 282), (144, 351),

Gene: Kenzers_69 Start: 40798, Stop: 41073, Start Num: 92
Candidate Starts for Kenzers_69:

(Start: 92 @40798 has 68 MA's), (127, 40984),

Gene: Khuang_70 Start: 39192, Stop: 39488, Start Num: 83

Candidate Starts for Khuang_70:

(83, 39192), (94, 39222), (119, 39360),

Gene: Kieran_65 Start: 41080, Stop: 41355, Start Num: 92

Candidate Starts for Kieran_65:

(51, 41005), (Start: 92 @41080 has 68 MA's), (127, 41266), (133, 41296),

Gene: Kimberlium_1 Start: 41, Stop: 373, Start Num: 81

Candidate Starts for Kimberlium_1:

(66, 11), (Start: 81 @41 has 65 MA's), (Start: 101 @119 has 1 MA's), (118, 212), (132, 284), (141, 329), (143, 338), (144, 353),

Gene: Lahqtemish_69 Start: 41710, Stop: 41985, Start Num: 92

Candidate Starts for Lahqtemish_69:

(39, 41602), (52, 41635), (63, 41650), (75, 41677), (77, 41683), (87, 41698), (Start: 92 @41710 has 68 MA's),

Gene: Leona_68 Start: 38237, Stop: 38518, Start Num: 85

Candidate Starts for Leona_68:

(Start: 85 @38237 has 1 MA's), (117, 38384), (130, 38447),

Gene: Leroy_1 Start: 39, Stop: 371, Start Num: 81

Candidate Starts for Leroy_1:

(65, 9), (70, 15), (74, 27), (Start: 81 @39 has 65 MA's), (105, 141), (106, 144), (123, 234), (129, 264), (132, 282), (144, 351),

Gene: LimaBean_68 Start: 40790, Stop: 41065, Start Num: 92

Candidate Starts for LimaBean_68:

(52, 40715), (63, 40730), (76, 40760), (77, 40763), (Start: 92 @40790 has 68 MA's),

Gene: LitninMcQueen_1 Start: 39, Stop: 371, Start Num: 81

Candidate Starts for LitninMcQueen_1:

(65, 9), (70, 15), (Start: 81 @39 has 65 MA's), (Start: 101 @117 has 1 MA's), (105, 141), (123, 234), (132, 282), (139, 318), (144, 351),

Gene: LittleShirley_1 Start: 41, Stop: 373, Start Num: 81

Candidate Starts for LittleShirley_1:

(66, 11), (Start: 81 @41 has 65 MA's), (Start: 101 @119 has 1 MA's), (118, 212), (123, 236), (132, 284), (143, 338), (144, 353),

Gene: LittleTokyo_73 Start: 38604, Stop: 38882, Start Num: 90

Candidate Starts for LittleTokyo_73:

(Start: 90 @38604 has 14 MA's), (127, 38796),

Gene: Loviatar_114 Start: 42044, Stop: 42379, Start Num: 63

Candidate Starts for Loviatar_114:

(52, 42029), (63, 42044), (77, 42077), (Start: 92 @42104 has 68 MA's), (98, 42137), (128, 42293),

Gene: Lutum_1 Start: 39, Stop: 371, Start Num: 81

Candidate Starts for Lutum_1:

(65, 9), (70, 15), (74, 27), (Start: 81 @39 has 65 MA's), (Start: 101 @117 has 1 MA's), (105, 141), (106, 144), (123, 234), (129, 264), (132, 282), (144, 351),

Gene: Lynlen_71 Start: 40984, Stop: 41259, Start Num: 92

Candidate Starts for Lynlen_71:

(87, 40972), (Start: 92 @40984 has 68 MA's),

Gene: Mahdia_60 Start: 41790, Stop: 42113, Start Num: 56

Candidate Starts for Mahdia_60:

(Start: 56 @41790 has 1 MA's), (Start: 61 @41796 has 1 MA's), (116, 41970), (119, 41988), (134, 42075),

Gene: Maja_56 Start: 36343, Stop: 36714, Start Num: 45

Candidate Starts for Maja_56:

(Start: 45 @36343 has 1 MA's), (78, 36415), (Start: 89 @36433 has 3 MA's),

Gene: Malisha_1 Start: 39, Stop: 371, Start Num: 81

Candidate Starts for Malisha_1:

(65, 9), (70, 15), (Start: 81 @39 has 65 MA's), (Start: 101 @117 has 1 MA's), (117, 207), (123, 234), (129, 264), (132, 282), (139, 318), (144, 351),

Gene: Milomuff_73 Start: 41357, Stop: 41632, Start Num: 92

Candidate Starts for Milomuff_73:

(Start: 92 @41357 has 68 MA's),

Gene: Min1_34 Start: 16506, Stop: 16799, Start Num: 89

Candidate Starts for Min1_34:

(53, 16446), (65, 16461), (67, 16464), (Start: 73 @16479 has 3 MA's), (80, 16491), (Start: 89 @16506 has 3 MA's), (111, 16617), (123, 16686), (142, 16782),

Gene: Misha28_1 Start: 42, Stop: 374, Start Num: 81

Candidate Starts for Misha28_1:

(65, 9), (71, 15), (Start: 81 @42 has 65 MA's), (Start: 101 @120 has 1 MA's), (118, 213), (123, 237), (132, 285), (143, 339), (144, 354),

Gene: Morrissey_63 Start: 43651, Stop: 44007, Start Num: 46

Candidate Starts for Morrissey_63:

(Start: 46 @43651 has 1 MA's), (52, 43666), (Start: 61 @43678 has 1 MA's), (Start: 73 @43702 has 3 MA's), (116, 43864), (134, 43969),

Gene: Mova_1 Start: 41, Stop: 373, Start Num: 81

Candidate Starts for Mova_1:

(66, 11), (Start: 81 @41 has 65 MA's), (Start: 101 @119 has 1 MA's), (118, 212), (123, 236), (132, 284), (143, 338), (144, 353),

Gene: Mozy_1 Start: 40, Stop: 372, Start Num: 81

Candidate Starts for Mozy_1:

(64, 7), (68, 13), (Start: 81 @40 has 65 MA's), (97, 85), (99, 109), (Start: 101 @118 has 1 MA's), (116, 199), (123, 235), (132, 283), (141, 328), (143, 337), (144, 352),

Gene: MsUbiquitous_71 Start: 41251, Stop: 41526, Start Num: 92

Candidate Starts for MsUbiquitous_71:

(Start: 92 @41251 has 68 MA's),

Gene: MulchExplorer_1 Start: 41, Stop: 373, Start Num: 81

Candidate Starts for MulchExplorer_1:

(66, 11), (Start: 81 @41 has 65 MA's), (Start: 101 @119 has 1 MA's), (118, 212), (132, 284), (141, 329), (143, 338), (144, 353),

Gene: Nicky22_69 Start: 41321, Stop: 41596, Start Num: 92

Candidate Starts for Nicky22_69:

(Start: 92 @41321 has 68 MA's), (127, 41507),

Gene: ODay_1 Start: 39, Stop: 371, Start Num: 81

Candidate Starts for ODay_1:

(65, 9), (70, 15), (Start: 81 @39 has 65 MA's), (Start: 101 @117 has 1 MA's), (105, 141), (123, 234), (132, 282), (139, 318), (144, 351),

Gene: Ogopogo_2 Start: 299, Stop: 631, Start Num: 81

Candidate Starts for Ogopogo_2:

(Start: 81 @299 has 65 MA's), (Start: 101 @377 has 1 MA's), (123, 494), (129, 524), (132, 542), (141, 587), (144, 611),

Gene: Olliecat_66 Start: 38762, Stop: 39037, Start Num: 92

Candidate Starts for Olliecat_66:

(1, 38429), (19, 38579), (35, 38630), (Start: 92 @38762 has 68 MA's), (127, 38948), (138, 39005),

Gene: Orcanus_65 Start: 39051, Stop: 39329, Start Num: 90

Candidate Starts for Orcanus_65:

(Start: 90 @39051 has 14 MA's),

Gene: PastaFagioli_69 Start: 41718, Stop: 42053, Start Num: 63

Candidate Starts for PastaFagioli_69:

(39, 41670), (52, 41703), (63, 41718), (75, 41745), (77, 41751), (87, 41766), (Start: 92 @41778 has 68 MA's),

Gene: Periwinkle_1 Start: 39, Stop: 371, Start Num: 81

Candidate Starts for Periwinkle_1:

(65, 9), (70, 15), (74, 27), (Start: 81 @39 has 65 MA's), (Start: 101 @117 has 1 MA's), (105, 141), (106, 144), (123, 234), (129, 264), (132, 282), (144, 351),

Gene: Phabuloso_1 Start: 39, Stop: 371, Start Num: 81

Candidate Starts for Phabuloso_1:

(65, 9), (70, 15), (Start: 81 @39 has 65 MA's), (Start: 101 @117 has 1 MA's), (105, 141), (123, 234), (132, 282), (139, 318), (144, 351),

Gene: PhigPhack_73 Start: 41119, Stop: 41394, Start Num: 92

Candidate Starts for PhigPhack_73:

(Start: 92 @41119 has 68 MA's), (127, 41305),

Gene: Phisb_72 Start: 41092, Stop: 41367, Start Num: 92

Candidate Starts for Phisb_72:

(Start: 92 @41092 has 68 MA's),

Gene: Phistory_1 Start: 39, Stop: 371, Start Num: 81

Candidate Starts for Phistory_1:

(65, 9), (70, 15), (Start: 81 @39 has 65 MA's), (105, 141), (106, 144), (123, 234), (129, 264), (132, 282), (139, 318), (144, 351),

Gene: PhluffyCoco_68 Start: 38203, Stop: 38490, Start Num: 81

Candidate Starts for PhluffyCoco_68:

(Start: 81 @38203 has 65 MA's), (117, 38356), (130, 38419),

Gene: Piper2020_1 Start: 42, Stop: 374, Start Num: 81

Candidate Starts for Piper2020_1:

(65, 9), (71, 15), (Start: 81 @42 has 65 MA's), (Start: 101 @120 has 1 MA's), (118, 213), (123, 237), (132, 285), (143, 339), (144, 354),

Gene: Plumbus_1 Start: 41, Stop: 373, Start Num: 81

Candidate Starts for Plumbus_1:

(66, 11), (Start: 81 @41 has 65 MA's), (Start: 101 @119 has 1 MA's), (118, 212), (132, 284), (141, 329), (143, 338), (144, 353),

Gene: Puppies_62 Start: 41790, Stop: 42113, Start Num: 59

Candidate Starts for Puppies_62:

(25, 41697), (34, 41718), (38, 41733), (40, 41739), (49, 41775), (Start: 59 @41790 has 2 MA's), (119, 41988),

Gene: QMacho_72 Start: 41222, Stop: 41497, Start Num: 92

Candidate Starts for QMacho_72:

(Start: 92 @41222 has 68 MA's),

Gene: Quenya_69 Start: 41516, Stop: 41791, Start Num: 92

Candidate Starts for Quenya_69:

(Start: 92 @41516 has 68 MA's), (98, 41549), (127, 41702), (141, 41774),

Gene: Quico_1 Start: 41, Stop: 373, Start Num: 81

Candidate Starts for Quico_1:

(66, 11), (Start: 81 @41 has 65 MA's), (97, 86), (99, 110), (Start: 101 @119 has 1 MA's), (116, 200), (123, 236), (132, 284), (141, 329), (143, 338), (144, 353),

Gene: Rattail_71 Start: 38499, Stop: 38786, Start Num: 81

Candidate Starts for Rattail_71:

(Start: 81 @38499 has 65 MA's), (117, 38652), (130, 38715),

Gene: RedFox_71 Start: 38363, Stop: 38650, Start Num: 81

Candidate Starts for RedFox_71:

(Start: 81 @38363 has 65 MA's), (117, 38516), (130, 38579),

Gene: Renna12_72 Start: 38798, Stop: 39091, Start Num: 81

Candidate Starts for Renna12_72:

(Start: 72 @38777 has 1 MA's), (Start: 81 @38798 has 65 MA's), (117, 38957), (130, 39020),

Gene: Rialto_1 Start: 41, Stop: 373, Start Num: 81

Candidate Starts for Rialto_1:

(66, 11), (Start: 81 @41 has 65 MA's), (Start: 101 @119 has 1 MA's), (118, 212), (123, 236), (132, 284), (143, 338), (144, 353),

Gene: Rollins_70 Start: 39578, Stop: 39853, Start Num: 92

Candidate Starts for Rollins_70:

(13, 39380), (18, 39395), (27, 39422), (37, 39455), (52, 39503), (63, 39518), (77, 39551), (Start: 92 @39578 has 68 MA's),

Gene: Rona_66 Start: 41247, Stop: 41522, Start Num: 92

Candidate Starts for Rona_66:

(51, 41172), (Start: 92 @41247 has 68 MA's), (127, 41433), (133, 41463),

Gene: Ronaldo_147 Start: 67378, Stop: 67635, Start Num: 93

Candidate Starts for Ronaldo_147:

(Start: 93 @67378 has 5 MA's), (109, 67474), (115, 67498), (119, 67528), (128, 67561),

Gene: Ruchi_64 Start: 38215, Stop: 38493, Start Num: 90

Candidate Starts for Ruchi_64:

(39, 38110), (50, 38140), (Start: 84 @38203 has 2 MA's), (Start: 90 @38215 has 14 MA's),

Gene: SanaSana_70 Start: 41542, Stop: 41817, Start Num: 92

Candidate Starts for SanaSana_70:

(7, 41296), (9, 41311), (14, 41350), (48, 41458), (52, 41467), (63, 41482), (77, 41515), (Start: 92 @41542 has 68 MA's), (98, 41575), (127, 41728), (128, 41731),

Gene: SansAfet_72 Start: 41068, Stop: 41343, Start Num: 92

Candidate Starts for SansAfet_72:

(Start: 92 @41068 has 68 MA's), (127, 41254),

Gene: Sapo_61 Start: 45211, Stop: 45513, Start Num: 82

Candidate Starts for Sapo_61:

(Start: 82 @45211 has 1 MA's), (105, 45304), (113, 45337), (124, 45412), (143, 45505),

Gene: SarBear_72 Start: 41148, Stop: 41423, Start Num: 92

Candidate Starts for SarBear_72:

(Start: 92 @41148 has 68 MA's),

Gene: Schmidt_58 Start: 36837, Stop: 37133, Start Num: 81

Candidate Starts for Schmidt_58:

(Start: 81 @36837 has 65 MA's), (119, 37008), (139, 37107),

Gene: Shagrat_110 Start: 58151, Stop: 58423, Start Num: 91

Candidate Starts for Shagrat_110:

(Start: 91 @58151 has 1 MA's), (110, 58256), (117, 58295), (135, 58391), (137, 58394),

Gene: Sharkboy_68 Start: 41611, Stop: 41886, Start Num: 92

Candidate Starts for Sharkboy_68:

(51, 41536), (Start: 92 @41611 has 68 MA's), (98, 41644), (127, 41797), (133, 41827),

Gene: Shayna_75 Start: 41004, Stop: 41279, Start Num: 92

Candidate Starts for Shayna_75:

(Start: 92 @41004 has 68 MA's), (127, 41190),

Gene: SilverChicken_1 Start: 38, Stop: 370, Start Num: 81

Candidate Starts for SilverChicken_1:

(66, 11), (Start: 81 @38 has 65 MA's), (Start: 101 @116 has 1 MA's), (106, 143), (123, 233), (129, 263), (132, 281), (141, 326), (144, 350),

Gene: Skylord_70 Start: 39495, Stop: 39770, Start Num: 92
Candidate Starts for Skylord_70:
(13, 39297), (18, 39312), (27, 39339), (37, 39372), (52, 39420), (63, 39435), (77, 39468), (Start: 92 @39495 has 68 MA's),

Gene: Slay_70 Start: 41458, Stop: 41733, Start Num: 92
Candidate Starts for Slay_70:
(Start: 92 @41458 has 68 MA's), (127, 41644),

Gene: Sleepyhead_67 Start: 43516, Stop: 43788, Start Num: 90
Candidate Starts for Sleepyhead_67:
(Start: 90 @43516 has 14 MA's), (Start: 92 @43522 has 68 MA's),

Gene: Slim_1 Start: 41, Stop: 373, Start Num: 81
Candidate Starts for Slim_1:
(66, 11), (Start: 81 @41 has 65 MA's), (Start: 101 @119 has 1 MA's), (118, 212), (123, 236), (132, 284), (143, 338), (144, 353),

Gene: Softsoap_71 Start: 41189, Stop: 41464, Start Num: 92
Candidate Starts for Softsoap_71:
(Start: 92 @41189 has 68 MA's),

Gene: Solea_73 Start: 41356, Stop: 41631, Start Num: 92
Candidate Starts for Solea_73:
(Start: 92 @41356 has 68 MA's),

Gene: Soul22_1 Start: 38, Stop: 370, Start Num: 81
Candidate Starts for Soul22_1:
(66, 11), (Start: 81 @38 has 65 MA's), (Start: 101 @116 has 1 MA's), (106, 143), (123, 233), (129, 263), (132, 281), (141, 326), (144, 350),

Gene: Splinter_64 Start: 40315, Stop: 40611, Start Num: 81
Candidate Starts for Splinter_64:
(Start: 81 @40315 has 65 MA's), (123, 40504), (134, 40573),

Gene: Spooky_1 Start: 39, Stop: 371, Start Num: 81
Candidate Starts for Spooky_1:
(65, 9), (70, 15), (Start: 81 @39 has 65 MA's), (123, 234), (126, 249), (132, 282), (139, 318), (144, 351),

Gene: Squiddly_2 Start: 730, Stop: 1062, Start Num: 81
Candidate Starts for Squiddly_2:
(28, 601), (31, 613), (64, 697), (Start: 81 @730 has 65 MA's), (118, 901), (122, 919), (132, 973), (139, 1009), (144, 1042),

Gene: Squirrel_66 Start: 38761, Stop: 39036, Start Num: 92
Candidate Starts for Squirrel_66:
(1, 38428), (19, 38578), (35, 38629), (Start: 92 @38761 has 68 MA's), (127, 38947), (138, 39004),

Gene: Squirty_1 Start: 40, Stop: 372, Start Num: 81
Candidate Starts for Squirty_1:

(64, 7), (68, 13), (Start: 81 @40 has 65 MA's), (99, 109), (Start: 101 @118 has 1 MA's), (118, 211), (129, 265), (132, 283), (141, 328), (143, 337), (144, 352),

Gene: Starcevich_1 Start: 41, Stop: 373, Start Num: 81

Candidate Starts for Starcevich_1:

(66, 11), (Start: 81 @41 has 65 MA's), (Start: 101 @119 has 1 MA's), (118, 212), (123, 236), (132, 284), (143, 338), (144, 353),

Gene: Stoor_69 Start: 41350, Stop: 41625, Start Num: 92

Candidate Starts for Stoor_69:

(Start: 92 @41350 has 68 MA's), (127, 41536), (128, 41539),

Gene: Stromboli_68 Start: 41130, Stop: 41405, Start Num: 92

Candidate Starts for Stromboli_68:

(7, 40884), (9, 40899), (14, 40938), (48, 41046), (52, 41055), (63, 41070), (77, 41103), (Start: 92 @41130 has 68 MA's), (127, 41316), (128, 41319),

Gene: SunnyD_75 Start: 41007, Stop: 41282, Start Num: 92

Candidate Starts for SunnyD_75:

(Start: 92 @41007 has 68 MA's), (127, 41193),

Gene: Swervy_70 Start: 41047, Stop: 41322, Start Num: 92

Candidate Starts for Swervy_70:

(Start: 92 @41047 has 68 MA's), (127, 41233),

Gene: TZGordon_65 Start: 39203, Stop: 39499, Start Num: 81

Candidate Starts for TZGordon_65:

(Start: 81 @39203 has 65 MA's), (123, 39392), (134, 39461),

Gene: TaylorSipht_65 Start: 38681, Stop: 38959, Start Num: 90

Candidate Starts for TaylorSipht_65:

(Start: 90 @38681 has 14 MA's),

Gene: Tchotchke_1 Start: 41, Stop: 373, Start Num: 81

Candidate Starts for Tchotchke_1:

(66, 11), (Start: 81 @41 has 65 MA's), (97, 86), (99, 110), (Start: 101 @119 has 1 MA's), (116, 200), (123, 236), (132, 284), (141, 329), (143, 338), (144, 353),

Gene: Teagster_75 Start: 41426, Stop: 41701, Start Num: 92

Candidate Starts for Teagster_75:

(Start: 92 @41426 has 68 MA's), (127, 41612),

Gene: TinaLin_63 Start: 39046, Stop: 39342, Start Num: 81

Candidate Starts for TinaLin_63:

(60, 39004), (Start: 81 @39046 has 65 MA's), (96, 39088), (112, 39172), (134, 39304),

Gene: Toad24_67 Start: 39472, Stop: 39750, Start Num: 90

Candidate Starts for Toad24_67:

(Start: 61 @39418 has 1 MA's), (Start: 90 @39472 has 14 MA's), (143, 39742),

Gene: TootsiePop_1 Start: 42, Stop: 374, Start Num: 81

Candidate Starts for TootsiePop_1:

(65, 9), (71, 15), (Start: 81 @42 has 65 MA's), (Start: 101 @120 has 1 MA's), (118, 213), (123, 237), (132, 285), (143, 339), (144, 354),

Gene: Totinger_1 Start: 41, Stop: 373, Start Num: 81

Candidate Starts for Totinger_1:

(66, 11), (Start: 81 @41 has 65 MA's), (Start: 101 @119 has 1 MA's), (118, 212), (123, 236), (132, 284), (143, 338), (144, 353),

Gene: Trine_65 Start: 43058, Stop: 43372, Start Num: 61

Candidate Starts for Trine_65:

(Start: 61 @43058 has 1 MA's), (110, 43199),

Gene: TukTuk_70 Start: 41237, Stop: 41512, Start Num: 92

Candidate Starts for TukTuk_70:

(Start: 92 @41237 has 68 MA's), (127, 41423),

Gene: Typha_129 Start: 74982, Stop: 75305, Start Num: 69

Candidate Starts for Typha_129:

(Start: 69 @74982 has 4 MA's), (110, 75132), (126, 75213), (131, 75237), (133, 75249),

Gene: Upyo_69 Start: 44979, Stop: 45296, Start Num: 62

Candidate Starts for Upyo_69:

(Start: 62 @44979 has 1 MA's), (100, 45075), (116, 45153), (119, 45171),

Gene: Vendetta_64 Start: 40315, Stop: 40611, Start Num: 81

Candidate Starts for Vendetta_64:

(Start: 81 @40315 has 65 MA's), (123, 40504), (134, 40573),

Gene: Vitas_71 Start: 39646, Stop: 39921, Start Num: 92

Candidate Starts for Vitas_71:

(23, 39487), (57, 39580), (Start: 92 @39646 has 68 MA's), (98, 39679),

Gene: Volt_150 Start: 67542, Stop: 67799, Start Num: 93

Candidate Starts for Volt_150:

(Start: 93 @67542 has 5 MA's), (109, 67638), (115, 67662), (119, 67692), (128, 67725),

Gene: Vulpecula_64 Start: 37410, Stop: 37688, Start Num: 90

Candidate Starts for Vulpecula_64:

(Start: 84 @37398 has 2 MA's), (Start: 90 @37410 has 14 MA's),

Gene: WalkingDead_71 Start: 42012, Stop: 42287, Start Num: 92

Candidate Starts for WalkingDead_71:

(Start: 92 @42012 has 68 MA's), (127, 42198), (128, 42201),

Gene: Whitney_1 Start: 39, Stop: 371, Start Num: 81

Candidate Starts for Whitney_1:

(65, 9), (70, 15), (74, 27), (Start: 81 @39 has 65 MA's), (Start: 101 @117 has 1 MA's), (105, 141), (106, 144), (123, 234), (129, 264), (132, 282), (139, 318), (144, 351),

Gene: Widow_62 Start: 42336, Stop: 42659, Start Num: 59

Candidate Starts for Widow_62:

(25, 42243), (34, 42264), (38, 42279), (40, 42285), (47, 42312), (49, 42321), (Start: 59 @42336 has 2 MA's), (119, 42534),

Gene: WileyE_70 Start: 38402, Stop: 38680, Start Num: 90

Candidate Starts for WileyE_70:

(Start: 84 @38390 has 2 MA's), (Start: 90 @38402 has 14 MA's),

Gene: Yoshi_1 Start: 38, Stop: 370, Start Num: 81

Candidate Starts for Yoshi_1:

(66, 11), (Start: 81 @38 has 65 MA's), (Start: 101 @116 has 1 MA's), (106, 143), (123, 233), (129, 263), (132, 281), (141, 326), (144, 350),

Gene: Zapner_2 Start: 562, Stop: 894, Start Num: 81

Candidate Starts for Zapner_2:

(64, 529), (Start: 81 @562 has 65 MA's), (123, 757), (129, 787), (132, 805), (141, 850), (144, 874),