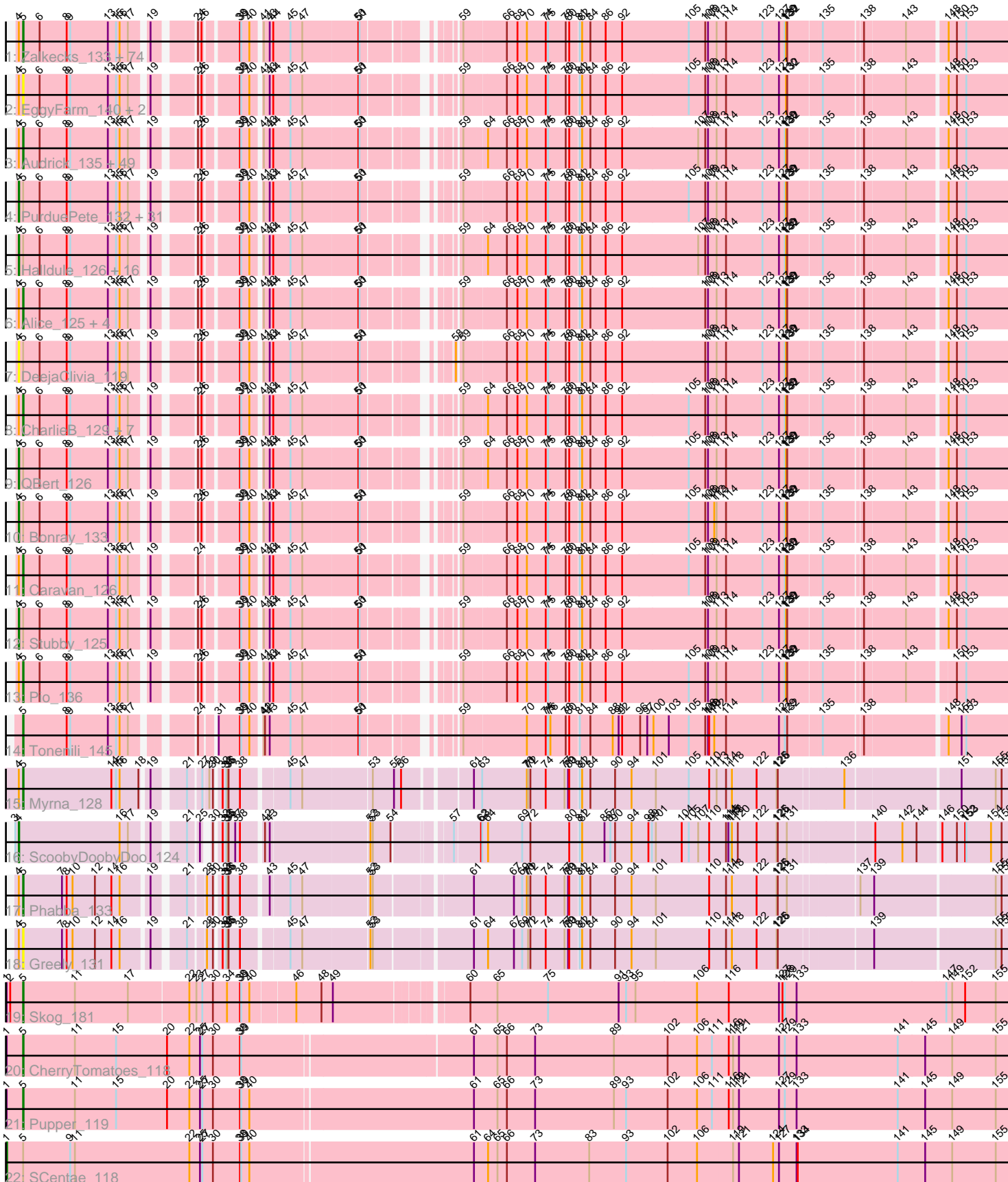


Pham 224298



Note: Tracks are now grouped by subcluster and scaled. Switching in subcluster is indicated by changes in track color. Track scale is now set by default to display the region 30 bp upstream of start 1 to 30 bp downstream of the last possible start. If this default region is judged to be packed too tightly with annotated starts, the track will be further scaled to only show that region of the ORF with annotated starts. This action will be indicated by adding "Zoomed" to the title. For starts, yellow indicates the location of called starts comprised solely of Glimmer/GeneMark auto-annotations, green indicates the location of called starts with at least 1 manual gene annotation.

Pham 224298 Report

This analysis was run 03/28/25 on database version 593.

Pham number 224298 has 205 members, 26 are drafts.

Phages represented in each track:

- Track 1 : Zalkecks_133, Lee7_130, EasyJones_135, Tyke_132, Yucca_131, Izajani_132, BananaFence_131, Gabriel_132, Dandelion_137, FudgeTart_130, Domi_125, Wally_131, Mikro_129, BackyardAgain_129, StephanieG_130, Cane17_124, Pier_136, Maby2021_132, TinyTim_132, ScottMcG_128, StubbySaigey_136, Blubba_124, Ablatia_131, Nappy_134, Lukilu_122, Morizzled23_133, DTDevon_132, IkeLoa_126, Jessibeth14_131, SrishMeg2525_131, ParkTD_133, Demodog_139, NuevoMundo_137, BeanWater_124, Erdmann_132, Bigswole_135, Nidhogg_134, Gizmo_137, Tainan_135, NedWong_133, Willis_133, Shrimp_132, Darko_132, YemiJoy2021_133, LordLeafolot_136, Quasimodo_134, Spud_131, MoMoMixon_132, Babyland_134, Daffodil_137, Concombre_138, ZygoTaiga_130, Breeniome_131, HyRo_123, Rizal_127, I3_137, Dietrick_124, Sauce_132, Naval22_137, YoungMoneyMata_134, Zeenon_133, Shifa_121, Megamind_131, MikeLiesIn_133, Bread_131, Khaleesi_131, Trinitium_130, Lethe_132, Pleione_135, Ava3_133, JayJay_137, Salacia_136, ChaylaJr_128, Asterius_135, Delylah_135
- Track 2 : EggyFarm_140, Grasshills_139, BigCity_140
- Track 3 : Audrick_135, Bxz1_129, Sprinklers_128, Bangla1971_133, DirtMonster_126, Grungle_119, InigoMontoya_135, Momo_132, Guwapp_131, Gamgam_133, Ghost_131, GlutenPhree_132, Jemmno_132, Drazdys_130, Jaygup_132, Jedediah_135, ET08_120, Matsumoto_129, ShiaLabeouf_131, Astraea_128, Primadonna_126, CindyLou_134, Chomp_132, Kboogie_136, Ronan_126, Yassified_129, LifeSavor_130, Spec_128, Roots515_131, Littleton_132, LolaVinca_132, JPickles_129, Ading_132, Cali_127, SilverDipper_134, Capablanca_135, Derek_131, Phlegm_136, LRRHood_125, Latch_133, Ngannou_129, Burrough_132, Issimir_130, ArcherS7_131, Belieber_128, Koguma_129, ErnieJ_126, Catera_128, Janiyra_135, Adlitam_133
- Track 4 : PurduePete_132, EmToTheThree_134, NoodleTree_139, Basquiat_129, Jezreel_130, FoxtrotP1_132, Cactojaque_128, DrPhinkDaddy_131, Mangeria_132, Iota_127, Flabslab_127, Fongie_130, Ewok_133, Kamryn_132, Chargie21_129, Loanshark_131, Fludd_133, Blackbrain_128, McWolfish_130, RoMag_127, Shelob_134, ChickenPhender_128, Colt_124, Bipolarisk_131, BadAgartude_128, Norm_133, Melpomini_126, Napoleon13_128, Delilah_132, Tortoise16_129, FrayBell_137, EmmaElysia_133
- Track 5 : Halldule_126, JustHall_130, Shnickers_132, Atlantean_132, Specks_137, Pivoine_132, Shaqnato_125, Essence_129, ValleyTerrace_133, Teardrop_131, Amataga_133, Patter_133, Naija_132, InterFolia_138, SmallFry_132, Rahel_131, Phusco_132

- Track 6 : Alice_125, Pinkcreek_123, LinStu_130, Rabinovish_131, Sebata_132
- Track 7 : DeejaClivia_119
- Track 8 : CharlieB_129, JigglyPuff_140, JulietS_127, SVoro_130, Blackdragon_128, Turret_128, McGee_134, Phox_129
- Track 9 : QBert_126
- Track 10 : Bonray_133
- Track 11 : Caravan_126
- Track 12 : Stubby_125
- Track 13 : Pio_136
- Track 14 : Tonenili_145
- Track 15 : Myrna_128
- Track 16 : ScoobyDoobyDoo_124
- Track 17 : Phabba_133
- Track 18 : Greely_131
- Track 19 : Skog_181
- Track 20 : CherryTomatoes_118
- Track 21 : Pupper_119
- Track 22 : SCentae_118

Summary of Final Annotations (See graph section above for start numbers):

The start number called the most often in the published annotations is 5, it was called in 128 of the 179 non-draft genes in the pham.

Genes that call this "Most Annotated" start:

- Ablatia_131, Ading_132, Adlitam_133, Alice_125, ArcherS7_131, Asterius_135, Astraea_128, Audrick_135, Ava3_133, Babyland_134, BackyardAgain_129, BananaFence_131, Bangla1971_133, BeanWater_124, Belieber_128, BigCity_140, Bigswole_135, Blackdragon_128, Blubba_124, Bread_131, Breeniome_131, Burrough_132, Bxz1_129, Cali_127, Cane17_124, Capablanca_135, Caravan_126, Catera_128, CharlieB_129, ChaylaJr_128, CherryTomatoes_118, Chomp_132, CindyLou_134, Concombre_138, DTDevon_132, Daffodil_137, Dandelion_137, Darko_132, Delylah_135, Demodog_139, Derek_131, Dietrick_124, DirtMonster_126, Domi_125, Drazdys_130, ET08_120, EasyJones_135, EggyFarm_140, Erdmann_132, ErnieJ_126, FudgeTart_130, Gabriel_132, Gangam_133, Ghost_131, Gizmo_137, GlutenPhree_132, Grasshills_139, Greely_131, Grungle_119, Guwapp_131, HyRo_123, I3_137, IkeLoa_126, InigoMontoya_135, Issimir_130, Izajani_132, JPickles_129, Janiyra_135, JayJay_137, Jaygup_132, Jediah_135, Jemmno_132, Jessibeth14_131, JigglyPuff_140, JulietS_127, Kboogie_136, Khaleesi_131, Koguma_129, LRRHood_125, Latch_133, Lee7_130, Lethe_132, LifeSavor_130, LinStu_130, Littleton_132, LolaVinca_132, LordLeafolot_136, Lukilu_122, Maby2021_132, Matsumoto_129, McGee_134, Megamind_131, MikeLiesIn_133, Mikro_129, MoMoMixon_132, Momo_132, Morizzled23_133, Myrna_128, Nappy_134, Naval22_137, NedWong_133, Ngannou_129, Nidhogg_134, NuevoMundo_137, ParkTD_133, Phabba_133, Phlegm_136, Phox_129, Pier_136, Pinkcreek_123, Pio_136, Pleione_135, Primadonna_126, Pupper_119, Quasimodo_134, Rabinovish_131, Rizal_127, Ronan_126, Roots515_131, SVoro_130, Salacia_136, Sauce_132, ScottMcG_128, Sebata_132, ShiaLabeouf_131, Shifa_121, Shrimp_132, SilverDipper_134, Skog_181, Spec_128, Sprinklers_128, Spud_131, SrishMeg2525_131, StephanieG_130,

StubbySaigey_136, Tainan_135, TinyTim_132, Tonenili_145, Trinitium_130, Turret_128, Tyke_132, Wally_131, Willis_133, Yassified_129, YemiJoy2021_133, YoungMoneyMata_134, Yucca_131, Zalkecks_133, Zeenon_133, ZygoTaiga_130,

Genes that have the "Most Annotated" start but do not call it:

- Amataga_133, Atlantean_132, BadAgartude_128, Basquiat_129, Bipolarisk_131, Blackbrain_128, Bonray_133, Cactojaque_128, Chargie21_129, ChickenPhender_128, Colt_124, DeejaClivia_119, Delilah_132, DrPhinkDaddy_131, EmToTheThree_134, EmmaElysia_133, Essence_129, Ewok_133, Flabslab_127, Fludd_133, Fongie_130, FoxtrotP1_132, FrayBell_137, Halldule_126, InterFolia_138, Iota_127, Jezreel_130, JustHall_130, Kamryn_132, Loanshark_131, Mangeria_132, McWolfish_130, Melpomini_126, Naija_132, Napoleon13_128, NoodleTree_139, Norm_133, Patter_133, Phusco_132, Pivoine_132, PurduePete_132, QBert_126, Rahel_131, RoMag_127, SCentae_118, Shaq nato_125, Shelob_134, Shnickers_132, SmallFry_132, Specks_137, Stubby_125, Teardrop_131, Tortoise16_129, ValleyTerrace_133,

Genes that do not have the "Most Annotated" start:

- ScoobyDoobyDoo_124,

Summary by start number:

Start 1:

- Found in 4 of 205 (2.0%) of genes in pham
- Manual Annotations of this start: 1 of 179
- Called 25.0% of time when present
- Phage (with cluster) where this start called: SCentae_118 (DO),

Start 4:

- Found in 200 of 205 (97.6%) of genes in pham
- Manual Annotations of this start: 50 of 179
- Called 27.0% of time when present
- Phage (with cluster) where this start called: Amataga_133 (C1), Atlantean_132 (C1), BadAgartude_128 (C1), Basquiat_129 (C1), Bipolarisk_131 (C1), Blackbrain_128 (C1), Bonray_133 (C1), Cactojaque_128 (C1), Chargie21_129 (C1), ChickenPhender_128 (C1), Colt_124 (C1), DeejaClivia_119 (C1), Delilah_132 (C1), DrPhinkDaddy_131 (C1), EmToTheThree_134 (C1), EmmaElysia_133 (C1), Essence_129 (C1), Ewok_133 (C1), Flabslab_127 (C1), Fludd_133 (C1), Fongie_130 (C1), FoxtrotP1_132 (C1), FrayBell_137 (C1), Halldule_126 (C1), InterFolia_138 (C1), Iota_127 (C1), Jezreel_130 (C1), JustHall_130 (C1), Kamryn_132 (C1), Loanshark_131 (C1), Mangeria_132 (C1), McWolfish_130 (C1), Melpomini_126 (C1), Naija_132 (C1), Napoleon13_128 (C1), NoodleTree_139 (C1), Norm_133 (C1), Patter_133 (C1), Phusco_132 (C1), Pivoine_132 (C1), PurduePete_132 (C1), QBert_126 (C1), Rahel_131 (C1), RoMag_127 (C1), ScoobyDoobyDoo_124 (C2), Shaq nato_125 (C1), Shelob_134 (C1), Shnickers_132 (C1), SmallFry_132 (C1), Specks_137 (C1), Stubby_125 (C1), Teardrop_131 (C1), Tortoise16_129 (C1), ValleyTerrace_133 (C1),

Start 5:

- Found in 204 of 205 (99.5%) of genes in pham
- Manual Annotations of this start: 128 of 179
- Called 73.5% of time when present

- Phage (with cluster) where this start called: Ablatia_131 (C1), Ading_132 (C1), Adlitam_133 (C1), Alice_125 (C1), ArcherS7_131 (C1), Asterius_135 (C1), Astraea_128 (C1), Audrick_135 (C1), Ava3_133 (C1), Babyland_134 (C1), BackyardAgain_129 (C1), BananaFence_131 (C1), Bangla1971_133 (C1), BeanWater_124 (C1), Belieber_128 (C1), BigCity_140 (C1), Bigswole_135 (C1), Blackdragon_128 (C1), Blubba_124 (C1), Bread_131 (C1), Breeniome_131 (C1), Burrough_132 (C1), Bxz1_129 (C1), Cali_127 (C1), Cane17_124 (C1), Capablanca_135 (C1), Caravan_126 (C1), Catera_128 (C1), CharlieB_129 (C1), ChaylaJr_128 (C1), CherryTomatoes_118 (DO), Chomp_132 (C1), CindyLou_134 (C1), Concombre_138 (C1), DTDevon_132 (C1), Daffodil_137 (C1), Dandelion_137 (C1), Darko_132 (C1), Delylah_135 (C1), Demodog_139 (C1), Derek_131 (C1), Dietrick_124 (C1), DirtMonster_126 (C1), Domi_125 (C1), Drazdys_130 (C1), ET08_120 (C1), EasyJones_135 (C1), EggyFarm_140 (C1), Erdmann_132 (C1), ErnieJ_126 (C1), FudgeTart_130 (C1), Gabriel_132 (C1), Gamgam_133 (C1), Ghost_131 (C1), Gizmo_137 (C1), GlutenPhree_132 (C1), Grasshills_139 (C1), Greely_131 (C2), Grungle_119 (C1), Guwapp_131 (C1), HyRo_123 (C1), I3_137 (C1), IkeLoa_126 (C1), InigoMontoya_135 (C1), Issimir_130 (C1), Izajani_132 (C1), JPickles_129 (C1), Janiyra_135 (C1), JayJay_137 (C1), Jaygup_132 (C1), Jedediah_135 (C1), Jemmno_132 (C1), Jessibeth14_131 (C1), JigglyPuff_140 (C1), JulietS_127 (C1), Kboogie_136 (C1), Khaleesi_131 (C1), Koguma_129 (C1), LRRHood_125 (C1), Latch_133 (C1), Lee7_130 (C1), Lethe_132 (C1), LifeSavor_130 (C1), LinStu_130 (C1), Littleton_132 (C1), LolaVinca_132 (C1), LordLeafolot_136 (C1), Lukilu_122 (C1), Maby2021_132 (C1), Matsumoto_129 (C1), McGee_134 (C1), Megamind_131 (C1), MikeLiesIn_133 (C1), Mikro_129 (C1), MoMoMixon_132 (C1), Momo_132 (C1), Morizzled23_133 (C1), Myrna_128 (C2), Nappy_134 (C1), Naval22_137 (C1), NedWong_133 (C1), Ngannou_129 (C1), Nidhogg_134 (C1), NuevoMundo_137 (C1), ParkTD_133 (C1), Phabba_133 (C2), Phlegm_136 (C1), Phox_129 (C1), Pier_136 (C1), Pinkcreek_123 (C1), Pio_136 (C1), Pleione_135 (C1), Primadonna_126 (C1), Pupper_119 (DO), Quasimodo_134 (C1), Rabinovich_131 (C1), Rizal_127 (C1), Ronan_126 (C1), Roots515_131 (C1), SVoro_130 (C1), Salacia_136 (C1), Sauce_132 (C1), ScottMcG_128 (C1), Sebata_132 (C1), ShiaLabeouf_131 (C1), Shifa_121 (C1), Shrimp_132 (C1), SilverDipper_134 (C1), Skog_181 (DO), Spec_128 (C1), Sprinklers_128 (C1), Spud_131 (C1), SrishMeg2525_131 (C1), StephanieG_130 (C1), StubbySaigey_136 (C1), Tainan_135 (C1), TinyTim_132 (C1), Tonenili_145 (C1), Trinitium_130 (C1), Turret_128 (C1), Tyke_132 (C1), Wally_131 (C1), Willis_133 (C1), Yassified_129 (C1), YemiJoy2021_133 (C1), YoungMoneyMata_134 (C1), Yucca_131 (C1), Zalkecks_133 (C1), Zeenon_133 (C1), ZygoTaiga_130 (C1),

Summary by clusters:

There are 3 clusters represented in this pham: DO, C1, C2,

Info for manual annotations of cluster C1:

- Start number 4 was manually annotated 49 times for cluster C1.
- Start number 5 was manually annotated 123 times for cluster C1.

Info for manual annotations of cluster C2:

- Start number 4 was manually annotated 1 time for cluster C2.
- Start number 5 was manually annotated 2 times for cluster C2.

Info for manual annotations of cluster DO:

- Start number 1 was manually annotated 1 time for cluster DO.

- Start number 5 was manually annotated 3 times for cluster DO.

Gene Information:

Gene: Ablatia_131 Start: 71595, Stop: 73853, Start Num: 5

Candidate Starts for Ablatia_131:

(Start: 4 @71586 has 50 MA's), (Start: 5 @71595 has 128 MA's), (6, 71634), (8, 71703), (9, 71712), (13, 71808), (15, 71829), (16, 71838), (17, 71859), (19, 71895), (24, 71979), (26, 71988), (38, 72063), (39, 72066), (40, 72087), (41, 72108), (43, 72123), (44, 72132), (45, 72171), (47, 72201), (50, 72339), (51, 72342), (59, 72510), (66, 72609), (68, 72636), (70, 72660), (74, 72708), (75, 72714), (78, 72759), (80, 72768), (81, 72789), (82, 72795), (84, 72813), (86, 72852), (92, 72894), (105, 73062), (108, 73104), (109, 73110), (113, 73131), (114, 73155), (123, 73242), (127, 73284), (129, 73299), (130, 73302), (132, 73305), (135, 73383), (138, 73473), (143, 73575), (148, 73662), (150, 73680), (153, 73704),

Gene: Ading_132 Start: 71564, Stop: 73822, Start Num: 5

Candidate Starts for Ading_132:

(Start: 4 @71555 has 50 MA's), (Start: 5 @71564 has 128 MA's), (6, 71603), (8, 71672), (9, 71681), (13, 71777), (15, 71798), (16, 71807), (17, 71828), (19, 71864), (24, 71948), (26, 71957), (38, 72032), (39, 72035), (40, 72056), (41, 72077), (43, 72092), (44, 72101), (45, 72140), (47, 72170), (50, 72308), (51, 72311), (59, 72479), (64, 72530), (66, 72578), (68, 72605), (70, 72629), (74, 72677), (75, 72683), (78, 72728), (80, 72737), (81, 72758), (82, 72764), (84, 72782), (86, 72821), (92, 72863), (107, 73055), (108, 73073), (109, 73079), (113, 73100), (114, 73124), (123, 73211), (127, 73253), (129, 73268), (130, 73271), (132, 73274), (135, 73352), (138, 73442), (143, 73544), (148, 73631), (150, 73649), (153, 73673),

Gene: Adlitam_133 Start: 72060, Stop: 74318, Start Num: 5

Candidate Starts for Adlitam_133:

(Start: 4 @72051 has 50 MA's), (Start: 5 @72060 has 128 MA's), (6, 72099), (8, 72168), (9, 72177), (13, 72273), (15, 72294), (16, 72303), (17, 72324), (19, 72360), (24, 72444), (26, 72453), (38, 72528), (39, 72531), (40, 72552), (41, 72573), (43, 72588), (44, 72597), (45, 72636), (47, 72666), (50, 72804), (51, 72807), (59, 72975), (64, 73026), (66, 73074), (68, 73101), (70, 73125), (74, 73173), (75, 73179), (78, 73224), (80, 73233), (81, 73254), (82, 73260), (84, 73278), (86, 73317), (92, 73359), (107, 73551), (108, 73569), (109, 73575), (113, 73596), (114, 73620), (123, 73707), (127, 73749), (129, 73764), (130, 73767), (132, 73770), (135, 73848), (138, 73938), (143, 74040), (148, 74127), (150, 74145), (153, 74169),

Gene: Alice_125 Start: 71285, Stop: 73543, Start Num: 5

Candidate Starts for Alice_125:

(Start: 4 @71276 has 50 MA's), (Start: 5 @71285 has 128 MA's), (6, 71324), (8, 71393), (9, 71402), (13, 71498), (15, 71519), (16, 71528), (17, 71549), (19, 71585), (24, 71669), (26, 71678), (38, 71753), (39, 71756), (40, 71777), (41, 71798), (43, 71813), (44, 71822), (45, 71861), (47, 71891), (50, 72029), (51, 72032), (59, 72200), (66, 72299), (68, 72326), (70, 72350), (74, 72398), (75, 72404), (78, 72449), (80, 72458), (81, 72479), (82, 72485), (84, 72503), (86, 72542), (92, 72584), (108, 72794), (109, 72800), (113, 72821), (114, 72845), (123, 72932), (127, 72974), (129, 72989), (130, 72992), (132, 72995), (135, 73073), (138, 73163), (143, 73265), (148, 73352), (150, 73370), (153, 73394),

Gene: Amataga_133 Start: 71296, Stop: 73563, Start Num: 4

Candidate Starts for Amataga_133:

(Start: 4 @71296 has 50 MA's), (Start: 5 @71305 has 128 MA's), (6, 71344), (8, 71413), (9, 71422), (13, 71518), (15, 71539), (16, 71548), (17, 71569), (19, 71605), (24, 71689), (26, 71698), (38, 71773),

(39, 71776), (40, 71797), (41, 71818), (43, 71833), (44, 71842), (45, 71881), (47, 71911), (50, 72049), (51, 72052), (59, 72220), (64, 72271), (66, 72319), (68, 72346), (70, 72370), (74, 72418), (75, 72424), (78, 72469), (80, 72478), (81, 72499), (82, 72505), (84, 72523), (86, 72562), (92, 72604), (107, 72796), (108, 72814), (109, 72820), (113, 72841), (114, 72865), (123, 72952), (127, 72994), (129, 73009), (130, 73012), (132, 73015), (135, 73093), (138, 73183), (143, 73285), (148, 73372), (150, 73390), (153, 73414),

Gene: ArcherS7_131 Start: 71144, Stop: 73402, Start Num: 5

Candidate Starts for ArcherS7_131:

(Start: 4 @71135 has 50 MA's), (Start: 5 @71144 has 128 MA's), (6, 71183), (8, 71252), (9, 71261), (13, 71357), (15, 71378), (16, 71387), (17, 71408), (19, 71444), (24, 71528), (26, 71537), (38, 71612), (39, 71615), (40, 71636), (41, 71657), (43, 71672), (44, 71681), (45, 71720), (47, 71750), (50, 71888), (51, 71891), (59, 72059), (64, 72110), (66, 72158), (68, 72185), (70, 72209), (74, 72257), (75, 72263), (78, 72308), (80, 72317), (81, 72338), (82, 72344), (84, 72362), (86, 72401), (92, 72443), (107, 72635), (108, 72653), (109, 72659), (113, 72680), (114, 72704), (123, 72791), (127, 72833), (129, 72848), (130, 72851), (132, 72854), (135, 72932), (138, 73022), (143, 73124), (148, 73211), (150, 73229), (153, 73253),

Gene: Asterius_135 Start: 71820, Stop: 74078, Start Num: 5

Candidate Starts for Asterius_135:

(Start: 4 @71811 has 50 MA's), (Start: 5 @71820 has 128 MA's), (6, 71859), (8, 71928), (9, 71937), (13, 72033), (15, 72054), (16, 72063), (17, 72084), (19, 72120), (24, 72204), (26, 72213), (38, 72288), (39, 72291), (40, 72312), (41, 72333), (43, 72348), (44, 72357), (45, 72396), (47, 72426), (50, 72564), (51, 72567), (59, 72735), (66, 72834), (68, 72861), (70, 72885), (74, 72933), (75, 72939), (78, 72984), (80, 72993), (81, 73014), (82, 73020), (84, 73038), (86, 73077), (92, 73119), (105, 73287), (108, 73329), (109, 73335), (113, 73356), (114, 73380), (123, 73467), (127, 73509), (129, 73524), (130, 73527), (132, 73530), (135, 73608), (138, 73698), (143, 73800), (148, 73887), (150, 73905), (153, 73929),

Gene: Astraea_128 Start: 70585, Stop: 72843, Start Num: 5

Candidate Starts for Astraea_128:

(Start: 4 @70576 has 50 MA's), (Start: 5 @70585 has 128 MA's), (6, 70624), (8, 70693), (9, 70702), (13, 70798), (15, 70819), (16, 70828), (17, 70849), (19, 70885), (24, 70969), (26, 70978), (38, 71053), (39, 71056), (40, 71077), (41, 71098), (43, 71113), (44, 71122), (45, 71161), (47, 71191), (50, 71329), (51, 71332), (59, 71500), (64, 71551), (66, 71599), (68, 71626), (70, 71650), (74, 71698), (75, 71704), (78, 71749), (80, 71758), (81, 71779), (82, 71785), (84, 71803), (86, 71842), (92, 71884), (107, 72076), (108, 72094), (109, 72100), (113, 72121), (114, 72145), (123, 72232), (127, 72274), (129, 72289), (130, 72292), (132, 72295), (135, 72373), (138, 72463), (143, 72565), (148, 72652), (150, 72670), (153, 72694),

Gene: Atlantean_132 Start: 71296, Stop: 73563, Start Num: 4

Candidate Starts for Atlantean_132:

(Start: 4 @71296 has 50 MA's), (Start: 5 @71305 has 128 MA's), (6, 71344), (8, 71413), (9, 71422), (13, 71518), (15, 71539), (16, 71548), (17, 71569), (19, 71605), (24, 71689), (26, 71698), (38, 71773), (39, 71776), (40, 71797), (41, 71818), (43, 71833), (44, 71842), (45, 71881), (47, 71911), (50, 72049), (51, 72052), (59, 72220), (64, 72271), (66, 72319), (68, 72346), (70, 72370), (74, 72418), (75, 72424), (78, 72469), (80, 72478), (81, 72499), (82, 72505), (84, 72523), (86, 72562), (92, 72604), (107, 72796), (108, 72814), (109, 72820), (113, 72841), (114, 72865), (123, 72952), (127, 72994), (129, 73009), (130, 73012), (132, 73015), (135, 73093), (138, 73183), (143, 73285), (148, 73372), (150, 73390), (153, 73414),

Gene: Audrick_135 Start: 71284, Stop: 73542, Start Num: 5

Candidate Starts for Audrick_135:

(Start: 4 @71275 has 50 MA's), (Start: 5 @71284 has 128 MA's), (6, 71323), (8, 71392), (9, 71401), (13, 71497), (15, 71518), (16, 71527), (17, 71548), (19, 71584), (24, 71668), (26, 71677), (38, 71752), (39, 71755), (40, 71776), (41, 71797), (43, 71812), (44, 71821), (45, 71860), (47, 71890), (50, 72028), (51, 72031), (59, 72199), (64, 72250), (66, 72298), (68, 72325), (70, 72349), (74, 72397), (75, 72403), (78, 72448), (80, 72457), (81, 72478), (82, 72484), (84, 72502), (86, 72541), (92, 72583), (107, 72775), (108, 72793), (109, 72799), (113, 72820), (114, 72844), (123, 72931), (127, 72973), (129, 72988), (130, 72991), (132, 72994), (135, 73072), (138, 73162), (143, 73264), (148, 73351), (150, 73369), (153, 73393),

Gene: Ava3_133 Start: 71729, Stop: 73987, Start Num: 5

Candidate Starts for Ava3_133:

(Start: 4 @71720 has 50 MA's), (Start: 5 @71729 has 128 MA's), (6, 71768), (8, 71837), (9, 71846), (13, 71942), (15, 71963), (16, 71972), (17, 71993), (19, 72029), (24, 72113), (26, 72122), (38, 72197), (39, 72200), (40, 72221), (41, 72242), (43, 72257), (44, 72266), (45, 72305), (47, 72335), (50, 72473), (51, 72476), (59, 72644), (66, 72743), (68, 72770), (70, 72794), (74, 72842), (75, 72848), (78, 72893), (80, 72902), (81, 72923), (82, 72929), (84, 72947), (86, 72986), (92, 73028), (105, 73196), (108, 73238), (109, 73244), (113, 73265), (114, 73289), (123, 73376), (127, 73418), (129, 73433), (130, 73436), (132, 73439), (135, 73517), (138, 73607), (143, 73709), (148, 73796), (150, 73814), (153, 73838),

Gene: Babyland_134 Start: 71383, Stop: 73641, Start Num: 5

Candidate Starts for Babyland_134:

(Start: 4 @71374 has 50 MA's), (Start: 5 @71383 has 128 MA's), (6, 71422), (8, 71491), (9, 71500), (13, 71596), (15, 71617), (16, 71626), (17, 71647), (19, 71683), (24, 71767), (26, 71776), (38, 71851), (39, 71854), (40, 71875), (41, 71896), (43, 71911), (44, 71920), (45, 71959), (47, 71989), (50, 72127), (51, 72130), (59, 72298), (66, 72397), (68, 72424), (70, 72448), (74, 72496), (75, 72502), (78, 72547), (80, 72556), (81, 72577), (82, 72583), (84, 72601), (86, 72640), (92, 72682), (105, 72850), (108, 72892), (109, 72898), (113, 72919), (114, 72943), (123, 73030), (127, 73072), (129, 73087), (130, 73090), (132, 73093), (135, 73171), (138, 73261), (143, 73363), (148, 73450), (150, 73468), (153, 73492),

Gene: BackyardAgain_129 Start: 70732, Stop: 72990, Start Num: 5

Candidate Starts for BackyardAgain_129:

(Start: 4 @70723 has 50 MA's), (Start: 5 @70732 has 128 MA's), (6, 70771), (8, 70840), (9, 70849), (13, 70945), (15, 70966), (16, 70975), (17, 70996), (19, 71032), (24, 71116), (26, 71125), (38, 71200), (39, 71203), (40, 71224), (41, 71245), (43, 71260), (44, 71269), (45, 71308), (47, 71338), (50, 71476), (51, 71479), (59, 71647), (66, 71746), (68, 71773), (70, 71797), (74, 71845), (75, 71851), (78, 71896), (80, 71905), (81, 71926), (82, 71932), (84, 71950), (86, 71989), (92, 72031), (105, 72199), (108, 72241), (109, 72247), (113, 72268), (114, 72292), (123, 72379), (127, 72421), (129, 72436), (130, 72439), (132, 72442), (135, 72520), (138, 72610), (143, 72712), (148, 72799), (150, 72817), (153, 72841),

Gene: BadAgartude_128 Start: 72022, Stop: 74289, Start Num: 4

Candidate Starts for BadAgartude_128:

(Start: 4 @72022 has 50 MA's), (Start: 5 @72031 has 128 MA's), (6, 72070), (8, 72139), (9, 72148), (13, 72244), (15, 72265), (16, 72274), (17, 72295), (19, 72331), (24, 72415), (26, 72424), (38, 72499), (39, 72502), (40, 72523), (41, 72544), (43, 72559), (44, 72568), (45, 72607), (47, 72637), (50, 72775), (51, 72778), (59, 72946), (66, 73045), (68, 73072), (70, 73096), (74, 73144), (75, 73150), (78, 73195), (80, 73204), (81, 73225), (82, 73231), (84, 73249), (86, 73288), (92, 73330), (105, 73498), (108, 73540), (109, 73546), (113, 73567), (114, 73591), (123, 73678), (127, 73720), (129, 73735), (130, 73738), (132, 73741), (135, 73819), (138, 73909), (143, 74011), (148, 74098), (150, 74116), (153, 74140),

Gene: BananaFence_131 Start: 71985, Stop: 74243, Start Num: 5

Candidate Starts for BananaFence_131:

(Start: 4 @71976 has 50 MA's), (Start: 5 @71985 has 128 MA's), (6, 72024), (8, 72093), (9, 72102), (13, 72198), (15, 72219), (16, 72228), (17, 72249), (19, 72285), (24, 72369), (26, 72378), (38, 72453), (39, 72456), (40, 72477), (41, 72498), (43, 72513), (44, 72522), (45, 72561), (47, 72591), (50, 72729), (51, 72732), (59, 72900), (66, 72999), (68, 73026), (70, 73050), (74, 73098), (75, 73104), (78, 73149), (80, 73158), (81, 73179), (82, 73185), (84, 73203), (86, 73242), (92, 73284), (105, 73452), (108, 73494), (109, 73500), (113, 73521), (114, 73545), (123, 73632), (127, 73674), (129, 73689), (130, 73692), (132, 73695), (135, 73773), (138, 73863), (143, 73965), (148, 74052), (150, 74070), (153, 74094),

Gene: Bangla1971_133 Start: 71274, Stop: 73532, Start Num: 5

Candidate Starts for Bangla1971_133:

(Start: 4 @71265 has 50 MA's), (Start: 5 @71274 has 128 MA's), (6, 71313), (8, 71382), (9, 71391), (13, 71487), (15, 71508), (16, 71517), (17, 71538), (19, 71574), (24, 71658), (26, 71667), (38, 71742), (39, 71745), (40, 71766), (41, 71787), (43, 71802), (44, 71811), (45, 71850), (47, 71880), (50, 72018), (51, 72021), (59, 72189), (64, 72240), (66, 72288), (68, 72315), (70, 72339), (74, 72387), (75, 72393), (78, 72438), (80, 72447), (81, 72468), (82, 72474), (84, 72492), (86, 72531), (92, 72573), (107, 72765), (108, 72783), (109, 72789), (113, 72810), (114, 72834), (123, 72921), (127, 72963), (129, 72978), (130, 72981), (132, 72984), (135, 73062), (138, 73152), (143, 73254), (148, 73341), (150, 73359), (153, 73383),

Gene: Basquiat_129 Start: 70874, Stop: 73141, Start Num: 4

Candidate Starts for Basquiat_129:

(Start: 4 @70874 has 50 MA's), (Start: 5 @70883 has 128 MA's), (6, 70922), (8, 70991), (9, 71000), (13, 71096), (15, 71117), (16, 71126), (17, 71147), (19, 71183), (24, 71267), (26, 71276), (38, 71351), (39, 71354), (40, 71375), (41, 71396), (43, 71411), (44, 71420), (45, 71459), (47, 71489), (50, 71627), (51, 71630), (59, 71798), (66, 71897), (68, 71924), (70, 71948), (74, 71996), (75, 72002), (78, 72047), (80, 72056), (81, 72077), (82, 72083), (84, 72101), (86, 72140), (92, 72182), (105, 72350), (108, 72392), (109, 72398), (113, 72419), (114, 72443), (123, 72530), (127, 72572), (129, 72587), (130, 72590), (132, 72593), (135, 72671), (138, 72761), (143, 72863), (148, 72950), (150, 72968), (153, 72992),

Gene: BeanWater_124 Start: 71583, Stop: 73841, Start Num: 5

Candidate Starts for BeanWater_124:

(Start: 4 @71574 has 50 MA's), (Start: 5 @71583 has 128 MA's), (6, 71622), (8, 71691), (9, 71700), (13, 71796), (15, 71817), (16, 71826), (17, 71847), (19, 71883), (24, 71967), (26, 71976), (38, 72051), (39, 72054), (40, 72075), (41, 72096), (43, 72111), (44, 72120), (45, 72159), (47, 72189), (50, 72327), (51, 72330), (59, 72498), (66, 72597), (68, 72624), (70, 72648), (74, 72696), (75, 72702), (78, 72747), (80, 72756), (81, 72777), (82, 72783), (84, 72801), (86, 72840), (92, 72882), (105, 73050), (108, 73092), (109, 73098), (113, 73119), (114, 73143), (123, 73230), (127, 73272), (129, 73287), (130, 73290), (132, 73293), (135, 73371), (138, 73461), (143, 73563), (148, 73650), (150, 73668), (153, 73692),

Gene: Belieber_128 Start: 71058, Stop: 73316, Start Num: 5

Candidate Starts for Belieber_128:

(Start: 4 @71049 has 50 MA's), (Start: 5 @71058 has 128 MA's), (6, 71097), (8, 71166), (9, 71175), (13, 71271), (15, 71292), (16, 71301), (17, 71322), (19, 71358), (24, 71442), (26, 71451), (38, 71526), (39, 71529), (40, 71550), (41, 71571), (43, 71586), (44, 71595), (45, 71634), (47, 71664), (50, 71802), (51, 71805), (59, 71973), (64, 72024), (66, 72072), (68, 72099), (70, 72123), (74, 72171), (75, 72177), (78, 72222), (80, 72231), (81, 72252), (82, 72258), (84, 72276), (86, 72315), (92, 72357), (107, 72549), (108, 72567), (109, 72573), (113, 72594), (114, 72618), (123, 72705), (127, 72747), (129, 72762), (130, 72765), (132, 72768), (135, 72846), (138, 72936), (143, 73038), (148, 73125), (150, 73143),

(153, 73167),

Gene: BigCity_140 Start: 74255, Stop: 76513, Start Num: 5

Candidate Starts for BigCity_140:

(Start: 4 @74246 has 50 MA's), (Start: 5 @74255 has 128 MA's), (6, 74294), (8, 74363), (9, 74372), (13, 74468), (15, 74489), (16, 74498), (17, 74519), (19, 74555), (24, 74639), (26, 74648), (38, 74723), (39, 74726), (40, 74747), (41, 74768), (43, 74783), (44, 74792), (45, 74831), (47, 74861), (50, 74999), (51, 75002), (59, 75170), (66, 75269), (68, 75296), (70, 75320), (74, 75368), (75, 75374), (78, 75419), (80, 75428), (81, 75449), (82, 75455), (84, 75473), (86, 75512), (92, 75554), (105, 75722), (108, 75764), (109, 75770), (113, 75791), (114, 75815), (123, 75902), (127, 75944), (130, 75962), (132, 75965), (135, 76043), (138, 76133), (143, 76235), (148, 76322), (150, 76340), (153, 76364),

Gene: Bigswole_135 Start: 73540, Stop: 75798, Start Num: 5

Candidate Starts for Bigswole_135:

(Start: 4 @73531 has 50 MA's), (Start: 5 @73540 has 128 MA's), (6, 73579), (8, 73648), (9, 73657), (13, 73753), (15, 73774), (16, 73783), (17, 73804), (19, 73840), (24, 73924), (26, 73933), (38, 74008), (39, 74011), (40, 74032), (41, 74053), (43, 74068), (44, 74077), (45, 74116), (47, 74146), (50, 74284), (51, 74287), (59, 74455), (66, 74554), (68, 74581), (70, 74605), (74, 74653), (75, 74659), (78, 74704), (80, 74713), (81, 74734), (82, 74740), (84, 74758), (86, 74797), (92, 74839), (105, 75007), (108, 75049), (109, 75055), (113, 75076), (114, 75100), (123, 75187), (127, 75229), (129, 75244), (130, 75247), (132, 75250), (135, 75328), (138, 75418), (143, 75520), (148, 75607), (150, 75625), (153, 75649),

Gene: Bipolarisk_131 Start: 71988, Stop: 74255, Start Num: 4

Candidate Starts for Bipolarisk_131:

(Start: 4 @71988 has 50 MA's), (Start: 5 @71997 has 128 MA's), (6, 72036), (8, 72105), (9, 72114), (13, 72210), (15, 72231), (16, 72240), (17, 72261), (19, 72297), (24, 72381), (26, 72390), (38, 72465), (39, 72468), (40, 72489), (41, 72510), (43, 72525), (44, 72534), (45, 72573), (47, 72603), (50, 72741), (51, 72744), (59, 72912), (66, 73011), (68, 73038), (70, 73062), (74, 73110), (75, 73116), (78, 73161), (80, 73170), (81, 73191), (82, 73197), (84, 73215), (86, 73254), (92, 73296), (105, 73464), (108, 73506), (109, 73512), (113, 73533), (114, 73557), (123, 73644), (127, 73686), (129, 73701), (130, 73704), (132, 73707), (135, 73785), (138, 73875), (143, 73977), (148, 74064), (150, 74082), (153, 74106),

Gene: Blackbrain_128 Start: 70759, Stop: 73026, Start Num: 4

Candidate Starts for Blackbrain_128:

(Start: 4 @70759 has 50 MA's), (Start: 5 @70768 has 128 MA's), (6, 70807), (8, 70876), (9, 70885), (13, 70981), (15, 71002), (16, 71011), (17, 71032), (19, 71068), (24, 71152), (26, 71161), (38, 71236), (39, 71239), (40, 71260), (41, 71281), (43, 71296), (44, 71305), (45, 71344), (47, 71374), (50, 71512), (51, 71515), (59, 71683), (66, 71782), (68, 71809), (70, 71833), (74, 71881), (75, 71887), (78, 71932), (80, 71941), (81, 71962), (82, 71968), (84, 71986), (86, 72025), (92, 72067), (105, 72235), (108, 72277), (109, 72283), (113, 72304), (114, 72328), (123, 72415), (127, 72457), (129, 72472), (130, 72475), (132, 72478), (135, 72556), (138, 72646), (143, 72748), (148, 72835), (150, 72853), (153, 72877),

Gene: Blackdragon_128 Start: 71412, Stop: 73670, Start Num: 5

Candidate Starts for Blackdragon_128:

(Start: 4 @71403 has 50 MA's), (Start: 5 @71412 has 128 MA's), (6, 71451), (8, 71520), (9, 71529), (13, 71625), (15, 71646), (16, 71655), (17, 71676), (19, 71712), (24, 71796), (26, 71805), (38, 71880), (39, 71883), (40, 71904), (41, 71925), (43, 71940), (44, 71949), (45, 71988), (47, 72018), (50, 72156), (51, 72159), (59, 72327), (64, 72378), (66, 72426), (68, 72453), (70, 72477), (74, 72525), (75, 72531), (78, 72576), (80, 72585), (81, 72606), (82, 72612), (84, 72630), (86, 72669), (92, 72711), (105, 72879), (108, 72921), (109, 72927), (113, 72948), (114, 72972), (123, 73059), (127, 73101), (129, 73116),

(130, 73119), (132, 73122), (135, 73200), (138, 73290), (143, 73392), (148, 73479), (150, 73497), (153, 73521),

Gene: Blubba_124 Start: 73130, Stop: 75388, Start Num: 5

Candidate Starts for Blubba_124:

(Start: 4 @73121 has 50 MA's), (Start: 5 @73130 has 128 MA's), (6, 73169), (8, 73238), (9, 73247), (13, 73343), (15, 73364), (16, 73373), (17, 73394), (19, 73430), (24, 73514), (26, 73523), (38, 73598), (39, 73601), (40, 73622), (41, 73643), (43, 73658), (44, 73667), (45, 73706), (47, 73736), (50, 73874), (51, 73877), (59, 74045), (66, 74144), (68, 74171), (70, 74195), (74, 74243), (75, 74249), (78, 74294), (80, 74303), (81, 74324), (82, 74330), (84, 74348), (86, 74387), (92, 74429), (105, 74597), (108, 74639), (109, 74645), (113, 74666), (114, 74690), (123, 74777), (127, 74819), (129, 74834), (130, 74837), (132, 74840), (135, 74918), (138, 75008), (143, 75110), (148, 75197), (150, 75215), (153, 75239),

Gene: Bonray_133 Start: 72630, Stop: 74897, Start Num: 4

Candidate Starts for Bonray_133:

(Start: 4 @72630 has 50 MA's), (Start: 5 @72639 has 128 MA's), (6, 72678), (8, 72747), (9, 72756), (13, 72852), (15, 72873), (16, 72882), (17, 72903), (19, 72939), (24, 73023), (26, 73032), (38, 73107), (39, 73110), (40, 73131), (41, 73152), (43, 73167), (44, 73176), (45, 73215), (47, 73245), (50, 73383), (51, 73386), (59, 73554), (66, 73653), (68, 73680), (70, 73704), (74, 73752), (75, 73758), (78, 73803), (80, 73812), (81, 73833), (82, 73839), (84, 73857), (86, 73896), (92, 73938), (105, 74106), (108, 74148), (109, 74154), (112, 74169), (113, 74175), (114, 74199), (123, 74286), (127, 74328), (129, 74343), (130, 74346), (132, 74349), (135, 74427), (138, 74517), (143, 74619), (148, 74706), (150, 74724), (153, 74748),

Gene: Bread_131 Start: 71815, Stop: 74073, Start Num: 5

Candidate Starts for Bread_131:

(Start: 4 @71806 has 50 MA's), (Start: 5 @71815 has 128 MA's), (6, 71854), (8, 71923), (9, 71932), (13, 72028), (15, 72049), (16, 72058), (17, 72079), (19, 72115), (24, 72199), (26, 72208), (38, 72283), (39, 72286), (40, 72307), (41, 72328), (43, 72343), (44, 72352), (45, 72391), (47, 72421), (50, 72559), (51, 72562), (59, 72730), (66, 72829), (68, 72856), (70, 72880), (74, 72928), (75, 72934), (78, 72979), (80, 72988), (81, 73009), (82, 73015), (84, 73033), (86, 73072), (92, 73114), (105, 73282), (108, 73324), (109, 73330), (113, 73351), (114, 73375), (123, 73462), (127, 73504), (129, 73519), (130, 73522), (132, 73525), (135, 73603), (138, 73693), (143, 73795), (148, 73882), (150, 73900), (153, 73924),

Gene: Breeniome_131 Start: 70173, Stop: 72431, Start Num: 5

Candidate Starts for Breeniome_131:

(Start: 4 @70164 has 50 MA's), (Start: 5 @70173 has 128 MA's), (6, 70212), (8, 70281), (9, 70290), (13, 70386), (15, 70407), (16, 70416), (17, 70437), (19, 70473), (24, 70557), (26, 70566), (38, 70641), (39, 70644), (40, 70665), (41, 70686), (43, 70701), (44, 70710), (45, 70749), (47, 70779), (50, 70917), (51, 70920), (59, 71088), (66, 71187), (68, 71214), (70, 71238), (74, 71286), (75, 71292), (78, 71337), (80, 71346), (81, 71367), (82, 71373), (84, 71391), (86, 71430), (92, 71472), (105, 71640), (108, 71682), (109, 71688), (113, 71709), (114, 71733), (123, 71820), (127, 71862), (129, 71877), (130, 71880), (132, 71883), (135, 71961), (138, 72051), (143, 72153), (148, 72240), (150, 72258), (153, 72282),

Gene: Burrough_132 Start: 72324, Stop: 74582, Start Num: 5

Candidate Starts for Burrough_132:

(Start: 4 @72315 has 50 MA's), (Start: 5 @72324 has 128 MA's), (6, 72363), (8, 72432), (9, 72441), (13, 72537), (15, 72558), (16, 72567), (17, 72588), (19, 72624), (24, 72708), (26, 72717), (38, 72792), (39, 72795), (40, 72816), (41, 72837), (43, 72852), (44, 72861), (45, 72900), (47, 72930), (50, 73068), (51, 73071), (59, 73239), (64, 73290), (66, 73338), (68, 73365), (70, 73389), (74, 73437), (75, 73443),

(78, 73488), (80, 73497), (81, 73518), (82, 73524), (84, 73542), (86, 73581), (92, 73623), (107, 73815), (108, 73833), (109, 73839), (113, 73860), (114, 73884), (123, 73971), (127, 74013), (129, 74028), (130, 74031), (132, 74034), (135, 74112), (138, 74202), (143, 74304), (148, 74391), (150, 74409), (153, 74433),

Gene: Bxz1_129 Start: 73527, Stop: 75785, Start Num: 5

Candidate Starts for Bxz1_129:

(Start: 4 @73518 has 50 MA's), (Start: 5 @73527 has 128 MA's), (6, 73566), (8, 73635), (9, 73644), (13, 73740), (15, 73761), (16, 73770), (17, 73791), (19, 73827), (24, 73911), (26, 73920), (38, 73995), (39, 73998), (40, 74019), (41, 74040), (43, 74055), (44, 74064), (45, 74103), (47, 74133), (50, 74271), (51, 74274), (59, 74442), (64, 74493), (66, 74541), (68, 74568), (70, 74592), (74, 74640), (75, 74646), (78, 74691), (80, 74700), (81, 74721), (82, 74727), (84, 74745), (86, 74784), (92, 74826), (107, 75018), (108, 75036), (109, 75042), (113, 75063), (114, 75087), (123, 75174), (127, 75216), (129, 75231), (130, 75234), (132, 75237), (135, 75315), (138, 75405), (143, 75507), (148, 75594), (150, 75612), (153, 75636),

Gene: Cactojaque_128 Start: 70866, Stop: 73133, Start Num: 4

Candidate Starts for Cactojaque_128:

(Start: 4 @70866 has 50 MA's), (Start: 5 @70875 has 128 MA's), (6, 70914), (8, 70983), (9, 70992), (13, 71088), (15, 71109), (16, 71118), (17, 71139), (19, 71175), (24, 71259), (26, 71268), (38, 71343), (39, 71346), (40, 71367), (41, 71388), (43, 71403), (44, 71412), (45, 71451), (47, 71481), (50, 71619), (51, 71622), (59, 71790), (66, 71889), (68, 71916), (70, 71940), (74, 71988), (75, 71994), (78, 72039), (80, 72048), (81, 72069), (82, 72075), (84, 72093), (86, 72132), (92, 72174), (105, 72342), (108, 72384), (109, 72390), (113, 72411), (114, 72435), (123, 72522), (127, 72564), (129, 72579), (130, 72582), (132, 72585), (135, 72663), (138, 72753), (143, 72855), (148, 72942), (150, 72960), (153, 72984),

Gene: Cali_127 Start: 72326, Stop: 74584, Start Num: 5

Candidate Starts for Cali_127:

(Start: 4 @72317 has 50 MA's), (Start: 5 @72326 has 128 MA's), (6, 72365), (8, 72434), (9, 72443), (13, 72539), (15, 72560), (16, 72569), (17, 72590), (19, 72626), (24, 72710), (26, 72719), (38, 72794), (39, 72797), (40, 72818), (41, 72839), (43, 72854), (44, 72863), (45, 72902), (47, 72932), (50, 73070), (51, 73073), (59, 73241), (64, 73292), (66, 73340), (68, 73367), (70, 73391), (74, 73439), (75, 73445), (78, 73490), (80, 73499), (81, 73520), (82, 73526), (84, 73544), (86, 73583), (92, 73625), (107, 73817), (108, 73835), (109, 73841), (113, 73862), (114, 73886), (123, 73973), (127, 74015), (129, 74030), (130, 74033), (132, 74036), (135, 74114), (138, 74204), (143, 74306), (148, 74393), (150, 74411), (153, 74435),

Gene: Cane17_124 Start: 73188, Stop: 75446, Start Num: 5

Candidate Starts for Cane17_124:

(Start: 4 @73179 has 50 MA's), (Start: 5 @73188 has 128 MA's), (6, 73227), (8, 73296), (9, 73305), (13, 73401), (15, 73422), (16, 73431), (17, 73452), (19, 73488), (24, 73572), (26, 73581), (38, 73656), (39, 73659), (40, 73680), (41, 73701), (43, 73716), (44, 73725), (45, 73764), (47, 73794), (50, 73932), (51, 73935), (59, 74103), (66, 74202), (68, 74229), (70, 74253), (74, 74301), (75, 74307), (78, 74352), (80, 74361), (81, 74382), (82, 74388), (84, 74406), (86, 74445), (92, 74487), (105, 74655), (108, 74697), (109, 74703), (113, 74724), (114, 74748), (123, 74835), (127, 74877), (129, 74892), (130, 74895), (132, 74898), (135, 74976), (138, 75066), (143, 75168), (148, 75255), (150, 75273), (153, 75297),

Gene: Capablanca_135 Start: 73055, Stop: 75313, Start Num: 5

Candidate Starts for Capablanca_135:

(Start: 4 @73046 has 50 MA's), (Start: 5 @73055 has 128 MA's), (6, 73094), (8, 73163), (9, 73172), (13, 73268), (15, 73289), (16, 73298), (17, 73319), (19, 73355), (24, 73439), (26, 73448), (38, 73523),

(39, 73526), (40, 73547), (41, 73568), (43, 73583), (44, 73592), (45, 73631), (47, 73661), (50, 73799), (51, 73802), (59, 73970), (64, 74021), (66, 74069), (68, 74096), (70, 74120), (74, 74168), (75, 74174), (78, 74219), (80, 74228), (81, 74249), (82, 74255), (84, 74273), (86, 74312), (92, 74354), (107, 74546), (108, 74564), (109, 74570), (113, 74591), (114, 74615), (123, 74702), (127, 74744), (129, 74759), (130, 74762), (132, 74765), (135, 74843), (138, 74933), (143, 75035), (148, 75122), (150, 75140), (153, 75164),

Gene: Caravan_126 Start: 71683, Stop: 73941, Start Num: 5

Candidate Starts for Caravan_126:

(Start: 4 @71674 has 50 MA's), (Start: 5 @71683 has 128 MA's), (6, 71722), (8, 71791), (9, 71800), (13, 71896), (15, 71917), (16, 71926), (17, 71947), (19, 71983), (24, 72067), (38, 72151), (39, 72154), (40, 72175), (41, 72196), (43, 72211), (44, 72220), (45, 72259), (47, 72289), (50, 72427), (51, 72430), (59, 72598), (66, 72697), (68, 72724), (70, 72748), (74, 72796), (75, 72802), (78, 72847), (80, 72856), (81, 72877), (82, 72883), (84, 72901), (86, 72940), (92, 72982), (105, 73150), (108, 73192), (109, 73198), (113, 73219), (114, 73243), (123, 73330), (127, 73372), (129, 73387), (130, 73390), (132, 73393), (135, 73471), (138, 73561), (143, 73663), (148, 73750), (150, 73768), (153, 73792),

Gene: Catera_128 Start: 70590, Stop: 72848, Start Num: 5

Candidate Starts for Catera_128:

(Start: 4 @70581 has 50 MA's), (Start: 5 @70590 has 128 MA's), (6, 70629), (8, 70698), (9, 70707), (13, 70803), (15, 70824), (16, 70833), (17, 70854), (19, 70890), (24, 70974), (26, 70983), (38, 71058), (39, 71061), (40, 71082), (41, 71103), (43, 71118), (44, 71127), (45, 71166), (47, 71196), (50, 71334), (51, 71337), (59, 71505), (64, 71556), (66, 71604), (68, 71631), (70, 71655), (74, 71703), (75, 71709), (78, 71754), (80, 71763), (81, 71784), (82, 71790), (84, 71808), (86, 71847), (92, 71889), (107, 72081), (108, 72099), (109, 72105), (113, 72126), (114, 72150), (123, 72237), (127, 72279), (129, 72294), (130, 72297), (132, 72300), (135, 72378), (138, 72468), (143, 72570), (148, 72657), (150, 72675), (153, 72699),

Gene: Chargie21_129 Start: 70874, Stop: 73141, Start Num: 4

Candidate Starts for Chargie21_129:

(Start: 4 @70874 has 50 MA's), (Start: 5 @70883 has 128 MA's), (6, 70922), (8, 70991), (9, 71000), (13, 71096), (15, 71117), (16, 71126), (17, 71147), (19, 71183), (24, 71267), (26, 71276), (38, 71351), (39, 71354), (40, 71375), (41, 71396), (43, 71411), (44, 71420), (45, 71459), (47, 71489), (50, 71627), (51, 71630), (59, 71798), (66, 71897), (68, 71924), (70, 71948), (74, 71996), (75, 72002), (78, 72047), (80, 72056), (81, 72077), (82, 72083), (84, 72101), (86, 72140), (92, 72182), (105, 72350), (108, 72392), (109, 72398), (113, 72419), (114, 72443), (123, 72530), (127, 72572), (129, 72587), (130, 72590), (132, 72593), (135, 72671), (138, 72761), (143, 72863), (148, 72950), (150, 72968), (153, 72992),

Gene: CharlieB_129 Start: 71209, Stop: 73467, Start Num: 5

Candidate Starts for CharlieB_129:

(Start: 4 @71200 has 50 MA's), (Start: 5 @71209 has 128 MA's), (6, 71248), (8, 71317), (9, 71326), (13, 71422), (15, 71443), (16, 71452), (17, 71473), (19, 71509), (24, 71593), (26, 71602), (38, 71677), (39, 71680), (40, 71701), (41, 71722), (43, 71737), (44, 71746), (45, 71785), (47, 71815), (50, 71953), (51, 71956), (59, 72124), (64, 72175), (66, 72223), (68, 72250), (70, 72274), (74, 72322), (75, 72328), (78, 72373), (80, 72382), (81, 72403), (82, 72409), (84, 72427), (86, 72466), (92, 72508), (105, 72676), (108, 72718), (109, 72724), (113, 72745), (114, 72769), (123, 72856), (127, 72898), (129, 72913), (130, 72916), (132, 72919), (135, 72997), (138, 73087), (143, 73189), (148, 73276), (150, 73294), (153, 73318),

Gene: ChaylaJr_128 Start: 70691, Stop: 72949, Start Num: 5

Candidate Starts for ChaylaJr_128:

(Start: 4 @70682 has 50 MA's), (Start: 5 @70691 has 128 MA's), (6, 70730), (8, 70799), (9, 70808), (13, 70904), (15, 70925), (16, 70934), (17, 70955), (19, 70991), (24, 71075), (26, 71084), (38, 71159), (39, 71162), (40, 71183), (41, 71204), (43, 71219), (44, 71228), (45, 71267), (47, 71297), (50, 71435), (51, 71438), (59, 71606), (66, 71705), (68, 71732), (70, 71756), (74, 71804), (75, 71810), (78, 71855), (80, 71864), (81, 71885), (82, 71891), (84, 71909), (86, 71948), (92, 71990), (105, 72158), (108, 72200), (109, 72206), (113, 72227), (114, 72251), (123, 72338), (127, 72380), (129, 72395), (130, 72398), (132, 72401), (135, 72479), (138, 72569), (143, 72671), (148, 72758), (150, 72776), (153, 72800),

Gene: CherryTomatoes_118 Start: 71847, Stop: 74345, Start Num: 5

Candidate Starts for CherryTomatoes_118:

(Start: 1 @71805 has 1 MA's), (Start: 5 @71847 has 128 MA's), (11, 71979), (15, 72084), (20, 72210), (22, 72267), (25, 72294), (27, 72300), (30, 72327), (38, 72396), (39, 72399), (61, 72963), (65, 73023), (66, 73047), (73, 73119), (89, 73320), (102, 73455), (106, 73530), (111, 73563), (116, 73602), (119, 73611), (121, 73626), (127, 73728), (129, 73743), (133, 73773), (141, 74031), (145, 74100), (149, 74166), (155, 74277),

Gene: ChickenPhender_128 Start: 70506, Stop: 72773, Start Num: 4

Candidate Starts for ChickenPhender_128:

(Start: 4 @70506 has 50 MA's), (Start: 5 @70515 has 128 MA's), (6, 70554), (8, 70623), (9, 70632), (13, 70728), (15, 70749), (16, 70758), (17, 70779), (19, 70815), (24, 70899), (26, 70908), (38, 70983), (39, 70986), (40, 71007), (41, 71028), (43, 71043), (44, 71052), (45, 71091), (47, 71121), (50, 71259), (51, 71262), (59, 71430), (66, 71529), (68, 71556), (70, 71580), (74, 71628), (75, 71634), (78, 71679), (80, 71688), (81, 71709), (82, 71715), (84, 71733), (86, 71772), (92, 71814), (105, 71982), (108, 72024), (109, 72030), (113, 72051), (114, 72075), (123, 72162), (127, 72204), (129, 72219), (130, 72222), (132, 72225), (135, 72303), (138, 72393), (143, 72495), (148, 72582), (150, 72600), (153, 72624),

Gene: Chomp_132 Start: 72594, Stop: 74852, Start Num: 5

Candidate Starts for Chomp_132:

(Start: 4 @72585 has 50 MA's), (Start: 5 @72594 has 128 MA's), (6, 72633), (8, 72702), (9, 72711), (13, 72807), (15, 72828), (16, 72837), (17, 72858), (19, 72894), (24, 72978), (26, 72987), (38, 73062), (39, 73065), (40, 73086), (41, 73107), (43, 73122), (44, 73131), (45, 73170), (47, 73200), (50, 73338), (51, 73341), (59, 73509), (64, 73560), (66, 73608), (68, 73635), (70, 73659), (74, 73707), (75, 73713), (78, 73758), (80, 73767), (81, 73788), (82, 73794), (84, 73812), (86, 73851), (92, 73893), (107, 74085), (108, 74103), (109, 74109), (113, 74130), (114, 74154), (123, 74241), (127, 74283), (129, 74298), (130, 74301), (132, 74304), (135, 74382), (138, 74472), (143, 74574), (148, 74661), (150, 74679), (153, 74703),

Gene: CindyLou_134 Start: 72634, Stop: 74892, Start Num: 5

Candidate Starts for CindyLou_134:

(Start: 4 @72625 has 50 MA's), (Start: 5 @72634 has 128 MA's), (6, 72673), (8, 72742), (9, 72751), (13, 72847), (15, 72868), (16, 72877), (17, 72898), (19, 72934), (24, 73018), (26, 73027), (38, 73102), (39, 73105), (40, 73126), (41, 73147), (43, 73162), (44, 73171), (45, 73210), (47, 73240), (50, 73378), (51, 73381), (59, 73549), (64, 73600), (66, 73648), (68, 73675), (70, 73699), (74, 73747), (75, 73753), (78, 73798), (80, 73807), (81, 73828), (82, 73834), (84, 73852), (86, 73891), (92, 73933), (107, 74125), (108, 74143), (109, 74149), (113, 74170), (114, 74194), (123, 74281), (127, 74323), (129, 74338), (130, 74341), (132, 74344), (135, 74422), (138, 74512), (143, 74614), (148, 74701), (150, 74719), (153, 74743),

Gene: Colt_124 Start: 73296, Stop: 75563, Start Num: 4

Candidate Starts for Colt_124:

(Start: 4 @73296 has 50 MA's), (Start: 5 @73305 has 128 MA's), (6, 73344), (8, 73413), (9, 73422), (13, 73518), (15, 73539), (16, 73548), (17, 73569), (19, 73605), (24, 73689), (26, 73698), (38, 73773), (39, 73776), (40, 73797), (41, 73818), (43, 73833), (44, 73842), (45, 73881), (47, 73911), (50, 74049), (51, 74052), (59, 74220), (66, 74319), (68, 74346), (70, 74370), (74, 74418), (75, 74424), (78, 74469), (80, 74478), (81, 74499), (82, 74505), (84, 74523), (86, 74562), (92, 74604), (105, 74772), (108, 74814), (109, 74820), (113, 74841), (114, 74865), (123, 74952), (127, 74994), (129, 75009), (130, 75012), (132, 75015), (135, 75093), (138, 75183), (143, 75285), (148, 75372), (150, 75390), (153, 75414),

Gene: Concombre_138 Start: 74488, Stop: 76746, Start Num: 5

Candidate Starts for Concombre_138:

(Start: 4 @74479 has 50 MA's), (Start: 5 @74488 has 128 MA's), (6, 74527), (8, 74596), (9, 74605), (13, 74701), (15, 74722), (16, 74731), (17, 74752), (19, 74788), (24, 74872), (26, 74881), (38, 74956), (39, 74959), (40, 74980), (41, 75001), (43, 75016), (44, 75025), (45, 75064), (47, 75094), (50, 75232), (51, 75235), (59, 75403), (66, 75502), (68, 75529), (70, 75553), (74, 75601), (75, 75607), (78, 75652), (80, 75661), (81, 75682), (82, 75688), (84, 75706), (86, 75745), (92, 75787), (105, 75955), (108, 75997), (109, 76003), (113, 76024), (114, 76048), (123, 76135), (127, 76177), (129, 76192), (130, 76195), (132, 76198), (135, 76276), (138, 76366), (143, 76468), (148, 76555), (150, 76573), (153, 76597),

Gene: DTDevon_132 Start: 72356, Stop: 74614, Start Num: 5

Candidate Starts for DTDevon_132:

(Start: 4 @72347 has 50 MA's), (Start: 5 @72356 has 128 MA's), (6, 72395), (8, 72464), (9, 72473), (13, 72569), (15, 72590), (16, 72599), (17, 72620), (19, 72656), (24, 72740), (26, 72749), (38, 72824), (39, 72827), (40, 72848), (41, 72869), (43, 72884), (44, 72893), (45, 72932), (47, 72962), (50, 73100), (51, 73103), (59, 73271), (66, 73370), (68, 73397), (70, 73421), (74, 73469), (75, 73475), (78, 73520), (80, 73529), (81, 73550), (82, 73556), (84, 73574), (86, 73613), (92, 73655), (105, 73823), (108, 73865), (109, 73871), (113, 73892), (114, 73916), (123, 74003), (127, 74045), (129, 74060), (130, 74063), (132, 74066), (135, 74144), (138, 74234), (143, 74336), (148, 74423), (150, 74441), (153, 74465),

Gene: Daffodil_137 Start: 72297, Stop: 74555, Start Num: 5

Candidate Starts for Daffodil_137:

(Start: 4 @72288 has 50 MA's), (Start: 5 @72297 has 128 MA's), (6, 72336), (8, 72405), (9, 72414), (13, 72510), (15, 72531), (16, 72540), (17, 72561), (19, 72597), (24, 72681), (26, 72690), (38, 72765), (39, 72768), (40, 72789), (41, 72810), (43, 72825), (44, 72834), (45, 72873), (47, 72903), (50, 73041), (51, 73044), (59, 73212), (66, 73311), (68, 73338), (70, 73362), (74, 73410), (75, 73416), (78, 73461), (80, 73470), (81, 73491), (82, 73497), (84, 73515), (86, 73554), (92, 73596), (105, 73764), (108, 73806), (109, 73812), (113, 73833), (114, 73857), (123, 73944), (127, 73986), (129, 74001), (130, 74004), (132, 74007), (135, 74085), (138, 74175), (143, 74277), (148, 74364), (150, 74382), (153, 74406),

Gene: Dandelion_137 Start: 74489, Stop: 76747, Start Num: 5

Candidate Starts for Dandelion_137:

(Start: 4 @74480 has 50 MA's), (Start: 5 @74489 has 128 MA's), (6, 74528), (8, 74597), (9, 74606), (13, 74702), (15, 74723), (16, 74732), (17, 74753), (19, 74789), (24, 74873), (26, 74882), (38, 74957), (39, 74960), (40, 74981), (41, 75002), (43, 75017), (44, 75026), (45, 75065), (47, 75095), (50, 75233), (51, 75236), (59, 75404), (66, 75503), (68, 75530), (70, 75554), (74, 75602), (75, 75608), (78, 75653), (80, 75662), (81, 75683), (82, 75689), (84, 75707), (86, 75746), (92, 75788), (105, 75956), (108, 75998), (109, 76004), (113, 76025), (114, 76049), (123, 76136), (127, 76178), (129, 76193), (130, 76196), (132, 76199), (135, 76277), (138, 76367), (143, 76469), (148, 76556), (150, 76574), (153, 76598),

Gene: Darko_132 Start: 71989, Stop: 74247, Start Num: 5

Candidate Starts for Darko_132:

(Start: 4 @71980 has 50 MA's), (Start: 5 @71989 has 128 MA's), (6, 72028), (8, 72097), (9, 72106), (13, 72202), (15, 72223), (16, 72232), (17, 72253), (19, 72289), (24, 72373), (26, 72382), (38, 72457), (39, 72460), (40, 72481), (41, 72502), (43, 72517), (44, 72526), (45, 72565), (47, 72595), (50, 72733), (51, 72736), (59, 72904), (66, 73003), (68, 73030), (70, 73054), (74, 73102), (75, 73108), (78, 73153), (80, 73162), (81, 73183), (82, 73189), (84, 73207), (86, 73246), (92, 73288), (105, 73456), (108, 73498), (109, 73504), (113, 73525), (114, 73549), (123, 73636), (127, 73678), (129, 73693), (130, 73696), (132, 73699), (135, 73777), (138, 73867), (143, 73969), (148, 74056), (150, 74074), (153, 74098),

Gene: DeejaClivia_119 Start: 68646, Stop: 70913, Start Num: 4

Candidate Starts for DeejaClivia_119:

(Start: 4 @68646 has 50 MA's), (Start: 5 @68655 has 128 MA's), (6, 68694), (8, 68763), (9, 68772), (13, 68868), (15, 68889), (16, 68898), (17, 68919), (19, 68955), (24, 69039), (26, 69048), (38, 69123), (39, 69126), (40, 69147), (41, 69168), (43, 69183), (44, 69192), (45, 69231), (47, 69261), (50, 69399), (51, 69402), (58, 69561), (59, 69570), (66, 69669), (68, 69696), (70, 69720), (74, 69768), (75, 69774), (78, 69819), (80, 69828), (81, 69849), (82, 69855), (84, 69873), (86, 69912), (92, 69954), (108, 70164), (109, 70170), (113, 70191), (114, 70215), (123, 70302), (127, 70344), (129, 70359), (130, 70362), (132, 70365), (135, 70443), (138, 70533), (143, 70635), (148, 70722), (150, 70740), (153, 70764),

Gene: Delilah_132 Start: 72442, Stop: 74709, Start Num: 4

Candidate Starts for Delilah_132:

(Start: 4 @72442 has 50 MA's), (Start: 5 @72451 has 128 MA's), (6, 72490), (8, 72559), (9, 72568), (13, 72664), (15, 72685), (16, 72694), (17, 72715), (19, 72751), (24, 72835), (26, 72844), (38, 72919), (39, 72922), (40, 72943), (41, 72964), (43, 72979), (44, 72988), (45, 73027), (47, 73057), (50, 73195), (51, 73198), (59, 73366), (66, 73465), (68, 73492), (70, 73516), (74, 73564), (75, 73570), (78, 73615), (80, 73624), (81, 73645), (82, 73651), (84, 73669), (86, 73708), (92, 73750), (105, 73918), (108, 73960), (109, 73966), (113, 73987), (114, 74011), (123, 74098), (127, 74140), (129, 74155), (130, 74158), (132, 74161), (135, 74239), (138, 74329), (143, 74431), (148, 74518), (150, 74536), (153, 74560),

Gene: Delylah_135 Start: 71990, Stop: 74248, Start Num: 5

Candidate Starts for Delylah_135:

(Start: 4 @71981 has 50 MA's), (Start: 5 @71990 has 128 MA's), (6, 72029), (8, 72098), (9, 72107), (13, 72203), (15, 72224), (16, 72233), (17, 72254), (19, 72290), (24, 72374), (26, 72383), (38, 72458), (39, 72461), (40, 72482), (41, 72503), (43, 72518), (44, 72527), (45, 72566), (47, 72596), (50, 72734), (51, 72737), (59, 72905), (66, 73004), (68, 73031), (70, 73055), (74, 73103), (75, 73109), (78, 73154), (80, 73163), (81, 73184), (82, 73190), (84, 73208), (86, 73247), (92, 73289), (105, 73457), (108, 73499), (109, 73505), (113, 73526), (114, 73550), (123, 73637), (127, 73679), (129, 73694), (130, 73697), (132, 73700), (135, 73778), (138, 73868), (143, 73970), (148, 74057), (150, 74075), (153, 74099),

Gene: Demodog_139 Start: 74497, Stop: 76755, Start Num: 5

Candidate Starts for Demodog_139:

(Start: 4 @74488 has 50 MA's), (Start: 5 @74497 has 128 MA's), (6, 74536), (8, 74605), (9, 74614), (13, 74710), (15, 74731), (16, 74740), (17, 74761), (19, 74797), (24, 74881), (26, 74890), (38, 74965), (39, 74968), (40, 74989), (41, 75010), (43, 75025), (44, 75034), (45, 75073), (47, 75103), (50, 75241), (51, 75244), (59, 75412), (66, 75511), (68, 75538), (70, 75562), (74, 75610), (75, 75616), (78, 75661), (80, 75670), (81, 75691), (82, 75697), (84, 75715), (86, 75754), (92, 75796), (105, 75964), (108, 76006), (109, 76012), (113, 76033), (114, 76057), (123, 76144), (127, 76186), (129, 76201), (130, 76204), (132, 76207), (135, 76285), (138, 76375), (143, 76477), (148, 76564), (150, 76582), (153, 76606),

Gene: Derek_131 Start: 71916, Stop: 74174, Start Num: 5

Candidate Starts for Derek_131:

(Start: 4 @71907 has 50 MA's), (Start: 5 @71916 has 128 MA's), (6, 71955), (8, 72024), (9, 72033), (13, 72129), (15, 72150), (16, 72159), (17, 72180), (19, 72216), (24, 72300), (26, 72309), (38, 72384), (39, 72387), (40, 72408), (41, 72429), (43, 72444), (44, 72453), (45, 72492), (47, 72522), (50, 72660), (51, 72663), (59, 72831), (64, 72882), (66, 72930), (68, 72957), (70, 72981), (74, 73029), (75, 73035), (78, 73080), (80, 73089), (81, 73110), (82, 73116), (84, 73134), (86, 73173), (92, 73215), (107, 73407), (108, 73425), (109, 73431), (113, 73452), (114, 73476), (123, 73563), (127, 73605), (129, 73620), (130, 73623), (132, 73626), (135, 73704), (138, 73794), (143, 73896), (148, 73983), (150, 74001), (153, 74025),

Gene: Dietrick_124 Start: 69992, Stop: 72250, Start Num: 5

Candidate Starts for Dietrick_124:

(Start: 4 @69983 has 50 MA's), (Start: 5 @69992 has 128 MA's), (6, 70031), (8, 70100), (9, 70109), (13, 70205), (15, 70226), (16, 70235), (17, 70256), (19, 70292), (24, 70376), (26, 70385), (38, 70460), (39, 70463), (40, 70484), (41, 70505), (43, 70520), (44, 70529), (45, 70568), (47, 70598), (50, 70736), (51, 70739), (59, 70907), (66, 71006), (68, 71033), (70, 71057), (74, 71105), (75, 71111), (78, 71156), (80, 71165), (81, 71186), (82, 71192), (84, 71210), (86, 71249), (92, 71291), (105, 71459), (108, 71501), (109, 71507), (113, 71528), (114, 71552), (123, 71639), (127, 71681), (129, 71696), (130, 71699), (132, 71702), (135, 71780), (138, 71870), (143, 71972), (148, 72059), (150, 72077), (153, 72101),

Gene: DirtMonster_126 Start: 71250, Stop: 73508, Start Num: 5

Candidate Starts for DirtMonster_126:

(Start: 4 @71241 has 50 MA's), (Start: 5 @71250 has 128 MA's), (6, 71289), (8, 71358), (9, 71367), (13, 71463), (15, 71484), (16, 71493), (17, 71514), (19, 71550), (24, 71634), (26, 71643), (38, 71718), (39, 71721), (40, 71742), (41, 71763), (43, 71778), (44, 71787), (45, 71826), (47, 71856), (50, 71994), (51, 71997), (59, 72165), (64, 72216), (66, 72264), (68, 72291), (70, 72315), (74, 72363), (75, 72369), (78, 72414), (80, 72423), (81, 72444), (82, 72450), (84, 72468), (86, 72507), (92, 72549), (107, 72741), (108, 72759), (109, 72765), (113, 72786), (114, 72810), (123, 72897), (127, 72939), (129, 72954), (130, 72957), (132, 72960), (135, 73038), (138, 73128), (143, 73230), (148, 73317), (150, 73335), (153, 73359),

Gene: Domi_125 Start: 71329, Stop: 73587, Start Num: 5

Candidate Starts for Domi_125:

(Start: 4 @71320 has 50 MA's), (Start: 5 @71329 has 128 MA's), (6, 71368), (8, 71437), (9, 71446), (13, 71542), (15, 71563), (16, 71572), (17, 71593), (19, 71629), (24, 71713), (26, 71722), (38, 71797), (39, 71800), (40, 71821), (41, 71842), (43, 71857), (44, 71866), (45, 71905), (47, 71935), (50, 72073), (51, 72076), (59, 72244), (66, 72343), (68, 72370), (70, 72394), (74, 72442), (75, 72448), (78, 72493), (80, 72502), (81, 72523), (82, 72529), (84, 72547), (86, 72586), (92, 72628), (105, 72796), (108, 72838), (109, 72844), (113, 72865), (114, 72889), (123, 72976), (127, 73018), (129, 73033), (130, 73036), (132, 73039), (135, 73117), (138, 73207), (143, 73309), (148, 73396), (150, 73414), (153, 73438),

Gene: DrPhinkDaddy_131 Start: 72500, Stop: 74767, Start Num: 4

Candidate Starts for DrPhinkDaddy_131:

(Start: 4 @72500 has 50 MA's), (Start: 5 @72509 has 128 MA's), (6, 72548), (8, 72617), (9, 72626), (13, 72722), (15, 72743), (16, 72752), (17, 72773), (19, 72809), (24, 72893), (26, 72902), (38, 72977), (39, 72980), (40, 73001), (41, 73022), (43, 73037), (44, 73046), (45, 73085), (47, 73115), (50, 73253), (51, 73256), (59, 73424), (66, 73523), (68, 73550), (70, 73574), (74, 73622), (75, 73628), (78, 73673), (80, 73682), (81, 73703), (82, 73709), (84, 73727), (86, 73766), (92, 73808), (105, 73976), (108, 74018), (109, 74024), (113, 74045), (114, 74069), (123, 74156), (127, 74198), (129, 74213), (130,

74216), (132, 74219), (135, 74297), (138, 74387), (143, 74489), (148, 74576), (150, 74594), (153, 74618),

Gene: Drazdys_130 Start: 70980, Stop: 73238, Start Num: 5

Candidate Starts for Drazdys_130:

(Start: 4 @70971 has 50 MA's), (Start: 5 @70980 has 128 MA's), (6, 71019), (8, 71088), (9, 71097), (13, 71193), (15, 71214), (16, 71223), (17, 71244), (19, 71280), (24, 71364), (26, 71373), (38, 71448), (39, 71451), (40, 71472), (41, 71493), (43, 71508), (44, 71517), (45, 71556), (47, 71586), (50, 71724), (51, 71727), (59, 71895), (64, 71946), (66, 71994), (68, 72021), (70, 72045), (74, 72093), (75, 72099), (78, 72144), (80, 72153), (81, 72174), (82, 72180), (84, 72198), (86, 72237), (92, 72279), (107, 72471), (108, 72489), (109, 72495), (113, 72516), (114, 72540), (123, 72627), (127, 72669), (129, 72684), (130, 72687), (132, 72690), (135, 72768), (138, 72858), (143, 72960), (148, 73047), (150, 73065), (153, 73089),

Gene: ET08_120 Start: 70970, Stop: 73228, Start Num: 5

Candidate Starts for ET08_120:

(Start: 4 @70961 has 50 MA's), (Start: 5 @70970 has 128 MA's), (6, 71009), (8, 71078), (9, 71087), (13, 71183), (15, 71204), (16, 71213), (17, 71234), (19, 71270), (24, 71354), (26, 71363), (38, 71438), (39, 71441), (40, 71462), (41, 71483), (43, 71498), (44, 71507), (45, 71546), (47, 71576), (50, 71714), (51, 71717), (59, 71885), (64, 71936), (66, 71984), (68, 72011), (70, 72035), (74, 72083), (75, 72089), (78, 72134), (80, 72143), (81, 72164), (82, 72170), (84, 72188), (86, 72227), (92, 72269), (107, 72461), (108, 72479), (109, 72485), (113, 72506), (114, 72530), (123, 72617), (127, 72659), (129, 72674), (130, 72677), (132, 72680), (135, 72758), (138, 72848), (143, 72950), (148, 73037), (150, 73055), (153, 73079),

Gene: EasyJones_135 Start: 71537, Stop: 73795, Start Num: 5

Candidate Starts for EasyJones_135:

(Start: 4 @71528 has 50 MA's), (Start: 5 @71537 has 128 MA's), (6, 71576), (8, 71645), (9, 71654), (13, 71750), (15, 71771), (16, 71780), (17, 71801), (19, 71837), (24, 71921), (26, 71930), (38, 72005), (39, 72008), (40, 72029), (41, 72050), (43, 72065), (44, 72074), (45, 72113), (47, 72143), (50, 72281), (51, 72284), (59, 72452), (66, 72551), (68, 72578), (70, 72602), (74, 72650), (75, 72656), (78, 72701), (80, 72710), (81, 72731), (82, 72737), (84, 72755), (86, 72794), (92, 72836), (105, 73004), (108, 73046), (109, 73052), (113, 73073), (114, 73097), (123, 73184), (127, 73226), (129, 73241), (130, 73244), (132, 73247), (135, 73325), (138, 73415), (143, 73517), (148, 73604), (150, 73622), (153, 73646),

Gene: EggyFarm_140 Start: 74255, Stop: 76513, Start Num: 5

Candidate Starts for EggyFarm_140:

(Start: 4 @74246 has 50 MA's), (Start: 5 @74255 has 128 MA's), (6, 74294), (8, 74363), (9, 74372), (13, 74468), (15, 74489), (16, 74498), (17, 74519), (19, 74555), (24, 74639), (26, 74648), (38, 74723), (39, 74726), (40, 74747), (41, 74768), (43, 74783), (44, 74792), (45, 74831), (47, 74861), (50, 74999), (51, 75002), (59, 75170), (66, 75269), (68, 75296), (70, 75320), (74, 75368), (75, 75374), (78, 75419), (80, 75428), (81, 75449), (82, 75455), (84, 75473), (86, 75512), (92, 75554), (105, 75722), (108, 75764), (109, 75770), (113, 75791), (114, 75815), (123, 75902), (127, 75944), (130, 75962), (132, 75965), (135, 76043), (138, 76133), (143, 76235), (148, 76322), (150, 76340), (153, 76364),

Gene: EmToTheThree_134 Start: 73240, Stop: 75507, Start Num: 4

Candidate Starts for EmToTheThree_134:

(Start: 4 @73240 has 50 MA's), (Start: 5 @73249 has 128 MA's), (6, 73288), (8, 73357), (9, 73366), (13, 73462), (15, 73483), (16, 73492), (17, 73513), (19, 73549), (24, 73633), (26, 73642), (38, 73717), (39, 73720), (40, 73741), (41, 73762), (43, 73777), (44, 73786), (45, 73825), (47, 73855), (50, 73993), (51, 73996), (59, 74164), (66, 74263), (68, 74290), (70, 74314), (74, 74362), (75, 74368), (78, 74413), (80, 74422), (81, 74443), (82, 74449), (84, 74467), (86, 74506), (92, 74548), (105, 74716), (108,

74758), (109, 74764), (113, 74785), (114, 74809), (123, 74896), (127, 74938), (129, 74953), (130, 74956), (132, 74959), (135, 75037), (138, 75127), (143, 75229), (148, 75316), (150, 75334), (153, 75358),

Gene: EmmaElysia_133 Start: 71515, Stop: 73782, Start Num: 4

Candidate Starts for EmmaElysia_133:

(Start: 4 @71515 has 50 MA's), (Start: 5 @71524 has 128 MA's), (6, 71563), (8, 71632), (9, 71641), (13, 71737), (15, 71758), (16, 71767), (17, 71788), (19, 71824), (24, 71908), (26, 71917), (38, 71992), (39, 71995), (40, 72016), (41, 72037), (43, 72052), (44, 72061), (45, 72100), (47, 72130), (50, 72268), (51, 72271), (59, 72439), (66, 72538), (68, 72565), (70, 72589), (74, 72637), (75, 72643), (78, 72688), (80, 72697), (81, 72718), (82, 72724), (84, 72742), (86, 72781), (92, 72823), (105, 72991), (108, 73033), (109, 73039), (113, 73060), (114, 73084), (123, 73171), (127, 73213), (129, 73228), (130, 73231), (132, 73234), (135, 73312), (138, 73402), (143, 73504), (148, 73591), (150, 73609), (153, 73633),

Gene: Erdmann_132 Start: 72298, Stop: 74556, Start Num: 5

Candidate Starts for Erdmann_132:

(Start: 4 @72289 has 50 MA's), (Start: 5 @72298 has 128 MA's), (6, 72337), (8, 72406), (9, 72415), (13, 72511), (15, 72532), (16, 72541), (17, 72562), (19, 72598), (24, 72682), (26, 72691), (38, 72766), (39, 72769), (40, 72790), (41, 72811), (43, 72826), (44, 72835), (45, 72874), (47, 72904), (50, 73042), (51, 73045), (59, 73213), (66, 73312), (68, 73339), (70, 73363), (74, 73411), (75, 73417), (78, 73462), (80, 73471), (81, 73492), (82, 73498), (84, 73516), (86, 73555), (92, 73597), (105, 73765), (108, 73807), (109, 73813), (113, 73834), (114, 73858), (123, 73945), (127, 73987), (129, 74002), (130, 74005), (132, 74008), (135, 74086), (138, 74176), (143, 74278), (148, 74365), (150, 74383), (153, 74407),

Gene: ErnieJ_126 Start: 70267, Stop: 72525, Start Num: 5

Candidate Starts for ErnieJ_126:

(Start: 4 @70258 has 50 MA's), (Start: 5 @70267 has 128 MA's), (6, 70306), (8, 70375), (9, 70384), (13, 70480), (15, 70501), (16, 70510), (17, 70531), (19, 70567), (24, 70651), (26, 70660), (38, 70735), (39, 70738), (40, 70759), (41, 70780), (43, 70795), (44, 70804), (45, 70843), (47, 70873), (50, 71011), (51, 71014), (59, 71182), (64, 71233), (66, 71281), (68, 71308), (70, 71332), (74, 71380), (75, 71386), (78, 71431), (80, 71440), (81, 71461), (82, 71467), (84, 71485), (86, 71524), (92, 71566), (107, 71758), (108, 71776), (109, 71782), (113, 71803), (114, 71827), (123, 71914), (127, 71956), (129, 71971), (130, 71974), (132, 71977), (135, 72055), (138, 72145), (143, 72247), (148, 72334), (150, 72352), (153, 72376),

Gene: Essence_129 Start: 71137, Stop: 73404, Start Num: 4

Candidate Starts for Essence_129:

(Start: 4 @71137 has 50 MA's), (Start: 5 @71146 has 128 MA's), (6, 71185), (8, 71254), (9, 71263), (13, 71359), (15, 71380), (16, 71389), (17, 71410), (19, 71446), (24, 71530), (26, 71539), (38, 71614), (39, 71617), (40, 71638), (41, 71659), (43, 71674), (44, 71683), (45, 71722), (47, 71752), (50, 71890), (51, 71893), (59, 72061), (64, 72112), (66, 72160), (68, 72187), (70, 72211), (74, 72259), (75, 72265), (78, 72310), (80, 72319), (81, 72340), (82, 72346), (84, 72364), (86, 72403), (92, 72445), (107, 72637), (108, 72655), (109, 72661), (113, 72682), (114, 72706), (123, 72793), (127, 72835), (129, 72850), (130, 72853), (132, 72856), (135, 72934), (138, 73024), (143, 73126), (148, 73213), (150, 73231), (153, 73255),

Gene: Ewok_133 Start: 71666, Stop: 73933, Start Num: 4

Candidate Starts for Ewok_133:

(Start: 4 @71666 has 50 MA's), (Start: 5 @71675 has 128 MA's), (6, 71714), (8, 71783), (9, 71792), (13, 71888), (15, 71909), (16, 71918), (17, 71939), (19, 71975), (24, 72059), (26, 72068), (38, 72143), (39, 72146), (40, 72167), (41, 72188), (43, 72203), (44, 72212), (45, 72251), (47, 72281), (50, 72419),

(51, 72422), (59, 72590), (66, 72689), (68, 72716), (70, 72740), (74, 72788), (75, 72794), (78, 72839), (80, 72848), (81, 72869), (82, 72875), (84, 72893), (86, 72932), (92, 72974), (105, 73142), (108, 73184), (109, 73190), (113, 73211), (114, 73235), (123, 73322), (127, 73364), (129, 73379), (130, 73382), (132, 73385), (135, 73463), (138, 73553), (143, 73655), (148, 73742), (150, 73760), (153, 73784),

Gene: Flabslab_127 Start: 69848, Stop: 72115, Start Num: 4

Candidate Starts for Flabslab_127:

(Start: 4 @69848 has 50 MA's), (Start: 5 @69857 has 128 MA's), (6, 69896), (8, 69965), (9, 69974), (13, 70070), (15, 70091), (16, 70100), (17, 70121), (19, 70157), (24, 70241), (26, 70250), (38, 70325), (39, 70328), (40, 70349), (41, 70370), (43, 70385), (44, 70394), (45, 70433), (47, 70463), (50, 70601), (51, 70604), (59, 70772), (66, 70871), (68, 70898), (70, 70922), (74, 70970), (75, 70976), (78, 71021), (80, 71030), (81, 71051), (82, 71057), (84, 71075), (86, 71114), (92, 71156), (105, 71324), (108, 71366), (109, 71372), (113, 71393), (114, 71417), (123, 71504), (127, 71546), (129, 71561), (130, 71564), (132, 71567), (135, 71645), (138, 71735), (143, 71837), (148, 71924), (150, 71942), (153, 71966),

Gene: Fludd_133 Start: 71314, Stop: 73581, Start Num: 4

Candidate Starts for Fludd_133:

(Start: 4 @71314 has 50 MA's), (Start: 5 @71323 has 128 MA's), (6, 71362), (8, 71431), (9, 71440), (13, 71536), (15, 71557), (16, 71566), (17, 71587), (19, 71623), (24, 71707), (26, 71716), (38, 71791), (39, 71794), (40, 71815), (41, 71836), (43, 71851), (44, 71860), (45, 71899), (47, 71929), (50, 72067), (51, 72070), (59, 72238), (66, 72337), (68, 72364), (70, 72388), (74, 72436), (75, 72442), (78, 72487), (80, 72496), (81, 72517), (82, 72523), (84, 72541), (86, 72580), (92, 72622), (105, 72790), (108, 72832), (109, 72838), (113, 72859), (114, 72883), (123, 72970), (127, 73012), (129, 73027), (130, 73030), (132, 73033), (135, 73111), (138, 73201), (143, 73303), (148, 73390), (150, 73408), (153, 73432),

Gene: Fongie_130 Start: 71879, Stop: 74146, Start Num: 4

Candidate Starts for Fongie_130:

(Start: 4 @71879 has 50 MA's), (Start: 5 @71888 has 128 MA's), (6, 71927), (8, 71996), (9, 72005), (13, 72101), (15, 72122), (16, 72131), (17, 72152), (19, 72188), (24, 72272), (26, 72281), (38, 72356), (39, 72359), (40, 72380), (41, 72401), (43, 72416), (44, 72425), (45, 72464), (47, 72494), (50, 72632), (51, 72635), (59, 72803), (66, 72902), (68, 72929), (70, 72953), (74, 73001), (75, 73007), (78, 73052), (80, 73061), (81, 73082), (82, 73088), (84, 73106), (86, 73145), (92, 73187), (105, 73355), (108, 73397), (109, 73403), (113, 73424), (114, 73448), (123, 73535), (127, 73577), (129, 73592), (130, 73595), (132, 73598), (135, 73676), (138, 73766), (143, 73868), (148, 73955), (150, 73973), (153, 73997),

Gene: FoxtrotP1_132 Start: 73449, Stop: 75716, Start Num: 4

Candidate Starts for FoxtrotP1_132:

(Start: 4 @73449 has 50 MA's), (Start: 5 @73458 has 128 MA's), (6, 73497), (8, 73566), (9, 73575), (13, 73671), (15, 73692), (16, 73701), (17, 73722), (19, 73758), (24, 73842), (26, 73851), (38, 73926), (39, 73929), (40, 73950), (41, 73971), (43, 73986), (44, 73995), (45, 74034), (47, 74064), (50, 74202), (51, 74205), (59, 74373), (66, 74472), (68, 74499), (70, 74523), (74, 74571), (75, 74577), (78, 74622), (80, 74631), (81, 74652), (82, 74658), (84, 74676), (86, 74715), (92, 74757), (105, 74925), (108, 74967), (109, 74973), (113, 74994), (114, 75018), (123, 75105), (127, 75147), (129, 75162), (130, 75165), (132, 75168), (135, 75246), (138, 75336), (143, 75438), (148, 75525), (150, 75543), (153, 75567),

Gene: FrayBell_137 Start: 72613, Stop: 74880, Start Num: 4

Candidate Starts for FrayBell_137:

(Start: 4 @72613 has 50 MA's), (Start: 5 @72622 has 128 MA's), (6, 72661), (8, 72730), (9, 72739), (13, 72835), (15, 72856), (16, 72865), (17, 72886), (19, 72922), (24, 73006), (26, 73015), (38, 73090), (39, 73093), (40, 73114), (41, 73135), (43, 73150), (44, 73159), (45, 73198), (47, 73228), (50, 73366), (51, 73369), (59, 73537), (66, 73636), (68, 73663), (70, 73687), (74, 73735), (75, 73741), (78, 73786), (80, 73795), (81, 73816), (82, 73822), (84, 73840), (86, 73879), (92, 73921), (105, 74089), (108, 74131), (109, 74137), (113, 74158), (114, 74182), (123, 74269), (127, 74311), (129, 74326), (130, 74329), (132, 74332), (135, 74410), (138, 74500), (143, 74602), (148, 74689), (150, 74707), (153, 74731),

Gene: FudgeTart_130 Start: 71328, Stop: 73586, Start Num: 5

Candidate Starts for FudgeTart_130:

(Start: 4 @71319 has 50 MA's), (Start: 5 @71328 has 128 MA's), (6, 71367), (8, 71436), (9, 71445), (13, 71541), (15, 71562), (16, 71571), (17, 71592), (19, 71628), (24, 71712), (26, 71721), (38, 71796), (39, 71799), (40, 71820), (41, 71841), (43, 71856), (44, 71865), (45, 71904), (47, 71934), (50, 72072), (51, 72075), (59, 72243), (66, 72342), (68, 72369), (70, 72393), (74, 72441), (75, 72447), (78, 72492), (80, 72501), (81, 72522), (82, 72528), (84, 72546), (86, 72585), (92, 72627), (105, 72795), (108, 72837), (109, 72843), (113, 72864), (114, 72888), (123, 72975), (127, 73017), (129, 73032), (130, 73035), (132, 73038), (135, 73116), (138, 73206), (143, 73308), (148, 73395), (150, 73413), (153, 73437),

Gene: Gabriel_132 Start: 70552, Stop: 72810, Start Num: 5

Candidate Starts for Gabriel_132:

(Start: 4 @70543 has 50 MA's), (Start: 5 @70552 has 128 MA's), (6, 70591), (8, 70660), (9, 70669), (13, 70765), (15, 70786), (16, 70795), (17, 70816), (19, 70852), (24, 70936), (26, 70945), (38, 71020), (39, 71023), (40, 71044), (41, 71065), (43, 71080), (44, 71089), (45, 71128), (47, 71158), (50, 71296), (51, 71299), (59, 71467), (66, 71566), (68, 71593), (70, 71617), (74, 71665), (75, 71671), (78, 71716), (80, 71725), (81, 71746), (82, 71752), (84, 71770), (86, 71809), (92, 71851), (105, 72019), (108, 72061), (109, 72067), (113, 72088), (114, 72112), (123, 72199), (127, 72241), (129, 72256), (130, 72259), (132, 72262), (135, 72340), (138, 72430), (143, 72532), (148, 72619), (150, 72637), (153, 72661),

Gene: Gamgam_133 Start: 71295, Stop: 73553, Start Num: 5

Candidate Starts for Gamgam_133:

(Start: 4 @71286 has 50 MA's), (Start: 5 @71295 has 128 MA's), (6, 71334), (8, 71403), (9, 71412), (13, 71508), (15, 71529), (16, 71538), (17, 71559), (19, 71595), (24, 71679), (26, 71688), (38, 71763), (39, 71766), (40, 71787), (41, 71808), (43, 71823), (44, 71832), (45, 71871), (47, 71901), (50, 72039), (51, 72042), (59, 72210), (64, 72261), (66, 72309), (68, 72336), (70, 72360), (74, 72408), (75, 72414), (78, 72459), (80, 72468), (81, 72489), (82, 72495), (84, 72513), (86, 72552), (92, 72594), (107, 72786), (108, 72804), (109, 72810), (113, 72831), (114, 72855), (123, 72942), (127, 72984), (129, 72999), (130, 73002), (132, 73005), (135, 73083), (138, 73173), (143, 73275), (148, 73362), (150, 73380), (153, 73404),

Gene: Ghost_131 Start: 71305, Stop: 73563, Start Num: 5

Candidate Starts for Ghost_131:

(Start: 4 @71296 has 50 MA's), (Start: 5 @71305 has 128 MA's), (6, 71344), (8, 71413), (9, 71422), (13, 71518), (15, 71539), (16, 71548), (17, 71569), (19, 71605), (24, 71689), (26, 71698), (38, 71773), (39, 71776), (40, 71797), (41, 71818), (43, 71833), (44, 71842), (45, 71881), (47, 71911), (50, 72049), (51, 72052), (59, 72220), (64, 72271), (66, 72319), (68, 72346), (70, 72370), (74, 72418), (75, 72424), (78, 72469), (80, 72478), (81, 72499), (82, 72505), (84, 72523), (86, 72562), (92, 72604), (107, 72796), (108, 72814), (109, 72820), (113, 72841), (114, 72865), (123, 72952), (127, 72994), (129, 73009), (130, 73012), (132, 73015), (135, 73093), (138, 73183), (143, 73285), (148, 73372), (150, 73390), (153, 73414),

Gene: Gizmo_137 Start: 73927, Stop: 76185, Start Num: 5

Candidate Starts for Gizmo_137:

(Start: 4 @73918 has 50 MA's), (Start: 5 @73927 has 128 MA's), (6, 73966), (8, 74035), (9, 74044), (13, 74140), (15, 74161), (16, 74170), (17, 74191), (19, 74227), (24, 74311), (26, 74320), (38, 74395), (39, 74398), (40, 74419), (41, 74440), (43, 74455), (44, 74464), (45, 74503), (47, 74533), (50, 74671), (51, 74674), (59, 74842), (66, 74941), (68, 74968), (70, 74992), (74, 75040), (75, 75046), (78, 75091), (80, 75100), (81, 75121), (82, 75127), (84, 75145), (86, 75184), (92, 75226), (105, 75394), (108, 75436), (109, 75442), (113, 75463), (114, 75487), (123, 75574), (127, 75616), (129, 75631), (130, 75634), (132, 75637), (135, 75715), (138, 75805), (143, 75907), (148, 75994), (150, 76012), (153, 76036),

Gene: GlutenPhree_132 Start: 71305, Stop: 73563, Start Num: 5

Candidate Starts for GlutenPhree_132:

(Start: 4 @71296 has 50 MA's), (Start: 5 @71305 has 128 MA's), (6, 71344), (8, 71413), (9, 71422), (13, 71518), (15, 71539), (16, 71548), (17, 71569), (19, 71605), (24, 71689), (26, 71698), (38, 71773), (39, 71776), (40, 71797), (41, 71818), (43, 71833), (44, 71842), (45, 71881), (47, 71911), (50, 72049), (51, 72052), (59, 72220), (64, 72271), (66, 72319), (68, 72346), (70, 72370), (74, 72418), (75, 72424), (78, 72469), (80, 72478), (81, 72499), (82, 72505), (84, 72523), (86, 72562), (92, 72604), (107, 72796), (108, 72814), (109, 72820), (113, 72841), (114, 72865), (123, 72952), (127, 72994), (129, 73009), (130, 73012), (132, 73015), (135, 73093), (138, 73183), (143, 73285), (148, 73372), (150, 73390), (153, 73414),

Gene: Grasshills_139 Start: 74255, Stop: 76513, Start Num: 5

Candidate Starts for Grasshills_139:

(Start: 4 @74246 has 50 MA's), (Start: 5 @74255 has 128 MA's), (6, 74294), (8, 74363), (9, 74372), (13, 74468), (15, 74489), (16, 74498), (17, 74519), (19, 74555), (24, 74639), (26, 74648), (38, 74723), (39, 74726), (40, 74747), (41, 74768), (43, 74783), (44, 74792), (45, 74831), (47, 74861), (50, 74999), (51, 75002), (59, 75170), (66, 75269), (68, 75296), (70, 75320), (74, 75368), (75, 75374), (78, 75419), (80, 75428), (81, 75449), (82, 75455), (84, 75473), (86, 75512), (92, 75554), (105, 75722), (108, 75764), (109, 75770), (113, 75791), (114, 75815), (123, 75902), (127, 75944), (130, 75962), (132, 75965), (135, 76043), (138, 76133), (143, 76235), (148, 76322), (150, 76340), (153, 76364),

Gene: Greely_131 Start: 72598, Stop: 74934, Start Num: 5

Candidate Starts for Greely_131:

(Start: 4 @72589 has 50 MA's), (Start: 5 @72598 has 128 MA's), (7, 72694), (8, 72706), (10, 72721), (12, 72778), (14, 72820), (16, 72841), (19, 72901), (21, 72967), (28, 73000), (30, 73015), (32, 73027), (33, 73036), (35, 73039), (36, 73042), (38, 73069), (45, 73171), (47, 73201), (52, 73363), (53, 73369), (61, 73588), (64, 73624), (67, 73690), (69, 73711), (71, 73726), (72, 73732), (74, 73771), (77, 73819), (79, 73828), (80, 73831), (81, 73852), (82, 73858), (84, 73876), (90, 73939), (94, 73981), (101, 74038), (110, 74173), (114, 74215), (118, 74230), (122, 74293), (125, 74344), (126, 74347), (139, 74557), (155, 74848), (156, 74863),

Gene: Grungle_119 Start: 68570, Stop: 70828, Start Num: 5

Candidate Starts for Grungle_119:

(Start: 4 @68561 has 50 MA's), (Start: 5 @68570 has 128 MA's), (6, 68609), (8, 68678), (9, 68687), (13, 68783), (15, 68804), (16, 68813), (17, 68834), (19, 68870), (24, 68954), (26, 68963), (38, 69038), (39, 69041), (40, 69062), (41, 69083), (43, 69098), (44, 69107), (45, 69146), (47, 69176), (50, 69314), (51, 69317), (59, 69485), (64, 69536), (66, 69584), (68, 69611), (70, 69635), (74, 69683), (75, 69689), (78, 69734), (80, 69743), (81, 69764), (82, 69770), (84, 69788), (86, 69827), (92, 69869), (107, 70061), (108, 70079), (109, 70085), (113, 70106), (114, 70130), (123, 70217), (127, 70259), (129, 70274), (130, 70277), (132, 70280), (135, 70358), (138, 70448), (143, 70550), (148, 70637), (150, 70655), (153, 70679),

Gene: Guwapp_131 Start: 70717, Stop: 72975, Start Num: 5

Candidate Starts for Guwapp_131:

(Start: 4 @70708 has 50 MA's), (Start: 5 @70717 has 128 MA's), (6, 70756), (8, 70825), (9, 70834), (13, 70930), (15, 70951), (16, 70960), (17, 70981), (19, 71017), (24, 71101), (26, 71110), (38, 71185), (39, 71188), (40, 71209), (41, 71230), (43, 71245), (44, 71254), (45, 71293), (47, 71323), (50, 71461), (51, 71464), (59, 71632), (64, 71683), (66, 71731), (68, 71758), (70, 71782), (74, 71830), (75, 71836), (78, 71881), (80, 71890), (81, 71911), (82, 71917), (84, 71935), (86, 71974), (92, 72016), (107, 72208), (108, 72226), (109, 72232), (113, 72253), (114, 72277), (123, 72364), (127, 72406), (129, 72421), (130, 72424), (132, 72427), (135, 72505), (138, 72595), (143, 72697), (148, 72784), (150, 72802), (153, 72826),

Gene: Halldule_126 Start: 69587, Stop: 71854, Start Num: 4

Candidate Starts for Halldule_126:

(Start: 4 @69587 has 50 MA's), (Start: 5 @69596 has 128 MA's), (6, 69635), (8, 69704), (9, 69713), (13, 69809), (15, 69830), (16, 69839), (17, 69860), (19, 69896), (24, 69980), (26, 69989), (38, 70064), (39, 70067), (40, 70088), (41, 70109), (43, 70124), (44, 70133), (45, 70172), (47, 70202), (50, 70340), (51, 70343), (59, 70511), (64, 70562), (66, 70610), (68, 70637), (70, 70661), (74, 70709), (75, 70715), (78, 70760), (80, 70769), (81, 70790), (82, 70796), (84, 70814), (86, 70853), (92, 70895), (107, 71087), (108, 71105), (109, 71111), (113, 71132), (114, 71156), (123, 71243), (127, 71285), (129, 71300), (130, 71303), (132, 71306), (135, 71384), (138, 71474), (143, 71576), (148, 71663), (150, 71681), (153, 71705),

Gene: HyRo_123 Start: 71248, Stop: 73506, Start Num: 5

Candidate Starts for HyRo_123:

(Start: 4 @71239 has 50 MA's), (Start: 5 @71248 has 128 MA's), (6, 71287), (8, 71356), (9, 71365), (13, 71461), (15, 71482), (16, 71491), (17, 71512), (19, 71548), (24, 71632), (26, 71641), (38, 71716), (39, 71719), (40, 71740), (41, 71761), (43, 71776), (44, 71785), (45, 71824), (47, 71854), (50, 71992), (51, 71995), (59, 72163), (66, 72262), (68, 72289), (70, 72313), (74, 72361), (75, 72367), (78, 72412), (80, 72421), (81, 72442), (82, 72448), (84, 72466), (86, 72505), (92, 72547), (105, 72715), (108, 72757), (109, 72763), (113, 72784), (114, 72808), (123, 72895), (127, 72937), (129, 72952), (130, 72955), (132, 72958), (135, 73036), (138, 73126), (143, 73228), (148, 73315), (150, 73333), (153, 73357),

Gene: I3_137 Start: 72783, Stop: 75041, Start Num: 5

Candidate Starts for I3_137:

(Start: 4 @72774 has 50 MA's), (Start: 5 @72783 has 128 MA's), (6, 72822), (8, 72891), (9, 72900), (13, 72996), (15, 73017), (16, 73026), (17, 73047), (19, 73083), (24, 73167), (26, 73176), (38, 73251), (39, 73254), (40, 73275), (41, 73296), (43, 73311), (44, 73320), (45, 73359), (47, 73389), (50, 73527), (51, 73530), (59, 73698), (66, 73797), (68, 73824), (70, 73848), (74, 73896), (75, 73902), (78, 73947), (80, 73956), (81, 73977), (82, 73983), (84, 74001), (86, 74040), (92, 74082), (105, 74250), (108, 74292), (109, 74298), (113, 74319), (114, 74343), (123, 74430), (127, 74472), (129, 74487), (130, 74490), (132, 74493), (135, 74571), (138, 74661), (143, 74763), (148, 74850), (150, 74868), (153, 74892),

Gene: IkeLoa_126 Start: 71203, Stop: 73461, Start Num: 5

Candidate Starts for IkeLoa_126:

(Start: 4 @71194 has 50 MA's), (Start: 5 @71203 has 128 MA's), (6, 71242), (8, 71311), (9, 71320), (13, 71416), (15, 71437), (16, 71446), (17, 71467), (19, 71503), (24, 71587), (26, 71596), (38, 71671), (39, 71674), (40, 71695), (41, 71716), (43, 71731), (44, 71740), (45, 71779), (47, 71809), (50, 71947), (51, 71950), (59, 72118), (66, 72217), (68, 72244), (70, 72268), (74, 72316), (75, 72322), (78, 72367), (80, 72376), (81, 72397), (82, 72403), (84, 72421), (86, 72460), (92, 72502), (105, 72670), (108, 72712), (109, 72718), (113, 72739), (114, 72763), (123, 72850), (127, 72892), (129, 72907), (130, 72910), (132, 72913), (135, 72991), (138, 73081), (143, 73183), (148, 73270), (150, 73288), (153,

73312),

Gene: InigoMontoya_135 Start: 71266, Stop: 73524, Start Num: 5

Candidate Starts for InigoMontoya_135:

(Start: 4 @71257 has 50 MA's), (Start: 5 @71266 has 128 MA's), (6, 71305), (8, 71374), (9, 71383), (13, 71479), (15, 71500), (16, 71509), (17, 71530), (19, 71566), (24, 71650), (26, 71659), (38, 71734), (39, 71737), (40, 71758), (41, 71779), (43, 71794), (44, 71803), (45, 71842), (47, 71872), (50, 72010), (51, 72013), (59, 72181), (64, 72232), (66, 72280), (68, 72307), (70, 72331), (74, 72379), (75, 72385), (78, 72430), (80, 72439), (81, 72460), (82, 72466), (84, 72484), (86, 72523), (92, 72565), (107, 72757), (108, 72775), (109, 72781), (113, 72802), (114, 72826), (123, 72913), (127, 72955), (129, 72970), (130, 72973), (132, 72976), (135, 73054), (138, 73144), (143, 73246), (148, 73333), (150, 73351), (153, 73375),

Gene: InterFolia_138 Start: 73548, Stop: 75815, Start Num: 4

Candidate Starts for InterFolia_138:

(Start: 4 @73548 has 50 MA's), (Start: 5 @73557 has 128 MA's), (6, 73596), (8, 73665), (9, 73674), (13, 73770), (15, 73791), (16, 73800), (17, 73821), (19, 73857), (24, 73941), (26, 73950), (38, 74025), (39, 74028), (40, 74049), (41, 74070), (43, 74085), (44, 74094), (45, 74133), (47, 74163), (50, 74301), (51, 74304), (59, 74472), (64, 74523), (66, 74571), (68, 74598), (70, 74622), (74, 74670), (75, 74676), (78, 74721), (80, 74730), (81, 74751), (82, 74757), (84, 74775), (86, 74814), (92, 74856), (107, 75048), (108, 75066), (109, 75072), (113, 75093), (114, 75117), (123, 75204), (127, 75246), (129, 75261), (130, 75264), (132, 75267), (135, 75345), (138, 75435), (143, 75537), (148, 75624), (150, 75642), (153, 75666),

Gene: Iota_127 Start: 71245, Stop: 73512, Start Num: 4

Candidate Starts for Iota_127:

(Start: 4 @71245 has 50 MA's), (Start: 5 @71254 has 128 MA's), (6, 71293), (8, 71362), (9, 71371), (13, 71467), (15, 71488), (16, 71497), (17, 71518), (19, 71554), (24, 71638), (26, 71647), (38, 71722), (39, 71725), (40, 71746), (41, 71767), (43, 71782), (44, 71791), (45, 71830), (47, 71860), (50, 71998), (51, 72001), (59, 72169), (66, 72268), (68, 72295), (70, 72319), (74, 72367), (75, 72373), (78, 72418), (80, 72427), (81, 72448), (82, 72454), (84, 72472), (86, 72511), (92, 72553), (105, 72721), (108, 72763), (109, 72769), (113, 72790), (114, 72814), (123, 72901), (127, 72943), (129, 72958), (130, 72961), (132, 72964), (135, 73042), (138, 73132), (143, 73234), (148, 73321), (150, 73339), (153, 73363),

Gene: Issimir_130 Start: 72262, Stop: 74520, Start Num: 5

Candidate Starts for Issimir_130:

(Start: 4 @72253 has 50 MA's), (Start: 5 @72262 has 128 MA's), (6, 72301), (8, 72370), (9, 72379), (13, 72475), (15, 72496), (16, 72505), (17, 72526), (19, 72562), (24, 72646), (26, 72655), (38, 72730), (39, 72733), (40, 72754), (41, 72775), (43, 72790), (44, 72799), (45, 72838), (47, 72868), (50, 73006), (51, 73009), (59, 73177), (64, 73228), (66, 73276), (68, 73303), (70, 73327), (74, 73375), (75, 73381), (78, 73426), (80, 73435), (81, 73456), (82, 73462), (84, 73480), (86, 73519), (92, 73561), (107, 73753), (108, 73771), (109, 73777), (113, 73798), (114, 73822), (123, 73909), (127, 73951), (129, 73966), (130, 73969), (132, 73972), (135, 74050), (138, 74140), (143, 74242), (148, 74329), (150, 74347), (153, 74371),

Gene: Izajani_132 Start: 72468, Stop: 74726, Start Num: 5

Candidate Starts for Izajani_132:

(Start: 4 @72459 has 50 MA's), (Start: 5 @72468 has 128 MA's), (6, 72507), (8, 72576), (9, 72585), (13, 72681), (15, 72702), (16, 72711), (17, 72732), (19, 72768), (24, 72852), (26, 72861), (38, 72936), (39, 72939), (40, 72960), (41, 72981), (43, 72996), (44, 73005), (45, 73044), (47, 73074), (50, 73212), (51, 73215), (59, 73383), (66, 73482), (68, 73509), (70, 73533), (74, 73581), (75, 73587), (78, 73632), (80, 73641), (81, 73662), (82, 73668), (84, 73686), (86, 73725), (92, 73767), (105, 73935), (108,

73977), (109, 73983), (113, 74004), (114, 74028), (123, 74115), (127, 74157), (129, 74172), (130, 74175), (132, 74178), (135, 74256), (138, 74346), (143, 74448), (148, 74535), (150, 74553), (153, 74577),

Gene: JPickles_129 Start: 70057, Stop: 72315, Start Num: 5

Candidate Starts for JPickles_129:

(Start: 4 @70048 has 50 MA's), (Start: 5 @70057 has 128 MA's), (6, 70096), (8, 70165), (9, 70174), (13, 70270), (15, 70291), (16, 70300), (17, 70321), (19, 70357), (24, 70441), (26, 70450), (38, 70525), (39, 70528), (40, 70549), (41, 70570), (43, 70585), (44, 70594), (45, 70633), (47, 70663), (50, 70801), (51, 70804), (59, 70972), (64, 71023), (66, 71071), (68, 71098), (70, 71122), (74, 71170), (75, 71176), (78, 71221), (80, 71230), (81, 71251), (82, 71257), (84, 71275), (86, 71314), (92, 71356), (107, 71548), (108, 71566), (109, 71572), (113, 71593), (114, 71617), (123, 71704), (127, 71746), (129, 71761), (130, 71764), (132, 71767), (135, 71845), (138, 71935), (143, 72037), (148, 72124), (150, 72142), (153, 72166),

Gene: Janiyra_135 Start: 72232, Stop: 74490, Start Num: 5

Candidate Starts for Janiyra_135:

(Start: 4 @72223 has 50 MA's), (Start: 5 @72232 has 128 MA's), (6, 72271), (8, 72340), (9, 72349), (13, 72445), (15, 72466), (16, 72475), (17, 72496), (19, 72532), (24, 72616), (26, 72625), (38, 72700), (39, 72703), (40, 72724), (41, 72745), (43, 72760), (44, 72769), (45, 72808), (47, 72838), (50, 72976), (51, 72979), (59, 73147), (64, 73198), (66, 73246), (68, 73273), (70, 73297), (74, 73345), (75, 73351), (78, 73396), (80, 73405), (81, 73426), (82, 73432), (84, 73450), (86, 73489), (92, 73531), (107, 73723), (108, 73741), (109, 73747), (113, 73768), (114, 73792), (123, 73879), (127, 73921), (129, 73936), (130, 73939), (132, 73942), (135, 74020), (138, 74110), (143, 74212), (148, 74299), (150, 74317), (153, 74341),

Gene: JayJay_137 Start: 73263, Stop: 75521, Start Num: 5

Candidate Starts for JayJay_137:

(Start: 4 @73254 has 50 MA's), (Start: 5 @73263 has 128 MA's), (6, 73302), (8, 73371), (9, 73380), (13, 73476), (15, 73497), (16, 73506), (17, 73527), (19, 73563), (24, 73647), (26, 73656), (38, 73731), (39, 73734), (40, 73755), (41, 73776), (43, 73791), (44, 73800), (45, 73839), (47, 73869), (50, 74007), (51, 74010), (59, 74178), (66, 74277), (68, 74304), (70, 74328), (74, 74376), (75, 74382), (78, 74427), (80, 74436), (81, 74457), (82, 74463), (84, 74481), (86, 74520), (92, 74562), (105, 74730), (108, 74772), (109, 74778), (113, 74799), (114, 74823), (123, 74910), (127, 74952), (129, 74967), (130, 74970), (132, 74973), (135, 75051), (138, 75141), (143, 75243), (148, 75330), (150, 75348), (153, 75372),

Gene: Jaygup_132 Start: 71582, Stop: 73840, Start Num: 5

Candidate Starts for Jaygup_132:

(Start: 4 @71573 has 50 MA's), (Start: 5 @71582 has 128 MA's), (6, 71621), (8, 71690), (9, 71699), (13, 71795), (15, 71816), (16, 71825), (17, 71846), (19, 71882), (24, 71966), (26, 71975), (38, 72050), (39, 72053), (40, 72074), (41, 72095), (43, 72110), (44, 72119), (45, 72158), (47, 72188), (50, 72326), (51, 72329), (59, 72497), (64, 72548), (66, 72596), (68, 72623), (70, 72647), (74, 72695), (75, 72701), (78, 72746), (80, 72755), (81, 72776), (82, 72782), (84, 72800), (86, 72839), (92, 72881), (107, 73073), (108, 73091), (109, 73097), (113, 73118), (114, 73142), (123, 73229), (127, 73271), (129, 73286), (130, 73289), (132, 73292), (135, 73370), (138, 73460), (143, 73562), (148, 73649), (150, 73667), (153, 73691),

Gene: Jedediah_135 Start: 72115, Stop: 74373, Start Num: 5

Candidate Starts for Jedediah_135:

(Start: 4 @72106 has 50 MA's), (Start: 5 @72115 has 128 MA's), (6, 72154), (8, 72223), (9, 72232), (13, 72328), (15, 72349), (16, 72358), (17, 72379), (19, 72415), (24, 72499), (26, 72508), (38, 72583), (39, 72586), (40, 72607), (41, 72628), (43, 72643), (44, 72652), (45, 72691), (47, 72721), (50, 72859),

(51, 72862), (59, 73030), (64, 73081), (66, 73129), (68, 73156), (70, 73180), (74, 73228), (75, 73234), (78, 73279), (80, 73288), (81, 73309), (82, 73315), (84, 73333), (86, 73372), (92, 73414), (107, 73606), (108, 73624), (109, 73630), (113, 73651), (114, 73675), (123, 73762), (127, 73804), (129, 73819), (130, 73822), (132, 73825), (135, 73903), (138, 73993), (143, 74095), (148, 74182), (150, 74200), (153, 74224),

Gene: Jemmno_132 Start: 71562, Stop: 73820, Start Num: 5

Candidate Starts for Jemmno_132:

(Start: 4 @71553 has 50 MA's), (Start: 5 @71562 has 128 MA's), (6, 71601), (8, 71670), (9, 71679), (13, 71775), (15, 71796), (16, 71805), (17, 71826), (19, 71862), (24, 71946), (26, 71955), (38, 72030), (39, 72033), (40, 72054), (41, 72075), (43, 72090), (44, 72099), (45, 72138), (47, 72168), (50, 72306), (51, 72309), (59, 72477), (64, 72528), (66, 72576), (68, 72603), (70, 72627), (74, 72675), (75, 72681), (78, 72726), (80, 72735), (81, 72756), (82, 72762), (84, 72780), (86, 72819), (92, 72861), (107, 73053), (108, 73071), (109, 73077), (113, 73098), (114, 73122), (123, 73209), (127, 73251), (129, 73266), (130, 73269), (132, 73272), (135, 73350), (138, 73440), (143, 73542), (148, 73629), (150, 73647), (153, 73671),

Gene: Jessibeth14_131 Start: 72094, Stop: 74352, Start Num: 5

Candidate Starts for Jessibeth14_131:

(Start: 4 @72085 has 50 MA's), (Start: 5 @72094 has 128 MA's), (6, 72133), (8, 72202), (9, 72211), (13, 72307), (15, 72328), (16, 72337), (17, 72358), (19, 72394), (24, 72478), (26, 72487), (38, 72562), (39, 72565), (40, 72586), (41, 72607), (43, 72622), (44, 72631), (45, 72670), (47, 72700), (50, 72838), (51, 72841), (59, 73009), (66, 73108), (68, 73135), (70, 73159), (74, 73207), (75, 73213), (78, 73258), (80, 73267), (81, 73288), (82, 73294), (84, 73312), (86, 73351), (92, 73393), (105, 73561), (108, 73603), (109, 73609), (113, 73630), (114, 73654), (123, 73741), (127, 73783), (129, 73798), (130, 73801), (132, 73804), (135, 73882), (138, 73972), (143, 74074), (148, 74161), (150, 74179), (153, 74203),

Gene: Jezreel_130 Start: 72239, Stop: 74506, Start Num: 4

Candidate Starts for Jezreel_130:

(Start: 4 @72239 has 50 MA's), (Start: 5 @72248 has 128 MA's), (6, 72287), (8, 72356), (9, 72365), (13, 72461), (15, 72482), (16, 72491), (17, 72512), (19, 72548), (24, 72632), (26, 72641), (38, 72716), (39, 72719), (40, 72740), (41, 72761), (43, 72776), (44, 72785), (45, 72824), (47, 72854), (50, 72992), (51, 72995), (59, 73163), (66, 73262), (68, 73289), (70, 73313), (74, 73361), (75, 73367), (78, 73412), (80, 73421), (81, 73442), (82, 73448), (84, 73466), (86, 73505), (92, 73547), (105, 73715), (108, 73757), (109, 73763), (113, 73784), (114, 73808), (123, 73895), (127, 73937), (129, 73952), (130, 73955), (132, 73958), (135, 74036), (138, 74126), (143, 74228), (148, 74315), (150, 74333), (153, 74357),

Gene: JigglyPuff_140 Start: 74412, Stop: 76670, Start Num: 5

Candidate Starts for JigglyPuff_140:

(Start: 4 @74403 has 50 MA's), (Start: 5 @74412 has 128 MA's), (6, 74451), (8, 74520), (9, 74529), (13, 74625), (15, 74646), (16, 74655), (17, 74676), (19, 74712), (24, 74796), (26, 74805), (38, 74880), (39, 74883), (40, 74904), (41, 74925), (43, 74940), (44, 74949), (45, 74988), (47, 75018), (50, 75156), (51, 75159), (59, 75327), (64, 75378), (66, 75426), (68, 75453), (70, 75477), (74, 75525), (75, 75531), (78, 75576), (80, 75585), (81, 75606), (82, 75612), (84, 75630), (86, 75669), (92, 75711), (105, 75879), (108, 75921), (109, 75927), (113, 75948), (114, 75972), (123, 76059), (127, 76101), (129, 76116), (130, 76119), (132, 76122), (135, 76200), (138, 76290), (143, 76392), (148, 76479), (150, 76497), (153, 76521),

Gene: JulietS_127 Start: 69449, Stop: 71707, Start Num: 5

Candidate Starts for JulietS_127:

(Start: 4 @69440 has 50 MA's), (Start: 5 @69449 has 128 MA's), (6, 69488), (8, 69557), (9, 69566), (13, 69662), (15, 69683), (16, 69692), (17, 69713), (19, 69749), (24, 69833), (26, 69842), (38, 69917), (39, 69920), (40, 69941), (41, 69962), (43, 69977), (44, 69986), (45, 70025), (47, 70055), (50, 70193), (51, 70196), (59, 70364), (64, 70415), (66, 70463), (68, 70490), (70, 70514), (74, 70562), (75, 70568), (78, 70613), (80, 70622), (81, 70643), (82, 70649), (84, 70667), (86, 70706), (92, 70748), (105, 70916), (108, 70958), (109, 70964), (113, 70985), (114, 71009), (123, 71096), (127, 71138), (129, 71153), (130, 71156), (132, 71159), (135, 71237), (138, 71327), (143, 71429), (148, 71516), (150, 71534), (153, 71558),

Gene: JustHall_130 Start: 72081, Stop: 74348, Start Num: 4

Candidate Starts for JustHall_130:

(Start: 4 @72081 has 50 MA's), (Start: 5 @72090 has 128 MA's), (6, 72129), (8, 72198), (9, 72207), (13, 72303), (15, 72324), (16, 72333), (17, 72354), (19, 72390), (24, 72474), (26, 72483), (38, 72558), (39, 72561), (40, 72582), (41, 72603), (43, 72618), (44, 72627), (45, 72666), (47, 72696), (50, 72834), (51, 72837), (59, 73005), (64, 73056), (66, 73104), (68, 73131), (70, 73155), (74, 73203), (75, 73209), (78, 73254), (80, 73263), (81, 73284), (82, 73290), (84, 73308), (86, 73347), (92, 73389), (107, 73581), (108, 73599), (109, 73605), (113, 73626), (114, 73650), (123, 73737), (127, 73779), (129, 73794), (130, 73797), (132, 73800), (135, 73878), (138, 73968), (143, 74070), (148, 74157), (150, 74175), (153, 74199),

Gene: Kamryn_132 Start: 72891, Stop: 75158, Start Num: 4

Candidate Starts for Kamryn_132:

(Start: 4 @72891 has 50 MA's), (Start: 5 @72900 has 128 MA's), (6, 72939), (8, 73008), (9, 73017), (13, 73113), (15, 73134), (16, 73143), (17, 73164), (19, 73200), (24, 73284), (26, 73293), (38, 73368), (39, 73371), (40, 73392), (41, 73413), (43, 73428), (44, 73437), (45, 73476), (47, 73506), (50, 73644), (51, 73647), (59, 73815), (66, 73914), (68, 73941), (70, 73965), (74, 74013), (75, 74019), (78, 74064), (80, 74073), (81, 74094), (82, 74100), (84, 74118), (86, 74157), (92, 74199), (105, 74367), (108, 74409), (109, 74415), (113, 74436), (114, 74460), (123, 74547), (127, 74589), (129, 74604), (130, 74607), (132, 74610), (135, 74688), (138, 74778), (143, 74880), (148, 74967), (150, 74985), (153, 75009),

Gene: Kboogie_136 Start: 71255, Stop: 73513, Start Num: 5

Candidate Starts for Kboogie_136:

(Start: 4 @71246 has 50 MA's), (Start: 5 @71255 has 128 MA's), (6, 71294), (8, 71363), (9, 71372), (13, 71468), (15, 71489), (16, 71498), (17, 71519), (19, 71555), (24, 71639), (26, 71648), (38, 71723), (39, 71726), (40, 71747), (41, 71768), (43, 71783), (44, 71792), (45, 71831), (47, 71861), (50, 71999), (51, 72002), (59, 72170), (64, 72221), (66, 72269), (68, 72296), (70, 72320), (74, 72368), (75, 72374), (78, 72419), (80, 72428), (81, 72449), (82, 72455), (84, 72473), (86, 72512), (92, 72554), (107, 72746), (108, 72764), (109, 72770), (113, 72791), (114, 72815), (123, 72902), (127, 72944), (129, 72959), (130, 72962), (132, 72965), (135, 73043), (138, 73133), (143, 73235), (148, 73322), (150, 73340), (153, 73364),

Gene: Khaleesi_131 Start: 72197, Stop: 74455, Start Num: 5

Candidate Starts for Khaleesi_131:

(Start: 4 @72188 has 50 MA's), (Start: 5 @72197 has 128 MA's), (6, 72236), (8, 72305), (9, 72314), (13, 72410), (15, 72431), (16, 72440), (17, 72461), (19, 72497), (24, 72581), (26, 72590), (38, 72665), (39, 72668), (40, 72689), (41, 72710), (43, 72725), (44, 72734), (45, 72773), (47, 72803), (50, 72941), (51, 72944), (59, 73112), (66, 73211), (68, 73238), (70, 73262), (74, 73310), (75, 73316), (78, 73361), (80, 73370), (81, 73391), (82, 73397), (84, 73415), (86, 73454), (92, 73496), (105, 73664), (108, 73706), (109, 73712), (113, 73733), (114, 73757), (123, 73844), (127, 73886), (129, 73901), (130, 73904), (132, 73907), (135, 73985), (138, 74075), (143, 74177), (148, 74264), (150, 74282), (153, 74306),

Gene: Koguma_129 Start: 69732, Stop: 71990, Start Num: 5

Candidate Starts for Koguma_129:

(Start: 4 @69723 has 50 MA's), (Start: 5 @69732 has 128 MA's), (6, 69771), (8, 69840), (9, 69849), (13, 69945), (15, 69966), (16, 69975), (17, 69996), (19, 70032), (24, 70116), (26, 70125), (38, 70200), (39, 70203), (40, 70224), (41, 70245), (43, 70260), (44, 70269), (45, 70308), (47, 70338), (50, 70476), (51, 70479), (59, 70647), (64, 70698), (66, 70746), (68, 70773), (70, 70797), (74, 70845), (75, 70851), (78, 70896), (80, 70905), (81, 70926), (82, 70932), (84, 70950), (86, 70989), (92, 71031), (107, 71223), (108, 71241), (109, 71247), (113, 71268), (114, 71292), (123, 71379), (127, 71421), (129, 71436), (130, 71439), (132, 71442), (135, 71520), (138, 71610), (143, 71712), (148, 71799), (150, 71817), (153, 71841),

Gene: LRRHood_125 Start: 71540, Stop: 73798, Start Num: 5

Candidate Starts for LRRHood_125:

(Start: 4 @71531 has 50 MA's), (Start: 5 @71540 has 128 MA's), (6, 71579), (8, 71648), (9, 71657), (13, 71753), (15, 71774), (16, 71783), (17, 71804), (19, 71840), (24, 71924), (26, 71933), (38, 72008), (39, 72011), (40, 72032), (41, 72053), (43, 72068), (44, 72077), (45, 72116), (47, 72146), (50, 72284), (51, 72287), (59, 72455), (64, 72506), (66, 72554), (68, 72581), (70, 72605), (74, 72653), (75, 72659), (78, 72704), (80, 72713), (81, 72734), (82, 72740), (84, 72758), (86, 72797), (92, 72839), (107, 73031), (108, 73049), (109, 73055), (113, 73076), (114, 73100), (123, 73187), (127, 73229), (129, 73244), (130, 73247), (132, 73250), (135, 73328), (138, 73418), (143, 73520), (148, 73607), (150, 73625), (153, 73649),

Gene: Latch_133 Start: 71305, Stop: 73563, Start Num: 5

Candidate Starts for Latch_133:

(Start: 4 @71296 has 50 MA's), (Start: 5 @71305 has 128 MA's), (6, 71344), (8, 71413), (9, 71422), (13, 71518), (15, 71539), (16, 71548), (17, 71569), (19, 71605), (24, 71689), (26, 71698), (38, 71773), (39, 71776), (40, 71797), (41, 71818), (43, 71833), (44, 71842), (45, 71881), (47, 71911), (50, 72049), (51, 72052), (59, 72220), (64, 72271), (66, 72319), (68, 72346), (70, 72370), (74, 72418), (75, 72424), (78, 72469), (80, 72478), (81, 72499), (82, 72505), (84, 72523), (86, 72562), (92, 72604), (107, 72796), (108, 72814), (109, 72820), (113, 72841), (114, 72865), (123, 72952), (127, 72994), (129, 73009), (130, 73012), (132, 73015), (135, 73093), (138, 73183), (143, 73285), (148, 73372), (150, 73390), (153, 73414),

Gene: Lee7_130 Start: 72821, Stop: 75079, Start Num: 5

Candidate Starts for Lee7_130:

(Start: 4 @72812 has 50 MA's), (Start: 5 @72821 has 128 MA's), (6, 72860), (8, 72929), (9, 72938), (13, 73034), (15, 73055), (16, 73064), (17, 73085), (19, 73121), (24, 73205), (26, 73214), (38, 73289), (39, 73292), (40, 73313), (41, 73334), (43, 73349), (44, 73358), (45, 73397), (47, 73427), (50, 73565), (51, 73568), (59, 73736), (66, 73835), (68, 73862), (70, 73886), (74, 73934), (75, 73940), (78, 73985), (80, 73994), (81, 74015), (82, 74021), (84, 74039), (86, 74078), (92, 74120), (105, 74288), (108, 74330), (109, 74336), (113, 74357), (114, 74381), (123, 74468), (127, 74510), (129, 74525), (130, 74528), (132, 74531), (135, 74609), (138, 74699), (143, 74801), (148, 74888), (150, 74906), (153, 74930),

Gene: Lethe_132 Start: 72259, Stop: 74517, Start Num: 5

Candidate Starts for Lethe_132:

(Start: 4 @72250 has 50 MA's), (Start: 5 @72259 has 128 MA's), (6, 72298), (8, 72367), (9, 72376), (13, 72472), (15, 72493), (16, 72502), (17, 72523), (19, 72559), (24, 72643), (26, 72652), (38, 72727), (39, 72730), (40, 72751), (41, 72772), (43, 72787), (44, 72796), (45, 72835), (47, 72865), (50, 73003), (51, 73006), (59, 73174), (66, 73273), (68, 73300), (70, 73324), (74, 73372), (75, 73378), (78, 73423), (80, 73432), (81, 73453), (82, 73459), (84, 73477), (86, 73516), (92, 73558), (105, 73726), (108, 73768), (109, 73774), (113, 73795), (114, 73819), (123, 73906), (127, 73948), (129, 73963), (130, 73966), (132, 73969), (135, 74047), (138, 74137), (143, 74239), (148, 74326), (150, 74344), (153,

74368),

Gene: LifeSavor_130 Start: 71514, Stop: 73772, Start Num: 5

Candidate Starts for LifeSavor_130:

(Start: 4 @71505 has 50 MA's), (Start: 5 @71514 has 128 MA's), (6, 71553), (8, 71622), (9, 71631), (13, 71727), (15, 71748), (16, 71757), (17, 71778), (19, 71814), (24, 71898), (26, 71907), (38, 71982), (39, 71985), (40, 72006), (41, 72027), (43, 72042), (44, 72051), (45, 72090), (47, 72120), (50, 72258), (51, 72261), (59, 72429), (64, 72480), (66, 72528), (68, 72555), (70, 72579), (74, 72627), (75, 72633), (78, 72678), (80, 72687), (81, 72708), (82, 72714), (84, 72732), (86, 72771), (92, 72813), (107, 73005), (108, 73023), (109, 73029), (113, 73050), (114, 73074), (123, 73161), (127, 73203), (129, 73218), (130, 73221), (132, 73224), (135, 73302), (138, 73392), (143, 73494), (148, 73581), (150, 73599), (153, 73623),

Gene: LinStu_130 Start: 72149, Stop: 74407, Start Num: 5

Candidate Starts for LinStu_130:

(Start: 4 @72140 has 50 MA's), (Start: 5 @72149 has 128 MA's), (6, 72188), (8, 72257), (9, 72266), (13, 72362), (15, 72383), (16, 72392), (17, 72413), (19, 72449), (24, 72533), (26, 72542), (38, 72617), (39, 72620), (40, 72641), (41, 72662), (43, 72677), (44, 72686), (45, 72725), (47, 72755), (50, 72893), (51, 72896), (59, 73064), (66, 73163), (68, 73190), (70, 73214), (74, 73262), (75, 73268), (78, 73313), (80, 73322), (81, 73343), (82, 73349), (84, 73367), (86, 73406), (92, 73448), (108, 73658), (109, 73664), (113, 73685), (114, 73709), (123, 73796), (127, 73838), (129, 73853), (130, 73856), (132, 73859), (135, 73937), (138, 74027), (143, 74129), (148, 74216), (150, 74234), (153, 74258),

Gene: Littleton_132 Start: 71634, Stop: 73892, Start Num: 5

Candidate Starts for Littleton_132:

(Start: 4 @71625 has 50 MA's), (Start: 5 @71634 has 128 MA's), (6, 71673), (8, 71742), (9, 71751), (13, 71847), (15, 71868), (16, 71877), (17, 71898), (19, 71934), (24, 72018), (26, 72027), (38, 72102), (39, 72105), (40, 72126), (41, 72147), (43, 72162), (44, 72171), (45, 72210), (47, 72240), (50, 72378), (51, 72381), (59, 72549), (64, 72600), (66, 72648), (68, 72675), (70, 72699), (74, 72747), (75, 72753), (78, 72798), (80, 72807), (81, 72828), (82, 72834), (84, 72852), (86, 72891), (92, 72933), (107, 73125), (108, 73143), (109, 73149), (113, 73170), (114, 73194), (123, 73281), (127, 73323), (129, 73338), (130, 73341), (132, 73344), (135, 73422), (138, 73512), (143, 73614), (148, 73701), (150, 73719), (153, 73743),

Gene: Loanshark_131 Start: 72156, Stop: 74423, Start Num: 4

Candidate Starts for Loanshark_131:

(Start: 4 @72156 has 50 MA's), (Start: 5 @72165 has 128 MA's), (6, 72204), (8, 72273), (9, 72282), (13, 72378), (15, 72399), (16, 72408), (17, 72429), (19, 72465), (24, 72549), (26, 72558), (38, 72633), (39, 72636), (40, 72657), (41, 72678), (43, 72693), (44, 72702), (45, 72741), (47, 72771), (50, 72909), (51, 72912), (59, 73080), (66, 73179), (68, 73206), (70, 73230), (74, 73278), (75, 73284), (78, 73329), (80, 73338), (81, 73359), (82, 73365), (84, 73383), (86, 73422), (92, 73464), (105, 73632), (108, 73674), (109, 73680), (113, 73701), (114, 73725), (123, 73812), (127, 73854), (129, 73869), (130, 73872), (132, 73875), (135, 73953), (138, 74043), (143, 74145), (148, 74232), (150, 74250), (153, 74274),

Gene: LolaVinca_132 Start: 72508, Stop: 74766, Start Num: 5

Candidate Starts for LolaVinca_132:

(Start: 4 @72499 has 50 MA's), (Start: 5 @72508 has 128 MA's), (6, 72547), (8, 72616), (9, 72625), (13, 72721), (15, 72742), (16, 72751), (17, 72772), (19, 72808), (24, 72892), (26, 72901), (38, 72976), (39, 72979), (40, 73000), (41, 73021), (43, 73036), (44, 73045), (45, 73084), (47, 73114), (50, 73252), (51, 73255), (59, 73423), (64, 73474), (66, 73522), (68, 73549), (70, 73573), (74, 73621), (75, 73627), (78, 73672), (80, 73681), (81, 73702), (82, 73708), (84, 73726), (86, 73765), (92, 73807), (107, 73999), (108, 74017), (109, 74023), (113, 74044), (114, 74068), (123, 74155), (127, 74197), (129, 74212),

(130, 74215), (132, 74218), (135, 74296), (138, 74386), (143, 74488), (148, 74575), (150, 74593), (153, 74617),

Gene: LordLeafolot_136 Start: 73474, Stop: 75732, Start Num: 5

Candidate Starts for LordLeafolot_136:

(Start: 4 @73465 has 50 MA's), (Start: 5 @73474 has 128 MA's), (6, 73513), (8, 73582), (9, 73591), (13, 73687), (15, 73708), (16, 73717), (17, 73738), (19, 73774), (24, 73858), (26, 73867), (38, 73942), (39, 73945), (40, 73966), (41, 73987), (43, 74002), (44, 74011), (45, 74050), (47, 74080), (50, 74218), (51, 74221), (59, 74389), (66, 74488), (68, 74515), (70, 74539), (74, 74587), (75, 74593), (78, 74638), (80, 74647), (81, 74668), (82, 74674), (84, 74692), (86, 74731), (92, 74773), (105, 74941), (108, 74983), (109, 74989), (113, 75010), (114, 75034), (123, 75121), (127, 75163), (129, 75178), (130, 75181), (132, 75184), (135, 75262), (138, 75352), (143, 75454), (148, 75541), (150, 75559), (153, 75583),

Gene: Lukilu_122 Start: 72550, Stop: 74808, Start Num: 5

Candidate Starts for Lukilu_122:

(Start: 4 @72541 has 50 MA's), (Start: 5 @72550 has 128 MA's), (6, 72589), (8, 72658), (9, 72667), (13, 72763), (15, 72784), (16, 72793), (17, 72814), (19, 72850), (24, 72934), (26, 72943), (38, 73018), (39, 73021), (40, 73042), (41, 73063), (43, 73078), (44, 73087), (45, 73126), (47, 73156), (50, 73294), (51, 73297), (59, 73465), (66, 73564), (68, 73591), (70, 73615), (74, 73663), (75, 73669), (78, 73714), (80, 73723), (81, 73744), (82, 73750), (84, 73768), (86, 73807), (92, 73849), (105, 74017), (108, 74059), (109, 74065), (113, 74086), (114, 74110), (123, 74197), (127, 74239), (129, 74254), (130, 74257), (132, 74260), (135, 74338), (138, 74428), (143, 74530), (148, 74617), (150, 74635), (153, 74659),

Gene: Maby2021_132 Start: 72281, Stop: 74539, Start Num: 5

Candidate Starts for Maby2021_132:

(Start: 4 @72272 has 50 MA's), (Start: 5 @72281 has 128 MA's), (6, 72320), (8, 72389), (9, 72398), (13, 72494), (15, 72515), (16, 72524), (17, 72545), (19, 72581), (24, 72665), (26, 72674), (38, 72749), (39, 72752), (40, 72773), (41, 72794), (43, 72809), (44, 72818), (45, 72857), (47, 72887), (50, 73025), (51, 73028), (59, 73196), (66, 73295), (68, 73322), (70, 73346), (74, 73394), (75, 73400), (78, 73445), (80, 73454), (81, 73475), (82, 73481), (84, 73499), (86, 73538), (92, 73580), (105, 73748), (108, 73790), (109, 73796), (113, 73817), (114, 73841), (123, 73928), (127, 73970), (129, 73985), (130, 73988), (132, 73991), (135, 74069), (138, 74159), (143, 74261), (148, 74348), (150, 74366), (153, 74390),

Gene: Mangeria_132 Start: 72342, Stop: 74609, Start Num: 4

Candidate Starts for Mangeria_132:

(Start: 4 @72342 has 50 MA's), (Start: 5 @72351 has 128 MA's), (6, 72390), (8, 72459), (9, 72468), (13, 72564), (15, 72585), (16, 72594), (17, 72615), (19, 72651), (24, 72735), (26, 72744), (38, 72819), (39, 72822), (40, 72843), (41, 72864), (43, 72879), (44, 72888), (45, 72927), (47, 72957), (50, 73095), (51, 73098), (59, 73266), (66, 73365), (68, 73392), (70, 73416), (74, 73464), (75, 73470), (78, 73515), (80, 73524), (81, 73545), (82, 73551), (84, 73569), (86, 73608), (92, 73650), (105, 73818), (108, 73860), (109, 73866), (113, 73887), (114, 73911), (123, 73998), (127, 74040), (129, 74055), (130, 74058), (132, 74061), (135, 74139), (138, 74229), (143, 74331), (148, 74418), (150, 74436), (153, 74460),

Gene: Matsumoto_129 Start: 71142, Stop: 73400, Start Num: 5

Candidate Starts for Matsumoto_129:

(Start: 4 @71133 has 50 MA's), (Start: 5 @71142 has 128 MA's), (6, 71181), (8, 71250), (9, 71259), (13, 71355), (15, 71376), (16, 71385), (17, 71406), (19, 71442), (24, 71526), (26, 71535), (38, 71610), (39, 71613), (40, 71634), (41, 71655), (43, 71670), (44, 71679), (45, 71718), (47, 71748), (50, 71886), (51, 71889), (59, 72057), (64, 72108), (66, 72156), (68, 72183), (70, 72207), (74, 72255), (75, 72261),

(78, 72306), (80, 72315), (81, 72336), (82, 72342), (84, 72360), (86, 72399), (92, 72441), (107, 72633), (108, 72651), (109, 72657), (113, 72678), (114, 72702), (123, 72789), (127, 72831), (129, 72846), (130, 72849), (132, 72852), (135, 72930), (138, 73020), (143, 73122), (148, 73209), (150, 73227), (153, 73251),

Gene: McGee_134 Start: 70896, Stop: 73154, Start Num: 5

Candidate Starts for McGee_134:

(Start: 4 @70887 has 50 MA's), (Start: 5 @70896 has 128 MA's), (6, 70935), (8, 71004), (9, 71013), (13, 71109), (15, 71130), (16, 71139), (17, 71160), (19, 71196), (24, 71280), (26, 71289), (38, 71364), (39, 71367), (40, 71388), (41, 71409), (43, 71424), (44, 71433), (45, 71472), (47, 71502), (50, 71640), (51, 71643), (59, 71811), (64, 71862), (66, 71910), (68, 71937), (70, 71961), (74, 72009), (75, 72015), (78, 72060), (80, 72069), (81, 72090), (82, 72096), (84, 72114), (86, 72153), (92, 72195), (105, 72363), (108, 72405), (109, 72411), (113, 72432), (114, 72456), (123, 72543), (127, 72585), (129, 72600), (130, 72603), (132, 72606), (135, 72684), (138, 72774), (143, 72876), (148, 72963), (150, 72981), (153, 73005),

Gene: McWolfish_130 Start: 72061, Stop: 74328, Start Num: 4

Candidate Starts for McWolfish_130:

(Start: 4 @72061 has 50 MA's), (Start: 5 @72070 has 128 MA's), (6, 72109), (8, 72178), (9, 72187), (13, 72283), (15, 72304), (16, 72313), (17, 72334), (19, 72370), (24, 72454), (26, 72463), (38, 72538), (39, 72541), (40, 72562), (41, 72583), (43, 72598), (44, 72607), (45, 72646), (47, 72676), (50, 72814), (51, 72817), (59, 72985), (66, 73084), (68, 73111), (70, 73135), (74, 73183), (75, 73189), (78, 73234), (80, 73243), (81, 73264), (82, 73270), (84, 73288), (86, 73327), (92, 73369), (105, 73537), (108, 73579), (109, 73585), (113, 73606), (114, 73630), (123, 73717), (127, 73759), (129, 73774), (130, 73777), (132, 73780), (135, 73858), (138, 73948), (143, 74050), (148, 74137), (150, 74155), (153, 74179),

Gene: Megamind_131 Start: 71954, Stop: 74212, Start Num: 5

Candidate Starts for Megamind_131:

(Start: 4 @71945 has 50 MA's), (Start: 5 @71954 has 128 MA's), (6, 71993), (8, 72062), (9, 72071), (13, 72167), (15, 72188), (16, 72197), (17, 72218), (19, 72254), (24, 72338), (26, 72347), (38, 72422), (39, 72425), (40, 72446), (41, 72467), (43, 72482), (44, 72491), (45, 72530), (47, 72560), (50, 72698), (51, 72701), (59, 72869), (66, 72968), (68, 72995), (70, 73019), (74, 73067), (75, 73073), (78, 73118), (80, 73127), (81, 73148), (82, 73154), (84, 73172), (86, 73211), (92, 73253), (105, 73421), (108, 73463), (109, 73469), (113, 73490), (114, 73514), (123, 73601), (127, 73643), (129, 73658), (130, 73661), (132, 73664), (135, 73742), (138, 73832), (143, 73934), (148, 74021), (150, 74039), (153, 74063),

Gene: Melpomini_126 Start: 69411, Stop: 71678, Start Num: 4

Candidate Starts for Melpomini_126:

(Start: 4 @69411 has 50 MA's), (Start: 5 @69420 has 128 MA's), (6, 69459), (8, 69528), (9, 69537), (13, 69633), (15, 69654), (16, 69663), (17, 69684), (19, 69720), (24, 69804), (26, 69813), (38, 69888), (39, 69891), (40, 69912), (41, 69933), (43, 69948), (44, 69957), (45, 69996), (47, 70026), (50, 70164), (51, 70167), (59, 70335), (66, 70434), (68, 70461), (70, 70485), (74, 70533), (75, 70539), (78, 70584), (80, 70593), (81, 70614), (82, 70620), (84, 70638), (86, 70677), (92, 70719), (105, 70887), (108, 70929), (109, 70935), (113, 70956), (114, 70980), (123, 71067), (127, 71109), (129, 71124), (130, 71127), (132, 71130), (135, 71208), (138, 71298), (143, 71400), (148, 71487), (150, 71505), (153, 71529),

Gene: MikeLiesIn_133 Start: 72311, Stop: 74569, Start Num: 5

Candidate Starts for MikeLiesIn_133:

(Start: 4 @72302 has 50 MA's), (Start: 5 @72311 has 128 MA's), (6, 72350), (8, 72419), (9, 72428), (13, 72524), (15, 72545), (16, 72554), (17, 72575), (19, 72611), (24, 72695), (26, 72704), (38, 72779),

(39, 72782), (40, 72803), (41, 72824), (43, 72839), (44, 72848), (45, 72887), (47, 72917), (50, 73055), (51, 73058), (59, 73226), (66, 73325), (68, 73352), (70, 73376), (74, 73424), (75, 73430), (78, 73475), (80, 73484), (81, 73505), (82, 73511), (84, 73529), (86, 73568), (92, 73610), (105, 73778), (108, 73820), (109, 73826), (113, 73847), (114, 73871), (123, 73958), (127, 74000), (129, 74015), (130, 74018), (132, 74021), (135, 74099), (138, 74189), (143, 74291), (148, 74378), (150, 74396), (153, 74420),

Gene: Mikro_129 Start: 73524, Stop: 75782, Start Num: 5

Candidate Starts for Mikro_129:

(Start: 4 @73515 has 50 MA's), (Start: 5 @73524 has 128 MA's), (6, 73563), (8, 73632), (9, 73641), (13, 73737), (15, 73758), (16, 73767), (17, 73788), (19, 73824), (24, 73908), (26, 73917), (38, 73992), (39, 73995), (40, 74016), (41, 74037), (43, 74052), (44, 74061), (45, 74100), (47, 74130), (50, 74268), (51, 74271), (59, 74439), (66, 74538), (68, 74565), (70, 74589), (74, 74637), (75, 74643), (78, 74688), (80, 74697), (81, 74718), (82, 74724), (84, 74742), (86, 74781), (92, 74823), (105, 74991), (108, 75033), (109, 75039), (113, 75060), (114, 75084), (123, 75171), (127, 75213), (129, 75228), (130, 75231), (132, 75234), (135, 75312), (138, 75402), (143, 75504), (148, 75591), (150, 75609), (153, 75633),

Gene: MoMoMixon_132 Start: 71787, Stop: 74045, Start Num: 5

Candidate Starts for MoMoMixon_132:

(Start: 4 @71778 has 50 MA's), (Start: 5 @71787 has 128 MA's), (6, 71826), (8, 71895), (9, 71904), (13, 72000), (15, 72021), (16, 72030), (17, 72051), (19, 72087), (24, 72171), (26, 72180), (38, 72255), (39, 72258), (40, 72279), (41, 72300), (43, 72315), (44, 72324), (45, 72363), (47, 72393), (50, 72531), (51, 72534), (59, 72702), (66, 72801), (68, 72828), (70, 72852), (74, 72900), (75, 72906), (78, 72951), (80, 72960), (81, 72981), (82, 72987), (84, 73005), (86, 73044), (92, 73086), (105, 73254), (108, 73296), (109, 73302), (113, 73323), (114, 73347), (123, 73434), (127, 73476), (129, 73491), (130, 73494), (132, 73497), (135, 73575), (138, 73665), (143, 73767), (148, 73854), (150, 73872), (153, 73896),

Gene: Momo_132 Start: 71305, Stop: 73563, Start Num: 5

Candidate Starts for Momo_132:

(Start: 4 @71296 has 50 MA's), (Start: 5 @71305 has 128 MA's), (6, 71344), (8, 71413), (9, 71422), (13, 71518), (15, 71539), (16, 71548), (17, 71569), (19, 71605), (24, 71689), (26, 71698), (38, 71773), (39, 71776), (40, 71797), (41, 71818), (43, 71833), (44, 71842), (45, 71881), (47, 71911), (50, 72049), (51, 72052), (59, 72220), (64, 72271), (66, 72319), (68, 72346), (70, 72370), (74, 72418), (75, 72424), (78, 72469), (80, 72478), (81, 72499), (82, 72505), (84, 72523), (86, 72562), (92, 72604), (107, 72796), (108, 72814), (109, 72820), (113, 72841), (114, 72865), (123, 72952), (127, 72994), (129, 73009), (130, 73012), (132, 73015), (135, 73093), (138, 73183), (143, 73285), (148, 73372), (150, 73390), (153, 73414),

Gene: Morizzled23_133 Start: 71660, Stop: 73918, Start Num: 5

Candidate Starts for Morizzled23_133:

(Start: 4 @71651 has 50 MA's), (Start: 5 @71660 has 128 MA's), (6, 71699), (8, 71768), (9, 71777), (13, 71873), (15, 71894), (16, 71903), (17, 71924), (19, 71960), (24, 72044), (26, 72053), (38, 72128), (39, 72131), (40, 72152), (41, 72173), (43, 72188), (44, 72197), (45, 72236), (47, 72266), (50, 72404), (51, 72407), (59, 72575), (66, 72674), (68, 72701), (70, 72725), (74, 72773), (75, 72779), (78, 72824), (80, 72833), (81, 72854), (82, 72860), (84, 72878), (86, 72917), (92, 72959), (105, 73127), (108, 73169), (109, 73175), (113, 73196), (114, 73220), (123, 73307), (127, 73349), (129, 73364), (130, 73367), (132, 73370), (135, 73448), (138, 73538), (143, 73640), (148, 73727), (150, 73745), (153, 73769),

Gene: Myrna_128 Start: 73298, Stop: 75631, Start Num: 5

Candidate Starts for Myrna_128:

(Start: 4 @73289 has 50 MA's), (Start: 5 @73298 has 128 MA's), (14, 73520), (15, 73532), (16, 73541), (18, 73589), (19, 73604), (21, 73667), (27, 73694), (29, 73703), (30, 73712), (32, 73724), (33, 73733), (35, 73736), (36, 73739), (38, 73766), (45, 73868), (47, 73898), (53, 74066), (55, 74120), (56, 74138), (61, 74285), (63, 74306), (70, 74420), (71, 74423), (72, 74429), (74, 74468), (77, 74516), (79, 74525), (80, 74528), (81, 74549), (82, 74555), (84, 74573), (90, 74636), (94, 74678), (101, 74735), (105, 74819), (110, 74870), (113, 74888), (114, 74912), (118, 74927), (122, 74990), (125, 75041), (126, 75044), (136, 75191), (151, 75458), (155, 75545), (156, 75560),

Gene: Naija_132 Start: 71296, Stop: 73563, Start Num: 4

Candidate Starts for Naija_132:

(Start: 4 @71296 has 50 MA's), (Start: 5 @71305 has 128 MA's), (6, 71344), (8, 71413), (9, 71422), (13, 71518), (15, 71539), (16, 71548), (17, 71569), (19, 71605), (24, 71689), (26, 71698), (38, 71773), (39, 71776), (40, 71797), (41, 71818), (43, 71833), (44, 71842), (45, 71881), (47, 71911), (50, 72049), (51, 72052), (59, 72220), (64, 72271), (66, 72319), (68, 72346), (70, 72370), (74, 72418), (75, 72424), (78, 72469), (80, 72478), (81, 72499), (82, 72505), (84, 72523), (86, 72562), (92, 72604), (107, 72796), (108, 72814), (109, 72820), (113, 72841), (114, 72865), (123, 72952), (127, 72994), (129, 73009), (130, 73012), (132, 73015), (135, 73093), (138, 73183), (143, 73285), (148, 73372), (150, 73390), (153, 73414),

Gene: Napoleon13_128 Start: 69849, Stop: 72116, Start Num: 4

Candidate Starts for Napoleon13_128:

(Start: 4 @69849 has 50 MA's), (Start: 5 @69858 has 128 MA's), (6, 69897), (8, 69966), (9, 69975), (13, 70071), (15, 70092), (16, 70101), (17, 70122), (19, 70158), (24, 70242), (26, 70251), (38, 70326), (39, 70329), (40, 70350), (41, 70371), (43, 70386), (44, 70395), (45, 70434), (47, 70464), (50, 70602), (51, 70605), (59, 70773), (66, 70872), (68, 70899), (70, 70923), (74, 70971), (75, 70977), (78, 71022), (80, 71031), (81, 71052), (82, 71058), (84, 71076), (86, 71115), (92, 71157), (105, 71325), (108, 71367), (109, 71373), (113, 71394), (114, 71418), (123, 71505), (127, 71547), (129, 71562), (130, 71565), (132, 71568), (135, 71646), (138, 71736), (143, 71838), (148, 71925), (150, 71943), (153, 71967),

Gene: Nappy_134 Start: 73221, Stop: 75479, Start Num: 5

Candidate Starts for Nappy_134:

(Start: 4 @73212 has 50 MA's), (Start: 5 @73221 has 128 MA's), (6, 73260), (8, 73329), (9, 73338), (13, 73434), (15, 73455), (16, 73464), (17, 73485), (19, 73521), (24, 73605), (26, 73614), (38, 73689), (39, 73692), (40, 73713), (41, 73734), (43, 73749), (44, 73758), (45, 73797), (47, 73827), (50, 73965), (51, 73968), (59, 74136), (66, 74235), (68, 74262), (70, 74286), (74, 74334), (75, 74340), (78, 74385), (80, 74394), (81, 74415), (82, 74421), (84, 74439), (86, 74478), (92, 74520), (105, 74688), (108, 74730), (109, 74736), (113, 74757), (114, 74781), (123, 74868), (127, 74910), (129, 74925), (130, 74928), (132, 74931), (135, 75009), (138, 75099), (143, 75201), (148, 75288), (150, 75306), (153, 75330),

Gene: Naval22_137 Start: 73754, Stop: 76012, Start Num: 5

Candidate Starts for Naval22_137:

(Start: 4 @73745 has 50 MA's), (Start: 5 @73754 has 128 MA's), (6, 73793), (8, 73862), (9, 73871), (13, 73967), (15, 73988), (16, 73997), (17, 74018), (19, 74054), (24, 74138), (26, 74147), (38, 74222), (39, 74225), (40, 74246), (41, 74267), (43, 74282), (44, 74291), (45, 74330), (47, 74360), (50, 74498), (51, 74501), (59, 74669), (66, 74768), (68, 74795), (70, 74819), (74, 74867), (75, 74873), (78, 74918), (80, 74927), (81, 74948), (82, 74954), (84, 74972), (86, 75011), (92, 75053), (105, 75221), (108, 75263), (109, 75269), (113, 75290), (114, 75314), (123, 75401), (127, 75443), (129, 75458), (130, 75461), (132, 75464), (135, 75542), (138, 75632), (143, 75734), (148, 75821), (150, 75839), (153, 75863),

Gene: NedWong_133 Start: 72288, Stop: 74546, Start Num: 5

Candidate Starts for NedWong_133:

(Start: 4 @72279 has 50 MA's), (Start: 5 @72288 has 128 MA's), (6, 72327), (8, 72396), (9, 72405), (13, 72501), (15, 72522), (16, 72531), (17, 72552), (19, 72588), (24, 72672), (26, 72681), (38, 72756), (39, 72759), (40, 72780), (41, 72801), (43, 72816), (44, 72825), (45, 72864), (47, 72894), (50, 73032), (51, 73035), (59, 73203), (66, 73302), (68, 73329), (70, 73353), (74, 73401), (75, 73407), (78, 73452), (80, 73461), (81, 73482), (82, 73488), (84, 73506), (86, 73545), (92, 73587), (105, 73755), (108, 73797), (109, 73803), (113, 73824), (114, 73848), (123, 73935), (127, 73977), (129, 73992), (130, 73995), (132, 73998), (135, 74076), (138, 74166), (143, 74268), (148, 74355), (150, 74373), (153, 74397),

Gene: Ngannou_129 Start: 70287, Stop: 72545, Start Num: 5

Candidate Starts for Ngannou_129:

(Start: 4 @70278 has 50 MA's), (Start: 5 @70287 has 128 MA's), (6, 70326), (8, 70395), (9, 70404), (13, 70500), (15, 70521), (16, 70530), (17, 70551), (19, 70587), (24, 70671), (26, 70680), (38, 70755), (39, 70758), (40, 70779), (41, 70800), (43, 70815), (44, 70824), (45, 70863), (47, 70893), (50, 71031), (51, 71034), (59, 71202), (64, 71253), (66, 71301), (68, 71328), (70, 71352), (74, 71400), (75, 71406), (78, 71451), (80, 71460), (81, 71481), (82, 71487), (84, 71505), (86, 71544), (92, 71586), (107, 71778), (108, 71796), (109, 71802), (113, 71823), (114, 71847), (123, 71934), (127, 71976), (129, 71991), (130, 71994), (132, 71997), (135, 72075), (138, 72165), (143, 72267), (148, 72354), (150, 72372), (153, 72396),

Gene: Nidhogg_134 Start: 72511, Stop: 74769, Start Num: 5

Candidate Starts for Nidhogg_134:

(Start: 4 @72502 has 50 MA's), (Start: 5 @72511 has 128 MA's), (6, 72550), (8, 72619), (9, 72628), (13, 72724), (15, 72745), (16, 72754), (17, 72775), (19, 72811), (24, 72895), (26, 72904), (38, 72979), (39, 72982), (40, 73003), (41, 73024), (43, 73039), (44, 73048), (45, 73087), (47, 73117), (50, 73255), (51, 73258), (59, 73426), (66, 73525), (68, 73552), (70, 73576), (74, 73624), (75, 73630), (78, 73675), (80, 73684), (81, 73705), (82, 73711), (84, 73729), (86, 73768), (92, 73810), (105, 73978), (108, 74020), (109, 74026), (113, 74047), (114, 74071), (123, 74158), (127, 74200), (129, 74215), (130, 74218), (132, 74221), (135, 74299), (138, 74389), (143, 74491), (148, 74578), (150, 74596), (153, 74620),

Gene: NoodleTree_139 Start: 72372, Stop: 74639, Start Num: 4

Candidate Starts for NoodleTree_139:

(Start: 4 @72372 has 50 MA's), (Start: 5 @72381 has 128 MA's), (6, 72420), (8, 72489), (9, 72498), (13, 72594), (15, 72615), (16, 72624), (17, 72645), (19, 72681), (24, 72765), (26, 72774), (38, 72849), (39, 72852), (40, 72873), (41, 72894), (43, 72909), (44, 72918), (45, 72957), (47, 72987), (50, 73125), (51, 73128), (59, 73296), (66, 73395), (68, 73422), (70, 73446), (74, 73494), (75, 73500), (78, 73545), (80, 73554), (81, 73575), (82, 73581), (84, 73599), (86, 73638), (92, 73680), (105, 73848), (108, 73890), (109, 73896), (113, 73917), (114, 73941), (123, 74028), (127, 74070), (129, 74085), (130, 74088), (132, 74091), (135, 74169), (138, 74259), (143, 74361), (148, 74448), (150, 74466), (153, 74490),

Gene: Norm_133 Start: 72974, Stop: 75241, Start Num: 4

Candidate Starts for Norm_133:

(Start: 4 @72974 has 50 MA's), (Start: 5 @72983 has 128 MA's), (6, 73022), (8, 73091), (9, 73100), (13, 73196), (15, 73217), (16, 73226), (17, 73247), (19, 73283), (24, 73367), (26, 73376), (38, 73451), (39, 73454), (40, 73475), (41, 73496), (43, 73511), (44, 73520), (45, 73559), (47, 73589), (50, 73727), (51, 73730), (59, 73898), (66, 73997), (68, 74024), (70, 74048), (74, 74096), (75, 74102), (78, 74147), (80, 74156), (81, 74177), (82, 74183), (84, 74201), (86, 74240), (92, 74282), (105, 74450), (108, 74492), (109, 74498), (113, 74519), (114, 74543), (123, 74630), (127, 74672), (129, 74687), (130, 74690), (132, 74693), (135, 74771), (138, 74861), (143, 74963), (148, 75050), (150, 75068), (153, 75092),

Gene: NuevoMundo_137 Start: 74563, Stop: 76821, Start Num: 5

Candidate Starts for NuevoMundo_137:

(Start: 4 @74554 has 50 MA's), (Start: 5 @74563 has 128 MA's), (6, 74602), (8, 74671), (9, 74680), (13, 74776), (15, 74797), (16, 74806), (17, 74827), (19, 74863), (24, 74947), (26, 74956), (38, 75031), (39, 75034), (40, 75055), (41, 75076), (43, 75091), (44, 75100), (45, 75139), (47, 75169), (50, 75307), (51, 75310), (59, 75478), (66, 75577), (68, 75604), (70, 75628), (74, 75676), (75, 75682), (78, 75727), (80, 75736), (81, 75757), (82, 75763), (84, 75781), (86, 75820), (92, 75862), (105, 76030), (108, 76072), (109, 76078), (113, 76099), (114, 76123), (123, 76210), (127, 76252), (129, 76267), (130, 76270), (132, 76273), (135, 76351), (138, 76441), (143, 76543), (148, 76630), (150, 76648), (153, 76672),

Gene: ParkTD_133 Start: 72294, Stop: 74552, Start Num: 5

Candidate Starts for ParkTD_133:

(Start: 4 @72285 has 50 MA's), (Start: 5 @72294 has 128 MA's), (6, 72333), (8, 72402), (9, 72411), (13, 72507), (15, 72528), (16, 72537), (17, 72558), (19, 72594), (24, 72678), (26, 72687), (38, 72762), (39, 72765), (40, 72786), (41, 72807), (43, 72822), (44, 72831), (45, 72870), (47, 72900), (50, 73038), (51, 73041), (59, 73209), (66, 73308), (68, 73335), (70, 73359), (74, 73407), (75, 73413), (78, 73458), (80, 73467), (81, 73488), (82, 73494), (84, 73512), (86, 73551), (92, 73593), (105, 73761), (108, 73803), (109, 73809), (113, 73830), (114, 73854), (123, 73941), (127, 73983), (129, 73998), (130, 74001), (132, 74004), (135, 74082), (138, 74172), (143, 74274), (148, 74361), (150, 74379), (153, 74403),

Gene: Patter_133 Start: 71313, Stop: 73580, Start Num: 4

Candidate Starts for Patter_133:

(Start: 4 @71313 has 50 MA's), (Start: 5 @71322 has 128 MA's), (6, 71361), (8, 71430), (9, 71439), (13, 71535), (15, 71556), (16, 71565), (17, 71586), (19, 71622), (24, 71706), (26, 71715), (38, 71790), (39, 71793), (40, 71814), (41, 71835), (43, 71850), (44, 71859), (45, 71898), (47, 71928), (50, 72066), (51, 72069), (59, 72237), (64, 72288), (66, 72336), (68, 72363), (70, 72387), (74, 72435), (75, 72441), (78, 72486), (80, 72495), (81, 72516), (82, 72522), (84, 72540), (86, 72579), (92, 72621), (107, 72813), (108, 72831), (109, 72837), (113, 72858), (114, 72882), (123, 72969), (127, 73011), (129, 73026), (130, 73029), (132, 73032), (135, 73110), (138, 73200), (143, 73302), (148, 73389), (150, 73407), (153, 73431),

Gene: Phabba_133 Start: 72298, Stop: 74628, Start Num: 5

Candidate Starts for Phabba_133:

(Start: 4 @72289 has 50 MA's), (Start: 5 @72298 has 128 MA's), (7, 72394), (8, 72406), (10, 72421), (12, 72478), (14, 72520), (16, 72541), (19, 72601), (21, 72667), (28, 72700), (30, 72715), (32, 72727), (33, 72736), (35, 72739), (36, 72742), (38, 72769), (43, 72829), (45, 72871), (47, 72901), (52, 73063), (53, 73069), (61, 73282), (67, 73384), (69, 73405), (70, 73417), (71, 73420), (72, 73426), (74, 73465), (77, 73513), (79, 73522), (80, 73525), (81, 73546), (82, 73552), (84, 73570), (90, 73633), (94, 73675), (101, 73732), (110, 73867), (114, 73909), (118, 73924), (122, 73987), (125, 74038), (126, 74041), (131, 74062), (137, 74221), (139, 74251), (155, 74542), (156, 74557),

Gene: Phlegm_136 Start: 71305, Stop: 73563, Start Num: 5

Candidate Starts for Phlegm_136:

(Start: 4 @71296 has 50 MA's), (Start: 5 @71305 has 128 MA's), (6, 71344), (8, 71413), (9, 71422), (13, 71518), (15, 71539), (16, 71548), (17, 71569), (19, 71605), (24, 71689), (26, 71698), (38, 71773), (39, 71776), (40, 71797), (41, 71818), (43, 71833), (44, 71842), (45, 71881), (47, 71911), (50, 72049), (51, 72052), (59, 72220), (64, 72271), (66, 72319), (68, 72346), (70, 72370), (74, 72418), (75, 72424), (78, 72469), (80, 72478), (81, 72499), (82, 72505), (84, 72523), (86, 72562), (92, 72604), (107, 72796), (108, 72814), (109, 72820), (113, 72841), (114, 72865), (123, 72952), (127, 72994), (129, 73009), (130, 73012), (132, 73015), (135, 73093), (138, 73183), (143, 73285), (148, 73372), (150, 73390),

(153, 73414),

Gene: Phox_129 Start: 72574, Stop: 74832, Start Num: 5

Candidate Starts for Phox_129:

(Start: 4 @72565 has 50 MA's), (Start: 5 @72574 has 128 MA's), (6, 72613), (8, 72682), (9, 72691), (13, 72787), (15, 72808), (16, 72817), (17, 72838), (19, 72874), (24, 72958), (26, 72967), (38, 73042), (39, 73045), (40, 73066), (41, 73087), (43, 73102), (44, 73111), (45, 73150), (47, 73180), (50, 73318), (51, 73321), (59, 73489), (64, 73540), (66, 73588), (68, 73615), (70, 73639), (74, 73687), (75, 73693), (78, 73738), (80, 73747), (81, 73768), (82, 73774), (84, 73792), (86, 73831), (92, 73873), (105, 74041), (108, 74083), (109, 74089), (113, 74110), (114, 74134), (123, 74221), (127, 74263), (129, 74278), (130, 74281), (132, 74284), (135, 74362), (138, 74452), (143, 74554), (148, 74641), (150, 74659), (153, 74683),

Gene: Phusco_132 Start: 71572, Stop: 73839, Start Num: 4

Candidate Starts for Phusco_132:

(Start: 4 @71572 has 50 MA's), (Start: 5 @71581 has 128 MA's), (6, 71620), (8, 71689), (9, 71698), (13, 71794), (15, 71815), (16, 71824), (17, 71845), (19, 71881), (24, 71965), (26, 71974), (38, 72049), (39, 72052), (40, 72073), (41, 72094), (43, 72109), (44, 72118), (45, 72157), (47, 72187), (50, 72325), (51, 72328), (59, 72496), (64, 72547), (66, 72595), (68, 72622), (70, 72646), (74, 72694), (75, 72700), (78, 72745), (80, 72754), (81, 72775), (82, 72781), (84, 72799), (86, 72838), (92, 72880), (107, 73072), (108, 73090), (109, 73096), (113, 73117), (114, 73141), (123, 73228), (127, 73270), (129, 73285), (130, 73288), (132, 73291), (135, 73369), (138, 73459), (143, 73561), (148, 73648), (150, 73666), (153, 73690),

Gene: Pier_136 Start: 74571, Stop: 76829, Start Num: 5

Candidate Starts for Pier_136:

(Start: 4 @74562 has 50 MA's), (Start: 5 @74571 has 128 MA's), (6, 74610), (8, 74679), (9, 74688), (13, 74784), (15, 74805), (16, 74814), (17, 74835), (19, 74871), (24, 74955), (26, 74964), (38, 75039), (39, 75042), (40, 75063), (41, 75084), (43, 75099), (44, 75108), (45, 75147), (47, 75177), (50, 75315), (51, 75318), (59, 75486), (66, 75585), (68, 75612), (70, 75636), (74, 75684), (75, 75690), (78, 75735), (80, 75744), (81, 75765), (82, 75771), (84, 75789), (86, 75828), (92, 75870), (105, 76038), (108, 76080), (109, 76086), (113, 76107), (114, 76131), (123, 76218), (127, 76260), (129, 76275), (130, 76278), (132, 76281), (135, 76359), (138, 76449), (143, 76551), (148, 76638), (150, 76656), (153, 76680),

Gene: Pinkcreek_123 Start: 69915, Stop: 72173, Start Num: 5

Candidate Starts for Pinkcreek_123:

(Start: 4 @69906 has 50 MA's), (Start: 5 @69915 has 128 MA's), (6, 69954), (8, 70023), (9, 70032), (13, 70128), (15, 70149), (16, 70158), (17, 70179), (19, 70215), (24, 70299), (26, 70308), (38, 70383), (39, 70386), (40, 70407), (41, 70428), (43, 70443), (44, 70452), (45, 70491), (47, 70521), (50, 70659), (51, 70662), (59, 70830), (66, 70929), (68, 70956), (70, 70980), (74, 71028), (75, 71034), (78, 71079), (80, 71088), (81, 71109), (82, 71115), (84, 71133), (86, 71172), (92, 71214), (108, 71424), (109, 71430), (113, 71451), (114, 71475), (123, 71562), (127, 71604), (129, 71619), (130, 71622), (132, 71625), (135, 71703), (138, 71793), (143, 71895), (148, 71982), (150, 72000), (153, 72024),

Gene: Pio_136 Start: 74183, Stop: 76441, Start Num: 5

Candidate Starts for Pio_136:

(Start: 4 @74174 has 50 MA's), (Start: 5 @74183 has 128 MA's), (6, 74222), (8, 74291), (9, 74300), (13, 74396), (15, 74417), (16, 74426), (17, 74447), (19, 74483), (24, 74567), (26, 74576), (38, 74651), (39, 74654), (40, 74675), (41, 74696), (43, 74711), (44, 74720), (45, 74759), (47, 74789), (50, 74927), (51, 74930), (59, 75098), (66, 75197), (68, 75224), (70, 75248), (74, 75296), (75, 75302), (78, 75347), (80, 75356), (81, 75377), (82, 75383), (84, 75401), (86, 75440), (92, 75482), (105, 75650), (108, 75692), (109, 75698), (113, 75719), (114, 75743), (123, 75830), (127, 75872), (129, 75887), (130,

75890), (132, 75893), (135, 75971), (138, 76061), (143, 76163), (150, 76268), (153, 76292),

Gene: Pivoine_132 Start: 71296, Stop: 73563, Start Num: 4

Candidate Starts for Pivoine_132:

(Start: 4 @71296 has 50 MA's), (Start: 5 @71305 has 128 MA's), (6, 71344), (8, 71413), (9, 71422), (13, 71518), (15, 71539), (16, 71548), (17, 71569), (19, 71605), (24, 71689), (26, 71698), (38, 71773), (39, 71776), (40, 71797), (41, 71818), (43, 71833), (44, 71842), (45, 71881), (47, 71911), (50, 72049), (51, 72052), (59, 72220), (64, 72271), (66, 72319), (68, 72346), (70, 72370), (74, 72418), (75, 72424), (78, 72469), (80, 72478), (81, 72499), (82, 72505), (84, 72523), (86, 72562), (92, 72604), (107, 72796), (108, 72814), (109, 72820), (113, 72841), (114, 72865), (123, 72952), (127, 72994), (129, 73009), (130, 73012), (132, 73015), (135, 73093), (138, 73183), (143, 73285), (148, 73372), (150, 73390), (153, 73414),

Gene: Pleione_135 Start: 72461, Stop: 74719, Start Num: 5

Candidate Starts for Pleione_135:

(Start: 4 @72452 has 50 MA's), (Start: 5 @72461 has 128 MA's), (6, 72500), (8, 72569), (9, 72578), (13, 72674), (15, 72695), (16, 72704), (17, 72725), (19, 72761), (24, 72845), (26, 72854), (38, 72929), (39, 72932), (40, 72953), (41, 72974), (43, 72989), (44, 72998), (45, 73037), (47, 73067), (50, 73205), (51, 73208), (59, 73376), (66, 73475), (68, 73502), (70, 73526), (74, 73574), (75, 73580), (78, 73625), (80, 73634), (81, 73655), (82, 73661), (84, 73679), (86, 73718), (92, 73760), (105, 73928), (108, 73970), (109, 73976), (113, 73997), (114, 74021), (123, 74108), (127, 74150), (129, 74165), (130, 74168), (132, 74171), (135, 74249), (138, 74339), (143, 74441), (148, 74528), (150, 74546), (153, 74570),

Gene: Primadonna_126 Start: 70946, Stop: 73204, Start Num: 5

Candidate Starts for Primadonna_126:

(Start: 4 @70937 has 50 MA's), (Start: 5 @70946 has 128 MA's), (6, 70985), (8, 71054), (9, 71063), (13, 71159), (15, 71180), (16, 71189), (17, 71210), (19, 71246), (24, 71330), (26, 71339), (38, 71414), (39, 71417), (40, 71438), (41, 71459), (43, 71474), (44, 71483), (45, 71522), (47, 71552), (50, 71690), (51, 71693), (59, 71861), (64, 71912), (66, 71960), (68, 71987), (70, 72011), (74, 72059), (75, 72065), (78, 72110), (80, 72119), (81, 72140), (82, 72146), (84, 72164), (86, 72203), (92, 72245), (107, 72437), (108, 72455), (109, 72461), (113, 72482), (114, 72506), (123, 72593), (127, 72635), (129, 72650), (130, 72653), (132, 72656), (135, 72734), (138, 72824), (143, 72926), (148, 73013), (150, 73031), (153, 73055),

Gene: Pupper_119 Start: 72687, Stop: 75194, Start Num: 5

Candidate Starts for Pupper_119:

(Start: 1 @72645 has 1 MA's), (Start: 5 @72687 has 128 MA's), (11, 72819), (15, 72924), (20, 73050), (22, 73107), (25, 73134), (27, 73140), (30, 73167), (38, 73236), (39, 73239), (40, 73260), (61, 73812), (65, 73872), (66, 73896), (73, 73968), (89, 74169), (93, 74199), (102, 74304), (106, 74379), (111, 74412), (116, 74451), (119, 74460), (121, 74475), (127, 74577), (129, 74592), (133, 74622), (141, 74880), (145, 74949), (149, 75015), (155, 75126),

Gene: PurduePete_132 Start: 72699, Stop: 74966, Start Num: 4

Candidate Starts for PurduePete_132:

(Start: 4 @72699 has 50 MA's), (Start: 5 @72708 has 128 MA's), (6, 72747), (8, 72816), (9, 72825), (13, 72921), (15, 72942), (16, 72951), (17, 72972), (19, 73008), (24, 73092), (26, 73101), (38, 73176), (39, 73179), (40, 73200), (41, 73221), (43, 73236), (44, 73245), (45, 73284), (47, 73314), (50, 73452), (51, 73455), (59, 73623), (66, 73722), (68, 73749), (70, 73773), (74, 73821), (75, 73827), (78, 73872), (80, 73881), (81, 73902), (82, 73908), (84, 73926), (86, 73965), (92, 74007), (105, 74175), (108, 74217), (109, 74223), (113, 74244), (114, 74268), (123, 74355), (127, 74397), (129, 74412), (130, 74415), (132, 74418), (135, 74496), (138, 74586), (143, 74688), (148, 74775), (150, 74793), (153, 74817),

Gene: QBert_126 Start: 71289, Stop: 73556, Start Num: 4

Candidate Starts for QBert_126:

(Start: 4 @71289 has 50 MA's), (Start: 5 @71298 has 128 MA's), (6, 71337), (8, 71406), (9, 71415), (13, 71511), (15, 71532), (16, 71541), (17, 71562), (19, 71598), (24, 71682), (26, 71691), (38, 71766), (39, 71769), (40, 71790), (41, 71811), (43, 71826), (44, 71835), (45, 71874), (47, 71904), (50, 72042), (51, 72045), (59, 72213), (64, 72264), (66, 72312), (68, 72339), (70, 72363), (74, 72411), (75, 72417), (78, 72462), (80, 72471), (81, 72492), (82, 72498), (84, 72516), (86, 72555), (92, 72597), (105, 72765), (108, 72807), (109, 72813), (113, 72834), (114, 72858), (123, 72945), (127, 72987), (129, 73002), (130, 73005), (132, 73008), (135, 73086), (138, 73176), (143, 73278), (148, 73365), (150, 73383), (153, 73407),

Gene: Quasimodo_134 Start: 72722, Stop: 74980, Start Num: 5

Candidate Starts for Quasimodo_134:

(Start: 4 @72713 has 50 MA's), (Start: 5 @72722 has 128 MA's), (6, 72761), (8, 72830), (9, 72839), (13, 72935), (15, 72956), (16, 72965), (17, 72986), (19, 73022), (24, 73106), (26, 73115), (38, 73190), (39, 73193), (40, 73214), (41, 73235), (43, 73250), (44, 73259), (45, 73298), (47, 73328), (50, 73466), (51, 73469), (59, 73637), (66, 73736), (68, 73763), (70, 73787), (74, 73835), (75, 73841), (78, 73886), (80, 73895), (81, 73916), (82, 73922), (84, 73940), (86, 73979), (92, 74021), (105, 74189), (108, 74231), (109, 74237), (113, 74258), (114, 74282), (123, 74369), (127, 74411), (129, 74426), (130, 74429), (132, 74432), (135, 74510), (138, 74600), (143, 74702), (148, 74789), (150, 74807), (153, 74831),

Gene: Rabinovish_131 Start: 72906, Stop: 75164, Start Num: 5

Candidate Starts for Rabinovish_131:

(Start: 4 @72897 has 50 MA's), (Start: 5 @72906 has 128 MA's), (6, 72945), (8, 73014), (9, 73023), (13, 73119), (15, 73140), (16, 73149), (17, 73170), (19, 73206), (24, 73290), (26, 73299), (38, 73374), (39, 73377), (40, 73398), (41, 73419), (43, 73434), (44, 73443), (45, 73482), (47, 73512), (50, 73650), (51, 73653), (59, 73821), (66, 73920), (68, 73947), (70, 73971), (74, 74019), (75, 74025), (78, 74070), (80, 74079), (81, 74100), (82, 74106), (84, 74124), (86, 74163), (92, 74205), (108, 74415), (109, 74421), (113, 74442), (114, 74466), (123, 74553), (127, 74595), (129, 74610), (130, 74613), (132, 74616), (135, 74694), (138, 74784), (143, 74886), (148, 74973), (150, 74991), (153, 75015),

Gene: Rahel_131 Start: 71174, Stop: 73441, Start Num: 4

Candidate Starts for Rahel_131:

(Start: 4 @71174 has 50 MA's), (Start: 5 @71183 has 128 MA's), (6, 71222), (8, 71291), (9, 71300), (13, 71396), (15, 71417), (16, 71426), (17, 71447), (19, 71483), (24, 71567), (26, 71576), (38, 71651), (39, 71654), (40, 71675), (41, 71696), (43, 71711), (44, 71720), (45, 71759), (47, 71789), (50, 71927), (51, 71930), (59, 72098), (64, 72149), (66, 72197), (68, 72224), (70, 72248), (74, 72296), (75, 72302), (78, 72347), (80, 72356), (81, 72377), (82, 72383), (84, 72401), (86, 72440), (92, 72482), (107, 72674), (108, 72692), (109, 72698), (113, 72719), (114, 72743), (123, 72830), (127, 72872), (129, 72887), (130, 72890), (132, 72893), (135, 72971), (138, 73061), (143, 73163), (148, 73250), (150, 73268), (153, 73292),

Gene: Rizal_127 Start: 70331, Stop: 72589, Start Num: 5

Candidate Starts for Rizal_127:

(Start: 4 @70322 has 50 MA's), (Start: 5 @70331 has 128 MA's), (6, 70370), (8, 70439), (9, 70448), (13, 70544), (15, 70565), (16, 70574), (17, 70595), (19, 70631), (24, 70715), (26, 70724), (38, 70799), (39, 70802), (40, 70823), (41, 70844), (43, 70859), (44, 70868), (45, 70907), (47, 70937), (50, 71075), (51, 71078), (59, 71246), (66, 71345), (68, 71372), (70, 71396), (74, 71444), (75, 71450), (78, 71495), (80, 71504), (81, 71525), (82, 71531), (84, 71549), (86, 71588), (92, 71630), (105, 71798), (108, 71840), (109, 71846), (113, 71867), (114, 71891), (123, 71978), (127, 72020), (129, 72035), (130, 72038), (132, 72041), (135, 72119), (138, 72209), (143, 72311), (148, 72398), (150, 72416), (153,

72440),

Gene: RoMag_127 Start: 71486, Stop: 73753, Start Num: 4

Candidate Starts for RoMag_127:

(Start: 4 @71486 has 50 MA's), (Start: 5 @71495 has 128 MA's), (6, 71534), (8, 71603), (9, 71612), (13, 71708), (15, 71729), (16, 71738), (17, 71759), (19, 71795), (24, 71879), (26, 71888), (38, 71963), (39, 71966), (40, 71987), (41, 72008), (43, 72023), (44, 72032), (45, 72071), (47, 72101), (50, 72239), (51, 72242), (59, 72410), (66, 72509), (68, 72536), (70, 72560), (74, 72608), (75, 72614), (78, 72659), (80, 72668), (81, 72689), (82, 72695), (84, 72713), (86, 72752), (92, 72794), (105, 72962), (108, 73004), (109, 73010), (113, 73031), (114, 73055), (123, 73142), (127, 73184), (129, 73199), (130, 73202), (132, 73205), (135, 73283), (138, 73373), (143, 73475), (148, 73562), (150, 73580), (153, 73604),

Gene: Ronan_126 Start: 69444, Stop: 71702, Start Num: 5

Candidate Starts for Ronan_126:

(Start: 4 @69435 has 50 MA's), (Start: 5 @69444 has 128 MA's), (6, 69483), (8, 69552), (9, 69561), (13, 69657), (15, 69678), (16, 69687), (17, 69708), (19, 69744), (24, 69828), (26, 69837), (38, 69912), (39, 69915), (40, 69936), (41, 69957), (43, 69972), (44, 69981), (45, 70020), (47, 70050), (50, 70188), (51, 70191), (59, 70359), (64, 70410), (66, 70458), (68, 70485), (70, 70509), (74, 70557), (75, 70563), (78, 70608), (80, 70617), (81, 70638), (82, 70644), (84, 70662), (86, 70701), (92, 70743), (107, 70935), (108, 70953), (109, 70959), (113, 70980), (114, 71004), (123, 71091), (127, 71133), (129, 71148), (130, 71151), (132, 71154), (135, 71232), (138, 71322), (143, 71424), (148, 71511), (150, 71529), (153, 71553),

Gene: Roots515_131 Start: 72960, Stop: 75218, Start Num: 5

Candidate Starts for Roots515_131:

(Start: 4 @72951 has 50 MA's), (Start: 5 @72960 has 128 MA's), (6, 72999), (8, 73068), (9, 73077), (13, 73173), (15, 73194), (16, 73203), (17, 73224), (19, 73260), (24, 73344), (26, 73353), (38, 73428), (39, 73431), (40, 73452), (41, 73473), (43, 73488), (44, 73497), (45, 73536), (47, 73566), (50, 73704), (51, 73707), (59, 73875), (64, 73926), (66, 73974), (68, 74001), (70, 74025), (74, 74073), (75, 74079), (78, 74124), (80, 74133), (81, 74154), (82, 74160), (84, 74178), (86, 74217), (92, 74259), (107, 74451), (108, 74469), (109, 74475), (113, 74496), (114, 74520), (123, 74607), (127, 74649), (129, 74664), (130, 74667), (132, 74670), (135, 74748), (138, 74838), (143, 74940), (148, 75027), (150, 75045), (153, 75069),

Gene: SCentae_118 Start: 72795, Stop: 75347, Start Num: 1

Candidate Starts for SCentae_118:

(Start: 1 @72795 has 1 MA's), (Start: 5 @72837 has 128 MA's), (9, 72957), (11, 72969), (22, 73260), (25, 73287), (27, 73293), (30, 73320), (38, 73389), (39, 73392), (40, 73413), (61, 73965), (64, 74001), (65, 74025), (66, 74049), (73, 74121), (83, 74259), (93, 74352), (102, 74457), (106, 74532), (119, 74613), (121, 74628), (124, 74715), (127, 74730), (133, 74775), (134, 74778), (141, 75030), (145, 75099), (149, 75168), (155, 75279),

Gene: SVoro_130 Start: 72668, Stop: 74926, Start Num: 5

Candidate Starts for SVoro_130:

(Start: 4 @72659 has 50 MA's), (Start: 5 @72668 has 128 MA's), (6, 72707), (8, 72776), (9, 72785), (13, 72881), (15, 72902), (16, 72911), (17, 72932), (19, 72968), (24, 73052), (26, 73061), (38, 73136), (39, 73139), (40, 73160), (41, 73181), (43, 73196), (44, 73205), (45, 73244), (47, 73274), (50, 73412), (51, 73415), (59, 73583), (64, 73634), (66, 73682), (68, 73709), (70, 73733), (74, 73781), (75, 73787), (78, 73832), (80, 73841), (81, 73862), (82, 73868), (84, 73886), (86, 73925), (92, 73967), (105, 74135), (108, 74177), (109, 74183), (113, 74204), (114, 74228), (123, 74315), (127, 74357), (129, 74372), (130, 74375), (132, 74378), (135, 74456), (138, 74546), (143, 74648), (148, 74735), (150, 74753), (153, 74777),

Gene: Salacia_136 Start: 72622, Stop: 74880, Start Num: 5

Candidate Starts for Salacia_136:

(Start: 4 @72613 has 50 MA's), (Start: 5 @72622 has 128 MA's), (6, 72661), (8, 72730), (9, 72739), (13, 72835), (15, 72856), (16, 72865), (17, 72886), (19, 72922), (24, 73006), (26, 73015), (38, 73090), (39, 73093), (40, 73114), (41, 73135), (43, 73150), (44, 73159), (45, 73198), (47, 73228), (50, 73366), (51, 73369), (59, 73537), (66, 73636), (68, 73663), (70, 73687), (74, 73735), (75, 73741), (78, 73786), (80, 73795), (81, 73816), (82, 73822), (84, 73840), (86, 73879), (92, 73921), (105, 74089), (108, 74131), (109, 74137), (113, 74158), (114, 74182), (123, 74269), (127, 74311), (129, 74326), (130, 74329), (132, 74332), (135, 74410), (138, 74500), (143, 74602), (148, 74689), (150, 74707), (153, 74731),

Gene: Sauce_132 Start: 71238, Stop: 73496, Start Num: 5

Candidate Starts for Sauce_132:

(Start: 4 @71229 has 50 MA's), (Start: 5 @71238 has 128 MA's), (6, 71277), (8, 71346), (9, 71355), (13, 71451), (15, 71472), (16, 71481), (17, 71502), (19, 71538), (24, 71622), (26, 71631), (38, 71706), (39, 71709), (40, 71730), (41, 71751), (43, 71766), (44, 71775), (45, 71814), (47, 71844), (50, 71982), (51, 71985), (59, 72153), (66, 72252), (68, 72279), (70, 72303), (74, 72351), (75, 72357), (78, 72402), (80, 72411), (81, 72432), (82, 72438), (84, 72456), (86, 72495), (92, 72537), (105, 72705), (108, 72747), (109, 72753), (113, 72774), (114, 72798), (123, 72885), (127, 72927), (129, 72942), (130, 72945), (132, 72948), (135, 73026), (138, 73116), (143, 73218), (148, 73305), (150, 73323), (153, 73347),

Gene: ScoobyDoobyDoo_124 Start: 71962, Stop: 74271, Start Num: 4

Candidate Starts for ScoobyDoobyDoo_124:

(3, 71953), (Start: 4 @71962 has 50 MA's), (16, 72214), (17, 72235), (19, 72274), (21, 72337), (25, 72358), (30, 72367), (32, 72379), (33, 72388), (35, 72391), (36, 72394), (37, 72409), (38, 72421), (42, 72469), (43, 72481), (52, 72715), (53, 72721), (54, 72766), (57, 72883), (62, 72946), (63, 72949), (64, 72964), (69, 73051), (72, 73072), (80, 73171), (81, 73192), (82, 73198), (85, 73252), (87, 73267), (90, 73279), (94, 73318), (98, 73357), (99, 73366), (101, 73375), (104, 73441), (105, 73459), (107, 73483), (110, 73510), (114, 73552), (115, 73558), (117, 73564), (118, 73567), (120, 73582), (122, 73630), (125, 73681), (126, 73684), (131, 73705), (140, 73897), (142, 73966), (144, 74002), (146, 74056), (150, 74086), (152, 74107), (153, 74110), (154, 74173), (156, 74200),

Gene: ScottMcG_128 Start: 71244, Stop: 73502, Start Num: 5

Candidate Starts for ScottMcG_128:

(Start: 4 @71235 has 50 MA's), (Start: 5 @71244 has 128 MA's), (6, 71283), (8, 71352), (9, 71361), (13, 71457), (15, 71478), (16, 71487), (17, 71508), (19, 71544), (24, 71628), (26, 71637), (38, 71712), (39, 71715), (40, 71736), (41, 71757), (43, 71772), (44, 71781), (45, 71820), (47, 71850), (50, 71988), (51, 71991), (59, 72159), (66, 72258), (68, 72285), (70, 72309), (74, 72357), (75, 72363), (78, 72408), (80, 72417), (81, 72438), (82, 72444), (84, 72462), (86, 72501), (92, 72543), (105, 72711), (108, 72753), (109, 72759), (113, 72780), (114, 72804), (123, 72891), (127, 72933), (129, 72948), (130, 72951), (132, 72954), (135, 73032), (138, 73122), (143, 73224), (148, 73311), (150, 73329), (153, 73353),

Gene: Sebata_132 Start: 72707, Stop: 74965, Start Num: 5

Candidate Starts for Sebata_132:

(Start: 4 @72698 has 50 MA's), (Start: 5 @72707 has 128 MA's), (6, 72746), (8, 72815), (9, 72824), (13, 72920), (15, 72941), (16, 72950), (17, 72971), (19, 73007), (24, 73091), (26, 73100), (38, 73175), (39, 73178), (40, 73199), (41, 73220), (43, 73235), (44, 73244), (45, 73283), (47, 73313), (50, 73451), (51, 73454), (59, 73622), (66, 73721), (68, 73748), (70, 73772), (74, 73820), (75, 73826), (78, 73871), (80, 73880), (81, 73901), (82, 73907), (84, 73925), (86, 73964), (92, 74006), (108, 74216), (109, 74222), (113, 74243), (114, 74267), (123, 74354), (127, 74396), (129, 74411), (130, 74414), (132,

74417), (135, 74495), (138, 74585), (143, 74687), (148, 74774), (150, 74792), (153, 74816),

Gene: Shaqnato_125 Start: 70279, Stop: 72546, Start Num: 4

Candidate Starts for Shaqnato_125:

(Start: 4 @70279 has 50 MA's), (Start: 5 @70288 has 128 MA's), (6, 70327), (8, 70396), (9, 70405), (13, 70501), (15, 70522), (16, 70531), (17, 70552), (19, 70588), (24, 70672), (26, 70681), (38, 70756), (39, 70759), (40, 70780), (41, 70801), (43, 70816), (44, 70825), (45, 70864), (47, 70894), (50, 71032), (51, 71035), (59, 71203), (64, 71254), (66, 71302), (68, 71329), (70, 71353), (74, 71401), (75, 71407), (78, 71452), (80, 71461), (81, 71482), (82, 71488), (84, 71506), (86, 71545), (92, 71587), (107, 71779), (108, 71797), (109, 71803), (113, 71824), (114, 71848), (123, 71935), (127, 71977), (129, 71992), (130, 71995), (132, 71998), (135, 72076), (138, 72166), (143, 72268), (148, 72355), (150, 72373), (153, 72397),

Gene: Shelob_134 Start: 73081, Stop: 75348, Start Num: 4

Candidate Starts for Shelob_134:

(Start: 4 @73081 has 50 MA's), (Start: 5 @73090 has 128 MA's), (6, 73129), (8, 73198), (9, 73207), (13, 73303), (15, 73324), (16, 73333), (17, 73354), (19, 73390), (24, 73474), (26, 73483), (38, 73558), (39, 73561), (40, 73582), (41, 73603), (43, 73618), (44, 73627), (45, 73666), (47, 73696), (50, 73834), (51, 73837), (59, 74005), (66, 74104), (68, 74131), (70, 74155), (74, 74203), (75, 74209), (78, 74254), (80, 74263), (81, 74284), (82, 74290), (84, 74308), (86, 74347), (92, 74389), (105, 74557), (108, 74599), (109, 74605), (113, 74626), (114, 74650), (123, 74737), (127, 74779), (129, 74794), (130, 74797), (132, 74800), (135, 74878), (138, 74968), (143, 75070), (148, 75157), (150, 75175), (153, 75199),

Gene: ShiaLabeouf_131 Start: 71618, Stop: 73876, Start Num: 5

Candidate Starts for ShiaLabeouf_131:

(Start: 4 @71609 has 50 MA's), (Start: 5 @71618 has 128 MA's), (6, 71657), (8, 71726), (9, 71735), (13, 71831), (15, 71852), (16, 71861), (17, 71882), (19, 71918), (24, 72002), (26, 72011), (38, 72086), (39, 72089), (40, 72110), (41, 72131), (43, 72146), (44, 72155), (45, 72194), (47, 72224), (50, 72362), (51, 72365), (59, 72533), (64, 72584), (66, 72632), (68, 72659), (70, 72683), (74, 72731), (75, 72737), (78, 72782), (80, 72791), (81, 72812), (82, 72818), (84, 72836), (86, 72875), (92, 72917), (107, 73109), (108, 73127), (109, 73133), (113, 73154), (114, 73178), (123, 73265), (127, 73307), (129, 73322), (130, 73325), (132, 73328), (135, 73406), (138, 73496), (143, 73598), (148, 73685), (150, 73703), (153, 73727),

Gene: Shifa_121 Start: 70514, Stop: 72772, Start Num: 5

Candidate Starts for Shifa_121:

(Start: 4 @70505 has 50 MA's), (Start: 5 @70514 has 128 MA's), (6, 70553), (8, 70622), (9, 70631), (13, 70727), (15, 70748), (16, 70757), (17, 70778), (19, 70814), (24, 70898), (26, 70907), (38, 70982), (39, 70985), (40, 71006), (41, 71027), (43, 71042), (44, 71051), (45, 71090), (47, 71120), (50, 71258), (51, 71261), (59, 71429), (66, 71528), (68, 71555), (70, 71579), (74, 71627), (75, 71633), (78, 71678), (80, 71687), (81, 71708), (82, 71714), (84, 71732), (86, 71771), (92, 71813), (105, 71981), (108, 72023), (109, 72029), (113, 72050), (114, 72074), (123, 72161), (127, 72203), (129, 72218), (130, 72221), (132, 72224), (135, 72302), (138, 72392), (143, 72494), (148, 72581), (150, 72599), (153, 72623),

Gene: Shnickers_132 Start: 71573, Stop: 73840, Start Num: 4

Candidate Starts for Shnickers_132:

(Start: 4 @71573 has 50 MA's), (Start: 5 @71582 has 128 MA's), (6, 71621), (8, 71690), (9, 71699), (13, 71795), (15, 71816), (16, 71825), (17, 71846), (19, 71882), (24, 71966), (26, 71975), (38, 72050), (39, 72053), (40, 72074), (41, 72095), (43, 72110), (44, 72119), (45, 72158), (47, 72188), (50, 72326), (51, 72329), (59, 72497), (64, 72548), (66, 72596), (68, 72623), (70, 72647), (74, 72695), (75, 72701), (78, 72746), (80, 72755), (81, 72776), (82, 72782), (84, 72800), (86, 72839), (92, 72881), (107, 73073),

(108, 73091), (109, 73097), (113, 73118), (114, 73142), (123, 73229), (127, 73271), (129, 73286), (130, 73289), (132, 73292), (135, 73370), (138, 73460), (143, 73562), (148, 73649), (150, 73667), (153, 73691),

Gene: Shrimp_132 Start: 72302, Stop: 74560, Start Num: 5

Candidate Starts for Shrimp_132:

(Start: 4 @72293 has 50 MA's), (Start: 5 @72302 has 128 MA's), (6, 72341), (8, 72410), (9, 72419), (13, 72515), (15, 72536), (16, 72545), (17, 72566), (19, 72602), (24, 72686), (26, 72695), (38, 72770), (39, 72773), (40, 72794), (41, 72815), (43, 72830), (44, 72839), (45, 72878), (47, 72908), (50, 73046), (51, 73049), (59, 73217), (66, 73316), (68, 73343), (70, 73367), (74, 73415), (75, 73421), (78, 73466), (80, 73475), (81, 73496), (82, 73502), (84, 73520), (86, 73559), (92, 73601), (105, 73769), (108, 73811), (109, 73817), (113, 73838), (114, 73862), (123, 73949), (127, 73991), (129, 74006), (130, 74009), (132, 74012), (135, 74090), (138, 74180), (143, 74282), (148, 74369), (150, 74387), (153, 74411),

Gene: SilverDipper_134 Start: 71305, Stop: 73563, Start Num: 5

Candidate Starts for SilverDipper_134:

(Start: 4 @71296 has 50 MA's), (Start: 5 @71305 has 128 MA's), (6, 71344), (8, 71413), (9, 71422), (13, 71518), (15, 71539), (16, 71548), (17, 71569), (19, 71605), (24, 71689), (26, 71698), (38, 71773), (39, 71776), (40, 71797), (41, 71818), (43, 71833), (44, 71842), (45, 71881), (47, 71911), (50, 72049), (51, 72052), (59, 72220), (64, 72271), (66, 72319), (68, 72346), (70, 72370), (74, 72418), (75, 72424), (78, 72469), (80, 72478), (81, 72499), (82, 72505), (84, 72523), (86, 72562), (92, 72604), (107, 72796), (108, 72814), (109, 72820), (113, 72841), (114, 72865), (123, 72952), (127, 72994), (129, 73009), (130, 73012), (132, 73015), (135, 73093), (138, 73183), (143, 73285), (148, 73372), (150, 73390), (153, 73414),

Gene: Skog_181 Start: 102669, Stop: 105125, Start Num: 5

Candidate Starts for Skog_181:

(Start: 1 @102627 has 1 MA's), (2, 102636), (Start: 5 @102669 has 128 MA's), (11, 102801), (17, 102936), (22, 103086), (23, 103104), (27, 103119), (30, 103146), (34, 103182), (38, 103215), (39, 103218), (40, 103239), (46, 103347), (48, 103410), (49, 103437), (60, 103728), (65, 103797), (75, 103926), (91, 104106), (93, 104124), (95, 104148), (106, 104304), (116, 104385), (127, 104511), (128, 104520), (129, 104526), (133, 104556), (147, 104934), (149, 104946), (152, 104979), (155, 105057),

Gene: SmallFry_132 Start: 70798, Stop: 73065, Start Num: 4

Candidate Starts for SmallFry_132:

(Start: 4 @70798 has 50 MA's), (Start: 5 @70807 has 128 MA's), (6, 70846), (8, 70915), (9, 70924), (13, 71020), (15, 71041), (16, 71050), (17, 71071), (19, 71107), (24, 71191), (26, 71200), (38, 71275), (39, 71278), (40, 71299), (41, 71320), (43, 71335), (44, 71344), (45, 71383), (47, 71413), (50, 71551), (51, 71554), (59, 71722), (64, 71773), (66, 71821), (68, 71848), (70, 71872), (74, 71920), (75, 71926), (78, 71971), (80, 71980), (81, 72001), (82, 72007), (84, 72025), (86, 72064), (92, 72106), (107, 72298), (108, 72316), (109, 72322), (113, 72343), (114, 72367), (123, 72454), (127, 72496), (129, 72511), (130, 72514), (132, 72517), (135, 72595), (138, 72685), (143, 72787), (148, 72874), (150, 72892), (153, 72916),

Gene: Spec_128 Start: 71347, Stop: 73605, Start Num: 5

Candidate Starts for Spec_128:

(Start: 4 @71338 has 50 MA's), (Start: 5 @71347 has 128 MA's), (6, 71386), (8, 71455), (9, 71464), (13, 71560), (15, 71581), (16, 71590), (17, 71611), (19, 71647), (24, 71731), (26, 71740), (38, 71815), (39, 71818), (40, 71839), (41, 71860), (43, 71875), (44, 71884), (45, 71923), (47, 71953), (50, 72091), (51, 72094), (59, 72262), (64, 72313), (66, 72361), (68, 72388), (70, 72412), (74, 72460), (75, 72466), (78, 72511), (80, 72520), (81, 72541), (82, 72547), (84, 72565), (86, 72604), (92, 72646), (107, 72838), (108, 72856), (109, 72862), (113, 72883), (114, 72907), (123, 72994), (127, 73036), (129, 73051),

(130, 73054), (132, 73057), (135, 73135), (138, 73225), (143, 73327), (148, 73414), (150, 73432),
(153, 73456),

Gene: Specks_137 Start: 73463, Stop: 75730, Start Num: 4

Candidate Starts for Specks_137:

(Start: 4 @73463 has 50 MA's), (Start: 5 @73472 has 128 MA's), (6, 73511), (8, 73580), (9, 73589),
(13, 73685), (15, 73706), (16, 73715), (17, 73736), (19, 73772), (24, 73856), (26, 73865), (38, 73940),
(39, 73943), (40, 73964), (41, 73985), (43, 74000), (44, 74009), (45, 74048), (47, 74078), (50, 74216),
(51, 74219), (59, 74387), (64, 74438), (66, 74486), (68, 74513), (70, 74537), (74, 74585), (75, 74591),
(78, 74636), (80, 74645), (81, 74666), (82, 74672), (84, 74690), (86, 74729), (92, 74771), (107, 74963),
(108, 74981), (109, 74987), (113, 75008), (114, 75032), (123, 75119), (127, 75161), (129, 75176),
(130, 75179), (132, 75182), (135, 75260), (138, 75350), (143, 75452), (148, 75539), (150, 75557),
(153, 75581),

Gene: Sprinklers_128 Start: 70863, Stop: 73121, Start Num: 5

Candidate Starts for Sprinklers_128:

(Start: 4 @70854 has 50 MA's), (Start: 5 @70863 has 128 MA's), (6, 70902), (8, 70971), (9, 70980),
(13, 71076), (15, 71097), (16, 71106), (17, 71127), (19, 71163), (24, 71247), (26, 71256), (38, 71331),
(39, 71334), (40, 71355), (41, 71376), (43, 71391), (44, 71400), (45, 71439), (47, 71469), (50, 71607),
(51, 71610), (59, 71778), (64, 71829), (66, 71877), (68, 71904), (70, 71928), (74, 71976), (75, 71982),
(78, 72027), (80, 72036), (81, 72057), (82, 72063), (84, 72081), (86, 72120), (92, 72162), (107, 72354),
(108, 72372), (109, 72378), (113, 72399), (114, 72423), (123, 72510), (127, 72552), (129, 72567),
(130, 72570), (132, 72573), (135, 72651), (138, 72741), (143, 72843), (148, 72930), (150, 72948),
(153, 72972),

Gene: Spud_131 Start: 72368, Stop: 74626, Start Num: 5

Candidate Starts for Spud_131:

(Start: 4 @72359 has 50 MA's), (Start: 5 @72368 has 128 MA's), (6, 72407), (8, 72476), (9, 72485),
(13, 72581), (15, 72602), (16, 72611), (17, 72632), (19, 72668), (24, 72752), (26, 72761), (38, 72836),
(39, 72839), (40, 72860), (41, 72881), (43, 72896), (44, 72905), (45, 72944), (47, 72974), (50, 73112),
(51, 73115), (59, 73283), (66, 73382), (68, 73409), (70, 73433), (74, 73481), (75, 73487), (78, 73532),
(80, 73541), (81, 73562), (82, 73568), (84, 73586), (86, 73625), (92, 73667), (105, 73835), (108,
73877), (109, 73883), (113, 73904), (114, 73928), (123, 74015), (127, 74057), (129, 74072), (130,
74075), (132, 74078), (135, 74156), (138, 74246), (143, 74348), (148, 74435), (150, 74453), (153,
74477),

Gene: SrishMeg2525_131 Start: 72390, Stop: 74648, Start Num: 5

Candidate Starts for SrishMeg2525_131:

(Start: 4 @72381 has 50 MA's), (Start: 5 @72390 has 128 MA's), (6, 72429), (8, 72498), (9, 72507),
(13, 72603), (15, 72624), (16, 72633), (17, 72654), (19, 72690), (24, 72774), (26, 72783), (38, 72858),
(39, 72861), (40, 72882), (41, 72903), (43, 72918), (44, 72927), (45, 72966), (47, 72996), (50, 73134),
(51, 73137), (59, 73305), (66, 73404), (68, 73431), (70, 73455), (74, 73503), (75, 73509), (78, 73554),
(80, 73563), (81, 73584), (82, 73590), (84, 73608), (86, 73647), (92, 73689), (105, 73857), (108,
73899), (109, 73905), (113, 73926), (114, 73950), (123, 74037), (127, 74079), (129, 74094), (130,
74097), (132, 74100), (135, 74178), (138, 74268), (143, 74370), (148, 74457), (150, 74475), (153,
74499),

Gene: StephanieG_130 Start: 73200, Stop: 75458, Start Num: 5

Candidate Starts for StephanieG_130:

(Start: 4 @73191 has 50 MA's), (Start: 5 @73200 has 128 MA's), (6, 73239), (8, 73308), (9, 73317),
(13, 73413), (15, 73434), (16, 73443), (17, 73464), (19, 73500), (24, 73584), (26, 73593), (38, 73668),
(39, 73671), (40, 73692), (41, 73713), (43, 73728), (44, 73737), (45, 73776), (47, 73806), (50, 73944),
(51, 73947), (59, 74115), (66, 74214), (68, 74241), (70, 74265), (74, 74313), (75, 74319), (78, 74364),

(80, 74373), (81, 74394), (82, 74400), (84, 74418), (86, 74457), (92, 74499), (105, 74667), (108, 74709), (109, 74715), (113, 74736), (114, 74760), (123, 74847), (127, 74889), (129, 74904), (130, 74907), (132, 74910), (135, 74988), (138, 75078), (143, 75180), (148, 75267), (150, 75285), (153, 75309),

Gene: Stubby_125 Start: 70821, Stop: 73088, Start Num: 4

Candidate Starts for Stubby_125:

(Start: 4 @70821 has 50 MA's), (Start: 5 @70830 has 128 MA's), (6, 70869), (8, 70938), (9, 70947), (13, 71043), (15, 71064), (16, 71073), (17, 71094), (19, 71130), (24, 71214), (26, 71223), (38, 71298), (39, 71301), (40, 71322), (41, 71343), (43, 71358), (44, 71367), (45, 71406), (47, 71436), (50, 71574), (51, 71577), (59, 71745), (66, 71844), (68, 71871), (70, 71895), (74, 71943), (75, 71949), (78, 71994), (80, 72003), (81, 72024), (82, 72030), (84, 72048), (86, 72087), (92, 72129), (108, 72339), (109, 72345), (113, 72366), (114, 72390), (123, 72477), (127, 72519), (129, 72534), (130, 72537), (132, 72540), (135, 72618), (138, 72708), (143, 72810), (148, 72897), (150, 72915), (153, 72939),

Gene: StubbySaigey_136 Start: 71465, Stop: 73723, Start Num: 5

Candidate Starts for StubbySaigey_136:

(Start: 4 @71456 has 50 MA's), (Start: 5 @71465 has 128 MA's), (6, 71504), (8, 71573), (9, 71582), (13, 71678), (15, 71699), (16, 71708), (17, 71729), (19, 71765), (24, 71849), (26, 71858), (38, 71933), (39, 71936), (40, 71957), (41, 71978), (43, 71993), (44, 72002), (45, 72041), (47, 72071), (50, 72209), (51, 72212), (59, 72380), (66, 72479), (68, 72506), (70, 72530), (74, 72578), (75, 72584), (78, 72629), (80, 72638), (81, 72659), (82, 72665), (84, 72683), (86, 72722), (92, 72764), (105, 72932), (108, 72974), (109, 72980), (113, 73001), (114, 73025), (123, 73112), (127, 73154), (129, 73169), (130, 73172), (132, 73175), (135, 73253), (138, 73343), (143, 73445), (148, 73532), (150, 73550), (153, 73574),

Gene: Tainan_135 Start: 72795, Stop: 75053, Start Num: 5

Candidate Starts for Tainan_135:

(Start: 4 @72786 has 50 MA's), (Start: 5 @72795 has 128 MA's), (6, 72834), (8, 72903), (9, 72912), (13, 73008), (15, 73029), (16, 73038), (17, 73059), (19, 73095), (24, 73179), (26, 73188), (38, 73263), (39, 73266), (40, 73287), (41, 73308), (43, 73323), (44, 73332), (45, 73371), (47, 73401), (50, 73539), (51, 73542), (59, 73710), (66, 73809), (68, 73836), (70, 73860), (74, 73908), (75, 73914), (78, 73959), (80, 73968), (81, 73989), (82, 73995), (84, 74013), (86, 74052), (92, 74094), (105, 74262), (108, 74304), (109, 74310), (113, 74331), (114, 74355), (123, 74442), (127, 74484), (129, 74499), (130, 74502), (132, 74505), (135, 74583), (138, 74673), (143, 74775), (148, 74862), (150, 74880), (153, 74904),

Gene: Teardrop_131 Start: 70787, Stop: 73054, Start Num: 4

Candidate Starts for Teardrop_131:

(Start: 4 @70787 has 50 MA's), (Start: 5 @70796 has 128 MA's), (6, 70835), (8, 70904), (9, 70913), (13, 71009), (15, 71030), (16, 71039), (17, 71060), (19, 71096), (24, 71180), (26, 71189), (38, 71264), (39, 71267), (40, 71288), (41, 71309), (43, 71324), (44, 71333), (45, 71372), (47, 71402), (50, 71540), (51, 71543), (59, 71711), (64, 71762), (66, 71810), (68, 71837), (70, 71861), (74, 71909), (75, 71915), (78, 71960), (80, 71969), (81, 71990), (82, 71996), (84, 72014), (86, 72053), (92, 72095), (107, 72287), (108, 72305), (109, 72311), (113, 72332), (114, 72356), (123, 72443), (127, 72485), (129, 72500), (130, 72503), (132, 72506), (135, 72584), (138, 72674), (143, 72776), (148, 72863), (150, 72881), (153, 72905),

Gene: TinyTim_132 Start: 72048, Stop: 74306, Start Num: 5

Candidate Starts for TinyTim_132:

(Start: 4 @72039 has 50 MA's), (Start: 5 @72048 has 128 MA's), (6, 72087), (8, 72156), (9, 72165), (13, 72261), (15, 72282), (16, 72291), (17, 72312), (19, 72348), (24, 72432), (26, 72441), (38, 72516), (39, 72519), (40, 72540), (41, 72561), (43, 72576), (44, 72585), (45, 72624), (47, 72654), (50, 72792),

(51, 72795), (59, 72963), (66, 73062), (68, 73089), (70, 73113), (74, 73161), (75, 73167), (78, 73212), (80, 73221), (81, 73242), (82, 73248), (84, 73266), (86, 73305), (92, 73347), (105, 73515), (108, 73557), (109, 73563), (113, 73584), (114, 73608), (123, 73695), (127, 73737), (129, 73752), (130, 73755), (132, 73758), (135, 73836), (138, 73926), (143, 74028), (148, 74115), (150, 74133), (153, 74157),

Gene: Tonenili_145 Start: 74823, Stop: 77069, Start Num: 5

Candidate Starts for Tonenili_145:

(Start: 5 @74823 has 128 MA's), (8, 74931), (9, 74940), (13, 75036), (15, 75057), (16, 75066), (17, 75087), (24, 75201), (31, 75231), (38, 75285), (39, 75288), (40, 75309), (41, 75330), (42, 75333), (43, 75345), (45, 75393), (47, 75423), (50, 75561), (51, 75564), (59, 75732), (70, 75882), (74, 75930), (75, 75936), (76, 75942), (78, 75981), (80, 75990), (81, 76011), (84, 76035), (88, 76092), (91, 76107), (92, 76116), (96, 76161), (97, 76179), (100, 76194), (103, 76233), (105, 76284), (108, 76326), (109, 76332), (110, 76335), (112, 76347), (114, 76377), (127, 76506), (129, 76521), (132, 76527), (135, 76608), (138, 76698), (148, 76884), (151, 76914), (153, 76926),

Gene: Tortoise16_129 Start: 71398, Stop: 73665, Start Num: 4

Candidate Starts for Tortoise16_129:

(Start: 4 @71398 has 50 MA's), (Start: 5 @71407 has 128 MA's), (6, 71446), (8, 71515), (9, 71524), (13, 71620), (15, 71641), (16, 71650), (17, 71671), (19, 71707), (24, 71791), (26, 71800), (38, 71875), (39, 71878), (40, 71899), (41, 71920), (43, 71935), (44, 71944), (45, 71983), (47, 72013), (50, 72151), (51, 72154), (59, 72322), (66, 72421), (68, 72448), (70, 72472), (74, 72520), (75, 72526), (78, 72571), (80, 72580), (81, 72601), (82, 72607), (84, 72625), (86, 72664), (92, 72706), (105, 72874), (108, 72916), (109, 72922), (113, 72943), (114, 72967), (123, 73054), (127, 73096), (129, 73111), (130, 73114), (132, 73117), (135, 73195), (138, 73285), (143, 73387), (148, 73474), (150, 73492), (153, 73516),

Gene: Trinitium_130 Start: 71231, Stop: 73489, Start Num: 5

Candidate Starts for Trinitium_130:

(Start: 4 @71222 has 50 MA's), (Start: 5 @71231 has 128 MA's), (6, 71270), (8, 71339), (9, 71348), (13, 71444), (15, 71465), (16, 71474), (17, 71495), (19, 71531), (24, 71615), (26, 71624), (38, 71699), (39, 71702), (40, 71723), (41, 71744), (43, 71759), (44, 71768), (45, 71807), (47, 71837), (50, 71975), (51, 71978), (59, 72146), (66, 72245), (68, 72272), (70, 72296), (74, 72344), (75, 72350), (78, 72395), (80, 72404), (81, 72425), (82, 72431), (84, 72449), (86, 72488), (92, 72530), (105, 72698), (108, 72740), (109, 72746), (113, 72767), (114, 72791), (123, 72878), (127, 72920), (129, 72935), (130, 72938), (132, 72941), (135, 73019), (138, 73109), (143, 73211), (148, 73298), (150, 73316), (153, 73340),

Gene: Turret_128 Start: 70676, Stop: 72934, Start Num: 5

Candidate Starts for Turret_128:

(Start: 4 @70667 has 50 MA's), (Start: 5 @70676 has 128 MA's), (6, 70715), (8, 70784), (9, 70793), (13, 70889), (15, 70910), (16, 70919), (17, 70940), (19, 70976), (24, 71060), (26, 71069), (38, 71144), (39, 71147), (40, 71168), (41, 71189), (43, 71204), (44, 71213), (45, 71252), (47, 71282), (50, 71420), (51, 71423), (59, 71591), (64, 71642), (66, 71690), (68, 71717), (70, 71741), (74, 71789), (75, 71795), (78, 71840), (80, 71849), (81, 71870), (82, 71876), (84, 71894), (86, 71933), (92, 71975), (105, 72143), (108, 72185), (109, 72191), (113, 72212), (114, 72236), (123, 72323), (127, 72365), (129, 72380), (130, 72383), (132, 72386), (135, 72464), (138, 72554), (143, 72656), (148, 72743), (150, 72761), (153, 72785),

Gene: Tyke_132 Start: 72703, Stop: 74961, Start Num: 5

Candidate Starts for Tyke_132:

(Start: 4 @72694 has 50 MA's), (Start: 5 @72703 has 128 MA's), (6, 72742), (8, 72811), (9, 72820), (13, 72916), (15, 72937), (16, 72946), (17, 72967), (19, 73003), (24, 73087), (26, 73096), (38, 73171),

(39, 73174), (40, 73195), (41, 73216), (43, 73231), (44, 73240), (45, 73279), (47, 73309), (50, 73447), (51, 73450), (59, 73618), (66, 73717), (68, 73744), (70, 73768), (74, 73816), (75, 73822), (78, 73867), (80, 73876), (81, 73897), (82, 73903), (84, 73921), (86, 73960), (92, 74002), (105, 74170), (108, 74212), (109, 74218), (113, 74239), (114, 74263), (123, 74350), (127, 74392), (129, 74407), (130, 74410), (132, 74413), (135, 74491), (138, 74581), (143, 74683), (148, 74770), (150, 74788), (153, 74812),

Gene: ValleyTerrace_133 Start: 71296, Stop: 73563, Start Num: 4

Candidate Starts for ValleyTerrace_133:

(Start: 4 @71296 has 50 MA's), (Start: 5 @71305 has 128 MA's), (6, 71344), (8, 71413), (9, 71422), (13, 71518), (15, 71539), (16, 71548), (17, 71569), (19, 71605), (24, 71689), (26, 71698), (38, 71773), (39, 71776), (40, 71797), (41, 71818), (43, 71833), (44, 71842), (45, 71881), (47, 71911), (50, 72049), (51, 72052), (59, 72220), (64, 72271), (66, 72319), (68, 72346), (70, 72370), (74, 72418), (75, 72424), (78, 72469), (80, 72478), (81, 72499), (82, 72505), (84, 72523), (86, 72562), (92, 72604), (107, 72796), (108, 72814), (109, 72820), (113, 72841), (114, 72865), (123, 72952), (127, 72994), (129, 73009), (130, 73012), (132, 73015), (135, 73093), (138, 73183), (143, 73285), (148, 73372), (150, 73390), (153, 73414),

Gene: Wally_131 Start: 70826, Stop: 73084, Start Num: 5

Candidate Starts for Wally_131:

(Start: 4 @70817 has 50 MA's), (Start: 5 @70826 has 128 MA's), (6, 70865), (8, 70934), (9, 70943), (13, 71039), (15, 71060), (16, 71069), (17, 71090), (19, 71126), (24, 71210), (26, 71219), (38, 71294), (39, 71297), (40, 71318), (41, 71339), (43, 71354), (44, 71363), (45, 71402), (47, 71432), (50, 71570), (51, 71573), (59, 71741), (66, 71840), (68, 71867), (70, 71891), (74, 71939), (75, 71945), (78, 71990), (80, 71999), (81, 72020), (82, 72026), (84, 72044), (86, 72083), (92, 72125), (105, 72293), (108, 72335), (109, 72341), (113, 72362), (114, 72386), (123, 72473), (127, 72515), (129, 72530), (130, 72533), (132, 72536), (135, 72614), (138, 72704), (143, 72806), (148, 72893), (150, 72911), (153, 72935),

Gene: Willis_133 Start: 72193, Stop: 74451, Start Num: 5

Candidate Starts for Willis_133:

(Start: 4 @72184 has 50 MA's), (Start: 5 @72193 has 128 MA's), (6, 72232), (8, 72301), (9, 72310), (13, 72406), (15, 72427), (16, 72436), (17, 72457), (19, 72493), (24, 72577), (26, 72586), (38, 72661), (39, 72664), (40, 72685), (41, 72706), (43, 72721), (44, 72730), (45, 72769), (47, 72799), (50, 72937), (51, 72940), (59, 73108), (66, 73207), (68, 73234), (70, 73258), (74, 73306), (75, 73312), (78, 73357), (80, 73366), (81, 73387), (82, 73393), (84, 73411), (86, 73450), (92, 73492), (105, 73660), (108, 73702), (109, 73708), (113, 73729), (114, 73753), (123, 73840), (127, 73882), (129, 73897), (130, 73900), (132, 73903), (135, 73981), (138, 74071), (143, 74173), (148, 74260), (150, 74278), (153, 74302),

Gene: Yassified_129 Start: 70903, Stop: 73161, Start Num: 5

Candidate Starts for Yassified_129:

(Start: 4 @70894 has 50 MA's), (Start: 5 @70903 has 128 MA's), (6, 70942), (8, 71011), (9, 71020), (13, 71116), (15, 71137), (16, 71146), (17, 71167), (19, 71203), (24, 71287), (26, 71296), (38, 71371), (39, 71374), (40, 71395), (41, 71416), (43, 71431), (44, 71440), (45, 71479), (47, 71509), (50, 71647), (51, 71650), (59, 71818), (64, 71869), (66, 71917), (68, 71944), (70, 71968), (74, 72016), (75, 72022), (78, 72067), (80, 72076), (81, 72097), (82, 72103), (84, 72121), (86, 72160), (92, 72202), (107, 72394), (108, 72412), (109, 72418), (113, 72439), (114, 72463), (123, 72550), (127, 72592), (129, 72607), (130, 72610), (132, 72613), (135, 72691), (138, 72781), (143, 72883), (148, 72970), (150, 72988), (153, 73012),

Gene: YemiJoy2021_133 Start: 72285, Stop: 74543, Start Num: 5

Candidate Starts for YemiJoy2021_133:

(Start: 4 @72276 has 50 MA's), (Start: 5 @72285 has 128 MA's), (6, 72324), (8, 72393), (9, 72402), (13, 72498), (15, 72519), (16, 72528), (17, 72549), (19, 72585), (24, 72669), (26, 72678), (38, 72753), (39, 72756), (40, 72777), (41, 72798), (43, 72813), (44, 72822), (45, 72861), (47, 72891), (50, 73029), (51, 73032), (59, 73200), (66, 73299), (68, 73326), (70, 73350), (74, 73398), (75, 73404), (78, 73449), (80, 73458), (81, 73479), (82, 73485), (84, 73503), (86, 73542), (92, 73584), (105, 73752), (108, 73794), (109, 73800), (113, 73821), (114, 73845), (123, 73932), (127, 73974), (129, 73989), (130, 73992), (132, 73995), (135, 74073), (138, 74163), (143, 74265), (148, 74352), (150, 74370), (153, 74394),

Gene: YoungMoneyMata_134 Start: 71931, Stop: 74189, Start Num: 5

Candidate Starts for YoungMoneyMata_134:

(Start: 4 @71922 has 50 MA's), (Start: 5 @71931 has 128 MA's), (6, 71970), (8, 72039), (9, 72048), (13, 72144), (15, 72165), (16, 72174), (17, 72195), (19, 72231), (24, 72315), (26, 72324), (38, 72399), (39, 72402), (40, 72423), (41, 72444), (43, 72459), (44, 72468), (45, 72507), (47, 72537), (50, 72675), (51, 72678), (59, 72846), (66, 72945), (68, 72972), (70, 72996), (74, 73044), (75, 73050), (78, 73095), (80, 73104), (81, 73125), (82, 73131), (84, 73149), (86, 73188), (92, 73230), (105, 73398), (108, 73440), (109, 73446), (113, 73467), (114, 73491), (123, 73578), (127, 73620), (129, 73635), (130, 73638), (132, 73641), (135, 73719), (138, 73809), (143, 73911), (148, 73998), (150, 74016), (153, 74040),

Gene: Yucca_131 Start: 71967, Stop: 74225, Start Num: 5

Candidate Starts for Yucca_131:

(Start: 4 @71958 has 50 MA's), (Start: 5 @71967 has 128 MA's), (6, 72006), (8, 72075), (9, 72084), (13, 72180), (15, 72201), (16, 72210), (17, 72231), (19, 72267), (24, 72351), (26, 72360), (38, 72435), (39, 72438), (40, 72459), (41, 72480), (43, 72495), (44, 72504), (45, 72543), (47, 72573), (50, 72711), (51, 72714), (59, 72882), (66, 72981), (68, 73008), (70, 73032), (74, 73080), (75, 73086), (78, 73131), (80, 73140), (81, 73161), (82, 73167), (84, 73185), (86, 73224), (92, 73266), (105, 73434), (108, 73476), (109, 73482), (113, 73503), (114, 73527), (123, 73614), (127, 73656), (129, 73671), (130, 73674), (132, 73677), (135, 73755), (138, 73845), (143, 73947), (148, 74034), (150, 74052), (153, 74076),

Gene: Zalkecks_133 Start: 71968, Stop: 74226, Start Num: 5

Candidate Starts for Zalkecks_133:

(Start: 4 @71959 has 50 MA's), (Start: 5 @71968 has 128 MA's), (6, 72007), (8, 72076), (9, 72085), (13, 72181), (15, 72202), (16, 72211), (17, 72232), (19, 72268), (24, 72352), (26, 72361), (38, 72436), (39, 72439), (40, 72460), (41, 72481), (43, 72496), (44, 72505), (45, 72544), (47, 72574), (50, 72712), (51, 72715), (59, 72883), (66, 72982), (68, 73009), (70, 73033), (74, 73081), (75, 73087), (78, 73132), (80, 73141), (81, 73162), (82, 73168), (84, 73186), (86, 73225), (92, 73267), (105, 73435), (108, 73477), (109, 73483), (113, 73504), (114, 73528), (123, 73615), (127, 73657), (129, 73672), (130, 73675), (132, 73678), (135, 73756), (138, 73846), (143, 73948), (148, 74035), (150, 74053), (153, 74077),

Gene: Zeenon_133 Start: 72053, Stop: 74311, Start Num: 5

Candidate Starts for Zeenon_133:

(Start: 4 @72044 has 50 MA's), (Start: 5 @72053 has 128 MA's), (6, 72092), (8, 72161), (9, 72170), (13, 72266), (15, 72287), (16, 72296), (17, 72317), (19, 72353), (24, 72437), (26, 72446), (38, 72521), (39, 72524), (40, 72545), (41, 72566), (43, 72581), (44, 72590), (45, 72629), (47, 72659), (50, 72797), (51, 72800), (59, 72968), (66, 73067), (68, 73094), (70, 73118), (74, 73166), (75, 73172), (78, 73217), (80, 73226), (81, 73247), (82, 73253), (84, 73271), (86, 73310), (92, 73352), (105, 73520), (108, 73562), (109, 73568), (113, 73589), (114, 73613), (123, 73700), (127, 73742), (129, 73757), (130, 73760), (132, 73763), (135, 73841), (138, 73931), (143, 74033), (148, 74120), (150, 74138), (153, 74162),

Gene: ZygoTaiga_130 Start: 73213, Stop: 75471, Start Num: 5

Candidate Starts for ZygoTaiga_130:

(Start: 4 @73204 has 50 MA's), (Start: 5 @73213 has 128 MA's), (6, 73252), (8, 73321), (9, 73330), (13, 73426), (15, 73447), (16, 73456), (17, 73477), (19, 73513), (24, 73597), (26, 73606), (38, 73681), (39, 73684), (40, 73705), (41, 73726), (43, 73741), (44, 73750), (45, 73789), (47, 73819), (50, 73957), (51, 73960), (59, 74128), (66, 74227), (68, 74254), (70, 74278), (74, 74326), (75, 74332), (78, 74377), (80, 74386), (81, 74407), (82, 74413), (84, 74431), (86, 74470), (92, 74512), (105, 74680), (108, 74722), (109, 74728), (113, 74749), (114, 74773), (123, 74860), (127, 74902), (129, 74917), (130, 74920), (132, 74923), (135, 75001), (138, 75091), (143, 75193), (148, 75280), (150, 75298), (153, 75322),