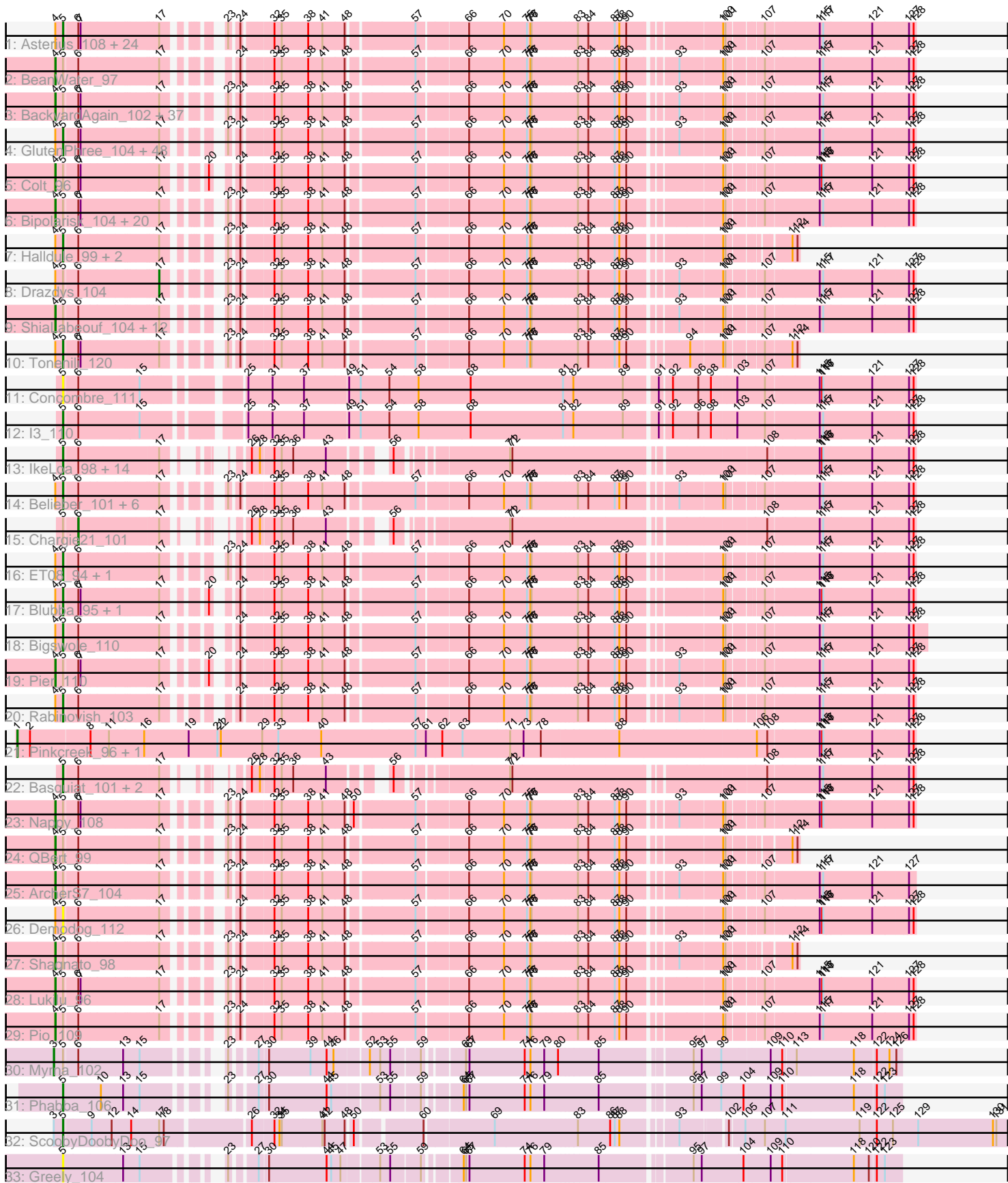


Pham 224302



Note: Tracks are now grouped by subcluster and scaled. Switching in subcluster is indicated by changes in track color. Track scale is now set by default to display the region 30 bp upstream of start 1 to 30 bp downstream of the last possible start. If this default region is judged to be packed too tightly with annotated starts, the track will be further scaled to only show that region of the ORF with annotated starts. This action will be indicated by adding "Zoomed" to the title. For starts, yellow indicates the location of called starts comprised solely of Glimmer/GeneMark auto-annotations, green indicates the location of called starts with at least 1 manual gene annotation.

Pham 224302 Report

This analysis was run 03/28/25 on database version 593.

Pham number 224302 has 201 members, 26 are drafts.

Phages represented in each track:

- Track 1 : Asterius_108, Rizal_101, Naval22_110, Izajani_105, SrishMeg2525_104, Caravan_100, PurduePete_105, Shrimp_105, MoMoMixon_106, ZygoTaiga_104, Gizmo_109, Burrough_105, MikeLiesIn_106, Megamind_104, Zeenon_107, Maby2021_105, Ava3_106, Lethe_105, ParkTD_106, Zalkecks_106, NedWong_106, Willis_106, Fongie_103, Pleione_108, Lee7_103
- Track 2 : BeanWater_97
- Track 3 : BackyardAgain_102, Patter_105, ValleyTerrace_105, JPickles_103, Atlantean_104, RoMag_100, Pivoine_104, BadAgartude_101, Khaleesi_104, Spud_105, Ngannou_101, Cali_101, Roots515_104, Napoleon13_101, Naija_104, Catera_102, Rahel_104, Mangeria_105, Ading_105, Amataga_105, Jaygup_105, JustHall_102, Blackbrain_100, Specks_110, Shnickers_105, Latch_105, FrayBell_110, StubbySaigey_108, Kamryn_105, Phusco_105, EmmaElysia_105, McWolfish_103, Bxz1_103, LifeSavor_104, Babyland_106, Teardrop_104, Littleton_105, SilverDipper_106
- Track 4 : GlutenPhree_104, CharlieB_101, Ghost_104, Jezreel_103, Phox_102, CindyLou_106, Primadonna_99, Gamgam_105, Turret_100, Tainan_109, Derek_105, Yassified_102, BananaFence_104, Grasshills_112, Domi_99, Kboogie_109, ScottMcG_102, Phlegm_107, DTDevon_106, LolaVinca_106, StephanieG_104, Blackdragon_101, Momo_104, EggyFarm_113, SVoro_103, Jemmno_105, Sprinklers_101, Capablanca_107, Bread_105, InigoMontoya_106, BigCity_113, Janiyra_107, NoodleTree_112, Spec_101, Jedediah_108, Ronan_99, Adlitam_105, Matsumoto_102, Cactojaque_100, Salacia_109, Bangla1971_106, DirtMonster_99, Mikro_103, NuevoMundo_111, LordLeafolot_109, Koguma_102, InterFolia_113, Audrick_107, JigglyPuff_113
- Track 5 : Colt_96
- Track 6 : Bipolarisk_104, Delylah_108, Ewok_106, Jessibeth14_104, Erdmann_106, Issimir_104, Dietrick_97, TinyTim_105, Shelob_107, Bonray_105, Darko_105, DrPhinkDaddy_104, Morizzled23_105, Norm_106, Nidhogg_106, Yucca_105, Delilah_105, Daffodil_110, FoxtrotP1_105, Flabslab_99, Iota_100
- Track 7 : Halldule_99, Grungle_93, JulietS_100
- Track 8 : Drazdys_104
- Track 9 : ShiaLabeouf_104, ChaylaJr_100, Essence_102, Melpomini_99, Trinitium_102, YoungMoneyMata_106, McGee_107, Wally_104, SmallFry_105, Tortoise16_102, Tyke_106, ChickenPhender_101, Quasimodo_106
- Track 10 : Tonenili_120
- Track 11 : Concombre_111
- Track 12 : I3_110

- Track 13 : IkeLoa_98, Loanshark_104, Sebata_106, JayJay_110, LinStu_104, LRRHood_99, Stubby_97, Sauce_105, Shifa_93, HyRo_96, FudgeTart_104, EmToTheThree_107, DeejaClivia_93, EasyJones_107, Dandelion_111
- Track 14 : Belieber_101, YemiJoy2021_106, Ablatia_103, Breeniome_104, Chomp_104, Guwapp_104, Gabriel_106
- Track 15 : Chargie21_101
- Track 16 : ET08_94, Astraea_102
- Track 17 : Blubba_95, Cane17_95
- Track 18 : Bigswole_110
- Track 19 : Pier_110
- Track 20 : Rabinovish_103
- Track 21 : Pinkcreek_96, Alice_98
- Track 22 : Basquiat_101, Fludd_105, ErnieJ_100
- Track 23 : Nappy_108
- Track 24 : QBert_99
- Track 25 : ArcherS7_104
- Track 26 : Demodog_112
- Track 27 : Shaqnato_98
- Track 28 : Lukilu_96
- Track 29 : Pio_109
- Track 30 : Myrna_102
- Track 31 : Phabba_106
- Track 32 : ScoobyDoobyDoo_97
- Track 33 : Greely_104

Summary of Final Annotations (See graph section above for start numbers):

The start number called the most often in the published annotations is 5, it was called in 89 of the 175 non-draft genes in the pham.

Genes that call this "Most Annotated" start:

- Ablatia_103, Adlitam_105, Asterius_108, Astraea_102, Audrick_107, Ava3_106, BananaFence_104, Bangla1971_106, Basquiat_101, Belieber_101, BigCity_113, Bigswole_110, Blackdragon_101, Blubba_95, Bread_105, Breeniome_104, Burrough_105, Cactojaque_100, Cane17_95, Capablanca_107, Caravan_100, CharlieB_101, Chomp_104, CindyLou_106, Concombre_111, DTDevon_106, Dandelion_111, DeejaClivia_93, Demodog_112, Derek_105, DirtMonster_99, Domi_99, ET08_94, EasyJones_107, EggyFarm_113, EmToTheThree_107, ErnieJ_100, Fludd_105, Fongie_103, FudgeTart_104, Gabriel_106, Gamgam_105, Ghost_104, Gizmo_109, GlutenPhree_104, Grasshills_112, Greely_104, Grungle_93, Guwapp_104, Halldule_99, HyRo_96, I3_110, IkeLoa_98, InigoMontoya_106, InterFolia_113, Izajani_105, Janiyra_107, JayJay_110, Jedediah_108, Jemmno_105, Jezreel_103, JigglyPuff_113, JulietS_100, Kboogie_109, Koguma_102, LRRHood_99, Lee7_103, Lethe_105, LinStu_104, Loanshark_104, LolaVinca_106, LordLeafolot_109, Maby2021_105, Matsumoto_102, Megamind_104, MikeLiesIn_106, Mikro_103, MoMoMixon_106, Momo_104, Naval22_110, NedWong_106, NoodleTree_112, NuevoMundo_111, ParkTD_106, Phabba_106, Phlegm_107, Phox_102, Pleione_108, Primadonna_99, PurduePete_105, Rabinovish_103, Rizal_101, Ronan_99, SVoro_103, Salacia_109, Sauce_105, ScoobyDoobyDoo_97, ScottMcG_102, Sebata_106, Shifa_93, Shrimp_105,

Spec_101, Sprinklers_101, SrishMeg2525_104, StephanieG_104, Stubby_97, Tainan_109, Tonenili_120, Turret_100, Willis_106, Yassified_102, YemiJoy2021_106, Zalkecks_106, Zeenon_107, ZygoTaiga_104,

Genes that have the "Most Annotated" start but do not call it:

- Ading_105, Amataga_105, ArcherS7_104, Atlantean_104, Babyland_106, BackyardAgain_102, BadAgartude_101, BeanWater_97, Bipolarisk_104, Blackbrain_100, Bonray_105, Bxz1_103, Cali_101, Catera_102, Chargie21_101, ChaylaJr_100, ChickenPhender_101, Colt_96, Daffodil_110, Darko_105, Delilah_105, Delylah_108, Dietrick_97, DrPhinkDaddy_104, Drazdys_104, EmmaElysia_105, Erdmann_106, Essence_102, Ewok_106, Flabslab_99, FoxtrotP1_105, FrayBell_110, Iota_100, Issimir_104, JPickles_103, Jaygup_105, Jessibeth14_104, JustHall_102, Kamryn_105, Khaleesi_104, Latch_105, LifeSavor_104, Littleton_105, Lukilu_96, Mangeria_105, McGee_107, McWolfish_103, Melpomini_99, Morizzled23_105, Myrna_102, Naija_104, Napoleon13_101, Nappy_108, Ngannou_101, Nidhogg_106, Norm_106, Patter_105, Phusco_105, Pier_110, Pio_109, Pivoine_104, QBert_99, Quasimodo_106, Rahel_104, RoMag_100, Roots515_104, Shaqnato_98, Shelob_107, ShiaLabeouf_104, Shnickers_105, SilverDipper_106, SmallFry_105, Specks_110, Spud_105, StubbySaigey_108, Teardrop_104, TinyTim_105, Tortoise16_102, Trinitium_102, Tyke_106, ValleyTerrace_105, Wally_104, YoungMoneyMata_106, Yucca_105,

Genes that do not have the "Most Annotated" start:

- Alice_98, Pinkcreek_96,

Summary by start number:

Start 1:

- Found in 2 of 201 (1.0%) of genes in pham
- Manual Annotations of this start: 2 of 175
- Called 100.0% of time when present
- Phage (with cluster) where this start called: Alice_98 (C1), Pinkcreek_96 (C1),

Start 3:

- Found in 2 of 201 (1.0%) of genes in pham
- Manual Annotations of this start: 1 of 175
- Called 50.0% of time when present
- Phage (with cluster) where this start called: Myrna_102 (C2),

Start 4:

- Found in 174 of 201 (86.6%) of genes in pham
- Manual Annotations of this start: 81 of 175
- Called 46.6% of time when present
- Phage (with cluster) where this start called: Ading_105 (C1), Amataga_105 (C1), ArcherS7_104 (C1), Atlantean_104 (C1), Babyland_106 (C1), BackyardAgain_102 (C1), BadAgartude_101 (C1), BeanWater_97 (C1), Bipolarisk_104 (C1), Blackbrain_100 (C1), Bonray_105 (C1), Bxz1_103 (C1), Cali_101 (C1), Catera_102 (C1), ChaylaJr_100 (C1), ChickenPhender_101 (C1), Colt_96 (C1), Daffodil_110 (C1), Darko_105 (C1), Delilah_105 (C1), Delylah_108 (C1), Dietrick_97 (C1), DrPhinkDaddy_104 (C1), EmmaElysia_105 (C1), Erdmann_106 (C1), Essence_102 (C1), Ewok_106 (C1), Flabslab_99 (C1), FoxtrotP1_105 (C1), FrayBell_110 (C1), Iota_100 (C1), Issimir_104 (C1), JPickles_103 (C1), Jaygup_105 (C1),

Jessibeth14_104 (C1), JustHall_102 (C1), Kamryn_105 (C1), Khaleesi_104 (C1), Latch_105 (C1), LifeSavor_104 (C1), Littleton_105 (C1), Lukilu_96 (C1), Mangeria_105 (C1), McGee_107 (C1), McWolfish_103 (C1), Melpomini_99 (C1), Morizzled23_105 (C1), Naija_104 (C1), Napoleon13_101 (C1), Nappy_108 (C1), Ngannou_101 (C1), Nidhogg_106 (C1), Norm_106 (C1), Patter_105 (C1), Phusco_105 (C1), Pier_110 (C1), Pio_109 (C1), Pivoine_104 (C1), QBert_99 (C1), Quasimodo_106 (C1), Rahel_104 (C1), RoMag_100 (C1), Roots515_104 (C1), Shaqnato_98 (C1), Shelob_107 (C1), ShiaLabeouf_104 (C1), Shnickers_105 (C1), SilverDipper_106 (C1), SmallFry_105 (C1), Specks_110 (C1), Spud_105 (C1), StubbySaigey_108 (C1), Teardrop_104 (C1), TinyTim_105 (C1), Tortoise16_102 (C1), Trinitium_102 (C1), Tyke_106 (C1), ValleyTerrace_105 (C1), Wally_104 (C1), YoungMoneyMata_106 (C1), Yucca_105 (C1),

Start 5:

- Found in 199 of 201 (99.0%) of genes in pham
- Manual Annotations of this start: 89 of 175
- Called 57.8% of time when present
- Phage (with cluster) where this start called: Ablatia_103 (C1), Adlitam_105 (C1), Asterius_108 (C1), Astraea_102 (C1), Audrick_107 (C1), Ava3_106 (C1), BananaFence_104 (C1), Bangla1971_106 (C1), Basquiat_101 (C1), Belieber_101 (C1), BigCity_113 (C1), Bigswole_110 (C1), Blackdragon_101 (C1), Blubba_95 (C1), Bread_105 (C1), Breeniome_104 (C1), Burrough_105 (C1), Cactojaque_100 (C1), Cane17_95 (C1), Capablanca_107 (C1), Caravan_100 (C1), CharlieB_101 (C1), Chomp_104 (C1), CindyLou_106 (C1), Concombre_111 (C1), DTDevon_106 (C1), Dandelion_111 (C1), DeejaClivia_93 (C1), Demodog_112 (C1), Derek_105 (C1), DirtMonster_99 (C1), Domi_99 (C1), ET08_94 (C1), EasyJones_107 (C1), EggyFarm_113 (C1), EmToTheThree_107 (C1), ErnieJ_100 (C1), Fludd_105 (C1), Fongie_103 (C1), FudgeTart_104 (C1), Gabriel_106 (C1), Gangam_105 (C1), Ghost_104 (C1), Gizmo_109 (C1), GlutenPhree_104 (C1), Grasshills_112 (C1), Greely_104 (C2), Grungle_93 (C1), Guwapp_104 (C1), Halldule_99 (C1), HyRo_96 (C1), I3_110 (C1), IkeLoa_98 (C1), InigoMontoya_106 (C1), InterFolia_113 (C1), Izajani_105 (C1), Janiyra_107 (C1), JayJay_110 (C1), Jedediah_108 (C1), Jemmno_105 (C1), Jezreel_103 (C1), JigglyPuff_113 (C1), JulietS_100 (C1), Kboogie_109 (C1), Koguma_102 (C1), LRRHood_99 (C1), Lee7_103 (C1), Lethe_105 (C1), LinStu_104 (C1), Loanshark_104 (C1), LolaVinca_106 (C1), LordLeafolot_109 (C1), Maby2021_105 (C1), Matsumoto_102 (C1), Megamind_104 (C1), MikeLiesIn_106 (C1), Mikro_103 (C1), MoMoMixon_106 (C1), Momo_104 (C1), Naval22_110 (C1), NedWong_106 (C1), NoodleTree_112 (C1), NuevoMundo_111 (C1), ParkTD_106 (C1), Phabba_106 (C2), Phlegm_107 (C1), Phox_102 (C1), Pleione_108 (C1), Primadonna_99 (C1), PurduePete_105 (C1), Rabinovich_103 (C1), Rizal_101 (C1), Ronan_99 (C1), SVoro_103 (C1), Salacia_109 (C1), Sauce_105 (C1), ScoobyDoobyDoo_97 (C2), ScottMcG_102 (C1), Sebata_106 (C1), Shifa_93 (C1), Shrimp_105 (C1), Spec_101 (C1), Sprinklers_101 (C1), SrishMeg2525_104 (C1), StephanieG_104 (C1), Stubby_97 (C1), Tainan_109 (C1), Tonenili_120 (C1), Turret_100 (C1), Willis_106 (C1), Yassified_102 (C1), YemiJoy2021_106 (C1), Zalkecks_106 (C1), Zeenon_107 (C1), ZygoTaiga_104 (C1),

Start 6:

- Found in 196 of 201 (97.5%) of genes in pham
- Manual Annotations of this start: 1 of 175
- Called 0.5% of time when present
- Phage (with cluster) where this start called: Chargie21_101 (C1),

Start 17:

- Found in 194 of 201 (96.5%) of genes in pham
- Manual Annotations of this start: 1 of 175
- Called 0.5% of time when present
- Phage (with cluster) where this start called: Drazdys_104 (C1),

Summary by clusters:

There are 2 clusters represented in this pham: C2, C1,

Info for manual annotations of cluster C1:

- Start number 1 was manually annotated 2 times for cluster C1.
- Start number 4 was manually annotated 81 times for cluster C1.
- Start number 5 was manually annotated 87 times for cluster C1.
- Start number 6 was manually annotated 1 time for cluster C1.
- Start number 17 was manually annotated 1 time for cluster C1.

Info for manual annotations of cluster C2:

- Start number 3 was manually annotated 1 time for cluster C2.
- Start number 5 was manually annotated 2 times for cluster C2.

Gene Information:

Gene: Ablatia_103 Start: 52460, Stop: 54346, Start Num: 5

Candidate Starts for Ablatia_103:

(Start: 4 @52442 has 81 MA's), (Start: 5 @52460 has 89 MA's), (Start: 6 @52493 has 1 MA's), (Start: 17 @52685 has 1 MA's), (23, 52763), (24, 52781), (32, 52847), (35, 52865), (38, 52931), (41, 52967), (48, 53024), (57, 53180), (66, 53303), (70, 53390), (75, 53447), (76, 53456), (77, 53459), (83, 53567), (84, 53591), (87, 53657), (88, 53669), (90, 53687), (93, 53789), (100, 53888), (101, 53894), (107, 53975), (115, 54110), (117, 54119), (121, 54242), (127, 54329), (128, 54341),

Gene: Ading_105 Start: 52826, Stop: 54730, Start Num: 4

Candidate Starts for Ading_105:

(Start: 4 @52826 has 81 MA's), (Start: 5 @52844 has 89 MA's), (Start: 6 @52877 has 1 MA's), (7, 52883), (Start: 17 @53069 has 1 MA's), (23, 53147), (24, 53165), (32, 53231), (35, 53249), (38, 53315), (41, 53351), (48, 53408), (57, 53564), (66, 53687), (70, 53774), (75, 53831), (76, 53840), (77, 53843), (83, 53951), (84, 53975), (87, 54041), (88, 54053), (90, 54071), (93, 54173), (100, 54272), (101, 54278), (107, 54359), (115, 54494), (117, 54503), (121, 54626), (127, 54713), (128, 54725),

Gene: Adlitam_105 Start: 52861, Stop: 54747, Start Num: 5

Candidate Starts for Adlitam_105:

(Start: 4 @52843 has 81 MA's), (Start: 5 @52861 has 89 MA's), (Start: 6 @52894 has 1 MA's), (7, 52900), (Start: 17 @53086 has 1 MA's), (23, 53164), (24, 53182), (32, 53248), (35, 53266), (38, 53332), (41, 53368), (48, 53425), (57, 53581), (66, 53704), (70, 53791), (75, 53848), (76, 53857), (77, 53860), (83, 53968), (84, 53992), (87, 54058), (88, 54070), (90, 54088), (93, 54190), (100, 54289), (101, 54295), (107, 54376), (115, 54511), (117, 54520), (121, 54643), (127, 54730), (128, 54742),

Gene: Alice_98 Start: 51763, Stop: 54024, Start Num: 1

Candidate Starts for Alice_98:

(Start: 1 @51763 has 2 MA's), (2, 51796), (8, 51946), (11, 51994), (16, 52084), (19, 52198), (21, 52273), (22, 52282), (29, 52390), (33, 52429), (40, 52537), (57, 52780), (61, 52807), (62, 52849), (63,

52900), (71, 53020), (73, 53053), (78, 53098), (88, 53284), (106, 53632), (108, 53659), (115, 53788), (116, 53794), (117, 53797), (121, 53920), (127, 54007), (128, 54019),

Gene: Amataga_105 Start: 52088, Stop: 53992, Start Num: 4

Candidate Starts for Amataga_105:

(Start: 4 @52088 has 81 MA's), (Start: 5 @52106 has 89 MA's), (Start: 6 @52139 has 1 MA's), (7, 52145), (Start: 17 @52331 has 1 MA's), (23, 52409), (24, 52427), (32, 52493), (35, 52511), (38, 52577), (41, 52613), (48, 52670), (57, 52826), (66, 52949), (70, 53036), (75, 53093), (76, 53102), (77, 53105), (83, 53213), (84, 53237), (87, 53303), (88, 53315), (90, 53333), (93, 53435), (100, 53534), (101, 53540), (107, 53621), (115, 53756), (117, 53765), (121, 53888), (127, 53975), (128, 53987),

Gene: ArcherS7_104 Start: 52406, Stop: 54310, Start Num: 4

Candidate Starts for ArcherS7_104:

(Start: 4 @52406 has 81 MA's), (Start: 5 @52424 has 89 MA's), (Start: 6 @52457 has 1 MA's), (Start: 17 @52649 has 1 MA's), (23, 52727), (24, 52745), (32, 52811), (35, 52829), (38, 52895), (41, 52931), (48, 52988), (57, 53144), (66, 53267), (70, 53354), (75, 53411), (76, 53420), (77, 53423), (83, 53531), (84, 53555), (87, 53621), (88, 53633), (90, 53651), (93, 53753), (100, 53852), (101, 53858), (107, 53939), (115, 54074), (117, 54083), (121, 54206), (127, 54293),

Gene: Asterius_108 Start: 53099, Stop: 54985, Start Num: 5

Candidate Starts for Asterius_108:

(Start: 4 @53081 has 81 MA's), (Start: 5 @53099 has 89 MA's), (Start: 6 @53132 has 1 MA's), (7, 53138), (Start: 17 @53324 has 1 MA's), (23, 53402), (24, 53420), (32, 53486), (35, 53504), (38, 53570), (41, 53606), (48, 53663), (57, 53819), (66, 53942), (70, 54029), (75, 54086), (76, 54095), (77, 54098), (83, 54206), (84, 54230), (87, 54296), (88, 54308), (90, 54326), (100, 54527), (101, 54533), (107, 54614), (115, 54749), (117, 54758), (121, 54881), (127, 54968), (128, 54980),

Gene: Astraea_102 Start: 51875, Stop: 53761, Start Num: 5

Candidate Starts for Astraea_102:

(Start: 4 @51857 has 81 MA's), (Start: 5 @51875 has 89 MA's), (Start: 6 @51908 has 1 MA's), (Start: 17 @52100 has 1 MA's), (23, 52178), (24, 52196), (32, 52262), (35, 52280), (38, 52346), (41, 52382), (48, 52439), (57, 52595), (66, 52718), (70, 52805), (75, 52862), (76, 52871), (77, 52874), (83, 52982), (84, 53006), (87, 53072), (88, 53084), (90, 53102), (100, 53303), (101, 53309), (107, 53390), (115, 53525), (117, 53534), (121, 53657), (127, 53744), (128, 53756),

Gene: Atlantean_104 Start: 52088, Stop: 53992, Start Num: 4

Candidate Starts for Atlantean_104:

(Start: 4 @52088 has 81 MA's), (Start: 5 @52106 has 89 MA's), (Start: 6 @52139 has 1 MA's), (7, 52145), (Start: 17 @52331 has 1 MA's), (23, 52409), (24, 52427), (32, 52493), (35, 52511), (38, 52577), (41, 52613), (48, 52670), (57, 52826), (66, 52949), (70, 53036), (75, 53093), (76, 53102), (77, 53105), (83, 53213), (84, 53237), (87, 53303), (88, 53315), (90, 53333), (93, 53435), (100, 53534), (101, 53540), (107, 53621), (115, 53756), (117, 53765), (121, 53888), (127, 53975), (128, 53987),

Gene: Audrick_107 Start: 52085, Stop: 53971, Start Num: 5

Candidate Starts for Audrick_107:

(Start: 4 @52067 has 81 MA's), (Start: 5 @52085 has 89 MA's), (Start: 6 @52118 has 1 MA's), (7, 52124), (Start: 17 @52310 has 1 MA's), (23, 52388), (24, 52406), (32, 52472), (35, 52490), (38, 52556), (41, 52592), (48, 52649), (57, 52805), (66, 52928), (70, 53015), (75, 53072), (76, 53081), (77, 53084), (83, 53192), (84, 53216), (87, 53282), (88, 53294), (90, 53312), (93, 53414), (100, 53513), (101, 53519), (107, 53600), (115, 53735), (117, 53744), (121, 53867), (127, 53954), (128, 53966),

Gene: Ava3_106 Start: 53019, Stop: 54905, Start Num: 5

Candidate Starts for Ava3_106:

(Start: 4 @53001 has 81 MA's), (Start: 5 @53019 has 89 MA's), (Start: 6 @53052 has 1 MA's), (7, 53058), (Start: 17 @53244 has 1 MA's), (23, 53322), (24, 53340), (32, 53406), (35, 53424), (38, 53490), (41, 53526), (48, 53583), (57, 53739), (66, 53862), (70, 53949), (75, 54006), (76, 54015), (77, 54018), (83, 54126), (84, 54150), (87, 54216), (88, 54228), (90, 54246), (100, 54447), (101, 54453), (107, 54534), (115, 54669), (117, 54678), (121, 54801), (127, 54888), (128, 54900),

Gene: Babyland_106 Start: 52176, Stop: 54080, Start Num: 4

Candidate Starts for Babyland_106:

(Start: 4 @52176 has 81 MA's), (Start: 5 @52194 has 89 MA's), (Start: 6 @52227 has 1 MA's), (7, 52233), (Start: 17 @52419 has 1 MA's), (23, 52497), (24, 52515), (32, 52581), (35, 52599), (38, 52665), (41, 52701), (48, 52758), (57, 52914), (66, 53037), (70, 53124), (75, 53181), (76, 53190), (77, 53193), (83, 53301), (84, 53325), (87, 53391), (88, 53403), (90, 53421), (93, 53523), (100, 53622), (101, 53628), (107, 53709), (115, 53844), (117, 53853), (121, 53976), (127, 54063), (128, 54075),

Gene: BackyardAgain_102 Start: 52003, Stop: 53907, Start Num: 4

Candidate Starts for BackyardAgain_102:

(Start: 4 @52003 has 81 MA's), (Start: 5 @52021 has 89 MA's), (Start: 6 @52054 has 1 MA's), (7, 52060), (Start: 17 @52246 has 1 MA's), (23, 52324), (24, 52342), (32, 52408), (35, 52426), (38, 52492), (41, 52528), (48, 52585), (57, 52741), (66, 52864), (70, 52951), (75, 53008), (76, 53017), (77, 53020), (83, 53128), (84, 53152), (87, 53218), (88, 53230), (90, 53248), (93, 53350), (100, 53449), (101, 53455), (107, 53536), (115, 53671), (117, 53680), (121, 53803), (127, 53890), (128, 53902),

Gene: BadAgartude_101 Start: 53526, Stop: 55430, Start Num: 4

Candidate Starts for BadAgartude_101:

(Start: 4 @53526 has 81 MA's), (Start: 5 @53544 has 89 MA's), (Start: 6 @53577 has 1 MA's), (7, 53583), (Start: 17 @53769 has 1 MA's), (23, 53847), (24, 53865), (32, 53931), (35, 53949), (38, 54015), (41, 54051), (48, 54108), (57, 54264), (66, 54387), (70, 54474), (75, 54531), (76, 54540), (77, 54543), (83, 54651), (84, 54675), (87, 54741), (88, 54753), (90, 54771), (93, 54873), (100, 54972), (101, 54978), (107, 55059), (115, 55194), (117, 55203), (121, 55326), (127, 55413), (128, 55425),

Gene: BananaFence_104 Start: 53275, Stop: 55161, Start Num: 5

Candidate Starts for BananaFence_104:

(Start: 4 @53257 has 81 MA's), (Start: 5 @53275 has 89 MA's), (Start: 6 @53308 has 1 MA's), (7, 53314), (Start: 17 @53500 has 1 MA's), (23, 53578), (24, 53596), (32, 53662), (35, 53680), (38, 53746), (41, 53782), (48, 53839), (57, 53995), (66, 54118), (70, 54205), (75, 54262), (76, 54271), (77, 54274), (83, 54382), (84, 54406), (87, 54472), (88, 54484), (90, 54502), (93, 54604), (100, 54703), (101, 54709), (107, 54790), (115, 54925), (117, 54934), (121, 55057), (127, 55144), (128, 55156),

Gene: Bangla1971_106 Start: 52554, Stop: 54440, Start Num: 5

Candidate Starts for Bangla1971_106:

(Start: 4 @52536 has 81 MA's), (Start: 5 @52554 has 89 MA's), (Start: 6 @52587 has 1 MA's), (7, 52593), (Start: 17 @52779 has 1 MA's), (23, 52857), (24, 52875), (32, 52941), (35, 52959), (38, 53025), (41, 53061), (48, 53118), (57, 53274), (66, 53397), (70, 53484), (75, 53541), (76, 53550), (77, 53553), (83, 53661), (84, 53685), (87, 53751), (88, 53763), (90, 53781), (93, 53883), (100, 53982), (101, 53988), (107, 54069), (115, 54204), (117, 54213), (121, 54336), (127, 54423), (128, 54435),

Gene: Basquiat_101 Start: 51821, Stop: 53623, Start Num: 5

Candidate Starts for Basquiat_101:

(Start: 5 @51821 has 89 MA's), (Start: 6 @51854 has 1 MA's), (Start: 17 @52049 has 1 MA's), (26, 52127), (28, 52145), (32, 52175), (35, 52193), (36, 52223), (43, 52304), (56, 52409), (71, 52655), (72, 52661), (108, 53258), (115, 53387), (117, 53396), (121, 53519), (127, 53606), (128, 53618),

Gene: BeanWater_97 Start: 52853, Stop: 54757, Start Num: 4

Candidate Starts for BeanWater_97:

(Start: 4 @52853 has 81 MA's), (Start: 5 @52871 has 89 MA's), (Start: 6 @52904 has 1 MA's), (Start: 17 @53096 has 1 MA's), (24, 53192), (32, 53258), (35, 53276), (38, 53342), (41, 53378), (48, 53435), (57, 53591), (66, 53714), (70, 53801), (75, 53858), (76, 53867), (77, 53870), (83, 53978), (84, 54002), (87, 54068), (88, 54080), (90, 54098), (93, 54200), (100, 54299), (101, 54305), (107, 54386), (115, 54521), (117, 54530), (121, 54653), (127, 54740), (128, 54752),

Gene: Belieber_101 Start: 52337, Stop: 54223, Start Num: 5

Candidate Starts for Belieber_101:

(Start: 4 @52319 has 81 MA's), (Start: 5 @52337 has 89 MA's), (Start: 6 @52370 has 1 MA's), (Start: 17 @52562 has 1 MA's), (23, 52640), (24, 52658), (32, 52724), (35, 52742), (38, 52808), (41, 52844), (48, 52901), (57, 53057), (66, 53180), (70, 53267), (75, 53324), (76, 53333), (77, 53336), (83, 53444), (84, 53468), (87, 53534), (88, 53546), (90, 53564), (93, 53666), (100, 53765), (101, 53771), (107, 53852), (115, 53987), (117, 53996), (121, 54119), (127, 54206), (128, 54218),

Gene: BigCity_113 Start: 55535, Stop: 57421, Start Num: 5

Candidate Starts for BigCity_113:

(Start: 4 @55517 has 81 MA's), (Start: 5 @55535 has 89 MA's), (Start: 6 @55568 has 1 MA's), (7, 55574), (Start: 17 @55760 has 1 MA's), (23, 55838), (24, 55856), (32, 55922), (35, 55940), (38, 56006), (41, 56042), (48, 56099), (57, 56255), (66, 56378), (70, 56465), (75, 56522), (76, 56531), (77, 56534), (83, 56642), (84, 56666), (87, 56732), (88, 56744), (90, 56762), (93, 56864), (100, 56963), (101, 56969), (107, 57050), (115, 57185), (117, 57194), (121, 57317), (127, 57404), (128, 57416),

Gene: Bigswole_110 Start: 56064, Stop: 57980, Start Num: 5

Candidate Starts for Bigswole_110:

(Start: 4 @56046 has 81 MA's), (Start: 5 @56064 has 89 MA's), (Start: 6 @56097 has 1 MA's), (Start: 17 @56289 has 1 MA's), (24, 56385), (32, 56451), (35, 56469), (38, 56535), (41, 56571), (48, 56628), (57, 56784), (66, 56907), (70, 56994), (75, 57051), (76, 57060), (77, 57063), (83, 57171), (84, 57195), (87, 57261), (88, 57273), (90, 57291), (100, 57492), (101, 57498), (107, 57579), (115, 57714), (117, 57723), (121, 57846), (127, 57933), (128, 57945),

Gene: Bipolarisk_104 Start: 53259, Stop: 55163, Start Num: 4

Candidate Starts for Bipolarisk_104:

(Start: 4 @53259 has 81 MA's), (Start: 5 @53277 has 89 MA's), (Start: 6 @53310 has 1 MA's), (7, 53316), (Start: 17 @53502 has 1 MA's), (23, 53580), (24, 53598), (32, 53664), (35, 53682), (38, 53748), (41, 53784), (48, 53841), (57, 53997), (66, 54120), (70, 54207), (75, 54264), (76, 54273), (77, 54276), (83, 54384), (84, 54408), (87, 54474), (88, 54486), (90, 54504), (100, 54705), (101, 54711), (107, 54792), (115, 54927), (117, 54936), (121, 55059), (127, 55146), (128, 55158),

Gene: Blackbrain_100 Start: 51550, Stop: 53454, Start Num: 4

Candidate Starts for Blackbrain_100:

(Start: 4 @51550 has 81 MA's), (Start: 5 @51568 has 89 MA's), (Start: 6 @51601 has 1 MA's), (7, 51607), (Start: 17 @51793 has 1 MA's), (23, 51871), (24, 51889), (32, 51955), (35, 51973), (38, 52039), (41, 52075), (48, 52132), (57, 52288), (66, 52411), (70, 52498), (75, 52555), (76, 52564), (77, 52567), (83, 52675), (84, 52699), (87, 52765), (88, 52777), (90, 52795), (93, 52897), (100, 52996), (101, 53002), (107, 53083), (115, 53218), (117, 53227), (121, 53350), (127, 53437), (128, 53449),

Gene: Blackdragon_101 Start: 52701, Stop: 54587, Start Num: 5

Candidate Starts for Blackdragon_101:

(Start: 4 @52683 has 81 MA's), (Start: 5 @52701 has 89 MA's), (Start: 6 @52734 has 1 MA's), (7, 52740), (Start: 17 @52926 has 1 MA's), (23, 53004), (24, 53022), (32, 53088), (35, 53106), (38, 53172), (41, 53208), (48, 53265), (57, 53421), (66, 53544), (70, 53631), (75, 53688), (76, 53697), (77, 53700), (83, 53808), (84, 53832), (87, 53898), (88, 53910), (90, 53928), (93, 54030), (100, 54129),

(101, 54135), (107, 54216), (115, 54351), (117, 54360), (121, 54483), (127, 54570), (128, 54582),

Gene: Blubba_95 Start: 53311, Stop: 55194, Start Num: 5

Candidate Starts for Blubba_95:

(Start: 4 @53293 has 81 MA's), (Start: 5 @53311 has 89 MA's), (Start: 6 @53344 has 1 MA's), (7, 53350), (Start: 17 @53536 has 1 MA's), (20, 53602), (24, 53632), (32, 53698), (35, 53716), (38, 53782), (41, 53818), (48, 53875), (57, 54031), (66, 54154), (70, 54241), (75, 54298), (76, 54307), (77, 54310), (83, 54418), (84, 54442), (87, 54508), (88, 54520), (90, 54538), (100, 54739), (101, 54745), (107, 54823), (115, 54958), (116, 54964), (117, 54967), (121, 55090), (127, 55177), (128, 55189),

Gene: Bonray_105 Start: 53432, Stop: 55336, Start Num: 4

Candidate Starts for Bonray_105:

(Start: 4 @53432 has 81 MA's), (Start: 5 @53450 has 89 MA's), (Start: 6 @53483 has 1 MA's), (7, 53489), (Start: 17 @53675 has 1 MA's), (23, 53753), (24, 53771), (32, 53837), (35, 53855), (38, 53921), (41, 53957), (48, 54014), (57, 54170), (66, 54293), (70, 54380), (75, 54437), (76, 54446), (77, 54449), (83, 54557), (84, 54581), (87, 54647), (88, 54659), (90, 54677), (100, 54878), (101, 54884), (107, 54965), (115, 55100), (117, 55109), (121, 55232), (127, 55319), (128, 55331),

Gene: Bread_105 Start: 53105, Stop: 54991, Start Num: 5

Candidate Starts for Bread_105:

(Start: 4 @53087 has 81 MA's), (Start: 5 @53105 has 89 MA's), (Start: 6 @53138 has 1 MA's), (7, 53144), (Start: 17 @53330 has 1 MA's), (23, 53408), (24, 53426), (32, 53492), (35, 53510), (38, 53576), (41, 53612), (48, 53669), (57, 53825), (66, 53948), (70, 54035), (75, 54092), (76, 54101), (77, 54104), (83, 54212), (84, 54236), (87, 54302), (88, 54314), (90, 54332), (93, 54434), (100, 54533), (101, 54539), (107, 54620), (115, 54755), (117, 54764), (121, 54887), (127, 54974), (128, 54986),

Gene: Breeniome_104 Start: 51687, Stop: 53573, Start Num: 5

Candidate Starts for Breeniome_104:

(Start: 4 @51669 has 81 MA's), (Start: 5 @51687 has 89 MA's), (Start: 6 @51720 has 1 MA's), (Start: 17 @51912 has 1 MA's), (23, 51990), (24, 52008), (32, 52074), (35, 52092), (38, 52158), (41, 52194), (48, 52251), (57, 52407), (66, 52530), (70, 52617), (75, 52674), (76, 52683), (77, 52686), (83, 52794), (84, 52818), (87, 52884), (88, 52896), (90, 52914), (93, 53016), (100, 53115), (101, 53121), (107, 53202), (115, 53337), (117, 53346), (121, 53469), (127, 53556), (128, 53568),

Gene: Burrough_105 Start: 53604, Stop: 55490, Start Num: 5

Candidate Starts for Burrough_105:

(Start: 4 @53586 has 81 MA's), (Start: 5 @53604 has 89 MA's), (Start: 6 @53637 has 1 MA's), (7, 53643), (Start: 17 @53829 has 1 MA's), (23, 53907), (24, 53925), (32, 53991), (35, 54009), (38, 54075), (41, 54111), (48, 54168), (57, 54324), (66, 54447), (70, 54534), (75, 54591), (76, 54600), (77, 54603), (83, 54711), (84, 54735), (87, 54801), (88, 54813), (90, 54831), (100, 55032), (101, 55038), (107, 55119), (115, 55254), (117, 55263), (121, 55386), (127, 55473), (128, 55485),

Gene: Bxz1_103 Start: 55024, Stop: 56928, Start Num: 4

Candidate Starts for Bxz1_103:

(Start: 4 @55024 has 81 MA's), (Start: 5 @55042 has 89 MA's), (Start: 6 @55075 has 1 MA's), (7, 55081), (Start: 17 @55267 has 1 MA's), (23, 55345), (24, 55363), (32, 55429), (35, 55447), (38, 55513), (41, 55549), (48, 55606), (57, 55762), (66, 55885), (70, 55972), (75, 56029), (76, 56038), (77, 56041), (83, 56149), (84, 56173), (87, 56239), (88, 56251), (90, 56269), (93, 56371), (100, 56470), (101, 56476), (107, 56557), (115, 56692), (117, 56701), (121, 56824), (127, 56911), (128, 56923),

Gene: Cactojaque_100 Start: 51675, Stop: 53561, Start Num: 5

Candidate Starts for Cactojaque_100:

(Start: 4 @51657 has 81 MA's), (Start: 5 @51675 has 89 MA's), (Start: 6 @51708 has 1 MA's), (7, 51714), (Start: 17 @51900 has 1 MA's), (23, 51978), (24, 51996), (32, 52062), (35, 52080), (38, 52146), (41, 52182), (48, 52239), (57, 52395), (66, 52518), (70, 52605), (75, 52662), (76, 52671), (77, 52674), (83, 52782), (84, 52806), (87, 52872), (88, 52884), (90, 52902), (93, 53004), (100, 53103), (101, 53109), (107, 53190), (115, 53325), (117, 53334), (121, 53457), (127, 53544), (128, 53556),

Gene: Cali_101 Start: 53588, Stop: 55492, Start Num: 4

Candidate Starts for Cali_101:

(Start: 4 @53588 has 81 MA's), (Start: 5 @53606 has 89 MA's), (Start: 6 @53639 has 1 MA's), (7, 53645), (Start: 17 @53831 has 1 MA's), (23, 53909), (24, 53927), (32, 53993), (35, 54011), (38, 54077), (41, 54113), (48, 54170), (57, 54326), (66, 54449), (70, 54536), (75, 54593), (76, 54602), (77, 54605), (83, 54713), (84, 54737), (87, 54803), (88, 54815), (90, 54833), (93, 54935), (100, 55034), (101, 55040), (107, 55121), (115, 55256), (117, 55265), (121, 55388), (127, 55475), (128, 55487),

Gene: Cane17_95 Start: 53369, Stop: 55252, Start Num: 5

Candidate Starts for Cane17_95:

(Start: 4 @53351 has 81 MA's), (Start: 5 @53369 has 89 MA's), (Start: 6 @53402 has 1 MA's), (7, 53408), (Start: 17 @53594 has 1 MA's), (20, 53660), (24, 53690), (32, 53756), (35, 53774), (38, 53840), (41, 53876), (48, 53933), (57, 54089), (66, 54212), (70, 54299), (75, 54356), (76, 54365), (77, 54368), (83, 54476), (84, 54500), (87, 54566), (88, 54578), (90, 54596), (100, 54797), (101, 54803), (107, 54881), (115, 55016), (116, 55022), (117, 55025), (121, 55148), (127, 55235), (128, 55247),

Gene: Capablanca_107 Start: 53856, Stop: 55742, Start Num: 5

Candidate Starts for Capablanca_107:

(Start: 4 @53838 has 81 MA's), (Start: 5 @53856 has 89 MA's), (Start: 6 @53889 has 1 MA's), (7, 53895), (Start: 17 @54081 has 1 MA's), (23, 54159), (24, 54177), (32, 54243), (35, 54261), (38, 54327), (41, 54363), (48, 54420), (57, 54576), (66, 54699), (70, 54786), (75, 54843), (76, 54852), (77, 54855), (83, 54963), (84, 54987), (87, 55053), (88, 55065), (90, 55083), (93, 55185), (100, 55284), (101, 55290), (107, 55371), (115, 55506), (117, 55515), (121, 55638), (127, 55725), (128, 55737),

Gene: Caravan_100 Start: 52963, Stop: 54849, Start Num: 5

Candidate Starts for Caravan_100:

(Start: 4 @52945 has 81 MA's), (Start: 5 @52963 has 89 MA's), (Start: 6 @52996 has 1 MA's), (7, 53002), (Start: 17 @53188 has 1 MA's), (23, 53266), (24, 53284), (32, 53350), (35, 53368), (38, 53434), (41, 53470), (48, 53527), (57, 53683), (66, 53806), (70, 53893), (75, 53950), (76, 53959), (77, 53962), (83, 54070), (84, 54094), (87, 54160), (88, 54172), (90, 54190), (100, 54391), (101, 54397), (107, 54478), (115, 54613), (117, 54622), (121, 54745), (127, 54832), (128, 54844),

Gene: Catera_102 Start: 51861, Stop: 53765, Start Num: 4

Candidate Starts for Catera_102:

(Start: 4 @51861 has 81 MA's), (Start: 5 @51879 has 89 MA's), (Start: 6 @51912 has 1 MA's), (7, 51918), (Start: 17 @52104 has 1 MA's), (23, 52182), (24, 52200), (32, 52266), (35, 52284), (38, 52350), (41, 52386), (48, 52443), (57, 52599), (66, 52722), (70, 52809), (75, 52866), (76, 52875), (77, 52878), (83, 52986), (84, 53010), (87, 53076), (88, 53088), (90, 53106), (93, 53208), (100, 53307), (101, 53313), (107, 53394), (115, 53529), (117, 53538), (121, 53661), (127, 53748), (128, 53760),

Gene: Chargie21_101 Start: 51854, Stop: 53623, Start Num: 6

Candidate Starts for Chargie21_101:

(Start: 5 @51821 has 89 MA's), (Start: 6 @51854 has 1 MA's), (Start: 17 @52049 has 1 MA's), (26, 52127), (28, 52145), (32, 52175), (35, 52193), (36, 52223), (43, 52304), (56, 52409), (71, 52655), (72, 52661), (108, 53258), (115, 53387), (117, 53396), (121, 53519), (127, 53606), (128, 53618),

Gene: CharlieB_101 Start: 52008, Stop: 53894, Start Num: 5

Candidate Starts for CharlieB_101:

(Start: 4 @51990 has 81 MA's), (Start: 5 @52008 has 89 MA's), (Start: 6 @52041 has 1 MA's), (7, 52047), (Start: 17 @52233 has 1 MA's), (23, 52311), (24, 52329), (32, 52395), (35, 52413), (38, 52479), (41, 52515), (48, 52572), (57, 52728), (66, 52851), (70, 52938), (75, 52995), (76, 53004), (77, 53007), (83, 53115), (84, 53139), (87, 53205), (88, 53217), (90, 53235), (93, 53337), (100, 53436), (101, 53442), (107, 53523), (115, 53658), (117, 53667), (121, 53790), (127, 53877), (128, 53889),

Gene: ChaylaJr_100 Start: 51484, Stop: 53388, Start Num: 4

Candidate Starts for ChaylaJr_100:

(Start: 4 @51484 has 81 MA's), (Start: 5 @51502 has 89 MA's), (Start: 6 @51535 has 1 MA's), (Start: 17 @51727 has 1 MA's), (23, 51805), (24, 51823), (32, 51889), (35, 51907), (38, 51973), (41, 52009), (48, 52066), (57, 52222), (66, 52345), (70, 52432), (75, 52489), (76, 52498), (77, 52501), (83, 52609), (84, 52633), (87, 52699), (88, 52711), (90, 52729), (93, 52831), (100, 52930), (101, 52936), (107, 53017), (115, 53152), (117, 53161), (121, 53284), (127, 53371), (128, 53383),

Gene: ChickenPhender_101 Start: 51787, Stop: 53691, Start Num: 4

Candidate Starts for ChickenPhender_101:

(Start: 4 @51787 has 81 MA's), (Start: 5 @51805 has 89 MA's), (Start: 6 @51838 has 1 MA's), (Start: 17 @52030 has 1 MA's), (23, 52108), (24, 52126), (32, 52192), (35, 52210), (38, 52276), (41, 52312), (48, 52369), (57, 52525), (66, 52648), (70, 52735), (75, 52792), (76, 52801), (77, 52804), (83, 52912), (84, 52936), (87, 53002), (88, 53014), (90, 53032), (93, 53134), (100, 53233), (101, 53239), (107, 53320), (115, 53455), (117, 53464), (121, 53587), (127, 53674), (128, 53686),

Gene: Chomp_104 Start: 53394, Stop: 55280, Start Num: 5

Candidate Starts for Chomp_104:

(Start: 4 @53376 has 81 MA's), (Start: 5 @53394 has 89 MA's), (Start: 6 @53427 has 1 MA's), (Start: 17 @53619 has 1 MA's), (23, 53697), (24, 53715), (32, 53781), (35, 53799), (38, 53865), (41, 53901), (48, 53958), (57, 54114), (66, 54237), (70, 54324), (75, 54381), (76, 54390), (77, 54393), (83, 54501), (84, 54525), (87, 54591), (88, 54603), (90, 54621), (93, 54723), (100, 54822), (101, 54828), (107, 54909), (115, 55044), (117, 55053), (121, 55176), (127, 55263), (128, 55275),

Gene: CindyLou_106 Start: 53435, Stop: 55321, Start Num: 5

Candidate Starts for CindyLou_106:

(Start: 4 @53417 has 81 MA's), (Start: 5 @53435 has 89 MA's), (Start: 6 @53468 has 1 MA's), (7, 53474), (Start: 17 @53660 has 1 MA's), (23, 53738), (24, 53756), (32, 53822), (35, 53840), (38, 53906), (41, 53942), (48, 53999), (57, 54155), (66, 54278), (70, 54365), (75, 54422), (76, 54431), (77, 54434), (83, 54542), (84, 54566), (87, 54632), (88, 54644), (90, 54662), (93, 54764), (100, 54863), (101, 54869), (107, 54950), (115, 55085), (117, 55094), (121, 55217), (127, 55304), (128, 55316),

Gene: Colt_96 Start: 53947, Stop: 55848, Start Num: 4

Candidate Starts for Colt_96:

(Start: 4 @53947 has 81 MA's), (Start: 5 @53965 has 89 MA's), (Start: 6 @53998 has 1 MA's), (7, 54004), (Start: 17 @54190 has 1 MA's), (20, 54256), (24, 54286), (32, 54352), (35, 54370), (38, 54436), (41, 54472), (48, 54529), (57, 54685), (66, 54808), (70, 54895), (75, 54952), (76, 54961), (77, 54964), (83, 55072), (84, 55096), (87, 55162), (88, 55174), (90, 55192), (100, 55393), (101, 55399), (107, 55477), (115, 55612), (116, 55618), (117, 55621), (121, 55744), (127, 55831), (128, 55843),

Gene: Concombres_111 Start: 55604, Stop: 57652, Start Num: 5

Candidate Starts for Concombres_111:

(Start: 5 @55604 has 89 MA's), (Start: 6 @55637 has 1 MA's), (15, 55787), (25, 55994), (31, 56054), (37, 56135), (49, 56243), (51, 56273), (54, 56348), (58, 56423), (68, 56555), (81, 56792), (82, 56819), (89, 56948), (91, 57026), (92, 57053), (96, 57116), (98, 57149), (103, 57209), (107, 57281), (115, 57416), (116, 57422), (117, 57425), (121, 57548), (127, 57635), (128, 57647),

Gene: DTDevon_106 Start: 53880, Stop: 55766, Start Num: 5

Candidate Starts for DTDevon_106:

(Start: 4 @53862 has 81 MA's), (Start: 5 @53880 has 89 MA's), (Start: 6 @53913 has 1 MA's), (7, 53919), (Start: 17 @54105 has 1 MA's), (23, 54183), (24, 54201), (32, 54267), (35, 54285), (38, 54351), (41, 54387), (48, 54444), (57, 54600), (66, 54723), (70, 54810), (75, 54867), (76, 54876), (77, 54879), (83, 54987), (84, 55011), (87, 55077), (88, 55089), (90, 55107), (93, 55209), (100, 55308), (101, 55314), (107, 55395), (115, 55530), (117, 55539), (121, 55662), (127, 55749), (128, 55761),

Gene: Daffodil_110 Start: 53559, Stop: 55463, Start Num: 4

Candidate Starts for Daffodil_110:

(Start: 4 @53559 has 81 MA's), (Start: 5 @53577 has 89 MA's), (Start: 6 @53610 has 1 MA's), (7, 53616), (Start: 17 @53802 has 1 MA's), (23, 53880), (24, 53898), (32, 53964), (35, 53982), (38, 54048), (41, 54084), (48, 54141), (57, 54297), (66, 54420), (70, 54507), (75, 54564), (76, 54573), (77, 54576), (83, 54684), (84, 54708), (87, 54774), (88, 54786), (90, 54804), (100, 55005), (101, 55011), (107, 55092), (115, 55227), (117, 55236), (121, 55359), (127, 55446), (128, 55458),

Gene: Dandelion_111 Start: 55842, Stop: 57644, Start Num: 5

Candidate Starts for Dandelion_111:

(Start: 5 @55842 has 89 MA's), (Start: 6 @55875 has 1 MA's), (Start: 17 @56070 has 1 MA's), (26, 56148), (28, 56166), (32, 56196), (35, 56214), (36, 56244), (43, 56325), (56, 56430), (71, 56676), (72, 56682), (108, 57279), (115, 57408), (116, 57414), (117, 57417), (121, 57540), (127, 57627), (128, 57639),

Gene: Darko_105 Start: 53495, Stop: 55399, Start Num: 4

Candidate Starts for Darko_105:

(Start: 4 @53495 has 81 MA's), (Start: 5 @53513 has 89 MA's), (Start: 6 @53546 has 1 MA's), (7, 53552), (Start: 17 @53738 has 1 MA's), (23, 53816), (24, 53834), (32, 53900), (35, 53918), (38, 53984), (41, 54020), (48, 54077), (57, 54233), (66, 54356), (70, 54443), (75, 54500), (76, 54509), (77, 54512), (83, 54620), (84, 54644), (87, 54710), (88, 54722), (90, 54740), (100, 54941), (101, 54947), (107, 55028), (115, 55163), (117, 55172), (121, 55295), (127, 55382), (128, 55394),

Gene: DeejaClivia_93 Start: 50018, Stop: 51820, Start Num: 5

Candidate Starts for DeejaClivia_93:

(Start: 5 @50018 has 89 MA's), (Start: 6 @50051 has 1 MA's), (Start: 17 @50246 has 1 MA's), (26, 50324), (28, 50342), (32, 50372), (35, 50390), (36, 50420), (43, 50501), (56, 50606), (71, 50852), (72, 50858), (108, 51455), (115, 51584), (116, 51590), (117, 51593), (121, 51716), (127, 51803), (128, 51815),

Gene: Delilah_105 Start: 53713, Stop: 55617, Start Num: 4

Candidate Starts for Delilah_105:

(Start: 4 @53713 has 81 MA's), (Start: 5 @53731 has 89 MA's), (Start: 6 @53764 has 1 MA's), (7, 53770), (Start: 17 @53956 has 1 MA's), (23, 54034), (24, 54052), (32, 54118), (35, 54136), (38, 54202), (41, 54238), (48, 54295), (57, 54451), (66, 54574), (70, 54661), (75, 54718), (76, 54727), (77, 54730), (83, 54838), (84, 54862), (87, 54928), (88, 54940), (90, 54958), (100, 55159), (101, 55165), (107, 55246), (115, 55381), (117, 55390), (121, 55513), (127, 55600), (128, 55612),

Gene: Delylah_108 Start: 53252, Stop: 55156, Start Num: 4

Candidate Starts for Delylah_108:

(Start: 4 @53252 has 81 MA's), (Start: 5 @53270 has 89 MA's), (Start: 6 @53303 has 1 MA's), (7, 53309), (Start: 17 @53495 has 1 MA's), (23, 53573), (24, 53591), (32, 53657), (35, 53675), (38, 53741), (41, 53777), (48, 53834), (57, 53990), (66, 54113), (70, 54200), (75, 54257), (76, 54266), (77, 54269), (83, 54377), (84, 54401), (87, 54467), (88, 54479), (90, 54497), (100, 54698), (101, 54704),

(107, 54785), (115, 54920), (117, 54929), (121, 55052), (127, 55139), (128, 55151),

Gene: Demodog_112 Start: 55776, Stop: 57662, Start Num: 5

Candidate Starts for Demodog_112:

(Start: 4 @55758 has 81 MA's), (Start: 5 @55776 has 89 MA's), (Start: 6 @55809 has 1 MA's), (Start: 17 @56001 has 1 MA's), (24, 56097), (32, 56163), (35, 56181), (38, 56247), (41, 56283), (48, 56340), (57, 56496), (66, 56619), (70, 56706), (75, 56763), (76, 56772), (77, 56775), (83, 56883), (84, 56907), (87, 56973), (88, 56985), (90, 57003), (100, 57204), (101, 57210), (107, 57291), (115, 57426), (116, 57432), (117, 57435), (121, 57558), (127, 57645), (128, 57657),

Gene: Derek_105 Start: 53196, Stop: 55082, Start Num: 5

Candidate Starts for Derek_105:

(Start: 4 @53178 has 81 MA's), (Start: 5 @53196 has 89 MA's), (Start: 6 @53229 has 1 MA's), (7, 53235), (Start: 17 @53421 has 1 MA's), (23, 53499), (24, 53517), (32, 53583), (35, 53601), (38, 53667), (41, 53703), (48, 53760), (57, 53916), (66, 54039), (70, 54126), (75, 54183), (76, 54192), (77, 54195), (83, 54303), (84, 54327), (87, 54393), (88, 54405), (90, 54423), (93, 54525), (100, 54624), (101, 54630), (107, 54711), (115, 54846), (117, 54855), (121, 54978), (127, 55065), (128, 55077),

Gene: Dietrick_97 Start: 51254, Stop: 53158, Start Num: 4

Candidate Starts for Dietrick_97:

(Start: 4 @51254 has 81 MA's), (Start: 5 @51272 has 89 MA's), (Start: 6 @51305 has 1 MA's), (7, 51311), (Start: 17 @51497 has 1 MA's), (23, 51575), (24, 51593), (32, 51659), (35, 51677), (38, 51743), (41, 51779), (48, 51836), (57, 51992), (66, 52115), (70, 52202), (75, 52259), (76, 52268), (77, 52271), (83, 52379), (84, 52403), (87, 52469), (88, 52481), (90, 52499), (100, 52700), (101, 52706), (107, 52787), (115, 52922), (117, 52931), (121, 53054), (127, 53141), (128, 53153),

Gene: DirtMonster_99 Start: 52764, Stop: 54650, Start Num: 5

Candidate Starts for DirtMonster_99:

(Start: 4 @52746 has 81 MA's), (Start: 5 @52764 has 89 MA's), (Start: 6 @52797 has 1 MA's), (7, 52803), (Start: 17 @52989 has 1 MA's), (23, 53067), (24, 53085), (32, 53151), (35, 53169), (38, 53235), (41, 53271), (48, 53328), (57, 53484), (66, 53607), (70, 53694), (75, 53751), (76, 53760), (77, 53763), (83, 53871), (84, 53895), (87, 53961), (88, 53973), (90, 53991), (93, 54093), (100, 54192), (101, 54198), (107, 54279), (115, 54414), (117, 54423), (121, 54546), (127, 54633), (128, 54645),

Gene: Domi_99 Start: 52618, Stop: 54504, Start Num: 5

Candidate Starts for Domi_99:

(Start: 4 @52600 has 81 MA's), (Start: 5 @52618 has 89 MA's), (Start: 6 @52651 has 1 MA's), (7, 52657), (Start: 17 @52843 has 1 MA's), (23, 52921), (24, 52939), (32, 53005), (35, 53023), (38, 53089), (41, 53125), (48, 53182), (57, 53338), (66, 53461), (70, 53548), (75, 53605), (76, 53614), (77, 53617), (83, 53725), (84, 53749), (87, 53815), (88, 53827), (90, 53845), (93, 53947), (100, 54046), (101, 54052), (107, 54133), (115, 54268), (117, 54277), (121, 54400), (127, 54487), (128, 54499),

Gene: DrPhinkDaddy_104 Start: 53781, Stop: 55685, Start Num: 4

Candidate Starts for DrPhinkDaddy_104:

(Start: 4 @53781 has 81 MA's), (Start: 5 @53799 has 89 MA's), (Start: 6 @53832 has 1 MA's), (7, 53838), (Start: 17 @54024 has 1 MA's), (23, 54102), (24, 54120), (32, 54186), (35, 54204), (38, 54270), (41, 54306), (48, 54363), (57, 54519), (66, 54642), (70, 54729), (75, 54786), (76, 54795), (77, 54798), (83, 54906), (84, 54930), (87, 54996), (88, 55008), (90, 55026), (100, 55227), (101, 55233), (107, 55314), (115, 55449), (117, 55458), (121, 55581), (127, 55668), (128, 55680),

Gene: Drazdys_104 Start: 52719, Stop: 54380, Start Num: 17

Candidate Starts for Drazdys_104:

(Start: 4 @52476 has 81 MA's), (Start: 5 @52494 has 89 MA's), (Start: 6 @52527 has 1 MA's), (Start: 17 @52719 has 1 MA's), (23, 52797), (24, 52815), (32, 52881), (35, 52899), (38, 52965), (41, 53001), (48, 53058), (57, 53214), (66, 53337), (70, 53424), (75, 53481), (76, 53490), (77, 53493), (83, 53601), (84, 53625), (87, 53691), (88, 53703), (90, 53721), (93, 53823), (100, 53922), (101, 53928), (107, 54009), (115, 54144), (117, 54153), (121, 54276), (127, 54363), (128, 54375),

Gene: ET08_94 Start: 52260, Stop: 54146, Start Num: 5

Candidate Starts for ET08_94:

(Start: 4 @52242 has 81 MA's), (Start: 5 @52260 has 89 MA's), (Start: 6 @52293 has 1 MA's), (Start: 17 @52485 has 1 MA's), (23, 52563), (24, 52581), (32, 52647), (35, 52665), (38, 52731), (41, 52767), (48, 52824), (57, 52980), (66, 53103), (70, 53190), (75, 53247), (76, 53256), (77, 53259), (83, 53367), (84, 53391), (87, 53457), (88, 53469), (90, 53487), (100, 53688), (101, 53694), (107, 53775), (115, 53910), (117, 53919), (121, 54042), (127, 54129), (128, 54141),

Gene: EasyJones_107 Start: 52485, Stop: 54287, Start Num: 5

Candidate Starts for EasyJones_107:

(Start: 5 @52485 has 89 MA's), (Start: 6 @52518 has 1 MA's), (Start: 17 @52713 has 1 MA's), (26, 52791), (28, 52809), (32, 52839), (35, 52857), (36, 52887), (43, 52968), (56, 53073), (71, 53319), (72, 53325), (108, 53922), (115, 54051), (116, 54057), (117, 54060), (121, 54183), (127, 54270), (128, 54282),

Gene: EggyFarm_113 Start: 55535, Stop: 57421, Start Num: 5

Candidate Starts for EggyFarm_113:

(Start: 4 @55517 has 81 MA's), (Start: 5 @55535 has 89 MA's), (Start: 6 @55568 has 1 MA's), (7, 55574), (Start: 17 @55760 has 1 MA's), (23, 55838), (24, 55856), (32, 55922), (35, 55940), (38, 56006), (41, 56042), (48, 56099), (57, 56255), (66, 56378), (70, 56465), (75, 56522), (76, 56531), (77, 56534), (83, 56642), (84, 56666), (87, 56732), (88, 56744), (90, 56762), (93, 56864), (100, 56963), (101, 56969), (107, 57050), (115, 57185), (117, 57194), (121, 57317), (127, 57404), (128, 57416),

Gene: EmToTheThree_107 Start: 54622, Stop: 56424, Start Num: 5

Candidate Starts for EmToTheThree_107:

(Start: 5 @54622 has 89 MA's), (Start: 6 @54655 has 1 MA's), (Start: 17 @54850 has 1 MA's), (26, 54928), (28, 54946), (32, 54976), (35, 54994), (36, 55024), (43, 55105), (56, 55210), (71, 55456), (72, 55462), (108, 56059), (115, 56188), (116, 56194), (117, 56197), (121, 56320), (127, 56407), (128, 56419),

Gene: EmmaElysia_105 Start: 52307, Stop: 54211, Start Num: 4

Candidate Starts for EmmaElysia_105:

(Start: 4 @52307 has 81 MA's), (Start: 5 @52325 has 89 MA's), (Start: 6 @52358 has 1 MA's), (7, 52364), (Start: 17 @52550 has 1 MA's), (23, 52628), (24, 52646), (32, 52712), (35, 52730), (38, 52796), (41, 52832), (48, 52889), (57, 53045), (66, 53168), (70, 53255), (75, 53312), (76, 53321), (77, 53324), (83, 53432), (84, 53456), (87, 53522), (88, 53534), (90, 53552), (93, 53654), (100, 53753), (101, 53759), (107, 53840), (115, 53975), (117, 53984), (121, 54107), (127, 54194), (128, 54206),

Gene: Erdmann_106 Start: 53560, Stop: 55464, Start Num: 4

Candidate Starts for Erdmann_106:

(Start: 4 @53560 has 81 MA's), (Start: 5 @53578 has 89 MA's), (Start: 6 @53611 has 1 MA's), (7, 53617), (Start: 17 @53803 has 1 MA's), (23, 53881), (24, 53899), (32, 53965), (35, 53983), (38, 54049), (41, 54085), (48, 54142), (57, 54298), (66, 54421), (70, 54508), (75, 54565), (76, 54574), (77, 54577), (83, 54685), (84, 54709), (87, 54775), (88, 54787), (90, 54805), (100, 55006), (101, 55012), (107, 55093), (115, 55228), (117, 55237), (121, 55360), (127, 55447), (128, 55459),

Gene: ErnieJ_100 Start: 51616, Stop: 53418, Start Num: 5

Candidate Starts for ErnieJ_100:

(Start: 5 @51616 has 89 MA's), (Start: 6 @51649 has 1 MA's), (Start: 17 @51844 has 1 MA's), (26, 51922), (28, 51940), (32, 51970), (35, 51988), (36, 52018), (43, 52099), (56, 52204), (71, 52450), (72, 52456), (108, 53053), (115, 53182), (117, 53191), (121, 53314), (127, 53401), (128, 53413),

Gene: Essence_102 Start: 52642, Stop: 54546, Start Num: 4

Candidate Starts for Essence_102:

(Start: 4 @52642 has 81 MA's), (Start: 5 @52660 has 89 MA's), (Start: 6 @52693 has 1 MA's), (Start: 17 @52885 has 1 MA's), (23, 52963), (24, 52981), (32, 53047), (35, 53065), (38, 53131), (41, 53167), (48, 53224), (57, 53380), (66, 53503), (70, 53590), (75, 53647), (76, 53656), (77, 53659), (83, 53767), (84, 53791), (87, 53857), (88, 53869), (90, 53887), (93, 53989), (100, 54088), (101, 54094), (107, 54175), (115, 54310), (117, 54319), (121, 54442), (127, 54529), (128, 54541),

Gene: Ewok_106 Start: 52947, Stop: 54851, Start Num: 4

Candidate Starts for Ewok_106:

(Start: 4 @52947 has 81 MA's), (Start: 5 @52965 has 89 MA's), (Start: 6 @52998 has 1 MA's), (7, 53004), (Start: 17 @53190 has 1 MA's), (23, 53268), (24, 53286), (32, 53352), (35, 53370), (38, 53436), (41, 53472), (48, 53529), (57, 53685), (66, 53808), (70, 53895), (75, 53952), (76, 53961), (77, 53964), (83, 54072), (84, 54096), (87, 54162), (88, 54174), (90, 54192), (100, 54393), (101, 54399), (107, 54480), (115, 54615), (117, 54624), (121, 54747), (127, 54834), (128, 54846),

Gene: Flabslab_99 Start: 50639, Stop: 52543, Start Num: 4

Candidate Starts for Flabslab_99:

(Start: 4 @50639 has 81 MA's), (Start: 5 @50657 has 89 MA's), (Start: 6 @50690 has 1 MA's), (7, 50696), (Start: 17 @50882 has 1 MA's), (23, 50960), (24, 50978), (32, 51044), (35, 51062), (38, 51128), (41, 51164), (48, 51221), (57, 51377), (66, 51500), (70, 51587), (75, 51644), (76, 51653), (77, 51656), (83, 51764), (84, 51788), (87, 51854), (88, 51866), (90, 51884), (100, 52085), (101, 52091), (107, 52172), (115, 52307), (117, 52316), (121, 52439), (127, 52526), (128, 52538),

Gene: Fludd_105 Start: 52256, Stop: 54058, Start Num: 5

Candidate Starts for Fludd_105:

(Start: 5 @52256 has 89 MA's), (Start: 6 @52289 has 1 MA's), (Start: 17 @52484 has 1 MA's), (26, 52562), (28, 52580), (32, 52610), (35, 52628), (36, 52658), (43, 52739), (56, 52844), (71, 53090), (72, 53096), (108, 53693), (115, 53822), (117, 53831), (121, 53954), (127, 54041), (128, 54053),

Gene: Fongie_103 Start: 53178, Stop: 55064, Start Num: 5

Candidate Starts for Fongie_103:

(Start: 4 @53160 has 81 MA's), (Start: 5 @53178 has 89 MA's), (Start: 6 @53211 has 1 MA's), (7, 53217), (Start: 17 @53403 has 1 MA's), (23, 53481), (24, 53499), (32, 53565), (35, 53583), (38, 53649), (41, 53685), (48, 53742), (57, 53898), (66, 54021), (70, 54108), (75, 54165), (76, 54174), (77, 54177), (83, 54285), (84, 54309), (87, 54375), (88, 54387), (90, 54405), (100, 54606), (101, 54612), (107, 54693), (115, 54828), (117, 54837), (121, 54960), (127, 55047), (128, 55059),

Gene: FoxtrotP1_105 Start: 54730, Stop: 56634, Start Num: 4

Candidate Starts for FoxtrotP1_105:

(Start: 4 @54730 has 81 MA's), (Start: 5 @54748 has 89 MA's), (Start: 6 @54781 has 1 MA's), (7, 54787), (Start: 17 @54973 has 1 MA's), (23, 55051), (24, 55069), (32, 55135), (35, 55153), (38, 55219), (41, 55255), (48, 55312), (57, 55468), (66, 55591), (70, 55678), (75, 55735), (76, 55744), (77, 55747), (83, 55855), (84, 55879), (87, 55945), (88, 55957), (90, 55975), (100, 56176), (101, 56182), (107, 56263), (115, 56398), (117, 56407), (121, 56530), (127, 56617), (128, 56629),

Gene: FrayBell_110 Start: 54128, Stop: 56032, Start Num: 4

Candidate Starts for FrayBell_110:

(Start: 4 @54128 has 81 MA's), (Start: 5 @54146 has 89 MA's), (Start: 6 @54179 has 1 MA's), (7, 54185), (Start: 17 @54371 has 1 MA's), (23, 54449), (24, 54467), (32, 54533), (35, 54551), (38, 54617), (41, 54653), (48, 54710), (57, 54866), (66, 54989), (70, 55076), (75, 55133), (76, 55142), (77, 55145), (83, 55253), (84, 55277), (87, 55343), (88, 55355), (90, 55373), (93, 55475), (100, 55574), (101, 55580), (107, 55661), (115, 55796), (117, 55805), (121, 55928), (127, 56015), (128, 56027),

Gene: FudgeTart_104 Start: 52690, Stop: 54492, Start Num: 5

Candidate Starts for FudgeTart_104:

(Start: 5 @52690 has 89 MA's), (Start: 6 @52723 has 1 MA's), (Start: 17 @52918 has 1 MA's), (26, 52996), (28, 53014), (32, 53044), (35, 53062), (36, 53092), (43, 53173), (56, 53278), (71, 53524), (72, 53530), (108, 54127), (115, 54256), (116, 54262), (117, 54265), (121, 54388), (127, 54475), (128, 54487),

Gene: Gabriel_106 Start: 52066, Stop: 53952, Start Num: 5

Candidate Starts for Gabriel_106:

(Start: 4 @52048 has 81 MA's), (Start: 5 @52066 has 89 MA's), (Start: 6 @52099 has 1 MA's), (Start: 17 @52291 has 1 MA's), (23, 52369), (24, 52387), (32, 52453), (35, 52471), (38, 52537), (41, 52573), (48, 52630), (57, 52786), (66, 52909), (70, 52996), (75, 53053), (76, 53062), (77, 53065), (83, 53173), (84, 53197), (87, 53263), (88, 53275), (90, 53293), (93, 53395), (100, 53494), (101, 53500), (107, 53581), (115, 53716), (117, 53725), (121, 53848), (127, 53935), (128, 53947),

Gene: Gamgam_105 Start: 52106, Stop: 53992, Start Num: 5

Candidate Starts for Gamgam_105:

(Start: 4 @52088 has 81 MA's), (Start: 5 @52106 has 89 MA's), (Start: 6 @52139 has 1 MA's), (7, 52145), (Start: 17 @52331 has 1 MA's), (23, 52409), (24, 52427), (32, 52493), (35, 52511), (38, 52577), (41, 52613), (48, 52670), (57, 52826), (66, 52949), (70, 53036), (75, 53093), (76, 53102), (77, 53105), (83, 53213), (84, 53237), (87, 53303), (88, 53315), (90, 53333), (93, 53435), (100, 53534), (101, 53540), (107, 53621), (115, 53756), (117, 53765), (121, 53888), (127, 53975), (128, 53987),

Gene: Ghost_104 Start: 52106, Stop: 53992, Start Num: 5

Candidate Starts for Ghost_104:

(Start: 4 @52088 has 81 MA's), (Start: 5 @52106 has 89 MA's), (Start: 6 @52139 has 1 MA's), (7, 52145), (Start: 17 @52331 has 1 MA's), (23, 52409), (24, 52427), (32, 52493), (35, 52511), (38, 52577), (41, 52613), (48, 52670), (57, 52826), (66, 52949), (70, 53036), (75, 53093), (76, 53102), (77, 53105), (83, 53213), (84, 53237), (87, 53303), (88, 53315), (90, 53333), (93, 53435), (100, 53534), (101, 53540), (107, 53621), (115, 53756), (117, 53765), (121, 53888), (127, 53975), (128, 53987),

Gene: Gizmo_109 Start: 54728, Stop: 56614, Start Num: 5

Candidate Starts for Gizmo_109:

(Start: 4 @54710 has 81 MA's), (Start: 5 @54728 has 89 MA's), (Start: 6 @54761 has 1 MA's), (7, 54767), (Start: 17 @54953 has 1 MA's), (23, 55031), (24, 55049), (32, 55115), (35, 55133), (38, 55199), (41, 55235), (48, 55292), (57, 55448), (66, 55571), (70, 55658), (75, 55715), (76, 55724), (77, 55727), (83, 55835), (84, 55859), (87, 55925), (88, 55937), (90, 55955), (100, 56156), (101, 56162), (107, 56243), (115, 56378), (117, 56387), (121, 56510), (127, 56597), (128, 56609),

Gene: GlutenPhree_104 Start: 52106, Stop: 53992, Start Num: 5

Candidate Starts for GlutenPhree_104:

(Start: 4 @52088 has 81 MA's), (Start: 5 @52106 has 89 MA's), (Start: 6 @52139 has 1 MA's), (7, 52145), (Start: 17 @52331 has 1 MA's), (23, 52409), (24, 52427), (32, 52493), (35, 52511), (38, 52577), (41, 52613), (48, 52670), (57, 52826), (66, 52949), (70, 53036), (75, 53093), (76, 53102), (77, 53105), (83, 53213), (84, 53237), (87, 53303), (88, 53315), (90, 53333), (93, 53435), (100, 53534), (101, 53540), (107, 53621), (115, 53756), (117, 53765), (121, 53888), (127, 53975), (128, 53987),

Gene: Grasshills_112 Start: 55535, Stop: 57421, Start Num: 5

Candidate Starts for Grasshills_112:

(Start: 4 @55517 has 81 MA's), (Start: 5 @55535 has 89 MA's), (Start: 6 @55568 has 1 MA's), (7, 55574), (Start: 17 @55760 has 1 MA's), (23, 55838), (24, 55856), (32, 55922), (35, 55940), (38, 56006), (41, 56042), (48, 56099), (57, 56255), (66, 56378), (70, 56465), (75, 56522), (76, 56531), (77, 56534), (83, 56642), (84, 56666), (87, 56732), (88, 56744), (90, 56762), (93, 56864), (100, 56963), (101, 56969), (107, 57050), (115, 57185), (117, 57194), (121, 57317), (127, 57404), (128, 57416),

Gene: Greely_104 Start: 51685, Stop: 53577, Start Num: 5

Candidate Starts for Greely_104:

(Start: 5 @51685 has 89 MA's), (13, 51835), (15, 51874), (23, 52009), (27, 52057), (30, 52078), (44, 52225), (45, 52237), (47, 52261), (53, 52348), (55, 52372), (59, 52444), (64, 52522), (65, 52528), (67, 52537), (74, 52678), (76, 52693), (79, 52729), (85, 52858), (95, 53068), (97, 53089), (104, 53197), (109, 53260), (110, 53290), (118, 53464), (120, 53500), (122, 53515), (123, 53533),

Gene: Grungle_93 Start: 49918, Stop: 51501, Start Num: 5

Candidate Starts for Grungle_93:

(Start: 4 @49900 has 81 MA's), (Start: 5 @49918 has 89 MA's), (Start: 6 @49951 has 1 MA's), (Start: 17 @50143 has 1 MA's), (23, 50221), (24, 50239), (32, 50305), (35, 50323), (38, 50389), (41, 50425), (48, 50482), (57, 50638), (66, 50761), (70, 50848), (75, 50905), (76, 50914), (77, 50917), (83, 51025), (84, 51049), (87, 51115), (88, 51127), (90, 51145), (100, 51346), (101, 51352), (112, 51484), (114, 51496),

Gene: Guwapp_104 Start: 52231, Stop: 54117, Start Num: 5

Candidate Starts for Guwapp_104:

(Start: 4 @52213 has 81 MA's), (Start: 5 @52231 has 89 MA's), (Start: 6 @52264 has 1 MA's), (Start: 17 @52456 has 1 MA's), (23, 52534), (24, 52552), (32, 52618), (35, 52636), (38, 52702), (41, 52738), (48, 52795), (57, 52951), (66, 53074), (70, 53161), (75, 53218), (76, 53227), (77, 53230), (83, 53338), (84, 53362), (87, 53428), (88, 53440), (90, 53458), (93, 53560), (100, 53659), (101, 53665), (107, 53746), (115, 53881), (117, 53890), (121, 54013), (127, 54100), (128, 54112),

Gene: Halldule_99 Start: 50944, Stop: 52527, Start Num: 5

Candidate Starts for Halldule_99:

(Start: 4 @50926 has 81 MA's), (Start: 5 @50944 has 89 MA's), (Start: 6 @50977 has 1 MA's), (Start: 17 @51169 has 1 MA's), (23, 51247), (24, 51265), (32, 51331), (35, 51349), (38, 51415), (41, 51451), (48, 51508), (57, 51664), (66, 51787), (70, 51874), (75, 51931), (76, 51940), (77, 51943), (83, 52051), (84, 52075), (87, 52141), (88, 52153), (90, 52171), (100, 52372), (101, 52378), (112, 52510), (114, 52522),

Gene: HyRo_96 Start: 52186, Stop: 53988, Start Num: 5

Candidate Starts for HyRo_96:

(Start: 5 @52186 has 89 MA's), (Start: 6 @52219 has 1 MA's), (Start: 17 @52414 has 1 MA's), (26, 52492), (28, 52510), (32, 52540), (35, 52558), (36, 52588), (43, 52669), (56, 52774), (71, 53020), (72, 53026), (108, 53623), (115, 53752), (116, 53758), (117, 53761), (121, 53884), (127, 53971), (128, 53983),

Gene: I3_110 Start: 53901, Stop: 55949, Start Num: 5

Candidate Starts for I3_110:

(Start: 5 @53901 has 89 MA's), (Start: 6 @53934 has 1 MA's), (15, 54084), (25, 54291), (31, 54351), (37, 54432), (49, 54540), (51, 54570), (54, 54645), (58, 54720), (68, 54852), (81, 55089), (82, 55116), (89, 55245), (91, 55323), (92, 55350), (96, 55413), (98, 55446), (103, 55506), (107, 55578), (115, 55713), (117, 55722), (121, 55845), (127, 55932), (128, 55944),

Gene: IkeLoa_98 Start: 52016, Stop: 53818, Start Num: 5

Candidate Starts for IkeLoa_98:

(Start: 5 @52016 has 89 MA's), (Start: 6 @52049 has 1 MA's), (Start: 17 @52244 has 1 MA's), (26, 52322), (28, 52340), (32, 52370), (35, 52388), (36, 52418), (43, 52499), (56, 52604), (71, 52850), (72, 52856), (108, 53453), (115, 53582), (116, 53588), (117, 53591), (121, 53714), (127, 53801), (128, 53813),

Gene: InigoMontoya_106 Start: 52067, Stop: 53953, Start Num: 5

Candidate Starts for InigoMontoya_106:

(Start: 4 @52049 has 81 MA's), (Start: 5 @52067 has 89 MA's), (Start: 6 @52100 has 1 MA's), (7, 52106), (Start: 17 @52292 has 1 MA's), (23, 52370), (24, 52388), (32, 52454), (35, 52472), (38, 52538), (41, 52574), (48, 52631), (57, 52787), (66, 52910), (70, 52997), (75, 53054), (76, 53063), (77, 53066), (83, 53174), (84, 53198), (87, 53264), (88, 53276), (90, 53294), (93, 53396), (100, 53495), (101, 53501), (107, 53582), (115, 53717), (117, 53726), (121, 53849), (127, 53936), (128, 53948),

Gene: InterFolia_113 Start: 55081, Stop: 56967, Start Num: 5

Candidate Starts for InterFolia_113:

(Start: 4 @55063 has 81 MA's), (Start: 5 @55081 has 89 MA's), (Start: 6 @55114 has 1 MA's), (7, 55120), (Start: 17 @55306 has 1 MA's), (23, 55384), (24, 55402), (32, 55468), (35, 55486), (38, 55552), (41, 55588), (48, 55645), (57, 55801), (66, 55924), (70, 56011), (75, 56068), (76, 56077), (77, 56080), (83, 56188), (84, 56212), (87, 56278), (88, 56290), (90, 56308), (93, 56410), (100, 56509), (101, 56515), (107, 56596), (115, 56731), (117, 56740), (121, 56863), (127, 56950), (128, 56962),

Gene: Iota_100 Start: 52525, Stop: 54429, Start Num: 4

Candidate Starts for Iota_100:

(Start: 4 @52525 has 81 MA's), (Start: 5 @52543 has 89 MA's), (Start: 6 @52576 has 1 MA's), (7, 52582), (Start: 17 @52768 has 1 MA's), (23, 52846), (24, 52864), (32, 52930), (35, 52948), (38, 53014), (41, 53050), (48, 53107), (57, 53263), (66, 53386), (70, 53473), (75, 53530), (76, 53539), (77, 53542), (83, 53650), (84, 53674), (87, 53740), (88, 53752), (90, 53770), (100, 53971), (101, 53977), (107, 54058), (115, 54193), (117, 54202), (121, 54325), (127, 54412), (128, 54424),

Gene: Issimir_104 Start: 53534, Stop: 55438, Start Num: 4

Candidate Starts for Issimir_104:

(Start: 4 @53534 has 81 MA's), (Start: 5 @53552 has 89 MA's), (Start: 6 @53585 has 1 MA's), (7, 53591), (Start: 17 @53777 has 1 MA's), (23, 53855), (24, 53873), (32, 53939), (35, 53957), (38, 54023), (41, 54059), (48, 54116), (57, 54272), (66, 54395), (70, 54482), (75, 54539), (76, 54548), (77, 54551), (83, 54659), (84, 54683), (87, 54749), (88, 54761), (90, 54779), (100, 54980), (101, 54986), (107, 55067), (115, 55202), (117, 55211), (121, 55334), (127, 55421), (128, 55433),

Gene: Izajani_105 Start: 53758, Stop: 55644, Start Num: 5

Candidate Starts for Izajani_105:

(Start: 4 @53740 has 81 MA's), (Start: 5 @53758 has 89 MA's), (Start: 6 @53791 has 1 MA's), (7, 53797), (Start: 17 @53983 has 1 MA's), (23, 54061), (24, 54079), (32, 54145), (35, 54163), (38, 54229), (41, 54265), (48, 54322), (57, 54478), (66, 54601), (70, 54688), (75, 54745), (76, 54754), (77, 54757), (83, 54865), (84, 54889), (87, 54955), (88, 54967), (90, 54985), (100, 55186), (101, 55192), (107, 55273), (115, 55408), (117, 55417), (121, 55540), (127, 55627), (128, 55639),

Gene: JPickles_103 Start: 51319, Stop: 53223, Start Num: 4

Candidate Starts for JPickles_103:

(Start: 4 @51319 has 81 MA's), (Start: 5 @51337 has 89 MA's), (Start: 6 @51370 has 1 MA's), (7, 51376), (Start: 17 @51562 has 1 MA's), (23, 51640), (24, 51658), (32, 51724), (35, 51742), (38, 51808), (41, 51844), (48, 51901), (57, 52057), (66, 52180), (70, 52267), (75, 52324), (76, 52333), (77, 52336), (83, 52444), (84, 52468), (87, 52534), (88, 52546), (90, 52564), (93, 52666), (100, 52765),

(101, 52771), (107, 52852), (115, 52987), (117, 52996), (121, 53119), (127, 53206), (128, 53218),

Gene: Janiyra_107 Start: 53033, Stop: 54919, Start Num: 5

Candidate Starts for Janiyra_107:

(Start: 4 @53015 has 81 MA's), (Start: 5 @53033 has 89 MA's), (Start: 6 @53066 has 1 MA's), (7, 53072), (Start: 17 @53258 has 1 MA's), (23, 53336), (24, 53354), (32, 53420), (35, 53438), (38, 53504), (41, 53540), (48, 53597), (57, 53753), (66, 53876), (70, 53963), (75, 54020), (76, 54029), (77, 54032), (83, 54140), (84, 54164), (87, 54230), (88, 54242), (90, 54260), (93, 54362), (100, 54461), (101, 54467), (107, 54548), (115, 54683), (117, 54692), (121, 54815), (127, 54902), (128, 54914),

Gene: JayJay_110 Start: 54626, Stop: 56428, Start Num: 5

Candidate Starts for JayJay_110:

(Start: 5 @54626 has 89 MA's), (Start: 6 @54659 has 1 MA's), (Start: 17 @54854 has 1 MA's), (26, 54932), (28, 54950), (32, 54980), (35, 54998), (36, 55028), (43, 55109), (56, 55214), (71, 55460), (72, 55466), (108, 56063), (115, 56192), (116, 56198), (117, 56201), (121, 56324), (127, 56411), (128, 56423),

Gene: Jaygup_105 Start: 52844, Stop: 54748, Start Num: 4

Candidate Starts for Jaygup_105:

(Start: 4 @52844 has 81 MA's), (Start: 5 @52862 has 89 MA's), (Start: 6 @52895 has 1 MA's), (7, 52901), (Start: 17 @53087 has 1 MA's), (23, 53165), (24, 53183), (32, 53249), (35, 53267), (38, 53333), (41, 53369), (48, 53426), (57, 53582), (66, 53705), (70, 53792), (75, 53849), (76, 53858), (77, 53861), (83, 53969), (84, 53993), (87, 54059), (88, 54071), (90, 54089), (93, 54191), (100, 54290), (101, 54296), (107, 54377), (115, 54512), (117, 54521), (121, 54644), (127, 54731), (128, 54743),

Gene: Jedediah_108 Start: 53395, Stop: 55281, Start Num: 5

Candidate Starts for Jedediah_108:

(Start: 4 @53377 has 81 MA's), (Start: 5 @53395 has 89 MA's), (Start: 6 @53428 has 1 MA's), (7, 53434), (Start: 17 @53620 has 1 MA's), (23, 53698), (24, 53716), (32, 53782), (35, 53800), (38, 53866), (41, 53902), (48, 53959), (57, 54115), (66, 54238), (70, 54325), (75, 54382), (76, 54391), (77, 54394), (83, 54502), (84, 54526), (87, 54592), (88, 54604), (90, 54622), (93, 54724), (100, 54823), (101, 54829), (107, 54910), (115, 55045), (117, 55054), (121, 55177), (127, 55264), (128, 55276),

Gene: Jemmno_105 Start: 52842, Stop: 54728, Start Num: 5

Candidate Starts for Jemmno_105:

(Start: 4 @52824 has 81 MA's), (Start: 5 @52842 has 89 MA's), (Start: 6 @52875 has 1 MA's), (7, 52881), (Start: 17 @53067 has 1 MA's), (23, 53145), (24, 53163), (32, 53229), (35, 53247), (38, 53313), (41, 53349), (48, 53406), (57, 53562), (66, 53685), (70, 53772), (75, 53829), (76, 53838), (77, 53841), (83, 53949), (84, 53973), (87, 54039), (88, 54051), (90, 54069), (93, 54171), (100, 54270), (101, 54276), (107, 54357), (115, 54492), (117, 54501), (121, 54624), (127, 54711), (128, 54723),

Gene: Jessibeth14_104 Start: 53345, Stop: 55249, Start Num: 4

Candidate Starts for Jessibeth14_104:

(Start: 4 @53345 has 81 MA's), (Start: 5 @53363 has 89 MA's), (Start: 6 @53396 has 1 MA's), (7, 53402), (Start: 17 @53588 has 1 MA's), (23, 53666), (24, 53684), (32, 53750), (35, 53768), (38, 53834), (41, 53870), (48, 53927), (57, 54083), (66, 54206), (70, 54293), (75, 54350), (76, 54359), (77, 54362), (83, 54470), (84, 54494), (87, 54560), (88, 54572), (90, 54590), (100, 54791), (101, 54797), (107, 54878), (115, 55013), (117, 55022), (121, 55145), (127, 55232), (128, 55244),

Gene: Jezreel_103 Start: 53526, Stop: 55412, Start Num: 5

Candidate Starts for Jezreel_103:

(Start: 4 @53508 has 81 MA's), (Start: 5 @53526 has 89 MA's), (Start: 6 @53559 has 1 MA's), (7, 53565), (Start: 17 @53751 has 1 MA's), (23, 53829), (24, 53847), (32, 53913), (35, 53931), (38,

53997), (41, 54033), (48, 54090), (57, 54246), (66, 54369), (70, 54456), (75, 54513), (76, 54522), (77, 54525), (83, 54633), (84, 54657), (87, 54723), (88, 54735), (90, 54753), (93, 54855), (100, 54954), (101, 54960), (107, 55041), (115, 55176), (117, 55185), (121, 55308), (127, 55395), (128, 55407),

Gene: JigglyPuff_113 Start: 55692, Stop: 57578, Start Num: 5

Candidate Starts for JigglyPuff_113:

(Start: 4 @55674 has 81 MA's), (Start: 5 @55692 has 89 MA's), (Start: 6 @55725 has 1 MA's), (7, 55731), (Start: 17 @55917 has 1 MA's), (23, 55995), (24, 56013), (32, 56079), (35, 56097), (38, 56163), (41, 56199), (48, 56256), (57, 56412), (66, 56535), (70, 56622), (75, 56679), (76, 56688), (77, 56691), (83, 56799), (84, 56823), (87, 56889), (88, 56901), (90, 56919), (93, 57021), (100, 57120), (101, 57126), (107, 57207), (115, 57342), (117, 57351), (121, 57474), (127, 57561), (128, 57573),

Gene: JulietS_100 Start: 50797, Stop: 52380, Start Num: 5

Candidate Starts for JulietS_100:

(Start: 4 @50779 has 81 MA's), (Start: 5 @50797 has 89 MA's), (Start: 6 @50830 has 1 MA's), (Start: 17 @51022 has 1 MA's), (23, 51100), (24, 51118), (32, 51184), (35, 51202), (38, 51268), (41, 51304), (48, 51361), (57, 51517), (66, 51640), (70, 51727), (75, 51784), (76, 51793), (77, 51796), (83, 51904), (84, 51928), (87, 51994), (88, 52006), (90, 52024), (100, 52225), (101, 52231), (112, 52363), (114, 52375),

Gene: JustHall_102 Start: 52883, Stop: 54787, Start Num: 4

Candidate Starts for JustHall_102:

(Start: 4 @52883 has 81 MA's), (Start: 5 @52901 has 89 MA's), (Start: 6 @52934 has 1 MA's), (7, 52940), (Start: 17 @53126 has 1 MA's), (23, 53204), (24, 53222), (32, 53288), (35, 53306), (38, 53372), (41, 53408), (48, 53465), (57, 53621), (66, 53744), (70, 53831), (75, 53888), (76, 53897), (77, 53900), (83, 54008), (84, 54032), (87, 54098), (88, 54110), (90, 54128), (93, 54230), (100, 54329), (101, 54335), (107, 54416), (115, 54551), (117, 54560), (121, 54683), (127, 54770), (128, 54782),

Gene: Kamryn_105 Start: 54160, Stop: 56064, Start Num: 4

Candidate Starts for Kamryn_105:

(Start: 4 @54160 has 81 MA's), (Start: 5 @54178 has 89 MA's), (Start: 6 @54211 has 1 MA's), (7, 54217), (Start: 17 @54403 has 1 MA's), (23, 54481), (24, 54499), (32, 54565), (35, 54583), (38, 54649), (41, 54685), (48, 54742), (57, 54898), (66, 55021), (70, 55108), (75, 55165), (76, 55174), (77, 55177), (83, 55285), (84, 55309), (87, 55375), (88, 55387), (90, 55405), (93, 55507), (100, 55606), (101, 55612), (107, 55693), (115, 55828), (117, 55837), (121, 55960), (127, 56047), (128, 56059),

Gene: Kboogie_109 Start: 52534, Stop: 54420, Start Num: 5

Candidate Starts for Kboogie_109:

(Start: 4 @52516 has 81 MA's), (Start: 5 @52534 has 89 MA's), (Start: 6 @52567 has 1 MA's), (7, 52573), (Start: 17 @52759 has 1 MA's), (23, 52837), (24, 52855), (32, 52921), (35, 52939), (38, 53005), (41, 53041), (48, 53098), (57, 53254), (66, 53377), (70, 53464), (75, 53521), (76, 53530), (77, 53533), (83, 53641), (84, 53665), (87, 53731), (88, 53743), (90, 53761), (93, 53863), (100, 53962), (101, 53968), (107, 54049), (115, 54184), (117, 54193), (121, 54316), (127, 54403), (128, 54415),

Gene: Khaleesi_104 Start: 53459, Stop: 55363, Start Num: 4

Candidate Starts for Khaleesi_104:

(Start: 4 @53459 has 81 MA's), (Start: 5 @53477 has 89 MA's), (Start: 6 @53510 has 1 MA's), (7, 53516), (Start: 17 @53702 has 1 MA's), (23, 53780), (24, 53798), (32, 53864), (35, 53882), (38, 53948), (41, 53984), (48, 54041), (57, 54197), (66, 54320), (70, 54407), (75, 54464), (76, 54473), (77, 54476), (83, 54584), (84, 54608), (87, 54674), (88, 54686), (90, 54704), (93, 54806), (100, 54905), (101, 54911), (107, 54992), (115, 55127), (117, 55136), (121, 55259), (127, 55346), (128, 55358),

Gene: Koguma_102 Start: 51022, Stop: 52908, Start Num: 5

Candidate Starts for Koguma_102:

(Start: 4 @51004 has 81 MA's), (Start: 5 @51022 has 89 MA's), (Start: 6 @51055 has 1 MA's), (7, 51061), (Start: 17 @51247 has 1 MA's), (23, 51325), (24, 51343), (32, 51409), (35, 51427), (38, 51493), (41, 51529), (48, 51586), (57, 51742), (66, 51865), (70, 51952), (75, 52009), (76, 52018), (77, 52021), (83, 52129), (84, 52153), (87, 52219), (88, 52231), (90, 52249), (93, 52351), (100, 52450), (101, 52456), (107, 52537), (115, 52672), (117, 52681), (121, 52804), (127, 52891), (128, 52903),

Gene: LRRHood_99 Start: 52904, Stop: 54706, Start Num: 5

Candidate Starts for LRRHood_99:

(Start: 5 @52904 has 89 MA's), (Start: 6 @52937 has 1 MA's), (Start: 17 @53132 has 1 MA's), (26, 53210), (28, 53228), (32, 53258), (35, 53276), (36, 53306), (43, 53387), (56, 53492), (71, 53738), (72, 53744), (108, 54341), (115, 54470), (116, 54476), (117, 54479), (121, 54602), (127, 54689), (128, 54701),

Gene: Latch_105 Start: 52088, Stop: 53992, Start Num: 4

Candidate Starts for Latch_105:

(Start: 4 @52088 has 81 MA's), (Start: 5 @52106 has 89 MA's), (Start: 6 @52139 has 1 MA's), (7, 52145), (Start: 17 @52331 has 1 MA's), (23, 52409), (24, 52427), (32, 52493), (35, 52511), (38, 52577), (41, 52613), (48, 52670), (57, 52826), (66, 52949), (70, 53036), (75, 53093), (76, 53102), (77, 53105), (83, 53213), (84, 53237), (87, 53303), (88, 53315), (90, 53333), (93, 53435), (100, 53534), (101, 53540), (107, 53621), (115, 53756), (117, 53765), (121, 53888), (127, 53975), (128, 53987),

Gene: Lee7_103 Start: 54111, Stop: 55997, Start Num: 5

Candidate Starts for Lee7_103:

(Start: 4 @54093 has 81 MA's), (Start: 5 @54111 has 89 MA's), (Start: 6 @54144 has 1 MA's), (7, 54150), (Start: 17 @54336 has 1 MA's), (23, 54414), (24, 54432), (32, 54498), (35, 54516), (38, 54582), (41, 54618), (48, 54675), (57, 54831), (66, 54954), (70, 55041), (75, 55098), (76, 55107), (77, 55110), (83, 55218), (84, 55242), (87, 55308), (88, 55320), (90, 55338), (100, 55539), (101, 55545), (107, 55626), (115, 55761), (117, 55770), (121, 55893), (127, 55980), (128, 55992),

Gene: Lethe_105 Start: 53549, Stop: 55435, Start Num: 5

Candidate Starts for Lethe_105:

(Start: 4 @53531 has 81 MA's), (Start: 5 @53549 has 89 MA's), (Start: 6 @53582 has 1 MA's), (7, 53588), (Start: 17 @53774 has 1 MA's), (23, 53852), (24, 53870), (32, 53936), (35, 53954), (38, 54020), (41, 54056), (48, 54113), (57, 54269), (66, 54392), (70, 54479), (75, 54536), (76, 54545), (77, 54548), (83, 54656), (84, 54680), (87, 54746), (88, 54758), (90, 54776), (100, 54977), (101, 54983), (107, 55064), (115, 55199), (117, 55208), (121, 55331), (127, 55418), (128, 55430),

Gene: LifeSavor_104 Start: 52776, Stop: 54680, Start Num: 4

Candidate Starts for LifeSavor_104:

(Start: 4 @52776 has 81 MA's), (Start: 5 @52794 has 89 MA's), (Start: 6 @52827 has 1 MA's), (7, 52833), (Start: 17 @53019 has 1 MA's), (23, 53097), (24, 53115), (32, 53181), (35, 53199), (38, 53265), (41, 53301), (48, 53358), (57, 53514), (66, 53637), (70, 53724), (75, 53781), (76, 53790), (77, 53793), (83, 53901), (84, 53925), (87, 53991), (88, 54003), (90, 54021), (93, 54123), (100, 54222), (101, 54228), (107, 54309), (115, 54444), (117, 54453), (121, 54576), (127, 54663), (128, 54675),

Gene: LinStu_104 Start: 53512, Stop: 55314, Start Num: 5

Candidate Starts for LinStu_104:

(Start: 5 @53512 has 89 MA's), (Start: 6 @53545 has 1 MA's), (Start: 17 @53740 has 1 MA's), (26, 53818), (28, 53836), (32, 53866), (35, 53884), (36, 53914), (43, 53995), (56, 54100), (71, 54346), (72, 54352), (108, 54949), (115, 55078), (116, 55084), (117, 55087), (121, 55210), (127, 55297), (128, 55309),

Gene: Littleton_105 Start: 52905, Stop: 54809, Start Num: 4

Candidate Starts for Littleton_105:

(Start: 4 @52905 has 81 MA's), (Start: 5 @52923 has 89 MA's), (Start: 6 @52956 has 1 MA's), (7, 52962), (Start: 17 @53148 has 1 MA's), (23, 53226), (24, 53244), (32, 53310), (35, 53328), (38, 53394), (41, 53430), (48, 53487), (57, 53643), (66, 53766), (70, 53853), (75, 53910), (76, 53919), (77, 53922), (83, 54030), (84, 54054), (87, 54120), (88, 54132), (90, 54150), (93, 54252), (100, 54351), (101, 54357), (107, 54438), (115, 54573), (117, 54582), (121, 54705), (127, 54792), (128, 54804),

Gene: Loanshark_104 Start: 53529, Stop: 55331, Start Num: 5

Candidate Starts for Loanshark_104:

(Start: 5 @53529 has 89 MA's), (Start: 6 @53562 has 1 MA's), (Start: 17 @53757 has 1 MA's), (26, 53835), (28, 53853), (32, 53883), (35, 53901), (36, 53931), (43, 54012), (56, 54117), (71, 54363), (72, 54369), (108, 54966), (115, 55095), (116, 55101), (117, 55104), (121, 55227), (127, 55314), (128, 55326),

Gene: LolaVinca_106 Start: 53797, Stop: 55683, Start Num: 5

Candidate Starts for LolaVinca_106:

(Start: 4 @53779 has 81 MA's), (Start: 5 @53797 has 89 MA's), (Start: 6 @53830 has 1 MA's), (7, 53836), (Start: 17 @54022 has 1 MA's), (23, 54100), (24, 54118), (32, 54184), (35, 54202), (38, 54268), (41, 54304), (48, 54361), (57, 54517), (66, 54640), (70, 54727), (75, 54784), (76, 54793), (77, 54796), (83, 54904), (84, 54928), (87, 54994), (88, 55006), (90, 55024), (93, 55126), (100, 55225), (101, 55231), (107, 55312), (115, 55447), (117, 55456), (121, 55579), (127, 55666), (128, 55678),

Gene: LordLeafolot_109 Start: 54764, Stop: 56650, Start Num: 5

Candidate Starts for LordLeafolot_109:

(Start: 4 @54746 has 81 MA's), (Start: 5 @54764 has 89 MA's), (Start: 6 @54797 has 1 MA's), (7, 54803), (Start: 17 @54989 has 1 MA's), (23, 55067), (24, 55085), (32, 55151), (35, 55169), (38, 55235), (41, 55271), (48, 55328), (57, 55484), (66, 55607), (70, 55694), (75, 55751), (76, 55760), (77, 55763), (83, 55871), (84, 55895), (87, 55961), (88, 55973), (90, 55991), (93, 56093), (100, 56192), (101, 56198), (107, 56279), (115, 56414), (117, 56423), (121, 56546), (127, 56633), (128, 56645),

Gene: Lukilu_96 Start: 53192, Stop: 55096, Start Num: 4

Candidate Starts for Lukilu_96:

(Start: 4 @53192 has 81 MA's), (Start: 5 @53210 has 89 MA's), (Start: 6 @53243 has 1 MA's), (7, 53249), (Start: 17 @53435 has 1 MA's), (23, 53513), (24, 53531), (32, 53597), (35, 53615), (38, 53681), (41, 53717), (48, 53774), (57, 53930), (66, 54053), (70, 54140), (75, 54197), (76, 54206), (77, 54209), (83, 54317), (84, 54341), (87, 54407), (88, 54419), (90, 54437), (100, 54638), (101, 54644), (107, 54725), (115, 54860), (116, 54866), (117, 54869), (121, 54992), (127, 55079), (128, 55091),

Gene: Maby2021_105 Start: 53571, Stop: 55457, Start Num: 5

Candidate Starts for Maby2021_105:

(Start: 4 @53553 has 81 MA's), (Start: 5 @53571 has 89 MA's), (Start: 6 @53604 has 1 MA's), (7, 53610), (Start: 17 @53796 has 1 MA's), (23, 53874), (24, 53892), (32, 53958), (35, 53976), (38, 54042), (41, 54078), (48, 54135), (57, 54291), (66, 54414), (70, 54501), (75, 54558), (76, 54567), (77, 54570), (83, 54678), (84, 54702), (87, 54768), (88, 54780), (90, 54798), (100, 54999), (101, 55005), (107, 55086), (115, 55221), (117, 55230), (121, 55353), (127, 55440), (128, 55452),

Gene: Mangeria_105 Start: 53622, Stop: 55526, Start Num: 4

Candidate Starts for Mangeria_105:

(Start: 4 @53622 has 81 MA's), (Start: 5 @53640 has 89 MA's), (Start: 6 @53673 has 1 MA's), (7, 53679), (Start: 17 @53865 has 1 MA's), (23, 53943), (24, 53961), (32, 54027), (35, 54045), (38, 54111), (41, 54147), (48, 54204), (57, 54360), (66, 54483), (70, 54570), (75, 54627), (76, 54636), (77, 54639), (83, 54747), (84, 54771), (87, 54837), (88, 54849), (90, 54867), (93, 54969), (100, 55068),

(101, 55074), (107, 55155), (115, 55290), (117, 55299), (121, 55422), (127, 55509), (128, 55521),

Gene: Matsumoto_102 Start: 52422, Stop: 54308, Start Num: 5

Candidate Starts for Matsumoto_102:

(Start: 4 @52404 has 81 MA's), (Start: 5 @52422 has 89 MA's), (Start: 6 @52455 has 1 MA's), (7, 52461), (Start: 17 @52647 has 1 MA's), (23, 52725), (24, 52743), (32, 52809), (35, 52827), (38, 52893), (41, 52929), (48, 52986), (57, 53142), (66, 53265), (70, 53352), (75, 53409), (76, 53418), (77, 53421), (83, 53529), (84, 53553), (87, 53619), (88, 53631), (90, 53649), (93, 53751), (100, 53850), (101, 53856), (107, 53937), (115, 54072), (117, 54081), (121, 54204), (127, 54291), (128, 54303),

Gene: McGee_107 Start: 52157, Stop: 54061, Start Num: 4

Candidate Starts for McGee_107:

(Start: 4 @52157 has 81 MA's), (Start: 5 @52175 has 89 MA's), (Start: 6 @52208 has 1 MA's), (Start: 17 @52400 has 1 MA's), (23, 52478), (24, 52496), (32, 52562), (35, 52580), (38, 52646), (41, 52682), (48, 52739), (57, 52895), (66, 53018), (70, 53105), (75, 53162), (76, 53171), (77, 53174), (83, 53282), (84, 53306), (87, 53372), (88, 53384), (90, 53402), (93, 53504), (100, 53603), (101, 53609), (107, 53690), (115, 53825), (117, 53834), (121, 53957), (127, 54044), (128, 54056),

Gene: McWolfish_103 Start: 53342, Stop: 55246, Start Num: 4

Candidate Starts for McWolfish_103:

(Start: 4 @53342 has 81 MA's), (Start: 5 @53360 has 89 MA's), (Start: 6 @53393 has 1 MA's), (7, 53399), (Start: 17 @53585 has 1 MA's), (23, 53663), (24, 53681), (32, 53747), (35, 53765), (38, 53831), (41, 53867), (48, 53924), (57, 54080), (66, 54203), (70, 54290), (75, 54347), (76, 54356), (77, 54359), (83, 54467), (84, 54491), (87, 54557), (88, 54569), (90, 54587), (93, 54689), (100, 54788), (101, 54794), (107, 54875), (115, 55010), (117, 55019), (121, 55142), (127, 55229), (128, 55241),

Gene: Megamind_104 Start: 53244, Stop: 55130, Start Num: 5

Candidate Starts for Megamind_104:

(Start: 4 @53226 has 81 MA's), (Start: 5 @53244 has 89 MA's), (Start: 6 @53277 has 1 MA's), (7, 53283), (Start: 17 @53469 has 1 MA's), (23, 53547), (24, 53565), (32, 53631), (35, 53649), (38, 53715), (41, 53751), (48, 53808), (57, 53964), (66, 54087), (70, 54174), (75, 54231), (76, 54240), (77, 54243), (83, 54351), (84, 54375), (87, 54441), (88, 54453), (90, 54471), (100, 54672), (101, 54678), (107, 54759), (115, 54894), (117, 54903), (121, 55026), (127, 55113), (128, 55125),

Gene: Melpomini_99 Start: 50692, Stop: 52596, Start Num: 4

Candidate Starts for Melpomini_99:

(Start: 4 @50692 has 81 MA's), (Start: 5 @50710 has 89 MA's), (Start: 6 @50743 has 1 MA's), (Start: 17 @50935 has 1 MA's), (23, 51013), (24, 51031), (32, 51097), (35, 51115), (38, 51181), (41, 51217), (48, 51274), (57, 51430), (66, 51553), (70, 51640), (75, 51697), (76, 51706), (77, 51709), (83, 51817), (84, 51841), (87, 51907), (88, 51919), (90, 51937), (93, 52039), (100, 52138), (101, 52144), (107, 52225), (115, 52360), (117, 52369), (121, 52492), (127, 52579), (128, 52591),

Gene: MikeLiesIn_106 Start: 53591, Stop: 55477, Start Num: 5

Candidate Starts for MikeLiesIn_106:

(Start: 4 @53573 has 81 MA's), (Start: 5 @53591 has 89 MA's), (Start: 6 @53624 has 1 MA's), (7, 53630), (Start: 17 @53816 has 1 MA's), (23, 53894), (24, 53912), (32, 53978), (35, 53996), (38, 54062), (41, 54098), (48, 54155), (57, 54311), (66, 54434), (70, 54521), (75, 54578), (76, 54587), (77, 54590), (83, 54698), (84, 54722), (87, 54788), (88, 54800), (90, 54818), (100, 55019), (101, 55025), (107, 55106), (115, 55241), (117, 55250), (121, 55373), (127, 55460), (128, 55472),

Gene: Mikro_103 Start: 54813, Stop: 56699, Start Num: 5

Candidate Starts for Mikro_103:

(Start: 4 @54795 has 81 MA's), (Start: 5 @54813 has 89 MA's), (Start: 6 @54846 has 1 MA's), (7, 54852), (Start: 17 @55038 has 1 MA's), (23, 55116), (24, 55134), (32, 55200), (35, 55218), (38, 55284), (41, 55320), (48, 55377), (57, 55533), (66, 55656), (70, 55743), (75, 55800), (76, 55809), (77, 55812), (83, 55920), (84, 55944), (87, 56010), (88, 56022), (90, 56040), (93, 56142), (100, 56241), (101, 56247), (107, 56328), (115, 56463), (117, 56472), (121, 56595), (127, 56682), (128, 56694),

Gene: MoMoMixon_106 Start: 53067, Stop: 54953, Start Num: 5

Candidate Starts for MoMoMixon_106:

(Start: 4 @53049 has 81 MA's), (Start: 5 @53067 has 89 MA's), (Start: 6 @53100 has 1 MA's), (7, 53106), (Start: 17 @53292 has 1 MA's), (23, 53370), (24, 53388), (32, 53454), (35, 53472), (38, 53538), (41, 53574), (48, 53631), (57, 53787), (66, 53910), (70, 53997), (75, 54054), (76, 54063), (77, 54066), (83, 54174), (84, 54198), (87, 54264), (88, 54276), (90, 54294), (100, 54495), (101, 54501), (107, 54582), (115, 54717), (117, 54726), (121, 54849), (127, 54936), (128, 54948),

Gene: Momo_104 Start: 52106, Stop: 53992, Start Num: 5

Candidate Starts for Momo_104:

(Start: 4 @52088 has 81 MA's), (Start: 5 @52106 has 89 MA's), (Start: 6 @52139 has 1 MA's), (7, 52145), (Start: 17 @52331 has 1 MA's), (23, 52409), (24, 52427), (32, 52493), (35, 52511), (38, 52577), (41, 52613), (48, 52670), (57, 52826), (66, 52949), (70, 53036), (75, 53093), (76, 53102), (77, 53105), (83, 53213), (84, 53237), (87, 53303), (88, 53315), (90, 53333), (93, 53435), (100, 53534), (101, 53540), (107, 53621), (115, 53756), (117, 53765), (121, 53888), (127, 53975), (128, 53987),

Gene: Morizzled23_105 Start: 52453, Stop: 54357, Start Num: 4

Candidate Starts for Morizzled23_105:

(Start: 4 @52453 has 81 MA's), (Start: 5 @52471 has 89 MA's), (Start: 6 @52504 has 1 MA's), (7, 52510), (Start: 17 @52696 has 1 MA's), (23, 52774), (24, 52792), (32, 52858), (35, 52876), (38, 52942), (41, 52978), (48, 53035), (57, 53191), (66, 53314), (70, 53401), (75, 53458), (76, 53467), (77, 53470), (83, 53578), (84, 53602), (87, 53668), (88, 53680), (90, 53698), (100, 53899), (101, 53905), (107, 53986), (115, 54121), (117, 54130), (121, 54253), (127, 54340), (128, 54352),

Gene: Myrna_102 Start: 52463, Stop: 54373, Start Num: 3

Candidate Starts for Myrna_102:

(Start: 3 @52463 has 1 MA's), (Start: 5 @52487 has 89 MA's), (Start: 6 @52520 has 1 MA's), (13, 52631), (15, 52670), (23, 52805), (27, 52853), (30, 52874), (39, 52979), (44, 53021), (46, 53039), (52, 53120), (53, 53144), (55, 53168), (59, 53240), (65, 53324), (67, 53333), (74, 53474), (76, 53489), (79, 53525), (80, 53558), (85, 53654), (95, 53864), (97, 53885), (99, 53936), (109, 54056), (110, 54086), (113, 54113), (118, 54260), (122, 54311), (124, 54341), (126, 54359),

Gene: Naija_104 Start: 52088, Stop: 53992, Start Num: 4

Candidate Starts for Naija_104:

(Start: 4 @52088 has 81 MA's), (Start: 5 @52106 has 89 MA's), (Start: 6 @52139 has 1 MA's), (7, 52145), (Start: 17 @52331 has 1 MA's), (23, 52409), (24, 52427), (32, 52493), (35, 52511), (38, 52577), (41, 52613), (48, 52670), (57, 52826), (66, 52949), (70, 53036), (75, 53093), (76, 53102), (77, 53105), (83, 53213), (84, 53237), (87, 53303), (88, 53315), (90, 53333), (93, 53435), (100, 53534), (101, 53540), (107, 53621), (115, 53756), (117, 53765), (121, 53888), (127, 53975), (128, 53987),

Gene: Napoleon13_101 Start: 51130, Stop: 53034, Start Num: 4

Candidate Starts for Napoleon13_101:

(Start: 4 @51130 has 81 MA's), (Start: 5 @51148 has 89 MA's), (Start: 6 @51181 has 1 MA's), (7, 51187), (Start: 17 @51373 has 1 MA's), (23, 51451), (24, 51469), (32, 51535), (35, 51553), (38, 51619), (41, 51655), (48, 51712), (57, 51868), (66, 51991), (70, 52078), (75, 52135), (76, 52144), (77, 52147), (83, 52255), (84, 52279), (87, 52345), (88, 52357), (90, 52375), (93, 52477), (100, 52576), (101, 52582), (107, 52663), (115, 52798), (117, 52807), (121, 52930), (127, 53017), (128, 53029),

Gene: Nappy_108 Start: 54483, Stop: 56387, Start Num: 4

Candidate Starts for Nappy_108:

(Start: 4 @54483 has 81 MA's), (Start: 5 @54501 has 89 MA's), (Start: 6 @54534 has 1 MA's), (7, 54540), (Start: 17 @54726 has 1 MA's), (23, 54804), (24, 54822), (32, 54888), (35, 54906), (38, 54972), (41, 55008), (48, 55065), (50, 55077), (57, 55221), (66, 55344), (70, 55431), (75, 55488), (76, 55497), (77, 55500), (83, 55608), (84, 55632), (87, 55698), (88, 55710), (90, 55728), (93, 55830), (100, 55929), (101, 55935), (107, 56016), (115, 56151), (116, 56157), (117, 56160), (121, 56283), (127, 56370), (128, 56382),

Gene: Naval22_110 Start: 55082, Stop: 56968, Start Num: 5

Candidate Starts for Naval22_110:

(Start: 4 @55064 has 81 MA's), (Start: 5 @55082 has 89 MA's), (Start: 6 @55115 has 1 MA's), (7, 55121), (Start: 17 @55307 has 1 MA's), (23, 55385), (24, 55403), (32, 55469), (35, 55487), (38, 55553), (41, 55589), (48, 55646), (57, 55802), (66, 55925), (70, 56012), (75, 56069), (76, 56078), (77, 56081), (83, 56189), (84, 56213), (87, 56279), (88, 56291), (90, 56309), (100, 56510), (101, 56516), (107, 56597), (115, 56732), (117, 56741), (121, 56864), (127, 56951), (128, 56963),

Gene: NedWong_106 Start: 53578, Stop: 55464, Start Num: 5

Candidate Starts for NedWong_106:

(Start: 4 @53560 has 81 MA's), (Start: 5 @53578 has 89 MA's), (Start: 6 @53611 has 1 MA's), (7, 53617), (Start: 17 @53803 has 1 MA's), (23, 53881), (24, 53899), (32, 53965), (35, 53983), (38, 54049), (41, 54085), (48, 54142), (57, 54298), (66, 54421), (70, 54508), (75, 54565), (76, 54574), (77, 54577), (83, 54685), (84, 54709), (87, 54775), (88, 54787), (90, 54805), (100, 55006), (101, 55012), (107, 55093), (115, 55228), (117, 55237), (121, 55360), (127, 55447), (128, 55459),

Gene: Ngannou_101 Start: 51070, Stop: 52974, Start Num: 4

Candidate Starts for Ngannou_101:

(Start: 4 @51070 has 81 MA's), (Start: 5 @51088 has 89 MA's), (Start: 6 @51121 has 1 MA's), (7, 51127), (Start: 17 @51313 has 1 MA's), (23, 51391), (24, 51409), (32, 51475), (35, 51493), (38, 51559), (41, 51595), (48, 51652), (57, 51808), (66, 51931), (70, 52018), (75, 52075), (76, 52084), (77, 52087), (83, 52195), (84, 52219), (87, 52285), (88, 52297), (90, 52315), (93, 52417), (100, 52516), (101, 52522), (107, 52603), (115, 52738), (117, 52747), (121, 52870), (127, 52957), (128, 52969),

Gene: Nidhogg_106 Start: 53294, Stop: 55198, Start Num: 4

Candidate Starts for Nidhogg_106:

(Start: 4 @53294 has 81 MA's), (Start: 5 @53312 has 89 MA's), (Start: 6 @53345 has 1 MA's), (7, 53351), (Start: 17 @53537 has 1 MA's), (23, 53615), (24, 53633), (32, 53699), (35, 53717), (38, 53783), (41, 53819), (48, 53876), (57, 54032), (66, 54155), (70, 54242), (75, 54299), (76, 54308), (77, 54311), (83, 54419), (84, 54443), (87, 54509), (88, 54521), (90, 54539), (100, 54740), (101, 54746), (107, 54827), (115, 54962), (117, 54971), (121, 55094), (127, 55181), (128, 55193),

Gene: NoodleTree_112 Start: 53904, Stop: 55790, Start Num: 5

Candidate Starts for NoodleTree_112:

(Start: 4 @53886 has 81 MA's), (Start: 5 @53904 has 89 MA's), (Start: 6 @53937 has 1 MA's), (7, 53943), (Start: 17 @54129 has 1 MA's), (23, 54207), (24, 54225), (32, 54291), (35, 54309), (38, 54375), (41, 54411), (48, 54468), (57, 54624), (66, 54747), (70, 54834), (75, 54891), (76, 54900), (77, 54903), (83, 55011), (84, 55035), (87, 55101), (88, 55113), (90, 55131), (93, 55233), (100, 55332), (101, 55338), (107, 55419), (115, 55554), (117, 55563), (121, 55686), (127, 55773), (128, 55785),

Gene: Norm_106 Start: 54489, Stop: 56393, Start Num: 4

Candidate Starts for Norm_106:

(Start: 4 @54489 has 81 MA's), (Start: 5 @54507 has 89 MA's), (Start: 6 @54540 has 1 MA's), (7, 54546), (Start: 17 @54732 has 1 MA's), (23, 54810), (24, 54828), (32, 54894), (35, 54912), (38, 54978), (41, 55014), (48, 55071), (57, 55227), (66, 55350), (70, 55437), (75, 55494), (76, 55503), (77, 55506), (83, 55614), (84, 55638), (87, 55704), (88, 55716), (90, 55734), (100, 55935), (101, 55941), (107, 56022), (115, 56157), (117, 56166), (121, 56289), (127, 56376), (128, 56388),

Gene: NuevoMundo_111 Start: 55852, Stop: 57738, Start Num: 5

Candidate Starts for NuevoMundo_111:

(Start: 4 @55834 has 81 MA's), (Start: 5 @55852 has 89 MA's), (Start: 6 @55885 has 1 MA's), (7, 55891), (Start: 17 @56077 has 1 MA's), (23, 56155), (24, 56173), (32, 56239), (35, 56257), (38, 56323), (41, 56359), (48, 56416), (57, 56572), (66, 56695), (70, 56782), (75, 56839), (76, 56848), (77, 56851), (83, 56959), (84, 56983), (87, 57049), (88, 57061), (90, 57079), (93, 57181), (100, 57280), (101, 57286), (107, 57367), (115, 57502), (117, 57511), (121, 57634), (127, 57721), (128, 57733),

Gene: ParkTD_106 Start: 53574, Stop: 55460, Start Num: 5

Candidate Starts for ParkTD_106:

(Start: 4 @53556 has 81 MA's), (Start: 5 @53574 has 89 MA's), (Start: 6 @53607 has 1 MA's), (7, 53613), (Start: 17 @53799 has 1 MA's), (23, 53877), (24, 53895), (32, 53961), (35, 53979), (38, 54045), (41, 54081), (48, 54138), (57, 54294), (66, 54417), (70, 54504), (75, 54561), (76, 54570), (77, 54573), (83, 54681), (84, 54705), (87, 54771), (88, 54783), (90, 54801), (100, 55002), (101, 55008), (107, 55089), (115, 55224), (117, 55233), (121, 55356), (127, 55443), (128, 55455),

Gene: Patter_105 Start: 52105, Stop: 54009, Start Num: 4

Candidate Starts for Patter_105:

(Start: 4 @52105 has 81 MA's), (Start: 5 @52123 has 89 MA's), (Start: 6 @52156 has 1 MA's), (7, 52162), (Start: 17 @52348 has 1 MA's), (23, 52426), (24, 52444), (32, 52510), (35, 52528), (38, 52594), (41, 52630), (48, 52687), (57, 52843), (66, 52966), (70, 53053), (75, 53110), (76, 53119), (77, 53122), (83, 53230), (84, 53254), (87, 53320), (88, 53332), (90, 53350), (93, 53452), (100, 53551), (101, 53557), (107, 53638), (115, 53773), (117, 53782), (121, 53905), (127, 53992), (128, 54004),

Gene: Phabba_106 Start: 51448, Stop: 53340, Start Num: 5

Candidate Starts for Phabba_106:

(Start: 5 @51448 has 89 MA's), (10, 51544), (13, 51598), (15, 51637), (23, 51772), (27, 51820), (30, 51841), (44, 51988), (45, 52000), (53, 52111), (55, 52135), (59, 52207), (64, 52285), (65, 52291), (67, 52300), (74, 52441), (76, 52456), (79, 52492), (85, 52621), (95, 52831), (97, 52852), (99, 52903), (104, 52960), (109, 53023), (110, 53053), (118, 53227), (122, 53278), (123, 53296),

Gene: Phlegm_107 Start: 52106, Stop: 53992, Start Num: 5

Candidate Starts for Phlegm_107:

(Start: 4 @52088 has 81 MA's), (Start: 5 @52106 has 89 MA's), (Start: 6 @52139 has 1 MA's), (7, 52145), (Start: 17 @52331 has 1 MA's), (23, 52409), (24, 52427), (32, 52493), (35, 52511), (38, 52577), (41, 52613), (48, 52670), (57, 52826), (66, 52949), (70, 53036), (75, 53093), (76, 53102), (77, 53105), (83, 53213), (84, 53237), (87, 53303), (88, 53315), (90, 53333), (93, 53435), (100, 53534), (101, 53540), (107, 53621), (115, 53756), (117, 53765), (121, 53888), (127, 53975), (128, 53987),

Gene: Phox_102 Start: 53854, Stop: 55740, Start Num: 5

Candidate Starts for Phox_102:

(Start: 4 @53836 has 81 MA's), (Start: 5 @53854 has 89 MA's), (Start: 6 @53887 has 1 MA's), (7, 53893), (Start: 17 @54079 has 1 MA's), (23, 54157), (24, 54175), (32, 54241), (35, 54259), (38, 54325), (41, 54361), (48, 54418), (57, 54574), (66, 54697), (70, 54784), (75, 54841), (76, 54850), (77, 54853), (83, 54961), (84, 54985), (87, 55051), (88, 55063), (90, 55081), (93, 55183), (100, 55282), (101, 55288), (107, 55369), (115, 55504), (117, 55513), (121, 55636), (127, 55723), (128, 55735),

Gene: Phusco_105 Start: 52853, Stop: 54757, Start Num: 4

Candidate Starts for Phusco_105:

(Start: 4 @52853 has 81 MA's), (Start: 5 @52871 has 89 MA's), (Start: 6 @52904 has 1 MA's), (7, 52910), (Start: 17 @53096 has 1 MA's), (23, 53174), (24, 53192), (32, 53258), (35, 53276), (38, 53342), (41, 53378), (48, 53435), (57, 53591), (66, 53714), (70, 53801), (75, 53858), (76, 53867), (77, 53870), (83, 53978), (84, 54002), (87, 54068), (88, 54080), (90, 54098), (93, 54200), (100, 54299), (101, 54305), (107, 54386), (115, 54521), (117, 54530), (121, 54653), (127, 54740), (128, 54752),

Gene: Pier_110 Start: 55842, Stop: 57746, Start Num: 4

Candidate Starts for Pier_110:

(Start: 4 @55842 has 81 MA's), (Start: 5 @55860 has 89 MA's), (Start: 6 @55893 has 1 MA's), (7, 55899), (Start: 17 @56085 has 1 MA's), (20, 56151), (24, 56181), (32, 56247), (35, 56265), (38, 56331), (41, 56367), (48, 56424), (57, 56580), (66, 56703), (70, 56790), (75, 56847), (76, 56856), (77, 56859), (83, 56967), (84, 56991), (87, 57057), (88, 57069), (90, 57087), (93, 57189), (100, 57288), (101, 57294), (107, 57375), (115, 57510), (117, 57519), (121, 57642), (127, 57729), (128, 57741),

Gene: Pinkcreek_96 Start: 50819, Stop: 53080, Start Num: 1

Candidate Starts for Pinkcreek_96:

(Start: 1 @50819 has 2 MA's), (2, 50852), (8, 51002), (11, 51050), (16, 51140), (19, 51254), (21, 51329), (22, 51338), (29, 51446), (33, 51485), (40, 51593), (57, 51836), (61, 51863), (62, 51905), (63, 51956), (71, 52076), (73, 52109), (78, 52154), (88, 52340), (106, 52688), (108, 52715), (115, 52844), (116, 52850), (117, 52853), (121, 52976), (127, 53063), (128, 53075),

Gene: Pio_109 Start: 55446, Stop: 57350, Start Num: 4

Candidate Starts for Pio_109:

(Start: 4 @55446 has 81 MA's), (Start: 5 @55464 has 89 MA's), (Start: 6 @55497 has 1 MA's), (Start: 17 @55689 has 1 MA's), (23, 55767), (24, 55785), (32, 55851), (35, 55869), (38, 55935), (41, 55971), (48, 56028), (57, 56184), (66, 56307), (70, 56394), (75, 56451), (76, 56460), (77, 56463), (83, 56571), (84, 56595), (87, 56661), (88, 56673), (90, 56691), (100, 56892), (101, 56898), (107, 56979), (115, 57114), (117, 57123), (121, 57246), (127, 57333), (128, 57345),

Gene: Pivoine_104 Start: 52088, Stop: 53992, Start Num: 4

Candidate Starts for Pivoine_104:

(Start: 4 @52088 has 81 MA's), (Start: 5 @52106 has 89 MA's), (Start: 6 @52139 has 1 MA's), (7, 52145), (Start: 17 @52331 has 1 MA's), (23, 52409), (24, 52427), (32, 52493), (35, 52511), (38, 52577), (41, 52613), (48, 52670), (57, 52826), (66, 52949), (70, 53036), (75, 53093), (76, 53102), (77, 53105), (83, 53213), (84, 53237), (87, 53303), (88, 53315), (90, 53333), (93, 53435), (100, 53534), (101, 53540), (107, 53621), (115, 53756), (117, 53765), (121, 53888), (127, 53975), (128, 53987),

Gene: Pleione_108 Start: 53741, Stop: 55627, Start Num: 5

Candidate Starts for Pleione_108:

(Start: 4 @53723 has 81 MA's), (Start: 5 @53741 has 89 MA's), (Start: 6 @53774 has 1 MA's), (7, 53780), (Start: 17 @53966 has 1 MA's), (23, 54044), (24, 54062), (32, 54128), (35, 54146), (38, 54212), (41, 54248), (48, 54305), (57, 54461), (66, 54584), (70, 54671), (75, 54728), (76, 54737), (77, 54740), (83, 54848), (84, 54872), (87, 54938), (88, 54950), (90, 54968), (100, 55169), (101, 55175), (107, 55256), (115, 55391), (117, 55400), (121, 55523), (127, 55610), (128, 55622),

Gene: Primadonna_99 Start: 52470, Stop: 54356, Start Num: 5

Candidate Starts for Primadonna_99:

(Start: 4 @52452 has 81 MA's), (Start: 5 @52470 has 89 MA's), (Start: 6 @52503 has 1 MA's), (7, 52509), (Start: 17 @52695 has 1 MA's), (23, 52773), (24, 52791), (32, 52857), (35, 52875), (38, 52941), (41, 52977), (48, 53034), (57, 53190), (66, 53313), (70, 53400), (75, 53457), (76, 53466), (77, 53469), (83, 53577), (84, 53601), (87, 53667), (88, 53679), (90, 53697), (93, 53799), (100, 53898),

(101, 53904), (107, 53985), (115, 54120), (117, 54129), (121, 54252), (127, 54339), (128, 54351),

Gene: PurduePete_105 Start: 53998, Stop: 55884, Start Num: 5

Candidate Starts for PurduePete_105:

(Start: 4 @53980 has 81 MA's), (Start: 5 @53998 has 89 MA's), (Start: 6 @54031 has 1 MA's), (7, 54037), (Start: 17 @54223 has 1 MA's), (23, 54301), (24, 54319), (32, 54385), (35, 54403), (38, 54469), (41, 54505), (48, 54562), (57, 54718), (66, 54841), (70, 54928), (75, 54985), (76, 54994), (77, 54997), (83, 55105), (84, 55129), (87, 55195), (88, 55207), (90, 55225), (100, 55426), (101, 55432), (107, 55513), (115, 55648), (117, 55657), (121, 55780), (127, 55867), (128, 55879),

Gene: QBert_99 Start: 52628, Stop: 54229, Start Num: 4

Candidate Starts for QBert_99:

(Start: 4 @52628 has 81 MA's), (Start: 5 @52646 has 89 MA's), (Start: 6 @52679 has 1 MA's), (Start: 17 @52871 has 1 MA's), (23, 52949), (24, 52967), (32, 53033), (35, 53051), (38, 53117), (41, 53153), (48, 53210), (57, 53366), (66, 53489), (70, 53576), (75, 53633), (76, 53642), (77, 53645), (83, 53753), (84, 53777), (87, 53843), (88, 53855), (90, 53873), (100, 54074), (101, 54080), (112, 54212), (114, 54224),

Gene: Quasimodo_106 Start: 53515, Stop: 55419, Start Num: 4

Candidate Starts for Quasimodo_106:

(Start: 4 @53515 has 81 MA's), (Start: 5 @53533 has 89 MA's), (Start: 6 @53566 has 1 MA's), (Start: 17 @53758 has 1 MA's), (23, 53836), (24, 53854), (32, 53920), (35, 53938), (38, 54004), (41, 54040), (48, 54097), (57, 54253), (66, 54376), (70, 54463), (75, 54520), (76, 54529), (77, 54532), (83, 54640), (84, 54664), (87, 54730), (88, 54742), (90, 54760), (93, 54862), (100, 54961), (101, 54967), (107, 55048), (115, 55183), (117, 55192), (121, 55315), (127, 55402), (128, 55414),

Gene: Rabinovish_103 Start: 53770, Stop: 55656, Start Num: 5

Candidate Starts for Rabinovish_103:

(Start: 4 @53752 has 81 MA's), (Start: 5 @53770 has 89 MA's), (Start: 6 @53803 has 1 MA's), (Start: 17 @53995 has 1 MA's), (24, 54091), (32, 54157), (35, 54175), (38, 54241), (41, 54277), (48, 54334), (57, 54490), (66, 54613), (70, 54700), (75, 54757), (76, 54766), (77, 54769), (83, 54877), (84, 54901), (87, 54967), (88, 54979), (90, 54997), (93, 55099), (100, 55198), (101, 55204), (107, 55285), (115, 55420), (117, 55429), (121, 55552), (127, 55639), (128, 55651),

Gene: Rahel_104 Start: 52445, Stop: 54349, Start Num: 4

Candidate Starts for Rahel_104:

(Start: 4 @52445 has 81 MA's), (Start: 5 @52463 has 89 MA's), (Start: 6 @52496 has 1 MA's), (7, 52502), (Start: 17 @52688 has 1 MA's), (23, 52766), (24, 52784), (32, 52850), (35, 52868), (38, 52934), (41, 52970), (48, 53027), (57, 53183), (66, 53306), (70, 53393), (75, 53450), (76, 53459), (77, 53462), (83, 53570), (84, 53594), (87, 53660), (88, 53672), (90, 53690), (93, 53792), (100, 53891), (101, 53897), (107, 53978), (115, 54113), (117, 54122), (121, 54245), (127, 54332), (128, 54344),

Gene: Rizal_101 Start: 51611, Stop: 53497, Start Num: 5

Candidate Starts for Rizal_101:

(Start: 4 @51593 has 81 MA's), (Start: 5 @51611 has 89 MA's), (Start: 6 @51644 has 1 MA's), (7, 51650), (Start: 17 @51836 has 1 MA's), (23, 51914), (24, 51932), (32, 51998), (35, 52016), (38, 52082), (41, 52118), (48, 52175), (57, 52331), (66, 52454), (70, 52541), (75, 52598), (76, 52607), (77, 52610), (83, 52718), (84, 52742), (87, 52808), (88, 52820), (90, 52838), (100, 53039), (101, 53045), (107, 53126), (115, 53261), (117, 53270), (121, 53393), (127, 53480), (128, 53492),

Gene: RoMag_100 Start: 52765, Stop: 54669, Start Num: 4

Candidate Starts for RoMag_100:

(Start: 4 @52765 has 81 MA's), (Start: 5 @52783 has 89 MA's), (Start: 6 @52816 has 1 MA's), (7, 52822), (Start: 17 @53008 has 1 MA's), (23, 53086), (24, 53104), (32, 53170), (35, 53188), (38, 53254), (41, 53290), (48, 53347), (57, 53503), (66, 53626), (70, 53713), (75, 53770), (76, 53779), (77, 53782), (83, 53890), (84, 53914), (87, 53980), (88, 53992), (90, 54010), (93, 54112), (100, 54211), (101, 54217), (107, 54298), (115, 54433), (117, 54442), (121, 54565), (127, 54652), (128, 54664),

Gene: Ronan_99 Start: 50734, Stop: 52620, Start Num: 5

Candidate Starts for Ronan_99:

(Start: 4 @50716 has 81 MA's), (Start: 5 @50734 has 89 MA's), (Start: 6 @50767 has 1 MA's), (7, 50773), (Start: 17 @50959 has 1 MA's), (23, 51037), (24, 51055), (32, 51121), (35, 51139), (38, 51205), (41, 51241), (48, 51298), (57, 51454), (66, 51577), (70, 51664), (75, 51721), (76, 51730), (77, 51733), (83, 51841), (84, 51865), (87, 51931), (88, 51943), (90, 51961), (93, 52063), (100, 52162), (101, 52168), (107, 52249), (115, 52384), (117, 52393), (121, 52516), (127, 52603), (128, 52615),

Gene: Roots515_104 Start: 53753, Stop: 55657, Start Num: 4

Candidate Starts for Roots515_104:

(Start: 4 @53753 has 81 MA's), (Start: 5 @53771 has 89 MA's), (Start: 6 @53804 has 1 MA's), (7, 53810), (Start: 17 @53996 has 1 MA's), (23, 54074), (24, 54092), (32, 54158), (35, 54176), (38, 54242), (41, 54278), (48, 54335), (57, 54491), (66, 54614), (70, 54701), (75, 54758), (76, 54767), (77, 54770), (83, 54878), (84, 54902), (87, 54968), (88, 54980), (90, 54998), (93, 55100), (100, 55199), (101, 55205), (107, 55286), (115, 55421), (117, 55430), (121, 55553), (127, 55640), (128, 55652),

Gene: SVoro_103 Start: 53948, Stop: 55834, Start Num: 5

Candidate Starts for SVoro_103:

(Start: 4 @53930 has 81 MA's), (Start: 5 @53948 has 89 MA's), (Start: 6 @53981 has 1 MA's), (7, 53987), (Start: 17 @54173 has 1 MA's), (23, 54251), (24, 54269), (32, 54335), (35, 54353), (38, 54419), (41, 54455), (48, 54512), (57, 54668), (66, 54791), (70, 54878), (75, 54935), (76, 54944), (77, 54947), (83, 55055), (84, 55079), (87, 55145), (88, 55157), (90, 55175), (93, 55277), (100, 55376), (101, 55382), (107, 55463), (115, 55598), (117, 55607), (121, 55730), (127, 55817), (128, 55829),

Gene: Salacia_109 Start: 53912, Stop: 55798, Start Num: 5

Candidate Starts for Salacia_109:

(Start: 4 @53894 has 81 MA's), (Start: 5 @53912 has 89 MA's), (Start: 6 @53945 has 1 MA's), (7, 53951), (Start: 17 @54137 has 1 MA's), (23, 54215), (24, 54233), (32, 54299), (35, 54317), (38, 54383), (41, 54419), (48, 54476), (57, 54632), (66, 54755), (70, 54842), (75, 54899), (76, 54908), (77, 54911), (83, 55019), (84, 55043), (87, 55109), (88, 55121), (90, 55139), (93, 55241), (100, 55340), (101, 55346), (107, 55427), (115, 55562), (117, 55571), (121, 55694), (127, 55781), (128, 55793),

Gene: Sauce_105 Start: 52602, Stop: 54404, Start Num: 5

Candidate Starts for Sauce_105:

(Start: 5 @52602 has 89 MA's), (Start: 6 @52635 has 1 MA's), (Start: 17 @52830 has 1 MA's), (26, 52908), (28, 52926), (32, 52956), (35, 52974), (36, 53004), (43, 53085), (56, 53190), (71, 53436), (72, 53442), (108, 54039), (115, 54168), (116, 54174), (117, 54177), (121, 54300), (127, 54387), (128, 54399),

Gene: ScoobyDoobyDoo_97 Start: 50692, Stop: 53040, Start Num: 5

Candidate Starts for ScoobyDoobyDoo_97:

(Start: 3 @50668 has 1 MA's), (Start: 5 @50692 has 89 MA's), (9, 50758), (12, 50809), (14, 50857), (Start: 17 @50920 has 1 MA's), (18, 50932), (26, 51127), (32, 51175), (34, 51187), (35, 51193), (41, 51295), (42, 51301), (48, 51352), (50, 51364), (60, 51514), (69, 51682), (83, 51880), (86, 51958), (87, 51970), (88, 51982), (93, 52105), (102, 52204), (105, 52240), (107, 52285), (111, 52339), (119, 52528), (122, 52573), (125, 52612), (129, 52678), (130, 52873), (131, 52882),

Gene: ScottMcG_102 Start: 52533, Stop: 54419, Start Num: 5

Candidate Starts for ScottMcG_102:

(Start: 4 @52515 has 81 MA's), (Start: 5 @52533 has 89 MA's), (Start: 6 @52566 has 1 MA's), (7, 52572), (Start: 17 @52758 has 1 MA's), (23, 52836), (24, 52854), (32, 52920), (35, 52938), (38, 53004), (41, 53040), (48, 53097), (57, 53253), (66, 53376), (70, 53463), (75, 53520), (76, 53529), (77, 53532), (83, 53640), (84, 53664), (87, 53730), (88, 53742), (90, 53760), (93, 53862), (100, 53961), (101, 53967), (107, 54048), (115, 54183), (117, 54192), (121, 54315), (127, 54402), (128, 54414),

Gene: Sebata_106 Start: 54071, Stop: 55873, Start Num: 5

Candidate Starts for Sebata_106:

(Start: 5 @54071 has 89 MA's), (Start: 6 @54104 has 1 MA's), (Start: 17 @54299 has 1 MA's), (26, 54377), (28, 54395), (32, 54425), (35, 54443), (36, 54473), (43, 54554), (56, 54659), (71, 54905), (72, 54911), (108, 55508), (115, 55637), (116, 55643), (117, 55646), (121, 55769), (127, 55856), (128, 55868),

Gene: Shaqnato_98 Start: 51628, Stop: 53229, Start Num: 4

Candidate Starts for Shaqnato_98:

(Start: 4 @51628 has 81 MA's), (Start: 5 @51646 has 89 MA's), (Start: 6 @51679 has 1 MA's), (Start: 17 @51871 has 1 MA's), (23, 51949), (24, 51967), (32, 52033), (35, 52051), (38, 52117), (41, 52153), (48, 52210), (57, 52366), (66, 52489), (70, 52576), (75, 52633), (76, 52642), (77, 52645), (83, 52753), (84, 52777), (87, 52843), (88, 52855), (90, 52873), (93, 52975), (100, 53074), (101, 53080), (112, 53212), (114, 53224),

Gene: Shelob_107 Start: 54341, Stop: 56245, Start Num: 4

Candidate Starts for Shelob_107:

(Start: 4 @54341 has 81 MA's), (Start: 5 @54359 has 89 MA's), (Start: 6 @54392 has 1 MA's), (7, 54398), (Start: 17 @54584 has 1 MA's), (23, 54662), (24, 54680), (32, 54746), (35, 54764), (38, 54830), (41, 54866), (48, 54923), (57, 55079), (66, 55202), (70, 55289), (75, 55346), (76, 55355), (77, 55358), (83, 55466), (84, 55490), (87, 55556), (88, 55568), (90, 55586), (100, 55787), (101, 55793), (107, 55874), (115, 56009), (117, 56018), (121, 56141), (127, 56228), (128, 56240),

Gene: ShiaLabeouf_104 Start: 52880, Stop: 54784, Start Num: 4

Candidate Starts for ShiaLabeouf_104:

(Start: 4 @52880 has 81 MA's), (Start: 5 @52898 has 89 MA's), (Start: 6 @52931 has 1 MA's), (Start: 17 @53123 has 1 MA's), (23, 53201), (24, 53219), (32, 53285), (35, 53303), (38, 53369), (41, 53405), (48, 53462), (57, 53618), (66, 53741), (70, 53828), (75, 53885), (76, 53894), (77, 53897), (83, 54005), (84, 54029), (87, 54095), (88, 54107), (90, 54125), (93, 54227), (100, 54326), (101, 54332), (107, 54413), (115, 54548), (117, 54557), (121, 54680), (127, 54767), (128, 54779),

Gene: Shifa_93 Start: 51452, Stop: 53254, Start Num: 5

Candidate Starts for Shifa_93:

(Start: 5 @51452 has 89 MA's), (Start: 6 @51485 has 1 MA's), (Start: 17 @51680 has 1 MA's), (26, 51758), (28, 51776), (32, 51806), (35, 51824), (36, 51854), (43, 51935), (56, 52040), (71, 52286), (72, 52292), (108, 52889), (115, 53018), (116, 53024), (117, 53027), (121, 53150), (127, 53237), (128, 53249),

Gene: Shnickers_105 Start: 52844, Stop: 54748, Start Num: 4

Candidate Starts for Shnickers_105:

(Start: 4 @52844 has 81 MA's), (Start: 5 @52862 has 89 MA's), (Start: 6 @52895 has 1 MA's), (7, 52901), (Start: 17 @53087 has 1 MA's), (23, 53165), (24, 53183), (32, 53249), (35, 53267), (38, 53333), (41, 53369), (48, 53426), (57, 53582), (66, 53705), (70, 53792), (75, 53849), (76, 53858), (77, 53861), (83, 53969), (84, 53993), (87, 54059), (88, 54071), (90, 54089), (93, 54191), (100, 54290), (101, 54296), (107, 54377), (115, 54512), (117, 54521), (121, 54644), (127, 54731), (128, 54743),

Gene: Shrimp_105 Start: 53582, Stop: 55468, Start Num: 5

Candidate Starts for Shrimp_105:

(Start: 4 @53564 has 81 MA's), (Start: 5 @53582 has 89 MA's), (Start: 6 @53615 has 1 MA's), (7, 53621), (Start: 17 @53807 has 1 MA's), (23, 53885), (24, 53903), (32, 53969), (35, 53987), (38, 54053), (41, 54089), (48, 54146), (57, 54302), (66, 54425), (70, 54512), (75, 54569), (76, 54578), (77, 54581), (83, 54689), (84, 54713), (87, 54779), (88, 54791), (90, 54809), (100, 55010), (101, 55016), (107, 55097), (115, 55232), (117, 55241), (121, 55364), (127, 55451), (128, 55463),

Gene: SilverDipper_106 Start: 52088, Stop: 53992, Start Num: 4

Candidate Starts for SilverDipper_106:

(Start: 4 @52088 has 81 MA's), (Start: 5 @52106 has 89 MA's), (Start: 6 @52139 has 1 MA's), (7, 52145), (Start: 17 @52331 has 1 MA's), (23, 52409), (24, 52427), (32, 52493), (35, 52511), (38, 52577), (41, 52613), (48, 52670), (57, 52826), (66, 52949), (70, 53036), (75, 53093), (76, 53102), (77, 53105), (83, 53213), (84, 53237), (87, 53303), (88, 53315), (90, 53333), (93, 53435), (100, 53534), (101, 53540), (107, 53621), (115, 53756), (117, 53765), (121, 53888), (127, 53975), (128, 53987),

Gene: SmallFry_105 Start: 52069, Stop: 53973, Start Num: 4

Candidate Starts for SmallFry_105:

(Start: 4 @52069 has 81 MA's), (Start: 5 @52087 has 89 MA's), (Start: 6 @52120 has 1 MA's), (Start: 17 @52312 has 1 MA's), (23, 52390), (24, 52408), (32, 52474), (35, 52492), (38, 52558), (41, 52594), (48, 52651), (57, 52807), (66, 52930), (70, 53017), (75, 53074), (76, 53083), (77, 53086), (83, 53194), (84, 53218), (87, 53284), (88, 53296), (90, 53314), (93, 53416), (100, 53515), (101, 53521), (107, 53602), (115, 53737), (117, 53746), (121, 53869), (127, 53956), (128, 53968),

Gene: Spec_101 Start: 52627, Stop: 54513, Start Num: 5

Candidate Starts for Spec_101:

(Start: 4 @52609 has 81 MA's), (Start: 5 @52627 has 89 MA's), (Start: 6 @52660 has 1 MA's), (7, 52666), (Start: 17 @52852 has 1 MA's), (23, 52930), (24, 52948), (32, 53014), (35, 53032), (38, 53098), (41, 53134), (48, 53191), (57, 53347), (66, 53470), (70, 53557), (75, 53614), (76, 53623), (77, 53626), (83, 53734), (84, 53758), (87, 53824), (88, 53836), (90, 53854), (93, 53956), (100, 54055), (101, 54061), (107, 54142), (115, 54277), (117, 54286), (121, 54409), (127, 54496), (128, 54508),

Gene: Specks_110 Start: 54743, Stop: 56647, Start Num: 4

Candidate Starts for Specks_110:

(Start: 4 @54743 has 81 MA's), (Start: 5 @54761 has 89 MA's), (Start: 6 @54794 has 1 MA's), (7, 54800), (Start: 17 @54986 has 1 MA's), (23, 55064), (24, 55082), (32, 55148), (35, 55166), (38, 55232), (41, 55268), (48, 55325), (57, 55481), (66, 55604), (70, 55691), (75, 55748), (76, 55757), (77, 55760), (83, 55868), (84, 55892), (87, 55958), (88, 55970), (90, 55988), (93, 56090), (100, 56189), (101, 56195), (107, 56276), (115, 56411), (117, 56420), (121, 56543), (127, 56630), (128, 56642),

Gene: Sprinklers_101 Start: 52143, Stop: 54029, Start Num: 5

Candidate Starts for Sprinklers_101:

(Start: 4 @52125 has 81 MA's), (Start: 5 @52143 has 89 MA's), (Start: 6 @52176 has 1 MA's), (7, 52182), (Start: 17 @52368 has 1 MA's), (23, 52446), (24, 52464), (32, 52530), (35, 52548), (38, 52614), (41, 52650), (48, 52707), (57, 52863), (66, 52986), (70, 53073), (75, 53130), (76, 53139), (77, 53142), (83, 53250), (84, 53274), (87, 53340), (88, 53352), (90, 53370), (93, 53472), (100, 53571), (101, 53577), (107, 53658), (115, 53793), (117, 53802), (121, 53925), (127, 54012), (128, 54024),

Gene: Spud_105 Start: 53640, Stop: 55544, Start Num: 4

Candidate Starts for Spud_105:

(Start: 4 @53640 has 81 MA's), (Start: 5 @53658 has 89 MA's), (Start: 6 @53691 has 1 MA's), (7, 53697), (Start: 17 @53883 has 1 MA's), (23, 53961), (24, 53979), (32, 54045), (35, 54063), (38,

54129), (41, 54165), (48, 54222), (57, 54378), (66, 54501), (70, 54588), (75, 54645), (76, 54654), (77, 54657), (83, 54765), (84, 54789), (87, 54855), (88, 54867), (90, 54885), (93, 54987), (100, 55086), (101, 55092), (107, 55173), (115, 55308), (117, 55317), (121, 55440), (127, 55527), (128, 55539),

Gene: SrishMeg2525_104 Start: 53680, Stop: 55566, Start Num: 5

Candidate Starts for SrishMeg2525_104:

(Start: 4 @53662 has 81 MA's), (Start: 5 @53680 has 89 MA's), (Start: 6 @53713 has 1 MA's), (7, 53719), (Start: 17 @53905 has 1 MA's), (23, 53983), (24, 54001), (32, 54067), (35, 54085), (38, 54151), (41, 54187), (48, 54244), (57, 54400), (66, 54523), (70, 54610), (75, 54667), (76, 54676), (77, 54679), (83, 54787), (84, 54811), (87, 54877), (88, 54889), (90, 54907), (100, 55108), (101, 55114), (107, 55195), (115, 55330), (117, 55339), (121, 55462), (127, 55549), (128, 55561),

Gene: StephanieG_104 Start: 54488, Stop: 56374, Start Num: 5

Candidate Starts for StephanieG_104:

(Start: 4 @54470 has 81 MA's), (Start: 5 @54488 has 89 MA's), (Start: 6 @54521 has 1 MA's), (7, 54527), (Start: 17 @54713 has 1 MA's), (23, 54791), (24, 54809), (32, 54875), (35, 54893), (38, 54959), (41, 54995), (48, 55052), (57, 55208), (66, 55331), (70, 55418), (75, 55475), (76, 55484), (77, 55487), (83, 55595), (84, 55619), (87, 55685), (88, 55697), (90, 55715), (93, 55817), (100, 55916), (101, 55922), (107, 56003), (115, 56138), (117, 56147), (121, 56270), (127, 56357), (128, 56369),

Gene: Stubby_97 Start: 51768, Stop: 53570, Start Num: 5

Candidate Starts for Stubby_97:

(Start: 5 @51768 has 89 MA's), (Start: 6 @51801 has 1 MA's), (Start: 17 @51996 has 1 MA's), (26, 52074), (28, 52092), (32, 52122), (35, 52140), (36, 52170), (43, 52251), (56, 52356), (71, 52602), (72, 52608), (108, 53205), (115, 53334), (116, 53340), (117, 53343), (121, 53466), (127, 53553), (128, 53565),

Gene: StubbySaigey_108 Start: 52257, Stop: 54161, Start Num: 4

Candidate Starts for StubbySaigey_108:

(Start: 4 @52257 has 81 MA's), (Start: 5 @52275 has 89 MA's), (Start: 6 @52308 has 1 MA's), (7, 52314), (Start: 17 @52500 has 1 MA's), (23, 52578), (24, 52596), (32, 52662), (35, 52680), (38, 52746), (41, 52782), (48, 52839), (57, 52995), (66, 53118), (70, 53205), (75, 53262), (76, 53271), (77, 53274), (83, 53382), (84, 53406), (87, 53472), (88, 53484), (90, 53502), (93, 53604), (100, 53703), (101, 53709), (107, 53790), (115, 53925), (117, 53934), (121, 54057), (127, 54144), (128, 54156),

Gene: Tainan_109 Start: 54084, Stop: 55970, Start Num: 5

Candidate Starts for Tainan_109:

(Start: 4 @54066 has 81 MA's), (Start: 5 @54084 has 89 MA's), (Start: 6 @54117 has 1 MA's), (7, 54123), (Start: 17 @54309 has 1 MA's), (23, 54387), (24, 54405), (32, 54471), (35, 54489), (38, 54555), (41, 54591), (48, 54648), (57, 54804), (66, 54927), (70, 55014), (75, 55071), (76, 55080), (77, 55083), (83, 55191), (84, 55215), (87, 55281), (88, 55293), (90, 55311), (93, 55413), (100, 55512), (101, 55518), (107, 55599), (115, 55734), (117, 55743), (121, 55866), (127, 55953), (128, 55965),

Gene: Teardrop_104 Start: 52067, Stop: 53971, Start Num: 4

Candidate Starts for Teardrop_104:

(Start: 4 @52067 has 81 MA's), (Start: 5 @52085 has 89 MA's), (Start: 6 @52118 has 1 MA's), (7, 52124), (Start: 17 @52310 has 1 MA's), (23, 52388), (24, 52406), (32, 52472), (35, 52490), (38, 52556), (41, 52592), (48, 52649), (57, 52805), (66, 52928), (70, 53015), (75, 53072), (76, 53081), (77, 53084), (83, 53192), (84, 53216), (87, 53282), (88, 53294), (90, 53312), (93, 53414), (100, 53513), (101, 53519), (107, 53600), (115, 53735), (117, 53744), (121, 53867), (127, 53954), (128, 53966),

Gene: TinyTim_105 Start: 53320, Stop: 55224, Start Num: 4

Candidate Starts for TinyTim_105:

(Start: 4 @53320 has 81 MA's), (Start: 5 @53338 has 89 MA's), (Start: 6 @53371 has 1 MA's), (7, 53377), (Start: 17 @53563 has 1 MA's), (23, 53641), (24, 53659), (32, 53725), (35, 53743), (38, 53809), (41, 53845), (48, 53902), (57, 54058), (66, 54181), (70, 54268), (75, 54325), (76, 54334), (77, 54337), (83, 54445), (84, 54469), (87, 54535), (88, 54547), (90, 54565), (100, 54766), (101, 54772), (107, 54853), (115, 54988), (117, 54997), (121, 55120), (127, 55207), (128, 55219),

Gene: Tonenili_120 Start: 57084, Stop: 58682, Start Num: 5

Candidate Starts for Tonenili_120:

(Start: 4 @57066 has 81 MA's), (Start: 5 @57084 has 89 MA's), (Start: 6 @57117 has 1 MA's), (7, 57123), (Start: 17 @57309 has 1 MA's), (23, 57387), (24, 57405), (32, 57471), (35, 57489), (38, 57555), (41, 57591), (48, 57648), (57, 57804), (66, 57927), (70, 58014), (75, 58071), (76, 58080), (77, 58083), (83, 58191), (84, 58215), (87, 58281), (88, 58293), (90, 58311), (94, 58440), (100, 58512), (101, 58518), (107, 58599), (112, 58665), (114, 58677),

Gene: Tortoise16_102 Start: 52668, Stop: 54572, Start Num: 4

Candidate Starts for Tortoise16_102:

(Start: 4 @52668 has 81 MA's), (Start: 5 @52686 has 89 MA's), (Start: 6 @52719 has 1 MA's), (Start: 17 @52911 has 1 MA's), (23, 52989), (24, 53007), (32, 53073), (35, 53091), (38, 53157), (41, 53193), (48, 53250), (57, 53406), (66, 53529), (70, 53616), (75, 53673), (76, 53682), (77, 53685), (83, 53793), (84, 53817), (87, 53883), (88, 53895), (90, 53913), (93, 54015), (100, 54114), (101, 54120), (107, 54201), (115, 54336), (117, 54345), (121, 54468), (127, 54555), (128, 54567),

Gene: Trinitium_102 Start: 52023, Stop: 53927, Start Num: 4

Candidate Starts for Trinitium_102:

(Start: 4 @52023 has 81 MA's), (Start: 5 @52041 has 89 MA's), (Start: 6 @52074 has 1 MA's), (Start: 17 @52266 has 1 MA's), (23, 52344), (24, 52362), (32, 52428), (35, 52446), (38, 52512), (41, 52548), (48, 52605), (57, 52761), (66, 52884), (70, 52971), (75, 53028), (76, 53037), (77, 53040), (83, 53148), (84, 53172), (87, 53238), (88, 53250), (90, 53268), (93, 53370), (100, 53469), (101, 53475), (107, 53556), (115, 53691), (117, 53700), (121, 53823), (127, 53910), (128, 53922),

Gene: Turret_100 Start: 51486, Stop: 53372, Start Num: 5

Candidate Starts for Turret_100:

(Start: 4 @51468 has 81 MA's), (Start: 5 @51486 has 89 MA's), (Start: 6 @51519 has 1 MA's), (7, 51525), (Start: 17 @51711 has 1 MA's), (23, 51789), (24, 51807), (32, 51873), (35, 51891), (38, 51957), (41, 51993), (48, 52050), (57, 52206), (66, 52329), (70, 52416), (75, 52473), (76, 52482), (77, 52485), (83, 52593), (84, 52617), (87, 52683), (88, 52695), (90, 52713), (93, 52815), (100, 52914), (101, 52920), (107, 53001), (115, 53136), (117, 53145), (121, 53268), (127, 53355), (128, 53367),

Gene: Tyke_106 Start: 54209, Stop: 56113, Start Num: 4

Candidate Starts for Tyke_106:

(Start: 4 @54209 has 81 MA's), (Start: 5 @54227 has 89 MA's), (Start: 6 @54260 has 1 MA's), (Start: 17 @54452 has 1 MA's), (23, 54530), (24, 54548), (32, 54614), (35, 54632), (38, 54698), (41, 54734), (48, 54791), (57, 54947), (66, 55070), (70, 55157), (75, 55214), (76, 55223), (77, 55226), (83, 55334), (84, 55358), (87, 55424), (88, 55436), (90, 55454), (93, 55556), (100, 55655), (101, 55661), (107, 55742), (115, 55877), (117, 55886), (121, 56009), (127, 56096), (128, 56108),

Gene: ValleyTerrace_105 Start: 52088, Stop: 53992, Start Num: 4

Candidate Starts for ValleyTerrace_105:

(Start: 4 @52088 has 81 MA's), (Start: 5 @52106 has 89 MA's), (Start: 6 @52139 has 1 MA's), (7, 52145), (Start: 17 @52331 has 1 MA's), (23, 52409), (24, 52427), (32, 52493), (35, 52511), (38, 52577), (41, 52613), (48, 52670), (57, 52826), (66, 52949), (70, 53036), (75, 53093), (76, 53102), (77, 53105), (83, 53213), (84, 53237), (87, 53303), (88, 53315), (90, 53333), (93, 53435), (100, 53534), (101, 53540), (107, 53621), (115, 53756), (117, 53765), (121, 53888), (127, 53975), (128, 53987),

Gene: Wally_104 Start: 52098, Stop: 54002, Start Num: 4

Candidate Starts for Wally_104:

(Start: 4 @52098 has 81 MA's), (Start: 5 @52116 has 89 MA's), (Start: 6 @52149 has 1 MA's), (Start: 17 @52341 has 1 MA's), (23, 52419), (24, 52437), (32, 52503), (35, 52521), (38, 52587), (41, 52623), (48, 52680), (57, 52836), (66, 52959), (70, 53046), (75, 53103), (76, 53112), (77, 53115), (83, 53223), (84, 53247), (87, 53313), (88, 53325), (90, 53343), (93, 53445), (100, 53544), (101, 53550), (107, 53631), (115, 53766), (117, 53775), (121, 53898), (127, 53985), (128, 53997),

Gene: Willis_106 Start: 53473, Stop: 55359, Start Num: 5

Candidate Starts for Willis_106:

(Start: 4 @53455 has 81 MA's), (Start: 5 @53473 has 89 MA's), (Start: 6 @53506 has 1 MA's), (7, 53512), (Start: 17 @53698 has 1 MA's), (23, 53776), (24, 53794), (32, 53860), (35, 53878), (38, 53944), (41, 53980), (48, 54037), (57, 54193), (66, 54316), (70, 54403), (75, 54460), (76, 54469), (77, 54472), (83, 54580), (84, 54604), (87, 54670), (88, 54682), (90, 54700), (100, 54901), (101, 54907), (107, 54988), (115, 55123), (117, 55132), (121, 55255), (127, 55342), (128, 55354),

Gene: Yassified_102 Start: 52193, Stop: 54079, Start Num: 5

Candidate Starts for Yassified_102:

(Start: 4 @52175 has 81 MA's), (Start: 5 @52193 has 89 MA's), (Start: 6 @52226 has 1 MA's), (7, 52232), (Start: 17 @52418 has 1 MA's), (23, 52496), (24, 52514), (32, 52580), (35, 52598), (38, 52664), (41, 52700), (48, 52757), (57, 52913), (66, 53036), (70, 53123), (75, 53180), (76, 53189), (77, 53192), (83, 53300), (84, 53324), (87, 53390), (88, 53402), (90, 53420), (93, 53522), (100, 53621), (101, 53627), (107, 53708), (115, 53843), (117, 53852), (121, 53975), (127, 54062), (128, 54074),

Gene: YemiJoy2021_106 Start: 53575, Stop: 55461, Start Num: 5

Candidate Starts for YemiJoy2021_106:

(Start: 4 @53557 has 81 MA's), (Start: 5 @53575 has 89 MA's), (Start: 6 @53608 has 1 MA's), (Start: 17 @53800 has 1 MA's), (23, 53878), (24, 53896), (32, 53962), (35, 53980), (38, 54046), (41, 54082), (48, 54139), (57, 54295), (66, 54418), (70, 54505), (75, 54562), (76, 54571), (77, 54574), (83, 54682), (84, 54706), (87, 54772), (88, 54784), (90, 54802), (93, 54904), (100, 55003), (101, 55009), (107, 55090), (115, 55225), (117, 55234), (121, 55357), (127, 55444), (128, 55456),

Gene: YoungMoneyMata_106 Start: 52724, Stop: 54628, Start Num: 4

Candidate Starts for YoungMoneyMata_106:

(Start: 4 @52724 has 81 MA's), (Start: 5 @52742 has 89 MA's), (Start: 6 @52775 has 1 MA's), (Start: 17 @52967 has 1 MA's), (23, 53045), (24, 53063), (32, 53129), (35, 53147), (38, 53213), (41, 53249), (48, 53306), (57, 53462), (66, 53585), (70, 53672), (75, 53729), (76, 53738), (77, 53741), (83, 53849), (84, 53873), (87, 53939), (88, 53951), (90, 53969), (93, 54071), (100, 54170), (101, 54176), (107, 54257), (115, 54392), (117, 54401), (121, 54524), (127, 54611), (128, 54623),

Gene: Yucca_105 Start: 53239, Stop: 55143, Start Num: 4

Candidate Starts for Yucca_105:

(Start: 4 @53239 has 81 MA's), (Start: 5 @53257 has 89 MA's), (Start: 6 @53290 has 1 MA's), (7, 53296), (Start: 17 @53482 has 1 MA's), (23, 53560), (24, 53578), (32, 53644), (35, 53662), (38, 53728), (41, 53764), (48, 53821), (57, 53977), (66, 54100), (70, 54187), (75, 54244), (76, 54253), (77, 54256), (83, 54364), (84, 54388), (87, 54454), (88, 54466), (90, 54484), (100, 54685), (101, 54691), (107, 54772), (115, 54907), (117, 54916), (121, 55039), (127, 55126), (128, 55138),

Gene: Zalkecks_106 Start: 53258, Stop: 55144, Start Num: 5

Candidate Starts for Zalkecks_106:

(Start: 4 @53240 has 81 MA's), (Start: 5 @53258 has 89 MA's), (Start: 6 @53291 has 1 MA's), (7, 53297), (Start: 17 @53483 has 1 MA's), (23, 53561), (24, 53579), (32, 53645), (35, 53663), (38,

53729), (41, 53765), (48, 53822), (57, 53978), (66, 54101), (70, 54188), (75, 54245), (76, 54254), (77, 54257), (83, 54365), (84, 54389), (87, 54455), (88, 54467), (90, 54485), (100, 54686), (101, 54692), (107, 54773), (115, 54908), (117, 54917), (121, 55040), (127, 55127), (128, 55139),

Gene: Zeenon_107 Start: 53343, Stop: 55229, Start Num: 5

Candidate Starts for Zeenon_107:

(Start: 4 @53325 has 81 MA's), (Start: 5 @53343 has 89 MA's), (Start: 6 @53376 has 1 MA's), (7, 53382), (Start: 17 @53568 has 1 MA's), (23, 53646), (24, 53664), (32, 53730), (35, 53748), (38, 53814), (41, 53850), (48, 53907), (57, 54063), (66, 54186), (70, 54273), (75, 54330), (76, 54339), (77, 54342), (83, 54450), (84, 54474), (87, 54540), (88, 54552), (90, 54570), (100, 54771), (101, 54777), (107, 54858), (115, 54993), (117, 55002), (121, 55125), (127, 55212), (128, 55224),

Gene: ZygoTaiga_104 Start: 54503, Stop: 56389, Start Num: 5

Candidate Starts for ZygoTaiga_104:

(Start: 4 @54485 has 81 MA's), (Start: 5 @54503 has 89 MA's), (Start: 6 @54536 has 1 MA's), (7, 54542), (Start: 17 @54728 has 1 MA's), (23, 54806), (24, 54824), (32, 54890), (35, 54908), (38, 54974), (41, 55010), (48, 55067), (57, 55223), (66, 55346), (70, 55433), (75, 55490), (76, 55499), (77, 55502), (83, 55610), (84, 55634), (87, 55700), (88, 55712), (90, 55730), (100, 55931), (101, 55937), (107, 56018), (115, 56153), (117, 56162), (121, 56285), (127, 56372), (128, 56384),