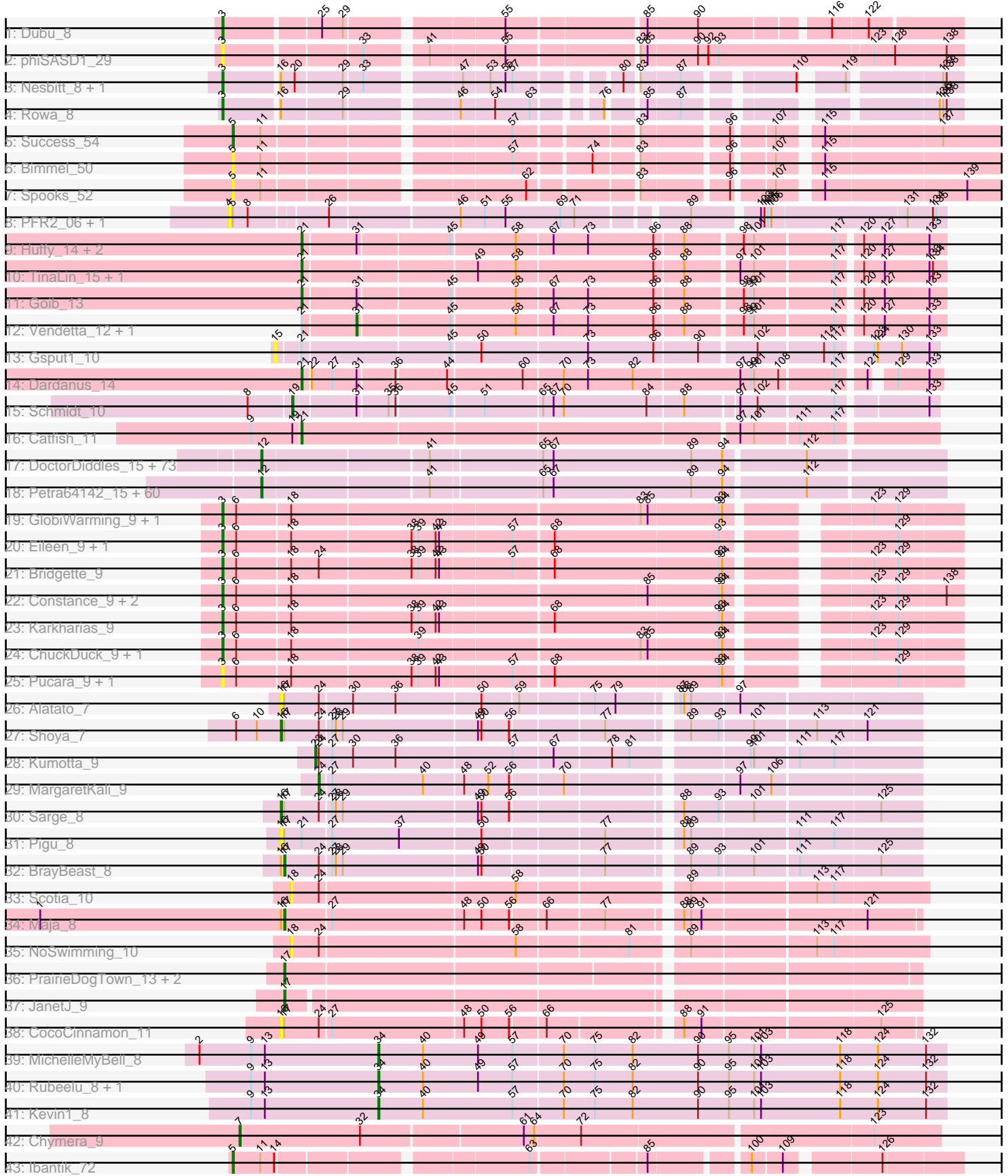


Pham 224312



Note: Tracks are now grouped by subcluster and scaled. Switching in subcluster is indicated by changes in track color. Track scale is now set by default to display the region 30 bp upstream of start 1 to 30 bp downstream of the last possible start. If this default region is judged to be packed too tightly with annotated starts, the track will be further scaled to only show that region of the ORF with annotated starts. This action will be indicated by adding "Zoomed" to the title. For starts, yellow indicates the location of called starts comprised solely of Glimmer/GeneMark auto-annotations, green indicates the location of called starts with at least 1 manual gene annotation.

Pham 224312 Report

This analysis was run 03/28/25 on database version 593.

Pham number 224312 has 191 members, 26 are drafts.

Phages represented in each track:

- Track 1 : Dubu_8
- Track 2 : phiSASD1_29
- Track 3 : Nesbitt_8, AbbeyMikolon_8
- Track 4 : Rowa_8
- Track 5 : Success_54
- Track 6 : Bimmel_50
- Track 7 : Spooks_52
- Track 8 : PFR2_06, PFR1_06
- Track 9 : Huffy_14, TZGordon_14, DinoDaryn_14
- Track 10 : TinaLin_15, Banquo_16
- Track 11 : Goib_13
- Track 12 : Vendetta_12, Splinter_12
- Track 13 : Gspu1_10
- Track 14 : Dardanus_14
- Track 15 : Schmidt_10
- Track 16 : Catfish_11
- Track 17 : DoctorDiddles_15, Henry_15, Palpatine_14, FireRed_14, IHOP_14, Bruin_14, Contagion_14, MISSy_14, Willez_14, Quallification_16, Bask21_14, Harella_13, Rakim_16, Balomoji_14, Dusk_14, StellaBean_15, Command613_16, Thimble_15, Miniwave_15, Gator_13, CrystalP_15, Mindy_15, Tomaszewski_14, Manda_15, Mosby_14, BugsBunny_12, FairyPath_15, Icee_14, Pat3_14, MPhalcon_14, Marshmallow_15, BaboJay_14, YassJohnny_15, ShamWow_15, Rimmer_14, Sotrice96_15, Teaspoon_14, SophKB_15, Buck_14, Kostya_15, NelitzaMV_15, Eureka_15, Cactus_16, Goku_15, Phaja_14, TeardropMSU_14, ABCat_14, SirDuracell_14, BilboSwaggins_15, Goldilocks_16, Toto_15, Holt_16, Sassay_14, Murica_13, Policronamos_14, Inca_14, Asriel_14, Barbarian_14, Traaww1_13, Flypotenuse_13, PhatBacter_14, StormChicken_15, Daikon_13, HufflyPuff_13, Tuco_15, Myrale_15, Phaux_13, Glexan_13, Amao_15, xkcd_15, BadStone_14, FoghornLeghorn_14, Nala_14, Cookies_15
- Track 18 : Petra64142_15, Adnama_16, Lilpickle_13, BigBubba_14, Thresher_15, GoldenSpark_16, Lilizi_16, OrionPax_15, HanKaySha_15, Hopey_15, Terminus_14, AmericanBeauty_16, Bench_16, TBrady12_16, Maxxinista_15, 244_15, Stark_15, Hoonter_16, Cjw1_14, Ukulele_14, Becksu_14, ChosenOne_13, Pharsalus_15, Simpliphy_15, Pumpkin_15, Czyszczon1_15, Highbury_15, MadamMonkfish_14, Stank_16, Kanye_16, RiverMonster_14, Xandras_16, GooberAzure_16, Argent26_16, Wiggin_16, Nimrod_14, Youngblood_14, Emmina_14, ChotaBhai_14, DrDrey_15, Elph10_15, StolenFromERC_16, Paperbeatsrock_16, Elite2014_13,

ShereKhan_16, Murphy_14, Misfit_14, Filch_15, Gemini_16, Phrux_14, Lilac_16, Dumbo_14, JeTaime_16, Easy2Say_15, Porky_13, Gage_16, Tarkin_16, Moldemort_15, NoSleep_15, Kimchi_16, Saints25_15

- Track 19 : GlobiWarming_9, Judy_9
- Track 20 : Eileen_9, Peas_9
- Track 21 : Bridgette_9
- Track 22 : Constance_9, PeggyLeg03_9, FosterFrank_9
- Track 23 : Karkharias_9
- Track 24 : ChuckDuck_9, KayMoney_9
- Track 25 : Pucara_9, HotPotato_9
- Track 26 : Alatato_7
- Track 27 : Shoya_7
- Track 28 : Kumotta_9
- Track 29 : MargaretKali_9
- Track 30 : Sarge_8
- Track 31 : Pigu_8
- Track 32 : BrayBeast_8
- Track 33 : Scotia_10
- Track 34 : Maja_8
- Track 35 : NoSwimming_10
- Track 36 : PrairieDogTown_13, Aoka_9, EvenBluerMoon_9
- Track 37 : JanetJ_9
- Track 38 : CocoCinnamon_11
- Track 39 : MichelleMyBell_8
- Track 40 : Rubeelu_8, Butters_8
- Track 41 : Kevin1_8
- Track 42 : Chymera_9
- Track 43 : Ibantik_72

Summary of Final Annotations (See graph section above for start numbers):

The start number called the most often in the published annotations is 12, it was called in 125 of the 165 non-draft genes in the pham.

Genes that call this "Most Annotated" start:

- 244_15, ABCat_14, Adnama_16, Amao_15, AmericanBeauty_16, Argent26_16, Asriel_14, BaboJay_14, BadStone_14, Balomoji_14, Barbarian_14, Bask21_14, Becksu_14, Bench_16, BigBubba_14, BilboSwaggins_15, Bruin_14, Buck_14, BugsBunny_12, Cactus_16, ChosenOne_13, ChotaBhai_14, Cjw1_14, Command613_16, Contagion_14, Cookies_15, CrystalP_15, Czyszczonek_15, Daikon_13, DoctorDiddles_15, DrDrey_15, Dumbo_14, Dusk_14, Easy2Say_15, Elite2014_13, Elph10_15, Emmina_14, Eureka_15, FairyPath_15, Filch_15, FireRed_14, Flypotenuse_13, FoghornLeghorn_14, Gage_16, Gator_13, Gemini_16, Glexan_13, Goku_15, GoldenSpark_16, Goldilocks_16, GooberAzure_16, HanKaySha_15, Harella_13, Henry_15, Highbury_15, Holt_16, Hoonter_16, Hopey_15, HuffyPuff_13, IHOP_14, Icee_14, Inca_14, JeTaime_16, Kanye_16, Kimchi_16, Kostya_15, Lilac_16, Lilizi_16, Lilpickle_13, MISSy_14, MPhalcon_14, MadamMonkfish_14, Manda_15, Marshmallow_15, Maxxinista_15, Mindy_15, Miniwave_15, Misfit_14, Moldemort_15, Mosby_14, Murica_13, Murphy_14, Myrale_15, Nala_14, NelitzaMV_15, Nimrod_14, NoSleep_15, OrionPax_15,

Palpatine_14, Paperbeatsrock_16, Pat3_14, Petra64142_15, Phaja_14, Pharsalus_15, PhatBacter_14, Phaux_13, Phrux_14, Policronamos_14, Porky_13, Pumpkin_15, Quallification_16, Rakim_16, Rimmer_14, RiverMonster_14, Saints25_15, Sassay_14, ShamWow_15, ShereKhan_16, Simpliphy_15, SirDuracell_14, SophKB_15, Sotrice96_15, Stank_16, Stark_15, StellaBean_15, StolenFromERC_16, StormChicken_15, TBrady12_16, Tarkin_16, TeardropMSU_14, Teaspoon_14, Terminus_14, Thimble_15, Thresher_15, Tomaszewski_14, Toto_15, Traaww1_13, Tuco_15, Ukulele_14, Wiggin_16, Willez_14, Xandras_16, YassJohnny_15, Youngblood_14, xkcd_15,

Genes that have the "Most Annotated" start but do not call it:

-

Genes that do not have the "Most Annotated" start:

- AbbeyMikolon_8, Alatato_7, Aoka_9, Banquo_16, Bimmel_50, BrayBeast_8, Bridgette_9, Butters_8, Catfish_11, ChuckDuck_9, Chymera_9, CocoCinnamon_11, Constance_9, Dardanus_14, DinoDaryn_14, Dubu_8, Eileen_9, EvenBluerMoon_9, FosterFrank_9, GlobiWarming_9, Goib_13, Gspu1_10, HotPotato_9, Huffy_14, Ibantik_72, JanetJ_9, Judy_9, Karkharias_9, KayMoney_9, Kevin1_8, Kumotta_9, Maja_8, MargaretKali_9, MichelleMyBell_8, Nesbitt_8, NoSwimming_10, PFR1_06, PFR2_06, Peas_9, PeggyLeg03_9, Pigu_8, PrairieDogTown_13, Pucara_9, Rowa_8, Rubeelu_8, Sarge_8, Schmidt_10, Scotia_10, Shoya_7, Splinter_12, Spooks_52, Success_54, TZGordon_14, TinaLin_15, Vendetta_12, phiSASD1_29,

Summary by start number:

Start 3:

- Found in 18 of 191 (9.4%) of genes in pham
- Manual Annotations of this start: 13 of 165
- Called 100.0% of time when present
- Phage (with cluster) where this start called: AbbeyMikolon_8 (BL), Bridgette_9 (FA), ChuckDuck_9 (FA), Constance_9 (FA), Dubu_8 (BJ), Eileen_9 (FA), FosterFrank_9 (FA), GlobiWarming_9 (FA), HotPotato_9 (FA), Judy_9 (FA), Karkharias_9 (FA), KayMoney_9 (FA), Nesbitt_8 (BL), Peas_9 (FA), PeggyLeg03_9 (FA), Pucara_9 (FA), Rowa_8 (BL), phiSASD1_29 (BJ),

Start 4:

- Found in 2 of 191 (1.0%) of genes in pham
- No Manual Annotations of this start.
- Called 100.0% of time when present
- Phage (with cluster) where this start called: PFR1_06 (BX), PFR2_06 (BX),

Start 5:

- Found in 6 of 191 (3.1%) of genes in pham
- Manual Annotations of this start: 2 of 165
- Called 66.7% of time when present
- Phage (with cluster) where this start called: Bimmel_50 (BT), Ibantik_72 (singleton), Spooks_52 (BT), Success_54 (BT),

Start 7:

- Found in 1 of 191 (0.5%) of genes in pham
- Manual Annotations of this start: 1 of 165
- Called 100.0% of time when present

- Phage (with cluster) where this start called: Chymera_9 (singleton),

Start 12:

- Found in 135 of 191 (70.7%) of genes in pham
- Manual Annotations of this start: 125 of 165
- Called 100.0% of time when present
- Phage (with cluster) where this start called: 244_15 (E), ABCat_14 (E), Adnama_16 (E), Amao_15 (E), AmericanBeauty_16 (E), Argent26_16 (E), Asriel_14 (E), BaboJay_14 (E), BadStone_14 (E), Balomoji_14 (E), Barbarian_14 (E), Bask21_14 (E), Becksu_14 (E), Bench_16 (E), BigBubba_14 (E), BilboSwaggins_15 (E), Bruin_14 (E), Buck_14 (E), BugsBunny_12 (E), Cactus_16 (E), ChosenOne_13 (E), ChotaBhai_14 (E), Cjw1_14 (E), Command613_16 (E), Contagion_14 (E), Cookies_15 (E), CrystalP_15 (E), Czystczon1_15 (E), Daikon_13 (E), DoctorDiddles_15 (E), DrDrey_15 (E), Dumbo_14 (E), Dusk_14 (E), Easy2Say_15 (E), Elite2014_13 (E), Elph10_15 (E), Emmina_14 (E), Eureka_15 (E), FairyPath_15 (E), Filch_15 (E), FireRed_14 (E), Flypotenuse_13 (E), FoghornLeghorn_14 (E), Gage_16 (E), Gator_13 (E), Gemini_16 (E), Glexan_13 (E), Goku_15 (E), GoldenSpark_16 (E), Goldilocks_16 (E), GooberAzure_16 (E), HanKaySha_15 (E), Harella_13 (E), Henry_15 (E), Highbury_15 (E), Holt_16 (E), Hoonter_16 (E), Hopey_15 (E), HufflyPuff_13 (E), IHOP_14 (E), Icee_14 (E), Inca_14 (E), JeTaimie_16 (E), Kanye_16 (E), Kimchi_16 (E), Kostya_15 (E), Lilac_16 (E), Lilizi_16 (E), Lilpickle_13 (E), MISSy_14 (E), MPhalcon_14 (E), MadamMonkfish_14 (E), Manda_15 (E), Marshmallow_15 (E), Maxxinista_15 (E), Mindy_15 (E), Miniwave_15 (E), Misfit_14 (E), Moldemort_15 (E), Mosby_14 (E), Murica_13 (E), Murphy_14 (E), Myrale_15 (E), Nala_14 (E), NelitzaMV_15 (E), Nimrod_14 (E), NoSleep_15 (E), OrionPax_15 (E), Palpatine_14 (E), Paperbeatsrock_16 (E), Pat3_14 (E), Petra64142_15 (E), Phaja_14 (E), Pharsalus_15 (E), PhatBacter_14 (E), Phaux_13 (E), Phrux_14 (E), Policronamos_14 (E), Porky_13 (E), Pumpkin_15 (E), Quallification_16 (E), Rakim_16 (E), Rimmer_14 (E), RiverMonster_14 (E), Saints25_15 (E), Sassay_14 (E), ShamWow_15 (E), ShereKhan_16 (E), Simpliphy_15 (E), SirDuracell_14 (E), SophKB_15 (E), Sotrice96_15 (E), Stank_16 (E), Stark_15 (E), StellaBean_15 (E), StolenFromERC_16 (E), StormChicken_15 (E), TBrady12_16 (E), Tarkin_16 (E), TeardropMSU_14 (E), Teaspoon_14 (E), Terminus_14 (E), Thimble_15 (E), Thresher_15 (E), Tomaszewski_14 (E), Toto_15 (E), Traaww1_13 (E), Tuco_15 (E), Ukulele_14 (E), Wiggin_16 (E), Willez_14 (E), Xandras_16 (E), YassJohnny_15 (E), Youngblood_14 (E), xkcd_15 (E),

Start 15:

- Found in 1 of 191 (0.5%) of genes in pham
- No Manual Annotations of this start.
- Called 100.0% of time when present
- Phage (with cluster) where this start called: Gspu1_10 (CU2),

Start 16:

- Found in 10 of 191 (5.2%) of genes in pham
- Manual Annotations of this start: 2 of 165
- Called 50.0% of time when present
- Phage (with cluster) where this start called: Alatato_7 (FB), CocoCinnamon_11 (FO), Pigu_8 (FB), Sarge_8 (FB), Shoya_7 (FB),

Start 17:

- Found in 11 of 191 (5.8%) of genes in pham
- Manual Annotations of this start: 5 of 165

- Called 54.5% of time when present
- Phage (with cluster) where this start called: Aoka_9 (FO), BrayBeast_8 (FB), EvenBluerMoon_9 (FO), JanetJ_9 (FO), Maja_8 (FO), PrairieDogTown_13 (FO),

Start 18:

- Found in 15 of 191 (7.9%) of genes in pham
- No Manual Annotations of this start.
- Called 13.3% of time when present
- Phage (with cluster) where this start called: NoSwimming_10 (FO), Scotia_10 (FO),

Start 19:

- Found in 2 of 191 (1.0%) of genes in pham
- Manual Annotations of this start: 1 of 165
- Called 50.0% of time when present
- Phage (with cluster) where this start called: Schmidt_10 (CU4),

Start 21:

- Found in 12 of 191 (6.3%) of genes in pham
- Manual Annotations of this start: 8 of 165
- Called 66.7% of time when present
- Phage (with cluster) where this start called: Banquo_16 (CU1), Catfish_11 (CU5), Dardanus_14 (CU3), DinoDaryn_14 (CU1), Goib_13 (CU1), Huffy_14 (CU1), TZGordon_14 (CU1), TinaLin_15 (CU1),

Start 23:

- Found in 1 of 191 (0.5%) of genes in pham
- Manual Annotations of this start: 1 of 165
- Called 100.0% of time when present
- Phage (with cluster) where this start called: Kumotta_9 (FB),

Start 24:

- Found in 10 of 191 (5.2%) of genes in pham
- Manual Annotations of this start: 1 of 165
- Called 10.0% of time when present
- Phage (with cluster) where this start called: MargaretKali_9 (FB),

Start 31:

- Found in 8 of 191 (4.2%) of genes in pham
- Manual Annotations of this start: 2 of 165
- Called 25.0% of time when present
- Phage (with cluster) where this start called: Splinter_12 (CU1), Vendetta_12 (CU1),

Start 34:

- Found in 4 of 191 (2.1%) of genes in pham
- Manual Annotations of this start: 4 of 165
- Called 100.0% of time when present
- Phage (with cluster) where this start called: Butters_8 (N), Kevin1_8 (N), MichelleMyBell_8 (N), Rubeelu_8 (N),

Summary by clusters:

There are 15 clusters represented in this pham: CU5, CU4, E, CU2, CU1, BL, singleton, BJ, N, BT, FA, FB, CU3, BX, FO,

Info for manual annotations of cluster BJ:

- Start number 3 was manually annotated 1 time for cluster BJ.

Info for manual annotations of cluster BL:

- Start number 3 was manually annotated 3 times for cluster BL.

Info for manual annotations of cluster BT:

- Start number 5 was manually annotated 1 time for cluster BT.

Info for manual annotations of cluster CU1:

- Start number 21 was manually annotated 6 times for cluster CU1.
- Start number 31 was manually annotated 2 times for cluster CU1.

Info for manual annotations of cluster CU3:

- Start number 21 was manually annotated 1 time for cluster CU3.

Info for manual annotations of cluster CU4:

- Start number 19 was manually annotated 1 time for cluster CU4.

Info for manual annotations of cluster CU5:

- Start number 21 was manually annotated 1 time for cluster CU5.

Info for manual annotations of cluster E:

- Start number 12 was manually annotated 125 times for cluster E.

Info for manual annotations of cluster FA:

- Start number 3 was manually annotated 9 times for cluster FA.

Info for manual annotations of cluster FB:

- Start number 16 was manually annotated 2 times for cluster FB.
- Start number 17 was manually annotated 1 time for cluster FB.
- Start number 23 was manually annotated 1 time for cluster FB.
- Start number 24 was manually annotated 1 time for cluster FB.

Info for manual annotations of cluster FO:

- Start number 17 was manually annotated 4 times for cluster FO.

Info for manual annotations of cluster N:

- Start number 34 was manually annotated 4 times for cluster N.

Gene Information:

Gene: 244_15 Start: 8901, Stop: 9467, Start Num: 12

Candidate Starts for 244_15:

(Start: 12 @8901 has 125 MA's), (41, 9039), (65, 9129), (67, 9138), (89, 9258), (94, 9285), (112, 9351),

Gene: ABCat_14 Start: 9678, Stop: 10244, Start Num: 12

Candidate Starts for ABCat_14:

(Start: 12 @9678 has 125 MA's), (41, 9816), (65, 9906), (67, 9915), (89, 10035), (94, 10062), (112, 10128),

Gene: AbbeyMikolon_8 Start: 6661, Stop: 7194, Start Num: 3

Candidate Starts for AbbeyMikolon_8:

(Start: 3 @6661 has 13 MA's), (Start: 16 @6706 has 2 MA's), (20, 6718), (29, 6757), (33, 6772), (47, 6844), (53, 6865), (55, 6877), (57, 6883), (80, 6955), (83, 6964), (87, 6997), (110, 7078), (119, 7105), (137, 7177), (138, 7180),

Gene: Adnama_16 Start: 9133, Stop: 9699, Start Num: 12

Candidate Starts for Adnama_16:

(Start: 12 @9133 has 125 MA's), (41, 9271), (65, 9361), (67, 9370), (89, 9490), (94, 9517), (112, 9583),

Gene: Alatato_7 Start: 6034, Stop: 6552, Start Num: 16

Candidate Starts for Alatato_7:

(Start: 16 @6034 has 2 MA's), (Start: 17 @6037 has 5 MA's), (Start: 24 @6067 has 1 MA's), (30, 6094), (36, 6130), (50, 6202), (59, 6232), (75, 6292), (79, 6310), (87, 6352), (88, 6355), (89, 6361), (97, 6400),

Gene: Amao_15 Start: 8883, Stop: 9449, Start Num: 12

Candidate Starts for Amao_15:

(Start: 12 @8883 has 125 MA's), (41, 9021), (65, 9111), (67, 9120), (89, 9240), (94, 9267), (112, 9333),

Gene: AmericanBeauty_16 Start: 9130, Stop: 9696, Start Num: 12

Candidate Starts for AmericanBeauty_16:

(Start: 12 @9130 has 125 MA's), (41, 9268), (65, 9358), (67, 9367), (89, 9487), (94, 9514), (112, 9580),

Gene: Aoka_9 Start: 7589, Stop: 8104, Start Num: 17

Candidate Starts for Aoka_9:

(Start: 17 @7589 has 5 MA's),

Gene: Argent26_16 Start: 9133, Stop: 9699, Start Num: 12

Candidate Starts for Argent26_16:

(Start: 12 @9133 has 125 MA's), (41, 9271), (65, 9361), (67, 9370), (89, 9490), (94, 9517), (112, 9583),

Gene: Asriel_14 Start: 8550, Stop: 9116, Start Num: 12

Candidate Starts for Asriel_14:

(Start: 12 @8550 has 125 MA's), (41, 8688), (65, 8778), (67, 8787), (89, 8907), (94, 8934), (112, 9000),

Gene: BaboJay_14 Start: 9212, Stop: 9778, Start Num: 12

Candidate Starts for BaboJay_14:

(Start: 12 @9212 has 125 MA's), (41, 9350), (65, 9440), (67, 9449), (89, 9569), (94, 9596), (112, 9662),

Gene: BadStone_14 Start: 9678, Stop: 10244, Start Num: 12

Candidate Starts for BadStone_14:

(Start: 12 @9678 has 125 MA's), (41, 9816), (65, 9906), (67, 9915), (89, 10035), (94, 10062), (112, 10128),

Gene: Balomoji_14 Start: 9412, Stop: 9978, Start Num: 12

Candidate Starts for Balomoji_14:

(Start: 12 @9412 has 125 MA's), (41, 9550), (65, 9640), (67, 9649), (89, 9769), (94, 9796), (112, 9862),

Gene: Banquo_16 Start: 9976, Stop: 10500, Start Num: 21

Candidate Starts for Banquo_16:

(Start: 21 @9976 has 8 MA's), (49, 10117), (58, 10150), (86, 10267), (88, 10291), (97, 10333), (101, 10345), (117, 10411), (120, 10429), (127, 10447), (133, 10486), (134, 10489),

Gene: Barbarian_14 Start: 8550, Stop: 9116, Start Num: 12

Candidate Starts for Barbarian_14:

(Start: 12 @8550 has 125 MA's), (41, 8688), (65, 8778), (67, 8787), (89, 8907), (94, 8934), (112, 9000),

Gene: Bask21_14 Start: 8345, Stop: 8911, Start Num: 12

Candidate Starts for Bask21_14:

(Start: 12 @8345 has 125 MA's), (41, 8483), (65, 8573), (67, 8582), (89, 8702), (94, 8729), (112, 8795),

Gene: Becksu_14 Start: 9320, Stop: 9886, Start Num: 12

Candidate Starts for Becksu_14:

(Start: 12 @9320 has 125 MA's), (41, 9458), (65, 9548), (67, 9557), (89, 9677), (94, 9704), (112, 9770),

Gene: Bench_16 Start: 9006, Stop: 9572, Start Num: 12

Candidate Starts for Bench_16:

(Start: 12 @9006 has 125 MA's), (41, 9144), (65, 9234), (67, 9243), (89, 9363), (94, 9390), (112, 9456),

Gene: BigBubba_14 Start: 8389, Stop: 8955, Start Num: 12

Candidate Starts for BigBubba_14:

(Start: 12 @8389 has 125 MA's), (41, 8527), (65, 8617), (67, 8626), (89, 8746), (94, 8773), (112, 8839),

Gene: BilboSwaggins_15 Start: 9679, Stop: 10245, Start Num: 12

Candidate Starts for BilboSwaggins_15:

(Start: 12 @9679 has 125 MA's), (41, 9817), (65, 9907), (67, 9916), (89, 10036), (94, 10063), (112, 10129),

Gene: Bimmel_50 Start: 30092, Stop: 30691, Start Num: 5

Candidate Starts for Bimmel_50:

(Start: 5 @30092 has 2 MA's), (11, 30116), (57, 30311), (74, 30371), (83, 30404), (96, 30473), (107, 30503), (115, 30533),

Gene: BrayBeast_8 Start: 6486, Stop: 7001, Start Num: 17

Candidate Starts for BrayBeast_8:

(Start: 16 @6483 has 2 MA's), (Start: 17 @6486 has 5 MA's), (Start: 24 @6516 has 1 MA's), (27, 6525), (28, 6528), (29, 6534), (49, 6648), (50, 6651), (77, 6750), (89, 6810), (93, 6834), (101, 6861), (111, 6897), (125, 6966),

Gene: Bridgette_9 Start: 7210, Stop: 7803, Start Num: 3

Candidate Starts for Bridgette_9:

(Start: 3 @7210 has 13 MA's), (6, 7222), (18, 7267), (Start: 24 @7291 has 1 MA's), (38, 7369), (39, 7375), (42, 7390), (43, 7393), (57, 7453), (68, 7486), (93, 7627), (94, 7630), (123, 7729), (129, 7750),

Gene: Bruin_14 Start: 9186, Stop: 9752, Start Num: 12

Candidate Starts for Bruin_14:

(Start: 12 @9186 has 125 MA's), (41, 9324), (65, 9414), (67, 9423), (89, 9543), (94, 9570), (112, 9636),

Gene: Buck_14 Start: 9635, Stop: 10201, Start Num: 12

Candidate Starts for Buck_14:

(Start: 12 @9635 has 125 MA's), (41, 9773), (65, 9863), (67, 9872), (89, 9992), (94, 10019), (112, 10085),

Gene: BugsBunny_12 Start: 8752, Stop: 9318, Start Num: 12

Candidate Starts for BugsBunny_12:

(Start: 12 @8752 has 125 MA's), (41, 8890), (65, 8980), (67, 8989), (89, 9109), (94, 9136), (112, 9202),

Gene: Butters_8 Start: 5970, Stop: 6461, Start Num: 34

Candidate Starts for Butters_8:

(9, 5859), (13, 5871), (Start: 34 @5970 has 4 MA's), (40, 6009), (49, 6057), (57, 6087), (70, 6129), (75, 6156), (82, 6189), (90, 6246), (95, 6273), (101, 6294), (103, 6300), (118, 6369), (124, 6402), (132, 6444),

Gene: Cactus_16 Start: 8891, Stop: 9457, Start Num: 12

Candidate Starts for Cactus_16:

(Start: 12 @8891 has 125 MA's), (41, 9029), (65, 9119), (67, 9128), (89, 9248), (94, 9275), (112, 9341),

Gene: Catfish_11 Start: 7940, Stop: 8464, Start Num: 21

Candidate Starts for Catfish_11:

(9, 7898), (Start: 19 @7934 has 1 MA's), (Start: 21 @7940 has 8 MA's), (97, 8303), (101, 8315), (111, 8351), (117, 8381),

Gene: ChosenOne_13 Start: 8353, Stop: 8919, Start Num: 12

Candidate Starts for ChosenOne_13:

(Start: 12 @8353 has 125 MA's), (41, 8491), (65, 8581), (67, 8590), (89, 8710), (94, 8737), (112, 8803),

Gene: ChotaBhai_14 Start: 8389, Stop: 8955, Start Num: 12

Candidate Starts for ChotaBhai_14:

(Start: 12 @8389 has 125 MA's), (41, 8527), (65, 8617), (67, 8626), (89, 8746), (94, 8773), (112, 8839),

Gene: ChuckDuck_9 Start: 7169, Stop: 7759, Start Num: 3

Candidate Starts for ChuckDuck_9:

(Start: 3 @7169 has 13 MA's), (6, 7181), (18, 7226), (39, 7334), (83, 7517), (85, 7523), (93, 7583), (94, 7586), (123, 7685), (129, 7706),

Gene: Chymera_9 Start: 7652, Stop: 8236, Start Num: 7

Candidate Starts for Chymera_9:

(Start: 7 @7652 has 1 MA's), (32, 7757), (61, 7889), (64, 7898), (72, 7937), (123, 8180),

Gene: Cjw1_14 Start: 9903, Stop: 10469, Start Num: 12

Candidate Starts for Cjw1_14:

(Start: 12 @9903 has 125 MA's), (41, 10041), (65, 10131), (67, 10140), (89, 10260), (94, 10287), (112, 10353),

Gene: CocoCinnamon_11 Start: 7690, Stop: 8205, Start Num: 16

Candidate Starts for CocoCinnamon_11:

(Start: 16 @7690 has 2 MA's), (Start: 17 @7693 has 5 MA's), (Start: 24 @7723 has 1 MA's), (27, 7732), (48, 7843), (50, 7858), (56, 7882), (66, 7909), (88, 8011), (91, 8026), (125, 8173),

Gene: Command613_16 Start: 9947, Stop: 10513, Start Num: 12

Candidate Starts for Command613_16:

(Start: 12 @9947 has 125 MA's), (41, 10085), (65, 10175), (67, 10184), (89, 10304), (94, 10331), (112, 10397),

Gene: Constance_9 Start: 7215, Stop: 7805, Start Num: 3

Candidate Starts for Constance_9:

(Start: 3 @7215 has 13 MA's), (6, 7227), (18, 7272), (85, 7569), (93, 7629), (94, 7632), (123, 7731), (129, 7752), (138, 7791),

Gene: Contagion_14 Start: 9186, Stop: 9752, Start Num: 12

Candidate Starts for Contagion_14:

(Start: 12 @9186 has 125 MA's), (41, 9324), (65, 9414), (67, 9423), (89, 9543), (94, 9570), (112, 9636),

Gene: Cookies_15 Start: 9551, Stop: 10117, Start Num: 12

Candidate Starts for Cookies_15:

(Start: 12 @9551 has 125 MA's), (41, 9689), (65, 9779), (67, 9788), (89, 9908), (94, 9935), (112, 10001),

Gene: CrystalP_15 Start: 9679, Stop: 10245, Start Num: 12

Candidate Starts for CrystalP_15:

(Start: 12 @9679 has 125 MA's), (41, 9817), (65, 9907), (67, 9916), (89, 10036), (94, 10063), (112, 10129),

Gene: Czyszczone1_15 Start: 8888, Stop: 9454, Start Num: 12

Candidate Starts for Czyszczone1_15:

(Start: 12 @8888 has 125 MA's), (41, 9026), (65, 9116), (67, 9125), (89, 9245), (94, 9272), (112, 9338),

Gene: Daikon_13 Start: 9413, Stop: 9979, Start Num: 12

Candidate Starts for Daikon_13:

(Start: 12 @9413 has 125 MA's), (41, 9551), (65, 9641), (67, 9650), (89, 9770), (94, 9797), (112, 9863),

Gene: Dardanus_14 Start: 9026, Stop: 9541, Start Num: 21

Candidate Starts for Dardanus_14:

(Start: 21 @9026 has 8 MA's), (22, 9032), (27, 9050), (Start: 31 @9071 has 2 MA's), (36, 9101), (44, 9143), (60, 9206), (70, 9239), (73, 9260), (82, 9299), (97, 9389), (99, 9398), (101, 9401), (108, 9422), (117, 9467), (121, 9488), (129, 9503), (133, 9530),

Gene: DinoDaryn_14 Start: 9110, Stop: 9634, Start Num: 21

Candidate Starts for DinoDaryn_14:

(Start: 21 @9110 has 8 MA's), (Start: 31 @9155 has 2 MA's), (45, 9230), (58, 9284), (67, 9314), (73, 9344), (86, 9401), (88, 9425), (98, 9470), (101, 9479), (117, 9545), (120, 9563), (127, 9581), (133, 9620),

Gene: DoctorDiddles_15 Start: 8844, Stop: 9410, Start Num: 12

Candidate Starts for DoctorDiddles_15:

(Start: 12 @8844 has 125 MA's), (41, 8982), (65, 9072), (67, 9081), (89, 9201), (94, 9228), (112, 9294),

Gene: DrDrey_15 Start: 9629, Stop: 10195, Start Num: 12

Candidate Starts for DrDrey_15:

(Start: 12 @9629 has 125 MA's), (41, 9767), (65, 9857), (67, 9866), (89, 9986), (94, 10013), (112, 10079),

Gene: Dubu_8 Start: 6313, Stop: 6891, Start Num: 3

Candidate Starts for Dubu_8:

(Start: 3 @6313 has 13 MA's), (25, 6391), (29, 6409), (55, 6529), (85, 6640), (90, 6682), (116, 6784), (122, 6814),

Gene: Dumbo_14 Start: 8610, Stop: 9176, Start Num: 12

Candidate Starts for Dumbo_14:

(Start: 12 @8610 has 125 MA's), (41, 8748), (65, 8838), (67, 8847), (89, 8967), (94, 8994), (112, 9060),

Gene: Dusk_14 Start: 9338, Stop: 9904, Start Num: 12

Candidate Starts for Dusk_14:

(Start: 12 @9338 has 125 MA's), (41, 9476), (65, 9566), (67, 9575), (89, 9695), (94, 9722), (112, 9788),

Gene: Easy2Say_15 Start: 9876, Stop: 10442, Start Num: 12

Candidate Starts for Easy2Say_15:

(Start: 12 @9876 has 125 MA's), (41, 10014), (65, 10104), (67, 10113), (89, 10233), (94, 10260), (112, 10326),

Gene: Eileen_9 Start: 7175, Stop: 7768, Start Num: 3

Candidate Starts for Eileen_9:

(Start: 3 @7175 has 13 MA's), (6, 7187), (18, 7232), (38, 7334), (39, 7340), (42, 7355), (43, 7358), (57, 7418), (68, 7451), (93, 7592), (129, 7715),

Gene: Elite2014_13 Start: 8353, Stop: 8919, Start Num: 12

Candidate Starts for Elite2014_13:

(Start: 12 @8353 has 125 MA's), (41, 8491), (65, 8581), (67, 8590), (89, 8710), (94, 8737), (112, 8803),

Gene: Elph10_15 Start: 8613, Stop: 9179, Start Num: 12

Candidate Starts for Elph10_15:

(Start: 12 @8613 has 125 MA's), (41, 8751), (65, 8841), (67, 8850), (89, 8970), (94, 8997), (112, 9063),

Gene: Emmina_14 Start: 8458, Stop: 9024, Start Num: 12

Candidate Starts for Emmina_14:

(Start: 12 @8458 has 125 MA's), (41, 8596), (65, 8686), (67, 8695), (89, 8815), (94, 8842), (112, 8908),

Gene: Eureka_15 Start: 9658, Stop: 10224, Start Num: 12

Candidate Starts for Eureka_15:

(Start: 12 @9658 has 125 MA's), (41, 9796), (65, 9886), (67, 9895), (89, 10015), (94, 10042), (112, 10108),

Gene: EvenBluerMoon_9 Start: 7623, Stop: 8138, Start Num: 17

Candidate Starts for EvenBluerMoon_9:

(Start: 17 @7623 has 5 MA's),

Gene: FairyPath_15 Start: 9876, Stop: 10442, Start Num: 12

Candidate Starts for FairyPath_15:

(Start: 12 @9876 has 125 MA's), (41, 10014), (65, 10104), (67, 10113), (89, 10233), (94, 10260), (112, 10326),

Gene: Filch_15 Start: 8898, Stop: 9464, Start Num: 12

Candidate Starts for Filch_15:

(Start: 12 @8898 has 125 MA's), (41, 9036), (65, 9126), (67, 9135), (89, 9255), (94, 9282), (112, 9348),

Gene: FireRed_14 Start: 9186, Stop: 9752, Start Num: 12

Candidate Starts for FireRed_14:

(Start: 12 @9186 has 125 MA's), (41, 9324), (65, 9414), (67, 9423), (89, 9543), (94, 9570), (112, 9636),

Gene: Flypotenuse_13 Start: 9295, Stop: 9861, Start Num: 12

Candidate Starts for Flypotenuse_13:

(Start: 12 @9295 has 125 MA's), (41, 9433), (65, 9523), (67, 9532), (89, 9652), (94, 9679), (112, 9745),

Gene: FoghornLeghorn_14 Start: 9183, Stop: 9749, Start Num: 12

Candidate Starts for FoghornLeghorn_14:

(Start: 12 @9183 has 125 MA's), (41, 9321), (65, 9411), (67, 9420), (89, 9540), (94, 9567), (112, 9633),

Gene: FosterFrank_9 Start: 7173, Stop: 7763, Start Num: 3

Candidate Starts for FosterFrank_9:

(Start: 3 @7173 has 13 MA's), (6, 7185), (18, 7230), (85, 7527), (93, 7587), (94, 7590), (123, 7689), (129, 7710), (138, 7749),

Gene: Gage_16 Start: 9133, Stop: 9699, Start Num: 12

Candidate Starts for Gage_16:

(Start: 12 @9133 has 125 MA's), (41, 9271), (65, 9361), (67, 9370), (89, 9490), (94, 9517), (112, 9583),

Gene: Gator_13 Start: 9294, Stop: 9860, Start Num: 12

Candidate Starts for Gator_13:

(Start: 12 @9294 has 125 MA's), (41, 9432), (65, 9522), (67, 9531), (89, 9651), (94, 9678), (112, 9744),

Gene: Gemini_16 Start: 9133, Stop: 9699, Start Num: 12

Candidate Starts for Gemini_16:

(Start: 12 @9133 has 125 MA's), (41, 9271), (65, 9361), (67, 9370), (89, 9490), (94, 9517), (112, 9583),

Gene: Glexan_13 Start: 9295, Stop: 9861, Start Num: 12

Candidate Starts for Glexan_13:

(Start: 12 @9295 has 125 MA's), (41, 9433), (65, 9523), (67, 9532), (89, 9652), (94, 9679), (112, 9745),

Gene: GlobiWarming_9 Start: 7170, Stop: 7760, Start Num: 3

Candidate Starts for GlobiWarming_9:

(Start: 3 @7170 has 13 MA's), (6, 7182), (18, 7227), (83, 7518), (85, 7524), (93, 7584), (94, 7587), (123, 7686), (129, 7707),

Gene: Goib_13 Start: 8885, Stop: 9409, Start Num: 21

Candidate Starts for Goib_13:

(Start: 21 @8885 has 8 MA's), (Start: 31 @8930 has 2 MA's), (45, 9005), (58, 9059), (67, 9089), (73, 9119), (86, 9176), (88, 9200), (98, 9245), (99, 9251), (101, 9254), (117, 9320), (120, 9338), (127, 9356), (133, 9395),

Gene: Goku_15 Start: 9385, Stop: 9951, Start Num: 12

Candidate Starts for Goku_15:

(Start: 12 @9385 has 125 MA's), (41, 9523), (65, 9613), (67, 9622), (89, 9742), (94, 9769), (112, 9835),

Gene: GoldenSpark_16 Start: 9133, Stop: 9699, Start Num: 12

Candidate Starts for GoldenSpark_16:

(Start: 12 @9133 has 125 MA's), (41, 9271), (65, 9361), (67, 9370), (89, 9490), (94, 9517), (112, 9583),

Gene: Goldilocks_16 Start: 9089, Stop: 9655, Start Num: 12

Candidate Starts for Goldilocks_16:

(Start: 12 @9089 has 125 MA's), (41, 9227), (65, 9317), (67, 9326), (89, 9446), (94, 9473), (112, 9539),

Gene: GooberAzure_16 Start: 9133, Stop: 9699, Start Num: 12

Candidate Starts for GooberAzure_16:

(Start: 12 @9133 has 125 MA's), (41, 9271), (65, 9361), (67, 9370), (89, 9490), (94, 9517), (112, 9583),

Gene: Gspu1_10 Start: 7323, Stop: 7862, Start Num: 15

Candidate Starts for Gspu1_10:

(15, 7323), (Start: 21 @7341 has 8 MA's), (45, 7464), (50, 7488), (73, 7578), (86, 7635), (90, 7671), (102, 7716), (114, 7770), (117, 7779), (123, 7806), (124, 7809), (130, 7830), (133, 7854),

Gene: HanKaySha_15 Start: 8888, Stop: 9454, Start Num: 12

Candidate Starts for HanKaySha_15:

(Start: 12 @8888 has 125 MA's), (41, 9026), (65, 9116), (67, 9125), (89, 9245), (94, 9272), (112, 9338),

Gene: Harella_13 Start: 9295, Stop: 9861, Start Num: 12

Candidate Starts for Harella_13:

(Start: 12 @9295 has 125 MA's), (41, 9433), (65, 9523), (67, 9532), (89, 9652), (94, 9679), (112, 9745),

Gene: Henry_15 Start: 9678, Stop: 10244, Start Num: 12

Candidate Starts for Henry_15:

(Start: 12 @9678 has 125 MA's), (41, 9816), (65, 9906), (67, 9915), (89, 10035), (94, 10062), (112, 10128),

Gene: Highbury_15 Start: 8807, Stop: 9373, Start Num: 12

Candidate Starts for Highbury_15:

(Start: 12 @8807 has 125 MA's), (41, 8945), (65, 9035), (67, 9044), (89, 9164), (94, 9191), (112, 9257),

Gene: Holt_16 Start: 8962, Stop: 9528, Start Num: 12

Candidate Starts for Holt_16:

(Start: 12 @8962 has 125 MA's), (41, 9100), (65, 9190), (67, 9199), (89, 9319), (94, 9346), (112, 9412),

Gene: Hoonter_16 Start: 9133, Stop: 9699, Start Num: 12

Candidate Starts for Hoonter_16:

(Start: 12 @9133 has 125 MA's), (41, 9271), (65, 9361), (67, 9370), (89, 9490), (94, 9517), (112, 9583),

Gene: Hokey_15 Start: 8898, Stop: 9464, Start Num: 12

Candidate Starts for Hokey_15:

(Start: 12 @8898 has 125 MA's), (41, 9036), (65, 9126), (67, 9135), (89, 9255), (94, 9282), (112, 9348),

Gene: HotPotato_9 Start: 7175, Stop: 7768, Start Num: 3

Candidate Starts for HotPotato_9:

(Start: 3 @7175 has 13 MA's), (6, 7187), (18, 7232), (38, 7334), (39, 7340), (42, 7355), (43, 7358), (57, 7418), (68, 7451), (93, 7592), (94, 7595), (129, 7715),

Gene: HufflyPuff_13 Start: 9142, Stop: 9708, Start Num: 12

Candidate Starts for HufflyPuff_13:

(Start: 12 @9142 has 125 MA's), (41, 9280), (65, 9370), (67, 9379), (89, 9499), (94, 9526), (112, 9592),

Gene: Huffly_14 Start: 9110, Stop: 9634, Start Num: 21

Candidate Starts for Huffly_14:

(Start: 21 @9110 has 8 MA's), (Start: 31 @9155 has 2 MA's), (45, 9230), (58, 9284), (67, 9314), (73, 9344), (86, 9401), (88, 9425), (98, 9470), (101, 9479), (117, 9545), (120, 9563), (127, 9581), (133, 9620),

Gene: IHOP_14 Start: 9338, Stop: 9904, Start Num: 12

Candidate Starts for IHOP_14:

(Start: 12 @9338 has 125 MA's), (41, 9476), (65, 9566), (67, 9575), (89, 9695), (94, 9722), (112, 9788),

Gene: Ibantik_72 Start: 34097, Stop: 34657, Start Num: 5

Candidate Starts for Ibantik_72:

(Start: 5 @34097 has 2 MA's), (11, 34121), (14, 34133), (63, 34331), (85, 34421), (100, 34496), (109, 34520), (126, 34592),

Gene: Icee_14 Start: 9338, Stop: 9904, Start Num: 12

Candidate Starts for Icee_14:

(Start: 12 @9338 has 125 MA's), (41, 9476), (65, 9566), (67, 9575), (89, 9695), (94, 9722), (112, 9788),

Gene: Inca_14 Start: 8358, Stop: 8924, Start Num: 12

Candidate Starts for Inca_14:

(Start: 12 @8358 has 125 MA's), (41, 8496), (65, 8586), (67, 8595), (89, 8715), (94, 8742), (112, 8808),

Gene: JanetJ_9 Start: 7405, Stop: 7920, Start Num: 17

Candidate Starts for JanetJ_9:

(Start: 17 @7405 has 5 MA's),

Gene: JeTaime_16 Start: 9938, Stop: 10504, Start Num: 12

Candidate Starts for JeTaime_16:

(Start: 12 @9938 has 125 MA's), (41, 10076), (65, 10166), (67, 10175), (89, 10295), (94, 10322), (112, 10388),

Gene: Judy_9 Start: 7214, Stop: 7804, Start Num: 3

Candidate Starts for Judy_9:

(Start: 3 @7214 has 13 MA's), (6, 7226), (18, 7271), (83, 7562), (85, 7568), (93, 7628), (94, 7631), (123, 7730), (129, 7751),

Gene: Kanye_16 Start: 10126, Stop: 10692, Start Num: 12

Candidate Starts for Kanye_16:

(Start: 12 @10126 has 125 MA's), (41, 10264), (65, 10354), (67, 10363), (89, 10483), (94, 10510), (112, 10576),

Gene: Karkharias_9 Start: 7171, Stop: 7764, Start Num: 3

Candidate Starts for Karkharias_9:

(Start: 3 @7171 has 13 MA's), (6, 7183), (18, 7228), (38, 7330), (39, 7336), (42, 7351), (43, 7354), (68, 7447), (93, 7588), (94, 7591), (123, 7690), (129, 7711),

Gene: KayMoney_9 Start: 7171, Stop: 7761, Start Num: 3

Candidate Starts for KayMoney_9:

(Start: 3 @7171 has 13 MA's), (6, 7183), (18, 7228), (39, 7336), (83, 7519), (85, 7525), (93, 7585), (94, 7588), (123, 7687), (129, 7708),

Gene: Kevin1_8 Start: 5970, Stop: 6461, Start Num: 34

Candidate Starts for Kevin1_8:

(9, 5859), (13, 5871), (Start: 34 @5970 has 4 MA's), (40, 6009), (57, 6087), (70, 6129), (75, 6156), (82, 6189), (90, 6246), (95, 6273), (101, 6294), (103, 6300), (118, 6369), (124, 6402), (132, 6444),

Gene: Kimchi_16 Start: 9133, Stop: 9699, Start Num: 12

Candidate Starts for Kimchi_16:

(Start: 12 @9133 has 125 MA's), (41, 9271), (65, 9361), (67, 9370), (89, 9490), (94, 9517), (112, 9583),

Gene: Kostya_15 Start: 9678, Stop: 10244, Start Num: 12

Candidate Starts for Kostya_15:

(Start: 12 @9678 has 125 MA's), (41, 9816), (65, 9906), (67, 9915), (89, 10035), (94, 10062), (112, 10128),

Gene: Kumotta_9 Start: 7342, Stop: 7839, Start Num: 23

Candidate Starts for Kumotta_9:

(Start: 23 @7342 has 1 MA's), (Start: 24 @7345 has 1 MA's), (27, 7357), (30, 7375), (36, 7411), (57, 7510), (67, 7543), (78, 7591), (81, 7606), (99, 7696), (101, 7699), (111, 7735), (117, 7765),

Gene: Lilac_16 Start: 8634, Stop: 9200, Start Num: 12

Candidate Starts for Lilac_16:

(Start: 12 @8634 has 125 MA's), (41, 8772), (65, 8862), (67, 8871), (89, 8991), (94, 9018), (112, 9084),

Gene: Lilizi_16 Start: 8845, Stop: 9411, Start Num: 12

Candidate Starts for Lilizi_16:

(Start: 12 @8845 has 125 MA's), (41, 8983), (65, 9073), (67, 9082), (89, 9202), (94, 9229), (112, 9295),

Gene: Lilpickle_13 Start: 8353, Stop: 8919, Start Num: 12

Candidate Starts for Lilpickle_13:

(Start: 12 @8353 has 125 MA's), (41, 8491), (65, 8581), (67, 8590), (89, 8710), (94, 8737), (112, 8803),

Gene: MISSy_14 Start: 9186, Stop: 9752, Start Num: 12

Candidate Starts for MISSy_14:

(Start: 12 @9186 has 125 MA's), (41, 9324), (65, 9414), (67, 9423), (89, 9543), (94, 9570), (112, 9636),

Gene: MPhalcon_14 Start: 9186, Stop: 9752, Start Num: 12

Candidate Starts for MPhalcon_14:

(Start: 12 @9186 has 125 MA's), (41, 9324), (65, 9414), (67, 9423), (89, 9543), (94, 9570), (112, 9636),

Gene: MadamMonkfish_14 Start: 8564, Stop: 9130, Start Num: 12

Candidate Starts for MadamMonkfish_14:

(Start: 12 @8564 has 125 MA's), (41, 8702), (65, 8792), (67, 8801), (89, 8921), (94, 8948), (112, 9014),

Gene: Maja_8 Start: 6915, Stop: 7427, Start Num: 17

Candidate Starts for Maja_8:

(1, 6702), (Start: 16 @6912 has 2 MA's), (Start: 17 @6915 has 5 MA's), (27, 6954), (48, 7065), (50, 7080), (56, 7104), (66, 7131), (77, 7179), (88, 7233), (89, 7239), (91, 7248), (121, 7383),

Gene: Manda_15 Start: 9648, Stop: 10214, Start Num: 12

Candidate Starts for Manda_15:

(Start: 12 @9648 has 125 MA's), (41, 9786), (65, 9876), (67, 9885), (89, 10005), (94, 10032), (112, 10098),

Gene: MargaretKali_9 Start: 6988, Stop: 7473, Start Num: 24

Candidate Starts for MargaretKali_9:

(Start: 24 @6988 has 1 MA's), (27, 6997), (40, 7075), (48, 7108), (52, 7129), (56, 7147), (70, 7189), (97, 7321), (106, 7348),

Gene: Marshmallow_15 Start: 9678, Stop: 10244, Start Num: 12

Candidate Starts for Marshmallow_15:

(Start: 12 @9678 has 125 MA's), (41, 9816), (65, 9906), (67, 9915), (89, 10035), (94, 10062), (112, 10128),

Gene: Maxxinista_15 Start: 8613, Stop: 9179, Start Num: 12

Candidate Starts for Maxxinista_15:

(Start: 12 @8613 has 125 MA's), (41, 8751), (65, 8841), (67, 8850), (89, 8970), (94, 8997), (112, 9063),

Gene: MichelleMyBell_8 Start: 5990, Stop: 6481, Start Num: 34

Candidate Starts for MichelleMyBell_8:

(2, 5834), (9, 5879), (13, 5891), (Start: 34 @5990 has 4 MA's), (40, 6029), (49, 6077), (57, 6107), (70, 6149), (75, 6176), (82, 6209), (90, 6266), (95, 6293), (101, 6314), (103, 6320), (118, 6389), (124, 6422), (132, 6464),

Gene: Mindy_15 Start: 9457, Stop: 10023, Start Num: 12

Candidate Starts for Mindy_15:

(Start: 12 @9457 has 125 MA's), (41, 9595), (65, 9685), (67, 9694), (89, 9814), (94, 9841), (112, 9907),

Gene: Miniwave_15 Start: 9876, Stop: 10442, Start Num: 12

Candidate Starts for Miniwave_15:

(Start: 12 @9876 has 125 MA's), (41, 10014), (65, 10104), (67, 10113), (89, 10233), (94, 10260), (112, 10326),

Gene: Misfit_14 Start: 9230, Stop: 9796, Start Num: 12

Candidate Starts for Misfit_14:

(Start: 12 @9230 has 125 MA's), (41, 9368), (65, 9458), (67, 9467), (89, 9587), (94, 9614), (112, 9680),

Gene: Moldemort_15 Start: 8888, Stop: 9454, Start Num: 12

Candidate Starts for Moldemort_15:

(Start: 12 @8888 has 125 MA's), (41, 9026), (65, 9116), (67, 9125), (89, 9245), (94, 9272), (112, 9338),

Gene: Mosby_14 Start: 9186, Stop: 9752, Start Num: 12

Candidate Starts for Mosby_14:

(Start: 12 @9186 has 125 MA's), (41, 9324), (65, 9414), (67, 9423), (89, 9543), (94, 9570), (112, 9636),

Gene: Murica_13 Start: 9142, Stop: 9708, Start Num: 12

Candidate Starts for Murica_13:

(Start: 12 @9142 has 125 MA's), (41, 9280), (65, 9370), (67, 9379), (89, 9499), (94, 9526), (112, 9592),

Gene: Murphy_14 Start: 8605, Stop: 9171, Start Num: 12

Candidate Starts for Murphy_14:

(Start: 12 @8605 has 125 MA's), (41, 8743), (65, 8833), (67, 8842), (89, 8962), (94, 8989), (112, 9055),

Gene: Myrale_15 Start: 9549, Stop: 10115, Start Num: 12

Candidate Starts for Myrale_15:

(Start: 12 @9549 has 125 MA's), (41, 9687), (65, 9777), (67, 9786), (89, 9906), (94, 9933), (112, 9999),

Gene: Nala_14 Start: 9186, Stop: 9752, Start Num: 12

Candidate Starts for Nala_14:

(Start: 12 @9186 has 125 MA's), (41, 9324), (65, 9414), (67, 9423), (89, 9543), (94, 9570), (112, 9636),

Gene: NelitzaMV_15 Start: 9748, Stop: 10314, Start Num: 12

Candidate Starts for NelitzaMV_15:

(Start: 12 @9748 has 125 MA's), (41, 9886), (65, 9976), (67, 9985), (89, 10105), (94, 10132), (112, 10198),

Gene: Nesbitt_8 Start: 6733, Stop: 7266, Start Num: 3

Candidate Starts for Nesbitt_8:

(Start: 3 @6733 has 13 MA's), (Start: 16 @6778 has 2 MA's), (20, 6790), (29, 6829), (33, 6844), (47, 6916), (53, 6937), (55, 6949), (57, 6955), (80, 7027), (83, 7036), (87, 7069), (110, 7150), (119, 7177), (137, 7249), (138, 7252),

Gene: Nimrod_14 Start: 9385, Stop: 9951, Start Num: 12

Candidate Starts for Nimrod_14:

(Start: 12 @9385 has 125 MA's), (41, 9523), (65, 9613), (67, 9622), (89, 9742), (94, 9769), (112, 9835),

Gene: NoSleep_15 Start: 8885, Stop: 9451, Start Num: 12

Candidate Starts for NoSleep_15:

(Start: 12 @8885 has 125 MA's), (41, 9023), (65, 9113), (67, 9122), (89, 9242), (94, 9269), (112, 9335),

Gene: NoSwimming_10 Start: 8529, Stop: 9050, Start Num: 18

Candidate Starts for NoSwimming_10:

(18, 8529), (Start: 24 @8553 has 1 MA's), (58, 8718), (81, 8811), (89, 8853), (113, 8955), (117, 8970),

Gene: OrionPax_15 Start: 8888, Stop: 9454, Start Num: 12

Candidate Starts for OrionPax_15:

(Start: 12 @8888 has 125 MA's), (41, 9026), (65, 9116), (67, 9125), (89, 9245), (94, 9272), (112, 9338),

Gene: PFR1_06 Start: 6360, Stop: 6935, Start Num: 4

Candidate Starts for PFR1_06:

(4, 6360), (Start: 5 @6363 has 2 MA's), (8, 6375), (26, 6438), (46, 6546), (51, 6567), (55, 6585), (69, 6633), (71, 6645), (89, 6729), (103, 6780), (104, 6783), (105, 6786), (106, 6789), (131, 6903), (134, 6924), (135, 6927),

Gene: PFR2_06 Start: 6360, Stop: 6935, Start Num: 4

Candidate Starts for PFR2_06:

(4, 6360), (Start: 5 @6363 has 2 MA's), (8, 6375), (26, 6438), (46, 6546), (51, 6567), (55, 6585), (69, 6633), (71, 6645), (89, 6729), (103, 6780), (104, 6783), (105, 6786), (106, 6789), (131, 6903), (134, 6924), (135, 6927),

Gene: Palpatine_14 Start: 9183, Stop: 9749, Start Num: 12

Candidate Starts for Palpatine_14:

(Start: 12 @9183 has 125 MA's), (41, 9321), (65, 9411), (67, 9420), (89, 9540), (94, 9567), (112, 9633),

Gene: Paperbeatsrock_16 Start: 10120, Stop: 10686, Start Num: 12

Candidate Starts for Paperbeatsrock_16:

(Start: 12 @10120 has 125 MA's), (41, 10258), (65, 10348), (67, 10357), (89, 10477), (94, 10504), (112, 10570),

Gene: Pat3_14 Start: 8388, Stop: 8954, Start Num: 12

Candidate Starts for Pat3_14:

(Start: 12 @8388 has 125 MA's), (41, 8526), (65, 8616), (67, 8625), (89, 8745), (94, 8772), (112, 8838),

Gene: Peas_9 Start: 7175, Stop: 7768, Start Num: 3

Candidate Starts for Peas_9:

(Start: 3 @7175 has 13 MA's), (6, 7187), (18, 7232), (38, 7334), (39, 7340), (42, 7355), (43, 7358), (57, 7418), (68, 7451), (93, 7592), (129, 7715),

Gene: PeggyLeg03_9 Start: 7215, Stop: 7805, Start Num: 3

Candidate Starts for PeggyLeg03_9:

(Start: 3 @7215 has 13 MA's), (6, 7227), (18, 7272), (85, 7569), (93, 7629), (94, 7632), (123, 7731), (129, 7752), (138, 7791),

Gene: Petra64142_15 Start: 9601, Stop: 10167, Start Num: 12

Candidate Starts for Petra64142_15:

(Start: 12 @9601 has 125 MA's), (41, 9739), (65, 9829), (67, 9838), (89, 9958), (94, 9985), (112, 10051),

Gene: Phaja_14 Start: 9338, Stop: 9904, Start Num: 12

Candidate Starts for Phaja_14:

(Start: 12 @9338 has 125 MA's), (41, 9476), (65, 9566), (67, 9575), (89, 9695), (94, 9722), (112, 9788),

Gene: Pharsalus_15 Start: 9920, Stop: 10486, Start Num: 12

Candidate Starts for Pharsalus_15:

(Start: 12 @9920 has 125 MA's), (41, 10058), (65, 10148), (67, 10157), (89, 10277), (94, 10304), (112, 10370),

Gene: PhatBacter_14 Start: 9186, Stop: 9752, Start Num: 12

Candidate Starts for PhatBacter_14:

(Start: 12 @9186 has 125 MA's), (41, 9324), (65, 9414), (67, 9423), (89, 9543), (94, 9570), (112, 9636),

Gene: Phaux_13 Start: 9186, Stop: 9752, Start Num: 12

Candidate Starts for Phaux_13:

(Start: 12 @9186 has 125 MA's), (41, 9324), (65, 9414), (67, 9423), (89, 9543), (94, 9570), (112, 9636),

Gene: Phrux_14 Start: 8884, Stop: 9450, Start Num: 12

Candidate Starts for Phrux_14:

(Start: 12 @8884 has 125 MA's), (41, 9022), (65, 9112), (67, 9121), (89, 9241), (94, 9268), (112, 9334),

Gene: Pigu_8 Start: 5996, Stop: 6514, Start Num: 16

Candidate Starts for Pigu_8:

(Start: 16 @5996 has 2 MA's), (Start: 17 @5999 has 5 MA's), (Start: 21 @6014 has 8 MA's), (27, 6038), (37, 6095), (50, 6164), (77, 6263), (88, 6317), (89, 6323), (111, 6410), (117, 6440),

Gene: Policronamos_14 Start: 9186, Stop: 9752, Start Num: 12

Candidate Starts for Policronamos_14:

(Start: 12 @9186 has 125 MA's), (41, 9324), (65, 9414), (67, 9423), (89, 9543), (94, 9570), (112, 9636),

Gene: Porky_13 Start: 8458, Stop: 9024, Start Num: 12

Candidate Starts for Porky_13:

(Start: 12 @8458 has 125 MA's), (41, 8596), (65, 8686), (67, 8695), (89, 8815), (94, 8842), (112, 8908),

Gene: PrairieDogTown_13 Start: 7625, Stop: 8140, Start Num: 17

Candidate Starts for PrairieDogTown_13:

(Start: 17 @7625 has 5 MA's),

Gene: Pucara_9 Start: 7174, Stop: 7767, Start Num: 3

Candidate Starts for Pucara_9:

(Start: 3 @7174 has 13 MA's), (6, 7186), (18, 7231), (38, 7333), (39, 7339), (42, 7354), (43, 7357), (57, 7417), (68, 7450), (93, 7591), (94, 7594), (129, 7714),

Gene: Pumpkin_15 Start: 8701, Stop: 9267, Start Num: 12

Candidate Starts for Pumpkin_15:

(Start: 12 @8701 has 125 MA's), (41, 8839), (65, 8929), (67, 8938), (89, 9058), (94, 9085), (112, 9151),

Gene: Quallification_16 Start: 9885, Stop: 10451, Start Num: 12

Candidate Starts for Quallification_16:

(Start: 12 @9885 has 125 MA's), (41, 10023), (65, 10113), (67, 10122), (89, 10242), (94, 10269), (112, 10335),

Gene: Rakim_16 Start: 9792, Stop: 10358, Start Num: 12

Candidate Starts for Rakim_16:

(Start: 12 @9792 has 125 MA's), (41, 9930), (65, 10020), (67, 10029), (89, 10149), (94, 10176), (112, 10242),

Gene: Rimmer_14 Start: 9245, Stop: 9811, Start Num: 12

Candidate Starts for Rimmer_14:

(Start: 12 @9245 has 125 MA's), (41, 9383), (65, 9473), (67, 9482), (89, 9602), (94, 9629), (112, 9695),

Gene: RiverMonster_14 Start: 8898, Stop: 9464, Start Num: 12

Candidate Starts for RiverMonster_14:

(Start: 12 @8898 has 125 MA's), (41, 9036), (65, 9126), (67, 9135), (89, 9255), (94, 9282), (112, 9348),

Gene: Rowa_8 Start: 6493, Stop: 7023, Start Num: 3

Candidate Starts for Rowa_8:

(Start: 3 @6493 has 13 MA's), (Start: 16 @6538 has 2 MA's), (29, 6589), (46, 6673), (54, 6700), (63, 6730), (76, 6775), (85, 6799), (87, 6826), (136, 7003), (137, 7006), (138, 7009),

Gene: Rubeelu_8 Start: 5970, Stop: 6461, Start Num: 34

Candidate Starts for Rubeelu_8:

(9, 5859), (13, 5871), (Start: 34 @5970 has 4 MA's), (40, 6009), (49, 6057), (57, 6087), (70, 6129), (75, 6156), (82, 6189), (90, 6246), (95, 6273), (101, 6294), (103, 6300), (118, 6369), (124, 6402), (132, 6444),

Gene: Saints25_15 Start: 8807, Stop: 9373, Start Num: 12

Candidate Starts for Saints25_15:

(Start: 12 @8807 has 125 MA's), (41, 8945), (65, 9035), (67, 9044), (89, 9164), (94, 9191), (112, 9257),

Gene: Sarge_8 Start: 6394, Stop: 6912, Start Num: 16

Candidate Starts for Sarge_8:

(Start: 16 @6394 has 2 MA's), (Start: 17 @6397 has 5 MA's), (Start: 24 @6427 has 1 MA's), (27, 6436), (28, 6439), (29, 6445), (49, 6559), (50, 6562), (56, 6586), (88, 6715), (93, 6745), (101, 6772), (125, 6877),

Gene: Sassay_14 Start: 9186, Stop: 9752, Start Num: 12

Candidate Starts for Sassay_14:

(Start: 12 @9186 has 125 MA's), (41, 9324), (65, 9414), (67, 9423), (89, 9543), (94, 9570), (112, 9636),

Gene: Schmidt_10 Start: 7341, Stop: 7862, Start Num: 19

Candidate Starts for Schmidt_10:

(8, 7305), (Start: 19 @7341 has 1 MA's), (Start: 31 @7392 has 2 MA's), (35, 7416), (36, 7422), (45, 7467), (51, 7494), (65, 7542), (67, 7551), (70, 7560), (84, 7632), (88, 7662), (97, 7704), (102, 7719), (117, 7782), (133, 7854),

Gene: Scotia_10 Start: 8535, Stop: 9056, Start Num: 18

Candidate Starts for Scotia_10:

(18, 8535), (Start: 24 @8559 has 1 MA's), (58, 8724), (89, 8859), (113, 8961), (117, 8976),

Gene: ShamWow_15 Start: 9679, Stop: 10245, Start Num: 12

Candidate Starts for ShamWow_15:

(Start: 12 @9679 has 125 MA's), (41, 9817), (65, 9907), (67, 9916), (89, 10036), (94, 10063), (112, 10129),

Gene: ShereKhan_16 Start: 10126, Stop: 10692, Start Num: 12

Candidate Starts for ShereKhan_16:

(Start: 12 @10126 has 125 MA's), (41, 10264), (65, 10354), (67, 10363), (89, 10483), (94, 10510), (112, 10576),

Gene: Shoya_7 Start: 6030, Stop: 6548, Start Num: 16

Candidate Starts for Shoya_7:

(6, 5991), (10, 6009), (Start: 16 @6030 has 2 MA's), (Start: 17 @6033 has 5 MA's), (Start: 24 @6063 has 1 MA's), (27, 6072), (28, 6075), (29, 6081), (49, 6195), (50, 6198), (56, 6222), (77, 6297), (89, 6357), (93, 6381), (101, 6408), (113, 6459), (121, 6501),

Gene: Simpliphy_15 Start: 8888, Stop: 9454, Start Num: 12

Candidate Starts for Simpliphy_15:

(Start: 12 @8888 has 125 MA's), (41, 9026), (65, 9116), (67, 9125), (89, 9245), (94, 9272), (112, 9338),

Gene: SirDuracell_14 Start: 8345, Stop: 8911, Start Num: 12

Candidate Starts for SirDuracell_14:

(Start: 12 @8345 has 125 MA's), (41, 8483), (65, 8573), (67, 8582), (89, 8702), (94, 8729), (112, 8795),

Gene: SophKB_15 Start: 9678, Stop: 10244, Start Num: 12

Candidate Starts for SophKB_15:

(Start: 12 @9678 has 125 MA's), (41, 9816), (65, 9906), (67, 9915), (89, 10035), (94, 10062), (112, 10128),

Gene: Sotrice96_15 Start: 9634, Stop: 10200, Start Num: 12

Candidate Starts for Sotrice96_15:

(Start: 12 @9634 has 125 MA's), (41, 9772), (65, 9862), (67, 9871), (89, 9991), (94, 10018), (112, 10084),

Gene: Splinter_12 Start: 8930, Stop: 9409, Start Num: 31

Candidate Starts for Splinter_12:

(Start: 21 @8885 has 8 MA's), (Start: 31 @8930 has 2 MA's), (45, 9005), (58, 9059), (67, 9089), (73, 9119), (86, 9176), (88, 9200), (98, 9245), (99, 9251), (101, 9254), (117, 9320), (120, 9338), (127, 9356), (133, 9395),

Gene: Spooks_52 Start: 31393, Stop: 31992, Start Num: 5

Candidate Starts for Spooks_52:

(Start: 5 @31393 has 2 MA's), (11, 31417), (62, 31624), (83, 31705), (96, 31774), (107, 31804), (115, 31834), (139, 31954),

Gene: Stank_16 Start: 9133, Stop: 9699, Start Num: 12

Candidate Starts for Stank_16:

(Start: 12 @9133 has 125 MA's), (41, 9271), (65, 9361), (67, 9370), (89, 9490), (94, 9517), (112, 9583),

Gene: Stark_15 Start: 8901, Stop: 9467, Start Num: 12

Candidate Starts for Stark_15:

(Start: 12 @8901 has 125 MA's), (41, 9039), (65, 9129), (67, 9138), (89, 9258), (94, 9285), (112, 9351),

Gene: StellaBean_15 Start: 9678, Stop: 10244, Start Num: 12

Candidate Starts for StellaBean_15:

(Start: 12 @9678 has 125 MA's), (41, 9816), (65, 9906), (67, 9915), (89, 10035), (94, 10062), (112, 10128),

Gene: StolenFromERC_16 Start: 9133, Stop: 9699, Start Num: 12

Candidate Starts for StolenFromERC_16:

(Start: 12 @9133 has 125 MA's), (41, 9271), (65, 9361), (67, 9370), (89, 9490), (94, 9517), (112, 9583),

Gene: StormChicken_15 Start: 9851, Stop: 10417, Start Num: 12

Candidate Starts for StormChicken_15:

(Start: 12 @9851 has 125 MA's), (41, 9989), (65, 10079), (67, 10088), (89, 10208), (94, 10235), (112, 10301),

Gene: Success_54 Start: 30512, Stop: 31111, Start Num: 5

Candidate Starts for Success_54:

(Start: 5 @30512 has 2 MA's), (11, 30536), (57, 30731), (83, 30824), (96, 30893), (107, 30923), (115, 30953), (137, 31052),

Gene: TBrady12_16 Start: 9130, Stop: 9696, Start Num: 12

Candidate Starts for TBrady12_16:

(Start: 12 @9130 has 125 MA's), (41, 9268), (65, 9358), (67, 9367), (89, 9487), (94, 9514), (112, 9580),

Gene: TZGordon_14 Start: 9027, Stop: 9551, Start Num: 21

Candidate Starts for TZGordon_14:

(Start: 21 @9027 has 8 MA's), (Start: 31 @9072 has 2 MA's), (45, 9147), (58, 9201), (67, 9231), (73, 9261), (86, 9318), (88, 9342), (98, 9387), (101, 9396), (117, 9462), (120, 9480), (127, 9498), (133, 9537),

Gene: Tarkin_16 Start: 10129, Stop: 10695, Start Num: 12

Candidate Starts for Tarkin_16:

(Start: 12 @10129 has 125 MA's), (41, 10267), (65, 10357), (67, 10366), (89, 10486), (94, 10513), (112, 10579),

Gene: TeardropMSU_14 Start: 9586, Stop: 10152, Start Num: 12

Candidate Starts for TeardropMSU_14:

(Start: 12 @9586 has 125 MA's), (41, 9724), (65, 9814), (67, 9823), (89, 9943), (94, 9970), (112, 10036),

Gene: Teaspoon_14 Start: 8583, Stop: 9149, Start Num: 12

Candidate Starts for Teaspoon_14:

(Start: 12 @8583 has 125 MA's), (41, 8721), (65, 8811), (67, 8820), (89, 8940), (94, 8967), (112, 9033),

Gene: Terminus_14 Start: 9230, Stop: 9796, Start Num: 12

Candidate Starts for Terminus_14:

(Start: 12 @9230 has 125 MA's), (41, 9368), (65, 9458), (67, 9467), (89, 9587), (94, 9614), (112, 9680),

Gene: Thimble_15 Start: 8635, Stop: 9201, Start Num: 12

Candidate Starts for Thimble_15:

(Start: 12 @8635 has 125 MA's), (41, 8773), (65, 8863), (67, 8872), (89, 8992), (94, 9019), (112, 9085),

Gene: Thresher_15 Start: 9891, Stop: 10457, Start Num: 12

Candidate Starts for Thresher_15:

(Start: 12 @9891 has 125 MA's), (41, 10029), (65, 10119), (67, 10128), (89, 10248), (94, 10275), (112, 10341),

Gene: TinaLin_15 Start: 9599, Stop: 10123, Start Num: 21

Candidate Starts for TinaLin_15:

(Start: 21 @9599 has 8 MA's), (49, 9740), (58, 9773), (86, 9890), (88, 9914), (97, 9956), (101, 9968), (117, 10034), (120, 10052), (127, 10070), (133, 10109), (134, 10112),

Gene: Tomaszewski_14 Start: 9279, Stop: 9845, Start Num: 12

Candidate Starts for Tomaszewski_14:

(Start: 12 @9279 has 125 MA's), (41, 9417), (65, 9507), (67, 9516), (89, 9636), (94, 9663), (112, 9729),

Gene: Toto_15 Start: 9679, Stop: 10245, Start Num: 12

Candidate Starts for Toto_15:

(Start: 12 @9679 has 125 MA's), (41, 9817), (65, 9907), (67, 9916), (89, 10036), (94, 10063), (112, 10129),

Gene: Traaww1_13 Start: 9324, Stop: 9890, Start Num: 12

Candidate Starts for Traaww1_13:

(Start: 12 @9324 has 125 MA's), (41, 9462), (65, 9552), (67, 9561), (89, 9681), (94, 9708), (112, 9774),

Gene: Tuco_15 Start: 9678, Stop: 10244, Start Num: 12

Candidate Starts for Tuco_15:

(Start: 12 @9678 has 125 MA's), (41, 9816), (65, 9906), (67, 9915), (89, 10035), (94, 10062), (112, 10128),

Gene: Ukulele_14 Start: 8901, Stop: 9467, Start Num: 12

Candidate Starts for Ukulele_14:

(Start: 12 @8901 has 125 MA's), (41, 9039), (65, 9129), (67, 9138), (89, 9258), (94, 9285), (112, 9351),

Gene: Vendetta_12 Start: 8930, Stop: 9409, Start Num: 31

Candidate Starts for Vendetta_12:

(Start: 21 @8885 has 8 MA's), (Start: 31 @8930 has 2 MA's), (45, 9005), (58, 9059), (67, 9089), (73, 9119), (86, 9176), (88, 9200), (98, 9245), (99, 9251), (101, 9254), (117, 9320), (120, 9338), (127, 9356), (133, 9395),

Gene: Wiggin_16 Start: 9133, Stop: 9699, Start Num: 12

Candidate Starts for Wiggin_16:

(Start: 12 @9133 has 125 MA's), (41, 9271), (65, 9361), (67, 9370), (89, 9490), (94, 9517), (112, 9583),

Gene: Willez_14 Start: 9186, Stop: 9752, Start Num: 12

Candidate Starts for Willez_14:

(Start: 12 @9186 has 125 MA's), (41, 9324), (65, 9414), (67, 9423), (89, 9543), (94, 9570), (112, 9636),

Gene: Xandras_16 Start: 9133, Stop: 9699, Start Num: 12

Candidate Starts for Xandras_16:

(Start: 12 @9133 has 125 MA's), (41, 9271), (65, 9361), (67, 9370), (89, 9490), (94, 9517), (112, 9583),

Gene: YassJohnny_15 Start: 9678, Stop: 10244, Start Num: 12

Candidate Starts for YassJohnny_15:

(Start: 12 @9678 has 125 MA's), (41, 9816), (65, 9906), (67, 9915), (89, 10035), (94, 10062), (112, 10128),

Gene: Youngblood_14 Start: 9311, Stop: 9877, Start Num: 12

Candidate Starts for Youngblood_14:

(Start: 12 @9311 has 125 MA's), (41, 9449), (65, 9539), (67, 9548), (89, 9668), (94, 9695), (112, 9761),

Gene: phiSASD1_29 Start: 6506, Stop: 7102, Start Num: 3

Candidate Starts for phiSASD1_29:

(Start: 3 @6506 has 13 MA's), (33, 6617), (41, 6662), (55, 6722), (83, 6827), (85, 6833), (90, 6875), (92, 6884), (93, 6893), (123, 7025), (128, 7043), (138, 7088),

Gene: xkcd_15 Start: 9338, Stop: 9904, Start Num: 12

Candidate Starts for xkcd_15:

(Start: 12 @9338 has 125 MA's), (41, 9476), (65, 9566), (67, 9575), (89, 9695), (94, 9722), (112, 9788),