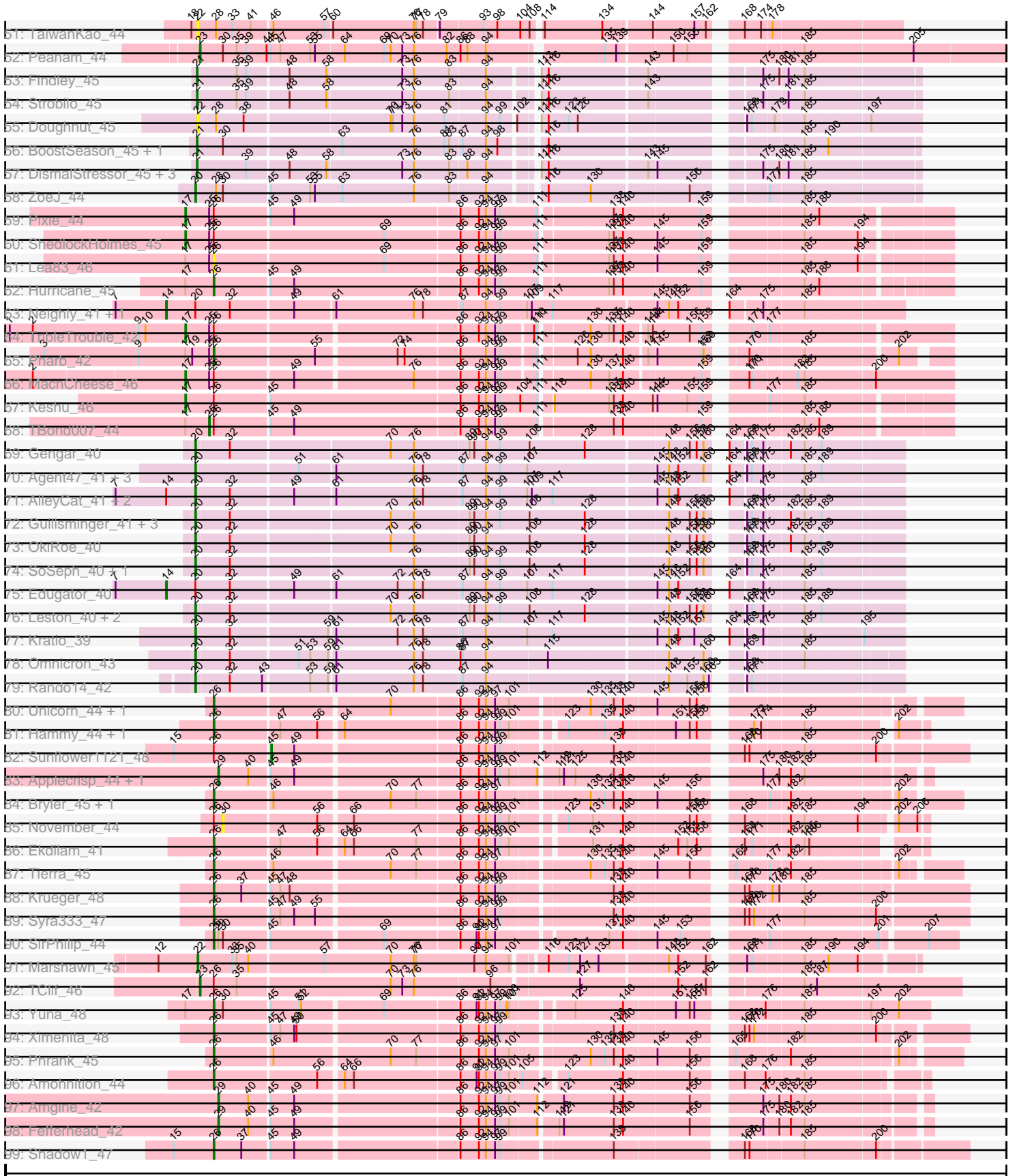


Pham 224320

1: ActinUp_42+7	10	13	23	23	41	51	50	78	78	83	88	108	114	130	134	144	157	162	168	174	178											
2: Padfoot_42+19	10	13	23	23	41	51	50	78	78	83	88	108	114	130	134	144	157	162	168	174	178											
3: Simphazie_42+2	10	13	23	23	41	51	50	78	78	83	88	108	114	130	134	144	157	162	168	174	178											
4: Lorens_42+5	10	13	23	23	41	51	50	78	78	83	88	108	114	130	134	144	157	162	168	174	178											
5: Topper_42+3	10	13	23	23	41	51	50	78	78	83	88	108	114	130	134	144	157	162	168	174	178											
6: Eira2_46	10	13	23	23	41	51	50	64	68	78	78	90	108	114	130	134	144	157	162	168	174	178										
7: BarrelRoll_42	10	13	23	23	41	51	50	78	78	83	88	108	114	130	134	144	157	162	168	174	178											
8: Devera_46+2	10	13	23	23	41	51	50	78	78	83	88	108	114	130	134	144	157	162	168	174	178											
9: Tim_43+2	10	13	23	23	41	51	50	61	67	70	73	80	87	90	95	108	114	121	134	144	185	201	209	210								
10: Valdis_46	11	13	23	23	41	51	50	78	78	83	88	108	114	134	144	144	162	168	174	178	185	201	209	210								
11: AlishaPH_42+1	10	13	23	23	41	51	50	61	67	70	73	80	87	90	95	108	114	121	134	144	149	154	168	174	178	185	194	212				
12: Biglebops_37+3	11	13	23	23	41	51	50	78	78	83	88	108	114	134	144	144	157	162	168	174	178	185	201	209	210							
13: Megsy_43	10	13	23	23	41	51	50	78	78	83	88	108	114	134	144	144	162	168	174	178	185	201	209	210								
14: BagnaKamaia_41	10	13	23	23	41	51	50	78	78	83	88	108	114	134	144	144	162	168	174	178	185	192	209	210								
15: LaterM_43+1	10	13	23	23	41	51	50	61	67	70	73	80	87	90	95	108	114	121	134	144	149	154	168	174	178	185	192	203	212			
16: Curiosium_46	16	23	35	42	45	50	53	54	61	70	73	80	87	90	95	108	114	116	120	122	134	144	149	154	168	174	178	185	199	194	203	212
17: Teejan_40+2	11	13	23	23	41	51	50	61	67	70	73	80	87	90	95	108	114	121	134	144	149	154	168	174	178	185	199	194	203	212		
18: Bellia96_43	11	13	23	23	41	51	50	61	67	70	73	80	87	90	95	108	114	121	134	144	149	154	168	174	178	185	199	194	203	212		
19: Angelica_42+1	10	13	23	23	41	51	50	61	67	70	73	80	87	90	95	108	114	121	134	144	149	154	168	174	178	185	199	194	203	212		
20: Leivond_46+2	11	13	23	23	41	51	50	61	67	70	73	80	87	90	95	108	114	121	134	144	149	154	168	174	178	185	199	194	203	212		
21: Apocalypse_46	11	13	23	23	41	51	50	61	67	70	73	80	87	90	95	108	114	121	134	144	149	154	168	174	178	185	199	194	203	212		
22: Lindivi_42	10	13	23	23	41	51	50	61	67	70	73	80	87	90	95	108	114	121	134	144	149	154	168	174	178	185	199	194	203	212		
23: Dartin_44+2	10	13	23	23	41	51	50	61	67	70	73	80	87	90	95	108	114	121	134	144	149	154	168	174	178	185	199	194	203	212		
24: Ageoidapage_44	11	13	23	23	41	51	50	61	67	70	73	80	87	90	95	108	114	120	134	144	149	154	168	174	178	185	199	194	203	212		
25: CheetoDust_41	10	13	23	23	41	51	50	61	67	70	73	80	87	90	95	108	114	120	134	144	149	154	168	174	178	185	199	194	203	212		
26: LastHope_45	23	23	35	42	45	50	54	61	67	70	73	80	87	90	95	108	114	123	134	144	149	154	168	174	178	185	199	194	203	212		
27: Chris_44	10	13	23	23	41	51	50	61	67	70	73	80	87	90	95	108	114	123	134	144	149	154	168	174	178	185	199	194	203	212		
28: Adonis_42	10	13	23	23	41	51	50	61	67	70	73	80	87	90	95	108	114	123	134	144	149	154	168	174	178	185	199	194	203	212		
29: Orkel_43+3	10	13	23	23	41	51	50	61	67	70	73	80	87	90	95	108	114	123	134	144	149	154	168	174	178	185	199	194	203	212		
30: Pritivi_43+1	10	13	23	23	41	51	50	61	67	70	73	80	87	90	95	108	114	123	134	144	149	154	168	174	178	185	199	194	203	212		
31: Beezoo_44	10	13	23	23	41	51	50	61	67	70	73	80	87	90	95	108	114	123	134	144	149	154	168	174	178	185	199	194	203	212		
32: Zavala_43+1	10	13	23	23	41	51	50	61	67	70	73	80	87	90	95	108	114	123	134	144	149	154	168	174	178	185	199	194	203	212		
33: Adepnagia_42	10	13	23	23	41	51	50	61	67	70	73	80	87	90	95	108	114	123	134	144	149	154	168	174	178	185	199	194	203	212		
34: Torres_40+1	10	13	23	23	41	51	50	61	67	70	73	80	87	90	95	108	114	123	134	144	149	154	168	174	178	185	199	194	203	212		
35: Kisi_46	10	13	23	23	41	51	50	61	67	70	73	80	87	90	95	108	114	123	134	144	149	154	168	174	178	185	199	194	203	212		
36: Nibo_44	10	13	23	23	41	51	50	61	67	70	73	80	87	90	95	108	114	123	134	144	149	154	168	174	178	185	199	194	203	212		
37: TingHuaYa_43	10	13	23	23	41	51	50	61	67	70	73	80	87	90	95	108	114	123	134	144	149	154	168	174	178	185	199	194	203	212		
38: Yunkell_45+1	10	13	23	23	41	51	50	61	67	70	73	80	87	90	95	108	114	123	134	144	149	154	168	174	178	185	199	194	203	212		
39: Pokerus_41	10	13	23	23	41	51	50	61	67	70	73	80	87	90	95	108	114	123	134	144	149	154	168	174	178	185	199	194	203	212		
40: Anaya_44	10	13	23	23	41	51	50	61	67	70	73	80	87	90	95	108	114	123	134	144	149	154	168	174	178	185	199	194	203	212		
41: MeaningOfLife_43	10	13	23	23	41	51	50	61	67	70	73	80	87	90	95	108	114	123	134	144	149	154	168	174	178	185	199	194	203	212		
42: Deby_42	10	13	23	23	41	51	50	61	67	70	73	80	87	90	95	108	114	123	134	144	149	154	168	174	178	185	199	194	203	212		
43: Niklas_44	10	13	23	23	41	51	50	61	67	70	73	80	87	90	95	108	114	123	134	144	149	154	168	174	178	185	199	194	203	212		
44: Emerson_43	10	13	23	23	41	51	50	61	67	70	73	80	87	90	95	108	114	123	134	144	149	154	168	174	178	185	199	194	203	212		
45: Shaobing_44+1	11	13	23	23	41	51	50	61	67	70	73	80	87	90	95	108	114	123	134	144	149	154	168	174	178	185	199	194	203	212		
46: MarkPheW_45	10	13	23	23	41	51	50	61	67	70	73	80	87	90	95	108	114	123	134	144	149	154	168	174	178	185	199	194	203	212		
47: YoureAdopted_41	10	13	23	23	41	51	50	61	67	70	73	80	87	90	95	108	114	123	134	144	149	154	168	174	178	185	199	194	203	212		
48: CrimD_42	10	13	23	23	41	51	50	61	67	70	73	80	87	90	95	108	114	123	134	144	149	154	168	174	178	185	199	194	203	212		
49: Murucutumbu_43	10	13	23	23	41	51	50	61	67	70	73	80	87	90	95	108	114	123	134	144	149	154	168	174	178	185	199	194	203	212		
50: LiiPharaoh_37	10	13	23	23	41	51	50	61	67	70	73	80	87	90	95	108	114	123	134	144	149	154	168	174	178	185	199	194	203	212		

Pham 224320



Note: Tracks are now grouped by subcluster and scaled. Switching in subcluster is indicated by changes in track color. Track scale is now set by default to display the region 30 bp upstream of start 1 to 30 bp downstream of the last possible start. If this default region is judged to be packed too tightly with annotated starts, the track will be further scaled to only show that region of the ORF with annotated starts. This action will be indicated by adding "Zoomed" to the title. For starts, yellow indicates the location of called starts comprised solely of Glimmer/GeneMark auto-annotations, green indicates the location of called starts with at least 1 manual gene annotation.

Pham 224320 Report

This analysis was run 03/28/25 on database version 593.

Pham number 224320 has 179 members, 16 are drafts.

Phages represented in each track:

- Track 1 : ActinUp_42, Jayhawk_43, Ramen_42, Atiba_42, Veliki_42, HedwigODU_42, Padpat_43, Tachez_42
- Track 2 : Padfoot_42, Dalmuri_42, Jeckyll_42, CREW_42, Asayake_42, Blizzard_42, BEEST_42, Durfee_42, Inky_42, Spock_42, BGIlluviae_42, ShiaSurprise_43, CallaLilly_44, Lunahalos_42, JAWS_42, Belladonna_42, Clipper_46, Jarvi_42, Twitch_42, Peel_42
- Track 3 : Slimphazie_42, TruffulaTree_42, Rapunzel97_42
- Track 4 : Llorens_42, CaseJules_43, Boiiii_42, Joy99_42, Homura_42, Capricorn_42
- Track 5 : Topper_42, Hyperbowlee_42, Rosmarinus_42, Piatt_42
- Track 6 : Efra2_45
- Track 7 : BarrelRoll_42
- Track 8 : Devera_46, Illumine_45, Dole_45
- Track 9 : Tiri_43, Ganymede_43, QuincyRose_41
- Track 10 : Validus_46
- Track 11 : AlishaPH_42, Geraldini_44
- Track 12 : Biglebops_37, Amelie_37, SgtBeansprout_37, Nutello_37
- Track 13 : Megsy_43
- Track 14 : BaghaKamala_41
- Track 15 : LaterM_43, Stinson_43
- Track 16 : Curiosium_45
- Track 17 : Teejan_40, Mdavu_38, Enkosi_40
- Track 18 : Bella96_43
- Track 19 : Angelica_42, Sulley_42
- Track 20 : LeMond_46, Scarlett_46, Oscar_46
- Track 21 : Apocalypse_45
- Track 22 : LindNT_42
- Track 23 : Dartin_44, McMater_44, Richo_44
- Track 24 : Ageofdapage_44
- Track 25 : CheetoDust_41
- Track 26 : LastHope_45
- Track 27 : Chris_44
- Track 28 : Adonis_42
- Track 29 : Urkel_43, SamuelLPlaqson_43, TiniBug_43, DrHayes_43
- Track 30 : Prithvi_43, TreyKay_43
- Track 31 : Beezoo_44
- Track 32 : Zavala_43, Mynx_43

- Track 33 : AdepHagia_42
- Track 34 : Torres_40, Nikao_40
- Track 35 : KiSi_46
- Track 36 : Nibb_44
- Track 37 : TingHuaYa_43
- Track 38 : Yunkel11_45, Guanica15_45
- Track 39 : Pokerus_41
- Track 40 : Anaya_44
- Track 41 : MeaningOfLife_43
- Track 42 : Deby_42
- Track 43 : Niklas_44
- Track 44 : Emerson_43
- Track 45 : Shaobing_44, Chavito_45
- Track 46 : MarkPhew_45
- Track 47 : YoureAdopted_41
- Track 48 : CrimD_42
- Track 49 : Murucutumbu_43
- Track 50 : LilPharaoh_37
- Track 51 : TaiwanKao_44
- Track 52 : Peanam_44
- Track 53 : Findley_45
- Track 54 : Strobilo_45
- Track 55 : Doughnut_45
- Track 56 : BoostSeason_45, Mufasa_45
- Track 57 : DismalStressor_45, Milly_45, Marcoliusprime_45, DismalFunk_45
- Track 58 : ZoeJ_44
- Track 59 : Pixie_44
- Track 60 : ShedlockHolmes_45
- Track 61 : Lea83_46
- Track 62 : Hurricane_45
- Track 63 : Neighly_41, Psycho_41
- Track 64 : TribbleTrouble_42
- Track 65 : Pharb_42
- Track 66 : MacnCheese_46
- Track 67 : Keshu_46
- Track 68 : TBond007_44
- Track 69 : Gengar_40
- Track 70 : Agent47_41, ViviJ_40, Collard_40, InvictusManeo_40
- Track 71 : AlleyCat_41, Larva_41, Dadosky_41
- Track 72 : Guillsminger_41, Paola_40, Feyre_40, Miryou_42
- Track 73 : OkiRoe_40
- Track 74 : SoSeph_40, Heftyboy_40
- Track 75 : Edugator_40
- Track 76 : Leston_40, Thyatira_42, Waterfoul_41
- Track 77 : Kratio_39
- Track 78 : Omnicron_43
- Track 79 : Rando14_42
- Track 80 : Unicorn_44, PhelpsODU_44
- Track 81 : Hammy_44, DarthP_44
- Track 82 : Sunflower1121_48
- Track 83 : Applecrisp_44, Ellie_40
- Track 84 : Bryler_45, Cain_45
- Track 85 : November_44

- Track 86 : Ekdilam_41
- Track 87 : Tierra_45
- Track 88 : Krueger_48
- Track 89 : Syra333_47
- Track 90 : SirPhilip_44
- Track 91 : Marshawn_45
- Track 92 : TClif_46
- Track 93 : Yuna_48
- Track 94 : Ximenita_48
- Track 95 : Phrank_45
- Track 96 : Amohnition_44
- Track 97 : Amgine_42
- Track 98 : Fefferhead_42
- Track 99 : Shadow1_47

Summary of Final Annotations (See graph section above for start numbers):

The start number called the most often in the published annotations is 10, it was called in 38 of the 163 non-draft genes in the pham.

Genes that call this "Most Annotated" start:

- ActinUp_42, Asayake_42, Atiba_42, BEEST_42, BGIlluviae_42, BaghaKamala_41, Belladonna_42, Blizzard_42, CREW_42, CallaLilly_44, Clipper_46, Dalmuri_42, DrHayes_43, Durfee_42, Ganymede_43, HedwigODU_42, Inky_42, JAWS_42, Jarvi_42, Jayhawk_43, Jeckyll_42, Lunahalos_42, MeaningOfLife_43, Padfoot_42, Padpat_43, Peel_42, QuincyRose_41, Ramen_42, Rapunzel97_42, SamuelLPlaqsom_43, ShiaSurprise_43, Slimphazie_42, Spock_42, Tachez_42, TiniBug_43, Tiri_43, TruffulaTree_42, Twitch_42, Urkel_43, Veliki_42,

Genes that have the "Most Annotated" start but do not call it:

- Adephegia_42, Ageofdapage_44, BarrelRoll_42, Beezoo_44, Boiiii_42, Capricorn_42, CaseJules_43, CrimD_42, Emerson_43, Homura_42, Hyperbowlee_42, Joy99_42, LaterM_43, Llorens_42, Murucutumbu_43, Piatt_42, Rosmarinus_42, Stinson_43, Topper_42, TribleTrouble_42,

Genes that do not have the "Most Annotated" start:

- Adonis_42, Agent47_41, AlishaPH_42, AlleyCat_41, Amelie_37, Amgine_42, Amohnition_44, Anaya_44, Angelica_42, Apocalypse_45, Applecrisp_44, Bella96_43, Biglebops_37, BoostSeason_45, Bryler_45, Cain_45, Chavito_45, CheetoDust_41, Chris_44, Collard_40, Curiosium_45, Dadosky_41, DarthP_44, Dartin_44, Deby_42, Devera_46, DismalFunk_45, DismalStressor_45, Dole_45, Doughnut_45, Edugator_40, Efra2_45, Ekdilam_41, Ellie_40, Enkosi_40, Fefferhead_42, Feyre_40, Findley_45, Gengar_40, Geraldini_44, Guanica15_45, Guillsminger_41, Hammy_44, Heftyboy_40, Hurricane_45, Illumine_45, InvictusManeo_40, Keshu_46, KiSi_46, Kratio_39, Krueger_48, Larva_41, LastHope_45, LeMond_46, Lea83_46, Leston_40, LilPharaoh_37, LindNT_42, MacnCheese_46, Marcoliusprime_45, MarkPhew_45, Marshawn_45, McMater_44, Mdavu_38, Megsy_43, Milly_45, Miryou_42, Mufasa_45, Mynx_43, Neighly_41, Nibb_44, Nikao_40, Niklas_44, November_44, Nutello_37, OkiRoe_40, Omnicron_43, Oscar_46, Paola_40, Peanam_44, Pharb_42, PhelpsODU_44, Phrank_45, Pixie_44, Pokerus_41, Prithvi_43, Psycho_41,

Rando14_42, Richo_44, Scarlett_46, SgtBeansprout_37, Shadow1_47, Shaobing_44, ShedlockHolmes_45, SirPhilip_44, SoSeph_40, Strobilo_45, Sulley_42, Sunflower1121_48, Syra333_47, TBond007_44, TClif_46, TaiwanKao_44, Teejan_40, Thyatira_42, Tierra_45, TingHuaYa_43, Torres_40, TreyKay_43, Unicorn_44, Validus_46, ViviJ_40, Waterfoul_41, Ximenita_48, YoureAdopted_41, Yuna_48, Yunkel11_45, Zavala_43, ZoeJ_44,

Summary by start number:

Start 8:

- Found in 1 of 179 (0.6%) of genes in pham
- Manual Annotations of this start: 1 of 163
- Called 100.0% of time when present
- Phage (with cluster) where this start called: Beezoo_44 (K1),

Start 10:

- Found in 60 of 179 (33.5%) of genes in pham
- Manual Annotations of this start: 38 of 163
- Called 66.7% of time when present
- Phage (with cluster) where this start called: ActinUp_42 (K1), Asayake_42 (K1), Atiba_42 (K1), BEEST_42 (K1), BGIlluviae_42 (K1), BaghaKamala_41 (K1), Belladonna_42 (K1), Blizzard_42 (K1), CREW_42 (K1), CallaLilly_44 (K1), Clipper_46 (K1), Dalmuri_42 (K1), DrHayes_43 (K1), Durfee_42 (K1), Ganymede_43 (K1), HedwigODU_42 (K1), Inky_42 (K1), JAWS_42 (K1), Jarvi_42 (K1), Jayhawk_43 (K1), Jeckyll_42 (K1), Lunahalos_42 (K1), MeaningOfLife_43 (K1), Padfoot_42 (K1), Padpat_43 (K1), Peel_42 (K1), QuincyRose_41 (K1), Ramen_42 (K1), Rapunzel97_42 (K1), SamuelLPlaqson_43 (K1), ShiaSurprise_43 (K1), Slimphazie_42 (K1), Spock_42 (K1), Tachez_42 (K1), TiniBug_43 (K1), Tiri_43 (K1), TruffulaTree_42 (K1), Twitch_42 (K1), Urkel_43 (K1), Veliki_42 (K1),

Start 11:

- Found in 18 of 179 (10.1%) of genes in pham
- Manual Annotations of this start: 8 of 163
- Called 44.4% of time when present
- Phage (with cluster) where this start called: AlishaPH_42 (K1), Anaya_44 (K1), Angelica_42 (K1), CheetoDust_41 (K1), Geraldini_44 (K1), LindNT_42 (K1), Sulley_42 (K1), YoureAdopted_41 (K1),

Start 13:

- Found in 37 of 179 (20.7%) of genes in pham
- Manual Annotations of this start: 2 of 163
- Called 5.4% of time when present
- Phage (with cluster) where this start called: Adephagia_42 (K1), Murucutumbu_43 (K1),

Start 14:

- Found in 6 of 179 (3.4%) of genes in pham
- Manual Annotations of this start: 2 of 163
- Called 50.0% of time when present
- Phage (with cluster) where this start called: Edugator_40 (K5), Neighly_41 (K3), Psycho_41 (K5),

Start 16:

- Found in 10 of 179 (5.6%) of genes in pham
- Manual Annotations of this start: 1 of 163
- Called 20.0% of time when present
- Phage (with cluster) where this start called: Nikao_40 (K1), Torres_40 (K1),

Start 17:

- Found in 11 of 179 (6.1%) of genes in pham
- Manual Annotations of this start: 6 of 163
- Called 54.5% of time when present
- Phage (with cluster) where this start called: Keshu_46 (K3), MacnCheese_46 (K3), MarkPhew_45 (K1), Pixie_44 (K3), ShedlockHolmes_45 (K3), TribbleTrouble_42 (K3),

Start 18:

- Found in 78 of 179 (43.6%) of genes in pham
- Manual Annotations of this start: 2 of 163
- Called 2.6% of time when present
- Phage (with cluster) where this start called: Ageofdapage_44 (K1), Apocalypse_45 (K1),

Start 20:

- Found in 25 of 179 (14.0%) of genes in pham
- Manual Annotations of this start: 21 of 163
- Called 88.0% of time when present
- Phage (with cluster) where this start called: Agent47_41 (K5), AlleyCat_41 (K5), Collard_40 (K5), Dadosky_41 (K5), Feyre_40 (K5), Gengar_40 (K5), Guillsminger_41 (K5), Heftyboy_40 (K5), InvictusManeo_40 (K5), Kratio_39 (K5), Larva_41 (K5), Leston_40 (K5), Miryou_42 (K5), OkiRoe_40 (K5), Omnicron_43 (K5), Paola_40 (K5), Rando14_42 (K5), SoSeph_40 (K5), Thyatira_42 (K5), ViviJ_40 (K5), Waterfoul_41 (K5), ZoeJ_44 (K2),

Start 21:

- Found in 8 of 179 (4.5%) of genes in pham
- Manual Annotations of this start: 8 of 163
- Called 100.0% of time when present
- Phage (with cluster) where this start called: BoostSeason_45 (K2), DismalFunk_45 (K2), DismalStressor_45 (K2), Findley_45 (K2), Marcoliusprime_45 (K2), Milly_45 (K2), Mufasa_45 (K2), Strobilo_45 (K2),

Start 22:

- Found in 83 of 179 (46.4%) of genes in pham
- Manual Annotations of this start: 22 of 163
- Called 28.9% of time when present
- Phage (with cluster) where this start called: Adonis_42 (K1), BarrelRoll_42 (K1), Bella96_43 (K1), Boiiii_42 (K1), Capricorn_42 (K1), CaseJules_43 (K1), Deby_42 (K1), Devera_46 (K1), Dole_45 (K1), Doughnut_45 (K2), Homura_42 (K1), Illumine_45 (K1), Joy99_42 (K1), LaterM_43 (K1), Llorens_42 (K1), Marshawn_45 (K6), Megsy_43 (K1), Mynx_43 (K1), Pokerus_41 (K1), Prithvi_43 (K1), Stinson_43 (K1), TaiwanKao_44 (K1), TreyKay_43 (K1), Zavala_43 (K1),

Start 23:

- Found in 19 of 179 (10.6%) of genes in pham
- Manual Annotations of this start: 12 of 163
- Called 89.5% of time when present

- Phage (with cluster) where this start called: Amelie_37 (K1), Binglebops_37 (K1), Chavito_45 (K1), Dartin_44 (K1), Enkosi_40 (K1), LilPharaoh_37 (K1), McMater_44 (K1), Mdavu_38 (K1), Niklas_44 (K1), Nutello_37 (K1), Peanam_44 (K1), Richo_44 (K1), SgtBeansprout_37 (K1), Shaobing_44 (K1), TClif_46 (K6), Teejan_40 (K1), Validus_46 (K1),

Start 24:

- Found in 2 of 179 (1.1%) of genes in pham
- Manual Annotations of this start: 1 of 163
- Called 50.0% of time when present
- Phage (with cluster) where this start called: Chris_44 (K1),

Start 25:

- Found in 7 of 179 (3.9%) of genes in pham
- Manual Annotations of this start: 1 of 163
- Called 14.3% of time when present
- Phage (with cluster) where this start called: TBond007_44 (K3),

Start 26:

- Found in 30 of 179 (16.8%) of genes in pham
- Manual Annotations of this start: 18 of 163
- Called 63.3% of time when present
- Phage (with cluster) where this start called: Amohnition_44 (K6), Bryler_45 (K6), Cain_45 (K6), DarthP_44 (K6), Ekdilam_41 (K6), Hammy_44 (K6), Hurricane_45 (K3), Krueger_48 (K6), Lea83_46 (K3), Pharb_42 (K3), PhelpsODU_44 (K6), Phrank_45 (K6), Shadow1_47 (K6), SirPhilip_44 (K6), Syra333_47 (K6), Tierra_45 (K6), Unicorn_44 (K6), Ximenita_48 (K6), Yuna_48 (K6),

Start 27:

- Found in 1 of 179 (0.6%) of genes in pham
- Manual Annotations of this start: 1 of 163
- Called 100.0% of time when present
- Phage (with cluster) where this start called: KiSi_46 (K1),

Start 29:

- Found in 18 of 179 (10.1%) of genes in pham
- Manual Annotations of this start: 12 of 163
- Called 77.8% of time when present
- Phage (with cluster) where this start called: Amgine_42 (K6), Applecrisp_44 (K6), Curiosium_45 (K1), Efra2_45 (K1), Ellie_40 (K6), Fefferhead_42 (K6), Guanica15_45 (K1), LastHope_45 (K1), LeMond_46 (K1), Nibb_44 (K1), Oscar_46 (K1), Scarlett_46 (K1), TingHuaYa_43 (K1), Yunkel11_45 (K1),

Start 30:

- Found in 10 of 179 (5.6%) of genes in pham
- No Manual Annotations of this start.
- Called 10.0% of time when present
- Phage (with cluster) where this start called: November_44 (K6),

Start 33:

- Found in 62 of 179 (34.6%) of genes in pham
- Manual Annotations of this start: 6 of 163
- Called 9.7% of time when present

- Phage (with cluster) where this start called: CrimD_42 (K1), Emerson_43 (K1), Hyperbowlee_42 (K1), Piatt_42 (K1), Rosmarinus_42 (K1), Topper_42 (K1),

Start 45:

- Found in 40 of 179 (22.3%) of genes in pham
- Manual Annotations of this start: 1 of 163
- Called 2.5% of time when present
- Phage (with cluster) where this start called: Sunflower1121_48 (K6),

Summary by clusters:

There are 5 clusters represented in this pham: K3, K2, K1, K6, K5,

Info for manual annotations of cluster K1:

- Start number 8 was manually annotated 1 time for cluster K1.
- Start number 10 was manually annotated 38 times for cluster K1.
- Start number 11 was manually annotated 8 times for cluster K1.
- Start number 13 was manually annotated 2 times for cluster K1.
- Start number 16 was manually annotated 1 time for cluster K1.
- Start number 17 was manually annotated 1 time for cluster K1.
- Start number 18 was manually annotated 2 times for cluster K1.
- Start number 22 was manually annotated 21 times for cluster K1.
- Start number 23 was manually annotated 11 times for cluster K1.
- Start number 24 was manually annotated 1 time for cluster K1.
- Start number 27 was manually annotated 1 time for cluster K1.
- Start number 29 was manually annotated 9 times for cluster K1.
- Start number 33 was manually annotated 6 times for cluster K1.

Info for manual annotations of cluster K2:

- Start number 20 was manually annotated 1 time for cluster K2.
- Start number 21 was manually annotated 8 times for cluster K2.

Info for manual annotations of cluster K3:

- Start number 17 was manually annotated 5 times for cluster K3.
- Start number 25 was manually annotated 1 time for cluster K3.
- Start number 26 was manually annotated 2 times for cluster K3.

Info for manual annotations of cluster K5:

- Start number 14 was manually annotated 2 times for cluster K5.
- Start number 20 was manually annotated 20 times for cluster K5.

Info for manual annotations of cluster K6:

- Start number 22 was manually annotated 1 time for cluster K6.
- Start number 23 was manually annotated 1 time for cluster K6.
- Start number 26 was manually annotated 16 times for cluster K6.
- Start number 29 was manually annotated 3 times for cluster K6.
- Start number 45 was manually annotated 1 time for cluster K6.

Gene Information:

Gene: ActinUp_42 Start: 34574, Stop: 33672, Start Num: 10

Candidate Starts for ActinUp_42:

(Start: 10 @34574 has 38 MA's), (Start: 18 @34517 has 2 MA's), (Start: 22 @34511 has 22 MA's), (28, 34487), (Start: 33 @34466 has 6 MA's), (41, 34442), (57, 34352), (60, 34343), (76, 34238), (77, 34235), (78, 34226), (79, 34208), (81, 34202), (93, 34154), (98, 34136), (104, 34106), (108, 34094), (114, 34085), (130, 34028), (134, 34013), (144, 33956), (157, 33905), (162, 33890), (168, 33863), (174, 33842), (178, 33830),

Gene: Adephagia_42 Start: 34550, Stop: 33669, Start Num: 13

Candidate Starts for Adephagia_42:

(Start: 10 @34571 has 38 MA's), (Start: 13 @34550 has 2 MA's), (Start: 18 @34514 has 2 MA's), (Start: 22 @34508 has 22 MA's), (28, 34484), (Start: 33 @34463 has 6 MA's), (41, 34439), (57, 34349), (60, 34340), (76, 34235), (77, 34232), (78, 34223), (79, 34205), (81, 34199), (93, 34151), (98, 34133), (104, 34103), (108, 34091), (114, 34082), (130, 34025), (134, 34010), (144, 33953), (157, 33902), (162, 33887), (168, 33860), (174, 33839), (178, 33827),

Gene: Adonis_42 Start: 34806, Stop: 33967, Start Num: 22

Candidate Starts for Adonis_42:

(Start: 11 @34860 has 8 MA's), (Start: 18 @34812 has 2 MA's), (Start: 22 @34806 has 22 MA's), (28, 34782), (34, 34758), (41, 34737), (57, 34647), (60, 34638), (76, 34533), (77, 34530), (78, 34521), (79, 34503), (91, 34458), (93, 34449), (98, 34431), (104, 34401), (108, 34389), (114, 34380), (134, 34308), (144, 34251), (162, 34185), (174, 34137), (178, 34125), (185, 34086),

Gene: Agent47_41 Start: 34000, Stop: 33149, Start Num: 20

Candidate Starts for Agent47_41:

(Start: 20 @34000 has 21 MA's), (51, 33871), (61, 33829), (76, 33730), (78, 33718), (87, 33670), (94, 33640), (99, 33622), (107, 33586), (145, 33427), (148, 33412), (152, 33400), (160, 33367), (164, 33358), (169, 33340), (171, 33334), (175, 33319), (185, 33271), (189, 33250),

Gene: Ageofdapage_44 Start: 35489, Stop: 34644, Start Num: 18

Candidate Starts for Ageofdapage_44:

(Start: 10 @35546 has 38 MA's), (Start: 13 @35525 has 2 MA's), (Start: 18 @35489 has 2 MA's), (Start: 22 @35483 has 22 MA's), (28, 35459), (Start: 33 @35438 has 6 MA's), (34, 35435), (41, 35414), (57, 35324), (60, 35315), (76, 35210), (77, 35207), (78, 35198), (79, 35180), (91, 35135), (93, 35126), (108, 35066), (114, 35057), (134, 34985), (144, 34928), (146, 34919), (162, 34862), (169, 34832), (174, 34814), (178, 34802), (192, 34712),

Gene: AlishaPH_42 Start: 34836, Stop: 33943, Start Num: 11

Candidate Starts for AlishaPH_42:

(Start: 11 @34836 has 8 MA's), (Start: 18 @34788 has 2 MA's), (Start: 22 @34782 has 22 MA's), (28, 34758), (41, 34713), (57, 34623), (60, 34614), (76, 34509), (77, 34506), (78, 34497), (79, 34479), (81, 34473), (93, 34425), (98, 34407), (104, 34377), (108, 34365), (114, 34356), (134, 34284), (144, 34227), (162, 34161), (168, 34134), (174, 34113), (178, 34101),

Gene: AlleyCat_41 Start: 33853, Stop: 33002, Start Num: 20

Candidate Starts for AlleyCat_41:

(7, 33955), (Start: 14 @33889 has 2 MA's), (Start: 20 @33853 has 21 MA's), (32, 33808), (49, 33730), (61, 33682), (76, 33583), (78, 33571), (87, 33523), (94, 33493), (99, 33475), (107, 33439), (109, 33433), (117, 33406), (145, 33280), (148, 33265), (152, 33253), (164, 33211), (175, 33172), (185, 33124),

Gene: Amelie_37 Start: 34082, Stop: 33180, Start Num: 23

Candidate Starts for Amelie_37:

(Start: 16 @34100 has 1 MA's), (Start: 23 @34082 has 12 MA's), (35, 34034), (42, 34007), (Start: 45 @33989 has 1 MA's), (50, 33956), (53, 33938), (55, 33932), (57, 33920), (70, 33836), (73, 33821), (76, 33806), (82, 33764), (90, 33728), (95, 33710), (105, 33668), (116, 33650), (127, 33611), (142, 33542), (149, 33503), (154, 33488), (167, 33434), (173, 33416), (178, 33398), (185, 33359), (194, 33293), (212, 33203),

Gene: Amgine_42 Start: 35522, Stop: 34689, Start Num: 29

Candidate Starts for Amgine_42:

(Start: 29 @35522 has 12 MA's), (40, 35483), (Start: 45 @35459 has 1 MA's), (49, 35429), (86, 35228), (92, 35204), (94, 35195), (97, 35183), (99, 35177), (101, 35165), (112, 35132), (121, 35105), (138, 35042), (140, 35030), (156, 34946), (175, 34877), (180, 34859), (182, 34847), (185, 34829),

Gene: Amohnition_44 Start: 35581, Stop: 34757, Start Num: 26

Candidate Starts for Amohnition_44:

(Start: 26 @35581 has 18 MA's), (56, 35452), (64, 35425), (66, 35413), (86, 35281), (91, 35260), (92, 35257), (94, 35248), (97, 35236), (99, 35230), (101, 35218), (105, 35203), (123, 35161), (140, 35092), (156, 35011), (168, 34966), (176, 34939), (185, 34894),

Gene: Anaya_44 Start: 35172, Stop: 34279, Start Num: 11

Candidate Starts for Anaya_44:

(Start: 11 @35172 has 8 MA's), (Start: 18 @35124 has 2 MA's), (Start: 22 @35118 has 22 MA's), (28, 35094), (34, 35070), (41, 35049), (46, 35025), (57, 34959), (60, 34950), (76, 34845), (77, 34842), (78, 34833), (79, 34815), (91, 34770), (93, 34761), (98, 34743), (104, 34713), (108, 34701), (114, 34692), (134, 34620), (144, 34563), (162, 34497), (174, 34449), (178, 34437),

Gene: Angelica_42 Start: 34792, Stop: 33899, Start Num: 11

Candidate Starts for Angelica_42:

(Start: 11 @34792 has 8 MA's), (Start: 18 @34744 has 2 MA's), (Start: 22 @34738 has 22 MA's), (28, 34714), (41, 34669), (60, 34570), (76, 34465), (77, 34462), (78, 34453), (79, 34435), (93, 34381), (98, 34363), (104, 34333), (108, 34321), (114, 34312), (134, 34240), (144, 34183), (162, 34117), (168, 34090), (174, 34069), (178, 34057),

Gene: Apocalypse_45 Start: 35530, Stop: 34685, Start Num: 18

Candidate Starts for Apocalypse_45:

(Start: 11 @35578 has 8 MA's), (Start: 18 @35530 has 2 MA's), (Start: 22 @35524 has 22 MA's), (28, 35500), (41, 35455), (60, 35356), (76, 35251), (77, 35248), (78, 35239), (79, 35221), (93, 35167), (98, 35149), (108, 35107), (114, 35098), (144, 34969), (162, 34903), (178, 34843),

Gene: Applecrisp_44 Start: 35019, Stop: 34186, Start Num: 29

Candidate Starts for Applecrisp_44:

(Start: 29 @35019 has 12 MA's), (40, 34980), (Start: 45 @34956 has 1 MA's), (49, 34926), (86, 34725), (92, 34701), (94, 34692), (97, 34680), (99, 34674), (101, 34662), (112, 34629), (119, 34608), (121, 34602), (125, 34587), (138, 34539), (140, 34527), (175, 34374), (180, 34356), (182, 34344), (185, 34326),

Gene: Asayake_42 Start: 34886, Stop: 33984, Start Num: 10

Candidate Starts for Asayake_42:

(Start: 10 @34886 has 38 MA's), (Start: 13 @34865 has 2 MA's), (Start: 18 @34829 has 2 MA's), (Start: 22 @34823 has 22 MA's), (28, 34799), (Start: 33 @34778 has 6 MA's), (41, 34754), (57, 34664), (60, 34655), (76, 34550), (77, 34547), (78, 34538), (79, 34520), (81, 34514), (93, 34466), (98, 34448), (104, 34418), (108, 34406), (114, 34397), (134, 34325), (144, 34268), (157, 34217), (162, 34202), (168, 34175), (174, 34154), (178, 34142),

Gene: Atiba_42 Start: 34534, Stop: 33632, Start Num: 10

Candidate Starts for Atiba_42:

(Start: 10 @34534 has 38 MA's), (Start: 18 @34477 has 2 MA's), (Start: 22 @34471 has 22 MA's), (28, 34447), (Start: 33 @34426 has 6 MA's), (41, 34402), (57, 34312), (60, 34303), (76, 34198), (77, 34195), (78, 34186), (79, 34168), (81, 34162), (93, 34114), (98, 34096), (104, 34066), (108, 34054), (114, 34045), (130, 33988), (134, 33973), (144, 33916), (157, 33865), (162, 33850), (168, 33823), (174, 33802), (178, 33790),

Gene: BEEST_42 Start: 34886, Stop: 33984, Start Num: 10

Candidate Starts for BEEST_42:

(Start: 10 @34886 has 38 MA's), (Start: 13 @34865 has 2 MA's), (Start: 18 @34829 has 2 MA's), (Start: 22 @34823 has 22 MA's), (28, 34799), (Start: 33 @34778 has 6 MA's), (41, 34754), (57, 34664), (60, 34655), (76, 34550), (77, 34547), (78, 34538), (79, 34520), (81, 34514), (93, 34466), (98, 34448), (104, 34418), (108, 34406), (114, 34397), (134, 34325), (144, 34268), (157, 34217), (162, 34202), (168, 34175), (174, 34154), (178, 34142),

Gene: BGlluviae_42 Start: 34689, Stop: 33787, Start Num: 10

Candidate Starts for BGlluviae_42:

(Start: 10 @34689 has 38 MA's), (Start: 13 @34668 has 2 MA's), (Start: 18 @34632 has 2 MA's), (Start: 22 @34626 has 22 MA's), (28, 34602), (Start: 33 @34581 has 6 MA's), (41, 34557), (57, 34467), (60, 34458), (76, 34353), (77, 34350), (78, 34341), (79, 34323), (81, 34317), (93, 34269), (98, 34251), (104, 34221), (108, 34209), (114, 34200), (134, 34128), (144, 34071), (157, 34020), (162, 34005), (168, 33978), (174, 33957), (178, 33945),

Gene: BaghaKamala_41 Start: 34011, Stop: 33109, Start Num: 10

Candidate Starts for BaghaKamala_41:

(Start: 10 @34011 has 38 MA's), (Start: 18 @33954 has 2 MA's), (Start: 22 @33948 has 22 MA's), (28, 33924), (41, 33879), (46, 33855), (57, 33789), (60, 33780), (76, 33675), (77, 33672), (78, 33663), (79, 33645), (81, 33639), (93, 33591), (98, 33573), (104, 33543), (108, 33531), (114, 33522), (134, 33450), (144, 33393), (162, 33327), (168, 33300), (174, 33279), (178, 33267),

Gene: BarrelRoll_42 Start: 34494, Stop: 33655, Start Num: 22

Candidate Starts for BarrelRoll_42:

(Start: 10 @34557 has 38 MA's), (Start: 18 @34500 has 2 MA's), (Start: 22 @34494 has 22 MA's), (28, 34470), (Start: 33 @34449 has 6 MA's), (41, 34425), (57, 34335), (60, 34326), (76, 34221), (77, 34218), (78, 34209), (79, 34191), (81, 34185), (93, 34137), (98, 34119), (104, 34089), (108, 34077), (114, 34068), (130, 34011), (134, 33996), (144, 33939), (157, 33888), (162, 33873), (168, 33846), (178, 33813),

Gene: Beezoo_44 Start: 35566, Stop: 34634, Start Num: 8

Candidate Starts for Beezoo_44:

(Start: 8 @35566 has 1 MA's), (Start: 10 @35536 has 38 MA's), (Start: 13 @35515 has 2 MA's), (Start: 18 @35479 has 2 MA's), (Start: 22 @35473 has 22 MA's), (28, 35449), (41, 35404), (46, 35380), (57, 35314), (60, 35305), (76, 35200), (77, 35197), (78, 35188), (91, 35125), (93, 35116), (98, 35098), (104, 35068), (108, 35056), (114, 35047), (144, 34918), (157, 34867), (162, 34852), (168, 34825), (174, 34804), (178, 34792),

Gene: Bella96_43 Start: 35364, Stop: 34525, Start Num: 22

Candidate Starts for Bella96_43:

(Start: 11 @35418 has 8 MA's), (Start: 18 @35370 has 2 MA's), (Start: 22 @35364 has 22 MA's), (28, 35340), (31, 35325), (34, 35316), (41, 35295), (46, 35271), (49, 35244), (57, 35205), (60, 35196), (76, 35091), (77, 35088), (79, 35061), (81, 35055), (86, 35037), (91, 35016), (93, 35007), (98, 34989), (108, 34947), (114, 34938), (134, 34866), (144, 34809), (157, 34758), (162, 34743), (174, 34695), (178,

34683), (192, 34593),

Gene: Belladonna_42 Start: 34689, Stop: 33787, Start Num: 10

Candidate Starts for Belladonna_42:

(Start: 10 @34689 has 38 MA's), (Start: 13 @34668 has 2 MA's), (Start: 18 @34632 has 2 MA's), (Start: 22 @34626 has 22 MA's), (28, 34602), (Start: 33 @34581 has 6 MA's), (41, 34557), (57, 34467), (60, 34458), (76, 34353), (77, 34350), (78, 34341), (79, 34323), (81, 34317), (93, 34269), (98, 34251), (104, 34221), (108, 34209), (114, 34200), (134, 34128), (144, 34071), (157, 34020), (162, 34005), (168, 33978), (174, 33957), (178, 33945),

Gene: Biglebops_37 Start: 34082, Stop: 33180, Start Num: 23

Candidate Starts for Biglebops_37:

(Start: 16 @34100 has 1 MA's), (Start: 23 @34082 has 12 MA's), (35, 34034), (42, 34007), (Start: 45 @33989 has 1 MA's), (50, 33956), (53, 33938), (55, 33932), (57, 33920), (70, 33836), (73, 33821), (76, 33806), (82, 33764), (90, 33728), (95, 33710), (105, 33668), (116, 33650), (127, 33611), (142, 33542), (149, 33503), (154, 33488), (167, 33434), (173, 33416), (178, 33398), (185, 33359), (194, 33293), (212, 33203),

Gene: Blizzard_42 Start: 34886, Stop: 33984, Start Num: 10

Candidate Starts for Blizzard_42:

(Start: 10 @34886 has 38 MA's), (Start: 13 @34865 has 2 MA's), (Start: 18 @34829 has 2 MA's), (Start: 22 @34823 has 22 MA's), (28, 34799), (Start: 33 @34778 has 6 MA's), (41, 34754), (57, 34664), (60, 34655), (76, 34550), (77, 34547), (78, 34538), (79, 34520), (81, 34514), (93, 34466), (98, 34448), (104, 34418), (108, 34406), (114, 34397), (134, 34325), (144, 34268), (157, 34217), (162, 34202), (168, 34175), (174, 34154), (178, 34142),

Gene: Boiiii_42 Start: 34825, Stop: 33986, Start Num: 22

Candidate Starts for Boiiii_42:

(Start: 10 @34888 has 38 MA's), (Start: 13 @34867 has 2 MA's), (Start: 18 @34831 has 2 MA's), (Start: 22 @34825 has 22 MA's), (28, 34801), (Start: 33 @34780 has 6 MA's), (41, 34756), (57, 34666), (60, 34657), (76, 34552), (77, 34549), (78, 34540), (79, 34522), (81, 34516), (93, 34468), (98, 34450), (104, 34420), (108, 34408), (114, 34399), (134, 34327), (144, 34270), (157, 34219), (162, 34204), (168, 34177), (174, 34156), (178, 34144),

Gene: BoostSeason_45 Start: 36162, Stop: 35314, Start Num: 21

Candidate Starts for BoostSeason_45:

(Start: 21 @36162 has 8 MA's), (30, 36129), (63, 35979), (76, 35886), (81, 35847), (83, 35841), (87, 35826), (94, 35796), (98, 35781), (116, 35736), (185, 35451), (190, 35421),

Gene: Bryler_45 Start: 34405, Stop: 33539, Start Num: 26

Candidate Starts for Bryler_45:

(Start: 26 @34405 has 18 MA's), (46, 34333), (70, 34189), (77, 34156), (86, 34105), (92, 34081), (94, 34072), (97, 34060), (130, 33955), (135, 33937), (138, 33925), (140, 33913), (145, 33874), (156, 33832), (177, 33757), (182, 33733), (202, 33607),

Gene: CREW_42 Start: 34689, Stop: 33787, Start Num: 10

Candidate Starts for CREW_42:

(Start: 10 @34689 has 38 MA's), (Start: 13 @34668 has 2 MA's), (Start: 18 @34632 has 2 MA's), (Start: 22 @34626 has 22 MA's), (28, 34602), (Start: 33 @34581 has 6 MA's), (41, 34557), (57, 34467), (60, 34458), (76, 34353), (77, 34350), (78, 34341), (79, 34323), (81, 34317), (93, 34269), (98, 34251), (104, 34221), (108, 34209), (114, 34200), (134, 34128), (144, 34071), (157, 34020), (162, 34005), (168, 33978), (174, 33957), (178, 33945),

Gene: Cain_45 Start: 34393, Stop: 33527, Start Num: 26

Candidate Starts for Cain_45:

(Start: 26 @34393 has 18 MA's), (46, 34321), (70, 34177), (77, 34144), (86, 34093), (92, 34069), (94, 34060), (97, 34048), (130, 33943), (135, 33925), (138, 33913), (140, 33901), (145, 33862), (156, 33820), (177, 33745), (182, 33721), (202, 33595),

Gene: CallaLilly_44 Start: 34612, Stop: 33710, Start Num: 10

Candidate Starts for CallaLilly_44:

(Start: 10 @34612 has 38 MA's), (Start: 13 @34591 has 2 MA's), (Start: 18 @34555 has 2 MA's), (Start: 22 @34549 has 22 MA's), (28, 34525), (Start: 33 @34504 has 6 MA's), (41, 34480), (57, 34390), (60, 34381), (76, 34276), (77, 34273), (78, 34264), (79, 34246), (81, 34240), (93, 34192), (98, 34174), (104, 34144), (108, 34132), (114, 34123), (134, 34051), (144, 33994), (157, 33943), (162, 33928), (168, 33901), (174, 33880), (178, 33868),

Gene: Capricorn_42 Start: 34626, Stop: 33787, Start Num: 22

Candidate Starts for Capricorn_42:

(Start: 10 @34689 has 38 MA's), (Start: 13 @34668 has 2 MA's), (Start: 18 @34632 has 2 MA's), (Start: 22 @34626 has 22 MA's), (28, 34602), (Start: 33 @34581 has 6 MA's), (41, 34557), (57, 34467), (60, 34458), (76, 34353), (77, 34350), (78, 34341), (79, 34323), (81, 34317), (93, 34269), (98, 34251), (104, 34221), (108, 34209), (114, 34200), (134, 34128), (144, 34071), (157, 34020), (162, 34005), (168, 33978), (174, 33957), (178, 33945),

Gene: CaseJules_43 Start: 34823, Stop: 33984, Start Num: 22

Candidate Starts for CaseJules_43:

(Start: 10 @34886 has 38 MA's), (Start: 13 @34865 has 2 MA's), (Start: 18 @34829 has 2 MA's), (Start: 22 @34823 has 22 MA's), (28, 34799), (Start: 33 @34778 has 6 MA's), (41, 34754), (57, 34664), (60, 34655), (76, 34550), (77, 34547), (78, 34538), (79, 34520), (81, 34514), (93, 34466), (98, 34448), (104, 34418), (108, 34406), (114, 34397), (134, 34325), (144, 34268), (157, 34217), (162, 34202), (168, 34175), (174, 34154), (178, 34142),

Gene: Chavito_45 Start: 35800, Stop: 34844, Start Num: 23

Candidate Starts for Chavito_45:

(Start: 23 @35800 has 12 MA's), (Start: 26 @35782 has 18 MA's), (30, 35770), (39, 35740), (42, 35725), (44, 35713), (Start: 45 @35707 has 1 MA's), (47, 35695), (57, 35638), (67, 35593), (69, 35563), (70, 35554), (73, 35539), (76, 35524), (82, 35482), (85, 35467), (94, 35431), (116, 35377), (119, 35365), (121, 35359), (150, 35227), (155, 35209), (177, 35131), (185, 35089), (201, 34999),

Gene: CheetoDust_41 Start: 34052, Stop: 33159, Start Num: 11

Candidate Starts for CheetoDust_41:

(Start: 11 @34052 has 8 MA's), (Start: 18 @34004 has 2 MA's), (Start: 22 @33998 has 22 MA's), (28, 33974), (34, 33950), (41, 33929), (60, 33830), (76, 33725), (79, 33695), (91, 33650), (93, 33641), (98, 33623), (104, 33593), (108, 33581), (114, 33572), (120, 33548), (134, 33500), (162, 33377), (174, 33329), (180, 33308),

Gene: Chris_44 Start: 35259, Stop: 34477, Start Num: 24

Candidate Starts for Chris_44:

(Start: 24 @35259 has 1 MA's), (Start: 29 @35244 has 12 MA's), (Start: 45 @35181 has 1 MA's), (50, 35148), (51, 35145), (80, 34971), (92, 34926), (93, 34920), (94, 34917), (97, 34905), (101, 34887), (105, 34872), (125, 34821), (143, 34731), (144, 34725), (146, 34716), (157, 34674), (176, 34608), (180, 34593), (182, 34581), (193, 34518), (199, 34482),

Gene: Clipper_46 Start: 35207, Stop: 34305, Start Num: 10

Candidate Starts for Clipper_46:

(Start: 10 @35207 has 38 MA's), (Start: 13 @35186 has 2 MA's), (Start: 18 @35150 has 2 MA's), (Start: 22 @35144 has 22 MA's), (28, 35120), (Start: 33 @35099 has 6 MA's), (41, 35075), (57, 34985), (60, 34976), (76, 34871), (77, 34868), (78, 34859), (79, 34841), (81, 34835), (93, 34787), (98, 34769), (104, 34739), (108, 34727), (114, 34718), (134, 34646), (144, 34589), (157, 34538), (162, 34523), (168, 34496), (174, 34475), (178, 34463),

Gene: Collard_40 Start: 33961, Stop: 33110, Start Num: 20

Candidate Starts for Collard_40:

(Start: 20 @33961 has 21 MA's), (51, 33832), (61, 33790), (76, 33691), (78, 33679), (87, 33631), (94, 33601), (99, 33583), (107, 33547), (145, 33388), (148, 33373), (152, 33361), (160, 33328), (164, 33319), (169, 33301), (171, 33295), (175, 33280), (185, 33232), (189, 33211),

Gene: CrimD_42 Start: 34709, Stop: 33915, Start Num: 33

Candidate Starts for CrimD_42:

(Start: 10 @34817 has 38 MA's), (Start: 13 @34796 has 2 MA's), (Start: 18 @34760 has 2 MA's), (Start: 22 @34754 has 22 MA's), (28, 34730), (Start: 33 @34709 has 6 MA's), (41, 34685), (46, 34661), (57, 34595), (60, 34586), (76, 34481), (77, 34478), (78, 34469), (79, 34451), (93, 34397), (98, 34379), (104, 34349), (108, 34337), (114, 34328), (134, 34256), (144, 34199), (157, 34148), (162, 34133), (168, 34106), (174, 34085), (178, 34073),

Gene: Curiosium_45 Start: 33580, Stop: 32717, Start Num: 29

Candidate Starts for Curiosium_45:

(6, 33718), (Start: 29 @33580 has 12 MA's), (54, 33463), (65, 33421), (67, 33403), (84, 33286), (86, 33280), (88, 33271), (90, 33262), (94, 33247), (97, 33238), (122, 33160), (125, 33148), (126, 33145), (141, 33076), (145, 33046), (146, 33040), (156, 33004), (157, 32998), (174, 32911), (184, 32860), (185, 32854), (203, 32728),

Gene: Dadosky_41 Start: 33855, Stop: 33004, Start Num: 20

Candidate Starts for Dadosky_41:

(7, 33957), (Start: 14 @33891 has 2 MA's), (Start: 20 @33855 has 21 MA's), (32, 33810), (49, 33732), (61, 33684), (76, 33585), (78, 33573), (87, 33525), (94, 33495), (99, 33477), (107, 33441), (109, 33435), (117, 33408), (145, 33282), (148, 33267), (152, 33255), (164, 33213), (175, 33174), (185, 33126),

Gene: Dalmuri_42 Start: 34689, Stop: 33787, Start Num: 10

Candidate Starts for Dalmuri_42:

(Start: 10 @34689 has 38 MA's), (Start: 13 @34668 has 2 MA's), (Start: 18 @34632 has 2 MA's), (Start: 22 @34626 has 22 MA's), (28, 34602), (Start: 33 @34581 has 6 MA's), (41, 34557), (57, 34467), (60, 34458), (76, 34353), (77, 34350), (78, 34341), (79, 34323), (81, 34317), (93, 34269), (98, 34251), (104, 34221), (108, 34209), (114, 34200), (134, 34128), (144, 34071), (157, 34020), (162, 34005), (168, 33978), (174, 33957), (178, 33945),

Gene: DarthP_44 Start: 35487, Stop: 34669, Start Num: 26

Candidate Starts for DarthP_44:

(Start: 26 @35487 has 18 MA's), (47, 35406), (56, 35358), (64, 35331), (86, 35187), (92, 35163), (94, 35154), (97, 35142), (99, 35136), (101, 35124), (123, 35067), (135, 35022), (140, 34998), (151, 34935), (156, 34917), (158, 34908), (172, 34860), (174, 34851), (185, 34800), (202, 34704),

Gene: Dartin_44 Start: 35155, Stop: 34205, Start Num: 23

Candidate Starts for Dartin_44:

(4, 35275), (5, 35272), (Start: 23 @35155 has 12 MA's), (35, 35107), (39, 35095), (44, 35068), (Start: 45 @35062 has 1 MA's), (47, 35050), (67, 34948), (70, 34909), (73, 34894), (76, 34879), (92, 34795), (94, 34786), (106, 34750), (135, 34669), (150, 34588), (155, 34570), (177, 34492), (178, 34489), (185,

34450), (201, 34360), (211, 34252),

Gene: Deby_42 Start: 34754, Stop: 33915, Start Num: 22

Candidate Starts for Deby_42:

(Start: 11 @34808 has 8 MA's), (Start: 18 @34760 has 2 MA's), (Start: 22 @34754 has 22 MA's), (28, 34730), (41, 34685), (60, 34586), (76, 34481), (77, 34478), (78, 34469), (79, 34451), (93, 34397), (98, 34379), (104, 34349), (108, 34337), (114, 34328), (134, 34256), (144, 34199), (162, 34133), (168, 34106), (174, 34085), (178, 34073),

Gene: Devera_46 Start: 35291, Stop: 34452, Start Num: 22

Candidate Starts for Devera_46:

(Start: 22 @35291 has 22 MA's), (Start: 33 @35246 has 6 MA's), (41, 35222), (46, 35198), (57, 35132), (60, 35123), (62, 35117), (76, 35018), (77, 35015), (78, 35006), (79, 34988), (91, 34943), (93, 34934), (108, 34874), (114, 34865), (134, 34793), (136, 34787), (143, 34742), (144, 34736), (146, 34727), (157, 34685), (162, 34670), (166, 34652), (174, 34622), (178, 34610), (185, 34571),

Gene: DismalFunk_45 Start: 36592, Stop: 35744, Start Num: 21

Candidate Starts for DismalFunk_45:

(Start: 21 @36592 has 8 MA's), (39, 36529), (48, 36478), (58, 36430), (73, 36334), (76, 36319), (83, 36274), (88, 36253), (94, 36229), (113, 36178), (116, 36169), (143, 36049), (145, 36040), (175, 35932), (180, 35914), (181, 35905), (185, 35884),

Gene: DismalStressor_45 Start: 36592, Stop: 35744, Start Num: 21

Candidate Starts for DismalStressor_45:

(Start: 21 @36592 has 8 MA's), (39, 36529), (48, 36478), (58, 36430), (73, 36334), (76, 36319), (83, 36274), (88, 36253), (94, 36229), (113, 36178), (116, 36169), (143, 36049), (145, 36040), (175, 35932), (180, 35914), (181, 35905), (185, 35884),

Gene: Dole_45 Start: 35293, Stop: 34454, Start Num: 22

Candidate Starts for Dole_45:

(Start: 22 @35293 has 22 MA's), (Start: 33 @35248 has 6 MA's), (41, 35224), (46, 35200), (57, 35134), (60, 35125), (62, 35119), (76, 35020), (77, 35017), (78, 35008), (79, 34990), (91, 34945), (93, 34936), (108, 34876), (114, 34867), (134, 34795), (136, 34789), (143, 34744), (144, 34738), (146, 34729), (157, 34687), (162, 34672), (166, 34654), (174, 34624), (178, 34612), (185, 34573),

Gene: Doughnut_45 Start: 36199, Stop: 35345, Start Num: 22

Candidate Starts for Doughnut_45:

(Start: 22 @36199 has 22 MA's), (28, 36175), (38, 36139), (70, 35956), (71, 35953), (73, 35941), (76, 35926), (81, 35887), (94, 35836), (99, 35818), (102, 35803), (113, 35785), (116, 35776), (123, 35752), (126, 35740), (169, 35560), (171, 35554), (179, 35527), (185, 35491), (197, 35410),

Gene: DrHayes_43 Start: 35473, Stop: 34568, Start Num: 10

Candidate Starts for DrHayes_43:

(Start: 10 @35473 has 38 MA's), (Start: 18 @35413 has 2 MA's), (Start: 22 @35407 has 22 MA's), (28, 35383), (31, 35368), (34, 35359), (41, 35338), (46, 35314), (49, 35287), (57, 35248), (60, 35239), (76, 35134), (77, 35131), (79, 35104), (86, 35080), (91, 35059), (93, 35050), (98, 35032), (108, 34990), (114, 34981), (124, 34945), (134, 34909), (144, 34852), (162, 34786), (178, 34726), (192, 34636),

Gene: Durfee_42 Start: 34886, Stop: 33984, Start Num: 10

Candidate Starts for Durfee_42:

(Start: 10 @34886 has 38 MA's), (Start: 13 @34865 has 2 MA's), (Start: 18 @34829 has 2 MA's), (Start: 22 @34823 has 22 MA's), (28, 34799), (Start: 33 @34778 has 6 MA's), (41, 34754), (57, 34664), (60, 34655), (76, 34550), (77, 34547), (78, 34538), (79, 34520), (81, 34514), (93, 34466), (98,

34448), (104, 34418), (108, 34406), (114, 34397), (134, 34325), (144, 34268), (157, 34217), (162, 34202), (168, 34175), (174, 34154), (178, 34142),

Gene: Edugator_40 Start: 34316, Stop: 33429, Start Num: 14

Candidate Starts for Edugator_40:

(7, 34382), (Start: 14 @34316 has 2 MA's), (Start: 20 @34280 has 21 MA's), (32, 34235), (49, 34157), (61, 34109), (72, 34031), (76, 34010), (78, 33998), (87, 33950), (94, 33920), (99, 33902), (107, 33866), (117, 33833), (145, 33707), (148, 33692), (152, 33680), (164, 33638), (175, 33599), (185, 33551),

Gene: Efra2_45 Start: 34522, Stop: 33767, Start Num: 29

Candidate Starts for Efra2_45:

(Start: 29 @34522 has 12 MA's), (64, 34366), (68, 34324), (93, 34192), (94, 34189), (99, 34171), (103, 34147), (105, 34141), (119, 34114), (122, 34105), (123, 34102), (135, 34057), (139, 34042), (140, 34033), (159, 33943), (160, 33940),

Gene: Ekdilam_41 Start: 35048, Stop: 34230, Start Num: 26

Candidate Starts for Ekdilam_41:

(Start: 26 @35048 has 18 MA's), (47, 34967), (56, 34919), (64, 34892), (66, 34880), (77, 34799), (86, 34748), (92, 34724), (94, 34715), (97, 34703), (99, 34697), (101, 34685), (131, 34598), (140, 34559), (152, 34493), (155, 34481), (158, 34469), (168, 34433), (171, 34424), (182, 34379), (185, 34361), (186, 34355),

Gene: Ellie_40 Start: 34710, Stop: 33877, Start Num: 29

Candidate Starts for Ellie_40:

(Start: 29 @34710 has 12 MA's), (40, 34671), (Start: 45 @34647 has 1 MA's), (49, 34617), (86, 34416), (92, 34392), (94, 34383), (97, 34371), (99, 34365), (101, 34353), (112, 34320), (119, 34299), (121, 34293), (125, 34278), (138, 34230), (140, 34218), (175, 34065), (180, 34047), (182, 34035), (185, 34017),

Gene: Emerson_43 Start: 34457, Stop: 33663, Start Num: 33

Candidate Starts for Emerson_43:

(Start: 10 @34565 has 38 MA's), (Start: 18 @34508 has 2 MA's), (Start: 22 @34502 has 22 MA's), (28, 34478), (Start: 33 @34457 has 6 MA's), (41, 34433), (57, 34343), (60, 34334), (76, 34229), (77, 34226), (78, 34217), (79, 34199), (81, 34193), (93, 34145), (98, 34127), (104, 34097), (108, 34085), (114, 34076), (130, 34019), (134, 34004), (144, 33947), (157, 33896), (162, 33881), (168, 33854), (174, 33833), (178, 33821),

Gene: Enkosi_40 Start: 36695, Stop: 35793, Start Num: 23

Candidate Starts for Enkosi_40:

(Start: 16 @36713 has 1 MA's), (Start: 23 @36695 has 12 MA's), (35, 36647), (42, 36620), (Start: 45 @36602 has 1 MA's), (50, 36569), (53, 36551), (55, 36545), (57, 36533), (70, 36449), (73, 36434), (76, 36419), (82, 36377), (90, 36341), (95, 36323), (105, 36281), (116, 36263), (127, 36224), (135, 36194), (142, 36155), (149, 36116), (154, 36101), (167, 36047), (173, 36029), (178, 36011), (185, 35972), (194, 35906), (212, 35816),

Gene: Fefferhead_42 Start: 34661, Stop: 33828, Start Num: 29

Candidate Starts for Fefferhead_42:

(Start: 29 @34661 has 12 MA's), (40, 34622), (Start: 45 @34598 has 1 MA's), (49, 34568), (86, 34367), (92, 34343), (94, 34334), (97, 34322), (99, 34316), (101, 34304), (112, 34271), (119, 34250), (121, 34244), (138, 34181), (140, 34169), (156, 34085), (175, 34016), (180, 33998), (182, 33986), (185, 33968),

Gene: Feyre_40 Start: 33712, Stop: 32870, Start Num: 20

Candidate Starts for Feyre_40:

(Start: 20 @33712 has 21 MA's), (32, 33670), (70, 33475), (76, 33445), (89, 33376), (90, 33370), (94, 33355), (99, 33337), (108, 33301), (128, 33229), (148, 33130), (156, 33103), (158, 33094), (160, 33085), (169, 33058), (171, 33052), (175, 33037), (182, 33007), (185, 32989), (189, 32968),

Gene: Findley_45 Start: 36585, Stop: 35737, Start Num: 21

Candidate Starts for Findley_45:

(Start: 21 @36585 has 8 MA's), (35, 36534), (39, 36522), (48, 36471), (58, 36423), (73, 36327), (76, 36312), (83, 36267), (94, 36222), (113, 36171), (116, 36162), (143, 36042), (175, 35925), (180, 35907), (181, 35898), (185, 35877),

Gene: Ganymede_43 Start: 35009, Stop: 34107, Start Num: 10

Candidate Starts for Ganymede_43:

(Start: 10 @35009 has 38 MA's), (Start: 18 @34952 has 2 MA's), (Start: 22 @34946 has 22 MA's), (28, 34922), (Start: 33 @34901 has 6 MA's), (41, 34877), (57, 34787), (60, 34778), (76, 34673), (77, 34670), (78, 34661), (79, 34643), (81, 34637), (93, 34589), (98, 34571), (104, 34541), (108, 34529), (114, 34520), (130, 34463), (134, 34448), (144, 34391), (162, 34325), (168, 34298), (174, 34277), (178, 34265),

Gene: Gengar_40 Start: 33822, Stop: 32980, Start Num: 20

Candidate Starts for Gengar_40:

(Start: 20 @33822 has 21 MA's), (32, 33780), (70, 33585), (76, 33555), (89, 33486), (90, 33480), (94, 33465), (99, 33447), (108, 33411), (128, 33339), (148, 33240), (156, 33213), (158, 33204), (160, 33195), (164, 33186), (169, 33168), (171, 33162), (175, 33147), (182, 33117), (185, 33099), (189, 33078),

Gene: Geraldini_44 Start: 35613, Stop: 34720, Start Num: 11

Candidate Starts for Geraldini_44:

(Start: 11 @35613 has 8 MA's), (Start: 18 @35565 has 2 MA's), (Start: 22 @35559 has 22 MA's), (28, 35535), (41, 35490), (57, 35400), (60, 35391), (76, 35286), (77, 35283), (78, 35274), (79, 35256), (81, 35250), (93, 35202), (98, 35184), (104, 35154), (108, 35142), (114, 35133), (134, 35061), (144, 35004), (162, 34938), (168, 34911), (174, 34890), (178, 34878),

Gene: Guanica15_45 Start: 34479, Stop: 33724, Start Num: 29

Candidate Starts for Guanica15_45:

(Start: 29 @34479 has 12 MA's), (64, 34323), (93, 34149), (94, 34146), (99, 34128), (103, 34104), (105, 34098), (119, 34071), (122, 34062), (123, 34059), (135, 34014), (139, 33999), (140, 33990), (159, 33900), (160, 33897), (174, 33846),

Gene: Guillsminger_41 Start: 33793, Stop: 32951, Start Num: 20

Candidate Starts for Guillsminger_41:

(Start: 20 @33793 has 21 MA's), (32, 33751), (70, 33556), (76, 33526), (89, 33457), (90, 33451), (94, 33436), (99, 33418), (108, 33382), (128, 33310), (148, 33211), (156, 33184), (158, 33175), (160, 33166), (169, 33139), (171, 33133), (175, 33118), (182, 33088), (185, 33070), (189, 33049),

Gene: Hammy_44 Start: 35475, Stop: 34657, Start Num: 26

Candidate Starts for Hammy_44:

(Start: 26 @35475 has 18 MA's), (47, 35394), (56, 35346), (64, 35319), (86, 35175), (92, 35151), (94, 35142), (97, 35130), (99, 35124), (101, 35112), (123, 35055), (135, 35010), (140, 34986), (151, 34923), (156, 34905), (158, 34896), (172, 34848), (174, 34839), (185, 34788), (202, 34692),

Gene: HedwigODU_42 Start: 34574, Stop: 33672, Start Num: 10

Candidate Starts for HedwigODU_42:

(Start: 10 @34574 has 38 MA's), (Start: 18 @34517 has 2 MA's), (Start: 22 @34511 has 22 MA's), (28, 34487), (Start: 33 @34466 has 6 MA's), (41, 34442), (57, 34352), (60, 34343), (76, 34238), (77, 34235), (78, 34226), (79, 34208), (81, 34202), (93, 34154), (98, 34136), (104, 34106), (108, 34094), (114, 34085), (130, 34028), (134, 34013), (144, 33956), (157, 33905), (162, 33890), (168, 33863), (174, 33842), (178, 33830),

Gene: Heftyboy_40 Start: 33939, Stop: 33097, Start Num: 20

Candidate Starts for Heftyboy_40:

(Start: 20 @33939 has 21 MA's), (32, 33897), (76, 33672), (89, 33603), (90, 33597), (94, 33582), (99, 33564), (108, 33528), (128, 33456), (148, 33357), (156, 33330), (158, 33321), (160, 33312), (169, 33285), (171, 33279), (175, 33264), (185, 33216), (189, 33195),

Gene: Homura_42 Start: 34626, Stop: 33787, Start Num: 22

Candidate Starts for Homura_42:

(Start: 10 @34689 has 38 MA's), (Start: 13 @34668 has 2 MA's), (Start: 18 @34632 has 2 MA's), (Start: 22 @34626 has 22 MA's), (28, 34602), (Start: 33 @34581 has 6 MA's), (41, 34557), (57, 34467), (60, 34458), (76, 34353), (77, 34350), (78, 34341), (79, 34323), (81, 34317), (93, 34269), (98, 34251), (104, 34221), (108, 34209), (114, 34200), (134, 34128), (144, 34071), (157, 34020), (162, 34005), (168, 33978), (174, 33957), (178, 33945),

Gene: Hurricane_45 Start: 35158, Stop: 34283, Start Num: 26

Candidate Starts for Hurricane_45:

(Start: 17 @35194 has 6 MA's), (Start: 26 @35158 has 18 MA's), (Start: 45 @35089 has 1 MA's), (49, 35059), (86, 34849), (92, 34825), (94, 34816), (97, 34804), (99, 34798), (111, 34750), (137, 34669), (138, 34663), (140, 34651), (159, 34552), (185, 34447), (188, 34429),

Gene: Hyperbowlee_42 Start: 34778, Stop: 33984, Start Num: 33

Candidate Starts for Hyperbowlee_42:

(Start: 10 @34886 has 38 MA's), (Start: 13 @34865 has 2 MA's), (Start: 18 @34829 has 2 MA's), (Start: 22 @34823 has 22 MA's), (28, 34799), (Start: 33 @34778 has 6 MA's), (41, 34754), (57, 34664), (60, 34655), (76, 34550), (77, 34547), (78, 34538), (79, 34520), (81, 34514), (93, 34466), (98, 34448), (104, 34418), (108, 34406), (114, 34397), (134, 34325), (144, 34268), (157, 34217), (162, 34202), (168, 34175), (174, 34154), (178, 34142),

Gene: Illumine_45 Start: 35293, Stop: 34454, Start Num: 22

Candidate Starts for Illumine_45:

(Start: 22 @35293 has 22 MA's), (Start: 33 @35248 has 6 MA's), (41, 35224), (46, 35200), (57, 35134), (60, 35125), (62, 35119), (76, 35020), (77, 35017), (78, 35008), (79, 34990), (91, 34945), (93, 34936), (108, 34876), (114, 34867), (134, 34795), (136, 34789), (143, 34744), (144, 34738), (146, 34729), (157, 34687), (162, 34672), (166, 34654), (174, 34624), (178, 34612), (185, 34573),

Gene: Inky_42 Start: 34689, Stop: 33787, Start Num: 10

Candidate Starts for Inky_42:

(Start: 10 @34689 has 38 MA's), (Start: 13 @34668 has 2 MA's), (Start: 18 @34632 has 2 MA's), (Start: 22 @34626 has 22 MA's), (28, 34602), (Start: 33 @34581 has 6 MA's), (41, 34557), (57, 34467), (60, 34458), (76, 34353), (77, 34350), (78, 34341), (79, 34323), (81, 34317), (93, 34269), (98, 34251), (104, 34221), (108, 34209), (114, 34200), (134, 34128), (144, 34071), (157, 34020), (162, 34005), (168, 33978), (174, 33957), (178, 33945),

Gene: InvictusManeo_40 Start: 34004, Stop: 33153, Start Num: 20

Candidate Starts for InvictusManeo_40:

(Start: 20 @34004 has 21 MA's), (51, 33875), (61, 33833), (76, 33734), (78, 33722), (87, 33674), (94, 33644), (99, 33626), (107, 33590), (145, 33431), (148, 33416), (152, 33404), (160, 33371), (164,

33362), (169, 33344), (171, 33338), (175, 33323), (185, 33275), (189, 33254),

Gene: JAWS_42 Start: 34563, Stop: 33661, Start Num: 10

Candidate Starts for JAWS_42:

(Start: 10 @34563 has 38 MA's), (Start: 13 @34542 has 2 MA's), (Start: 18 @34506 has 2 MA's), (Start: 22 @34500 has 22 MA's), (28, 34476), (Start: 33 @34455 has 6 MA's), (41, 34431), (57, 34341), (60, 34332), (76, 34227), (77, 34224), (78, 34215), (79, 34197), (81, 34191), (93, 34143), (98, 34125), (104, 34095), (108, 34083), (114, 34074), (134, 34002), (144, 33945), (157, 33894), (162, 33879), (168, 33852), (174, 33831), (178, 33819),

Gene: Jarvi_42 Start: 34689, Stop: 33787, Start Num: 10

Candidate Starts for Jarvi_42:

(Start: 10 @34689 has 38 MA's), (Start: 13 @34668 has 2 MA's), (Start: 18 @34632 has 2 MA's), (Start: 22 @34626 has 22 MA's), (28, 34602), (Start: 33 @34581 has 6 MA's), (41, 34557), (57, 34467), (60, 34458), (76, 34353), (77, 34350), (78, 34341), (79, 34323), (81, 34317), (93, 34269), (98, 34251), (104, 34221), (108, 34209), (114, 34200), (134, 34128), (144, 34071), (157, 34020), (162, 34005), (168, 33978), (174, 33957), (178, 33945),

Gene: Jayhawk_43 Start: 34572, Stop: 33670, Start Num: 10

Candidate Starts for Jayhawk_43:

(Start: 10 @34572 has 38 MA's), (Start: 18 @34515 has 2 MA's), (Start: 22 @34509 has 22 MA's), (28, 34485), (Start: 33 @34464 has 6 MA's), (41, 34440), (57, 34350), (60, 34341), (76, 34236), (77, 34233), (78, 34224), (79, 34206), (81, 34200), (93, 34152), (98, 34134), (104, 34104), (108, 34092), (114, 34083), (130, 34026), (134, 34011), (144, 33954), (157, 33903), (162, 33888), (168, 33861), (174, 33840), (178, 33828),

Gene: Jeckyll_42 Start: 34689, Stop: 33787, Start Num: 10

Candidate Starts for Jeckyll_42:

(Start: 10 @34689 has 38 MA's), (Start: 13 @34668 has 2 MA's), (Start: 18 @34632 has 2 MA's), (Start: 22 @34626 has 22 MA's), (28, 34602), (Start: 33 @34581 has 6 MA's), (41, 34557), (57, 34467), (60, 34458), (76, 34353), (77, 34350), (78, 34341), (79, 34323), (81, 34317), (93, 34269), (98, 34251), (104, 34221), (108, 34209), (114, 34200), (134, 34128), (144, 34071), (157, 34020), (162, 34005), (168, 33978), (174, 33957), (178, 33945),

Gene: Joy99_42 Start: 34555, Stop: 33716, Start Num: 22

Candidate Starts for Joy99_42:

(Start: 10 @34618 has 38 MA's), (Start: 13 @34597 has 2 MA's), (Start: 18 @34561 has 2 MA's), (Start: 22 @34555 has 22 MA's), (28, 34531), (Start: 33 @34510 has 6 MA's), (41, 34486), (57, 34396), (60, 34387), (76, 34282), (77, 34279), (78, 34270), (79, 34252), (81, 34246), (93, 34198), (98, 34180), (104, 34150), (108, 34138), (114, 34129), (134, 34057), (144, 34000), (157, 33949), (162, 33934), (168, 33907), (174, 33886), (178, 33874),

Gene: Keshu_46 Start: 35253, Stop: 34336, Start Num: 17

Candidate Starts for Keshu_46:

(Start: 17 @35253 has 6 MA's), (Start: 26 @35217 has 18 MA's), (Start: 45 @35148 has 1 MA's), (86, 34908), (92, 34884), (94, 34875), (97, 34863), (99, 34857), (104, 34830), (111, 34809), (118, 34797), (137, 34728), (138, 34722), (140, 34710), (144, 34671), (145, 34668), (155, 34629), (159, 34611), (177, 34548), (185, 34506),

Gene: KiSi_46 Start: 35654, Stop: 34881, Start Num: 27

Candidate Starts for KiSi_46:

(Start: 27 @35654 has 1 MA's), (Start: 29 @35651 has 12 MA's), (Start: 45 @35588 has 1 MA's), (50, 35555), (74, 35423), (92, 35333), (94, 35324), (105, 35279), (140, 35168), (143, 35135), (146, 35120),

(151, 35102), (171, 35030), (185, 34967), (187, 34955),

Gene: Kratio_39 Start: 33552, Stop: 32701, Start Num: 20

Candidate Starts for Kratio_39:

(Start: 20 @33552 has 21 MA's), (32, 33507), (59, 33387), (61, 33381), (72, 33303), (76, 33282), (78, 33270), (87, 33222), (94, 33192), (107, 33138), (117, 33105), (145, 32979), (148, 32964), (152, 32952), (157, 32931), (164, 32910), (169, 32892), (175, 32871), (185, 32823), (195, 32751),

Gene: Krueger_48 Start: 35401, Stop: 34511, Start Num: 26

Candidate Starts for Krueger_48:

(Start: 26 @35401 has 18 MA's), (37, 35365), (Start: 45 @35332 has 1 MA's), (47, 35320), (48, 35308), (86, 35101), (92, 35077), (94, 35068), (97, 35056), (99, 35050), (138, 34918), (140, 34906), (168, 34780), (170, 34774), (178, 34747), (180, 34738), (185, 34708),

Gene: Larva_41 Start: 33722, Stop: 32871, Start Num: 20

Candidate Starts for Larva_41:

(7, 33824), (Start: 14 @33758 has 2 MA's), (Start: 20 @33722 has 21 MA's), (32, 33677), (49, 33599), (61, 33551), (76, 33452), (78, 33440), (87, 33392), (94, 33362), (99, 33344), (107, 33308), (109, 33302), (117, 33275), (145, 33149), (148, 33134), (152, 33122), (164, 33080), (175, 33041), (185, 32993),

Gene: LastHope_45 Start: 33885, Stop: 33040, Start Num: 29

Candidate Starts for LastHope_45:

(Start: 29 @33885 has 12 MA's), (67, 33708), (76, 33639), (84, 33591), (86, 33585), (88, 33576), (92, 33561), (94, 33552), (121, 33468), (126, 33450), (129, 33438), (132, 33426), (141, 33381), (156, 33309), (157, 33303), (166, 33246), (168, 33237), (169, 33234), (174, 33216), (185, 33159), (203, 33051),

Gene: LaterM_43 Start: 35407, Stop: 34568, Start Num: 22

Candidate Starts for LaterM_43:

(Start: 10 @35470 has 38 MA's), (Start: 13 @35449 has 2 MA's), (Start: 18 @35413 has 2 MA's), (Start: 22 @35407 has 22 MA's), (28, 35383), (Start: 33 @35362 has 6 MA's), (34, 35359), (41, 35338), (57, 35248), (60, 35239), (76, 35134), (77, 35131), (78, 35122), (79, 35104), (91, 35059), (93, 35050), (108, 34990), (114, 34981), (134, 34909), (144, 34852), (162, 34786), (169, 34756), (174, 34738), (178, 34726), (192, 34636),

Gene: LeMond_46 Start: 35651, Stop: 34884, Start Num: 29

Candidate Starts for LeMond_46:

(Start: 29 @35651 has 12 MA's), (Start: 45 @35588 has 1 MA's), (53, 35537), (72, 35432), (74, 35423), (86, 35357), (92, 35333), (94, 35324), (105, 35279), (140, 35168), (146, 35120), (150, 35105), (171, 35030), (179, 35003), (185, 34967),

Gene: Lea83_46 Start: 35192, Stop: 34311, Start Num: 26

Candidate Starts for Lea83_46:

(Start: 17 @35228 has 6 MA's), (Start: 25 @35198 has 1 MA's), (Start: 26 @35192 has 18 MA's), (69, 34976), (86, 34883), (92, 34859), (94, 34850), (97, 34838), (99, 34832), (111, 34784), (137, 34703), (138, 34697), (140, 34685), (145, 34643), (159, 34586), (185, 34481), (194, 34415),

Gene: Leston_40 Start: 33923, Stop: 33081, Start Num: 20

Candidate Starts for Leston_40:

(Start: 20 @33923 has 21 MA's), (32, 33881), (70, 33686), (76, 33656), (89, 33587), (90, 33581), (94, 33566), (99, 33548), (108, 33512), (128, 33440), (148, 33341), (156, 33314), (158, 33305), (160, 33296), (169, 33269), (171, 33263), (175, 33248), (185, 33200), (189, 33179),

Gene: LilPharaoh_37 Start: 34082, Stop: 33180, Start Num: 23

Candidate Starts for LilPharaoh_37:

(Start: 16 @34100 has 1 MA's), (Start: 23 @34082 has 12 MA's), (35, 34034), (42, 34007), (Start: 45 @33989 has 1 MA's), (50, 33956), (53, 33938), (55, 33932), (57, 33920), (70, 33836), (73, 33821), (76, 33806), (82, 33764), (90, 33728), (95, 33710), (105, 33668), (116, 33650), (127, 33611), (142, 33542), (149, 33503), (154, 33488), (167, 33434), (173, 33416), (178, 33398), (185, 33359), (194, 33293), (212, 33203),

Gene: LindNT_42 Start: 34750, Stop: 33857, Start Num: 11

Candidate Starts for LindNT_42:

(Start: 11 @34750 has 8 MA's), (Start: 18 @34702 has 2 MA's), (Start: 22 @34696 has 22 MA's), (28, 34672), (Start: 33 @34651 has 6 MA's), (41, 34627), (57, 34537), (60, 34528), (76, 34423), (77, 34420), (78, 34411), (79, 34393), (91, 34348), (93, 34339), (98, 34321), (104, 34291), (108, 34279), (114, 34270), (134, 34198), (144, 34141), (162, 34075), (168, 34048), (174, 34027), (178, 34015),

Gene: Llorens_42 Start: 34626, Stop: 33787, Start Num: 22

Candidate Starts for Llorens_42:

(Start: 10 @34689 has 38 MA's), (Start: 13 @34668 has 2 MA's), (Start: 18 @34632 has 2 MA's), (Start: 22 @34626 has 22 MA's), (28, 34602), (Start: 33 @34581 has 6 MA's), (41, 34557), (57, 34467), (60, 34458), (76, 34353), (77, 34350), (78, 34341), (79, 34323), (81, 34317), (93, 34269), (98, 34251), (104, 34221), (108, 34209), (114, 34200), (134, 34128), (144, 34071), (157, 34020), (162, 34005), (168, 33978), (174, 33957), (178, 33945),

Gene: Lunahalos_42 Start: 34689, Stop: 33787, Start Num: 10

Candidate Starts for Lunahalos_42:

(Start: 10 @34689 has 38 MA's), (Start: 13 @34668 has 2 MA's), (Start: 18 @34632 has 2 MA's), (Start: 22 @34626 has 22 MA's), (28, 34602), (Start: 33 @34581 has 6 MA's), (41, 34557), (57, 34467), (60, 34458), (76, 34353), (77, 34350), (78, 34341), (79, 34323), (81, 34317), (93, 34269), (98, 34251), (104, 34221), (108, 34209), (114, 34200), (134, 34128), (144, 34071), (157, 34020), (162, 34005), (168, 33978), (174, 33957), (178, 33945),

Gene: MacnCheese_46 Start: 36148, Stop: 35237, Start Num: 17

Candidate Starts for MacnCheese_46:

(2, 36340), (Start: 17 @36148 has 6 MA's), (Start: 25 @36118 has 1 MA's), (Start: 26 @36112 has 18 MA's), (49, 36013), (76, 35866), (86, 35812), (92, 35788), (94, 35779), (97, 35767), (99, 35761), (111, 35719), (130, 35662), (137, 35638), (140, 35620), (159, 35527), (170, 35491), (171, 35488), (183, 35434), (185, 35425), (200, 35338),

Gene: Marcoliusprime_45 Start: 36592, Stop: 35744, Start Num: 21

Candidate Starts for Marcoliusprime_45:

(Start: 21 @36592 has 8 MA's), (39, 36529), (48, 36478), (58, 36430), (73, 36334), (76, 36319), (83, 36274), (88, 36253), (94, 36229), (113, 36178), (116, 36169), (143, 36049), (145, 36040), (175, 35932), (180, 35914), (181, 35905), (185, 35884),

Gene: MarkPhew_45 Start: 35124, Stop: 34315, Start Num: 17

Candidate Starts for MarkPhew_45:

(Start: 17 @35124 has 6 MA's), (Start: 24 @35103 has 1 MA's), (Start: 29 @35088 has 12 MA's), (Start: 45 @35025 has 1 MA's), (51, 34989), (76, 34848), (92, 34770), (94, 34761), (97, 34749), (105, 34716), (140, 34605), (145, 34563), (146, 34557), (147, 34554), (157, 34515), (161, 34503), (166, 34485), (176, 34449), (191, 34362), (198, 34326),

Gene: Marshawn_45 Start: 35460, Stop: 34612, Start Num: 22

Candidate Starts for Marshawn_45:

(12, 35508), (Start: 22 @35460 has 22 MA's), (Start: 33 @35415 has 6 MA's), (35, 35409), (40, 35394), (57, 35301), (70, 35217), (76, 35187), (77, 35184), (90, 35109), (94, 35094), (101, 35064), (116, 35031), (123, 35007), (127, 34992), (133, 34968), (148, 34887), (152, 34875), (162, 34839), (169, 34812), (171, 34806), (185, 34743), (190, 34713), (194, 34677),

Gene: McMater_44 Start: 35155, Stop: 34205, Start Num: 23

Candidate Starts for McMater_44:

(4, 35275), (5, 35272), (Start: 23 @35155 has 12 MA's), (35, 35107), (39, 35095), (44, 35068), (Start: 45 @35062 has 1 MA's), (47, 35050), (67, 34948), (70, 34909), (73, 34894), (76, 34879), (92, 34795), (94, 34786), (106, 34750), (135, 34669), (150, 34588), (155, 34570), (177, 34492), (178, 34489), (185, 34450), (201, 34360), (211, 34252),

Gene: Mdavu_38 Start: 34071, Stop: 33169, Start Num: 23

Candidate Starts for Mdavu_38:

(Start: 16 @34089 has 1 MA's), (Start: 23 @34071 has 12 MA's), (35, 34023), (42, 33996), (Start: 45 @33978 has 1 MA's), (50, 33945), (53, 33927), (55, 33921), (57, 33909), (70, 33825), (73, 33810), (76, 33795), (82, 33753), (90, 33717), (95, 33699), (105, 33657), (116, 33639), (127, 33600), (135, 33570), (142, 33531), (149, 33492), (154, 33477), (167, 33423), (173, 33405), (178, 33387), (185, 33348), (194, 33282), (212, 33192),

Gene: MeaningOfLife_43 Start: 35503, Stop: 34601, Start Num: 10

Candidate Starts for MeaningOfLife_43:

(Start: 10 @35503 has 38 MA's), (Start: 18 @35446 has 2 MA's), (Start: 22 @35440 has 22 MA's), (28, 35416), (Start: 33 @35395 has 6 MA's), (41, 35371), (55, 35293), (57, 35281), (60, 35272), (76, 35167), (77, 35164), (78, 35155), (79, 35137), (81, 35131), (93, 35083), (98, 35065), (104, 35035), (108, 35023), (114, 35014), (130, 34957), (134, 34942), (144, 34885), (157, 34834), (162, 34819), (168, 34792), (174, 34771), (178, 34759),

Gene: Megsy_43 Start: 34755, Stop: 33916, Start Num: 22

Candidate Starts for Megsy_43:

(Start: 11 @34809 has 8 MA's), (Start: 18 @34761 has 2 MA's), (Start: 22 @34755 has 22 MA's), (28, 34731), (Start: 33 @34710 has 6 MA's), (41, 34686), (46, 34662), (57, 34596), (60, 34587), (76, 34482), (77, 34479), (78, 34470), (79, 34452), (93, 34398), (98, 34380), (104, 34350), (108, 34338), (114, 34329), (134, 34257), (144, 34200), (157, 34149), (162, 34134), (168, 34107), (174, 34086), (178, 34074),

Gene: Milly_45 Start: 36565, Stop: 35717, Start Num: 21

Candidate Starts for Milly_45:

(Start: 21 @36565 has 8 MA's), (39, 36502), (48, 36451), (58, 36403), (73, 36307), (76, 36292), (83, 36247), (88, 36226), (94, 36202), (113, 36151), (116, 36142), (143, 36022), (145, 36013), (175, 35905), (180, 35887), (181, 35878), (185, 35857),

Gene: Miryou_42 Start: 36125, Stop: 35283, Start Num: 20

Candidate Starts for Miryou_42:

(Start: 20 @36125 has 21 MA's), (32, 36083), (70, 35888), (76, 35858), (89, 35789), (90, 35783), (94, 35768), (99, 35750), (108, 35714), (128, 35642), (148, 35543), (156, 35516), (158, 35507), (160, 35498), (169, 35471), (171, 35465), (175, 35450), (182, 35420), (185, 35402), (189, 35381),

Gene: Mufasa_45 Start: 36153, Stop: 35305, Start Num: 21

Candidate Starts for Mufasa_45:

(Start: 21 @36153 has 8 MA's), (30, 36120), (63, 35970), (76, 35877), (81, 35838), (83, 35832), (87, 35817), (94, 35787), (98, 35772), (116, 35727), (185, 35442), (190, 35412),

Gene: Murucutumbu_43 Start: 35542, Stop: 34661, Start Num: 13

Candidate Starts for Murucutumbu_43:

(Start: 10 @35563 has 38 MA's), (Start: 13 @35542 has 2 MA's), (Start: 18 @35506 has 2 MA's), (Start: 22 @35500 has 22 MA's), (28, 35476), (Start: 33 @35455 has 6 MA's), (34, 35452), (41, 35431), (57, 35341), (60, 35332), (76, 35227), (77, 35224), (78, 35215), (79, 35197), (93, 35143), (108, 35083), (114, 35074), (130, 35017), (144, 34945), (162, 34879), (169, 34849), (174, 34831), (178, 34819), (192, 34729),

Gene: Mynx_43 Start: 34830, Stop: 33991, Start Num: 22

Candidate Starts for Mynx_43:

(Start: 11 @34884 has 8 MA's), (Start: 18 @34836 has 2 MA's), (Start: 22 @34830 has 22 MA's), (28, 34806), (41, 34761), (46, 34737), (57, 34671), (60, 34662), (76, 34557), (77, 34554), (78, 34545), (79, 34527), (91, 34482), (93, 34473), (98, 34455), (104, 34425), (108, 34413), (114, 34404), (144, 34275), (157, 34224), (162, 34209), (168, 34182), (174, 34161), (178, 34149),

Gene: Neighly_41 Start: 33757, Stop: 32870, Start Num: 14

Candidate Starts for Neighly_41:

(7, 33823), (Start: 14 @33757 has 2 MA's), (Start: 20 @33721 has 21 MA's), (32, 33676), (49, 33598), (61, 33550), (76, 33451), (78, 33439), (87, 33391), (94, 33361), (99, 33343), (107, 33307), (109, 33301), (117, 33274), (145, 33148), (148, 33133), (152, 33121), (164, 33079), (175, 33040), (185, 32992),

Gene: Nibb_44 Start: 34807, Stop: 34040, Start Num: 29

Candidate Starts for Nibb_44:

(Start: 29 @34807 has 12 MA's), (36, 34780), (40, 34768), (Start: 45 @34744 has 1 MA's), (49, 34714), (68, 34615), (69, 34606), (74, 34579), (92, 34489), (93, 34483), (94, 34480), (97, 34468), (105, 34435), (125, 34384), (143, 34294), (146, 34279), (156, 34243), (169, 34195), (171, 34189), (177, 34168), (185, 34126), (191, 34084), (196, 34051),

Gene: Nikao_40 Start: 36713, Stop: 35793, Start Num: 16

Candidate Starts for Nikao_40:

(Start: 16 @36713 has 1 MA's), (Start: 23 @36695 has 12 MA's), (35, 36647), (42, 36620), (Start: 45 @36602 has 1 MA's), (50, 36569), (53, 36551), (55, 36545), (57, 36533), (70, 36449), (73, 36434), (76, 36419), (82, 36377), (90, 36341), (95, 36323), (105, 36281), (116, 36263), (127, 36224), (135, 36194), (142, 36155), (149, 36116), (154, 36101), (167, 36047), (173, 36029), (178, 36011), (185, 35972), (194, 35906), (212, 35816),

Gene: Niklas_44 Start: 35225, Stop: 34236, Start Num: 23

Candidate Starts for Niklas_44:

(Start: 23 @35225 has 12 MA's), (30, 35195), (35, 35177), (39, 35165), (44, 35138), (Start: 45 @35132 has 1 MA's), (47, 35120), (53, 35081), (55, 35075), (64, 35039), (69, 34988), (70, 34979), (73, 34964), (76, 34949), (82, 34907), (86, 34889), (94, 34856), (135, 34709), (139, 34694), (150, 34628), (155, 34610), (185, 34490), (205, 34355), (208, 34319),

Gene: November_44 Start: 35179, Stop: 34367, Start Num: 30

Candidate Starts for November_44:

(Start: 26 @35191 has 18 MA's), (30, 35179), (56, 35062), (66, 35023), (86, 34891), (92, 34867), (94, 34858), (97, 34846), (99, 34840), (101, 34828), (123, 34771), (131, 34741), (140, 34702), (156, 34621), (158, 34612), (168, 34576), (182, 34522), (185, 34504), (194, 34438), (202, 34402), (206, 34378),

Gene: Nutello_37 Start: 34082, Stop: 33180, Start Num: 23

Candidate Starts for Nutello_37:

(Start: 16 @34100 has 1 MA's), (Start: 23 @34082 has 12 MA's), (35, 34034), (42, 34007), (Start: 45 @33989 has 1 MA's), (50, 33956), (53, 33938), (55, 33932), (57, 33920), (70, 33836), (73, 33821), (76, 33806), (82, 33764), (90, 33728), (95, 33710), (105, 33668), (116, 33650), (127, 33611), (142, 33542), (149, 33503), (154, 33488), (167, 33434), (173, 33416), (178, 33398), (185, 33359), (194, 33293), (212, 33203),

Gene: OkiRoe_40 Start: 33795, Stop: 32953, Start Num: 20

Candidate Starts for OkiRoe_40:

(Start: 20 @33795 has 21 MA's), (32, 33753), (70, 33558), (76, 33528), (89, 33459), (90, 33453), (94, 33438), (108, 33384), (128, 33312), (148, 33213), (156, 33186), (158, 33177), (160, 33168), (169, 33141), (171, 33135), (175, 33120), (182, 33090), (185, 33072), (189, 33051),

Gene: Omnicron_43 Start: 33409, Stop: 32570, Start Num: 20

Candidate Starts for Omnicron_43:

(Start: 20 @33409 has 21 MA's), (32, 33367), (51, 33283), (53, 33268), (59, 33247), (61, 33241), (76, 33142), (78, 33130), (86, 33085), (87, 33082), (94, 33052), (115, 32974), (148, 32827), (160, 32782), (169, 32755), (185, 32686),

Gene: Oscar_46 Start: 35554, Stop: 34787, Start Num: 29

Candidate Starts for Oscar_46:

(Start: 29 @35554 has 12 MA's), (Start: 45 @35491 has 1 MA's), (53, 35440), (72, 35335), (74, 35326), (86, 35260), (92, 35236), (94, 35227), (105, 35182), (140, 35071), (146, 35023), (150, 35008), (171, 34933), (179, 34906), (185, 34870),

Gene: Padfoot_42 Start: 34886, Stop: 33984, Start Num: 10

Candidate Starts for Padfoot_42:

(Start: 10 @34886 has 38 MA's), (Start: 13 @34865 has 2 MA's), (Start: 18 @34829 has 2 MA's), (Start: 22 @34823 has 22 MA's), (28, 34799), (Start: 33 @34778 has 6 MA's), (41, 34754), (57, 34664), (60, 34655), (76, 34550), (77, 34547), (78, 34538), (79, 34520), (81, 34514), (93, 34466), (98, 34448), (104, 34418), (108, 34406), (114, 34397), (134, 34325), (144, 34268), (157, 34217), (162, 34202), (168, 34175), (174, 34154), (178, 34142),

Gene: Padpat_43 Start: 34565, Stop: 33663, Start Num: 10

Candidate Starts for Padpat_43:

(Start: 10 @34565 has 38 MA's), (Start: 18 @34508 has 2 MA's), (Start: 22 @34502 has 22 MA's), (28, 34478), (Start: 33 @34457 has 6 MA's), (41, 34433), (57, 34343), (60, 34334), (76, 34229), (77, 34226), (78, 34217), (79, 34199), (81, 34193), (93, 34145), (98, 34127), (104, 34097), (108, 34085), (114, 34076), (130, 34019), (134, 34004), (144, 33947), (157, 33896), (162, 33881), (168, 33854), (174, 33833), (178, 33821),

Gene: Paola_40 Start: 33793, Stop: 32951, Start Num: 20

Candidate Starts for Paola_40:

(Start: 20 @33793 has 21 MA's), (32, 33751), (70, 33556), (76, 33526), (89, 33457), (90, 33451), (94, 33436), (99, 33418), (108, 33382), (128, 33310), (148, 33211), (156, 33184), (158, 33175), (160, 33166), (169, 33139), (171, 33133), (175, 33118), (182, 33088), (185, 33070), (189, 33049),

Gene: Peanam_44 Start: 35181, Stop: 34210, Start Num: 23

Candidate Starts for Peanam_44:

(Start: 23 @35181 has 12 MA's), (30, 35151), (35, 35133), (39, 35121), (44, 35094), (Start: 45 @35088 has 1 MA's), (47, 35076), (53, 35037), (55, 35031), (64, 34995), (69, 34944), (70, 34935), (73, 34920), (76, 34905), (82, 34863), (86, 34845), (88, 34836), (94, 34812), (135, 34680), (139, 34665), (150, 34599), (155, 34581), (185, 34461), (205, 34326),

Gene: Peel_42 Start: 34691, Stop: 33789, Start Num: 10

Candidate Starts for Peel_42:

(Start: 10 @34691 has 38 MA's), (Start: 13 @34670 has 2 MA's), (Start: 18 @34634 has 2 MA's), (Start: 22 @34628 has 22 MA's), (28, 34604), (Start: 33 @34583 has 6 MA's), (41, 34559), (57, 34469), (60, 34460), (76, 34355), (77, 34352), (78, 34343), (79, 34325), (81, 34319), (93, 34271), (98, 34253), (104, 34223), (108, 34211), (114, 34202), (134, 34130), (144, 34073), (157, 34022), (162, 34007), (168, 33980), (174, 33959), (178, 33947),

Gene: Pharb_42 Start: 33912, Stop: 33067, Start Num: 26

Candidate Starts for Pharb_42:

(3, 34131), (9, 34008), (Start: 17 @33948 has 6 MA's), (19, 33939), (Start: 25 @33918 has 1 MA's), (Start: 26 @33912 has 18 MA's), (55, 33786), (72, 33687), (74, 33678), (86, 33612), (94, 33579), (97, 33567), (99, 33561), (111, 33519), (126, 33477), (130, 33462), (140, 33420), (143, 33393), (145, 33384), (159, 33327), (160, 33324), (170, 33291), (185, 33225), (202, 33117),

Gene: PhelpsODU_44 Start: 34427, Stop: 33552, Start Num: 26

Candidate Starts for PhelpsODU_44:

(Start: 26 @34427 has 18 MA's), (70, 34211), (86, 34127), (92, 34103), (94, 34094), (97, 34082), (101, 34064), (130, 33971), (135, 33953), (138, 33941), (140, 33929), (145, 33890), (156, 33848), (158, 33839),

Gene: Phrank_45 Start: 34384, Stop: 33518, Start Num: 26

Candidate Starts for Phrank_45:

(Start: 26 @34384 has 18 MA's), (46, 34312), (70, 34168), (77, 34135), (86, 34084), (92, 34060), (94, 34051), (97, 34039), (101, 34021), (130, 33934), (135, 33916), (138, 33904), (140, 33892), (145, 33853), (156, 33811), (165, 33778), (182, 33712), (202, 33586),

Gene: Piatt_42 Start: 34778, Stop: 33984, Start Num: 33

Candidate Starts for Piatt_42:

(Start: 10 @34886 has 38 MA's), (Start: 13 @34865 has 2 MA's), (Start: 18 @34829 has 2 MA's), (Start: 22 @34823 has 22 MA's), (28, 34799), (Start: 33 @34778 has 6 MA's), (41, 34754), (57, 34664), (60, 34655), (76, 34550), (77, 34547), (78, 34538), (79, 34520), (81, 34514), (93, 34466), (98, 34448), (104, 34418), (108, 34406), (114, 34397), (134, 34325), (144, 34268), (157, 34217), (162, 34202), (168, 34175), (174, 34154), (178, 34142),

Gene: Pixie_44 Start: 34706, Stop: 33786, Start Num: 17

Candidate Starts for Pixie_44:

(Start: 17 @34706 has 6 MA's), (Start: 25 @34676 has 1 MA's), (Start: 26 @34670 has 18 MA's), (Start: 45 @34601 has 1 MA's), (49, 34571), (86, 34361), (92, 34337), (94, 34328), (97, 34316), (99, 34310), (111, 34262), (138, 34175), (140, 34163), (159, 34064), (185, 33959), (188, 33941),

Gene: Pokerus_41 Start: 34547, Stop: 33708, Start Num: 22

Candidate Starts for Pokerus_41:

(Start: 11 @34601 has 8 MA's), (Start: 18 @34553 has 2 MA's), (Start: 22 @34547 has 22 MA's), (28, 34523), (41, 34478), (57, 34388), (60, 34379), (76, 34274), (77, 34271), (78, 34262), (79, 34244), (81, 34238), (93, 34190), (98, 34172), (104, 34142), (108, 34130), (114, 34121), (134, 34049), (144, 33992), (162, 33926), (168, 33899), (174, 33878), (178, 33866),

Gene: Prithvi_43 Start: 34696, Stop: 33857, Start Num: 22

Candidate Starts for Prithvi_43:

(Start: 11 @34750 has 8 MA's), (Start: 18 @34702 has 2 MA's), (Start: 22 @34696 has 22 MA's), (28, 34672), (Start: 33 @34651 has 6 MA's), (41, 34627), (57, 34537), (60, 34528), (76, 34423), (77,

34420), (78, 34411), (79, 34393), (91, 34348), (93, 34339), (98, 34321), (104, 34291), (108, 34279), (114, 34270), (134, 34198), (144, 34141), (162, 34075), (168, 34048), (174, 34027), (178, 34015),

Gene: Psycho_41 Start: 33888, Stop: 33001, Start Num: 14

Candidate Starts for Psycho_41:

(7, 33954), (Start: 14 @33888 has 2 MA's), (Start: 20 @33852 has 21 MA's), (32, 33807), (49, 33729), (61, 33681), (76, 33582), (78, 33570), (87, 33522), (94, 33492), (99, 33474), (107, 33438), (109, 33432), (117, 33405), (145, 33279), (148, 33264), (152, 33252), (164, 33210), (175, 33171), (185, 33123),

Gene: QuincyRose_41 Start: 35009, Stop: 34107, Start Num: 10

Candidate Starts for QuincyRose_41:

(Start: 10 @35009 has 38 MA's), (Start: 18 @34952 has 2 MA's), (Start: 22 @34946 has 22 MA's), (28, 34922), (Start: 33 @34901 has 6 MA's), (41, 34877), (57, 34787), (60, 34778), (76, 34673), (77, 34670), (78, 34661), (79, 34643), (81, 34637), (93, 34589), (98, 34571), (104, 34541), (108, 34529), (114, 34520), (130, 34463), (134, 34448), (144, 34391), (162, 34325), (168, 34298), (174, 34277), (178, 34265),

Gene: Ramen_42 Start: 34576, Stop: 33674, Start Num: 10

Candidate Starts for Ramen_42:

(Start: 10 @34576 has 38 MA's), (Start: 18 @34519 has 2 MA's), (Start: 22 @34513 has 22 MA's), (28, 34489), (Start: 33 @34468 has 6 MA's), (41, 34444), (57, 34354), (60, 34345), (76, 34240), (77, 34237), (78, 34228), (79, 34210), (81, 34204), (93, 34156), (98, 34138), (104, 34108), (108, 34096), (114, 34087), (130, 34030), (134, 34015), (144, 33958), (157, 33907), (162, 33892), (168, 33865), (174, 33844), (178, 33832),

Gene: Rando14_42 Start: 32984, Stop: 32142, Start Num: 20

Candidate Starts for Rando14_42:

(Start: 20 @32984 has 21 MA's), (32, 32942), (43, 32900), (53, 32843), (59, 32822), (61, 32816), (76, 32717), (78, 32705), (87, 32657), (94, 32627), (148, 32402), (155, 32378), (160, 32357), (163, 32351), (169, 32330), (171, 32324),

Gene: Rapunzel97_42 Start: 34572, Stop: 33670, Start Num: 10

Candidate Starts for Rapunzel97_42:

(Start: 10 @34572 has 38 MA's), (Start: 18 @34515 has 2 MA's), (Start: 22 @34509 has 22 MA's), (28, 34485), (Start: 33 @34464 has 6 MA's), (41, 34440), (57, 34350), (60, 34341), (76, 34236), (77, 34233), (78, 34224), (79, 34206), (81, 34200), (93, 34152), (98, 34134), (104, 34104), (108, 34092), (114, 34083), (130, 34026), (134, 34011), (144, 33954), (157, 33903), (162, 33888), (168, 33861), (178, 33828),

Gene: Richo_44 Start: 35155, Stop: 34205, Start Num: 23

Candidate Starts for Richo_44:

(4, 35275), (5, 35272), (Start: 23 @35155 has 12 MA's), (35, 35107), (39, 35095), (44, 35068), (Start: 45 @35062 has 1 MA's), (47, 35050), (67, 34948), (70, 34909), (73, 34894), (76, 34879), (92, 34795), (94, 34786), (106, 34750), (135, 34669), (150, 34588), (155, 34570), (177, 34492), (178, 34489), (185, 34450), (201, 34360), (211, 34252),

Gene: Rosmarinus_42 Start: 34569, Stop: 33775, Start Num: 33

Candidate Starts for Rosmarinus_42:

(Start: 10 @34677 has 38 MA's), (Start: 13 @34656 has 2 MA's), (Start: 18 @34620 has 2 MA's), (Start: 22 @34614 has 22 MA's), (28, 34590), (Start: 33 @34569 has 6 MA's), (41, 34545), (57, 34455), (60, 34446), (76, 34341), (77, 34338), (78, 34329), (79, 34311), (81, 34305), (93, 34257), (98, 34239), (104, 34209), (108, 34197), (114, 34188), (134, 34116), (144, 34059), (157, 34008), (162,

33993), (168, 33966), (174, 33945), (178, 33933),

Gene: SamuelLPlaqson_43 Start: 35473, Stop: 34568, Start Num: 10

Candidate Starts for SamuelLPlaqson_43:

(Start: 10 @35473 has 38 MA's), (Start: 18 @35413 has 2 MA's), (Start: 22 @35407 has 22 MA's), (28, 35383), (31, 35368), (34, 35359), (41, 35338), (46, 35314), (49, 35287), (57, 35248), (60, 35239), (76, 35134), (77, 35131), (79, 35104), (86, 35080), (91, 35059), (93, 35050), (98, 35032), (108, 34990), (114, 34981), (124, 34945), (134, 34909), (144, 34852), (162, 34786), (178, 34726), (192, 34636),

Gene: Scarlett_46 Start: 35546, Stop: 34779, Start Num: 29

Candidate Starts for Scarlett_46:

(Start: 29 @35546 has 12 MA's), (Start: 45 @35483 has 1 MA's), (53, 35432), (72, 35327), (74, 35318), (86, 35252), (92, 35228), (94, 35219), (105, 35174), (140, 35063), (146, 35015), (150, 35000), (171, 34925), (179, 34898), (185, 34862),

Gene: SgtBeansprout_37 Start: 34082, Stop: 33180, Start Num: 23

Candidate Starts for SgtBeansprout_37:

(Start: 16 @34100 has 1 MA's), (Start: 23 @34082 has 12 MA's), (35, 34034), (42, 34007), (Start: 45 @33989 has 1 MA's), (50, 33956), (53, 33938), (55, 33932), (57, 33920), (70, 33836), (73, 33821), (76, 33806), (82, 33764), (90, 33728), (95, 33710), (105, 33668), (116, 33650), (127, 33611), (142, 33542), (149, 33503), (154, 33488), (167, 33434), (173, 33416), (178, 33398), (185, 33359), (194, 33293), (212, 33203),

Gene: Shadow1_47 Start: 35548, Stop: 34661, Start Num: 26

Candidate Starts for Shadow1_47:

(15, 35599), (Start: 26 @35548 has 18 MA's), (37, 35512), (Start: 45 @35479 has 1 MA's), (49, 35449), (86, 35248), (92, 35224), (94, 35215), (97, 35203), (99, 35197), (138, 35065), (168, 34927), (170, 34921), (185, 34855), (200, 34768),

Gene: Shaobing_44 Start: 35188, Stop: 34232, Start Num: 23

Candidate Starts for Shaobing_44:

(Start: 23 @35188 has 12 MA's), (Start: 26 @35170 has 18 MA's), (30, 35158), (39, 35128), (42, 35113), (44, 35101), (Start: 45 @35095 has 1 MA's), (47, 35083), (57, 35026), (67, 34981), (69, 34951), (70, 34942), (73, 34927), (76, 34912), (82, 34870), (85, 34855), (94, 34819), (116, 34765), (119, 34753), (121, 34747), (150, 34615), (155, 34597), (177, 34519), (185, 34477), (201, 34387),

Gene: ShedlockHolmes_45 Start: 35232, Stop: 34315, Start Num: 17

Candidate Starts for ShedlockHolmes_45:

(Start: 17 @35232 has 6 MA's), (Start: 25 @35202 has 1 MA's), (Start: 26 @35196 has 18 MA's), (69, 34980), (86, 34887), (92, 34863), (94, 34854), (97, 34842), (99, 34836), (111, 34788), (137, 34707), (138, 34701), (140, 34689), (145, 34647), (159, 34590), (185, 34485), (194, 34419),

Gene: ShiaSurprise_43 Start: 34886, Stop: 33984, Start Num: 10

Candidate Starts for ShiaSurprise_43:

(Start: 10 @34886 has 38 MA's), (Start: 13 @34865 has 2 MA's), (Start: 18 @34829 has 2 MA's), (Start: 22 @34823 has 22 MA's), (28, 34799), (Start: 33 @34778 has 6 MA's), (41, 34754), (57, 34664), (60, 34655), (76, 34550), (77, 34547), (78, 34538), (79, 34520), (81, 34514), (93, 34466), (98, 34448), (104, 34418), (108, 34406), (114, 34397), (134, 34325), (144, 34268), (157, 34217), (162, 34202), (168, 34175), (174, 34154), (178, 34142),

Gene: SirPhilip_44 Start: 35758, Stop: 34889, Start Num: 26

Candidate Starts for SirPhilip_44:

(Start: 26 @35758 has 18 MA's), (Start: 29 @35752 has 12 MA's), (30, 35746), (Start: 45 @35689 has 1 MA's), (69, 35551), (86, 35458), (91, 35437), (92, 35434), (94, 35425), (97, 35413), (137, 35284), (140, 35266), (145, 35227), (153, 35197), (177, 35110), (201, 34978), (207, 34927),

Gene: Slimphazie_42 Start: 34572, Stop: 33670, Start Num: 10

Candidate Starts for Slimphazie_42:

(Start: 10 @34572 has 38 MA's), (Start: 18 @34515 has 2 MA's), (Start: 22 @34509 has 22 MA's), (28, 34485), (Start: 33 @34464 has 6 MA's), (41, 34440), (57, 34350), (60, 34341), (76, 34236), (77, 34233), (78, 34224), (79, 34206), (81, 34200), (93, 34152), (98, 34134), (104, 34104), (108, 34092), (114, 34083), (130, 34026), (134, 34011), (144, 33954), (157, 33903), (162, 33888), (168, 33861), (178, 33828),

Gene: SoSeph_40 Start: 33939, Stop: 33097, Start Num: 20

Candidate Starts for SoSeph_40:

(Start: 20 @33939 has 21 MA's), (32, 33897), (76, 33672), (89, 33603), (90, 33597), (94, 33582), (99, 33564), (108, 33528), (128, 33456), (148, 33357), (156, 33330), (158, 33321), (160, 33312), (169, 33285), (171, 33279), (175, 33264), (185, 33216), (189, 33195),

Gene: Spock_42 Start: 34690, Stop: 33788, Start Num: 10

Candidate Starts for Spock_42:

(Start: 10 @34690 has 38 MA's), (Start: 13 @34669 has 2 MA's), (Start: 18 @34633 has 2 MA's), (Start: 22 @34627 has 22 MA's), (28, 34603), (Start: 33 @34582 has 6 MA's), (41, 34558), (57, 34468), (60, 34459), (76, 34354), (77, 34351), (78, 34342), (79, 34324), (81, 34318), (93, 34270), (98, 34252), (104, 34222), (108, 34210), (114, 34201), (134, 34129), (144, 34072), (157, 34021), (162, 34006), (168, 33979), (174, 33958), (178, 33946),

Gene: Stinson_43 Start: 35020, Stop: 34181, Start Num: 22

Candidate Starts for Stinson_43:

(Start: 10 @35083 has 38 MA's), (Start: 13 @35062 has 2 MA's), (Start: 18 @35026 has 2 MA's), (Start: 22 @35020 has 22 MA's), (28, 34996), (Start: 33 @34975 has 6 MA's), (34, 34972), (41, 34951), (57, 34861), (60, 34852), (76, 34747), (77, 34744), (78, 34735), (79, 34717), (91, 34672), (93, 34663), (108, 34603), (114, 34594), (134, 34522), (144, 34465), (162, 34399), (169, 34369), (174, 34351), (178, 34339), (192, 34249),

Gene: Strobilo_45 Start: 36567, Stop: 35719, Start Num: 21

Candidate Starts for Strobilo_45:

(Start: 21 @36567 has 8 MA's), (35, 36516), (39, 36504), (48, 36453), (58, 36405), (73, 36309), (76, 36294), (83, 36249), (94, 36204), (113, 36153), (116, 36144), (143, 36024), (175, 35907), (181, 35880), (185, 35859),

Gene: Sulley_42 Start: 34807, Stop: 33914, Start Num: 11

Candidate Starts for Sulley_42:

(Start: 11 @34807 has 8 MA's), (Start: 18 @34759 has 2 MA's), (Start: 22 @34753 has 22 MA's), (28, 34729), (41, 34684), (60, 34585), (76, 34480), (77, 34477), (78, 34468), (79, 34450), (93, 34396), (98, 34378), (104, 34348), (108, 34336), (114, 34327), (134, 34255), (144, 34198), (162, 34132), (168, 34105), (174, 34084), (178, 34072),

Gene: Sunflower1121_48 Start: 35580, Stop: 34762, Start Num: 45

Candidate Starts for Sunflower1121_48:

(15, 35700), (Start: 26 @35649 has 18 MA's), (Start: 45 @35580 has 1 MA's), (49, 35550), (86, 35349), (92, 35325), (94, 35316), (97, 35304), (99, 35298), (138, 35166), (168, 35028), (170, 35022), (185, 34956), (200, 34869),

Gene: Syra333_47 Start: 35315, Stop: 34425, Start Num: 26

Candidate Starts for Syra333_47:

(Start: 26 @35315 has 18 MA's), (Start: 45 @35246 has 1 MA's), (47, 35234), (49, 35216), (55, 35189), (86, 35015), (92, 34991), (94, 34982), (97, 34970), (99, 34964), (138, 34832), (140, 34820), (168, 34694), (170, 34688), (172, 34682), (185, 34622), (200, 34535),

Gene: TBond007_44 Start: 34675, Stop: 33785, Start Num: 25

Candidate Starts for TBond007_44:

(Start: 17 @34705 has 6 MA's), (Start: 25 @34675 has 1 MA's), (Start: 26 @34669 has 18 MA's), (Start: 45 @34600 has 1 MA's), (49, 34570), (86, 34360), (92, 34336), (94, 34327), (97, 34315), (99, 34309), (111, 34261), (138, 34174), (140, 34162), (159, 34063), (185, 33958), (188, 33940),

Gene: TClif_46 Start: 35608, Stop: 34700, Start Num: 23

Candidate Starts for TClif_46:

(Start: 23 @35608 has 12 MA's), (Start: 26 @35590 has 18 MA's), (35, 35560), (70, 35368), (73, 35353), (76, 35338), (96, 35242), (127, 35140), (152, 35023), (162, 34987), (185, 34894), (187, 34879),

Gene: Tachez_42 Start: 34534, Stop: 33632, Start Num: 10

Candidate Starts for Tachez_42:

(Start: 10 @34534 has 38 MA's), (Start: 18 @34477 has 2 MA's), (Start: 22 @34471 has 22 MA's), (28, 34447), (Start: 33 @34426 has 6 MA's), (41, 34402), (57, 34312), (60, 34303), (76, 34198), (77, 34195), (78, 34186), (79, 34168), (81, 34162), (93, 34114), (98, 34096), (104, 34066), (108, 34054), (114, 34045), (130, 33988), (134, 33973), (144, 33916), (157, 33865), (162, 33850), (168, 33823), (174, 33802), (178, 33790),

Gene: TaiwanKao_44 Start: 34752, Stop: 33913, Start Num: 22

Candidate Starts for TaiwanKao_44:

(Start: 18 @34758 has 2 MA's), (Start: 22 @34752 has 22 MA's), (28, 34728), (Start: 33 @34707 has 6 MA's), (41, 34683), (46, 34659), (57, 34593), (60, 34584), (76, 34479), (77, 34476), (78, 34467), (79, 34449), (93, 34395), (98, 34377), (104, 34347), (108, 34335), (114, 34326), (134, 34254), (144, 34197), (157, 34146), (162, 34131), (168, 34104), (174, 34083), (178, 34071),

Gene: Teejan_40 Start: 36695, Stop: 35793, Start Num: 23

Candidate Starts for Teejan_40:

(Start: 16 @36713 has 1 MA's), (Start: 23 @36695 has 12 MA's), (35, 36647), (42, 36620), (Start: 45 @36602 has 1 MA's), (50, 36569), (53, 36551), (55, 36545), (57, 36533), (70, 36449), (73, 36434), (76, 36419), (82, 36377), (90, 36341), (95, 36323), (105, 36281), (116, 36263), (127, 36224), (135, 36194), (142, 36155), (149, 36116), (154, 36101), (167, 36047), (173, 36029), (178, 36011), (185, 35972), (194, 35906), (212, 35816),

Gene: Thyatira_42 Start: 36140, Stop: 35298, Start Num: 20

Candidate Starts for Thyatira_42:

(Start: 20 @36140 has 21 MA's), (32, 36098), (70, 35903), (76, 35873), (89, 35804), (90, 35798), (94, 35783), (99, 35765), (108, 35729), (128, 35657), (148, 35558), (156, 35531), (158, 35522), (160, 35513), (169, 35486), (171, 35480), (175, 35465), (185, 35417), (189, 35396),

Gene: Tierra_45 Start: 35195, Stop: 34329, Start Num: 26

Candidate Starts for Tierra_45:

(Start: 26 @35195 has 18 MA's), (46, 35123), (70, 34979), (77, 34946), (86, 34895), (92, 34871), (94, 34862), (97, 34850), (130, 34745), (135, 34727), (138, 34715), (140, 34703), (145, 34664), (156, 34622), (165, 34589), (177, 34547), (182, 34523), (202, 34397),

Gene: TingHuaYa_43 Start: 33668, Stop: 32823, Start Num: 29

Candidate Starts for TingHuaYa_43:

(Start: 29 @33668 has 12 MA's), (67, 33491), (76, 33422), (84, 33374), (86, 33368), (88, 33359), (92, 33344), (94, 33335), (126, 33233), (129, 33221), (132, 33209), (137, 33194), (141, 33164), (157, 33086), (166, 33029), (168, 33020), (169, 33017), (174, 32999), (185, 32942), (203, 32834), (204, 32831),

Gene: TiniBug_43 Start: 35469, Stop: 34564, Start Num: 10

Candidate Starts for TiniBug_43:

(Start: 10 @35469 has 38 MA's), (Start: 18 @35409 has 2 MA's), (Start: 22 @35403 has 22 MA's), (28, 35379), (31, 35364), (34, 35355), (41, 35334), (46, 35310), (49, 35283), (57, 35244), (60, 35235), (76, 35130), (77, 35127), (79, 35100), (86, 35076), (91, 35055), (93, 35046), (98, 35028), (108, 34986), (114, 34977), (124, 34941), (134, 34905), (144, 34848), (162, 34782), (178, 34722), (192, 34632),

Gene: Tiri_43 Start: 34869, Stop: 33967, Start Num: 10

Candidate Starts for Tiri_43:

(Start: 10 @34869 has 38 MA's), (Start: 18 @34812 has 2 MA's), (Start: 22 @34806 has 22 MA's), (28, 34782), (Start: 33 @34761 has 6 MA's), (41, 34737), (57, 34647), (60, 34638), (76, 34533), (77, 34530), (78, 34521), (79, 34503), (81, 34497), (93, 34449), (98, 34431), (104, 34401), (108, 34389), (114, 34380), (130, 34323), (134, 34308), (144, 34251), (162, 34185), (168, 34158), (174, 34137), (178, 34125),

Gene: Topper_42 Start: 34581, Stop: 33787, Start Num: 33

Candidate Starts for Topper_42:

(Start: 10 @34689 has 38 MA's), (Start: 13 @34668 has 2 MA's), (Start: 18 @34632 has 2 MA's), (Start: 22 @34626 has 22 MA's), (28, 34602), (Start: 33 @34581 has 6 MA's), (41, 34557), (57, 34467), (60, 34458), (76, 34353), (77, 34350), (78, 34341), (79, 34323), (81, 34317), (93, 34269), (98, 34251), (104, 34221), (108, 34209), (114, 34200), (134, 34128), (144, 34071), (157, 34020), (162, 34005), (168, 33978), (174, 33957), (178, 33945),

Gene: Torres_40 Start: 36714, Stop: 35794, Start Num: 16

Candidate Starts for Torres_40:

(Start: 16 @36714 has 1 MA's), (Start: 23 @36696 has 12 MA's), (35, 36648), (42, 36621), (Start: 45 @36603 has 1 MA's), (50, 36570), (53, 36552), (55, 36546), (57, 36534), (70, 36450), (73, 36435), (76, 36420), (82, 36378), (90, 36342), (95, 36324), (105, 36282), (116, 36264), (127, 36225), (135, 36195), (142, 36156), (149, 36117), (154, 36102), (167, 36048), (173, 36030), (178, 36012), (185, 35973), (194, 35907), (212, 35817),

Gene: TreyKay_43 Start: 34696, Stop: 33857, Start Num: 22

Candidate Starts for TreyKay_43:

(Start: 11 @34750 has 8 MA's), (Start: 18 @34702 has 2 MA's), (Start: 22 @34696 has 22 MA's), (28, 34672), (Start: 33 @34651 has 6 MA's), (41, 34627), (57, 34537), (60, 34528), (76, 34423), (77, 34420), (78, 34411), (79, 34393), (91, 34348), (93, 34339), (98, 34321), (104, 34291), (108, 34279), (114, 34270), (134, 34198), (144, 34141), (162, 34075), (168, 34048), (174, 34027), (178, 34015),

Gene: TribbleTrouble_42 Start: 34597, Stop: 33695, Start Num: 17

Candidate Starts for TribbleTrouble_42:

(1, 34825), (2, 34795), (9, 34657), (Start: 10 @34648 has 38 MA's), (Start: 17 @34597 has 6 MA's), (Start: 25 @34567 has 1 MA's), (Start: 26 @34561 has 18 MA's), (86, 34261), (92, 34237), (94, 34228), (97, 34216), (99, 34210), (110, 34171), (111, 34168), (130, 34111), (137, 34087), (138, 34081), (140, 34069), (143, 34042), (144, 34036), (156, 33991), (159, 33976), (171, 33934), (177, 33913),

Gene: TruffulaTree_42 Start: 34568, Stop: 33666, Start Num: 10

Candidate Starts for TruffulaTree_42:

(Start: 10 @34568 has 38 MA's), (Start: 18 @34511 has 2 MA's), (Start: 22 @34505 has 22 MA's), (28, 34481), (Start: 33 @34460 has 6 MA's), (41, 34436), (57, 34346), (60, 34337), (76, 34232), (77, 34229), (78, 34220), (79, 34202), (81, 34196), (93, 34148), (98, 34130), (104, 34100), (108, 34088), (114, 34079), (130, 34022), (134, 34007), (144, 33950), (157, 33899), (162, 33884), (168, 33857), (178, 33824),

Gene: Twitch_42 Start: 34691, Stop: 33789, Start Num: 10

Candidate Starts for Twitch_42:

(Start: 10 @34691 has 38 MA's), (Start: 13 @34670 has 2 MA's), (Start: 18 @34634 has 2 MA's), (Start: 22 @34628 has 22 MA's), (28, 34604), (Start: 33 @34583 has 6 MA's), (41, 34559), (57, 34469), (60, 34460), (76, 34355), (77, 34352), (78, 34343), (79, 34325), (81, 34319), (93, 34271), (98, 34253), (104, 34223), (108, 34211), (114, 34202), (134, 34130), (144, 34073), (157, 34022), (162, 34007), (168, 33980), (174, 33959), (178, 33947),

Gene: Unicorn_44 Start: 34427, Stop: 33552, Start Num: 26

Candidate Starts for Unicorn_44:

(Start: 26 @34427 has 18 MA's), (70, 34211), (86, 34127), (92, 34103), (94, 34094), (97, 34082), (101, 34064), (130, 33971), (135, 33953), (138, 33941), (140, 33929), (145, 33890), (156, 33848), (158, 33839),

Gene: Urkel_43 Start: 35473, Stop: 34568, Start Num: 10

Candidate Starts for Urkel_43:

(Start: 10 @35473 has 38 MA's), (Start: 18 @35413 has 2 MA's), (Start: 22 @35407 has 22 MA's), (28, 35383), (31, 35368), (34, 35359), (41, 35338), (46, 35314), (49, 35287), (57, 35248), (60, 35239), (76, 35134), (77, 35131), (79, 35104), (86, 35080), (91, 35059), (93, 35050), (98, 35032), (108, 34990), (114, 34981), (124, 34945), (134, 34909), (144, 34852), (162, 34786), (178, 34726), (192, 34636),

Gene: Validus_46 Start: 35225, Stop: 34305, Start Num: 23

Candidate Starts for Validus_46:

(Start: 23 @35225 has 12 MA's), (31, 35189), (35, 35177), (39, 35165), (44, 35138), (67, 35018), (70, 34979), (73, 34964), (75, 34955), (76, 34949), (87, 34886), (92, 34865), (93, 34859), (94, 34856), (106, 34817), (116, 34805), (121, 34787), (135, 34736), (185, 34517), (201, 34427), (209, 34364), (210, 34352),

Gene: Veliki_42 Start: 34608, Stop: 33706, Start Num: 10

Candidate Starts for Veliki_42:

(Start: 10 @34608 has 38 MA's), (Start: 18 @34551 has 2 MA's), (Start: 22 @34545 has 22 MA's), (28, 34521), (Start: 33 @34500 has 6 MA's), (41, 34476), (57, 34386), (60, 34377), (76, 34272), (77, 34269), (78, 34260), (79, 34242), (81, 34236), (93, 34188), (98, 34170), (104, 34140), (108, 34128), (114, 34119), (130, 34062), (134, 34047), (144, 33990), (157, 33939), (162, 33924), (168, 33897), (174, 33876), (178, 33864),

Gene: ViviJ_40 Start: 33761, Stop: 32910, Start Num: 20

Candidate Starts for ViviJ_40:

(Start: 20 @33761 has 21 MA's), (51, 33632), (61, 33590), (76, 33491), (78, 33479), (87, 33431), (94, 33401), (99, 33383), (107, 33347), (145, 33188), (148, 33173), (152, 33161), (160, 33128), (164, 33119), (169, 33101), (171, 33095), (175, 33080), (185, 33032), (189, 33011),

Gene: Waterfoul_41 Start: 34034, Stop: 33192, Start Num: 20

Candidate Starts for Waterfoul_41:

(Start: 20 @34034 has 21 MA's), (32, 33992), (70, 33797), (76, 33767), (89, 33698), (90, 33692), (94, 33677), (99, 33659), (108, 33623), (128, 33551), (148, 33452), (156, 33425), (158, 33416), (160, 33407), (169, 33380), (171, 33374), (175, 33359), (185, 33311), (189, 33290),

Gene: Ximenita_48 Start: 35501, Stop: 34620, Start Num: 26

Candidate Starts for Ximenita_48:

(Start: 26 @35501 has 18 MA's), (Start: 45 @35432 has 1 MA's), (47, 35420), (49, 35402), (50, 35399), (86, 35201), (92, 35177), (94, 35168), (97, 35156), (99, 35150), (138, 35018), (140, 35006), (168, 34880), (170, 34874), (172, 34868), (185, 34808), (200, 34721),

Gene: YoureAdopted_41 Start: 34767, Stop: 33874, Start Num: 11

Candidate Starts for YoureAdopted_41:

(Start: 11 @34767 has 8 MA's), (Start: 18 @34719 has 2 MA's), (Start: 22 @34713 has 22 MA's), (28, 34689), (41, 34644), (46, 34620), (57, 34554), (60, 34545), (76, 34440), (77, 34437), (78, 34428), (79, 34410), (91, 34365), (93, 34356), (98, 34338), (104, 34308), (108, 34296), (114, 34287), (144, 34158), (157, 34107), (162, 34092), (168, 34065), (174, 34044), (178, 34032),

Gene: Yuna_48 Start: 36294, Stop: 35452, Start Num: 26

Candidate Starts for Yuna_48:

(Start: 17 @36330 has 6 MA's), (Start: 26 @36294 has 18 MA's), (30, 36282), (Start: 45 @36225 has 1 MA's), (51, 36189), (52, 36186), (69, 36087), (86, 35994), (91, 35973), (92, 35970), (94, 35961), (97, 35949), (99, 35943), (100, 35934), (101, 35931), (125, 35862), (140, 35802), (151, 35739), (156, 35721), (157, 35715), (176, 35649), (185, 35604), (197, 35523), (202, 35490),

Gene: Yunkel11_45 Start: 34478, Stop: 33723, Start Num: 29

Candidate Starts for Yunkel11_45:

(Start: 29 @34478 has 12 MA's), (64, 34322), (93, 34148), (94, 34145), (99, 34127), (103, 34103), (105, 34097), (119, 34070), (122, 34061), (123, 34058), (135, 34013), (139, 33998), (140, 33989), (159, 33899), (160, 33896), (174, 33845),

Gene: Zavala_43 Start: 34790, Stop: 33951, Start Num: 22

Candidate Starts for Zavala_43:

(Start: 11 @34844 has 8 MA's), (Start: 18 @34796 has 2 MA's), (Start: 22 @34790 has 22 MA's), (28, 34766), (41, 34721), (46, 34697), (57, 34631), (60, 34622), (76, 34517), (77, 34514), (78, 34505), (79, 34487), (91, 34442), (93, 34433), (98, 34415), (104, 34385), (108, 34373), (114, 34364), (144, 34235), (157, 34184), (162, 34169), (168, 34142), (174, 34121), (178, 34109),

Gene: ZoeJ_44 Start: 36029, Stop: 35175, Start Num: 20

Candidate Starts for ZoeJ_44:

(Start: 20 @36029 has 21 MA's), (28, 36002), (30, 35993), (Start: 45 @35936 has 1 MA's), (53, 35885), (55, 35879), (63, 35843), (76, 35750), (83, 35705), (94, 35660), (116, 35600), (130, 35549), (156, 35429), (177, 35357), (185, 35315),