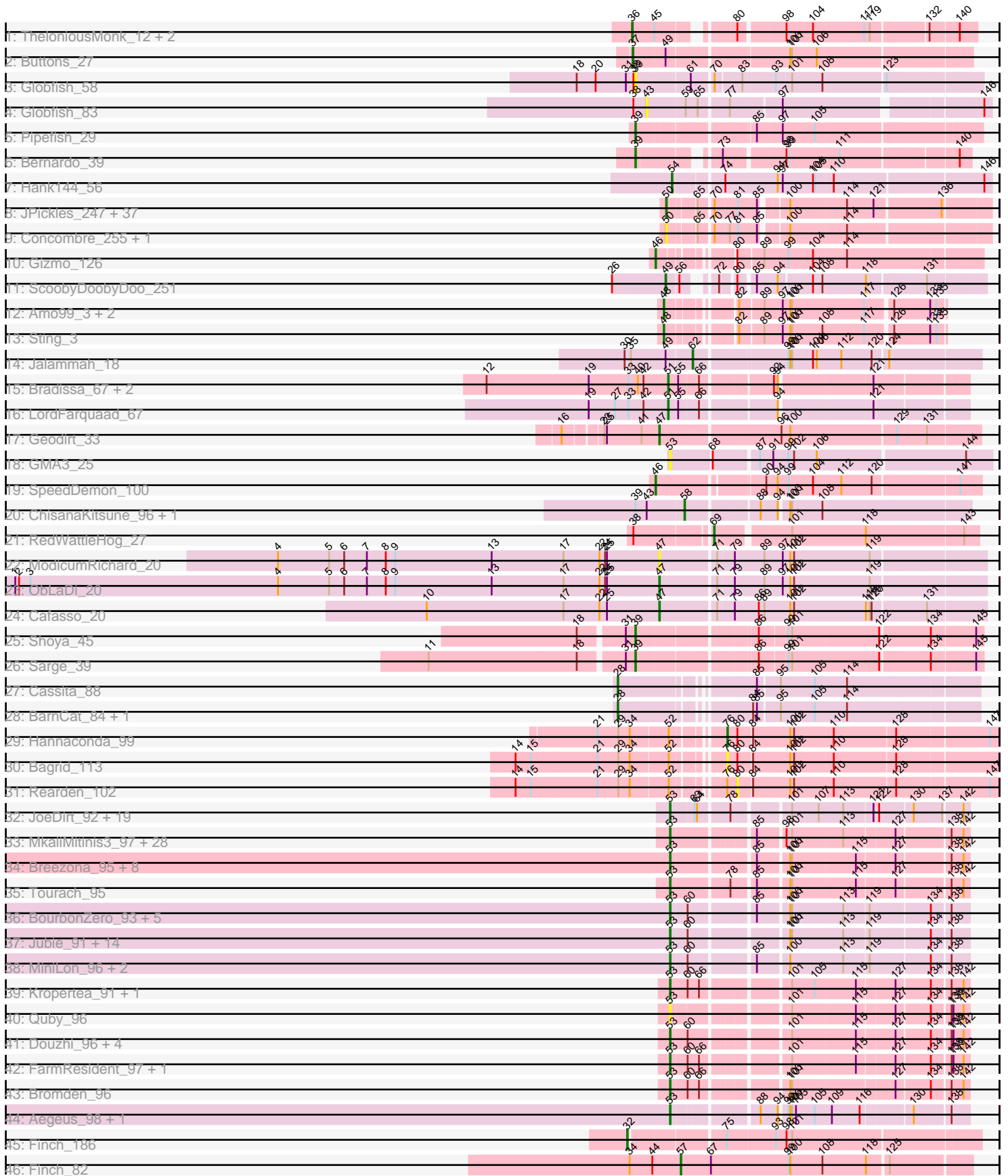


Pham 224322



Note: Tracks are now grouped by subcluster and scaled. Switching in subcluster is indicated by changes in track color. Track scale is now set by default to display the region 30 bp upstream of start 1 to 30 bp downstream of the last possible start. If this default region is judged to be packed too tightly with annotated starts, the track will be further scaled to only show that region of the ORF with annotated starts. This action will be indicated by adding "Zoomed" to the title. For starts, yellow indicates the location of called starts comprised solely of Glimmer/GeneMark auto-annotations, green indicates the location of called starts with at least 1 manual gene annotation.

Pham 224322 Report

This analysis was run 03/28/25 on database version 593.

Pham number 224322 has 175 members, 41 are drafts.

Phages represented in each track:

- Track 1 : TheloniousMonk_12, Target_12, Gwendoluna_12
- Track 2 : Buttons_27
- Track 3 : Globfish_58
- Track 4 : Globfish_83
- Track 5 : Pipefish_29
- Track 6 : Bernardo_39
- Track 7 : Hank144_56
- Track 8 : JPickles_247, StubbySaigey_256, Asterius_250, Darko_249, Blackbrain_248, Maby2021_250, Issimir_243, TinyTim_248, Erdmann_251, Ablatia_247, BananaFence_247, Ading_252, Shrimp_252, Gizmo_255, Belieber_242, Chargie21_247, Trinitium_246, ZygoTaiga_246, Basquiat_247, Bread_246, Yucca_250, Specks_254, Astraea_245, Lee7_249, Janiyra_253, Bonray_252, McGee_251, ErnieJ_243, Salacia_251, FoxtrotP1_248, Morizzled23_247, PurduePete_250, FudgeTart_245, Primadonna_244, Cactojaque_244, SrishMeg2525_247, EmToTheThree_250, Teardrop_248
- Track 9 : Concombre_255, Demodog_256
- Track 10 : Gizmo_126
- Track 11 : ScoobyDoobyDoo_251
- Track 12 : Amo99_3, ColdSoup_3, Jollymon_3
- Track 13 : Sting_3
- Track 14 : Jalammah_18
- Track 15 : Bradissa_67, Lilas_67, EnalisNailo_66
- Track 16 : LordFarquaad_67
- Track 17 : Geodirt_33
- Track 18 : GMA3_25
- Track 19 : SpeedDemon_100
- Track 20 : ChisanaKitsune_96, MintFritos_94
- Track 21 : RedWattleHog_27
- Track 22 : ModicumRichard_20
- Track 23 : ObLaDi_20
- Track 24 : Cafasso_20
- Track 25 : Shoya_45
- Track 26 : Sarge_39
- Track 27 : Cassita_88
- Track 28 : BarnCat_84, LeeroyJenkins_94
- Track 29 : Hannaconda_99
- Track 30 : Bagrid_113

- Track 31 : Rearden_102
- Track 32 : JoeDirt_92, AvadaKedavra_91, Wyatt2_92, Appletree2_90, LeBron_90, Rose5_92, UPIE_90, Silverleaf_90, Tyson_92, DirkDirk_88, Enceladus_88, Acquire49_91, CicholasNage_88, Halena_88, MAckerman_89, Poochiewood_89, Zaria_91, Calm_92, OhShagHennessy_87, Wamburggrxpress_90
- Track 33 : MkaliMitinis3_97, Rossetti_95, DHan_98, LilDestine_93, Archie_92, DanBing_94, Loadrie_94, Bazzle_92, Finemlucis_96, Underpass_85, BigCheese_95, Claus_94, GuuelaD_92, Baoshan_92, Kahlid_94, Lewan_96, Zakai_96, Hafay_96, Nicholasp3_95, Crossroads_95, Vetrrix_93, Sarshaun_96, Soap141_95, Wilder_96, ZhongYanYuan_92, Gardann_95, Rumpelstiltskin_91, SoJulia_97, BobsGarage_94
- Track 34 : Breezona_95, Faith1_95, DrSeegs_94, Wigglewiggle_95, Itos_95, Winky_95, Netyap_94, Gabriela_95, Miley16_95
- Track 35 : Tourach_95
- Track 36 : BourbonZero_93, Ellson_91, Krypton555_94, KirDoubleO7_90, DuncansLeg_92, LiyuLake_91
- Track 37 : Jubie_91, Snenia_91, TriFive_92, Moostard_89, Bellis_90, Red305_93, Finnry_92, Jobypre_92, Nicholas_90, MsGreen_92, Kingsolomon_90, Samty_91, Clautastrophe_90, Lumos_92, Whirlwind_93
- Track 38 : MiniLon_96, MiniMac_96, Lolly9_91
- Track 39 : Kropertea_91, DyoEdafos_98
- Track 40 : Quby_96
- Track 41 : Douzhi_96, Sheng711_97, Douge_96, BrainDrainer_97, PYPDinur_96
- Track 42 : FarmResident_97, Chaser_95
- Track 43 : Bromden_96
- Track 44 : Aegeus_98, Baudelaire_98
- Track 45 : Finch_186
- Track 46 : Finch_82

Summary of Final Annotations (See graph section above for start numbers):

The start number called the most often in the published annotations is 53, it was called in 70 of the 134 non-draft genes in the pham.

Genes that call this "Most Annotated" start:

- Acquire49_91, Aegeus_98, Appletree2_90, Archie_92, AvadaKedavra_91, Baoshan_92, Baudelaire_98, Bazzle_92, Bellis_90, BigCheese_95, BobsGarage_94, BourbonZero_93, BrainDrainer_97, Breezona_95, Bromden_96, Calm_92, Chaser_95, CicholasNage_88, Claus_94, Clautastrophe_90, Crossroads_95, DHan_98, DanBing_94, DirkDirk_88, Douge_96, Douzhi_96, DrSeegs_94, DuncansLeg_92, DyoEdafos_98, Ellson_91, Enceladus_88, Faith1_95, FarmResident_97, Finemlucis_96, Finnry_92, GMA3_25, Gabriela_95, Gardann_95, GuuelaD_92, Hafay_96, Halena_88, Itos_95, Jobypre_92, JoeDirt_92, Jubie_91, Kahlid_94, Kingsolomon_90, KirDoubleO7_90, Kropertea_91, Krypton555_94, LeBron_90, Lewan_96, LilDestine_93, LiyuLake_91, Loadrie_94, Lolly9_91, Lumos_92, MAckerman_89, Miley16_95, MiniLon_96, MiniMac_96, MkaliMitinis3_97, Moostard_89, MsGreen_92, Netyap_94, Nicholas_90, Nicholasp3_95, OhShagHennessy_87, PYPDinur_96, Poochiewood_89, Quby_96, Red305_93, Rose5_92, Rossetti_95, Rumpelstiltskin_91, Samty_91, Sarshaun_96, Sheng711_97, Silverleaf_90, Snenia_91, SoJulia_97, Soap141_95, Tourach_95, TriFive_92, Tyson_92, UPIE_90, Underpass_85, Vetrrix_93, Wamburggrxpress_90, Whirlwind_93,

Wigglewiggles_95, Wilder_96, Winky_95, Wyatt2_92, Zakai_96, Zaria_91, ZhongYanYuan_92,

Genes that have the "Most Annotated" start but do not call it:

-

Genes that do not have the "Most Annotated" start:

- Ablatia_247, Ading_252, Amo99_3, Asterius_250, Astraea_245, Bagrid_113, BananaFence_247, BarnCat_84, Basquiat_247, Belieber_242, Bernardo_39, Blackbrain_248, Bonray_252, Bradissa_67, Bread_246, Buttons_27, Cactojaque_244, Cafasso_20, Cassita_88, Charge21_247, ChisanaKitsune_96, ColdSoup_3, Concombre_255, Darko_249, Demodog_256, EmToTheThree_250, EnalisNailo_66, Erdmann_251, ErnieJ_243, Finch_186, Finch_82, FoxtrotP1_248, FudgeTart_245, Geodirt_33, Gizmo_126, Gizmo_255, Globfish_58, Globfish_83, Gwendoluna_12, Hank144_56, Hannaconda_99, Issimir_243, JPickles_247, Jalammah_18, Janiyra_253, Jollymon_3, Lee7_249, LeeroyJenkins_94, Lilas_67, LordFarquaad_67, Maby2021_250, McGee_251, MintFritos_94, ModicumRichard_20, Morizzled23_247, ObLaDi_20, Pipefish_29, Primadonna_244, PurduePete_250, Rearden_102, RedWattleHog_27, Salacia_251, Sarge_39, ScoobyDoobyDoo_251, Shoya_45, Shrimp_252, Specks_254, SpeedDemon_100, SrishMeg2525_247, Sting_3, StubbySaigey_256, Target_12, Teardrop_248, TheloniousMonk_12, TinyTim_248, Trinitium_246, Yucca_250, ZygoTaiga_246,

Summary by start number:

Start 28:

- Found in 3 of 175 (1.7%) of genes in pham
- Manual Annotations of this start: 3 of 134
- Called 100.0% of time when present
- Phage (with cluster) where this start called: BarnCat_84 (GB), Cassita_88 (GB), LeeroyJenkins_94 (GB),

Start 32:

- Found in 1 of 175 (0.6%) of genes in pham
- Manual Annotations of this start: 1 of 134
- Called 100.0% of time when present
- Phage (with cluster) where this start called: Finch_186 (singleton),

Start 36:

- Found in 3 of 175 (1.7%) of genes in pham
- Manual Annotations of this start: 3 of 134
- Called 100.0% of time when present
- Phage (with cluster) where this start called: Gwendoluna_12 (A1), Target_12 (A1), TheloniousMonk_12 (A1),

Start 37:

- Found in 1 of 175 (0.6%) of genes in pham
- Manual Annotations of this start: 1 of 134
- Called 100.0% of time when present
- Phage (with cluster) where this start called: Buttons_27 (A1),

Start 39:

- Found in 7 of 175 (4.0%) of genes in pham

- Manual Annotations of this start: 4 of 134
- Called 71.4% of time when present
- Phage (with cluster) where this start called: Bernardo_39 (B3), Globfish_58 (AY), Pipefish_29 (B3), Sarge_39 (FB), Shoya_45 (FB),

Start 43:

- Found in 3 of 175 (1.7%) of genes in pham
- No Manual Annotations of this start.
- Called 33.3% of time when present
- Phage (with cluster) where this start called: Globfish_83 (AY),

Start 46:

- Found in 2 of 175 (1.1%) of genes in pham
- Manual Annotations of this start: 2 of 134
- Called 100.0% of time when present
- Phage (with cluster) where this start called: Gizmo_126 (C1), SpeedDemon_100 (DL),

Start 47:

- Found in 4 of 175 (2.3%) of genes in pham
- Manual Annotations of this start: 3 of 134
- Called 100.0% of time when present
- Phage (with cluster) where this start called: Cafasso_20 (DZ), Geodirt_33 (DE1), ModicumRichard_20 (DZ), ObLaDi_20 (DZ),

Start 48:

- Found in 4 of 175 (2.3%) of genes in pham
- Manual Annotations of this start: 2 of 134
- Called 100.0% of time when present
- Phage (with cluster) where this start called: Amo99_3 (CP), ColdSoup_3 (CP), Jollymon_3 (CP), Sting_3 (CP),

Start 49:

- Found in 3 of 175 (1.7%) of genes in pham
- Manual Annotations of this start: 1 of 134
- Called 33.3% of time when present
- Phage (with cluster) where this start called: ScoobyDoobyDoo_251 (C2),

Start 50:

- Found in 40 of 175 (22.9%) of genes in pham
- Manual Annotations of this start: 34 of 134
- Called 100.0% of time when present
- Phage (with cluster) where this start called: Ablatia_247 (C1), Ading_252 (C1), Asterius_250 (C1), Astraea_245 (C1), BananaFence_247 (C1), Basquiat_247 (C1), Belieber_242 (C1), Blackbrain_248 (C1), Bonray_252 (C1), Bread_246 (C1), Cactojaque_244 (C1), Chargie21_247 (C1), Concombre_255 (C1), Darko_249 (C1), Demodog_256 (C1), EmToTheThree_250 (C1), Erdmann_251 (C1), ErnieJ_243 (C1), FoxtrotP1_248 (C1), FudgeTart_245 (C1), Gizmo_255 (C1), Issimir_243 (C1), JPickles_247 (C1), Janiyra_253 (C1), Lee7_249 (C1), Maby2021_250 (C1), McGee_251 (C1), Morizzled23_247 (C1), Primadonna_244 (C1), PurduePete_250 (C1), Salacia_251 (C1), Shrimp_252 (C1), Specks_254 (C1), SrishMeg2525_247 (C1), StubbySaigey_256 (C1), Teardrop_248 (C1), TinyTim_248 (C1), Trinitium_246 (C1), Yucca_250 (C1), ZygoTaiga_246 (C1),

Start 51:

- Found in 4 of 175 (2.3%) of genes in pham
- Manual Annotations of this start: 4 of 134
- Called 100.0% of time when present
- Phage (with cluster) where this start called: Bradissa_67 (CY1), EnalisNailo_66 (CY1), Lilas_67 (CY1), LordFarquaad_67 (CZ2),

Start 53:

- Found in 97 of 175 (55.4%) of genes in pham
- Manual Annotations of this start: 70 of 134
- Called 100.0% of time when present
- Phage (with cluster) where this start called: Acquire49_91 (L1), Aegeus_98 (L5), Appletree2_90 (L1), Archie_92 (L2), AvadaKedavra_91 (L1), Baoshan_92 (L2), Baudelaire_98 (L5), Bazzle_92 (L2), Bellis_90 (L3), BigCheese_95 (L2), BobsGarage_94 (L2), BourbonZero_93 (L3), BrainDrainer_97 (L4), Breezona_95 (L2), Bromden_96 (L4), Calm_92 (L1), Chaser_95 (L4), CicholasNage_88 (L1), Claus_94 (L2), Clautastrophe_90 (L3), Crossroads_95 (L2), DHan_98 (L2), DanBing_94 (L2), DirkDirk_88 (L1), Douge_96 (L4), Douzhi_96 (L4), DrSeegs_94 (L2), DuncansLeg_92 (L3), DyoEdafos_98 (L4), Ellson_91 (L3), Enceladus_88 (L1), Faith1_95 (L2), FarmResident_97 (L4), Finemlucis_96 (L2), Finnry_92 (L3), GMA3_25 (DF2), Gabriela_95 (L2), Gardann_95 (L2), GuuelaD_92 (L2), Hafay_96 (L2), Halena_88 (L1), Itos_95 (L2), Jobypre_92 (L3), JoeDirt_92 (L1), Jubie_91 (L3), Kahlid_94 (L2), Kingsolomon_90 (L3), KirDoubleO7_90 (L3), Kropertea_91 (L4), Krypton555_94 (L3), LeBron_90 (L1), Lewan_96 (L2), LilDestine_93 (L2), LiyuLake_91 (L3), Loadrie_94 (L2), Lolly9_91 (L3), Lumos_92 (L3), MAckerman_89 (L1), Miley16_95 (L2), MiniLon_96 (L3), MiniMac_96 (L3), MkaliMitinis3_97 (L2), Moostard_89 (L3), MsGreen_92 (L3), Netyap_94 (L2), Nicholas_90 (L3), Nicholasp3_95 (L2), OhShagHennessy_87 (L1), PYPDinur_96 (L4), Poochiewood_89 (L1), Quby_96 (L4), Red305_93 (L3), Rose5_92 (L1), Rossetti_95 (L2), Rumpelstiltskin_91 (L2), Samty_91 (L3), Sarshaun_96 (L2), Sheng711_97 (L4), Silverleaf_90 (L1), Snenia_91 (L3), SoJulia_97 (L2), Soap141_95 (L2), Tourach_95 (L2), TriFive_92 (L3), Tyson_92 (L1), UPIE_90 (L1), Underpass_85 (L2), Vetrix_93 (L2), Wamburggrxpress_90 (L1), Whirlwind_93 (L3), Wigglewiggle_95 (L2), Wilder_96 (L2), Winky_95 (L2), Wyatt2_92 (L1), Zakai_96 (L2), Zaria_91 (L1), ZhongYanYuan_92 (L2),

Start 54:

- Found in 1 of 175 (0.6%) of genes in pham
- Manual Annotations of this start: 1 of 134
- Called 100.0% of time when present
- Phage (with cluster) where this start called: Hank144_56 (BD2),

Start 57:

- Found in 1 of 175 (0.6%) of genes in pham
- Manual Annotations of this start: 1 of 134
- Called 100.0% of time when present
- Phage (with cluster) where this start called: Finch_82 (singleton),

Start 58:

- Found in 2 of 175 (1.1%) of genes in pham
- Manual Annotations of this start: 1 of 134
- Called 100.0% of time when present

- Phage (with cluster) where this start called: ChisanaKitsune_96 (DQ), MintFritos_94 (DQ),

Start 62:

- Found in 1 of 175 (0.6%) of genes in pham
- Manual Annotations of this start: 1 of 134
- Called 100.0% of time when present
- Phage (with cluster) where this start called: Jalammah_18 (CV),

Start 69:

- Found in 1 of 175 (0.6%) of genes in pham
- Manual Annotations of this start: 1 of 134
- Called 100.0% of time when present
- Phage (with cluster) where this start called: RedWattleHog_27 (DX),

Start 76:

- Found in 3 of 175 (1.7%) of genes in pham
- Manual Annotations of this start: 1 of 134
- Called 66.7% of time when present
- Phage (with cluster) where this start called: Bagrid_113 (J), Hannaconda_99 (J),

Start 80:

- Found in 8 of 175 (4.6%) of genes in pham
- No Manual Annotations of this start.
- Called 12.5% of time when present
- Phage (with cluster) where this start called: Rearden_102 (J),

Summary by clusters:

There are 25 clusters represented in this pham: singleton, CZ2, DL, FB, DZ, DX, DQ, DF2, A1, BD2, C2, C1, CY1, J, L4, L5, L2, L3, L1, AY, CP, CV, DE1, B3, GB,

Info for manual annotations of cluster A1:

- Start number 36 was manually annotated 3 times for cluster A1.
- Start number 37 was manually annotated 1 time for cluster A1.

Info for manual annotations of cluster B3:

- Start number 39 was manually annotated 2 times for cluster B3.

Info for manual annotations of cluster BD2:

- Start number 54 was manually annotated 1 time for cluster BD2.

Info for manual annotations of cluster C1:

- Start number 46 was manually annotated 1 time for cluster C1.
- Start number 50 was manually annotated 34 times for cluster C1.

Info for manual annotations of cluster C2:

- Start number 49 was manually annotated 1 time for cluster C2.

Info for manual annotations of cluster CP:

- Start number 48 was manually annotated 2 times for cluster CP.

Info for manual annotations of cluster CV:

- Start number 62 was manually annotated 1 time for cluster CV.

Info for manual annotations of cluster CY1:

- Start number 51 was manually annotated 3 times for cluster CY1.

Info for manual annotations of cluster CZ2:

- Start number 51 was manually annotated 1 time for cluster CZ2.

Info for manual annotations of cluster DE1:

- Start number 47 was manually annotated 1 time for cluster DE1.

Info for manual annotations of cluster DL:

- Start number 46 was manually annotated 1 time for cluster DL.

Info for manual annotations of cluster DQ:

- Start number 58 was manually annotated 1 time for cluster DQ.

Info for manual annotations of cluster DX:

- Start number 69 was manually annotated 1 time for cluster DX.

Info for manual annotations of cluster DZ:

- Start number 47 was manually annotated 2 times for cluster DZ.

Info for manual annotations of cluster FB:

- Start number 39 was manually annotated 2 times for cluster FB.

Info for manual annotations of cluster GB:

- Start number 28 was manually annotated 3 times for cluster GB.

Info for manual annotations of cluster J:

- Start number 76 was manually annotated 1 time for cluster J.

Info for manual annotations of cluster L1:

- Start number 53 was manually annotated 19 times for cluster L1.

Info for manual annotations of cluster L2:

- Start number 53 was manually annotated 28 times for cluster L2.

Info for manual annotations of cluster L3:

- Start number 53 was manually annotated 17 times for cluster L3.

Info for manual annotations of cluster L4:

- Start number 53 was manually annotated 4 times for cluster L4.

Info for manual annotations of cluster L5:

- Start number 53 was manually annotated 2 times for cluster L5.

Gene Information:

Gene: Ablatia_247 Start: 141923, Stop: 142372, Start Num: 50

Candidate Starts for Ablatia_247:

(Start: 50 @141923 has 34 MA's), (65, 141962), (70, 141980), (81, 142013), (85, 142040), (100, 142073), (114, 142160), (121, 142202), (136, 142301),

Gene: Acquire49_91 Start: 57365, Stop: 57775, Start Num: 53

Candidate Starts for Acquire49_91:

(Start: 53 @57365 has 70 MA's), (63, 57395), (64, 57398), (78, 57443), (101, 57521), (107, 57563), (113, 57599), (121, 57641), (122, 57647), (130, 57695), (137, 57740), (142, 57767),

Gene: Ading_252 Start: 144356, Stop: 144805, Start Num: 50

Candidate Starts for Ading_252:

(Start: 50 @144356 has 34 MA's), (65, 144395), (70, 144413), (81, 144446), (85, 144473), (100, 144506), (114, 144593), (121, 144635), (136, 144734),

Gene: Aegeus_98 Start: 59877, Stop: 60281, Start Num: 53

Candidate Starts for Aegeus_98:

(Start: 53 @59877 has 70 MA's), (88, 59988), (94, 60015), (99, 60024), (100, 60027), (101, 60030), (103, 60036), (105, 60066), (109, 60090), (116, 60132), (130, 60201), (138, 60255),

Gene: Amo99_3 Start: 2875, Stop: 3255, Start Num: 48

Candidate Starts for Amo99_3:

(Start: 48 @2875 has 2 MA's), (82, 2959), (89, 2992), (97, 3019), (100, 3031), (101, 3034), (117, 3145), (126, 3181), (133, 3235), (135, 3244),

Gene: Appletree2_90 Start: 57125, Stop: 57535, Start Num: 53

Candidate Starts for Appletree2_90:

(Start: 53 @57125 has 70 MA's), (63, 57155), (64, 57158), (78, 57203), (101, 57281), (107, 57323), (113, 57359), (121, 57401), (122, 57407), (130, 57455), (137, 57500), (142, 57527),

Gene: Archie_92 Start: 59049, Stop: 59462, Start Num: 53

Candidate Starts for Archie_92:

(Start: 53 @59049 has 70 MA's), (85, 59160), (98, 59199), (101, 59208), (113, 59286), (127, 59358), (138, 59436), (142, 59454),

Gene: Asterius_250 Start: 142368, Stop: 142817, Start Num: 50

Candidate Starts for Asterius_250:

(Start: 50 @142368 has 34 MA's), (65, 142407), (70, 142425), (81, 142458), (85, 142485), (100, 142518), (114, 142605), (121, 142647), (136, 142746),

Gene: Astraea_245 Start: 141563, Stop: 142012, Start Num: 50

Candidate Starts for Astraea_245:

(Start: 50 @141563 has 34 MA's), (65, 141602), (70, 141620), (81, 141653), (85, 141680), (100, 141713), (114, 141800), (121, 141842), (136, 141941),

Gene: AvadaKedavra_91 Start: 57477, Stop: 57887, Start Num: 53

Candidate Starts for AvadaKedavra_91:

(Start: 53 @57477 has 70 MA's), (63, 57507), (64, 57510), (78, 57555), (101, 57633), (107, 57675), (113, 57711), (121, 57753), (122, 57759), (130, 57807), (137, 57852), (142, 57879),

Gene: Bagrid_113 Start: 63671, Stop: 64075, Start Num: 76

Candidate Starts for Bagrid_113:

(14, 63371), (15, 63395), (21, 63500), (29, 63533), (34, 63551), (52, 63608), (Start: 76 @63671 has 1 MA's), (80, 63686), (84, 63704), (100, 63761), (102, 63767), (110, 63827), (128, 63920),

Gene: BananaFence_247 Start: 142192, Stop: 142641, Start Num: 50

Candidate Starts for BananaFence_247:

(Start: 50 @142192 has 34 MA's), (65, 142231), (70, 142249), (81, 142282), (85, 142309), (100, 142342), (114, 142429), (121, 142471), (136, 142570),

Gene: Baoshan_92 Start: 59704, Stop: 60117, Start Num: 53

Candidate Starts for Baoshan_92:

(Start: 53 @59704 has 70 MA's), (85, 59815), (98, 59854), (101, 59863), (113, 59941), (127, 60013), (138, 60091), (142, 60109),

Gene: BarnCat_84 Start: 47542, Stop: 47033, Start Num: 28

Candidate Starts for BarnCat_84:

(Start: 28 @47542 has 3 MA's), (84, 47371), (85, 47365), (95, 47335), (105, 47281), (114, 47233),

Gene: Basquiat_247 Start: 140478, Stop: 140927, Start Num: 50

Candidate Starts for Basquiat_247:

(Start: 50 @140478 has 34 MA's), (65, 140517), (70, 140535), (81, 140568), (85, 140595), (100, 140628), (114, 140715), (121, 140757), (136, 140856),

Gene: Baudelaire_98 Start: 59877, Stop: 60281, Start Num: 53

Candidate Starts for Baudelaire_98:

(Start: 53 @59877 has 70 MA's), (88, 59988), (94, 60015), (99, 60024), (100, 60027), (101, 60030), (103, 60036), (105, 60066), (109, 60090), (116, 60132), (130, 60201), (138, 60255),

Gene: Bazzle_92 Start: 59605, Stop: 60018, Start Num: 53

Candidate Starts for Bazzle_92:

(Start: 53 @59605 has 70 MA's), (85, 59716), (98, 59755), (101, 59764), (113, 59842), (127, 59914), (138, 59992), (142, 60010),

Gene: Belieber_242 Start: 140605, Stop: 141054, Start Num: 50

Candidate Starts for Belieber_242:

(Start: 50 @140605 has 34 MA's), (65, 140644), (70, 140662), (81, 140695), (85, 140722), (100, 140755), (114, 140842), (121, 140884), (136, 140983),

Gene: Bellis_90 Start: 59240, Stop: 59647, Start Num: 53

Candidate Starts for Bellis_90:

(Start: 53 @59240 has 70 MA's), (60, 59261), (100, 59390), (101, 59393), (113, 59471), (119, 59507), (134, 59594), (138, 59621),

Gene: Bernardo_39 Start: 36994, Stop: 37440, Start Num: 39

Candidate Starts for Bernardo_39:

(Start: 39 @36994 has 4 MA's), (73, 37090), (98, 37174), (99, 37177), (111, 37255), (140, 37423),

Gene: BigCheese_95 Start: 59815, Stop: 60228, Start Num: 53

Candidate Starts for BigCheese_95:

(Start: 53 @59815 has 70 MA's), (85, 59926), (98, 59965), (101, 59974), (113, 60052), (127, 60124), (138, 60202), (142, 60220),

Gene: Blackbrain_248 Start: 142255, Stop: 142704, Start Num: 50

Candidate Starts for Blackbrain_248:

(Start: 50 @142255 has 34 MA's), (65, 142294), (70, 142312), (81, 142345), (85, 142372), (100, 142405), (114, 142492), (121, 142534), (136, 142633),

Gene: BobsGarage_94 Start: 59815, Stop: 60228, Start Num: 53

Candidate Starts for BobsGarage_94:

(Start: 53 @59815 has 70 MA's), (85, 59926), (98, 59965), (101, 59974), (113, 60052), (127, 60124), (138, 60202), (142, 60220),

Gene: Bonray_252 Start: 144055, Stop: 144504, Start Num: 50

Candidate Starts for Bonray_252:

(Start: 50 @144055 has 34 MA's), (65, 144094), (70, 144112), (81, 144145), (85, 144172), (100, 144205), (114, 144292), (121, 144334), (136, 144433),

Gene: BourbonZero_93 Start: 59266, Stop: 59673, Start Num: 53

Candidate Starts for BourbonZero_93:

(Start: 53 @59266 has 70 MA's), (60, 59287), (85, 59371), (100, 59416), (101, 59419), (113, 59497), (119, 59533), (134, 59620), (138, 59647),

Gene: Bradissa_67 Start: 46915, Stop: 47334, Start Num: 51

Candidate Starts for Bradissa_67:

(12, 46627), (19, 46789), (33, 46852), (40, 46867), (42, 46876), (Start: 51 @46915 has 4 MA's), (55, 46927), (66, 46957), (92, 47056), (94, 47062), (121, 47200),

Gene: BrainDrainer_97 Start: 59520, Stop: 59927, Start Num: 53

Candidate Starts for BrainDrainer_97:

(Start: 53 @59520 has 70 MA's), (60, 59541), (101, 59673), (115, 59769), (127, 59823), (134, 59874), (138, 59901), (139, 59904), (142, 59919),

Gene: Bread_246 Start: 142022, Stop: 142471, Start Num: 50

Candidate Starts for Bread_246:

(Start: 50 @142022 has 34 MA's), (65, 142061), (70, 142079), (81, 142112), (85, 142139), (100, 142172), (114, 142259), (121, 142301), (136, 142400),

Gene: Breezona_95 Start: 59815, Stop: 60228, Start Num: 53

Candidate Starts for Breezona_95:

(Start: 53 @59815 has 70 MA's), (85, 59926), (100, 59971), (101, 59974), (115, 60070), (127, 60124), (138, 60202), (142, 60220),

Gene: Bromden_96 Start: 60413, Stop: 60820, Start Num: 53

Candidate Starts for Bromden_96:

(Start: 53 @60413 has 70 MA's), (60, 60434), (66, 60449), (100, 60563), (101, 60566), (127, 60716), (134, 60767), (138, 60794), (142, 60812),

Gene: Buttons_27 Start: 21411, Stop: 21896, Start Num: 37

Candidate Starts for Buttons_27:

(Start: 37 @21411 has 1 MA's), (Start: 49 @21459 has 1 MA's), (100, 21630), (101, 21633), (106, 21672),

Gene: Cactojaque_244 Start: 141201, Stop: 141650, Start Num: 50

Candidate Starts for Cactojaque_244:

(Start: 50 @141201 has 34 MA's), (65, 141240), (70, 141258), (81, 141291), (85, 141318), (100, 141351), (114, 141438), (121, 141480), (136, 141579),

Gene: Cafasso_20 Start: 18713, Stop: 18225, Start Num: 47

Candidate Starts for Cafasso_20:

(10, 19079), (17, 18863), (22, 18806), (25, 18794), (Start: 47 @18713 has 3 MA's), (71, 18629), (79, 18605), (86, 18569), (89, 18560), (100, 18521), (102, 18515), (118, 18401), (119, 18395), (120, 18392), (131, 18314),

Gene: Calm_92 Start: 57376, Stop: 57786, Start Num: 53

Candidate Starts for Calm_92:

(Start: 53 @57376 has 70 MA's), (63, 57406), (64, 57409), (78, 57454), (101, 57532), (107, 57574), (113, 57610), (121, 57652), (122, 57658), (130, 57706), (137, 57751), (142, 57778),

Gene: Cassita_88 Start: 48685, Stop: 48176, Start Num: 28

Candidate Starts for Cassita_88:

(Start: 28 @48685 has 3 MA's), (85, 48508), (95, 48478), (105, 48424), (114, 48376),

Gene: Chargie21_247 Start: 140478, Stop: 140927, Start Num: 50

Candidate Starts for Chargie21_247:

(Start: 50 @140478 has 34 MA's), (65, 140517), (70, 140535), (81, 140568), (85, 140595), (100, 140628), (114, 140715), (121, 140757), (136, 140856),

Gene: Chaser_95 Start: 58821, Stop: 59228, Start Num: 53

Candidate Starts for Chaser_95:

(Start: 53 @58821 has 70 MA's), (60, 58842), (66, 58857), (101, 58974), (115, 59070), (127, 59124), (134, 59175), (138, 59202), (139, 59205), (142, 59220),

Gene: ChisanaKitsune_96 Start: 72440, Stop: 72853, Start Num: 58

Candidate Starts for ChisanaKitsune_96:

(Start: 39 @72365 has 4 MA's), (43, 72383), (Start: 58 @72440 has 1 MA's), (88, 72536), (94, 72563), (100, 72575), (101, 72578), (108, 72626),

Gene: CicholasNage_88 Start: 57029, Stop: 57439, Start Num: 53

Candidate Starts for CicholasNage_88:

(Start: 53 @57029 has 70 MA's), (63, 57059), (64, 57062), (78, 57107), (101, 57185), (107, 57227), (113, 57263), (121, 57305), (122, 57311), (130, 57359), (137, 57404), (142, 57431),

Gene: Claus_94 Start: 59528, Stop: 59941, Start Num: 53

Candidate Starts for Claus_94:

(Start: 53 @59528 has 70 MA's), (85, 59639), (98, 59678), (101, 59687), (113, 59765), (127, 59837), (138, 59915), (142, 59933),

Gene: Clautastrophe_90 Start: 59235, Stop: 59642, Start Num: 53

Candidate Starts for Clautastrophe_90:

(Start: 53 @59235 has 70 MA's), (60, 59256), (100, 59385), (101, 59388), (113, 59466), (119, 59502), (134, 59589), (138, 59616),

Gene: ColdSoup_3 Start: 2875, Stop: 3255, Start Num: 48

Candidate Starts for ColdSoup_3:

(Start: 48 @2875 has 2 MA's), (82, 2959), (89, 2992), (97, 3019), (100, 3031), (101, 3034), (117, 3145), (126, 3181), (133, 3235), (135, 3244),

Gene: Concombres_255 Start: 144217, Stop: 144666, Start Num: 50

Candidate Starts for Concombres_255:

(Start: 50 @144217 has 34 MA's), (65, 144256), (70, 144274), (77, 144295), (81, 144307), (85, 144334), (100, 144367), (114, 144454),

Gene: Crossroads_95 Start: 59527, Stop: 59940, Start Num: 53

Candidate Starts for Crossroads_95:

(Start: 53 @59527 has 70 MA's), (85, 59638), (98, 59677), (101, 59686), (113, 59764), (127, 59836), (138, 59914), (142, 59932),

Gene: DHan_98 Start: 59751, Stop: 60164, Start Num: 53

Candidate Starts for DHan_98:

(Start: 53 @59751 has 70 MA's), (85, 59862), (98, 59901), (101, 59910), (113, 59988), (127, 60060), (138, 60138), (142, 60156),

Gene: DanBing_94 Start: 59444, Stop: 59857, Start Num: 53

Candidate Starts for DanBing_94:

(Start: 53 @59444 has 70 MA's), (85, 59555), (98, 59594), (101, 59603), (113, 59681), (127, 59753), (138, 59831), (142, 59849),

Gene: Darko_249 Start: 142196, Stop: 142645, Start Num: 50

Candidate Starts for Darko_249:

(Start: 50 @142196 has 34 MA's), (65, 142235), (70, 142253), (81, 142286), (85, 142313), (100, 142346), (114, 142433), (121, 142475), (136, 142574),

Gene: Demodog_256 Start: 144227, Stop: 144676, Start Num: 50

Candidate Starts for Demodog_256:

(Start: 50 @144227 has 34 MA's), (65, 144266), (70, 144284), (77, 144305), (81, 144317), (85, 144344), (100, 144377), (114, 144464),

Gene: DirkDirk_88 Start: 56705, Stop: 57115, Start Num: 53

Candidate Starts for DirkDirk_88:

(Start: 53 @56705 has 70 MA's), (63, 56735), (64, 56738), (78, 56783), (101, 56861), (107, 56903), (113, 56939), (121, 56981), (122, 56987), (130, 57035), (137, 57080), (142, 57107),

Gene: Douge_96 Start: 58940, Stop: 59347, Start Num: 53

Candidate Starts for Douge_96:

(Start: 53 @58940 has 70 MA's), (60, 58961), (101, 59093), (115, 59189), (127, 59243), (134, 59294), (138, 59321), (139, 59324), (142, 59339),

Gene: Douzhi_96 Start: 59209, Stop: 59616, Start Num: 53

Candidate Starts for Douzhi_96:

(Start: 53 @59209 has 70 MA's), (60, 59230), (101, 59362), (115, 59458), (127, 59512), (134, 59563), (138, 59590), (139, 59593), (142, 59608),

Gene: DrSeegs_94 Start: 59815, Stop: 60228, Start Num: 53

Candidate Starts for DrSeegs_94:

(Start: 53 @59815 has 70 MA's), (85, 59926), (100, 59971), (101, 59974), (115, 60070), (127, 60124), (138, 60202), (142, 60220),

Gene: DuncansLeg_92 Start: 59254, Stop: 59661, Start Num: 53

Candidate Starts for DuncansLeg_92:

(Start: 53 @59254 has 70 MA's), (60, 59275), (85, 59359), (100, 59404), (101, 59407), (113, 59485), (119, 59521), (134, 59608), (138, 59635),

Gene: DyoEdafos_98 Start: 59531, Stop: 59938, Start Num: 53

Candidate Starts for DyoEdafos_98:

(Start: 53 @59531 has 70 MA's), (60, 59552), (66, 59567), (101, 59684), (105, 59720), (115, 59780), (127, 59834), (134, 59885), (138, 59912), (142, 59930),

Gene: Ellson_91 Start: 59569, Stop: 59976, Start Num: 53

Candidate Starts for Ellson_91:

(Start: 53 @59569 has 70 MA's), (60, 59590), (85, 59674), (100, 59719), (101, 59722), (113, 59800), (119, 59836), (134, 59923), (138, 59950),

Gene: EmToTheThree_250 Start: 143104, Stop: 143553, Start Num: 50

Candidate Starts for EmToTheThree_250:

(Start: 50 @143104 has 34 MA's), (65, 143143), (70, 143161), (81, 143194), (85, 143221), (100, 143254), (114, 143341), (121, 143383), (136, 143482),

Gene: EnalisNailo_66 Start: 46449, Stop: 46868, Start Num: 51

Candidate Starts for EnalisNailo_66:

(12, 46161), (19, 46323), (33, 46386), (40, 46401), (42, 46410), (Start: 51 @46449 has 4 MA's), (55, 46461), (66, 46491), (92, 46590), (94, 46596), (121, 46734),

Gene: Enceladus_88 Start: 57406, Stop: 57816, Start Num: 53

Candidate Starts for Enceladus_88:

(Start: 53 @57406 has 70 MA's), (63, 57436), (64, 57439), (78, 57484), (101, 57562), (107, 57604), (113, 57640), (121, 57682), (122, 57688), (130, 57736), (137, 57781), (142, 57808),

Gene: Erdmann_251 Start: 143072, Stop: 143521, Start Num: 50

Candidate Starts for Erdmann_251:

(Start: 50 @143072 has 34 MA's), (65, 143111), (70, 143129), (81, 143162), (85, 143189), (100, 143222), (114, 143309), (121, 143351), (136, 143450),

Gene: ErnieJ_243 Start: 139900, Stop: 140349, Start Num: 50

Candidate Starts for ErnieJ_243:

(Start: 50 @139900 has 34 MA's), (65, 139939), (70, 139957), (81, 139990), (85, 140017), (100, 140050), (114, 140137), (121, 140179), (136, 140278),

Gene: Faith1_95 Start: 59452, Stop: 59865, Start Num: 53

Candidate Starts for Faith1_95:

(Start: 53 @59452 has 70 MA's), (85, 59563), (100, 59608), (101, 59611), (115, 59707), (127, 59761), (138, 59839), (142, 59857),

Gene: FarmResident_97 Start: 59091, Stop: 59498, Start Num: 53

Candidate Starts for FarmResident_97:

(Start: 53 @59091 has 70 MA's), (60, 59112), (66, 59127), (101, 59244), (115, 59340), (127, 59394), (134, 59445), (138, 59472), (139, 59475), (142, 59490),

Gene: Finch_186 Start: 111122, Stop: 111628, Start Num: 32

Candidate Starts for Finch_186:

(Start: 32 @111122 has 1 MA's), (75, 111254), (93, 111326), (98, 111341), (101, 111350),

Gene: Finch_82 Start: 71334, Stop: 71777, Start Num: 57

Candidate Starts for Finch_82:

(34, 71253), (44, 71289), (Start: 57 @71334 has 1 MA's), (67, 71382), (99, 71505), (100, 71508), (108, 71559), (118, 71625), (125, 71655),

Gene: Finemlucis_96 Start: 60566, Stop: 60979, Start Num: 53

Candidate Starts for Finemlucis_96:

(Start: 53 @60566 has 70 MA's), (85, 60677), (98, 60716), (101, 60725), (113, 60803), (127, 60875), (138, 60953), (142, 60971),

Gene: Finnry_92 Start: 59588, Stop: 59995, Start Num: 53

Candidate Starts for Finnry_92:

(Start: 53 @59588 has 70 MA's), (60, 59609), (100, 59738), (101, 59741), (113, 59819), (119, 59855), (134, 59942), (138, 59969),

Gene: FoxtrotP1_248 Start: 143658, Stop: 144107, Start Num: 50

Candidate Starts for FoxtrotP1_248:

(Start: 50 @143658 has 34 MA's), (65, 143697), (70, 143715), (81, 143748), (85, 143775), (100, 143808), (114, 143895), (121, 143937), (136, 144036),

Gene: FudgeTart_245 Start: 142162, Stop: 142611, Start Num: 50

Candidate Starts for FudgeTart_245:

(Start: 50 @142162 has 34 MA's), (65, 142201), (70, 142219), (81, 142252), (85, 142279), (100, 142312), (114, 142399), (121, 142441), (136, 142540),

Gene: GMA3_25 Start: 35593, Stop: 36075, Start Num: 53

Candidate Starts for GMA3_25:

(Start: 53 @35593 has 70 MA's), (68, 35656), (87, 35722), (91, 35743), (99, 35764), (102, 35773), (106, 35809), (144, 36034),

Gene: Gabriela_95 Start: 58798, Stop: 59211, Start Num: 53

Candidate Starts for Gabriela_95:

(Start: 53 @58798 has 70 MA's), (85, 58909), (100, 58954), (101, 58957), (115, 59053), (127, 59107), (138, 59185), (142, 59203),

Gene: Gardann_95 Start: 59299, Stop: 59712, Start Num: 53

Candidate Starts for Gardann_95:

(Start: 53 @59299 has 70 MA's), (85, 59410), (98, 59449), (101, 59458), (113, 59536), (127, 59608), (138, 59686), (142, 59704),

Gene: Geodirt_33 Start: 32468, Stop: 31986, Start Num: 47

Candidate Starts for Geodirt_33:

(16, 32606), (23, 32552), (25, 32549), (41, 32495), (Start: 47 @32468 has 3 MA's), (96, 32285), (100, 32273), (129, 32111), (131, 32066),

Gene: Gizmo_255 Start: 144989, Stop: 145438, Start Num: 50

Candidate Starts for Gizmo_255:

(Start: 50 @144989 has 34 MA's), (65, 145028), (70, 145046), (81, 145079), (85, 145106), (100, 145139), (114, 145226), (121, 145268), (136, 145367),

Gene: Gizmo_126 Start: 66298, Stop: 65843, Start Num: 46

Candidate Starts for Gizmo_126:

(Start: 46 @66298 has 2 MA's), (80, 66211), (89, 66175), (99, 66139), (104, 66100), (114, 66049),

Gene: Globfish_58 Start: 33707, Stop: 34201, Start Num: 39

Candidate Starts for Globfish_58:

(18, 33614), (20, 33644), (31, 33692), (38, 33704), (Start: 39 @33707 has 4 MA's), (61, 33788), (70, 33818), (83, 33851), (93, 33896), (101, 33917), (108, 33965), (123, 34058),

Gene: Globfish_83 Start: 46529, Stop: 47017, Start Num: 43

Candidate Starts for Globfish_83:

(38, 46508), (43, 46529), (59, 46586), (65, 46604), (77, 46646), (97, 46721), (146, 47006),

Gene: GuuelaD_92 Start: 59411, Stop: 59824, Start Num: 53

Candidate Starts for GuuelaD_92:

(Start: 53 @59411 has 70 MA's), (85, 59522), (98, 59561), (101, 59570), (113, 59648), (127, 59720), (138, 59798), (142, 59816),

Gene: Gwendoluna_12 Start: 7666, Stop: 8121, Start Num: 36

Candidate Starts for Gwendoluna_12:

(Start: 36 @7666 has 3 MA's), (45, 7699), (80, 7786), (98, 7846), (104, 7888), (117, 7966), (119, 7975), (132, 8056), (140, 8095),

Gene: Hafay_96 Start: 59523, Stop: 59936, Start Num: 53

Candidate Starts for Hafay_96:

(Start: 53 @59523 has 70 MA's), (85, 59634), (98, 59673), (101, 59682), (113, 59760), (127, 59832), (138, 59910), (142, 59928),

Gene: Halena_88 Start: 56292, Stop: 56702, Start Num: 53

Candidate Starts for Halena_88:

(Start: 53 @56292 has 70 MA's), (63, 56322), (64, 56325), (78, 56370), (101, 56448), (107, 56490), (113, 56526), (121, 56568), (122, 56574), (130, 56622), (137, 56667), (142, 56694),

Gene: Hank144_56 Start: 39762, Stop: 39295, Start Num: 54

Candidate Starts for Hank144_56:

(Start: 54 @39762 has 1 MA's), (74, 39693), (94, 39615), (97, 39609), (104, 39561), (105, 39558), (110, 39531), (146, 39306),

Gene: Hannaconda_99 Start: 57411, Stop: 57815, Start Num: 76

Candidate Starts for Hannaconda_99:

(21, 57240), (29, 57273), (34, 57291), (52, 57348), (Start: 76 @57411 has 1 MA's), (80, 57426), (84, 57444), (100, 57501), (102, 57507), (110, 57567), (128, 57660), (147, 57801),

Gene: Issimir_243 Start: 142261, Stop: 142710, Start Num: 50

Candidate Starts for Issimir_243:

(Start: 50 @142261 has 34 MA's), (65, 142300), (70, 142318), (81, 142351), (85, 142378), (100, 142411), (114, 142498), (121, 142540), (136, 142639),

Gene: Itos_95 Start: 58358, Stop: 58771, Start Num: 53

Candidate Starts for Itos_95:

(Start: 53 @58358 has 70 MA's), (85, 58469), (100, 58514), (101, 58517), (115, 58613), (127, 58667), (138, 58745), (142, 58763),

Gene: JPickles_247 Start: 141311, Stop: 141760, Start Num: 50

Candidate Starts for JPickles_247:

(Start: 50 @141311 has 34 MA's), (65, 141350), (70, 141368), (81, 141401), (85, 141428), (100, 141461), (114, 141548), (121, 141590), (136, 141689),

Gene: Jalammah_18 Start: 10634, Stop: 11050, Start Num: 62

Candidate Starts for Jalammah_18:

(30, 10535), (35, 10544), (Start: 49 @10595 has 1 MA's), (Start: 62 @10634 has 1 MA's), (99, 10763), (100, 10766), (101, 10769), (104, 10802), (106, 10808), (112, 10844), (120, 10892), (124, 10913),

Gene: Janiyra_253 Start: 142848, Stop: 143297, Start Num: 50

Candidate Starts for Janiyra_253:

(Start: 50 @142848 has 34 MA's), (65, 142887), (70, 142905), (81, 142938), (85, 142965), (100, 142998), (114, 143085), (121, 143127), (136, 143226),

Gene: Jobypre_92 Start: 59235, Stop: 59642, Start Num: 53

Candidate Starts for Jobypre_92:

(Start: 53 @59235 has 70 MA's), (60, 59256), (100, 59385), (101, 59388), (113, 59466), (119, 59502), (134, 59589), (138, 59616),

Gene: JoeDirt_92 Start: 57967, Stop: 58377, Start Num: 53

Candidate Starts for JoeDirt_92:

(Start: 53 @57967 has 70 MA's), (63, 57997), (64, 58000), (78, 58045), (101, 58123), (107, 58165), (113, 58201), (121, 58243), (122, 58249), (130, 58297), (137, 58342), (142, 58369),

Gene: Jollymon_3 Start: 2875, Stop: 3255, Start Num: 48

Candidate Starts for Jollymon_3:

(Start: 48 @2875 has 2 MA's), (82, 2959), (89, 2992), (97, 3019), (100, 3031), (101, 3034), (117, 3145), (126, 3181), (133, 3235), (135, 3244),

Gene: Jubie_91 Start: 59370, Stop: 59777, Start Num: 53

Candidate Starts for Jubie_91:

(Start: 53 @59370 has 70 MA's), (60, 59391), (100, 59520), (101, 59523), (113, 59601), (119, 59637), (134, 59724), (138, 59751),

Gene: Kahlid_94 Start: 59217, Stop: 59630, Start Num: 53

Candidate Starts for Kahlid_94:

(Start: 53 @59217 has 70 MA's), (85, 59328), (98, 59367), (101, 59376), (113, 59454), (127, 59526), (138, 59604), (142, 59622),

Gene: Kingsolomon_90 Start: 59344, Stop: 59751, Start Num: 53

Candidate Starts for Kingsolomon_90:

(Start: 53 @59344 has 70 MA's), (60, 59365), (100, 59494), (101, 59497), (113, 59575), (119, 59611), (134, 59698), (138, 59725),

Gene: KirDoubleO7_90 Start: 59256, Stop: 59663, Start Num: 53

Candidate Starts for KirDoubleO7_90:

(Start: 53 @59256 has 70 MA's), (60, 59277), (85, 59361), (100, 59406), (101, 59409), (113, 59487), (119, 59523), (134, 59610), (138, 59637),

Gene: Kropertea_91 Start: 58811, Stop: 59221, Start Num: 53

Candidate Starts for Kropertea_91:

(Start: 53 @58811 has 70 MA's), (60, 58832), (66, 58847), (101, 58967), (105, 59003), (115, 59063), (127, 59117), (134, 59168), (138, 59195), (142, 59213),

Gene: Krypton555_94 Start: 59747, Stop: 60154, Start Num: 53

Candidate Starts for Krypton555_94:

(Start: 53 @59747 has 70 MA's), (60, 59768), (85, 59852), (100, 59897), (101, 59900), (113, 59978), (119, 60014), (134, 60101), (138, 60128),

Gene: LeBron_90 Start: 56599, Stop: 57009, Start Num: 53

Candidate Starts for LeBron_90:

(Start: 53 @56599 has 70 MA's), (63, 56629), (64, 56632), (78, 56677), (101, 56755), (107, 56797), (113, 56833), (121, 56875), (122, 56881), (130, 56929), (137, 56974), (142, 57001),

Gene: Lee7_249 Start: 144611, Stop: 145060, Start Num: 50

Candidate Starts for Lee7_249:

(Start: 50 @144611 has 34 MA's), (65, 144650), (70, 144668), (81, 144701), (85, 144728), (100, 144761), (114, 144848), (121, 144890), (136, 144989),

Gene: LeeroyJenkins_94 Start: 49860, Stop: 49351, Start Num: 28

Candidate Starts for LeeroyJenkins_94:

(Start: 28 @49860 has 3 MA's), (84, 49689), (85, 49683), (95, 49653), (105, 49599), (114, 49551),

Gene: Lewan_96 Start: 59451, Stop: 59864, Start Num: 53

Candidate Starts for Lewan_96:

(Start: 53 @59451 has 70 MA's), (85, 59562), (98, 59601), (101, 59610), (113, 59688), (127, 59760), (138, 59838), (142, 59856),

Gene: LilDestine_93 Start: 59128, Stop: 59541, Start Num: 53

Candidate Starts for LilDestine_93:

(Start: 53 @59128 has 70 MA's), (85, 59239), (98, 59278), (101, 59287), (113, 59365), (127, 59437), (138, 59515), (142, 59533),

Gene: Lilas_67 Start: 47987, Stop: 48406, Start Num: 51

Candidate Starts for Lilas_67:

(12, 47699), (19, 47861), (33, 47924), (40, 47939), (42, 47948), (Start: 51 @47987 has 4 MA's), (55, 47999), (66, 48029), (92, 48128), (94, 48134), (121, 48272),

Gene: LiyuLake_91 Start: 59329, Stop: 59736, Start Num: 53

Candidate Starts for LiyuLake_91:

(Start: 53 @59329 has 70 MA's), (60, 59350), (85, 59434), (100, 59479), (101, 59482), (113, 59560), (119, 59596), (134, 59683), (138, 59710),

Gene: Loadrie_94 Start: 59619, Stop: 60032, Start Num: 53

Candidate Starts for Loadrie_94:

(Start: 53 @59619 has 70 MA's), (85, 59730), (98, 59769), (101, 59778), (113, 59856), (127, 59928), (138, 60006), (142, 60024),

Gene: Lolly9_91 Start: 59420, Stop: 59827, Start Num: 53

Candidate Starts for Lolly9_91:

(Start: 53 @59420 has 70 MA's), (60, 59441), (85, 59525), (100, 59570), (113, 59651), (119, 59687), (134, 59774), (138, 59801),

Gene: LordFarquaad_67 Start: 43212, Stop: 43631, Start Num: 51

Candidate Starts for LordFarquaad_67:

(19, 43086), (27, 43128), (33, 43149), (42, 43173), (Start: 51 @43212 has 4 MA's), (55, 43224), (66, 43254), (94, 43359), (121, 43497),

Gene: Lumos_92 Start: 59232, Stop: 59639, Start Num: 53

Candidate Starts for Lumos_92:

(Start: 53 @59232 has 70 MA's), (60, 59253), (100, 59382), (101, 59385), (113, 59463), (119, 59499), (134, 59586), (138, 59613),

Gene: MAckerman_89 Start: 56285, Stop: 56695, Start Num: 53

Candidate Starts for MAckerman_89:

(Start: 53 @56285 has 70 MA's), (63, 56315), (64, 56318), (78, 56363), (101, 56441), (107, 56483), (113, 56519), (121, 56561), (122, 56567), (130, 56615), (137, 56660), (142, 56687),

Gene: Maby2021_250 Start: 143650, Stop: 144099, Start Num: 50

Candidate Starts for Maby2021_250:

(Start: 50 @143650 has 34 MA's), (65, 143689), (70, 143707), (81, 143740), (85, 143767), (100, 143800), (114, 143887), (121, 143929), (136, 144028),

Gene: McGee_251 Start: 142298, Stop: 142747, Start Num: 50

Candidate Starts for McGee_251:

(Start: 50 @142298 has 34 MA's), (65, 142337), (70, 142355), (81, 142388), (85, 142415), (100, 142448), (114, 142535), (121, 142577), (136, 142676),

Gene: Miley16_95 Start: 59815, Stop: 60228, Start Num: 53

Candidate Starts for Miley16_95:

(Start: 53 @59815 has 70 MA's), (85, 59926), (100, 59971), (101, 59974), (115, 60070), (127, 60124), (138, 60202), (142, 60220),

Gene: MiniLon_96 Start: 59421, Stop: 59828, Start Num: 53

Candidate Starts for MiniLon_96:

(Start: 53 @59421 has 70 MA's), (60, 59442), (85, 59526), (100, 59571), (113, 59652), (119, 59688), (134, 59775), (138, 59802),

Gene: MiniMac_96 Start: 59416, Stop: 59823, Start Num: 53

Candidate Starts for MiniMac_96:

(Start: 53 @59416 has 70 MA's), (60, 59437), (85, 59521), (100, 59566), (113, 59647), (119, 59683), (134, 59770), (138, 59797),

Gene: MintFritos_94 Start: 72730, Stop: 73143, Start Num: 58

Candidate Starts for MintFritos_94:

(Start: 39 @72655 has 4 MA's), (43, 72673), (Start: 58 @72730 has 1 MA's), (88, 72826), (94, 72853), (100, 72865), (101, 72868), (108, 72916),

Gene: MkaliMitinis3_97 Start: 59582, Stop: 59995, Start Num: 53

Candidate Starts for MkaliMitinis3_97:

(Start: 53 @59582 has 70 MA's), (85, 59693), (98, 59732), (101, 59741), (113, 59819), (127, 59891), (138, 59969), (142, 59987),

Gene: ModicumRichard_20 Start: 18713, Stop: 18225, Start Num: 47

Candidate Starts for ModicumRichard_20:

(4, 19316), (5, 19235), (6, 19211), (7, 19175), (8, 19145), (9, 19130), (13, 18977), (17, 18863), (22, 18806), (24, 18797), (25, 18794), (Start: 47 @18713 has 3 MA's), (71, 18629), (79, 18605), (89, 18560), (97, 18533), (100, 18521), (102, 18515), (119, 18395),

Gene: Moostard_89 Start: 59339, Stop: 59746, Start Num: 53

Candidate Starts for Moostard_89:

(Start: 53 @59339 has 70 MA's), (60, 59360), (100, 59489), (101, 59492), (113, 59570), (119, 59606), (134, 59693), (138, 59720),

Gene: Morizzled23_247 Start: 141326, Stop: 141775, Start Num: 50

Candidate Starts for Morizzled23_247:

(Start: 50 @141326 has 34 MA's), (65, 141365), (70, 141383), (81, 141416), (85, 141443), (100, 141476), (114, 141563), (121, 141605), (136, 141704),

Gene: MsGreen_92 Start: 59234, Stop: 59641, Start Num: 53

Candidate Starts for MsGreen_92:

(Start: 53 @59234 has 70 MA's), (60, 59255), (100, 59384), (101, 59387), (113, 59465), (119, 59501), (134, 59588), (138, 59615),

Gene: Netyap_94 Start: 59453, Stop: 59866, Start Num: 53

Candidate Starts for Netyap_94:

(Start: 53 @59453 has 70 MA's), (85, 59564), (100, 59609), (101, 59612), (115, 59708), (127, 59762), (138, 59840), (142, 59858),

Gene: Nicholas_90 Start: 59344, Stop: 59751, Start Num: 53

Candidate Starts for Nicholas_90:

(Start: 53 @59344 has 70 MA's), (60, 59365), (100, 59494), (101, 59497), (113, 59575), (119, 59611), (134, 59698), (138, 59725),

Gene: Nicholasp3_95 Start: 59299, Stop: 59712, Start Num: 53

Candidate Starts for Nicholasp3_95:

(Start: 53 @59299 has 70 MA's), (85, 59410), (98, 59449), (101, 59458), (113, 59536), (127, 59608), (138, 59686), (142, 59704),

Gene: ObLaDi_20 Start: 18692, Stop: 18204, Start Num: 47

Candidate Starts for ObLaDi_20:

(1, 19712), (2, 19706), (3, 19688), (4, 19295), (5, 19214), (6, 19190), (7, 19154), (8, 19124), (9, 19109), (13, 18956), (17, 18842), (22, 18785), (24, 18776), (25, 18773), (Start: 47 @18692 has 3 MA's), (71, 18608), (79, 18584), (89, 18539), (97, 18512), (100, 18500), (102, 18494), (119, 18374),

Gene: OhShagHennessy_87 Start: 56542, Stop: 56952, Start Num: 53

Candidate Starts for OhShagHennessy_87:

(Start: 53 @56542 has 70 MA's), (63, 56572), (64, 56575), (78, 56620), (101, 56698), (107, 56740), (113, 56776), (121, 56818), (122, 56824), (130, 56872), (137, 56917), (142, 56944),

Gene: PYPDinur_96 Start: 59772, Stop: 60179, Start Num: 53

Candidate Starts for PYPDinur_96:

(Start: 53 @59772 has 70 MA's), (60, 59793), (101, 59925), (115, 60021), (127, 60075), (134, 60126), (138, 60153), (139, 60156), (142, 60171),

Gene: Pipefish_29 Start: 27509, Stop: 27015, Start Num: 39

Candidate Starts for Pipefish_29:

(Start: 39 @27509 has 4 MA's), (85, 27344), (97, 27311), (105, 27260),

Gene: Poochiewood_89 Start: 57939, Stop: 58349, Start Num: 53

Candidate Starts for Poochiewood_89:

(Start: 53 @57939 has 70 MA's), (63, 57969), (64, 57972), (78, 58017), (101, 58095), (107, 58137), (113, 58173), (121, 58215), (122, 58221), (130, 58269), (137, 58314), (142, 58341),

Gene: Primadonna_244 Start: 142325, Stop: 142774, Start Num: 50

Candidate Starts for Primadonna_244:

(Start: 50 @142325 has 34 MA's), (65, 142364), (70, 142382), (81, 142415), (85, 142442), (100, 142475), (114, 142562), (121, 142604), (136, 142703),

Gene: PurduePete_250 Start: 143690, Stop: 144139, Start Num: 50

Candidate Starts for PurduePete_250:

(Start: 50 @143690 has 34 MA's), (65, 143729), (70, 143747), (81, 143780), (85, 143807), (100, 143840), (114, 143927), (121, 143969), (136, 144068),

Gene: Quby_96 Start: 59183, Stop: 59590, Start Num: 53

Candidate Starts for Quby_96:

(Start: 53 @59183 has 70 MA's), (101, 59336), (115, 59432), (127, 59486), (134, 59537), (138, 59564), (139, 59567), (142, 59582),

Gene: Rearden_102 Start: 60176, Stop: 60565, Start Num: 80

Candidate Starts for Rearden_102:

(14, 59861), (15, 59885), (21, 59990), (29, 60023), (34, 60041), (52, 60098), (Start: 76 @60161 has 1 MA's), (80, 60176), (84, 60194), (100, 60251), (102, 60257), (110, 60317), (128, 60410), (147, 60551),

Gene: Red305_93 Start: 59235, Stop: 59642, Start Num: 53

Candidate Starts for Red305_93:

(Start: 53 @59235 has 70 MA's), (60, 59256), (100, 59385), (101, 59388), (113, 59466), (119, 59502), (134, 59589), (138, 59616),

Gene: RedWattleHog_27 Start: 28545, Stop: 28156, Start Num: 69

Candidate Starts for RedWattleHog_27:

(38, 28650), (Start: 69 @28545 has 1 MA's), (101, 28443), (118, 28326), (143, 28179),

Gene: Rose5_92 Start: 57809, Stop: 58219, Start Num: 53

Candidate Starts for Rose5_92:

(Start: 53 @57809 has 70 MA's), (63, 57839), (64, 57842), (78, 57887), (101, 57965), (107, 58007), (113, 58043), (121, 58085), (122, 58091), (130, 58139), (137, 58184), (142, 58211),

Gene: Rossetti_95 Start: 59618, Stop: 60031, Start Num: 53

Candidate Starts for Rossetti_95:

(Start: 53 @59618 has 70 MA's), (85, 59729), (98, 59768), (101, 59777), (113, 59855), (127, 59927), (138, 60005), (142, 60023),

Gene: Rumpelstiltskin_91 Start: 59092, Stop: 59505, Start Num: 53

Candidate Starts for Rumpelstiltskin_91:

(Start: 53 @59092 has 70 MA's), (85, 59203), (98, 59242), (101, 59251), (113, 59329), (127, 59401), (138, 59479), (142, 59497),

Gene: Salacia_251 Start: 144116, Stop: 144565, Start Num: 50

Candidate Starts for Salacia_251:

(Start: 50 @144116 has 34 MA's), (65, 144155), (70, 144173), (81, 144206), (85, 144233), (100, 144266), (114, 144353), (121, 144395), (136, 144494),

Gene: Samty_91 Start: 59332, Stop: 59739, Start Num: 53

Candidate Starts for Samty_91:

(Start: 53 @59332 has 70 MA's), (60, 59353), (100, 59482), (101, 59485), (113, 59563), (119, 59599), (134, 59686), (138, 59713),

Gene: Sarge_39 Start: 25703, Stop: 26194, Start Num: 39

Candidate Starts for Sarge_39:

(11, 25388), (18, 25622), (31, 25688), (Start: 39 @25703 has 4 MA's), (86, 25868), (99, 25904), (101, 25910), (122, 26045), (134, 26117), (145, 26183),

Gene: Sarshaun_96 Start: 60210, Stop: 60623, Start Num: 53

Candidate Starts for Sarshaun_96:

(Start: 53 @60210 has 70 MA's), (85, 60321), (98, 60360), (101, 60369), (113, 60447), (127, 60519), (138, 60597), (142, 60615),

Gene: ScoobyDoobyDoo_251 Start: 151338, Stop: 151754, Start Num: 49

Candidate Starts for ScoobyDoobyDoo_251:

(26, 151257), (Start: 49 @151338 has 1 MA's), (56, 151356), (72, 151383), (80, 151401), (85, 151422), (94, 151452), (104, 151500), (108, 151515), (118, 151581), (131, 151668),

Gene: Sheng711_97 Start: 59248, Stop: 59655, Start Num: 53

Candidate Starts for Sheng711_97:

(Start: 53 @59248 has 70 MA's), (60, 59269), (101, 59401), (115, 59497), (127, 59551), (134, 59602), (138, 59629), (139, 59632), (142, 59647),

Gene: Shoya_45 Start: 27671, Stop: 28162, Start Num: 39

Candidate Starts for Shoya_45:

(18, 27590), (31, 27656), (Start: 39 @27671 has 4 MA's), (86, 27836), (99, 27872), (101, 27878), (122, 28013), (134, 28085), (145, 28151),

Gene: Shrimp_252 Start: 143727, Stop: 144176, Start Num: 50

Candidate Starts for Shrimp_252:

(Start: 50 @143727 has 34 MA's), (65, 143766), (70, 143784), (81, 143817), (85, 143844), (100, 143877), (114, 143964), (121, 144006), (136, 144105),

Gene: Silverleaf_90 Start: 57305, Stop: 57715, Start Num: 53

Candidate Starts for Silverleaf_90:

(Start: 53 @57305 has 70 MA's), (63, 57335), (64, 57338), (78, 57383), (101, 57461), (107, 57503), (113, 57539), (121, 57581), (122, 57587), (130, 57635), (137, 57680), (142, 57707),

Gene: Snenia_91 Start: 59236, Stop: 59643, Start Num: 53

Candidate Starts for Snenia_91:

(Start: 53 @59236 has 70 MA's), (60, 59257), (100, 59386), (101, 59389), (113, 59467), (119, 59503), (134, 59590), (138, 59617),

Gene: SoJulia_97 Start: 60975, Stop: 61388, Start Num: 53

Candidate Starts for SoJulia_97:

(Start: 53 @60975 has 70 MA's), (85, 61086), (98, 61125), (101, 61134), (113, 61212), (127, 61284), (138, 61362), (142, 61380),

Gene: Soap141_95 Start: 60210, Stop: 60623, Start Num: 53

Candidate Starts for Soap141_95:

(Start: 53 @60210 has 70 MA's), (85, 60321), (98, 60360), (101, 60369), (113, 60447), (127, 60519), (138, 60597), (142, 60615),

Gene: Specks_254 Start: 143067, Stop: 143516, Start Num: 50

Candidate Starts for Specks_254:

(Start: 50 @143067 has 34 MA's), (65, 143106), (70, 143124), (81, 143157), (85, 143184), (100, 143217), (114, 143304), (121, 143346), (136, 143445),

Gene: SpeedDemon_100 Start: 4893, Stop: 5351, Start Num: 46
Candidate Starts for SpeedDemon_100:
(Start: 46 @4893 has 2 MA's), (90, 5040), (94, 5055), (99, 5070), (104, 5109), (112, 5151), (120, 5199),
(141, 5319),

Gene: SrishMeg2525_247 Start: 143222, Stop: 143671, Start Num: 50
Candidate Starts for SrishMeg2525_247:
(Start: 50 @143222 has 34 MA's), (65, 143261), (70, 143279), (81, 143312), (85, 143339), (100,
143372), (114, 143459), (121, 143501), (136, 143600),

Gene: Sting_3 Start: 2872, Stop: 3252, Start Num: 48
Candidate Starts for Sting_3:
(Start: 48 @2872 has 2 MA's), (82, 2956), (89, 2989), (97, 3016), (100, 3028), (101, 3031), (108, 3079),
(117, 3142), (126, 3178), (133, 3232), (135, 3241),

Gene: StubbySaigey_256 Start: 142752, Stop: 143201, Start Num: 50
Candidate Starts for StubbySaigey_256:
(Start: 50 @142752 has 34 MA's), (65, 142791), (70, 142809), (81, 142842), (85, 142869), (100,
142902), (114, 142989), (121, 143031), (136, 143130),

Gene: Target_12 Start: 7244, Stop: 7699, Start Num: 36
Candidate Starts for Target_12:
(Start: 36 @7244 has 3 MA's), (45, 7277), (80, 7364), (98, 7424), (104, 7466), (117, 7544), (119, 7553),
(132, 7634), (140, 7673),

Gene: Teardrop_248 Start: 142079, Stop: 142528, Start Num: 50
Candidate Starts for Teardrop_248:
(Start: 50 @142079 has 34 MA's), (65, 142118), (70, 142136), (81, 142169), (85, 142196), (100,
142229), (114, 142316), (121, 142358), (136, 142457),

Gene: TheloniousMonk_12 Start: 7471, Stop: 7926, Start Num: 36
Candidate Starts for TheloniousMonk_12:
(Start: 36 @7471 has 3 MA's), (45, 7504), (80, 7591), (98, 7651), (104, 7693), (117, 7771), (119, 7780),
(132, 7861), (140, 7900),

Gene: TinyTim_248 Start: 142046, Stop: 142495, Start Num: 50
Candidate Starts for TinyTim_248:
(Start: 50 @142046 has 34 MA's), (65, 142085), (70, 142103), (81, 142136), (85, 142163), (100,
142196), (114, 142283), (121, 142325), (136, 142424),

Gene: Tourach_95 Start: 60189, Stop: 60602, Start Num: 53
Candidate Starts for Tourach_95:
(Start: 53 @60189 has 70 MA's), (78, 60270), (85, 60300), (100, 60345), (101, 60348), (115, 60444),
(127, 60498), (138, 60576), (142, 60594),

Gene: TriFive_92 Start: 59348, Stop: 59755, Start Num: 53
Candidate Starts for TriFive_92:
(Start: 53 @59348 has 70 MA's), (60, 59369), (100, 59498), (101, 59501), (113, 59579), (119, 59615),
(134, 59702), (138, 59729),

Gene: Trinitium_246 Start: 140800, Stop: 141249, Start Num: 50
Candidate Starts for Trinitium_246:

(Start: 50 @140800 has 34 MA's), (65, 140839), (70, 140857), (81, 140890), (85, 140917), (100, 140950), (114, 141037), (121, 141079), (136, 141178),

Gene: Tyson_92 Start: 57702, Stop: 58112, Start Num: 53

Candidate Starts for Tyson_92:

(Start: 53 @57702 has 70 MA's), (63, 57732), (64, 57735), (78, 57780), (101, 57858), (107, 57900), (113, 57936), (121, 57978), (122, 57984), (130, 58032), (137, 58077), (142, 58104),

Gene: UPIE_90 Start: 57298, Stop: 57708, Start Num: 53

Candidate Starts for UPIE_90:

(Start: 53 @57298 has 70 MA's), (63, 57328), (64, 57331), (78, 57376), (101, 57454), (107, 57496), (113, 57532), (121, 57574), (122, 57580), (130, 57628), (137, 57673), (142, 57700),

Gene: Underpass_85 Start: 54335, Stop: 54748, Start Num: 53

Candidate Starts for Underpass_85:

(Start: 53 @54335 has 70 MA's), (85, 54446), (98, 54485), (101, 54494), (113, 54572), (127, 54644), (138, 54722), (142, 54740),

Gene: Vetrix_93 Start: 59073, Stop: 59486, Start Num: 53

Candidate Starts for Vetrix_93:

(Start: 53 @59073 has 70 MA's), (85, 59184), (98, 59223), (101, 59232), (113, 59310), (127, 59382), (138, 59460), (142, 59478),

Gene: Wamburgxpress_90 Start: 57426, Stop: 57836, Start Num: 53

Candidate Starts for Wamburgxpress_90:

(Start: 53 @57426 has 70 MA's), (63, 57456), (64, 57459), (78, 57504), (101, 57582), (107, 57624), (113, 57660), (121, 57702), (122, 57708), (130, 57756), (137, 57801), (142, 57828),

Gene: Whirlwind_93 Start: 59575, Stop: 59982, Start Num: 53

Candidate Starts for Whirlwind_93:

(Start: 53 @59575 has 70 MA's), (60, 59596), (100, 59725), (101, 59728), (113, 59806), (119, 59842), (134, 59929), (138, 59956),

Gene: Wigglewigggle_95 Start: 59375, Stop: 59788, Start Num: 53

Candidate Starts for Wigglewigggle_95:

(Start: 53 @59375 has 70 MA's), (85, 59486), (100, 59531), (101, 59534), (115, 59630), (127, 59684), (138, 59762), (142, 59780),

Gene: Wilder_96 Start: 59217, Stop: 59630, Start Num: 53

Candidate Starts for Wilder_96:

(Start: 53 @59217 has 70 MA's), (85, 59328), (98, 59367), (101, 59376), (113, 59454), (127, 59526), (138, 59604), (142, 59622),

Gene: Winky_95 Start: 59815, Stop: 60228, Start Num: 53

Candidate Starts for Winky_95:

(Start: 53 @59815 has 70 MA's), (85, 59926), (100, 59971), (101, 59974), (115, 60070), (127, 60124), (138, 60202), (142, 60220),

Gene: Wyatt2_92 Start: 57733, Stop: 58143, Start Num: 53

Candidate Starts for Wyatt2_92:

(Start: 53 @57733 has 70 MA's), (63, 57763), (64, 57766), (78, 57811), (101, 57889), (107, 57931), (113, 57967), (121, 58009), (122, 58015), (130, 58063), (137, 58108), (142, 58135),

Gene: Yucca_250 Start: 143605, Stop: 144054, Start Num: 50

Candidate Starts for Yucca_250:

(Start: 50 @143605 has 34 MA's), (65, 143644), (70, 143662), (81, 143695), (85, 143722), (100, 143755), (114, 143842), (121, 143884), (136, 143983),

Gene: Zakai_96 Start: 59860, Stop: 60273, Start Num: 53

Candidate Starts for Zakai_96:

(Start: 53 @59860 has 70 MA's), (85, 59971), (98, 60010), (101, 60019), (113, 60097), (127, 60169), (138, 60247), (142, 60265),

Gene: Zaria_91 Start: 56841, Stop: 57251, Start Num: 53

Candidate Starts for Zaria_91:

(Start: 53 @56841 has 70 MA's), (63, 56871), (64, 56874), (78, 56919), (101, 56997), (107, 57039), (113, 57075), (121, 57117), (122, 57123), (130, 57171), (137, 57216), (142, 57243),

Gene: ZhongYanYuan_92 Start: 59271, Stop: 59684, Start Num: 53

Candidate Starts for ZhongYanYuan_92:

(Start: 53 @59271 has 70 MA's), (85, 59382), (98, 59421), (101, 59430), (113, 59508), (127, 59580), (138, 59658), (142, 59676),

Gene: ZygoTaiga_246 Start: 143902, Stop: 144351, Start Num: 50

Candidate Starts for ZygoTaiga_246:

(Start: 50 @143902 has 34 MA's), (65, 143941), (70, 143959), (81, 143992), (85, 144019), (100, 144052), (114, 144139), (121, 144181), (136, 144280),