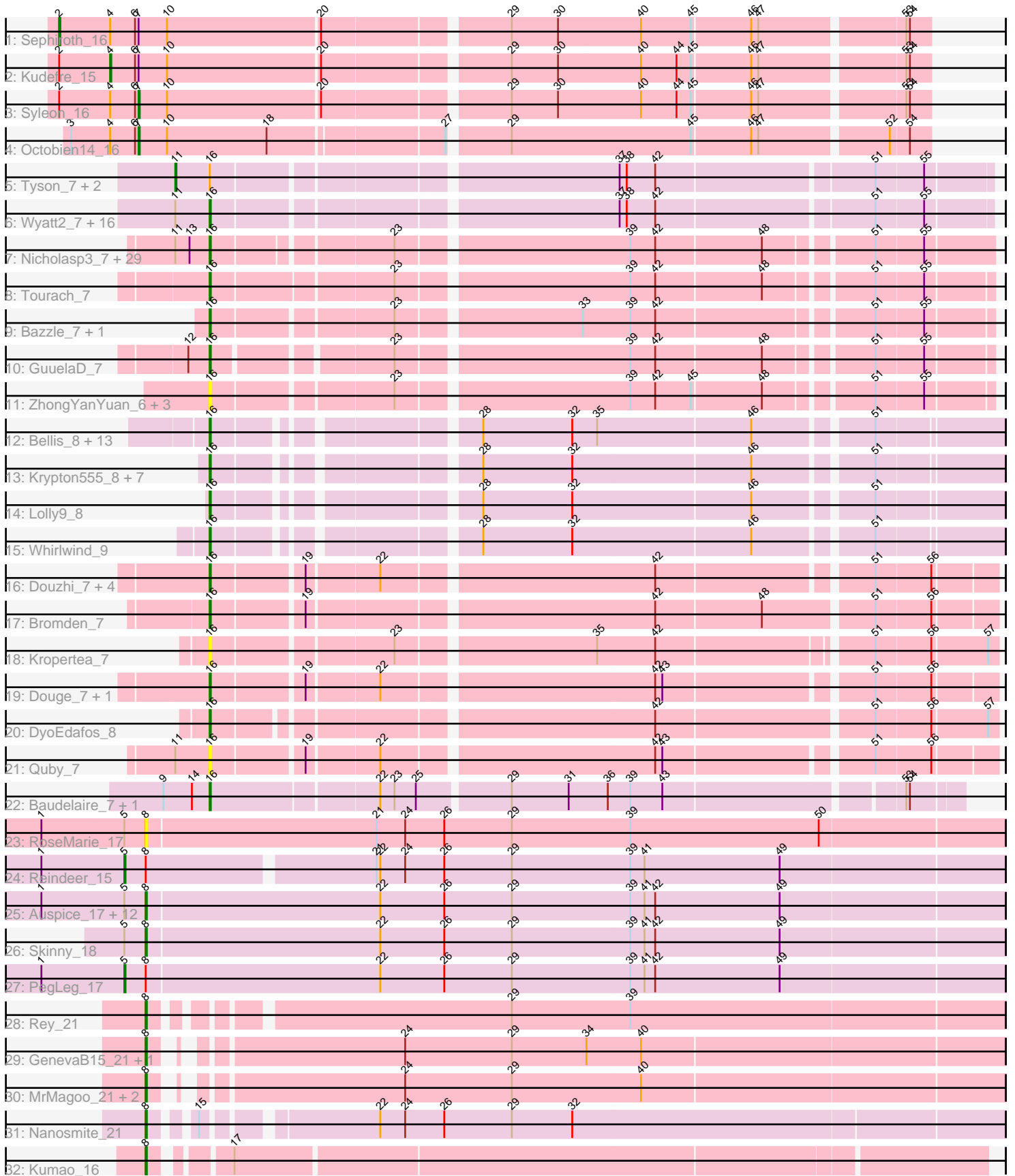


Pham 224404



Note: Tracks are now grouped by subcluster and scaled. Switching in subcluster is indicated by changes in track color. Track scale is now set by default to display the region 30 bp upstream of start 1 to 30 bp downstream of the last possible start. If this default region is judged to be packed too tightly with annotated starts, the track will be further scaled to only show that region of the ORF with annotated starts. This action will be indicated by adding "Zoomed" to the title. For starts, yellow indicates the location of called starts comprised solely of Glimmer/GeneMark auto-annotations, green indicates the location of called starts with at least 1 manual gene annotation.

## Pham 224404 Report

This analysis was run 03/28/25 on database version 593.

Pham number 224404 has 124 members, 29 are drafts.

Phages represented in each track:

- Track 1 : Sephiroth\_16
- Track 2 : Kudefre\_15
- Track 3 : Syleon\_16
- Track 4 : Octobien14\_16
- Track 5 : Tyson\_7, LeBron\_7, UPIE\_7
- Track 6 : Wyatt2\_7, Zaria\_7, CicholasNage\_7, AvadaKedavra\_7, JoeDirt\_7, Wamburgxpress\_7, Appletree2\_7, Rose5\_7, Calm\_7, MAckerman\_7, Enceladus\_7, DirkDirk\_7, Poochiewood\_7, Silverleaf\_7, Halena\_7, Acquire49\_7, OhShagHennessy\_7
- Track 7 : Nicholasp3\_7, Underpass\_7, Vetric\_7, Soap141\_7, BobsGarage\_7, Netyap\_7, Miley16\_7, Gabriela\_7, LilDestine\_7, Faith1\_7, Winky\_7, Sarshaun\_7, Kahlid\_7, Finemlucis\_7, Zakai\_7, Rossetti\_7, Lewan\_7, Loadrie\_7, Gardann\_7, DrSeegs\_7, Wilder\_7, Breezona\_7, SoJulia\_7, MkaliMitinis3\_7, Hafay\_7, Itos\_7, BigCheese\_7, Crossroads\_7, Wigglewiggle\_7, Rumpelstiltskin\_7
- Track 8 : Tourach\_7
- Track 9 : Bazzle\_7, Archie\_7
- Track 10 : GuuelaD\_7
- Track 11 : ZhongYanYuan\_6, DHan\_7, Claus\_7, Baoshan\_6
- Track 12 : Bellis\_8, Nicholas\_8, Lumos\_8, Red305\_8, Moostard\_8, TriFive\_8, Snenia\_8, MsGreen\_8, Kingsolomon\_8, Jubie\_8, Clautastrophe\_8, Samty\_8, Jobypre\_8, Finnry\_8
- Track 13 : Krypton555\_8, DuncansLeg\_8, MiniLon\_8, Ellson\_8, MiniMac\_8, KirDoubleO7\_6, BourbonZero\_7, LiyuLake\_8
- Track 14 : Lolly9\_8
- Track 15 : Whirlwind\_9
- Track 16 : Douzhi\_7, BrainDrainer\_8, PYPDinur\_7, Chaser\_7, Sheng711\_7
- Track 17 : Bromden\_7
- Track 18 : Kropertea\_7
- Track 19 : Douge\_7, FarmResident\_7
- Track 20 : DyoEdafos\_8
- Track 21 : Quby\_7
- Track 22 : Baudelaire\_7, Aegeus\_7
- Track 23 : RoseMarie\_17
- Track 24 : Reindeer\_15
- Track 25 : Auspice\_17, Bricole\_17, Dulcita\_18, IPhane7\_17, Diminimus\_18, KleverKiS\_17, Izel\_16, FreakyGoo\_17, Glaske16\_18, LilhomieP\_16, TyDawg\_17, Bongo\_17, SlimJimmy\_16

- Track 26 : Skinny\_18
- Track 27 : PegLeg\_17
- Track 28 : Rey\_21
- Track 29 : GenevaB15\_21, Aziz\_21
- Track 30 : MrMagoo\_21, GardenSalsa\_21, Estes\_22
- Track 31 : Nanosmite\_21
- Track 32 : Kumao\_16

**Summary of Final Annotations (See graph section above for start numbers):**

The start number called the most often in the published annotations is 16, it was called in 67 of the 95 non-draft genes in the pham.

Genes that call this "Most Annotated" start:

- Acquire49\_7, Aegeus\_7, Appletree2\_7, Archie\_7, AvadaKedavra\_7, Baoshan\_6, Baudelaire\_7, Bazzle\_7, Bellis\_8, BigCheese\_7, BobsGarage\_7, BourbonZero\_7, BrainDrainer\_8, Breezona\_7, Bromden\_7, Calm\_7, Chaser\_7, CicholasNage\_7, Claus\_7, Clautastrophe\_8, Crossroads\_7, DHan\_7, DirkDirk\_7, Douge\_7, Douzhi\_7, DrSeegs\_7, DuncansLeg\_8, DyoEdafos\_8, Ellson\_8, Enceladus\_7, Faith1\_7, FarmResident\_7, Finemlucis\_7, Finnry\_8, Gabriela\_7, Gardann\_7, GuuelaD\_7, Hafay\_7, Halena\_7, Itos\_7, Jobypre\_8, JoeDirt\_7, Jubie\_8, Kahlid\_7, Kingsolomon\_8, KirDoubleO7\_6, Kropertea\_7, Krypton555\_8, Lewan\_7, LilDestine\_7, LiyuLake\_8, Loadrie\_7, Lolly9\_8, Lumos\_8, MAckerman\_7, Miley16\_7, MiniLon\_8, MiniMac\_8, MkaliMitinis3\_7, Moostard\_8, MsGreen\_8, Netyap\_7, Nicholas\_8, Nicholasp3\_7, OhShagHennessy\_7, PYPDinur\_7, Pochiewood\_7, Quby\_7, Red305\_8, Rose5\_7, Rossetti\_7, Rumpelstiltskin\_7, Samty\_8, Sarshaun\_7, Sheng711\_7, Silverleaf\_7, Snenia\_8, SoJulia\_7, Soap141\_7, Tourach\_7, TriFive\_8, Underpass\_7, Vetrix\_7, Wamburggrxpress\_7, Whirlwind\_9, Wigglewiggle\_7, Wilder\_7, Winky\_7, Wyatt2\_7, Zakai\_7, Zaria\_7, ZhongYanYuan\_6,

Genes that have the "Most Annotated" start but do not call it:

- LeBron\_7, Tyson\_7, UPIE\_7,

Genes that do not have the "Most Annotated" start:

- Auspice\_17, Aziz\_21, Bongo\_17, Bricole\_17, Diminimus\_18, Dulcita\_18, Estes\_22, FreakyGoo\_17, GardenSalsa\_21, GenevaB15\_21, Glaske16\_18, IPhane7\_17, Izel\_16, KleverKiS\_17, Kudrefre\_15, Kumao\_16, LilhomieP\_16, MrMagoo\_21, Nanosmite\_21, Octobien14\_16, PegLeg\_17, Reindeer\_15, Rey\_21, RoseMarie\_17, Sephiroth\_16, Skinny\_18, SlimJimmy\_16, Syleon\_16, TyDawg\_17,

**Summary by start number:**

Start 2:

- Found in 3 of 124 ( 2.4% ) of genes in pham
- Manual Annotations of this start: 1 of 95
- Called 33.3% of time when present
- Phage (with cluster) where this start called: Sephiroth\_16 (DU1),

Start 4:

- Found in 4 of 124 ( 3.2% ) of genes in pham

- Manual Annotations of this start: 1 of 95
- Called 25.0% of time when present
- Phage (with cluster) where this start called: Kudrefre\_15 (DU1),

#### Start 5:

- Found in 17 of 124 ( 13.7% ) of genes in pham
- Manual Annotations of this start: 2 of 95
- Called 11.8% of time when present
- Phage (with cluster) where this start called: PegLeg\_17 (M1), Reindeer\_15 (M1),

#### Start 7:

- Found in 4 of 124 ( 3.2% ) of genes in pham
- Manual Annotations of this start: 2 of 95
- Called 50.0% of time when present
- Phage (with cluster) where this start called: Octobien14\_16 (DU1), Syleon\_16 (DU1),

#### Start 8:

- Found in 25 of 124 ( 20.2% ) of genes in pham
- Manual Annotations of this start: 19 of 95
- Called 92.0% of time when present
- Phage (with cluster) where this start called: Auspice\_17 (M1), Aziz\_21 (M2), Bongo\_17 (M1), Bricole\_17 (M1), Diminimus\_18 (M1), Dulcita\_18 (M1), Estes\_22 (M2), FreakyGoo\_17 (M1), GardenSalsa\_21 (M2), GenevaB15\_21 (M2), Glaske16\_18 (M1), IPhane7\_17 (M1), Izel\_16 (M1), KleverKiS\_17 (M1), Kumao\_16 (singleton), LilhomieP\_16 (M1), MrMagoo\_21 (M2), Nanosmite\_21 (M3), Rey\_21 (M2), RoseMarie\_17 (M), Skinny\_18 (M1), SlimJimmy\_16 (M1), TyDawg\_17 (M1),

#### Start 11:

- Found in 51 of 124 ( 41.1% ) of genes in pham
- Manual Annotations of this start: 3 of 95
- Called 5.9% of time when present
- Phage (with cluster) where this start called: LeBron\_7 (L1), Tyson\_7 (L1), UPIE\_7 (L1),

#### Start 16:

- Found in 95 of 124 ( 76.6% ) of genes in pham
- Manual Annotations of this start: 67 of 95
- Called 96.8% of time when present
- Phage (with cluster) where this start called: Acquire49\_7 (L1), Aegeus\_7 (L5), Appletree2\_7 (L1), Archie\_7 (L2), AvadaKedavra\_7 (L1), Baoshan\_6 (L2), Baudelaire\_7 (L5), Bazzle\_7 (L2), Bellis\_8 (L3), BigCheese\_7 (L2), BobsGarage\_7 (L2), BourbonZero\_7 (L3), BrainDrainer\_8 (L4), Breezona\_7 (L2), Bromden\_7 (L4), Calm\_7 (L1), Chaser\_7 (L4), CicholasNage\_7 (L1), Claus\_7 (L2), Clautastrophe\_8 (L3), Crossroads\_7 (L2), DHan\_7 (L2), DirkDirk\_7 (L1), Douge\_7 (L4), Douzhi\_7 (L4), DrSeegs\_7 (L2), DuncansLeg\_8 (L3), DyoEdafos\_8 (L4), Ellison\_8 (L3), Enceladus\_7 (L1), Faith1\_7 (L2), FarmResident\_7 (L4), Finemlucis\_7 (L2), Finnry\_8 (L3), Gabriela\_7 (L2), Gardann\_7 (L2), GuuelaD\_7 (L2), Hafay\_7 (L2), Halena\_7 (L1), Itos\_7 (L2), Jobypre\_8 (L3), JoeDirt\_7 (L1), Jubie\_8 (L3), Kahlid\_7 (L2), Kingsolomon\_8 (L3), KirDoubleO7\_6 (L3), Kropertea\_7 (L4), Krypton555\_8 (L3), Lewan\_7 (L2), LilDestine\_7 (L2), LiyuLake\_8 (L3), Loadrie\_7 (L2), Lolly9\_8 (L3), Lumos\_8 (L3), MAckerman\_7 (L1), Miley16\_7 (L2), MiniLon\_8 (L3), MiniMac\_8 (L3), MkaliMitinis3\_7 (L2), Moostard\_8 (L3), MsGreen\_8 (L3), Netyap\_7 (L2), Nicholas\_8

(L3), Nicholasp3\_7 (L2), OhShagHennessey\_7 (L1), PYPDinur\_7 (L4), Poochiewood\_7 (L1), Quby\_7 (L4), Red305\_8 (L3), Rose5\_7 (L1), Rossetti\_7 (L2), Rumpelstiltskin\_7 (L2), Samty\_8 (L3), Sarshaun\_7 (L2), Sheng711\_7 (L4), Silverleaf\_7 (L1), Snenia\_8 (L3), SoJulia\_7 (L2), Soap141\_7 (L2), Tourach\_7 (L2), TriFive\_8 (L3), Underpass\_7 (L2), Vetrix\_7 (L2), Wamburgexpress\_7 (L1), Whirlwind\_9 (L3), Wigglewiggles\_7 (L2), Wilder\_7 (L2), Winky\_7 (L2), Wyatt2\_7 (L1), Zakai\_7 (L2), Zaria\_7 (L1), ZhongYanYuan\_6 (L2),

### **Summary by clusters:**

There are 11 clusters represented in this pham: M1, M2, M, singleton, L4, L5, L2, L3, M3, L1, DU1,

Info for manual annotations of cluster DU1:

- Start number 2 was manually annotated 1 time for cluster DU1.
- Start number 4 was manually annotated 1 time for cluster DU1.
- Start number 7 was manually annotated 2 times for cluster DU1.

Info for manual annotations of cluster L1:

- Start number 11 was manually annotated 3 times for cluster L1.
- Start number 16 was manually annotated 16 times for cluster L1.

Info for manual annotations of cluster L2:

- Start number 16 was manually annotated 28 times for cluster L2.

Info for manual annotations of cluster L3:

- Start number 16 was manually annotated 17 times for cluster L3.

Info for manual annotations of cluster L4:

- Start number 16 was manually annotated 4 times for cluster L4.

Info for manual annotations of cluster L5:

- Start number 16 was manually annotated 2 times for cluster L5.

Info for manual annotations of cluster M1:

- Start number 5 was manually annotated 2 times for cluster M1.
- Start number 8 was manually annotated 11 times for cluster M1.

Info for manual annotations of cluster M2:

- Start number 8 was manually annotated 6 times for cluster M2.

Info for manual annotations of cluster M3:

- Start number 8 was manually annotated 1 time for cluster M3.

### **Gene Information:**

Gene: Acquire49\_7 Start: 5429, Stop: 6040, Start Num: 16

Candidate Starts for Acquire49\_7:

(Start: 11 @5402 has 3 MA's), (Start: 16 @5429 has 67 MA's), (37, 5744), (38, 5750), (42, 5774), (51, 5948), (55, 5987),

Gene: Aegeus\_7 Start: 5028, Stop: 5621, Start Num: 16

Candidate Starts for Aegeus\_7:

(9, 4989), (14, 5013), (Start: 16 @5028 has 67 MA's), (22, 5163), (23, 5175), (25, 5193), (29, 5265), (31, 5313), (36, 5346), (39, 5364), (43, 5391), (53, 5577), (54, 5580),

Gene: Appletree2\_7 Start: 5403, Stop: 6014, Start Num: 16

Candidate Starts for Appletree2\_7:

(Start: 11 @5376 has 3 MA's), (Start: 16 @5403 has 67 MA's), (37, 5718), (38, 5724), (42, 5748), (51, 5922), (55, 5961),

Gene: Archie\_7 Start: 5396, Stop: 6001, Start Num: 16

Candidate Starts for Archie\_7:

(Start: 16 @5396 has 67 MA's), (23, 5537), (33, 5681), (39, 5720), (42, 5741), (51, 5909), (55, 5948),

Gene: Auspice\_17 Start: 9093, Stop: 9809, Start Num: 8

Candidate Starts for Auspice\_17:

(1, 9006), (Start: 5 @9075 has 2 MA's), (Start: 8 @9093 has 19 MA's), (22, 9288), (26, 9342), (29, 9399), (39, 9498), (41, 9510), (42, 9519), (49, 9624),

Gene: AvadaKedavra\_7 Start: 5429, Stop: 6040, Start Num: 16

Candidate Starts for AvadaKedavra\_7:

(Start: 11 @5402 has 3 MA's), (Start: 16 @5429 has 67 MA's), (37, 5744), (38, 5750), (42, 5774), (51, 5948), (55, 5987),

Gene: Aziz\_21 Start: 9693, Stop: 10367, Start Num: 8

Candidate Starts for Aziz\_21:

(Start: 8 @9693 has 19 MA's), (24, 9870), (29, 9960), (34, 10023), (40, 10068),

Gene: Baoshan\_6 Start: 5250, Stop: 5855, Start Num: 16

Candidate Starts for Baoshan\_6:

(Start: 16 @5250 has 67 MA's), (23, 5391), (39, 5574), (42, 5595), (45, 5625), (48, 5682), (51, 5763), (55, 5802),

Gene: Baudelaire\_7 Start: 5028, Stop: 5621, Start Num: 16

Candidate Starts for Baudelaire\_7:

(9, 4989), (14, 5013), (Start: 16 @5028 has 67 MA's), (22, 5163), (23, 5175), (25, 5193), (29, 5265), (31, 5313), (36, 5346), (39, 5364), (43, 5391), (53, 5577), (54, 5580),

Gene: Bazzle\_7 Start: 5372, Stop: 5977, Start Num: 16

Candidate Starts for Bazzle\_7:

(Start: 16 @5372 has 67 MA's), (23, 5513), (33, 5657), (39, 5696), (42, 5717), (51, 5885), (55, 5924),

Gene: Bellis\_8 Start: 5538, Stop: 6137, Start Num: 16

Candidate Starts for Bellis\_8:

(Start: 16 @5538 has 67 MA's), (28, 5724), (32, 5799), (35, 5820), (46, 5946), (51, 6036),

Gene: BigCheese\_7 Start: 5422, Stop: 6027, Start Num: 16

Candidate Starts for BigCheese\_7:

(Start: 11 @5395 has 3 MA's), (13, 5407), (Start: 16 @5422 has 67 MA's), (23, 5560), (39, 5743), (42, 5764), (48, 5851), (51, 5932), (55, 5971),

Gene: BobsGarage\_7 Start: 5422, Stop: 6027, Start Num: 16

Candidate Starts for BobsGarage\_7:

(Start: 11 @5395 has 3 MA's), (13, 5407), (Start: 16 @5422 has 67 MA's), (23, 5560), (39, 5743), (42, 5764), (48, 5851), (51, 5932), (55, 5971),

Gene: Bongo\_17 Start: 9093, Stop: 9809, Start Num: 8

Candidate Starts for Bongo\_17:

(1, 9006), (Start: 5 @9075 has 2 MA's), (Start: 8 @9093 has 19 MA's), (22, 9288), (26, 9342), (29, 9399), (39, 9498), (41, 9510), (42, 9519), (49, 9624),

Gene: BourbonZero\_7 Start: 5543, Stop: 6142, Start Num: 16

Candidate Starts for BourbonZero\_7:

(Start: 16 @5543 has 67 MA's), (28, 5729), (32, 5804), (46, 5951), (51, 6041),

Gene: BrainDrainer\_8 Start: 5236, Stop: 5844, Start Num: 16

Candidate Starts for BrainDrainer\_8:

(Start: 16 @5236 has 67 MA's), (19, 5308), (22, 5365), (42, 5581), (51, 5749), (56, 5794),

Gene: Breezona\_7 Start: 5422, Stop: 6027, Start Num: 16

Candidate Starts for Breezona\_7:

(Start: 11 @5395 has 3 MA's), (13, 5407), (Start: 16 @5422 has 67 MA's), (23, 5560), (39, 5743), (42, 5764), (48, 5851), (51, 5932), (55, 5971),

Gene: Bricole\_17 Start: 9092, Stop: 9808, Start Num: 8

Candidate Starts for Bricole\_17:

(1, 9005), (Start: 5 @9074 has 2 MA's), (Start: 8 @9092 has 19 MA's), (22, 9287), (26, 9341), (29, 9398), (39, 9497), (41, 9509), (42, 9518), (49, 9623),

Gene: Bromden\_7 Start: 5140, Stop: 5754, Start Num: 16

Candidate Starts for Bromden\_7:

(Start: 16 @5140 has 67 MA's), (19, 5212), (42, 5485), (48, 5572), (51, 5659), (56, 5704),

Gene: Calm\_7 Start: 5430, Stop: 6041, Start Num: 16

Candidate Starts for Calm\_7:

(Start: 11 @5403 has 3 MA's), (Start: 16 @5430 has 67 MA's), (37, 5745), (38, 5751), (42, 5775), (51, 5949), (55, 5988),

Gene: Chaser\_7 Start: 5142, Stop: 5759, Start Num: 16

Candidate Starts for Chaser\_7:

(Start: 16 @5142 has 67 MA's), (19, 5214), (22, 5271), (42, 5487), (51, 5664), (56, 5709),

Gene: CicholasNage\_7 Start: 5430, Stop: 6041, Start Num: 16

Candidate Starts for CicholasNage\_7:

(Start: 11 @5403 has 3 MA's), (Start: 16 @5430 has 67 MA's), (37, 5745), (38, 5751), (42, 5775), (51, 5949), (55, 5988),

Gene: Claus\_7 Start: 5430, Stop: 6035, Start Num: 16

Candidate Starts for Claus\_7:

(Start: 16 @5430 has 67 MA's), (23, 5571), (39, 5754), (42, 5775), (45, 5805), (48, 5862), (51, 5943), (55, 5982),

Gene: Clautastrophe\_8 Start: 5542, Stop: 6141, Start Num: 16

Candidate Starts for Clautastrophe\_8:

(Start: 16 @5542 has 67 MA's), (28, 5728), (32, 5803), (35, 5824), (46, 5950), (51, 6040),

Gene: Crossroads\_7 Start: 5422, Stop: 6027, Start Num: 16

Candidate Starts for Crossroads\_7:

(Start: 11 @5395 has 3 MA's), (13, 5407), (Start: 16 @5422 has 67 MA's), (23, 5560), (39, 5743), (42, 5764), (48, 5851), (51, 5932), (55, 5971),

Gene: DHan\_7 Start: 5366, Stop: 5971, Start Num: 16

Candidate Starts for DHan\_7:

(Start: 16 @5366 has 67 MA's), (23, 5507), (39, 5690), (42, 5711), (45, 5741), (48, 5798), (51, 5879), (55, 5918),

Gene: Diminimus\_18 Start: 9092, Stop: 9808, Start Num: 8

Candidate Starts for Diminimus\_18:

(1, 9005), (Start: 5 @9074 has 2 MA's), (Start: 8 @9092 has 19 MA's), (22, 9287), (26, 9341), (29, 9398), (39, 9497), (41, 9509), (42, 9518), (49, 9623),

Gene: DirkDirk\_7 Start: 5431, Stop: 6042, Start Num: 16

Candidate Starts for DirkDirk\_7:

(Start: 11 @5404 has 3 MA's), (Start: 16 @5431 has 67 MA's), (37, 5746), (38, 5752), (42, 5776), (51, 5950), (55, 5989),

Gene: Douge\_7 Start: 5097, Stop: 5705, Start Num: 16

Candidate Starts for Douge\_7:

(Start: 16 @5097 has 67 MA's), (19, 5169), (22, 5226), (42, 5442), (43, 5448), (51, 5610), (56, 5655),

Gene: Douzhi\_7 Start: 5097, Stop: 5705, Start Num: 16

Candidate Starts for Douzhi\_7:

(Start: 16 @5097 has 67 MA's), (19, 5169), (22, 5226), (42, 5442), (51, 5610), (56, 5655),

Gene: DrSeegs\_7 Start: 5422, Stop: 6027, Start Num: 16

Candidate Starts for DrSeegs\_7:

(Start: 11 @5395 has 3 MA's), (13, 5407), (Start: 16 @5422 has 67 MA's), (23, 5560), (39, 5743), (42, 5764), (48, 5851), (51, 5932), (55, 5971),

Gene: Dulcita\_18 Start: 9092, Stop: 9808, Start Num: 8

Candidate Starts for Dulcita\_18:

(1, 9005), (Start: 5 @9074 has 2 MA's), (Start: 8 @9092 has 19 MA's), (22, 9287), (26, 9341), (29, 9398), (39, 9497), (41, 9509), (42, 9518), (49, 9623),

Gene: DuncansLeg\_8 Start: 5545, Stop: 6144, Start Num: 16

Candidate Starts for DuncansLeg\_8:

(Start: 16 @5545 has 67 MA's), (28, 5731), (32, 5806), (46, 5953), (51, 6043),

Gene: DyoEdafos\_8 Start: 5282, Stop: 5893, Start Num: 16

Candidate Starts for DyoEdafos\_8:

(Start: 16 @5282 has 67 MA's), (42, 5621), (51, 5795), (56, 5840), (57, 5885),

Gene: Ellson\_8 Start: 5554, Stop: 6153, Start Num: 16

Candidate Starts for Ellson\_8:

(Start: 16 @5554 has 67 MA's), (28, 5740), (32, 5815), (46, 5962), (51, 6052),

Gene: Enceladus\_7 Start: 5431, Stop: 6042, Start Num: 16

Candidate Starts for Enceladus\_7:



(Start: 11 @5404 has 3 MA's), (Start: 16 @5431 has 67 MA's), (37, 5746), (38, 5752), (42, 5776), (51, 5950), (55, 5989),

Gene: Estes\_22 Start: 9832, Stop: 10506, Start Num: 8

Candidate Starts for Estes\_22:

(Start: 8 @9832 has 19 MA's), (24, 10009), (29, 10099), (40, 10207),

Gene: Faith1\_7 Start: 5422, Stop: 6027, Start Num: 16

Candidate Starts for Faith1\_7:

(Start: 11 @5395 has 3 MA's), (13, 5407), (Start: 16 @5422 has 67 MA's), (23, 5560), (39, 5743), (42, 5764), (48, 5851), (51, 5932), (55, 5971),

Gene: FarmResident\_7 Start: 5136, Stop: 5750, Start Num: 16

Candidate Starts for FarmResident\_7:

(Start: 16 @5136 has 67 MA's), (19, 5205), (22, 5262), (42, 5478), (43, 5484), (51, 5655), (56, 5700),

Gene: Finemlucis\_7 Start: 5422, Stop: 6027, Start Num: 16

Candidate Starts for Finemlucis\_7:

(Start: 11 @5395 has 3 MA's), (13, 5407), (Start: 16 @5422 has 67 MA's), (23, 5560), (39, 5743), (42, 5764), (48, 5851), (51, 5932), (55, 5971),

Gene: Finnry\_8 Start: 5539, Stop: 6138, Start Num: 16

Candidate Starts for Finnry\_8:

(Start: 16 @5539 has 67 MA's), (28, 5725), (32, 5800), (35, 5821), (46, 5947), (51, 6037),

Gene: FreakyGoo\_17 Start: 9093, Stop: 9809, Start Num: 8

Candidate Starts for FreakyGoo\_17:

(1, 9006), (Start: 5 @9075 has 2 MA's), (Start: 8 @9093 has 19 MA's), (22, 9288), (26, 9342), (29, 9399), (39, 9498), (41, 9510), (42, 9519), (49, 9624),

Gene: Gabriela\_7 Start: 5422, Stop: 6027, Start Num: 16

Candidate Starts for Gabriela\_7:

(Start: 11 @5395 has 3 MA's), (13, 5407), (Start: 16 @5422 has 67 MA's), (23, 5560), (39, 5743), (42, 5764), (48, 5851), (51, 5932), (55, 5971),

Gene: Gardann\_7 Start: 5422, Stop: 6027, Start Num: 16

Candidate Starts for Gardann\_7:

(Start: 11 @5395 has 3 MA's), (13, 5407), (Start: 16 @5422 has 67 MA's), (23, 5560), (39, 5743), (42, 5764), (48, 5851), (51, 5932), (55, 5971),

Gene: GardenSalsa\_21 Start: 9666, Stop: 10340, Start Num: 8

Candidate Starts for GardenSalsa\_21:

(Start: 8 @9666 has 19 MA's), (24, 9843), (29, 9933), (40, 10041),

Gene: GenevaB15\_21 Start: 9693, Stop: 10367, Start Num: 8

Candidate Starts for GenevaB15\_21:

(Start: 8 @9693 has 19 MA's), (24, 9870), (29, 9960), (34, 10023), (40, 10068),

Gene: Glaske16\_18 Start: 9092, Stop: 9808, Start Num: 8

Candidate Starts for Glaske16\_18:

(1, 9005), (Start: 5 @9074 has 2 MA's), (Start: 8 @9092 has 19 MA's), (22, 9287), (26, 9341), (29, 9398), (39, 9497), (41, 9509), (42, 9518), (49, 9623),

Gene: GuuelaD\_7 Start: 5462, Stop: 6061, Start Num: 16

Candidate Starts for GuuelaD\_7:

(12, 5447), (Start: 16 @5462 has 67 MA's), (23, 5597), (39, 5780), (42, 5801), (48, 5888), (51, 5969), (55, 6008),

Gene: Hafay\_7 Start: 5455, Stop: 6060, Start Num: 16

Candidate Starts for Hafay\_7:

(Start: 11 @5428 has 3 MA's), (13, 5440), (Start: 16 @5455 has 67 MA's), (23, 5593), (39, 5776), (42, 5797), (48, 5884), (51, 5965), (55, 6004),

Gene: Halena\_7 Start: 5430, Stop: 6041, Start Num: 16

Candidate Starts for Halena\_7:

(Start: 11 @5403 has 3 MA's), (Start: 16 @5430 has 67 MA's), (37, 5745), (38, 5751), (42, 5775), (51, 5949), (55, 5988),

Gene: IPhane7\_17 Start: 9093, Stop: 9809, Start Num: 8

Candidate Starts for IPhane7\_17:

(1, 9006), (Start: 5 @9075 has 2 MA's), (Start: 8 @9093 has 19 MA's), (22, 9288), (26, 9342), (29, 9399), (39, 9498), (41, 9510), (42, 9519), (49, 9624),

Gene: Itos\_7 Start: 5422, Stop: 6027, Start Num: 16

Candidate Starts for Itos\_7:

(Start: 11 @5395 has 3 MA's), (13, 5407), (Start: 16 @5422 has 67 MA's), (23, 5560), (39, 5743), (42, 5764), (48, 5851), (51, 5932), (55, 5971),

Gene: Izel\_16 Start: 9092, Stop: 9808, Start Num: 8

Candidate Starts for Izel\_16:

(1, 9005), (Start: 5 @9074 has 2 MA's), (Start: 8 @9092 has 19 MA's), (22, 9287), (26, 9341), (29, 9398), (39, 9497), (41, 9509), (42, 9518), (49, 9623),

Gene: Jobypre\_8 Start: 5542, Stop: 6141, Start Num: 16

Candidate Starts for Jobypre\_8:

(Start: 16 @5542 has 67 MA's), (28, 5728), (32, 5803), (35, 5824), (46, 5950), (51, 6040),

Gene: JoeDirt\_7 Start: 5430, Stop: 6041, Start Num: 16

Candidate Starts for JoeDirt\_7:

(Start: 11 @5403 has 3 MA's), (Start: 16 @5430 has 67 MA's), (37, 5745), (38, 5751), (42, 5775), (51, 5949), (55, 5988),

Gene: Jubie\_8 Start: 5542, Stop: 6141, Start Num: 16

Candidate Starts for Jubie\_8:

(Start: 16 @5542 has 67 MA's), (28, 5728), (32, 5803), (35, 5824), (46, 5950), (51, 6040),

Gene: Kahlid\_7 Start: 5422, Stop: 6027, Start Num: 16

Candidate Starts for Kahlid\_7:

(Start: 11 @5395 has 3 MA's), (13, 5407), (Start: 16 @5422 has 67 MA's), (23, 5560), (39, 5743), (42, 5764), (48, 5851), (51, 5932), (55, 5971),

Gene: Kingsolomon\_8 Start: 5542, Stop: 6141, Start Num: 16

Candidate Starts for Kingsolomon\_8:

(Start: 16 @5542 has 67 MA's), (28, 5728), (32, 5803), (35, 5824), (46, 5950), (51, 6040),

Gene: KirDoubleO7\_6 Start: 5554, Stop: 6153, Start Num: 16

Candidate Starts for KirDoubleO7\_6:

(Start: 16 @5554 has 67 MA's), (28, 5740), (32, 5815), (46, 5962), (51, 6052),

Gene: KleverKiS\_17 Start: 9089, Stop: 9805, Start Num: 8

Candidate Starts for KleverKiS\_17:

(1, 9002), (Start: 5 @9071 has 2 MA's), (Start: 8 @9089 has 19 MA's), (22, 9284), (26, 9338), (29, 9395), (39, 9494), (41, 9506), (42, 9515), (49, 9620),

Gene: Kropertea\_7 Start: 5089, Stop: 5700, Start Num: 16

Candidate Starts for Kropertea\_7:

(Start: 16 @5089 has 67 MA's), (23, 5230), (35, 5386), (42, 5434), (51, 5602), (56, 5647), (57, 5692),

Gene: Krypton555\_8 Start: 5533, Stop: 6132, Start Num: 16

Candidate Starts for Krypton555\_8:

(Start: 16 @5533 has 67 MA's), (28, 5719), (32, 5794), (46, 5941), (51, 6031),

Gene: Kudrefre\_15 Start: 8967, Stop: 9623, Start Num: 4

Candidate Starts for Kudrefre\_15:

(Start: 2 @8925 has 1 MA's), (Start: 4 @8967 has 1 MA's), (6, 8988), (Start: 7 @8991 has 2 MA's), (10, 9015), (20, 9141), (29, 9285), (30, 9324), (40, 9393), (44, 9423), (45, 9435), (46, 9483), (47, 9489), (53, 9603), (54, 9606),

Gene: Kumao\_16 Start: 8489, Stop: 9151, Start Num: 8

Candidate Starts for Kumao\_16:

(Start: 8 @8489 has 19 MA's), (17, 8540),

Gene: LeBron\_7 Start: 5403, Stop: 6041, Start Num: 11

Candidate Starts for LeBron\_7:

(Start: 11 @5403 has 3 MA's), (Start: 16 @5430 has 67 MA's), (37, 5745), (38, 5751), (42, 5775), (51, 5949), (55, 5988),

Gene: Lewan\_7 Start: 5422, Stop: 6027, Start Num: 16

Candidate Starts for Lewan\_7:

(Start: 11 @5395 has 3 MA's), (13, 5407), (Start: 16 @5422 has 67 MA's), (23, 5560), (39, 5743), (42, 5764), (48, 5851), (51, 5932), (55, 5971),

Gene: LilDestine\_7 Start: 5422, Stop: 6027, Start Num: 16

Candidate Starts for LilDestine\_7:

(Start: 11 @5395 has 3 MA's), (13, 5407), (Start: 16 @5422 has 67 MA's), (23, 5560), (39, 5743), (42, 5764), (48, 5851), (51, 5932), (55, 5971),

Gene: LilhomieP\_16 Start: 9093, Stop: 9809, Start Num: 8

Candidate Starts for LilhomieP\_16:

(1, 9006), (Start: 5 @9075 has 2 MA's), (Start: 8 @9093 has 19 MA's), (22, 9288), (26, 9342), (29, 9399), (39, 9498), (41, 9510), (42, 9519), (49, 9624),

Gene: LiyuLake\_8 Start: 5545, Stop: 6144, Start Num: 16

Candidate Starts for LiyuLake\_8:

(Start: 16 @5545 has 67 MA's), (28, 5731), (32, 5806), (46, 5953), (51, 6043),

Gene: Loadrie\_7 Start: 5455, Stop: 6060, Start Num: 16

Candidate Starts for Loadrie\_7:

(Start: 11 @5428 has 3 MA's), (13, 5440), (Start: 16 @5455 has 67 MA's), (23, 5593), (39, 5776), (42, 5797), (48, 5884), (51, 5965), (55, 6004),

Gene: Lolly9\_8 Start: 5548, Stop: 6147, Start Num: 16

Candidate Starts for Lolly9\_8:

(Start: 16 @5548 has 67 MA's), (28, 5734), (32, 5809), (46, 5956), (51, 6046),

Gene: Lumos\_8 Start: 5542, Stop: 6141, Start Num: 16

Candidate Starts for Lumos\_8:

(Start: 16 @5542 has 67 MA's), (28, 5728), (32, 5803), (35, 5824), (46, 5950), (51, 6040),

Gene: MAckerman\_7 Start: 5429, Stop: 6040, Start Num: 16

Candidate Starts for MAckerman\_7:

(Start: 11 @5402 has 3 MA's), (Start: 16 @5429 has 67 MA's), (37, 5744), (38, 5750), (42, 5774), (51, 5948), (55, 5987),

Gene: Miley16\_7 Start: 5422, Stop: 6027, Start Num: 16

Candidate Starts for Miley16\_7:

(Start: 11 @5395 has 3 MA's), (13, 5407), (Start: 16 @5422 has 67 MA's), (23, 5560), (39, 5743), (42, 5764), (48, 5851), (51, 5932), (55, 5971),

Gene: MiniLon\_8 Start: 5548, Stop: 6147, Start Num: 16

Candidate Starts for MiniLon\_8:

(Start: 16 @5548 has 67 MA's), (28, 5734), (32, 5809), (46, 5956), (51, 6046),

Gene: MiniMac\_8 Start: 5548, Stop: 6147, Start Num: 16

Candidate Starts for MiniMac\_8:

(Start: 16 @5548 has 67 MA's), (28, 5734), (32, 5809), (46, 5956), (51, 6046),

Gene: MkaliMitinis3\_7 Start: 5422, Stop: 6027, Start Num: 16

Candidate Starts for MkaliMitinis3\_7:

(Start: 11 @5395 has 3 MA's), (13, 5407), (Start: 16 @5422 has 67 MA's), (23, 5560), (39, 5743), (42, 5764), (48, 5851), (51, 5932), (55, 5971),

Gene: Moostard\_8 Start: 5538, Stop: 6137, Start Num: 16

Candidate Starts for Moostard\_8:

(Start: 16 @5538 has 67 MA's), (28, 5724), (32, 5799), (35, 5820), (46, 5946), (51, 6036),

Gene: MrMagoo\_21 Start: 9666, Stop: 10340, Start Num: 8

Candidate Starts for MrMagoo\_21:

(Start: 8 @9666 has 19 MA's), (24, 9843), (29, 9933), (40, 10041),

Gene: MsGreen\_8 Start: 5542, Stop: 6141, Start Num: 16

Candidate Starts for MsGreen\_8:

(Start: 16 @5542 has 67 MA's), (28, 5728), (32, 5803), (35, 5824), (46, 5950), (51, 6040),

Gene: Nanosmite\_21 Start: 9886, Stop: 10557, Start Num: 8

Candidate Starts for Nanosmite\_21:

(Start: 8 @9886 has 19 MA's), (15, 9913), (22, 10039), (24, 10060), (26, 10093), (29, 10150), (32, 10201),

Gene: Netyap\_7 Start: 5422, Stop: 6027, Start Num: 16

Candidate Starts for Netyap\_7:

(Start: 11 @5395 has 3 MA's), (13, 5407), (Start: 16 @5422 has 67 MA's), (23, 5560), (39, 5743), (42, 5764), (48, 5851), (51, 5932), (55, 5971),

Gene: Nicholas\_8 Start: 5542, Stop: 6141, Start Num: 16

Candidate Starts for Nicholas\_8:

(Start: 16 @5542 has 67 MA's), (28, 5728), (32, 5803), (35, 5824), (46, 5950), (51, 6040),

Gene: Nicholasp3\_7 Start: 5422, Stop: 6027, Start Num: 16

Candidate Starts for Nicholasp3\_7:

(Start: 11 @5395 has 3 MA's), (13, 5407), (Start: 16 @5422 has 67 MA's), (23, 5560), (39, 5743), (42, 5764), (48, 5851), (51, 5932), (55, 5971),

Gene: Octobien14\_16 Start: 10060, Stop: 10689, Start Num: 7

Candidate Starts for Octobien14\_16:

(3, 10003), (Start: 4 @10036 has 1 MA's), (6, 10057), (Start: 7 @10060 has 2 MA's), (10, 10084), (18, 10168), (27, 10306), (29, 10351), (45, 10501), (46, 10549), (47, 10555), (52, 10657), (54, 10672),

Gene: OhShagHennessy\_7 Start: 5403, Stop: 6014, Start Num: 16

Candidate Starts for OhShagHennessy\_7:

(Start: 11 @5376 has 3 MA's), (Start: 16 @5403 has 67 MA's), (37, 5718), (38, 5724), (42, 5748), (51, 5922), (55, 5961),

Gene: PYPDinur\_7 Start: 5097, Stop: 5705, Start Num: 16

Candidate Starts for PYPDinur\_7:

(Start: 16 @5097 has 67 MA's), (19, 5169), (22, 5226), (42, 5442), (51, 5610), (56, 5655),

Gene: PegLeg\_17 Start: 9074, Stop: 9808, Start Num: 5

Candidate Starts for PegLeg\_17:

(1, 9005), (Start: 5 @9074 has 2 MA's), (Start: 8 @9092 has 19 MA's), (22, 9287), (26, 9341), (29, 9398), (39, 9497), (41, 9509), (42, 9518), (49, 9623),

Gene: Pochiewood\_7 Start: 5429, Stop: 6040, Start Num: 16

Candidate Starts for Pochiewood\_7:

(Start: 11 @5402 has 3 MA's), (Start: 16 @5429 has 67 MA's), (37, 5744), (38, 5750), (42, 5774), (51, 5948), (55, 5987),

Gene: Quby\_7 Start: 5096, Stop: 5704, Start Num: 16

Candidate Starts for Quby\_7:

(Start: 11 @5069 has 3 MA's), (Start: 16 @5096 has 67 MA's), (19, 5168), (22, 5225), (42, 5441), (43, 5447), (51, 5609), (56, 5654),

Gene: Red305\_8 Start: 5542, Stop: 6141, Start Num: 16

Candidate Starts for Red305\_8:

(Start: 16 @5542 has 67 MA's), (28, 5728), (32, 5803), (35, 5824), (46, 5950), (51, 6040),

Gene: Reindeer\_15 Start: 8937, Stop: 9662, Start Num: 5

Candidate Starts for Reindeer\_15:

(1, 8868), (Start: 5 @8937 has 2 MA's), (Start: 8 @8955 has 19 MA's), (21, 9138), (22, 9141), (24, 9162), (26, 9195), (29, 9252), (39, 9351), (41, 9363), (49, 9477),

Gene: Rey\_21 Start: 9898, Stop: 10575, Start Num: 8

Candidate Starts for Rey\_21:

(Start: 8 @9898 has 19 MA's), (29, 10165), (39, 10264),

Gene: Rose5\_7 Start: 5429, Stop: 6040, Start Num: 16

Candidate Starts for Rose5\_7:

(Start: 11 @5402 has 3 MA's), (Start: 16 @5429 has 67 MA's), (37, 5744), (38, 5750), (42, 5774), (51, 5948), (55, 5987),

Gene: RoseMarie\_17 Start: 9337, Stop: 10053, Start Num: 8

Candidate Starts for RoseMarie\_17:

(1, 9250), (Start: 5 @9319 has 2 MA's), (Start: 8 @9337 has 19 MA's), (21, 9529), (24, 9553), (26, 9586), (29, 9643), (39, 9742), (50, 9901),

Gene: Rossetti\_7 Start: 5422, Stop: 6027, Start Num: 16

Candidate Starts for Rossetti\_7:

(Start: 11 @5395 has 3 MA's), (13, 5407), (Start: 16 @5422 has 67 MA's), (23, 5560), (39, 5743), (42, 5764), (48, 5851), (51, 5932), (55, 5971),

Gene: Rumpelstiltskin\_7 Start: 5422, Stop: 6027, Start Num: 16

Candidate Starts for Rumpelstiltskin\_7:

(Start: 11 @5395 has 3 MA's), (13, 5407), (Start: 16 @5422 has 67 MA's), (23, 5560), (39, 5743), (42, 5764), (48, 5851), (51, 5932), (55, 5971),

Gene: Samty\_8 Start: 5538, Stop: 6137, Start Num: 16

Candidate Starts for Samty\_8:

(Start: 16 @5538 has 67 MA's), (28, 5724), (32, 5799), (35, 5820), (46, 5946), (51, 6036),

Gene: Sarshaun\_7 Start: 5455, Stop: 6060, Start Num: 16

Candidate Starts for Sarshaun\_7:

(Start: 11 @5428 has 3 MA's), (13, 5440), (Start: 16 @5455 has 67 MA's), (23, 5593), (39, 5776), (42, 5797), (48, 5884), (51, 5965), (55, 6004),

Gene: Sephiroth\_16 Start: 9096, Stop: 9794, Start Num: 2

Candidate Starts for Sephiroth\_16:

(Start: 2 @9096 has 1 MA's), (Start: 4 @9138 has 1 MA's), (6, 9159), (Start: 7 @9162 has 2 MA's), (10, 9186), (20, 9312), (29, 9456), (30, 9495), (40, 9564), (45, 9606), (46, 9654), (47, 9660), (53, 9774), (54, 9777),

Gene: Sheng711\_7 Start: 5097, Stop: 5705, Start Num: 16

Candidate Starts for Sheng711\_7:

(Start: 16 @5097 has 67 MA's), (19, 5169), (22, 5226), (42, 5442), (51, 5610), (56, 5655),

Gene: Silverleaf\_7 Start: 5429, Stop: 6040, Start Num: 16

Candidate Starts for Silverleaf\_7:

(Start: 11 @5402 has 3 MA's), (Start: 16 @5429 has 67 MA's), (37, 5744), (38, 5750), (42, 5774), (51, 5948), (55, 5987),

Gene: Skinny\_18 Start: 9093, Stop: 9809, Start Num: 8

Candidate Starts for Skinny\_18:

(Start: 5 @9075 has 2 MA's), (Start: 8 @9093 has 19 MA's), (22, 9288), (26, 9342), (29, 9399), (39, 9498), (41, 9510), (42, 9519), (49, 9624),

Gene: SlimJimmy\_16 Start: 9092, Stop: 9808, Start Num: 8

Candidate Starts for SlimJimmy\_16:

(1, 9005), (Start: 5 @9074 has 2 MA's), (Start: 8 @9092 has 19 MA's), (22, 9287), (26, 9341), (29, 9398), (39, 9497), (41, 9509), (42, 9518), (49, 9623),

Gene: Snenia\_8 Start: 5542, Stop: 6141, Start Num: 16

Candidate Starts for Snenia\_8:

(Start: 16 @5542 has 67 MA's), (28, 5728), (32, 5803), (35, 5824), (46, 5950), (51, 6040),

Gene: SoJulia\_7 Start: 5422, Stop: 6027, Start Num: 16

Candidate Starts for SoJulia\_7:

(Start: 11 @5395 has 3 MA's), (13, 5407), (Start: 16 @5422 has 67 MA's), (23, 5560), (39, 5743), (42, 5764), (48, 5851), (51, 5932), (55, 5971),

Gene: Soap141\_7 Start: 5455, Stop: 6060, Start Num: 16

Candidate Starts for Soap141\_7:

(Start: 11 @5428 has 3 MA's), (13, 5440), (Start: 16 @5455 has 67 MA's), (23, 5593), (39, 5776), (42, 5797), (48, 5884), (51, 5965), (55, 6004),

Gene: Syleon\_16 Start: 9084, Stop: 9716, Start Num: 7

Candidate Starts for Syleon\_16:

(Start: 2 @9018 has 1 MA's), (Start: 4 @9060 has 1 MA's), (6, 9081), (Start: 7 @9084 has 2 MA's), (10, 9108), (20, 9234), (29, 9378), (30, 9417), (40, 9486), (44, 9516), (45, 9528), (46, 9576), (47, 9582), (53, 9696), (54, 9699),

Gene: Tourach\_7 Start: 5433, Stop: 6041, Start Num: 16

Candidate Starts for Tourach\_7:

(Start: 16 @5433 has 67 MA's), (23, 5577), (39, 5760), (42, 5781), (48, 5868), (51, 5949), (55, 5988),

Gene: TriFive\_8 Start: 5542, Stop: 6141, Start Num: 16

Candidate Starts for TriFive\_8:

(Start: 16 @5542 has 67 MA's), (28, 5728), (32, 5803), (35, 5824), (46, 5950), (51, 6040),

Gene: TyDawg\_17 Start: 9093, Stop: 9809, Start Num: 8

Candidate Starts for TyDawg\_17:

(1, 9006), (Start: 5 @9075 has 2 MA's), (Start: 8 @9093 has 19 MA's), (22, 9288), (26, 9342), (29, 9399), (39, 9498), (41, 9510), (42, 9519), (49, 9624),

Gene: Tyson\_7 Start: 5402, Stop: 6040, Start Num: 11

Candidate Starts for Tyson\_7:

(Start: 11 @5402 has 3 MA's), (Start: 16 @5429 has 67 MA's), (37, 5744), (38, 5750), (42, 5774), (51, 5948), (55, 5987),

Gene: UPIE\_7 Start: 5400, Stop: 6038, Start Num: 11

Candidate Starts for UPIE\_7:

(Start: 11 @5400 has 3 MA's), (Start: 16 @5427 has 67 MA's), (37, 5742), (38, 5748), (42, 5772), (51, 5946), (55, 5985),

Gene: Underpass\_7 Start: 5422, Stop: 6027, Start Num: 16

Candidate Starts for Underpass\_7:

(Start: 11 @5395 has 3 MA's), (13, 5407), (Start: 16 @5422 has 67 MA's), (23, 5560), (39, 5743), (42, 5764), (48, 5851), (51, 5932), (55, 5971),

Gene: Vetrax\_7 Start: 5422, Stop: 6027, Start Num: 16

Candidate Starts for Vetrax\_7:

(Start: 11 @5395 has 3 MA's), (13, 5407), (Start: 16 @5422 has 67 MA's), (23, 5560), (39, 5743), (42, 5764), (48, 5851), (51, 5932), (55, 5971),

Gene: Wamburgexpress\_7 Start: 5429, Stop: 6040, Start Num: 16

Candidate Starts for Wamburgexpress\_7:

(Start: 11 @5402 has 3 MA's), (Start: 16 @5429 has 67 MA's), (37, 5744), (38, 5750), (42, 5774), (51, 5948), (55, 5987),

Gene: Whirlwind\_9 Start: 5535, Stop: 6134, Start Num: 16

Candidate Starts for Whirlwind\_9:

(Start: 16 @5535 has 67 MA's), (28, 5721), (32, 5796), (46, 5943), (51, 6033),

Gene: Wigglewigggle\_7 Start: 5455, Stop: 6060, Start Num: 16

Candidate Starts for Wigglewigggle\_7:

(Start: 11 @5428 has 3 MA's), (13, 5440), (Start: 16 @5455 has 67 MA's), (23, 5593), (39, 5776), (42, 5797), (48, 5884), (51, 5965), (55, 6004),

Gene: Wilder\_7 Start: 5422, Stop: 6027, Start Num: 16

Candidate Starts for Wilder\_7:

(Start: 11 @5395 has 3 MA's), (13, 5407), (Start: 16 @5422 has 67 MA's), (23, 5560), (39, 5743), (42, 5764), (48, 5851), (51, 5932), (55, 5971),

Gene: Winky\_7 Start: 5422, Stop: 6027, Start Num: 16

Candidate Starts for Winky\_7:

(Start: 11 @5395 has 3 MA's), (13, 5407), (Start: 16 @5422 has 67 MA's), (23, 5560), (39, 5743), (42, 5764), (48, 5851), (51, 5932), (55, 5971),

Gene: Wyatt2\_7 Start: 5429, Stop: 6040, Start Num: 16

Candidate Starts for Wyatt2\_7:

(Start: 11 @5402 has 3 MA's), (Start: 16 @5429 has 67 MA's), (37, 5744), (38, 5750), (42, 5774), (51, 5948), (55, 5987),

Gene: Zakai\_7 Start: 5410, Stop: 6015, Start Num: 16

Candidate Starts for Zakai\_7:

(Start: 11 @5383 has 3 MA's), (13, 5395), (Start: 16 @5410 has 67 MA's), (23, 5548), (39, 5731), (42, 5752), (48, 5839), (51, 5920), (55, 5959),

Gene: Zaria\_7 Start: 5430, Stop: 6041, Start Num: 16

Candidate Starts for Zaria\_7:

(Start: 11 @5403 has 3 MA's), (Start: 16 @5430 has 67 MA's), (37, 5745), (38, 5751), (42, 5775), (51, 5949), (55, 5988),

Gene: ZhongYanYuan\_6 Start: 5250, Stop: 5855, Start Num: 16

Candidate Starts for ZhongYanYuan\_6:

(Start: 16 @5250 has 67 MA's), (23, 5391), (39, 5574), (42, 5595), (45, 5625), (48, 5682), (51, 5763), (55, 5802),