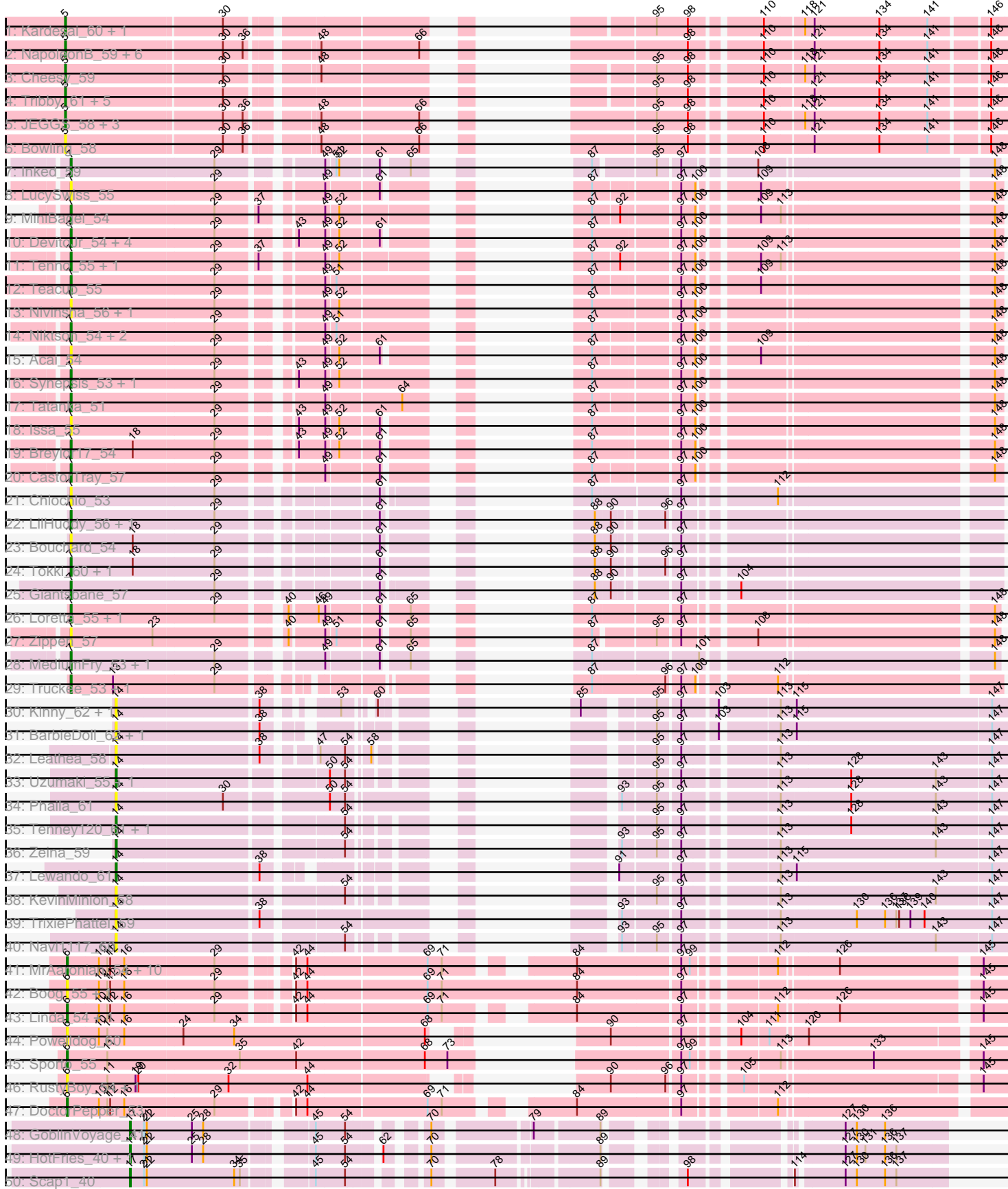
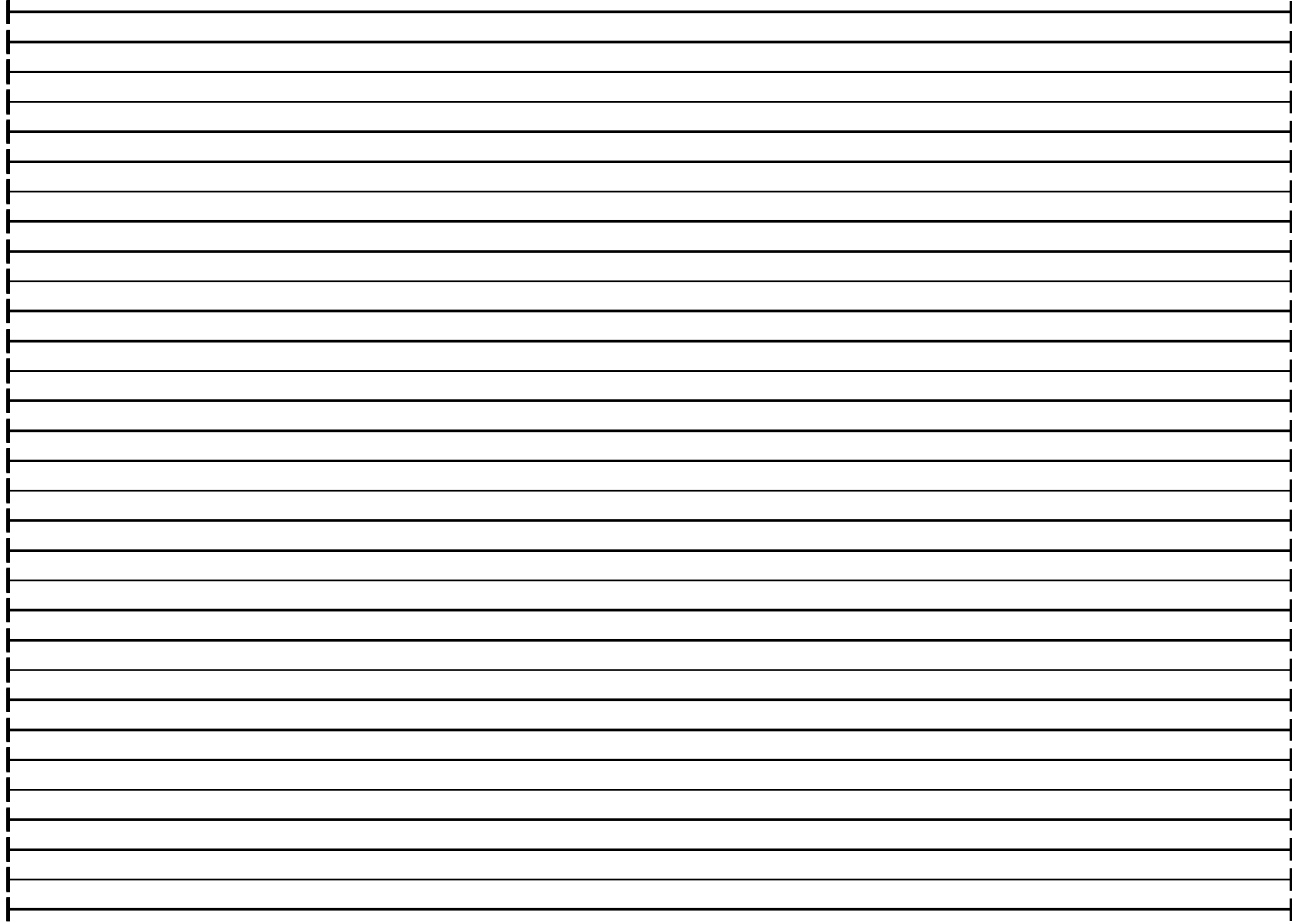
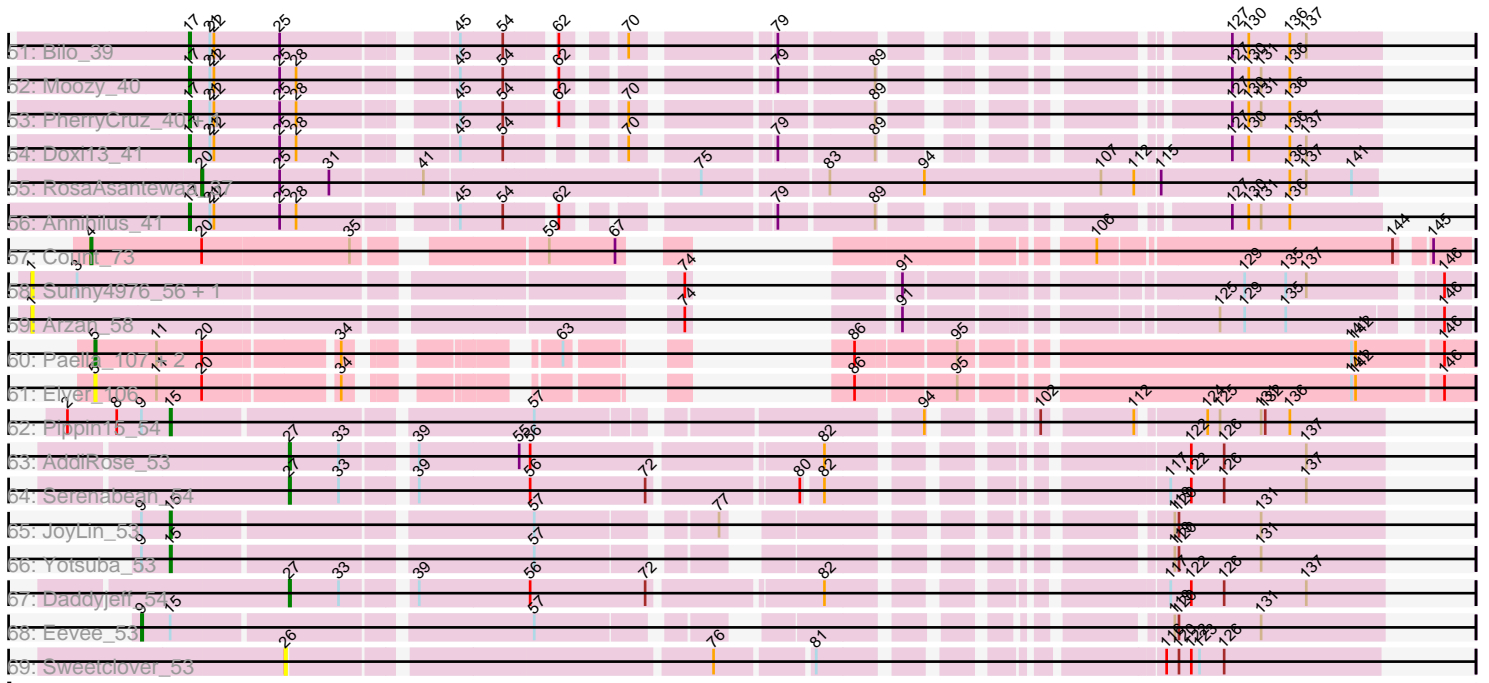


Pham 224412



Pham 224412



Note: Tracks are now grouped by subcluster and scaled. Switching in subcluster is indicated by changes in track color. Track scale is now set by default to display the region 30 bp upstream of start 1 to 30 bp downstream of the last possible start. If this default region is judged to be packed too tightly with annotated starts, the track will be further scaled to only show that region of the ORF with annotated starts. This action will be indicated by adding "Zoomed" to the title. For starts, yellow indicates the location of called starts comprised solely of Glimmer/GeneMark auto-annotations, green indicates the location of called starts with at least 1 manual gene annotation.

Pham 224412 Report

This analysis was run 03/28/25 on database version 593.

Pham number 224412 has 120 members, 32 are drafts.

Phages represented in each track:

- Track 1 : Kardesai_60, Mooshroom_61
- Track 2 : NapoleonB_59, GoCrazy_58, Hankly_58, KeaneyLin_58, Benllo_60, Circum_61, Dynamite_59
- Track 3 : Cheesy_59
- Track 4 : Tribby_61, Elsa_59, Arcadia_59, Correa_56, Xenomorph_56, Nason_59
- Track 5 : JEGGS_58, BenitoAntonio_59, Heisenberger_58, Mudcat_56
- Track 6 : Bowling_58
- Track 7 : Inked_59
- Track 8 : LucySwiss_55
- Track 9 : MiniBagel_54
- Track 10 : DevitoJr_54, Trustiboi_54, Gordon_52, Nightmare_56, ScienceWizSam_55
- Track 11 : Tenno_55, CapnMurica_52
- Track 12 : Teacup_55
- Track 13 : Nivinsha_56, AreFloNak_57
- Track 14 : Niktson_54, ElephantMan_54, Brunswick_55
- Track 15 : Acai_54
- Track 16 : Synopsis_53, Darby_53
- Track 17 : Tatanka_51
- Track 18 : Issa_55
- Track 19 : Breylor17_54
- Track 20 : CastorTray_57
- Track 21 : Chlochlo_53
- Track 22 : LilHuddy_56, Shepard_57
- Track 23 : Bouchard_54
- Track 24 : Tokki_60, Phaby_57
- Track 25 : Giantsbane_57
- Track 26 : Loretta_55, Ingrid_58
- Track 27 : Zippen_57
- Track 28 : MediumFry_53, Caterpillar_52
- Track 29 : Truckee_53, Makai_55
- Track 30 : Kinny_62, Renaldo_64
- Track 31 : BarbieDoll_62, Biscute_61
- Track 32 : Leathea_58
- Track 33 : Uzumaki_55, Argan_56
- Track 34 : Phaila_61
- Track 35 : Tenney120_61, GantcherGoblin_56

- Track 36 : Zeina_59
- Track 37 : Lewando_61
- Track 38 : KevinMinion_58
- Track 39 : TrixiePhattel_59
- Track 40 : Navi1117_60
- Track 41 : MrAaronian_54, Egad_54, Stayer_54, Sloopyjoe_54, BronxBay_54, Raunak_57, Djungelskog_53, Shiba_53, StarLord_54, ProfFrink_54, Michelle_54
- Track 42 : Boog_55, HerbBucket_54
- Track 43 : Linda_54, Salk_54
- Track 44 : PowellDog_60
- Track 45 : Sporto_55
- Track 46 : RustyBoy_54, Natasha_54
- Track 47 : DoctorPepper_53
- Track 48 : GoblinVoyage_41
- Track 49 : HotFries_40, SheRa_41
- Track 50 : Scap1_40
- Track 51 : Bilo_39
- Track 52 : Moozy_40
- Track 53 : PherryCruz_40, RavenPuff_40
- Track 54 : Doxi13_41
- Track 55 : RosaAsantewaa_37
- Track 56 : Annihilus_41
- Track 57 : Count_73
- Track 58 : Sunny4976_56, Jazzy4900_57
- Track 59 : Arzan_58
- Track 60 : Paella_107, Qui_107, Gandionco_104
- Track 61 : Elver_106
- Track 62 : Pippin15_54
- Track 63 : AddiRose_53
- Track 64 : Serenabean_54
- Track 65 : JoyLin_53
- Track 66 : Yotsuba_53
- Track 67 : Daddyjeff_54
- Track 68 : Eevee_53
- Track 69 : Sweetclover_53

Summary of Final Annotations (See graph section above for start numbers):

The start number called the most often in the published annotations is 7, it was called in 29 of the 88 non-draft genes in the pham.

Genes that call this "Most Annotated" start:

- Acai_54, AreFloNak_57, Bouchard_54, Breylor17_54, Brunswick_55, CapnMurica_52, CastorTray_57, Caterpillar_52, Chlochlo_53, Darby_53, DevitoJr_54, ElephantMan_54, Giantsbane_57, Gordon_52, Ingrid_58, Inked_59, Issa_55, LilHuddy_56, Loretta_55, LucySwiss_55, Makai_55, MediumFry_53, MiniBagel_54, Nightmare_56, Niktson_54, Nivinsha_56, Phaby_57, ScienceWizSam_55, Shepard_57, Synopsis_53, Tatanka_51, Teacup_55, Tenno_55, Tokki_60, Truckee_53, Trustiboi_54, Zippen_57,

Genes that have the "Most Annotated" start but do not call it:

-

Genes that do not have the "Most Annotated" start:

- AddiRose_53, Annihilus_41, Arcadia_59, Argan_56, Arzan_58, BarbieDoll_62, BenitoAntonio_59, Benllo_60, Bilo_39, Biscute_61, Boog_55, Bowling_58, BronxBay_54, Cheesy_59, Circum_61, Correa_56, Count_73, Daddyjeff_54, Djungelskog_53, DoctorPepper_53, Doxi13_41, Dynamite_59, Eevee_53, Egad_54, Elsa_59, Elver_106, Gandionco_104, GantcherGoblin_56, GoCrazy_58, GoblinVoyage_41, Hankly_58, Heisenberger_58, HerbBucket_54, HotFries_40, JEGGS_58, Jazzy4900_57, JoyLin_53, Kardesai_60, KeaneyLin_58, KevinMinion_58, Kinny_62, Leatheia_58, Lewando_61, Linda_54, Michelle_54, Mooshroom_61, Moozy_40, MrAaronian_54, Mudcat_56, NapoleonB_59, Nason_59, Natasha_54, Navi1117_60, Paella_107, Phaila_61, PherryCruz_40, Pippin15_54, PowellDog_60, ProfFrink_54, Qui_107, Raunak_57, RavenPuff_40, Renaldo_64, RosaAsantewaa_37, RustyBoy_54, Salk_54, Scap1_40, Serenabean_54, SheRa_41, Shiba_53, Sloopyjoe_54, Sporto_55, StarLord_54, Stayer_54, Sunny4976_56, Sweetclover_53, Tenney120_61, Tribby_61, TrixiePhattel_59, Uzumaki_55, Xenomorph_56, Yotsuba_53, Zeina_59,

Summary by start number:

Start 1:

- Found in 3 of 120 (2.5%) of genes in pham
- No Manual Annotations of this start.
- Called 100.0% of time when present
- Phage (with cluster) where this start called: Arzan_58 (FI), Jazzy4900_57 (FI), Sunny4976_56 (FI),

Start 4:

- Found in 1 of 120 (0.8%) of genes in pham
- Manual Annotations of this start: 1 of 88
- Called 100.0% of time when present
- Phage (with cluster) where this start called: Count_73 (EL),

Start 5:

- Found in 25 of 120 (20.8%) of genes in pham
- Manual Annotations of this start: 21 of 88
- Called 100.0% of time when present
- Phage (with cluster) where this start called: Arcadia_59 (AM), BenitoAntonio_59 (AM), Benllo_60 (AM), Bowling_58 (AM), Cheesy_59 (AM), Circum_61 (AM), Correa_56 (AM), Dynamite_59 (AM), Elsa_59 (AM), Elver_106 (FK), Gandionco_104 (FK), GoCrazy_58 (AM), Hankly_58 (AM), Heisenberger_58 (AM), JEGGS_58 (AM), Kardesai_60 (AM), KeaneyLin_58 (AM), Mooshroom_61 (AM), Mudcat_56 (AM), NapoleonB_59 (AM), Nason_59 (AM), Paella_107 (FK), Qui_107 (FK), Tribby_61 (AM), Xenomorph_56 (AM),

Start 6:

- Found in 20 of 120 (16.7%) of genes in pham
- Manual Annotations of this start: 14 of 88
- Called 100.0% of time when present
- Phage (with cluster) where this start called: Boog_55 (AW), BronxBay_54 (AW), Djungelskog_53 (AW), DoctorPepper_53 (AW), Egad_54 (AW), HerbBucket_54 (AW),

Linda_54 (AW), Michelle_54 (AW), MrAaronian_54 (AW), Natasha_54 (AW), PowellDog_60 (AW), ProfFrink_54 (AW), Raunak_57 (AW), RustyBoy_54 (AW), Salk_54 (AW), Shiba_53 (AW), Sloopyjoe_54 (AW), Sporto_55 (AW), StarLord_54 (AW), Stayer_54 (AW),

Start 7:

- Found in 37 of 120 (30.8%) of genes in pham
- Manual Annotations of this start: 29 of 88
- Called 100.0% of time when present
- Phage (with cluster) where this start called: Acai_54 (AU1), AreFloNak_57 (AU1), Bouchard_54 (AU2), Breylor17_54 (AU1), Brunswick_55 (AU1), CapnMurica_52 (AU1), CastorTray_57 (AU1), Caterpillar_52 (AU4), Chlochlo_53 (AU2), Darby_53 (AU1), DevitoJr_54 (AU1), ElephantMan_54 (AU1), Giantsbane_57 (AU2), Gordon_52 (AU1), Ingrid_58 (AU3), Inked_59 (AU), Issa_55 (AU1), LilHuddy_56 (AU2), Loretta_55 (AU3), LucySwiss_55 (AU1), Makai_55 (AU5), MediumFry_53 (AU4), MiniBagel_54 (AU1), Nightmare_56 (AU1), Niktson_54 (AU1), Nivinsha_56 (AU1), Phaby_57 (AU2), ScienceWizSam_55 (AU1), Shepard_57 (AU2), Synopsis_53 (AU1), Tatanka_51 (AU1), Teacup_55 (AU1), Tenno_55 (AU1), Tokki_60 (AU2), Truckee_53 (AU5), Trustiboi_54 (AU1), Zippen_57 (AU3),

Start 9:

- Found in 4 of 120 (3.3%) of genes in pham
- Manual Annotations of this start: 1 of 88
- Called 25.0% of time when present
- Phage (with cluster) where this start called: Eevee_53 (JA),

Start 14:

- Found in 15 of 120 (12.5%) of genes in pham
- Manual Annotations of this start: 5 of 88
- Called 100.0% of time when present
- Phage (with cluster) where this start called: Argan_56 (AU6), BarbieDoll_62 (AU6), Biscute_61 (AU6), GantcherGoblin_56 (AU6), KevinMinion_58 (AU6), Kinny_62 (AU6), Leathe_58 (AU6), Lewando_61 (AU6), Navi1117_60 (AU6), Phaila_61 (AU6), Renaldo_64 (AU6), Tenney120_61 (AU6), TrixiePhattel_59 (AU6), Uzumaki_55 (AU6), Zeina_59 (AU6),

Start 15:

- Found in 4 of 120 (3.3%) of genes in pham
- Manual Annotations of this start: 3 of 88
- Called 75.0% of time when present
- Phage (with cluster) where this start called: JoyLin_53 (JA), Pippin15_54 (JA), Yotsuba_53 (JA),

Start 17:

- Found in 10 of 120 (8.3%) of genes in pham
- Manual Annotations of this start: 10 of 88
- Called 100.0% of time when present
- Phage (with cluster) where this start called: Annihilus_41 (BI2), Bilo_39 (BI2), Doxi13_41 (BI2), GoblinVoyage_41 (BI2), HotFries_40 (BI2), Moozy_40 (BI2), PherryCruz_40 (BI2), RavenPuff_40 (BI2), Scap1_40 (BI2), SheRa_41 (BI2),

Start 20:

- Found in 8 of 120 (6.7%) of genes in pham

- Manual Annotations of this start: 1 of 88
- Called 12.5% of time when present
- Phage (with cluster) where this start called: RosaAsantewaa_37 (BI2),

Start 26:

- Found in 1 of 120 (0.8%) of genes in pham
- No Manual Annotations of this start.
- Called 100.0% of time when present
- Phage (with cluster) where this start called: Sweetclover_53 (JA),

Start 27:

- Found in 3 of 120 (2.5%) of genes in pham
- Manual Annotations of this start: 3 of 88
- Called 100.0% of time when present
- Phage (with cluster) where this start called: AddiRose_53 (JA), Daddyjeff_54 (JA), Serenabean_54 (JA),

Summary by clusters:

There are 14 clusters represented in this pham: EL, AU5, AM, AU1, AU3, AU2, AU, AU4, AW, AU6, FI, FK, BI2, JA,

Info for manual annotations of cluster AM:

- Start number 5 was manually annotated 19 times for cluster AM.

Info for manual annotations of cluster AU:

- Start number 7 was manually annotated 1 time for cluster AU.

Info for manual annotations of cluster AU1:

- Start number 7 was manually annotated 17 times for cluster AU1.

Info for manual annotations of cluster AU2:

- Start number 7 was manually annotated 5 times for cluster AU2.

Info for manual annotations of cluster AU3:

- Start number 7 was manually annotated 2 times for cluster AU3.

Info for manual annotations of cluster AU4:

- Start number 7 was manually annotated 2 times for cluster AU4.

Info for manual annotations of cluster AU5:

- Start number 7 was manually annotated 2 times for cluster AU5.

Info for manual annotations of cluster AU6:

- Start number 14 was manually annotated 5 times for cluster AU6.

Info for manual annotations of cluster AW:

- Start number 6 was manually annotated 14 times for cluster AW.

Info for manual annotations of cluster BI2:

- Start number 17 was manually annotated 10 times for cluster BI2.
- Start number 20 was manually annotated 1 time for cluster BI2.

Info for manual annotations of cluster EL:

- Start number 4 was manually annotated 1 time for cluster EL.

Info for manual annotations of cluster FK:

- Start number 5 was manually annotated 2 times for cluster FK.

Info for manual annotations of cluster JA:

- Start number 9 was manually annotated 1 time for cluster JA.
- Start number 15 was manually annotated 3 times for cluster JA.
- Start number 27 was manually annotated 3 times for cluster JA.

Gene Information:

Gene: Acai_54 Start: 37297, Stop: 38052, Start Num: 7

Candidate Starts for Acai_54:

(Start: 7 @37297 has 29 MA's), (29, 37447), (49, 37537), (52, 37549), (61, 37588), (87, 37669), (97, 37750), (100, 37765), (109, 37816), (148, 38044),

Gene: AddiRose_53 Start: 34578, Stop: 35276, Start Num: 27

Candidate Starts for AddiRose_53:

(Start: 27 @34578 has 3 MA's), (33, 34614), (39, 34656), (55, 34728), (56, 34734), (82, 34932), (122, 35136), (126, 35160), (137, 35220),

Gene: Annihilus_41 Start: 29092, Stop: 29790, Start Num: 17

Candidate Starts for Annihilus_41:

(Start: 17 @29092 has 10 MA's), (21, 29107), (22, 29110), (25, 29158), (28, 29170), (45, 29266), (54, 29296), (62, 29323), (79, 29437), (89, 29500), (127, 29683), (130, 29695), (131, 29704), (136, 29725),

Gene: Arcadia_59 Start: 35986, Stop: 36783, Start Num: 5

Candidate Starts for Arcadia_59:

(Start: 5 @35986 has 21 MA's), (30, 36148), (95, 36439), (98, 36472), (110, 36538), (121, 36586), (134, 36655), (141, 36706), (146, 36763),

Gene: AreFloNak_57 Start: 37264, Stop: 38031, Start Num: 7

Candidate Starts for AreFloNak_57:

(Start: 7 @37264 has 29 MA's), (29, 37414), (49, 37504), (52, 37516), (87, 37645), (97, 37729), (100, 37744), (148, 38023),

Gene: Argan_56 Start: 35931, Stop: 36647, Start Num: 14

Candidate Starts for Argan_56:

(Start: 14 @35931 has 5 MA's), (50, 36135), (54, 36150), (95, 36303), (97, 36324), (113, 36411), (128, 36483), (143, 36573), (147, 36630),

Gene: Arzan_58 Start: 36809, Stop: 37624, Start Num: 1

Candidate Starts for Arzan_58:

(1, 36809), (74, 37223), (91, 37271), (125, 37463), (129, 37481), (135, 37511), (146, 37607),

Gene: BarbieDoll_62 Start: 37638, Stop: 38342, Start Num: 14

Candidate Starts for BarbieDoll_62:

(Start: 14 @37638 has 5 MA's), (38, 37782), (95, 37998), (97, 38019), (103, 38052), (113, 38106), (115, 38121), (147, 38325),

Gene: BenitoAntonio_59 Start: 35510, Stop: 36310, Start Num: 5

Candidate Starts for BenitoAntonio_59:

(Start: 5 @35510 has 21 MA's), (30, 35672), (36, 35693), (48, 35753), (66, 35852), (95, 35966), (98, 35999), (110, 36065), (118, 36104), (121, 36113), (134, 36182), (141, 36233), (146, 36290),

Gene: Benllo_60 Start: 36188, Stop: 36988, Start Num: 5

Candidate Starts for Benllo_60:

(Start: 5 @36188 has 21 MA's), (30, 36350), (36, 36371), (48, 36431), (66, 36530), (98, 36677), (110, 36743), (121, 36791), (134, 36860), (141, 36911), (146, 36968),

Gene: Bilo_39 Start: 29209, Stop: 29907, Start Num: 17

Candidate Starts for Bilo_39:

(Start: 17 @29209 has 10 MA's), (21, 29224), (22, 29227), (25, 29275), (45, 29383), (54, 29413), (62, 29440), (70, 29470), (79, 29554), (127, 29800), (130, 29812), (136, 29842), (137, 29854),

Gene: Biscute_61 Start: 37290, Stop: 37994, Start Num: 14

Candidate Starts for Biscute_61:

(Start: 14 @37290 has 5 MA's), (38, 37434), (95, 37650), (97, 37671), (103, 37704), (113, 37758), (115, 37773), (147, 37977),

Gene: Boog_55 Start: 34696, Stop: 35613, Start Num: 6

Candidate Starts for Boog_55:

(Start: 6 @34696 has 14 MA's), (10, 34729), (11, 34738), (12, 34741), (16, 34756), (29, 34849), (42, 34912), (44, 34924), (69, 35047), (71, 35062), (84, 35206), (97, 35311), (145, 35587),

Gene: Bouchard_54 Start: 37255, Stop: 38007, Start Num: 7

Candidate Starts for Bouchard_54:

(Start: 7 @37255 has 29 MA's), (18, 37321), (29, 37405), (61, 37546), (88, 37633), (90, 37648), (97, 37705),

Gene: Bowling_58 Start: 35826, Stop: 36626, Start Num: 5

Candidate Starts for Bowling_58:

(Start: 5 @35826 has 21 MA's), (30, 35988), (36, 36009), (48, 36069), (66, 36168), (95, 36282), (98, 36315), (110, 36381), (121, 36429), (134, 36498), (141, 36549), (146, 36606),

Gene: Breylor17_54 Start: 37846, Stop: 38604, Start Num: 7

Candidate Starts for Breylor17_54:

(Start: 7 @37846 has 29 MA's), (18, 37912), (29, 37996), (43, 38059), (49, 38086), (52, 38098), (61, 38137), (87, 38218), (97, 38302), (100, 38317), (148, 38596),

Gene: BronxBay_54 Start: 34994, Stop: 35869, Start Num: 6

Candidate Starts for BronxBay_54:

(Start: 6 @34994 has 14 MA's), (10, 35027), (11, 35036), (12, 35039), (16, 35054), (29, 35147), (42, 35210), (44, 35222), (69, 35345), (71, 35360), (84, 35462), (97, 35567), (99, 35576), (112, 35648), (126, 35705), (145, 35843),

Gene: Brunswick_55 Start: 37137, Stop: 37901, Start Num: 7

Candidate Starts for Brunswick_55:

(Start: 7 @37137 has 29 MA's), (29, 37287), (49, 37377), (51, 37386), (87, 37518), (97, 37599), (100, 37614), (148, 37893),

Gene: CapnMurica_52 Start: 38039, Stop: 38800, Start Num: 7

Candidate Starts for CapnMurica_52:

(Start: 7 @38039 has 29 MA's), (29, 38189), (37, 38228), (49, 38279), (52, 38291), (87, 38417), (92, 38444), (97, 38498), (100, 38513), (109, 38564), (113, 38585), (148, 38792),

Gene: CastorTray_57 Start: 37910, Stop: 38665, Start Num: 7

Candidate Starts for CastorTray_57:

(Start: 7 @37910 has 29 MA's), (29, 38060), (49, 38150), (61, 38201), (87, 38282), (97, 38363), (100, 38378), (148, 38657),

Gene: Caterpillar_52 Start: 36399, Stop: 37157, Start Num: 7

Candidate Starts for Caterpillar_52:

(Start: 7 @36399 has 29 MA's), (29, 36549), (49, 36639), (61, 36690), (65, 36714), (87, 36771), (101, 36873), (148, 37152),

Gene: Cheesy_59 Start: 35695, Stop: 36489, Start Num: 5

Candidate Starts for Cheesy_59:

(Start: 5 @35695 has 21 MA's), (30, 35857), (48, 35938), (95, 36145), (98, 36178), (110, 36244), (118, 36283), (121, 36292), (134, 36361), (141, 36412), (146, 36469),

Gene: Chlochlo_53 Start: 36999, Stop: 37757, Start Num: 7

Candidate Starts for Chlochlo_53:

(Start: 7 @36999 has 29 MA's), (29, 37149), (61, 37290), (87, 37371), (97, 37455), (112, 37539),

Gene: Circum_61 Start: 36379, Stop: 37179, Start Num: 5

Candidate Starts for Circum_61:

(Start: 5 @36379 has 21 MA's), (30, 36541), (36, 36562), (48, 36622), (66, 36721), (98, 36868), (110, 36934), (121, 36982), (134, 37051), (141, 37102), (146, 37159),

Gene: Correa_56 Start: 34853, Stop: 35650, Start Num: 5

Candidate Starts for Correa_56:

(Start: 5 @34853 has 21 MA's), (30, 35015), (95, 35306), (98, 35339), (110, 35405), (121, 35453), (134, 35522), (141, 35573), (146, 35630),

Gene: Count_73 Start: 48676, Stop: 49458, Start Num: 4

Candidate Starts for Count_73:

(Start: 4 @48676 has 1 MA's), (Start: 20 @48757 has 1 MA's), (35, 48862), (59, 48973), (67, 49021), (106, 49213), (144, 49417), (145, 49432),

Gene: Daddyjeff_54 Start: 34798, Stop: 35496, Start Num: 27

Candidate Starts for Daddyjeff_54:

(Start: 27 @34798 has 3 MA's), (33, 34834), (39, 34876), (56, 34954), (72, 35038), (82, 35152), (117, 35341), (122, 35356), (126, 35380), (137, 35440),

Gene: Darby_53 Start: 37084, Stop: 37848, Start Num: 7

Candidate Starts for Darby_53:

(Start: 7 @37084 has 29 MA's), (29, 37234), (43, 37297), (49, 37324), (52, 37336), (87, 37462), (97, 37546), (100, 37561), (148, 37840),

Gene: DevitoJr_54 Start: 37476, Stop: 38234, Start Num: 7

Candidate Starts for DevitoJr_54:

(Start: 7 @37476 has 29 MA's), (29, 37626), (43, 37689), (49, 37716), (52, 37728), (61, 37767), (87, 37848), (97, 37932), (100, 37947), (148, 38226),

Gene: Djungelskog_53 Start: 34993, Stop: 35868, Start Num: 6

Candidate Starts for Djungelskog_53:

(Start: 6 @34993 has 14 MA's), (10, 35026), (11, 35035), (12, 35038), (16, 35053), (29, 35146), (42, 35209), (44, 35221), (69, 35344), (71, 35359), (84, 35461), (97, 35566), (99, 35575), (112, 35647), (126, 35704), (145, 35842),

Gene: DoctorPepper_53 Start: 34698, Stop: 35573, Start Num: 6

Candidate Starts for DoctorPepper_53:

(Start: 6 @34698 has 14 MA's), (10, 34731), (11, 34740), (12, 34743), (16, 34758), (29, 34851), (42, 34914), (44, 34926), (69, 35049), (71, 35064), (84, 35166), (97, 35271), (112, 35352),

Gene: Doxi13_41 Start: 29065, Stop: 29763, Start Num: 17

Candidate Starts for Doxi13_41:

(Start: 17 @29065 has 10 MA's), (21, 29080), (22, 29083), (25, 29131), (28, 29143), (45, 29239), (54, 29269), (70, 29326), (79, 29410), (89, 29473), (127, 29656), (130, 29668), (136, 29698), (137, 29710),

Gene: Dynamite_59 Start: 35903, Stop: 36703, Start Num: 5

Candidate Starts for Dynamite_59:

(Start: 5 @35903 has 21 MA's), (30, 36065), (36, 36086), (48, 36146), (66, 36245), (98, 36392), (110, 36458), (121, 36506), (134, 36575), (141, 36626), (146, 36683),

Gene: Eevee_53 Start: 37769, Stop: 38530, Start Num: 9

Candidate Starts for Eevee_53:

(Start: 9 @37769 has 1 MA's), (Start: 15 @37790 has 3 MA's), (57, 38033), (119, 38378), (120, 38381), (131, 38441),

Gene: Egad_54 Start: 34995, Stop: 35870, Start Num: 6

Candidate Starts for Egad_54:

(Start: 6 @34995 has 14 MA's), (10, 35028), (11, 35037), (12, 35040), (16, 35055), (29, 35148), (42, 35211), (44, 35223), (69, 35346), (71, 35361), (84, 35463), (97, 35568), (99, 35577), (112, 35649), (126, 35706), (145, 35844),

Gene: ElephantMan_54 Start: 37760, Stop: 38524, Start Num: 7

Candidate Starts for ElephantMan_54:

(Start: 7 @37760 has 29 MA's), (29, 37910), (49, 38000), (51, 38009), (87, 38141), (97, 38222), (100, 38237), (148, 38516),

Gene: Elsa_59 Start: 35986, Stop: 36783, Start Num: 5

Candidate Starts for Elsa_59:

(Start: 5 @35986 has 21 MA's), (30, 36148), (95, 36439), (98, 36472), (110, 36538), (121, 36586), (134, 36655), (141, 36706), (146, 36763),

Gene: Elver_106 Start: 57707, Stop: 58456, Start Num: 5

Candidate Starts for Elver_106:

(Start: 5 @57707 has 21 MA's), (11, 57752), (Start: 20 @57785 has 1 MA's), (34, 57872), (86, 58043), (95, 58109), (141, 58373), (142, 58376), (146, 58436),

Gene: Gandionco_104 Start: 56521, Stop: 57270, Start Num: 5

Candidate Starts for Gandionco_104:

(Start: 5 @56521 has 21 MA's), (11, 56566), (Start: 20 @56599 has 1 MA's), (34, 56686), (63, 56788), (86, 56857), (95, 56923), (141, 57187), (142, 57190), (146, 57250),

Gene: GantcherGoblin_56 Start: 36006, Stop: 36722, Start Num: 14

Candidate Starts for GantcherGoblin_56:

(Start: 14 @36006 has 5 MA's), (54, 36225), (95, 36378), (97, 36399), (113, 36486), (128, 36558), (143, 36648), (147, 36705),

Gene: Giantsbane_57 Start: 36358, Stop: 37107, Start Num: 7

Candidate Starts for Giantsbane_57:

(Start: 7 @36358 has 29 MA's), (29, 36508), (61, 36649), (88, 36733), (90, 36748), (97, 36805), (104, 36850),

Gene: GoCrazy_58 Start: 35844, Stop: 36644, Start Num: 5

Candidate Starts for GoCrazy_58:

(Start: 5 @35844 has 21 MA's), (30, 36006), (36, 36027), (48, 36087), (66, 36186), (98, 36333), (110, 36399), (121, 36447), (134, 36516), (141, 36567), (146, 36624),

Gene: GoblinVoyage_41 Start: 29065, Stop: 29763, Start Num: 17

Candidate Starts for GoblinVoyage_41:

(Start: 17 @29065 has 10 MA's), (21, 29080), (22, 29083), (25, 29131), (28, 29143), (45, 29239), (54, 29269), (70, 29326), (79, 29410), (89, 29473), (127, 29656), (130, 29668), (136, 29698),

Gene: Gordon_52 Start: 37901, Stop: 38656, Start Num: 7

Candidate Starts for Gordon_52:

(Start: 7 @37901 has 29 MA's), (29, 38051), (43, 38114), (49, 38141), (52, 38153), (61, 38192), (87, 38273), (97, 38357), (100, 38372), (148, 38651),

Gene: Hankly_58 Start: 35118, Stop: 35918, Start Num: 5

Candidate Starts for Hankly_58:

(Start: 5 @35118 has 21 MA's), (30, 35280), (36, 35301), (48, 35361), (66, 35460), (98, 35607), (110, 35673), (121, 35721), (134, 35790), (141, 35841), (146, 35898),

Gene: Heisenberger_58 Start: 35412, Stop: 36188, Start Num: 5

Candidate Starts for Heisenberger_58:

(Start: 5 @35412 has 21 MA's), (30, 35574), (36, 35595), (48, 35655), (66, 35730), (95, 35844), (98, 35877), (110, 35943), (118, 35982), (121, 35991), (134, 36060), (141, 36111), (146, 36168),

Gene: HerbBucket_54 Start: 34693, Stop: 35610, Start Num: 6

Candidate Starts for HerbBucket_54:

(Start: 6 @34693 has 14 MA's), (10, 34726), (11, 34735), (12, 34738), (16, 34753), (29, 34846), (42, 34909), (44, 34921), (69, 35044), (71, 35059), (84, 35203), (97, 35308), (145, 35584),

Gene: HotFries_40 Start: 29110, Stop: 29808, Start Num: 17

Candidate Starts for HotFries_40:

(Start: 17 @29110 has 10 MA's), (21, 29125), (22, 29128), (25, 29176), (28, 29188), (45, 29284), (54, 29314), (62, 29341), (70, 29371), (89, 29518), (127, 29701), (130, 29713), (131, 29722), (136, 29743), (137, 29755),

Gene: Ingrid_58 Start: 37183, Stop: 37938, Start Num: 7

Candidate Starts for Ingrid_58:

(Start: 7 @37183 has 29 MA's), (29, 37333), (40, 37390), (46, 37417), (49, 37423), (61, 37474), (65, 37498), (87, 37555), (97, 37639), (148, 37933),

Gene: Inked_59 Start: 38306, Stop: 39055, Start Num: 7

Candidate Starts for Inked_59:

(Start: 7 @38306 has 29 MA's), (29, 38456), (49, 38546), (51, 38555), (52, 38558), (61, 38597), (65, 38621), (87, 38678), (95, 38735), (97, 38756), (108, 38819), (148, 39050),

Gene: Issa_55 Start: 37136, Stop: 37894, Start Num: 7

Candidate Starts for Issa_55:

(Start: 7 @37136 has 29 MA's), (29, 37286), (43, 37349), (49, 37376), (52, 37388), (61, 37427), (87, 37508), (97, 37592), (100, 37607), (148, 37886),

Gene: JEGGS_58 Start: 35467, Stop: 36267, Start Num: 5

Candidate Starts for JEGGS_58:

(Start: 5 @35467 has 21 MA's), (30, 35629), (36, 35650), (48, 35710), (66, 35809), (95, 35923), (98, 35956), (110, 36022), (118, 36061), (121, 36070), (134, 36139), (141, 36190), (146, 36247),

Gene: Jazzy4900_57 Start: 37585, Stop: 38403, Start Num: 1

Candidate Starts for Jazzy4900_57:

(1, 37585), (3, 37618), (74, 37999), (91, 38047), (129, 38257), (135, 38287), (137, 38302), (146, 38386),

Gene: JoyLin_53 Start: 37910, Stop: 38650, Start Num: 15

Candidate Starts for JoyLin_53:

(Start: 9 @37889 has 1 MA's), (Start: 15 @37910 has 3 MA's), (57, 38153), (77, 38267), (119, 38498), (120, 38501), (131, 38561),

Gene: Kardesai_60 Start: 36088, Stop: 36885, Start Num: 5

Candidate Starts for Kardesai_60:

(Start: 5 @36088 has 21 MA's), (30, 36250), (95, 36541), (98, 36574), (110, 36640), (118, 36679), (121, 36688), (134, 36757), (141, 36808), (146, 36865),

Gene: KeaneyLin_58 Start: 35844, Stop: 36644, Start Num: 5

Candidate Starts for KeaneyLin_58:

(Start: 5 @35844 has 21 MA's), (30, 36006), (36, 36027), (48, 36087), (66, 36186), (98, 36333), (110, 36399), (121, 36447), (134, 36516), (141, 36567), (146, 36624),

Gene: KevinMinion_58 Start: 36882, Stop: 37598, Start Num: 14

Candidate Starts for KevinMinion_58:

(Start: 14 @36882 has 5 MA's), (54, 37101), (95, 37254), (97, 37275), (113, 37362), (143, 37524), (147, 37581),

Gene: Kinny_62 Start: 38133, Stop: 38822, Start Num: 14

Candidate Starts for Kinny_62:

(Start: 14 @38133 has 5 MA's), (38, 38277), (53, 38328), (60, 38346), (85, 38415), (95, 38478), (97, 38499), (103, 38532), (113, 38586), (115, 38601), (147, 38805),

Gene: Leathea_58 Start: 35757, Stop: 36464, Start Num: 14

Candidate Starts for Leathea_58:

(Start: 14 @35757 has 5 MA's), (38, 35901), (47, 35943), (54, 35967), (58, 35985), (95, 36120), (97, 36141), (113, 36228), (147, 36447),

Gene: Lewando_61 Start: 37710, Stop: 38414, Start Num: 14

Candidate Starts for Lewando_61:

(Start: 14 @37710 has 5 MA's), (38, 37854), (91, 38034), (97, 38091), (113, 38178), (115, 38193), (147, 38397),

Gene: LilHuddy_56 Start: 37293, Stop: 38045, Start Num: 7

Candidate Starts for LilHuddy_56:

(Start: 7 @37293 has 29 MA's), (29, 37443), (61, 37584), (88, 37671), (90, 37686), (96, 37731), (97, 37743),

Gene: Linda_54 Start: 34991, Stop: 35866, Start Num: 6

Candidate Starts for Linda_54:

(Start: 6 @34991 has 14 MA's), (10, 35024), (11, 35033), (12, 35036), (16, 35051), (29, 35144), (42, 35207), (44, 35219), (69, 35342), (71, 35357), (84, 35459), (97, 35564), (112, 35645), (126, 35702), (145, 35840),

Gene: Loretta_55 Start: 37183, Stop: 37938, Start Num: 7

Candidate Starts for Loretta_55:

(Start: 7 @37183 has 29 MA's), (29, 37333), (40, 37390), (46, 37417), (49, 37423), (61, 37474), (65, 37498), (87, 37555), (97, 37639), (148, 37933),

Gene: LucySwiss_55 Start: 36929, Stop: 37684, Start Num: 7

Candidate Starts for LucySwiss_55:

(Start: 7 @36929 has 29 MA's), (29, 37079), (49, 37169), (61, 37220), (87, 37301), (97, 37382), (100, 37397), (109, 37448), (148, 37676),

Gene: Makai_55 Start: 37391, Stop: 38140, Start Num: 7

Candidate Starts for Makai_55:

(Start: 7 @37391 has 29 MA's), (13, 37436), (29, 37541), (87, 37751), (96, 37826), (97, 37838), (100, 37853), (112, 37922),

Gene: MediumFry_53 Start: 36688, Stop: 37446, Start Num: 7

Candidate Starts for MediumFry_53:

(Start: 7 @36688 has 29 MA's), (29, 36838), (49, 36928), (61, 36979), (65, 37003), (87, 37060), (101, 37162), (148, 37441),

Gene: Michelle_54 Start: 34993, Stop: 35868, Start Num: 6

Candidate Starts for Michelle_54:

(Start: 6 @34993 has 14 MA's), (10, 35026), (11, 35035), (12, 35038), (16, 35053), (29, 35146), (42, 35209), (44, 35221), (69, 35344), (71, 35359), (84, 35461), (97, 35566), (99, 35575), (112, 35647), (126, 35704), (145, 35842),

Gene: MiniBagel_54 Start: 38021, Stop: 38782, Start Num: 7

Candidate Starts for MiniBagel_54:

(Start: 7 @38021 has 29 MA's), (29, 38171), (37, 38210), (49, 38261), (52, 38273), (87, 38399), (92, 38426), (97, 38480), (100, 38495), (109, 38546), (113, 38567), (148, 38774),

Gene: Mooshroom_61 Start: 36088, Stop: 36885, Start Num: 5

Candidate Starts for Mooshroom_61:

(Start: 5 @36088 has 21 MA's), (30, 36250), (95, 36541), (98, 36574), (110, 36640), (118, 36679), (121, 36688), (134, 36757), (141, 36808), (146, 36865),

Gene: Moozy_40 Start: 29067, Stop: 29765, Start Num: 17

Candidate Starts for Moozy_40:

(Start: 17 @29067 has 10 MA's), (21, 29082), (22, 29085), (25, 29133), (28, 29145), (45, 29241), (54, 29271), (62, 29298), (79, 29412), (89, 29475), (127, 29658), (130, 29670), (131, 29679), (136, 29700),

Gene: MrAaronian_54 Start: 34993, Stop: 35868, Start Num: 6

Candidate Starts for MrAaronian_54:

(Start: 6 @34993 has 14 MA's), (10, 35026), (11, 35035), (12, 35038), (16, 35053), (29, 35146), (42, 35209), (44, 35221), (69, 35344), (71, 35359), (84, 35461), (97, 35566), (99, 35575), (112, 35647), (126, 35704), (145, 35842),

Gene: Mudcat_56 Start: 36825, Stop: 37625, Start Num: 5

Candidate Starts for Mudcat_56:

(Start: 5 @36825 has 21 MA's), (30, 36987), (36, 37008), (48, 37068), (66, 37167), (95, 37281), (98, 37314), (110, 37380), (118, 37419), (121, 37428), (134, 37497), (141, 37548), (146, 37605),

Gene: NapoleonB_59 Start: 35903, Stop: 36703, Start Num: 5

Candidate Starts for NapoleonB_59:

(Start: 5 @35903 has 21 MA's), (30, 36065), (36, 36086), (48, 36146), (66, 36245), (98, 36392), (110, 36458), (121, 36506), (134, 36575), (141, 36626), (146, 36683),

Gene: Nason_59 Start: 35986, Stop: 36783, Start Num: 5

Candidate Starts for Nason_59:

(Start: 5 @35986 has 21 MA's), (30, 36148), (95, 36439), (98, 36472), (110, 36538), (121, 36586), (134, 36655), (141, 36706), (146, 36763),

Gene: Natasha_54 Start: 34823, Stop: 35617, Start Num: 6

Candidate Starts for Natasha_54:

(Start: 6 @34823 has 14 MA's), (11, 34865), (19, 34895), (Start: 20 @34898 has 1 MA's), (32, 34991), (44, 35075), (90, 35249), (96, 35306), (97, 35318), (105, 35366), (145, 35591),

Gene: Navi1117_60 Start: 36699, Stop: 37415, Start Num: 14

Candidate Starts for Navi1117_60:

(Start: 14 @36699 has 5 MA's), (54, 36918), (93, 37038), (95, 37071), (97, 37092), (113, 37179), (143, 37341), (147, 37398),

Gene: Nightmare_56 Start: 38318, Stop: 39076, Start Num: 7

Candidate Starts for Nightmare_56:

(Start: 7 @38318 has 29 MA's), (29, 38468), (43, 38531), (49, 38558), (52, 38570), (61, 38609), (87, 38690), (97, 38774), (100, 38789), (148, 39068),

Gene: Niktson_54 Start: 37760, Stop: 38524, Start Num: 7

Candidate Starts for Niktson_54:

(Start: 7 @37760 has 29 MA's), (29, 37910), (49, 38000), (51, 38009), (87, 38141), (97, 38222), (100, 38237), (148, 38516),

Gene: Nivinsha_56 Start: 37264, Stop: 38031, Start Num: 7

Candidate Starts for Nivinsha_56:

(Start: 7 @37264 has 29 MA's), (29, 37414), (49, 37504), (52, 37516), (87, 37645), (97, 37729), (100, 37744), (148, 38023),

Gene: Paella_107 Start: 58297, Stop: 59046, Start Num: 5

Candidate Starts for Paella_107:

(Start: 5 @58297 has 21 MA's), (11, 58342), (Start: 20 @58375 has 1 MA's), (34, 58462), (63, 58564), (86, 58633), (95, 58699), (141, 58963), (142, 58966), (146, 59026),

Gene: Phaby_57 Start: 37911, Stop: 38663, Start Num: 7

Candidate Starts for Phaby_57:

(Start: 7 @37911 has 29 MA's), (18, 37977), (29, 38061), (61, 38202), (88, 38289), (90, 38304), (96, 38349), (97, 38361),

Gene: Phaila_61 Start: 36120, Stop: 36854, Start Num: 14

Candidate Starts for Phaila_61:

(Start: 14 @36120 has 5 MA's), (30, 36231), (50, 36327), (54, 36342), (93, 36477), (95, 36510), (97, 36531), (113, 36618), (128, 36690), (143, 36780), (147, 36837),

Gene: PherryCruz_40 Start: 29061, Stop: 29759, Start Num: 17

Candidate Starts for PherryCruz_40:

(Start: 17 @29061 has 10 MA's), (21, 29076), (22, 29079), (25, 29127), (28, 29139), (45, 29235), (54, 29265), (62, 29292), (70, 29322), (89, 29469), (127, 29652), (130, 29664), (131, 29673), (136, 29694),

Gene: Pippin15_54 Start: 34805, Stop: 35566, Start Num: 15

Candidate Starts for Pippin15_54:

(2, 34730), (8, 34766), (Start: 9 @34784 has 1 MA's), (Start: 15 @34805 has 3 MA's), (57, 35048), (94, 35291), (102, 35339), (112, 35396), (124, 35438), (125, 35447), (131, 35477), (132, 35480), (136, 35498),

Gene: Powelldog_60 Start: 36214, Stop: 37014, Start Num: 6

Candidate Starts for Powelldog_60:

(Start: 6 @36214 has 14 MA's), (10, 36247), (11, 36256), (16, 36274), (24, 36334), (34, 36388), (68, 36586), (90, 36643), (97, 36712), (104, 36757), (111, 36784), (120, 36817),

Gene: ProfFrink_54 Start: 34994, Stop: 35869, Start Num: 6

Candidate Starts for ProfFrink_54:

(Start: 6 @34994 has 14 MA's), (10, 35027), (11, 35036), (12, 35039), (16, 35054), (29, 35147), (42, 35210), (44, 35222), (69, 35345), (71, 35360), (84, 35462), (97, 35567), (99, 35576), (112, 35648), (126, 35705), (145, 35843),

Gene: Qui_107 Start: 58297, Stop: 59046, Start Num: 5

Candidate Starts for Qui_107:

(Start: 5 @58297 has 21 MA's), (11, 58342), (Start: 20 @58375 has 1 MA's), (34, 58462), (63, 58564), (86, 58633), (95, 58699), (141, 58963), (142, 58966), (146, 59026),

Gene: Raunak_57 Start: 34691, Stop: 35566, Start Num: 6

Candidate Starts for Raunak_57:

(Start: 6 @34691 has 14 MA's), (10, 34724), (11, 34733), (12, 34736), (16, 34751), (29, 34844), (42, 34907), (44, 34919), (69, 35042), (71, 35057), (84, 35159), (97, 35264), (99, 35273), (112, 35345), (126, 35402), (145, 35540),

Gene: RavenPuff_40 Start: 29061, Stop: 29759, Start Num: 17

Candidate Starts for RavenPuff_40:

(Start: 17 @29061 has 10 MA's), (21, 29076), (22, 29079), (25, 29127), (28, 29139), (45, 29235), (54, 29265), (62, 29292), (70, 29322), (89, 29469), (127, 29652), (130, 29664), (131, 29673), (136, 29694),

Gene: Renaldo_64 Start: 37949, Stop: 38638, Start Num: 14

Candidate Starts for Renaldo_64:

(Start: 14 @37949 has 5 MA's), (38, 38093), (53, 38144), (60, 38162), (85, 38231), (95, 38294), (97, 38315), (103, 38348), (113, 38402), (115, 38417), (147, 38621),

Gene: RosaAsantewaa_37 Start: 28089, Stop: 28907, Start Num: 20

Candidate Starts for RosaAsantewaa_37:

(Start: 20 @28089 has 1 MA's), (25, 28146), (31, 28182), (41, 28245), (75, 28434), (83, 28515), (94, 28584), (107, 28713), (112, 28737), (115, 28752), (136, 28845), (137, 28857), (141, 28890),

Gene: RustyBoy_54 Start: 34804, Stop: 35598, Start Num: 6

Candidate Starts for RustyBoy_54:

(Start: 6 @34804 has 14 MA's), (11, 34846), (19, 34876), (Start: 20 @34879 has 1 MA's), (32, 34972), (44, 35056), (90, 35230), (96, 35287), (97, 35299), (105, 35347), (145, 35572),

Gene: Salk_54 Start: 34991, Stop: 35866, Start Num: 6

Candidate Starts for Salk_54:

(Start: 6 @34991 has 14 MA's), (10, 35024), (11, 35033), (12, 35036), (16, 35051), (29, 35144), (42, 35207), (44, 35219), (69, 35342), (71, 35357), (84, 35459), (97, 35564), (112, 35645), (126, 35702), (145, 35840),

Gene: Scap1_40 Start: 28953, Stop: 29648, Start Num: 17

Candidate Starts for Scap1_40:

(Start: 17 @28953 has 10 MA's), (21, 28968), (22, 28971), (34, 29064), (35, 29070), (45, 29127), (54, 29157), (70, 29214), (78, 29268), (89, 29358), (98, 29412), (114, 29496), (127, 29541), (130, 29553), (136, 29583), (137, 29595),

Gene: ScienceWizSam_55 Start: 37372, Stop: 38130, Start Num: 7

Candidate Starts for ScienceWizSam_55:

(Start: 7 @37372 has 29 MA's), (29, 37522), (43, 37585), (49, 37612), (52, 37624), (61, 37663), (87, 37744), (97, 37828), (100, 37843), (148, 38122),

Gene: Serenabean_54 Start: 34832, Stop: 35524, Start Num: 27

Candidate Starts for Serenabean_54:

(Start: 27 @34832 has 3 MA's), (33, 34868), (39, 34910), (56, 34988), (72, 35072), (80, 35168), (82, 35180), (117, 35369), (122, 35384), (126, 35408), (137, 35468),

Gene: SheRa_41 Start: 29108, Stop: 29806, Start Num: 17

Candidate Starts for SheRa_41:

(Start: 17 @29108 has 10 MA's), (21, 29123), (22, 29126), (25, 29174), (28, 29186), (45, 29282), (54, 29312), (62, 29339), (70, 29369), (89, 29516), (127, 29699), (130, 29711), (131, 29720), (136, 29741), (137, 29753),

Gene: Shepard_57 Start: 37134, Stop: 37886, Start Num: 7

Candidate Starts for Shepard_57:

(Start: 7 @37134 has 29 MA's), (29, 37284), (61, 37425), (88, 37512), (90, 37527), (96, 37572), (97, 37584),

Gene: Shiba_53 Start: 34691, Stop: 35566, Start Num: 6

Candidate Starts for Shiba_53:

(Start: 6 @34691 has 14 MA's), (10, 34724), (11, 34733), (12, 34736), (16, 34751), (29, 34844), (42, 34907), (44, 34919), (69, 35042), (71, 35057), (84, 35159), (97, 35264), (99, 35273), (112, 35345), (126, 35402), (145, 35540),

Gene: Sloopyjoe_54 Start: 34995, Stop: 35870, Start Num: 6

Candidate Starts for Sloopyjoe_54:

(Start: 6 @34995 has 14 MA's), (10, 35028), (11, 35037), (12, 35040), (16, 35055), (29, 35148), (42, 35211), (44, 35223), (69, 35346), (71, 35361), (84, 35463), (97, 35568), (99, 35577), (112, 35649), (126, 35706), (145, 35844),

Gene: Sporto_55 Start: 36496, Stop: 37332, Start Num: 6

Candidate Starts for Sporto_55:

(Start: 6 @36496 has 14 MA's), (11, 36538), (35, 36676), (42, 36736), (68, 36868), (73, 36892), (97, 37027), (99, 37036), (113, 37111), (133, 37201), (145, 37306),

Gene: StarLord_54 Start: 34994, Stop: 35869, Start Num: 6

Candidate Starts for StarLord_54:

(Start: 6 @34994 has 14 MA's), (10, 35027), (11, 35036), (12, 35039), (16, 35054), (29, 35147), (42, 35210), (44, 35222), (69, 35345), (71, 35360), (84, 35462), (97, 35567), (99, 35576), (112, 35648), (126, 35705), (145, 35843),

Gene: Stayer_54 Start: 34991, Stop: 35866, Start Num: 6

Candidate Starts for Stayer_54:

(Start: 6 @34991 has 14 MA's), (10, 35024), (11, 35033), (12, 35036), (16, 35051), (29, 35144), (42, 35207), (44, 35219), (69, 35342), (71, 35357), (84, 35459), (97, 35564), (99, 35573), (112, 35645), (126, 35702), (145, 35840),

Gene: Sunny4976_56 Start: 37585, Stop: 38403, Start Num: 1

Candidate Starts for Sunny4976_56:

(1, 37585), (3, 37618), (74, 37999), (91, 38047), (129, 38257), (135, 38287), (137, 38302), (146, 38386),

Gene: Sweetclover_53 Start: 33842, Stop: 34537, Start Num: 26

Candidate Starts for Sweetclover_53:

(26, 33842), (76, 34124), (81, 34187), (116, 34382), (120, 34391), (122, 34400), (123, 34406), (126, 34424),

Gene: Synopsis_53 Start: 37431, Stop: 38198, Start Num: 7

Candidate Starts for Synopsis_53:

(Start: 7 @37431 has 29 MA's), (29, 37581), (43, 37644), (49, 37671), (52, 37683), (87, 37812), (97, 37896), (100, 37911), (148, 38190),

Gene: Tatanka_51 Start: 37563, Stop: 38327, Start Num: 7

Candidate Starts for Tatanka_51:

(Start: 7 @37563 has 29 MA's), (29, 37713), (49, 37803), (64, 37878), (87, 37944), (97, 38025), (100, 38040), (148, 38319),

Gene: Teacup_55 Start: 37789, Stop: 38553, Start Num: 7

Candidate Starts for Teacup_55:

(Start: 7 @37789 has 29 MA's), (29, 37939), (49, 38029), (51, 38038), (87, 38170), (97, 38251), (100, 38266), (109, 38317), (148, 38545),

Gene: Tenney120_61 Start: 36666, Stop: 37382, Start Num: 14

Candidate Starts for Tenney120_61:

(Start: 14 @36666 has 5 MA's), (54, 36885), (95, 37038), (97, 37059), (113, 37146), (128, 37218), (143, 37308), (147, 37365),

Gene: Tenno_55 Start: 38094, Stop: 38855, Start Num: 7

Candidate Starts for Tenno_55:

(Start: 7 @38094 has 29 MA's), (29, 38244), (37, 38283), (49, 38334), (52, 38346), (87, 38472), (92, 38499), (97, 38553), (100, 38568), (109, 38619), (113, 38640), (148, 38847),

Gene: Tokki_60 Start: 37524, Stop: 38276, Start Num: 7

Candidate Starts for Tokki_60:

(Start: 7 @37524 has 29 MA's), (18, 37590), (29, 37674), (61, 37815), (88, 37902), (90, 37917), (96, 37962), (97, 37974),

Gene: Tribby_61 Start: 36239, Stop: 37036, Start Num: 5

Candidate Starts for Tribby_61:

(Start: 5 @36239 has 21 MA's), (30, 36401), (95, 36692), (98, 36725), (110, 36791), (121, 36839), (134, 36908), (141, 36959), (146, 37016),

Gene: TrixiePhattel_59 Start: 36099, Stop: 36839, Start Num: 14

Candidate Starts for TrixiePhattel_59:

(Start: 14 @36099 has 5 MA's), (38, 36243), (93, 36459), (97, 36513), (113, 36600), (130, 36678), (136, 36708), (137, 36720), (138, 36723), (139, 36735), (140, 36750), (147, 36822),

Gene: Truckee_53 Start: 37181, Stop: 37930, Start Num: 7

Candidate Starts for Truckee_53:

(Start: 7 @37181 has 29 MA's), (13, 37226), (29, 37331), (87, 37541), (96, 37616), (97, 37628), (100, 37643), (112, 37712),

Gene: Trustiboi_54 Start: 37632, Stop: 38390, Start Num: 7

Candidate Starts for Trustiboi_54:

(Start: 7 @37632 has 29 MA's), (29, 37782), (43, 37845), (49, 37872), (52, 37884), (61, 37923), (87, 38004), (97, 38088), (100, 38103), (148, 38382),

Gene: Uzumaki_55 Start: 36107, Stop: 36823, Start Num: 14

Candidate Starts for Uzumaki_55:

(Start: 14 @36107 has 5 MA's), (50, 36311), (54, 36326), (95, 36479), (97, 36500), (113, 36587), (128, 36659), (143, 36749), (147, 36806),

Gene: Xenomorph_56 Start: 35657, Stop: 36454, Start Num: 5

Candidate Starts for Xenomorph_56:

(Start: 5 @35657 has 21 MA's), (30, 35819), (95, 36110), (98, 36143), (110, 36209), (121, 36257), (134, 36326), (141, 36377), (146, 36434),

Gene: Yotsuba_53 Start: 37928, Stop: 38668, Start Num: 15

Candidate Starts for Yotsuba_53:

(Start: 9 @37907 has 1 MA's), (Start: 15 @37928 has 3 MA's), (57, 38171), (119, 38516), (120, 38519), (131, 38579),

Gene: Zeina_59 Start: 36674, Stop: 37390, Start Num: 14

Candidate Starts for Zeina_59:

(Start: 14 @36674 has 5 MA's), (54, 36893), (93, 37013), (95, 37046), (97, 37067), (113, 37154), (143, 37316), (147, 37373),

Gene: Zippen_57 Start: 38006, Stop: 38755, Start Num: 7

Candidate Starts for Zippen_57:

(Start: 7 @38006 has 29 MA's), (23, 38093), (40, 38213), (49, 38246), (51, 38255), (61, 38297), (65, 38321), (87, 38378), (95, 38435), (97, 38456), (108, 38519), (148, 38750),