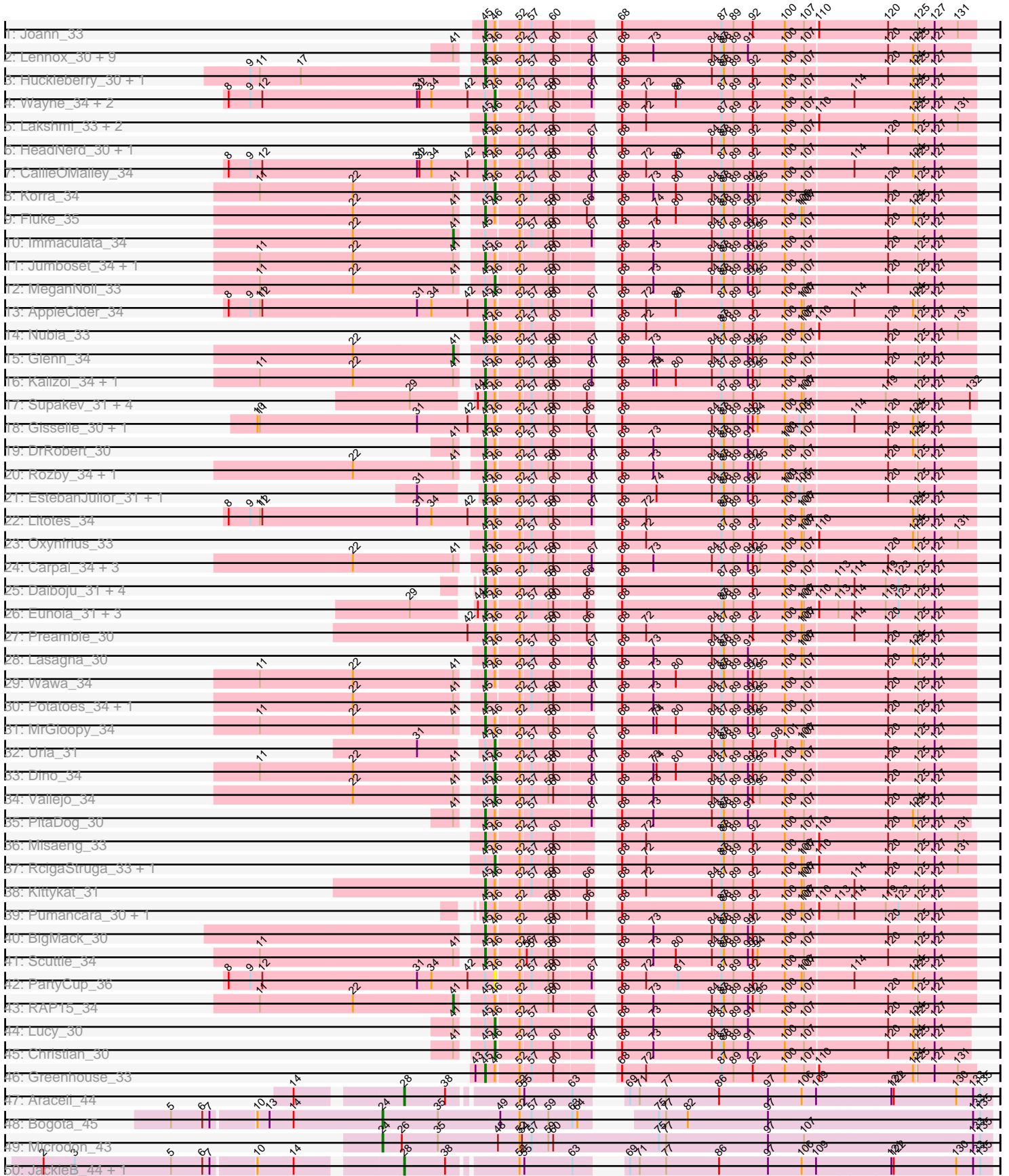
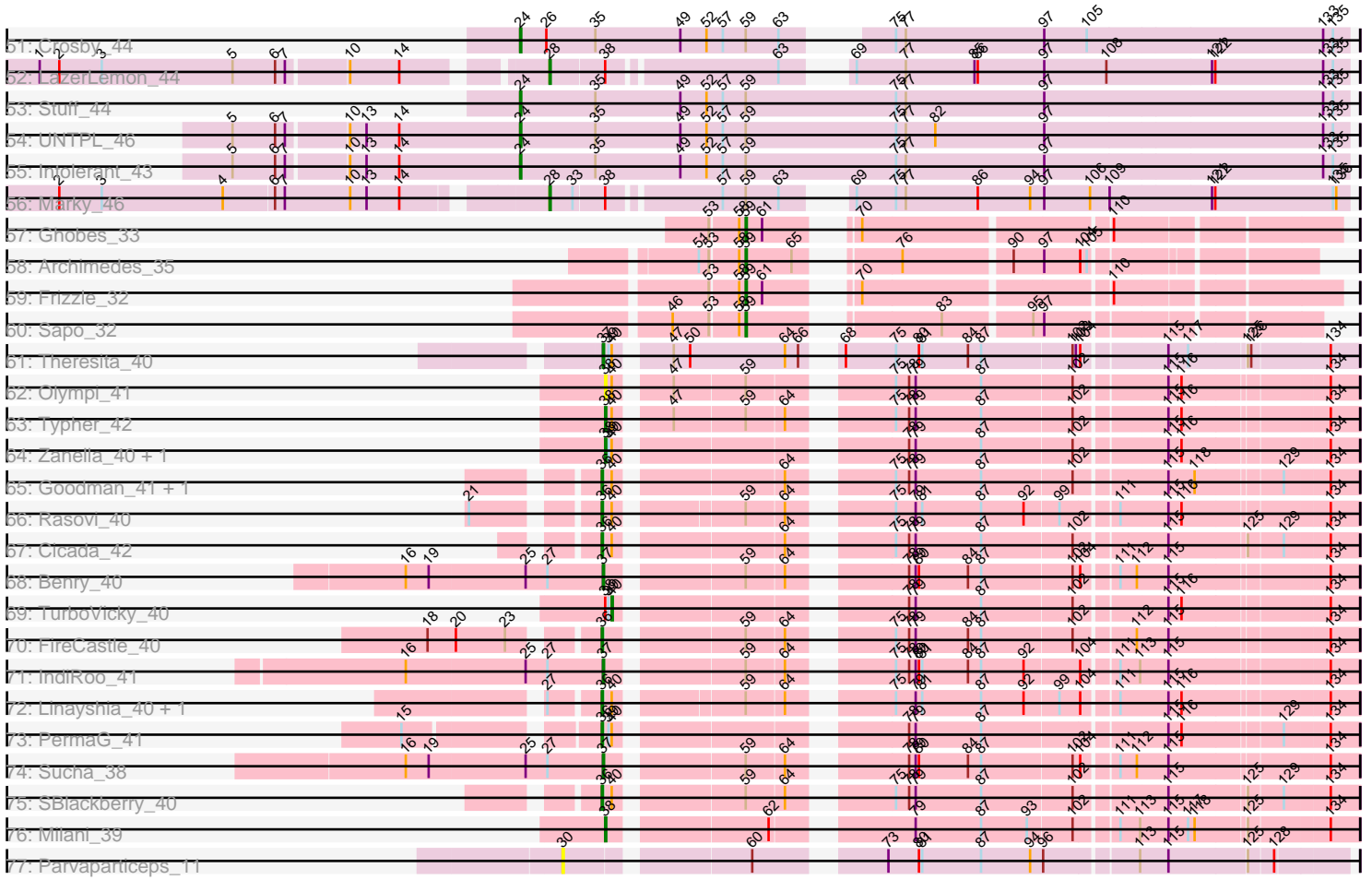


Pham 224415



Pham 224415



Note: Tracks are now grouped by subcluster and scaled. Switching in subcluster is indicated by changes in track color. Track scale is now set by default to display the region 30 bp upstream of start 1 to 30 bp downstream of the last possible start. If this default region is judged to be packed too tightly with annotated starts, the track will be further scaled to only show that region of the ORF with annotated starts. This action will be indicated by adding "Zoomed" to the title. For starts, yellow indicates the location of called starts comprised solely of Glimmer/GeneMark auto-annotations, green indicates the location of called starts with at least 1 manual gene annotation.

## Pham 224415 Report

This analysis was run 03/28/25 on database version 593.

Pham number 224415 has 118 members, 4 are drafts.

Phages represented in each track:

- Track 1 : Joann\_33
- Track 2 : Lennox\_30, ChewChew\_30, WonderBoy\_29, Bodacious\_30, Pterodactyl\_30, Nancia\_30, Makoto\_30, CristinaYang\_30, LilStuart\_30, OurGirlNessie\_30
- Track 3 : Huckleberry\_30, Moki\_30
- Track 4 : Wayne\_34, Canowicakte\_34, Suppi\_34
- Track 5 : Lakshmi\_33, GreenHearts\_33, Albanese\_33
- Track 6 : HeadNerd\_30, Bennie\_30
- Track 7 : CallieOMalley\_34
- Track 8 : Korra\_34
- Track 9 : Fluke\_35
- Track 10 : Immaculata\_34
- Track 11 : Jumboset\_34, Savage2526\_34
- Track 12 : MeganNoll\_33
- Track 13 : AppleCider\_34
- Track 14 : Nubia\_33
- Track 15 : Glenn\_34
- Track 16 : Kalizoi\_34, Zorro\_34
- Track 17 : Supakev\_31, AustinPowers\_31, Vulture\_31, HunterDalle\_31, Chridison\_30
- Track 18 : Gisselle\_30, DreamTeam\_30
- Track 19 : DrRobert\_30
- Track 20 : Rozby\_34, BrotherBLo\_34
- Track 21 : EstebanJulior\_31, MamaPearl\_31
- Track 22 : Litotes\_34
- Track 23 : Oxynfrius\_33
- Track 24 : Carpal\_34, Riverdale\_34, Beethoven\_34, TattModd\_34
- Track 25 : Daiboju\_31, Temper16\_31, Herb\_31, Sergei\_31, KingBob\_31
- Track 26 : Eunoia\_31, Riovina\_31, OMalley\_31, Aledel\_31
- Track 27 : Preamble\_30
- Track 28 : Lasagna\_30
- Track 29 : Wawa\_34
- Track 30 : Potatoes\_34, Cholula\_34
- Track 31 : MrGloopy\_34
- Track 32 : Urla\_31
- Track 33 : Dino\_34
- Track 34 : Vallejo\_34

- Track 35 : PitaDog\_30
- Track 36 : Misaeng\_33
- Track 37 : RcigaStruga\_33, Huntingdon\_33
- Track 38 : Kittykat\_31
- Track 39 : Pumancara\_30, PinkFriday\_30
- Track 40 : BigMack\_30
- Track 41 : Scuttle\_34
- Track 42 : PartyCup\_36
- Track 43 : RAP15\_34
- Track 44 : Lucy\_30
- Track 45 : Christian\_30
- Track 46 : Greenhouse\_33
- Track 47 : Araceli\_44
- Track 48 : Bogota\_45
- Track 49 : Microdon\_43
- Track 50 : JackieB\_44, Henoccus\_44
- Track 51 : Crosby\_44
- Track 52 : LazerLemon\_44
- Track 53 : Stuff\_44
- Track 54 : UNTPL\_46
- Track 55 : Intolerant\_43
- Track 56 : Marky\_46
- Track 57 : Ghobes\_33
- Track 58 : Archimedes\_35
- Track 59 : Frizzle\_32
- Track 60 : Sapo\_32
- Track 61 : Theresita\_40
- Track 62 : Olympi\_41
- Track 63 : Typher\_42
- Track 64 : Zanella\_40, Jera\_41
- Track 65 : Goodman\_41, Johann\_41
- Track 66 : Rasovi\_40
- Track 67 : Cicada\_42
- Track 68 : Benry\_40
- Track 69 : TurboVicky\_40
- Track 70 : FireCastle\_40
- Track 71 : IndiRoo\_41
- Track 72 : Linayshia\_40, Htur\_40
- Track 73 : PermaG\_41
- Track 74 : Sucha\_38
- Track 75 : SBlackberry\_40
- Track 76 : Milani\_39
- Track 77 : Parvaparticeps\_11

***Summary of Final Annotations (See graph section above for start numbers):***

The start number called the most often in the published annotations is 45, it was called in 67 of the 114 non-draft genes in the pham.

Genes that call this "Most Annotated" start:

- Albanese\_33, Aledel\_31, AppleCider\_34, AustinPowers\_31, Beethoven\_34, Bennie\_30, BigMack\_30, Bodacious\_30, BrotherBLo\_34, CallieOMalley\_34, Carpal\_34, ChewChew\_30, Cholula\_34, Chridison\_30, CristinaYang\_30, Daiboju\_31, DrRobert\_30, DreamTeam\_30, EstebanJulior\_31, Eunoia\_31, Fluke\_35, Gisselle\_30, GreenHearts\_33, Greenhouse\_33, HeadNerd\_30, Herb\_31, Huckleberry\_30, HunterDalle\_31, Joann\_33, Jumboset\_34, Kalizoi\_34, KingBob\_31, Kittykat\_31, Lakshmi\_33, Lasagna\_30, Lennox\_30, LilStuart\_30, Litotes\_34, Makoto\_30, MamaPearl\_31, Misaeng\_33, Moki\_30, MrGloopy\_34, Nancia\_30, Nubia\_33, OMalley\_31, OurGirlNessie\_30, Oxynfrius\_33, PinkFriday\_30, PitaDog\_30, Potatoes\_34, Preamble\_30, Pterodactyl\_30, Pumancara\_30, Riovina\_31, Riverdale\_34, Rozby\_34, Savage2526\_34, Scuttle\_34, Sergei\_31, Supakev\_31, TattModd\_34, Temper16\_31, Vulture\_31, Wawa\_34, WonderBoy\_29, Zorro\_34,

Genes that have the "Most Annotated" start but do not call it:

- Canowicakte\_34, Christian\_30, Dino\_34, Glenn\_34, Huntingdon\_33, Immaculata\_34, Korra\_34, Lucy\_30, MeganNoll\_33, PartyCup\_36, RAP15\_34, RcigaStruga\_33, Suppi\_34, Urla\_31, Vallejo\_34, Wayne\_34,

Genes that do not have the "Most Annotated" start:

- Araceli\_44, Archimedes\_35, Benry\_40, Bogota\_45, Cicada\_42, Crosby\_44, FireCastle\_40, Frizzle\_32, Ghobes\_33, Goodman\_41, Henoccus\_44, Htur\_40, IndiRoo\_41, Intolerant\_43, JackieB\_44, Jera\_41, Johann\_41, LazerLemon\_44, Linayshia\_40, Marky\_46, Microdon\_43, Milani\_39, Olympi\_41, Parvarticeps\_11, PermaG\_41, Rasovi\_40, SBlackberry\_40, Sapo\_32, Stuff\_44, Sucha\_38, Theresita\_40, TurboVicky\_40, Typher\_42, UNTPL\_46, Zanella\_40,

### Summary by start number:

Start 24:

- Found in 6 of 118 ( 5.1% ) of genes in pham
- Manual Annotations of this start: 6 of 114
- Called 100.0% of time when present
- Phage (with cluster) where this start called: Bogota\_45 (BH), Crosby\_44 (BH), Intolerant\_43 (BH), Microdon\_43 (BH), Stuff\_44 (BH), UNTPL\_46 (BH),

Start 28:

- Found in 5 of 118 ( 4.2% ) of genes in pham
- Manual Annotations of this start: 5 of 114
- Called 100.0% of time when present
- Phage (with cluster) where this start called: Araceli\_44 (BH), Henoccus\_44 (BH), JackieB\_44 (BH), LazerLemon\_44 (BH), Marky\_46 (BH),

Start 30:

- Found in 1 of 118 ( 0.8% ) of genes in pham
- No Manual Annotations of this start.
- Called 100.0% of time when present
- Phage (with cluster) where this start called: Parvarticeps\_11 (UNK),

Start 36:

- Found in 9 of 118 ( 7.6% ) of genes in pham
- Manual Annotations of this start: 8 of 114
- Called 100.0% of time when present

- Phage (with cluster) where this start called: Cicada\_42 (EJ), FireCastle\_40 (EJ), Goodman\_41 (EJ), Htur\_40 (EJ), Johann\_41 (EJ), Linayshia\_40 (EJ), PermaG\_41 (EJ), Rasovi\_40 (EJ), SBlackberry\_40 (EJ),

#### Start 37:

- Found in 4 of 118 ( 3.4% ) of genes in pham
- Manual Annotations of this start: 4 of 114
- Called 100.0% of time when present
- Phage (with cluster) where this start called: Berry\_40 (EJ), IndiRoo\_41 (EJ), Sucha\_38 (EJ), Theresita\_40 (EA7),

#### Start 38:

- Found in 11 of 118 ( 9.3% ) of genes in pham
- Manual Annotations of this start: 4 of 114
- Called 45.5% of time when present
- Phage (with cluster) where this start called: Jera\_41 (EJ), Milani\_39 (EJ), Olympi\_41 (EJ), Typher\_42 (EJ), Zanella\_40 (EJ),

#### Start 40:

- Found in 14 of 118 ( 11.9% ) of genes in pham
- Manual Annotations of this start: 1 of 114
- Called 7.1% of time when present
- Phage (with cluster) where this start called: TurboVicky\_40 (EJ),

#### Start 41:

- Found in 37 of 118 ( 31.4% ) of genes in pham
- Manual Annotations of this start: 3 of 114
- Called 8.1% of time when present
- Phage (with cluster) where this start called: Glenn\_34 (AK), Immaculata\_34 (AK), RAP15\_34 (AK),

#### Start 45:

- Found in 83 of 118 ( 70.3% ) of genes in pham
- Manual Annotations of this start: 67 of 114
- Called 80.7% of time when present
- Phage (with cluster) where this start called: Albanese\_33 (AK), Aledel\_31 (AK), AppleCider\_34 (AK), AustinPowers\_31 (AK), Beethoven\_34 (AK), Bennie\_30 (AK), BigMack\_30 (AK), Bodacious\_30 (AK), BrotherBLo\_34 (AK), CallieOMalley\_34 (AK), Carpal\_34 (AK), ChewChew\_30 (AK), Cholula\_34 (AK), Chridison\_30 (AK), CristinaYang\_30 (AK), Daiboju\_31 (AK), DrRobert\_30 (AK), DreamTeam\_30 (AK), EstebanJulior\_31 (AK), Eunoia\_31 (AK), Fluke\_35 (AK), Gisselle\_30 (AK), GreenHearts\_33 (AK), Greenhouse\_33 (AK), HeadNerd\_30 (AK), Herb\_31 (AK), Huckleberry\_30 (AK), HunterDalle\_31 (AK), Joann\_33 (AK), Jumboset\_34 (AK), Kalizoi\_34 (AK), KingBob\_31 (AK), Kittykat\_31 (AK), Lakshmi\_33 (AK), Lasagna\_30 (AK), Lennox\_30 (AK), LilStuart\_30 (AK), Litotes\_34 (AK), Makoto\_30 (AK), MamaPearl\_31 (AK), Misaeng\_33 (AK), Moki\_30 (AK), MrGloopy\_34 (AK), Nancia\_30 (AK), Nubia\_33 (AK), OMalley\_31 (AK), OurGirlNessie\_30 (AK), Oxynfrius\_33 (AK), PinkFriday\_30 (AK), PitaDog\_30 (AK), Potatoes\_34 (AK), Preamble\_30 (AK), Pterodactyl\_30 (AK), Pumancara\_30 (AK), Rivovina\_31 (AK), Riverdale\_34 (AK), Rozby\_34 (AK), Savage2526\_34 (AK), Scuttle\_34 (AK), Sergei\_31 (AK), Supakev\_31 (AK), TattModd\_34 (AK), Temper16\_31 (AK), Vulture\_31 (AK), Wawa\_34 (AK), WonderBoy\_29 (AK), Zorro\_34 (AK),

Start 46:

- Found in 81 of 118 ( 68.6% ) of genes in pham
- Manual Annotations of this start: 12 of 114
- Called 16.0% of time when present
- Phage (with cluster) where this start called: Canowicakte\_34 (AK), Christian\_30 (AK), Dino\_34 (AK), Huntingdon\_33 (AK), Korra\_34 (AK), Lucy\_30 (AK), MeganNoll\_33 (AK), PartyCup\_36 (AK), RcigaStruga\_33 (AK), Suppi\_34 (AK), Urla\_31 (AK), Vallejo\_34 (AK), Wayne\_34 (AK),

Start 59:

- Found in 74 of 118 ( 62.7% ) of genes in pham
- Manual Annotations of this start: 4 of 114
- Called 5.4% of time when present
- Phage (with cluster) where this start called: Archimedes\_35 (DA), Frizzle\_32 (DA), Ghobes\_33 (DA), Sapo\_32 (DA),

**Summary by clusters:**

There are 6 clusters represented in this pham: EJ, AK, BH, DA, UNK, EA7,

Info for manual annotations of cluster AK:

- Start number 41 was manually annotated 3 times for cluster AK.
- Start number 45 was manually annotated 67 times for cluster AK.
- Start number 46 was manually annotated 12 times for cluster AK.

Info for manual annotations of cluster BH:

- Start number 24 was manually annotated 6 times for cluster BH.
- Start number 28 was manually annotated 5 times for cluster BH.

Info for manual annotations of cluster DA:

- Start number 59 was manually annotated 4 times for cluster DA.

Info for manual annotations of cluster EA7:

- Start number 37 was manually annotated 1 time for cluster EA7.

Info for manual annotations of cluster EJ:

- Start number 36 was manually annotated 8 times for cluster EJ.
- Start number 37 was manually annotated 3 times for cluster EJ.
- Start number 38 was manually annotated 4 times for cluster EJ.
- Start number 40 was manually annotated 1 time for cluster EJ.

**Gene Information:**

Gene: Albanese\_33 Start: 25146, Stop: 25703, Start Num: 45

Candidate Starts for Albanese\_33:

(Start: 45 @25146 has 67 MA's), (Start: 46 @25158 has 12 MA's), (52, 25185), (57, 25197), (60, 25224), (68, 25278), (72, 25308), (87, 25401), (89, 25416), (92, 25440), (100, 25479), (107, 25503), (110, 25518), (124, 25632), (125, 25635), (127, 25656), (131, 25683),

Gene: Aledel\_31 Start: 24783, Stop: 25343, Start Num: 45

Candidate Starts for Aledel\_31:

(29, 24711), (44, 24774), (Start: 45 @24783 has 67 MA's), (Start: 46 @24795 has 12 MA's), (52, 24822), (57, 24834), (Start: 59 @24855 has 4 MA's), (60, 24861), (66, 24900), (68, 24915), (87, 25038), (88, 25041), (89, 25053), (92, 25077), (100, 25116), (106, 25137), (107, 25140), (110, 25155), (113, 25179), (114, 25197), (119, 25236), (123, 25251), (125, 25272), (127, 25293),

Gene: AppleCider\_34 Start: 25187, Stop: 25744, Start Num: 45

Candidate Starts for AppleCider\_34:

(8, 24872), (9, 24899), (11, 24911), (12, 24914), (31, 25103), (34, 25121), (42, 25166), (Start: 45 @25187 has 67 MA's), (Start: 46 @25199 has 12 MA's), (52, 25226), (57, 25238), (Start: 59 @25259 has 4 MA's), (60, 25265), (67, 25310), (68, 25319), (72, 25349), (80, 25385), (81, 25388), (87, 25442), (89, 25457), (92, 25481), (100, 25520), (106, 25541), (107, 25544), (114, 25601), (124, 25673), (125, 25676), (127, 25697),

Gene: Araceli\_44 Start: 33079, Stop: 33750, Start Num: 28

Candidate Starts for Araceli\_44:

(14, 32962), (Start: 28 @33079 has 5 MA's), (Start: 38 @33130 has 4 MA's), (52, 33208), (55, 33214), (63, 33274), (69, 33304), (71, 33316), (77, 33349), (86, 33415), (97, 33475), (106, 33517), (109, 33535), (121, 33625), (122, 33628), (130, 33706), (133, 33727), (135, 33736),

Gene: Archimedes\_35 Start: 31428, Stop: 30985, Start Num: 59

Candidate Starts for Archimedes\_35:

(51, 31467), (53, 31458), (58, 31434), (Start: 59 @31428 has 4 MA's), (65, 31386), (76, 31326), (90, 31233), (97, 31206), (104, 31173), (105, 31167),

Gene: AustinPowers\_31 Start: 24781, Stop: 25341, Start Num: 45

Candidate Starts for AustinPowers\_31:

(29, 24709), (44, 24772), (Start: 45 @24781 has 67 MA's), (Start: 46 @24793 has 12 MA's), (52, 24820), (57, 24832), (Start: 59 @24853 has 4 MA's), (60, 24859), (66, 24898), (68, 24913), (87, 25036), (89, 25051), (92, 25075), (100, 25114), (106, 25135), (107, 25138), (119, 25234), (125, 25270), (127, 25291), (132, 25333),

Gene: Beethoven\_34 Start: 25166, Stop: 25723, Start Num: 45

Candidate Starts for Beethoven\_34:

(22, 25019), (Start: 41 @25142 has 3 MA's), (Start: 45 @25166 has 67 MA's), (Start: 46 @25178 has 12 MA's), (52, 25205), (57, 25217), (Start: 59 @25238 has 4 MA's), (60, 25244), (67, 25289), (68, 25298), (73, 25337), (84, 25409), (87, 25421), (89, 25436), (91, 25454), (92, 25460), (95, 25469), (100, 25499), (107, 25523), (120, 25622), (125, 25655), (127, 25676),

Gene: Bennie\_30 Start: 23623, Stop: 24180, Start Num: 45

Candidate Starts for Bennie\_30:

(Start: 45 @23623 has 67 MA's), (Start: 46 @23635 has 12 MA's), (52, 23662), (57, 23674), (Start: 59 @23695 has 4 MA's), (60, 23701), (67, 23746), (68, 23755), (84, 23866), (87, 23878), (88, 23881), (89, 23893), (92, 23917), (100, 23956), (107, 23980), (120, 24079), (125, 24112), (127, 24133),

Gene: Benry\_40 Start: 25022, Stop: 25630, Start Num: 37

Candidate Starts for Benry\_40:

(16, 24845), (19, 24866), (25, 24953), (27, 24971), (Start: 37 @25022 has 4 MA's), (Start: 59 @25130 has 4 MA's), (64, 25163), (78, 25247), (79, 25253), (80, 25256), (84, 25301), (87, 25313), (102, 25394), (104, 25400), (111, 25427), (112, 25442), (115, 25469), (134, 25604),

Gene: BigMack\_30 Start: 23645, Stop: 24202, Start Num: 45

Candidate Starts for BigMack\_30:



(Start: 45 @23645 has 67 MA's), (Start: 46 @23657 has 12 MA's), (52, 23684), (Start: 59 @23717 has 4 MA's), (60, 23723), (68, 23777), (73, 23816), (84, 23888), (87, 23900), (88, 23903), (89, 23915), (91, 23933), (92, 23939), (100, 23978), (107, 24002), (120, 24101), (125, 24134), (127, 24155),

Gene: Bodacious\_30 Start: 23631, Stop: 24182, Start Num: 45

Candidate Starts for Bodacious\_30:

(Start: 41 @23607 has 3 MA's), (Start: 45 @23631 has 67 MA's), (Start: 46 @23643 has 12 MA's), (52, 23670), (57, 23682), (60, 23709), (67, 23754), (68, 23763), (73, 23802), (84, 23874), (87, 23886), (88, 23889), (89, 23901), (91, 23919), (100, 23964), (107, 23988), (120, 24087), (124, 24117), (125, 24120), (127, 24141),

Gene: Bogota\_45 Start: 33597, Stop: 34298, Start Num: 24

Candidate Starts for Bogota\_45:

(5, 33342), (6, 33381), (7, 33390), (10, 33441), (13, 33456), (14, 33486), (Start: 24 @33597 has 6 MA's), (35, 33666), (49, 33744), (52, 33768), (57, 33783), (Start: 59 @33804 has 4 MA's), (63, 33834), (64, 33840), (75, 33888), (77, 33897), (82, 33924), (97, 34023), (133, 34275), (135, 34284),

Gene: BrotherBLo\_34 Start: 25191, Stop: 25748, Start Num: 45

Candidate Starts for BrotherBLo\_34:

(22, 25044), (Start: 41 @25167 has 3 MA's), (Start: 45 @25191 has 67 MA's), (Start: 46 @25203 has 12 MA's), (52, 25230), (57, 25242), (Start: 59 @25263 has 4 MA's), (60, 25269), (67, 25314), (68, 25323), (73, 25362), (84, 25434), (87, 25446), (88, 25449), (89, 25461), (91, 25479), (92, 25485), (95, 25494), (100, 25524), (107, 25548), (120, 25647), (125, 25680), (127, 25701),

Gene: CallieOMalley\_34 Start: 25187, Stop: 25744, Start Num: 45

Candidate Starts for CallieOMalley\_34:

(8, 24872), (9, 24899), (12, 24914), (31, 25103), (32, 25106), (34, 25121), (42, 25166), (Start: 45 @25187 has 67 MA's), (Start: 46 @25199 has 12 MA's), (52, 25226), (57, 25238), (Start: 59 @25259 has 4 MA's), (60, 25265), (67, 25310), (68, 25319), (72, 25349), (80, 25385), (81, 25388), (87, 25442), (89, 25457), (92, 25481), (100, 25520), (107, 25544), (114, 25601), (124, 25673), (125, 25676), (127, 25697),

Gene: Canowicakte\_34 Start: 25234, Stop: 25779, Start Num: 46

Candidate Starts for Canowicakte\_34:

(8, 24907), (9, 24934), (12, 24949), (31, 25138), (32, 25141), (34, 25156), (42, 25201), (Start: 45 @25222 has 67 MA's), (Start: 46 @25234 has 12 MA's), (52, 25261), (57, 25273), (Start: 59 @25294 has 4 MA's), (60, 25300), (67, 25345), (68, 25354), (72, 25384), (80, 25420), (81, 25423), (87, 25477), (89, 25492), (92, 25516), (100, 25555), (107, 25579), (114, 25636), (124, 25708), (125, 25711), (127, 25732),

Gene: Carpal\_34 Start: 25173, Stop: 25730, Start Num: 45

Candidate Starts for Carpal\_34:

(22, 25026), (Start: 41 @25149 has 3 MA's), (Start: 45 @25173 has 67 MA's), (Start: 46 @25185 has 12 MA's), (52, 25212), (57, 25224), (Start: 59 @25245 has 4 MA's), (60, 25251), (67, 25296), (68, 25305), (73, 25344), (84, 25416), (87, 25428), (89, 25443), (91, 25461), (92, 25467), (95, 25476), (100, 25506), (107, 25530), (120, 25629), (125, 25662), (127, 25683),

Gene: ChewChew\_30 Start: 23626, Stop: 24177, Start Num: 45

Candidate Starts for ChewChew\_30:

(Start: 41 @23602 has 3 MA's), (Start: 45 @23626 has 67 MA's), (Start: 46 @23638 has 12 MA's), (52, 23665), (57, 23677), (60, 23704), (67, 23749), (68, 23758), (73, 23797), (84, 23869), (87, 23881), (88, 23884), (89, 23896), (91, 23914), (100, 23959), (107, 23983), (120, 24082), (124, 24112), (125, 24115), (127, 24136),

Gene: Cholula\_34 Start: 25219, Stop: 25776, Start Num: 45

Candidate Starts for Cholula\_34:

(22, 25072), (Start: 41 @25195 has 3 MA's), (Start: 45 @25219 has 67 MA's), (52, 25258), (57, 25270), (Start: 59 @25291 has 4 MA's), (60, 25297), (67, 25342), (68, 25351), (73, 25390), (84, 25462), (87, 25474), (89, 25489), (91, 25507), (92, 25513), (95, 25522), (100, 25552), (107, 25576), (120, 25675), (125, 25708), (127, 25729),

Gene: Chridison\_30 Start: 24781, Stop: 25341, Start Num: 45

Candidate Starts for Chridison\_30:

(29, 24709), (44, 24772), (Start: 45 @24781 has 67 MA's), (Start: 46 @24793 has 12 MA's), (52, 24820), (57, 24832), (Start: 59 @24853 has 4 MA's), (60, 24859), (66, 24898), (68, 24913), (87, 25036), (89, 25051), (92, 25075), (100, 25114), (106, 25135), (107, 25138), (119, 25234), (125, 25270), (127, 25291), (132, 25333),

Gene: Christian\_30 Start: 23639, Stop: 24178, Start Num: 46

Candidate Starts for Christian\_30:

(Start: 41 @23603 has 3 MA's), (Start: 45 @23627 has 67 MA's), (Start: 46 @23639 has 12 MA's), (52, 23666), (57, 23678), (60, 23705), (67, 23750), (68, 23759), (73, 23798), (84, 23870), (87, 23882), (88, 23885), (89, 23897), (91, 23915), (100, 23960), (107, 23984), (120, 24083), (124, 24113), (125, 24116), (127, 24137),

Gene: Cicada\_42 Start: 26852, Stop: 27460, Start Num: 36

Candidate Starts for Cicada\_42:

(Start: 36 @26852 has 8 MA's), (Start: 40 @26858 has 1 MA's), (64, 26993), (75, 27065), (78, 27077), (79, 27083), (87, 27143), (102, 27224), (115, 27299), (125, 27365), (129, 27395), (134, 27434),

Gene: CristinaYang\_30 Start: 23631, Stop: 24182, Start Num: 45

Candidate Starts for CristinaYang\_30:

(Start: 41 @23607 has 3 MA's), (Start: 45 @23631 has 67 MA's), (Start: 46 @23643 has 12 MA's), (52, 23670), (57, 23682), (60, 23709), (67, 23754), (68, 23763), (73, 23802), (84, 23874), (87, 23886), (88, 23889), (89, 23901), (91, 23919), (100, 23964), (107, 23988), (120, 24087), (124, 24117), (125, 24120), (127, 24141),

Gene: Crosby\_44 Start: 33342, Stop: 34043, Start Num: 24

Candidate Starts for Crosby\_44:

(Start: 24 @33342 has 6 MA's), (26, 33366), (35, 33411), (49, 33489), (52, 33513), (57, 33528), (Start: 59 @33549 has 4 MA's), (63, 33579), (75, 33633), (77, 33642), (97, 33768), (105, 33807), (133, 34020), (135, 34029),

Gene: Daiboju\_31 Start: 24770, Stop: 25330, Start Num: 45

Candidate Starts for Daiboju\_31:

(Start: 45 @24770 has 67 MA's), (Start: 46 @24782 has 12 MA's), (52, 24809), (Start: 59 @24842 has 4 MA's), (60, 24848), (66, 24887), (68, 24902), (87, 25025), (89, 25040), (92, 25064), (100, 25103), (107, 25127), (113, 25166), (114, 25184), (119, 25223), (123, 25238), (125, 25259), (127, 25280),

Gene: Dino\_34 Start: 25199, Stop: 25744, Start Num: 46

Candidate Starts for Dino\_34:

(11, 24926), (22, 25040), (Start: 41 @25163 has 3 MA's), (Start: 45 @25187 has 67 MA's), (Start: 46 @25199 has 12 MA's), (52, 25226), (57, 25238), (Start: 59 @25259 has 4 MA's), (60, 25265), (67, 25310), (68, 25319), (73, 25358), (74, 25361), (80, 25385), (84, 25430), (87, 25442), (89, 25457), (91, 25475), (92, 25481), (95, 25490), (100, 25520), (107, 25544), (120, 25643), (125, 25676), (127, 25697),

Gene: DrRobert\_30 Start: 23627, Stop: 24184, Start Num: 45

Candidate Starts for DrRobert\_30:

(Start: 41 @23603 has 3 MA's), (Start: 45 @23627 has 67 MA's), (Start: 46 @23639 has 12 MA's), (52, 23666), (57, 23678), (60, 23705), (67, 23750), (68, 23759), (73, 23798), (84, 23870), (87, 23882), (88, 23885), (89, 23897), (91, 23915), (100, 23960), (101, 23963), (107, 23984), (120, 24083), (124, 24113), (125, 24116), (127, 24137),

Gene: DreamTeam\_30 Start: 23722, Stop: 24273, Start Num: 45

Candidate Starts for DreamTeam\_30:

(10, 23443), (11, 23446), (31, 23638), (42, 23701), (Start: 45 @23722 has 67 MA's), (Start: 46 @23734 has 12 MA's), (52, 23761), (57, 23773), (Start: 59 @23794 has 4 MA's), (60, 23800), (66, 23839), (68, 23854), (84, 23965), (87, 23977), (88, 23980), (89, 23992), (91, 24010), (92, 24016), (94, 24022), (100, 24055), (105, 24073), (107, 24079), (114, 24136), (120, 24178), (124, 24208), (125, 24211), (127, 24232),

Gene: EstebanJulior\_31 Start: 24817, Stop: 25374, Start Num: 45

Candidate Starts for EstebanJulior\_31:

(31, 24760), (Start: 45 @24817 has 67 MA's), (Start: 46 @24829 has 12 MA's), (52, 24856), (57, 24868), (60, 24895), (67, 24940), (68, 24949), (74, 24991), (84, 25060), (87, 25072), (88, 25075), (89, 25087), (91, 25105), (92, 25111), (100, 25150), (101, 25153), (105, 25168), (107, 25174), (120, 25273), (125, 25306), (127, 25327),

Gene: Eunoia\_31 Start: 24783, Stop: 25343, Start Num: 45

Candidate Starts for Eunoia\_31:

(29, 24711), (44, 24774), (Start: 45 @24783 has 67 MA's), (Start: 46 @24795 has 12 MA's), (52, 24822), (57, 24834), (Start: 59 @24855 has 4 MA's), (60, 24861), (66, 24900), (68, 24915), (87, 25038), (88, 25041), (89, 25053), (92, 25077), (100, 25116), (106, 25137), (107, 25140), (110, 25155), (113, 25179), (114, 25197), (119, 25236), (123, 25251), (125, 25272), (127, 25293),

Gene: FireCastle\_40 Start: 26550, Stop: 27158, Start Num: 36

Candidate Starts for FireCastle\_40:

(18, 26418), (20, 26442), (23, 26487), (Start: 36 @26550 has 8 MA's), (Start: 59 @26658 has 4 MA's), (64, 26691), (75, 26763), (78, 26775), (79, 26781), (84, 26829), (87, 26841), (102, 26922), (112, 26970), (115, 26997), (134, 27132),

Gene: Fluke\_35 Start: 25328, Stop: 25885, Start Num: 45

Candidate Starts for Fluke\_35:

(22, 25181), (Start: 41 @25304 has 3 MA's), (Start: 45 @25328 has 67 MA's), (Start: 46 @25340 has 12 MA's), (52, 25367), (Start: 59 @25400 has 4 MA's), (60, 25406), (66, 25445), (68, 25460), (74, 25502), (80, 25526), (84, 25571), (87, 25583), (88, 25586), (89, 25598), (91, 25616), (92, 25622), (100, 25661), (105, 25679), (106, 25682), (107, 25685), (120, 25784), (124, 25814), (125, 25817), (127, 25838),

Gene: Frizzle\_32 Start: 30551, Stop: 30084, Start Num: 59

Candidate Starts for Frizzle\_32:

(53, 30581), (58, 30557), (Start: 59 @30551 has 4 MA's), (61, 30536), (70, 30485), (110, 30275),

Gene: Ghobes\_33 Start: 30552, Stop: 30085, Start Num: 59

Candidate Starts for Ghobes\_33:

(53, 30582), (58, 30558), (Start: 59 @30552 has 4 MA's), (61, 30537), (70, 30486), (110, 30276),

Gene: Gisselle\_30 Start: 23722, Stop: 24273, Start Num: 45

Candidate Starts for Gisselle\_30:

(10, 23443), (11, 23446), (31, 23638), (42, 23701), (Start: 45 @23722 has 67 MA's), (Start: 46 @23734 has 12 MA's), (52, 23761), (57, 23773), (Start: 59 @23794 has 4 MA's), (60, 23800), (66, 23839), (68, 23854), (84, 23965), (87, 23977), (88, 23980), (89, 23992), (91, 24010), (92, 24016), (94, 24022), (100, 24055), (105, 24073), (107, 24079), (114, 24136), (120, 24178), (124, 24208), (125, 24211), (127, 24232),

Gene: Glenn\_34 Start: 25199, Stop: 25780, Start Num: 41

Candidate Starts for Glenn\_34:

(22, 25076), (Start: 41 @25199 has 3 MA's), (Start: 45 @25223 has 67 MA's), (Start: 46 @25235 has 12 MA's), (52, 25262), (57, 25274), (Start: 59 @25295 has 4 MA's), (60, 25301), (67, 25346), (68, 25355), (73, 25394), (84, 25466), (87, 25478), (89, 25493), (91, 25511), (92, 25517), (95, 25526), (100, 25556), (107, 25580), (120, 25679), (125, 25712), (127, 25733),

Gene: Goodman\_41 Start: 26757, Stop: 27365, Start Num: 36

Candidate Starts for Goodman\_41:

(Start: 36 @26757 has 8 MA's), (Start: 40 @26763 has 1 MA's), (64, 26898), (75, 26970), (78, 26982), (79, 26988), (87, 27048), (102, 27129), (115, 27204), (118, 27228), (129, 27300), (134, 27339),

Gene: GreenHearts\_33 Start: 25238, Stop: 25795, Start Num: 45

Candidate Starts for GreenHearts\_33:

(Start: 45 @25238 has 67 MA's), (Start: 46 @25250 has 12 MA's), (52, 25277), (57, 25289), (60, 25316), (68, 25370), (72, 25400), (87, 25493), (89, 25508), (92, 25532), (100, 25571), (107, 25595), (110, 25610), (124, 25724), (125, 25727), (127, 25748), (131, 25775),

Gene: Greenhouse\_33 Start: 25152, Stop: 25709, Start Num: 45

Candidate Starts for Greenhouse\_33:

(43, 25140), (Start: 45 @25152 has 67 MA's), (Start: 46 @25164 has 12 MA's), (52, 25191), (57, 25203), (60, 25230), (68, 25284), (72, 25314), (87, 25407), (89, 25422), (92, 25446), (100, 25485), (107, 25509), (110, 25524), (124, 25638), (125, 25641), (127, 25662), (131, 25689),

Gene: HeadNerd\_30 Start: 23623, Stop: 24180, Start Num: 45

Candidate Starts for HeadNerd\_30:

(Start: 45 @23623 has 67 MA's), (Start: 46 @23635 has 12 MA's), (52, 23662), (57, 23674), (Start: 59 @23695 has 4 MA's), (60, 23701), (67, 23746), (68, 23755), (84, 23866), (87, 23878), (88, 23881), (89, 23893), (92, 23917), (100, 23956), (107, 23980), (120, 24079), (125, 24112), (127, 24133),

Gene: Henoccus\_44 Start: 33096, Stop: 33767, Start Num: 28

Candidate Starts for Henoccus\_44:

(2, 32676), (3, 32715), (5, 32835), (6, 32874), (7, 32883), (10, 32934), (14, 32979), (Start: 28 @33096 has 5 MA's), (Start: 38 @33147 has 4 MA's), (52, 33225), (55, 33231), (63, 33291), (69, 33321), (71, 33333), (77, 33366), (86, 33432), (97, 33492), (106, 33534), (109, 33552), (121, 33642), (122, 33645), (130, 33723), (133, 33744), (135, 33753),

Gene: Herb\_31 Start: 24769, Stop: 25329, Start Num: 45

Candidate Starts for Herb\_31:

(Start: 45 @24769 has 67 MA's), (Start: 46 @24781 has 12 MA's), (52, 24808), (Start: 59 @24841 has 4 MA's), (60, 24847), (66, 24886), (68, 24901), (87, 25024), (89, 25039), (92, 25063), (100, 25102), (107, 25126), (113, 25165), (114, 25183), (119, 25222), (123, 25237), (125, 25258), (127, 25279),

Gene: Htur\_40 Start: 26856, Stop: 27461, Start Num: 36

Candidate Starts for Htur\_40:

(27, 26814), (Start: 36 @26856 has 8 MA's), (Start: 40 @26862 has 1 MA's), (Start: 59 @26961 has 4 MA's), (64, 26994), (75, 27066), (79, 27084), (81, 27090), (87, 27144), (92, 27183), (99, 27213), (104, 27231), (111, 27258), (115, 27300), (116, 27312), (134, 27435),

Gene: Huckleberry\_30 Start: 23611, Stop: 24168, Start Num: 45

Candidate Starts for Huckleberry\_30:

(9, 23338), (11, 23350), (17, 23401), (Start: 45 @23611 has 67 MA's), (Start: 46 @23623 has 12 MA's), (52, 23650), (57, 23662), (60, 23689), (67, 23734), (68, 23743), (84, 23854), (87, 23866), (88, 23869), (89, 23881), (92, 23905), (100, 23944), (107, 23968), (120, 24067), (124, 24097), (125, 24100), (127, 24121),

Gene: HunterDalle\_31 Start: 24780, Stop: 25340, Start Num: 45

Candidate Starts for HunterDalle\_31:

(29, 24708), (44, 24771), (Start: 45 @24780 has 67 MA's), (Start: 46 @24792 has 12 MA's), (52, 24819), (57, 24831), (Start: 59 @24852 has 4 MA's), (60, 24858), (66, 24897), (68, 24912), (87, 25035), (89, 25050), (92, 25074), (100, 25113), (106, 25134), (107, 25137), (119, 25233), (125, 25269), (127, 25290), (132, 25332),

Gene: Huntingdon\_33 Start: 25142, Stop: 25687, Start Num: 46

Candidate Starts for Huntingdon\_33:

(Start: 45 @25130 has 67 MA's), (Start: 46 @25142 has 12 MA's), (52, 25169), (57, 25181), (Start: 59 @25202 has 4 MA's), (60, 25208), (68, 25262), (72, 25292), (87, 25385), (88, 25388), (89, 25400), (92, 25424), (100, 25463), (106, 25484), (107, 25487), (110, 25502), (120, 25586), (125, 25619), (127, 25640), (131, 25667),

Gene: Immaculata\_34 Start: 25194, Stop: 25775, Start Num: 41

Candidate Starts for Immaculata\_34:

(22, 25071), (Start: 41 @25194 has 3 MA's), (Start: 45 @25218 has 67 MA's), (52, 25257), (57, 25269), (Start: 59 @25290 has 4 MA's), (60, 25296), (67, 25341), (68, 25350), (73, 25389), (84, 25461), (87, 25473), (89, 25488), (91, 25506), (92, 25512), (95, 25521), (100, 25551), (107, 25575), (120, 25674), (125, 25707), (127, 25728),

Gene: IndiRoo\_41 Start: 25292, Stop: 25900, Start Num: 37

Candidate Starts for IndiRoo\_41:

(16, 25115), (25, 25223), (27, 25241), (Start: 37 @25292 has 4 MA's), (Start: 59 @25400 has 4 MA's), (64, 25433), (75, 25505), (78, 25517), (79, 25523), (80, 25526), (81, 25529), (84, 25571), (87, 25583), (92, 25622), (104, 25670), (111, 25697), (113, 25715), (115, 25739), (134, 25874),

Gene: Intolerant\_43 Start: 33235, Stop: 33990, Start Num: 24

Candidate Starts for Intolerant\_43:

(5, 32980), (6, 33019), (7, 33028), (10, 33079), (13, 33094), (14, 33124), (Start: 24 @33235 has 6 MA's), (35, 33304), (49, 33382), (52, 33406), (57, 33421), (Start: 59 @33442 has 4 MA's), (75, 33580), (77, 33589), (97, 33715), (133, 33967), (135, 33976),

Gene: JackieB\_44 Start: 32935, Stop: 33606, Start Num: 28

Candidate Starts for JackieB\_44:

(2, 32515), (3, 32554), (5, 32674), (6, 32713), (7, 32722), (10, 32773), (14, 32818), (Start: 28 @32935 has 5 MA's), (Start: 38 @32986 has 4 MA's), (52, 33064), (55, 33070), (63, 33130), (69, 33160), (71, 33172), (77, 33205), (86, 33271), (97, 33331), (106, 33373), (109, 33391), (121, 33481), (122, 33484), (130, 33562), (133, 33583), (135, 33592),

Gene: Jera\_41 Start: 25784, Stop: 26392, Start Num: 38

Candidate Starts for Jera\_41:

(Start: 38 @25784 has 4 MA's), (39, 25787), (Start: 40 @25790 has 1 MA's), (78, 26009), (79, 26015), (87, 26075), (102, 26156), (115, 26231), (116, 26243), (134, 26366),

Gene: Joann\_33 Start: 25123, Stop: 25680, Start Num: 45

Candidate Starts for Joann\_33:

(Start: 45 @25123 has 67 MA's), (Start: 46 @25135 has 12 MA's), (52, 25162), (57, 25174), (60, 25201), (68, 25255), (87, 25378), (89, 25393), (92, 25417), (100, 25456), (107, 25480), (110, 25495), (120, 25579), (125, 25612), (127, 25633), (131, 25660),

Gene: Johann\_41 Start: 26757, Stop: 27365, Start Num: 36

Candidate Starts for Johann\_41:

(Start: 36 @26757 has 8 MA's), (Start: 40 @26763 has 1 MA's), (64, 26898), (75, 26970), (78, 26982), (79, 26988), (87, 27048), (102, 27129), (115, 27204), (118, 27228), (129, 27300), (134, 27339),

Gene: Jumboset\_34 Start: 25166, Stop: 25720, Start Num: 45

Candidate Starts for Jumboset\_34:

(11, 24905), (22, 25019), (Start: 41 @25142 has 3 MA's), (Start: 45 @25166 has 67 MA's), (Start: 46 @25178 has 12 MA's), (52, 25202), (Start: 59 @25235 has 4 MA's), (60, 25241), (68, 25295), (73, 25334), (84, 25406), (87, 25418), (88, 25421), (89, 25433), (91, 25451), (92, 25457), (95, 25466), (100, 25496), (107, 25520), (120, 25619), (125, 25652), (127, 25673),

Gene: Kalizoi\_34 Start: 25165, Stop: 25722, Start Num: 45

Candidate Starts for Kalizoi\_34:

(11, 24904), (22, 25018), (Start: 41 @25141 has 3 MA's), (Start: 45 @25165 has 67 MA's), (Start: 46 @25177 has 12 MA's), (52, 25204), (57, 25216), (Start: 59 @25237 has 4 MA's), (60, 25243), (67, 25288), (68, 25297), (73, 25336), (74, 25339), (80, 25363), (84, 25408), (87, 25420), (89, 25435), (91, 25453), (92, 25459), (95, 25468), (100, 25498), (107, 25522), (120, 25621), (125, 25654), (127, 25675),

Gene: KingBob\_31 Start: 24770, Stop: 25330, Start Num: 45

Candidate Starts for KingBob\_31:

(Start: 45 @24770 has 67 MA's), (Start: 46 @24782 has 12 MA's), (52, 24809), (Start: 59 @24842 has 4 MA's), (60, 24848), (66, 24887), (68, 24902), (87, 25025), (89, 25040), (92, 25064), (100, 25103), (107, 25127), (113, 25166), (114, 25184), (119, 25223), (123, 25238), (125, 25259), (127, 25280),

Gene: Kittykat\_31 Start: 23824, Stop: 24381, Start Num: 45

Candidate Starts for Kittykat\_31:

(Start: 45 @23824 has 67 MA's), (Start: 46 @23836 has 12 MA's), (52, 23863), (57, 23875), (Start: 59 @23896 has 4 MA's), (60, 23902), (66, 23941), (68, 23956), (72, 23986), (84, 24067), (87, 24079), (89, 24094), (92, 24118), (100, 24157), (106, 24178), (107, 24181), (114, 24238), (120, 24280), (125, 24313), (127, 24334),

Gene: Korra\_34 Start: 25199, Stop: 25744, Start Num: 46

Candidate Starts for Korra\_34:

(11, 24926), (22, 25040), (Start: 41 @25163 has 3 MA's), (Start: 45 @25187 has 67 MA's), (Start: 46 @25199 has 12 MA's), (52, 25226), (57, 25238), (60, 25265), (67, 25310), (68, 25319), (73, 25358), (80, 25385), (84, 25430), (87, 25442), (88, 25445), (89, 25457), (91, 25475), (92, 25481), (95, 25490), (100, 25520), (107, 25544), (120, 25643), (125, 25676), (127, 25697),

Gene: Lakshmi\_33 Start: 25122, Stop: 25679, Start Num: 45

Candidate Starts for Lakshmi\_33:

(Start: 45 @25122 has 67 MA's), (Start: 46 @25134 has 12 MA's), (52, 25161), (57, 25173), (60, 25200), (68, 25254), (72, 25284), (87, 25377), (89, 25392), (92, 25416), (100, 25455), (107, 25479),

(110, 25494), (124, 25608), (125, 25611), (127, 25632), (131, 25659),

Gene: Lasagna\_30 Start: 23642, Stop: 24199, Start Num: 45

Candidate Starts for Lasagna\_30:

(Start: 45 @23642 has 67 MA's), (Start: 46 @23654 has 12 MA's), (52, 23681), (57, 23693), (60, 23720), (67, 23765), (68, 23774), (73, 23813), (84, 23885), (87, 23897), (88, 23900), (89, 23912), (91, 23930), (100, 23975), (106, 23996), (107, 23999), (120, 24098), (124, 24128), (125, 24131), (127, 24152),

Gene: LazerLemon\_44 Start: 33723, Stop: 34394, Start Num: 28

Candidate Starts for LazerLemon\_44:

(1, 33294), (2, 33312), (3, 33351), (5, 33471), (6, 33510), (7, 33519), (10, 33570), (14, 33615), (Start: 28 @33723 has 5 MA's), (Start: 38 @33771 has 4 MA's), (63, 33915), (69, 33945), (77, 33990), (85, 34053), (86, 34056), (97, 34116), (108, 34173), (121, 34269), (122, 34272), (133, 34371), (135, 34380),

Gene: Lennox\_30 Start: 23615, Stop: 24166, Start Num: 45

Candidate Starts for Lennox\_30:

(Start: 41 @23591 has 3 MA's), (Start: 45 @23615 has 67 MA's), (Start: 46 @23627 has 12 MA's), (52, 23654), (57, 23666), (60, 23693), (67, 23738), (68, 23747), (73, 23786), (84, 23858), (87, 23870), (88, 23873), (89, 23885), (91, 23903), (100, 23948), (107, 23972), (120, 24071), (124, 24101), (125, 24104), (127, 24125),

Gene: LilStuart\_30 Start: 23619, Stop: 24170, Start Num: 45

Candidate Starts for LilStuart\_30:

(Start: 41 @23595 has 3 MA's), (Start: 45 @23619 has 67 MA's), (Start: 46 @23631 has 12 MA's), (52, 23658), (57, 23670), (60, 23697), (67, 23742), (68, 23751), (73, 23790), (84, 23862), (87, 23874), (88, 23877), (89, 23889), (91, 23907), (100, 23952), (107, 23976), (120, 24075), (124, 24105), (125, 24108), (127, 24129),

Gene: Linayshia\_40 Start: 26824, Stop: 27429, Start Num: 36

Candidate Starts for Linayshia\_40:

(27, 26782), (Start: 36 @26824 has 8 MA's), (Start: 40 @26830 has 1 MA's), (Start: 59 @26929 has 4 MA's), (64, 26962), (75, 27034), (79, 27052), (81, 27058), (87, 27112), (92, 27151), (99, 27181), (104, 27199), (111, 27226), (115, 27268), (116, 27280), (134, 27403),

Gene: Litotes\_34 Start: 25172, Stop: 25729, Start Num: 45

Candidate Starts for Litotes\_34:

(8, 24857), (9, 24884), (11, 24896), (12, 24899), (31, 25088), (34, 25106), (42, 25151), (Start: 45 @25172 has 67 MA's), (Start: 46 @25184 has 12 MA's), (52, 25211), (57, 25223), (Start: 59 @25244 has 4 MA's), (60, 25250), (67, 25295), (68, 25304), (72, 25334), (87, 25427), (88, 25430), (89, 25442), (92, 25466), (100, 25505), (106, 25526), (107, 25529), (124, 25658), (125, 25661), (127, 25682),

Gene: Lucy\_30 Start: 23619, Stop: 24158, Start Num: 46

Candidate Starts for Lucy\_30:

(Start: 41 @23583 has 3 MA's), (Start: 45 @23607 has 67 MA's), (Start: 46 @23619 has 12 MA's), (52, 23646), (57, 23658), (67, 23730), (68, 23739), (73, 23778), (84, 23850), (87, 23862), (89, 23877), (91, 23895), (100, 23940), (107, 23964), (120, 24063), (124, 24093), (125, 24096), (127, 24117),

Gene: Makoto\_30 Start: 23627, Stop: 24178, Start Num: 45

Candidate Starts for Makoto\_30:

(Start: 41 @23603 has 3 MA's), (Start: 45 @23627 has 67 MA's), (Start: 46 @23639 has 12 MA's), (52, 23666), (57, 23678), (60, 23705), (67, 23750), (68, 23759), (73, 23798), (84, 23870), (87, 23882), (88,

23885), (89, 23897), (91, 23915), (100, 23960), (107, 23984), (120, 24083), (124, 24113), (125, 24116), (127, 24137),

Gene: MamaPearl\_31 Start: 24817, Stop: 25374, Start Num: 45

Candidate Starts for MamaPearl\_31:

(31, 24760), (Start: 45 @24817 has 67 MA's), (Start: 46 @24829 has 12 MA's), (52, 24856), (57, 24868), (60, 24895), (67, 24940), (68, 24949), (74, 24991), (84, 25060), (87, 25072), (88, 25075), (89, 25087), (91, 25105), (92, 25111), (100, 25150), (101, 25153), (105, 25168), (107, 25174), (120, 25273), (125, 25306), (127, 25327),

Gene: Marky\_46 Start: 33813, Stop: 34481, Start Num: 28

Candidate Starts for Marky\_46:

(2, 33393), (3, 33432), (4, 33543), (6, 33588), (7, 33597), (10, 33657), (13, 33672), (14, 33702), (Start: 28 @33813 has 5 MA's), (33, 33834), (Start: 38 @33861 has 4 MA's), (57, 33954), (Start: 59 @33975 has 4 MA's), (63, 34005), (69, 34035), (75, 34071), (77, 34080), (86, 34146), (94, 34194), (97, 34206), (106, 34248), (109, 34266), (121, 34356), (122, 34359), (135, 34467), (136, 34470),

Gene: MeganNoll\_33 Start: 25235, Stop: 25777, Start Num: 46

Candidate Starts for MeganNoll\_33:

(11, 24962), (22, 25076), (Start: 41 @25199 has 3 MA's), (Start: 45 @25223 has 67 MA's), (Start: 46 @25235 has 12 MA's), (52, 25259), (Start: 59 @25292 has 4 MA's), (60, 25298), (68, 25352), (73, 25391), (84, 25463), (87, 25475), (88, 25478), (89, 25490), (91, 25508), (92, 25514), (95, 25523), (100, 25553), (107, 25577), (120, 25676), (125, 25709), (127, 25730),

Gene: Microdon\_43 Start: 33041, Stop: 33796, Start Num: 24

Candidate Starts for Microdon\_43:

(Start: 24 @33041 has 6 MA's), (26, 33065), (35, 33110), (48, 33185), (52, 33212), (54, 33215), (57, 33227), (Start: 59 @33248 has 4 MA's), (60, 33254), (75, 33386), (77, 33395), (97, 33521), (107, 33566), (133, 33773), (135, 33782),

Gene: Milani\_39 Start: 25369, Stop: 25977, Start Num: 38

Candidate Starts for Milani\_39:

(Start: 38 @25369 has 4 MA's), (62, 25498), (79, 25600), (87, 25660), (93, 25702), (102, 25741), (111, 25774), (113, 25792), (115, 25816), (117, 25834), (118, 25840), (125, 25882), (134, 25951),

Gene: Misaeng\_33 Start: 25361, Stop: 25918, Start Num: 45

Candidate Starts for Misaeng\_33:

(Start: 45 @25361 has 67 MA's), (Start: 46 @25373 has 12 MA's), (52, 25400), (57, 25412), (60, 25439), (68, 25493), (72, 25523), (87, 25616), (88, 25619), (89, 25631), (92, 25655), (100, 25694), (107, 25718), (110, 25733), (120, 25817), (125, 25850), (127, 25871), (131, 25898),

Gene: Moki\_30 Start: 23611, Stop: 24168, Start Num: 45

Candidate Starts for Moki\_30:

(9, 23338), (11, 23350), (17, 23401), (Start: 45 @23611 has 67 MA's), (Start: 46 @23623 has 12 MA's), (52, 23650), (57, 23662), (60, 23689), (67, 23734), (68, 23743), (84, 23854), (87, 23866), (88, 23869), (89, 23881), (92, 23905), (100, 23944), (107, 23968), (120, 24067), (124, 24097), (125, 24100), (127, 24121),

Gene: MrGloopy\_34 Start: 25157, Stop: 25711, Start Num: 45

Candidate Starts for MrGloopy\_34:

(11, 24896), (22, 25010), (Start: 41 @25133 has 3 MA's), (Start: 45 @25157 has 67 MA's), (Start: 46 @25169 has 12 MA's), (52, 25193), (Start: 59 @25226 has 4 MA's), (60, 25232), (68, 25286), (73, 25325), (74, 25328), (80, 25352), (84, 25397), (87, 25409), (89, 25424), (91, 25442), (92, 25448), (95,



25457), (100, 25487), (107, 25511), (120, 25610), (125, 25643), (127, 25664),

Gene: Nancia\_30 Start: 23631, Stop: 24182, Start Num: 45

Candidate Starts for Nancia\_30:

(Start: 41 @23607 has 3 MA's), (Start: 45 @23631 has 67 MA's), (Start: 46 @23643 has 12 MA's), (52, 23670), (57, 23682), (60, 23709), (67, 23754), (68, 23763), (73, 23802), (84, 23874), (87, 23886), (88, 23889), (89, 23901), (91, 23919), (100, 23964), (107, 23988), (120, 24087), (124, 24117), (125, 24120), (127, 24141),

Gene: Nubia\_33 Start: 25071, Stop: 25628, Start Num: 45

Candidate Starts for Nubia\_33:

(Start: 45 @25071 has 67 MA's), (Start: 46 @25083 has 12 MA's), (52, 25110), (57, 25122), (60, 25149), (68, 25203), (72, 25233), (87, 25326), (88, 25329), (89, 25341), (92, 25365), (100, 25404), (106, 25425), (107, 25428), (110, 25443), (120, 25527), (125, 25560), (127, 25581), (131, 25608),

Gene: OMalley\_31 Start: 24783, Stop: 25343, Start Num: 45

Candidate Starts for OMalley\_31:

(29, 24711), (44, 24774), (Start: 45 @24783 has 67 MA's), (Start: 46 @24795 has 12 MA's), (52, 24822), (57, 24834), (Start: 59 @24855 has 4 MA's), (60, 24861), (66, 24900), (68, 24915), (87, 25038), (88, 25041), (89, 25053), (92, 25077), (100, 25116), (106, 25137), (107, 25140), (110, 25155), (113, 25179), (114, 25197), (119, 25236), (123, 25251), (125, 25272), (127, 25293),

Gene: Olympi\_41 Start: 26627, Stop: 27235, Start Num: 38

Candidate Starts for Olympi\_41:

(Start: 38 @26627 has 4 MA's), (Start: 40 @26633 has 1 MA's), (47, 26672), (Start: 59 @26735 has 4 MA's), (75, 26840), (78, 26852), (79, 26858), (87, 26918), (102, 26999), (115, 27074), (116, 27086), (134, 27209),

Gene: OurGirlNessie\_30 Start: 23608, Stop: 24165, Start Num: 45

Candidate Starts for OurGirlNessie\_30:

(Start: 41 @23584 has 3 MA's), (Start: 45 @23608 has 67 MA's), (Start: 46 @23620 has 12 MA's), (52, 23647), (57, 23659), (60, 23686), (67, 23731), (68, 23740), (73, 23779), (84, 23851), (87, 23863), (88, 23866), (89, 23878), (91, 23896), (100, 23941), (107, 23965), (120, 24064), (124, 24094), (125, 24097), (127, 24118),

Gene: Oxynfrius\_33 Start: 25096, Stop: 25653, Start Num: 45

Candidate Starts for Oxynfrius\_33:

(Start: 45 @25096 has 67 MA's), (Start: 46 @25108 has 12 MA's), (52, 25135), (57, 25147), (60, 25174), (68, 25228), (72, 25258), (87, 25351), (89, 25366), (92, 25390), (100, 25429), (106, 25450), (107, 25453), (110, 25468), (124, 25582), (125, 25585), (127, 25606), (131, 25633),

Gene: PartyCup\_36 Start: 25231, Stop: 25776, Start Num: 46

Candidate Starts for PartyCup\_36:

(8, 24904), (9, 24931), (12, 24946), (31, 25135), (34, 25153), (42, 25198), (Start: 45 @25219 has 67 MA's), (Start: 46 @25231 has 12 MA's), (52, 25258), (57, 25270), (Start: 59 @25291 has 4 MA's), (60, 25297), (67, 25342), (68, 25351), (72, 25381), (81, 25420), (87, 25474), (89, 25489), (92, 25513), (100, 25552), (106, 25573), (107, 25576), (114, 25633), (124, 25705), (125, 25708), (127, 25729),

Gene: Parvaparticeps\_11 Start: 7129, Stop: 7770, Start Num: 30

Candidate Starts for Parvaparticeps\_11:

(30, 7129), (60, 7279), (73, 7375), (80, 7402), (81, 7405), (87, 7459), (94, 7504), (96, 7516), (113, 7594), (115, 7618), (125, 7687), (128, 7708),

Gene: PermaG\_41 Start: 26661, Stop: 27269, Start Num: 36

Candidate Starts for PermaG\_41:

(15, 26508), (Start: 36 @26661 has 8 MA's), (39, 26664), (Start: 40 @26667 has 1 MA's), (78, 26886), (79, 26892), (87, 26952), (115, 27108), (116, 27120), (129, 27204), (134, 27243),

Gene: PinkFriday\_30 Start: 23660, Stop: 24220, Start Num: 45

Candidate Starts for PinkFriday\_30:

(Start: 45 @23660 has 67 MA's), (Start: 46 @23672 has 12 MA's), (52, 23699), (Start: 59 @23732 has 4 MA's), (60, 23738), (66, 23777), (68, 23792), (87, 23915), (88, 23918), (89, 23930), (92, 23954), (100, 23993), (106, 24014), (107, 24017), (110, 24032), (113, 24056), (114, 24074), (119, 24113), (123, 24128), (125, 24149), (127, 24170),

Gene: PitaDog\_30 Start: 23618, Stop: 24169, Start Num: 45

Candidate Starts for PitaDog\_30:

(Start: 41 @23594 has 3 MA's), (Start: 45 @23618 has 67 MA's), (Start: 46 @23630 has 12 MA's), (52, 23657), (57, 23669), (67, 23741), (68, 23750), (73, 23789), (84, 23861), (87, 23873), (88, 23876), (89, 23888), (91, 23906), (100, 23951), (107, 23975), (120, 24074), (124, 24104), (125, 24107), (127, 24128),

Gene: Potatoes\_34 Start: 25219, Stop: 25776, Start Num: 45

Candidate Starts for Potatoes\_34:

(22, 25072), (Start: 41 @25195 has 3 MA's), (Start: 45 @25219 has 67 MA's), (52, 25258), (57, 25270), (Start: 59 @25291 has 4 MA's), (60, 25297), (67, 25342), (68, 25351), (73, 25390), (84, 25462), (87, 25474), (89, 25489), (91, 25507), (92, 25513), (95, 25522), (100, 25552), (107, 25576), (120, 25675), (125, 25708), (127, 25729),

Gene: Preamble\_30 Start: 23678, Stop: 24235, Start Num: 45

Candidate Starts for Preamble\_30:

(42, 23657), (Start: 45 @23678 has 67 MA's), (Start: 46 @23690 has 12 MA's), (52, 23717), (Start: 59 @23750 has 4 MA's), (60, 23756), (66, 23795), (68, 23810), (72, 23840), (84, 23921), (87, 23933), (89, 23948), (92, 23972), (100, 24011), (106, 24032), (107, 24035), (114, 24092), (120, 24134), (125, 24167), (127, 24188),

Gene: Pterodactyl\_30 Start: 23609, Stop: 24160, Start Num: 45

Candidate Starts for Pterodactyl\_30:

(Start: 41 @23585 has 3 MA's), (Start: 45 @23609 has 67 MA's), (Start: 46 @23621 has 12 MA's), (52, 23648), (57, 23660), (60, 23687), (67, 23732), (68, 23741), (73, 23780), (84, 23852), (87, 23864), (88, 23867), (89, 23879), (91, 23897), (100, 23942), (107, 23966), (120, 24065), (124, 24095), (125, 24098), (127, 24119),

Gene: Pumancara\_30 Start: 23579, Stop: 24139, Start Num: 45

Candidate Starts for Pumancara\_30:

(Start: 45 @23579 has 67 MA's), (Start: 46 @23591 has 12 MA's), (52, 23618), (Start: 59 @23651 has 4 MA's), (60, 23657), (66, 23696), (68, 23711), (87, 23834), (88, 23837), (89, 23849), (92, 23873), (100, 23912), (106, 23933), (107, 23936), (110, 23951), (113, 23975), (114, 23993), (119, 24032), (123, 24047), (125, 24068), (127, 24089),

Gene: RAP15\_34 Start: 25199, Stop: 25777, Start Num: 41

Candidate Starts for RAP15\_34:

(11, 24962), (22, 25076), (Start: 41 @25199 has 3 MA's), (Start: 45 @25223 has 67 MA's), (Start: 46 @25235 has 12 MA's), (52, 25259), (Start: 59 @25292 has 4 MA's), (60, 25298), (68, 25352), (73, 25391), (84, 25463), (87, 25475), (88, 25478), (89, 25490), (91, 25508), (92, 25514), (95, 25523), (100, 25553), (107, 25577), (120, 25676), (125, 25709), (127, 25730),

Gene: Rasovi\_40 Start: 26856, Stop: 27461, Start Num: 36

Candidate Starts for Rasovi\_40:

(21, 26760), (Start: 36 @26856 has 8 MA's), (Start: 40 @26862 has 1 MA's), (Start: 59 @26961 has 4 MA's), (64, 26994), (75, 27066), (79, 27084), (81, 27090), (87, 27144), (92, 27183), (99, 27213), (111, 27258), (115, 27300), (116, 27312), (134, 27435),

Gene: RcigaStruga\_33 Start: 25142, Stop: 25687, Start Num: 46

Candidate Starts for RcigaStruga\_33:

(Start: 45 @25130 has 67 MA's), (Start: 46 @25142 has 12 MA's), (52, 25169), (57, 25181), (Start: 59 @25202 has 4 MA's), (60, 25208), (68, 25262), (72, 25292), (87, 25385), (88, 25388), (89, 25400), (92, 25424), (100, 25463), (106, 25484), (107, 25487), (110, 25502), (120, 25586), (125, 25619), (127, 25640), (131, 25667),

Gene: Riovina\_31 Start: 24783, Stop: 25343, Start Num: 45

Candidate Starts for Riovina\_31:

(29, 24711), (44, 24774), (Start: 45 @24783 has 67 MA's), (Start: 46 @24795 has 12 MA's), (52, 24822), (57, 24834), (Start: 59 @24855 has 4 MA's), (60, 24861), (66, 24900), (68, 24915), (87, 25038), (88, 25041), (89, 25053), (92, 25077), (100, 25116), (106, 25137), (107, 25140), (110, 25155), (113, 25179), (114, 25197), (119, 25236), (123, 25251), (125, 25272), (127, 25293),

Gene: Riverdale\_34 Start: 25153, Stop: 25710, Start Num: 45

Candidate Starts for Riverdale\_34:

(22, 25006), (Start: 41 @25129 has 3 MA's), (Start: 45 @25153 has 67 MA's), (Start: 46 @25165 has 12 MA's), (52, 25192), (57, 25204), (Start: 59 @25225 has 4 MA's), (60, 25231), (67, 25276), (68, 25285), (73, 25324), (84, 25396), (87, 25408), (89, 25423), (91, 25441), (92, 25447), (95, 25456), (100, 25486), (107, 25510), (120, 25609), (125, 25642), (127, 25663),

Gene: Rozby\_34 Start: 25154, Stop: 25711, Start Num: 45

Candidate Starts for Rozby\_34:

(22, 25007), (Start: 41 @25130 has 3 MA's), (Start: 45 @25154 has 67 MA's), (Start: 46 @25166 has 12 MA's), (52, 25193), (57, 25205), (Start: 59 @25226 has 4 MA's), (60, 25232), (67, 25277), (68, 25286), (73, 25325), (84, 25397), (87, 25409), (88, 25412), (89, 25424), (91, 25442), (92, 25448), (95, 25457), (100, 25487), (107, 25511), (120, 25610), (125, 25643), (127, 25664),

Gene: SBlackberry\_40 Start: 26630, Stop: 27238, Start Num: 36

Candidate Starts for SBlackberry\_40:

(Start: 36 @26630 has 8 MA's), (Start: 40 @26636 has 1 MA's), (Start: 59 @26738 has 4 MA's), (64, 26771), (75, 26843), (78, 26855), (79, 26861), (87, 26921), (102, 27002), (115, 27077), (125, 27143), (129, 27173), (134, 27212),

Gene: Sapo\_32 Start: 30573, Stop: 30124, Start Num: 59

Candidate Starts for Sapo\_32:

(Start: 46 @30636 has 12 MA's), (53, 30603), (58, 30579), (Start: 59 @30573 has 4 MA's), (83, 30435), (95, 30360), (97, 30351),

Gene: Savage2526\_34 Start: 25217, Stop: 25771, Start Num: 45

Candidate Starts for Savage2526\_34:

(11, 24956), (22, 25070), (Start: 41 @25193 has 3 MA's), (Start: 45 @25217 has 67 MA's), (Start: 46 @25229 has 12 MA's), (52, 25253), (Start: 59 @25286 has 4 MA's), (60, 25292), (68, 25346), (73, 25385), (84, 25457), (87, 25469), (88, 25472), (89, 25484), (91, 25502), (92, 25508), (95, 25517), (100, 25547), (107, 25571), (120, 25670), (125, 25703), (127, 25724),

Gene: Scuttle\_34 Start: 25238, Stop: 25795, Start Num: 45

Candidate Starts for Scuttle\_34:

(11, 24977), (Start: 41 @25214 has 3 MA's), (Start: 45 @25238 has 67 MA's), (Start: 46 @25250 has 12 MA's), (52, 25277), (56, 25283), (57, 25289), (Start: 59 @25310 has 4 MA's), (60, 25316), (68, 25370), (73, 25409), (80, 25436), (84, 25481), (87, 25493), (88, 25496), (89, 25508), (91, 25526), (92, 25532), (94, 25538), (100, 25571), (107, 25595), (120, 25694), (125, 25727), (127, 25748),

Gene: Sergei\_31 Start: 24770, Stop: 25330, Start Num: 45

Candidate Starts for Sergei\_31:

(Start: 45 @24770 has 67 MA's), (Start: 46 @24782 has 12 MA's), (52, 24809), (Start: 59 @24842 has 4 MA's), (60, 24848), (66, 24887), (68, 24902), (87, 25025), (89, 25040), (92, 25064), (100, 25103), (107, 25127), (113, 25166), (114, 25184), (119, 25223), (123, 25238), (125, 25259), (127, 25280),

Gene: Stuff\_44 Start: 33521, Stop: 34276, Start Num: 24

Candidate Starts for Stuff\_44:

(Start: 24 @33521 has 6 MA's), (35, 33590), (49, 33668), (52, 33692), (57, 33707), (Start: 59 @33728 has 4 MA's), (75, 33866), (77, 33875), (97, 34001), (133, 34253), (135, 34262),

Gene: Sucha\_38 Start: 24242, Stop: 24850, Start Num: 37

Candidate Starts for Sucha\_38:

(16, 24065), (19, 24086), (25, 24173), (27, 24191), (Start: 37 @24242 has 4 MA's), (Start: 59 @24350 has 4 MA's), (64, 24383), (78, 24467), (79, 24473), (80, 24476), (84, 24521), (87, 24533), (102, 24614), (104, 24620), (111, 24647), (112, 24662), (115, 24689), (134, 24824),

Gene: Supakev\_31 Start: 24783, Stop: 25343, Start Num: 45

Candidate Starts for Supakev\_31:

(29, 24711), (44, 24774), (Start: 45 @24783 has 67 MA's), (Start: 46 @24795 has 12 MA's), (52, 24822), (57, 24834), (Start: 59 @24855 has 4 MA's), (60, 24861), (66, 24900), (68, 24915), (87, 25038), (89, 25053), (92, 25077), (100, 25116), (106, 25137), (107, 25140), (119, 25236), (125, 25272), (127, 25293), (132, 25335),

Gene: Suppi\_34 Start: 25234, Stop: 25779, Start Num: 46

Candidate Starts for Suppi\_34:

(8, 24907), (9, 24934), (12, 24949), (31, 25138), (32, 25141), (34, 25156), (42, 25201), (Start: 45 @25222 has 67 MA's), (Start: 46 @25234 has 12 MA's), (52, 25261), (57, 25273), (Start: 59 @25294 has 4 MA's), (60, 25300), (67, 25345), (68, 25354), (72, 25384), (80, 25420), (81, 25423), (87, 25477), (89, 25492), (92, 25516), (100, 25555), (107, 25579), (114, 25636), (124, 25708), (125, 25711), (127, 25732),

Gene: TattModd\_34 Start: 25216, Stop: 25773, Start Num: 45

Candidate Starts for TattModd\_34:

(22, 25069), (Start: 41 @25192 has 3 MA's), (Start: 45 @25216 has 67 MA's), (Start: 46 @25228 has 12 MA's), (52, 25255), (57, 25267), (Start: 59 @25288 has 4 MA's), (60, 25294), (67, 25339), (68, 25348), (73, 25387), (84, 25459), (87, 25471), (89, 25486), (91, 25504), (92, 25510), (95, 25519), (100, 25549), (107, 25573), (120, 25672), (125, 25705), (127, 25726),

Gene: Temper16\_31 Start: 24770, Stop: 25330, Start Num: 45

Candidate Starts for Temper16\_31:

(Start: 45 @24770 has 67 MA's), (Start: 46 @24782 has 12 MA's), (52, 24809), (Start: 59 @24842 has 4 MA's), (60, 24848), (66, 24887), (68, 24902), (87, 25025), (89, 25040), (92, 25064), (100, 25103), (107, 25127), (113, 25166), (114, 25184), (119, 25223), (123, 25238), (125, 25259), (127, 25280),

Gene: Theresita\_40 Start: 25288, Stop: 25905, Start Num: 37

Candidate Starts for Theresita\_40:

(Start: 37 @25288 has 4 MA's), (39, 25291), (Start: 40 @25294 has 1 MA's), (47, 25333), (50, 25348), (64, 25435), (66, 25447), (68, 25462), (75, 25507), (80, 25528), (81, 25531), (84, 25573), (87, 25585), (102, 25666), (103, 25669), (104, 25672), (115, 25741), (117, 25759), (125, 25807), (126, 25810), (134, 25879),

Gene: TurboVicky\_40 Start: 26538, Stop: 27140, Start Num: 40

Candidate Starts for TurboVicky\_40:

(Start: 38 @26532 has 4 MA's), (39, 26535), (Start: 40 @26538 has 1 MA's), (78, 26757), (79, 26763), (87, 26823), (102, 26904), (115, 26979), (116, 26991), (134, 27114),

Gene: Typher\_42 Start: 26650, Stop: 27258, Start Num: 38

Candidate Starts for Typher\_42:

(Start: 38 @26650 has 4 MA's), (Start: 40 @26656 has 1 MA's), (47, 26695), (Start: 59 @26758 has 4 MA's), (64, 26791), (75, 26863), (78, 26875), (79, 26881), (87, 26941), (102, 27022), (115, 27097), (116, 27109), (134, 27232),

Gene: UNTPL\_46 Start: 33578, Stop: 34333, Start Num: 24

Candidate Starts for UNTPL\_46:

(5, 33323), (6, 33362), (7, 33371), (10, 33422), (13, 33437), (14, 33467), (Start: 24 @33578 has 6 MA's), (35, 33647), (49, 33725), (52, 33749), (57, 33764), (Start: 59 @33785 has 4 MA's), (75, 33923), (77, 33932), (82, 33959), (97, 34058), (133, 34310), (135, 34319),

Gene: Urla\_31 Start: 24836, Stop: 25381, Start Num: 46

Candidate Starts for Urla\_31:

(31, 24767), (Start: 45 @24824 has 67 MA's), (Start: 46 @24836 has 12 MA's), (52, 24863), (57, 24875), (60, 24902), (67, 24947), (68, 24956), (84, 25067), (87, 25079), (88, 25082), (89, 25094), (92, 25118), (98, 25145), (101, 25160), (106, 25178), (107, 25181), (120, 25280), (125, 25313), (127, 25334),

Gene: Vallejo\_34 Start: 25168, Stop: 25713, Start Num: 46

Candidate Starts for Vallejo\_34:

(22, 25009), (Start: 41 @25132 has 3 MA's), (Start: 45 @25156 has 67 MA's), (Start: 46 @25168 has 12 MA's), (52, 25195), (57, 25207), (Start: 59 @25228 has 4 MA's), (60, 25234), (67, 25279), (68, 25288), (73, 25327), (84, 25399), (87, 25411), (89, 25426), (91, 25444), (92, 25450), (95, 25459), (100, 25489), (107, 25513), (120, 25612), (125, 25645), (127, 25666),

Gene: Vulture\_31 Start: 24780, Stop: 25340, Start Num: 45

Candidate Starts for Vulture\_31:

(29, 24708), (44, 24771), (Start: 45 @24780 has 67 MA's), (Start: 46 @24792 has 12 MA's), (52, 24819), (57, 24831), (Start: 59 @24852 has 4 MA's), (60, 24858), (66, 24897), (68, 24912), (87, 25035), (89, 25050), (92, 25074), (100, 25113), (106, 25134), (107, 25137), (119, 25233), (125, 25269), (127, 25290), (132, 25332),

Gene: Wawa\_34 Start: 25208, Stop: 25765, Start Num: 45

Candidate Starts for Wawa\_34:

(11, 24947), (22, 25061), (Start: 41 @25184 has 3 MA's), (Start: 45 @25208 has 67 MA's), (Start: 46 @25220 has 12 MA's), (52, 25247), (57, 25259), (60, 25286), (67, 25331), (68, 25340), (73, 25379), (80, 25406), (84, 25451), (87, 25463), (88, 25466), (89, 25478), (91, 25496), (92, 25502), (95, 25511), (100, 25541), (107, 25565), (120, 25664), (125, 25697), (127, 25718),

Gene: Wayne\_34 Start: 25280, Stop: 25825, Start Num: 46

Candidate Starts for Wayne\_34:

(8, 24953), (9, 24980), (12, 24995), (31, 25184), (32, 25187), (34, 25202), (42, 25247), (Start: 45 @25268 has 67 MA's), (Start: 46 @25280 has 12 MA's), (52, 25307), (57, 25319), (Start: 59 @25340 has 4 MA's), (60, 25346), (67, 25391), (68, 25400), (72, 25430), (80, 25466), (81, 25469), (87, 25523), (89, 25538), (92, 25562), (100, 25601), (107, 25625), (114, 25682), (124, 25754), (125, 25757), (127, 25778),

Gene: WonderBoy\_29 Start: 23599, Stop: 24150, Start Num: 45

Candidate Starts for WonderBoy\_29:

(Start: 41 @23575 has 3 MA's), (Start: 45 @23599 has 67 MA's), (Start: 46 @23611 has 12 MA's), (52, 23638), (57, 23650), (60, 23677), (67, 23722), (68, 23731), (73, 23770), (84, 23842), (87, 23854), (88, 23857), (89, 23869), (91, 23887), (100, 23932), (107, 23956), (120, 24055), (124, 24085), (125, 24088), (127, 24109),

Gene: Zanella\_40 Start: 26530, Stop: 27138, Start Num: 38

Candidate Starts for Zanella\_40:

(Start: 38 @26530 has 4 MA's), (39, 26533), (Start: 40 @26536 has 1 MA's), (78, 26755), (79, 26761), (87, 26821), (102, 26902), (115, 26977), (116, 26989), (134, 27112),

Gene: Zorro\_34 Start: 25187, Stop: 25744, Start Num: 45

Candidate Starts for Zorro\_34:

(11, 24926), (22, 25040), (Start: 41 @25163 has 3 MA's), (Start: 45 @25187 has 67 MA's), (Start: 46 @25199 has 12 MA's), (52, 25226), (57, 25238), (Start: 59 @25259 has 4 MA's), (60, 25265), (67, 25310), (68, 25319), (73, 25358), (74, 25361), (80, 25385), (84, 25430), (87, 25442), (89, 25457), (91, 25475), (92, 25481), (95, 25490), (100, 25520), (107, 25544), (120, 25643), (125, 25676), (127, 25697),