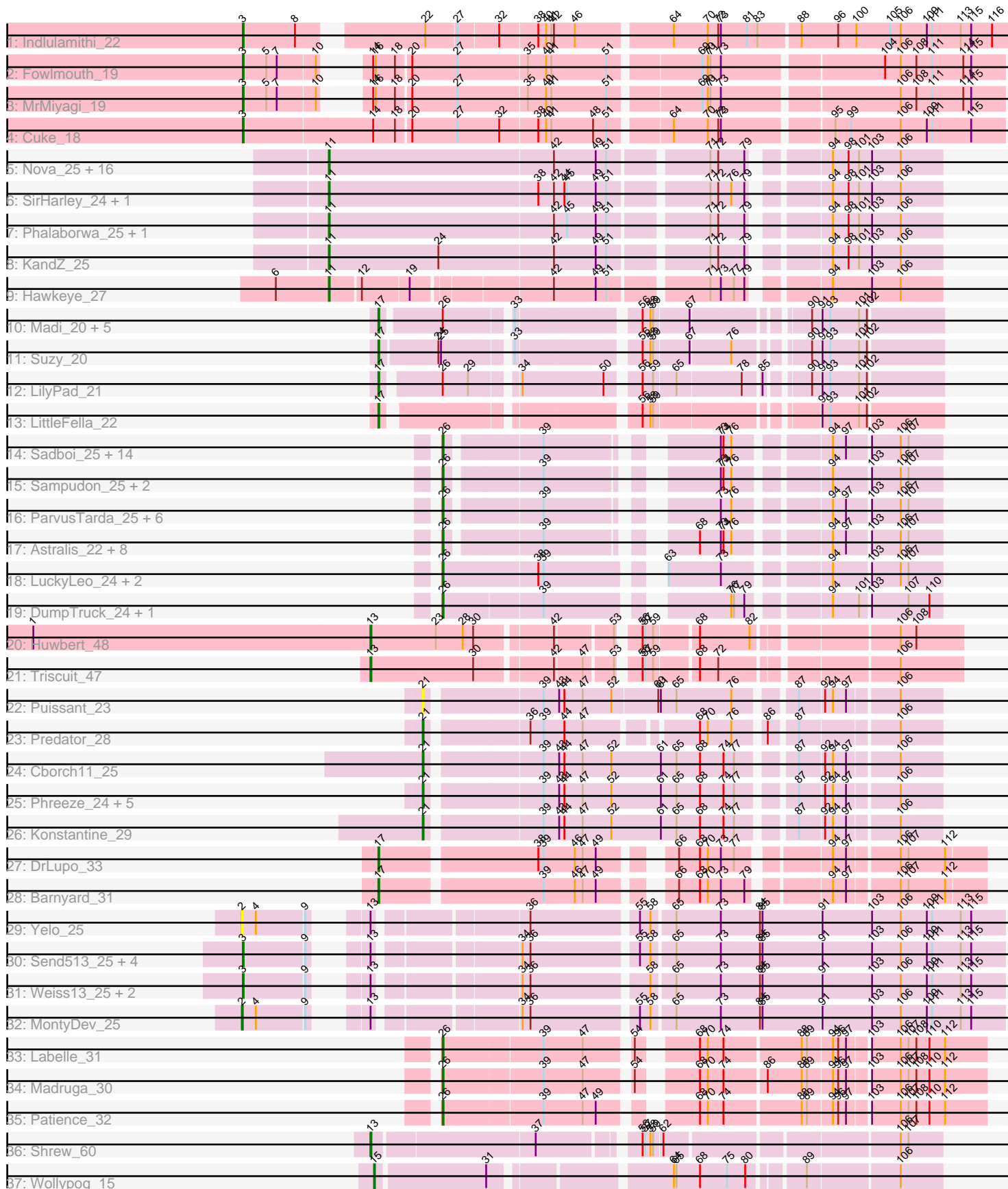


Pham 224452



Note: Tracks are now grouped by subcluster and scaled. Switching in subcluster is indicated by changes in track color. Track scale is now set by default to display the region 30 bp upstream of start 1 to 30 bp downstream of the last possible start. If this default region is judged to be packed too tightly with annotated starts, the track will be further scaled to only show that region of the ORF with annotated starts. This action will be indicated by adding "Zoomed" to the title. For starts, yellow indicates the location of called starts comprised solely of Glimmer/GeneMark auto-annotations, green indicates the location of called starts with at least 1 manual gene annotation.

Pham 224452 Report

This analysis was run 03/28/25 on database version 593.

Pham number 224452 has 104 members, 12 are drafts.

Phages represented in each track:

- Track 1 : Indlulamithi_22
- Track 2 : Fowlmouth_19
- Track 3 : MrMiyagi_19
- Track 4 : Cuke_18
- Track 5 : Nova_25, Butterscotch_25, Penelope2018_25, WaldoWhy_26, Thoth_25, BigMama_23, Erk16_25, Giuseppe_25, Mopey_25, Prager_25, PLOT_26, Chill_26, Troll4_25, Adjutor_26, Visconti_25, Helpful_26, PBI1_25
- Track 6 : SirHarley_24, Gumball_24
- Track 7 : Phalaborwa_25, Delton_25
- Track 8 : KandZ_25
- Track 9 : Hawkeye_27
- Track 10 : Madi_20, BiteSize_20, Terapin_20, Sienna_20, Beyoncage_20, Djokovic_20
- Track 11 : Suzy_20
- Track 12 : LilyPad_21
- Track 13 : LittleFella_22
- Track 14 : Sadboi_25, Yikes_26, Alephilan_21, DaviePasture_25, Gibbin_26, Mima20_24, GretelLyn_25, OtterstedtS21_25, Ranch_25, Patos_26, Erutan_25, Zany_23, NorManre_26, LavAbarElk_23, DoobyDoo_24
- Track 15 : Sampudon_25, Lila22_24, Jalebi_24
- Track 16 : ParvusTarda_25, Lambo_25, Fulcrum_26, MoiGyank_27, BirthdayBoy_26, GOATification_26, Wojtek_24
- Track 17 : Astralis_22, Alyssamiracle_24, Avian_23, Genamy16_24, Rumi_24, Jamemuya19_22, RazorC_23, Stormer_23, NovaSharks_24
- Track 18 : LuckyLeo_24, Apeppi_22, Tillicus_25
- Track 19 : DumpTruck_24, Xenia2_25
- Track 20 : Huwbert_48
- Track 21 : Triscuit_47
- Track 22 : Puissant_23
- Track 23 : Predator_28
- Track 24 : Cborch11_25
- Track 25 : Phreeze_24, Beckerton_24, Oaker_24, Megatron06_26, Thumb_24, Damien_24
- Track 26 : Konstantine_29
- Track 27 : DrLupo_33
- Track 28 : Barnyard_31
- Track 29 : Yelo_25

- Track 30 : Send513_25, Candle_25, Nilo_26, Riparian_25, Zenon_26
- Track 31 : Weiss13_25, Papyrus_25, Rope_25
- Track 32 : MontyDev_25
- Track 33 : Labelle_31
- Track 34 : Madruga_30
- Track 35 : Patience_32
- Track 36 : Shrew_60
- Track 37 : Wollypog_15

Summary of Final Annotations (See graph section above for start numbers):

The start number called the most often in the published annotations is 26, it was called in 33 of the 92 non-draft genes in the pham.

Genes that call this "Most Annotated" start:

- Alephilan_21, Alyssamiracle_24, Apeppi_22, Astralis_22, Avian_23, BirthdayBoy_26, DaviePasture_25, DoobyDoo_24, DumpTruck_24, Erutan_25, Fulcrum_26, GOATification_26, Genamy16_24, Gibbin_26, GretelLyn_25, Jalebi_24, Jamemuya19_22, Labelle_31, Lambo_25, LavAbarElk_23, Lila22_24, LuckyLeo_24, Madruga_30, Mima20_24, MoiGyank_27, NorManre_26, NovaSharks_24, OtterstedtS21_25, ParvusTarda_25, Patience_32, Patos_26, Ranch_25, RazorC_23, Rumi_24, Sadboi_25, Sampudon_25, Stormer_23, Tillicus_25, Wojtek_24, Xenia2_25, Yikes_26, Zany_23,

Genes that have the "Most Annotated" start but do not call it:

- Beyoncage_20, BiteSize_20, Djokovic_20, LilyPad_21, Madi_20, Sienna_20, Terapin_20,

Genes that do not have the "Most Annotated" start:

- Adjutor_26, Barnyard_31, Beckerton_24, BigMama_23, Butterscotch_25, Candle_25, Cborch11_25, Chill_26, Cuke_18, Damien_24, Delton_25, DrLupo_33, Erk16_25, Fowlmouth_19, Giuseppe_25, Gumball_24, Hawkeye_27, Helpful_26, Huwburt_48, Indlulamithi_22, KandZ_25, Konstantine_29, LittleFella_22, Megatron06_26, MontyDev_25, Mopey_25, MrMiyagi_19, Nilo_26, Nova_25, Oaker_24, PBI1_25, PLOT_26, Papyrus_25, Penelope2018_25, Phalaborwa_25, Phreeze_24, Prager_25, Predator_28, Puissant_23, Riparian_25, Rope_25, Send513_25, Shrew_60, SirHarley_24, Suzy_20, Thoth_25, Thumb_24, Triscuit_47, Troll4_25, Visconti_25, WaldoWhy_26, Weiss13_25, Wollypog_15, Yelo_25, Zenon_26,

Summary by start number:

Start 2:

- Found in 2 of 104 (1.9%) of genes in pham
- Manual Annotations of this start: 1 of 92
- Called 100.0% of time when present
- Phage (with cluster) where this start called: MontyDev_25 (R), Yelo_25 (R),

Start 3:

- Found in 12 of 104 (11.5%) of genes in pham

- Manual Annotations of this start: 12 of 92
- Called 100.0% of time when present
- Phage (with cluster) where this start called: Candle_25 (R), Cuke_18 (AC), Fowlmouth_19 (AC), Indulamithi_22 (AC), MrMiyagi_19 (AC), Nilo_26 (R), Papyrus_25 (R), Riparian_25 (R), Rope_25 (R), Send513_25 (R), Weiss13_25 (R), Zenon_26 (R),

Start 11:

- Found in 23 of 104 (22.1%) of genes in pham
- Manual Annotations of this start: 22 of 92
- Called 100.0% of time when present
- Phage (with cluster) where this start called: Adjutor_26 (D1), BigMama_23 (D1), Butterscotch_25 (D1), Chill_26 (D1), Delton_25 (D1), Erk16_25 (D1), Giuseppe_25 (D1), Gumball_24 (D1), Hawkeye_27 (D2), Helpful_26 (D1), KandZ_25 (D1), Mopey_25 (D1), Nova_25 (D1), PBI1_25 (D1), PLOT_26 (D1), Penelope2018_25 (D1), Phalaborwa_25 (D1), Prager_25 (D1), SirHarley_24 (D1), Thoth_25 (D1), Troll4_25 (D1), Visconti_25 (D1), WaldoWhy_26 (D1),

Start 13:

- Found in 13 of 104 (12.5%) of genes in pham
- Manual Annotations of this start: 3 of 92
- Called 23.1% of time when present
- Phage (with cluster) where this start called: Huwbert_48 (GG), Shrew_60 (singleton), Triscuit_47 (GG),

Start 15:

- Found in 1 of 104 (1.0%) of genes in pham
- Manual Annotations of this start: 1 of 92
- Called 100.0% of time when present
- Phage (with cluster) where this start called: Wollypog_15 (singleton),

Start 17:

- Found in 11 of 104 (10.6%) of genes in pham
- Manual Annotations of this start: 11 of 92
- Called 100.0% of time when present
- Phage (with cluster) where this start called: Barnyard_31 (H2), Beyoncage_20 (DG1), BiteSize_20 (DG1), Djokovic_20 (DG1), DrLupo_33 (H2), LilyPad_21 (DG1), LittleFella_22 (DG2), Madi_20 (DG1), Sienna_20 (DG1), Suzy_20 (DG1), Terapin_20 (DG1),

Start 21:

- Found in 10 of 104 (9.6%) of genes in pham
- Manual Annotations of this start: 9 of 92
- Called 100.0% of time when present
- Phage (with cluster) where this start called: Beckerton_24 (H1), Cborch11_25 (H1), Damien_24 (H1), Konstantine_29 (H1), Megatron06_26 (H1), Oaker_24 (H1), Phreeze_24 (H1), Predator_28 (H1), Puissant_23 (H1), Thumb_24 (H1),

Start 26:

- Found in 49 of 104 (47.1%) of genes in pham
- Manual Annotations of this start: 33 of 92
- Called 85.7% of time when present

• Phage (with cluster) where this start called: Alephilan_21 (DV), Alyssamiracle_24 (DV), Apeppi_22 (DV), Astralis_22 (DV), Avian_23 (DV), BirthdayBoy_26 (DV), DaviePasture_25 (DV), DoobyDoo_24 (DV), DumpTruck_24 (DV), Erutan_25 (DV), Fulcram_26 (DV), GOATification_26 (DV), Genamy16_24 (DV), Gibbin_26 (DV), Gretellyn_25 (DV), Jalebi_24 (DV), Jamemuya19_22 (DV), Labelle_31 (U), Lambo_25 (DV), LavAbarElk_23 (DV), Lila22_24 (DV), LuckyLeo_24 (DV), Madrugá_30 (U), Mima20_24 (DV), MoiGyank_27 (DV), NorManre_26 (DV), NovaSharks_24 (DV), OtterstedtS21_25 (DV), ParvusTarda_25 (DV), Patience_32 (U), Patos_26 (DV), Ranch_25 (DV), RazorC_23 (DV), Rumi_24 (DV), Sadboi_25 (DV), Sampudon_25 (DV), Stormer_23 (DV), Tillicus_25 (DV), Wojtek_24 (DV), Xenia2_25 (DV), Yikes_26 (DV), Zany_23 (DV),

Summary by clusters:

There are 12 clusters represented in this pham: DG2, AC, H2, H1, singleton, GG, R, U, DV, DG1, D2, D1,

Info for manual annotations of cluster AC:

•Start number 3 was manually annotated 4 times for cluster AC.

Info for manual annotations of cluster D1:

•Start number 11 was manually annotated 21 times for cluster D1.

Info for manual annotations of cluster D2:

•Start number 11 was manually annotated 1 time for cluster D2.

Info for manual annotations of cluster DG1:

•Start number 17 was manually annotated 8 times for cluster DG1.

Info for manual annotations of cluster DG2:

•Start number 17 was manually annotated 1 time for cluster DG2.

Info for manual annotations of cluster DV:

•Start number 26 was manually annotated 30 times for cluster DV.

Info for manual annotations of cluster GG:

•Start number 13 was manually annotated 2 times for cluster GG.

Info for manual annotations of cluster H1:

•Start number 21 was manually annotated 9 times for cluster H1.

Info for manual annotations of cluster H2:

•Start number 17 was manually annotated 2 times for cluster H2.

Info for manual annotations of cluster R:

•Start number 2 was manually annotated 1 time for cluster R.

•Start number 3 was manually annotated 8 times for cluster R.

Info for manual annotations of cluster U:

•Start number 26 was manually annotated 3 times for cluster U.

Gene Information:

Gene: Adjutor_26 Start: 15426, Stop: 16079, Start Num: 11

Candidate Starts for Adjutor_26:

(Start: 11 @15426 has 22 MA's), (42, 15681), (49, 15729), (51, 15741), (71, 15843), (72, 15852), (79, 15882), (94, 15954), (98, 15972), (101, 15984), (103, 15999), (106, 16032),

Gene: Alephilan_21 Start: 15936, Stop: 16421, Start Num: 26

Candidate Starts for Alephilan_21:

(Start: 26 @15936 has 33 MA's), (39, 16041), (73, 16197), (74, 16200), (76, 16209), (94, 16302), (97, 16317), (103, 16341), (106, 16374), (107, 16383),

Gene: Alyssamiracle_24 Start: 14342, Stop: 14818, Start Num: 26

Candidate Starts for Alyssamiracle_24:

(Start: 26 @14342 has 33 MA's), (39, 14438), (68, 14570), (73, 14594), (74, 14597), (76, 14606), (94, 14699), (97, 14714), (103, 14738), (106, 14771), (107, 14780),

Gene: Apeppi_22 Start: 16058, Stop: 16555, Start Num: 26

Candidate Starts for Apeppi_22:

(Start: 26 @16058 has 33 MA's), (38, 16163), (39, 16169), (63, 16271), (73, 16331), (94, 16436), (103, 16475), (106, 16508), (107, 16517),

Gene: Astralis_22 Start: 14342, Stop: 14818, Start Num: 26

Candidate Starts for Astralis_22:

(Start: 26 @14342 has 33 MA's), (39, 14438), (68, 14570), (73, 14594), (74, 14597), (76, 14606), (94, 14699), (97, 14714), (103, 14738), (106, 14771), (107, 14780),

Gene: Avian_23 Start: 14342, Stop: 14818, Start Num: 26

Candidate Starts for Avian_23:

(Start: 26 @14342 has 33 MA's), (39, 14438), (68, 14570), (73, 14594), (74, 14597), (76, 14606), (94, 14699), (97, 14714), (103, 14738), (106, 14771), (107, 14780),

Gene: Barnyard_31 Start: 17229, Stop: 17840, Start Num: 17

Candidate Starts for Barnyard_31:

(Start: 17 @17229 has 11 MA's), (39, 17403), (46, 17439), (47, 17448), (49, 17463), (66, 17523), (68, 17547), (70, 17556), (73, 17571), (79, 17598), (94, 17676), (97, 17691), (106, 17745), (107, 17754), (112, 17796),

Gene: Beckerton_24 Start: 15907, Stop: 16452, Start Num: 21

Candidate Starts for Beckerton_24:

(Start: 21 @15907 has 9 MA's), (39, 16027), (43, 16045), (44, 16051), (47, 16072), (52, 16105), (61, 16162), (65, 16180), (68, 16207), (74, 16234), (77, 16246), (87, 16300), (92, 16327), (94, 16336), (97, 16351), (106, 16405),

Gene: Beyoncage_20 Start: 11749, Stop: 12312, Start Num: 17

Candidate Starts for Beyoncage_20:

(Start: 17 @11749 has 11 MA's), (Start: 26 @11812 has 33 MA's), (33, 11878), (56, 12004), (58, 12013), (59, 12016), (67, 12055), (90, 12169), (91, 12178), (93, 12187), (101, 12220), (102, 12229),

Gene: BigMama_23 Start: 15502, Stop: 16155, Start Num: 11

Candidate Starts for BigMama_23:

(Start: 11 @15502 has 22 MA's), (42, 15757), (49, 15805), (51, 15817), (71, 15919), (72, 15928), (79, 15958), (94, 16030), (98, 16048), (101, 16060), (103, 16075), (106, 16108),

Gene: BirthdayBoy_26 Start: 16789, Stop: 17265, Start Num: 26

Candidate Starts for BirthdayBoy_26:

(Start: 26 @16789 has 33 MA's), (39, 16885), (73, 17041), (76, 17053), (94, 17146), (97, 17161), (103, 17185), (106, 17218), (107, 17227),

Gene: BiteSize_20 Start: 11749, Stop: 12312, Start Num: 17

Candidate Starts for BiteSize_20:

(Start: 17 @11749 has 11 MA's), (Start: 26 @11812 has 33 MA's), (33, 11878), (56, 12004), (58, 12013), (59, 12016), (67, 12055), (90, 12169), (91, 12178), (93, 12187), (101, 12220), (102, 12229),

Gene: Butterscotch_25 Start: 15486, Stop: 16139, Start Num: 11

Candidate Starts for Butterscotch_25:

(Start: 11 @15486 has 22 MA's), (42, 15741), (49, 15789), (51, 15801), (71, 15903), (72, 15912), (79, 15942), (94, 16014), (98, 16032), (101, 16044), (103, 16059), (106, 16092),

Gene: Candle_25 Start: 15923, Stop: 16699, Start Num: 3

Candidate Starts for Candle_25:

(Start: 3 @15923 has 12 MA's), (9, 15992), (Start: 13 @16022 has 3 MA's), (34, 16166), (36, 16175), (55, 16289), (58, 16301), (65, 16325), (73, 16376), (84, 16421), (85, 16424), (91, 16490), (103, 16547), (106, 16580), (109, 16610), (111, 16616), (113, 16649), (115, 16661),

Gene: Cborch11_25 Start: 15369, Stop: 15914, Start Num: 21

Candidate Starts for Cborch11_25:

(Start: 21 @15369 has 9 MA's), (39, 15489), (43, 15507), (44, 15513), (47, 15534), (52, 15567), (61, 15624), (65, 15642), (68, 15669), (74, 15696), (77, 15708), (87, 15762), (92, 15789), (94, 15798), (97, 15813), (106, 15867),

Gene: Chill_26 Start: 15492, Stop: 16145, Start Num: 11

Candidate Starts for Chill_26:

(Start: 11 @15492 has 22 MA's), (42, 15747), (49, 15795), (51, 15807), (71, 15909), (72, 15918), (79, 15948), (94, 16020), (98, 16038), (101, 16050), (103, 16065), (106, 16098),

Gene: Cuke_18 Start: 11044, Stop: 11877, Start Num: 3

Candidate Starts for Cuke_18:

(Start: 3 @11044 has 12 MA's), (14, 11191), (18, 11215), (20, 11230), (27, 11281), (32, 11329), (38, 11371), (40, 11380), (41, 11386), (48, 11434), (51, 11449), (64, 11512), (70, 11551), (72, 11563), (73, 11566), (95, 11683), (99, 11701), (106, 11758), (109, 11788), (111, 11794), (115, 11839),

Gene: Damien_24 Start: 15370, Stop: 15915, Start Num: 21

Candidate Starts for Damien_24:

(Start: 21 @15370 has 9 MA's), (39, 15490), (43, 15508), (44, 15514), (47, 15535), (52, 15568), (61, 15625), (65, 15643), (68, 15670), (74, 15697), (77, 15709), (87, 15763), (92, 15790), (94, 15799), (97, 15814), (106, 15868),

Gene: DaviePasture_25 Start: 16546, Stop: 17034, Start Num: 26

Candidate Starts for DaviePasture_25:

(Start: 26 @16546 has 33 MA's), (39, 16654), (73, 16810), (74, 16813), (76, 16822), (94, 16915), (97, 16930), (103, 16954), (106, 16987), (107, 16996),

Gene: Delton_25 Start: 15498, Stop: 16151, Start Num: 11

Candidate Starts for Delton_25:

(Start: 11 @15498 has 22 MA's), (42, 15753), (45, 15768), (49, 15801), (51, 15813), (71, 15915), (72, 15924), (79, 15954), (94, 16026), (98, 16044), (101, 16056), (103, 16071), (106, 16104),

Gene: Djokovic_20 Start: 11749, Stop: 12312, Start Num: 17

Candidate Starts for Djokovic_20:

(Start: 17 @11749 has 11 MA's), (Start: 26 @11812 has 33 MA's), (33, 11878), (56, 12004), (58, 12013), (59, 12016), (67, 12055), (90, 12169), (91, 12178), (93, 12187), (101, 12220), (102, 12229),

Gene: DoobyDoo_24 Start: 15723, Stop: 16199, Start Num: 26

Candidate Starts for DoobyDoo_24:

(Start: 26 @15723 has 33 MA's), (39, 15819), (73, 15975), (74, 15978), (76, 15987), (94, 16080), (97, 16095), (103, 16119), (106, 16152), (107, 16161),

Gene: DrLupo_33 Start: 17635, Stop: 18246, Start Num: 17

Candidate Starts for DrLupo_33:

(Start: 17 @17635 has 11 MA's), (38, 17803), (39, 17809), (46, 17845), (47, 17854), (49, 17869), (66, 17929), (68, 17953), (70, 17962), (73, 17977), (77, 17992), (94, 18082), (97, 18097), (106, 18151), (107, 18160), (112, 18202),

Gene: DumpTruck_24 Start: 15958, Stop: 16452, Start Num: 26

Candidate Starts for DumpTruck_24:

(Start: 26 @15958 has 33 MA's), (39, 16066), (76, 16240), (77, 16243), (79, 16255), (94, 16333), (101, 16363), (103, 16372), (107, 16414), (110, 16438),

Gene: Erk16_25 Start: 15489, Stop: 16142, Start Num: 11

Candidate Starts for Erk16_25:

(Start: 11 @15489 has 22 MA's), (42, 15744), (49, 15792), (51, 15804), (71, 15906), (72, 15915), (79, 15945), (94, 16017), (98, 16035), (101, 16047), (103, 16062), (106, 16095),

Gene: Erutan_25 Start: 16236, Stop: 16712, Start Num: 26

Candidate Starts for Erutan_25:

(Start: 26 @16236 has 33 MA's), (39, 16332), (73, 16488), (74, 16491), (76, 16500), (94, 16593), (97, 16608), (103, 16632), (106, 16665), (107, 16674),

Gene: Fowlmouth_19 Start: 11198, Stop: 11980, Start Num: 3

Candidate Starts for Fowlmouth_19:

(Start: 3 @11198 has 12 MA's), (5, 11225), (7, 11237), (10, 11279), (14, 11294), (16, 11297), (18, 11318), (20, 11333), (27, 11384), (35, 11462), (40, 11483), (41, 11489), (51, 11552), (69, 11648), (70, 11654), (71, 11657), (73, 11669), (104, 11843), (106, 11861), (108, 11879), (111, 11897), (114, 11933), (115, 11942),

Gene: Fulcrum_26 Start: 16769, Stop: 17245, Start Num: 26

Candidate Starts for Fulcrum_26:

(Start: 26 @16769 has 33 MA's), (39, 16865), (73, 17021), (76, 17033), (94, 17126), (97, 17141), (103, 17165), (106, 17198), (107, 17207),

Gene: GOATification_26 Start: 16769, Stop: 17245, Start Num: 26

Candidate Starts for GOATification_26:

(Start: 26 @16769 has 33 MA's), (39, 16865), (73, 17021), (76, 17033), (94, 17126), (97, 17141), (103, 17165), (106, 17198), (107, 17207),

Gene: Genamy16_24 Start: 14342, Stop: 14818, Start Num: 26

Candidate Starts for Genamy16_24:

(Start: 26 @14342 has 33 MA's), (39, 14438), (68, 14570), (73, 14594), (74, 14597), (76, 14606), (94, 14699), (97, 14714), (103, 14738), (106, 14771), (107, 14780),

Gene: Gibbin_26 Start: 16829, Stop: 17317, Start Num: 26

Candidate Starts for Gibbin_26:

(Start: 26 @16829 has 33 MA's), (39, 16937), (73, 17093), (74, 17096), (76, 17105), (94, 17198), (97, 17213), (103, 17237), (106, 17270), (107, 17279),

Gene: Giuseppe_25 Start: 15478, Stop: 16131, Start Num: 11

Candidate Starts for Giuseppe_25:

(Start: 11 @15478 has 22 MA's), (42, 15733), (49, 15781), (51, 15793), (71, 15895), (72, 15904), (79, 15934), (94, 16006), (98, 16024), (101, 16036), (103, 16051), (106, 16084),

Gene: Gretellyn_25 Start: 17103, Stop: 17579, Start Num: 26

Candidate Starts for Gretellyn_25:

(Start: 26 @17103 has 33 MA's), (39, 17199), (73, 17355), (74, 17358), (76, 17367), (94, 17460), (97, 17475), (103, 17499), (106, 17532), (107, 17541),

Gene: Gumball_24 Start: 15436, Stop: 16089, Start Num: 11

Candidate Starts for Gumball_24:

(Start: 11 @15436 has 22 MA's), (38, 15673), (42, 15691), (44, 15703), (45, 15706), (49, 15739), (51, 15751), (71, 15853), (72, 15862), (76, 15877), (79, 15892), (94, 15964), (98, 15982), (101, 15994), (103, 16009), (106, 16042),

Gene: Hawkeye_27 Start: 15385, Stop: 16014, Start Num: 11

Candidate Starts for Hawkeye_27:

(6, 15328), (Start: 11 @15385 has 22 MA's), (12, 15418), (19, 15469), (42, 15616), (49, 15664), (51, 15676), (71, 15778), (73, 15790), (77, 15805), (79, 15817), (94, 15889), (103, 15934), (106, 15967),

Gene: Helpful_26 Start: 15486, Stop: 16139, Start Num: 11

Candidate Starts for Helpful_26:

(Start: 11 @15486 has 22 MA's), (42, 15741), (49, 15789), (51, 15801), (71, 15903), (72, 15912), (79, 15942), (94, 16014), (98, 16032), (101, 16044), (103, 16059), (106, 16092),

Gene: Huwbert_48 Start: 24385, Stop: 24990, Start Num: 13

Candidate Starts for Huwbert_48:

(1, 23998), (Start: 13 @24385 has 3 MA's), (23, 24460), (28, 24490), (30, 24502), (42, 24583), (53, 24643), (56, 24661), (57, 24664), (59, 24673), (68, 24718), (82, 24775), (106, 24919), (108, 24937),

Gene: Indlulamithi_22 Start: 13331, Stop: 14158, Start Num: 3

Candidate Starts for Indlulamithi_22:

(Start: 3 @13331 has 12 MA's), (8, 13391), (22, 13511), (27, 13544), (32, 13589), (38, 13631), (40, 13640), (41, 13646), (42, 13649), (46, 13673), (64, 13775), (70, 13814), (72, 13826), (73, 13829), (81, 13859), (83, 13871), (88, 13916), (96, 13958), (100, 13979), (105, 14018), (106, 14030), (109, 14060), (111, 14066), (113, 14099), (115, 14111), (116, 14135),

Gene: Jalebi_24 Start: 17279, Stop: 17755, Start Num: 26

Candidate Starts for Jalebi_24:

(Start: 26 @17279 has 33 MA's), (39, 17375), (73, 17531), (74, 17534), (76, 17543), (94, 17636), (103, 17675), (106, 17708), (107, 17717),

Gene: Jamemuya19_22 Start: 14342, Stop: 14818, Start Num: 26

Candidate Starts for Jamemuya19_22:

(Start: 26 @14342 has 33 MA's), (39, 14438), (68, 14570), (73, 14594), (74, 14597), (76, 14606), (94, 14699), (97, 14714), (103, 14738), (106, 14771), (107, 14780),

Gene: KandZ_25 Start: 15586, Stop: 16239, Start Num: 11

Candidate Starts for KandZ_25:

(Start: 11 @15586 has 22 MA's), (24, 15712), (42, 15841), (49, 15889), (51, 15901), (71, 16003), (72, 16012), (79, 16042), (94, 16114), (98, 16132), (101, 16144), (103, 16159), (106, 16192),

Gene: Konstantine_29 Start: 16571, Stop: 17116, Start Num: 21

Candidate Starts for Konstantine_29:

(Start: 21 @16571 has 9 MA's), (39, 16691), (43, 16709), (44, 16715), (47, 16736), (52, 16769), (61, 16826), (65, 16844), (68, 16871), (74, 16898), (77, 16910), (87, 16964), (92, 16991), (94, 17000), (97, 17015), (106, 17069),

Gene: Labelle_31 Start: 18732, Stop: 19292, Start Num: 26

Candidate Starts for Labelle_31:

(Start: 26 @18732 has 33 MA's), (39, 18840), (47, 18885), (54, 18930), (68, 18981), (70, 18990), (74, 19008), (88, 19092), (89, 19098), (94, 19125), (96, 19131), (97, 19140), (103, 19161), (106, 19194), (107, 19203), (108, 19212), (110, 19227), (112, 19245),

Gene: Lambo_25 Start: 16772, Stop: 17257, Start Num: 26

Candidate Starts for Lambo_25:

(Start: 26 @16772 has 33 MA's), (39, 16877), (73, 17033), (76, 17045), (94, 17138), (97, 17153), (103, 17177), (106, 17210), (107, 17219),

Gene: LavAbarElk_23 Start: 15206, Stop: 15694, Start Num: 26

Candidate Starts for LavAbarElk_23:

(Start: 26 @15206 has 33 MA's), (39, 15314), (73, 15470), (74, 15473), (76, 15482), (94, 15575), (97, 15590), (103, 15614), (106, 15647), (107, 15656),

Gene: Lila22_24 Start: 16727, Stop: 17203, Start Num: 26

Candidate Starts for Lila22_24:

(Start: 26 @16727 has 33 MA's), (39, 16823), (73, 16979), (74, 16982), (76, 16991), (94, 17084), (103, 17123), (106, 17156), (107, 17165),

Gene: LilyPad_21 Start: 12413, Stop: 12973, Start Num: 17

Candidate Starts for LilyPad_21:

(Start: 17 @12413 has 11 MA's), (Start: 26 @12473 has 33 MA's), (29, 12500), (34, 12545), (50, 12635), (56, 12665), (59, 12677), (65, 12701), (78, 12773), (85, 12791), (90, 12830), (91, 12839), (93, 12848), (101, 12881), (102, 12890),

Gene: LittleFella_22 Start: 14288, Stop: 14845, Start Num: 17

Candidate Starts for LittleFella_22:

(Start: 17 @14288 has 11 MA's), (56, 14537), (58, 14546), (59, 14549), (91, 14711), (93, 14720), (101, 14753), (102, 14762),

Gene: LuckyLeo_24 Start: 16058, Stop: 16555, Start Num: 26

Candidate Starts for LuckyLeo_24:

(Start: 26 @16058 has 33 MA's), (38, 16163), (39, 16169), (63, 16271), (73, 16331), (94, 16436), (103, 16475), (106, 16508), (107, 16517),

Gene: Madi_20 Start: 11749, Stop: 12312, Start Num: 17

Candidate Starts for Madi_20:

(Start: 17 @11749 has 11 MA's), (Start: 26 @11812 has 33 MA's), (33, 11878), (56, 12004), (58, 12013), (59, 12016), (67, 12055), (90, 12169), (91, 12178), (93, 12187), (101, 12220), (102, 12229),

Gene: Madruga_30 Start: 18401, Stop: 18961, Start Num: 26

Candidate Starts for Madruga_30:

(Start: 26 @18401 has 33 MA's), (39, 18509), (47, 18554), (54, 18599), (68, 18650), (70, 18659), (74, 18677), (86, 18722), (88, 18761), (89, 18767), (94, 18794), (96, 18800), (97, 18809), (103, 18830), (106, 18863), (107, 18872), (108, 18881), (110, 18896), (112, 18914),

Gene: Megatron06_26 Start: 15903, Stop: 16448, Start Num: 21

Candidate Starts for Megatron06_26:

(Start: 21 @15903 has 9 MA's), (39, 16023), (43, 16041), (44, 16047), (47, 16068), (52, 16101), (61, 16158), (65, 16176), (68, 16203), (74, 16230), (77, 16242), (87, 16296), (92, 16323), (94, 16332), (97, 16347), (106, 16401),

Gene: Mima20_24 Start: 16456, Stop: 16944, Start Num: 26

Candidate Starts for Mima20_24:

(Start: 26 @16456 has 33 MA's), (39, 16564), (73, 16720), (74, 16723), (76, 16732), (94, 16825), (97, 16840), (103, 16864), (106, 16897), (107, 16906),

Gene: MoiGyank_27 Start: 17140, Stop: 17616, Start Num: 26

Candidate Starts for MoiGyank_27:

(Start: 26 @17140 has 33 MA's), (39, 17236), (73, 17392), (76, 17404), (94, 17497), (97, 17512), (103, 17536), (106, 17569), (107, 17578),

Gene: MontyDev_25 Start: 15564, Stop: 16340, Start Num: 2

Candidate Starts for MontyDev_25:

(Start: 2 @15564 has 1 MA's), (4, 15579), (9, 15633), (Start: 13 @15663 has 3 MA's), (34, 15807), (36, 15816), (55, 15930), (58, 15942), (65, 15966), (73, 16017), (84, 16062), (85, 16065), (91, 16131), (103, 16188), (106, 16221), (109, 16251), (111, 16257), (113, 16290), (115, 16302),

Gene: Mopey_25 Start: 15486, Stop: 16139, Start Num: 11

Candidate Starts for Mopey_25:

(Start: 11 @15486 has 22 MA's), (42, 15741), (49, 15789), (51, 15801), (71, 15903), (72, 15912), (79, 15942), (94, 16014), (98, 16032), (101, 16044), (103, 16059), (106, 16092),

Gene: MrMiyagi_19 Start: 11218, Stop: 12000, Start Num: 3

Candidate Starts for MrMiyagi_19:

(Start: 3 @11218 has 12 MA's), (5, 11245), (7, 11257), (10, 11299), (14, 11314), (16, 11317), (18, 11338), (20, 11353), (27, 11404), (35, 11482), (40, 11503), (41, 11509), (51, 11572), (69, 11668), (70, 11674), (71, 11677), (73, 11689), (106, 11881), (108, 11899), (111, 11917), (114, 11953), (115, 11962),

Gene: Nilo_26 Start: 15920, Stop: 16696, Start Num: 3

Candidate Starts for Nilo_26:

(Start: 3 @15920 has 12 MA's), (9, 15989), (Start: 13 @16019 has 3 MA's), (34, 16163), (36, 16172), (55, 16286), (58, 16298), (65, 16322), (73, 16373), (84, 16418), (85, 16421), (91, 16487), (103, 16544), (106, 16577), (109, 16607), (111, 16613), (113, 16646), (115, 16658),

Gene: NorManre_26 Start: 16335, Stop: 16823, Start Num: 26

Candidate Starts for NorManre_26:

(Start: 26 @16335 has 33 MA's), (39, 16443), (73, 16599), (74, 16602), (76, 16611), (94, 16704), (97, 16719), (103, 16743), (106, 16776), (107, 16785),

Gene: Nova_25 Start: 15913, Stop: 16566, Start Num: 11

Candidate Starts for Nova_25:

(Start: 11 @15913 has 22 MA's), (42, 16168), (49, 16216), (51, 16228), (71, 16330), (72, 16339), (79, 16369), (94, 16441), (98, 16459), (101, 16471), (103, 16486), (106, 16519),

Gene: NovaSharks_24 Start: 14342, Stop: 14818, Start Num: 26

Candidate Starts for NovaSharks_24:

(Start: 26 @14342 has 33 MA's), (39, 14438), (68, 14570), (73, 14594), (74, 14597), (76, 14606), (94, 14699), (97, 14714), (103, 14738), (106, 14771), (107, 14780),

Gene: Oaker_24 Start: 15627, Stop: 16172, Start Num: 21

Candidate Starts for Oaker_24:

(Start: 21 @15627 has 9 MA's), (39, 15747), (43, 15765), (44, 15771), (47, 15792), (52, 15825), (61, 15882), (65, 15900), (68, 15927), (74, 15954), (77, 15966), (87, 16020), (92, 16047), (94, 16056), (97, 16071), (106, 16125),

Gene: OtterstedtS21_25 Start: 16425, Stop: 16901, Start Num: 26

Candidate Starts for OtterstedtS21_25:

(Start: 26 @16425 has 33 MA's), (39, 16521), (73, 16677), (74, 16680), (76, 16689), (94, 16782), (97, 16797), (103, 16821), (106, 16854), (107, 16863),

Gene: PBI1_25 Start: 15417, Stop: 16070, Start Num: 11

Candidate Starts for PBI1_25:

(Start: 11 @15417 has 22 MA's), (42, 15672), (49, 15720), (51, 15732), (71, 15834), (72, 15843), (79, 15873), (94, 15945), (98, 15963), (101, 15975), (103, 15990), (106, 16023),

Gene: PLOT_26 Start: 15489, Stop: 16142, Start Num: 11

Candidate Starts for PLOT_26:

(Start: 11 @15489 has 22 MA's), (42, 15744), (49, 15792), (51, 15804), (71, 15906), (72, 15915), (79, 15945), (94, 16017), (98, 16035), (101, 16047), (103, 16062), (106, 16095),

Gene: Papyrus_25 Start: 15582, Stop: 16358, Start Num: 3

Candidate Starts for Papyrus_25:

(Start: 3 @15582 has 12 MA's), (9, 15651), (Start: 13 @15681 has 3 MA's), (34, 15825), (36, 15834), (58, 15960), (65, 15984), (73, 16035), (84, 16080), (85, 16083), (91, 16149), (103, 16206), (106, 16239), (109, 16269), (111, 16275), (113, 16308), (115, 16320),

Gene: ParvusTarda_25 Start: 15907, Stop: 16383, Start Num: 26

Candidate Starts for ParvusTarda_25:

(Start: 26 @15907 has 33 MA's), (39, 16003), (73, 16159), (76, 16171), (94, 16264), (97, 16279), (103, 16303), (106, 16336), (107, 16345),

Gene: Patience_32 Start: 19282, Stop: 19842, Start Num: 26

Candidate Starts for Patience_32:

(Start: 26 @19282 has 33 MA's), (39, 19390), (47, 19435), (49, 19450), (68, 19531), (70, 19540), (74, 19558), (88, 19642), (89, 19648), (94, 19675), (96, 19681), (97, 19690), (103, 19711), (106, 19744), (107, 19753), (108, 19762), (110, 19777), (112, 19795),

Gene: Patos_26 Start: 16335, Stop: 16823, Start Num: 26

Candidate Starts for Patos_26:

(Start: 26 @16335 has 33 MA's), (39, 16443), (73, 16599), (74, 16602), (76, 16611), (94, 16704), (97, 16719), (103, 16743), (106, 16776), (107, 16785),

Gene: Penelope2018_25 Start: 15486, Stop: 16139, Start Num: 11

Candidate Starts for Penelope2018_25:

(Start: 11 @15486 has 22 MA's), (42, 15741), (49, 15789), (51, 15801), (71, 15903), (72, 15912), (79, 15942), (94, 16014), (98, 16032), (101, 16044), (103, 16059), (106, 16092),

Gene: Phalaborwa_25 Start: 15519, Stop: 16172, Start Num: 11

Candidate Starts for Phalaborwa_25:

(Start: 11 @15519 has 22 MA's), (42, 15774), (45, 15789), (49, 15822), (51, 15834), (71, 15936), (72, 15945), (79, 15975), (94, 16047), (98, 16065), (101, 16077), (103, 16092), (106, 16125),

Gene: Phreeze_24 Start: 15370, Stop: 15915, Start Num: 21

Candidate Starts for Phreeze_24:

(Start: 21 @15370 has 9 MA's), (39, 15490), (43, 15508), (44, 15514), (47, 15535), (52, 15568), (61, 15625), (65, 15643), (68, 15670), (74, 15697), (77, 15709), (87, 15763), (92, 15790), (94, 15799), (97, 15814), (106, 15868),

Gene: Prager_25 Start: 15498, Stop: 16151, Start Num: 11

Candidate Starts for Prager_25:

(Start: 11 @15498 has 22 MA's), (42, 15753), (49, 15801), (51, 15813), (71, 15915), (72, 15924), (79, 15954), (94, 16026), (98, 16044), (101, 16056), (103, 16071), (106, 16104),

Gene: Predator_28 Start: 16911, Stop: 17432, Start Num: 21

Candidate Starts for Predator_28:

(Start: 21 @16911 has 9 MA's), (36, 17016), (39, 17031), (44, 17055), (47, 17076), (68, 17187), (70, 17196), (76, 17223), (86, 17253), (87, 17280), (106, 17385),

Gene: Puissant_23 Start: 15838, Stop: 16380, Start Num: 21

Candidate Starts for Puissant_23:

(Start: 21 @15838 has 9 MA's), (39, 15958), (43, 15976), (44, 15982), (47, 16003), (52, 16036), (60, 16087), (61, 16090), (65, 16108), (76, 16171), (87, 16228), (92, 16255), (94, 16264), (97, 16279), (106, 16333),

Gene: Ranch_25 Start: 15273, Stop: 15749, Start Num: 26

Candidate Starts for Ranch_25:

(Start: 26 @15273 has 33 MA's), (39, 15369), (73, 15525), (74, 15528), (76, 15537), (94, 15630), (97, 15645), (103, 15669), (106, 15702), (107, 15711),

Gene: RazorC_23 Start: 14342, Stop: 14818, Start Num: 26

Candidate Starts for RazorC_23:

(Start: 26 @14342 has 33 MA's), (39, 14438), (68, 14570), (73, 14594), (74, 14597), (76, 14606), (94, 14699), (97, 14714), (103, 14738), (106, 14771), (107, 14780),

Gene: Riparian_25 Start: 15381, Stop: 16157, Start Num: 3

Candidate Starts for Riparian_25:

(Start: 3 @15381 has 12 MA's), (9, 15450), (Start: 13 @15480 has 3 MA's), (34, 15624), (36, 15633), (55, 15747), (58, 15759), (65, 15783), (73, 15834), (84, 15879), (85, 15882), (91, 15948), (103, 16005), (106, 16038), (109, 16068), (111, 16074), (113, 16107), (115, 16119),

Gene: Rope_25 Start: 15573, Stop: 16349, Start Num: 3

Candidate Starts for Rope_25:

(Start: 3 @15573 has 12 MA's), (9, 15642), (Start: 13 @15672 has 3 MA's), (34, 15816), (36, 15825), (58, 15951), (65, 15975), (73, 16026), (84, 16071), (85, 16074), (91, 16140), (103, 16197), (106,

16230), (109, 16260), (111, 16266), (113, 16299), (115, 16311),

Gene: Rumi_24 Start: 14342, Stop: 14818, Start Num: 26

Candidate Starts for Rumi_24:

(Start: 26 @14342 has 33 MA's), (39, 14438), (68, 14570), (73, 14594), (74, 14597), (76, 14606), (94, 14699), (97, 14714), (103, 14738), (106, 14771), (107, 14780),

Gene: Sadboi_25 Start: 17103, Stop: 17579, Start Num: 26

Candidate Starts for Sadboi_25:

(Start: 26 @17103 has 33 MA's), (39, 17199), (73, 17355), (74, 17358), (76, 17367), (94, 17460), (97, 17475), (103, 17499), (106, 17532), (107, 17541),

Gene: Sampudon_25 Start: 17279, Stop: 17755, Start Num: 26

Candidate Starts for Sampudon_25:

(Start: 26 @17279 has 33 MA's), (39, 17375), (73, 17531), (74, 17534), (76, 17543), (94, 17636), (103, 17675), (106, 17708), (107, 17717),

Gene: Send513_25 Start: 15923, Stop: 16699, Start Num: 3

Candidate Starts for Send513_25:

(Start: 3 @15923 has 12 MA's), (9, 15992), (Start: 13 @16022 has 3 MA's), (34, 16166), (36, 16175), (55, 16289), (58, 16301), (65, 16325), (73, 16376), (84, 16421), (85, 16424), (91, 16490), (103, 16547), (106, 16580), (109, 16610), (111, 16616), (113, 16649), (115, 16661),

Gene: Shrew_60 Start: 29033, Stop: 29623, Start Num: 13

Candidate Starts for Shrew_60:

(Start: 13 @29033 has 3 MA's), (37, 29210), (56, 29309), (57, 29312), (58, 29318), (59, 29321), (62, 29330), (106, 29576), (107, 29585),

Gene: Sienna_20 Start: 11749, Stop: 12312, Start Num: 17

Candidate Starts for Sienna_20:

(Start: 17 @11749 has 11 MA's), (Start: 26 @11812 has 33 MA's), (33, 11878), (56, 12004), (58, 12013), (59, 12016), (67, 12055), (90, 12169), (91, 12178), (93, 12187), (101, 12220), (102, 12229),

Gene: SirHarley_24 Start: 15418, Stop: 16071, Start Num: 11

Candidate Starts for SirHarley_24:

(Start: 11 @15418 has 22 MA's), (38, 15655), (42, 15673), (44, 15685), (45, 15688), (49, 15721), (51, 15733), (71, 15835), (72, 15844), (76, 15859), (79, 15874), (94, 15946), (98, 15964), (101, 15976), (103, 15991), (106, 16024),

Gene: Stormer_23 Start: 14342, Stop: 14818, Start Num: 26

Candidate Starts for Stormer_23:

(Start: 26 @14342 has 33 MA's), (39, 14438), (68, 14570), (73, 14594), (74, 14597), (76, 14606), (94, 14699), (97, 14714), (103, 14738), (106, 14771), (107, 14780),

Gene: Suzy_20 Start: 12976, Stop: 13545, Start Num: 17

Candidate Starts for Suzy_20:

(Start: 17 @12976 has 11 MA's), (24, 13039), (25, 13042), (33, 13111), (56, 13237), (58, 13246), (59, 13249), (67, 13288), (76, 13333), (90, 13402), (91, 13411), (93, 13420), (101, 13453), (102, 13462),

Gene: Terapin_20 Start: 11749, Stop: 12312, Start Num: 17

Candidate Starts for Terapin_20:

(Start: 17 @11749 has 11 MA's), (Start: 26 @11812 has 33 MA's), (33, 11878), (56, 12004), (58, 12013), (59, 12016), (67, 12055), (90, 12169), (91, 12178), (93, 12187), (101, 12220), (102, 12229),

Gene: Thoth_25 Start: 15483, Stop: 16136, Start Num: 11

Candidate Starts for Thoth_25:

(Start: 11 @15483 has 22 MA's), (42, 15738), (49, 15786), (51, 15798), (71, 15900), (72, 15909), (79, 15939), (94, 16011), (98, 16029), (101, 16041), (103, 16056), (106, 16089),

Gene: Thumb_24 Start: 15370, Stop: 15915, Start Num: 21

Candidate Starts for Thumb_24:

(Start: 21 @15370 has 9 MA's), (39, 15490), (43, 15508), (44, 15514), (47, 15535), (52, 15568), (61, 15625), (65, 15643), (68, 15670), (74, 15697), (77, 15709), (87, 15763), (92, 15790), (94, 15799), (97, 15814), (106, 15868),

Gene: Tillicus_25 Start: 15652, Stop: 16149, Start Num: 26

Candidate Starts for Tillicus_25:

(Start: 26 @15652 has 33 MA's), (38, 15757), (39, 15763), (63, 15865), (73, 15925), (94, 16030), (103, 16069), (106, 16102), (107, 16111),

Gene: Triscuit_47 Start: 24305, Stop: 24910, Start Num: 13

Candidate Starts for Triscuit_47:

(Start: 13 @24305 has 3 MA's), (30, 24422), (42, 24503), (47, 24533), (53, 24563), (56, 24581), (57, 24584), (59, 24593), (68, 24638), (72, 24659), (106, 24839),

Gene: Troll4_25 Start: 15487, Stop: 16140, Start Num: 11

Candidate Starts for Troll4_25:

(Start: 11 @15487 has 22 MA's), (42, 15742), (49, 15790), (51, 15802), (71, 15904), (72, 15913), (79, 15943), (94, 16015), (98, 16033), (101, 16045), (103, 16060), (106, 16093),

Gene: Visconti_25 Start: 15496, Stop: 16149, Start Num: 11

Candidate Starts for Visconti_25:

(Start: 11 @15496 has 22 MA's), (42, 15751), (49, 15799), (51, 15811), (71, 15913), (72, 15922), (79, 15952), (94, 16024), (98, 16042), (101, 16054), (103, 16069), (106, 16102),

Gene: WaldoWhy_26 Start: 15492, Stop: 16145, Start Num: 11

Candidate Starts for WaldoWhy_26:

(Start: 11 @15492 has 22 MA's), (42, 15747), (49, 15795), (51, 15807), (71, 15909), (72, 15918), (79, 15948), (94, 16020), (98, 16038), (101, 16050), (103, 16065), (106, 16098),

Gene: Weiss13_25 Start: 15613, Stop: 16389, Start Num: 3

Candidate Starts for Weiss13_25:

(Start: 3 @15613 has 12 MA's), (9, 15682), (Start: 13 @15712 has 3 MA's), (34, 15856), (36, 15865), (58, 15991), (65, 16015), (73, 16066), (84, 16111), (85, 16114), (91, 16180), (103, 16237), (106, 16270), (109, 16300), (111, 16306), (113, 16339), (115, 16351),

Gene: Wojtek_24 Start: 15980, Stop: 16456, Start Num: 26

Candidate Starts for Wojtek_24:

(Start: 26 @15980 has 33 MA's), (39, 16076), (73, 16232), (76, 16244), (94, 16337), (97, 16352), (103, 16376), (106, 16409), (107, 16418),

Gene: Wollypog_15 Start: 10559, Stop: 11137, Start Num: 15

Candidate Starts for Wollypog_15:

(Start: 15 @10559 has 1 MA's), (31, 10679), (64, 10859), (65, 10862), (68, 10889), (75, 10919), (80, 10940), (89, 10991), (106, 11090),

Gene: Xenia2_25 Start: 16000, Stop: 16494, Start Num: 26

Candidate Starts for Xenia2_25:

(Start: 26 @16000 has 33 MA's), (39, 16108), (76, 16282), (77, 16285), (79, 16297), (94, 16375), (101, 16405), (103, 16414), (107, 16456), (110, 16480),

Gene: Yelo_25 Start: 15906, Stop: 16682, Start Num: 2

Candidate Starts for Yelo_25:

(Start: 2 @15906 has 1 MA's), (4, 15921), (9, 15975), (Start: 13 @16005 has 3 MA's), (36, 16158), (55, 16272), (58, 16284), (65, 16308), (73, 16359), (84, 16404), (85, 16407), (91, 16473), (103, 16530), (106, 16563), (109, 16593), (111, 16599), (113, 16632), (115, 16644),

Gene: Yikes_26 Start: 17364, Stop: 17840, Start Num: 26

Candidate Starts for Yikes_26:

(Start: 26 @17364 has 33 MA's), (39, 17460), (73, 17616), (74, 17619), (76, 17628), (94, 17721), (97, 17736), (103, 17760), (106, 17793), (107, 17802),

Gene: Zany_23 Start: 16493, Stop: 16969, Start Num: 26

Candidate Starts for Zany_23:

(Start: 26 @16493 has 33 MA's), (39, 16589), (73, 16745), (74, 16748), (76, 16757), (94, 16850), (97, 16865), (103, 16889), (106, 16922), (107, 16931),

Gene: Zenon_26 Start: 15925, Stop: 16701, Start Num: 3

Candidate Starts for Zenon_26:

(Start: 3 @15925 has 12 MA's), (9, 15994), (Start: 13 @16024 has 3 MA's), (34, 16168), (36, 16177), (55, 16291), (58, 16303), (65, 16327), (73, 16378), (84, 16423), (85, 16426), (91, 16492), (103, 16549), (106, 16582), (109, 16612), (111, 16618), (113, 16651), (115, 16663),