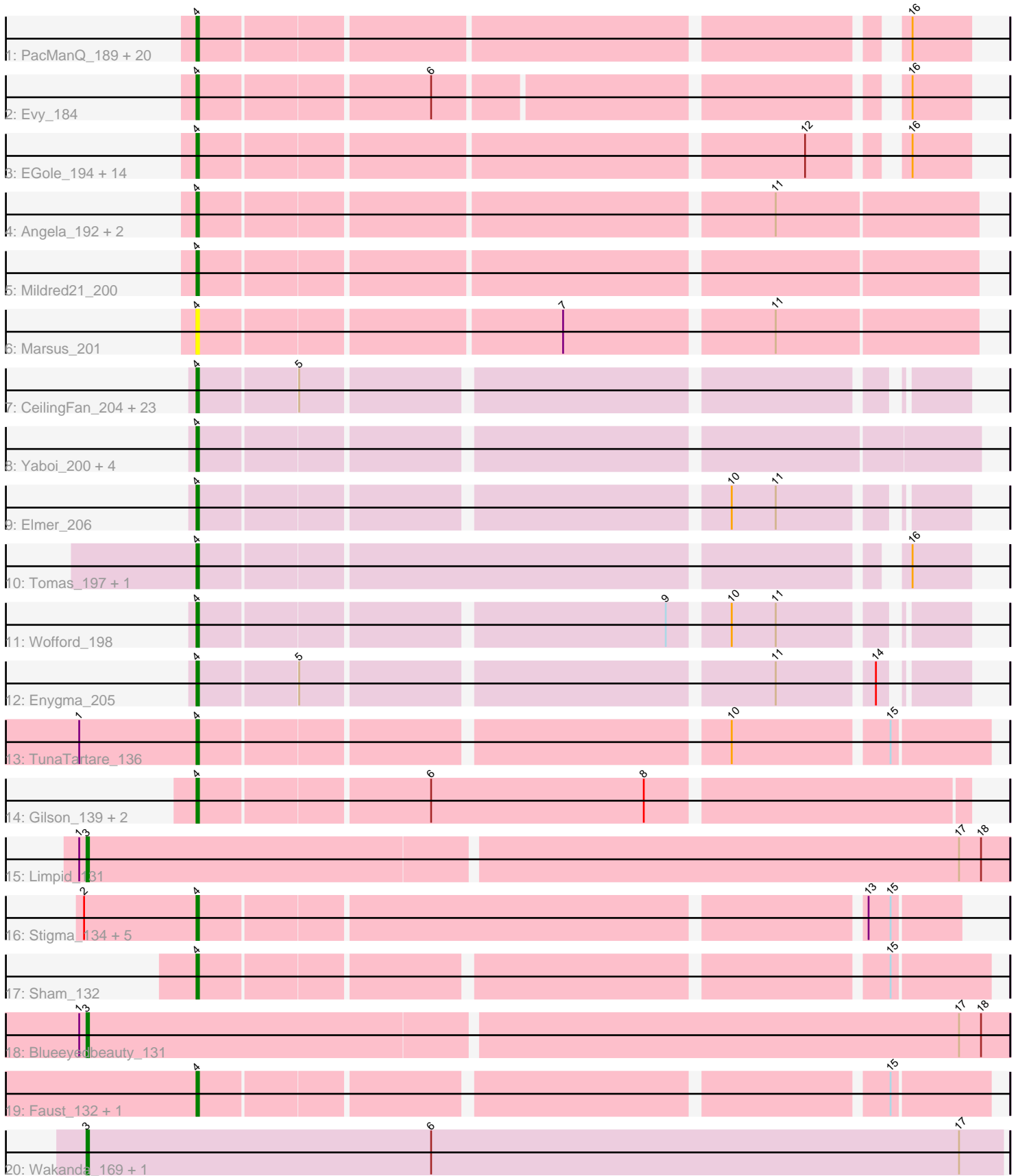


Pham 224475



Note: Tracks are now grouped by subcluster and scaled. Switching in subcluster is indicated by changes in track color. Track scale is now set by default to display the region 30 bp upstream of start 1 to 30 bp downstream of the last possible start. If this default region is judged to be packed too tightly with annotated starts, the track will be further scaled to only show that region of the ORF with annotated starts. This action will be indicated by adding "Zoomed" to the title. For starts, yellow indicates the location of called starts comprised solely of Glimmer/GeneMark auto-annotations, green indicates the location of called starts with at least 1 manual gene annotation.

Pham 224475 Report

This analysis was run 03/28/25 on database version 593.

Pham number 224475 has 93 members, 10 are drafts.

Phages represented in each track:

- Track 1 : PacManQ_189, Leo04_192, HangryHippo_190, Cross_190, Larnav_191, Daubenski_183, Scheme_195, BlueOtter_190, Teutsch_189, Shuckle_192, Cursive_191, Samisti12_193, Pepperwood_190, Sushi23_191, Watermoore_190, Peebs_188, Tribute_188, Paradiddles_183, Bmoc_194, Lululemon_189, Cadmus_192
- Track 2 : Evy_184
- Track 3 : EGole_194, WhereRU_189, Liandry_189, Riptide_191, Navo_184, Jay2Jay_196, Targaryen_190, Bartholomune_190, PinkiePie_189, Squillium_192, NootNoot_186, Persimmon_190, Braelyn_186, Warpy_194, Anedea_195
- Track 4 : Angela_192, MulchMansion_193, LilMartin_190
- Track 5 : Mildred21_200
- Track 6 : Marsus_201
- Track 7 : CeilingFan_204, Karimac_200, Gibbi_207, JimJam_207, Bordeaux_198, Quaran19_200, Mugiwara_209, Rikishi_206, SaltySpitoon_199, StarPlatinum_206, IchabodCrane_195, Jollison_197, Birchlyn_198, TomSawyer_204, Battuta_197, KentuckyRacer_206, Amabiko_204, Spelly_203, MindFlayer_193, Starbow_197, PumpkinSpice_202, Wipeout_191, LukeCage_201, Spilled_206
- Track 8 : Yaboi_200, Sollertia_196, BoomerJR_195, Stanimal_195, Genie2_195
- Track 9 : Elmer_206
- Track 10 : Tomas_197, Annadreamy_124
- Track 11 : Wofford_198
- Track 12 : Enygma_205
- Track 13 : TunaTartare_136
- Track 14 : Gilson_139, Emma1919_139, MeganTheeKilla_137
- Track 15 : Limpid_131
- Track 16 : Stigma_134, Comrade_133, Belfort_137, SparkleGoddess_135, Westy_138, Karp_133
- Track 17 : Sham_132
- Track 18 : Blueeyedbeauty_131
- Track 19 : Faust_132, SeresaTree_133
- Track 20 : Wakanda_169, Muntaha_171

Summary of Final Annotations (See graph section above for start numbers):

The start number called the most often in the published annotations is 4, it was called in 79 of the 83 non-draft genes in the pham.

Genes that call this "Most Annotated" start:

- Amabiko_204, Anedea_195, Angela_192, Annadreamy_124, Bartholomune_190, Battuta_197, Belfort_137, Birchlyn_198, BlueOtter_190, Bmoc_194, BoomerJR_195, Bordeaux_198, Braelyn_186, Cadmus_192, CeilingFan_204, Comrade_133, Cross_190, Cursive_191, Daubenski_183, EGole_194, Elmer_206, Emma1919_139, Enygma_205, Evy_184, Faust_132, Genie2_195, Gibbi_207, Gilson_139, HangryHippo_190, IchabodCrane_195, Jay2Jay_196, JimJam_207, Jollison_197, Karimac_200, Karp_133, KentuckyRacer_206, Larnav_191, Leo04_192, Liandry_189, LilMartin_190, LukeCage_201, Lululemon_189, Marsus_201, MeganTheeKilla_137, Mildred21_200, MindFlayer_193, Mugiwara_209, MulchMansion_193, Navo_184, NootNoot_186, PacManQ_189, Paradiddles_183, Peebs_188, Pepperwood_190, Persimmon_190, PinkiePie_189, PumpkinSpice_202, Quarant19_200, Rikishi_206, Riptide_191, SaltySpittoon_199, Samisti12_193, Scheme_195, SeresaTree_133, Sham_132, Shuckle_192, Sollertia_196, SparkleGoddess_135, Spelly_203, Spilled_206, Squillium_192, Stanimal_195, StarPlatinum_206, Starbow_197, Stigma_134, Sushi23_191, Targaryen_190, Teutsch_189, TomSawyer_204, Tomas_197, Tribute_188, TunaTartare_136, Warpy_194, Watermoore_190, Westy_138, WhereRU_189, Wipeout_191, Wofford_198, Yaboi_200,

Genes that have the "Most Annotated" start but do not call it:

-

Genes that do not have the "Most Annotated" start:

- Blueeyedbeauty_131, Limpid_131, Muntaha_171, Wakanda_169,

Summary by start number:

Start 3:

- Found in 4 of 93 (4.3%) of genes in pham
- Manual Annotations of this start: 4 of 83
- Called 100.0% of time when present
- Phage (with cluster) where this start called: Blueeyedbeauty_131 (BK1), Limpid_131 (BK1), Muntaha_171 (BK2), Wakanda_169 (BK2),

Start 4:

- Found in 89 of 93 (95.7%) of genes in pham
- Manual Annotations of this start: 79 of 83
- Called 100.0% of time when present
- Phage (with cluster) where this start called: Amabiko_204 (BE2), Anedea_195 (BE1), Angela_192 (BE1), Annadreamy_124 (BK1), Bartholomune_190 (BE1), Battuta_197 (BE2), Belfort_137 (BK1), Birchlyn_198 (BE2), BlueOtter_190 (BE1), Bmoc_194 (BE1), BoomerJR_195 (BE2), Bordeaux_198 (BE2), Braelyn_186 (BE1), Cadmus_192 (BE1), CeilingFan_204 (BE2), Comrade_133 (BK1), Cross_190 (BE1), Cursive_191 (BE1), Daubenski_183 (BE1), EGole_194 (BE1), Elmer_206 (BE2), Emma1919_139 (BK1), Enygma_205 (BE2), Evy_184 (BE1), Faust_132 (BK1), Genie2_195 (BE2), Gibbi_207 (BE2), Gilson_139 (BK1), HangryHippo_190 (BE1), IchabodCrane_195 (BE2), Jay2Jay_196 (BE1), JimJam_207 (BE2), Jollison_197 (BE2), Karimac_200 (BE2), Karp_133 (BK1), KentuckyRacer_206 (BE2), Larnav_191 (BE1), Leo04_192 (BE1), Liandry_189 (BE1), LilMartin_190 (BE1), LukeCage_201

(BE2), Lululemon_189 (BE1), Marsus_201 (BE1), MeganTheeKilla_137 (BK1), Mildred21_200 (BE1), MindFlayer_193 (BE2), Mugiwara_209 (BE2), MulchMansion_193 (BE1), Navo_184 (BE1), NootNoot_186 (BE1), PacManQ_189 (BE1), Paradiddles_183 (BE1), Peebs_188 (BE1), Pepperwood_190 (BE1), Persimmon_190 (BE1), PinkiePie_189 (BE1), PumpkinSpice_202 (BE2), Quaran19_200 (BE2), Rikishi_206 (BE2), Riptide_191 (BE1), SaltySpittoon_199 (BE2), Samisti12_193 (BE1), Scheme_195 (BE1), SeresaTree_133 (BK1), Sham_132 (BK1), Shuckle_192 (BE1), Sollertia_196 (BE2), SparkleGoddess_135 (BK1), Spelly_203 (BE2), Spilled_206 (BE2), Squillium_192 (BE1), Stanimal_195 (BE2), StarPlatinum_206 (BE2), Starbow_197 (BE2), Stigma_134 (BK1), Sushi23_191 (BE1), Targaryen_190 (BE1), Teutsch_189 (BE1), TomSawyer_204 (BE2), Tomas_197 (BE2), Tribute_188 (BE1), TunaTartare_136 (BK1), Warpy_194 (BE1), Watermoore_190 (BE1), Westy_138 (BK1), WhereRU_189 (BE1), Wipeout_191 (BE2), Wofford_198 (BE2), Yaboi_200 (BE2),

Summary by clusters:

There are 4 clusters represented in this pham: BE2, BE1, BK1, BK2,

Info for manual annotations of cluster BE1:

- Start number 4 was manually annotated 37 times for cluster BE1.

Info for manual annotations of cluster BE2:

- Start number 4 was manually annotated 30 times for cluster BE2.

Info for manual annotations of cluster BK1:

- Start number 3 was manually annotated 2 times for cluster BK1.
- Start number 4 was manually annotated 12 times for cluster BK1.

Info for manual annotations of cluster BK2:

- Start number 3 was manually annotated 2 times for cluster BK2.

Gene Information:

Gene: Amabiko_204 Start: 100359, Stop: 100643, Start Num: 4

Candidate Starts for Amabiko_204:

(Start: 4 @100359 has 79 MA's), (5, 100398),

Gene: Anedea_195 Start: 100010, Stop: 100297, Start Num: 4

Candidate Starts for Anedea_195:

(Start: 4 @100010 has 79 MA's), (12, 100244), (16, 100274),

Gene: Angela_192 Start: 99651, Stop: 99953, Start Num: 4

Candidate Starts for Angela_192:

(Start: 4 @99651 has 79 MA's), (11, 99873),

Gene: Annadreamy_124 Start: 73662, Stop: 73958, Start Num: 4

Candidate Starts for Annadreamy_124:

(Start: 4 @73662 has 79 MA's), (16, 73935),

Gene: Bartholomune_190 Start: 99518, Stop: 99805, Start Num: 4

Candidate Starts for Bartholomune_190:
(Start: 4 @99518 has 79 MA's), (12, 99752), (16, 99782),

Gene: Battuta_197 Start: 99675, Stop: 99959, Start Num: 4
Candidate Starts for Battuta_197:
(Start: 4 @99675 has 79 MA's), (5, 99714),

Gene: Belfort_137 Start: 80130, Stop: 80423, Start Num: 4
Candidate Starts for Belfort_137:
(2, 80085), (Start: 4 @80130 has 79 MA's), (13, 80388), (15, 80397),

Gene: Birchlyn_198 Start: 97607, Stop: 97891, Start Num: 4
Candidate Starts for Birchlyn_198:
(Start: 4 @97607 has 79 MA's), (5, 97646),

Gene: BlueOtter_190 Start: 100311, Stop: 100598, Start Num: 4
Candidate Starts for BlueOtter_190:
(Start: 4 @100311 has 79 MA's), (16, 100575),

Gene: Blueeyedbeauty_131 Start: 77347, Stop: 77718, Start Num: 3
Candidate Starts for Blueeyedbeauty_131:
(1, 77344), (Start: 3 @77347 has 4 MA's), (17, 77698), (18, 77707),

Gene: Bmoc_194 Start: 100157, Stop: 100444, Start Num: 4
Candidate Starts for Bmoc_194:
(Start: 4 @100157 has 79 MA's), (16, 100421),

Gene: BoomerJR_195 Start: 99877, Stop: 100176, Start Num: 4
Candidate Starts for BoomerJR_195:
(Start: 4 @99877 has 79 MA's),

Gene: Bordeaux_198 Start: 100258, Stop: 100542, Start Num: 4
Candidate Starts for Bordeaux_198:
(Start: 4 @100258 has 79 MA's), (5, 100297),

Gene: Braelyn_186 Start: 98994, Stop: 99281, Start Num: 4
Candidate Starts for Braelyn_186:
(Start: 4 @98994 has 79 MA's), (12, 99228), (16, 99258),

Gene: Cadmus_192 Start: 100050, Stop: 100337, Start Num: 4
Candidate Starts for Cadmus_192:
(Start: 4 @100050 has 79 MA's), (16, 100314),

Gene: CeilingFan_204 Start: 101052, Stop: 101336, Start Num: 4
Candidate Starts for CeilingFan_204:
(Start: 4 @101052 has 79 MA's), (5, 101091),

Gene: Comrade_133 Start: 79449, Stop: 79742, Start Num: 4
Candidate Starts for Comrade_133:
(2, 79404), (Start: 4 @79449 has 79 MA's), (13, 79707), (15, 79716),

Gene: Cross_190 Start: 100956, Stop: 101243, Start Num: 4
Candidate Starts for Cross_190:

(Start: 4 @100956 has 79 MA's), (16, 101220),

Gene: Cursive_191 Start: 99858, Stop: 100145, Start Num: 4

Candidate Starts for Cursive_191:

(Start: 4 @99858 has 79 MA's), (16, 100122),

Gene: Daubenski_183 Start: 100580, Stop: 100867, Start Num: 4

Candidate Starts for Daubenski_183:

(Start: 4 @100580 has 79 MA's), (16, 100844),

Gene: EGole_194 Start: 102608, Stop: 102895, Start Num: 4

Candidate Starts for EGole_194:

(Start: 4 @102608 has 79 MA's), (12, 102842), (16, 102872),

Gene: Elmer_206 Start: 103322, Stop: 103606, Start Num: 4

Candidate Starts for Elmer_206:

(Start: 4 @103322 has 79 MA's), (10, 103523), (11, 103541),

Gene: Emma1919_139 Start: 79324, Stop: 79626, Start Num: 4

Candidate Starts for Emma1919_139:

(Start: 4 @79324 has 79 MA's), (6, 79414), (8, 79501),

Gene: Enygma_205 Start: 102883, Stop: 103167, Start Num: 4

Candidate Starts for Enygma_205:

(Start: 4 @102883 has 79 MA's), (5, 102922), (11, 103102), (14, 103138),

Gene: Evy_184 Start: 101005, Stop: 101289, Start Num: 4

Candidate Starts for Evy_184:

(Start: 4 @101005 has 79 MA's), (6, 101095), (16, 101266),

Gene: Faust_132 Start: 80292, Stop: 80591, Start Num: 4

Candidate Starts for Faust_132:

(Start: 4 @80292 has 79 MA's), (15, 80553),

Gene: Genie2_195 Start: 99991, Stop: 100290, Start Num: 4

Candidate Starts for Genie2_195:

(Start: 4 @99991 has 79 MA's),

Gene: Gibbi_207 Start: 100545, Stop: 100829, Start Num: 4

Candidate Starts for Gibbi_207:

(Start: 4 @100545 has 79 MA's), (5, 100584),

Gene: Gilson_139 Start: 79286, Stop: 79588, Start Num: 4

Candidate Starts for Gilson_139:

(Start: 4 @79286 has 79 MA's), (6, 79376), (8, 79463),

Gene: HangryHippo_190 Start: 100311, Stop: 100598, Start Num: 4

Candidate Starts for HangryHippo_190:

(Start: 4 @100311 has 79 MA's), (16, 100575),

Gene: IchabodCrane_195 Start: 100060, Stop: 100344, Start Num: 4

Candidate Starts for IchabodCrane_195:

(Start: 4 @100060 has 79 MA's), (5, 100099),

Gene: Jay2Jay_196 Start: 101157, Stop: 101444, Start Num: 4
Candidate Starts for Jay2Jay_196:
(Start: 4 @101157 has 79 MA's), (12, 101391), (16, 101421),

Gene: JimJam_207 Start: 101981, Stop: 102265, Start Num: 4
Candidate Starts for JimJam_207:
(Start: 4 @101981 has 79 MA's), (5, 102020),

Gene: Jollison_197 Start: 100191, Stop: 100475, Start Num: 4
Candidate Starts for Jollison_197:
(Start: 4 @100191 has 79 MA's), (5, 100230),

Gene: Karimac_200 Start: 100385, Stop: 100669, Start Num: 4
Candidate Starts for Karimac_200:
(Start: 4 @100385 has 79 MA's), (5, 100424),

Gene: Karp_133 Start: 79557, Stop: 79850, Start Num: 4
Candidate Starts for Karp_133:
(2, 79512), (Start: 4 @79557 has 79 MA's), (13, 79815), (15, 79824),

Gene: KentuckyRacer_206 Start: 101896, Stop: 102180, Start Num: 4
Candidate Starts for KentuckyRacer_206:
(Start: 4 @101896 has 79 MA's), (5, 101935),

Gene: Larnav_191 Start: 100931, Stop: 101218, Start Num: 4
Candidate Starts for Larnav_191:
(Start: 4 @100931 has 79 MA's), (16, 101195),

Gene: Leo04_192 Start: 101322, Stop: 101609, Start Num: 4
Candidate Starts for Leo04_192:
(Start: 4 @101322 has 79 MA's), (16, 101586),

Gene: Liandry_189 Start: 99837, Stop: 100124, Start Num: 4
Candidate Starts for Liandry_189:
(Start: 4 @99837 has 79 MA's), (12, 100071), (16, 100101),

Gene: LilMartin_190 Start: 99268, Stop: 99570, Start Num: 4
Candidate Starts for LilMartin_190:
(Start: 4 @99268 has 79 MA's), (11, 99490),

Gene: Limpid_131 Start: 78901, Stop: 79272, Start Num: 3
Candidate Starts for Limpid_131:
(1, 78898), (Start: 3 @78901 has 4 MA's), (17, 79252), (18, 79261),

Gene: LukeCage_201 Start: 101488, Stop: 101784, Start Num: 4
Candidate Starts for LukeCage_201:
(Start: 4 @101488 has 79 MA's), (5, 101527),

Gene: Lululemon_189 Start: 99692, Stop: 99979, Start Num: 4
Candidate Starts for Lululemon_189:
(Start: 4 @99692 has 79 MA's), (16, 99956),

Gene: Marsus_201 Start: 100536, Stop: 100838, Start Num: 4
Candidate Starts for Marsus_201:
(Start: 4 @100536 has 79 MA's), (7, 100677), (11, 100758),

Gene: MeganTheeKilla_137 Start: 79366, Stop: 79668, Start Num: 4
Candidate Starts for MeganTheeKilla_137:
(Start: 4 @79366 has 79 MA's), (6, 79456), (8, 79543),

Gene: Mildred21_200 Start: 98784, Stop: 99086, Start Num: 4
Candidate Starts for Mildred21_200:
(Start: 4 @98784 has 79 MA's),

Gene: MindFlayer_193 Start: 99576, Stop: 99860, Start Num: 4
Candidate Starts for MindFlayer_193:
(Start: 4 @99576 has 79 MA's), (5, 99615),

Gene: Mugiwara_209 Start: 102269, Stop: 102565, Start Num: 4
Candidate Starts for Mugiwara_209:
(Start: 4 @102269 has 79 MA's), (5, 102308),

Gene: MulchMansion_193 Start: 100650, Stop: 100952, Start Num: 4
Candidate Starts for MulchMansion_193:
(Start: 4 @100650 has 79 MA's), (11, 100872),

Gene: Muntaha_171 Start: 90649, Stop: 91023, Start Num: 3
Candidate Starts for Muntaha_171:
(Start: 3 @90649 has 4 MA's), (6, 90790), (17, 91006),

Gene: Navo_184 Start: 98375, Stop: 98662, Start Num: 4
Candidate Starts for Navo_184:
(Start: 4 @98375 has 79 MA's), (12, 98609), (16, 98639),

Gene: NootNoot_186 Start: 98626, Stop: 98913, Start Num: 4
Candidate Starts for NootNoot_186:
(Start: 4 @98626 has 79 MA's), (12, 98860), (16, 98890),

Gene: PacManQ_189 Start: 99692, Stop: 99979, Start Num: 4
Candidate Starts for PacManQ_189:
(Start: 4 @99692 has 79 MA's), (16, 99956),

Gene: Paradiddles_183 Start: 101298, Stop: 101585, Start Num: 4
Candidate Starts for Paradiddles_183:
(Start: 4 @101298 has 79 MA's), (16, 101562),

Gene: Peebs_188 Start: 100604, Stop: 100891, Start Num: 4
Candidate Starts for Peebs_188:
(Start: 4 @100604 has 79 MA's), (16, 100868),

Gene: Pepperwood_190 Start: 100562, Stop: 100849, Start Num: 4
Candidate Starts for Pepperwood_190:
(Start: 4 @100562 has 79 MA's), (16, 100826),

Gene: Persimmon_190 Start: 98570, Stop: 98857, Start Num: 4

Candidate Starts for Persimmon_190:
(Start: 4 @98570 has 79 MA's), (12, 98804), (16, 98834),

Gene: PinkiePie_189 Start: 99837, Stop: 100124, Start Num: 4
Candidate Starts for PinkiePie_189:
(Start: 4 @99837 has 79 MA's), (12, 100071), (16, 100101),

Gene: PumpkinSpice_202 Start: 100797, Stop: 101081, Start Num: 4
Candidate Starts for PumpkinSpice_202:
(Start: 4 @100797 has 79 MA's), (5, 100836),

Gene: Quaran19_200 Start: 100238, Stop: 100522, Start Num: 4
Candidate Starts for Quaran19_200:
(Start: 4 @100238 has 79 MA's), (5, 100277),

Gene: Rikishi_206 Start: 100519, Stop: 100803, Start Num: 4
Candidate Starts for Rikishi_206:
(Start: 4 @100519 has 79 MA's), (5, 100558),

Gene: Riptide_191 Start: 98649, Stop: 98936, Start Num: 4
Candidate Starts for Riptide_191:
(Start: 4 @98649 has 79 MA's), (12, 98883), (16, 98913),

Gene: SaltySpittoon_199 Start: 99780, Stop: 100064, Start Num: 4
Candidate Starts for SaltySpittoon_199:
(Start: 4 @99780 has 79 MA's), (5, 99819),

Gene: Samisti12_193 Start: 102015, Stop: 102302, Start Num: 4
Candidate Starts for Samisti12_193:
(Start: 4 @102015 has 79 MA's), (16, 102279),

Gene: Scheme_195 Start: 102199, Stop: 102486, Start Num: 4
Candidate Starts for Scheme_195:
(Start: 4 @102199 has 79 MA's), (16, 102463),

Gene: SeresaTree_133 Start: 79674, Stop: 79973, Start Num: 4
Candidate Starts for SeresaTree_133:
(Start: 4 @79674 has 79 MA's), (15, 79935),

Gene: Sham_132 Start: 80226, Stop: 80525, Start Num: 4
Candidate Starts for Sham_132:
(Start: 4 @80226 has 79 MA's), (15, 80487),

Gene: Shuckle_192 Start: 100668, Stop: 100955, Start Num: 4
Candidate Starts for Shuckle_192:
(Start: 4 @100668 has 79 MA's), (16, 100932),

Gene: Sollertia_196 Start: 99991, Stop: 100290, Start Num: 4
Candidate Starts for Sollertia_196:
(Start: 4 @99991 has 79 MA's),

Gene: SparkleGoddess_135 Start: 79749, Stop: 80042, Start Num: 4
Candidate Starts for SparkleGoddess_135:

(2, 79704), (Start: 4 @79749 has 79 MA's), (13, 80007), (15, 80016),

Gene: Spelly_203 Start: 99709, Stop: 99993, Start Num: 4

Candidate Starts for Spelly_203:

(Start: 4 @99709 has 79 MA's), (5, 99748),

Gene: Spilled_206 Start: 100913, Stop: 101197, Start Num: 4

Candidate Starts for Spilled_206:

(Start: 4 @100913 has 79 MA's), (5, 100952),

Gene: Squillium_192 Start: 99839, Stop: 100126, Start Num: 4

Candidate Starts for Squillium_192:

(Start: 4 @99839 has 79 MA's), (12, 100073), (16, 100103),

Gene: Stanimal_195 Start: 100352, Stop: 100651, Start Num: 4

Candidate Starts for Stanimal_195:

(Start: 4 @100352 has 79 MA's),

Gene: StarPlatinum_206 Start: 102177, Stop: 102473, Start Num: 4

Candidate Starts for StarPlatinum_206:

(Start: 4 @102177 has 79 MA's), (5, 102216),

Gene: Starbow_197 Start: 99753, Stop: 100037, Start Num: 4

Candidate Starts for Starbow_197:

(Start: 4 @99753 has 79 MA's), (5, 99792),

Gene: Stigma_134 Start: 79894, Stop: 80187, Start Num: 4

Candidate Starts for Stigma_134:

(2, 79849), (Start: 4 @79894 has 79 MA's), (13, 80152), (15, 80161),

Gene: Sushi23_191 Start: 101668, Stop: 101955, Start Num: 4

Candidate Starts for Sushi23_191:

(Start: 4 @101668 has 79 MA's), (16, 101932),

Gene: Targaryen_190 Start: 101686, Stop: 101973, Start Num: 4

Candidate Starts for Targaryen_190:

(Start: 4 @101686 has 79 MA's), (12, 101920), (16, 101950),

Gene: Teutsch_189 Start: 101116, Stop: 101403, Start Num: 4

Candidate Starts for Teutsch_189:

(Start: 4 @101116 has 79 MA's), (16, 101380),

Gene: TomSawyer_204 Start: 102224, Stop: 102508, Start Num: 4

Candidate Starts for TomSawyer_204:

(Start: 4 @102224 has 79 MA's), (5, 102263),

Gene: Tomas_197 Start: 100801, Stop: 101091, Start Num: 4

Candidate Starts for Tomas_197:

(Start: 4 @100801 has 79 MA's), (16, 101068),

Gene: Tribute_188 Start: 101133, Stop: 101420, Start Num: 4

Candidate Starts for Tribute_188:

(Start: 4 @101133 has 79 MA's), (16, 101397),

Gene: TunaTartare_136 Start: 82592, Stop: 82891, Start Num: 4
Candidate Starts for TunaTartare_136:
(1, 82544), (Start: 4 @82592 has 79 MA's), (10, 82793), (15, 82853),

Gene: Wakanda_169 Start: 90329, Stop: 90703, Start Num: 3
Candidate Starts for Wakanda_169:
(Start: 3 @90329 has 4 MA's), (6, 90470), (17, 90686),

Gene: Warpy_194 Start: 100598, Stop: 100885, Start Num: 4
Candidate Starts for Warpy_194:
(Start: 4 @100598 has 79 MA's), (12, 100832), (16, 100862),

Gene: Watermoore_190 Start: 101954, Stop: 102241, Start Num: 4
Candidate Starts for Watermoore_190:
(Start: 4 @101954 has 79 MA's), (16, 102218),

Gene: Westy_138 Start: 80783, Stop: 81076, Start Num: 4
Candidate Starts for Westy_138:
(2, 80738), (Start: 4 @80783 has 79 MA's), (13, 81041), (15, 81050),

Gene: WhereRU_189 Start: 99322, Stop: 99609, Start Num: 4
Candidate Starts for WhereRU_189:
(Start: 4 @99322 has 79 MA's), (12, 99556), (16, 99586),

Gene: Wipeout_191 Start: 101176, Stop: 101460, Start Num: 4
Candidate Starts for Wipeout_191:
(Start: 4 @101176 has 79 MA's), (5, 101215),

Gene: Wofford_198 Start: 103190, Stop: 103474, Start Num: 4
Candidate Starts for Wofford_198:
(Start: 4 @103190 has 79 MA's), (9, 103370), (10, 103391), (11, 103409),

Gene: Yaboi_200 Start: 99926, Stop: 100225, Start Num: 4
Candidate Starts for Yaboi_200:
(Start: 4 @99926 has 79 MA's),