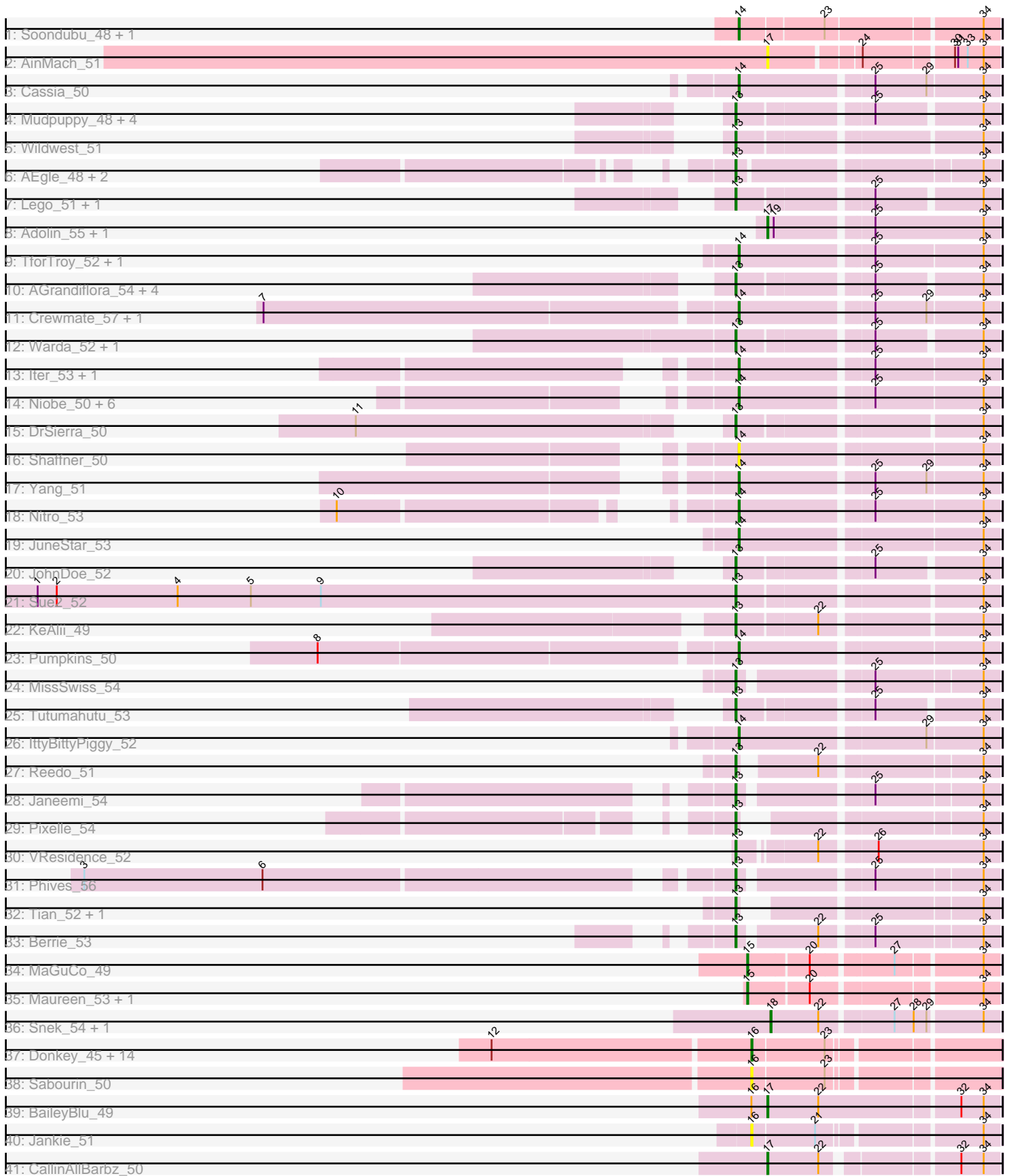


Pham 224513



Note: Tracks are now grouped by subcluster and scaled. Switching in subcluster is indicated by changes in track color. Track scale is now set by default to display the region 30 bp upstream of start 1 to 30 bp downstream of the last possible start. If this default region is judged to be packed too tightly with annotated starts, the track will be further scaled to only show that region of the ORF with annotated starts. This action will be indicated by adding "Zoomed" to the title. For starts, yellow indicates the location of called starts comprised solely of Glimmer/GeneMark auto-annotations, green indicates the location of called starts with at least 1 manual gene annotation.

## Pham 224513 Report

This analysis was run 03/28/25 on database version 593.

Pham number 224513 has 81 members, 18 are drafts.

Phages represented in each track:

- Track 1 : Soondubu\_48, Exile\_46
- Track 2 : AinMach\_51
- Track 3 : Cassia\_50
- Track 4 : Mudpuppy\_48, Community\_55, Cyan\_52, Lizalica\_51, Tuck\_55
- Track 5 : Wildwest\_51
- Track 6 : AEgle\_48, Adumb2043\_49, Turab\_49
- Track 7 : Lego\_51, Kaylissa\_53
- Track 8 : Adolin\_55, DrManhattan\_54
- Track 9 : TforTroy\_52, Tallboi\_51
- Track 10 : AGrandiflora\_54, Powerpuff\_54, YesChef\_52, Simpson\_54, Joemato\_52
- Track 11 : Crewmate\_57, ObiToo\_56
- Track 12 : Warda\_52, Tbone\_52
- Track 13 : Iter\_53, Ascela\_53
- Track 14 : Niobe\_50, Jstan\_52, Elezi\_50, Asa16\_50, Eraser\_50, London\_50, Subaru\_51
- Track 15 : DrSierra\_50
- Track 16 : Shaffner\_50
- Track 17 : Yang\_51
- Track 18 : Nitro\_53
- Track 19 : JuneStar\_53
- Track 20 : JohnDoe\_52
- Track 21 : Sue2\_52
- Track 22 : KeAlii\_49
- Track 23 : Pumpkins\_50
- Track 24 : MissSwiss\_54
- Track 25 : Tutumahutu\_53
- Track 26 : IttyBittyPiggy\_52
- Track 27 : Reedo\_51
- Track 28 : Janeemi\_54
- Track 29 : Pixelle\_54
- Track 30 : VResidence\_52
- Track 31 : Phives\_56
- Track 32 : Tian\_52, Amyev\_53
- Track 33 : Berrie\_53
- Track 34 : MaGuCo\_49
- Track 35 : Maureen\_53, Liebe\_53
- Track 36 : Snek\_54, Tweety19\_55

- Track 37 : Donkey\_45, RockScotty\_47, Sooty\_45, Mysterium\_44, SpecialK\_45, Gumpizza\_46, Beaupre\_48, Halsey\_45, Cappuccino\_45, Stuu\_49, Kalimba\_45, Giorgio\_46, Ashes\_45, Gambol\_46, Moss\_45
- Track 38 : Sabourin\_50
- Track 39 : BaileyBlu\_49
- Track 40 : Jankie\_51
- Track 41 : CallinAllBarbz\_50

### **Summary of Final Annotations (See graph section above for start numbers):**

The start number called the most often in the published annotations is 13, it was called in 26 of the 63 non-draft genes in the pham.

Genes that call this "Most Annotated" start:

- AEgle\_48, AGrandiflora\_54, Adumb2043\_49, Amyev\_53, Berrie\_53, Community\_55, Cyan\_52, DrSierra\_50, Janeemi\_54, Joemato\_52, JohnDoe\_52, Kaylissa\_53, KeAlii\_49, Lego\_51, Lizalica\_51, MissSwiss\_54, Mudpuppy\_48, Phives\_56, Pixelle\_54, Powerpuff\_54, Reedo\_51, Simpson\_54, Sue2\_52, Tbone\_52, Tian\_52, Tuck\_55, Turab\_49, Tutumahutu\_53, VResidence\_52, Warda\_52, Wildwest\_51, YesChef\_52,

Genes that have the "Most Annotated" start but do not call it:

- 

Genes that do not have the "Most Annotated" start:

- Adolin\_55, AinMach\_51, Asa16\_50, Ascela\_53, Ashes\_45, BaileyBlu\_49, Beaupre\_48, CallinAllBarbz\_50, Cappuccino\_45, Cassia\_50, Crewmate\_57, Donkey\_45, DrManhattan\_54, Elezi\_50, Eraser\_50, Exile\_46, Gambol\_46, Giorgio\_46, Gumpizza\_46, Halsey\_45, Iter\_53, IttyBittyPiggy\_52, Jankie\_51, Jstan\_52, JuneStar\_53, Kalimba\_45, Liebe\_53, London\_50, MaGuCo\_49, Maureen\_53, Moss\_45, Mysterium\_44, Niobe\_50, Nitro\_53, ObiToo\_56, Pumpkins\_50, RockScotty\_47, Sabourin\_50, Shaffner\_50, Snek\_54, Soondubu\_48, Sooty\_45, SpecialK\_45, Stuu\_49, Subaru\_51, Tallboi\_51, TforTroy\_52, Tweety19\_55, Yang\_51,

### **Summary by start number:**

Start 13:

- Found in 32 of 81 ( 39.5% ) of genes in pham
- Manual Annotations of this start: 26 of 63
- Called 100.0% of time when present
- Phage (with cluster) where this start called: AEgle\_48 (AZ1), AGrandiflora\_54 (AZ1), Adumb2043\_49 (AZ1), Amyev\_53 (AZ1), Berrie\_53 (AZ1), Community\_55 (AZ1), Cyan\_52 (AZ1), DrSierra\_50 (AZ1), Janeemi\_54 (AZ1), Joemato\_52 (AZ1), JohnDoe\_52 (AZ1), Kaylissa\_53 (AZ1), KeAlii\_49 (AZ1), Lego\_51 (AZ1), Lizalica\_51 (AZ1), MissSwiss\_54 (AZ1), Mudpuppy\_48 (AZ1), Phives\_56 (AZ1), Pixelle\_54 (AZ1), Powerpuff\_54 (AZ1), Reedo\_51 (AZ1), Simpson\_54 (AZ1), Sue2\_52 (AZ1), Tbone\_52 (AZ1), Tian\_52 (AZ1), Tuck\_55 (AZ1), Turab\_49 (AZ1), Tutumahutu\_53 (AZ1), VResidence\_52 (AZ1), Warda\_52 (AZ1), Wildwest\_51 (AZ1), YesChef\_52 (AZ1),

Start 14:

- Found in 22 of 81 ( 27.2% ) of genes in pham
- Manual Annotations of this start: 18 of 63
- Called 100.0% of time when present
- Phage (with cluster) where this start called: Asa16\_50 (AZ1), Ascela\_53 (AZ1), Cassia\_50 (AZ1), Crewmate\_57 (AZ1), Elezi\_50 (AZ1), Eraser\_50 (AZ1), Exile\_46 (AZ), Iter\_53 (AZ1), IttyBittyPiggy\_52 (AZ1), Jstan\_52 (AZ1), JuneStar\_53 (AZ1), London\_50 (AZ1), Niobe\_50 (AZ1), Nitro\_53 (AZ1), ObiToo\_56 (AZ1), Pumpkins\_50 (AZ1), Shaffner\_50 (AZ1), Soondubu\_48 (AZ), Subaru\_51 (AZ1), Tallboi\_51 (AZ1), TforTroy\_52 (AZ1), Yang\_51 (AZ1),

Start 15:

- Found in 3 of 81 ( 3.7% ) of genes in pham
- Manual Annotations of this start: 3 of 63
- Called 100.0% of time when present
- Phage (with cluster) where this start called: Liebe\_53 (AZ2), MaGuCo\_49 (AZ2), Maureen\_53 (AZ2),

Start 16:

- Found in 18 of 81 ( 22.2% ) of genes in pham
- Manual Annotations of this start: 10 of 63
- Called 94.4% of time when present
- Phage (with cluster) where this start called: Ashes\_45 (AZ5), Beaupre\_48 (AZ5), Cappuccino\_45 (AZ5), Donkey\_45 (AZ5), Gambol\_46 (AZ5), Giorgio\_46 (AZ5), Gumpizza\_46 (AZ5), Halsey\_45 (AZ5), Jankie\_51 (FP), Kalimba\_45 (AZ5), Moss\_45 (AZ5), Mysterium\_44 (AZ5), RockScotty\_47 (AZ5), Sabourin\_50 (AZ5), Sooty\_45 (AZ5), SpecialK\_45 (AZ5), Stuu\_49 (AZ5),

Start 17:

- Found in 5 of 81 ( 6.2% ) of genes in pham
- Manual Annotations of this start: 4 of 63
- Called 100.0% of time when present
- Phage (with cluster) where this start called: Adolin\_55 (AZ1), AinMach\_51 (AZ), BaileyBlu\_49 (FP), CallinAllBarbz\_50 (FP), DrManhattan\_54 (AZ1),

Start 18:

- Found in 2 of 81 ( 2.5% ) of genes in pham
- Manual Annotations of this start: 2 of 63
- Called 100.0% of time when present
- Phage (with cluster) where this start called: Snek\_54 (AZ3), Tweety19\_55 (AZ3),

**Summary by clusters:**

There are 6 clusters represented in this pham: FP, AZ, AZ1, AZ2, AZ3, AZ5,

Info for manual annotations of cluster AZ:

- Start number 14 was manually annotated 1 time for cluster AZ.

Info for manual annotations of cluster AZ1:

- Start number 13 was manually annotated 26 times for cluster AZ1.
- Start number 14 was manually annotated 17 times for cluster AZ1.
- Start number 17 was manually annotated 2 times for cluster AZ1.

Info for manual annotations of cluster AZ2:

- Start number 15 was manually annotated 3 times for cluster AZ2.

Info for manual annotations of cluster AZ3:

- Start number 18 was manually annotated 2 times for cluster AZ3.

Info for manual annotations of cluster AZ5:

- Start number 16 was manually annotated 10 times for cluster AZ5.

Info for manual annotations of cluster FP:

- Start number 17 was manually annotated 2 times for cluster FP.

### ***Gene Information:***

Gene: AEgle\_48 Start: 36313, Stop: 36537, Start Num: 13

Candidate Starts for AEgle\_48:

(Start: 13 @36313 has 26 MA's), (34, 36523),

Gene: AGrandiflora\_54 Start: 37650, Stop: 37871, Start Num: 13

Candidate Starts for AGrandiflora\_54:

(Start: 13 @37650 has 26 MA's), (25, 37764), (34, 37857),

Gene: Adolin\_55 Start: 36749, Stop: 36955, Start Num: 17

Candidate Starts for Adolin\_55:

(Start: 17 @36749 has 4 MA's), (19, 36755), (25, 36839), (34, 36941),

Gene: Adumb2043\_49 Start: 36334, Stop: 36558, Start Num: 13

Candidate Starts for Adumb2043\_49:

(Start: 13 @36334 has 26 MA's), (34, 36544),

Gene: AinMach\_51 Start: 36840, Stop: 37037, Start Num: 17

Candidate Starts for AinMach\_51:

(Start: 17 @36840 has 4 MA's), (24, 36918), (30, 36996), (31, 36999), (33, 37008), (34, 37023),

Gene: Amyev\_53 Start: 39795, Stop: 39995, Start Num: 13

Candidate Starts for Amyev\_53:

(Start: 13 @39795 has 26 MA's), (34, 39981),

Gene: Asa16\_50 Start: 37882, Stop: 38112, Start Num: 14

Candidate Starts for Asa16\_50:

(Start: 14 @37882 has 18 MA's), (25, 37999), (34, 38098),

Gene: Ascela\_53 Start: 37957, Stop: 38187, Start Num: 14

Candidate Starts for Ascela\_53:

(Start: 14 @37957 has 18 MA's), (25, 38074), (34, 38173),

Gene: Ashes\_45 Start: 33455, Stop: 33667, Start Num: 16

Candidate Starts for Ashes\_45:

(12, 33218), (Start: 16 @33455 has 10 MA's), (23, 33521),

Gene: BaileyBlu\_49 Start: 35978, Stop: 36187, Start Num: 17  
Candidate Starts for BaileyBlu\_49:  
(Start: 16 @35963 has 10 MA's), (Start: 17 @35978 has 4 MA's), (22, 36026), (32, 36152), (34, 36173),

Gene: Beaupre\_48 Start: 33265, Stop: 33477, Start Num: 16  
Candidate Starts for Beaupre\_48:  
(12, 33028), (Start: 16 @33265 has 10 MA's), (23, 33331),

Gene: Berrie\_53 Start: 38048, Stop: 38266, Start Num: 13  
Candidate Starts for Berrie\_53:  
(Start: 13 @38048 has 26 MA's), (22, 38114), (25, 38156), (34, 38252),

Gene: CallinAllBarbz\_50 Start: 36450, Stop: 36644, Start Num: 17  
Candidate Starts for CallinAllBarbz\_50:  
(Start: 17 @36450 has 4 MA's), (22, 36498), (32, 36609), (34, 36630),

Gene: Cappuccino\_45 Start: 33320, Stop: 33532, Start Num: 16  
Candidate Starts for Cappuccino\_45:  
(12, 33083), (Start: 16 @33320 has 10 MA's), (23, 33386),

Gene: Cassia\_50 Start: 37073, Stop: 37303, Start Num: 14  
Candidate Starts for Cassia\_50:  
(Start: 14 @37073 has 18 MA's), (25, 37190), (29, 37238), (34, 37289),

Gene: Community\_55 Start: 39440, Stop: 39658, Start Num: 13  
Candidate Starts for Community\_55:  
(Start: 13 @39440 has 26 MA's), (25, 39548), (34, 39644),

Gene: Crewmate\_57 Start: 38837, Stop: 39067, Start Num: 14  
Candidate Starts for Crewmate\_57:  
(7, 38405), (Start: 14 @38837 has 18 MA's), (25, 38954), (29, 39002), (34, 39053),

Gene: Cyan\_52 Start: 37207, Stop: 37428, Start Num: 13  
Candidate Starts for Cyan\_52:  
(Start: 13 @37207 has 26 MA's), (25, 37321), (34, 37414),

Gene: Donkey\_45 Start: 33310, Stop: 33522, Start Num: 16  
Candidate Starts for Donkey\_45:  
(12, 33073), (Start: 16 @33310 has 10 MA's), (23, 33376),

Gene: DrManhattan\_54 Start: 36317, Stop: 36523, Start Num: 17  
Candidate Starts for DrManhattan\_54:  
(Start: 17 @36317 has 4 MA's), (19, 36323), (25, 36407), (34, 36509),

Gene: DrSierra\_50 Start: 36034, Stop: 36258, Start Num: 13  
Candidate Starts for DrSierra\_50:  
(11, 35728), (Start: 13 @36034 has 26 MA's), (34, 36244),

Gene: Elezi\_50 Start: 37880, Stop: 38110, Start Num: 14  
Candidate Starts for Elezi\_50:  
(Start: 14 @37880 has 18 MA's), (25, 37997), (34, 38096),

Gene: Eraser\_50 Start: 37889, Stop: 38119, Start Num: 14

Candidate Starts for Eraser\_50:  
(Start: 14 @37889 has 18 MA's), (25, 38006), (34, 38105),

Gene: Exile\_46 Start: 39253, Stop: 39480, Start Num: 14  
Candidate Starts for Exile\_46:  
(Start: 14 @39253 has 18 MA's), (23, 39328), (34, 39466),

Gene: Gambol\_46 Start: 33329, Stop: 33541, Start Num: 16  
Candidate Starts for Gambol\_46:  
(12, 33092), (Start: 16 @33329 has 10 MA's), (23, 33395),

Gene: Giorgio\_46 Start: 33248, Stop: 33460, Start Num: 16  
Candidate Starts for Giorgio\_46:  
(12, 33011), (Start: 16 @33248 has 10 MA's), (23, 33314),

Gene: Gumpizza\_46 Start: 33204, Stop: 33416, Start Num: 16  
Candidate Starts for Gumpizza\_46:  
(12, 32967), (Start: 16 @33204 has 10 MA's), (23, 33270),

Gene: Halsey\_45 Start: 33457, Stop: 33669, Start Num: 16  
Candidate Starts for Halsey\_45:  
(12, 33220), (Start: 16 @33457 has 10 MA's), (23, 33523),

Gene: Iter\_53 Start: 37949, Stop: 38179, Start Num: 14  
Candidate Starts for Iter\_53:  
(Start: 14 @37949 has 18 MA's), (25, 38066), (34, 38165),

Gene: IttyBittyPiggy\_52 Start: 36661, Stop: 36891, Start Num: 14  
Candidate Starts for IttyBittyPiggy\_52:  
(Start: 14 @36661 has 18 MA's), (29, 36826), (34, 36877),

Gene: Janeemi\_54 Start: 38904, Stop: 39122, Start Num: 13  
Candidate Starts for Janeemi\_54:  
(Start: 13 @38904 has 26 MA's), (25, 39012), (34, 39108),

Gene: Jankie\_51 Start: 35153, Stop: 35362, Start Num: 16  
Candidate Starts for Jankie\_51:  
(Start: 16 @35153 has 10 MA's), (21, 35210), (34, 35348),

Gene: Joemato\_52 Start: 37287, Stop: 37508, Start Num: 13  
Candidate Starts for Joemato\_52:  
(Start: 13 @37287 has 26 MA's), (25, 37401), (34, 37494),

Gene: JohnDoe\_52 Start: 37271, Stop: 37492, Start Num: 13  
Candidate Starts for JohnDoe\_52:  
(Start: 13 @37271 has 26 MA's), (25, 37385), (34, 37478),

Gene: Jstan\_52 Start: 37884, Stop: 38114, Start Num: 14  
Candidate Starts for Jstan\_52:  
(Start: 14 @37884 has 18 MA's), (25, 38001), (34, 38100),

Gene: JuneStar\_53 Start: 40003, Stop: 40233, Start Num: 14  
Candidate Starts for JuneStar\_53:

(Start: 14 @40003 has 18 MA's), (34, 40219),

Gene: Kalimba\_45 Start: 33307, Stop: 33519, Start Num: 16

Candidate Starts for Kalimba\_45:

(12, 33070), (Start: 16 @33307 has 10 MA's), (23, 33373),

Gene: Kaylissa\_53 Start: 37666, Stop: 37887, Start Num: 13

Candidate Starts for Kaylissa\_53:

(Start: 13 @37666 has 26 MA's), (25, 37780), (34, 37873),

Gene: KeAlii\_49 Start: 36858, Stop: 37082, Start Num: 13

Candidate Starts for KeAlii\_49:

(Start: 13 @36858 has 26 MA's), (22, 36930), (34, 37068),

Gene: Lego\_51 Start: 36986, Stop: 37207, Start Num: 13

Candidate Starts for Lego\_51:

(Start: 13 @36986 has 26 MA's), (25, 37100), (34, 37193),

Gene: Liebe\_53 Start: 39401, Stop: 39613, Start Num: 15

Candidate Starts for Liebe\_53:

(Start: 15 @39401 has 3 MA's), (20, 39455), (34, 39599),

Gene: Lizalica\_51 Start: 36731, Stop: 36952, Start Num: 13

Candidate Starts for Lizalica\_51:

(Start: 13 @36731 has 26 MA's), (25, 36845), (34, 36938),

Gene: London\_50 Start: 37880, Stop: 38110, Start Num: 14

Candidate Starts for London\_50:

(Start: 14 @37880 has 18 MA's), (25, 37997), (34, 38096),

Gene: MaGuCo\_49 Start: 38092, Stop: 38304, Start Num: 15

Candidate Starts for MaGuCo\_49:

(Start: 15 @38092 has 3 MA's), (20, 38146), (27, 38215), (34, 38290),

Gene: Maureen\_53 Start: 39400, Stop: 39612, Start Num: 15

Candidate Starts for Maureen\_53:

(Start: 15 @39400 has 3 MA's), (20, 39454), (34, 39598),

Gene: MissSwiss\_54 Start: 36480, Stop: 36698, Start Num: 13

Candidate Starts for MissSwiss\_54:

(Start: 13 @36480 has 26 MA's), (25, 36588), (34, 36684),

Gene: Moss\_45 Start: 33397, Stop: 33609, Start Num: 16

Candidate Starts for Moss\_45:

(12, 33160), (Start: 16 @33397 has 10 MA's), (23, 33463),

Gene: Mudpuppy\_48 Start: 36915, Stop: 37136, Start Num: 13

Candidate Starts for Mudpuppy\_48:

(Start: 13 @36915 has 26 MA's), (25, 37029), (34, 37122),

Gene: Mysterium\_44 Start: 33230, Stop: 33442, Start Num: 16

Candidate Starts for Mysterium\_44:

(12, 32993), (Start: 16 @33230 has 10 MA's), (23, 33296),



Gene: Niobe\_50 Start: 37883, Stop: 38113, Start Num: 14  
Candidate Starts for Niobe\_50:  
(Start: 14 @37883 has 18 MA's), (25, 38000), (34, 38099),

Gene: Nitro\_53 Start: 38988, Stop: 39218, Start Num: 14  
Candidate Starts for Nitro\_53:  
(10, 38691), (Start: 14 @38988 has 18 MA's), (25, 39105), (34, 39204),

Gene: ObiToo\_56 Start: 38231, Stop: 38461, Start Num: 14  
Candidate Starts for ObiToo\_56:  
(7, 37799), (Start: 14 @38231 has 18 MA's), (25, 38348), (29, 38396), (34, 38447),

Gene: Phives\_56 Start: 39558, Stop: 39776, Start Num: 13  
Candidate Starts for Phives\_56:  
(3, 38994), (6, 39162), (Start: 13 @39558 has 26 MA's), (25, 39666), (34, 39762),

Gene: Pixelle\_54 Start: 40140, Stop: 40340, Start Num: 13  
Candidate Starts for Pixelle\_54:  
(Start: 13 @40140 has 26 MA's), (34, 40326),

Gene: Powerpuff\_54 Start: 38373, Stop: 38594, Start Num: 13  
Candidate Starts for Powerpuff\_54:  
(Start: 13 @38373 has 26 MA's), (25, 38487), (34, 38580),

Gene: Pumpkins\_50 Start: 37746, Stop: 37976, Start Num: 14  
Candidate Starts for Pumpkins\_50:  
(8, 37368), (Start: 14 @37746 has 18 MA's), (34, 37962),

Gene: Reedo\_51 Start: 35724, Stop: 35936, Start Num: 13  
Candidate Starts for Reedo\_51:  
(Start: 13 @35724 has 26 MA's), (22, 35784), (34, 35922),

Gene: RockScotty\_47 Start: 33228, Stop: 33440, Start Num: 16  
Candidate Starts for RockScotty\_47:  
(12, 32991), (Start: 16 @33228 has 10 MA's), (23, 33294),

Gene: Sabourin\_50 Start: 33308, Stop: 33520, Start Num: 16  
Candidate Starts for Sabourin\_50:  
(Start: 16 @33308 has 10 MA's), (23, 33374),

Gene: Shaffner\_50 Start: 37680, Stop: 37910, Start Num: 14  
Candidate Starts for Shaffner\_50:  
(Start: 14 @37680 has 18 MA's), (34, 37896),

Gene: Simpson\_54 Start: 37291, Stop: 37512, Start Num: 13  
Candidate Starts for Simpson\_54:  
(Start: 13 @37291 has 26 MA's), (25, 37405), (34, 37498),

Gene: Snek\_54 Start: 36857, Stop: 37057, Start Num: 18  
Candidate Starts for Snek\_54:  
(Start: 18 @36857 has 2 MA's), (22, 36902), (27, 36965), (28, 36983), (29, 36995), (34, 37043),

Gene: Soondubu\_48 Start: 39736, Stop: 39963, Start Num: 14  
Candidate Starts for Soondubu\_48:  
(Start: 14 @39736 has 18 MA's), (23, 39811), (34, 39949),

Gene: Sooty\_45 Start: 33322, Stop: 33534, Start Num: 16  
Candidate Starts for Sooty\_45:  
(12, 33085), (Start: 16 @33322 has 10 MA's), (23, 33388),

Gene: SpecialK\_45 Start: 33306, Stop: 33518, Start Num: 16  
Candidate Starts for SpecialK\_45:  
(12, 33069), (Start: 16 @33306 has 10 MA's), (23, 33372),

Gene: Stuu\_49 Start: 33420, Stop: 33632, Start Num: 16  
Candidate Starts for Stuu\_49:  
(12, 33183), (Start: 16 @33420 has 10 MA's), (23, 33486),

Gene: Subaru\_51 Start: 37880, Stop: 38110, Start Num: 14  
Candidate Starts for Subaru\_51:  
(Start: 14 @37880 has 18 MA's), (25, 37997), (34, 38096),

Gene: Sue2\_52 Start: 37060, Stop: 37284, Start Num: 13  
Candidate Starts for Sue2\_52:  
(1, 36403), (2, 36421), (4, 36535), (5, 36604), (9, 36670), (Start: 13 @37060 has 26 MA's), (34, 37270),

Gene: Tallboi\_51 Start: 38238, Stop: 38468, Start Num: 14  
Candidate Starts for Tallboi\_51:  
(Start: 14 @38238 has 18 MA's), (25, 38355), (34, 38454),

Gene: Tbone\_52 Start: 37857, Stop: 38078, Start Num: 13  
Candidate Starts for Tbone\_52:  
(Start: 13 @37857 has 26 MA's), (25, 37971), (34, 38064),

Gene: TforTroy\_52 Start: 37603, Stop: 37833, Start Num: 14  
Candidate Starts for TforTroy\_52:  
(Start: 14 @37603 has 18 MA's), (25, 37720), (34, 37819),

Gene: Tian\_52 Start: 39795, Stop: 39995, Start Num: 13  
Candidate Starts for Tian\_52:  
(Start: 13 @39795 has 26 MA's), (34, 39981),

Gene: Tuck\_55 Start: 39348, Stop: 39566, Start Num: 13  
Candidate Starts for Tuck\_55:  
(Start: 13 @39348 has 26 MA's), (25, 39456), (34, 39552),

Gene: Turab\_49 Start: 36357, Stop: 36581, Start Num: 13  
Candidate Starts for Turab\_49:  
(Start: 13 @36357 has 26 MA's), (34, 36567),

Gene: Tutumahutu\_53 Start: 37244, Stop: 37465, Start Num: 13  
Candidate Starts for Tutumahutu\_53:  
(Start: 13 @37244 has 26 MA's), (25, 37358), (34, 37451),

Gene: Tweety19\_55 Start: 36857, Stop: 37057, Start Num: 18

Candidate Starts for Tweety19\_55:

(Start: 18 @36857 has 2 MA's), (22, 36902), (27, 36965), (28, 36983), (29, 36995), (34, 37043),

Gene: VResidence\_52 Start: 36790, Stop: 37014, Start Num: 13

Candidate Starts for VResidence\_52:

(Start: 13 @36790 has 26 MA's), (22, 36856), (26, 36901), (34, 37000),

Gene: Warda\_52 Start: 37355, Stop: 37576, Start Num: 13

Candidate Starts for Warda\_52:

(Start: 13 @37355 has 26 MA's), (25, 37469), (34, 37562),

Gene: Wildwest\_51 Start: 37289, Stop: 37513, Start Num: 13

Candidate Starts for Wildwest\_51:

(Start: 13 @37289 has 26 MA's), (34, 37499),

Gene: Yang\_51 Start: 37412, Stop: 37642, Start Num: 14

Candidate Starts for Yang\_51:

(Start: 14 @37412 has 18 MA's), (25, 37529), (29, 37577), (34, 37628),

Gene: YesChef\_52 Start: 37232, Stop: 37453, Start Num: 13

Candidate Starts for YesChef\_52:

(Start: 13 @37232 has 26 MA's), (25, 37346), (34, 37439),