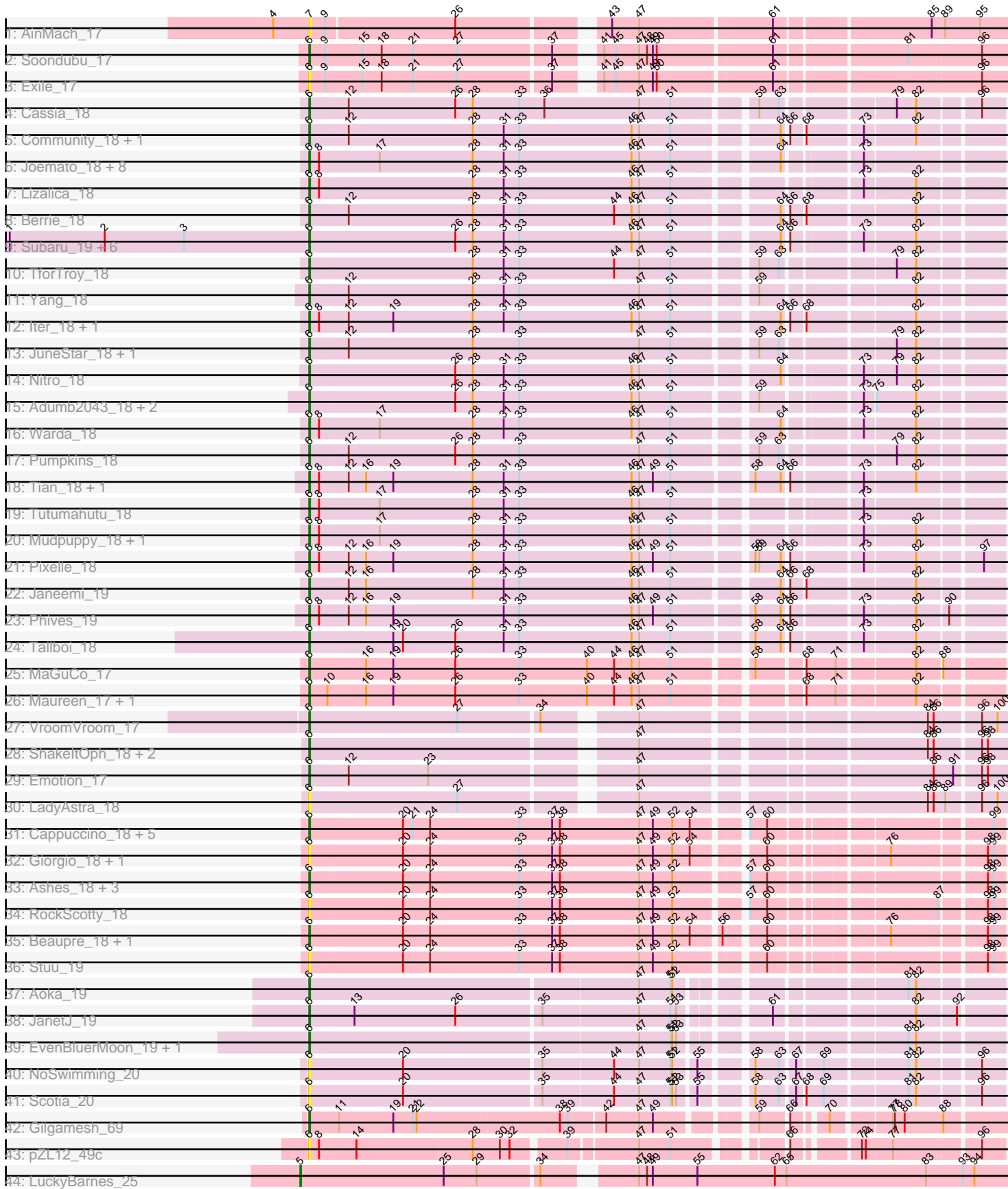


Pham 224523



Note: Tracks are now grouped by subcluster and scaled. Switching in subcluster is indicated by changes in track color. Track scale is now set by default to display the region 30 bp upstream of start 1 to 30 bp downstream of the last possible start. If this default region is judged to be packed too tightly with annotated starts, the track will be further scaled to only show that region of the ORF with annotated starts. This action will be indicated by adding "Zoomed" to the title. For starts, yellow indicates the location of called starts comprised solely of Glimmer/GeneMark auto-annotations, green indicates the location of called starts with at least 1 manual gene annotation.

Pham 224523 Report

This analysis was run 03/28/25 on database version 593.

Pham number 224523 has 79 members, 24 are drafts.

Phages represented in each track:

- Track 1 : AinMach_17
- Track 2 : Soondubu_17
- Track 3 : Exile_17
- Track 4 : Cassia_18
- Track 5 : Community_18, Tuck_19
- Track 6 : Joemato_18, AGrandiflora_18, Cyan_18, JohnDoe_18, Kaylissa_18, Lego_18, Powerpuff_18, YesChef_18, Simpson_20
- Track 7 : Lizalica_18
- Track 8 : Berrie_18
- Track 9 : Subaru_19, Elezi_18, Jstan_19, Eraser_18, Asa16_18, London_18, Niobe_18
- Track 10 : TforTroy_18
- Track 11 : Yang_18
- Track 12 : lter_18, Ascela_18
- Track 13 : JuneStar_18, Shaffner_19
- Track 14 : Nitro_18
- Track 15 : Adumb2043_18, Turab_18, AEgle_18
- Track 16 : Warda_18
- Track 17 : Pumpkins_18
- Track 18 : Tian_18, Amyev_18
- Track 19 : Tutumahutu_18
- Track 20 : Mudpuppy_18, Tbone_18
- Track 21 : Pixelle_18
- Track 22 : Janeemi_19
- Track 23 : Phives_19
- Track 24 : Tallboi_18
- Track 25 : MaGuCo_17
- Track 26 : Maureen_17, Liebe_17
- Track 27 : VroomVroom_17
- Track 28 : ShakeltOph_18, MiniMommy_17, JasmineDragon_17
- Track 29 : Emotion_17
- Track 30 : LadyAstra_18
- Track 31 : Cappuccino_18, Kalimba_18, Gambol_18, Donkey_18, Sabourin_18, Sooty_18
- Track 32 : Giorgio_18, Gumpizza_18
- Track 33 : Ashes_18, Halsey_18, Moss_18, SpecialK_18
- Track 34 : RockScotty_18

- Track 35 : Beaupre_18, Mysterium_18
- Track 36 : Stuu_19
- Track 37 : Aoka_19
- Track 38 : JanetJ_19
- Track 39 : EvenBluerMoon_19, PrairieDogTown_28
- Track 40 : NoSwimming_20
- Track 41 : Scotia_20
- Track 42 : Gilgamesh_69
- Track 43 : pZL12_49c
- Track 44 : LuckyBarnes_25

Summary of Final Annotations (See graph section above for start numbers):

The start number called the most often in the published annotations is 6, it was called in 54 of the 55 non-draft genes in the pham.

Genes that call this "Most Annotated" start:

- AEgle_18, AGrandiflora_18, Adumb2043_18, Amyev_18, Aoka_19, Asa16_18, Ascela_18, Ashes_18, Beaupre_18, Berrie_18, Cappuccino_18, Cassia_18, Community_18, Cyan_18, Donkey_18, Elezi_18, Emotion_17, Eraser_18, EvenBluerMoon_19, Exile_17, Gambol_18, Gilgamesh_69, Giorgio_18, Gumpizza_18, Halsey_18, Iter_18, Janeemi_19, JanetJ_19, JasmineDragon_17, Joemato_18, JohnDoe_18, Jstan_19, JuneStar_18, Kalimba_18, Kaylissa_18, LadyAstra_18, Lego_18, Liebe_17, Lizalica_18, London_18, MaGuCo_17, Maureen_17, MiniMommy_17, Moss_18, Mudpuppy_18, Mysterium_18, Niobe_18, Nitro_18, NoSwimming_20, Phives_19, Pixelle_18, Powerpuff_18, PrairieDogTown_28, Pumpkins_18, RockScotty_18, Sabourin_18, Scotia_20, Shaffner_19, ShakeltOph_18, Simpson_20, Soondubu_17, Sooty_18, SpecialK_18, Stuu_19, Subaru_19, Tallboi_18, Tbone_18, TforTroy_18, Tian_18, Tuck_19, Turab_18, Tutumahutu_18, VroomVroom_17, Warda_18, Yang_18, YesChef_18, pZL12_49c,

Genes that have the "Most Annotated" start but do not call it:

-

Genes that do not have the "Most Annotated" start:

- AinMach_17, LuckyBarnes_25,

Summary by start number:

Start 5:

- Found in 1 of 79 (1.3%) of genes in pham
- Manual Annotations of this start: 1 of 55
- Called 100.0% of time when present
- Phage (with cluster) where this start called: LuckyBarnes_25 (singleton),

Start 6:

- Found in 77 of 79 (97.5%) of genes in pham
- Manual Annotations of this start: 54 of 55
- Called 100.0% of time when present

- Phage (with cluster) where this start called: AEgle_18 (AZ1), AGrandiflora_18 (AZ1), Adumb2043_18 (AZ1), Amyev_18 (AZ1), Aoka_19 (FO), Asa16_18 (AZ1), Ascela_18 (AZ1), Ashes_18 (AZ5), Beaupre_18 (AZ5), Berrie_18 (AZ1), Cappuccino_18 (AZ5), Cassia_18 (AZ1), Community_18 (AZ1), Cyan_18 (AZ1), Donkey_18 (AZ5), Elezi_18 (AZ1), Emotion_17 (AZ4), Eraser_18 (AZ1), EvenBluerMoon_19 (FO), Exile_17 (AZ), Gambol_18 (AZ5), Gilgamesh_69 (singleton), Giorgio_18 (AZ5), Gumpizza_18 (AZ5), Halsey_18 (AZ5), Iter_18 (AZ1), Janeemi_19 (AZ1), JanetJ_19 (FO), JasmineDragon_17 (AZ4), Joemato_18 (AZ1), JohnDoe_18 (AZ1), Jstan_19 (AZ1), JuneStar_18 (AZ1), Kalimba_18 (AZ5), Kaylissa_18 (AZ1), LadyAstra_18 (AZ4), Lego_18 (AZ1), Liebe_17 (AZ2), Lizalica_18 (AZ1), London_18 (AZ1), MaGuCo_17 (AZ2), Maureen_17 (AZ2), MiniMommy_17 (AZ4), Moss_18 (AZ5), Mudpuppy_18 (AZ1), Mysterium_18 (AZ5), Niobe_18 (AZ1), Nitro_18 (AZ1), NoSwimming_20 (FO), Phives_19 (AZ1), Pixelle_18 (AZ1), Powerpuff_18 (AZ1), PrairieDogTown_28 (FO), Pumpkins_18 (AZ1), RockScotty_18 (AZ5), Sabourin_18 (AZ5), Scotia_20 (FO), Shaffner_19 (AZ1), ShakeltOph_18 (AZ4), Simpson_20 (AZ1), Soondubu_17 (AZ), Sooty_18 (AZ5), SpecialK_18 (AZ5), Stuu_19 (AZ5), Subaru_19 (AZ1), Tallboi_18 (AZ1), Tbone_18 (AZ1), TforTroy_18 (AZ1), Tian_18 (AZ1), Tuck_19 (AZ1), Turab_18 (AZ1), Tutumahutu_18 (AZ1), VroomVroom_17 (AZ4), Warda_18 (AZ1), Yang_18 (AZ1), YesChef_18 (AZ1), pZL12_49c (singleton),

Start 7:

- Found in 1 of 79 (1.3%) of genes in pham
- No Manual Annotations of this start.
- Called 100.0% of time when present
- Phage (with cluster) where this start called: AinMach_17 (AZ),

Summary by clusters:

There are 7 clusters represented in this pham: singleton, AZ1, AZ2, AZ, AZ4, AZ5, FO,

Info for manual annotations of cluster AZ:

- Start number 6 was manually annotated 1 time for cluster AZ.

Info for manual annotations of cluster AZ1:

- Start number 6 was manually annotated 33 times for cluster AZ1.

Info for manual annotations of cluster AZ2:

- Start number 6 was manually annotated 3 times for cluster AZ2.

Info for manual annotations of cluster AZ4:

- Start number 6 was manually annotated 3 times for cluster AZ4.

Info for manual annotations of cluster AZ5:

- Start number 6 was manually annotated 10 times for cluster AZ5.

Info for manual annotations of cluster FO:

- Start number 6 was manually annotated 3 times for cluster FO.

Gene Information:

Gene: AEgle_18 Start: 13938, Stop: 14930, Start Num: 6
Candidate Starts for AEgle_18:
(Start: 6 @13938 has 54 MA's), (26, 14160), (28, 14187), (31, 14235), (33, 14259), (46, 14433), (47, 14445), (51, 14493), (59, 14598), (73, 14733), (75, 14748), (82, 14808),

Gene: AGrandiflora_18 Start: 13923, Stop: 14915, Start Num: 6
Candidate Starts for AGrandiflora_18:
(Start: 6 @13923 has 54 MA's), (8, 13938), (17, 14028), (28, 14172), (31, 14220), (33, 14244), (46, 14418), (47, 14430), (51, 14478), (64, 14616), (73, 14718),

Gene: Adumb2043_18 Start: 13937, Stop: 14929, Start Num: 6
Candidate Starts for Adumb2043_18:
(Start: 6 @13937 has 54 MA's), (26, 14159), (28, 14186), (31, 14234), (33, 14258), (46, 14432), (47, 14444), (51, 14492), (59, 14597), (73, 14732), (75, 14747), (82, 14807),

Gene: AinMach_17 Start: 13100, Stop: 14092, Start Num: 7
Candidate Starts for AinMach_17:
(4, 13043), (7, 13100), (9, 13121), (26, 13316), (43, 13517), (47, 13559), (61, 13754), (85, 13979), (89, 13997), (95, 14051),

Gene: Amyev_18 Start: 13952, Stop: 14950, Start Num: 6
Candidate Starts for Amyev_18:
(Start: 6 @13952 has 54 MA's), (8, 13967), (12, 14009), (16, 14036), (19, 14078), (28, 14201), (31, 14249), (33, 14273), (46, 14447), (47, 14459), (49, 14480), (51, 14507), (58, 14609), (64, 14648), (66, 14654), (73, 14753), (82, 14828),

Gene: Aoka_19 Start: 15069, Stop: 16034, Start Num: 6
Candidate Starts for Aoka_19:
(Start: 6 @15069 has 54 MA's), (47, 15561), (51, 15609), (52, 15612), (81, 15900), (82, 15912),

Gene: Asa16_18 Start: 13907, Stop: 14899, Start Num: 6
Candidate Starts for Asa16_18:
(1, 13445), (2, 13592), (3, 13715), (Start: 6 @13907 has 54 MA's), (26, 14129), (28, 14156), (31, 14204), (33, 14228), (46, 14402), (47, 14414), (51, 14462), (64, 14600), (66, 14606), (73, 14702), (82, 14777),

Gene: Ascela_18 Start: 13935, Stop: 14927, Start Num: 6
Candidate Starts for Ascela_18:
(Start: 6 @13935 has 54 MA's), (8, 13950), (12, 13992), (19, 14061), (28, 14184), (31, 14232), (33, 14256), (46, 14430), (47, 14442), (51, 14490), (64, 14628), (66, 14634), (68, 14652), (82, 14805),

Gene: Ashes_18 Start: 13636, Stop: 14622, Start Num: 6
Candidate Starts for Ashes_18:
(Start: 6 @13636 has 54 MA's), (20, 13777), (24, 13819), (33, 13957), (37, 14008), (38, 14020), (47, 14143), (49, 14164), (52, 14194), (57, 14281), (60, 14305), (98, 14596), (99, 14605),

Gene: Beaupre_18 Start: 13637, Stop: 14623, Start Num: 6
Candidate Starts for Beaupre_18:
(Start: 6 @13637 has 54 MA's), (20, 13778), (24, 13820), (33, 13958), (37, 14009), (38, 14021), (47, 14144), (49, 14165), (52, 14195), (54, 14222), (56, 14258), (60, 14306), (76, 14462), (98, 14597), (99, 14606),

Gene: Berrie_18 Start: 14069, Stop: 15064, Start Num: 6

Candidate Starts for Berrie_18:

(Start: 6 @14069 has 54 MA's), (12, 14126), (28, 14318), (31, 14366), (33, 14390), (44, 14537), (46, 14564), (47, 14576), (51, 14624), (64, 14762), (66, 14768), (68, 14786), (82, 14942),

Gene: Cappuccino_18 Start: 13544, Stop: 14530, Start Num: 6

Candidate Starts for Cappuccino_18:

(Start: 6 @13544 has 54 MA's), (20, 13685), (21, 13700), (24, 13727), (33, 13865), (37, 13916), (38, 13928), (47, 14051), (49, 14072), (52, 14102), (54, 14129), (57, 14189), (60, 14213), (99, 14513),

Gene: Cassia_18 Start: 14031, Stop: 15026, Start Num: 6

Candidate Starts for Cassia_18:

(Start: 6 @14031 has 54 MA's), (12, 14088), (26, 14253), (28, 14280), (33, 14352), (36, 14391), (47, 14538), (51, 14586), (59, 14691), (63, 14721), (79, 14874), (82, 14904), (96, 14991),

Gene: Community_18 Start: 15151, Stop: 16146, Start Num: 6

Candidate Starts for Community_18:

(Start: 6 @15151 has 54 MA's), (12, 15208), (28, 15400), (31, 15448), (33, 15472), (46, 15646), (47, 15658), (51, 15706), (64, 15844), (66, 15850), (68, 15868), (73, 15949), (82, 16024),

Gene: Cyan_18 Start: 13926, Stop: 14918, Start Num: 6

Candidate Starts for Cyan_18:

(Start: 6 @13926 has 54 MA's), (8, 13941), (17, 14031), (28, 14175), (31, 14223), (33, 14247), (46, 14421), (47, 14433), (51, 14481), (64, 14619), (73, 14721),

Gene: Donkey_18 Start: 13544, Stop: 14530, Start Num: 6

Candidate Starts for Donkey_18:

(Start: 6 @13544 has 54 MA's), (20, 13685), (21, 13700), (24, 13727), (33, 13865), (37, 13916), (38, 13928), (47, 14051), (49, 14072), (52, 14102), (54, 14129), (57, 14189), (60, 14213), (99, 14513),

Gene: Elezi_18 Start: 13908, Stop: 14900, Start Num: 6

Candidate Starts for Elezi_18:

(1, 13446), (2, 13593), (3, 13716), (Start: 6 @13908 has 54 MA's), (26, 14130), (28, 14157), (31, 14205), (33, 14229), (46, 14403), (47, 14415), (51, 14463), (64, 14601), (66, 14607), (73, 14703), (82, 14778),

Gene: Emotion_17 Start: 12170, Stop: 13147, Start Num: 6

Candidate Starts for Emotion_17:

(Start: 6 @12170 has 54 MA's), (12, 12227), (23, 12350), (47, 12635), (86, 13037), (91, 13064), (96, 13100), (98, 13109),

Gene: Eraser_18 Start: 13908, Stop: 14900, Start Num: 6

Candidate Starts for Eraser_18:

(1, 13446), (2, 13593), (3, 13716), (Start: 6 @13908 has 54 MA's), (26, 14130), (28, 14157), (31, 14205), (33, 14229), (46, 14403), (47, 14415), (51, 14463), (64, 14601), (66, 14607), (73, 14703), (82, 14778),

Gene: EvenBluerMoon_19 Start: 15104, Stop: 16069, Start Num: 6

Candidate Starts for EvenBluerMoon_19:

(Start: 6 @15104 has 54 MA's), (47, 15596), (51, 15644), (52, 15647), (53, 15653), (81, 15935), (82, 15947),

Gene: Exile_17 Start: 14567, Stop: 15568, Start Num: 6

Candidate Starts for Exile_17:

(Start: 6 @14567 has 54 MA's), (9, 14591), (15, 14648), (18, 14678), (21, 14726), (27, 14795), (37, 14933), (41, 14981), (45, 14999), (47, 15035), (49, 15056), (50, 15062), (61, 15230), (96, 15530),

Gene: Gambol_18 Start: 13544, Stop: 14530, Start Num: 6

Candidate Starts for Gambol_18:

(Start: 6 @13544 has 54 MA's), (20, 13685), (21, 13700), (24, 13727), (33, 13865), (37, 13916), (38, 13928), (47, 14051), (49, 14072), (52, 14102), (54, 14129), (57, 14189), (60, 14213), (99, 14513),

Gene: Gilgamesh_69 Start: 63750, Stop: 64724, Start Num: 6

Candidate Starts for Gilgamesh_69:

(Start: 6 @63750 has 54 MA's), (11, 63792), (19, 63876), (21, 63906), (22, 63912), (38, 64131), (39, 64143), (42, 64197), (47, 64248), (49, 64269), (59, 64389), (66, 64428), (70, 64470), (77, 64551), (78, 64554), (80, 64569), (88, 64626),

Gene: Giorgio_18 Start: 13644, Stop: 14630, Start Num: 6

Candidate Starts for Giorgio_18:

(Start: 6 @13644 has 54 MA's), (20, 13785), (24, 13827), (33, 13965), (37, 14016), (38, 14028), (47, 14151), (49, 14172), (52, 14202), (54, 14229), (60, 14313), (76, 14469), (98, 14604), (99, 14613),

Gene: Gumpizza_18 Start: 13637, Stop: 14623, Start Num: 6

Candidate Starts for Gumpizza_18:

(Start: 6 @13637 has 54 MA's), (20, 13778), (24, 13820), (33, 13958), (37, 14009), (38, 14021), (47, 14144), (49, 14165), (52, 14195), (54, 14222), (60, 14306), (76, 14462), (98, 14597), (99, 14606),

Gene: Halsey_18 Start: 13636, Stop: 14622, Start Num: 6

Candidate Starts for Halsey_18:

(Start: 6 @13636 has 54 MA's), (20, 13777), (24, 13819), (33, 13957), (37, 14008), (38, 14020), (47, 14143), (49, 14164), (52, 14194), (57, 14281), (60, 14305), (98, 14596), (99, 14605),

Gene: Iter_18 Start: 13935, Stop: 14927, Start Num: 6

Candidate Starts for Iter_18:

(Start: 6 @13935 has 54 MA's), (8, 13950), (12, 13992), (19, 14061), (28, 14184), (31, 14232), (33, 14256), (46, 14430), (47, 14442), (51, 14490), (64, 14628), (66, 14634), (68, 14652), (82, 14805),

Gene: Janeemi_19 Start: 15179, Stop: 16174, Start Num: 6

Candidate Starts for Janeemi_19:

(Start: 6 @15179 has 54 MA's), (12, 15236), (16, 15263), (28, 15428), (31, 15476), (33, 15500), (46, 15674), (47, 15686), (51, 15734), (64, 15872), (66, 15878), (68, 15896), (82, 16052),

Gene: JanetJ_19 Start: 14886, Stop: 15851, Start Num: 6

Candidate Starts for JanetJ_19:

(Start: 6 @14886 has 54 MA's), (13, 14952), (26, 15108), (35, 15234), (47, 15378), (51, 15426), (53, 15435), (61, 15540), (82, 15729), (92, 15786),

Gene: JasmineDragon_17 Start: 12097, Stop: 13074, Start Num: 6

Candidate Starts for JasmineDragon_17:

(Start: 6 @12097 has 54 MA's), (47, 12562), (84, 12955), (86, 12964), (96, 13027), (98, 13036),

Gene: Joemato_18 Start: 13926, Stop: 14918, Start Num: 6

Candidate Starts for Joemato_18:

(Start: 6 @13926 has 54 MA's), (8, 13941), (17, 14031), (28, 14175), (31, 14223), (33, 14247), (46, 14421), (47, 14433), (51, 14481), (64, 14619), (73, 14721),

Gene: JohnDoe_18 Start: 13921, Stop: 14913, Start Num: 6

Candidate Starts for JohnDoe_18:

(Start: 6 @13921 has 54 MA's), (8, 13936), (17, 14026), (28, 14170), (31, 14218), (33, 14242), (46, 14416), (47, 14428), (51, 14476), (64, 14614), (73, 14716),

Gene: Jstan_19 Start: 13908, Stop: 14900, Start Num: 6

Candidate Starts for Jstan_19:

(1, 13446), (2, 13593), (3, 13716), (Start: 6 @13908 has 54 MA's), (26, 14130), (28, 14157), (31, 14205), (33, 14229), (46, 14403), (47, 14415), (51, 14463), (64, 14601), (66, 14607), (73, 14703), (82, 14778),

Gene: JuneStar_18 Start: 14029, Stop: 15024, Start Num: 6

Candidate Starts for JuneStar_18:

(Start: 6 @14029 has 54 MA's), (12, 14086), (28, 14278), (33, 14350), (47, 14536), (51, 14584), (59, 14689), (63, 14719), (79, 14872), (82, 14902),

Gene: Kalimba_18 Start: 13545, Stop: 14531, Start Num: 6

Candidate Starts for Kalimba_18:

(Start: 6 @13545 has 54 MA's), (20, 13686), (21, 13701), (24, 13728), (33, 13866), (37, 13917), (38, 13929), (47, 14052), (49, 14073), (52, 14103), (54, 14130), (57, 14190), (60, 14214), (99, 14514),

Gene: Kaylissa_18 Start: 13927, Stop: 14919, Start Num: 6

Candidate Starts for Kaylissa_18:

(Start: 6 @13927 has 54 MA's), (8, 13942), (17, 14032), (28, 14176), (31, 14224), (33, 14248), (46, 14422), (47, 14434), (51, 14482), (64, 14620), (73, 14722),

Gene: LadyAstra_18 Start: 12099, Stop: 13076, Start Num: 6

Candidate Starts for LadyAstra_18:

(Start: 6 @12099 has 54 MA's), (27, 12324), (47, 12564), (84, 12957), (86, 12966), (89, 12981), (96, 13029), (100, 13053),

Gene: Lego_18 Start: 13926, Stop: 14918, Start Num: 6

Candidate Starts for Lego_18:

(Start: 6 @13926 has 54 MA's), (8, 13941), (17, 14031), (28, 14175), (31, 14223), (33, 14247), (46, 14421), (47, 14433), (51, 14481), (64, 14619), (73, 14721),

Gene: Liebe_17 Start: 12447, Stop: 13442, Start Num: 6

Candidate Starts for Liebe_17:

(Start: 6 @12447 has 54 MA's), (10, 12474), (16, 12531), (19, 12573), (26, 12669), (33, 12768), (40, 12873), (44, 12915), (46, 12942), (47, 12954), (51, 13002), (68, 13164), (71, 13209), (82, 13320),

Gene: Lizalica_18 Start: 13911, Stop: 14903, Start Num: 6

Candidate Starts for Lizalica_18:

(Start: 6 @13911 has 54 MA's), (8, 13926), (28, 14160), (31, 14208), (33, 14232), (46, 14406), (47, 14418), (51, 14466), (73, 14706), (82, 14781),

Gene: London_18 Start: 13908, Stop: 14900, Start Num: 6

Candidate Starts for London_18:

(1, 13446), (2, 13593), (3, 13716), (Start: 6 @13908 has 54 MA's), (26, 14130), (28, 14157), (31, 14205), (33, 14229), (46, 14403), (47, 14415), (51, 14463), (64, 14601), (66, 14607), (73, 14703), (82, 14778),

Gene: LuckyBarnes_25 Start: 20888, Stop: 21940, Start Num: 5

Candidate Starts for LuckyBarnes_25:

(Start: 5 @20888 has 1 MA's), (25, 21110), (29, 21161), (34, 21251), (47, 21368), (48, 21380), (49, 21389), (55, 21458), (62, 21578), (65, 21596), (83, 21812), (93, 21869), (94, 21887),

Gene: MaGuCo_17 Start: 12381, Stop: 13376, Start Num: 6

Candidate Starts for MaGuCo_17:

(Start: 6 @12381 has 54 MA's), (16, 12465), (19, 12507), (26, 12603), (33, 12702), (40, 12807), (44, 12849), (46, 12876), (47, 12888), (51, 12936), (58, 13035), (68, 13098), (71, 13143), (82, 13254), (88, 13290),

Gene: Maureen_17 Start: 12447, Stop: 13442, Start Num: 6

Candidate Starts for Maureen_17:

(Start: 6 @12447 has 54 MA's), (10, 12474), (16, 12531), (19, 12573), (26, 12669), (33, 12768), (40, 12873), (44, 12915), (46, 12942), (47, 12954), (51, 13002), (68, 13164), (71, 13209), (82, 13320),

Gene: MiniMommy_17 Start: 12098, Stop: 13075, Start Num: 6

Candidate Starts for MiniMommy_17:

(Start: 6 @12098 has 54 MA's), (47, 12563), (84, 12956), (86, 12965), (96, 13028), (98, 13037),

Gene: Moss_18 Start: 13636, Stop: 14622, Start Num: 6

Candidate Starts for Moss_18:

(Start: 6 @13636 has 54 MA's), (20, 13777), (24, 13819), (33, 13957), (37, 14008), (38, 14020), (47, 14143), (49, 14164), (52, 14194), (57, 14281), (60, 14305), (98, 14596), (99, 14605),

Gene: Mudpuppy_18 Start: 13925, Stop: 14917, Start Num: 6

Candidate Starts for Mudpuppy_18:

(Start: 6 @13925 has 54 MA's), (8, 13940), (17, 14030), (28, 14174), (31, 14222), (33, 14246), (46, 14420), (47, 14432), (51, 14480), (73, 14720), (82, 14795),

Gene: Mysterium_18 Start: 13637, Stop: 14623, Start Num: 6

Candidate Starts for Mysterium_18:

(Start: 6 @13637 has 54 MA's), (20, 13778), (24, 13820), (33, 13958), (37, 14009), (38, 14021), (47, 14144), (49, 14165), (52, 14195), (54, 14222), (56, 14258), (60, 14306), (76, 14462), (98, 14597), (99, 14606),

Gene: Niobe_18 Start: 13908, Stop: 14900, Start Num: 6

Candidate Starts for Niobe_18:

(1, 13446), (2, 13593), (3, 13716), (Start: 6 @13908 has 54 MA's), (26, 14130), (28, 14157), (31, 14205), (33, 14229), (46, 14403), (47, 14415), (51, 14463), (64, 14601), (66, 14607), (73, 14703), (82, 14778),

Gene: Nitro_18 Start: 13933, Stop: 14928, Start Num: 6

Candidate Starts for Nitro_18:

(Start: 6 @13933 has 54 MA's), (26, 14155), (28, 14182), (31, 14230), (33, 14254), (46, 14428), (47, 14440), (51, 14488), (64, 14629), (73, 14731), (79, 14776), (82, 14806),

Gene: NoSwimming_20 Start: 16027, Stop: 16992, Start Num: 6

Candidate Starts for NoSwimming_20:

(Start: 6 @16027 has 54 MA's), (20, 16168), (35, 16375), (44, 16480), (47, 16519), (51, 16567), (52, 16570), (55, 16600), (58, 16654), (63, 16690), (67, 16708), (69, 16741), (81, 16858), (82, 16870), (96, 16957),

Gene: Phives_19 Start: 15012, Stop: 16010, Start Num: 6

Candidate Starts for Phives_19:

(Start: 6 @15012 has 54 MA's), (8, 15027), (12, 15069), (16, 15096), (19, 15138), (31, 15309), (33, 15333), (46, 15507), (47, 15519), (49, 15540), (51, 15567), (58, 15669), (64, 15708), (66, 15714), (73, 15813), (82, 15888), (90, 15933),

Gene: Pixelle_18 Start: 13955, Stop: 14953, Start Num: 6

Candidate Starts for Pixelle_18:

(Start: 6 @13955 has 54 MA's), (8, 13970), (12, 14012), (16, 14039), (19, 14081), (28, 14204), (31, 14252), (33, 14276), (46, 14450), (47, 14462), (49, 14483), (51, 14510), (58, 14612), (59, 14618), (64, 14651), (66, 14657), (73, 14756), (82, 14831), (97, 14921),

Gene: Powerpuff_18 Start: 13977, Stop: 14969, Start Num: 6

Candidate Starts for Powerpuff_18:

(Start: 6 @13977 has 54 MA's), (8, 13992), (17, 14082), (28, 14226), (31, 14274), (33, 14298), (46, 14472), (47, 14484), (51, 14532), (64, 14670), (73, 14772),

Gene: PrairieDogTown_28 Start: 15106, Stop: 16071, Start Num: 6

Candidate Starts for PrairieDogTown_28:

(Start: 6 @15106 has 54 MA's), (47, 15598), (51, 15646), (52, 15649), (53, 15655), (81, 15937), (82, 15949),

Gene: Pumpkins_18 Start: 14041, Stop: 15036, Start Num: 6

Candidate Starts for Pumpkins_18:

(Start: 6 @14041 has 54 MA's), (12, 14098), (26, 14263), (28, 14290), (33, 14362), (47, 14548), (51, 14596), (59, 14701), (63, 14731), (79, 14884), (82, 14914),

Gene: RockScotty_18 Start: 13636, Stop: 14622, Start Num: 6

Candidate Starts for RockScotty_18:

(Start: 6 @13636 has 54 MA's), (20, 13777), (24, 13819), (33, 13957), (37, 14008), (38, 14020), (47, 14143), (49, 14164), (52, 14194), (57, 14281), (60, 14305), (87, 14533), (98, 14596), (99, 14605),

Gene: Sabourin_18 Start: 13543, Stop: 14529, Start Num: 6

Candidate Starts for Sabourin_18:

(Start: 6 @13543 has 54 MA's), (20, 13684), (21, 13699), (24, 13726), (33, 13864), (37, 13915), (38, 13927), (47, 14050), (49, 14071), (52, 14101), (54, 14128), (57, 14188), (60, 14212), (99, 14512),

Gene: Scotia_20 Start: 16027, Stop: 16992, Start Num: 6

Candidate Starts for Scotia_20:

(Start: 6 @16027 has 54 MA's), (20, 16168), (35, 16375), (44, 16480), (47, 16519), (51, 16567), (52, 16570), (53, 16576), (55, 16600), (58, 16654), (63, 16690), (67, 16708), (68, 16717), (69, 16741), (81, 16858), (82, 16870), (96, 16957),

Gene: Shaffner_19 Start: 14028, Stop: 15023, Start Num: 6

Candidate Starts for Shaffner_19:

(Start: 6 @14028 has 54 MA's), (12, 14085), (28, 14277), (33, 14349), (47, 14535), (51, 14583), (59, 14688), (63, 14718), (79, 14871), (82, 14901),

Gene: ShakeltOph_18 Start: 12097, Stop: 13074, Start Num: 6

Candidate Starts for ShakeltOph_18:

(Start: 6 @12097 has 54 MA's), (47, 12562), (84, 12955), (86, 12964), (96, 13027), (98, 13036),

Gene: Simpson_20 Start: 13926, Stop: 14918, Start Num: 6

Candidate Starts for Simpson_20:

(Start: 6 @13926 has 54 MA's), (8, 13941), (17, 14031), (28, 14175), (31, 14223), (33, 14247), (46, 14421), (47, 14433), (51, 14481), (64, 14619), (73, 14721),

Gene: Soondubu_17 Start: 14575, Stop: 15576, Start Num: 6

Candidate Starts for Soondubu_17:

(Start: 6 @14575 has 54 MA's), (9, 14599), (15, 14656), (18, 14686), (21, 14734), (27, 14803), (37, 14941), (41, 14989), (45, 15007), (47, 15043), (48, 15055), (49, 15064), (50, 15070), (61, 15238), (81, 15427), (96, 15538),

Gene: Sooty_18 Start: 13546, Stop: 14532, Start Num: 6

Candidate Starts for Sooty_18:

(Start: 6 @13546 has 54 MA's), (20, 13687), (21, 13702), (24, 13729), (33, 13867), (37, 13918), (38, 13930), (47, 14053), (49, 14074), (52, 14104), (54, 14131), (57, 14191), (60, 14215), (99, 14515),

Gene: SpecialK_18 Start: 13543, Stop: 14529, Start Num: 6

Candidate Starts for SpecialK_18:

(Start: 6 @13543 has 54 MA's), (20, 13684), (24, 13726), (33, 13864), (37, 13915), (38, 13927), (47, 14050), (49, 14071), (52, 14101), (57, 14188), (60, 14212), (98, 14503), (99, 14512),

Gene: Stuu_19 Start: 13636, Stop: 14622, Start Num: 6

Candidate Starts for Stuu_19:

(Start: 6 @13636 has 54 MA's), (20, 13777), (24, 13819), (33, 13957), (37, 14008), (38, 14020), (47, 14143), (49, 14164), (52, 14194), (60, 14305), (98, 14596), (99, 14605),

Gene: Subaru_19 Start: 13908, Stop: 14900, Start Num: 6

Candidate Starts for Subaru_19:

(1, 13446), (2, 13593), (3, 13716), (Start: 6 @13908 has 54 MA's), (26, 14130), (28, 14157), (31, 14205), (33, 14229), (46, 14403), (47, 14415), (51, 14463), (64, 14601), (66, 14607), (73, 14703), (82, 14778),

Gene: Tallboi_18 Start: 13934, Stop: 14932, Start Num: 6

Candidate Starts for Tallboi_18:

(Start: 6 @13934 has 54 MA's), (19, 14060), (20, 14075), (26, 14156), (31, 14231), (33, 14255), (46, 14429), (47, 14441), (51, 14489), (58, 14591), (64, 14630), (66, 14636), (73, 14735), (82, 14810),

Gene: Tbone_18 Start: 13930, Stop: 14922, Start Num: 6

Candidate Starts for Tbone_18:

(Start: 6 @13930 has 54 MA's), (8, 13945), (17, 14035), (28, 14179), (31, 14227), (33, 14251), (46, 14425), (47, 14437), (51, 14485), (73, 14725), (82, 14800),

Gene: TforTroy_18 Start: 14059, Stop: 15054, Start Num: 6

Candidate Starts for TforTroy_18:

(Start: 6 @14059 has 54 MA's), (28, 14308), (31, 14356), (33, 14380), (44, 14527), (47, 14566), (51, 14614), (59, 14719), (63, 14749), (79, 14902), (82, 14932),

Gene: Tian_18 Start: 13952, Stop: 14950, Start Num: 6

Candidate Starts for Tian_18:

(Start: 6 @13952 has 54 MA's), (8, 13967), (12, 14009), (16, 14036), (19, 14078), (28, 14201), (31, 14249), (33, 14273), (46, 14447), (47, 14459), (49, 14480), (51, 14507), (58, 14609), (64, 14648), (66, 14654), (73, 14753), (82, 14828),

Gene: Tuck_19 Start: 15131, Stop: 16126, Start Num: 6

Candidate Starts for Tuck_19:

(Start: 6 @15131 has 54 MA's), (12, 15188), (28, 15380), (31, 15428), (33, 15452), (46, 15626), (47, 15638), (51, 15686), (64, 15824), (66, 15830), (68, 15848), (73, 15929), (82, 16004),

Gene: Turab_18 Start: 13937, Stop: 14929, Start Num: 6

Candidate Starts for Turab_18:

(Start: 6 @13937 has 54 MA's), (26, 14159), (28, 14186), (31, 14234), (33, 14258), (46, 14432), (47, 14444), (51, 14492), (59, 14597), (73, 14732), (75, 14747), (82, 14807),

Gene: Tutumahutu_18 Start: 13977, Stop: 14969, Start Num: 6

Candidate Starts for Tutumahutu_18:

(Start: 6 @13977 has 54 MA's), (8, 13992), (17, 14082), (28, 14226), (31, 14274), (33, 14298), (46, 14472), (47, 14484), (51, 14532), (73, 14772),

Gene: VroomVroom_17 Start: 12110, Stop: 13087, Start Num: 6

Candidate Starts for VroomVroom_17:

(Start: 6 @12110 has 54 MA's), (27, 12335), (34, 12455), (47, 12575), (84, 12968), (86, 12977), (96, 13040), (100, 13064),

Gene: Warda_18 Start: 13922, Stop: 14914, Start Num: 6

Candidate Starts for Warda_18:

(Start: 6 @13922 has 54 MA's), (8, 13937), (17, 14027), (28, 14171), (31, 14219), (33, 14243), (46, 14417), (47, 14429), (51, 14477), (64, 14615), (73, 14717), (82, 14792),

Gene: Yang_18 Start: 14030, Stop: 15025, Start Num: 6

Candidate Starts for Yang_18:

(Start: 6 @14030 has 54 MA's), (12, 14087), (28, 14279), (31, 14327), (33, 14351), (47, 14537), (51, 14585), (59, 14690), (82, 14903),

Gene: YesChef_18 Start: 13977, Stop: 14969, Start Num: 6

Candidate Starts for YesChef_18:

(Start: 6 @13977 has 54 MA's), (8, 13992), (17, 14082), (28, 14226), (31, 14274), (33, 14298), (46, 14472), (47, 14484), (51, 14532), (64, 14670), (73, 14772),

Gene: pZL12_49c Start: 38471, Stop: 37530, Start Num: 6

Candidate Starts for pZL12_49c:

(Start: 6 @38471 has 54 MA's), (8, 38456), (14, 38405), (28, 38228), (30, 38189), (32, 38174), (39, 38099), (47, 38003), (51, 37955), (66, 37820), (72, 37736), (74, 37730), (77, 37691), (96, 37565),