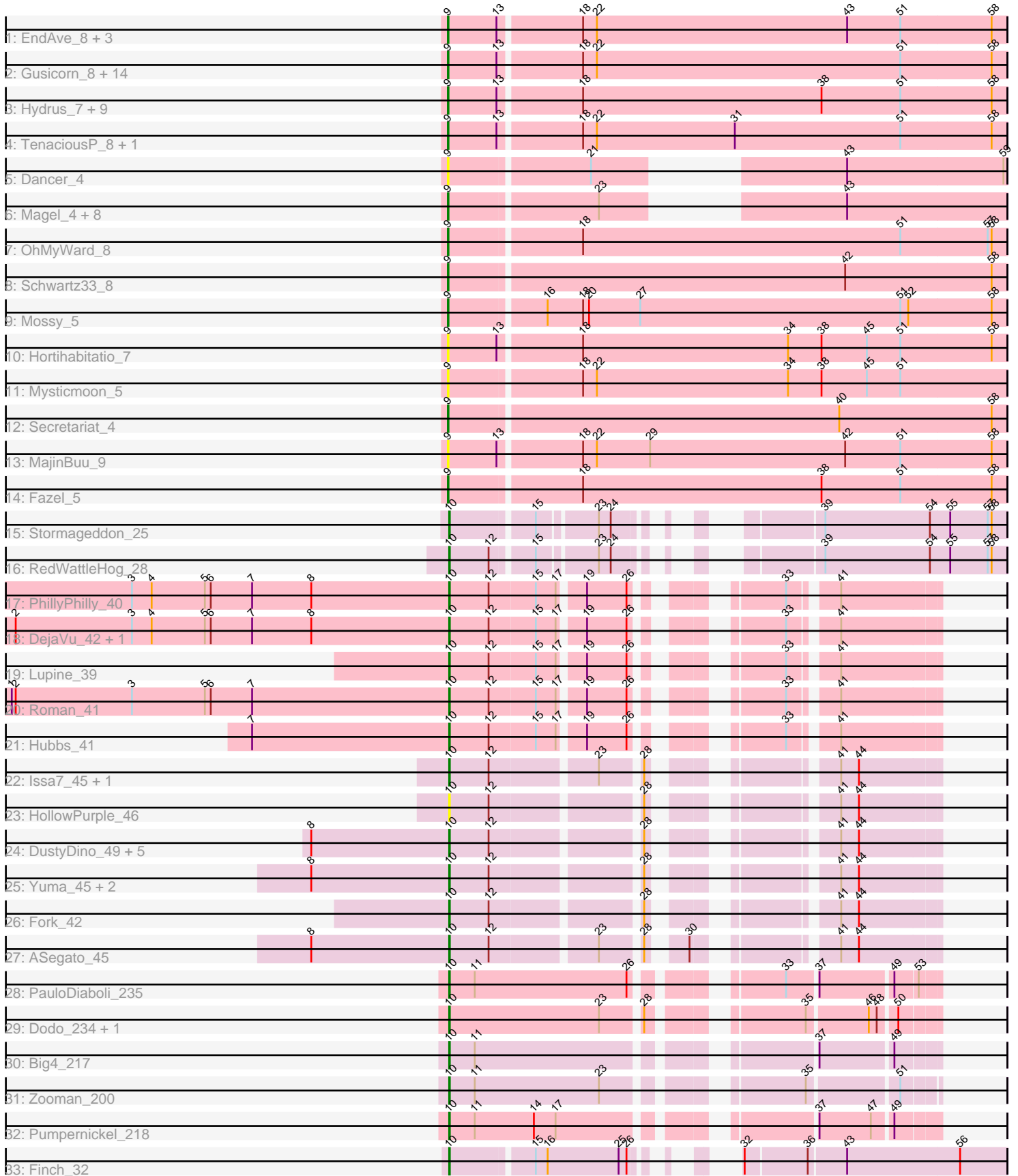


Pham 224526



Note: Tracks are now grouped by subcluster and scaled. Switching in subcluster is indicated by changes in track color. Track scale is now set by default to display the region 30 bp upstream of start 1 to 30 bp downstream of the last possible start. If this default region is judged to be packed too tightly with annotated starts, the track will be further scaled to only show that region of the ORF with annotated starts. This action will be indicated by adding "Zoomed" to the title. For starts, yellow indicates the location of called starts comprised solely of Glimmer/GeneMark auto-annotations, green indicates the location of called starts with at least 1 manual gene annotation.

Pham 224526 Report

This analysis was run 03/28/25 on database version 593.

Pham number 224526 has 78 members, 15 are drafts.

Phages represented in each track:

- Track 1 : EndAve_8, AlainaMarie_8, Chikenjars_8, Nithya_8
- Track 2 : Gusicorn_8, ShaggyRogers_8, BetterYeti_8, Burley_8, BluerMoon_8, Citrus_8, Runhaar_8, Rickmore_7, Vardy_8, Aflac_8, Figliar_8, Duffington_8, Eddiemania_7, Nadmeg_8, OlgasClover_8
- Track 3 : Hydrus_7, Demure_4, Madvan_8, Arataki_4, Kenosha_5, Crocheter_7, Zeph_7, Phepper_8, Untouchable_7, Pherobrine_5
- Track 4 : TenaciousP_8, Jodelie19_8
- Track 5 : Dancer_4
- Track 6 : Magel_4, Odesza_4, Capybara_4, NoPickles_4, Kerry_4, Gill_4, Roney_4, Tanis_4, Gravy_4
- Track 7 : OhMyWard_8
- Track 8 : Schwartz33_8
- Track 9 : Mossy_5
- Track 10 : Hortihabitatio_7
- Track 11 : Mysticmoon_5
- Track 12 : Secretariat_4
- Track 13 : MajinBuu_9
- Track 14 : Fazel_5
- Track 15 : Stormageddon_25
- Track 16 : RedWattleHog_28
- Track 17 : PhillyPhilly_40
- Track 18 : DejaVu_42, Pavlo_39
- Track 19 : Lupine_39
- Track 20 : Roman_41
- Track 21 : Hubbs_41
- Track 22 : Issa7_45, Musetta_46
- Track 23 : HollowPurple_46
- Track 24 : DustyDino_49, Welcome_47, Lyell_46, RunningBrook_47, StevieWelch_46, Necrophoxinus_48
- Track 25 : Yuma_45, Casablanclas_47, Erenyeager_46
- Track 26 : Fork_42
- Track 27 : ASegato_45
- Track 28 : PauloDiaboli_235
- Track 29 : Dodo_234, A3Wally_235
- Track 30 : Big4_217
- Track 31 : Zooman_200
- Track 32 : Pumpernickel_218

- Track 33 : Finch_32

Summary of Final Annotations (See graph section above for start numbers):

The start number called the most often in the published annotations is 9, it was called in 38 of the 63 non-draft genes in the pham.

Genes that call this "Most Annotated" start:

- Aflac_8, AlainaMarie_8, Arataki_4, BetterYeti_8, BluerMoon_8, Burley_8, Capybara_4, Chikenjars_8, Citrus_8, Crocheter_7, Dancer_4, Demure_4, Duffington_8, Eddiemania_7, EndAve_8, Fazel_5, Figliar_8, Gill_4, Gravy_4, Gusicorn_8, Hortihabitatio_7, Hydrus_7, Jodelie19_8, Kenosha_5, Kerry_4, Madvan_8, Magel_4, MajinBuu_9, Mossy_5, Mysticmoon_5, Nadmeg_8, Nithya_8, NoPickles_4, Odesza_4, OhMyWard_8, OlgasClover_8, Phepper_8, Pherobrine_5, Rickmore_7, Roney_4, Runhaar_8, Schwartz33_8, Secretariat_4, ShaggyRogers_8, Tanis_4, TenaciousP_8, Untouchable_7, Vardy_8, Zeph_7,

Genes that have the "Most Annotated" start but do not call it:

-

Genes that do not have the "Most Annotated" start:

- A3Wally_235, ASegato_45, Big4_217, Casablanacas_47, DejaVu_42, Dodo_234, DustyDino_49, Erenyeager_46, Finch_32, Fork_42, HollowPurple_46, Hubbs_41, Issa7_45, Lupine_39, Lyell_46, Musetta_46, Necrophoxinus_48, PauloDiaboli_235, Pavlo_39, PhillyPhilly_40, Pumpnickel_218, RedWattleHog_28, Roman_41, RunningBrook_47, StevieWelch_46, Stormageddon_25, Welcome_47, Yuma_45, Zooman_200,

Summary by start number:

Start 9:

- Found in 49 of 78 (62.8%) of genes in pham
- Manual Annotations of this start: 38 of 63
- Called 100.0% of time when present
- Phage (with cluster) where this start called: Aflac_8 (DJ), AlainaMarie_8 (DJ), Arataki_4 (DJ), BetterYeti_8 (DJ), BluerMoon_8 (DJ), Burley_8 (DJ), Capybara_4 (DJ), Chikenjars_8 (DJ), Citrus_8 (DJ), Crocheter_7 (DJ), Dancer_4 (DJ), Demure_4 (DJ), Duffington_8 (DJ), Eddiemania_7 (DJ), EndAve_8 (DJ), Fazel_5 (DJ), Figliar_8 (DJ), Gill_4 (DJ), Gravy_4 (DJ), Gusicorn_8 (DJ), Hortihabitatio_7 (DJ), Hydrus_7 (DJ), Jodelie19_8 (DJ), Kenosha_5 (DJ), Kerry_4 (DJ), Madvan_8 (DJ), Magel_4 (DJ), MajinBuu_9 (DJ), Mossy_5 (DJ), Mysticmoon_5 (DJ), Nadmeg_8 (DJ), Nithya_8 (DJ), NoPickles_4 (DJ), Odesza_4 (DJ), OhMyWard_8 (DJ), OlgasClover_8 (DJ), Phepper_8 (DJ), Pherobrine_5 (DJ), Rickmore_7 (DJ), Roney_4 (DJ), Runhaar_8 (DJ), Schwartz33_8 (DJ), Secretariat_4 (DJ), ShaggyRogers_8 (DJ), Tanis_4 (DJ), TenaciousP_8 (DJ), Untouchable_7 (DJ), Vardy_8 (DJ), Zeph_7 (DJ),

Start 10:

- Found in 29 of 78 (37.2%) of genes in pham
- Manual Annotations of this start: 25 of 63
- Called 100.0% of time when present

• Phage (with cluster) where this start called: A3Wally_235 (GD1), ASegato_45 (ED2), Big4_217 (GD2), Casablanacas_47 (ED2), DejaVu_42 (ED1), Dodo_234 (GD1), DustyDino_49 (ED2), Erenyeager_46 (ED2), Finch_32 (singleton), Fork_42 (ED2), HollowPurple_46 (ED2), Hubbs_41 (ED1), Issa7_45 (ED2), Lupine_39 (ED1), Lyell_46 (ED2), Musetta_46 (ED2), Necrophoxinus_48 (ED2), PauloDiaboli_235 (GD1), Pavlo_39 (ED1), PhillyPhilly_40 (ED1), Pumpernickel_218 (GD4), RedWattleHog_28 (DX), Roman_41 (ED1), RunningBrook_47 (ED2), StevieWelch_46 (ED2), Stormageddon_25 (DX), Welcome_47 (ED2), Yuma_45 (ED2), Zooman_200 (GD2),

Summary by clusters:

There are 8 clusters represented in this pham: GD1, GD2, DJ, singleton, ED2, ED1, DX, GD4,

Info for manual annotations of cluster DJ:

•Start number 9 was manually annotated 38 times for cluster DJ.

Info for manual annotations of cluster DX:

•Start number 10 was manually annotated 2 times for cluster DX.

Info for manual annotations of cluster ED1:

•Start number 10 was manually annotated 6 times for cluster ED1.

Info for manual annotations of cluster ED2:

•Start number 10 was manually annotated 11 times for cluster ED2.

Info for manual annotations of cluster GD1:

•Start number 10 was manually annotated 2 times for cluster GD1.

Info for manual annotations of cluster GD2:

•Start number 10 was manually annotated 2 times for cluster GD2.

Info for manual annotations of cluster GD4:

•Start number 10 was manually annotated 1 time for cluster GD4.

Gene Information:

Gene: A3Wally_235 Start: 125991, Stop: 126635, Start Num: 10

Candidate Starts for A3Wally_235:

(Start: 10 @125991 has 25 MA's), (23, 126219), (28, 126273), (35, 126456), (46, 126543), (48, 126555), (50, 126579),

Gene: ASegato_45 Start: 19908, Stop: 20519, Start Num: 10

Candidate Starts for ASegato_45:

(8, 19698), (Start: 10 @19908 has 25 MA's), (12, 19968), (23, 20118), (28, 20172), (30, 20211), (41, 20373), (44, 20400),

Gene: Aflac_8 Start: 3585, Stop: 4418, Start Num: 9

Candidate Starts for Aflac_8:

(Start: 9 @3585 has 38 MA's), (13, 3657), (18, 3774), (22, 3795), (51, 4257), (58, 4395),

Gene: AlainaMarie_8 Start: 3576, Stop: 4409, Start Num: 9
Candidate Starts for AlainaMarie_8:
(Start: 9 @3576 has 38 MA's), (13, 3648), (18, 3765), (22, 3786), (43, 4167), (51, 4248), (58, 4386),

Gene: Arataki_4 Start: 1373, Stop: 2206, Start Num: 9
Candidate Starts for Arataki_4:
(Start: 9 @1373 has 38 MA's), (13, 1445), (18, 1562), (38, 1925), (51, 2045), (58, 2183),

Gene: BetterYeti_8 Start: 3582, Stop: 4415, Start Num: 9
Candidate Starts for BetterYeti_8:
(Start: 9 @3582 has 38 MA's), (13, 3654), (18, 3771), (22, 3792), (51, 4254), (58, 4392),

Gene: Big4_217 Start: 121400, Stop: 122044, Start Num: 10
Candidate Starts for Big4_217:
(Start: 10 @121400 has 25 MA's), (11, 121439), (37, 121877), (49, 121982),

Gene: BluerMoon_8 Start: 3579, Stop: 4412, Start Num: 9
Candidate Starts for BluerMoon_8:
(Start: 9 @3579 has 38 MA's), (13, 3651), (18, 3768), (22, 3789), (51, 4251), (58, 4389),

Gene: Burley_8 Start: 3582, Stop: 4415, Start Num: 9
Candidate Starts for Burley_8:
(Start: 9 @3582 has 38 MA's), (13, 3654), (18, 3771), (22, 3792), (51, 4254), (58, 4392),

Gene: Capybara_4 Start: 1145, Stop: 1834, Start Num: 9
Candidate Starts for Capybara_4:
(Start: 9 @1145 has 38 MA's), (23, 1358), (43, 1592),

Gene: Casablancas_47 Start: 19992, Stop: 20603, Start Num: 10
Candidate Starts for Casablancas_47:
(8, 19782), (Start: 10 @19992 has 25 MA's), (12, 20052), (28, 20256), (41, 20457), (44, 20484),

Gene: Chikenjars_8 Start: 3576, Stop: 4409, Start Num: 9
Candidate Starts for Chikenjars_8:
(Start: 9 @3576 has 38 MA's), (13, 3648), (18, 3765), (22, 3786), (43, 4167), (51, 4248), (58, 4386),

Gene: Citrus_8 Start: 3582, Stop: 4415, Start Num: 9
Candidate Starts for Citrus_8:
(Start: 9 @3582 has 38 MA's), (13, 3654), (18, 3771), (22, 3792), (51, 4254), (58, 4392),

Gene: Crocheter_7 Start: 2509, Stop: 3342, Start Num: 9
Candidate Starts for Crocheter_7:
(Start: 9 @2509 has 38 MA's), (13, 2581), (18, 2698), (38, 3061), (51, 3181), (58, 3319),

Gene: Dancer_4 Start: 1145, Stop: 1834, Start Num: 9
Candidate Starts for Dancer_4:
(Start: 9 @1145 has 38 MA's), (21, 1346), (43, 1592), (59, 1829),

Gene: DejaVu_42 Start: 19157, Stop: 19768, Start Num: 10
Candidate Starts for DejaVu_42:
(2, 18497), (3, 18674), (4, 18704), (5, 18785), (6, 18794), (7, 18857), (8, 18947), (Start: 10 @19157 has 25 MA's), (12, 19217), (15, 19286), (17, 19316), (19, 19349), (26, 19409), (33, 19562), (41, 19622),

Gene: Demure_4 Start: 1373, Stop: 2206, Start Num: 9

Candidate Starts for Demure_4:

(Start: 9 @1373 has 38 MA's), (13, 1445), (18, 1562), (38, 1925), (51, 2045), (58, 2183),

Gene: Dodo_234 Start: 125793, Stop: 126437, Start Num: 10

Candidate Starts for Dodo_234:

(Start: 10 @125793 has 25 MA's), (23, 126021), (28, 126075), (35, 126258), (46, 126345), (48, 126357), (50, 126381),

Gene: Duffington_8 Start: 3561, Stop: 4394, Start Num: 9

Candidate Starts for Duffington_8:

(Start: 9 @3561 has 38 MA's), (13, 3633), (18, 3750), (22, 3771), (51, 4233), (58, 4371),

Gene: DustyDino_49 Start: 20847, Stop: 21458, Start Num: 10

Candidate Starts for DustyDino_49:

(8, 20637), (Start: 10 @20847 has 25 MA's), (12, 20907), (28, 21111), (41, 21312), (44, 21339),

Gene: Eddiemania_7 Start: 2767, Stop: 3600, Start Num: 9

Candidate Starts for Eddiemania_7:

(Start: 9 @2767 has 38 MA's), (13, 2839), (18, 2956), (22, 2977), (51, 3439), (58, 3577),

Gene: EndAve_8 Start: 3576, Stop: 4409, Start Num: 9

Candidate Starts for EndAve_8:

(Start: 9 @3576 has 38 MA's), (13, 3648), (18, 3765), (22, 3786), (43, 4167), (51, 4248), (58, 4386),

Gene: Erenyeager_46 Start: 20242, Stop: 20853, Start Num: 10

Candidate Starts for Erenyeager_46:

(8, 20032), (Start: 10 @20242 has 25 MA's), (12, 20302), (28, 20506), (41, 20707), (44, 20734),

Gene: Fazel_5 Start: 2306, Stop: 3139, Start Num: 9

Candidate Starts for Fazel_5:

(Start: 9 @2306 has 38 MA's), (18, 2495), (38, 2858), (51, 2978), (58, 3116),

Gene: Figliar_8 Start: 3585, Stop: 4418, Start Num: 9

Candidate Starts for Figliar_8:

(Start: 9 @3585 has 38 MA's), (13, 3657), (18, 3774), (22, 3795), (51, 4257), (58, 4395),

Gene: Finch_32 Start: 27174, Stop: 27863, Start Num: 10

Candidate Starts for Finch_32:

(Start: 10 @27174 has 25 MA's), (15, 27291), (16, 27309), (25, 27417), (26, 27429), (32, 27477), (36, 27567), (43, 27621), (56, 27792),

Gene: Fork_42 Start: 19557, Stop: 20168, Start Num: 10

Candidate Starts for Fork_42:

(Start: 10 @19557 has 25 MA's), (12, 19617), (28, 19821), (41, 20022), (44, 20049),

Gene: Gill_4 Start: 1145, Stop: 1834, Start Num: 9

Candidate Starts for Gill_4:

(Start: 9 @1145 has 38 MA's), (23, 1358), (43, 1592),

Gene: Gravy_4 Start: 1145, Stop: 1834, Start Num: 9

Candidate Starts for Gravy_4:

(Start: 9 @1145 has 38 MA's), (23, 1358), (43, 1592),

Gene: Gusicorn_8 Start: 3582, Stop: 4415, Start Num: 9

Candidate Starts for Gusicorn_8:

(Start: 9 @3582 has 38 MA's), (13, 3654), (18, 3771), (22, 3792), (51, 4254), (58, 4392),

Gene: HollowPurple_46 Start: 20110, Stop: 20721, Start Num: 10

Candidate Starts for HollowPurple_46:

(Start: 10 @20110 has 25 MA's), (12, 20170), (28, 20374), (41, 20575), (44, 20602),

Gene: Hortihabitatio_7 Start: 2863, Stop: 3696, Start Num: 9

Candidate Starts for Hortihabitatio_7:

(Start: 9 @2863 has 38 MA's), (13, 2935), (18, 3052), (34, 3364), (38, 3415), (45, 3484), (51, 3535), (58, 3673),

Gene: Hubbs_41 Start: 19369, Stop: 19980, Start Num: 10

Candidate Starts for Hubbs_41:

(7, 19069), (Start: 10 @19369 has 25 MA's), (12, 19429), (15, 19498), (17, 19528), (19, 19561), (26, 19621), (33, 19774), (41, 19834),

Gene: Hydrus_7 Start: 2767, Stop: 3600, Start Num: 9

Candidate Starts for Hydrus_7:

(Start: 9 @2767 has 38 MA's), (13, 2839), (18, 2956), (38, 3319), (51, 3439), (58, 3577),

Gene: Issa7_45 Start: 19563, Stop: 20174, Start Num: 10

Candidate Starts for Issa7_45:

(Start: 10 @19563 has 25 MA's), (12, 19623), (23, 19773), (28, 19827), (41, 20028), (44, 20055),

Gene: Jodelie19_8 Start: 3579, Stop: 4412, Start Num: 9

Candidate Starts for Jodelie19_8:

(Start: 9 @3579 has 38 MA's), (13, 3651), (18, 3768), (22, 3789), (31, 3999), (51, 4251), (58, 4389),

Gene: Kenosha_5 Start: 1368, Stop: 2201, Start Num: 9

Candidate Starts for Kenosha_5:

(Start: 9 @1368 has 38 MA's), (13, 1440), (18, 1557), (38, 1920), (51, 2040), (58, 2178),

Gene: Kerry_4 Start: 1145, Stop: 1834, Start Num: 9

Candidate Starts for Kerry_4:

(Start: 9 @1145 has 38 MA's), (23, 1358), (43, 1592),

Gene: Lupine_39 Start: 18570, Stop: 19181, Start Num: 10

Candidate Starts for Lupine_39:

(Start: 10 @18570 has 25 MA's), (12, 18630), (15, 18699), (17, 18729), (19, 18762), (26, 18822), (33, 18975), (41, 19035),

Gene: Lyell_46 Start: 20161, Stop: 20772, Start Num: 10

Candidate Starts for Lyell_46:

(8, 19951), (Start: 10 @20161 has 25 MA's), (12, 20221), (28, 20425), (41, 20626), (44, 20653),

Gene: Madvan_8 Start: 3582, Stop: 4415, Start Num: 9

Candidate Starts for Madvan_8:

(Start: 9 @3582 has 38 MA's), (13, 3654), (18, 3771), (38, 4134), (51, 4254), (58, 4392),

Gene: Magel_4 Start: 1145, Stop: 1834, Start Num: 9

Candidate Starts for Magel_4:

(Start: 9 @1145 has 38 MA's), (23, 1358), (43, 1592),

Gene: MajinBuu_9 Start: 3579, Stop: 4412, Start Num: 9

Candidate Starts for MajinBuu_9:

(Start: 9 @3579 has 38 MA's), (13, 3651), (18, 3768), (22, 3789), (29, 3870), (42, 4167), (51, 4251), (58, 4389),

Gene: Mossy_5 Start: 1428, Stop: 2261, Start Num: 9

Candidate Starts for Mossy_5:

(Start: 9 @1428 has 38 MA's), (16, 1563), (18, 1617), (20, 1626), (27, 1704), (51, 2100), (52, 2112), (58, 2238),

Gene: Musetta_46 Start: 20279, Stop: 20890, Start Num: 10

Candidate Starts for Musetta_46:

(Start: 10 @20279 has 25 MA's), (12, 20339), (23, 20489), (28, 20543), (41, 20744), (44, 20771),

Gene: Mysticmoon_5 Start: 1338, Stop: 2171, Start Num: 9

Candidate Starts for Mysticmoon_5:

(Start: 9 @1338 has 38 MA's), (18, 1527), (22, 1548), (34, 1839), (38, 1890), (45, 1959), (51, 2010),

Gene: Nadmeg_8 Start: 3583, Stop: 4416, Start Num: 9

Candidate Starts for Nadmeg_8:

(Start: 9 @3583 has 38 MA's), (13, 3655), (18, 3772), (22, 3793), (51, 4255), (58, 4393),

Gene: Necrophoxinus_48 Start: 20855, Stop: 21466, Start Num: 10

Candidate Starts for Necrophoxinus_48:

(8, 20645), (Start: 10 @20855 has 25 MA's), (12, 20915), (28, 21119), (41, 21320), (44, 21347),

Gene: Nithya_8 Start: 3576, Stop: 4409, Start Num: 9

Candidate Starts for Nithya_8:

(Start: 9 @3576 has 38 MA's), (13, 3648), (18, 3765), (22, 3786), (43, 4167), (51, 4248), (58, 4386),

Gene: NoPickles_4 Start: 1145, Stop: 1834, Start Num: 9

Candidate Starts for NoPickles_4:

(Start: 9 @1145 has 38 MA's), (23, 1358), (43, 1592),

Gene: Odesza_4 Start: 1145, Stop: 1834, Start Num: 9

Candidate Starts for Odesza_4:

(Start: 9 @1145 has 38 MA's), (23, 1358), (43, 1592),

Gene: OhMyWard_8 Start: 3580, Stop: 4413, Start Num: 9

Candidate Starts for OhMyWard_8:

(Start: 9 @3580 has 38 MA's), (18, 3769), (51, 4252), (57, 4384), (58, 4390),

Gene: OlgasClover_8 Start: 3576, Stop: 4409, Start Num: 9

Candidate Starts for OlgasClover_8:

(Start: 9 @3576 has 38 MA's), (13, 3648), (18, 3765), (22, 3786), (51, 4248), (58, 4386),

Gene: PauloDiaboli_235 Start: 124195, Stop: 124839, Start Num: 10

Candidate Starts for PauloDiaboli_235:

(Start: 10 @124195 has 25 MA's), (11, 124234), (26, 124465), (33, 124630), (37, 124672), (49, 124777), (53, 124810),

Gene: Pavlo_39 Start: 18848, Stop: 19459, Start Num: 10

Candidate Starts for Pavlo_39:

(2, 18188), (3, 18365), (4, 18395), (5, 18476), (6, 18485), (7, 18548), (8, 18638), (Start: 10 @18848 has 25 MA's), (12, 18908), (15, 18977), (17, 19007), (19, 19040), (26, 19100), (33, 19253), (41, 19313),

Gene: Phepper_8 Start: 3582, Stop: 4415, Start Num: 9

Candidate Starts for Phepper_8:

(Start: 9 @3582 has 38 MA's), (13, 3654), (18, 3771), (38, 4134), (51, 4254), (58, 4392),

Gene: Pherobrine_5 Start: 1339, Stop: 2172, Start Num: 9

Candidate Starts for Pherobrine_5:

(Start: 9 @1339 has 38 MA's), (13, 1411), (18, 1528), (38, 1891), (51, 2011), (58, 2149),

Gene: PhillyPhilly_40 Start: 18750, Stop: 19361, Start Num: 10

Candidate Starts for PhillyPhilly_40:

(3, 18267), (4, 18297), (5, 18378), (6, 18387), (7, 18450), (8, 18540), (Start: 10 @18750 has 25 MA's), (12, 18810), (15, 18879), (17, 18909), (19, 18942), (26, 19002), (33, 19155), (41, 19215),

Gene: Pumpernickel_218 Start: 125283, Stop: 125930, Start Num: 10

Candidate Starts for Pumpernickel_218:

(Start: 10 @125283 has 25 MA's), (11, 125322), (14, 125412), (17, 125445), (37, 125760), (47, 125838), (49, 125865),

Gene: RedWattleHog_28 Start: 28686, Stop: 29360, Start Num: 10

Candidate Starts for RedWattleHog_28:

(Start: 10 @28686 has 25 MA's), (12, 28746), (15, 28803), (23, 28884), (24, 28902), (39, 29085), (54, 29244), (55, 29274), (57, 29331), (58, 29337),

Gene: Rickmore_7 Start: 2144, Stop: 2977, Start Num: 9

Candidate Starts for Rickmore_7:

(Start: 9 @2144 has 38 MA's), (13, 2216), (18, 2333), (22, 2354), (51, 2816), (58, 2954),

Gene: Roman_41 Start: 19216, Stop: 19827, Start Num: 10

Candidate Starts for Roman_41:

(1, 18550), (2, 18556), (3, 18733), (5, 18844), (6, 18853), (7, 18916), (Start: 10 @19216 has 25 MA's), (12, 19276), (15, 19345), (17, 19375), (19, 19408), (26, 19468), (33, 19621), (41, 19681),

Gene: Roney_4 Start: 1145, Stop: 1834, Start Num: 9

Candidate Starts for Roney_4:

(Start: 9 @1145 has 38 MA's), (23, 1358), (43, 1592),

Gene: Runhaar_8 Start: 3582, Stop: 4415, Start Num: 9

Candidate Starts for Runhaar_8:

(Start: 9 @3582 has 38 MA's), (13, 3654), (18, 3771), (22, 3792), (51, 4254), (58, 4392),

Gene: RunningBrook_47 Start: 20847, Stop: 21458, Start Num: 10

Candidate Starts for RunningBrook_47:

(8, 20637), (Start: 10 @20847 has 25 MA's), (12, 20907), (28, 21111), (41, 21312), (44, 21339),

Gene: Schwartz33_8 Start: 3598, Stop: 4431, Start Num: 9

Candidate Starts for Schwartz33_8:
(Start: 9 @3598 has 38 MA's), (42, 4186), (58, 4408),

Gene: Secretariat_4 Start: 1204, Stop: 2037, Start Num: 9
Candidate Starts for Secretariat_4:
(Start: 9 @1204 has 38 MA's), (40, 1783), (58, 2014),

Gene: ShaggyRogers_8 Start: 3581, Stop: 4414, Start Num: 9
Candidate Starts for ShaggyRogers_8:
(Start: 9 @3581 has 38 MA's), (13, 3653), (18, 3770), (22, 3791), (51, 4253), (58, 4391),

Gene: StevieWelch_46 Start: 20247, Stop: 20858, Start Num: 10
Candidate Starts for StevieWelch_46:
(8, 20037), (Start: 10 @20247 has 25 MA's), (12, 20307), (28, 20511), (41, 20712), (44, 20739),

Gene: Stormageddon_25 Start: 28669, Stop: 29343, Start Num: 10
Candidate Starts for Stormageddon_25:
(Start: 10 @28669 has 25 MA's), (15, 28786), (23, 28867), (24, 28885), (39, 29068), (54, 29227), (55, 29257), (57, 29314), (58, 29320),

Gene: Tanis_4 Start: 1145, Stop: 1684, Start Num: 9
Candidate Starts for Tanis_4:
(Start: 9 @1145 has 38 MA's), (23, 1358), (43, 1442),

Gene: TenaciousP_8 Start: 3579, Stop: 4412, Start Num: 9
Candidate Starts for TenaciousP_8:
(Start: 9 @3579 has 38 MA's), (13, 3651), (18, 3768), (22, 3789), (31, 3999), (51, 4251), (58, 4389),

Gene: Untouchable_7 Start: 2508, Stop: 3341, Start Num: 9
Candidate Starts for Untouchable_7:
(Start: 9 @2508 has 38 MA's), (13, 2580), (18, 2697), (38, 3060), (51, 3180), (58, 3318),

Gene: Vardy_8 Start: 3581, Stop: 4414, Start Num: 9
Candidate Starts for Vardy_8:
(Start: 9 @3581 has 38 MA's), (13, 3653), (18, 3770), (22, 3791), (51, 4253), (58, 4391),

Gene: Welcome_47 Start: 20264, Stop: 20875, Start Num: 10
Candidate Starts for Welcome_47:
(8, 20054), (Start: 10 @20264 has 25 MA's), (12, 20324), (28, 20528), (41, 20729), (44, 20756),

Gene: Yuma_45 Start: 20175, Stop: 20786, Start Num: 10
Candidate Starts for Yuma_45:
(8, 19965), (Start: 10 @20175 has 25 MA's), (12, 20235), (28, 20439), (41, 20640), (44, 20667),

Gene: Zeph_7 Start: 2767, Stop: 3600, Start Num: 9
Candidate Starts for Zeph_7:
(Start: 9 @2767 has 38 MA's), (13, 2839), (18, 2956), (38, 3319), (51, 3439), (58, 3577),

Gene: Zooman_200 Start: 118042, Stop: 118683, Start Num: 10
Candidate Starts for Zooman_200:
(Start: 10 @118042 has 25 MA's), (11, 118081), (23, 118270), (35, 118507), (51, 118633),