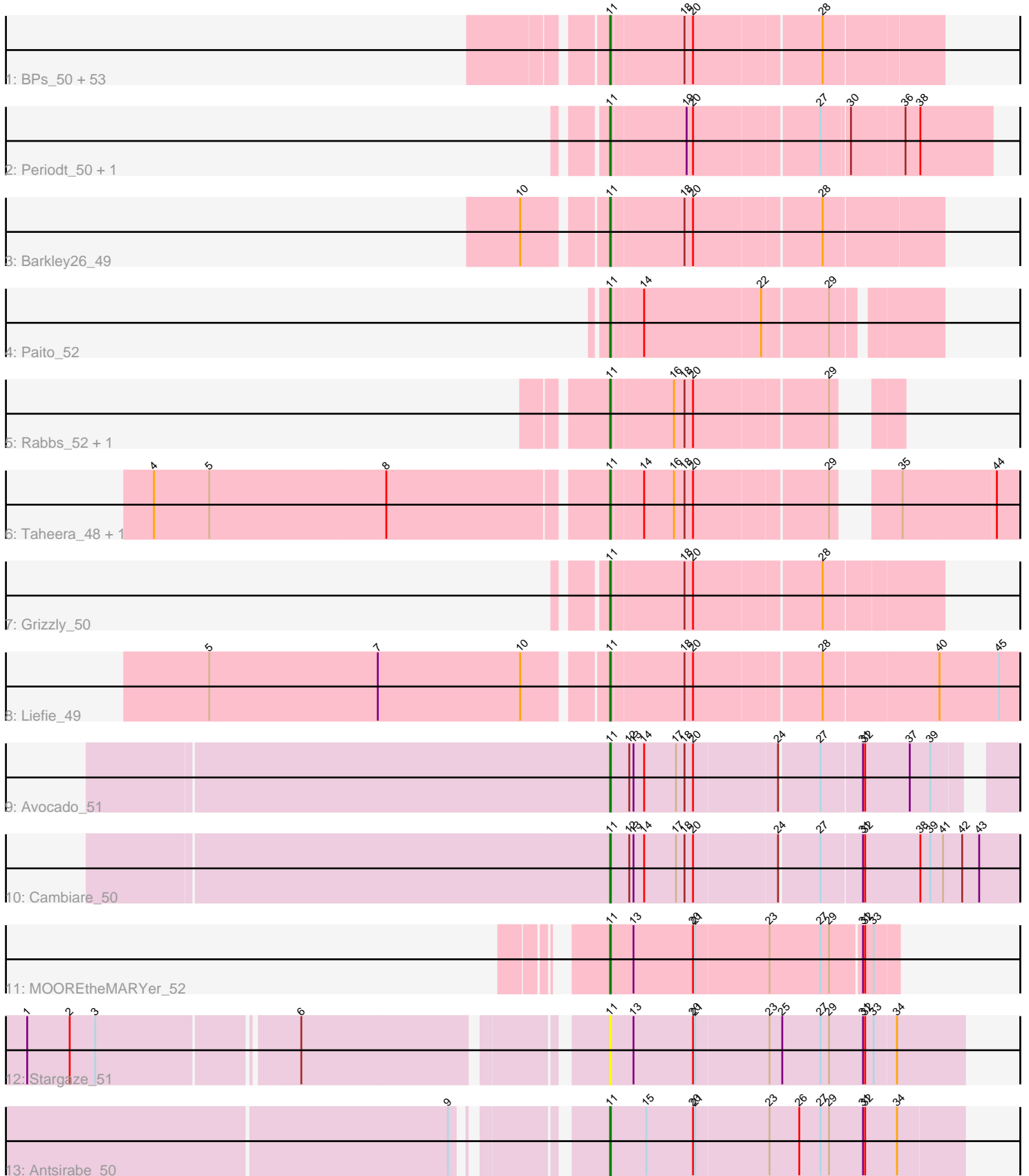


Pham 224558



Note: Tracks are now grouped by subcluster and scaled. Switching in subcluster is indicated by changes in track color. Track scale is now set by default to display the region 30 bp upstream of start 1 to 30 bp downstream of the last possible start. If this default region is judged to be packed too tightly with annotated starts, the track will be further scaled to only show that region of the ORF with annotated starts. This action will be indicated by adding "Zoomed" to the title. For starts, yellow indicates the location of called starts comprised solely of Glimmer/GeneMark auto-annotations, green indicates the location of called starts with at least 1 manual gene annotation.

Pham 224558 Report

This analysis was run 03/28/25 on database version 593.

Pham number 224558 has 69 members, 5 are drafts.

Phages represented in each track:

- Track 1 : BPs_50, DNAllI_0048, CassieYates_50, Darionha_50, Kareem_50, JorRay_50, Avrafan_50, TomBrady_50, BruceB_50, Coleslaw_50, CLED96_50, Annihilator_50, Aroostook_50, Phish_49, Chance64_50, Marmie_50, Angel_50, Olga_50, Zombie_49, Sizemore_50, Kasen3_50, AzulaCat_48, Camri_50, Plagueis_50, Peeb_49, Frosty24_50, Crespo_49, Schiebel_50, Gideon_51, Renaissance_50, Cedasite_50, OctaviousRex_49, Halo_50, Cherrybomb426_50, LouisV14_52, PinkYoshi_50, DMoney_49, BQuat_50, Sweets_49, ZoMa_48, Jane_50, Remy19_50, TinaBug_48, Jonghyun_48, ShaboiShabazz_49, GoldenAsh_49, Hotshotbaby7_50, Wendigo_48, Hope_50, Phreak_50, ECartman_48, Mowgli_50, Gomashi_49, Maliketh_48
- Track 2 : Periodt_50, Jolene_50
- Track 3 : Barkley26_49
- Track 4 : Paito_52
- Track 5 : Rabbs_52, Sneeze_51
- Track 6 : Taheera_48, Terror_48
- Track 7 : Grizzly_50
- Track 8 : Liefie_49
- Track 9 : Avocado_51
- Track 10 : Cambiare_50
- Track 11 : MOOREtheMARYer_52
- Track 12 : Stargaze_51
- Track 13 : Antsirabe_50

Summary of Final Annotations (See graph section above for start numbers):

The start number called the most often in the published annotations is 11, it was called in 64 of the 64 non-draft genes in the pham.

Genes that call this "Most Annotated" start:

- Angel_50, Annihilator_50, Antsirabe_50, Aroostook_50, Avocado_51, Avrafan_50, AzulaCat_48, BPs_50, BQuat_50, Barkley26_49, BruceB_50, CLED96_50, Cambiare_50, Camri_50, CassieYates_50, Cedasite_50, Chance64_50, Cherrybomb426_50, Coleslaw_50, Crespo_49, DMoney_49, DNAllI_0048, Darionha_50, ECartman_48, Frosty24_50, Gideon_51, GoldenAsh_49, Gomashi_49,

Grizzly_50, Halo_50, Hope_50, Hotshotbaby7_50, Jane_50, Jolene_50, Jonghyun_48, JorRay_50, Kareem_50, Kasen3_50, Liefie_49, LouisV14_52, MOOREtheMARYer_52, Maliketh_48, Marmie_50, Mowgli_50, OctaviousRex_49, Olga_50, Paito_52, Peeb_49, Periodt_50, Phish_49, Phreak_50, PinkYoshi_50, Plagueis_50, Rabbs_52, Remy19_50, Renaissance_50, Schiebel_50, ShaboiShabazz_49, Sizemore_50, Sneeze_51, Stargaze_51, Sweets_49, Taheera_48, Terror_48, TinaBug_48, TomBrady_50, Wendigo_48, ZoMa_48, Zombie_49,

Genes that have the "Most Annotated" start but do not call it:

-

Genes that do not have the "Most Annotated" start:

-

Summary by start number:

Start 11:

- Found in 69 of 69 (100.0%) of genes in pham
- Manual Annotations of this start: 64 of 64
- Called 100.0% of time when present
- Phage (with cluster) where this start called: Angel_50 (G1), Annihilator_50 (G1), Antsirabe_50 (G5), Aroostook_50 (G1), Avocado_51 (G2), Avrafan_50 (G1), AzulaCat_48 (G1), BPs_50 (G1), BQuat_50 (G1), Barkley26_49 (G1), BruceB_50 (G1), CLED96_50 (G1), Cambiare_50 (G2), Camri_50 (G1), CassieYates_50 (G1), Cedasite_50 (G1), Chance64_50 (G1), Cherrybomb426_50 (G1), Coleslaw_50 (G1), Crespo_49 (G1), DMoney_49 (G1), DNAIII_0048 (G1), Darionha_50 (G1), ECartman_48 (G1), Frosty24_50 (G1), Gideon_51 (G1), GoldenAsh_49 (G1), Gomashi_49 (G1), Grizzly_50 (G1), Halo_50 (G1), Hope_50 (G1), Hotshotbaby7_50 (G1), Jane_50 (G1), Jolene_50 (G1), Jonghyun_48 (G1), JorRay_50 (G1), Kareem_50 (G1), Kasen3_50 (G1), Liefie_49 (G1), LouisV14_52 (G1), MOOREtheMARYer_52 (G3), Maliketh_48 (G1), Marmie_50 (G1), Mowgli_50 (G1), OctaviousRex_49 (G1), Olga_50 (G1), Paito_52 (G1), Peeb_49 (G1), Periodt_50 (G1), Phish_49 (G1), Phreak_50 (G1), PinkYoshi_50 (G1), Plagueis_50 (G1), Rabbs_52 (G1), Remy19_50 (G1), Renaissance_50 (G1), Schiebel_50 (G1), ShaboiShabazz_49 (G1), Sizemore_50 (G1), Sneeze_51 (G1), Stargaze_51 (G5), Sweets_49 (G1), Taheera_48 (G1), Terror_48 (G1), TinaBug_48 (G1), TomBrady_50 (G1), Wendigo_48 (G1), ZoMa_48 (G1), Zombie_49 (G1),

Summary by clusters:

There are 4 clusters represented in this pham: G5, G3, G2, G1,

Info for manual annotations of cluster G1:

- Start number 11 was manually annotated 60 times for cluster G1.

Info for manual annotations of cluster G2:

- Start number 11 was manually annotated 2 times for cluster G2.

Info for manual annotations of cluster G3:

- Start number 11 was manually annotated 1 time for cluster G3.

Info for manual annotations of cluster G5:

- Start number 11 was manually annotated 1 time for cluster G5.

Gene Information:

Gene: Angel_50 Start: 36462, Stop: 36902, Start Num: 11

Candidate Starts for Angel_50:

(Start: 11 @36462 has 64 MA's), (18, 36561), (20, 36573), (28, 36744),

Gene: Annihilator_50 Start: 36468, Stop: 36908, Start Num: 11

Candidate Starts for Annihilator_50:

(Start: 11 @36468 has 64 MA's), (18, 36567), (20, 36579), (28, 36750),

Gene: Antsirabe_50 Start: 37691, Stop: 38182, Start Num: 11

Candidate Starts for Antsirabe_50:

(9, 37529), (Start: 11 @37691 has 64 MA's), (15, 37742), (20, 37808), (21, 37811), (23, 37913), (26, 37955), (27, 37985), (29, 37997), (31, 38042), (32, 38045), (34, 38090),

Gene: Aroostook_50 Start: 36477, Stop: 36917, Start Num: 11

Candidate Starts for Aroostook_50:

(Start: 11 @36477 has 64 MA's), (18, 36576), (20, 36588), (28, 36759),

Gene: Avocado_51 Start: 38631, Stop: 39161, Start Num: 11

Candidate Starts for Avocado_51:

(Start: 11 @38631 has 64 MA's), (12, 38658), (13, 38664), (14, 38679), (17, 38724), (18, 38736), (20, 38748), (24, 38859), (27, 38913), (31, 38967), (32, 38970), (37, 39033), (39, 39060),

Gene: Avrafan_50 Start: 36477, Stop: 36917, Start Num: 11

Candidate Starts for Avrafan_50:

(Start: 11 @36477 has 64 MA's), (18, 36576), (20, 36588), (28, 36759),

Gene: AzulaCat_48 Start: 36477, Stop: 36917, Start Num: 11

Candidate Starts for AzulaCat_48:

(Start: 11 @36477 has 64 MA's), (18, 36576), (20, 36588), (28, 36759),

Gene: BPs_50 Start: 36477, Stop: 36917, Start Num: 11

Candidate Starts for BPs_50:

(Start: 11 @36477 has 64 MA's), (18, 36576), (20, 36588), (28, 36759),

Gene: BQuat_50 Start: 36914, Stop: 37354, Start Num: 11

Candidate Starts for BQuat_50:

(Start: 11 @36914 has 64 MA's), (18, 37013), (20, 37025), (28, 37196),

Gene: Barkley26_49 Start: 36379, Stop: 36822, Start Num: 11

Candidate Starts for Barkley26_49:

(10, 36274), (Start: 11 @36379 has 64 MA's), (18, 36478), (20, 36490), (28, 36661),

Gene: BruceB_50 Start: 36477, Stop: 36917, Start Num: 11

Candidate Starts for BruceB_50:

(Start: 11 @36477 has 64 MA's), (18, 36576), (20, 36588), (28, 36759),

Gene: CLED96_50 Start: 36477, Stop: 36917, Start Num: 11

Candidate Starts for CLED96_50:

(Start: 11 @36477 has 64 MA's), (18, 36576), (20, 36588), (28, 36759),

Gene: Cambiare_50 Start: 38392, Stop: 38961, Start Num: 11

Candidate Starts for Cambiare_50:

(Start: 11 @38392 has 64 MA's), (12, 38419), (13, 38425), (14, 38440), (17, 38485), (18, 38497), (20, 38509), (24, 38620), (27, 38674), (31, 38728), (32, 38731), (38, 38809), (39, 38821), (41, 38839), (42, 38866), (43, 38890),

Gene: Camri_50 Start: 36477, Stop: 36917, Start Num: 11

Candidate Starts for Camri_50:

(Start: 11 @36477 has 64 MA's), (18, 36576), (20, 36588), (28, 36759),

Gene: CassieYates_50 Start: 36477, Stop: 36917, Start Num: 11

Candidate Starts for CassieYates_50:

(Start: 11 @36477 has 64 MA's), (18, 36576), (20, 36588), (28, 36759),

Gene: Cedasite_50 Start: 36477, Stop: 36917, Start Num: 11

Candidate Starts for Cedasite_50:

(Start: 11 @36477 has 64 MA's), (18, 36576), (20, 36588), (28, 36759),

Gene: Chance64_50 Start: 36477, Stop: 36917, Start Num: 11

Candidate Starts for Chance64_50:

(Start: 11 @36477 has 64 MA's), (18, 36576), (20, 36588), (28, 36759),

Gene: Cherrybomb426_50 Start: 36477, Stop: 36917, Start Num: 11

Candidate Starts for Cherrybomb426_50:

(Start: 11 @36477 has 64 MA's), (18, 36576), (20, 36588), (28, 36759),

Gene: Coleslaw_50 Start: 36914, Stop: 37354, Start Num: 11

Candidate Starts for Coleslaw_50:

(Start: 11 @36914 has 64 MA's), (18, 37013), (20, 37025), (28, 37196),

Gene: Crespo_49 Start: 36478, Stop: 36918, Start Num: 11

Candidate Starts for Crespo_49:

(Start: 11 @36478 has 64 MA's), (18, 36577), (20, 36589), (28, 36760),

Gene: DMoney_49 Start: 36477, Stop: 36917, Start Num: 11

Candidate Starts for DMoney_49:

(Start: 11 @36477 has 64 MA's), (18, 36576), (20, 36588), (28, 36759),

Gene: DNAIII_0048 Start: 35012, Stop: 35452, Start Num: 11

Candidate Starts for DNAIII_0048:

(Start: 11 @35012 has 64 MA's), (18, 35111), (20, 35123), (28, 35294),

Gene: Darionha_50 Start: 36477, Stop: 36917, Start Num: 11

Candidate Starts for Darionha_50:

(Start: 11 @36477 has 64 MA's), (18, 36576), (20, 36588), (28, 36759),

Gene: ECartman_48 Start: 36477, Stop: 36917, Start Num: 11

Candidate Starts for ECartman_48:

(Start: 11 @36477 has 64 MA's), (18, 36576), (20, 36588), (28, 36759),

Gene: Frosty24_50 Start: 36477, Stop: 36917, Start Num: 11
Candidate Starts for Frosty24_50:
(Start: 11 @36477 has 64 MA's), (18, 36576), (20, 36588), (28, 36759),

Gene: Gideon_51 Start: 36924, Stop: 37364, Start Num: 11
Candidate Starts for Gideon_51:
(Start: 11 @36924 has 64 MA's), (18, 37023), (20, 37035), (28, 37206),

Gene: GoldenAsh_49 Start: 36462, Stop: 36902, Start Num: 11
Candidate Starts for GoldenAsh_49:
(Start: 11 @36462 has 64 MA's), (18, 36561), (20, 36573), (28, 36744),

Gene: Gomashi_49 Start: 36478, Stop: 36918, Start Num: 11
Candidate Starts for Gomashi_49:
(Start: 11 @36478 has 64 MA's), (18, 36577), (20, 36589), (28, 36760),

Gene: Grizzly_50 Start: 36549, Stop: 36989, Start Num: 11
Candidate Starts for Grizzly_50:
(Start: 11 @36549 has 64 MA's), (18, 36648), (20, 36660), (28, 36831),

Gene: Halo_50 Start: 36472, Stop: 36912, Start Num: 11
Candidate Starts for Halo_50:
(Start: 11 @36472 has 64 MA's), (18, 36571), (20, 36583), (28, 36754),

Gene: Hope_50 Start: 36477, Stop: 36917, Start Num: 11
Candidate Starts for Hope_50:
(Start: 11 @36477 has 64 MA's), (18, 36576), (20, 36588), (28, 36759),

Gene: Hotshotbaby7_50 Start: 36477, Stop: 36917, Start Num: 11
Candidate Starts for Hotshotbaby7_50:
(Start: 11 @36477 has 64 MA's), (18, 36576), (20, 36588), (28, 36759),

Gene: Jane_50 Start: 36477, Stop: 36917, Start Num: 11
Candidate Starts for Jane_50:
(Start: 11 @36477 has 64 MA's), (18, 36576), (20, 36588), (28, 36759),

Gene: Jolene_50 Start: 36570, Stop: 37079, Start Num: 11
Candidate Starts for Jolene_50:
(Start: 11 @36570 has 64 MA's), (19, 36672), (20, 36681), (27, 36849), (30, 36885), (36, 36957), (38, 36978),

Gene: Jonghyun_48 Start: 36477, Stop: 36917, Start Num: 11
Candidate Starts for Jonghyun_48:
(Start: 11 @36477 has 64 MA's), (18, 36576), (20, 36588), (28, 36759),

Gene: JorRay_50 Start: 36477, Stop: 36917, Start Num: 11
Candidate Starts for JorRay_50:
(Start: 11 @36477 has 64 MA's), (18, 36576), (20, 36588), (28, 36759),

Gene: Kareem_50 Start: 36477, Stop: 36917, Start Num: 11
Candidate Starts for Kareem_50:
(Start: 11 @36477 has 64 MA's), (18, 36576), (20, 36588), (28, 36759),

Gene: Kasen3_50 Start: 36463, Stop: 36903, Start Num: 11
Candidate Starts for Kasen3_50:
(Start: 11 @36463 has 64 MA's), (18, 36562), (20, 36574), (28, 36745),

Gene: Liefie_49 Start: 36385, Stop: 37023, Start Num: 11
Candidate Starts for Liefie_49:
(5, 35842), (7, 36079), (10, 36280), (Start: 11 @36385 has 64 MA's), (18, 36484), (20, 36496), (28, 36667), (40, 36820), (45, 36904),

Gene: LouisV14_52 Start: 38742, Stop: 39182, Start Num: 11
Candidate Starts for LouisV14_52:
(Start: 11 @38742 has 64 MA's), (18, 38841), (20, 38853), (28, 39024),

Gene: MOOREtheMARYer_52 Start: 38230, Stop: 38625, Start Num: 11
Candidate Starts for MOOREtheMARYer_52:
(Start: 11 @38230 has 64 MA's), (13, 38263), (20, 38347), (21, 38350), (23, 38452), (27, 38524), (29, 38536), (31, 38578), (32, 38581), (33, 38593),

Gene: Maliketh_48 Start: 36477, Stop: 36917, Start Num: 11
Candidate Starts for Maliketh_48:
(Start: 11 @36477 has 64 MA's), (18, 36576), (20, 36588), (28, 36759),

Gene: Marmie_50 Start: 36477, Stop: 36917, Start Num: 11
Candidate Starts for Marmie_50:
(Start: 11 @36477 has 64 MA's), (18, 36576), (20, 36588), (28, 36759),

Gene: Mowgli_50 Start: 36477, Stop: 36917, Start Num: 11
Candidate Starts for Mowgli_50:
(Start: 11 @36477 has 64 MA's), (18, 36576), (20, 36588), (28, 36759),

Gene: OctaviousRex_49 Start: 36477, Stop: 36917, Start Num: 11
Candidate Starts for OctaviousRex_49:
(Start: 11 @36477 has 64 MA's), (18, 36576), (20, 36588), (28, 36759),

Gene: Olga_50 Start: 36477, Stop: 36917, Start Num: 11
Candidate Starts for Olga_50:
(Start: 11 @36477 has 64 MA's), (18, 36576), (20, 36588), (28, 36759),

Gene: Paito_52 Start: 37171, Stop: 37599, Start Num: 11
Candidate Starts for Paito_52:
(Start: 11 @37171 has 64 MA's), (14, 37213), (22, 37375), (29, 37462),

Gene: Peeb_49 Start: 36468, Stop: 36908, Start Num: 11
Candidate Starts for Peeb_49:
(Start: 11 @36468 has 64 MA's), (18, 36567), (20, 36579), (28, 36750),

Gene: Periodt_50 Start: 36561, Stop: 37070, Start Num: 11
Candidate Starts for Periodt_50:
(Start: 11 @36561 has 64 MA's), (19, 36663), (20, 36672), (27, 36840), (30, 36876), (36, 36948), (38, 36969),

Gene: Phish_49 Start: 36477, Stop: 36917, Start Num: 11
Candidate Starts for Phish_49:

(Start: 11 @36477 has 64 MA's), (18, 36576), (20, 36588), (28, 36759),

Gene: Phreak_50 Start: 36477, Stop: 36917, Start Num: 11

Candidate Starts for Phreak_50:

(Start: 11 @36477 has 64 MA's), (18, 36576), (20, 36588), (28, 36759),

Gene: PinkYoshi_50 Start: 36468, Stop: 36908, Start Num: 11

Candidate Starts for PinkYoshi_50:

(Start: 11 @36468 has 64 MA's), (18, 36567), (20, 36579), (28, 36750),

Gene: Plagueis_50 Start: 36297, Stop: 36737, Start Num: 11

Candidate Starts for Plagueis_50:

(Start: 11 @36297 has 64 MA's), (18, 36396), (20, 36408), (28, 36579),

Gene: Rabbs_52 Start: 36715, Stop: 37056, Start Num: 11

Candidate Starts for Rabbs_52:

(Start: 11 @36715 has 64 MA's), (16, 36799), (18, 36814), (20, 36826), (29, 37006),

Gene: Remy19_50 Start: 36477, Stop: 36917, Start Num: 11

Candidate Starts for Remy19_50:

(Start: 11 @36477 has 64 MA's), (18, 36576), (20, 36588), (28, 36759),

Gene: Renaissance_50 Start: 36477, Stop: 36917, Start Num: 11

Candidate Starts for Renaissance_50:

(Start: 11 @36477 has 64 MA's), (18, 36576), (20, 36588), (28, 36759),

Gene: Schiebel_50 Start: 36462, Stop: 36902, Start Num: 11

Candidate Starts for Schiebel_50:

(Start: 11 @36462 has 64 MA's), (18, 36561), (20, 36573), (28, 36744),

Gene: ShaboiShabazz_49 Start: 36477, Stop: 36917, Start Num: 11

Candidate Starts for ShaboiShabazz_49:

(Start: 11 @36477 has 64 MA's), (18, 36576), (20, 36588), (28, 36759),

Gene: Sizemore_50 Start: 36463, Stop: 36903, Start Num: 11

Candidate Starts for Sizemore_50:

(Start: 11 @36463 has 64 MA's), (18, 36562), (20, 36574), (28, 36745),

Gene: Sneeze_51 Start: 36714, Stop: 37055, Start Num: 11

Candidate Starts for Sneeze_51:

(Start: 11 @36714 has 64 MA's), (16, 36798), (18, 36813), (20, 36825), (29, 37005),

Gene: Stargaze_51 Start: 37954, Stop: 38448, Start Num: 11

Candidate Starts for Stargaze_51:

(1, 37216), (2, 37276), (3, 37312), (6, 37573), (Start: 11 @37954 has 64 MA's), (13, 37987), (20, 38071), (21, 38074), (23, 38176), (25, 38194), (27, 38248), (29, 38260), (31, 38308), (32, 38311), (33, 38323), (34, 38353),

Gene: Sweets_49 Start: 36472, Stop: 36912, Start Num: 11

Candidate Starts for Sweets_49:

(Start: 11 @36472 has 64 MA's), (18, 36571), (20, 36583), (28, 36754),

Gene: Taheera_48 Start: 36090, Stop: 36704, Start Num: 11

Candidate Starts for Taheera_48:

(4, 35469), (5, 35547), (8, 35796), (Start: 11 @36090 has 64 MA's), (14, 36132), (16, 36174), (18, 36189), (20, 36201), (29, 36381), (35, 36432), (44, 36561),

Gene: Terror_48 Start: 36090, Stop: 36704, Start Num: 11

Candidate Starts for Terror_48:

(4, 35469), (5, 35547), (8, 35796), (Start: 11 @36090 has 64 MA's), (14, 36132), (16, 36174), (18, 36189), (20, 36201), (29, 36381), (35, 36432), (44, 36561),

Gene: TinaBug_48 Start: 36472, Stop: 36912, Start Num: 11

Candidate Starts for TinaBug_48:

(Start: 11 @36472 has 64 MA's), (18, 36571), (20, 36583), (28, 36754),

Gene: TomBrady_50 Start: 36478, Stop: 36918, Start Num: 11

Candidate Starts for TomBrady_50:

(Start: 11 @36478 has 64 MA's), (18, 36577), (20, 36589), (28, 36760),

Gene: Wendigo_48 Start: 36477, Stop: 36917, Start Num: 11

Candidate Starts for Wendigo_48:

(Start: 11 @36477 has 64 MA's), (18, 36576), (20, 36588), (28, 36759),

Gene: ZoMa_48 Start: 36477, Stop: 36917, Start Num: 11

Candidate Starts for ZoMa_48:

(Start: 11 @36477 has 64 MA's), (18, 36576), (20, 36588), (28, 36759),

Gene: Zombie_49 Start: 36477, Stop: 36917, Start Num: 11

Candidate Starts for Zombie_49:

(Start: 11 @36477 has 64 MA's), (18, 36576), (20, 36588), (28, 36759),