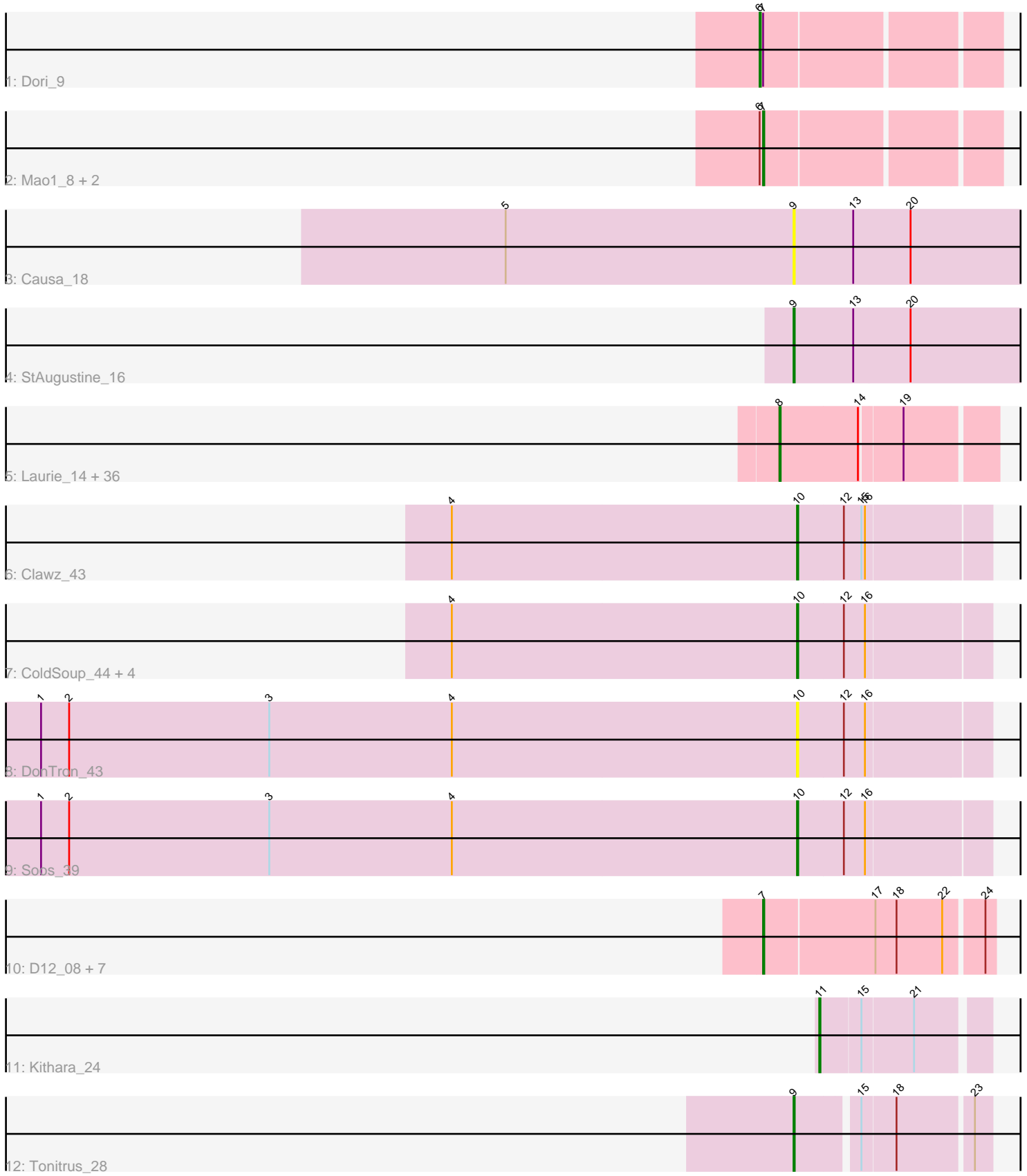


Pham 224590



Note: Tracks are now grouped by subcluster and scaled. Switching in subcluster is indicated by changes in track color. Track scale is now set by default to display the region 30 bp upstream of start 1 to 30 bp downstream of the last possible start. If this default region is judged to be packed too tightly with annotated starts, the track will be further scaled to only show that region of the ORF with annotated starts. This action will be indicated by adding "Zoomed" to the title. For starts, yellow indicates the location of called starts comprised solely of Glimmer/GeneMark auto-annotations, green indicates the location of called starts with at least 1 manual gene annotation.

Pham 224590 Report

This analysis was run 03/28/25 on database version 593.

Pham number 224590 has 61 members, 9 are drafts.

Phages represented in each track:

- Track 1 : Dori_9
- Track 2 : Mao1_8, Sejanus_9, Mask_9
- Track 3 : Causa_18
- Track 4 : StAugustine_16
- Track 5 : Laurie_14, Tinciduntolum_15, Brownie5_14, Allegro_14, Blocker23_14, Lars_14, Opia_14, Tres_14, Faze9_14, Rhinoforte_14, Ares_14, Lephleur_14, Godines_14, Rosebush_14, Eaglehorse_14, MasterPo_14, Holeinone_14, FrenchFry_14, Bananafish_14, Hedgerow_14, Vic9_00014, Glass_14, Kaleb_14, Phantasmagoria_14, Calamitous_14, LilSmirk_14, PrinceCharming_14, West99_14, ItsyBitsy1_14, TA17A_14, Arbiter_14, Boyle_14, LizLemon_14, Coffee_14, Kheth_14, Kolhan_14, Sabella_14
- Track 6 : Clawz_43
- Track 7 : ColdSoup_44, KingstonB_43, Amo99_44, Jollymon_43, Sting_42
- Track 8 : DonTron_43
- Track 9 : Soos_39
- Track 10 : D12_08, PR_08, Taptic_8, GodPhather_9, Argie_9, Jeon_8, Megabear_8, Cepens_8
- Track 11 : Kithara_24
- Track 12 : Tonitrus_28

Summary of Final Annotations (See graph section above for start numbers):

The start number called the most often in the published annotations is 8, it was called in 33 of the 52 non-draft genes in the pham.

Genes that call this "Most Annotated" start:

- Allegro_14, Arbiter_14, Ares_14, Bananafish_14, Blocker23_14, Boyle_14, Brownie5_14, Calamitous_14, Coffee_14, Eaglehorse_14, Faze9_14, FrenchFry_14, Glass_14, Godines_14, Hedgerow_14, Holeinone_14, ItsyBitsy1_14, Kaleb_14, Kheth_14, Kolhan_14, Lars_14, Laurie_14, Lephleur_14, LilSmirk_14, LizLemon_14, MasterPo_14, Opia_14, Phantasmagoria_14, PrinceCharming_14, Rhinoforte_14, Rosebush_14, Sabella_14, TA17A_14, Tinciduntolum_15, Tres_14, Vic9_00014, West99_14,

Genes that have the "Most Annotated" start but do not call it:

-

Genes that do not have the "Most Annotated" start:

- Amo99_44, Argie_9, Causa_18, Cepens_8, Clawz_43, ColdSoup_44, D12_08, DonTron_43, Dori_9, GodPhather_9, Jeon_8, Jollymon_43, KingstonB_43, Kithara_24, Mao1_8, Mask_9, Megabear_8, PR_08, Sejanus_9, Soos_39, StAugustine_16, Sting_42, Taptic_8, Tonitrus_28,

Summary by start number:

Start 6:

- Found in 4 of 61 (6.6%) of genes in pham
- Manual Annotations of this start: 1 of 52
- Called 25.0% of time when present
- Phage (with cluster) where this start called: Dori_9 (AD),

Start 7:

- Found in 12 of 61 (19.7%) of genes in pham
- Manual Annotations of this start: 11 of 52
- Called 91.7% of time when present
- Phage (with cluster) where this start called: Argie_9 (W), Cepens_8 (W), D12_08 (W), GodPhather_9 (W), Jeon_8 (W), Mao1_8 (AD), Mask_9 (AD), Megabear_8 (W), PR_08 (W), Sejanus_9 (AD), Taptic_8 (W),

Start 8:

- Found in 37 of 61 (60.7%) of genes in pham
- Manual Annotations of this start: 33 of 52
- Called 100.0% of time when present
- Phage (with cluster) where this start called: Allegro_14 (B2), Arbiter_14 (B2), Ares_14 (B2), Bananafish_14 (B2), Blocker23_14 (B2), Boyle_14 (B2), Brownie5_14 (B2), Calamitous_14 (B2), Coffee_14 (B2), Eaglehorse_14 (B2), Faze9_14 (B2), FrenchFry_14 (B2), Glass_14 (B2), Godines_14 (B2), Hedgerow_14 (B2), Holeinone_14 (B2), ItsyBitsy1_14 (B2), Kaleb_14 (B2), Kheth_14 (B2), Kolhan_14 (B2), Lars_14 (B2), Laurie_14 (B2), Lephleur_14 (B2), LilSmirk_14 (B2), LizLemon_14 (B2), MasterPo_14 (B2), Opia_14 (B2), Phantasmagoria_14 (B2), PrinceCharming_14 (B2), Rhinoforte_14 (B2), Rosebush_14 (B2), Sabella_14 (B2), TA17A_14 (B2), Tinciduntolum_15 (B2), Tres_14 (B2), Vic9_00014 (B2), West99_14 (B2),

Start 9:

- Found in 3 of 61 (4.9%) of genes in pham
- Manual Annotations of this start: 2 of 52
- Called 100.0% of time when present
- Phage (with cluster) where this start called: Causa_18 (AI), StAugustine_16 (AI), Tonitrus_28 (singleton),

Start 10:

- Found in 8 of 61 (13.1%) of genes in pham
- Manual Annotations of this start: 4 of 52
- Called 100.0% of time when present
- Phage (with cluster) where this start called: Amo99_44 (CP), Clawz_43 (CP), ColdSoup_44 (CP), DonTron_43 (CP), Jollymon_43 (CP), KingstonB_43 (CP),

Soos_39 (CP), Sting_42 (CP),

Start 11:

- Found in 1 of 61 (1.6%) of genes in pham
- Manual Annotations of this start: 1 of 52
- Called 100.0% of time when present
- Phage (with cluster) where this start called: Kithara_24 (singleton),

Summary by clusters:

There are 6 clusters represented in this pham: singleton, B2, AI, W, CP, AD,

Info for manual annotations of cluster AD:

- Start number 6 was manually annotated 1 time for cluster AD.
- Start number 7 was manually annotated 3 times for cluster AD.

Info for manual annotations of cluster AI:

- Start number 9 was manually annotated 1 time for cluster AI.

Info for manual annotations of cluster B2:

- Start number 8 was manually annotated 33 times for cluster B2.

Info for manual annotations of cluster CP:

- Start number 10 was manually annotated 4 times for cluster CP.

Info for manual annotations of cluster W:

- Start number 7 was manually annotated 8 times for cluster W.

Gene Information:

Gene: Allegro_14 Start: 12064, Stop: 12237, Start Num: 8

Candidate Starts for Allegro_14:

(Start: 8 @12064 has 33 MA's), (14, 12130), (19, 12163),

Gene: Amo99_44 Start: 22933, Stop: 23091, Start Num: 10

Candidate Starts for Amo99_44:

(4, 22639), (Start: 10 @22933 has 4 MA's), (12, 22972), (16, 22990),

Gene: Arbiter_14 Start: 12154, Stop: 12327, Start Num: 8

Candidate Starts for Arbiter_14:

(Start: 8 @12154 has 33 MA's), (14, 12220), (19, 12253),

Gene: Ares_14 Start: 12064, Stop: 12237, Start Num: 8

Candidate Starts for Ares_14:

(Start: 8 @12064 has 33 MA's), (14, 12130), (19, 12163),

Gene: Argie_9 Start: 10545, Stop: 10733, Start Num: 7

Candidate Starts for Argie_9:

(Start: 7 @10545 has 11 MA's), (17, 10638), (18, 10656), (22, 10695), (24, 10725),

Gene: Bananafish_14 Start: 12064, Stop: 12237, Start Num: 8

Candidate Starts for Bananafish_14:
(Start: 8 @12064 has 33 MA's), (14, 12130), (19, 12163),

Gene: Blocker23_14 Start: 12181, Stop: 12354, Start Num: 8
Candidate Starts for Blocker23_14:
(Start: 8 @12181 has 33 MA's), (14, 12247), (19, 12280),

Gene: Boyle_14 Start: 12181, Stop: 12354, Start Num: 8
Candidate Starts for Boyle_14:
(Start: 8 @12181 has 33 MA's), (14, 12247), (19, 12280),

Gene: Brownie5_14 Start: 12181, Stop: 12354, Start Num: 8
Candidate Starts for Brownie5_14:
(Start: 8 @12181 has 33 MA's), (14, 12247), (19, 12280),

Gene: Calamitous_14 Start: 12064, Stop: 12237, Start Num: 8
Candidate Starts for Calamitous_14:
(Start: 8 @12064 has 33 MA's), (14, 12130), (19, 12163),

Gene: Causa_18 Start: 12947, Stop: 13141, Start Num: 9
Candidate Starts for Causa_18:
(5, 12701), (Start: 9 @12947 has 2 MA's), (13, 12998), (20, 13046),

Gene: Cepens_8 Start: 10284, Stop: 10472, Start Num: 7
Candidate Starts for Cepens_8:
(Start: 7 @10284 has 11 MA's), (17, 10377), (18, 10395), (22, 10434), (24, 10464),

Gene: Clawz_43 Start: 22851, Stop: 23009, Start Num: 10
Candidate Starts for Clawz_43:
(4, 22557), (Start: 10 @22851 has 4 MA's), (12, 22890), (15, 22905), (16, 22908),

Gene: Coffee_14 Start: 12181, Stop: 12354, Start Num: 8
Candidate Starts for Coffee_14:
(Start: 8 @12181 has 33 MA's), (14, 12247), (19, 12280),

Gene: ColdSoup_44 Start: 22933, Stop: 23091, Start Num: 10
Candidate Starts for ColdSoup_44:
(4, 22639), (Start: 10 @22933 has 4 MA's), (12, 22972), (16, 22990),

Gene: D12_08 Start: 10239, Stop: 10427, Start Num: 7
Candidate Starts for D12_08:
(Start: 7 @10239 has 11 MA's), (17, 10332), (18, 10350), (22, 10389), (24, 10419),

Gene: DonTron_43 Start: 23003, Stop: 23161, Start Num: 10
Candidate Starts for DonTron_43:
(1, 22358), (2, 22382), (3, 22553), (4, 22709), (Start: 10 @23003 has 4 MA's), (12, 23042), (16, 23060),

Gene: Dori_9 Start: 8150, Stop: 8341, Start Num: 6
Candidate Starts for Dori_9:
(Start: 6 @8150 has 1 MA's), (Start: 7 @8153 has 11 MA's),

Gene: Eaglehorse_14 Start: 12082, Stop: 12255, Start Num: 8
Candidate Starts for Eaglehorse_14:

(Start: 8 @12082 has 33 MA's), (14, 12148), (19, 12181),

Gene: Faze9_14 Start: 12181, Stop: 12354, Start Num: 8

Candidate Starts for Faze9_14:

(Start: 8 @12181 has 33 MA's), (14, 12247), (19, 12280),

Gene: FrenchFry_14 Start: 12181, Stop: 12354, Start Num: 8

Candidate Starts for FrenchFry_14:

(Start: 8 @12181 has 33 MA's), (14, 12247), (19, 12280),

Gene: Glass_14 Start: 12181, Stop: 12354, Start Num: 8

Candidate Starts for Glass_14:

(Start: 8 @12181 has 33 MA's), (14, 12247), (19, 12280),

Gene: GodPhather_9 Start: 10542, Stop: 10730, Start Num: 7

Candidate Starts for GodPhather_9:

(Start: 7 @10542 has 11 MA's), (17, 10635), (18, 10653), (22, 10692), (24, 10722),

Gene: Godines_14 Start: 12064, Stop: 12237, Start Num: 8

Candidate Starts for Godines_14:

(Start: 8 @12064 has 33 MA's), (14, 12130), (19, 12163),

Gene: Hedgerow_14 Start: 12163, Stop: 12336, Start Num: 8

Candidate Starts for Hedgerow_14:

(Start: 8 @12163 has 33 MA's), (14, 12229), (19, 12262),

Gene: Holeinone_14 Start: 12063, Stop: 12236, Start Num: 8

Candidate Starts for Holeinone_14:

(Start: 8 @12063 has 33 MA's), (14, 12129), (19, 12162),

Gene: ItsyBitsy1_14 Start: 12055, Stop: 12228, Start Num: 8

Candidate Starts for ItsyBitsy1_14:

(Start: 8 @12055 has 33 MA's), (14, 12121), (19, 12154),

Gene: Jeon_8 Start: 10272, Stop: 10460, Start Num: 7

Candidate Starts for Jeon_8:

(Start: 7 @10272 has 11 MA's), (17, 10365), (18, 10383), (22, 10422), (24, 10452),

Gene: Jollymon_43 Start: 22933, Stop: 23091, Start Num: 10

Candidate Starts for Jollymon_43:

(4, 22639), (Start: 10 @22933 has 4 MA's), (12, 22972), (16, 22990),

Gene: Kaleb_14 Start: 12181, Stop: 12354, Start Num: 8

Candidate Starts for Kaleb_14:

(Start: 8 @12181 has 33 MA's), (14, 12247), (19, 12280),

Gene: Kheth_14 Start: 12064, Stop: 12237, Start Num: 8

Candidate Starts for Kheth_14:

(Start: 8 @12064 has 33 MA's), (14, 12130), (19, 12163),

Gene: KingstonB_43 Start: 22441, Stop: 22599, Start Num: 10

Candidate Starts for KingstonB_43:

(4, 22147), (Start: 10 @22441 has 4 MA's), (12, 22480), (16, 22498),

Gene: Kithara_24 Start: 14309, Stop: 14440, Start Num: 11
Candidate Starts for Kithara_24:
(Start: 11 @14309 has 1 MA's), (15, 14342), (21, 14384),

Gene: Kolhan_14 Start: 12064, Stop: 12237, Start Num: 8
Candidate Starts for Kolhan_14:
(Start: 8 @12064 has 33 MA's), (14, 12130), (19, 12163),

Gene: Lars_14 Start: 12181, Stop: 12354, Start Num: 8
Candidate Starts for Lars_14:
(Start: 8 @12181 has 33 MA's), (14, 12247), (19, 12280),

Gene: Laurie_14 Start: 12065, Stop: 12238, Start Num: 8
Candidate Starts for Laurie_14:
(Start: 8 @12065 has 33 MA's), (14, 12131), (19, 12164),

Gene: Lephleur_14 Start: 12064, Stop: 12237, Start Num: 8
Candidate Starts for Lephleur_14:
(Start: 8 @12064 has 33 MA's), (14, 12130), (19, 12163),

Gene: LilSmirk_14 Start: 12064, Stop: 12237, Start Num: 8
Candidate Starts for LilSmirk_14:
(Start: 8 @12064 has 33 MA's), (14, 12130), (19, 12163),

Gene: LizLemon_14 Start: 12181, Stop: 12354, Start Num: 8
Candidate Starts for LizLemon_14:
(Start: 8 @12181 has 33 MA's), (14, 12247), (19, 12280),

Gene: Mao1_8 Start: 8549, Stop: 8737, Start Num: 7
Candidate Starts for Mao1_8:
(Start: 6 @8546 has 1 MA's), (Start: 7 @8549 has 11 MA's),

Gene: Mask_9 Start: 8550, Stop: 8738, Start Num: 7
Candidate Starts for Mask_9:
(Start: 6 @8547 has 1 MA's), (Start: 7 @8550 has 11 MA's),

Gene: MasterPo_14 Start: 12064, Stop: 12237, Start Num: 8
Candidate Starts for MasterPo_14:
(Start: 8 @12064 has 33 MA's), (14, 12130), (19, 12163),

Gene: Megabear_8 Start: 10239, Stop: 10427, Start Num: 7
Candidate Starts for Megabear_8:
(Start: 7 @10239 has 11 MA's), (17, 10332), (18, 10350), (22, 10389), (24, 10419),

Gene: Opia_14 Start: 12064, Stop: 12237, Start Num: 8
Candidate Starts for Opia_14:
(Start: 8 @12064 has 33 MA's), (14, 12130), (19, 12163),

Gene: PR_08 Start: 10239, Stop: 10427, Start Num: 7
Candidate Starts for PR_08:
(Start: 7 @10239 has 11 MA's), (17, 10332), (18, 10350), (22, 10389), (24, 10419),

Gene: Phantasmagoria_14 Start: 12064, Stop: 12237, Start Num: 8
Candidate Starts for Phantasmagoria_14:
(Start: 8 @12064 has 33 MA's), (14, 12130), (19, 12163),

Gene: PrinceCharming_14 Start: 12181, Stop: 12354, Start Num: 8
Candidate Starts for PrinceCharming_14:
(Start: 8 @12181 has 33 MA's), (14, 12247), (19, 12280),

Gene: Rhinoforte_14 Start: 12181, Stop: 12354, Start Num: 8
Candidate Starts for Rhinoforte_14:
(Start: 8 @12181 has 33 MA's), (14, 12247), (19, 12280),

Gene: Rosebush_14 Start: 12181, Stop: 12354, Start Num: 8
Candidate Starts for Rosebush_14:
(Start: 8 @12181 has 33 MA's), (14, 12247), (19, 12280),

Gene: Sabella_14 Start: 12064, Stop: 12237, Start Num: 8
Candidate Starts for Sabella_14:
(Start: 8 @12064 has 33 MA's), (14, 12130), (19, 12163),

Gene: Sejanus_9 Start: 9366, Stop: 9554, Start Num: 7
Candidate Starts for Sejanus_9:
(Start: 6 @9363 has 1 MA's), (Start: 7 @9366 has 11 MA's),

Gene: Soos_39 Start: 22170, Stop: 22328, Start Num: 10
Candidate Starts for Soos_39:
(1, 21525), (2, 21549), (3, 21720), (4, 21876), (Start: 10 @22170 has 4 MA's), (12, 22209), (16, 22227),

Gene: StAugustine_16 Start: 12941, Stop: 13135, Start Num: 9
Candidate Starts for StAugustine_16:
(Start: 9 @12941 has 2 MA's), (13, 12992), (20, 13040),

Gene: Sting_42 Start: 22609, Stop: 22767, Start Num: 10
Candidate Starts for Sting_42:
(4, 22315), (Start: 10 @22609 has 4 MA's), (12, 22648), (16, 22666),

Gene: TA17A_14 Start: 12064, Stop: 12237, Start Num: 8
Candidate Starts for TA17A_14:
(Start: 8 @12064 has 33 MA's), (14, 12130), (19, 12163),

Gene: Taptic_8 Start: 10239, Stop: 10427, Start Num: 7
Candidate Starts for Taptic_8:
(Start: 7 @10239 has 11 MA's), (17, 10332), (18, 10350), (22, 10389), (24, 10419),

Gene: Tinciduntolum_15 Start: 12180, Stop: 12353, Start Num: 8
Candidate Starts for Tinciduntolum_15:
(Start: 8 @12180 has 33 MA's), (14, 12246), (19, 12279),

Gene: Tonitrus_28 Start: 18735, Stop: 18884, Start Num: 9
Candidate Starts for Tonitrus_28:
(Start: 9 @18735 has 2 MA's), (15, 18783), (18, 18810), (23, 18870),

Gene: Tres_14 Start: 12064, Stop: 12237, Start Num: 8

Candidate Starts for Tres_14:

(Start: 8 @12064 has 33 MA's), (14, 12130), (19, 12163),

Gene: Vic9_00014 Start: 12507, Stop: 12680, Start Num: 8

Candidate Starts for Vic9_00014:

(Start: 8 @12507 has 33 MA's), (14, 12573), (19, 12606),

Gene: West99_14 Start: 12181, Stop: 12354, Start Num: 8

Candidate Starts for West99_14:

(Start: 8 @12181 has 33 MA's), (14, 12247), (19, 12280),