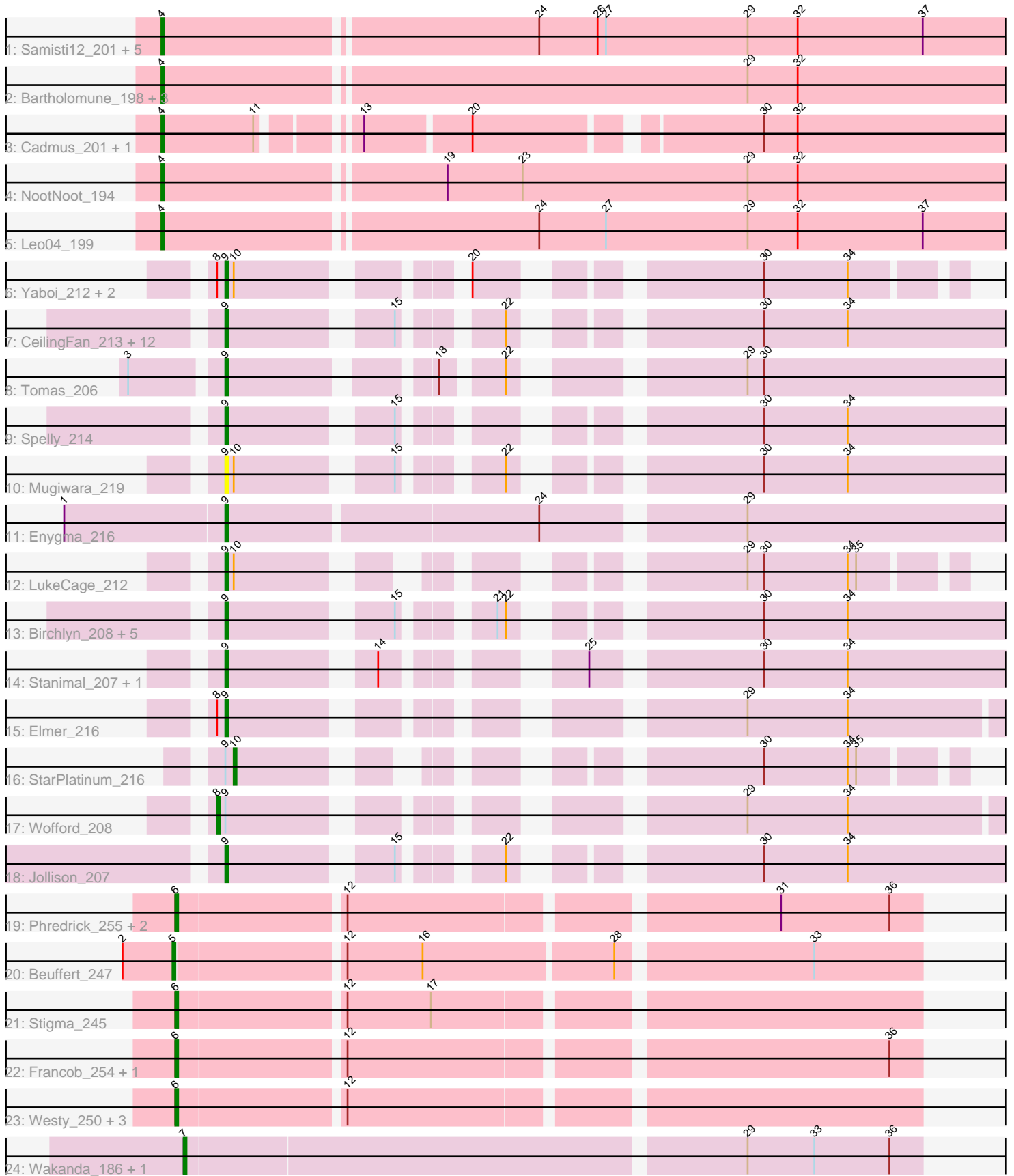


Pham 224596



Note: Tracks are now grouped by subcluster and scaled. Switching in subcluster is indicated by changes in track color. Track scale is now set by default to display the region 30 bp upstream of start 1 to 30 bp downstream of the last possible start. If this default region is judged to be packed too tightly with annotated starts, the track will be further scaled to only show that region of the ORF with annotated starts. This action will be indicated by adding "Zoomed" to the title. For starts, yellow indicates the location of called starts comprised solely of Glimmer/GeneMark auto-annotations, green indicates the location of called starts with at least 1 manual gene annotation.

Pham 224596 Report

This analysis was run 03/28/25 on database version 593.

Pham number 224596 has 60 members, 5 are drafts.

Phages represented in each track:

- Track 1 : Samisti12_201, Peebs_195, Tribute_195, Teutsch_197, Pepperwood_197, Sushi23_198
- Track 2 : Bartholomune_198, PinkiePie_197, Squillium_200, Liandry_197
- Track 3 : Cadmus_201, Cursive_199
- Track 4 : NootNoot_194
- Track 5 : Leo04_199
- Track 6 : Yaboi_212, Sollertia_208, BoomerJR_206
- Track 7 : CeilingFan_213, Quaran19_209, Rikishi_217, Battuta_207, Bordeaux_207, Spilled_216, PumpkinSpice_212, Wipeout_200, Karimac_210, JimJam_216, Starbow_206, KentuckyRacer_215, SaltySpittoon_209
- Track 8 : Tomas_206
- Track 9 : Spelly_214
- Track 10 : Mugiwara_219
- Track 11 : Enygma_216
- Track 12 : LukeCage_212
- Track 13 : Birchlyn_208, IchabodCrane_204, TomSawyer_213, Gibbi_217, Amabiko_213, MindFlayer_202
- Track 14 : Stanimal_207, Genie2_206
- Track 15 : Elmer_216
- Track 16 : StarPlatinum_216
- Track 17 : Wofford_208
- Track 18 : Jollison_207
- Track 19 : Phredrick_255, MeganTheeKilla_251, Emma1919_250
- Track 20 : Beuffert_247
- Track 21 : Stigma_245
- Track 22 : Francob_254, Gilson_250
- Track 23 : Westy_250, Belfort_248, SparkleGoddess_247, Karp_247
- Track 24 : Wakanda_186, Muntaha_187

Summary of Final Annotations (See graph section above for start numbers):

The start number called the most often in the published annotations is 9, it was called in 28 of the 55 non-draft genes in the pham.

Genes that call this "Most Annotated" start:

- Amabiko_213, Battuta_207, Birchlyn_208, BoomerJR_206, Bordeaux_207, CeilingFan_213, Elmer_216, Enygma_216, Genie2_206, Gibbi_217, IchabodCrane_204, JimJam_216, Jollison_207, Karimac_210, KentuckyRacer_215, LukeCage_212, MindFlayer_202, Mugiwara_219, PumpkinSpice_212, Quaran19_209, Rikishi_217, SaltySpittoon_209, Sollertia_208, Spelly_214, Spilled_216, Stanimal_207, Starbow_206, TomSawyer_213, Tomas_206, Wipeout_200, Yaboi_212,

Genes that have the "Most Annotated" start but do not call it:

- StarPlatinum_216, Wofford_208,

Genes that do not have the "Most Annotated" start:

- Bartholomune_198, Belfort_248, Beuffert_247, Cadmus_201, Cursive_199, Emma1919_250, Francob_254, Gilson_250, Karp_247, Leo04_199, Liandry_197, MeganTheeKilla_251, Muntaha_187, NootNoot_194, Peebs_195, Pepperwood_197, Phredrick_255, PinkiePie_197, Samisti12_201, SparkleGoddess_247, Squillium_200, Stigma_245, Sushi23_198, Teutsch_197, Tribute_195, Wakanda_186, Westy_250,

Summary by start number:

Start 4:

- Found in 14 of 60 (23.3%) of genes in pham
- Manual Annotations of this start: 13 of 55
- Called 100.0% of time when present
- Phage (with cluster) where this start called: Bartholomune_198 (BE1), Cadmus_201 (BE1), Cursive_199 (BE1), Leo04_199 (BE1), Liandry_197 (BE1), NootNoot_194 (BE1), Peebs_195 (BE1), Pepperwood_197 (BE1), PinkiePie_197 (BE1), Samisti12_201 (BE1), Squillium_200 (BE1), Sushi23_198 (BE1), Teutsch_197 (BE1), Tribute_195 (BE1),

Start 5:

- Found in 1 of 60 (1.7%) of genes in pham
- Manual Annotations of this start: 1 of 55
- Called 100.0% of time when present
- Phage (with cluster) where this start called: Beuffert_247 (BK1),

Start 6:

- Found in 10 of 60 (16.7%) of genes in pham
- Manual Annotations of this start: 9 of 55
- Called 100.0% of time when present
- Phage (with cluster) where this start called: Belfort_248 (BK1), Emma1919_250 (BK1), Francob_254 (BK1), Gilson_250 (BK1), Karp_247 (BK1), MeganTheeKilla_251 (BK1), Phredrick_255 (BK1), SparkleGoddess_247 (BK1), Stigma_245 (BK1), Westy_250 (BK1),

Start 7:

- Found in 2 of 60 (3.3%) of genes in pham
- Manual Annotations of this start: 2 of 55
- Called 100.0% of time when present
- Phage (with cluster) where this start called: Muntaha_187 (BK2), Wakanda_186 (BK2),

Start 8:

- Found in 5 of 60 (8.3%) of genes in pham
- Manual Annotations of this start: 1 of 55
- Called 20.0% of time when present
- Phage (with cluster) where this start called: Wofford_208 (BE2),

Start 9:

- Found in 33 of 60 (55.0%) of genes in pham
- Manual Annotations of this start: 28 of 55
- Called 93.9% of time when present
- Phage (with cluster) where this start called: Amabiko_213 (BE2), Battuta_207 (BE2), Birchlyn_208 (BE2), BoomerJR_206 (BE2), Bordeaux_207 (BE2), CeilingFan_213 (BE2), Elmer_216 (BE2), Enygma_216 (BE2), Genie2_206 (BE2), Gibbi_217 (BE2), IchabodCrane_204 (BE2), JimJam_216 (BE2), Jollison_207 (BE2), Karimac_210 (BE2), KentuckyRacer_215 (BE2), LukeCage_212 (BE2), MindFlayer_202 (BE2), Mugiwara_219 (BE2), PumpkinSpice_212 (BE2), Quarant19_209 (BE2), Rikishi_217 (BE2), SaltySpittoon_209 (BE2), Sollertia_208 (BE2), Spelly_214 (BE2), Spilled_216 (BE2), Stanimal_207 (BE2), Starbow_206 (BE2), TomSawyer_213 (BE2), Tomas_206 (BE2), Wipeout_200 (BE2), Yaboi_212 (BE2),

Start 10:

- Found in 6 of 60 (10.0%) of genes in pham
- Manual Annotations of this start: 1 of 55
- Called 16.7% of time when present
- Phage (with cluster) where this start called: StarPlatinum_216 (BE2),

Summary by clusters:

There are 4 clusters represented in this pham: BE2, BE1, BK1, BK2,

Info for manual annotations of cluster BE1:

- Start number 4 was manually annotated 13 times for cluster BE1.

Info for manual annotations of cluster BE2:

- Start number 8 was manually annotated 1 time for cluster BE2.
- Start number 9 was manually annotated 28 times for cluster BE2.
- Start number 10 was manually annotated 1 time for cluster BE2.

Info for manual annotations of cluster BK1:

- Start number 5 was manually annotated 1 time for cluster BK1.
- Start number 6 was manually annotated 9 times for cluster BK1.

Info for manual annotations of cluster BK2:

- Start number 7 was manually annotated 2 times for cluster BK2.

Gene Information:

Gene: Amabiko_213 Start: 104099, Stop: 104332, Start Num: 9

Candidate Starts for Amabiko_213:

(Start: 9 @104099 has 28 MA's), (15, 104150), (21, 104174), (22, 104177), (30, 104246), (34, 104276),

Gene: Bartholomune_198 Start: 103045, Stop: 103350, Start Num: 4

Candidate Starts for Bartholomune_198:

(Start: 4 @103045 has 13 MA's), (29, 103249), (32, 103267),

Gene: Battuta_207 Start: 103415, Stop: 103648, Start Num: 9

Candidate Starts for Battuta_207:

(Start: 9 @103415 has 28 MA's), (15, 103466), (22, 103493), (30, 103562), (34, 103592),

Gene: Belfort_248 Start: 118324, Stop: 118575, Start Num: 6

Candidate Starts for Belfort_248:

(Start: 6 @118324 has 9 MA's), (12, 118381),

Gene: Beuffert_247 Start: 118782, Stop: 119036, Start Num: 5

Candidate Starts for Beuffert_247:

(2, 118764), (Start: 5 @118782 has 1 MA's), (12, 118839), (16, 118866), (28, 118932), (33, 118998),

Gene: Birchlyn_208 Start: 101347, Stop: 101580, Start Num: 9

Candidate Starts for Birchlyn_208:

(Start: 9 @101347 has 28 MA's), (15, 101398), (21, 101422), (22, 101425), (30, 101494), (34, 101524),

Gene: BoomerJR_206 Start: 104126, Stop: 104338, Start Num: 9

Candidate Starts for BoomerJR_206:

(Start: 8 @104123 has 1 MA's), (Start: 9 @104126 has 28 MA's), (Start: 10 @104129 has 1 MA's), (20, 104192), (30, 104273), (34, 104303),

Gene: Bordeaux_207 Start: 103998, Stop: 104231, Start Num: 9

Candidate Starts for Bordeaux_207:

(Start: 9 @103998 has 28 MA's), (15, 104049), (22, 104076), (30, 104145), (34, 104175),

Gene: Cadmus_201 Start: 104364, Stop: 104648, Start Num: 4

Candidate Starts for Cadmus_201:

(Start: 4 @104364 has 13 MA's), (11, 104397), (13, 104424), (20, 104460), (30, 104553), (32, 104565),

Gene: CeilingFan_213 Start: 104792, Stop: 105025, Start Num: 9

Candidate Starts for CeilingFan_213:

(Start: 9 @104792 has 28 MA's), (15, 104843), (22, 104870), (30, 104939), (34, 104969),

Gene: Cursive_199 Start: 103712, Stop: 103996, Start Num: 4

Candidate Starts for Cursive_199:

(Start: 4 @103712 has 13 MA's), (11, 103745), (13, 103772), (20, 103808), (30, 103901), (32, 103913),

Gene: Elmer_216 Start: 107116, Stop: 107349, Start Num: 9

Candidate Starts for Elmer_216:

(Start: 8 @107113 has 1 MA's), (Start: 9 @107116 has 28 MA's), (29, 107260), (34, 107296),

Gene: Emma1919_250 Start: 117485, Stop: 117736, Start Num: 6

Candidate Starts for Emma1919_250:

(Start: 6 @117485 has 9 MA's), (12, 117542), (31, 117686), (36, 117725),

Gene: Enygma_216 Start: 106936, Stop: 107202, Start Num: 9

Candidate Starts for Enygma_216:

(1, 106879), (Start: 9 @106936 has 28 MA's), (24, 107044), (29, 107110),

Gene: Francob_254 Start: 118980, Stop: 119231, Start Num: 6
Candidate Starts for Francob_254:
(Start: 6 @118980 has 9 MA's), (12, 119037), (36, 119220),

Gene: Genie2_206 Start: 104240, Stop: 104476, Start Num: 9
Candidate Starts for Genie2_206:
(Start: 9 @104240 has 28 MA's), (14, 104285), (25, 104336), (30, 104390), (34, 104420),

Gene: Gibbi_217 Start: 104285, Stop: 104518, Start Num: 9
Candidate Starts for Gibbi_217:
(Start: 9 @104285 has 28 MA's), (15, 104336), (21, 104360), (22, 104363), (30, 104432), (34, 104462),

Gene: Gilson_250 Start: 118245, Stop: 118496, Start Num: 6
Candidate Starts for Gilson_250:
(Start: 6 @118245 has 9 MA's), (12, 118302), (36, 118485),

Gene: IchabodCrane_204 Start: 103800, Stop: 104033, Start Num: 9
Candidate Starts for IchabodCrane_204:
(Start: 9 @103800 has 28 MA's), (15, 103851), (21, 103875), (22, 103878), (30, 103947), (34, 103977),

Gene: JimJam_216 Start: 105721, Stop: 105954, Start Num: 9
Candidate Starts for JimJam_216:
(Start: 9 @105721 has 28 MA's), (15, 105772), (22, 105799), (30, 105868), (34, 105898),

Gene: Jollison_207 Start: 103931, Stop: 104164, Start Num: 9
Candidate Starts for Jollison_207:
(Start: 9 @103931 has 28 MA's), (15, 103982), (22, 104009), (30, 104078), (34, 104108),

Gene: Karimac_210 Start: 104125, Stop: 104358, Start Num: 9
Candidate Starts for Karimac_210:
(Start: 9 @104125 has 28 MA's), (15, 104176), (22, 104203), (30, 104272), (34, 104302),

Gene: Karp_247 Start: 119922, Stop: 120173, Start Num: 6
Candidate Starts for Karp_247:
(Start: 6 @119922 has 9 MA's), (12, 119979),

Gene: KentuckyRacer_215 Start: 105636, Stop: 105869, Start Num: 9
Candidate Starts for KentuckyRacer_215:
(Start: 9 @105636 has 28 MA's), (15, 105687), (22, 105714), (30, 105783), (34, 105813),

Gene: Leo04_199 Start: 104671, Stop: 104976, Start Num: 4
Candidate Starts for Leo04_199:
(Start: 4 @104671 has 13 MA's), (24, 104800), (27, 104824), (29, 104875), (32, 104893), (37, 104938),

Gene: Liandry_197 Start: 103364, Stop: 103669, Start Num: 4
Candidate Starts for Liandry_197:
(Start: 4 @103364 has 13 MA's), (29, 103568), (32, 103586),

Gene: LukeCage_212 Start: 105748, Stop: 105954, Start Num: 9
Candidate Starts for LukeCage_212:
(Start: 9 @105748 has 28 MA's), (Start: 10 @105751 has 1 MA's), (29, 105883), (30, 105889), (34, 105919), (35, 105922),

Gene: MeganTheeKilla_251 Start: 117644, Stop: 117895, Start Num: 6
Candidate Starts for MeganTheeKilla_251:
(Start: 6 @117644 has 9 MA's), (12, 117701), (31, 117845), (36, 117884),

Gene: MindFlayer_202 Start: 103316, Stop: 103549, Start Num: 9
Candidate Starts for MindFlayer_202:
(Start: 9 @103316 has 28 MA's), (15, 103367), (21, 103391), (22, 103394), (30, 103463), (34, 103493),

Gene: Mugiwara_219 Start: 106245, Stop: 106478, Start Num: 9
Candidate Starts for Mugiwara_219:
(Start: 9 @106245 has 28 MA's), (Start: 10 @106248 has 1 MA's), (15, 106296), (22, 106323), (30, 106392), (34, 106422),

Gene: Muntaha_187 Start: 96355, Stop: 96612, Start Num: 7
Candidate Starts for Muntaha_187:
(Start: 7 @96355 has 2 MA's), (29, 96550), (33, 96574), (36, 96601),

Gene: NootNoot_194 Start: 102153, Stop: 102458, Start Num: 4
Candidate Starts for NootNoot_194:
(Start: 4 @102153 has 13 MA's), (19, 102249), (23, 102276), (29, 102357), (32, 102375),

Gene: Peebs_195 Start: 103953, Stop: 104258, Start Num: 4
Candidate Starts for Peebs_195:
(Start: 4 @103953 has 13 MA's), (24, 104082), (26, 104103), (27, 104106), (29, 104157), (32, 104175), (37, 104220),

Gene: Pepperwood_197 Start: 103911, Stop: 104216, Start Num: 4
Candidate Starts for Pepperwood_197:
(Start: 4 @103911 has 13 MA's), (24, 104040), (26, 104061), (27, 104064), (29, 104115), (32, 104133), (37, 104178),

Gene: Phredrick_255 Start: 118327, Stop: 118578, Start Num: 6
Candidate Starts for Phredrick_255:
(Start: 6 @118327 has 9 MA's), (12, 118384), (31, 118528), (36, 118567),

Gene: PinkiePie_197 Start: 103364, Stop: 103669, Start Num: 4
Candidate Starts for PinkiePie_197:
(Start: 4 @103364 has 13 MA's), (29, 103568), (32, 103586),

Gene: PumpkinSpice_212 Start: 104537, Stop: 104770, Start Num: 9
Candidate Starts for PumpkinSpice_212:
(Start: 9 @104537 has 28 MA's), (15, 104588), (22, 104615), (30, 104684), (34, 104714),

Gene: Quaran19_209 Start: 103978, Stop: 104211, Start Num: 9
Candidate Starts for Quaran19_209:
(Start: 9 @103978 has 28 MA's), (15, 104029), (22, 104056), (30, 104125), (34, 104155),

Gene: Rikishi_217 Start: 104259, Stop: 104492, Start Num: 9
Candidate Starts for Rikishi_217:
(Start: 9 @104259 has 28 MA's), (15, 104310), (22, 104337), (30, 104406), (34, 104436),

Gene: SaltySpittoon_209 Start: 103520, Stop: 103753, Start Num: 9
Candidate Starts for SaltySpittoon_209:

(Start: 9 @103520 has 28 MA's), (15, 103571), (22, 103598), (30, 103667), (34, 103697),

Gene: Samisti12_201 Start: 105535, Stop: 105840, Start Num: 4

Candidate Starts for Samisti12_201:

(Start: 4 @105535 has 13 MA's), (24, 105664), (26, 105685), (27, 105688), (29, 105739), (32, 105757), (37, 105802),

Gene: Sollertia_208 Start: 104240, Stop: 104452, Start Num: 9

Candidate Starts for Sollertia_208:

(Start: 8 @104237 has 1 MA's), (Start: 9 @104240 has 28 MA's), (Start: 10 @104243 has 1 MA's), (20, 104306), (30, 104387), (34, 104417),

Gene: SparkleGoddess_247 Start: 119197, Stop: 119448, Start Num: 6

Candidate Starts for SparkleGoddess_247:

(Start: 6 @119197 has 9 MA's), (12, 119254),

Gene: Spelly_214 Start: 103449, Stop: 103682, Start Num: 9

Candidate Starts for Spelly_214:

(Start: 9 @103449 has 28 MA's), (15, 103500), (30, 103596), (34, 103626),

Gene: Spilled_216 Start: 104653, Stop: 104886, Start Num: 9

Candidate Starts for Spilled_216:

(Start: 9 @104653 has 28 MA's), (15, 104704), (22, 104731), (30, 104800), (34, 104830),

Gene: Squillium_200 Start: 103366, Stop: 103671, Start Num: 4

Candidate Starts for Squillium_200:

(Start: 4 @103366 has 13 MA's), (29, 103570), (32, 103588),

Gene: Stanimal_207 Start: 104601, Stop: 104837, Start Num: 9

Candidate Starts for Stanimal_207:

(Start: 9 @104601 has 28 MA's), (14, 104646), (25, 104697), (30, 104751), (34, 104781),

Gene: StarPlatinum_216 Start: 106260, Stop: 106463, Start Num: 10

Candidate Starts for StarPlatinum_216:

(Start: 9 @106257 has 28 MA's), (Start: 10 @106260 has 1 MA's), (30, 106398), (34, 106428), (35, 106431),

Gene: Starbow_206 Start: 103493, Stop: 103726, Start Num: 9

Candidate Starts for Starbow_206:

(Start: 9 @103493 has 28 MA's), (15, 103544), (22, 103571), (30, 103640), (34, 103670),

Gene: Stigma_245 Start: 118909, Stop: 119160, Start Num: 6

Candidate Starts for Stigma_245:

(Start: 6 @118909 has 9 MA's), (12, 118966), (17, 118996),

Gene: Sushi23_198 Start: 105017, Stop: 105322, Start Num: 4

Candidate Starts for Sushi23_198:

(Start: 4 @105017 has 13 MA's), (24, 105146), (26, 105167), (27, 105170), (29, 105221), (32, 105239), (37, 105284),

Gene: Teutsch_197 Start: 104632, Stop: 104937, Start Num: 4

Candidate Starts for Teutsch_197:

(Start: 4 @104632 has 13 MA's), (24, 104761), (26, 104782), (27, 104785), (29, 104836), (32, 104854), (37, 104899),

Gene: TomSawyer_213 Start: 105964, Stop: 106197, Start Num: 9

Candidate Starts for TomSawyer_213:

(Start: 9 @105964 has 28 MA's), (15, 106015), (21, 106039), (22, 106042), (30, 106111), (34, 106141),

Gene: Tomas_206 Start: 104664, Stop: 104903, Start Num: 9

Candidate Starts for Tomas_206:

(3, 104634), (Start: 9 @104664 has 28 MA's), (18, 104727), (22, 104745), (29, 104811), (30, 104817),

Gene: Tribute_195 Start: 104482, Stop: 104787, Start Num: 4

Candidate Starts for Tribute_195:

(Start: 4 @104482 has 13 MA's), (24, 104611), (26, 104632), (27, 104635), (29, 104686), (32, 104704), (37, 104749),

Gene: Wakanda_186 Start: 96416, Stop: 96673, Start Num: 7

Candidate Starts for Wakanda_186:

(Start: 7 @96416 has 2 MA's), (29, 96611), (33, 96635), (36, 96662),

Gene: Westy_250 Start: 119727, Stop: 119978, Start Num: 6

Candidate Starts for Westy_250:

(Start: 6 @119727 has 9 MA's), (12, 119784),

Gene: Wipeout_200 Start: 104916, Stop: 105149, Start Num: 9

Candidate Starts for Wipeout_200:

(Start: 9 @104916 has 28 MA's), (15, 104967), (22, 104994), (30, 105063), (34, 105093),

Gene: Wofford_208 Start: 106981, Stop: 107217, Start Num: 8

Candidate Starts for Wofford_208:

(Start: 8 @106981 has 1 MA's), (Start: 9 @106984 has 28 MA's), (29, 107128), (34, 107164),

Gene: Yaboi_212 Start: 104175, Stop: 104387, Start Num: 9

Candidate Starts for Yaboi_212:

(Start: 8 @104172 has 1 MA's), (Start: 9 @104175 has 28 MA's), (Start: 10 @104178 has 1 MA's), (20, 104241), (30, 104322), (34, 104352),