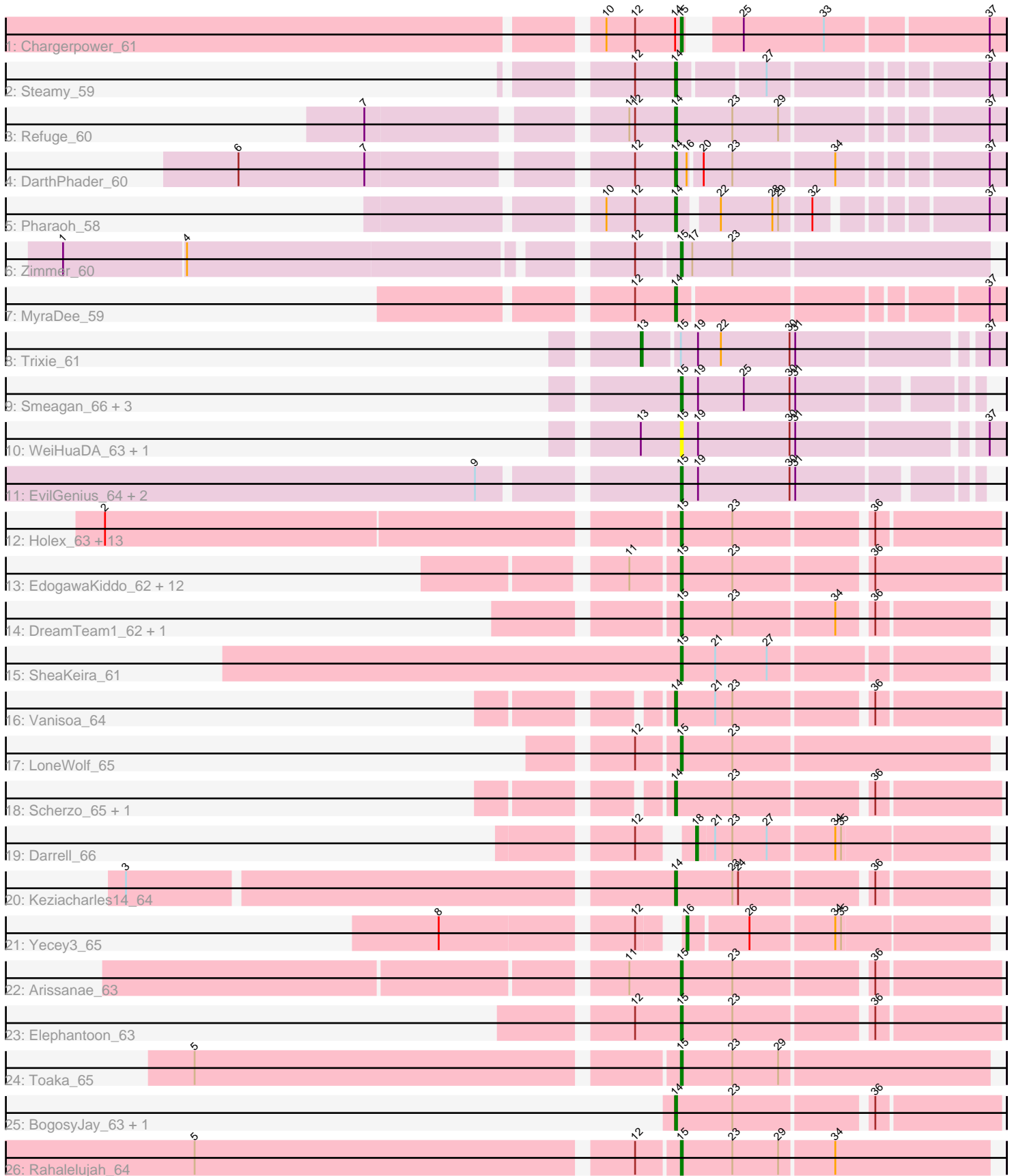


Pham 224599



Note: Tracks are now grouped by subcluster and scaled. Switching in subcluster is indicated by changes in track color. Track scale is now set by default to display the region 30 bp upstream of start 1 to 30 bp downstream of the last possible start. If this default region is judged to be packed too tightly with annotated starts, the track will be further scaled to only show that region of the ORF with annotated starts. This action will be indicated by adding "Zoomed" to the title. For starts, yellow indicates the location of called starts comprised solely of Glimmer/GeneMark auto-annotations, green indicates the location of called starts with at least 1 manual gene annotation.

Pham 224599 Report

This analysis was run 03/28/25 on database version 593.

Pham number 224599 has 60 members, 10 are drafts.

Phages represented in each track:

- Track 1 : Chargerpower_61
- Track 2 : Steamy_59
- Track 3 : Refuge_60
- Track 4 : DarthPhader_60
- Track 5 : Pharaoh_58
- Track 6 : Zimmer_60
- Track 7 : MyraDee_59
- Track 8 : Trixie_61
- Track 9 : Smeagan_66, Leviathan_65, Whabigail7_64, Dignity_65
- Track 10 : WeiHuaDA_63, Colin_61
- Track 11 : EvilGenius_64, ChipMunk_65, KingCyrus_64
- Track 12 : Horex_63, Hanray_63, Jiawan_62, Onglai_63, Qobbit_63, ExplosioNervosa_63, Priya_63, EmyBug_62, Eidsmoe_63, Conquerage_63, Alma_63, Lilleskat_61, Spouty_63, Fayely_63
- Track 13 : EdogawaKiddo_62, RyeScarlet_66, HortumSL17_65, Tubs_64, PackMan_63, Aliter_65, Phonnegut_65, Phaeder_64, Sachima_60, Pioneer_65, Myxus_64, Catalina_66, Beemo_65
- Track 14 : DreamTeam1_62, Charm_62
- Track 15 : SheaKeira_61
- Track 16 : Vanisoa_64
- Track 17 : LoneWolf_65
- Track 18 : Scherzo_65, Ugenie5_61
- Track 19 : Darrell_66
- Track 20 : Keziacharles14_64
- Track 21 : Yecey3_65
- Track 22 : Arissanae_63
- Track 23 : Elephantoon_63
- Track 24 : Toaka_65
- Track 25 : BogosyJay_63, Maminiaina_63
- Track 26 : Rahalelujah_64

Summary of Final Annotations (See graph section above for start numbers):

The start number called the most often in the published annotations is 15, it was called in 36 of the 50 non-draft genes in the pham.

Genes that call this "Most Annotated" start:

- Aliter_65, Alma_63, Arissanae_63, Beemo_65, Catalina_66, Chargerpower_61, Charm_62, ChipMunk_65, Colin_61, Conquerage_63, Dignity_65, DreamTeam1_62, EdogawaKiddo_62, Eidsmoe_63, Elephantoon_63, EmyBug_62, EvilGenius_64, ExplosioNervosa_63, Fayely_63, Hanray_63, Holec_63, HortumSL17_65, Jiawan_62, KingCyrus_64, Leviathan_65, Lilleskat_61, LoneWolf_65, Myxus_64, Onglai_63, PackMan_63, Phaeder_64, Phonnegut_65, Pioneer_65, Priya_63, Qobbit_63, Rahalelujah_64, RyeScarlet_66, Sachima_60, SheaKeira_61, Smeagan_66, Spouty_63, Toaka_65, Tubs_64, WeiHuaDA_63, Whabigail7_64, Zimmer_60,

Genes that have the "Most Annotated" start but do not call it:

- Trixie_61,

Genes that do not have the "Most Annotated" start:

- BogosyJay_63, Darrell_66, DarthPhader_60, Keziacharles14_64, Maminaiaina_63, MyraDee_59, Pharaoh_58, Refuge_60, Scherzo_65, Steamy_59, Ugenie5_61, Vanisoa_64, Yecey3_65,

Summary by start number:

Start 13:

- Found in 3 of 60 (5.0%) of genes in pham
- Manual Annotations of this start: 1 of 50
- Called 33.3% of time when present
- Phage (with cluster) where this start called: Trixie_61 (A2),

Start 14:

- Found in 12 of 60 (20.0%) of genes in pham
- Manual Annotations of this start: 11 of 50
- Called 91.7% of time when present
- Phage (with cluster) where this start called: BogosyJay_63 (A9), DarthPhader_60 (A12), Keziacharles14_64 (A9), Maminaiaina_63 (A9), MyraDee_59 (A18), Pharaoh_58 (A12), Refuge_60 (A12), Scherzo_65 (A9), Steamy_59 (A12), Ugenie5_61 (A9), Vanisoa_64 (A9),

Start 15:

- Found in 47 of 60 (78.3%) of genes in pham
- Manual Annotations of this start: 36 of 50
- Called 97.9% of time when present
- Phage (with cluster) where this start called: Aliter_65 (A9), Alma_63 (A9), Arissanae_63 (A9), Beemo_65 (A9), Catalina_66 (A9), Chargerpower_61 (A), Charm_62 (A9), ChipMunk_65 (A2), Colin_61 (A2), Conquerage_63 (A9), Dignity_65 (A2), DreamTeam1_62 (A9), EdogawaKiddo_62 (A9), Eidsmoe_63 (A9), Elephantoon_63 (A9), EmyBug_62 (A9), EvilGenius_64 (A2), ExplosioNervosa_63 (A9), Fayely_63 (A9), Hanray_63 (A9), Holec_63 (A9), HortumSL17_65 (A9), Jiawan_62 (A9), KingCyrus_64 (A2), Leviathan_65 (A2), Lilleskat_61 (A9), LoneWolf_65 (A9), Myxus_64 (A9), Onglai_63 (A9), PackMan_63 (A9), Phaeder_64 (A9), Phonnegut_65 (A9), Pioneer_65 (A9), Priya_63 (A9), Qobbit_63 (A9), Rahalelujah_64 (A9), RyeScarlet_66 (A9), Sachima_60 (A9), SheaKeira_61 (A9), Smeagan_66 (A2), Spouty_63 (A9), Toaka_65 (A9), Tubs_64 (A9), WeiHuaDA_63

(A2), Whabigail7_64 (A2), Zimmer_60 (A12),

Start 16:

- Found in 2 of 60 (3.3%) of genes in pham
- Manual Annotations of this start: 1 of 50
- Called 50.0% of time when present
- Phage (with cluster) where this start called: Yecey3_65 (A9),

Start 18:

- Found in 1 of 60 (1.7%) of genes in pham
- Manual Annotations of this start: 1 of 50
- Called 100.0% of time when present
- Phage (with cluster) where this start called: Darrell_66 (A9),

Summary by clusters:

There are 5 clusters represented in this pham: A9, A, A2, A18, A12,

Info for manual annotations of cluster A:

- Start number 15 was manually annotated 1 time for cluster A.

Info for manual annotations of cluster A12:

- Start number 14 was manually annotated 4 times for cluster A12.
- Start number 15 was manually annotated 1 time for cluster A12.

Info for manual annotations of cluster A18:

- Start number 14 was manually annotated 1 time for cluster A18.

Info for manual annotations of cluster A2:

- Start number 13 was manually annotated 1 time for cluster A2.
- Start number 15 was manually annotated 7 times for cluster A2.

Info for manual annotations of cluster A9:

- Start number 14 was manually annotated 6 times for cluster A9.
- Start number 15 was manually annotated 27 times for cluster A9.
- Start number 16 was manually annotated 1 time for cluster A9.
- Start number 18 was manually annotated 1 time for cluster A9.

Gene Information:

Gene: Aliter_65 Start: 40065, Stop: 39910, Start Num: 15

Candidate Starts for Aliter_65:

(11, 40089), (Start: 15 @40065 has 36 MA's), (23, 40038), (36, 39972),

Gene: Alma_63 Start: 40097, Stop: 39942, Start Num: 15

Candidate Starts for Alma_63:

(2, 40385), (Start: 15 @40097 has 36 MA's), (23, 40070), (36, 40004),

Gene: Arissanae_63 Start: 40631, Stop: 40476, Start Num: 15

Candidate Starts for Arissanae_63:

(11, 40658), (Start: 15 @40631 has 36 MA's), (23, 40604), (36, 40538),

Gene: Beemo_65 Start: 40235, Stop: 40080, Start Num: 15
Candidate Starts for Beemo_65:
(11, 40259), (Start: 15 @40235 has 36 MA's), (23, 40208), (36, 40142),

Gene: BogosyJay_63 Start: 40035, Stop: 39877, Start Num: 14
Candidate Starts for BogosyJay_63:
(Start: 14 @40035 has 11 MA's), (23, 40005), (36, 39939),

Gene: Catalina_66 Start: 40138, Stop: 39983, Start Num: 15
Candidate Starts for Catalina_66:
(11, 40162), (Start: 15 @40138 has 36 MA's), (23, 40111), (36, 40045),

Gene: Chargerpower_61 Start: 38578, Stop: 38429, Start Num: 15
Candidate Starts for Chargerpower_61:
(10, 38617), (12, 38602), (Start: 14 @38581 has 11 MA's), (Start: 15 @38578 has 36 MA's), (25, 38560), (33, 38518), (37, 38437),

Gene: Charm_62 Start: 39763, Stop: 39614, Start Num: 15
Candidate Starts for Charm_62:
(Start: 15 @39763 has 36 MA's), (23, 39736), (34, 39685), (36, 39670),

Gene: ChipMunk_65 Start: 41613, Stop: 41470, Start Num: 15
Candidate Starts for ChipMunk_65:
(9, 41706), (Start: 15 @41613 has 36 MA's), (19, 41604), (30, 41556), (31, 41553),

Gene: Colin_61 Start: 40164, Stop: 40006, Start Num: 15
Candidate Starts for Colin_61:
(Start: 13 @40185 has 1 MA's), (Start: 15 @40164 has 36 MA's), (19, 40155), (30, 40107), (31, 40104), (37, 40014),

Gene: Conquerage_63 Start: 39866, Stop: 39711, Start Num: 15
Candidate Starts for Conquerage_63:
(2, 40154), (Start: 15 @39866 has 36 MA's), (23, 39839), (36, 39773),

Gene: Darrell_66 Start: 40703, Stop: 40557, Start Num: 18
Candidate Starts for Darrell_66:
(12, 40724), (Start: 18 @40703 has 1 MA's), (21, 40694), (23, 40685), (27, 40667), (34, 40634), (35, 40631),

Gene: DarthPhader_60 Start: 40985, Stop: 40830, Start Num: 14
Candidate Starts for DarthPhader_60:
(6, 41195), (7, 41129), (12, 41006), (Start: 14 @40985 has 11 MA's), (Start: 16 @40979 has 1 MA's), (20, 40973), (23, 40958), (34, 40907), (37, 40838),

Gene: Dignity_65 Start: 40427, Stop: 40284, Start Num: 15
Candidate Starts for Dignity_65:
(Start: 15 @40427 has 36 MA's), (19, 40418), (25, 40394), (30, 40370), (31, 40367),

Gene: DreamTeam1_62 Start: 39595, Stop: 39446, Start Num: 15
Candidate Starts for DreamTeam1_62:
(Start: 15 @39595 has 36 MA's), (23, 39568), (34, 39517), (36, 39502),

Gene: EdogawaKiddo_62 Start: 40105, Stop: 39947, Start Num: 15
Candidate Starts for EdogawaKiddo_62:
(11, 40129), (Start: 15 @40105 has 36 MA's), (23, 40078), (36, 40012),

Gene: Eidsmoe_63 Start: 39858, Stop: 39703, Start Num: 15
Candidate Starts for Eidsmoe_63:
(2, 40146), (Start: 15 @39858 has 36 MA's), (23, 39831), (36, 39765),

Gene: Elephantoon_63 Start: 39445, Stop: 39290, Start Num: 15
Candidate Starts for Elephantoon_63:
(12, 39469), (Start: 15 @39445 has 36 MA's), (23, 39418), (36, 39352),

Gene: EmyBug_62 Start: 39860, Stop: 39705, Start Num: 15
Candidate Starts for EmyBug_62:
(2, 40148), (Start: 15 @39860 has 36 MA's), (23, 39833), (36, 39767),

Gene: EvilGenius_64 Start: 41614, Stop: 41471, Start Num: 15
Candidate Starts for EvilGenius_64:
(9, 41707), (Start: 15 @41614 has 36 MA's), (19, 41605), (30, 41557), (31, 41554),

Gene: ExplosioNervosa_63 Start: 39926, Stop: 39771, Start Num: 15
Candidate Starts for ExplosioNervosa_63:
(2, 40214), (Start: 15 @39926 has 36 MA's), (23, 39899), (36, 39833),

Gene: Fayely_63 Start: 39827, Stop: 39672, Start Num: 15
Candidate Starts for Fayely_63:
(2, 40115), (Start: 15 @39827 has 36 MA's), (23, 39800), (36, 39734),

Gene: Hanray_63 Start: 40190, Stop: 40035, Start Num: 15
Candidate Starts for Hanray_63:
(2, 40478), (Start: 15 @40190 has 36 MA's), (23, 40163), (36, 40097),

Gene: Horex_63 Start: 40206, Stop: 40051, Start Num: 15
Candidate Starts for Horex_63:
(2, 40494), (Start: 15 @40206 has 36 MA's), (23, 40179), (36, 40113),

Gene: HortumSL17_65 Start: 40137, Stop: 39982, Start Num: 15
Candidate Starts for HortumSL17_65:
(11, 40161), (Start: 15 @40137 has 36 MA's), (23, 40110), (36, 40044),

Gene: Jiawan_62 Start: 40222, Stop: 40067, Start Num: 15
Candidate Starts for Jiawan_62:
(2, 40510), (Start: 15 @40222 has 36 MA's), (23, 40195), (36, 40129),

Gene: Keziacharles14_64 Start: 41212, Stop: 41060, Start Num: 14
Candidate Starts for Keziacharles14_64:
(3, 41485), (Start: 14 @41212 has 11 MA's), (23, 41182), (24, 41179), (36, 41116),

Gene: KingCyrus_64 Start: 41609, Stop: 41466, Start Num: 15
Candidate Starts for KingCyrus_64:
(9, 41702), (Start: 15 @41609 has 36 MA's), (19, 41600), (30, 41552), (31, 41549),

Gene: Leviathan_65 Start: 40476, Stop: 40333, Start Num: 15

Candidate Starts for Leviathan_65:

(Start: 15 @40476 has 36 MA's), (19, 40467), (25, 40443), (30, 40419), (31, 40416),

Gene: Lilleskat_61 Start: 40058, Stop: 39900, Start Num: 15

Candidate Starts for Lilleskat_61:

(2, 40346), (Start: 15 @40058 has 36 MA's), (23, 40031), (36, 39965),

Gene: LoneWolf_65 Start: 40176, Stop: 40018, Start Num: 15

Candidate Starts for LoneWolf_65:

(12, 40197), (Start: 15 @40176 has 36 MA's), (23, 40149),

Gene: Maminiaina_63 Start: 40017, Stop: 39859, Start Num: 14

Candidate Starts for Maminiaina_63:

(Start: 14 @40017 has 11 MA's), (23, 39987), (36, 39921),

Gene: MyraDee_59 Start: 36819, Stop: 36664, Start Num: 14

Candidate Starts for MyraDee_59:

(12, 36840), (Start: 14 @36819 has 11 MA's), (37, 36672),

Gene: Myxus_64 Start: 40137, Stop: 39982, Start Num: 15

Candidate Starts for Myxus_64:

(11, 40161), (Start: 15 @40137 has 36 MA's), (23, 40110), (36, 40044),

Gene: Onglai_63 Start: 38478, Stop: 38323, Start Num: 15

Candidate Starts for Onglai_63:

(2, 38766), (Start: 15 @38478 has 36 MA's), (23, 38451), (36, 38385),

Gene: PackMan_63 Start: 40012, Stop: 39857, Start Num: 15

Candidate Starts for PackMan_63:

(11, 40036), (Start: 15 @40012 has 36 MA's), (23, 39985), (36, 39919),

Gene: Phaeder_64 Start: 40012, Stop: 39857, Start Num: 15

Candidate Starts for Phaeder_64:

(11, 40036), (Start: 15 @40012 has 36 MA's), (23, 39985), (36, 39919),

Gene: Pharaoh_58 Start: 39859, Stop: 39713, Start Num: 14

Candidate Starts for Pharaoh_58:

(10, 39895), (12, 39880), (Start: 14 @39859 has 11 MA's), (22, 39841), (28, 39814), (29, 39811), (32, 39796), (37, 39721),

Gene: Phonnegut_65 Start: 40234, Stop: 40079, Start Num: 15

Candidate Starts for Phonnegut_65:

(11, 40258), (Start: 15 @40234 has 36 MA's), (23, 40207), (36, 40141),

Gene: Pioneer_65 Start: 40234, Stop: 40079, Start Num: 15

Candidate Starts for Pioneer_65:

(11, 40258), (Start: 15 @40234 has 36 MA's), (23, 40207), (36, 40141),

Gene: Priya_63 Start: 39861, Stop: 39706, Start Num: 15

Candidate Starts for Priya_63:

(2, 40149), (Start: 15 @39861 has 36 MA's), (23, 39834), (36, 39768),

Gene: Qobbit_63 Start: 39823, Stop: 39668, Start Num: 15

Candidate Starts for Qobbit_63:

(2, 40111), (Start: 15 @39823 has 36 MA's), (23, 39796), (36, 39730),

Gene: Rahalelujah_64 Start: 39776, Stop: 39618, Start Num: 15

Candidate Starts for Rahalelujah_64:

(5, 40019), (12, 39797), (Start: 15 @39776 has 36 MA's), (23, 39749), (29, 39725), (34, 39698),

Gene: Refuge_60 Start: 41000, Stop: 40842, Start Num: 14

Candidate Starts for Refuge_60:

(7, 41144), (11, 41024), (12, 41021), (Start: 14 @41000 has 11 MA's), (23, 40970), (29, 40946), (37, 40850),

Gene: RyeScarlet_66 Start: 40209, Stop: 40054, Start Num: 15

Candidate Starts for RyeScarlet_66:

(11, 40233), (Start: 15 @40209 has 36 MA's), (23, 40182), (36, 40116),

Gene: Sachima_60 Start: 40038, Stop: 39880, Start Num: 15

Candidate Starts for Sachima_60:

(11, 40062), (Start: 15 @40038 has 36 MA's), (23, 40011), (36, 39945),

Gene: Scherzo_65 Start: 40426, Stop: 40268, Start Num: 14

Candidate Starts for Scherzo_65:

(Start: 14 @40426 has 11 MA's), (23, 40396), (36, 40330),

Gene: SheaKeira_61 Start: 39614, Stop: 39462, Start Num: 15

Candidate Starts for SheaKeira_61:

(Start: 15 @39614 has 36 MA's), (21, 39596), (27, 39569),

Gene: Smeagan_66 Start: 40563, Stop: 40420, Start Num: 15

Candidate Starts for Smeagan_66:

(Start: 15 @40563 has 36 MA's), (19, 40554), (25, 40530), (30, 40506), (31, 40503),

Gene: Spouty_63 Start: 39860, Stop: 39705, Start Num: 15

Candidate Starts for Spouty_63:

(2, 40148), (Start: 15 @39860 has 36 MA's), (23, 39833), (36, 39767),

Gene: Steamy_59 Start: 39593, Stop: 39441, Start Num: 14

Candidate Starts for Steamy_59:

(12, 39614), (Start: 14 @39593 has 11 MA's), (27, 39551), (37, 39449),

Gene: Toaka_65 Start: 40248, Stop: 40090, Start Num: 15

Candidate Starts for Toaka_65:

(5, 40491), (Start: 15 @40248 has 36 MA's), (23, 40221), (29, 40197),

Gene: Trixie_61 Start: 40009, Stop: 39833, Start Num: 13

Candidate Starts for Trixie_61:

(Start: 13 @40009 has 1 MA's), (Start: 15 @39991 has 36 MA's), (19, 39982), (22, 39970), (30, 39934), (31, 39931), (37, 39841),

Gene: Tubs_64 Start: 40012, Stop: 39857, Start Num: 15

Candidate Starts for Tubs_64:

(11, 40036), (Start: 15 @40012 has 36 MA's), (23, 39985), (36, 39919),

Gene: Ugenie5_61 Start: 40425, Stop: 40267, Start Num: 14

Candidate Starts for Ugenie5_61:

(Start: 14 @40425 has 11 MA's), (23, 40395), (36, 40329),

Gene: Vanisoa_64 Start: 41119, Stop: 40961, Start Num: 14

Candidate Starts for Vanisoa_64:

(Start: 14 @41119 has 11 MA's), (21, 41098), (23, 41089), (36, 41023),

Gene: WeiHuaDA_63 Start: 40711, Stop: 40553, Start Num: 15

Candidate Starts for WeiHuaDA_63:

(Start: 13 @40732 has 1 MA's), (Start: 15 @40711 has 36 MA's), (19, 40702), (30, 40654), (31, 40651), (37, 40561),

Gene: Whabigail7_64 Start: 40282, Stop: 40139, Start Num: 15

Candidate Starts for Whabigail7_64:

(Start: 15 @40282 has 36 MA's), (19, 40273), (25, 40249), (30, 40225), (31, 40222),

Gene: Yecey3_65 Start: 40008, Stop: 39859, Start Num: 16

Candidate Starts for Yecey3_65:

(8, 40116), (12, 40023), (Start: 16 @40008 has 1 MA's), (26, 39978), (34, 39936), (35, 39933),

Gene: Zimmer_60 Start: 40828, Stop: 40670, Start Num: 15

Candidate Starts for Zimmer_60:

(1, 41128), (4, 41065), (12, 40849), (Start: 15 @40828 has 36 MA's), (17, 40822), (23, 40801),