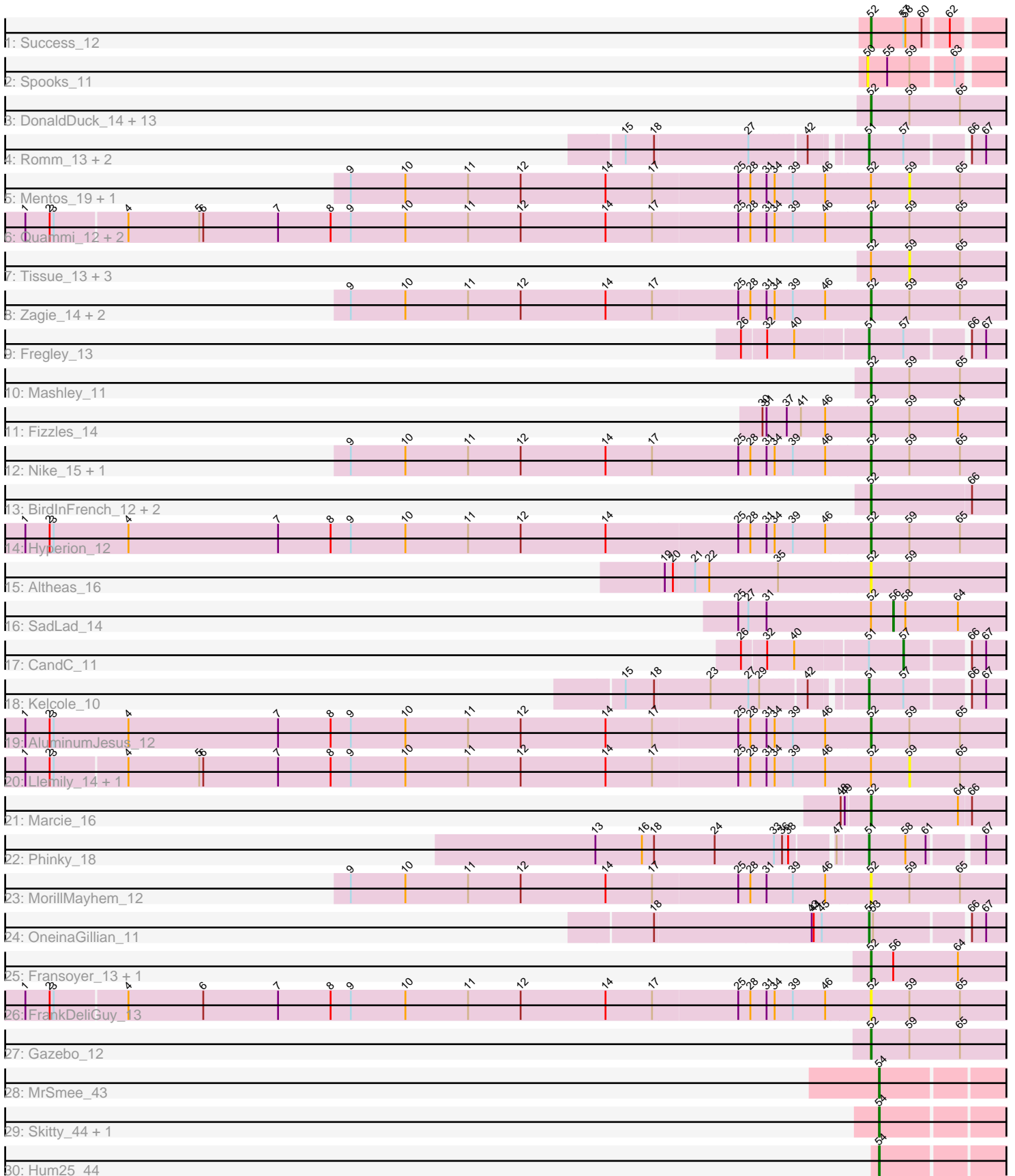


Pham 224602



Note: Tracks are now grouped by subcluster and scaled. Switching in subcluster is indicated by changes in track color. Track scale is now set by default to display the region 30 bp upstream of start 1 to 30 bp downstream of the last possible start. If this default region is judged to be packed too tightly with annotated starts, the track will be further scaled to only show that region of the ORF with annotated starts. This action will be indicated by adding "Zoomed" to the title. For starts, yellow indicates the location of called starts comprised solely of Glimmer/GeneMark auto-annotations, green indicates the location of called starts with at least 1 manual gene annotation.

Pham 224602 Report

This analysis was run 03/28/25 on database version 593.

Pham number 224602 has 59 members, 15 are drafts.

Phages represented in each track:

- Track 1 : Success_12
- Track 2 : Spooks_11
- Track 3 : DonaldDuck_14, Phabia_14, Namago_14, BabyDotz_13, Lonelysoil_13, SallyK_15, Casend_15, Wheelie_13, Wayne3_15, Jehoshaphat_16, StrawberryJamm_16, Teehee_16, Grassboy_15, Judebell_16
- Track 4 : Romm_13, Tempo_11, RobinRose_12
- Track 5 : Mentos_19, Statler_15
- Track 6 : Quammi_12, Rudy_12, Viceroy_13
- Track 7 : Tissue_13, EverythinBagel_14, Kyva_17, Zhafia_17
- Track 8 : Zagie_14, Rowlf_10, Blab_12
- Track 9 : Fregley_13
- Track 10 : Mashley_11
- Track 11 : Fizzles_14
- Track 12 : Nike_15, Squash_16
- Track 13 : BirdInFrench_12, Pepe25_11, Wilca_12
- Track 14 : Hyperion_12
- Track 15 : Altheas_16
- Track 16 : SadLad_14
- Track 17 : CandC_11
- Track 18 : Kelcole_10
- Track 19 : AluminumJesus_12
- Track 20 : Llemily_14, Sillytadpoles_14
- Track 21 : Marcie_16
- Track 22 : Phinky_18
- Track 23 : MorillMayhem_12
- Track 24 : OneinaGillian_11
- Track 25 : Fransoyer_13, RubyRalph_13
- Track 26 : FrankDeliGuy_13
- Track 27 : Gazebo_12
- Track 28 : MrSmee_43
- Track 29 : Skitty_44, Pitbull_42
- Track 30 : Hum25_44

Summary of Final Annotations (See graph section above for start numbers):

The start number called the most often in the published annotations is 52, it was called in 33 of the 44 non-draft genes in the pham.

Genes that call this "Most Annotated" start:

- Altheas_16, AluminumJesus_12, BabyDotz_13, BirdInFrench_12, Blab_12, Casend_15, DonaldDuck_14, Fizzles_14, FrankDeliGuy_13, Fransoyer_13, Gazebo_12, Grassboy_15, Hyperion_12, Jehoshaphat_16, Judebell_16, Lonelysoil_13, Marcie_16, Mashley_11, MorillMayhem_12, Namago_14, Nike_15, Pepe25_11, Phabia_14, Quammi_12, Rowlf_10, RubyRalph_13, Rudy_12, SallyK_15, Squash_16, StrawberryJamm_16, Success_12, Teehee_16, Viceroy_13, Wayne3_15, Wheelie_13, Wilca_12, Zagie_14,

Genes that have the "Most Annotated" start but do not call it:

- EverythinBagel_14, Kyva_17, Llemily_14, Mentos_19, SadLad_14, Sillytadpoles_14, Statler_15, Tissue_13, Zhafia_17,

Genes that do not have the "Most Annotated" start:

- CandC_11, Fregley_13, Hum25_44, Kelcole_10, MrSmee_43, OneinaGillian_11, Phinky_18, Pitbull_42, RobinRose_12, Romm_13, Skitty_44, Spooks_11, Tempo_11,

Summary by start number:

Start 50:

- Found in 1 of 59 (1.7%) of genes in pham
- No Manual Annotations of this start.
- Called 100.0% of time when present
- Phage (with cluster) where this start called: Spooks_11 (BT),

Start 51:

- Found in 8 of 59 (13.6%) of genes in pham
- Manual Annotations of this start: 6 of 44
- Called 87.5% of time when present
- Phage (with cluster) where this start called: Fregley_13 (EG), Kelcole_10 (EG), OneinaGillian_11 (EG), Phinky_18 (EG), RobinRose_12 (EG), Romm_13 (EG), Tempo_11 (EG),

Start 52:

- Found in 46 of 59 (78.0%) of genes in pham
- Manual Annotations of this start: 33 of 44
- Called 80.4% of time when present
- Phage (with cluster) where this start called: Altheas_16 (EG), AluminumJesus_12 (EG), BabyDotz_13 (EG), BirdInFrench_12 (EG), Blab_12 (EG), Casend_15 (EG), DonaldDuck_14 (EG), Fizzles_14 (EG), FrankDeliGuy_13 (EG), Fransoyer_13 (EG), Gazebo_12 (EG), Grassboy_15 (EG), Hyperion_12 (EG), Jehoshaphat_16 (EG), Judebell_16 (EG), Lonelysoil_13 (EG), Marcie_16 (EG), Mashley_11 (EG), MorillMayhem_12 (EG), Namago_14 (EG), Nike_15 (EG), Pepe25_11 (EG), Phabia_14 (EG), Quammi_12 (EG), Rowlf_10 (EG), RubyRalph_13 (EG), Rudy_12 (EG), SallyK_15 (EG), Squash_16 (EG), StrawberryJamm_16 (EG), Success_12 (BT), Teehee_16 (EG), Viceroy_13 (EG), Wayne3_15 (EG), Wheelie_13 (EG), Wilca_12 (EG), Zagie_14 (EG),

Start 54:

- Found in 4 of 59 (6.8%) of genes in pham
- Manual Annotations of this start: 3 of 44
- Called 100.0% of time when present
- Phage (with cluster) where this start called: Hum25_44 (FQ), MrSmee_43 (FQ), Pitbull_42 (FQ), Skitty_44 (FQ),

Start 56:

- Found in 3 of 59 (5.1%) of genes in pham
- Manual Annotations of this start: 1 of 44
- Called 33.3% of time when present
- Phage (with cluster) where this start called: SadLad_14 (EG),

Start 57:

- Found in 7 of 59 (11.9%) of genes in pham
- Manual Annotations of this start: 1 of 44
- Called 14.3% of time when present
- Phage (with cluster) where this start called: CandC_11 (EG),

Start 59:

- Found in 39 of 59 (66.1%) of genes in pham
- No Manual Annotations of this start.
- Called 20.5% of time when present
- Phage (with cluster) where this start called: EverythinBagel_14 (EG), Kyva_17 (EG), Llemily_14 (EG), Mentos_19 (EG), Sillytadpoles_14 (EG), Statler_15 (EG), Tissue_13 (EG), Zhafia_17 (EG),

Summary by clusters:

There are 3 clusters represented in this pham: BT, FQ, EG,

Info for manual annotations of cluster BT:

- Start number 52 was manually annotated 1 time for cluster BT.

Info for manual annotations of cluster EG:

- Start number 51 was manually annotated 6 times for cluster EG.
- Start number 52 was manually annotated 32 times for cluster EG.
- Start number 56 was manually annotated 1 time for cluster EG.
- Start number 57 was manually annotated 1 time for cluster EG.

Info for manual annotations of cluster FQ:

- Start number 54 was manually annotated 3 times for cluster FQ.

Gene Information:

Gene: Altheas_16 Start: 5368, Stop: 5153, Start Num: 52

Candidate Starts for Altheas_16:

(19, 5665), (20, 5653), (21, 5623), (22, 5602), (35, 5500), (Start: 52 @5368 has 33 MA's), (59, 5311),

Gene: AluminumJesus_12 Start: 4567, Stop: 4352, Start Num: 52

Candidate Starts for AluminumJesus_12:

(1, 5812), (2, 5776), (3, 5770), (4, 5659), (7, 5437), (8, 5359), (9, 5329), (10, 5248), (11, 5155), (12, 5077), (14, 4951), (17, 4882), (25, 4759), (28, 4741), (31, 4717), (34, 4705), (39, 4678), (46, 4630), (Start: 52 @4567 has 33 MA's), (59, 4510), (65, 4435),

Gene: BabyDotz_13 Start: 5024, Stop: 4809, Start Num: 52

Candidate Starts for BabyDotz_13:

(Start: 52 @5024 has 33 MA's), (59, 4967), (65, 4892),

Gene: BirdInFrench_12 Start: 3464, Stop: 3252, Start Num: 52

Candidate Starts for BirdInFrench_12:

(Start: 52 @3464 has 33 MA's), (66, 3317),

Gene: Blab_12 Start: 4349, Stop: 4134, Start Num: 52

Candidate Starts for Blab_12:

(9, 5111), (10, 5030), (11, 4937), (12, 4859), (14, 4733), (17, 4664), (25, 4541), (28, 4523), (31, 4499), (34, 4487), (39, 4460), (46, 4412), (Start: 52 @4349 has 33 MA's), (59, 4292), (65, 4217),

Gene: CandC_11 Start: 3165, Stop: 3016, Start Num: 57

Candidate Starts for CandC_11:

(26, 3390), (32, 3357), (40, 3318), (Start: 51 @3216 has 6 MA's), (Start: 57 @3165 has 1 MA's), (66, 3081), (67, 3060),

Gene: Casend_15 Start: 5321, Stop: 5106, Start Num: 52

Candidate Starts for Casend_15:

(Start: 52 @5321 has 33 MA's), (59, 5264), (65, 5189),

Gene: DonaldDuck_14 Start: 4667, Stop: 4452, Start Num: 52

Candidate Starts for DonaldDuck_14:

(Start: 52 @4667 has 33 MA's), (59, 4610), (65, 4535),

Gene: EverythinBagel_14 Start: 5038, Stop: 4880, Start Num: 59

Candidate Starts for EverythinBagel_14:

(Start: 52 @5095 has 33 MA's), (59, 5038), (65, 4963),

Gene: Fizzles_14 Start: 4739, Stop: 4524, Start Num: 52

Candidate Starts for Fizzles_14:

(30, 4895), (31, 4889), (37, 4859), (41, 4838), (46, 4802), (Start: 52 @4739 has 33 MA's), (59, 4682), (64, 4610),

Gene: FrankDeliGuy_13 Start: 4553, Stop: 4338, Start Num: 52

Candidate Starts for FrankDeliGuy_13:

(1, 5792), (2, 5756), (3, 5750), (4, 5645), (6, 5534), (7, 5423), (8, 5345), (9, 5315), (10, 5234), (11, 5141), (12, 5063), (14, 4937), (17, 4868), (25, 4745), (28, 4727), (31, 4703), (34, 4691), (39, 4664), (46, 4616), (Start: 52 @4553 has 33 MA's), (59, 4496), (65, 4421),

Gene: Fransoyer_13 Start: 4233, Stop: 4018, Start Num: 52

Candidate Starts for Fransoyer_13:

(Start: 52 @4233 has 33 MA's), (Start: 56 @4200 has 1 MA's), (64, 4104),

Gene: Fregley_13 Start: 3754, Stop: 3554, Start Num: 51

Candidate Starts for Fregley_13:

(26, 3928), (32, 3895), (40, 3856), (Start: 51 @3754 has 6 MA's), (Start: 57 @3703 has 1 MA's), (66, 3619), (67, 3598),

Gene: Gazebo_12 Start: 4574, Stop: 4359, Start Num: 52

Candidate Starts for Gazebo_12:

(Start: 52 @4574 has 33 MA's), (59, 4517), (65, 4442),

Gene: Grassboy_15 Start: 5355, Stop: 5140, Start Num: 52

Candidate Starts for Grassboy_15:

(Start: 52 @5355 has 33 MA's), (59, 5298), (65, 5223),

Gene: Hum25_44 Start: 27639, Stop: 27827, Start Num: 54

Candidate Starts for Hum25_44:

(Start: 54 @27639 has 3 MA's),

Gene: Hyperion_12 Start: 4612, Stop: 4397, Start Num: 52

Candidate Starts for Hyperion_12:

(1, 5857), (2, 5821), (3, 5815), (4, 5704), (7, 5482), (8, 5404), (9, 5374), (10, 5293), (11, 5200), (12, 5122), (14, 4996), (25, 4804), (28, 4786), (31, 4762), (34, 4750), (39, 4723), (46, 4675), (Start: 52 @4612 has 33 MA's), (59, 4555), (65, 4480),

Gene: Jehoshaphat_16 Start: 5613, Stop: 5398, Start Num: 52

Candidate Starts for Jehoshaphat_16:

(Start: 52 @5613 has 33 MA's), (59, 5556), (65, 5481),

Gene: Judebell_16 Start: 5139, Stop: 4924, Start Num: 52

Candidate Starts for Judebell_16:

(Start: 52 @5139 has 33 MA's), (59, 5082), (65, 5007),

Gene: Kelcole_10 Start: 3363, Stop: 3163, Start Num: 51

Candidate Starts for Kelcole_10:

(15, 3684), (18, 3642), (23, 3561), (27, 3507), (29, 3492), (42, 3432), (Start: 51 @3363 has 6 MA's), (Start: 57 @3312 has 1 MA's), (66, 3228), (67, 3207),

Gene: Kyva_17 Start: 5333, Stop: 5175, Start Num: 59

Candidate Starts for Kyva_17:

(Start: 52 @5390 has 33 MA's), (59, 5333), (65, 5258),

Gene: Llemily_14 Start: 4332, Stop: 4174, Start Num: 59

Candidate Starts for Llemily_14:

(1, 5628), (2, 5592), (3, 5586), (4, 5481), (5, 5376), (6, 5370), (7, 5259), (8, 5181), (9, 5151), (10, 5070), (11, 4977), (12, 4899), (14, 4773), (17, 4704), (25, 4581), (28, 4563), (31, 4539), (34, 4527), (39, 4500), (46, 4452), (Start: 52 @4389 has 33 MA's), (59, 4332), (65, 4257),

Gene: Lonelysoil_13 Start: 4634, Stop: 4419, Start Num: 52

Candidate Starts for Lonelysoil_13:

(Start: 52 @4634 has 33 MA's), (59, 4577), (65, 4502),

Gene: Marcie_16 Start: 4028, Stop: 3816, Start Num: 52

Candidate Starts for Marcie_16:

(48, 4067), (49, 4061), (Start: 52 @4028 has 33 MA's), (64, 3899), (66, 3881),

Gene: Mashley_11 Start: 4429, Stop: 4214, Start Num: 52

Candidate Starts for Mashley_11:

(Start: 52 @4429 has 33 MA's), (59, 4372), (65, 4297),

Gene: Mentos_19 Start: 5911, Stop: 5753, Start Num: 59

Candidate Starts for Mentos_19:

(9, 6730), (10, 6649), (11, 6556), (12, 6478), (14, 6352), (17, 6283), (25, 6160), (28, 6142), (31, 6118), (34, 6106), (39, 6079), (46, 6031), (Start: 52 @5968 has 33 MA's), (59, 5911), (65, 5836),

Gene: MorillMayhem_12 Start: 4437, Stop: 4222, Start Num: 52

Candidate Starts for MorillMayhem_12:

(9, 5199), (10, 5118), (11, 5025), (12, 4947), (14, 4821), (17, 4752), (25, 4629), (28, 4611), (31, 4587), (39, 4548), (46, 4500), (Start: 52 @4437 has 33 MA's), (59, 4380), (65, 4305),

Gene: MrSmee_43 Start: 28469, Stop: 28657, Start Num: 54

Candidate Starts for MrSmee_43:

(Start: 54 @28469 has 3 MA's),

Gene: Namago_14 Start: 4446, Stop: 4231, Start Num: 52

Candidate Starts for Namago_14:

(Start: 52 @4446 has 33 MA's), (59, 4389), (65, 4314),

Gene: Nike_15 Start: 5337, Stop: 5122, Start Num: 52

Candidate Starts for Nike_15:

(9, 6102), (10, 6021), (11, 5928), (12, 5850), (14, 5724), (17, 5655), (25, 5529), (28, 5511), (31, 5487), (34, 5475), (39, 5448), (46, 5400), (Start: 52 @5337 has 33 MA's), (59, 5280), (65, 5205),

Gene: OneinaGillian_11 Start: 3006, Stop: 2806, Start Num: 51

Candidate Starts for OneinaGillian_11:

(18, 3318), (43, 3090), (44, 3087), (45, 3075), (Start: 51 @3006 has 6 MA's), (53, 3000), (66, 2871), (67, 2850),

Gene: Pepe25_11 Start: 3464, Stop: 3252, Start Num: 52

Candidate Starts for Pepe25_11:

(Start: 52 @3464 has 33 MA's), (66, 3317),

Gene: Phabia_14 Start: 4804, Stop: 4589, Start Num: 52

Candidate Starts for Phabia_14:

(Start: 52 @4804 has 33 MA's), (59, 4747), (65, 4672),

Gene: Phinky_18 Start: 5034, Stop: 4834, Start Num: 51

Candidate Starts for Phinky_18:

(13, 5412), (16, 5343), (18, 5325), (24, 5235), (33, 5151), (36, 5139), (38, 5130), (47, 5076), (Start: 51 @5034 has 6 MA's), (58, 4980), (61, 4950), (67, 4878),

Gene: Pitbull_42 Start: 26865, Stop: 27053, Start Num: 54

Candidate Starts for Pitbull_42:

(Start: 54 @26865 has 3 MA's),

Gene: Quammi_12 Start: 4378, Stop: 4163, Start Num: 52

Candidate Starts for Quammi_12:

(1, 5617), (2, 5581), (3, 5575), (4, 5470), (5, 5365), (6, 5359), (7, 5248), (8, 5170), (9, 5140), (10, 5059), (11, 4966), (12, 4888), (14, 4762), (17, 4693), (25, 4570), (28, 4552), (31, 4528), (34, 4516), (39, 4489), (46, 4441), (Start: 52 @4378 has 33 MA's), (59, 4321), (65, 4246),

Gene: RobinRose_12 Start: 3192, Stop: 2992, Start Num: 51

Candidate Starts for RobinRose_12:

(15, 3513), (18, 3471), (27, 3336), (42, 3261), (Start: 51 @3192 has 6 MA's), (Start: 57 @3141 has 1 MA's), (66, 3057), (67, 3036),

Gene: Romm_13 Start: 3192, Stop: 2992, Start Num: 51

Candidate Starts for Romm_13:

(15, 3513), (18, 3471), (27, 3336), (42, 3261), (Start: 51 @3192 has 6 MA's), (Start: 57 @3141 has 1 MA's), (66, 3057), (67, 3036),

Gene: Rowlf_10 Start: 4144, Stop: 3929, Start Num: 52

Candidate Starts for Rowlf_10:

(9, 4906), (10, 4825), (11, 4732), (12, 4654), (14, 4528), (17, 4459), (25, 4336), (28, 4318), (31, 4294), (34, 4282), (39, 4255), (46, 4207), (Start: 52 @4144 has 33 MA's), (59, 4087), (65, 4012),

Gene: RubyRalph_13 Start: 4167, Stop: 3952, Start Num: 52

Candidate Starts for RubyRalph_13:

(Start: 52 @4167 has 33 MA's), (Start: 56 @4134 has 1 MA's), (64, 4038),

Gene: Rudy_12 Start: 4378, Stop: 4163, Start Num: 52

Candidate Starts for Rudy_12:

(1, 5617), (2, 5581), (3, 5575), (4, 5470), (5, 5365), (6, 5359), (7, 5248), (8, 5170), (9, 5140), (10, 5059), (11, 4966), (12, 4888), (14, 4762), (17, 4693), (25, 4570), (28, 4552), (31, 4528), (34, 4516), (39, 4489), (46, 4441), (Start: 52 @4378 has 33 MA's), (59, 4321), (65, 4246),

Gene: SadLad_14 Start: 4551, Stop: 4369, Start Num: 56

Candidate Starts for SadLad_14:

(25, 4779), (27, 4764), (31, 4737), (Start: 52 @4584 has 33 MA's), (Start: 56 @4551 has 1 MA's), (58, 4533), (64, 4455),

Gene: SallyK_15 Start: 5539, Stop: 5324, Start Num: 52

Candidate Starts for SallyK_15:

(Start: 52 @5539 has 33 MA's), (59, 5482), (65, 5407),

Gene: Sillytadpoles_14 Start: 4319, Stop: 4161, Start Num: 59

Candidate Starts for Sillytadpoles_14:

(1, 5615), (2, 5579), (3, 5573), (4, 5468), (5, 5363), (6, 5357), (7, 5246), (8, 5168), (9, 5138), (10, 5057), (11, 4964), (12, 4886), (14, 4760), (17, 4691), (25, 4568), (28, 4550), (31, 4526), (34, 4514), (39, 4487), (46, 4439), (Start: 52 @4376 has 33 MA's), (59, 4319), (65, 4244),

Gene: Skitty_44 Start: 26378, Stop: 26566, Start Num: 54

Candidate Starts for Skitty_44:

(Start: 54 @26378 has 3 MA's),

Gene: Spooks_11 Start: 9089, Stop: 8904, Start Num: 50

Candidate Starts for Spooks_11:

(50, 9089), (55, 9062), (59, 9029), (63, 8972),

Gene: Squash_16 Start: 5392, Stop: 5177, Start Num: 52

Candidate Starts for Squash_16:

(9, 6157), (10, 6076), (11, 5983), (12, 5905), (14, 5779), (17, 5710), (25, 5584), (28, 5566), (31, 5542), (34, 5530), (39, 5503), (46, 5455), (Start: 52 @5392 has 33 MA's), (59, 5335), (65, 5260),

Gene: Statler_15 Start: 4855, Stop: 4697, Start Num: 59

Candidate Starts for Statler_15:

(9, 5674), (10, 5593), (11, 5500), (12, 5422), (14, 5296), (17, 5227), (25, 5104), (28, 5086), (31, 5062), (34, 5050), (39, 5023), (46, 4975), (Start: 52 @4912 has 33 MA's), (59, 4855), (65, 4780),

Gene: StrawberryJamm_16 Start: 4678, Stop: 4463, Start Num: 52

Candidate Starts for StrawberryJamm_16:

(Start: 52 @4678 has 33 MA's), (59, 4621), (65, 4546),

Gene: Success_12 Start: 8329, Stop: 8147, Start Num: 52

Candidate Starts for Success_12:

(Start: 52 @8329 has 33 MA's), (Start: 57 @8281 has 1 MA's), (58, 8278), (60, 8254), (62, 8221),

Gene: Teehee_16 Start: 5613, Stop: 5398, Start Num: 52

Candidate Starts for Teehee_16:

(Start: 52 @5613 has 33 MA's), (59, 5556), (65, 5481),

Gene: Tempo_11 Start: 3387, Stop: 3187, Start Num: 51

Candidate Starts for Tempo_11:

(15, 3708), (18, 3666), (27, 3531), (42, 3456), (Start: 51 @3387 has 6 MA's), (Start: 57 @3336 has 1 MA's), (66, 3252), (67, 3231),

Gene: Tissue_13 Start: 4687, Stop: 4529, Start Num: 59

Candidate Starts for Tissue_13:

(Start: 52 @4744 has 33 MA's), (59, 4687), (65, 4612),

Gene: Viceroy_13 Start: 4378, Stop: 4163, Start Num: 52

Candidate Starts for Viceroy_13:

(1, 5617), (2, 5581), (3, 5575), (4, 5470), (5, 5365), (6, 5359), (7, 5248), (8, 5170), (9, 5140), (10, 5059), (11, 4966), (12, 4888), (14, 4762), (17, 4693), (25, 4570), (28, 4552), (31, 4528), (34, 4516), (39, 4489), (46, 4441), (Start: 52 @4378 has 33 MA's), (59, 4321), (65, 4246),

Gene: Wayne3_15 Start: 5316, Stop: 5101, Start Num: 52

Candidate Starts for Wayne3_15:

(Start: 52 @5316 has 33 MA's), (59, 5259), (65, 5184),

Gene: Wheelie_13 Start: 4667, Stop: 4452, Start Num: 52

Candidate Starts for Wheelie_13:

(Start: 52 @4667 has 33 MA's), (59, 4610), (65, 4535),

Gene: Wilca_12 Start: 3464, Stop: 3252, Start Num: 52

Candidate Starts for Wilca_12:

(Start: 52 @3464 has 33 MA's), (66, 3317),

Gene: Zagie_14 Start: 4881, Stop: 4666, Start Num: 52

Candidate Starts for Zagie_14:

(9, 5643), (10, 5562), (11, 5469), (12, 5391), (14, 5265), (17, 5196), (25, 5073), (28, 5055), (31, 5031), (34, 5019), (39, 4992), (46, 4944), (Start: 52 @4881 has 33 MA's), (59, 4824), (65, 4749),

Gene: Zhafia_17 Start: 5059, Stop: 4901, Start Num: 59

Candidate Starts for Zhafia_17:

(Start: 52 @5116 has 33 MA's), (59, 5059), (65, 4984),