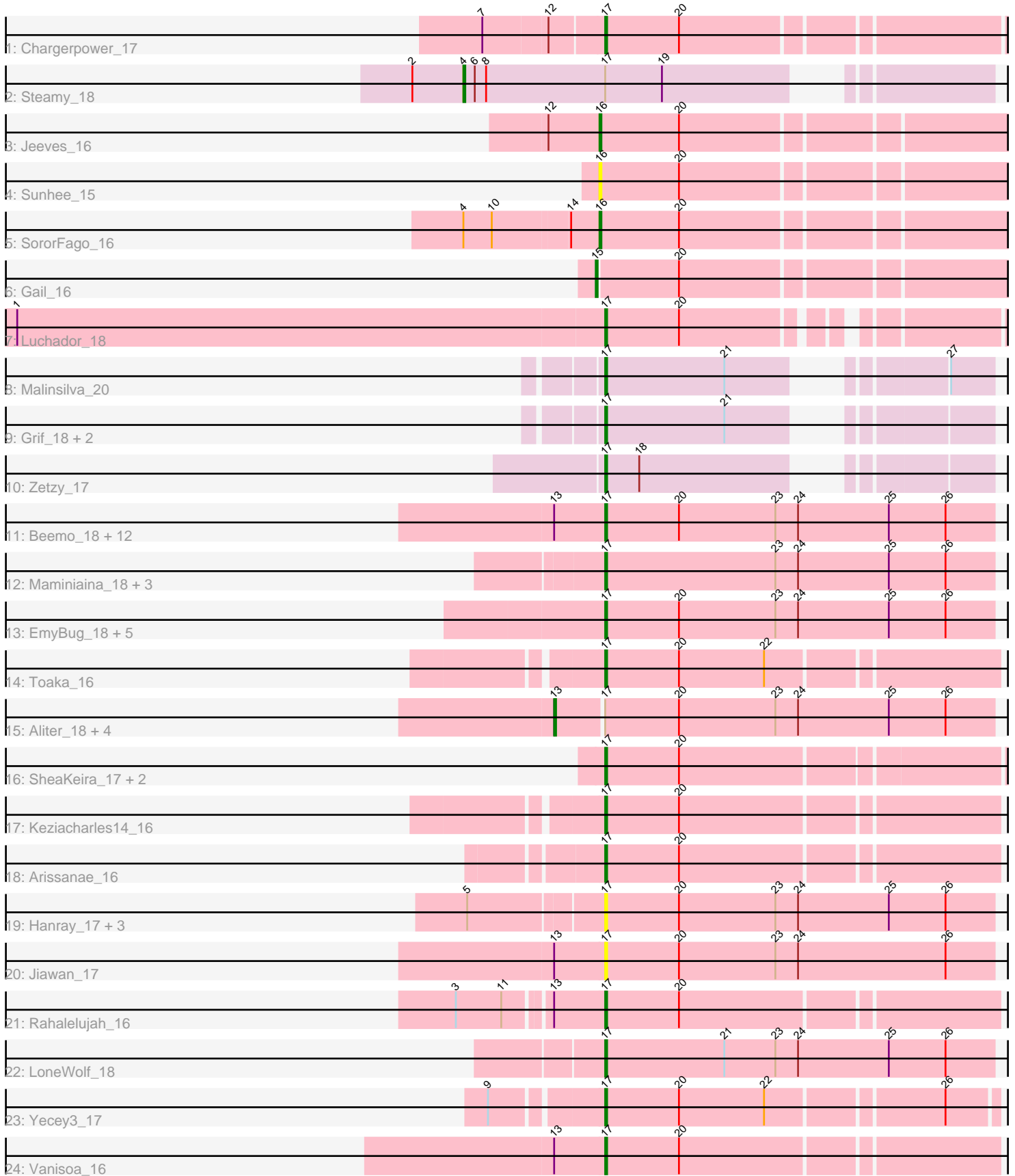


Pham 224629



Note: Tracks are now grouped by subcluster and scaled. Switching in subcluster is indicated by changes in track color. Track scale is now set by default to display the region 30 bp upstream of start 1 to 30 bp downstream of the last possible start. If this default region is judged to be packed too tightly with annotated starts, the track will be further scaled to only show that region of the ORF with annotated starts. This action will be indicated by adding "Zoomed" to the title. For starts, yellow indicates the location of called starts comprised solely of Glimmer/GeneMark auto-annotations, green indicates the location of called starts with at least 1 manual gene annotation.

Pham 224629 Report

This analysis was run 03/28/25 on database version 593.

Pham number 224629 has 55 members, 9 are drafts.

Phages represented in each track:

- Track 1 : Chargerpower_17
- Track 2 : Steamy_18
- Track 3 : Jeeves_16
- Track 4 : Sunhee_15
- Track 5 : SororFago_16
- Track 6 : Gail_16
- Track 7 : Luchador_18
- Track 8 : Malinsilva_20
- Track 9 : Grif_18, GingkoMaracino_18, Ollie_18
- Track 10 : Zetzy_17
- Track 11 : Beemo_18, Phaeder_18, Ugenie5_15, Fayely_18, Phonnegut_18, Sachima_16, EdogawaKiddo_16, ExplosioNervosa_18, Pioneer_18, Tubs_18, Scherzo_18, Lilleskat_16, Qobbit_18
- Track 12 : Maminiaina_18, BogosyJay_18, Elephantoon_18, Darrell_19
- Track 13 : EmyBug_18, Alma_18, Conquerage_18, Eidsmoe_18, Spouty_18, Priya_18
- Track 14 : Toaka_16
- Track 15 : Aliter_18, Myxus_18, Catalina_18, HortumSL17_18, PackMan_18
- Track 16 : SheaKeira_17, DreamTeam1_17, Charm_17
- Track 17 : Keziacharles14_16
- Track 18 : Arissanae_16
- Track 19 : Hanray_17, RyeScarlet_19, Onglai_17, Horex_17
- Track 20 : Jiawan_17
- Track 21 : Rahalelujah_16
- Track 22 : LoneWolf_18
- Track 23 : Yecey3_17
- Track 24 : Vanisoa_16

Summary of Final Annotations (See graph section above for start numbers):

The start number called the most often in the published annotations is 17, it was called in 37 of the 46 non-draft genes in the pham.

Genes that call this "Most Annotated" start:

- Alma_18, Arissanae_16, Beemo_18, BogosyJay_18, Chargerpower_17, Charm_17, Conquerage_18, Darrell_19, DreamTeam1_17, EdogawaKiddo_16, Eidsmoe_18, Elephantoon_18, EmyBug_18, ExplosioNervosa_18, Fayely_18, GingkoMaracino_18, Grif_18, Hanray_17, Holec_17, Jiawan_17, Keziacharles14_16, Lilleskat_16, LoneWolf_18, Luchador_18, Malinsilva_20, Maminaiaina_18, Ollie_18, Onglai_17, Phaeder_18, Phonnegut_18, Pioneer_18, Priya_18, Qobbit_18, Rahalelujah_16, RyeScarlet_19, Sachima_16, Scherzo_18, SheaKeira_17, Spouty_18, Toaka_16, Tubs_18, Ugenie5_15, Vanisoa_16, Yecey3_17, Zetzy_17,

Genes that have the "Most Annotated" start but do not call it:

- Aliter_18, Catalina_18, HortumSL17_18, Myxus_18, PackMan_18, Steamy_18,

Genes that do not have the "Most Annotated" start:

- Gail_16, Jeeves_16, SororFago_16, Sunhee_15,

Summary by start number:

Start 4:

- Found in 2 of 55 (3.6%) of genes in pham
- Manual Annotations of this start: 1 of 46
- Called 50.0% of time when present
- Phage (with cluster) where this start called: Steamy_18 (A12),

Start 13:

- Found in 21 of 55 (38.2%) of genes in pham
- Manual Annotations of this start: 5 of 46
- Called 23.8% of time when present
- Phage (with cluster) where this start called: Aliter_18 (A9), Catalina_18 (A9), HortumSL17_18 (A9), Myxus_18 (A9), PackMan_18 (A9),

Start 15:

- Found in 1 of 55 (1.8%) of genes in pham
- Manual Annotations of this start: 1 of 46
- Called 100.0% of time when present
- Phage (with cluster) where this start called: Gail_16 (A14),

Start 16:

- Found in 3 of 55 (5.5%) of genes in pham
- Manual Annotations of this start: 2 of 46
- Called 100.0% of time when present
- Phage (with cluster) where this start called: Jeeves_16 (A14), SororFago_16 (A14), Sunhee_15 (A14),

Start 17:

- Found in 51 of 55 (92.7%) of genes in pham
- Manual Annotations of this start: 37 of 46
- Called 88.2% of time when present
- Phage (with cluster) where this start called: Alma_18 (A9), Arissanae_16 (A9), Beemo_18 (A9), BogosyJay_18 (A9), Chargerpower_17 (A), Charm_17 (A9), Conquerage_18 (A9), Darrell_19 (A9), DreamTeam1_17 (A9), EdogawaKiddo_16 (A9), Eidsmoe_18 (A9), Elephantoon_18 (A9), EmyBug_18 (A9), ExplosioNervosa_18 (A9), Fayely_18 (A9), GingkoMaracino_18 (A3), Grif_18 (A3), Hanray_17 (A9), Holec_17 (A9), Jiawan_17 (A9), Keziacharles14_16 (A9), Lilleskat_16 (A9),

LoneWolf_18 (A9), Luchador_18 (A14), Malinsilva_20 (A3), Maminaiaina_18 (A9), Ollie_18 (A3), Onglai_17 (A9), Phaeder_18 (A9), Phonnegut_18 (A9), Pioneer_18 (A9), Priya_18 (A9), Qobbit_18 (A9), Rahalelujah_16 (A9), RyeScarlet_19 (A9), Sachima_16 (A9), Scherzo_18 (A9), SheaKeira_17 (A9), Spouty_18 (A9), Toaka_16 (A9), Tubs_18 (A9), Ugenie5_15 (A9), Vanisoa_16 (A9), Yecey3_17 (A9), Zetzy_17 (A3),

Summary by clusters:

There are 5 clusters represented in this pham: A9, A14, A3, A, A12,

Info for manual annotations of cluster A:

- Start number 17 was manually annotated 1 time for cluster A.

Info for manual annotations of cluster A12:

- Start number 4 was manually annotated 1 time for cluster A12.

Info for manual annotations of cluster A14:

- Start number 15 was manually annotated 1 time for cluster A14.
- Start number 16 was manually annotated 2 times for cluster A14.
- Start number 17 was manually annotated 1 time for cluster A14.

Info for manual annotations of cluster A3:

- Start number 17 was manually annotated 5 times for cluster A3.

Info for manual annotations of cluster A9:

- Start number 13 was manually annotated 5 times for cluster A9.
- Start number 17 was manually annotated 30 times for cluster A9.

Gene Information:

Gene: Aliter_18 Start: 13817, Stop: 14065, Start Num: 13

Candidate Starts for Aliter_18:

(Start: 13 @13817 has 5 MA's), (Start: 17 @13841 has 37 MA's), (20, 13880), (23, 13931), (24, 13943), (25, 13991), (26, 14021),

Gene: Alma_18 Start: 13920, Stop: 14144, Start Num: 17

Candidate Starts for Alma_18:

(Start: 17 @13920 has 37 MA's), (20, 13959), (23, 14010), (24, 14022), (25, 14070), (26, 14100),

Gene: Arissanae_16 Start: 12012, Stop: 12230, Start Num: 17

Candidate Starts for Arissanae_16:

(Start: 17 @12012 has 37 MA's), (20, 12051),

Gene: Beemo_18 Start: 13947, Stop: 14171, Start Num: 17

Candidate Starts for Beemo_18:

(Start: 13 @13923 has 5 MA's), (Start: 17 @13947 has 37 MA's), (20, 13986), (23, 14037), (24, 14049), (25, 14097), (26, 14127),

Gene: BogosyJay_18 Start: 13667, Stop: 13891, Start Num: 17

Candidate Starts for BogosyJay_18:

(Start: 17 @13667 has 37 MA's), (23, 13757), (24, 13769), (25, 13817), (26, 13847),

Gene: Catalina_18 Start: 13890, Stop: 14138, Start Num: 13

Candidate Starts for Catalina_18:

(Start: 13 @13890 has 5 MA's), (Start: 17 @13914 has 37 MA's), (20, 13953), (23, 14004), (24, 14016), (25, 14064), (26, 14094),

Gene: Chargerpower_17 Start: 12361, Stop: 12588, Start Num: 17

Candidate Starts for Chargerpower_17:

(7, 12304), (12, 12337), (Start: 17 @12361 has 37 MA's), (20, 12400),

Gene: Charm_17 Start: 12095, Stop: 12319, Start Num: 17

Candidate Starts for Charm_17:

(Start: 17 @12095 has 37 MA's), (20, 12134),

Gene: Conquerage_18 Start: 13943, Stop: 14167, Start Num: 17

Candidate Starts for Conquerage_18:

(Start: 17 @13943 has 37 MA's), (20, 13982), (23, 14033), (24, 14045), (25, 14093), (26, 14123),

Gene: Darrell_19 Start: 14104, Stop: 14328, Start Num: 17

Candidate Starts for Darrell_19:

(Start: 17 @14104 has 37 MA's), (23, 14194), (24, 14206), (25, 14254), (26, 14284),

Gene: DreamTeam1_17 Start: 12095, Stop: 12319, Start Num: 17

Candidate Starts for DreamTeam1_17:

(Start: 17 @12095 has 37 MA's), (20, 12134),

Gene: EdogawaKiddo_16 Start: 13913, Stop: 14137, Start Num: 17

Candidate Starts for EdogawaKiddo_16:

(Start: 13 @13889 has 5 MA's), (Start: 17 @13913 has 37 MA's), (20, 13952), (23, 14003), (24, 14015), (25, 14063), (26, 14093),

Gene: Eidsmoe_18 Start: 13943, Stop: 14167, Start Num: 17

Candidate Starts for Eidsmoe_18:

(Start: 17 @13943 has 37 MA's), (20, 13982), (23, 14033), (24, 14045), (25, 14093), (26, 14123),

Gene: Elephantoon_18 Start: 13530, Stop: 13757, Start Num: 17

Candidate Starts for Elephantoon_18:

(Start: 17 @13530 has 37 MA's), (23, 13620), (24, 13632), (25, 13680), (26, 13710),

Gene: EmyBug_18 Start: 13943, Stop: 14167, Start Num: 17

Candidate Starts for EmyBug_18:

(Start: 17 @13943 has 37 MA's), (20, 13982), (23, 14033), (24, 14045), (25, 14093), (26, 14123),

Gene: ExplosioNervosa_18 Start: 13946, Stop: 14170, Start Num: 17

Candidate Starts for ExplosioNervosa_18:

(Start: 13 @13922 has 5 MA's), (Start: 17 @13946 has 37 MA's), (20, 13985), (23, 14036), (24, 14048), (25, 14096), (26, 14126),

Gene: Fayely_18 Start: 13946, Stop: 14170, Start Num: 17

Candidate Starts for Fayely_18:

(Start: 13 @13922 has 5 MA's), (Start: 17 @13946 has 37 MA's), (20, 13985), (23, 14036), (24, 14048), (25, 14096), (26, 14126),

Gene: Gail_16 Start: 12246, Stop: 12479, Start Num: 15
Candidate Starts for Gail_16:
(Start: 15 @12246 has 1 MA's), (20, 12288),

Gene: GingkoMaracino_18 Start: 12488, Stop: 12673, Start Num: 17
Candidate Starts for GingkoMaracino_18:
(Start: 17 @12488 has 37 MA's), (21, 12551),

Gene: Grif_18 Start: 12685, Stop: 12870, Start Num: 17
Candidate Starts for Grif_18:
(Start: 17 @12685 has 37 MA's), (21, 12748),

Gene: Hanray_17 Start: 13917, Stop: 14141, Start Num: 17
Candidate Starts for Hanray_17:
(5, 13851), (Start: 17 @13917 has 37 MA's), (20, 13956), (23, 14007), (24, 14019), (25, 14067), (26, 14097),

Gene: Horex_17 Start: 13917, Stop: 14141, Start Num: 17
Candidate Starts for Horex_17:
(5, 13851), (Start: 17 @13917 has 37 MA's), (20, 13956), (23, 14007), (24, 14019), (25, 14067), (26, 14097),

Gene: HortumSL17_18 Start: 13889, Stop: 14137, Start Num: 13
Candidate Starts for HortumSL17_18:
(Start: 13 @13889 has 5 MA's), (Start: 17 @13913 has 37 MA's), (20, 13952), (23, 14003), (24, 14015), (25, 14063), (26, 14093),

Gene: Jeeves_16 Start: 12289, Stop: 12522, Start Num: 16
Candidate Starts for Jeeves_16:
(12, 12262), (Start: 16 @12289 has 2 MA's), (20, 12331),

Gene: Jiawan_17 Start: 13949, Stop: 14173, Start Num: 17
Candidate Starts for Jiawan_17:
(Start: 13 @13925 has 5 MA's), (Start: 17 @13949 has 37 MA's), (20, 13988), (23, 14039), (24, 14051), (26, 14129),

Gene: Keziacharles14_16 Start: 12056, Stop: 12274, Start Num: 17
Candidate Starts for Keziacharles14_16:
(Start: 17 @12056 has 37 MA's), (20, 12095),

Gene: Lilleskat_16 Start: 13913, Stop: 14137, Start Num: 17
Candidate Starts for Lilleskat_16:
(Start: 13 @13889 has 5 MA's), (Start: 17 @13913 has 37 MA's), (20, 13952), (23, 14003), (24, 14015), (25, 14063), (26, 14093),

Gene: LoneWolf_18 Start: 13722, Stop: 13946, Start Num: 17
Candidate Starts for LoneWolf_18:
(Start: 17 @13722 has 37 MA's), (21, 13785), (23, 13812), (24, 13824), (25, 13872), (26, 13902),

Gene: Luchador_18 Start: 13500, Stop: 13706, Start Num: 17
Candidate Starts for Luchador_18:
(1, 13191), (Start: 17 @13500 has 37 MA's), (20, 13539),

Gene: Malinsilva_20 Start: 12594, Stop: 12779, Start Num: 17

Candidate Starts for Malinsilva_20:

(Start: 17 @12594 has 37 MA's), (21, 12657), (27, 12738),

Gene: Maminaiaina_18 Start: 13646, Stop: 13870, Start Num: 17

Candidate Starts for Maminaiaina_18:

(Start: 17 @13646 has 37 MA's), (23, 13736), (24, 13748), (25, 13796), (26, 13826),

Gene: Myxus_18 Start: 13889, Stop: 14137, Start Num: 13

Candidate Starts for Myxus_18:

(Start: 13 @13889 has 5 MA's), (Start: 17 @13913 has 37 MA's), (20, 13952), (23, 14003), (24, 14015), (25, 14063), (26, 14093),

Gene: Ollie_18 Start: 12473, Stop: 12658, Start Num: 17

Candidate Starts for Ollie_18:

(Start: 17 @12473 has 37 MA's), (21, 12536),

Gene: Onglai_17 Start: 12247, Stop: 12471, Start Num: 17

Candidate Starts for Onglai_17:

(5, 12181), (Start: 17 @12247 has 37 MA's), (20, 12286), (23, 12337), (24, 12349), (25, 12397), (26, 12427),

Gene: PackMan_18 Start: 13889, Stop: 14137, Start Num: 13

Candidate Starts for PackMan_18:

(Start: 13 @13889 has 5 MA's), (Start: 17 @13913 has 37 MA's), (20, 13952), (23, 14003), (24, 14015), (25, 14063), (26, 14093),

Gene: Phaeder_18 Start: 13913, Stop: 14137, Start Num: 17

Candidate Starts for Phaeder_18:

(Start: 13 @13889 has 5 MA's), (Start: 17 @13913 has 37 MA's), (20, 13952), (23, 14003), (24, 14015), (25, 14063), (26, 14093),

Gene: Phonnegut_18 Start: 13946, Stop: 14170, Start Num: 17

Candidate Starts for Phonnegut_18:

(Start: 13 @13922 has 5 MA's), (Start: 17 @13946 has 37 MA's), (20, 13985), (23, 14036), (24, 14048), (25, 14096), (26, 14126),

Gene: Pioneer_18 Start: 13946, Stop: 14170, Start Num: 17

Candidate Starts for Pioneer_18:

(Start: 13 @13922 has 5 MA's), (Start: 17 @13946 has 37 MA's), (20, 13985), (23, 14036), (24, 14048), (25, 14096), (26, 14126),

Gene: Priya_18 Start: 13944, Stop: 14168, Start Num: 17

Candidate Starts for Priya_18:

(Start: 17 @13944 has 37 MA's), (20, 13983), (23, 14034), (24, 14046), (25, 14094), (26, 14124),

Gene: Qobbit_18 Start: 13943, Stop: 14167, Start Num: 17

Candidate Starts for Qobbit_18:

(Start: 13 @13919 has 5 MA's), (Start: 17 @13943 has 37 MA's), (20, 13982), (23, 14033), (24, 14045), (25, 14093), (26, 14123),

Gene: Rahalelujah_16 Start: 11982, Stop: 12200, Start Num: 17

Candidate Starts for Rahalelujah_16:

(3, 11913), (11, 11937), (Start: 13 @11958 has 5 MA's), (Start: 17 @11982 has 37 MA's), (20, 12021),

Gene: RyeScarlet_19 Start: 13917, Stop: 14141, Start Num: 17

Candidate Starts for RyeScarlet_19:

(5, 13851), (Start: 17 @13917 has 37 MA's), (20, 13956), (23, 14007), (24, 14019), (25, 14067), (26, 14097),

Gene: Sachima_16 Start: 13913, Stop: 14137, Start Num: 17

Candidate Starts for Sachima_16:

(Start: 13 @13889 has 5 MA's), (Start: 17 @13913 has 37 MA's), (20, 13952), (23, 14003), (24, 14015), (25, 14063), (26, 14093),

Gene: Scherzo_18 Start: 13946, Stop: 14170, Start Num: 17

Candidate Starts for Scherzo_18:

(Start: 13 @13922 has 5 MA's), (Start: 17 @13946 has 37 MA's), (20, 13985), (23, 14036), (24, 14048), (25, 14096), (26, 14126),

Gene: SheaKeira_17 Start: 12121, Stop: 12345, Start Num: 17

Candidate Starts for SheaKeira_17:

(Start: 17 @12121 has 37 MA's), (20, 12160),

Gene: SororFago_16 Start: 12265, Stop: 12498, Start Num: 16

Candidate Starts for SororFago_16:

(Start: 4 @12196 has 1 MA's), (10, 12211), (14, 12250), (Start: 16 @12265 has 2 MA's), (20, 12307),

Gene: Spouty_18 Start: 13943, Stop: 14167, Start Num: 17

Candidate Starts for Spouty_18:

(Start: 17 @13943 has 37 MA's), (20, 13982), (23, 14033), (24, 14045), (25, 14093), (26, 14123),

Gene: Steamy_18 Start: 13652, Stop: 13915, Start Num: 4

Candidate Starts for Steamy_18:

(2, 13625), (Start: 4 @13652 has 1 MA's), (6, 13658), (8, 13664), (Start: 17 @13727 has 37 MA's), (19, 13757),

Gene: Sunhee_15 Start: 12301, Stop: 12534, Start Num: 16

Candidate Starts for Sunhee_15:

(Start: 16 @12301 has 2 MA's), (20, 12343),

Gene: Toaka_16 Start: 12274, Stop: 12492, Start Num: 17

Candidate Starts for Toaka_16:

(Start: 17 @12274 has 37 MA's), (20, 12313), (22, 12358),

Gene: Tubs_18 Start: 13913, Stop: 14137, Start Num: 17

Candidate Starts for Tubs_18:

(Start: 13 @13889 has 5 MA's), (Start: 17 @13913 has 37 MA's), (20, 13952), (23, 14003), (24, 14015), (25, 14063), (26, 14093),

Gene: Ugenie5_15 Start: 13946, Stop: 14170, Start Num: 17

Candidate Starts for Ugenie5_15:

(Start: 13 @13922 has 5 MA's), (Start: 17 @13946 has 37 MA's), (20, 13985), (23, 14036), (24, 14048), (25, 14096), (26, 14126),

Gene: Vanisoa_16 Start: 12000, Stop: 12218, Start Num: 17

Candidate Starts for Vanisoa_16:

(Start: 13 @11976 has 5 MA's), (Start: 17 @12000 has 37 MA's), (20, 12039),

Gene: Yecey3_17 Start: 12045, Stop: 12260, Start Num: 17

Candidate Starts for Yecey3_17:

(9, 11994), (Start: 17 @12045 has 37 MA's), (20, 12084), (22, 12129), (26, 12216),

Gene: Zetzy_17 Start: 12134, Stop: 12319, Start Num: 17

Candidate Starts for Zetzy_17:

(Start: 17 @12134 has 37 MA's), (18, 12152),