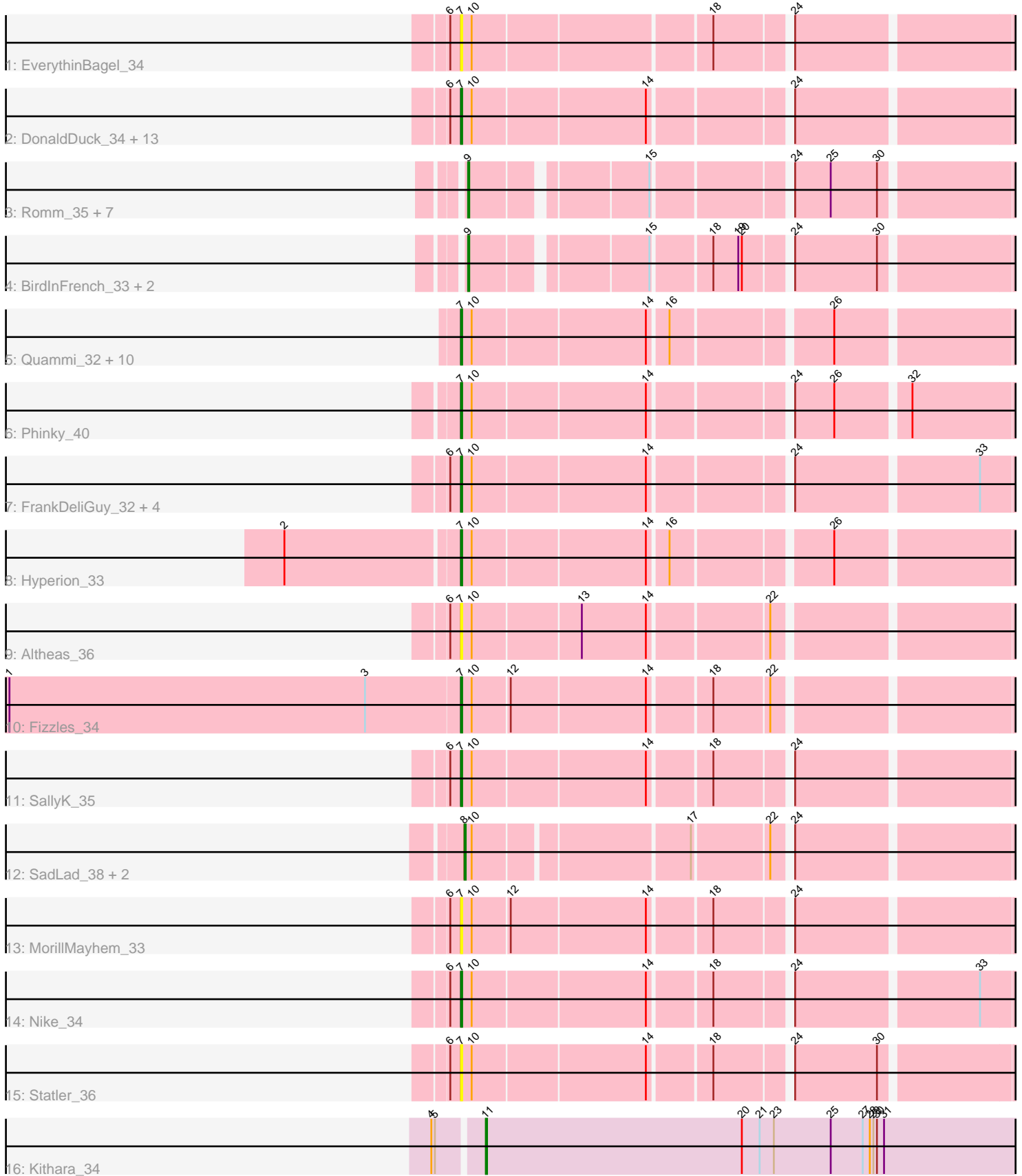


# Pham 224636



Note: Tracks are now grouped by subcluster and scaled. Switching in subcluster is indicated by changes in track color. Track scale is now set by default to display the region 30 bp upstream of start 1 to 30 bp downstream of the last possible start. If this default region is judged to be packed too tightly with annotated starts, the track will be further scaled to only show that region of the ORF with annotated starts. This action will be indicated by adding "Zoomed" to the title. For starts, yellow indicates the location of called starts comprised solely of Glimmer/GeneMark auto-annotations, green indicates the location of called starts with at least 1 manual gene annotation.

## Pham 224636 Report

This analysis was run 03/28/25 on database version 593.

Pham number 224636 has 54 members, 13 are drafts.

Phages represented in each track:

- Track 1 : EverythinBagel\_34
- Track 2 : DonaldDuck\_34, Phabia\_34, Tissue\_34, Wayne3\_35, Lonelysoil\_33, Wheelie\_33, Sillytadpoles\_35, Jehoshaphat\_36, Llemily\_34, Squash\_36, Teehee\_35, Judebell\_36, Casend\_35, Zhafia\_37
- Track 3 : Romm\_35, OneinaGillian\_33, RobinRose\_35, Marcie\_38, Fregley\_34, Kelcole\_32, CandC\_32, Tempo\_33
- Track 4 : BirdInFrench\_33, Wilca\_33, Pepe25\_32
- Track 5 : Quammi\_32, Rowlf\_30, Viceroy\_33, Gazebo\_33, AluminumJesus\_32, Rudy\_32, Blab\_32, Zagie\_34, Mashley\_32, StrawberryJamm\_36, Mentos\_39
- Track 6 : Phinky\_40
- Track 7 : FrankDeliGuy\_32, Namago\_34, BabyDotz\_33, Grassboy\_35, Kyva\_36
- Track 8 : Hyperion\_33
- Track 9 : Altheas\_36
- Track 10 : Fizzles\_34
- Track 11 : SallyK\_35
- Track 12 : SadLad\_38, RubyRalph\_36, Fransoyer\_36
- Track 13 : MorillMayhem\_33
- Track 14 : Nike\_34
- Track 15 : Statler\_36
- Track 16 : Kithara\_34

### ***Summary of Final Annotations (See graph section above for start numbers):***

The start number called the most often in the published annotations is 7, it was called in 27 of the 41 non-draft genes in the pham.

Genes that call this "Most Annotated" start:

- Altheas\_36, AluminumJesus\_32, BabyDotz\_33, Blab\_32, Casend\_35, DonaldDuck\_34, EverythinBagel\_34, Fizzles\_34, FrankDeliGuy\_32, Gazebo\_33, Grassboy\_35, Hyperion\_33, Jehoshaphat\_36, Judebell\_36, Kyva\_36, Llemily\_34, Lonelysoil\_33, Mashley\_32, Mentos\_39, MorillMayhem\_33, Namago\_34, Nike\_34, Phabia\_34, Phinky\_40, Quammi\_32, Rowlf\_30, Rudy\_32, SallyK\_35, Sillytadpoles\_35, Squash\_36, Statler\_36, StrawberryJamm\_36, Teehee\_35, Tissue\_34, Viceroy\_33, Wayne3\_35, Wheelie\_33, Zagie\_34, Zhafia\_37,

Genes that have the "Most Annotated" start but do not call it:

- 

Genes that do not have the "Most Annotated" start:

• BirdInFrench\_33, CandC\_32, Fransoyer\_36, Fregley\_34, Kelcole\_32, Kithara\_34, Marcie\_38, OneinaGillian\_33, Pepe25\_32, RobinRose\_35, Romm\_35, RubyRalph\_36, SadLad\_38, Tempo\_33, Wilca\_33,

### Summary by start number:

Start 7:

- Found in 39 of 54 ( 72.2% ) of genes in pham
- Manual Annotations of this start: 27 of 41
- Called 100.0% of time when present
- Phage (with cluster) where this start called: Altheas\_36 (EG), AluminumJesus\_32 (EG), BabyDotz\_33 (EG), Blab\_32 (EG), Casend\_35 (EG), DonaldDuck\_34 (EG), EverythinBagel\_34 (EG), Fizzles\_34 (EG), FrankDeliGuy\_32 (EG), Gazebo\_33 (EG), Grassboy\_35 (EG), Hyperion\_33 (EG), Jehoshaphat\_36 (EG), Judebell\_36 (EG), Kyva\_36 (EG), Lemily\_34 (EG), Lonelysoil\_33 (EG), Mashley\_32 (EG), Mentos\_39 (EG), MorillMayhem\_33 (EG), Namago\_34 (EG), Nike\_34 (EG), Phabia\_34 (EG), Phinky\_40 (EG), Quammi\_32 (EG), Rowlf\_30 (EG), Rudy\_32 (EG), SallyK\_35 (EG), Sillytadpoles\_35 (EG), Squash\_36 (EG), Statler\_36 (EG), StrawberryJamm\_36 (EG), Teehee\_35 (EG), Tissue\_34 (EG), Viceroy\_33 (EG), Wayne3\_35 (EG), Wheelie\_33 (EG), Zagie\_34 (EG), Zhafia\_37 (EG),

Start 8:

- Found in 3 of 54 ( 5.6% ) of genes in pham
- Manual Annotations of this start: 3 of 41
- Called 100.0% of time when present
- Phage (with cluster) where this start called: Fransoyer\_36 (EG), RubyRalph\_36 (EG), SadLad\_38 (EG),

Start 9:

- Found in 11 of 54 ( 20.4% ) of genes in pham
- Manual Annotations of this start: 10 of 41
- Called 100.0% of time when present
- Phage (with cluster) where this start called: BirdInFrench\_33 (EG), CandC\_32 (EG), Fregley\_34 (EG), Kelcole\_32 (EG), Marcie\_38 (EG), OneinaGillian\_33 (EG), Pepe25\_32 (EG), RobinRose\_35 (EG), Romm\_35 (EG), Tempo\_33 (EG), Wilca\_33 (EG),

Start 11:

- Found in 1 of 54 ( 1.9% ) of genes in pham
- Manual Annotations of this start: 1 of 41
- Called 100.0% of time when present
- Phage (with cluster) where this start called: Kithara\_34 (singleton),

### Summary by clusters:

There are 2 clusters represented in this pham: EG, singleton,

Info for manual annotations of cluster EG:

- Start number 7 was manually annotated 27 times for cluster EG.
- Start number 8 was manually annotated 3 times for cluster EG.
- Start number 9 was manually annotated 10 times for cluster EG.

### **Gene Information:**

Gene: Altheas\_36 Start: 22886, Stop: 23344, Start Num: 7

Candidate Starts for Altheas\_36:

(6, 22877), (Start: 7 @22886 has 27 MA's), (10, 22895), (13, 22982), (14, 23036), (22, 23129),

Gene: AluminumJesus\_32 Start: 22382, Stop: 22840, Start Num: 7

Candidate Starts for AluminumJesus\_32:

(Start: 7 @22382 has 27 MA's), (10, 22391), (14, 22532), (16, 22547), (26, 22670),

Gene: BabyDotz\_33 Start: 22636, Stop: 23094, Start Num: 7

Candidate Starts for BabyDotz\_33:

(6, 22627), (Start: 7 @22636 has 27 MA's), (10, 22645), (14, 22786), (24, 22891), (33, 23038),

Gene: BirdInFrench\_33 Start: 21258, Stop: 21692, Start Num: 9

Candidate Starts for BirdInFrench\_33:

(Start: 9 @21258 has 10 MA's), (15, 21390), (18, 21435), (19, 21456), (20, 21459), (24, 21492), (30, 21561),

Gene: Blab\_32 Start: 22307, Stop: 22765, Start Num: 7

Candidate Starts for Blab\_32:

(Start: 7 @22307 has 27 MA's), (10, 22316), (14, 22457), (16, 22472), (26, 22595),

Gene: CandC\_32 Start: 20958, Stop: 21392, Start Num: 9

Candidate Starts for CandC\_32:

(Start: 9 @20958 has 10 MA's), (15, 21090), (24, 21192), (25, 21222), (30, 21261),

Gene: Casend\_35 Start: 23045, Stop: 23503, Start Num: 7

Candidate Starts for Casend\_35:

(6, 23036), (Start: 7 @23045 has 27 MA's), (10, 23054), (14, 23195), (24, 23300),

Gene: DonaldDuck\_34 Start: 22391, Stop: 22849, Start Num: 7

Candidate Starts for DonaldDuck\_34:

(6, 22382), (Start: 7 @22391 has 27 MA's), (10, 22400), (14, 22541), (24, 22646),

Gene: EverythinBagel\_34 Start: 22779, Stop: 23237, Start Num: 7

Candidate Starts for EverythinBagel\_34:

(6, 22770), (Start: 7 @22779 has 27 MA's), (10, 22788), (18, 22977), (24, 23034),

Gene: Fizzles\_34 Start: 22106, Stop: 22564, Start Num: 7

Candidate Starts for Fizzles\_34:

(1, 21728), (3, 22028), (Start: 7 @22106 has 27 MA's), (10, 22115), (12, 22145), (14, 22256), (18, 22304), (22, 22349),

Gene: FrankDeliGuy\_32 Start: 22351, Stop: 22809, Start Num: 7

Candidate Starts for FrankDeliGuy\_32:

(6, 22342), (Start: 7 @22351 has 27 MA's), (10, 22360), (14, 22501), (24, 22606), (33, 22753),

Gene: Fransoyer\_36 Start: 22231, Stop: 22677, Start Num: 8

Candidate Starts for Fransoyer\_36:

(Start: 8 @22231 has 3 MA's), (10, 22237), (17, 22405), (22, 22465), (24, 22477),

Gene: Fregley\_34 Start: 21528, Stop: 21962, Start Num: 9

Candidate Starts for Fregley\_34:

(Start: 9 @21528 has 10 MA's), (15, 21660), (24, 21762), (25, 21792), (30, 21831),

Gene: Gazebo\_33 Start: 22845, Stop: 23303, Start Num: 7

Candidate Starts for Gazebo\_33:

(Start: 7 @22845 has 27 MA's), (10, 22854), (14, 22995), (16, 23010), (26, 23133),

Gene: Grassboy\_35 Start: 23020, Stop: 23478, Start Num: 7

Candidate Starts for Grassboy\_35:

(6, 23011), (Start: 7 @23020 has 27 MA's), (10, 23029), (14, 23170), (24, 23275), (33, 23422),

Gene: Hyperion\_33 Start: 22801, Stop: 23259, Start Num: 7

Candidate Starts for Hyperion\_33:

(2, 22660), (Start: 7 @22801 has 27 MA's), (10, 22810), (14, 22951), (16, 22966), (26, 23089),

Gene: Jehoshaphat\_36 Start: 23310, Stop: 23768, Start Num: 7

Candidate Starts for Jehoshaphat\_36:

(6, 23301), (Start: 7 @23310 has 27 MA's), (10, 23319), (14, 23460), (24, 23565),

Gene: Judebell\_36 Start: 22816, Stop: 23274, Start Num: 7

Candidate Starts for Judebell\_36:

(6, 22807), (Start: 7 @22816 has 27 MA's), (10, 22825), (14, 22966), (24, 23071),

Gene: Kelcole\_32 Start: 21410, Stop: 21844, Start Num: 9

Candidate Starts for Kelcole\_32:

(Start: 9 @21410 has 10 MA's), (15, 21542), (24, 21644), (25, 21674), (30, 21713),

Gene: Kithara\_34 Start: 24027, Stop: 24524, Start Num: 11

Candidate Starts for Kithara\_34:

(4, 23988), (5, 23991), (Start: 11 @24027 has 1 MA's), (20, 24243), (21, 24258), (23, 24270), (25, 24318), (27, 24345), (28, 24351), (29, 24354), (30, 24357), (31, 24363),

Gene: Kyva\_36 Start: 23055, Stop: 23513, Start Num: 7

Candidate Starts for Kyva\_36:

(6, 23046), (Start: 7 @23055 has 27 MA's), (10, 23064), (14, 23205), (24, 23310), (33, 23457),

Gene: Llemily\_34 Start: 22086, Stop: 22544, Start Num: 7

Candidate Starts for Llemily\_34:

(6, 22077), (Start: 7 @22086 has 27 MA's), (10, 22095), (14, 22236), (24, 22341),

Gene: Lonelysoil\_33 Start: 22331, Stop: 22789, Start Num: 7

Candidate Starts for Lonelysoil\_33:

(6, 22322), (Start: 7 @22331 has 27 MA's), (10, 22340), (14, 22481), (24, 22586),

Gene: Marcie\_38 Start: 22066, Stop: 22500, Start Num: 9

Candidate Starts for Marcie\_38:

(Start: 9 @22066 has 10 MA's), (15, 22198), (24, 22300), (25, 22330), (30, 22369),

Gene: Mashley\_32 Start: 22617, Stop: 23075, Start Num: 7

Candidate Starts for Mashley\_32:

(Start: 7 @22617 has 27 MA's), (10, 22626), (14, 22767), (16, 22782), (26, 22905),

Gene: Mentos\_39 Start: 23704, Stop: 24162, Start Num: 7

Candidate Starts for Mentos\_39:

(Start: 7 @23704 has 27 MA's), (10, 23713), (14, 23854), (16, 23869), (26, 23992),

Gene: MorillMayhem\_33 Start: 22601, Stop: 23059, Start Num: 7

Candidate Starts for MorillMayhem\_33:

(6, 22592), (Start: 7 @22601 has 27 MA's), (10, 22610), (12, 22640), (14, 22751), (18, 22799), (24, 22856),

Gene: Namago\_34 Start: 22185, Stop: 22643, Start Num: 7

Candidate Starts for Namago\_34:

(6, 22176), (Start: 7 @22185 has 27 MA's), (10, 22194), (14, 22335), (24, 22440), (33, 22587),

Gene: Nike\_34 Start: 23137, Stop: 23595, Start Num: 7

Candidate Starts for Nike\_34:

(6, 23128), (Start: 7 @23137 has 27 MA's), (10, 23146), (14, 23287), (18, 23335), (24, 23392), (33, 23539),

Gene: OneinaGillian\_33 Start: 21057, Stop: 21491, Start Num: 9

Candidate Starts for OneinaGillian\_33:

(Start: 9 @21057 has 10 MA's), (15, 21189), (24, 21291), (25, 21321), (30, 21360),

Gene: Pepe25\_32 Start: 21275, Stop: 21709, Start Num: 9

Candidate Starts for Pepe25\_32:

(Start: 9 @21275 has 10 MA's), (15, 21407), (18, 21452), (19, 21473), (20, 21476), (24, 21509), (30, 21578),

Gene: Phabia\_34 Start: 22504, Stop: 22962, Start Num: 7

Candidate Starts for Phabia\_34:

(6, 22495), (Start: 7 @22504 has 27 MA's), (10, 22513), (14, 22654), (24, 22759),

Gene: Phinky\_40 Start: 23684, Stop: 24142, Start Num: 7

Candidate Starts for Phinky\_40:

(Start: 7 @23684 has 27 MA's), (10, 23693), (14, 23834), (24, 23939), (26, 23972), (32, 24029),

Gene: Quammi\_32 Start: 22090, Stop: 22548, Start Num: 7

Candidate Starts for Quammi\_32:

(Start: 7 @22090 has 27 MA's), (10, 22099), (14, 22240), (16, 22255), (26, 22378),

Gene: RobinRose\_35 Start: 21561, Stop: 21995, Start Num: 9

Candidate Starts for RobinRose\_35:

(Start: 9 @21561 has 10 MA's), (15, 21693), (24, 21795), (25, 21825), (30, 21864),

Gene: Romm\_35 Start: 21561, Stop: 21995, Start Num: 9

Candidate Starts for Romm\_35:

(Start: 9 @21561 has 10 MA's), (15, 21693), (24, 21795), (25, 21825), (30, 21864),

Gene: Rowlf\_30 Start: 22265, Stop: 22723, Start Num: 7

Candidate Starts for Rowlf\_30:

(Start: 7 @22265 has 27 MA's), (10, 22274), (14, 22415), (16, 22430), (26, 22553),

Gene: RubyRalph\_36 Start: 22159, Stop: 22605, Start Num: 8

Candidate Starts for RubyRalph\_36:

(Start: 8 @22159 has 3 MA's), (10, 22165), (17, 22333), (22, 22393), (24, 22405),

Gene: Rudy\_32 Start: 22123, Stop: 22581, Start Num: 7

Candidate Starts for Rudy\_32:

(Start: 7 @22123 has 27 MA's), (10, 22132), (14, 22273), (16, 22288), (26, 22411),

Gene: SadLad\_38 Start: 23102, Stop: 23548, Start Num: 8

Candidate Starts for SadLad\_38:

(Start: 8 @23102 has 3 MA's), (10, 23108), (17, 23276), (22, 23336), (24, 23348),

Gene: SallyK\_35 Start: 23184, Stop: 23642, Start Num: 7

Candidate Starts for SallyK\_35:

(6, 23175), (Start: 7 @23184 has 27 MA's), (10, 23193), (14, 23334), (18, 23382), (24, 23439),

Gene: Sillytadpoles\_35 Start: 22074, Stop: 22532, Start Num: 7

Candidate Starts for Sillytadpoles\_35:

(6, 22065), (Start: 7 @22074 has 27 MA's), (10, 22083), (14, 22224), (24, 22329),

Gene: Squash\_36 Start: 23148, Stop: 23606, Start Num: 7

Candidate Starts for Squash\_36:

(6, 23139), (Start: 7 @23148 has 27 MA's), (10, 23157), (14, 23298), (24, 23403),

Gene: Statler\_36 Start: 22993, Stop: 23451, Start Num: 7

Candidate Starts for Statler\_36:

(6, 22984), (Start: 7 @22993 has 27 MA's), (10, 23002), (14, 23143), (18, 23191), (24, 23248), (30, 23317),

Gene: StrawberryJamm\_36 Start: 22327, Stop: 22785, Start Num: 7

Candidate Starts for StrawberryJamm\_36:

(Start: 7 @22327 has 27 MA's), (10, 22336), (14, 22477), (16, 22492), (26, 22615),

Gene: Teehee\_35 Start: 23310, Stop: 23768, Start Num: 7

Candidate Starts for Teehee\_35:

(6, 23301), (Start: 7 @23310 has 27 MA's), (10, 23319), (14, 23460), (24, 23565),

Gene: Tempo\_33 Start: 21437, Stop: 21871, Start Num: 9

Candidate Starts for Tempo\_33:

(Start: 9 @21437 has 10 MA's), (15, 21569), (24, 21671), (25, 21701), (30, 21740),

Gene: Tissue\_34 Start: 22827, Stop: 23285, Start Num: 7

Candidate Starts for Tissue\_34:

(6, 22818), (Start: 7 @22827 has 27 MA's), (10, 22836), (14, 22977), (24, 23082),

Gene: Viceroy\_33 Start: 22090, Stop: 22548, Start Num: 7

Candidate Starts for Viceroy\_33:

(Start: 7 @22090 has 27 MA's), (10, 22099), (14, 22240), (16, 22255), (26, 22378),

Gene: Wayne3\_35 Start: 23073, Stop: 23531, Start Num: 7

Candidate Starts for Wayne3\_35:

(6, 23064), (Start: 7 @23073 has 27 MA's), (10, 23082), (14, 23223), (24, 23328),

Gene: Wheelie\_33 Start: 22391, Stop: 22849, Start Num: 7

Candidate Starts for Wheelie\_33:

(6, 22382), (Start: 7 @22391 has 27 MA's), (10, 22400), (14, 22541), (24, 22646),

Gene: Wilca\_33 Start: 21258, Stop: 21692, Start Num: 9

Candidate Starts for Wilca\_33:

(Start: 9 @21258 has 10 MA's), (15, 21390), (18, 21435), (19, 21456), (20, 21459), (24, 21492), (30, 21561),

Gene: Zagie\_34 Start: 22528, Stop: 22986, Start Num: 7

Candidate Starts for Zagie\_34:

(Start: 7 @22528 has 27 MA's), (10, 22537), (14, 22678), (16, 22693), (26, 22816),

Gene: Zhafia\_37 Start: 22869, Stop: 23327, Start Num: 7

Candidate Starts for Zhafia\_37:

(6, 22860), (Start: 7 @22869 has 27 MA's), (10, 22878), (14, 23019), (24, 23124),