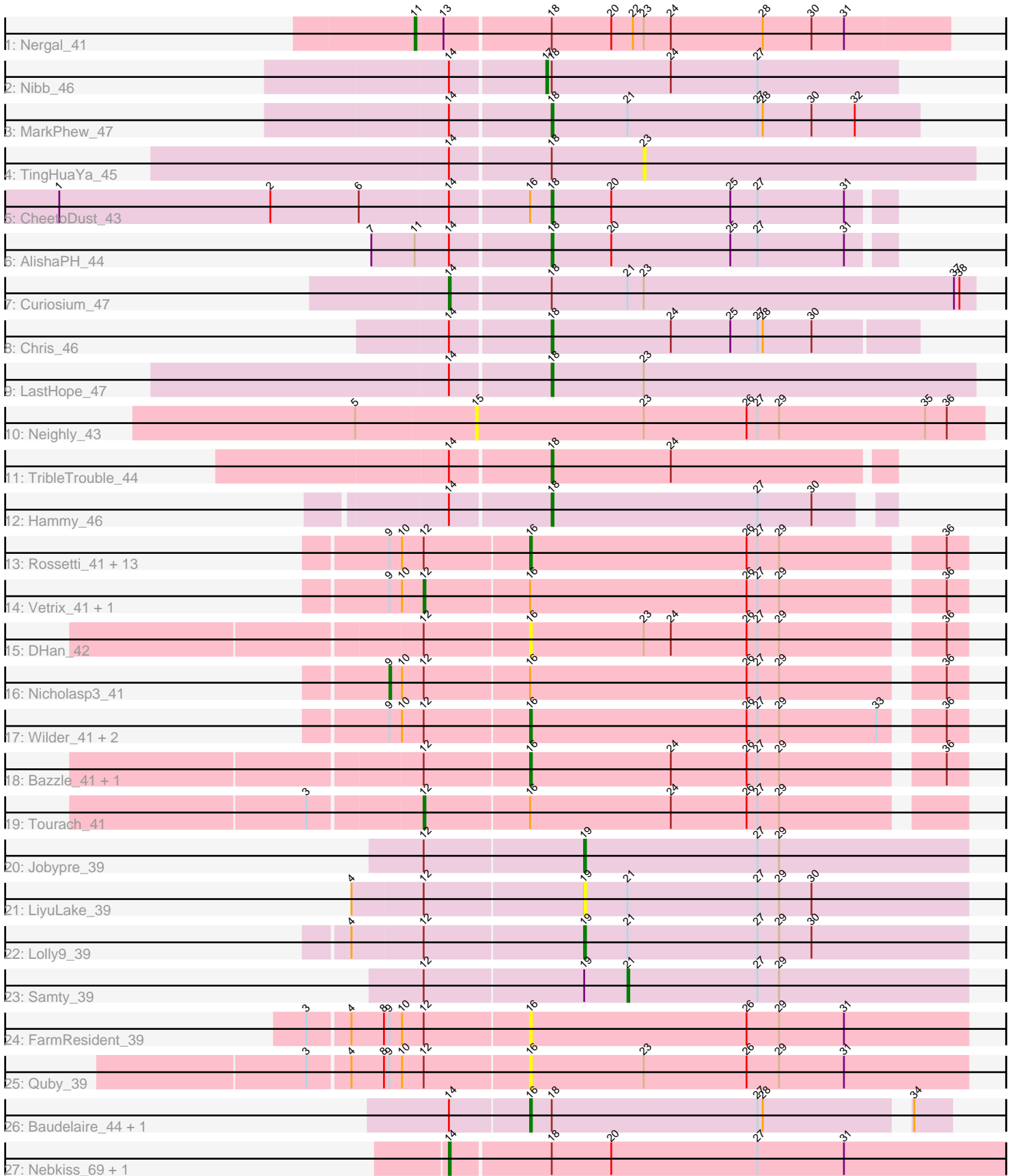


Pham 224679



Note: Tracks are now grouped by subcluster and scaled. Switching in subcluster is indicated by changes in track color. Track scale is now set by default to display the region 30 bp upstream of start 1 to 30 bp downstream of the last possible start. If this default region is judged to be packed too tightly with annotated starts, the track will be further scaled to only show that region of the ORF with annotated starts. This action will be indicated by adding "Zoomed" to the title. For starts, yellow indicates the location of called starts comprised solely of Glimmer/GeneMark auto-annotations, green indicates the location of called starts with at least 1 manual gene annotation.

Pham 224679 Report

This analysis was run 03/28/25 on database version 593.

Pham number 224679 has 46 members, 11 are drafts.

Phages represented in each track:

- Track 1 : Nergal_41
- Track 2 : Nibb_46
- Track 3 : MarkPhew_47
- Track 4 : TingHuaYa_45
- Track 5 : CheetoDust_43
- Track 6 : AlishaPH_44
- Track 7 : Curiosium_47
- Track 8 : Chris_46
- Track 9 : LastHope_47
- Track 10 : Neighly_43
- Track 11 : TribbleTrouble_44
- Track 12 : Hammy_46
- Track 13 : Rossetti_41, Crossroads_41, Itos_40, BigCheese_41, Finemlucis_41, GuuelaD_41, Gardann_41, Netyap_41, BobsGarage_41, Miley16_41, Gabriela_41, SoJulia_42, Underpass_41, Zakai_41
- Track 14 : Vetrix_41, DrSeegs_41
- Track 15 : DHan_42
- Track 16 : Nicholasp3_41
- Track 17 : Wilder_41, Hafay_41, Soap141_41
- Track 18 : Bazzle_41, Archie_41
- Track 19 : Tourach_41
- Track 20 : Jobypre_39
- Track 21 : LiyuLake_39
- Track 22 : Lolly9_39
- Track 23 : Samty_39
- Track 24 : FarmResident_39
- Track 25 : Quby_39
- Track 26 : Baudelaire_44, Aegeus_44
- Track 27 : Nebkiss_69, Gaia_69

Summary of Final Annotations (See graph section above for start numbers):

The start number called the most often in the published annotations is 16, it was called in 16 of the 35 non-draft genes in the pham.

Genes that call this "Most Annotated" start:

- Aegeus_44, Archie_41, Baudelaire_44, Bazzle_41, BigCheese_41, BobsGarage_41, Crossroads_41, DHan_42, FarmResident_39, Finemlucis_41, Gabriela_41, Gardann_41, GuuelaD_41, Hafay_41, Itos_40, Miley16_41, Netyap_41, Quby_39, Rossetti_41, SoJulia_42, Soap141_41, Underpass_41, Wilder_41, Zakai_41,

Genes that have the "Most Annotated" start but do not call it:

- CheetoDust_43, DrSeegs_41, Nicholasp3_41, Tourach_41, Vetrix_41,

Genes that do not have the "Most Annotated" start:

- AlishaPH_44, Chris_46, Curiosium_47, Gaia_69, Hammy_46, Jobypre_39, LastHope_47, LiyuLake_39, Lolly9_39, MarkPhew_47, Nebkiss_69, Neighly_43, Nergal_41, Nibb_46, Samty_39, TingHuaYa_45, TribbleTrouble_44,

Summary by start number:

Start 9:

- Found in 22 of 46 (47.8%) of genes in pham
- Manual Annotations of this start: 1 of 35
- Called 4.5% of time when present
- Phage (with cluster) where this start called: Nicholasp3_41 (L2),

Start 11:

- Found in 2 of 46 (4.3%) of genes in pham
- Manual Annotations of this start: 1 of 35
- Called 50.0% of time when present
- Phage (with cluster) where this start called: Nergal_41 (AG),

Start 12:

- Found in 30 of 46 (65.2%) of genes in pham
- Manual Annotations of this start: 3 of 35
- Called 10.0% of time when present
- Phage (with cluster) where this start called: DrSeegs_41 (L2), Tourach_41 (L2), Vetrix_41 (L2),

Start 14:

- Found in 14 of 46 (30.4%) of genes in pham
- Manual Annotations of this start: 3 of 35
- Called 21.4% of time when present
- Phage (with cluster) where this start called: Curiosium_47 (K1), Gaia_69 (X), Nebkiss_69 (X),

Start 15:

- Found in 1 of 46 (2.2%) of genes in pham
- No Manual Annotations of this start.
- Called 100.0% of time when present
- Phage (with cluster) where this start called: Neighly_43 (K3),

Start 16:

- Found in 29 of 46 (63.0%) of genes in pham
- Manual Annotations of this start: 16 of 35

- Called 82.8% of time when present
- Phage (with cluster) where this start called: Aegeus_44 (L5), Archie_41 (L2), Baudelaire_44 (L5), Bazzle_41 (L2), BigCheese_41 (L2), BobsGarage_41 (L2), Crossroads_41 (L2), DHan_42 (L2), FarmResident_39 (L4), Finemlucis_41 (L2), Gabriela_41 (L2), Gardann_41 (L2), GuuelaD_41 (L2), Hafay_41 (L2), Itos_40 (L2), Miley16_41 (L2), Netyap_41 (L2), Quby_39 (L4), Rossetti_41 (L2), SoJulia_42 (L2), Soap141_41 (L2), Underpass_41 (L2), Wilder_41 (L2), Zakai_41 (L2),

Start 17:

- Found in 1 of 46 (2.2%) of genes in pham
- Manual Annotations of this start: 1 of 35
- Called 100.0% of time when present
- Phage (with cluster) where this start called: Nibb_46 (K1),

Start 18:

- Found in 15 of 46 (32.6%) of genes in pham
- Manual Annotations of this start: 7 of 35
- Called 46.7% of time when present
- Phage (with cluster) where this start called: AlishaPH_44 (K1), CheetoDust_43 (K1), Chris_46 (K1), Hammy_46 (K6), LastHope_47 (K1), MarkPhew_47 (K1), TribbleTrouble_44 (K3),

Start 19:

- Found in 4 of 46 (8.7%) of genes in pham
- Manual Annotations of this start: 2 of 35
- Called 75.0% of time when present
- Phage (with cluster) where this start called: Jobypre_39 (L3), LiyuLake_39 (L3), Lolly9_39 (L3),

Start 21:

- Found in 5 of 46 (10.9%) of genes in pham
- Manual Annotations of this start: 1 of 35
- Called 20.0% of time when present
- Phage (with cluster) where this start called: Samty_39 (L3),

Start 23:

- Found in 7 of 46 (15.2%) of genes in pham
- No Manual Annotations of this start.
- Called 14.3% of time when present
- Phage (with cluster) where this start called: TingHuaYa_45 (K1),

Summary by clusters:

There are 9 clusters represented in this pham: AG, K1, K3, L4, L5, L2, K6, X, L3,

Info for manual annotations of cluster AG:

- Start number 11 was manually annotated 1 time for cluster AG.

Info for manual annotations of cluster K1:

- Start number 14 was manually annotated 1 time for cluster K1.
- Start number 17 was manually annotated 1 time for cluster K1.
- Start number 18 was manually annotated 5 times for cluster K1.

Info for manual annotations of cluster K3:

- Start number 18 was manually annotated 1 time for cluster K3.

Info for manual annotations of cluster K6:

- Start number 18 was manually annotated 1 time for cluster K6.

Info for manual annotations of cluster L2:

- Start number 9 was manually annotated 1 time for cluster L2.
- Start number 12 was manually annotated 3 times for cluster L2.
- Start number 16 was manually annotated 14 times for cluster L2.

Info for manual annotations of cluster L3:

- Start number 19 was manually annotated 2 times for cluster L3.
- Start number 21 was manually annotated 1 time for cluster L3.

Info for manual annotations of cluster L5:

- Start number 16 was manually annotated 2 times for cluster L5.

Info for manual annotations of cluster X:

- Start number 14 was manually annotated 2 times for cluster X.

Gene Information:

Gene: Aegeus_44 Start: 36838, Stop: 37059, Start Num: 16

Candidate Starts for Aegeus_44:

(Start: 14 @36796 has 3 MA's), (Start: 16 @36838 has 16 MA's), (Start: 18 @36850 has 7 MA's), (27, 36964), (28, 36967), (34, 37039),

Gene: AlishaPH_44 Start: 35486, Stop: 35671, Start Num: 18

Candidate Starts for AlishaPH_44:

(7, 35390), (Start: 11 @35414 has 1 MA's), (Start: 14 @35432 has 3 MA's), (Start: 18 @35486 has 7 MA's), (20, 35519), (25, 35585), (27, 35600), (31, 35648),

Gene: Archie_41 Start: 34671, Stop: 34901, Start Num: 16

Candidate Starts for Archie_41:

(Start: 12 @34614 has 3 MA's), (Start: 16 @34671 has 16 MA's), (24, 34749), (26, 34791), (27, 34797), (29, 34809), (36, 34890),

Gene: Baudelaire_44 Start: 36838, Stop: 37059, Start Num: 16

Candidate Starts for Baudelaire_44:

(Start: 14 @36796 has 3 MA's), (Start: 16 @36838 has 16 MA's), (Start: 18 @36850 has 7 MA's), (27, 36964), (28, 36967), (34, 37039),

Gene: Bazzle_41 Start: 34703, Stop: 34933, Start Num: 16

Candidate Starts for Bazzle_41:

(Start: 12 @34646 has 3 MA's), (Start: 16 @34703 has 16 MA's), (24, 34781), (26, 34823), (27, 34829), (29, 34841), (36, 34922),

Gene: BigCheese_41 Start: 34467, Stop: 34697, Start Num: 16

Candidate Starts for BigCheese_41:

(Start: 9 @34392 has 1 MA's), (10, 34398), (Start: 12 @34410 has 3 MA's), (Start: 16 @34467 has 16 MA's), (26, 34587), (27, 34593), (29, 34605), (36, 34686),

Gene: BobsGarage_41 Start: 34467, Stop: 34697, Start Num: 16

Candidate Starts for BobsGarage_41:

(Start: 9 @34392 has 1 MA's), (10, 34398), (Start: 12 @34410 has 3 MA's), (Start: 16 @34467 has 16 MA's), (26, 34587), (27, 34593), (29, 34605), (36, 34686),

Gene: CheetoDust_43 Start: 34700, Stop: 34885, Start Num: 18

Candidate Starts for CheetoDust_43:

(1, 34433), (2, 34550), (6, 34598), (Start: 14 @34646 has 3 MA's), (Start: 16 @34688 has 16 MA's), (Start: 18 @34700 has 7 MA's), (20, 34733), (25, 34799), (27, 34814), (31, 34862),

Gene: Chris_46 Start: 35995, Stop: 36195, Start Num: 18

Candidate Starts for Chris_46:

(Start: 14 @35941 has 3 MA's), (Start: 18 @35995 has 7 MA's), (24, 36061), (25, 36094), (27, 36109), (28, 36112), (30, 36139),

Gene: Crossroads_41 Start: 34469, Stop: 34699, Start Num: 16

Candidate Starts for Crossroads_41:

(Start: 9 @34394 has 1 MA's), (10, 34400), (Start: 12 @34412 has 3 MA's), (Start: 16 @34469 has 16 MA's), (26, 34589), (27, 34595), (29, 34607), (36, 34688),

Gene: Curiosium_47 Start: 34347, Stop: 34634, Start Num: 14

Candidate Starts for Curiosium_47:

(Start: 14 @34347 has 3 MA's), (Start: 18 @34401 has 7 MA's), (Start: 21 @34443 has 1 MA's), (23, 34452), (37, 34623), (38, 34626),

Gene: DHan_42 Start: 34427, Stop: 34657, Start Num: 16

Candidate Starts for DHan_42:

(Start: 12 @34370 has 3 MA's), (Start: 16 @34427 has 16 MA's), (23, 34490), (24, 34505), (26, 34547), (27, 34553), (29, 34565), (36, 34646),

Gene: DrSeegs_41 Start: 34410, Stop: 34697, Start Num: 12

Candidate Starts for DrSeegs_41:

(Start: 9 @34392 has 1 MA's), (10, 34398), (Start: 12 @34410 has 3 MA's), (Start: 16 @34467 has 16 MA's), (26, 34587), (27, 34593), (29, 34605), (36, 34686),

Gene: FarmResident_39 Start: 33175, Stop: 33417, Start Num: 16

Candidate Starts for FarmResident_39:

(3, 33058), (4, 33079), (8, 33097), (Start: 9 @33100 has 1 MA's), (10, 33106), (Start: 12 @33118 has 3 MA's), (Start: 16 @33175 has 16 MA's), (26, 33295), (29, 33313), (31, 33349),

Gene: Finemlucis_41 Start: 34743, Stop: 34973, Start Num: 16

Candidate Starts for Finemlucis_41:

(Start: 9 @34668 has 1 MA's), (10, 34674), (Start: 12 @34686 has 3 MA's), (Start: 16 @34743 has 16 MA's), (26, 34863), (27, 34869), (29, 34881), (36, 34962),

Gene: Gabriela_41 Start: 34729, Stop: 34959, Start Num: 16

Candidate Starts for Gabriela_41:

(Start: 9 @34654 has 1 MA's), (10, 34660), (Start: 12 @34672 has 3 MA's), (Start: 16 @34729 has 16 MA's), (26, 34849), (27, 34855), (29, 34867), (36, 34948),

Gene: Gaia_69 Start: 45400, Stop: 45705, Start Num: 14
Candidate Starts for Gaia_69:
(Start: 14 @45400 has 3 MA's), (Start: 18 @45454 has 7 MA's), (20, 45487), (27, 45568), (31, 45616),

Gene: Gardann_41 Start: 34468, Stop: 34698, Start Num: 16
Candidate Starts for Gardann_41:
(Start: 9 @34393 has 1 MA's), (10, 34399), (Start: 12 @34411 has 3 MA's), (Start: 16 @34468 has 16 MA's), (26, 34588), (27, 34594), (29, 34606), (36, 34687),

Gene: GuuelaD_41 Start: 34506, Stop: 34736, Start Num: 16
Candidate Starts for GuuelaD_41:
(Start: 9 @34431 has 1 MA's), (10, 34437), (Start: 12 @34449 has 3 MA's), (Start: 16 @34506 has 16 MA's), (26, 34626), (27, 34632), (29, 34644), (36, 34725),

Gene: Hafay_41 Start: 34501, Stop: 34731, Start Num: 16
Candidate Starts for Hafay_41:
(Start: 9 @34426 has 1 MA's), (10, 34432), (Start: 12 @34444 has 3 MA's), (Start: 16 @34501 has 16 MA's), (26, 34621), (27, 34627), (29, 34639), (33, 34693), (36, 34720),

Gene: Hammy_46 Start: 36187, Stop: 36366, Start Num: 18
Candidate Starts for Hammy_46:
(Start: 14 @36133 has 3 MA's), (Start: 18 @36187 has 7 MA's), (27, 36301), (30, 36331),

Gene: Itos_40 Start: 33373, Stop: 33603, Start Num: 16
Candidate Starts for Itos_40:
(Start: 9 @33298 has 1 MA's), (10, 33304), (Start: 12 @33316 has 3 MA's), (Start: 16 @33373 has 16 MA's), (26, 33493), (27, 33499), (29, 33511), (36, 33592),

Gene: Jobypre_39 Start: 34742, Stop: 34954, Start Num: 19
Candidate Starts for Jobypre_39:
(Start: 12 @34655 has 3 MA's), (Start: 19 @34742 has 2 MA's), (27, 34838), (29, 34850),

Gene: LastHope_47 Start: 34715, Stop: 34948, Start Num: 18
Candidate Starts for LastHope_47:
(Start: 14 @34661 has 3 MA's), (Start: 18 @34715 has 7 MA's), (23, 34766),

Gene: LiyuLake_39 Start: 34726, Stop: 34938, Start Num: 19
Candidate Starts for LiyuLake_39:
(4, 34600), (Start: 12 @34639 has 3 MA's), (Start: 19 @34726 has 2 MA's), (Start: 21 @34750 has 1 MA's), (27, 34822), (29, 34834), (30, 34852),

Gene: Lolly9_39 Start: 34550, Stop: 34762, Start Num: 19
Candidate Starts for Lolly9_39:
(4, 34424), (Start: 12 @34463 has 3 MA's), (Start: 19 @34550 has 2 MA's), (Start: 21 @34574 has 1 MA's), (27, 34646), (29, 34658), (30, 34676),

Gene: MarkPhew_47 Start: 35823, Stop: 36026, Start Num: 18
Candidate Starts for MarkPhew_47:
(Start: 14 @35769 has 3 MA's), (Start: 18 @35823 has 7 MA's), (Start: 21 @35865 has 1 MA's), (27, 35937), (28, 35940), (30, 35967), (32, 35991),

Gene: Miley16_41 Start: 34467, Stop: 34697, Start Num: 16
Candidate Starts for Miley16_41:

(Start: 9 @34392 has 1 MA's), (10, 34398), (Start: 12 @34410 has 3 MA's), (Start: 16 @34467 has 16 MA's), (26, 34587), (27, 34593), (29, 34605), (36, 34686),

Gene: Nebkiss_69 Start: 44011, Stop: 44316, Start Num: 14

Candidate Starts for Nebkiss_69:

(Start: 14 @44011 has 3 MA's), (Start: 18 @44065 has 7 MA's), (20, 44098), (27, 44179), (31, 44227),

Gene: Neighly_43 Start: 34451, Stop: 34732, Start Num: 15

Candidate Starts for Neighly_43:

(5, 34385), (15, 34451), (23, 34544), (26, 34601), (27, 34607), (29, 34619), (35, 34700), (36, 34712),

Gene: Nergal_41 Start: 33794, Stop: 34084, Start Num: 11

Candidate Starts for Nergal_41:

(Start: 11 @33794 has 1 MA's), (13, 33809), (Start: 18 @33866 has 7 MA's), (20, 33899), (22, 33911), (23, 33917), (24, 33932), (28, 33983), (30, 34010), (31, 34028),

Gene: Netyap_41 Start: 34467, Stop: 34697, Start Num: 16

Candidate Starts for Netyap_41:

(Start: 9 @34392 has 1 MA's), (10, 34398), (Start: 12 @34410 has 3 MA's), (Start: 16 @34467 has 16 MA's), (26, 34587), (27, 34593), (29, 34605), (36, 34686),

Gene: Nibb_46 Start: 35544, Stop: 35738, Start Num: 17

Candidate Starts for Nibb_46:

(Start: 14 @35493 has 3 MA's), (Start: 17 @35544 has 1 MA's), (Start: 18 @35547 has 7 MA's), (24, 35613), (27, 35661),

Gene: Nicholasp3_41 Start: 34393, Stop: 34698, Start Num: 9

Candidate Starts for Nicholasp3_41:

(Start: 9 @34393 has 1 MA's), (10, 34399), (Start: 12 @34411 has 3 MA's), (Start: 16 @34468 has 16 MA's), (26, 34588), (27, 34594), (29, 34606), (36, 34687),

Gene: Quby_39 Start: 33131, Stop: 33373, Start Num: 16

Candidate Starts for Quby_39:

(3, 33014), (4, 33035), (8, 33053), (Start: 9 @33056 has 1 MA's), (10, 33062), (Start: 12 @33074 has 3 MA's), (Start: 16 @33131 has 16 MA's), (23, 33194), (26, 33251), (29, 33269), (31, 33305),

Gene: Rossetti_41 Start: 34734, Stop: 34964, Start Num: 16

Candidate Starts for Rossetti_41:

(Start: 9 @34659 has 1 MA's), (10, 34665), (Start: 12 @34677 has 3 MA's), (Start: 16 @34734 has 16 MA's), (26, 34854), (27, 34860), (29, 34872), (36, 34953),

Gene: Samty_39 Start: 34767, Stop: 34955, Start Num: 21

Candidate Starts for Samty_39:

(Start: 12 @34656 has 3 MA's), (Start: 19 @34743 has 2 MA's), (Start: 21 @34767 has 1 MA's), (27, 34839), (29, 34851),

Gene: SoJulia_42 Start: 34727, Stop: 34957, Start Num: 16

Candidate Starts for SoJulia_42:

(Start: 9 @34652 has 1 MA's), (10, 34658), (Start: 12 @34670 has 3 MA's), (Start: 16 @34727 has 16 MA's), (26, 34847), (27, 34853), (29, 34865), (36, 34946),

Gene: Soap141_41 Start: 34501, Stop: 34731, Start Num: 16

Candidate Starts for Soap141_41:

(Start: 9 @34426 has 1 MA's), (10, 34432), (Start: 12 @34444 has 3 MA's), (Start: 16 @34501 has 16 MA's), (26, 34621), (27, 34627), (29, 34639), (33, 34693), (36, 34720),

Gene: TingHuaYa_45 Start: 34549, Stop: 34731, Start Num: 23

Candidate Starts for TingHuaYa_45:

(Start: 14 @34444 has 3 MA's), (Start: 18 @34498 has 7 MA's), (23, 34549),

Gene: Tourach_41 Start: 34425, Stop: 34712, Start Num: 12

Candidate Starts for Tourach_41:

(3, 34365), (Start: 12 @34425 has 3 MA's), (Start: 16 @34482 has 16 MA's), (24, 34560), (26, 34602), (27, 34608), (29, 34620),

Gene: TribelTrouble_44 Start: 35315, Stop: 35500, Start Num: 18

Candidate Starts for TribelTrouble_44:

(Start: 14 @35261 has 3 MA's), (Start: 18 @35315 has 7 MA's), (24, 35381),

Gene: Underpass_41 Start: 34468, Stop: 34698, Start Num: 16

Candidate Starts for Underpass_41:

(Start: 9 @34393 has 1 MA's), (10, 34399), (Start: 12 @34411 has 3 MA's), (Start: 16 @34468 has 16 MA's), (26, 34588), (27, 34594), (29, 34606), (36, 34687),

Gene: Vetrix_41 Start: 34417, Stop: 34704, Start Num: 12

Candidate Starts for Vetrix_41:

(Start: 9 @34399 has 1 MA's), (10, 34405), (Start: 12 @34417 has 3 MA's), (Start: 16 @34474 has 16 MA's), (26, 34594), (27, 34600), (29, 34612), (36, 34693),

Gene: Wilder_41 Start: 34473, Stop: 34703, Start Num: 16

Candidate Starts for Wilder_41:

(Start: 9 @34398 has 1 MA's), (10, 34404), (Start: 12 @34416 has 3 MA's), (Start: 16 @34473 has 16 MA's), (26, 34593), (27, 34599), (29, 34611), (33, 34665), (36, 34692),

Gene: Zakai_41 Start: 34725, Stop: 34955, Start Num: 16

Candidate Starts for Zakai_41:

(Start: 9 @34650 has 1 MA's), (10, 34656), (Start: 12 @34668 has 3 MA's), (Start: 16 @34725 has 16 MA's), (26, 34845), (27, 34851), (29, 34863), (36, 34944),