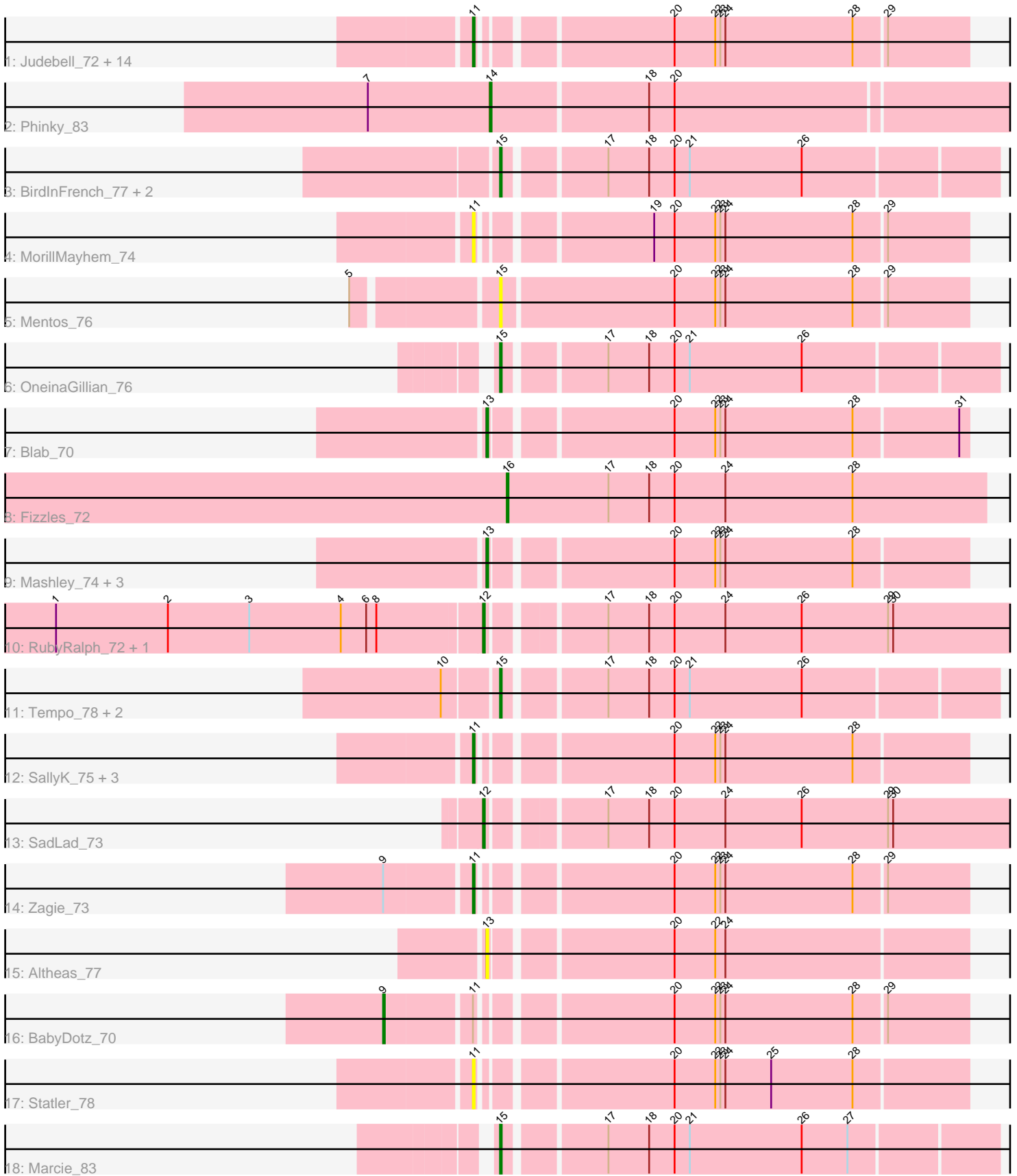


Pham 224699



Note: Tracks are now grouped by subcluster and scaled. Switching in subcluster is indicated by changes in track color. Track scale is now set by default to display the region 30 bp upstream of start 1 to 30 bp downstream of the last possible start. If this default region is judged to be packed too tightly with annotated starts, the track will be further scaled to only show that region of the ORF with annotated starts. This action will be indicated by adding "Zoomed" to the title. For starts, yellow indicates the location of called starts comprised solely of Glimmer/GeneMark auto-annotations, green indicates the location of called starts with at least 1 manual gene annotation.

Pham 224699 Report

This analysis was run 03/28/25 on database version 593.

Pham number 224699 has 43 members, 7 are drafts.

Phages represented in each track:

- Track 1 : Judebell_72, Nike_73, Namago_73, Phabia_72, Quammi_71, Viceroy_71, Rudy_70, Casend_73, Wayne3_74, Zhafia_77, Teehee_73, Squash_75, Llemily_74, Jehoshaphat_74, Sillytadpoles_75
- Track 2 : Phinky_83
- Track 3 : BirdInFrench_77, RobinRose_79, Wilca_77
- Track 4 : MorillMayhem_74
- Track 5 : Mentos_76
- Track 6 : OneinaGillian_76
- Track 7 : Blab_70
- Track 8 : Fizzles_72
- Track 9 : Mashley_74, AluminumJesus_70, Hyperion_72, Gazebo_73
- Track 10 : RubyRalph_72, Fransoyer_71
- Track 11 : Tempo_78, CandC_75, Fregley_78
- Track 12 : SallyK_75, Lonelysoil_70, StrawberryJamm_77, Rowlf_70
- Track 13 : SadLad_73
- Track 14 : Zagie_73
- Track 15 : Altheas_77
- Track 16 : BabyDotz_70
- Track 17 : Statler_78
- Track 18 : Marcie_83

Summary of Final Annotations (See graph section above for start numbers):

The start number called the most often in the published annotations is 11, it was called in 17 of the 36 non-draft genes in the pham.

Genes that call this "Most Annotated" start:

- Casend_73, Jehoshaphat_74, Judebell_72, Llemily_74, Lonelysoil_70, MorillMayhem_74, Namago_73, Nike_73, Phabia_72, Quammi_71, Rowlf_70, Rudy_70, SallyK_75, Sillytadpoles_75, Squash_75, Statler_78, StrawberryJamm_77, Teehee_73, Viceroy_71, Wayne3_74, Zagie_73, Zhafia_77,

Genes that have the "Most Annotated" start but do not call it:

- BabyDotz_70,

Genes that do not have the "Most Annotated" start:

- Altheas_77, AluminumJesus_70, BirdInFrench_77, Blab_70, CandC_75, Fizzles_72, Fransoyer_71, Fregley_78, Gazebo_73, Hyperion_72, Marcie_83, Mashley_74, Mentos_76, OneinaGillian_76, Phinky_83, RobinRose_79, RubyRalph_72, SadLad_73, Tempo_78, Wilca_77,

Summary by start number:

Start 9:

- Found in 2 of 43 (4.7%) of genes in pham
- Manual Annotations of this start: 1 of 36
- Called 50.0% of time when present
- Phage (with cluster) where this start called: BabyDotz_70 (EG),

Start 11:

- Found in 23 of 43 (53.5%) of genes in pham
- Manual Annotations of this start: 17 of 36
- Called 95.7% of time when present
- Phage (with cluster) where this start called: Casend_73 (EG), Jehoshaphat_74 (EG), Judebell_72 (EG), Lemily_74 (EG), Lonelysoil_70 (EG), MorillMayhem_74 (EG), Namago_73 (EG), Nike_73 (EG), Phabia_72 (EG), Quammi_71 (EG), Rowlf_70 (EG), Rudy_70 (EG), SallyK_75 (EG), Sillytadpoles_75 (EG), Squash_75 (EG), Statler_78 (EG), StrawberryJamm_77 (EG), Teehee_73 (EG), Viceroy_71 (EG), Wayne3_74 (EG), Zagie_73 (EG), Zhafia_77 (EG),

Start 12:

- Found in 3 of 43 (7.0%) of genes in pham
- Manual Annotations of this start: 3 of 36
- Called 100.0% of time when present
- Phage (with cluster) where this start called: Fransoyer_71 (EG), RubyRalph_72 (EG), SadLad_73 (EG),

Start 13:

- Found in 6 of 43 (14.0%) of genes in pham
- Manual Annotations of this start: 5 of 36
- Called 100.0% of time when present
- Phage (with cluster) where this start called: Altheas_77 (EG), AluminumJesus_70 (EG), Blab_70 (EG), Gazebo_73 (EG), Hyperion_72 (EG), Mashley_74 (EG),

Start 14:

- Found in 1 of 43 (2.3%) of genes in pham
- Manual Annotations of this start: 1 of 36
- Called 100.0% of time when present
- Phage (with cluster) where this start called: Phinky_83 (EG),

Start 15:

- Found in 9 of 43 (20.9%) of genes in pham
- Manual Annotations of this start: 8 of 36
- Called 100.0% of time when present
- Phage (with cluster) where this start called: BirdInFrench_77 (EG), CandC_75 (EG), Fregley_78 (EG), Marcie_83 (EG), Mentos_76 (EG), OneinaGillian_76 (EG), RobinRose_79 (EG), Tempo_78 (EG), Wilca_77 (EG),

Start 16:

- Found in 1 of 43 (2.3%) of genes in pham
- Manual Annotations of this start: 1 of 36
- Called 100.0% of time when present
- Phage (with cluster) where this start called: Fizzles_72 (EG),

Summary by clusters:

There is one cluster represented in this pham: EG

Info for manual annotations of cluster EG:

- Start number 9 was manually annotated 1 time for cluster EG.
- Start number 11 was manually annotated 17 times for cluster EG.
- Start number 12 was manually annotated 3 times for cluster EG.
- Start number 13 was manually annotated 5 times for cluster EG.
- Start number 14 was manually annotated 1 time for cluster EG.
- Start number 15 was manually annotated 8 times for cluster EG.
- Start number 16 was manually annotated 1 time for cluster EG.

Gene Information:

Gene: Altheas_77 Start: 51282, Stop: 51013, Start Num: 13

Candidate Starts for Altheas_77:

(Start: 13 @51282 has 5 MA's), (20, 51183), (22, 51159), (24, 51153),

Gene: AluminumJesus_70 Start: 49888, Stop: 49619, Start Num: 13

Candidate Starts for AluminumJesus_70:

(Start: 13 @49888 has 5 MA's), (20, 49789), (22, 49765), (23, 49762), (24, 49759), (28, 49684),

Gene: BabyDotz_70 Start: 51169, Stop: 50849, Start Num: 9

Candidate Starts for BabyDotz_70:

(Start: 9 @51169 has 1 MA's), (Start: 11 @51121 has 17 MA's), (20, 51019), (22, 50995), (23, 50992), (24, 50989), (28, 50914), (29, 50896),

Gene: BirdInFrench_77 Start: 50673, Stop: 50395, Start Num: 15

Candidate Starts for BirdInFrench_77:

(Start: 15 @50673 has 8 MA's), (17, 50619), (18, 50595), (20, 50580), (21, 50571), (26, 50505),

Gene: Blab_70 Start: 50179, Stop: 49910, Start Num: 13

Candidate Starts for Blab_70:

(Start: 13 @50179 has 5 MA's), (20, 50080), (22, 50056), (23, 50053), (24, 50050), (28, 49975), (31, 49915),

Gene: CandC_75 Start: 50039, Stop: 49761, Start Num: 15

Candidate Starts for CandC_75:

(10, 50069), (Start: 15 @50039 has 8 MA's), (17, 49985), (18, 49961), (20, 49946), (21, 49937), (26, 49871),

Gene: Casend_73 Start: 50678, Stop: 50406, Start Num: 11

Candidate Starts for Casend_73:

(Start: 11 @50678 has 17 MA's), (20, 50576), (22, 50552), (23, 50549), (24, 50546), (28, 50471), (29, 50453),

Gene: Fizzles_72 Start: 50172, Stop: 49891, Start Num: 16

Candidate Starts for Fizzles_72:

(Start: 16 @50172 has 1 MA's), (17, 50112), (18, 50088), (20, 50073), (24, 50043), (28, 49968),

Gene: Fransoyer_71 Start: 50342, Stop: 50022, Start Num: 12

Candidate Starts for Fransoyer_71:

(1, 50588), (2, 50522), (3, 50474), (4, 50420), (6, 50405), (8, 50399), (Start: 12 @50342 has 3 MA's), (17, 50282), (18, 50258), (20, 50243), (24, 50213), (26, 50168), (29, 50117), (30, 50114),

Gene: Fregley_78 Start: 50388, Stop: 50110, Start Num: 15

Candidate Starts for Fregley_78:

(10, 50418), (Start: 15 @50388 has 8 MA's), (17, 50334), (18, 50310), (20, 50295), (21, 50286), (26, 50220),

Gene: Gazebo_73 Start: 50838, Stop: 50569, Start Num: 13

Candidate Starts for Gazebo_73:

(Start: 13 @50838 has 5 MA's), (20, 50739), (22, 50715), (23, 50712), (24, 50709), (28, 50634),

Gene: Hyperion_72 Start: 50369, Stop: 50100, Start Num: 13

Candidate Starts for Hyperion_72:

(Start: 13 @50369 has 5 MA's), (20, 50270), (22, 50246), (23, 50243), (24, 50240), (28, 50165),

Gene: Jehoshaphat_74 Start: 50946, Stop: 50674, Start Num: 11

Candidate Starts for Jehoshaphat_74:

(Start: 11 @50946 has 17 MA's), (20, 50844), (22, 50820), (23, 50817), (24, 50814), (28, 50739), (29, 50721),

Gene: Judebell_72 Start: 50170, Stop: 49898, Start Num: 11

Candidate Starts for Judebell_72:

(Start: 11 @50170 has 17 MA's), (20, 50068), (22, 50044), (23, 50041), (24, 50038), (28, 49963), (29, 49945),

Gene: Llemily_74 Start: 49722, Stop: 49450, Start Num: 11

Candidate Starts for Llemily_74:

(Start: 11 @49722 has 17 MA's), (20, 49620), (22, 49596), (23, 49593), (24, 49590), (28, 49515), (29, 49497),

Gene: Lonelysoil_70 Start: 49482, Stop: 49210, Start Num: 11

Candidate Starts for Lonelysoil_70:

(Start: 11 @49482 has 17 MA's), (20, 49380), (22, 49356), (23, 49353), (24, 49350), (28, 49275),

Gene: Marcie_83 Start: 51613, Stop: 51335, Start Num: 15

Candidate Starts for Marcie_83:

(Start: 15 @51613 has 8 MA's), (17, 51559), (18, 51535), (20, 51520), (21, 51511), (26, 51445), (27, 51418),

Gene: Mashley_74 Start: 50891, Stop: 50622, Start Num: 13

Candidate Starts for Mashley_74:

(Start: 13 @50891 has 5 MA's), (20, 50792), (22, 50768), (23, 50765), (24, 50762), (28, 50687),

Gene: Mentos_76 Start: 51391, Stop: 51122, Start Num: 15

Candidate Starts for Mentos_76:

(5, 51469), (Start: 15 @51391 has 8 MA's), (20, 51292), (22, 51268), (23, 51265), (24, 51262), (28, 51187), (29, 51169),

Gene: MorillMayhem_74 Start: 50941, Stop: 50669, Start Num: 11

Candidate Starts for MorillMayhem_74:

(Start: 11 @50941 has 17 MA's), (19, 50851), (20, 50839), (22, 50815), (23, 50812), (24, 50809), (28, 50734), (29, 50716),

Gene: Namago_73 Start: 49786, Stop: 49514, Start Num: 11

Candidate Starts for Namago_73:

(Start: 11 @49786 has 17 MA's), (20, 49684), (22, 49660), (23, 49657), (24, 49654), (28, 49579), (29, 49561),

Gene: Nike_73 Start: 51086, Stop: 50814, Start Num: 11

Candidate Starts for Nike_73:

(Start: 11 @51086 has 17 MA's), (20, 50984), (22, 50960), (23, 50957), (24, 50954), (28, 50879), (29, 50861),

Gene: OneinaGillian_76 Start: 50251, Stop: 49973, Start Num: 15

Candidate Starts for OneinaGillian_76:

(Start: 15 @50251 has 8 MA's), (17, 50197), (18, 50173), (20, 50158), (21, 50149), (26, 50083),

Gene: Phabia_72 Start: 50137, Stop: 49865, Start Num: 11

Candidate Starts for Phabia_72:

(Start: 11 @50137 has 17 MA's), (20, 50035), (22, 50011), (23, 50008), (24, 50005), (28, 49930), (29, 49912),

Gene: Phinky_83 Start: 53441, Stop: 53133, Start Num: 14

Candidate Starts for Phinky_83:

(7, 53513), (Start: 14 @53441 has 1 MA's), (18, 53351), (20, 53336),

Gene: Quammi_71 Start: 49837, Stop: 49565, Start Num: 11

Candidate Starts for Quammi_71:

(Start: 11 @49837 has 17 MA's), (20, 49735), (22, 49711), (23, 49708), (24, 49705), (28, 49630), (29, 49612),

Gene: RobinRose_79 Start: 50795, Stop: 50517, Start Num: 15

Candidate Starts for RobinRose_79:

(Start: 15 @50795 has 8 MA's), (17, 50741), (18, 50717), (20, 50702), (21, 50693), (26, 50627),

Gene: Rowlf_70 Start: 50044, Stop: 49772, Start Num: 11

Candidate Starts for Rowlf_70:

(Start: 11 @50044 has 17 MA's), (20, 49942), (22, 49918), (23, 49915), (24, 49912), (28, 49837),

Gene: RubyRalph_72 Start: 50116, Stop: 49796, Start Num: 12

Candidate Starts for RubyRalph_72:

(1, 50362), (2, 50296), (3, 50248), (4, 50194), (6, 50179), (8, 50173), (Start: 12 @50116 has 3 MA's), (17, 50056), (18, 50032), (20, 50017), (24, 49987), (26, 49942), (29, 49891), (30, 49888),

Gene: Rudy_70 Start: 49873, Stop: 49601, Start Num: 11

Candidate Starts for Rudy_70:

(Start: 11 @49873 has 17 MA's), (20, 49771), (22, 49747), (23, 49744), (24, 49741), (28, 49666), (29, 49648),

Gene: SadLad_73 Start: 51022, Stop: 50702, Start Num: 12

Candidate Starts for SadLad_73:

(Start: 12 @51022 has 3 MA's), (17, 50962), (18, 50938), (20, 50923), (24, 50893), (26, 50848), (29, 50797), (30, 50794),

Gene: SallyK_75 Start: 51575, Stop: 51303, Start Num: 11

Candidate Starts for SallyK_75:

(Start: 11 @51575 has 17 MA's), (20, 51473), (22, 51449), (23, 51446), (24, 51443), (28, 51368),

Gene: Sillytadpoles_75 Start: 49710, Stop: 49438, Start Num: 11

Candidate Starts for Sillytadpoles_75:

(Start: 11 @49710 has 17 MA's), (20, 49608), (22, 49584), (23, 49581), (24, 49578), (28, 49503), (29, 49485),

Gene: Squash_75 Start: 50808, Stop: 50536, Start Num: 11

Candidate Starts for Squash_75:

(Start: 11 @50808 has 17 MA's), (20, 50706), (22, 50682), (23, 50679), (24, 50676), (28, 50601), (29, 50583),

Gene: Statler_78 Start: 50760, Stop: 50488, Start Num: 11

Candidate Starts for Statler_78:

(Start: 11 @50760 has 17 MA's), (20, 50658), (22, 50634), (23, 50631), (24, 50628), (25, 50601), (28, 50553),

Gene: StrawberryJamm_77 Start: 49978, Stop: 49706, Start Num: 11

Candidate Starts for StrawberryJamm_77:

(Start: 11 @49978 has 17 MA's), (20, 49876), (22, 49852), (23, 49849), (24, 49846), (28, 49771),

Gene: Teehee_73 Start: 50943, Stop: 50671, Start Num: 11

Candidate Starts for Teehee_73:

(Start: 11 @50943 has 17 MA's), (20, 50841), (22, 50817), (23, 50814), (24, 50811), (28, 50736), (29, 50718),

Gene: Tempo_78 Start: 50735, Stop: 50457, Start Num: 15

Candidate Starts for Tempo_78:

(10, 50765), (Start: 15 @50735 has 8 MA's), (17, 50681), (18, 50657), (20, 50642), (21, 50633), (26, 50567),

Gene: Viceroy_71 Start: 49843, Stop: 49571, Start Num: 11

Candidate Starts for Viceroy_71:

(Start: 11 @49843 has 17 MA's), (20, 49741), (22, 49717), (23, 49714), (24, 49711), (28, 49636), (29, 49618),

Gene: Wayne3_74 Start: 50706, Stop: 50434, Start Num: 11

Candidate Starts for Wayne3_74:

(Start: 11 @50706 has 17 MA's), (20, 50604), (22, 50580), (23, 50577), (24, 50574), (28, 50499), (29, 50481),

Gene: Wilca_77 Start: 50673, Stop: 50395, Start Num: 15

Candidate Starts for Wilca_77:

(Start: 15 @50673 has 8 MA's), (17, 50619), (18, 50595), (20, 50580), (21, 50571), (26, 50505),

Gene: Zagie_73 Start: 50255, Stop: 49983, Start Num: 11

Candidate Starts for Zagie_73:

(Start: 9 @50303 has 1 MA's), (Start: 11 @50255 has 17 MA's), (20, 50153), (22, 50129), (23, 50126),
(24, 50123), (28, 50048), (29, 50030),

Gene: Zhafia_77 Start: 50507, Stop: 50235, Start Num: 11

Candidate Starts for Zhafia_77:

(Start: 11 @50507 has 17 MA's), (20, 50405), (22, 50381), (23, 50378), (24, 50375), (28, 50300), (29,
50282),