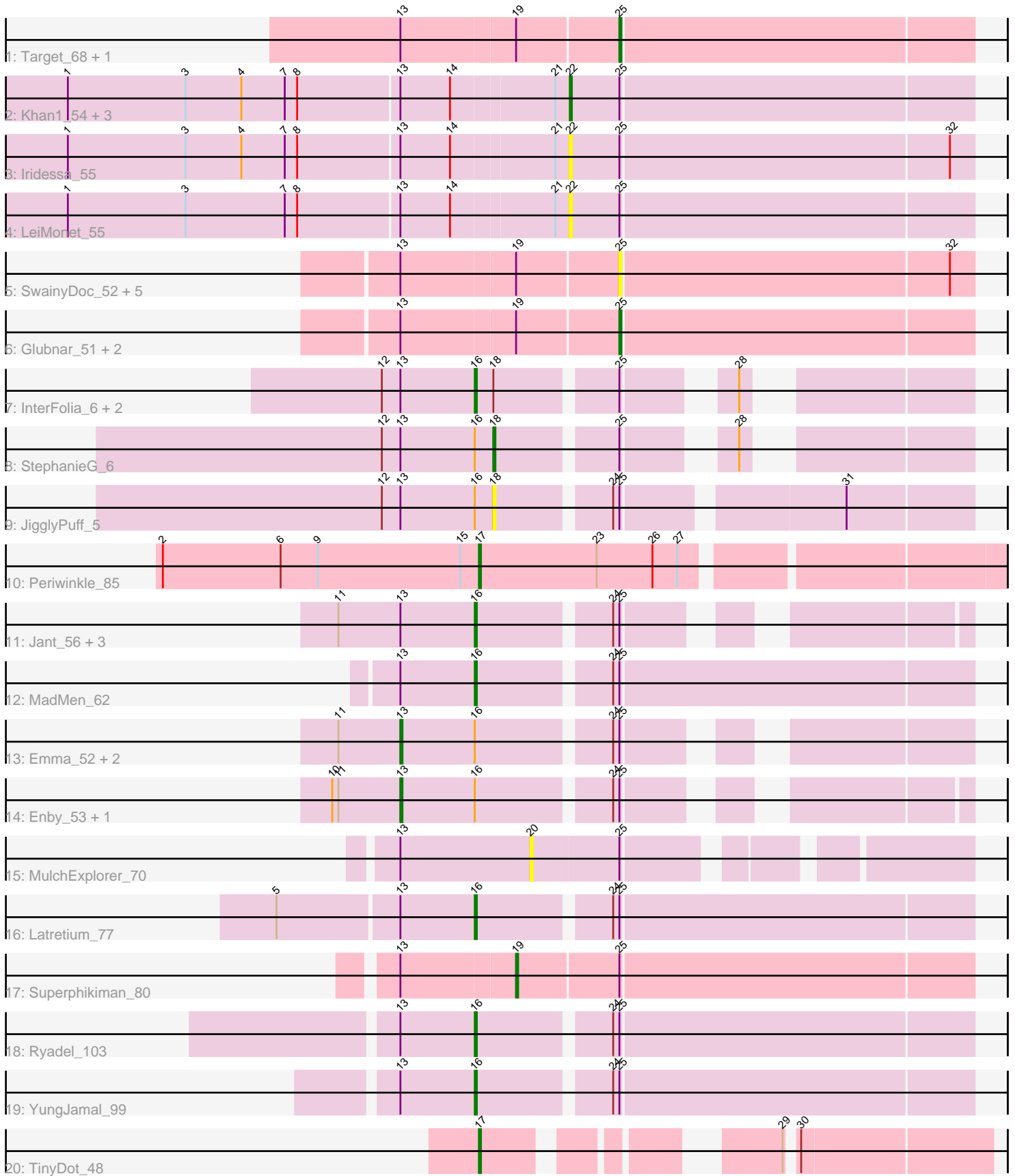


Pham 224722



Note: Tracks are now grouped by subcluster and scaled. Switching in subcluster is indicated by changes in track color. Track scale is now set by default to display the region 30 bp upstream of start 1 to 30 bp downstream of the last possible start. If this default region is judged to be packed too tightly with annotated starts, the track will be further scaled to only show that region of the ORF with annotated starts. This action will be indicated by adding "Zoomed" to the title. For starts, yellow indicates the location of called starts comprised solely of Glimmer/GeneMark auto-annotations, green indicates the location of called starts with at least 1 manual gene annotation.

Pham 224722 Report

This analysis was run 03/28/25 on database version 593.

Pham number 224722 has 39 members, 19 are drafts.

Phages represented in each track:

- Track 1 : Target_68, Raid_65
- Track 2 : Khan1_54, Gwilliam_54, MrPhizzler_54, Rimu_57
- Track 3 : Iridessa_55
- Track 4 : LeiMonet_55
- Track 5 : SwainyDoc_52, Ben11_51, Chentzyk_52, TinyTerror_52, Marlia_52, SlippinJimmy_53
- Track 6 : Glubnar_51, Olivio_51, Heathcliff_51
- Track 7 : InterFolia_6, LordLeafolot_6, Tainan_6
- Track 8 : StephanieG_6
- Track 9 : JigglyPuff_5
- Track 10 : Periwinkle_85
- Track 11 : Jant_56, Bobi_55, Krakatau_50, Harley_54
- Track 12 : MadMen_62
- Track 13 : Emma_52, Mova_53, VRedHorse_52
- Track 14 : Enby_53, Lorde_53
- Track 15 : MulchExplorer_70
- Track 16 : Latretium_77
- Track 17 : Superphikiman_80
- Track 18 : Ryadel_103
- Track 19 : YungJamal_99
- Track 20 : TinyDot_48

Summary of Final Annotations (See graph section above for start numbers):

The start number called the most often in the published annotations is 16, it was called in 8 of the 20 non-draft genes in the pham.

Genes that call this "Most Annotated" start:

- Bobi_55, Harley_54, InterFolia_6, Jant_56, Krakatau_50, Latretium_77, LordLeafolot_6, MadMen_62, Ryadel_103, Tainan_6, YungJamal_99,

Genes that have the "Most Annotated" start but do not call it:

- Emma_52, Enby_53, JigglyPuff_5, Lorde_53, Mova_53, StephanieG_6, VRedHorse_52,

Genes that do not have the "Most Annotated" start:

- Ben11_51, Chentzyk_52, Glubnar_51, Gwilliam_54, Heathcliff_51, Iridessa_55, Khan1_54, LeiMonet_55, Marlia_52, MrPhizzler_54, MulchExplorer_70, Olivio_51, Periwinkle_85, Raid_65, Rimu_57, SlippinJimmy_53, Superphikiman_80, SwainyDoc_52, Target_68, TinyDot_48, TinyTerror_52,

Summary by start number:

Start 13:

- Found in 37 of 39 (94.9%) of genes in pham
- Manual Annotations of this start: 5 of 20
- Called 13.5% of time when present
- Phage (with cluster) where this start called: Emma_52 (F1), Enby_53 (F1), Lorde_53 (F1), Mova_53 (F1), VRedHorse_52 (F1),

Start 16:

- Found in 18 of 39 (46.2%) of genes in pham
- Manual Annotations of this start: 8 of 20
- Called 61.1% of time when present
- Phage (with cluster) where this start called: Bobi_55 (F1), Harley_54 (F1), InterFolia_6 (C1), Jant_56 (F1), Krakatau_50 (F1), Latretium_77 (F1), LordLeafolot_6 (C1), MadMen_62 (F1), Ryadel_103 (O), Tainan_6 (C1), YungJamal_99 (O),

Start 17:

- Found in 2 of 39 (5.1%) of genes in pham
- Manual Annotations of this start: 2 of 20
- Called 100.0% of time when present
- Phage (with cluster) where this start called: Periwinkle_85 (DN1), TinyDot_48 (singleton),

Start 18:

- Found in 5 of 39 (12.8%) of genes in pham
- Manual Annotations of this start: 1 of 20
- Called 40.0% of time when present
- Phage (with cluster) where this start called: JigglyPuff_5 (C1), StephanieG_6 (C1),

Start 19:

- Found in 12 of 39 (30.8%) of genes in pham
- Manual Annotations of this start: 1 of 20
- Called 8.3% of time when present
- Phage (with cluster) where this start called: Superphikiman_80 (J),

Start 20:

- Found in 1 of 39 (2.6%) of genes in pham
- No Manual Annotations of this start.
- Called 100.0% of time when present
- Phage (with cluster) where this start called: MulchExplorer_70 (F1),

Start 22:

- Found in 6 of 39 (15.4%) of genes in pham
- Manual Annotations of this start: 1 of 20
- Called 100.0% of time when present

- Phage (with cluster) where this start called: Gwilliam_54 (B1), Iridessa_55 (B1), Khan1_54 (B1), LeiMonet_55 (B1), MrPhizzler_54 (B1), Rimu_57 (B1),

Start 25:

- Found in 37 of 39 (94.9%) of genes in pham
- Manual Annotations of this start: 2 of 20
- Called 29.7% of time when present
- Phage (with cluster) where this start called: Ben11_51 (B3), Chentzyk_52 (B3), Glubnar_51 (B3), Heathcliff_51 (B3), Marlia_52 (B3), Olivio_51 (B3), Raid_65 (A1), SlippinJimmy_53 (B3), SwainyDoc_52 (B3), Target_68 (A1), TinyTerror_52 (B3),

Summary by clusters:

There are 9 clusters represented in this pham: F1, singleton, J, O, A1, DN1, B1, B3, C1,

Info for manual annotations of cluster A1:

- Start number 25 was manually annotated 1 time for cluster A1.

Info for manual annotations of cluster B1:

- Start number 22 was manually annotated 1 time for cluster B1.

Info for manual annotations of cluster B3:

- Start number 25 was manually annotated 1 time for cluster B3.

Info for manual annotations of cluster C1:

- Start number 16 was manually annotated 1 time for cluster C1.
- Start number 18 was manually annotated 1 time for cluster C1.

Info for manual annotations of cluster DN1:

- Start number 17 was manually annotated 1 time for cluster DN1.

Info for manual annotations of cluster F1:

- Start number 13 was manually annotated 5 times for cluster F1.
- Start number 16 was manually annotated 5 times for cluster F1.

Info for manual annotations of cluster J:

- Start number 19 was manually annotated 1 time for cluster J.

Info for manual annotations of cluster O:

- Start number 16 was manually annotated 2 times for cluster O.

Gene Information:

Gene: Ben11_51 Start: 45593, Stop: 45426, Start Num: 25

Candidate Starts for Ben11_51:

(Start: 13 @45695 has 5 MA's), (Start: 19 @45641 has 1 MA's), (Start: 25 @45593 has 2 MA's), (32, 45437),

Gene: Bobi_55 Start: 38256, Stop: 38450, Start Num: 16

Candidate Starts for Bobi_55:

(11, 38190), (Start: 13 @38220 has 5 MA's), (Start: 16 @38256 has 8 MA's), (24, 38316), (Start: 25 @38319 has 2 MA's),

Gene: Chentzyk_52 Start: 46135, Stop: 45968, Start Num: 25

Candidate Starts for Chentzyk_52:

(Start: 13 @46237 has 5 MA's), (Start: 19 @46183 has 1 MA's), (Start: 25 @46135 has 2 MA's), (32, 45979),

Gene: Emma_52 Start: 36405, Stop: 36638, Start Num: 13

Candidate Starts for Emma_52:

(11, 36375), (Start: 13 @36405 has 5 MA's), (Start: 16 @36441 has 8 MA's), (24, 36501), (Start: 25 @36504 has 2 MA's),

Gene: Enby_53 Start: 35552, Stop: 35782, Start Num: 13

Candidate Starts for Enby_53:

(10, 35519), (11, 35522), (Start: 13 @35552 has 5 MA's), (Start: 16 @35588 has 8 MA's), (24, 35648), (Start: 25 @35651 has 2 MA's),

Gene: Glubnar_51 Start: 45303, Stop: 45136, Start Num: 25

Candidate Starts for Glubnar_51:

(Start: 13 @45405 has 5 MA's), (Start: 19 @45351 has 1 MA's), (Start: 25 @45303 has 2 MA's),

Gene: Gwilliam_54 Start: 47871, Stop: 47680, Start Num: 22

Candidate Starts for Gwilliam_54:

(1, 48108), (3, 48051), (4, 48024), (7, 48003), (8, 47997), (Start: 13 @47949 has 5 MA's), (14, 47925), (21, 47877), (Start: 22 @47871 has 1 MA's), (Start: 25 @47847 has 2 MA's),

Gene: Harley_54 Start: 37188, Stop: 37382, Start Num: 16

Candidate Starts for Harley_54:

(11, 37122), (Start: 13 @37152 has 5 MA's), (Start: 16 @37188 has 8 MA's), (24, 37248), (Start: 25 @37251 has 2 MA's),

Gene: Heathcliff_51 Start: 45274, Stop: 45107, Start Num: 25

Candidate Starts for Heathcliff_51:

(Start: 13 @45376 has 5 MA's), (Start: 19 @45322 has 1 MA's), (Start: 25 @45274 has 2 MA's),

Gene: InterFolia_6 Start: 1924, Stop: 2115, Start Num: 16

Candidate Starts for InterFolia_6:

(12, 1879), (Start: 13 @1888 has 5 MA's), (Start: 16 @1924 has 8 MA's), (Start: 18 @1933 has 1 MA's), (Start: 25 @1987 has 2 MA's), (28, 2026),

Gene: Iridessa_55 Start: 47522, Stop: 47331, Start Num: 22

Candidate Starts for Iridessa_55:

(1, 47759), (3, 47702), (4, 47675), (7, 47654), (8, 47648), (Start: 13 @47600 has 5 MA's), (14, 47576), (21, 47528), (Start: 22 @47522 has 1 MA's), (Start: 25 @47498 has 2 MA's), (32, 47342),

Gene: Jant_56 Start: 38892, Stop: 39086, Start Num: 16

Candidate Starts for Jant_56:

(11, 38826), (Start: 13 @38856 has 5 MA's), (Start: 16 @38892 has 8 MA's), (24, 38952), (Start: 25 @38955 has 2 MA's),

Gene: JigglyPuff_5 Start: 1776, Stop: 1985, Start Num: 18

Candidate Starts for JigglyPuff_5:

(12, 1722), (Start: 13 @1731 has 5 MA's), (Start: 16 @1767 has 8 MA's), (Start: 18 @1776 has 1 MA's), (24, 1827), (Start: 25 @1830 has 2 MA's), (31, 1926),

Gene: Khan1_54 Start: 47495, Stop: 47304, Start Num: 22

Candidate Starts for Khan1_54:

(1, 47732), (3, 47675), (4, 47648), (7, 47627), (8, 47621), (Start: 13 @47573 has 5 MA's), (14, 47549), (21, 47501), (Start: 22 @47495 has 1 MA's), (Start: 25 @47471 has 2 MA's),

Gene: Krakatau_50 Start: 36883, Stop: 37077, Start Num: 16

Candidate Starts for Krakatau_50:

(11, 36817), (Start: 13 @36847 has 5 MA's), (Start: 16 @36883 has 8 MA's), (24, 36943), (Start: 25 @36946 has 2 MA's),

Gene: Latretium_77 Start: 46947, Stop: 47177, Start Num: 16

Candidate Starts for Latretium_77:

(5, 46854), (Start: 13 @46911 has 5 MA's), (Start: 16 @46947 has 8 MA's), (24, 47007), (Start: 25 @47010 has 2 MA's),

Gene: LeiMonet_55 Start: 47494, Stop: 47303, Start Num: 22

Candidate Starts for LeiMonet_55:

(1, 47731), (3, 47674), (7, 47626), (8, 47620), (Start: 13 @47572 has 5 MA's), (14, 47548), (21, 47500), (Start: 22 @47494 has 1 MA's), (Start: 25 @47470 has 2 MA's),

Gene: LordLeafolot_6 Start: 1924, Stop: 2115, Start Num: 16

Candidate Starts for LordLeafolot_6:

(12, 1879), (Start: 13 @1888 has 5 MA's), (Start: 16 @1924 has 8 MA's), (Start: 18 @1933 has 1 MA's), (Start: 25 @1987 has 2 MA's), (28, 2026),

Gene: Lorde_53 Start: 35527, Stop: 35757, Start Num: 13

Candidate Starts for Lorde_53:

(10, 35494), (11, 35497), (Start: 13 @35527 has 5 MA's), (Start: 16 @35563 has 8 MA's), (24, 35623), (Start: 25 @35626 has 2 MA's),

Gene: MadMen_62 Start: 41080, Stop: 41310, Start Num: 16

Candidate Starts for MadMen_62:

(Start: 13 @41044 has 5 MA's), (Start: 16 @41080 has 8 MA's), (24, 41140), (Start: 25 @41143 has 2 MA's),

Gene: Marlia_52 Start: 45756, Stop: 45589, Start Num: 25

Candidate Starts for Marlia_52:

(Start: 13 @45858 has 5 MA's), (Start: 19 @45804 has 1 MA's), (Start: 25 @45756 has 2 MA's), (32, 45600),

Gene: Mova_53 Start: 36684, Stop: 36917, Start Num: 13

Candidate Starts for Mova_53:

(11, 36654), (Start: 13 @36684 has 5 MA's), (Start: 16 @36720 has 8 MA's), (24, 36780), (Start: 25 @36783 has 2 MA's),

Gene: MrPhizzler_54 Start: 47472, Stop: 47281, Start Num: 22

Candidate Starts for MrPhizzler_54:

(1, 47709), (3, 47652), (4, 47625), (7, 47604), (8, 47598), (Start: 13 @47550 has 5 MA's), (14, 47526), (21, 47478), (Start: 22 @47472 has 1 MA's), (Start: 25 @47448 has 2 MA's),

Gene: MulchExplorer_70 Start: 43157, Stop: 43342, Start Num: 20
Candidate Starts for MulchExplorer_70:
(Start: 13 @43094 has 5 MA's), (20, 43157), (Start: 25 @43199 has 2 MA's),

Gene: Olivio_51 Start: 45617, Stop: 45459, Start Num: 25
Candidate Starts for Olivio_51:
(Start: 13 @45719 has 5 MA's), (Start: 19 @45665 has 1 MA's), (Start: 25 @45617 has 2 MA's),

Gene: Periwinkle_85 Start: 46796, Stop: 47035, Start Num: 17
Candidate Starts for Periwinkle_85:
(2, 46643), (6, 46700), (9, 46718), (15, 46787), (Start: 17 @46796 has 2 MA's), (23, 46853), (26, 46880), (27, 46892),

Gene: Raid_65 Start: 42540, Stop: 42373, Start Num: 25
Candidate Starts for Raid_65:
(Start: 13 @42642 has 5 MA's), (Start: 19 @42588 has 1 MA's), (Start: 25 @42540 has 2 MA's),

Gene: Rimu_57 Start: 47492, Stop: 47301, Start Num: 22
Candidate Starts for Rimu_57:
(1, 47729), (3, 47672), (4, 47645), (7, 47624), (8, 47618), (Start: 13 @47570 has 5 MA's), (14, 47546), (21, 47498), (Start: 22 @47492 has 1 MA's), (Start: 25 @47468 has 2 MA's),

Gene: Ryadel_103 Start: 62455, Stop: 62225, Start Num: 16
Candidate Starts for Ryadel_103:
(Start: 13 @62491 has 5 MA's), (Start: 16 @62455 has 8 MA's), (24, 62395), (Start: 25 @62392 has 2 MA's),

Gene: SlippinJimmy_53 Start: 46540, Stop: 46373, Start Num: 25
Candidate Starts for SlippinJimmy_53:
(Start: 13 @46642 has 5 MA's), (Start: 19 @46588 has 1 MA's), (Start: 25 @46540 has 2 MA's), (32, 46384),

Gene: StephanieG_6 Start: 1933, Stop: 2115, Start Num: 18
Candidate Starts for StephanieG_6:
(12, 1879), (Start: 13 @1888 has 5 MA's), (Start: 16 @1924 has 8 MA's), (Start: 18 @1933 has 1 MA's), (Start: 25 @1987 has 2 MA's), (28, 2026),

Gene: Superphikiman_80 Start: 49081, Stop: 48866, Start Num: 19
Candidate Starts for Superphikiman_80:
(Start: 13 @49135 has 5 MA's), (Start: 19 @49081 has 1 MA's), (Start: 25 @49033 has 2 MA's),

Gene: SwainyDoc_52 Start: 45770, Stop: 45603, Start Num: 25
Candidate Starts for SwainyDoc_52:
(Start: 13 @45872 has 5 MA's), (Start: 19 @45818 has 1 MA's), (Start: 25 @45770 has 2 MA's), (32, 45614),

Gene: Tainan_6 Start: 1924, Stop: 2115, Start Num: 16
Candidate Starts for Tainan_6:
(12, 1879), (Start: 13 @1888 has 5 MA's), (Start: 16 @1924 has 8 MA's), (Start: 18 @1933 has 1 MA's), (Start: 25 @1987 has 2 MA's), (28, 2026),

Gene: Target_68 Start: 42412, Stop: 42245, Start Num: 25
Candidate Starts for Target_68:

(Start: 13 @42514 has 5 MA's), (Start: 19 @42460 has 1 MA's), (Start: 25 @42412 has 2 MA's),

Gene: TinyDot_48 Start: 31963, Stop: 32163, Start Num: 17

Candidate Starts for TinyDot_48:

(Start: 17 @31963 has 2 MA's), (29, 32071), (30, 32074),

Gene: TinyTerror_52 Start: 45805, Stop: 45638, Start Num: 25

Candidate Starts for TinyTerror_52:

(Start: 13 @45907 has 5 MA's), (Start: 19 @45853 has 1 MA's), (Start: 25 @45805 has 2 MA's), (32, 45649),

Gene: VRedHorse_52 Start: 36525, Stop: 36758, Start Num: 13

Candidate Starts for VRedHorse_52:

(11, 36495), (Start: 13 @36525 has 5 MA's), (Start: 16 @36561 has 8 MA's), (24, 36621), (Start: 25 @36624 has 2 MA's),

Gene: YungJamal_99 Start: 61508, Stop: 61278, Start Num: 16

Candidate Starts for YungJamal_99:

(Start: 13 @61544 has 5 MA's), (Start: 16 @61508 has 8 MA's), (24, 61448), (Start: 25 @61445 has 2 MA's),