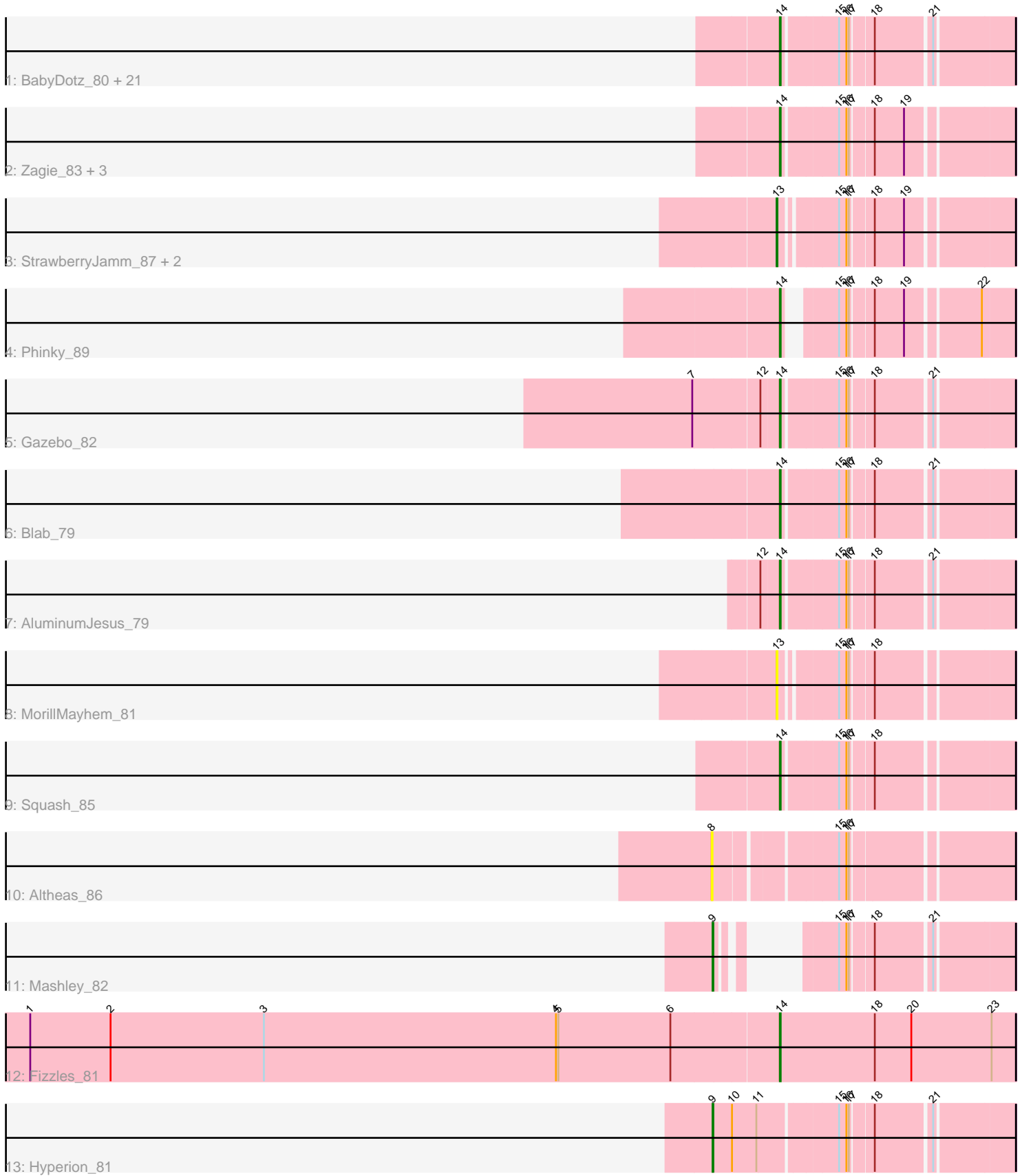


Pham 224725



Note: Tracks are now grouped by subcluster and scaled. Switching in subcluster is indicated by changes in track color. Track scale is now set by default to display the region 30 bp upstream of start 1 to 30 bp downstream of the last possible start. If this default region is judged to be packed too tightly with annotated starts, the track will be further scaled to only show that region of the ORF with annotated starts. This action will be indicated by adding "Zoomed" to the title. For starts, yellow indicates the location of called starts comprised solely of Glimmer/GeneMark auto-annotations, green indicates the location of called starts with at least 1 manual gene annotation.

Pham 224725 Report

This analysis was run 03/28/25 on database version 593.

Pham number 224725 has 39 members, 12 are drafts.

Phages represented in each track:

- Track 1 : BabyDotz_80, SallyK_84, Casend_82, Wayne3_83, Sillytadpoles_84, Rowlf_78, DonaldDuck_83, Nike_81, Phabia_81, Lonelysoil_79, Quammi_80, Jehoshaphat_83, Rudy_79, Llemily_83, Viceroy_80, Zhafia_87, Judebell_81, EverythinBagel_81, FrankDeliGuy_81, Wheelie_81, Teehee_82, Tissue_82
- Track 2 : Zagie_83, Namago_84, Statler_86, Mentos_85
- Track 3 : StrawberryJamm_87, Grassboy_86, Kyva_85
- Track 4 : Phinky_89
- Track 5 : Gazebo_82
- Track 6 : Blab_79
- Track 7 : AluminumJesus_79
- Track 8 : MorillMayhem_81
- Track 9 : Squash_85
- Track 10 : Altheas_86
- Track 11 : Mashley_82
- Track 12 : Fizzles_81
- Track 13 : Hyperion_81

Summary of Final Annotations (See graph section above for start numbers):

The start number called the most often in the published annotations is 14, it was called in 23 of the 27 non-draft genes in the pham.

Genes that call this "Most Annotated" start:

- AluminumJesus_79, BabyDotz_80, Blab_79, Casend_82, DonaldDuck_83, EverythinBagel_81, Fizzles_81, FrankDeliGuy_81, Gazebo_82, Jehoshaphat_83, Judebell_81, Llemily_83, Lonelysoil_79, Mentos_85, Namago_84, Nike_81, Phabia_81, Phinky_89, Quammi_80, Rowlf_78, Rudy_79, SallyK_84, Sillytadpoles_84, Squash_85, Statler_86, Teehee_82, Tissue_82, Viceroy_80, Wayne3_83, Wheelie_81, Zagie_83, Zhafia_87,

Genes that have the "Most Annotated" start but do not call it:

-

Genes that do not have the "Most Annotated" start:

• Altheas_86, Grassboy_86, Hyperion_81, Kyva_85, Mashley_82, MorillMayhem_81, StrawberryJamm_87,

Summary by start number:

Start 8:

- Found in 1 of 39 (2.6%) of genes in pham
- No Manual Annotations of this start.
- Called 100.0% of time when present
- Phage (with cluster) where this start called: Altheas_86 (EG),

Start 9:

- Found in 2 of 39 (5.1%) of genes in pham
- Manual Annotations of this start: 2 of 27
- Called 100.0% of time when present
- Phage (with cluster) where this start called: Hyperion_81 (EG), Mashley_82 (EG),

Start 13:

- Found in 4 of 39 (10.3%) of genes in pham
- Manual Annotations of this start: 2 of 27
- Called 100.0% of time when present
- Phage (with cluster) where this start called: Grassboy_86 (EG), Kyva_85 (EG), MorillMayhem_81 (EG), StrawberryJamm_87 (EG),

Start 14:

- Found in 32 of 39 (82.1%) of genes in pham
- Manual Annotations of this start: 23 of 27
- Called 100.0% of time when present
- Phage (with cluster) where this start called: AluminumJesus_79 (EG), BabyDotz_80 (EG), Blab_79 (EG), Casend_82 (EG), DonaldDuck_83 (EG), EverythinBagel_81 (EG), Fizzles_81 (EG), FrankDeliGuy_81 (EG), Gazebo_82 (EG), Jehoshaphat_83 (EG), Judebell_81 (EG), Llemily_83 (EG), Lonelysoil_79 (EG), Mentos_85 (EG), Namago_84 (EG), Nike_81 (EG), Phabia_81 (EG), Phinky_89 (EG), Quammi_80 (EG), Rowlf_78 (EG), Rudy_79 (EG), SallyK_84 (EG), Sillytadpoles_84 (EG), Squash_85 (EG), Statler_86 (EG), Teehee_82 (EG), Tissue_82 (EG), Viceroy_80 (EG), Wayne3_83 (EG), Wheelie_81 (EG), Zagie_83 (EG), Zhafia_87 (EG),

Summary by clusters:

There is one cluster represented in this pham: EG

Info for manual annotations of cluster EG:

- Start number 9 was manually annotated 2 times for cluster EG.
- Start number 13 was manually annotated 2 times for cluster EG.
- Start number 14 was manually annotated 23 times for cluster EG.

Gene Information:

Gene: Altheas_86 Start: 53932, Stop: 53603, Start Num: 8

Candidate Starts for Altheas_86:

(8, 53932), (15, 53797), (16, 53788), (17, 53785),

Gene: AluminumJesus_79 Start: 52519, Stop: 52265, Start Num: 14
Candidate Starts for AluminumJesus_79:
(12, 52540), (Start: 14 @52519 has 23 MA's), (15, 52456), (16, 52447), (17, 52444), (18, 52420), (21, 52357),

Gene: BabyDotz_80 Start: 53900, Stop: 53646, Start Num: 14
Candidate Starts for BabyDotz_80:
(Start: 14 @53900 has 23 MA's), (15, 53837), (16, 53828), (17, 53825), (18, 53801), (21, 53738),

Gene: Blab_79 Start: 52813, Stop: 52559, Start Num: 14
Candidate Starts for Blab_79:
(Start: 14 @52813 has 23 MA's), (15, 52750), (16, 52741), (17, 52738), (18, 52714), (21, 52651),

Gene: Casend_82 Start: 53179, Stop: 52925, Start Num: 14
Candidate Starts for Casend_82:
(Start: 14 @53179 has 23 MA's), (15, 53116), (16, 53107), (17, 53104), (18, 53080), (21, 53017),

Gene: DonaldDuck_83 Start: 52531, Stop: 52277, Start Num: 14
Candidate Starts for DonaldDuck_83:
(Start: 14 @52531 has 23 MA's), (15, 52468), (16, 52459), (17, 52456), (18, 52432), (21, 52369),

Gene: EverythinBagel_81 Start: 52416, Stop: 52165, Start Num: 14
Candidate Starts for EverythinBagel_81:
(Start: 14 @52416 has 23 MA's), (15, 52356), (16, 52347), (17, 52344), (18, 52320), (21, 52257),

Gene: Fizzles_81 Start: 52917, Stop: 52627, Start Num: 14
Candidate Starts for Fizzles_81:
(1, 53835), (2, 53736), (3, 53547), (4, 53187), (5, 53184), (6, 53046), (Start: 14 @52917 has 23 MA's), (18, 52800), (20, 52755), (23, 52656),

Gene: FrankDeliGuy_81 Start: 52902, Stop: 52648, Start Num: 14
Candidate Starts for FrankDeliGuy_81:
(Start: 14 @52902 has 23 MA's), (15, 52839), (16, 52830), (17, 52827), (18, 52803), (21, 52740),

Gene: Gazebo_82 Start: 53465, Stop: 53211, Start Num: 14
Candidate Starts for Gazebo_82:
(7, 53564), (12, 53486), (Start: 14 @53465 has 23 MA's), (15, 53402), (16, 53393), (17, 53390), (18, 53366), (21, 53303),

Gene: Grassboy_86 Start: 53577, Stop: 53326, Start Num: 13
Candidate Starts for Grassboy_86:
(Start: 13 @53577 has 2 MA's), (15, 53517), (16, 53508), (17, 53505), (18, 53481), (19, 53445),

Gene: Hyperion_81 Start: 53081, Stop: 52746, Start Num: 9
Candidate Starts for Hyperion_81:
(Start: 9 @53081 has 2 MA's), (10, 53057), (11, 53027), (15, 52937), (16, 52928), (17, 52925), (18, 52901), (21, 52838),

Gene: Jehoshaphat_83 Start: 53447, Stop: 53193, Start Num: 14
Candidate Starts for Jehoshaphat_83:
(Start: 14 @53447 has 23 MA's), (15, 53384), (16, 53375), (17, 53372), (18, 53348), (21, 53285),

Gene: Judebell_81 Start: 52674, Stop: 52420, Start Num: 14
Candidate Starts for Judebell_81:
(Start: 14 @52674 has 23 MA's), (15, 52611), (16, 52602), (17, 52599), (18, 52575), (21, 52512),

Gene: Kyva_85 Start: 53601, Stop: 53350, Start Num: 13
Candidate Starts for Kyva_85:
(Start: 13 @53601 has 2 MA's), (15, 53541), (16, 53532), (17, 53529), (18, 53505), (19, 53469),

Gene: Llemily_83 Start: 52226, Stop: 51972, Start Num: 14
Candidate Starts for Llemily_83:
(Start: 14 @52226 has 23 MA's), (15, 52163), (16, 52154), (17, 52151), (18, 52127), (21, 52064),

Gene: Lonelysoil_79 Start: 51983, Stop: 51729, Start Num: 14
Candidate Starts for Lonelysoil_79:
(Start: 14 @51983 has 23 MA's), (15, 51920), (16, 51911), (17, 51908), (18, 51884), (21, 51821),

Gene: Mashley_82 Start: 53253, Stop: 52999, Start Num: 9
Candidate Starts for Mashley_82:
(Start: 9 @53253 has 2 MA's), (15, 53190), (16, 53181), (17, 53178), (18, 53154), (21, 53091),

Gene: Mentos_85 Start: 53905, Stop: 53651, Start Num: 14
Candidate Starts for Mentos_85:
(Start: 14 @53905 has 23 MA's), (15, 53842), (16, 53833), (17, 53830), (18, 53806), (19, 53770),

Gene: MorillMayhem_81 Start: 53064, Stop: 52813, Start Num: 13
Candidate Starts for MorillMayhem_81:
(Start: 13 @53064 has 2 MA's), (15, 53004), (16, 52995), (17, 52992), (18, 52968),

Gene: Namago_84 Start: 52954, Stop: 52700, Start Num: 14
Candidate Starts for Namago_84:
(Start: 14 @52954 has 23 MA's), (15, 52891), (16, 52882), (17, 52879), (18, 52855), (19, 52819),

Gene: Nike_81 Start: 53475, Stop: 53224, Start Num: 14
Candidate Starts for Nike_81:
(Start: 14 @53475 has 23 MA's), (15, 53415), (16, 53406), (17, 53403), (18, 53379), (21, 53316),

Gene: Phabia_81 Start: 52638, Stop: 52384, Start Num: 14
Candidate Starts for Phabia_81:
(Start: 14 @52638 has 23 MA's), (15, 52575), (16, 52566), (17, 52563), (18, 52539), (21, 52476),

Gene: Phinky_89 Start: 55334, Stop: 55098, Start Num: 14
Candidate Starts for Phinky_89:
(Start: 14 @55334 has 23 MA's), (15, 55289), (16, 55280), (17, 55277), (18, 55253), (19, 55217), (22, 55136),

Gene: Quammi_80 Start: 52338, Stop: 52084, Start Num: 14
Candidate Starts for Quammi_80:
(Start: 14 @52338 has 23 MA's), (15, 52275), (16, 52266), (17, 52263), (18, 52239), (21, 52176),

Gene: Rowlf_78 Start: 52433, Stop: 52179, Start Num: 14
Candidate Starts for Rowlf_78:
(Start: 14 @52433 has 23 MA's), (15, 52370), (16, 52361), (17, 52358), (18, 52334), (21, 52271),

Gene: Rudy_79 Start: 52374, Stop: 52120, Start Num: 14
Candidate Starts for Rudy_79:
(Start: 14 @52374 has 23 MA's), (15, 52311), (16, 52302), (17, 52299), (18, 52275), (21, 52212),

Gene: SallyK_84 Start: 54077, Stop: 53823, Start Num: 14
Candidate Starts for SallyK_84:
(Start: 14 @54077 has 23 MA's), (15, 54014), (16, 54005), (17, 54002), (18, 53978), (21, 53915),

Gene: Sillytadpoles_84 Start: 52214, Stop: 51960, Start Num: 14
Candidate Starts for Sillytadpoles_84:
(Start: 14 @52214 has 23 MA's), (15, 52151), (16, 52142), (17, 52139), (18, 52115), (21, 52052),

Gene: Squash_85 Start: 53587, Stop: 53333, Start Num: 14
Candidate Starts for Squash_85:
(Start: 14 @53587 has 23 MA's), (15, 53524), (16, 53515), (17, 53512), (18, 53488),

Gene: Statler_86 Start: 52981, Stop: 52727, Start Num: 14
Candidate Starts for Statler_86:
(Start: 14 @52981 has 23 MA's), (15, 52918), (16, 52909), (17, 52906), (18, 52882), (19, 52846),

Gene: StrawberryJamm_87 Start: 52751, Stop: 52500, Start Num: 13
Candidate Starts for StrawberryJamm_87:
(Start: 13 @52751 has 2 MA's), (15, 52691), (16, 52682), (17, 52679), (18, 52655), (19, 52619),

Gene: Teehee_82 Start: 53444, Stop: 53190, Start Num: 14
Candidate Starts for Teehee_82:
(Start: 14 @53444 has 23 MA's), (15, 53381), (16, 53372), (17, 53369), (18, 53345), (21, 53282),

Gene: Tissue_82 Start: 53211, Stop: 52957, Start Num: 14
Candidate Starts for Tissue_82:
(Start: 14 @53211 has 23 MA's), (15, 53148), (16, 53139), (17, 53136), (18, 53112), (21, 53049),

Gene: Viceroy_80 Start: 52347, Stop: 52093, Start Num: 14
Candidate Starts for Viceroy_80:
(Start: 14 @52347 has 23 MA's), (15, 52284), (16, 52275), (17, 52272), (18, 52248), (21, 52185),

Gene: Wayne3_83 Start: 53207, Stop: 52953, Start Num: 14
Candidate Starts for Wayne3_83:
(Start: 14 @53207 has 23 MA's), (15, 53144), (16, 53135), (17, 53132), (18, 53108), (21, 53045),

Gene: Wheelie_81 Start: 52528, Stop: 52274, Start Num: 14
Candidate Starts for Wheelie_81:
(Start: 14 @52528 has 23 MA's), (15, 52465), (16, 52456), (17, 52453), (18, 52429), (21, 52366),

Gene: Zagie_83 Start: 53034, Stop: 52780, Start Num: 14
Candidate Starts for Zagie_83:
(Start: 14 @53034 has 23 MA's), (15, 52971), (16, 52962), (17, 52959), (18, 52935), (19, 52899),

Gene: Zhafia_87 Start: 53008, Stop: 52754, Start Num: 14
Candidate Starts for Zhafia_87:
(Start: 14 @53008 has 23 MA's), (15, 52945), (16, 52936), (17, 52933), (18, 52909), (21, 52846),