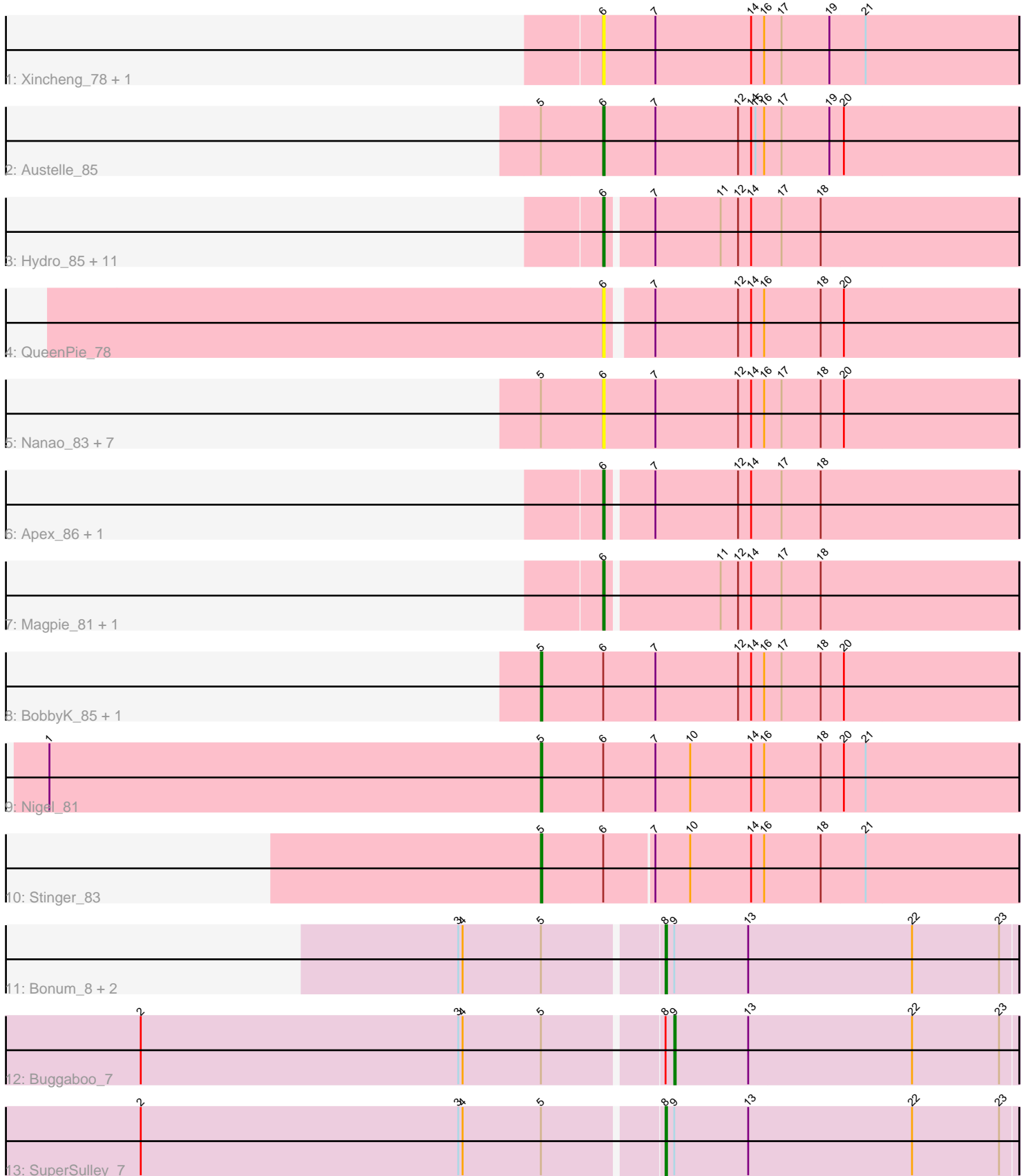


Pham 224732



Note: Tracks are now grouped by subcluster and scaled. Switching in subcluster is indicated by changes in track color. Track scale is now set by default to display the region 30 bp upstream of start 1 to 30 bp downstream of the last possible start. If this default region is judged to be packed too tightly with annotated starts, the track will be further scaled to only show that region of the ORF with annotated starts. This action will be indicated by adding "Zoomed" to the title. For starts, yellow indicates the location of called starts comprised solely of Glimmer/GeneMark auto-annotations, green indicates the location of called starts with at least 1 manual gene annotation.

Pham 224732 Report

This analysis was run 03/28/25 on database version 593.

Pham number 224732 has 37 members, 12 are drafts.

Phages represented in each track:

- Track 1 : Xincheng_78, JaguarMi_79
- Track 2 : Austelle_85
- Track 3 : Hydro_85, Hangman_85, Mudslide_85, VioletZ_87, Frederick_86, Waleliano_84, Mithril_84, RawrgerThat_84, Fortunato_83, Lolalove_86, Zemanar_84, BrownCNA_86
- Track 4 : QueenPie_78
- Track 5 : Nanao_83, Poster_82, Epah_83, Lambano_81, GinPorsche_83, Hally898_81, Antihero_83, Ahwei_83
- Track 6 : Apex_86, Prince_84
- Track 7 : Magpie_81, Fanaw_80
- Track 8 : BobbyK_85, JAMaL_84
- Track 9 : Nigel_81
- Track 10 : Stinger_83
- Track 11 : Bonum_8, NosilaM_8, Kabluna_8
- Track 12 : Buggaboo_7
- Track 13 : SuperSulley_7

Summary of Final Annotations (See graph section above for start numbers):

The start number called the most often in the published annotations is 6, it was called in 16 of the 25 non-draft genes in the pham.

Genes that call this "Most Annotated" start:

- Ahwei_83, Antihero_83, Apex_86, Austelle_85, BrownCNA_86, Epah_83, Fanaw_80, Fortunato_83, Frederick_86, GinPorsche_83, Hally898_81, Hangman_85, Hydro_85, JaguarMi_79, Lambano_81, Lolalove_86, Magpie_81, Mithril_84, Mudslide_85, Nanao_83, Poster_82, Prince_84, QueenPie_78, RawrgerThat_84, VioletZ_87, Waleliano_84, Xincheng_78, Zemanar_84,

Genes that have the "Most Annotated" start but do not call it:

- BobbyK_85, JAMaL_84, Nigel_81, Stinger_83,

Genes that do not have the "Most Annotated" start:

- Bonum_8, Buggaboo_7, Kabluna_8, NosilaM_8, SuperSulley_7,

Summary by start number:

Start 5:

- Found in 18 of 37 (48.6%) of genes in pham
- Manual Annotations of this start: 4 of 25
- Called 22.2% of time when present
- Phage (with cluster) where this start called: BobbyK_85 (B4), JAMaL_84 (B4), Nigel_81 (B4), Stinger_83 (B4),

Start 6:

- Found in 32 of 37 (86.5%) of genes in pham
- Manual Annotations of this start: 16 of 25
- Called 87.5% of time when present
- Phage (with cluster) where this start called: Ahwei_83 (B4), Antihero_83 (B4), Apex_86 (B4), Austelle_85 (B4), BrownCNA_86 (B4), Epah_83 (B4), Fanaw_80 (B4), Fortunato_83 (B4), Frederick_86 (B4), GinPorsche_83 (B4), Hally898_81 (B4), Hangman_85 (B4), Hydro_85 (B4), JaguarMi_79 (B4), Lambano_81 (B4), Lolalove_86 (B4), Magpie_81 (B4), Mithril_84 (B4), Mudslide_85 (B4), Nanao_83 (B4), Poster_82 (B4), Prince_84 (B4), QueenPie_78 (B4), RawrgerThat_84 (B4), VioletZ_87 (B4), Waleliano_84 (B4), Xincheng_78 (B4), Zemanar_84 (B4),

Start 8:

- Found in 5 of 37 (13.5%) of genes in pham
- Manual Annotations of this start: 4 of 25
- Called 80.0% of time when present
- Phage (with cluster) where this start called: Bonum_8 (CR2), Kabluna_8 (CR2), NosilaM_8 (CR2), SuperSulley_7 (CR2),

Start 9:

- Found in 5 of 37 (13.5%) of genes in pham
- Manual Annotations of this start: 1 of 25
- Called 20.0% of time when present
- Phage (with cluster) where this start called: Buggaboo_7 (CR2),

Summary by clusters:

There are 2 clusters represented in this pham: B4, CR2,

Info for manual annotations of cluster B4:

- Start number 5 was manually annotated 4 times for cluster B4.
- Start number 6 was manually annotated 16 times for cluster B4.

Info for manual annotations of cluster CR2:

- Start number 8 was manually annotated 4 times for cluster CR2.
- Start number 9 was manually annotated 1 time for cluster CR2.

Gene Information:

Gene: Ahwei_83 Start: 64624, Stop: 64340, Start Num: 6

Candidate Starts for Ahwei_83:

(Start: 5 @64666 has 4 MA's), (Start: 6 @64624 has 16 MA's), (7, 64588), (12, 64531), (14, 64522), (16, 64513), (17, 64501), (18, 64474), (20, 64459),

Gene: Antihero_83 Start: 64547, Stop: 64263, Start Num: 6

Candidate Starts for Antihero_83:

(Start: 5 @64589 has 4 MA's), (Start: 6 @64547 has 16 MA's), (7, 64511), (12, 64454), (14, 64445), (16, 64436), (17, 64424), (18, 64397), (20, 64382),

Gene: Apex_86 Start: 65693, Stop: 65415, Start Num: 6

Candidate Starts for Apex_86:

(Start: 6 @65693 has 16 MA's), (7, 65663), (12, 65606), (14, 65597), (17, 65576), (18, 65549),

Gene: Austelle_85 Start: 66243, Stop: 65959, Start Num: 6

Candidate Starts for Austelle_85:

(Start: 5 @66285 has 4 MA's), (Start: 6 @66243 has 16 MA's), (7, 66207), (12, 66150), (14, 66141), (15, 66138), (16, 66132), (17, 66120), (19, 66087), (20, 66078),

Gene: BobbyK_85 Start: 65257, Stop: 64931, Start Num: 5

Candidate Starts for BobbyK_85:

(Start: 5 @65257 has 4 MA's), (Start: 6 @65215 has 16 MA's), (7, 65179), (12, 65122), (14, 65113), (16, 65104), (17, 65092), (18, 65065), (20, 65050),

Gene: Bonum_8 Start: 5088, Stop: 5327, Start Num: 8

Candidate Starts for Bonum_8:

(3, 4953), (4, 4956), (Start: 5 @5010 has 4 MA's), (Start: 8 @5088 has 4 MA's), (Start: 9 @5094 has 1 MA's), (13, 5145), (22, 5256), (23, 5316),

Gene: BrownCNA_86 Start: 65641, Stop: 65363, Start Num: 6

Candidate Starts for BrownCNA_86:

(Start: 6 @65641 has 16 MA's), (7, 65611), (11, 65566), (12, 65554), (14, 65545), (17, 65524), (18, 65497),

Gene: Buggaboo_7 Start: 4613, Stop: 4846, Start Num: 9

Candidate Starts for Buggaboo_7:

(2, 4253), (3, 4472), (4, 4475), (Start: 5 @4529 has 4 MA's), (Start: 8 @4607 has 4 MA's), (Start: 9 @4613 has 1 MA's), (13, 4664), (22, 4775), (23, 4835),

Gene: Epah_83 Start: 64547, Stop: 64263, Start Num: 6

Candidate Starts for Epah_83:

(Start: 5 @64589 has 4 MA's), (Start: 6 @64547 has 16 MA's), (7, 64511), (12, 64454), (14, 64445), (16, 64436), (17, 64424), (18, 64397), (20, 64382),

Gene: Fanaw_80 Start: 65228, Stop: 64950, Start Num: 6

Candidate Starts for Fanaw_80:

(Start: 6 @65228 has 16 MA's), (11, 65153), (12, 65141), (14, 65132), (17, 65111), (18, 65084),

Gene: Fortunato_83 Start: 65020, Stop: 64742, Start Num: 6

Candidate Starts for Fortunato_83:

(Start: 6 @65020 has 16 MA's), (7, 64990), (11, 64945), (12, 64933), (14, 64924), (17, 64903), (18, 64876),

Gene: Frederick_86 Start: 65507, Stop: 65229, Start Num: 6

Candidate Starts for Frederick_86:

(Start: 6 @65507 has 16 MA's), (7, 65477), (11, 65432), (12, 65420), (14, 65411), (17, 65390), (18, 65363),

Gene: GinPorsche_83 Start: 64544, Stop: 64260, Start Num: 6

Candidate Starts for GinPorsche_83:

(Start: 5 @64586 has 4 MA's), (Start: 6 @64544 has 16 MA's), (7, 64508), (12, 64451), (14, 64442), (16, 64433), (17, 64421), (18, 64394), (20, 64379),

Gene: Hally898_81 Start: 64384, Stop: 64100, Start Num: 6

Candidate Starts for Hally898_81:

(Start: 5 @64426 has 4 MA's), (Start: 6 @64384 has 16 MA's), (7, 64348), (12, 64291), (14, 64282), (16, 64273), (17, 64261), (18, 64234), (20, 64219),

Gene: Hangman_85 Start: 65719, Stop: 65441, Start Num: 6

Candidate Starts for Hangman_85:

(Start: 6 @65719 has 16 MA's), (7, 65689), (11, 65644), (12, 65632), (14, 65623), (17, 65602), (18, 65575),

Gene: Hydro_85 Start: 65594, Stop: 65316, Start Num: 6

Candidate Starts for Hydro_85:

(Start: 6 @65594 has 16 MA's), (7, 65564), (11, 65519), (12, 65507), (14, 65498), (17, 65477), (18, 65450),

Gene: JAMaL_84 Start: 65126, Stop: 64800, Start Num: 5

Candidate Starts for JAMaL_84:

(Start: 5 @65126 has 4 MA's), (Start: 6 @65084 has 16 MA's), (7, 65048), (12, 64991), (14, 64982), (16, 64973), (17, 64961), (18, 64934), (20, 64919),

Gene: JaguarMi_79 Start: 65587, Stop: 65303, Start Num: 6

Candidate Starts for JaguarMi_79:

(Start: 6 @65587 has 16 MA's), (7, 65551), (14, 65485), (16, 65476), (17, 65464), (19, 65431), (21, 65407),

Gene: Kabluna_8 Start: 4479, Stop: 4718, Start Num: 8

Candidate Starts for Kabluna_8:

(3, 4344), (4, 4347), (Start: 5 @4401 has 4 MA's), (Start: 8 @4479 has 4 MA's), (Start: 9 @4485 has 1 MA's), (13, 4536), (22, 4647), (23, 4707),

Gene: Lambano_81 Start: 64384, Stop: 64100, Start Num: 6

Candidate Starts for Lambano_81:

(Start: 5 @64426 has 4 MA's), (Start: 6 @64384 has 16 MA's), (7, 64348), (12, 64291), (14, 64282), (16, 64273), (17, 64261), (18, 64234), (20, 64219),

Gene: Lolalove_86 Start: 65538, Stop: 65260, Start Num: 6

Candidate Starts for Lolalove_86:

(Start: 6 @65538 has 16 MA's), (7, 65508), (11, 65463), (12, 65451), (14, 65442), (17, 65421), (18, 65394),

Gene: Magpie_81 Start: 65221, Stop: 64943, Start Num: 6

Candidate Starts for Magpie_81:

(Start: 6 @65221 has 16 MA's), (11, 65146), (12, 65134), (14, 65125), (17, 65104), (18, 65077),

Gene: Mithril_84 Start: 65378, Stop: 65100, Start Num: 6

Candidate Starts for Mithril_84:

(Start: 6 @65378 has 16 MA's), (7, 65348), (11, 65303), (12, 65291), (14, 65282), (17, 65261), (18, 65234),

Gene: Mudslide_85 Start: 65768, Stop: 65490, Start Num: 6

Candidate Starts for Mudslide_85:

(Start: 6 @65768 has 16 MA's), (7, 65738), (11, 65693), (12, 65681), (14, 65672), (17, 65651), (18, 65624),

Gene: Nanao_83 Start: 64397, Stop: 64113, Start Num: 6

Candidate Starts for Nanao_83:

(Start: 5 @64439 has 4 MA's), (Start: 6 @64397 has 16 MA's), (7, 64361), (12, 64304), (14, 64295), (16, 64286), (17, 64274), (18, 64247), (20, 64232),

Gene: Nigel_81 Start: 63962, Stop: 63636, Start Num: 5

Candidate Starts for Nigel_81:

(1, 64301), (Start: 5 @63962 has 4 MA's), (Start: 6 @63920 has 16 MA's), (7, 63884), (10, 63860), (14, 63818), (16, 63809), (18, 63770), (20, 63755), (21, 63740),

Gene: NosilaM_8 Start: 5367, Stop: 5606, Start Num: 8

Candidate Starts for NosilaM_8:

(3, 5232), (4, 5235), (Start: 5 @5289 has 4 MA's), (Start: 8 @5367 has 4 MA's), (Start: 9 @5373 has 1 MA's), (13, 5424), (22, 5535), (23, 5595),

Gene: Poster_82 Start: 64398, Stop: 64114, Start Num: 6

Candidate Starts for Poster_82:

(Start: 5 @64440 has 4 MA's), (Start: 6 @64398 has 16 MA's), (7, 64362), (12, 64305), (14, 64296), (16, 64287), (17, 64275), (18, 64248), (20, 64233),

Gene: Prince_84 Start: 65635, Stop: 65357, Start Num: 6

Candidate Starts for Prince_84:

(Start: 6 @65635 has 16 MA's), (7, 65605), (12, 65548), (14, 65539), (17, 65518), (18, 65491),

Gene: QueenPie_78 Start: 64138, Stop: 63863, Start Num: 6

Candidate Starts for QueenPie_78:

(Start: 6 @64138 has 16 MA's), (7, 64111), (12, 64054), (14, 64045), (16, 64036), (18, 63997), (20, 63982),

Gene: RawrgerThat_84 Start: 65226, Stop: 64948, Start Num: 6

Candidate Starts for RawrgerThat_84:

(Start: 6 @65226 has 16 MA's), (7, 65196), (11, 65151), (12, 65139), (14, 65130), (17, 65109), (18, 65082),

Gene: Stinger_83 Start: 64081, Stop: 63758, Start Num: 5

Candidate Starts for Stinger_83:

(Start: 5 @64081 has 4 MA's), (Start: 6 @64039 has 16 MA's), (7, 64006), (10, 63982), (14, 63940), (16, 63931), (18, 63892), (21, 63862),

Gene: SuperSulley_7 Start: 4607, Stop: 4846, Start Num: 8

Candidate Starts for SuperSulley_7:

(2, 4253), (3, 4472), (4, 4475), (Start: 5 @4529 has 4 MA's), (Start: 8 @4607 has 4 MA's), (Start: 9 @4613 has 1 MA's), (13, 4664), (22, 4775), (23, 4835),

Gene: VioletZ_87 Start: 65725, Stop: 65447, Start Num: 6

Candidate Starts for VioletZ_87:

(Start: 6 @65725 has 16 MA's), (7, 65695), (11, 65650), (12, 65638), (14, 65629), (17, 65608), (18, 65581),

Gene: Waleliano_84 Start: 65393, Stop: 65115, Start Num: 6

Candidate Starts for Waleliano_84:

(Start: 6 @65393 has 16 MA's), (7, 65363), (11, 65318), (12, 65306), (14, 65297), (17, 65276), (18, 65249),

Gene: Xincheng_78 Start: 65538, Stop: 65254, Start Num: 6

Candidate Starts for Xincheng_78:

(Start: 6 @65538 has 16 MA's), (7, 65502), (14, 65436), (16, 65427), (17, 65415), (19, 65382), (21, 65358),

Gene: Zemanar_84 Start: 65406, Stop: 65128, Start Num: 6

Candidate Starts for Zemanar_84:

(Start: 6 @65406 has 16 MA's), (7, 65376), (11, 65331), (12, 65319), (14, 65310), (17, 65289), (18, 65262),