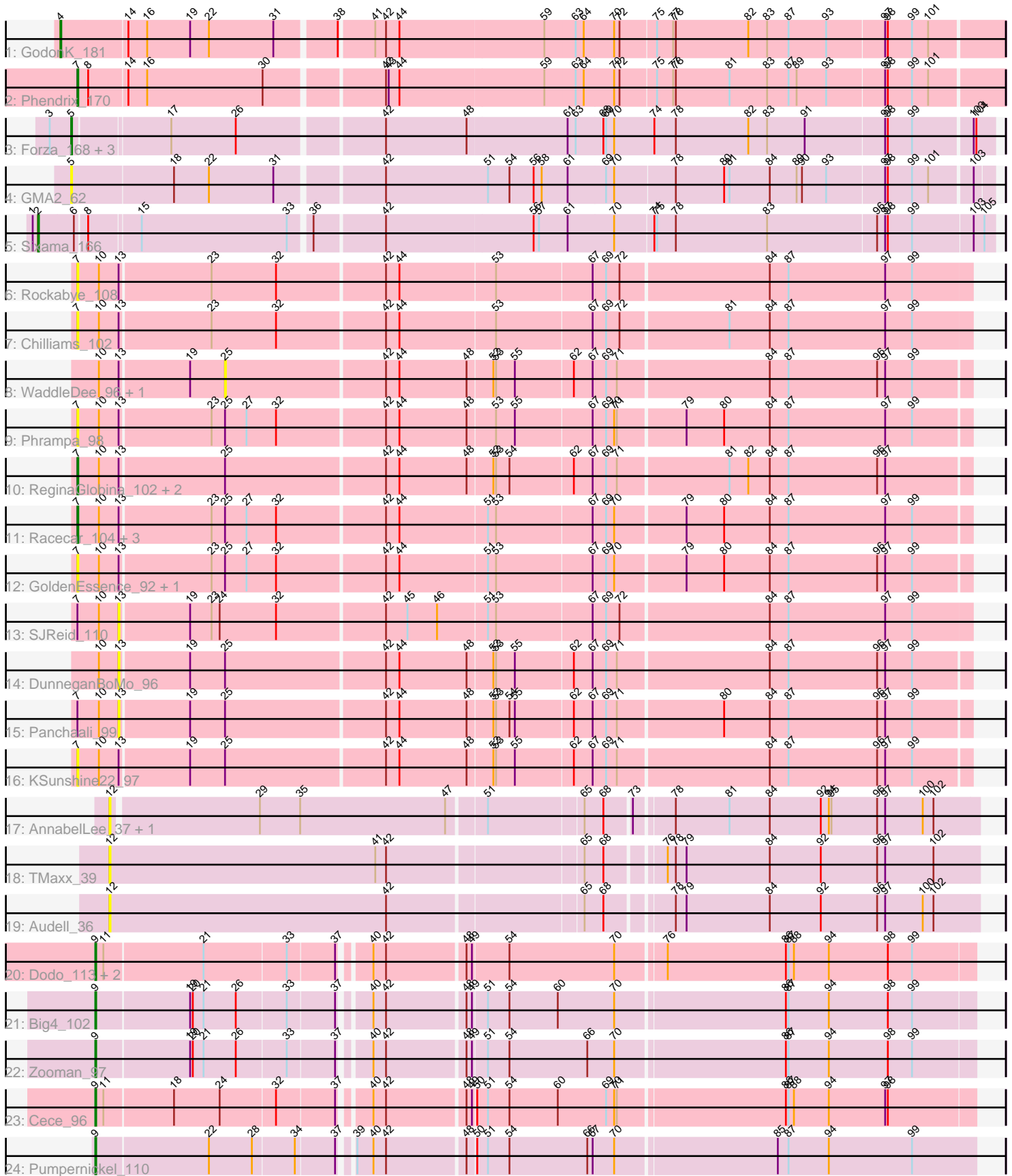


Pham 224736



Note: Tracks are now grouped by subcluster and scaled. Switching in subcluster is indicated by changes in track color. Track scale is now set by default to display the region 30 bp upstream of start 1 to 30 bp downstream of the last possible start. If this default region is judged to be packed too tightly with annotated starts, the track will be further scaled to only show that region of the ORF with annotated starts. This action will be indicated by adding "Zoomed" to the title. For starts, yellow indicates the location of called starts comprised solely of Glimmer/GeneMark auto-annotations, green indicates the location of called starts with at least 1 manual gene annotation.

## Pham 224736 Report

This analysis was run 03/28/25 on database version 593.

Pham number 224736 has 37 members, 20 are drafts.

Phages represented in each track:

- Track 1 : GodonK\_181
- Track 2 : Phendrix\_170
- Track 3 : Forza\_168, Boopy\_167, BlueNGold\_164, Mareelih\_165
- Track 4 : GMA2\_62
- Track 5 : Sixama\_166
- Track 6 : Rockabye\_108
- Track 7 : Chilliams\_102
- Track 8 : WaddleDee\_96, Ellewin\_94
- Track 9 : Phrampa\_98
- Track 10 : ReginaGlobina\_102, LeoJr\_102, Atuin\_97
- Track 11 : Racecar\_104, Mimi\_103, Talia1610\_103, Bloom\_107
- Track 12 : GoldenEssence\_92, Patbob\_104
- Track 13 : SJReid\_110
- Track 14 : DunneganBoMo\_96
- Track 15 : Panchaali\_99
- Track 16 : KSunshine22\_97
- Track 17 : AnnabelLee\_37, Neuvillette\_37
- Track 18 : TMaxx\_39
- Track 19 : Audell\_36
- Track 20 : Dodo\_113, PauloDiaboli\_113, A3Wally\_113
- Track 21 : Big4\_102
- Track 22 : Zooman\_97
- Track 23 : Cece\_96
- Track 24 : Pumpernickel\_110

### ***Summary of Final Annotations (See graph section above for start numbers):***

The start number called the most often in the published annotations is 9, it was called in 6 of the 17 non-draft genes in the pham.

Genes that call this "Most Annotated" start:

- A3Wally\_113, Big4\_102, Cece\_96, Dodo\_113, PauloDiaboli\_113, Pumpernickel\_110, Zooman\_97,

Genes that have the "Most Annotated" start but do not call it:

- 

Genes that do not have the "Most Annotated" start:

- AnnabelLee\_37, Atuin\_97, Audell\_36, Bloom\_107, BlueNGold\_164, Boopy\_167, Chilliams\_102, DunneganBoMo\_96, Ellewin\_94, Forza\_168, GMA2\_62, GodonK\_181, GoldenEssence\_92, KSunshine22\_97, LeoJr\_102, Mareelih\_165, Mimi\_103, Neuville\_37, Panchaali\_99, Patbob\_104, Phendrix\_170, Phrampa\_98, Racecar\_104, ReginaGlobina\_102, Rockabye\_108, SJReid\_110, Sixama\_166, TMaxx\_39, Talia1610\_103, WaddleDee\_96,

### Summary by start number:

Start 2:

- Found in 1 of 37 ( 2.7% ) of genes in pham
- Manual Annotations of this start: 1 of 17
- Called 100.0% of time when present
- Phage (with cluster) where this start called: Sixama\_166 (DS),

Start 4:

- Found in 1 of 37 ( 2.7% ) of genes in pham
- Manual Annotations of this start: 1 of 17
- Called 100.0% of time when present
- Phage (with cluster) where this start called: GodonK\_181 (DK),

Start 5:

- Found in 5 of 37 ( 13.5% ) of genes in pham
- Manual Annotations of this start: 4 of 17
- Called 100.0% of time when present
- Phage (with cluster) where this start called: BlueNGold\_164 (DS), Boopy\_167 (DS), Forza\_168 (DS), GMA2\_62 (DS), Mareelih\_165 (DS),

Start 7:

- Found in 16 of 37 ( 43.2% ) of genes in pham
- Manual Annotations of this start: 5 of 17
- Called 87.5% of time when present
- Phage (with cluster) where this start called: Atuin\_97 (FC), Bloom\_107 (FC), Chilliams\_102 (FC), GoldenEssence\_92 (FC), KSunshine22\_97 (FC), LeoJr\_102 (FC), Mimi\_103 (FC), Patbob\_104 (FC), Phendrix\_170 (DK), Phrampa\_98 (FC), Racecar\_104 (FC), ReginaGlobina\_102 (FC), Rockabye\_108 (FC), Talia1610\_103 (FC),

Start 9:

- Found in 7 of 37 ( 18.9% ) of genes in pham
- Manual Annotations of this start: 6 of 17
- Called 100.0% of time when present
- Phage (with cluster) where this start called: A3Wally\_113 (GD1), Big4\_102 (GD2), Cece\_96 (GD3), Dodo\_113 (GD1), PauloDiaboli\_113 (GD1), Pumpernickel\_110 (GD4), Zooman\_97 (GD2),

Start 12:

- Found in 4 of 37 ( 10.8% ) of genes in pham
- No Manual Annotations of this start.

- Called 100.0% of time when present
- Phage (with cluster) where this start called: AnnabelLee\_37 (FR), Audell\_36 (FR), Neuville\_37 (FR), TMaxx\_39 (FR),

Start 13:

- Found in 18 of 37 ( 48.6% ) of genes in pham
- No Manual Annotations of this start.
- Called 16.7% of time when present
- Phage (with cluster) where this start called: DunneganBoMo\_96 (FC), Panchaali\_99 (FC), SJReid\_110 (FC),

Start 25:

- Found in 15 of 37 ( 40.5% ) of genes in pham
- No Manual Annotations of this start.
- Called 13.3% of time when present
- Phage (with cluster) where this start called: Ellewin\_94 (FC), WaddleDee\_96 (FC),

### **Summary by clusters:**

There are 8 clusters represented in this pham: GD1, FR, GD3, GD4, DK, GD2, FC, DS,

Info for manual annotations of cluster DK:

- Start number 4 was manually annotated 1 time for cluster DK.
- Start number 7 was manually annotated 1 time for cluster DK.

Info for manual annotations of cluster DS:

- Start number 2 was manually annotated 1 time for cluster DS.
- Start number 5 was manually annotated 4 times for cluster DS.

Info for manual annotations of cluster FC:

- Start number 7 was manually annotated 4 times for cluster FC.

Info for manual annotations of cluster GD1:

- Start number 9 was manually annotated 2 times for cluster GD1.

Info for manual annotations of cluster GD2:

- Start number 9 was manually annotated 2 times for cluster GD2.

Info for manual annotations of cluster GD3:

- Start number 9 was manually annotated 1 time for cluster GD3.

Info for manual annotations of cluster GD4:

- Start number 9 was manually annotated 1 time for cluster GD4.

### **Gene Information:**

Gene: A3Wally\_113 Start: 77350, Stop: 76415, Start Num: 9

Candidate Starts for A3Wally\_113:

(Start: 9 @77350 has 6 MA's), (11, 77341), (21, 77233), (33, 77143), (37, 77092), (40, 77065), (42, 77053), (48, 76969), (49, 76963), (54, 76924), (70, 76807), (76, 76756), (86, 76624), (87, 76621), (88, 76615), (94, 76576), (98, 76510), (99, 76483),

Gene: AnnabelLee\_37 Start: 24525, Stop: 23593, Start Num: 12

Candidate Starts for AnnabelLee\_37:

(12, 24525), (29, 24366), (35, 24321), (47, 24159), (51, 24120), (65, 24018), (68, 23997), (73, 23970), (78, 23931), (81, 23871), (84, 23826), (92, 23769), (94, 23760), (95, 23757), (96, 23706), (97, 23697), (100, 23655), (102, 23643),

Gene: Atuin\_97 Start: 83319, Stop: 84290, Start Num: 7

Candidate Starts for Atuin\_97:

(Start: 7 @83319 has 5 MA's), (10, 83343), (13, 83364), (25, 83478), (42, 83652), (44, 83667), (48, 83742), (52, 83769), (53, 83772), (54, 83787), (62, 83856), (67, 83877), (69, 83892), (71, 83904), (81, 84024), (82, 84045), (84, 84069), (87, 84090), (96, 84189), (97, 84198),

Gene: Audell\_36 Start: 26923, Stop: 25982, Start Num: 12

Candidate Starts for Audell\_36:

(12, 26923), (42, 26614), (65, 26407), (68, 26386), (78, 26320), (79, 26308), (84, 26215), (92, 26158), (96, 26095), (97, 26086), (100, 26044), (102, 26032),

Gene: Big4\_102 Start: 76433, Stop: 75498, Start Num: 9

Candidate Starts for Big4\_102:

(Start: 9 @76433 has 6 MA's), (19, 76331), (20, 76328), (21, 76316), (26, 76280), (33, 76226), (37, 76175), (40, 76148), (42, 76136), (48, 76052), (49, 76046), (51, 76031), (54, 76007), (60, 75953), (70, 75890), (86, 75707), (87, 75704), (94, 75659), (98, 75593), (99, 75566),

Gene: Bloom\_107 Start: 83495, Stop: 84466, Start Num: 7

Candidate Starts for Bloom\_107:

(Start: 7 @83495 has 5 MA's), (10, 83519), (13, 83540), (23, 83639), (25, 83654), (27, 83678), (32, 83711), (42, 83828), (44, 83843), (51, 83939), (53, 83948), (67, 84053), (69, 84068), (70, 84077), (79, 84152), (80, 84194), (84, 84245), (87, 84266), (97, 84374), (99, 84404),

Gene: BlueNGold\_164 Start: 94575, Stop: 93583, Start Num: 5

Candidate Starts for BlueNGold\_164:

(3, 94599), (Start: 5 @94575 has 4 MA's), (17, 94473), (26, 94401), (42, 94248), (48, 94158), (61, 94050), (63, 94041), (68, 94011), (69, 94008), (70, 93999), (74, 93954), (78, 93930), (82, 93849), (83, 93828), (91, 93786), (97, 93699), (98, 93696), (99, 93669), (103, 93606), (104, 93603),

Gene: Boopy\_167 Start: 94586, Stop: 93594, Start Num: 5

Candidate Starts for Boopy\_167:

(3, 94610), (Start: 5 @94586 has 4 MA's), (17, 94484), (26, 94412), (42, 94259), (48, 94169), (61, 94061), (63, 94052), (68, 94022), (69, 94019), (70, 94010), (74, 93965), (78, 93941), (82, 93860), (83, 93839), (91, 93797), (97, 93710), (98, 93707), (99, 93680), (103, 93617), (104, 93614),

Gene: Cece\_96 Start: 79474, Stop: 78539, Start Num: 9

Candidate Starts for Cece\_96:

(Start: 9 @79474 has 6 MA's), (11, 79465), (18, 79390), (24, 79339), (32, 79279), (37, 79216), (40, 79189), (42, 79177), (48, 79093), (49, 79087), (50, 79084), (51, 79072), (54, 79048), (60, 78994), (69, 78940), (70, 78931), (71, 78928), (86, 78748), (87, 78745), (88, 78739), (94, 78700), (97, 78637), (98, 78634),

Gene: Chilliams\_102 Start: 76293, Stop: 77267, Start Num: 7

Candidate Starts for Chilliams\_102:

(Start: 7 @76293 has 5 MA's), (10, 76317), (13, 76338), (23, 76437), (32, 76509), (42, 76626), (44, 76641), (53, 76746), (67, 76851), (69, 76866), (72, 76881), (81, 76998), (84, 77043), (87, 77064), (97, 77172), (99, 77202),

Gene: Dodo\_113 Start: 77660, Stop: 76725, Start Num: 9

Candidate Starts for Dodo\_113:

(Start: 9 @77660 has 6 MA's), (11, 77651), (21, 77543), (33, 77453), (37, 77402), (40, 77375), (42, 77363), (48, 77279), (49, 77273), (54, 77234), (70, 77117), (76, 77066), (86, 76934), (87, 76931), (88, 76925), (94, 76886), (98, 76820), (99, 76793),

Gene: DunneganBoMo\_96 Start: 79281, Stop: 80207, Start Num: 13

Candidate Starts for DunneganBoMo\_96:

(10, 79260), (13, 79281), (19, 79356), (25, 79395), (42, 79569), (44, 79584), (48, 79659), (52, 79686), (53, 79689), (55, 79710), (62, 79773), (67, 79794), (69, 79809), (71, 79821), (84, 79986), (87, 80007), (96, 80106), (97, 80115), (99, 80145),

Gene: Ellewin\_94 Start: 78806, Stop: 79618, Start Num: 25

Candidate Starts for Ellewin\_94:

(10, 78671), (13, 78692), (19, 78767), (25, 78806), (42, 78980), (44, 78995), (48, 79070), (52, 79097), (53, 79100), (55, 79121), (62, 79184), (67, 79205), (69, 79220), (71, 79232), (84, 79397), (87, 79418), (96, 79517), (97, 79526), (99, 79556),

Gene: Forza\_168 Start: 94503, Stop: 93511, Start Num: 5

Candidate Starts for Forza\_168:

(3, 94527), (Start: 5 @94503 has 4 MA's), (17, 94401), (26, 94329), (42, 94176), (48, 94086), (61, 93978), (63, 93969), (68, 93939), (69, 93936), (70, 93927), (74, 93882), (78, 93858), (82, 93777), (83, 93756), (91, 93714), (97, 93627), (98, 93624), (99, 93597), (103, 93534), (104, 93531),

Gene: GMA2\_62 Start: 65413, Stop: 64418, Start Num: 5

Candidate Starts for GMA2\_62:

(Start: 5 @65413 has 4 MA's), (18, 65302), (22, 65263), (31, 65191), (42, 65080), (51, 64966), (54, 64942), (56, 64915), (58, 64906), (61, 64879), (69, 64837), (70, 64828), (78, 64762), (80, 64708), (81, 64702), (84, 64657), (89, 64627), (90, 64621), (93, 64594), (97, 64531), (98, 64528), (99, 64501), (101, 64483), (103, 64438),

Gene: GodonK\_181 Start: 91029, Stop: 90010, Start Num: 4

Candidate Starts for GodonK\_181:

(Start: 4 @91029 has 1 MA's), (14, 90957), (16, 90936), (19, 90888), (22, 90867), (31, 90795), (38, 90732), (41, 90696), (42, 90684), (44, 90669), (59, 90510), (63, 90477), (64, 90468), (70, 90435), (72, 90429), (75, 90390), (77, 90372), (78, 90369), (82, 90288), (83, 90267), (87, 90243), (93, 90201), (97, 90138), (98, 90135), (99, 90108), (101, 90090),

Gene: GoldenEssence\_92 Start: 77287, Stop: 78258, Start Num: 7

Candidate Starts for GoldenEssence\_92:

(Start: 7 @77287 has 5 MA's), (10, 77311), (13, 77332), (23, 77431), (25, 77446), (27, 77470), (32, 77503), (42, 77620), (44, 77635), (51, 77731), (53, 77740), (67, 77845), (69, 77860), (70, 77869), (79, 77944), (80, 77986), (84, 78037), (87, 78058), (96, 78157), (97, 78166), (99, 78196),

Gene: KSunshine22\_97 Start: 80248, Stop: 81219, Start Num: 7

Candidate Starts for KSunshine22\_97:

(Start: 7 @80248 has 5 MA's), (10, 80272), (13, 80293), (19, 80368), (25, 80407), (42, 80581), (44, 80596), (48, 80671), (52, 80698), (53, 80701), (55, 80722), (62, 80785), (67, 80806), (69, 80821), (71,

80833), (84, 80998), (87, 81019), (96, 81118), (97, 81127), (99, 81157),

Gene: LeoJr\_102 Start: 83555, Stop: 84526, Start Num: 7

Candidate Starts for LeoJr\_102:

(Start: 7 @83555 has 5 MA's), (10, 83579), (13, 83600), (25, 83714), (42, 83888), (44, 83903), (48, 83978), (52, 84005), (53, 84008), (54, 84023), (62, 84092), (67, 84113), (69, 84128), (71, 84140), (81, 84260), (82, 84281), (84, 84305), (87, 84326), (96, 84425), (97, 84434),

Gene: Mareelih\_165 Start: 94021, Stop: 93029, Start Num: 5

Candidate Starts for Mareelih\_165:

(3, 94045), (Start: 5 @94021 has 4 MA's), (17, 93919), (26, 93847), (42, 93694), (48, 93604), (61, 93496), (63, 93487), (68, 93457), (69, 93454), (70, 93445), (74, 93400), (78, 93376), (82, 93295), (83, 93274), (91, 93232), (97, 93145), (98, 93142), (99, 93115), (103, 93052), (104, 93049),

Gene: Mimi\_103 Start: 82842, Stop: 83813, Start Num: 7

Candidate Starts for Mimi\_103:

(Start: 7 @82842 has 5 MA's), (10, 82866), (13, 82887), (23, 82986), (25, 83001), (27, 83025), (32, 83058), (42, 83175), (44, 83190), (51, 83286), (53, 83295), (67, 83400), (69, 83415), (70, 83424), (79, 83499), (80, 83541), (84, 83592), (87, 83613), (97, 83721), (99, 83751),

Gene: Neuville\_37 Start: 24528, Stop: 23596, Start Num: 12

Candidate Starts for Neuville\_37:

(12, 24528), (29, 24369), (35, 24324), (47, 24162), (51, 24123), (65, 24021), (68, 24000), (73, 23973), (78, 23934), (81, 23874), (84, 23829), (92, 23772), (94, 23763), (95, 23760), (96, 23709), (97, 23700), (100, 23658), (102, 23646),

Gene: Panchaali\_99 Start: 80252, Stop: 81178, Start Num: 13

Candidate Starts for Panchaali\_99:

(Start: 7 @80207 has 5 MA's), (10, 80231), (13, 80252), (19, 80327), (25, 80366), (42, 80540), (44, 80555), (48, 80630), (52, 80657), (53, 80660), (54, 80675), (55, 80681), (62, 80744), (67, 80765), (69, 80780), (71, 80792), (80, 80906), (84, 80957), (87, 80978), (96, 81077), (97, 81086), (99, 81116),

Gene: Patbob\_104 Start: 83577, Stop: 84548, Start Num: 7

Candidate Starts for Patbob\_104:

(Start: 7 @83577 has 5 MA's), (10, 83601), (13, 83622), (23, 83721), (25, 83736), (27, 83760), (32, 83793), (42, 83910), (44, 83925), (51, 84021), (53, 84030), (67, 84135), (69, 84150), (70, 84159), (79, 84234), (80, 84276), (84, 84327), (87, 84348), (96, 84447), (97, 84456), (99, 84486),

Gene: PauloDiaboli\_113 Start: 76695, Stop: 75760, Start Num: 9

Candidate Starts for PauloDiaboli\_113:

(Start: 9 @76695 has 6 MA's), (11, 76686), (21, 76578), (33, 76488), (37, 76437), (40, 76410), (42, 76398), (48, 76314), (49, 76308), (54, 76269), (70, 76152), (76, 76101), (86, 75969), (87, 75966), (88, 75960), (94, 75921), (98, 75855), (99, 75828),

Gene: Phendrix\_170 Start: 90108, Stop: 89107, Start Num: 7

Candidate Starts for Phendrix\_170:

(Start: 7 @90108 has 5 MA's), (8, 90096), (14, 90054), (16, 90033), (30, 89904), (42, 89781), (43, 89778), (44, 89766), (59, 89607), (63, 89574), (64, 89565), (70, 89532), (72, 89526), (75, 89487), (77, 89469), (78, 89466), (81, 89406), (83, 89364), (87, 89340), (89, 89331), (93, 89298), (97, 89235), (98, 89232), (99, 89205), (101, 89187),

Gene: Phrampa\_98 Start: 84980, Stop: 85951, Start Num: 7

Candidate Starts for Phrampa\_98:

(Start: 7 @84980 has 5 MA's), (10, 85004), (13, 85025), (23, 85124), (25, 85139), (27, 85163), (32, 85196), (42, 85313), (44, 85328), (48, 85403), (53, 85433), (55, 85454), (67, 85538), (69, 85553), (70, 85562), (71, 85565), (79, 85637), (80, 85679), (84, 85730), (87, 85751), (97, 85859), (99, 85889),

Gene: Pumpernickel\_110 Start: 78248, Stop: 77310, Start Num: 9

Candidate Starts for Pumpernickel\_110:

(Start: 9 @78248 has 6 MA's), (22, 78125), (28, 78077), (34, 78032), (37, 77990), (39, 77981), (40, 77963), (42, 77951), (48, 77867), (50, 77858), (51, 77846), (54, 77822), (66, 77735), (67, 77729), (70, 77705), (85, 77531), (87, 77519), (94, 77474), (99, 77381),

Gene: Racecar\_104 Start: 83495, Stop: 84466, Start Num: 7

Candidate Starts for Racecar\_104:

(Start: 7 @83495 has 5 MA's), (10, 83519), (13, 83540), (23, 83639), (25, 83654), (27, 83678), (32, 83711), (42, 83828), (44, 83843), (51, 83939), (53, 83948), (67, 84053), (69, 84068), (70, 84077), (79, 84152), (80, 84194), (84, 84245), (87, 84266), (97, 84374), (99, 84404),

Gene: ReginaGlobina\_102 Start: 83120, Stop: 84091, Start Num: 7

Candidate Starts for ReginaGlobina\_102:

(Start: 7 @83120 has 5 MA's), (10, 83144), (13, 83165), (25, 83279), (42, 83453), (44, 83468), (48, 83543), (52, 83570), (53, 83573), (54, 83588), (62, 83657), (67, 83678), (69, 83693), (71, 83705), (81, 83825), (82, 83846), (84, 83870), (87, 83891), (96, 83990), (97, 83999),

Gene: Rockabye\_108 Start: 76731, Stop: 77705, Start Num: 7

Candidate Starts for Rockabye\_108:

(Start: 7 @76731 has 5 MA's), (10, 76755), (13, 76776), (23, 76875), (32, 76947), (42, 77064), (44, 77079), (53, 77184), (67, 77289), (69, 77304), (72, 77319), (84, 77481), (87, 77502), (97, 77610), (99, 77640),

Gene: SJReid\_110 Start: 75794, Stop: 76723, Start Num: 13

Candidate Starts for SJReid\_110:

(Start: 7 @75749 has 5 MA's), (10, 75773), (13, 75794), (19, 75869), (23, 75893), (24, 75902), (32, 75965), (42, 76082), (45, 76106), (46, 76139), (51, 76193), (53, 76202), (67, 76307), (69, 76322), (72, 76337), (84, 76499), (87, 76520), (97, 76628), (99, 76658),

Gene: Sixama\_166 Start: 94053, Stop: 93025, Start Num: 2

Candidate Starts for Sixama\_166:

(1, 94059), (Start: 2 @94053 has 1 MA's), (6, 94014), (8, 94002), (15, 93948), (33, 93786), (36, 93765), (42, 93690), (56, 93528), (57, 93522), (61, 93492), (70, 93441), (74, 93399), (75, 93396), (78, 93375), (83, 93273), (96, 93153), (97, 93144), (98, 93141), (99, 93114), (103, 93048), (105, 93036),

Gene: TMaxx\_39 Start: 25180, Stop: 24239, Start Num: 12

Candidate Starts for TMaxx\_39:

(12, 25180), (41, 24883), (42, 24871), (65, 24664), (68, 24643), (76, 24586), (78, 24577), (79, 24565), (84, 24472), (92, 24415), (96, 24352), (97, 24343), (102, 24289),

Gene: Talia1610\_103 Start: 82860, Stop: 83831, Start Num: 7

Candidate Starts for Talia1610\_103:

(Start: 7 @82860 has 5 MA's), (10, 82884), (13, 82905), (23, 83004), (25, 83019), (27, 83043), (32, 83076), (42, 83193), (44, 83208), (51, 83304), (53, 83313), (67, 83418), (69, 83433), (70, 83442), (79, 83517), (80, 83559), (84, 83610), (87, 83631), (97, 83739), (99, 83769),

Gene: WaddleDee\_96 Start: 78581, Stop: 79393, Start Num: 25

Candidate Starts for WaddleDee\_96:



(10, 78446), (13, 78467), (19, 78542), (25, 78581), (42, 78755), (44, 78770), (48, 78845), (52, 78872), (53, 78875), (55, 78896), (62, 78959), (67, 78980), (69, 78995), (71, 79007), (84, 79172), (87, 79193), (96, 79292), (97, 79301), (99, 79331),

Gene: Zooman\_97 Start: 74278, Stop: 73343, Start Num: 9

Candidate Starts for Zooman\_97:

(Start: 9 @74278 has 6 MA's), (19, 74176), (20, 74173), (21, 74161), (26, 74125), (33, 74071), (37, 74020), (40, 73993), (42, 73981), (48, 73897), (49, 73891), (51, 73876), (54, 73852), (66, 73765), (70, 73735), (86, 73552), (87, 73549), (94, 73504), (98, 73438), (99, 73411),