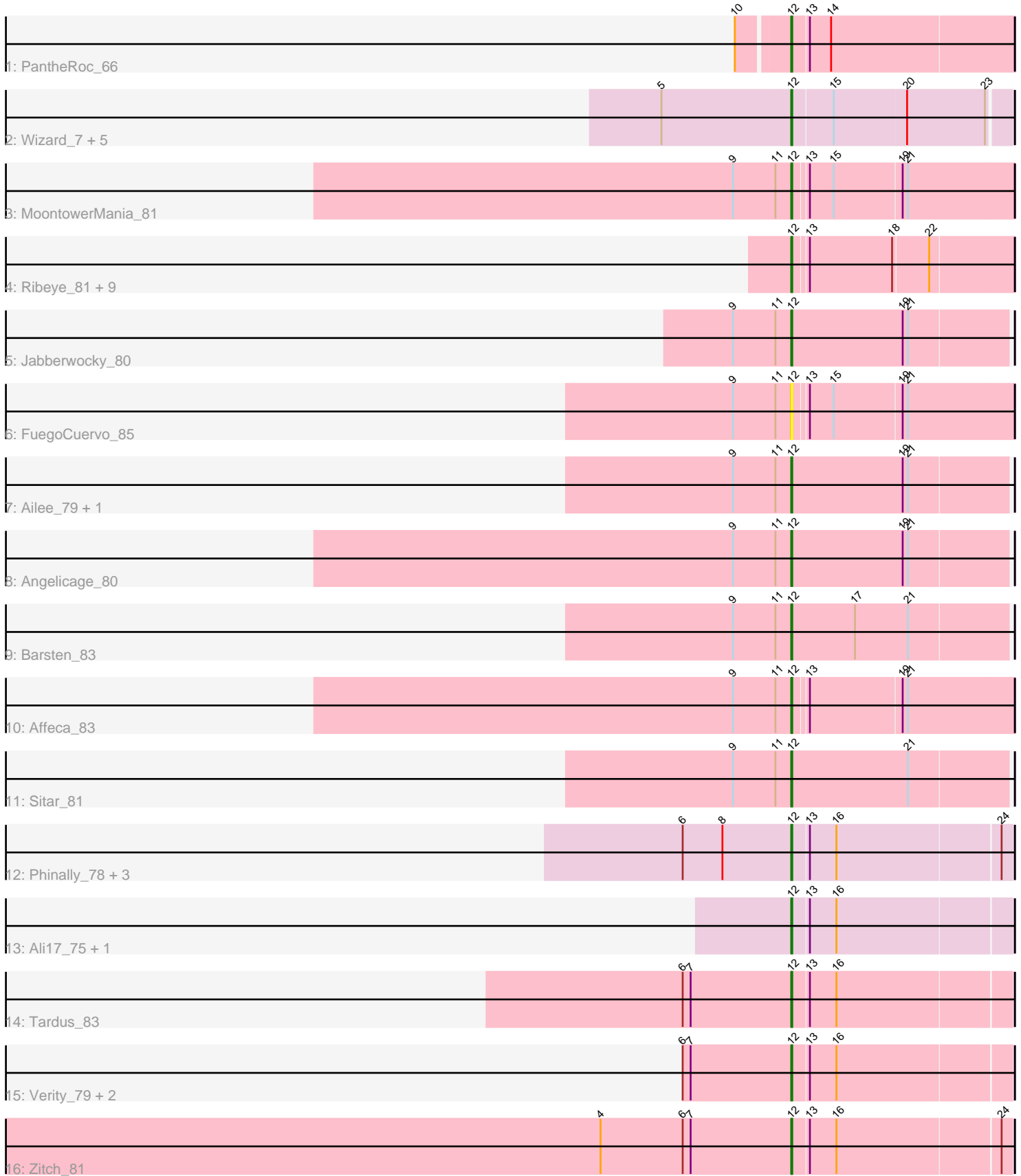


Zoomed Pham 224737



Note: Tracks are now grouped by subcluster and scaled. Switching in subcluster is indicated by changes in track color. Track scale is now set by default to display the region 30 bp upstream of start 1 to 30 bp downstream of the last possible start. If this default region is judged to be packed too tightly with annotated starts, the track will be further scaled to only show that region of the ORF with annotated starts. This action will be indicated by adding "Zoomed" to the title. For starts, yellow indicates the location of called starts comprised solely of Glimmer/GeneMark auto-annotations, green indicates the location of called starts with at least 1 manual gene annotation.

Pham 224737 Report

This analysis was run 03/28/25 on database version 593.

Pham number 224737 has 37 members, 7 are drafts.

Phages represented in each track:

- Track 1 : PantheRoc_66
- Track 2 : Wizard_7, Egi03_8, Fireball_7, Gezellig_7, Phlop_7, PullumCavea_7
- Track 3 : MoontowerMania_81
- Track 4 : Ribeye_81, Bizzy_82, Gustavo_83, Saronaya_83, Flatwoods_82, Tycho_81, Tangerine_82, Kwobi_83, Kroos_82, Derg_74
- Track 5 : Jabberwocky_80
- Track 6 : FuegoCuervo_85
- Track 7 : Ailee_79, Shivanishola_83
- Track 8 : Angelicage_80
- Track 9 : Barsten_83
- Track 10 : Affeca_83
- Track 11 : Sitar_81
- Track 12 : Phinally_78, Leonard_78, Phauci_70, Hans_79
- Track 13 : Ali17_75, Inspectinfecti_79
- Track 14 : Tardus_83
- Track 15 : Verity_79, DoctorFroggo_80, Delrey21_80
- Track 16 : Zitch_81

Summary of Final Annotations (See graph section above for start numbers):

The start number called the most often in the published annotations is 12, it was called in 30 of the 30 non-draft genes in the pham.

Genes that call this "Most Annotated" start:

- Affeca_83, Ailee_79, Ali17_75, Angelicage_80, Barsten_83, Bizzy_82, Delrey21_80, Derg_74, DoctorFroggo_80, Egi03_8, Fireball_7, Flatwoods_82, FuegoCuervo_85, Gezellig_7, Gustavo_83, Hans_79, Inspectinfecti_79, Jabberwocky_80, Kroos_82, Kwobi_83, Leonard_78, MoontowerMania_81, PantheRoc_66, Phauci_70, Phinally_78, Phlop_7, PullumCavea_7, Ribeye_81, Saronaya_83, Shivanishola_83, Sitar_81, Tangerine_82, Tardus_83, Tycho_81, Verity_79, Wizard_7, Zitch_81,

Genes that have the "Most Annotated" start but do not call it:

-

Genes that do not have the "Most Annotated" start:

-

Summary by start number:

Start 12:

- Found in 37 of 37 (100.0%) of genes in pham
- Manual Annotations of this start: 30 of 30
- Called 100.0% of time when present
- Phage (with cluster) where this start called: Affeca_83 (DE1), Ailee_79 (DE1), Ali17_75 (DE2), Angelicage_80 (DE1), Barsten_83 (DE1), Bizzy_82 (DE1), Delrey21_80 (DE4), Derg_74 (DE1), DoctorFroggo_80 (DE4), Egi03_8 (DC1), Fireball_7 (DC1), Flatwoods_82 (DE1), FuegoCuervo_85 (DE1), Gezellig_7 (DC1), Gustavo_83 (DE1), Hans_79 (DE2), Inspectinfecti_79 (DE2), Jabberwocky_80 (DE1), Kroos_82 (DE1), Kwobi_83 (DE1), Leonard_78 (DE2), MoontowerMania_81 (DE1), PantheRoc_66 (CZ3), Phauci_70 (DE2), Phinally_78 (DE2), Phlop_7 (DC1), PullumCavea_7 (DC1), Ribeye_81 (DE1), Saronaya_83 (DE1), Shivanishola_83 (DE1), Sitar_81 (DE1), Tangerine_82 (DE1), Tardus_83 (DE4), Tycho_81 (DE1), Verity_79 (DE4), Wizard_7 (DC1), Zitch_81 (DE4),

Summary by clusters:

There are 5 clusters represented in this pham: CZ3, DE1, DE2, DE4, DC1,

Info for manual annotations of cluster CZ3:

- Start number 12 was manually annotated 1 time for cluster CZ3.

Info for manual annotations of cluster DC1:

- Start number 12 was manually annotated 4 times for cluster DC1.

Info for manual annotations of cluster DE1:

- Start number 12 was manually annotated 14 times for cluster DE1.

Info for manual annotations of cluster DE2:

- Start number 12 was manually annotated 6 times for cluster DE2.

Info for manual annotations of cluster DE4:

- Start number 12 was manually annotated 5 times for cluster DE4.

Gene Information:

Gene: Affeca_83 Start: 57314, Stop: 57556, Start Num: 12

Candidate Starts for Affeca_83:

(9, 57248), (11, 57296), (Start: 12 @57314 has 30 MA's), (13, 57329), (19, 57431), (21, 57437),

Gene: Ailee_79 Start: 56341, Stop: 56583, Start Num: 12

Candidate Starts for Ailee_79:

(9, 56275), (11, 56323), (Start: 12 @56341 has 30 MA's), (19, 56467), (21, 56473),

Gene: Ali17_75 Start: 54408, Stop: 54647, Start Num: 12

Candidate Starts for Ali17_75:

(Start: 12 @54408 has 30 MA's), (13, 54426), (16, 54456),

Gene: Angelicage_80 Start: 57282, Stop: 57524, Start Num: 12

Candidate Starts for Angelicage_80:

(9, 57216), (11, 57264), (Start: 12 @57282 has 30 MA's), (19, 57408), (21, 57414),

Gene: Barsten_83 Start: 57245, Stop: 57487, Start Num: 12

Candidate Starts for Barsten_83:

(9, 57179), (11, 57227), (Start: 12 @57245 has 30 MA's), (17, 57317), (21, 57377),

Gene: Bizzy_82 Start: 55643, Stop: 55882, Start Num: 12

Candidate Starts for Bizzy_82:

(Start: 12 @55643 has 30 MA's), (13, 55658), (18, 55751), (22, 55790),

Gene: Delrey21_80 Start: 57154, Stop: 57393, Start Num: 12

Candidate Starts for Delrey21_80:

(6, 57031), (7, 57040), (Start: 12 @57154 has 30 MA's), (13, 57172), (16, 57202),

Gene: Derg_74 Start: 54265, Stop: 54504, Start Num: 12

Candidate Starts for Derg_74:

(Start: 12 @54265 has 30 MA's), (13, 54280), (18, 54373), (22, 54412),

Gene: DoctorFroggo_80 Start: 57154, Stop: 57393, Start Num: 12

Candidate Starts for DoctorFroggo_80:

(6, 57031), (7, 57040), (Start: 12 @57154 has 30 MA's), (13, 57172), (16, 57202),

Gene: Egi03_8 Start: 3557, Stop: 3793, Start Num: 12

Candidate Starts for Egi03_8:

(5, 3416), (Start: 12 @3557 has 30 MA's), (15, 3602), (20, 3683), (23, 3770),

Gene: Fireball_7 Start: 3557, Stop: 3793, Start Num: 12

Candidate Starts for Fireball_7:

(5, 3416), (Start: 12 @3557 has 30 MA's), (15, 3602), (20, 3683), (23, 3770),

Gene: Flatwoods_82 Start: 55178, Stop: 55417, Start Num: 12

Candidate Starts for Flatwoods_82:

(Start: 12 @55178 has 30 MA's), (13, 55193), (18, 55286), (22, 55325),

Gene: FuegoCuervo_85 Start: 56784, Stop: 57026, Start Num: 12

Candidate Starts for FuegoCuervo_85:

(9, 56718), (11, 56766), (Start: 12 @56784 has 30 MA's), (13, 56799), (15, 56826), (19, 56901), (21, 56907),

Gene: Gezellig_7 Start: 3557, Stop: 3793, Start Num: 12

Candidate Starts for Gezellig_7:

(5, 3416), (Start: 12 @3557 has 30 MA's), (15, 3602), (20, 3683), (23, 3770),

Gene: Gustavo_83 Start: 56361, Stop: 56600, Start Num: 12

Candidate Starts for Gustavo_83:

(Start: 12 @56361 has 30 MA's), (13, 56376), (18, 56469), (22, 56508),

Gene: Hans_79 Start: 55335, Stop: 55574, Start Num: 12

Candidate Starts for Hans_79:

(6, 55212), (8, 55257), (Start: 12 @55335 has 30 MA's), (13, 55353), (16, 55383), (24, 55563),

Gene: Inspectinfecti_79 Start: 55312, Stop: 55551, Start Num: 12

Candidate Starts for Inspectinfecti_79:

(Start: 12 @55312 has 30 MA's), (13, 55330), (16, 55360),

Gene: Jabberwocky_80 Start: 57354, Stop: 57596, Start Num: 12

Candidate Starts for Jabberwocky_80:

(9, 57288), (11, 57336), (Start: 12 @57354 has 30 MA's), (19, 57480), (21, 57486),

Gene: Kroos_82 Start: 56304, Stop: 56543, Start Num: 12

Candidate Starts for Kroos_82:

(Start: 12 @56304 has 30 MA's), (13, 56319), (18, 56412), (22, 56451),

Gene: Kwobi_83 Start: 56813, Stop: 57052, Start Num: 12

Candidate Starts for Kwobi_83:

(Start: 12 @56813 has 30 MA's), (13, 56828), (18, 56921), (22, 56960),

Gene: Leonard_78 Start: 55375, Stop: 55614, Start Num: 12

Candidate Starts for Leonard_78:

(6, 55252), (8, 55297), (Start: 12 @55375 has 30 MA's), (13, 55393), (16, 55423), (24, 55603),

Gene: MoontowerMania_81 Start: 57695, Stop: 57937, Start Num: 12

Candidate Starts for MoontowerMania_81:

(9, 57629), (11, 57677), (Start: 12 @57695 has 30 MA's), (13, 57710), (15, 57737), (19, 57812), (21, 57818),

Gene: PantheRoc_66 Start: 44024, Stop: 44269, Start Num: 12

Candidate Starts for PantheRoc_66:

(10, 43970), (Start: 12 @44024 has 30 MA's), (13, 44042), (14, 44066),

Gene: Phauci_70 Start: 52412, Stop: 52651, Start Num: 12

Candidate Starts for Phauci_70:

(6, 52289), (8, 52334), (Start: 12 @52412 has 30 MA's), (13, 52430), (16, 52460), (24, 52640),

Gene: Phinally_78 Start: 55372, Stop: 55611, Start Num: 12

Candidate Starts for Phinally_78:

(6, 55249), (8, 55294), (Start: 12 @55372 has 30 MA's), (13, 55390), (16, 55420), (24, 55600),

Gene: Phlop_7 Start: 3557, Stop: 3793, Start Num: 12

Candidate Starts for Phlop_7:

(5, 3416), (Start: 12 @3557 has 30 MA's), (15, 3602), (20, 3683), (23, 3770),

Gene: PullumCavea_7 Start: 3557, Stop: 3793, Start Num: 12

Candidate Starts for PullumCavea_7:

(5, 3416), (Start: 12 @3557 has 30 MA's), (15, 3602), (20, 3683), (23, 3770),

Gene: Ribeye_81 Start: 55504, Stop: 55743, Start Num: 12

Candidate Starts for Ribeye_81:

(Start: 12 @55504 has 30 MA's), (13, 55519), (18, 55612), (22, 55651),

Gene: Saronaya_83 Start: 56361, Stop: 56600, Start Num: 12

Candidate Starts for Saronaya_83:

(Start: 12 @56361 has 30 MA's), (13, 56376), (18, 56469), (22, 56508),

Gene: Shivanishola_83 Start: 55640, Stop: 55882, Start Num: 12

Candidate Starts for Shivanishola_83:

(9, 55574), (11, 55622), (Start: 12 @55640 has 30 MA's), (19, 55766), (21, 55772),

Gene: Sitar_81 Start: 57762, Stop: 58004, Start Num: 12

Candidate Starts for Sitar_81:

(9, 57696), (11, 57744), (Start: 12 @57762 has 30 MA's), (21, 57894),

Gene: Tangerine_82 Start: 55637, Stop: 55876, Start Num: 12

Candidate Starts for Tangerine_82:

(Start: 12 @55637 has 30 MA's), (13, 55652), (18, 55745), (22, 55784),

Gene: Tardus_83 Start: 56466, Stop: 56705, Start Num: 12

Candidate Starts for Tardus_83:

(6, 56343), (7, 56352), (Start: 12 @56466 has 30 MA's), (13, 56484), (16, 56514),

Gene: Tycho_81 Start: 55839, Stop: 56078, Start Num: 12

Candidate Starts for Tycho_81:

(Start: 12 @55839 has 30 MA's), (13, 55854), (18, 55947), (22, 55986),

Gene: Verity_79 Start: 57016, Stop: 57255, Start Num: 12

Candidate Starts for Verity_79:

(6, 56893), (7, 56902), (Start: 12 @57016 has 30 MA's), (13, 57034), (16, 57064),

Gene: Wizard_7 Start: 3557, Stop: 3793, Start Num: 12

Candidate Starts for Wizard_7:

(5, 3416), (Start: 12 @3557 has 30 MA's), (15, 3602), (20, 3683), (23, 3770),

Gene: Zitch_81 Start: 55195, Stop: 55434, Start Num: 12

Candidate Starts for Zitch_81:

(1, 54091), (2, 54109), (3, 54190), (4, 54979), (6, 55072), (7, 55081), (Start: 12 @55195 has 30 MA's),
(13, 55213), (16, 55243), (24, 55423),