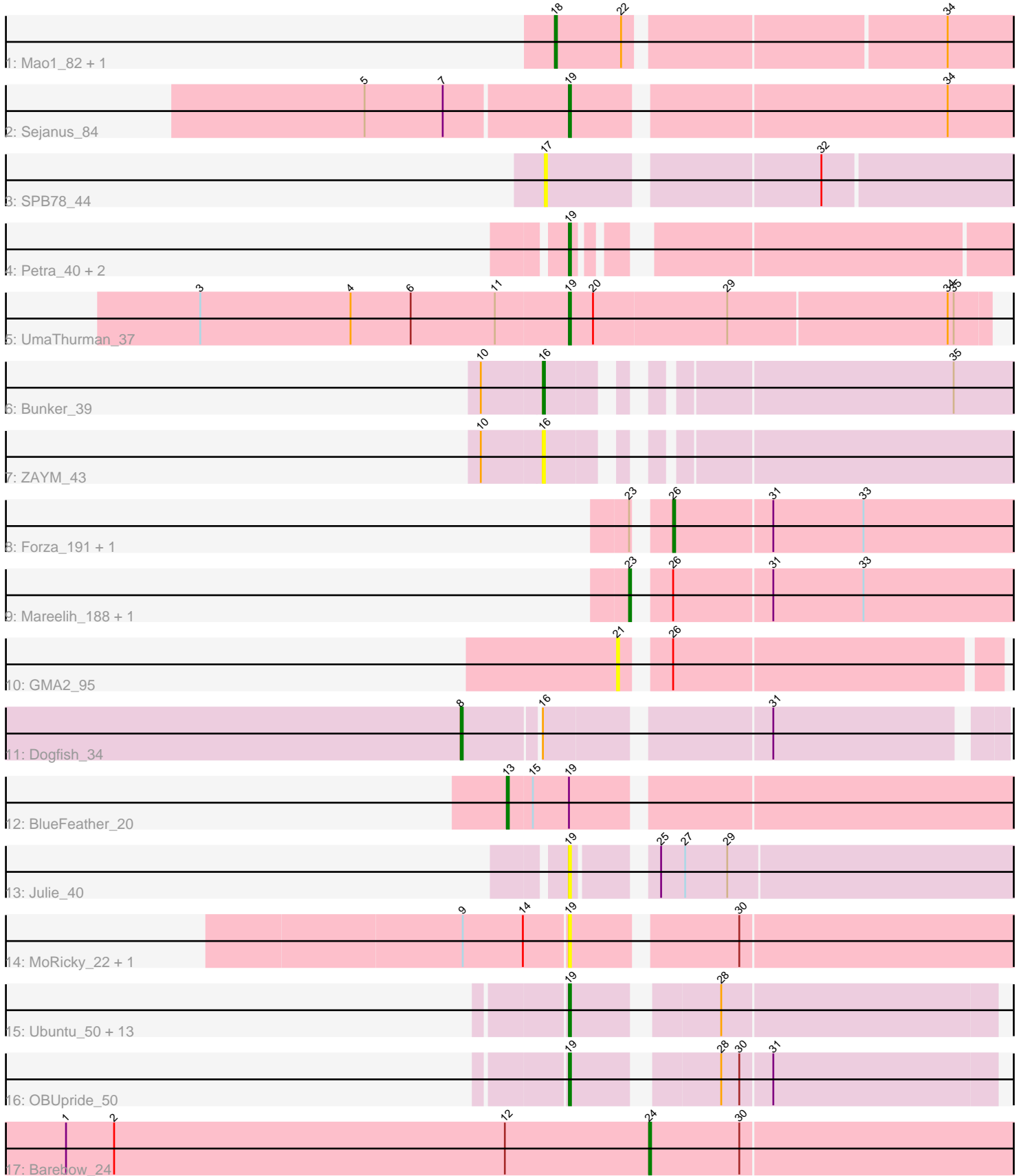


Pham 224739



Note: Tracks are now grouped by subcluster and scaled. Switching in subcluster is indicated by changes in track color. Track scale is now set by default to display the region 30 bp upstream of start 1 to 30 bp downstream of the last possible start. If this default region is judged to be packed too tightly with annotated starts, the track will be further scaled to only show that region of the ORF with annotated starts. This action will be indicated by adding "Zoomed" to the title. For starts, yellow indicates the location of called starts comprised solely of Glimmer/GeneMark auto-annotations, green indicates the location of called starts with at least 1 manual gene annotation.

## Pham 224739 Report

This analysis was run 03/28/25 on database version 593.

WARNING: Pham size does not match number of genes in report. Either unphamerated genes have been added (by you) or starterator has removed genes due to invalid start codon.

Pham number 224739 has 36 members, 6 are drafts.

Phages represented in each track:

- Track 1 : Mao1\_82, Dori\_80
- Track 2 : Sejanus\_84
- Track 3 : SPB78\_44
- Track 4 : Petra\_40, Zarbodnamra\_42, Obliviate\_39
- Track 5 : UmaThurman\_37
- Track 6 : Bunker\_39
- Track 7 : ZAYM\_43
- Track 8 : Forza\_191, BlueNGold\_187
- Track 9 : Mareelih\_188, Boopy\_191
- Track 10 : GMA2\_95
- Track 11 : Dogfish\_34
- Track 12 : BlueFeather\_20
- Track 13 : Julie\_40
- Track 14 : MoRicky\_22, Smilerella\_21
- Track 15 : Ubuntu\_50, LilHazelNut\_50, Evanesce\_49, Hadrien\_50, Forge\_48, Webster2\_50, Ein37\_50, Amymech\_50, DeepSoil15\_50, Amochick\_50, Gancho\_49, Daegal\_52, Luke\_50, Kinbote\_50
- Track 16 : OBUpride\_50
- Track 17 : Barebow\_24

### ***Summary of Final Annotations (See graph section above for start numbers):***

The start number called the most often in the published annotations is 19, it was called in 20 of the 30 non-draft genes in the pham.

Genes that call this "Most Annotated" start:

- Amochick\_50, Amymech\_50, Daegal\_52, DeepSoil15\_50, Ein37\_50, Evanesce\_49, Forge\_48, Gancho\_49, Hadrien\_50, Julie\_40, Kinbote\_50, LilHazelNut\_50, Luke\_50, MoRicky\_22, OBUpride\_50, Obliviate\_39, Petra\_40, Sejanus\_84, Smilerella\_21, Ubuntu\_50, UmaThurman\_37, Webster2\_50, Zarbodnamra\_42,

Genes that have the "Most Annotated" start but do not call it:

- BlueFeather\_20,

Genes that do not have the "Most Annotated" start:

- Barebow\_24, BlueNGold\_187, Boopy\_191, Bunker\_39, Dogfish\_34, Dori\_80, Forza\_191, GMA2\_95, Mao1\_82, Mareelih\_188, SPB78\_44, ZAYM\_43,

### Summary by start number:

Start 8:

- Found in 1 of 36 ( 2.8% ) of genes in pham
- Manual Annotations of this start: 1 of 30
- Called 100.0% of time when present
- Phage (with cluster) where this start called: Dogfish\_34 (DT),

Start 13:

- Found in 1 of 36 ( 2.8% ) of genes in pham
- Manual Annotations of this start: 1 of 30
- Called 100.0% of time when present
- Phage (with cluster) where this start called: BlueFeather\_20 (FE),

Start 16:

- Found in 3 of 36 ( 8.3% ) of genes in pham
- Manual Annotations of this start: 1 of 30
- Called 66.7% of time when present
- Phage (with cluster) where this start called: Bunker\_39 (DB), ZAYM\_43 (DB),

Start 17:

- Found in 1 of 36 ( 2.8% ) of genes in pham
- No Manual Annotations of this start.
- Called 100.0% of time when present
- Phage (with cluster) where this start called: SPB78\_44 (BA),

Start 18:

- Found in 2 of 36 ( 5.6% ) of genes in pham
- Manual Annotations of this start: 2 of 30
- Called 100.0% of time when present
- Phage (with cluster) where this start called: Dori\_80 (AD), Mao1\_82 (AD),

Start 19:

- Found in 24 of 36 ( 66.7% ) of genes in pham
- Manual Annotations of this start: 20 of 30
- Called 95.8% of time when present
- Phage (with cluster) where this start called: Amochick\_50 (Q), Amymech\_50 (Q), Daegal\_52 (Q), DeepSoil15\_50 (Q), Ein37\_50 (Q), Evanesce\_49 (Q), Forge\_48 (Q), Gancho\_49 (Q), Hadrien\_50 (Q), Julie\_40 (FF), Kinbote\_50 (Q), LilHazelNut\_50 (Q), Luke\_50 (Q), MoRicky\_22 (GH), OBUpride\_50 (Q), Obliviate\_39 (CV), Petra\_40 (CV), Sejanus\_84 (AD), Smilerella\_21 (GH), Ubuntu\_50 (Q), UmaThurman\_37 (CV), Webster2\_50 (Q), Zarbodnamra\_42 (CV),

Start 21:

- Found in 1 of 36 ( 2.8% ) of genes in pham

- No Manual Annotations of this start.
- Called 100.0% of time when present
- Phage (with cluster) where this start called: GMA2\_95 (DS),

#### Start 23:

- Found in 4 of 36 ( 11.1% ) of genes in pham
- Manual Annotations of this start: 2 of 30
- Called 50.0% of time when present
- Phage (with cluster) where this start called: Boopy\_191 (DS), Mareelih\_188 (DS),

#### Start 24:

- Found in 1 of 36 ( 2.8% ) of genes in pham
- Manual Annotations of this start: 1 of 30
- Called 100.0% of time when present
- Phage (with cluster) where this start called: Barebow\_24 (singleton),

#### Start 26:

- Found in 5 of 36 ( 13.9% ) of genes in pham
- Manual Annotations of this start: 2 of 30
- Called 40.0% of time when present
- Phage (with cluster) where this start called: BlueNGold\_187 (DS), Forza\_191 (DS),

### **Summary by clusters:**

There are 11 clusters represented in this pham: singleton, AD, DB, CV, Q, FE, FF, BA, DT, DS, GH,

Info for manual annotations of cluster AD:

- Start number 18 was manually annotated 2 times for cluster AD.
- Start number 19 was manually annotated 1 time for cluster AD.

Info for manual annotations of cluster CV:

- Start number 19 was manually annotated 4 times for cluster CV.

Info for manual annotations of cluster DB:

- Start number 16 was manually annotated 1 time for cluster DB.

Info for manual annotations of cluster DS:

- Start number 23 was manually annotated 2 times for cluster DS.
- Start number 26 was manually annotated 2 times for cluster DS.

Info for manual annotations of cluster DT:

- Start number 8 was manually annotated 1 time for cluster DT.

Info for manual annotations of cluster FE:

- Start number 13 was manually annotated 1 time for cluster FE.

Info for manual annotations of cluster Q:

- Start number 19 was manually annotated 15 times for cluster Q.

**Gene Information:**

Gene: Amochick\_50 Start: 36955, Stop: 37152, Start Num: 19

Candidate Starts for Amochick\_50:

(Start: 19 @36955 has 20 MA's), (28, 37018),

Gene: Amymech\_50 Start: 36949, Stop: 37146, Start Num: 19

Candidate Starts for Amymech\_50:

(Start: 19 @36949 has 20 MA's), (28, 37012),

Gene: Barebow\_24 Start: 17257, Stop: 17445, Start Num: 24

Candidate Starts for Barebow\_24:

(1, 16966), (2, 16990), (12, 17185), (Start: 24 @17257 has 1 MA's), (30, 17302),

Gene: BlueFeather\_20 Start: 14165, Stop: 14407, Start Num: 13

Candidate Starts for BlueFeather\_20:

(Start: 13 @14165 has 1 MA's), (15, 14177), (Start: 19 @14195 has 20 MA's),

Gene: BlueNGold\_187 Start: 109354, Stop: 109548, Start Num: 26

Candidate Starts for BlueNGold\_187:

(Start: 23 @109342 has 2 MA's), (Start: 26 @109354 has 2 MA's), (31, 109402), (33, 109447),

Gene: Boopy\_191 Start: 109353, Stop: 109559, Start Num: 23

Candidate Starts for Boopy\_191:

(Start: 23 @109353 has 2 MA's), (Start: 26 @109365 has 2 MA's), (31, 109413), (33, 109458),

Gene: Bunker\_39 Start: 31881, Stop: 32090, Start Num: 16

Candidate Starts for Bunker\_39:

(10, 31854), (Start: 16 @31881 has 1 MA's), (35, 32055),

Gene: Daegal\_52 Start: 37533, Stop: 37730, Start Num: 19

Candidate Starts for Daegal\_52:

(Start: 19 @37533 has 20 MA's), (28, 37596),

Gene: DeepSoil15\_50 Start: 36949, Stop: 37146, Start Num: 19

Candidate Starts for DeepSoil15\_50:

(Start: 19 @36949 has 20 MA's), (28, 37012),

Gene: Dogfish\_34 Start: 29638, Stop: 29883, Start Num: 8

Candidate Starts for Dogfish\_34:

(Start: 8 @29638 has 1 MA's), (Start: 16 @29674 has 1 MA's), (31, 29776),

Gene: Dori\_80 Start: 57490, Stop: 57729, Start Num: 18

Candidate Starts for Dori\_80:

(Start: 18 @57490 has 2 MA's), (22, 57523), (34, 57673),

Gene: Ein37\_50 Start: 36949, Stop: 37146, Start Num: 19

Candidate Starts for Ein37\_50:

(Start: 19 @36949 has 20 MA's), (28, 37012),

Gene: Evanesce\_49 Start: 36949, Stop: 37146, Start Num: 19

Candidate Starts for Evanesce\_49:  
(Start: 19 @36949 has 20 MA's), (28, 37012),

Gene: Forge\_48 Start: 36949, Stop: 37146, Start Num: 19  
Candidate Starts for Forge\_48:  
(Start: 19 @36949 has 20 MA's), (28, 37012),

Gene: Forza\_191 Start: 109282, Stop: 109476, Start Num: 26  
Candidate Starts for Forza\_191:  
(Start: 23 @109270 has 2 MA's), (Start: 26 @109282 has 2 MA's), (31, 109330), (33, 109375),

Gene: GMA2\_95 Start: 87367, Stop: 87170, Start Num: 21  
Candidate Starts for GMA2\_95:  
(21, 87367), (Start: 26 @87349 has 2 MA's),

Gene: Gancho\_49 Start: 36672, Stop: 36869, Start Num: 19  
Candidate Starts for Gancho\_49:  
(Start: 19 @36672 has 20 MA's), (28, 36735),

Gene: Hadrien\_50 Start: 36949, Stop: 37146, Start Num: 19  
Candidate Starts for Hadrien\_50:  
(Start: 19 @36949 has 20 MA's), (28, 37012),

Gene: Julie\_40 Start: 30591, Stop: 30806, Start Num: 19  
Candidate Starts for Julie\_40:  
(Start: 19 @30591 has 20 MA's), (25, 30624), (27, 30636), (29, 30657),

Gene: Kinbote\_50 Start: 36949, Stop: 37146, Start Num: 19  
Candidate Starts for Kinbote\_50:  
(Start: 19 @36949 has 20 MA's), (28, 37012),

Gene: LilHazelnut\_50 Start: 36949, Stop: 37146, Start Num: 19  
Candidate Starts for LilHazelnut\_50:  
(Start: 19 @36949 has 20 MA's), (28, 37012),

Gene: Luke\_50 Start: 36904, Stop: 37101, Start Num: 19  
Candidate Starts for Luke\_50:  
(Start: 19 @36904 has 20 MA's), (28, 36967),

Gene: Mao1\_82 Start: 56379, Stop: 56618, Start Num: 18  
Candidate Starts for Mao1\_82:  
(Start: 18 @56379 has 2 MA's), (22, 56412), (34, 56562),

Gene: Mareelih\_188 Start: 108788, Stop: 108994, Start Num: 23  
Candidate Starts for Mareelih\_188:  
(Start: 23 @108788 has 2 MA's), (Start: 26 @108800 has 2 MA's), (31, 108848), (33, 108893),

Gene: MoRicky\_22 Start: 14364, Stop: 14573, Start Num: 19  
Candidate Starts for MoRicky\_22:  
(9, 14313), (14, 14343), (Start: 19 @14364 has 20 MA's), (30, 14439),

Gene: OBUpride\_50 Start: 36945, Stop: 37142, Start Num: 19  
Candidate Starts for OBUpride\_50:

(Start: 19 @36945 has 20 MA's), (28, 37008), (30, 37017), (31, 37032),

Gene: Obliviate\_39 Start: 31330, Stop: 31524, Start Num: 19

Candidate Starts for Obliviate\_39:

(Start: 19 @31330 has 20 MA's),

Gene: Petra\_40 Start: 31689, Stop: 31883, Start Num: 19

Candidate Starts for Petra\_40:

(Start: 19 @31689 has 20 MA's),

Gene: SPB78\_44 Start: 32113, Stop: 32337, Start Num: 17

Candidate Starts for SPB78\_44:

(17, 32113), (32, 32239),

Gene: Sejanus\_84 Start: 57638, Stop: 57847, Start Num: 19

Candidate Starts for Sejanus\_84:

(5, 57539), (7, 57578), (Start: 19 @57638 has 20 MA's), (34, 57815),

Gene: Smilerella\_21 Start: 14454, Stop: 14663, Start Num: 19

Candidate Starts for Smilerella\_21:

(9, 14403), (14, 14433), (Start: 19 @14454 has 20 MA's), (30, 14529),

Gene: Ubuntu\_50 Start: 36949, Stop: 37146, Start Num: 19

Candidate Starts for Ubuntu\_50:

(Start: 19 @36949 has 20 MA's), (28, 37012),

Gene: UmaThurman\_37 Start: 31748, Stop: 31954, Start Num: 19

Candidate Starts for UmaThurman\_37:

(3, 31565), (4, 31640), (6, 31670), (11, 31712), (Start: 19 @31748 has 20 MA's), (20, 31760), (29, 31826), (34, 31934), (35, 31937),

Gene: Webster2\_50 Start: 36949, Stop: 37146, Start Num: 19

Candidate Starts for Webster2\_50:

(Start: 19 @36949 has 20 MA's), (28, 37012),

Gene: ZAYM\_43 Start: 32247, Stop: 32456, Start Num: 16

Candidate Starts for ZAYM\_43:

(10, 32220), (Start: 16 @32247 has 1 MA's),

Gene: Zarbodnamra\_42 Start: 32451, Stop: 32645, Start Num: 19

Candidate Starts for Zarbodnamra\_42:

(Start: 19 @32451 has 20 MA's),