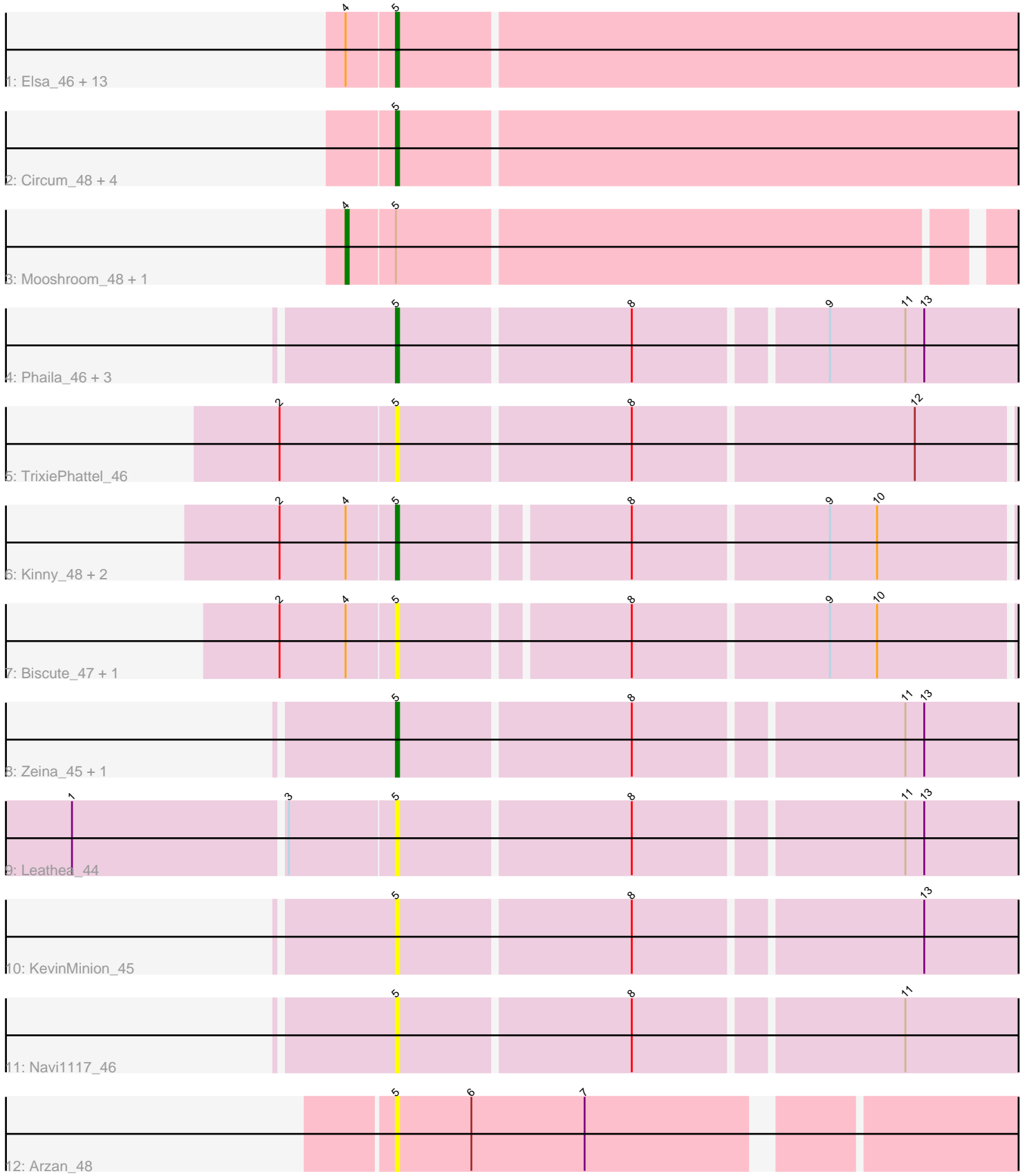


Pham 224740



Note: Tracks are now grouped by subcluster and scaled. Switching in subcluster is indicated by changes in track color. Track scale is now set by default to display the region 30 bp upstream of start 1 to 30 bp downstream of the last possible start. If this default region is judged to be packed too tightly with annotated starts, the track will be further scaled to only show that region of the ORF with annotated starts. This action will be indicated by adding "Zoomed" to the title. For starts, yellow indicates the location of called starts comprised solely of Glimmer/GeneMark auto-annotations, green indicates the location of called starts with at least 1 manual gene annotation.

## Pham 224740 Report

This analysis was run 03/28/25 on database version 593.

Pham number 224740 has 37 members, 13 are drafts.

Phages represented in each track:

- Track 1 : Elsa\_46, Xenomorph\_42, KeaneyLin\_45, Tribby\_46, GoCrazy\_45, NapoleonB\_46, Cheesy\_46, Arcadia\_46, Kardesai\_47, Nason\_46, Correa\_44, Benllo\_46, Dynamite\_46, Hankly\_45
- Track 2 : Circum\_48, Mudcat\_43, Bowling\_45, JEGGS\_45, Heisenberger\_45
- Track 3 : Mooshroom\_48, BenitoAntonio\_46
- Track 4 : Phaila\_46, GantcherGoblin\_43, Argan\_42, Uzumaki\_42
- Track 5 : TrixiePhattel\_46
- Track 6 : Kinny\_48, BarbieDoll\_48, Lewando\_46
- Track 7 : Biscute\_47, Renaldo\_48
- Track 8 : Zeina\_45, Tenney120\_46
- Track 9 : Leathea\_44
- Track 10 : KevinMinion\_45
- Track 11 : Navi1117\_46
- Track 12 : Arzan\_48

### ***Summary of Final Annotations (See graph section above for start numbers):***

The start number called the most often in the published annotations is 5, it was called in 22 of the 24 non-draft genes in the pham.

Genes that call this "Most Annotated" start:

- Arcadia\_46, Argan\_42, Arzan\_48, BarbieDoll\_48, Benllo\_46, Biscute\_47, Bowling\_45, Cheesy\_46, Circum\_48, Correa\_44, Dynamite\_46, Elsa\_46, GantcherGoblin\_43, GoCrazy\_45, Hankly\_45, Heisenberger\_45, JEGGS\_45, Kardesai\_47, KeaneyLin\_45, KevinMinion\_45, Kinny\_48, Leathea\_44, Lewando\_46, Mudcat\_43, NapoleonB\_46, Nason\_46, Navi1117\_46, Phaila\_46, Renaldo\_48, Tenney120\_46, Tribby\_46, TrixiePhattel\_46, Uzumaki\_42, Xenomorph\_42, Zeina\_45,

Genes that have the "Most Annotated" start but do not call it:

- BenitoAntonio\_46, Mooshroom\_48,

Genes that do not have the "Most Annotated" start:

-

## Summary by start number:

### Start 4:

- Found in 21 of 37 ( 56.8% ) of genes in pham
- Manual Annotations of this start: 2 of 24
- Called 9.5% of time when present
- Phage (with cluster) where this start called: BenitoAntonio\_46 (AM), Mooshroom\_48 (AM),

### Start 5:

- Found in 37 of 37 ( 100.0% ) of genes in pham
- Manual Annotations of this start: 22 of 24
- Called 94.6% of time when present
- Phage (with cluster) where this start called: Arcadia\_46 (AM), Argan\_42 (AU6), Arzan\_48 (FI), BarbieDoll\_48 (AU6), Benllo\_46 (AM), Biscute\_47 (AU6), Bowling\_45 (AM), Cheesy\_46 (AM), Circum\_48 (AM), Correa\_44 (AM), Dynamite\_46 (AM), Elsa\_46 (AM), GantcherGoblin\_43 (AU6), GoCrazy\_45 (AM), Hankly\_45 (AM), Heisenberger\_45 (AM), JEGGS\_45 (AM), Kardesai\_47 (AM), KeaneyLin\_45 (AM), KevinMinion\_45 (AU6), Kinny\_48 (AU6), Leathea\_44 (AU6), Lewando\_46 (AU6), Mudcat\_43 (AM), NapoleonB\_46 (AM), Nason\_46 (AM), Navi1117\_46 (AU6), Phaila\_46 (AU6), Renaldo\_48 (AU6), Tenney120\_46 (AU6), Tribby\_46 (AM), TrixiePhattel\_46 (AU6), Uzumaki\_42 (AU6), Xenomorph\_42 (AM), Zeina\_45 (AU6),

## Summary by clusters:

There are 3 clusters represented in this pham: FI, AM, AU6,

### Info for manual annotations of cluster AM:

- Start number 4 was manually annotated 2 times for cluster AM.
- Start number 5 was manually annotated 17 times for cluster AM.

### Info for manual annotations of cluster AU6:

- Start number 5 was manually annotated 5 times for cluster AU6.

## Gene Information:

Gene: Arcadia\_46 Start: 31207, Stop: 31410, Start Num: 5

Candidate Starts for Arcadia\_46:

(Start: 4 @31192 has 2 MA's), (Start: 5 @31207 has 22 MA's),

Gene: Argan\_42 Start: 30951, Stop: 31151, Start Num: 5

Candidate Starts for Argan\_42:

(Start: 5 @30951 has 22 MA's), (8, 31023), (9, 31080), (11, 31104), (13, 31110),

Gene: Arzan\_48 Start: 32418, Stop: 32612, Start Num: 5

Candidate Starts for Arzan\_48:

(Start: 5 @32418 has 22 MA's), (6, 32442), (7, 32478),

Gene: BarbieDoll\_48 Start: 32954, Stop: 33151, Start Num: 5

Candidate Starts for BarbieDoll\_48:

(2, 32918), (Start: 4 @32939 has 2 MA's), (Start: 5 @32954 has 22 MA's), (8, 33023), (9, 33083), (10, 33098),

Gene: BenitoAntonio\_46 Start: 30769, Stop: 30978, Start Num: 4  
Candidate Starts for BenitoAntonio\_46:  
(Start: 4 @30769 has 2 MA's), (Start: 5 @30784 has 22 MA's),

Gene: Benllo\_46 Start: 31468, Stop: 31662, Start Num: 5  
Candidate Starts for Benllo\_46:  
(Start: 4 @31453 has 2 MA's), (Start: 5 @31468 has 22 MA's),

Gene: Biscute\_47 Start: 32606, Stop: 32803, Start Num: 5  
Candidate Starts for Biscute\_47:  
(2, 32570), (Start: 4 @32591 has 2 MA's), (Start: 5 @32606 has 22 MA's), (8, 32675), (9, 32735), (10, 32750),

Gene: Bowling\_45 Start: 30980, Stop: 31183, Start Num: 5  
Candidate Starts for Bowling\_45:  
(Start: 5 @30980 has 22 MA's),

Gene: Cheesy\_46 Start: 30905, Stop: 31099, Start Num: 5  
Candidate Starts for Cheesy\_46:  
(Start: 4 @30890 has 2 MA's), (Start: 5 @30905 has 22 MA's),

Gene: Circum\_48 Start: 31618, Stop: 31821, Start Num: 5  
Candidate Starts for Circum\_48:  
(Start: 5 @31618 has 22 MA's),

Gene: Correa\_44 Start: 30090, Stop: 30284, Start Num: 5  
Candidate Starts for Correa\_44:  
(Start: 4 @30075 has 2 MA's), (Start: 5 @30090 has 22 MA's),

Gene: Dynamite\_46 Start: 31170, Stop: 31373, Start Num: 5  
Candidate Starts for Dynamite\_46:  
(Start: 4 @31155 has 2 MA's), (Start: 5 @31170 has 22 MA's),

Gene: Elsa\_46 Start: 31207, Stop: 31410, Start Num: 5  
Candidate Starts for Elsa\_46:  
(Start: 4 @31192 has 2 MA's), (Start: 5 @31207 has 22 MA's),

Gene: GantcherGoblin\_43 Start: 31449, Stop: 31649, Start Num: 5  
Candidate Starts for GantcherGoblin\_43:  
(Start: 5 @31449 has 22 MA's), (8, 31521), (9, 31578), (11, 31602), (13, 31608),

Gene: GoCrazy\_45 Start: 31096, Stop: 31290, Start Num: 5  
Candidate Starts for GoCrazy\_45:  
(Start: 4 @31081 has 2 MA's), (Start: 5 @31096 has 22 MA's),

Gene: Hankly\_45 Start: 30397, Stop: 30591, Start Num: 5  
Candidate Starts for Hankly\_45:  
(Start: 4 @30382 has 2 MA's), (Start: 5 @30397 has 22 MA's),

Gene: Heisenberger\_45 Start: 30648, Stop: 30851, Start Num: 5

Candidate Starts for Heisenberger\_45:

(Start: 5 @30648 has 22 MA's),

Gene: JEGGS\_45 Start: 30702, Stop: 30905, Start Num: 5

Candidate Starts for JEGGS\_45:

(Start: 5 @30702 has 22 MA's),

Gene: Kardesai\_47 Start: 31368, Stop: 31562, Start Num: 5

Candidate Starts for Kardesai\_47:

(Start: 4 @31353 has 2 MA's), (Start: 5 @31368 has 22 MA's),

Gene: KeaneyLin\_45 Start: 31096, Stop: 31290, Start Num: 5

Candidate Starts for KeaneyLin\_45:

(Start: 4 @31081 has 2 MA's), (Start: 5 @31096 has 22 MA's),

Gene: KevinMinion\_45 Start: 32203, Stop: 32403, Start Num: 5

Candidate Starts for KevinMinion\_45:

(Start: 5 @32203 has 22 MA's), (8, 32275), (13, 32362),

Gene: Kinny\_48 Start: 33448, Stop: 33645, Start Num: 5

Candidate Starts for Kinny\_48:

(2, 33412), (Start: 4 @33433 has 2 MA's), (Start: 5 @33448 has 22 MA's), (8, 33517), (9, 33577), (10, 33592),

Gene: Leathea\_44 Start: 31131, Stop: 31331, Start Num: 5

Candidate Starts for Leathea\_44:

(1, 31032), (3, 31098), (Start: 5 @31131 has 22 MA's), (8, 31203), (11, 31284), (13, 31290),

Gene: Lewando\_46 Start: 32740, Stop: 32937, Start Num: 5

Candidate Starts for Lewando\_46:

(2, 32704), (Start: 4 @32725 has 2 MA's), (Start: 5 @32740 has 22 MA's), (8, 32809), (9, 32869), (10, 32884),

Gene: Mooshroom\_48 Start: 31353, Stop: 31562, Start Num: 4

Candidate Starts for Mooshroom\_48:

(Start: 4 @31353 has 2 MA's), (Start: 5 @31368 has 22 MA's),

Gene: Mudcat\_43 Start: 32061, Stop: 32264, Start Num: 5

Candidate Starts for Mudcat\_43:

(Start: 5 @32061 has 22 MA's),

Gene: NapoleonB\_46 Start: 31170, Stop: 31373, Start Num: 5

Candidate Starts for NapoleonB\_46:

(Start: 4 @31155 has 2 MA's), (Start: 5 @31170 has 22 MA's),

Gene: Nason\_46 Start: 31207, Stop: 31410, Start Num: 5

Candidate Starts for Nason\_46:

(Start: 4 @31192 has 2 MA's), (Start: 5 @31207 has 22 MA's),

Gene: Navi1117\_46 Start: 31853, Stop: 32053, Start Num: 5

Candidate Starts for Navi1117\_46:

(Start: 5 @31853 has 22 MA's), (8, 31925), (11, 32006),

Gene: Phaila\_46 Start: 31342, Stop: 31542, Start Num: 5

Candidate Starts for Phaila\_46:

(Start: 5 @31342 has 22 MA's), (8, 31414), (9, 31471), (11, 31495), (13, 31501),

Gene: Renaldo\_48 Start: 33049, Stop: 33246, Start Num: 5

Candidate Starts for Renaldo\_48:

(2, 33013), (Start: 4 @33034 has 2 MA's), (Start: 5 @33049 has 22 MA's), (8, 33118), (9, 33178), (10, 33193),

Gene: Tenney120\_46 Start: 31745, Stop: 31945, Start Num: 5

Candidate Starts for Tenney120\_46:

(Start: 5 @31745 has 22 MA's), (8, 31817), (11, 31898), (13, 31904),

Gene: Tribby\_46 Start: 30923, Stop: 31117, Start Num: 5

Candidate Starts for Tribby\_46:

(Start: 4 @30908 has 2 MA's), (Start: 5 @30923 has 22 MA's),

Gene: TrixiePhattel\_46 Start: 31423, Stop: 31620, Start Num: 5

Candidate Starts for TrixiePhattel\_46:

(2, 31387), (Start: 5 @31423 has 22 MA's), (8, 31495), (12, 31582),

Gene: Uzumaki\_42 Start: 31442, Stop: 31642, Start Num: 5

Candidate Starts for Uzumaki\_42:

(Start: 5 @31442 has 22 MA's), (8, 31514), (9, 31571), (11, 31595), (13, 31601),

Gene: Xenomorph\_42 Start: 30634, Stop: 30828, Start Num: 5

Candidate Starts for Xenomorph\_42:

(Start: 4 @30619 has 2 MA's), (Start: 5 @30634 has 22 MA's),

Gene: Zeina\_45 Start: 31758, Stop: 31958, Start Num: 5

Candidate Starts for Zeina\_45:

(Start: 5 @31758 has 22 MA's), (8, 31830), (11, 31911), (13, 31917),