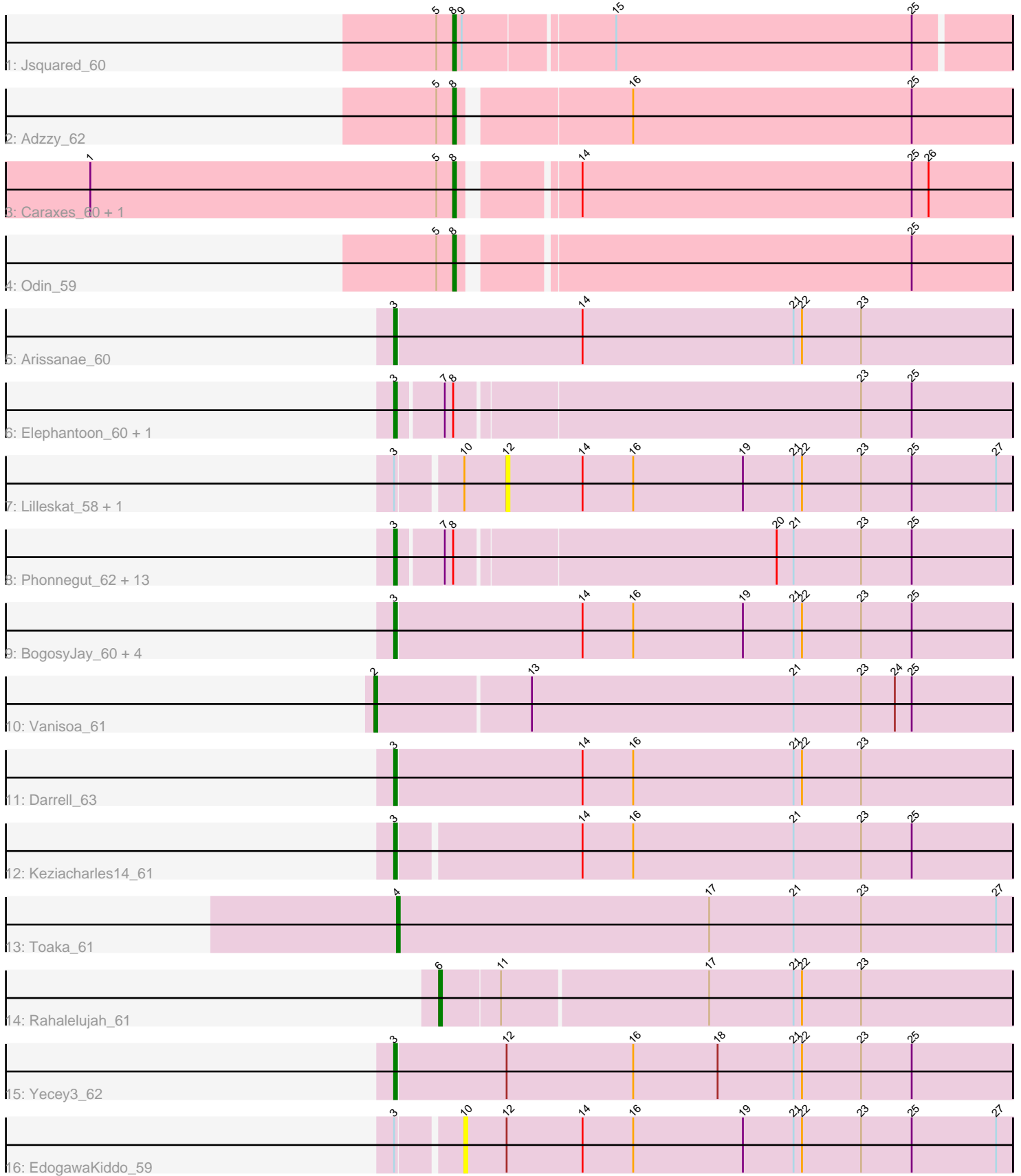


Pham 224742



Note: Tracks are now grouped by subcluster and scaled. Switching in subcluster is indicated by changes in track color. Track scale is now set by default to display the region 30 bp upstream of start 1 to 30 bp downstream of the last possible start. If this default region is judged to be packed too tightly with annotated starts, the track will be further scaled to only show that region of the ORF with annotated starts. This action will be indicated by adding "Zoomed" to the title. For starts, yellow indicates the location of called starts comprised solely of Glimmer/GeneMark auto-annotations, green indicates the location of called starts with at least 1 manual gene annotation.

Pham 224742 Report

This analysis was run 03/28/25 on database version 593.

Pham number 224742 has 36 members, 9 are drafts.

Phages represented in each track:

- Track 1 : Jsquared_60
- Track 2 : Adzzy_62
- Track 3 : Caraxes_60, Superchunk_59
- Track 4 : Odin_59
- Track 5 : Arissanae_60
- Track 6 : Elephantoon_60, LoneWolf_62
- Track 7 : Lilleskat_58, Sachima_57
- Track 8 : Phonnegut_62, Ugenie5_58, Onglai_60, HortumSL17_62, Scherzo_62, Jiawan_59, Aliter_62, Hanray_60, Pioneer_62, RyeScarlet_63, Myxus_61, Horex_60, Catalina_63, Beemo_62
- Track 9 : BogosyJay_60, Tubs_61, Maminiaina_60, Phaeder_61, PackMan_60
- Track 10 : Vanisoa_61
- Track 11 : Darrell_63
- Track 12 : Keziacharles14_61
- Track 13 : Toaka_61
- Track 14 : Rahalelujah_61
- Track 15 : Yecey3_62
- Track 16 : EdogawaKiddo_59

Summary of Final Annotations (See graph section above for start numbers):

The start number called the most often in the published annotations is 3, it was called in 20 of the 27 non-draft genes in the pham.

Genes that call this "Most Annotated" start:

- Aliter_62, Arissanae_60, Beemo_62, BogosyJay_60, Catalina_63, Darrell_63, Elephantoon_60, Hanray_60, Horex_60, HortumSL17_62, Jiawan_59, Keziacharles14_61, LoneWolf_62, Maminiaina_60, Myxus_61, Onglai_60, PackMan_60, Phaeder_61, Phonnegut_62, Pioneer_62, RyeScarlet_63, Scherzo_62, Tubs_61, Ugenie5_58, Yecey3_62,

Genes that have the "Most Annotated" start but do not call it:

- EdogawaKiddo_59, Lilleskat_58, Sachima_57,

Genes that do not have the "Most Annotated" start:

- Adzzy_62, Caraxes_60, Jsquared_60, Odin_59, Rahalelujah_61, Superchunk_59, Toaka_61, Vanisoa_61,

Summary by start number:

Start 2:

- Found in 1 of 36 (2.8%) of genes in pham
- Manual Annotations of this start: 1 of 27
- Called 100.0% of time when present
- Phage (with cluster) where this start called: Vanisoa_61 (A9),

Start 3:

- Found in 28 of 36 (77.8%) of genes in pham
- Manual Annotations of this start: 20 of 27
- Called 89.3% of time when present
- Phage (with cluster) where this start called: Aliter_62 (A9), Arissanae_60 (A9), Beemo_62 (A9), BogosyJay_60 (A9), Catalina_63 (A9), Darrell_63 (A9), Elephantoon_60 (A9), Hanray_60 (A9), Holes_60 (A9), HortumSL17_62 (A9), Jiawan_59 (A9), Keziacharles14_61 (A9), LoneWolf_62 (A9), Maminina_60 (A9), Myxus_61 (A9), Onglai_60 (A9), PackMan_60 (A9), Phaeder_61 (A9), Phonnegut_62 (A9), Pioneer_62 (A9), RyeScarlet_63 (A9), Scherzo_62 (A9), Tubs_61 (A9), Ugenie5_58 (A9), Yecey3_62 (A9),

Start 4:

- Found in 1 of 36 (2.8%) of genes in pham
- Manual Annotations of this start: 1 of 27
- Called 100.0% of time when present
- Phage (with cluster) where this start called: Toaka_61 (A9),

Start 6:

- Found in 1 of 36 (2.8%) of genes in pham
- Manual Annotations of this start: 1 of 27
- Called 100.0% of time when present
- Phage (with cluster) where this start called: Rahalelujah_61 (A9),

Start 8:

- Found in 21 of 36 (58.3%) of genes in pham
- Manual Annotations of this start: 4 of 27
- Called 23.8% of time when present
- Phage (with cluster) where this start called: Adzzy_62 (A2), Caraxes_60 (A2), Jsquared_60 (A2), Odin_59 (A2), Superchunk_59 (A2),

Start 10:

- Found in 3 of 36 (8.3%) of genes in pham
- No Manual Annotations of this start.
- Called 33.3% of time when present
- Phage (with cluster) where this start called: EdogawaKiddo_59 (A9),

Start 12:

- Found in 4 of 36 (11.1%) of genes in pham
- No Manual Annotations of this start.
- Called 50.0% of time when present

- Phage (with cluster) where this start called: Lilleskat_58 (A9), Sachima_57 (A9),

Summary by clusters:

There are 2 clusters represented in this pham: A9, A2,

Info for manual annotations of cluster A2:

- Start number 8 was manually annotated 4 times for cluster A2.

Info for manual annotations of cluster A9:

- Start number 2 was manually annotated 1 time for cluster A9.
- Start number 3 was manually annotated 20 times for cluster A9.
- Start number 4 was manually annotated 1 time for cluster A9.
- Start number 6 was manually annotated 1 time for cluster A9.

Gene Information:

Gene: Adzzy_62 Start: 38280, Stop: 38089, Start Num: 8

Candidate Starts for Adzzy_62:

(5, 38286), (Start: 8 @38280 has 4 MA's), (16, 38223), (25, 38124),

Gene: Aliter_62 Start: 39332, Stop: 39120, Start Num: 3

Candidate Starts for Aliter_62:

(Start: 3 @39332 has 20 MA's), (7, 39317), (Start: 8 @39314 has 4 MA's), (20, 39203), (21, 39197), (23, 39173), (25, 39155),

Gene: Arissanae_60 Start: 39898, Stop: 39680, Start Num: 3

Candidate Starts for Arissanae_60:

(Start: 3 @39898 has 20 MA's), (14, 39832), (21, 39757), (22, 39754), (23, 39733),

Gene: Beemo_62 Start: 39502, Stop: 39290, Start Num: 3

Candidate Starts for Beemo_62:

(Start: 3 @39502 has 20 MA's), (7, 39487), (Start: 8 @39484 has 4 MA's), (20, 39373), (21, 39367), (23, 39343), (25, 39325),

Gene: BogosyJay_60 Start: 39299, Stop: 39081, Start Num: 3

Candidate Starts for BogosyJay_60:

(Start: 3 @39299 has 20 MA's), (14, 39233), (16, 39215), (19, 39176), (21, 39158), (22, 39155), (23, 39134), (25, 39116),

Gene: Caraxes_60 Start: 37974, Stop: 37786, Start Num: 8

Candidate Starts for Caraxes_60:

(1, 38103), (5, 37980), (Start: 8 @37974 has 4 MA's), (14, 37938), (25, 37821), (26, 37815),

Gene: Catalina_63 Start: 39405, Stop: 39193, Start Num: 3

Candidate Starts for Catalina_63:

(Start: 3 @39405 has 20 MA's), (7, 39390), (Start: 8 @39387 has 4 MA's), (20, 39276), (21, 39270), (23, 39246), (25, 39228),

Gene: Darrell_63 Start: 39973, Stop: 39755, Start Num: 3

Candidate Starts for Darrell_63:

(Start: 3 @39973 has 20 MA's), (14, 39907), (16, 39889), (21, 39832), (22, 39829), (23, 39808),

Gene: EdogawaKiddo_59 Start: 39348, Stop: 39154, Start Num: 10

Candidate Starts for EdogawaKiddo_59:

(Start: 3 @39369 has 20 MA's), (10, 39348), (12, 39333), (14, 39306), (16, 39288), (19, 39249), (21, 39231), (22, 39228), (23, 39207), (25, 39189), (27, 39159),

Gene: Elephantoon_60 Start: 38712, Stop: 38500, Start Num: 3

Candidate Starts for Elephantoon_60:

(Start: 3 @38712 has 20 MA's), (7, 38697), (Start: 8 @38694 has 4 MA's), (23, 38553), (25, 38535),

Gene: Hanray_60 Start: 39457, Stop: 39245, Start Num: 3

Candidate Starts for Hanray_60:

(Start: 3 @39457 has 20 MA's), (7, 39442), (Start: 8 @39439 has 4 MA's), (20, 39328), (21, 39322), (23, 39298), (25, 39280),

Gene: Horex_60 Start: 39473, Stop: 39261, Start Num: 3

Candidate Starts for Horex_60:

(Start: 3 @39473 has 20 MA's), (7, 39458), (Start: 8 @39455 has 4 MA's), (20, 39344), (21, 39338), (23, 39314), (25, 39296),

Gene: HortumSL17_62 Start: 39404, Stop: 39192, Start Num: 3

Candidate Starts for HortumSL17_62:

(Start: 3 @39404 has 20 MA's), (7, 39389), (Start: 8 @39386 has 4 MA's), (20, 39275), (21, 39269), (23, 39245), (25, 39227),

Gene: Jiawan_59 Start: 39489, Stop: 39277, Start Num: 3

Candidate Starts for Jiawan_59:

(Start: 3 @39489 has 20 MA's), (7, 39474), (Start: 8 @39471 has 4 MA's), (20, 39360), (21, 39354), (23, 39330), (25, 39312),

Gene: Jsquared_60 Start: 38644, Stop: 38453, Start Num: 8

Candidate Starts for Jsquared_60:

(5, 38650), (Start: 8 @38644 has 4 MA's), (9, 38641), (15, 38590), (25, 38485),

Gene: Keziacharles14_61 Start: 40467, Stop: 40252, Start Num: 3

Candidate Starts for Keziacharles14_61:

(Start: 3 @40467 has 20 MA's), (14, 40404), (16, 40386), (21, 40329), (23, 40305), (25, 40287),

Gene: Lilleskat_58 Start: 39286, Stop: 39107, Start Num: 12

Candidate Starts for Lilleskat_58:

(Start: 3 @39322 has 20 MA's), (10, 39301), (12, 39286), (14, 39259), (16, 39241), (19, 39202), (21, 39184), (22, 39181), (23, 39160), (25, 39142), (27, 39112),

Gene: LoneWolf_62 Start: 39434, Stop: 39222, Start Num: 3

Candidate Starts for LoneWolf_62:

(Start: 3 @39434 has 20 MA's), (7, 39419), (Start: 8 @39416 has 4 MA's), (23, 39275), (25, 39257),

Gene: Maminiaina_60 Start: 39281, Stop: 39063, Start Num: 3

Candidate Starts for Maminiaina_60:

(Start: 3 @39281 has 20 MA's), (14, 39215), (16, 39197), (19, 39158), (21, 39140), (22, 39137), (23, 39116), (25, 39098),

Gene: Myxus_61 Start: 39404, Stop: 39192, Start Num: 3

Candidate Starts for Myxus_61:

(Start: 3 @39404 has 20 MA's), (7, 39389), (Start: 8 @39386 has 4 MA's), (20, 39275), (21, 39269), (23, 39245), (25, 39227),

Gene: Odin_59 Start: 38358, Stop: 38170, Start Num: 8

Candidate Starts for Odin_59:

(5, 38364), (Start: 8 @38358 has 4 MA's), (25, 38205),

Gene: Onglai_60 Start: 37745, Stop: 37533, Start Num: 3

Candidate Starts for Onglai_60:

(Start: 3 @37745 has 20 MA's), (7, 37730), (Start: 8 @37727 has 4 MA's), (20, 37616), (21, 37610), (23, 37586), (25, 37568),

Gene: PackMan_60 Start: 39279, Stop: 39061, Start Num: 3

Candidate Starts for PackMan_60:

(Start: 3 @39279 has 20 MA's), (14, 39213), (16, 39195), (19, 39156), (21, 39138), (22, 39135), (23, 39114), (25, 39096),

Gene: Phaeder_61 Start: 39279, Stop: 39061, Start Num: 3

Candidate Starts for Phaeder_61:

(Start: 3 @39279 has 20 MA's), (14, 39213), (16, 39195), (19, 39156), (21, 39138), (22, 39135), (23, 39114), (25, 39096),

Gene: Phonnegut_62 Start: 39501, Stop: 39289, Start Num: 3

Candidate Starts for Phonnegut_62:

(Start: 3 @39501 has 20 MA's), (7, 39486), (Start: 8 @39483 has 4 MA's), (20, 39372), (21, 39366), (23, 39342), (25, 39324),

Gene: Pioneer_62 Start: 39501, Stop: 39289, Start Num: 3

Candidate Starts for Pioneer_62:

(Start: 3 @39501 has 20 MA's), (7, 39486), (Start: 8 @39483 has 4 MA's), (20, 39372), (21, 39366), (23, 39342), (25, 39324),

Gene: Rahalelujah_61 Start: 39034, Stop: 38834, Start Num: 6

Candidate Starts for Rahalelujah_61:

(Start: 6 @39034 has 1 MA's), (11, 39013), (17, 38941), (21, 38911), (22, 38908), (23, 38887),

Gene: RyeScarlet_63 Start: 39476, Stop: 39264, Start Num: 3

Candidate Starts for RyeScarlet_63:

(Start: 3 @39476 has 20 MA's), (7, 39461), (Start: 8 @39458 has 4 MA's), (20, 39347), (21, 39341), (23, 39317), (25, 39299),

Gene: Sachima_57 Start: 39266, Stop: 39087, Start Num: 12

Candidate Starts for Sachima_57:

(Start: 3 @39302 has 20 MA's), (10, 39281), (12, 39266), (14, 39239), (16, 39221), (19, 39182), (21, 39164), (22, 39161), (23, 39140), (25, 39122), (27, 39092),

Gene: Scherzo_62 Start: 39690, Stop: 39478, Start Num: 3

Candidate Starts for Scherzo_62:

(Start: 3 @39690 has 20 MA's), (7, 39675), (Start: 8 @39672 has 4 MA's), (20, 39561), (21, 39555), (23, 39531), (25, 39513),

Gene: Superchunk_59 Start: 37974, Stop: 37786, Start Num: 8

Candidate Starts for Superchunk_59:

(1, 38103), (5, 37980), (Start: 8 @37974 has 4 MA's), (14, 37938), (25, 37821), (26, 37815),

Gene: Toaka_61 Start: 39301, Stop: 39083, Start Num: 4

Candidate Starts for Toaka_61:

(Start: 4 @39301 has 1 MA's), (17, 39190), (21, 39160), (23, 39136), (27, 39088),

Gene: Tubs_61 Start: 39279, Stop: 39061, Start Num: 3

Candidate Starts for Tubs_61:

(Start: 3 @39279 has 20 MA's), (14, 39213), (16, 39195), (19, 39156), (21, 39138), (22, 39135), (23, 39114), (25, 39096),

Gene: Ugenie5_58 Start: 39689, Stop: 39477, Start Num: 3

Candidate Starts for Ugenie5_58:

(Start: 3 @39689 has 20 MA's), (7, 39674), (Start: 8 @39671 has 4 MA's), (20, 39560), (21, 39554), (23, 39530), (25, 39512),

Gene: Vanisoa_61 Start: 40386, Stop: 40162, Start Num: 2

Candidate Starts for Vanisoa_61:

(Start: 2 @40386 has 1 MA's), (13, 40332), (21, 40239), (23, 40215), (24, 40203), (25, 40197),

Gene: Yecey3_62 Start: 39278, Stop: 39060, Start Num: 3

Candidate Starts for Yecey3_62:

(Start: 3 @39278 has 20 MA's), (12, 39239), (16, 39194), (18, 39164), (21, 39137), (22, 39134), (23, 39113), (25, 39095),