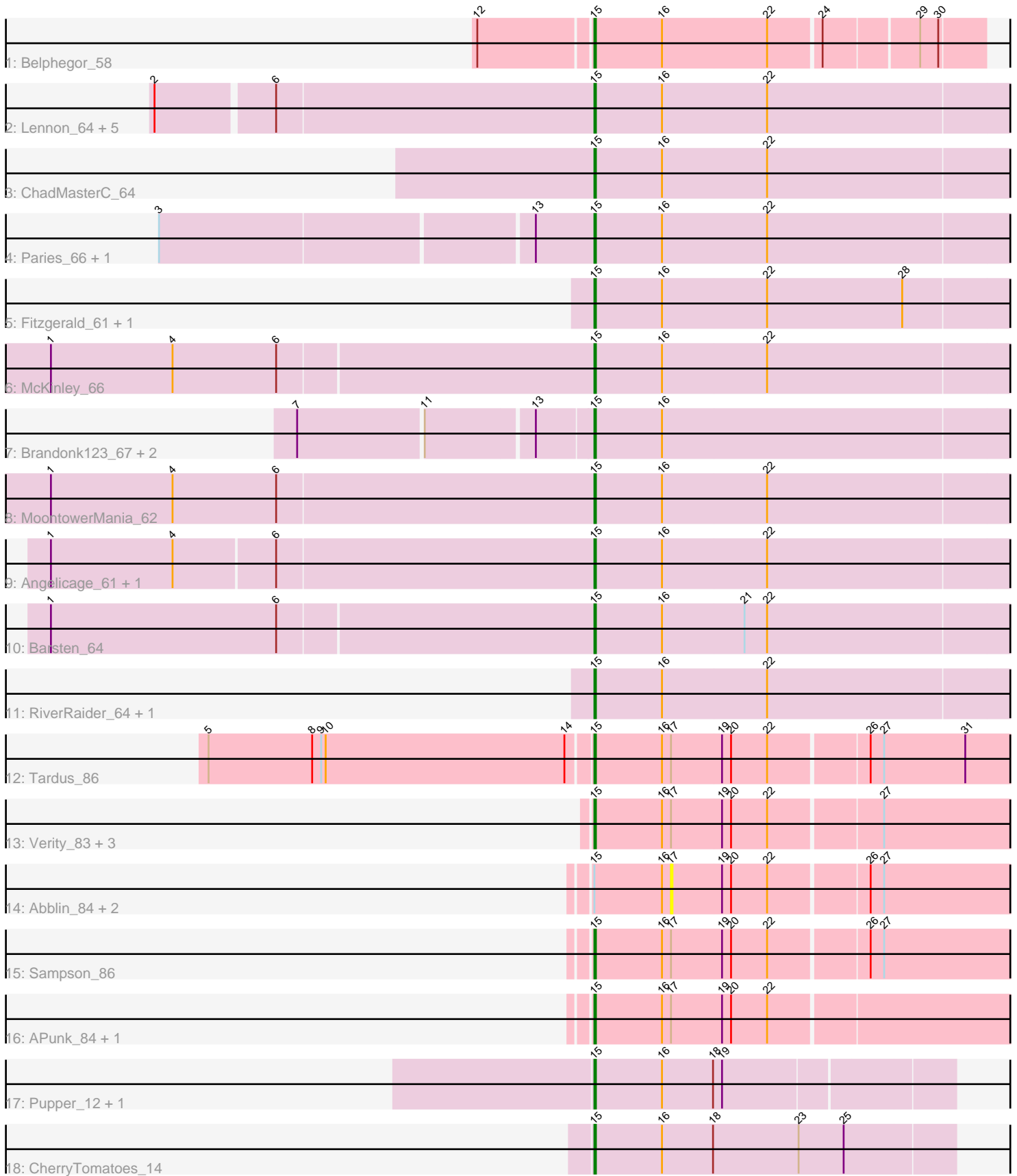


Pham 224743



Note: Tracks are now grouped by subcluster and scaled. Switching in subcluster is indicated by changes in track color. Track scale is now set by default to display the region 30 bp upstream of start 1 to 30 bp downstream of the last possible start. If this default region is judged to be packed too tightly with annotated starts, the track will be further scaled to only show that region of the ORF with annotated starts. This action will be indicated by adding "Zoomed" to the title. For starts, yellow indicates the location of called starts comprised solely of Glimmer/GeneMark auto-annotations, green indicates the location of called starts with at least 1 manual gene annotation.

Pham 224743 Report

This analysis was run 03/28/25 on database version 593.

Pham number 224743 has 36 members, 4 are drafts.

Phages represented in each track:

- Track 1 : Belphegor_58
- Track 2 : Lennon_64, Geodirt_63, Sitar_64, Keitabear_63, Stultus_60, Kewpiedoll_63
- Track 3 : ChadMasterC_64
- Track 4 : Paries_66, Galadriel_63
- Track 5 : Fitzgerald_61, Jabberwocky_61
- Track 6 : McKinley_66
- Track 7 : Brandonk123_67, Kamashten_62, Thing3_62
- Track 8 : MoontowerMania_62
- Track 9 : Angelicage_61, Shivanishola_61
- Track 10 : Barsten_64
- Track 11 : RiverRaider_64, Sedona_63
- Track 12 : Tardus_86
- Track 13 : Verity_83, Delrey21_84, DoctorFroggo_84, Zipp_84
- Track 14 : Abblin_84, Natkenzie_84, Scioto_84
- Track 15 : Sampson_86
- Track 16 : APunk_84, Zitch_86
- Track 17 : Pupper_12, SCentae_12
- Track 18 : CherryTomatoes_14

Summary of Final Annotations (See graph section above for start numbers):

The start number called the most often in the published annotations is 15, it was called in 32 of the 32 non-draft genes in the pham.

Genes that call this "Most Annotated" start:

- APunk_84, Angelicage_61, Barsten_64, Belphegor_58, Brandonk123_67, ChadMasterC_64, CherryTomatoes_14, Delrey21_84, DoctorFroggo_84, Fitzgerald_61, Galadriel_63, Geodirt_63, Jabberwocky_61, Kamashten_62, Keitabear_63, Kewpiedoll_63, Lennon_64, McKinley_66, MoontowerMania_62, Paries_66, Pupper_12, RiverRaider_64, SCentae_12, Sampson_86, Sedona_63, Shivanishola_61, Sitar_64, Stultus_60, Tardus_86, Thing3_62, Verity_83, Zipp_84, Zitch_86,

Genes that have the "Most Annotated" start but do not call it:

- Abblin_84, Natkenzie_84, Scioto_84,

Genes that do not have the "Most Annotated" start:

-

Summary by start number:

Start 15:

- Found in 36 of 36 (100.0%) of genes in pham
- Manual Annotations of this start: 32 of 32
- Called 91.7% of time when present
- Phage (with cluster) where this start called: APunk_84 (DE4), Angelicage_61 (DE1), Barsten_64 (DE1), Belphegor_58 (DE), Brandonk123_67 (DE1), ChadMasterC_64 (DE1), CherryTomatoes_14 (DO), Delrey21_84 (DE4), DoctorFroggo_84 (DE4), Fitzgerald_61 (DE1), Galadriel_63 (DE1), Geodirt_63 (DE1), Jabberwocky_61 (DE1), Kamashten_62 (DE1), Keitabear_63 (DE1), Kewpiedoll_63 (DE1), Lennon_64 (DE1), McKinley_66 (DE1), MoontowerMania_62 (DE1), Paries_66 (DE1), Pupper_12 (DO), RiverRaider_64 (DE1), SCentae_12 (DO), Sampson_86 (DE4), Sedona_63 (DE1), Shivanishola_61 (DE1), Sitar_64 (DE1), Stultus_60 (DE1), Tardus_86 (DE4), Thing3_62 (DE1), Verity_83 (DE4), Zipp_84 (DE4), Zitch_86 (DE4),

Start 17:

- Found in 11 of 36 (30.6%) of genes in pham
- No Manual Annotations of this start.
- Called 27.3% of time when present
- Phage (with cluster) where this start called: Abblin_84 (DE4), Natkenzie_84 (DE4), Scioto_84 (DE4),

Summary by clusters:

There are 4 clusters represented in this pham: DO, DE, DE4, DE1,

Info for manual annotations of cluster DE:

- Start number 15 was manually annotated 1 time for cluster DE.

Info for manual annotations of cluster DE1:

- Start number 15 was manually annotated 20 times for cluster DE1.

Info for manual annotations of cluster DE4:

- Start number 15 was manually annotated 8 times for cluster DE4.

Info for manual annotations of cluster DO:

- Start number 15 was manually annotated 3 times for cluster DO.

Gene Information:

Gene: APunk_84 Start: 57342, Stop: 57623, Start Num: 15

Candidate Starts for APunk_84:

(Start: 15 @57342 has 32 MA's), (16, 57387), (17, 57393), (19, 57426), (20, 57432), (22, 57456),

Gene: Abblin_84 Start: 57551, Stop: 57781, Start Num: 17
Candidate Starts for Abblin_84:
(Start: 15 @57500 has 32 MA's), (16, 57545), (17, 57551), (19, 57584), (20, 57590), (22, 57614), (26, 57677), (27, 57686),

Gene: Angelicage_61 Start: 49989, Stop: 50273, Start Num: 15
Candidate Starts for Angelicage_61:
(1, 49632), (4, 49713), (6, 49779), (Start: 15 @49989 has 32 MA's), (16, 50034), (22, 50103),

Gene: Barsten_64 Start: 50125, Stop: 50409, Start Num: 15
Candidate Starts for Barsten_64:
(1, 49768), (6, 49918), (Start: 15 @50125 has 32 MA's), (16, 50170), (21, 50224), (22, 50239),

Gene: Belphegor_58 Start: 47990, Stop: 48238, Start Num: 15
Candidate Starts for Belphegor_58:
(12, 47918), (Start: 15 @47990 has 32 MA's), (16, 48035), (22, 48104), (24, 48137), (29, 48197), (30, 48209),

Gene: Brandonk123_67 Start: 49918, Stop: 50202, Start Num: 15
Candidate Starts for Brandonk123_67:
(7, 49735), (11, 49816), (13, 49885), (Start: 15 @49918 has 32 MA's), (16, 49963),

Gene: ChadMasterC_64 Start: 51638, Stop: 51922, Start Num: 15
Candidate Starts for ChadMasterC_64:
(Start: 15 @51638 has 32 MA's), (16, 51683), (22, 51752),

Gene: CherryTomatoes_14 Start: 4328, Stop: 4564, Start Num: 15
Candidate Starts for CherryTomatoes_14:
(Start: 15 @4328 has 32 MA's), (16, 4373), (18, 4406), (23, 4463), (25, 4493),

Gene: Delrey21_84 Start: 58911, Stop: 59192, Start Num: 15
Candidate Starts for Delrey21_84:
(Start: 15 @58911 has 32 MA's), (16, 58956), (17, 58962), (19, 58995), (20, 59001), (22, 59025), (27, 59097),

Gene: DoctorFroggo_84 Start: 58911, Stop: 59192, Start Num: 15
Candidate Starts for DoctorFroggo_84:
(Start: 15 @58911 has 32 MA's), (16, 58956), (17, 58962), (19, 58995), (20, 59001), (22, 59025), (27, 59097),

Gene: Fitzgerald_61 Start: 50359, Stop: 50643, Start Num: 15
Candidate Starts for Fitzgerald_61:
(Start: 15 @50359 has 32 MA's), (16, 50404), (22, 50473), (28, 50563),

Gene: Galadriel_63 Start: 50552, Stop: 50836, Start Num: 15
Candidate Starts for Galadriel_63:
(3, 50273), (13, 50513), (Start: 15 @50552 has 32 MA's), (16, 50597), (22, 50666),

Gene: Geodirt_63 Start: 50703, Stop: 50987, Start Num: 15
Candidate Starts for Geodirt_63:
(2, 50418), (6, 50493), (Start: 15 @50703 has 32 MA's), (16, 50748), (22, 50817),

Gene: Jabberwocky_61 Start: 50593, Stop: 50877, Start Num: 15

Candidate Starts for Jabberwocky_61:
(Start: 15 @50593 has 32 MA's), (16, 50638), (22, 50707), (28, 50797),

Gene: Kamashten_62 Start: 49351, Stop: 49635, Start Num: 15
Candidate Starts for Kamashten_62:
(7, 49168), (11, 49249), (13, 49318), (Start: 15 @49351 has 32 MA's), (16, 49396),

Gene: Keitabear_63 Start: 51257, Stop: 51541, Start Num: 15
Candidate Starts for Keitabear_63:
(2, 50972), (6, 51047), (Start: 15 @51257 has 32 MA's), (16, 51302), (22, 51371),

Gene: Kewpiedoll_63 Start: 50615, Stop: 50899, Start Num: 15
Candidate Starts for Kewpiedoll_63:
(2, 50330), (6, 50405), (Start: 15 @50615 has 32 MA's), (16, 50660), (22, 50729),

Gene: Lennon_64 Start: 51406, Stop: 51690, Start Num: 15
Candidate Starts for Lennon_64:
(2, 51121), (6, 51196), (Start: 15 @51406 has 32 MA's), (16, 51451), (22, 51520),

Gene: McKinley_66 Start: 50477, Stop: 50761, Start Num: 15
Candidate Starts for McKinley_66:
(1, 50120), (4, 50201), (6, 50270), (Start: 15 @50477 has 32 MA's), (16, 50522), (22, 50591),

Gene: MoontowerMania_62 Start: 50638, Stop: 50922, Start Num: 15
Candidate Starts for MoontowerMania_62:
(1, 50278), (4, 50359), (6, 50428), (Start: 15 @50638 has 32 MA's), (16, 50683), (22, 50752),

Gene: Natkenzie_84 Start: 57551, Stop: 57781, Start Num: 17
Candidate Starts for Natkenzie_84:
(Start: 15 @57500 has 32 MA's), (16, 57545), (17, 57551), (19, 57584), (20, 57590), (22, 57614), (26, 57677), (27, 57686),

Gene: Paries_66 Start: 50738, Stop: 51022, Start Num: 15
Candidate Starts for Paries_66:
(3, 50459), (13, 50699), (Start: 15 @50738 has 32 MA's), (16, 50783), (22, 50852),

Gene: Pupper_12 Start: 4107, Stop: 4337, Start Num: 15
Candidate Starts for Pupper_12:
(Start: 15 @4107 has 32 MA's), (16, 4152), (18, 4185), (19, 4191),

Gene: RiverRaider_64 Start: 48088, Stop: 48372, Start Num: 15
Candidate Starts for RiverRaider_64:
(Start: 15 @48088 has 32 MA's), (16, 48133), (22, 48202),

Gene: SCentae_12 Start: 4106, Stop: 4336, Start Num: 15
Candidate Starts for SCentae_12:
(Start: 15 @4106 has 32 MA's), (16, 4151), (18, 4184), (19, 4190),

Gene: Sampson_86 Start: 57651, Stop: 57932, Start Num: 15
Candidate Starts for Sampson_86:
(Start: 15 @57651 has 32 MA's), (16, 57696), (17, 57702), (19, 57735), (20, 57741), (22, 57765), (26, 57828), (27, 57837),

Gene: Scioto_84 Start: 57552, Stop: 57782, Start Num: 17

Candidate Starts for Scioto_84:

(Start: 15 @57501 has 32 MA's), (16, 57546), (17, 57552), (19, 57585), (20, 57591), (22, 57615), (26, 57678), (27, 57687),

Gene: Sedona_63 Start: 51205, Stop: 51489, Start Num: 15

Candidate Starts for Sedona_63:

(Start: 15 @51205 has 32 MA's), (16, 51250), (22, 51319),

Gene: Shivanishola_61 Start: 48244, Stop: 48528, Start Num: 15

Candidate Starts for Shivanishola_61:

(1, 47887), (4, 47968), (6, 48037), (Start: 15 @48244 has 32 MA's), (16, 48289), (22, 48358),

Gene: Sitar_64 Start: 51115, Stop: 51399, Start Num: 15

Candidate Starts for Sitar_64:

(2, 50830), (6, 50905), (Start: 15 @51115 has 32 MA's), (16, 51160), (22, 51229),

Gene: Stultus_60 Start: 49377, Stop: 49661, Start Num: 15

Candidate Starts for Stultus_60:

(2, 49092), (6, 49167), (Start: 15 @49377 has 32 MA's), (16, 49422), (22, 49491),

Gene: Tardus_86 Start: 57993, Stop: 58274, Start Num: 15

Candidate Starts for Tardus_86:

(5, 57741), (8, 57810), (9, 57816), (10, 57819), (14, 57978), (Start: 15 @57993 has 32 MA's), (16, 58038), (17, 58044), (19, 58077), (20, 58083), (22, 58107), (26, 58170), (27, 58179), (31, 58233),

Gene: Thing3_62 Start: 49351, Stop: 49635, Start Num: 15

Candidate Starts for Thing3_62:

(7, 49168), (11, 49249), (13, 49318), (Start: 15 @49351 has 32 MA's), (16, 49396),

Gene: Verity_83 Start: 58773, Stop: 59054, Start Num: 15

Candidate Starts for Verity_83:

(Start: 15 @58773 has 32 MA's), (16, 58818), (17, 58824), (19, 58857), (20, 58863), (22, 58887), (27, 58959),

Gene: Zipp_84 Start: 58654, Stop: 58935, Start Num: 15

Candidate Starts for Zipp_84:

(Start: 15 @58654 has 32 MA's), (16, 58699), (17, 58705), (19, 58738), (20, 58744), (22, 58768), (27, 58840),

Gene: Zitch_86 Start: 56966, Stop: 57247, Start Num: 15

Candidate Starts for Zitch_86:

(Start: 15 @56966 has 32 MA's), (16, 57011), (17, 57017), (19, 57050), (20, 57056), (22, 57080),