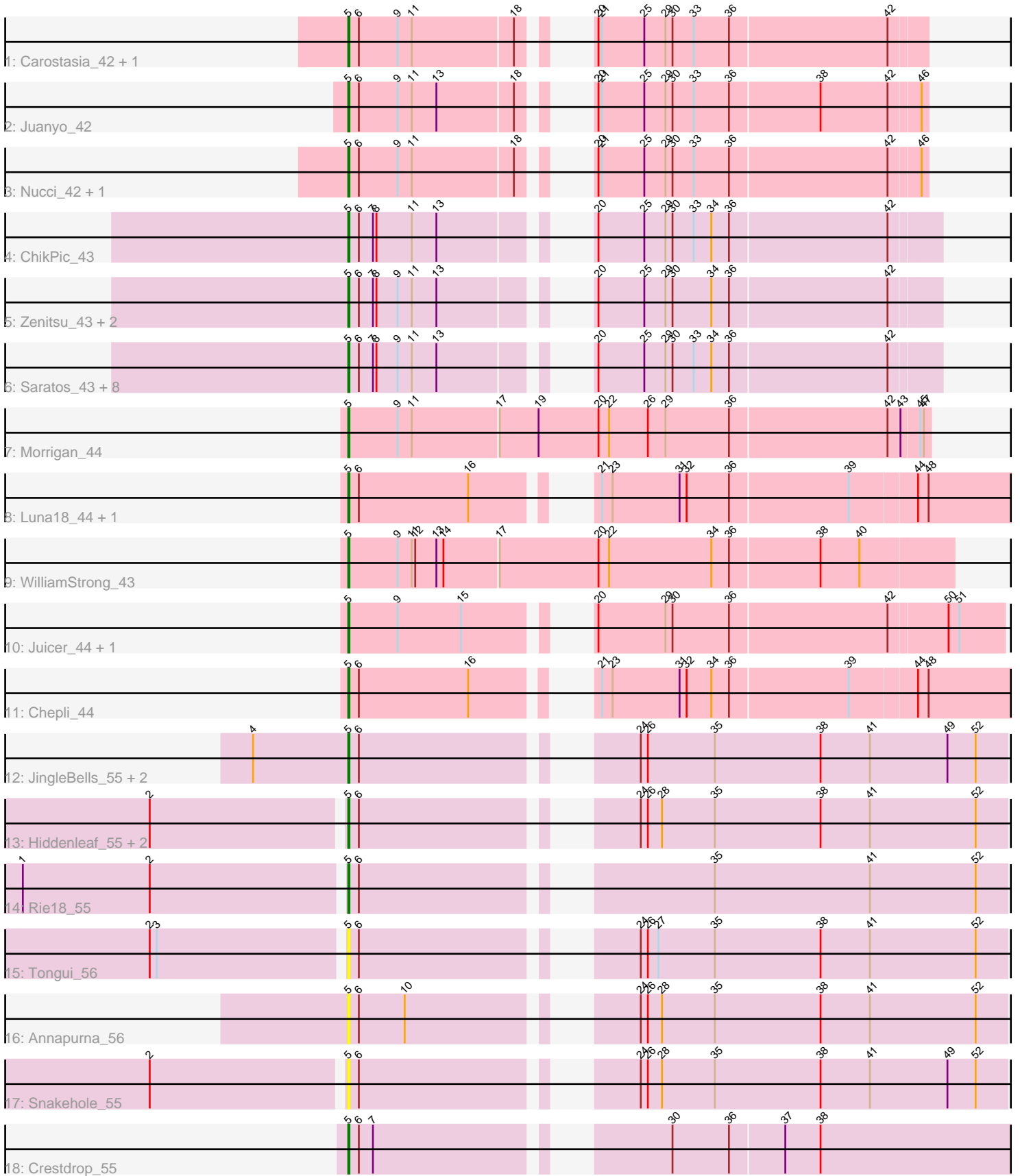


Pham 224744



Note: Tracks are now grouped by subcluster and scaled. Switching in subcluster is indicated by changes in track color. Track scale is now set by default to display the region 30 bp upstream of start 1 to 30 bp downstream of the last possible start. If this default region is judged to be packed too tightly with annotated starts, the track will be further scaled to only show that region of the ORF with annotated starts. This action will be indicated by adding "Zoomed" to the title. For starts, yellow indicates the location of called starts comprised solely of Glimmer/GeneMark auto-annotations, green indicates the location of called starts with at least 1 manual gene annotation.

Pham 224744 Report

This analysis was run 03/28/25 on database version 593.

Pham number 224744 has 36 members, 6 are drafts.

Phages represented in each track:

- Track 1 : Carostasia_42, Quartz_43
- Track 2 : Juanyo_42
- Track 3 : Nucci_42, Mandalorian_42
- Track 4 : ChikPic_43
- Track 5 : Zenitsu_43, Sansa_42, MCubed_43
- Track 6 : Saratos_43, Finny_44, Phanita_42, PSirce_42, Andromedas_43, Glamour_43, Shamu_44, Eleri_43, ColaCorta_43
- Track 7 : Morigan_44
- Track 8 : Luna18_44, KatChan_44
- Track 9 : WilliamStrong_43
- Track 10 : Juicer_44, Jemerald_44
- Track 11 : Chepli_44
- Track 12 : JingleBells_55, DannyDe_55, FreddieHg_55
- Track 13 : Hiddenleaf_55, SilentWarrior_55, Chivey_55
- Track 14 : Rie18_55
- Track 15 : Tongui_56
- Track 16 : Annapurna_56
- Track 17 : Snakehole_55
- Track 18 : Crestdrop_55

Summary of Final Annotations (See graph section above for start numbers):

The start number called the most often in the published annotations is 5, it was called in 30 of the 30 non-draft genes in the pham.

Genes that call this "Most Annotated" start:

- Andromedas_43, Annapurna_56, Carostasia_42, Chepli_44, ChikPic_43, Chivey_55, ColaCorta_43, Crestdrop_55, DannyDe_55, Eleri_43, Finny_44, FreddieHg_55, Glamour_43, Hiddenleaf_55, Jemerald_44, JingleBells_55, Juanyo_42, Juicer_44, KatChan_44, Luna18_44, MCubed_43, Mandalorian_42, Morigan_44, Nucci_42, PSirce_42, Phanita_42, Quartz_43, Rie18_55, Sansa_42, Saratos_43, Shamu_44, SilentWarrior_55, Snakehole_55, Tongui_56, WilliamStrong_43, Zenitsu_43,

Genes that have the "Most Annotated" start but do not call it:

-

Genes that do not have the "Most Annotated" start:

-

Summary by start number:

Start 5:

- Found in 36 of 36 (100.0%) of genes in pham
- Manual Annotations of this start: 30 of 30
- Called 100.0% of time when present
- Phage (with cluster) where this start called: Andromedas_43 (EA2), Annapurna_56 (EF), Carostasia_42 (EA10), Chepli_44 (EA6), ChikPic_43 (EA2), Chivey_55 (EF), ColaCorta_43 (EA2), Crestdrop_55 (EF), DannyDe_55 (EF), Eleri_43 (EA2), Finny_44 (EA2), FreddieHg_55 (EF), Glamour_43 (EA2), Hiddenleaf_55 (EF), Jemerald_44 (EA6), JingleBells_55 (EF), Juanyo_42 (EA10), Juicer_44 (EA6), KatChan_44 (EA6), Luna18_44 (EA6), MCubed_43 (EA2), Mandalorian_42 (EA10), Morrigan_44 (EA6), Nucci_42 (EA10), PSirce_42 (EA2), Phanita_42 (EA2), Quartz_43 (EA10), Rie18_55 (EF), Sansa_42 (EA2), Saratos_43 (EA2), Shamu_44 (EA2), SilentWarrior_55 (EF), Snakehole_55 (EF), Tongui_56 (EF), WilliamStrong_43 (EA6), Zenitsu_43 (EA2),

Summary by clusters:

There are 4 clusters represented in this pham: EA2, EA10, EF, EA6,

Info for manual annotations of cluster EA10:

- Start number 5 was manually annotated 5 times for cluster EA10.

Info for manual annotations of cluster EA2:

- Start number 5 was manually annotated 11 times for cluster EA2.

Info for manual annotations of cluster EA6:

- Start number 5 was manually annotated 7 times for cluster EA6.

Info for manual annotations of cluster EF:

- Start number 5 was manually annotated 7 times for cluster EF.

Gene Information:

Gene: Andromedas_43 Start: 31962, Stop: 31519, Start Num: 5

Candidate Starts for Andromedas_43:

(Start: 5 @31962 has 30 MA's), (6, 31953), (7, 31941), (8, 31938), (9, 31920), (11, 31908), (13, 31887), (20, 31803), (25, 31764), (29, 31746), (30, 31740), (33, 31722), (34, 31707), (36, 31692), (42, 31560),

Gene: Annapurna_56 Start: 39067, Stop: 39576, Start Num: 5

Candidate Starts for Annapurna_56:

(Start: 5 @39067 has 30 MA's), (6, 39076), (10, 39115), (24, 39265), (26, 39271), (28, 39283), (35, 39328), (38, 39418), (41, 39460), (52, 39550),

Gene: Carostasia_42 Start: 31495, Stop: 31064, Start Num: 5

Candidate Starts for Carostasia_42:

(Start: 5 @31495 has 30 MA's), (6, 31486), (9, 31453), (11, 31441), (18, 31357), (20, 31336), (21, 31333), (25, 31297), (29, 31279), (30, 31273), (33, 31255), (36, 31225), (42, 31093),

Gene: Chepli_44 Start: 31401, Stop: 30856, Start Num: 5

Candidate Starts for Chepli_44:

(Start: 5 @31401 has 30 MA's), (6, 31392), (16, 31299), (21, 31236), (23, 31227), (31, 31170), (32, 31164), (34, 31143), (36, 31128), (39, 31029), (44, 30975), (48, 30966),

Gene: ChikPic_43 Start: 31816, Stop: 31373, Start Num: 5

Candidate Starts for ChikPic_43:

(Start: 5 @31816 has 30 MA's), (6, 31807), (7, 31795), (8, 31792), (11, 31762), (13, 31741), (20, 31657), (25, 31618), (29, 31600), (30, 31594), (33, 31576), (34, 31561), (36, 31546), (42, 31414),

Gene: Chivey_55 Start: 39021, Stop: 39530, Start Num: 5

Candidate Starts for Chivey_55:

(2, 38862), (Start: 5 @39021 has 30 MA's), (6, 39030), (24, 39219), (26, 39225), (28, 39237), (35, 39282), (38, 39372), (41, 39414), (52, 39504),

Gene: ColaCorta_43 Start: 31962, Stop: 31519, Start Num: 5

Candidate Starts for ColaCorta_43:

(Start: 5 @31962 has 30 MA's), (6, 31953), (7, 31941), (8, 31938), (9, 31920), (11, 31908), (13, 31887), (20, 31803), (25, 31764), (29, 31746), (30, 31740), (33, 31722), (34, 31707), (36, 31692), (42, 31560),

Gene: Crestdrop_55 Start: 39188, Stop: 39706, Start Num: 5

Candidate Starts for Crestdrop_55:

(Start: 5 @39188 has 30 MA's), (6, 39197), (7, 39209), (30, 39413), (36, 39461), (37, 39506), (38, 39536),

Gene: DannyDe_55 Start: 39022, Stop: 39531, Start Num: 5

Candidate Starts for DannyDe_55:

(4, 38941), (Start: 5 @39022 has 30 MA's), (6, 39031), (24, 39220), (26, 39226), (35, 39283), (38, 39373), (41, 39415), (49, 39481), (52, 39505),

Gene: Eleri_43 Start: 31806, Stop: 31363, Start Num: 5

Candidate Starts for Eleri_43:

(Start: 5 @31806 has 30 MA's), (6, 31797), (7, 31785), (8, 31782), (9, 31764), (11, 31752), (13, 31731), (20, 31647), (25, 31608), (29, 31590), (30, 31584), (33, 31566), (34, 31551), (36, 31536), (42, 31404),

Gene: Finny_44 Start: 31800, Stop: 31357, Start Num: 5

Candidate Starts for Finny_44:

(Start: 5 @31800 has 30 MA's), (6, 31791), (7, 31779), (8, 31776), (9, 31758), (11, 31746), (13, 31725), (20, 31641), (25, 31602), (29, 31584), (30, 31578), (33, 31560), (34, 31545), (36, 31530), (42, 31398),

Gene: FreddieHg_55 Start: 39038, Stop: 39547, Start Num: 5

Candidate Starts for FreddieHg_55:

(4, 38957), (Start: 5 @39038 has 30 MA's), (6, 39047), (24, 39236), (26, 39242), (35, 39299), (38, 39389), (41, 39431), (49, 39497), (52, 39521),

Gene: Glamour_43 Start: 31954, Stop: 31511, Start Num: 5

Candidate Starts for Glamour_43:

(Start: 5 @31954 has 30 MA's), (6, 31945), (7, 31933), (8, 31930), (9, 31912), (11, 31900), (13, 31879), (20, 31795), (25, 31756), (29, 31738), (30, 31732), (33, 31714), (34, 31699), (36, 31684), (42, 31552),

Gene: Hiddenleaf_55 Start: 39021, Stop: 39530, Start Num: 5

Candidate Starts for Hiddenleaf_55:

(2, 38862), (Start: 5 @39021 has 30 MA's), (6, 39030), (24, 39219), (26, 39225), (28, 39237), (35, 39282), (38, 39372), (41, 39414), (52, 39504),

Gene: Jemerald_44 Start: 32468, Stop: 31968, Start Num: 5

Candidate Starts for Jemerald_44:

(Start: 5 @32468 has 30 MA's), (9, 32426), (15, 32372), (20, 32306), (29, 32249), (30, 32243), (36, 32195), (42, 32063), (50, 32015), (51, 32006),

Gene: JingleBells_55 Start: 39130, Stop: 39639, Start Num: 5

Candidate Starts for JingleBells_55:

(4, 39049), (Start: 5 @39130 has 30 MA's), (6, 39139), (24, 39328), (26, 39334), (35, 39391), (38, 39481), (41, 39523), (49, 39589), (52, 39613),

Gene: Juanyo_42 Start: 31426, Stop: 30995, Start Num: 5

Candidate Starts for Juanyo_42:

(Start: 5 @31426 has 30 MA's), (6, 31417), (9, 31384), (11, 31372), (13, 31351), (18, 31288), (20, 31267), (21, 31264), (25, 31228), (29, 31210), (30, 31204), (33, 31186), (36, 31156), (38, 31081), (42, 31024), (46, 31000),

Gene: Juicer_44 Start: 32468, Stop: 31968, Start Num: 5

Candidate Starts for Juicer_44:

(Start: 5 @32468 has 30 MA's), (9, 32426), (15, 32372), (20, 32306), (29, 32249), (30, 32243), (36, 32195), (42, 32063), (50, 32015), (51, 32006),

Gene: KatChan_44 Start: 31413, Stop: 30868, Start Num: 5

Candidate Starts for KatChan_44:

(Start: 5 @31413 has 30 MA's), (6, 31404), (16, 31311), (21, 31248), (23, 31239), (31, 31182), (32, 31176), (36, 31140), (39, 31041), (44, 30987), (48, 30978),

Gene: Luna18_44 Start: 31413, Stop: 30868, Start Num: 5

Candidate Starts for Luna18_44:

(Start: 5 @31413 has 30 MA's), (6, 31404), (16, 31311), (21, 31248), (23, 31239), (31, 31182), (32, 31176), (36, 31140), (39, 31041), (44, 30987), (48, 30978),

Gene: MCubed_43 Start: 31831, Stop: 31388, Start Num: 5

Candidate Starts for MCubed_43:

(Start: 5 @31831 has 30 MA's), (6, 31822), (7, 31810), (8, 31807), (9, 31789), (11, 31777), (13, 31756), (20, 31672), (25, 31633), (29, 31615), (30, 31609), (34, 31576), (36, 31561), (42, 31429),

Gene: Mandalorian_42 Start: 31505, Stop: 31074, Start Num: 5

Candidate Starts for Mandalorian_42:

(Start: 5 @31505 has 30 MA's), (6, 31496), (9, 31463), (11, 31451), (18, 31367), (20, 31346), (21, 31343), (25, 31307), (29, 31289), (30, 31283), (33, 31265), (36, 31235), (42, 31103), (46, 31079),

Gene: Morrigan_44 Start: 31356, Stop: 30871, Start Num: 5

Candidate Starts for Morrigan_44:

(Start: 5 @31356 has 30 MA's), (9, 31314), (11, 31302), (17, 31230), (19, 31197), (20, 31146), (22, 31137), (26, 31104), (29, 31089), (36, 31035), (42, 30903), (43, 30894), (45, 30879), (47, 30876),

Gene: Nucci_42 Start: 31488, Stop: 31057, Start Num: 5

Candidate Starts for Nucci_42:

(Start: 5 @31488 has 30 MA's), (6, 31479), (9, 31446), (11, 31434), (18, 31350), (20, 31329), (21, 31326), (25, 31290), (29, 31272), (30, 31266), (33, 31248), (36, 31218), (42, 31086), (46, 31062),

Gene: PSirce_42 Start: 31961, Stop: 31518, Start Num: 5

Candidate Starts for PSirce_42:

(Start: 5 @31961 has 30 MA's), (6, 31952), (7, 31940), (8, 31937), (9, 31919), (11, 31907), (13, 31886), (20, 31802), (25, 31763), (29, 31745), (30, 31739), (33, 31721), (34, 31706), (36, 31691), (42, 31559),

Gene: Phanita_42 Start: 31743, Stop: 31300, Start Num: 5

Candidate Starts for Phanita_42:

(Start: 5 @31743 has 30 MA's), (6, 31734), (7, 31722), (8, 31719), (9, 31701), (11, 31689), (13, 31668), (20, 31584), (25, 31545), (29, 31527), (30, 31521), (33, 31503), (34, 31488), (36, 31473), (42, 31341),

Gene: Quartz_43 Start: 31618, Stop: 31187, Start Num: 5

Candidate Starts for Quartz_43:

(Start: 5 @31618 has 30 MA's), (6, 31609), (9, 31576), (11, 31564), (18, 31480), (20, 31459), (21, 31456), (25, 31420), (29, 31402), (30, 31396), (33, 31378), (36, 31348), (42, 31216),

Gene: Rie18_55 Start: 39472, Stop: 39981, Start Num: 5

Candidate Starts for Rie18_55:

(1, 39205), (2, 39313), (Start: 5 @39472 has 30 MA's), (6, 39481), (35, 39733), (41, 39865), (52, 39955),

Gene: Sansa_42 Start: 32036, Stop: 31593, Start Num: 5

Candidate Starts for Sansa_42:

(Start: 5 @32036 has 30 MA's), (6, 32027), (7, 32015), (8, 32012), (9, 31994), (11, 31982), (13, 31961), (20, 31877), (25, 31838), (29, 31820), (30, 31814), (34, 31781), (36, 31766), (42, 31634),

Gene: Saratos_43 Start: 31791, Stop: 31348, Start Num: 5

Candidate Starts for Saratos_43:

(Start: 5 @31791 has 30 MA's), (6, 31782), (7, 31770), (8, 31767), (9, 31749), (11, 31737), (13, 31716), (20, 31632), (25, 31593), (29, 31575), (30, 31569), (33, 31551), (34, 31536), (36, 31521), (42, 31389),

Gene: Shamu_44 Start: 31970, Stop: 31527, Start Num: 5

Candidate Starts for Shamu_44:

(Start: 5 @31970 has 30 MA's), (6, 31961), (7, 31949), (8, 31946), (9, 31928), (11, 31916), (13, 31895), (20, 31811), (25, 31772), (29, 31754), (30, 31748), (33, 31730), (34, 31715), (36, 31700), (42, 31568),

Gene: SilentWarrior_55 Start: 38991, Stop: 39500, Start Num: 5

Candidate Starts for SilentWarrior_55:

(2, 38832), (Start: 5 @38991 has 30 MA's), (6, 39000), (24, 39189), (26, 39195), (28, 39207), (35, 39252), (38, 39342), (41, 39384), (52, 39474),

Gene: Snakehole_55 Start: 38999, Stop: 39508, Start Num: 5

Candidate Starts for Snakehole_55:

(2, 38840), (Start: 5 @38999 has 30 MA's), (6, 39008), (24, 39197), (26, 39203), (28, 39215), (35, 39260), (38, 39350), (41, 39392), (49, 39458), (52, 39482),

Gene: Tongui_56 Start: 39387, Stop: 39896, Start Num: 5

Candidate Starts for Tongui_56:

(2, 39228), (3, 39234), (Start: 5 @39387 has 30 MA's), (6, 39396), (24, 39585), (26, 39591), (27, 39600), (35, 39648), (38, 39738), (41, 39780), (52, 39870),

Gene: WilliamStrong_43 Start: 31938, Stop: 31432, Start Num: 5

Candidate Starts for WilliamStrong_43:

(Start: 5 @31938 has 30 MA's), (9, 31896), (11, 31884), (12, 31881), (13, 31863), (14, 31857), (17, 31812), (20, 31728), (22, 31719), (34, 31632), (36, 31617), (38, 31542), (40, 31509),

Gene: Zenitsu_43 Start: 31836, Stop: 31393, Start Num: 5

Candidate Starts for Zenitsu_43:

(Start: 5 @31836 has 30 MA's), (6, 31827), (7, 31815), (8, 31812), (9, 31794), (11, 31782), (13, 31761), (20, 31677), (25, 31638), (29, 31620), (30, 31614), (34, 31581), (36, 31566), (42, 31434),