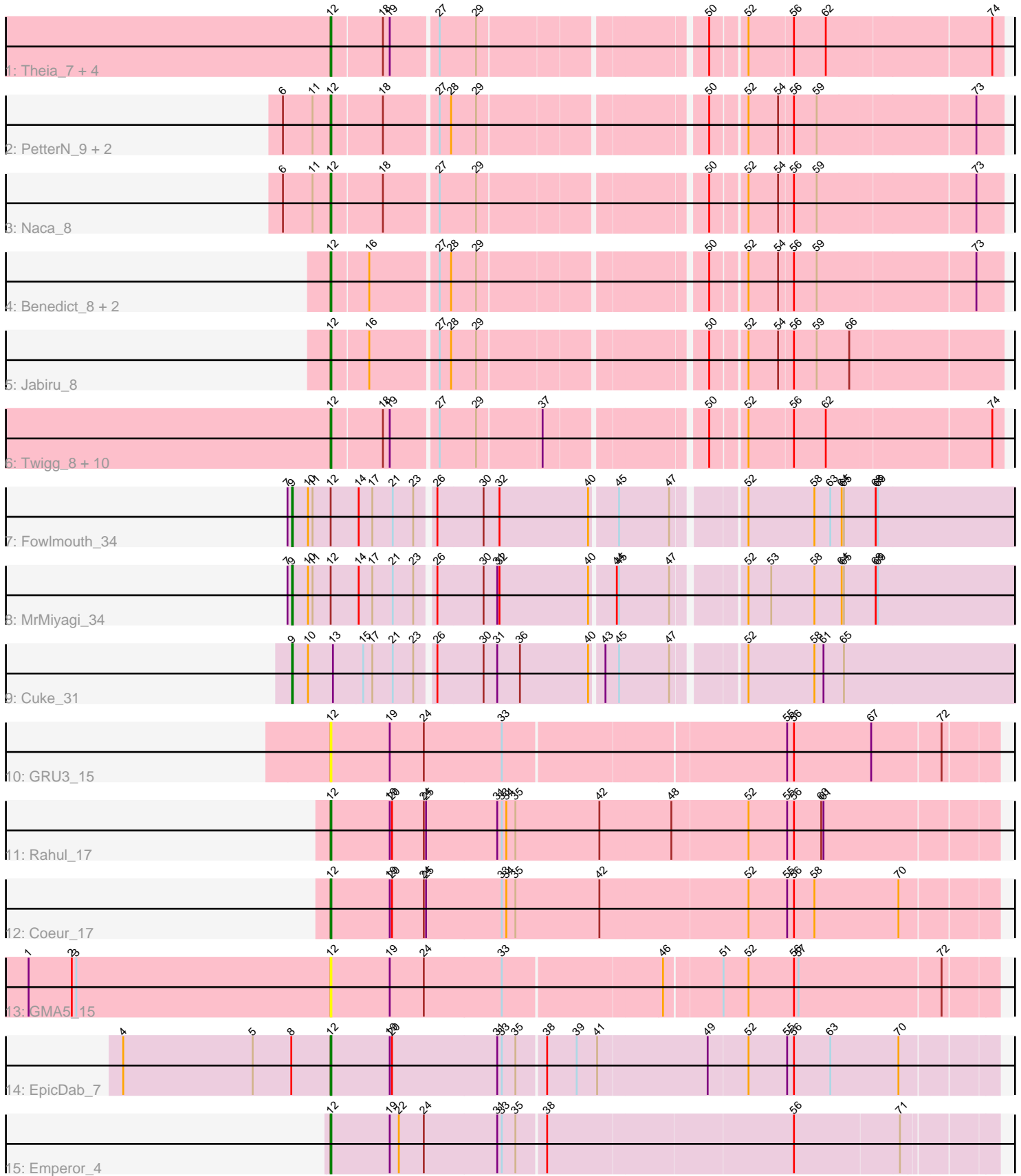


Pham 224772



Note: Tracks are now grouped by subcluster and scaled. Switching in subcluster is indicated by changes in track color. Track scale is now set by default to display the region 30 bp upstream of start 1 to 30 bp downstream of the last possible start. If this default region is judged to be packed too tightly with annotated starts, the track will be further scaled to only show that region of the ORF with annotated starts. This action will be indicated by adding "Zoomed" to the title. For starts, yellow indicates the location of called starts comprised solely of Glimmer/GeneMark auto-annotations, green indicates the location of called starts with at least 1 manual gene annotation.

Pham 224772 Report

This analysis was run 03/28/25 on database version 593.

Pham number 224772 has 33 members, 4 are drafts.

Phages represented in each track:

- Track 1 : Theia_7, Midas2_8, MarysWell_7, Coog_8, Dublin_7
- Track 2 : PetterN_9, Chadwick_9, Scorpia_9
- Track 3 : Naca_8
- Track 4 : Benedict_8, Airmid_8, EITiger69_8
- Track 5 : Jabiru_8
- Track 6 : Twigg_8, Milcery_8, Micasa_8, Tarynearal_7, Cuco_8, LittleCherry_8, HuhtaEnerson15_8, George_7, Swirley_8, Prinashe11_9, Bonamassa_8
- Track 7 : Fowlmouth_34
- Track 8 : MrMiyagi_34
- Track 9 : Cuke_31
- Track 10 : GRU3_15
- Track 11 : Rahul_17
- Track 12 : Coeur_17
- Track 13 : GMA5_15
- Track 14 : EpicDab_7
- Track 15 : Emperor_4

Summary of Final Annotations (See graph section above for start numbers):

The start number called the most often in the published annotations is 12, it was called in 26 of the 29 non-draft genes in the pham.

Genes that call this "Most Annotated" start:

- Airmid_8, Benedict_8, Bonamassa_8, Chadwick_9, Coeur_17, Coog_8, Cuco_8, Dublin_7, EITiger69_8, Emperor_4, EpicDab_7, GMA5_15, GRU3_15, George_7, HuhtaEnerson15_8, Jabiru_8, LittleCherry_8, MarysWell_7, Micasa_8, Midas2_8, Milcery_8, Naca_8, PetterN_9, Prinashe11_9, Rahul_17, Scorpia_9, Swirley_8, Tarynearal_7, Theia_7, Twigg_8,

Genes that have the "Most Annotated" start but do not call it:

- Fowlmouth_34, MrMiyagi_34,

Genes that do not have the "Most Annotated" start:

- Cuke_31,

Summary by start number:

Start 9:

- Found in 3 of 33 (9.1%) of genes in pham
- Manual Annotations of this start: 3 of 29
- Called 100.0% of time when present
- Phage (with cluster) where this start called: Cuke_31 (AC), Fowlmouth_34 (AC), MrMiyagi_34 (AC),

Start 12:

- Found in 32 of 33 (97.0%) of genes in pham
- Manual Annotations of this start: 26 of 29
- Called 93.8% of time when present
- Phage (with cluster) where this start called: Airmid_8 (A5), Benedict_8 (A5), Bonamassa_8 (A5), Chadwick_9 (A5), Coeur_17 (CW2), Coog_8 (A5), Cuco_8 (A5), Dublin_7 (A5), ElTiger69_8 (A5), Emperor_4 (DM), EpicDab_7 (DM), GMA5_15 (CW2), GRU3_15 (CW2), George_7 (A5), HuhtaEnerson15_8 (A5), Jabiru_8 (A5), LittleCherry_8 (A5), MarysWell_7 (A5), Micasa_8 (A5), Midas2_8 (A5), Milcery_8 (A5), Naca_8 (A5), PetterN_9 (A5), Prinash11_9 (A5), Rahul_17 (CW2), Scorpia_9 (A5), Swirley_8 (A5), Tarynearal_7 (A5), Theia_7 (A5), Twigg_8 (A5),

Summary by clusters:

There are 4 clusters represented in this pham: AC, CW2, A5, DM,

Info for manual annotations of cluster A5:

- Start number 12 was manually annotated 22 times for cluster A5.

Info for manual annotations of cluster AC:

- Start number 9 was manually annotated 3 times for cluster AC.

Info for manual annotations of cluster CW2:

- Start number 12 was manually annotated 2 times for cluster CW2.

Info for manual annotations of cluster DM:

- Start number 12 was manually annotated 2 times for cluster DM.

Gene Information:

Gene: Airmid_8 Start: 5180, Stop: 5989, Start Num: 12

Candidate Starts for Airmid_8:

(Start: 12 @5180 has 26 MA's), (16, 5225), (27, 5309), (28, 5324), (29, 5357), (50, 5627), (52, 5669), (54, 5708), (56, 5726), (59, 5756), (73, 5954),

Gene: Benedict_8 Start: 5182, Stop: 5991, Start Num: 12

Candidate Starts for Benedict_8:

(Start: 12 @5182 has 26 MA's), (16, 5227), (27, 5311), (28, 5326), (29, 5359), (50, 5629), (52, 5671), (54, 5710), (56, 5728), (59, 5758), (73, 5956),

Gene: Bonamassa_8 Start: 5355, Stop: 6164, Start Num: 12

Candidate Starts for Bonamassa_8:

(Start: 12 @5355 has 26 MA's), (18, 5418), (19, 5427), (27, 5484), (29, 5532), (37, 5613), (50, 5802), (52, 5844), (56, 5901), (62, 5943), (74, 6150),

Gene: Chadwick_9 Start: 5150, Stop: 5959, Start Num: 12

Candidate Starts for Chadwick_9:

(6, 5087), (11, 5126), (Start: 12 @5150 has 26 MA's), (18, 5213), (27, 5279), (28, 5294), (29, 5327), (50, 5597), (52, 5639), (54, 5678), (56, 5696), (59, 5726), (73, 5924),

Gene: Coeur_17 Start: 11931, Stop: 12794, Start Num: 12

Candidate Starts for Coeur_17:

(Start: 12 @11931 has 26 MA's), (19, 12009), (20, 12012), (24, 12054), (25, 12057), (33, 12156), (34, 12162), (35, 12174), (42, 12285), (52, 12477), (55, 12528), (56, 12537), (58, 12564), (70, 12675),

Gene: Coog_8 Start: 5323, Stop: 6132, Start Num: 12

Candidate Starts for Coog_8:

(Start: 12 @5323 has 26 MA's), (18, 5386), (19, 5395), (27, 5452), (29, 5500), (50, 5770), (52, 5812), (56, 5869), (62, 5911), (74, 6118),

Gene: Cuco_8 Start: 5354, Stop: 6163, Start Num: 12

Candidate Starts for Cuco_8:

(Start: 12 @5354 has 26 MA's), (18, 5417), (19, 5426), (27, 5483), (29, 5531), (37, 5612), (50, 5801), (52, 5843), (56, 5900), (62, 5942), (74, 6149),

Gene: Cuke_31 Start: 27339, Stop: 28265, Start Num: 9

Candidate Starts for Cuke_31:

(Start: 9 @27339 has 3 MA's), (10, 27360), (13, 27393), (15, 27432), (17, 27444), (21, 27471), (23, 27498), (26, 27519), (30, 27579), (31, 27597), (36, 27627), (40, 27717), (43, 27732), (45, 27750), (47, 27816), (52, 27897), (58, 27984), (61, 27996), (65, 28023),

Gene: Dublin_7 Start: 5322, Stop: 6131, Start Num: 12

Candidate Starts for Dublin_7:

(Start: 12 @5322 has 26 MA's), (18, 5385), (19, 5394), (27, 5451), (29, 5499), (50, 5769), (52, 5811), (56, 5868), (62, 5910), (74, 6117),

Gene: EITiger69_8 Start: 5180, Stop: 5989, Start Num: 12

Candidate Starts for EITiger69_8:

(Start: 12 @5180 has 26 MA's), (16, 5225), (27, 5309), (28, 5324), (29, 5357), (50, 5627), (52, 5669), (54, 5708), (56, 5726), (59, 5756), (73, 5954),

Gene: Emperor_4 Start: 2151, Stop: 2993, Start Num: 12

Candidate Starts for Emperor_4:

(Start: 12 @2151 has 26 MA's), (19, 2229), (22, 2241), (24, 2274), (31, 2370), (33, 2376), (35, 2394), (38, 2430), (56, 2745), (71, 2880),

Gene: EpicDab_7 Start: 4348, Stop: 5202, Start Num: 12

Candidate Starts for EpicDab_7:

(4, 4075), (5, 4246), (8, 4297), (Start: 12 @4348 has 26 MA's), (19, 4426), (20, 4429), (31, 4567), (33, 4573), (35, 4591), (38, 4627), (39, 4666), (41, 4693), (49, 4834), (52, 4885), (55, 4936), (56, 4945), (63, 4993), (70, 5083),

Gene: Fowlmouth_34 Start: 30830, Stop: 31756, Start Num: 9

Candidate Starts for Fowlmouth_34:

(7, 30824), (Start: 9 @30830 has 3 MA's), (10, 30851), (11, 30857), (Start: 12 @30881 has 26 MA's), (14, 30917), (17, 30935), (21, 30962), (23, 30989), (26, 31010), (30, 31070), (32, 31091), (40, 31208), (45, 31241), (47, 31307), (52, 31388), (58, 31475), (63, 31496), (64, 31511), (65, 31514), (68, 31556), (69, 31559),

Gene: GMA5_15 Start: 12085, Stop: 12933, Start Num: 12

Candidate Starts for GMA5_15:

(1, 11686), (2, 11743), (3, 11749), (Start: 12 @12085 has 26 MA's), (19, 12163), (24, 12208), (33, 12310), (46, 12511), (51, 12583), (52, 12616), (56, 12676), (57, 12682), (72, 12865),

Gene: GRU3_15 Start: 12090, Stop: 12938, Start Num: 12

Candidate Starts for GRU3_15:

(Start: 12 @12090 has 26 MA's), (19, 12168), (24, 12213), (33, 12315), (55, 12672), (56, 12681), (67, 12783), (72, 12870),

Gene: George_7 Start: 5355, Stop: 6164, Start Num: 12

Candidate Starts for George_7:

(Start: 12 @5355 has 26 MA's), (18, 5418), (19, 5427), (27, 5484), (29, 5532), (37, 5613), (50, 5802), (52, 5844), (56, 5901), (62, 5943), (74, 6150),

Gene: HuhtaEnerson15_8 Start: 5355, Stop: 6164, Start Num: 12

Candidate Starts for HuhtaEnerson15_8:

(Start: 12 @5355 has 26 MA's), (18, 5418), (19, 5427), (27, 5484), (29, 5532), (37, 5613), (50, 5802), (52, 5844), (56, 5901), (62, 5943), (74, 6150),

Gene: Jabiru_8 Start: 5180, Stop: 5989, Start Num: 12

Candidate Starts for Jabiru_8:

(Start: 12 @5180 has 26 MA's), (16, 5225), (27, 5309), (28, 5324), (29, 5357), (50, 5627), (52, 5669), (54, 5708), (56, 5726), (59, 5756), (66, 5798),

Gene: LittleCherry_8 Start: 5356, Stop: 6165, Start Num: 12

Candidate Starts for LittleCherry_8:

(Start: 12 @5356 has 26 MA's), (18, 5419), (19, 5428), (27, 5485), (29, 5533), (37, 5614), (50, 5803), (52, 5845), (56, 5902), (62, 5944), (74, 6151),

Gene: MarysWell_7 Start: 5323, Stop: 6132, Start Num: 12

Candidate Starts for MarysWell_7:

(Start: 12 @5323 has 26 MA's), (18, 5386), (19, 5395), (27, 5452), (29, 5500), (50, 5770), (52, 5812), (56, 5869), (62, 5911), (74, 6118),

Gene: Micasa_8 Start: 5324, Stop: 6133, Start Num: 12

Candidate Starts for Micasa_8:

(Start: 12 @5324 has 26 MA's), (18, 5387), (19, 5396), (27, 5453), (29, 5501), (37, 5582), (50, 5771), (52, 5813), (56, 5870), (62, 5912), (74, 6119),

Gene: Midas2_8 Start: 5323, Stop: 6132, Start Num: 12

Candidate Starts for Midas2_8:

(Start: 12 @5323 has 26 MA's), (18, 5386), (19, 5395), (27, 5452), (29, 5500), (50, 5770), (52, 5812), (56, 5869), (62, 5911), (74, 6118),

Gene: Milcery_8 Start: 5360, Stop: 6169, Start Num: 12

Candidate Starts for Milcery_8:

(Start: 12 @5360 has 26 MA's), (18, 5423), (19, 5432), (27, 5489), (29, 5537), (37, 5618), (50, 5807), (52, 5849), (56, 5906), (62, 5948), (74, 6155),

Gene: MrMiyagi_34 Start: 30841, Stop: 31767, Start Num: 9

Candidate Starts for MrMiyagi_34:

(7, 30835), (Start: 9 @30841 has 3 MA's), (10, 30862), (11, 30868), (Start: 12 @30892 has 26 MA's), (14, 30928), (17, 30946), (21, 30973), (23, 31000), (26, 31021), (30, 31081), (31, 31099), (32, 31102), (40, 31219), (44, 31249), (45, 31252), (47, 31318), (52, 31399), (53, 31429), (58, 31486), (64, 31522), (65, 31525), (68, 31567), (69, 31570),

Gene: Naca_8 Start: 5264, Stop: 6073, Start Num: 12

Candidate Starts for Naca_8:

(6, 5201), (11, 5240), (Start: 12 @5264 has 26 MA's), (18, 5327), (27, 5393), (29, 5441), (50, 5711), (52, 5753), (54, 5792), (56, 5810), (59, 5840), (73, 6038),

Gene: PetterN_9 Start: 5151, Stop: 5960, Start Num: 12

Candidate Starts for PetterN_9:

(6, 5088), (11, 5127), (Start: 12 @5151 has 26 MA's), (18, 5214), (27, 5280), (28, 5295), (29, 5328), (50, 5598), (52, 5640), (54, 5679), (56, 5697), (59, 5727), (73, 5925),

Gene: Prin Ashe11_9 Start: 5323, Stop: 6132, Start Num: 12

Candidate Starts for Prin Ashe11_9:

(Start: 12 @5323 has 26 MA's), (18, 5386), (19, 5395), (27, 5452), (29, 5500), (37, 5581), (50, 5770), (52, 5812), (56, 5869), (62, 5911), (74, 6118),

Gene: Rahul_17 Start: 11952, Stop: 12815, Start Num: 12

Candidate Starts for Rahul_17:

(Start: 12 @11952 has 26 MA's), (19, 12030), (20, 12033), (24, 12075), (25, 12078), (31, 12171), (33, 12177), (34, 12183), (35, 12195), (42, 12306), (48, 12399), (52, 12498), (55, 12549), (56, 12558), (60, 12594), (61, 12597),

Gene: Scorpio_9 Start: 5152, Stop: 5961, Start Num: 12

Candidate Starts for Scorpio_9:

(6, 5089), (11, 5128), (Start: 12 @5152 has 26 MA's), (18, 5215), (27, 5281), (28, 5296), (29, 5329), (50, 5599), (52, 5641), (54, 5680), (56, 5698), (59, 5728), (73, 5926),

Gene: Swirley_8 Start: 5325, Stop: 6134, Start Num: 12

Candidate Starts for Swirley_8:

(Start: 12 @5325 has 26 MA's), (18, 5388), (19, 5397), (27, 5454), (29, 5502), (37, 5583), (50, 5772), (52, 5814), (56, 5871), (62, 5913), (74, 6120),

Gene: Tarynearal_7 Start: 5352, Stop: 6161, Start Num: 12

Candidate Starts for Tarynearal_7:

(Start: 12 @5352 has 26 MA's), (18, 5415), (19, 5424), (27, 5481), (29, 5529), (37, 5610), (50, 5799), (52, 5841), (56, 5898), (62, 5940), (74, 6147),

Gene: Theia_7 Start: 5291, Stop: 6100, Start Num: 12

Candidate Starts for Theia_7:

(Start: 12 @5291 has 26 MA's), (18, 5354), (19, 5363), (27, 5420), (29, 5468), (50, 5738), (52, 5780), (56, 5837), (62, 5879), (74, 6086),

Gene: Twigg_8 Start: 5324, Stop: 6133, Start Num: 12

Candidate Starts for Twigg_8:

(Start: 12 @5324 has 26 MA's), (18, 5387), (19, 5396), (27, 5453), (29, 5501), (37, 5582), (50, 5771), (52, 5813), (56, 5870), (62, 5912), (74, 6119),