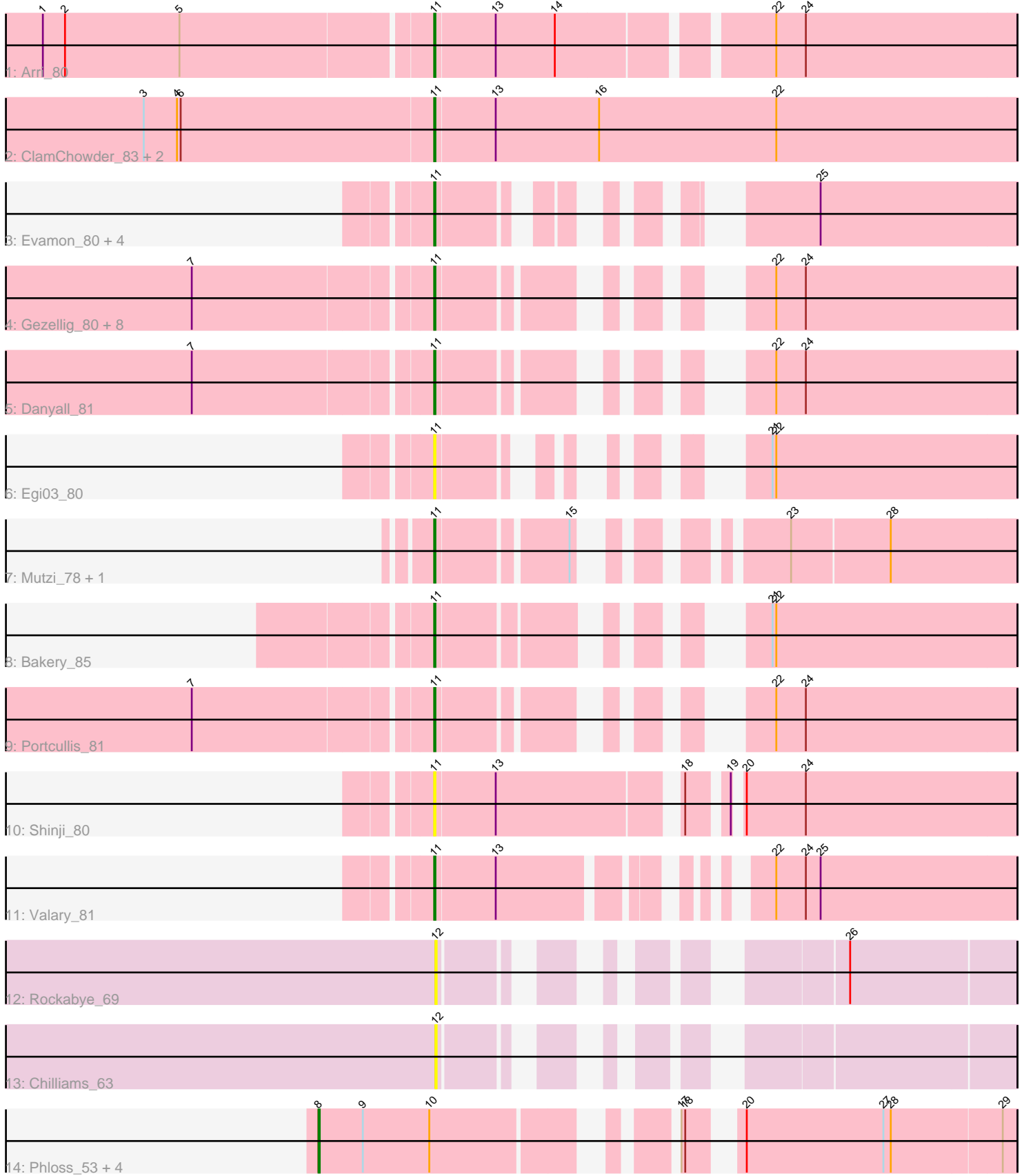


Pham 224776



Note: Tracks are now grouped by subcluster and scaled. Switching in subcluster is indicated by changes in track color. Track scale is now set by default to display the region 30 bp upstream of start 1 to 30 bp downstream of the last possible start. If this default region is judged to be packed too tightly with annotated starts, the track will be further scaled to only show that region of the ORF with annotated starts. This action will be indicated by adding "Zoomed" to the title. For starts, yellow indicates the location of called starts comprised solely of Glimmer/GeneMark auto-annotations, green indicates the location of called starts with at least 1 manual gene annotation.

## Pham 224776 Report

This analysis was run 03/28/25 on database version 593.

Pham number 224776 has 33 members, 7 are drafts.

Phages represented in each track:

- Track 1 : Arri\_80
- Track 2 : ClamChowder\_83, Barb\_83, Fugax\_84
- Track 3 : Evamon\_80, SmokingBunny\_81, Salvador\_80, Twister6\_81, Togo\_80
- Track 4 : Gezellig\_80, KimmyK\_80, Halo3\_78, CherryCola\_81, PullumCavea\_79, Phlop\_78, RogerDodger\_84, CoveyB\_81, Wizard\_77
- Track 5 : Danyall\_81
- Track 6 : Egi03\_80
- Track 7 : Mutzi\_78, YungMoney\_79
- Track 8 : Bakery\_85
- Track 9 : Portcullis\_81
- Track 10 : Shinji\_80
- Track 11 : Valary\_81
- Track 12 : Rockabye\_69
- Track 13 : Chilliams\_63
- Track 14 : Phloss\_53, Carcharodon\_55, Schnauzer\_56, Parmesanjohn\_55, Smurph\_55

### ***Summary of Final Annotations (See graph section above for start numbers):***

The start number called the most often in the published annotations is 11, it was called in 21 of the 26 non-draft genes in the pham.

Genes that call this "Most Annotated" start:

- Arri\_80, Bakery\_85, Barb\_83, CherryCola\_81, ClamChowder\_83, CoveyB\_81, Danyall\_81, Egi03\_80, Evamon\_80, Fugax\_84, Gezellig\_80, Halo3\_78, KimmyK\_80, Mutzi\_78, Phlop\_78, Portcullis\_81, PullumCavea\_79, RogerDodger\_84, Salvador\_80, Shinji\_80, SmokingBunny\_81, Togo\_80, Twister6\_81, Valary\_81, Wizard\_77, YungMoney\_79,

Genes that have the "Most Annotated" start but do not call it:

- 

Genes that do not have the "Most Annotated" start:

- Carcharodon\_55, Chilliams\_63, Parmesanjohn\_55, Phloss\_53, Rockabye\_69, Schnauzer\_56, Smurph\_55,

### Summary by start number:

#### Start 8:

- Found in 5 of 33 ( 15.2% ) of genes in pham
- Manual Annotations of this start: 5 of 26
- Called 100.0% of time when present
- Phage (with cluster) where this start called: Carcharodon\_55 (N), Parmesanjohn\_55 (N), Phloss\_53 (N), Schnauzer\_56 (N), Smurph\_55 (N),

#### Start 11:

- Found in 26 of 33 ( 78.8% ) of genes in pham
- Manual Annotations of this start: 21 of 26
- Called 100.0% of time when present
- Phage (with cluster) where this start called: Arri\_80 (DC1), Bakery\_85 (DC1), Barb\_83 (DC1), CherryCola\_81 (DC1), ClamChowder\_83 (DC1), CoveyB\_81 (DC1), Danyall\_81 (DC1), Egi03\_80 (DC1), Evamon\_80 (DC1), Fugax\_84 (DC1), Gezellig\_80 (DC1), Halo3\_78 (DC1), KimmyK\_80 (DC1), Mutzi\_78 (DC1), Phlop\_78 (DC1), Portcullis\_81 (DC1), PullumCavea\_79 (DC1), RogerDodger\_84 (DC1), Salvador\_80 (DC1), Shinji\_80 (DC1), SmokingBunny\_81 (DC1), Togo\_80 (DC1), Twister6\_81 (DC1), Valary\_81 (DC1), Wizard\_77 (DC1), YungMoney\_79 (DC1),

#### Start 12:

- Found in 2 of 33 ( 6.1% ) of genes in pham
- No Manual Annotations of this start.
- Called 100.0% of time when present
- Phage (with cluster) where this start called: Chilliams\_63 (FC), Rockabye\_69 (FC),

### Summary by clusters:

There are 3 clusters represented in this pham: FC, N, DC1,

Info for manual annotations of cluster DC1:

- Start number 11 was manually annotated 21 times for cluster DC1.

Info for manual annotations of cluster N:

- Start number 8 was manually annotated 5 times for cluster N.

### Gene Information:

Gene: Arri\_80 Start: 52921, Stop: 53367, Start Num: 11

Candidate Starts for Arri\_80:

(1, 52615), (2, 52633), (5, 52726), (Start: 11 @52921 has 21 MA's), (13, 52969), (14, 53017), (22, 53173), (24, 53197),

Gene: Bakery\_85 Start: 55359, Stop: 55733, Start Num: 11

Candidate Starts for Bakery\_85:

(Start: 11 @55359 has 21 MA's), (21, 55536), (22, 55539),

Gene: Barb\_83 Start: 53513, Stop: 53983, Start Num: 11

Candidate Starts for Barb\_83:

(3, 53279), (4, 53306), (6, 53309), (Start: 11 @53513 has 21 MA's), (13, 53561), (16, 53645), (22, 53789),

Gene: Carcharodon\_55 Start: 36177, Stop: 36665, Start Num: 8

Candidate Starts for Carcharodon\_55:

(Start: 8 @36177 has 5 MA's), (9, 36213), (10, 36267), (17, 36420), (18, 36423), (20, 36450), (27, 36561), (28, 36567), (29, 36654),

Gene: CherryCola\_81 Start: 53607, Stop: 53978, Start Num: 11

Candidate Starts for CherryCola\_81:

(7, 53424), (Start: 11 @53607 has 21 MA's), (22, 53784), (24, 53808),

Gene: Chilliams\_63 Start: 29204, Stop: 29557, Start Num: 12

Candidate Starts for Chilliams\_63:

(12, 29204),

Gene: ClamChowder\_83 Start: 53513, Stop: 53983, Start Num: 11

Candidate Starts for ClamChowder\_83:

(3, 53279), (4, 53306), (6, 53309), (Start: 11 @53513 has 21 MA's), (13, 53561), (16, 53645), (22, 53789),

Gene: CoveyB\_81 Start: 53099, Stop: 53470, Start Num: 11

Candidate Starts for CoveyB\_81:

(7, 52916), (Start: 11 @53099 has 21 MA's), (22, 53276), (24, 53300),

Gene: Danyall\_81 Start: 52793, Stop: 53164, Start Num: 11

Candidate Starts for Danyall\_81:

(7, 52610), (Start: 11 @52793 has 21 MA's), (22, 52970), (24, 52994),

Gene: Egi03\_80 Start: 52659, Stop: 53000, Start Num: 11

Candidate Starts for Egi03\_80:

(Start: 11 @52659 has 21 MA's), (21, 52803), (22, 52806),

Gene: Evamon\_80 Start: 53024, Stop: 53377, Start Num: 11

Candidate Starts for Evamon\_80:

(Start: 11 @53024 has 21 MA's), (25, 53219),

Gene: Fugax\_84 Start: 53505, Stop: 53975, Start Num: 11

Candidate Starts for Fugax\_84:

(3, 53271), (4, 53298), (6, 53301), (Start: 11 @53505 has 21 MA's), (13, 53553), (16, 53637), (22, 53781),

Gene: Gezellig\_80 Start: 52852, Stop: 53223, Start Num: 11

Candidate Starts for Gezellig\_80:

(7, 52669), (Start: 11 @52852 has 21 MA's), (22, 53029), (24, 53053),

Gene: Halo3\_78 Start: 53437, Stop: 53808, Start Num: 11

Candidate Starts for Halo3\_78:

(7, 53254), (Start: 11 @53437 has 21 MA's), (22, 53614), (24, 53638),

Gene: KimmyK\_80 Start: 53299, Stop: 53670, Start Num: 11  
Candidate Starts for KimmyK\_80:  
(7, 53116), (Start: 11 @53299 has 21 MA's), (22, 53476), (24, 53500),

Gene: Mutzi\_78 Start: 53560, Stop: 53943, Start Num: 11  
Candidate Starts for Mutzi\_78:  
(Start: 11 @53560 has 21 MA's), (15, 53656), (23, 53764), (28, 53842),

Gene: Parmesanjohn\_55 Start: 36197, Stop: 36685, Start Num: 8  
Candidate Starts for Parmesanjohn\_55:  
(Start: 8 @36197 has 5 MA's), (9, 36233), (10, 36287), (17, 36440), (18, 36443), (20, 36470), (27, 36581), (28, 36587), (29, 36674),

Gene: Phlop\_78 Start: 52902, Stop: 53273, Start Num: 11  
Candidate Starts for Phlop\_78:  
(7, 52719), (Start: 11 @52902 has 21 MA's), (22, 53079), (24, 53103),

Gene: Phloss\_53 Start: 35604, Stop: 36092, Start Num: 8  
Candidate Starts for Phloss\_53:  
(Start: 8 @35604 has 5 MA's), (9, 35640), (10, 35694), (17, 35847), (18, 35850), (20, 35877), (27, 35988), (28, 35994), (29, 36081),

Gene: Portcullis\_81 Start: 52908, Stop: 53279, Start Num: 11  
Candidate Starts for Portcullis\_81:  
(7, 52725), (Start: 11 @52908 has 21 MA's), (22, 53085), (24, 53109),

Gene: PullumCavea\_79 Start: 53079, Stop: 53450, Start Num: 11  
Candidate Starts for PullumCavea\_79:  
(7, 52896), (Start: 11 @53079 has 21 MA's), (22, 53256), (24, 53280),

Gene: Rockabye\_69 Start: 29857, Stop: 30210, Start Num: 12  
Candidate Starts for Rockabye\_69:  
(12, 29857), (26, 30079),

Gene: RogerDodger\_84 Start: 53667, Stop: 54038, Start Num: 11  
Candidate Starts for RogerDodger\_84:  
(7, 53484), (Start: 11 @53667 has 21 MA's), (22, 53844), (24, 53868),

Gene: Salvador\_80 Start: 53022, Stop: 53375, Start Num: 11  
Candidate Starts for Salvador\_80:  
(Start: 11 @53022 has 21 MA's), (25, 53217),

Gene: Schnauzer\_56 Start: 36197, Stop: 36685, Start Num: 8  
Candidate Starts for Schnauzer\_56:  
(Start: 8 @36197 has 5 MA's), (9, 36233), (10, 36287), (17, 36440), (18, 36443), (20, 36470), (27, 36581), (28, 36587), (29, 36674),

Gene: Shinji\_80 Start: 53025, Stop: 53456, Start Num: 11  
Candidate Starts for Shinji\_80:  
(Start: 11 @53025 has 21 MA's), (13, 53073), (18, 53208), (19, 53235), (20, 53238), (24, 53286),

Gene: SmokingBunny\_81 Start: 54018, Stop: 54371, Start Num: 11  
Candidate Starts for SmokingBunny\_81:

(Start: 11 @54018 has 21 MA's), (25, 54213),

Gene: Smurph\_55 Start: 36197, Stop: 36685, Start Num: 8

Candidate Starts for Smurph\_55:

(Start: 8 @36197 has 5 MA's), (9, 36233), (10, 36287), (17, 36440), (18, 36443), (20, 36470), (27, 36581), (28, 36587), (29, 36674),

Gene: Togo\_80 Start: 54018, Stop: 54371, Start Num: 11

Candidate Starts for Togo\_80:

(Start: 11 @54018 has 21 MA's), (25, 54213),

Gene: Twister6\_81 Start: 52367, Stop: 52720, Start Num: 11

Candidate Starts for Twister6\_81:

(Start: 11 @52367 has 21 MA's), (25, 52562),

Gene: Valary\_81 Start: 53764, Stop: 54165, Start Num: 11

Candidate Starts for Valary\_81:

(Start: 11 @53764 has 21 MA's), (13, 53812), (22, 53971), (24, 53995), (25, 54007),

Gene: Wizard\_77 Start: 52852, Stop: 53223, Start Num: 11

Candidate Starts for Wizard\_77:

(7, 52669), (Start: 11 @52852 has 21 MA's), (22, 53029), (24, 53053),

Gene: YungMoney\_79 Start: 54400, Stop: 54783, Start Num: 11

Candidate Starts for YungMoney\_79:

(Start: 11 @54400 has 21 MA's), (15, 54496), (23, 54604), (28, 54682),