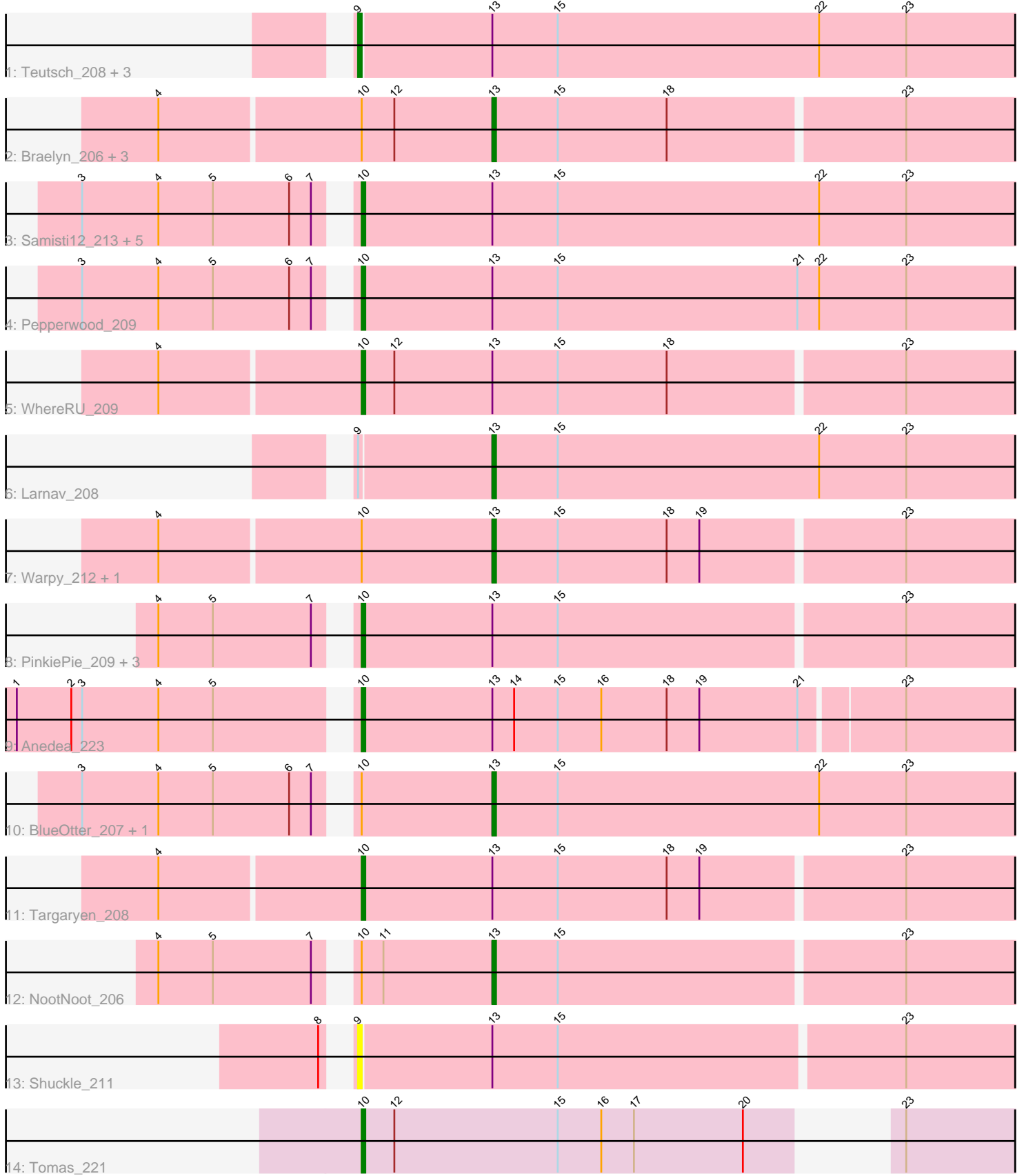


Pham 224793



Note: Tracks are now grouped by subcluster and scaled. Switching in subcluster is indicated by changes in track color. Track scale is now set by default to display the region 30 bp upstream of start 1 to 30 bp downstream of the last possible start. If this default region is judged to be packed too tightly with annotated starts, the track will be further scaled to only show that region of the ORF with annotated starts. This action will be indicated by adding "Zoomed" to the title. For starts, yellow indicates the location of called starts comprised solely of Glimmer/GeneMark auto-annotations, green indicates the location of called starts with at least 1 manual gene annotation.

Pham 224793 Report

This analysis was run 03/28/25 on database version 593.

Pham number 224793 has 30 members, 1 are drafts.

Phages represented in each track:

- Track 1 : Teutsch_208, EGole_212, Leo04_210, Peebs_206
- Track 2 : Braelyn_206, Navo_204, Persimmon_212, Bartholomune_210
- Track 3 : Samisti12_213, Lululemon_206, Watermoore_208, PacManQ_206, Cross_208, Cursive_211
- Track 4 : Pepperwood_209
- Track 5 : WhereRU_209
- Track 6 : Larnav_208
- Track 7 : Warpy_212, Jay2Jay_214
- Track 8 : PinkiePie_209, Liandry_209, Paradiddles_201, Squillium_212
- Track 9 : Anedea_223
- Track 10 : BlueOtter_207, HangryHippo_207
- Track 11 : Targaryen_208
- Track 12 : NootNoot_206
- Track 13 : Shuckle_211
- Track 14 : Tomas_221

Summary of Final Annotations (See graph section above for start numbers):

The start number called the most often in the published annotations is 10, it was called in 15 of the 29 non-draft genes in the pham.

Genes that call this "Most Annotated" start:

- Anedea_223, Cross_208, Cursive_211, Liandry_209, Lululemon_206, PacManQ_206, Paradiddles_201, Pepperwood_209, PinkiePie_209, Samisti12_213, Squillium_212, Targaryen_208, Tomas_221, Watermoore_208, WhereRU_209,

Genes that have the "Most Annotated" start but do not call it:

- Bartholomune_210, BlueOtter_207, Braelyn_206, HangryHippo_207, Jay2Jay_214, Navo_204, NootNoot_206, Persimmon_212, Warpy_212,

Genes that do not have the "Most Annotated" start:

- EGole_212, Larnav_208, Leo04_210, Peebs_206, Shuckle_211, Teutsch_208,

Summary by start number:

Start 9:

- Found in 6 of 30 (20.0%) of genes in pham
- Manual Annotations of this start: 4 of 29
- Called 83.3% of time when present
- Phage (with cluster) where this start called: EGole_212 (BE1), Leo04_210 (BE1), Peebs_206 (BE1), Shuckle_211 (BE1), Teutsch_208 (BE1),

Start 10:

- Found in 24 of 30 (80.0%) of genes in pham
- Manual Annotations of this start: 15 of 29
- Called 62.5% of time when present
- Phage (with cluster) where this start called: Anedea_223 (BE1), Cross_208 (BE1), Cursive_211 (BE1), Liandry_209 (BE1), Lululemon_206 (BE1), PacManQ_206 (BE1), Paradiddles_201 (BE1), Pepperwood_209 (BE1), PinkiePie_209 (BE1), Samisti12_213 (BE1), Squillium_212 (BE1), Targaryen_208 (BE1), Tomas_221 (BE2), Watermoore_208 (BE1), WhereRU_209 (BE1),

Start 13:

- Found in 29 of 30 (96.7%) of genes in pham
- Manual Annotations of this start: 10 of 29
- Called 34.5% of time when present
- Phage (with cluster) where this start called: Bartholomune_210 (BE1), BlueOtter_207 (BE1), Braelyn_206 (BE1), HangryHippo_207 (BE1), Jay2Jay_214 (BE1), Larnav_208 (BE1), Navo_204 (BE1), NootNoot_206 (BE1), Persimmon_212 (BE1), Warpy_212 (BE1),

Summary by clusters:

There are 2 clusters represented in this pham: BE2, BE1,

Info for manual annotations of cluster BE1:

- Start number 9 was manually annotated 4 times for cluster BE1.
- Start number 10 was manually annotated 14 times for cluster BE1.
- Start number 13 was manually annotated 10 times for cluster BE1.

Info for manual annotations of cluster BE2:

- Start number 10 was manually annotated 1 time for cluster BE2.

Gene Information:

Gene: Anedea_223 Start: 108049, Stop: 108228, Start Num: 10

Candidate Starts for Anedea_223:

(1, 107962), (2, 107977), (3, 107980), (4, 108001), (5, 108016), (Start: 10 @108049 has 15 MA's), (Start: 13 @108085 has 10 MA's), (14, 108091), (15, 108103), (16, 108115), (18, 108133), (19, 108142), (21, 108169), (23, 108196),

Gene: Bartholomune_210 Start: 105719, Stop: 105883, Start Num: 13

Candidate Starts for Bartholomune_210:

(4, 105629), (Start: 10 @105683 has 15 MA's), (12, 105692), (Start: 13 @105719 has 10 MA's), (15, 105737), (18, 105767), (23, 105830),

Gene: BlueOtter_207 Start: 105856, Stop: 106023, Start Num: 13

Candidate Starts for BlueOtter_207:

(3, 105751), (4, 105772), (5, 105787), (6, 105808), (7, 105814), (Start: 10 @105820 has 15 MA's), (Start: 13 @105856 has 10 MA's), (15, 105874), (22, 105946), (23, 105970),

Gene: Braelyn_206 Start: 105366, Stop: 105530, Start Num: 13

Candidate Starts for Braelyn_206:

(4, 105276), (Start: 10 @105330 has 15 MA's), (12, 105339), (Start: 13 @105366 has 10 MA's), (15, 105384), (18, 105414), (23, 105477),

Gene: Cross_208 Start: 106465, Stop: 106668, Start Num: 10

Candidate Starts for Cross_208:

(3, 106396), (4, 106417), (5, 106432), (6, 106453), (7, 106459), (Start: 10 @106465 has 15 MA's), (Start: 13 @106501 has 10 MA's), (15, 106519), (22, 106591), (23, 106615),

Gene: Cursive_211 Start: 106149, Stop: 106352, Start Num: 10

Candidate Starts for Cursive_211:

(3, 106080), (4, 106101), (5, 106116), (6, 106137), (7, 106143), (Start: 10 @106149 has 15 MA's), (Start: 13 @106185 has 10 MA's), (15, 106203), (22, 106275), (23, 106299),

Gene: EGole_212 Start: 108162, Stop: 108365, Start Num: 9

Candidate Starts for EGole_212:

(Start: 9 @108162 has 4 MA's), (Start: 13 @108198 has 10 MA's), (15, 108216), (22, 108288), (23, 108312),

Gene: HangryHippo_207 Start: 105856, Stop: 106023, Start Num: 13

Candidate Starts for HangryHippo_207:

(3, 105751), (4, 105772), (5, 105787), (6, 105808), (7, 105814), (Start: 10 @105820 has 15 MA's), (Start: 13 @105856 has 10 MA's), (15, 105874), (22, 105946), (23, 105970),

Gene: Jay2Jay_214 Start: 106812, Stop: 106976, Start Num: 13

Candidate Starts for Jay2Jay_214:

(4, 106722), (Start: 10 @106776 has 15 MA's), (Start: 13 @106812 has 10 MA's), (15, 106830), (18, 106860), (19, 106869), (23, 106923),

Gene: Larnav_208 Start: 106317, Stop: 106484, Start Num: 13

Candidate Starts for Larnav_208:

(Start: 9 @106281 has 4 MA's), (Start: 13 @106317 has 10 MA's), (15, 106335), (22, 106407), (23, 106431),

Gene: Leo04_210 Start: 106846, Stop: 107049, Start Num: 9

Candidate Starts for Leo04_210:

(Start: 9 @106846 has 4 MA's), (Start: 13 @106882 has 10 MA's), (15, 106900), (22, 106972), (23, 106996),

Gene: Liandry_209 Start: 105926, Stop: 106126, Start Num: 10

Candidate Starts for Liandry_209:

(4, 105878), (5, 105893), (7, 105920), (Start: 10 @105926 has 15 MA's), (Start: 13 @105962 has 10 MA's), (15, 105980), (23, 106073),

Gene: Lululemon_206 Start: 105201, Stop: 105404, Start Num: 10

Candidate Starts for Lululemon_206:

(3, 105132), (4, 105153), (5, 105168), (6, 105189), (7, 105195), (Start: 10 @105201 has 15 MA's), (Start: 13 @105237 has 10 MA's), (15, 105255), (22, 105327), (23, 105351),

Gene: Navo_204 Start: 104570, Stop: 104734, Start Num: 13

Candidate Starts for Navo_204:

(4, 104480), (Start: 10 @104534 has 15 MA's), (12, 104543), (Start: 13 @104570 has 10 MA's), (15, 104588), (18, 104618), (23, 104681),

Gene: NootNoot_206 Start: 104774, Stop: 104938, Start Num: 13

Candidate Starts for NootNoot_206:

(4, 104690), (5, 104705), (7, 104732), (Start: 10 @104738 has 15 MA's), (11, 104744), (Start: 13 @104774 has 10 MA's), (15, 104792), (23, 104885),

Gene: PacManQ_206 Start: 105201, Stop: 105404, Start Num: 10

Candidate Starts for PacManQ_206:

(3, 105132), (4, 105153), (5, 105168), (6, 105189), (7, 105195), (Start: 10 @105201 has 15 MA's), (Start: 13 @105237 has 10 MA's), (15, 105255), (22, 105327), (23, 105351),

Gene: Paradiddles_201 Start: 107113, Stop: 107313, Start Num: 10

Candidate Starts for Paradiddles_201:

(4, 107065), (5, 107080), (7, 107107), (Start: 10 @107113 has 15 MA's), (Start: 13 @107149 has 10 MA's), (15, 107167), (23, 107260),

Gene: Peebs_206 Start: 106252, Stop: 106455, Start Num: 9

Candidate Starts for Peebs_206:

(Start: 9 @106252 has 4 MA's), (Start: 13 @106288 has 10 MA's), (15, 106306), (22, 106378), (23, 106402),

Gene: Pepperwood_209 Start: 106487, Stop: 106690, Start Num: 10

Candidate Starts for Pepperwood_209:

(3, 106418), (4, 106439), (5, 106454), (6, 106475), (7, 106481), (Start: 10 @106487 has 15 MA's), (Start: 13 @106523 has 10 MA's), (15, 106541), (21, 106607), (22, 106613), (23, 106637),

Gene: Persimmon_212 Start: 105588, Stop: 105752, Start Num: 13

Candidate Starts for Persimmon_212:

(4, 105498), (Start: 10 @105552 has 15 MA's), (12, 105561), (Start: 13 @105588 has 10 MA's), (15, 105606), (18, 105636), (23, 105699),

Gene: PinkiePie_209 Start: 105926, Stop: 106126, Start Num: 10

Candidate Starts for PinkiePie_209:

(4, 105878), (5, 105893), (7, 105920), (Start: 10 @105926 has 15 MA's), (Start: 13 @105962 has 10 MA's), (15, 105980), (23, 106073),

Gene: Samisti12_213 Start: 108111, Stop: 108314, Start Num: 10

Candidate Starts for Samisti12_213:

(3, 108042), (4, 108063), (5, 108078), (6, 108099), (7, 108105), (Start: 10 @108111 has 15 MA's), (Start: 13 @108147 has 10 MA's), (15, 108165), (22, 108237), (23, 108261),

Gene: Shuckle_211 Start: 106484, Stop: 106684, Start Num: 9

Candidate Starts for Shuckle_211:

(8, 106481), (Start: 9 @106484 has 4 MA's), (Start: 13 @106520 has 10 MA's), (15, 106538), (23, 106631),

Gene: Squillium_212 Start: 105928, Stop: 106128, Start Num: 10
Candidate Starts for Squillium_212:
(4, 105880), (5, 105895), (7, 105922), (Start: 10 @105928 has 15 MA's), (Start: 13 @105964 has 10 MA's), (15, 105982), (23, 106075),

Gene: Targaryen_208 Start: 107305, Stop: 107505, Start Num: 10
Candidate Starts for Targaryen_208:
(4, 107251), (Start: 10 @107305 has 15 MA's), (Start: 13 @107341 has 10 MA's), (15, 107359), (18, 107389), (19, 107398), (23, 107452),

Gene: Teutsch_208 Start: 106940, Stop: 107143, Start Num: 9
Candidate Starts for Teutsch_208:
(Start: 9 @106940 has 4 MA's), (Start: 13 @106976 has 10 MA's), (15, 106994), (22, 107066), (23, 107090),

Gene: Tomas_221 Start: 107946, Stop: 108128, Start Num: 10
Candidate Starts for Tomas_221:
(Start: 10 @107946 has 15 MA's), (12, 107955), (15, 108000), (16, 108012), (17, 108021), (20, 108051), (23, 108069),

Gene: Warpy_212 Start: 106250, Stop: 106414, Start Num: 13
Candidate Starts for Warpy_212:
(4, 106160), (Start: 10 @106214 has 15 MA's), (Start: 13 @106250 has 10 MA's), (15, 106268), (18, 106298), (19, 106307), (23, 106361),

Gene: Watermoore_208 Start: 107463, Stop: 107666, Start Num: 10
Candidate Starts for Watermoore_208:
(3, 107394), (4, 107415), (5, 107430), (6, 107451), (7, 107457), (Start: 10 @107463 has 15 MA's), (Start: 13 @107499 has 10 MA's), (15, 107517), (22, 107589), (23, 107613),

Gene: WhereRU_209 Start: 105731, Stop: 105931, Start Num: 10
Candidate Starts for WhereRU_209:
(4, 105677), (Start: 10 @105731 has 15 MA's), (12, 105740), (Start: 13 @105767 has 10 MA's), (15, 105785), (18, 105815), (23, 105878),